

Ohio

**Department of
Job and Family Services**

**Public Assistance Monthly Statistics Report
CALENDAR YEAR 2011**

<http://jfs.ohio.gov/pams/index.stm>

Data Management and Reporting

Office of Fiscal and Monitoring Services

30 E. Broad Street - 38th Fl.

Columbus, Ohio 43215-3414

**OHIO DEPARTMENT OF JOB AND FAMILY SERVICES
PUBLIC ASSISTANCE MONTHLY STATISTICS
TABLE OF CONTENTS
CALENDAR YEAR 2011**

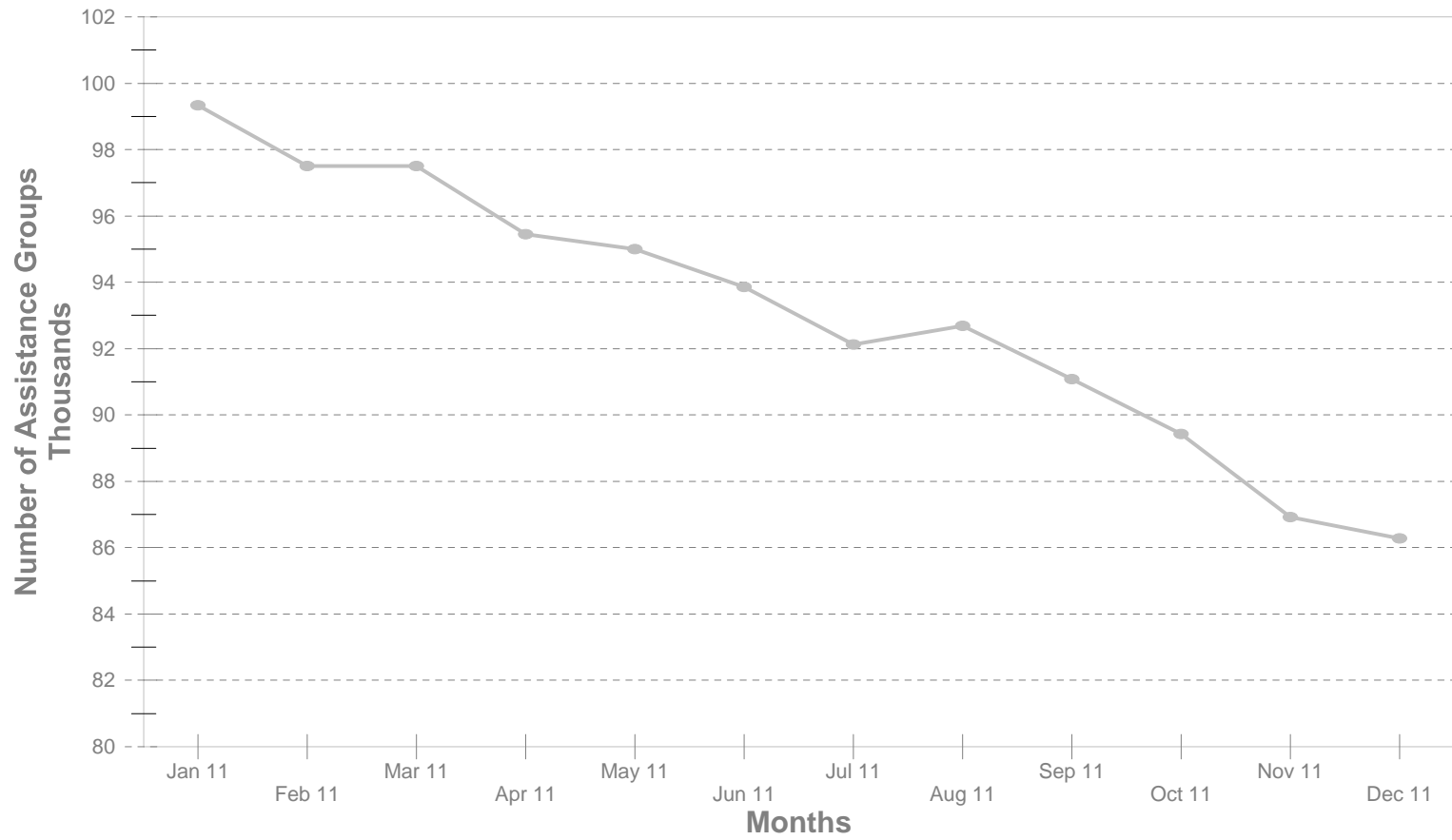
<u>TITLE</u>	<u>PAGE(S)</u>
Statewide Summary of Public Assistance Programs.	1
Table 1S: OWF (TANF) CY 2011	2-16
Table 2S: Foster Care (Title IV-E) Program Summary. CY 2011: Not Available	17-20
Table 3S: Disability Assistance Program Summary.CY 2011	21-26
Table 3S2: DA Payments for Medical Services. CY 2011.....	27
Table 5S: FNS Benefits Program Summary. CY 2011.....	28-33
Table 6S: Medicaid (Title XIX): Eligibles and Expenditures.CY 2011: Not Available.....	34-41
Table 7S: Child Day Care Summary . CY 2011.....	42-45
Table 10S: Percent of Ohio's Population Participating in Selected Public Assistance Programs. CY 2011.....	46-49

All data in the PAMS report is limited to the information available at the time it was constructed. It does not account for backdated or retroactive eligibility or any adjustments made subsequent to its creation.

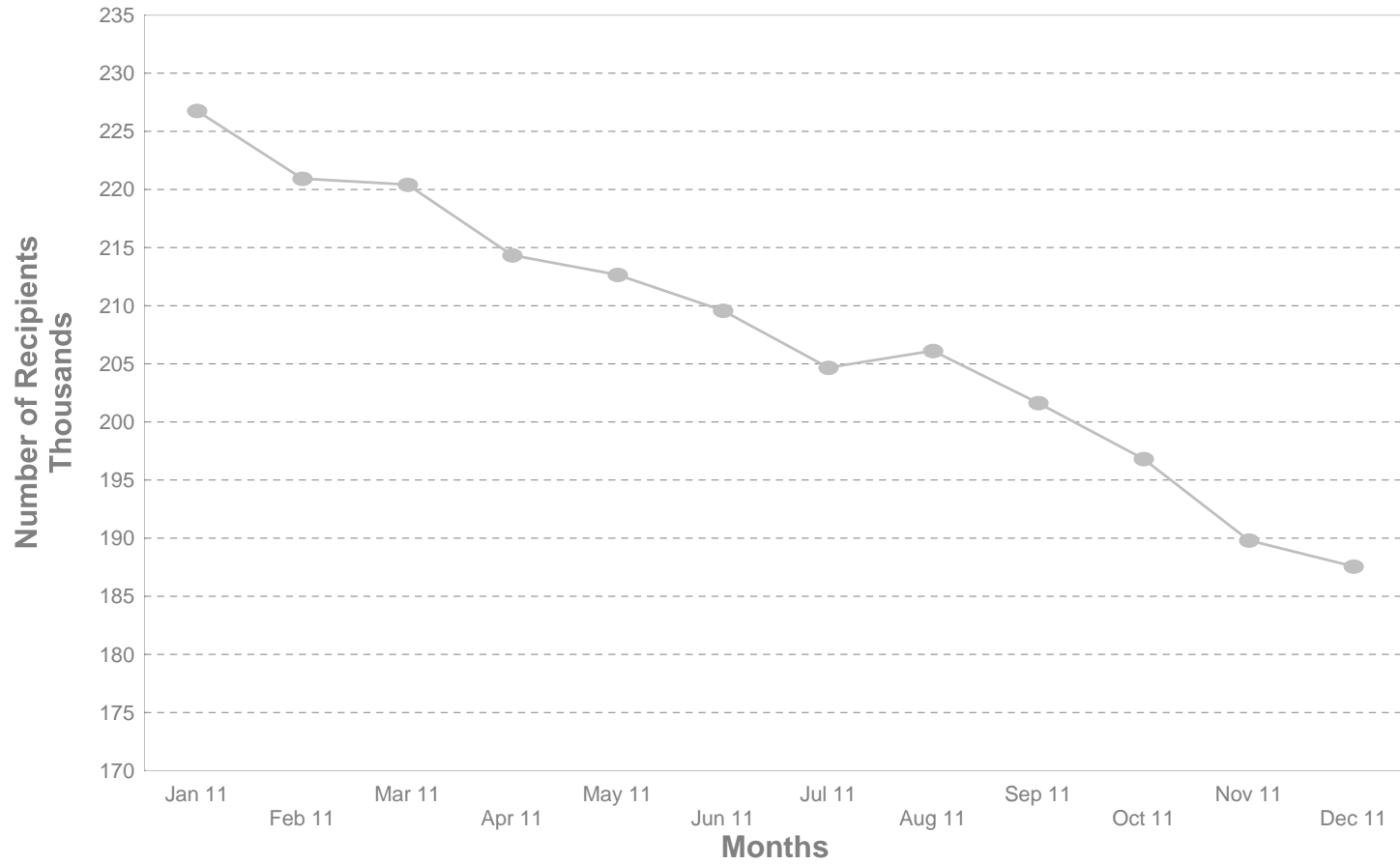
STATEWIDE SUMMARY OF PUBLIC ASSISTANCE PROGRAMS FOR CALENDAR YEAR 2011

	CY 2011	CY 2010	% CHANGE CY 11 / CY10	CY 2009	% CHANGE CY 11 / CY09
OHIO WORKS FIRST (OWF)-COMBINED					
Average Number of Assistance Groups	93,097	100,654	-7.5%	93,485	-0.4%
Average Number of Recipients	\$207,618	\$230,908	-10.1%	\$211,326	-1.8%
Total Payments to Recipients	\$414,818,185.00	\$461,885,616.00	-10.2%	\$410,769,562.00	1.0%
Average Payment Per Recipient Per Month	\$166	\$167	-0.1%	\$162	2.8%
OWF-REGULAR, OWF-INCAPACITATED, & OWF REGULAR VENDOR P					
Average Number of Assistance Groups	86,075	92,478	-6.9%	86,717	-0.7%
Average Number of Recipients	\$180,235	\$198,794	-9.3%	\$184,631	-2.4%
Total Payments to Recipients	\$373,622,853.00	\$413,057,576.00	-9.5%	\$371,821,476.00	0.5%
Average Payment Per Recipient Per Month	\$173	\$173	-0.2%	\$168	2.9%
OWF-UNEMPLOYED AND OWF-UNEMPLOYED VENDOR PAYMENTS					
Average Number of Assistance Groups	7,022	8,176	-14.1%	6,768	3.8%
Average Number of Recipients	\$27,383	\$32,114	-14.7%	\$26,695	2.6%
Total Payments to Recipients	\$41,195,332.00	\$48,828,040.00	-15.6%	\$38,948,086.00	5.8%
Average Payment Per Recipient Per Month	\$125	\$127	-1.1%	\$122	3.1%
TITLE IV-E FOSTER CARE AND ADOPTION ASSISTANCE					
Average Number of Assistance Groups	N.A.	N.A.	N.A.	N.A.	N.A.
Total Payments to Recipients	N.A.	N.A.	N.A.	N.A.	N.A.
Average Payment Per Recipient Per Month	N.A.	N.A.	N.A.	N.A.	N.A.
FOOD AND NUTRITION SERVICE BENEFITS					
Average Number of Assistance Groups	854,883	780,144	9.6%	662,569	29.0%
Average Number of Persons	\$1,787,105	\$1,660,549	7.6%	\$1,435,490	24.5%
Total Coupons Issued	\$3,007,906,174	\$2,811,342,933	7.0%	\$2,367,566,809	27.0%
Average Issuance Per Person Per Month	\$140	\$141	-0.6%	\$137	2.0%
DISABILITY ASSISTANCE					
Average Number of Assistance Groups	13,095	13,378	-2.1%	15,265	-14.2%
Average Number of Recipients	\$13,136	\$13,428	-2.2%	\$15,333	-14.3%
Total Payments to Recipients	\$22,202,466.00	\$24,105,650.00	-7.9%	\$24,469,389.00	-9.3%
Total Medical Assistance Payments	0	0	0.0%	0	0.0%
Medicaid Eligibles	0	0	0.0%	0	0.0%
Medicaid Expenditures	\$0	\$0	0.0%	\$0	0.0%

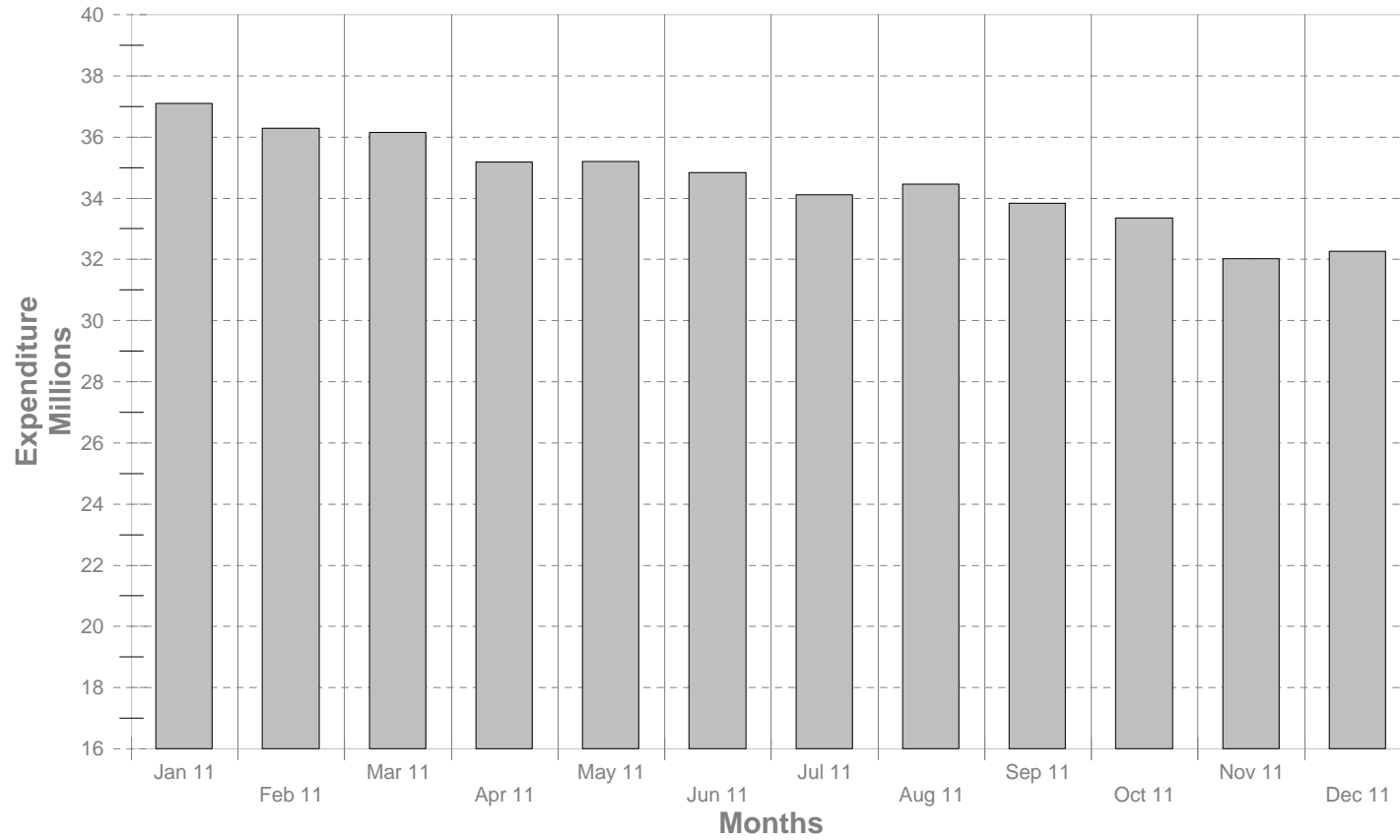
No. of OWF Combined Assistance Groups During The Last 12 Months



Number of OWF Combined Recipients During The Last 12 Months



OWF Combined Net Expenditure During The Last 12 Months



Ohio Department of Job & Family Services

Table 1S

Ohio Work First (OWF) Combined (Excludes OWF Refugee Data)

CALENDAR YEAR 2011

	Average Number of				Total Actual Expenditures		
	Assist. Groups	Recipients	Adults	Children	Gross Amount	Cancelled Amount	Net Amount
Ohio	93,096	207,618	56,926	150,692	\$415,125,229.00	\$307,044.00	\$414,818,185.00
Adams	225	406	51	356	\$895,511.00	\$568.00	\$894,943.00
Allen	450	813	90	723	\$1,810,065.00	\$1,412.00	\$1,808,653.00
Ashland	140	292	71	221	\$612,086.00	\$0.00	\$612,086.00
Ashtabula	837	1,824	497	1,327	\$3,709,720.00	\$2,662.00	\$3,707,058.00
Athens	796	1,962	753	1,209	\$3,701,286.00	\$5,333.00	\$3,695,953.00
Auglaize	93	163	23	140	\$367,568.00	\$259.00	\$367,309.00
Belmont	413	857	232	625	\$1,757,157.00	\$977.00	\$1,756,180.00
Brown	205	374	53	320	\$823,429.00	\$518.00	\$822,911.00
Butler	1,832	3,402	408	2,994	\$7,459,731.00	\$2,396.00	\$7,457,335.00
Carroll	166	402	135	267	\$741,934.00	\$98.00	\$741,836.00
Champaign	285	650	185	465	\$1,246,130.00	\$355.00	\$1,245,775.00
Clark	1,612	3,537	1,033	2,504	\$7,092,857.00	\$5,959.00	\$7,086,898.00
Clermont	705	1,557	367	1,190	\$3,118,271.00	\$580.00	\$3,117,691.00
Clinton	182	368	61	306	\$773,281.00	\$459.00	\$772,822.00
Columbiana	563	1,163	267	896	\$2,388,387.00	\$1,722.00	\$2,386,665.00
Coshocton	365	879	309	571	\$1,616,061.00	\$3,613.00	\$1,612,448.00
Crawford	317	743	227	516	\$1,438,559.00	\$3,868.00	\$1,434,691.00
Cuyahoga	11,442	23,790	5,977	17,812	\$50,365,313.00	\$31,109.00	\$50,334,204.00
Darke	211	517	165	352	\$959,616.00	\$825.00	\$958,791.00
Defiance	150	384	111	273	\$704,733.00	\$343.00	\$704,390.00
Delaware	489	1,190	408	782	\$2,201,511.00	\$4,119.00	\$2,197,392.00
Erie	528	1,276	336	940	\$2,403,374.00	\$964.00	\$2,402,410.00

Ohio Department of Job & Family Services

Table 1S

Ohio Work First (OWF) Combined (Excludes OWF Refugee Data)

CALENDAR YEAR 2011

	Average Number of				Total Actual Expenditures		
	Assist. Groups	Recipients	Adults	Children	Gross Amount	Cancelled Amount	Net Amount
Ohio	93,096	207,618	56,926	150,692	\$415,125,229.00	\$307,044.00	\$414,818,185.00
Fairfield	818	1,850	567	1,283	\$3,574,501.00	\$3,712.00	\$3,570,789.00
Fayette	303	770	246	524	\$1,386,420.00	\$1,357.00	\$1,385,063.00
Franklin	12,755	29,838	8,165	21,673	\$58,368,817.00	\$42,820.00	\$58,325,997.00
Fulton	62	102	1	101	\$228,045.00	\$0.00	\$228,045.00
Gallia	476	1,110	377	732	\$2,110,392.00	\$359.00	\$2,110,033.00
Geauga	103	197	46	151	\$415,277.00	\$405.00	\$414,872.00
Greene	712	1,477	421	1,056	\$3,069,623.00	\$2,563.00	\$3,067,060.00
Guernsey	349	849	283	567	\$1,602,394.00	\$1,150.00	\$1,601,244.00
Hamilton	8,945	20,751	5,098	15,652	\$41,580,565.00	\$18,981.00	\$41,561,584.00
Hancock	132	210	16	194	\$509,807.00	\$457.00	\$509,350.00
Hardin	137	308	72	236	\$609,587.00	\$259.00	\$609,328.00
Harrison	163	399	136	263	\$744,336.00	\$1,825.00	\$742,511.00
Henry	55	97	16	81	\$216,597.00	\$284.00	\$216,313.00
Highland	459	1,188	385	803	\$2,249,668.00	\$355.00	\$2,249,313.00
Hocking	391	951	302	649	\$1,786,433.00	\$995.00	\$1,785,438.00
Holmes	74	180	71	109	\$326,139.00	\$225.00	\$325,914.00
Huron	421	984	258	726	\$1,884,179.00	\$2,479.00	\$1,881,700.00
Jackson	448	939	249	690	\$1,925,909.00	\$945.00	\$1,924,964.00
Jefferson	747	1,689	516	1,173	\$3,299,452.00	\$614.00	\$3,298,838.00
Knox	395	980	342	638	\$1,786,330.00	\$1,749.00	\$1,784,581.00
Lake	773	1,769	517	1,252	\$3,490,474.00	\$4,745.00	\$3,485,729.00
Lawrence	874	1,723	411	1,312	\$3,595,575.00	\$873.00	\$3,594,702.00

Ohio Department of Job & Family Services

Table 1S

Ohio Work First (OWF) Combined (Excludes OWF Refugee Data)

CALENDAR YEAR 2011

	Average Number of				Total Actual Expenditures		
	Assist. Groups	Recipients	Adults	Children	Gross Amount	Cancelled Amount	Net Amount
Ohio	93,096	207,618	56,926	150,692	\$415,125,229.00	\$307,044.00	\$414,818,185.00
Licking	735	1,610	429	1,182	\$3,209,985.00	\$2,398.00	\$3,207,587.00
Logan	347	833	276	557	\$1,569,313.00	\$355.00	\$1,568,958.00
Lorain	2,116	4,529	1,167	3,362	\$9,132,437.00	\$7,391.00	\$9,125,046.00
Lucas	5,384	11,823	3,177	8,646	\$23,773,584.00	\$17,177.00	\$23,756,407.00
Madison	373	911	300	610	\$1,723,723.00	\$0.00	\$1,723,723.00
Mahoning	3,480	8,245	2,594	5,651	\$15,557,361.00	\$10,958.00	\$15,546,403.00
Marion	614	1,425	381	1,043	\$2,761,211.00	\$544.00	\$2,760,667.00
Medina	320	681	187	493	\$1,339,156.00	\$2,559.00	\$1,336,597.00
Meigs	256	553	170	384	\$1,129,117.00	\$259.00	\$1,128,858.00
Mercer	131	313	104	210	\$582,341.00	\$0.00	\$582,341.00
Miami	434	870	196	674	\$1,763,909.00	\$3,748.00	\$1,760,161.00
Monroe	38	82	24	58	\$162,424.00	\$0.00	\$162,424.00
Montgomery	5,838	13,028	3,660	9,367	\$26,781,228.00	\$15,519.00	\$26,765,709.00
Morgan	102	215	54	161	\$435,318.00	\$1,771.00	\$433,547.00
Morrow	213	512	163	349	\$982,194.00	\$2,262.00	\$979,932.00
Muskingum	1,133	2,585	778	1,807	\$4,856,995.00	\$4,653.00	\$4,852,342.00
Noble	35	77	21	56	\$151,685.00	\$0.00	\$151,685.00
Ottawa	183	434	141	293	\$829,688.00	\$2,007.00	\$827,681.00
Paulding	96	240	82	158	\$444,478.00	\$0.00	\$444,478.00
Perry	424	1,004	303	701	\$1,874,971.00	\$434.00	\$1,874,537.00
Pickaway	486	1,148	363	784	\$2,238,760.00	\$1,272.00	\$2,237,488.00
Pike	515	1,261	403	858	\$2,399,745.00	\$614.00	\$2,399,131.00

Ohio Department of Job & Family Services

Table 1S

Ohio Work First (OWF) Combined (Excludes OWF Refugee Data)

CALENDAR YEAR 2011

	Average Number of				Total Actual Expenditures		
	Assist. Groups	Recipients	Adults	Children	Gross Amount	Cancelled Amount	Net Amount
Ohio	93,096	207,618	56,926	150,692	\$415,125,229.00	\$307,044.00	\$414,818,185.00
Portage	664	1,458	440	1,018	\$2,899,512.00	\$1,077.00	\$2,898,435.00
Preble	243	526	144	382	\$1,042,439.00	\$1,715.00	\$1,040,724.00
Putnam	52	132	30	102	\$255,844.00	\$0.00	\$255,844.00
Richland	1,340	3,182	1,017	2,165	\$6,312,939.00	\$5,640.00	\$6,307,299.00
Ross	895	1,991	558	1,433	\$3,903,582.00	\$1,866.00	\$3,901,716.00
Sandusky	238	503	98	404	\$1,008,530.00	\$1,065.00	\$1,007,465.00
Scioto	1,244	2,405	498	1,908	\$5,122,162.00	\$5,414.00	\$5,116,748.00
Seneca	215	458	116	342	\$935,225.00	\$259.00	\$934,966.00
Shelby	228	510	116	394	\$1,020,008.00	\$921.00	\$1,019,087.00
Stark	3,079	6,864	2,036	4,828	\$13,517,170.00	\$13,423.00	\$13,503,747.00
Summit	5,458	12,152	3,765	8,387	\$24,455,496.00	\$22,669.00	\$24,432,827.00
Trumbull	1,973	4,339	1,298	3,042	\$8,553,331.00	\$8,576.00	\$8,544,755.00
Tuscarawas	465	1,038	299	739	\$2,040,717.00	\$3,004.00	\$2,037,713.00
Union	237	600	198	402	\$1,082,871.00	\$0.00	\$1,082,871.00
Van Wert	120	258	66	192	\$516,809.00	\$898.00	\$515,911.00
Vinton	188	430	126	304	\$852,387.00	\$259.00	\$852,128.00
Warren	434	957	213	744	\$1,919,153.00	\$1,373.00	\$1,917,780.00
Washington	131	192	3	189	\$469,633.00	\$355.00	\$469,278.00
Wayne	434	981	294	687	\$1,884,008.00	\$3,220.00	\$1,880,788.00
Williams	210	562	207	355	\$1,020,742.00	\$1,127.00	\$1,019,615.00
Wood	340	672	146	526	\$1,409,933.00	\$4,014.00	\$1,405,919.00
Wyandot	61	124	35	89	\$256,015.00	\$957.00	\$255,058.00

Source: GRP342RA Report from Office of Information Services. Data includes OWF-Regular, OWF-Incapacitated, OWF-Unemployed and Vendor Payments.

Ohio Department of Job & Family Services

Table 1S

Ohio Work First (OWF) Regular

CALENDAR YEAR 2011

	Average Number of				Total Actual Expenditures		
	Assist. Groups	Recipients	Adults	Children	Gross Amount	Cancelled Amount	Net Amount
Ohio	86,075	180,235	44,115	136,120	\$373,891,560.00	\$268,707.00	\$373,622,853.00
Adams	217	375	36	339	\$847,867.00	\$568.00	\$847,299.00
Allen	448	808	87	721	\$1,802,688.00	\$1,412.00	\$1,801,276.00
Ashland	128	247	48	199	\$535,184.00	\$0.00	\$535,184.00
Ashtabula	756	1,504	351	1,153	\$3,196,149.00	\$1,228.00	\$3,194,921.00
Athens	658	1,455	498	957	\$2,915,447.00	\$3,037.00	\$2,912,410.00
Auglaize	91	154	18	136	\$351,367.00	\$259.00	\$351,108.00
Belmont	389	769	186	583	\$1,610,627.00	\$977.00	\$1,609,650.00
Brown	200	350	42	307	\$780,121.00	\$518.00	\$779,603.00
Butler	1,829	3,393	403	2,989	\$7,439,288.00	\$2,396.00	\$7,436,892.00
Carroll	144	312	90	222	\$614,774.00	\$98.00	\$614,676.00
Champaign	267	579	151	428	\$1,140,393.00	\$355.00	\$1,140,038.00
Clark	1,470	2,988	765	2,223	\$6,237,510.00	\$4,629.00	\$6,232,881.00
Clermont	655	1,339	269	1,070	\$2,786,308.00	\$580.00	\$2,785,728.00
Clinton	176	344	50	294	\$736,902.00	\$459.00	\$736,443.00
Columbiana	533	1,044	208	836	\$2,200,214.00	\$1,036.00	\$2,199,178.00
Coshocton	315	683	209	473	\$1,324,833.00	\$3,494.00	\$1,321,339.00
Crawford	287	625	168	458	\$1,257,745.00	\$2,928.00	\$1,254,817.00
Cuyahoga	10,954	21,803	5,049	16,754	\$47,368,094.00	\$31,109.00	\$47,336,985.00
Darke	184	406	112	295	\$807,642.00	\$825.00	\$806,817.00
Defiance	127	298	72	226	\$574,892.00	\$0.00	\$574,892.00
Delaware	419	929	279	650	\$1,822,080.00	\$4,119.00	\$1,817,961.00
Erie	505	1,177	289	888	\$2,269,787.00	\$964.00	\$2,268,823.00

Ohio Department of Job & Family Services

Table 1S

Ohio Work First (OWF) Regular

CALENDAR YEAR 2011

	Average Number of				Total Actual Expenditures		
	Assist. Groups	Recipients	Adults	Children	Gross Amount	Cancelled Amount	Net Amount
Ohio	86,075	180,235	44,115	136,120	\$373,891,560.00	\$268,707.00	\$373,622,853.00
Fairfield	735	1,538	406	1,132	\$3,108,547.00	\$3,712.00	\$3,104,835.00
Fayette	256	576	151	425	\$1,119,637.00	\$1,357.00	\$1,118,280.00
Franklin	11,391	24,491	5,885	18,607	\$50,350,491.00	\$39,384.00	\$50,311,107.00
Fulton	62	102	1	101	\$228,045.00	\$0.00	\$228,045.00
Gallia	401	817	229	588	\$1,672,575.00	\$359.00	\$1,672,216.00
Geauga	100	185	40	145	\$398,537.00	\$405.00	\$398,132.00
Greene	668	1,309	338	971	\$2,807,894.00	\$2,563.00	\$2,805,331.00
Guernsey	307	678	201	477	\$1,344,011.00	\$614.00	\$1,343,397.00
Hamilton	8,589	19,462	4,626	14,836	\$39,573,916.00	\$16,972.00	\$39,556,944.00
Hancock	130	203	14	189	\$495,053.00	\$457.00	\$494,596.00
Hardin	126	267	52	216	\$544,571.00	\$259.00	\$544,312.00
Harrison	142	316	95	221	\$622,705.00	\$1,825.00	\$620,880.00
Henry	54	93	14	80	\$209,907.00	\$284.00	\$209,623.00
Highland	384	881	235	647	\$1,777,210.00	\$355.00	\$1,776,855.00
Hocking	330	702	182	520	\$1,417,089.00	\$995.00	\$1,416,094.00
Holmes	59	126	41	85	\$245,503.00	\$225.00	\$245,278.00
Huron	362	755	171	585	\$1,545,766.00	\$1,736.00	\$1,544,030.00
Jackson	409	789	173	616	\$1,690,807.00	\$945.00	\$1,689,862.00
Jefferson	680	1,415	384	1,031	\$2,887,588.00	\$614.00	\$2,886,974.00
Knox	342	767	237	530	\$1,488,995.00	\$355.00	\$1,488,640.00
Lake	699	1,495	397	1,098	\$3,067,757.00	\$4,311.00	\$3,063,446.00
Lawrence	831	1,558	324	1,234	\$3,350,763.00	\$873.00	\$3,349,890.00

Ohio Department of Job & Family Services

Table 1S

Ohio Work First (OWF) Regular

CALENDAR YEAR 2011

	Average Number of				Total Actual Expenditures		
	Assist. Groups	Recipients	Adults	Children	Gross Amount	Cancelled Amount	Net Amount
Ohio	86,075	180,235	44,115	136,120	\$373,891,560.00	\$268,707.00	\$373,622,853.00
Licking	672	1,355	305	1,050	\$2,841,498.00	\$1,771.00	\$2,839,727.00
Logan	311	686	204	482	\$1,359,123.00	\$355.00	\$1,358,768.00
Lorain	2,036	4,224	1,025	3,199	\$8,661,473.00	\$7,334.00	\$8,654,139.00
Lucas	5,023	10,472	2,534	7,938	\$21,738,929.00	\$16,940.00	\$21,721,989.00
Madison	332	752	221	531	\$1,483,496.00	\$0.00	\$1,483,496.00
Mahoning	3,208	7,148	2,058	5,090	\$13,998,089.00	\$9,777.00	\$13,988,312.00
Marion	552	1,168	262	906	\$2,365,219.00	\$544.00	\$2,364,675.00
Medina	303	610	153	457	\$1,239,345.00	\$2,140.00	\$1,237,205.00
Meigs	230	459	118	342	\$979,001.00	\$259.00	\$978,742.00
Mercer	113	238	68	171	\$478,419.00	\$0.00	\$478,419.00
Miami	414	799	161	639	\$1,662,320.00	\$3,748.00	\$1,658,572.00
Monroe	33	65	15	50	\$137,344.00	\$0.00	\$137,344.00
Montgomery	5,495	11,682	3,034	8,648	\$24,695,396.00	\$10,975.00	\$24,684,421.00
Morgan	94	185	38	147	\$386,691.00	\$1,144.00	\$385,547.00
Morrow	190	415	116	299	\$836,057.00	\$1,828.00	\$834,229.00
Muskingum	998	2,041	509	1,532	\$4,112,775.00	\$4,035.00	\$4,108,740.00
Noble	34	70	18	52	\$141,972.00	\$0.00	\$141,972.00
Ottawa	154	326	87	238	\$668,067.00	\$1,480.00	\$666,587.00
Paulding	84	194	60	134	\$377,013.00	\$0.00	\$377,013.00
Perry	374	810	203	607	\$1,591,384.00	\$0.00	\$1,591,384.00
Pickaway	432	922	257	665	\$1,901,197.00	\$1,272.00	\$1,899,925.00
Pike	432	925	236	689	\$1,888,033.00	\$614.00	\$1,887,419.00

Ohio Department of Job & Family Services

Table 1S

Ohio Work First (OWF) Regular

CALENDAR YEAR 2011

	Average Number of				Total Actual Expenditures		
	Assist. Groups	Recipients	Adults	Children	Gross Amount	Cancelled Amount	Net Amount
Ohio	86,075	180,235	44,115	136,120	\$373,891,560.00	\$268,707.00	\$373,622,853.00
Portage	611	1,259	339	921	\$2,592,453.00	\$1,077.00	\$2,591,376.00
Preble	228	464	114	350	\$941,987.00	\$1,715.00	\$940,272.00
Putnam	44	96	14	82	\$199,097.00	\$0.00	\$199,097.00
Richland	1,193	2,606	725	1,881	\$5,400,790.00	\$5,640.00	\$5,395,150.00
Ross	830	1,739	432	1,307	\$3,536,811.00	\$1,866.00	\$3,534,945.00
Sandusky	220	446	86	360	\$917,485.00	\$1,065.00	\$916,420.00
Scioto	1,189	2,188	390	1,798	\$4,781,507.00	\$4,251.00	\$4,777,256.00
Seneca	200	401	88	313	\$846,778.00	\$259.00	\$846,519.00
Shelby	221	483	102	381	\$978,347.00	\$385.00	\$977,962.00
Stark	2,821	5,899	1,548	4,351	\$12,075,170.00	\$11,215.00	\$12,063,955.00
Summit	5,005	10,394	2,885	7,509	\$21,792,118.00	\$18,875.00	\$21,773,243.00
Trumbull	1,828	3,777	1,012	2,765	\$7,736,040.00	\$7,504.00	\$7,728,536.00
Tuscarawas	401	791	184	606	\$1,668,498.00	\$3,004.00	\$1,665,494.00
Union	200	447	125	322	\$873,630.00	\$0.00	\$873,630.00
Van Wert	111	221	49	172	\$460,462.00	\$898.00	\$459,564.00
Vinton	164	338	79	259	\$702,039.00	\$259.00	\$701,780.00
Warren	401	831	159	673	\$1,729,579.00	\$693.00	\$1,728,886.00
Washington	131	192	3	189	\$469,633.00	\$355.00	\$469,278.00
Wayne	393	822	216	606	\$1,650,711.00	\$1,825.00	\$1,648,886.00
Williams	182	453	152	301	\$863,538.00	\$0.00	\$863,538.00
Wood	326	635	134	501	\$1,343,221.00	\$4,014.00	\$1,339,207.00
Wyandot	55	103	24	79	\$221,546.00	\$0.00	\$221,546.00

Source: GRP342RA Report from Office of Information Services. Data includes OEF-Regular, OWF-Incapacitated and Vendor Payments.

Ohio Department of Job & Family Services

Table 1S

Ohio Work First (OWF) Unemployed

CALENDAR YEAR 2011

	Average Number of				Total Actual Expenditures		
	Assist. Groups	Recipients	Adults	Children	Gross Amount	Cancelled Amount	Net Amount
Ohio	7,022	27,383	12,810	14,573	\$41,233,669.00	\$38,337.00	\$41,195,332.00
Adams	7	31	14	17	\$47,644.00	\$0.00	\$47,644.00
Allen	1	5	3	2	\$7,377.00	\$0.00	\$7,377.00
Ashland	12	46	23	23	\$76,902.00	\$0.00	\$76,902.00
Ashtabula	81	321	146	175	\$513,571.00	\$1,434.00	\$512,137.00
Athens	138	507	255	252	\$785,839.00	\$2,296.00	\$783,543.00
Auglaize	3	9	5	4	\$16,201.00	\$0.00	\$16,201.00
Belmont	24	88	46	42	\$146,530.00	\$0.00	\$146,530.00
Brown	6	24	11	13	\$43,308.00	\$0.00	\$43,308.00
Butler	2	9	4	5	\$20,443.00	\$0.00	\$20,443.00
Carroll	23	90	45	45	\$127,160.00	\$0.00	\$127,160.00
Champaign	18	72	35	37	\$105,737.00	\$0.00	\$105,737.00
Clark	142	549	268	281	\$855,347.00	\$1,330.00	\$854,017.00
Clermont	50	218	98	120	\$331,963.00	\$0.00	\$331,963.00
Clinton	6	24	11	12	\$36,379.00	\$0.00	\$36,379.00
Columbiana	30	119	60	59	\$188,173.00	\$686.00	\$187,487.00
Coshocton	50	196	99	97	\$291,228.00	\$119.00	\$291,109.00
Crawford	30	118	59	58	\$180,814.00	\$940.00	\$179,874.00
Cuyahoga	489	1,986	928	1,058	\$2,997,219.00	\$0.00	\$2,997,219.00
Darke	27	111	53	58	\$151,974.00	\$0.00	\$151,974.00
Defiance	23	87	39	47	\$129,841.00	\$343.00	\$129,498.00
Delaware	70	261	129	132	\$379,431.00	\$0.00	\$379,431.00
Erie	24	99	47	52	\$133,587.00	\$0.00	\$133,587.00

Ohio Department of Job & Family Services

Table 1S

Ohio Work First (OWF) Unemployed

CALENDAR YEAR 2011

	Average Number of				Total Actual Expenditures		
	Assist. Groups	Recipients	Adults	Children	Gross Amount	Cancelled Amount	Net Amount
Ohio	7,022	27,383	12,810	14,573	\$41,233,669.00	\$38,337.00	\$41,195,332.00
Fairfield	83	312	161	151	\$465,954.00	\$0.00	\$465,954.00
Fayette	48	194	94	100	\$266,783.00	\$0.00	\$266,783.00
Franklin	1,364	5,347	2,281	3,066	\$8,018,326.00	\$3,436.00	\$8,014,890.00
Fulton	0	0	0	0	\$0.00	\$0.00	\$0.00
Gallia	75	292	148	144	\$437,817.00	\$0.00	\$437,817.00
Geauga	3	12	5	7	\$16,740.00	\$0.00	\$16,740.00
Greene	44	168	83	85	\$261,729.00	\$0.00	\$261,729.00
Guernsey	43	171	82	90	\$258,383.00	\$536.00	\$257,847.00
Hamilton	356	1,289	473	816	\$2,006,649.00	\$2,009.00	\$2,004,640.00
Hancock	2	7	2	5	\$14,754.00	\$0.00	\$14,754.00
Hardin	10	41	20	20	\$65,016.00	\$0.00	\$65,016.00
Harrison	21	83	42	42	\$121,631.00	\$0.00	\$121,631.00
Henry	1	4	2	2	\$6,690.00	\$0.00	\$6,690.00
Highland	76	306	150	156	\$472,458.00	\$0.00	\$472,458.00
Hocking	61	250	120	130	\$369,344.00	\$0.00	\$369,344.00
Holmes	15	54	30	24	\$80,636.00	\$0.00	\$80,636.00
Huron	59	228	87	142	\$338,413.00	\$743.00	\$337,670.00
Jackson	39	150	76	74	\$235,102.00	\$0.00	\$235,102.00
Jefferson	67	275	132	142	\$411,864.00	\$0.00	\$411,864.00
Knox	53	213	105	108	\$297,335.00	\$1,394.00	\$295,941.00
Lake	74	274	119	154	\$422,717.00	\$434.00	\$422,283.00
Lawrence	44	165	86	78	\$244,812.00	\$0.00	\$244,812.00

Ohio Department of Job & Family Services

Table 1S

Ohio Work First (OWF) Unemployed

CALENDAR YEAR 2011

	Average Number of				Total Actual Expenditures		
	Assist. Groups	Recipients	Adults	Children	Gross Amount	Cancelled Amount	Net Amount
Ohio	7,022	27,383	12,810	14,573	\$41,233,669.00	\$38,337.00	\$41,195,332.00
Licking	62	256	124	132	\$368,487.00	\$627.00	\$367,860.00
Logan	36	147	72	75	\$210,190.00	\$0.00	\$210,190.00
Lorain	81	305	142	163	\$470,964.00	\$57.00	\$470,907.00
Lucas	362	1,351	643	708	\$2,034,655.00	\$237.00	\$2,034,418.00
Madison	41	159	79	80	\$240,227.00	\$0.00	\$240,227.00
Mahoning	272	1,097	536	561	\$1,559,272.00	\$1,181.00	\$1,558,091.00
Marion	61	257	119	138	\$395,992.00	\$0.00	\$395,992.00
Medina	17	71	34	37	\$99,811.00	\$419.00	\$99,392.00
Meigs	26	94	52	42	\$150,116.00	\$0.00	\$150,116.00
Mercer	18	75	36	39	\$103,922.00	\$0.00	\$103,922.00
Miami	20	71	35	36	\$101,589.00	\$0.00	\$101,589.00
Monroe	4	17	9	8	\$25,080.00	\$0.00	\$25,080.00
Montgomery	343	1,346	626	720	\$2,085,832.00	\$4,544.00	\$2,081,288.00
Morgan	8	30	16	14	\$48,627.00	\$627.00	\$48,000.00
Morrow	23	97	47	50	\$146,137.00	\$434.00	\$145,703.00
Muskingum	135	544	268	276	\$744,220.00	\$618.00	\$743,602.00
Noble	2	7	3	4	\$9,713.00	\$0.00	\$9,713.00
Ottawa	29	108	54	55	\$161,621.00	\$527.00	\$161,094.00
Paulding	12	46	22	24	\$67,465.00	\$0.00	\$67,465.00
Perry	50	194	100	94	\$283,587.00	\$434.00	\$283,153.00
Pickaway	54	226	107	119	\$337,563.00	\$0.00	\$337,563.00
Pike	83	336	167	169	\$511,712.00	\$0.00	\$511,712.00

Ohio Department of Job & Family Services

Table 1S

Ohio Work First (OWF) Unemployed

CALENDAR YEAR 2011

	Average Number of				Total Actual Expenditures		
	Assist. Groups	Recipients	Adults	Children	Gross Amount	Cancelled Amount	Net Amount
Ohio	7,022	27,383	12,810	14,573	\$41,233,669.00	\$38,337.00	\$41,195,332.00
Portage	53	199	101	97	\$307,059.00	\$0.00	\$307,059.00
Preble	15	62	30	32	\$100,452.00	\$0.00	\$100,452.00
Putnam	8	36	16	20	\$56,747.00	\$0.00	\$56,747.00
Richland	147	576	292	284	\$912,149.00	\$0.00	\$912,149.00
Ross	64	252	126	126	\$366,771.00	\$0.00	\$366,771.00
Sandusky	17	57	13	44	\$91,045.00	\$0.00	\$91,045.00
Scioto	54	217	108	110	\$340,655.00	\$1,163.00	\$339,492.00
Seneca	15	57	28	29	\$88,447.00	\$0.00	\$88,447.00
Shelby	7	27	14	13	\$41,661.00	\$536.00	\$41,125.00
Stark	258	964	488	477	\$1,442,000.00	\$2,208.00	\$1,439,792.00
Summit	453	1,758	880	877	\$2,663,378.00	\$3,794.00	\$2,659,584.00
Trumbull	144	562	286	277	\$817,291.00	\$1,072.00	\$816,219.00
Tuscarawas	64	247	115	132	\$372,219.00	\$0.00	\$372,219.00
Union	37	153	73	80	\$209,241.00	\$0.00	\$209,241.00
Van Wert	9	37	17	21	\$56,347.00	\$0.00	\$56,347.00
Vinton	24	92	47	45	\$150,348.00	\$0.00	\$150,348.00
Warren	32	126	55	71	\$189,574.00	\$680.00	\$188,894.00
Washington	0	0	0	0	\$0.00	\$0.00	\$0.00
Wayne	40	160	79	81	\$233,297.00	\$1,395.00	\$231,902.00
Williams	28	109	55	54	\$157,204.00	\$1,127.00	\$156,077.00
Wood	14	36	12	25	\$66,712.00	\$0.00	\$66,712.00
Wyandot	5	21	11	10	\$34,469.00	\$957.00	\$33,512.00

Source: GRP342RA Report from Office of Information Services. Data includes OWF-Unemployed and Vendor Payments.

Ohio Department of Job & Family Services

Table 2S: Title IV-E Foster Care and Adoption Assistance

CALENDAR YEAR 2011

	Foster Care								Total Foster Care and	
	Foster Family Homes		Child Care Institutions		Homes & institutions		Adoption Assistance		Adoption Assistance	
	Children	Gross Amount	Children	Gross Amount	Children	Gross Amount	Children	Gross Amount	Children	Gross Amount
Ohio	0	0	0	0	0	0	0	0	0	0
Adams	0	0	0	0	0	0	0	0	0	0
Allen	0	0	0	0	0	0	0	0	0	0
Ashland	0	0	0	0	0	0	0	0	0	0
Ashtabula	0	0	0	0	0	0	0	0	0	0
Athens	0	0	0	0	0	0	0	0	0	0
Auglaize	0	0	0	0	0	0	0	0	0	0
Belmont	0	0	0	0	0	0	0	0	0	0
Brown	0	0	0	0	0	0	0	0	0	0
Butler	0	0	0	0	0	0	0	0	0	0
Carroll	0	0	0	0	0	0	0	0	0	0
Champaign	0	0	0	0	0	0	0	0	0	0
Clark	0	0	0	0	0	0	0	0	0	0
Clermont	0	0	0	0	0	0	0	0	0	0
Clinton	0	0	0	0	0	0	0	0	0	0
Columbiana	0	0	0	0	0	0	0	0	0	0
Coshocton	0	0	0	0	0	0	0	0	0	0
Crawford	0	0	0	0	0	0	0	0	0	0
Cuyahoga	0	0	0	0	0	0	0	0	0	0
Darke	0	0	0	0	0	0	0	0	0	0
Defiance	0	0	0	0	0	0	0	0	0	0
Delaware	0	0	0	0	0	0	0	0	0	0
Erie	0	0	0	0	0	0	0	0	0	0

Ohio Department of Job & Family Services

Table 2S: Title IV-E Foster Care and Adoption Assistance

CALENDAR YEAR 2011

	Foster Care								Total Foster Care and	
	Foster Family Homes		Child Care Institutions		Homes & institutions		Adoption Assistance		Adoption Assistance	
	Children	Gross Amount	Children	Gross Amount	Children	Gross Amount	Children	Gross Amount	Children	Gross Amount
Ohio	0	0	0	0	0	0	0	0	0	0
Fairfield	0	0	0	0	0	0	0	0	0	0
Fayette	0	0	0	0	0	0	0	0	0	0
Franklin	0	0	0	0	0	0	0	0	0	0
Fulton	0	0	0	0	0	0	0	0	0	0
Gallia	0	0	0	0	0	0	0	0	0	0
Geauga	0	0	0	0	0	0	0	0	0	0
Greene	0	0	0	0	0	0	0	0	0	0
Guernsey	0	0	0	0	0	0	0	0	0	0
Hamilton	0	0	0	0	0	0	0	0	0	0
Hancock	0	0	0	0	0	0	0	0	0	0
Hardin	0	0	0	0	0	0	0	0	0	0
Harrison	0	0	0	0	0	0	0	0	0	0
Henry	0	0	0	0	0	0	0	0	0	0
Highland	0	0	0	0	0	0	0	0	0	0
Hocking	0	0	0	0	0	0	0	0	0	0
Holmes	0	0	0	0	0	0	0	0	0	0
Huron	0	0	0	0	0	0	0	0	0	0
Jackson	0	0	0	0	0	0	0	0	0	0
Jefferson	0	0	0	0	0	0	0	0	0	0
Knox	0	0	0	0	0	0	0	0	0	0
Lake	0	0	0	0	0	0	0	0	0	0
Lawrence	0	0	0	0	0	0	0	0	0	0

Ohio Department of Job & Family Services

Table 2S: Title IV-E Foster Care and Adoption Assistance

CALENDAR YEAR 2011

	Foster Care								Total Foster Care and	
	Foster Family Homes		Child Care Institutions		Homes & institutions		Adoption Assistance		Adoption Assistance	
	Children	Gross Amount	Children	Gross Amount	Children	Gross Amount	Children	Gross Amount	Children	Gross Amount
Ohio	0	0	0	0	0	0	0	0	0	0
Licking	0	0	0	0	0	0	0	0	0	0
Logan	0	0	0	0	0	0	0	0	0	0
Lorain	0	0	0	0	0	0	0	0	0	0
Lucas	0	0	0	0	0	0	0	0	0	0
Madison	0	0	0	0	0	0	0	0	0	0
Mahoning	0	0	0	0	0	0	0	0	0	0
Marion	0	0	0	0	0	0	0	0	0	0
Medina	0	0	0	0	0	0	0	0	0	0
Meigs	0	0	0	0	0	0	0	0	0	0
Mercer	0	0	0	0	0	0	0	0	0	0
Miami	0	0	0	0	0	0	0	0	0	0
Monroe	0	0	0	0	0	0	0	0	0	0
Montgomery	0	0	0	0	0	0	0	0	0	0
Morgan	0	0	0	0	0	0	0	0	0	0
Morrow	0	0	0	0	0	0	0	0	0	0
Muskingum	0	0	0	0	0	0	0	0	0	0
Noble	0	0	0	0	0	0	0	0	0	0
Ottawa	0	0	0	0	0	0	0	0	0	0
Paulding	0	0	0	0	0	0	0	0	0	0
Perry	0	0	0	0	0	0	0	0	0	0
Pickaway	0	0	0	0	0	0	0	0	0	0
Pike	0	0	0	0	0	0	0	0	0	0

Ohio Department of Job & Family Services

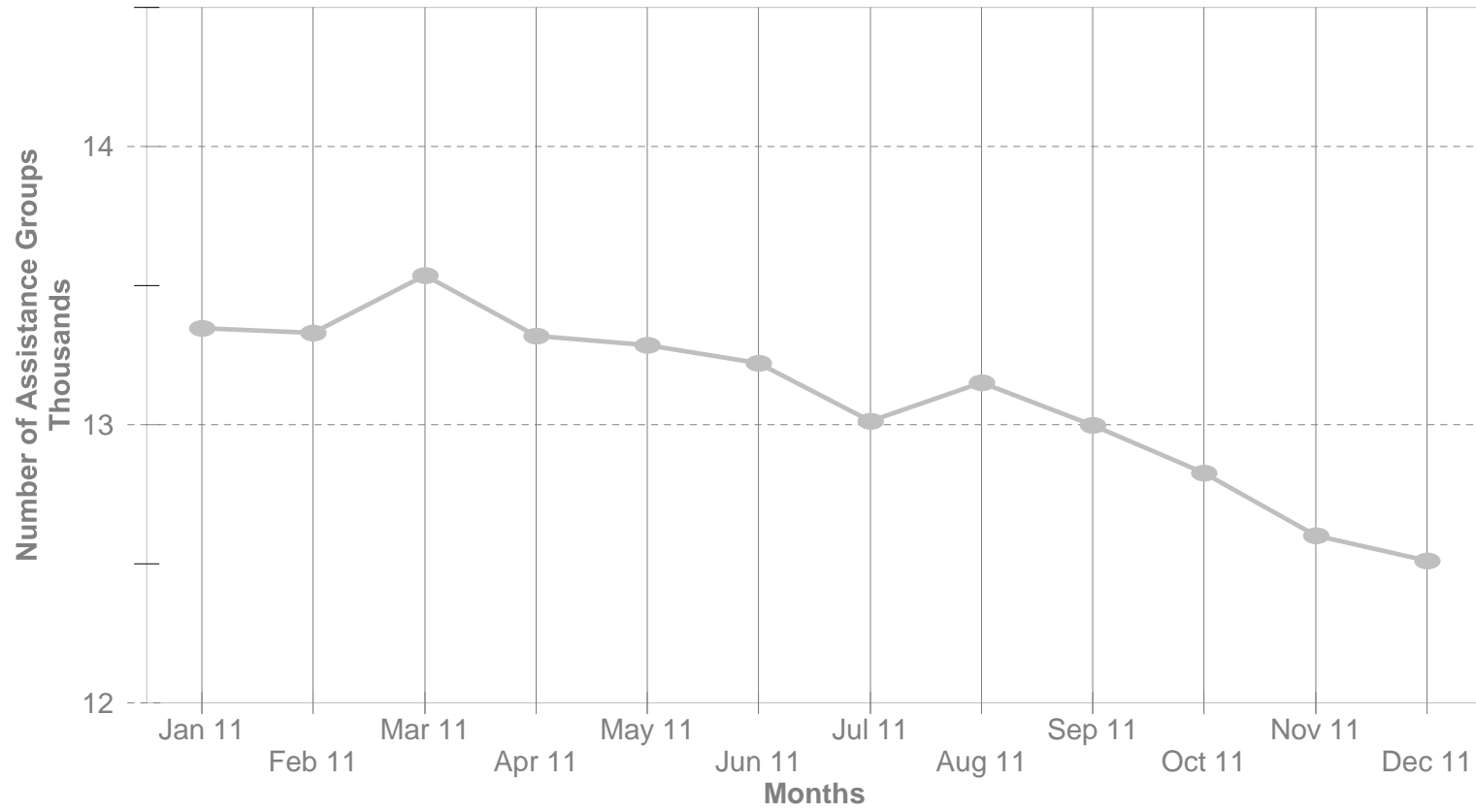
Table 2S: Title IV-E Foster Care and Adoption Assistance

CALENDAR YEAR 2011

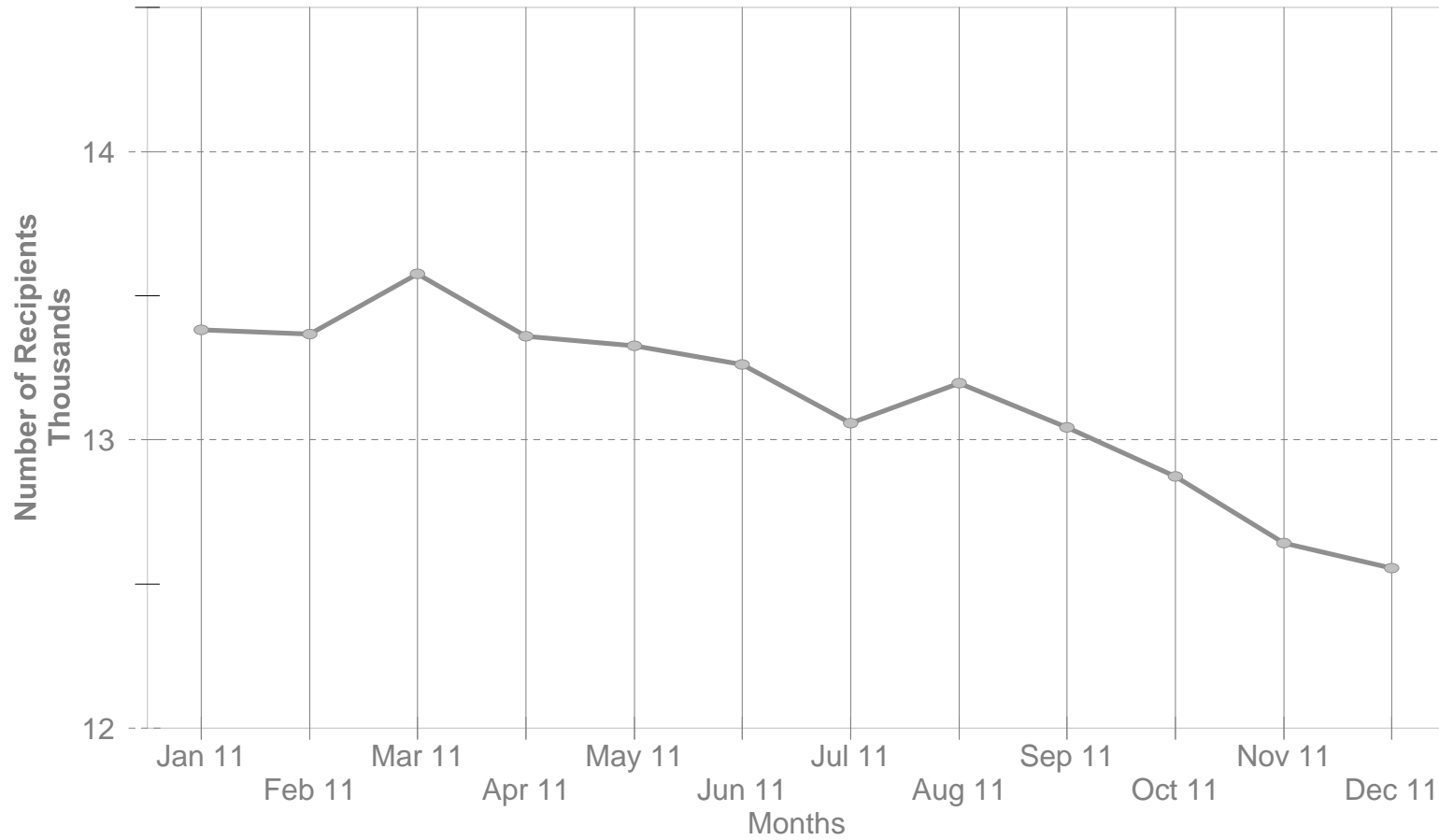
	Foster Care								Total Foster Care and	
	Foster Family Homes		Child Care Institutions		Homes & institutions		Adoption Assistance		Adoption Assistance	
	Children	Gross Amount	Children	Gross Amount	Children	Gross Amount	Children	Gross Amount	Children	Gross Amount
Ohio	0	0	0	0	0	0	0	0	0	0
Portage	0	0	0	0	0	0	0	0	0	0
Preble	0	0	0	0	0	0	0	0	0	0
Putnam	0	0	0	0	0	0	0	0	0	0
Richland	0	0	0	0	0	0	0	0	0	0
Ross	0	0	0	0	0	0	0	0	0	0
Sandusky	0	0	0	0	0	0	0	0	0	0
Scioto	0	0	0	0	0	0	0	0	0	0
Seneca	0	0	0	0	0	0	0	0	0	0
Shelby	0	0	0	0	0	0	0	0	0	0
Stark	0	0	0	0	0	0	0	0	0	0
Summit	0	0	0	0	0	0	0	0	0	0
Trumbull	0	0	0	0	0	0	0	0	0	0
Tuscarawas	0	0	0	0	0	0	0	0	0	0
Union	0	0	0	0	0	0	0	0	0	0
Van Wert	0	0	0	0	0	0	0	0	0	0
Vinton	0	0	0	0	0	0	0	0	0	0
Warren	0	0	0	0	0	0	0	0	0	0
Washington	0	0	0	0	0	0	0	0	0	0
Wayne	0	0	0	0	0	0	0	0	0	0
Williams	0	0	0	0	0	0	0	0	0	0
Wood	0	0	0	0	0	0	0	0	0	0
Wyandot	0	0	0	0	0	0	0	0	0	0

SOURCE: GBS003RB Report from Office of Information Services. Federal funds only.

DA Cash Assistance Group During The Last 12 Months



DA Cash Recipients During Last 12 Months



Ohio Department of Job & Family Services

Table 3S: Disability Assistance (DA)

CALENDAR YEAR 2011

	Cash Assistance							Medical Assistance	
	Average Number of				Total Actual Expenditures			Avg. Unduplicated	Total
	Assist.Groups	Recipients	Adults	Children	Gross Amount	Cancelled Amount	Net Amount	Recipients	Amount Paid
Ohio	13,095	13,136	13,136	0	\$22,217,220	\$14,754	\$22,202,466	0	\$45,142
Adams	66	66	66	0	\$109,627	\$0	\$109,627	0	\$0
Allen	134	135	135	0	\$235,527	\$969	\$234,558	0	\$0
Ashland	28	28	28	0	\$48,915	\$115	\$48,800	0	(\$859)
Ashtabula	271	272	272	0	\$463,475	\$115	\$463,360	0	\$0
Athens	223	224	224	0	\$372,407	\$460	\$371,947	0	\$0
Auglaize	36	36	36	0	\$57,052	\$0	\$57,052	0	\$0
Belmont	135	135	135	0	\$209,536	\$115	\$209,421	0	\$0
Brown	72	72	72	0	\$116,366	\$0	\$116,366	0	\$0
Butler	451	451	451	0	\$785,325	\$115	\$785,210	0	(\$91)
Carroll	24	24	24	0	\$41,684	\$0	\$41,684	0	\$0
Champaign	44	44	44	0	\$72,547	\$0	\$72,547	0	\$0
Clark	280	281	281	0	\$440,558	\$460	\$440,098	0	(\$6)
Clermont	137	137	137	0	\$226,974	\$0	\$226,974	0	\$0
Clinton	107	108	108	0	\$184,481	\$0	\$184,481	0	\$0
Columbiana	135	135	135	0	\$228,824	\$1,035	\$227,789	0	\$0
Coshocton	74	74	74	0	\$118,506	\$230	\$118,276	0	\$0
Crawford	69	69	69	0	\$111,996	\$0	\$111,996	0	\$0
Cuyahoga	545	547	547	0	\$940,138	\$460	\$939,678	0	(\$3,908)
Darke	38	38	38	0	\$67,368	\$0	\$67,368	0	\$0
Defiance	21	21	21	0	\$33,466	\$620	\$32,846	0	\$0
Delaware	40	40	40	0	\$66,822	\$115	\$66,707	0	\$0
Erie	77	77	77	0	\$123,295	\$0	\$123,295	0	\$0

Ohio Department of Job & Family Services

Table 3S: Disability Assistance (DA)

CALENDAR YEAR 2011

	Cash Assistance							Medical Assistance	
	Average Number of				Total Actual Expenditures			Avg. Unduplicated	Total
	Assist.Groups	Recipients	Adults	Children	Gross Amount	Cancelled Amount	Net Amount	Recipients	Amount Paid
Ohio	13,095	13,136	13,136	0	\$22,217,220	\$14,754	\$22,202,466	0	\$45,142
Fairfield	256	258	258	0	\$406,607	\$0	\$406,607	0	\$0
Fayette	51	52	52	0	\$83,883	\$0	\$83,883	0	\$0
Franklin	1,660	1,665	1,665	0	\$2,697,343	\$1,671	\$2,695,672	0	\$0
Fulton	19	19	19	0	\$32,877	\$0	\$32,877	0	\$0
Gallia	49	49	49	0	\$91,383	\$115	\$91,268	0	\$0
Geauga	18	18	18	0	\$27,243	\$551	\$26,692	0	(\$42)
Greene	114	114	114	0	\$194,481	\$0	\$194,481	0	\$0
Guernsey	77	77	77	0	\$135,072	\$0	\$135,072	0	\$0
Hamilton	922	923	923	0	\$1,604,151	\$1,030	\$1,603,121	0	\$0
Hancock	49	49	49	0	\$84,842	\$115	\$84,727	0	\$0
Hardin	34	34	34	0	\$59,896	\$0	\$59,896	0	\$0
Harrison	38	38	38	0	\$56,898	\$0	\$56,898	0	\$0
Henry	18	18	18	0	\$29,375	\$69	\$29,306	0	\$0
Highland	91	91	91	0	\$152,783	\$115	\$152,668	0	\$0
Hocking	60	60	60	0	\$113,491	\$0	\$113,491	0	\$0
Holmes	28	28	28	0	\$44,962	\$0	\$44,962	0	\$0
Huron	62	62	62	0	\$100,227	\$0	\$100,227	0	\$0
Jackson	80	80	80	0	\$143,613	\$0	\$143,613	0	\$0
Jefferson	109	109	109	0	\$191,722	\$115	\$191,607	0	\$0
Knox	88	88	88	0	\$154,359	\$0	\$154,359	0	(\$61)
Lake	140	142	142	0	\$242,122	\$115	\$242,007	0	(\$56)
Lawrence	77	77	77	0	\$115,201	\$0	\$115,201	0	\$0

Ohio Department of Job & Family Services

Table 3S: Disability Assistance (DA)

CALENDAR YEAR 2011

	Cash Assistance							Medical Assistance	
	Average Number of				Total Actual Expenditures			Avg. Unduplicated	Total
	Assist.Groups	Recipients	Adults	Children	Gross Amount	Cancelled Amount	Net Amount	Recipients	Amount Paid
Ohio	13,095	13,136	13,136	0	\$22,217,220	\$14,754	\$22,202,466	0	\$45,142
Licking	244	245	245	0	\$424,387	\$1,035	\$423,352	0	\$0
Logan	100	101	101	0	\$168,141	\$0	\$168,141	0	\$0
Lorain	246	248	248	0	\$469,400	\$874	\$468,526	0	(\$24)
Lucas	664	665	665	0	\$1,152,007	\$885	\$1,151,122	0	\$10
Madison	19	19	19	0	\$30,072	\$0	\$30,072	0	\$0
Mahoning	238	238	238	0	\$422,119	\$0	\$422,119	0	\$0
Marion	125	125	125	0	\$206,076	\$0	\$206,076	0	\$0
Medina	79	80	80	0	\$131,566	\$115	\$131,451	0	\$0
Meigs	57	57	57	0	\$101,142	\$0	\$101,142	0	(\$103)
Mercer	28	28	28	0	\$48,928	\$0	\$48,928	0	\$0
Miami	69	70	70	0	\$113,325	\$0	\$113,325	0	\$0
Monroe	18	18	18	0	\$28,237	\$0	\$28,237	0	\$0
Montgomery	894	896	896	0	\$1,425,819	\$357	\$1,425,462	0	\$0
Morgan	30	30	30	0	\$46,224	\$115	\$46,109	0	\$0
Morrow	61	61	61	0	\$100,093	\$115	\$99,978	0	\$0
Muskingum	338	341	341	0	\$557,144	\$230	\$556,914	0	\$0
Noble	16	16	16	0	\$22,681	\$0	\$22,681	0	\$0
Ottawa	50	51	51	0	\$79,873	\$0	\$79,873	0	\$0
Paulding	35	35	35	0	\$61,337	\$0	\$61,337	0	\$0
Perry	111	111	111	0	\$201,935	\$0	\$201,935	0	\$0
Pickaway	68	68	68	0	\$111,530	\$115	\$111,415	0	\$0
Pike	76	76	76	0	\$125,455	\$0	\$125,455	0	\$0

Ohio Department of Job & Family Services

Table 3S: Disability Assistance (DA)

CALENDAR YEAR 2011

	Cash Assistance							Medical Assistance	
	Average Number of				Total Actual Expenditures			Avg. Unduplicated	Total
	Assist.Groups	Recipients	Adults	Children	Gross Amount	Cancelled Amount	Net Amount	Recipients	Amount Paid
Ohio	13,095	13,136	13,136	0	\$22,217,220	\$14,754	\$22,202,466	0	\$45,142
Portage	68	68	68	0	\$107,711	\$166	\$107,545	0	(\$185)
Preble	51	52	52	0	\$80,934	\$0	\$80,934	0	\$0
Putnam	8	8	8	0	\$13,044	\$0	\$13,044	0	\$0
Richland	194	195	195	0	\$361,489	\$0	\$361,489	0	\$0
Ross	126	126	126	0	\$223,448	\$559	\$222,889	0	\$0
Sandusky	63	63	63	0	\$109,828	\$0	\$109,828	0	\$0
Scioto	240	240	240	0	\$446,060	\$0	\$446,060	0	\$0
Seneca	43	43	43	0	\$69,118	\$0	\$69,118	0	\$0
Shelby	31	32	32	0	\$52,706	\$0	\$52,706	0	\$0
Stark	426	427	427	0	\$757,857	\$376	\$757,481	0	\$0
Summit	402	403	403	0	\$744,397	\$532	\$743,865	0	\$50,467
Trumbull	180	180	180	0	\$311,353	\$0	\$311,353	0	\$0
Tuscarawas	76	76	76	0	\$121,614	\$0	\$121,614	0	\$0
Union	26	26	26	0	\$48,327	\$0	\$48,327	0	\$0
Van Wert	40	40	40	0	\$71,902	\$115	\$71,787	0	\$0
Vinton	77	79	79	0	\$131,295	\$0	\$131,295	0	\$0
Warren	78	79	79	0	\$124,686	\$115	\$124,571	0	\$0
Washington	52	52	52	0	\$86,453	\$115	\$86,338	0	\$0
Wayne	188	189	189	0	\$320,882	\$230	\$320,652	0	\$0
Williams	31	31	31	0	\$51,179	\$0	\$51,179	0	\$0
Wood	68	68	68	0	\$107,331	\$0	\$107,331	0	\$0
Wyandot	21	21	21	0	\$30,695	\$0	\$30,695	0	\$0
Unknown	0	0	0	0	\$0	\$0	\$0	0	\$0

*SOURCE: GRP342RA Report from Office of Information Services and BOMC 9260-R001 Report from Medicaid Management Information Services.

Ohio Department of Job & Family Services

Table 3-S2: DA Payments For Medical Services: Calendar Year 2011 Unavailable

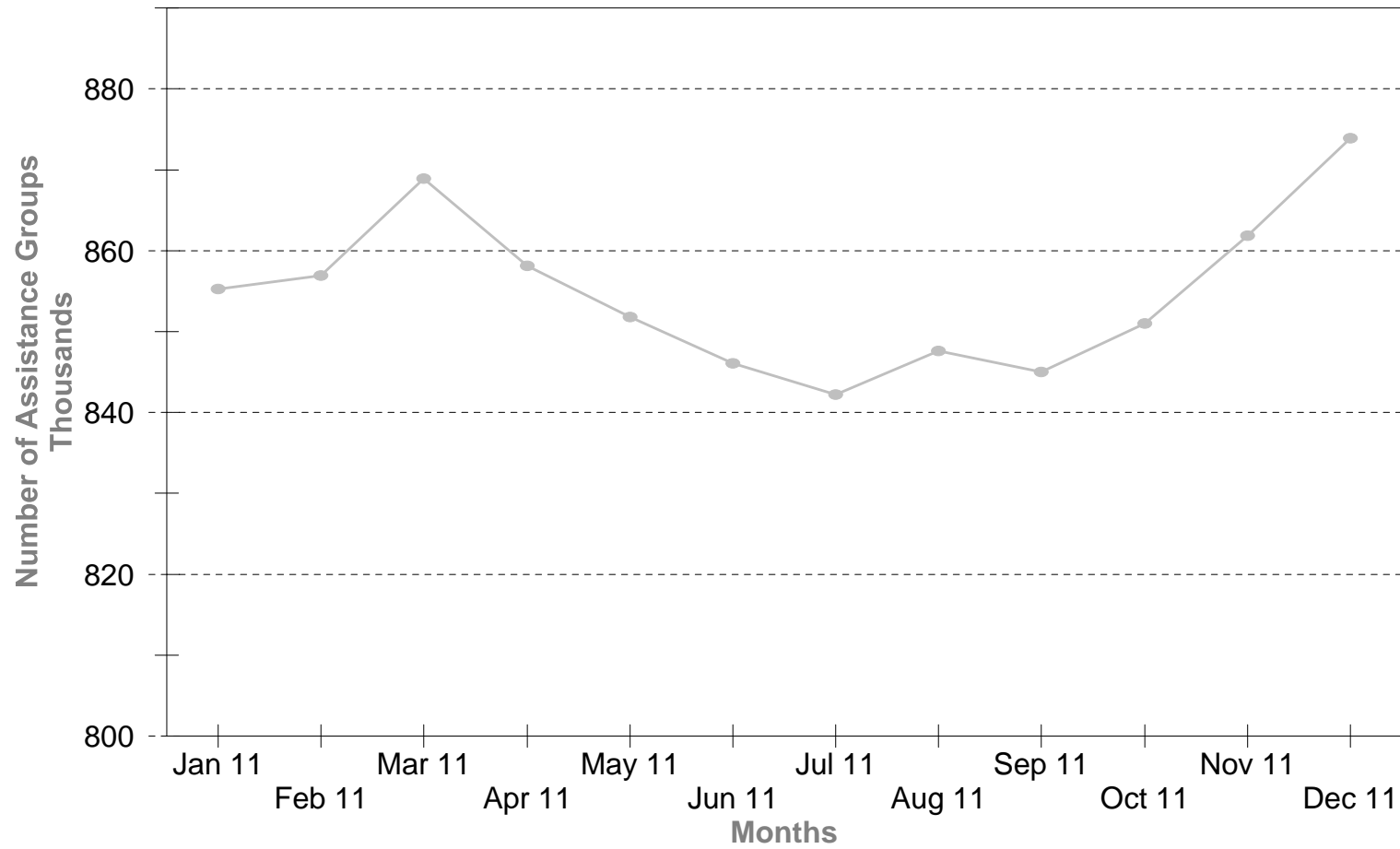
CALENDAR YEAR 2011

Category of services	Total Payments	Average Number of		Percent of Total
		Claim Frequencies	Duplicated Recipients	
Advanced Practical Nurse Services	\$0.00	0	0	0.0%
Ambulance Services	\$0.00	0	0	0.0%
Ambulatory Surgery	\$0.00	0	0	0.0%
Chiropractor Services	\$0.00	0	0	0.0%
Clinic	\$0.00	0	0	0.0%
Dental Services	\$0.00	0	0	0.0%
EPSDT	\$0.00	0	0	0.0%
Family Planning	\$0.00	0	0	0.0%
Federally Qualified Health Center	\$0.00	0	0	0.0%
Health Maintenance Organization	\$0.00	0	0	0.0%
Home Health Services	\$0.00	0	0	0.0%
Independent Laboratory	\$0.00	0	0	0.0%
Independent Hospital	\$0.00	0	0	0.0%
ICF	\$0.00	0	0	0.0%
Midwifery Services	\$0.00	0	0	0.0%
Optometric Services	\$0.00	0	0	0.0%
Outpatient Health Services	\$0.00	0	0	0.0%
Passport Waiver III	\$0.00	0	0	0.0%
Outpatient Hospital General	\$0.00	0	0	0.0%
Physical Therapy Services	\$0.00	0	0	0.0%
Physician Services	\$0.00	0	0	0.0%
Physiological Laboratory	\$0.00	0	0	0.0%
Podiatrists Therapy	\$0.00	0	0	0.0%
Prescribed Drugs	\$0.00	0	0	0.0%
Private Duty Nursing Services	\$0.00	0	0	0.0%
Psychology Services	\$0.00	0	0	0.0%
Rural Health Services	\$0.00	0	0	0.0%
SNF	\$0.00	0	0	0.0%
Supplies and Medical Equipment	\$0.00	0	0	0.0%
Waivered Services	\$0.00	0	0	0.0%
Other	\$0.00	0	0	0.0%
Statewide Total	\$0.00	0	0	0.00%

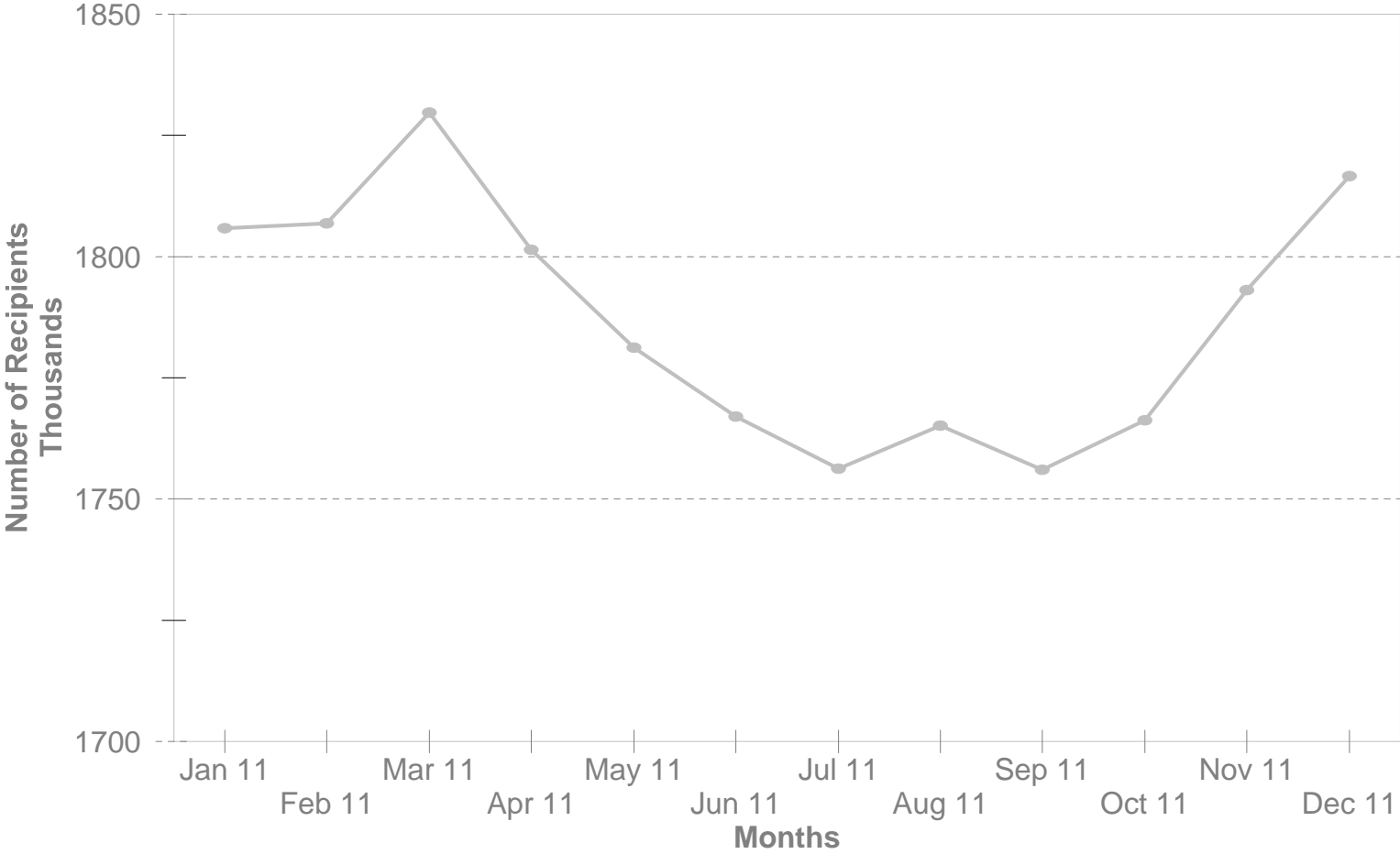
SOURCE: BOMC 9260 Report from Medicaid Management Information Services.

NOTE: Recipients are unduplicated within Category of Services, however, the Statewide Total represents a duplicated count.

Food Stamp Benefits Assistance Groups During Last 12 Months



Food Stamp Benefits Recipients During Last 12 Months



Ohio Department of Job & Family Services

Table 5S: Food and Nutrition Benefits

Calendar Year 2011

	Average Number of Persons					Average Number of Assistance Groups					Total Coupons Issued
	Public Assistance	Non-Public Assistance	Total	Average Issuance	% Change from Previous Year	Public Assistance	Non-Public Assistance	Total	Average Issuance	% Change from Previous Year	
Ohio	317,008	1,470,096	1,787,105	\$140	7.6%	239,627	615,256	854,883	\$293	9.58%	\$3,007,906,174
Adams	1,274	6,058	7,332	\$132	6.4%	952	2,123	3,074	\$314	7.58%	\$11,591,570
Allen	2,527	13,948	16,475	\$138	11.5%	2,151	5,293	7,443	\$306	12.55%	\$27,328,395
Ashland	665	5,390	6,054	\$128	5.6%	540	2,058	2,598	\$298	9.96%	\$9,288,773
Ashtabula	4,018	16,044	20,062	\$137	3.7%	3,083	6,467	9,550	\$288	4.76%	\$33,009,350
Athens	2,608	8,249	10,857	\$138	7.8%	1,990	3,618	5,608	\$267	10.30%	\$17,961,658
Auglaize	516	4,045	4,561	\$129	8.4%	443	1,430	1,873	\$315	9.94%	\$7,085,907
Belmont	2,270	8,255	10,524	\$125	8.0%	1,749	3,127	4,876	\$270	8.57%	\$15,827,500
Brown	1,006	6,756	7,762	\$132	10.4%	795	2,410	3,205	\$320	13.36%	\$12,309,395
Butler	6,241	39,858	46,099	\$144	6.0%	5,115	15,849	20,964	\$316	9.30%	\$79,468,577
Carroll	491	3,628	4,120	\$131	4.1%	379	1,380	1,759	\$307	7.65%	\$6,488,690
Champaign	872	4,401	5,272	\$131	7.9%	652	1,634	2,286	\$301	9.38%	\$8,257,317
Clark	4,476	23,335	27,811	\$141	9.0%	3,606	9,681	13,288	\$296	10.38%	\$47,133,666
Clermont	2,765	18,450	21,214	\$134	8.8%	2,143	6,855	8,998	\$317	10.44%	\$34,233,671
Clinton	982	6,548	7,530	\$135	20.4%	806	2,492	3,299	\$308	20.19%	\$12,181,180
Columbiana	3,114	14,590	17,704	\$132	4.3%	2,515	5,673	8,187	\$286	6.98%	\$28,106,085
Coshocton	991	5,875	6,867	\$131	7.2%	770	2,360	3,130	\$287	9.17%	\$10,764,075
Crawford	1,254	6,809	8,062	\$132	6.1%	983	2,657	3,640	\$291	7.88%	\$12,725,859
Cuyahoga	37,387	230,269	267,656	\$144	9.4%	27,404	112,319	139,723	\$275	11.40%	\$460,910,222
Darke	723	4,717	5,439	\$128	14.5%	528	1,681	2,209	\$314	16.51%	\$8,323,564
Defiance	651	4,596	5,247	\$129	3.7%	497	1,753	2,250	\$301	5.81%	\$8,112,428
Delaware	1,625	6,808	8,433	\$135	10.4%	1,166	2,769	3,935	\$290	12.27%	\$13,672,635
Erie	1,854	10,200	12,054	\$140	12.4%	1,486	4,265	5,751	\$294	15.50%	\$20,309,872

Ohio Department of Job & Family Services

Table 5S: Food and Nutrition Benefits

Calendar Year 2011

	Average Number of Persons					Average Number of Assistance Groups					Total Coupons Issued
	Public Assistance	Non-Public Assistance	Total	Average Issuance	% Change from Previous Year	Public Assistance	Non-Public Assistance	Total	Average Issuance	% Change from Previous Year	
Ohio	317,008	1,470,096	1,787,105	\$140	7.6%	239,627	615,256	854,883	\$293	9.58%	\$3,007,906,174
Fairfield	2,586	16,836	19,422	\$136	10.9%	2,093	6,862	8,956	\$296	14.13%	\$31,794,190
Fayette	997	4,689	5,686	\$134	14.1%	718	1,758	2,475	\$307	16.22%	\$9,122,055
Franklin	36,767	166,641	203,408	\$147	9.0%	27,074	67,121	94,194	\$318	10.47%	\$359,024,742
Fulton	451	3,566	4,017	\$123	4.0%	349	1,235	1,583	\$311	6.25%	\$5,905,943
Gallia	1,796	5,286	7,082	\$134	6.7%	1,297	2,041	3,338	\$284	9.36%	\$11,369,857
Geauga	633	3,416	4,049	\$131	17.4%	512	1,312	1,824	\$292	16.76%	\$6,387,631
Greene	2,388	11,699	14,087	\$138	11.6%	1,828	4,778	6,606	\$295	13.03%	\$23,386,591
Guernsey	1,407	6,732	8,139	\$129	3.7%	1,144	2,655	3,799	\$276	5.67%	\$12,595,293
Hamilton	23,157	106,124	129,281	\$149	5.9%	17,600	46,315	63,915	\$302	7.94%	\$231,646,443
Hancock	1,024	6,787	7,811	\$140	7.8%	861	2,627	3,488	\$314	8.18%	\$13,121,012
Hardin	473	3,375	3,848	\$131	10.7%	391	1,210	1,601	\$314	10.23%	\$6,039,661
Harrison	599	2,205	2,804	\$132	2.6%	459	873	1,333	\$277	5.36%	\$4,426,242
Henry	306	2,465	2,771	\$126	5.8%	237	887	1,125	\$311	9.16%	\$4,197,044
Highland	1,452	7,650	9,102	\$131	5.5%	1,043	2,753	3,796	\$314	8.50%	\$14,303,788
Hocking	1,065	4,942	6,007	\$132	7.9%	794	1,865	2,659	\$298	10.97%	\$9,511,412
Holmes	255	1,819	2,074	\$124	6.5%	192	635	826	\$312	11.25%	\$3,094,759
Huron	1,152	8,079	9,232	\$133	9.4%	878	3,029	3,907	\$315	12.06%	\$14,769,068
Jackson	1,600	5,750	7,350	\$134	1.8%	1,229	2,274	3,503	\$281	3.82%	\$11,824,908
Jefferson	2,894	9,741	12,635	\$134	7.3%	2,182	3,914	6,096	\$277	8.64%	\$20,288,479
Knox	1,341	6,906	8,247	\$135	8.2%	996	2,690	3,686	\$302	10.19%	\$13,341,230
Lake	3,979	17,761	21,739	\$139	9.5%	3,152	7,487	10,639	\$284	11.65%	\$36,236,472
Lawrence	3,617	10,498	14,115	\$131	5.4%	2,772	4,255	7,027	\$264	6.57%	\$22,267,570

Ohio Department of Job & Family Services

Table 5S: Food and Nutrition Benefits

Calendar Year 2011

	Average Number of Persons					Average Number of Assistance Groups					Total Coupons Issued
	Public Assistance	Non-Public Assistance	Total	Average Issuance	% Change from Previous Year	Public Assistance	Non-Public Assistance	Total	Average Issuance	% Change from Previous Year	
Ohio	317,008	1,470,096	1,787,105	\$140	7.6%	239,627	615,256	854,883	\$293	9.58%	\$3,007,906,174
Licking	3,336	18,078	21,415	\$138	6.3%	2,628	7,129	9,757	\$304	8.30%	\$35,548,772
Logan	939	6,618	7,557	\$135	8.7%	704	2,559	3,263	\$313	12.67%	\$12,264,458
Lorain	8,223	33,844	42,067	\$138	6.3%	5,916	13,442	19,358	\$299	7.64%	\$69,492,301
Lucas	23,096	68,201	91,297	\$141	6.4%	16,834	28,771	45,605	\$283	8.67%	\$154,617,561
Madison	870	4,385	5,255	\$137	7.5%	613	1,731	2,344	\$307	9.30%	\$8,622,219
Mahoning	11,339	36,004	47,342	\$138	7.7%	8,309	15,733	24,042	\$271	10.23%	\$78,163,039
Marion	1,826	10,471	12,297	\$136	8.8%	1,467	4,090	5,557	\$301	9.26%	\$20,039,957
Medina	1,627	9,446	11,073	\$133	14.7%	1,309	3,779	5,089	\$290	17.20%	\$17,717,991
Meigs	1,300	4,297	5,597	\$131	4.8%	988	1,630	2,617	\$279	5.61%	\$8,765,742
Mercer	461	2,805	3,266	\$133	7.8%	364	1,041	1,405	\$309	10.85%	\$5,208,790
Miami	1,348	7,900	9,248	\$130	6.5%	1,039	2,955	3,993	\$301	9.29%	\$14,406,568
Monroe	487	1,761	2,248	\$127	1.2%	392	624	1,016	\$281	3.46%	\$3,430,646
Montgomery	18,106	69,619	87,725	\$147	6.4%	13,964	29,455	43,419	\$297	7.90%	\$154,956,465
Morgan	530	2,104	2,635	\$128	4.4%	420	778	1,198	\$281	6.23%	\$4,040,265
Morrow	797	4,540	5,337	\$129	7.8%	593	1,688	2,281	\$302	9.17%	\$8,268,406
Muskingum	3,498	16,536	20,034	\$132	6.4%	2,764	6,887	9,650	\$274	8.43%	\$31,770,103
Noble	283	1,302	1,585	\$125	2.4%	227	492	719	\$276	3.45%	\$2,378,152
Ottawa	685	3,365	4,050	\$129	5.0%	535	1,387	1,922	\$271	8.13%	\$6,261,491
Paulding	385	2,316	2,700	\$129	2.5%	292	866	1,158	\$301	5.23%	\$4,185,588
Perry	1,405	6,638	8,043	\$132	10.6%	1,064	2,542	3,607	\$294	12.31%	\$12,733,041
Pickaway	1,557	6,803	8,359	\$137	4.7%	1,143	2,710	3,853	\$298	6.61%	\$13,777,109
Pike	1,438	6,301	7,738	\$135	7.0%	1,122	2,362	3,483	\$300	9.64%	\$12,548,964

Ohio Department of Job & Family Services

Table 5S: Food and Nutrition Benefits

Calendar Year 2011

	Average Number of Persons					Average Number of Assistance Groups					Total Coupons Issued
	Public Assistance	Non-Public Assistance	Total	Average Issuance	% Change from Previous Year	Public Assistance	Non-Public Assistance	Total	Average Issuance	% Change from Previous Year	
Ohio	317,008	1,470,096	1,787,105	\$140	7.6%	239,627	615,256	854,883	\$293	9.58%	\$3,007,906,174
Portage	2,536	14,869	17,404	\$138	8.5%	2,020	6,283	8,303	\$289	11.61%	\$28,835,288
Preble	858	4,664	5,522	\$134	15.7%	619	1,721	2,340	\$316	19.31%	\$8,886,914
Putnam	282	2,244	2,526	\$130	4.6%	228	799	1,027	\$320	3.92%	\$3,939,834
Richland	3,502	17,121	20,623	\$141	7.3%	2,729	6,951	9,680	\$301	9.48%	\$34,929,479
Ross	2,985	13,976	16,962	\$139	9.1%	2,237	5,570	7,807	\$303	11.58%	\$28,352,769
Sandusky	1,026	6,081	7,107	\$132	4.6%	811	2,297	3,107	\$303	6.02%	\$11,283,960
Scioto	4,668	15,280	19,948	\$130	4.5%	3,676	6,268	9,945	\$261	5.20%	\$31,176,846
Seneca	935	7,826	8,760	\$136	7.9%	756	3,031	3,787	\$315	12.21%	\$14,319,303
Shelby	652	4,590	5,242	\$135	2.2%	496	1,653	2,150	\$329	5.24%	\$8,489,383
Stark	11,041	46,974	58,015	\$140	7.8%	8,152	19,445	27,597	\$295	10.20%	\$97,813,313
Summit	18,974	63,526	82,500	\$146	3.9%	13,801	28,254	42,055	\$286	6.15%	\$144,320,511
Trumbull	6,074	27,599	33,673	\$132	9.4%	4,639	10,757	15,396	\$290	10.87%	\$53,536,514
Tuscarawas	2,143	11,074	13,217	\$129	3.0%	1,734	4,306	6,040	\$283	5.19%	\$20,526,657
Union	673	3,516	4,189	\$130	14.6%	474	1,294	1,768	\$308	15.42%	\$6,534,365
Van Wert	433	2,868	3,302	\$125	7.7%	332	1,044	1,376	\$300	10.30%	\$4,962,443
Vinton	683	3,112	3,795	\$133	3.1%	530	1,156	1,686	\$299	5.59%	\$6,057,230
Warren	1,556	8,967	10,523	\$132	9.9%	1,160	3,249	4,409	\$316	11.26%	\$16,723,906
Washington	1,553	6,440	7,994	\$131	7.5%	1,343	2,509	3,851	\$271	8.12%	\$12,522,979
Wayne	2,253	10,824	13,077	\$134	7.3%	1,755	4,339	6,094	\$288	9.52%	\$21,056,325
Williams	710	4,872	5,582	\$129	10.2%	535	1,859	2,393	\$302	11.05%	\$8,669,940
Wood	1,406	6,954	8,360	\$132	5.7%	1,124	2,724	3,847	\$286	7.97%	\$13,227,304
Wyandot	284	1,595	1,879	\$124	0.9%	240	630	870	\$268	4.96%	\$2,798,504

Source: CRIS-E GRP304RA and GRP 304RC Reports from Office of Information Services. Cuyahoga County data also comes from the GRP 342 RA.

Ohio Department of Job & Family Services

Table 6-SA: Average Number of Medicaid Eligibles Unavailable Due to Major Systems Conversion

CALENDAR YEAR 2011

	Aged Blind and Disabled (ABD)				OWF & Related	Healthy Start	CFC Total	Total Medicaid	Foster Care	Adoption Assistance	Transitional	Nursing Facilities
	Aged	Blind	Disabled	Total								
Ohio	0	0	0	0	0	0	0	0	0	0	0	0
Adams	0	0	0	0	0	0	0	0	0	0	0	0
Allen	0	0	0	0	0	0	0	0	0	0	0	0
Ashland	0	0	0	0	0	0	0	0	0	0	0	0
Ashtabula	0	0	0	0	0	0	0	0	0	0	0	0
Athens	0	0	0	0	0	0	0	0	0	0	0	0
Auglaize	0	0	0	0	0	0	0	0	0	0	0	0
Belmont	0	0	0	0	0	0	0	0	0	0	0	0
Brown	0	0	0	0	0	0	0	0	0	0	0	0
Butler	0	0	0	0	0	0	0	0	0	0	0	0
Carroll	0	0	0	0	0	0	0	0	0	0	0	0
Champaign	0	0	0	0	0	0	0	0	0	0	0	0
Clark	0	0	0	0	0	0	0	0	0	0	0	0
Clermont	0	0	0	0	0	0	0	0	0	0	0	0
Clinton	0	0	0	0	0	0	0	0	0	0	0	0
Columbiana	0	0	0	0	0	0	0	0	0	0	0	0
Coshocton	0	0	0	0	0	0	0	0	0	0	0	0
Crawford	0	0	0	0	0	0	0	0	0	0	0	0
Cuyahoga	0	0	0	0	0	0	0	0	0	0	0	0
Darke	0	0	0	0	0	0	0	0	0	0	0	0
Defiance	0	0	0	0	0	0	0	0	0	0	0	0
Delaware	0	0	0	0	0	0	0	0	0	0	0	0
Erie	0	0	0	0	0	0	0	0	0	0	0	0

Ohio Department of Job & Family Services

Table 6-SA: Average Number of Medicaid Eligibles Unavailable Due to Major Systems Conversion

CALENDAR YEAR 2011

	Aged Blind and Disabled (ABD)				OWF & Related	Healthy Start	CFC Total	Total Medicaid	Foster Care	Adoption Assistance	Transitional	Nursing Facilities
	Aged	Blind	Disabled	Total								
Ohio	0	0	0	0	0	0	0	0	0	0	0	0
Fairfield	0	0	0	0	0	0	0	0	0	0	0	0
Fayette	0	0	0	0	0	0	0	0	0	0	0	0
Franklin	0	0	0	0	0	0	0	0	0	0	0	0
Fulton	0	0	0	0	0	0	0	0	0	0	0	0
Gallia	0	0	0	0	0	0	0	0	0	0	0	0
Geauga	0	0	0	0	0	0	0	0	0	0	0	0
Greene	0	0	0	0	0	0	0	0	0	0	0	0
Guernsey	0	0	0	0	0	0	0	0	0	0	0	0
Hamilton	0	0	0	0	0	0	0	0	0	0	0	0
Hancock	0	0	0	0	0	0	0	0	0	0	0	0
Hardin	0	0	0	0	0	0	0	0	0	0	0	0
Harrison	0	0	0	0	0	0	0	0	0	0	0	0
Henry	0	0	0	0	0	0	0	0	0	0	0	0
Highland	0	0	0	0	0	0	0	0	0	0	0	0
Hocking	0	0	0	0	0	0	0	0	0	0	0	0
Holmes	0	0	0	0	0	0	0	0	0	0	0	0
Huron	0	0	0	0	0	0	0	0	0	0	0	0
Jackson	0	0	0	0	0	0	0	0	0	0	0	0
Jefferson	0	0	0	0	0	0	0	0	0	0	0	0
Knox	0	0	0	0	0	0	0	0	0	0	0	0
Lake	0	0	0	0	0	0	0	0	0	0	0	0
Lawrence	0	0	0	0	0	0	0	0	0	0	0	0

Ohio Department of Job & Family Services

Table 6-SA: Average Number of Medicaid Eligibles Unavailable Due to Major Systems Conversion

CALENDAR YEAR 2011

	Aged Blind and Disabled (ABD)				OWF & Related	Healthy Start	CFC Total	Total Medicaid	Foster Care	Adoption Assistance	Transitional	Nursing Facilities
	Aged	Blind	Disabled	Total								
Ohio	0	0	0	0	0	0	0	0	0	0	0	0
Licking	0	0	0	0	0	0	0	0	0	0	0	0
Logan	0	0	0	0	0	0	0	0	0	0	0	0
Lorain	0	0	0	0	0	0	0	0	0	0	0	0
Lucas	0	0	0	0	0	0	0	0	0	0	0	0
Madison	0	0	0	0	0	0	0	0	0	0	0	0
Mahoning	0	0	0	0	0	0	0	0	0	0	0	0
Marion	0	0	0	0	0	0	0	0	0	0	0	0
Medina	0	0	0	0	0	0	0	0	0	0	0	0
Meigs	0	0	0	0	0	0	0	0	0	0	0	0
Mercer	0	0	0	0	0	0	0	0	0	0	0	0
Miami	0	0	0	0	0	0	0	0	0	0	0	0
Monroe	0	0	0	0	0	0	0	0	0	0	0	0
Montgomery	0	0	0	0	0	0	0	0	0	0	0	0
Morgan	0	0	0	0	0	0	0	0	0	0	0	0
Morrow	0	0	0	0	0	0	0	0	0	0	0	0
Muskingum	0	0	0	0	0	0	0	0	0	0	0	0
Noble	0	0	0	0	0	0	0	0	0	0	0	0
Ottawa	0	0	0	0	0	0	0	0	0	0	0	0
Paulding	0	0	0	0	0	0	0	0	0	0	0	0
Perry	0	0	0	0	0	0	0	0	0	0	0	0
Pickaway	0	0	0	0	0	0	0	0	0	0	0	0
Pike	0	0	0	0	0	0	0	0	0	0	0	0

Ohio Department of Job & Family Services

Table 6-SA: Average Number of Medicaid Eligibles Unavailable Due to Major Systems Conversion

CALENDAR YEAR 2011

	Aged Blind and Disabled (ABD)				OWF & Related	Healthy Start	CFC Total	Total Medicaid	Foster Care	Adoption Assistance	Transitional	Nursing Facilities
	Aged	Blind	Disabled	Total								
Ohio	0	0	0	0	0	0	0	0	0	0	0	0
Portage	0	0	0	0	0	0	0	0	0	0	0	0
Preble	0	0	0	0	0	0	0	0	0	0	0	0
Putnam	0	0	0	0	0	0	0	0	0	0	0	0
Richland	0	0	0	0	0	0	0	0	0	0	0	0
Ross	0	0	0	0	0	0	0	0	0	0	0	0
Sandusky	0	0	0	0	0	0	0	0	0	0	0	0
Scioto	0	0	0	0	0	0	0	0	0	0	0	0
Seneca	0	0	0	0	0	0	0	0	0	0	0	0
Shelby	0	0	0	0	0	0	0	0	0	0	0	0
Stark	0	0	0	0	0	0	0	0	0	0	0	0
Summit	0	0	0	0	0	0	0	0	0	0	0	0
Trumbull	0	0	0	0	0	0	0	0	0	0	0	0
Tuscarawas	0	0	0	0	0	0	0	0	0	0	0	0
Union	0	0	0	0	0	0	0	0	0	0	0	0
Unknown	0	0	0	0	0	0	0	0	0	0	0	0
Van Wert	0	0	0	0	0	0	0	0	0	0	0	0
Vinton	0	0	0	0	0	0	0	0	0	0	0	0
Warren	0	0	0	0	0	0	0	0	0	0	0	0
Washington	0	0	0	0	0	0	0	0	0	0	0	0
Wayne	0	0	0	0	0	0	0	0	0	0	0	0
Williams	0	0	0	0	0	0	0	0	0	0	0	0
Wood	0	0	0	0	0	0	0	0	0	0	0	0
Wyandot	0	0	0	0	0	0	0	0	0	0	0	0

Ohio Department of Job & Family Services

Table 6-SB: Total Medicaid Expenditures Unavailable Due to Major Systems Conversion

CALENDAR YEAR 2011

	Aged Blind and Disabled (ABD)				OWF & Related	Healthy Start	CFC Total	Total Medicaid	Foster Care	Adoption Assistance	Transitional	Nursing Facilities
	Aged	Blind	Disabled	Total								
Ohio	0	0	0	0	0	0	0	0	0	0	0	0
Adams	0	0	0	0	0	0	0	0	0	0	0	0
Allen	0	0	0	0	0	0	0	0	0	0	0	0
Ashland	0	0	0	0	0	0	0	0	0	0	0	0
Ashtabula	0	0	0	0	0	0	0	0	0	0	0	0
Athens	0	0	0	0	0	0	0	0	0	0	0	0
Auglaize	0	0	0	0	0	0	0	0	0	0	0	0
Belmont	0	0	0	0	0	0	0	0	0	0	0	0
Brown	0	0	0	0	0	0	0	0	0	0	0	0
Butler	0	0	0	0	0	0	0	0	0	0	0	0
Carroll	0	0	0	0	0	0	0	0	0	0	0	0
Champaign	0	0	0	0	0	0	0	0	0	0	0	0
Clark	0	0	0	0	0	0	0	0	0	0	0	0
Clermont	0	0	0	0	0	0	0	0	0	0	0	0
Clinton	0	0	0	0	0	0	0	0	0	0	0	0
Columbiana	0	0	0	0	0	0	0	0	0	0	0	0
Coshocton	0	0	0	0	0	0	0	0	0	0	0	0
Crawford	0	0	0	0	0	0	0	0	0	0	0	0
Cuyahoga	0	0	0	0	0	0	0	0	0	0	0	0
Darke	0	0	0	0	0	0	0	0	0	0	0	0
Defiance	0	0	0	0	0	0	0	0	0	0	0	0
Delaware	0	0	0	0	0	0	0	0	0	0	0	0
Erie	0	0	0	0	0	0	0	0	0	0	0	0

Ohio Department of Job & Family Services

Table 6-SB: Total Medicaid Expenditures Unavailable Due to Major Systems Conversion

CALENDAR YEAR 2011

	Aged Blind and Disabled (ABD)				OWF & Related	Healthy Start	CFC Total	Total Medicaid	Foster Care	Adoption Assistance	Transitional	Nursing Facilities
	Aged	Blind	Disabled	Total								
Ohio	0	0	0	0	0	0	0	0	0	0	0	0
Fairfield	0	0	0	0	0	0	0	0	0	0	0	0
Fayette	0	0	0	0	0	0	0	0	0	0	0	0
Franklin	0	0	0	0	0	0	0	0	0	0	0	0
Fulton	0	0	0	0	0	0	0	0	0	0	0	0
Gallia	0	0	0	0	0	0	0	0	0	0	0	0
Geauga	0	0	0	0	0	0	0	0	0	0	0	0
Greene	0	0	0	0	0	0	0	0	0	0	0	0
Guernsey	0	0	0	0	0	0	0	0	0	0	0	0
Hamilton	0	0	0	0	0	0	0	0	0	0	0	0
Hancock	0	0	0	0	0	0	0	0	0	0	0	0
Hardin	0	0	0	0	0	0	0	0	0	0	0	0
Harrison	0	0	0	0	0	0	0	0	0	0	0	0
Henry	0	0	0	0	0	0	0	0	0	0	0	0
Highland	0	0	0	0	0	0	0	0	0	0	0	0
Hocking	0	0	0	0	0	0	0	0	0	0	0	0
Holmes	0	0	0	0	0	0	0	0	0	0	0	0
Huron	0	0	0	0	0	0	0	0	0	0	0	0
Jackson	0	0	0	0	0	0	0	0	0	0	0	0
Jefferson	0	0	0	0	0	0	0	0	0	0	0	0
Knox	0	0	0	0	0	0	0	0	0	0	0	0
Lake	0	0	0	0	0	0	0	0	0	0	0	0
Lawrence	0	0	0	0	0	0	0	0	0	0	0	0

Ohio Department of Job & Family Services

Table 6-SB: Total Medicaid Expenditures Unavailable Due to Major Systems Conversion

CALENDAR YEAR 2011

	Aged Blind and Disabled (ABD)				OWF & Related	Healthy Start	CFC Total	Total Medicaid	Foster Care	Adoption Assistance	Transitional	Nursing Facilities
	Aged	Blind	Disabled	Total								
Ohio	0	0	0	0	0	0	0	0	0	0	0	0
Licking	0	0	0	0	0	0	0	0	0	0	0	0
Logan	0	0	0	0	0	0	0	0	0	0	0	0
Lorain	0	0	0	0	0	0	0	0	0	0	0	0
Lucas	0	0	0	0	0	0	0	0	0	0	0	0
Madison	0	0	0	0	0	0	0	0	0	0	0	0
Mahoning	0	0	0	0	0	0	0	0	0	0	0	0
Marion	0	0	0	0	0	0	0	0	0	0	0	0
Medina	0	0	0	0	0	0	0	0	0	0	0	0
Meigs	0	0	0	0	0	0	0	0	0	0	0	0
Mercer	0	0	0	0	0	0	0	0	0	0	0	0
Miami	0	0	0	0	0	0	0	0	0	0	0	0
Monroe	0	0	0	0	0	0	0	0	0	0	0	0
Montgomery	0	0	0	0	0	0	0	0	0	0	0	0
Morgan	0	0	0	0	0	0	0	0	0	0	0	0
Morrow	0	0	0	0	0	0	0	0	0	0	0	0
Muskingum	0	0	0	0	0	0	0	0	0	0	0	0
Noble	0	0	0	0	0	0	0	0	0	0	0	0
Ottawa	0	0	0	0	0	0	0	0	0	0	0	0
Paulding	0	0	0	0	0	0	0	0	0	0	0	0
Perry	0	0	0	0	0	0	0	0	0	0	0	0
Pickaway	0	0	0	0	0	0	0	0	0	0	0	0
Pike	0	0	0	0	0	0	0	0	0	0	0	0

Ohio Department of Job & Family Services

Table 6-SB: Total Medicaid Expenditures Unavailable Due to Major Systems Conversion

CALENDAR YEAR 2011

	Aged Blind and Disabled (ABD)				OWF & Related	Healthy Start	CFC Total	Total Medicaid	Foster Care	Adoption Assistance	Transitional	Nursing Facilities
	Aged	Blind	Disabled	Total								
Ohio	0	0	0	0	0	0	0	0	0	0	0	0
Portage	0	0	0	0	0	0	0	0	0	0	0	0
Preble	0	0	0	0	0	0	0	0	0	0	0	0
Putnam	0	0	0	0	0	0	0	0	0	0	0	0
Richland	0	0	0	0	0	0	0	0	0	0	0	0
Ross	0	0	0	0	0	0	0	0	0	0	0	0
Sandusky	0	0	0	0	0	0	0	0	0	0	0	0
Scioto	0	0	0	0	0	0	0	0	0	0	0	0
Seneca	0	0	0	0	0	0	0	0	0	0	0	0
Shelby	0	0	0	0	0	0	0	0	0	0	0	0
Stark	0	0	0	0	0	0	0	0	0	0	0	0
Summit	0	0	0	0	0	0	0	0	0	0	0	0
Trumbull	0	0	0	0	0	0	0	0	0	0	0	0
Tuscarawas	0	0	0	0	0	0	0	0	0	0	0	0
Union	0	0	0	0	0	0	0	0	0	0	0	0
Unknown	0	0	0	0	0	0	0	0	0	0	0	0
Van Wert	0	0	0	0	0	0	0	0	0	0	0	0
Vinton	0	0	0	0	0	0	0	0	0	0	0	0
Warren	0	0	0	0	0	0	0	0	0	0	0	0
Washington	0	0	0	0	0	0	0	0	0	0	0	0
Wayne	0	0	0	0	0	0	0	0	0	0	0	0
Williams	0	0	0	0	0	0	0	0	0	0	0	0
Wood	0	0	0	0	0	0	0	0	0	0	0	0
Wyandot	0	0	0	0	0	0	0	0	0	0	0	0

Ohio Department of Job & Family Services

Table 7S: Child Care Preliminary

CALENDAR YEAR 2011

	OWF JOBS, LEAP, and Transitional		Other Child Care		Local Funding		All Program Sources	
	Average Number of Children Served		Average Number of Children Served		Average No. of Children Served		Average Number of Children Served	
	Total	% Of State Total	Total	% Of State Total	Total	% Of State Total	Total	% Of State Total
Ohio	16,064	100.00%	89,963	100.00%	26	100.00%	106,052	100.00%
Adams	7	0.04%	89	0.10%	0	0.00%	96	0.09%
Allen	29	0.18%	724	0.80%	0	0.00%	753	0.71%
Ashland	7	0.04%	147	0.16%	0	0.00%	153	0.14%
Ashtabula	42	0.26%	671	0.75%	0	0.00%	713	0.67%
Athens	31	0.19%	132	0.15%	0	0.00%	163	0.15%
Auglaize	2	0.01%	148	0.16%	0	0.00%	150	0.14%
Belmont	18	0.11%	258	0.29%	0	0.00%	276	0.26%
Brown	7	0.04%	175	0.19%	0	0.00%	182	0.17%
Butler	187	1.16%	2,289	2.54%	0	0.00%	2,476	2.33%
Carroll	2	0.01%	90	0.10%	0	0.00%	92	0.09%
Champaign	25	0.16%	191	0.21%	0	0.00%	216	0.20%
Clark	107	0.67%	987	1.10%	0	0.00%	1,094	1.03%
Clermont	50	0.31%	621	0.69%	0	0.00%	671	0.63%
Clinton	15	0.09%	203	0.23%	0	0.00%	218	0.21%
Columbiana	99	0.62%	864	0.96%	0	0.00%	963	0.91%
Coshocton	25	0.16%	152	0.17%	0	0.00%	178	0.17%
Crawford	4	0.03%	134	0.15%	0	0.00%	138	0.13%
Cuyahoga	2,689	16.74%	15,683	17.43%	0	0.00%	18,372	17.32%
Darke	8	0.05%	81	0.09%	0	0.00%	90	0.08%
Defiance	15	0.09%	206	0.23%	0	0.00%	222	0.21%
Delaware	46	0.28%	506	0.56%	0	0.00%	551	0.52%
Erie	15	0.09%	718	0.80%	0	0.00%	732	0.69%

Ohio Department of Job & Family Services

Table 7S: Child Care Preliminary

CALENDAR YEAR 2011

	OWF JOBS, LEAP, and Transitional		Other Child Care		Local Funding		All Program Sources	
	Average Number of Children Served		Average Number of Children Served		Average No. of Children Served		Average Number of Children Served	
	Total	% Of State Total	Total	% Of State Total	Total	% Of State Total	Total	% Of State Total
Ohio	16,064	100.00%	89,963	100.00%	26	100.00%	106,052	100.00%
Fairfield	107	0.67%	792	0.88%	0	0.00%	899	0.85%
Fayette	31	0.20%	199	0.22%	0	0.00%	231	0.22%
Franklin	3,309	20.60%	14,261	15.85%	26	98.42%	17,596	16.59%
Fulton	0	0.00%	203	0.23%	0	0.00%	203	0.19%
Gallia	9	0.06%	138	0.15%	0	0.00%	147	0.14%
Geauga	8	0.05%	201	0.22%	0	0.00%	209	0.20%
Greene	79	0.49%	794	0.88%	0	0.00%	873	0.82%
Guernsey	22	0.14%	264	0.29%	0	0.00%	286	0.27%
Hamilton	4,267	26.57%	12,229	13.59%	0	0.00%	16,496	15.55%
Hancock	0	0.00%	433	0.48%	0	0.00%	433	0.41%
Hardin	5	0.03%	77	0.09%	0	0.00%	83	0.08%
Harrison	2	0.01%	41	0.05%	0	0.00%	43	0.04%
Henry	1	0.01%	107	0.12%	0	0.00%	108	0.10%
Highland	27	0.17%	154	0.17%	0	0.00%	181	0.17%
Hocking	12	0.07%	108	0.12%	0	0.00%	120	0.11%
Holmes	9	0.06%	90	0.10%	0	0.00%	99	0.09%
Huron	35	0.22%	413	0.46%	0	0.00%	448	0.42%
Jackson	21	0.13%	110	0.12%	0	0.00%	131	0.12%
Jefferson	39	0.25%	322	0.36%	0	0.00%	361	0.34%
Knox	25	0.16%	228	0.25%	0	0.00%	253	0.24%
Lake	107	0.67%	1,120	1.25%	0	0.00%	1,227	1.16%
Lawrence	19	0.12%	370	0.41%	0	0.00%	390	0.37%

Ohio Department of Job & Family Services

Table 7S: Child Care Preliminary

CALENDAR YEAR 2011

	OWF JOBS, LEAP, and Transitional		Other Child Care		Local Funding		All Program Sources	
	Average Number of Children Served		Average Number of Children Served		Average No. of Children Served		Average Number of Children Served	
	Total	% Of State Total	Total	% Of State Total	Total	% Of State Total	Total	% Of State Total
Ohio	16,064	100.00%	89,963	100.00%	26	100.00%	106,052	100.00%
Licking	149	0.93%	1,125	1.25%	0	0.00%	1,274	1.20%
Logan	13	0.08%	79	0.09%	0	0.00%	91	0.09%
Lorain	191	1.19%	2,195	2.44%	0	0.00%	2,386	2.25%
Lucas	1,139	7.09%	4,429	4.92%	0	0.00%	5,568	5.25%
Madison	29	0.18%	141	0.16%	0	0.00%	170	0.16%
Mahoning	413	2.57%	1,867	2.07%	0	0.00%	2,280	2.15%
Marion	19	0.12%	313	0.35%	0	0.00%	332	0.31%
Medina	39	0.24%	810	0.90%	0	0.00%	849	0.80%
Meigs	8	0.05%	90	0.10%	0	0.00%	97	0.09%
Mercer	26	0.16%	142	0.16%	0	0.00%	169	0.16%
Miami	46	0.28%	334	0.37%	0	0.00%	379	0.36%
Monroe	3	0.02%	26	0.03%	0	0.00%	29	0.03%
Montgomery	500	3.11%	4,917	5.47%	0	0.00%	5,417	5.11%
Morgan	9	0.06%	69	0.08%	0	0.00%	78	0.07%
Morrow	7	0.04%	138	0.15%	0	0.00%	145	0.14%
Muskingum	88	0.55%	776	0.86%	0	0.00%	864	0.81%
Noble	4	0.03%	88	0.10%	0	0.00%	93	0.09%
Ottawa	21	0.13%	95	0.11%	0	0.00%	116	0.11%
Paulding	1	0.01%	20	0.02%	0	0.00%	21	0.02%
Perry	30	0.19%	130	0.14%	0	0.00%	160	0.15%
Pickaway	32	0.20%	116	0.13%	0	0.00%	148	0.14%
Pike	20	0.12%	68	0.08%	0	0.00%	88	0.08%

Ohio Department of Job & Family Services

Table 7S: Child Care Preliminary

CALENDAR YEAR 2011

	OWF JOBS, LEAP, and Transitional		Other Child Care		Local Funding		All Program Sources	
	Average Number of Children Served		Average Number of Children Served		Average No. of Children Served		Average Number of Children Served	
	Total	% Of State Total	Total	% Of State Total	Total	% Of State Total	Total	% Of State Total
Ohio	16,064	100.00%	89,963	100.00%	26	100.00%	106,052	100.00%
Portage	78	0.48%	600	0.67%	0	0.00%	678	0.64%
Preble	38	0.24%	190	0.21%	0	0.00%	228	0.21%
Putnam	4	0.02%	105	0.12%	0	0.00%	109	0.10%
Richland	119	0.74%	997	1.11%	0	0.00%	1,116	1.05%
Ross	10	0.06%	378	0.42%	0	0.00%	387	0.37%
Sandusky	38	0.24%	550	0.61%	0	0.00%	589	0.55%
Scioto	61	0.38%	509	0.57%	0	0.00%	570	0.54%
Seneca	4	0.03%	249	0.28%	0	0.00%	253	0.24%
Shelby	7	0.04%	217	0.24%	0	0.00%	224	0.21%
Stark	430	2.68%	2,555	2.84%	0	0.00%	2,985	2.81%
Summit	615	3.83%	3,748	4.17%	0	0.00%	4,363	4.11%
Trumbull	103	0.64%	1,397	1.55%	0	0.00%	1,500	1.41%
Tuscarawas	25	0.15%	434	0.48%	0	0.00%	458	0.43%
Union	20	0.13%	201	0.22%	0	1.27%	221	0.21%
Van Wert	1	0.00%	49	0.05%	0	0.00%	50	0.05%
Vinton	6	0.03%	39	0.04%	0	0.00%	45	0.04%
Warren	59	0.36%	562	0.62%	0	0.00%	621	0.59%
Washington	0	0.00%	251	0.28%	0	0.31%	251	0.24%
Wayne	63	0.39%	567	0.63%	0	0.00%	630	0.59%
Williams	4	0.02%	133	0.15%	0	0.00%	137	0.13%
Wood	20	0.13%	483	0.54%	0	0.00%	503	0.47%
Wyandot	6	0.03%	61	0.07%	0	0.00%	67	0.06%

SOURCE: COGNOS. The above numbers have not been reconciled between the CCIDS/3299 data collection system and 2827 ODJFS fiscal reporting system; therefore they may not be conclusive at this time.

OWF data consist of funding codes: 173,312, 313,314, 326, & 327. Other data consist of funding codes: 320, 321, 322, 323, 324, 325, 328, 329, and 342. Local Funding is from funding code 899.

Ohio Department of Job & Family Services

Table 10S: Percent of Ohio's Population Participating in Selected Public Assistance Programs

CALENDAR YEAR 2011

	Percent All		Disability Assistance		OWF Combined		Foster Care Unavailable		FNS Benefits	
	Estimated Total Population *	Families Below Poverty Level	Average Number of Recipients	Recipients as % of Total Population	Average Number of Recipients	Recipients as % of Total Population	Average Number of Recipients	Recipients as % of Total Population	Average Number of Persons	Recipients as % of Total Population
Ohio	11,536,504	7.80%	13,136	0.11%	93,096	0.81%	0	0.00%	1,787,105	15.49%
Adams	28,550	12.80%	66	0.23%	225	0.79%	0	0.00%	7,332	25.68%
Allen	106,331	9.60%	135	0.13%	450	0.42%	0	0.00%	16,475	15.49%
Ashland	53,139	7.10%	28	0.05%	140	0.26%	0	0.00%	6,054	11.39%
Ashtabula	101,497	9.20%	272	0.27%	837	0.83%	0	0.00%	20,062	19.77%
Athens	64,757	14.00%	224	0.35%	796	1.23%	0	0.00%	10,857	16.77%
Auglaize	45,949	4.90%	36	0.08%	93	0.20%	0	0.00%	4,561	9.93%
Belmont	70,400	11.70%	135	0.19%	413	0.59%	0	0.00%	10,524	14.95%
Brown	44,846	8.80%	72	0.16%	205	0.46%	0	0.00%	7,762	17.31%
Butler	368,130	5.40%	451	0.12%	1,832	0.50%	0	0.00%	46,099	12.52%
Carroll	28,836	8.50%	24	0.08%	166	0.58%	0	0.00%	4,120	14.29%
Champaign	40,097	5.10%	44	0.11%	285	0.71%	0	0.00%	5,272	13.15%
Clark	138,333	7.90%	281	0.20%	1,612	1.17%	0	0.00%	27,811	20.10%
Clermont	197,363	5.30%	137	0.07%	705	0.36%	0	0.00%	21,214	10.75%
Clinton	42,040	6.40%	108	0.26%	182	0.43%	0	0.00%	7,530	17.91%
Columbiana	107,841	9.00%	135	0.13%	563	0.52%	0	0.00%	17,704	16.42%
Coshocton	36,901	7.00%	74	0.20%	365	0.99%	0	0.00%	6,867	18.61%
Crawford	43,784	7.80%	69	0.16%	317	0.72%	0	0.00%	8,062	18.41%
Cuyahoga	1,280,122	10.30%	547	0.04%	11,442	0.89%	0	0.00%	267,656	20.91%
Darke	52,959	6.00%	38	0.07%	211	0.40%	0	0.00%	5,439	10.27%
Defiance	39,037	4.50%	21	0.05%	150	0.38%	0	0.00%	5,247	13.44%
Delaware	174,214	2.90%	40	0.02%	489	0.28%	0	0.00%	8,433	4.84%
Erie	77,079	6.00%	77	0.10%	528	0.69%	0	0.00%	12,054	15.64%

Ohio Department of Job & Family Services

Table 10S: Percent of Ohio's Population Participating in Selected Public Assistance Programs

CALENDAR YEAR 2011

	Percent All		Disability Assistance		OWF Combined		Foster Care Unavailable		FNS Benefits	
	Estimated Total Population *	Families Below Poverty Level	Average Number of Recipients	Recipients as % of Total Population	Average Number of Recipients	Recipients as % of Total Population	Average Number of Recipients	Recipients as % of Total Population	Average Number of Persons	Recipients as % of Total Population
Ohio	11,536,504	7.80%	13,136	0.11%	93,096	0.81%	0	0.00%	1,787,105	15.49%
Fairfield	146,156	4.50%	258	0.18%	818	0.56%	0	0.00%	19,422	13.29%
Fayette	29,030	7.70%	52	0.18%	303	1.04%	0	0.00%	5,686	19.59%
Franklin	1,163,414	8.20%	1,665	0.14%	12,755	1.10%	0	0.00%	203,408	17.48%
Fulton	42,698	4.00%	19	0.04%	62	0.15%	0	0.00%	4,017	9.41%
Gallia	30,934	13.50%	49	0.16%	476	1.54%	0	0.00%	7,082	22.89%
Geauga	93,389	2.80%	18	0.02%	103	0.11%	0	0.00%	4,049	4.34%
Greene	161,573	5.20%	114	0.07%	712	0.44%	0	0.00%	14,087	8.72%
Guernsey	40,087	12.90%	77	0.19%	349	0.87%	0	0.00%	8,139	20.30%
Hamilton	802,374	8.80%	923	0.11%	8,945	1.11%	0	0.00%	129,281	16.11%
Hancock	74,782	5.20%	49	0.07%	132	0.18%	0	0.00%	7,811	10.44%
Hardin	32,058	8.90%	34	0.11%	137	0.43%	0	0.00%	3,848	12.00%
Harrison	15,864	11.00%	38	0.24%	163	1.03%	0	0.00%	2,804	17.67%
Henry	28,215	5.30%	18	0.06%	55	0.19%	0	0.00%	2,771	9.82%
Highland	43,589	9.00%	91	0.21%	459	1.05%	0	0.00%	9,102	20.88%
Hocking	29,380	10.30%	60	0.21%	391	1.33%	0	0.00%	6,007	20.45%
Holmes	42,366	10.50%	28	0.07%	74	0.17%	0	0.00%	2,074	4.90%
Huron	59,626	6.50%	62	0.10%	421	0.71%	0	0.00%	9,232	15.48%
Jackson	33,225	13.60%	80	0.24%	448	1.35%	0	0.00%	7,350	22.12%
Jefferson	69,709	11.40%	109	0.16%	747	1.07%	0	0.00%	12,635	18.12%
Knox	60,921	7.40%	88	0.14%	395	0.65%	0	0.00%	8,247	13.54%
Lake	230,041	3.50%	142	0.06%	773	0.34%	0	0.00%	21,739	9.45%
Lawrence	62,450	15.10%	77	0.12%	874	1.40%	0	0.00%	14,115	22.60%

Ohio Department of Job & Family Services

Table 10S: Percent of Ohio's Population Participating in Selected Public Assistance Programs

CALENDAR YEAR 2011

	Percent All		Disability Assistance		OWF Combined		Foster Care Unavailable		FNS Benefits	
	Estimated Total Population *	Families Below Poverty Level	Average Number of Recipients	Recipients as % of Total Population	Average Number of Recipients	Recipients as % of Total Population	Average Number of Recipients	Recipients as % of Total Population	Average Number of Persons	Recipients as % of Total Population
Ohio	11,536,504	7.80%	13,136	0.11%	93,096	0.81%	0	0.00%	1,787,105	15.49%
Licking	166,492	5.50%	245	0.15%	735	0.44%	0	0.00%	21,415	12.86%
Logan	45,858	7.10%	101	0.22%	347	0.76%	0	0.00%	7,557	16.48%
Lorain	301,356	6.70%	248	0.08%	2,116	0.70%	0	0.00%	42,067	13.96%
Lucas	441,815	10.70%	665	0.15%	5,384	1.22%	0	0.00%	91,297	20.66%
Madison	43,435	6.20%	19	0.04%	373	0.86%	0	0.00%	5,255	12.10%
Mahoning	238,823	9.60%	238	0.10%	3,480	1.46%	0	0.00%	47,342	19.82%
Marion	66,501	7.40%	125	0.19%	614	0.92%	0	0.00%	12,297	18.49%
Medina	172,332	3.50%	80	0.05%	320	0.19%	0	0.00%	11,073	6.43%
Meigs	23,770	14.30%	57	0.24%	256	1.08%	0	0.00%	5,597	23.55%
Mercer	40,814	4.60%	28	0.07%	131	0.32%	0	0.00%	3,266	8.00%
Miami	102,506	5.10%	70	0.07%	434	0.42%	0	0.00%	9,248	9.02%
Monroe	14,642	11.00%	18	0.12%	38	0.26%	0	0.00%	2,248	15.35%
Montgomery	535,153	8.30%	896	0.17%	5,838	1.09%	0	0.00%	87,725	16.39%
Morgan	15,054	15.70%	30	0.20%	102	0.68%	0	0.00%	2,635	17.50%
Morrow	34,827	6.60%	61	0.18%	213	0.61%	0	0.00%	5,337	15.33%
Muskingum	86,074	9.90%	341	0.40%	1,133	1.32%	0	0.00%	20,034	23.27%
Noble	14,645	8.30%	16	0.11%	35	0.24%	0	0.00%	1,585	10.83%
Ottawa	41,428	4.20%	51	0.12%	183	0.44%	0	0.00%	4,050	9.77%
Paulding	19,614	4.90%	35	0.18%	96	0.49%	0	0.00%	2,700	13.77%
Perry	36,058	9.40%	111	0.31%	424	1.18%	0	0.00%	8,043	22.31%
Pickaway	55,698	7.60%	68	0.12%	486	0.87%	0	0.00%	8,359	15.01%
Pike	28,709	15.10%	76	0.26%	515	1.80%	0	0.00%	7,738	26.95%
Portage	161,419	5.90%	68	0.04%	664	0.41%	0	0.00%	17,404	10.78%

Ohio Department of Job & Family Services

Table 10S: Percent of Ohio's Population Participating in Selected Public Assistance Programs

CALENDAR YEAR 2011

	Percent All		Disability Assistance		OWF Combined		Foster Care Unavailable		FNS Benefits	
	Estimated Total Population *	Families Below Poverty Level	Average Number of Recipients	Recipients as % of Total Population	Average Number of Recipients	Recipients as % of Total Population	Average Number of Recipients	Recipients as % of Total Population	Average Number of Persons	Recipients as % of Total Population
Ohio	11,536,504	7.80%	13,136	0.11%	93,096	0.81%	0	0.00%	1,787,105	15.49%
Preble	42,270	4.50%	52	0.12%	243	0.57%	0	0.00%	5,522	13.06%
Putnam	34,499	4.00%	8	0.02%	52	0.15%	0	0.00%	2,526	7.32%
Richland	124,475	8.20%	195	0.16%	1,340	1.08%	0	0.00%	20,623	16.57%
Ross	78,064	9.10%	126	0.16%	895	1.15%	0	0.00%	16,962	21.73%
Sandusky	60,944	5.70%	63	0.10%	238	0.39%	0	0.00%	7,107	11.66%
Scioto	79,499	15.20%	240	0.30%	1,244	1.56%	0	0.00%	19,948	25.09%
Seneca	56,745	6.10%	43	0.08%	215	0.38%	0	0.00%	8,760	15.44%
Shelby	49,423	5.30%	32	0.06%	228	0.46%	0	0.00%	5,242	10.61%
Stark	375,586	6.80%	427	0.11%	3,079	0.82%	0	0.00%	58,015	15.45%
Summit	541,781	7.50%	403	0.07%	5,458	1.01%	0	0.00%	82,500	15.23%
Trumbull	210,312	7.90%	180	0.09%	1,973	0.94%	0	0.00%	33,673	16.01%
Tuscarawas	92,582	7.20%	76	0.08%	465	0.50%	0	0.00%	13,217	14.28%
Union	52,300	3.60%	26	0.05%	237	0.45%	0	0.00%	4,189	8.01%
Van Wert	28,744	4.20%	40	0.14%	120	0.42%	0	0.00%	3,302	11.49%
Vinton	13,435	15.10%	79	0.59%	188	1.40%	0	0.00%	3,795	28.25%
Warren	212,693	3.00%	79	0.04%	434	0.20%	0	0.00%	10,523	4.95%
Washington	61,778	8.60%	52	0.08%	131	0.21%	0	0.00%	7,994	12.94%
Wayne	114,520	5.40%	189	0.16%	434	0.38%	0	0.00%	13,077	11.42%
Williams	37,642	3.90%	31	0.08%	210	0.56%	0	0.00%	5,582	14.83%
Wood	125,488	4.70%	68	0.05%	340	0.27%	0	0.00%	8,360	6.66%
Wyandot	22,615	3.80%	21	0.09%	61	0.27%	0	0.00%	1,879	8.31%

*SOURCE:2009 Ohio County Population Estimates, Ohio Dept. of Development, GRP342RA, GBS003RA, GRP304RA and GRP304RC Reports from Office of Information Services.