

Ohio Department of Job and Family Services

PUBLIC ASSISTANCE MONTHLY STATISTICS NOVEMBER 2007



<http://jfs.ohio.gov/pams/index.stm>

Bureau of Research and Evaluation : Federal Reports\ Data Development Section
Office of Research, Assessment, and Accountability
P.O. Box 1618
Columbus, Ohio 43216-1618

OHIO DEPARTMENT OF JOB AND FAMILY SERVICES

PUBLIC ASSISTANCE MONTHLY STATISTICS

TABLE OF CONTENTS

<u>TITLE</u>	<u>PAGE(S)</u>
Monthly Review of Public Assistance Statistics.....	1
Statewide Summary of Public Assistance Programs.....	2
Table 1: OWF (TANF) Summary.....	3-14
Table 2: Foster Care (Title IV-E) Program Summary. . Temporarily Unavailable.....	15-17
Table 3: Disability Assistance Program Summary.....	18-22
Table 3-A: DA Payments for Medical Services.....	23
Table 5: FNS Benefits Program Summary.....	24-28
Table 6: Medicaid (Title XIX): Eligibles and Expenditures.....	29-34
Table 7: Child Day Care Summary.....	35-37
Table 8: Program Summaries of Recipients, Expenditures, and Average Payment Per Recipient During the Last 12 Months.....	38
Table 10: Percent of Ohio's Population Participating in Selected Public Assistance Programs.....	39-41
<i>Note: Table 4 and Table 9 were discontinued.</i>	
Also: <i>Table 7-A, Updated Child Day Care Summary for August 2007.....</i>	<i>42-44</i>

All data in the PAMS report is limited to the information available at the time it was constructed. It does not account for backdated or retroactive eligibility or any adjustments made subsequent to its creation.

MONTHLY REVIEW OF PUBLIC ASSISTANCE STATISTICS FOR NOVEMBER 2007

OHIO WORKS FIRST (OWF)

For the month of November 2007, OWF-Combined assistance groups totaled 80,212; recipients totaled 172,256 and money payments totaled \$26,038,818. The percent change from October 2007 to November 2007 was 0.1% for assistance groups; 0.1% for recipients, and -1.9% for money payments. For OWF- Regular (OWF-R) there were 77,123 assistance groups; 159,745 recipients, and \$24,712,019 in money payments issued for November 2007. The percent change from October 2007 to November 2007 was 0.1% for assistance groups; 0.2% for recipients, and -1.8% for money payments. For OWF-Unemployed (OWF-U), assistance groups totaled 3,089; recipients, 12,511 and money payments were \$1,326,799. The percent change from October 2007 to November 2007 was -0.7% for assistance groups; -0.8% for recipients and -3.6% for money payments.

FOSTER CARE (TITLE IV-E)

Data not available due to SACWIS implementation.

DISABILITY ASSISTANCE (DA)

For the month of November 2007, there were 15,797 assistance groups; 15,883 recipients, and \$2,066,469 in DA financial assistance. The average DA financial assistance per recipient was \$130.11. Total DA expenditures for medical services for November 2007 were \$1,247,819. Of this total, \$916,916 or 73.5% was spent for prescribed drugs, and \$231,641 or 18.6% was spent for physician services. Medical expenses were paid for 2,603 recipients for an average expenditure of \$479.38 per recipient.

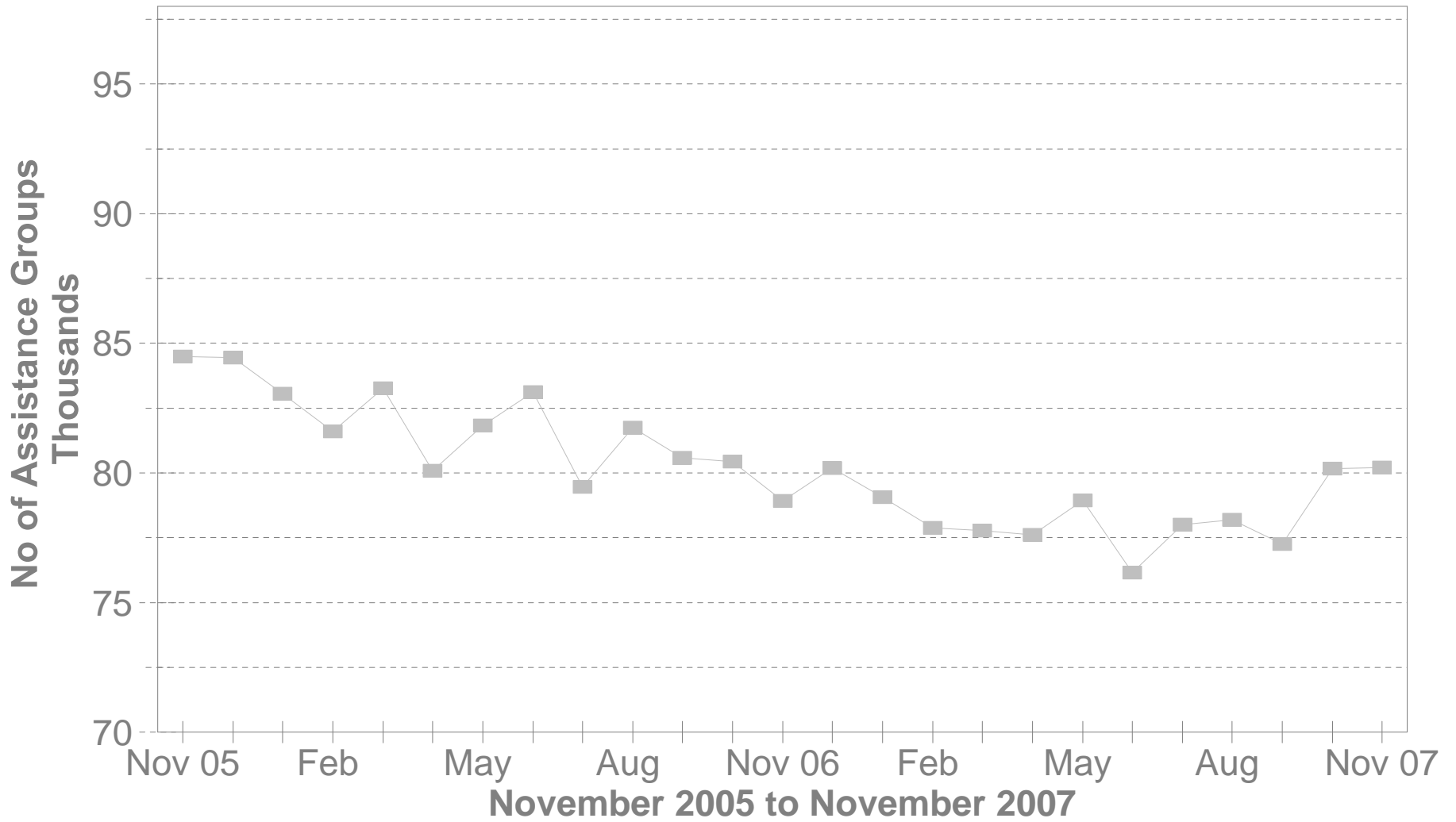
FOOD AND NUTRITION SERVICES BENEFITS (FNS)

Total persons participating in the FNS benefits program during November 2007 increased to 1,113,367 by 4,618 or 0.4% from 1,108,749 persons reported in October 2007. Households increased by 1,488 or 0.3% over October 2007 levels. The total dollar value of FNS related benefits issued during November 2007 decreased by \$1,186,813 or -1.0% from \$118,686,943 reported in October 2007 to \$117,500,130 reported in November 2007. The average benefit issuance per person decreased by \$1.51 or -1.4% from those issued in October 2007. The average benefit issuance per person decreased from \$107.05 reported in October 2007 to \$105.54 reported in November 2007.

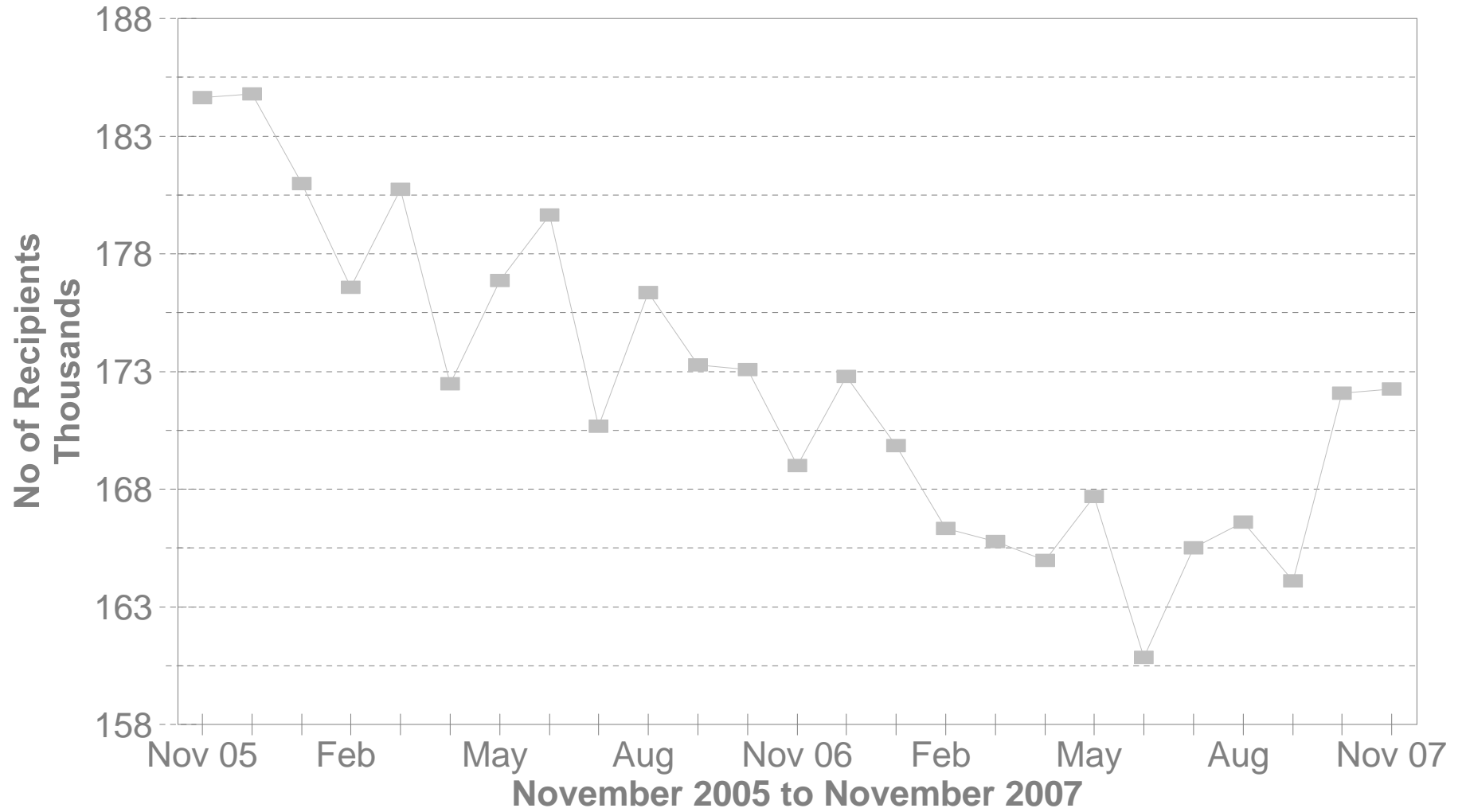
Please note: All data in the PAMS report is limited to the information available at the time it was constructed. It does not account for backdated or retroactive eligibility or any adjustments made subsequent to its creation.

STATEWIDE SUMMARY OF PUBLIC ASSISTANCE PROGRAMS FOR NOVEMBER 2007					
	November 2007	October 2007	% CHANGE Nov 07 / Oct 07	November 2006	% CHANGE Nov 07 / Nov 06
OHIO WORKS FIRST (OWF)-COMBI					
Assistance Groups	80,212	80,161	0.1%	78,913	1.6%
Recipients	172,256	172,074	0.1%	169,001	1.9%
Net Payments	\$26,038,818	\$26,535,888	-1.9%	\$25,591,161	1.7%
Average Per Recipient	\$151.16	\$154.21	-2.0%	\$151.43	-0.2%
OWF-REGULAR, OWF-INCAPACITATED,& OWF REGULAR VENDOR PAYMENTS					
Assistance Groups	77,123	77,051	0.1%	75,743	1.8%
Recipients	159,745	159,461	0.2%	156,220	2.3%
Net Payments	\$24,712,019	\$25,159,772	-1.8%	\$24,233,824	2.0%
Average Per Recipient	\$154.70	\$157.78	-2.0%	\$155.13	-0.3%
OWF-UNEMPLOYED AND OWF-UNEMPLOYED VENDOR PAYMENTS					
Assistance Groups	3,089	3,110	-0.7%	3,170	-2.6%
Recipients	12,511	12,613	-0.8%	12,781	-2.1%
Net Payments	\$1,326,799	\$1,376,116	-3.6%	\$1,357,337	-2.2%
Average Per Recipient	\$106.05	\$109.10	-2.8%	\$106.20	-0.1%
TITLE IV-E FOSTER CARE					
Assistance Groups/Recipients	N.A.	N.A.	N.A.	26,828	N.A.
Gross Payments	N.A.	N.A.	N.A.	\$13,607,688	N.A.
Average Per Recipient	N.A.	N.A.	N.A.	\$507.22	N.A.
DISABILITY ASSISTANCE					
Assistance Groups	15,797	15,893	-0.6%	13,497	17.0%
Recipients	15,883	15,985	-0.6%	13,578	17.0%
Net Payments	\$2,066,469	\$2,175,937	-5.0%	\$1,732,064	19.3%
Medical Assistance	\$1,247,819	\$1,652,796	-24.5%	\$2,493,512	-50.0%
FNS BENEFITS					
Assistance Groups	509,820	508,332	0.3%	485,788	4.9%
Persons	1,113,367	1,108,749	0.4%	1,061,392	4.9%
Total Coupons Issued	\$117,500,130	\$118,686,943	-1.0%	\$106,332,849	10.5%
Average Per Recipient	\$105.54	\$107.05	-1.4%	\$100.18	5.3%

No of OWF Combined Assistance Groups During The Last 25 Months

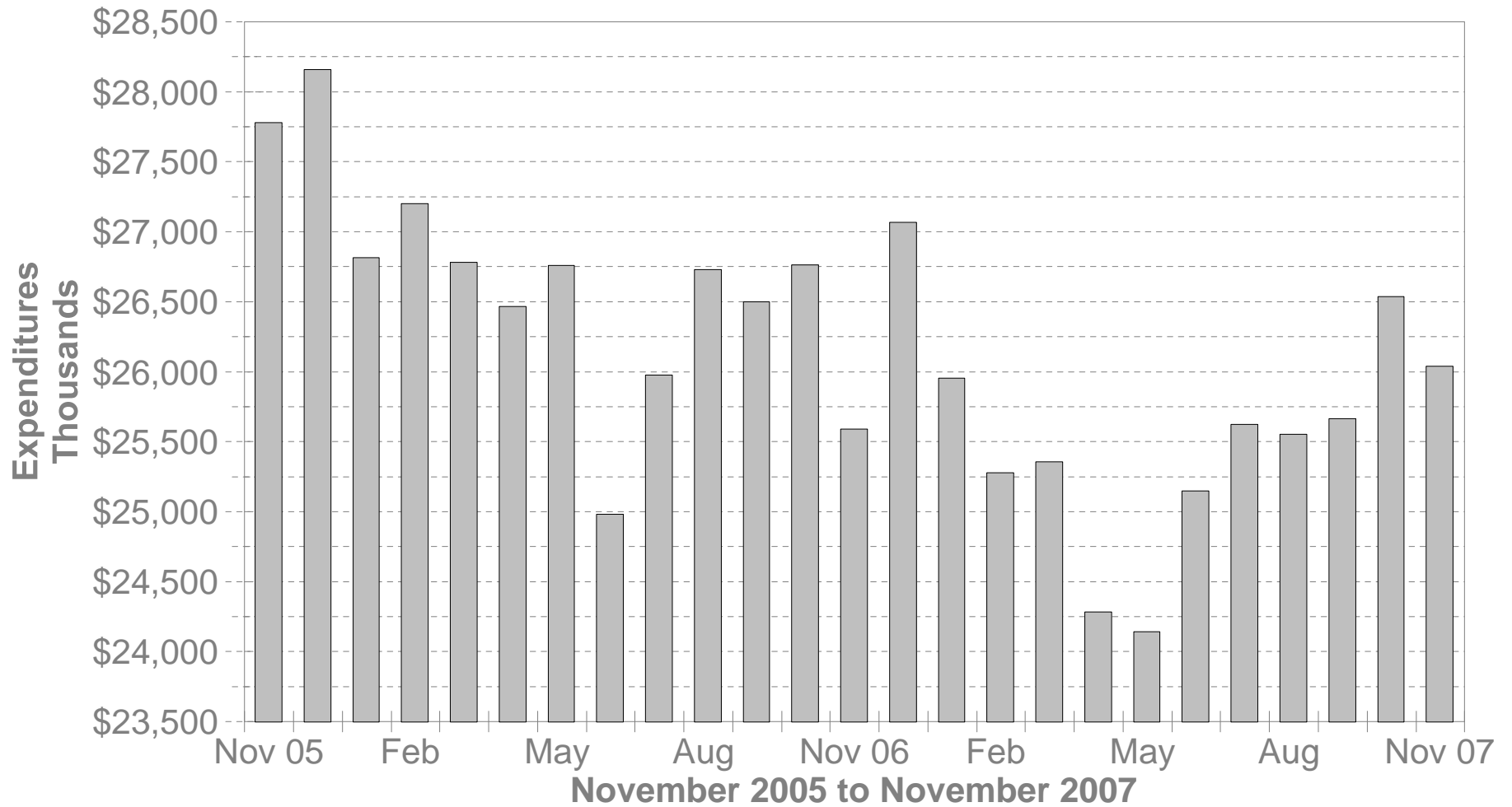


No of OWF Combined Recipients During The Last 25 Months



OWF Combined Net Expenditures

During The Last 25 Months



**TABLE 1
OHIO WORKS FIRST COMBINED
NOVEMBER 2007**

OHIO COUNTY	ASSISTANCE GROUP	RECIPIENTS	ADULTS	CHILDREN	ACTUAL EXPENDITURES		
					GROSS AMOUNT	CANCELLED AMOUNT	NET AMOUNT
STATEWIDE	80,212	172,256	42,495	129,761	\$27,075,040.00	\$1,036,222.00	\$26,038,818.00
ADAMS	138	219	7	212	\$39,413.00	\$490.00	\$38,923.00
ALLEN	417	677	52	625	\$130,264.00	\$4,509.00	\$125,755.00
ASHLAND	103	215	51	164	\$33,426.00	\$292.00	\$33,134.00
ASHTABULA	681	1,442	350	1,092	\$216,232.00	\$4,994.00	\$211,238.00
ATHENS	663	1,609	587	1,022	\$229,031.00	\$7,089.00	\$221,942.00
AUGLAIZE	69	103	2	101	\$19,278.00	\$245.00	\$19,033.00
BELMONT	306	618	141	477	\$93,016.00	\$2,993.00	\$90,023.00
BROWN	149	248	28	220	\$43,475.00	\$1,071.00	\$42,404.00
BUTLER	1,601	3,058	467	2,591	\$502,953.00	\$12,738.00	\$490,215.00
CARROLL	96	184	50	134	\$30,006.00	\$1,088.00	\$28,918.00
CHAMPAIGN	195	433	125	308	\$63,137.00	\$4,062.00	\$59,075.00
CLARK	1,362	2,938	760	2,178	\$458,943.00	\$17,933.00	\$441,010.00
CLERMONT	441	768	88	680	\$136,822.00	\$2,991.00	\$133,831.00
CLINTON	129	242	38	204	\$40,924.00	\$1,669.00	\$39,255.00
COLUMBIANA	442	802	129	673	\$137,169.00	\$3,168.00	\$134,001.00
COSHOCTON	245	539	165	374	\$77,468.00	\$3,819.00	\$73,649.00
CRAWFORD	177	376	96	280	\$62,742.00	\$2,551.00	\$60,191.00
CUYAHOGA	11,261	22,659	5,016	17,643	\$3,854,721.00	\$180,054.00	\$3,674,667.00
DARKE	164	362	104	258	\$55,672.00	\$1,964.00	\$53,708.00
DEFIANCE	149	350	92	258	\$53,168.00	\$672.00	\$52,496.00
DELAWARE	315	721	232	489	\$112,753.00	\$2,532.00	\$110,221.00
ERIE	248	456	44	412	\$79,272.00	\$3,038.00	\$76,234.00
FAIRFIELD	834	1,926	602	1,324	\$286,359.00	\$8,735.00	\$277,624.00
FAYETTE	137	286	58	228	\$46,353.00	\$1,425.00	\$44,928.00
FRANKLIN	12,017	27,341	7,104	20,237	\$4,142,075.00	\$220,682.00	\$3,921,393.00
FULTON	69	116	5	111	\$20,115.00	\$336.00	\$19,779.00
GALLIA	442	1,015	339	676	\$154,298.00	\$7,519.00	\$146,779.00
GEAUGA	66	111	11	100	\$19,872.00	\$1,339.00	\$18,533.00
GREENE	597	1,233	301	932	\$192,372.00	\$3,945.00	\$188,427.00

Source: GRP342RA Report from Management Information Services. Data includes ADC-Regular, ADC-Incapacitated, and Vendor Payments.

**TABLE 1
OHIO WORKS FIRST COMBINED
NOVEMBER 2007**

OHIO COUNTY	ASSISTANCE GROUP	RECIPIENTS	ADULTS	CHILDREN	ACTUAL EXPENDITURES		
					GROSS AMOUNT	CANCELLED AMOUNT	NET AMOUNT
STATEWIDE	80,212	172,256	42,495	129,761	\$27,075,040.00	\$1,036,222.00	\$26,038,818.00
GUERNSEY	174	294	44	250	\$51,454.00	\$1,999.00	\$49,455.00
HAMILTON	7,769	18,281	4,340	13,941	\$2,815,736.00	\$131,659.00	\$2,684,077.00
HANCOCK	97	139	0	139	\$29,180.00	\$245.00	\$28,935.00
HARDIN	66	109	6	103	\$20,265.00	\$0.00	\$20,265.00
HARRISON	101	199	52	147	\$30,274.00	\$581.00	\$29,693.00
HENRY	38	65	6	59	\$12,665.00	\$581.00	\$12,084.00
HIGHLAND	228	534	127	407	\$82,193.00	\$2,426.00	\$79,767.00
HOCKING	273	604	183	421	\$93,629.00	\$2,662.00	\$90,967.00
HOLMES	39	84	18	66	\$12,365.00	\$737.00	\$11,628.00
HURON	191	304	19	285	\$56,837.00	\$1,539.00	\$55,298.00
JACKSON	322	612	113	499	\$103,010.00	\$2,711.00	\$100,299.00
JEFFERSON	701	1,595	475	1,120	\$239,366.00	\$6,480.00	\$232,886.00
KNOX	279	623	190	433	\$92,313.00	\$4,327.00	\$87,986.00
LAKE	478	980	224	756	\$162,876.00	\$7,729.00	\$155,147.00
LAWRENCE	770	1,539	357	1,182	\$245,783.00	\$10,296.00	\$235,487.00
LICKING	629	1,332	363	969	\$195,742.00	\$9,255.00	\$186,487.00
LOGAN	198	403	100	303	\$64,264.00	\$1,274.00	\$62,990.00
LORAIN	1,962	4,190	961	3,229	\$654,229.00	\$31,205.00	\$623,024.00
LUCAS	5,843	13,108	3,624	9,484	\$2,004,022.00	\$58,349.00	\$1,945,673.00
MADISON	235	562	171	391	\$78,932.00	\$2,881.00	\$76,051.00
MAHONING	2,900	6,651	1,811	4,840	\$1,010,442.00	\$29,331.00	\$981,111.00
MARION	375	697	99	598	\$115,797.00	\$4,657.00	\$111,140.00
MEDINA	230	480	111	369	\$75,704.00	\$2,683.00	\$73,021.00
MEIGS	221	509	147	362	\$78,401.00	\$735.00	\$77,666.00
MERCER	68	139	37	102	\$19,708.00	\$410.00	\$19,298.00
MIAMI	319	600	113	487	\$101,793.00	\$3,755.00	\$98,038.00
MONROE	47	113	27	86	\$16,383.00	\$0.00	\$16,383.00
MONTGOMERY	5,294	10,963	2,636	8,327	\$1,710,078.00	\$42,699.00	\$1,667,379.00
MORGAN	82	141	24	117	\$23,946.00	\$336.00	\$23,610.00
MORROW	117	216	41	175	\$36,259.00	\$490.00	\$35,769.00

Source: GRP342RA Report from Management Information Services. Data includes ADC-Regular, ADC-Incapacitated, and Vendor Payments.

**TABLE 1
OHIO WORKS FIRST COMBINED
NOVEMBER 2007**

OHIO COUNTY	ASSISTANCE GROUP	RECIPIENTS	ADULTS	CHILDREN	ACTUAL EXPENDITURES		
					GROSS AMOUNT	CANCELLED AMOUNT	NET AMOUNT
STATEWIDE	80,212	172,256	42,495	129,761	\$27,075,040.00	\$1,036,222.00	\$26,038,818.00
MUSKINGUM	833	1,771	465	1,306	\$268,449.00	\$7,708.00	\$260,741.00
NOBLE	37	79	22	57	\$11,017.00	\$507.00	\$10,510.00
OTTAWA	120	265	66	199	\$39,096.00	\$808.00	\$38,288.00
PAULDING	87	221	66	155	\$31,026.00	\$490.00	\$30,536.00
PERRY	342	794	221	573	\$109,761.00	\$6,236.00	\$103,525.00
PICKAWAY	373	858	253	605	\$127,627.00	\$4,196.00	\$123,431.00
PIKE	370	808	221	587	\$127,876.00	\$4,269.00	\$123,607.00
PORTAGE	414	768	146	622	\$130,860.00	\$4,272.00	\$126,588.00
PREBLE	184	374	90	284	\$57,408.00	\$1,743.00	\$55,665.00
PUTNAM	28	44	3	41	\$8,172.00	\$0.00	\$8,172.00
RICHLAND	632	1,223	238	985	\$206,370.00	\$4,237.00	\$202,133.00
ROSS	686	1,476	377	1,099	\$232,474.00	\$6,773.00	\$225,701.00
SANDUSKY	193	373	54	319	\$59,640.00	\$5,244.00	\$54,396.00
SCIOTO	1,103	2,173	454	1,719	\$357,114.00	\$7,852.00	\$349,262.00
SENECA	182	382	71	311	\$59,755.00	\$490.00	\$59,265.00
SHELBY	157	266	27	239	\$46,323.00	\$2,972.00	\$43,351.00
STARK	2,837	6,356	1,814	4,542	\$947,660.00	\$26,414.00	\$921,246.00
SUMMIT	4,885	10,534	2,987	7,547	\$1,663,448.00	\$55,679.00	\$1,607,769.00
TRUMBULL	1,368	2,727	602	2,125	\$439,430.00	\$14,189.00	\$425,241.00
TUSCARAWAS	342	682	167	515	\$113,293.00	\$2,307.00	\$110,986.00
UNION	119	271	72	199	\$38,032.00	\$336.00	\$37,696.00
VAN WERT	56	90	7	83	\$16,375.00	\$581.00	\$15,794.00
VINTON	140	291	72	219	\$46,661.00	\$203.00	\$46,458.00
WARREN	233	403	56	347	\$72,113.00	\$3,288.00	\$68,825.00
WASHINGTON	130	186	0	186	\$35,957.00	\$490.00	\$35,467.00
WAYNE	403	918	303	615	\$138,410.00	\$7,867.00	\$130,543.00
WILLIAMS	150	380	128	252	\$50,669.00	\$466.00	\$50,203.00
WOOD	203	334	30	304	\$61,288.00	\$294.00	\$60,994.00
WYANDOT	46	96	20	76	\$13,761.00	\$336.00	\$13,425.00

Source: GRP342RA Report from Management Information Services. Data includes ADC-Regular, ADC-Incapacitated, and Vendor Payments.

**TABLE 1
OHIO WORKS FIRST REGULAR
NOVEMBER 2007**

OHIO COUNTY	ASSISTANCE GROUP	RECIPIENTS	ADULTS	CHILDREN	ACTUAL EXPENDITURES		
					GROSS AMOUNT	CANCELLED AMOUNT	NET AMOUNT
STATEWIDE	77,123	159,745	36,791	122,954	\$25,694,223.00	\$982,204.00	\$24,712,019.00
ADAMS	138	219	7	212	\$39,413.00	\$490.00	\$38,923.00
ALLEN	417	677	52	625	\$130,264.00	\$4,509.00	\$125,755.00
ASHLAND	101	203	47	156	\$32,608.00	\$292.00	\$32,316.00
ASHTABULA	639	1,263	270	993	\$198,121.00	\$4,865.00	\$193,256.00
ATHENS	571	1,271	414	857	\$189,994.00	\$6,150.00	\$183,844.00
AUGLAIZE	69	103	2	101	\$19,278.00	\$245.00	\$19,033.00
BELMONT	287	548	104	444	\$85,992.00	\$2,993.00	\$82,999.00
BROWN	149	248	28	220	\$43,475.00	\$1,071.00	\$42,404.00
BUTLER	1,600	3,053	466	2,587	\$502,163.00	\$12,738.00	\$489,425.00
CARROLL	95	179	48	131	\$29,413.00	\$1,088.00	\$28,325.00
CHAMPAIGN	183	384	101	283	\$58,514.00	\$3,362.00	\$55,152.00
CLARK	1,312	2,725	659	2,066	\$435,902.00	\$17,523.00	\$418,379.00
CLERMONT	441	768	88	680	\$136,822.00	\$2,991.00	\$133,831.00
CLINTON	129	242	38	204	\$40,924.00	\$1,669.00	\$39,255.00
COLUMBIANA	438	787	121	666	\$135,128.00	\$3,168.00	\$131,960.00
COSHOCTON	230	481	135	346	\$70,270.00	\$3,350.00	\$66,920.00
CRAWFORD	171	358	85	273	\$60,493.00	\$2,551.00	\$57,942.00
CUYAHOGA	11,024	21,743	4,578	17,165	\$3,749,085.00	\$175,542.00	\$3,573,543.00
DARKE	154	321	84	237	\$49,545.00	\$1,964.00	\$47,581.00
DEFIANCE	142	318	78	240	\$48,681.00	\$672.00	\$48,009.00
DELAWARE	285	602	176	426	\$98,474.00	\$1,839.00	\$96,635.00
ERIE	247	449	42	407	\$78,704.00	\$2,301.00	\$76,403.00
FAIRFIELD	753	1,614	445	1,169	\$246,568.00	\$8,325.00	\$238,243.00
FAYETTE	134	275	52	223	\$44,701.00	\$1,425.00	\$43,276.00
FRANKLIN	11,409	24,744	6,074	18,670	\$3,860,193.00	\$205,619.00	\$3,654,574.00
FULTON	69	116	5	111	\$20,115.00	\$336.00	\$19,779.00
GALLIA	398	854	252	602	\$138,323.00	\$5,249.00	\$133,074.00
GEAUGA	66	111	11	100	\$19,872.00	\$1,339.00	\$18,533.00
GREENE	574	1,145	257	888	\$183,943.00	\$3,713.00	\$180,230.00

Source: GRP342RA Report from Management Information Services. Data includes ADC-Regular, ADC-Incapacitated, and Vendor Payments.

**TABLE 1
OHIO WORKS FIRST REGULAR
NOVEMBER 2007**

OHIO COUNTY	ASSISTANCE GROUP	RECIPIENTS	ADULTS	CHILDREN	ACTUAL EXPENDITURES		
					GROSS AMOUNT	CANCELLED AMOUNT	NET AMOUNT
STATEWIDE	77,123	159,745	36,791	122,954	\$25,694,223.00	\$982,204.00	\$24,712,019.00
GUERNSEY	169	278	34	244	\$49,516.00	\$1,999.00	\$47,517.00
HAMILTON	7,618	17,633	4,057	13,576	\$2,742,361.00	\$127,270.00	\$2,615,091.00
HANCOCK	97	139	0	139	\$29,180.00	\$245.00	\$28,935.00
HARDIN	66	109	6	103	\$20,265.00	\$0.00	\$20,265.00
HARRISON	95	175	41	134	\$27,864.00	\$581.00	\$27,283.00
HENRY	38	65	6	59	\$12,665.00	\$581.00	\$12,084.00
HIGHLAND	221	501	113	388	\$79,370.00	\$2,426.00	\$76,944.00
HOCKING	247	508	132	376	\$82,527.00	\$2,372.00	\$80,155.00
HOLMES	36	70	12	58	\$11,029.00	\$737.00	\$10,292.00
HURON	185	294	18	276	\$55,224.00	\$1,539.00	\$53,685.00
JACKSON	307	551	83	468	\$95,822.00	\$2,711.00	\$93,111.00
JEFFERSON	645	1,362	364	998	\$213,758.00	\$6,125.00	\$207,633.00
KNOX	254	526	141	385	\$81,369.00	\$4,284.00	\$77,085.00
LAKE	459	905	190	715	\$152,177.00	\$7,484.00	\$144,693.00
LAWRENCE	726	1,362	273	1,089	\$225,446.00	\$10,113.00	\$215,333.00
LICKING	595	1,186	296	890	\$182,910.00	\$9,225.00	\$173,685.00
LOGAN	195	393	94	299	\$63,830.00	\$1,179.00	\$62,651.00
LORAIN	1,907	3,971	865	3,106	\$631,347.00	\$30,493.00	\$600,854.00
LUCAS	5,533	11,885	3,057	8,828	\$1,872,230.00	\$54,921.00	\$1,817,309.00
MADISON	217	483	133	350	\$71,697.00	\$2,679.00	\$69,018.00
MAHONING	2,804	6,245	1,623	4,622	\$965,400.00	\$28,019.00	\$937,381.00
MARION	366	659	85	574	\$111,783.00	\$3,583.00	\$108,200.00
MEDINA	222	448	95	353	\$72,416.00	\$2,273.00	\$70,143.00
MEIGS	199	422	103	319	\$68,361.00	\$735.00	\$67,626.00
MERCER	67	135	35	100	\$19,201.00	\$410.00	\$18,791.00
MIAMI	315	586	105	481	\$99,741.00	\$3,755.00	\$95,986.00
MONROE	43	93	19	74	\$14,117.00	\$0.00	\$14,117.00
MONTGOMERY	5,274	10,890	2,615	8,275	\$1,700,860.00	\$42,454.00	\$1,658,406.00
MORGAN	80	134	20	114	\$23,502.00	\$336.00	\$23,166.00
MORROW	114	202	35	167	\$34,394.00	\$490.00	\$33,904.00

Source: GRP342RA Report from Management Information Services. Data includes ADC-Regular, ADC-Incapacitated, and Vendor Payments.

**TABLE 1
OHIO WORKS FIRST REGULAR
NOVEMBER 2007**

OHIO COUNTY	ASSISTANCE GROUP	RECIPIENTS	ADULTS	CHILDREN	ACTUAL EXPENDITURES		
					GROSS AMOUNT	CANCELLED AMOUNT	NET AMOUNT
STATEWIDE	77,123	159,745	36,791	122,954	\$25,694,223.00	\$982,204.00	\$24,712,019.00
MUSKINGUM	781	1,577	363	1,214	\$248,894.00	\$7,201.00	\$241,693.00
NOBLE	35	68	18	50	\$10,064.00	\$507.00	\$9,557.00
OTTAWA	110	235	55	180	\$35,291.00	\$579.00	\$34,712.00
PAULDING	78	179	48	131	\$27,018.00	\$490.00	\$26,528.00
PERRY	309	661	154	507	\$96,938.00	\$4,262.00	\$92,676.00
PICKAWAY	347	744	201	543	\$116,277.00	\$4,196.00	\$112,081.00
PIKE	343	698	167	531	\$114,230.00	\$3,859.00	\$110,371.00
PORTAGE	408	749	138	611	\$128,158.00	\$3,862.00	\$124,296.00
PREBLE	178	351	78	273	\$55,203.00	\$1,743.00	\$53,460.00
PUTNAM	24	38	3	35	\$7,109.00	\$0.00	\$7,109.00
RICHLAND	618	1,164	211	953	\$199,784.00	\$4,237.00	\$195,547.00
ROSS	648	1,332	311	1,021	\$213,317.00	\$5,673.00	\$207,644.00
SANDUSKY	176	327	50	277	\$54,108.00	\$3,521.00	\$50,587.00
SCIOTO	1,046	1,947	345	1,602	\$332,202.00	\$7,100.00	\$325,102.00
SENECA	179	371	65	306	\$58,580.00	\$490.00	\$58,090.00
SHELBY	156	263	25	238	\$46,323.00	\$2,562.00	\$43,761.00
STARK	2,663	5,645	1,471	4,174	\$874,317.00	\$25,673.00	\$848,644.00
SUMMIT	4,640	9,529	2,506	7,023	\$1,547,927.00	\$52,279.00	\$1,495,648.00
TRUMBULL	1,324	2,553	515	2,038	\$422,200.00	\$12,679.00	\$409,521.00
TUSCARAWAS	320	588	125	463	\$102,576.00	\$1,897.00	\$100,679.00
UNION	111	236	56	180	\$35,639.00	\$336.00	\$35,303.00
VAN WERT	56	90	7	83	\$16,375.00	\$581.00	\$15,794.00
VINTON	135	272	62	210	\$44,409.00	\$203.00	\$44,206.00
WARREN	229	392	51	341	\$70,732.00	\$3,288.00	\$67,444.00
WASHINGTON	130	186	0	186	\$35,957.00	\$490.00	\$35,467.00
WAYNE	373	789	243	546	\$121,130.00	\$7,002.00	\$114,128.00
WILLIAMS	139	325	106	219	\$47,669.00	\$466.00	\$47,203.00
WOOD	203	334	30	304	\$61,288.00	\$294.00	\$60,994.00
WYANDOT	45	91	18	73	\$13,168.00	\$336.00	\$12,832.00

Source: GRP342RA Report from Management Information Services. Data includes ADC-Regular, ADC-Incapacitated, and Vendor Payments.

**TABLE 1
OHIO WORKS FIRST UNEMPLOYED
NOVEMBER 2007**

OHIO COUNTY	ASSISTANCE GROUP	RECIPIENTS	ADULTS	CHILDREN	ACTUAL EXPENDITURES		
					GROSS AMOUNT	CANCELLED AMOUNT	NET AMOUNT
STATEWIDE	3,089	12,511	5,704	6,807	\$1,380,817.00	\$54,018.00	\$1,326,799.00
ADAMS	0	0	0	0	\$0.00	\$0.00	\$0.00
ALLEN	0	0	0	0	\$0.00	\$0.00	\$0.00
ASHLAND	2	12	4	8	\$818.00	\$0.00	\$818.00
ASHTABULA	42	179	80	99	\$18,111.00	\$129.00	\$17,982.00
ATHENS	92	338	173	165	\$39,037.00	\$939.00	\$38,098.00
AUGLAIZE	0	0	0	0	\$0.00	\$0.00	\$0.00
BELMONT	19	70	37	33	\$7,024.00	\$0.00	\$7,024.00
BROWN	0	0	0	0	\$0.00	\$0.00	\$0.00
BUTLER	1	5	1	4	\$790.00	\$0.00	\$790.00
CARROLL	1	5	2	3	\$593.00	\$0.00	\$593.00
CHAMPAIGN	12	49	24	25	\$4,623.00	\$700.00	\$3,923.00
CLARK	50	213	101	112	\$23,041.00	\$410.00	\$22,631.00
CLERMONT	0	0	0	0	\$0.00	\$0.00	\$0.00
CLINTON	0	0	0	0	\$0.00	\$0.00	\$0.00
COLUMBIANA	4	15	8	7	\$2,041.00	\$0.00	\$2,041.00
COSHOCTON	15	58	30	28	\$7,198.00	\$469.00	\$6,729.00
CRAWFORD	6	18	11	7	\$2,249.00	\$0.00	\$2,249.00
CUYAHOGA	237	916	438	478	\$105,636.00	\$4,512.00	\$101,124.00
DARKE	10	41	20	21	\$6,127.00	\$0.00	\$6,127.00
DEFIANCE	7	32	14	18	\$4,487.00	\$0.00	\$4,487.00
DELAWARE	30	119	56	63	\$14,279.00	\$693.00	\$13,586.00
ERIE	1	7	2	5	\$568.00	\$737.00	-\$169.00
FAIRFIELD	81	312	157	155	\$39,791.00	\$410.00	\$39,381.00
FAYETTE	3	11	6	5	\$1,652.00	\$0.00	\$1,652.00
FRANKLIN	608	2,597	1,030	1,567	\$281,882.00	\$15,063.00	\$266,819.00
FULTON	0	0	0	0	\$0.00	\$0.00	\$0.00
GALLIA	44	161	87	74	\$15,975.00	\$2,270.00	\$13,705.00
GEAUGA	0	0	0	0	\$0.00	\$0.00	\$0.00
GREENE	23	88	44	44	\$8,429.00	\$232.00	\$8,197.00

Source: GRP342RA Report from Management Information Services. Data includes ADC-Regular, ADC-Incapacitated, and Vendor Payments.

**TABLE 1
OHIO WORKS FIRST UNEMPLOYED
NOVEMBER 2007**

OHIO COUNTY	ASSISTANCE GROUP	RECIPIENTS	ADULTS	CHILDREN	ACTUAL EXPENDITURES		
					GROSS AMOUNT	CANCELLED AMOUNT	NET AMOUNT
STATEWIDE	3,089	12,511	5,704	6,807	\$1,380,817.00	\$54,018.00	\$1,326,799.00
GUERNSEY	5	16	10	6	\$1,938.00	\$0.00	\$1,938.00
HAMILTON	151	648	283	365	\$73,375.00	\$4,389.00	\$68,986.00
HANCOCK	0	0	0	0	\$0.00	\$0.00	\$0.00
HARDIN	0	0	0	0	\$0.00	\$0.00	\$0.00
HARRISON	6	24	11	13	\$2,410.00	\$0.00	\$2,410.00
HENRY	0	0	0	0	\$0.00	\$0.00	\$0.00
HIGHLAND	7	33	14	19	\$2,823.00	\$0.00	\$2,823.00
HOCKING	26	96	51	45	\$11,102.00	\$290.00	\$10,812.00
HOLMES	3	14	6	8	\$1,336.00	\$0.00	\$1,336.00
HURON	6	10	1	9	\$1,613.00	\$0.00	\$1,613.00
JACKSON	15	61	30	31	\$7,188.00	\$0.00	\$7,188.00
JEFFERSON	56	233	111	122	\$25,608.00	\$355.00	\$25,253.00
KNOX	25	97	49	48	\$10,944.00	\$43.00	\$10,901.00
LAKE	19	75	34	41	\$10,699.00	\$245.00	\$10,454.00
LAWRENCE	44	177	84	93	\$20,337.00	\$183.00	\$20,154.00
LICKING	34	146	67	79	\$12,832.00	\$30.00	\$12,802.00
LOGAN	3	10	6	4	\$434.00	\$95.00	\$339.00
LORAIN	55	219	96	123	\$22,882.00	\$712.00	\$22,170.00
LUCAS	310	1,223	567	656	\$131,792.00	\$3,428.00	\$128,364.00
MADISON	18	79	38	41	\$7,235.00	\$202.00	\$7,033.00
MAHONING	96	406	188	218	\$45,042.00	\$1,312.00	\$43,730.00
MARION	9	38	14	24	\$4,014.00	\$1,074.00	\$2,940.00
MEDINA	8	32	16	16	\$3,288.00	\$410.00	\$2,878.00
MEIGS	22	87	44	43	\$10,040.00	\$0.00	\$10,040.00
MERCER	1	4	2	2	\$507.00	\$0.00	\$507.00
MIAMI	4	14	8	6	\$2,052.00	\$0.00	\$2,052.00
MONROE	4	20	8	12	\$2,266.00	\$0.00	\$2,266.00
MONTGOMERY	20	73	21	52	\$9,218.00	\$245.00	\$8,973.00
MORGAN	2	7	4	3	\$444.00	\$0.00	\$444.00
MORROW	3	14	6	8	\$1,865.00	\$0.00	\$1,865.00

Source: GRP342RA Report from Management Information Services. Data includes ADC-Regular, ADC-Incapacitated, and Vendor Payments.

**TABLE 1
OHIO WORKS FIRST UNEMPLOYED
NOVEMBER 2007**

OHIO COUNTY	ASSISTANCE GROUP	RECIPIENTS	ADULTS	CHILDREN	ACTUAL EXPENDITURES		
					GROSS AMOUNT	CANCELLED AMOUNT	NET AMOUNT
STATEWIDE	3,089	12,511	5,704	6,807	\$1,380,817.00	\$54,018.00	\$1,326,799.00
MUSKINGUM	52	194	102	92	\$19,555.00	\$507.00	\$19,048.00
NOBLE	2	11	4	7	\$953.00	\$0.00	\$953.00
OTTAWA	10	30	11	19	\$3,805.00	\$229.00	\$3,576.00
PAULDING	9	42	18	24	\$4,008.00	\$0.00	\$4,008.00
PERRY	33	133	67	66	\$12,823.00	\$1,974.00	\$10,849.00
PICKAWAY	26	114	52	62	\$11,350.00	\$0.00	\$11,350.00
PIKE	27	110	54	56	\$13,646.00	\$410.00	\$13,236.00
PORTAGE	6	19	8	11	\$2,702.00	\$410.00	\$2,292.00
PREBLE	6	23	12	11	\$2,205.00	\$0.00	\$2,205.00
PUTNAM	4	6	0	6	\$1,063.00	\$0.00	\$1,063.00
RICHLAND	14	59	27	32	\$6,586.00	\$0.00	\$6,586.00
ROSS	38	144	66	78	\$19,157.00	\$1,100.00	\$18,057.00
SANDUSKY	17	46	4	42	\$5,532.00	\$1,723.00	\$3,809.00
SCIOTO	57	226	109	117	\$24,912.00	\$752.00	\$24,160.00
SENECA	3	11	6	5	\$1,175.00	\$0.00	\$1,175.00
SHELBY	1	3	2	1	\$0.00	\$410.00	-\$410.00
STARK	174	711	343	368	\$73,343.00	\$741.00	\$72,602.00
SUMMIT	245	1,005	481	524	\$115,521.00	\$3,400.00	\$112,121.00
TRUMBULL	44	174	87	87	\$17,230.00	\$1,510.00	\$15,720.00
TUSCARAWAS	22	94	42	52	\$10,717.00	\$410.00	\$10,307.00
UNION	8	35	16	19	\$2,393.00	\$0.00	\$2,393.00
VAN WERT	0	0	0	0	\$0.00	\$0.00	\$0.00
VINTON	5	19	10	9	\$2,252.00	\$0.00	\$2,252.00
WARREN	4	11	5	6	\$1,381.00	\$0.00	\$1,381.00
WASHINGTON	0	0	0	0	\$0.00	\$0.00	\$0.00
WAYNE	30	129	60	69	\$17,280.00	\$865.00	\$16,415.00
WILLIAMS	11	55	22	33	\$3,000.00	\$0.00	\$3,000.00
WOOD	0	0	0	0	\$0.00	\$0.00	\$0.00
WYANDOT	1	5	2	3	\$593.00	\$0.00	\$593.00

Source: GRP342RA Report from Management Information Services. Data includes ADC-Regular, ADC-Incapacitated, and Vendor Payments.

TABLE 2
TITLE IV-E FOSTER CARE AND ADOPTION ASSISTANCE
DATA NOT AVAILABLE FOR NOVEMBER 2007

OHIO COUNTY	FOSTER CARE						ADOPTION ASSISTANCE		TOTAL FOSTER CARE AND ADOPTION ASSISTANCE	
	FOSTER FAMILY HOMES		CHILD CARE INSTITUTIONS		HOMES & INSTITUTIONS		CHILDREN	GROSS AMOUNT	CHILDREN	GROSS AMOUNT
	CHILDREN	GROSS AMOUNT	CHILDREN	GROSS AMOUNT	CHILDREN	GROSS AMOUNT				
STATEWIDE	0	\$0.00	0	\$0.00	0	\$0.00	0	\$0.00	0	\$0.00
ADAMS					0	\$0.00			0	\$0.00
ALLEN					0	\$0.00			0	\$0.00
ASHLAND					0	\$0.00			0	\$0.00
ASHTABULA					0	\$0.00			0	\$0.00
ATHENS					0	\$0.00			0	\$0.00
AUGLAIZE					0	\$0.00			0	\$0.00
BELMONT					0	\$0.00			0	\$0.00
BROWN					0	\$0.00			0	\$0.00
BUTLER					0	\$0.00			0	\$0.00
CARROLL					0	\$0.00			0	\$0.00
CHAMPAIGN					0	\$0.00			0	\$0.00
CLARK					0	\$0.00			0	\$0.00
CLERMONT					0	\$0.00			0	\$0.00
CLINTON					0	\$0.00			0	\$0.00
COLUMBIANA					0	\$0.00			0	\$0.00
COSHOCTON					0	\$0.00			0	\$0.00
CRAWFORD					0	\$0.00			0	\$0.00
CUYAHOGA					0	\$0.00			0	\$0.00
DARKE					0	\$0.00			0	\$0.00
DEFIANCE					0	\$0.00			0	\$0.00
DELAWARE					0	\$0.00			0	\$0.00
ERIE					0	\$0.00			0	\$0.00
FAIRFIELD					0	\$0.00			0	\$0.00
FAYETTE					0	\$0.00			0	\$0.00
FRANKLIN					0	\$0.00			0	\$0.00
FULTON					0	\$0.00			0	\$0.00
GALLIA					0	\$0.00			0	\$0.00
GEAUGA					0	\$0.00			0	\$0.00
GREENE					0	\$0.00			0	\$0.00

SOURCE: GBS003RB Report from Management Information Services. Federal funds only.

TABLE 2
TITLE IV-E FOSTER CARE AND ADOPTION ASSISTANCE
DATA NOT AVAILABLE FOR NOVEMBER 2007

OHIO COUNTY	FOSTER CARE						ADOPTION ASSISTANCE		TOTAL FOSTER CARE AND ADOPTION ASSISTANCE	
	FOSTER FAMILY HOMES		CHILD CARE INSTITUTIONS		HOMES & INSTITUTIONS		CHILDREN	GROSS AMOUNT	CHILDREN	GROSS AMOUNT
	CHILDREN	GROSS AMOUNT	CHILDREN	GROSS AMOUNT	CHILDREN	GROSS AMOUNT				
STATEWIDE	0	\$0.00	0	\$0.00	0	\$0.00	0	\$0.00	0	\$0.00
GUERNSEY					0	\$0.00			0	\$0.00
HAMILTON					0	\$0.00			0	\$0.00
HANCOCK					0	\$0.00			0	\$0.00
HARDIN					0	\$0.00			0	\$0.00
HARRISON					0	\$0.00			0	\$0.00
HENRY					0	\$0.00			0	\$0.00
HIGHLAND					0	\$0.00			0	\$0.00
HOCKING					0	\$0.00			0	\$0.00
HOLMES					0	\$0.00			0	\$0.00
HURON					0	\$0.00			0	\$0.00
JACKSON					0	\$0.00			0	\$0.00
JEFFERSON					0	\$0.00			0	\$0.00
KNOX					0	\$0.00			0	\$0.00
LAKE					0	\$0.00			0	\$0.00
LAWRENCE					0	\$0.00			0	\$0.00
LICKING					0	\$0.00			0	\$0.00
LOGAN					0	\$0.00			0	\$0.00
LORAIN					0	\$0.00			0	\$0.00
LUCAS					0	\$0.00			0	\$0.00
MADISON					0	\$0.00			0	\$0.00
MAHONING					0	\$0.00			0	\$0.00
MARION					0	\$0.00			0	\$0.00
MEDINA					0	\$0.00			0	\$0.00
MEIGS					0	\$0.00			0	\$0.00
MERCER					0	\$0.00			0	\$0.00
MIAMI					0	\$0.00			0	\$0.00
MONROE					0	\$0.00			0	\$0.00
MONTGOMERY					0	\$0.00			0	\$0.00
MORGAN					0	\$0.00			0	\$0.00
MORROW					0	\$0.00			0	\$0.00

SOURCE: GBS003RB Report from Management Information Services. Federal funds only.

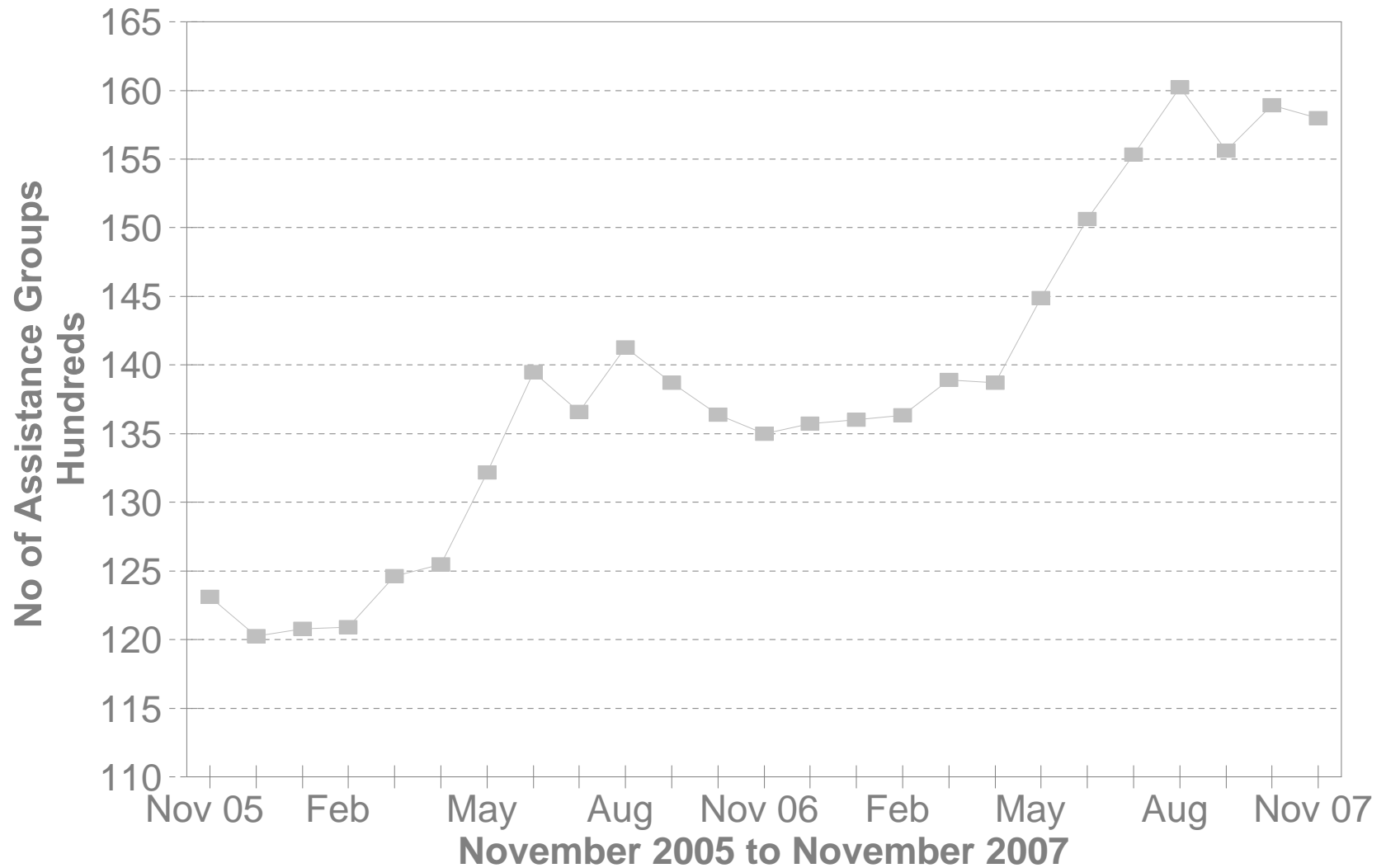
TABLE 2
TITLE IV-E FOSTER CARE AND ADOPTION ASSISTANCE
DATA NOT AVAILABLE FOR NOVEMBER 2007

OHIO COUNTY	FOSTER CARE						ADOPTION ASSISTANCE		TOTAL FOSTER CARE AND ADOPTION ASSISTANCE	
	FOSTER FAMILY HOMES		CHILD CARE INSTITUTIONS		HOMES & INSTITUTIONS		CHILDREN	GROSS AMOUNT	CHILDREN	GROSS AMOUNT
	CHILDREN	GROSS AMOUNT	CHILDREN	GROSS AMOUNT	CHILDREN	GROSS AMOUNT				
STATEWIDE	0	\$0.00	0	\$0.00	0	\$0.00	0	\$0.00	0	\$0.00
MUSKINGUM					0	\$0.00			0	\$0.00
NOBLE					0	\$0.00			0	\$0.00
OTTAWA					0	\$0.00			0	\$0.00
PAULDING					0	\$0.00			0	\$0.00
PERRY					0	\$0.00			0	\$0.00
PICKAWAY					0	\$0.00			0	\$0.00
PIKE					0	\$0.00			0	\$0.00
PORTAGE					0	\$0.00			0	\$0.00
PREBLE					0	\$0.00			0	\$0.00
PUTNAM					0	\$0.00			0	\$0.00
RICHLAND					0	\$0.00			0	\$0.00
ROSS					0	\$0.00			0	\$0.00
SANDUSKY					0	\$0.00			0	\$0.00
SCIOTO					0	\$0.00			0	\$0.00
SENECA					0	\$0.00			0	\$0.00
SHELBY					0	\$0.00			0	\$0.00
STARK					0	\$0.00			0	\$0.00
SUMMIT					0	\$0.00			0	\$0.00
TRUMBULL					0	\$0.00			0	\$0.00
TUSCARAWAS					0	\$0.00			0	\$0.00
UNION					0	\$0.00			0	\$0.00
VAN WERT					0	\$0.00			0	\$0.00
VINTON					0	\$0.00			0	\$0.00
WARREN					0	\$0.00			0	\$0.00
WASHINGTON					0	\$0.00			0	\$0.00
WAYNE					0	\$0.00			0	\$0.00
WILLIAMS					0	\$0.00			0	\$0.00
WOOD					0	\$0.00			0	\$0.00
WYANDOT					0	\$0.00			0	\$0.00

SOURCE: GBS003RB Report from Management Information Services. Federal funds only.

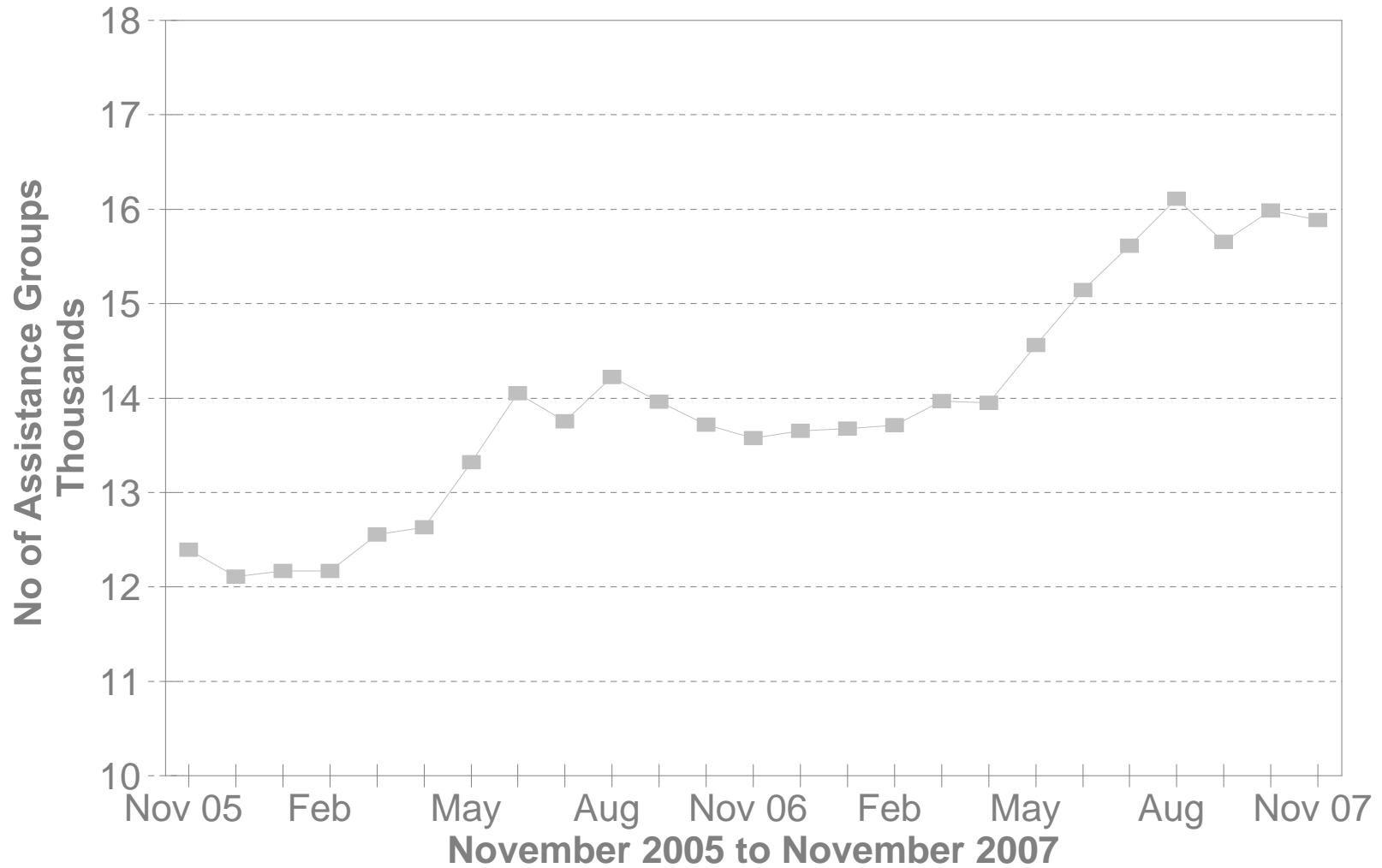
DA Cash Assistance Groups

During The Last 25 Months



DA Cash Recipients

During The Last 25 Months



**TABLE 3
DISABILITY ASSISTANCE (DA)
NOVEMBER 2007**

OHIO COUNTY	CASH ASSISTANCE							MEDICAL ASSISTANCE	
	ASSISTANCE GROUPS	RECIPIENTS	ADULTS	CHILDREN	ACTUAL EXPENDITURES			UNDUPLICATED RECIPIENTS	ACTUAL AMOUNT PAID
					GROSS AMOUNT	CANCELLED AMOUNT	NET AMOUNT		
STATEWIDE	15,797	15,883	15,883	0	\$2,185,676.00	\$119,207.00	\$2,066,469.00	2,603	\$1,247,819.29
ADAMS	97	99	99	0	\$11,336.00	\$115.00	\$11,221.00	16	\$5,959.74
ALLEN	133	133	133	0	\$16,432.00	\$460.00	\$15,972.00	8	\$4,593.44
ASHLAND	36	36	36	0	\$4,915.00	\$575.00	\$4,340.00	10	\$4,081.73
ASHTABULA	340	341	341	0	\$51,801.00	\$1,873.00	\$49,928.00	19	\$5,527.68
ATHENS	292	297	297	0	\$37,019.00	\$1,004.00	\$36,015.00	14	\$5,757.05
AUGLAIZE	31	31	31	0	\$3,616.00	\$0.00	\$3,616.00	9	\$2,861.63
BELMONT	151	153	153	0	\$25,306.00	\$389.00	\$24,917.00	19	\$8,829.46
BROWN	109	111	111	0	\$15,390.00	\$1,861.00	\$13,529.00	7	\$2,939.13
BUTLER	463	463	463	0	\$61,531.00	\$3,228.00	\$58,303.00	41	\$19,081.21
CARROLL	26	26	26	0	\$2,812.00	\$115.00	\$2,697.00	3	\$816.46
CHAMPAIGN	33	33	33	0	\$3,637.00	\$123.00	\$3,514.00	9	\$4,830.63
CLARK	394	396	396	0	\$48,572.00	\$1,035.00	\$47,537.00	61	\$31,662.79
CLERMONT	221	222	222	0	\$27,182.00	\$1,150.00	\$26,032.00	16	\$7,648.75
CLINTON	75	76	76	0	\$11,023.00	\$230.00	\$10,793.00	1	\$877.54
COLUMBIANA	147	148	148	0	\$23,020.00	\$345.00	\$22,675.00	27	\$12,322.16
COSHOCTON	120	122	122	0	\$18,467.00	\$230.00	\$18,237.00	4	\$2,821.24
CRAWFORD	57	57	57	0	\$7,734.00	\$115.00	\$7,619.00	10	\$7,621.38
CUYAHOGA	1,032	1,035	1,035	0	\$143,641.00	\$10,749.00	\$132,892.00	526	\$204,086.59
DARKE	35	35	35	0	\$4,791.00	\$0.00	\$4,791.00	4	\$2,372.82
DEFIANCE	29	29	29	0	\$4,042.00	\$345.00	\$3,697.00	7	\$1,782.90
DELAWARE	83	83	83	0	\$10,360.00	\$920.00	\$9,440.00	11	\$6,249.38
ERIE	99	99	99	0	\$12,694.00	\$1,150.00	\$11,544.00	11	\$4,253.12
FAIRFIELD	192	192	192	0	\$26,397.00	\$1,699.00	\$24,698.00	19	\$11,023.43
FAYETTE	43	43	43	0	\$4,723.00	\$115.00	\$4,608.00	12	\$4,479.45
FRANKLIN	1,367	1,374	1,374	0	\$204,883.00	\$13,163.00	\$191,720.00	202	\$110,370.72
FULTON	42	42	42	0	\$4,833.00	\$0.00	\$4,833.00	4	\$1,602.77
GALLIA	84	85	85	0	\$12,532.00	\$230.00	\$12,302.00	39	\$25,870.13
GEAUGA	29	29	29	0	\$3,158.00	\$115.00	\$3,043.00	1	\$654.18
GREENE	186	186	186	0	\$24,271.00	\$575.00	\$23,696.00	30	\$14,038.58

*SOURCE: GRP342RA Report from Management Information Services and BOMC 9260-R001 Report from Medicaid Management Information Services.

**TABLE 3
DISABILITY ASSISTANCE (DA)
NOVEMBER 2007**

OHIO COUNTY	CASH ASSISTANCE							MEDICAL ASSISTANCE	
	ASSISTANCE GROUPS	RECIPIENTS	ADULTS	CHILDREN	ACTUAL EXPENDITURES			UNDUPLICATED RECIPIENTS	ACTUAL AMOUNT PAID
					GROSS AMOUNT	CANCELLED AMOUNT	NET AMOUNT		
STATEWIDE	15,797	15,883	15,883	0	\$2,185,676.00	\$119,207.00	\$2,066,469.00	2,603	\$1,247,819.29
GUERNSEY	146	146	146	0	\$18,581.00	\$115.00	\$18,466.00	13	\$5,205.75
HAMILTON	778	778	778	0	\$115,488.00	\$11,900.00	\$103,588.00	75	\$38,087.05
HANCOCK	85	85	85	0	\$12,104.00	\$460.00	\$11,644.00	9	\$4,603.16
HARDIN	46	46	46	0	\$6,413.00	\$0.00	\$6,413.00	9	\$4,206.37
HARRISON	57	57	57	0	\$6,480.00	\$115.00	\$6,365.00	3	\$543.60
HENRY	6	6	6	0	\$805.00	\$0.00	\$805.00	1	\$341.27
HIGHLAND	119	120	120	0	\$16,479.00	\$2,439.00	\$14,040.00	15	\$6,233.91
HOCKING	62	64	64	0	\$7,580.00	\$230.00	\$7,350.00	8	\$2,753.90
HOLMES	27	27	27	0	\$3,039.00	\$1,100.00	\$1,939.00	2	\$1,000.07
HURON	64	65	65	0	\$11,735.00	\$115.00	\$11,620.00	4	\$1,262.88
JACKSON	126	127	127	0	\$14,883.00	\$345.00	\$14,538.00	25	\$16,908.37
JEFFERSON	177	177	177	0	\$22,081.00	\$1,498.00	\$20,583.00	27	\$9,493.66
KNOX	124	124	124	0	\$17,127.00	\$230.00	\$16,897.00	10	\$4,472.99
LAKE	145	145	145	0	\$21,630.00	\$690.00	\$20,940.00	23	\$11,392.53
LAWRENCE	87	87	87	0	\$15,409.00	\$263.00	\$15,146.00	26	\$14,764.27
LICKING	281	284	284	0	\$36,120.00	\$3,172.00	\$32,948.00	14	\$10,742.54
LOGAN	80	83	83	0	\$10,660.00	\$230.00	\$10,430.00	11	\$4,017.24
LORAIN	358	362	362	0	\$50,350.00	\$8,479.00	\$41,871.00	48	\$20,138.79
LUCAS	1,069	1,075	1,075	0	\$142,020.00	\$8,168.00	\$133,852.00	166	\$71,589.80
MADISON	27	27	27	0	\$3,565.00	\$345.00	\$3,220.00	9	\$6,581.25
MAHONING	269	269	269	0	\$39,342.00	\$2,098.00	\$37,244.00	99	\$57,262.02
MARION	193	195	195	0	\$26,551.00	\$1,743.00	\$24,808.00	6	\$6,785.28
MEDINA	85	87	87	0	\$11,207.00	\$345.00	\$10,862.00	14	\$3,784.47
MEIGS	81	82	82	0	\$11,944.00	\$460.00	\$11,484.00	22	\$6,608.19
MERCER	35	35	35	0	\$4,573.00	\$0.00	\$4,573.00	2	\$525.73
MIAMI	81	82	82	0	\$9,616.00	\$927.00	\$8,689.00	9	\$3,249.66
MONROE	29	29	29	0	\$4,027.00	\$90.00	\$3,937.00	12	\$3,580.22
MONTGOMERY	932	936	936	0	\$134,352.00	\$6,775.00	\$127,577.00	181	\$96,307.31
MORGAN	67	69	69	0	\$10,267.00	\$230.00	\$10,037.00	11	\$8,491.65
MORROW	82	82	82	0	\$12,151.00	\$345.00	\$11,806.00	7	\$4,469.56

*SOURCE: GRP342RA Report from Management Information Services and BOMC 9260-R001 Report from Medicaid Management Information Services.

**TABLE 3
DISABILITY ASSISTANCE (DA)
NOVEMBER 2007**

OHIO COUNTY	CASH ASSISTANCE							MEDICAL ASSISTANCE	
	ASSISTANCE GROUPS	RECIPIENTS	ADULTS	CHILDREN	ACTUAL EXPENDITURES			UNDUPLICATED RECIPIENTS	ACTUAL AMOUNT PAID
					GROSS AMOUNT	CANCELLED AMOUNT	NET AMOUNT		
STATEWIDE	15,797	15,883	15,883	0	\$2,185,676.00	\$119,207.00	\$2,066,469.00	2,603	\$1,247,819.29
MUSKINGUM	378	385	385	0	\$45,399.00	\$1,723.00	\$43,676.00	10	\$4,498.26
NOBLE	18	18	18	0	\$2,000.00	\$0.00	\$2,000.00	3	\$1,232.43
OTTAWA	44	44	44	0	\$4,989.00	\$345.00	\$4,644.00	9	\$3,198.06
PAULDING	33	34	34	0	\$6,284.00	\$575.00	\$5,709.00	2	\$471.63
PERRY	118	120	120	0	\$13,579.00	\$1,797.00	\$11,782.00	13	\$6,499.63
PICKAWAY	88	89	89	0	\$12,910.00	\$690.00	\$12,220.00	11	\$6,440.03
PIKE	72	72	72	0	\$8,170.00	\$460.00	\$7,710.00	25	\$11,304.95
PORTAGE	125	125	125	0	\$21,175.00	\$690.00	\$20,485.00	20	\$16,050.63
PREBLE	62	63	63	0	\$7,428.00	\$230.00	\$7,198.00	8	\$6,148.01
PUTNAM	8	8	8	0	\$920.00	\$0.00	\$920.00	4	\$1,799.88
RICHLAND	269	270	270	0	\$31,664.00	\$690.00	\$30,974.00	14	\$7,482.26
ROSS	163	164	164	0	\$19,984.00	\$1,035.00	\$18,949.00	38	\$21,507.11
SANDUSKY	104	105	105	0	\$13,725.00	\$560.00	\$13,165.00	8	\$1,590.78
SCIOTO	292	292	292	0	\$42,780.00	\$2,224.00	\$40,556.00	34	\$17,281.33
SENECA	81	81	81	0	\$9,503.00	\$549.00	\$8,954.00	18	\$8,403.39
SHELBY	39	39	39	0	\$5,306.00	\$0.00	\$5,306.00	8	\$2,863.53
STARK	496	496	496	0	\$70,078.00	\$2,744.00	\$67,334.00	62	\$34,153.59
SUMMIT	554	554	554	0	\$91,701.00	\$3,798.00	\$87,903.00	224	\$110,213.30
TRUMBULL	331	331	331	0	\$44,125.00	\$1,387.00	\$42,738.00	31	\$15,733.35
TUSCARAWAS	130	131	131	0	\$15,725.00	\$858.00	\$14,867.00	11	\$4,693.47
UNION	34	34	34	0	\$5,024.00	\$115.00	\$4,909.00	2	\$2,456.87
VAN WERT	31	32	32	0	\$3,663.00	\$0.00	\$3,663.00	3	\$1,203.06
VINTON	67	69	69	0	\$11,040.00	\$345.00	\$10,695.00	9	\$6,420.02
WARREN	85	86	86	0	\$11,774.00	\$230.00	\$11,544.00	8	\$5,639.55
WASHINGTON	149	149	149	0	\$17,852.00	\$460.00	\$17,392.00	7	\$3,039.51
WAYNE	237	238	238	0	\$29,378.00	\$2,656.00	\$26,722.00	10	\$3,024.01
WILLIAMS	49	49	49	0	\$7,093.00	\$0.00	\$7,093.00	3	\$1,049.89
WOOD	59	60	60	0	\$6,960.00	\$230.00	\$6,730.00	3	\$459.00
WYANDOT	17	18	18	0	\$2,750.00	\$0.00	\$2,750.00	4	\$2,542.18
UNKNOWN									\$0.00

*SOURCE: GRP342RA Report from Management Information Services and BOMC 9260-R001 Report from Medicaid Management Information Services.

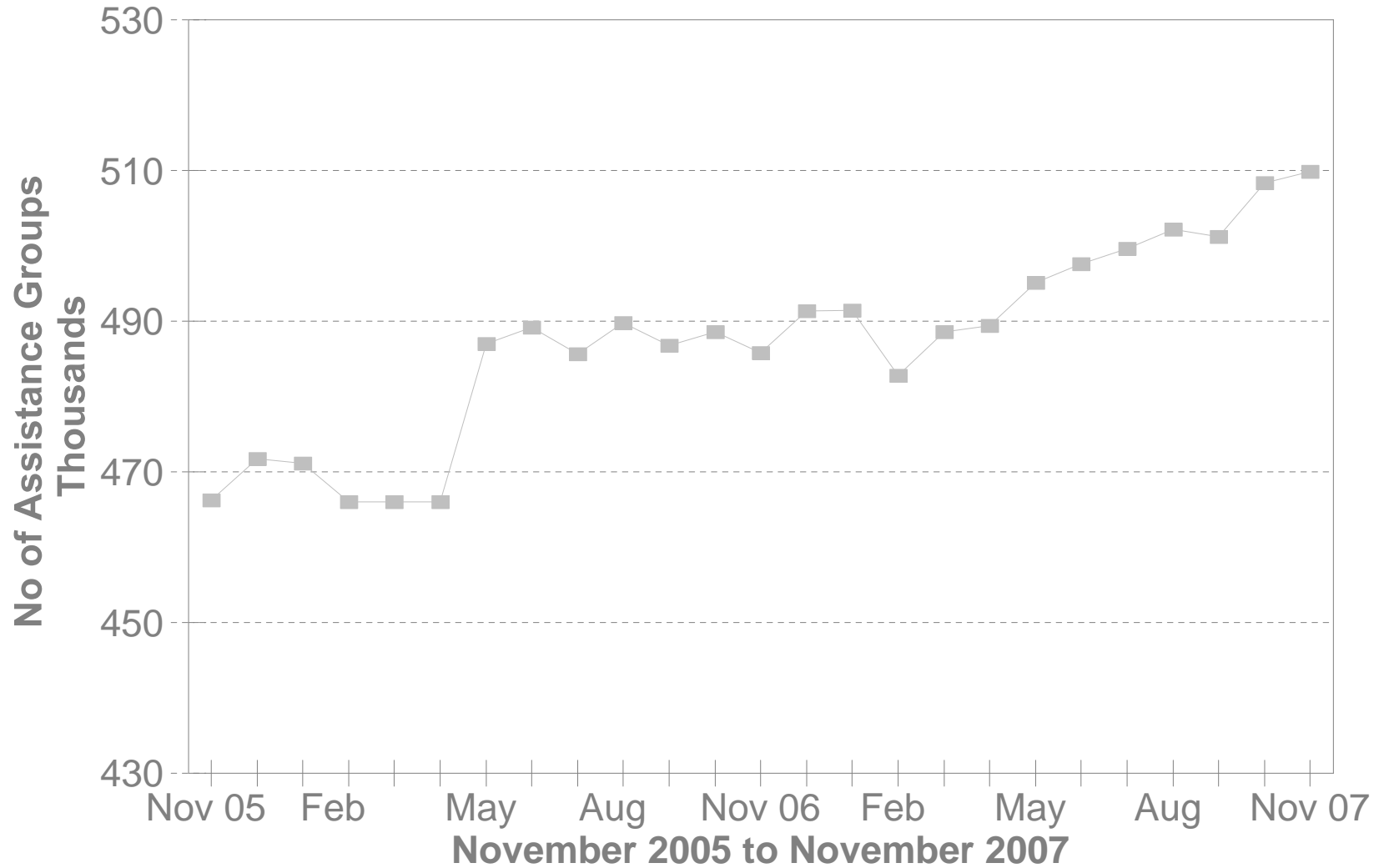
**TABLE 3-A
DA PAYMENTS FOR MEDICAL SERVICES
NOVEMBER 2007**

CATEGORY OF SERVICES	DISABILITY ASSISTANCE			
	PAYMENTS	CLAIM FREQUENCY	DUPLICATED RECIPIENTS	PERCENT OF TOTAL
ADVANCED PRACTICAL NURSE SVCS.	\$2,317.66	67	54	0.2%
AMBULANCE SERVICES	\$0.00	0	0	0.0%
AMBULATORY SURGERY	\$7,576.00	23	21	0.6%
CHIROPRACTER SERVICES	\$0.00	0	0	0.0%
CLINIC	\$21,391.17	262	113	1.7%
DENTAL SERVICES	\$1,796.24	25	22	0.1%
EPSDT	\$0.00	0	0	0.0%
FAMILY PLANNING	\$43.58	1	1	0.0%
FEDERALLY QUALIFIED HEALTH CTR	\$0.00	1	1	0.0%
HEALTH MAINTENANCE ORGANIZATION	\$0.00	0	0	0.0%
HOME HEALTH SERVICES	\$0.00	0	0	0.0%
INDEPENDENT LABORATORY	\$13,998.49	213	157	1.1%
INPATIENT HOSPITAL	\$0.00	0	0	0.0%
ICF	\$0.00	0	0	0.0%
MIDWIFERY SERVICES	\$0.00	0	0	0.0%
OPTOMETRIC SERVICES	\$0.00	0	0	0.0%
OUTPATIENT HEALTH SERVICES	\$0.00	0	0	0.0%
PASSPORT WAIVER III	\$0.00	0	0	0.0%
OUTPATIENT HOSPITAL GENERAL	\$0.00	0	0	0.0%
PHYSICAL THERAPY SERVICES	\$0.00	0	0	0.0%
PHYSICIAN SERVICES	\$231,640.98	3,466	1,538	18.6%
PHYSIOLOGICAL LABORATORY	\$3,845.12	17	12	0.3%
PODIATRISTS THERAPY	\$7,987.03	117	77	0.6%
PRESCRIBED DRUGS	\$916,916.07	14,765	2,409	73.5%
PRIVATE DUTY NURSING SERVICES	\$0.00	0	0	0.0%
PSYCHOLOGY SERVICES	\$0.00	0	0	0.0%
RURAL HEALTH SERVICES	\$0.00	0	0	0.0%
SNF	\$0.00	0	0	0.0%
SUPPLIES AND MEDICAL EQUIPMENT	\$37,346.77	705	345	3.0%
WAIVERED SERVICES	\$2,960.18	34	29	0.2%
OTHER	\$0.00	0	0	0.0%
STATEWIDE TOTAL	\$1,247,819.29	19,696	4,779	100.00%

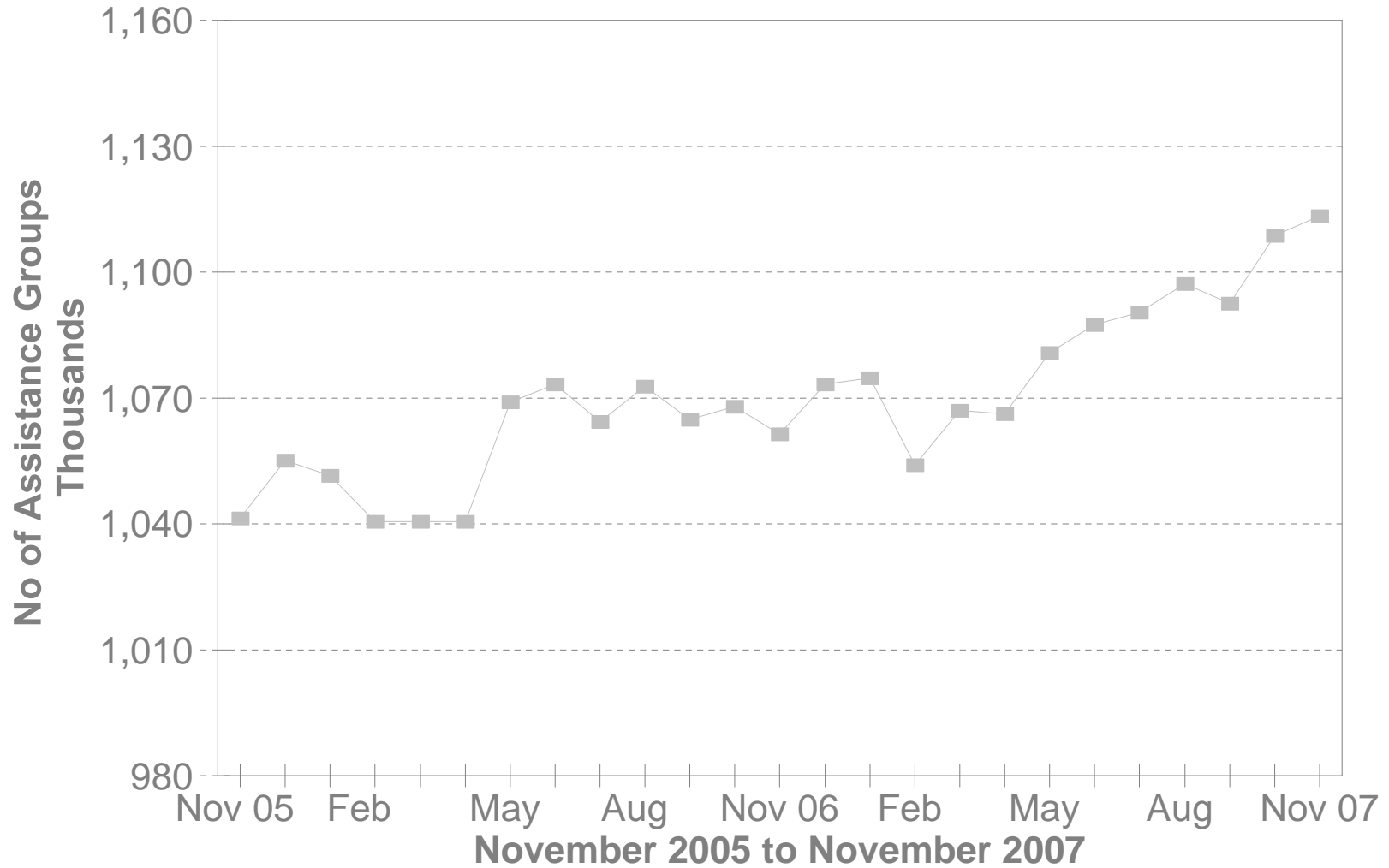
SOURCE: BOMC 9260 Report from Medicaid Management Information Services.

NOTE: Recipients are unduplicated within Category of Services, however, the Statewide Total represents a duplicated count.

No of FNS Benefits Assistance Groups During The Last 25 Months



No of FNS Benefits Cash Recipients During The Last 25 Months



**TABLE 5
FOOD AND NUTRITION BENEFITS
NOVEMBER 2007**

OHIO COUNTY	PERSONS					ASSISTANCE GROUPS			TOTAL COUPONS ISSUED
	PUBLIC ASSISTANCE	NON-PUBLIC ASSISTANCE	TOTAL	AVERAGE ISSUANCE	% CHANGE PREV. MO.	PUBLIC ASSISTANCE	NON-PUBLIC ASSISTANCE	TOTAL	
STATEWIDE	247,937	865,430	1,113,367	\$106	0.4%	181,273	328,547	509,820	\$117,500,130
ADAMS	1,160	3,687	4,847	\$100	0.4%	866	1,228	2,094	\$484,435
ALLEN	1,942	7,335	9,277	\$107	0.2%	1,515	2,457	3,972	\$992,635
ASHLAND	513	2,745	3,258	\$103	0.6%	377	972	1,349	\$333,975
ASHTABULA	3,487	9,489	12,976	\$102	2.2%	2,500	3,481	5,981	\$1,324,033
ATHENS	2,194	5,100	7,294	\$101	0.5%	1,636	1,965	3,601	\$733,174
AUGLAIZE	318	1,792	2,110	\$101	-3.3%	289	625	914	\$213,058
BELMONT	1,855	5,108	6,963	\$95	-0.4%	1,433	1,869	3,302	\$658,818
BROWN	675	2,809	3,484	\$100	-2.7%	536	990	1,526	\$348,658
BUTLER	5,396	21,572	26,968	\$109	-1.2%	4,234	7,686	11,920	\$2,930,361
CARROLL	337	1,818	2,155	\$99	0.6%	273	627	900	\$212,287
CHAMPAIGN	612	2,447	3,059	\$100	0.4%	448	836	1,284	\$304,491
CLARK	3,595	14,351	17,946	\$105	1.5%	2,875	5,354	8,229	\$1,887,540
CLERMONT	2,092	9,533	11,625	\$105	1.2%	1,643	3,308	4,951	\$1,216,879
CLINTON	653	2,624	3,277	\$103	-2.4%	541	961	1,502	\$337,557
COLUMBIANA	2,678	9,422	12,100	\$101	-0.0%	2,065	3,319	5,384	\$1,220,750
COSHOCTON	772	3,577	4,349	\$98	2.3%	609	1,289	1,898	\$428,054
CRAWFORD	900	3,720	4,620	\$101	3.8%	706	1,343	2,049	\$467,044
CUYAHOGA	27,084	157,100	184,184	\$107	1.1%	17,532	71,874	89,406	\$19,655,910
DARKE	491	1,863	2,354	\$101	-1.5%	374	665	1,039	\$238,580
DEFIANCE	532	2,380	2,912	\$101	2.1%	395	799	1,194	\$294,215
DELAWARE	1,106	3,456	4,562	\$104	1.1%	814	1,304	2,118	\$472,495
ERIE	1,151	4,870	6,021	\$109	4.2%	958	1,846	2,804	\$654,215
FAIRFIELD	2,039	8,815	10,854	\$105	1.1%	1,582	3,231	4,813	\$1,143,838
FAYETTE	597	2,242	2,839	\$109	3.2%	474	816	1,290	\$308,536
FRANKLIN	29,467	99,067	128,534	\$110	-0.6%	21,140	34,950	56,090	\$14,184,564
FULTON	370	1,724	2,094	\$97	2.8%	286	593	879	\$202,541
GALLIA	1,715	3,419	5,134	\$101	1.9%	1,194	1,202	2,396	\$516,602
GEAUGA	337	1,216	1,553	\$103	-6.6%	290	443	733	\$160,723
GREENE	1,886	6,764	8,650	\$106	0.6%	1,411	2,634	4,045	\$916,798

Source: CRIS-E GRP304RA and GRP 304RC Reports from Management Information Services. Cuyahoga County data also comes from the GRP 342 RA.

**TABLE 5
FOOD AND NUTRITION BENEFITS
NOVEMBER 2007**

OHIO COUNTY	PERSONS					ASSISTANCE GROUPS			TOTAL COUPONS ISSUED
	PUBLIC ASSISTANCE	NON-PUBLIC ASSISTANCE	TOTAL	AVERAGE ISSUANCE	% CHANGE PREV. MO.	PUBLIC ASSISTANCE	NON-PUBLIC ASSISTANCE	TOTAL	
STATEWIDE	247,937	865,430	1,113,367	\$106	0.4%	181,273	328,547	509,820	\$117,500,130
GUERNSEY	1,195	4,817	6,012	\$101	-0.6%	978	1,774	2,752	\$607,914
HAMILTON	17,596	57,945	75,541	\$110	-1.0%	12,967	20,939	33,906	\$8,299,256
HANCOCK	792	3,395	4,187	\$105	-1.4%	651	1,230	1,881	\$440,083
HARDIN	364	1,659	2,023	\$98	5.4%	289	600	889	\$198,647
HARRISON	509	1,463	1,972	\$97	-1.0%	391	530	921	\$191,034
HENRY	207	1,128	1,335	\$98	-2.3%	163	347	510	\$130,928
HIGHLAND	1,063	3,893	4,956	\$100	-1.6%	789	1,336	2,125	\$493,701
HOCKING	870	2,648	3,518	\$100	1.8%	614	939	1,553	\$351,180
HOLMES	169	807	976	\$93	-6.4%	136	283	419	\$90,783
HURON	708	4,351	5,059	\$100	-0.3%	580	1,478	2,058	\$507,849
JACKSON	1,404	4,117	5,521	\$104	4.3%	1,087	1,502	2,589	\$574,077
JEFFERSON	2,511	5,933	8,444	\$100	-2.3%	1,836	2,270	4,106	\$847,739
KNOX	997	3,619	4,616	\$102	2.5%	729	1,279	2,008	\$469,156
LAKE	2,630	8,444	11,074	\$111	0.8%	1,988	3,205	5,193	\$1,226,923
LAWRENCE	3,503	7,181	10,684	\$97	1.0%	2,548	2,715	5,263	\$1,039,957
LICKING	2,697	10,110	12,807	\$103	3.2%	2,035	3,671	5,706	\$1,313,569
LOGAN	693	2,963	3,656	\$104	0.4%	517	1,021	1,538	\$379,458
LORAIN	6,449	20,970	27,419	\$105	-1.4%	4,474	7,124	11,598	\$2,869,184
LUCAS	19,295	44,641	63,936	\$107	0.4%	13,431	16,843	30,274	\$6,848,721
MADISON	743	2,305	3,048	\$105	1.5%	523	830	1,353	\$321,365
MAHONING	8,853	20,947	29,800	\$103	0.1%	6,380	7,972	14,352	\$3,072,733
MARION	1,453	6,117	7,570	\$104	1.5%	1,168	2,192	3,360	\$786,201
MEDINA	1,088	4,116	5,204	\$103	-0.7%	829	1,510	2,339	\$535,063
MEIGS	1,200	2,972	4,172	\$101	2.3%	859	1,058	1,917	\$423,125
MERCER	350	1,186	1,536	\$96	-1.5%	269	416	685	\$147,374
MIAMI	1,074	3,553	4,627	\$99	0.2%	819	1,297	2,116	\$458,344
MONROE	417	1,268	1,685	\$97	5.5%	313	421	734	\$162,680
MONTGOMERY	14,690	42,226	56,916	\$108	-0.6%	10,984	15,708	26,692	\$6,145,619
MORGAN	443	1,462	1,905	\$94	1.4%	358	506	864	\$178,904
MORROW	557	2,506	3,063	\$96	3.0%	408	853	1,261	\$293,028

Source: CRIS-E GRP304RA and GRP 304RC Reports from Management Information Services. Cuyahoga County data also comes from the GRP 342 RA.

**TABLE 5
FOOD AND NUTRITION BENEFITS
NOVEMBER 2007**

OHIO COUNTY	PERSONS					ASSISTANCE GROUPS			TOTAL COUPONS ISSUED
	PUBLIC ASSISTANCE	NON-PUBLIC ASSISTANCE	TOTAL	AVERAGE ISSUANCE	% CHANGE PREV. MO.	PUBLIC ASSISTANCE	NON-PUBLIC ASSISTANCE	TOTAL	
STATEWIDE	247,937	865,430	1,113,367	\$106	0.4%	181,273	328,547	509,820	\$117,500,130
MUSKINGUM	2,857	11,183	14,040	\$101	0.2%	2,227	4,143	6,370	\$1,413,041
NOBLE	282	888	1,170	\$90	-1.1%	213	327	540	\$105,414
OTTAWA	568	1,983	2,551	\$102	0.6%	400	712	1,112	\$259,499
PAULDING	333	1,090	1,423	\$99	4.7%	236	378	614	\$140,978
PERRY	1,132	4,393	5,525	\$98	2.6%	823	1,507	2,330	\$542,005
PICKAWAY	1,266	3,759	5,025	\$104	4.2%	902	1,417	2,319	\$522,115
PIKE	1,239	4,052	5,291	\$104	0.5%	935	1,422	2,357	\$550,634
PORTAGE	1,790	7,595	9,385	\$108	-0.0%	1,396	2,729	4,125	\$1,015,943
PREBLE	535	2,162	2,697	\$104	2.3%	389	721	1,110	\$281,358
PUTNAM	238	1,198	1,436	\$101	-5.2%	192	422	614	\$145,157
RICHLAND	2,468	9,945	12,413	\$107	1.3%	2,002	3,590	5,592	\$1,330,102
ROSS	2,395	8,658	11,053	\$107	0.9%	1,730	3,119	4,849	\$1,185,727
SANDUSKY	703	3,484	4,187	\$104	2.0%	555	1,270	1,825	\$433,520
SCIOTO	4,350	11,483	15,833	\$96	0.7%	3,393	4,292	7,685	\$1,527,545
SENECA	811	3,991	4,802	\$103	0.3%	624	1,405	2,029	\$496,786
SHELBY	471	2,220	2,691	\$105	-1.8%	357	754	1,111	\$282,532
STARK	8,179	23,776	31,955	\$105	1.9%	5,703	8,479	14,182	\$3,354,648
SUMMIT	14,513	39,242	53,755	\$107	0.4%	10,812	15,042	25,854	\$5,731,691
TRUMBULL	4,483	14,951	19,434	\$101	2.0%	3,435	5,242	8,677	\$1,967,102
TUSCARAWAS	1,771	6,075	7,846	\$98	3.4%	1,370	2,205	3,575	\$768,005
UNION	461	1,917	2,378	\$103	-3.4%	345	690	1,035	\$244,925
VAN WERT	311	1,204	1,515	\$96	7.6%	240	417	657	\$145,913
VINTON	588	2,005	2,593	\$102	1.2%	431	683	1,114	\$263,919
WARREN	902	3,214	4,116	\$99	3.7%	687	1,101	1,788	\$407,423
WASHINGTON	1,293	4,148	5,441	\$99	-0.0%	1,100	1,536	2,636	\$540,200
WAYNE	1,807	5,404	7,211	\$106	2.2%	1,344	1,989	3,333	\$762,899
WILLIAMS	538	2,318	2,856	\$97	-1.0%	388	851	1,239	\$278,436
WOOD	986	3,530	4,516	\$103	0.0%	782	1,287	2,069	\$463,434
WYANDOT	193	775	968	\$95	1.7%	153	301	454	\$91,818

Source: CRIS-E GRP304RA and GRP 304RC Reports from Management Information Services. Cuyahoga County data also comes from the GRP 342 RA.

**Table 6A
November 2007
Medicaid Eligibles**

County	Aged	Blind	Disabled	ABD Total	OWF & Related	Healthy Start	CFC Total	Total Medicaid	Foster Care	Adoption Assistance	Transitional	Nursing Facilities
STATEWIDE	151,693	757	248,239	400,689	1,014,536	271,834	1,286,370	1,687,059	10,672	23,203	146,496	53,200
ADAMS	823	5	1,425	2,253	4,360	1,188	5,548	7,801	30	62	777	121
ALLEN	1,281	4	2,093	3,378	9,815	2,700	12,515	15,893	210	366	1,323	556
ASHLAND	614	2	635	1,251	3,570	1,443	5,013	6,264	43	26	646	278
ASHTABULA	1,638	5	3,274	4,917	11,098	3,133	14,231	19,148	84	228	2,146	1,003
ATHENS	883	9	2,111	3,003	5,894	1,285	7,179	10,182	86	140	737	185
AUGLAIZE	475	5	466	946	2,534	960	3,494	4,440	5	45	556	280
BELMONT	1,425	4	2,089	3,518	6,736	1,733	8,469	11,987	36	114	1,223	501
BROWN	761	0	1,071	1,832	4,192	1,387	5,579	7,411	18	42	836	235
BUTLER	3,294	18	5,922	9,234	27,409	6,717	34,126	43,360	418	550	4,490	1,187
CARROLL	433	2	565	1,000	2,566	787	3,353	4,353	6	18	603	188
CHAMPAIGN	503	0	626	1,129	3,071	1,175	4,246	5,375	7	35	722	245
CLARK	2,267	7	3,675	5,949	16,507	4,121	20,628	26,577	238	507	2,348	993
CLERMONT	1,781	11	2,906	4,698	12,439	4,431	16,870	21,568	200	279	2,036	696
CLINTON	530	1	807	1,338	3,682	1,054	4,736	6,074	38	78	669	161
COLUMBIANA	1,732	15	2,684	4,431	10,654	3,376	14,030	18,461	72	109	1,767	611
COSHOCTON	632	1	963	1,596	3,925	1,067	4,992	6,588	24	81	673	287
CRAWFORD	713	8	889	1,610	4,359	1,278	5,637	7,247	55	54	876	186
CUYAHOGA	23,272	134	36,309	59,715	146,322	33,214	179,536	239,251	1,323	4,904	16,974	7,067
DARKE	590	1	671	1,262	2,756	1,266	4,022	5,284	32	50	578	306
DEFIANCE	405	4	620	1,029	3,067	1,070	4,137	5,166	12	26	652	195
DELAWARE	844	0	1,061	1,905	4,512	1,759	6,271	8,176	22	96	785	302
ERIE	919	4	1,255	2,178	6,081	1,806	7,887	10,065	69	65	990	414
FAIRFIELD	1,345	6	2,152	3,503	10,573	3,051	13,624	17,127	25	348	2,100	444
FAYETTE	580	3	855	1,438	2,893	788	3,681	5,119	13	18	485	315
FRANKLIN	12,280	86	24,810	37,176	118,551	32,511	151,062	188,238	2,040	2,856	13,122	3,673
FULTON	384	1	425	810	2,492	979	3,471	4,281	16	39	500	202
GALLIA	876	3	1,576	2,455	4,269	936	5,205	7,660	20	63	638	184
GEAUGA	581	1	546	1,128	2,251	1,010	3,261	4,389	13	127	456	277
GREENE	1,391	20	1,876	3,287	9,384	2,619	12,003	15,290	79	123	1,819	585

Source: ODJFS Report BOMM1321 Prepared: Bureau of Research and Evaluation.

**Table 6A
November 2007
Medicaid Eligibles**

County	Aged	Blind	Disabled	ABD Total	OWF & Related	Healthy Start	CFC Total	Total Medicaid	Foster Care	Adoption Assistance	Transitional	Nursing Facilities
STATEWIDE	151,693	757	248,239	400,689	1,014,536	271,834	1,286,370	1,687,059	10,672	23,203	146,496	53,200
GUERNSEY	843	4	1,412	2,259	5,305	1,508	6,813	9,072	41	152	834	167
HAMILTON	10,563	59	18,420	29,042	67,623	18,435	86,058	115,100	826	1,722	6,416	3,610
HANCOCK	651	6	931	1,588	4,140	1,463	5,603	7,191	53	63	611	294
HARDIN	389	2	578	969	2,451	738	3,189	4,158	15	80	371	141
HARRISON	315	0	526	841	1,722	462	2,184	3,025	22	21	270	129
HENRY	267	0	343	610	1,856	686	2,542	3,152	10	35	407	138
HIGHLAND	863	2	1,160	2,025	4,775	1,450	6,225	8,250	25	33	772	256
HOCKING	519	4	840	1,363	3,468	1,007	4,475	5,838	29	62	576	143
HOLMES	435	2	422	859	1,446	876	2,322	3,181	14	20	306	381
HURON	647	2	872	1,521	5,512	1,884	7,396	8,917	42	51	925	184
JACKSON	877	0	1,406	2,283	4,893	1,106	5,999	8,282	32	16	714	167
JEFFERSON	1,238	10	2,357	3,605	7,269	1,642	8,911	12,516	83	115	1,178	366
KNOX	756	1	1,306	2,063	4,805	1,321	6,126	8,189	16	62	1,129	425
LAKE	1,796	3	2,534	4,333	10,372	3,674	14,046	18,379	66	81	1,877	1,057
LAWRENCE	1,665	6	3,291	4,962	8,272	2,377	10,649	15,611	60	67	1,081	333
LICKING	1,572	3	2,710	4,285	12,935	3,722	16,657	20,942	209	400	2,437	550
LOGAN	605	1	686	1,292	3,831	1,041	4,872	6,164	8	96	732	194
LORAIN	2,966	14	5,406	8,386	25,083	6,325	31,408	39,794	90	479	3,745	1,238
LUCAS	6,676	49	14,472	21,197	55,571	10,491	66,062	87,259	482	1,509	7,170	1,968
MADISON	420	1	603	1,024	2,877	973	3,850	4,874	30	34	492	122
MAHONING	4,145	15	6,947	11,107	26,077	5,543	31,620	42,727	263	187	3,122	1,534
MARION	986	3	1,795	2,784	6,607	1,871	8,478	11,262	50	129	1,131	265
MEDINA	1,074	8	1,273	2,355	6,555	2,187	8,742	11,097	33	157	1,374	650
MEIGS	573	4	1,048	1,625	3,308	818	4,126	5,751	8	11	453	143
MERCER	385	0	415	800	1,646	761	2,407	3,207	20	56	392	194
MIAMI	1,156	2	1,306	2,464	5,396	1,951	7,347	9,811	73	126	909	433
MONROE	303	0	394	697	1,520	448	1,968	2,665	14	17	272	99
MONTGOMERY	7,472	24	12,859	20,355	52,091	12,207	64,298	84,653	723	1,339	6,644	2,360
MORGAN	329	1	527	857	1,908	545	2,453	3,310	0	13	407	116
MORROW	443	1	620	1,064	3,071	1,026	4,097	5,161	4	57	746	149

Source: ODJFS Report BOMM1321 Prepared: Bureau of Research and Evaluation.

**Table 6A
November 2007
Medicaid Eligibles**

County	Aged	Blind	Disabled	ABD Total	OWF & Related	Healthy Start	CFC Total	Total Medicaid	Foster Care	Adoption Assistance	Transitional	Nursing Facilities
STATEWIDE	151,693	757	248,239	400,689	1,014,536	271,834	1,286,370	1,687,059	10,672	23,203	146,496	53,200
MUSKINGUM	1,683	19	2,925	4,627	11,504	2,740	14,244	18,871	116	220	1,940	484
NOBLE	236	0	259	495	1,152	373	1,525	2,020	4	10	267	82
OTTAWA	464	4	534	1,002	2,571	865	3,436	4,438	13	6	530	161
PAULDING	204	1	388	593	1,317	612	1,929	2,522	6	25	272	46
PERRY	587	7	1,177	1,771	5,067	1,261	6,328	8,099	29	78	853	196
PICKAWAY	668	2	1,059	1,729	4,574	1,126	5,700	7,429	26	24	798	172
PIKE	840	0	1,484	2,324	4,285	1,340	5,625	7,949	21	28	545	275
PORTAGE	1,302	5	1,874	3,181	9,376	2,494	11,870	15,051	95	204	1,305	603
PREBLE	418	7	666	1,091	3,269	1,010	4,279	5,370	45	40	735	205
PUTNAM	290	0	334	624	1,498	604	2,102	2,726	2	15	272	204
RICHLAND	1,933	0	2,779	4,712	10,986	3,541	14,527	19,239	51	263	1,746	626
ROSS	1,229	3	2,414	3,646	9,821	2,135	11,956	15,602	81	89	1,329	296
SANDUSKY	764	5	1,052	1,821	4,522	1,643	6,165	7,986	25	55	853	361
SCIOTO	2,534	5	4,816	7,355	11,468	2,392	13,860	21,215	89	91	1,576	581
SENECA	748	4	1,032	1,784	4,596	1,608	6,204	7,988	53	127	881	325
SHELBY	429	3	611	1,043	3,116	1,064	4,180	5,223	17	61	509	185
STARK	5,212	21	7,083	12,316	31,385	8,453	39,838	52,154	417	1,059	5,806	2,263
SUMMIT	7,170	40	11,188	18,398	45,862	10,122	55,984	74,382	491	861	6,322	2,176
TRUMBULL	2,906	15	4,809	7,730	19,375	5,775	25,150	32,880	172	531	3,018	1,201
TUSCARAWAS	1,367	8	1,621	2,996	7,382	2,571	9,953	12,949	109	201	1,327	483
UNION	359	1	467	827	2,447	910	3,357	4,184	26	41	474	115
UNKNOWN	0	0	0	0	0	0	0	0	0	0	0	0
VAN WERT	320	0	424	744	1,473	886	2,359	3,103	3	17	333	163
VINTON	320	0	598	918	2,175	688	2,863	3,781	15	18	276	62
WARREN	1,461	5	1,625	3,091	5,255	2,519	7,774	10,865	42	110	937	840
WASHINGTON	1,060	6	1,609	2,675	5,322	1,949	7,271	9,946	16	74	1,168	342
WAYNE	1,189	3	1,711	2,903	6,817	2,418	9,235	12,138	79	148	1,297	507
WILLIAMS	474	2	531	1,007	3,241	865	4,106	5,113	17	44	911	179
WOOD	1,018	4	1,095	2,117	5,205	1,858	7,063	9,180	32	104	965	409
WYANDOT	327	0	258	585	1,128	630	1,758	2,343	5	20	231	175

Source: ODJFS Report BOMM1321 Prepared: Bureau of Research and Evaluation.

**Table 6B
November 2007
Medicaid Expenditures**

	Aged	Blind	Disabled	ABD Total	OWF & Related	Healthy Start	CFC Total	Total Medicaid	Foster Care	Adoption Assistance	Transitional	Nursing Facilities
STATEWIDE	\$243,050,986	\$824,555	\$439,923,749	\$683,799,290	\$235,038,761	\$67,756,330	\$302,795,091	\$987,576,733	\$4,884,499	\$4,369,486	\$31,459,014	\$260,133,149
ADAMS	\$825,776	\$4,023	\$1,912,702	\$2,742,501	\$981,371	\$361,289	\$1,342,660	\$4,096,306	\$9,823	\$14,554	\$174,834	\$564,472
ALLEN	\$2,423,849	\$13,478	\$3,908,922	\$6,346,249	\$3,405,263	\$1,937,008	\$5,342,271	\$11,701,611	\$44,734	\$16,224	\$271,185	\$2,770,400
ASHLAND	\$1,177,065	\$1,253	\$1,315,346	\$2,493,664	\$832,018	\$526,937	\$1,358,955	\$3,853,513	\$10,893	\$2,417	\$138,368	\$1,226,318
ASHTABULA	\$3,232,925	\$11,451	\$6,244,947	\$9,489,323	\$2,546,691	\$769,585	\$3,316,276	\$12,812,738	\$45,496	\$31,840	\$438,735	\$5,303,506
ATHENS	\$1,002,162	\$6,022	\$2,708,396	\$3,716,579	\$1,506,133	\$437,236	\$1,943,369	\$5,661,149	\$81,902	\$31,358	\$157,039	\$727,624
AUGLAIZE	\$1,025,496	\$10,114	\$841,867	\$1,877,476	\$601,907	\$223,917	\$825,824	\$2,706,195	\$2,119	\$9,073	\$113,175	\$1,095,180
BELMONT	\$1,970,961	\$3,119	\$3,604,653	\$5,578,733	\$1,481,841	\$366,078	\$1,847,920	\$7,431,755	\$24,968	\$16,537	\$258,162	\$1,922,671
BROWN	\$1,295,673	\$0	\$1,664,043	\$2,959,716	\$997,772	\$334,910	\$1,332,682	\$4,297,360	\$8,631	\$16,482	\$175,337	\$1,151,514
BUTLER	\$6,214,122	\$32,043	\$11,462,424	\$17,708,589	\$6,452,751	\$2,025,972	\$8,478,724	\$26,221,662	\$137,015	\$95,979	\$986,984	\$6,653,375
CARROLL	\$614,212	\$2,146	\$1,085,832	\$1,702,190	\$608,890	\$145,039	\$753,929	\$2,456,589	\$3,419	\$490	\$130,403	\$837,891
CHAMPAIGN	\$898,207	\$100	\$1,181,609	\$2,079,917	\$726,889	\$268,357	\$995,246	\$3,075,163	\$8,844	\$5,287	\$148,345	\$1,098,659
CLARK	\$3,686,496	\$5,225	\$6,596,801	\$10,288,522	\$3,805,349	\$968,672	\$4,774,021	\$15,073,150	\$94,064	\$53,507	\$510,863	\$4,389,577
CLERMONT	\$2,797,453	\$12,734	\$6,171,359	\$8,981,546	\$3,320,628	\$1,267,232	\$4,587,861	\$13,612,521	\$126,000	\$44,246	\$448,096	\$4,566,109
CLINTON	\$723,023	\$1,098	\$1,151,612	\$1,875,732	\$822,395	\$442,053	\$1,264,448	\$3,141,062	\$19,965	\$10,249	\$161,986	\$724,442
COLUMBIANA	\$2,587,118	\$3,913	\$4,563,390	\$7,154,421	\$2,374,219	\$601,687	\$2,975,906	\$10,156,087	\$39,068	\$20,378	\$211,351	\$2,855,967
COSHOCTON	\$866,762	\$2,008	\$1,337,923	\$2,206,693	\$813,523	\$223,148	\$1,036,671	\$3,244,835	\$3,113	\$10,981	\$139,346	\$667,604
CRAWFORD	\$966,696	\$6,810	\$1,231,317	\$2,204,823	\$954,231	\$296,263	\$1,250,494	\$3,472,784	\$11,777	\$8,114	\$202,632	\$723,395
CUYAHOGA	\$36,743,624	\$120,461	\$60,857,569	\$97,721,654	\$32,654,802	\$7,284,619	\$39,939,420	\$137,741,904	\$804,269	\$998,314	\$3,574,289	\$37,645,259
DARKE	\$1,066,919	\$9	\$1,309,286	\$2,376,215	\$682,956	\$298,666	\$981,622	\$3,358,279	\$15,300	\$18,381	\$156,071	\$1,223,703
DEFIANCE	\$654,116	\$4,320	\$998,276	\$1,656,712	\$685,912	\$221,904	\$907,816	\$2,569,650	\$611	\$11,410	\$142,254	\$712,037
DELAWARE	\$1,351,743	\$0	\$2,496,900	\$3,848,643	\$1,025,940	\$514,256	\$1,540,197	\$5,388,839	\$12,066	\$9,341	\$165,527	\$1,320,065
ERIE	\$1,504,238	\$3,624	\$2,135,075	\$3,642,938	\$1,383,048	\$375,897	\$1,758,945	\$5,405,141	\$25,865	\$22,970	\$227,856	\$1,585,184
FAIRFIELD	\$2,087,615	\$6,657	\$3,265,521	\$5,359,793	\$2,253,786	\$769,952	\$3,023,738	\$8,391,200	\$4,258	\$31,577	\$434,654	\$1,932,591
FAYETTE	\$1,201,309	\$15,808	\$1,992,633	\$3,209,750	\$668,130	\$207,549	\$875,679	\$4,085,429	\$1,077	\$4,574	\$117,627	\$1,840,922
FRANKLIN	\$19,223,720	\$86,464	\$49,540,499	\$68,850,682	\$27,881,218	\$8,241,249	\$36,122,467	\$105,029,933	\$785,405	\$426,429	\$2,961,305	\$21,673,014
FULTON	\$779,201	\$1,033	\$917,319	\$1,697,553	\$531,107	\$216,525	\$747,632	\$2,473,957	\$6,445	\$14,340	\$107,149	\$816,587
GALLIA	\$1,608,319	\$8,052	\$3,850,149	\$5,466,520	\$985,134	\$174,510	\$1,159,644	\$6,626,229	\$7,069	\$3,346	\$129,923	\$773,040
GEAUGA	\$1,279,282	\$1,099	\$1,473,002	\$2,753,383	\$505,728	\$224,963	\$730,691	\$3,484,091	\$4,870	\$20,149	\$90,206	\$1,630,628
GREENE	\$2,515,636	\$22,924	\$3,138,488	\$5,677,048	\$2,314,718	\$707,134	\$3,021,852	\$8,703,892	\$47,508	\$22,409	\$383,304	\$2,801,133

**Table 6B
November 2007
Medicaid Expenditures**

	Aged	Blind	Disabled	ABD Total	OWF & Related	Healthy Start	CFC Total	Total Medicaid	Foster Care	Adoption Assistance	Transitional	Nursing Facilities
STATEWIDE	\$243,050,986	\$824,555	\$439,923,749	\$683,799,290	\$235,038,761	\$67,756,330	\$302,795,091	\$987,576,733	\$4,884,499	\$4,369,486	\$31,459,014	\$260,133,149
GUERNSEY	\$1,058,857	\$1,545	\$2,995,794	\$4,056,196	\$1,115,534	\$296,936	\$1,412,470	\$5,481,421	\$11,258	\$29,160	\$165,202	\$746,584
HAMILTON	\$18,635,732	\$71,488	\$31,797,484	\$50,504,704	\$16,808,013	\$5,240,073	\$22,048,085	\$72,623,426	\$561,720	\$472,434	\$1,481,695	\$19,608,561
HANCOCK	\$1,178,880	\$4,650	\$1,778,454	\$2,961,985	\$954,222	\$380,206	\$1,334,428	\$4,300,549	\$14,929	\$9,651	\$142,038	\$1,277,476
HARDIN	\$530,223	\$0	\$743,797	\$1,274,020	\$529,670	\$145,245	\$674,915	\$1,948,935	\$5,981	\$2,646	\$81,383	\$514,919
HARRISON	\$520,247	\$0	\$729,480	\$1,249,727	\$337,744	\$93,475	\$431,219	\$1,681,043	\$3,293	\$2,703	\$53,718	\$556,709
HENRY	\$523,953	\$0	\$1,307,366	\$1,831,319	\$405,779	\$173,781	\$579,561	\$2,426,892	\$1,755	\$7,188	\$94,279	\$561,289
HIGHLAND	\$1,249,999	\$928	\$1,875,964	\$3,126,891	\$1,094,253	\$420,448	\$1,514,701	\$4,644,585	\$8,096	\$8,502	\$110,465	\$1,179,550
HOCKING	\$712,154	\$9,968	\$1,457,299	\$2,179,422	\$825,859	\$222,418	\$1,048,278	\$3,227,700	\$24,116	\$6,893	\$146,814	\$632,038
HOLMES	\$1,062,590	\$2,284	\$1,132,907	\$2,197,781	\$368,549	\$167,556	\$536,105	\$2,733,886	\$3,994	\$990	\$67,205	\$1,659,831
HURON	\$881,840	\$178	\$1,241,294	\$2,123,313	\$1,544,343	\$504,659	\$2,049,003	\$4,172,315	\$16,793	\$3,120	\$192,511	\$743,817
JACKSON	\$1,032,226	\$0	\$1,553,970	\$2,586,197	\$1,031,009	\$227,095	\$1,258,103	\$3,854,854	\$16,933	\$3,871	\$147,253	\$651,360
JEFFERSON	\$1,565,874	\$4,267	\$2,815,263	\$4,385,404	\$1,516,045	\$327,960	\$1,844,005	\$6,234,810	\$25,238	\$23,459	\$236,502	\$1,429,070
KNOX	\$1,650,584	\$1,084	\$4,276,331	\$5,927,999	\$1,039,094	\$282,884	\$1,321,977	\$7,249,976	\$1,426	\$16,806	\$246,880	\$3,068,196
LAKE	\$3,679,982	\$72	\$7,028,913	\$10,708,966	\$2,626,292	\$949,769	\$3,576,062	\$14,297,786	\$75,640	\$15,646	\$381,272	\$5,645,525
LAWRENCE	\$1,958,613	\$5,480	\$3,866,834	\$5,830,928	\$1,752,140	\$446,331	\$2,198,471	\$8,035,055	\$24,051	\$12,293	\$224,537	\$1,362,461
LICKING	\$2,427,445	-\$2,988	\$5,441,447	\$7,865,903	\$2,910,137	\$857,772	\$3,767,909	\$11,642,097	\$55,329	\$55,920	\$598,375	\$2,740,853
LOGAN	\$875,685	\$1,070	\$1,078,328	\$1,955,083	\$851,375	\$244,575	\$1,095,950	\$3,076,855	\$2,982	\$7,846	\$155,886	\$875,962
LORAIN	\$4,766,270	\$10,444	\$8,732,121	\$13,508,834	\$5,338,160	\$1,493,958	\$6,832,117	\$20,359,886	\$71,525	\$55,473	\$791,592	\$6,067,242
LUCAS	\$10,089,353	\$54,814	\$24,973,435	\$35,117,602	\$13,047,114	\$2,607,459	\$15,654,572	\$50,871,926	\$174,474	\$272,541	\$1,568,299	\$9,659,111
MADISON	\$568,215	\$296	\$1,248,514	\$1,817,026	\$745,480	\$206,446	\$951,926	\$2,768,952	\$11,643	\$8,185	\$110,219	\$705,406
MAHONING	\$6,703,262	\$25,637	\$10,237,335	\$16,966,233	\$5,822,274	\$1,395,997	\$7,218,271	\$24,209,177	\$141,606	\$23,377	\$691,362	\$6,679,760
MARION	\$1,487,871	\$2,232	\$2,591,543	\$4,081,645	\$1,426,558	\$494,112	\$1,920,670	\$6,004,062	\$18,225	\$12,846	\$245,271	\$1,231,568
MEDINA	\$2,172,672	\$41,967	\$3,195,925	\$5,410,564	\$1,361,227	\$499,678	\$1,860,906	\$7,275,322	\$13,144	\$9,474	\$281,106	\$3,407,229
MEIGS	\$608,306	\$4,483	\$1,214,619	\$1,827,407	\$723,187	\$135,923	\$859,109	\$2,687,126	\$508	-\$31	\$97,958	\$568,553
MERCER	\$607,390	\$0	\$803,111	\$1,410,502	\$365,417	\$175,479	\$540,896	\$1,952,173	\$13,847	\$4,138	\$89,907	\$773,874
MIAMI	\$2,013,475	\$5,973	\$2,571,386	\$4,590,834	\$1,234,748	\$681,406	\$1,916,154	\$6,519,939	\$31,045	\$22,179	\$186,001	\$1,755,035
MONROE	\$355,176	\$0	\$522,711	\$877,887	\$321,085	\$83,961	\$405,046	\$1,283,517	\$1,743	\$2,599	\$51,965	\$374,465
MONTGOMERY	\$11,588,483	\$26,870	\$21,544,428	\$33,159,781	\$12,047,298	\$2,849,269	\$14,896,567	\$48,096,022	\$264,122	\$207,390	\$1,429,687	\$10,962,708
MORGAN	\$476,624	\$75	\$638,964	\$1,115,663	\$349,030	\$146,698	\$495,728	\$1,611,717	\$0	\$1,563	\$76,840	\$480,247
MORROW	\$904,485	\$1,101	\$1,561,430	\$2,467,017	\$698,845	\$248,439	\$947,284	\$3,416,615	\$0	\$3,280	\$158,914	\$1,218,368

**Table 6B
November 2007
Medicaid Expenditures**

	Aged	Blind	Disabled	ABD Total	OWF & Related	Healthy Start	CFC Total	Total Medicaid	Foster Care	Adoption Assistance	Transitional	Nursing Facilities
STATEWIDE	\$243,050,986	\$824,555	\$439,923,749	\$683,799,290	\$235,038,761	\$67,756,330	\$302,795,091	\$987,576,733	\$4,884,499	\$4,369,486	\$31,459,014	\$260,133,149
MUSKINGUM	\$2,139,170	\$11,943	\$3,398,258	\$5,549,371	\$2,332,204	\$522,065	\$2,854,268	\$8,406,759	\$25,991	\$29,716	\$386,135	\$1,997,013
NOBLE	\$340,443	\$0	\$280,878	\$621,321	\$258,302	\$93,924	\$352,226	\$973,547	\$0	\$430	\$60,123	\$315,902
OTTAWA	\$964,825	\$10,280	\$1,673,867	\$2,648,972	\$546,342	\$171,408	\$717,750	\$3,367,910	\$7,156	\$571	\$105,331	\$757,220
PAULDING	\$218,751	\$339	\$582,004	\$801,095	\$302,566	\$182,508	\$485,073	\$1,286,168	\$6,299	\$2,689	\$59,190	\$182,827
PERRY	\$738,777	\$4,467	\$2,065,756	\$2,809,000	\$1,070,905	\$232,498	\$1,303,403	\$4,112,856	\$11,529	\$4,438	\$168,108	\$1,231,910
PICKAWAY	\$797,691	\$58	\$1,350,630	\$2,148,378	\$1,076,967	\$219,577	\$1,296,544	\$3,444,922	\$7,072	\$13,193	\$167,379	\$725,623
PIKE	\$1,170,335	\$0	\$2,703,061	\$3,873,396	\$1,031,055	\$289,426	\$1,320,481	\$5,194,061	\$13,975	\$3,358	\$133,891	\$1,456,544
PORTAGE	\$2,117,600	\$14,603	\$4,849,934	\$6,982,137	\$2,272,325	\$659,667	\$2,931,991	\$9,915,618	\$52,313	\$33,523	\$289,665	\$3,435,391
PREBLE	\$769,464	\$6,497	\$1,528,110	\$2,304,071	\$739,622	\$281,811	\$1,021,433	\$3,326,057	\$13,423	\$4,917	\$149,804	\$1,061,962
PUTNAM	\$581,348	\$983	\$782,122	\$1,364,453	\$309,983	\$130,463	\$440,446	\$1,804,958	\$220	\$199	\$57,302	\$889,640
RICHLAND	\$2,761,612	\$0	\$4,879,999	\$7,641,611	\$2,599,330	\$853,367	\$3,452,697	\$11,124,106	\$12,766	\$37,458	\$407,444	\$3,088,942
ROSS	\$1,425,453	\$3,304	\$3,657,445	\$5,086,202	\$2,238,735	\$486,299	\$2,725,034	\$7,839,847	\$42,082	\$10,629	\$295,087	\$1,144,591
SANDUSKY	\$1,352,269	\$3,739	\$2,448,381	\$3,804,389	\$1,016,572	\$351,669	\$1,368,241	\$5,178,071	\$16,027	\$7,548	\$181,263	\$1,656,774
SCIOTO	\$3,064,334	\$3,090	\$6,258,374	\$9,325,799	\$2,731,961	\$546,634	\$3,278,595	\$12,631,999	\$14,903	\$145,598	\$343,806	\$2,398,297
SENECA	\$1,634,044	\$2,153	\$3,434,822	\$5,071,019	\$961,393	\$354,989	\$1,316,382	\$6,387,401	\$17,895	\$9,327	\$186,792	\$1,437,041
SHELBY	\$662,981	\$1,220	\$982,594	\$1,646,795	\$708,717	\$281,244	\$989,962	\$2,636,904	\$14,609	\$10,217	\$112,305	\$744,733
STARK	\$9,275,829	\$29,947	\$13,263,430	\$22,569,205	\$7,082,353	\$1,958,567	\$9,040,920	\$31,626,017	\$179,532	\$287,208	\$1,220,883	\$9,890,089
SUMMIT	\$10,950,034	\$40,371	\$20,621,856	\$31,612,260	\$10,880,136	\$2,557,043	\$13,437,179	\$45,102,327	\$283,157	\$158,219	\$1,325,208	\$10,193,707
TRUMBULL	\$4,586,096	\$12,460	\$7,358,577	\$11,957,133	\$4,393,004	\$1,435,867	\$5,828,871	\$17,790,691	\$64,412	\$32,936	\$654,196	\$5,334,039
TUSCARAWAS	\$2,162,035	\$2,275	\$2,459,901	\$4,624,211	\$1,562,525	\$530,752	\$2,093,278	\$6,723,694	\$41,630	\$37,721	\$253,493	\$1,776,192
UNION	\$571,421	\$89	\$866,969	\$1,438,480	\$555,030	\$204,081	\$759,111	\$2,197,591	\$11,728	\$3,447	\$104,985	\$516,832
UNKNOWN	\$309	\$0	\$1,345	\$1,655	\$758,017	\$0	\$758,017	\$759,671	\$5	\$181,054	\$0	\$1,357
VAN WERT	\$602,057	\$0	\$766,130	\$1,368,187	-\$55,113	\$205,647	\$150,534	\$1,518,869	\$781	\$5,937	\$78,326	\$625,982
VINTON	\$329,017	\$0	\$699,716	\$1,028,733	\$484,203	\$128,793	\$612,997	\$1,642,429	\$7,130	\$1,291	\$60,844	\$238,193
WARREN	\$3,092,239	\$5,063	\$4,560,179	\$7,657,481	\$1,296,676	\$895,669	\$2,192,345	\$9,861,238	\$10,832	\$24,439	\$205,130	\$4,472,411
WASHINGTON	\$1,389,582	\$3,799	\$2,044,355	\$3,437,736	\$1,140,782	\$393,963	\$1,534,746	\$4,972,482	\$8,767	\$2,984	\$264,127	\$1,277,161
WAYNE	\$1,933,664	\$2,532	\$2,863,044	\$4,799,241	\$1,444,119	\$566,156	\$2,010,275	\$6,809,516	\$23,012	\$11,552	\$271,071	\$1,945,061
WILLIAMS	\$748,085	\$2,192	\$857,899	\$1,608,176	\$763,190	\$159,085	\$922,275	\$2,530,451	\$3,760	\$17,821	\$191,499	\$698,095
WOOD	\$1,770,785	\$3,243	\$2,254,836	\$4,028,864	\$1,297,409	\$499,482	\$1,796,892	\$5,867,723	\$8,447	\$15,932	\$216,868	\$1,593,660
WYANDOT	\$690,551	\$0	\$514,972	\$1,205,523	\$244,619	\$131,061	\$375,680	\$1,581,203	\$3,055	\$2,036	\$46,613	\$675,323

**TABLE 7
CHILD CARE
NOVEMBER 2007**

OHIO COUNTY	OWF JOBS, LEAP, and TRANSITIONAL		OTHER CHILD CARE		LOCAL FUNDING		ALL PROGRAM SOURCES	
	CHILDREN SERVED		CHILDREN SERVED		CHILDREN SERVED		CHILDREN SERVED	
	TOTAL	% OF STATE TOTAL	TOTAL	% OF STATE TOTAL	TOTAL	% OF STATE TOTAL	TOTAL	% OF STATE TOTAL
STATEWIDE	23,726	100.00%	81,688	100.00%	121	100.00%	105,535	100.00%
ADAMS	36	0.15%	115	0.14%	0	0.00%	151	0.14%
ALLEN	206	0.87%	425	0.52%	0	0.00%	631	0.60%
ASHLAND	21	0.09%	170	0.21%	0	0.00%	191	0.18%
ASHTABULA	219	0.92%	729	0.89%	0	0.00%	948	0.90%
ATHENS	113	0.48%	203	0.25%	0	0.00%	316	0.30%
AUGLAIZE	12	0.05%	85	0.10%	0	0.00%	97	0.09%
BELMONT	78	0.33%	260	0.32%	0	0.00%	338	0.32%
BROWN	20	0.08%	147	0.18%	0	0.00%	167	0.16%
BUTLER	187	0.79%	1,628	1.99%	0	0.00%	1,815	1.72%
CARROLL	39	0.16%	73	0.09%	0	0.00%	112	0.11%
CHAMPAIGN	48	0.20%	155	0.19%	0	0.00%	203	0.19%
CLARK	172	0.72%	696	0.85%	0	0.00%	868	0.82%
CLERMONT	263	1.11%	568	0.70%	0	0.00%	831	0.79%
CLINTON	11	0.05%	138	0.17%	0	0.00%	149	0.14%
COLUMBIANA	190	0.80%	880	1.08%	0	0.00%	1,070	1.01%
COSHOCTON	80	0.34%	234	0.29%	0	0.00%	314	0.30%
CRAWFORD	50	0.21%	215	0.26%	0	0.00%	265	0.25%
CUYAHOGA	4,071	17.16%	17,681	21.64%	0	0.00%	21,752	20.61%
DARKE	49	0.21%	114	0.14%	0	0.00%	163	0.15%
DEFIANCE	79	0.33%	163	0.20%	0	0.00%	242	0.23%
DELAWARE	63	0.27%	431	0.53%	0	0.00%	494	0.47%
ERIE	53	0.22%	674	0.83%	0	0.00%	727	0.69%
FAIRFIELD	116	0.49%	739	0.90%	0	0.00%	855	0.81%
FAYETTE	64	0.27%	251	0.31%	0	0.00%	315	0.30%
FRANKLIN	2,852	12.02%	10,418	12.75%	111	91.74%	13,381	12.68%
FULTON	68	0.29%	169	0.21%	0	0.00%	237	0.22%
GALLIA	42	0.18%	149	0.18%	0	0.00%	191	0.18%
GEAUGA	34	0.14%	201	0.25%	0	0.00%	235	0.22%
GREENE	192	0.81%	622	0.76%	0	0.00%	814	0.77%

**TABLE 7
CHILD CARE
NOVEMBER 2007**

OHIO COUNTY	OWF JOBS, LEAP, and TRANSITIONAL		OTHER CHILD CARE		LOCAL FUNDING		ALL PROGRAM SOURCES	
	CHILDREN SERVED		CHILDREN SERVED		CHILDREN SERVED		CHILDREN SERVED	
	TOTAL	% OF STATE TOTAL	TOTAL	% OF STATE TOTAL	TOTAL	% OF STATE TOTAL	TOTAL	% OF STATE TOTAL
STATEWIDE	23,726	100.00%	81,688	100.00%	121	100.00%	105,535	100.00%
GUERNSEY	112	0.47%	282	0.35%	0	0.00%	394	0.37%
HAMILTON	3,544	14.94%	10,339	12.66%	0	0.00%	13,883	13.15%
HANCOCK	119	0.50%	379	0.46%	0	0.00%	498	0.47%
HARDIN	25	0.11%	49	0.06%	0	0.00%	74	0.07%
HARRISON	13	0.05%	42	0.05%	0	0.00%	55	0.05%
HENRY	45	0.19%	125	0.15%	0	0.00%	170	0.16%
HIGHLAND	15	0.06%	203	0.25%	0	0.00%	218	0.21%
HOCKING	49	0.21%	84	0.10%	0	0.00%	133	0.13%
HOLMES	54	0.23%	114	0.14%	0	0.00%	168	0.16%
HURON	8	0.03%	455	0.56%	0	0.00%	463	0.44%
JACKSON	36	0.15%	134	0.16%	0	0.00%	170	0.16%
JEFFERSON	60	0.25%	326	0.40%	0	0.00%	386	0.37%
KNOX	65	0.27%	273	0.33%	0	0.00%	338	0.32%
LAKE	238	1.00%	936	1.15%	3	2.48%	1,177	1.12%
LAWRENCE	188	0.79%	409	0.50%	0	0.00%	597	0.57%
LICKING	203	0.86%	1,114	1.36%	0	0.00%	1,317	1.25%
LOGAN	51	0.21%	62	0.08%	0	0.00%	113	0.11%
LORAIN	648	2.73%	1,609	1.97%	0	0.00%	2,257	2.14%
LUCAS	2,199	9.27%	3,233	3.96%	0	0.00%	5,432	5.15%
MADISON	34	0.14%	131	0.16%	0	0.00%	165	0.16%
MAHONING	969	4.08%	1,375	1.68%	0	0.00%	2,344	2.22%
MARION	32	0.13%	382	0.47%	0	0.00%	414	0.39%
MEDINA	117	0.49%	752	0.92%	0	0.00%	869	0.82%
MEIGS	14	0.06%	188	0.23%	0	0.00%	202	0.19%
MERCER	17	0.07%	157	0.19%	0	0.00%	174	0.16%
MIAMI	128	0.54%	342	0.42%	0	0.00%	470	0.45%
MONROE	16	0.07%	48	0.06%	0	0.00%	64	0.06%
MONTGOMERY	720	3.03%	4,161	5.09%	0	0.00%	4,881	4.63%
MORGAN	4	0.02%	116	0.14%	0	0.00%	120	0.11%
MORROW	36	0.15%	189	0.23%	0	0.00%	225	0.21%

**TABLE 7
CHILD CARE
NOVEMBER 2007**

OHIO COUNTY	OWF JOBS, LEAP, and TRANSITIONAL		OTHER CHILD CARE		LOCAL FUNDING		ALL PROGRAM SOURCES	
	CHILDREN SERVED		CHILDREN SERVED		CHILDREN SERVED		CHILDREN SERVED	
	TOTAL	% OF STATE TOTAL	TOTAL	% OF STATE TOTAL	TOTAL	% OF STATE TOTAL	TOTAL	% OF STATE TOTAL
STATEWIDE	23,726	100.00%	81,688	100.00%	121	100.00%	105,535	100.00%
MUSKINGUM	371	1.56%	723	0.89%	0	0.00%	1,094	1.04%
NOBLE	40	0.17%	93	0.11%	0	0.00%	133	0.13%
OTTAWA	58	0.24%	123	0.15%	0	0.00%	181	0.17%
PAULDING	3	0.01%	32	0.04%	0	0.00%	35	0.03%
PERRY	37	0.16%	263	0.32%	0	0.00%	300	0.28%
PICKAWAY	85	0.36%	122	0.15%	0	0.00%	207	0.20%
PIKE	47	0.20%	66	0.08%	0	0.00%	113	0.11%
PORTAGE	172	0.72%	754	0.92%	0	0.00%	926	0.88%
PREBLE	58	0.24%	109	0.13%	0	0.00%	167	0.16%
PUTNAM	13	0.05%	84	0.10%	0	0.00%	97	0.09%
RICHLAND	284	1.20%	904	1.11%	0	0.00%	1,188	1.13%
ROSS	103	0.43%	339	0.41%	0	0.00%	442	0.42%
SANDUSKY	84	0.35%	514	0.63%	0	0.00%	598	0.57%
SCIOTO	122	0.51%	550	0.67%	0	0.00%	672	0.64%
SENECA	26	0.11%	274	0.34%	0	0.00%	300	0.28%
SHELBY	109	0.46%	268	0.33%	0	0.00%	377	0.36%
STARK	817	3.44%	2,301	2.82%	0	0.00%	3,118	2.95%
SUMMIT	1,126	4.75%	3,828	4.69%	0	0.00%	4,954	4.69%
TRUMBULL	322	1.36%	1,534	1.88%	0	0.00%	1,856	1.76%
TUSCARAWAS	39	0.16%	428	0.52%	0	0.00%	467	0.44%
UNION	22	0.09%	243	0.30%	7	5.79%	272	0.26%
VAN WERT	7	0.03%	46	0.06%	0	0.00%	53	0.05%
VINTON	8	0.03%	74	0.09%	0	0.00%	82	0.08%
WARREN	183	0.77%	503	0.62%	0	0.00%	686	0.65%
WASHINGTON	73	0.31%	282	0.35%	0	0.00%	355	0.34%
WAYNE	175	0.74%	333	0.41%	0	0.00%	508	0.48%
WILLIAMS	43	0.18%	106	0.13%	0	0.00%	149	0.14%
WOOD	105	0.44%	388	0.47%	0	0.00%	493	0.47%
WYANDOT	7	0.03%	62	0.08%	0	0.00%	69	0.07%

SOURCE: COGNOS. The above numbers have not been reconciled between the CCIDS/3299 data collection system and 2827 ODJFS fiscal reporting system; therefore they may not be conclusive at this time.

OWF data consist of funding codes: 173,312, 313,314, 326, & 327. Other data consist of funding codes: 320, 321, 322, 323, 324, 325, 328, 329, and 342. Local Funding is from funding code 899.

**TABLE 8
RECIPIENTS, EXPENDITURES, AND AVERAGE PAYMENT PER RECIPIENT
DURING THE LAST 12 MONTHS IN OHIO**

RECIPIENTS	OWF-R	OWF-U	OWF\ CHILD CARE	Other CHILD CARE	DISABILITY ASSISTANCE	TITLE IV-E	FNS BENEFITS
December 2006	159,543	13,239	23,727	79,838	13,654	27,223	1,073,211
January 2007	156,974	12,864	22,470	78,182	13,678	27,150	1,074,737
February	153,574	12,747	23,275	74,852	13,709	26,969	1,054,032
March	152,985	12,792	23,584	78,334	13,965	26,244	1,066,951
April	152,556	12,406	23,527	77,738	13,947	26,182	1,066,248
May	155,417	12,271	24,152	80,832	14,564	25,706	1,080,781
June	149,827	11,014	22,927	80,331	15,145	23,939	1,087,411
July	154,067	11,428	12,135	83,212	15,614	N.A.	1,090,411
August	154,690	11,902	12,173	83,746	16,113	N.A.	1,097,227
September	152,800	11,309	11,026	80,414	15,652	N.A.	1,092,555
October	159,461	12,613	22,320	78,918	15,985	N.A.	1,108,749
November 2007	159,745	12,511	23,726	81,688	15,883	N.A.	1,113,367
12 MONTH AVERAGE	155,137	12,258	20,420	79,840	14,826	22,782	1,083,807
EXPENDITURES							
December 2006	\$25,577,815	\$1,491,073	N.A.	N.A.	\$1,905,592	\$15,347,273	\$107,670,387
January 2007	\$24,563,001	\$1,389,124	N.A.	N.A.	\$1,860,503	\$14,522,840	\$107,705,366
February	\$23,926,643	\$1,349,595	N.A.	N.A.	\$1,847,646	\$13,904,623	\$105,628,316
March	\$23,971,956	\$1,384,820	N.A.	N.A.	\$1,952,139	\$13,522,041	\$107,457,412
April	\$23,014,252	\$1,269,486	N.A.	N.A.	\$1,768,558	\$17,403,927	\$107,329,580
May	\$22,934,016	\$1,208,788	N.A.	N.A.	\$2,040,201	\$13,271,398	\$108,138,296
June	\$23,962,387	\$1,187,020	N.A.	N.A.	\$2,347,409	\$18,639,187	\$108,329,737
July	\$24,360,922	\$1,261,090	N.A.	N.A.	\$2,333,309	N.A.	\$109,603,726
August	\$24,283,786	\$1,266,545	N.A.	N.A.	\$2,376,545	N.A.	\$110,301,820
September	\$24,408,901	\$1,256,532	N.A.	N.A.	\$2,091,985	N.A.	\$109,690,552
October	\$25,159,772	\$1,376,116	N.A.	N.A.	\$2,175,937	N.A.	\$118,686,943
November 2007	\$24,712,019	\$1,326,799	N.A.	N.A.	\$2,066,469	N.A.	\$117,500,130
TOTAL DOLLARS	\$24,239,623	\$1,313,916	N.A.	N.A.	\$2,063,858	\$15,230,184	\$109,836,855
AVERAGE PAYMENT							
December 2006	\$160	\$113	N.A.	N.A.	\$140	\$564	\$100
January 2007	\$156	\$108	N.A.	N.A.	\$136	\$535	\$100
February	\$156	\$106	N.A.	N.A.	\$135	\$516	\$100
March	\$157	\$108	N.A.	N.A.	\$140	\$515	\$101
April	\$151	\$102	N.A.	N.A.	\$127	\$665	\$101
May	\$148	\$99	N.A.	N.A.	\$140	\$516	\$100
June	\$160	\$108	N.A.	N.A.	\$155	\$779	\$100
July	\$158	\$110	N.A.	N.A.	\$149	N.A.	\$101
August	\$157	\$106	N.A.	N.A.	\$147	N.A.	\$101
September	\$160	\$111	N.A.	N.A.	\$134	N.A.	\$100
October	\$158	\$109	N.A.	N.A.	\$136	N.A.	\$107
November 2007	\$155	\$106	N.A.	N.A.	\$130	N.A.	\$106

Note: N.A. means Not Available.

**TABLE 10
PERCENT OF OHIO'S POPULATION PARTICIPATING IN SELECTED
PUBLIC ASSISTANCE PROGRAMS FOR NOVEMBER 2007**

OHIO COUNTY	Estimated Total Population	Percent of All Families Below Poverty Level	DISABILITY ASSISTANCE		OWF COMBINED		FOSTER CARE UNAVAILABLE		FNS BENEFITS	
			Recipients as % of		Recipients	Recipients as % of	Recipients	Recipients as % of	Recipients	Recipients as % of
			Recipients	Total Population						
STATEWIDE	11,478,006	7.80%	15,883	0.14%	172,256	1.50%	0	0.00%	1,113,367	9.70%
ADAMS	28,516	12.80%	99	0.35%	219	0.77%	0	0.00%	4,847	17.00%
ALLEN	105,788	9.60%	133	0.13%	677	0.64%	0	0.00%	9,277	8.77%
ASHLAND	54,727	7.10%	36	0.07%	215	0.39%	0	0.00%	3,258	5.95%
ASHTABULA	102,703	9.20%	341	0.33%	1,442	1.40%	0	0.00%	12,976	12.63%
ATHENS	61,860	14.00%	297	0.48%	1,609	2.60%	0	0.00%	7,294	11.79%
AUGLAIZE	47,060	4.90%	31	0.07%	103	0.22%	0	0.00%	2,110	4.48%
BELMONT	68,771	11.70%	153	0.22%	618	0.90%	0	0.00%	6,963	10.12%
BROWN	44,423	8.80%	111	0.25%	248	0.56%	0	0.00%	3,484	7.84%
BUTLER	354,992	5.40%	463	0.13%	3,058	0.86%	0	0.00%	26,968	7.60%
CARROLL	29,189	8.50%	26	0.09%	184	0.63%	0	0.00%	2,155	7.38%
CHAMPAIGN	39,921	5.10%	33	0.08%	433	1.08%	0	0.00%	3,059	7.66%
CLARK	141,872	7.90%	396	0.28%	2,938	2.07%	0	0.00%	17,946	12.65%
CLERMONT	192,706	5.30%	222	0.12%	768	0.40%	0	0.00%	11,625	6.03%
CLINTON	43,399	6.40%	76	0.18%	242	0.56%	0	0.00%	3,277	7.55%
COLUMBIANA	110,542	9.00%	148	0.13%	802	0.73%	0	0.00%	12,100	10.95%
COSHOCTON	36,976	7.00%	122	0.33%	539	1.46%	0	0.00%	4,349	11.76%
CRAWFORD	45,047	7.80%	57	0.13%	376	0.83%	0	0.00%	4,620	10.26%
CUYAHOGA	1,314,241	10.30%	1,035	0.08%	22,659	1.72%	0	0.00%	184,184	14.01%
DARKE	52,780	6.00%	35	0.07%	362	0.69%	0	0.00%	2,354	4.46%
DEFIANCE	39,091	4.50%	29	0.07%	350	0.90%	0	0.00%	2,912	7.45%
DELAWARE	156,697	2.90%	83	0.05%	721	0.46%	0	0.00%	4,562	2.91%
ERIE	78,116	6.00%	99	0.13%	456	0.58%	0	0.00%	6,021	7.71%
FAIRFIELD	140,591	4.50%	192	0.14%	1,926	1.37%	0	0.00%	10,854	7.72%
FAYETTE	28,305	7.70%	43	0.15%	286	1.01%	0	0.00%	2,839	10.03%
FRANKLIN	1,095,662	8.20%	1,374	0.13%	27,341	2.50%	0	0.00%	128,534	11.73%
FULTON	42,900	4.00%	42	0.10%	116	0.27%	0	0.00%	2,094	4.88%
GALLIA	31,313	13.50%	85	0.27%	1,015	3.24%	0	0.00%	5,134	16.40%
GEAUGA	95,676	2.80%	29	0.03%	111	0.12%	0	0.00%	1,553	1.62%
GREENE	152,298	5.20%	186	0.12%	1,233	0.81%	0	0.00%	8,650	5.68%

*SOURCE: 2006 Ohio County Population Estimates, Ohio Dept. of Development, GRP342RA, GBS003RA, GRP304RA and GRP304RC Reports from Management Information Services.

**TABLE 10
PERCENT OF OHIO'S POPULATION PARTICIPATING IN SELECTED
PUBLIC ASSISTANCE PROGRAMS FOR NOVEMBER 2007**

OHIO COUNTY	Estimated Total Population	Percent of All Families Below Poverty Level	DISABILITY ASSISTANCE		OWF COMBINED		FOSTER CARE UNAVAILABLE		FNS BENEFITS	
			Recipients as % of		Recipients	Recipients as % of	Recipients	Recipients as % of	Recipients	Recipients as % of
			Recipients	Total Population						
STATEWIDE	11,478,006	7.80%	15,883	0.14%	172,256	1.50%	0	0.00%	1,113,367	9.70%
GUERNSEY	40,876	12.90%	146	0.36%	294	0.72%	0	0.00%	6,012	14.71%
HAMILTON	822,596	8.80%	778	0.09%	18,281	2.22%	0	0.00%	75,541	9.18%
HANCOCK	73,824	5.20%	85	0.12%	139	0.19%	0	0.00%	4,187	5.67%
HARDIN	31,966	8.90%	46	0.14%	109	0.34%	0	0.00%	2,023	6.33%
HARRISON	15,799	11.00%	57	0.36%	199	1.26%	0	0.00%	1,972	12.48%
HENRY	29,520	5.30%	6	0.02%	65	0.22%	0	0.00%	1,335	4.52%
HIGHLAND	42,833	9.00%	120	0.28%	534	1.25%	0	0.00%	4,956	11.57%
HOCKING	28,973	10.30%	64	0.22%	604	2.08%	0	0.00%	3,518	12.14%
HOLMES	41,574	10.50%	27	0.06%	84	0.20%	0	0.00%	976	2.35%
HURON	60,313	6.50%	65	0.11%	304	0.50%	0	0.00%	5,059	8.39%
JACKSON	33,543	13.60%	127	0.38%	612	1.82%	0	0.00%	5,521	16.46%
JEFFERSON	70,125	11.40%	177	0.25%	1,595	2.27%	0	0.00%	8,444	12.04%
KNOX	58,561	7.40%	124	0.21%	623	1.06%	0	0.00%	4,616	7.88%
LAKE	232,892	3.50%	145	0.06%	980	0.42%	0	0.00%	11,074	4.75%
LAWRENCE	63,179	15.10%	87	0.14%	1,539	2.44%	0	0.00%	10,684	16.91%
LICKING	156,287	5.50%	284	0.18%	1,332	0.85%	0	0.00%	12,807	8.19%
LOGAN	46,189	7.10%	83	0.18%	403	0.87%	0	0.00%	3,656	7.92%
LORAIN	301,993	6.70%	362	0.12%	4,190	1.39%	0	0.00%	27,419	9.08%
LUCAS	445,281	10.70%	1,075	0.24%	13,108	2.94%	0	0.00%	63,936	14.36%
MADISON	41,496	6.20%	27	0.07%	562	1.35%	0	0.00%	3,048	7.35%
MAHONING	251,026	9.60%	269	0.11%	6,651	2.65%	0	0.00%	29,800	11.87%
MARION	65,583	7.40%	195	0.30%	697	1.06%	0	0.00%	7,570	11.54%
MEDINA	169,353	3.50%	87	0.05%	480	0.28%	0	0.00%	5,204	3.07%
MEIGS	23,092	14.30%	82	0.36%	509	2.20%	0	0.00%	4,172	18.07%
MERCER	41,303	4.60%	35	0.08%	139	0.34%	0	0.00%	1,536	3.72%
MIAMI	101,914	5.10%	82	0.08%	600	0.59%	0	0.00%	4,627	4.54%
MONROE	14,606	11.00%	29	0.20%	113	0.77%	0	0.00%	1,685	11.54%
MONTGOMERY	542,237	8.30%	936	0.17%	10,963	2.02%	0	0.00%	56,916	10.50%
MORGAN	14,821	15.70%	69	0.47%	141	0.95%	0	0.00%	1,905	12.85%
MORROW	34,529	6.60%	82	0.24%	216	0.63%	0	0.00%	3,063	8.87%

*SOURCE: 2006 Ohio County Population Estimates, Ohio Dept. of Development, GRP342RA, GBS003RA, GRP304RA and GRP304RC Reports from Management Information Services.

**TABLE 10
PERCENT OF OHIO'S POPULATION PARTICIPATING IN SELECTED
PUBLIC ASSISTANCE PROGRAMS FOR NOVEMBER 2007**

OHIO COUNTY	Estimated Total Population	Percent of All Families Below Poverty Level	DISABILITY ASSISTANCE		OWF COMBINED		FOSTER CARE UNAVAILABLE		FNS BENEFITS	
			Recipients as % of		Recipients	Recipients as % of	Recipients	Recipients as % of	Recipients	Recipients as % of
			Recipients	Total Population						
STATEWIDE	11,478,006	7.80%	15,883	0.14%	172,256	1.50%	0	0.00%	1,113,367	9.70%
MUSKINGUM	86,125	9.90%	385	0.45%	1,771	2.06%	0	0.00%	14,040	16.30%
NOBLE	14,165	8.30%	18	0.13%	79	0.56%	0	0.00%	1,170	8.26%
OTTAWA	41,331	4.20%	44	0.11%	265	0.64%	0	0.00%	2,551	6.17%
PAULDING	19,432	4.90%	34	0.17%	221	1.14%	0	0.00%	1,423	7.32%
PERRY	35,313	9.40%	120	0.34%	794	2.25%	0	0.00%	5,525	15.65%
PICKAWAY	53,606	7.60%	89	0.17%	858	1.60%	0	0.00%	5,025	9.37%
PIKE	28,269	15.10%	72	0.25%	808	2.86%	0	0.00%	5,291	18.72%
PORTAGE	155,012	5.90%	125	0.08%	768	0.50%	0	0.00%	9,385	6.05%
PREBLE	42,491	4.50%	63	0.15%	374	0.88%	0	0.00%	2,697	6.35%
PUTNAM	34,744	4.00%	8	0.02%	44	0.13%	0	0.00%	1,436	4.13%
RICHLAND	127,010	8.20%	270	0.21%	1,223	0.96%	0	0.00%	12,413	9.77%
ROSS	75,556	9.10%	164	0.22%	1,476	1.95%	0	0.00%	11,053	14.63%
SANDUSKY	61,625	5.70%	105	0.17%	373	0.61%	0	0.00%	4,187	6.79%
SCIOTO	76,441	15.20%	292	0.38%	2,173	2.84%	0	0.00%	15,833	20.71%
SENECA	57,255	6.10%	81	0.14%	382	0.67%	0	0.00%	4,802	8.39%
SHELBY	48,884	5.30%	39	0.08%	266	0.54%	0	0.00%	2,691	5.50%
STARK	380,575	6.80%	496	0.13%	6,356	1.67%	0	0.00%	31,955	8.40%
SUMMIT	545,931	7.50%	554	0.10%	10,534	1.93%	0	0.00%	53,755	9.85%
TRUMBULL	217,362	7.90%	331	0.15%	2,727	1.25%	0	0.00%	19,434	8.94%
TUSCARAWAS	91,766	7.20%	131	0.14%	682	0.74%	0	0.00%	7,846	8.55%
UNION	46,702	3.60%	34	0.07%	271	0.58%	0	0.00%	2,378	5.09%
VAN WERT	29,303	4.20%	32	0.11%	90	0.31%	0	0.00%	1,515	5.17%
VINTON	13,519	15.10%	69	0.51%	291	2.15%	0	0.00%	2,593	19.18%
WARREN	201,871	3.00%	86	0.04%	403	0.20%	0	0.00%	4,116	2.04%
WASHINGTON	61,867	8.60%	149	0.24%	186	0.30%	0	0.00%	5,441	8.79%
WAYNE	113,950	5.40%	238	0.21%	918	0.81%	0	0.00%	7,211	6.33%
WILLIAMS	38,719	3.90%	49	0.13%	380	0.98%	0	0.00%	2,856	7.38%
WOOD	124,183	4.70%	60	0.05%	334	0.27%	0	0.00%	4,516	3.64%
WYANDOT	22,553	3.80%	18	0.08%	96	0.43%	0	0.00%	968	4.29%
UNKNOWN										

*SOURCE: 2006 Ohio County Population Estimates, Ohio Dept. of Development, GRP342RA, GBS003RA, GRP304RA and GRP304RC Reports from Management Information Services.

**TABLE 7
CHILD CARE REVISION
AUGUST 2007 UPDATE**

OHIO COUNTY	OWF JOBS, LEAP, and TRANSITIONAL		OTHER CHILD CARE		LOCAL FUNDING		ALL PROGRAM SOURCES	
	CHILDREN SERVED		CHILDREN SERVED		CHILDREN SERVED		CHILDREN SERVED	
	TOTAL	% OF STATE TOTAL	TOTAL	% OF STATE TOTAL	TOTAL	% OF STATE TOTAL	TOTAL	% OF STATE TOTAL
STATEWIDE	23,892	100.00%	82,583	100.00%	106	100.00%	106,581	100.00%
ADAMS	18	0.08%	111	0.13%	0	0.00%	129	0.12%
ALLEN	193	0.81%	435	0.53%	0	0.00%	628	0.59%
ASHLAND	15	0.06%	205	0.25%	0	0.00%	220	0.21%
ASHTABULA	231	0.97%	691	0.84%	0	0.00%	922	0.87%
ATHENS	86	0.36%	197	0.24%	0	0.00%	283	0.27%
AUGLAIZE	23	0.10%	91	0.11%	0	0.00%	114	0.11%
BELMONT	59	0.25%	289	0.35%	0	0.00%	348	0.33%
BROWN	15	0.06%	122	0.15%	0	0.00%	137	0.13%
BUTLER	185	0.77%	1,656	2.01%	0	0.00%	1,841	1.73%
CARROLL	26	0.11%	58	0.07%	0	0.00%	84	0.08%
CHAMPAIGN	33	0.14%	117	0.14%	0	0.00%	150	0.14%
CLARK	157	0.66%	661	0.80%	0	0.00%	818	0.77%
CLERMONT	210	0.88%	700	0.85%	0	0.00%	910	0.85%
CLINTON	13	0.05%	239	0.29%	0	0.00%	252	0.24%
COLUMBIANA	161	0.67%	846	1.02%	0	0.00%	1,007	0.94%
COSHOCTON	79	0.33%	204	0.25%	0	0.00%	283	0.27%
CRAWFORD	68	0.28%	231	0.28%	0	0.00%	299	0.28%
CUYAHOGA	4,328	18.11%	18,266	22.12%	0	0.00%	22,594	21.20%
DARKE	20	0.08%	84	0.10%	0	0.00%	104	0.10%
DEFIANCE	65	0.27%	142	0.17%	0	0.00%	207	0.19%
DELAWARE	59	0.25%	360	0.44%	1	0.94%	420	0.39%
ERIE	42	0.18%	636	0.77%	0	0.00%	678	0.64%
FAIRFIELD	126	0.53%	778	0.94%	0	0.00%	904	0.85%
FAYETTE	21	0.09%	237	0.29%	0	0.00%	258	0.24%
FRANKLIN	2,917	12.21%	9,664	11.70%	103	97.17%	12,684	11.90%
FULTON	52	0.22%	169	0.20%	0	0.00%	221	0.21%
GALLIA	47	0.20%	150	0.18%	0	0.00%	197	0.18%
GEAUGA	41	0.17%	195	0.24%	0	0.00%	236	0.22%
GREENE	243	1.02%	728	0.88%	0	0.00%	971	0.91%

**TABLE 7
CHILD CARE REVISION
AUGUST 2007 UPDATE**

OHIO COUNTY	OWF JOBS, LEAP, and TRANSITIONAL		OTHER CHILD CARE		LOCAL FUNDING		ALL PROGRAM SOURCES	
	CHILDREN SERVED		CHILDREN SERVED		CHILDREN SERVED		CHILDREN SERVED	
	TOTAL	% OF STATE TOTAL	TOTAL	% OF STATE TOTAL	TOTAL	% OF STATE TOTAL	TOTAL	% OF STATE TOTAL
STATEWIDE	23,892	100.00%	82,583	100.00%	106	100.00%	106,581	100.00%
GUERNSEY	139	0.58%	262	0.32%	0	0.00%	401	0.38%
HAMILTON	3,321	13.90%	10,525	12.74%	0	0.00%	13,846	12.99%
HANCOCK	127	0.53%	328	0.40%	0	0.00%	455	0.43%
HARDIN	22	0.09%	58	0.07%	0	0.00%	80	0.08%
HARRISON	16	0.07%	49	0.06%	0	0.00%	65	0.06%
HENRY	36	0.15%	91	0.11%	0	0.00%	127	0.12%
HIGHLAND	8	0.03%	205	0.25%	0	0.00%	213	0.20%
HOCKING	40	0.17%	86	0.10%	0	0.00%	126	0.12%
HOLMES	65	0.27%	122	0.15%	0	0.00%	187	0.18%
HURON	6	0.03%	420	0.51%	0	0.00%	426	0.40%
JACKSON	50	0.21%	124	0.15%	0	0.00%	174	0.16%
JEFFERSON	64	0.27%	291	0.35%	0	0.00%	355	0.33%
KNOX	89	0.37%	263	0.32%	0	0.00%	352	0.33%
LAKE	291	1.22%	906	1.10%	0	0.00%	1,197	1.12%
LAWRENCE	179	0.75%	436	0.53%	0	0.00%	615	0.58%
LICKING	218	0.91%	1,145	1.39%	0	0.00%	1,363	1.28%
LOGAN	34	0.14%	57	0.07%	0	0.00%	91	0.09%
LORAIN	691	2.89%	1,637	1.98%	0	0.00%	2,328	2.18%
LUCAS	2,172	9.09%	3,164	3.83%	0	0.00%	5,336	5.01%
MADISON	23	0.10%	137	0.17%	0	0.00%	160	0.15%
MAHONING	891	3.73%	1,424	1.72%	0	0.00%	2,315	2.17%
MARION	26	0.11%	346	0.42%	0	0.00%	372	0.35%
MEDINA	109	0.46%	541	0.66%	0	0.00%	650	0.61%
MEIGS	5	0.02%	166	0.20%	0	0.00%	171	0.16%
MERCER	21	0.09%	127	0.15%	0	0.00%	148	0.14%
MIAMI	129	0.54%	313	0.38%	0	0.00%	442	0.41%
MONROE	0	0.00%	59	0.07%	0	0.00%	59	0.06%
MONTGOMERY	890	3.73%	5,469	6.62%	0	0.00%	6,359	5.97%
MORGAN	9	0.04%	113	0.14%	0	0.00%	122	0.11%
MORROW	39	0.16%	180	0.22%	0	0.00%	219	0.21%

**TABLE 7
CHILD CARE REVISION
AUGUST 2007 UPDATE**

OHIO COUNTY	OWF JOBS, LEAP, and TRANSITIONAL		OTHER CHILD CARE		LOCAL FUNDING		ALL PROGRAM SOURCES	
	CHILDREN SERVED		CHILDREN SERVED		CHILDREN SERVED		CHILDREN SERVED	
	TOTAL	% OF STATE TOTAL	TOTAL	% OF STATE TOTAL	TOTAL	% OF STATE TOTAL	TOTAL	% OF STATE TOTAL
STATEWIDE	23,892	100.00%	82,583	100.00%	106	100.00%	106,581	100.00%
MUSKINGUM	364	1.52%	753	0.91%	0	0.00%	1,117	1.05%
NOBLE	36	0.15%	92	0.11%	0	0.00%	128	0.12%
OTTAWA	78	0.33%	102	0.12%	0	0.00%	180	0.17%
PAULDING	6	0.03%	49	0.06%	0	0.00%	55	0.05%
PERRY	51	0.21%	266	0.32%	0	0.00%	317	0.30%
PICKAWAY	92	0.39%	159	0.19%	0	0.00%	251	0.24%
PIKE	50	0.21%	78	0.09%	0	0.00%	128	0.12%
PORTAGE	210	0.88%	689	0.83%	0	0.00%	899	0.84%
PREBLE	60	0.25%	146	0.18%	0	0.00%	206	0.19%
PUTNAM	20	0.08%	100	0.12%	0	0.00%	120	0.11%
RICHLAND	277	1.16%	925	1.12%	0	0.00%	1,202	1.13%
ROSS	121	0.51%	317	0.38%	0	0.00%	438	0.41%
SANDUSKY	101	0.42%	438	0.53%	0	0.00%	539	0.51%
SCIOTO	150	0.63%	571	0.69%	0	0.00%	721	0.68%
SENECA	29	0.12%	262	0.32%	0	0.00%	291	0.27%
SHELBY	67	0.28%	268	0.32%	0	0.00%	335	0.31%
STARK	875	3.66%	2,316	2.80%	0	0.00%	3,191	2.99%
SUMMIT	1,004	4.20%	3,752	4.54%	0	0.00%	4,756	4.46%
TRUMBULL	323	1.35%	1,501	1.82%	0	0.00%	1,824	1.71%
TUSCARAWAS	45	0.19%	409	0.50%	0	0.00%	454	0.43%
UNION	25	0.10%	251	0.30%	2	1.89%	278	0.26%
VAN WERT	19	0.08%	46	0.06%	0	0.00%	65	0.06%
VINTON	5	0.02%	92	0.11%	0	0.00%	97	0.09%
WARREN	201	0.84%	506	0.61%	0	0.00%	707	0.66%
WASHINGTON	87	0.36%	283	0.34%	0	0.00%	370	0.35%
WAYNE	182	0.76%	393	0.48%	0	0.00%	575	0.54%
WILLIAMS	54	0.23%	103	0.12%	0	0.00%	157	0.15%
WOOD	111	0.46%	351	0.43%	0	0.00%	462	0.43%
WYANDOT	6	0.03%	59	0.07%	0	0.00%	65	0.06%

SOURCE: COGNOS. The above numbers have not been reconciled between the CCIDS/3299 data collection system and 2827 ODJFS fiscal reporting system; therefore they may not be conclusive at this time.

OWF data consist of funding codes: 173,312, 313,314, 326, & 327. Other data consist of funding codes: 320, 321, 322, 323, 324, 325, 328, 329, and 342. Local Funding is from funding code 899.