

# Ohio Department of Job and Family Services

## PUBLIC ASSISTANCE MONTHLY STATISTICS SEPTEMBER 2007



<http://jfs.ohio.gov/pams/index.stm>

Bureau of Research and Evaluation : Federal Reports\ Data Development Section  
Office of Research, Assessment, and Accountability  
P.O. Box 1618  
Columbus, Ohio 43216-1618

OHIO DEPARTMENT OF JOB AND FAMILY SERVICES

PUBLIC ASSISTANCE MONTHLY STATISTICS

TABLE OF CONTENTS

<u>TITLE</u>	<u>PAGE(S)</u>
Monthly Review of Public Assistance Statistics.....	1
Statewide Summary of Public Assistance Programs.....	2
Table 1: OWF (TANF) Summary.....	3-14
Table 2: Foster Care (Title IV-E) Program Summary. . Temporarily Unavailable.....	15-17
Table 3: Disability Assistance Program Summary.....	18-22
Table 3-A: DA Payments for Medical Services.....	23
Table 5: FNS Benefits Program Summary.....	24-28
Table 6: Medicaid (Title XIX): Eligibles and Expenditures.....	29-34
Table 7: Child Day Care Summary.....	35-37
Table 8: Program Summaries of Recipients, Expenditures, and Average Payment Per Recipient During the Last 12 Months.....	38
Table 10: Percent of Ohio's Population Participating in Selected Public Assistance Programs.....	39-41
<i>Note: Table 4 and Table 9 were discontinued.</i>	
Also: Table 7-A, Updated Child Day Care Summary for June 2007.....	42-44

All data in the PAMS report is limited to the information available at the time it was constructed. It does not account for backdated or retroactive eligibility or any adjustments made subsequent to its creation.

## MONTHLY REVIEW OF PUBLIC ASSISTANCE STATISTICS FOR SEPTEMBER 2007

### OHIO WORKS FIRST (OWF)

For the month of September 2007, OWF-Combined assistance groups totaled 77,249; recipients totaled 164,109 and money payments totaled \$25,665,433. The percent change from August 2007 to September 2007 was -1.2% for assistance groups; -1.5% for recipients, and 0.4% for money payments. For OWF- Regular (OWF-R) there were 74,425 assistance groups; 152,800 recipients, and \$24,408,901 in money payments issued for September 2007. The percent change from August 2007 to September 2007 was -1.1% for assistance groups; -1.2% for recipients, and 0.5% for money payments. For OWF-Unemployed (OWF-U), assistance groups totaled 2,824; recipients, 11,309 and money payments were \$1,256,532. The percent change from August 2007 to September 2007 was -3.7% for assistance groups; -5.0% for recipients and -0.8% for money payments.

### FOSTER CARE (TITLE IV-E)

**Data not available due to SACWIS implementation.**

### DISABILITY ASSISTANCE (DA)

For the month of September 2007, there were 15,561 assistance groups; 15,652 recipients, and \$2,091,985 in DA financial assistance. The average DA financial assistance per recipient was \$137.62. Total DA expenditures for medical services for September 2007 were \$1,352,912. Of this total, \$983,572 or 72.7% was spent for prescribed drugs, and \$272,318 or 20.1% was spent for physician services. Medical expenses were paid for 2,837 recipients for an average expenditure of \$476.88 per recipient.

### FOOD AND NUTRITION SERVICES BENEFITS (FNS)

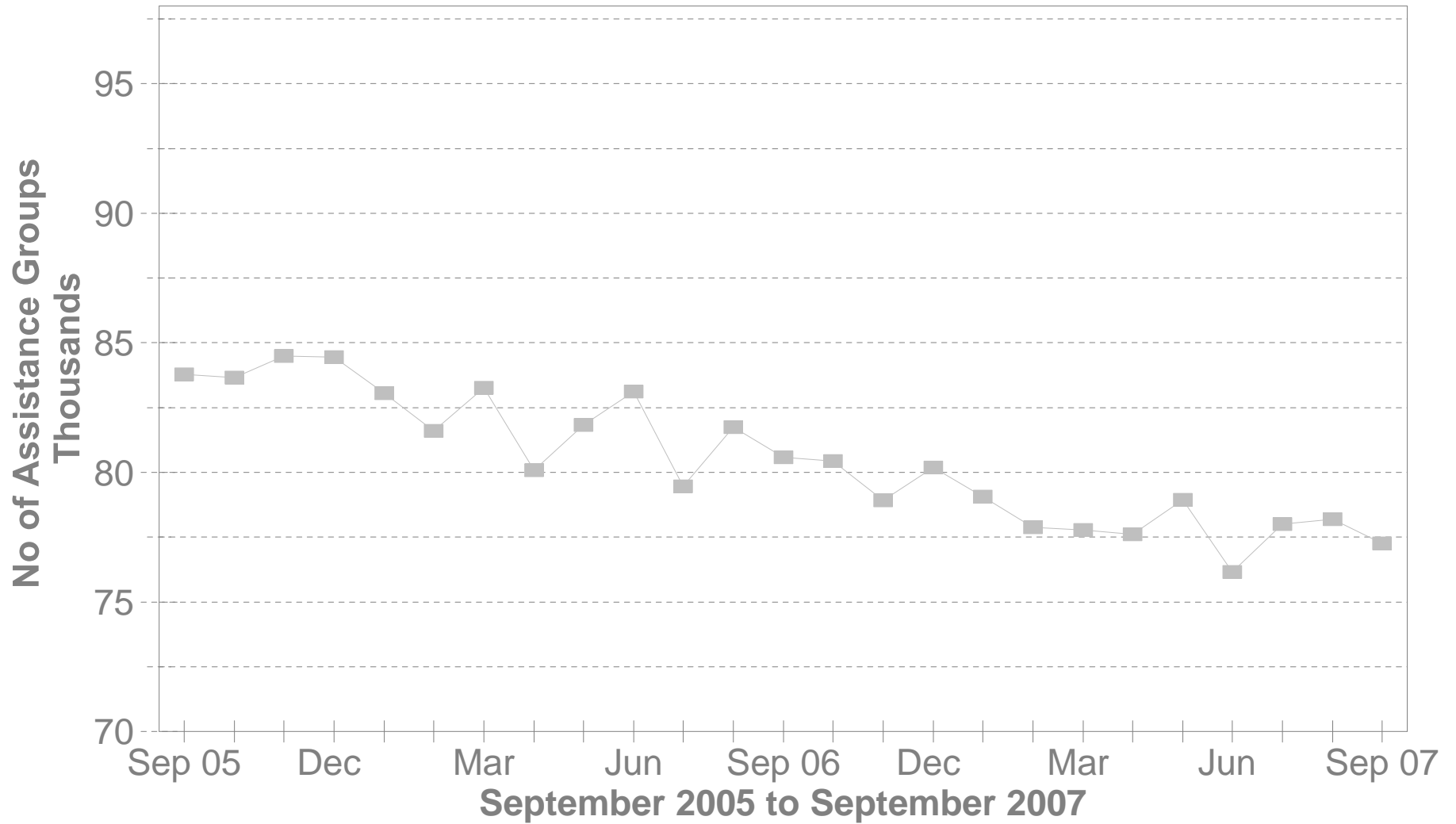
Total persons participating in the FNS benefits program during September 2007 decreased to 1,092,555 by 4,672 or -0.4% from 1,097,227 persons reported in August 2007. Households decreased by 950 or -0.2% over August 2007 levels. The total dollar value of FNS related benefits issued during September 2007 decreased by \$611,268 or -0.6% from \$110,301,820 reported in August 2007 to \$109,690,552 reported in September 2007. The average benefit issuance per person decreased by \$.13 or -0.1% from those issued in August 2007. The average benefit issuance per person decreased from \$100.53 reported in August 2007 to \$100.10 reported in September 2007.

*Please note: All data in the PAMS report is limited to the information available at the time it was constructed. It does not account for backdated or retroactive eligibility or any adjustments made subsequent to its creation.*

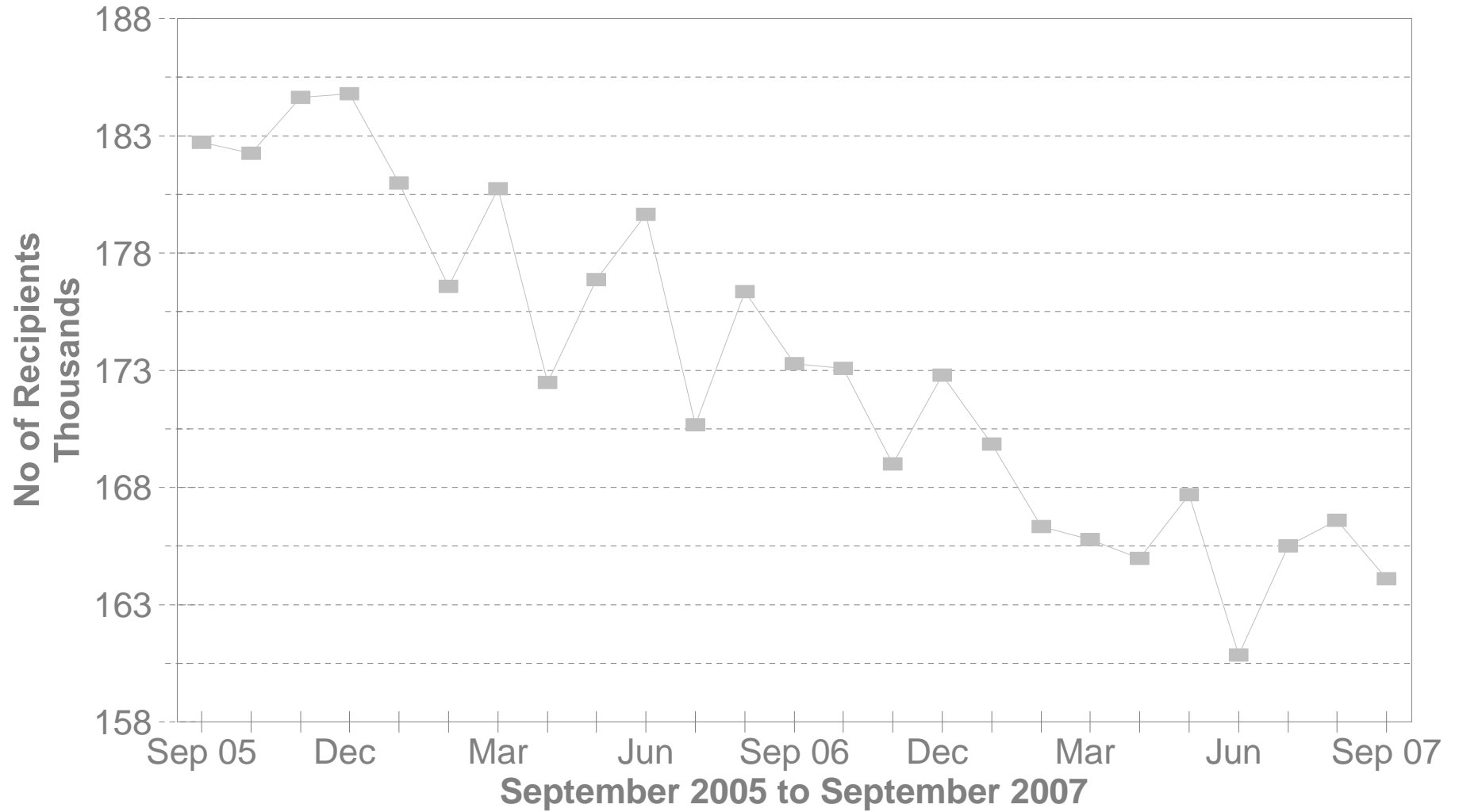
**STATEWIDE SUMMARY OF PUBLIC ASSISTANCE PROGRAMS FOR SEPTEMBER 2007**

	September 2007	August 2007	% CHANGE Sep 07 / Aug 07	September 2006	% CHANGE Sep 07 / Sep 06
<b>OHIO WORKS FIRST (OWF)-COMBI</b>					
Assistance Groups	77,249	78,185	-1.2%	80,584	-4.1%
Recipients	164,109	166,592	-1.5%	173,284	-5.3%
Net Payments	\$25,665,433	\$25,552,087	0.4%	\$26,500,449	-3.2%
Average Per Recipient	\$156.39	\$153.38	2.0%	\$152.93	2.3%
<b>OWF-REGULAR, OWF-INCAPACITATED,&amp; OWF REGULAR VENDOR PAYMENTS</b>					
Assistance Groups	74,425	75,251	-1.1%	77,115	-3.5%
Recipients	152,800	154,690	-1.2%	159,269	-4.1%
Net Payments	\$24,408,901	\$24,285,786	0.5%	\$24,982,385	-2.3%
Average Per Recipient	\$159.74	\$157.00	1.8%	\$156.86	1.8%
<b>OWF-UNEMPLOYED AND OWF-UNEMPLOYED VENDOR PAYMENTS</b>					
Assistance Groups	2,824	2,934	-3.7%	3,469	-18.6%
Recipients	11,309	11,902	-5.0%	14,015	-19.3%
Net Payments	\$1,256,532	\$1,266,301	-0.8%	\$1,518,064	-17.2%
Average Per Recipient	\$111.11	\$106.39	4.4%	\$108.32	2.6%
<b>TITLE IV-E FOSTER CARE</b>					
Assistance Groups/Recipients	N.A.	N.A.	N.A.	27,121	N.A.
Gross Payments	N.A.	N.A.	N.A.	\$13,730,291	N.A.
Average Per Recipient	N.A.	N.A.	N.A.	\$506.26	N.A.
<b>DISABILITY ASSISTANCE</b>					
Assistance Groups	15,561	16,023	-2.9%	13,869	12.2%
Recipients	15,652	16,113	-2.9%	13,960	12.1%
Net Payments	\$2,091,985	\$2,376,545	-12.0%	\$1,816,230	15.2%
Medical Assistance	\$1,352,912	\$1,733,482	-22.0%	\$2,155,802	-37.2%
<b>FNS BENEFITS</b>					
Assistance Groups	501,235	502,185	-0.2%	486,776	3.0%
Persons	1,092,555	1,097,227	-0.4%	1,064,886	2.6%
Total Coupons Issued	\$109,690,552	\$110,301,820	-0.6%	\$106,390,515	3.1%
Average Per Recipient	\$100.40	\$100.53	-0.1%	\$99.91	0.5%

# No of OWF Combined Assistance Groups During The Last 25 Months



# No of OWF Combined Recipients During The Last 25 Months





**TABLE 1  
OHIO WORKS FIRST COMBINED  
SEPTEMBER 2007**

OHIO COUNTY	ASSISTANCE GROUP	RECIPIENTS	ADULTS	CHILDREN	ACTUAL EXPENDITURES		
					GROSS AMOUNT	CANCELLED AMOUNT	NET AMOUNT
<b>STATEWIDE</b>	<b>77,249</b>	<b>164,109</b>	<b>39,526</b>	<b>124,583</b>	<b>\$26,184,642.00</b>	<b>\$519,209.00</b>	<b>\$25,665,433.00</b>
ADAMS	131	200	4	196	\$37,215.00	\$245.00	\$36,970.00
ALLEN	419	693	49	644	\$125,100.00	\$851.00	\$124,249.00
ASHLAND	84	162	35	127	\$27,499.00	\$245.00	\$27,254.00
ASHTABULA	625	1,296	305	991	\$204,798.00	\$689.00	\$204,109.00
ATHENS	625	1,458	524	934	\$211,913.00	\$3,492.00	\$208,421.00
AUGLAIZE	73	113	4	109	\$21,329.00	\$813.00	\$20,516.00
BELMONT	294	582	127	455	\$95,433.00	\$1,395.00	\$94,038.00
BROWN	149	252	29	223	\$43,451.00	\$1,236.00	\$42,215.00
BUTLER	1,492	2,716	384	2,332	\$468,246.00	\$6,114.00	\$462,132.00
CARROLL	87	165	40	125	\$27,845.00	\$0.00	\$27,845.00
CHAMPAIGN	198	441	126	315	\$67,332.00	\$2,268.00	\$65,064.00
CLARK	1,301	2,790	721	2,069	\$446,956.00	\$8,590.00	\$438,366.00
CLERMONT	421	729	71	658	\$130,880.00	\$3,004.00	\$127,876.00
CLINTON	123	227	32	195	\$38,320.00	\$1,082.00	\$37,238.00
COLUMBIANA	415	749	109	640	\$130,604.00	\$1,014.00	\$129,590.00
COSHOCTON	217	447	130	317	\$71,101.00	\$2,316.00	\$68,785.00
CRAWFORD	154	309	69	240	\$51,397.00	\$336.00	\$51,061.00
CUYAHOGA	11,239	22,424	4,921	17,503	\$3,791,033.00	\$100,803.00	\$3,690,230.00
DARKE	146	316	85	231	\$50,147.00	\$0.00	\$50,147.00
DEFIANCE	127	270	67	203	\$41,600.00	\$245.00	\$41,355.00
DELAWARE	298	661	217	444	\$103,003.00	\$1,077.00	\$101,926.00
ERIE	226	405	23	382	\$71,439.00	\$917.00	\$70,522.00
FAIRFIELD	809	1,923	598	1,325	\$278,041.00	\$8,258.00	\$269,783.00
FAYETTE	123	244	42	202	\$41,147.00	\$1,695.00	\$39,452.00
FRANKLIN	11,420	25,818	6,514	19,304	\$3,966,318.00	\$98,822.00	\$3,867,496.00
FULTON	66	108	6	102	\$18,790.00	\$410.00	\$18,380.00
GALLIA	396	918	302	616	\$137,629.00	\$1,600.00	\$136,029.00
GEAUGA	66	110	11	99	\$20,158.00	\$746.00	\$19,412.00
GREENE	542	1,127	269	858	\$182,250.00	\$2,176.00	\$180,074.00

Source: GRP342RA Report from Management Information Services. Data includes ADC-Regular, ADC-Incapacitated, and Vendor Payments.



**TABLE 1  
OHIO WORKS FIRST COMBINED  
SEPTEMBER 2007**

OHIO COUNTY	ASSISTANCE GROUP	RECIPIENTS	ADULTS	CHILDREN	ACTUAL EXPENDITURES		
					GROSS AMOUNT	CANCELLED AMOUNT	NET AMOUNT
<b>STATEWIDE</b>	<b>77,249</b>	<b>164,109</b>	<b>39,526</b>	<b>124,583</b>	<b>\$26,184,642.00</b>	<b>\$519,209.00</b>	<b>\$25,665,433.00</b>
GUERNSEY	162	265	30	235	\$48,657.00	\$336.00	\$48,321.00
HAMILTON	7,612	17,914	4,239	13,675	\$2,801,485.00	\$48,450.00	\$2,753,035.00
HANCOCK	100	144	0	144	\$28,463.00	\$581.00	\$27,882.00
HARDIN	73	119	7	112	\$21,792.00	\$245.00	\$21,547.00
HARRISON	92	187	47	140	\$30,274.00	\$1,401.00	\$28,873.00
HENRY	36	60	5	55	\$10,844.00	\$0.00	\$10,844.00
HIGHLAND	220	498	116	382	\$77,668.00	\$1,242.00	\$76,426.00
HOCKING	256	550	155	395	\$86,661.00	\$2,541.00	\$84,120.00
HOLMES	43	82	18	64	\$13,847.00	\$0.00	\$13,847.00
HURON	162	250	4	246	\$46,528.00	\$1,708.00	\$44,820.00
JACKSON	306	546	82	464	\$97,319.00	\$245.00	\$97,074.00
JEFFERSON	686	1,541	453	1,088	\$235,168.00	\$4,938.00	\$230,230.00
KNOX	267	598	180	418	\$85,578.00	\$1,349.00	\$84,229.00
LAKE	425	838	173	665	\$148,313.00	\$3,321.00	\$144,992.00
LAWRENCE	733	1,431	308	1,123	\$229,409.00	\$4,367.00	\$225,042.00
LICKING	571	1,178	309	869	\$186,383.00	\$3,037.00	\$183,346.00
LOGAN	177	346	83	263	\$57,039.00	\$336.00	\$56,703.00
LORAIN	1,879	3,979	892	3,087	\$631,529.00	\$9,890.00	\$621,639.00
LUCAS	5,660	12,686	3,478	9,208	\$1,933,664.00	\$36,419.00	\$1,897,245.00
MADISON	219	519	155	364	\$83,304.00	\$917.00	\$82,387.00
MAHONING	2,803	6,398	1,700	4,698	\$976,860.00	\$16,032.00	\$960,828.00
MARION	376	703	92	611	\$119,431.00	\$2,881.00	\$116,550.00
MEDINA	223	443	110	333	\$68,384.00	\$1,071.00	\$67,313.00
MEIGS	214	479	131	348	\$73,226.00	\$1,008.00	\$72,218.00
MERCER	52	97	23	74	\$15,522.00	\$490.00	\$15,032.00
MIAMI	301	567	107	460	\$92,577.00	\$1,115.00	\$91,462.00
MONROE	51	115	34	81	\$18,769.00	\$410.00	\$18,359.00
MONTGOMERY	5,072	10,318	2,417	7,901	\$1,659,870.00	\$31,555.00	\$1,628,315.00
MORGAN	81	134	19	115	\$24,014.00	\$0.00	\$24,014.00
MORROW	121	226	46	180	\$40,551.00	\$581.00	\$39,970.00

Source: GRP342RA Report from Management Information Services. Data includes ADC-Regular, ADC-Incapacitated, and Vendor Payments.

**TABLE 1  
OHIO WORKS FIRST COMBINED  
SEPTEMBER 2007**

OHIO COUNTY	ASSISTANCE GROUP	RECIPIENTS	ADULTS	CHILDREN	ACTUAL EXPENDITURES		
					GROSS AMOUNT	CANCELLED AMOUNT	NET AMOUNT
<b>STATEWIDE</b>	<b>77,249</b>	<b>164,109</b>	<b>39,526</b>	<b>124,583</b>	<b>\$26,184,642.00</b>	<b>\$519,209.00</b>	<b>\$25,665,433.00</b>
MUSKINGUM	819	1,721	453	1,268	\$264,620.00	\$4,906.00	\$259,714.00
NOBLE	37	83	24	59	\$13,005.00	\$0.00	\$13,005.00
OTTAWA	128	288	69	219	\$41,805.00	\$641.00	\$41,164.00
PAULDING	91	230	76	154	\$30,967.00	\$0.00	\$30,967.00
PERRY	290	645	159	486	\$97,509.00	\$1,261.00	\$96,248.00
PICKAWAY	373	841	236	605	\$132,640.00	\$2,226.00	\$130,414.00
PIKE	338	722	183	539	\$117,135.00	\$1,545.00	\$115,590.00
PORTAGE	404	763	153	610	\$130,379.00	\$1,755.00	\$128,624.00
PREBLE	168	333	70	263	\$52,423.00	\$1,356.00	\$51,067.00
PUTNAM	30	45	2	43	\$9,126.00	\$410.00	\$8,716.00
RICHLAND	624	1,173	217	956	\$202,926.00	\$2,483.00	\$200,443.00
ROSS	632	1,357	323	1,034	\$212,628.00	\$1,636.00	\$210,992.00
SANDUSKY	208	402	42	360	\$63,266.00	\$245.00	\$63,021.00
SCIOTO	1,060	2,035	404	1,631	\$336,683.00	\$3,845.00	\$332,838.00
SENECA	171	341	60	281	\$58,780.00	\$826.00	\$57,954.00
SHELBY	139	243	20	223	\$44,554.00	\$628.00	\$43,926.00
STARK	2,689	5,895	1,660	4,235	\$903,274.00	\$15,699.00	\$887,575.00
SUMMIT	4,705	9,991	2,792	7,199	\$1,623,768.00	\$33,616.00	\$1,590,152.00
TRUMBULL	1,329	2,630	563	2,067	\$436,593.00	\$5,043.00	\$431,550.00
TUSCARAWAS	318	618	150	468	\$103,035.00	\$1,804.00	\$101,231.00
UNION	121	266	74	192	\$39,548.00	\$581.00	\$38,967.00
VAN WERT	54	86	5	81	\$15,813.00	\$0.00	\$15,813.00
VINTON	136	288	74	214	\$44,058.00	\$0.00	\$44,058.00
WARREN	225	382	49	333	\$68,188.00	\$2,999.00	\$65,189.00
WASHINGTON	130	190	1	189	\$37,021.00	\$336.00	\$36,685.00
WAYNE	377	829	256	573	\$126,602.00	\$5,330.00	\$121,272.00
WILLIAMS	149	366	125	241	\$50,536.00	\$1,669.00	\$48,867.00
WOOD	217	380	34	346	\$66,801.00	\$322.00	\$66,479.00
WYANDOT	48	102	25	77	\$16,856.00	\$1,142.00	\$15,714.00

Source: GRP342RA Report from Management Information Services. Data includes ADC-Regular, ADC-Incapacitated, and Vendor Payments.

**TABLE 1  
OHIO WORKS FIRST REGULAR  
SEPTEMBER 2007**

OHIO COUNTY	ASSISTANCE GROUP	RECIPIENTS	ADULTS	CHILDREN	ACTUAL EXPENDITURES		
					GROSS AMOUNT	CANCELLED AMOUNT	NET AMOUNT
<b>STATEWIDE</b>	<b>74,425</b>	<b>152,800</b>	<b>34,383</b>	<b>118,417</b>	<b>\$24,900,861.00</b>	<b>\$491,960.00</b>	<b>\$24,408,901.00</b>
ADAMS	131	200	4	196	\$37,215.00	\$245.00	\$36,970.00
ALLEN	417	677	45	632	\$125,013.00	\$851.00	\$124,162.00
ASHLAND	81	148	29	119	\$25,825.00	\$245.00	\$25,580.00
ASHTABULA	589	1,147	236	911	\$188,020.00	\$689.00	\$187,331.00
ATHENS	545	1,172	377	795	\$177,870.00	\$2,575.00	\$175,295.00
AUGLAIZE	73	113	4	109	\$21,329.00	\$813.00	\$20,516.00
BELMONT	277	517	95	422	\$88,206.00	\$1,395.00	\$86,811.00
BROWN	149	252	29	223	\$43,451.00	\$1,236.00	\$42,215.00
BUTLER	1,492	2,716	384	2,332	\$468,246.00	\$6,114.00	\$462,132.00
CARROLL	84	148	34	114	\$26,144.00	\$0.00	\$26,144.00
CHAMPAIGN	188	401	105	296	\$62,443.00	\$2,268.00	\$60,175.00
CLARK	1,251	2,591	621	1,970	\$422,392.00	\$8,031.00	\$414,361.00
CLERMONT	420	726	69	657	\$130,470.00	\$3,004.00	\$127,466.00
CLINTON	123	227	32	195	\$38,320.00	\$1,082.00	\$37,238.00
COLUMBIANA	412	739	104	635	\$129,349.00	\$1,014.00	\$128,335.00
COSHOCTON	205	396	106	290	\$64,836.00	\$2,316.00	\$62,520.00
CRAWFORD	154	309	69	240	\$51,397.00	\$336.00	\$51,061.00
CUYAHOGA	11,007	21,553	4,497	17,056	\$3,686,855.00	\$99,144.00	\$3,587,711.00
DARKE	139	287	70	217	\$46,832.00	\$0.00	\$46,832.00
DEFIANCE	122	252	57	195	\$38,849.00	\$245.00	\$38,604.00
DELAWARE	270	551	166	385	\$88,646.00	\$1,077.00	\$87,569.00
ERIE	224	392	19	373	\$70,415.00	\$917.00	\$69,498.00
FAIRFIELD	719	1,553	424	1,129	\$239,640.00	\$6,077.00	\$233,563.00
FAYETTE	119	226	34	192	\$37,867.00	\$1,695.00	\$36,172.00
FRANKLIN	10,869	23,453	5,593	17,860	\$3,706,876.00	\$89,052.00	\$3,617,824.00
FULTON	66	108	6	102	\$18,790.00	\$410.00	\$18,380.00
GALLIA	356	771	223	548	\$121,090.00	\$979.00	\$120,111.00
GEAUGA	66	110	11	99	\$20,158.00	\$746.00	\$19,412.00
GREENE	523	1,048	232	816	\$172,206.00	\$2,176.00	\$170,030.00

Source: GRP342RA Report from Management Information Services. Data includes ADC-Regular, ADC-Incapacitated, and Vendor Payments.

**TABLE 1  
OHIO WORKS FIRST REGULAR  
SEPTEMBER 2007**

OHIO COUNTY	ASSISTANCE GROUP	RECIPIENTS	ADULTS	CHILDREN	ACTUAL EXPENDITURES		
					GROSS AMOUNT	CANCELLED AMOUNT	NET AMOUNT
<b>STATEWIDE</b>	<b>74,425</b>	<b>152,800</b>	<b>34,383</b>	<b>118,417</b>	<b>\$24,900,861.00</b>	<b>\$491,960.00</b>	<b>\$24,408,901.00</b>
GUERNSEY	161	264	29	235	\$48,412.00	\$336.00	\$48,076.00
HAMILTON	7,464	17,271	3,953	13,318	\$2,729,277.00	\$48,114.00	\$2,681,163.00
HANCOCK	100	144	0	144	\$28,463.00	\$581.00	\$27,882.00
HARDIN	73	119	7	112	\$21,792.00	\$245.00	\$21,547.00
HARRISON	87	168	37	131	\$28,591.00	\$1,401.00	\$27,190.00
HENRY	36	60	5	55	\$10,844.00	\$0.00	\$10,844.00
HIGHLAND	216	479	109	370	\$75,836.00	\$1,242.00	\$74,594.00
HOCKING	239	489	123	366	\$78,691.00	\$2,541.00	\$76,150.00
HOLMES	41	75	14	61	\$12,835.00	\$0.00	\$12,835.00
HURON	159	244	4	240	\$45,937.00	\$1,372.00	\$44,565.00
JACKSON	300	523	70	453	\$93,353.00	\$245.00	\$93,108.00
JEFFERSON	633	1,326	350	976	\$208,213.00	\$4,938.00	\$203,275.00
KNOX	251	536	148	388	\$79,754.00	\$1,349.00	\$78,405.00
LAKE	413	788	152	636	\$141,990.00	\$3,321.00	\$138,669.00
LAWRENCE	698	1,289	242	1,047	\$215,796.00	\$4,367.00	\$211,429.00
LICKING	546	1,073	259	814	\$176,619.00	\$3,037.00	\$173,582.00
LOGAN	173	333	75	258	\$55,974.00	\$336.00	\$55,638.00
LORAIN	1,820	3,738	784	2,954	\$602,251.00	\$9,297.00	\$592,954.00
LUCAS	5,350	11,472	2,909	8,563	\$1,800,821.00	\$32,546.00	\$1,768,275.00
MADISON	202	444	120	324	\$74,187.00	\$917.00	\$73,270.00
MAHONING	2,712	6,023	1,521	4,502	\$930,497.00	\$16,032.00	\$914,465.00
MARION	371	688	85	603	\$117,152.00	\$2,061.00	\$115,091.00
MEDINA	215	411	94	317	\$65,219.00	\$1,071.00	\$64,148.00
MEIGS	197	412	97	315	\$65,953.00	\$1,008.00	\$64,945.00
MERCER	51	92	21	71	\$14,929.00	\$490.00	\$14,439.00
MIAMI	295	551	95	456	\$90,875.00	\$1,115.00	\$89,760.00
MONROE	46	92	24	68	\$15,754.00	\$410.00	\$15,344.00
MONTGOMERY	5,050	10,234	2,391	7,843	\$1,651,646.00	\$31,555.00	\$1,620,091.00
MORGAN	81	134	19	115	\$24,014.00	\$0.00	\$24,014.00
MORROW	119	218	42	176	\$39,548.00	\$581.00	\$38,967.00

Source: GRP342RA Report from Management Information Services. Data includes ADC-Regular, ADC-Incapacitated, and Vendor Payments.

**TABLE 1  
OHIO WORKS FIRST REGULAR  
SEPTEMBER 2007**

OHIO COUNTY	ASSISTANCE GROUP	RECIPIENTS	ADULTS	CHILDREN	ACTUAL EXPENDITURES		
					GROSS AMOUNT	CANCELLED AMOUNT	NET AMOUNT
<b>STATEWIDE</b>	<b>74,425</b>	<b>152,800</b>	<b>34,383</b>	<b>118,417</b>	<b>\$24,900,861.00</b>	<b>\$491,960.00</b>	<b>\$24,408,901.00</b>
MUSKINGUM	773	1,534	360	1,174	\$246,930.00	\$4,543.00	\$242,387.00
NOBLE	34	66	18	48	\$11,092.00	\$0.00	\$11,092.00
OTTAWA	113	243	55	188	\$36,880.00	\$243.00	\$36,637.00
PAULDING	81	183	56	127	\$27,052.00	\$0.00	\$27,052.00
PERRY	268	563	116	447	\$87,387.00	\$1,261.00	\$86,126.00
PICKAWAY	358	787	206	581	\$124,910.00	\$2,226.00	\$122,684.00
PIKE	317	647	142	505	\$107,061.00	\$1,545.00	\$105,516.00
PORTAGE	398	741	143	598	\$127,310.00	\$1,755.00	\$125,555.00
PREBLE	164	316	62	254	\$50,443.00	\$1,356.00	\$49,087.00
PUTNAM	26	40	2	38	\$8,198.00	\$410.00	\$7,788.00
RICHLAND	614	1,137	198	939	\$198,554.00	\$2,483.00	\$196,071.00
ROSS	599	1,218	265	953	\$195,668.00	\$1,636.00	\$194,032.00
SANDUSKY	177	326	40	286	\$55,050.00	\$245.00	\$54,805.00
SCIOTO	1,014	1,857	312	1,545	\$314,838.00	\$3,845.00	\$310,993.00
SENECA	169	334	56	278	\$57,863.00	\$826.00	\$57,037.00
SHELBY	139	243	20	223	\$44,554.00	\$628.00	\$43,926.00
STARK	2,523	5,244	1,341	3,903	\$833,626.00	\$15,699.00	\$817,927.00
SUMMIT	4,491	9,132	2,376	6,756	\$1,522,454.00	\$29,870.00	\$1,492,584.00
TRUMBULL	1,291	2,483	488	1,995	\$419,636.00	\$5,043.00	\$414,593.00
TUSCARAWAS	300	548	115	433	\$93,522.00	\$858.00	\$92,664.00
UNION	113	231	58	173	\$35,727.00	\$581.00	\$35,146.00
VAN WERT	54	86	5	81	\$15,813.00	\$0.00	\$15,813.00
VINTON	132	269	66	203	\$42,779.00	\$0.00	\$42,779.00
WARREN	220	368	44	324	\$66,096.00	\$2,999.00	\$63,097.00
WASHINGTON	130	190	1	189	\$37,021.00	\$336.00	\$36,685.00
WAYNE	360	766	222	544	\$118,243.00	\$5,199.00	\$113,044.00
WILLIAMS	139	321	105	216	\$46,982.00	\$1,669.00	\$45,313.00
WOOD	211	357	34	323	\$64,635.00	\$322.00	\$64,313.00
WYANDOT	47	97	23	74	\$16,564.00	\$1,142.00	\$15,422.00

Source: GRP342RA Report from Management Information Services. Data includes ADC-Regular, ADC-Incapacitated, and Vendor Payments.

**TABLE 1  
OHIO WORKS FIRST UNEMPLOYED  
SEPTEMBER 2007**

OHIO COUNTY	ASSISTANCE GROUP	RECIPIENTS	ADULTS	CHILDREN	ACTUAL EXPENDITURES		
					GROSS AMOUNT	CANCELLED AMOUNT	NET AMOUNT
<b>STATEWIDE</b>	<b>2,824</b>	<b>11,309</b>	<b>5,143</b>	<b>6,166</b>	<b>\$1,283,781.00</b>	<b>\$27,249.00</b>	<b>\$1,256,532.00</b>
ADAMS	0	0	0	0	\$0.00	\$0.00	\$0.00
ALLEN	2	16	4	12	\$87.00	\$0.00	\$87.00
ASHLAND	3	14	6	8	\$1,674.00	\$0.00	\$1,674.00
ASHTABULA	36	149	69	80	\$16,778.00	\$0.00	\$16,778.00
ATHENS	80	286	147	139	\$34,043.00	\$917.00	\$33,126.00
AUGLAIZE	0	0	0	0	\$0.00	\$0.00	\$0.00
BELMONT	17	65	32	33	\$7,227.00	\$0.00	\$7,227.00
BROWN	0	0	0	0	\$0.00	\$0.00	\$0.00
BUTLER	0	0	0	0	\$0.00	\$0.00	\$0.00
CARROLL	3	17	6	11	\$1,701.00	\$0.00	\$1,701.00
CHAMPAIGN	10	40	21	19	\$4,889.00	\$0.00	\$4,889.00
CLARK	50	199	100	99	\$24,564.00	\$559.00	\$24,005.00
CLERMONT	1	3	2	1	\$410.00	\$0.00	\$410.00
CLINTON	0	0	0	0	\$0.00	\$0.00	\$0.00
COLUMBIANA	3	10	5	5	\$1,255.00	\$0.00	\$1,255.00
COSHOCTON	12	51	24	27	\$6,265.00	\$0.00	\$6,265.00
CRAWFORD	0	0	0	0	\$0.00	\$0.00	\$0.00
CUYAHOGA	232	871	424	447	\$104,178.00	\$1,659.00	\$102,519.00
DARKE	7	29	15	14	\$3,315.00	\$0.00	\$3,315.00
DEFIANCE	5	18	10	8	\$2,751.00	\$0.00	\$2,751.00
DELAWARE	28	110	51	59	\$14,357.00	\$0.00	\$14,357.00
ERIE	2	13	4	9	\$1,024.00	\$0.00	\$1,024.00
FAIRFIELD	90	370	174	196	\$38,401.00	\$2,181.00	\$36,220.00
FAYETTE	4	18	8	10	\$3,280.00	\$0.00	\$3,280.00
FRANKLIN	551	2,365	921	1,444	\$259,442.00	\$9,770.00	\$249,672.00
FULTON	0	0	0	0	\$0.00	\$0.00	\$0.00
GALLIA	40	147	79	68	\$16,539.00	\$621.00	\$15,918.00
GEAUGA	0	0	0	0	\$0.00	\$0.00	\$0.00
GREENE	19	79	37	42	\$10,044.00	\$0.00	\$10,044.00

Source: GRP342RA Report from Management Information Services. Data includes ADC-Regular, ADC-Incapacitated, and Vendor Payments.

**TABLE 1  
OHIO WORKS FIRST UNEMPLOYED  
SEPTEMBER 2007**

OHIO COUNTY	ASSISTANCE GROUP	RECIPIENTS	ADULTS	CHILDREN	ACTUAL EXPENDITURES		
					GROSS AMOUNT	CANCELLED AMOUNT	NET AMOUNT
<b>STATEWIDE</b>	<b>2,824</b>	<b>11,309</b>	<b>5,143</b>	<b>6,166</b>	<b>\$1,283,781.00</b>	<b>\$27,249.00</b>	<b>\$1,256,532.00</b>
GUERNSEY	1	1	1	0	\$245.00	\$0.00	\$245.00
HAMILTON	148	643	286	357	\$72,208.00	\$336.00	\$71,872.00
HANCOCK	0	0	0	0	\$0.00	\$0.00	\$0.00
HARDIN	0	0	0	0	\$0.00	\$0.00	\$0.00
HARRISON	5	19	10	9	\$1,683.00	\$0.00	\$1,683.00
HENRY	0	0	0	0	\$0.00	\$0.00	\$0.00
HIGHLAND	4	19	7	12	\$1,832.00	\$0.00	\$1,832.00
HOCKING	17	61	32	29	\$7,970.00	\$0.00	\$7,970.00
HOLMES	2	7	4	3	\$1,012.00	\$0.00	\$1,012.00
HURON	3	6	0	6	\$591.00	\$336.00	\$255.00
JACKSON	6	23	12	11	\$3,966.00	\$0.00	\$3,966.00
JEFFERSON	53	215	103	112	\$26,955.00	\$0.00	\$26,955.00
KNOX	16	62	32	30	\$5,824.00	\$0.00	\$5,824.00
LAKE	12	50	21	29	\$6,323.00	\$0.00	\$6,323.00
LAWRENCE	35	142	66	76	\$13,613.00	\$0.00	\$13,613.00
LICKING	25	105	50	55	\$9,764.00	\$0.00	\$9,764.00
LOGAN	4	13	8	5	\$1,065.00	\$0.00	\$1,065.00
LORAIN	59	241	108	133	\$29,278.00	\$593.00	\$28,685.00
LUCAS	310	1,214	569	645	\$132,843.00	\$3,873.00	\$128,970.00
MADISON	17	75	35	40	\$9,117.00	\$0.00	\$9,117.00
MAHONING	91	375	179	196	\$46,363.00	\$0.00	\$46,363.00
MARION	5	15	7	8	\$2,279.00	\$820.00	\$1,459.00
MEDINA	8	32	16	16	\$3,165.00	\$0.00	\$3,165.00
MEIGS	17	67	34	33	\$7,273.00	\$0.00	\$7,273.00
MERCER	1	5	2	3	\$593.00	\$0.00	\$593.00
MIAMI	6	16	12	4	\$1,702.00	\$0.00	\$1,702.00
MONROE	5	23	10	13	\$3,015.00	\$0.00	\$3,015.00
MONTGOMERY	22	84	26	58	\$8,224.00	\$0.00	\$8,224.00
MORGAN	0	0	0	0	\$0.00	\$0.00	\$0.00
MORROW	2	8	4	4	\$1,003.00	\$0.00	\$1,003.00

Source: GRP342RA Report from Management Information Services. Data includes ADC-Regular, ADC-Incapacitated, and Vendor Payments.

**TABLE 1  
OHIO WORKS FIRST UNEMPLOYED  
SEPTEMBER 2007**

OHIO COUNTY	ASSISTANCE GROUP	RECIPIENTS	ADULTS	CHILDREN	ACTUAL EXPENDITURES		
					GROSS AMOUNT	CANCELLED AMOUNT	NET AMOUNT
<b>STATEWIDE</b>	<b>2,824</b>	<b>11,309</b>	<b>5,143</b>	<b>6,166</b>	<b>\$1,283,781.00</b>	<b>\$27,249.00</b>	<b>\$1,256,532.00</b>
MUSKINGUM	46	187	93	94	\$17,690.00	\$363.00	\$17,327.00
NOBLE	3	17	6	11	\$1,913.00	\$0.00	\$1,913.00
OTTAWA	15	45	14	31	\$4,925.00	\$398.00	\$4,527.00
PAULDING	10	47	20	27	\$3,915.00	\$0.00	\$3,915.00
PERRY	22	82	43	39	\$10,122.00	\$0.00	\$10,122.00
PICKAWAY	15	54	30	24	\$7,730.00	\$0.00	\$7,730.00
PIKE	21	75	41	34	\$10,074.00	\$0.00	\$10,074.00
PORTAGE	6	22	10	12	\$3,069.00	\$0.00	\$3,069.00
PREBLE	4	17	8	9	\$1,980.00	\$0.00	\$1,980.00
PUTNAM	4	5	0	5	\$928.00	\$0.00	\$928.00
RICHLAND	10	36	19	17	\$4,372.00	\$0.00	\$4,372.00
ROSS	33	139	58	81	\$16,960.00	\$0.00	\$16,960.00
SANDUSKY	31	76	2	74	\$8,216.00	\$0.00	\$8,216.00
SCIOTO	46	178	92	86	\$21,845.00	\$0.00	\$21,845.00
SENECA	2	7	4	3	\$917.00	\$0.00	\$917.00
SHELBY	0	0	0	0	\$0.00	\$0.00	\$0.00
STARK	166	651	319	332	\$69,648.00	\$0.00	\$69,648.00
SUMMIT	214	859	416	443	\$101,314.00	\$3,746.00	\$97,568.00
TRUMBULL	38	147	75	72	\$16,957.00	\$0.00	\$16,957.00
TUSCARAWAS	18	70	35	35	\$9,513.00	\$946.00	\$8,567.00
UNION	8	35	16	19	\$3,821.00	\$0.00	\$3,821.00
VAN WERT	0	0	0	0	\$0.00	\$0.00	\$0.00
VINTON	4	19	8	11	\$1,279.00	\$0.00	\$1,279.00
WARREN	5	14	5	9	\$2,092.00	\$0.00	\$2,092.00
WASHINGTON	0	0	0	0	\$0.00	\$0.00	\$0.00
WAYNE	17	63	34	29	\$8,359.00	\$131.00	\$8,228.00
WILLIAMS	10	45	20	25	\$3,554.00	\$0.00	\$3,554.00
WOOD	6	23	0	23	\$2,166.00	\$0.00	\$2,166.00
WYANDOT	1	5	2	3	\$292.00	\$0.00	\$292.00

Source: GRP342RA Report from Management Information Services. Data includes ADC-Regular, ADC-Incapacitated, and Vendor Payments.



**TABLE 2**  
**TITLE IV-E FOSTER CARE AND ADOPTION ASSISTANCE**  
**DATA NOT AVAILABLE FOR SEPTEMBER 2007**

OHIO COUNTY	FOSTER CARE						ADOPTION ASSISTANCE		TOTAL FOSTER CARE AND ADOPTION ASSISTANCE	
	FOSTER FAMILY HOMES		CHILD CARE INSTITUTIONS		HOMES & INSTITUTIONS		CHILDREN	GROSS AMOUNT	CHILDREN	GROSS AMOUNT
	CHILDREN	GROSS AMOUNT	CHILDREN	GROSS AMOUNT	CHILDREN	GROSS AMOUNT				
STATEWIDE	0	\$0.00	0	\$0.00	0	\$0.00	0	\$0.00	0	\$0.00
ADAMS					0	\$0.00			0	\$0.00
ALLEN					0	\$0.00			0	\$0.00
ASHLAND					0	\$0.00			0	\$0.00
ASHTABULA					0	\$0.00			0	\$0.00
ATHENS					0	\$0.00			0	\$0.00
AUGLAIZE					0	\$0.00			0	\$0.00
BELMONT					0	\$0.00			0	\$0.00
BROWN					0	\$0.00			0	\$0.00
BUTLER					0	\$0.00			0	\$0.00
CARROLL					0	\$0.00			0	\$0.00
CHAMPAIGN					0	\$0.00			0	\$0.00
CLARK					0	\$0.00			0	\$0.00
CLERMONT					0	\$0.00			0	\$0.00
CLINTON					0	\$0.00			0	\$0.00
COLUMBIANA					0	\$0.00			0	\$0.00
COSHOCTON					0	\$0.00			0	\$0.00
CRAWFORD					0	\$0.00			0	\$0.00
CUYAHOGA					0	\$0.00			0	\$0.00
DARKE					0	\$0.00			0	\$0.00
DEFIANCE					0	\$0.00			0	\$0.00
DELAWARE					0	\$0.00			0	\$0.00
ERIE					0	\$0.00			0	\$0.00
FAIRFIELD					0	\$0.00			0	\$0.00
FAYETTE					0	\$0.00			0	\$0.00
FRANKLIN					0	\$0.00			0	\$0.00
FULTON					0	\$0.00			0	\$0.00
GALLIA					0	\$0.00			0	\$0.00
GEAUGA					0	\$0.00			0	\$0.00
GREENE					0	\$0.00			0	\$0.00

SOURCE: GBS003RB Report from Management Information Services. Federal funds only.

**TABLE 2**  
**TITLE IV-E FOSTER CARE AND ADOPTION ASSISTANCE**  
**DATA NOT AVAILABLE FOR SEPTEMBER 2007**

OHIO COUNTY	FOSTER CARE						ADOPTION ASSISTANCE		TOTAL FOSTER CARE AND ADOPTION ASSISTANCE	
	FOSTER FAMILY HOMES		CHILD CARE INSTITUTIONS		HOMES & INSTITUTIONS		CHILDREN	GROSS AMOUNT	CHILDREN	GROSS AMOUNT
	CHILDREN	GROSS AMOUNT	CHILDREN	GROSS AMOUNT	CHILDREN	GROSS AMOUNT				
STATEWIDE	0	\$0.00	0	\$0.00	0	\$0.00	0	\$0.00	0	\$0.00
GUERNSEY					0	\$0.00			0	\$0.00
HAMILTON					0	\$0.00			0	\$0.00
HANCOCK					0	\$0.00			0	\$0.00
HARDIN					0	\$0.00			0	\$0.00
HARRISON					0	\$0.00			0	\$0.00
HENRY					0	\$0.00			0	\$0.00
HIGHLAND					0	\$0.00			0	\$0.00
HOCKING					0	\$0.00			0	\$0.00
HOLMES					0	\$0.00			0	\$0.00
HURON					0	\$0.00			0	\$0.00
JACKSON					0	\$0.00			0	\$0.00
JEFFERSON					0	\$0.00			0	\$0.00
KNOX					0	\$0.00			0	\$0.00
LAKE					0	\$0.00			0	\$0.00
LAWRENCE					0	\$0.00			0	\$0.00
LICKING					0	\$0.00			0	\$0.00
LOGAN					0	\$0.00			0	\$0.00
LORAIN					0	\$0.00			0	\$0.00
LUCAS					0	\$0.00			0	\$0.00
MADISON					0	\$0.00			0	\$0.00
MAHONING					0	\$0.00			0	\$0.00
MARION					0	\$0.00			0	\$0.00
MEDINA					0	\$0.00			0	\$0.00
MEIGS					0	\$0.00			0	\$0.00
MERCER					0	\$0.00			0	\$0.00
MIAMI					0	\$0.00			0	\$0.00
MONROE					0	\$0.00			0	\$0.00
MONTGOMERY					0	\$0.00			0	\$0.00
MORGAN					0	\$0.00			0	\$0.00
MORROW					0	\$0.00			0	\$0.00

SOURCE: GBS003RB Report from Management Information Services. Federal funds only.

**TABLE 2**  
**TITLE IV-E FOSTER CARE AND ADOPTION ASSISTANCE**  
**DATA NOT AVAILABLE FOR SEPTEMBER 2007**

OHIO COUNTY	FOSTER CARE						ADOPTION ASSISTANCE		TOTAL FOSTER CARE AND ADOPTION ASSISTANCE	
	FOSTER FAMILY HOMES		CHILD CARE INSTITUTIONS		HOMES & INSTITUTIONS		CHILDREN	GROSS AMOUNT	CHILDREN	GROSS AMOUNT
	CHILDREN	GROSS AMOUNT	CHILDREN	GROSS AMOUNT	CHILDREN	GROSS AMOUNT				
STATEWIDE	0	\$0.00	0	\$0.00	0	\$0.00	0	\$0.00	0	\$0.00
MUSKINGUM					0	\$0.00			0	\$0.00
NOBLE					0	\$0.00			0	\$0.00
OTTAWA					0	\$0.00			0	\$0.00
PAULDING					0	\$0.00			0	\$0.00
PERRY					0	\$0.00			0	\$0.00
PICKAWAY					0	\$0.00			0	\$0.00
PIKE					0	\$0.00			0	\$0.00
PORTAGE					0	\$0.00			0	\$0.00
PREBLE					0	\$0.00			0	\$0.00
PUTNAM					0	\$0.00			0	\$0.00
RICHLAND					0	\$0.00			0	\$0.00
ROSS					0	\$0.00			0	\$0.00
SANDUSKY					0	\$0.00			0	\$0.00
SCIOTO					0	\$0.00			0	\$0.00
SENECA					0	\$0.00			0	\$0.00
SHELBY					0	\$0.00			0	\$0.00
STARK					0	\$0.00			0	\$0.00
SUMMIT					0	\$0.00			0	\$0.00
TRUMBULL					0	\$0.00			0	\$0.00
TUSCARAWAS					0	\$0.00			0	\$0.00
UNION					0	\$0.00			0	\$0.00
VAN WERT					0	\$0.00			0	\$0.00
VINTON					0	\$0.00			0	\$0.00
WARREN					0	\$0.00			0	\$0.00
WASHINGTON					0	\$0.00			0	\$0.00
WAYNE					0	\$0.00			0	\$0.00
WILLIAMS					0	\$0.00			0	\$0.00
WOOD					0	\$0.00			0	\$0.00
WYANDOT					0	\$0.00			0	\$0.00

SOURCE: GBS003RB Report from Management Information Services. Federal funds only.





**TABLE 3  
DISABILITY ASSISTANCE (DA)  
SEPTEMBER 2007**

OHIO COUNTY	CASH ASSISTANCE							MEDICAL ASSISTANCE	
	ASSISTANCE GROUPS	RECIPIENTS	ADULTS	CHILDREN	ACTUAL EXPENDITURES			UNDUPLICATED RECIPIENTS	ACTUAL AMOUNT PAID
					GROSS AMOUNT	CANCELLED AMOUNT	NET AMOUNT		
<b>STATEWIDE</b>	<b>15,561</b>	<b>15,652</b>	<b>15,652</b>	<b>0</b>	<b>\$2,154,019.00</b>	<b>\$62,034.00</b>	<b>\$2,091,985.00</b>	<b>2,837</b>	<b>\$1,352,911.56</b>
ADAMS	102	105	105	0	\$12,513.00	\$460.00	\$12,053.00	18	\$9,816.24
ALLEN	131	131	131	0	\$18,814.00	\$0.00	\$18,814.00	12	\$7,775.00
ASHLAND	33	33	33	0	\$4,649.00	\$0.00	\$4,649.00	12	\$6,268.78
ASHTABULA	315	316	316	0	\$49,806.00	\$460.00	\$49,346.00	19	\$4,879.99
ATHENS	288	292	292	0	\$35,442.00	\$115.00	\$35,327.00	17	\$4,588.50
AUGLAIZE	28	28	28	0	\$3,558.00	\$0.00	\$3,558.00	8	\$2,296.63
BELMONT	148	151	151	0	\$18,334.00	\$115.00	\$18,219.00	21	\$11,278.87
BROWN	89	90	90	0	\$13,459.00	\$0.00	\$13,459.00	10	\$2,419.75
BUTLER	450	450	450	0	\$63,848.00	\$885.00	\$62,963.00	46	\$24,741.16
CARROLL	30	30	30	0	\$3,423.00	\$0.00	\$3,423.00	4	\$993.97
CHAMPAIGN	36	36	36	0	\$3,786.00	\$962.00	\$2,824.00	10	\$4,404.59
CLARK	409	411	411	0	\$54,826.00	\$2,952.00	\$51,874.00	63	\$34,383.90
CLERMONT	212	213	213	0	\$26,383.00	\$920.00	\$25,463.00	17	\$9,183.68
CLINTON	77	78	78	0	\$10,536.00	\$115.00	\$10,421.00	2	\$1,223.25
COLUMBIANA	139	139	139	0	\$24,991.00	\$230.00	\$24,761.00	30	\$14,270.92
COSHOCTON	121	122	122	0	\$14,944.00	\$0.00	\$14,944.00	4	\$2,280.18
CRAWFORD	53	53	53	0	\$6,784.00	\$115.00	\$6,669.00	9	\$8,465.20
CUYAHOGA	1,043	1,047	1,047	0	\$146,854.00	\$9,651.00	\$137,203.00	565	\$209,276.40
DARKE	31	31	31	0	\$3,609.00	\$0.00	\$3,609.00	4	\$3,318.96
DEFIANCE	29	29	29	0	\$3,220.00	\$417.00	\$2,803.00	7	\$3,359.32
DELAWARE	82	83	83	0	\$8,939.00	\$460.00	\$8,479.00	11	\$4,879.33
ERIE	96	96	96	0	\$11,957.00	\$0.00	\$11,957.00	12	\$5,383.41
FAIRFIELD	190	190	190	0	\$22,955.00	\$230.00	\$22,725.00	18	\$15,522.93
FAYETTE	42	42	42	0	\$6,587.00	\$690.00	\$5,897.00	13	\$5,016.95
FRANKLIN	1,284	1,293	1,293	0	\$212,561.00	\$5,876.00	\$206,685.00	233	\$131,439.08
FULTON	44	44	44	0	\$5,148.00	\$0.00	\$5,148.00	5	\$2,030.64
GALLIA	82	83	83	0	\$11,439.00	\$0.00	\$11,439.00	44	\$24,415.55
GEAUGA	31	31	31	0	\$3,251.00	\$345.00	\$2,906.00	1	\$252.56
GREENE	174	174	174	0	\$24,231.00	\$230.00	\$24,001.00	31	\$16,000.51

\*SOURCE: GRP342RA Report from Management Information Services and BOMC 9260-R001 Report from Medicaid Management Information Services.

**TABLE 3  
DISABILITY ASSISTANCE (DA)  
SEPTEMBER 2007**

OHIO COUNTY	CASH ASSISTANCE							MEDICAL ASSISTANCE	
	ASSISTANCE GROUPS	RECIPIENTS	ADULTS	CHILDREN	ACTUAL EXPENDITURES			UNDUPLICATED RECIPIENTS	ACTUAL AMOUNT PAID
					GROSS AMOUNT	CANCELLED AMOUNT	NET AMOUNT		
<b>STATEWIDE</b>	<b>15,561</b>	<b>15,652</b>	<b>15,652</b>	<b>0</b>	<b>\$2,154,019.00</b>	<b>\$62,034.00</b>	<b>\$2,091,985.00</b>	<b>2,837</b>	<b>\$1,352,911.56</b>
GUERNSEY	145	146	146	0	\$21,097.00	\$741.00	\$20,356.00	14	\$8,079.76
HAMILTON	720	720	720	0	\$112,675.00	\$5,592.00	\$107,083.00	80	\$53,755.17
HANCOCK	79	79	79	0	\$10,325.00	\$230.00	\$10,095.00	9	\$4,931.35
HARDIN	47	47	47	0	\$5,320.00	\$230.00	\$5,090.00	11	\$3,790.25
HARRISON	58	58	58	0	\$6,670.00	\$0.00	\$6,670.00	2	\$490.38
HENRY	10	10	10	0	\$1,380.00	\$0.00	\$1,380.00	2	\$634.91
HIGHLAND	111	111	111	0	\$14,226.00	\$115.00	\$14,111.00	15	\$7,273.12
HOCKING	64	67	67	0	\$12,603.00	\$330.00	\$12,273.00	9	\$3,376.47
HOLMES	29	29	29	0	\$3,220.00	\$115.00	\$3,105.00	1	\$65.75
HURON	61	62	62	0	\$6,913.00	\$984.00	\$5,929.00	5	\$1,801.29
JACKSON	127	128	128	0	\$17,145.00	\$2,018.00	\$15,127.00	26	\$19,804.38
JEFFERSON	175	175	175	0	\$21,253.00	\$1,151.00	\$20,102.00	27	\$8,879.07
KNOX	122	122	122	0	\$15,116.00	\$230.00	\$14,886.00	11	\$5,334.17
LAKE	141	141	141	0	\$19,320.00	\$230.00	\$19,090.00	24	\$9,254.80
LAWRENCE	81	81	81	0	\$10,341.00	\$230.00	\$10,111.00	24	\$10,219.80
LICKING	302	304	304	0	\$44,191.00	\$2,228.00	\$41,963.00	16	\$13,002.98
LOGAN	78	81	81	0	\$10,136.00	\$230.00	\$9,906.00	14	\$4,792.29
LORAIN	387	389	389	0	\$48,483.00	\$460.00	\$48,023.00	53	\$19,162.76
LUCAS	1,085	1,089	1,089	0	\$151,855.00	\$3,432.00	\$148,423.00	179	\$74,975.85
MADISON	32	32	32	0	\$4,379.00	\$0.00	\$4,379.00	11	\$8,763.07
MAHONING	274	274	274	0	\$42,443.00	\$2,415.00	\$40,028.00	118	\$66,993.93
MARION	195	199	199	0	\$26,351.00	\$793.00	\$25,558.00	7	\$4,559.26
MEDINA	86	88	88	0	\$15,363.00	\$230.00	\$15,133.00	13	\$5,673.02
MEIGS	78	79	79	0	\$9,171.00	\$115.00	\$9,056.00	23	\$7,626.70
MERCER	34	34	34	0	\$3,910.00	\$0.00	\$3,910.00	5	\$506.77
MIAMI	81	82	82	0	\$12,226.00	\$115.00	\$12,111.00	11	\$3,844.11
MONROE	30	30	30	0	\$3,450.00	\$230.00	\$3,220.00	11	\$2,809.95
MONTGOMERY	901	905	905	0	\$119,053.00	\$3,546.00	\$115,507.00	200	\$97,937.62
MORGAN	60	62	62	0	\$8,998.00	\$0.00	\$8,998.00	13	\$8,757.06
MORROW	75	75	75	0	\$12,040.00	\$233.00	\$11,807.00	9	\$9,364.41

\*SOURCE: GRP342RA Report from Management Information Services and BOMC 9260-R001 Report from Medicaid Management Information Services.

**TABLE 3  
DISABILITY ASSISTANCE (DA)  
SEPTEMBER 2007**

OHIO COUNTY	CASH ASSISTANCE							MEDICAL ASSISTANCE	
	ASSISTANCE GROUPS	RECIPIENTS	ADULTS	CHILDREN	ACTUAL EXPENDITURES			UNDUPLICATED RECIPIENTS	ACTUAL AMOUNT PAID
					GROSS AMOUNT	CANCELLED AMOUNT	NET AMOUNT		
<b>STATEWIDE</b>	<b>15,561</b>	<b>15,652</b>	<b>15,652</b>	<b>0</b>	<b>\$2,154,019.00</b>	<b>\$62,034.00</b>	<b>\$2,091,985.00</b>	<b>2,837</b>	<b>\$1,352,911.56</b>
MUSKINGUM	386	394	394	0	\$53,811.00	\$812.00	\$52,999.00	12	\$5,379.23
NOBLE	19	19	19	0	\$2,365.00	\$0.00	\$2,365.00	3	\$1,029.07
OTTAWA	42	43	43	0	\$4,975.00	\$115.00	\$4,860.00	10	\$5,757.25
PAULDING	26	27	27	0	\$3,330.00	\$0.00	\$3,330.00	3	\$1,124.41
PERRY	115	117	117	0	\$14,377.00	\$115.00	\$14,262.00	16	\$7,295.14
PICKAWAY	82	83	83	0	\$9,263.00	\$345.00	\$8,918.00	11	\$8,752.03
PIKE	78	78	78	0	\$10,211.00	\$0.00	\$10,211.00	28	\$11,971.29
PORTAGE	123	123	123	0	\$16,822.00	\$805.00	\$16,017.00	20	\$8,223.55
PREBLE	60	61	61	0	\$8,444.00	\$0.00	\$8,444.00	7	\$2,059.64
PUTNAM	9	9	9	0	\$1,265.00	\$115.00	\$1,150.00	3	\$1,637.92
RICHLAND	296	297	297	0	\$36,404.00	\$345.00	\$36,059.00	13	\$5,977.69
ROSS	153	154	154	0	\$22,310.00	\$115.00	\$22,195.00	41	\$22,781.81
SANDUSKY	98	99	99	0	\$11,869.00	\$115.00	\$11,754.00	8	\$1,474.78
SCIOTO	281	282	282	0	\$36,529.00	\$403.00	\$36,126.00	37	\$18,462.64
SENECA	82	82	82	0	\$13,290.00	\$0.00	\$13,290.00	18	\$6,789.40
SHELBY	40	40	40	0	\$4,662.00	\$0.00	\$4,662.00	10	\$3,900.12
STARK	487	487	487	0	\$63,065.00	\$575.00	\$62,490.00	68	\$33,463.98
SUMMIT	518	518	518	0	\$70,659.00	\$2,449.00	\$68,210.00	246	\$111,115.30
TRUMBULL	337	337	337	0	\$39,912.00	\$812.00	\$39,100.00	32	\$16,414.47
TUSCARAWAS	129	130	130	0	\$16,584.00	\$345.00	\$16,239.00	9	\$4,598.77
UNION	35	35	35	0	\$5,439.00	\$0.00	\$5,439.00	4	\$3,001.88
VAN WERT	35	37	37	0	\$4,757.00	\$159.00	\$4,598.00	3	\$611.52
VINTON	65	66	66	0	\$7,514.00	\$0.00	\$7,514.00	9	\$7,297.37
WARREN	87	89	89	0	\$11,544.00	\$115.00	\$11,429.00	8	\$5,769.72
WASHINGTON	153	153	153	0	\$19,398.00	\$1,101.00	\$18,297.00	8	\$5,031.49
WAYNE	240	241	241	0	\$30,266.00	\$941.00	\$29,325.00	11	\$5,569.97
WILLIAMS	52	52	52	0	\$8,112.00	\$115.00	\$7,997.00	3	\$1,994.19
WOOD	59	61	61	0	\$8,328.00	\$686.00	\$7,642.00	3	\$3,002.60
WYANDOT	17	18	18	0	\$2,014.00	\$0.00	\$2,014.00	4	\$5,797.63
UNKNOWN									\$0.00

\*SOURCE: GRP342RA Report from Management Information Services and BOMC 9260-R001 Report from Medicaid Management Information Services.



**TABLE 3-A  
DA PAYMENTS FOR MEDICAL SERVICES  
SEPTEMBER 2007**

CATEGORY OF SERVICES	DISABILITY ASSISTANCE			
	PAYMENTS	CLAIM FREQUENCY	DUPLICATED RECIPIENTS	PERCENT OF TOTAL
ADVANCED PRACTICAL NURSE SVCS.	\$2,372.14	64	54	0.2%
AMBULANCE SERVICES	\$0.00	0	0	0.0%
AMBULATORY SURGERY	\$5,668.24	13	11	0.4%
CHIROPRACTER SERVICES	\$0.00	0	0	0.0%
CLINIC	\$14,671.20	215	111	1.1%
DENTAL SERVICES	\$3,449.42	43	37	0.3%
EPSDT	\$0.00	0	0	0.0%
FAMILY PLANNING	\$0.00	0	0	0.0%
FEDERALLY QUALIFIED HEALTH CTR	\$0.00	1	1	0.0%
HEALTH MAINTENANCE ORGANIZATION	\$0.00	0	0	0.0%
HOME HEALTH SERVICES	\$0.00	0	0	0.0%
INDEPENDENT LABORATORY	\$13,206.26	198	136	1.0%
INPATIENT HOSPITAL	\$0.00	0	0	0.0%
ICF	\$0.00	0	0	0.0%
MIDWIFERY SERVICES	\$0.00	0	0	0.0%
OPTOMETRIC SERVICES	\$0.00	0	0	0.0%
OUTPATIENT HEALTH SERVICES	\$0.00	0	0	0.0%
PASSPORT WAIVER III	\$0.00	0	0	0.0%
OUTPATIENT HOSPITAL GENERAL	\$0.00	0	0	0.0%
PHYSICAL THERAPY SERVICES	\$0.00	0	0	0.0%
PHYSICIAN SERVICES	\$272,317.86	3,683	1,613	20.1%
PHYSIOLOGICAL LABORATORY	\$3,614.86	11	9	0.3%
PODIATRISTS THERAPY	\$6,305.22	97	71	0.5%
PRESCRIBED DRUGS	\$983,572.45	15,753	2,611	72.7%
PRIVATE DUTY NURSING SERVICES	\$0.00	0	0	0.0%
PSYCHOLOGY SERVICES	\$0.00	0	0	0.0%
RURAL HEALTH SERVICES	\$0.00	0	0	0.0%
SNF	\$0.00	0	0	0.0%
SUPPLIES AND MEDICAL EQUIPMENT	\$43,870.65	870	391	3.2%
WAIVERED SERVICES	\$3,863.26	40	36	0.3%
OTHER	\$0.00	0	0	0.0%
<b>STATEWIDE TOTAL</b>	<b>\$1,352,911.56</b>	<b>20,988</b>	<b>5,081</b>	<b>100.00%</b>

SOURCE: BOMC 9260 Report from Medicaid Management Information Services.

NOTE: Recipients are unduplicated within Category of Services, however, the Statewide Total represents a duplicated count.





**TABLE 5  
FOOD AND NUTRITION BENEFITS  
SEPTEMBER 2007**

OHIO COUNTY	PERSONS					ASSISTANCE GROUPS			TOTAL COUPONS ISSUED
	PUBLIC ASSISTANCE	NON-PUBLIC ASSISTANCE	TOTAL	AVERAGE ISSUANCE	% CHANGE PREV. MO.	PUBLIC ASSISTANCE	NON-PUBLIC ASSISTANCE	TOTAL	
<b>STATEWIDE</b>	<b>246,934</b>	<b>845,621</b>	<b>1,092,555</b>	<b>\$100</b>	<b>-0.4%</b>	<b>179,824</b>	<b>321,411</b>	<b>501,235</b>	<b>\$109,690,552</b>
ADAMS	1,142	3,662	4,804	\$93	1.0%	849	1,210	2,059	\$448,259
ALLEN	1,973	7,152	9,125	\$101	-1.5%	1,526	2,431	3,957	\$921,829
ASHLAND	487	2,582	3,069	\$91	1.7%	362	906	1,268	\$279,969
ASHTABULA	3,377	9,150	12,527	\$97	-0.3%	2,438	3,328	5,766	\$1,216,602
ATHENS	2,241	4,987	7,228	\$96	-0.7%	1,650	1,931	3,581	\$690,948
AUGLAIZE	333	1,781	2,114	\$98	1.1%	292	610	902	\$206,532
BELMONT	1,897	4,975	6,872	\$89	-0.4%	1,430	1,834	3,264	\$608,246
BROWN	679	2,729	3,408	\$91	-1.8%	530	951	1,481	\$310,276
BUTLER	5,379	21,568	26,947	\$104	-0.0%	4,185	7,752	11,937	\$2,805,211
CARROLL	362	1,757	2,119	\$95	-4.1%	277	626	903	\$200,384
CHAMPAIGN	630	2,262	2,892	\$96	-2.6%	447	781	1,228	\$277,627
CLARK	3,600	13,870	17,470	\$101	-1.3%	2,862	5,196	8,058	\$1,767,761
CLERMONT	2,146	9,083	11,229	\$99	0.9%	1,650	3,173	4,823	\$1,115,979
CLINTON	651	2,557	3,208	\$97	-1.7%	514	933	1,447	\$312,319
COLUMBIANA	2,632	9,244	11,876	\$96	-1.7%	2,022	3,249	5,271	\$1,136,502
COSHOCTON	728	3,493	4,221	\$95	3.3%	577	1,279	1,856	\$400,019
CRAWFORD	854	3,653	4,507	\$98	0.3%	681	1,315	1,996	\$440,847
CUYAHOGA	26,719	154,279	180,998	\$103	0.1%	17,062	70,451	87,513	\$18,555,530
DARKE	504	1,922	2,426	\$94	5.7%	386	669	1,055	\$228,576
DEFIANCE	560	2,378	2,938	\$95	4.6%	400	816	1,216	\$278,344
DELAWARE	1,134	3,229	4,363	\$99	-2.4%	813	1,219	2,032	\$433,904
ERIE	1,121	4,480	5,601	\$102	-3.3%	915	1,697	2,612	\$569,945
FAIRFIELD	2,052	8,409	10,461	\$100	-0.4%	1,550	3,070	4,620	\$1,042,811
FAYETTE	562	2,057	2,619	\$99	-3.3%	441	735	1,176	\$258,797
FRANKLIN	29,271	97,964	127,235	\$105	-0.7%	20,970	34,573	55,543	\$13,335,951
FULTON	347	1,763	2,110	\$92	-1.8%	268	604	872	\$194,939
GALLIA	1,681	3,305	4,986	\$95	-2.1%	1,184	1,180	2,364	\$475,263
GEAUGA	356	1,273	1,629	\$95	-2.8%	294	460	754	\$155,252
GREENE	1,860	6,529	8,389	\$99	-1.1%	1,398	2,532	3,930	\$832,442

Source: CRIS-E GRP304RA and GRP 304RC Reports from Management Information Services. Cuyahoga County data also comes from the GRP 342 RA.

**TABLE 5  
FOOD AND NUTRITION BENEFITS  
SEPTEMBER 2007**

OHIO COUNTY	PERSONS					ASSISTANCE GROUPS			TOTAL COUPONS ISSUED
	PUBLIC ASSISTANCE	NON-PUBLIC ASSISTANCE	TOTAL	AVERAGE ISSUANCE	% CHANGE PREV. MO.	PUBLIC ASSISTANCE	NON-PUBLIC ASSISTANCE	TOTAL	
<b>STATEWIDE</b>	<b>246,934</b>	<b>845,621</b>	<b>1,092,555</b>	<b>\$100</b>	<b>-0.4%</b>	<b>179,824</b>	<b>321,411</b>	<b>501,235</b>	<b>\$109,690,552</b>
GUERNSEY	1,188	4,652	5,840	\$94	-1.2%	976	1,708	2,684	\$546,092
HAMILTON	17,769	57,048	74,817	\$105	0.1%	13,001	20,591	33,592	\$7,874,019
HANCOCK	770	3,478	4,248	\$100	0.0%	636	1,251	1,887	\$423,008
HARDIN	372	1,471	1,843	\$95	0.4%	294	541	835	\$175,407
HARRISON	508	1,466	1,974	\$91	-2.4%	380	539	919	\$180,135
HENRY	209	1,163	1,372	\$94	-3.9%	156	366	522	\$128,517
HIGHLAND	1,034	3,909	4,943	\$95	0.2%	764	1,328	2,092	\$471,674
HOCKING	859	2,493	3,352	\$94	-1.3%	626	890	1,516	\$314,440
HOLMES	154	803	957	\$86	0.2%	131	274	405	\$81,999
HURON	739	4,108	4,847	\$94	1.4%	603	1,405	2,008	\$456,885
JACKSON	1,393	3,913	5,306	\$98	0.5%	1,065	1,445	2,510	\$522,007
JEFFERSON	2,500	5,889	8,389	\$94	-3.7%	1,835	2,236	4,071	\$789,939
KNOX	983	3,408	4,391	\$96	-4.5%	718	1,228	1,946	\$421,306
LAKE	2,439	8,248	10,687	\$103	-1.3%	1,883	3,111	4,994	\$1,102,045
LAWRENCE	3,463	7,058	10,521	\$91	-0.2%	2,532	2,667	5,199	\$955,110
LICKING	2,759	9,534	12,293	\$100	0.6%	2,072	3,498	5,570	\$1,227,045
LOGAN	678	2,837	3,515	\$98	-1.0%	509	982	1,491	\$344,637
LORAIN	6,590	20,936	27,526	\$100	1.4%	4,524	7,034	11,558	\$2,745,585
LUCAS	19,424	43,341	62,765	\$103	-0.9%	13,422	16,418	29,840	\$6,449,157
MADISON	734	2,242	2,976	\$101	-1.6%	506	817	1,323	\$299,589
MAHONING	8,641	20,852	29,493	\$97	-2.3%	6,225	7,853	14,078	\$2,856,177
MARION	1,414	5,825	7,239	\$99	-1.1%	1,133	2,094	3,227	\$719,297
MEDINA	1,105	3,982	5,087	\$99	-0.4%	840	1,459	2,299	\$505,077
MEIGS	1,194	2,847	4,041	\$94	-0.5%	864	996	1,860	\$379,350
MERCER	340	1,093	1,433	\$90	-1.6%	271	386	657	\$129,270
MIAMI	1,095	3,399	4,494	\$93	-1.7%	807	1,243	2,050	\$415,852
MONROE	400	1,115	1,515	\$88	-0.7%	308	381	689	\$133,409
MONTGOMERY	14,773	41,399	56,172	\$103	0.4%	11,000	15,556	26,556	\$5,774,507
MORGAN	432	1,467	1,899	\$90	-4.0%	350	509	859	\$171,365
MORROW	550	2,357	2,907	\$93	-0.9%	411	799	1,210	\$270,239

Source: CRIS-E GRP304RA and GRP 304RC Reports from Management Information Services. Cuyahoga County data also comes from the GRP 342 RA.

**TABLE 5  
FOOD AND NUTRITION BENEFITS  
SEPTEMBER 2007**

OHIO COUNTY	PERSONS					ASSISTANCE GROUPS			TOTAL COUPONS ISSUED
	PUBLIC ASSISTANCE	NON-PUBLIC ASSISTANCE	TOTAL	AVERAGE ISSUANCE	% CHANGE PREV. MO.	PUBLIC ASSISTANCE	NON-PUBLIC ASSISTANCE	TOTAL	
<b>STATEWIDE</b>	<b>246,934</b>	<b>845,621</b>	<b>1,092,555</b>	<b>\$100</b>	<b>-0.4%</b>	<b>179,824</b>	<b>321,411</b>	<b>501,235</b>	<b>\$109,690,552</b>
MUSKINGUM	2,766	11,244	14,010	\$95	-0.2%	2,167	4,166	6,333	\$1,327,582
NOBLE	292	919	1,211	\$85	2.9%	227	330	557	\$102,920
OTTAWA	589	1,869	2,458	\$97	-1.0%	406	654	1,060	\$238,216
PAULDING	350	1,028	1,378	\$91	-4.2%	239	352	591	\$125,943
PERRY	1,125	4,211	5,336	\$94	1.6%	823	1,445	2,268	\$502,166
PICKAWAY	1,259	3,690	4,949	\$100	2.7%	895	1,379	2,274	\$495,484
PIKE	1,238	3,869	5,107	\$96	0.2%	929	1,403	2,332	\$491,010
PORTAGE	1,728	7,242	8,970	\$101	-2.6%	1,375	2,609	3,984	\$908,731
PREBLE	531	2,041	2,572	\$98	1.1%	394	678	1,072	\$251,513
PUTNAM	226	1,304	1,530	\$94	5.0%	184	444	628	\$143,790
RICHLAND	2,500	9,594	12,094	\$99	-2.9%	1,993	3,445	5,438	\$1,201,521
ROSS	2,450	8,308	10,758	\$101	-0.1%	1,755	2,996	4,751	\$1,084,382
SANDUSKY	721	3,553	4,274	\$97	-1.8%	551	1,282	1,833	\$416,156
SCIOTO	4,322	11,379	15,701	\$91	-0.7%	3,355	4,296	7,651	\$1,430,360
SENECA	788	3,979	4,767	\$99	0.3%	610	1,396	2,006	\$472,637
SHELBY	471	2,120	2,591	\$97	-2.8%	363	705	1,068	\$250,683
STARK	8,078	22,843	30,921	\$99	-0.1%	5,678	8,168	13,846	\$3,059,852
SUMMIT	14,521	38,653	53,174	\$102	-0.0%	10,880	14,996	25,876	\$5,423,853
TRUMBULL	4,412	14,267	18,679	\$96	-1.9%	3,380	4,993	8,373	\$1,793,312
TUSCARAWAS	1,754	5,729	7,483	\$95	0.8%	1,375	2,102	3,477	\$710,346
UNION	445	1,897	2,342	\$97	-1.5%	340	669	1,009	\$227,304
VAN WERT	298	1,063	1,361	\$87	-0.4%	238	377	615	\$118,238
VINTON	598	1,877	2,475	\$96	0.4%	430	659	1,089	\$237,015
WARREN	864	3,002	3,866	\$93	0.3%	671	1,019	1,690	\$357,669
WASHINGTON	1,308	4,011	5,319	\$96	-3.8%	1,099	1,464	2,563	\$508,946
WAYNE	1,767	5,173	6,940	\$100	-2.1%	1,319	1,944	3,263	\$690,967
WILLIAMS	565	2,214	2,779	\$89	1.8%	397	805	1,202	\$247,559
WOOD	988	3,346	4,334	\$96	-0.5%	776	1,225	2,001	\$417,386
WYANDOT	193	770	963	\$94	2.4%	160	294	454	\$90,808

Source: CRIS-E GRP304RA and GRP 304RC Reports from Management Information Services. Cuyahoga County data also comes from the GRP 342 RA.

**Table 6A  
September 2007  
Medicaid Eligibles**

County	Aged	Blind	Disabled	ABD Total	OWF & Related	Healthy Start	CFC Total	Total Medicaid	Foster Care	Adoption Assistance	Transitional	Nursing Facilities
STATEWIDE	150,963	771	247,551	399,285	1,005,060	269,598	1,274,658	1,673,943	10,470	22,475	139,863	53,550
ADAMS	824	5	1,443	2,272	4,407	1,169	5,576	7,848	39	62	791	126
ALLEN	1,295	4	2,093	3,392	9,732	2,613	12,345	15,737	206	364	1,262	587
ASHLAND	604	2	613	1,219	3,338	1,451	4,789	6,008	35	25	581	275
ASHTABULA	1,638	5	3,215	4,858	10,959	3,031	13,990	18,848	83	224	1,982	1,015
ATHENS	880	9	2,148	3,037	5,873	1,292	7,165	10,202	77	145	731	180
AUGLAIZE	477	5	479	961	2,506	932	3,438	4,399	4	45	483	282
BELMONT	1,407	6	2,090	3,503	6,747	1,742	8,489	11,992	31	108	1,188	504
BROWN	744	0	1,065	1,809	4,110	1,442	5,552	7,361	17	41	822	234
BUTLER	3,255	18	5,888	9,161	27,243	6,782	34,025	43,186	374	541	4,317	1,200
CARROLL	426	2	572	1,000	2,489	776	3,265	4,265	7	8	558	192
CHAMPAIGN	491	1	609	1,101	3,100	1,219	4,319	5,420	7	35	668	244
CLARK	2,269	7	3,674	5,950	16,319	4,055	20,374	26,324	201	515	2,204	996
CLERMONT	1,749	11	2,872	4,632	12,202	4,345	16,547	21,179	211	276	2,013	715
CLINTON	530	1	794	1,325	3,653	1,033	4,686	6,011	38	77	647	157
COLUMBIANA	1,730	15	2,654	4,399	10,638	3,330	13,968	18,367	80	109	1,623	614
COSHOCTON	623	1	959	1,583	3,843	1,114	4,957	6,540	15	47	650	294
CRAWFORD	707	8	881	1,596	4,341	1,231	5,572	7,168	47	54	837	183
CUYAHOGA	23,103	136	36,342	59,581	146,037	32,711	178,748	238,329	1,344	4,918	16,478	7,044
DARKE	588	1	660	1,249	2,806	1,249	4,055	5,304	32	50	498	306
DEFIANCE	414	4	616	1,034	3,039	1,064	4,103	5,137	14	26	630	205
DELAWARE	817	1	1,064	1,882	4,446	1,739	6,185	8,067	22	96	715	311
ERIE	933	4	1,221	2,158	5,966	1,804	7,770	9,928	62	74	949	422
FAIRFIELD	1,328	7	2,132	3,467	10,170	3,026	13,196	16,663	32	190	1,910	453
FAYETTE	593	3	842	1,438	2,816	798	3,614	5,052	13	18	504	323
FRANKLIN	12,171	86	24,602	36,859	117,388	31,789	149,177	186,036	2,002	2,836	12,282	3,721
FULTON	401	1	428	830	2,547	970	3,517	4,347	21	34	520	218
GALLIA	882	3	1,575	2,460	4,155	1,008	5,163	7,623	16	63	598	189
GEAUGA	598	1	548	1,147	2,222	1,014	3,236	4,383	18	124	424	285
GREENE	1,385	19	1,834	3,238	9,263	2,563	11,826	15,064	87	116	1,662	577

Source: ODJFS Report BOMM1321 Prepared: Bureau of Research and Evaluation.

**Table 6A  
September 2007  
Medicaid Eligibles**

County	Aged	Blind	Disabled	ABD Total	OWF & Related	Healthy Start	CFC Total	Total Medicaid	Foster Care	Adoption Assistance	Transitional	Nursing Facilities
STATEWIDE	150,963	771	247,551	399,285	1,005,060	269,598	1,274,658	1,673,943	10,470	22,475	139,863	53,550
GUERNSEY	840	4	1,391	2,235	5,218	1,442	6,660	8,895	34	80	835	176
HAMILTON	10,590	61	18,398	29,049	66,734	18,356	85,090	114,139	858	1,702	6,134	3,638
HANCOCK	641	8	907	1,556	4,173	1,457	5,630	7,186	46	63	611	291
HARDIN	389	2	584	975	2,332	760	3,092	4,067	11	85	338	148
HARRISON	326	1	537	864	1,747	464	2,211	3,075	19	20	262	127
HENRY	265	0	336	601	1,807	747	2,554	3,155	9	23	371	138
HIGHLAND	860	2	1,136	1,998	4,749	1,446	6,195	8,193	20	35	750	245
HOCKING	524	4	824	1,352	3,419	975	4,394	5,746	31	60	583	146
HOLMES	425	3	424	852	1,403	842	2,245	3,097	15	21	261	373
HURON	618	2	886	1,506	5,226	1,967	7,193	8,699	43	45	836	185
JACKSON	890	0	1,396	2,286	4,779	1,150	5,929	8,215	41	16	725	171
JEFFERSON	1,259	9	2,338	3,606	7,150	1,766	8,916	12,522	80	65	1,104	367
KNOX	759	1	1,323	2,083	4,614	1,345	5,959	8,042	14	36	1,018	473
LAKE	1,752	3	2,507	4,262	10,378	3,656	14,034	18,296	65	94	1,834	1,014
LAWRENCE	1,671	4	3,315	4,990	8,204	2,350	10,554	15,544	59	67	1,055	339
LICKING	1,569	2	2,698	4,269	12,867	3,696	16,563	20,832	191	394	2,409	543
LOGAN	600	2	678	1,280	3,786	1,001	4,787	6,067	10	97	735	198
LORAIN	2,933	13	5,462	8,408	24,830	6,252	31,082	39,490	96	428	3,462	1,224
LUCAS	6,663	47	14,412	21,122	55,033	10,515	65,548	86,670	489	1,488	6,774	1,979
MADISON	408	1	607	1,016	2,803	941	3,744	4,760	28	34	459	125
MAHONING	4,164	15	6,881	11,060	25,918	5,705	31,623	42,683	242	188	3,090	1,574
MARION	981	3	1,795	2,779	6,505	1,914	8,419	11,198	44	130	1,075	269
MEDINA	1,066	7	1,282	2,355	6,439	2,242	8,681	11,036	31	157	1,302	641
MEIGS	559	4	1,036	1,599	3,335	782	4,117	5,716	11	15	466	133
MERCER	397	0	406	803	1,616	758	2,374	3,177	19	56	374	199
MIAMI	1,153	2	1,318	2,473	5,274	1,907	7,181	9,654	65	129	862	428
MONROE	297	0	400	697	1,454	468	1,922	2,619	13	15	281	97
MONTGOMERY	7,365	31	12,888	20,284	51,692	12,106	63,798	84,082	691	1,415	6,296	2,355
MORGAN	321	1	518	840	1,916	562	2,478	3,318	0	12	403	113
MORROW	447	1	623	1,071	3,058	1,059	4,117	5,188	4	57	671	146

Source: ODJFS Report BOMM1321 Prepared: Bureau of Research and Evaluation.



**Table 6A  
September 2007  
Medicaid Eligibles**

County	Aged	Blind	Disabled	ABD Total	OWF & Related	Healthy Start	CFC Total	Total Medicaid	Foster Care	Adoption Assistance	Transitional	Nursing Facilities
STATEWIDE	150,963	771	247,551	399,285	1,005,060	269,598	1,274,658	1,673,943	10,470	22,475	139,863	53,550
MUSKINGUM	1,678	18	2,928	4,624	11,487	2,675	14,162	18,786	114	216	1,764	491
NOBLE	250	0	260	510	1,181	364	1,545	2,055	4	10	275	86
OTTAWA	458	4	542	1,004	2,582	843	3,425	4,429	13	6	525	167
PAULDING	208	1	371	580	1,330	616	1,946	2,526	6	26	277	44
PERRY	564	7	1,185	1,756	4,995	1,241	6,236	7,992	33	39	768	194
PICKAWAY	670	2	1,063	1,735	4,545	1,195	5,740	7,475	18	24	754	174
PIKE	834	0	1,469	2,303	4,225	1,353	5,578	7,881	24	28	536	277
PORTAGE	1,281	5	1,850	3,136	9,221	2,430	11,651	14,787	99	203	1,315	605
PREBLE	410	7	662	1,079	3,229	958	4,187	5,266	46	42	647	203
PUTNAM	283	0	337	620	1,508	603	2,111	2,731	2	15	260	214
RICHLAND	1,930	0	2,749	4,679	10,905	3,450	14,355	19,034	48	266	1,701	636
ROSS	1,231	3	2,417	3,651	9,697	2,211	11,908	15,559	77	70	1,339	314
SANDUSKY	747	5	1,034	1,786	4,618	1,622	6,240	8,026	27	54	808	349
SCIOTO	2,549	6	4,820	7,375	11,488	2,385	13,873	21,248	91	86	1,517	599
SENECA	743	4	1,033	1,780	4,542	1,639	6,181	7,961	45	125	804	333
SHELBY	416	3	614	1,033	3,056	1,073	4,129	5,162	15	60	405	181
STARK	5,255	24	7,043	12,322	31,232	8,366	39,598	51,920	393	1,055	5,635	2,320
SUMMIT	7,118	41	11,216	18,375	45,342	9,863	55,205	73,580	515	874	6,005	2,213
TRUMBULL	2,905	15	4,787	7,707	18,984	5,703	24,687	32,394	143	269	2,979	1,190
TUSCARAWAS	1,337	5	1,633	2,975	7,306	2,550	9,856	12,831	107	199	1,252	463
UNION	351	1	472	824	2,478	865	3,343	4,167	27	35	479	111
UNKNOWN	0	0	0	0	0	0	0	0	0	0	0	0
VAN WERT	333	0	413	746	1,437	882	2,319	3,065	3	13	332	170
VINTON	313	0	603	916	2,087	712	2,799	3,715	14	25	265	61
WARREN	1,431	6	1,642	3,079	5,194	2,439	7,633	10,712	44	108	931	833
WASHINGTON	1,066	6	1,612	2,684	5,310	1,957	7,267	9,951	13	74	1,139	339
WAYNE	1,181	3	1,725	2,909	6,776	2,413	9,189	12,098	75	142	1,259	513
WILLIAMS	477	2	528	1,007	3,209	851	4,060	5,067	18	43	907	186
WOOD	1,014	4	1,070	2,088	5,140	1,778	6,918	9,006	36	100	873	404
WYANDOT	336	0	254	590	1,142	638	1,780	2,370	6	20	209	173

Source: ODJFS Report BOMM1321 Prepared: Bureau of Research and Evaluation.

**Table 6B  
September 2007  
Medicaid Expenditures**

	Aged	Blind	Disabled	ABD Total	OWF & Related	Healthy Start	CFC Total	Total Medicaid	Foster Care	Adoption Assistance	Transitional	Nursing Facilities
<b>STATEWIDE</b>	<b>\$245,995,488</b>	<b>\$824,854</b>	<b>\$438,680,617</b>	<b>\$685,500,958</b>	<b>\$228,754,456</b>	<b>\$65,446,294</b>	<b>\$294,200,750</b>	<b>\$980,483,954</b>	<b>\$4,985,247</b>	<b>\$4,093,551</b>	<b>\$29,925,151</b>	<b>\$262,995,966</b>
ADAMS	\$926,683	\$3,852	\$2,113,679	\$3,044,214	\$927,573	\$300,137	\$1,227,710	\$4,284,927	\$5,207	\$8,961	\$165,408	\$649,919
ALLEN	\$2,320,206	\$14,013	\$3,549,827	\$5,884,045	\$2,197,439	\$1,200,663	\$3,398,102	\$9,291,621	\$30,202	\$13,666	\$261,440	\$2,647,873
ASHLAND	\$1,149,263	\$1,336	\$1,184,870	\$2,335,469	\$756,277	\$311,240	\$1,067,517	\$3,404,455	\$2,613	\$3,959	\$131,209	\$1,211,593
ASHTABULA	\$3,169,989	\$12,059	\$6,600,781	\$9,782,829	\$2,321,554	\$741,558	\$3,063,113	\$12,850,689	\$30,523	\$47,325	\$448,252	\$5,133,226
ATHENS	\$996,262	\$4,949	\$2,718,241	\$3,719,452	\$1,274,606	\$371,679	\$1,646,285	\$5,366,610	\$48,515	\$33,382	\$132,390	\$722,640
AUGLAIZE	\$1,033,953	\$9,633	\$889,168	\$1,932,754	\$660,568	\$208,921	\$869,489	\$2,813,247	\$2,057	\$9,478	\$111,211	\$1,086,582
BELMONT	\$2,062,682	\$13,680	\$3,277,701	\$5,354,064	\$1,427,759	\$432,408	\$1,860,167	\$7,217,129	\$15,178	\$22,384	\$264,233	\$1,888,435
BROWN	\$1,306,445	\$0	\$1,948,375	\$3,254,820	\$898,690	\$324,828	\$1,223,518	\$4,479,503	\$3,522	\$14,070	\$166,631	\$1,249,564
BUTLER	\$6,456,665	\$26,608	\$11,622,608	\$18,105,881	\$6,488,684	\$1,847,233	\$8,335,917	\$26,463,250	\$96,602	\$135,325	\$912,537	\$6,800,248
CARROLL	\$647,667	\$2,146	\$1,312,947	\$1,962,760	\$496,830	\$147,807	\$644,637	\$2,607,728	\$1,606	\$673	\$117,510	\$894,112
CHAMPAIGN	\$843,453	\$33	\$1,142,389	\$1,985,875	\$859,338	\$304,594	\$1,163,932	\$3,149,807	\$9,404	\$6,097	\$163,753	\$1,142,526
CLARK	\$3,933,552	\$5,537	\$6,549,819	\$10,488,908	\$3,772,852	\$932,989	\$4,705,841	\$15,209,595	\$95,301	\$47,690	\$500,002	\$4,619,692
CLERMONT	\$2,793,425	\$12,711	\$6,454,160	\$9,260,295	\$2,972,961	\$966,797	\$3,939,758	\$13,230,958	\$120,313	\$45,389	\$477,589	\$4,622,918
CLINTON	\$751,351	\$1,098	\$1,174,672	\$1,927,121	\$830,098	\$242,439	\$1,072,537	\$3,000,705	\$16,617	\$10,827	\$133,570	\$732,558
COLUMBIANA	\$2,572,350	\$5,451	\$4,466,435	\$7,044,236	\$2,185,509	\$604,408	\$2,789,917	\$9,862,227	\$38,803	\$21,735	\$198,520	\$2,454,986
COSHOCTON	\$924,494	\$929	\$1,692,956	\$2,618,379	\$816,971	\$205,659	\$1,022,630	\$3,645,154	\$4,661	\$11,957	\$140,000	\$1,179,291
CRAWFORD	\$958,367	\$6,893	\$1,390,605	\$2,355,865	\$904,095	\$235,406	\$1,139,501	\$3,506,209	\$13,347	\$6,822	\$198,113	\$738,879
CUYAHOGA	\$37,210,429	\$117,092	\$61,765,568	\$99,093,089	\$31,652,376	\$7,082,763	\$38,735,140	\$137,886,262	\$894,048	\$954,189	\$3,284,981	\$37,914,107
DARKE	\$1,101,159	\$9	\$1,092,334	\$2,193,501	\$671,161	\$300,561	\$971,722	\$3,169,862	\$10,346	\$12,673	\$128,585	\$1,276,261
DEFIANCE	\$698,594	\$1,307	\$902,322	\$1,602,223	\$661,969	\$221,260	\$883,229	\$2,486,161	\$2,620	\$4,624	\$153,957	\$779,211
DELAWARE	\$1,400,590	\$1,139	\$2,435,215	\$3,836,944	\$1,237,509	\$581,274	\$1,818,783	\$5,655,727	\$15,140	\$8,655	\$163,113	\$1,317,779
ERIE	\$1,544,126	\$3,346	-\$6,360,242	-\$4,812,770	\$1,276,907	\$363,220	\$1,640,127	-\$3,168,685	\$22,433	\$61,008	\$206,191	\$1,629,611
FAIRFIELD	\$2,096,722	\$8,403	\$3,450,463	\$5,555,587	\$2,235,292	\$771,085	\$3,006,378	\$8,573,570	\$7,265	\$39,525	\$427,430	\$1,963,111
FAYETTE	\$1,071,568	\$16,030	\$1,686,433	\$2,774,030	\$602,027	\$199,229	\$801,256	\$3,575,286	\$1,642	\$3,603	\$101,836	\$1,535,209
FRANKLIN	\$18,478,957	\$76,516	\$54,975,440	\$73,530,913	\$26,928,685	\$8,030,500	\$34,959,185	\$108,522,539	\$763,631	\$494,623	\$2,873,322	\$21,444,091
FULTON	\$834,698	\$1,033	\$963,725	\$1,799,456	\$571,839	\$207,332	\$779,171	\$2,581,669	\$6,805	\$12,054	\$120,249	\$902,576
GALLIA	\$1,664,578	\$2,002	\$3,899,915	\$5,566,495	\$995,197	\$248,429	\$1,243,626	\$6,818,088	\$5,732	\$4,536	\$124,485	\$857,938
GEAUGA	\$1,250,126	\$1,099	\$1,717,171	\$2,968,396	\$465,826	\$313,908	\$779,734	\$3,748,292	\$12,661	\$25,350	\$95,154	\$1,595,422
GREENE	\$2,273,170	\$14,848	\$2,955,287	\$5,243,304	\$2,211,734	\$650,282	\$2,862,017	\$8,109,106	\$51,785	\$17,640	\$371,673	\$2,427,883

**Table 6B  
September 2007  
Medicaid Expenditures**

	Aged	Blind	Disabled	ABD Total	OWF & Related	Healthy Start	CFC Total	Total Medicaid	Foster Care	Adoption Assistance	Transitional	Nursing Facilities
<b>STATEWIDE</b>	<b>\$245,995,488</b>	<b>\$824,854</b>	<b>\$438,680,617</b>	<b>\$685,500,958</b>	<b>\$228,754,456</b>	<b>\$65,446,294</b>	<b>\$294,200,750</b>	<b>\$980,483,954</b>	<b>\$4,985,247</b>	<b>\$4,093,551</b>	<b>\$29,925,151</b>	<b>\$262,995,966</b>
GUERNSEY	\$702,205	\$601	\$2,791,669	\$3,494,475	\$1,048,444	\$450,598	\$1,499,042	\$5,008,938	\$10,042	\$14,871	\$166,798	\$354,928
HAMILTON	\$19,519,076	\$78,015	\$33,413,032	\$53,010,122	\$16,229,182	\$5,161,203	\$21,390,385	\$74,467,284	\$445,085	\$308,386	\$1,307,296	\$20,634,876
HANCOCK	\$1,141,345	\$6,251	\$1,637,757	\$2,785,354	\$949,091	\$369,272	\$1,318,363	\$4,107,221	\$16,518	\$16,973	\$142,454	\$1,278,015
HARDIN	\$519,649	\$39	\$1,044,846	\$1,564,533	\$523,174	\$170,285	\$693,459	\$2,257,993	\$2,393	\$5,465	\$78,179	\$690,460
HARRISON	\$523,810	\$929	\$699,209	\$1,223,948	\$367,851	\$82,992	\$450,843	\$1,674,969	\$4,073	\$1,690	\$56,882	\$555,965
HENRY	\$536,583	\$0	\$1,260,180	\$1,796,763	\$536,069	\$163,967	\$700,037	\$2,528,596	\$1,468	\$19,459	\$93,610	\$599,702
HIGHLAND	\$1,189,406	\$179	\$1,933,133	\$3,122,718	\$998,564	\$320,745	\$1,319,309	\$4,443,174	\$3,135	\$9,625	\$170,713	\$1,152,005
HOCKING	\$483,872	\$8,829	\$1,248,199	\$1,740,901	\$777,781	\$211,896	\$989,677	\$2,730,578	\$26,000	\$8,725	\$133,514	\$432,952
HOLMES	\$1,007,624	\$2,146	\$1,092,399	\$2,102,168	\$317,056	\$197,217	\$514,272	\$2,616,440	\$5,961	\$1,701	\$60,694	\$1,614,581
HURON	\$795,677	\$240	\$1,229,022	\$2,024,939	\$1,076,240	\$423,240	\$1,499,479	\$3,524,417	\$29,800	\$2,294	\$182,632	\$687,933
JACKSON	\$1,085,148	\$0	\$1,716,468	\$2,801,616	\$954,475	\$252,382	\$1,206,856	\$4,016,978	\$15,985	\$1,739	\$137,319	\$721,057
JEFFERSON	\$1,557,338	\$4,030	\$2,916,826	\$4,478,194	\$1,632,978	\$327,575	\$1,960,552	\$6,446,209	\$33,419	\$21,925	\$217,545	\$1,386,655
KNOX	\$1,666,314	\$1,243	\$4,486,708	\$6,154,266	\$1,041,444	\$297,183	\$1,338,627	\$7,492,892	\$875	\$9,568	\$213,043	\$3,227,881
LAKE	\$3,384,856	\$83	\$6,067,888	\$9,452,827	\$2,218,030	\$878,867	\$3,096,898	\$12,578,598	\$31,025	\$11,281	\$362,304	\$5,318,029
LAWRENCE	\$2,165,950	\$4,613	\$3,981,052	\$6,151,615	\$1,828,218	\$460,903	\$2,289,121	\$8,444,053	\$27,413	\$11,281	\$240,486	\$1,502,247
LICKING	\$2,621,498	\$345	\$5,266,457	\$7,888,299	\$2,692,514	\$744,661	\$3,437,174	\$11,329,968	\$61,501	\$54,761	\$504,954	\$2,710,562
LOGAN	\$935,157	\$1,123	\$981,478	\$1,917,757	\$780,541	\$272,602	\$1,053,143	\$2,971,503	\$1,681	\$8,307	\$144,903	\$757,359
LORAIN	\$5,072,086	\$17,789	\$9,492,746	\$14,582,621	\$5,238,516	\$1,367,641	\$6,606,158	\$21,199,115	\$24,664	\$66,115	\$667,771	\$6,359,612
LUCAS	\$9,810,730	\$41,333	\$25,751,576	\$35,603,640	\$13,191,074	\$2,650,710	\$15,841,784	\$51,500,124	\$180,620	\$371,725	\$1,542,995	\$10,279,827
MADISON	\$532,513	\$306	\$1,298,942	\$1,831,761	\$608,474	\$208,367	\$816,842	\$2,648,603	\$18,825	\$4,399	\$88,969	\$650,103
MAHONING	\$7,312,596	\$26,841	\$11,068,729	\$18,408,165	\$5,733,580	\$1,211,476	\$6,945,056	\$25,372,821	\$100,217	\$17,845	\$634,456	\$7,085,030
MARION	\$1,238,206	\$2,266	\$2,654,185	\$3,894,657	\$1,554,504	\$464,196	\$2,018,701	\$5,916,698	\$193,096	\$12,066	\$204,892	\$1,064,531
MEDINA	\$2,310,240	\$44,990	\$3,635,174	\$5,990,404	\$1,335,340	\$437,275	\$1,772,616	\$7,770,591	\$14,913	\$9,004	\$262,867	\$3,443,456
MEIGS	\$624,011	\$11,563	\$1,151,294	\$1,786,869	\$694,360	\$151,314	\$845,674	\$2,633,163	\$1,890	\$1,075	\$102,927	\$525,298
MERCER	\$685,453	\$0	\$742,690	\$1,428,144	\$360,917	\$234,992	\$595,909	\$2,029,148	\$8,336	\$6,825	\$81,507	\$830,648
MIAMI	\$2,084,017	\$5,618	\$2,654,628	\$4,744,263	\$1,309,001	\$718,346	\$2,027,348	\$6,772,675	\$39,380	\$22,900	\$183,771	\$1,892,352
MONROE	\$349,629	\$0	\$642,178	\$991,807	\$315,687	\$84,276	\$399,963	\$1,392,689	\$2,515	\$2,060	\$54,977	\$355,231
MONTGOMERY	\$12,099,128	\$25,245	\$13,791,896	\$25,916,269	\$13,131,823	\$3,031,224	\$16,163,047	\$42,116,087	\$271,682	\$236,957	\$1,414,029	\$11,823,411
MORGAN	\$449,898	\$215	\$603,020	\$1,053,134	\$373,380	\$106,936	\$480,317	\$1,533,727	\$0	\$2,030	\$77,662	\$417,379
MORROW	\$694,558	\$1,101	\$1,413,540	\$2,109,199	\$648,433	\$223,716	\$872,149	\$2,983,925	\$0	\$4,596	\$140,680	\$662,199

**Table 6B  
September 2007  
Medicaid Expenditures**

	Aged	Blind	Disabled	ABD Total	OWF & Related	Healthy Start	CFC Total	Total Medicaid	Foster Care	Adoption Assistance	Transitional	Nursing Facilities
<b>STATEWIDE</b>	<b>\$245,995,488</b>	<b>\$824,854</b>	<b>\$438,680,617</b>	<b>\$685,500,958</b>	<b>\$228,754,456</b>	<b>\$65,446,294</b>	<b>\$294,200,750</b>	<b>\$980,483,954</b>	<b>\$4,985,247</b>	<b>\$4,093,551</b>	<b>\$29,925,151</b>	<b>\$262,995,966</b>
MUSKINGUM	\$2,147,174	\$13,363	\$3,410,290	\$5,570,827	\$2,344,341	\$557,219	\$2,901,560	\$8,490,190	\$30,919	\$26,733	\$385,024	\$1,937,283
NOBLE	\$359,599	\$0	\$295,856	\$655,455	\$249,589	\$85,355	\$334,944	\$990,399	\$0	\$559	\$56,532	\$341,609
OTTAWA	\$968,335	\$10,253	\$1,582,730	\$2,561,318	\$563,202	\$174,219	\$737,421	\$3,300,848	\$7,331	\$199	\$118,967	\$765,318
PAULDING	\$189,694	\$32	\$568,436	\$758,162	\$270,662	\$117,617	\$388,279	\$1,146,441	\$8,491	\$5,223	\$52,001	\$154,769
PERRY	\$585,329	\$4,874	\$2,896,199	\$3,486,402	\$1,035,070	\$226,873	\$1,261,943	\$4,752,628	\$16,162	\$4,105	\$173,580	\$1,041,084
PICKAWAY	\$809,041	\$40	\$1,457,868	\$2,266,949	\$984,764	\$227,931	\$1,212,695	\$3,479,644	\$7,587	\$12,462	\$143,601	\$703,816
PIKE	\$1,157,915	\$0	\$2,593,861	\$3,751,776	\$999,832	\$266,166	\$1,265,998	\$5,018,498	\$12,610	\$3,983	\$110,187	\$1,601,849
PORTAGE	\$2,246,181	\$10,477	\$5,234,260	\$7,490,918	\$2,201,842	\$690,189	\$2,892,030	\$10,389,157	\$59,191	\$31,216	\$299,135	\$3,711,874
PREBLE	\$714,683	\$5,303	\$1,355,094	\$2,075,080	\$687,379	\$210,668	\$898,047	\$2,973,361	\$16,622	\$4,142	\$146,215	\$1,124,916
PUTNAM	\$532,269	\$0	\$746,691	\$1,278,960	\$296,373	\$142,634	\$439,007	\$1,718,772	\$2,155	\$370	\$54,873	\$846,030
RICHLAND	\$2,754,526	\$0	\$4,824,250	\$7,578,776	\$2,656,746	\$847,981	\$3,504,726	\$11,111,991	\$18,730	\$44,712	\$371,531	\$2,900,715
ROSS	\$1,310,346	\$3,304	\$3,254,314	\$4,567,963	\$2,045,241	\$422,177	\$2,467,417	\$7,044,903	\$36,317	\$12,102	\$269,077	\$1,040,058
SANDUSKY	\$1,268,272	\$4,991	\$2,524,023	\$3,797,285	\$918,985	\$417,008	\$1,335,994	\$5,141,023	\$16,366	\$3,855	\$168,129	\$1,593,344
SCIOTO	\$3,129,545	\$7,587	\$6,437,258	\$9,574,390	\$3,628,522	\$477,253	\$4,105,774	\$13,694,092	\$18,115	\$34,448	\$310,366	\$2,397,813
SENECA	\$1,659,727	\$2,153	\$4,068,249	\$5,730,130	\$968,295	\$582,473	\$1,550,768	\$7,280,897	\$25,092	\$10,511	\$181,999	\$1,408,874
SHELBY	\$660,742	\$1,178	\$1,060,051	\$1,721,972	\$684,829	\$269,407	\$954,235	\$2,676,391	\$6,501	\$10,148	\$96,795	\$732,437
STARK	\$10,301,850	\$37,119	\$13,901,436	\$24,240,405	\$7,248,352	\$2,007,054	\$9,255,406	\$33,524,532	\$241,563	\$169,701	\$1,177,412	\$10,709,588
SUMMIT	\$11,379,288	\$39,289	\$21,007,876	\$32,426,453	\$10,709,434	\$2,538,173	\$13,247,606	\$45,701,220	\$384,400	\$145,348	\$1,312,532	\$9,966,686
TRUMBULL	\$4,319,056	\$11,415	\$7,764,119	\$12,094,591	\$4,387,711	\$1,738,768	\$6,126,479	\$18,227,892	\$55,055	\$46,996	\$657,525	\$4,893,721
TUSCARAWAS	\$2,222,546	\$4,320	\$2,727,936	\$4,954,803	\$1,683,161	\$548,437	\$2,231,599	\$7,197,422	\$35,210	\$34,011	\$270,128	\$1,876,893
UNION	\$601,805	\$246	\$936,497	\$1,538,548	\$517,119	\$206,352	\$723,472	\$2,262,019	\$10,162	\$7,895	\$94,813	\$474,283
UNKNOWN	\$135	\$0	\$2,094	\$2,229	-\$1,289,138	\$0	-\$1,289,138	-\$1,286,910	\$0	\$66,248	\$0	\$791
VAN WERT	\$603,150	\$0	\$624,358	\$1,227,508	\$739,465	\$198,144	\$937,609	\$2,165,199	\$912	\$5,775	\$76,508	\$637,011
VINTON	\$342,161	\$0	\$701,081	\$1,043,242	\$497,128	\$138,535	\$635,663	\$1,679,447	\$2,633	\$1,096	\$61,728	\$231,923
WARREN	\$3,208,477	\$5,344	\$4,822,615	\$8,036,436	\$1,168,359	\$593,186	\$1,761,545	\$9,804,939	\$10,819	\$19,188	\$188,984	\$4,605,168
WASHINGTON	\$1,414,323	\$5,187	\$2,584,755	\$4,004,265	\$1,083,668	\$405,928	\$1,489,595	\$5,493,860	\$8,068	\$2,134	\$223,386	\$1,485,444
WAYNE	\$2,107,202	\$2,832	\$3,517,802	\$5,627,836	\$1,636,942	\$603,184	\$2,240,127	\$7,868,001	\$19,608	\$11,343	\$265,132	\$2,200,211
WILLIAMS	\$772,426	\$2,192	\$874,776	\$1,649,394	\$584,818	\$197,013	\$781,830	\$2,431,562	\$3,724	\$21,027	\$191,073	\$709,405
WOOD	\$1,939,392	\$3,671	\$2,151,507	\$4,094,570	\$1,232,166	\$411,593	\$1,643,759	\$5,749,292	\$25,466	\$11,588	\$186,049	\$1,691,431
WYANDOT	\$720,206	\$0	\$514,551	\$1,234,757	\$250,531	\$120,089	\$370,620	\$1,605,376	\$4,350	\$2,565	\$37,696	\$779,094

**TABLE 7  
CHILD CARE  
SEPTEMBER 2007**

OHIO COUNTY	OWF JOBS, LEAP, and TRANSITIONAL		OTHER CHILD CARE		LOCAL FUNDING		ALL PROGRAM SOURCES	
	CHILDREN SERVED		CHILDREN SERVED		CHILDREN SERVED		CHILDREN SERVED	
	TOTAL	% OF STATE TOTAL	TOTAL	% OF STATE TOTAL	TOTAL	% OF STATE TOTAL	TOTAL	% OF STATE TOTAL
<b>STATEWIDE</b>	<b>11,026</b>	<b>100.00%</b>	<b>80,414</b>	<b>100.00%</b>	<b>124</b>	<b>100.00%</b>	<b>91,564</b>	<b>100.00%</b>
ADAMS	0	0.00%	106	0.13%	0	0.00%	106	0.12%
ALLEN	16	0.15%	461	0.57%	0	0.00%	477	0.52%
ASHLAND	5	0.05%	192	0.24%	0	0.00%	197	0.22%
ASHTABULA	45	0.41%	458	0.57%	0	0.00%	503	0.55%
ATHENS	33	0.30%	176	0.22%	0	0.00%	209	0.23%
AUGLAIZE	0	0.00%	91	0.11%	0	0.00%	91	0.10%
BELMONT	44	0.40%	271	0.34%	0	0.00%	315	0.34%
BROWN	5	0.05%	119	0.15%	0	0.00%	124	0.14%
BUTLER	111	1.01%	1,609	2.00%	0	0.00%	1,720	1.88%
CARROLL	3	0.03%	60	0.07%	0	0.00%	63	0.07%
CHAMPAIGN	23	0.21%	131	0.16%	0	0.00%	154	0.17%
CLARK	62	0.56%	709	0.88%	0	0.00%	771	0.84%
CLERMONT	23	0.21%	512	0.64%	0	0.00%	535	0.58%
CLINTON	0	0.00%	145	0.18%	0	0.00%	145	0.16%
COLUMBIANA	58	0.53%	934	1.16%	0	0.00%	992	1.08%
COSHOCTON	16	0.15%	228	0.28%	0	0.00%	244	0.27%
CRAWFORD	21	0.19%	233	0.29%	0	0.00%	254	0.28%
CUYAHOGA	2,130	19.32%	18,078	22.48%	0	0.00%	20,208	22.07%
DARKE	3	0.03%	82	0.10%	0	0.00%	85	0.09%
DEFIANCE	6	0.05%	145	0.18%	0	0.00%	151	0.16%
DELAWARE	32	0.29%	247	0.31%	0	0.00%	279	0.30%
ERIE	1	0.01%	629	0.78%	0	0.00%	630	0.69%
FAIRFIELD	40	0.36%	638	0.79%	0	0.00%	678	0.74%
FAYETTE	21	0.19%	236	0.29%	0	0.00%	257	0.28%
FRANKLIN	1,658	15.04%	10,507	13.07%	121	97.58%	12,286	13.42%
FULTON	0	0.00%	137	0.17%	0	0.00%	137	0.15%
GALLIA	36	0.33%	150	0.19%	0	0.00%	186	0.20%
GEAUGA	2	0.02%	209	0.26%	0	0.00%	211	0.23%
GREENE	51	0.46%	656	0.82%	0	0.00%	707	0.77%

**TABLE 7  
CHILD CARE  
SEPTEMBER 2007**

OHIO COUNTY	OWF JOBS, LEAP, and TRANSITIONAL		OTHER CHILD CARE		LOCAL FUNDING		ALL PROGRAM SOURCES	
	CHILDREN SERVED		CHILDREN SERVED		CHILDREN SERVED		CHILDREN SERVED	
	TOTAL	% OF STATE TOTAL	TOTAL	% OF STATE TOTAL	TOTAL	% OF STATE TOTAL	TOTAL	% OF STATE TOTAL
<b>STATEWIDE</b>	<b>11,026</b>	<b>100.00%</b>	<b>80,414</b>	<b>100.00%</b>	<b>124</b>	<b>100.00%</b>	<b>91,564</b>	<b>100.00%</b>
GUERNSEY	25	0.23%	310	0.39%	0	0.00%	335	0.37%
HAMILTON	2,541	23.05%	10,620	13.21%	0	0.00%	13,161	14.37%
HANCOCK	7	0.06%	363	0.45%	0	0.00%	370	0.40%
HARDIN	0	0.00%	50	0.06%	0	0.00%	50	0.05%
HARRISON	8	0.07%	48	0.06%	0	0.00%	56	0.06%
HENRY	4	0.04%	100	0.12%	0	0.00%	104	0.11%
HIGHLAND	6	0.05%	220	0.27%	0	0.00%	226	0.25%
HOCKING	29	0.26%	84	0.10%	0	0.00%	113	0.12%
HOLMES	16	0.15%	127	0.16%	0	0.00%	143	0.16%
HURON	4	0.04%	442	0.55%	0	0.00%	446	0.49%
JACKSON	29	0.26%	124	0.15%	0	0.00%	153	0.17%
JEFFERSON	64	0.58%	312	0.39%	0	0.00%	376	0.41%
KNOX	16	0.15%	274	0.34%	0	0.00%	290	0.32%
LAKE	34	0.31%	871	1.08%	0	0.00%	905	0.99%
LAWRENCE	53	0.48%	432	0.54%	0	0.00%	485	0.53%
LICKING	103	0.93%	1,139	1.42%	0	0.00%	1,242	1.36%
LOGAN	6	0.05%	59	0.07%	0	0.00%	65	0.07%
LORAIN	309	2.80%	1,621	2.02%	0	0.00%	1,930	2.11%
LUCAS	676	6.13%	2,523	3.14%	0	0.00%	3,199	3.49%
MADISON	20	0.18%	139	0.17%	0	0.00%	159	0.17%
MAHONING	455	4.13%	1,410	1.75%	0	0.00%	1,865	2.04%
MARION	15	0.14%	355	0.44%	0	0.00%	370	0.40%
MEDINA	23	0.21%	700	0.87%	0	0.00%	723	0.79%
MEIGS	0	0.00%	0	0.00%	0	0.00%	0	0.00%
MERCER	24	0.22%	124	0.15%	0	0.00%	148	0.16%
MIAMI	3	0.03%	225	0.28%	0	0.00%	228	0.25%
MONROE	0	0.00%	59	0.07%	0	0.00%	59	0.06%
MONTGOMERY	368	3.34%	4,166	5.18%	0	0.00%	4,534	4.95%
MORGAN	2	0.02%	105	0.13%	0	0.00%	107	0.12%
MORROW	8	0.07%	174	0.22%	0	0.00%	182	0.20%

**TABLE 7  
CHILD CARE  
SEPTEMBER 2007**

OHIO COUNTY	OWF JOBS, LEAP, and TRANSITIONAL		OTHER CHILD CARE		LOCAL FUNDING		ALL PROGRAM SOURCES	
	CHILDREN SERVED		CHILDREN SERVED		CHILDREN SERVED		CHILDREN SERVED	
	TOTAL	% OF STATE TOTAL	TOTAL	% OF STATE TOTAL	TOTAL	% OF STATE TOTAL	TOTAL	% OF STATE TOTAL
<b>STATEWIDE</b>	<b>11,026</b>	<b>100.00%</b>	<b>80,414</b>	<b>100.00%</b>	<b>124</b>	<b>100.00%</b>	<b>91,564</b>	<b>100.00%</b>
MUSKINGUM	150	1.36%	732	0.91%	0	0.00%	882	0.96%
NOBLE	4	0.04%	102	0.13%	0	0.00%	106	0.12%
OTTAWA	26	0.24%	118	0.15%	0	0.00%	144	0.16%
PAULDING	3	0.03%	47	0.06%	0	0.00%	50	0.05%
PERRY	44	0.40%	248	0.31%	0	0.00%	292	0.32%
PICKAWAY	63	0.57%	140	0.17%	0	0.00%	203	0.22%
PIKE	11	0.10%	75	0.09%	0	0.00%	86	0.09%
PORTAGE	41	0.37%	633	0.79%	0	0.00%	674	0.74%
PREBLE	42	0.38%	147	0.18%	0	0.00%	189	0.21%
PUTNAM	0	0.00%	92	0.11%	0	0.00%	92	0.10%
RICHLAND	54	0.49%	904	1.12%	0	0.00%	958	1.05%
ROSS	9	0.08%	322	0.40%	0	0.00%	331	0.36%
SANDUSKY	29	0.26%	421	0.52%	0	0.00%	450	0.49%
SCIOTO	69	0.63%	590	0.73%	0	0.00%	659	0.72%
SENECA	5	0.05%	243	0.30%	0	0.00%	248	0.27%
SHELBY	0	0.00%	287	0.36%	0	0.00%	287	0.31%
STARK	368	3.34%	2,338	2.91%	0	0.00%	2,706	2.96%
SUMMIT	547	4.96%	3,826	4.76%	0	0.00%	4,373	4.78%
TRUMBULL	119	1.08%	1,533	1.91%	0	0.00%	1,652	1.80%
TUSCARAWAS	7	0.06%	380	0.47%	0	0.00%	387	0.42%
UNION	2	0.02%	228	0.28%	3	2.42%	233	0.25%
VAN WERT	2	0.02%	43	0.05%	0	0.00%	45	0.05%
VINTON	4	0.04%	88	0.11%	0	0.00%	92	0.10%
WARREN	21	0.19%	458	0.57%	0	0.00%	479	0.52%
WASHINGTON	54	0.49%	242	0.30%	0	0.00%	296	0.32%
WAYNE	38	0.34%	350	0.44%	0	0.00%	388	0.42%
WILLIAMS	5	0.05%	104	0.13%	0	0.00%	109	0.12%
WOOD	15	0.14%	349	0.43%	0	0.00%	364	0.40%
WYANDOT	1	0.01%	49	0.06%	0	0.00%	50	0.05%

SOURCE: COGNOS. The above numbers have not been reconciled between the CCIDS/3299 data collection system and 2827 ODJFS fiscal reporting system; therefore they may not be conclusive at this time. ELI data missing from counts above.

OWF data consist of funding codes: 173,312, 313,314, 326, & 327. Other data consist of funding codes: 320, 321, 322, 323, 324, 325, 328, 329, and 342. Local Funding is from funding code 899.

**TABLE 8  
RECIPIENTS, EXPENDITURES, AND AVERAGE PAYMENT PER RECIPIENT  
DURING THE LAST 12 MONTHS IN OHIO**

<b>RECIPIENTS</b>	<b>OWF-R</b>	<b>OWF-U</b>	<b>OWF\ CHILD CARE</b>	<b>Other CHILD CARE</b>	<b>DISABILITY ASSISTANCE</b>	<b>TITLE IV-E</b>	<b>FNS BENEFITS</b>
October 2006	159,372	13,714	26,501	74,946	13,718	27,108	1,067,925
November	156,220	12,781	23,696	78,584	13,578	26,828	1,061,392
December	159,543	13,239	23,727	79,838	13,654	27,223	1,073,211
January 2007	156,974	12,864	22,470	78,182	13,678	27,150	1,074,737
February	153,574	12,747	23,275	74,852	13,709	26,969	1,054,032
March	152,985	12,792	23,584	78,334	13,965	26,244	1,066,951
April	152,556	12,406	23,527	77,738	13,947	26,182	1,066,248
May	155,417	12,271	24,152	80,832	14,564	25,706	1,080,781
June	149,827	11,014	22,927	80,331	15,145	23,939	1,087,411
July	154,067	11,428	12,135	83,212	15,614	N.A.	1,090,411
August	154,690	11,902	12,173	83,746	16,113	N.A.	1,097,227
September 2007	152,800	11,309	11,026	80,414	15,652	N.A.	1,092,555
<b>12 MONTH AVERAGE</b>	<b>154,835</b>	<b>12,372</b>	<b>20,766</b>	<b>79,251</b>	<b>14,445</b>	<b>26,372</b>	<b>1,076,073</b>
<b>EXPENDITURES</b>							
October 2006	\$25,271,659	\$1,490,001	N.A.	N.A.	\$1,707,917	\$13,947,005	\$108,425,686
November	\$24,233,824	\$1,357,337	N.A.	N.A.	\$1,732,064	\$13,607,688	\$106,332,849
December	\$25,577,815	\$1,491,073	N.A.	N.A.	\$1,905,592	\$15,347,273	\$107,670,387
January 2007	\$24,563,001	\$1,389,124	N.A.	N.A.	\$1,860,503	\$14,522,840	\$107,705,366
February	\$23,926,643	\$1,349,595	N.A.	N.A.	\$1,847,646	\$13,904,623	\$105,628,316
March	\$23,971,956	\$1,384,820	N.A.	N.A.	\$1,952,139	\$13,522,041	\$107,457,412
April	\$23,014,252	\$1,269,486	N.A.	N.A.	\$1,768,558	\$17,403,927	\$107,329,580
May	\$22,934,016	\$1,208,788	N.A.	N.A.	\$2,040,201	\$13,271,398	\$108,138,296
June	\$23,962,387	\$1,187,020	N.A.	N.A.	\$2,347,409	\$18,639,187	\$108,329,737
July	\$24,360,922	\$1,261,090	N.A.	N.A.	\$2,333,309	N.A.	\$109,603,726
August	\$24,283,786	\$1,266,545	N.A.	N.A.	\$2,376,545	N.A.	\$110,301,820
September 2007	\$24,408,901	\$1,256,532	N.A.	N.A.	\$2,091,985	N.A.	\$109,690,552
<b>TOTAL DOLLARS</b>	<b>\$24,209,097</b>	<b>\$1,325,951</b>	<b>N.A.</b>	<b>N.A.</b>	<b>\$1,996,989</b>	<b>\$14,907,331</b>	<b>\$108,051,144</b>
<b>AVERAGE PAYMENT</b>							
October 2006	\$159	\$109	N.A.	N.A.	\$125	\$514	\$102
November	\$155	\$106	N.A.	N.A.	\$128	\$507	\$100
December	\$160	\$113	N.A.	N.A.	\$140	\$564	\$100
January 2007	\$156	\$108	N.A.	N.A.	\$136	\$535	\$100
February	\$156	\$106	N.A.	N.A.	\$135	\$516	\$100
March	\$157	\$108	N.A.	N.A.	\$140	\$515	\$101
April	\$151	\$102	N.A.	N.A.	\$127	\$665	\$101
May	\$148	\$99	N.A.	N.A.	\$140	\$516	\$100
June	\$160	\$108	N.A.	N.A.	\$155	\$779	\$100
July	\$158	\$110	N.A.	N.A.	\$149	N.A.	\$101
August	\$157	\$106	N.A.	N.A.	\$147	N.A.	\$101
September 2007	\$160	\$111	N.A.	N.A.	\$134	N.A.	\$100

Note: N.A. means Not Available.



**TABLE 10  
PERCENT OF OHIO'S POPULATION PARTICIPATING IN SELECTED  
PUBLIC ASSISTANCE PROGRAMS FOR SEPTEMBER 2007**

OHIO COUNTY	Estimated Total Population *	Percent of All Families Below Poverty Level	DISABILITY ASSISTANCE		OWF COMBINED		FOSTER CARE UNAVAILABLE		FNS BENEFITS	
			Recipients as % of		Recipients	Recipients as % of	Recipients	Recipients as % of	Recipients	Recipients as % of
			Recipients	Total Population						
<b>STATEWIDE</b>	<b>11,478,006</b>	<b>7.80%</b>	<b>15,652</b>	<b>0.14%</b>	<b>164,109</b>	<b>1.43%</b>	<b>0</b>	<b>0.00%</b>	<b>1,092,555</b>	<b>9.52%</b>
ADAMS	28,516	12.80%	105	0.37%	200	0.70%	0	0.00%	4,804	16.85%
ALLEN	105,788	9.60%	131	0.12%	693	0.66%	0	0.00%	9,125	8.63%
ASHLAND	54,727	7.10%	33	0.06%	162	0.30%	0	0.00%	3,069	5.61%
ASHTABULA	102,703	9.20%	316	0.31%	1,296	1.26%	0	0.00%	12,527	12.20%
ATHENS	61,860	14.00%	292	0.47%	1,458	2.36%	0	0.00%	7,228	11.68%
AUGLAIZE	47,060	4.90%	28	0.06%	113	0.24%	0	0.00%	2,114	4.49%
BELMONT	68,771	11.70%	151	0.22%	582	0.85%	0	0.00%	6,872	9.99%
BROWN	44,423	8.80%	90	0.20%	252	0.57%	0	0.00%	3,408	7.67%
BUTLER	354,992	5.40%	450	0.13%	2,716	0.77%	0	0.00%	26,947	7.59%
CARROLL	29,189	8.50%	30	0.10%	165	0.57%	0	0.00%	2,119	7.26%
CHAMPAIGN	39,921	5.10%	36	0.09%	441	1.10%	0	0.00%	2,892	7.24%
CLARK	141,872	7.90%	411	0.29%	2,790	1.97%	0	0.00%	17,470	12.31%
CLERMONT	192,706	5.30%	213	0.11%	729	0.38%	0	0.00%	11,229	5.83%
CLINTON	43,399	6.40%	78	0.18%	227	0.52%	0	0.00%	3,208	7.39%
COLUMBIANA	110,542	9.00%	139	0.13%	749	0.68%	0	0.00%	11,876	10.74%
COSHOCTON	36,976	7.00%	122	0.33%	447	1.21%	0	0.00%	4,221	11.42%
CRAWFORD	45,047	7.80%	53	0.12%	309	0.69%	0	0.00%	4,507	10.01%
CUYAHOGA	1,314,241	10.30%	1,047	0.08%	22,424	1.71%	0	0.00%	180,998	13.77%
DARKE	52,780	6.00%	31	0.06%	316	0.60%	0	0.00%	2,426	4.60%
DEFIANCE	39,091	4.50%	29	0.07%	270	0.69%	0	0.00%	2,938	7.52%
DELAWARE	156,697	2.90%	83	0.05%	661	0.42%	0	0.00%	4,363	2.78%
ERIE	78,116	6.00%	96	0.12%	405	0.52%	0	0.00%	5,601	7.17%
FAIRFIELD	140,591	4.50%	190	0.14%	1,923	1.37%	0	0.00%	10,461	7.44%
FAYETTE	28,305	7.70%	42	0.15%	244	0.86%	0	0.00%	2,619	9.25%
FRANKLIN	1,095,662	8.20%	1,293	0.12%	25,818	2.36%	0	0.00%	127,235	11.61%
FULTON	42,900	4.00%	44	0.10%	108	0.25%	0	0.00%	2,110	4.92%
GALLIA	31,313	13.50%	83	0.27%	918	2.93%	0	0.00%	4,986	15.92%
GEAUGA	95,676	2.80%	31	0.03%	110	0.11%	0	0.00%	1,629	1.70%
GREENE	152,298	5.20%	174	0.11%	1,127	0.74%	0	0.00%	8,389	5.51%

\*SOURCE: 2006 Ohio County Population Estimates, Ohio Dept. of Development, GRP342RA, GBS003RA, GRP304RA and GRP304RC Reports from Management Information Services.

**TABLE 10  
PERCENT OF OHIO'S POPULATION PARTICIPATING IN SELECTED  
PUBLIC ASSISTANCE PROGRAMS FOR SEPTEMBER 2007**

OHIO COUNTY	Estimated Total Population *	Percent of All Families Below Poverty Level	DISABILITY ASSISTANCE		OWF COMBINED		FOSTER CARE UNAVAILABLE		FNS BENEFITS	
			Recipients as % of		Recipients	Recipients as % of	Recipients	Recipients as % of	Recipients	Recipients as % of
			Recipients	Total Population						
<b>STATEWIDE</b>	<b>11,478,006</b>	<b>7.80%</b>	<b>15,652</b>	<b>0.14%</b>	<b>164,109</b>	<b>1.43%</b>	<b>0</b>	<b>0.00%</b>	<b>1,092,555</b>	<b>9.52%</b>
GUERNSEY	40,876	12.90%	146	0.36%	265	0.65%	0	0.00%	5,840	14.29%
HAMILTON	822,596	8.80%	720	0.09%	17,914	2.18%	0	0.00%	74,817	9.10%
HANCOCK	73,824	5.20%	79	0.11%	144	0.20%	0	0.00%	4,248	5.75%
HARDIN	31,966	8.90%	47	0.15%	119	0.37%	0	0.00%	1,843	5.77%
HARRISON	15,799	11.00%	58	0.37%	187	1.18%	0	0.00%	1,974	12.49%
HENRY	29,520	5.30%	10	0.03%	60	0.20%	0	0.00%	1,372	4.65%
HIGHLAND	42,833	9.00%	111	0.26%	498	1.16%	0	0.00%	4,943	11.54%
HOCKING	28,973	10.30%	67	0.23%	550	1.90%	0	0.00%	3,352	11.57%
HOLMES	41,574	10.50%	29	0.07%	82	0.20%	0	0.00%	957	2.30%
HURON	60,313	6.50%	62	0.10%	250	0.41%	0	0.00%	4,847	8.04%
JACKSON	33,543	13.60%	128	0.38%	546	1.63%	0	0.00%	5,306	15.82%
JEFFERSON	70,125	11.40%	175	0.25%	1,541	2.20%	0	0.00%	8,389	11.96%
KNOX	58,561	7.40%	122	0.21%	598	1.02%	0	0.00%	4,391	7.50%
LAKE	232,892	3.50%	141	0.06%	838	0.36%	0	0.00%	10,687	4.59%
LAWRENCE	63,179	15.10%	81	0.13%	1,431	2.26%	0	0.00%	10,521	16.65%
LICKING	156,287	5.50%	304	0.19%	1,178	0.75%	0	0.00%	12,293	7.87%
LOGAN	46,189	7.10%	81	0.18%	346	0.75%	0	0.00%	3,515	7.61%
LORAIN	301,993	6.70%	389	0.13%	3,979	1.32%	0	0.00%	27,526	9.11%
LUCAS	445,281	10.70%	1,089	0.24%	12,686	2.85%	0	0.00%	62,765	14.10%
MADISON	41,496	6.20%	32	0.08%	519	1.25%	0	0.00%	2,976	7.17%
MAHONING	251,026	9.60%	274	0.11%	6,398	2.55%	0	0.00%	29,493	11.75%
MARION	65,583	7.40%	199	0.30%	703	1.07%	0	0.00%	7,239	11.04%
MEDINA	169,353	3.50%	88	0.05%	443	0.26%	0	0.00%	5,087	3.00%
MEIGS	23,092	14.30%	79	0.34%	479	2.07%	0	0.00%	4,041	17.50%
MERCER	41,303	4.60%	34	0.08%	97	0.23%	0	0.00%	1,433	3.47%
MIAMI	101,914	5.10%	82	0.08%	567	0.56%	0	0.00%	4,494	4.41%
MONROE	14,606	11.00%	30	0.21%	115	0.79%	0	0.00%	1,515	10.37%
MONTGOMERY	542,237	8.30%	905	0.17%	10,318	1.90%	0	0.00%	56,172	10.36%
MORGAN	14,821	15.70%	62	0.42%	134	0.90%	0	0.00%	1,899	12.81%
MORROW	34,529	6.60%	75	0.22%	226	0.65%	0	0.00%	2,907	8.42%

\*SOURCE: 2006 Ohio County Population Estimates, Ohio Dept. of Development, GRP342RA, GBS003RA, GRP304RA and GRP304RC Reports from Management Information Services.

**TABLE 10  
PERCENT OF OHIO'S POPULATION PARTICIPATING IN SELECTED  
PUBLIC ASSISTANCE PROGRAMS FOR SEPTEMBER 2007**

OHIO COUNTY	Estimated Total Population *	Percent of All Families Below Poverty Level	DISABILITY ASSISTANCE		OWF COMBINED		FOSTER CARE UNAVAILABLE		FNS BENEFITS	
			Recipients as % of		Recipients as % of		Recipients as % of		Recipients as % of	
			Recipients	Total Population	Recipients	Total Population	Recipients	Total Population	Recipients	Total Population
<b>STATEWIDE</b>	<b>11,478,006</b>	<b>7.80%</b>	<b>15,652</b>	<b>0.14%</b>	<b>164,109</b>	<b>1.43%</b>	<b>0</b>	<b>0.00%</b>	<b>1,092,555</b>	<b>9.52%</b>
MUSKINGUM	86,125	9.90%	394	0.46%	1,721	2.00%	0	0.00%	14,010	16.27%
NOBLE	14,165	8.30%	19	0.13%	83	0.59%	0	0.00%	1,211	8.55%
OTTAWA	41,331	4.20%	43	0.10%	288	0.70%	0	0.00%	2,458	5.95%
PAULDING	19,432	4.90%	27	0.14%	230	1.18%	0	0.00%	1,378	7.09%
PERRY	35,313	9.40%	117	0.33%	645	1.83%	0	0.00%	5,336	15.11%
PICKAWAY	53,606	7.60%	83	0.15%	841	1.57%	0	0.00%	4,949	9.23%
PIKE	28,269	15.10%	78	0.28%	722	2.55%	0	0.00%	5,107	18.07%
PORTAGE	155,012	5.90%	123	0.08%	763	0.49%	0	0.00%	8,970	5.79%
PREBLE	42,491	4.50%	61	0.14%	333	0.78%	0	0.00%	2,572	6.05%
PUTNAM	34,744	4.00%	9	0.03%	45	0.13%	0	0.00%	1,530	4.40%
RICHLAND	127,010	8.20%	297	0.23%	1,173	0.92%	0	0.00%	12,094	9.52%
ROSS	75,556	9.10%	154	0.20%	1,357	1.80%	0	0.00%	10,758	14.24%
SANDUSKY	61,625	5.70%	99	0.16%	402	0.65%	0	0.00%	4,274	6.94%
SCIOTO	76,441	15.20%	282	0.37%	2,035	2.66%	0	0.00%	15,701	20.54%
SENECA	57,255	6.10%	82	0.14%	341	0.60%	0	0.00%	4,767	8.33%
SHELBY	48,884	5.30%	40	0.08%	243	0.50%	0	0.00%	2,591	5.30%
STARK	380,575	6.80%	487	0.13%	5,895	1.55%	0	0.00%	30,921	8.12%
SUMMIT	545,931	7.50%	518	0.09%	9,991	1.83%	0	0.00%	53,174	9.74%
TRUMBULL	217,362	7.90%	337	0.16%	2,630	1.21%	0	0.00%	18,679	8.59%
TUSCARAWAS	91,766	7.20%	130	0.14%	618	0.67%	0	0.00%	7,483	8.15%
UNION	46,702	3.60%	35	0.07%	266	0.57%	0	0.00%	2,342	5.01%
VAN WERT	29,303	4.20%	37	0.13%	86	0.29%	0	0.00%	1,361	4.64%
VINTON	13,519	15.10%	66	0.49%	288	2.13%	0	0.00%	2,475	18.31%
WARREN	201,871	3.00%	89	0.04%	382	0.19%	0	0.00%	3,866	1.92%
WASHINGTON	61,867	8.60%	153	0.25%	190	0.31%	0	0.00%	5,319	8.60%
WAYNE	113,950	5.40%	241	0.21%	829	0.73%	0	0.00%	6,940	6.09%
WILLIAMS	38,719	3.90%	52	0.13%	366	0.95%	0	0.00%	2,779	7.18%
WOOD	124,183	4.70%	61	0.05%	380	0.31%	0	0.00%	4,334	3.49%
WYANDOT	22,553	3.80%	18	0.08%	102	0.45%	0	0.00%	963	4.27%
UNKNOWN										

\*SOURCE: 2006 Ohio County Population Estimates, Ohio Dept. of Development, GRP342RA, GBS003RA, GRP304RA and GRP304RC Reports from Management Information Services.

**TABLE 7  
CHILD CARE REVISION  
JUNE UPDATE**

OHIO COUNTY	OWF JOBS, LEAP, and TRANSITIONAL		OTHER CHILD CARE		LOCAL FUNDING		ALL PROGRAM SOURCES	
	CHILDREN SERVED		CHILDREN SERVED		CHILDREN SERVED		CHILDREN SERVED	
	TOTAL	% OF STATE TOTAL	TOTAL	% OF STATE TOTAL	TOTAL	% OF STATE TOTAL	TOTAL	% OF STATE TOTAL
<b>STATEWIDE</b>	<b>22,979</b>	<b>100.00%</b>	<b>80,614</b>	<b>100.00%</b>	<b>128</b>	<b>100.00%</b>	<b>103,721</b>	<b>100.00%</b>
ADAMS	17	0.07%	107	0.13%	0	0.00%	124	0.12%
ALLEN	183	0.80%	443	0.55%	0	0.00%	626	0.60%
ASHLAND	13	0.06%	207	0.26%	0	0.00%	220	0.21%
ASHTABULA	200	0.87%	654	0.81%	0	0.00%	854	0.82%
ATHENS	82	0.36%	200	0.25%	0	0.00%	282	0.27%
AUGLAIZE	20	0.09%	110	0.14%	0	0.00%	130	0.13%
BELMONT	68	0.30%	274	0.34%	0	0.00%	342	0.33%
BROWN	10	0.04%	116	0.14%	0	0.00%	126	0.12%
BUTLER	190	0.83%	1,540	1.91%	0	0.00%	1,730	1.67%
CARROLL	18	0.08%	51	0.06%	0	0.00%	69	0.07%
CHAMPAIGN	29	0.13%	136	0.17%	0	0.00%	165	0.16%
CLARK	129	0.56%	665	0.82%	0	0.00%	794	0.77%
CLERMONT	153	0.67%	561	0.70%	0	0.00%	714	0.69%
CLINTON	2	0.01%	237	0.29%	0	0.00%	239	0.23%
COLUMBIANA	157	0.68%	865	1.07%	0	0.00%	1,022	0.99%
COSHOCTON	76	0.33%	190	0.24%	0	0.00%	266	0.26%
CRAWFORD	65	0.28%	224	0.28%	0	0.00%	289	0.28%
CUYAHOGA	4,482	19.50%	18,381	22.80%	0	0.00%	22,863	22.04%
DARKE	22	0.10%	91	0.11%	0	0.00%	113	0.11%
DEFIANCE	58	0.25%	158	0.20%	0	0.00%	216	0.21%
DELAWARE	50	0.22%	358	0.44%	0	0.00%	408	0.39%
ERIE	43	0.19%	582	0.72%	0	0.00%	625	0.60%
FAIRFIELD	134	0.58%	819	1.02%	0	0.00%	953	0.92%
FAYETTE	18	0.08%	201	0.25%	0	0.00%	219	0.21%
FRANKLIN	2,778	12.09%	9,827	12.19%	120	93.75%	12,725	12.27%
FULTON	51	0.22%	159	0.20%	0	0.00%	210	0.20%
GALLIA	43	0.19%	146	0.18%	0	0.00%	189	0.18%
GEAUGA	50	0.22%	191	0.24%	0	0.00%	241	0.23%
GREENE	227	0.99%	702	0.87%	0	0.00%	929	0.90%

**TABLE 7  
CHILD CARE REVISION  
JUNE UPDATE**

OHIO COUNTY	OWF JOBS, LEAP, and TRANSITIONAL		OTHER CHILD CARE		LOCAL FUNDING		ALL PROGRAM SOURCES	
	CHILDREN SERVED		CHILDREN SERVED		CHILDREN SERVED		CHILDREN SERVED	
	TOTAL	% OF STATE TOTAL	TOTAL	% OF STATE TOTAL	TOTAL	% OF STATE TOTAL	TOTAL	% OF STATE TOTAL
<b>STATEWIDE</b>	<b>22,979</b>	<b>100.00%</b>	<b>80,614</b>	<b>100.00%</b>	<b>128</b>	<b>100.00%</b>	<b>103,721</b>	<b>100.00%</b>
GUERNSEY	108	0.47%	291	0.36%	0	0.00%	399	0.38%
HAMILTON	3,266	14.21%	10,180	12.63%	0	0.00%	13,446	12.96%
HANCOCK	109	0.47%	340	0.42%	0	0.00%	449	0.43%
HARDIN	21	0.09%	56	0.07%	0	0.00%	77	0.07%
HARRISON	12	0.05%	42	0.05%	0	0.00%	54	0.05%
HENRY	35	0.15%	106	0.13%	0	0.00%	141	0.14%
HIGHLAND	9	0.04%	184	0.23%	0	0.00%	193	0.19%
HOCKING	43	0.19%	84	0.10%	0	0.00%	127	0.12%
HOLMES	56	0.24%	123	0.15%	0	0.00%	179	0.17%
HURON	11	0.05%	428	0.53%	0	0.00%	439	0.42%
JACKSON	43	0.19%	118	0.15%	0	0.00%	161	0.16%
JEFFERSON	82	0.36%	274	0.34%	0	0.00%	356	0.34%
KNOX	73	0.32%	239	0.30%	0	0.00%	312	0.30%
LAKE	258	1.12%	870	1.08%	0	0.00%	1,128	1.09%
LAWRENCE	125	0.54%	456	0.57%	0	0.00%	581	0.56%
LICKING	215	0.94%	1,090	1.35%	0	0.00%	1,305	1.26%
LOGAN	37	0.16%	57	0.07%	0	0.00%	94	0.09%
LORAIN	762	3.32%	1,677	2.08%	0	0.00%	2,439	2.35%
LUCAS	2,027	8.82%	2,771	3.44%	0	0.00%	4,798	4.63%
MADISON	30	0.13%	138	0.17%	0	0.00%	168	0.16%
MAHONING	934	4.06%	1,465	1.82%	0	0.00%	2,399	2.31%
MARION	33	0.14%	377	0.47%	0	0.00%	410	0.40%
MEDINA	120	0.52%	735	0.91%	0	0.00%	855	0.82%
MEIGS	12	0.05%	172	0.21%	0	0.00%	184	0.18%
MERCER	31	0.13%	136	0.17%	0	0.00%	167	0.16%
MIAMI	94	0.41%	316	0.39%	0	0.00%	410	0.40%
MONROE	4	0.02%	52	0.06%	0	0.00%	56	0.05%
MONTGOMERY	815	3.55%	5,064	6.28%	1	0.78%	5,880	5.67%
MORGAN	6	0.03%	91	0.11%	0	0.00%	97	0.09%
MORROW	25	0.11%	186	0.23%	0	0.00%	211	0.20%

**TABLE 7  
CHILD CARE REVISION  
JUNE UPDATE**

OHIO COUNTY	OWF JOBS, LEAP, and TRANSITIONAL		OTHER CHILD CARE		LOCAL FUNDING		ALL PROGRAM SOURCES	
	CHILDREN SERVED		CHILDREN SERVED		CHILDREN SERVED		CHILDREN SERVED	
	TOTAL	% OF STATE TOTAL	TOTAL	% OF STATE TOTAL	TOTAL	% OF STATE TOTAL	TOTAL	% OF STATE TOTAL
<b>STATEWIDE</b>	<b>22,979</b>	<b>100.00%</b>	<b>80,614</b>	<b>100.00%</b>	<b>128</b>	<b>100.00%</b>	<b>103,721</b>	<b>100.00%</b>
MUSKINGUM	298	1.30%	721	0.89%	0	0.00%	1,019	0.98%
NOBLE	33	0.14%	82	0.10%	0	0.00%	115	0.11%
OTTAWA	69	0.30%	104	0.13%	0	0.00%	173	0.17%
PAULDING	5	0.02%	38	0.05%	0	0.00%	43	0.04%
PERRY	47	0.20%	271	0.34%	0	0.00%	318	0.31%
PICKAWAY	68	0.30%	141	0.17%	0	0.00%	209	0.20%
PIKE	57	0.25%	76	0.09%	0	0.00%	133	0.13%
PORTAGE	171	0.74%	574	0.71%	0	0.00%	745	0.72%
PREBLE	25	0.11%	44	0.05%	0	0.00%	69	0.07%
PUTNAM	20	0.09%	101	0.13%	0	0.00%	121	0.12%
RICHLAND	266	1.16%	816	1.01%	0	0.00%	1,082	1.04%
ROSS	116	0.50%	277	0.34%	0	0.00%	393	0.38%
SANDUSKY	96	0.42%	446	0.55%	0	0.00%	542	0.52%
SCIOTO	117	0.51%	579	0.72%	0	0.00%	696	0.67%
SENECA	22	0.10%	275	0.34%	0	0.00%	297	0.29%
SHELBY	50	0.22%	272	0.34%	0	0.00%	322	0.31%
STARK	825	3.59%	2,153	2.67%	0	0.00%	2,978	2.87%
SUMMIT	945	4.11%	3,615	4.48%	0	0.00%	4,560	4.40%
TRUMBULL	306	1.33%	1,474	1.83%	0	0.00%	1,780	1.72%
TUSCARAWAS	46	0.20%	374	0.46%	0	0.00%	420	0.40%
UNION	37	0.16%	159	0.20%	7	5.47%	203	0.20%
VAN WERT	16	0.07%	46	0.06%	0	0.00%	62	0.06%
VINTON	7	0.03%	88	0.11%	0	0.00%	95	0.09%
WARREN	159	0.69%	441	0.55%	0	0.00%	600	0.58%
WASHINGTON	86	0.37%	271	0.34%	0	0.00%	357	0.34%
WAYNE	175	0.76%	404	0.50%	0	0.00%	579	0.56%
WILLIAMS	45	0.20%	93	0.12%	0	0.00%	138	0.13%
WOOD	96	0.42%	314	0.39%	0	0.00%	410	0.40%
WYANDOT	12	0.05%	52	0.06%	0	0.00%	64	0.06%

SOURCE: COGNOS. The above numbers have not been reconciled between the CCIDS/3299 data collection system and 2827 ODJFS fiscal reporting system; therefore they may not be conclusive at this time.

OWF data consist of funding codes: 173,312, 313,314, 326, & 327. Other data consist of funding codes: 320, 321, 322, 323, 324, 325, 328, 329, and 342. Local Funding is from funding code 899.