

# Ohio Department of Job and Family Services

## PUBLIC ASSISTANCE MONTHLY STATISTICS JULY 2007



<http://jfs.ohio.gov/pams/index.stm>  
Bureau of Research and Evaluation : Federal Reports\ Data Development Section  
Office of Research, Assessment, and Accountability  
P.O. Box 1618  
Columbus, Ohio 43216-1618

OHIO DEPARTMENT OF JOB AND FAMILY SERVICES

PUBLIC ASSISTANCE MONTHLY STATISTICS

TABLE OF CONTENTS

<u>TITLE</u>	<u>PAGE(S)</u>
Monthly Review of Public Assistance Statistics.....	1
Statewide Summary of Public Assistance Programs.....	2
Table 1: OWF (TANF) Summary.....	3-14
Table 2: Foster Care (Title IV-E) Program Summary. . Temporarily Unavailable.....	15-17
Table 3: Disability Assistance Program Summary.....	18-22
Table 3-A: DA Payments for Medical Services.....	23
Table 5: FNS Benefits Program Summary.....	24-28
Table 6: Medicaid (Title XIX): Eligibles and Expenditures.....	29-34
Table 7: Child Day Care Summary.....	35-37
Table 8: Program Summaries of Recipients, Expenditures, and Average Payment Per Recipient During the Last 12 Months.....	38
Table 10: Percent of Ohio's Population Participating in Selected Public Assistance Programs.....	39-41
Note: Table 4 and Table 9 were discontinued.	
Also: Table 7-A, Updated Child Day Care Summary for April 2007.....	42-44

All data in the PAMS report is limited to the information available at the time it was constructed. It does not account for backdated or retroactive eligibility or any adjustments made subsequent to its creation.

## MONTHLY REVIEW OF PUBLIC ASSISTANCE STATISTICS FOR JULY 2007

### OHIO WORKS FIRST (OWF)

For the month of July 2007, OWF-Combined assistance groups totaled 78,001; recipients totaled 165,495 and money payments totaled \$25,622,012. The percent change from June 2007 to July 2007 was 2.4% for assistance groups; 2.9% for recipients, and 1.9% for money payments. For OWF- Regular (OWF-R) there were 75,169 assistance groups; 154,067 recipients, and \$24,360,922 in money payments issued for July 2007. The percent change from June 2007 to July 2007 was 2.4% for assistance groups; 2.8% for recipients, and 1.7% for money payments. For OWF-Unemployed (OWF-U) assistance groups totaled 2,832; recipients, 11,428 and money payments were \$1,261,090. The percent change from June 2007 to July 2007 was 3.9% for assistance groups; 3.8% for recipients and 6.2% for money payments.

### FOSTER CARE (TITLE IV-E)

**Data not available due to SACWIS implementation.**

### DISABILITY ASSISTANCE (DA)

For the month of July 2007, there were 15,532 assistance groups; 15,614 recipients, and \$2,333,309 in DA financial assistance. The average DA financial assistance per recipient was \$149.44. Total DA expenditures for medical services for July 2007 were \$1,462,385. Of this total, \$1,088,488 or 74.4% was spent for prescribed drugs, and \$303,264 or 20.7% was spent for physician services. Medical expenses were paid for 3,049 recipients for an average expenditure of \$479.63 per recipient.

### FOOD AND NUTRITION SERVICES BENEFITS (FNS)

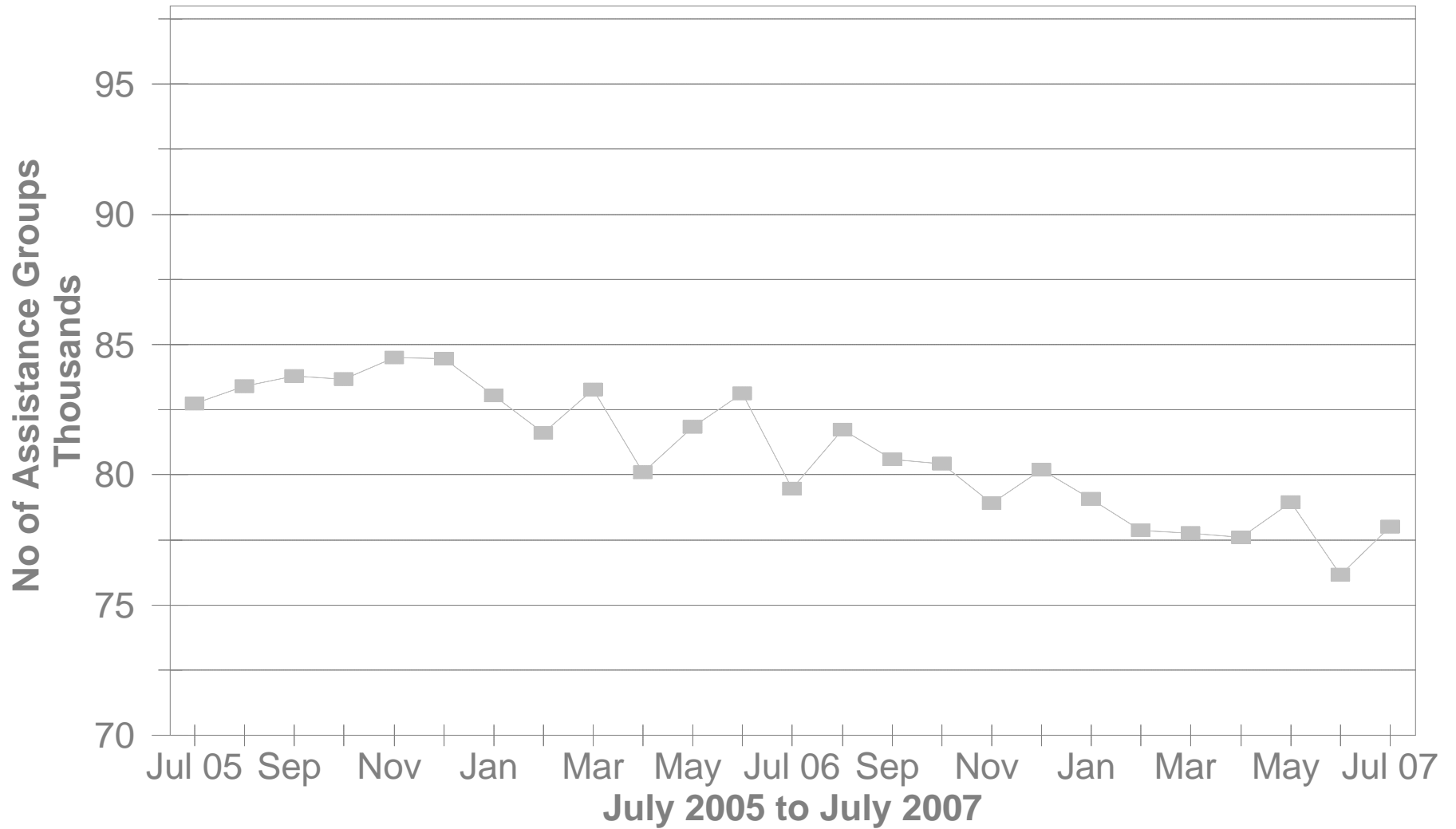
Total persons participating in the FNS benefits program during July 2007 increased to 1,090,411 by 2,970 or 0.3% from 1,087,441 persons reported in June 2007. Households increased by 2,001 or 0.4% over June 2007 levels. The total dollar value of FNS related benefits issued during July 2007 increased by \$ 1,273,989 or 1.2% from \$108,329,737 reported in June 2007 to \$109,603,726 reported in July 2007. The average benefit issuance per person increased by \$.90 or 0.9% from those issued in June 2007. The average benefit issuance per person increased from \$99.62 reported in June 2007 to \$100.52 reported in July 2007.

*Please note: All data in the PAMS report is limited to the information available at the time it was constructed. It does not account for backdated or retroactive eligibility or any adjustments made subsequent to its creation.*

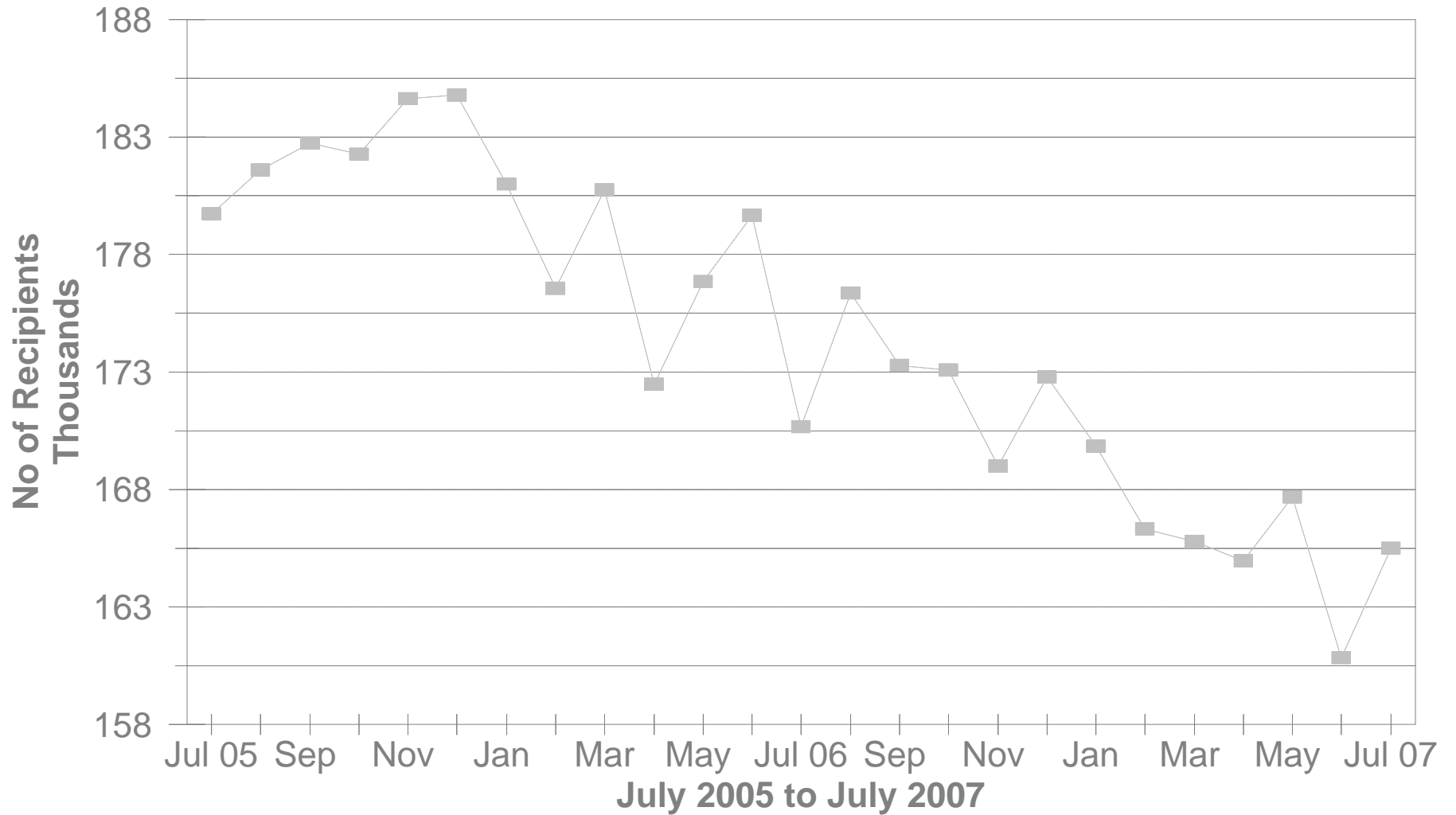
**STATEWIDE SUMMARY OF PUBLIC ASSISTANCE PROGRAMS FOR JULY 2007**

	July 2007	June 2007	% CHANGE Jul 07 / Jun 07	July 2006	% CHANGE Jul 07 / Jul 06
<b>OHIO WORKS FIRST (OWF)-COMBI</b>					
Assistance Groups	78,001	76,158	2.4%	79,467	-1.8%
Recipients	165,495	160,841	2.9%	170,679	-3.0%
Net Payments	\$25,622,012	\$25,149,407	1.9%	\$25,974,533	-1.4%
Average Per Recipient	\$154.82	\$156.36	-1.0%	\$152.18	1.7%
<b>OWF-REGULAR, OWF-INCAPACITATED, &amp; OWF REGULAR VENDOR PAYMENTS</b>					
Assistance Groups	75,169	73,433	2.4%	75,884	-0.9%
Recipients	154,067	149,827	2.8%	156,237	-1.4%
Net Payments	\$24,360,922	\$23,962,387	1.7%	\$24,432,662	-0.3%
Average Per Recipient	\$158.12	\$159.93	-1.1%	\$156.38	1.1%
<b>OWF-UNEMPLOYED AND OWF-UNEMPLOYED VENDOR PAYMENTS</b>					
Assistance Groups	2,832	2,725	3.9%	3,583	-21.0%
Recipients	11,428	11,014	3.8%	14,442	-20.9%
Net Payments	\$1,261,090	\$1,187,020	6.2%	\$1,541,871	-18.2%
Average Per Recipient	\$110.35	\$107.77	2.4%	\$106.76	3.4%
<b>TITLE IV-E FOSTER CARE</b>					
Assistance Groups/Recipients	N.A.	23,939	N.A.	26,830	N.A.
Gross Payments	N.A.	\$18,639,187	N.A.	\$13,801,221	N.A.
Average Per Recipient	N.A.	\$778.61	N.A.	\$514.40	N.A.
<b>DISABILITY ASSISTANCE</b>					
Assistance Groups	15,532	15,064	3.1%	13,660	13.7%
Recipients	15,614	15,145	3.1%	13,753	13.5%
Net Payments	\$2,333,309	\$2,347,409	-0.6%	\$1,843,070	26.6%
Medical Assistance	\$1,462,385	\$1,612,728	-9.3%	\$2,366,844	-38.2%
<b>FNS BENEFITS</b>					
Assistance Groups	499,609	497,608	0.4%	485,648	2.9%
Persons	1,090,411	1,087,441	0.3%	1,064,369	2.4%
Total Coupons Issued	\$109,603,726	\$108,329,737	1.2%	\$106,503,524	2.9%
Average Per Recipient	\$100.52	\$99.62	0.9%	\$100.06	0.5%

# No of OWF Combined Assistance Groups During The Last 25 Months

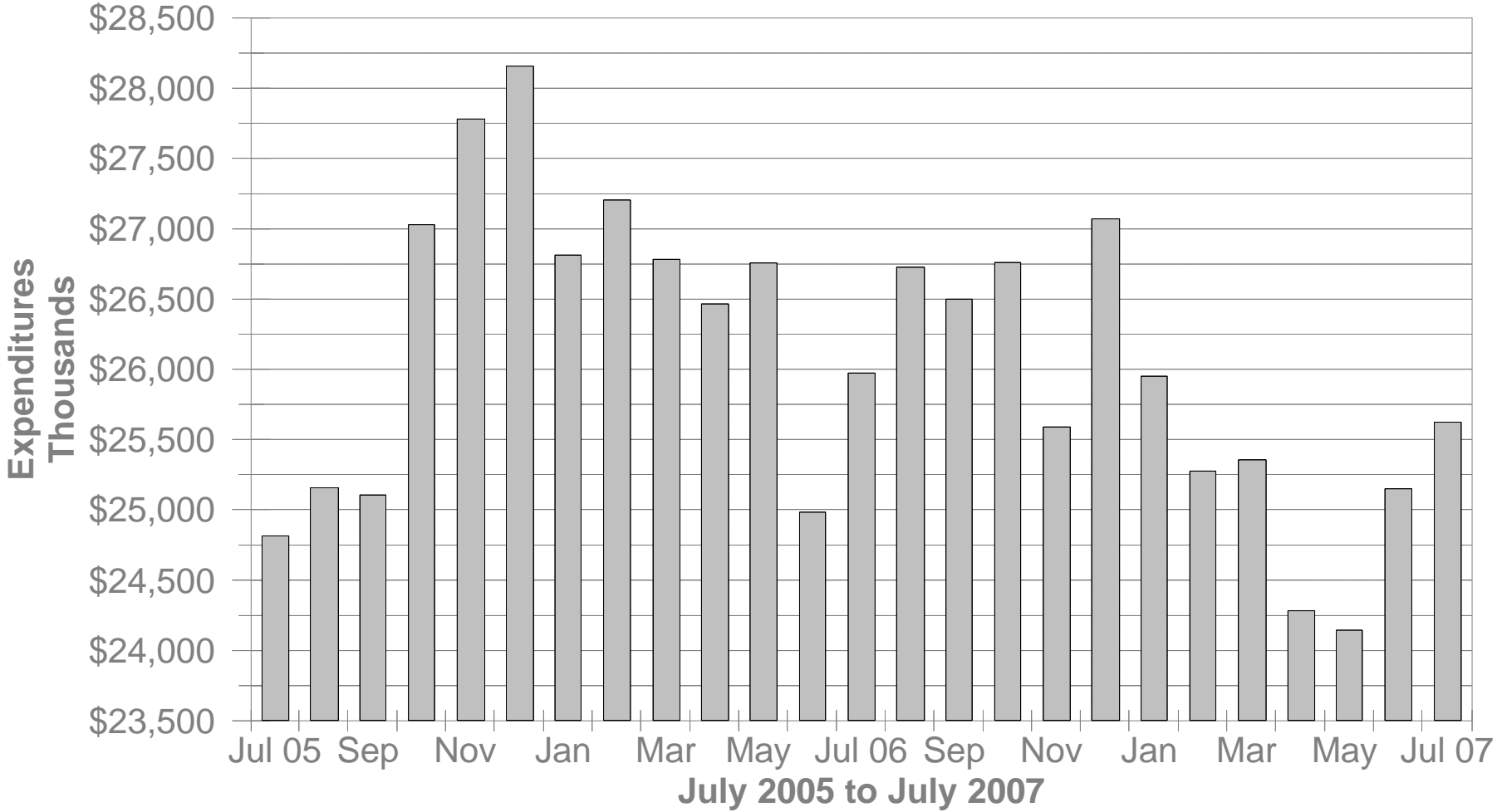


# No of OWF Combined Recipients During The Last 25 Months



# OWF Combined Net Expenditures

## During The Last 25 Months



**TABLE 1  
OHIO WORKS FIRST COMBINED  
JULY 2007**

OHIO COUNTY	ASSISTANCE GROUP	RECIPIENTS	ADULTS	CHILDREN	ACTUAL EXPENDITURES		
					GROSS AMOUNT	CANCELLED AMOUNT	NET AMOUNT
<b>STATEWIDE</b>	<b>78,001</b>	<b>165,495</b>	<b>39,746</b>	<b>125,749</b>	<b>\$26,614,621.00</b>	<b>\$992,609.00</b>	<b>\$25,622,012.00</b>
ADAMS	144	226	3	223	\$40,967.00	\$2,216.00	\$38,751.00
ALLEN	431	716	58	658	\$133,388.00	\$5,983.00	\$127,405.00
ASHLAND	91	191	39	152	\$29,721.00	\$0.00	\$29,721.00
ASHTABULA	628	1,275	287	988	\$204,741.00	\$5,650.00	\$199,091.00
ATHENS	627	1,507	534	973	\$222,582.00	\$4,043.00	\$218,539.00
AUGLAIZE	67	102	2	100	\$20,000.00	\$490.00	\$19,510.00
BELMONT	294	576	114	462	\$90,775.00	\$2,216.00	\$88,559.00
BROWN	158	272	23	249	\$47,644.00	\$3,537.00	\$44,107.00
BUTLER	1,494	2,712	381	2,331	\$482,220.00	\$11,907.00	\$470,313.00
CARROLL	78	148	35	113	\$23,605.00	\$136.00	\$23,469.00
CHAMPAIGN	221	501	151	350	\$78,150.00	\$2,820.00	\$75,330.00
CLARK	1,279	2,717	685	2,032	\$439,469.00	\$14,770.00	\$424,699.00
CLERMONT	406	698	76	622	\$129,431.00	\$4,073.00	\$125,358.00
CLINTON	127	234	35	199	\$41,318.00	\$746.00	\$40,572.00
COLUMBIANA	416	713	83	630	\$124,490.00	\$2,027.00	\$122,463.00
COSHOCTON	193	364	95	269	\$61,755.00	\$1,327.00	\$60,428.00
CRAWFORD	146	305	70	235	\$49,644.00	\$1,302.00	\$48,342.00
CUYAHOGA	11,608	23,316	5,213	18,103	\$3,916,840.00	\$187,478.00	\$3,729,362.00
DARKE	156	347	95	252	\$58,406.00	\$1,670.00	\$56,736.00
DEFIANCE	134	303	71	232	\$48,503.00	\$1,663.00	\$46,840.00
DELAWARE	321	709	237	472	\$112,882.00	\$5,796.00	\$107,086.00
ERIE	246	445	39	406	\$77,514.00	\$2,541.00	\$74,973.00
FAIRFIELD	824	1,940	618	1,322	\$286,911.00	\$8,538.00	\$278,373.00
FAYETTE	141	264	52	212	\$47,064.00	\$4,007.00	\$43,057.00
FRANKLIN	11,606	26,361	6,661	19,700	\$4,097,325.00	\$166,738.00	\$3,930,587.00
FULTON	62	103	4	99	\$17,801.00	\$1,317.00	\$16,484.00
GALLIA	417	970	326	644	\$140,621.00	\$5,349.00	\$135,272.00
GEAUGA	64	105	11	94	\$19,401.00	\$410.00	\$18,991.00
GREENE	552	1,100	257	843	\$178,097.00	\$4,208.00	\$173,889.00

Source: GRP342RA Report from Management Information Services. Data includes ADC-Regular, ADC-Incapacitated, and Vendor Payments.



**TABLE 1  
OHIO WORKS FIRST COMBINED  
JULY 2007**

OHIO COUNTY	ASSISTANCE GROUP	RECIPIENTS	ADULTS	CHILDREN	ACTUAL EXPENDITURES		
					GROSS AMOUNT	CANCELLED AMOUNT	NET AMOUNT
<b>STATEWIDE</b>	<b>78,001</b>	<b>165,495</b>	<b>39,746</b>	<b>125,749</b>	<b>\$26,614,621.00</b>	<b>\$992,609.00</b>	<b>\$25,622,012.00</b>
GUERNSEY	154	260	32	228	\$45,806.00	\$0.00	\$45,806.00
HAMILTON	7,412	17,095	3,997	13,098	\$2,758,952.00	\$95,006.00	\$2,663,946.00
HANCOCK	112	163	1	162	\$31,429.00	\$2,646.00	\$28,783.00
HARDIN	67	107	6	101	\$20,926.00	\$562.00	\$20,364.00
HARRISON	96	215	53	162	\$32,228.00	\$709.00	\$31,519.00
HENRY	34	49	4	45	\$10,243.00	\$0.00	\$10,243.00
HIGHLAND	201	435	98	337	\$65,685.00	\$1,162.00	\$64,523.00
HOCKING	283	633	183	450	\$96,024.00	\$3,480.00	\$92,544.00
HOLMES	44	85	17	68	\$13,807.00	\$775.00	\$13,032.00
HURON	172	265	4	261	\$49,737.00	\$3,650.00	\$46,087.00
JACKSON	294	510	58	452	\$89,279.00	\$5,294.00	\$83,985.00
JEFFERSON	722	1,609	463	1,146	\$240,364.00	\$10,622.00	\$229,742.00
KNOX	252	547	161	386	\$83,408.00	\$1,572.00	\$81,836.00
LAKE	446	889	195	694	\$154,010.00	\$4,799.00	\$149,211.00
LAWRENCE	784	1,560	353	1,207	\$250,160.00	\$7,530.00	\$242,630.00
LICKING	582	1,219	308	911	\$186,107.00	\$4,068.00	\$182,039.00
LOGAN	181	369	85	284	\$61,914.00	\$980.00	\$60,934.00
LORAIN	1,889	4,036	878	3,158	\$633,309.00	\$19,005.00	\$614,304.00
LUCAS	5,856	13,174	3,640	9,534	\$2,045,622.00	\$105,365.00	\$1,940,257.00
MADISON	219	503	162	341	\$81,174.00	\$969.00	\$80,205.00
MAHONING	2,914	6,639	1,781	4,858	\$1,020,531.00	\$29,766.00	\$990,765.00
MARION	385	705	98	607	\$120,407.00	\$3,128.00	\$117,279.00
MEDINA	209	404	91	313	\$64,732.00	\$2,086.00	\$62,646.00
MEIGS	202	408	100	308	\$65,326.00	\$2,502.00	\$62,824.00
MERCER	65	134	35	99	\$20,571.00	\$826.00	\$19,745.00
MIAMI	294	528	88	440	\$89,616.00	\$1,817.00	\$87,799.00
MONROE	55	126	41	85	\$18,273.00	\$746.00	\$17,527.00
MONTGOMERY	5,040	10,266	2,395	7,871	\$1,667,634.00	\$59,621.00	\$1,608,013.00
MORGAN	81	140	21	119	\$24,121.00	\$245.00	\$23,876.00
MORROW	112	214	45	169	\$33,617.00	\$699.00	\$32,918.00

Source: GRP342RA Report from Management Information Services. Data includes ADC-Regular, ADC-Incapacitated, and Vendor Payments.

**TABLE 1  
OHIO WORKS FIRST COMBINED  
JULY 2007**

OHIO COUNTY	ASSISTANCE GROUP	RECIPIENTS	ADULTS	CHILDREN	ACTUAL EXPENDITURES		
					GROSS AMOUNT	CANCELLED AMOUNT	NET AMOUNT
<b>STATEWIDE</b>	<b>78,001</b>	<b>165,495</b>	<b>39,746</b>	<b>125,749</b>	<b>\$26,614,621.00</b>	<b>\$992,609.00</b>	<b>\$25,622,012.00</b>
MUSKINGUM	863	1,822	488	1,334	\$277,605.00	\$5,833.00	\$271,772.00
NOBLE	35	75	19	56	\$11,574.00	\$735.00	\$10,839.00
OTTAWA	125	280	70	210	\$40,804.00	\$886.00	\$39,918.00
PAULDING	93	238	84	154	\$34,278.00	\$836.00	\$33,442.00
PERRY	266	599	151	448	\$86,830.00	\$2,223.00	\$84,607.00
PICKAWAY	383	882	254	628	\$134,694.00	\$3,695.00	\$130,999.00
PIKE	348	722	179	543	\$117,183.00	\$4,309.00	\$112,874.00
PORTAGE	403	772	152	620	\$128,420.00	\$3,857.00	\$124,563.00
PREBLE	183	397	91	306	\$60,490.00	\$1,201.00	\$59,289.00
PUTNAM	30	47	3	44	\$9,425.00	\$490.00	\$8,935.00
RICHLAND	626	1,151	213	938	\$201,444.00	\$6,243.00	\$195,201.00
ROSS	637	1,329	326	1,003	\$212,444.00	\$6,593.00	\$205,851.00
SANDUSKY	201	378	41	337	\$62,646.00	\$1,316.00	\$61,330.00
SCIOTO	1,055	1,977	361	1,616	\$336,072.00	\$13,121.00	\$322,951.00
SENECA	168	344	54	290	\$57,313.00	\$0.00	\$57,313.00
SHELBY	144	267	27	240	\$46,185.00	\$2,861.00	\$43,324.00
STARK	2,737	6,017	1,672	4,345	\$920,269.00	\$35,382.00	\$884,887.00
SUMMIT	4,492	9,457	2,549	6,908	\$1,560,350.00	\$48,906.00	\$1,511,444.00
TRUMBULL	1,316	2,626	529	2,097	\$433,710.00	\$9,380.00	\$424,330.00
TUSCARAWAS	334	669	159	510	\$112,650.00	\$4,828.00	\$107,822.00
UNION	127	287	86	201	\$41,822.00	\$336.00	\$41,486.00
VAN WERT	50	77	4	73	\$14,469.00	\$672.00	\$13,797.00
VINTON	124	257	65	192	\$39,467.00	\$1,151.00	\$38,316.00
WARREN	208	343	37	306	\$62,674.00	\$3,937.00	\$58,737.00
WASHINGTON	139	205	4	201	\$40,175.00	\$900.00	\$39,275.00
WAYNE	409	908	295	613	\$134,348.00	\$7,211.00	\$127,137.00
WILLIAMS	158	397	135	262	\$59,319.00	\$245.00	\$59,074.00
WOOD	218	384	33	351	\$67,942.00	\$2,874.00	\$65,068.00
WYANDOT	41	81	17	64	\$13,742.00	\$0.00	\$13,742.00

Source: GRP342RA Report from Management Information Services. Data includes ADC-Regular, ADC-Incapacitated, and Vendor Payments.

**TABLE 1  
OHIO WORKS FIRST REGULAR  
JULY 2007**

OHIO COUNTY	ASSISTANCE GROUP	RECIPIENTS	ADULTS	CHILDREN	ACTUAL EXPENDITURES		
					GROSS AMOUNT	CANCELLED AMOUNT	NET AMOUNT
<b>STATEWIDE</b>	<b>75,169</b>	<b>154,067</b>	<b>34,572</b>	<b>119,495</b>	<b>\$25,305,126.00</b>	<b>\$944,204.00</b>	<b>\$24,360,922.00</b>
ADAMS	144	226	3	223	\$40,967.00	\$2,216.00	\$38,751.00
ALLEN	431	716	58	658	\$133,388.00	\$5,983.00	\$127,405.00
ASHLAND	91	191	39	152	\$29,721.00	\$0.00	\$29,721.00
ASHTABULA	605	1,166	242	924	\$193,539.00	\$5,143.00	\$188,396.00
ATHENS	534	1,164	364	800	\$181,182.00	\$2,636.00	\$178,546.00
AUGLAIZE	67	102	2	100	\$20,000.00	\$490.00	\$19,510.00
BELMONT	278	516	82	434	\$84,238.00	\$2,216.00	\$82,022.00
BROWN	158	272	23	249	\$47,644.00	\$3,537.00	\$44,107.00
BUTLER	1,493	2,710	380	2,330	\$481,884.00	\$11,907.00	\$469,977.00
CARROLL	75	131	29	102	\$22,352.00	\$136.00	\$22,216.00
CHAMPAIGN	207	448	123	325	\$72,104.00	\$2,363.00	\$69,741.00
CLARK	1,237	2,551	602	1,949	\$417,557.00	\$14,283.00	\$403,274.00
CLERMONT	402	680	68	612	\$126,668.00	\$3,566.00	\$123,102.00
CLINTON	126	231	33	198	\$40,908.00	\$746.00	\$40,162.00
COLUMBIANA	412	695	75	620	\$122,769.00	\$2,027.00	\$120,742.00
COSHOCTON	187	341	84	257	\$58,710.00	\$1,327.00	\$57,383.00
CRAWFORD	143	293	64	229	\$48,441.00	\$1,008.00	\$47,433.00
CUYAHOGA	11,357	22,330	4,743	17,587	\$3,801,098.00	\$182,726.00	\$3,618,372.00
DARKE	149	316	80	236	\$53,457.00	\$1,670.00	\$51,787.00
DEFIANCE	130	287	63	224	\$46,740.00	\$1,663.00	\$45,077.00
DELAWARE	293	603	189	414	\$98,672.00	\$5,796.00	\$92,876.00
ERIE	244	432	35	397	\$76,117.00	\$2,541.00	\$73,576.00
FAIRFIELD	739	1,576	450	1,126	\$246,101.00	\$7,521.00	\$238,580.00
FAYETTE	137	251	44	207	\$44,947.00	\$4,007.00	\$40,940.00
FRANKLIN	11,026	23,881	5,684	18,197	\$3,815,324.00	\$156,094.00	\$3,659,230.00
FULTON	60	97	2	95	\$16,813.00	\$991.00	\$15,822.00
GALLIA	375	809	242	567	\$124,043.00	\$4,063.00	\$119,980.00
GEAUGA	64	105	11	94	\$19,401.00	\$410.00	\$18,991.00
GREENE	540	1,054	233	821	\$172,921.00	\$4,208.00	\$168,713.00

Source: GRP342RA Report from Management Information Services. Data includes ADC-Regular, ADC-Incapacitated, and Vendor Payments.

**TABLE 1  
OHIO WORKS FIRST REGULAR  
JULY 2007**

OHIO COUNTY	ASSISTANCE GROUP	RECIPIENTS	ADULTS	CHILDREN	ACTUAL EXPENDITURES		
					GROSS AMOUNT	CANCELLED AMOUNT	NET AMOUNT
<b>STATEWIDE</b>	<b>75,169</b>	<b>154,067</b>	<b>34,572</b>	<b>119,495</b>	<b>\$25,305,126.00</b>	<b>\$944,204.00</b>	<b>\$24,360,922.00</b>
GUERNSEY	151	246	26	220	\$44,449.00	\$0.00	\$44,449.00
HAMILTON	7,269	16,507	3,729	12,778	\$2,688,995.00	\$94,197.00	\$2,594,798.00
HANCOCK	112	163	1	162	\$31,429.00	\$2,646.00	\$28,783.00
HARDIN	67	107	6	101	\$20,926.00	\$562.00	\$20,364.00
HARRISON	90	190	41	149	\$29,145.00	\$709.00	\$28,436.00
HENRY	34	49	4	45	\$10,243.00	\$0.00	\$10,243.00
HIGHLAND	191	394	78	316	\$61,731.00	\$1,162.00	\$60,569.00
HOCKING	263	555	145	410	\$86,744.00	\$2,563.00	\$84,181.00
HOLMES	42	77	13	64	\$12,532.00	\$775.00	\$11,757.00
HURON	171	263	4	259	\$49,737.00	\$3,314.00	\$46,423.00
JACKSON	293	507	56	451	\$88,692.00	\$5,294.00	\$83,398.00
JEFFERSON	675	1,412	371	1,041	\$219,438.00	\$10,212.00	\$209,226.00
KNOX	236	484	129	355	\$76,602.00	\$1,572.00	\$75,030.00
LAKE	430	830	169	661	\$143,904.00	\$4,554.00	\$139,350.00
LAWRENCE	746	1,409	279	1,130	\$233,296.00	\$7,006.00	\$226,290.00
LICKING	555	1,109	254	855	\$175,304.00	\$3,733.00	\$171,571.00
LOGAN	179	363	81	282	\$60,912.00	\$980.00	\$59,932.00
LORAIN	1,836	3,824	788	3,036	\$607,772.00	\$18,094.00	\$589,678.00
LUCAS	5,544	11,956	3,069	8,887	\$1,907,225.00	\$97,720.00	\$1,809,505.00
MADISON	199	424	122	302	\$72,315.00	\$581.00	\$71,734.00
MAHONING	2,827	6,283	1,611	4,672	\$977,971.00	\$29,441.00	\$948,530.00
MARION	380	691	91	600	\$118,418.00	\$3,128.00	\$115,290.00
MEDINA	204	381	81	300	\$63,120.00	\$2,086.00	\$61,034.00
MEIGS	192	369	80	289	\$61,008.00	\$2,502.00	\$58,506.00
MERCER	62	117	29	88	\$19,355.00	\$826.00	\$18,529.00
MIAMI	288	507	76	431	\$86,946.00	\$1,817.00	\$85,129.00
MONROE	49	105	29	76	\$16,154.00	\$336.00	\$15,818.00
MONTGOMERY	5,021	10,189	2,374	7,815	\$1,659,536.00	\$59,211.00	\$1,600,325.00
MORGAN	80	137	19	118	\$23,835.00	\$245.00	\$23,590.00
MORROW	109	202	39	163	\$32,471.00	\$699.00	\$31,772.00

Source: GRP342RA Report from Management Information Services. Data includes ADC-Regular, ADC-Incapacitated, and Vendor Payments.

**TABLE 1  
OHIO WORKS FIRST REGULAR  
JULY 2007**

OHIO COUNTY	ASSISTANCE GROUP	RECIPIENTS	ADULTS	CHILDREN	ACTUAL EXPENDITURES		
					GROSS AMOUNT	CANCELLED AMOUNT	NET AMOUNT
<b>STATEWIDE</b>	<b>75,169</b>	<b>154,067</b>	<b>34,572</b>	<b>119,495</b>	<b>\$25,305,126.00</b>	<b>\$944,204.00</b>	<b>\$24,360,922.00</b>
MUSKINGUM	810	1,612	381	1,231	\$255,642.00	\$5,397.00	\$250,245.00
NOBLE	35	75	19	56	\$11,574.00	\$735.00	\$10,839.00
OTTAWA	113	240	58	182	\$37,381.00	\$488.00	\$36,893.00
PAULDING	79	175	56	119	\$27,148.00	\$836.00	\$26,312.00
PERRY	235	477	89	388	\$73,243.00	\$1,813.00	\$71,430.00
PICKAWAY	365	813	219	594	\$124,834.00	\$3,285.00	\$121,549.00
PIKE	331	663	146	517	\$110,122.00	\$4,309.00	\$105,813.00
PORTAGE	399	759	144	615	\$126,241.00	\$3,857.00	\$122,384.00
PREBLE	177	371	79	292	\$57,480.00	\$1,201.00	\$56,279.00
PUTNAM	27	44	3	41	\$8,690.00	\$490.00	\$8,200.00
RICHLAND	618	1,120	197	923	\$196,476.00	\$6,243.00	\$190,233.00
ROSS	604	1,188	267	921	\$196,525.00	\$6,369.00	\$190,156.00
SANDUSKY	176	313	39	274	\$53,753.00	\$980.00	\$52,773.00
SCIOTO	1,021	1,846	295	1,551	\$322,299.00	\$10,964.00	\$311,335.00
SENECA	167	340	52	288	\$56,806.00	\$0.00	\$56,806.00
SHELBY	143	264	25	239	\$45,775.00	\$2,861.00	\$42,914.00
STARK	2,591	5,419	1,389	4,030	\$857,514.00	\$33,885.00	\$823,629.00
SUMMIT	4,270	8,557	2,114	6,443	\$1,455,998.00	\$43,822.00	\$1,412,176.00
TRUMBULL	1,283	2,498	466	2,032	\$417,977.00	\$8,665.00	\$409,312.00
TUSCARAWAS	320	603	132	471	\$106,284.00	\$3,797.00	\$102,487.00
UNION	116	241	64	177	\$38,118.00	\$336.00	\$37,782.00
VAN WERT	50	77	4	73	\$14,469.00	\$672.00	\$13,797.00
VINTON	118	233	53	180	\$36,905.00	\$1,151.00	\$35,754.00
WARREN	204	329	31	298	\$60,605.00	\$3,937.00	\$56,668.00
WASHINGTON	139	205	4	201	\$40,175.00	\$900.00	\$39,275.00
WAYNE	385	814	249	565	\$125,516.00	\$6,853.00	\$118,663.00
WILLIAMS	142	331	106	225	\$51,634.00	\$245.00	\$51,389.00
WOOD	211	355	33	322	\$64,289.00	\$2,874.00	\$61,415.00
WYANDOT	41	81	17	64	\$13,742.00	\$0.00	\$13,742.00

Source: GRP342RA Report from Management Information Services. Data includes ADC-Regular, ADC-Incapacitated, and Vendor Payments.

**TABLE 1  
OHIO WORKS FIRST UNEMPLOYED  
JULY 2007**

OHIO COUNTY	ASSISTANCE GROUP	RECIPIENTS	ADULTS	CHILDREN	ACTUAL EXPENDITURES		
					GROSS AMOUNT	CANCELLED AMOUNT	NET AMOUNT
<b>STATEWIDE</b>	<b>2,832</b>	<b>11,428</b>	<b>5,174</b>	<b>6,254</b>	<b>\$1,309,495.00</b>	<b>\$48,405.00</b>	<b>\$1,261,090.00</b>
ADAMS	0	0	0	0	\$0.00	\$0.00	\$0.00
ALLEN	0	0	0	0	\$0.00	\$0.00	\$0.00
ASHLAND	0	0	0	0	\$0.00	\$0.00	\$0.00
ASHTABULA	23	109	45	64	\$11,202.00	\$507.00	\$10,695.00
ATHENS	93	343	170	173	\$41,400.00	\$1,407.00	\$39,993.00
AUGLAIZE	0	0	0	0	\$0.00	\$0.00	\$0.00
BELMONT	16	60	32	28	\$6,537.00	\$0.00	\$6,537.00
BROWN	0	0	0	0	\$0.00	\$0.00	\$0.00
BUTLER	1	2	1	1	\$336.00	\$0.00	\$336.00
CARROLL	3	17	6	11	\$1,253.00	\$0.00	\$1,253.00
CHAMPAIGN	14	53	28	25	\$6,046.00	\$457.00	\$5,589.00
CLARK	42	166	83	83	\$21,912.00	\$487.00	\$21,425.00
CLERMONT	4	18	8	10	\$2,763.00	\$507.00	\$2,256.00
CLINTON	1	3	2	1	\$410.00	\$0.00	\$410.00
COLUMBIANA	4	18	8	10	\$1,721.00	\$0.00	\$1,721.00
COSHOCTON	6	23	11	12	\$3,045.00	\$0.00	\$3,045.00
CRAWFORD	3	12	6	6	\$1,203.00	\$294.00	\$909.00
CUYAHOGA	251	986	470	516	\$115,742.00	\$4,752.00	\$110,990.00
DARKE	7	31	15	16	\$4,949.00	\$0.00	\$4,949.00
DEFIANCE	4	16	8	8	\$1,763.00	\$0.00	\$1,763.00
DELAWARE	28	106	48	58	\$14,210.00	\$0.00	\$14,210.00
ERIE	2	13	4	9	\$1,397.00	\$0.00	\$1,397.00
FAIRFIELD	85	364	168	196	\$40,810.00	\$1,017.00	\$39,793.00
FAYETTE	4	13	8	5	\$2,117.00	\$0.00	\$2,117.00
FRANKLIN	580	2,480	977	1,503	\$282,001.00	\$10,644.00	\$271,357.00
FULTON	2	6	2	4	\$988.00	\$326.00	\$662.00
GALLIA	42	161	84	77	\$16,578.00	\$1,286.00	\$15,292.00
GEAUGA	0	0	0	0	\$0.00	\$0.00	\$0.00
GREENE	12	46	24	22	\$5,176.00	\$0.00	\$5,176.00

Source: GRP342RA Report from Management Information Services. Data includes ADC-Regular, ADC-Incapacitated, and Vendor Payments.

**TABLE 1  
OHIO WORKS FIRST UNEMPLOYED  
JULY 2007**

OHIO COUNTY	ASSISTANCE GROUP	RECIPIENTS	ADULTS	CHILDREN	ACTUAL EXPENDITURES		
					GROSS AMOUNT	CANCELLED AMOUNT	NET AMOUNT
<b>STATEWIDE</b>	<b>2,832</b>	<b>11,428</b>	<b>5,174</b>	<b>6,254</b>	<b>\$1,309,495.00</b>	<b>\$48,405.00</b>	<b>\$1,261,090.00</b>
GUERNSEY	3	14	6	8	\$1,357.00	\$0.00	\$1,357.00
HAMILTON	143	588	268	320	\$69,957.00	\$809.00	\$69,148.00
HANCOCK	0	0	0	0	\$0.00	\$0.00	\$0.00
HARDIN	0	0	0	0	\$0.00	\$0.00	\$0.00
HARRISON	6	25	12	13	\$3,083.00	\$0.00	\$3,083.00
HENRY	0	0	0	0	\$0.00	\$0.00	\$0.00
HIGHLAND	10	41	20	21	\$3,954.00	\$0.00	\$3,954.00
HOCKING	20	78	38	40	\$9,280.00	\$917.00	\$8,363.00
HOLMES	2	8	4	4	\$1,275.00	\$0.00	\$1,275.00
HURON	1	2	0	2	\$0.00	\$336.00	-\$336.00
JACKSON	1	3	2	1	\$587.00	\$0.00	\$587.00
JEFFERSON	47	197	92	105	\$20,926.00	\$410.00	\$20,516.00
KNOX	16	63	32	31	\$6,806.00	\$0.00	\$6,806.00
LAKE	16	59	26	33	\$10,106.00	\$245.00	\$9,861.00
LAWRENCE	38	151	74	77	\$16,864.00	\$524.00	\$16,340.00
LICKING	27	110	54	56	\$10,803.00	\$335.00	\$10,468.00
LOGAN	2	6	4	2	\$1,002.00	\$0.00	\$1,002.00
LORAIN	53	212	90	122	\$25,537.00	\$911.00	\$24,626.00
LUCAS	312	1,218	571	647	\$138,397.00	\$7,645.00	\$130,752.00
MADISON	20	79	40	39	\$8,859.00	\$388.00	\$8,471.00
MAHONING	87	356	170	186	\$42,560.00	\$325.00	\$42,235.00
MARION	5	14	7	7	\$1,989.00	\$0.00	\$1,989.00
MEDINA	5	23	10	13	\$1,612.00	\$0.00	\$1,612.00
MEIGS	10	39	20	19	\$4,318.00	\$0.00	\$4,318.00
MERCER	3	17	6	11	\$1,216.00	\$0.00	\$1,216.00
MIAMI	6	21	12	9	\$2,670.00	\$0.00	\$2,670.00
MONROE	6	21	12	9	\$2,119.00	\$410.00	\$1,709.00
MONTGOMERY	19	77	21	56	\$8,098.00	\$410.00	\$7,688.00
MORGAN	1	3	2	1	\$286.00	\$0.00	\$286.00
MORROW	3	12	6	6	\$1,146.00	\$0.00	\$1,146.00

Source: GRP342RA Report from Management Information Services. Data includes ADC-Regular, ADC-Incapacitated, and Vendor Payments.

**TABLE 1  
OHIO WORKS FIRST UNEMPLOYED  
JULY 2007**

OHIO COUNTY	ASSISTANCE GROUP	RECIPIENTS	ADULTS	CHILDREN	ACTUAL EXPENDITURES		
					GROSS AMOUNT	CANCELLED AMOUNT	NET AMOUNT
<b>STATEWIDE</b>	<b>2,832</b>	<b>11,428</b>	<b>5,174</b>	<b>6,254</b>	<b>\$1,309,495.00</b>	<b>\$48,405.00</b>	<b>\$1,261,090.00</b>
MUSKINGUM	53	210	107	103	\$21,963.00	\$436.00	\$21,527.00
NOBLE	0	0	0	0	\$0.00	\$0.00	\$0.00
OTTAWA	12	40	12	28	\$3,423.00	\$398.00	\$3,025.00
PAULDING	14	63	28	35	\$7,130.00	\$0.00	\$7,130.00
PERRY	31	122	62	60	\$13,587.00	\$410.00	\$13,177.00
PICKAWAY	18	69	35	34	\$9,860.00	\$410.00	\$9,450.00
PIKE	17	59	33	26	\$7,061.00	\$0.00	\$7,061.00
PORTAGE	4	13	8	5	\$2,179.00	\$0.00	\$2,179.00
PREBLE	6	26	12	14	\$3,010.00	\$0.00	\$3,010.00
PUTNAM	3	3	0	3	\$735.00	\$0.00	\$735.00
RICHLAND	8	31	16	15	\$4,968.00	\$0.00	\$4,968.00
ROSS	33	141	59	82	\$15,919.00	\$224.00	\$15,695.00
SANDUSKY	25	65	2	63	\$8,893.00	\$336.00	\$8,557.00
SCIOTO	34	131	66	65	\$13,773.00	\$2,157.00	\$11,616.00
SENECA	1	4	2	2	\$507.00	\$0.00	\$507.00
SHELBY	1	3	2	1	\$410.00	\$0.00	\$410.00
STARK	146	598	283	315	\$62,755.00	\$1,497.00	\$61,258.00
SUMMIT	222	900	435	465	\$104,352.00	\$5,084.00	\$99,268.00
TRUMBULL	33	128	63	65	\$15,733.00	\$715.00	\$15,018.00
TUSCARAWAS	14	66	27	39	\$6,366.00	\$1,031.00	\$5,335.00
UNION	11	46	22	24	\$3,704.00	\$0.00	\$3,704.00
VAN WERT	0	0	0	0	\$0.00	\$0.00	\$0.00
VINTON	6	24	12	12	\$2,562.00	\$0.00	\$2,562.00
WARREN	4	14	6	8	\$2,069.00	\$0.00	\$2,069.00
WASHINGTON	0	0	0	0	\$0.00	\$0.00	\$0.00
WAYNE	24	94	46	48	\$8,832.00	\$358.00	\$8,474.00
WILLIAMS	16	66	29	37	\$7,685.00	\$0.00	\$7,685.00
WOOD	7	29	0	29	\$3,653.00	\$0.00	\$3,653.00
WYANDOT	0	0	0	0	\$0.00	\$0.00	\$0.00

Source: GRP342RA Report from Management Information Services. Data includes ADC-Regular, ADC-Incapacitated, and Vendor Payments.



**TABLE 2**  
**TITLE IV-E FOSTER CARE AND ADOPTION ASSISTANCE**  
**DATA NOT AVAILABLE FOR JULY 2007**

OHIO COUNTY	FOSTER CARE						ADOPTION ASSISTANCE		TOTAL FOSTER CARE AND ADOPTION ASSISTANCE	
	FOSTER FAMILY HOMES		CHILD CARE INSTITUTIONS		HOMES & INSTITUTIONS		CHILDREN	GROSS AMOUNT	CHILDREN	GROSS AMOUNT
	CHILDREN	GROSS AMOUNT	CHILDREN	GROSS AMOUNT	CHILDREN	GROSS AMOUNT				
STATEWIDE	0	\$0.00	0	\$0.00	0	\$0.00	0	\$0.00	0	\$0.00
ADAMS					0	\$0.00			0	\$0.00
ALLEN					0	\$0.00			0	\$0.00
ASHLAND					0	\$0.00			0	\$0.00
ASHTABULA					0	\$0.00			0	\$0.00
ATHENS					0	\$0.00			0	\$0.00
AUGLAIZE					0	\$0.00			0	\$0.00
BELMONT					0	\$0.00			0	\$0.00
BROWN					0	\$0.00			0	\$0.00
BUTLER					0	\$0.00			0	\$0.00
CARROLL					0	\$0.00			0	\$0.00
CHAMPAIGN					0	\$0.00			0	\$0.00
CLARK					0	\$0.00			0	\$0.00
CLERMONT					0	\$0.00			0	\$0.00
CLINTON					0	\$0.00			0	\$0.00
COLUMBIANA					0	\$0.00			0	\$0.00
COSHOCTON					0	\$0.00			0	\$0.00
CRAWFORD					0	\$0.00			0	\$0.00
CUYAHOGA					0	\$0.00			0	\$0.00
DARKE					0	\$0.00			0	\$0.00
DEFIANCE					0	\$0.00			0	\$0.00
DELAWARE					0	\$0.00			0	\$0.00
ERIE					0	\$0.00			0	\$0.00
FAIRFIELD					0	\$0.00			0	\$0.00
FAYETTE					0	\$0.00			0	\$0.00
FRANKLIN					0	\$0.00			0	\$0.00
FULTON					0	\$0.00			0	\$0.00
GALLIA					0	\$0.00			0	\$0.00
GEAUGA					0	\$0.00			0	\$0.00
GREENE					0	\$0.00			0	\$0.00

SOURCE: GBS003RB Report from Management Information Services. Federal funds only.

**TABLE 2**  
**TITLE IV-E FOSTER CARE AND ADOPTION ASSISTANCE**  
**DATA NOT AVAILABLE FOR JULY 2007**

OHIO COUNTY	FOSTER CARE						ADOPTION ASSISTANCE		TOTAL FOSTER CARE AND ADOPTION ASSISTANCE	
	FOSTER FAMILY HOMES		CHILD CARE INSTITUTIONS		HOMES & INSTITUTIONS		CHILDREN	GROSS AMOUNT	CHILDREN	GROSS AMOUNT
	CHILDREN	GROSS AMOUNT	CHILDREN	GROSS AMOUNT	CHILDREN	GROSS AMOUNT				
STATEWIDE	0	\$0.00	0	\$0.00	0	\$0.00	0	\$0.00	0	\$0.00
GUERNSEY					0	\$0.00			0	\$0.00
HAMILTON					0	\$0.00			0	\$0.00
HANCOCK					0	\$0.00			0	\$0.00
HARDIN					0	\$0.00			0	\$0.00
HARRISON					0	\$0.00			0	\$0.00
HENRY					0	\$0.00			0	\$0.00
HIGHLAND					0	\$0.00			0	\$0.00
HOCKING					0	\$0.00			0	\$0.00
HOLMES					0	\$0.00			0	\$0.00
HURON					0	\$0.00			0	\$0.00
JACKSON					0	\$0.00			0	\$0.00
JEFFERSON					0	\$0.00			0	\$0.00
KNOX					0	\$0.00			0	\$0.00
LAKE					0	\$0.00			0	\$0.00
LAWRENCE					0	\$0.00			0	\$0.00
LICKING					0	\$0.00			0	\$0.00
LOGAN					0	\$0.00			0	\$0.00
LORAIN					0	\$0.00			0	\$0.00
LUCAS					0	\$0.00			0	\$0.00
MADISON					0	\$0.00			0	\$0.00
MAHONING					0	\$0.00			0	\$0.00
MARION					0	\$0.00			0	\$0.00
MEDINA					0	\$0.00			0	\$0.00
MEIGS					0	\$0.00			0	\$0.00
MERCER					0	\$0.00			0	\$0.00
MIAMI					0	\$0.00			0	\$0.00
MONROE					0	\$0.00			0	\$0.00
MONTGOMERY					0	\$0.00			0	\$0.00
MORGAN					0	\$0.00			0	\$0.00
MORROW					0	\$0.00			0	\$0.00

SOURCE: GBS003RB Report from Management Information Services. Federal funds only.

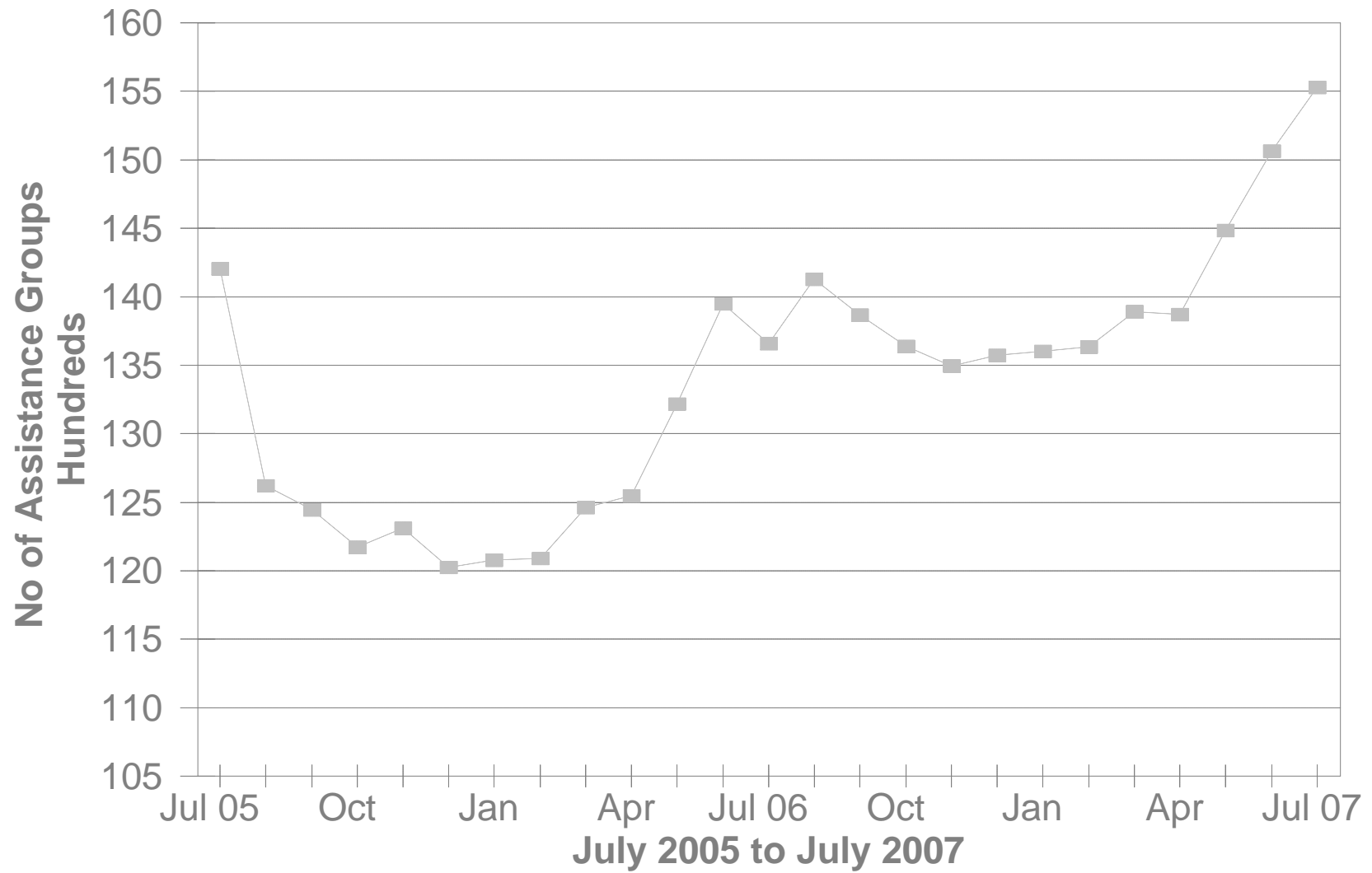
**TABLE 2**  
**TITLE IV-E FOSTER CARE AND ADOPTION ASSISTANCE**  
**DATA NOT AVAILABLE FOR JULY 2007**

OHIO COUNTY	FOSTER CARE						ADOPTION ASSISTANCE		TOTAL FOSTER CARE AND ADOPTION ASSISTANCE	
	FOSTER FAMILY HOMES		CHILD CARE INSTITUTIONS		HOMES & INSTITUTIONS		CHILDREN	GROSS AMOUNT	CHILDREN	GROSS AMOUNT
	CHILDREN	GROSS AMOUNT	CHILDREN	GROSS AMOUNT	CHILDREN	GROSS AMOUNT				
STATEWIDE	0	\$0.00	0	\$0.00	0	\$0.00	0	\$0.00	0	\$0.00
MUSKINGUM					0	\$0.00			0	\$0.00
NOBLE					0	\$0.00			0	\$0.00
OTTAWA					0	\$0.00			0	\$0.00
PAULDING					0	\$0.00			0	\$0.00
PERRY					0	\$0.00			0	\$0.00
PICKAWAY					0	\$0.00			0	\$0.00
PIKE					0	\$0.00			0	\$0.00
PORTAGE					0	\$0.00			0	\$0.00
PREBLE					0	\$0.00			0	\$0.00
PUTNAM					0	\$0.00			0	\$0.00
RICHLAND					0	\$0.00			0	\$0.00
ROSS					0	\$0.00			0	\$0.00
SANDUSKY					0	\$0.00			0	\$0.00
SCIOTO					0	\$0.00			0	\$0.00
SENECA					0	\$0.00			0	\$0.00
SHELBY					0	\$0.00			0	\$0.00
STARK					0	\$0.00			0	\$0.00
SUMMIT					0	\$0.00			0	\$0.00
TRUMBULL					0	\$0.00			0	\$0.00
TUSCARAWAS					0	\$0.00			0	\$0.00
UNION					0	\$0.00			0	\$0.00
VAN WERT					0	\$0.00			0	\$0.00
VINTON					0	\$0.00			0	\$0.00
WARREN					0	\$0.00			0	\$0.00
WASHINGTON					0	\$0.00			0	\$0.00
WAYNE					0	\$0.00			0	\$0.00
WILLIAMS					0	\$0.00			0	\$0.00
WOOD					0	\$0.00			0	\$0.00
WYANDOT					0	\$0.00			0	\$0.00

SOURCE: GBS003RB Report from Management Information Services. Federal funds only.

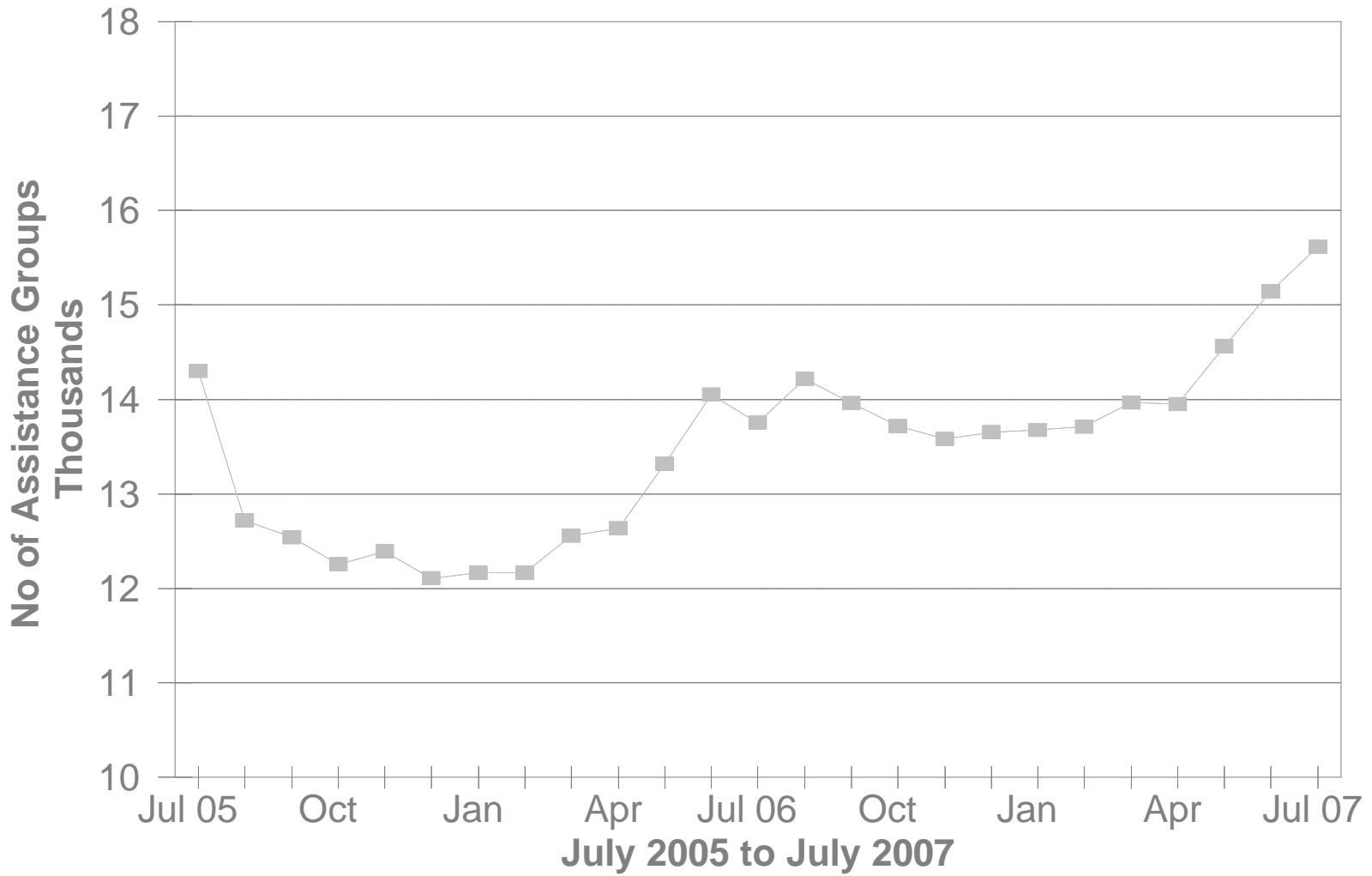
# DA Cash Assistance Groups

## During The Last 25 Months



# DA Cash Recipients

## During The Last 25 Months



**TABLE 3  
DISABILITY ASSISTANCE (DA)  
JULY 2007**

OHIO COUNTY	CASH ASSISTANCE							MEDICAL ASSISTANCE	
	ASSISTANCE GROUPS	RECIPIENTS	ADULTS	CHILDREN	ACTUAL EXPENDITURES			UNDUPLICATED RECIPIENTS	ACTUAL AMOUNT PAID
					GROSS AMOUNT	CANCELLED AMOUNT	NET AMOUNT		
<b>STATEWIDE</b>	<b>15,532</b>	<b>15,614</b>	<b>15,614</b>	<b>0</b>	<b>\$2,442,397.00</b>	<b>\$109,088.00</b>	<b>\$2,333,309.00</b>	<b>3,049</b>	<b>\$1,462,384.78</b>
ADAMS	105	108	108	0	\$14,671	\$864	\$13,807	17	\$9,415.77
ALLEN	133	133	133	0	\$24,055	\$575	\$23,480	11	\$6,494.13
ASHLAND	35	37	37	0	\$4,115	\$0	\$4,115	13	\$5,886.45
ASHTABULA	298	299	299	0	\$49,217	\$311	\$48,906	18	\$6,534.62
ATHENS	290	294	294	0	\$35,259	\$1,564	\$33,695	17	\$4,087.10
AUGLAIZE	26	26	26	0	\$4,158	\$827	\$3,331	7	\$2,627.73
BELMONT	144	146	146	0	\$20,851	\$230	\$20,621	23	\$8,395.22
BROWN	89	90	90	0	\$16,709	\$1,699	\$15,010	11	\$3,565.15
BUTLER	461	461	461	0	\$74,162	\$2,630	\$71,532	46	\$21,913.62
CARROLL	26	26	26	0	\$2,937	\$0	\$2,937	5	\$1,182.79
CHAMPAIGN	48	48	48	0	\$6,961	\$675	\$6,286	8	\$3,798.08
CLARK	388	389	389	0	\$57,449	\$3,389	\$54,060	67	\$40,851.18
CLERMONT	212	213	213	0	\$30,935	\$502	\$30,433	15	\$9,352.94
CLINTON	76	77	77	0	\$12,571	\$230	\$12,341	1	\$1,209.01
COLUMBIANA	129	129	129	0	\$24,605	\$345	\$24,260	37	\$19,823.09
COSHOCTON	122	123	123	0	\$16,809	\$115	\$16,694	4	\$2,676.60
CRAWFORD	49	49	49	0	\$5,569	\$345	\$5,224	10	\$9,164.06
CUYAHOGA	1,051	1,056	1,056	0	\$171,314	\$13,666	\$157,648	617	\$231,255.83
DARKE	32	33	33	0	\$4,097	\$345	\$3,752	5	\$2,858.80
DEFIANCE	26	26	26	0	\$3,731	\$645	\$3,086	9	\$4,618.25
DELAWARE	96	97	97	0	\$12,054	\$1,035	\$11,019	11	\$5,940.20
ERIE	103	103	103	0	\$16,013	\$1,157	\$14,856	14	\$5,488.43
FAIRFIELD	192	192	192	0	\$24,468	\$664	\$23,804	21	\$15,316.40
FAYETTE	40	40	40	0	\$7,008	\$0	\$7,008	15	\$5,516.43
FRANKLIN	1,257	1,265	1,265	0	\$224,397	\$7,862	\$216,535	263	\$154,860.11
FULTON	46	46	46	0	\$6,905	\$115	\$6,790	4	\$2,036.57
GALLIA	93	94	94	0	\$15,685	\$115	\$15,570	43	\$24,012.06
GEAUGA	30	30	30	0	\$3,536	\$115	\$3,421	1	\$750.80
GREENE	179	179	179	0	\$23,744	\$1,643	\$22,101	36	\$23,447.09

\*SOURCE: GRP342RA Report from Management Information Services and BOMC 9260-R001 Report from Medicaid Management Information Services.

**TABLE 3  
DISABILITY ASSISTANCE (DA)  
JULY 2007**

OHIO COUNTY	CASH ASSISTANCE							MEDICAL ASSISTANCE	
	ASSISTANCE GROUPS	RECIPIENTS	ADULTS	CHILDREN	ACTUAL EXPENDITURES			UNDUPLICATED RECIPIENTS	ACTUAL AMOUNT PAID
					GROSS AMOUNT	CANCELLED AMOUNT	NET AMOUNT		
<b>STATEWIDE</b>	<b>15,532</b>	<b>15,614</b>	<b>15,614</b>	<b>0</b>	<b>\$2,442,397.00</b>	<b>\$109,088.00</b>	<b>\$2,333,309.00</b>	<b>3,049</b>	<b>\$1,462,384.78</b>
GUERNSEY	151	152	152	0	\$21,353	\$856	\$20,497	14	\$6,722.77
HAMILTON	703	703	703	0	\$111,418	\$4,887	\$106,531	89	\$45,467.24
HANCOCK	87	87	87	0	\$12,792	\$345	\$12,447	9	\$5,121.11
HARDIN	46	46	46	0	\$7,539	\$230	\$7,309	13	\$4,648.96
HARRISON	59	59	59	0	\$8,577	\$115	\$8,462	4	\$605.09
HENRY	8	8	8	0	\$1,809	\$0	\$1,809	2	\$558.49
HIGHLAND	120	120	120	0	\$17,287	\$979	\$16,308	15	\$7,058.53
HOCKING	67	69	69	0	\$7,643	\$215	\$7,428	9	\$3,195.24
HOLMES	27	27	27	0	\$4,140	\$230	\$3,910	1	\$429.57
HURON	71	72	72	0	\$10,107	\$1,609	\$8,498	5	\$3,308.25
JACKSON	128	129	129	0	\$22,846	\$1,138	\$21,708	27	\$24,128.03
JEFFERSON	191	191	191	0	\$30,593	\$1,253	\$29,340	31	\$15,178.13
KNOX	121	121	121	0	\$19,644	\$1,847	\$17,797	12	\$7,829.98
LAKE	139	139	139	0	\$18,703	\$115	\$18,588	26	\$11,160.19
LAWRENCE	80	80	80	0	\$12,198	\$115	\$12,083	26	\$11,974.41
LICKING	283	285	285	0	\$49,769	\$2,134	\$47,635	19	\$11,200.19
LOGAN	74	76	76	0	\$10,662	\$0	\$10,662	14	\$3,959.81
LORAIN	390	391	391	0	\$62,872	\$3,489	\$59,383	57	\$31,224.66
LUCAS	1,074	1,077	1,077	0	\$167,180	\$11,536	\$155,644	199	\$85,610.12
MADISON	28	28	28	0	\$4,231	\$115	\$4,116	13	\$7,808.81
MAHONING	273	273	273	0	\$48,316	\$3,433	\$44,883	125	\$67,805.91
MARION	189	193	193	0	\$35,188	\$1,339	\$33,849	8	\$8,457.76
MEDINA	82	83	83	0	\$11,987	\$460	\$11,527	14	\$5,875.06
MEIGS	84	84	84	0	\$12,286	\$0	\$12,286	29	\$9,956.66
MERCER	36	36	36	0	\$5,110	\$0	\$5,110	5	\$934.26
MIAMI	79	79	79	0	\$10,021	\$345	\$9,676	11	\$5,493.68
MONROE	29	29	29	0	\$3,253	\$0	\$3,253	10	\$2,847.28
MONTGOMERY	885	889	889	0	\$137,858	\$6,438	\$131,420	207	\$103,939.45
MORGAN	55	57	57	0	\$6,995	\$0	\$6,995	11	\$5,691.54
MORROW	63	63	63	0	\$15,280	\$118	\$15,162	9	\$6,494.67

\*SOURCE: GRP342RA Report from Management Information Services and BOMC 9260-R001 Report from Medicaid Management Information Services.

**TABLE 3  
DISABILITY ASSISTANCE (DA)  
JULY 2007**

OHIO COUNTY	CASH ASSISTANCE							MEDICAL ASSISTANCE	
	ASSISTANCE GROUPS	RECIPIENTS	ADULTS	CHILDREN	ACTUAL EXPENDITURES			UNDUPLICATED RECIPIENTS	ACTUAL AMOUNT PAID
					GROSS AMOUNT	CANCELLED AMOUNT	NET AMOUNT		
<b>STATEWIDE</b>	<b>15,532</b>	<b>15,614</b>	<b>15,614</b>	<b>0</b>	<b>\$2,442,397.00</b>	<b>\$109,088.00</b>	<b>\$2,333,309.00</b>	<b>3,049</b>	<b>\$1,462,384.78</b>
MUSKINGUM	388	392	392	0	\$51,487	\$2,635	\$48,852	14	\$6,597.47
NOBLE	19	19	19	0	\$2,904	\$0	\$2,904	4	\$1,022.17
OTTAWA	49	50	50	0	\$7,641	\$115	\$7,526	9	\$5,583.91
PAULDING	26	28	28	0	\$4,579	\$115	\$4,464	2	\$453.52
PERRY	118	120	120	0	\$15,872	\$0	\$15,872	13	\$7,006.27
PICKAWAY	80	80	80	0	\$11,161	\$345	\$10,816	11	\$8,822.34
PIKE	65	65	65	0	\$7,590	\$230	\$7,360	29	\$9,315.65
PORTAGE	126	126	126	0	\$26,598	\$345	\$26,253	21	\$8,922.05
PREBLE	54	54	54	0	\$7,805	\$115	\$7,690	8	\$3,734.85
PUTNAM	10	10	10	0	\$1,150	\$0	\$1,150	3	\$2,327.27
RICHLAND	328	329	329	0	\$48,186	\$1,977	\$46,209	14	\$5,345.13
ROSS	168	170	170	0	\$24,599	\$1,278	\$23,321	41	\$21,651.56
SANDUSKY	86	87	87	0	\$15,683	\$1,150	\$14,533	8	\$1,923.45
SCIOTO	273	274	274	0	\$45,013	\$1,937	\$43,076	36	\$20,202.71
SENECA	89	89	89	0	\$13,728	\$230	\$13,498	17	\$6,577.08
SHELBY	43	43	43	0	\$5,537	\$115	\$5,422	10	\$3,106.43
STARK	504	505	505	0	\$77,962	\$3,630	\$74,332	74	\$39,181.30
SUMMIT	510	510	510	0	\$88,132	\$4,646	\$83,486	268	\$117,346.72
TRUMBULL	334	334	334	0	\$52,472	\$1,510	\$50,962	36	\$16,395.36
TUSCARAWAS	125	126	126	0	\$18,575	\$345	\$18,230	10	\$4,145.63
UNION	30	30	30	0	\$3,502	\$0	\$3,502	5	\$1,797.77
VAN WERT	32	34	34	0	\$4,367	\$159	\$4,208	3	\$973.01
VINTON	67	68	68	0	\$10,199	\$0	\$10,199	10	\$3,869.43
WARREN	93	95	95	0	\$14,471	\$460	\$14,011	9	\$3,054.61
WASHINGTON	151	151	151	0	\$23,649	\$230	\$23,419	10	\$6,391.67
WAYNE	242	243	243	0	\$37,864	\$2,076	\$35,788	10	\$3,643.79
WILLIAMS	51	51	51	0	\$8,873	\$96	\$8,777	3	\$504.39
WOOD	56	58	58	0	\$8,697	\$230	\$8,467	3	\$1,882.00
WYANDOT	17	18	18	0	\$2,459	\$115	\$2,344	5	\$12,842.88
UNKNOWN									\$0.00

\*SOURCE: GRP342RA Report from Management Information Services and BOMC 9260-R001 Report from Medicaid Management Information Services.



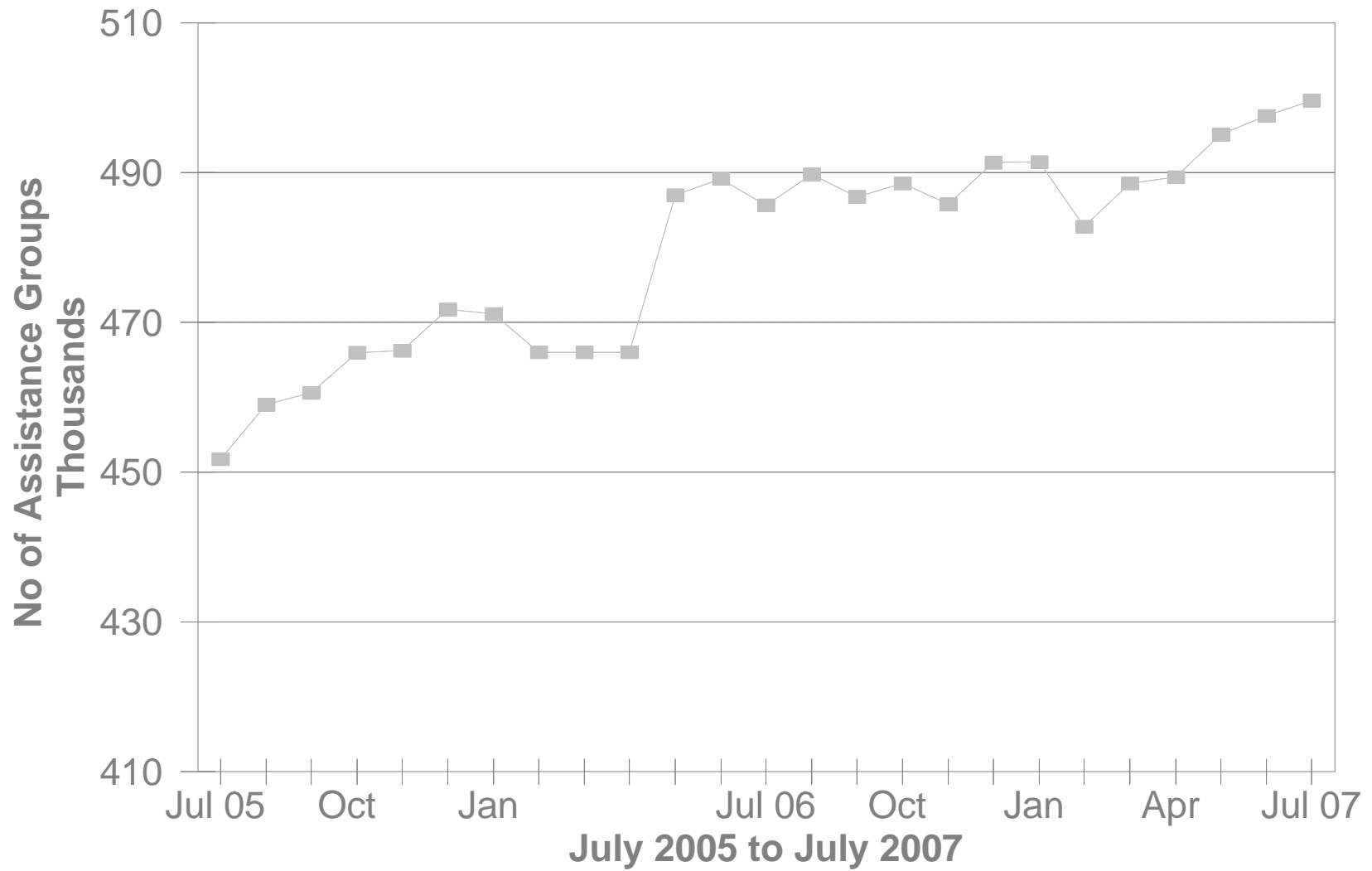
**TABLE 3-A  
DA PAYMENTS FOR MEDICAL SERVICES  
JULY 2007**

CATEGORY OF SERVICES	DISABILITY ASSISTANCE			
	PAYMENTS	CLAIM FREQUENCY	DUPLICATED RECIPIENTS	PERCENT OF TOTAL
ADVANCED PRACTICAL NURSE SVCS.	\$2,608.27	66	58	0.2%
AMBULANCE SERVICES	\$0.00	0	0	0.0%
AMBULATORY SURGERY	\$3,839.96	13	11	0.3%
CHIROPRACTER SERVICES	\$0.00	0	0	0.0%
CLINIC	\$8,952.55	167	104	0.6%
DENTAL SERVICES	\$4,621.38	42	32	0.3%
EPSDT	\$0.00	0	0	0.0%
FAMILY PLANNING	\$0.00	0	0	0.0%
FEDERALLY QUALIFIED HEALTH CTR	\$0.00	1	1	0.0%
HEALTH MAINTENANCE ORGANIZATION	\$0.00	0	0	0.0%
HOME HEALTH SERVICES	\$0.00	0	0	0.0%
INDEPENDENT LABORATORY	\$10,301.30	212	162	0.7%
INPATIENT HOSPITAL	\$0.00	0	0	0.0%
ICF	\$0.00	0	0	0.0%
MIDWIFERY SERVICES	\$0.00	0	0	0.0%
OPTOMETRIC SERVICES	\$0.00	0	0	0.0%
OUTPATIENT HEALTH SERVICES	\$0.00	0	0	0.0%
PASSPORT WAIVER III	\$0.00	0	0	0.0%
OUTPATIENT HOSPITAL GENERAL	\$0.00	0	0	0.0%
PHYSICAL THERAPY SERVICES	\$0.00	0	0	0.0%
PHYSICIAN SERVICES	\$303,263.85	4,146	1,687	20.7%
PHYSIOLOGICAL LABORATORY	\$2,054.16	8	7	0.1%
PODIATRISTS THERAPY	\$6,486.44	92	74	0.4%
PRESCRIBED DRUGS	\$1,088,488.09	17,333	2,851	74.4%
PRIVATE DUTY NURSING SERVICES	\$0.00	0	0	0.0%
PSYCHOLOGY SERVICES	\$0.00	0	0	0.0%
RURAL HEALTH SERVICES	\$0.00	0	0	0.0%
SNF	\$0.00	0	0	0.0%
SUPPLIES AND MEDICAL EQUIPMENT	\$28,446.17	565	307	1.9%
WAIVERED SERVICES	\$3,322.61	31	33	0.2%
OTHER	\$0.00	0	0	0.0%
<b>STATEWIDE TOTAL</b>	<b>\$1,462,384.78</b>	<b>22,676</b>	<b>5,327</b>	<b>100.00%</b>

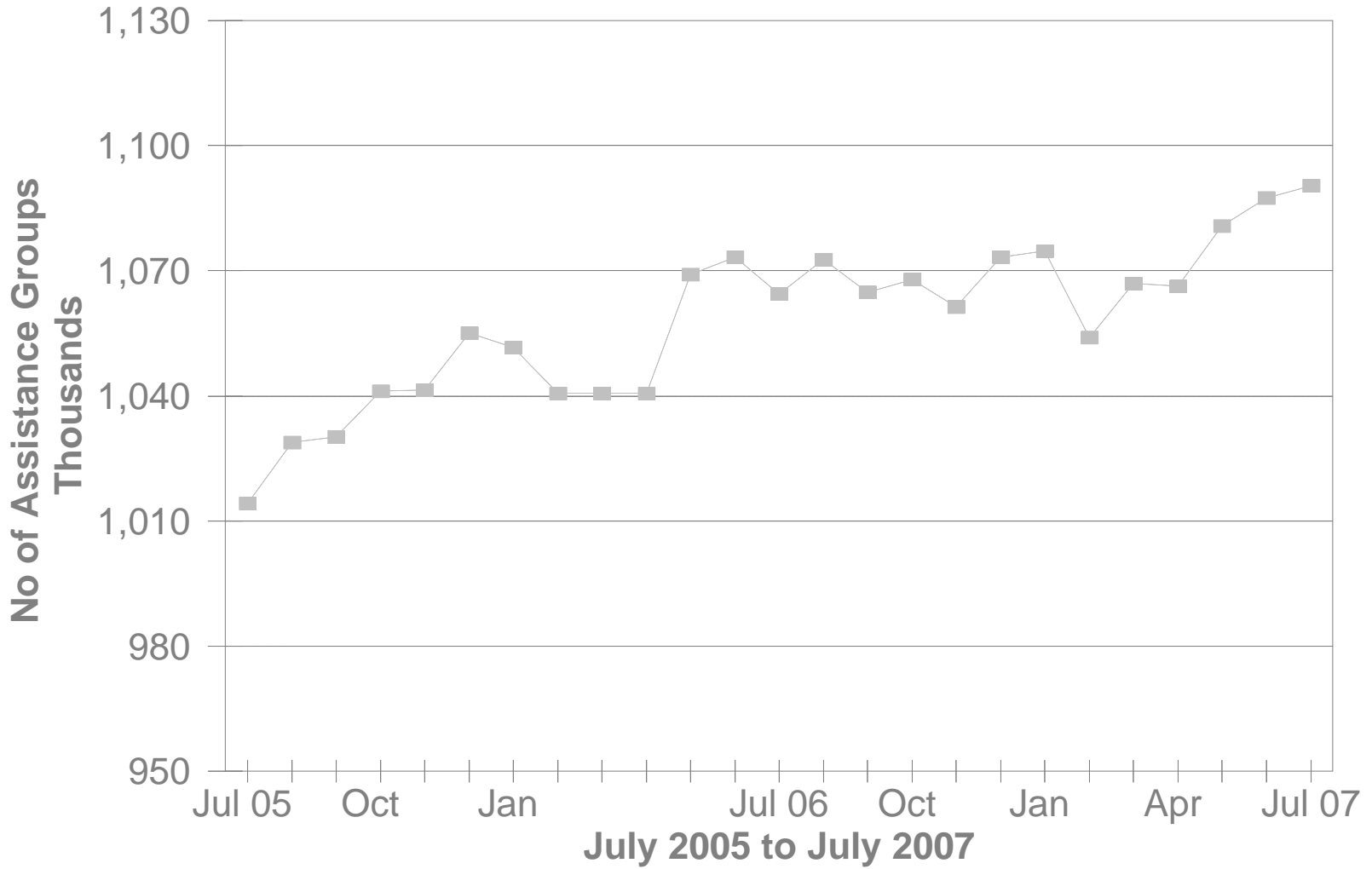
SOURCE: BOMC 9260 Report from Medicaid Management Information Services.

NOTE: Recipients are unduplicated within Category of Services, however, the Statewide Total represents a duplicated count.

# No of FNS Benefits Assistance Groups During The Last 25 Months



# No of FNS Benefits Cash Recipients During The Last 25 Months



**TABLE 5  
FOOD AND NUTRITION BENEFITS  
JULY 2007**

OHIO COUNTY	PERSONS					ASSISTANCE GROUPS			TOTAL COUPONS ISSUED
	PUBLIC ASSISTANCE	NON-PUBLIC ASSISTANCE	TOTAL	AVERAGE ISSUANCE	% CHANGE PREV. MO.	PUBLIC ASSISTANCE	NON-PUBLIC ASSISTANCE	TOTAL	
<b>STATEWIDE</b>	<b>248,228</b>	<b>842,183</b>	<b>1,090,411</b>	<b>\$101</b>	<b>0.3%</b>	<b>180,779</b>	<b>318,830</b>	<b>499,609</b>	<b>\$109,603,726</b>
ADAMS	1,182	3,562	4,744	\$95	1.0%	863	1,174	2,037	\$449,190
ALLEN	1,955	7,462	9,417	\$101	2.5%	1,513	2,519	4,032	\$954,011
ASHLAND	500	2,586	3,086	\$97	1.7%	370	902	1,272	\$298,438
ASHTABULA	3,345	9,136	12,481	\$98	-0.2%	2,439	3,286	5,725	\$1,224,158
ATHENS	2,197	4,928	7,125	\$94	-1.8%	1,644	1,892	3,536	\$666,627
AUGLAIZE	301	1,797	2,098	\$101	0.1%	273	625	898	\$211,189
BELMONT	1,914	5,050	6,964	\$88	-0.5%	1,466	1,837	3,303	\$610,971
BROWN	682	2,733	3,415	\$94	-1.7%	533	937	1,470	\$319,812
BUTLER	5,495	21,214	26,709	\$105	0.4%	4,267	7,613	11,880	\$2,812,847
CARROLL	350	1,867	2,217	\$91	-3.4%	277	637	914	\$201,248
CHAMPAIGN	629	2,191	2,820	\$97	0.3%	458	758	1,216	\$274,122
CLARK	3,648	13,709	17,357	\$101	-0.5%	2,906	5,095	8,001	\$1,752,697
CLERMONT	2,141	8,896	11,037	\$101	-1.3%	1,661	3,101	4,762	\$1,110,491
CLINTON	656	2,567	3,223	\$98	-0.5%	529	913	1,442	\$314,407
COLUMBIANA	2,643	9,596	12,239	\$95	-0.0%	2,012	3,339	5,351	\$1,166,010
COSHOCTON	778	3,469	4,247	\$95	4.3%	617	1,248	1,865	\$403,730
CRAWFORD	842	3,605	4,447	\$93	1.3%	672	1,295	1,967	\$414,947
CUYAHOGA	26,642	153,649	180,291	\$102	0.2%	16,874	70,192	87,066	\$18,328,659
DARKE	499	1,844	2,343	\$96	1.3%	375	638	1,013	\$224,073
DEFIANCE	559	2,314	2,873	\$98	-1.8%	400	796	1,196	\$282,180
DELAWARE	1,093	3,274	4,367	\$98	-0.6%	787	1,235	2,022	\$428,249
ERIE	1,132	4,647	5,779	\$101	-0.6%	912	1,752	2,664	\$584,812
FAIRFIELD	2,023	8,290	10,313	\$99	1.3%	1,551	2,984	4,535	\$1,022,482
FAYETTE	583	2,128	2,711	\$101	5.4%	467	754	1,221	\$273,757
FRANKLIN	29,585	97,066	126,651	\$106	0.3%	21,047	34,198	55,245	\$13,482,332
FULTON	372	1,735	2,107	\$91	-0.0%	281	583	864	\$191,345
GALLIA	1,727	3,363	5,090	\$95	1.8%	1,205	1,194	2,399	\$482,781
GEAUGA	376	1,312	1,688	\$95	-0.5%	309	473	782	\$159,745
GREENE	1,890	6,437	8,327	\$100	0.3%	1,443	2,487	3,930	\$832,844

Source: CRIS-E GRP304RA and GRP 304RC Reports from Management Information Services. Cuyahoga County data also comes from the GRP 342 RA.

**TABLE 5  
FOOD AND NUTRITION BENEFITS  
JULY 2007**

OHIO COUNTY	PERSONS					ASSISTANCE GROUPS			TOTAL COUPONS ISSUED
	PUBLIC ASSISTANCE	NON-PUBLIC ASSISTANCE	TOTAL	AVERAGE ISSUANCE	% CHANGE PREV. MO.	PUBLIC ASSISTANCE	NON-PUBLIC ASSISTANCE	TOTAL	
<b>STATEWIDE</b>	<b>248,228</b>	<b>842,183</b>	<b>1,090,411</b>	<b>\$101</b>	<b>0.3%</b>	<b>180,779</b>	<b>318,830</b>	<b>499,609</b>	<b>\$109,603,726</b>
GUERNSEY	1,240	4,569	5,809	\$95	-3.6%	1,003	1,660	2,663	\$552,773
HAMILTON	17,732	56,770	74,502	\$106	1.9%	13,032	20,424	33,456	\$7,910,265
HANCOCK	792	3,262	4,054	\$99	0.5%	654	1,168	1,822	\$402,404
HARDIN	356	1,488	1,844	\$94	-0.3%	289	536	825	\$173,083
HARRISON	533	1,416	1,949	\$90	-3.7%	388	507	895	\$176,242
HENRY	206	1,161	1,367	\$91	-0.4%	162	371	533	\$124,708
HIGHLAND	973	3,962	4,935	\$93	2.7%	740	1,346	2,086	\$456,673
HOCKING	878	2,544	3,422	\$94	0.9%	640	880	1,520	\$322,991
HOLMES	149	795	944	\$87	-1.9%	130	279	409	\$82,292
HURON	758	4,016	4,774	\$94	-0.7%	620	1,357	1,977	\$449,716
JACKSON	1,419	3,815	5,234	\$97	1.1%	1,082	1,404	2,486	\$509,886
JEFFERSON	2,610	6,008	8,618	\$94	-0.8%	1,900	2,274	4,174	\$806,821
KNOX	967	3,463	4,430	\$95	-1.1%	721	1,209	1,930	\$422,902
LAKE	2,578	8,211	10,789	\$105	1.8%	1,983	3,013	4,996	\$1,129,236
LAWRENCE	3,451	7,029	10,480	\$91	-0.8%	2,533	2,626	5,159	\$953,327
LICKING	2,731	9,465	12,196	\$100	-0.3%	2,065	3,444	5,509	\$1,216,452
LOGAN	679	2,766	3,445	\$98	-0.3%	503	947	1,450	\$339,052
LORAIN	6,465	20,385	26,850	\$100	-0.7%	4,478	6,848	11,326	\$2,675,607
LUCAS	19,721	43,585	63,306	\$103	0.5%	13,620	16,453	30,073	\$6,497,621
MADISON	751	2,215	2,966	\$98	0.9%	523	810	1,333	\$291,266
MAHONING	8,750	20,896	29,646	\$95	-0.3%	6,258	7,817	14,075	\$2,827,391
MARION	1,465	5,814	7,279	\$100	-0.8%	1,185	2,068	3,253	\$729,237
MEDINA	1,081	4,023	5,104	\$100	1.0%	815	1,475	2,290	\$509,839
MEIGS	1,200	2,874	4,074	\$93	-1.4%	866	988	1,854	\$379,548
MERCER	374	1,084	1,458	\$91	0.9%	286	378	664	\$132,358
MIAMI	1,104	3,251	4,355	\$91	-2.7%	820	1,198	2,018	\$396,263
MONROE	396	1,160	1,556	\$88	0.5%	314	390	704	\$137,152
MONTGOMERY	14,628	40,820	55,448	\$104	1.0%	10,931	15,346	26,277	\$5,756,877
MORGAN	426	1,483	1,909	\$87	4.3%	351	499	850	\$165,784
MORROW	548	2,296	2,844	\$94	-1.0%	412	775	1,187	\$267,249

Source: CRIS-E GRP304RA and GRP 304RC Reports from Management Information Services. Cuyahoga County data also comes from the GRP 342 RA.

**TABLE 5  
FOOD AND NUTRITION BENEFITS  
JULY 2007**

OHIO COUNTY	PERSONS					ASSISTANCE GROUPS			TOTAL COUPONS ISSUED
	PUBLIC ASSISTANCE	NON-PUBLIC ASSISTANCE	TOTAL	AVERAGE ISSUANCE	% CHANGE PREV. MO.	PUBLIC ASSISTANCE	NON-PUBLIC ASSISTANCE	TOTAL	
<b>STATEWIDE</b>	<b>248,228</b>	<b>842,183</b>	<b>1,090,411</b>	<b>\$101</b>	<b>0.3%</b>	<b>180,779</b>	<b>318,830</b>	<b>499,609</b>	<b>\$109,603,726</b>
MUSKINGUM	2,771	11,259	14,030	\$96	0.8%	2,161	4,136	6,297	\$1,341,546
NOBLE	289	871	1,160	\$83	1.1%	232	314	546	\$96,722
OTTAWA	635	1,832	2,467	\$97	-0.2%	421	649	1,070	\$238,084
PAULDING	344	1,065	1,409	\$91	-0.6%	242	356	598	\$128,714
PERRY	1,151	4,014	5,165	\$94	-1.3%	835	1,378	2,213	\$484,518
PICKAWAY	1,242	3,533	4,775	\$97	0.3%	892	1,314	2,206	\$460,941
PIKE	1,271	3,936	5,207	\$95	-0.0%	947	1,399	2,346	\$496,855
PORTAGE	1,750	7,357	9,107	\$102	-0.9%	1,385	2,653	4,038	\$924,794
PREBLE	542	2,067	2,609	\$100	0.7%	392	698	1,090	\$259,709
PUTNAM	232	1,274	1,506	\$99	2.3%	184	417	601	\$149,377
RICHLAND	2,544	9,820	12,364	\$98	0.0%	2,011	3,529	5,540	\$1,214,250
ROSS	2,499	8,234	10,733	\$101	-0.1%	1,782	2,950	4,732	\$1,088,990
SANDUSKY	702	3,456	4,158	\$98	1.9%	545	1,217	1,762	\$408,817
SCIOTO	4,345	11,337	15,682	\$90	-1.0%	3,372	4,267	7,639	\$1,413,920
SENECA	813	3,755	4,568	\$97	0.6%	641	1,301	1,942	\$443,210
SHELBY	463	2,088	2,551	\$102	-4.5%	355	696	1,051	\$261,051
STARK	8,032	22,892	30,924	\$99	-0.4%	5,658	8,140	13,798	\$3,049,910
SUMMIT	14,418	38,441	52,859	\$102	0.5%	10,827	14,859	25,686	\$5,411,005
TRUMBULL	4,503	14,284	18,787	\$95	0.6%	3,461	4,936	8,397	\$1,780,983
TUSCARAWAS	1,764	5,746	7,510	\$93	0.1%	1,382	2,081	3,463	\$700,437
UNION	492	1,859	2,351	\$100	1.6%	361	671	1,032	\$235,705
VAN WERT	282	1,069	1,351	\$87	-1.7%	229	371	600	\$118,057
VINTON	604	1,918	2,522	\$91	0.3%	455	657	1,112	\$230,712
WARREN	921	2,965	3,886	\$95	0.6%	708	1,008	1,716	\$367,784
WASHINGTON	1,348	4,207	5,555	\$94	0.7%	1,137	1,516	2,653	\$521,148
WAYNE	1,796	5,403	7,199	\$99	-1.0%	1,348	2,039	3,387	\$709,211
WILLIAMS	570	2,220	2,790	\$93	2.3%	397	799	1,196	\$260,463
WOOD	1,015	3,440	4,455	\$99	1.8%	808	1,236	2,044	\$442,352
WYANDOT	190	788	978	\$93	-1.7%	156	296	452	\$91,292

Source: CRIS-E GRP304RA and GRP 304RC Reports from Management Information Services. Cuyahoga County data also comes from the GRP 342 RA.

**Table 6A  
July 2007  
Medicaid Eligibles**

County	Aged	Blind	Disabled	ABD Total	OWF & Related	Healthy Start	CFC Total	Total Medicaid	Foster Care	Adoption Assistance	Transitional	Nursing Facilities
STATEWIDE	149,953	757	247,637	398,347	997,885	270,376	1,268,261	1,666,608	10,335	21,600	135,984	53,761
ADAMS	816	5	1,459	2,280	4,277	1,176	5,453	7,733	30	39	756	126
ALLEN	1,295	5	2,102	3,402	9,208	2,649	11,857	15,259	115	132	1,174	607
ASHLAND	596	2	625	1,223	3,328	1,440	4,768	5,991	33	25	594	267
ASHTABULA	1,624	6	3,154	4,784	10,908	3,179	14,087	18,871	77	225	1,845	998
ATHENS	875	8	2,170	3,053	5,815	1,306	7,121	10,174	99	149	724	185
AUGLAIZE	485	5	467	957	2,474	925	3,399	4,356	4	45	474	280
BELMONT	1,427	4	2,090	3,521	6,745	1,721	8,466	11,987	36	109	1,148	517
BROWN	747	0	1,045	1,792	4,160	1,476	5,636	7,428	17	41	784	238
BUTLER	3,219	19	5,855	9,093	27,154	6,829	33,983	43,076	342	538	4,397	1,209
CARROLL	438	2	573	1,013	2,490	736	3,226	4,239	6	8	491	204
CHAMPAIGN	490	1	591	1,082	3,031	1,163	4,194	5,276	8	24	604	239
CLARK	2,229	7	3,656	5,892	16,005	4,146	20,151	26,043	183	513	2,079	989
CLERMONT	1,707	9	2,882	4,598	11,739	4,439	16,178	20,776	193	271	1,933	697
CLINTON	533	1	817	1,351	3,660	1,045	4,705	6,056	43	75	684	160
COLUMBIANA	1,722	14	2,640	4,376	10,784	3,245	14,029	18,405	87	109	1,505	612
COSHOCTON	627	1	948	1,576	3,915	1,046	4,961	6,537	17	48	698	290
CRAWFORD	700	8	879	1,587	4,327	1,229	5,556	7,143	41	47	822	178
CUYAHOGA	23,042	136	36,461	59,639	146,520	32,233	178,753	238,392	1,378	4,939	16,493	7,168
DARKE	576	1	647	1,224	2,787	1,282	4,069	5,293	22	42	522	297
DEFIANCE	418	3	608	1,029	3,120	1,066	4,186	5,215	16	26	611	202
DELAWARE	811	1	1,059	1,871	4,274	1,734	6,008	7,879	27	66	708	299
ERIE	925	4	1,224	2,153	5,872	1,798	7,670	9,823	60	76	851	419
FAIRFIELD	1,334	7	2,154	3,495	10,012	2,943	12,955	16,450	40	194	1,841	452
FAYETTE	581	3	848	1,432	2,773	783	3,556	4,988	9	16	420	325
FRANKLIN	12,059	89	24,669	36,817	117,276	31,604	148,880	185,697	2,078	2,801	12,167	3,737
FULTON	380	1	422	803	2,459	980	3,439	4,242	22	31	475	208
GALLIA	869	3	1,603	2,475	4,107	975	5,082	7,557	16	45	534	183
GEAUGA	625	1	550	1,176	2,206	1,021	3,227	4,403	16	124	431	306
GREENE	1,376	17	1,831	3,224	9,161	2,655	11,816	15,040	92	116	1,689	564

Source: ODJFS Report BOMM1321 Prepared: Bureau of Research and Evaluation.

**Table 6A  
July 2007  
Medicaid Eligibles**

County	Aged	Blind	Disabled	ABD Total	OWF & Related	Healthy Start	CFC Total	Total Medicaid	Foster Care	Adoption Assistance	Transitional	Nursing Facilities
STATEWIDE	149,953	757	247,637	398,347	997,885	270,376	1,268,261	1,666,608	10,335	21,600	135,984	53,761
GUERNSEY	827	4	1,408	2,239	5,219	1,495	6,714	8,953	36	76	882	174
HAMILTON	10,495	60	18,502	29,057	65,379	18,421	83,800	112,857	820	1,724	6,066	3,681
HANCOCK	619	7	915	1,541	4,164	1,426	5,590	7,131	50	62	646	292
HARDIN	386	3	582	971	2,245	795	3,040	4,011	10	48	348	146
HARRISON	323	1	535	859	1,760	457	2,217	3,076	19	21	263	121
HENRY	253	0	345	598	1,665	784	2,449	3,047	9	23	313	137
HIGHLAND	847	0	1,145	1,992	4,625	1,436	6,061	8,053	20	37	702	251
HOCKING	519	3	852	1,374	3,521	969	4,490	5,864	34	50	568	152
HOLMES	424	3	433	860	1,384	850	2,234	3,094	12	18	264	372
HURON	620	3	885	1,508	5,146	1,944	7,090	8,598	42	44	826	185
JACKSON	869	0	1,406	2,275	4,559	1,209	5,768	8,043	39	14	689	175
JEFFERSON	1,238	10	2,357	3,605	7,283	1,671	8,954	12,559	83	63	1,109	358
KNOX	752	2	1,324	2,078	4,609	1,398	6,007	8,085	15	37	991	480
LAKE	1,745	3	2,517	4,265	10,444	3,619	14,063	18,328	65	96	1,784	1,035
LAWRENCE	1,675	5	3,319	4,999	8,300	2,308	10,608	15,607	60	63	1,070	342
LICKING	1,569	3	2,660	4,232	12,672	3,657	16,329	20,561	186	390	2,304	550
LOGAN	607	2	683	1,292	3,685	998	4,683	5,975	6	54	670	201
LORAIN	2,873	14	5,411	8,298	24,595	6,349	30,944	39,242	94	428	3,324	1,222
LUCAS	6,544	45	14,485	21,074	55,148	10,974	66,122	87,196	495	1,468	6,795	2,016
MADISON	422	1	601	1,024	2,837	957	3,794	4,818	27	35	463	128
MAHONING	4,171	15	6,861	11,047	25,946	5,979	31,925	42,972	212	184	2,906	1,591
MARION	988	3	1,790	2,781	6,416	1,881	8,297	11,078	46	131	1,102	274
MEDINA	1,060	7	1,293	2,360	6,239	2,265	8,504	10,864	33	89	1,262	659
MEIGS	565	5	1,045	1,615	3,314	783	4,097	5,712	15	13	441	141
MERCER	398	0	399	797	1,595	743	2,338	3,135	19	38	364	198
MIAMI	1,137	2	1,305	2,444	5,265	1,894	7,159	9,603	70	119	975	423
MONROE	302	0	397	699	1,409	491	1,900	2,599	8	15	231	98
MONTGOMERY	7,339	28	12,823	20,190	50,413	12,265	62,678	82,868	657	1,248	5,966	2,384
MORGAN	321	0	517	838	1,892	560	2,452	3,290	1	13	385	111
MORROW	441	0	594	1,035	2,947	1,097	4,044	5,079	4	57	593	147

Source: ODJFS Report BOMM1321 Prepared: Bureau of Research and Evaluation.



**Table 6A  
July 2007  
Medicaid Eligibles**

County	Aged	Blind	Disabled	ABD Total	OWF & Related	Healthy Start	CFC Total	Total Medicaid	Foster Care	Adoption Assistance	Transitional	Nursing Facilities
STATEWIDE	149,953	757	247,637	398,347	997,885	270,376	1,268,261	1,666,608	10,335	21,600	135,984	53,761
MUSKINGUM	1,653	19	2,902	4,574	11,447	2,814	14,261	18,835	107	217	1,608	484
NOBLE	248	0	261	509	1,159	370	1,529	2,038	4	12	243	90
OTTAWA	461	4	542	1,007	2,645	840	3,485	4,492	14	7	528	160
PAULDING	203	1	383	587	1,380	565	1,945	2,532	7	23	269	43
PERRY	570	8	1,173	1,751	4,947	1,224	6,171	7,922	37	37	766	191
PICKAWAY	661	1	1,052	1,714	4,490	1,222	5,712	7,426	17	21	693	171
PIKE	831	0	1,478	2,309	4,193	1,406	5,599	7,908	23	22	509	279
PORTAGE	1,276	5	1,848	3,129	9,142	2,528	11,670	14,799	99	201	1,292	618
PREBLE	413	7	660	1,080	3,208	959	4,167	5,247	49	42	623	207
PUTNAM	286	0	326	612	1,469	646	2,115	2,727	2	8	247	213
RICHLAND	1,916	0	2,774	4,690	10,802	3,554	14,356	19,046	48	267	1,629	635
ROSS	1,225	3	2,387	3,615	9,510	2,256	11,766	15,381	66	70	1,317	315
SANDUSKY	726	5	1,007	1,738	4,477	1,656	6,133	7,871	23	54	718	349
SCIOTO	2,529	5	4,817	7,351	11,451	2,346	13,797	21,148	81	87	1,370	590
SENECA	736	3	1,045	1,784	4,293	1,635	5,928	7,712	44	68	804	325
SHELBY	422	3	616	1,041	3,025	1,086	4,111	5,152	15	51	379	183
STARK	5,205	22	7,050	12,277	31,339	8,253	39,592	51,869	407	1,048	5,288	2,293
SUMMIT	7,061	41	11,205	18,307	45,050	9,807	54,857	73,164	526	874	5,780	2,197
TRUMBULL	2,898	13	4,737	7,648	18,878	5,590	24,468	32,116	135	268	2,947	1,177
TUSCARAWAS	1,326	3	1,628	2,957	7,182	2,581	9,763	12,720	103	194	1,242	466
UNION	345	1	466	812	2,412	884	3,296	4,108	27	35	441	112
UNKNOWN	0	0	0	0	0	0	0	0	0	0	0	0
VAN WERT	331	0	413	744	1,469	864	2,333	3,077	3	14	345	167
VINTON	315	0	602	917	2,107	722	2,829	3,746	15	24	262	57
WARREN	1,401	7	1,640	3,048	5,155	2,370	7,525	10,573	45	107	874	816
WASHINGTON	1,063	6	1,621	2,690	5,345	1,950	7,295	9,985	14	74	1,057	350
WAYNE	1,179	2	1,739	2,920	6,692	2,443	9,135	12,055	67	138	1,151	507
WILLIAMS	480	2	516	998	3,204	856	4,060	5,058	20	28	816	191
WOOD	1,003	4	1,072	2,079	4,964	1,868	6,832	8,911	37	57	810	397
WYANDOT	335	0	259	594	1,187	582	1,769	2,363	6	20	220	178

Source: ODJFS Report BOMM1321 Prepared: Bureau of Research and Evaluation.

**Table 6B  
July 2007  
Medicaid Expenditures**

	Aged	Blind	Disabled	ABD Total	OWF & Related	Healthy Start	CFC Total	Total Medicaid	Foster Care	Adoption Assistance	Transitional	Nursing Facilities
<b>STATEWIDE</b>	<b>\$222,460,617</b>	<b>\$465,055</b>	<b>\$327,748,794</b>	<b>\$550,674,467</b>	<b>\$59,312,690</b>	<b>\$27,945,512</b>	<b>\$87,258,202</b>	<b>\$638,683,453</b>	<b>\$5,251,389</b>	<b>\$3,875,753</b>	<b>\$3,603,688</b>	<b>\$248,037,850</b>
ADAMS	\$854,989	\$250	\$1,072,360	\$1,927,599	\$218,093	\$93,918	\$312,011	\$2,232,387	\$10,040	\$12,567	\$18,030	\$522,798
ALLEN	\$2,057,180	\$9,837	\$2,629,231	\$4,696,249	\$535,193	\$512,356	\$1,047,549	\$5,758,534	\$38,356	\$12,097	\$12,039	\$2,493,508
ASHLAND	\$1,048,845	\$916	\$707,560	\$1,757,322	\$181,095	\$123,381	\$304,477	\$2,062,371	\$3,173	\$5,579	\$16,749	\$1,095,521
ASHTABULA	\$2,788,749	\$8,189	\$4,500,073	\$7,297,012	\$799,883	\$191,219	\$991,101	\$8,293,444	\$31,496	\$46,898	\$50,799	\$4,953,756
ATHENS	\$967,616	\$236	\$1,263,396	\$2,231,248	\$392,803	\$223,224	\$616,027	\$2,848,538	\$44,428	\$21,515	\$41,469	\$692,505
AUGLAIZE	\$1,046,287	\$6,693	\$690,201	\$1,743,182	\$141,991	\$93,777	\$235,768	\$1,991,236	\$2,548	\$9,602	\$31,303	\$1,108,091
BELMONT	\$1,924,117	\$1,908	\$2,025,278	\$3,951,302	\$282,345	\$123,891	\$406,236	\$4,361,879	\$9,926	\$12,792	\$23,849	\$1,815,256
BROWN	\$1,141,661	\$0	\$1,414,424	\$2,556,085	\$363,170	\$168,133	\$531,303	\$3,091,593	\$9,142	\$22,226	\$13,556	\$1,157,110
BUTLER	\$6,396,697	\$17,430	\$7,748,955	\$14,163,083	\$1,715,600	\$689,667	\$2,405,267	\$16,591,397	\$91,003	\$67,742	\$126,340	\$7,155,567
CARROLL	\$583,919	\$0	\$866,654	\$1,450,573	\$92,530	\$25,308	\$117,838	\$1,568,651	\$1,703	\$401	\$11,264	\$772,345
CHAMPAIGN	\$918,112	\$0	\$1,365,085	\$2,283,197	\$107,371	\$94,617	\$201,988	\$2,485,185	\$11,112	\$5,117	\$16,004	\$1,200,448
CLARK	\$3,799,132	\$183	\$4,302,705	\$8,102,019	\$843,452	\$301,114	\$1,144,566	\$9,275,877	\$65,371	\$31,465	\$38,913	\$4,828,710
CLERMONT	\$2,369,023	\$5,839	\$4,864,358	\$7,239,219	\$1,036,377	\$452,051	\$1,488,429	\$8,764,316	\$186,464	\$49,765	\$53,592	\$3,944,050
CLINTON	\$646,966	\$0	\$753,935	\$1,400,901	\$425,016	\$200,542	\$625,559	\$2,027,466	\$17,534	\$11,309	\$20,608	\$656,634
COLUMBIANA	\$2,499,634	\$6,634	\$3,409,796	\$5,916,064	\$2,827,090	\$489,053	\$3,316,143	\$9,257,742	\$36,858	\$13,020	\$147,315	\$2,341,576
COSHOCTON	\$885,239	\$20	\$1,117,964	\$2,003,223	\$349,100	\$89,073	\$438,172	\$2,442,036	\$3,713	\$10,846	\$11,257	\$1,012,108
CRAWFORD	\$731,227	\$3,491	\$898,280	\$1,632,998	\$273,537	\$98,328	\$371,865	\$2,009,605	\$15,631	\$7,304	\$18,372	\$667,071
CUYAHOGA	\$33,988,193	\$31,058	\$44,297,630	\$78,316,882	\$7,843,129	\$2,597,447	\$10,440,576	\$88,787,607	\$822,235	\$908,513	\$357,638	\$36,060,258
DARKE	\$1,007,902	\$37	\$777,017	\$1,784,956	\$182,399	\$109,330	\$291,729	\$2,079,679	\$9,712	\$12,170	\$9,931	\$1,185,885
DEFIANCE	\$775,422	\$3,694	\$459,218	\$1,238,334	\$184,913	\$57,563	\$242,475	\$1,481,926	\$2,198	\$2,375	\$9,157	\$817,927
DELAWARE	\$1,151,057	\$449	\$1,840,954	\$2,992,459	\$214,490	\$317,217	\$531,708	\$3,524,359	\$17,206	\$8,775	\$17,747	\$1,146,167
ERIE	\$1,426,106	\$232	\$9,521,830	\$10,948,169	\$257,065	\$122,651	\$379,716	\$11,333,156	\$25,268	\$47,966	\$9,643	\$1,461,491
FAIRFIELD	\$1,951,590	\$4,143	\$2,632,489	\$4,588,222	\$531,979	\$253,654	\$785,634	\$5,379,782	\$11,949	\$27,683	\$47,062	\$1,926,017
FAYETTE	\$896,646	\$14,558	\$1,347,430	\$2,258,634	\$168,351	\$53,397	\$221,749	\$2,480,383	\$2,840	\$2,042	\$10,908	\$1,544,451
FRANKLIN	\$16,061,232	\$36,760	\$35,599,383	\$51,697,375	\$7,081,436	\$3,807,696	\$10,889,132	\$62,649,249	\$987,084	\$482,052	\$278,616	\$20,660,427
FULTON	\$742,135	\$0	\$657,121	\$1,399,257	\$90,195	\$48,972	\$139,166	\$1,539,579	\$6,649	\$19,504	\$3,011	\$818,595
GALLIA	\$1,593,024	\$250	\$3,184,670	\$4,777,943	\$213,125	\$54,861	\$267,986	\$5,049,336	\$10,584	\$1,745	\$19,768	\$743,039
GEAUGA	\$918,067	\$0	\$1,055,172	\$1,973,239	\$118,145	\$89,207	\$207,352	\$2,180,679	\$8,371	\$20,686	\$15,234	\$1,175,373
GREENE	\$2,097,139	\$2,461	\$2,210,006	\$4,309,606	\$592,565	\$213,158	\$805,722	\$5,117,185	\$48,331	\$23,728	\$78,373	\$2,401,362

**Table 6B  
July 2007  
Medicaid Expenditures**

	Aged	Blind	Disabled	ABD Total	OWF & Related	Healthy Start	CFC Total	Total Medicaid	Foster Care	Adoption Assistance	Transitional	Nursing Facilities
<b>STATEWIDE</b>	\$222,460,617	\$465,055	\$327,748,794	\$550,674,467	\$59,312,690	\$27,945,512	\$87,258,202	\$638,683,453	\$5,251,389	\$3,875,753	\$3,603,688	\$248,037,850
GUERNSEY	\$980,064	\$208	\$2,038,639	\$3,018,912	\$118,234	\$68,164	\$186,398	\$3,207,764	\$12,720	\$11,636	-\$1,747	\$765,834
HAMILTON	\$17,486,472	\$86,279	\$24,606,607	\$42,179,358	\$5,608,409	\$2,688,796	\$8,297,205	\$50,511,424	\$572,717	\$430,145	\$300,203	\$20,004,158
HANCOCK	\$1,029,802	\$2,447	\$1,207,710	\$2,239,959	\$278,981	\$133,523	\$412,505	\$2,653,028	\$16,526	\$8,752	\$16,057	\$1,211,090
HARDIN	\$338,955	\$18	\$453,685	\$792,658	\$200,922	\$73,263	\$274,185	\$1,066,843	\$2,047	\$7,909	\$17,512	\$300,846
HARRISON	\$590,479	\$673	\$462,536	\$1,053,687	\$91,119	\$15,440	\$106,559	\$1,161,868	\$3,295	\$3,194	\$3,156	\$440,743
HENRY	\$474,683	\$0	\$1,027,618	\$1,502,301	\$66,445	\$43,347	\$109,792	\$1,612,901	\$10,541	\$15,264	\$2,989	\$515,379
HIGHLAND	\$1,070,251	\$1,161	\$1,456,908	\$2,528,320	\$267,192	\$213,371	\$480,563	\$3,038,462	\$30,971	\$7,479	\$12,313	\$1,091,693
HOCKING	\$738,763	\$5,599	\$741,610	\$1,485,972	\$353,933	\$109,847	\$463,779	\$1,949,752	\$19,424	\$7,134	\$14,891	\$721,425
HOLMES	\$956,439	\$0	\$905,284	\$1,861,724	\$107,848	\$73,478	\$181,327	\$2,043,050	\$5,054	\$1,583	\$2,357	\$1,532,160
HURON	\$744,935	\$200	\$684,015	\$1,429,150	\$444,182	\$116,988	\$561,169	\$1,990,318	\$13,731	\$2,613	\$10,618	\$641,223
JACKSON	\$819,141	\$0	\$913,848	\$1,732,989	\$395,694	\$143,203	\$538,897	\$2,274,747	\$22,138	\$2,587	\$224,668	\$632,210
JEFFERSON	\$1,439,038	\$661	\$1,791,489	\$3,231,188	\$182,278	\$118,834	\$301,112	\$3,543,379	\$27,875	\$14,358	\$19,222	\$1,251,881
KNOX	\$1,506,354	\$934	\$3,409,910	\$4,917,199	\$207,563	\$97,091	\$304,654	\$5,221,852	\$2,157	\$11,713	\$26,053	\$3,061,748
LAKE	\$3,266,090	\$4,481	\$5,201,644	\$8,472,214	\$612,746	\$233,732	\$846,478	\$9,342,361	\$33,963	\$10,724	\$45,345	\$5,097,347
LAWRENCE	\$1,885,885	\$885	\$2,347,204	\$4,233,975	\$316,698	\$115,030	\$431,728	\$4,669,539	\$22,929	\$12,848	\$25,872	\$1,393,345
LICKING	\$2,005,866	\$1,651	\$4,215,778	\$6,223,295	\$426,058	\$487,125	\$913,184	\$7,136,622	\$59,708	\$50,573	\$57,750	\$2,466,398
LOGAN	\$813,745	\$0	\$772,347	\$1,586,092	\$182,163	\$158,232	\$340,395	\$1,927,101	\$341	\$5,539	-\$1,500	\$717,105
LORAIN	\$4,389,428	\$10,259	\$5,728,532	\$10,128,218	\$1,158,135	\$489,875	\$1,648,010	\$11,793,688	\$32,968	\$57,451	\$73,909	\$5,581,348
LUCAS	\$8,556,384	\$4,767	\$17,177,036	\$25,738,187	\$2,959,418	\$1,005,779	\$3,965,197	\$29,789,153	\$211,040	\$262,965	\$163,938	\$9,081,081
MADISON	\$461,596	\$234	\$1,062,337	\$1,524,166	\$133,290	\$103,362	\$236,653	\$1,760,819	\$10,788	\$4,721	\$15,461	\$596,678
MAHONING	\$6,473,076	\$24,076	\$10,116,654	\$16,613,806	\$1,292,589	\$428,761	\$1,721,350	\$18,354,041	\$105,485	\$17,098	\$95,028	\$6,689,254
MARION	\$1,406,144	\$118	\$1,799,296	\$3,205,558	\$566,739	\$188,757	\$755,496	\$3,964,034	\$244,037	\$14,616	\$12,680	\$1,176,027
MEDINA	\$2,127,078	\$42,189	\$2,766,357	\$4,935,625	\$251,989	\$155,837	\$407,826	\$5,343,964	\$11,188	\$8,066	\$23,323	\$3,296,502
MEIGS	\$535,065	\$1,141	\$602,225	\$1,138,432	\$91,549	\$39,051	\$130,600	\$1,269,956	\$2,736	\$1,507	-\$1,173	\$511,622
MERCER	\$651,769	\$120	\$588,464	\$1,240,353	\$93,933	\$37,437	\$131,370	\$1,372,258	\$8,335	\$4,547	\$7,419	\$810,693
MIAMI	\$1,886,266	\$14,309	\$1,810,525	\$3,711,100	\$483,561	\$197,256	\$680,818	\$4,398,316	\$34,407	\$23,263	\$40,285	\$1,713,699
MONROE	\$328,124	\$0	\$289,704	\$617,828	\$36,805	\$34,277	\$71,082	\$689,354	\$3,467	\$1,685	\$4,306	\$351,946
MONTGOMERY	\$10,633,112	\$10,218	\$15,645,958	\$26,289,288	\$2,882,769	\$1,394,652	\$4,277,421	\$30,593,578	\$217,212	\$236,858	\$147,822	\$11,110,755
MORGAN	\$454,208	\$66	\$359,749	\$814,024	\$76,753	\$39,936	\$116,689	\$930,798	\$0	\$1,066	\$9,778	\$395,411
MORROW	\$683,828	\$0	\$1,128,778	\$1,812,606	\$135,733	\$94,658	\$230,391	\$2,043,857	\$0	\$4,371	\$13,926	\$1,031,330

**Table 6B  
July 2007  
Medicaid Expenditures**

	Aged	Blind	Disabled	ABD Total	OWF & Related	Healthy Start	CFC Total	Total Medicaid	Foster Care	Adoption Assistance	Transitional	Nursing Facilities
<b>STATEWIDE</b>	<b>\$222,460,617</b>	<b>\$465,055</b>	<b>\$327,748,794</b>	<b>\$550,674,467</b>	<b>\$59,312,690</b>	<b>\$27,945,512</b>	<b>\$87,258,202</b>	<b>\$638,683,453</b>	<b>\$5,251,389</b>	<b>\$3,875,753</b>	<b>\$3,603,688</b>	<b>\$248,037,850</b>
MUSKINGUM	\$1,892,883	\$3,672	\$1,973,591	\$3,870,146	\$353,829	\$130,846	\$484,675	\$4,355,972	\$15,451	\$19,747	\$15,479	\$1,723,597
NOBLE	\$338,843	\$0	\$240,815	\$579,658	\$38,402	\$9,304	\$47,707	\$627,364	\$0	\$526	\$1,688	\$322,822
OTTAWA	\$801,305	\$10,787	\$1,527,249	\$2,339,340	\$119,708	\$58,084	\$177,792	\$2,525,561	\$2,340	\$720	\$3,367	\$558,791
PAULDING	\$170,500	\$253	\$229,036	\$399,789	\$61,063	\$30,601	\$91,664	\$491,453	\$6,272	\$2,072	\$5,706	\$123,032
PERRY	\$541,100	\$1,471	\$1,450,225	\$1,992,796	\$220,494	\$73,832	\$294,326	\$2,293,899	\$6,709	\$3,321	\$15,636	\$945,635
PICKAWAY	\$773,791	\$9	\$1,105,862	\$1,879,661	\$221,747	\$63,096	\$284,843	\$2,164,699	\$9,631	\$9,597	\$18,860	\$660,693
PIKE	\$934,018	\$0	\$1,278,714	\$2,212,733	\$317,707	\$210,328	\$528,035	\$2,740,766	\$17,413	\$3,445	\$14,338	\$1,247,007
PORTAGE	\$2,064,306	\$10,018	\$4,158,553	\$6,232,877	\$642,385	\$248,499	\$890,884	\$7,124,220	\$42,497	\$29,494	\$32,460	\$3,368,283
PREBLE	\$646,991	\$848	\$892,249	\$1,540,089	\$169,532	\$70,918	\$240,449	\$1,781,918	\$26,061	\$3,643	-\$2,310	\$1,026,365
PUTNAM	\$477,665	\$0	\$604,239	\$1,081,904	\$23,703	\$34,955	\$58,658	\$1,148,615	\$1,402	\$735	-\$11,377	\$747,494
RICHLAND	\$2,501,873	\$0	\$4,144,796	\$6,646,670	\$514,147	\$482,844	\$996,990	\$7,672,028	\$12,514	\$39,240	\$60,193	\$2,590,833
ROSS	\$1,282,153	\$0	\$1,949,406	\$3,231,559	\$452,768	\$285,683	\$738,451	\$3,999,499	\$41,127	\$10,814	\$34,970	\$1,163,502
SANDUSKY	\$1,225,306	\$396	\$1,942,870	\$3,168,573	\$250,198	\$109,360	\$359,558	\$3,531,128	\$17,562	\$4,789	\$12,379	\$1,851,289
SCIOTO	\$2,691,668	\$588	\$3,228,365	\$5,920,620	\$639,717	\$168,420	\$808,137	\$6,746,182	\$12,194	\$87,021	\$18,832	\$1,887,575
SENECA	\$1,490,756	\$0	\$2,993,535	\$4,484,291	\$176,062	\$383,983	\$560,045	\$5,044,336	\$25,084	\$10,650	\$28,542	\$1,319,386
SHELBY	\$582,001	\$107	\$752,970	\$1,335,078	\$158,809	\$99,370	\$258,179	\$1,593,387	\$6,016	\$10,230	\$7,093	\$761,207
STARK	\$9,138,872	\$25,504	\$8,596,469	\$17,760,846	\$1,610,829	\$626,753	\$2,237,582	\$20,005,748	\$180,155	\$132,386	\$87,193	\$9,631,253
SUMMIT	\$10,133,669	\$18,666	\$15,433,626	\$25,585,961	\$2,432,160	\$957,578	\$3,389,738	\$29,022,364	\$358,042	\$171,606	\$97,840	\$9,455,289
TRUMBULL	\$4,228,186	\$13,670	\$8,212,008	\$12,453,864	\$1,355,351	\$818,047	\$2,173,398	\$14,634,582	\$68,781	\$38,368	\$105,283	\$4,938,975
TUSCARAWAS	\$1,970,348	\$4,573	\$1,696,460	\$3,671,381	\$314,079	\$192,259	\$506,338	\$4,201,762	\$36,108	\$53,795	\$23,243	\$1,619,469
UNION	\$551,376	\$153	\$704,355	\$1,255,884	\$150,857	\$93,792	\$244,649	\$1,500,533	\$13,040	\$3,776	\$7,820	\$443,805
UNKNOWN	\$269	\$0	\$1,239	\$1,508	-\$886,180	\$0	-\$886,180	-\$884,672	\$2,799	\$35,407	\$0	\$645
VAN WERT	\$557,090	\$0	\$328,010	\$885,100	\$42,028	\$41,514	\$83,542	\$973,910	\$589	\$4,635	\$3,107	\$557,138
VINTON	\$261,399	\$0	\$348,967	\$610,366	\$299,702	\$68,471	\$368,173	\$979,051	\$3,340	\$896	\$6,001	\$212,062
WARREN	\$2,879,347	\$4,644	\$3,695,018	\$6,579,009	\$440,273	\$364,726	\$805,000	\$7,389,329	\$11,520	\$19,421	\$50,498	\$4,354,089
WASHINGTON	\$1,290,108	\$1,173	\$1,303,092	\$2,594,374	\$311,425	\$128,563	\$439,988	\$3,034,361	\$22,652	\$2,623	\$33,216	\$1,312,975
WAYNE	\$1,865,613	\$293	\$1,871,420	\$3,737,326	\$313,883	\$1,035,573	\$1,349,456	\$5,087,146	\$18,176	\$7,160	\$15,701	\$1,897,340
WILLIAMS	\$759,667	\$0	\$697,864	\$1,457,530	\$133,757	\$133,596	\$267,352	\$1,724,995	\$8,490	\$16,102	\$9,877	\$691,237
WOOD	\$1,832,741	\$265	\$1,572,738	\$3,405,744	\$294,630	\$178,225	\$472,855	\$3,882,207	\$12,204	\$11,753	\$14,682	\$1,520,062
WYANDOT	\$575,828	\$0	\$289,428	\$865,256	\$53,462	\$52,387	\$105,849	\$971,105	\$4,494	\$2,031	\$2,364	\$557,024

**TABLE 7  
CHILD CARE  
JULY 2007 PRELIMINARY**

OHIO COUNTY	OWF JOBS, LEAP, and TRANSITIONAL		OTHER CHILD CARE		LOCAL FUNDING		ALL PROGRAM SOURCES	
	CHILDREN SERVED		CHILDREN SERVED		CHILDREN SERVED		CHILDREN SERVED	
	TOTAL	% OF STATE TOTAL	TOTAL	% OF STATE TOTAL	TOTAL	% OF STATE TOTAL	TOTAL	% OF STATE TOTAL
<b>STATEWIDE</b>	<b>12,135</b>	<b>100.00%</b>	<b>83,212</b>	<b>100.00%</b>	<b>116</b>	<b>100.00%</b>	<b>95,463</b>	<b>100.00%</b>
ADAMS	0	0.00%	118	0.14%	0	0.00%	118	0.12%
ALLEN	22	0.18%	523	0.63%	0	0.00%	545	0.57%
ASHLAND	6	0.05%	219	0.26%	0	0.00%	225	0.24%
ASHTABULA	10	0.08%	296	0.36%	0	0.00%	306	0.32%
ATHENS	47	0.39%	222	0.27%	0	0.00%	269	0.28%
AUGLAIZE	0	0.00%	99	0.12%	0	0.00%	99	0.10%
BELMONT	38	0.31%	286	0.34%	0	0.00%	324	0.34%
BROWN	5	0.04%	135	0.16%	0	0.00%	140	0.15%
BUTLER	132	1.09%	1,543	1.85%	0	0.00%	1,675	1.75%
CARROLL	3	0.02%	56	0.07%	0	0.00%	59	0.06%
CHAMPAIGN	30	0.25%	135	0.16%	0	0.00%	165	0.17%
CLARK	61	0.50%	776	0.93%	0	0.00%	837	0.88%
CLERMONT	23	0.19%	607	0.73%	0	0.00%	630	0.66%
CLINTON	5	0.04%	249	0.30%	0	0.00%	254	0.27%
COLUMBIANA	66	0.54%	922	1.11%	0	0.00%	988	1.03%
COSHOCTON	31	0.26%	207	0.25%	0	0.00%	238	0.25%
CRAWFORD	25	0.21%	256	0.31%	0	0.00%	281	0.29%
CUYAHOGA	2,541	20.94%	19,036	22.88%	0	0.00%	21,577	22.60%
DARKE	2	0.02%	93	0.11%	0	0.00%	95	0.10%
DEFIANCE	12	0.10%	176	0.21%	0	0.00%	188	0.20%
DELAWARE	38	0.31%	349	0.42%	1	0.86%	388	0.41%
ERIE	3	0.02%	672	0.81%	0	0.00%	675	0.71%
FAIRFIELD	53	0.44%	543	0.65%	0	0.00%	596	0.62%
FAYETTE	23	0.19%	255	0.31%	0	0.00%	278	0.29%
FRANKLIN	1,872	15.43%	10,677	12.83%	110	94.83%	12,659	13.26%
FULTON	3	0.02%	178	0.21%	0	0.00%	181	0.19%
GALLIA	45	0.37%	169	0.20%	0	0.00%	214	0.22%
GEAUGA	11	0.09%	200	0.24%	0	0.00%	211	0.22%
GREENE	75	0.62%	698	0.84%	0	0.00%	773	0.81%

**TABLE 7  
CHILD CARE  
JULY 2007 PRELIMINARY**

OHIO COUNTY	OWF JOBS, LEAP, and TRANSITIONAL		OTHER CHILD CARE		LOCAL FUNDING		ALL PROGRAM SOURCES	
	CHILDREN SERVED		CHILDREN SERVED		CHILDREN SERVED		CHILDREN SERVED	
	TOTAL	% OF STATE TOTAL	TOTAL	% OF STATE TOTAL	TOTAL	% OF STATE TOTAL	TOTAL	% OF STATE TOTAL
<b>STATEWIDE</b>	<b>12,135</b>	<b>100.00%</b>	<b>83,212</b>	<b>100.00%</b>	<b>116</b>	<b>100.00%</b>	<b>95,463</b>	<b>100.00%</b>
GUERNSEY	19	0.16%	334	0.40%	0	0.00%	353	0.37%
HAMILTON	2,476	20.40%	10,697	12.86%	0	0.00%	13,173	13.80%
HANCOCK	2	0.02%	362	0.44%	0	0.00%	364	0.38%
HARDIN	0	0.00%	68	0.08%	0	0.00%	68	0.07%
HARRISON	2	0.02%	45	0.05%	0	0.00%	47	0.05%
HENRY	6	0.05%	116	0.14%	0	0.00%	122	0.13%
HIGHLAND	6	0.05%	203	0.24%	0	0.00%	209	0.22%
HOCKING	21	0.17%	88	0.11%	0	0.00%	109	0.11%
HOLMES	23	0.19%	122	0.15%	0	0.00%	145	0.15%
HURON	0	0.00%	444	0.53%	0	0.00%	444	0.47%
JACKSON	22	0.18%	125	0.15%	0	0.00%	147	0.15%
JEFFERSON	67	0.55%	300	0.36%	0	0.00%	367	0.38%
KNOX	16	0.13%	248	0.30%	0	0.00%	264	0.28%
LAKE	69	0.57%	877	1.05%	0	0.00%	946	0.99%
LAWRENCE	52	0.43%	428	0.51%	0	0.00%	480	0.50%
LICKING	112	0.92%	1,164	1.40%	0	0.00%	1,276	1.34%
LOGAN	8	0.07%	55	0.07%	0	0.00%	63	0.07%
LORAIN	390	3.21%	1,869	2.25%	0	0.00%	2,259	2.37%
LUCAS	579	4.77%	1,723	2.07%	0	0.00%	2,302	2.41%
MADISON	30	0.25%	131	0.16%	0	0.00%	161	0.17%
MAHONING	523	4.31%	1,497	1.80%	0	0.00%	2,020	2.12%
MARION	18	0.15%	380	0.46%	0	0.00%	398	0.42%
MEDINA	27	0.22%	820	0.99%	0	0.00%	847	0.89%
MEIGS	11	0.09%	178	0.21%	0	0.00%	189	0.20%
MERCER	33	0.27%	147	0.18%	0	0.00%	180	0.19%
MIAMI	4	0.03%	300	0.36%	0	0.00%	304	0.32%
MONROE	4	0.03%	57	0.07%	0	0.00%	61	0.06%
MONTGOMERY	461	3.80%	4,659	5.60%	0	0.00%	5,120	5.36%
MORGAN	8	0.07%	113	0.14%	0	0.00%	121	0.13%
MORROW	12	0.10%	173	0.21%	0	0.00%	185	0.19%

**TABLE 7  
CHILD CARE  
JULY 2007 PRELIMINARY**

OHIO COUNTY	OWF JOBS, LEAP, and TRANSITIONAL		OTHER CHILD CARE		LOCAL FUNDING		ALL PROGRAM SOURCES	
	CHILDREN SERVED		CHILDREN SERVED		CHILDREN SERVED		CHILDREN SERVED	
	TOTAL	% OF STATE TOTAL	TOTAL	% OF STATE TOTAL	TOTAL	% OF STATE TOTAL	TOTAL	% OF STATE TOTAL
<b>STATEWIDE</b>	<b>12,135</b>	<b>100.00%</b>	<b>83,212</b>	<b>100.00%</b>	<b>116</b>	<b>100.00%</b>	<b>95,463</b>	<b>100.00%</b>
MUSKINGUM	147	1.21%	829	1.00%	0	0.00%	976	1.02%
NOBLE	8	0.07%	92	0.11%	0	0.00%	100	0.10%
OTTAWA	33	0.27%	115	0.14%	0	0.00%	148	0.16%
PAULDING	5	0.04%	46	0.06%	0	0.00%	51	0.05%
PERRY	30	0.25%	190	0.23%	0	0.00%	220	0.23%
PICKAWAY	58	0.48%	159	0.19%	0	0.00%	217	0.23%
PIKE	15	0.12%	84	0.10%	0	0.00%	99	0.10%
PORTAGE	62	0.51%	620	0.75%	0	0.00%	682	0.71%
PREBLE	57	0.47%	168	0.20%	0	0.00%	225	0.24%
PUTNAM	0	0.00%	103	0.12%	0	0.00%	103	0.11%
RICHLAND	64	0.53%	931	1.12%	0	0.00%	995	1.04%
ROSS	28	0.23%	340	0.41%	0	0.00%	368	0.39%
SANDUSKY	41	0.34%	473	0.57%	0	0.00%	514	0.54%
SCIOTO	64	0.53%	623	0.75%	0	0.00%	687	0.72%
SENECA	5	0.04%	224	0.27%	0	0.00%	229	0.24%
SHELBY	1	0.01%	272	0.33%	0	0.00%	273	0.29%
STARK	424	3.49%	2,490	2.99%	0	0.00%	2,914	3.05%
SUMMIT	597	4.92%	3,961	4.76%	0	0.00%	4,558	4.77%
TRUMBULL	129	1.06%	1,574	1.89%	0	0.00%	1,703	1.78%
TUSCARAWAS	16	0.13%	492	0.59%	0	0.00%	508	0.53%
UNION	8	0.07%	231	0.28%	4	3.45%	243	0.25%
VAN WERT	2	0.02%	54	0.06%	0	0.00%	56	0.06%
VINTON	5	0.04%	101	0.12%	0	0.00%	106	0.11%
WARREN	30	0.25%	423	0.51%	0	0.00%	453	0.47%
WASHINGTON	49	0.40%	287	0.34%	0	0.00%	336	0.35%
WAYNE	41	0.34%	422	0.51%	0	0.00%	463	0.49%
WILLIAMS	10	0.08%	103	0.12%	0	0.00%	113	0.12%
WOOD	22	0.18%	334	0.40%	0	0.00%	356	0.37%
WYANDOT	1	0.01%	53	0.06%	1	0.86%	55	0.06%

SOURCE: COGNOS. The above numbers have not been reconciled between the CCIDS/3299 data collection system and 2827 ODJFS fiscal reporting system; therefore they may not be conclusive at this time. ELI data missing in counts above.

OWF data consist of funding codes: 173,312, 313,314, 326, & 327. Other data consist of funding codes: 320, 321, 322, 323, 324, 325, 328, 329, and 342. Local Funding is from funding code 899.

**TABLE 8  
RECIPIENTS, EXPENDITURES, AND AVERAGE PAYMENT PER RECIPIENT  
DURING THE LAST 12 MONTHS IN OHIO**

<b>RECIPIENTS</b>	<b>OWF-R</b>	<b>OWF-U</b>	<b>OWF\ CHILD CARE</b>	<b>Other CHILD CARE</b>	<b>DISABILITY ASSISTANCE</b>	<b>TITLE IV-E</b>	<b>FNS BENEFITS</b>
August 2006	161,518	14,842	25,066	78,202	14,220	27,084	1,072,753
September	159,269	14,015	25,720	75,554	13,960	27,121	1,064,886
October	159,372	13,714	26,501	74,946	13,718	27,108	1,067,925
November	156,220	12,781	23,696	78,584	13,578	26,828	1,061,392
December	159,543	13,239	23,727	79,838	13,654	27,223	1,073,211
January 2007	156,974	12,864	22,470	78,182	13,678	27,150	1,074,737
February	153,574	12,747	23,275	74,852	13,709	26,969	1,054,032
March	152,985	12,792	23,584	78,334	13,965	26,244	1,066,951
April	152,556	12,406	23,527	77,738	13,947	26,182	1,066,248
May	155,417	12,271	24,152	80,832	14,564	25,706	1,080,781
June	149,827	11,014	22,927	80,331	15,145	23,939	1,087,411
July	154,067	11,428	12,135	83,212	15,614	N.A.	1,090,411
<b>12 MONTH AVERAGE</b>	<b>155,944</b>	<b>12,843</b>	<b>23,065</b>	<b>78,384</b>	<b>14,146</b>	<b>26,505</b>	<b>1,071,728</b>
<b>EXPENDITURES</b>							
August 2006	\$25,149,711	\$1,578,643	N.A.	N.A.	\$2,026,360	\$13,842,955	\$107,495,300
September	\$24,982,385	\$1,518,064	N.A.	N.A.	\$1,816,230	\$13,730,291	\$106,390,515
October	\$25,271,659	\$1,490,001	N.A.	N.A.	\$1,707,917	\$13,947,005	\$108,425,686
November	\$24,233,824	\$1,357,337	N.A.	N.A.	\$1,732,064	\$13,607,688	\$106,332,849
December	\$25,577,815	\$1,491,073	N.A.	N.A.	\$1,905,592	\$15,347,273	\$107,670,387
January 2007	\$24,563,001	\$1,389,124	N.A.	N.A.	\$1,860,503	\$14,522,840	\$107,705,366
February	\$23,926,643	\$1,349,595	N.A.	N.A.	\$1,847,646	\$13,904,623	\$105,628,316
March	\$23,971,956	\$1,384,820	N.A.	N.A.	\$1,952,139	\$13,522,041	\$107,457,412
April	\$23,014,252	\$1,269,486	N.A.	N.A.	\$1,768,558	\$17,403,927	\$107,329,580
May	\$22,934,016	\$1,208,788	N.A.	N.A.	\$2,040,201	\$13,271,398	\$108,138,296
June	\$23,962,387	\$1,187,020	N.A.	N.A.	\$2,347,409	\$18,639,187	\$108,329,737
July	\$24,360,922	\$1,261,090	N.A.	N.A.	\$2,333,309	N.A.	\$109,603,726
<b>TOTAL DOLLARS</b>	<b>\$24,329,048</b>	<b>\$1,373,753</b>	<b>N.A.</b>	<b>N.A.</b>	<b>\$1,944,827</b>	<b>\$14,703,566</b>	<b>\$107,542,264</b>
<b>AVERAGE PAYMENT</b>							
August 2006	\$156	\$106	N.A.	N.A.	\$143	\$511	\$100
September	\$157	\$108	N.A.	N.A.	\$130	\$506	\$100
October	\$159	\$109	N.A.	N.A.	\$125	\$514	\$102
November	\$155	\$106	N.A.	N.A.	\$128	\$507	\$100
December	\$160	\$113	N.A.	N.A.	\$140	\$564	\$100
January 2007	\$156	\$108	N.A.	N.A.	\$136	\$535	\$100
February	\$156	\$106	N.A.	N.A.	\$135	\$516	\$100
March	\$157	\$108	N.A.	N.A.	\$140	\$515	\$101
April	\$151	\$102	N.A.	N.A.	\$127	\$665	\$101
May	\$148	\$99	N.A.	N.A.	\$140	\$516	\$100
June	\$160	\$108	N.A.	N.A.	\$155	\$779	\$100
July	\$158	\$110	N.A.	N.A.	\$149	N.A.	\$101

Note: N.A. means Not Available.



**TABLE 10  
PERCENT OF OHIO'S POPULATION PARTICIPATING IN SELECTED  
PUBLIC ASSISTANCE PROGRAMS FOR JULY 2007**

OHIO COUNTY	Estimated Total Population *	Percent of All Families Below Poverty Level	DISABILITY ASSISTANCE		OWF COMBINED		FOSTER CARE UNAVAILABLE		FNS BENEFITS	
			Recipients as % of		Recipients	Recipients as % of	Recipients	Recipients as % of	Recipients	Recipients as % of
			Recipients	Total Population						
<b>STATEWIDE</b>	<b>11,478,006</b>	<b>7.80%</b>	<b>15,614</b>	<b>0.14%</b>	<b>165,495</b>	<b>1.44%</b>	<b>0</b>	<b>0.00%</b>	<b>1,090,411</b>	<b>9.50%</b>
ADAMS	28,516	12.80%	108	0.38%	226	0.79%	0	0.00%	4,744	16.64%
ALLEN	105,788	9.60%	133	0.13%	716	0.68%	0	0.00%	9,417	8.90%
ASHLAND	54,727	7.10%	37	0.07%	191	0.35%	0	0.00%	3,086	5.64%
ASHTABULA	102,703	9.20%	299	0.29%	1,275	1.24%	0	0.00%	12,481	12.15%
ATHENS	61,860	14.00%	294	0.48%	1,507	2.44%	0	0.00%	7,125	11.52%
AUGLAIZE	47,060	4.90%	26	0.06%	102	0.22%	0	0.00%	2,098	4.46%
BELMONT	68,771	11.70%	146	0.21%	576	0.84%	0	0.00%	6,964	10.13%
BROWN	44,423	8.80%	90	0.20%	272	0.61%	0	0.00%	3,415	7.69%
BUTLER	354,992	5.40%	461	0.13%	2,712	0.76%	0	0.00%	26,709	7.52%
CARROLL	29,189	8.50%	26	0.09%	148	0.51%	0	0.00%	2,217	7.60%
CHAMPAIGN	39,921	5.10%	48	0.12%	501	1.25%	0	0.00%	2,820	7.06%
CLARK	141,872	7.90%	389	0.27%	2,717	1.92%	0	0.00%	17,357	12.23%
CLERMONT	192,706	5.30%	213	0.11%	698	0.36%	0	0.00%	11,037	5.73%
CLINTON	43,399	6.40%	77	0.18%	234	0.54%	0	0.00%	3,223	7.43%
COLUMBIANA	110,542	9.00%	129	0.12%	713	0.65%	0	0.00%	12,239	11.07%
COSHOCTON	36,976	7.00%	123	0.33%	364	0.98%	0	0.00%	4,247	11.49%
CRAWFORD	45,047	7.80%	49	0.11%	305	0.68%	0	0.00%	4,447	9.87%
CUYAHOGA	1,314,241	10.30%	1,056	0.08%	23,316	1.77%	0	0.00%	180,291	13.72%
DARKE	52,780	6.00%	33	0.06%	347	0.66%	0	0.00%	2,343	4.44%
DEFIANCE	39,091	4.50%	26	0.07%	303	0.78%	0	0.00%	2,873	7.35%
DELAWARE	156,697	2.90%	97	0.06%	709	0.45%	0	0.00%	4,367	2.79%
ERIE	78,116	6.00%	103	0.13%	445	0.57%	0	0.00%	5,779	7.40%
FAIRFIELD	140,591	4.50%	192	0.14%	1,940	1.38%	0	0.00%	10,313	7.34%
FAYETTE	28,305	7.70%	40	0.14%	264	0.93%	0	0.00%	2,711	9.58%
FRANKLIN	1,095,662	8.20%	1,265	0.12%	26,361	2.41%	0	0.00%	126,651	11.56%
FULTON	42,900	4.00%	46	0.11%	103	0.24%	0	0.00%	2,107	4.91%
GALLIA	31,313	13.50%	94	0.30%	970	3.10%	0	0.00%	5,090	16.26%
GEAUGA	95,676	2.80%	30	0.03%	105	0.11%	0	0.00%	1,688	1.76%
GREENE	152,298	5.20%	179	0.12%	1,100	0.72%	0	0.00%	8,327	5.47%

\*SOURCE: 2006 Ohio County Population Estimates, Ohio Dept. of Development, GRP342RA, GBS003RA, GRP304RA and GRP304RC Reports from Management Information Services.

**TABLE 10  
PERCENT OF OHIO'S POPULATION PARTICIPATING IN SELECTED  
PUBLIC ASSISTANCE PROGRAMS FOR JULY 2007**

OHIO COUNTY	Estimated Total Population *	Percent of All Families Below Poverty Level	DISABILITY ASSISTANCE		OWF COMBINED		FOSTER CARE UNAVAILABLE		FNS BENEFITS	
			Recipients as % of		Recipients as % of		Recipients as % of		Recipients as % of	
			Recipients	Total Population	Recipients	Total Population	Recipients	Total Population	Recipients	Total Population
<b>STATEWIDE</b>	<b>11,478,006</b>	<b>7.80%</b>	<b>15,614</b>	<b>0.14%</b>	<b>165,495</b>	<b>1.44%</b>	<b>0</b>	<b>0.00%</b>	<b>1,090,411</b>	<b>9.50%</b>
GUERNSEY	40,876	12.90%	152	0.37%	260	0.64%	0	0.00%	5,809	14.21%
HAMILTON	822,596	8.80%	703	0.09%	17,095	2.08%	0	0.00%	74,502	9.06%
HANCOCK	73,824	5.20%	87	0.12%	163	0.22%	0	0.00%	4,054	5.49%
HARDIN	31,966	8.90%	46	0.14%	107	0.33%	0	0.00%	1,844	5.77%
HARRISON	15,799	11.00%	59	0.37%	215	1.36%	0	0.00%	1,949	12.34%
HENRY	29,520	5.30%	8	0.03%	49	0.17%	0	0.00%	1,367	4.63%
HIGHLAND	42,833	9.00%	120	0.28%	435	1.02%	0	0.00%	4,935	11.52%
HOCKING	28,973	10.30%	69	0.24%	633	2.18%	0	0.00%	3,422	11.81%
HOLMES	41,574	10.50%	27	0.06%	85	0.20%	0	0.00%	944	2.27%
HURON	60,313	6.50%	72	0.12%	265	0.44%	0	0.00%	4,774	7.92%
JACKSON	33,543	13.60%	129	0.38%	510	1.52%	0	0.00%	5,234	15.60%
JEFFERSON	70,125	11.40%	191	0.27%	1,609	2.29%	0	0.00%	8,618	12.29%
KNOX	58,561	7.40%	121	0.21%	547	0.93%	0	0.00%	4,430	7.56%
LAKE	232,892	3.50%	139	0.06%	889	0.38%	0	0.00%	10,789	4.63%
LAWRENCE	63,179	15.10%	80	0.13%	1,560	2.47%	0	0.00%	10,480	16.59%
LICKING	156,287	5.50%	285	0.18%	1,219	0.78%	0	0.00%	12,196	7.80%
LOGAN	46,189	7.10%	76	0.16%	369	0.80%	0	0.00%	3,445	7.46%
LORAIN	301,993	6.70%	391	0.13%	4,036	1.34%	0	0.00%	26,850	8.89%
LUCAS	445,281	10.70%	1,077	0.24%	13,174	2.96%	0	0.00%	63,306	14.22%
MADISON	41,496	6.20%	28	0.07%	503	1.21%	0	0.00%	2,966	7.15%
MAHONING	251,026	9.60%	273	0.11%	6,639	2.64%	0	0.00%	29,646	11.81%
MARION	65,583	7.40%	193	0.29%	705	1.07%	0	0.00%	7,279	11.10%
MEDINA	169,353	3.50%	83	0.05%	404	0.24%	0	0.00%	5,104	3.01%
MEIGS	23,092	14.30%	84	0.36%	408	1.77%	0	0.00%	4,074	17.64%
MERCER	41,303	4.60%	36	0.09%	134	0.32%	0	0.00%	1,458	3.53%
MIAMI	101,914	5.10%	79	0.08%	528	0.52%	0	0.00%	4,355	4.27%
MONROE	14,606	11.00%	29	0.20%	126	0.86%	0	0.00%	1,556	10.65%
MONTGOMERY	542,237	8.30%	889	0.16%	10,266	1.89%	0	0.00%	55,448	10.23%
MORGAN	14,821	15.70%	57	0.38%	140	0.94%	0	0.00%	1,909	12.88%
MORROW	34,529	6.60%	63	0.18%	214	0.62%	0	0.00%	2,844	8.24%

\*SOURCE: 2006 Ohio County Population Estimates, Ohio Dept. of Development, GRP342RA, GBS003RA, GRP304RA and GRP304RC Reports from Management Information Services.

**TABLE 10  
PERCENT OF OHIO'S POPULATION PARTICIPATING IN SELECTED  
PUBLIC ASSISTANCE PROGRAMS FOR JULY 2007**

OHIO COUNTY	Estimated Total Population *	Percent of All Families Below Poverty Level	DISABILITY ASSISTANCE		OWF COMBINED		FOSTER CARE UNAVAILABLE		FNS BENEFITS	
			Recipients as % of		Recipients as % of		Recipients as % of		Recipients as % of	
			Recipients	Total Population	Recipients	Total Population	Recipients	Total Population	Recipients	Total Population
<b>STATEWIDE</b>	<b>11,478,006</b>	<b>7.80%</b>	<b>15,614</b>	<b>0.14%</b>	<b>165,495</b>	<b>1.44%</b>	<b>0</b>	<b>0.00%</b>	<b>1,090,411</b>	<b>9.50%</b>
MUSKINGUM	86,125	9.90%	392	0.46%	1,822	2.12%	0	0.00%	14,030	16.29%
NOBLE	14,165	8.30%	19	0.13%	75	0.53%	0	0.00%	1,160	8.19%
OTTAWA	41,331	4.20%	50	0.12%	280	0.68%	0	0.00%	2,467	5.97%
PAULDING	19,432	4.90%	28	0.14%	238	1.22%	0	0.00%	1,409	7.25%
PERRY	35,313	9.40%	120	0.34%	599	1.70%	0	0.00%	5,165	14.63%
PICKAWAY	53,606	7.60%	80	0.15%	882	1.65%	0	0.00%	4,775	8.91%
PIKE	28,269	15.10%	65	0.23%	722	2.55%	0	0.00%	5,207	18.42%
PORTAGE	155,012	5.90%	126	0.08%	772	0.50%	0	0.00%	9,107	5.88%
PREBLE	42,491	4.50%	54	0.13%	397	0.93%	0	0.00%	2,609	6.14%
PUTNAM	34,744	4.00%	10	0.03%	47	0.14%	0	0.00%	1,506	4.33%
RICHLAND	127,010	8.20%	329	0.26%	1,151	0.91%	0	0.00%	12,364	9.73%
ROSS	75,556	9.10%	170	0.22%	1,329	1.76%	0	0.00%	10,733	14.21%
SANDUSKY	61,625	5.70%	87	0.14%	378	0.61%	0	0.00%	4,158	6.75%
SCIOTO	76,441	15.20%	274	0.36%	1,977	2.59%	0	0.00%	15,682	20.52%
SENECA	57,255	6.10%	89	0.16%	344	0.60%	0	0.00%	4,568	7.98%
SHELBY	48,884	5.30%	43	0.09%	267	0.55%	0	0.00%	2,551	5.22%
STARK	380,575	6.80%	505	0.13%	6,017	1.58%	0	0.00%	30,924	8.13%
SUMMIT	545,931	7.50%	510	0.09%	9,457	1.73%	0	0.00%	52,859	9.68%
TRUMBULL	217,362	7.90%	334	0.15%	2,626	1.21%	0	0.00%	18,787	8.64%
TUSCARAWAS	91,766	7.20%	126	0.14%	669	0.73%	0	0.00%	7,510	8.18%
UNION	46,702	3.60%	30	0.06%	287	0.61%	0	0.00%	2,351	5.03%
VAN WERT	29,303	4.20%	34	0.12%	77	0.26%	0	0.00%	1,351	4.61%
VINTON	13,519	15.10%	68	0.50%	257	1.90%	0	0.00%	2,522	18.66%
WARREN	201,871	3.00%	95	0.05%	343	0.17%	0	0.00%	3,886	1.92%
WASHINGTON	61,867	8.60%	151	0.24%	205	0.33%	0	0.00%	5,555	8.98%
WAYNE	113,950	5.40%	243	0.21%	908	0.80%	0	0.00%	7,199	6.32%
WILLIAMS	38,719	3.90%	51	0.13%	397	1.03%	0	0.00%	2,790	7.21%
WOOD	124,183	4.70%	58	0.05%	384	0.31%	0	0.00%	4,455	3.59%
WYANDOT	22,553	3.80%	18	0.08%	81	0.36%	0	0.00%	978	4.34%
UNKNOWN										

\*SOURCE: 2006 Ohio County Population Estimates, Ohio Dept. of Development, GRP342RA, GBS003RA, GRP304RA and GRP304RC Reports from Management Information Services.

**TABLE 7  
CHILD CARE REVISION  
APRIL 2007 UPDATE**

OHIO COUNTY	OWF JOBS, LEAP, and TRANSITIONAL		OTHER CHILD CARE		LOCAL FUNDING		ALL PROGRAM SOURCES	
	CHILDREN SERVED		CHILDREN SERVED		CHILDREN SERVED		CHILDREN SERVED	
	TOTAL	% OF STATE TOTAL	TOTAL	% OF STATE TOTAL	TOTAL	% OF STATE TOTAL	TOTAL	% OF STATE TOTAL
<b>STATEWIDE</b>	<b>23,535</b>	<b>100.00%</b>	<b>77,827</b>	<b>100.00%</b>	<b>103</b>	<b>100.00%</b>	<b>101,465</b>	<b>100.00%</b>
ADAMS	40	0.17%	112	0.14%	0	0.00%	152	0.15%
ALLEN	162	0.69%	440	0.57%	0	0.00%	602	0.59%
ASHLAND	7	0.03%	205	0.26%	0	0.00%	212	0.21%
ASHTABULA	186	0.79%	655	0.84%	0	0.00%	841	0.83%
ATHENS	94	0.40%	210	0.27%	0	0.00%	304	0.30%
AUGLAIZE	15	0.06%	124	0.16%	0	0.00%	139	0.14%
BELMONT	90	0.38%	233	0.30%	0	0.00%	323	0.32%
BROWN	21	0.09%	125	0.16%	0	0.00%	146	0.14%
BUTLER	202	0.86%	1,472	1.89%	0	0.00%	1,674	1.65%
CARROLL	17	0.07%	59	0.08%	0	0.00%	76	0.07%
CHAMPAIGN	31	0.13%	134	0.17%	0	0.00%	165	0.16%
CLARK	135	0.57%	638	0.82%	0	0.00%	773	0.76%
CLERMONT	190	0.81%	383	0.49%	0	0.00%	573	0.56%
CLINTON	10	0.04%	161	0.21%	0	0.00%	171	0.17%
COLUMBIANA	176	0.75%	846	1.09%	0	0.00%	1,022	1.01%
COSHOCTON	79	0.34%	180	0.23%	0	0.00%	259	0.26%
CRAWFORD	64	0.27%	208	0.27%	0	0.00%	272	0.27%
CUYAHOGA	4,567	19.41%	18,304	23.52%	0	0.00%	22,871	22.54%
DARKE	30	0.13%	104	0.13%	0	0.00%	134	0.13%
DEFIANCE	69	0.29%	139	0.18%	0	0.00%	208	0.20%
DELAWARE	53	0.23%	382	0.49%	1	0.97%	436	0.43%
ERIE	59	0.25%	577	0.74%	0	0.00%	636	0.63%
FAIRFIELD	109	0.46%	516	0.66%	0	0.00%	625	0.62%
FAYETTE	58	0.25%	254	0.33%	0	0.00%	312	0.31%
FRANKLIN	2,894	12.30%	9,385	12.06%	98	95.15%	12,377	12.20%
FULTON	50	0.21%	153	0.20%	0	0.00%	203	0.20%
GALLIA	48	0.20%	150	0.19%	0	0.00%	198	0.20%
GEAUGA	44	0.19%	177	0.23%	0	0.00%	221	0.22%
GREENE	244	1.04%	673	0.86%	0	0.00%	917	0.90%

**TABLE 7  
CHILD CARE REVISION  
APRIL 2007 UPDATE**

OHIO COUNTY	OWF JOBS, LEAP, and TRANSITIONAL		OTHER CHILD CARE		LOCAL FUNDING		ALL PROGRAM SOURCES	
	CHILDREN SERVED		CHILDREN SERVED		CHILDREN SERVED		CHILDREN SERVED	
	TOTAL	% OF STATE TOTAL	TOTAL	% OF STATE TOTAL	TOTAL	% OF STATE TOTAL	TOTAL	% OF STATE TOTAL
<b>STATEWIDE</b>	<b>23,535</b>	<b>100.00%</b>	<b>77,827</b>	<b>100.00%</b>	<b>103</b>	<b>100.00%</b>	<b>101,465</b>	<b>100.00%</b>
GUERNSEY	107	0.45%	285	0.37%	0	0.00%	392	0.39%
HAMILTON	3,328	14.14%	9,528	12.24%	0	0.00%	12,856	12.67%
HANCOCK	113	0.48%	369	0.47%	0	0.00%	482	0.48%
HARDIN	19	0.08%	63	0.08%	0	0.00%	82	0.08%
HARRISON	9	0.04%	42	0.05%	0	0.00%	51	0.05%
HENRY	42	0.18%	106	0.14%	0	0.00%	148	0.15%
HIGHLAND	16	0.07%	157	0.20%	0	0.00%	173	0.17%
HOCKING	43	0.18%	89	0.11%	0	0.00%	132	0.13%
HOLMES	47	0.20%	94	0.12%	0	0.00%	141	0.14%
HURON	10	0.04%	431	0.55%	0	0.00%	441	0.43%
JACKSON	50	0.21%	125	0.16%	0	0.00%	175	0.17%
JEFFERSON	79	0.34%	294	0.38%	0	0.00%	373	0.37%
KNOX	74	0.31%	231	0.30%	0	0.00%	305	0.30%
LAKE	263	1.12%	803	1.03%	0	0.00%	1,066	1.05%
LAWRENCE	148	0.63%	445	0.57%	0	0.00%	593	0.58%
LICKING	202	0.86%	1,051	1.35%	0	0.00%	1,253	1.23%
LOGAN	37	0.16%	52	0.07%	0	0.00%	89	0.09%
LORAIN	733	3.11%	1,630	2.09%	0	0.00%	2,363	2.33%
LUCAS	1,871	7.95%	2,559	3.29%	0	0.00%	4,430	4.37%
MADISON	31	0.13%	116	0.15%	0	0.00%	147	0.14%
MAHONING	956	4.06%	1,461	1.88%	0	0.00%	2,417	2.38%
MARION	29	0.12%	391	0.50%	0	0.00%	420	0.41%
MEDINA	113	0.48%	750	0.96%	0	0.00%	863	0.85%
MEIGS	12	0.05%	195	0.25%	0	0.00%	207	0.20%
MERCER	28	0.12%	129	0.17%	0	0.00%	157	0.15%
MIAMI	118	0.50%	241	0.31%	0	0.00%	359	0.35%
MONROE	1	0.00%	51	0.07%	0	0.00%	52	0.05%
MONTGOMERY	907	3.85%	4,453	5.72%	0	0.00%	5,360	5.28%
MORGAN	4	0.02%	85	0.11%	0	0.00%	89	0.09%
MORROW	21	0.09%	161	0.21%	0	0.00%	182	0.18%

**TABLE 7  
CHILD CARE REVISION  
APRIL 2007 UPDATE**

OHIO COUNTY	OWF JOBS, LEAP, and TRANSITIONAL		OTHER CHILD CARE		LOCAL FUNDING		ALL PROGRAM SOURCES	
	CHILDREN SERVED		CHILDREN SERVED		CHILDREN SERVED		CHILDREN SERVED	
	TOTAL	% OF STATE TOTAL	TOTAL	% OF STATE TOTAL	TOTAL	% OF STATE TOTAL	TOTAL	% OF STATE TOTAL
<b>STATEWIDE</b>	<b>23,535</b>	<b>100.00%</b>	<b>77,827</b>	<b>100.00%</b>	<b>103</b>	<b>100.00%</b>	<b>101,465</b>	<b>100.00%</b>
MUSKINGUM	279	1.19%	764	0.98%	0	0.00%	1,043	1.03%
NOBLE	41	0.17%	84	0.11%	0	0.00%	125	0.12%
OTTAWA	85	0.36%	102	0.13%	0	0.00%	187	0.18%
PAULDING	5	0.02%	34	0.04%	0	0.00%	39	0.04%
PERRY	61	0.26%	223	0.29%	0	0.00%	284	0.28%
PICKAWAY	78	0.33%	132	0.17%	0	0.00%	210	0.21%
PIKE	55	0.23%	78	0.10%	0	0.00%	133	0.13%
PORTAGE	157	0.67%	601	0.77%	0	0.00%	758	0.75%
PREBLE	49	0.21%	138	0.18%	0	0.00%	187	0.18%
PUTNAM	21	0.09%	106	0.14%	0	0.00%	127	0.13%
RICHLAND	279	1.19%	812	1.04%	0	0.00%	1,091	1.08%
ROSS	114	0.48%	308	0.40%	0	0.00%	422	0.42%
SANDUSKY	94	0.40%	451	0.58%	0	0.00%	545	0.54%
SCIOTO	128	0.54%	555	0.71%	0	0.00%	683	0.67%
SENECA	27	0.11%	256	0.33%	0	0.00%	283	0.28%
SHELBY	48	0.20%	263	0.34%	0	0.00%	311	0.31%
STARK	838	3.56%	2,159	2.77%	0	0.00%	2,997	2.95%
SUMMIT	985	4.19%	3,679	4.73%	0	0.00%	4,664	4.60%
TRUMBULL	316	1.34%	1,535	1.97%	0	0.00%	1,851	1.82%
TUSCARAWAS	52	0.22%	358	0.46%	0	0.00%	410	0.40%
UNION	29	0.12%	203	0.26%	4	3.88%	236	0.23%
VAN WERT	12	0.05%	40	0.05%	0	0.00%	52	0.05%
VINTON	5	0.02%	82	0.11%	0	0.00%	87	0.09%
WARREN	165	0.70%	413	0.53%	0	0.00%	578	0.57%
WASHINGTON	113	0.48%	283	0.36%	0	0.00%	396	0.39%
WAYNE	191	0.81%	356	0.46%	0	0.00%	547	0.54%
WILLIAMS	52	0.22%	100	0.13%	0	0.00%	152	0.15%
WOOD	95	0.40%	286	0.37%	0	0.00%	381	0.38%
WYANDOT	6	0.03%	40	0.05%	0	0.00%	46	0.05%

SOURCE: COGNOS. The above numbers have not been reconciled between the CCIDS/3299 data collection system and 2827 ODJFS fiscal reporting system; therefore they may not be conclusive at this time.

OWF data consist of funding codes: 173,312, 313,314, 326, & 327. Other data consist of funding codes: 320, 321, 322, 323, 324, 325, 328, 329, and 342. Local Funding is from funding code 899.