

Ohio Department of Job and Family Services

PUBLIC ASSISTANCE MONTHLY STATISTICS

MAY 2007



<http://jfs.ohio.gov/pams/index.stm>

Bureau of Research and Evaluation : Federal Reports\ Data Development Section

Office of Research, Assessment, and Accountability

P.O. Box 1618

Columbus, Ohio 43216-1618

OHIO DEPARTMENT OF JOB AND FAMILY SERVICES

PUBLIC ASSISTANCE MONTHLY STATISTICS

TABLE OF CONTENTS

<u>TITLE</u>	<u>PAGE(S)</u>
Monthly Review of Public Assistance Statistics.	1
Statewide Summary of Public Assistance Programs.	2
Table 1: OWF (TANF) Summary	3-14
Table 2: Foster Care (Title IV-E) Program Summary.	15-17
Table 3: Disability Assistance Program Summary.	18-22
Table 3-A: DA Payments for Medical Services.	23
Table 5: FNS Benefits Program Summary.	24-28
Table 6: Medicaid (Title XIX): Eligibles and Expenditures.	29-34
Table 7: Child Day Care Summary	35-37
Table 8: Program Summaries of Recipients, Expenditures, and Average Payment Per Recipient During the Last 12 Months.	38
Table 10: Percent of Ohio's Population Participating in Selected Public Assistance Programs.	39-41
<i>Note: Table 4 and Table 9 were discontinued.</i>	
<i>Also: Table 7-A, Updated Child Day Care Summary for February 2007</i>	<i>42-44</i>

All data in the PAMS report is limited to the information available at the time it was constructed. It does not account for backdated or retroactive eligibility or any adjustments made subsequent to its creation.

MONTHLY REVIEW OF PUBLIC ASSISTANCE STATISTICS FOR MAY 2007

OHIO WORKS FIRST (OWF)

For the month of May 2007, OWF-Combined assistance groups totaled 78,942; recipients totaled 167,688 and money payments totaled \$24,142,804. The percent change from April 2007 to May 2007 was 1.7% for assistance groups; 1.7% for recipients, and -0.6% for money payments. For OWF- Regular (OWF-R) there were 75,881 assistance groups; 155,417 recipients, and \$22,934,016 in money payments issued for May 2007. The percent change from April 2007 to May 2007 was 1.8% for assistance groups; 1.9% for recipients, and -0.3% for money payments. For OWF-Unemployed (OWF-U) assistance groups totaled 3,061; recipients, 12,271 and money payments were \$1,208,788. The percent change from April 2007 to May 2007 was -1.0% for assistance groups; -1.1% for recipients and -4.8% for money payments.

FOSTER CARE (TITLE IV-E)

A total of 25,706 children received \$13,271,398 in Title IV-E assistance during the month of May 2007. Included in this total were 5,996 foster care children who received \$5,585,195 in money payments. Of these Title IV-E children, 2,600 or 10.1% were in foster family homes who received \$1,070,222 and 3,396 or 13.2% children in child care institutions who received \$4,514,973 in OWF foster care assistance. The remaining 19,710 children reported as participating in Title IV-E received \$7,686,203 in adoption assistance. Overall, the average amount of Foster Care received per child was \$ 516.28.

DISABILITY ASSISTANCE (DA)

For the month of May 2007, there were 14,485 assistance groups; 14,564 recipients, and \$2,040,201 in DA financial assistance. The average DA financial assistance per recipient was \$140.09. Total DA expenditures for medical services for May 2007 were \$ 2,157,296. Of this total, \$1,523,080 or 70.6% was spent for prescribed drugs, and \$466,619 or 21.6% was spent for physician services. Medical expenses were paid for 3,499 recipients for an average expenditure of \$616.55 per recipient.

FOOD AND NUTRITION SERVICES BENEFITS (FNS)

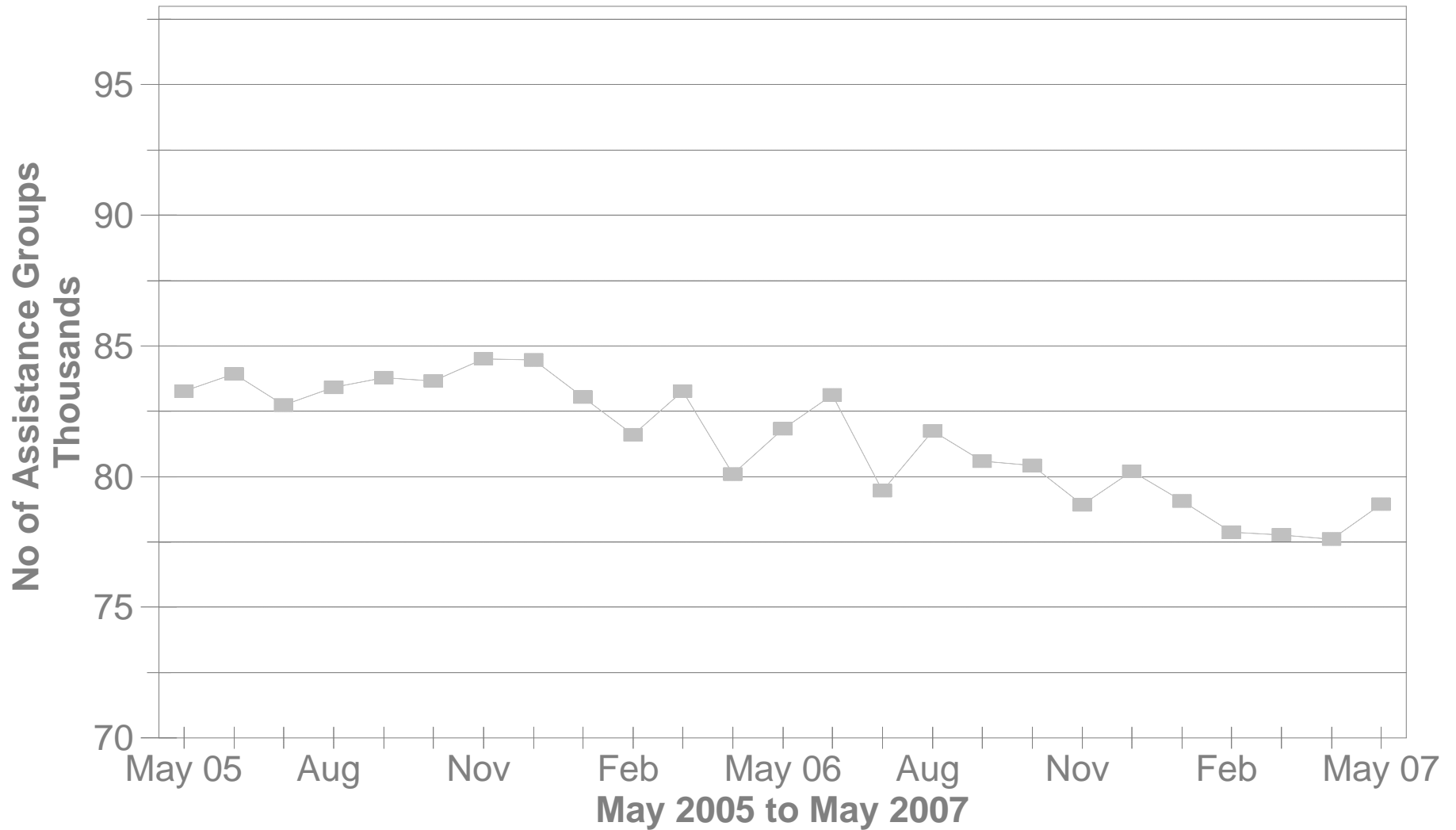
Total persons participating in the FNS benefits program during May 2007 increased to 1,080,781 by 14,533 or 1.4% from 1,066,248 persons reported in April 2007. Households increased by 5,674 or 1.2% over April 2007 levels. The total dollar value of FNS related benefits issued during May 2007 increased by \$ 808,716 or 0.8% from \$107,329,580 reported in April 2007 to \$108,138,296 reported in May 2007. The average benefit issuance per person decreased by \$.60 or -0.6% from those issued in April 2007. The average benefit issuance per person decreased from \$100.66 reported in April 2007 to \$100.06 reported in May 2007.

Please note: All data in the PAMS report is limited to the information available at the time it was constructed. It does not account for backdated or retroactive eligibility or any adjustments made subsequent to its creation.

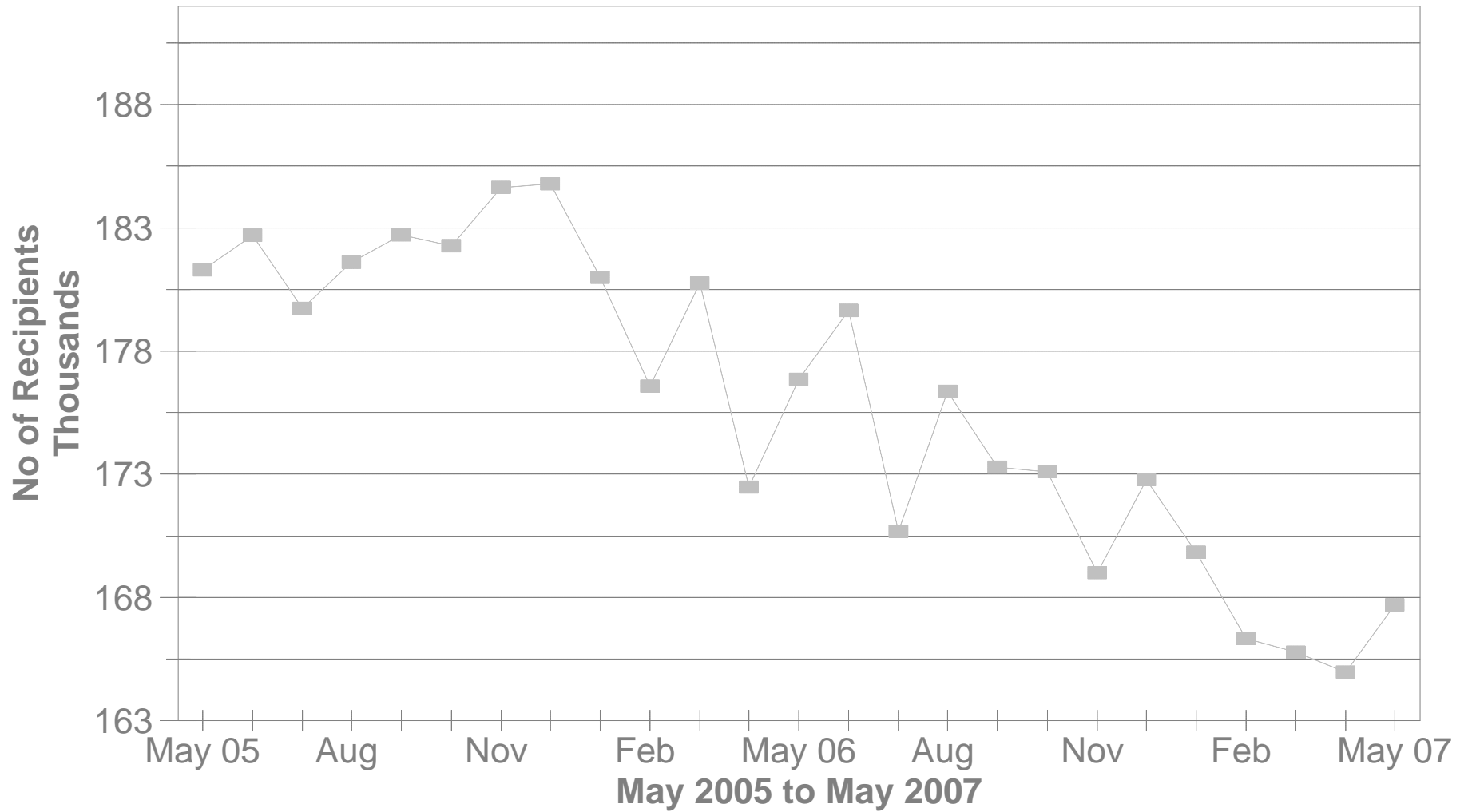
STATEWIDE SUMMARY OF PUBLIC ASSISTANCE PROGRAMS FOR MAY 2007

	May 2007	April 2007	% CHANGE May 07 / Apr 07	May 2006	% CHANGE May 07 / May 06
OHIO WORKS FIRST (OWF)-COMB					
Assistance Groups	78,942	77,601	1.7%	81,827	-3.5%
Recipients	167,688	164,962	1.7%	176,854	-5.2%
Net Payments	\$24,142,804	\$24,283,738	-0.6%	\$26,757,585	-9.8%
Average Per Recipient	\$143.97	\$147.21	-2.2%	\$151.30	-4.8%
OWF-REGULAR, OWF-INCAPACITATED,& OWF REGULAR VENDOR PAYMENTS					
Assistance Groups	75,881	74,508	1.8%	77,805	-2.5%
Recipients	155,417	152,556	1.9%	160,685	-3.3%
Net Payments	\$22,934,016	\$23,014,252	-0.3%	\$25,034,827	-8.4%
Average Per Recipient	\$147.56	\$150.86	-2.2%	\$155.80	-5.3%
OWF-UNEMPLOYED AND OWF-UNEMPLOYED VENDOR PAYMENTS					
Assistance Groups	3,061	3,093	-1.0%	4,022	-23.9%
Recipients	12,271	12,406	-1.1%	16,169	-24.1%
Net Payments	\$1,208,788	\$1,269,486	-4.8%	\$1,722,758	-29.8%
Average Per Recipient	\$98.51	\$102.33	-3.7%	\$106.55	-7.5%
TITLE IV-E FOSTER CARE					
Assistance Groups/Recipients	25,706	26,182	-1.8%	27,254	-5.7%
Gross Payments	\$13,271,398	\$17,403,927	-23.7%	\$13,784,900	-3.7%
Average Per Recipient	\$516.28	\$664.73	-22.3%	\$505.79	2.1%
DISABILITY ASSISTANCE					
Assistance Groups	14,485	13,870	4.4%	13,219	9.6%
Recipients	14,564	13,947	4.4%	13,319	9.3%
Net Payments	\$2,040,201	\$1,768,558	15.4%	\$1,986,853	2.7%
Medical Assistance	\$2,157,296	\$1,726,745	24.9%	\$3,185,546	-32.3%
FNS BENEFITS					
Assistance Groups	495,086	489,412	1.2%	487,016	1.7%
Persons	1,080,781	1,066,248	1.4%	1,069,042	1.1%
Total Coupons Issued	\$108,138,296	\$107,329,580	0.8%	\$106,934,328	1.1%
Average Per Recipient	\$100.06	\$100.66	-0.6%	\$100.03	0.0%

No of OWF Combined Assistance Groups During The Last 25 Months

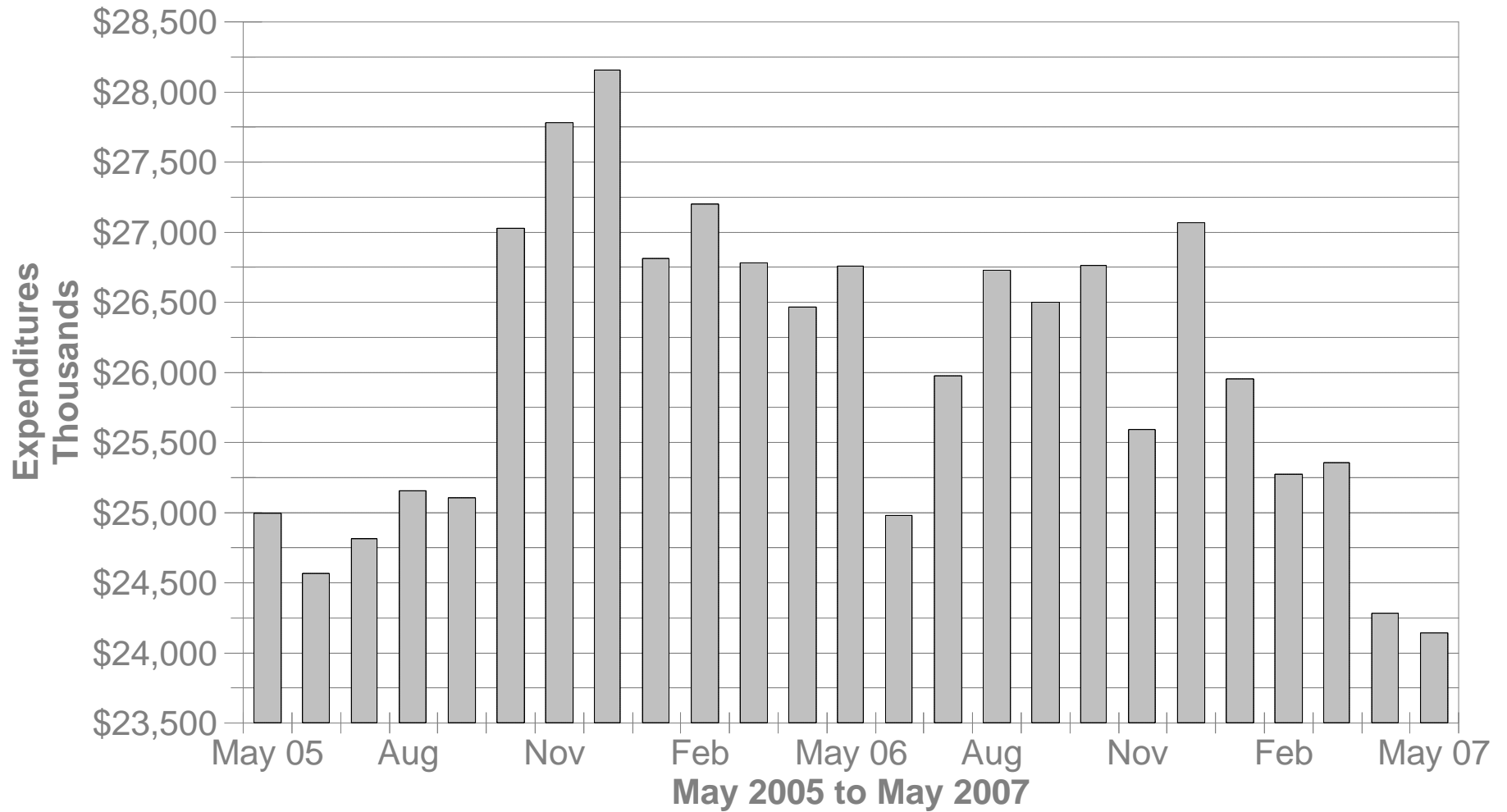


No of OWF Combined Recipients During The Last 25 Months



OWF Combined Net Expenditures

During The Last 25 Months



**TABLE 1
OHIO WORKS FIRST COMBINED
MAY 2007**

OHIO COUNTY	ASSISTANCE GROUP	RECIPIENTS	ADULTS	CHILDREN	ACTUAL EXPENDITURES		
					GROSS AMOUNT	CANCELLED AMOUNT	NET AMOUNT
STATEWIDE	78,942	167,688	40,539	127,149	\$26,353,569.00	\$2,210,765.00	\$24,142,804.00
ADAMS	145	230	5	225	\$41,687.00	\$1,664.00	\$40,023.00
ALLEN	434	690	44	646	\$127,173.00	\$7,185.00	\$119,988.00
ASHLAND	80	160	33	127	\$25,820.00	\$1,094.00	\$24,726.00
ASHTABULA	688	1,411	323	1,088	\$220,193.00	\$18,468.00	\$201,725.00
ATHENS	668	1,610	569	1,041	\$232,497.00	\$17,574.00	\$214,923.00
AUGLAIZE	68	99	0	99	\$19,030.00	\$416.00	\$18,614.00
BELMONT	316	629	145	484	\$98,626.00	\$6,096.00	\$92,530.00
BROWN	158	259	17	242	\$47,273.00	\$245.00	\$47,028.00
BUTLER	1,522	2,780	401	2,379	\$486,390.00	\$33,062.00	\$453,328.00
CARROLL	83	153	34	119	\$23,135.00	\$2,354.00	\$20,781.00
CHAMPAIGN	212	459	133	326	\$71,366.00	\$2,373.00	\$68,993.00
CLARK	1,239	2,631	654	1,977	\$418,863.00	\$20,026.00	\$398,837.00
CLERMONT	403	675	66	609	\$116,765.00	\$10,174.00	\$106,591.00
CLINTON	116	217	26	191	\$36,415.00	\$1,498.00	\$34,917.00
COLUMBIANA	428	775	97	678	\$131,137.00	\$3,603.00	\$127,534.00
COSHOCTON	212	439	123	316	\$68,728.00	\$7,170.00	\$61,558.00
CRAWFORD	137	275	58	217	\$43,692.00	\$3,840.00	\$39,852.00
CUYAHOGA	11,868	23,820	5,404	18,416	\$3,954,136.00	\$310,044.00	\$3,644,092.00
DARKE	164	337	96	241	\$54,260.00	\$7,167.00	\$47,093.00
DEFIANCE	145	336	88	248	\$50,030.00	\$4,488.00	\$45,542.00
DELAWARE	338	771	254	517	\$119,985.00	\$11,391.00	\$108,594.00
ERIE	228	389	29	360	\$68,563.00	\$3,982.00	\$64,581.00
FAIRFIELD	838	1,963	628	1,335	\$286,186.00	\$21,215.00	\$264,971.00
FAYETTE	155	297	67	230	\$47,895.00	\$4,942.00	\$42,953.00
FRANKLIN	11,360	25,650	6,371	19,279	\$3,892,089.00	\$476,710.00	\$3,415,379.00
FULTON	64	98	4	94	\$18,115.00	\$1,162.00	\$16,953.00
GALLIA	491	1,185	413	772	\$160,394.00	\$24,854.00	\$135,540.00
GEAUGA	69	107	12	95	\$19,238.00	\$2,518.00	\$16,720.00
GREENE	559	1,101	259	842	\$176,994.00	\$10,222.00	\$166,772.00

Source: GRP342RA Report from Management Information Services. Data includes ADC-Regular, ADC-Incapacitated, and Vendor Payments.

**TABLE 1
OHIO WORKS FIRST COMBINED
MAY 2007**

OHIO COUNTY	ASSISTANCE GROUP	RECIPIENTS	ADULTS	CHILDREN	ACTUAL EXPENDITURES		
					GROSS AMOUNT	CANCELLED AMOUNT	NET AMOUNT
STATEWIDE	78,942	167,688	40,539	127,149	\$26,353,569.00	\$2,210,765.00	\$24,142,804.00
GUERNSEY	168	282	31	251	\$49,350.00	\$2,808.00	\$46,542.00
HAMILTON	7,201	16,427	3,744	12,683	\$2,563,715.00	\$244,362.00	\$2,319,353.00
HANCOCK	102	140	1	139	\$28,679.00	\$1,980.00	\$26,699.00
HARDIN	67	107	9	98	\$18,714.00	\$2,216.00	\$16,498.00
HARRISON	110	232	65	167	\$31,827.00	\$1,988.00	\$29,839.00
HENRY	41	64	7	57	\$11,930.00	\$991.00	\$10,939.00
HIGHLAND	189	400	88	312	\$61,915.00	\$5,231.00	\$56,684.00
HOCKING	288	649	187	462	\$90,110.00	\$8,265.00	\$81,845.00
HOLMES	42	72	15	57	\$12,872.00	\$336.00	\$12,536.00
HURON	161	250	3	247	\$44,436.00	\$4,358.00	\$40,078.00
JACKSON	310	555	73	482	\$95,653.00	\$5,708.00	\$89,945.00
JEFFERSON	740	1,670	488	1,182	\$244,712.00	\$15,256.00	\$229,456.00
KNOX	267	580	175	405	\$83,419.00	\$4,725.00	\$78,694.00
LAKE	480	990	231	759	\$164,284.00	\$17,386.00	\$146,898.00
LAWRENCE	754	1,485	320	1,165	\$234,599.00	\$16,286.00	\$218,313.00
LICKING	573	1,191	313	878	\$181,623.00	\$15,779.00	\$165,844.00
LOGAN	197	405	92	313	\$63,279.00	\$3,040.00	\$60,239.00
LORAIN	1,965	4,252	947	3,305	\$662,237.00	\$47,974.00	\$614,263.00
LUCAS	6,158	14,026	3,980	10,046	\$2,122,825.00	\$198,622.00	\$1,924,203.00
MADISON	218	499	164	335	\$74,369.00	\$4,037.00	\$70,332.00
MAHONING	2,897	6,655	1,747	4,908	\$1,011,140.00	\$54,972.00	\$956,168.00
MARION	403	761	105	656	\$123,704.00	\$13,865.00	\$109,839.00
MEDINA	227	458	110	348	\$72,587.00	\$8,109.00	\$64,478.00
MEIGS	195	390	99	291	\$60,704.00	\$5,728.00	\$54,976.00
MERCER	70	165	41	124	\$21,967.00	\$2,688.00	\$19,279.00
MIAMI	297	541	92	449	\$91,808.00	\$6,153.00	\$85,655.00
MONROE	62	155	54	101	\$21,305.00	\$1,191.00	\$20,114.00
MONTGOMERY	5,080	10,339	2,429	7,910	\$1,657,538.00	\$107,223.00	\$1,550,315.00
MORGAN	79	153	19	134	\$24,372.00	\$2,500.00	\$21,872.00
MORROW	117	231	54	177	\$36,889.00	\$2,256.00	\$34,633.00

Source: GRP342RA Report from Management Information Services. Data includes ADC-Regular, ADC-Incapacitated, and Vendor Payments.

**TABLE 1
OHIO WORKS FIRST COMBINED
MAY 2007**

OHIO COUNTY	ASSISTANCE GROUP	RECIPIENTS	ADULTS	CHILDREN	ACTUAL EXPENDITURES		
					GROSS AMOUNT	CANCELLED AMOUNT	NET AMOUNT
STATEWIDE	78,942	167,688	40,539	127,149	\$26,353,569.00	\$2,210,765.00	\$24,142,804.00
MUSKINGUM	859	1,832	489	1,343	\$273,909.00	\$18,934.00	\$254,975.00
NOBLE	34	76	17	59	\$11,697.00	\$1,215.00	\$10,482.00
OTTAWA	137	317	100	217	\$46,159.00	\$2,730.00	\$43,429.00
PAULDING	109	281	102	179	\$38,501.00	\$1,803.00	\$36,698.00
PERRY	261	576	132	444	\$86,688.00	\$2,944.00	\$83,744.00
PICKAWAY	369	814	222	592	\$120,102.00	\$9,608.00	\$110,494.00
PIKE	354	771	191	580	\$122,461.00	\$8,909.00	\$113,552.00
PORTAGE	427	808	156	652	\$137,080.00	\$11,283.00	\$125,797.00
PREBLE	184	381	89	292	\$59,132.00	\$3,258.00	\$55,874.00
PUTNAM	21	35	1	34	\$6,341.00	\$0.00	\$6,341.00
RICHLAND	625	1,133	197	936	\$193,130.00	\$12,178.00	\$180,952.00
ROSS	664	1,424	353	1,071	\$218,759.00	\$18,650.00	\$200,109.00
SANDUSKY	204	391	66	325	\$62,920.00	\$3,955.00	\$58,965.00
SCIOTO	1,042	1,970	372	1,598	\$323,184.00	\$21,673.00	\$301,511.00
SENECA	173	355	61	294	\$57,748.00	\$2,034.00	\$55,714.00
SHELBY	140	261	32	229	\$46,391.00	\$1,629.00	\$44,762.00
STARK	2,843	6,386	1,813	4,573	\$929,943.00	\$67,173.00	\$862,770.00
SUMMIT	4,569	9,640	2,597	7,043	\$1,538,655.00	\$115,365.00	\$1,423,290.00
TRUMBULL	1,373	2,713	571	2,142	\$455,518.00	\$37,863.00	\$417,655.00
TUSCARAWAS	383	800	224	576	\$117,441.00	\$11,122.00	\$106,319.00
UNION	138	318	98	220	\$44,912.00	\$2,388.00	\$42,524.00
VAN WERT	45	65	0	65	\$12,962.00	\$336.00	\$12,626.00
VINTON	128	264	64	200	\$40,349.00	\$2,850.00	\$37,499.00
WARREN	220	368	37	331	\$68,303.00	\$3,133.00	\$65,170.00
WASHINGTON	140	204	1	203	\$39,934.00	\$2,183.00	\$37,751.00
WAYNE	433	971	319	652	\$147,827.00	\$7,278.00	\$140,549.00
WILLIAMS	160	399	135	264	\$51,970.00	\$8,771.00	\$43,199.00
WOOD	219	387	48	339	\$69,719.00	\$7,804.00	\$61,915.00
WYANDOT	42	78	16	62	\$12,597.00	\$2,126.00	\$10,471.00

Source: GRP342RA Report from Management Information Services. Data includes ADC-Regular, ADC-Incapacitated, and Vendor Payments.

**TABLE 1
OHIO WORKS FIRST REGULAR
MAY 2007**

OHIO COUNTY	ASSISTANCE GROUP	RECIPIENTS	ADULTS	CHILDREN	ACTUAL EXPENDITURES		
					GROSS AMOUNT	CANCELLED AMOUNT	NET AMOUNT
STATEWIDE	75,881	155,417	34,914	120,503	\$25,025,398.00	\$2,091,382.00	\$22,934,016.00
ADAMS	145	230	5	225	\$41,687.00	\$1,664.00	\$40,023.00
ALLEN	434	690	44	646	\$127,173.00	\$7,185.00	\$119,988.00
ASHLAND	79	157	31	126	\$25,441.00	\$1,094.00	\$24,347.00
ASHTABULA	654	1,281	262	1,019	\$205,739.00	\$16,926.00	\$188,813.00
ATHENS	559	1,226	377	849	\$186,708.00	\$13,742.00	\$172,966.00
AUGLAIZE	68	99	0	99	\$19,030.00	\$416.00	\$18,614.00
BELMONT	297	552	105	447	\$90,661.00	\$6,096.00	\$84,565.00
BROWN	158	259	17	242	\$47,273.00	\$245.00	\$47,028.00
BUTLER	1,522	2,780	401	2,379	\$486,390.00	\$33,062.00	\$453,328.00
CARROLL	81	142	30	112	\$22,829.00	\$1,761.00	\$21,068.00
CHAMPAIGN	198	406	105	301	\$66,165.00	\$2,373.00	\$63,792.00
CLARK	1,198	2,467	573	1,894	\$398,289.00	\$18,333.00	\$379,956.00
CLERMONT	403	675	66	609	\$116,765.00	\$10,174.00	\$106,591.00
CLINTON	116	217	26	191	\$36,415.00	\$1,498.00	\$34,917.00
COLUMBIANA	426	765	93	672	\$129,970.00	\$3,603.00	\$126,367.00
COSHOCTON	195	380	92	288	\$62,267.00	\$6,663.00	\$55,604.00
CRAWFORD	133	262	52	210	\$42,273.00	\$3,840.00	\$38,433.00
CUYAHOGA	11,599	22,781	4,911	17,870	\$3,844,762.00	\$303,613.00	\$3,541,149.00
DARKE	157	310	82	228	\$51,460.00	\$6,914.00	\$44,546.00
DEFIANCE	138	306	74	232	\$46,960.00	\$4,488.00	\$42,472.00
DELAWARE	305	637	194	443	\$103,946.00	\$9,909.00	\$94,037.00
ERIE	226	376	25	351	\$67,166.00	\$3,982.00	\$63,184.00
FAIRFIELD	758	1,627	471	1,156	\$248,087.00	\$17,786.00	\$230,301.00
FAYETTE	147	270	52	218	\$45,617.00	\$4,464.00	\$41,153.00
FRANKLIN	10,794	23,206	5,427	17,779	\$3,630,247.00	\$446,818.00	\$3,183,429.00
FULTON	63	96	4	92	\$17,779.00	\$1,162.00	\$16,617.00
GALLIA	424	937	281	656	\$134,655.00	\$21,864.00	\$112,791.00
GEAUGA	69	107	12	95	\$19,238.00	\$2,518.00	\$16,720.00
GREENE	547	1,053	235	818	\$172,035.00	\$9,715.00	\$162,320.00

Source: GRP342RA Report from Management Information Services. Data includes ADC-Regular, ADC-Incapacitated, and Vendor Payments.

**TABLE 1
OHIO WORKS FIRST REGULAR
MAY 2007**

OHIO COUNTY	ASSISTANCE GROUP	RECIPIENTS	ADULTS	CHILDREN	ACTUAL EXPENDITURES		
					GROSS AMOUNT	CANCELLED AMOUNT	NET AMOUNT
STATEWIDE	75,881	155,417	34,914	120,503	\$25,025,398.00	\$2,091,382.00	\$22,934,016.00
GUERNSEY	167	278	29	249	\$48,843.00	\$2,808.00	\$46,035.00
HAMILTON	7,067	15,880	3,499	12,381	\$2,500,995.00	\$234,704.00	\$2,266,291.00
HANCOCK	102	140	1	139	\$28,679.00	\$1,980.00	\$26,699.00
HARDIN	67	107	9	98	\$18,714.00	\$2,216.00	\$16,498.00
HARRISON	103	197	50	147	\$29,482.00	\$1,988.00	\$27,494.00
HENRY	40	60	5	55	\$11,377.00	\$991.00	\$10,386.00
HIGHLAND	180	356	70	286	\$57,990.00	\$5,231.00	\$52,759.00
HOCKING	263	540	137	403	\$78,724.00	\$7,262.00	\$71,462.00
HOLMES	39	62	9	53	\$11,834.00	\$336.00	\$11,498.00
HURON	160	249	3	246	\$44,255.00	\$4,358.00	\$39,897.00
JACKSON	303	533	60	473	\$93,305.00	\$5,708.00	\$87,597.00
JEFFERSON	682	1,426	373	1,053	\$220,157.00	\$11,776.00	\$208,381.00
KNOX	247	507	135	372	\$74,918.00	\$4,725.00	\$70,193.00
LAKE	459	902	198	704	\$156,504.00	\$17,386.00	\$139,118.00
LAWRENCE	719	1,332	250	1,082	\$219,588.00	\$15,369.00	\$204,219.00
LICKING	541	1,074	252	822	\$168,579.00	\$14,778.00	\$153,801.00
LOGAN	193	385	84	301	\$61,956.00	\$3,040.00	\$58,916.00
LORAIN	1,905	4,028	853	3,175	\$635,725.00	\$47,314.00	\$588,411.00
LUCAS	5,798	12,627	3,324	9,303	\$1,971,158.00	\$182,198.00	\$1,788,960.00
MADISON	192	397	113	284	\$65,112.00	\$2,937.00	\$62,175.00
MAHONING	2,807	6,286	1,569	4,717	\$969,680.00	\$52,723.00	\$916,957.00
MARION	396	738	96	642	\$120,627.00	\$13,358.00	\$107,269.00
MEDINA	216	417	88	329	\$68,788.00	\$7,922.00	\$60,866.00
MEIGS	186	351	80	271	\$57,621.00	\$5,328.00	\$52,293.00
MERCER	66	146	33	113	\$20,095.00	\$2,688.00	\$17,407.00
MIAMI	295	535	88	447	\$90,988.00	\$6,153.00	\$84,835.00
MONROE	54	124	38	86	\$18,380.00	\$1,145.00	\$17,235.00
MONTGOMERY	5,060	10,265	2,409	7,856	\$1,650,932.00	\$107,223.00	\$1,543,709.00
MORGAN	78	150	17	133	\$23,962.00	\$2,500.00	\$21,462.00
MORROW	113	215	46	169	\$34,460.00	\$2,256.00	\$32,204.00

Source: GRP342RA Report from Management Information Services. Data includes ADC-Regular, ADC-Incapacitated, and Vendor Payments.

**TABLE 1
OHIO WORKS FIRST REGULAR
MAY 2007**

OHIO COUNTY	ASSISTANCE GROUP	RECIPIENTS	ADULTS	CHILDREN	ACTUAL EXPENDITURES		
					GROSS AMOUNT	CANCELLED AMOUNT	NET AMOUNT
STATEWIDE	75,881	155,417	34,914	120,503	\$25,025,398.00	\$2,091,382.00	\$22,934,016.00
MUSKINGUM	799	1,588	368	1,220	\$250,582.00	\$16,943.00	\$233,639.00
NOBLE	34	76	17	59	\$11,697.00	\$1,215.00	\$10,482.00
OTTAWA	124	271	77	194	\$40,988.00	\$2,228.00	\$38,760.00
PAULDING	91	206	66	140	\$29,690.00	\$1,401.00	\$28,289.00
PERRY	234	467	78	389	\$74,595.00	\$2,580.00	\$72,015.00
PICKAWAY	355	762	195	567	\$114,673.00	\$9,266.00	\$105,407.00
PIKE	336	699	155	544	\$113,695.00	\$8,909.00	\$104,786.00
PORTAGE	421	791	148	643	\$135,234.00	\$10,776.00	\$124,458.00
PREBLE	176	350	73	277	\$56,360.00	\$2,848.00	\$53,512.00
PUTNAM	18	32	1	31	\$5,606.00	\$0.00	\$5,606.00
RICHLAND	618	1,108	183	925	\$189,659.00	\$11,413.00	\$178,246.00
ROSS	630	1,279	291	988	\$203,351.00	\$17,535.00	\$185,816.00
SANDUSKY	200	381	64	317	\$61,086.00	\$3,955.00	\$57,131.00
SCIOTO	994	1,784	280	1,504	\$303,443.00	\$19,809.00	\$283,634.00
SENECA	171	347	59	288	\$56,734.00	\$2,034.00	\$54,700.00
SHELBY	137	247	26	221	\$45,205.00	\$1,629.00	\$43,576.00
STARK	2,647	5,607	1,429	4,178	\$848,561.00	\$60,986.00	\$787,575.00
SUMMIT	4,362	8,792	2,193	6,599	\$1,441,386.00	\$107,635.00	\$1,333,751.00
TRUMBULL	1,335	2,569	495	2,074	\$436,645.00	\$34,827.00	\$401,818.00
TUSCARAWAS	355	690	170	520	\$107,281.00	\$10,205.00	\$97,076.00
UNION	130	283	82	201	\$41,913.00	\$2,388.00	\$39,525.00
VAN WERT	45	65	0	65	\$12,962.00	\$336.00	\$12,626.00
VINTON	121	240	50	190	\$37,172.00	\$2,850.00	\$34,322.00
WARREN	218	361	35	326	\$67,520.00	\$3,133.00	\$64,387.00
WASHINGTON	140	204	1	203	\$39,934.00	\$2,183.00	\$37,751.00
WAYNE	395	820	244	576	\$130,678.00	\$6,627.00	\$124,051.00
WILLIAMS	147	347	111	236	\$47,660.00	\$7,775.00	\$39,885.00
WOOD	216	376	44	332	\$68,471.00	\$7,461.00	\$61,010.00
WYANDOT	41	74	14	60	\$12,162.00	\$2,126.00	\$10,036.00

Source: GRP342RA Report from Management Information Services. Data includes ADC-Regular, ADC-Incapacitated, and Vendor Payments.

**TABLE 1
OHIO WORKS FIRST UNEMPLOYED
MAY 2007**

OHIO COUNTY	ASSISTANCE GROUP	RECIPIENTS	ADULTS	CHILDREN	ACTUAL EXPENDITURES		
					GROSS AMOUNT	CANCELLED AMOUNT	NET AMOUNT
STATEWIDE	3,061	12,271	5,625	6,646	\$1,328,171.00	\$119,383.00	\$1,208,788.00
ADAMS	0	0	0	0	\$0.00	\$0.00	\$0.00
ALLEN	0	0	0	0	\$0.00	\$0.00	\$0.00
ASHLAND	1	3	2	1	\$379.00	\$0.00	\$379.00
ASHTABULA	34	130	61	69	\$14,454.00	\$1,542.00	\$12,912.00
ATHENS	109	384	192	192	\$45,789.00	\$3,832.00	\$41,957.00
AUGLAIZE	0	0	0	0	\$0.00	\$0.00	\$0.00
BELMONT	19	77	40	37	\$7,965.00	\$0.00	\$7,965.00
BROWN	0	0	0	0	\$0.00	\$0.00	\$0.00
BUTLER	0	0	0	0	\$0.00	\$0.00	\$0.00
CARROLL	2	11	4	7	\$306.00	\$593.00	-\$287.00
CHAMPAIGN	14	53	28	25	\$5,201.00	\$0.00	\$5,201.00
CLARK	41	164	81	83	\$20,574.00	\$1,693.00	\$18,881.00
CLERMONT	0	0	0	0	\$0.00	\$0.00	\$0.00
CLINTON	0	0	0	0	\$0.00	\$0.00	\$0.00
COLUMBIANA	2	10	4	6	\$1,167.00	\$0.00	\$1,167.00
COSHOCTON	17	59	31	28	\$6,461.00	\$507.00	\$5,954.00
CRAWFORD	4	13	6	7	\$1,419.00	\$0.00	\$1,419.00
CUYAHOGA	269	1,039	493	546	\$109,374.00	\$6,431.00	\$102,943.00
DARKE	7	27	14	13	\$2,800.00	\$253.00	\$2,547.00
DEFIANCE	7	30	14	16	\$3,070.00	\$0.00	\$3,070.00
DELAWARE	33	134	60	74	\$16,039.00	\$1,482.00	\$14,557.00
ERIE	2	13	4	9	\$1,397.00	\$0.00	\$1,397.00
FAIRFIELD	80	336	157	179	\$38,099.00	\$3,429.00	\$34,670.00
FAYETTE	8	27	15	12	\$2,278.00	\$478.00	\$1,800.00
FRANKLIN	566	2,444	944	1,500	\$261,842.00	\$29,892.00	\$231,950.00
FULTON	1	2	0	2	\$336.00	\$0.00	\$336.00
GALLIA	67	248	132	116	\$25,739.00	\$2,990.00	\$22,749.00
GEAUGA	0	0	0	0	\$0.00	\$0.00	\$0.00
GREENE	12	48	24	24	\$4,959.00	\$507.00	\$4,452.00

Source: GRP342RA Report from Management Information Services. Data includes ADC-Regular, ADC-Incapacitated, and Vendor Payments.

**TABLE 1
OHIO WORKS FIRST UNEMPLOYED
MAY 2007**

OHIO COUNTY	ASSISTANCE GROUP	RECIPIENTS	ADULTS	CHILDREN	ACTUAL EXPENDITURES		
					GROSS AMOUNT	CANCELLED AMOUNT	NET AMOUNT
STATEWIDE	3,061	12,271	5,625	6,646	\$1,328,171.00	\$119,383.00	\$1,208,788.00
GUERNSEY	1	4	2	2	\$507.00	\$0.00	\$507.00
HAMILTON	134	547	245	302	\$62,720.00	\$9,658.00	\$53,062.00
HANCOCK	0	0	0	0	\$0.00	\$0.00	\$0.00
HARDIN	0	0	0	0	\$0.00	\$0.00	\$0.00
HARRISON	7	35	15	20	\$2,345.00	\$0.00	\$2,345.00
HENRY	1	4	2	2	\$553.00	\$0.00	\$553.00
HIGHLAND	9	44	18	26	\$3,925.00	\$0.00	\$3,925.00
HOCKING	25	109	50	59	\$11,386.00	\$1,003.00	\$10,383.00
HOLMES	3	10	6	4	\$1,038.00	\$0.00	\$1,038.00
HURON	1	1	0	1	\$181.00	\$0.00	\$181.00
JACKSON	7	22	13	9	\$2,348.00	\$0.00	\$2,348.00
JEFFERSON	58	244	115	129	\$24,555.00	\$3,480.00	\$21,075.00
KNOX	20	73	40	33	\$8,501.00	\$0.00	\$8,501.00
LAKE	21	88	33	55	\$7,780.00	\$0.00	\$7,780.00
LAWRENCE	35	153	70	83	\$15,011.00	\$917.00	\$14,094.00
LICKING	32	117	61	56	\$13,044.00	\$1,001.00	\$12,043.00
LOGAN	4	20	8	12	\$1,323.00	\$0.00	\$1,323.00
LORAIN	60	224	94	130	\$26,512.00	\$660.00	\$25,852.00
LUCAS	360	1,399	656	743	\$151,667.00	\$16,424.00	\$135,243.00
MADISON	26	102	51	51	\$9,257.00	\$1,100.00	\$8,157.00
MAHONING	90	369	178	191	\$41,460.00	\$2,249.00	\$39,211.00
MARION	7	23	9	14	\$3,077.00	\$507.00	\$2,570.00
MEDINA	11	41	22	19	\$3,799.00	\$187.00	\$3,612.00
MEIGS	9	39	19	20	\$3,083.00	\$400.00	\$2,683.00
MERCER	4	19	8	11	\$1,872.00	\$0.00	\$1,872.00
MIAMI	2	6	4	2	\$820.00	\$0.00	\$820.00
MONROE	8	31	16	15	\$2,925.00	\$46.00	\$2,879.00
MONTGOMERY	20	74	20	54	\$6,606.00	\$0.00	\$6,606.00
MORGAN	1	3	2	1	\$410.00	\$0.00	\$410.00
MORROW	4	16	8	8	\$2,429.00	\$0.00	\$2,429.00

Source: GRP342RA Report from Management Information Services. Data includes ADC-Regular, ADC-Incapacitated, and Vendor Payments.

**TABLE 1
OHIO WORKS FIRST UNEMPLOYED
MAY 2007**

OHIO COUNTY	ASSISTANCE GROUP	RECIPIENTS	ADULTS	CHILDREN	ACTUAL EXPENDITURES		
					GROSS AMOUNT	CANCELLED AMOUNT	NET AMOUNT
STATEWIDE	3,061	12,271	5,625	6,646	\$1,328,171.00	\$119,383.00	\$1,208,788.00
MUSKINGUM	60	244	121	123	\$23,327.00	\$1,991.00	\$21,336.00
NOBLE	0	0	0	0	\$0.00	\$0.00	\$0.00
OTTAWA	13	46	23	23	\$5,171.00	\$502.00	\$4,669.00
PAULDING	18	75	36	39	\$8,811.00	\$402.00	\$8,409.00
PERRY	27	109	54	55	\$12,093.00	\$364.00	\$11,729.00
PICKAWAY	14	52	27	25	\$5,429.00	\$342.00	\$5,087.00
PIKE	18	72	36	36	\$8,766.00	\$0.00	\$8,766.00
PORTAGE	6	17	8	9	\$1,846.00	\$507.00	\$1,339.00
PREBLE	8	31	16	15	\$2,772.00	\$410.00	\$2,362.00
PUTNAM	3	3	0	3	\$735.00	\$0.00	\$735.00
RICHLAND	7	25	14	11	\$3,471.00	\$765.00	\$2,706.00
ROSS	34	145	62	83	\$15,408.00	\$1,115.00	\$14,293.00
SANDUSKY	4	10	2	8	\$1,834.00	\$0.00	\$1,834.00
SCIOTO	48	186	92	94	\$19,741.00	\$1,864.00	\$17,877.00
SENECA	2	8	2	6	\$1,014.00	\$0.00	\$1,014.00
SHELBY	3	14	6	8	\$1,186.00	\$0.00	\$1,186.00
STARK	196	779	384	395	\$81,382.00	\$6,187.00	\$75,195.00
SUMMIT	207	848	404	444	\$97,269.00	\$7,730.00	\$89,539.00
TRUMBULL	38	144	76	68	\$18,873.00	\$3,036.00	\$15,837.00
TUSCARAWAS	28	110	54	56	\$10,160.00	\$917.00	\$9,243.00
UNION	8	35	16	19	\$2,999.00	\$0.00	\$2,999.00
VAN WERT	0	0	0	0	\$0.00	\$0.00	\$0.00
VINTON	7	24	14	10	\$3,177.00	\$0.00	\$3,177.00
WARREN	2	7	2	5	\$783.00	\$0.00	\$783.00
WASHINGTON	0	0	0	0	\$0.00	\$0.00	\$0.00
WAYNE	38	151	75	76	\$17,149.00	\$651.00	\$16,498.00
WILLIAMS	13	52	24	28	\$4,310.00	\$996.00	\$3,314.00
WOOD	3	11	4	7	\$1,248.00	\$343.00	\$905.00
WYANDOT	1	4	2	2	\$435.00	\$0.00	\$435.00

Source: GRP342RA Report from Management Information Services. Data includes ADC-Regular, ADC-Incapacitated, and Vendor Payments.

**TABLE 2
TITLE IV-E FOSTER CARE AND ADOPTION ASSISTANCE
MAY 2007**

OHIO COUNTY	FOSTER CARE						ADOPTION ASSISTANCE		TOTAL FOSTER CARE AND ADOPTION ASSISTANCE	
	FOSTER FAMILY HOMES		CHILD CARE INSTITUTIONS		HOMES & INSTITUTIONS		CHILDREN	GROSS AMOUNT	CHILDREN	GROSS AMOUNT
	CHILDREN	GROSS AMOUNT	CHILDREN	GROSS AMOUNT	CHILDREN	GROSS AMOUNT				
STATEWIDE	2,600	\$1,070,222.30	3,396	\$4,514,972.75	5,996	\$5,585,195.05	19,710	\$7,686,203.33	25,706	\$13,271,398.38
ADAMS	16	\$3,881.73	6	\$14,940.36	22	\$18,822.09	36	\$11,508.69	58	\$30,330.78
ALLEN	77	\$39,909.42	20	\$28,317.03	97	\$68,226.45	126	\$37,732.42	223	\$105,958.87
ASHLAND	10	\$3,886.79	6	\$10,176.23	16	\$14,063.02	12	\$3,000.00	28	\$17,063.02
ASHTABULA	0	\$0.00	13	\$6,386.63	13	\$6,386.63	189	\$67,493.03	202	\$73,879.66
ATHENS	29	\$12,724.19	32	\$42,128.70	61	\$54,852.89	133	\$42,910.23	194	\$97,763.12
AUGLAIZE	2	\$1,756.98	2	\$2,840.19	4	\$4,597.17	47	\$17,753.53	51	\$22,350.70
BELMONT	1	\$598.38	23	\$24,693.55	24	\$25,291.93	115	\$46,287.13	139	\$71,579.06
BROWN	21	\$6,679.11	0	\$0.00	21	\$6,679.11	43	\$11,258.11	64	\$17,937.22
BUTLER	0	\$0.00	0	\$0.00	0	\$0.00	0	\$0.00	0	\$0.00
CARROLL	6	\$4,646.90	1	-\$3,724.77	7	\$922.13	7	\$1,750.00	14	\$2,672.13
CHAMPAIGN	1	\$369.89	0	\$0.00	1	\$369.89	22	\$7,789.80	23	\$8,159.69
CLARK	0	\$0.00	0	\$0.00	0	\$0.00	313	\$112,966.14	313	\$112,966.14
CLERMONT	58	\$22,511.85	129	\$165,282.77	187	\$187,794.62	268	\$71,887.95	455	\$259,682.57
CLINTON	32	\$19,381.30	0	\$0.00	32	\$19,381.30	72	\$28,694.03	104	\$48,075.33
COLUMBIANA	0	\$0.00	0	\$0.00	0	\$0.00	0	\$0.00	0	\$0.00
COSHOCTON	0	\$0.00	2	\$1,078.50	2	\$1,078.50	47	\$13,972.32	49	\$15,050.82
CRAWFORD	0	\$0.00	0	\$0.00	0	\$0.00	47	\$14,586.82	47	\$14,586.82
CUYAHOGA	338	\$119,576.18	832	\$1,213,832.68	1,170	\$1,333,408.86	5,197	\$2,474,934.50	6,367	\$3,808,343.36
DARKE	5	\$481.87	21	\$54,451.09	26	\$54,932.96	34	\$10,671.60	60	\$65,604.56
DEFIANCE	10	\$4,504.54	0	\$0.00	10	\$4,504.54	31	\$8,376.43	41	\$12,880.97
DELAWARE	8	\$2,988.90	0	\$0.00	8	\$2,988.90	65	\$20,498.42	73	\$23,487.32
ERIE	29	\$17,056.62	16	\$38,755.14	45	\$55,811.76	77	\$24,880.73	122	\$80,692.49
FAIRFIELD	0	\$0.00	0	\$0.00	0	\$0.00	176	\$47,665.23	176	\$47,665.23
FAYETTE	9	\$106.90	0	\$0.00	9	\$106.90	16	\$4,000.00	25	\$4,106.90
FRANKLIN	0	\$0.00	824	\$326,005.06	824	\$326,005.06	2,577	\$982,333.82	3,401	\$1,308,338.88
FULTON	0	\$0.00	18	\$28,847.35	18	\$28,847.35	16	\$4,298.30	34	\$33,145.65
GALLIA	11	\$3,705.72	4	\$6,530.53	15	\$10,236.25	49	\$12,215.00	64	\$22,451.25
GEAUGA	5	\$3,294.25	5	\$8,563.33	10	\$11,857.58	102	\$34,431.64	112	\$46,289.22
GREENE	0	\$0.00	0	\$0.00	0	\$0.00	98	\$34,033.30	98	\$34,033.30

SOURCE: GBS003RB Report from Management Information Services. Federal funds only.

**TABLE 2
TITLE IV-E FOSTER CARE AND ADOPTION ASSISTANCE
MAY 2007**

OHIO COUNTY	FOSTER CARE						ADOPTION ASSISTANCE		TOTAL FOSTER CARE AND ADOPTION ASSISTANCE	
	FOSTER FAMILY HOMES		CHILD CARE INSTITUTIONS		HOMES & INSTITUTIONS		CHILDREN	GROSS AMOUNT	CHILDREN	GROSS AMOUNT
	CHILDREN	GROSS AMOUNT	CHILDREN	GROSS AMOUNT	CHILDREN	GROSS AMOUNT				
STATEWIDE	2,600	\$1,070,222.30	3,396	\$4,514,972.75	5,996	\$5,585,195.05	19,710	\$7,686,203.33	25,706	\$13,271,398.38
GUERNSEY	27	\$15,292.12	11	\$22,494.30	38	\$37,786.42	80	\$25,083.30	118	\$62,869.72
HAMILTON	168	\$37,565.71	389	\$776,983.18	557	\$814,548.89	1,520	\$576,556.86	2,077	\$1,391,105.75
HANCOCK	18	\$12,186.87	0	\$0.00	18	\$12,186.87	54	\$16,459.12	72	\$28,645.99
HARDIN	0	\$0.00	11	\$6,561.00	11	\$6,561.00	44	\$14,158.45	55	\$20,719.45
HARRISON	15	\$5,620.50	0	\$0.00	15	\$5,620.50	21	\$6,740.15	36	\$12,360.65
HENRY	0	\$0.00	7	\$7,570.70	7	\$7,570.70	22	\$7,865.31	29	\$15,436.01
HIGHLAND	0	\$0.00	3	\$883.50	3	\$883.50	16	\$5,548.13	19	\$6,431.63
HOCKING	20	\$4,247.72	15	\$15,626.01	35	\$19,873.73	49	\$15,850.22	84	\$35,723.95
HOLMES	14	\$417.85	0	\$0.00	14	\$417.85	17	\$6,081.55	31	\$6,499.40
HURON	26	\$11,928.91	0	\$0.00	26	\$11,928.91	37	\$10,890.65	63	\$22,819.56
JACKSON	3	\$1,109.67	23	\$23,229.04	26	\$24,338.71	14	\$3,500.00	40	\$27,838.71
JEFFERSON	31	\$11,069.84	25	\$51,347.49	56	\$62,417.33	57	\$24,108.74	113	\$86,526.07
KNOX	4	\$1,530.84	3	\$3,257.13	7	\$4,787.97	31	\$10,541.98	38	\$15,329.95
LAKE	36	\$25,537.56	14	\$54,332.97	50	\$79,870.53	157	\$47,621.50	207	\$127,492.03
LAWRENCE	1	\$221.93	0	\$0.00	1	\$221.93	48	\$12,745.75	49	\$12,967.68
LICKING	0	\$0.00	0	\$0.00	0	\$0.00	0	\$0.00	0	\$0.00
LOGAN	5	\$2,931.65	0	\$0.00	5	\$2,931.65	51	\$18,612.75	56	\$21,544.40
LORAIN	0	\$0.00	8	\$28,878.16	8	\$28,878.16	444	\$155,447.57	452	\$184,325.73
LUCAS	505	\$223,059.04	59	\$101,976.07	564	\$325,035.11	1,641	\$614,425.78	2,205	\$939,460.89
MADISON	0	\$0.00	9	\$12,543.52	9	\$12,543.52	25	\$8,035.02	34	\$20,578.54
MAHONING	114	\$59,434.48	0	\$0.00	114	\$59,434.48	238	\$71,861.21	352	\$131,295.69
MARION	21	\$7,641.72	8	\$13,451.60	29	\$21,093.32	66	\$21,857.51	95	\$42,950.83
MEDINA	0	\$0.00	5	\$2,422.00	5	\$2,422.00	86	\$30,422.71	91	\$32,844.71
MEIGS	0	\$0.00	0	\$0.00	0	\$0.00	8	\$2,000.00	8	\$2,000.00
MERCER	8	\$4,339.04	0	\$0.00	8	\$4,339.04	33	\$8,757.11	41	\$13,096.15
MIAMI	25	\$18,543.13	31	\$47,108.69	56	\$65,651.82	107	\$36,228.45	163	\$101,880.27
MONROE	3	\$1,498.05	0	\$0.00	3	\$1,498.05	11	\$3,644.90	14	\$5,142.95
MONTGOMERY	284	\$126,880.53	214	\$395,101.38	498	\$521,981.91	1,203	\$594,752.04	1,701	\$1,116,733.95
MORGAN	0	\$0.00	0	\$0.00	0	\$0.00	12	\$2,986.00	12	\$2,986.00
MORROW	0	\$0.00	0	\$0.00	0	\$0.00	29	\$7,634.80	29	\$7,634.80

SOURCE: GBS003RB Report from Management Information Services. Federal funds only.

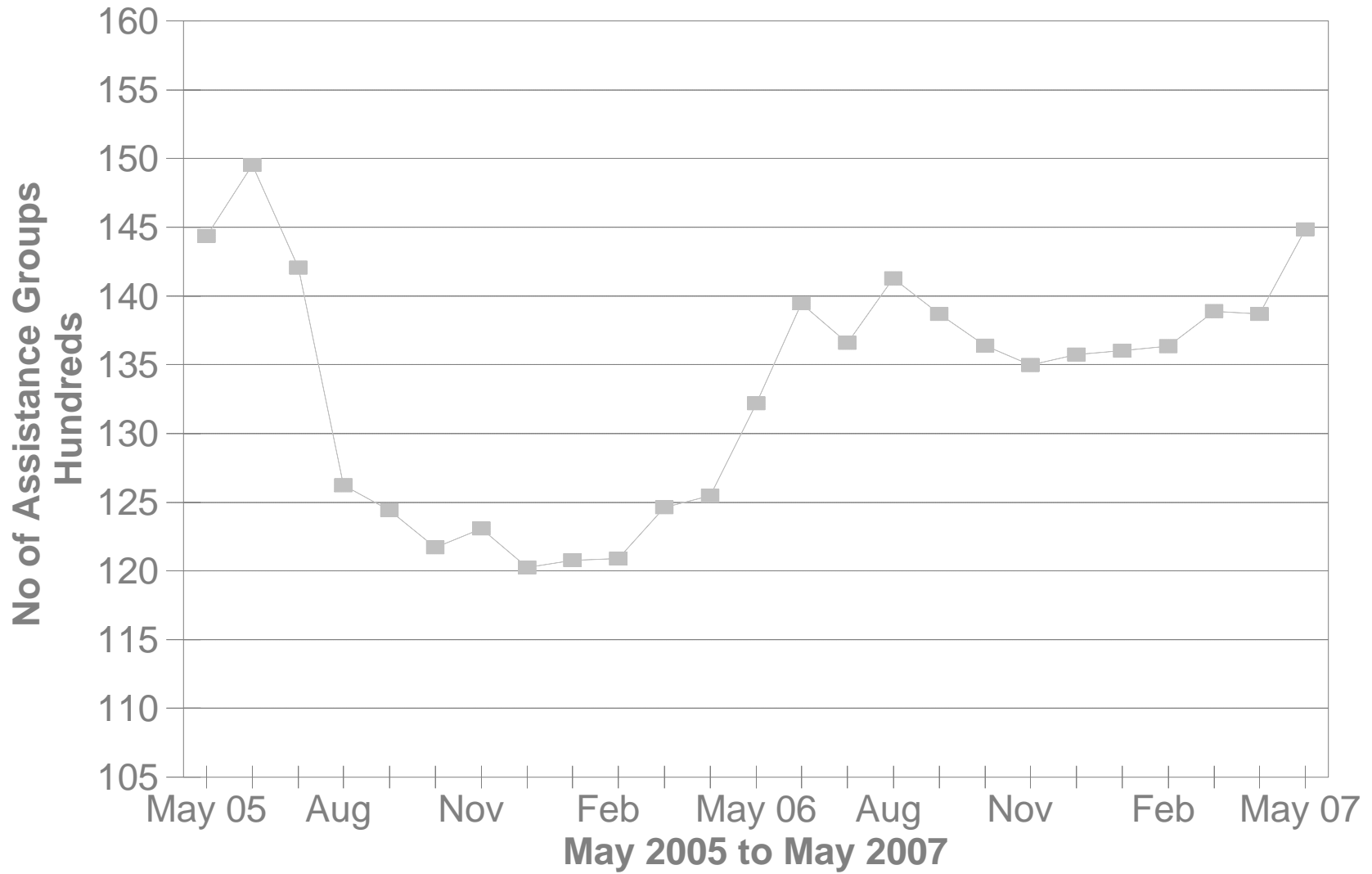
**TABLE 2
TITLE IV-E FOSTER CARE AND ADOPTION ASSISTANCE
MAY 2007**

OHIO COUNTY	FOSTER CARE						ADOPTION ASSISTANCE		TOTAL FOSTER CARE AND ADOPTION ASSISTANCE	
	FOSTER FAMILY HOMES		CHILD CARE INSTITUTIONS		HOMES & INSTITUTIONS		CHILDREN	GROSS AMOUNT	CHILDREN	GROSS AMOUNT
	CHILDREN	GROSS AMOUNT	CHILDREN	GROSS AMOUNT	CHILDREN	GROSS AMOUNT				
STATEWIDE	2,600	\$1,070,222.30	3,396	\$4,514,972.75	5,996	\$5,585,195.05	19,710	\$7,686,203.33	25,706	\$13,271,398.38
MUSKINGUM	0	\$0.00	0	\$0.00	0	\$0.00	0	\$0.00	0	\$0.00
NOBLE	0	\$0.00	0	\$0.00	0	\$0.00	7	\$1,750.00	7	\$1,750.00
OTTAWA	10	-\$1,476.59	6	\$17,399.28	16	\$15,922.69	2	\$500.00	18	\$16,422.69
PAULDING	4	\$3,642.21	0	\$0.00	4	\$3,642.21	24	\$9,560.04	28	\$13,202.25
PERRY	33	\$19,104.37	6	\$5,427.55	39	\$24,531.92	38	\$11,864.44	77	\$36,396.36
PICKAWAY	9	\$2,249.99	3	\$4,791.26	12	\$7,041.25	20	\$5,775.58	32	\$12,816.83
PIKE	8	\$3,698.88	12	\$14,578.19	20	\$18,277.07	23	\$7,113.75	43	\$25,390.82
PORTAGE	0	\$0.00	30	\$94,592.76	30	\$94,592.76	142	\$64,723.77	172	\$159,316.53
PREBLE	27	\$9,347.61	22	\$29,934.14	49	\$39,281.75	37	\$9,551.86	86	\$48,833.61
PUTNAM	0	\$0.00	1	\$2,253.35	1	\$2,253.35	13	\$3,250.00	14	\$5,503.35
RICHLAND	0	\$0.00	0	\$0.00	0	\$0.00	257	\$88,261.94	257	\$88,261.94
ROSS	21	\$11,670.05	1	-\$6,201.08	22	\$5,468.97	68	\$21,839.03	90	\$27,308.00
SANDUSKY	17	\$4,765.77	10	\$19,530.32	27	\$24,296.09	61	\$15,652.09	88	\$39,948.18
SCIOTO	14	\$6,136.53	0	\$0.00	14	\$6,136.53	51	\$15,842.31	65	\$21,978.84
SENECA	8	\$1,782.43	23	\$45,053.25	31	\$46,835.68	72	\$20,583.34	103	\$67,419.02
SHELBY	12	\$16,089.06	0	\$0.00	12	\$16,089.06	52	\$21,853.13	64	\$37,942.19
STARK	0	\$0.00	154	\$62,474.43	154	\$62,474.43	1,065	\$329,679.86	1,219	\$392,154.29
SUMMIT	203	\$66,038.38	166	\$425,054.32	369	\$491,092.70	924	\$301,191.99	1,293	\$792,284.69
TRUMBULL	102	\$42,661.43	23	\$73,650.05	125	\$116,311.48	308	\$84,845.80	433	\$201,157.28
TUSCARAWAS	20	\$10,212.28	73	\$89,913.57	93	\$100,125.85	154	\$50,616.25	247	\$150,742.10
UNION	20	\$18,681.20	0	\$0.00	20	\$18,681.20	31	\$9,450.31	51	\$28,131.51
VAN WERT	5	\$2,756.86	0	\$0.00	5	\$2,756.86	11	\$3,286.94	16	\$6,043.80
VINTON	0	\$0.00	0	\$0.00	0	\$0.00	25	\$7,234.39	25	\$7,234.39
WARREN	22	\$7,063.71	20	\$21,157.18	42	\$28,220.89	91	\$28,027.98	133	\$56,248.87
WASHINGTON	11	-\$1,730.53	4	\$4,977.42	15	\$3,246.89	37	\$9,727.28	52	\$12,974.17
WAYNE	40	\$6,485.81	21	\$31,547.56	61	\$38,033.37	75	\$27,534.99	136	\$65,568.36
WILLIAMS	0	\$0.00	17	\$20,015.46	17	\$20,015.46	22	\$6,096.60	39	\$26,112.06
WOOD	8	\$214.76	13	\$16,021.40	21	\$16,236.16	44	\$15,424.37	65	\$31,660.53
WYANDOT	10	\$1,709.41	2	\$9,931.23	12	\$11,640.64	20	\$6,618.56	32	\$18,259.20

SOURCE: GBS003RB Report from Management Information Services. Federal funds only.

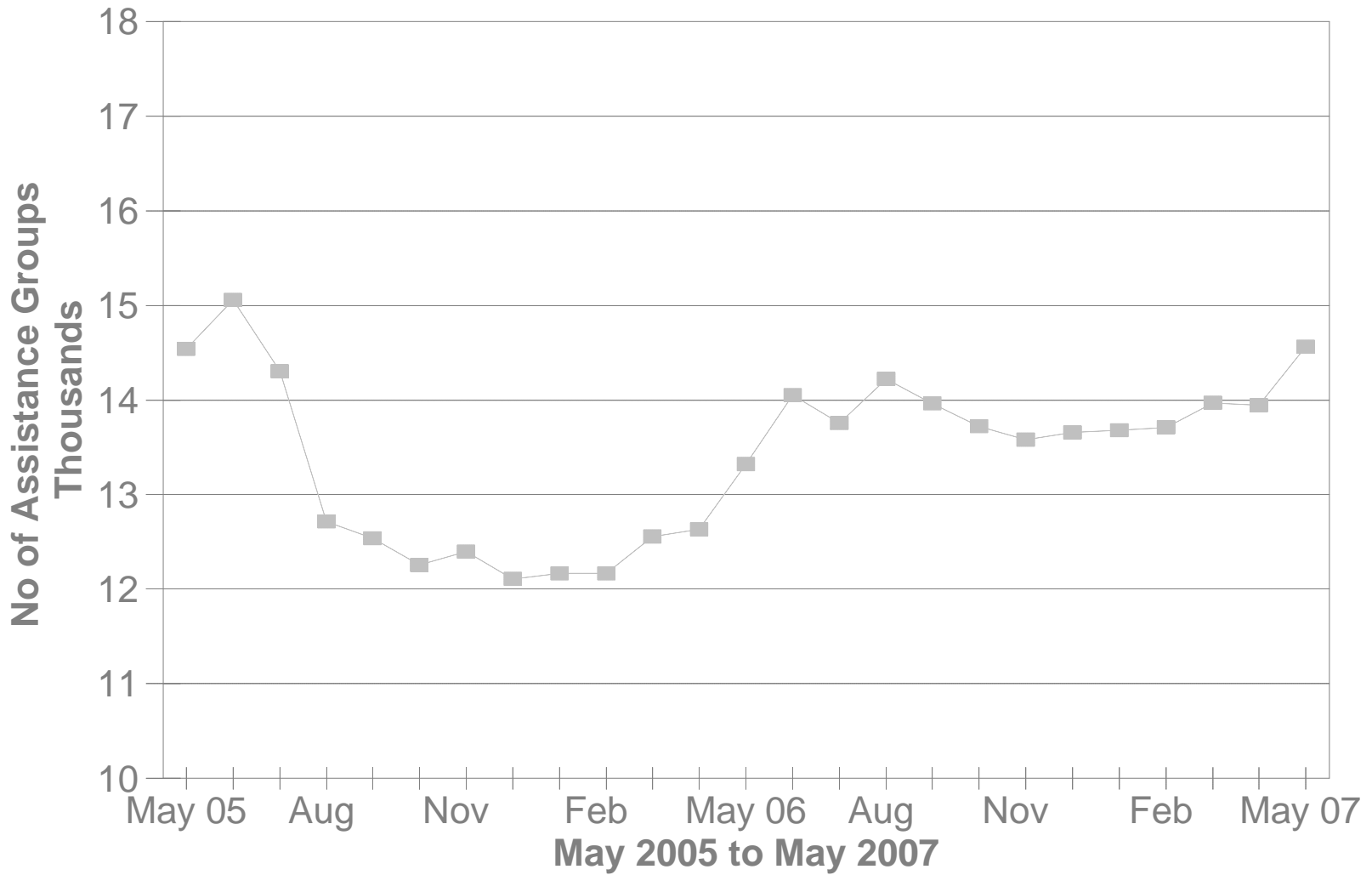
DA Cash Assistance Groups

During The Last 25 Months



DA Cash Recipients

During The Last 25 Months



**TABLE 3
DISABILITY ASSISTANCE (DA)
MAY 2007**

OHIO COUNTY	CASH ASSISTANCE							MEDICAL ASSISTANCE	
	ASSISTANCE GROUPS	RECIPIENTS	ADULTS	CHILDREN	ACTUAL EXPENDITURES			UNDUPLICATED RECIPIENTS	ACTUAL AMOUNT PAID
					GROSS AMOUNT	CANCELLED AMOUNT	NET AMOUNT		
STATEWIDE	14,485	14,564	14,564	0	\$2,219,112.00	\$178,911.00	\$2,040,201.00	3,499	\$2,157,296.45
ADAMS	95	98	98	0	\$13,781.00	\$345.00	\$13,436.00	18	\$10,787.38
ALLEN	129	129	129	0	\$21,613.00	\$920.00	\$20,693.00	14	\$13,936.35
ASHLAND	32	32	32	0	\$4,631.00	\$115.00	\$4,516.00	14	\$6,194.52
ASHTABULA	292	296	296	0	\$48,021.00	\$983.00	\$47,038.00	24	\$9,784.59
ATHENS	278	282	282	0	\$40,128.00	\$2,441.00	\$37,687.00	19	\$8,258.42
AUGLAIZE	29	29	29	0	\$3,943.00	\$230.00	\$3,713.00	7	\$3,183.27
BELMONT	140	143	143	0	\$18,680.00	\$357.00	\$18,323.00	22	\$18,038.55
BROWN	66	67	67	0	\$12,705.00	\$460.00	\$12,245.00	12	\$6,548.16
BUTLER	452	453	453	0	\$52,725.00	\$7,955.00	\$44,770.00	54	\$31,553.67
CARROLL	27	27	27	0	\$4,125.00	\$690.00	\$3,435.00	5	\$1,545.61
CHAMPAIGN	41	41	41	0	\$7,015.00	\$345.00	\$6,670.00	10	\$5,521.60
CLARK	347	348	348	0	\$50,011.00	\$4,148.00	\$45,863.00	72	\$52,976.68
CLERMONT	205	206	206	0	\$29,545.00	\$2,972.00	\$26,573.00	22	\$12,970.16
CLINTON	64	64	64	0	\$8,102.00	\$115.00	\$7,987.00	4	\$4,604.30
COLUMBIANA	118	118	118	0	\$20,072.00	\$1,851.00	\$18,221.00	39	\$29,175.78
COSHOCTON	118	119	119	0	\$16,729.00	\$1,546.00	\$15,183.00	5	\$3,046.50
CRAWFORD	59	59	59	0	\$7,715.00	\$345.00	\$7,370.00	11	\$13,008.09
CUYAHOGA	937	941	941	0	\$151,478.00	\$12,566.00	\$138,912.00	728	\$362,480.72
DARKE	33	34	34	0	\$4,696.00	\$230.00	\$4,466.00	6	\$3,400.35
DEFIANCE	28	28	28	0	\$2,908.00	\$326.00	\$2,582.00	10	\$4,761.74
DELAWARE	98	100	100	0	\$11,036.00	\$2,905.00	\$8,131.00	15	\$10,245.79
ERIE	97	97	97	0	\$16,530.00	\$575.00	\$15,955.00	15	\$7,072.03
FAIRFIELD	187	187	187	0	\$27,999.00	\$2,530.00	\$25,469.00	25	\$21,143.31
FAYETTE	36	36	36	0	\$4,255.00	\$1,486.00	\$2,769.00	18	\$10,737.28
FRANKLIN	1,139	1,143	1,143	0	\$187,819.00	\$18,683.00	\$169,136.00	308	\$242,601.57
FULTON	36	36	36	0	\$9,244.00	\$1,445.00	\$7,799.00	6	\$7,165.05
GALLIA	85	86	86	0	\$14,603.00	\$460.00	\$14,143.00	49	\$35,258.06
GEAUGA	30	30	30	0	\$4,165.00	\$575.00	\$3,590.00	1	\$881.80
GREENE	161	162	162	0	\$26,374.00	\$2,589.00	\$23,785.00	43	\$40,056.36

*SOURCE: GRP342RA Report from Management Information Services and BOMC 9260-R001 Report from Medicaid Management Information Services.

**TABLE 3
DISABILITY ASSISTANCE (DA)
MAY 2007**

OHIO COUNTY	CASH ASSISTANCE							MEDICAL ASSISTANCE	
	ASSISTANCE GROUPS	RECIPIENTS	ADULTS	CHILDREN	ACTUAL EXPENDITURES			UNDUPLICATED RECIPIENTS	ACTUAL AMOUNT PAID
					GROSS AMOUNT	CANCELLED AMOUNT	NET AMOUNT		
STATEWIDE	14,485	14,564	14,564	0	\$2,219,112.00	\$178,911.00	\$2,040,201.00	3,499	\$2,157,296.45
GUERNSEY	149	150	150	0	\$20,766.00	\$460.00	\$20,306.00	14	\$7,796.98
HAMILTON	683	684	684	0	\$108,361.00	\$13,845.00	\$94,516.00	102	\$69,544.00
HANCOCK	81	81	81	0	\$9,200.00	\$460.00	\$8,740.00	9	\$5,961.81
HARDIN	39	39	39	0	\$5,394.00	\$115.00	\$5,279.00	12	\$4,102.70
HARRISON	62	63	63	0	\$9,567.00	\$345.00	\$9,222.00	6	\$733.13
HENRY	10	10	10	0	\$2,394.00	\$115.00	\$2,279.00	1	\$517.65
HIGHLAND	103	103	103	0	\$16,058.00	\$690.00	\$15,368.00	17	\$11,239.72
HOCKING	69	70	70	0	\$9,857.00	\$0.00	\$9,857.00	8	\$3,152.65
HOLMES	34	34	34	0	\$3,979.00	\$0.00	\$3,979.00	1	\$391.84
HURON	62	64	64	0	\$8,330.00	\$1,495.00	\$6,835.00	6	\$4,636.47
JACKSON	113	114	114	0	\$14,201.00	\$1,732.00	\$12,469.00	28	\$19,192.77
JEFFERSON	187	187	187	0	\$25,868.00	\$1,150.00	\$24,718.00	36	\$21,148.95
KNOX	111	112	112	0	\$19,951.00	\$460.00	\$19,491.00	12	\$6,675.13
LAKE	141	141	141	0	\$18,149.00	\$2,070.00	\$16,079.00	29	\$19,593.60
LAWRENCE	75	75	75	0	\$12,332.00	\$879.00	\$11,453.00	26	\$15,491.35
LICKING	253	254	254	0	\$32,886.00	\$2,580.00	\$30,306.00	21	\$21,372.83
LOGAN	76	78	78	0	\$14,529.00	\$887.00	\$13,642.00	15	\$6,818.06
LORAIN	377	378	378	0	\$63,820.00	\$5,410.00	\$58,410.00	62	\$35,545.10
LUCAS	985	987	987	0	\$155,701.00	\$14,851.00	\$140,850.00	228	\$118,704.49
MADISON	25	25	25	0	\$3,549.00	\$0.00	\$3,549.00	14	\$9,731.79
MAHONING	256	256	256	0	\$39,924.00	\$2,302.00	\$37,622.00	137	\$83,571.24
MARION	168	169	169	0	\$27,601.00	\$2,217.00	\$25,384.00	8	\$7,842.13
MEDINA	72	72	72	0	\$9,584.00	\$460.00	\$9,124.00	16	\$10,051.28
MEIGS	71	73	73	0	\$9,735.00	\$230.00	\$9,505.00	30	\$16,296.61
MERCER	30	30	30	0	\$4,903.00	\$0.00	\$4,903.00	3	\$579.12
MIAMI	77	77	77	0	\$11,020.00	\$989.00	\$10,031.00	14	\$11,208.45
MONROE	29	29	29	0	\$6,387.00	\$230.00	\$6,157.00	13	\$4,390.48
MONTGOMERY	786	791	791	0	\$119,030.00	\$8,627.00	\$110,403.00	239	\$163,529.70
MORGAN	52	54	54	0	\$6,314.00	\$230.00	\$6,084.00	15	\$12,207.83
MORROW	53	53	53	0	\$10,227.00	\$460.00	\$9,767.00	11	\$13,511.82

*SOURCE: GRP342RA Report from Management Information Services and BOMC 9260-R001 Report from Medicaid Management Information Services.

**TABLE 3
DISABILITY ASSISTANCE (DA)
MAY 2007**

OHIO COUNTY	CASH ASSISTANCE							MEDICAL ASSISTANCE	
	ASSISTANCE GROUPS	RECIPIENTS	ADULTS	CHILDREN	ACTUAL EXPENDITURES			UNDUPLICATED RECIPIENTS	ACTUAL AMOUNT PAID
					GROSS AMOUNT	CANCELLED AMOUNT	NET AMOUNT		
STATEWIDE	14,485	14,564	14,564	0	\$2,219,112.00	\$178,911.00	\$2,040,201.00	3,499	\$2,157,296.45
MUSKINGUM	367	371	371	0	\$51,213.00	\$2,907.00	\$48,306.00	17	\$7,732.00
NOBLE	12	12	12	0	\$1,538.00	\$0.00	\$1,538.00	4	\$1,877.01
OTTAWA	44	44	44	0	\$7,113.00	\$115.00	\$6,998.00	12	\$5,806.05
PAULDING	25	27	27	0	\$3,088.00	\$115.00	\$2,973.00	3	\$463.43
PERRY	102	105	105	0	\$17,609.00	\$230.00	\$17,379.00	17	\$6,765.07
PICKAWAY	80	80	80	0	\$12,897.00	\$3,029.00	\$9,868.00	11	\$8,873.78
PIKE	74	76	76	0	\$9,862.00	\$230.00	\$9,632.00	27	\$12,017.59
PORTAGE	123	123	123	0	\$20,711.00	\$2,756.00	\$17,955.00	26	\$15,939.88
PREBLE	52	52	52	0	\$7,538.00	\$460.00	\$7,078.00	10	\$8,096.16
PUTNAM	9	9	9	0	\$1,035.00	\$0.00	\$1,035.00	4	\$3,772.60
RICHLAND	298	299	299	0	\$46,512.00	\$1,265.00	\$45,247.00	15	\$7,328.69
ROSS	171	171	171	0	\$25,696.00	\$2,755.00	\$22,941.00	47	\$25,069.22
SANDUSKY	68	69	69	0	\$10,877.00	\$345.00	\$10,532.00	7	\$1,945.96
SCIOTO	253	254	254	0	\$38,850.00	\$5,363.00	\$33,487.00	42	\$26,631.51
SENECA	83	83	83	0	\$12,570.00	\$230.00	\$12,340.00	18	\$10,318.14
SHELBY	42	42	42	0	\$6,454.00	\$230.00	\$6,224.00	12	\$4,236.35
STARK	462	463	463	0	\$88,521.00	\$5,060.00	\$83,461.00	87	\$52,436.78
SUMMIT	501	501	501	0	\$72,408.00	\$6,450.00	\$65,958.00	322	\$210,066.75
TRUMBULL	331	332	332	0	\$43,987.00	\$3,931.00	\$40,056.00	39	\$22,972.97
TUSCARAWAS	111	112	112	0	\$18,526.00	\$690.00	\$17,836.00	11	\$7,195.13
UNION	31	31	31	0	\$5,243.00	\$805.00	\$4,438.00	5	\$3,072.09
VAN WERT	31	32	32	0	\$4,050.00	\$0.00	\$4,050.00	3	\$804.34
VINTON	62	63	63	0	\$10,132.00	\$2,875.00	\$7,257.00	10	\$3,747.85
WARREN	91	93	93	0	\$14,310.00	\$1,035.00	\$13,275.00	8	\$7,160.44
WASHINGTON	137	137	137	0	\$22,095.00	\$1,728.00	\$20,367.00	11	\$7,710.02
WAYNE	226	227	227	0	\$31,887.00	\$2,140.00	\$29,747.00	11	\$3,380.80
WILLIAMS	41	41	41	0	\$5,444.00	\$345.00	\$5,099.00	3	\$2,279.60
WOOD	55	56	56	0	\$7,029.00	\$345.00	\$6,684.00	3	\$580.27
WYANDOT	15	15	15	0	\$1,652.00	\$0.00	\$1,652.00	5	\$6,548.24
UNKNOWN									-\$9.64

*SOURCE: GRP342RA Report from Management Information Services and BOMC 9260-R001 Report from Medicaid Management Information Services.

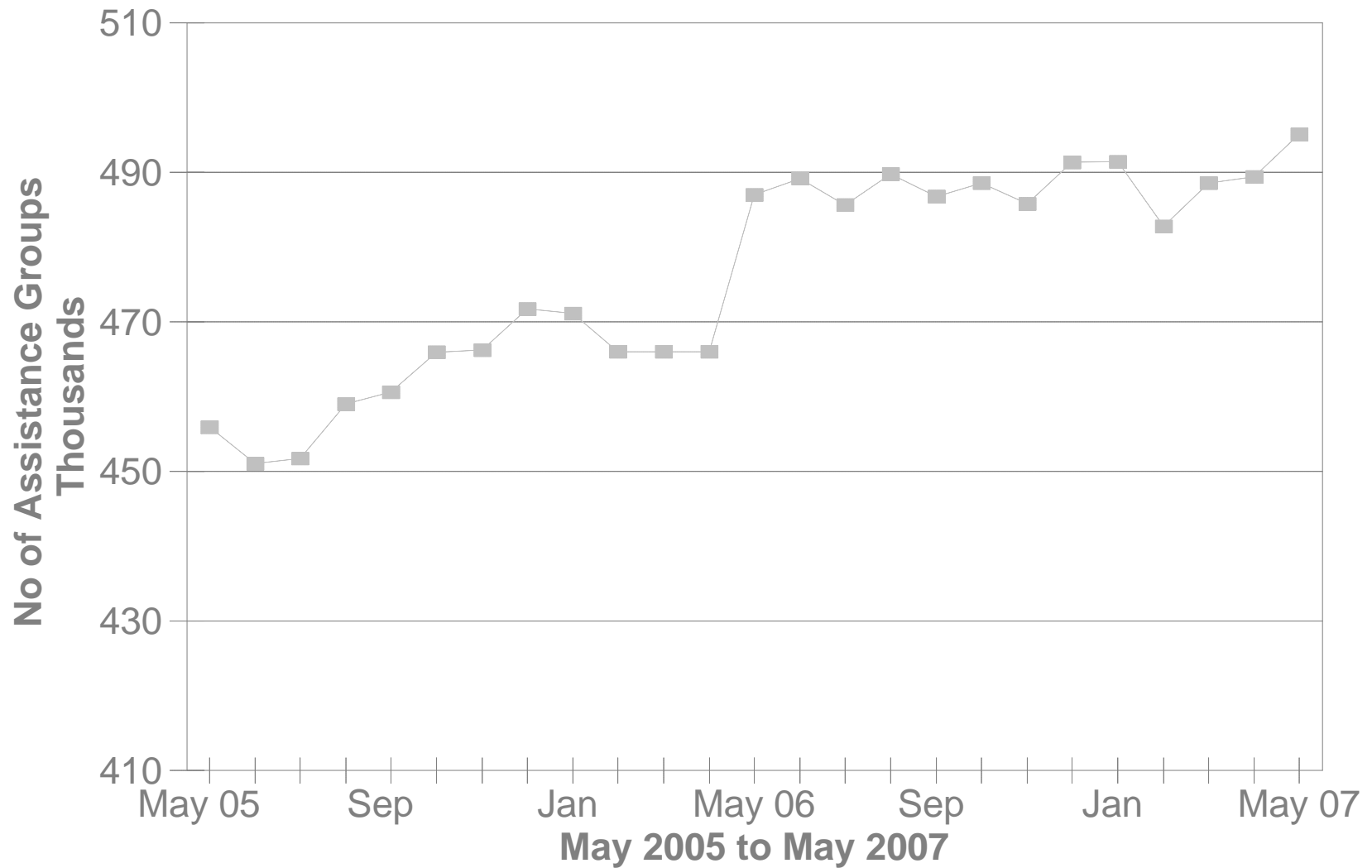
**TABLE 3-A
DA PAYMENTS FOR MEDICAL SERVICES
MAY 2007**

CATEGORY OF SERVICES	DISABILITY ASSISTANCE			
	PAYMENTS	CLAIM FREQUENCY	DUPLICATED RECIPIENTS	PERCENT OF TOTAL
ADVANCED PRACTICAL NURSE SVCS.	\$3,171.09	82	67	0.1%
AMBULANCE SERVICES	\$0.00	0	0	0.0%
AMBULATORY SURGERY	\$12,029.27	31	30	0.6%
CHIROPRACTER SERVICES	\$0.00	0	0	0.0%
CLINIC	\$48,406.72	610	216	2.2%
DENTAL SERVICES	\$5,451.46	52	46	0.3%
EPSDT	\$0.00	0	0	0.0%
FAMILY PLANNING	\$180.38	3	3	0.0%
FEDERALLY QUALIFIED HEALTH CTR	\$0.00	0	0	0.0%
HEALTH MAINTENANCE ORGANIZATION	\$0.00	0	0	0.0%
HOME HEALTH SERVICES	\$0.00	0	0	0.0%
INDEPENDENT LABORATORY	\$23,113.71	332	240	1.1%
INPATIENT HOSPITAL	(\$2,564.91)	-2	2	-0.1%
ICF	\$0.00	0	0	0.0%
MIDWIFERY SERVICES	\$0.00	0	0	0.0%
OPTOMETRIC SERVICES	\$0.00	0	0	0.0%
OUTPATIENT HEALTH SERVICES	\$0.00	0	0	0.0%
PASSPORT WAIVER III	\$0.00	0	0	0.0%
OUTPATIENT HOSPITAL GENERAL	\$0.00	0	0	0.0%
PHYSICAL THERAPY SERVICES	\$0.00	0	0	0.0%
PHYSICIAN SERVICES	\$466,618.72	6,240	2,205	21.6%
PHYSIOLOGICAL LABORATORY	\$6,345.32	14	12	0.3%
PODIATRISTS THERAPY	\$12,658.64	183	120	0.6%
PRESCRIBED DRUGS	\$1,523,079.72	24,215	3,263	70.6%
PRIVATE DUTY NURSING SERVICES	\$0.00	0	0	0.0%
PSYCHOLOGY SERVICES	\$0.00	0	0	0.0%
RURAL HEALTH SERVICES	\$0.00	0	0	0.0%
SNF	\$0.00	0	0	0.0%
SUPPLIES AND MEDICAL EQUIPMENT	\$52,936.34	1,029	491	2.5%
WAIVERED SERVICES	\$0.00	0	0	0.0%
OTHER	\$5,869.99	54	49	0.3%
STATEWIDE TOTAL	\$2,157,296.45	32,843	6,744	100.00%

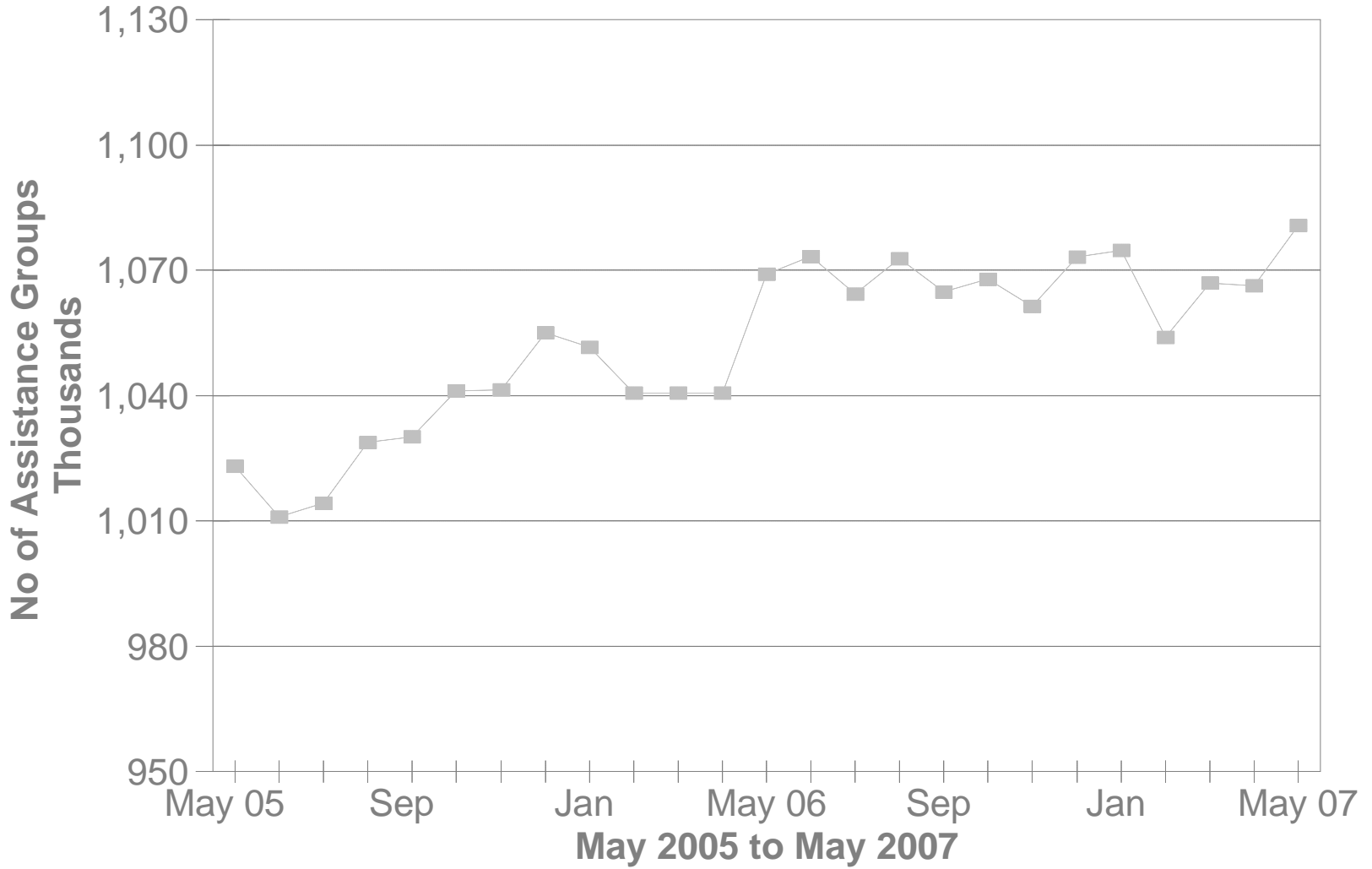
SOURCE: BOMC 9260 Report from Medicaid Management Information Services.

NOTE: Recipients are unduplicated within Category of Services, however, the Statewide Total represents a duplicated count.

No of FNS Benefits Assistance Groups During The Last 25 Months



No of FNS Benefits Cash Recipients During The Last 25 Months



**TABLE 5
FOOD AND NUTRITION BENEFITS
MAY 2007**

OHIO COUNTY	PERSONS					ASSISTANCE GROUPS			TOTAL COUPONS ISSUED
	PUBLIC ASSISTANCE	NON-PUBLIC ASSISTANCE	TOTAL	AVERAGE ISSUANCE	% CHANGE PREV. MO.	PUBLIC ASSISTANCE	NON-PUBLIC ASSISTANCE	TOTAL	
STATEWIDE	248,221	832,560	1,080,781	\$100	1.4%	180,143	314,943	495,086	\$108,138,296.00
ADAMS	1,212	3,445	4,657	\$95	1.4%	863	1,151	2,014	\$441,845
ALLEN	1,959	7,178	9,137	\$101	1.0%	1,510	2,443	3,953	\$921,879
ASHLAND	499	2,552	3,051	\$97	2.9%	370	888	1,258	\$294,946
ASHTABULA	3,467	9,044	12,511	\$97	1.4%	2,477	3,261	5,738	\$1,217,526
ATHENS	2,227	4,999	7,226	\$94	1.5%	1,644	1,904	3,548	\$681,227
AUGLAIZE	323	1,684	2,007	\$98	-0.9%	289	592	881	\$195,935
BELMONT	1,914	5,122	7,036	\$89	-0.1%	1,450	1,833	3,283	\$623,864
BROWN	704	2,634	3,338	\$94	-4.0%	538	890	1,428	\$313,388
BUTLER	5,482	20,692	26,174	\$104	1.1%	4,265	7,410	11,675	\$2,732,476
CARROLL	354	1,865	2,219	\$92	0.5%	279	631	910	\$204,834
CHAMPAIGN	632	2,041	2,673	\$99	0.9%	454	709	1,163	\$265,233
CLARK	3,563	13,676	17,239	\$100	1.4%	2,869	5,050	7,919	\$1,728,494
CLERMONT	2,080	8,925	11,005	\$99	-0.5%	1,628	3,056	4,684	\$1,092,293
CLINTON	666	2,632	3,298	\$95	2.9%	542	912	1,454	\$314,081
COLUMBIANA	2,715	9,603	12,318	\$95	0.9%	2,030	3,329	5,359	\$1,168,605
COSHOCTON	790	3,349	4,139	\$98	3.4%	611	1,236	1,847	\$403,714
CRAWFORD	852	3,566	4,418	\$93	1.1%	687	1,272	1,959	\$411,835
CUYAHOGA	26,506	151,968	178,474	\$101	1.0%	16,677	69,491	86,168	\$17,937,596
DARKE	473	1,782	2,255	\$94	0.3%	356	625	981	\$210,889
DEFIANCE	568	2,374	2,942	\$95	5.1%	392	817	1,209	\$279,534
DELAWARE	1,095	3,284	4,379	\$100	3.4%	798	1,244	2,042	\$437,250
ERIE	1,169	4,658	5,827	\$103	2.2%	946	1,759	2,705	\$597,806
FAIRFIELD	2,019	8,192	10,211	\$99	1.6%	1,553	2,935	4,488	\$1,011,267
FAYETTE	571	1,983	2,554	\$100	-0.2%	462	704	1,166	\$254,932
FRANKLIN	29,195	94,839	124,034	\$106	2.0%	20,732	33,482	54,214	\$13,100,347
FULTON	361	1,794	2,155	\$92	4.0%	278	609	887	\$197,216
GALLIA	1,768	3,265	5,033	\$95	-1.8%	1,211	1,155	2,366	\$479,726
GEAUGA	382	1,275	1,657	\$94	-6.0%	318	462	780	\$154,994
GREENE	1,939	6,407	8,346	\$100	2.2%	1,483	2,454	3,937	\$833,492

Source: CRIS-E GRP304RA and GRP 304RC Reports from Management Information Services. Cuyahoga County data also comes from the GRP 342 RA.

**TABLE 5
FOOD AND NUTRITION BENEFITS
MAY 2007**

OHIO COUNTY	PERSONS					ASSISTANCE GROUPS			TOTAL COUPONS ISSUED
	PUBLIC ASSISTANCE	NON-PUBLIC ASSISTANCE	TOTAL	AVERAGE ISSUANCE	% CHANGE PREV. MO.	PUBLIC ASSISTANCE	NON-PUBLIC ASSISTANCE	TOTAL	
STATEWIDE	248,221	832,560	1,080,781	\$100	1.4%	180,143	314,943	495,086	\$108,138,296.00
GUERNSEY	1,240	4,730	5,970	\$94	0.7%	1,007	1,682	2,689	\$561,389
HAMILTON	17,604	55,106	72,710	\$105	2.0%	12,926	19,938	32,864	\$7,665,225
HANCOCK	792	3,216	4,008	\$103	1.2%	650	1,170	1,820	\$413,188
HARDIN	374	1,483	1,857	\$93	-0.1%	297	534	831	\$172,659
HARRISON	499	1,434	1,933	\$91	0.6%	388	501	889	\$176,849
HENRY	196	1,051	1,247	\$88	-3.9%	151	339	490	\$110,192
HIGHLAND	1,008	3,867	4,875	\$95	-0.1%	755	1,304	2,059	\$460,863
HOCKING	906	2,499	3,405	\$93	-2.7%	645	867	1,512	\$315,745
HOLMES	179	830	1,009	\$88	5.2%	138	280	418	\$88,747
HURON	770	3,970	4,740	\$91	1.0%	628	1,349	1,977	\$432,396
JACKSON	1,439	3,751	5,190	\$97	0.7%	1,083	1,388	2,471	\$500,997
JEFFERSON	2,618	6,133	8,751	\$95	0.7%	1,925	2,306	4,231	\$834,605
KNOX	991	3,373	4,364	\$95	-1.2%	725	1,183	1,908	\$415,590
LAKE	2,567	8,177	10,744	\$107	1.6%	1,965	3,028	4,993	\$1,145,555
LAWRENCE	3,451	6,975	10,426	\$91	-1.1%	2,533	2,591	5,124	\$945,663
LICKING	2,769	9,526	12,295	\$100	1.8%	2,077	3,476	5,553	\$1,229,249
LOGAN	679	2,841	3,520	\$98	1.2%	503	965	1,468	\$345,855
LORAIN	6,471	20,601	27,072	\$101	2.7%	4,456	6,869	11,325	\$2,723,332
LUCAS	19,632	42,130	61,762	\$102	0.4%	13,457	15,952	29,409	\$6,327,251
MADISON	771	2,231	3,002	\$97	3.9%	535	807	1,342	\$291,613
MAHONING	8,733	20,807	29,540	\$97	2.1%	6,290	7,781	14,071	\$2,876,925
MARION	1,505	5,817	7,322	\$98	0.4%	1,212	2,084	3,296	\$716,157
MEDINA	1,090	4,118	5,208	\$102	2.4%	826	1,480	2,306	\$533,558
MEIGS	1,183	2,902	4,085	\$93	-0.4%	872	997	1,869	\$379,464
MERCER	413	1,028	1,441	\$92	-0.3%	293	370	663	\$132,524
MIAMI	1,060	3,385	4,445	\$93	5.4%	807	1,236	2,043	\$415,085
MONROE	419	1,162	1,581	\$89	1.9%	317	390	707	\$141,345
MONTGOMERY	14,537	40,124	54,661	\$103	2.9%	10,819	15,023	25,842	\$5,638,806
MORGAN	417	1,452	1,869	\$90	-1.0%	338	498	836	\$168,436
MORROW	524	2,277	2,801	\$94	-3.6%	399	764	1,163	\$262,295

Source: CRIS-E GRP304RA and GRP 304RC Reports from Management Information Services. Cuyahoga County data also comes from the GRP 342 RA.

**TABLE 5
FOOD AND NUTRITION BENEFITS
MAY 2007**

OHIO COUNTY	PERSONS					ASSISTANCE GROUPS			TOTAL COUPONS ISSUED
	PUBLIC ASSISTANCE	NON-PUBLIC ASSISTANCE	TOTAL	AVERAGE ISSUANCE	% CHANGE PREV. MO.	PUBLIC ASSISTANCE	NON-PUBLIC ASSISTANCE	TOTAL	
STATEWIDE	248,221	832,560	1,080,781	\$100	1.4%	180,143	314,943	495,086	\$108,138,296.00
MUSKINGUM	2,761	11,253	14,014	\$95	1.8%	2,144	4,141	6,285	\$1,335,863
NOBLE	269	864	1,133	\$90	0.4%	221	315	536	\$101,415
OTTAWA	619	1,898	2,517	\$99	1.7%	431	661	1,092	\$249,372
PAULDING	337	1,101	1,438	\$90	0.1%	233	385	618	\$129,900
PERRY	1,150	4,089	5,239	\$92	0.5%	835	1,395	2,230	\$484,021
PICKAWAY	1,251	3,509	4,760	\$97	2.0%	900	1,298	2,198	\$459,970
PIKE	1,315	4,013	5,328	\$94	3.3%	953	1,399	2,352	\$501,949
PORTAGE	1,797	7,395	9,192	\$102	0.6%	1,415	2,672	4,087	\$933,790
PREBLE	581	2,099	2,680	\$96	1.7%	406	686	1,092	\$258,212
PUTNAM	242	1,243	1,485	\$97	5.5%	196	409	605	\$144,149
RICHLAND	2,573	9,854	12,427	\$99	2.6%	2,028	3,517	5,545	\$1,228,851
ROSS	2,514	8,364	10,878	\$101	1.2%	1,791	2,964	4,755	\$1,096,517
SANDUSKY	735	3,258	3,993	\$99	0.4%	577	1,146	1,723	\$393,439
SCIOTO	4,311	11,565	15,876	\$90	1.0%	3,346	4,270	7,616	\$1,428,206
SENECA	762	3,699	4,461	\$97	1.2%	608	1,298	1,906	\$433,731
SHELBY	452	2,122	2,574	\$102	-3.3%	354	702	1,056	\$262,432
STARK	8,075	22,726	30,801	\$98	2.0%	5,692	8,046	13,738	\$3,018,653
SUMMIT	14,616	37,882	52,498	\$101	1.2%	10,843	14,673	25,516	\$5,318,745
TRUMBULL	4,436	14,179	18,615	\$95	0.8%	3,441	4,886	8,327	\$1,777,634
TUSCARAWAS	1,867	5,774	7,641	\$92	-0.2%	1,427	2,073	3,500	\$702,474
UNION	488	1,783	2,271	\$101	-2.7%	356	632	988	\$229,023
VAN WERT	284	1,045	1,329	\$83	-3.9%	222	361	583	\$110,471
VINTON	643	1,989	2,632	\$90	4.8%	461	667	1,128	\$237,976
WARREN	892	2,983	3,875	\$95	2.6%	693	1,010	1,703	\$368,443
WASHINGTON	1,334	4,219	5,553	\$94	2.2%	1,136	1,504	2,640	\$521,086
WAYNE	1,854	5,513	7,367	\$99	1.3%	1,381	2,086	3,467	\$726,034
WILLIAMS	570	2,152	2,722	\$91	1.8%	383	782	1,165	\$247,633
WOOD	976	3,406	4,382	\$96	-0.5%	781	1,221	2,002	\$420,861
WYANDOT	195	759	954	\$93	10.4%	160	288	448	\$88,664

Source: CRIS-E GRP304RA and GRP 304RC Reports from Management Information Services. Cuyahoga County data also comes from the GRP 342 RA.

**Table 6A
May 2007
Medicaid Eligibles**

County	Aged	Blind	Disabled	ABD Total	OWF & Related	Healthy Start	CFC Total	Total Medicaid	Foster Care	Adoption Assistance	Transitional	Nursing Facilities
STATEWIDE	148,957	771	246,375	396,103	994,666	274,507	1,269,173	1,665,276	9,786	21,065	135,028	53,661
ADAMS	829	4	1,437	2,270	4,261	1,200	5,461	7,731	32	39	714	123
ALLEN	1,271	5	2,105	3,381	9,129	2,710	11,839	15,220	114	135	1,022	591
ASHLAND	595	2	613	1,210	3,263	1,468	4,731	5,941	25	25	581	260
ASHTABULA	1,605	6	3,115	4,726	10,961	3,253	14,214	18,940	71	244	1,796	999
ATHENS	872	8	2,167	3,047	5,939	1,333	7,272	10,319	76	150	735	187
AUGLAIZE	497	5	442	944	2,365	986	3,351	4,295	4	45	440	285
BELMONT	1,411	3	2,113	3,527	6,742	1,758	8,500	12,027	38	110	1,022	515
BROWN	724	0	1,017	1,741	4,165	1,573	5,738	7,479	16	42	722	230
BUTLER	3,211	21	5,824	9,056	27,054	6,869	33,923	42,979	316	530	4,244	1,192
CARROLL	426	2	561	989	2,513	768	3,281	4,270	7	8	498	194
CHAMPAIGN	491	1	601	1,093	2,903	1,145	4,048	5,141	7	25	606	251
CLARK	2,218	7	3,583	5,808	15,813	4,074	19,887	25,695	168	512	1,913	974
CLERMONT	1,692	8	2,853	4,553	11,567	4,488	16,055	20,608	204	266	1,906	689
CLINTON	517	1	806	1,324	3,647	1,103	4,750	6,074	44	74	729	158
COLUMBIANA	1,699	15	2,640	4,354	10,798	3,316	14,114	18,468	74	110	1,536	612
COSHOCTON	616	1	917	1,534	3,882	1,089	4,971	6,505	19	48	632	284
CRAWFORD	688	8	899	1,595	4,227	1,271	5,498	7,093	39	49	791	183
CUYAHOGA	22,912	134	36,426	59,472	146,686	32,693	179,379	238,851	1,382	4,963	16,868	7,184
DARKE	569	1	639	1,209	2,764	1,283	4,047	5,256	23	43	538	303
DEFIANCE	400	3	610	1,013	3,089	1,102	4,191	5,204	16	27	543	196
DELAWARE	831	3	1,064	1,898	4,518	1,782	6,300	8,198	27	67	744	298
ERIE	925	4	1,246	2,175	6,033	1,737	7,770	9,945	55	84	854	414
FAIRFIELD	1,308	7	2,119	3,434	9,835	3,065	12,900	16,334	40	186	1,761	447
FAYETTE	571	3	843	1,417	2,830	779	3,609	5,026	9	16	531	328
FRANKLIN	11,945	89	24,441	36,475	116,277	32,572	148,849	185,324	1,613	2,406	12,743	3,735
FULTON	379	1	419	799	2,463	952	3,415	4,214	19	30	518	209
GALLIA	881	3	1,601	2,485	4,170	980	5,150	7,635	16	44	603	182
GEAUGA	617	1	547	1,165	2,145	965	3,110	4,275	14	112	390	317
GREENE	1,372	17	1,791	3,180	9,185	2,627	11,812	14,992	92	116	1,648	574

Source: ODJFS Report BOMM1321 Prepared: Bureau of Research and Evaluation.

**Table 6A
May 2007
Medicaid Eligibles**

County	Aged	Blind	Disabled	ABD Total	OWF & Related	Healthy Start	CFC Total	Total Medicaid	Foster Care	Adoption Assistance	Transitional	Nursing Facilities
STATEWIDE	148,957	771	246,375	396,103	994,666	274,507	1,269,173	1,665,276	9,786	21,065	135,028	53,661
GUERNSEY	822	4	1,417	2,243	5,213	1,608	6,821	9,064	41	71	776	165
HAMILTON	10,421	64	18,439	28,924	64,376	18,618	82,994	111,918	851	1,706	6,216	3,734
HANCOCK	615	4	898	1,517	4,131	1,468	5,599	7,116	49	53	697	297
HARDIN	390	4	586	980	2,208	802	3,010	3,990	13	48	320	142
HARRISON	304	1	523	828	1,752	440	2,192	3,020	18	20	272	115
HENRY	256	0	339	595	1,676	801	2,477	3,072	12	22	304	129
HIGHLAND	860	0	1,139	1,999	4,623	1,443	6,066	8,065	27	34	616	247
HOCKING	515	3	829	1,347	3,503	993	4,496	5,843	34	48	577	151
HOLMES	419	4	430	853	1,349	889	2,238	3,091	14	18	225	368
HURON	601	3	887	1,491	5,123	1,902	7,025	8,516	40	45	811	184
JACKSON	866	0	1,381	2,247	4,541	1,182	5,723	7,970	35	14	676	167
JEFFERSON	1,245	9	2,378	3,632	7,428	1,694	9,122	12,754	74	63	1,106	364
KNOX	738	2	1,303	2,043	4,649	1,360	6,009	8,052	15	38	1,048	481
LAKE	1,753	3	2,517	4,273	10,490	3,674	14,164	18,437	60	141	1,878	1,057
LAWRENCE	1,677	5	3,295	4,977	8,407	2,396	10,803	15,780	53	62	1,074	351
LICKING	1,571	4	2,659	4,234	12,702	3,626	16,328	20,562	167	380	2,237	541
LOGAN	595	2	669	1,266	3,593	970	4,563	5,829	6	51	539	192
LORAIN	2,829	14	5,358	8,201	24,717	6,421	31,138	39,339	105	428	3,259	1,203
LUCAS	6,496	43	14,379	20,918	55,459	11,097	66,556	87,474	497	1,452	6,920	2,017
MADISON	407	1	603	1,011	2,794	971	3,765	4,776	25	34	482	122
MAHONING	4,172	14	6,896	11,082	25,707	6,076	31,783	42,865	199	180	2,913	1,599
MARION	975	3	1,784	2,762	6,441	1,909	8,350	11,112	46	131	1,007	274
MEDINA	1,052	7	1,290	2,349	6,244	2,309	8,553	10,902	30	89	1,128	650
MEIGS	561	6	1,040	1,607	3,365	778	4,143	5,750	14	13	447	142
MERCER	396	0	390	786	1,545	762	2,307	3,093	17	37	352	200
MIAMI	1,121	2	1,309	2,432	5,260	1,903	7,163	9,595	68	116	988	412
MONROE	300	0	389	689	1,491	504	1,995	2,684	8	15	298	95
MONTGOMERY	7,307	28	12,771	20,106	49,841	12,629	62,470	82,576	675	1,234	5,983	2,402
MORGAN	316	0	522	838	1,959	528	2,487	3,325	1	13	382	111
MORROW	441	0	576	1,017	2,896	1,089	3,985	5,002	4	56	600	141

Source: ODJFS Report BOMM1321 Prepared: Bureau of Research and Evaluation.

**Table 6A
May 2007
Medicaid Eligibles**

County	Aged	Blind	Disabled	ABD Total	OWF & Related	Healthy Start	CFC Total	Total Medicaid	Foster Care	Adoption Assistance	Transitional	Nursing Facilities
STATEWIDE	148,957	771	246,375	396,103	994,666	274,507	1,269,173	1,665,276	9,786	21,065	135,028	53,661
MUSKINGUM	1,626	18	2,865	4,509	11,464	2,769	14,233	18,742	91	216	1,541	470
NOBLE	244	0	250	494	1,128	390	1,518	2,012	4	7	238	87
OTTAWA	468	4	535	1,007	2,591	832	3,423	4,430	13	7	447	163
PAULDING	211	1	373	585	1,347	578	1,925	2,510	7	21	271	42
PERRY	575	8	1,151	1,734	4,860	1,227	6,087	7,821	41	37	726	190
PICKAWAY	659	1	1,043	1,703	4,481	1,190	5,671	7,374	18	21	631	165
PIKE	821	0	1,479	2,300	4,336	1,337	5,673	7,973	26	22	497	281
PORTAGE	1,281	6	1,840	3,127	9,062	2,732	11,794	14,921	83	199	1,251	610
PREBLE	409	7	652	1,068	3,219	956	4,175	5,243	51	40	600	211
PUTNAM	281	0	333	614	1,491	633	2,124	2,738	2	7	220	215
RICHLAND	1,909	0	2,766	4,675	10,887	3,682	14,569	19,244	50	265	1,579	628
ROSS	1,216	3	2,403	3,622	9,490	2,333	11,823	15,445	70	66	1,185	305
SANDUSKY	726	6	982	1,714	4,275	1,614	5,889	7,603	23	55	635	336
SCIOTO	2,520	5	4,771	7,296	11,420	2,425	13,845	21,141	77	88	1,229	576
SENECA	746	3	1,048	1,797	4,203	1,650	5,853	7,650	43	67	806	324
SHELBY	407	3	595	1,005	2,943	1,097	4,040	5,045	15	50	368	177
STARK	5,169	22	7,033	12,224	31,355	8,268	39,623	51,847	424	1,056	5,141	2,311
SUMMIT	6,993	46	11,230	18,269	44,874	10,027	54,901	73,170	532	869	5,962	2,179
TRUMBULL	2,895	18	4,726	7,639	18,838	5,704	24,542	32,181	134	268	2,879	1,172
TUSCARAWAS	1,319	5	1,642	2,966	7,118	2,633	9,751	12,717	103	167	1,151	479
UNION	337	1	465	803	2,487	934	3,421	4,224	26	35	397	114
UNKNOWN	0	0	0	0	0	0	0	0	0	0	0	0
VAN WERT	327	0	404	731	1,475	852	2,327	3,058	6	13	330	163
VINTON	316	0	601	917	2,122	735	2,857	3,774	13	24	281	63
WARREN	1,385	6	1,627	3,018	5,259	2,398	7,657	10,675	40	108	868	810
WASHINGTON	1,063	6	1,586	2,655	5,388	1,926	7,314	9,969	12	45	1,025	347
WAYNE	1,172	3	1,735	2,910	6,633	2,499	9,132	12,042	54	94	1,180	509
WILLIAMS	471	2	501	974	3,191	839	4,030	5,004	22	27	801	194
WOOD	993	4	1,046	2,043	4,862	1,886	6,748	8,791	42	53	793	397
WYANDOT	325	0	258	583	1,160	578	1,738	2,321	6	20	237	176

Source: ODJFS Report BOMM1321 Prepared: Bureau of Research and Evaluation.

**Table 6B
May 2007
Medicaid Expenditures**

	Aged	Blind	Disabled	ABD Total	OWF & Related	Healthy Start	CFC Total	Total Medicaid	Foster Care	Adoption Assistance	Transitional	Nursing Facilities
STATEWIDE	\$276,250,572	\$1,255,147	\$603,721,994	\$881,227,714	\$402,739,030	\$107,912,266	\$510,651,296	\$1,392,969,530	\$6,081,694	\$4,950,313	\$53,877,021	\$263,256,229
ADAMS	\$1,082,261	\$12,051	\$2,737,841	\$3,832,153	\$1,817,493	\$479,166	\$2,296,659	\$6,159,560	\$10,241	\$9,699	\$315,921	\$585,498
ALLEN	\$2,386,155	\$14,404	\$4,683,927	\$7,084,486	\$3,600,614	\$1,374,122	\$4,974,736	\$12,079,409	\$39,337	\$20,813	\$415,790	\$2,658,601
ASHLAND	\$1,244,707	\$104	\$1,627,341	\$2,872,152	\$1,242,636	\$528,888	\$1,771,524	\$4,645,733	\$5,817	\$2,824	\$222,089	\$1,141,693
ASHTABULA	\$3,252,197	\$16,452	\$7,866,140	\$11,134,788	\$4,490,948	\$1,136,621	\$5,627,569	\$16,766,624	\$31,572	\$48,902	\$709,828	\$5,218,140
ATHENS	\$1,276,887	\$8,912	\$4,296,216	\$5,582,015	\$2,368,343	\$798,690	\$3,167,033	\$8,750,766	\$72,383	\$52,823	\$277,493	\$727,475
AUGLAIZE	\$1,164,057	\$15,609	\$1,028,730	\$2,208,396	\$956,513	\$402,525	\$1,359,038	\$3,568,202	\$3,195	\$10,951	\$210,355	\$1,172,468
BELMONT	\$2,621,352	\$2,296	\$5,263,829	\$7,887,477	\$2,653,113	\$618,363	\$3,271,476	\$11,167,718	\$24,178	\$19,247	\$413,347	\$1,924,403
BROWN	\$1,400,328	\$0	\$2,462,749	\$3,863,077	\$1,806,769	\$626,002	\$2,432,770	\$6,303,830	\$6,632	\$19,012	\$325,918	\$1,150,342
BUTLER	\$6,378,782	\$33,423	\$15,015,022	\$21,427,227	\$11,569,349	\$2,853,503	\$14,422,851	\$35,867,098	\$138,471	\$133,396	\$1,709,062	\$6,511,831
CARROLL	\$665,244	\$4,776	\$1,680,474	\$2,350,494	\$977,912	\$229,902	\$1,207,814	\$3,562,055	\$2,762	\$2,591	\$187,749	\$781,745
CHAMPAIGN	\$974,587	\$7,634	\$1,597,311	\$2,579,532	\$1,211,942	\$484,016	\$1,695,959	\$4,275,490	\$10,217	\$7,315	\$231,784	\$1,220,157
CLARK	\$4,069,836	\$10,925	\$9,256,752	\$13,337,513	\$6,297,599	\$1,639,728	\$7,937,326	\$21,290,674	-\$135,632	\$48,837	\$821,703	\$4,553,505
CLERMONT	\$2,748,968	\$12,645	\$8,029,678	\$10,791,291	\$5,389,748	\$1,960,530	\$7,350,278	\$18,157,950	\$416,966	\$81,378	\$797,988	\$4,271,513
CLINTON	\$803,698	\$5,168	\$1,774,900	\$2,583,766	\$1,536,529	\$426,765	\$1,963,294	\$4,549,161	\$18,820	\$10,511	\$296,787	\$837,028
COLUMBIANA	\$2,765,262	\$7,549	\$4,364,042	\$7,136,852	\$2,732,251	\$734,549	\$3,466,801	\$10,627,718	\$39,898	\$23,773	\$232,139	\$2,411,417
COSHOCTON	\$1,062,995	\$1,930	\$2,378,875	\$3,443,800	\$1,503,172	\$401,165	\$1,904,336	\$5,349,170	\$9,858	\$13,610	\$259,119	\$1,319,265
CRAWFORD	\$1,180,958	\$14,663	\$2,129,440	\$3,325,062	\$1,824,474	\$442,199	\$2,266,673	\$5,601,030	\$28,412	\$10,860	\$341,598	\$728,710
CUYAHOGA	\$43,532,204	\$228,261	\$85,327,999	\$129,088,464	\$58,179,855	\$11,168,884	\$69,348,739	\$198,491,105	\$975,216	\$1,213,171	\$6,492,772	\$39,763,325
DARKE	\$1,081,594	\$10	\$1,508,871	\$2,590,475	\$1,233,762	\$528,451	\$1,762,214	\$4,361,001	\$12,582	\$95,330	\$221,551	\$1,311,764
DEFIANCE	\$707,426	\$2,656	\$1,172,335	\$1,882,418	\$1,283,617	\$383,767	\$1,667,384	\$3,554,991	\$3,544	\$10,802	\$251,281	\$714,638
DELAWARE	\$1,576,218	\$11,755	\$3,515,652	\$5,103,625	\$2,108,633	\$762,037	\$2,870,669	\$7,974,293	\$15,556	\$19,396	\$319,858	\$1,335,971
ERIE	\$1,569,440	\$6,694	\$2,564,256	\$4,140,390	\$2,249,831	\$608,497	\$2,858,328	\$7,009,745	\$36,682	\$46,354	\$362,661	\$1,509,049
FAIRFIELD	\$2,409,875	\$6,111	\$5,136,266	\$7,552,253	\$3,987,428	\$1,202,878	\$5,190,306	\$12,752,938	\$12,769	\$38,497	\$742,019	\$1,958,448
FAYETTE	\$1,166,783	\$18,415	\$2,111,774	\$3,296,972	\$1,131,828	\$299,491	\$1,431,319	\$4,728,291	\$450	\$4,363	\$203,781	\$1,591,268
FRANKLIN	\$22,826,499	\$128,611	\$70,265,628	\$93,220,738	\$47,880,692	\$13,844,509	\$61,725,202	\$155,066,884	\$1,117,623	\$704,409	\$4,981,707	\$21,438,272
FULTON	\$854,145	\$2,118	\$1,145,116	\$2,001,379	\$957,195	\$433,736	\$1,390,931	\$3,394,472	\$8,544	\$20,118	\$216,539	\$990,104
GALLIA	\$1,857,314	\$6,081	\$4,675,301	\$6,538,696	\$1,584,873	\$317,236	\$1,902,109	\$8,457,977	\$19,164	\$6,132	\$215,984	\$740,592
GEAUGA	\$1,283,190	\$2,160	\$1,773,094	\$3,058,444	\$782,588	\$351,871	\$1,134,459	\$4,193,121	\$9,349	\$18,840	\$151,275	\$1,567,351
GREENE	\$2,562,146	\$21,659	\$4,237,630	\$6,821,436	\$3,883,309	\$1,093,650	\$4,976,959	\$11,805,600	\$52,188	\$28,485	\$713,517	\$2,669,809

**Table 6B
May 2007
Medicaid Expenditures**

	Aged	Blind	Disabled	ABD Total	OWF & Related	Healthy Start	CFC Total	Total Medicaid	Foster Care	Adoption Assistance	Transitional	Nursing Facilities
STATEWIDE	\$276,250,572	\$1,255,147	\$603,721,994	\$881,227,714	\$402,739,030	\$107,912,266	\$510,651,296	\$1,392,969,530	\$6,081,694	\$4,950,313	\$53,877,021	\$263,256,229
GUERNSEY	\$1,429,035	\$1,660	\$3,759,151	\$5,189,845	\$2,076,102	\$505,474	\$2,581,576	\$7,775,245	\$24,255	\$16,515	\$292,050	\$647,452
HAMILTON	\$21,685,787	\$105,818	\$42,662,272	\$64,453,877	\$27,248,943	\$8,330,030	\$35,578,973	\$100,140,604	\$672,535	\$359,719	\$2,525,751	\$21,461,028
HANCOCK	\$1,353,393	\$5,432	\$2,153,077	\$3,511,902	\$1,656,871	\$628,707	\$2,285,578	\$5,797,910	\$12,170	\$11,655	\$276,706	\$1,429,500
HARDIN	\$526,210	\$1,548	\$1,100,654	\$1,628,412	\$849,885	\$330,287	\$1,180,172	\$2,808,636	\$2,316	\$6,921	\$130,037	\$461,455
HARRISON	\$549,444	\$1,946	\$1,120,259	\$1,671,650	\$656,490	\$151,824	\$808,314	\$2,485,168	\$10,053	\$5,834	\$116,850	\$496,523
HENRY	\$546,349	\$0	\$1,352,999	\$1,899,348	\$664,581	\$331,353	\$995,933	\$2,911,527	\$8,525	\$9,456	\$122,558	\$562,945
HIGHLAND	\$1,490,774	\$254	\$2,547,079	\$4,038,107	\$1,872,868	\$651,420	\$2,524,287	\$6,571,893	\$9,458	\$19,092	\$266,413	\$1,349,342
HOCKING	\$766,215	\$10,202	\$1,998,796	\$2,775,213	\$1,521,337	\$362,914	\$1,884,252	\$4,663,447	\$26,641	\$13,702	\$255,028	\$594,349
HOLMES	\$1,069,461	\$5,834	\$1,601,660	\$2,676,955	\$562,048	\$288,945	\$850,993	\$3,527,948	\$3,573	\$1,227	\$95,390	\$1,651,757
HURON	\$928,218	\$2,684	\$1,846,359	\$2,777,260	\$1,908,414	\$708,856	\$2,617,270	\$5,394,630	\$14,515	\$4,649	\$308,307	\$684,776
JACKSON	\$1,105,619	\$0	\$3,040,732	\$4,146,351	\$1,732,567	\$459,930	\$2,192,498	\$6,459,378	\$15,456	\$6,857	\$260,131	\$730,162
JEFFERSON	\$1,831,299	\$9,694	\$4,891,672	\$6,732,665	\$2,901,373	\$637,238	\$3,538,612	\$10,297,668	\$54,960	\$30,593	\$413,300	\$1,326,809
KNOX	\$1,815,945	\$2,247	\$5,227,053	\$7,045,246	\$1,915,560	\$211,147	\$2,126,706	\$9,172,107	\$2,636	\$24,645	\$416,010	\$3,433,811
LAKE	\$3,818,680	\$4,602	\$7,388,672	\$11,211,955	\$4,285,588	\$1,491,039	\$5,776,627	\$17,001,584	\$40,168	\$24,315	\$765,949	\$5,437,162
LAWRENCE	\$2,827,356	\$8,021	\$6,596,271	\$9,431,647	\$3,305,436	\$870,265	\$4,175,700	\$13,612,790	\$38,009	\$18,043	\$417,904	\$1,474,181
LICKING	\$2,610,867	\$1,922	\$7,316,021	\$9,928,810	\$5,094,801	\$1,294,482	\$6,389,283	\$16,318,093	\$64,835	\$83,213	\$946,040	\$2,671,643
LOGAN	\$946,259	\$1,660	\$1,550,080	\$2,497,999	\$1,621,681	\$475,840	\$2,097,521	\$4,596,897	\$205	\$8,244	\$240,297	\$691,605
LORAIN	\$5,373,968	\$17,583	\$12,049,775	\$17,441,327	\$9,190,597	\$2,404,742	\$11,595,339	\$29,065,092	\$44,266	\$59,729	\$1,256,250	\$6,127,213
LUCAS	\$11,224,011	\$59,593	\$35,355,929	\$46,639,533	\$23,145,876	\$4,273,783	\$27,419,658	\$74,107,701	\$297,830	\$292,597	\$2,747,347	\$9,851,961
MADISON	\$634,678	\$3,540	\$1,862,861	\$2,501,079	\$1,146,052	\$817,804	\$1,963,856	\$4,464,936	\$20,599	\$7,131	\$178,562	\$646,527
MAHONING	\$7,349,016	\$31,006	\$12,078,151	\$19,458,173	\$10,481,108	\$2,624,010	\$13,105,117	\$32,581,681	\$114,585	\$21,620	\$1,173,606	\$6,838,511
MARION	\$1,666,293	\$4,668	\$4,266,480	\$5,937,441	\$2,847,298	\$822,447	\$3,669,745	\$9,609,403	\$159,615	\$40,515	\$418,033	\$1,243,216
MEDINA	\$2,352,591	\$43,091	\$4,349,800	\$6,745,482	\$2,442,045	\$763,594	\$3,205,639	\$9,953,749	\$16,562	\$10,004	\$441,252	\$3,452,490
MEIGS	\$816,284	\$14,362	\$2,005,179	\$2,835,825	\$1,242,145	\$280,116	\$1,522,261	\$4,358,709	\$4,167	\$2,592	\$175,992	\$600,790
MERCER	\$706,149	\$12	\$967,324	\$1,673,484	\$604,684	\$300,854	\$905,539	\$2,582,628	\$8,882	\$4,833	\$144,655	\$807,574
MIAMI	\$2,140,545	\$6,493	\$3,179,416	\$5,326,455	\$2,124,797	\$854,984	\$2,979,780	\$8,318,606	\$40,914	\$30,651	\$422,827	\$1,734,845
MONROE	\$426,898	\$37	\$821,848	\$1,248,784	\$544,000	\$152,483	\$696,484	\$1,945,822	\$803	\$1,753	\$107,451	\$358,767
MONTGOMERY	\$14,277,588	\$41,125	\$30,172,016	\$44,490,729	\$20,272,865	\$4,946,295	\$25,219,160	\$69,753,959	\$263,353	\$279,398	\$2,431,038	\$11,730,568
MORGAN	\$507,024	\$0	\$1,061,152	\$1,568,176	\$710,403	\$196,313	\$906,716	\$2,475,027	\$0	\$1,089	\$139,948	\$428,853
MORROW	\$806,860	\$0	\$1,610,585	\$2,417,445	\$1,128,200	\$372,720	\$1,500,920	\$3,919,231	\$0	\$6,494	\$233,834	\$635,414

**Table 6B
May 2007
Medicaid Expenditures**

	Aged	Blind	Disabled	ABD Total	OWF & Related	Healthy Start	CFC Total	Total Medicaid	Foster Care	Adoption Assistance	Transitional	Nursing Facilities
STATEWIDE	\$276,250,572	\$1,255,147	\$603,721,994	\$881,227,714	\$402,739,030	\$107,912,266	\$510,651,296	\$1,392,969,530	\$6,081,694	\$4,950,313	\$53,877,021	\$263,256,229
MUSKINGUM	\$2,375,591	\$24,305	\$5,265,717	\$7,665,613	\$3,990,667	\$1,318,871	\$5,309,537	\$12,976,423	\$12,094	\$32,260	\$622,724	\$1,823,959
NOBLE	\$422,199	\$0	\$390,797	\$812,996	\$484,258	\$126,152	\$610,410	\$1,423,406	\$0	\$1,042	\$99,224	\$321,578
OTTAWA	\$1,088,969	\$11,007	\$2,023,934	\$3,123,911	\$1,112,774	\$260,304	\$1,373,078	\$4,503,718	\$9,936	\$616	\$202,383	\$687,165
PAULDING	\$209,410	\$397	\$637,581	\$847,388	\$538,793	\$219,156	\$757,949	\$1,605,337	\$7,043	\$2,809	\$108,467	\$144,802
PERRY	\$677,256	\$9,809	\$3,347,526	\$4,034,591	\$1,914,356	\$424,742	\$2,339,098	\$6,381,033	\$12,550	\$6,745	\$293,918	\$998,514
PICKAWAY	\$851,265	\$45	\$2,536,064	\$3,387,373	\$1,856,283	\$444,049	\$2,300,332	\$5,687,705	\$20,485	\$13,779	\$278,814	\$672,770
PIKE	\$1,374,354	\$0	\$3,472,257	\$4,846,611	\$1,861,881	\$470,138	\$2,332,020	\$7,178,975	\$21,300	\$3,915	\$212,454	\$1,406,126
PORTAGE	\$2,482,454	\$21,709	\$5,743,873	\$8,248,037	\$4,091,964	\$1,201,157	\$5,293,121	\$13,542,183	\$42,770	\$38,903	\$505,350	\$3,397,888
PREBLE	\$805,912	\$10,356	\$1,615,750	\$2,432,018	\$1,265,676	\$375,419	\$1,641,096	\$4,074,455	\$21,094	\$6,356	\$262,330	\$1,047,333
PUTNAM	\$603,109	\$1,881	\$893,261	\$1,498,251	\$556,759	\$233,908	\$790,667	\$2,291,526	\$2,115	\$1,306	\$91,078	\$871,243
RICHLAND	\$3,231,442	\$0	\$6,573,791	\$9,805,233	\$4,338,858	\$1,442,739	\$5,781,597	\$15,616,242	\$23,476	\$65,649	\$659,273	\$2,851,304
ROSS	\$1,577,500	\$7,130	\$5,269,792	\$6,854,422	\$4,342,428	\$936,933	\$5,279,361	\$12,144,947	\$48,108	\$14,828	\$498,670	\$1,088,103
SANDUSKY	\$1,373,948	\$7,166	\$2,796,084	\$4,177,198	\$1,734,236	\$673,043	\$2,407,279	\$6,588,333	\$25,964	\$4,860	\$271,067	\$1,593,281
SCIOTO	\$3,752,728	\$6,416	\$10,812,020	\$14,571,164	\$4,738,408	\$1,309,243	\$6,047,651	\$20,650,816	\$20,761	\$18,629	\$520,984	\$2,375,232
SENECA	\$1,634,295	\$4,432	\$4,071,551	\$5,710,278	\$1,723,618	\$613,604	\$2,337,223	\$8,047,500	\$28,558	\$12,232	\$343,112	\$1,325,543
SHELBY	\$705,411	\$2,371	\$1,269,388	\$1,977,170	\$1,280,924	\$442,600	\$1,723,524	\$3,700,931	\$5,324	\$14,493	\$164,105	\$717,882
STARK	\$10,512,978	\$43,032	\$17,884,266	\$28,440,276	\$12,443,767	\$2,965,089	\$15,408,856	\$43,851,390	\$242,391	\$173,892	\$2,060,718	\$10,285,445
SUMMIT	\$13,244,269	\$74,637	\$29,386,523	\$42,705,429	\$18,660,120	\$3,652,972	\$22,313,092	\$65,097,931	\$369,902	\$224,050	\$2,344,119	\$10,150,397
TRUMBULL	\$4,642,046	\$13,229	\$9,037,507	\$13,692,782	\$7,468,110	\$2,150,682	\$9,618,792	\$23,315,661	\$67,785	\$42,236	\$1,132,344	\$5,015,495
TUSCARAWAS	\$2,255,958	\$2,682	\$4,056,834	\$6,315,474	\$2,933,277	\$968,982	\$3,902,258	\$10,229,888	\$45,427	\$39,271	\$506,074	\$1,743,396
UNION	\$588,447	\$191	\$1,112,538	\$1,701,176	\$1,028,026	\$373,682	\$1,401,708	\$3,102,884	\$22,141	\$6,056	\$182,474	\$455,668
UNKNOWN	\$225	\$0	\$2,705	\$2,930	-\$889,700	\$0	-\$889,700	-\$886,770	\$176	\$15,782	\$0	\$1,070
VAN WERT	\$638,567	\$0	\$856,974	\$1,495,541	\$606,992	\$327,642	\$934,634	\$2,434,129	\$1,258	\$8,615	\$135,602	\$624,412
VINTON	\$396,267	\$0	\$1,110,757	\$1,507,025	\$881,062	\$235,641	\$1,116,703	\$2,624,154	\$2,796	\$3,788	\$112,074	\$214,010
WARREN	\$3,220,824	\$7,289	\$5,521,489	\$8,749,602	\$2,121,122	\$1,110,552	\$3,231,674	\$11,985,656	\$16,103	\$25,035	\$338,119	\$4,456,672
WASHINGTON	\$1,714,907	\$7,863	\$3,547,861	\$5,270,631	\$2,124,191	\$653,926	\$2,778,116	\$8,048,747	\$11,349	\$2,895	\$391,923	\$1,724,889
WAYNE	\$2,183,685	\$2,175	\$4,130,133	\$6,315,994	\$2,494,281	\$970,521	\$3,464,802	\$9,782,419	\$20,070	\$11,221	\$398,892	\$1,984,886
WILLIAMS	\$876,347	\$4,364	\$1,162,966	\$2,043,677	\$1,486,198	\$329,052	\$1,815,250	\$3,859,061	\$9,434	\$18,550	\$347,516	\$745,193
WOOD	\$2,122,726	\$4,552	\$3,017,256	\$5,144,534	\$2,091,671	\$742,753	\$2,834,424	\$7,984,849	\$9,181	\$13,424	\$329,667	\$1,683,175
WYANDOT	\$599,557	\$0	\$614,289	\$1,213,846	\$460,400	\$267,076	\$727,476	\$1,941,322	\$3,425	\$1,552	\$102,416	\$483,187

**TABLE 7
CHILD CARE
MAY 2007**

OHIO COUNTY	OWF JOBS, LEAP, and TRANSITIONAL		OTHER CHILD CARE		LOCAL FUNDING		ALL PROGRAM SOURCES	
	CHILDREN SERVED		CHILDREN SERVED		CHILDREN SERVED		CHILDREN SERVED	
	TOTAL	% OF STATE TOTAL	TOTAL	% OF STATE TOTAL	TOTAL	% OF STATE TOTAL	TOTAL	% OF STATE TOTAL
STATEWIDE	24,152	100.00%	80,832	100.00%	113	100.00%	105,097	100.00%
ADAMS	37	0.15%	113	0.14%	0	0.00%	150	0.14%
ALLEN	167	0.69%	419	0.52%	0	0.00%	586	0.56%
ASHLAND	9	0.04%	210	0.26%	0	0.00%	219	0.21%
ASHTABULA	199	0.82%	684	0.85%	0	0.00%	883	0.84%
ATHENS	97	0.40%	220	0.27%	0	0.00%	317	0.30%
AUGLAIZE	25	0.10%	116	0.14%	0	0.00%	141	0.13%
BELMONT	77	0.32%	248	0.31%	0	0.00%	325	0.31%
BROWN	21	0.09%	121	0.15%	0	0.00%	142	0.14%
BUTLER	199	0.82%	1,604	1.98%	0	0.00%	1,803	1.72%
CARROLL	17	0.07%	58	0.07%	0	0.00%	75	0.07%
CHAMPAIGN	33	0.14%	137	0.17%	0	0.00%	170	0.16%
CLARK	124	0.51%	655	0.81%	0	0.00%	779	0.74%
CLERMONT	188	0.78%	468	0.58%	0	0.00%	656	0.62%
CLINTON	4	0.02%	203	0.25%	0	0.00%	207	0.20%
COLUMBIANA	175	0.72%	868	1.07%	0	0.00%	1,043	0.99%
COSHOCTON	74	0.31%	188	0.23%	0	0.00%	262	0.25%
CRAWFORD	66	0.27%	230	0.28%	0	0.00%	296	0.28%
CUYAHOGA	4,563	18.89%	18,012	22.28%	0	0.00%	22,575	21.48%
DARKE	32	0.13%	101	0.12%	0	0.00%	133	0.13%
DEFIANCE	64	0.26%	156	0.19%	0	0.00%	220	0.21%
DELAWARE	44	0.18%	336	0.42%	0	0.00%	380	0.36%
ERIE	52	0.22%	573	0.71%	0	0.00%	625	0.59%
FAIRFIELD	93	0.39%	518	0.64%	0	0.00%	611	0.58%
FAYETTE	59	0.24%	229	0.28%	0	0.00%	288	0.27%
FRANKLIN	3,019	12.50%	10,167	12.58%	108	95.58%	13,294	12.65%
FULTON	51	0.21%	155	0.19%	0	0.00%	206	0.20%
GALLIA	45	0.19%	148	0.18%	0	0.00%	193	0.18%
GEAUGA	49	0.20%	196	0.24%	0	0.00%	245	0.23%
GREENE	241	1.00%	768	0.95%	0	0.00%	1,009	0.96%

**TABLE 7
CHILD CARE
MAY 2007**

OHIO COUNTY	OWF JOBS, LEAP, and TRANSITIONAL		OTHER CHILD CARE		LOCAL FUNDING		ALL PROGRAM SOURCES	
	CHILDREN SERVED		CHILDREN SERVED		CHILDREN SERVED		CHILDREN SERVED	
	TOTAL	% OF STATE TOTAL	TOTAL	% OF STATE TOTAL	TOTAL	% OF STATE TOTAL	TOTAL	% OF STATE TOTAL
STATEWIDE	24,152	100.00%	80,832	100.00%	113	100.00%	105,097	100.00%
GUERNSEY	120	0.50%	297	0.37%	0	0.00%	417	0.40%
HAMILTON	3,518	14.57%	10,282	12.72%	0	0.00%	13,800	13.13%
HANCOCK	113	0.47%	341	0.42%	0	0.00%	454	0.43%
HARDIN	23	0.10%	62	0.08%	0	0.00%	85	0.08%
HARRISON	11	0.05%	54	0.07%	0	0.00%	65	0.06%
HENRY	36	0.15%	115	0.14%	0	0.00%	151	0.14%
HIGHLAND	12	0.05%	189	0.23%	0	0.00%	201	0.19%
HOCKING	47	0.19%	80	0.10%	0	0.00%	127	0.12%
HOLMES	53	0.22%	104	0.13%	0	0.00%	157	0.15%
HURON	9	0.04%	434	0.54%	0	0.00%	443	0.42%
JACKSON	44	0.18%	123	0.15%	0	0.00%	167	0.16%
JEFFERSON	77	0.32%	291	0.36%	0	0.00%	368	0.35%
KNOX	79	0.33%	246	0.30%	0	0.00%	325	0.31%
LAKE	275	1.14%	849	1.05%	0	0.00%	1,124	1.07%
LAWRENCE	139	0.58%	466	0.58%	0	0.00%	605	0.58%
LICKING	200	0.83%	1,053	1.30%	0	0.00%	1,253	1.19%
LOGAN	39	0.16%	51	0.06%	0	0.00%	90	0.09%
LORAIN	736	3.05%	1,680	2.08%	0	0.00%	2,416	2.30%
LUCAS	2,101	8.70%	2,958	3.66%	0	0.00%	5,059	4.81%
MADISON	32	0.13%	136	0.17%	0	0.00%	168	0.16%
MAHONING	963	3.99%	1,445	1.79%	0	0.00%	2,408	2.29%
MARION	28	0.12%	384	0.48%	0	0.00%	412	0.39%
MEDINA	125	0.52%	739	0.91%	0	0.00%	864	0.82%
MEIGS	11	0.05%	170	0.21%	0	0.00%	181	0.17%
MERCER	26	0.11%	136	0.17%	0	0.00%	162	0.15%
MIAMI	127	0.53%	334	0.41%	0	0.00%	461	0.44%
MONROE	1	0.00%	53	0.07%	0	0.00%	54	0.05%
MONTGOMERY	927	3.84%	5,120	6.33%	1	0.88%	6,048	5.75%
MORGAN	8	0.03%	90	0.11%	0	0.00%	98	0.09%
MORROW	20	0.08%	170	0.21%	0	0.00%	190	0.18%

**TABLE 7
CHILD CARE
MAY 2007**

OHIO COUNTY	OWF JOBS, LEAP, and TRANSITIONAL		OTHER CHILD CARE		LOCAL FUNDING		ALL PROGRAM SOURCES	
	CHILDREN SERVED		CHILDREN SERVED		CHILDREN SERVED		CHILDREN SERVED	
	TOTAL	% OF STATE TOTAL	TOTAL	% OF STATE TOTAL	TOTAL	% OF STATE TOTAL	TOTAL	% OF STATE TOTAL
STATEWIDE	24,152	100.00%	80,832	100.00%	113	100.00%	105,097	100.00%
MUSKINGUM	294	1.22%	752	0.93%	0	0.00%	1,046	1.00%
NOBLE	41	0.17%	82	0.10%	0	0.00%	123	0.12%
OTTAWA	84	0.35%	117	0.14%	0	0.00%	201	0.19%
PAULDING	7	0.03%	33	0.04%	0	0.00%	40	0.04%
PERRY	64	0.26%	247	0.31%	0	0.00%	311	0.30%
PICKAWAY	76	0.31%	134	0.17%	0	0.00%	210	0.20%
PIKE	58	0.24%	78	0.10%	0	0.00%	136	0.13%
PORTAGE	187	0.77%	651	0.81%	0	0.00%	838	0.80%
PREBLE	55	0.23%	126	0.16%	0	0.00%	181	0.17%
PUTNAM	23	0.10%	97	0.12%	0	0.00%	120	0.11%
RICHLAND	278	1.15%	836	1.03%	0	0.00%	1,114	1.06%
ROSS	110	0.46%	298	0.37%	0	0.00%	408	0.39%
SANDUSKY	91	0.38%	440	0.54%	0	0.00%	531	0.51%
SCIOTO	123	0.51%	573	0.71%	0	0.00%	696	0.66%
SENECA	26	0.11%	187	0.23%	0	0.00%	213	0.20%
SHELBY	50	0.21%	175	0.22%	0	0.00%	225	0.21%
STARK	845	3.50%	2,211	2.74%	0	0.00%	3,056	2.91%
SUMMIT	979	4.05%	3,642	4.51%	0	0.00%	4,621	4.40%
TRUMBULL	308	1.28%	1,524	1.89%	0	0.00%	1,832	1.74%
TUSCARAWAS	50	0.21%	328	0.41%	0	0.00%	378	0.36%
UNION	34	0.14%	222	0.27%	4	3.54%	260	0.25%
VAN WERT	21	0.09%	46	0.06%	0	0.00%	67	0.06%
VINTON	7	0.03%	92	0.11%	0	0.00%	99	0.09%
WARREN	168	0.70%	472	0.58%	0	0.00%	640	0.61%
WASHINGTON	102	0.42%	247	0.31%	0	0.00%	349	0.33%
WAYNE	186	0.77%	385	0.48%	0	0.00%	571	0.54%
WILLIAMS	48	0.20%	93	0.12%	0	0.00%	141	0.13%
WOOD	102	0.42%	343	0.42%	0	0.00%	445	0.42%
WYANDOT	11	0.05%	48	0.06%	0	0.00%	59	0.06%

SOURCE: COGNOS. The above numbers have not been reconciled between the CCIDS/3299 data collection system and 2827 ODJFS fiscal reporting system; therefore they may not be conclusive at this time. No OWF code 173 data available.

OWF data consist of funding codes: 173,312, 313,314, 326, & 327. Other data consist of funding codes: 320, 321, 322, 323, 324, 325, 328, 329, and 342. Local Funding is from funding code 899.

**TABLE 8
RECIPIENTS, EXPENDITURES, AND AVERAGE PAYMENT PER RECIPIENT
DURING THE LAST 12 MONTHS IN OHIO**

RECIPIENTS	OWF-R	OWF-U	OWF/ CHILD CARE	Other CHILD CARE	DISABILITY ASSISTANCE	TITLE IV-E	FNS BENEFITS
June 2006	163,683	15,964	24,531	76,147	14,049	27,007	1,073,268
July	156,237	14,442	24,580	77,029	13,753	26,830	1,064,369
August	161,518	14,842	25,066	78,202	14,220	27,084	1,072,753
September	159,269	14,015	25,720	75,554	13,960	27,121	1,064,886
October	159,372	13,714	26,501	74,946	13,718	27,108	1,067,925
November	156,220	12,781	23,696	78,584	13,578	26,828	1,061,392
December	159,543	13,239	23,727	79,838	13,654	27,223	1,073,211
January 2007	156,974	12,864	22,470	78,182	13,678	27,150	1,074,737
February	153,574	12,747	23,275	74,852	13,709	26,969	1,054,032
March	152,985	12,792	23,584	78,334	13,965	26,244	1,066,951
April	152,556	12,406	23,527	77,738	13,947	26,182	1,066,248
May	155,417	12,271	24,152	80,832	14,564	25,706	1,080,781
12 MONTH AVERAGE	157,279	13,506	24,236	77,520	13,900	26,788	1,068,379
EXPENDITURES							
June 2006	\$23,449,016	\$1,532,463	N.A.	N.A.	\$1,941,545	\$14,506,729	\$106,993,971
July	\$24,432,662	\$1,541,871	N.A.	N.A.	\$1,843,070	\$13,801,221	\$106,503,524
August	\$25,149,711	\$1,578,643	N.A.	N.A.	\$2,026,360	\$13,842,955	\$107,495,300
September	\$24,982,385	\$1,518,064	N.A.	N.A.	\$1,816,230	\$13,730,291	\$106,390,515
October	\$25,271,659	\$1,490,001	N.A.	N.A.	\$1,707,917	\$13,947,005	\$108,425,686
November	\$24,233,824	\$1,357,337	N.A.	N.A.	\$1,732,064	\$13,607,688	\$106,332,849
December	\$25,577,815	\$1,491,073	N.A.	N.A.	\$1,905,592	\$15,347,273	\$107,670,387
January 2007	\$24,563,001	\$1,389,124	N.A.	N.A.	\$1,860,503	\$14,522,840	\$107,705,366
February	\$23,926,643	\$1,349,595	N.A.	N.A.	\$1,847,646	\$13,904,623	\$105,628,316
March	\$23,971,956	\$1,384,820	N.A.	N.A.	\$1,952,139	\$13,522,041	\$107,457,412
April	\$23,014,252	\$1,269,486	N.A.	N.A.	\$1,768,558	\$17,403,927	\$107,329,580
May	\$22,934,016	\$1,208,788	N.A.	N.A.	\$2,040,201	\$13,271,398	\$108,138,296
TOTAL DOLLARS	\$22,381,077	\$1,325,206	N.A.	N.A.	\$1,700,135	\$13,178,049	\$98,161,076
AVERAGE PAYMENT							
June 2006	\$143	\$96	N.A.	N.A.	\$138	\$537	\$100
July	\$156	\$107	N.A.	N.A.	\$134	\$514	\$100
August	\$156	\$106	N.A.	N.A.	\$143	\$511	\$100
September	\$157	\$108	N.A.	N.A.	\$130	\$506	\$100
October	\$159	\$109	N.A.	N.A.	\$125	\$514	\$102
November	\$155	\$106	N.A.	N.A.	\$128	\$507	\$100
December	\$160	\$113	N.A.	N.A.	\$140	\$564	\$100
January 2007	\$156	\$108	N.A.	N.A.	\$136	\$535	\$100
February	\$156	\$106	N.A.	N.A.	\$135	\$516	\$100
March	\$157	\$108	N.A.	N.A.	\$140	\$515	\$101
April	\$151	\$102	N.A.	N.A.	\$127	\$665	\$101
May	\$148	\$99	N.A.	N.A.	\$140	\$516	\$100

Note: N.A. means Not Available.

**TABLE 10
PERCENT OF OHIO'S POPULATION PARTICIPATING IN SELECTED
PUBLIC ASSISTANCE PROGRAMS FOR MAY 2007**

OHIO COUNTY	Estimated Total Population *	Percent of All Families Below Poverty Level	DISABILITY ASSISTANCE		OWF COMBINED		FOSTER CARE		FNS BENEFITS	
			Recipients as % of		Recipients as % of		Recipients as % of		Recipients as % of	
			Recipients	Total Population	Recipients	Total Population	Recipients	Total Population	Recipients	Total Population
STATEWIDE	11,478,006	7.80%	14,564	0.13%	167,688	1.46%	25,706	0.22%	1,080,781	9.42%
ADAMS	28,516	12.80%	98	0.34%	230	0.81%	58	0.20%	4,657	16.33%
ALLEN	105,788	9.60%	129	0.12%	690	0.65%	223	0.21%	9,137	8.64%
ASHLAND	54,727	7.10%	32	0.06%	160	0.29%	28	0.05%	3,051	5.57%
ASHTABULA	102,703	9.20%	296	0.29%	1,411	1.37%	202	0.20%	12,511	12.18%
ATHENS	61,860	14.00%	282	0.46%	1,610	2.60%	194	0.31%	7,226	11.68%
AUGLAIZE	47,060	4.90%	29	0.06%	99	0.21%	51	0.11%	2,007	4.26%
BELMONT	68,771	11.70%	143	0.21%	629	0.91%	139	0.20%	7,036	10.23%
BROWN	44,423	8.80%	67	0.15%	259	0.58%	64	0.14%	3,338	7.51%
BUTLER	354,992	5.40%	453	0.13%	2,780	0.78%	0	0.00%	26,174	7.37%
CARROLL	29,189	8.50%	27	0.09%	153	0.52%	14	0.05%	2,219	7.60%
CHAMPAIGN	39,921	5.10%	41	0.10%	459	1.15%	23	0.06%	2,673	6.70%
CLARK	141,872	7.90%	348	0.25%	2,631	1.85%	313	0.22%	17,239	12.15%
CLERMONT	192,706	5.30%	206	0.11%	675	0.35%	455	0.24%	11,005	5.71%
CLINTON	43,399	6.40%	64	0.15%	217	0.50%	104	0.24%	3,298	7.60%
COLUMBIANA	110,542	9.00%	118	0.11%	775	0.70%	0	0.00%	12,318	11.14%
COSHOCTON	36,976	7.00%	119	0.32%	439	1.19%	49	0.13%	4,139	11.19%
CRAWFORD	45,047	7.80%	59	0.13%	275	0.61%	47	0.10%	4,418	9.81%
CUYAHOGA	1,314,241	10.30%	941	0.07%	23,820	1.81%	6,367	0.48%	178,474	13.58%
DARKE	52,780	6.00%	34	0.06%	337	0.64%	60	0.11%	2,255	4.27%
DEFIANCE	39,091	4.50%	28	0.07%	336	0.86%	41	0.10%	2,942	7.53%
DELAWARE	156,697	2.90%	100	0.06%	771	0.49%	73	0.05%	4,379	2.79%
ERIE	78,116	6.00%	97	0.12%	389	0.50%	122	0.16%	5,827	7.46%
FAIRFIELD	140,591	4.50%	187	0.13%	1,963	1.40%	176	0.13%	10,211	7.26%
FAYETTE	28,305	7.70%	36	0.13%	297	1.05%	25	0.09%	2,554	9.02%
FRANKLIN	1,095,662	8.20%	1,143	0.10%	25,650	2.34%	3,401	0.31%	124,034	11.32%
FULTON	42,900	4.00%	36	0.08%	98	0.23%	34	0.08%	2,155	5.02%
GALLIA	31,313	13.50%	86	0.27%	1,185	3.78%	64	0.20%	5,033	16.07%
GEAUGA	95,676	2.80%	30	0.03%	107	0.11%	112	0.12%	1,657	1.73%
GREENE	152,298	5.20%	162	0.11%	1,101	0.72%	98	0.06%	8,346	5.48%

*SOURCE: 2006 Ohio County Population Estimates, Ohio Dept. of Development, GRP342RA, GBS003RA, GRP304RA and GRP304RC Reports from Management Information Services.

**TABLE 10
PERCENT OF OHIO'S POPULATION PARTICIPATING IN SELECTED
PUBLIC ASSISTANCE PROGRAMS FOR MAY 2007**

OHIO COUNTY	Estimated Total Population *	Percent of All Families Below Poverty Level	DISABILITY ASSISTANCE		OWF COMBINED		FOSTER CARE		FNS BENEFITS	
			Recipients as % of		Recipients as % of		Recipients as % of		Recipients as % of	
			Recipients	Total Population	Recipients	Total Population	Recipients	Total Population	Recipients	Total Population
STATEWIDE	11,478,006	7.80%	14,564	0.13%	167,688	1.46%	25,706	0.22%	1,080,781	9.42%
GUERNSEY	40,876	12.90%	150	0.37%	282	0.69%	118	0.29%	5,970	14.61%
HAMILTON	822,596	8.80%	684	0.08%	16,427	2.00%	2,077	0.25%	72,710	8.84%
HANCOCK	73,824	5.20%	81	0.11%	140	0.19%	72	0.10%	4,008	5.43%
HARDIN	31,966	8.90%	39	0.12%	107	0.33%	55	0.17%	1,857	5.81%
HARRISON	15,799	11.00%	63	0.40%	232	1.47%	36	0.23%	1,933	12.23%
HENRY	29,520	5.30%	10	0.03%	64	0.22%	29	0.10%	1,247	4.22%
HIGHLAND	42,833	9.00%	103	0.24%	400	0.93%	19	0.04%	4,875	11.38%
HOCKING	28,973	10.30%	70	0.24%	649	2.24%	84	0.29%	3,405	11.75%
HOLMES	41,574	10.50%	34	0.08%	72	0.17%	31	0.07%	1,009	2.43%
HURON	60,313	6.50%	64	0.11%	250	0.41%	63	0.10%	4,740	7.86%
JACKSON	33,543	13.60%	114	0.34%	555	1.65%	40	0.12%	5,190	15.47%
JEFFERSON	70,125	11.40%	187	0.27%	1,670	2.38%	113	0.16%	8,751	12.48%
KNOX	58,561	7.40%	112	0.19%	580	0.99%	38	0.06%	4,364	7.45%
LAKE	232,892	3.50%	141	0.06%	990	0.43%	207	0.09%	10,744	4.61%
LAWRENCE	63,179	15.10%	75	0.12%	1,485	2.35%	49	0.08%	10,426	16.50%
LICKING	156,287	5.50%	254	0.16%	1,191	0.76%	0	0.00%	12,295	7.87%
LOGAN	46,189	7.10%	78	0.17%	405	0.88%	56	0.12%	3,520	7.62%
LORAIN	301,993	6.70%	378	0.13%	4,252	1.41%	452	0.15%	27,072	8.96%
LUCAS	445,281	10.70%	987	0.22%	14,026	3.15%	2,205	0.50%	61,762	13.87%
MADISON	41,496	6.20%	25	0.06%	499	1.20%	34	0.08%	3,002	7.23%
MAHONING	251,026	9.60%	256	0.10%	6,655	2.65%	352	0.14%	29,540	11.77%
MARION	65,583	7.40%	169	0.26%	761	1.16%	95	0.14%	7,322	11.16%
MEDINA	169,353	3.50%	72	0.04%	458	0.27%	91	0.05%	5,208	3.08%
MEIGS	23,092	14.30%	73	0.32%	390	1.69%	8	0.03%	4,085	17.69%
MERCER	41,303	4.60%	30	0.07%	165	0.40%	41	0.10%	1,441	3.49%
MIAMI	101,914	5.10%	77	0.08%	541	0.53%	163	0.16%	4,445	4.36%
MONROE	14,606	11.00%	29	0.20%	155	1.06%	14	0.10%	1,581	10.82%
MONTGOMERY	542,237	8.30%	791	0.15%	10,339	1.91%	1,701	0.31%	54,661	10.08%
MORGAN	14,821	15.70%	54	0.36%	153	1.03%	12	0.08%	1,869	12.61%
MORROW	34,529	6.60%	53	0.15%	231	0.67%	29	0.08%	2,801	8.11%

*SOURCE: 2006 Ohio County Population Estimates, Ohio Dept. of Development, GRP342RA, GBS003RA, GRP304RA and GRP304RC Reports from Management Information Services.

**TABLE 10
PERCENT OF OHIO'S POPULATION PARTICIPATING IN SELECTED
PUBLIC ASSISTANCE PROGRAMS FOR MAY 2007**

OHIO COUNTY	Estimated Total Population *	Percent of All Families Below Poverty Level	DISABILITY ASSISTANCE		OWF COMBINED		FOSTER CARE		FNS BENEFITS	
			Recipients as % of		Recipients as % of		Recipients as % of		Recipients as % of	
			Recipients	Total Population	Recipients	Total Population	Recipients	Total Population	Recipients	Total Population
STATEWIDE	11,478,006	7.80%	14,564	0.13%	167,688	1.46%	25,706	0.22%	1,080,781	9.42%
MUSKINGUM	86,125	9.90%	371	0.43%	1,832	2.13%	0	0.00%	14,014	16.27%
NOBLE	14,165	8.30%	12	0.08%	76	0.54%	7	0.05%	1,133	8.00%
OTTAWA	41,331	4.20%	44	0.11%	317	0.77%	18	0.04%	2,517	6.09%
PAULDING	19,432	4.90%	27	0.14%	281	1.45%	28	0.14%	1,438	7.40%
PERRY	35,313	9.40%	105	0.30%	576	1.63%	77	0.22%	5,239	14.84%
PICKAWAY	53,606	7.60%	80	0.15%	814	1.52%	32	0.06%	4,760	8.88%
PIKE	28,269	15.10%	76	0.27%	771	2.73%	43	0.15%	5,328	18.85%
PORTAGE	155,012	5.90%	123	0.08%	808	0.52%	172	0.11%	9,192	5.93%
PREBLE	42,491	4.50%	52	0.12%	381	0.90%	86	0.20%	2,680	6.31%
PUTNAM	34,744	4.00%	9	0.03%	35	0.10%	14	0.04%	1,485	4.27%
RICHLAND	127,010	8.20%	299	0.24%	1,133	0.89%	257	0.20%	12,427	9.78%
ROSS	75,556	9.10%	171	0.23%	1,424	1.88%	90	0.12%	10,878	14.40%
SANDUSKY	61,625	5.70%	69	0.11%	391	0.63%	88	0.14%	3,993	6.48%
SCIOTO	76,441	15.20%	254	0.33%	1,970	2.58%	65	0.09%	15,876	20.77%
SENECA	57,255	6.10%	83	0.14%	355	0.62%	103	0.18%	4,461	7.79%
SHELBY	48,884	5.30%	42	0.09%	261	0.53%	64	0.13%	2,574	5.27%
STARK	380,575	6.80%	463	0.12%	6,386	1.68%	1,219	0.32%	30,801	8.09%
SUMMIT	545,931	7.50%	501	0.09%	9,640	1.77%	1,293	0.24%	52,498	9.62%
TRUMBULL	217,362	7.90%	332	0.15%	2,713	1.25%	433	0.20%	18,615	8.56%
TUSCARAWAS	91,766	7.20%	112	0.12%	800	0.87%	247	0.27%	7,641	8.33%
UNION	46,702	3.60%	31	0.07%	318	0.68%	51	0.11%	2,271	4.86%
VAN WERT	29,303	4.20%	32	0.11%	65	0.22%	16	0.05%	1,329	4.54%
VINTON	13,519	15.10%	63	0.47%	264	1.95%	25	0.18%	2,632	19.47%
WARREN	201,871	3.00%	93	0.05%	368	0.18%	133	0.07%	3,875	1.92%
WASHINGTON	61,867	8.60%	137	0.22%	204	0.33%	52	0.08%	5,553	8.98%
WAYNE	113,950	5.40%	227	0.20%	971	0.85%	136	0.12%	7,367	6.47%
WILLIAMS	38,719	3.90%	41	0.11%	399	1.03%	39	0.10%	2,722	7.03%
WOOD	124,183	4.70%	56	0.05%	387	0.31%	65	0.05%	4,382	3.53%
WYANDOT	22,553	3.80%	15	0.07%	78	0.35%	32	0.14%	954	4.23%
UNKNOWN										

*SOURCE: 2006 Ohio County Population Estimates, Ohio Dept. of Development, GRP342RA, GBS003RA, GRP304RA and GRP304RC Reports from Management Information Services.

**TABLE 7
CHILD CARE REVISION
FEBRUARY 2007 UPDATE**

OHIO COUNTY	OWF JOBS, LEAP, and TRANSITIONAL		OTHER CHILD CARE		LOCAL FUNDING		ALL PROGRAM SOURCES	
	CHILDREN SERVED		CHILDREN SERVED		CHILDREN SERVED		CHILDREN SERVED	
	TOTAL	% OF STATE TOTAL	TOTAL	% OF STATE TOTAL	TOTAL	% OF STATE TOTAL	TOTAL	% OF STATE TOTAL
STATEWIDE	23,275	100.00%	74,852	100.00%	98	100.00%	98,225	100.00%
ADAMS	43	0.18%	91	0.12%	0	0.00%	134	0.14%
ALLEN	144	0.62%	455	0.61%	0	0.00%	599	0.61%
ASHLAND	6	0.03%	201	0.27%	0	0.00%	207	0.21%
ASHTABULA	200	0.86%	644	0.86%	0	0.00%	844	0.86%
ATHENS	90	0.39%	203	0.27%	0	0.00%	293	0.30%
AUGLAIZE	17	0.07%	127	0.17%	0	0.00%	144	0.15%
BELMONT	94	0.40%	242	0.32%	0	0.00%	336	0.34%
BROWN	17	0.07%	115	0.15%	0	0.00%	132	0.13%
BUTLER	204	0.88%	1,448	1.93%	0	0.00%	1,652	1.68%
CARROLL	16	0.07%	70	0.09%	0	0.00%	86	0.09%
CHAMPAIGN	23	0.10%	120	0.16%	0	0.00%	143	0.15%
CLARK	141	0.61%	620	0.83%	0	0.00%	761	0.77%
CLERMONT	187	0.80%	333	0.44%	0	0.00%	520	0.53%
CLINTON	10	0.04%	197	0.26%	0	0.00%	207	0.21%
COLUMBIANA	172	0.74%	808	1.08%	0	0.00%	980	1.00%
COSHOCTON	61	0.26%	178	0.24%	0	0.00%	239	0.24%
CRAWFORD	81	0.35%	192	0.26%	0	0.00%	273	0.28%
CUYAHOGA	4,504	19.35%	17,277	23.08%	0	0.00%	21,781	22.17%
DARKE	35	0.15%	123	0.16%	0	0.00%	158	0.16%
DEFIANCE	57	0.24%	142	0.19%	0	0.00%	199	0.20%
DELAWARE	43	0.18%	311	0.42%	2	2.04%	356	0.36%
ERIE	66	0.28%	558	0.75%	0	0.00%	624	0.64%
FAIRFIELD	115	0.49%	519	0.69%	0	0.00%	634	0.65%
FAYETTE	58	0.25%	238	0.32%	0	0.00%	296	0.30%
FRANKLIN	2,850	12.24%	8,545	11.42%	91	92.86%	11,486	11.69%
FULTON	50	0.21%	151	0.20%	0	0.00%	201	0.20%
GALLIA	47	0.20%	168	0.22%	0	0.00%	215	0.22%
GEAUGA	46	0.20%	180	0.24%	0	0.00%	226	0.23%
GREENE	239	1.03%	718	0.96%	0	0.00%	957	0.97%

**TABLE 7
CHILD CARE REVISION
FEBRUARY 2007 UPDATE**

OHIO COUNTY	OWF JOBS, LEAP, and TRANSITIONAL		OTHER CHILD CARE		LOCAL FUNDING		ALL PROGRAM SOURCES	
	CHILDREN SERVED		CHILDREN SERVED		CHILDREN SERVED		CHILDREN SERVED	
	TOTAL	% OF STATE TOTAL	TOTAL	% OF STATE TOTAL	TOTAL	% OF STATE TOTAL	TOTAL	% OF STATE TOTAL
STATEWIDE	23,275	100.00%	74,852	100.00%	98	100.00%	98,225	100.00%
GUERNSEY	112	0.48%	291	0.39%	0	0.00%	403	0.41%
HAMILTON	3,460	14.87%	9,532	12.73%	0	0.00%	12,992	13.23%
HANCOCK	99	0.43%	386	0.52%	0	0.00%	485	0.49%
HARDIN	21	0.09%	50	0.07%	0	0.00%	71	0.07%
HARRISON	12	0.05%	48	0.06%	0	0.00%	60	0.06%
HENRY	43	0.18%	91	0.12%	0	0.00%	134	0.14%
HIGHLAND	11	0.05%	200	0.27%	0	0.00%	211	0.21%
HOCKING	47	0.20%	108	0.14%	0	0.00%	155	0.16%
HOLMES	42	0.18%	99	0.13%	0	0.00%	141	0.14%
HURON	9	0.04%	424	0.57%	0	0.00%	433	0.44%
JACKSON	54	0.23%	127	0.17%	0	0.00%	181	0.18%
JEFFERSON	56	0.24%	269	0.36%	0	0.00%	325	0.33%
KNOX	71	0.31%	230	0.31%	0	0.00%	301	0.31%
LAKE	277	1.19%	845	1.13%	0	0.00%	1,122	1.14%
LAWRENCE	133	0.57%	457	0.61%	0	0.00%	590	0.60%
LICKING	214	0.92%	1,000	1.34%	0	0.00%	1,214	1.24%
LOGAN	39	0.17%	50	0.07%	0	0.00%	89	0.09%
LORAIN	714	3.07%	1,636	2.19%	0	0.00%	2,350	2.39%
LUCAS	1,888	8.11%	2,567	3.43%	0	0.00%	4,455	4.54%
MADISON	30	0.13%	105	0.14%	0	0.00%	135	0.14%
MAHONING	932	4.00%	1,506	2.01%	0	0.00%	2,438	2.48%
MARION	33	0.14%	382	0.51%	0	0.00%	415	0.42%
MEDINA	99	0.43%	696	0.93%	0	0.00%	795	0.81%
MEIGS	14	0.06%	174	0.23%	0	0.00%	188	0.19%
MERCER	25	0.11%	113	0.15%	0	0.00%	138	0.14%
MIAMI	105	0.45%	191	0.26%	0	0.00%	296	0.30%
MONROE	1	0.00%	56	0.07%	0	0.00%	57	0.06%
MONTGOMERY	950	4.08%	3,920	5.24%	1	1.02%	4,871	4.96%
MORGAN	7	0.03%	95	0.13%	0	0.00%	102	0.10%
MORROW	23	0.10%	152	0.20%	0	0.00%	175	0.18%

**TABLE 7
CHILD CARE REVISION
FEBRUARY 2007 UPDATE**

OHIO COUNTY	OWF JOBS, LEAP, and TRANSITIONAL		OTHER CHILD CARE		LOCAL FUNDING		ALL PROGRAM SOURCES	
	CHILDREN SERVED		CHILDREN SERVED		CHILDREN SERVED		CHILDREN SERVED	
	TOTAL	% OF STATE TOTAL	TOTAL	% OF STATE TOTAL	TOTAL	% OF STATE TOTAL	TOTAL	% OF STATE TOTAL
STATEWIDE	23,275	100.00%	74,852	100.00%	98	100.00%	98,225	100.00%
MUSKINGUM	279	1.20%	790	1.06%	0	0.00%	1,069	1.09%
NOBLE	41	0.18%	83	0.11%	0	0.00%	124	0.13%
OTTAWA	61	0.26%	83	0.11%	0	0.00%	144	0.15%
PAULDING	3	0.01%	26	0.03%	0	0.00%	29	0.03%
PERRY	56	0.24%	243	0.32%	0	0.00%	299	0.30%
PICKAWAY	81	0.35%	128	0.17%	0	0.00%	209	0.21%
PIKE	58	0.25%	74	0.10%	0	0.00%	132	0.13%
PORTAGE	152	0.65%	529	0.71%	0	0.00%	681	0.69%
PREBLE	41	0.18%	118	0.16%	0	0.00%	159	0.16%
PUTNAM	19	0.08%	100	0.13%	0	0.00%	119	0.12%
RICHLAND	290	1.25%	759	1.01%	0	0.00%	1,049	1.07%
ROSS	124	0.53%	295	0.39%	0	0.00%	419	0.43%
SANDUSKY	84	0.36%	460	0.61%	0	0.00%	544	0.55%
SCIOTO	126	0.54%	528	0.71%	0	0.00%	654	0.67%
SENECA	21	0.09%	249	0.33%	0	0.00%	270	0.27%
SHELBY	57	0.24%	276	0.37%	0	0.00%	333	0.34%
STARK	742	3.19%	2,177	2.91%	0	0.00%	2,919	2.97%
SUMMIT	932	4.00%	3,599	4.81%	0	0.00%	4,531	4.61%
TRUMBULL	270	1.16%	1,574	2.10%	0	0.00%	1,844	1.88%
TUSCARAWAS	39	0.17%	232	0.31%	0	0.00%	271	0.28%
UNION	31	0.13%	217	0.29%	4	4.08%	252	0.26%
VAN WERT	10	0.04%	39	0.05%	0	0.00%	49	0.05%
VINTON	5	0.02%	76	0.10%	0	0.00%	81	0.08%
WARREN	182	0.78%	356	0.48%	0	0.00%	538	0.55%
WASHINGTON	93	0.40%	248	0.33%	0	0.00%	341	0.35%
WAYNE	187	0.80%	389	0.52%	0	0.00%	576	0.59%
WILLIAMS	52	0.22%	98	0.13%	0	0.00%	150	0.15%
WOOD	96	0.41%	292	0.39%	0	0.00%	388	0.40%
WYANDOT	6	0.03%	40	0.05%	0	0.00%	46	0.05%

SOURCE: COGNOS. The above numbers have not been reconciled between the CCIDS/3299 data collection system and 2827 ODJFS fiscal reporting system; therefore they may not be conclusive at this time.

OWF data consist of funding codes: 173,312, 313,314, 326, & 327. Other data consist of funding codes: 320, 321, 322, 323, 324, 325, 328, 329, and 342. Local Funding is from funding code 899.