

Ohio Department of Job and Family Services

PUBLIC ASSISTANCE MONTHLY STATISTICS DECEMBER 2004



<http://jfs.ohio.gov/pams/index.stm>

Bureau of Research and Evaluation : Human Services Reporting Section
Office of Research, Assessment, and Accountability
P.O. Box 1618
Columbus, Ohio 43216

OHIO DEPARTMENT OF JOB AND FAMILY SERVICES

PUBLIC ASSISTANCE MONTHLY STATISTICS

TABLE OF CONTENTS

<u>TITLE</u>	<u>PAGE(S)</u>
Monthly Review of Public Assistance Statistics.	1
Statewide Summary of Public Assistance Programs.	2
Table 1: OWF (TANF) Summary	3-14
Table 2: Foster Care (Title IV-E) Program Summary.	15-17
Table 3: Disability Assistance Program Summary.	18-22
Table 3-A: DA Payments for Medical Services.	23
Table 5: FNS Benefits Program Summary.	24-28
Table 6: Medicaid (Title XIX): Eligibles and Expenditures.	29-34
Table 7: Child Day Care Summary	35-37
Table 8: Program Summaries of Recipients, Expenditures, and Average Payment Per Recipient During the Last 12 Months.	38
Table 10: Percent of Ohio's Population Participating in Selected Public Assistance Programs.	39-41
<i>Note: Table 4 and Table 9 were discontinued.</i>	
<i>Also: Table 7-A, Updated Child Care Summary for September 2004</i>	<i>42-44</i>

All data in the PAMS report is limited to the information available at the time it was constructed. It does not account for backdated or retroactive eligibility or any adjustments made subsequent to its creation.

MONTHLY REVIEW OF PUBLIC ASSISTANCE STATISTICS FOR DECEMBER 2004

OHIO WORKS FIRST

For the month of December 2004, OWF-Combined assistance groups totaled 87,753; recipients totaled 194,856 and money payments totaled \$26,464,462. The percent change from November 2004 to December 2004 was 0.5% for assistance groups; 0.7% for recipients, and -0.3% for money payments. For OWF- Regular (OWF-R) there were 83,590 assistance groups; 177,811 recipients, and \$24,793,390 in money payments issued for December 2004. The percent change from November 2004 to December 2004 was 0.3% for assistance groups; 0.4% for recipients, and -0.6% for money payments. For OWF-Unemployed (OWF-U) assistance groups totaled 4,163; recipients, 17,045 and money payments were \$1,671,072. The percent change from November 2004 to December 2004 was 3.8% for assistance groups; 3.8% for recipients and 4.2% for money payments.

FOSTER CARE (TITLE IV-E)

A total of 27,440 children received \$14,594,680 in Title IV-E assistance during the month of December 2004. Included in this total were 7,775 foster care children who received \$7,105,152 in money payments. Of these Title IV-E children, 3,291 or 12.0% were in foster family homes who received \$1,517,854 and 4,484 or 16.3% children in child care institutions who received \$5,587,298 in OWF foster care assistance. The remaining 19,665 children reported as participating in Title IV-E received \$7,489,527 in adoption assistance. Overall, the average amount of Foster Care received per child was \$531.88.

DISABILITY ASSISTANCE (DA)

For the month of December 2004, there were 13,419 assistance groups; 13,527 recipients, and \$1,805,243 in DA financial assistance. The average DA financial assistance per recipient was \$133.45. Total DA expenditures for medical services for December 2004 were \$ 8,121,738. Of this total, \$5,593,445 or 68.9% was spent for prescribed drugs, and \$1,984,669 or 24.4% was spent for physician services. Medical expenses were paid for 16,110 recipients for an average expenditure of \$504.14 per recipient.

FNS BENEFITS:

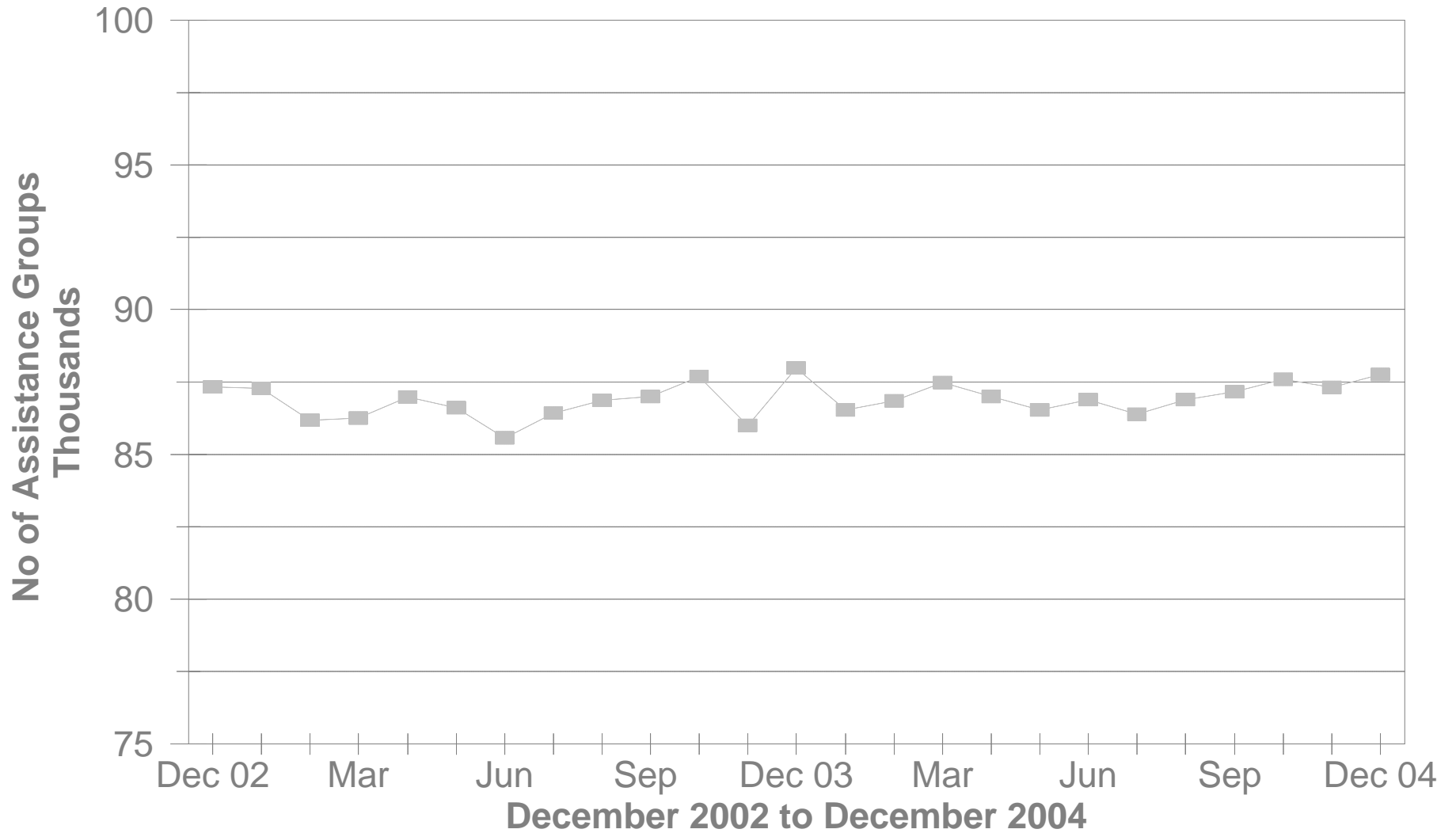
Total persons participating in the FNS benefits program during December 2004 increased to 996,586 by 13,415 or 1.4% from 983,171 persons reported in November 2004. Households increased by 7,492 or 1.7% over November 2004 levels. The total dollar value of FNS related benefits issued during December 2004 increased by \$1,701,752 or 1.8% from \$94,871,568 reported in November 2004 to \$96,573,320 reported in December 2004. The average benefit issuance per person increased by \$.40 or 0.4% from those issued in November 2004. The average benefit issuance per person increased from \$96.50 in November 2004 to \$96.90 in December 2004.

Please note: All data in the PAMS report is limited to the information available at the time it was constructed. It does not account for backdated or retroactive eligibility or any adjustments made subsequent to its creation.

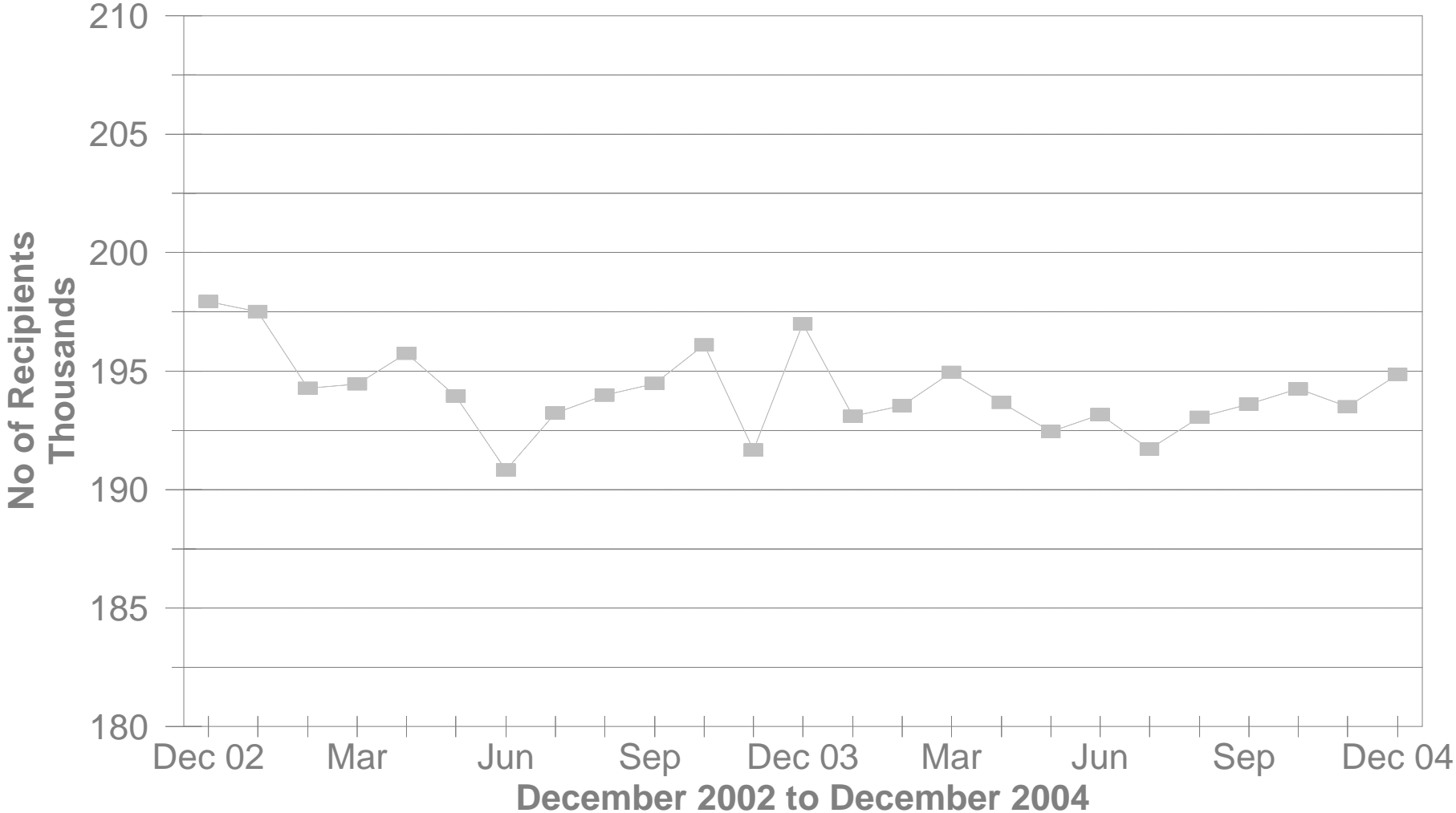
STATEWIDE SUMMARY OF PUBLIC ASSISTANCE PROGRAMS FOR DECEMBER 2004

	December 2004	November 2004	% CHANGE Dec 04 / Nov 04	December 2003	% CHANGE Dec 04 / Dec 03
OHIO WORKS FIRST (OWF)-COMBINED					
Assistance Groups	87,753	87,319	0.5%	87,976	-0.3%
Recipients	194,856	193,500	0.7%	196,993	-1.1%
Net Payments	\$26,464,462	\$26,538,317	-0.3%	\$27,027,051	-2.1%
Average Per Recipient	\$135.82	\$137.15	-1.0%	\$137.20	-1.0%
OWF-REGULAR, OWF-INCAPACITATED,& OWF REGULAR VENDOR PAYMENTS					
Assistance Groups	83,590	83,310	0.3%	83,952	-0.4%
Recipients	177,811	177,076	0.4%	180,532	-1.5%
Net Payments	\$24,793,390	\$24,934,252	-0.6%	\$25,390,802	-2.4%
Average Per Recipient	\$139.44	\$140.81	-1.0%	\$140.64	-0.9%
OWF-UNEMPLOYED AND OWF-UNEMPLOYED VENDOR PAYMENTS					
Assistance Groups	4,163	4,009	3.8%	4,024	3.5%
Recipients	17,045	16,424	3.8%	16,461	3.5%
Net Payments	\$1,671,072	\$1,604,065	4.2%	\$1,636,249	2.1%
Average Per Recipient	\$98.04	\$97.67	0.4%	\$99.40	-1.4%
TITLE IV-E FOSTER CARE					
Assistance Groups/Recipients	27,440	27,029	1.5%	25,871	6.1%
Gross Payments	\$14,594,680	\$14,560,414	0.2%	\$13,824,267	5.6%
Average Per Recipient	\$531.88	\$538.70	-1.3%	\$534.35	-0.5%
DISABILITY ASSISTANCE					
Assistance Groups	13,419	13,070	2.7%	12,898	4.0%
Recipients	13,527	13,173	2.7%	13,025	3.9%
Net Payments	\$1,805,243	\$1,776,656	1.6%	\$1,640,295	10.1%
Medical Assistance	\$8,121,738	\$7,051,210	15.2%	\$7,533,710	7.8%
FNS BENEFITS					
Assistance Groups	443,873	436,381	1.7%	414,062	7.2%
Persons	996,586	983,171	1.4%	935,770	6.5%
Total Coupons Issued	\$96,573,320	\$94,871,568	1.8%	\$83,581,169	15.5%
Average Per Recipient	\$96.90	\$96.50	0.4%	\$89.32	8.5%

No of OWF Combined Assistance Groups During The Last 25 Month

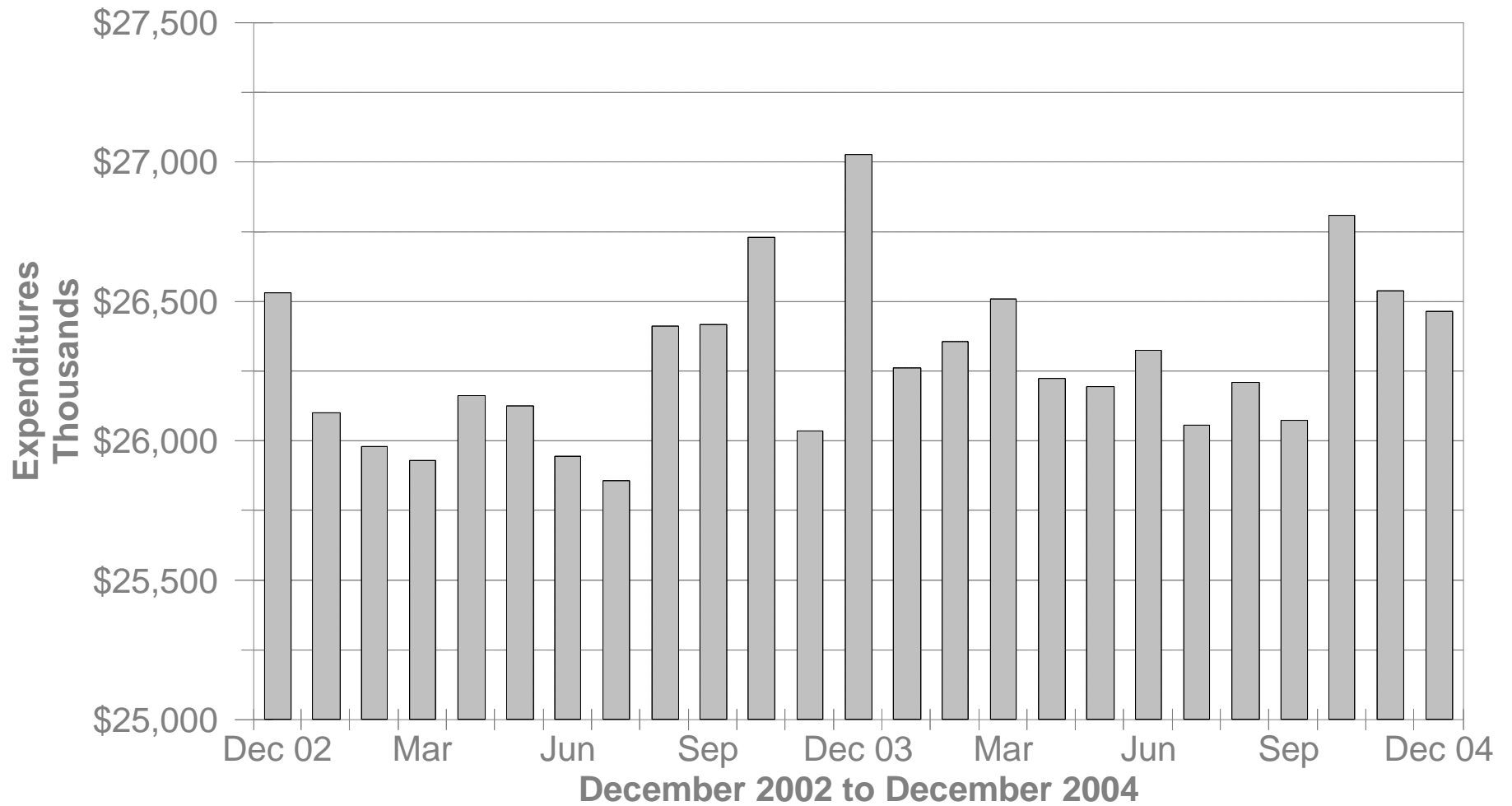


No of OWF Combined Recipients During The Last 25 Months



OWF Combined Net Expenditures

During The Last 25 Months



**TABLE 1
OWF COMBINED
DECEMBER 2004**

OHIO COUNTY	ASSISTANCE GROUP	RECIPIENTS	ADULTS	CHILDREN	ACTUAL EXPENDITURES		
					GROSS AMOUNT	CANCELLED AMOUNT	NET AMOUNT
STATEWIDE	87,753	194,856	51,035	143,821	\$27,468,492.00	\$1,004,030.00	\$26,464,462.00
ADAMS	135	218	4	214	\$36,902.00	\$2,962.00	\$33,940.00
ALLEN	483	908	107	801	\$143,125.00	\$5,742.00	\$137,383.00
ASHLAND	103	223	55	168	\$31,579.00	\$596.00	\$30,983.00
ASHTABULA	699	1,466	382	1,084	\$213,250.00	\$4,598.00	\$208,652.00
ATHENS	582	1,431	493	938	\$185,370.00	\$9,681.00	\$175,689.00
AUGLAIZE	53	80	4	76	\$13,159.00	\$470.00	\$12,689.00
BELMONT	515	1,124	361	763	\$154,515.00	\$4,437.00	\$150,078.00
BROWN	164	285	31	254	\$46,730.00	\$2,148.00	\$44,582.00
BUTLER	1,514	2,954	543	2,411	\$446,167.00	\$16,124.00	\$430,043.00
CARROLL	96	196	49	147	\$27,880.00	\$1,089.00	\$26,791.00
CHAMPAIGN	195	410	123	287	\$54,790.00	\$2,473.00	\$52,317.00
CLARK	1,350	2,944	784	2,160	\$425,147.00	\$12,816.00	\$412,331.00
CLERMONT	515	1,050	203	847	\$155,599.00	\$4,707.00	\$150,892.00
CLINTON	139	250	40	210	\$42,663.00	\$888.00	\$41,775.00
COLUMBIANA	508	1,006	212	794	\$146,451.00	\$2,380.00	\$144,071.00
COSHOCTON	201	386	99	287	\$59,146.00	\$1,290.00	\$57,856.00
CRAWFORD	235	532	171	361	\$71,791.00	\$446.00	\$71,345.00
CUYAHOGA	13,696	28,700	6,888	21,812	\$4,224,856.00	\$178,046.00	\$4,046,810.00
DARKE	132	271	79	192	\$42,439.00	\$0.00	\$42,439.00
DEFIANCE	116	249	66	183	\$35,626.00	\$528.00	\$35,098.00
DELAWARE	298	713	211	502	\$97,858.00	\$3,047.00	\$94,811.00
ERIE	218	357	26	331	\$60,685.00	\$1,138.00	\$59,547.00
FAIRFIELD	650	1,525	498	1,027	\$208,095.00	\$9,632.00	\$198,463.00
FAYETTE	147	315	69	246	\$44,333.00	\$1,441.00	\$42,892.00
FRANKLIN	11,763	26,908	6,875	20,033	\$3,716,617.00	\$145,164.00	\$3,571,453.00
FULTON	87	182	32	150	\$27,245.00	\$1,450.00	\$25,795.00
GALLIA	525	1,303	464	839	\$168,299.00	\$4,677.00	\$163,622.00
GEAUGA	87	180	40	140	\$25,135.00	\$545.00	\$24,590.00
GREENE	586	1,220	339	881	\$178,348.00	\$6,820.00	\$171,528.00

Source: GRP342RA Report from Management Information Services. Data includes ADC-Regular, ADC-Incapacitated, and Vendor Payments.

**TABLE 1
OWF COMBINED
DECEMBER 2004**

OHIO COUNTY	ASSISTANCE GROUP	RECIPIENTS	ADULTS	CHILDREN	ACTUAL EXPENDITURES		
					GROSS AMOUNT	CANCELLED AMOUNT	NET AMOUNT
STATEWIDE	87,753	194,856	51,035	143,821	\$27,468,492.00	\$1,004,030.00	\$26,464,462.00
GUERNSEY	213	414	92	322	\$63,352.00	\$1,405.00	\$61,947.00
HAMILTON	8,643	20,449	5,172	15,277	\$2,853,034.00	\$121,176.00	\$2,731,858.00
HANCOCK	197	411	98	313	\$57,826.00	\$2,344.00	\$55,482.00
HARDIN	65	107	13	94	\$18,088.00	\$1,776.00	\$16,312.00
HARRISON	117	263	72	191	\$36,265.00	\$1,680.00	\$34,585.00
HENRY	36	63	10	53	\$10,143.00	\$0.00	\$10,143.00
HIGHLAND	169	350	74	276	\$52,130.00	\$2,458.00	\$49,672.00
HOCKING	338	799	270	529	\$107,783.00	\$2,194.00	\$105,589.00
HOLMES	46	102	26	76	\$14,205.00	\$610.00	\$13,595.00
HURON	139	210	1	209	\$35,606.00	\$833.00	\$34,773.00
JACKSON	278	497	91	406	\$80,589.00	\$2,716.00	\$77,873.00
JEFFERSON	941	2,218	702	1,516	\$301,707.00	\$5,250.00	\$296,457.00
KNOX	233	525	152	373	\$66,719.00	\$2,644.00	\$64,075.00
LAKE	582	1,204	305	899	\$177,267.00	\$9,191.00	\$168,076.00
LAWRENCE	709	1,389	288	1,101	\$210,928.00	\$6,589.00	\$204,339.00
LICKING	582	1,276	357	919	\$172,856.00	\$6,387.00	\$166,469.00
LOGAN	203	450	135	315	\$60,990.00	\$2,502.00	\$58,488.00
LORAIN	2,210	5,137	1,335	3,802	\$706,173.00	\$27,325.00	\$678,848.00
LUCAS	7,489	18,029	5,339	12,690	\$2,415,280.00	\$78,059.00	\$2,337,221.00
MADISON	217	511	171	340	\$70,604.00	\$1,257.00	\$69,347.00
MAHONING	2,972	7,038	1,777	5,261	\$967,482.00	\$32,681.00	\$934,801.00
MARION	420	799	132	667	\$125,105.00	\$2,146.00	\$122,959.00
MEDINA	277	563	158	405	\$83,659.00	\$3,874.00	\$79,785.00
MEIGS	210	435	135	300	\$65,784.00	\$2,480.00	\$63,304.00
MERCER	51	146	39	107	\$16,619.00	\$558.00	\$16,061.00
MIAMI	313	598	122	476	\$95,788.00	\$1,365.00	\$94,423.00
MONROE	70	180	62	118	\$22,190.00	\$1,217.00	\$20,973.00
MONTGOMERY	5,809	12,627	3,260	9,367	\$1,807,980.00	\$73,887.00	\$1,734,093.00
MORGAN	88	167	25	142	\$24,027.00	\$833.00	\$23,194.00
MORROW	129	275	74	201	\$41,847.00	\$1,908.00	\$39,939.00

Source: GRP342RA Report from Management Information Services. Data includes ADC-Regular, ADC-Incapacitated, and Vendor Payments.

**TABLE 1
OWF COMBINED
DECEMBER 2004**

OHIO COUNTY	ASSISTANCE GROUP	RECIPIENTS	ADULTS	CHILDREN	ACTUAL EXPENDITURES		
					GROSS AMOUNT	CANCELLED AMOUNT	NET AMOUNT
STATEWIDE	87,753	194,856	51,035	143,821	\$27,468,492.00	\$1,004,030.00	\$26,464,462.00
MUSKINGUM	934	2,129	621	1,508	\$286,858.00	\$7,792.00	\$279,066.00
NOBLE	40	90	26	64	\$11,740.00	\$0.00	\$11,740.00
OTTAWA	134	331	111	220	\$43,461.00	\$742.00	\$42,719.00
PAULDING	102	236	87	149	\$31,310.00	\$1,188.00	\$30,122.00
PERRY	287	678	188	490	\$87,973.00	\$2,479.00	\$85,494.00
PICKAWAY	463	1,179	396	783	\$151,792.00	\$2,480.00	\$149,312.00
PIKE	314	669	156	513	\$98,548.00	\$2,113.00	\$96,435.00
PORTAGE	477	969	235	734	\$146,277.00	\$5,011.00	\$141,266.00
PREBLE	184	410	124	286	\$55,863.00	\$1,430.00	\$54,433.00
PUTNAM	73	162	46	116	\$20,993.00	\$939.00	\$20,054.00
RICHLAND	687	1,388	293	1,095	\$196,602.00	\$5,152.00	\$191,450.00
ROSS	819	1,926	594	1,332	\$260,785.00	\$8,421.00	\$252,364.00
SANDUSKY	195	394	87	307	\$61,791.00	\$3,321.00	\$58,470.00
SCIOTO	1,064	2,027	420	1,607	\$306,128.00	\$16,034.00	\$290,094.00
SENECA	149	282	40	242	\$43,098.00	\$804.00	\$42,294.00
SHELBY	131	255	39	216	\$41,252.00	\$1,952.00	\$39,300.00
STARK	3,205	7,350	2,235	5,115	\$1,005,508.00	\$28,487.00	\$977,021.00
SUMMIT	5,318	11,896	3,512	8,384	\$1,670,305.00	\$54,220.00	\$1,616,085.00
TRUMBULL	1,501	3,174	758	2,416	\$461,616.00	\$16,321.00	\$445,295.00
TUSCARAWAS	454	1,048	336	712	\$141,067.00	\$4,612.00	\$136,455.00
UNION	208	508	170	338	\$65,946.00	\$1,757.00	\$64,189.00
VAN WERT	37	59	6	53	\$9,954.00	\$305.00	\$9,649.00
VINTON	173	373	113	260	\$50,941.00	\$393.00	\$50,548.00
WARREN	214	401	70	331	\$63,071.00	\$3,989.00	\$59,082.00
WASHINGTON	147	233	9	224	\$39,506.00	\$596.00	\$38,910.00
WAYNE	460	1,055	342	713	\$137,869.00	\$4,247.00	\$133,622.00
WILLIAMS	150	363	125	238	\$43,832.00	\$3,223.00	\$40,609.00
WOOD	270	606	155	451	\$81,490.00	\$3,342.00	\$78,148.00
WYANDOT	25	47	6	41	\$7,090.00	\$0.00	\$7,090.00

Source: GRP342RA Report from Management Information Services. Data includes ADC-Regular, ADC-Incapacitated, and Vendor Payments.

**TABLE 1
OWF REGULAR
DECEMBER 2004**

OHIO COUNTY	ASSISTANCE GROUP	RECIPIENTS	ADULTS	CHILDREN	ACTUAL EXPENDITURES		
					GROSS AMOUNT	CANCELLED AMOUNT	NET AMOUNT
STATEWIDE	83,590	177,811	43,217	134,594	\$25,741,994.00	\$948,604.00	\$24,793,390.00
ADAMS	135	218	4	214	\$36,902.00	\$2,962.00	\$33,940.00
ALLEN	479	889	100	789	\$141,270.00	\$5,742.00	\$135,528.00
ASHLAND	98	203	45	158	\$29,493.00	\$596.00	\$28,897.00
ASHTABULA	663	1,320	314	1,006	\$196,580.00	\$4,375.00	\$192,205.00
ATHENS	469	1,006	296	710	\$143,221.00	\$6,137.00	\$137,084.00
AUGLAIZE	53	80	4	76	\$13,159.00	\$470.00	\$12,689.00
BELMONT	469	948	270	678	\$138,117.00	\$3,976.00	\$134,141.00
BROWN	164	285	31	254	\$46,730.00	\$2,148.00	\$44,582.00
BUTLER	1,494	2,894	517	2,377	\$439,252.00	\$15,751.00	\$423,501.00
CARROLL	92	180	41	139	\$26,554.00	\$1,089.00	\$25,465.00
CHAMPAIGN	185	372	103	269	\$50,365.00	\$2,473.00	\$47,892.00
CLARK	1,291	2,707	675	2,032	\$400,282.00	\$11,982.00	\$388,300.00
CLERMONT	507	1,015	187	828	\$152,089.00	\$4,707.00	\$147,382.00
CLINTON	137	241	36	205	\$40,322.00	\$888.00	\$39,434.00
COLUMBIANA	489	934	175	759	\$139,161.00	\$2,380.00	\$136,781.00
COSHOCTON	192	356	82	274	\$55,204.00	\$1,290.00	\$53,914.00
CRAWFORD	206	423	112	311	\$61,588.00	\$446.00	\$61,142.00
CUYAHOGA	13,266	26,903	6,061	20,842	\$4,043,100.00	\$172,243.00	\$3,870,857.00
DARKE	127	252	69	183	\$39,529.00	\$0.00	\$39,529.00
DEFIANCE	112	230	58	172	\$33,968.00	\$528.00	\$33,440.00
DELAWARE	267	576	151	425	\$83,195.00	\$2,872.00	\$80,323.00
ERIE	217	353	24	329	\$59,929.00	\$1,138.00	\$58,791.00
FAIRFIELD	577	1,234	356	878	\$178,370.00	\$9,171.00	\$169,199.00
FAYETTE	143	297	61	236	\$42,467.00	\$1,441.00	\$41,026.00
FRANKLIN	11,255	24,680	5,969	18,711	\$3,495,475.00	\$136,335.00	\$3,359,140.00
FULTON	86	179	30	149	\$27,198.00	\$1,450.00	\$25,748.00
GALLIA	434	959	291	668	\$134,028.00	\$3,902.00	\$130,126.00
GEAUGA	84	169	34	135	\$23,897.00	\$545.00	\$23,352.00
GREENE	548	1,073	268	805	\$162,275.00	\$5,219.00	\$157,056.00

Source: GRP342RA Report from Management Information Services. Data includes ADC-Regular, ADC-Incapacitated, and Vendor Payments.

**TABLE 1
OWF REGULAR
DECEMBER 2004**

OHIO COUNTY	ASSISTANCE GROUP	RECIPIENTS	ADULTS	CHILDREN	ACTUAL EXPENDITURES		
					GROSS AMOUNT	CANCELLED AMOUNT	NET AMOUNT
STATEWIDE	83,590	177,811	43,217	134,594	\$25,741,994.00	\$948,604.00	\$24,793,390.00
GUERNSEY	200	362	66	296	\$56,871.00	\$1,405.00	\$55,466.00
HAMILTON	8,469	19,686	4,848	14,838	\$2,773,390.00	\$116,154.00	\$2,657,236.00
HANCOCK	191	385	86	299	\$55,241.00	\$2,344.00	\$52,897.00
HARDIN	64	105	12	93	\$17,783.00	\$1,776.00	\$16,007.00
HARRISON	105	220	50	170	\$31,241.00	\$1,680.00	\$29,561.00
HENRY	35	59	8	51	\$9,682.00	\$0.00	\$9,682.00
HIGHLAND	161	318	58	260	\$49,002.00	\$2,458.00	\$46,544.00
HOCKING	284	594	165	429	\$86,132.00	\$1,655.00	\$84,477.00
HOLMES	44	94	22	72	\$13,377.00	\$610.00	\$12,767.00
HURON	136	205	1	204	\$34,787.00	\$833.00	\$33,954.00
JACKSON	267	453	71	382	\$75,159.00	\$2,716.00	\$72,443.00
JEFFERSON	839	1,792	498	1,294	\$258,147.00	\$4,338.00	\$253,809.00
KNOX	219	466	125	341	\$62,345.00	\$2,644.00	\$59,701.00
LAKE	535	1,031	242	789	\$156,744.00	\$8,191.00	\$148,553.00
LAWRENCE	676	1,247	223	1,024	\$196,239.00	\$6,589.00	\$189,650.00
LICKING	550	1,150	295	855	\$161,119.00	\$6,387.00	\$154,732.00
LOGAN	183	369	96	273	\$54,935.00	\$2,277.00	\$52,658.00
LORAIN	2,092	4,666	1,114	3,552	\$658,515.00	\$25,700.00	\$632,815.00
LUCAS	6,993	15,998	4,415	11,583	\$2,213,523.00	\$73,499.00	\$2,140,024.00
MADISON	191	405	119	286	\$59,710.00	\$1,097.00	\$58,613.00
MAHONING	2,850	6,504	1,546	4,958	\$916,308.00	\$30,993.00	\$885,315.00
MARION	413	771	118	653	\$121,791.00	\$2,146.00	\$119,645.00
MEDINA	266	516	136	380	\$79,050.00	\$3,874.00	\$75,176.00
MEIGS	194	375	104	271	\$59,290.00	\$2,480.00	\$56,810.00
MERCER	46	119	29	90	\$14,332.00	\$558.00	\$13,774.00
MIAMI	311	589	118	471	\$94,788.00	\$1,365.00	\$93,423.00
MONROE	56	124	34	90	\$16,797.00	\$1,217.00	\$15,580.00
MONTGOMERY	5,775	12,500	3,211	9,289	\$1,794,393.00	\$73,359.00	\$1,721,034.00
MORGAN	87	162	23	139	\$23,488.00	\$833.00	\$22,655.00
MORROW	115	219	46	173	\$35,009.00	\$1,908.00	\$33,101.00

Source: GRP342RA Report from Management Information Services. Data includes ADC-Regular, ADC-Incapacitated, and Vendor Payments.

**TABLE 1
OWF REGULAR
DECEMBER 2004**

OHIO COUNTY	ASSISTANCE GROUP	RECIPIENTS	ADULTS	CHILDREN	ACTUAL EXPENDITURES		
					GROSS AMOUNT	CANCELLED AMOUNT	NET AMOUNT
STATEWIDE	83,590	177,811	43,217	134,594	\$25,741,994.00	\$948,604.00	\$24,793,390.00
MUSKINGUM	866	1,878	494	1,384	\$261,306.00	\$6,888.00	\$254,418.00
NOBLE	40	90	26	64	\$11,740.00	\$0.00	\$11,740.00
OTTAWA	110	224	65	159	\$33,084.00	\$544.00	\$32,540.00
PAULDING	93	200	69	131	\$28,082.00	\$1,188.00	\$26,894.00
PERRY	246	517	109	408	\$71,271.00	\$1,907.00	\$69,364.00
PICKAWAY	390	865	249	616	\$119,743.00	\$2,107.00	\$117,636.00
PIKE	300	615	132	483	\$92,771.00	\$2,113.00	\$90,658.00
PORTAGE	462	904	207	697	\$140,024.00	\$4,871.00	\$135,153.00
PREBLE	171	362	98	264	\$51,092.00	\$1,430.00	\$49,662.00
PUTNAM	67	135	34	101	\$19,000.00	\$939.00	\$18,061.00
RICHLAND	672	1,335	266	1,069	\$192,266.00	\$5,096.00	\$187,170.00
ROSS	734	1,579	435	1,144	\$225,547.00	\$8,421.00	\$217,126.00
SANDUSKY	188	372	80	292	\$58,915.00	\$3,295.00	\$55,620.00
SCIOTO	1,011	1,816	318	1,498	\$283,721.00	\$15,514.00	\$268,207.00
SENECA	147	275	37	238	\$42,569.00	\$804.00	\$41,765.00
SHELBY	130	248	37	211	\$40,849.00	\$1,952.00	\$38,897.00
STARK	2,965	6,392	1,769	4,623	\$907,226.00	\$23,001.00	\$884,225.00
SUMMIT	4,997	10,587	2,886	7,701	\$1,539,046.00	\$50,490.00	\$1,488,556.00
TRUMBULL	1,427	2,867	615	2,252	\$428,977.00	\$14,082.00	\$414,895.00
TUSCARAWAS	405	840	240	600	\$120,336.00	\$4,151.00	\$116,185.00
UNION	184	414	122	292	\$57,089.00	\$1,667.00	\$55,422.00
VAN WERT	37	59	6	53	\$9,954.00	\$305.00	\$9,649.00
VINTON	161	330	90	240	\$45,960.00	\$393.00	\$45,567.00
WARREN	213	400	70	330	\$62,848.00	\$3,989.00	\$58,859.00
WASHINGTON	147	233	9	224	\$39,506.00	\$596.00	\$38,910.00
WAYNE	425	920	279	641	\$123,845.00	\$4,168.00	\$119,677.00
WILLIAMS	137	306	99	207	\$39,745.00	\$3,223.00	\$36,522.00
WOOD	255	543	127	416	\$75,789.00	\$2,128.00	\$73,661.00
WYANDOT	24	45	6	39	\$6,785.00	\$0.00	\$6,785.00

Source: GRP342RA Report from Management Information Services. Data includes ADC-Regular, ADC-Incapacitated, and Vendor Payments.

**TABLE 1
OWF UNEMPLOYED
DECEMBER 2004**

OHIO COUNTY	ASSISTANCE GROUP	RECIPIENTS	ADULTS	CHILDREN	ACTUAL EXPENDITURES		
					GROSS AMOUNT	CANCELLED AMOUNT	NET AMOUNT
STATEWIDE	4,163	17,045	7,818	9,227	\$1,726,498.00	\$55,426.00	\$1,671,072.00
ADAMS	0	0	0	0	\$0.00	\$0.00	\$0.00
ALLEN	4	19	7	12	\$1,855.00	\$0.00	\$1,855.00
ASHLAND	5	20	10	10	\$2,086.00	\$0.00	\$2,086.00
ASHTABULA	36	146	68	78	\$16,670.00	\$223.00	\$16,447.00
ATHENS	113	425	197	228	\$42,149.00	\$3,544.00	\$38,605.00
AUGLAIZE	0	0	0	0	\$0.00	\$0.00	\$0.00
BELMONT	46	176	91	85	\$16,398.00	\$461.00	\$15,937.00
BROWN	0	0	0	0	\$0.00	\$0.00	\$0.00
BUTLER	20	60	26	34	\$6,915.00	\$373.00	\$6,542.00
CARROLL	4	16	8	8	\$1,326.00	\$0.00	\$1,326.00
CHAMPAIGN	10	38	20	18	\$4,425.00	\$0.00	\$4,425.00
CLARK	59	237	109	128	\$24,865.00	\$834.00	\$24,031.00
CLERMONT	8	35	16	19	\$3,510.00	\$0.00	\$3,510.00
CLINTON	2	9	4	5	\$2,341.00	\$0.00	\$2,341.00
COLUMBIANA	19	72	37	35	\$7,290.00	\$0.00	\$7,290.00
COSHOCTON	9	30	17	13	\$3,942.00	\$0.00	\$3,942.00
CRAWFORD	29	109	59	50	\$10,203.00	\$0.00	\$10,203.00
CUYAHOGA	430	1,797	827	970	\$181,756.00	\$5,803.00	\$175,953.00
DARKE	5	19	10	9	\$2,910.00	\$0.00	\$2,910.00
DEFIANCE	4	19	8	11	\$1,658.00	\$0.00	\$1,658.00
DELAWARE	31	137	60	77	\$14,663.00	\$175.00	\$14,488.00
ERIE	1	4	2	2	\$756.00	\$0.00	\$756.00
FAIRFIELD	73	291	142	149	\$29,725.00	\$461.00	\$29,264.00
FAYETTE	4	18	8	10	\$1,866.00	\$0.00	\$1,866.00
FRANKLIN	508	2,228	906	1,322	\$221,142.00	\$8,829.00	\$212,313.00
FULTON	1	3	2	1	\$47.00	\$0.00	\$47.00
GALLIA	91	344	173	171	\$34,271.00	\$775.00	\$33,496.00
GEAUGA	3	11	6	5	\$1,238.00	\$0.00	\$1,238.00
GREENE	38	147	71	76	\$16,073.00	\$1,601.00	\$14,472.00

Source: GRP342RA Report from Management Information Services. Data includes ADC-Regular, ADC-Incapacitated, and Vendor Payments.

**TABLE 1
OWF UNEMPLOYED
DECEMBER 2004**

OHIO COUNTY	ASSISTANCE GROUP	RECIPIENTS	ADULTS	CHILDREN	ACTUAL EXPENDITURES		
					GROSS AMOUNT	CANCELLED AMOUNT	NET AMOUNT
STATEWIDE	4,163	17,045	7,818	9,227	\$1,726,498.00	\$55,426.00	\$1,671,072.00
GUERNSEY	13	52	26	26	\$6,481.00	\$0.00	\$6,481.00
HAMILTON	174	763	324	439	\$79,644.00	\$5,022.00	\$74,622.00
HANCOCK	6	26	12	14	\$2,585.00	\$0.00	\$2,585.00
HARDIN	1	2	1	1	\$305.00	\$0.00	\$305.00
HARRISON	12	43	22	21	\$5,024.00	\$0.00	\$5,024.00
HENRY	1	4	2	2	\$461.00	\$0.00	\$461.00
HIGHLAND	8	32	16	16	\$3,128.00	\$0.00	\$3,128.00
HOCKING	54	205	105	100	\$21,651.00	\$539.00	\$21,112.00
HOLMES	2	8	4	4	\$828.00	\$0.00	\$828.00
HURON	3	5	0	5	\$819.00	\$0.00	\$819.00
JACKSON	11	44	20	24	\$5,430.00	\$0.00	\$5,430.00
JEFFERSON	102	426	204	222	\$43,560.00	\$912.00	\$42,648.00
KNOX	14	59	27	32	\$4,374.00	\$0.00	\$4,374.00
LAKE	47	173	63	110	\$20,523.00	\$1,000.00	\$19,523.00
LAWRENCE	33	142	65	77	\$14,689.00	\$0.00	\$14,689.00
LICKING	32	126	62	64	\$11,737.00	\$0.00	\$11,737.00
LOGAN	20	81	39	42	\$6,055.00	\$225.00	\$5,830.00
LORAIN	118	471	221	250	\$47,658.00	\$1,625.00	\$46,033.00
LUCAS	496	2,031	924	1,107	\$201,757.00	\$4,560.00	\$197,197.00
MADISON	26	106	52	54	\$10,894.00	\$160.00	\$10,734.00
MAHONING	122	534	231	303	\$51,174.00	\$1,688.00	\$49,486.00
MARION	7	28	14	14	\$3,314.00	\$0.00	\$3,314.00
MEDINA	11	47	22	25	\$4,609.00	\$0.00	\$4,609.00
MEIGS	16	60	31	29	\$6,494.00	\$0.00	\$6,494.00
MERCER	5	27	10	17	\$2,287.00	\$0.00	\$2,287.00
MIAMI	2	9	4	5	\$1,000.00	\$0.00	\$1,000.00
MONROE	14	56	28	28	\$5,393.00	\$0.00	\$5,393.00
MONTGOMERY	34	127	49	78	\$13,587.00	\$528.00	\$13,059.00
MORGAN	1	5	2	3	\$539.00	\$0.00	\$539.00
MORROW	14	56	28	28	\$6,838.00	\$0.00	\$6,838.00

Source: GRP342RA Report from Management Information Services. Data includes ADC-Regular, ADC-Incapacitated, and Vendor Payments.

**TABLE 1
OWF UNEMPLOYED
DECEMBER 2004**

OHIO COUNTY	ASSISTANCE GROUP	RECIPIENTS	ADULTS	CHILDREN	ACTUAL EXPENDITURES		
					GROSS AMOUNT	CANCELLED AMOUNT	NET AMOUNT
STATEWIDE	4,163	17,045	7,818	9,227	\$1,726,498.00	\$55,426.00	\$1,671,072.00
MUSKINGUM	68	251	127	124	\$25,552.00	\$904.00	\$24,648.00
NOBLE	0	0	0	0	\$0.00	\$0.00	\$0.00
OTTAWA	24	107	46	61	\$10,377.00	\$198.00	\$10,179.00
PAULDING	9	36	18	18	\$3,228.00	\$0.00	\$3,228.00
PERRY	41	161	79	82	\$16,702.00	\$572.00	\$16,130.00
PICKAWAY	73	314	147	167	\$32,049.00	\$373.00	\$31,676.00
PIKE	14	54	24	30	\$5,777.00	\$0.00	\$5,777.00
PORTAGE	15	65	28	37	\$6,253.00	\$140.00	\$6,113.00
PREBLE	13	48	26	22	\$4,771.00	\$0.00	\$4,771.00
PUTNAM	6	27	12	15	\$1,993.00	\$0.00	\$1,993.00
RICHLAND	15	53	27	26	\$4,336.00	\$56.00	\$4,280.00
ROSS	85	347	159	188	\$35,238.00	\$0.00	\$35,238.00
SANDUSKY	7	22	7	15	\$2,876.00	\$26.00	\$2,850.00
SCIOTO	53	211	102	109	\$22,407.00	\$520.00	\$21,887.00
SENECA	2	7	3	4	\$529.00	\$0.00	\$529.00
SHELBY	1	7	2	5	\$403.00	\$0.00	\$403.00
STARK	240	958	466	492	\$98,282.00	\$5,486.00	\$92,796.00
SUMMIT	321	1,309	626	683	\$131,259.00	\$3,730.00	\$127,529.00
TRUMBULL	74	307	143	164	\$32,639.00	\$2,239.00	\$30,400.00
TUSCARAWAS	49	208	96	112	\$20,731.00	\$461.00	\$20,270.00
UNION	24	94	48	46	\$8,857.00	\$90.00	\$8,767.00
VAN WERT	0	0	0	0	\$0.00	\$0.00	\$0.00
VINTON	12	43	23	20	\$4,981.00	\$0.00	\$4,981.00
WARREN	1	1	0	1	\$223.00	\$0.00	\$223.00
WASHINGTON	0	0	0	0	\$0.00	\$0.00	\$0.00
WAYNE	35	135	63	72	\$14,024.00	\$79.00	\$13,945.00
WILLIAMS	13	57	26	31	\$4,087.00	\$0.00	\$4,087.00
WOOD	15	63	28	35	\$5,701.00	\$1,214.00	\$4,487.00
WYANDOT	1	2	0	2	\$305.00	\$0.00	\$305.00

Source: GRP342RA Report from Management Information Services. Data includes ADC-Regular, ADC-Incapacitated, and Vendor Payments.

**TABLE 2
TITLE IV-E FOSTER CARE
DECEMBER 2004**

OHIO COUNTY	FOSTER CARE						ADOPTION ASSISTANCE		TOTAL FOSTER CARE AND ADOPTION ASSISTANCE	
	FOSTER FAMILY HOMES		CHILD CARE INSTITUTIONS		HOMES & INSTITUTIONS		CHILDREN	GROSS AMOUNT	CHILDREN	GROSS AMOUNT
	CHILDREN	GROSS AMOUNT	CHILDREN	GROSS AMOUNT	CHILDREN	GROSS AMOUNT				
STATEWIDE	3,291	\$1,517,854.20	4,484	\$5,587,298.24	7,775	\$7,105,152.44	19,665	\$7,489,527.49	27,440	\$14,594,679.93
ADAMS	23	\$6,661.15	13	\$29,561.03	36	\$36,222.18	41	\$12,742.20	77	\$48,964.38
ALLEN	54	\$24,936.86	35	\$42,545.21	89	\$67,482.07	139	\$40,130.24	228	\$107,612.31
ASHLAND	5	\$1,960.47	0	\$0.00	5	\$1,960.47	9	\$2,250.00	14	\$4,210.47
ASHTABULA	0	\$0.00	7	\$1,501.50	7	\$1,501.50	171	\$61,052.26	178	\$62,553.76
ATHENS	46	\$23,325.72	44	\$58,547.99	90	\$81,873.71	107	\$34,958.96	197	\$116,832.67
AUGLAIZE	5	\$4,751.70	2	\$2,122.11	7	\$6,873.81	44	\$16,057.83	51	\$22,931.64
BELMONT	3	\$1,348.82	27	\$21,180.19	30	\$22,529.01	112	\$42,181.03	142	\$64,710.04
BROWN	22	\$7,117.08	2	\$3,434.95	24	\$10,552.03	36	\$9,714.34	60	\$20,266.37
BUTLER	107	\$42,582.67	117	\$124,029.47	224	\$166,612.14	536	\$166,535.29	760	\$333,147.43
CARROLL	7	\$4,962.97	0	\$0.00	7	\$4,962.97	4	\$1,000.00	11	\$5,962.97
CHAMPAIGN	2	\$1,348.53	16	\$15,321.37	18	\$16,669.90	14	\$4,544.40	32	\$21,214.30
CLARK	0	\$0.00	66	\$32,360.45	66	\$32,360.45	311	\$100,819.97	377	\$133,180.42
CLERMONT	64	\$23,364.88	117	\$159,319.22	181	\$182,684.10	200	\$55,115.15	381	\$237,799.25
CLINTON	27	\$11,552.06	0	\$0.00	27	\$11,552.06	58	\$21,840.64	85	\$33,392.70
COLUMBIANA	21	\$4,643.54	61	\$108,514.30	82	\$113,157.84	66	\$18,038.40	148	\$131,196.24
COSHOCTON	17	\$5,743.72	4	\$1,223.48	21	\$6,967.20	48	\$14,767.84	69	\$21,735.04
CRAWFORD	1	(\$351.51)	30	\$48,583.24	31	\$48,231.73	41	\$12,329.86	72	\$60,561.59
CUYAHOGA	557	\$251,243.43	1,211	\$1,761,422.01	1,768	\$2,012,665.44	4,821	\$2,324,551.61	6,589	\$4,337,217.05
DARKE	17	\$6,458.64	8	\$9,388.48	25	\$15,847.12	27	\$8,415.05	52	\$24,262.17
DEFIANCE	9	(\$493.66)	3	\$3,978.45	12	\$3,484.79	35	\$10,629.92	47	\$14,114.71
DELAWARE	11	\$5,420.71	15	\$35,307.13	26	\$40,727.84	60	\$17,894.48	86	\$58,622.32
ERIE	42	(\$1,783.67)	46	\$136,849.74	88	\$135,066.07	85	\$25,801.68	173	\$160,867.75
FAIRFIELD	0	\$0.00	0	\$0.00	0	\$0.00	145	\$38,528.46	145	\$38,528.46
FAYETTE	4	\$1,665.05	0	\$0.00	4	\$1,665.05	14	\$3,500.00	18	\$5,165.05
FRANKLIN	0	\$0.00	1,167	\$395,834.74	1,167	\$395,834.74	2,502	\$895,649.13	3,669	\$1,291,483.87
FULTON	1	\$318.79	9	\$24,988.17	10	\$25,306.96	16	\$4,596.80	26	\$29,903.76
GALLIA	18	\$6,362.87	2	\$1,925.57	20	\$8,288.44	39	\$9,965.00	59	\$18,253.44
GEAUGA	10	\$2,954.50	0	\$0.00	10	\$2,954.50	105	\$35,062.90	115	\$38,017.40
GREENE	0	\$0.00	26	\$11,998.88	26	\$11,998.88	88	\$27,145.79	114	\$39,144.67

SOURCE: GBS003RB Report from Management Information Services. Federal funds only.

**TABLE 2
TITLE IV-E FOSTER CARE
DECEMBER 2004**

OHIO COUNTY	FOSTER CARE						ADOPTION ASSISTANCE		TOTAL FOSTER CARE AND ADOPTION ASSISTANCE	
	FOSTER FAMILY HOMES		CHILD CARE INSTITUTIONS		HOMES & INSTITUTIONS		CHILDREN	GROSS AMOUNT	CHILDREN	GROSS AMOUNT
	CHILDREN	GROSS AMOUNT	CHILDREN	GROSS AMOUNT	CHILDREN	GROSS AMOUNT				
STATEWIDE	3,291	\$1,517,854.20	4,484	\$5,587,298.24	7,775	\$7,105,152.44	19,665	\$7,489,527.49	27,440	\$14,594,679.93
GUERNSEY	23	\$8,070.71	30	\$45,294.22	53	\$53,364.93	73	\$22,263.44	126	\$75,628.37
HAMILTON	0	\$0.00	0	\$0.00	0	\$0.00	1,527	\$594,195.22	1,527	\$594,195.22
HANCOCK	12	\$5,206.64	8	\$10,046.92	20	\$15,253.56	50	\$15,351.50	70	\$30,605.06
HARDIN	28	\$8,431.53	2	\$7,523.30	30	\$15,954.83	32	\$8,909.00	62	\$24,863.83
HARRISON	2	\$18.97	0	\$0.00	2	\$18.97	28	\$9,282.75	30	\$9,301.72
HENRY	0	\$0.00	12	\$14,003.76	12	\$14,003.76	26	\$8,156.69	38	\$22,160.45
HIGHLAND	18	\$16,238.21	0	\$0.00	18	\$16,238.21	16	\$5,536.73	34	\$21,774.94
HOCKING	26	\$10,792.08	11	\$11,734.01	37	\$22,526.09	46	\$15,354.73	83	\$37,880.82
HOLMES	6	\$3,148.81	2	\$5,246.22	8	\$8,395.03	25	\$10,569.00	33	\$18,964.03
HURON	32	\$17,205.66	0	\$0.00	32	\$17,205.66	29	\$8,497.47	61	\$25,703.13
JACKSON	0	\$0.00	22	\$34,358.58	22	\$34,358.58	15	\$3,750.00	37	\$38,108.58
JEFFERSON	38	\$23,150.09	27	\$56,982.50	65	\$80,132.59	60	\$23,796.76	125	\$103,929.35
KNOX	7	\$3,508.29	6	\$9,031.62	13	\$12,539.91	37	\$10,428.68	50	\$22,968.59
LAKE	36	\$24,310.79	25	\$78,883.70	61	\$103,194.49	147	\$43,243.14	208	\$146,437.63
LAWRENCE	6	\$1,757.52	0	\$0.00	6	\$1,757.52	38	\$10,246.00	44	\$12,003.52
LICKING	78	\$49,200.18	90	\$122,274.94	168	\$171,475.12	310	\$103,287.85	478	\$274,762.97
LOGAN	11	\$8,363.15	1	\$1,394.03	12	\$9,757.18	46	\$15,968.82	58	\$25,726.00
LORAIN	0	\$0.00	10	\$1,653.94	10	\$1,653.94	425	\$144,510.73	435	\$146,164.67
LUCAS	510	\$244,588.16	53	\$75,891.26	563	\$320,479.42	1,596	\$594,986.28	2,159	\$915,465.70
MADISON	0	\$0.00	13	\$20,414.09	13	\$20,414.09	25	\$8,184.22	38	\$28,598.31
MAHONING	110	\$47,510.18	47	\$128,085.88	157	\$175,596.06	240	\$68,635.05	397	\$244,231.11
MARION	19	\$7,347.86	13	\$33,349.29	32	\$40,697.15	71	\$22,814.91	103	\$63,512.06
MEDINA	0	\$0.00	0	\$0.00	0	\$0.00	86	\$30,600.65	86	\$30,600.65
MEIGS	1	\$1,211.84	14	\$10,036.35	15	\$11,248.19	5	\$1,250.00	20	\$12,498.19
MERCER	4	\$2,901.16	3	\$3,408.05	7	\$6,309.21	32	\$10,507.28	39	\$16,816.49
MIAMI	32	\$27,482.66	33	\$59,676.62	65	\$87,159.28	110	\$38,881.04	175	\$126,040.32
MONROE	5	\$2,497.60	0	\$0.00	5	\$2,497.60	9	\$2,996.00	14	\$5,493.60
MONTGOMERY	427	\$220,427.38	329	\$397,198.15	756	\$617,625.53	1,161	\$536,920.99	1,917	\$1,154,546.52
MORGAN	0	\$0.00	0	\$0.00	0	\$0.00	11	\$2,734.00	11	\$2,734.00
MORROW	3	\$1,609.56	0	\$0.00	3	\$1,609.56	40	\$11,255.60	43	\$12,865.16

SOURCE: GBS003RB Report from Management Information Services. Federal funds only.

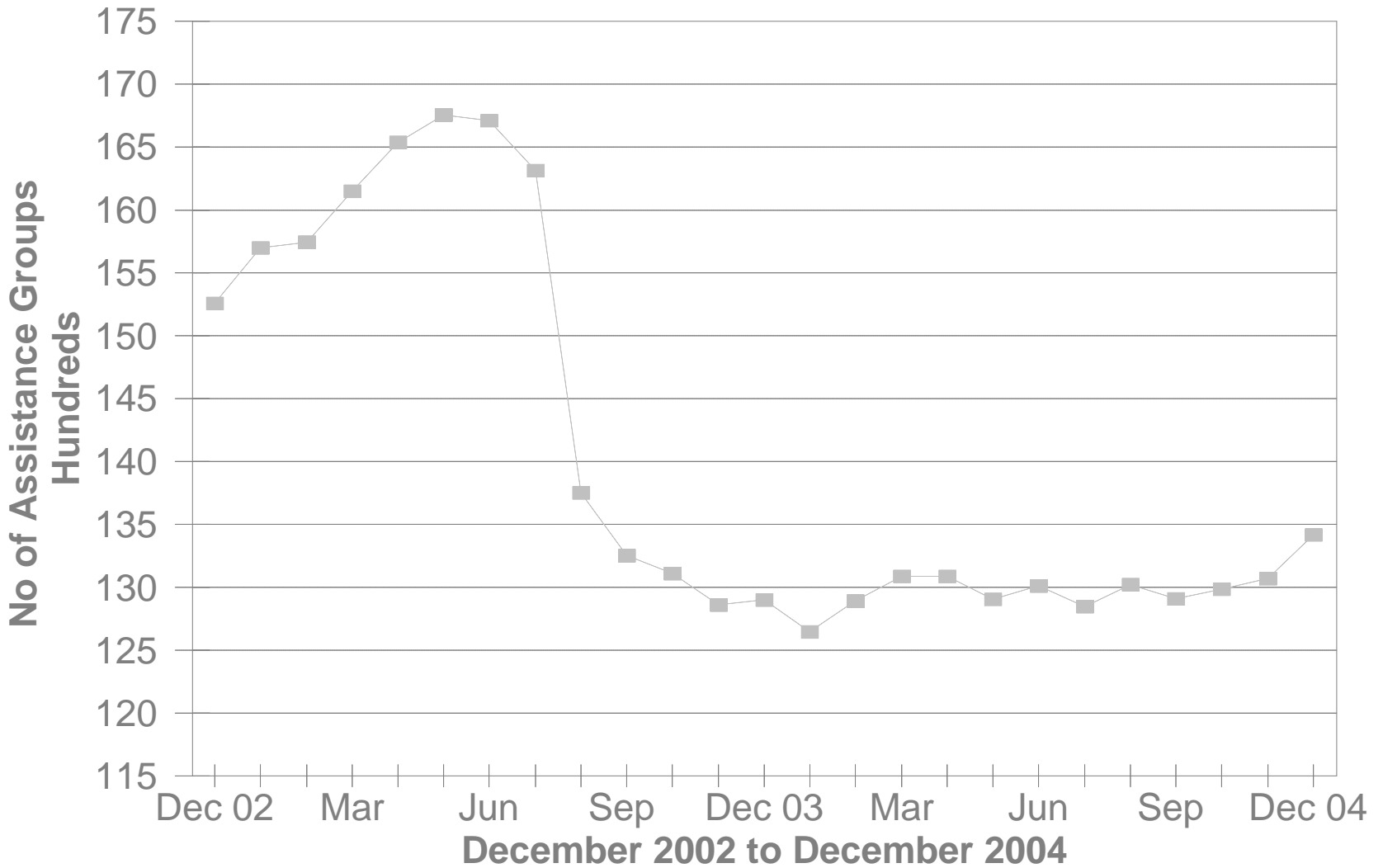
**TABLE 2
TITLE IV-E FOSTER CARE
DECEMBER 2004**

OHIO COUNTY	FOSTER CARE						ADOPTION ASSISTANCE		TOTAL FOSTER CARE AND ADOPTION ASSISTANCE	
	FOSTER FAMILY HOMES		CHILD CARE INSTITUTIONS		HOMES & INSTITUTIONS		CHILDREN	GROSS AMOUNT	CHILDREN	GROSS AMOUNT
	CHILDREN	GROSS AMOUNT	CHILDREN	GROSS AMOUNT	CHILDREN	GROSS AMOUNT				
STATEWIDE	3,291	\$1,517,854.20	4,484	\$5,587,298.24	7,775	\$7,105,152.44	19,665	\$7,489,527.49	27,440	\$14,594,679.93
MUSKINGUM	0	\$0.00	0	\$0.00	0	\$0.00	115	\$36,959.35	115	\$36,959.35
NOBLE	2	\$444.00	0	\$0.00	2	\$444.00	5	\$1,250.00	7	\$1,694.00
OTTAWA	0	\$0.00	0	\$0.00	0	\$0.00	3	\$899.20	3	\$899.20
PAULDING	4	\$1,258.04	5	\$5,860.58	9	\$7,118.62	22	\$6,066.96	31	\$13,185.58
PERRY	28	\$13,093.51	9	\$12,358.24	37	\$25,451.75	35	\$11,497.84	72	\$36,949.59
PICKAWAY	19	\$12,829.03	0	\$0.00	19	\$12,829.03	12	\$3,447.60	31	\$16,276.63
PIKE	10	\$4,902.71	0	\$0.00	10	\$4,902.71	22	\$5,863.88	32	\$10,766.59
PORTAGE	0	\$0.00	0	\$0.00	0	\$0.00	137	\$60,902.52	137	\$60,902.52
PREBLE	22	\$3,871.98	21	\$24,646.83	43	\$28,518.81	33	\$8,659.97	76	\$37,178.78
PUTNAM	0	\$0.00	1	\$1,604.06	1	\$1,604.06	13	\$3,250.00	14	\$4,854.06
RICHLAND	0	\$0.00	0	\$0.00	0	\$0.00	273	\$92,965.96	273	\$92,965.96
ROSS	28	\$11,820.95	36	\$31,207.67	64	\$43,028.62	46	\$16,939.75	110	\$59,968.37
SANDUSKY	20	\$11,989.64	0	\$0.00	20	\$11,989.64	63	\$16,152.24	83	\$28,141.88
SCIOTO	37	\$19,999.80	46	\$50,560.36	83	\$70,560.16	48	\$14,421.88	131	\$84,982.04
SENECA	17	\$255.06	0	\$0.00	17	\$255.06	75	\$23,671.27	92	\$23,926.33
SHELBY	18	\$15,334.77	6	\$7,073.64	24	\$22,408.41	59	\$20,259.20	83	\$42,667.61
STARK	0	\$0.00	200	\$68,503.48	200	\$68,503.48	955	\$288,546.36	1,155	\$357,049.84
SUMMIT	267	\$115,029.92	208	\$949,812.80	475	\$1,064,842.72	839	\$263,713.60	1,314	\$1,328,556.32
TRUMBULL	144	\$80,455.68	31	\$97,125.66	175	\$177,581.34	263	\$68,865.63	438	\$246,446.97
TUSCARAWAS	37	\$11,046.24	52	\$63,062.81	89	\$74,109.05	123	\$36,071.33	212	\$110,180.38
UNION	9	\$5,641.84	0	\$0.00	9	\$5,641.84	29	\$7,608.08	38	\$13,249.92
VAN WERT	0	\$0.00	0	\$0.00	0	\$0.00	22	\$9,115.29	22	\$9,115.29
VINTON	9	\$2,395.20	8	\$11,574.11	17	\$13,969.31	16	\$4,686.32	33	\$18,655.63
WARREN	29	\$9,388.92	15	\$14,105.24	44	\$23,494.16	88	\$27,782.82	132	\$51,276.98
WASHINGTON	24	\$2,995.94	3	\$3,543.68	27	\$6,539.62	33	\$8,578.24	60	\$15,117.86
WAYNE	48	\$19,216.44	25	\$49,787.78	73	\$69,004.22	68	\$25,862.57	141	\$94,866.79
WILLIAMS	4	\$1,406.04	14	\$11,293.18	18	\$12,699.22	21	\$5,787.12	39	\$18,486.34
WOOD	2	\$629.02	20	\$23,675.37	22	\$24,304.39	44	\$15,142.37	66	\$39,446.76
WYANDOT	6	\$2,775.12	5	\$5,077.64	11	\$7,852.76	13	\$5,626.38	24	\$13,479.14

SOURCE: GBS003RB Report from Management Information Services. Federal funds only.

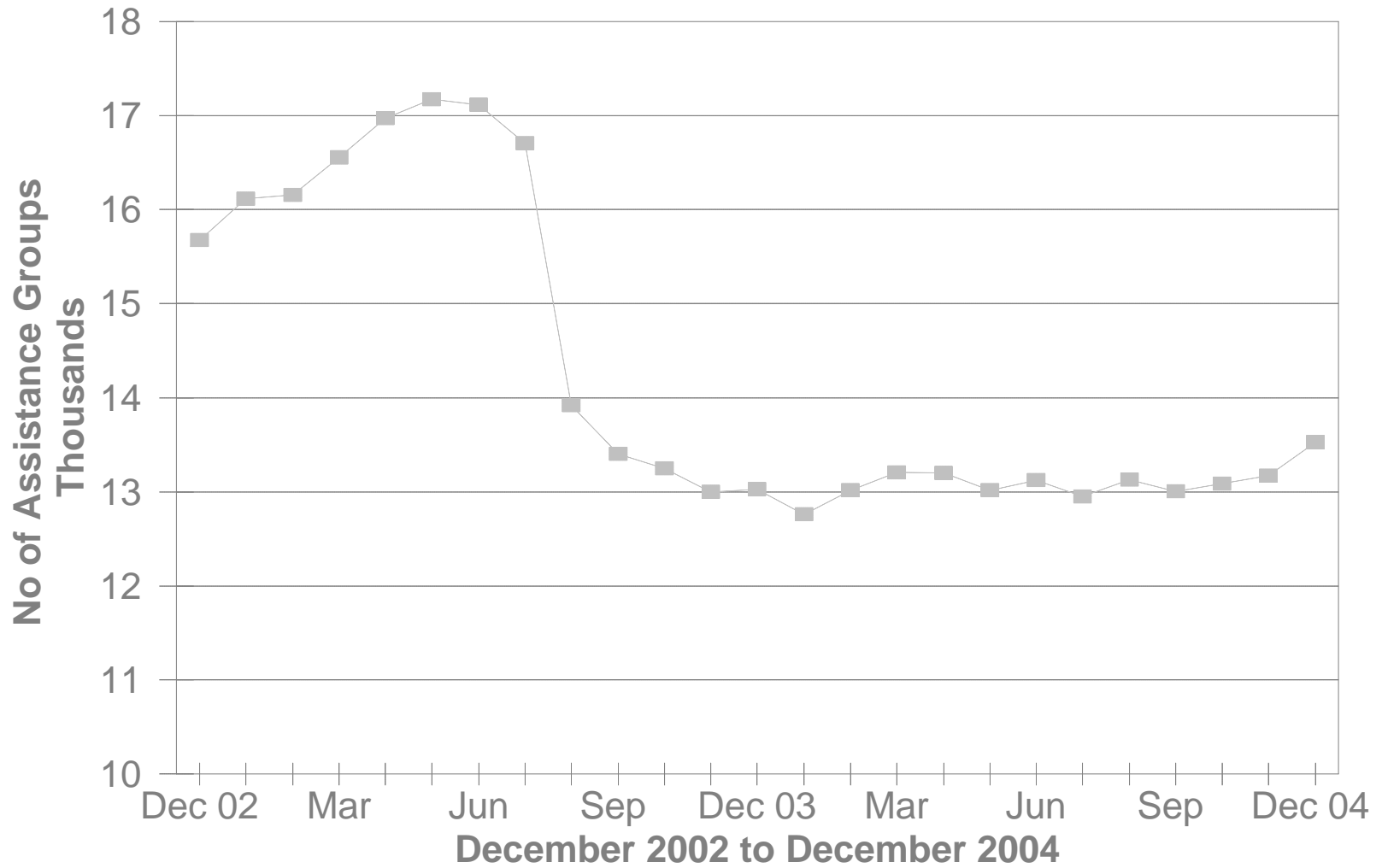
DA Cash Assistance Groups

During The Last 25 Month



DA Cash Recipients

During The Last 25 Month



**TABLE 3
DISABILITY ASSISTANCE (DA)
DECEMBER 2004**

OHIO COUNTY	CASH ASSISTANCE							MEDICAL ASSISTANCE	
	ASSISTANCE GROUPS	RECIPIENTS	ADULTS	CHILDREN	ACTUAL EXPENDITURES			UNDUPLICATED RECIPIENTS	ACTUAL AMOUNT PAID
					GROSS AMOUNT	CANCELLED AMOUNT	NET AMOUNT		
STATEWIDE	13,419	13,527	13,527	0	\$1,953,864.00	\$148,621.00	\$1,805,243.00	16,110	\$8,121,738.22
ADAMS	75	76	76	0	\$11,989.00	\$115.00	\$11,874.00	74	\$29,902.02
ALLEN	77	77	77	0	\$12,292.00	\$115.00	\$12,177.00	78	\$40,750.63
ASHLAND	39	40	40	0	\$6,408.00	\$115.00	\$6,293.00	50	\$21,555.76
ASHTABULA	277	280	280	0	\$38,791.00	\$2,854.00	\$35,937.00	178	\$73,149.04
ATHENS	212	216	216	0	\$29,549.00	\$1,322.00	\$28,227.00	110	\$48,723.10
AUGLAIZE	25	25	25	0	\$3,552.00	\$0.00	\$3,552.00	25	\$10,725.32
BELMONT	135	135	135	0	\$19,903.00	\$894.00	\$19,009.00	94	\$37,188.91
BROWN	50	50	50	0	\$6,907.00	\$460.00	\$6,447.00	58	\$31,370.63
BUTLER	448	448	448	0	\$64,502.00	\$3,007.00	\$61,495.00	349	\$183,909.07
CARROLL	23	23	23	0	\$4,914.00	\$230.00	\$4,684.00	23	\$10,836.84
CHAMPAIGN	31	31	31	0	\$5,312.00	\$0.00	\$5,312.00	59	\$35,622.39
CLARK	271	274	274	0	\$40,310.00	\$2,053.00	\$38,257.00	309	\$171,376.52
CLERMONT	181	183	183	0	\$24,240.00	\$1,150.00	\$23,090.00	110	\$61,429.22
CLINTON	63	63	63	0	\$10,007.00	\$575.00	\$9,432.00	36	\$24,435.05
COLUMBIANA	120	121	121	0	\$16,892.00	\$230.00	\$16,662.00	180	\$105,774.94
COSHOCTON	76	76	76	0	\$12,638.00	\$330.00	\$12,308.00	64	\$23,147.91
CRAWFORD	44	44	44	0	\$5,667.00	\$0.00	\$5,667.00	34	\$22,437.85
CUYAHOGA	1,792	1,808	1,808	0	\$225,227.00	\$37,079.00	\$188,148.00	2,950	\$1,359,090.03
DARKE	34	35	35	0	\$3,840.00	\$590.00	\$3,250.00	20	\$9,012.48
DEFIANCE	16	16	16	0	\$1,851.00	\$0.00	\$1,851.00	37	\$22,135.02
DELAWARE	66	67	67	0	\$10,521.00	\$460.00	\$10,061.00	90	\$54,030.30
ERIE	60	61	61	0	\$9,629.00	\$115.00	\$9,514.00	82	\$54,103.30
FAIRFIELD	102	103	103	0	\$15,457.00	\$502.00	\$14,955.00	108	\$66,618.78
FAYETTE	30	30	30	0	\$4,904.00	\$0.00	\$4,904.00	49	\$24,502.72
FRANKLIN	1,015	1,031	1,031	0	\$143,603.00	\$14,962.00	\$128,641.00	1,542	\$903,962.20
FULTON	20	20	20	0	\$2,726.00	\$230.00	\$2,496.00	20	\$8,396.23
GALLIA	41	41	41	0	\$7,579.00	\$245.00	\$7,334.00	111	\$71,667.63
GEAUGA	29	29	29	0	\$3,840.00	\$365.00	\$3,475.00	9	\$4,624.10
GREENE	162	163	163	0	\$21,561.00	\$1,420.00	\$20,141.00	154	\$72,845.92

*SOURCE: GRP342RA Report from Management Information Services and BOMC 9260-R001 Report from Medicaid Management Information Services.

**TABLE 3
DISABILITY ASSISTANCE (DA)
DECEMBER 2004**

OHIO COUNTY	CASH ASSISTANCE							MEDICAL ASSISTANCE	
	ASSISTANCE GROUPS	RECIPIENTS	ADULTS	CHILDREN	ACTUAL EXPENDITURES			UNDUPLICATED	ACTUAL AMOUNT
					GROSS AMOUNT	CANCELLED AMOUNT	NET AMOUNT	RECIPIENTS	PAID
STATEWIDE	13,419	13,527	13,527	0	\$1,953,864.00	\$148,621.00	\$1,805,243.00	16,110	\$8,121,738.22
GUERNSEY	124	127	127	0	\$17,507.00	\$690.00	\$16,817.00	71	\$33,827.63
HAMILTON	842	842	842	0	\$146,070.00	\$12,000.00	\$134,070.00	666	\$303,324.96
HANCOCK	63	63	63	0	\$10,587.00	\$230.00	\$10,357.00	50	\$27,451.24
HARDIN	33	33	33	0	\$4,297.00	\$115.00	\$4,182.00	33	\$23,299.77
HARRISON	44	47	47	0	\$8,339.00	\$0.00	\$8,339.00	37	\$17,249.90
HENRY	12	12	12	0	\$1,606.00	\$115.00	\$1,491.00	15	\$8,409.23
HIGHLAND	73	73	73	0	\$12,010.00	\$0.00	\$12,010.00	90	\$44,108.36
HOCKING	58	58	58	0	\$9,937.00	\$0.00	\$9,937.00	40	\$19,429.93
HOLMES	25	25	25	0	\$2,992.00	\$115.00	\$2,877.00	11	\$2,446.12
HURON	40	40	40	0	\$7,939.00	\$0.00	\$7,939.00	52	\$22,730.94
JACKSON	92	92	92	0	\$12,062.00	\$555.00	\$11,507.00	64	\$38,417.32
JEFFERSON	170	170	170	0	\$29,005.00	\$2,400.00	\$26,605.00	173	\$83,319.37
KNOX	67	67	67	0	\$9,399.00	\$0.00	\$9,399.00	70	\$39,345.40
LAKE	214	214	214	0	\$33,665.00	\$2,698.00	\$30,967.00	159	\$86,525.75
LAWRENCE	74	74	74	0	\$10,414.00	\$690.00	\$9,724.00	100	\$54,532.08
LICKING	197	199	199	0	\$29,463.00	\$460.00	\$29,003.00	164	\$91,314.72
LOGAN	35	35	35	0	\$4,559.00	\$230.00	\$4,329.00	70	\$34,952.92
LORAIN	287	288	288	0	\$47,856.00	\$4,111.00	\$43,745.00	404	\$195,792.35
LUCAS	589	594	594	0	\$85,346.00	\$5,290.00	\$80,056.00	1,010	\$457,337.55
MADISON	28	28	28	0	\$3,676.00	\$0.00	\$3,676.00	44	\$29,104.51
MAHONING	353	355	355	0	\$47,643.00	\$5,333.00	\$42,310.00	623	\$319,602.86
MARION	88	90	90	0	\$14,036.00	\$1,955.00	\$12,081.00	74	\$38,873.53
MEDINA	91	92	92	0	\$12,217.00	\$1,072.00	\$11,145.00	78	\$29,940.92
MEIGS	59	59	59	0	\$8,222.00	\$230.00	\$7,992.00	93	\$47,393.47
MERCER	29	29	29	0	\$3,229.00	\$0.00	\$3,229.00	26	\$8,992.29
MIAMI	68	68	68	0	\$8,302.00	\$345.00	\$7,957.00	54	\$25,078.09
MONROE	19	19	19	0	\$3,162.00	\$0.00	\$3,162.00	48	\$19,404.08
MONTGOMERY	536	543	543	0	\$81,026.00	\$7,847.00	\$73,179.00	971	\$500,115.49
MORGAN	43	43	43	0	\$6,653.00	\$0.00	\$6,653.00	38	\$14,657.45
MORROW	32	32	32	0	\$4,048.00	\$115.00	\$3,933.00	61	\$33,847.32

*SOURCE: GRP342RA Report from Management Information Services and BOMC 9260-R001 Report from Medicaid Management Information Services.

**TABLE 3
DISABILITY ASSISTANCE (DA)
DECEMBER 2004**

OHIO COUNTY	CASH ASSISTANCE							MEDICAL ASSISTANCE	
	ASSISTANCE GROUPS	RECIPIENTS	ADULTS	CHILDREN	ACTUAL EXPENDITURES			UNDUPLICATED	ACTUAL AMOUNT
					GROSS AMOUNT	CANCELLED AMOUNT	NET AMOUNT	RECIPIENTS	PAID
STATEWIDE	13,419	13,527	13,527	0	\$1,953,864.00	\$148,621.00	\$1,805,243.00	16,110	\$8,121,738.22
MUSKINGUM	233	236	236	0	\$38,365.00	\$1,380.00	\$36,985.00	134	\$59,914.46
NOBLE	20	20	20	0	\$2,208.00	\$115.00	\$2,093.00	20	\$7,772.71
OTTAWA	22	22	22	0	\$4,167.00	\$26.00	\$4,141.00	43	\$22,880.55
PAULDING	21	21	21	0	\$3,074.00	\$0.00	\$3,074.00	17	\$8,217.84
PERRY	80	82	82	0	\$13,080.00	\$115.00	\$12,965.00	78	\$40,528.20
PICKAWAY	50	50	50	0	\$7,266.00	\$920.00	\$6,346.00	62	\$31,998.23
PIKE	42	42	42	0	\$6,201.00	\$0.00	\$6,201.00	76	\$32,327.55
PORTAGE	139	140	140	0	\$23,990.00	\$964.00	\$23,026.00	139	\$75,269.95
PREBLE	33	33	33	0	\$3,888.00	\$115.00	\$3,773.00	33	\$17,883.78
PUTNAM	15	15	15	0	\$1,725.00	\$115.00	\$1,610.00	15	\$11,332.94
RICHLAND	184	186	186	0	\$27,761.00	\$1,743.00	\$26,018.00	115	\$64,049.43
ROSS	107	109	109	0	\$16,066.00	\$345.00	\$15,721.00	134	\$63,634.71
SANDUSKY	38	38	38	0	\$4,733.00	\$304.00	\$4,429.00	44	\$18,912.65
SCIOTO	235	239	239	0	\$33,628.00	\$3,945.00	\$29,683.00	159	\$75,422.98
SENECA	50	50	50	0	\$6,201.00	\$460.00	\$5,741.00	85	\$41,123.27
SHELBY	17	17	17	0	\$1,955.00	\$0.00	\$1,955.00	36	\$12,058.46
STARK	564	570	570	0	\$81,372.00	\$7,590.00	\$73,782.00	419	\$203,233.19
SUMMIT	662	666	666	0	\$99,226.00	\$8,835.00	\$90,391.00	1,268	\$622,849.01
TRUMBULL	354	354	354	0	\$47,210.00	\$1,610.00	\$45,600.00	284	\$137,212.95
TUSCARAWAS	111	113	113	0	\$17,158.00	\$575.00	\$16,583.00	115	\$58,714.78
UNION	25	25	25	0	\$3,932.00	\$0.00	\$3,932.00	49	\$34,333.78
VAN WERT	14	14	14	0	\$1,610.00	\$0.00	\$1,610.00	15	\$4,365.94
VINTON	34	34	34	0	\$5,815.00	\$0.00	\$5,815.00	45	\$21,285.43
WARREN	67	69	69	0	\$11,615.00	\$1,495.00	\$10,120.00	73	\$47,439.82
WASHINGTON	108	109	109	0	\$15,671.00	\$345.00	\$15,326.00	67	\$36,903.48
WAYNE	219	220	220	0	\$25,790.00	\$1,610.00	\$24,180.00	91	\$84,557.67
WILLIAMS	27	27	27	0	\$3,482.00	\$0.00	\$3,482.00	19	\$7,723.09
WOOD	42	42	42	0	\$5,992.00	\$0.00	\$5,992.00	66	\$37,595.14
WYANDOT	7	7	7	0	\$805.00	\$0.00	\$805.00	17	\$8,046.77
UNKNOWN									\$0.00

*SOURCE: GRP342RA Report from Management Information Services and BOMC 9260-R001 Report from Medicaid Management Information Services.

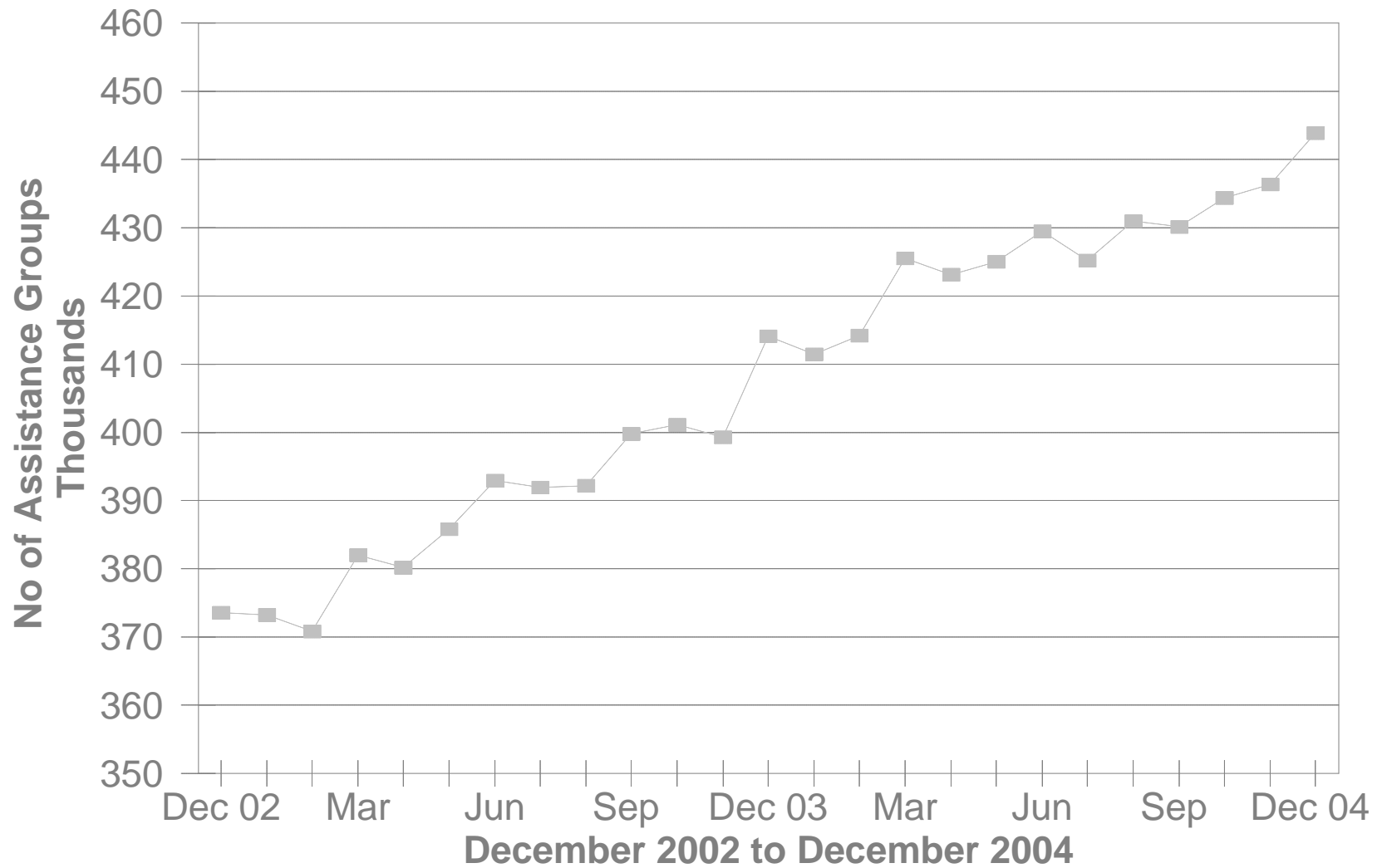
**TABLE 3-A
DA PAYMENTS FOR MEDICAL SERVICES
DECEMBER 2004**

CATEGORY OF SERVICES	DISABILITY ASSISTANCE			
	PAYMENTS	CLAIM FREQUENCY	DUPLICATED RECIPIENTS	PERCENT OF TOTAL
AMBULANCE SERVICES	\$0.00	0	0	0.0%
AMBULATORY SURGERY	\$43,709.60	99	92	0.5%
AMBULETTE SERVICES	\$0.00	0	0	0.0%
CHIROPRACTER SERVICES	\$0.00	0	0	0.0%
CLINIC	\$120,340.18	1,895	880	1.5%
DENTAL SERVICES	\$31,620.44	345	292	0.4%
EPSDT	\$0.00	0	0	0.0%
FAMILY PLANNING	\$1,163.75	22	17	0.0%
FEDERALLY QUALIFIED HEALTH CTR	\$0.00	0	0	0.0%
HEALTH MAINTENANCE ORGANIZATION	\$0.00	3	2	0.0%
HOME HEALTH SERVICES	\$0.00	0	0	0.0%
INDEPENDENT LABORATORY	\$61,303.03	1,354	954	0.8%
INPATIENT HOSPITAL	\$0.00	0	0	0.0%
ICF	\$0.00	0	0	0.0%
MIDWIFERY SERVICES	\$13,691.59	362	277	0.2%
OPTOMETRIC SERVICES	\$0.00	0	0	0.0%
OUTPATIENT HEALTH SERVICES	\$0.00	0	0	0.0%
PASSPORT WAIVER III	\$0.00	0	0	0.0%
OUTPATIENT HOSPITAL GENERAL	\$0.00	0	0	0.0%
PHYSICAL THERAPY SERVICES	\$0.00	0	0	0.0%
PHYSICIAN SERVICES	\$1,984,668.68	27,781	10,007	24.4%
PHYSIOLOGICAL LABORATORY	\$31,743.03	87	77	0.4%
PODIATRISTS THERAPY	\$34,214.87	538	352	0.4%
PRESCRIBED DRUGS	\$5,593,444.77	94,537	14,707	68.9%
PRIVATE DUTY NURSING SERVICES	\$0.00	0	0	0.0%
PSYCHOLOGY SERVICES	\$0.00	0	0	0.0%
RURAL HEALTH SERVICES	\$0.00	0	0	0.0%
SNF	\$0.00	0	0	0.0%
SUPPLIES AND MEDICAL EQUIPMENT	\$183,517.20	4,011	1,667	2.3%
WAIVERED SERVICES	\$22,321.08	201	199	0.3%
OTHER	\$0.00	6	4	0.0%
STATEWIDE TOTAL	\$8,121,738.22	131,241	29,527	100.00%

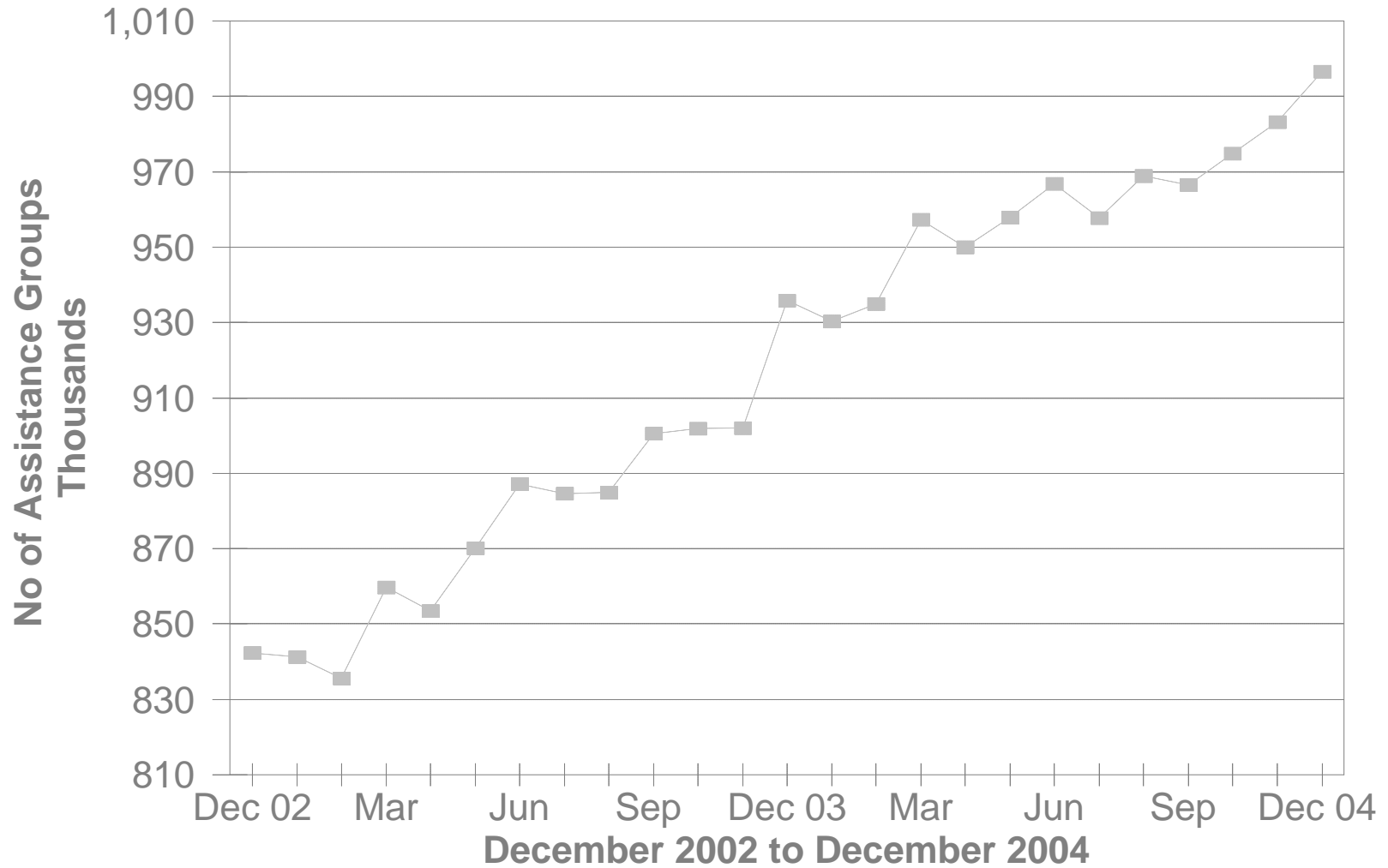
SOURCE: BOMC 9260 Report from Medicaid Management Information Services.

NOTE: Recipients are unduplicated within Category of Services, however, the Statewide Total represents a duplicated count.

No of FNS Benefits Assistance Groups During The Last 25 Month



No of FNS Benefits Cash Recipients During The Last 25 Month



**TABLE 5
FNS BENEFITS
DECEMBER 2004**

OHIO COUNTY	PERSONS					ASSISTANCE GROUPS			TOTAL COUPONS ISSUED
	PUBLIC ASSISTANCE	NON-PUBLIC ASSISTANCE	TOTAL	AVERAGE ISSUANCE	% CHANGE PREV. MO.	PUBLIC ASSISTANCE	NON-PUBLIC ASSISTANCE	TOTAL	
STATEWIDE	232,105	764,481	996,586	\$97	1.4%	153,844	290,029	443,873	\$96,573,320.00
ADAMS	962	3,365	4,327	\$91	2.5%	700	1,130	1,830	\$391,871
ALLEN	1,819	6,810	8,629	\$94	-0.0%	1,288	2,378	3,666	\$810,388
ASHLAND	389	2,420	2,809	\$91	1.8%	283	844	1,127	\$256,420
ASHTABULA	2,698	8,083	10,781	\$94	1.9%	1,842	2,927	4,769	\$1,008,613
ATHENS	1,992	4,730	6,722	\$92	1.2%	1,395	1,839	3,234	\$621,515
AUGLAIZE	260	1,560	1,820	\$96	2.4%	214	578	792	\$175,238
BELMONT	1,893	5,134	7,027	\$87	0.9%	1,285	1,962	3,247	\$612,598
BROWN	631	2,795	3,426	\$92	0.3%	467	1,002	1,469	\$315,849
BUTLER	5,074	17,803	22,877	\$100	-0.2%	3,659	6,470	10,129	\$2,298,891
CARROLL	305	1,789	2,094	\$93	4.0%	238	633	871	\$195,011
CHAMPAIGN	546	1,669	2,215	\$94	0.5%	373	623	996	\$207,548
CLARK	3,265	12,724	15,989	\$95	1.6%	2,434	4,748	7,182	\$1,515,433
CLERMONT	1,799	7,371	9,170	\$98	1.4%	1,219	2,579	3,798	\$898,358
CLINTON	541	2,379	2,920	\$96	3.4%	399	898	1,297	\$279,698
COLUMBIANA	2,338	8,834	11,172	\$91	1.5%	1,630	3,051	4,681	\$1,021,340
COSHOCTON	636	2,966	3,602	\$91	0.0%	474	1,095	1,569	\$326,450
CRAWFORD	817	3,322	4,139	\$91	-0.6%	572	1,227	1,799	\$375,956
CUYAHOGA	27,627	147,359	174,986	\$98	1.6%	15,791	65,667	81,458	\$17,164,442
DARKE	405	1,505	1,910	\$89	2.4%	284	573	857	\$170,762
DEFIANCE	426	1,844	2,270	\$95	-1.3%	304	621	925	\$215,232
DELAWARE	872	3,047	3,919	\$97	1.4%	582	1,141	1,723	\$379,372
ERIE	923	4,014	4,937	\$95	1.4%	708	1,480	2,188	\$469,065
FAIRFIELD	1,550	6,573	8,123	\$95	1.8%	1,159	2,383	3,542	\$772,037
FAYETTE	452	1,843	2,295	\$92	1.5%	350	682	1,032	\$210,250
FRANKLIN	27,320	85,508	112,828	\$102	0.9%	18,163	30,227	48,390	\$11,467,499
FULTON	331	1,604	1,935	\$85	2.5%	230	551	781	\$164,583
GALLIA	1,629	3,306	4,935	\$91	2.2%	1,038	1,212	2,250	\$446,744
GEAUGA	297	1,108	1,405	\$93	1.2%	205	419	624	\$130,020
GREENE	1,658	6,489	8,147	\$98	2.3%	1,168	2,535	3,703	\$800,432

Source: CRIS-E GRP304RA and GRP 304RC Reports from Management Information Services. Cuyahoga County data also comes from the GRP 342 RA.

**TABLE 5
FNS BENEFITS
DECEMBER 2004**

OHIO COUNTY	PERSONS					ASSISTANCE GROUPS			TOTAL COUPONS ISSUED
	PUBLIC ASSISTANCE	NON-PUBLIC ASSISTANCE	TOTAL	AVERAGE ISSUANCE	% CHANGE PREV. MO.	PUBLIC ASSISTANCE	NON-PUBLIC ASSISTANCE	TOTAL	
STATEWIDE	232,105	764,481	996,586	\$97	1.4%	153,844	290,029	443,873	\$96,573,320.00
GUERNSEY	1,088	4,236	5,324	\$91	0.6%	826	1,542	2,368	\$482,077
HAMILTON	18,281	49,320	67,601	\$103	2.9%	11,612	17,412	29,024	\$6,967,161
HANCOCK	741	2,741	3,482	\$96	1.5%	520	1,011	1,531	\$335,578
HARDIN	321	1,462	1,783	\$95	2.5%	252	551	803	\$169,252
HARRISON	434	1,194	1,628	\$91	-2.6%	309	439	748	\$148,122
HENRY	144	870	1,014	\$84	-2.6%	111	295	406	\$84,955
HIGHLAND	704	3,170	3,874	\$93	0.7%	518	1,096	1,614	\$360,170
HOCKING	776	2,250	3,026	\$90	0.4%	499	807	1,306	\$273,454
HOLMES	185	903	1,088	\$84	2.4%	119	317	436	\$90,905
HURON	556	3,197	3,753	\$94	2.8%	419	1,123	1,542	\$354,033
JACKSON	1,314	3,576	4,890	\$91	0.6%	957	1,312	2,269	\$445,797
JEFFERSON	2,638	6,226	8,864	\$92	0.4%	1,758	2,301	4,059	\$816,224
KNOX	808	2,851	3,659	\$90	0.5%	565	1,049	1,614	\$327,664
LAKE	2,097	7,658	9,755	\$101	-0.8%	1,481	2,950	4,431	\$984,873
LAWRENCE	3,142	7,241	10,383	\$88	0.8%	2,146	2,732	4,878	\$914,364
LICKING	2,278	8,481	10,759	\$96	0.8%	1,654	3,167	4,821	\$1,035,727
LOGAN	574	2,697	3,271	\$97	1.1%	400	944	1,344	\$315,758
LORAIN	6,166	20,331	26,497	\$96	0.6%	3,842	6,833	10,675	\$2,535,624
LUCAS	19,731	38,656	58,387	\$99	1.5%	12,103	14,310	26,413	\$5,763,019
MADISON	589	1,721	2,310	\$94	-0.4%	408	652	1,060	\$216,253
MAHONING	8,511	19,695	28,206	\$95	2.6%	5,663	7,321	12,984	\$2,685,858
MARION	1,271	5,068	6,339	\$94	2.5%	963	1,889	2,852	\$593,370
MEDINA	897	3,390	4,287	\$100	3.9%	632	1,284	1,916	\$428,673
MEIGS	1,017	3,114	4,131	\$95	1.4%	718	1,127	1,845	\$391,199
MERCER	322	899	1,221	\$89	-3.2%	229	335	564	\$109,092
MIAMI	988	3,204	4,192	\$90	1.7%	675	1,240	1,915	\$376,262
MONROE	378	1,053	1,431	\$85	1.7%	276	361	637	\$121,181
MONTGOMERY	13,221	35,582	48,803	\$100	0.1%	8,988	13,254	22,242	\$4,862,418
MORGAN	427	1,438	1,865	\$86	1.5%	304	515	819	\$159,968
MORROW	447	2,231	2,678	\$90	4.0%	319	787	1,106	\$241,005

Source: CRIS-E GRP304RA and GRP 304RC Reports from Management Information Services. Cuyahoga County data also comes from the GRP 342 RA.

**TABLE 5
FNS BENEFITS
DECEMBER 2004**

OHIO COUNTY	PERSONS					ASSISTANCE GROUPS			TOTAL COUPONS ISSUED
	PUBLIC ASSISTANCE	NON-PUBLIC ASSISTANCE	TOTAL	AVERAGE ISSUANCE	% CHANGE PREV. MO.	PUBLIC ASSISTANCE	NON-PUBLIC ASSISTANCE	TOTAL	
STATEWIDE	232,105	764,481	996,586	\$97	1.4%	153,844	290,029	443,873	\$96,573,320.00
MUSKINGUM	2,420	10,010	12,430	\$92	2.1%	1,750	3,739	5,489	\$1,144,092
NOBLE	213	872	1,085	\$80	2.0%	173	332	505	\$87,301
OTTAWA	405	1,559	1,964	\$93	4.4%	269	593	862	\$181,839
PAULDING	274	906	1,180	\$92	3.7%	195	334	529	\$108,163
PERRY	979	3,585	4,564	\$87	2.1%	675	1,265	1,940	\$398,915
PICKAWAY	1,088	3,584	4,672	\$93	0.4%	685	1,340	2,025	\$435,628
PIKE	1,181	3,695	4,876	\$90	3.9%	857	1,287	2,144	\$440,554
PORTAGE	1,746	5,814	7,560	\$103	1.5%	1,265	2,204	3,469	\$776,958
PREBLE	509	1,723	2,232	\$92	0.5%	327	605	932	\$206,426
PUTNAM	238	975	1,213	\$90	0.2%	172	356	528	\$108,996
RICHLAND	2,088	8,439	10,527	\$92	-0.1%	1,560	3,086	4,646	\$970,023
ROSS	2,162	6,964	9,126	\$93	1.5%	1,429	2,484	3,913	\$844,204
SANDUSKY	627	2,812	3,439	\$99	3.2%	437	1,012	1,449	\$341,933
SCIOTO	3,915	10,318	14,233	\$88	0.7%	2,847	3,925	6,772	\$1,258,912
SENECA	618	2,934	3,552	\$92	-0.6%	459	1,079	1,538	\$327,688
SHELBY	399	1,897	2,296	\$95	0.0%	275	647	922	\$217,957
STARK	7,604	21,015	28,619	\$96	2.7%	4,866	7,496	12,362	\$2,740,701
SUMMIT	14,206	34,051	48,257	\$99	1.2%	9,488	12,951	22,439	\$4,796,028
TRUMBULL	4,131	14,085	18,216	\$93	1.2%	2,870	4,849	7,719	\$1,686,966
TUSCARAWAS	1,513	5,248	6,761	\$87	3.8%	1,087	1,943	3,030	\$590,558
UNION	482	1,716	2,198	\$99	3.2%	305	658	963	\$216,508
VAN WERT	271	873	1,144	\$91	6.5%	198	318	516	\$104,373
VINTON	647	1,837	2,484	\$90	-0.4%	415	655	1,070	\$224,122
WARREN	736	2,933	3,669	\$93	-1.7%	532	1,060	1,592	\$341,310
WASHINGTON	1,074	4,173	5,247	\$90	-1.5%	883	1,552	2,435	\$472,325
WAYNE	1,609	4,440	6,049	\$96	1.7%	1,078	1,692	2,770	\$581,953
WILLIAMS	387	1,597	1,984	\$94	-0.8%	265	609	874	\$186,162
WOOD	938	3,386	4,324	\$97	0.8%	642	1,276	1,918	\$421,367
WYANDOT	144	631	775	\$90	3.9%	120	251	371	\$69,707

Source: CRIS-E GRP304RA and GRP 304RC Reports from Management Information Services. Cuyahoga County data also comes from the GRP 342 RA.

**Table 6A
December 2004
Medicaid Eligibles**

County	Aged	Blind	Disabled	ABD Total	OWF & Related	Healthy Start	CFC Total	Total Medicaid	Foster Care	Adoption Assistance	Transitional	Nursing Facilities
STATEWIDE	136,630	878	242,123	379,631	1,007,618	246,042	1,253,660	1,633,291	10,810	19,025	127,746	54,962
ADAMS	755	3	1,399	2,157	4,468	1,032	5,500	7,657	30	42	764	119
ALLEN	1,157	4	2,065	3,226	9,013	2,437	11,450	14,676	102	139	1,109	567
ASHLAND	561	3	603	1,167	3,563	1,317	4,880	6,047	8	12	783	272
ASHTABULA	1,506	7	2,997	4,510	10,945	2,886	13,831	18,341	67	159	1,792	1,044
ATHENS	828	16	2,071	2,915	6,477	1,329	7,806	10,721	96	107	929	198
AUGLAIZE	413	3	467	883	2,535	821	3,356	4,239	7	45	596	274
BELMONT	1,378	5	2,080	3,463	7,242	1,591	8,833	12,296	55	110	1,135	543
BROWN	715	0	973	1,688	4,413	1,412	5,825	7,513	21	37	800	234
BUTLER	2,795	25	5,688	8,508	24,502	5,751	30,253	38,761	260	492	3,091	1,202
CARROLL	374	2	554	930	2,560	769	3,329	4,259	7	6	557	175
CHAMPAIGN	467	2	591	1,060	2,628	955	3,583	4,643	21	19	501	254
CLARK	2,112	7	3,761	5,880	15,273	3,434	18,707	24,587	139	313	1,978	1,071
CLERMONT	1,415	5	2,700	4,120	11,723	3,930	15,653	19,773	206	202	1,780	709
CLINTON	479	4	801	1,284	3,582	946	4,528	5,812	36	60	658	144
COLUMBIANA	1,508	12	2,590	4,110	11,463	3,012	14,475	18,585	84	80	1,697	632
COSHOCTON	557	1	919	1,477	3,841	1,061	4,902	6,379	24	50	646	288
CRAWFORD	601	8	959	1,568	4,745	1,125	5,870	7,438	42	44	985	210
CUYAHOGA	22,067	158	36,113	58,338	155,381	31,817	187,198	245,536	2,035	4,548	14,168	7,356
DARKE	561	0	653	1,214	2,634	1,078	3,712	4,926	30	37	544	344
DEFIANCE	339	2	609	950	2,902	928	3,830	4,780	8	31	581	177
DELAWARE	687	2	1,010	1,699	4,462	1,393	5,855	7,554	31	56	790	285
ERIE	784	5	1,216	2,005	5,636	1,688	7,324	9,329	94	81	896	439
FAIRFIELD	1,162	6	1,843	3,011	8,634	2,807	11,441	14,452	63	151	1,328	444
FAYETTE	530	1	841	1,372	2,810	767	3,577	4,949	5	14	581	305
FRANKLIN	10,867	90	22,907	33,864	113,591	26,588	140,179	174,043	1,790	2,295	11,128	3,834
FULTON	370	0	400	770	2,555	858	3,413	4,183	13	29	571	214
GALLIA	841	2	1,528	2,371	4,270	856	5,126	7,497	21	35	511	201
GEAUGA	632	1	517	1,150	2,298	847	3,145	4,295	17	109	486	370
GREENE	1,243	10	1,796	3,049	9,283	2,115	11,398	14,447	71	109	1,595	595

**Table 6A
December 2004
Medicaid Eligibles**

County	Aged	Blind	Disabled	ABD Total	OWF & Related	Healthy Start	CFC Total	Total Medicaid	Foster Care	Adoption Assistance	Transitional	Nursing Facilities
STATEWIDE	136,630	878	242,123	379,631	1,007,618	246,042	1,253,660	1,633,291	10,810	19,025	127,746	54,962
GUERNSEY	771	2	1,443	2,216	5,578	1,409	6,987	9,203	54	63	771	172
HAMILTON	9,744	78	18,385	28,207	67,089	17,501	84,590	112,797	842	1,476	5,409	3,853
HANCOCK	563	4	865	1,432	4,138	1,337	5,475	6,907	26	42	601	272
HARDIN	360	2	572	934	2,377	720	3,097	4,031	23	33	478	126
HARRISON	270	0	493	763	1,695	468	2,163	2,926	3	26	289	112
HENRY	245	0	319	564	1,694	673	2,367	2,931	13	26	383	144
HIGHLAND	776	1	1,090	1,867	4,586	1,467	6,053	7,920	40	16	702	239
HOCKING	461	3	756	1,220	3,442	942	4,384	5,604	35	44	607	156
HOLMES	441	2	469	912	1,585	852	2,437	3,349	7	26	341	430
HURON	524	1	841	1,366	4,951	1,531	6,482	7,848	46	34	868	200
JACKSON	826	1	1,431	2,258	4,932	1,061	5,993	8,251	23	16	872	203
JEFFERSON	1,155	17	2,472	3,644	7,970	1,564	9,534	13,178	81	75	1,008	378
KNOX	693	3	1,229	1,925	4,227	1,315	5,542	7,467	22	40	902	523
LAKE	1,637	3	2,463	4,103	10,600	3,271	13,871	17,974	64	132	1,738	1,075
LAWRENCE	1,564	7	3,498	5,069	9,082	2,033	11,115	16,184	68	39	1,072	406
LICKING	1,447	4	2,581	4,032	12,355	3,437	15,792	19,824	177	296	2,071	585
LOGAN	538	3	646	1,187	3,872	928	4,800	5,987	11	47	597	201
LORAIN	2,682	19	5,155	7,856	26,214	5,278	31,492	39,348	85	416	3,399	1,318
LUCAS	5,726	42	13,875	19,643	54,169	10,108	64,277	83,920	480	1,432	5,287	1,935
MADISON	356	2	607	965	2,419	749	3,168	4,133	14	23	417	131
MAHONING	3,861	22	6,906	10,789	26,820	5,044	31,864	42,653	167	236	2,968	1,582
MARION	843	4	1,709	2,556	6,277	1,638	7,915	10,471	39	81	1,016	299
MEDINA	862	11	1,251	2,124	6,233	1,896	8,129	10,253	27	79	1,213	607
MEIGS	557	7	1,024	1,588	3,678	665	4,343	5,931	12	7	438	150
MERCER	306	1	448	755	1,674	592	2,266	3,021	5	29	378	189
MIAMI	1,006	7	1,324	2,337	5,427	1,873	7,300	9,637	71	117	1,005	462
MONROE	285	3	393	681	1,615	505	2,120	2,801	10	11	209	85
MONTGOMERY	6,198	46	12,657	18,901	49,110	10,856	59,966	78,867	762	1,232	4,663	2,372
MORGAN	289	0	501	790	2,170	522	2,692	3,482	1	12	407	102
MORROW	438	2	607	1,047	3,048	930	3,978	5,025	7	44	695	172

Source: ODJFS Report BOMM1321 Prepared: Bureau of Research and Evaluation.

**Table 6A
December 2004
Medicaid Eligibles**

County	Aged	Blind	Disabled	ABD Total	OWF & Related	Healthy Start	CFC Total	Total Medicaid	Foster Care	Adoption Assistance	Transitional	Nursing Facilities
STATEWIDE	136,630	878	242,123	379,631	1,007,618	246,042	1,253,660	1,633,291	10,810	19,025	127,746	54,962
MUSKINGUM	1,416	12	2,699	4,127	10,950	2,321	13,271	17,398	80	126	1,514	478
NOBLE	249	0	248	497	1,088	391	1,479	1,976	5	6	255	92
OTTAWA	438	3	523	964	2,195	865	3,060	4,024	0	7	372	207
PAULDING	178	2	386	566	1,272	493	1,765	2,331	10	18	220	45
PERRY	503	8	1,085	1,596	4,573	1,145	5,718	7,314	38	34	613	191
PICKAWAY	583	2	1,011	1,596	4,563	1,075	5,638	7,234	26	13	783	180
PIKE	750	0	1,499	2,249	4,496	1,096	5,592	7,841	30	23	727	295
PORTAGE	1,168	6	1,957	3,131	8,886	2,595	11,481	14,612	96	143	1,180	628
PREBLE	373	7	612	992	3,047	794	3,841	4,833	38	32	563	221
PUTNAM	282	2	358	642	1,392	474	1,866	2,508	2	7	205	236
RICHLAND	1,732	1	2,709	4,442	10,977	3,377	14,354	18,796	63	267	1,813	649
ROSS	1,127	2	2,317	3,446	8,994	1,962	10,956	14,402	95	46	1,246	301
SANDUSKY	685	5	927	1,617	4,255	1,440	5,695	7,312	29	62	651	393
SCIOTO	2,310	11	4,782	7,103	11,506	2,303	13,809	20,912	102	57	1,262	602
SENECA	676	4	1,030	1,710	4,047	1,657	5,704	7,414	47	79	778	322
SHELBY	387	6	586	979	3,036	1,055	4,091	5,070	23	54	536	194
STARK	4,785	21	6,851	11,657	31,668	7,674	39,342	50,999	523	948	5,157	2,277
SUMMIT	6,199	51	11,339	17,589	46,696	9,389	56,085	73,674	491	794	5,624	2,122
TRUMBULL	2,600	20	4,765	7,385	20,685	5,229	25,914	33,299	174	238	3,212	1,209
TUSCARAWAS	1,253	6	1,551	2,810	7,225	2,281	9,506	12,316	79	133	1,395	511
UNION	327	2	455	784	2,468	774	3,242	4,026	10	35	459	133
UNKNOWN	0	0	0	0	0	0	0	0	0	0	0	0
VAN WERT	285	0	407	692	1,640	797	2,437	3,129	6	24	320	150
VINTON	308	0	609	917	2,450	628	3,078	3,995	24	16	404	73
WARREN	1,240	5	1,563	2,808	5,960	2,276	8,236	11,044	55	85	874	839
WASHINGTON	961	7	1,652	2,620	5,676	1,946	7,622	10,242	18	39	1,004	352
WAYNE	1,097	8	1,722	2,827	6,514	2,224	8,738	11,565	80	89	1,301	492
WILLIAMS	419	2	469	890	2,813	767	3,580	4,470	20	22	634	206
WOOD	863	4	1,080	1,947	5,167	1,778	6,945	8,892	36	53	689	412
WYANDOT	308	0	270	578	923	521	1,444	2,022	12	13	171	173

**Table 6B
December 2004
Medicaid Expenditures**

	Aged	Blind	Disabled	ABD Total	OWF & Related	Healthy Start	CFC Total	Total Medicaid	Foster Care	Adoption Assistance	Transitional	Nursing Facilities
STATEWIDE	\$307,693,701	\$1,185,013	\$509,581,415	\$818,460,129	\$288,282,749	\$73,051,734	\$361,334,482	\$1,180,299,165	\$5,469,329	\$4,736,294	\$27,255,264	\$317,865,216
ADAMS	\$1,338,790	\$3,726	\$1,775,782	\$3,118,298	\$1,039,259	\$258,689	\$1,297,948	\$4,423,209	\$6,406	\$7,112	\$103,820	\$625,162
ALLEN	\$2,681,940	\$22,512	\$5,728,852	\$8,433,304	\$1,901,308	\$570,521	\$2,471,829	\$10,918,710	\$25,776	\$30,729	\$136,347	\$3,221,336
ASHLAND	\$1,382,842	\$772	\$1,233,747	\$2,617,361	\$787,808	\$465,142	\$1,252,950	\$3,870,965	\$773	\$1,844	\$73,691	\$1,409,316
ASHTABULA	\$3,873,775	\$11,041	\$6,827,137	\$10,711,953	\$2,251,513	\$616,756	\$2,868,269	\$13,606,921	\$31,803	\$39,921	\$358,855	\$6,064,099
ATHENS	\$1,491,529	\$6,650	\$2,983,064	\$4,481,242	\$1,649,058	\$403,186	\$2,052,244	\$6,533,496	\$91,872	\$32,144	\$106,227	\$1,010,992
AUGLAIZE	\$1,135,658	\$7,055	\$1,099,082	\$2,241,794	\$539,763	\$108,935	\$648,698	\$2,897,468	\$7,966	\$7,869	\$65,954	\$1,234,623
BELMONT	\$2,835,818	\$1,200	\$4,004,160	\$6,841,178	\$1,649,440	\$313,328	\$1,962,768	\$8,805,013	\$49,256	\$36,807	\$132,096	\$2,435,898
BROWN	\$1,728,649	\$0	\$2,142,948	\$3,871,597	\$1,355,723	\$313,358	\$1,669,081	\$5,540,677	\$4,139	\$5,362	\$139,838	\$1,324,205
BUTLER	\$6,670,117	\$42,291	\$13,491,153	\$20,203,561	\$7,962,643	\$1,726,205	\$9,688,849	\$29,924,651	\$132,517	\$138,629	\$819,393	\$7,652,955
CARROLL	\$751,537	\$609	\$1,307,658	\$2,059,804	\$433,809	\$98,998	\$532,807	\$2,592,610	\$1,673	\$1,417	\$50,830	\$945,821
CHAMPAIGN	\$1,200,912	\$598	\$1,456,047	\$2,657,557	\$656,392	\$270,041	\$926,433	\$3,583,990	\$8,705	\$2,965	\$62,329	\$1,304,274
CLARK	\$5,148,315	\$6,957	\$7,942,768	\$13,098,040	\$4,486,862	\$932,150	\$5,419,012	\$18,527,949	\$83,072	\$78,451	\$428,560	\$5,862,472
CLERMONT	\$3,111,322	\$18,797	\$6,985,116	\$10,115,235	\$3,186,932	\$981,096	\$4,168,028	\$14,295,034	\$93,440	\$32,957	\$323,900	\$5,088,766
CLINTON	\$917,188	\$2,009	\$1,305,163	\$2,224,360	\$967,721	\$195,619	\$1,163,340	\$3,396,221	\$12,034	\$9,740	\$90,049	\$697,064
COLUMBIANA	\$3,021,322	\$11,250	\$4,320,748	\$7,353,320	\$2,737,181	\$658,803	\$3,395,984	\$10,783,697	\$45,527	\$16,180	\$351,601	\$2,957,429
COSHOCTON	\$1,010,185	\$59	\$2,399,442	\$3,409,687	\$999,907	\$176,240	\$1,176,146	\$4,588,688	\$5,248	\$13,018	\$45,625	\$1,692,379
CRAWFORD	\$1,184,251	\$4,987	\$1,746,767	\$2,936,004	\$1,226,600	\$234,399	\$1,460,999	\$4,401,144	\$12,792	\$6,715	\$126,825	\$895,666
CUYAHOGA	\$48,914,085	\$248,739	\$68,411,710	\$117,574,535	\$51,763,723	\$10,279,361	\$62,043,084	\$179,652,608	\$1,430,680	\$1,051,713	\$4,680,693	\$49,364,357
DARKE	\$1,891,657	\$0	\$1,381,878	\$3,273,535	\$518,102	\$231,474	\$749,576	\$4,023,112	\$11,003	\$5,865	\$46,632	\$1,586,077
DEFIANCE	\$774,377	\$156	\$918,634	\$1,693,167	\$580,505	\$119,598	\$700,103	\$2,393,433	\$2,640	\$3,474	\$55,902	\$704,765
DELAWARE	\$1,638,482	\$5,537	\$3,081,252	\$4,725,270	\$961,786	\$339,838	\$1,301,624	\$6,026,527	\$24,997	\$25,416	\$104,192	\$1,484,451
ERIE	\$1,870,316	\$5,763	\$2,160,151	\$4,036,231	\$1,086,263	\$382,171	\$1,468,434	\$5,505,763	\$37,448	\$17,096	\$99,761	\$1,932,452
FAIRFIELD	\$2,649,481	\$2,188	\$3,763,315	\$6,414,983	\$1,895,622	\$639,766	\$2,535,388	\$8,951,999	\$15,977	\$56,808	\$166,161	\$2,242,347
FAYETTE	\$1,275,002	\$594	\$1,951,981	\$3,227,578	\$626,606	\$163,865	\$790,471	\$4,018,049	\$356	\$4,231	\$69,379	\$1,632,737
FRANKLIN	\$24,616,065	\$129,832	\$54,204,054	\$78,949,952	\$36,318,627	\$8,530,830	\$44,849,457	\$123,868,478	\$1,109,161	\$690,346	\$3,176,009	\$25,297,377
FULTON	\$954,213	\$0	\$887,116	\$1,841,329	\$425,738	\$126,082	\$551,820	\$2,393,554	\$5,870	\$6,375	\$35,896	\$1,005,643
GALLIA	\$2,223,775	\$345	\$3,755,838	\$5,979,957	\$1,012,600	\$282,392	\$1,294,992	\$7,277,286	\$7,657	\$2,561	\$49,385	\$1,017,372
GEAUGA	\$1,684,039	\$595	\$1,522,573	\$3,207,207	\$435,991	\$218,711	\$654,701	\$3,862,131	\$4,609	\$19,407	\$54,817	\$2,080,931
GREENE	\$2,970,004	\$3,130	\$3,855,590	\$6,828,723	\$2,327,733	\$617,587	\$2,945,320	\$9,777,176	\$47,169	\$20,353	\$210,413	\$3,208,671

**Table 6B
December 2004
Medicaid Expenditures**

	Aged	Blind	Disabled	ABD Total	OWF & Related	Healthy Start	CFC Total	Total Medicaid	Foster Care	Adoption Assistance	Transitional	Nursing Facilities
STATEWIDE	\$307,693,701	\$1,185,013	\$509,581,415	\$818,460,129	\$288,282,749	\$73,051,734	\$361,334,482	\$1,180,299,165	\$5,469,329	\$4,736,294	\$27,255,264	\$317,865,216
GUERNSEY	\$1,276,614	\$671	\$2,957,239	\$4,234,524	\$1,083,699	\$235,462	\$1,319,161	\$5,554,326	\$44,242	\$18,661	\$67,541	\$731,525
HAMILTON	\$23,618,600	\$123,381	\$37,359,415	\$61,101,396	\$21,620,423	\$7,058,291	\$28,678,714	\$89,841,756	\$658,382	\$462,162	\$1,386,280	\$24,947,942
HANCOCK	\$1,286,265	\$4,798	\$2,102,766	\$3,393,829	\$886,040	\$332,419	\$1,218,460	\$4,621,403	\$6,192	\$14,465	\$80,368	\$1,463,980
HARDIN	\$562,674	\$291	\$988,805	\$1,551,770	\$629,469	\$157,286	\$786,755	\$2,341,424	\$9,085	\$2,829	\$54,120	\$510,617
HARRISON	\$584,517	\$0	\$1,046,805	\$1,631,322	\$336,007	\$80,368	\$416,376	\$2,054,433	\$768	\$7,556	\$32,931	\$546,964
HENRY	\$607,957	\$0	\$1,488,110	\$2,096,067	\$445,995	\$172,194	\$618,189	\$2,714,256	\$6,333	\$4,669	\$43,439	\$617,656
HIGHLAND	\$1,539,882	\$1,291	\$1,851,471	\$3,392,645	\$979,265	\$517,821	\$1,497,086	\$4,889,731	\$7,191	\$2,249	\$89,286	\$1,353,098
HOCKING	\$890,095	\$5,560	\$1,090,749	\$1,986,404	\$740,831	\$179,629	\$920,459	\$2,906,863	\$23,829	\$6,752	\$50,268	\$688,871
HOLMES	\$1,274,764	\$776	\$1,616,336	\$2,891,876	\$296,155	\$175,856	\$472,011	\$3,363,887	\$6,400	\$10,699	\$35,907	\$2,203,091
HURON	\$950,211	\$185	\$1,396,225	\$2,346,622	\$959,185	\$571,633	\$1,530,818	\$3,877,439	\$15,359	\$4,693	\$80,721	\$853,138
JACKSON	\$1,452,689	\$212	\$1,764,004	\$3,216,905	\$1,221,540	\$209,776	\$1,431,317	\$4,652,900	\$5,819	\$7,166	\$115,666	\$960,466
JEFFERSON	\$2,350,915	\$7,659	\$4,273,599	\$6,632,172	\$1,800,893	\$284,484	\$2,085,377	\$8,726,131	\$53,434	\$14,332	\$207,907	\$1,773,460
KNOX	\$1,843,275	\$113	\$4,660,220	\$6,503,607	\$931,390	\$224,027	\$1,155,417	\$7,659,024	\$20,676	\$12,913	\$127,471	\$3,970,227
LAKE	\$4,823,553	\$814	\$7,833,319	\$12,657,685	\$2,320,512	\$704,895	\$3,025,408	\$15,685,897	\$79,121	\$28,681	\$170,680	\$6,903,210
LAWRENCE	\$3,360,085	\$4,931	\$4,669,430	\$8,034,447	\$2,167,493	\$482,324	\$2,649,817	\$10,685,761	\$32,170	\$6,923	\$130,043	\$1,887,475
LICKING	\$3,373,594	\$2,976	\$5,608,902	\$8,985,472	\$2,637,496	\$704,386	\$3,341,882	\$12,327,353	\$68,043	\$121,115	\$224,666	\$3,300,042
LOGAN	\$1,043,000	\$1,472	\$1,193,245	\$2,237,717	\$674,464	\$177,947	\$852,411	\$3,104,561	\$1,964	\$8,749	\$81,034	\$898,154
LORAIN	\$6,654,018	\$15,888	\$11,743,122	\$18,413,027	\$7,088,528	\$1,456,336	\$8,544,864	\$26,977,198	\$22,760	\$99,886	\$761,369	\$8,407,930
LUCAS	\$11,903,471	\$75,351	\$28,792,518	\$40,771,340	\$20,438,200	\$4,285,438	\$24,723,638	\$65,556,957	\$268,493	\$337,407	\$1,905,860	\$12,066,039
MADISON	\$855,715	\$95	\$1,533,407	\$2,389,216	\$764,762	\$220,301	\$985,063	\$3,374,279	\$34,774	\$4,452	\$46,818	\$884,930
MAHONING	\$8,554,053	\$26,573	\$11,296,210	\$19,876,836	\$5,811,806	\$1,240,398	\$7,052,203	\$26,936,211	\$128,250	\$36,247	\$349,669	\$8,346,681
MARION	\$1,576,028	\$4,112	\$3,021,356	\$4,601,495	\$1,645,052	\$861,062	\$2,506,114	\$7,110,516	\$17,312	\$18,795	\$184,481	\$1,472,518
MEDINA	\$2,466,490	\$61,931	\$3,300,927	\$5,829,348	\$1,535,567	\$580,187	\$2,115,754	\$7,946,185	\$19,811	\$17,246	\$182,515	\$3,594,597
MEIGS	\$865,859	\$9,403	\$1,303,033	\$2,178,294	\$898,030	\$127,106	\$1,025,136	\$3,203,431	\$5,403	\$147	\$59,931	\$650,003
MERCER	\$716,841	\$0	\$968,771	\$1,685,612	\$388,119	\$66,029	\$454,148	\$2,139,760	\$1,865	\$6,099	\$80,754	\$903,968
MIAMI	\$3,422,631	\$11,106	\$2,540,930	\$5,974,668	\$1,348,339	\$645,037	\$1,993,376	\$7,993,022	\$63,138	\$21,875	\$208,681	\$2,500,220
MONROE	\$432,253	\$775	\$475,512	\$908,541	\$384,547	\$76,073	\$460,619	\$1,369,819	\$1,249	\$1,867	\$24,863	\$324,872
MONTGOMERY	\$13,369,128	\$55,965	\$26,180,108	\$39,605,200	\$14,896,017	\$3,710,929	\$18,606,946	\$58,236,981	(\$582,100)	\$294,184	\$1,365,742	\$13,737,858
MORGAN	\$453,404	\$0	\$856,398	\$1,309,802	\$441,626	\$94,709	\$536,335	\$1,846,170	\$175	\$766	\$42,043	\$504,033
MORROW	\$951,996	\$1,532	\$1,361,349	\$2,314,877	\$663,515	\$492,473	\$1,155,988	\$3,471,745	\$9,380	\$15,722	\$102,423	\$933,788

**Table 6B
December 2004
Medicaid Expenditures**

	Aged	Blind	Disabled	ABD Total	OWF & Related	Healthy Start	CFC Total	Total Medicaid	Foster Care	Adoption Assistance	Transitional	Nursing Facilities
STATEWIDE	\$307,693,701	\$1,185,013	\$509,581,415	\$818,460,129	\$288,282,749	\$73,051,734	\$361,334,482	\$1,180,299,165	\$5,469,329	\$4,736,294	\$27,255,264	\$317,865,216
MUSKINGUM	\$2,561,743	\$6,777	\$3,921,572	\$6,490,091	\$2,199,315	\$495,931	\$2,695,246	\$9,188,183	\$39,500	\$16,126	\$232,748	\$2,181,963
NOBLE	\$454,398	\$0	\$270,963	\$725,361	\$174,172	\$67,649	\$241,821	\$967,182	\$81	\$501	\$15,497	\$392,578
OTTAWA	\$1,223,680	\$502	\$1,917,320	\$3,141,502	\$550,129	\$197,229	\$747,358	\$3,889,701	\$0	\$1,201	\$53,447	\$1,004,677
PAULDING	\$256,390	\$71	\$542,628	\$799,089	\$319,841	\$193,505	\$513,345	\$1,312,434	\$9,888	\$1,544	\$46,634	\$204,083
PERRY	\$757,673	\$1,116	\$2,058,370	\$2,817,160	\$1,015,071	\$191,154	\$1,206,225	\$4,023,640	\$19,065	\$3,485	\$82,280	\$1,108,478
PICKAWAY	\$1,152,762	\$12,385	\$1,683,654	\$2,848,801	\$1,314,068	\$197,106	\$1,511,175	\$4,362,835	\$6,391	\$1,569	\$156,302	\$901,444
PIKE	\$1,604,241	\$0	\$2,412,686	\$4,016,927	\$1,034,688	\$245,223	\$1,279,911	\$5,298,734	\$22,496	\$13,203	\$88,143	\$1,634,095
PORTAGE	\$2,538,976	\$10,712	\$5,635,498	\$8,185,186	\$2,137,589	\$626,650	\$2,764,238	\$10,949,935	\$45,557	\$38,581	\$228,612	\$3,900,280
PREBLE	\$959,296	\$11,297	\$1,589,584	\$2,560,177	\$786,194	\$895,970	\$1,682,165	\$4,255,453	\$50,612	\$3,672	\$92,402	\$1,264,748
PUTNAM	\$724,614	\$3,364	\$1,000,098	\$1,728,076	\$354,601	\$155,355	\$509,956	\$2,238,032	\$1,129	\$550	\$27,839	\$1,102,462
RICHLAND	\$3,689,229	\$105	\$8,203,678	\$11,893,012	\$2,689,174	\$805,352	\$3,494,527	\$15,392,907	\$39,781	\$70,428	\$314,049	\$4,054,200
ROSS	\$2,021,569	\$1,715	\$4,115,934	\$6,139,218	\$1,963,786	\$442,440	\$2,406,226	\$8,566,744	\$35,428	\$17,156	\$146,019	\$1,262,795
SANDUSKY	\$1,559,509	\$5,057	\$2,187,379	\$3,751,944	\$878,971	\$381,642	\$1,260,613	\$5,016,705	\$8,422	\$10,276	\$71,280	\$1,887,444
SCIOTO	\$4,698,959	\$10,824	\$7,097,309	\$11,807,093	\$3,153,989	\$569,769	\$3,723,758	\$15,536,373	\$50,232	\$25,954	\$194,884	\$3,108,646
SENECA	\$1,703,404	\$1,989	\$3,834,486	\$5,539,879	\$926,201	\$398,006	\$1,324,206	\$6,874,020	\$22,863	\$20,795	\$88,641	\$1,517,776
SHELBY	\$879,028	\$4,471	\$997,615	\$1,881,114	\$548,254	\$205,236	\$753,489	\$2,634,603	\$19,133	\$9,847	\$68,530	\$870,153
STARK	\$11,366,167	\$19,117	\$13,813,128	\$25,198,411	\$9,906,140	\$2,377,642	\$12,283,782	\$37,482,036	\$259,515	\$194,419	\$1,649,942	\$12,374,746
SUMMIT	\$13,505,617	\$83,529	\$28,446,184	\$42,035,329	\$16,691,382	\$3,419,455	\$20,110,838	\$62,158,446	\$269,875	\$149,369	\$1,908,576	\$11,915,568
TRUMBULL	\$5,374,935	\$28,410	\$8,547,291	\$13,950,636	\$5,275,351	\$1,302,948	\$6,578,299	\$20,550,995	\$69,558	\$28,991	\$413,932	\$5,916,021
TUSCARAWAS	\$2,749,548	\$5,476	\$2,867,445	\$5,622,470	\$1,507,311	\$472,295	\$1,979,606	\$7,608,652	\$38,078	\$61,416	\$160,107	\$2,357,128
UNION	\$892,082	\$1,996	\$1,170,664	\$2,064,742	\$553,345	\$180,335	\$733,679	\$2,800,061	\$4,492	\$4,960	\$49,633	\$825,641
UNKNOWN	\$0	\$0	\$0	\$0	(\$813,507)	\$0	(\$813,507)	(\$965,210)	\$0	\$0	\$0	\$0
VAN WERT	\$671,853	\$78	\$698,999	\$1,370,930	\$357,735	\$162,749	\$520,484	\$1,898,373	\$7,299	\$35,521	\$26,066	\$677,880
VINTON	\$532,353	\$0	\$778,348	\$1,310,701	\$528,708	\$128,978	\$657,686	\$1,968,733	\$4,914	\$1,120	\$36,135	\$318,790
WARREN	\$3,624,924	\$5,535	\$5,769,557	\$9,400,016	\$1,441,231	\$653,724	\$2,094,955	\$11,500,116	\$17,307	\$29,485	\$117,911	\$5,462,416
WASHINGTON	\$1,810,101	\$9,346	\$2,814,889	\$4,634,336	\$1,327,273	\$412,048	\$1,739,321	\$6,374,132	\$5,790	\$2,654	\$93,320	\$1,677,268
WAYNE	\$2,499,250	\$1,942	\$4,964,077	\$7,465,269	\$1,501,769	\$636,154	\$2,137,923	\$9,603,829	\$39,075	\$19,595	\$185,067	\$2,266,388
WILLIAMS	\$926,104	\$1,862	\$978,809	\$1,906,775	\$471,161	\$182,018	\$653,179	\$2,559,954	\$10,449	\$7,657	\$86,732	\$931,096
WOOD	\$2,221,370	\$2,084	\$2,690,699	\$4,914,152	\$1,407,792	\$498,888	\$1,906,680	\$6,822,234	\$30,060	\$9,948	\$104,031	\$2,042,074
WYANDOT	\$727,705	\$0	\$654,547	\$1,382,252	\$260,832	\$176,270	\$437,102	\$1,819,354	\$2,252	\$1,459	\$57,847	\$787,388

**TABLE 7
CHILD CARE
DECEMBER 2004**

OHIO COUNTY	OWF JOBS, LEAP, and TRANSITIONAL		OTHER CHILD CARE		LOCAL FUNDING		ALL PROGRAM SOURCES	
	CHILDREN SERVED		CHILDREN SERVED		CHILDREN SERVED		CHILDREN SERVED	
	TOTAL	% OF STATE TOTAL	TOTAL	% OF STATE TOTAL	TOTAL	% OF STATE TOTAL	TOTAL	% OF STATE TOTAL
STATEWIDE	16,077	100.00%	68,274	100.00%	648	100.00%	84,999	100.00%
ADAMS	1	0.01%	31	0.05%	0	0.00%	32	0.04%
ALLEN	34	0.21%	428	0.63%	0	0.00%	462	0.54%
ASHLAND	2	0.01%	127	0.19%	0	0.00%	129	0.15%
ASHTABULA	78	0.49%	548	0.80%	0	0.00%	626	0.74%
ATHENS	53	0.33%	201	0.29%	0	0.00%	254	0.30%
AUGLAIZE	0	0.00%	121	0.18%	0	0.00%	121	0.14%
BELMONT	67	0.42%	259	0.38%	0	0.00%	326	0.38%
BROWN	2	0.01%	72	0.11%	0	0.00%	74	0.09%
BUTLER	182	1.13%	1,249	1.83%	0	0.00%	1,431	1.68%
CARROLL	15	0.09%	43	0.06%	0	0.00%	58	0.07%
CHAMPAIGN	4	0.02%	138	0.20%	0	0.00%	142	0.17%
CLARK	103	0.64%	581	0.85%	0	0.00%	684	0.80%
CLERMONT	62	0.39%	477	0.70%	0	0.00%	539	0.63%
CLINTON	5	0.03%	134	0.20%	0	0.00%	139	0.16%
COLUMBIANA	55	0.34%	569	0.83%	0	0.00%	624	0.73%
COSHOCTON	27	0.17%	164	0.24%	0	0.00%	191	0.22%
CRAWFORD	17	0.11%	142	0.21%	0	0.00%	159	0.19%
CUYAHOGA	3,857	23.99%	17,005	24.91%	1	0.15%	20,863	24.54%
DARKE	7	0.04%	90	0.13%	0	0.00%	97	0.11%
DEFIANCE	1	0.01%	132	0.19%	0	0.00%	133	0.16%
DELAWARE	22	0.14%	173	0.25%	3	0.46%	198	0.23%
ERIE	4	0.02%	529	0.77%	0	0.00%	533	0.63%
FAIRFIELD	63	0.39%	424	0.62%	0	0.00%	487	0.57%
FAYETTE	29	0.18%	185	0.27%	0	0.00%	214	0.25%
FRANKLIN	2,512	15.62%	8,288	12.14%	218	33.64%	11,018	12.96%
FULTON	8	0.05%	162	0.24%	0	0.00%	170	0.20%
GALLIA	50	0.31%	194	0.28%	0	0.00%	244	0.29%
GEAUGA	4	0.02%	143	0.21%	0	0.00%	147	0.17%
GREENE	70	0.44%	607	0.89%	0	0.00%	677	0.80%

**TABLE 7
CHILD CARE
DECEMBER 2004**

OHIO COUNTY	OWF JOBS, LEAP, and TRANSITIONAL		OTHER CHILD CARE		LOCAL FUNDING		ALL PROGRAM SOURCES	
	CHILDREN SERVED		CHILDREN SERVED		CHILDREN SERVED		CHILDREN SERVED	
	TOTAL	% OF STATE TOTAL	TOTAL	% OF STATE TOTAL	TOTAL	% OF STATE TOTAL	TOTAL	% OF STATE TOTAL
STATEWIDE	16,077	100.00%	68,274	100.00%	648	100.00%	84,999	100.00%
GUERNSEY	24	0.15%	302	0.44%	0	0.00%	326	0.38%
HAMILTON	3,371	20.97%	8,413	12.32%	0	0.00%	11,784	13.86%
HANCOCK	28	0.17%	330	0.48%	0	0.00%	358	0.42%
HARDIN	2	0.01%	71	0.10%	0	0.00%	73	0.09%
HARRISON	9	0.06%	47	0.07%	0	0.00%	56	0.07%
HENRY	10	0.06%	98	0.14%	0	0.00%	108	0.13%
HIGHLAND	7	0.04%	193	0.28%	0	0.00%	200	0.24%
HOCKING	24	0.15%	170	0.25%	0	0.00%	194	0.23%
HOLMES	13	0.08%	98	0.14%	0	0.00%	111	0.13%
HURON	0	0.00%	440	0.64%	0	0.00%	440	0.52%
JACKSON	19	0.12%	165	0.24%	0	0.00%	184	0.22%
JEFFERSON	100	0.62%	338	0.50%	0	0.00%	438	0.52%
KNOX	21	0.13%	269	0.39%	0	0.00%	290	0.34%
LAKE	70	0.44%	817	1.20%	0	0.00%	887	1.04%
LAWRENCE	62	0.39%	495	0.73%	0	0.00%	557	0.66%
LICKING	102	0.63%	681	1.00%	0	0.00%	783	0.92%
LOGAN	20	0.12%	52	0.08%	0	0.00%	72	0.08%
LORAIN	448	2.79%	1,478	2.16%	0	0.00%	1,926	2.27%
LUCAS	820	5.10%	1,412	2.07%	425	65.59%	2,657	3.13%
MADISON	16	0.10%	74	0.11%	0	0.00%	90	0.11%
MAHONING	489	3.04%	1,531	2.24%	0	0.00%	2,020	2.38%
MARION	32	0.20%	323	0.47%	0	0.00%	355	0.42%
MEDINA	29	0.18%	587	0.86%	0	0.00%	616	0.72%
MEIGS	8	0.05%	143	0.21%	0	0.00%	151	0.18%
MERCER	29	0.18%	98	0.14%	0	0.00%	127	0.15%
MIAMI	0	0.00%	264	0.39%	0	0.00%	264	0.31%
MONROE	1	0.01%	35	0.05%	0	0.00%	36	0.04%
MONTGOMERY	860	5.35%	4,098	6.00%	1	0.15%	4,959	5.83%
MORGAN	0	0.00%	77	0.11%	0	0.00%	77	0.09%
MORROW	3	0.02%	155	0.23%	0	0.00%	158	0.19%

**TABLE 7
CHILD CARE
DECEMBER 2004**

OHIO COUNTY	OWF JOBS, LEAP, and TRANSITIONAL		OTHER CHILD CARE		LOCAL FUNDING		ALL PROGRAM SOURCES	
	CHILDREN SERVED		CHILDREN SERVED		CHILDREN SERVED		CHILDREN SERVED	
	TOTAL	% OF STATE TOTAL	TOTAL	% OF STATE TOTAL	TOTAL	% OF STATE TOTAL	TOTAL	% OF STATE TOTAL
STATEWIDE	16,077	100.00%	68,274	100.00%	648	100.00%	84,999	100.00%
MUSKINGUM	223	1.39%	592	0.87%	0	0.00%	815	0.96%
NOBLE	2	0.01%	95	0.14%	0	0.00%	97	0.11%
OTTAWA	20	0.12%	86	0.13%	0	0.00%	106	0.12%
PAULDING	1	0.01%	9	0.01%	0	0.00%	10	0.01%
PERRY	23	0.14%	214	0.31%	0	0.00%	237	0.28%
PICKAWAY	34	0.21%	117	0.17%	0	0.00%	151	0.18%
PIKE	19	0.12%	62	0.09%	0	0.00%	81	0.10%
PORTAGE	62	0.39%	637	0.93%	0	0.00%	699	0.82%
PREBLE	8	0.05%	95	0.14%	0	0.00%	103	0.12%
PUTNAM	13	0.08%	77	0.11%	0	0.00%	90	0.11%
RICHLAND	161	1.00%	771	1.13%	0	0.00%	932	1.10%
ROSS	6	0.04%	220	0.32%	0	0.00%	226	0.27%
SANDUSKY	59	0.37%	411	0.60%	0	0.00%	470	0.55%
SCIOTO	71	0.44%	502	0.74%	0	0.00%	573	0.67%
SENECA	0	0.00%	221	0.32%	0	0.00%	221	0.26%
SHELBY	3	0.02%	159	0.23%	0	0.00%	162	0.19%
STARK	441	2.74%	1,713	2.51%	0	0.00%	2,154	2.53%
SUMMIT	613	3.81%	2,564	3.76%	0	0.00%	3,177	3.74%
TRUMBULL	114	0.71%	1,518	2.22%	0	0.00%	1,632	1.92%
TUSCARAWAS	21	0.13%	287	0.42%	0	0.00%	308	0.36%
UNION	0	0.00%	4	0.01%	0	0.00%	4	0.00%
VAN WERT	1	0.01%	43	0.06%	0	0.00%	44	0.05%
VINTON	6	0.04%	77	0.11%	0	0.00%	83	0.10%
WARREN	55	0.34%	349	0.51%	0	0.00%	404	0.48%
WASHINGTON	33	0.21%	285	0.42%	0	0.00%	318	0.37%
WAYNE	94	0.58%	304	0.45%	0	0.00%	398	0.47%
WILLIAMS	6	0.04%	110	0.16%	0	0.00%	116	0.14%
WOOD	37	0.23%	252	0.37%	0	0.00%	289	0.34%
WYANDOT	0	0.00%	30	0.04%	0	0.00%	30	0.04%

SOURCE: COGNOS. The above numbers have not been reconciled between the CCIDS/3299 data collection system and 2827 ODJFS fiscal reporting system; therefore they may not be conclusive at this time.

OWF data consist of funding codes: 312, 313,314, 326, & 327. Other data consist of funding codes: 320, 321, 322, 323, 324, 325, 328, 329, and 342. Local Funding is from funding code 899.

**TABLE 8
RECIPIENTS, EXPENDITURES, AND AVERAGE PAYMENT PER RECIPIENT
DURING THE LAST 12 MONTHS IN OHIO**

RECIPIENTS	OWF-R	OWF-U	OWF\ CHILD CARE	Other\Local CHILD CARE	DISABILITY ASSISTANCE	TITLE IV-E	FNS BENEFITS
January 2004	176,525	16,572	17,342	81,657	12,762	25,742	930,391
February	176,591	16,946	16,622	78,916	13,013	25,961	934,876
March	177,476	17,466	16,783	79,488	13,086	26,395	957,339
April	175,819	17,859	17,292	73,676	13,199	26,167	949,984
May	175,364	17,090	16,380	71,877	13,014	26,728	957,891
June	176,410	16,761	15,873	70,670	13,125	27,023	966,742
July	175,492	16,215	17,025	76,365	12,952	27,446	961,345
August	176,900	16,141	14,955	67,418	13,128	26,794	968,953
September	177,276	16,330	15,135	68,105	13,006	27,126	966,523
October	177,652	16,591	14,753	65,414	13,085	26,963	974,870
November	177,076	16,424	14,713	65,200	13,173	27,029	983,171
December	177,811	17,045	16,077	68,274	13,527	27,440	996,586
12 MONTH AVERAGE	176,699	16,787	16,079	72,255	13,089	26,735	962,389
EXPENDITURES							
January 2004	\$24,617,828	\$1,643,023	N.A.	N.A.	\$1,633,608	\$12,754,750	\$81,551,062
February	\$24,649,146	\$1,707,835	N.A.	N.A.	\$1,708,755	\$13,462,475	\$82,969,877
March	\$24,778,004	\$1,731,579	N.A.	N.A.	\$1,760,786	\$14,811,934	\$86,088,054
April	\$24,479,601	\$1,743,512	N.A.	N.A.	\$1,743,821	\$12,812,373	\$84,433,387
May	\$24,510,455	\$1,683,791	N.A.	N.A.	\$1,717,225	\$14,538,568	\$84,982,281
June	\$24,695,230	\$1,629,234	N.A.	N.A.	\$1,775,365	\$13,541,071	\$86,088,824
July	\$24,518,267	\$1,537,939	N.A.	N.A.	\$1,650,143	\$14,462,718	\$85,444,646
August	\$24,662,472	\$1,546,295	N.A.	N.A.	\$1,718,500	\$13,646,981	\$86,716,053
September	\$24,510,896	\$1,562,152	N.A.	N.A.	\$1,653,854	\$13,810,598	\$86,367,236
October	\$25,165,130	\$1,644,497	N.A.	N.A.	\$1,785,256	\$14,422,182	\$93,499,595
November	\$24,934,252	\$1,604,065	N.A.	N.A.	\$1,776,656	\$14,560,414	\$94,871,568
December	\$24,793,390	\$1,671,072	N.A.	N.A.	\$1,805,243	\$14,594,680	\$96,573,320
TOTAL DOLLARS	\$24,692,889	\$1,642,083	N.A.	N.A.	\$1,727,434	\$13,951,562	\$87,465,492
AVERAGE PAYMENT							
January 2004	\$139	\$99	N.A.	N.A.	\$128	\$495	\$88
February	\$140	\$101	N.A.	N.A.	\$131	\$519	\$89
March	\$140	\$99	N.A.	N.A.	\$135	\$561	\$90
April	\$139	\$98	N.A.	N.A.	\$132	\$490	\$89
May	\$140	\$99	N.A.	N.A.	\$132	\$544	\$89
June	\$140	\$97	N.A.	N.A.	\$135	\$501	\$89
July	\$140	\$95	N.A.	N.A.	\$127	\$527	\$89
August	\$139	\$96	N.A.	N.A.	\$131	\$509	\$89
September	\$138	\$96	N.A.	N.A.	\$127	\$509	\$89
October	\$142	\$99	N.A.	N.A.	\$136	\$535	\$96
November	\$141	\$98	N.A.	N.A.	\$135	\$539	\$96
December	\$139	\$98	N.A.	N.A.	\$133	\$532	\$97

Note: N.A. means Not Available.

**TABLE 10
PERCENT OF OHIO'S POPULATION PARTICIPATING IN SELECTED
PUBLIC ASSISTANCE PROGRAMS FOR DECEMBER 2004**

OHIO COUNTY	Estimated Total Population *	Percent of All Families Below Poverty Level	DISABILITY ASSISTANCE		OWF COMBINED		FOSTER CARE		FNS BENEFITS	
			Recipients as % of		Recipients	Recipients as % of	Recipients	Recipients as % of	Recipients	Recipients as % of
			Recipients	Total Population						
STATEWIDE	11,435,798	7.80%	13,527	0.12%	194,856	1.70%	27,440	0.24%	996,586	8.71%
ADAMS	28,026	12.80%	76	0.27%	218	0.78%	77	0.27%	4,327	15.44%
ALLEN	108,241	9.60%	77	0.07%	908	0.84%	228	0.21%	8,629	7.97%
ASHLAND	53,749	7.10%	40	0.07%	223	0.41%	14	0.03%	2,809	5.23%
ASHTABULA	103,120	9.20%	280	0.27%	1,466	1.42%	178	0.17%	10,781	10.45%
ATHENS	64,380	14.00%	216	0.34%	1,431	2.22%	197	0.31%	6,722	10.44%
AUGLAIZE	46,740	4.90%	25	0.05%	80	0.17%	51	0.11%	1,820	3.89%
BELMONT	69,636	11.70%	135	0.19%	1,124	1.61%	142	0.20%	7,027	10.09%
BROWN	43,807	8.80%	50	0.11%	285	0.65%	60	0.14%	3,426	7.82%
BUTLER	343,207	5.40%	448	0.13%	2,954	0.86%	760	0.22%	22,877	6.67%
CARROLL	29,599	8.50%	23	0.08%	196	0.66%	11	0.04%	2,094	7.07%
CHAMPAIGN	39,544	5.10%	31	0.08%	410	1.04%	32	0.08%	2,215	5.60%
CLARK	143,351	7.90%	274	0.19%	2,944	2.05%	377	0.26%	15,989	11.15%
CLERMONT	185,799	5.30%	183	0.10%	1,050	0.57%	381	0.21%	9,170	4.94%
CLINTON	41,756	6.40%	63	0.15%	250	0.60%	85	0.20%	2,920	6.99%
COLUMBIANA	111,523	9.00%	121	0.11%	1,006	0.90%	148	0.13%	11,172	10.02%
COSHOCTON	37,132	7.00%	76	0.20%	386	1.04%	69	0.19%	3,602	9.70%
CRAWFORD	46,091	7.80%	44	0.10%	532	1.15%	72	0.16%	4,139	8.98%
CUYAHOGA	1,363,888	10.30%	1,808	0.13%	28,700	2.10%	6,589	0.48%	174,986	12.83%
DARKE	52,960	6.00%	35	0.07%	271	0.51%	52	0.10%	1,910	3.61%
DEFIANCE	39,054	4.50%	16	0.04%	249	0.64%	47	0.12%	2,270	5.81%
DELAWARE	132,797	2.90%	67	0.05%	713	0.54%	86	0.06%	3,919	2.95%
ERIE	78,709	6.00%	61	0.08%	357	0.45%	173	0.22%	4,937	6.27%
FAIRFIELD	132,549	4.50%	103	0.08%	1,525	1.15%	145	0.11%	8,123	6.13%
FAYETTE	28,158	7.70%	30	0.11%	315	1.12%	18	0.06%	2,295	8.15%
FRANKLIN	1,088,944	8.20%	1,031	0.09%	26,908	2.47%	3,669	0.34%	112,828	10.36%
FULTON	42,446	4.00%	20	0.05%	182	0.43%	26	0.06%	1,935	4.56%
GALLIA	31,398	13.50%	41	0.13%	1,303	4.15%	59	0.19%	4,935	15.72%
GEAUGA	93,941	2.80%	29	0.03%	180	0.19%	115	0.12%	1,405	1.50%
GREENE	151,257	5.20%	163	0.11%	1,220	0.81%	114	0.08%	8,147	5.39%

*SOURCE: 2003 Ohio County Population Estimates, Ohio Dept. of Development, GRP342RA, GBS003RA, GRP304RA and GRP304RC Reports from Management Information Services.

**TABLE 10
PERCENT OF OHIO'S POPULATION PARTICIPATING IN SELECTED
PUBLIC ASSISTANCE PROGRAMS FOR DECEMBER 2004**

OHIO COUNTY	Estimated Total Population *	Percent of All Families Below Poverty Level	DISABILITY ASSISTANCE		OWF COMBINED		FOSTER CARE		FNS BENEFITS	
			Recipients as % of		Recipients	Recipients as % of Total Population	Recipients	Recipients as % of Total Population	Recipients	Recipients as % of Total Population
			Recipients	Total Population						
STATEWIDE	11,435,798	7.80%	13,527	0.12%	194,856	1.70%	27,440	0.24%	996,586	8.71%
GUERNSEY	41,362	12.90%	127	0.31%	414	1.00%	126	0.30%	5,324	12.87%
HAMILTON	823,472	8.80%	842	0.10%	20,449	2.48%	1,527	0.19%	67,601	8.21%
HANCOCK	73,133	5.20%	63	0.09%	411	0.56%	70	0.10%	3,482	4.76%
HARDIN	31,608	8.90%	33	0.10%	107	0.34%	62	0.20%	1,783	5.64%
HARRISON	15,967	11.00%	47	0.29%	263	1.65%	30	0.19%	1,628	10.20%
HENRY	29,318	5.30%	12	0.04%	63	0.21%	38	0.13%	1,014	3.46%
HIGHLAND	41,963	9.00%	73	0.17%	350	0.83%	34	0.08%	3,874	9.23%
HOCKING	28,644	10.30%	58	0.20%	799	2.79%	83	0.29%	3,026	10.56%
HOLMES	40,681	10.50%	25	0.06%	102	0.25%	33	0.08%	1,088	2.67%
HURON	60,231	6.50%	40	0.07%	210	0.35%	61	0.10%	3,753	6.23%
JACKSON	33,074	13.60%	92	0.28%	497	1.50%	37	0.11%	4,890	14.79%
JEFFERSON	71,888	11.40%	170	0.24%	2,218	3.09%	125	0.17%	8,864	12.33%
KNOX	56,930	7.40%	67	0.12%	525	0.92%	50	0.09%	3,659	6.43%
LAKE	228,878	3.50%	214	0.09%	1,204	0.53%	208	0.09%	9,755	4.26%
LAWRENCE	62,550	15.10%	74	0.12%	1,389	2.22%	44	0.07%	10,383	16.60%
LICKING	150,634	5.50%	199	0.13%	1,276	0.85%	478	0.32%	10,759	7.14%
LOGAN	46,411	7.10%	35	0.08%	450	0.97%	58	0.12%	3,271	7.05%
LORAIN	291,164	6.70%	288	0.10%	5,137	1.76%	435	0.15%	26,497	9.10%
LUCAS	454,216	10.70%	594	0.13%	18,029	3.97%	2,159	0.48%	58,387	12.85%
MADISON	40,624	6.20%	28	0.07%	511	1.26%	38	0.09%	2,310	5.69%
MAHONING	251,660	9.60%	355	0.14%	7,038	2.80%	397	0.16%	28,206	11.21%
MARION	66,396	7.40%	90	0.14%	799	1.20%	103	0.16%	6,339	9.55%
MEDINA	161,641	3.50%	92	0.06%	563	0.35%	86	0.05%	4,287	2.65%
MEIGS	23,242	14.30%	59	0.25%	435	1.87%	20	0.09%	4,131	17.77%
MERCER	40,933	4.60%	29	0.07%	146	0.36%	39	0.10%	1,221	2.98%
MIAMI	100,230	5.10%	68	0.07%	598	0.60%	175	0.17%	4,192	4.18%
MONROE	14,927	11.00%	19	0.13%	180	1.21%	14	0.09%	1,431	9.59%
MONTGOMERY	552,187	8.30%	543	0.10%	12,627	2.29%	1,917	0.35%	48,803	8.84%
MORGAN	14,843	15.70%	43	0.29%	167	1.13%	11	0.07%	1,865	12.56%
MORROW	33,568	6.60%	32	0.10%	275	0.82%	43	0.13%	2,678	7.98%

*SOURCE: 2003 Ohio County Population Estimates, Ohio Dept. of Development, GRP342RA, GBS003RA, GRP304RA and GRP304RC Reports from Management Information Services.

**TABLE 10
PERCENT OF OHIO'S POPULATION PARTICIPATING IN SELECTED
PUBLIC ASSISTANCE PROGRAMS FOR DECEMBER 2004**

OHIO COUNTY	Estimated Total Population *	Percent of All Families Below Poverty Level	DISABILITY ASSISTANCE		OWF COMBINED		FOSTER CARE		FNS BENEFITS	
			Recipients as % of		Recipients	Recipients as % of Total Population	Recipients	Recipients as % of Total Population	Recipients	Recipients as % of Total Population
			Recipients	Total Population						
STATEWIDE	11,435,798	7.80%	13,527	0.12%	194,856	1.70%	27,440	0.24%	996,586	8.71%
MUSKINGUM	85,423	9.90%	236	0.28%	2,129	2.49%	115	0.13%	12,430	14.55%
NOBLE	14,054	8.30%	20	0.14%	90	0.64%	7	0.05%	1,085	7.72%
OTTAWA	41,192	4.20%	22	0.05%	331	0.80%	3	0.01%	1,964	4.77%
PAULDING	19,665	4.90%	21	0.11%	236	1.20%	31	0.16%	1,180	6.00%
PERRY	35,074	9.40%	82	0.23%	678	1.93%	72	0.21%	4,564	13.01%
PICKAWAY	51,723	7.60%	50	0.10%	1,179	2.28%	31	0.06%	4,672	9.03%
PIKE	28,194	15.10%	42	0.15%	669	2.37%	32	0.11%	4,876	17.29%
PORTAGE	154,870	5.90%	140	0.09%	969	0.63%	137	0.09%	7,560	4.88%
PREBLE	42,417	4.50%	33	0.08%	410	0.97%	76	0.18%	2,232	5.26%
PUTNAM	34,754	4.00%	15	0.04%	162	0.47%	14	0.04%	1,213	3.49%
RICHLAND	128,267	8.20%	186	0.15%	1,388	1.08%	273	0.21%	10,527	8.21%
ROSS	74,424	9.10%	109	0.15%	1,926	2.59%	110	0.15%	9,126	12.26%
SANDUSKY	61,753	5.70%	38	0.06%	394	0.64%	83	0.13%	3,439	5.57%
SCIOTO	77,453	15.20%	239	0.31%	2,027	2.62%	131	0.17%	14,233	18.38%
SENECA	57,734	6.10%	50	0.09%	282	0.49%	92	0.16%	3,552	6.15%
SHELBY	48,566	5.30%	17	0.04%	255	0.53%	83	0.17%	2,296	4.73%
STARK	377,519	6.80%	570	0.15%	7,350	1.95%	1,155	0.31%	28,619	7.58%
SUMMIT	546,773	7.50%	666	0.12%	11,896	2.18%	1,314	0.24%	48,257	8.83%
TRUMBULL	221,785	7.90%	354	0.16%	3,174	1.43%	438	0.20%	18,216	8.21%
TUSCARAWAS	91,706	7.20%	113	0.12%	1,048	1.14%	212	0.23%	6,761	7.37%
UNION	43,750	3.60%	25	0.06%	508	1.16%	38	0.09%	2,198	5.02%
VAN WERT	29,277	4.20%	14	0.05%	59	0.20%	22	0.08%	1,144	3.91%
VINTON	13,231	15.10%	34	0.26%	373	2.82%	33	0.25%	2,484	18.77%
WARREN	181,743	3.00%	69	0.04%	401	0.22%	132	0.07%	3,669	2.02%
WASHINGTON	62,505	8.60%	109	0.17%	233	0.37%	60	0.10%	5,247	8.39%
WAYNE	113,121	5.40%	220	0.19%	1,055	0.93%	141	0.12%	6,049	5.35%
WILLIAMS	38,802	3.90%	27	0.07%	363	0.94%	39	0.10%	1,984	5.11%
WOOD	123,020	4.70%	42	0.03%	606	0.49%	66	0.05%	4,324	3.51%
WYANDOT	22,826	3.80%	7	0.03%	47	0.21%	24	0.11%	775	3.40%
UNKNOWN										

*SOURCE: 2003 Ohio County Population Estimates, Ohio Dept. of Development, GRP342RA, GBS003RA, GRP304RA and GRP304RC Reports from Management Information Services.

**TABLE 7-A
CHILD CARE REVISION
SEPTEMBER 2004 UPDATE**

OHIO COUNTY	DWF JOBS, LEAP, and TRANSITIONAL		OTHER CHILD CARE		LOCAL FUNDING		ALL PROGRAM SOURCES	
	CHILDREN SERVED		CHILDREN SERVED		CHILDREN SERVED		CHILDREN SERVED	
	TOTAL	% OF STATE TOTAL	TOTAL	% OF STATE TOTAL	TOTAL	% OF STATE TOTAL	TOTAL	% OF STATE TOTAL
STATEWIDE	15,239	100.00%	68,457	100.00%	172	100.00%	83,868	100.00%
ADAMS	0	0.00%	28	0.04%	0	0.00%	28	0.03%
ALLEN	38	0.25%	418	0.61%	0	0.00%	456	0.54%
ASHLAND	1	0.01%	157	0.23%	0	0.00%	158	0.19%
ASHTABULA	97	0.64%	589	0.86%	0	0.00%	686	0.82%
ATHENS	50	0.33%	199	0.29%	0	0.00%	249	0.30%
AUGLAIZE	0	0.00%	113	0.17%	0	0.00%	113	0.13%
BELMONT	56	0.37%	285	0.42%	0	0.00%	341	0.41%
BROWN	2	0.01%	84	0.12%	0	0.00%	86	0.10%
BUTLER	184	1.21%	960	1.40%	0	0.00%	1,144	1.36%
CARROLL	17	0.11%	64	0.09%	0	0.00%	81	0.10%
CHAMPAIGN	14	0.09%	114	0.17%	0	0.00%	128	0.15%
CLARK	115	0.75%	619	0.90%	0	0.00%	734	0.88%
CLERMONT	73	0.48%	472	0.69%	0	0.00%	545	0.65%
CLINTON	3	0.02%	198	0.29%	0	0.00%	201	0.24%
COLUMBIANA	93	0.61%	803	1.17%	0	0.00%	896	1.07%
COSHOCTON	45	0.30%	160	0.23%	0	0.00%	205	0.24%
CRAWFORD	23	0.15%	184	0.27%	0	0.00%	207	0.25%
CUYAHOGA	4,204	27.59%	17,915	26.17%	2	1.16%	22,121	26.38%
DARKE	4	0.03%	83	0.12%	0	0.00%	87	0.10%
DEFIANCE	3	0.02%	112	0.16%	0	0.00%	115	0.14%
DELAWARE	25	0.16%	200	0.29%	9	5.23%	234	0.28%
ERIE	3	0.02%	527	0.77%	0	0.00%	530	0.63%
FAIRFIELD	45	0.30%	464	0.68%	0	0.00%	509	0.61%
FAYETTE	31	0.20%	190	0.28%	0	0.00%	221	0.26%
FRANKLIN	2,426	15.92%	8,259	12.06%	157	91.28%	10,842	12.93%
FULTON	6	0.04%	131	0.19%	0	0.00%	137	0.16%
GALLIA	55	0.36%	194	0.28%	0	0.00%	249	0.30%
GEAUGA	5	0.03%	137	0.20%	0	0.00%	142	0.17%
GREENE	73	0.48%	546	0.80%	0	0.00%	619	0.74%

**TABLE 7-A
CHILD CARE REVISION
SEPTEMBER 2004 UPDATE**

OHIO COUNTY	DWF JOBS, LEAP, and TRANSITIONAL		OTHER CHILD CARE		LOCAL FUNDING		ALL PROGRAM SOURCES	
	CHILDREN SERVED		CHILDREN SERVED		CHILDREN SERVED		CHILDREN SERVED	
	TOTAL	% OF STATE TOTAL	TOTAL	% OF STATE TOTAL	TOTAL	% OF STATE TOTAL	TOTAL	% OF STATE TOTAL
STATEWIDE	15,239	100.00%	68,457	100.00%	172	100.00%	83,868	100.00%
GUERNSEY	38	0.25%	305	0.45%	0	0.00%	343	0.41%
HAMILTON	3,168	20.79%	8,599	12.56%	0	0.00%	11,767	14.03%
HANCOCK	33	0.22%	292	0.43%	0	0.00%	325	0.39%
HARDIN	7	0.05%	78	0.11%	0	0.00%	85	0.10%
HARRISON	10	0.07%	49	0.07%	0	0.00%	59	0.07%
HENRY	20	0.13%	105	0.15%	0	0.00%	125	0.15%
HIGHLAND	13	0.09%	213	0.31%	0	0.00%	226	0.27%
HOCKING	20	0.13%	164	0.24%	0	0.00%	184	0.22%
HOLMES	3	0.02%	91	0.13%	0	0.00%	94	0.11%
HURON	0	0.00%	459	0.67%	0	0.00%	459	0.55%
JACKSON	30	0.20%	154	0.22%	0	0.00%	184	0.22%
JEFFERSON	83	0.54%	384	0.56%	0	0.00%	467	0.56%
KNOX	30	0.20%	238	0.35%	0	0.00%	268	0.32%
LAKE	91	0.60%	781	1.14%	0	0.00%	872	1.04%
LAWRENCE	52	0.34%	496	0.72%	0	0.00%	548	0.65%
LICKING	94	0.62%	764	1.12%	0	0.00%	858	1.02%
LOGAN	18	0.12%	54	0.08%	0	0.00%	72	0.09%
LORAIN	433	2.84%	1,391	2.03%	0	0.00%	1,824	2.17%
LUCAS	0	0.00%	0	0.00%	0	0.00%	0	0.00%
MADISON	14	0.09%	86	0.13%	0	0.00%	100	0.12%
MAHONING	482	3.16%	1,476	2.16%	0	0.00%	1,958	2.33%
MARION	27	0.18%	303	0.44%	0	0.00%	330	0.39%
MEDINA	20	0.13%	399	0.58%	0	0.00%	419	0.50%
MEIGS	7	0.05%	142	0.21%	0	0.00%	149	0.18%
MERCER	23	0.15%	84	0.12%	0	0.00%	107	0.13%
MIAMI	0	0.00%	274	0.40%	0	0.00%	274	0.33%
MONROE	0	0.00%	59	0.09%	0	0.00%	59	0.07%
MONTGOMERY	793	5.20%	3,869	5.65%	0	0.00%	4,662	5.56%
MORGAN	1	0.01%	72	0.11%	0	0.00%	73	0.09%
MORROW	3	0.02%	165	0.24%	0	0.00%	168	0.20%

**TABLE 7-A
CHILD CARE REVISION
SEPTEMBER 2004 UPDATE**

OHIO COUNTY	DWF JOBS, LEAP, and TRANSITIONAL		OTHER CHILD CARE		LOCAL FUNDING		ALL PROGRAM SOURCES	
	CHILDREN SERVED		CHILDREN SERVED		CHILDREN SERVED		CHILDREN SERVED	
	TOTAL	% OF STATE TOTAL	TOTAL	% OF STATE TOTAL	TOTAL	% OF STATE TOTAL	TOTAL	% OF STATE TOTAL
STATEWIDE	15,239	100.00%	68,457	100.00%	172	100.00%	83,868	100.00%
MUSKINGUM	193	1.27%	660	0.96%	0	0.00%	853	1.02%
NOBLE	7	0.05%	99	0.14%	0	0.00%	106	0.13%
OTTAWA	24	0.16%	84	0.12%	0	0.00%	108	0.13%
PAULDING	3	0.02%	11	0.02%	0	0.00%	14	0.02%
PERRY	28	0.18%	184	0.27%	0	0.00%	212	0.25%
PICKAWAY	19	0.12%	133	0.19%	0	0.00%	152	0.18%
PIKE	22	0.14%	71	0.10%	0	0.00%	93	0.11%
PORTAGE	66	0.43%	618	0.90%	0	0.00%	684	0.82%
PREBLE	20	0.13%	103	0.15%	0	0.00%	123	0.15%
PUTNAM	7	0.05%	65	0.09%	0	0.00%	72	0.09%
RICHLAND	127	0.83%	793	1.16%	0	0.00%	920	1.10%
ROSS	10	0.07%	222	0.32%	0	0.00%	232	0.28%
SANDUSKY	56	0.37%	364	0.53%	0	0.00%	420	0.50%
SCIOTO	75	0.49%	504	0.74%	0	0.00%	579	0.69%
SENECA	0	0.00%	202	0.30%	0	0.00%	202	0.24%
SHELBY	0	0.00%	114	0.17%	0	0.00%	114	0.14%
STARK	342	2.24%	1,998	2.92%	0	0.00%	2,340	2.79%
SUMMIT	636	4.17%	3,020	4.41%	0	0.00%	3,656	4.36%
TRUMBULL	141	0.93%	1,576	2.30%	0	0.00%	1,717	2.05%
TUSCARAWAS	26	0.17%	396	0.58%	0	0.00%	422	0.50%
UNION	0	0.00%	55	0.08%	4	2.33%	59	0.07%
VAN WERT	0	0.00%	48	0.07%	0	0.00%	48	0.06%
VINTON	8	0.05%	77	0.11%	0	0.00%	85	0.10%
WARREN	58	0.38%	306	0.45%	0	0.00%	364	0.43%
WASHINGTON	28	0.18%	267	0.39%	0	0.00%	295	0.35%
WAYNE	97	0.64%	346	0.51%	0	0.00%	443	0.53%
WILLIAMS	10	0.07%	93	0.14%	0	0.00%	103	0.12%
WOOD	32	0.21%	270	0.39%	0	0.00%	302	0.36%
WYANDOT	0	0.00%	27	0.04%	0	0.00%	27	0.03%

SOURCE: COGNOS. The above numbers have not been reconciled between the CCIDS/3299 data collection system and 2827 ODJFS fiscal reporting system; therefore they may not be conclusive at this time.

OWF data consist of funding codes: 312, 313,314, 326, & 327. Other data consist of funding codes: 320, 321 , 322, 323, 324, 325, 328, 329, and 342. Local Funding is from funding code 899.