

MONTHLY REVIEW OF PUBLIC ASSISTANCE STATISTICS FOR OCTOBER 2003

OHIO WORKS FIRST

For the month of October 2003, OWF-Combined assistance groups totaled 87,688; recipients totaled 196,104 and money payments totaled \$26,729,894. The percent change from September 2003 to October 2003 was 0.8% for assistance groups; 0.8% for recipients, and 1.2% for money payments. For OWF- Regular (OWF-R) there were 83,852 assistance groups; 180,465 recipients, and \$25,199,378 in money payments issued for October 2003. The percent change from September 2003 to October 2003 was 0.8% for assistance groups; 1.0% for recipients, and 1.2% for money payments. For OWF-Unemployed (OWF-U) assistance groups totaled 3,836; recipients 15,639, and money payments were \$1,530,516. The percent change from September 2003 to October 2003 was -0.4% for assistance groups; -0.5% for recipients and 0.6% for money payments.

FOSTER CARE (TITLE IV-E)

A total of 25,894 children received \$13,097,679 in Title IV-E assistance during the month of October 2003. Included in this total were 7,324 foster care children who received \$6,153,773 in money payments. Of these Title IV-E children, 3,067 or 11.8% were in foster family homes who received \$1,213,776 and 4,257 or 16.4% children in child care institutions who received \$4,939,998 in OWF foster care assistance. The remaining 18,570 children reported as participating in Title IV-E received \$6,943,906 in adoption assistance. Overall, the average amount of Foster Care received per child was \$505.82.

DISABILITY ASSISTANCE (DA)

For the month of October 2003, there were 13,110 assistance groups; 13,250 recipients, and \$1,621,874 in DA financial assistance. The average DA financial assistance per recipient was \$122.41. Total DA expenditures for medical services for October 2003 were \$8,568,349. Of this total, \$5,918,060 or 69.1% was spent for prescribed drugs, and \$2,157,205 or 25.2% was spent for physician services. Medical expenses were paid for 19,780 recipients for an average expenditure of \$433.18 per recipient.

FNS BENEFITS:

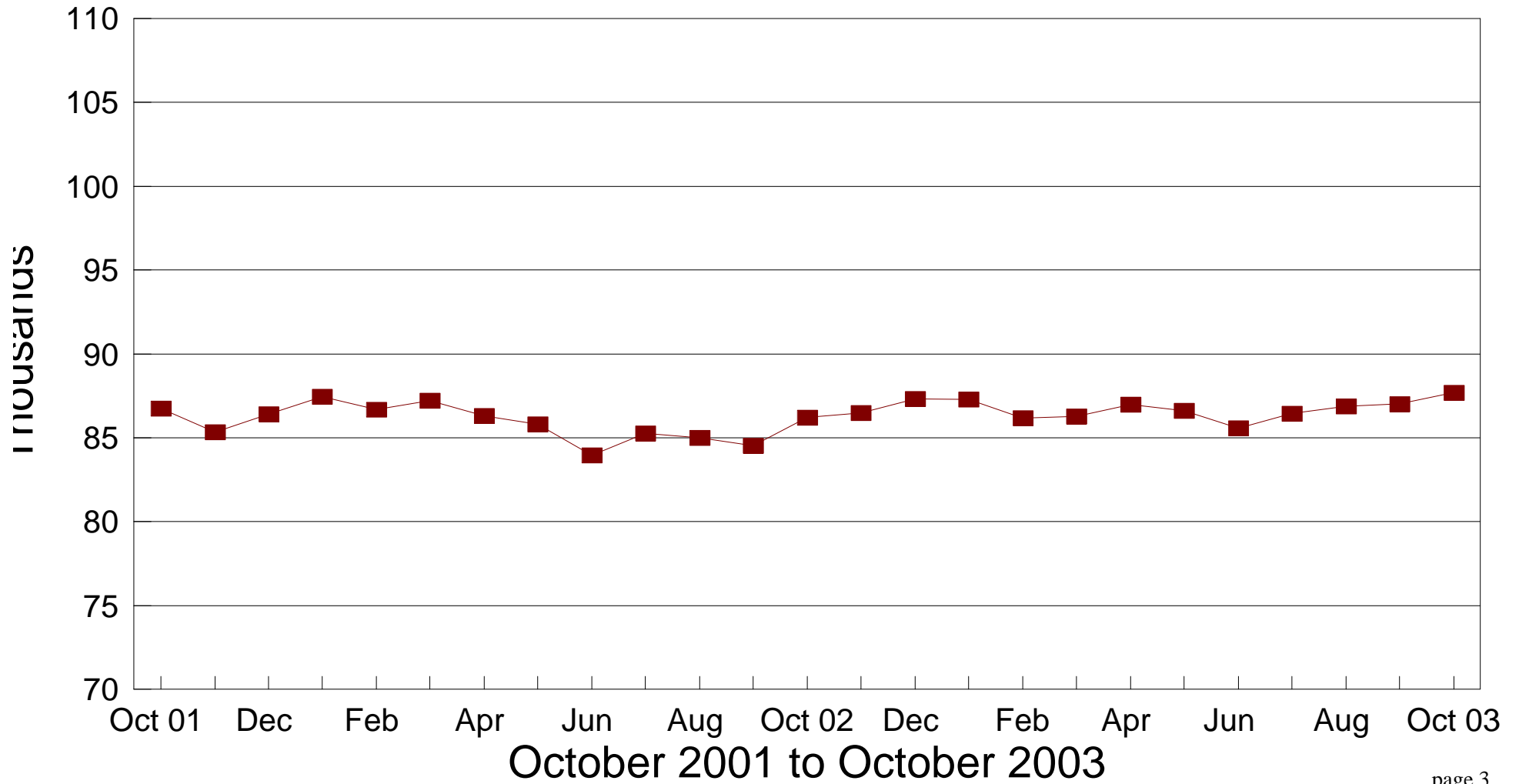
Total persons participating in the FNS benefits program during October 2003 increased to 901,828 by 1,256 or 0.1% from 900,572 persons reported in September 2003. Households increased by 1,310 or 0.3% over September 2003 levels. The total dollar value of FNS related benefits issued during October 2003 increased by \$846,934 or 1.1% from \$79,553,874 reported in September 2003 to \$80,400,808 reported in October 2003. The average benefit issuance per person increased by \$.81 or 0.9% from those issued in September 2003. The average benefit issuance per person increased from \$88.34 in September 2003 to \$89.15 in October 2003.

All data in the PAMS report is limited to the information available at the time it was constructed. It does not account for backdated or retroactive eligibility or any adjustments made subsequent to its creation.

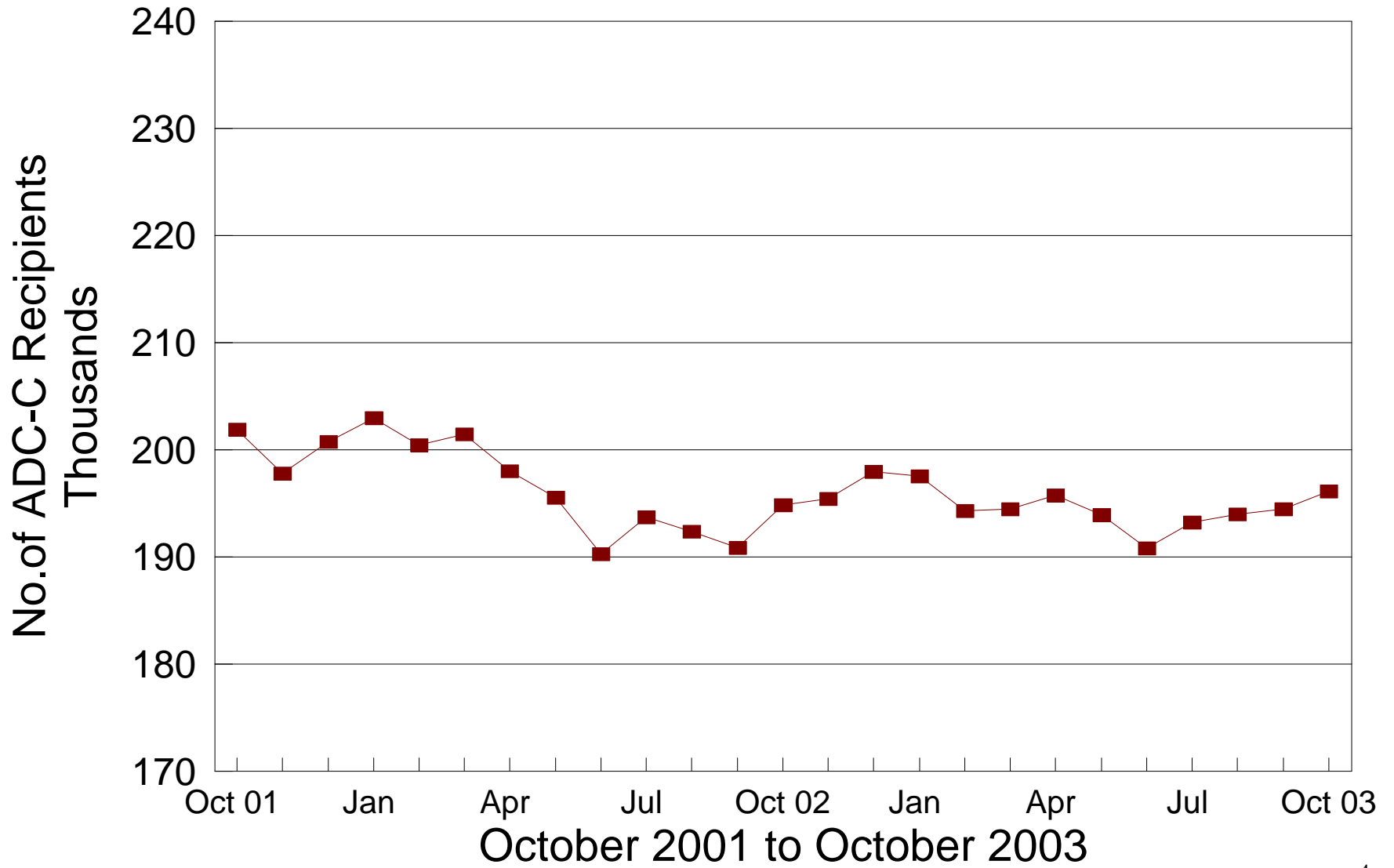
STATEWIDE SUMMARY OF PUBLIC ASSISTANCE PROGRAMS FOR OCTOBER 2003					
	October 2003	September 2003	% CHANGE Oct 03 / Sep 03	October 2002	% CHANGE Oct 03 / Oct 02
OHIO WORKS FIRST (OWF)-COMBINED					
Assistance Groups	87,688	87,006	0.8%	86,210	1.7%
Recipients	196,104	194,482	0.8%	194,847	0.6%
Net Payments	\$26,729,894	\$26,417,841	1.2%	\$26,300,955	1.6%
Average Per Recipient	\$136.30	\$135.84	0.3%	\$134.98	1.0%
OWF-REGULAR, OWF-INCAPACITATED,& OWF REGULAR VENDOR PAYMENTS					
Assistance Groups	83,852	83,155	0.8%	82,630	1.5%
Recipients	180,465	178,759	1.0%	180,031	0.2%
Net Payments	\$25,199,378	\$24,897,155	1.2%	\$24,908,150	1.2%
Average Per Recipient	\$139.64	\$139.28	0.3%	\$138.35	0.9%
OWF-UNEMPLOYED AND OWF-UNEMPLOYED VENDOR PAYMENTS					
Assistance Groups	3,836	3,851	-0.4%	3,580	7.2%
Recipients	15,639	15,723	-0.5%	14,816	5.6%
Net Payments	\$1,530,516	\$1,520,686	0.6%	\$1,392,805	9.9%
Average Per Recipient	\$97.87	\$96.72	1.2%	\$94.01	4.1%
TITLE IV-E FOSTER CARE					
Assistance Groups/Recipients	25,894	25,073	3.3%	24,284	6.6%
Gross Payments	\$13,097,679	\$13,071,839	0.2%	\$12,299,864	6.5%
Average Per Recipient	\$505.82	\$521.35	-3.0%	\$506.50	-0.1%
DISABILITY ASSISTANCE					
Assistance Groups	13,110	13,250	-1.1%	14,583	-10.1%
Recipients	13,250	13,405	-1.2%	15,012	-11.7%
Net Payments	\$1,621,874	\$1,598,862	1.4%	\$1,953,311	-17.0%
Medical Assistance	\$8,568,349	\$7,271,805	17.8%	\$8,285,521	3.4%
FNS BENEFITS					
Assistance Groups	401,120	399,810	0.3%	351,621	14.1%
Persons	901,828	900,572	0.1%	782,349	15.3%
Total Coupons Issued	\$80,400,808	\$79,553,874	1.1%	\$67,169,736	19.7%
Average Per Recipient	\$89.15	\$88.34	0.9%	\$85.86	3.8%

No. of OWF-Combined Assistance Groups

During the Last 25 Months

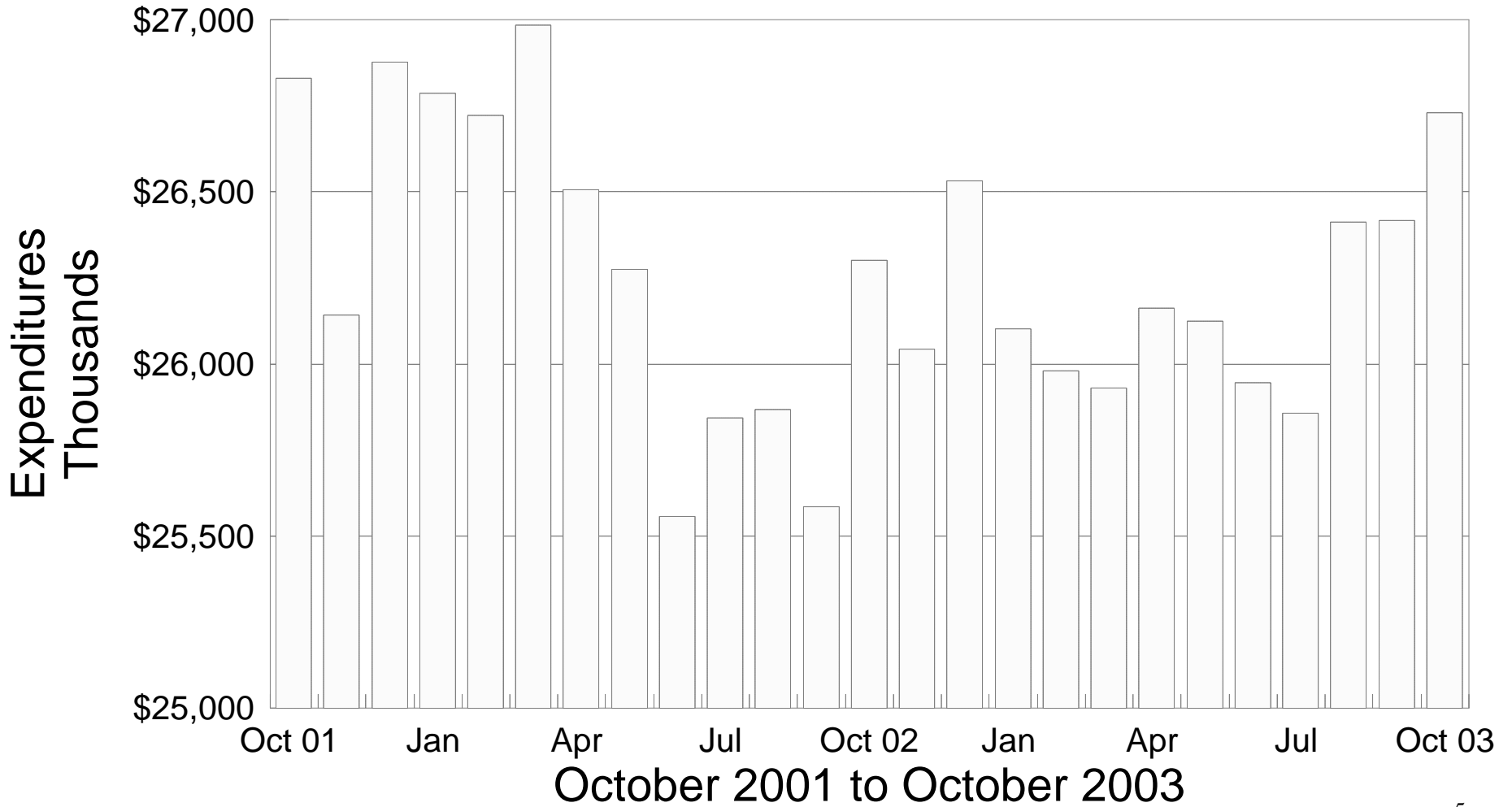


Number of OWF-Combined Recipients During the Last 25 Months



OWF-Combined Net Expenditures

During the Last 25 Months



**TABLE 1
OWF COMBINED
OCTOBER 2003**

OHIO COUNTY	ASSISTANCE GROUP	RECIPIENTS	ADULTS	CHILDREN	ACTUAL EXPENDITURES		
					GROSS AMOUNT	CANCELLED AMOUNT	NET AMOUNT
STATEWIDE	87,688	196,104	51,492	144,612	\$27,520,881.29	\$790,987.40	\$26,729,893.89
ADAMS	141	234	9	225	\$39,218.00	\$1,993.00	\$37,225.00
ALLEN	456	835	89	746	\$139,592.00	\$5,409.00	\$134,183.00
ASHLAND	89	188	46	142	\$27,600.00	\$305.00	\$27,295.00
ASHTABULA	713	1,603	425	1,178	\$217,528.00	\$5,920.00	\$211,608.00
ATHENS	602	1,410	469	941	\$187,827.00	\$4,891.00	\$182,936.00
AUGLAIZE	54	76	2	74	\$14,231.00	\$1,244.00	\$12,987.00
BELMONT	565	1,253	398	855	\$168,181.00	\$4,261.00	\$163,920.00
BROWN	166	286	32	254	\$44,883.00	\$2,612.00	\$42,271.00
BUTLER	1,566	3,170	675	2,495	\$469,842.00	\$16,505.00	\$453,337.00
CARROLL	96	200	49	151	\$25,047.00	\$734.00	\$24,313.00
CHAMPAIGN	174	369	99	270	\$49,980.00	\$570.00	\$49,410.00
CLARK	1,358	3,037	844	2,193	\$418,296.00	\$10,579.00	\$407,717.00
CLERMONT	558	1,127	243	884	\$167,265.00	\$5,795.00	\$161,470.00
CLINTON	127	218	40	178	\$36,600.00	\$528.00	\$36,072.00
COLUMBIANA	526	1,070	225	845	\$154,760.00	\$3,155.00	\$151,605.00
COSHOCTON	229	482	144	338	\$67,352.31	\$1,081.00	\$66,271.31
CRAWFORD	246	558	166	392	\$78,394.00	\$3,687.00	\$74,707.00
CUYAHOGA	14,736	31,590	7,831	23,759	\$4,664,091.16	\$144,388.00	\$4,519,703.16
DARKE	143	335	93	242	\$46,732.00	\$1,124.00	\$45,608.00
DEFIANCE	122	269	66	203	\$36,065.00	\$1,530.00	\$34,535.00
DELAWARE	294	672	208	464	\$89,933.45	\$2,062.00	\$87,871.45
ERIE	212	348	27	321	\$60,177.00	\$2,186.00	\$57,991.00
FAIRFIELD	530	1,219	394	825	\$163,801.00	\$5,607.00	\$158,194.00
FAYETTE	157	316	71	245	\$47,293.00	\$2,242.00	\$45,051.00
FRANKLIN	11,828	27,432	7,005	20,427	\$3,748,173.73	\$122,899.00	\$3,625,274.73
FULTON	79	159	32	127	\$22,031.00	\$0.00	\$22,031.00
GALLIA	480	1,173	412	761	\$152,755.00	\$2,107.00	\$150,648.00
GEAUGA	88	169	37	132	\$24,976.00	\$0.00	\$24,976.00
GREENE	600	1,290	363	927	\$184,532.00	\$4,129.00	\$180,403.00
GUERNSEY	216	418	90	328	\$62,741.00	\$2,501.00	\$60,240.00
HAMILTON	8,577	20,351	5,126	15,225	\$2,818,907.00	\$86,340.00	\$2,732,567.00
HANCOCK	161	326	75	251	\$50,627.00	\$1,855.00	\$48,772.00
HARDIN	51	78	6	72	\$13,912.00	\$803.00	\$13,109.00
HARRISON	97	218	55	163	\$29,225.00	\$305.00	\$28,920.00
HENRY	27	44	9	35	\$7,067.00	\$0.00	\$7,067.00
HIGHLAND	153	312	59	253	\$46,404.00	\$445.00	\$45,959.00
HOCKING	292	658	211	447	\$88,112.00	\$3,200.00	\$84,912.00
HOLMES	43	92	20	72	\$13,190.00	\$1,481.00	\$11,709.00
HURON	140	211	4	207	\$37,992.00	\$2,476.00	\$35,516.00
JACKSON	349	729	188	541	\$106,314.00	\$2,120.00	\$104,194.00
JEFFERSON	882	2,066	668	1,398	\$277,778.00	\$6,279.00	\$271,499.00
KNOX	247	578	183	395	\$74,894.00	\$1,162.00	\$73,732.00
LAKE	541	1,106	263	843	\$159,601.00	\$4,175.00	\$155,426.00
LAWRENCE	778	1,589	360	1,229	\$222,593.40	\$5,392.40	\$217,201.00

Source: GRP342RA Report from Management Information Services. Data includes ADC-Regular, ADC-Incapacitated, ADC-Unemployed, and Vendor Payments.

**TABLE 1
OWF COMBINED
OCTOBER 2003**

OHIO COUNTY	ASSISTANCE GROUP	RECIPIENTS	ADULTS	CHILDREN	ACTUAL EXPENDITURES		
					GROSS AMOUNT	CANCELLED AMOUNT	NET AMOUNT
STATEWIDE	87,688	196,104	51,492	144,612	\$27,520,881.29	\$790,987.40	\$26,729,893.89
LICKING	626	1,409	424	985	\$187,070.00	\$7,524.00	\$179,546.00
LOGAN	184	407	111	296	\$54,160.00	\$1,435.00	\$52,725.00
LORAIN	2,016	4,671	1,160	3,511	\$650,578.00	\$11,470.00	\$639,108.00
LUCAS	6,645	15,622	4,453	11,169	\$2,110,516.00	\$55,630.00	\$2,054,886.00
MADISON	215	506	165	341	\$68,542.00	\$1,952.00	\$66,590.00
MAHONING	2,907	6,741	1,712	5,029	\$938,698.00	\$20,422.00	\$918,276.00
MARION	387	708	95	613	\$111,272.00	\$2,977.00	\$108,295.00
MEDINA	257	575	157	418	\$80,765.00	\$2,998.00	\$77,767.00
MEIGS	202	427	120	307	\$60,301.00	\$1,225.00	\$59,076.00
MERCER	73	190	58	132	\$21,519.00	\$1,162.00	\$20,357.00
MIAMI	314	632	135	497	\$91,204.00	\$3,656.00	\$87,548.00
MONROE	88	225	76	149	\$27,104.00	\$0.00	\$27,104.00
MONTGOMERY	6,064	13,394	3,513	9,881	\$1,869,778.00	\$48,272.00	\$1,821,506.00
MORGAN	78	129	19	110	\$20,777.00	\$1,429.00	\$19,348.00
MORROW	129	255	65	190	\$38,424.00	\$1,345.00	\$37,079.00
MUSKINGUM	818	1,865	535	1,330	\$254,720.00	\$6,840.00	\$247,880.00
NOBLE	37	82	28	54	\$10,205.00	\$305.00	\$9,900.00
OTTAWA	122	282	87	195	\$35,968.00	\$751.00	\$35,217.00
PAULDING	107	265	91	174	\$35,898.00	\$1,016.00	\$34,882.00
PERRY	255	648	172	476	\$79,665.00	\$2,218.00	\$77,447.00
PICKAWAY	380	918	307	611	\$122,694.00	\$3,734.00	\$118,960.00
PIKE	351	806	208	598	\$111,704.00	\$1,558.00	\$110,146.00
PORTAGE	523	1,113	307	806	\$165,374.00	\$2,867.00	\$162,507.00
PREBLE	152	313	84	229	\$45,604.00	\$882.00	\$44,722.00
PUTNAM	80	194	62	132	\$24,857.00	\$1,405.00	\$23,452.00
RICHLAND	680	1,382	292	1,090	\$204,872.00	\$4,946.00	\$199,926.00
ROSS	623	1,406	384	1,022	\$193,272.24	\$5,784.00	\$187,488.24
SANDUSKY	208	385	61	324	\$60,105.00	\$1,982.00	\$58,123.00
SCIOTO	999	1,956	383	1,573	\$289,363.00	\$6,959.00	\$282,404.00
SENECA	122	223	23	200	\$33,097.00	\$528.00	\$32,569.00
SHELBY	130	251	46	205	\$38,556.00	\$2,155.00	\$36,401.00
STARK	3,240	7,654	2,359	5,295	\$1,050,613.00	\$29,053.00	\$1,021,560.00
SUMMIT	5,510	12,609	3,793	8,816	\$1,752,823.00	\$47,468.00	\$1,705,355.00
TRUMBULL	1,558	3,331	817	2,514	\$482,660.00	\$14,188.00	\$468,472.00
TUSCARAWAS	440	1,064	343	721	\$137,652.00	\$3,068.00	\$134,584.00
UNION	192	484	169	315	\$62,412.00	\$1,593.00	\$60,819.00
VAN WERT	41	66	10	56	\$10,767.00	\$223.00	\$10,544.00
VINTON	184	423	124	299	\$56,071.00	\$2,076.00	\$53,995.00
WARREN	229	414	90	324	\$63,417.00	\$1,584.00	\$61,833.00
WASHINGTON	142	224	11	213	\$38,543.00	\$1,542.00	\$37,001.00
WAYNE	441	990	341	649	\$135,935.00	\$2,932.00	\$133,003.00
WILLIAMS	175	433	148	285	\$54,995.00	\$3,299.00	\$51,696.00
WOOD	244	498	125	373	\$72,272.00	\$2,457.00	\$69,815.00
WYANDOT	31	70	18	52	\$9,545.00	\$0.00	\$9,545.00

Source: GRP342RA Report from Management Information Services. Data includes ADC-Regular, ADC-Incapacitated, and Vendor Payments.

**TABLE 1
OWF REGULAR
OCTOBER 2003**

OHIO COUNTY	ASSISTANCE GROUP	RECIPIENTS	ADULTS	CHILDREN	ACTUAL EXPENDITURES		
					GROSS AMOUNT	CANCELLED AMOUNT	NET AMOUNT
STATEWIDE	83,852	180,465	44,282	136,183	\$25,950,698.05	\$751,320.40	\$25,199,377.65
ADAMS	141	234	9	225	\$39,218.00	\$1,993.00	\$37,225.00
ALLEN	453	825	87	738	\$138,683.00	\$5,409.00	\$133,274.00
ASHLAND	84	167	36	131	\$25,310.00	\$305.00	\$25,005.00
ASHTABULA	667	1,419	336	1,083	\$197,958.00	\$5,124.00	\$192,834.00
ATHENS	512	1,078	312	766	\$154,126.00	\$4,891.00	\$149,235.00
AUGLAIZE	54	76	2	74	\$14,231.00	\$1,244.00	\$12,987.00
BELMONT	504	1,004	277	727	\$146,910.00	\$3,904.00	\$143,006.00
BROWN	164	280	28	252	\$44,137.00	\$2,612.00	\$41,525.00
BUTLER	1,554	3,140	666	2,474	\$466,202.00	\$16,505.00	\$449,697.00
CARROLL	87	159	31	128	\$22,719.00	\$734.00	\$21,985.00
CHAMPAIGN	165	334	81	253	\$45,937.00	\$570.00	\$45,367.00
CLARK	1,287	2,734	712	2,022	\$389,034.00	\$10,579.00	\$378,455.00
CLERMONT	541	1,061	214	847	\$160,501.00	\$5,795.00	\$154,706.00
CLINTON	127	218	40	178	\$36,600.00	\$528.00	\$36,072.00
COLUMBIANA	514	1,023	202	821	\$149,949.00	\$2,782.00	\$147,167.00
COSHOCTON	213	424	115	309	\$61,097.31	\$620.00	\$60,477.31
CRAWFORD	225	469	124	345	\$70,450.00	\$3,687.00	\$66,763.00
CUYAHOGA	14,301	29,739	6,991	22,748	\$4,478,994.16	\$137,605.00	\$4,341,389.16
DARKE	135	301	79	222	\$43,168.00	\$1,124.00	\$42,044.00
DEFIANCE	117	249	56	193	\$34,087.00	\$1,530.00	\$32,557.00
DELAWARE	270	573	164	409	\$80,727.45	\$2,062.00	\$78,665.45
ERIE	211	345	25	320	\$59,853.00	\$2,186.00	\$57,667.00
FAIRFIELD	474	994	282	712	\$140,671.00	\$5,007.00	\$135,664.00
FAYETTE	151	293	59	234	\$44,930.00	\$2,242.00	\$42,688.00
FRANKLIN	11,434	25,623	6,281	19,342	\$3,575,009.73	\$117,508.00	\$3,457,501.73
FULTON	78	157	31	126	\$21,811.00	\$0.00	\$21,811.00
GALLIA	392	834	241	593	\$119,014.00	\$2,107.00	\$116,907.00
GEAUGA	85	160	31	129	\$23,857.00	\$0.00	\$23,857.00
GREENE	568	1,167	302	865	\$170,761.00	\$4,129.00	\$166,632.00
GUERNSEY	211	397	81	316	\$60,025.00	\$2,501.00	\$57,524.00
HAMILTON	8,422	19,692	4,828	14,864	\$2,750,259.00	\$84,656.00	\$2,665,603.00
HANCOCK	156	308	65	243	\$48,201.00	\$1,575.00	\$46,626.00
HARDIN	51	78	6	72	\$13,912.00	\$803.00	\$13,109.00
HARRISON	94	205	49	156	\$27,647.00	\$305.00	\$27,342.00
HENRY	27	44	9	35	\$7,067.00	\$0.00	\$7,067.00
HIGHLAND	148	293	50	243	\$44,443.00	\$445.00	\$43,998.00
HOCKING	259	523	145	378	\$74,529.00	\$2,661.00	\$71,868.00
HOLMES	41	83	16	67	\$12,604.00	\$1,481.00	\$11,123.00
HURON	135	202	4	198	\$36,606.00	\$2,476.00	\$34,130.00
JACKSON	326	633	142	491	\$95,659.00	\$2,120.00	\$93,539.00
JEFFERSON	796	1,707	497	1,210	\$244,533.00	\$5,758.00	\$238,775.00
KNOX	224	484	137	347	\$66,869.00	\$678.00	\$66,191.00
LAKE	511	1,026	238	788	\$149,353.00	\$3,647.00	\$145,706.00
LAWRENCE	729	1,412	265	1,147	\$205,901.40	\$5,392.40	\$200,509.00

Source: GRP342RA Report from Management Information Services. Data includes ADC-Regular, ADC-Incapacitated, and Vendor Payments.

**TABLE 1
OWF REGULAR
OCTOBER 2003**

OHIO COUNTY	ASSISTANCE GROUP	RECIPIENTS	ADULTS	CHILDREN	ACTUAL EXPENDITURES		
					GROSS AMOUNT	CANCELLED AMOUNT	NET AMOUNT
STATEWIDE	83,852	180,465	44,282	136,183	\$25,950,698.05	\$751,320.40	\$25,199,377.65
LICKING	579	1,221	337	884	\$167,273.00	\$5,851.00	\$161,422.00
LOGAN	173	361	89	272	\$49,853.00	\$1,435.00	\$48,418.00
LORAIN	1,936	4,315	1,002	3,313	\$609,924.00	\$11,196.00	\$598,728.00
LUCAS	6,278	14,144	3,762	10,382	\$1,963,409.00	\$53,146.00	\$1,910,263.00
MADISON	192	417	124	293	\$58,543.00	\$1,952.00	\$56,591.00
MAHONING	2,791	6,265	1,490	4,775	\$890,880.00	\$19,405.00	\$871,475.00
MARION	382	696	88	608	\$109,492.00	\$2,977.00	\$106,515.00
MEDINA	243	525	130	395	\$76,198.00	\$2,998.00	\$73,200.00
MEIGS	192	387	101	286	\$55,596.00	\$1,225.00	\$54,371.00
MERCER	63	139	38	101	\$18,036.00	\$181.00	\$17,855.00
MIAMI	305	587	116	471	\$87,443.00	\$3,414.00	\$84,029.00
MONROE	75	168	49	119	\$22,058.00	\$0.00	\$22,058.00
MONTGOMERY	6,035	13,287	3,463	9,824	\$1,859,566.00	\$48,272.00	\$1,811,294.00
MORGAN	76	126	16	110	\$20,333.00	\$1,429.00	\$18,904.00
MORROW	124	233	55	178	\$36,132.00	\$1,345.00	\$34,787.00
MUSKINGUM	751	1,592	402	1,190	\$226,063.00	\$6,840.00	\$219,223.00
NOBLE	32	65	18	47	\$8,516.00	\$305.00	\$8,211.00
OTTAWA	107	228	63	165	\$30,605.00	\$528.00	\$30,077.00
PAULDING	95	218	70	148	\$31,297.00	\$1,016.00	\$30,281.00
PERRY	230	535	122	413	\$69,527.00	\$1,930.00	\$67,597.00
PICKAWAY	335	729	218	511	\$102,862.00	\$2,635.00	\$100,227.00
PIKE	329	720	165	555	\$103,546.00	\$1,558.00	\$101,988.00
PORTAGE	503	1,025	267	758	\$155,130.00	\$2,867.00	\$152,263.00
PREBLE	148	297	76	221	\$44,336.00	\$882.00	\$43,454.00
PUTNAM	69	153	45	108	\$20,528.00	\$1,405.00	\$19,123.00
RICHLAND	673	1,353	278	1,075	\$201,295.00	\$4,946.00	\$196,349.00
ROSS	576	1,212	297	915	\$176,103.00	\$4,891.00	\$171,212.00
SANDUSKY	171	313	55	258	\$49,756.00	\$833.00	\$48,923.00
SCIOTO	943	1,737	271	1,466	\$266,398.00	\$6,439.00	\$259,959.00
SENECA	121	220	23	197	\$33,031.00	\$528.00	\$32,503.00
SHELBY	127	242	42	200	\$37,049.00	\$1,740.00	\$35,309.00
STARK	2,960	6,522	1,807	4,715	\$941,709.00	\$27,311.00	\$914,398.00
SUMMIT	5,176	11,275	3,141	8,134	\$1,612,078.00	\$41,319.00	\$1,570,759.00
TRUMBULL	1,490	3,049	685	2,364	\$453,382.00	\$13,430.00	\$439,952.00
TUSCARAWAS	388	858	243	615	\$116,817.00	\$3,068.00	\$113,749.00
UNION	160	350	105	245	\$48,386.00	\$1,220.00	\$47,166.00
VAN WERT	40	63	8	55	\$10,419.00	\$223.00	\$10,196.00
VINTON	166	353	91	262	\$50,428.00	\$2,076.00	\$48,352.00
WARREN	226	403	84	319	\$61,703.00	\$1,584.00	\$60,119.00
WASHINGTON	142	224	11	213	\$38,543.00	\$1,542.00	\$37,001.00
WAYNE	399	833	262	571	\$121,385.00	\$2,342.00	\$119,043.00
WILLIAMS	157	358	112	246	\$46,797.00	\$3,299.00	\$43,498.00
WOOD	230	448	105	343	\$66,772.00	\$2,457.00	\$64,315.00
WYANDOT	26	52	10	42	\$7,947.00	\$0.00	\$7,947.00

Source: GRP342RA Report from Management Information Services. Data includes ADC-Regular, ADC-Incapacitated, and Vendor Payments.

**TABLE 1
OWF UNEMPLOYED
OCTOBER 2003**

OHIO COUNTY	ASSISTANCE GROUP	RECIPIENTS	ADULTS	CHILDREN	ACTUAL EXPENDITURES		
					GROSS AMOUNT	CANCELLED AMOUNT	NET AMOUNT
STATEWIDE	3,836	15,639	7,210	8,429	\$1,570,183.24	\$39,667.00	\$1,530,516.24
ADAMS	0	0	0	0	\$0.00	\$0.00	\$0.00
ALLEN	3	10	2	8	\$909.00	\$0.00	\$909.00
ASHLAND	5	21	10	11	\$2,290.00	\$0.00	\$2,290.00
ASHTABULA	46	184	89	95	\$19,570.00	\$796.00	\$18,774.00
ATHENS	90	332	157	175	\$33,701.00	\$0.00	\$33,701.00
AUGLAIZE	0	0	0	0	\$0.00	\$0.00	\$0.00
BELMONT	61	249	121	128	\$21,271.00	\$357.00	\$20,914.00
BROWN	2	6	4	2	\$746.00	\$0.00	\$746.00
BUTLER	12	30	9	21	\$3,640.00	\$0.00	\$3,640.00
CARROLL	9	41	18	23	\$2,328.00	\$0.00	\$2,328.00
CHAMPAIGN	9	35	18	17	\$4,043.00	\$0.00	\$4,043.00
CLARK	71	303	132	171	\$29,262.00	\$0.00	\$29,262.00
CLERMONT	17	66	29	37	\$6,764.00	\$0.00	\$6,764.00
CLINTON	0	0	0	0	\$0.00	\$0.00	\$0.00
COLUMBIANA	12	47	23	24	\$4,811.00	\$373.00	\$4,438.00
COSHOCTON	16	58	29	29	\$6,255.00	\$461.00	\$5,794.00
CRAWFORD	21	89	42	47	\$7,944.00	\$0.00	\$7,944.00
CUYAHOGA	435	1,851	840	1,011	\$185,097.00	\$6,783.00	\$178,314.00
DARKE	8	34	14	20	\$3,564.00	\$0.00	\$3,564.00
DEFIANCE	5	20	10	10	\$1,978.00	\$0.00	\$1,978.00
DELAWARE	24	99	44	55	\$9,206.00	\$0.00	\$9,206.00
ERIE	1	3	2	1	\$324.00	\$0.00	\$324.00
FAIRFIELD	56	225	112	113	\$23,130.00	\$600.00	\$22,530.00
FAYETTE	6	23	12	11	\$2,363.00	\$0.00	\$2,363.00
FRANKLIN	394	1,809	724	1,085	\$173,164.00	\$5,391.00	\$167,773.00
FULTON	1	2	1	1	\$220.00	\$0.00	\$220.00
GALLIA	88	339	171	168	\$33,741.00	\$0.00	\$33,741.00
GEAUGA	3	9	6	3	\$1,119.00	\$0.00	\$1,119.00
GREENE	32	123	61	62	\$13,771.00	\$0.00	\$13,771.00
GUERNSEY	5	21	9	12	\$2,716.00	\$0.00	\$2,716.00
HAMILTON	155	659	298	361	\$68,648.00	\$1,684.00	\$66,964.00
HANCOCK	5	18	10	8	\$2,426.00	\$280.00	\$2,146.00
HARDIN	0	0	0	0	\$0.00	\$0.00	\$0.00
HARRISON	3	13	6	7	\$1,578.00	\$0.00	\$1,578.00
HENRY	0	0	0	0	\$0.00	\$0.00	\$0.00
HIGHLAND	5	19	9	10	\$1,961.00	\$0.00	\$1,961.00
HOCKING	33	135	66	69	\$13,583.00	\$539.00	\$13,044.00
HOLMES	2	9	4	5	\$586.00	\$0.00	\$586.00
HURON	5	9	0	9	\$1,386.00	\$0.00	\$1,386.00
JACKSON	23	96	46	50	\$10,655.00	\$0.00	\$10,655.00
JEFFERSON	86	359	171	188	\$33,245.00	\$521.00	\$32,724.00
KNOX	23	94	46	48	\$8,025.00	\$484.00	\$7,541.00
LAKE	30	80	25	55	\$10,248.00	\$528.00	\$9,720.00
LAWRENCE	49	177	95	82	\$16,692.00	\$0.00	\$16,692.00

**TABLE 1
OWF UNEMPLOYED
OCTOBER 2003**

OHIO COUNTY	ASSISTANCE GROUP	RECIPIENTS	ADULTS	CHILDREN	ACTUAL EXPENDITURES		
					GROSS AMOUNT	CANCELLED AMOUNT	NET AMOUNT
STATEWIDE	3,836	15,639	7,210	8,429	\$1,570,183.24	\$39,667.00	\$1,530,516.24
LICKING	47	188	87	101	\$19,797.00	\$1,673.00	\$18,124.00
LOGAN	11	46	22	24	\$4,307.00	\$0.00	\$4,307.00
LORAIN	80	356	158	198	\$40,654.00	\$274.00	\$40,380.00
LUCAS	367	1,478	691	787	\$147,107.00	\$2,484.00	\$144,623.00
MADISON	23	89	41	48	\$9,999.00	\$0.00	\$9,999.00
MAHONING	116	476	222	254	\$47,818.00	\$1,017.00	\$46,801.00
MARION	5	12	7	5	\$1,780.00	\$0.00	\$1,780.00
MEDINA	14	50	27	23	\$4,567.00	\$0.00	\$4,567.00
MEIGS	10	40	19	21	\$4,705.00	\$0.00	\$4,705.00
MERCER	10	51	20	31	\$3,483.00	\$981.00	\$2,502.00
MIAMI	9	45	19	26	\$3,761.00	\$242.00	\$3,519.00
MONROE	13	57	27	30	\$5,046.00	\$0.00	\$5,046.00
MONTGOMERY	29	107	50	57	\$10,212.00	\$0.00	\$10,212.00
MORGAN	2	3	3	0	\$444.00	\$0.00	\$444.00
MORROW	5	22	10	12	\$2,292.00	\$0.00	\$2,292.00
MUSKINGUM	67	273	133	140	\$28,657.00	\$0.00	\$28,657.00
NOBLE	5	17	10	7	\$1,689.00	\$0.00	\$1,689.00
OTTAWA	15	54	24	30	\$5,363.00	\$223.00	\$5,140.00
PAULDING	12	47	21	26	\$4,601.00	\$0.00	\$4,601.00
PERRY	25	113	50	63	\$10,138.00	\$288.00	\$9,850.00
PICKAWAY	45	189	89	100	\$19,832.00	\$1,099.00	\$18,733.00
PIKE	22	86	43	43	\$8,158.00	\$0.00	\$8,158.00
PORTAGE	20	88	40	48	\$10,244.00	\$0.00	\$10,244.00
PREBLE	4	16	8	8	\$1,268.00	\$0.00	\$1,268.00
PUTNAM	11	41	17	24	\$4,329.00	\$0.00	\$4,329.00
RICHLAND	7	29	14	15	\$3,577.00	\$0.00	\$3,577.00
ROSS	47	194	87	107	\$17,169.24	\$893.00	\$16,276.24
SANDUSKY	37	72	6	66	\$10,349.00	\$1,149.00	\$9,200.00
SCIOTO	56	219	112	107	\$22,965.00	\$520.00	\$22,445.00
SENECA	1	3	0	3	\$66.00	\$0.00	\$66.00
SHELBY	3	9	4	5	\$1,507.00	\$415.00	\$1,092.00
STARK	280	1,132	552	580	\$108,904.00	\$1,742.00	\$107,162.00
SUMMIT	334	1,334	652	682	\$140,745.00	\$6,149.00	\$134,596.00
TRUMBULL	68	282	132	150	\$29,278.00	\$758.00	\$28,520.00
TUSCARAWAS	52	206	100	106	\$20,835.00	\$0.00	\$20,835.00
UNION	32	134	64	70	\$14,026.00	\$373.00	\$13,653.00
VAN WERT	1	3	2	1	\$348.00	\$0.00	\$348.00
VINTON	18	70	33	37	\$5,643.00	\$0.00	\$5,643.00
WARREN	3	11	6	5	\$1,714.00	\$0.00	\$1,714.00
WASHINGTON	0	0	0	0	\$0.00	\$0.00	\$0.00
WAYNE	42	157	79	78	\$14,550.00	\$590.00	\$13,960.00
WILLIAMS	18	75	36	39	\$8,198.00	\$0.00	\$8,198.00
WOOD	14	50	20	30	\$5,500.00	\$0.00	\$5,500.00
WYANDOT	5	18	8	10	\$1,598.00	\$0.00	\$1,598.00

Source: GRP342RA Report from Management Information Services. Data includes ADC-Unemployed and Vendor Payments.

**TABLE 2
TITLE IV-E FOSTER CARE
OCTOBER 2003**

OHIO COUNTY	FOSTER CARE						ADOPTION ASSISTANCE		TOTAL FOSTER CARE AND ADOPTION ASSISTANCE	
	FOSTER FAMILY HOMES		CHILD CARE INSTITUTIONS		HOMES & INSTITUTIONS		CHILDREN	GROSS AMOUNT	CHILDREN	GROSS AMOUNT
	CHILDREN	GROSS AMOUNT	CHILDREN	GROSS AMOUNT	CHILDREN	GROSS AMOUNT				
STATEWIDE	3,067	\$1,213,775.54	4,257	\$4,939,997.85	7,324	\$6,153,773.39	18,570	\$6,943,905.84	25,894	\$13,097,679.23
ADAMS	18	\$1,101.82	12	\$15,135.26	30	\$16,237.08	37	\$10,365.12	67	\$26,602.20
ALLEN	63	\$23,025.55	34	\$42,963.38	97	\$65,988.93	131	\$36,752.71	228	\$102,741.64
ASHLAND	0	\$0.00	0	\$0.00	0	\$0.00	10	\$2,475.00	10	\$2,475.00
ASHTABULA	0	\$0.00	0	\$0.00	0	\$0.00	154	\$53,451.64	154	\$53,451.64
ATHENS	38	\$11,918.77	47	\$43,411.17	85	\$55,329.94	102	\$34,900.02	187	\$90,229.96
AUGLAIZE	10	\$3,700.27	5	\$5,047.51	15	\$8,747.78	36	\$13,706.91	51	\$22,454.69
BELMONT	3	\$1,274.25	24	\$28,197.00	27	\$29,471.25	111	\$40,921.54	138	\$70,392.79
BROWN	15	\$8,457.66	2	\$3,618.89	17	\$12,076.55	35	\$9,554.16	52	\$21,630.71
BUTLER	101	\$38,353.66	154	\$172,760.59	255	\$211,114.25	501	\$148,720.89	756	\$359,835.14
CARROLL	7	\$4,864.04	0	\$0.00	7	\$4,864.04	6	\$1,500.00	13	\$6,364.04
CHAMPAIGN	1	\$560.05	0	\$0.00	1	\$560.05	13	\$4,132.42	14	\$4,692.47
CLARK	1	\$1,306.02	75	\$42,974.82	76	\$44,280.84	288	\$90,706.55	364	\$134,987.39
CLERMONT	71	\$718.25	98	\$168,278.65	169	\$168,996.90	192	\$51,886.66	361	\$220,883.56
CLINTON	28	\$13,283.67	1	\$3,991.97	29	\$17,275.64	47	\$15,912.14	76	\$33,187.78
COLUMBIANA	30	\$6,200.66	37	\$104,149.60	67	\$110,350.26	63	\$15,750.00	130	\$126,100.26
COSHOCTON	20	\$5,852.14	0	\$0.00	20	\$5,852.14	43	\$13,743.31	63	\$19,595.45
CRAWFORD	0	\$0.00	4	\$837.00	4	\$837.00	38	\$9,936.03	42	\$10,773.03
CUYAHOGA	651	\$285,798.92	1,420	\$2,120,236.70	2,071	\$2,406,035.62	4,417	\$2,126,435.88	6,488	\$4,532,471.50
DARKE	9	\$2,510.41	4	\$6,679.42	13	\$9,189.83	28	\$8,523.67	41	\$17,713.50
DEFIANCE	8	\$3,444.84	2	\$2,016.98	10	\$5,461.82	34	\$10,353.13	44	\$15,814.95
DELAWARE	20	\$6,291.70	11	\$14,664.16	31	\$20,955.86	57	\$17,323.81	88	\$38,279.67
ERIE	26	\$14,892.04	36	\$56,350.92	62	\$71,242.96	86	\$25,515.00	148	\$96,757.96
FAIRFIELD	0	\$0.00	0	\$0.00	0	\$0.00	128	\$33,458.93	128	\$33,458.93
FAYETTE	7	\$2,917.92	0	\$0.00	7	\$2,917.92	15	\$3,750.00	22	\$6,667.92
FRANKLIN	0	\$0.00	1,276	\$821,550.08	1,276	\$821,550.08	2,354	\$806,993.62	3,630	\$1,628,543.70
FULTON	8	\$962.21	15	\$20,249.76	23	\$21,211.97	16	\$4,588.28	39	\$25,800.25
GALLIA	7	\$931.87	7	\$6,857.93	14	\$7,789.80	43	\$11,715.00	57	\$19,504.80
GEAUGA	11	\$1,085.60	0	\$0.00	11	\$1,085.60	105	\$35,024.29	116	\$36,109.89
GREENE	0	\$0.00	21	\$10,268.98	21	\$10,268.98	83	\$28,135.57	104	\$38,404.55
GUERNSEY	15	\$7,477.25	15	\$13,904.19	30	\$21,381.44	74	\$22,765.74	104	\$44,147.18
HAMILTON	0	\$0.00	9	\$5,111.56	9	\$5,111.56	1,462	\$592,978.77	1,471	\$598,090.33
HANCOCK	18	\$3,172.42	12	\$15,178.14	30	\$18,350.56	42	\$12,775.48	72	\$31,126.04
HARDIN	23	\$21,356.90	2	\$3,898.16	25	\$25,255.06	28	\$7,552.06	53	\$32,807.12
HARRISON	0	\$0.00	0	\$0.00	0	\$0.00	28	\$9,160.00	28	\$9,160.00
HENRY	0	\$0.00	10	\$9,901.67	10	\$9,901.67	24	\$7,340.12	34	\$17,241.79
HIGHLAND	12	\$8,039.58	7	\$7,738.30	19	\$15,777.88	14	\$5,014.81	33	\$20,792.69
HOCKING	24	\$8,753.24	7	\$7,729.56	31	\$16,482.80	44	\$13,829.05	75	\$30,311.85
HOLMES	3	\$1,367.79	0	\$0.00	3	\$1,367.79	28	\$11,612.19	31	\$12,979.98
HURON	24	\$13,951.44	5	\$20,155.10	29	\$34,106.54	26	\$8,671.86	55	\$42,778.40
JACKSON	0	\$0.00	22	\$17,214.53	22	\$17,214.53	19	\$5,000.00	41	\$22,214.53
JEFFERSON	45	\$27,028.19	21	\$38,221.54	66	\$65,249.73	54	\$20,031.19	120	\$85,280.92
KNOX	11	\$7,012.94	0	\$0.00	11	\$7,012.94	34	\$9,573.63	45	\$16,586.57
LAKE	27	\$14,690.94	24	\$67,949.63	51	\$82,640.57	145	\$38,554.85	196	\$121,195.42
LAWRENCE	8	\$2,170.18	0	\$0.00	8	\$2,170.18	28	\$7,735.37	36	\$9,905.55

SOURCE: GBS003RB Report from Management Information Services. Federal funds only.

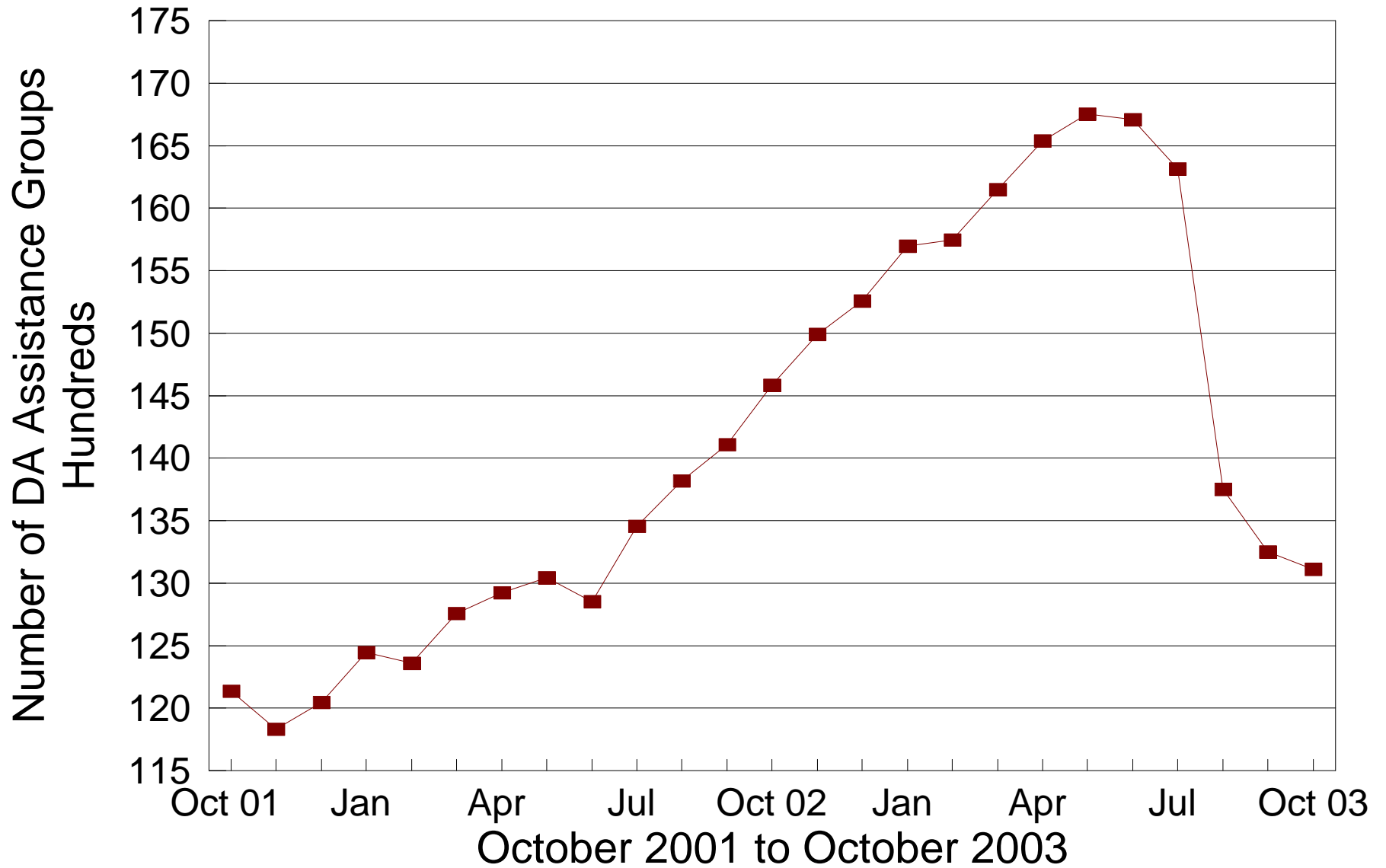
**TABLE 2
TITLE IV-E FOSTER CARE
OCTOBER 2003**

OHIO COUNTY	FOSTER CARE						ADOPTION ASSISTANCE		TOTAL FOSTER CARE AND ADOPTION ASSISTANCE	
	FOSTER FAMILY HOMES		CHILD CARE INSTITUTIONS		HOMES & INSTITUTIONS		CHILDREN	GROSS AMOUNT	CHILDREN	GROSS AMOUNT
	CHILDREN	GROSS AMOUNT	CHILDREN	GROSS AMOUNT	CHILDREN	GROSS AMOUNT				
STATEWIDE	3,067	\$1,213,775.54	4,257	\$4,939,997.85	7,324	\$6,153,773.39	18,570	\$6,943,905.84	25,894	\$13,097,679.23
LICKING	72	\$26,039.08	0	\$0.00	72	\$26,039.08	291	\$92,703.70	363	\$118,742.78
LOGAN	17	\$6,127.66	6	\$5,542.70	23	\$11,670.36	34	\$10,254.84	57	\$21,925.20
LORAIN	0	\$0.00	0	\$0.00	0	\$0.00	390	\$124,441.84	390	\$124,441.84
LUCAS	400	\$197,050.71	0	\$0.00	400	\$197,050.71	1,572	\$581,052.26	1,972	\$778,102.97
MADISON	0	\$0.00	12	\$13,510.97	12	\$13,510.97	27	\$9,388.55	39	\$22,899.52
MAHONING	91	\$44,221.48	0	\$0.00	91	\$44,221.48	236	\$68,708.39	327	\$112,929.87
MARION	18	\$11,411.80	0	\$0.00	18	\$11,411.80	72	\$23,236.44	90	\$34,648.24
MEDINA	0	\$0.00	0	\$0.00	0	\$0.00	78	\$26,370.61	78	\$26,370.61
MEIGS	5	\$1,432.49	9	\$6,679.14	14	\$8,111.63	3	\$750.00	17	\$8,861.63
MERCER	11	\$82.36	2	\$2,793.84	13	\$2,876.20	31	\$7,750.00	44	\$10,626.20
MIAMI	24	\$12,587.59	28	\$69,575.20	52	\$82,162.79	114	\$41,054.55	166	\$123,217.34
MONROE	2	\$984.80	0	\$0.00	2	\$984.80	8	\$2,588.28	10	\$3,573.08
MONTGOMERY	340	\$113,700.58	378	\$517,990.86	718	\$631,691.44	1,102	\$487,734.49	1,820	\$1,119,425.93
MORGAN	0	\$0.00	0	\$0.00	0	\$0.00	13	\$3,234.00	13	\$3,234.00
MORROW	5	\$5,961.82	0	\$0.00	5	\$5,961.82	43	\$11,741.25	48	\$17,703.07
MUSKINGUM	0	\$0.00	0	\$0.00	0	\$0.00	106	\$31,518.13	106	\$31,518.13
NOBLE	0	\$0.00	0	\$0.00	0	\$0.00	5	\$1,250.00	5	\$1,250.00
OTTAWA	0	\$0.00	1	\$54.40	1	\$54.40	3	\$897.07	4	\$951.47
PAULDING	2	\$429.44	3	\$5,178.66	5	\$5,608.10	21	\$5,808.87	26	\$11,416.97
PERRY	29	\$15,365.54	6	\$10,943.84	35	\$26,309.38	34	\$10,739.64	69	\$37,049.02
PICKAWAY	21	\$1,577.19	0	\$0.00	21	\$1,577.19	12	\$3,441.21	33	\$5,018.40
PIKE	1	\$729.49	19	\$13,178.44	20	\$13,907.93	22	\$5,852.39	42	\$19,760.32
PORTAGE	0	\$0.00	0	\$0.00	0	\$0.00	126	\$55,137.42	126	\$55,137.42
PREBLE	28	\$3,654.34	4	\$4,861.64	32	\$8,515.98	35	\$8,961.66	67	\$17,477.64
PUTNAM	1	\$638.30	2	\$2,830.36	3	\$3,468.66	13	\$3,250.00	16	\$6,718.66
RICHLAND	0	\$0.00	0	\$0.00	0	\$0.00	262	\$84,522.72	262	\$84,522.72
ROSS	16	\$3,435.52	0	\$0.00	16	\$3,435.52	32	\$10,034.88	48	\$13,470.40
SANDUSKY	19	\$120.98	11	\$18,537.79	30	\$18,658.77	55	\$14,455.94	85	\$33,114.71
SCIOTO	38	\$6,949.13	28	\$27,912.35	66	\$34,861.48	43	\$11,476.78	109	\$46,338.26
SENECA	14	\$4,450.38	0	\$0.00	14	\$4,450.38	83	\$22,632.45	97	\$27,082.83
SHELBY	2	\$885.58	5	\$6,952.40	7	\$7,837.98	60	\$19,202.19	67	\$27,040.17
STARK	0	\$0.00	174	\$64,993.64	174	\$64,993.64	917	\$271,129.24	1,091	\$336,122.88
SUMMIT	223	\$84,372.00	0	\$0.00	223	\$84,372.00	801	\$251,463.36	1,024	\$335,835.36
TRUMBULL	108	\$39,365.61	27	\$101,892.46	135	\$141,258.07	263	\$66,945.04	398	\$208,203.11
TUSCARAWAS	42	\$16,310.04	42	\$47,881.94	84	\$64,191.98	112	\$30,030.30	196	\$94,222.28
UNION	12	\$2,363.06	0	\$0.00	12	\$2,363.06	32	\$8,352.98	44	\$10,716.04
VAN WERT	2	\$1,292.18	6	\$21,346.62	8	\$22,638.80	23	\$8,379.68	31	\$31,018.48
VINTON	26	\$12,137.82	11	\$10,584.33	37	\$22,722.15	16	\$4,676.54	53	\$27,398.69
WARREN	28	\$149.92	13	\$12,710.06	41	\$12,859.98	87	\$27,073.99	128	\$39,933.97
WASHINGTON	22	\$7,118.40	0	\$0.00	22	\$7,118.40	27	\$7,565.97	49	\$14,684.37
WAYNE	74	\$34,782.61	27	\$48,712.30	101	\$83,494.91	60	\$22,811.16	161	\$106,306.07
WILLIAMS	7	\$2,133.73	7	\$9,754.66	14	\$11,888.39	21	\$5,544.14	35	\$17,432.53
WOOD	3	\$893.61	10	\$12,263.63	13	\$13,157.24	48	\$16,201.84	61	\$29,359.08
WYANDOT	1	\$547.11	7	\$6,072.47	8	\$6,619.58	14	\$4,713.65	22	\$11,333.23

SOURCE: GBS003RB Report from Management Information Services. Federal funds only.

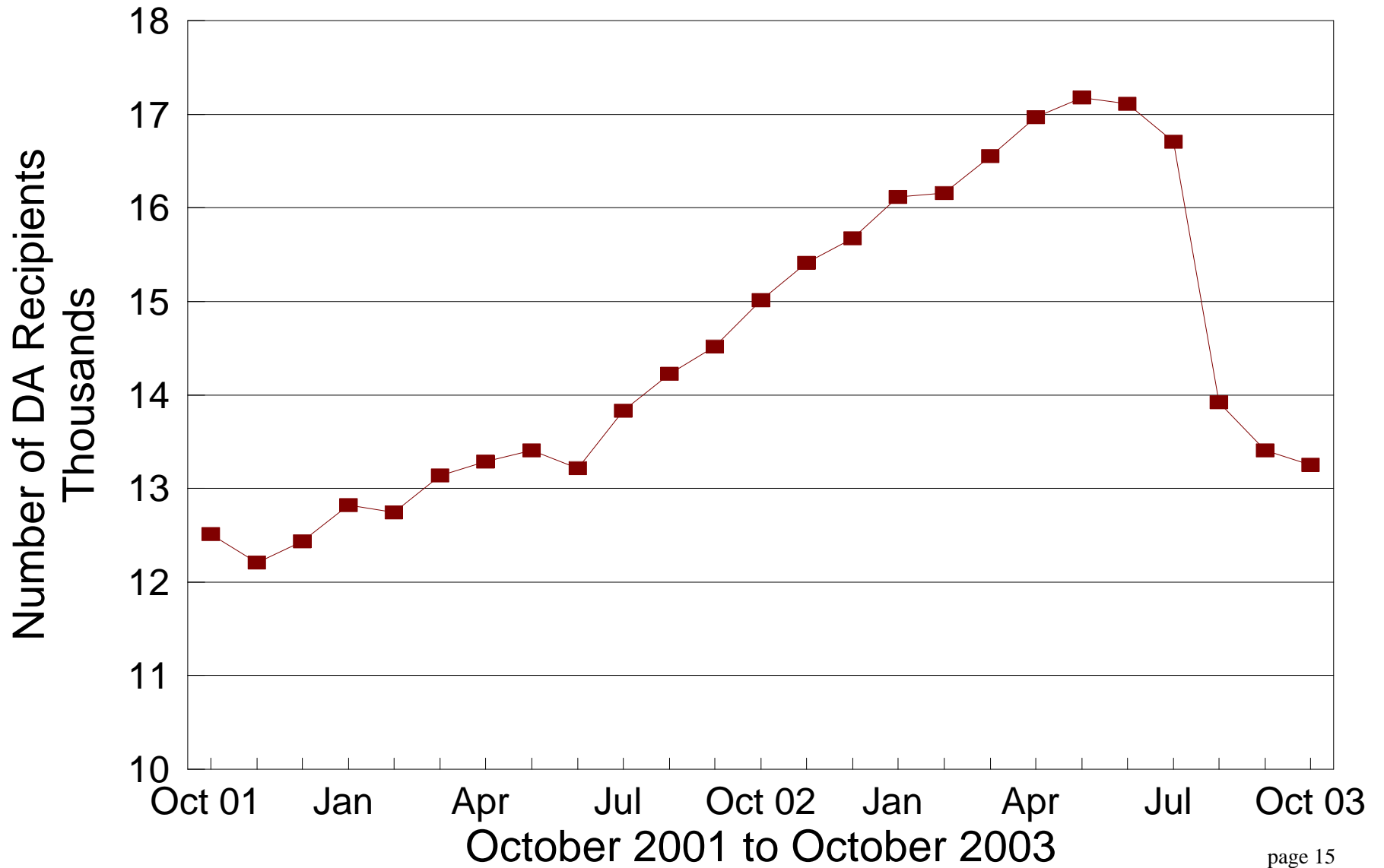
DA Cash Assistance Groups

During the Last 25 Months



DA Cash Recipients

During the Last 25 Months



**TABLE 3
DISABILITY ASSISTANCE (DA)
OCTOBER 2003**

OHIO COUNTY	CASH ASSISTANCE							MEDICAL ASSISTANCE	
	ASSISTANCE GROUPS	RECIPIENTS	ADULTS	CHILDREN	ACTUAL EXPENDITURES			UNDUPLICATED RECIPIENTS	ACTUAL AMOUNT PAID
					GROSS AMOUNT	CANCELLED AMOUNT	NET AMOUNT		
STATEWIDE	13,110	13,250	13,240	10	\$1,736,175.00	\$114,301.00	\$1,621,874.00	19,780	\$8,568,348.90
ADAMS	84	85	85	0	\$10,237.00	\$230.00	\$10,007.00	91	\$44,219.80
ALLEN	81	81	81	0	\$10,162.00	\$774.00	\$9,388.00	110	\$61,955.16
ASHLAND	27	28	28	0	\$4,126.00	\$230.00	\$3,896.00	47	\$20,889.77
ASHTABULA	272	273	273	0	\$37,144.00	\$805.00	\$36,339.00	195	\$61,903.20
ATHENS	180	183	183	0	\$22,964.00	\$920.00	\$22,044.00	139	\$52,094.98
AUGLAIZE	26	26	26	0	\$3,699.00	\$115.00	\$3,584.00	41	\$17,110.50
BELMONT	132	132	132	0	\$18,380.00	\$690.00	\$17,690.00	118	\$34,046.78
BROWN	36	36	36	0	\$4,140.00	\$0.00	\$4,140.00	63	\$32,988.61
BUTLER	434	436	436	0	\$57,771.00	\$3,203.00	\$54,568.00	434	\$183,544.04
CARROLL	27	27	27	0	\$3,289.00	\$115.00	\$3,174.00	34	\$18,381.68
CHAMPAIGN	29	30	30	0	\$3,501.00	\$230.00	\$3,271.00	64	\$29,016.62
CLARK	235	235	235	0	\$30,108.00	\$1,539.00	\$28,569.00	383	\$201,501.29
CLERMONT	161	163	163	0	\$21,547.00	\$1,460.00	\$20,087.00	133	\$62,635.22
CLINTON	48	48	48	0	\$7,581.00	\$115.00	\$7,466.00	44	\$21,219.62
COLUMBIANA	130	131	131	0	\$19,809.00	\$404.00	\$19,405.00	186	\$91,453.75
COSHOCTON	64	64	64	0	\$8,613.00	\$115.00	\$8,498.00	92	\$26,583.41
CRAWFORD	47	48	48	0	\$6,461.00	\$230.00	\$6,231.00	60	\$29,532.95
CUYAHOGA	1,931	1,958	1,954	4	\$232,844.00	\$27,988.00	\$204,856.00	3,684	\$1,344,041.92
DARKE	33	34	34	0	\$4,307.00	\$115.00	\$4,192.00	36	\$14,606.03
DEFIANCE	14	14	14	0	\$1,454.00	\$115.00	\$1,339.00	48	\$19,163.57
DELAWARE	59	61	61	0	\$8,639.00	\$345.00	\$8,294.00	95	\$43,069.75
ERIE	54	54	54	0	\$7,833.00	\$0.00	\$7,833.00	94	\$39,791.90
FAIRFIELD	99	102	102	0	\$13,152.00	\$0.00	\$13,152.00	110	\$66,538.57
FAYETTE	22	24	24	0	\$2,388.00	\$500.00	\$1,888.00	54	\$31,901.82
FRANKLIN	1,091	1,122	1,119	3	\$144,581.00	\$15,120.00	\$129,461.00	1,979	\$999,090.10
FULTON	18	18	18	0	\$2,551.00	\$115.00	\$2,436.00	28	\$9,039.14
GALLIA	46	46	46	0	\$5,650.00	\$0.00	\$5,650.00	146	\$71,195.73
GEAUGA	21	21	21	0	\$3,839.00	\$0.00	\$3,839.00	27	\$16,161.83
GREENE	176	177	177	0	\$23,035.00	\$1,265.00	\$21,770.00	202	\$82,657.59
GUERNSEY	120	121	121	0	\$17,223.00	\$755.00	\$16,468.00	68	\$21,910.94
HAMILTON	748	749	748	1	\$99,209.00	\$9,513.00	\$89,696.00	771	\$417,769.38
HANCOCK	45	45	45	0	\$7,762.00	\$0.00	\$7,762.00	82	\$41,521.54
HARDIN	18	18	18	0	\$2,070.00	\$0.00	\$2,070.00	34	\$13,856.16
HARRISON	37	38	38	0	\$5,647.00	\$273.00	\$5,374.00	28	\$8,228.07
HENRY	13	13	13	0	\$1,879.00	\$0.00	\$1,879.00	22	\$11,175.52
HIGHLAND	64	64	64	0	\$7,688.00	\$460.00	\$7,228.00	87	\$37,910.62
HOCKING	34	34	34	0	\$4,210.00	\$0.00	\$4,210.00	63	\$27,824.71
HOLMES	33	34	34	0	\$3,760.00	\$0.00	\$3,760.00	21	\$5,966.04
HURON	38	38	38	0	\$4,477.00	\$460.00	\$4,017.00	56	\$32,970.41
JACKSON	93	93	93	0	\$11,769.00	\$0.00	\$11,769.00	92	\$52,056.62
JEFFERSON	174	174	174	0	\$26,698.00	\$2,487.00	\$24,211.00	211	\$85,028.54
KNOX	78	78	78	0	\$9,956.00	\$660.00	\$9,296.00	84	\$36,369.79
LAKE	186	186	186	0	\$27,736.00	\$2,415.00	\$25,321.00	184	\$71,921.28
LAWRENCE	83	84	84	0	\$9,859.00	\$0.00	\$9,859.00	139	\$68,069.46

*SOURCE: GRP342RA Report from Management Information Services and BOMC 9260-R001 Report from Medicaid Management Information Services.

**TABLE 3
DISABILITY ASSISTANCE (DA)
OCTOBER 2003**

OHIO COUNTY	CASH ASSISTANCE							MEDICAL ASSISTANCE	
	ASSISTANCE GROUPS	RECIPIENTS	ADULTS	CHILDREN	ACTUAL EXPENDITURES			UNDUPLICATED RECIPIENTS	ACTUAL AMOUNT PAID
					GROSS AMOUNT	CANCELLED AMOUNT	NET AMOUNT		
STATEWIDE	13,110	13,250	13,240	10	\$1,736,175.00	\$114,301.00	\$1,621,874.00	19,780	\$8,568,348.90
LICKING	190	191	191	0	\$27,241.00	\$1,718.00	\$25,523.00	167	\$90,505.90
LOGAN	34	34	34	0	\$4,420.00	\$115.00	\$4,305.00	68	\$26,014.98
LORAIN	266	266	266	0	\$39,997.00	\$2,970.00	\$37,027.00	497	\$203,326.63
LUCAS	553	558	558	0	\$77,973.00	\$2,300.00	\$75,673.00	1,262	\$495,962.94
MADISON	29	29	29	0	\$3,167.00	\$115.00	\$3,052.00	60	\$29,558.82
MAHONING	400	403	403	0	\$51,864.00	\$4,455.00	\$47,409.00	746	\$333,501.95
MARION	89	90	90	0	\$12,131.00	\$460.00	\$11,671.00	73	\$39,534.02
MEDINA	76	76	76	0	\$11,113.00	\$115.00	\$10,998.00	92	\$33,515.17
MEIGS	59	59	59	0	\$7,356.00	\$0.00	\$7,356.00	104	\$43,177.39
MERCER	32	32	32	0	\$3,920.00	\$115.00	\$3,805.00	29	\$7,046.66
MIAMI	59	59	59	0	\$8,213.00	\$230.00	\$7,983.00	62	\$31,891.77
MONROE	15	15	15	0	\$1,760.00	\$230.00	\$1,530.00	43	\$14,633.79
MONTGOMERY	470	481	481	0	\$64,443.00	\$2,634.00	\$61,809.00	1,273	\$597,690.48
MORGAN	43	43	43	0	\$6,845.00	\$230.00	\$6,615.00	39	\$14,942.92
MORROW	17	17	17	0	\$1,880.00	\$115.00	\$1,765.00	80	\$35,407.64
MUSKINGUM	219	221	221	0	\$26,735.00	\$1,346.00	\$25,389.00	177	\$70,011.63
NOBLE	19	19	19	0	\$3,345.00	\$0.00	\$3,345.00	22	\$6,994.51
OTTAWA	24	24	24	0	\$2,653.00	\$115.00	\$2,538.00	42	\$16,148.37
PAULDING	23	23	23	0	\$3,139.00	\$115.00	\$3,024.00	29	\$9,081.55
PERRY	56	58	58	0	\$7,679.00	\$58.00	\$7,621.00	90	\$37,667.70
PICKAWAY	49	49	49	0	\$5,556.00	\$0.00	\$5,556.00	85	\$42,989.99
PIKE	64	64	64	0	\$7,494.00	\$115.00	\$7,379.00	90	\$31,849.89
PORTAGE	126	126	126	0	\$17,446.00	\$690.00	\$16,756.00	136	\$64,511.16
PREBLE	20	20	20	0	\$2,200.00	\$0.00	\$2,200.00	39	\$18,850.71
PUTNAM	11	11	11	0	\$1,840.00	\$0.00	\$1,840.00	13	\$6,836.24
RICHLAND	213	215	214	1	\$27,952.00	\$2,217.00	\$25,735.00	171	\$82,615.34
ROSS	110	110	109	1	\$14,117.00	\$679.00	\$13,438.00	146	\$61,052.21
SANDUSKY	41	41	41	0	\$5,248.00	\$0.00	\$5,248.00	34	\$11,445.46
SCIOTO	229	230	230	0	\$27,651.00	\$1,035.00	\$26,616.00	177	\$58,361.23
SENECA	46	47	47	0	\$6,407.00	\$115.00	\$6,292.00	88	\$30,030.78
SHELBY	16	16	16	0	\$1,955.00	\$0.00	\$1,955.00	47	\$19,430.53
STARK	526	533	533	0	\$69,659.00	\$5,842.00	\$63,817.00	536	\$221,686.86
SUMMIT	642	653	653	0	\$92,880.00	\$8,847.00	\$84,033.00	1,552	\$627,380.78
TRUMBULL	345	346	346	0	\$45,631.00	\$830.00	\$44,801.00	323	\$121,210.87
TUSCARAWAS	84	85	85	0	\$10,362.00	\$230.00	\$10,132.00	123	\$55,556.61
UNION	20	21	21	0	\$2,760.00	\$274.00	\$2,486.00	53	\$20,647.42
VAN WERT	12	12	12	0	\$1,314.00	\$0.00	\$1,314.00	13	\$3,348.23
VINTON	34	34	34	0	\$4,964.00	\$0.00	\$4,964.00	56	\$28,268.49
WARREN	49	50	50	0	\$7,590.00	\$115.00	\$7,475.00	115	\$69,746.23
WASHINGTON	102	102	102	0	\$11,678.00	\$460.00	\$11,218.00	69	\$28,229.96
WAYNE	265	268	268	0	\$34,267.00	\$1,195.00	\$33,072.00	127	\$109,956.33
WILLIAMS	23	24	24	0	\$2,804.00	\$230.00	\$2,574.00	42	\$13,199.58
WOOD	60	60	60	0	\$7,773.00	\$230.00	\$7,543.00	85	\$33,494.57
WYANDOT	9	9	9	0	\$1,005.00	\$0.00	\$1,005.00	26	\$12,120.20
UNKNOWN									\$0.00

*SOURCE: GRP342RA Report from Management Information Services and BOMC 9260-R001 Report from Medicaid Management Information Services.

**TABLE 3-A
DA PAYMENTS FOR MEDICAL SERVICES
OCTOBER 2003**

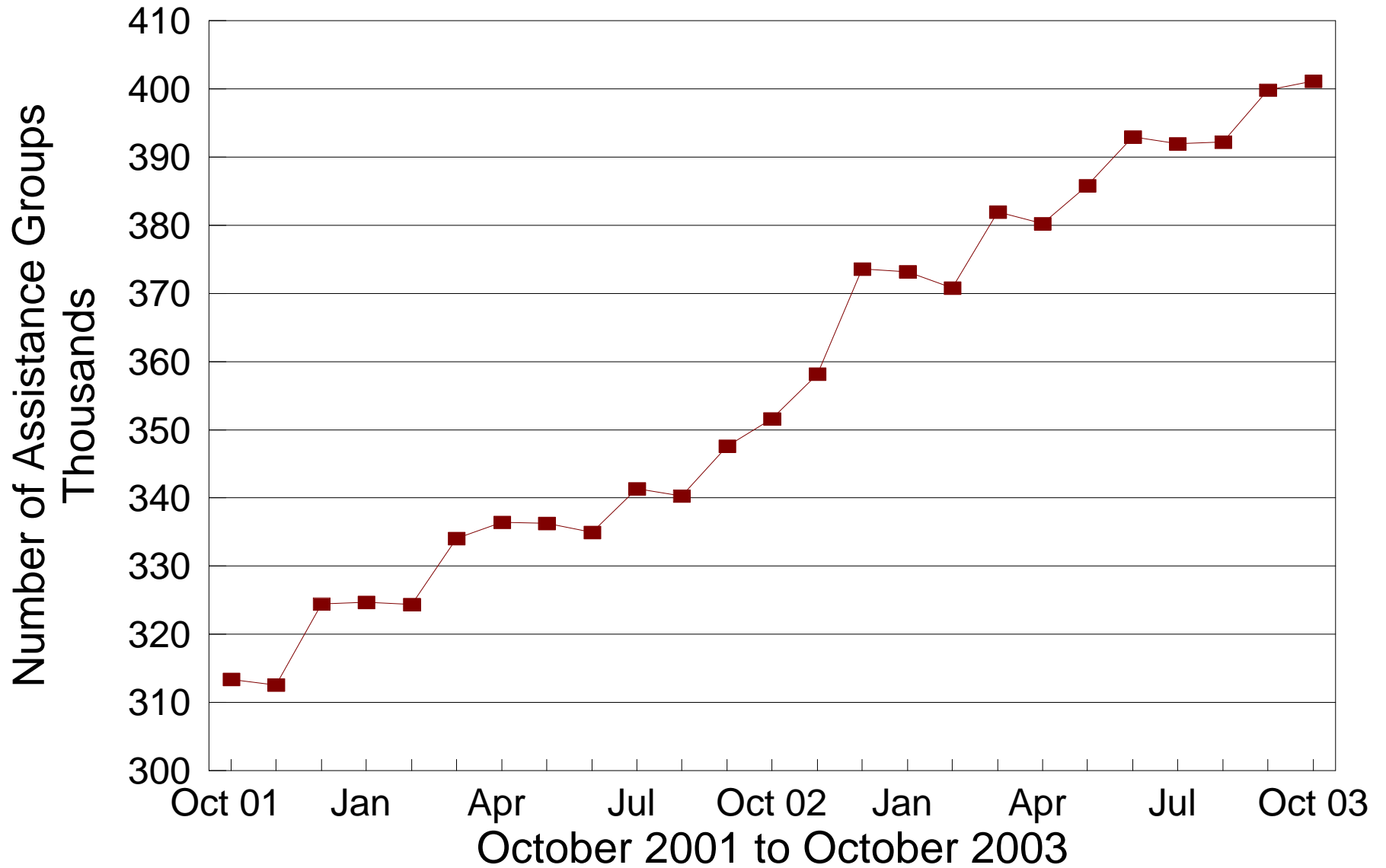
CATEGORY OF SERVICES	DISABILITY ASSISTANCE			
	PAYMENTS	CLAIM FREQUENCY	DUPLICATED RECIPIENTS	PERCENT OF TOTAL
AMBULANCE SERVICES	\$0.00	0	0	0.0%
AMBULATORY SURGERY	\$42,946.62	112	97	0.5%
AMBULETTE SERVICES	\$0.00	0	0	0.0%
CHIROPRACTER SERVICES	\$0.00	0	0	0.0%
CLINIC	\$99,724.40	1,894	940	1.2%
DENTAL SERVICES	\$35,912.80	375	325	0.4%
EPSDT	\$0.00	0	0	0.0%
FAMILY PLANNING	\$1,920.47	43	37	0.0%
FEDERALLY QUALIFIED HEALTH CTR	\$0.00	2	2	0.0%
HEALTH MAINTENANCE ORGANIZATION	\$0.00	0	0	0.0%
HOME HEALTH SERVICES	\$0.00	0	0	0.0%
INDEPENDENT LABORATORY	\$66,434.64	1,579	1,139	0.8%
INPATIENT HOSPITAL	\$0.00	0	0	0.0%
ICF	\$0.00	0	0	0.0%
MIDWIFERY SERVICES	\$9,281.94	258	202	0.1%
OPTOMETRIC SERVICES	\$0.00	0	0	0.0%
OUTPATIENT HEALTH SERVICES	\$0.00	1	1	0.0%
PASSPORT WAIVER III	\$0.00	0	0	0.0%
OUTPATIENT HOSPITAL GENERAL	\$0.00	0	0	0.0%
PHYSICAL THERAPY SERVICES	\$0.00	0	0	0.0%
PHYSICIAN SERVICES	\$2,157,205.28	31,806	12,061	25.2%
PHYSIOLOGICAL LABORATORY	\$24,002.16	79	66	0.3%
PODIATRISTS THERAPY	\$42,269.68	624	406	0.5%
PRESCRIBED DRUGS	\$5,918,060.39	102,235	17,582	69.1%
PRIVATE DUTY NURSING SERVICES	\$0.00	0	0	0.0%
PSYCHOLOGY SERVICES	\$0.00	0	0	0.0%
RURAL HEALTH SERVICES	\$0.00	0	0	0.0%
SNF	\$0.00	0	0	0.0%
SUPPLIES AND MEDICAL EQUIPMENT	\$150,933.53	3,447	1,705	1.8%
WAIVERED SERVICES	\$19,235.19	199	191	0.2%
OTHER	\$421.80	14	12	0.0%
STATEWIDE TOTAL	\$8,568,348.90	142,668	34,766	100.00%

SOURCE: BOMC 9260 Report from Medicaid Management Information Services.

NOTE: Recipients are unduplicated within Category of Services, however, the Statewide Total represents a duplicated count.

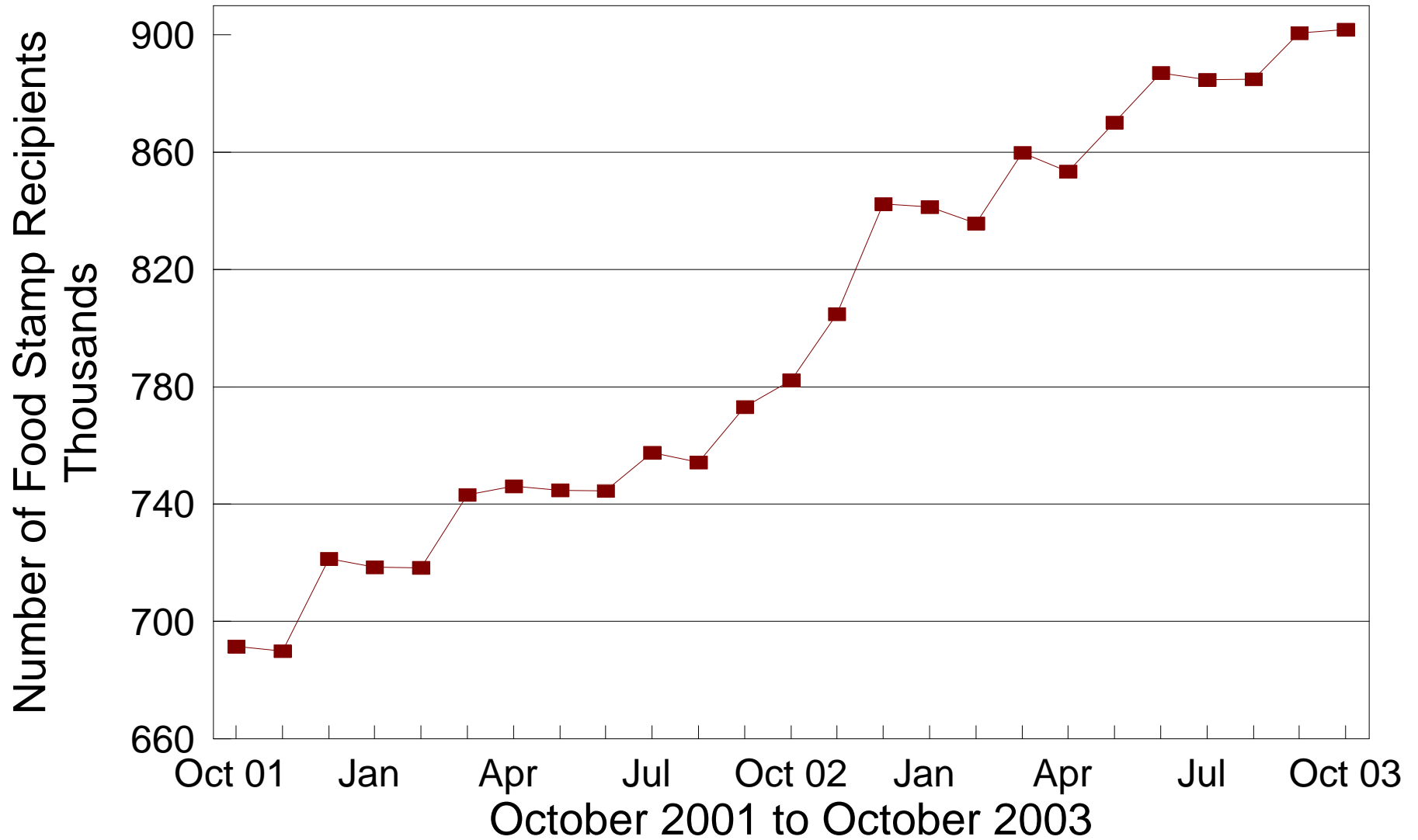
Number of FNS Benefits Assist. Groups

During the Last 25 Months



Number of FNS Benefits Recipients

During the Last 25 Months



**TABLE 5
FNS BENEFITS
OCTOBER 2003**

COUNTY	PERSONS					ASSISTANCE GROUPS			TOTAL COUPONS ISSUED
	PUBLIC ASSISTANCE	NON-PUBLIC ASSISTANCE	TOTAL	AVERAGE ISSUANCE	% CHANGE PREV. MO.	PUBLIC ASSISTANCE	NON-PUBLIC ASSISTANCE	TOTAL	
STATEWIDE	103,936	797,892	901,828	\$89	0.1%	36,498	364,622	401,120	\$80,400,808.00
ADAMS	43	3,844	3,887	\$83	-1.0%	14	1,655	1,669	\$323,771
ALLEN	336	7,454	7,790	\$88	1.3%	106	3,271	3,377	\$681,907
ASHLAND	100	2,302	2,402	\$89	2.1%	37	943	980	\$214,121
ASHTABULA	818	8,633	9,451	\$87	0.4%	299	3,998	4,297	\$825,112
ATHENS	797	5,584	6,381	\$84	-0.4%	277	2,773	3,050	\$534,409
AUGLAIZE	2	1,545	1,547	\$87	0.5%	1	676	677	\$133,948
BELMONT	712	6,213	6,925	\$77	-0.2%	241	2,912	3,153	\$532,800
BROWN	70	3,123	3,193	\$84	2.1%	25	1,314	1,339	\$269,343
BUTLER	1,830	18,140	19,970	\$93	1.1%	670	8,390	9,060	\$1,853,090
CARROLL	78	1,826	1,904	\$80	-0.1%	25	773	798	\$152,432
CHAMPAIGN	223	1,751	1,974	\$87	-1.2%	80	816	896	\$171,459
CLARK	1,640	12,728	14,368	\$88	-1.7%	564	5,953	6,517	\$1,270,905
CLERMONT	591	7,370	7,961	\$91	2.7%	214	3,181	3,395	\$723,143
CLINTON	98	2,226	2,324	\$87	1.4%	38	1,033	1,071	\$201,960
COLUMBIANA	485	9,833	10,318	\$85	-0.7%	168	4,143	4,311	\$880,237
COSHOCTON	283	2,990	3,273	\$83	-0.5%	97	1,324	1,421	\$271,557
CRAWFORD	312	3,562	3,874	\$83	2.1%	105	1,560	1,665	\$323,219
CUYAHOGA	15,237	143,560	158,797	\$91	-0.0%	5,491	67,722	73,213	\$14,523,678
DARKE	189	1,617	1,806	\$82	1.7%	61	727	788	\$147,797
DEFIANCE	147	1,985	2,132	\$87	0.5%	48	837	885	\$186,074
DELAWARE	387	3,019	3,406	\$88	-0.4%	133	1,402	1,535	\$299,960
ERIE	129	4,285	4,414	\$88	0.5%	36	1,882	1,918	\$388,699
FAIRFIELD	752	6,018	6,770	\$85	1.1%	265	2,728	2,993	\$572,960
FAYETTE	123	2,024	2,147	\$82	-1.3%	44	929	973	\$176,867
FRANKLIN	14,977	85,606	100,583	\$93	-0.1%	5,097	37,960	43,057	\$9,396,101
FULTON	63	1,459	1,522	\$80	-2.1%	21	632	653	\$121,170
GALLIA	686	4,051	4,737	\$82	1.5%	229	1,925	2,154	\$386,327
GEAUGA	76	1,223	1,299	\$86	0.6%	29	561	590	\$111,845
GREENE	800	6,943	7,743	\$89	1.4%	304	3,178	3,482	\$688,253
GUERNSEY	151	4,767	4,918	\$82	1.3%	51	2,127	2,178	\$405,379
HAMILTON	10,968	48,465	59,433	\$93	0.8%	3,722	21,788	25,510	\$5,550,775
HANCOCK	264	2,699	2,963	\$92	0.4%	101	1,224	1,325	\$271,900
HARDIN	16	1,577	1,593	\$82	0.8%	6	714	720	\$130,309
HARRISON	85	1,426	1,511	\$79	-2.9%	28	664	692	\$118,678
HENRY	33	884	917	\$80	1.7%	13	373	386	\$73,291
HIGHLAND	113	3,489	3,602	\$85	1.6%	40	1,437	1,477	\$304,675
HOCKING	380	2,203	2,583	\$80	-1.4%	134	995	1,129	\$206,425
HOLMES	62	955	1,017	\$80	5.8%	19	406	425	\$81,018
HURON	22	3,710	3,732	\$85	0.1%	9	1,521	1,530	\$316,344
JACKSON	431	4,132	4,563	\$83	1.8%	152	1,988	2,140	\$380,989
JEFFERSON	1,151	7,191	8,342	\$83	0.1%	390	3,414	3,804	\$696,354
KNOX	319	3,042	3,361	\$86	-2.4%	110	1,383	1,493	\$288,614
LAKE	667	8,389	9,056	\$94	-0.4%	249	3,836	4,085	\$849,717
LAWRENCE	595	9,511	10,106	\$81	0.6%	209	4,507	4,716	\$816,247

Source: CRIS-E GRP304RA and GRP 304RC Reports from Management Information Services. Cuyahoga County data also comes from the GRP 342 RA.

**TABLE 5
FNS BENEFITS
OCTOBER 2003**

COUNTY	PERSONS					ASSISTANCE GROUPS			TOTAL COUPONS ISSUED
	PUBLIC ASSISTANCE	NON-PUBLIC ASSISTANCE	TOTAL	AVERAGE ISSUANCE	% CHANGE PREV. MO.	PUBLIC ASSISTANCE	NON-PUBLIC ASSISTANCE	TOTAL	
STATEWIDE	103,936	797,892	901,828	\$89	0.1%	36,498	364,622	401,120	\$80,400,808.00
LICKING	951	8,061	9,012	\$88	1.1%	335	3,770	4,105	\$794,439
LOGAN	227	2,520	2,747	\$88	0.5%	74	1,080	1,154	\$241,464
LORAIN	2,432	21,583	24,015	\$89	-0.7%	837	8,760	9,597	\$2,126,756
LUCAS	8,498	43,596	52,094	\$89	0.0%	2,971	20,548	23,519	\$4,637,472
MADISON	307	1,805	2,112	\$90	0.4%	109	879	988	\$190,853
MAHONING	3,578	23,050	26,628	\$88	-0.0%	1,233	10,952	12,185	\$2,342,089
MARION	217	5,271	5,488	\$81	0.3%	84	2,395	2,479	\$443,058
MEDINA	309	3,468	3,777	\$91	0.4%	111	1,575	1,686	\$343,793
MEIGS	197	3,559	3,756	\$84	1.0%	71	1,600	1,671	\$313,743
MERCER	106	1,119	1,225	\$85	0.1%	34	521	555	\$104,657
MIAMI	397	3,508	3,905	\$87	2.0%	134	1,661	1,795	\$341,442
MONROE	128	1,306	1,434	\$74	-1.0%	42	586	628	\$105,408
MONTGOMERY	7,240	37,417	44,657	\$93	1.2%	2,632	17,446	20,078	\$4,137,858
MORGAN	43	1,654	1,697	\$80	1.4%	18	724	742	\$135,814
MORROW	92	2,090	2,182	\$84	0.4%	35	905	940	\$183,466
MUSKINGUM	1,012	10,242	11,254	\$83	-0.3%	354	4,569	4,923	\$938,258
NOBLE	22	1,021	1,043	\$76	0.0%	8	467	475	\$79,537
OTTAWA	191	1,581	1,772	\$85	0.1%	68	689	757	\$150,628
PAULDING	138	981	1,119	\$85	-4.3%	45	461	506	\$94,818
PERRY	313	3,627	3,940	\$81	-1.0%	100	1,594	1,694	\$320,271
PICKAWAY	523	3,518	4,041	\$88	0.0%	176	1,618	1,794	\$355,290
PIKE	367	4,258	4,625	\$84	1.2%	134	1,876	2,010	\$386,607
PORTAGE	686	5,992	6,678	\$93	-1.1%	252	2,832	3,084	\$620,900
PREBLE	174	1,621	1,795	\$88	1.3%	62	700	762	\$157,577
PUTNAM	127	1,051	1,178	\$82	0.7%	45	452	497	\$96,189
RICHLAND	655	9,204	9,859	\$87	-0.5%	228	4,109	4,337	\$853,413
ROSS	720	7,476	8,196	\$85	0.0%	251	3,249	3,500	\$693,758
SANDUSKY	153	2,831	2,984	\$87	-8.0%	49	1,257	1,306	\$259,969
SCIOTO	764	12,607	13,371	\$80	0.4%	261	6,146	6,407	\$1,071,400
SENECA	111	3,144	3,255	\$85	0.9%	31	1,374	1,405	\$278,255
SHELBY	106	1,677	1,783	\$89	-3.2%	37	726	763	\$159,513
STARK	4,369	22,193	26,562	\$88	-0.5%	1,530	9,900	11,430	\$2,342,854
SUMMIT	7,450	37,733	45,183	\$92	-0.0%	2,733	18,038	20,771	\$4,151,399
TRUMBULL	1,553	15,714	17,267	\$85	-0.2%	550	6,672	7,222	\$1,468,840
TUSCARAWAS	595	5,560	6,155	\$83	-0.3%	211	2,481	2,692	\$511,564
UNION	306	1,527	1,833	\$90	1.8%	102	695	797	\$165,408
VAN WERT	15	974	989	\$82	3.5%	5	439	444	\$80,944
VINTON	207	1,995	2,202	\$82	1.4%	69	888	957	\$181,028
WARREN	169	3,151	3,320	\$87	-2.0%	65	1,433	1,498	\$290,490
WASHINGTON	21	4,639	4,660	\$84	1.4%	8	2,150	2,158	\$389,550
WAYNE	623	4,923	5,546	\$89	1.4%	229	2,311	2,540	\$491,274
WILLIAMS	255	1,575	1,830	\$86	-2.8%	94	726	820	\$157,682
WOOD	323	3,116	3,439	\$88	1.3%	120	1,469	1,589	\$303,797
WYANDOT	25	600	625	\$85	-0.5%	9	324	333	\$53,424

**Table 6A
October 2003
Medicaid Eligibles**

County	Aged	Blind	Disabled	ABD Total	OWF & Related	Healthy Start	CFC Total	Total Medicaid	Foster Care	Adoption Assistance	Transitional	Nursing Facilities
STATEWIDE	132,316	886	232,092	365,294	943,044	248,956	1,192,000	1,557,294	10,896	17,901	120,366	55,686
ADAMS	750	5	1,341	2,096	3,969	1,216	5,185	7,281	19	38	605	127
ALLEN	1,139	6	2,009	3,154	8,295	2,398	10,693	13,847	108	130	938	556
ASHLAND	535	2	567	1,104	3,143	1,316	4,459	5,563	2	13	603	279
ASHTABULA	1,441	10	2,902	4,353	10,247	3,126	13,373	17,726	57	145	1,743	1,030
ATHENS	774	16	1,949	2,739	6,249	1,337	7,586	10,325	85	103	920	184
AUGLAIZE	403	3	423	829	2,139	845	2,984	3,813	14	39	412	251
BELMONT	1,370	5	2,106	3,481	7,022	1,669	8,691	12,172	54	109	1,166	577
BROWN	685	0	969	1,654	4,226	1,377	5,603	7,257	15	36	596	233
BUTLER	2,655	21	5,439	8,115	21,500	5,848	27,348	35,463	282	446	2,881	1,213
CARROLL	352	2	528	882	2,479	800	3,279	4,161	7	5	530	182
CHAMPAIGN	487	2	585	1,074	2,339	1,010	3,349	4,423	17	18	478	275
CLARK	1,962	7	3,641	5,610	14,509	3,454	17,963	23,573	162	285	1,931	1,055
CLERMONT	1,329	3	2,522	3,854	10,692	3,969	14,661	18,515	189	188	1,716	708
CLINTON	480	5	748	1,233	3,027	879	3,906	5,139	33	45	576	141
COLUMBIANA	1,475	14	2,504	3,993	11,084	3,341	14,425	18,418	88	73	1,765	656
COSHOCTON	521	2	884	1,407	3,303	1,125	4,428	5,835	22	44	546	273
CRAWFORD	579	8	915	1,502	4,466	1,103	5,569	7,071	41	38	863	229
CUYAHOGA	21,636	172	34,682	56,490	150,413	33,747	184,160	240,650	2,428	4,194	15,013	7,579
DARKE	555	1	632	1,188	2,459	1,045	3,504	4,692	18	35	428	351
DEFIANCE	341	2	511	854	2,591	946	3,537	4,391	10	30	447	176
DELAWARE	691	1	952	1,644	4,077	1,269	5,346	6,990	49	55	758	306
ERIE	788	4	1,138	1,930	5,339	1,666	7,005	8,935	82	80	740	407
FAIRFIELD	1,100	4	1,736	2,840	7,557	2,540	10,097	12,937	45	131	1,283	446
FAYETTE	547	1	787	1,335	2,616	884	3,500	4,835	8	15	498	320
FRANKLIN	10,389	92	21,732	32,213	106,021	25,272	131,293	163,506	1,738	2,135	10,826	3,913
FULTON	369	1	354	724	2,077	898	2,975	3,699	19	28	422	198
GALLIA	812	2	1,528	2,342	4,237	893	5,130	7,472	10	36	593	207
GEAUGA	635	3	484	1,122	2,023	799	2,822	3,944	19	106	363	375
GREENE	1,185	7	1,739	2,931	8,625	2,202	10,827	13,758	80	100	1,383	563
GUERNSEY	753	4	1,389	2,146	5,363	1,623	6,986	9,132	42	66	892	168
HAMILTON	9,559	79	17,418	27,056	63,826	17,358	81,184	108,240	891	1,373	5,819	3,989
HANCOCK	565	2	768	1,335	3,507	1,292	4,799	6,134	28	35	596	279
HARDIN	358	1	539	898	2,121	791	2,912	3,810	34	29	330	145
HARRISON	280	0	461	741	1,547	486	2,033	2,774	2	26	289	134
HENRY	235	0	292	527	1,477	744	2,221	2,748	11	24	325	131
HIGHLAND	744	0	1,025	1,769	4,311	1,578	5,889	7,658	18	14	733	246
HOCKING	442	2	750	1,194	2,975	1,116	4,091	5,285	32	42	483	155
HOLMES	442	2	452	896	1,593	647	2,240	3,136	10	27	317	430
HURON	511	2	832	1,345	4,726	1,688	6,414	7,759	38	29	824	186
JACKSON	784	2	1,387	2,173	4,334	1,263	5,597	7,770	20	19	754	199
JEFFERSON	1,121	17	2,460	3,598	7,668	1,423	9,091	12,689	81	67	925	403
KNOX	646	2	1,212	1,860	3,856	1,470	5,326	7,186	26	31	689	531
LAKE	1,609	4	2,317	3,930	9,973	3,167	13,140	17,070	67	131	1,683	1,087
LAWRENCE	1,502	6	3,497	5,005	8,825	2,123	10,948	15,953	59	29	1,078	365

**Table 6A
October 2003
Medicaid Eligibles**

County	Aged	Blind	Disabled	ABD Total	OWF & Related	Healthy Start	CFC Total	Total Medicaid	Foster Care	Adoption Assistance	Transitional	Nursing Facilities
STATEWIDE	132,316	886	232,092	365,294	943,044	248,956	1,192,000	1,557,294	10,896	17,901	120,366	55,686
LICKING	1,360	6	2,400	3,766	10,530	3,652	14,182	17,948	164	278	1,682	611
LOGAN	534	2	623	1,159	3,607	921	4,528	5,687	21	37	694	195
LORAIN	2,594	21	4,886	7,501	24,496	5,130	29,626	37,127	99	386	2,936	1,312
LUCAS	5,489	42	13,093	18,624	48,938	9,741	58,679	77,303	444	1,424	5,122	1,992
MADISON	342	2	580	924	2,220	753	2,973	3,897	13	25	343	134
MAHONING	3,754	23	6,733	10,510	26,182	5,047	31,229	41,739	153	241	2,955	1,622
MARION	796	5	1,704	2,505	5,516	1,738	7,254	9,759	39	78	851	281
MEDINA	860	12	1,170	2,042	5,482	2,019	7,501	9,543	20	71	983	627
MEIGS	541	5	1,036	1,582	3,547	718	4,265	5,847	12	3	546	130
MERCER	327	2	448	777	1,645	586	2,231	3,008	6	29	318	206
MIAMI	948	7	1,244	2,199	4,875	1,991	6,866	9,065	60	122	759	468
MONROE	276	3	409	688	1,483	392	1,875	2,563	7	10	255	93
MONTGOMERY	5,967	41	12,035	18,043	46,220	10,182	56,402	74,445	793	1,166	4,182	2,406
MORGAN	268	0	485	753	2,029	560	2,589	3,342	8	14	358	96
MORROW	381	2	574	957	2,874	936	3,810	4,767	7	49	674	165
MUSKINGUM	1,370	14	2,598	3,982	10,047	2,412	12,459	16,441	75	116	1,403	487
NOBLE	229	0	242	471	1,053	480	1,533	2,004	7	8	206	92
OTTAWA	403	1	473	877	2,207	823	3,030	3,907	1	3	489	208
PAULDING	177	1	367	545	1,206	495	1,701	2,246	6	17	218	46
PERRY	480	5	1,032	1,517	4,206	1,301	5,507	7,024	38	32	713	204
PICKAWAY	583	3	937	1,523	4,075	1,144	5,219	6,742	17	13	686	198
PIKE	691	0	1,498	2,189	4,352	1,095	5,447	7,636	21	23	695	277
PORTAGE	1,084	7	1,871	2,962	8,015	2,480	10,495	13,457	90	132	1,000	588
PREBLE	366	8	592	966	2,634	856	3,490	4,456	35	35	492	225
PUTNAM	263	4	364	631	1,302	544	1,846	2,477	5	7	227	234
RICHLAND	1,607	1	2,634	4,242	10,538	3,403	13,941	18,183	84	264	1,624	618
ROSS	1,054	0	2,249	3,303	8,419	2,073	10,492	13,795	73	36	1,195	292
SANDUSKY	716	7	891	1,614	3,997	1,500	5,497	7,111	22	59	623	412
SCIOTO	2,257	13	4,773	7,043	11,087	2,344	13,431	20,474	80	47	1,432	612
SENECA	696	3	998	1,697	3,707	1,595	5,302	6,999	25	91	674	360
SHELBY	383	5	529	917	2,685	1,109	3,794	4,711	7	54	455	193
STARK	4,607	24	6,546	11,177	30,178	7,350	37,528	48,705	511	907	4,232	2,336
SUMMIT	6,026	37	10,928	16,991	44,285	10,042	54,327	71,318	409	754	4,896	2,123
TRUMBULL	2,539	21	4,727	7,287	19,662	5,412	25,074	32,361	146	240	2,918	1,262
TUSCARAWAS	1,184	5	1,422	2,611	6,848	2,388	9,236	11,847	87	126	1,393	485
UNION	303	1	417	721	2,165	762	2,927	3,648	11	34	368	128
UNKNOWN	0	0	0	0	0	0	0	0	0	0	0	0
VAN WERT	266	1	367	634	1,510	767	2,277	2,911	9	24	332	143
VINTON	308	1	596	905	2,286	727	3,013	3,918	23	16	409	75
WARREN	1,188	5	1,481	2,674	5,084	2,239	7,323	9,997	34	85	845	818
WASHINGTON	946	7	1,575	2,528	5,334	2,043	7,377	9,905	23	34	954	351
WAYNE	1,041	8	1,701	2,750	5,801	2,270	8,071	10,821	109	77	1,014	482
WILLIAMS	433	3	451	887	2,598	836	3,434	4,321	13	22	527	238
WOOD	844	3	1,041	1,888	4,505	1,785	6,290	8,178	22	55	790	425
WYANDOT	299	1	266	566	788	572	1,360	1,926	7	15	138	178

Table 6B
October 2003
Medicaid Expenditures

County	Aged	Blind	Disabled	ABD Total	OWF & Related	Healthy Start	CFE Total	Total Medicaid	Foster Care	Adoption Assistance	Transitional	Nursing Facilities
STATEWIDE	\$285,403,131	\$1,285,359	\$439,586,368	\$726,274,858	\$258,638,216	\$70,269,517	\$328,907,733	\$1,055,693,800	\$5,729,569	\$3,901,668	\$24,315,103	\$306,492,537
ADAMS	\$1,010,001	\$4,275	\$1,671,222	\$2,685,499	\$821,694	\$244,599	\$1,066,292	\$3,759,031	\$10,770	\$4,890	\$84,078	\$581,816
ALLEN	\$2,499,393	\$13,805	\$3,121,293	\$5,634,491	\$1,847,004	\$499,145	\$2,346,149	\$7,988,517	\$33,223	\$19,919	\$102,473	\$2,771,073
ASHLAND	\$1,237,509	\$1,135	\$1,076,907	\$2,315,552	\$1,047,524	\$270,779	\$1,318,303	\$3,634,446	\$120	\$3,453	\$80,375	\$1,310,020
ASHTABULA	\$3,808,046	\$4,694	\$5,837,588	\$9,650,327	\$2,030,490	\$789,192	\$2,819,682	\$12,472,815	\$30,425	\$34,828	\$220,612	\$5,738,177
ATHENS	\$1,150,119	\$8,797	\$2,813,981	\$3,972,897	\$1,631,409	\$462,483	\$2,093,893	\$6,066,832	\$70,923	\$13,616	\$151,162	\$901,756
AUGLAIZE	\$1,020,510	\$5,706	\$688,406	\$1,714,621	\$609,751	\$161,151	\$770,902	\$2,486,358	\$3,272	\$7,870	\$41,879	\$1,059,657
BELMONT	\$2,739,359	\$2,707	\$3,529,674	\$6,271,739	\$1,391,362	\$419,916	\$1,811,278	\$8,085,197	\$22,246	\$33,672	\$118,659	\$2,370,517
BROWN	\$1,398,623	\$0	\$1,585,360	\$2,983,984	\$826,019	\$268,809	\$1,094,828	\$4,078,812	\$2,762	\$8,467	\$74,036	\$1,309,166
BUTLER	\$6,396,089	\$24,012	\$11,322,520	\$17,742,621	\$6,072,002	\$2,294,334	\$8,366,336	\$26,129,942	\$131,458	\$98,134	\$693,562	\$7,886,972
CARROLL	\$670,536	\$1,793	\$1,217,214	\$1,889,543	\$454,674	\$135,081	\$589,755	\$2,479,298	\$6,871	\$1,141	\$72,150	\$843,992
CHAMPAIGN	\$1,046,785	\$904	\$1,278,389	\$2,326,078	\$517,649	\$183,923	\$701,573	\$3,027,651	\$11,042	\$1,568	\$81,997	\$1,332,363
CLARK	\$4,696,974	\$21,778	\$7,286,480	\$12,005,233	\$4,218,749	\$1,410,188	\$5,628,937	\$17,650,410	\$71,764	\$63,646	\$457,240	\$5,501,277
CLERMONT	\$3,070,131	\$14,583	\$6,512,028	\$9,596,742	\$2,550,304	\$970,168	\$3,520,472	\$13,119,543	\$90,616	\$30,868	\$239,267	\$5,042,470
CLINTON	\$793,104	\$4,864	\$1,085,833	\$1,883,801	\$658,164	\$186,134	\$844,299	\$2,728,100	\$5,935	\$17,138	\$71,137	\$674,131
COLUMBIANA	\$2,907,584	\$6,994	\$4,346,859	\$7,261,438	\$2,636,892	\$623,470	\$3,260,362	\$10,526,018	\$61,819	\$14,586	\$224,200	\$3,046,798
COSHOCTON	\$926,323	\$504	\$2,144,435	\$3,071,262	\$626,103	\$134,226	\$760,329	\$3,835,225	\$3,309	\$20,497	\$61,878	\$1,365,353
CRAWFORD	\$1,255,559	\$6,925	\$1,425,482	\$2,687,966	\$938,819	\$160,671	\$1,099,490	\$3,788,896	\$12,628	\$6,437	\$116,943	\$1,024,205
CUYAHOGA	\$45,056,224	\$188,715	\$61,920,633	\$107,165,572	\$48,520,367	\$10,561,702	\$59,082,069	\$166,294,894	\$1,205,562	\$845,023	\$4,677,443	\$46,844,553
DARKE	\$1,319,132	\$673	\$1,135,411	\$2,455,216	\$525,335	\$221,813	\$747,148	\$3,202,795	\$4,981	\$5,634	\$55,557	\$1,465,065
DEFIANCE	\$786,310	\$400	\$675,873	\$1,462,583	\$457,309	\$199,330	\$656,638	\$2,119,221	\$2,143	\$3,183	\$60,041	\$748,015
DELAWARE	\$1,686,419	\$5,886	\$2,502,714	\$4,195,020	\$1,091,083	\$404,819	\$1,495,902	\$5,690,922	\$8,025	\$42,104	\$116,396	\$1,449,049
ERIE	\$1,750,887	\$540	\$2,050,494	\$3,801,921	\$1,238,820	\$269,965	\$1,508,785	\$5,310,706	\$20,788	\$11,575	\$100,698	\$1,725,265
FAIRFIELD	\$2,637,017	\$3,903	\$3,524,513	\$6,165,433	\$1,767,232	\$662,580	\$2,429,812	\$8,596,349	\$16,013	\$31,572	\$164,318	\$2,398,265
FAYETTE	\$1,337,287	\$2,401	\$1,598,756	\$2,938,444	\$547,255	\$163,806	\$711,061	\$3,649,505	\$1,589	\$2,073	\$171,364	\$1,733,876
FRANKLIN	\$22,156,416	\$108,579	\$47,376,267	\$69,641,262	\$33,574,888	\$8,897,685	\$42,472,573	\$112,164,233	\$1,016,959	\$636,536	\$2,911,603	\$24,928,893
FULTON	\$987,623	\$0	\$732,340	\$1,719,962	\$510,153	\$231,666	\$741,819	\$2,461,781	\$11,687	\$27,245	\$49,276	\$918,346
GALLIA	\$1,852,678	(\$487)	\$3,613,484	\$5,465,675	\$1,069,327	\$204,895	\$1,274,222	\$6,743,560	\$6,071	\$1,999	\$108,943	\$926,059
GEAUGA	\$1,767,390	\$33,356	\$1,468,897	\$3,269,642	\$406,321	\$181,668	\$587,988	\$3,857,820	\$7,410	\$14,998	\$37,770	\$2,177,280
GREENE	\$2,758,464	\$2,116	\$3,433,688	\$6,194,267	\$2,229,814	\$637,315	\$2,867,129	\$9,063,279	\$32,510	\$14,971	\$189,556	\$3,035,637
GUERNSEY	\$1,319,107	\$2,134	\$2,888,760	\$4,210,001	\$1,139,991	\$277,951	\$1,417,942	\$5,628,026	\$15,146	\$15,769	\$84,126	\$822,236
HAMILTON	\$22,414,903	\$313,801	\$34,144,849	\$56,873,553	\$19,892,374	\$6,598,289	\$26,490,664	\$83,463,290	\$595,341	\$292,856	\$1,392,611	\$25,153,012
HANCOCK	\$1,235,889	\$3,396	\$1,625,458	\$2,864,744	\$713,485	\$274,962	\$988,447	\$3,853,691	\$10,818	\$6,258	\$76,196	\$1,333,164
HARDIN	\$649,005	\$9,494	\$918,699	\$1,577,198	\$518,638	\$254,390	\$773,028	\$2,356,006	\$11,648	\$5,521	\$55,223	\$580,808
HARRISON	\$686,898	\$0	\$622,869	\$1,309,768	\$275,502	\$75,278	\$350,781	\$1,660,869	\$0	\$6,341	\$36,152	\$669,324
HENRY	\$555,677	\$0	\$957,457	\$1,513,134	\$262,450	\$156,848	\$419,298	\$1,932,432	\$4,494	\$4,174	\$32,149	\$555,399
HIGHLAND	\$1,322,029	\$0	\$1,592,500	\$2,914,529	\$1,235,537	\$302,522	\$1,538,060	\$4,452,588	\$137,243	\$1,327	\$151,125	\$1,177,172
HOCKING	\$683,101	\$8,736	\$1,238,943	\$1,930,780	\$674,592	\$241,763	\$916,355	\$2,847,136	\$12,745	\$6,057	\$56,300	\$749,071
HOLMES	\$1,445,273	\$0	\$1,242,532	\$2,687,805	\$327,486	\$99,374	\$426,860	\$3,114,924	\$730	\$5,047	\$37,491	\$2,165,627
HURON	\$837,362	\$0	\$1,266,785	\$2,104,148	\$930,450	\$448,633	\$1,379,083	\$3,484,196	\$17,589	\$1,240	\$88,360	\$765,863
JACKSON	\$1,199,735	\$2,792	\$1,442,159	\$2,644,686	\$933,783	\$241,834	\$1,175,617	\$3,822,102	\$11,989	\$549	\$73,634	\$897,553
JEFFERSON	\$2,098,742	\$26,168	\$3,326,285	\$5,451,195	\$1,513,138	\$255,690	\$1,768,827	\$7,224,753	\$44,229	\$16,390	\$96,043	\$1,808,167
KNOX	\$2,278,577	\$4,064	\$6,895,815	\$9,178,457	\$835,802	\$226,353	\$1,062,155	\$10,240,671	\$18,014	\$6,545	\$105,217	\$6,843,077
LAKE	\$4,595,203	\$1,161	\$6,656,419	\$11,252,783	\$1,821,500	\$585,775	\$2,407,275	\$13,690,241	\$45,872	\$39,764	\$236,131	\$6,372,711
LAWRENCE	\$2,431,888	\$17,417	\$4,360,634	\$6,809,940	\$2,140,248	\$486,632	\$2,626,880	\$9,442,679	\$34,763	\$9,631	\$125,850	\$1,607,798

Table 6B
October 2003
Medicaid Expenditures

County	Aged	Blind	Disabled	ABD Total	OWF & Related	Healthy Start	CFE Total	Total Medicaid	Foster Care	Adoption Assistance	Transitional	Nursing Facilities
STATEWIDE	\$285,403,131	\$1,285,359	\$439,586,368	\$726,274,858	\$258,638,216	\$70,269,517	\$328,907,733	\$1,055,693,800	\$5,729,569	\$3,901,668	\$24,315,103	\$306,492,537
LICKING	\$3,004,913	\$4,719	\$5,365,176	\$8,374,808	\$2,130,829	\$905,419	\$3,036,247	\$11,412,503	\$39,769	\$107,549	\$184,432	\$3,335,972
LOGAN	\$863,147	\$634	\$1,046,604	\$1,910,384	\$752,886	\$176,959	\$929,845	\$2,840,436	\$7,171	\$5,204	\$70,997	\$775,673
LORAIN	\$5,990,004	\$18,427	\$8,348,624	\$14,357,056	\$6,178,900	\$1,282,051	\$7,460,952	\$21,820,568	\$24,202	\$61,858	\$573,965	\$7,205,481
LUCAS	\$10,811,902	\$30,810	\$24,996,246	\$35,838,958	\$16,519,188	\$3,694,064	\$20,213,252	\$56,090,584	\$271,563	\$310,963	\$1,710,491	\$10,890,621
MADISON	\$661,042	\$3,446	\$1,493,493	\$2,157,981	\$467,644	\$141,917	\$609,562	\$2,767,543	\$29,702	\$5,548	\$45,733	\$727,845
MAHONING	\$7,395,518	\$51,250	\$10,261,623	\$17,708,390	\$5,783,040	\$833,040	\$6,616,080	\$24,336,193	\$78,287	\$39,755	\$366,720	\$7,623,816
MARION	\$1,355,347	\$3,855	\$2,795,865	\$4,155,067	\$1,164,052	\$559,868	\$1,723,919	\$5,878,986	\$14,376	\$11,783	\$101,928	\$1,244,838
MEDINA	\$2,538,128	\$82,868	\$3,716,180	\$6,337,177	\$975,243	\$322,945	\$1,298,189	\$7,635,366	\$4,787	\$9,606	\$107,359	\$4,063,902
MEIGS	\$658,652	\$6,473	\$1,169,654	\$1,834,779	\$721,403	\$125,322	\$846,725	\$2,681,504	\$11,267	\$345	\$88,111	\$537,378
MERCER	\$779,321	\$47	\$752,390	\$1,531,757	\$353,656	\$101,561	\$455,217	\$1,986,974	\$3,551	\$3,578	\$41,379	\$905,879
MIAMI	\$2,331,196	\$3,497	\$2,195,666	\$4,530,358	\$1,196,057	\$578,472	\$1,774,529	\$6,309,899	\$37,081	\$15,861	\$92,201	\$2,173,088
MONROE	\$387,813	\$546	\$496,825	\$885,184	\$248,104	\$54,595	\$302,699	\$1,188,700	\$1,653	\$2,667	\$15,916	\$353,692
MONTGOMERY	\$12,808,935	\$49,310	\$21,854,513	\$34,712,758	\$13,910,184	\$3,359,927	\$17,270,112	\$52,019,969	\$433,475	\$253,085	\$1,114,868	\$13,220,755
MORGAN	\$404,719	\$0	\$513,098	\$917,817	\$351,346	\$126,547	\$477,893	\$1,395,710	\$2,712	\$2,698	\$32,426	\$387,101
MORROW	\$735,752	\$0	\$1,067,556	\$1,803,308	\$775,656	\$162,927	\$938,583	\$2,743,244	\$3,538	\$11,444	\$92,035	\$767,454
MUSKINGUM	\$2,298,257	\$10,587	\$3,082,233	\$5,391,077	\$1,906,193	\$409,460	\$2,315,652	\$7,707,030	\$15,209	\$15,125	\$132,343	\$2,029,277
NOBLE	\$422,648	\$0	\$262,778	\$685,426	\$174,618	\$62,505	\$237,123	\$922,548	\$536	\$1,486	\$29,667	\$395,904
OTTAWA	\$1,137,200	\$34	\$1,506,241	\$2,643,475	\$475,142	\$164,977	\$640,119	\$3,283,594	\$1,085	\$879	\$88,352	\$901,239
PAULDING	\$257,882	\$72	\$680,449	\$938,403	\$298,055	\$71,948	\$370,003	\$1,308,406	\$1,958	\$1,263	\$20,120	\$193,525
PERRY	\$613,442	\$1,672	\$1,823,847	\$2,438,961	\$896,425	\$188,725	\$1,085,150	\$3,524,155	\$4,682	\$3,597	\$105,381	\$1,014,298
PICKAWAY	\$1,079,032	\$1,782	\$1,494,962	\$2,575,776	\$884,354	\$530,251	\$1,414,605	\$3,990,792	\$4,500	\$990	\$78,815	\$877,498
PIKE	\$1,277,960	\$0	\$2,219,964	\$3,497,924	\$790,424	\$292,063	\$1,082,487	\$4,580,705	\$7,178	\$11,783	\$99,193	\$1,599,148
PORTAGE	\$2,409,040	(\$5,857)	\$4,669,093	\$7,072,276	\$2,016,129	\$593,957	\$2,610,087	\$9,682,609	\$60,167	\$33,087	\$131,105	\$3,493,707
PREBLE	\$835,773	\$5,449	\$1,288,210	\$2,129,431	\$564,662	\$211,073	\$775,735	\$2,905,167	\$14,102	\$3,824	\$49,057	\$1,129,509
PUTNAM	\$677,465	\$5,195	\$1,118,998	\$1,801,659	\$265,119	\$75,095	\$340,214	\$2,141,873	\$2,840	\$59	\$12,201	\$1,185,158
RICHLAND	\$3,002,628	(\$18)	\$4,837,638	\$7,840,247	\$2,287,831	\$869,486	\$3,157,318	\$11,003,460	\$52,616	\$61,193	\$203,675	\$2,969,221
ROSS	\$1,664,493	\$0	\$3,051,151	\$4,715,645	\$2,008,314	\$564,766	\$2,573,080	\$7,291,484	\$22,469	\$12,257	\$130,978	\$1,160,669
SANDUSKY	\$1,581,995	\$3,738	\$2,118,587	\$3,704,320	\$680,468	\$418,148	\$1,098,616	\$4,806,606	\$8,265	\$10,614	\$30,494	\$1,907,592
SCIOTO	\$3,813,504	\$14,797	\$6,380,507	\$10,208,807	\$2,921,763	\$561,839	\$3,483,601	\$13,696,999	\$37,827	\$35,640	\$208,319	\$2,854,082
SENECA	\$1,886,683	\$1,283	\$3,528,814	\$5,416,780	\$652,964	\$380,652	\$1,033,615	\$6,451,968	\$7,023	\$16,633	\$67,767	\$1,729,492
SHELBY	\$909,987	\$2,123	\$901,501	\$1,813,611	\$588,421	\$182,476	\$770,897	\$2,584,620	\$6,843	\$9,203	\$79,710	\$978,769
STARK	\$12,040,808	\$27,214	\$11,727,141	\$23,795,163	\$9,514,791	\$2,189,734	\$11,704,525	\$35,504,533	\$291,861	\$147,087	\$1,196,722	\$11,895,629
SUMMIT	\$13,424,870	\$43,982	\$19,893,016	\$33,361,869	\$14,353,427	\$3,047,160	\$17,400,587	\$50,771,378	\$184,541	\$124,009	\$1,526,815	\$11,278,134
TRUMBULL	\$5,212,746	\$37,745	\$7,918,458	\$13,168,949	\$4,460,750	\$1,350,134	\$5,810,884	\$18,998,098	\$62,231	\$25,227	\$411,877	\$6,021,145
TUSCARAWAS	\$2,389,656	\$2,068	\$2,787,646	\$5,179,370	\$1,514,213	\$466,779	\$1,980,992	\$7,181,182	\$47,185	\$24,617	\$153,518	\$2,003,291
UNION	\$750,268	\$753	\$940,145	\$1,691,167	\$540,321	\$149,163	\$689,483	\$2,380,650	\$2,522	\$3,026	\$69,712	\$745,373
UNKNOWN	\$0	\$0	\$0	\$0	(\$1,010,842)	\$0	(\$1,010,842)	(\$1,010,842)	\$0	\$0	\$0	\$0
VAN WERT	\$584,230	\$0	\$659,058	\$1,243,287	\$293,359	\$135,865	\$429,223	\$1,674,418	\$8,456	\$26,436	\$22,364	\$622,896
VINTON	\$416,803	\$7,884	\$672,437	\$1,097,124	\$539,765	\$340,201	\$879,966	\$1,977,528	\$3,385	\$1,145	\$70,411	\$292,812
WARREN	\$3,372,883	\$1,961	\$4,039,721	\$7,414,565	\$1,121,594	\$579,129	\$1,700,723	\$9,120,466	\$7,495	\$12,619	\$110,683	\$4,740,658
WASHINGTON	\$1,552,172	\$4,009	\$2,229,284	\$3,785,465	\$1,278,702	\$489,146	\$1,767,848	\$5,554,713	\$5,817	\$9,328	\$136,875	\$1,626,129
WAYNE	\$2,781,454	\$855	\$4,046,980	\$6,829,290	\$1,235,687	\$524,932	\$1,760,619	\$8,590,251	\$33,196	\$13,474	\$124,861	\$2,330,725
WILLIAMS	\$1,014,003	\$1,219	\$775,489	\$1,790,710	\$504,242	\$151,316	\$655,558	\$2,451,920	\$4,050	\$4,908	\$61,741	\$955,515
WOOD	\$2,134,150	\$1,700	\$2,184,538	\$4,320,389	\$1,137,656	\$360,280	\$1,497,935	\$5,818,324	\$2,613	\$13,081	\$121,954	\$2,048,673
WYANDOT	\$658,828	\$507	\$517,062	\$1,176,398	\$183,991	\$104,838	\$288,829	\$1,465,227	\$2,240	\$2,025	\$20,611	\$687,948

**TABLE 7
CHILD CARE
OCTOBER 2003**

OHIO COUNTY	OWF JOBS, LEAP, and TRANSITIONAL		OTHER CHILD CARE		ALL PROGRAM SOURCES	
	CHILDREN SERVED		CHILDREN SERVED		CHILDREN SERVED	
	TOTAL	% OF STATE TOTAL	TOTAL	% OF STATE TOTAL	TOTAL	% OF STATE TOTAL
STATEWIDE	18,500	100.00%	79,329	100.00%	97,829	100.00%
ADAMS	0	0.00%	34	0.04%	34	0.03%
ALLEN	29	0.16%	416	0.52%	445	0.45%
ASHLAND	3	0.02%	152	0.19%	155	0.16%
ASHTABULA	107	0.58%	753	0.95%	860	0.88%
ATHENS	57	0.31%	247	0.31%	304	0.31%
AUGLAIZE	16	0.09%	117	0.15%	133	0.14%
BELMONT	80	0.43%	258	0.33%	338	0.35%
BROWN	1	0.01%	105	0.13%	106	0.11%
BUTLER	183	0.99%	1,136	1.43%	1,319	1.35%
CARROLL	17	0.09%	77	0.10%	94	0.10%
CHAMPAIGN	13	0.07%	169	0.21%	182	0.19%
CLARK	68	0.37%	369	0.47%	437	0.45%
CLERMONT	53	0.29%	493	0.62%	546	0.56%
CLINTON	0	0.00%	0	0.00%	0	0.00%
COLUMBIANA	59	0.32%	630	0.79%	689	0.70%
COSHOCTON	46	0.25%	210	0.26%	256	0.26%
CRAWFORD	19	0.10%	179	0.23%	198	0.20%
CUYAHOGA	5,175	27.97%	18,834	23.74%	24,009	24.54%
DARKE	8	0.04%	138	0.17%	146	0.15%
DEFIANCE	4	0.02%	158	0.20%	162	0.17%
DELAWARE	14	0.08%	218	0.27%	232	0.24%
ERIE	8	0.04%	644	0.81%	652	0.67%
FAIRFIELD	37	0.20%	423	0.53%	460	0.47%
FAYETTE	24	0.13%	200	0.25%	224	0.23%
FRANKLIN	3,047	16.47%	11,026	13.90%	14,073	14.39%
FULTON	4	0.02%	164	0.21%	168	0.17%
GALLIA	54	0.29%	205	0.26%	259	0.26%
GEAUGA	8	0.04%	167	0.21%	175	0.18%
GREENE	167	0.90%	716	0.90%	883	0.90%
GUERNSEY	38	0.21%	323	0.41%	361	0.37%
HAMILTON	3,188	17.23%	9,904	12.48%	13,092	13.38%
HANCOCK	12	0.06%	341	0.43%	353	0.36%
HARDIN	0	0.00%	73	0.09%	73	0.07%
HARRISON	14	0.08%	43	0.05%	57	0.06%
HENRY	38	0.21%	85	0.11%	123	0.13%
HIGHLAND	6	0.03%	238	0.30%	244	0.25%
HOCKING	0	0.00%	0	0.00%	0	0.00%
HOLMES	19	0.10%	81	0.10%	100	0.10%
HURON	3	0.02%	569	0.72%	572	0.58%
JACKSON	33	0.18%	160	0.20%	193	0.20%
JEFFERSON	90	0.49%	341	0.43%	431	0.44%
KNOX	23	0.12%	328	0.41%	351	0.36%
LAKE	111	0.60%	958	1.21%	1,069	1.09%
LAWRENCE	45	0.24%	479	0.60%	524	0.54%

SOURCE: NMR120RA. The above numbers have not been reconciled between the CCIDS/3299 data collection system and 2827 ODJFS fiscal reporting system; therefore they may not be conclusive at this time.

OWF data consist of funding codes: 312, 313,314, 326, & 327. Other data consist of funding codes: 320, 321 , 322, 323, 324, 325, 329, 342, and 899.

**TABLE 7
CHILD CARE
OCTOBER 2003**

OHIO COUNTY	OWF JOBS, LEAP, and TRANSITIONAL		OTHER CHILD CARE		ALL PROGRAM SOURCES	
	CHILDREN SERVED		CHILDREN SERVED		CHILDREN SERVED	
	TOTAL	% OF STATE TOTAL	TOTAL	% OF STATE TOTAL	TOTAL	% OF STATE TOTAL
STATEWIDE	18,500	100.00%	79,329	100.00%	97,829	100.00%
LICKING	138	0.75%	830	1.05%	968	0.99%
LOGAN	20	0.11%	70	0.09%	90	0.09%
LORAIN	406	2.19%	1,686	2.13%	2,092	2.14%
LUCAS	1,308	7.07%	2,254	2.84%	3,562	3.64%
MADISON	41	0.22%	95	0.12%	136	0.14%
MAHONING	533	2.88%	1,727	2.18%	2,260	2.31%
MARION	14	0.08%	377	0.48%	391	0.40%
MEDINA	78	0.42%	540	0.68%	618	0.63%
MEIGS	4	0.02%	153	0.19%	157	0.16%
MERCER	19	0.10%	134	0.17%	153	0.16%
MIAMI	3	0.02%	330	0.42%	333	0.34%
MONROE	0	0.00%	0	0.00%	0	0.00%
MONTGOMERY	772	4.17%	5,050	6.37%	5,822	5.95%
MORGAN	5	0.03%	76	0.10%	81	0.08%
MORROW	15	0.08%	162	0.20%	177	0.18%
MUSKINGUM	149	0.81%	754	0.95%	903	0.92%
NOBLE	1	0.01%	40	0.05%	41	0.04%
OTTAWA	31	0.17%	95	0.12%	126	0.13%
PAULDING	2	0.01%	22	0.03%	24	0.02%
PERRY	41	0.22%	166	0.21%	207	0.21%
PICKAWAY	41	0.22%	160	0.20%	201	0.21%
PIKE	18	0.10%	109	0.14%	127	0.13%
PORTAGE	85	0.46%	727	0.92%	812	0.83%
PREBLE	19	0.10%	133	0.17%	152	0.16%
PUTNAM	8	0.04%	79	0.10%	87	0.09%
RICHLAND	93	0.50%	840	1.06%	933	0.95%
ROSS	25	0.14%	279	0.35%	304	0.31%
SANDUSKY	76	0.41%	403	0.51%	479	0.49%
SCIOTO	111	0.60%	530	0.67%	641	0.66%
SENECA	12	0.06%	259	0.33%	271	0.28%
SHELBY	1	0.01%	272	0.34%	273	0.28%
STARK	397	2.15%	2,126	2.68%	2,523	2.58%
SUMMIT	626	3.38%	2,887	3.64%	3,513	3.59%
TRUMBULL	145	0.78%	1,605	2.02%	1,750	1.79%
TUSCARAWAS	46	0.25%	493	0.62%	539	0.55%
UNION	0	0.00%	22	0.03%	22	0.02%
VAN WERT	0	0.00%	60	0.08%	60	0.06%
VINTON	19	0.10%	104	0.13%	123	0.13%
WARREN	42	0.23%	343	0.43%	385	0.39%
WASHINGTON	38	0.21%	375	0.47%	413	0.42%
WAYNE	117	0.63%	369	0.47%	486	0.50%
WILLIAMS	21	0.11%	119	0.15%	140	0.14%
WOOD	59	0.32%	274	0.35%	333	0.34%
WYANDOT	0	0.00%	39	0.05%	39	0.04%

SOURCE: NMR120RA. The above numbers have not been reconciled between the CCIDS/3299 data collection system and 2827 ODJFS fiscal reporting system; therefore they may not be conclusive at this time.

OWF data consist of funding codes: 312, 313,314, 326, & 327. Other data consist of funding codes: 320, 321 , 322, 323, 324, 325, 329, 342, and 899.

TABLE 8
RECIPIENTS, EXPENDITURES, AND AVERAGE PAYMENT PER RECIPIENT
DURING THE LAST 12 MONTHS IN OHIO

	OWF-R	OWF-U	OWF\ CHILD CARE	OTHER\ CHILD CARE	DISABILTY ASSISTANCE	TITLE IV-E	FNS BENEFITS
RECIPIENTS							
November 2002	180,040	15,366	20,413	80,206	15,412	23,882	804,746
December	181,407	16,537	21,674	82,473	15,672	23,836	842,378
January 2003	180,357	17,145	20,986	84,041	16,114	24,428	841,323
February	177,379	16,899	20,315	83,341	16,159	24,080	835,650
March	177,267	17,176	20,255	82,934	16,553	24,734	859,754
April	178,408	17,332	20,380	84,098	16,970	25,432	853,470
May	177,334	16,598	20,461	86,141	17,175	25,725	870,179
June	175,468	15,357	19,942	86,134	17,114	25,562	887,138
July	177,427	15,796	19,871	88,257	16,705	24,980	884,678
August	178,508	15,466	19,051	82,897	13,921	26,113	884,945
September	178,759	15,723	18,171	81,175	13,405	25,073	900,572
October	180,465	15,639	18,500	79,329	13,250	25,894	901,828
12 MONTH AVERAGE	178,568	16,253	20,002	83,419	15,704	24,978	863,888
EXPENDITURES							
November 2002	\$24,595,097	\$1,446,878	N.A.	N.A.	\$1,859,545	\$11,556,365	\$67,986,461
December	\$24,928,511	\$1,603,240	N.A.	N.A.	\$1,922,076	\$12,756,184	\$72,028,907
January 2003	\$24,475,480	\$1,625,487	N.A.	N.A.	\$2,010,561	\$12,572,951	\$70,756,684
February	\$24,357,664	\$1,622,731	N.A.	N.A.	\$1,940,964	\$12,009,964	\$70,932,602
March	\$24,293,390	\$1,636,010	N.A.	N.A.	\$2,014,058	\$12,846,053	\$74,487,017
April	\$24,523,197	\$1,638,996	N.A.	N.A.	\$2,027,682	\$14,225,007	\$72,884,256
May	\$24,547,967	\$1,576,439	N.A.	N.A.	\$2,110,924	\$14,275,218	\$73,740,366
June	\$24,469,304	\$1,475,945	N.A.	N.A.	\$2,022,589	\$13,205,397	\$75,783,427
July	\$24,375,298	\$1,481,457	N.A.	N.A.	\$1,921,319	\$12,365,553	\$75,612,953
August	\$24,925,334	\$1,486,018	N.A.	N.A.	\$1,666,480	\$14,696,807	\$77,279,906
September	\$24,897,155	\$1,520,686	N.A.	N.A.	\$1,598,862	\$13,071,839	\$79,553,874
October	\$25,199,378	\$1,530,516	N.A.	N.A.	\$1,621,874	\$13,097,679	\$80,400,808
TOTAL DOLLARS	\$24,632,315	\$1,553,700	N.A.	N.A.	\$1,893,078	\$13,056,585	\$74,287,272
AVERAGE PAYMENT							
November 2002	\$137	\$94	N.A.	N.A.	\$121	\$484	\$84
December	\$137	\$97	N.A.	N.A.	\$123	\$535	\$86
January 2003	\$136	\$95	N.A.	N.A.	\$125	\$515	\$84
February	\$137	\$96	N.A.	N.A.	\$120	\$499	\$85
March	\$137	\$95	N.A.	N.A.	\$122	\$519	\$87
April	\$137	\$95	N.A.	N.A.	\$119	\$559	\$85
May	\$138	\$95	N.A.	N.A.	\$123	\$555	\$85
June	\$139	\$96	N.A.	N.A.	\$118	\$517	\$85
July	\$137	\$94	N.A.	N.A.	\$115	\$495	\$85
August	\$140	\$96	N.A.	N.A.	\$120	\$563	\$87
September	\$139	\$97	N.A.	N.A.	\$119	\$521	\$88
October	\$140	\$98	N.A.	N.A.	\$122	\$506	\$89

Note: N.A. means Not Available.

**TABLE 10
PERCENT OF OHIO'S POPULATION PARTICIPATING IN SELECTED
PUBLIC ASSISTANCE PROGRAMS FOR OCTOBER 2003**

OHIO COUNTY	Estimated Total Population *	Percent of All Families Below Poverty Level	DISABILITY ASSISTANCE		OWF COMBINED		FOSTER CARE		FNS BENEFITS	
			Recipients	Recipients as Percent of Total Population	Recipients	Recipients as Percent of Total Population	Recipients	Recipients as Percent of Total Population	Recipients	Recipients as Percent of Total Population
STATEWIDE	11,421,267	0.08	13,250	0.12	196,104	1.72	25,894	0.23	901,828	7.90
ADAMS	27,804	0.13	85	0.31	234	0.84	67	0.24	3,887	13.98
ALLEN	108,120	0.10	81	0.07	835	0.77	228	0.21	7,790	7.20
ASHLAND	52,900	0.07	28	0.05	188	0.36	10	0.02	2,402	4.54
ASHTABULA	102,515	0.09	273	0.27	1,603	1.56	154	0.15	9,451	9.22
ATHENS	63,256	0.14	183	0.29	1,410	2.23	187	0.30	6,381	10.09
AUGLAIZE	46,464	0.05	26	0.06	76	0.16	51	0.11	1,547	3.33
BELMONT	69,448	0.12	132	0.19	1,253	1.80	138	0.20	6,925	9.97
BROWN	43,464	0.09	36	0.08	286	0.66	52	0.12	3,193	7.35
BUTLER	340,543	0.05	436	0.13	3,170	0.93	756	0.22	19,970	5.86
CARROLL	29,166	0.09	27	0.09	200	0.69	13	0.04	1,904	6.53
CHAMPAIGN	39,121	0.05	30	0.08	369	0.94	14	0.04	1,974	5.05
CLARK	143,416	0.08	235	0.16	3,037	2.12	364	0.25	14,368	10.02
CLERMONT	183,352	0.05	163	0.09	1,127	0.61	361	0.20	7,961	4.34
CLINTON	41,090	0.06	48	0.12	218	0.53	76	0.18	2,324	5.66
COLUMBIANA	111,806	0.09	131	0.12	1,070	0.96	130	0.12	10,318	9.23
COSHOCTON	36,836	0.07	64	0.17	482	1.31	63	0.17	3,273	8.89
CRAWFORD	46,420	0.08	48	0.10	558	1.20	42	0.09	3,874	8.35
CUYAHOGA	1,379,049	0.10	1,958	0.14	31,590	2.29	6,488	0.47	158,797	11.51
DARKE	52,966	0.06	34	0.06	335	0.63	41	0.08	1,806	3.41
DEFIANCE	39,334	0.05	14	0.04	269	0.68	44	0.11	2,132	5.42
DELAWARE	125,399	0.03	61	0.05	672	0.54	88	0.07	3,406	2.72
ERIE	79,207	0.06	54	0.07	348	0.44	148	0.19	4,414	5.57
FAIRFIELD	129,161	0.05	102	0.08	1,219	0.94	128	0.10	6,770	5.24
FAYETTE	28,176	0.08	24	0.09	316	1.12	22	0.08	2,147	7.62
FRANKLIN	1,086,814	0.08	1,122	0.10	27,432	2.52	3,630	0.33	100,583	9.25
FULTON	42,573	0.04	18	0.04	159	0.37	39	0.09	1,522	3.58
GALLIA	31,301	0.14	46	0.15	1,173	3.75	57	0.18	4,737	15.13
GEAUGA	92,980	0.03	21	0.02	169	0.18	116	0.12	1,299	1.40
GREENE	149,964	0.05	177	0.12	1,290	0.86	104	0.07	7,743	5.16
GUERNSEY	40,987	0.13	121	0.30	418	1.02	104	0.25	4,918	12.00
HAMILTON	833,721	0.09	749	0.09	20,351	2.44	1,471	0.18	59,433	7.13
HANCOCK	72,286	0.05	45	0.06	326	0.45	72	0.10	2,963	4.10
HARDIN	31,731	0.09	18	0.06	78	0.25	53	0.17	1,593	5.02
HARRISON	15,890	0.11	38	0.24	218	1.37	28	0.18	1,511	9.51
HENRY	29,478	0.05	13	0.04	44	0.15	34	0.12	917	3.11
HIGHLAND	41,851	0.09	64	0.15	312	0.75	33	0.08	3,602	8.61
HOCKING	28,481	0.10	34	0.12	658	2.31	75	0.26	2,583	9.07
HOLMES	40,375	0.11	34	0.08	92	0.23	31	0.08	1,017	2.52
HURON	60,020	0.07	38	0.06	211	0.35	55	0.09	3,732	6.22
JACKSON	32,854	0.14	93	0.28	729	2.22	41	0.12	4,563	13.89
JEFFERSON	72,402	0.11	174	0.24	2,066	2.85	120	0.17	8,342	11.52
KNOX	56,037	0.07	78	0.14	578	1.03	45	0.08	3,361	6.00
LAKE	229,004	0.04	186	0.08	1,106	0.48	196	0.09	9,056	3.95
LAWRENCE	62,172	0.15	84	0.14	1,589	2.56	36	0.06	10,106	16.25

*SOURCE: 2002 Ohio County Population Estimates, Ohio Dept. of Development, GRP342RA, GBS003RA, GRP304RA and GRP304RC Reports from Management Information Services.

**TABLE 10
PERCENT OF OHIO'S POPULATION PARTICIPATING IN SELECTED
PUBLIC ASSISTANCE PROGRAMS FOR OCTOBER 2003**

OHIO COUNTY	Estimated Total Population *	Percent of All Families Below Poverty Level	DISABILITY ASSISTANCE		OWF COMBINED		FOSTER CARE		FNS BENEFITS	
			Recipients	Recipients as Percent of Total Population	Recipients	Recipients as Percent of Total Population	Recipients	Recipients as Percent of Total Population	Recipients	Recipients as Percent of Total Population
STATEWIDE	11,421,267	0.08	13,250	0.12	196,104	1.72	25,894	0.23	901,828	7.90
LICKING	148,731	0.06	191	0.13	1,409	0.95	363	0.24	9,012	6.06
LOGAN	46,262	0.07	34	0.07	407	0.88	57	0.12	2,747	5.94
LORAIN	288,360	0.07	266	0.09	4,671	1.62	390	0.14	24,015	8.33
LUCAS	453,506	0.11	558	0.12	15,622	3.44	1,972	0.43	52,094	11.49
MADISON	40,365	0.06	29	0.07	506	1.25	39	0.10	2,112	5.23
MAHONING	253,308	0.10	403	0.16	6,741	2.66	327	0.13	26,628	10.51
MARION	66,028	0.07	90	0.14	708	1.07	90	0.14	5,488	8.31
MEDINA	158,439	0.04	76	0.05	575	0.36	78	0.05	3,777	2.38
MEIGS	23,111	0.14	59	0.26	427	1.85	17	0.07	3,756	16.25
MERCER	40,815	0.05	32	0.08	190	0.47	44	0.11	1,225	3.00
MIAMI	99,596	0.05	59	0.06	632	0.63	166	0.17	3,905	3.92
MONROE	14,973	0.11	15	0.10	225	1.50	10	0.07	1,434	9.58
MONTGOMERY	554,470	0.08	481	0.09	13,394	2.42	1,820	0.33	44,657	8.05
MORGAN	14,749	0.16	43	0.29	129	0.87	13	0.09	1,697	11.51
MORROW	32,976	0.07	17	0.05	255	0.77	48	0.15	2,182	6.62
MUSKINGUM	85,349	0.10	221	0.26	1,865	2.19	106	0.12	11,254	13.19
NOBLE	14,088	0.08	19	0.13	82	0.58	5	0.04	1,043	7.40
OTTAWA	41,049	0.04	24	0.06	282	0.69	4	0.01	1,772	4.32
PAULDING	19,841	0.05	23	0.12	265	1.34	26	0.13	1,119	5.64
PERRY	34,408	0.09	58	0.17	648	1.88	69	0.20	3,940	11.45
PICKAWAY	53,437	0.08	49	0.09	918	1.72	33	0.06	4,041	7.56
PIKE	27,921	0.15	64	0.23	806	2.89	42	0.15	4,625	16.56
PORTAGE	153,886	0.06	126	0.08	1,113	0.72	126	0.08	6,678	4.34
PREBLE	42,680	0.05	20	0.05	313	0.73	67	0.16	1,795	4.21
PUTNAM	34,736	0.04	11	0.03	194	0.56	16	0.05	1,178	3.39
RICHLAND	128,004	0.08	215	0.17	1,382	1.08	262	0.20	9,859	7.70
ROSS	74,469	0.09	110	0.15	1,406	1.89	48	0.06	8,196	11.01
SANDUSKY	61,698	0.06	41	0.07	385	0.62	85	0.14	2,984	4.84
SCIOTO	78,041	0.15	230	0.29	1,956	2.51	109	0.14	13,371	17.13
SENECA	58,077	0.06	47	0.08	223	0.38	97	0.17	3,255	5.60
SHELBY	48,516	0.05	16	0.03	251	0.52	67	0.14	1,783	3.68
STARK	377,940	0.07	533	0.14	7,654	2.03	1,091	0.29	26,562	7.03
SUMMIT	546,381	0.08	653	0.12	12,609	2.31	1,024	0.19	45,183	8.27
TRUMBULL	223,518	0.08	346	0.15	3,331	1.49	398	0.18	17,267	7.73
TUSCARAWAS	91,490	0.07	85	0.09	1,064	1.16	196	0.21	6,155	6.73
UNION	43,010	0.04	21	0.05	484	1.13	44	0.10	1,833	4.26
VAN WERT	29,399	0.04	12	0.04	66	0.22	31	0.11	989	3.36
VINTON	13,128	0.15	34	0.26	423	3.22	53	0.40	2,202	16.77
WARREN	175,133	0.03	50	0.03	414	0.24	128	0.07	3,320	1.90
WASHINGTON	62,561	0.09	102	0.16	224	0.36	49	0.08	4,660	7.45
WAYNE	112,704	0.05	268	0.24	990	0.88	161	0.14	5,546	4.92
WILLIAMS	39,020	0.04	24	0.06	433	1.11	35	0.09	1,830	4.69
WOOD	122,387	0.05	60	0.05	498	0.41	61	0.05	3,439	2.81
WYANDOT	22,773	0.04	9	0.04	70	0.31	22	0.10	625	2.74
UNKNOWN										

*SOURCE: 2002 Ohio County Population Estimates, Ohio Dept. of Development, GRP342RA, GBS003RA, GRP304RA and GRP304RC Reports from Management Information Services.