

MONTHLY REVIEW OF PUBLIC ASSISTANCE STATISTICS FOR OCTOBER 2002

OHIO WORKS FIRST

For the month of October 2002, OWF-Combined assistance groups totaled 86,210; recipients totaled 194,847 and money payments totaled \$26,300,955. The percent change from September 2002 to October 2002 was 2.0% for assistance groups; 2.1% for recipients, and 2.8% for money payments. For OWF- Regular (OWF-R) there were 82,630 assistance groups; 180,031 recipients, and \$24,908,150 in money payments issued for October 2002. The percent change from September 2002 to October 2002 was 2.0% for assistance groups; 2.0% for recipients, and 2.8% for money payments. For OWF-Unemployed (OWF-U) assistance groups totaled 3,580; recipients 14,816, and money payments were \$1,392,805. The percent change from September 2002 to October 2002 was 2.0% for assistance groups; 2.9% for recipients and 3.1% for money payments.

FOSTER CARE (TITLE IV-E)

A total of 24,284 children received \$12,299,864 in Title IV-E assistance during the month of October 2002. Included in this total were 7,050 foster care children who received \$5,933,609 in money payments. Of these Title IV-E children, 3,138 or 12.9% were in foster family homes who received \$1,258,845 and 3,912 or 16.1% children in child care institutions who received \$4,674,764 in OWF foster care assistance. The remaining 17,234 children reported as participating in Title IV-E received \$6,366,255 in adoption assistance. Overall, the average amount of Foster Care received per child was \$506.50.

DISABILITY ASSISTANCE (DA)

For the month of October 2002, there were 14,583 assistance groups; 15,012 recipients, and \$1,953,311 in DA financial assistance. The average DA financial assistance per recipient was \$130.12. Total DA expenditures for medical services for October 2002 were \$8,285,521. Of this total, \$5,493,558 or 66.3% was spent for prescribed drugs, and \$2,291,956 or 27.7% was spent for physician services. Medical expenses were paid for 20,271 recipients for an average expenditure of \$408.74 per recipient.

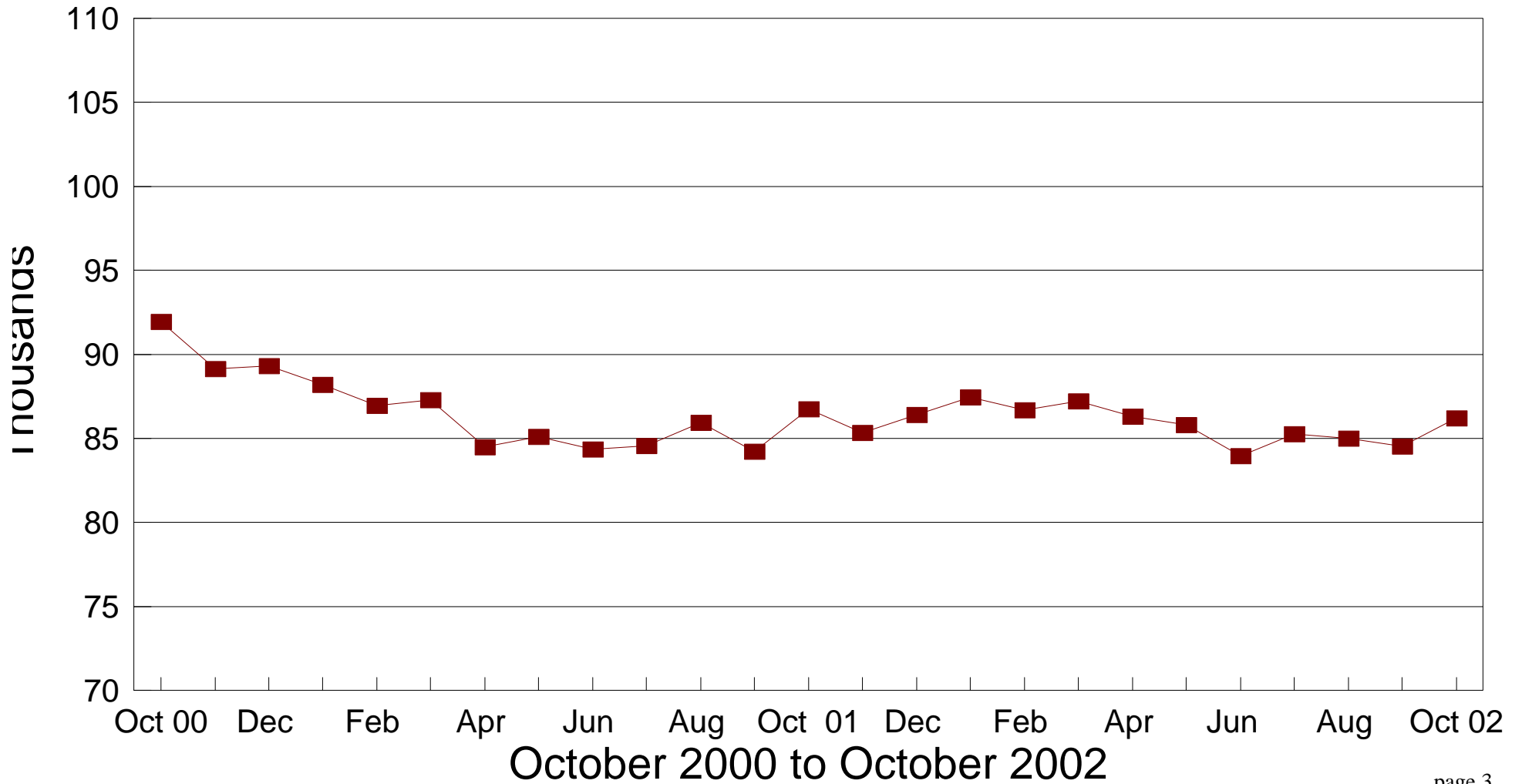
FNS BENEFITS:

Total persons participating in the FNS benefits program during October 2002 increased to 782,349 by 9,244 or 1.2% from 773,105 persons reported in September 2002. Households increased by 4,052 or 1.2% over September 2002 levels. The total dollar value of FNS related benefits issued during October 2002 increased by \$2,714,787 or 4.2% from \$64,454,949 reported in September 2002 to \$67,169,736 reported in October 2002. The average benefit issuance per person increased by \$2.49 or 3.0% from those issued in September 2002. The average benefit issuance per person increased from \$83.37 in September 2002 to \$85.86 in October 2002.

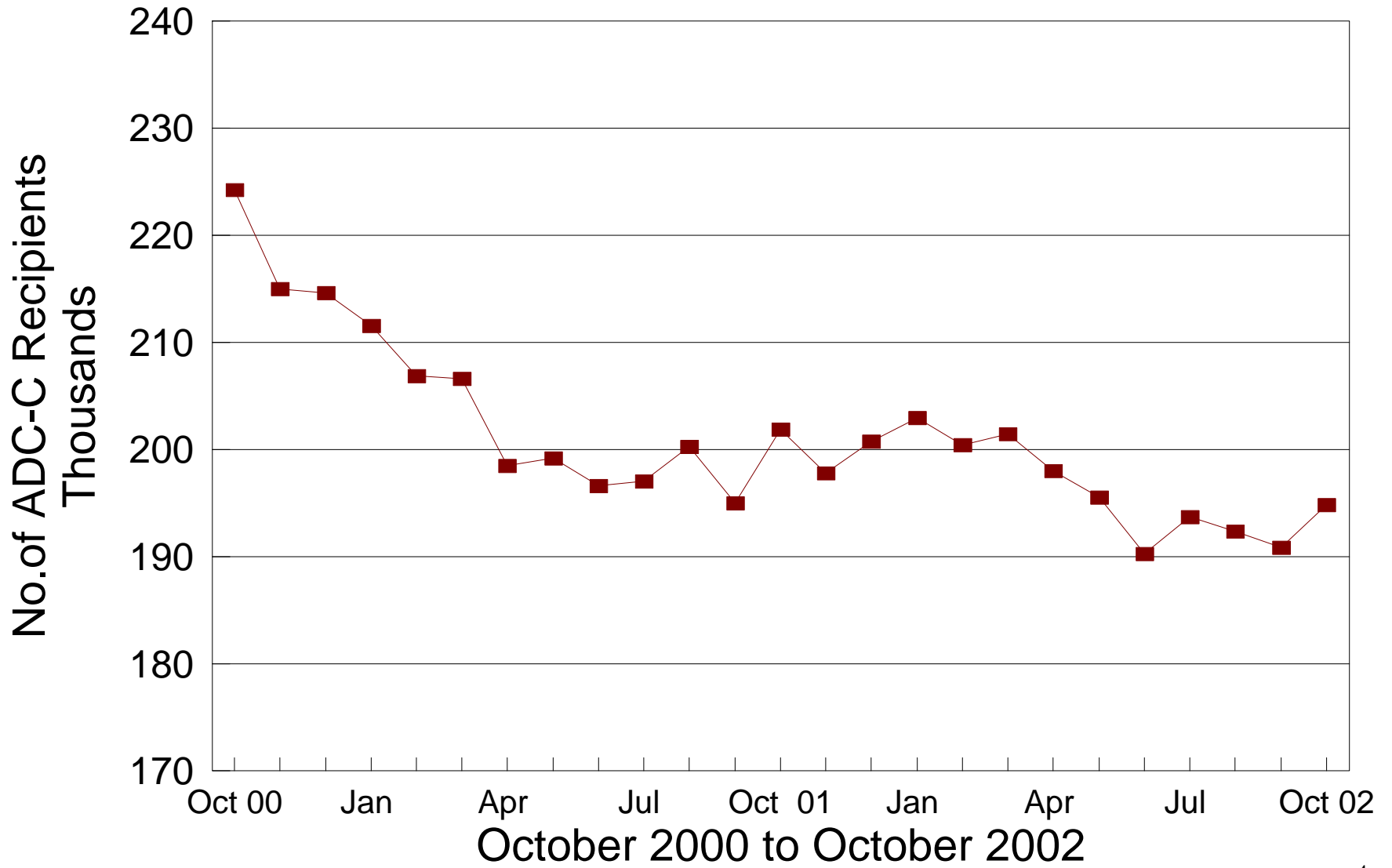
STATEWIDE SUMMARY OF PUBLIC ASSISTANCE PROGRAMS FOR OCTOBER 2002					
	October 2002	September 2002	% CHANGE Oct 02 / Sep 02	October 2001	% CHANGE Oct 02 / Oct 01
OHIO WORKS FIRST (OWF)-COMBINED					
Assistance Groups	86,210	84,535	2.0%	86,756	-0.6%
Recipients	194,847	190,862	2.1%	201,883	-3.5%
Net Payments	\$26,300,955	\$25,585,347	2.8%	\$26,829,694	-2.0%
Average Per Recipient	\$134.98	\$134.05	0.7%	\$132.90	1.6%
OWF-REGULAR, OWF-INCAPACITATED,& OWF REGULAR VENDOR PAYMENTS					
Assistance Groups	82,630	81,026	2.0%	83,325	-0.8%
Recipients	180,031	176,457	2.0%	187,194	-3.8%
Net Payments	\$24,908,150	\$24,235,034	2.8%	\$25,467,777	-2.2%
Average Per Recipient	\$138.35	\$137.34	0.7%	\$136.05	1.7%
OWF-UNEMPLOYED AND OWF-UNEMPLOYED VENDOR PAYMENTS					
Assistance Groups	3,580	3,509	2.0%	3,431	4.3%
Recipients	14,816	14,405	2.9%	14,689	0.9%
Net Payments	\$1,392,805	\$1,350,313	3.1%	\$1,361,917	2.3%
Average Per Recipient	\$94.01	\$93.74	0.3%	\$92.72	1.4%
TITLE IV-E FOSTER CARE					
Assistance Groups/Recipients	24,284	24,326	-0.2%	23,518	3.3%
Gross Payments	\$12,299,864	\$12,552,968	-2.0%	\$12,686,201	-3.0%
Average Per Recipient	\$506.50	\$516.03	-1.8%	\$539.43	-6.1%
DISABILITY ASSISTANCE					
Assistance Groups	14,583	14,110	3.4%	12,134	20.2%
Recipients	15,012	14,518	3.4%	12,511	20.0%
Net Payments	\$1,953,311	\$1,829,682	6.8%	\$1,463,447	33.5%
Medical Assistance	\$8,285,521	\$6,343,091	30.6%	\$6,318,929	31.1%
FNS BENEFITS					
Assistance Groups	351,621	347,569	1.2%	313,378	12.2%
Persons	782,349	773,105	1.2%	691,424	13.2%
Total Coupons Issued	\$67,169,736	\$64,454,949	4.2%	\$57,616,292	16.6%
Average Per Recipient	\$85.86	\$83.37	3.0%	\$83.33	3.0%

No.of OWF-Combined Assistance Groups

During the Last 25 Months

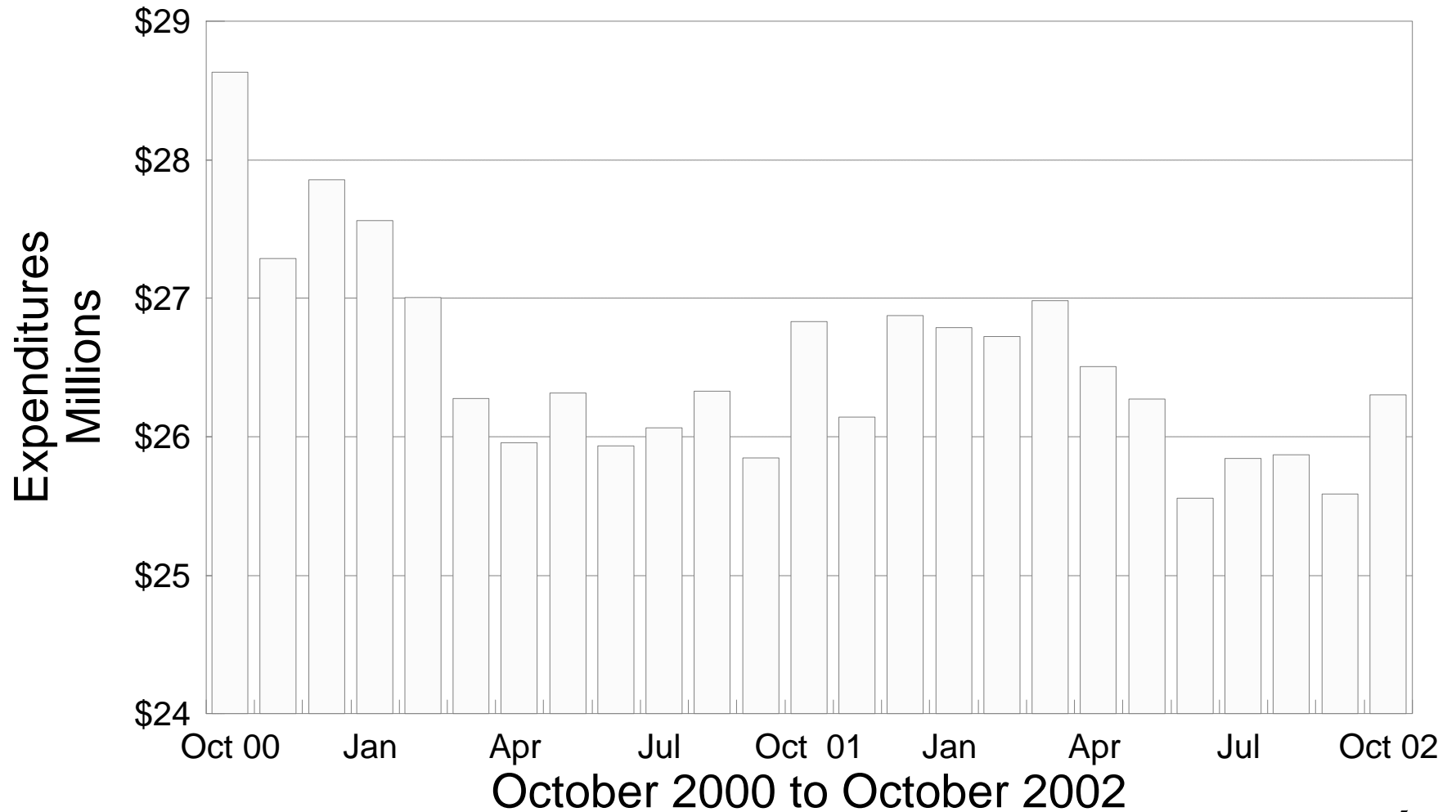


Number of OWF-Combined Recipients During the Last 25 Months



OWF-Combined Net Expenditures

During the Last 25 Months



**TABLE 1
OWF COMBINED
OCTOBER 2002**

OHIO COUNTY	ASSISTANCE GROUP	RECIPIENTS	ADULTS	CHILDREN	ACTUAL EXPENDITURES		
					GROSS AMOUNT	CANCELLED AMOUNT	NET AMOUNT
STATEWIDE	86,210	194,847	50,791	144,056	\$27,055,616.88	\$754,662.00	\$26,300,954.88
ADAMS	137	240	12	228	\$39,032.00	\$446.00	\$38,586.00
ALLEN	473	891	113	778	\$143,936.00	\$3,667.00	\$140,269.00
ASHLAND	91	199	49	150	\$25,764.00	\$1,124.00	\$24,640.00
ASHTABULA	661	1,485	381	1,104	\$209,890.00	\$8,091.00	\$201,799.00
ATHENS	590	1,475	490	985	\$183,505.00	\$5,188.00	\$178,317.00
AUGLAIZE	59	105	16	89	\$17,310.00	\$0.00	\$17,310.00
BELMONT	585	1,297	403	894	\$169,554.00	\$2,922.00	\$166,632.00
BROWN	156	254	22	232	\$42,223.00	\$974.00	\$41,249.00
BUTLER	1,690	3,622	916	2,706	\$519,662.00	\$11,944.00	\$507,718.00
CARROLL	97	187	39	148	\$28,069.00	\$2,371.00	\$25,698.00
CHAMPAIGN	181	386	104	282	\$53,278.00	\$223.00	\$53,055.00
CLARK	1,252	2,766	726	2,040	\$385,292.00	\$9,544.00	\$375,748.00
CLERMONT	534	1,095	239	856	\$161,795.00	\$7,019.00	\$154,776.00
CLINTON	124	204	38	166	\$32,910.00	\$1,014.00	\$31,896.00
COLUMBIANA	463	915	198	717	\$137,932.00	\$2,574.00	\$135,358.00
COSHOCTON	286	717	236	481	\$88,086.00	\$1,652.00	\$86,434.00
CRAWFORD	202	438	124	314	\$66,619.00	\$3,224.00	\$63,395.00
CUYAHOGA	15,581	34,603	8,755	25,848	\$4,960,955.00	\$163,706.00	\$4,797,249.00
DARKE	142	300	86	214	\$43,269.00	\$596.00	\$42,673.00
DEFIANCE	89	156	20	136	\$25,135.00	\$1,514.00	\$23,621.00
DELAWARE	237	518	158	360	\$74,725.00	\$1,617.00	\$73,108.00
ERIE	231	402	38	364	\$64,593.00	\$1,420.00	\$63,173.00
FAIRFIELD	517	1,207	389	818	\$161,195.00	\$6,256.00	\$154,939.00
FAYETTE	140	280	57	223	\$41,396.00	\$0.00	\$41,396.00
FRANKLIN	11,457	26,747	6,862	19,885	\$3,627,728.09	\$104,980.00	\$3,522,748.09
FULTON	57	116	21	95	\$15,647.00	\$0.00	\$15,647.00
GALLIA	471	1,155	380	775	\$147,022.00	\$3,988.00	\$143,034.00
GEAUGA	82	177	37	140	\$24,656.00	\$0.00	\$24,656.00
GREENE	716	1,634	496	1,138	\$226,242.00	\$5,390.00	\$220,852.00
GUERNSEY	166	308	59	249	\$48,377.00	\$1,761.00	\$46,616.00
HAMILTON	8,566	20,613	5,152	15,461	\$2,804,377.00	\$87,538.00	\$2,716,839.00
HANCOCK	119	222	40	182	\$35,066.00	\$900.00	\$34,166.00
HARDIN	62	116	21	95	\$17,745.00	\$223.00	\$17,522.00
HARRISON	82	159	41	118	\$23,691.00	\$498.00	\$23,193.00
HENRY	31	51	8	43	\$8,522.00	\$0.00	\$8,522.00
HIGHLAND	99	191	17	174	\$29,818.00	\$1,269.00	\$28,549.00
HOCKING	264	601	191	410	\$84,427.00	\$5,030.00	\$79,397.00
HOLMES	37	71	15	56	\$10,295.00	\$223.00	\$10,072.00
HURON	126	184	1	183	\$33,525.00	\$980.00	\$32,545.00
JACKSON	333	683	159	524	\$96,875.00	\$2,549.00	\$94,326.00
JEFFERSON	816	1,872	604	1,268	\$253,999.00	\$8,865.00	\$245,134.00
KNOX	233	566	181	385	\$73,453.00	\$1,091.00	\$72,362.00
LAKE	565	1,279	327	952	\$173,888.00	\$5,443.00	\$168,445.00
LAWRENCE	787	1,613	358	1,255	\$225,778.00	\$7,411.00	\$218,367.00

Source: GRP342RA Report from Management Information Services. Data includes ADC-Regular, ADC-Incapacitated, ADC-Unemployed, and Vendor Payments.

**TABLE 1
OWF COMBINED
OCTOBER 2002**

OHIO COUNTY	ASSISTANCE GROUP	RECIPIENTS	ADULTS	CHILDREN	ACTUAL EXPENDITURES		
					GROSS AMOUNT	CANCELLED AMOUNT	NET AMOUNT
STATEWIDE	86,210	194,847	50,791	144,056	\$27,055,616.88	\$754,662.00	\$26,300,954.88
LICKING	591	1,388	417	971	\$177,423.00	\$5,725.00	\$171,698.00
LOGAN	152	329	80	249	\$46,658.00	\$722.00	\$45,936.00
LORAIN	1,979	4,721	1,225	3,496	\$626,492.00	\$11,319.00	\$615,173.00
LUCAS	6,153	14,340	3,962	10,378	\$1,918,106.00	\$58,630.00	\$1,859,476.00
MADISON	189	452	144	308	\$61,015.00	\$819.00	\$60,196.00
MAHONING	2,696	6,087	1,486	4,601	\$847,766.00	\$10,375.00	\$837,391.00
MARION	355	627	74	553	\$104,288.00	\$1,849.00	\$102,439.00
MEDINA	252	550	153	397	\$84,557.00	\$528.00	\$84,029.00
MEIGS	247	562	176	386	\$74,355.00	\$1,731.00	\$72,624.00
MERCER	73	182	54	128	\$23,325.00	\$498.00	\$22,827.00
MIAMI	246	462	92	370	\$69,058.00	\$1,617.00	\$67,441.00
MONROE	72	173	52	121	\$22,299.00	\$684.00	\$21,615.00
MONTGOMERY	5,771	12,964	3,278	9,686	\$1,781,574.52	\$46,263.00	\$1,735,311.52
MORGAN	81	129	15	114	\$21,843.00	\$446.00	\$21,397.00
MORROW	144	292	72	220	\$43,769.00	\$1,628.00	\$42,141.00
MUSKINGUM	753	1,595	437	1,158	\$226,426.00	\$4,224.00	\$222,202.00
NOBLE	25	46	13	33	\$7,030.00	\$223.00	\$6,807.00
OTTAWA	143	346	109	237	\$43,628.00	\$1,914.00	\$41,714.00
PAULDING	72	150	50	100	\$22,470.00	\$825.00	\$21,645.00
PERRY	232	510	132	378	\$70,533.00	\$2,250.00	\$68,283.00
PICKAWAY	310	717	212	505	\$100,366.00	\$1,983.00	\$98,383.00
PIKE	352	784	188	596	\$105,684.00	\$2,104.00	\$103,580.00
PORTAGE	516	1,076	298	778	\$165,628.00	\$2,998.00	\$162,630.00
PREBLE	156	338	82	256	\$47,093.00	\$1,663.00	\$45,430.00
PUTNAM	62	137	40	97	\$18,489.00	\$631.00	\$17,858.00
RICHLAND	644	1,302	260	1,042	\$201,270.00	\$6,031.00	\$195,239.00
ROSS	781	1,867	591	1,276	\$250,424.00	\$5,340.00	\$245,084.00
SANDUSKY	178	321	39	282	\$51,035.00	\$1,696.00	\$49,339.00
SCIOTO	1,019	1,964	386	1,578	\$294,128.00	\$5,920.00	\$288,208.00
SENECA	132	241	36	205	\$37,481.00	\$856.00	\$36,625.00
SHELBY	139	244	28	216	\$39,107.00	\$2,095.00	\$37,012.00
STARK	3,263	7,820	2,418	5,402	\$1,053,668.00	\$28,043.00	\$1,025,625.00
SUMMIT	5,414	12,515	3,660	8,855	\$1,731,363.00	\$38,182.00	\$1,693,181.00
TRUMBULL	1,497	3,223	750	2,473	\$458,860.00	\$12,933.00	\$445,927.00
TUSCARAWAS	374	889	279	610	\$114,009.00	\$2,103.00	\$111,906.00
UNION	201	514	160	354	\$67,356.00	\$3,014.00	\$64,342.00
VAN WERT	30	46	2	44	\$7,837.00	\$0.00	\$7,837.00
VINTON	152	353	85	268	\$49,434.00	\$1,491.00	\$47,943.00
WARREN	174	329	70	259	\$51,915.00	\$1,538.00	\$50,377.00
WASHINGTON	139	218	23	195	\$38,019.00	\$1,361.00	\$36,658.00
WAYNE	444	1,030	339	691	\$136,941.27	\$2,833.00	\$134,108.27
WILLIAMS	150	365	113	252	\$49,501.00	\$2,037.00	\$47,464.00
WOOD	238	489	114	375	\$67,520.00	\$2,010.00	\$65,510.00
WYANDOT	32	60	18	42	\$8,617.00	\$305.00	\$8,312.00

**TABLE 1
OWF REGULAR
OCTOBER 2002**

OHIO COUNTY	ASSISTANCE GROUP	RECIPIENTS	ADULTS	CHILDREN	ACTUAL EXPENDITURES		
					GROSS AMOUNT	CANCELLED AMOUNT	NET AMOUNT
STATEWIDE	82,630	180,031	43,984	136,047	\$25,612,359.88	\$704,210.00	\$24,908,149.88
ADAMS	137	240	12	228	\$39,032.00	\$446.00	\$38,586.00
ALLEN	469	873	107	766	\$140,296.00	\$2,784.00	\$137,512.00
ASHLAND	87	185	41	144	\$24,463.00	\$1,124.00	\$23,339.00
ASHTABULA	625	1,334	310	1,024	\$192,950.00	\$6,356.00	\$186,594.00
ATHENS	496	1,113	312	801	\$148,861.00	\$2,928.00	\$145,933.00
AUGLAIZE	59	105	16	89	\$17,310.00	\$0.00	\$17,310.00
BELMONT	533	1,087	300	787	\$150,676.00	\$2,549.00	\$148,127.00
BROWN	155	250	20	230	\$41,378.00	\$974.00	\$40,404.00
BUTLER	1,609	3,287	764	2,523	\$486,054.00	\$11,405.00	\$474,649.00
CARROLL	93	173	31	142	\$27,361.00	\$2,371.00	\$24,990.00
CHAMPAIGN	170	339	82	257	\$49,923.00	\$223.00	\$49,700.00
CLARK	1,205	2,559	638	1,921	\$362,724.00	\$8,637.00	\$354,087.00
CLERMONT	519	1,031	211	820	\$154,431.00	\$6,558.00	\$147,873.00
CLINTON	123	203	37	166	\$32,687.00	\$1,014.00	\$31,673.00
COLUMBIANA	446	845	165	680	\$129,562.00	\$1,652.00	\$127,910.00
COSHOCTON	247	554	162	392	\$73,588.00	\$1,279.00	\$72,309.00
CRAWFORD	184	367	89	278	\$58,950.00	\$2,273.00	\$56,677.00
CUYAHOGA	15,090	32,511	7,802	24,709	\$4,756,867.00	\$158,428.00	\$4,598,439.00
DARKE	135	276	73	203	\$40,654.00	\$596.00	\$40,058.00
DEFIANCE	89	156	20	136	\$25,135.00	\$1,514.00	\$23,621.00
DELAWARE	219	449	124	325	\$68,009.00	\$1,394.00	\$66,615.00
ERIE	230	399	36	363	\$64,220.00	\$1,420.00	\$62,800.00
FAIRFIELD	469	1,006	298	708	\$143,600.00	\$5,778.00	\$137,822.00
FAYETTE	136	264	49	215	\$38,696.00	\$0.00	\$38,696.00
FRANKLIN	11,111	25,126	6,207	18,919	\$3,479,790.09	\$98,962.00	\$3,380,828.09
FULTON	56	112	19	93	\$15,186.00	\$0.00	\$15,186.00
GALLIA	406	903	253	650	\$123,830.00	\$3,268.00	\$120,562.00
GEAUGA	80	168	33	135	\$24,109.00	\$0.00	\$24,109.00
GREENE	678	1,484	424	1,060	\$210,914.00	\$4,820.00	\$206,094.00
GUERNSEY	164	298	55	243	\$47,147.00	\$1,761.00	\$45,386.00
HAMILTON	8,434	20,069	4,902	15,167	\$2,748,336.00	\$86,253.00	\$2,662,083.00
HANCOCK	117	215	36	179	\$34,339.00	\$900.00	\$33,439.00
HARDIN	59	99	15	84	\$15,945.00	\$223.00	\$15,722.00
HARRISON	81	155	39	116	\$23,230.00	\$498.00	\$22,732.00
HENRY	31	51	8	43	\$8,522.00	\$0.00	\$8,522.00
HIGHLAND	99	191	17	174	\$29,818.00	\$1,269.00	\$28,549.00
HOCKING	221	431	108	323	\$66,925.00	\$3,487.00	\$63,438.00
HOLMES	35	62	11	51	\$9,834.00	\$223.00	\$9,611.00
HURON	125	183	1	182	\$33,302.00	\$980.00	\$32,322.00
JACKSON	320	632	133	499	\$91,164.00	\$2,549.00	\$88,615.00
JEFFERSON	736	1,544	448	1,096	\$220,873.00	\$6,874.00	\$213,999.00
KNOX	212	476	139	337	\$64,833.00	\$678.00	\$64,155.00
LAKE	536	1,166	279	887	\$163,174.00	\$4,982.00	\$158,192.00
LAWRENCE	735	1,424	260	1,164	\$208,290.00	\$6,872.00	\$201,418.00

Source: GRP342RA Report from Management Information Services. Data includes ADC-Regular, ADC-Incapacitated, and Vendor Payments.

**TABLE 1
OWF REGULAR
OCTOBER 2002**

OHIO COUNTY	ASSISTANCE GROUP	RECIPIENTS	ADULTS	CHILDREN	ACTUAL EXPENDITURES		
					GROSS AMOUNT	CANCELLED AMOUNT	NET AMOUNT
STATEWIDE	82,630	180,031	43,984	136,047	\$25,612,359.88	\$704,210.00	\$24,908,149.88
LICKING	539	1,183	320	863	\$157,665.00	\$4,352.00	\$153,313.00
LOGAN	150	319	76	243	\$45,998.00	\$722.00	\$45,276.00
LORAIN	1,858	4,186	991	3,195	\$576,055.00	\$9,797.00	\$566,258.00
LUCAS	5,850	13,041	3,381	9,660	\$1,803,500.00	\$55,506.00	\$1,747,994.00
MADISON	173	378	112	266	\$53,062.00	\$446.00	\$52,616.00
MAHONING	2,606	5,741	1,315	4,426	\$812,717.00	\$9,541.00	\$803,176.00
MARION	352	617	70	547	\$102,708.00	\$1,849.00	\$100,859.00
MEDINA	238	501	126	375	\$78,471.00	\$528.00	\$77,943.00
MEIGS	226	494	136	358	\$67,088.00	\$1,731.00	\$65,357.00
MERCER	65	144	40	104	\$19,705.00	\$498.00	\$19,207.00
MIAMI	241	446	83	363	\$67,335.00	\$1,617.00	\$65,718.00
MONROE	62	143	37	106	\$18,464.00	\$684.00	\$17,780.00
MONTGOMERY	5,741	12,822	3,220	9,602	\$1,770,366.52	\$45,890.00	\$1,724,476.52
MORGAN	80	126	13	113	\$21,362.00	\$446.00	\$20,916.00
MORROW	135	260	55	205	\$40,136.00	\$1,628.00	\$38,508.00
MUSKINGUM	721	1,482	376	1,106	\$214,470.00	\$3,650.00	\$210,820.00
NOBLE	24	42	11	31	\$6,333.00	\$223.00	\$6,110.00
OTTAWA	125	269	78	191	\$36,969.00	\$1,482.00	\$35,487.00
PAULDING	70	141	46	95	\$20,921.00	\$452.00	\$20,469.00
PERRY	208	412	85	327	\$61,215.00	\$2,250.00	\$58,965.00
PICKAWAY	285	624	163	461	\$90,614.00	\$1,983.00	\$88,631.00
PIKE	332	707	150	557	\$100,500.00	\$1,793.00	\$98,707.00
PORTAGE	499	1,011	267	744	\$156,777.00	\$2,998.00	\$153,779.00
PREBLE	149	309	68	241	\$44,189.00	\$1,663.00	\$42,526.00
PUTNAM	58	128	35	93	\$17,351.00	\$631.00	\$16,720.00
RICHLAND	639	1,280	250	1,030	\$199,157.00	\$6,031.00	\$193,126.00
ROSS	709	1,577	453	1,124	\$221,940.00	\$4,269.00	\$217,671.00
SANDUSKY	147	248	30	218	\$42,545.00	\$648.00	\$41,897.00
SCIOTO	971	1,771	293	1,478	\$273,862.00	\$5,920.00	\$267,942.00
SENECA	131	236	34	202	\$37,216.00	\$856.00	\$36,360.00
SHELBY	138	243	28	215	\$38,884.00	\$2,095.00	\$36,789.00
STARK	2,992	6,731	1,882	4,849	\$945,773.00	\$25,228.00	\$920,545.00
SUMMIT	5,142	11,378	3,120	8,258	\$1,618,490.00	\$34,622.00	\$1,583,868.00
TRUMBULL	1,430	2,931	621	2,310	\$430,819.00	\$12,249.00	\$418,570.00
TUSCARAWAS	329	698	192	506	\$96,773.00	\$1,615.00	\$95,158.00
UNION	181	429	120	309	\$58,994.00	\$2,782.00	\$56,212.00
VAN WERT	30	46	2	44	\$7,837.00	\$0.00	\$7,837.00
VINTON	143	323	71	252	\$45,021.00	\$569.00	\$44,452.00
WARREN	172	324	67	257	\$51,237.00	\$1,538.00	\$49,699.00
WASHINGTON	138	215	21	194	\$37,460.00	\$1,361.00	\$36,099.00
WAYNE	399	860	256	604	\$119,990.27	\$2,466.00	\$117,524.27
WILLIAMS	138	320	90	230	\$44,314.00	\$1,498.00	\$42,816.00
WOOD	225	453	101	352	\$63,886.00	\$1,496.00	\$62,390.00
WYANDOT	28	47	13	34	\$7,202.00	\$305.00	\$6,897.00

**TABLE 1
OWF UNEMPLOYED
OCTOBER 2002**

OHIO COUNTY	ASSISTANCE GROUP	RECIPIENTS	ADULTS	CHILDREN	ACTUAL EXPENDITURES		
					GROSS AMOUNT	CANCELLED AMOUNT	NET AMOUNT
STATEWIDE	3,580	14,816	6,807	8,009	\$1,443,257.00	\$50,452.00	\$1,392,805.00
ADAMS	0	0	0	0	\$0.00	\$0.00	\$0.00
ALLEN	4	18	6	12	\$3,640.00	\$883.00	\$2,757.00
ASHLAND	4	14	8	6	\$1,301.00	\$0.00	\$1,301.00
ASHTABULA	36	151	71	80	\$16,940.00	\$1,735.00	\$15,205.00
ATHENS	94	362	178	184	\$34,644.00	\$2,260.00	\$32,384.00
AUGLAIZE	0	0	0	0	\$0.00	\$0.00	\$0.00
BELMONT	52	210	103	107	\$18,878.00	\$373.00	\$18,505.00
BROWN	1	4	2	2	\$845.00	\$0.00	\$845.00
BUTLER	81	335	152	183	\$33,608.00	\$539.00	\$33,069.00
CARROLL	4	14	8	6	\$708.00	\$0.00	\$708.00
CHAMPAIGN	11	47	22	25	\$3,355.00	\$0.00	\$3,355.00
CLARK	47	207	88	119	\$22,568.00	\$907.00	\$21,661.00
CLERMONT	15	64	28	36	\$7,364.00	\$461.00	\$6,903.00
CLINTON	1	1	1	0	\$223.00	\$0.00	\$223.00
COLUMBIANA	17	70	33	37	\$8,370.00	\$922.00	\$7,448.00
COSHOCTON	39	163	74	89	\$14,498.00	\$373.00	\$14,125.00
CRAWFORD	18	71	35	36	\$7,669.00	\$951.00	\$6,718.00
CUYAHOGA	491	2,092	953	1,139	\$204,088.00	\$5,278.00	\$198,810.00
DARKE	7	24	13	11	\$2,615.00	\$0.00	\$2,615.00
DEFIANCE	0	0	0	0	\$0.00	\$0.00	\$0.00
DELAWARE	18	69	34	35	\$6,716.00	\$223.00	\$6,493.00
ERIE	1	3	2	1	\$373.00	\$0.00	\$373.00
FAIRFIELD	48	201	91	110	\$17,595.00	\$478.00	\$17,117.00
FAYETTE	4	16	8	8	\$2,700.00	\$0.00	\$2,700.00
FRANKLIN	346	1,621	655	966	\$147,938.00	\$6,018.00	\$141,920.00
FULTON	1	4	2	2	\$461.00	\$0.00	\$461.00
GALLIA	65	252	127	125	\$23,192.00	\$720.00	\$22,472.00
GEAUGA	2	9	4	5	\$547.00	\$0.00	\$547.00
GREENE	38	150	72	78	\$15,328.00	\$570.00	\$14,758.00
GUERNSEY	2	10	4	6	\$1,230.00	\$0.00	\$1,230.00
HAMILTON	132	544	250	294	\$56,041.00	\$1,285.00	\$54,756.00
HANCOCK	2	7	4	3	\$727.00	\$0.00	\$727.00
HARDIN	3	17	6	11	\$1,800.00	\$0.00	\$1,800.00
HARRISON	1	4	2	2	\$461.00	\$0.00	\$461.00
HENRY	0	0	0	0	\$0.00	\$0.00	\$0.00
HIGHLAND	0	0	0	0	\$0.00	\$0.00	\$0.00
HOCKING	43	170	83	87	\$17,502.00	\$1,543.00	\$15,959.00
HOLMES	2	9	4	5	\$461.00	\$0.00	\$461.00
HURON	1	1	0	1	\$223.00	\$0.00	\$223.00
JACKSON	13	51	26	25	\$5,711.00	\$0.00	\$5,711.00
JEFFERSON	80	328	156	172	\$33,126.00	\$1,991.00	\$31,135.00
KNOX	21	90	42	48	\$8,620.00	\$413.00	\$8,207.00
LAKE	29	113	48	65	\$10,714.00	\$461.00	\$10,253.00
LAWRENCE	52	189	98	91	\$17,488.00	\$539.00	\$16,949.00

Source: GRP342RA Report from Management Information Services. Data includes ADC-Unemployed and Vendor Payments.

**TABLE 1
OWF UNEMPLOYED
OCTOBER 2002**

OHIO COUNTY	ASSISTANCE GROUP	RECIPIENTS	ADULTS	CHILDREN	ACTUAL EXPENDITURES		
					GROSS AMOUNT	CANCELLED AMOUNT	NET AMOUNT
STATEWIDE	3,580	14,816	6,807	8,009	\$1,443,257.00	\$50,452.00	\$1,392,805.00
LICKING	52	205	97	108	\$19,758.00	\$1,373.00	\$18,385.00
LOGAN	2	10	4	6	\$660.00	\$0.00	\$660.00
LORAIN	121	535	234	301	\$50,437.00	\$1,522.00	\$48,915.00
LUCAS	303	1,299	581	718	\$114,606.00	\$3,124.00	\$111,482.00
MADISON	16	74	32	42	\$7,953.00	\$373.00	\$7,580.00
MAHONING	90	346	171	175	\$35,049.00	\$834.00	\$34,215.00
MARION	3	10	4	6	\$1,580.00	\$0.00	\$1,580.00
MEDINA	14	49	27	22	\$6,086.00	\$0.00	\$6,086.00
MEIGS	21	68	40	28	\$7,267.00	\$0.00	\$7,267.00
MERCER	8	38	14	24	\$3,620.00	\$0.00	\$3,620.00
MIAMI	5	16	9	7	\$1,723.00	\$0.00	\$1,723.00
MONROE	10	30	15	15	\$3,835.00	\$0.00	\$3,835.00
MONTGOMERY	30	142	58	84	\$11,208.00	\$373.00	\$10,835.00
MORGAN	1	3	2	1	\$481.00	\$0.00	\$481.00
MORROW	9	32	17	15	\$3,633.00	\$0.00	\$3,633.00
MUSKINGUM	32	113	61	52	\$11,956.00	\$574.00	\$11,382.00
NOBLE	1	4	2	2	\$697.00	\$0.00	\$697.00
OTTAWA	18	77	31	46	\$6,659.00	\$432.00	\$6,227.00
PAULDING	2	9	4	5	\$1,549.00	\$373.00	\$1,176.00
PERRY	24	98	47	51	\$9,318.00	\$0.00	\$9,318.00
PICKAWAY	25	93	49	44	\$9,752.00	\$0.00	\$9,752.00
PIKE	20	77	38	39	\$5,184.00	\$311.00	\$4,873.00
PORTAGE	17	65	31	34	\$8,851.00	\$0.00	\$8,851.00
PREBLE	7	29	14	15	\$2,904.00	\$0.00	\$2,904.00
PUTNAM	4	9	5	4	\$1,138.00	\$0.00	\$1,138.00
RICHLAND	5	22	10	12	\$2,113.00	\$0.00	\$2,113.00
ROSS	72	290	138	152	\$28,484.00	\$1,071.00	\$27,413.00
SANDUSKY	31	73	9	64	\$8,490.00	\$1,048.00	\$7,442.00
SCIOTO	48	193	93	100	\$20,266.00	\$0.00	\$20,266.00
SENECA	1	5	2	3	\$265.00	\$0.00	\$265.00
SHELBY	1	1	0	1	\$223.00	\$0.00	\$223.00
STARK	271	1,089	536	553	\$107,895.00	\$2,815.00	\$105,080.00
SUMMIT	272	1,137	540	597	\$112,873.00	\$3,560.00	\$109,313.00
TRUMBULL	67	292	129	163	\$28,041.00	\$684.00	\$27,357.00
TUSCARAWAS	45	191	87	104	\$17,236.00	\$488.00	\$16,748.00
UNION	20	85	40	45	\$8,362.00	\$232.00	\$8,130.00
VAN WERT	0	0	0	0	\$0.00	\$0.00	\$0.00
VINTON	9	30	14	16	\$4,413.00	\$922.00	\$3,491.00
WARREN	2	5	3	2	\$678.00	\$0.00	\$678.00
WASHINGTON	1	3	2	1	\$559.00	\$0.00	\$559.00
WAYNE	45	170	83	87	\$16,951.00	\$367.00	\$16,584.00
WILLIAMS	12	45	23	22	\$5,187.00	\$539.00	\$4,648.00
WOOD	13	36	13	23	\$3,634.00	\$514.00	\$3,120.00
WYANDOT	4	13	5	8	\$1,415.00	\$0.00	\$1,415.00

Source: GRP342RA Report from Management Information Services. Data includes ADC-Unemployed and Vendor Payments.

**TABLE 2
TITLE IV-E FOSTER CARE
OCTOBER 2002**

OHIO COUNTY	FOSTER CARE						ADOPTION ASSISTANCE		TOTAL FOSTER CARE AND ADOPTION ASSISTANCE	
	FOSTER FAMILY HOMES		CHILD CARE INSTITUTIONS		HOMES & INSTITUTIONS		CHILDREN	GROSS AMOUNT	CHILDREN	GROSS AMOUNT
	CHILDREN	GROSS AMOUNT	CHILDREN	GROSS AMOUNT	CHILDREN	GROSS AMOUNT				
STATEWIDE	3,138	\$1,258,845.12	3,912	\$4,674,763.89	7,050	\$5,933,609.01	17,234	\$6,366,254.72	24,284	\$12,299,863.73
ADAMS	9	\$2,421.38	8	\$10,814.76	17	\$13,236.14	30	\$7,500.00	47	\$20,736.14
ALLEN	68	\$26,253.44	22	\$32,510.96	90	\$58,764.40	130	\$36,284.25	220	\$95,048.65
ASHLAND	3	\$697.11	0	\$0.00	3	\$697.11	13	\$3,225.00	16	\$3,922.11
ASHTABULA	0	\$0.00	0	\$0.00	0	\$0.00	142	\$46,698.52	142	\$46,698.52
ATHENS	50	\$18,307.47	39	\$52,588.13	89	\$70,895.60	86	\$26,442.71	175	\$97,338.31
AUGLAIZE	5	\$3,459.03	8	\$8,617.08	13	\$12,076.11	36	\$15,371.74	49	\$27,447.85
BELMONT	0	\$0.00	15	\$49,630.33	15	\$49,630.33	108	\$40,226.94	123	\$89,857.27
BROWN	27	\$9,734.17	3	\$15,631.73	30	\$25,365.90	30	\$7,773.55	60	\$33,139.45
BUTLER	139	\$53,805.01	209	\$217,671.92	348	\$271,476.93	465	\$131,921.38	813	\$403,398.31
CARROLL	4	\$3,900.54	0	\$0.00	4	\$3,900.54	5	\$1,250.00	9	\$5,150.54
CHAMPAIGN	1	\$857.25	10	\$18,860.74	11	\$19,717.99	13	\$5,176.56	24	\$24,894.55
CLARK	0	\$0.00	71	\$40,861.79	71	\$40,861.79	281	\$86,326.59	352	\$127,188.38
CLERMONT	43	\$13,168.87	71	\$105,321.00	114	\$118,489.87	182	\$48,110.00	296	\$166,599.87
CLINTON	24	\$11,100.15	0	\$0.00	24	\$11,100.15	46	\$14,279.66	70	\$25,379.81
COLUMBIANA	74	\$16,553.82	39	\$58,118.67	113	\$74,672.49	65	\$16,250.00	178	\$90,922.49
COSHOCTON	17	\$7,523.16	4	\$3,529.14	21	\$11,052.30	38	\$10,176.53	59	\$21,228.83
CRAWFORD	0	\$0.00	0	\$0.00	0	\$0.00	37	\$10,044.90	37	\$10,044.90
CUYAHOGA	654	\$283,199.74	1,141	\$1,911,222.27	1,795	\$2,194,422.01	3,872	\$1,902,217.76	5,667	\$4,096,639.77
DARKE	10	\$1,687.49	0	\$0.00	10	\$1,687.49	28	\$8,523.67	38	\$10,211.16
DEFIANCE	8	\$1,767.18	0	\$0.00	8	\$1,767.18	34	\$10,603.13	42	\$12,370.31
DELAWARE	25	\$8,717.24	5	\$13,861.98	30	\$22,579.22	62	\$19,000.29	92	\$41,579.51
ERIE	35	\$15,087.65	34	\$48,149.30	69	\$63,236.95	81	\$24,206.17	150	\$87,443.12
FAIRFIELD	1	\$273.55	0	\$0.00	1	\$273.55	109	\$28,879.48	110	\$29,153.03
FAYETTE	14	\$8,286.72	0	\$0.00	14	\$8,286.72	16	\$4,000.00	30	\$12,286.72
FRANKLIN	3	\$1,040.69	962	\$415,678.99	965	\$416,719.68	2,171	\$724,240.78	3,136	\$1,140,960.46
FULTON	3	\$6,330.11	10	\$8,876.62	13	\$15,206.73	14	\$3,647.07	27	\$18,853.80
GALLIA	9	\$2,133.69	22	\$51,862.18	31	\$53,995.87	42	\$10,465.00	73	\$64,460.87
GEAUGA	9	\$5,002.20	9	\$27,193.92	18	\$32,196.12	106	\$33,835.93	124	\$66,032.05
GREENE	0	\$0.00	9	\$4,633.70	9	\$4,633.70	77	\$22,779.83	86	\$27,413.53
GUERNSEY	31	\$13,161.78	19	\$44,847.44	50	\$58,009.22	72	\$21,659.14	122	\$79,668.36
HAMILTON	0	\$0.00	20	\$8,143.39	20	\$8,143.39	1,420	\$593,339.92	1,440	\$601,483.31
HANCOCK	18	\$2,797.89	3	\$2,994.12	21	\$5,792.01	37	\$10,229.50	58	\$16,021.51
HARDIN	11	\$11,201.35	2	\$4,027.02	13	\$15,228.37	26	\$6,743.00	39	\$21,971.37
HARRISON	2	\$1,860.19	1	\$2,223.65	3	\$4,083.84	29	\$10,520.00	32	\$14,603.84
HENRY	0	\$0.00	13	\$14,380.45	13	\$14,380.45	22	\$6,538.15	35	\$20,918.60
HIGHLAND	17	\$6,264.94	7	\$19,463.98	24	\$25,728.92	14	\$4,970.69	38	\$30,699.61
HOCKING	16	\$6,696.14	7	\$11,017.89	23	\$17,714.03	45	\$14,700.29	68	\$32,414.32
HOLMES	2	\$911.86	0	\$0.00	2	\$911.86	30	\$11,376.87	32	\$12,288.73
HURON	23	\$13,549.16	7	\$30,507.80	30	\$44,056.96	16	\$3,993.00	46	\$48,049.96
JACKSON	0	\$0.00	0	\$0.00	0	\$0.00	20	\$5,000.00	20	\$5,000.00
JEFFERSON	44	\$23,818.41	34	\$52,789.02	78	\$76,607.43	42	\$14,180.90	120	\$90,788.33
KNOX	6	\$2,279.62	0	\$0.00	6	\$2,279.62	35	\$9,985.39	41	\$12,265.01
LAKE	19	\$11,395.85	29	\$73,630.65	48	\$85,026.50	146	\$39,432.16	194	\$124,458.66
LAWRENCE	18	\$10,012.16	0	\$0.00	18	\$10,012.16	25	\$6,985.37	43	\$16,997.53

SOURCE: GBS003RB Report from Management Information Services. Federal funds only.

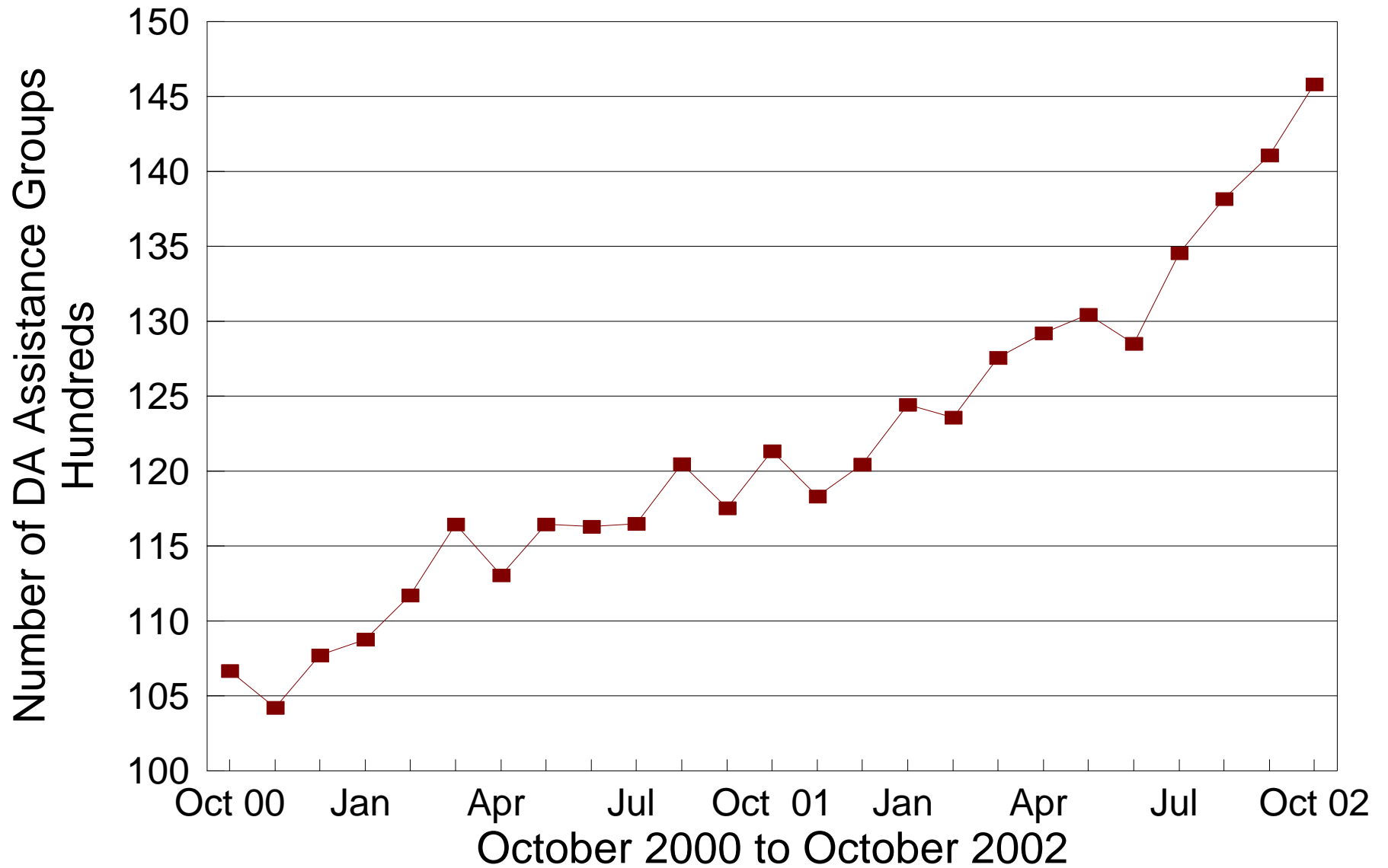
**TABLE 2
TITLE IV-E FOSTER CARE
OCTOBER 2002**

OHIO COUNTY	FOSTER CARE						ADOPTION ASSISTANCE		TOTAL FOSTER CARE AND ADOPTION ASSISTANCE	
	FOSTER FAMILY HOMES		CHILD CARE INSTITUTIONS		HOMES & INSTITUTIONS		CHILDREN	GROSS AMOUNT	CHILDREN	GROSS AMOUNT
	CHILDREN	GROSS AMOUNT	CHILDREN	GROSS AMOUNT	CHILDREN	GROSS AMOUNT				
STATEWIDE	3,138	\$1,258,845.12	3,912	\$4,674,763.89	7,050	\$5,933,609.01	17,234	\$6,366,254.72	24,284	\$12,299,863.73
LICKING	73	\$39,196.60	87	\$80,834.30	160	\$120,030.90	278	\$85,664.67	438	\$205,695.57
LOGAN	19	\$3,421.55	3	\$3,601.54	22	\$7,023.09	30	\$9,254.84	52	\$16,277.93
LORAIN	0	\$0.00	0	\$0.00	0	\$0.00	366	\$113,840.33	366	\$113,840.33
LUCAS	365	\$162,320.98	45	\$68,945.74	410	\$231,266.72	1,562	\$559,453.17	1,972	\$790,719.89
MADISON	0	\$0.00	12	\$1,602.90	12	\$1,602.90	25	\$7,720.74	37	\$9,323.64
MAHONING	114	\$24,653.03	0	\$0.00	114	\$24,653.03	242	\$67,048.23	356	\$91,701.26
MARION	15	\$9,594.94	10	\$15,679.62	25	\$25,274.56	70	\$27,022.81	95	\$52,297.37
MEDINA	0	\$0.00	0	\$0.00	0	\$0.00	58	\$18,413.28	58	\$18,413.28
MEIGS	9	\$3,870.17	8	\$7,200.85	17	\$11,071.02	1	\$250.00	18	\$11,321.02
MERCER	12	\$7,450.24	0	\$0.00	12	\$7,450.24	23	\$5,750.00	35	\$13,200.24
MIAMI	40	\$16,305.57	35	\$60,698.53	75	\$77,004.10	109	\$38,573.43	184	\$115,577.53
MONROE	4	\$1,080.44	3	\$12,800.54	7	\$13,880.98	7	\$2,191.21	14	\$16,072.19
MONTGOMERY	363	\$137,616.41	427	\$504,376.31	790	\$641,992.72	998	\$436,311.20	1,788	\$1,078,303.92
MORGAN	0	\$0.00	0	\$0.00	0	\$0.00	13	\$3,234.00	13	\$3,234.00
MORROW	5	\$7,856.73	2	(\$3,921.52)	7	\$3,935.21	43	\$12,726.57	50	\$16,661.78
MUSKINGUM	0	\$0.00	0	\$0.00	0	\$0.00	110	\$30,903.16	110	\$30,903.16
NOBLE	1	\$218.84	0	\$0.00	1	\$218.84	6	\$1,500.00	7	\$1,718.84
OTTAWA	1	\$1,240.13	3	\$2,412.33	4	\$3,652.46	2	\$500.00	6	\$4,152.46
PAULDING	3	\$786.96	7	\$5,749.83	10	\$6,536.79	20	\$5,411.80	30	\$11,948.59
PERRY	24	\$11,407.85	11	\$9,998.60	35	\$21,406.45	30	\$9,682.49	65	\$31,088.94
PICKAWAY	21	\$7,604.87	0	\$0.00	21	\$7,604.87	11	\$4,715.70	32	\$12,320.57
PIKE	5	\$1,334.24	10	\$11,378.66	15	\$12,712.90	21	\$5,602.39	36	\$18,315.29
PORTAGE	0	\$0.00	0	\$0.00	0	\$0.00	113	\$44,671.62	113	\$44,671.62
PREBLE	22	\$12,739.51	9	\$12,565.54	31	\$25,305.05	34	\$8,711.66	65	\$34,016.71
PUTNAM	3	\$1,550.16	1	\$1,036.15	4	\$2,586.31	11	\$2,750.00	15	\$5,336.31
RICHLAND	0	\$0.00	5	\$1,449.26	5	\$1,449.26	235	\$71,661.93	240	\$73,111.19
ROSS	14	\$3,006.08	20	\$31,039.01	34	\$34,045.09	27	\$7,959.52	61	\$42,004.61
SANDUSKY	21	\$2,716.41	25	\$46,412.14	46	\$49,128.55	50	\$12,838.86	96	\$61,967.41
SCIOTO	33	\$10,393.53	27	\$25,563.74	60	\$35,957.27	42	\$10,422.00	102	\$46,379.27
SENECA	8	\$2,188.40	0	\$0.00	8	\$2,188.40	84	\$21,302.98	92	\$23,491.38
SHELBY	11	\$3,818.05	8	\$10,317.20	19	\$14,135.25	54	\$18,255.14	73	\$32,390.39
STARK	0	\$0.00	143	\$64,799.46	143	\$64,799.46	830	\$235,832.17	973	\$300,631.63
SUMMIT	265	\$84,525.87	82	\$180,501.31	347	\$265,027.18	747	\$227,779.64	1,094	\$492,806.82
TRUMBULL	89	\$35,281.17	16	\$41,558.63	105	\$76,839.80	247	\$65,526.79	352	\$142,366.59
TUSCARAWAS	34	\$17,246.12	28	\$35,895.13	62	\$53,141.25	113	\$30,437.03	175	\$83,578.28
UNION	5	\$2,006.66	0	\$0.00	5	\$2,006.66	36	\$9,352.98	41	\$11,359.64
VAN WERT	0	\$0.00	3	\$15,726.00	3	\$15,726.00	26	\$8,688.46	29	\$24,414.46
VINTON	4	\$2,467.28	0	\$0.00	4	\$2,467.28	19	\$6,341.86	23	\$8,809.14
WARREN	38	\$14,574.85	13	\$25,258.30	51	\$39,833.15	80	\$25,706.88	131	\$65,540.03
WASHINGTON	11	\$3,882.78	0	\$0.00	11	\$3,882.78	26	\$6,852.98	37	\$10,735.76
WAYNE	49	\$16,398.26	18	\$24,839.44	67	\$41,237.70	57	\$21,317.56	124	\$62,555.26
WILLIAMS	12	\$3,283.28	8	\$3,332.40	20	\$6,615.68	20	\$5,544.14	40	\$12,159.82
WOOD	0	\$0.00	0	\$0.00	0	\$0.00	48	\$15,936.28	48	\$15,936.28
WYANDOT	3	\$1,550.15	10	\$13,451.33	13	\$15,001.48	12	\$3,482.40	25	\$18,483.88

SOURCE: GBS003RB Report from Management Information Services. Federal funds only.

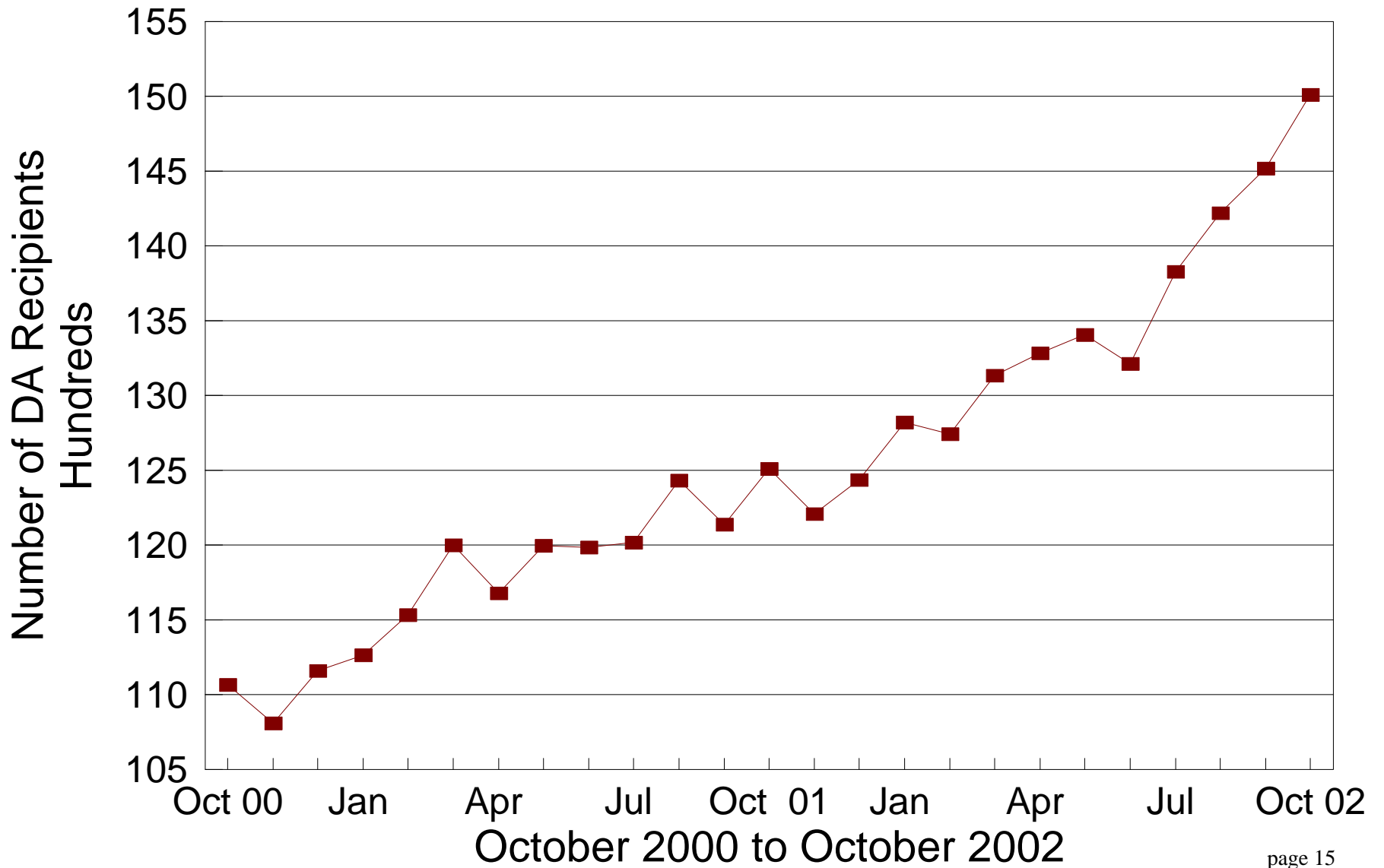
DA Cash Assistance Groups

During the Last 25 Months



DA Cash Recipients

During the Last 25 Months



**TABLE 3
DISABILITY ASSISTANCE (DA)
OCTOBER 2002**

OHIO COUNTY	CASH ASSISTANCE							MEDICAL ASSISTANCE	
	ASSISTANCE GROUPS	RECIPIENTS	ADULTS	CHILDREN	ACTUAL EXPENDITURES			UNDUPLICATED RECIPIENTS	ACTUAL AMOUNT PAID
					GROSS AMOUNT	CANCELLED AMOUNT	NET AMOUNT		
STATEWIDE	14,583	15,012	13,808	1,204	\$2,074,530.00	\$121,219.00	\$1,953,311.00	20,271	\$8,285,520.93
ADAMS	81	81	79	2	\$14,454.00	\$115.00	\$14,339.00	100	\$39,020.70
ALLEN	75	78	71	7	\$10,007.00	\$287.00	\$9,720.00	104	\$38,770.86
ASHLAND	23	25	25	0	\$3,533.00	\$115.00	\$3,418.00	49	\$27,098.03
ASHTABULA	285	293	280	13	\$44,910.00	\$879.00	\$44,031.00	230	\$78,808.88
ATHENS	170	174	171	3	\$24,178.00	\$775.00	\$23,403.00	157	\$60,682.50
AUGLAIZE	11	11	11	0	\$1,543.00	\$0.00	\$1,543.00	36	\$14,029.48
BELMONT	128	128	124	4	\$15,524.00	\$1,066.00	\$14,458.00	160	\$52,105.44
BROWN	26	26	25	1	\$5,909.00	\$214.00	\$5,695.00	81	\$40,137.04
BUTLER	453	457	444	13	\$62,424.00	\$2,070.00	\$60,354.00	453	\$189,344.03
CARROLL	35	35	33	2	\$8,839.00	\$0.00	\$8,839.00	35	\$14,520.25
CHAMPAIGN	41	41	37	4	\$7,043.00	\$115.00	\$6,928.00	45	\$29,237.06
CLARK	245	249	235	14	\$37,487.00	\$1,813.00	\$35,674.00	491	\$227,055.57
CLERMONT	180	182	173	9	\$24,362.00	\$1,774.00	\$22,588.00	159	\$63,143.77
CLINTON	33	35	32	3	\$5,203.00	\$115.00	\$5,088.00	43	\$28,710.48
COLUMBIANA	158	159	150	9	\$18,867.00	\$1,102.00	\$17,765.00	175	\$82,470.41
COSHOCTON	80	80	77	3	\$10,063.00	\$1,568.00	\$8,495.00	81	\$21,020.93
CRAWFORD	46	46	41	5	\$6,094.00	\$1,495.00	\$4,599.00	49	\$16,380.83
CUYAHOGA	2,144	2,215	2,077	138	\$281,049.00	\$20,853.00	\$260,196.00	3,515	\$1,234,615.14
DARKE	35	36	35	1	\$4,640.00	\$345.00	\$4,295.00	31	\$17,142.51
DEFIANCE	17	17	16	1	\$2,066.00	\$115.00	\$1,951.00	49	\$23,736.76
DELAWARE	65	66	66	0	\$8,400.00	\$345.00	\$8,055.00	85	\$40,895.40
ERIE	57	57	56	1	\$9,436.00	\$0.00	\$9,436.00	91	\$36,530.02
FAIRFIELD	117	128	100	28	\$17,701.00	\$854.00	\$16,847.00	99	\$45,340.43
FAYETTE	40	44	38	6	\$6,016.00	\$192.00	\$5,824.00	61	\$24,902.31
FRANKLIN	1,397	1,449	1,315	134	\$183,607.00	\$19,305.00	\$164,302.00	1,867	\$869,241.01
FULTON	19	19	19	0	\$2,147.00	\$230.00	\$1,917.00	37	\$13,851.05
GALLIA	40	41	41	0	\$5,664.00	\$0.00	\$5,664.00	139	\$73,177.03
GEAUGA	17	18	18	0	\$2,574.00	\$0.00	\$2,574.00	19	\$10,016.03
GREENE	186	193	186	7	\$24,256.00	\$2,257.00	\$21,999.00	240	\$93,523.58
GUERNSEY	103	105	103	2	\$19,928.00	\$230.00	\$19,698.00	101	\$41,661.00
HAMILTON	977	1,025	817	208	\$140,434.00	\$13,381.00	\$127,053.00	952	\$336,000.64
HANCOCK	39	41	33	8	\$6,639.00	\$115.00	\$6,524.00	90	\$39,454.63
HARDIN	17	18	17	1	\$2,931.00	\$230.00	\$2,701.00	39	\$18,224.48
HARRISON	53	60	50	10	\$10,824.00	\$0.00	\$10,824.00	33	\$9,552.23
HENRY	13	13	13	0	\$1,510.00	\$0.00	\$1,510.00	25	\$9,119.63
HIGHLAND	46	46	44	2	\$6,690.00	\$115.00	\$6,575.00	83	\$33,522.13
HOCKING	51	51	51	0	\$6,354.00	\$0.00	\$6,354.00	60	\$21,982.45
HOLMES	40	41	41	0	\$5,848.00	\$0.00	\$5,848.00	19	\$6,357.05
HURON	35	35	35	0	\$4,947.00	\$0.00	\$4,947.00	57	\$29,224.39
JACKSON	94	94	94	0	\$14,214.00	\$345.00	\$13,869.00	109	\$51,133.50
JEFFERSON	189	195	186	9	\$26,137.00	\$1,303.00	\$24,834.00	242	\$93,322.61
KNOX	73	74	74	0	\$10,842.00	\$0.00	\$10,842.00	82	\$39,402.94
LAKE	200	204	197	7	\$26,044.00	\$1,324.00	\$24,720.00	211	\$87,250.35
LAWRENCE	102	103	100	3	\$15,141.00	\$690.00	\$14,451.00	174	\$87,908.72

*SOURCE: GRP342RA Report from Management Information Services and BOMC 9260-R001 Report from Medicaid Management Information Services.

**TABLE 3
DISABILITY ASSISTANCE (DA)
OCTOBER 2002**

OHIO COUNTY	CASH ASSISTANCE							MEDICAL ASSISTANCE	
	ASSISTANCE GROUPS	RECIPIENTS	ADULTS	CHILDREN	ACTUAL EXPENDITURES			UNDUPLICATED RECIPIENTS	ACTUAL AMOUNT PAID
					GROSS AMOUNT	CANCELLED AMOUNT	NET AMOUNT		
STATEWIDE	14,583	15,012	13,808	1,204	\$2,074,530.00	\$121,219.00	\$1,953,311.00	20,271	\$8,285,520.93
LICKING	166	169	163	6	\$25,250.00	\$1,004.00	\$24,246.00	205	\$79,860.69
LOGAN	23	23	23	0	\$3,611.00	\$0.00	\$3,611.00	82	\$31,392.17
LORAIN	339	353	299	54	\$51,553.00	\$4,919.00	\$46,634.00	464	\$191,764.88
LUCAS	605	628	556	72	\$91,537.00	\$4,331.00	\$87,206.00	1,232	\$508,345.13
MADISON	37	39	37	2	\$6,362.00	\$0.00	\$6,362.00	53	\$23,045.26
MAHONING	478	494	442	52	\$65,903.00	\$4,446.00	\$61,457.00	752	\$306,258.60
MARION	93	94	88	6	\$13,997.00	\$575.00	\$13,422.00	90	\$32,266.84
MEDINA	80	81	77	4	\$17,553.00	\$230.00	\$17,323.00	118	\$45,625.81
MEIGS	74	74	73	1	\$11,489.00	\$179.00	\$11,310.00	108	\$32,747.87
MERCER	30	30	30	0	\$4,606.00	\$115.00	\$4,491.00	23	\$8,780.31
MIAMI	45	45	45	0	\$6,051.00	\$38.00	\$6,013.00	78	\$31,431.56
MONROE	22	22	22	0	\$3,723.00	\$0.00	\$3,723.00	41	\$12,006.39
MONTGOMERY	573	599	516	83	\$78,972.00	\$4,758.00	\$74,214.00	1,261	\$557,808.98
MORGAN	42	42	41	1	\$6,345.00	\$230.00	\$6,115.00	35	\$12,532.93
MORROW	19	19	19	0	\$2,300.00	\$115.00	\$2,185.00	75	\$32,232.52
MUSKINGUM	275	282	275	7	\$35,503.00	\$970.00	\$34,533.00	179	\$65,194.71
NOBLE	19	19	19	0	\$2,131.00	\$0.00	\$2,131.00	22	\$6,679.57
OTTAWA	28	28	27	1	\$4,106.00	\$115.00	\$3,991.00	43	\$16,072.94
PAULDING	27	27	27	0	\$4,482.00	\$115.00	\$4,367.00	22	\$8,135.41
PERRY	67	70	60	10	\$11,150.00	\$1,293.00	\$9,857.00	82	\$30,643.78
PICKAWAY	50	51	50	1	\$7,351.00	\$115.00	\$7,236.00	82	\$34,987.16
PIKE	63	66	57	9	\$9,296.00	\$115.00	\$9,181.00	77	\$27,023.02
PORTAGE	131	131	127	4	\$16,350.00	\$1,541.00	\$14,809.00	112	\$41,600.58
PREBLE	25	28	24	4	\$2,993.00	\$115.00	\$2,878.00	37	\$19,988.03
PUTNAM	16	16	16	0	\$1,670.00	\$115.00	\$1,555.00	21	\$7,388.43
RICHLAND	243	253	230	23	\$37,591.00	\$1,610.00	\$35,981.00	177	\$78,362.30
ROSS	111	115	111	4	\$19,915.00	\$345.00	\$19,570.00	151	\$61,112.87
SANDUSKY	51	51	49	2	\$7,280.00	\$115.00	\$7,165.00	48	\$13,272.77
SCIOTO	250	251	240	11	\$41,095.00	\$2,053.00	\$39,042.00	287	\$98,001.97
SENECA	55	61	53	8	\$8,297.00	\$115.00	\$8,182.00	69	\$29,005.90
SHELBY	18	20	14	6	\$2,158.00	\$115.00	\$2,043.00	53	\$19,088.91
STARK	551	565	512	53	\$79,863.00	\$5,603.00	\$74,260.00	483	\$200,501.55
SUMMIT	707	728	654	74	\$105,368.00	\$5,833.00	\$99,535.00	1,590	\$665,970.40
TRUMBULL	396	403	369	34	\$53,182.00	\$1,695.00	\$51,487.00	332	\$125,251.81
TUSCARAWAS	92	93	93	0	\$13,210.00	\$690.00	\$12,520.00	136	\$54,079.70
UNION	24	25	20	5	\$2,689.00	\$222.00	\$2,467.00	36	\$14,549.19
VAN WERT	12	12	12	0	\$1,350.00	\$0.00	\$1,350.00	13	\$4,281.01
VINTON	33	33	33	0	\$4,085.00	\$115.00	\$3,970.00	72	\$39,118.21
WARREN	49	49	49	0	\$7,768.00	\$230.00	\$7,538.00	94	\$65,497.84
WASHINGTON	104	104	103	1	\$18,342.00	\$115.00	\$18,227.00	86	\$34,816.13
WAYNE	234	238	235	3	\$29,357.00	\$230.00	\$29,127.00	196	\$121,565.49
WILLIAMS	27	29	28	1	\$4,212.00	\$622.00	\$3,590.00	56	\$18,337.43
WOOD	54	55	51	4	\$6,970.00	\$345.00	\$6,625.00	105	\$54,555.25
WYANDOT	9	9	9	0	\$1,035.00	\$0.00	\$1,035.00	35	\$14,808.97
UNKNOWN									(\$94.62)

*SOURCE: GRP342RA Report from Management Information Services and BOMC 9260-R001 Report from Medicaid Management Information Services.

**TABLE 3-A
DA PAYMENTS FOR MEDICAL SERVICES
OCTOBER 2002**

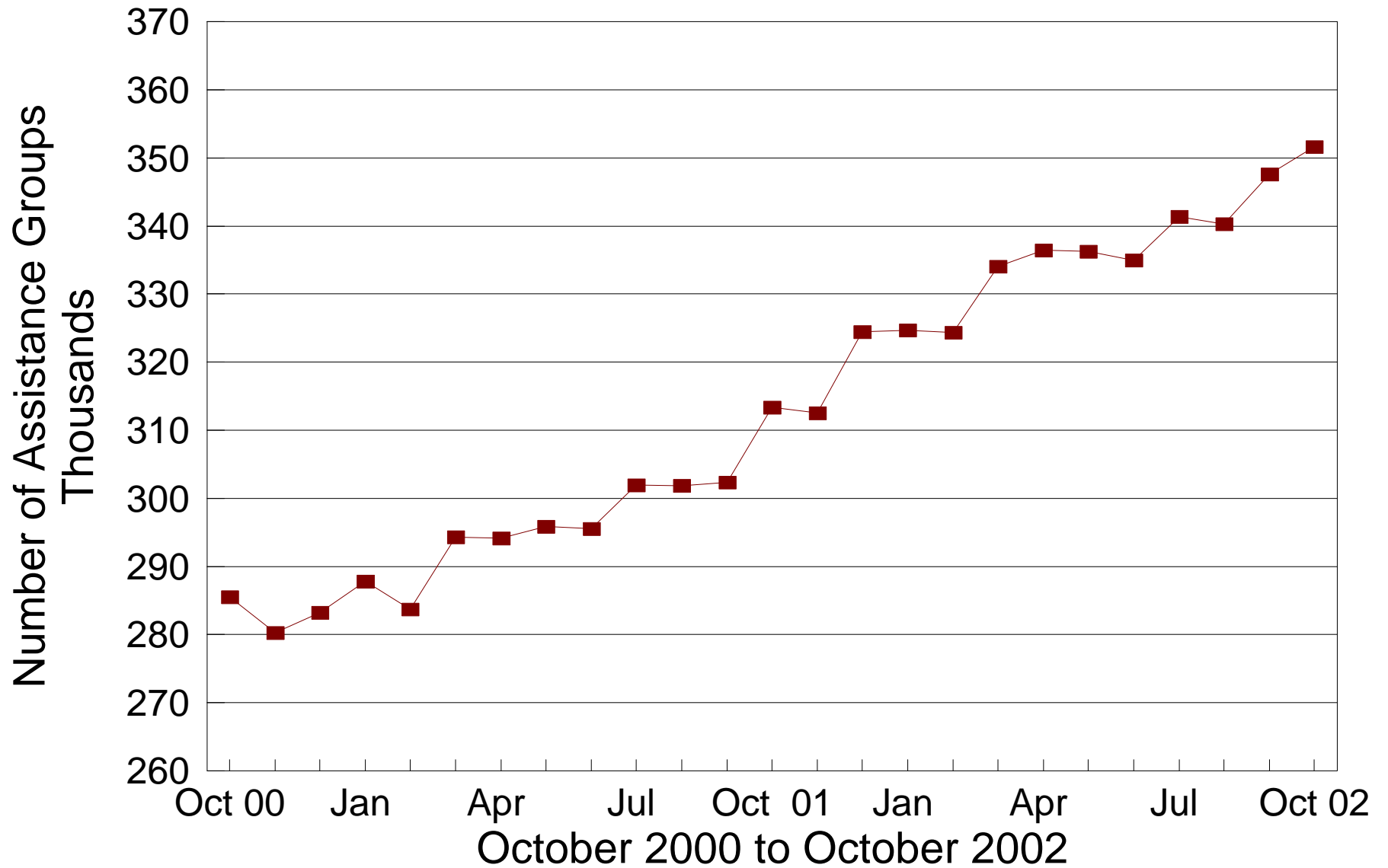
CATEGORY OF SERVICES	DISABILITY ASSISTANCE			
	PAYMENTS	CLAIM FREQUENCY	DUPLICATED RECIPIENTS	PERCENT OF TOTAL
AMBULANCE SERVICES	\$0.00	0	0	0.0%
AMBULATORY SURGERY	\$44,256.53	87	81	0.5%
AMBULETTE SERVICES	\$0.00	0	0	0.0%
CHIROPRACTER SERVICES	\$0.00	0	0	0.0%
CLINIC	\$130,066.08	2,072	1,026	1.6%
DENTAL SERVICES	\$51,280.85	459	390	0.6%
EPSDT	\$0.00	0	0	0.0%
FAMILY PLANNING	\$2,317.30	57	47	0.0%
FEDERALLY QUALIFIED HEALTH CTR	\$0.00	0	0	0.0%
HEALTH MAINTENANCE ORGANIZATION	\$0.00	0	0	0.0%
HOME HEALTH SERVICES	\$0.00	0	0	0.0%
INDEPENDENT LABORATORY	\$60,441.39	1,618	1,117	0.7%
INPATIENT HOSPITAL	(\$94.62)	(1)	1	-0.0%
ICF	\$0.00	0	0	0.0%
MIDWIFERY SERVICES	\$9,160.61	250	206	0.1%
OPTOMETRIC SERVICES	\$0.00	0	0	0.0%
OUTPATIENT HEALTH SERVICES	\$0.00	0	0	0.0%
PASSPORT WAIVER III	\$0.00	0	0	0.0%
OUTPATIENT HOSPITAL GENERAL	\$0.00	0	0	0.0%
PHYSICAL THERAPY SERVICES	\$0.00	0	0	0.0%
PHYSICIAN SERVICES	\$2,291,956.24	32,835	12,114	27.7%
PHYSIOLOGICAL LABORATORY	\$10,433.51	61	53	0.1%
PODIATRISTS THERAPY	\$34,638.21	565	391	0.4%
PRESCRIBED DRUGS	\$5,493,557.69	101,964	17,850	66.3%
PRIVATE DUTY NURSING SERVICES	\$0.00	0	0	0.0%
PSYCHOLOGY SERVICES	\$0.00	0	0	0.0%
RURAL HEALTH SERVICES	\$0.00	3	3	0.0%
SNF	\$0.00	0	0	0.0%
SUPPLIES AND MEDICAL EQUIPMENT	\$127,728.14	2,758	1,354	1.5%
WAIVERED SERVICES	\$29,779.00	269	240	0.4%
OTHER	\$0.00	0	0	0.0%
STATEWIDE TOTAL	\$8,285,520.93	142,997	34,873	100.00%

SOURCE: BOMC 9260 Report from Medicaid Management Information Services.

NOTE: Recipients are unduplicated within Category of Services, however, the Statewide Total represents a duplicated count.

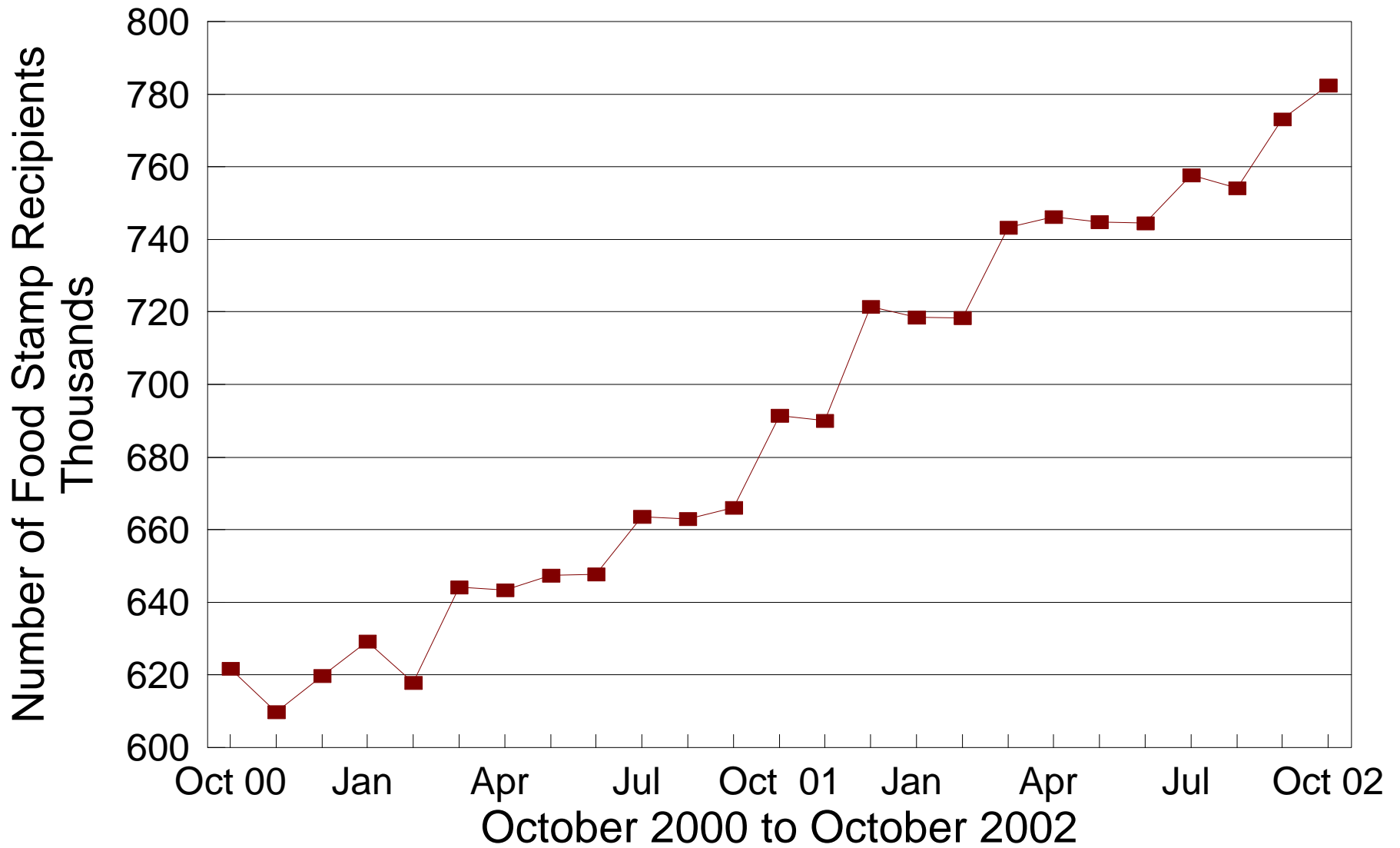
Number of FNS Benefits Assist. Groups

During the Last 25 Months



Number of FNS Benefits Recipients

During the Last 25 Months



**TABLE 5
FNS BENEFITS
OCTOBER 2002**

OHIO COUNTY	PERSONS					ASSISTANCE GROUPS			TOTAL COUPONS ISSUED
	PUBLIC ASSISTANCE	NON-PUBLIC ASSISTANCE	TOTAL	AVERAGE ISSUANCE	% CHANGE PREV. MO.	PUBLIC ASSISTANCE	NON-PUBLIC ASSISTANCE	TOTAL	
STATEWIDE	102,760	679,589	782,349	\$86	ERR	35,586	316,035	351,621	\$67,169,736
ADAMS	44	3,432	3,476	\$80	0.7%	14	1,489	1,503	\$278,259
ALLEN	368	6,357	6,725	\$87	3.2%	123	2,832	2,955	\$587,872
ASHLAND	67	1,725	1,792	\$87	-1.0%	26	733	759	\$156,756
ASHTABULA	802	7,382	8,184	\$82	2.6%	288	3,465	3,753	\$673,128
ATHENS	903	5,068	5,971	\$80	0.7%	295	2,535	2,830	\$476,298
AUGLAIZE	53	1,332	1,385	\$86	5.2%	19	577	596	\$119,080
BELMONT	677	5,925	6,602	\$74	0.9%	233	2,754	2,987	\$487,431
BROWN	40	2,501	2,541	\$80	0.7%	15	1,110	1,125	\$203,336
BUTLER	2,218	13,963	16,181	\$88	2.2%	781	6,941	7,722	\$1,429,711
CARROLL	86	1,627	1,713	\$83	-0.8%	29	702	731	\$141,827
CHAMPAIGN	234	1,485	1,719	\$82	-1.4%	79	713	792	\$141,598
CLARK	1,461	11,247	12,708	\$85	-0.2%	529	5,423	5,952	\$1,075,911
CLERMONT	556	5,872	6,428	\$88	-0.8%	196	2,584	2,780	\$562,798
CLINTON	100	1,897	1,997	\$82	-0.8%	40	910	950	\$163,960
COLUMBIANA	398	8,369	8,767	\$80	0.8%	143	3,598	3,741	\$702,343
COSHOCTON	434	2,451	2,885	\$80	4.1%	140	1,129	1,269	\$231,267
CRAWFORD	252	2,987	3,239	\$78	0.9%	90	1,320	1,410	\$253,929
CUYAHOGA	17,070	122,452	139,522	\$89	0.4%	5,967	57,713	63,680	\$12,354,047
DARKE	184	1,198	1,382	\$78	0.2%	65	583	648	\$107,782
DEFIANCE	53	1,653	1,706	\$83	3.5%	20	708	728	\$142,163
DELAWARE	262	2,635	2,897	\$83	0.4%	92	1,235	1,327	\$241,212
ERIE	178	3,573	3,751	\$88	6.2%	55	1,596	1,651	\$329,838
FAIRFIELD	728	4,759	5,487	\$83	0.5%	254	2,271	2,525	\$455,324
FAYETTE	113	1,658	1,771	\$81	-3.6%	39	795	834	\$143,716
FRANKLIN	14,790	71,171	85,961	\$91	1.7%	4,982	32,205	37,187	\$7,839,886
FULTON	49	1,104	1,153	\$77	8.5%	16	504	520	\$88,386
GALLIA	703	3,554	4,257	\$77	-1.7%	240	1,724	1,964	\$327,814
GEAUGA	90	946	1,036	\$85	4.2%	29	456	485	\$87,572
GREENE	1,045	5,682	6,727	\$87	1.6%	387	2,635	3,022	\$582,695
GUERNSEY	122	4,082	4,204	\$76	3.6%	41	1,850	1,891	\$321,202
HAMILTON	10,842	44,365	55,207	\$89	2.2%	3,572	20,525	24,097	\$4,901,304
HANCOCK	137	2,081	2,218	\$85	3.2%	49	993	1,042	\$188,184
HARDIN	37	1,333	1,370	\$81	-5.0%	17	629	646	\$110,764
HARRISON	31	1,234	1,265	\$76	4.5%	12	590	602	\$96,614
HENRY	18	727	745	\$78	4.1%	6	324	330	\$58,040
HIGHLAND	29	2,594	2,623	\$83	0.5%	9	1,147	1,156	\$216,764
HOCKING	320	2,032	2,352	\$78	2.8%	106	932	1,038	\$184,321
HOLMES	37	777	814	\$70	-0.9%	12	334	346	\$57,114
HURON	23	2,920	2,943	\$80	-0.0%	8	1,254	1,262	\$235,633
JACKSON	381	3,764	4,145	\$77	-1.2%	134	1,825	1,959	\$320,788
JEFFERSON	1,065	6,323	7,388	\$78	1.8%	365	3,106	3,471	\$578,774
KNOX	272	2,456	2,728	\$81	1.6%	91	1,164	1,255	\$221,250
LAKE	794	6,741	7,535	\$93	0.6%	278	3,142	3,420	\$697,589
LAWRENCE	572	8,863	9,435	\$76	1.2%	202	4,227	4,429	\$716,595

**TABLE 5
FNS BENEFITS
OCTOBER 2002**

OHIO COUNTY	PERSONS					ASSISTANCE GROUPS			TOTAL COUPONS ISSUED
	PUBLIC ASSISTANCE	NON-PUBLIC ASSISTANCE	TOTAL	AVERAGE ISSUANCE	% CHANGE PREV. MO.	PUBLIC ASSISTANCE	NON-PUBLIC ASSISTANCE	TOTAL	
STATEWIDE	102,760	679,589	782,349	\$86	ERR	35,586	316,035	351,621	\$67,169,736
LICKING	924	6,341	7,265	\$86	1.2%	315	3,080	3,395	\$628,237
LOGAN	122	2,229	2,351	\$88	-0.8%	44	1,003	1,047	\$206,978
LORAIN	2,669	18,387	21,056	\$86	2.1%	893	7,534	8,427	\$1,810,775
LUCAS	7,623	37,487	45,110	\$85	0.9%	2,708	17,832	20,540	\$3,852,282
MADISON	287	1,368	1,655	\$87	5.2%	96	711	807	\$143,235
MAHONING	3,077	20,296	23,373	\$87	2.4%	1,070	9,789	10,859	\$2,030,045
MARION	171	4,530	4,701	\$79	3.3%	66	2,115	2,181	\$372,911
MEDINA	295	2,710	3,005	\$87	3.2%	112	1,295	1,407	\$260,237
MEIGS	249	3,230	3,479	\$80	0.9%	81	1,484	1,565	\$279,274
MERCER	114	929	1,043	\$85	2.1%	38	451	489	\$89,160
MIAMI	269	2,830	3,099	\$83	0.1%	102	1,400	1,502	\$257,703
MONROE	97	1,265	1,362	\$71	0.6%	32	583	615	\$96,611
MONTGOMERY	6,701	31,858	38,559	\$87	0.8%	2,355	14,871	17,226	\$3,363,052
MORGAN	43	1,515	1,558	\$77	3.5%	17	666	683	\$120,225
MORROW	132	1,692	1,824	\$79	-1.8%	45	756	801	\$144,222
MUSKINGUM	820	8,724	9,544	\$81	0.7%	305	3,968	4,273	\$769,252
NOBLE	17	881	898	\$72	-2.3%	7	427	434	\$64,881
OTTAWA	239	1,137	1,376	\$80	2.9%	78	513	591	\$109,708
PAULDING	78	732	810	\$77	-5.3%	29	365	394	\$62,727
PERRY	256	3,123	3,379	\$78	0.4%	85	1,409	1,494	\$264,222
PICKAWAY	412	2,867	3,279	\$82	0.3%	140	1,348	1,488	\$269,844
PIKE	320	3,946	4,266	\$80	1.6%	110	1,755	1,865	\$340,135
PORTAGE	670	4,993	5,663	\$90	0.4%	253	2,355	2,608	\$509,778
PREBLE	162	1,365	1,527	\$81	-0.7%	58	600	658	\$123,140
PUTNAM	105	732	837	\$83	0.5%	39	351	390	\$69,366
RICHLAND	624	7,800	8,424	\$82	1.6%	220	3,552	3,772	\$694,687
ROSS	1,031	5,923	6,954	\$82	1.9%	350	2,740	3,090	\$570,333
SANDUSKY	108	2,354	2,462	\$83	-7.3%	41	1,066	1,107	\$205,149
SCIOTO	754	11,622	12,376	\$76	-0.5%	276	5,734	6,010	\$944,575
SENECA	113	2,598	2,711	\$84	-0.0%	37	1,175	1,212	\$226,654
SHELBY	107	1,322	1,429	\$88	-1.1%	35	598	633	\$126,030
STARK	4,402	18,493	22,895	\$86	2.5%	1,533	8,398	9,931	\$1,969,235
SUMMIT	7,363	32,896	40,259	\$88	1.3%	2,636	15,737	18,373	\$3,548,493
TRUMBULL	1,511	14,001	15,512	\$83	1.7%	510	6,057	6,567	\$1,285,029
TUSCARAWAS	422	4,715	5,137	\$78	1.2%	143	2,169	2,312	\$401,521
UNION	301	1,107	1,408	\$85	9.8%	93	532	625	\$119,262
VAN WERT	2	746	748	\$79	10.5%	1	354	355	\$58,746
VINTON	186	1,720	1,906	\$74	-1.0%	64	801	865	\$141,988
WARREN	163	2,379	2,542	\$83	2.0%	60	1,116	1,176	\$211,205
WASHINGTON	46	3,984	4,030	\$82	1.9%	19	1,912	1,931	\$328,729
WAYNE	604	4,026	4,630	\$85	1.7%	210	1,999	2,209	\$394,183
WILLIAMS	258	1,369	1,627	\$82	0.3%	89	631	720	\$134,147
WOOD	257	2,609	2,866	\$86	-0.3%	96	1,253	1,349	\$245,367
WYANDOT	18	461	479	\$74	-5.1%	7	268	275	\$35,528

Table 6A
October 2002
Medicaid Eligibles

County	Aged	Blind	Disabled	ABD Total	OWF & Related	Healthy Start	CFC Total	Total Medicaid	Foster Care	Adoption Assistance	Transitional	Nursing Facilities
STATEWIDE	129,897	872	222,331	353,100	876,793	232,712	1,109,505	1,462,605	11,854	16,546	107,084	56,241
ADAMS	760	3	1,295	2,058	3,823	1,117	4,940	6,998	18	33	663	133
ALLEN	1,128	4	1,922	3,054	7,365	2,195	9,560	12,614	109	129	759	575
ASHLAND	530	2	516	1,048	2,915	1,139	4,054	5,102	6	16	592	287
ASHTABULA	1,470	14	2,775	4,259	8,977	2,937	11,914	16,173	76	132	1,432	1,054
ATHENS	751	14	1,918	2,683	6,113	1,273	7,386	10,069	91	85	919	188
AUGLAIZE	398	4	403	805	2,001	735	2,736	3,541	14	39	393	262
BELMONT	1,350	4	1,992	3,346	6,867	1,495	8,362	11,708	61	104	1,053	583
BROWN	667	0	926	1,593	3,688	1,296	4,984	6,577	24	34	586	214
BUTLER	2,657	29	5,087	7,773	19,278	5,108	24,386	32,159	369	416	2,087	1,300
CARROLL	357	2	538	897	2,376	712	3,088	3,985	6	4	518	193
CHAMPAIGN	483	0	589	1,072	2,006	886	2,892	3,964	13	18	296	272
CLARK	1,973	5	3,586	5,564	13,663	3,129	16,792	22,356	201	266	1,863	1,132
CLERMONT	1,310	5	2,397	3,712	9,477	3,689	13,166	16,878	134	176	1,423	739
CLINTON	492	3	651	1,146	2,703	891	3,594	4,740	30	43	386	165
COLUMBIANA	1,451	13	2,474	3,938	10,573	3,201	13,774	17,712	73	80	1,783	680
COSHOCTON	538	1	844	1,383	3,169	1,013	4,182	5,565	28	37	506	277
CRAWFORD	573	9	903	1,485	3,928	1,177	5,105	6,590	70	37	809	229
CUYAHOGA	21,144	147	32,873	54,164	145,951	30,330	176,281	230,445	2,801	3,687	13,414	7,784
DARKE	562	2	614	1,178	2,152	1,020	3,172	4,350	17	28	415	357
DEFIANCE	337	3	512	852	2,389	789	3,178	4,030	10	32	466	183
DELAWARE	669	2	905	1,576	3,706	1,148	4,854	6,430	37	60	585	315
ERIE	752	4	1,050	1,806	4,976	1,625	6,601	8,407	83	77	730	386
FAIRFIELD	1,074	4	1,632	2,710	6,398	2,179	8,577	11,287	65	111	885	437
FAYETTE	556	1	751	1,308	2,465	796	3,261	4,569	15	16	515	317
FRANKLIN	9,973	94	20,800	30,867	97,486	23,535	121,021	151,888	1,844	1,938	8,052	3,843
FULTON	362	1	327	690	1,761	799	2,560	3,250	12	24	280	205
GALLIA	819	1	1,525	2,345	4,202	887	5,089	7,434	35	34	458	205
GEAUGA	633	1	418	1,052	1,748	687	2,435	3,487	20	107	282	374
GREENE	1,186	7	1,638	2,831	7,884	2,065	9,949	12,780	87	99	1,214	621
GUERNSEY	773	6	1,340	2,119	4,979	1,592	6,571	8,690	60	67	850	181
HAMILTON	9,633	72	16,913	26,618	61,329	17,230	78,559	105,177	958	1,332	5,208	4,015
HANCOCK	570	5	707	1,282	2,994	1,266	4,260	5,542	23	30	579	296
HARDIN	362	2	543	907	1,924	789	2,713	3,620	10	28	420	154
HARRISON	279	0	447	726	1,293	470	1,763	2,489	6	26	244	125
HENRY	229	0	306	535	1,335	600	1,935	2,470	17	21	211	136
HIGHLAND	744	2	944	1,690	3,809	1,424	5,233	6,923	25	14	725	238
HOCKING	414	4	715	1,133	2,808	1,064	3,872	5,005	24	43	449	160
HOLMES	460	2	446	908	1,325	582	1,907	2,815	3	29	303	438
HURON	494	2	767	1,263	4,299	1,646	5,945	7,208	33	20	839	197
JACKSON	782	2	1,360	2,144	4,213	1,116	5,329	7,473	22	19	615	213
JEFFERSON	1,109	19	2,370	3,498	7,050	1,354	8,404	11,902	89	57	978	409
KNOX	635	0	1,159	1,794	3,304	1,395	4,699	6,493	30	32	656	557
LAKE	1,568	1	2,129	3,698	8,699	2,743	11,442	15,140	65	133	1,238	1,081
LAWRENCE	1,477	10	3,445	4,932	8,612	2,082	10,694	15,626	69	26	1,153	378

Table 6A
October 2002
Medicaid Eligibles

County	Aged	Blind	Disabled	ABD Total	OWF & Related	Healthy Start	CFC Total	Total Medicaid	Foster Care	Adoption Assistance	Transitional	Nursing Facilities
STATEWIDE	129,897	872	222,331	353,100	876,793	232,712	1,109,505	1,462,605	11,854	16,546	107,084	56,241
LICKING	1,336	5	2,209	3,550	9,279	3,139	12,418	15,968	164	281	1,569	615
LOGAN	521	2	598	1,121	3,154	910	4,064	5,185	20	33	523	206
LORAIN	2,577	19	4,595	7,191	22,673	4,921	27,594	34,785	149	362	2,451	1,313
LUCAS	5,394	42	12,492	17,928	44,734	10,433	55,167	73,095	417	1,419	4,401	1,984
MADISON	354	2	540	896	1,933	686	2,619	3,515	13	24	345	136
MAHONING	3,666	22	6,618	10,306	24,308	4,855	29,163	39,469	122	246	2,404	1,581
MARION	757	6	1,635	2,398	5,019	1,678	6,697	9,095	34	75	863	280
MEDINA	893	12	1,083	1,988	4,695	1,890	6,585	8,573	41	61	783	636
MEIGS	529	5	1,004	1,538	3,533	630	4,163	5,701	15	1	618	135
MERCER	325	1	410	736	1,482	628	2,110	2,846	16	21	268	199
MIAMI	910	7	1,169	2,086	4,064	1,781	5,845	7,931	80	113	572	477
MONROE	282	3	422	707	1,420	401	1,821	2,528	7	8	275	93
MONTGOMERY	5,697	42	11,596	17,335	42,826	9,113	51,939	69,274	912	1,044	4,106	2,437
MORGAN	289	1	480	770	1,927	529	2,456	3,226	13	16	439	110
MORROW	367	2	536	905	2,604	887	3,491	4,396	9	43	543	163
MUSKINGUM	1,343	17	2,547	3,907	9,517	2,260	11,777	15,684	77	117	1,532	515
NOBLE	228	0	245	473	995	479	1,474	1,947	2	10	192	93
OTTAWA	374	0	472	846	1,955	758	2,713	3,559	4	2	377	202
PAULDING	172	2	325	499	1,036	459	1,495	1,994	8	16	221	40
PERRY	469	4	999	1,472	3,775	1,214	4,989	6,461	36	29	619	196
PICKAWAY	567	1	892	1,460	3,327	1,120	4,447	5,907	22	13	438	174
PIKE	724	0	1,489	2,213	4,254	1,021	5,275	7,488	15	22	697	281
PORTAGE	1,027	3	1,758	2,788	7,343	2,352	9,695	12,483	107	118	966	601
PREBLE	353	6	557	916	2,286	812	3,098	4,014	31	34	477	215
PUTNAM	276	3	317	596	1,049	482	1,531	2,127	6	5	175	240
RICHLAND	1,573	1	2,598	4,172	9,638	3,296	12,934	17,106	124	230	1,335	616
ROSS	1,082	0	2,124	3,206	7,734	2,071	9,805	13,011	71	28	1,131	304
SANDUSKY	678	8	893	1,579	3,530	1,502	5,032	6,611	42	51	602	392
SCIOTO	2,231	12	4,729	6,972	10,490	2,515	13,005	19,977	66	46	1,224	656
SENECA	620	2	950	1,572	3,515	1,511	5,026	6,598	21	87	674	264
SHELBY	376	4	521	901	2,312	1,083	3,395	4,296	17	51	409	180
STARK	4,453	30	6,201	10,684	27,310	6,897	34,207	44,891	565	824	4,067	2,319
SUMMIT	5,884	42	10,430	16,356	42,814	8,798	51,612	67,968	476	688	4,926	2,107
TRUMBULL	2,500	24	4,565	7,089	18,810	4,925	23,735	30,824	118	219	2,935	1,271
TUSCARAWAS	1,116	7	1,423	2,546	6,238	2,155	8,393	10,939	66	127	1,271	498
UNION	316	1	395	712	1,898	688	2,586	3,298	9	35	220	140
UNKNOWN	0	0	0	0	0	0	0	0	0	0	0	0
VAN WERT	268	1	349	618	1,376	704	2,080	2,698	7	25	293	141
VINTON	293	0	590	883	2,118	689	2,807	3,690	4	19	355	81
WARREN	1,143	6	1,415	2,564	4,145	1,938	6,083	8,647	50	74	545	817
WASHINGTON	894	8	1,505	2,407	4,999	2,052	7,051	9,458	12	31	888	324
WAYNE	1,023	6	1,589	2,618	5,520	2,133	7,653	10,271	69	72	1,108	486
WILLIAMS	413	2	426	841	2,382	864	3,246	4,087	12	21	548	221
WOOD	797	4	941	1,742	4,001	1,730	5,731	7,473	10	53	629	419
WYANDOT	323	1	247	571	762	517	1,279	1,850	12	13	238	195

Table 6B
October 2002
Medicaid Expenditures

County	Aged	Blind	Disabled	ABD Total	OWF & Related	Healthy Start	CFC Total	Total Medicaid	Foster Care	Adoption Assistance	Transitional	Nursing Facilities
STATEWIDE	\$262,092,063	\$1,172,613	\$411,616,974	\$674,881,650	\$221,445,291	\$59,706,241	\$281,151,533	\$956,232,372	\$6,171,862	\$3,561,151	\$19,291,104	\$285,937,727
ADAMS	\$981,610	\$4,163	\$1,662,076	\$2,647,849	\$882,970	\$281,452	\$1,164,422	\$3,812,271	\$11,240	\$1,119	\$92,278	\$600,967
ALLEN	\$2,466,411	\$9,968	\$3,062,302	\$5,538,681	\$1,494,066	\$670,489	\$2,164,554	\$7,706,209	\$48,168	\$25,876	\$78,899	\$2,767,322
ASHLAND	\$1,184,262	\$494	\$940,158	\$2,124,915	\$474,100	\$286,820	\$760,920	\$2,891,055	\$1,077	\$2,160	\$58,658	\$1,235,398
ASHTABULA	\$3,544,913	\$6,925	\$6,260,475	\$9,812,313	\$1,746,640	\$461,904	\$2,208,544	\$12,020,857	\$22,271	\$18,686	\$155,967	\$5,403,686
ATHENS	\$1,099,957	\$2,012	\$2,471,149	\$3,573,117	\$1,299,192	\$361,199	\$1,660,391	\$5,233,508	\$42,414	\$10,598	\$125,493	\$715,589
AUGLAIZE	\$1,015,562	\$6,899	\$681,917	\$1,704,378	\$487,777	\$211,444	\$699,221	\$2,403,906	\$3,856	\$4,697	\$58,039	\$1,048,256
BELMONT	\$2,646,768	\$2,127	\$2,983,746	\$5,632,641	\$1,428,085	\$291,010	\$1,719,096	\$7,351,737	\$25,780	\$45,866	\$111,108	\$2,285,811
BROWN	\$1,238,818	\$0	\$1,554,595	\$2,793,413	\$827,424	\$240,763	\$1,068,187	\$3,861,600	\$6,526	\$3,299	\$118,468	\$1,123,638
BUTLER	\$6,361,863	\$33,819	\$10,308,457	\$16,704,139	\$5,373,774	\$1,665,887	\$7,039,661	\$23,761,611	\$203,179	\$105,186	\$470,871	\$7,850,904
CARROLL	\$745,137	\$335	\$1,039,771	\$1,785,243	\$370,483	\$114,472	\$484,955	\$2,270,198	\$472	\$322	\$45,862	\$889,700
CHAMPAIGN	\$1,084,380	\$0	\$1,189,013	\$2,273,392	\$396,299	\$263,880	\$660,178	\$2,933,570	\$11,248	\$1,690	\$28,639	\$1,335,325
CLARK	\$4,422,105	\$4,706	\$6,565,171	\$10,991,982	\$2,924,108	\$657,192	\$3,581,301	\$14,574,765	\$98,898	\$102,928	\$285,439	\$5,389,889
CLERMONT	\$3,145,778	\$22,435	\$6,207,888	\$9,376,101	\$2,417,878	\$924,005	\$3,341,883	\$12,720,062	\$78,695	\$28,269	\$204,214	\$4,895,728
CLINTON	\$845,783	\$2,167	\$2,865,383	\$3,713,333	\$588,670	\$163,001	\$751,671	\$4,465,004	\$39,792	\$4,939	\$35,576	\$718,431
COLUMBIANA	\$2,850,474	\$6,839	\$3,903,363	\$6,760,676	\$2,399,320	\$718,707	\$3,118,026	\$9,878,703	\$51,911	\$13,314	\$263,710	\$2,980,936
COSHOCTON	\$891,511	\$521	\$1,959,400	\$2,851,432	\$581,278	\$162,145	\$743,422	\$3,594,854	\$7,520	\$8,281	\$50,489	\$1,304,351
CRAWFORD	\$1,201,426	\$2,593	\$1,347,933	\$2,551,952	\$741,937	\$78,960	\$820,897	\$3,375,390	\$13,224	\$5,302	\$107,594	\$1,001,027
CUYAHOGA	\$41,637,043	\$146,518	\$57,092,215	\$98,875,776	\$41,143,414	\$8,151,673	\$49,295,087	\$148,182,950	\$1,313,978	\$705,264	\$3,521,290	\$44,252,562
DARKE	\$1,283,430	\$2,962	\$1,186,487	\$2,472,879	\$414,378	\$224,190	\$638,568	\$3,118,604	\$6,604	\$3,552	\$41,462	\$1,544,012
DEFIANCE	\$702,404	\$1,190	\$674,687	\$1,378,282	\$345,919	\$159,703	\$505,622	\$1,883,903	\$6,473	\$2,885	\$39,162	\$707,003
DELAWARE	\$1,413,669	\$7,542	\$2,182,149	\$3,603,360	\$821,558	\$295,695	\$1,117,254	\$4,720,613	\$15,103	\$30,951	\$51,415	\$1,406,668
ERIE	\$1,633,094	\$706	\$1,474,360	\$3,108,160	\$844,773	\$253,577	\$1,098,350	\$4,206,510	\$32,164	\$10,168	\$77,700	\$1,629,941
FAIRFIELD	\$2,146,965	\$1,972	\$3,014,017	\$5,162,953	\$1,308,066	\$353,162	\$1,661,228	\$6,827,177	\$16,492	\$33,840	\$99,473	\$2,101,893
FAYETTE	\$1,228,151	\$73	\$1,490,261	\$2,718,485	\$500,179	\$239,146	\$739,325	\$3,457,810	\$4,443	\$1,201	\$49,313	\$1,550,262
FRANKLIN	\$18,537,638	\$146,632	\$47,644,305	\$66,328,574	\$28,352,835	\$7,823,969	\$36,176,805	\$102,513,932	\$1,120,874	\$592,046	\$2,121,965	\$23,130,699
FULTON	\$868,816	\$450	\$664,472	\$1,533,738	\$340,295	\$122,442	\$462,738	\$1,996,476	\$3,004	\$2,611	\$21,640	\$901,030
GALLIA	\$1,637,965	\$0	\$3,377,210	\$5,015,175	\$1,020,899	\$217,390	\$1,238,290	\$6,253,465	\$27,048	\$1,617	\$83,991	\$875,343
GEAUGA	\$1,817,359	\$670	\$1,090,812	\$2,908,842	\$331,169	\$159,683	\$490,852	\$3,400,045	\$12,993	\$16,297	\$29,721	\$1,962,992
GREENE	\$2,839,682	\$27,286	\$3,067,957	\$5,934,925	\$1,722,934	\$714,139	\$2,437,073	\$8,371,998	\$22,543	\$24,018	\$209,378	\$3,136,595
GUERNSEY	\$1,182,668	\$8,240	\$3,241,266	\$4,432,174	\$1,013,681	\$272,634	\$1,286,315	\$5,718,488	\$24,846	\$11,814	\$122,246	\$695,551
HAMILTON	\$20,800,244	\$91,557	\$29,828,838	\$50,720,639	\$17,368,911	\$5,753,825	\$23,122,736	\$73,901,221	\$590,171	\$284,180	\$1,169,696	\$22,940,087
HANCOCK	\$1,224,503	\$5,599	\$1,541,773	\$2,771,875	\$647,830	\$389,913	\$1,037,743	\$3,809,618	\$5,092	\$12,559	\$74,923	\$1,313,993
HARDIN	\$626,641	\$981	\$843,742	\$1,471,364	\$372,766	\$181,595	\$554,361	\$2,026,911	\$12,040	\$2,890	\$35,001	\$576,049
HARRISON	\$632,476	\$0	\$758,001	\$1,390,477	\$224,503	\$97,822	\$322,326	\$1,718,104	\$253	\$3,543	\$23,009	\$578,696
HENRY	\$499,435	\$0	\$1,057,236	\$1,556,670	\$283,692	\$104,891	\$388,583	\$1,945,317	\$5,209	\$2,768	\$20,737	\$504,064
HIGHLAND	\$1,177,328	\$1,447	\$1,542,347	\$2,721,122	\$782,762	\$427,678	\$1,210,441	\$3,931,563	\$4,640	\$2,777	\$124,749	\$1,174,193
HOCKING	\$689,797	\$8,224	\$1,136,525	\$1,834,546	\$726,832	\$223,586	\$950,418	\$2,784,964	\$12,190	\$7,071	\$57,137	\$746,912
HOLMES	\$1,344,000	\$0	\$1,120,242	\$2,464,242	\$217,507	\$175,861	\$393,369	\$2,857,610	\$307	\$4,155	\$32,954	\$1,902,308
HURON	\$850,539	\$928	\$1,051,170	\$1,902,637	\$812,752	\$291,511	\$1,104,262	\$3,008,572	\$17,089	\$1,159	\$122,039	\$755,847
JACKSON	\$1,053,624	\$4,570	\$1,439,345	\$2,497,539	\$853,470	\$214,237	\$1,067,707	\$3,565,246	\$14,965	\$663	\$62,129	\$851,901
JEFFERSON	\$2,042,896	\$16,184	\$3,357,543	\$5,416,623	\$1,618,156	\$201,109	\$1,819,265	\$7,237,472	\$49,206	\$6,311	\$161,872	\$1,907,863
KNOX	\$1,608,474	\$0	\$3,314,519	\$4,922,993	\$956,552	\$203,859	\$1,160,411	\$6,083,404	\$9,014	\$4,867	\$65,861	\$3,166,910
LAKE	\$4,028,895	\$96	\$6,638,303	\$10,667,294	\$1,732,723	\$548,549	\$2,281,272	\$12,948,979	\$25,862	\$25,590	\$126,425	\$6,002,860
LAWRENCE	\$2,126,051	\$15,215	\$3,918,870	\$6,060,136	\$2,010,301	\$403,576	\$2,413,877	\$8,474,013	\$25,876	\$5,205	\$123,001	\$1,580,187

Table 6B
October 2002
Medicaid Expenditures

County	Aged	Blind	Disabled	ABD Total	OWF & Related	Healthy Start	CFC Total	Total Medicaid	Foster Care	Adoption Assistance	Transitional	Nursing Facilities
STATEWIDE	\$262,092,063	\$1,172,613	\$411,616,974	\$674,881,650	\$221,445,291	\$59,706,241	\$281,151,533	\$956,232,372	\$6,171,862	\$3,561,151	\$19,291,104	\$285,937,727
LICKING	\$2,677,030	\$157,738	\$4,631,997	\$7,466,765	\$1,920,134	\$679,269	\$2,599,403	\$10,066,809	\$72,963	\$68,223	\$182,872	\$3,194,491
LOGAN	\$897,275	\$1,228	\$857,404	\$1,755,907	\$619,329	\$171,784	\$791,112	\$2,547,163	\$3,147	\$2,446	\$73,133	\$783,048
LORAIN	\$5,525,095	\$16,433	\$8,422,819	\$13,964,347	\$5,027,899	\$1,151,449	\$6,179,348	\$20,148,040	\$39,874	\$37,437	\$464,380	\$6,654,192
LUCAS	\$9,803,913	\$34,264	\$22,072,288	\$31,910,466	\$14,419,058	\$3,754,700	\$18,173,757	\$50,087,343	\$426,290	\$240,597	\$1,323,836	\$10,155,699
MADISON	\$556,272	\$456	\$1,364,899	\$1,921,627	\$451,304	\$147,948	\$599,252	\$2,520,879	\$7,343	\$4,387	\$39,416	\$660,929
MAHONING	\$7,550,384	\$42,842	\$11,112,112	\$18,705,338	\$5,607,097	\$1,029,270	\$6,636,368	\$25,341,763	\$71,724	\$33,923	\$332,272	\$7,545,570
MARION	\$1,291,321	\$3,744	\$2,535,701	\$3,830,765	\$999,131	\$326,869	\$1,326,000	\$5,156,766	\$12,127	\$21,880	\$82,901	\$1,236,770
MEDINA	\$2,392,846	\$77,162	\$3,360,644	\$5,830,652	\$942,728	\$304,404	\$1,247,131	\$7,077,783	\$20,575	\$13,927	\$73,943	\$3,719,124
MEIGS	\$684,047	\$3,073	\$1,327,967	\$2,015,087	\$739,938	\$110,146	\$850,084	\$2,865,172	\$5,782	\$0	\$77,241	\$534,753
MERCER	\$744,045	\$15	\$617,128	\$1,361,188	\$319,785	\$120,077	\$439,861	\$1,801,049	\$3,104	\$3,167	\$58,931	\$812,247
MIAMI	\$2,191,163	\$3,731	\$2,146,112	\$4,341,006	\$865,540	\$491,900	\$1,357,440	\$5,701,584	\$43,339	\$28,887	\$63,719	\$2,220,661
MONROE	\$466,604	\$1,008	\$696,278	\$1,163,890	\$230,353	\$48,287	\$278,640	\$1,442,530	\$2,601	\$2,527	\$20,969	\$341,233
MONTGOMERY	\$11,560,105	\$49,399	\$19,810,012	\$31,419,516	\$12,568,220	\$3,164,372	\$15,732,591	\$47,182,577	\$499,320	\$273,421	\$1,011,652	\$11,950,443
MORGAN	\$519,894	\$152	\$892,129	\$1,412,175	\$444,732	\$224,872	\$669,605	\$2,081,779	\$3,901	\$1,621	\$66,341	\$478,784
MORROW	\$654,360	\$52	\$836,969	\$1,491,382	\$440,357	\$129,427	\$569,784	\$2,062,570	\$3,807	\$2,521	\$70,581	\$647,598
MUSKINGUM	\$2,290,959	\$8,733	\$3,451,006	\$5,750,698	\$1,784,303	\$490,025	\$2,274,329	\$8,025,250	\$15,893	\$21,625	\$217,953	\$2,003,285
NOBLE	\$428,307	\$0	\$261,484	\$689,791	\$174,191	\$84,069	\$258,260	\$948,052	\$535	\$690	\$16,816	\$377,761
OTTAWA	\$989,356	\$0	\$1,716,079	\$2,705,434	\$395,734	\$146,157	\$541,891	\$3,247,326	\$345	\$0	\$32,296	\$827,663
PAULDING	\$188,217	\$71	\$359,525	\$547,813	\$251,560	\$137,479	\$389,039	\$936,852	\$5,012	\$1,314	\$71,170	\$151,600
PERRY	\$604,732	\$1,924	\$1,861,986	\$2,468,643	\$801,082	\$244,508	\$1,045,589	\$3,514,596	\$19,926	\$2,527	\$81,680	\$1,010,077
PICKAWAY	\$896,397	\$428	\$1,273,668	\$2,170,493	\$669,538	\$195,641	\$865,178	\$3,036,263	\$2,649	\$769	\$43,087	\$726,201
PIKE	\$1,190,818	\$0	\$2,113,303	\$3,304,121	\$869,999	\$176,637	\$1,046,636	\$4,353,848	\$21,668	\$22,130	\$91,513	\$1,418,897
PORTAGE	\$2,163,741	\$8,416	\$4,457,582	\$6,629,739	\$1,609,011	\$611,871	\$2,220,882	\$8,851,013	\$35,566	\$22,687	\$131,460	\$3,461,440
PREBLE	\$736,366	\$2,383	\$1,126,372	\$1,865,122	\$457,732	\$199,869	\$657,601	\$2,522,723	\$18,760	\$3,141	\$46,717	\$1,009,546
PUTNAM	\$634,047	\$4,644	\$786,809	\$1,425,499	\$327,212	\$47,190	\$374,402	\$1,799,901	\$1,691	\$50	\$8,784	\$979,832
RICHLAND	\$2,928,990	\$407	\$4,626,651	\$7,556,049	\$1,947,879	(\$74,844)	\$1,873,035	\$9,431,390	\$54,331	\$31,095	\$150,295	\$3,027,809
ROSS	\$1,513,829	\$1,745	\$2,831,367	\$4,346,941	\$1,438,990	\$450,677	\$1,889,667	\$6,238,383	\$1,446	\$9,352	\$122,572	\$1,169,467
SANDUSKY	\$1,445,995	\$2,972	\$1,925,757	\$3,374,725	\$703,301	\$316,689	\$1,019,990	\$4,394,715	\$20,868	\$25,709	\$73,847	\$1,656,147
SCIOTO	\$3,679,993	\$22,958	\$6,060,885	\$9,763,837	\$2,323,461	\$446,961	\$2,770,422	\$12,536,077	\$33,870	\$31,568	\$147,750	\$2,829,975
SENECA	\$1,566,440	\$1,657	\$3,096,078	\$4,664,175	\$662,206	\$281,633	\$943,839	\$5,609,717	\$3,498	\$26,528	\$52,684	\$1,399,359
SHELBY	\$779,496	\$998	\$709,311	\$1,489,805	\$538,010	\$171,446	\$709,456	\$2,199,261	\$6,733	\$5,112	\$38,880	\$794,985
STARK	\$10,719,749	\$32,661	\$11,584,921	\$22,337,332	\$5,325,883	\$1,353,624	\$6,679,507	\$29,016,839	\$229,851	\$145,506	\$497,113	\$11,733,841
SUMMIT	\$10,772,182	\$36,996	\$18,300,700	\$29,109,878	\$13,830,159	\$2,744,259	\$16,574,418	\$45,684,295	\$262,306	\$164,777	\$1,482,082	\$9,908,885
TRUMBULL	\$5,339,339	\$36,306	\$7,427,609	\$12,803,255	\$3,941,967	\$1,022,589	\$4,964,555	\$17,767,810	\$46,056	\$24,673	\$393,869	\$5,731,219
TUSCARAWAS	\$2,304,758	\$3,406	\$2,555,192	\$4,863,356	\$1,296,808	\$459,134	\$1,755,942	\$6,624,852	\$49,407	\$21,892	\$101,121	\$2,025,222
UNION	\$600,309	\$253	\$656,689	\$1,257,252	\$413,426	\$153,962	\$567,388	\$1,824,640	\$4,320	\$4,056	\$24,788	\$632,525
UNKNOWN	\$0	\$0	\$0	\$0	(\$302,329)	\$0	(\$302,329)	(\$302,329)	\$0	\$0	\$0	\$0
VAN WERT	\$523,440	\$1,348	\$550,176	\$1,074,964	\$324,306	\$161,252	\$485,558	\$1,560,521	\$10,024	\$29,468	\$30,034	\$541,578
VINTON	\$393,343	\$0	\$659,131	\$1,052,474	\$427,447	\$117,481	\$544,928	\$1,600,675	\$531	\$453	\$30,016	\$324,331
WARREN	\$3,139,971	\$4,034	\$4,206,908	\$7,350,913	\$908,835	\$533,624	\$1,442,459	\$8,794,939	\$19,978	\$21,044	\$82,217	\$4,700,887
WASHINGTON	\$1,511,532	\$7,375	\$2,217,229	\$3,736,137	\$939,387	\$333,066	\$1,272,453	\$5,008,588	\$1,495	\$3,740	\$103,420	\$1,518,632
WAYNE	\$2,333,333	\$617	\$3,736,479	\$6,070,429	\$1,087,978	\$452,865	\$1,540,843	\$7,611,275	\$36,364	\$10,075	\$120,091	\$2,071,162
WILLIAMS	\$939,618	\$700	\$747,097	\$1,687,415	\$353,336	\$101,034	\$454,370	\$2,142,762	\$3,595	\$7,116	\$36,066	\$923,240
WOOD	\$1,899,092	\$5,238	\$2,270,663	\$4,174,993	\$990,249	\$675,579	\$1,665,828	\$5,841,428	\$521	\$5,620	\$119,275	\$1,848,804
WYANDOT	\$702,820	\$0	\$610,405	\$1,313,225	\$155,168	\$58,242	\$213,410	\$1,526,635	\$3,980	\$937	\$14,722	\$754,438

**TABLE 7
CHILD CARE
OCTOBER 2002**

OHIO COUNTY	OWF JOBS, LEAP, and TRANSITIONAL		OTHER CHILD CARE		ALL PROGRAM SOURCES	
	CHILDREN SERVED		CHILDREN SERVED		CHILDREN SERVED	
	TOTAL	% OF STATE TOTAL	TOTAL	% OF STATE TOTAL	TOTAL	% OF STATE TOTAL
STATEWIDE	21,146	100.00%	79,902	100.00%	101,048	100.00%
ADAMS	0	0.00%	52	0.07%	52	0.05%
ALLEN	28	0.13%	515	0.64%	543	0.54%
ASHLAND	1	0.00%	102	0.13%	103	0.10%
ASHTABULA	116	0.55%	796	1.00%	912	0.90%
ATHENS	105	0.50%	291	0.36%	396	0.39%
AUGLAIZE	11	0.05%	170	0.21%	181	0.18%
BELMONT	128	0.61%	320	0.40%	448	0.44%
BROWN	6	0.03%	101	0.13%	107	0.11%
BUTLER	134	0.63%	1,341	1.68%	1,475	1.46%
CARROLL	21	0.10%	49	0.06%	70	0.07%
CHAMPAIGN	18	0.09%	199	0.25%	217	0.21%
CLARK	123	0.58%	731	0.91%	854	0.85%
CLERMONT	39	0.18%	556	0.70%	595	0.59%
CLINTON	11	0.05%	222	0.28%	233	0.23%
COLUMBIANA	42	0.20%	738	0.92%	780	0.77%
COSHOCTON	32	0.15%	247	0.31%	279	0.28%
CRAWFORD	32	0.15%	255	0.32%	287	0.28%
CUYAHOGA	6,324	29.91%	18,157	22.72%	24,481	24.23%
DARKE	15	0.07%	148	0.19%	163	0.16%
DEFIANCE	2	0.01%	209	0.26%	211	0.21%
DELAWARE	24	0.11%	202	0.25%	226	0.22%
ERIE	9	0.04%	894	1.12%	903	0.89%
FAIRFIELD	64	0.30%	614	0.77%	678	0.67%
FAYETTE	49	0.23%	251	0.31%	300	0.30%
FRANKLIN	3,196	15.11%	10,302	12.89%	13,498	13.36%
FULTON	5	0.02%	178	0.22%	183	0.18%
GALLIA	55	0.26%	217	0.27%	272	0.27%
GEAUGA	8	0.04%	210	0.26%	218	0.22%
GREENE	213	1.01%	687	0.86%	900	0.89%
GUERNSEY	36	0.17%	404	0.51%	440	0.44%
HAMILTON	3,467	16.40%	9,806	12.27%	13,273	13.14%
HANCOCK	21	0.10%	456	0.57%	477	0.47%
HARDIN	3	0.01%	89	0.11%	92	0.09%
HARRISON	2	0.01%	60	0.08%	62	0.06%
HENRY	10	0.05%	125	0.16%	135	0.13%
HIGHLAND	0	0.00%	235	0.29%	235	0.23%
HOCKING	4	0.02%	63	0.08%	67	0.07%
HOLMES	12	0.06%	107	0.13%	119	0.12%
HURON	0	0.00%	635	0.79%	635	0.63%
JACKSON	53	0.25%	194	0.24%	247	0.24%
JEFFERSON	135	0.64%	382	0.48%	517	0.51%
KNOX	27	0.13%	358	0.45%	385	0.38%
LAKE	98	0.46%	927	1.16%	1,025	1.01%
LAWRENCE	40	0.19%	439	0.55%	479	0.47%

SOURCE: NMR120RA.

ADC data consist of funding codes: 312, 313, 314, 326, & 327.

Other data consist of funding codes: 320, 321, 322, 323, 324, 325, 329, 342, and 899.

**TABLE 7
CHILD CARE
OCTOBER 2002**

OHIO COUNTY	OWF JOBS, LEAP, and TRANSITIONAL		OTHER CHILD CARE		ALL PROGRAM SOURCES	
	CHILDREN SERVED		CHILDREN SERVED		CHILDREN SERVED	
	TOTAL	% OF STATE TOTAL	TOTAL	% OF STATE TOTAL	TOTAL	% OF STATE TOTAL
STATEWIDE	21,146	100.00%	79,902	100.00%	101,048	100.00%
LICKING	135	0.64%	1,026	1.28%	1,161	1.15%
LOGAN	21	0.10%	91	0.11%	112	0.11%
LORAIN	514	2.43%	1,778	2.23%	2,292	2.27%
LUCAS	1,585	7.50%	1,884	2.36%	3,469	3.43%
MADISON	37	0.17%	101	0.13%	138	0.14%
MAHONING	483	2.28%	1,904	2.38%	2,387	2.36%
MARION	8	0.04%	417	0.52%	425	0.42%
MEDINA	39	0.18%	333	0.42%	372	0.37%
MEIGS	45	0.21%	264	0.33%	309	0.31%
MERCER	17	0.08%	154	0.19%	171	0.17%
MIAMI	0	0.00%	423	0.53%	423	0.42%
MONROE	0	0.00%	77	0.10%	77	0.08%
MONTGOMERY	856	4.05%	4,407	5.52%	5,263	5.21%
MORGAN	4	0.02%	99	0.12%	103	0.10%
MORROW	0	0.00%	0	0.00%	0	0.00%
MUSKINGUM	194	0.92%	814	1.02%	1,008	1.00%
NOBLE	5	0.02%	104	0.13%	109	0.11%
OTTAWA	11	0.05%	43	0.05%	54	0.05%
PAULDING	8	0.04%	21	0.03%	29	0.03%
PERRY	39	0.18%	218	0.27%	257	0.25%
PICKAWAY	37	0.17%	184	0.23%	221	0.22%
PIKE	45	0.21%	133	0.17%	178	0.18%
PORTAGE	97	0.46%	723	0.90%	820	0.81%
PREBLE	23	0.11%	184	0.23%	207	0.20%
PUTNAM	31	0.15%	79	0.10%	110	0.11%
RICHLAND	166	0.79%	990	1.24%	1,156	1.14%
ROSS	85	0.40%	315	0.39%	400	0.40%
SANDUSKY	40	0.19%	364	0.46%	404	0.40%
SCIOTO	135	0.64%	584	0.73%	719	0.71%
SENECA	26	0.12%	302	0.38%	328	0.32%
SHELBY	3	0.01%	267	0.33%	270	0.27%
STARK	482	2.28%	2,282	2.86%	2,764	2.74%
SUMMIT	609	2.88%	2,688	3.36%	3,297	3.26%
TRUMBULL	256	1.21%	1,103	1.38%	1,359	1.34%
TUSCARAWAS	75	0.35%	498	0.62%	573	0.57%
UNION	3	0.01%	133	0.17%	136	0.13%
VAN WERT	1	0.00%	70	0.09%	71	0.07%
VINTON	21	0.10%	114	0.14%	135	0.13%
WARREN	45	0.21%	373	0.47%	418	0.41%
WASHINGTON	16	0.08%	426	0.53%	442	0.44%
WAYNE	147	0.70%	414	0.52%	561	0.56%
WILLIAMS	25	0.12%	133	0.17%	158	0.16%
WOOD	56	0.26%	318	0.40%	374	0.37%
WYANDOT	2	0.01%	33	0.04%	35	0.03%

SOURCE: NMR120RA.

ADC data consist of funding codes: 312, 313, 314, 326, and 327.

Other data consist of funding codes: 320, 321, 322, 323, 324, 325, 329, 342, and 899.

**TABLE 8
RECIPIENTS, EXPENDITURES, AND AVERAGE PAYMENT PER RECIPIENT
DURING THE LAST 12 MONTHS IN OHIO**

	OWF-R	OWF-U	OWF\ CHILD CARE	OTHER\ CHILD CARE	DISABILITY ASSISTANCE	TITLE IV-E	FNS BENEFITS
RECIPIENTS							
November 2001	183,107	14,674	24,146	71,211	12,210	23,972	690,033
December	184,912	15,827	22,878	70,693	12,436	23,096	721,403
January 2002	186,522	16,433	22,050	70,269	12,820	23,590	718,549
February	183,508	16,927	21,564	69,748	12,742	23,814	718,353
March	184,027	17,425	24,089	74,224	13,136	23,642	743,179
April	181,602	16,421	24,088	77,613	13,285	24,646	746,175
May	179,859	15,700	24,444	77,777	13,405	24,314	744,760
June	175,697	14,598	22,429	79,133	13,214	24,284	744,545
July	178,945	14,740	22,047	81,473	13,828	24,305	757,686
August	178,009	14,363	22,124	83,567	14,221	24,354	754,199
September	176,457	14,405	21,184	81,795	14,518	24,326	773,105
October	180,031	14,816	21,146	79,902	15,012	24,284	782,349
12 MONTH AVERAGE	181,056	15,527	22,682	76,450	13,402	24,052	741,195
EXPENDITURES							
November 2001	\$24,789,040	\$1,351,672	N.A.	N.A.	\$1,453,214	\$13,530,283	\$56,315,486
December	\$25,362,547	\$1,514,381	N.A.	N.A.	\$1,542,268	\$11,729,619	\$60,098,721
January 2002	\$25,225,638	\$1,561,528	N.A.	N.A.	\$1,507,076	\$13,474,465	\$58,978,843
February	\$25,095,306	\$1,627,902	N.A.	N.A.	\$1,499,730	\$12,488,247	\$58,738,575
March	\$25,311,970	\$1,672,857	N.A.	N.A.	\$1,615,996	\$12,743,946	\$61,626,592
April	\$24,940,081	\$1,564,950	N.A.	N.A.	\$1,692,215	\$13,076,547	\$62,402,424
May	\$24,789,326	\$1,485,036	N.A.	N.A.	\$1,682,108	\$13,147,856	\$61,401,111
June	\$24,200,171	\$1,356,962	N.A.	N.A.	\$1,634,116	\$13,142,383	\$60,688,791
July	\$24,484,280	\$1,358,338	N.A.	N.A.	\$1,771,662	\$13,340,679	\$63,005,979
August	\$24,514,856	\$1,352,022	N.A.	N.A.	\$1,900,692	\$12,879,608	\$61,893,895
September	\$24,235,034	\$1,350,313	N.A.	N.A.	\$1,829,682	\$12,552,968	\$64,454,949
October	\$24,908,150	\$1,392,805	N.A.	N.A.	\$1,953,311	\$12,299,864	\$67,169,736
TOTAL DOLLARS	\$24,821,367	\$1,465,731	N.A.	N.A.	\$1,673,506	\$12,867,205	\$61,397,925
AVERAGE PAYMENT							
November 2001	\$135	\$92	N.A.	N.A.	\$119	\$564	\$82
December	\$137	\$96	N.A.	N.A.	\$124	\$508	\$83
January 2002	\$135	\$95	N.A.	N.A.	\$118	\$571	\$82
February	\$137	\$96	N.A.	N.A.	\$118	\$524	\$82
March	\$138	\$96	N.A.	N.A.	\$123	\$539	\$83
April	\$137	\$95	N.A.	N.A.	\$127	\$531	\$84
May	\$138	\$95	N.A.	N.A.	\$125	\$541	\$82
June	\$138	\$93	N.A.	N.A.	\$124	\$541	\$82
July	\$137	\$92	N.A.	N.A.	\$128	\$549	\$83
August	\$138	\$94	N.A.	N.A.	\$134	\$529	\$82
September	\$137	\$94	N.A.	N.A.	\$126	\$516	\$83
October	\$138	\$94	N.A.	N.A.	\$130	\$507	\$86

Note: N.A. means Not Available.

**TABLE 10
PERCENT OF OHIO'S POPULATION PARTICIPATING IN SELECTED
PUBLIC ASSISTANCE PROGRAMS FOR OCTOBER 2002**

OHIO COUNTY	Total Population *	Percent of Households Below Poverty Level	DISABILITY ASSISTANCE		OWF COMBINED		FOSTER CARE		FNS BENEFITS	
			Recipients	Recipients as Percent of Total Population	Recipients	Recipients as Percent of Total Population	Recipients	Recipients as Percent of Total Population	Recipients	Recipients as Percent of Total Population
STATEWIDE	11,355,212	0.10	15,012	0.13	194,847	1.72	24,284	0.21	782,349	6.89
ADAMS	27,330	0.25	81	0.30	240	0.88	47	0.17	3,476	12.72
ALLEN	108,473	0.10	78	0.07	891	0.82	220	0.20	6,725	6.20
ASHLAND	52,523	0.08	25	0.05	199	0.38	16	0.03	1,792	3.41
ASHTABULA	102,728	0.13	293	0.29	1,485	1.45	142	0.14	8,184	7.97
ATHENS	62,223	0.17	174	0.28	1,475	2.37	175	0.28	5,971	9.60
AUGLAIZE	46,611	0.05	11	0.02	105	0.23	49	0.11	1,385	2.97
BELMONT	70,226	0.14	128	0.18	1,297	1.85	123	0.18	6,602	9.40
BROWN	42,285	0.12	26	0.06	254	0.60	60	0.14	2,541	6.01
BUTLER	332,807	0.08	457	0.14	3,622	1.09	813	0.24	16,181	4.86
CARROLL	28,836	0.09	35	0.12	187	0.65	9	0.03	1,713	5.94
CHAMPAIGN	38,890	0.07	41	0.11	386	0.99	24	0.06	1,719	4.42
CLARK	144,742	0.10	249	0.17	2,766	1.91	352	0.24	12,708	8.78
CLERMONT	177,977	0.07	182	0.10	1,095	0.62	296	0.17	6,428	3.61
CLINTON	40,543	0.10	35	0.09	204	0.50	70	0.17	1,997	4.93
COLUMBIANA	112,075	0.13	159	0.14	915	0.82	178	0.16	8,767	7.82
COSHOCTON	36,655	0.10	80	0.22	717	1.96	59	0.16	2,885	7.87
CRAWFORD	46,966	0.10	46	0.10	438	0.93	37	0.08	3,239	6.90
CUYAHOGA **	1,393,845	0.11	2,215	0.16	34,603	2.48	5,667	0.41	139,522	10.01
DARKE	53,309	0.07	36	0.07	300	0.56	38	0.07	1,382	2.59
DEFIANCE	39,500	0.07	17	0.04	156	0.39	42	0.11	1,706	4.32
DELAWARE	109,989	0.04	66	0.06	518	0.47	92	0.08	2,897	2.63
ERIE	79,551	0.07	57	0.07	402	0.51	150	0.19	3,751	4.72
FAIRFIELD	122,759	0.07	128	0.10	1,207	0.98	110	0.09	5,487	4.47
FAYETTE	28,433	0.14	44	0.15	280	0.98	30	0.11	1,771	6.23
FRANKLIN	1,068,978	0.09	1,449	0.14	26,747	2.50	3,136	0.29	85,961	8.04
FULTON	42,084	0.05	19	0.05	116	0.28	27	0.06	1,153	2.74
GALLIA	31,069	0.18	41	0.13	1,155	3.72	73	0.23	4,257	13.70
GEAUGA	90,895	0.04	18	0.02	177	0.19	124	0.14	1,036	1.14
GREENE	147,886	0.07	193	0.13	1,634	1.10	86	0.06	6,727	4.55
GUERNSEY	40,792	0.15	105	0.26	308	0.76	122	0.30	4,204	10.31
HAMILTON	845,303	0.10	1,025	0.12	20,613	2.44	1,440	0.17	55,207	6.53
HANCOCK	71,295	0.06	41	0.06	222	0.31	58	0.08	2,218	3.11
HARDIN	31,945	0.13	18	0.06	116	0.36	39	0.12	1,370	4.29
HARRISON	15,856	0.16	60	0.38	159	1.00	32	0.20	1,265	7.98
HENRY	29,210	0.05	13	0.04	51	0.17	35	0.12	745	2.55
HIGHLAND	40,875	0.13	46	0.11	191	0.47	38	0.09	2,623	6.42
HOCKING	28,241	0.12	51	0.18	601	2.13	68	0.24	2,352	8.33
HOLMES	38,943	0.13	41	0.11	71	0.18	32	0.08	814	2.09
HURON	59,487	0.07	35	0.06	184	0.31	46	0.08	2,943	4.95
JACKSON	32,641	0.22	94	0.29	683	2.09	20	0.06	4,145	12.70
JEFFERSON	73,894	0.14	195	0.26	1,872	2.53	120	0.16	7,388	10.00
KNOX	54,500	0.09	74	0.14	566	1.04	41	0.08	2,728	5.01
LAKE	227,511	0.04	204	0.09	1,279	0.56	194	0.09	7,535	3.31
LAWRENCE	62,319	0.20	103	0.17	1,613	2.59	43	0.07	9,435	15.14

*SOURCE: 2000 Census of Ohio Population, Ohio Dept. of Development, GRP342RA, GBS003RA, GRP304RA and GRP304RC Reports from Management Information Services.

**TABLE 10
PERCENT OF OHIO'S POPULATION PARTICIPATING IN SELECTED
PUBLIC ASSISTANCE PROGRAMS FOR OCTOBER 2002**

OHIO COUNTY	Total Population *	Percent of Households Below Poverty Level	DISABILITY ASSISTANCE		OWF COMBINED		FOSTER CARE		FNS BENEFITS	
			Recipients	Recipients as Percent of Total Population	Recipients	Recipients as Percent of Total Population	Recipients	Recipients as Percent of Total Population	Recipients	Recipients as Percent of Total Population
STATEWIDE	11,355,212	0.10	15,012	0.13	194,847	1.72	24,284	0.21	782,349	6.89
LICKING	145,491	0.08	169	0.12	1,388	0.95	438	0.30	7,265	4.99
LOGAN	46,005	0.08	23	0.05	329	0.72	52	0.11	2,351	5.11
LORAIN	284,664	0.09	353	0.12	4,721	1.66	366	0.13	21,056	7.40
LUCAS	455,054	0.12	628	0.14	14,340	3.15	1,972	0.43	45,110	9.91
MADISON	40,213	0.06	39	0.10	452	1.12	37	0.09	1,655	4.12
MAHONING	257,555	0.13	494	0.19	6,087	2.36	356	0.14	23,373	9.07
MARION **	68,422	0.10	94	0.14	627	0.92	95	0.14	4,701	6.87
MEDINA	151,095	0.04	81	0.05	550	0.36	58	0.04	3,005	1.99
MEIGS	23,072	0.22	74	0.32	562	2.44	18	0.08	3,479	15.08
MERCER	40,924	0.05	30	0.07	182	0.44	35	0.09	1,043	2.55
MIAMI	98,868	0.06	45	0.05	462	0.47	184	0.19	3,099	3.13
MONROE	15,180	0.18	22	0.14	173	1.14	14	0.09	1,362	8.97
MONTGOMERY	559,062	0.10	599	0.11	12,964	2.32	1,788	0.32	38,559	6.90
MORGAN	14,897	0.16	42	0.28	129	0.87	13	0.09	1,558	10.46
MORROW	31,628	0.09	19	0.06	292	0.92	50	0.16	1,824	5.77
MUSKINGUM	84,585	0.12	282	0.33	1,595	1.89	110	0.13	9,544	11.28
NOBLE	14,058	0.12	19	0.14	46	0.33	7	0.05	898	6.39
OTTAWA	40,985	0.05	28	0.07	346	0.84	6	0.01	1,376	3.36
PAULDING	20,293	0.08	27	0.13	150	0.74	30	0.15	810	3.99
PERRY	34,078	0.16	70	0.21	510	1.50	65	0.19	3,379	9.92
PICKAWAY	52,727	0.10	51	0.10	717	1.36	32	0.06	3,279	6.22
PIKE	27,695	0.23	66	0.24	784	2.83	36	0.13	4,266	15.40
PORTAGE	152,061	0.08	131	0.09	1,076	0.71	113	0.07	5,663	3.72
PREBLE	42,337	0.08	28	0.07	338	0.80	65	0.15	1,527	3.61
PUTNAM	34,726	0.05	16	0.05	137	0.39	15	0.04	837	2.41
RICHLAND	128,852	0.08	253	0.20	1,302	1.01	240	0.19	8,424	6.54
ROSS	73,345	0.15	115	0.16	1,867	2.55	61	0.08	6,954	9.48
SANDUSKY	61,792	0.07	51	0.08	321	0.52	96	0.16	2,462	3.98
SCIOTO	79,195	0.22	251	0.32	1,964	2.48	102	0.13	12,376	15.63
SENECA	58,683	0.09	61	0.10	241	0.41	92	0.16	2,711	4.62
SHELBY	47,910	0.06	20	0.04	244	0.51	73	0.15	1,429	2.98
STARK	378,098	0.09	565	0.15	7,820	2.07	973	0.26	22,895	6.06
SUMMIT	542,899	0.10	728	0.13	12,515	2.31	1,094	0.20	40,259	7.42
TRUMBULL	225,116	0.09	403	0.18	3,223	1.43	352	0.16	15,512	6.89
TUSCARAWAS	90,914	0.09	93	0.10	889	0.98	175	0.19	5,137	5.65
UNION	40,909	0.06	25	0.06	514	1.26	41	0.10	1,408	3.44
VAN WERT	29,659	0.05	12	0.04	46	0.16	29	0.10	748	2.52
VINTON	12,806	0.19	33	0.26	353	2.76	23	0.18	1,906	14.88
WARREN	158,383	0.05	49	0.03	329	0.21	131	0.08	2,542	1.60
WASHINGTON	63,251	0.11	104	0.16	218	0.34	37	0.06	4,030	6.37
WAYNE	111,564	0.08	238	0.21	1,030	0.92	124	0.11	4,630	4.15
WILLIAMS	39,188	0.06	29	0.07	365	0.93	40	0.10	1,627	4.15
WOOD	121,065	0.05	55	0.05	489	0.40	48	0.04	2,866	2.37
WYANDOT	22,908	0.06	9	0.04	60	0.26	25	0.11	479	2.09
UNKNOWN										

*SOURCE: 2000 Census of Ohio Population, Ohio Dept. of Development, GRP342RA, GBS003RA, GRP304RA and GRP304RC Reports from Management Information Services.