

MONTHLY REVIEW OF PUBLIC ASSISTANCE STATISTICS FOR AUGUST 2002

OHIO WORKS FIRST

For the month of August 2002, OWF-Combined assistance groups totaled 84,992; recipients totaled 192,372 and money payments totaled \$25,866,878. The percent change from July 2002 to August 2002 was -0.3% for assistance groups; -0.7% for recipients, and 0.1% for money payments. For OWF- Regular (OWF-R) there were 81,503 assistance groups; 178,009 recipients, and \$24,514,856 in money payments issued for August 2002. The percent change from July 2002 to August 2002 was -0.2% for assistance groups; -0.5% for recipients, and 0.1% for money payments. For OWF-Unemployed (OWF-U) assistance groups totaled 3,489; recipients 14,363, and money payments were \$1,352,022. The percent change from July 2002 to August 2002 was -2.0% for assistance groups; -2.6% for recipients and -0.5% for money payments.

FOSTER CARE (TITLE IV-E)

A total of 24,354 children received \$12,879,608 in Title IV-E assistance during the month of August 2002. Included in this total were 7,393 foster care children who received \$6,646,270 in money payments. Of these Title IV-E children, 3,249 or 13.3% were in foster family homes who received \$1,294,424 and 4,144 or 17.0% children in child care institutions who received \$5,351,845 in OWF foster care assistance. The remaining 16,961 children reported as participating in Title IV-E received \$6,233,339 in adoption assistance. Overall, the average amount of Foster Care received per child was \$528.85.

DISABILITY ASSISTANCE (DA)

For the month of August 2002, there were 13,819 assistance groups; 14,221 recipients, and \$1,900,692 in DA financial assistance. The average DA financial assistance per recipient was \$133.65. Total DA expenditures for medical services for August 2002 were \$6,421,370. Of this total, \$4,247,044 or 66.1% was spent for prescribed drugs, and \$ 1,760,624 or 27.4% was spent for physician services. Medical expenses were paid for 18,903 recipients for an average expenditure of \$ 339.70 per recipient.

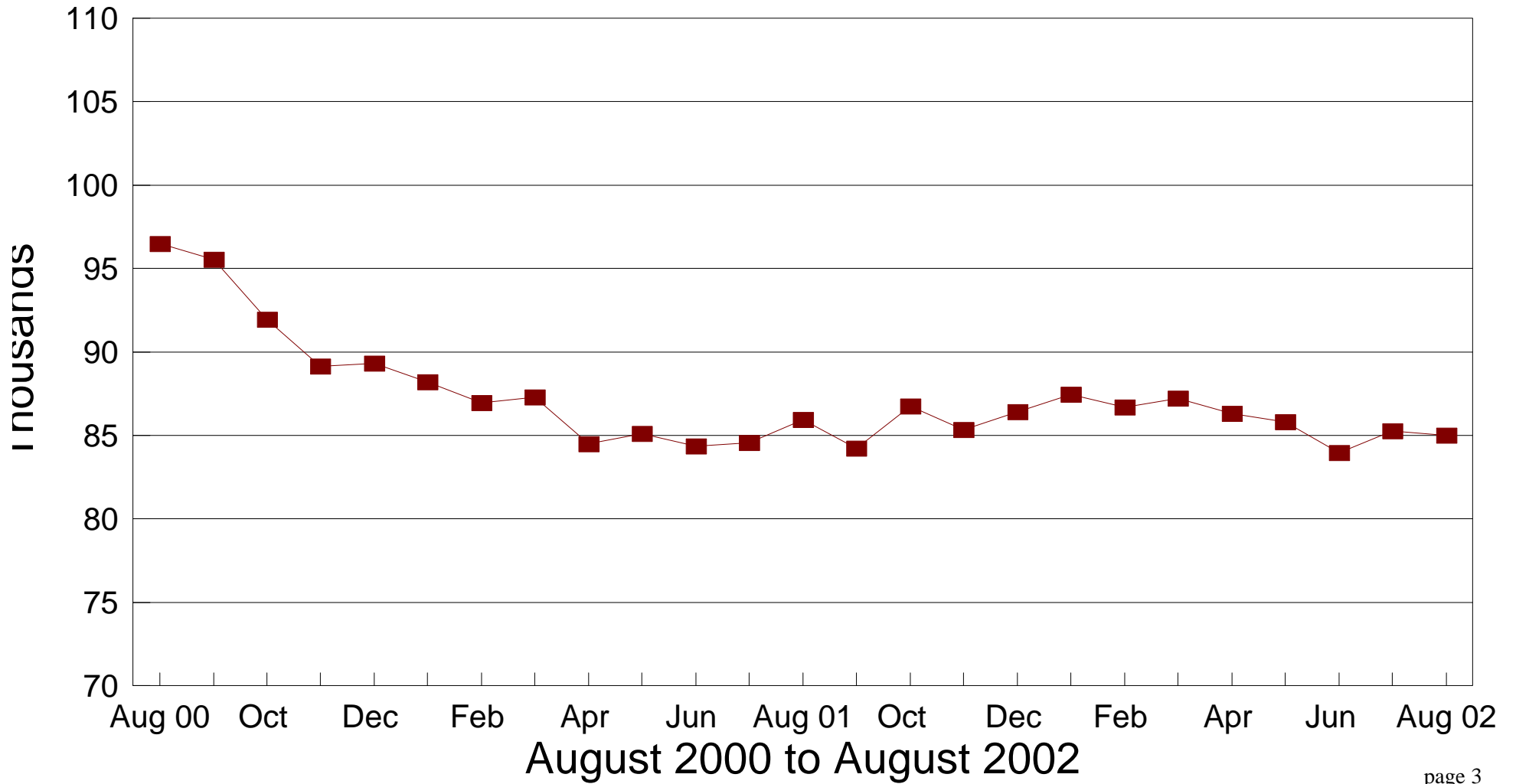
FNS BENEFITS:

Total persons participating in the FNS benefits program during August 2002 decreased to 754,199 by 3,487 or -0.5% from 757,686 persons reported in July 2002. Households decreased by 1,029 or -0.3% over July 2002 levels. The total dollar value of FNS related benefits issued during August 2002 decreased by \$1,112,084 or -1.8% from \$63,005,979 reported in July 2002 to \$61,893,895 reported in August 2002. The average benefit issuance per person decreased by \$1.09 or -1.3% from those issued in July 2002. The average benefit issuance per person decreased from \$83.16 in July 2002 to \$82.07 in August 2002.

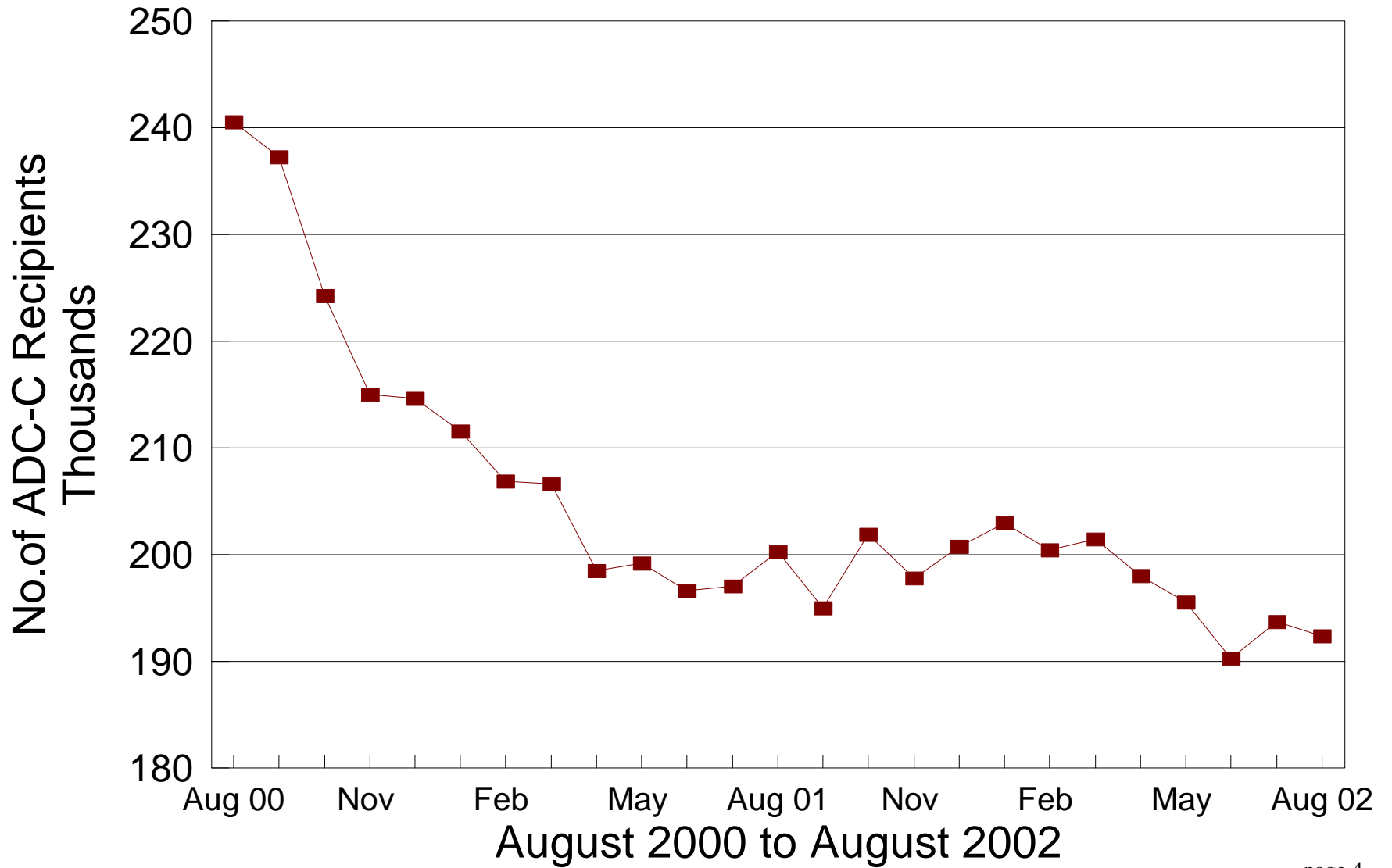
STATEWIDE SUMMARY OF PUBLIC ASSISTANCE PROGRAMS FOR AUGUST 2002					
	August 2002	July 2002	% CHANGE Aug 02 / Jul 02	August 2001	% CHANGE Aug 02 / Aug 01
OHIO WORKS FIRST (OWF)-COMBINED					
Assistance Groups	84,992	85,250	-0.3%	85,949	-1.1%
Recipients	192,372	193,685	-0.7%	200,289	-4.0%
Net Payments	\$25,866,878	25,842,618	0.1%	\$26,330,235	-1.8%
Average Per Recipient	\$134.46	\$133.43	0.8%	\$131.46	2.3%
OWF-REGULAR, OWF-INCAPACITATED,& OWF REGULAR VENDOR PAYMENTS					
Assistance Groups	81,503	81,689	-0.2%	82,574	-1.3%
Recipients	178,009	178,945	-0.5%	185,974	-4.3%
Net Payments	\$24,514,856	24,484,280	0.1%	\$25,014,906	-2.0%
Average Per Recipient	\$137.72	\$136.83	0.7%	\$134.51	2.4%
OWF-UNEMPLOYED AND OWF-UNEMPLOYED VENDOR PAYMENTS					
Assistance Groups	3,489	3,561	-2.0%	3,375	3.4%
Recipients	14,363	14,740	-2.6%	14,315	0.3%
Net Payments	\$1,352,022	1,358,338	-0.5%	\$1,315,329	2.8%
Average Per Recipient	\$94.13	\$92.15	2.1%	\$91.88	2.4%
TITLE IV-E FOSTER CARE					
Assistance Groups/Recipients	24,354	24,305	0.2%	22,565	7.9%
Gross Payments	\$12,879,608	13,340,679	-3.5%	\$12,469,095	3.3%
Average Per Recipient	\$528.85	\$548.89	-3.7%	\$552.59	-4.3%
DISABILITY ASSISTANCE					
Assistance Groups	13,819	13,454	2.7%	12,050	14.7%
Recipients	14,221	13,828	2.8%	12,433	14.4%
Net Payments	\$1,900,692	1,771,662	7.3%	\$1,494,739	27.2%
Medical Assistance (July adjustments)	\$6,421,370	\$11,003,757	-41.6%	\$5,778,654	11.1%
FNS BENEFITS					
Assistance Groups	340,289	341,318	-0.3%	301,872	12.7%
Persons	754,199	757,686	-0.5%	663,003	13.8%
Total Coupons Issued	\$61,893,895	63,005,979	-1.8%	\$50,080,300	23.6%
Average Per Recipient	\$82.07	\$83.16	-1.3%	\$75.54	8.6%

No. of OWF-Combined Assistance Groups

During the Last 25 Months

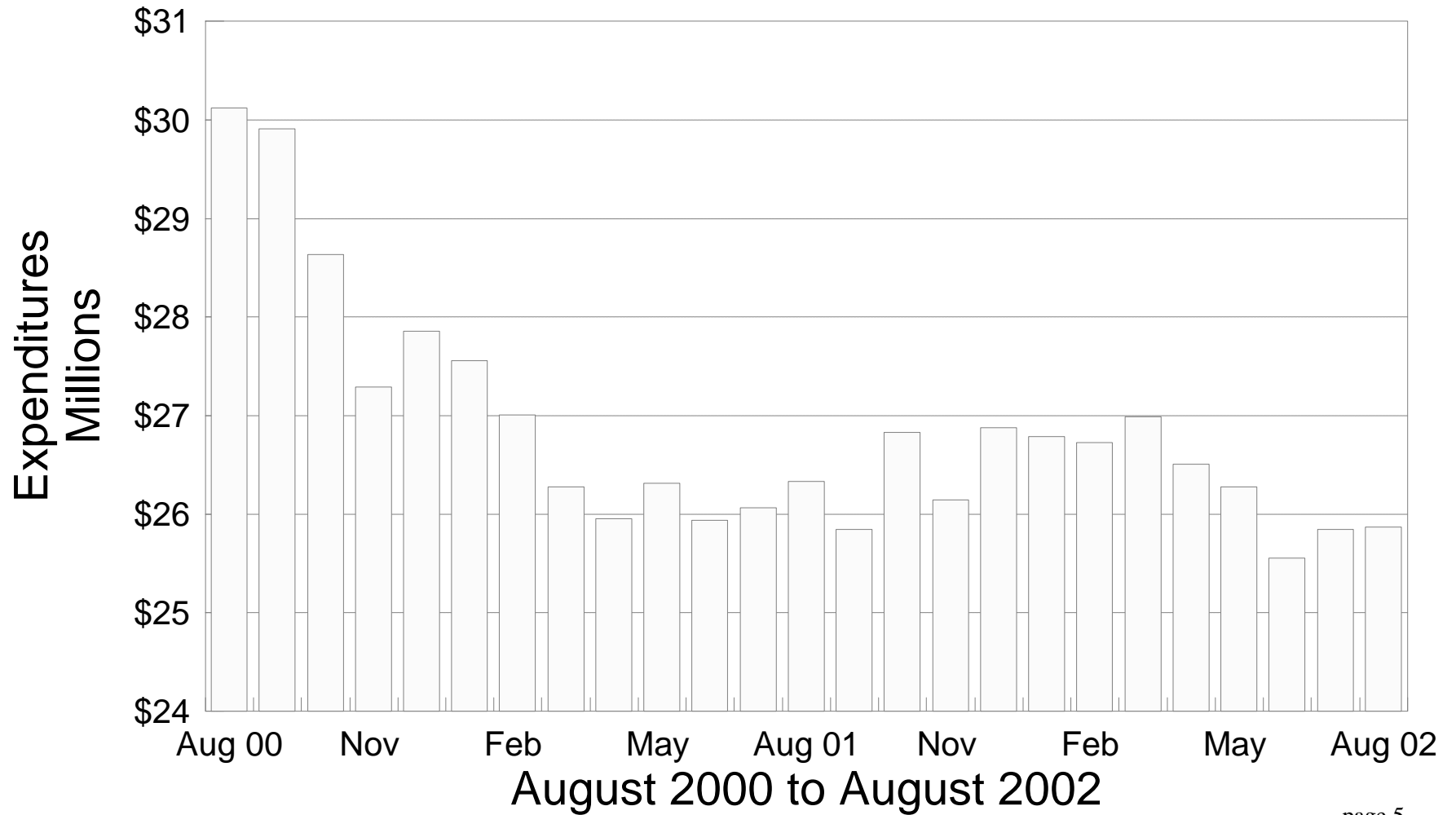


Number of OWF-Combined Recipients During the Last 25 Months



OWF-Combined Net Expenditures

During the Last 25 Months



**TABLE 1
OWF COMBINED
AUGUST 2002**

OHIO COUNTY	ASSISTANCE GROUP	RECIPIENTS	ADULTS	CHILDREN	ACTUAL EXPENDITURES		
					GROSS AMOUNT	CANCELLED AMOUNT	NET AMOUNT
STATEWIDE	84,992	192,372	49,758	142,614	\$26,530,880.05	\$664,002.00	\$25,866,878.05
ADAMS	135	231	8	223	\$37,706.00	\$1,197.00	\$36,509.00
ALLEN	443	798	76	722	\$126,577.00	\$2,982.00	\$123,595.00
ASHLAND	84	175	43	132	\$25,149.00	\$0.00	\$25,149.00
ASHTABULA	631	1,420	359	1,061	\$199,209.10	\$1,417.00	\$197,792.10
ATHENS	553	1,357	443	914	\$174,436.00	\$3,412.00	\$171,024.00
AUGLAIZE	54	100	15	85	\$15,662.00	\$0.00	\$15,662.00
BELMONT	563	1,240	373	867	\$164,056.00	\$2,730.00	\$161,326.00
BROWN	154	250	23	227	\$42,642.00	\$3,242.00	\$39,400.00
BUTLER	1,635	3,564	887	2,677	\$510,442.00	\$17,484.00	\$492,958.00
CARROLL	97	185	39	146	\$26,863.00	\$1,516.00	\$25,347.00
CHAMPAIGN	187	392	111	281	\$54,659.00	\$1,230.00	\$53,429.00
CLARK	1,232	2,727	727	2,000	\$384,066.00	\$7,940.00	\$376,126.00
CLERMONT	531	1,037	228	809	\$159,655.00	\$3,282.00	\$156,373.00
CLINTON	124	202	38	164	\$33,399.00	\$1,428.00	\$31,971.00
COLUMBIANA	437	853	163	690	\$130,643.00	\$2,500.00	\$128,143.00
COSHOCTON	274	672	224	448	\$86,508.95	\$3,204.00	\$83,304.95
CRAWFORD	189	396	99	297	\$55,760.00	\$2,808.00	\$52,952.00
CUYAHOGA	15,588	34,780	8,741	26,039	\$4,933,632.00	\$128,182.00	\$4,805,450.00
DARKE	142	319	86	233	\$45,562.00	\$1,706.00	\$43,856.00
DEFIANCE	85	132	15	117	\$24,031.00	\$2,006.00	\$22,025.00
DELAWARE	245	548	170	378	\$72,308.00	\$879.00	\$71,429.00
ERIE	223	369	31	338	\$59,199.00	\$934.00	\$58,265.00
FAIRFIELD	498	1,153	366	787	\$151,805.00	\$5,365.00	\$146,440.00
FAYETTE	138	291	67	224	\$42,147.00	\$689.00	\$41,458.00
FRANKLIN	11,245	26,348	6,758	19,590	\$3,579,714.00	\$111,315.00	\$3,468,399.00
FULTON	59	122	20	102	\$16,431.00	\$305.00	\$16,126.00
GALLIA	499	1,246	424	822	\$155,682.00	\$2,528.00	\$153,154.00
GEAUGA	72	155	33	122	\$20,609.00	\$373.00	\$20,236.00
GREENE	664	1,488	431	1,057	\$202,760.00	\$3,868.00	\$198,892.00
GUERNSEY	164	306	55	251	\$46,522.00	\$710.00	\$45,812.00
HAMILTON	8,345	20,112	5,007	15,105	\$2,712,041.00	\$64,810.00	\$2,647,231.00
HANCOCK	125	231	44	187	\$39,429.00	\$1,337.00	\$38,092.00
HARDIN	59	98	16	82	\$15,817.00	\$768.00	\$15,049.00
HARRISON	71	139	32	107	\$20,522.00	\$0.00	\$20,522.00
HENRY	29	44	7	37	\$8,511.00	\$678.00	\$7,833.00
HIGHLAND	99	183	17	166	\$27,506.00	\$541.00	\$26,965.00
HOCKING	263	611	195	416	\$79,273.00	\$2,275.00	\$76,998.00
HOLMES	43	86	21	65	\$11,572.00	\$193.00	\$11,379.00
HURON	127	184	0	184	\$33,059.00	\$180.00	\$32,879.00
JACKSON	348	718	181	537	\$105,050.00	\$1,546.00	\$103,504.00
JEFFERSON	792	1,786	568	1,218	\$241,883.00	\$3,201.00	\$238,682.00
KNOX	217	489	152	337	\$66,637.00	\$2,052.00	\$64,585.00
LAKE	589	1,350	361	989	\$179,571.00	\$6,064.00	\$173,507.00
LAWRENCE	772	1,564	325	1,239	\$221,095.00	\$5,129.00	\$215,966.00

Source: GRP342RA Report from Management Information Services. Data includes ADC-Regular, ADC-Incapacitated, ADC-Unemployed, and Vendor Payments.

**TABLE 1
OWF COMBINED
AUGUST 2002**

OHIO COUNTY	ASSISTANCE GROUP	RECIPIENTS	ADULTS	CHILDREN	ACTUAL EXPENDITURES		
					GROSS AMOUNT	CANCELLED AMOUNT	NET AMOUNT
STATEWIDE	84,992	192,372	49,758	142,614	\$26,530,880.05	\$664,002.00	\$25,866,878.05
LICKING	570	1,329	409	920	\$170,915.00	\$5,048.00	\$165,867.00
LOGAN	154	335	87	248	\$46,756.00	\$1,669.00	\$45,087.00
LORAIN	1,912	4,635	1,175	3,460	\$608,502.00	\$15,298.00	\$593,204.00
LUCAS	6,234	14,679	4,041	10,638	\$1,935,778.00	\$40,382.00	\$1,895,396.00
MADISON	186	437	143	294	\$58,976.00	\$2,187.00	\$56,789.00
MAHONING	2,632	5,930	1,424	4,506	\$836,945.00	\$12,696.00	\$824,249.00
MARION	370	658	88	570	\$106,029.00	\$2,698.00	\$103,331.00
MEDINA	234	507	133	374	\$75,299.00	\$1,281.00	\$74,018.00
MEIGS	248	565	182	383	\$72,939.00	\$580.00	\$72,359.00
MERCER	90	233	71	162	\$29,880.00	\$596.00	\$29,284.00
MIAMI	242	420	76	344	\$65,380.00	\$1,955.00	\$63,425.00
MONROE	67	163	53	110	\$20,057.00	\$53.00	\$20,004.00
MONTGOMERY	5,625	12,687	3,163	9,524	\$1,722,020.00	\$43,193.00	\$1,678,827.00
MORGAN	67	101	5	96	\$17,455.00	\$305.00	\$17,150.00
MORROW	140	286	72	214	\$41,826.00	\$684.00	\$41,142.00
MUSKINGUM	763	1,697	461	1,236	\$232,925.00	\$5,230.00	\$227,695.00
NOBLE	31	65	17	48	\$7,139.00	\$311.00	\$6,828.00
OTTAWA	117	271	82	189	\$35,997.00	\$552.00	\$35,445.00
PAULDING	64	139	45	94	\$17,596.00	\$223.00	\$17,373.00
PERRY	229	503	130	373	\$66,554.00	\$1,358.00	\$65,196.00
PICKAWAY	299	669	193	476	\$93,513.00	\$953.00	\$92,560.00
PIKE	331	723	162	561	\$100,599.00	\$905.00	\$99,694.00
PORTAGE	519	1,087	303	784	\$157,996.00	\$6,551.00	\$151,445.00
PREBLE	146	317	74	243	\$43,316.00	\$1,205.00	\$42,111.00
PUTNAM	79	180	52	128	\$23,705.00	\$1,032.00	\$22,673.00
RICHLAND	638	1,263	242	1,021	\$192,750.00	\$4,905.00	\$187,845.00
ROSS	764	1,836	571	1,265	\$243,868.00	\$6,369.00	\$237,499.00
SANDUSKY	187	325	30	295	\$50,745.00	\$1,081.00	\$49,664.00
SCIOTO	984	1,876	364	1,512	\$284,479.00	\$5,354.00	\$279,125.00
SENECA	132	230	27	203	\$36,295.00	\$1,071.00	\$35,224.00
SHELBY	120	214	27	187	\$34,679.00	\$1,444.00	\$33,235.00
STARK	3,185	7,599	2,310	5,289	\$1,014,800.00	\$24,554.00	\$990,246.00
SUMMIT	5,435	12,638	3,700	8,938	\$1,727,175.00	\$37,883.00	\$1,689,292.00
TRUMBULL	1,498	3,217	729	2,488	\$447,987.00	\$9,844.00	\$438,143.00
TUSCARAWAS	351	865	262	603	\$111,521.00	\$4,297.00	\$107,224.00
UNION	160	391	120	271	\$52,569.00	\$4,087.00	\$48,482.00
VAN WERT	32	47	2	45	\$7,853.00	\$223.00	\$7,630.00
VINTON	133	302	75	227	\$42,171.00	\$1,709.00	\$40,462.00
WARREN	176	316	61	255	\$49,818.00	\$1,652.00	\$48,166.00
WASHINGTON	130	195	10	185	\$35,307.00	\$1,197.00	\$34,110.00
WAYNE	472	1,070	361	709	\$142,566.00	\$4,013.00	\$138,553.00
WILLIAMS	156	385	128	257	\$48,937.00	\$1,749.00	\$47,188.00
WOOD	236	477	104	373	\$70,739.00	\$1,619.00	\$69,120.00
WYANDOT	30	59	15	44	\$8,723.00	\$0.00	\$8,723.00

Source: GRP342RA Report from Management Information Services. Data includes ADC-Regular, ADC-Incapacitated, and Vendor Payments.

**TABLE 1
OWF REGULAR
AUGUST 2002**

OHIO COUNTY	ASSISTANCE GROUP	RECIPIENTS	ADULTS	CHILDREN	ACTUAL EXPENDITURES		
					GROSS AMOUNT	CANCELLED AMOUNT	NET AMOUNT
STATEWIDE	81,503	178,009	43,163	134,846	\$25,143,761.05	\$628,905.00	\$24,514,856.05
ADAMS	135	231	8	223	\$37,706.00	\$1,197.00	\$36,509.00
ALLEN	442	793	74	719	\$125,284.00	\$2,982.00	\$122,302.00
ASHLAND	81	161	37	124	\$24,442.00	\$0.00	\$24,442.00
ASHTABULA	598	1,286	295	991	\$185,360.10	\$1,417.00	\$183,943.10
ATHENS	465	1,025	280	745	\$140,025.00	\$2,238.00	\$137,787.00
AUGLAIZE	54	100	15	85	\$15,662.00	\$0.00	\$15,662.00
BELMONT	516	1,052	281	771	\$149,175.00	\$2,730.00	\$146,445.00
BROWN	154	250	23	227	\$42,642.00	\$3,242.00	\$39,400.00
BUTLER	1,563	3,267	750	2,517	\$479,495.00	\$16,011.00	\$463,484.00
CARROLL	94	173	33	140	\$25,889.00	\$1,516.00	\$24,373.00
CHAMPAIGN	178	359	93	266	\$51,576.00	\$833.00	\$50,743.00
CLARK	1,184	2,516	637	1,879	\$362,481.00	\$7,439.00	\$355,042.00
CLERMONT	515	974	198	776	\$152,078.00	\$3,282.00	\$148,796.00
CLINTON	123	201	37	164	\$33,176.00	\$1,428.00	\$31,748.00
COLUMBIANA	426	804	141	663	\$125,732.00	\$2,500.00	\$123,232.00
COSHOCTON	236	519	151	368	\$71,872.95	\$2,831.00	\$69,041.95
CRAWFORD	175	340	74	266	\$50,348.00	\$2,065.00	\$48,283.00
CUYAHOGA	15,110	32,683	7,808	24,875	\$4,731,479.00	\$123,189.00	\$4,608,290.00
DARKE	136	298	75	223	\$43,381.00	\$1,410.00	\$41,971.00
DEFIANCE	85	132	15	117	\$24,031.00	\$2,006.00	\$22,025.00
DELAWARE	230	491	142	349	\$67,197.00	\$819.00	\$66,378.00
ERIE	221	362	27	335	\$58,700.00	\$934.00	\$57,766.00
FAIRFIELD	459	994	293	701	\$136,700.00	\$5,284.00	\$131,416.00
FAYETTE	132	267	56	211	\$38,572.00	\$689.00	\$37,883.00
FRANKLIN	10,886	24,714	6,072	18,642	\$3,430,585.00	\$108,308.00	\$3,322,277.00
FULTON	59	122	20	102	\$16,431.00	\$305.00	\$16,126.00
GALLIA	427	970	285	685	\$130,114.00	\$2,269.00	\$127,845.00
GEAUGA	69	143	27	116	\$19,830.00	\$373.00	\$19,457.00
GREENE	638	1,390	385	1,005	\$193,129.00	\$3,868.00	\$189,261.00
GUERNSEY	158	281	43	238	\$44,354.00	\$710.00	\$43,644.00
HAMILTON	8,216	19,591	4,760	14,831	\$2,660,054.00	\$64,810.00	\$2,595,244.00
HANCOCK	123	223	40	183	\$38,210.00	\$1,337.00	\$36,873.00
HARDIN	58	94	14	80	\$15,356.00	\$768.00	\$14,588.00
HARRISON	70	133	30	103	\$19,922.00	\$0.00	\$19,922.00
HENRY	28	40	5	35	\$7,708.00	\$678.00	\$7,030.00
HIGHLAND	98	179	15	164	\$26,815.00	\$223.00	\$26,592.00
HOCKING	225	457	122	335	\$65,248.00	\$1,606.00	\$63,642.00
HOLMES	38	68	11	57	\$9,971.00	\$193.00	\$9,778.00
HURON	127	184	0	184	\$33,059.00	\$180.00	\$32,879.00
JACKSON	332	659	151	508	\$97,986.00	\$1,546.00	\$96,440.00
JEFFERSON	723	1,498	432	1,066	\$215,562.00	\$2,828.00	\$212,734.00
KNOX	205	439	128	311	\$61,760.00	\$1,786.00	\$59,974.00
LAKE	546	1,202	293	909	\$165,107.00	\$6,064.00	\$159,043.00
LAWRENCE	724	1,384	232	1,152	\$205,797.00	\$4,756.00	\$201,041.00

Source: GRP342RA Report from Management Information Services. Data includes ADC-Regular, ADC-Incapacitated, and Vendor Payments.

**TABLE 1
OWF REGULAR
AUGUST 2002**

OHIO COUNTY	ASSISTANCE GROUP	RECIPIENTS	ADULTS	CHILDREN	ACTUAL EXPENDITURES		
					GROSS AMOUNT	CANCELLED AMOUNT	NET AMOUNT
STATEWIDE	81,503	178,009	43,163	134,846	\$25,143,761.05	\$628,905.00	\$24,514,856.05
LICKING	519	1,124	315	809	\$152,825.00	\$4,587.00	\$148,238.00
LOGAN	146	307	71	236	\$44,594.00	\$1,669.00	\$42,925.00
LORAIN	1,797	4,121	952	3,169	\$558,063.00	\$13,071.00	\$544,992.00
LUCAS	5,922	13,366	3,449	9,917	\$1,817,656.00	\$37,266.00	\$1,780,390.00
MADISON	168	351	107	244	\$51,791.00	\$2,144.00	\$49,647.00
MAHONING	2,546	5,597	1,266	4,331	\$803,022.00	\$12,391.00	\$790,631.00
MARION	366	649	86	563	\$104,557.00	\$2,475.00	\$102,082.00
MEDINA	219	453	104	349	\$68,414.00	\$820.00	\$67,594.00
MEIGS	225	483	138	345	\$64,024.00	\$580.00	\$63,444.00
MERCER	79	190	51	139	\$25,566.00	\$596.00	\$24,970.00
MIAMI	238	411	71	340	\$63,381.00	\$1,955.00	\$61,426.00
MONROE	56	124	32	92	\$16,645.00	\$53.00	\$16,592.00
MONTGOMERY	5,589	12,507	3,092	9,415	\$1,706,734.00	\$42,407.00	\$1,664,327.00
MORGAN	67	101	5	96	\$17,455.00	\$305.00	\$17,150.00
MORROW	129	248	53	195	\$37,259.00	\$684.00	\$36,575.00
MUSKINGUM	719	1,515	376	1,139	\$215,021.00	\$5,230.00	\$209,791.00
NOBLE	30	61	15	46	\$6,963.00	\$223.00	\$6,740.00
OTTAWA	103	213	58	155	\$30,649.00	\$223.00	\$30,426.00
PAULDING	61	126	40	86	\$16,865.00	\$223.00	\$16,642.00
PERRY	210	433	94	339	\$59,215.00	\$985.00	\$58,230.00
PICKAWAY	275	583	146	437	\$84,442.00	\$953.00	\$83,489.00
PIKE	321	691	144	547	\$97,171.00	\$532.00	\$96,639.00
PORTAGE	506	1,038	281	757	\$152,316.00	\$5,951.00	\$146,365.00
PREBLE	143	303	68	235	\$41,854.00	\$1,205.00	\$40,649.00
PUTNAM	75	168	46	122	\$22,676.00	\$751.00	\$21,925.00
RICHLAND	634	1,246	234	1,012	\$189,729.00	\$4,905.00	\$184,824.00
ROSS	695	1,547	435	1,112	\$215,703.00	\$5,020.00	\$210,683.00
SANDUSKY	145	239	22	217	\$39,309.00	\$751.00	\$38,558.00
SCIOTO	937	1,688	272	1,416	\$265,337.00	\$4,893.00	\$260,444.00
SENECA	129	218	25	193	\$34,884.00	\$446.00	\$34,438.00
SHELBY	118	209	25	184	\$33,743.00	\$1,444.00	\$32,299.00
STARK	2,943	6,627	1,830	4,797	\$919,858.00	\$23,356.00	\$896,502.00
SUMMIT	5,157	11,492	3,147	8,345	\$1,615,391.00	\$33,783.00	\$1,581,608.00
TRUMBULL	1,433	2,935	607	2,328	\$420,882.00	\$9,429.00	\$411,453.00
TUSCARAWAS	311	695	184	511	\$96,345.00	\$3,493.00	\$92,852.00
UNION	143	321	86	235	\$47,188.00	\$4,040.00	\$43,148.00
VAN WERT	32	47	2	45	\$7,853.00	\$223.00	\$7,630.00
VINTON	123	264	57	207	\$37,866.00	\$1,709.00	\$36,157.00
WARREN	176	316	61	255	\$49,818.00	\$1,652.00	\$48,166.00
WASHINGTON	130	195	10	185	\$35,307.00	\$1,197.00	\$34,110.00
WAYNE	439	946	301	645	\$129,885.00	\$3,640.00	\$126,245.00
WILLIAMS	138	323	93	230	\$41,604.00	\$1,376.00	\$40,228.00
WOOD	224	446	94	352	\$67,161.00	\$1,619.00	\$65,542.00
WYANDOT	25	43	10	33	\$6,738.00	\$0.00	\$6,738.00

Source: GRP342RA Report from Management Information Services. Data includes ADC-Regular, ADC-Incapacitated, and Vendor Payments.

**TABLE 1
OWF UNEMPLOYED
AUGUST 2002**

OHIO COUNTY	ASSISTANCE GROUP	RECIPIENTS	ADULTS	CHILDREN	ACTUAL EXPENDITURES		
					GROSS AMOUNT	CANCELLED AMOUNT	NET AMOUNT
STATEWIDE	3,489	14,363	6,595	7,768	\$1,387,119.00	\$35,097.00	\$1,352,022.00
ADAMS	0	0	0	0	\$0.00	\$0.00	\$0.00
ALLEN	1	5	2	3	\$1,293.00	\$0.00	\$1,293.00
ASHLAND	3	14	6	8	\$707.00	\$0.00	\$707.00
ASHTABULA	33	134	64	70	\$13,849.00	\$0.00	\$13,849.00
ATHENS	88	332	163	169	\$34,411.00	\$1,174.00	\$33,237.00
AUGLAIZE	0	0	0	0	\$0.00	\$0.00	\$0.00
BELMONT	47	188	92	96	\$14,881.00	\$0.00	\$14,881.00
BROWN	0	0	0	0	\$0.00	\$0.00	\$0.00
BUTLER	72	297	137	160	\$30,947.00	\$1,473.00	\$29,474.00
CARROLL	3	12	6	6	\$974.00	\$0.00	\$974.00
CHAMPAIGN	9	33	18	15	\$3,083.00	\$397.00	\$2,686.00
CLARK	48	211	90	121	\$21,585.00	\$501.00	\$21,084.00
CLERMONT	16	63	30	33	\$7,577.00	\$0.00	\$7,577.00
CLINTON	1	1	1	0	\$223.00	\$0.00	\$223.00
COLUMBIANA	11	49	22	27	\$4,911.00	\$0.00	\$4,911.00
COSHOCTON	38	153	73	80	\$14,636.00	\$373.00	\$14,263.00
CRAWFORD	14	56	25	31	\$5,412.00	\$743.00	\$4,669.00
CUYAHOGA	478	2,097	933	1,164	\$202,153.00	\$4,993.00	\$197,160.00
DARKE	6	21	11	10	\$2,181.00	\$296.00	\$1,885.00
DEFIANCE	0	0	0	0	\$0.00	\$0.00	\$0.00
DELAWARE	15	57	28	29	\$5,111.00	\$60.00	\$5,051.00
ERIE	2	7	4	3	\$499.00	\$0.00	\$499.00
FAIRFIELD	39	159	73	86	\$15,105.00	\$81.00	\$15,024.00
FAYETTE	6	24	11	13	\$3,575.00	\$0.00	\$3,575.00
FRANKLIN	359	1,634	686	948	\$149,129.00	\$3,007.00	\$146,122.00
FULTON	0	0	0	0	\$0.00	\$0.00	\$0.00
GALLIA	72	276	139	137	\$25,568.00	\$259.00	\$25,309.00
GEAUGA	3	12	6	6	\$779.00	\$0.00	\$779.00
GREENE	26	98	46	52	\$9,631.00	\$0.00	\$9,631.00
GUERNSEY	6	25	12	13	\$2,168.00	\$0.00	\$2,168.00
HAMILTON	129	521	247	274	\$51,987.00	\$0.00	\$51,987.00
HANCOCK	2	8	4	4	\$1,219.00	\$0.00	\$1,219.00
HARDIN	1	4	2	2	\$461.00	\$0.00	\$461.00
HARRISON	1	6	2	4	\$600.00	\$0.00	\$600.00
HENRY	1	4	2	2	\$803.00	\$0.00	\$803.00
HIGHLAND	1	4	2	2	\$691.00	\$318.00	\$373.00
HOCKING	38	154	73	81	\$14,025.00	\$669.00	\$13,356.00
HOLMES	5	18	10	8	\$1,601.00	\$0.00	\$1,601.00
HURON	0	0	0	0	\$0.00	\$0.00	\$0.00
JACKSON	16	59	30	29	\$7,064.00	\$0.00	\$7,064.00
JEFFERSON	69	288	136	152	\$26,321.00	\$373.00	\$25,948.00
KNOX	12	50	24	26	\$4,877.00	\$266.00	\$4,611.00
LAKE	43	148	68	80	\$14,464.00	\$0.00	\$14,464.00
LAWRENCE	48	180	93	87	\$15,298.00	\$373.00	\$14,925.00

Source: GRP342RA Report from Management Information Services. Data includes ADC-Unemployed and Vendor Payments.

**TABLE 1
OWF UNEMPLOYED
AUGUST 2002**

OHIO COUNTY	ASSISTANCE GROUP	RECIPIENTS	ADULTS	CHILDREN	ACTUAL EXPENDITURES		
					GROSS AMOUNT	CANCELLED AMOUNT	NET AMOUNT
STATEWIDE	3,489	14,363	6,595	7,768	\$1,387,119.00	\$35,097.00	\$1,352,022.00
LICKING	51	205	94	111	\$18,090.00	\$461.00	\$17,629.00
LOGAN	8	28	16	12	\$2,162.00	\$0.00	\$2,162.00
LORAIN	115	514	223	291	\$50,439.00	\$2,227.00	\$48,212.00
LUCAS	312	1,313	592	721	\$118,122.00	\$3,116.00	\$115,006.00
MADISON	18	86	36	50	\$7,185.00	\$43.00	\$7,142.00
MAHONING	86	333	158	175	\$33,923.00	\$305.00	\$33,618.00
MARION	4	9	2	7	\$1,472.00	\$223.00	\$1,249.00
MEDINA	15	54	29	25	\$6,885.00	\$461.00	\$6,424.00
MEIGS	23	82	44	38	\$8,915.00	\$0.00	\$8,915.00
MERCER	11	43	20	23	\$4,314.00	\$0.00	\$4,314.00
MIAMI	4	9	5	4	\$1,999.00	\$0.00	\$1,999.00
MONROE	11	39	21	18	\$3,412.00	\$0.00	\$3,412.00
MONTGOMERY	36	180	71	109	\$15,286.00	\$786.00	\$14,500.00
MORGAN	0	0	0	0	\$0.00	\$0.00	\$0.00
MORROW	11	38	19	19	\$4,567.00	\$0.00	\$4,567.00
MUSKINGUM	44	182	85	97	\$17,904.00	\$0.00	\$17,904.00
NOBLE	1	4	2	2	\$176.00	\$88.00	\$88.00
OTTAWA	14	58	24	34	\$5,348.00	\$329.00	\$5,019.00
PAULDING	3	13	5	8	\$731.00	\$0.00	\$731.00
PERRY	19	70	36	34	\$7,339.00	\$373.00	\$6,966.00
PICKAWAY	24	86	47	39	\$9,071.00	\$0.00	\$9,071.00
PIKE	10	32	18	14	\$3,428.00	\$373.00	\$3,055.00
PORTAGE	13	49	22	27	\$5,680.00	\$600.00	\$5,080.00
PREBLE	3	14	6	8	\$1,462.00	\$0.00	\$1,462.00
PUTNAM	4	12	6	6	\$1,029.00	\$281.00	\$748.00
RICHLAND	4	17	8	9	\$3,021.00	\$0.00	\$3,021.00
ROSS	69	289	136	153	\$28,165.00	\$1,349.00	\$26,816.00
SANDUSKY	42	86	8	78	\$11,436.00	\$330.00	\$11,106.00
SCIOTO	47	188	92	96	\$19,142.00	\$461.00	\$18,681.00
SENECA	3	12	2	10	\$1,411.00	\$625.00	\$786.00
SHELBY	2	5	2	3	\$936.00	\$0.00	\$936.00
STARK	242	972	480	492	\$94,942.00	\$1,198.00	\$93,744.00
SUMMIT	278	1,146	553	593	\$111,784.00	\$4,100.00	\$107,684.00
TRUMBULL	65	282	122	160	\$27,105.00	\$415.00	\$26,690.00
TUSCARAWAS	40	170	78	92	\$15,176.00	\$804.00	\$14,372.00
UNION	17	70	34	36	\$5,381.00	\$47.00	\$5,334.00
VAN WERT	0	0	0	0	\$0.00	\$0.00	\$0.00
VINTON	10	38	18	20	\$4,305.00	\$0.00	\$4,305.00
WARREN	0	0	0	0	\$0.00	\$0.00	\$0.00
WASHINGTON	0	0	0	0	\$0.00	\$0.00	\$0.00
WAYNE	33	124	60	64	\$12,681.00	\$373.00	\$12,308.00
WILLIAMS	18	62	35	27	\$7,333.00	\$373.00	\$6,960.00
WOOD	12	31	10	21	\$3,578.00	\$0.00	\$3,578.00
WYANDOT	5	16	5	11	\$1,985.00	\$0.00	\$1,985.00

Source: GRP342RA Report from Management Information Services. Data includes ADC-Unemployed and Vendor Payments.

**TABLE 2
TITLE IV-E FOSTER CARE
AUGUST 2002**

OHIO COUNTY	FOSTER CARE						ADOPTION ASSISTANCE		TOTAL FOSTER CARE AND ADOPTION ASSISTANCE	
	FOSTER FAMILY HOMES		CHILD CARE INSTITUTIONS		HOMES & INSTITUTIONS		CHILDREN	GROSS AMOUNT	CHILDREN	GROSS AMOUNT
	CHILDREN	GROSS AMOUNT	CHILDREN	GROSS AMOUNT	CHILDREN	GROSS AMOUNT				
STATEWIDE	3,249	\$1,294,424.28	4,144	\$5,351,845.22	7,393	\$6,646,269.50	16,961	\$6,233,338.59	24,354	\$12,879,608.09
ADAMS	11	\$2,242.44	9	\$15,584.04	20	\$17,826.48	31	\$7,750.00	51	\$25,576.48
ALLEN	71	\$25,446.57	25	\$31,796.52	96	\$57,243.09	131	\$37,183.48	227	\$94,426.57
ASHLAND	3	\$1,181.47	0	\$0.00	3	\$1,181.47	13	\$3,225.00	16	\$4,406.47
ASHTABULA	0	\$0.00	0	\$0.00	0	\$0.00	142	\$45,932.72	142	\$45,932.72
ATHENS	51	\$20,001.31	34	\$32,475.00	85	\$52,476.31	87	\$26,020.53	172	\$78,496.84
AUGLAIZE	8	\$4,846.97	8	\$7,485.63	16	\$12,332.60	33	\$11,108.43	49	\$23,441.03
BELMONT	0	\$0.00	18	\$41,586.20	18	\$41,586.20	108	\$41,190.36	126	\$82,776.56
BROWN	27	\$6,349.43	0	\$0.00	27	\$6,349.43	30	\$7,773.32	57	\$14,122.75
BUTLER	132	\$49,389.49	183	\$219,489.15	315	\$268,878.64	456	\$127,679.60	771	\$396,558.24
CARROLL	2	\$874.05	0	\$0.00	2	\$874.05	5	\$1,250.00	7	\$2,124.05
CHAMPAIGN	1	\$1,567.56	11	\$11,680.81	12	\$13,248.37	14	\$4,234.75	26	\$17,483.12
CLARK	41	\$11,295.03	81	\$47,573.92	122	\$58,868.95	275	\$84,079.28	397	\$142,948.23
CLERMONT	0	\$0.00	75	\$106,006.53	75	\$106,006.53	176	\$46,088.00	251	\$152,094.53
CLINTON	19	\$7,970.46	0	\$0.00	19	\$7,970.46	46	\$14,277.34	65	\$22,247.80
COLUMBIANA	32	\$6,687.09	34	\$98,114.10	66	\$104,801.19	65	\$16,250.00	131	\$121,051.19
COSHOCTON	22	\$10,120.28	1	\$1,393.09	23	\$11,513.37	38	\$10,175.96	61	\$21,689.33
CRAWFORD	0	\$0.00	0	\$0.00	0	\$0.00	35	\$8,736.00	35	\$8,736.00
CUYAHOGA	659	\$288,812.67	1,444	\$2,471,199.76	2,103	\$2,760,012.43	3,784	\$1,841,573.31	5,887	\$4,601,585.74
DARKE	8	\$2,315.91	8	\$6,802.22	16	\$9,118.13	28	\$8,081.53	44	\$17,199.66
DEFIANCE	14	\$2,197.73	5	\$16,903.39	19	\$19,101.12	34	\$10,351.57	53	\$29,452.69
DELAWARE	20	\$6,523.28	5	\$11,109.54	25	\$17,632.82	62	\$19,049.65	87	\$36,682.47
ERIE	49	\$16,098.26	39	\$64,186.19	88	\$80,284.45	77	\$23,144.68	165	\$103,429.13
FAIRFIELD	0	\$0.00	0	\$0.00	0	\$0.00	107	\$27,628.72	107	\$27,628.72
FAYETTE	15	\$8,270.25	0	\$0.00	15	\$8,270.25	16	\$4,000.00	31	\$12,270.25
FRANKLIN	0	\$0.00	823	\$370,313.34	823	\$370,313.34	2,131	\$716,858.16	2,954	\$1,087,171.50
FULTON	2	\$619.53	13	\$14,577.30	15	\$15,196.83	14	\$3,646.95	29	\$18,843.78
GALLIA	9	\$2,277.69	25	\$30,612.95	34	\$32,890.64	41	\$10,215.00	75	\$43,105.64
GEAUGA	8	\$2,842.58	7	\$27,105.82	15	\$29,948.40	106	\$34,397.42	121	\$64,345.82
GREENE	0	\$0.00	9	\$4,198.07	9	\$4,198.07	77	\$23,993.92	86	\$28,191.99
GUERNSEY	29	\$18,619.84	23	\$29,996.89	52	\$48,616.73	73	\$22,412.34	125	\$71,029.07
HAMILTON	0	\$0.00	16	\$1,267.82	16	\$1,267.82	1,411	\$599,582.77	1,427	\$600,850.59
HANCOCK	19	\$6,583.23	5	\$4,926.22	24	\$11,509.45	34	\$9,214.13	58	\$20,723.58
HARDIN	10	\$9,373.64	3	\$7,177.03	13	\$16,550.67	26	\$7,043.23	39	\$23,593.90
HARRISON	3	\$4,635.94	0	\$0.00	3	\$4,635.94	30	\$9,838.18	33	\$14,474.12
HENRY	0	\$0.00	13	\$15,312.85	13	\$15,312.85	22	\$6,157.15	35	\$21,470.00
HIGHLAND	17	\$5,082.58	6	\$5,952.78	23	\$11,035.36	14	\$4,969.47	37	\$16,004.83
HOCKING	15	\$6,415.16	8	\$9,975.77	23	\$16,390.93	46	\$15,153.12	69	\$31,544.05
HOLMES	4	\$1,875.05	0	\$0.00	4	\$1,875.05	30	\$11,373.57	34	\$13,248.62
HURON	27	\$11,261.00	8	\$28,985.53	35	\$40,246.53	16	\$3,993.00	51	\$44,239.53
JACKSON	0	\$0.00	0	\$0.00	0	\$0.00	21	\$5,250.00	21	\$5,250.00
JEFFERSON	42	\$23,268.96	29	\$65,174.17	71	\$88,443.13	41	\$13,876.09	112	\$102,319.22
KNOX	6	\$1,330.17	14	\$20,002.43	20	\$21,332.60	36	\$10,234.56	56	\$31,567.16
LAKE	22	\$3,664.73	34	\$90,296.16	56	\$93,960.89	145	\$42,371.47	201	\$136,332.36
LAWRENCE	34	\$21,957.12	0	\$0.00	34	\$21,957.12	25	\$7,234.75	59	\$29,191.87

SOURCE: GBS003RB Report from Management Information Services. Federal funds only.

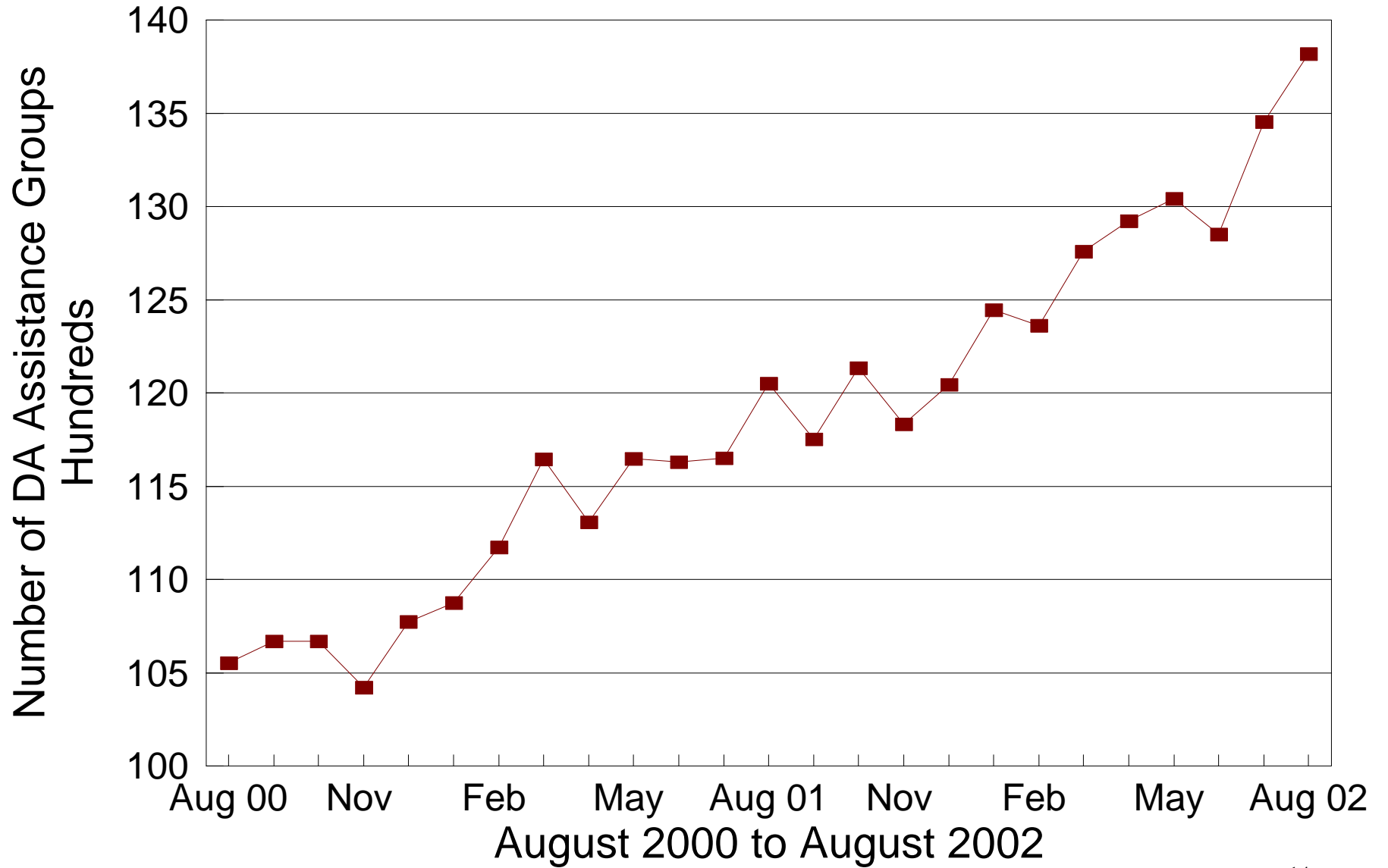
**TABLE 2
TITLE IV-E FOSTER CARE
AUGUST 2002**

OHIO COUNTY	FOSTER CARE						ADOPTION ASSISTANCE		TOTAL FOSTER CARE AND ADOPTION ASSISTANCE	
	FOSTER FAMILY HOMES		CHILD CARE INSTITUTIONS		HOMES & INSTITUTIONS		CHILDREN	GROSS AMOUNT	CHILDREN	GROSS AMOUNT
	CHILDREN	GROSS AMOUNT	CHILDREN	GROSS AMOUNT	CHILDREN	GROSS AMOUNT				
STATEWIDE	3,249	\$1,294,424.28	4,144	\$5,351,845.22	7,393	\$6,646,269.50	16,961	\$6,233,338.59	24,354	\$12,879,608.09
LICKING	79	\$43,195.82	58	\$66,111.01	137	\$109,306.83	278	\$85,969.40	415	\$195,276.23
LOGAN	26	\$8,381.97	3	\$1,226.47	29	\$9,608.44	28	\$8,606.44	57	\$18,214.88
LORAIN	0	\$0.00	0	\$0.00	0	\$0.00	346	\$106,544.84	346	\$106,544.84
LUCAS	458	\$235,378.75	64	\$98,299.83	522	\$333,678.58	1,539	\$550,622.81	2,061	\$884,301.39
MADISON	0	\$0.00	10	\$15,778.35	10	\$15,778.35	25	\$7,969.50	35	\$23,747.85
MAHONING	96	\$40,949.76	0	\$0.00	96	\$40,949.76	241	\$66,216.64	337	\$107,166.40
MARION	26	\$14,171.07	11	\$17,387.37	37	\$31,558.44	69	\$21,911.91	106	\$53,470.35
MEDINA	0	\$0.00	0	\$0.00	0	\$0.00	56	\$18,160.00	56	\$18,160.00
MEIGS	8	\$3,686.11	8	\$4,175.46	16	\$7,861.57	1	\$250.00	17	\$8,111.57
MERCER	11	\$8,143.88	5	\$10,744.33	16	\$18,888.21	23	\$5,750.00	39	\$24,638.21
MIAMI	57	\$12,271.66	33	\$41,486.39	90	\$53,758.05	110	\$39,386.90	200	\$93,144.95
MONROE	5	\$2,459.90	0	\$0.00	5	\$2,459.90	6	\$1,793.90	11	\$4,253.80
MONTGOMERY	396	\$79,454.17	464	\$546,720.52	860	\$626,174.69	957	\$408,141.06	1,817	\$1,034,315.75
MORGAN	0	\$0.00	0	\$0.00	0	\$0.00	13	\$3,234.00	13	\$3,234.00
MORROW	4	\$1,421.28	0	\$0.00	4	\$1,421.28	44	\$12,240.44	48	\$13,661.72
MUSKINGUM	0	\$0.00	0	\$0.00	0	\$0.00	112	\$31,150.58	112	\$31,150.58
NOBLE	1	\$218.66	0	\$0.00	1	\$218.66	6	\$1,500.00	7	\$1,718.66
OTTAWA	1	\$1,239.08	3	\$5,755.74	4	\$6,994.82	2	\$500.00	6	\$7,494.82
PAULDING	5	\$301.14	6	\$7,761.29	11	\$8,062.43	20	\$5,411.46	31	\$13,473.89
PERRY	20	\$6,775.35	0	\$0.00	20	\$6,775.35	28	\$9,341.24	48	\$16,116.59
PICKAWAY	21	\$12,419.93	0	\$0.00	21	\$12,419.93	8	\$2,000.00	29	\$14,419.93
PIKE	2	\$983.97	11	\$10,151.14	13	\$11,135.11	21	\$5,602.07	34	\$16,737.18
PORTAGE	0	\$0.00	0	\$0.00	0	\$0.00	115	\$45,328.35	115	\$45,328.35
PREBLE	19	\$12,163.85	14	\$30,431.10	33	\$42,594.95	34	\$8,711.42	67	\$51,306.37
PUTNAM	3	\$1,548.84	1	\$1,002.73	4	\$2,551.57	11	\$2,750.00	15	\$5,301.57
RICHLAND	0	\$0.00	6	\$1,509.76	6	\$1,509.76	237	\$71,251.82	243	\$72,761.58
ROSS	8	\$1,716.32	19	\$14,895.80	27	\$16,612.12	27	\$8,458.50	54	\$25,070.62
SANDUSKY	23	\$7,012.37	26	\$24,657.14	49	\$31,669.51	45	\$11,588.57	94	\$43,258.08
SCIOTO	29	\$9,961.03	31	\$27,849.75	60	\$37,810.78	41	\$10,172.00	101	\$47,982.78
SENECA	10	\$2,915.42	0	\$0.00	10	\$2,915.42	87	\$23,487.94	97	\$26,403.36
SHELBY	12	\$8,148.20	9	\$13,227.95	21	\$21,376.15	50	\$16,791.85	71	\$38,168.00
STARK	0	\$0.00	139	\$63,211.99	139	\$63,211.99	821	\$232,981.20	960	\$296,193.19
SUMMIT	275	\$115,032.61	118	\$267,625.59	393	\$382,658.20	745	\$228,072.18	1,138	\$610,730.38
TRUMBULL	97	\$26,799.12	24	\$64,160.18	121	\$90,959.30	245	\$63,112.51	366	\$154,071.81
TUSCARAWAS	27	\$11,216.03	28	\$44,520.47	55	\$55,736.50	109	\$29,466.89	164	\$85,203.39
UNION	4	\$1,194.39	0	\$0.00	4	\$1,194.39	37	\$9,602.68	41	\$10,797.07
VAN WERT	0	\$0.00	4	\$12,554.23	4	\$12,554.23	27	\$8,936.61	31	\$21,490.84
VINTON	5	\$2,167.34	0	\$0.00	5	\$2,167.34	19	\$5,925.97	24	\$8,093.31
WARREN	29	\$10,496.65	0	\$0.00	29	\$10,496.65	79	\$25,000.44	108	\$35,497.09
WASHINGTON	9	\$3,174.12	0	\$0.00	9	\$3,174.12	28	\$7,122.68	37	\$10,296.80
WAYNE	48	\$17,118.25	20	\$36,073.27	68	\$53,191.52	58	\$22,715.45	126	\$75,906.97
WILLIAMS	1	\$309.77	4	\$4,933.33	5	\$5,243.10	21	\$5,543.90	26	\$10,787.00
WOOD	0	\$0.00	0	\$0.00	0	\$0.00	48	\$15,932.95	48	\$15,932.95
WYANDOT	2	\$0.00	9	\$10,332.81	11	\$10,332.81	12	\$3,481.98	23	\$13,814.79

SOURCE: GBS003RB Report from Management Information Services. Federal funds only.

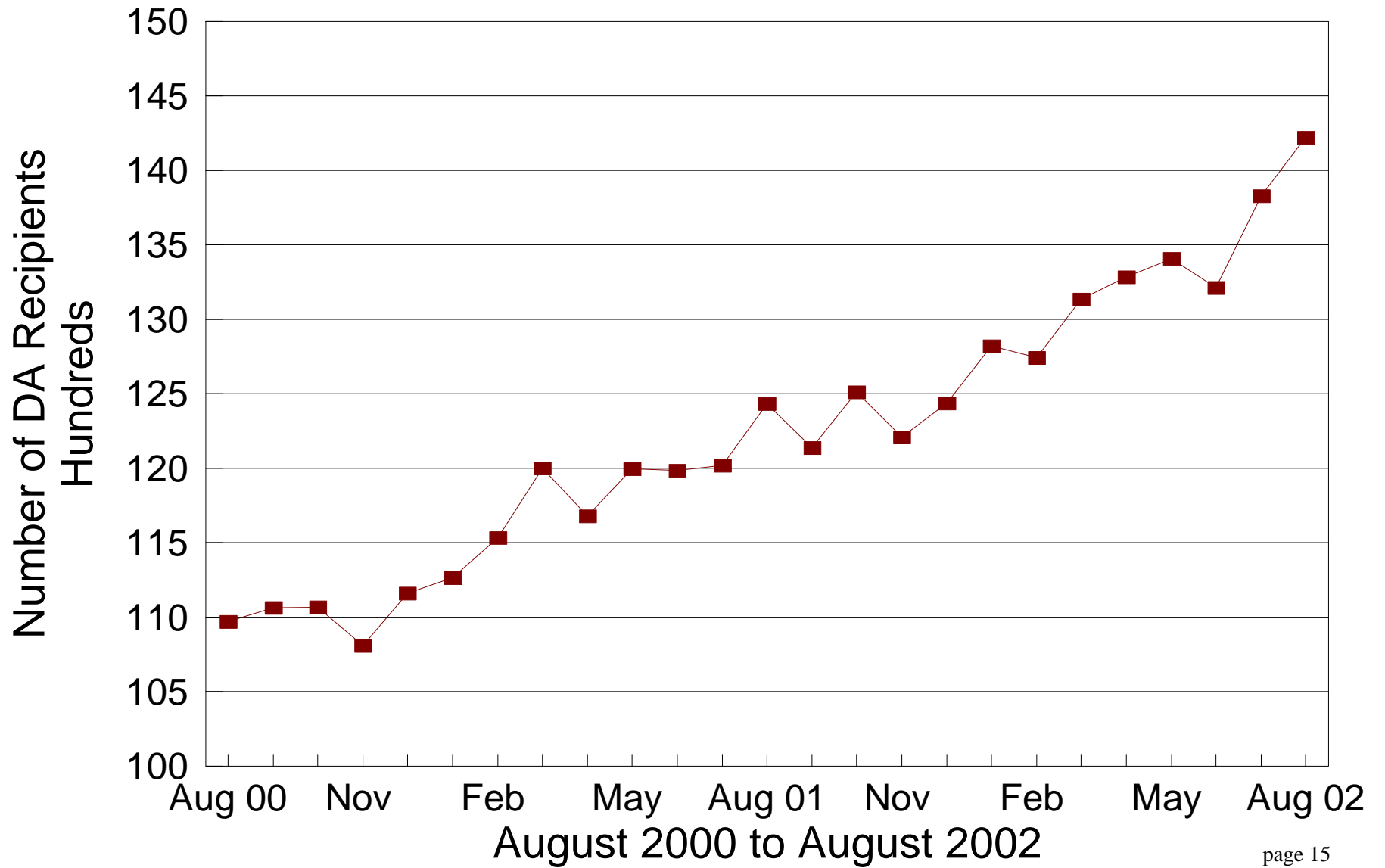
DA Cash Assistance Groups

During the Last 25 Months



DA Cash Recipients

During the Last 25 Months



**TABLE 3
DISABILITY ASSISTANCE (DA)
AUGUST 2002**

OHIO COUNTY	CASH ASSISTANCE							MEDICAL ASSISTANCE	
	ASSISTANCE GROUPS	RECIPIENTS	ADULTS	CHILDREN	ACTUAL EXPENDITURES			UNDUPLICATED RECIPIENTS	ACTUAL AMOUNT PAID
					GROSS AMOUNT	CANCELLED AMOUNT	NET AMOUNT		
STATEWIDE	13,819	14,221	13,059	1,162	\$2,024,937.36	\$124,245.00	\$1,900,692.36	18,903	\$6,421,369.62
ADAMS	58	58	57	1	\$8,843.00	\$0.00	\$8,843.00	99	\$35,876.16
ALLEN	66	66	61	5	\$9,807.00	\$725.00	\$9,082.00	94	\$34,068.46
ASHLAND	25	25	25	0	\$4,128.00	\$115.00	\$4,013.00	50	\$18,435.72
ASHTABULA	270	273	269	4	\$47,739.00	\$345.00	\$47,394.00	231	\$66,615.27
ATHENS	161	163	159	4	\$23,402.00	\$882.00	\$22,520.00	143	\$43,878.87
AUGLAIZE	15	15	15	0	\$1,840.00	\$0.00	\$1,840.00	28	\$11,725.98
BELMONT	129	130	125	5	\$19,417.00	\$690.00	\$18,727.00	156	\$44,493.37
BROWN	25	28	22	6	\$2,822.00	\$159.00	\$2,663.00	71	\$25,667.81
BUTLER	432	440	423	17	\$67,655.00	\$5,264.00	\$62,391.00	400	\$145,869.49
CARROLL	30	30	28	2	\$4,698.00	\$145.00	\$4,553.00	35	\$11,526.04
CHAMPAIGN	37	37	34	3	\$5,938.00	\$345.00	\$5,593.00	41	\$18,205.67
CLARK	222	226	214	12	\$40,287.00	\$3,049.00	\$37,238.00	459	\$172,676.20
CLERMONT	167	168	163	5	\$27,483.00	\$575.00	\$26,908.00	148	\$47,502.13
CLINTON	23	23	22	1	\$3,554.00	\$0.00	\$3,554.00	46	\$16,436.88
COLUMBIANA	165	166	160	6	\$25,486.00	\$1,035.00	\$24,451.00	163	\$50,961.88
COSHOCTON	74	75	72	3	\$14,604.00	\$431.00	\$14,173.00	79	\$24,707.68
CRAWFORD	47	47	44	3	\$6,235.00	\$920.00	\$5,315.00	41	\$13,448.23
CUYAHOGA	2,071	2,138	2,004	134	\$265,392.00	\$19,967.00	\$245,425.00	3,163	\$943,874.68
DARKE	36	37	36	1	\$6,503.00	\$64.00	\$6,439.00	37	\$11,773.22
DEFIANCE	15	15	14	1	\$1,736.00	\$0.00	\$1,736.00	47	\$23,555.90
DELAWARE	61	62	62	0	\$10,026.00	\$786.00	\$9,240.00	77	\$35,871.93
ERIE	47	47	45	2	\$6,647.00	\$0.00	\$6,647.00	89	\$31,147.96
FAIRFIELD	101	102	89	13	\$15,609.00	\$345.00	\$15,264.00	94	\$42,286.65
FAYETTE	41	44	38	6	\$5,849.00	\$115.00	\$5,734.00	57	\$16,653.41
FRANKLIN	1,365	1,416	1,277	139	\$178,358.00	\$13,992.00	\$164,366.00	1,721	\$662,465.60
FULTON	18	18	18	0	\$2,040.00	\$0.00	\$2,040.00	37	\$12,697.05
GALLIA	38	39	38	1	\$6,008.00	\$115.00	\$5,893.00	134	\$58,134.18
GEAUGA	18	18	18	0	\$3,134.00	\$0.00	\$3,134.00	25	\$7,020.76
GREENE	192	198	189	9	\$27,331.00	\$1,836.00	\$25,495.00	243	\$81,755.97
GUERNSEY	89	90	90	0	\$13,502.00	\$227.00	\$13,275.00	94	\$29,139.75
HAMILTON	930	976	780	196	\$146,872.00	\$15,954.00	\$130,918.00	909	\$269,155.23
HANCOCK	29	29	26	3	\$5,050.00	\$0.00	\$5,050.00	89	\$39,289.02
HARDIN	12	13	13	0	\$1,891.00	\$0.00	\$1,891.00	41	\$14,329.31
HARRISON	44	50	39	11	\$6,038.00	\$0.00	\$6,038.00	34	\$8,442.74
HENRY	15	15	15	0	\$1,666.00	\$0.00	\$1,666.00	20	\$7,547.44
HIGHLAND	47	47	44	3	\$7,004.00	\$230.00	\$6,774.00	79	\$27,465.12
HOCKING	42	43	43	0	\$5,648.00	\$115.00	\$5,533.00	52	\$21,693.19
HOLMES	32	33	33	0	\$4,763.00	\$230.00	\$4,533.00	18	\$4,002.64
HURON	42	42	42	0	\$6,126.00	\$690.00	\$5,436.00	64	\$19,382.45
JACKSON	88	88	87	1	\$14,641.00	\$115.00	\$14,526.00	115	\$48,205.25
JEFFERSON	173	183	168	15	\$27,038.00	\$248.00	\$26,790.00	241	\$72,282.58
KNOX	66	66	65	1	\$13,192.00	\$0.00	\$13,192.00	75	\$35,356.42
LAKE	199	203	196	7	\$29,372.00	\$1,732.00	\$27,640.00	202	\$54,726.77
LAWRENCE	93	95	90	5	\$16,804.00	\$3,163.00	\$13,641.00	162	\$65,146.31

*SOURCE: GRP342RA Report from Management Information Services and BOMC 9260-R001 Report from Medicaid Management Information Services.

**TABLE 3
DISABILITY ASSISTANCE (DA)
AUGUST 2002**

OHIO COUNTY	CASH ASSISTANCE							MEDICAL ASSISTANCE	
	ASSISTANCE GROUPS	RECIPIENTS	ADULTS	CHILDREN	ACTUAL EXPENDITURES			UNDUPLICATED RECIPIENTS	ACTUAL AMOUNT PAID
					GROSS AMOUNT	CANCELLED AMOUNT	NET AMOUNT		
STATEWIDE	13,819	14,221	13,059	1,162	\$2,024,937.36	\$124,245.00	\$1,900,692.36	18,903	\$6,421,369.62
LICKING	165	167	161	6	\$23,217.00	\$1,953.00	\$21,264.00	181	\$75,604.38
LOGAN	22	22	22	0	\$5,178.00	\$471.00	\$4,707.00	79	\$22,374.69
LORAIN	310	322	267	55	\$45,515.36	\$3,561.00	\$41,954.36	445	\$149,270.27
LUCAS	538	556	493	63	\$79,821.00	\$3,305.00	\$76,516.00	1,176	\$383,392.04
MADISON	38	39	39	0	\$5,307.00	\$230.00	\$5,077.00	36	\$12,191.32
MAHONING	438	458	404	54	\$64,777.00	\$2,642.00	\$62,135.00	696	\$223,192.42
MARION	97	99	93	6	\$17,247.00	\$1,035.00	\$16,212.00	97	\$31,628.72
MEDINA	69	69	68	1	\$11,233.00	\$675.00	\$10,558.00	101	\$35,521.16
MEIGS	79	80	78	2	\$10,182.00	\$230.00	\$9,952.00	100	\$28,596.04
MERCER	28	31	27	4	\$6,573.00	\$345.00	\$6,228.00	24	\$5,430.92
MIAMI	42	42	42	0	\$5,187.00	\$0.00	\$5,187.00	66	\$25,624.47
MONROE	18	18	18	0	\$2,205.00	\$115.00	\$2,090.00	41	\$11,099.47
MONTGOMERY	514	542	445	97	\$77,510.00	\$4,286.00	\$73,224.00	1,199	\$461,682.28
MORGAN	39	39	39	0	\$5,093.00	\$0.00	\$5,093.00	29	\$9,520.95
MORROW	20	20	20	0	\$2,896.00	\$304.00	\$2,592.00	59	\$24,197.55
MUSKINGUM	273	279	271	8	\$42,080.00	\$2,467.00	\$39,613.00	185	\$58,902.44
NOBLE	23	23	23	0	\$6,255.00	\$750.00	\$5,505.00	26	\$7,122.39
OTTAWA	21	21	20	1	\$3,392.00	\$0.00	\$3,392.00	39	\$10,152.33
PAULDING	22	22	22	0	\$3,962.00	\$213.00	\$3,749.00	20	\$4,341.67
PERRY	58	60	52	8	\$8,425.00	\$571.00	\$7,854.00	81	\$27,596.79
PICKAWAY	47	48	46	2	\$9,163.00	\$435.00	\$8,728.00	77	\$23,865.31
PIKE	64	67	58	9	\$9,188.00	\$0.00	\$9,188.00	75	\$23,075.03
PORTAGE	137	137	133	4	\$25,104.00	\$834.00	\$24,270.00	112	\$37,657.98
PREBLE	22	25	22	3	\$2,700.00	\$115.00	\$2,585.00	31	\$12,900.45
PUTNAM	14	14	14	0	\$1,879.00	\$0.00	\$1,879.00	20	\$3,005.08
RICHLAND	240	249	226	23	\$39,969.00	\$2,646.00	\$37,323.00	172	\$54,336.33
ROSS	105	108	105	3	\$14,256.00	\$650.00	\$13,606.00	133	\$46,597.67
SANDUSKY	49	49	47	2	\$6,603.00	\$195.00	\$6,408.00	43	\$10,745.25
SCIOTO	228	229	217	12	\$30,752.00	\$809.00	\$29,943.00	245	\$77,461.52
SENECA	59	66	58	8	\$9,456.00	\$230.00	\$9,226.00	67	\$20,592.74
SHELBY	19	20	16	4	\$2,841.00	\$0.00	\$2,841.00	59	\$19,845.57
STARK	528	543	490	53	\$76,224.00	\$6,504.00	\$69,720.00	452	\$146,608.88
SUMMIT	664	688	621	67	\$96,743.00	\$7,036.00	\$89,707.00	1,436	\$499,697.13
TRUMBULL	384	388	361	27	\$51,839.00	\$2,915.00	\$48,924.00	302	\$93,866.36
TUSCARAWAS	102	103	102	1	\$13,251.00	\$805.00	\$12,446.00	129	\$43,408.78
UNION	27	28	23	5	\$3,323.00	\$579.00	\$2,744.00	32	\$15,133.80
VAN WERT	12	12	12	0	\$2,292.00	\$115.00	\$2,177.00	16	\$3,226.99
VINTON	29	29	29	0	\$3,209.00	\$0.00	\$3,209.00	63	\$22,296.92
WARREN	42	43	41	2	\$7,583.00	\$0.00	\$7,583.00	96	\$38,686.02
WASHINGTON	83	83	82	1	\$12,198.00	\$842.00	\$11,356.00	89	\$31,736.06
WAYNE	225	229	226	3	\$27,672.00	\$1,341.00	\$26,331.00	177	\$95,793.84
WILLIAMS	23	24	24	0	\$3,210.00	\$230.00	\$2,980.00	57	\$17,856.52
WOOD	45	46	43	3	\$6,444.00	\$207.00	\$6,237.00	99	\$39,458.53
WYANDOT	7	7	7	0	\$805.00	\$0.00	\$805.00	38	\$10,577.19
UNKNOWN									\$0.00

*SOURCE: GRP342RA Report from Management Information Services and BOMC 9260-R001 Report from Medicaid Management Information Services.

**TABLE 3-A
DA PAYMENTS FOR MEDICAL SERVICES
AUGUST 2002**

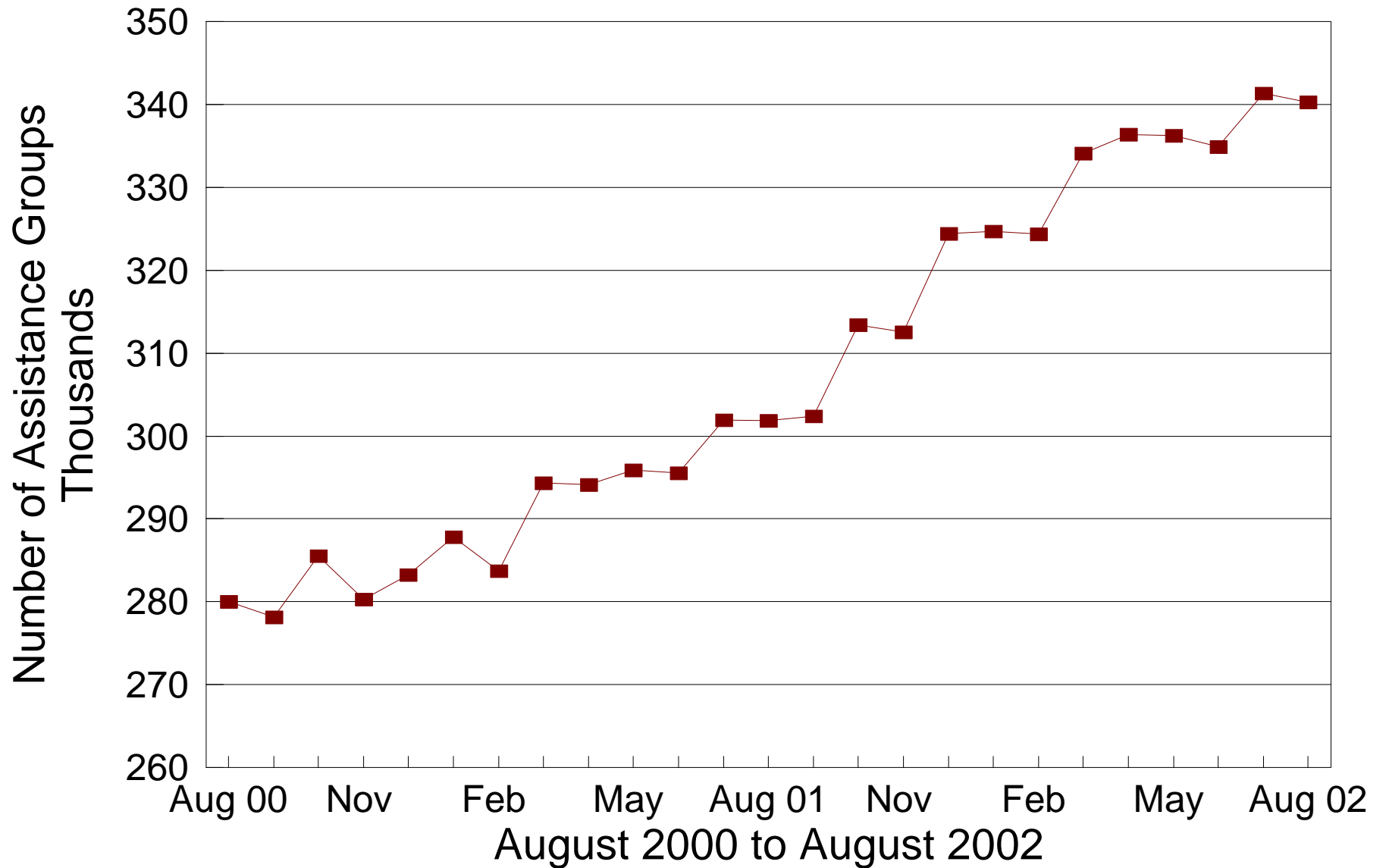
CATEGORY OF SERVICES	DISABILITY ASSISTANCE			
	PAYMENTS	CLAIM FREQUENCY	DUPLICATED RECIPIENTS	PERCENT OF TOTAL
AMBULANCE SERVICES	\$0.00	0	0	0.0%
AMBULATORY SURGERY	\$40,231.22	95	89	0.6%
AMBULETTE SERVICES	\$0.00	0	0	0.0%
CHIROPRACTER SERVICES	\$0.00	0	0	0.0%
CLINIC	\$104,446.38	1,892	866	1.6%
DENTAL SERVICES	\$34,871.12	343	287	0.5%
EPSDT	\$0.00	0	0	0.0%
FAMILY PLANNING	\$2,271.80	51	46	0.0%
FEDERALLY QUALIFIED HEALTH CTR	\$0.00	0	0	0.0%
HEALTH MAINTENANCE ORGANIZATION	\$0.00	0	0	0.0%
HOME HEALTH SERVICES	\$0.00	0	0	0.0%
INDEPENDENT LABORATORY	\$48,865.50	1,291	941	0.8%
INPATIENT HOSPITAL	\$0.00	0	0	0.0%
ICF	\$0.00	0	0	0.0%
MIDWIFERY SERVICES	\$6,499.24	167	153	0.1%
OPTOMETRIC SERVICES	\$0.00	0	0	0.0%
OUTPATIENT HEALTH SERVICES	\$0.00	0	0	0.0%
PASSPORT WAIVER III	\$0.00	0	0	0.0%
OUTPATIENT HOSPITAL GENERAL	\$0.00	0	0	0.0%
PHYSICAL THERAPY SERVICES	\$0.00	0	0	0.0%
PHYSICIAN SERVICES	\$1,760,624.15	26,414	10,707	27.4%
PHYSIOLOGICAL LABORATORY	\$13,428.40	71	63	0.2%
PODIATRISTS THERAPY	\$39,874.32	541	364	0.6%
PRESCRIBED DRUGS	\$4,247,044.23	78,047	16,391	66.1%
PRIVATE DUTY NURSING SERVICES	\$0.00	0	0	0.0%
PSYCHOLOGY SERVICES	\$0.00	0	0	0.0%
RURAL HEALTH SERVICES	\$0.00	0	0	0.0%
SNF	\$0.00	0	0	0.0%
SUPPLIES AND MEDICAL EQUIPMENT	\$98,948.18	2,147	1,178	1.5%
WAIVERED SERVICES	\$24,265.08	193	181	0.4%
OTHER	\$0.00	0	0	0.0%
STATEWIDE TOTAL	\$6,421,369.62	111,252	31,266	100.00%

SOURCE: BOMC 9260 Report from Medicaid Management Information Services.

NOTE: Recipients are unduplicated within Category of Services, however, the Statewide Total represents a duplicated count.

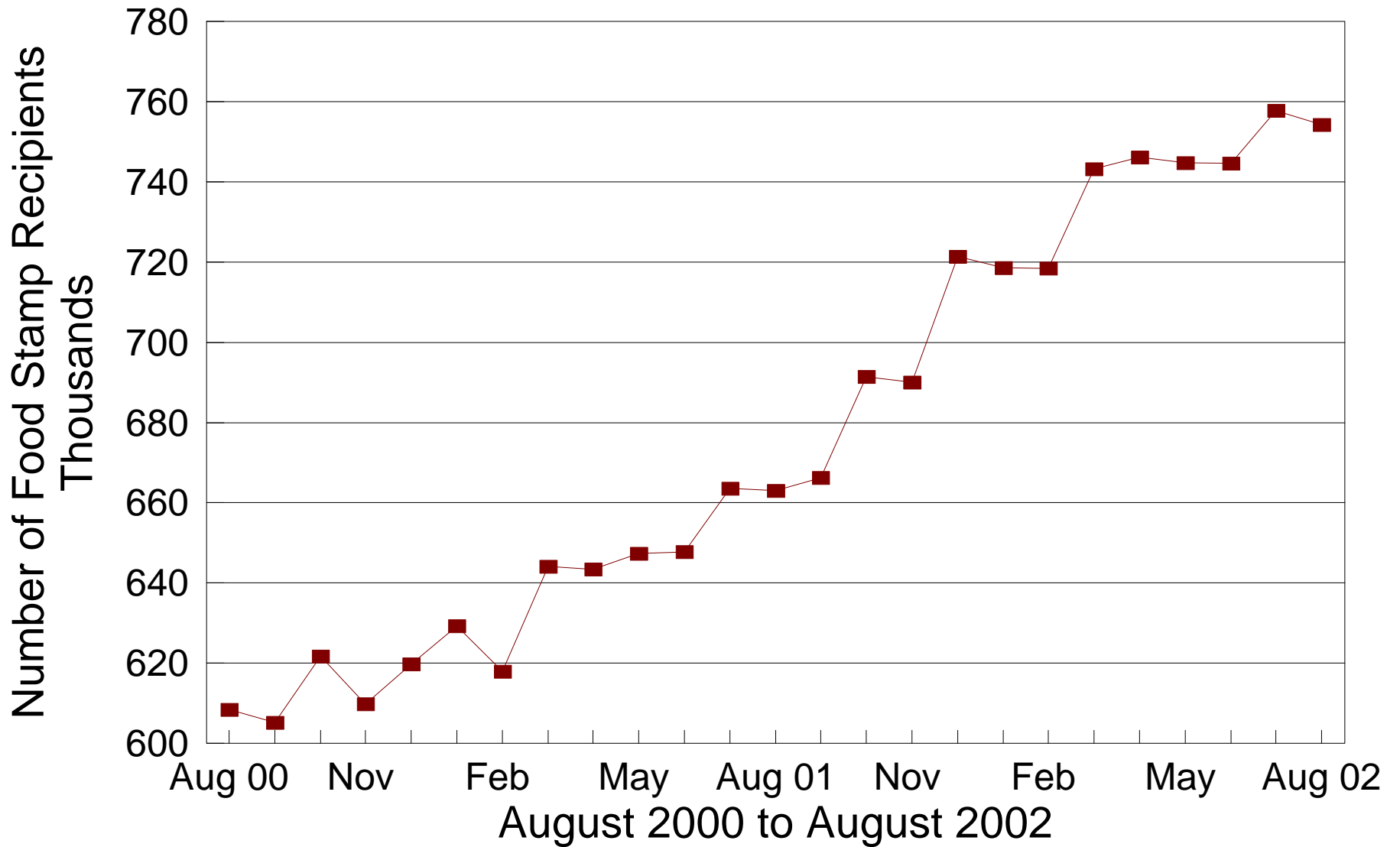
Number of FNS Benefits Assist. Groups

During the Last 25 Months



Number of FNS Benefits Recipients

During the Last 25 Months



**TABLE 5
FNS BENEFITS
AUGUST 2002**

OHIO COUNTY	PERSONS					ASSISTANCE GROUPS			TOTAL COUPONS ISSUED
	PUBLIC ASSISTANCE	NON-PUBLIC ASSISTANCE	TOTAL	AVERAGE ISSUANCE	% CHANGE PREV. MO.	PUBLIC ASSISTANCE	NON-PUBLIC ASSISTANCE	TOTAL	
STATEWIDE	108,504	645,695	754,199	\$82	-0.5%	37,946	302,343	340,289	\$61,893,895
ADAMS	82	3,268	3,350	\$72	-1.8%	29	1,438	1,467	\$242,808
ALLEN	369	5,734	6,103	\$83	-5.3%	128	2,624	2,752	\$505,133
ASHLAND	102	1,618	1,720	\$82	0.1%	32	704	736	\$141,150
ASHTABULA	816	6,953	7,769	\$80	-0.7%	289	3,306	3,595	\$621,926
ATHENS	843	4,810	5,653	\$76	-2.6%	295	2,375	2,670	\$430,114
AUGLAIZE	65	1,339	1,404	\$84	0.1%	22	573	595	\$117,588
BELMONT	652	5,829	6,481	\$71	0.8%	232	2,727	2,959	\$457,135
BROWN	68	2,456	2,524	\$76	0.7%	23	1,079	1,102	\$191,800
BUTLER	2,484	12,791	15,275	\$86	-0.4%	905	6,423	7,328	\$1,314,305
CARROLL	78	1,555	1,633	\$78	-0.6%	27	678	705	\$127,600
CHAMPAIGN	243	1,434	1,677	\$82	-0.9%	86	681	767	\$138,334
CLARK	1,669	10,844	12,513	\$81	-0.3%	596	5,170	5,766	\$1,016,958
CLERMONT	645	5,732	6,377	\$83	0.8%	235	2,525	2,760	\$526,315
CLINTON	138	1,749	1,887	\$79	1.1%	51	861	912	\$149,753
COLUMBIANA	344	8,077	8,421	\$77	-0.2%	130	3,478	3,608	\$647,006
COSHOCTON	496	2,206	2,702	\$78	1.7%	162	1,041	1,203	\$209,997
CRAWFORD	264	2,806	3,070	\$74	-3.0%	94	1,261	1,355	\$227,163
CUYAHOGA	18,072	118,156	136,228	\$84	0.5%	6,309	56,304	62,613	\$11,466,954
DARKE	208	1,154	1,362	\$76	-4.1%	73	568	641	\$103,638
DEFIANCE	48	1,478	1,526	\$81	-3.2%	22	658	680	\$124,108
DELAWARE	295	2,417	2,712	\$78	-2.9%	107	1,126	1,233	\$211,551
ERIE	151	3,243	3,394	\$82	-1.7%	48	1,454	1,502	\$277,786
FAIRFIELD	728	4,417	5,145	\$80	1.9%	263	2,121	2,384	\$412,563
FAYETTE	147	1,744	1,891	\$76	0.4%	52	812	864	\$144,194
FRANKLIN	15,138	66,936	82,074	\$88	0.2%	5,109	30,566	35,675	\$7,237,084
FULTON	65	911	976	\$75	-10.6%	23	440	463	\$73,137
GALLIA	803	3,419	4,222	\$75	1.1%	282	1,649	1,931	\$315,120
GEAUGA	89	878	967	\$79	0.6%	31	426	457	\$76,393
GREENE	1,011	5,340	6,351	\$81	-1.6%	387	2,467	2,854	\$515,933
GUERNSEY	114	3,725	3,839	\$75	-1.2%	46	1,724	1,770	\$287,307
HAMILTON	11,059	42,129	53,188	\$85	-0.3%	3,725	19,594	23,319	\$4,533,486
HANCOCK	180	1,853	2,033	\$82	-2.5%	69	929	998	\$167,582
HARDIN	45	1,273	1,318	\$75	-2.2%	17	613	630	\$98,846
HARRISON	23	1,146	1,169	\$70	-1.9%	8	545	553	\$81,582
HENRY	36	775	811	\$79	-2.9%	11	343	354	\$63,954
HIGHLAND	35	2,499	2,534	\$78	-1.9%	11	1,120	1,131	\$198,709
HOCKING	323	1,882	2,205	\$75	1.3%	108	886	994	\$166,258
HOLMES	41	746	787	\$72	-0.3%	13	329	342	\$56,817
HURON	46	2,782	2,828	\$77	-0.8%	16	1,199	1,215	\$218,309
JACKSON	481	3,603	4,084	\$76	-0.5%	178	1,773	1,951	\$310,821
JEFFERSON	1,021	6,023	7,044	\$76	-2.7%	363	2,996	3,359	\$532,996
KNOX	357	2,333	2,690	\$80	1.0%	127	1,115	1,242	\$214,795
LAKE	909	6,436	7,345	\$87	0.3%	326	3,009	3,335	\$642,443
LAWRENCE	629	8,548	9,177	\$72	-0.8%	217	4,091	4,308	\$661,093

**TABLE 5
FNS BENEFITS
AUGUST 2002**

OHIO COUNTY	PERSONS					ASSISTANCE GROUPS			TOTAL COUPONS ISSUED
	PUBLIC ASSISTANCE	NON-PUBLIC ASSISTANCE	TOTAL	AVERAGE ISSUANCE	% CHANGE PREV. MO.	PUBLIC ASSISTANCE	NON-PUBLIC ASSISTANCE	TOTAL	
STATEWIDE	108,504	645,695	754,199	\$82	-0.5%	37,946	302,343	340,289	\$61,893,895
LICKING	909	5,953	6,862	\$83	-0.7%	332	2,921	3,253	\$568,034
LOGAN	180	2,066	2,246	\$83	-5.1%	63	947	1,010	\$187,188
LORAIN	2,881	17,108	19,989	\$82	-0.1%	977	7,023	8,000	\$1,631,605
LUCAS	8,084	35,559	43,643	\$82	-0.8%	2,854	17,007	19,861	\$3,581,902
MADISON	273	1,324	1,597	\$80	-0.1%	93	679	772	\$127,685
MAHONING	3,229	19,329	22,558	\$82	-1.9%	1,148	9,310	10,458	\$1,841,751
MARION	257	4,199	4,456	\$76	0.2%	96	2,004	2,100	\$337,629
MEDINA	287	2,634	2,921	\$85	1.9%	109	1,236	1,345	\$247,814
MEIGS	337	3,100	3,437	\$76	1.7%	111	1,431	1,542	\$260,536
MERCER	133	832	965	\$82	-4.8%	45	423	468	\$78,756
MIAMI	308	2,699	3,007	\$78	-1.8%	105	1,349	1,454	\$234,505
MONROE	92	1,210	1,302	\$69	-1.5%	30	558	588	\$89,801
MONTGOMERY	7,116	29,919	37,035	\$83	-0.2%	2,507	14,153	16,660	\$3,080,018
MORGAN	28	1,391	1,419	\$70	-9.7%	10	629	639	\$99,935
MORROW	134	1,679	1,813	\$75	-1.3%	47	748	795	\$136,538
MUSKINGUM	1,029	8,269	9,298	\$77	0.1%	365	3,817	4,182	\$715,149
NOBLE	33	886	919	\$70	3.4%	10	415	425	\$63,872
OTTAWA	215	1,118	1,333	\$78	-1.0%	69	503	572	\$103,459
PAULDING	76	736	812	\$75	-3.2%	28	364	392	\$60,496
PERRY	290	2,970	3,260	\$73	-2.2%	101	1,332	1,433	\$238,724
PICKAWAY	405	2,839	3,244	\$77	1.6%	139	1,344	1,483	\$249,175
PIKE	393	3,737	4,130	\$78	-2.4%	139	1,675	1,814	\$320,277
PORTAGE	721	4,808	5,529	\$83	0.8%	273	2,265	2,538	\$460,683
PREBLE	192	1,241	1,433	\$77	-0.7%	64	561	625	\$110,683
PUTNAM	111	748	859	\$78	-3.0%	37	360	397	\$66,730
RICHLAND	622	7,415	8,037	\$79	-0.3%	233	3,404	3,637	\$634,336
ROSS	1,095	5,761	6,856	\$79	0.2%	390	2,645	3,035	\$540,404
SANDUSKY	123	2,572	2,695	\$79	0.4%	45	1,115	1,160	\$213,336
SCIOTO	858	11,449	12,307	\$72	-0.9%	310	5,612	5,922	\$891,677
SENECA	136	2,473	2,609	\$81	0.5%	46	1,120	1,166	\$211,970
SHELBY	117	1,272	1,389	\$85	-5.1%	44	580	624	\$117,968
STARK	4,533	17,276	21,809	\$82	-1.7%	1,594	7,921	9,515	\$1,780,774
SUMMIT	7,863	30,973	38,836	\$85	-0.8%	2,837	14,825	17,662	\$3,287,371
TRUMBULL	1,633	13,224	14,857	\$79	-2.0%	566	5,761	6,327	\$1,171,043
TUSCARAWAS	524	4,422	4,946	\$75	-1.5%	172	2,038	2,210	\$373,201
UNION	268	1,010	1,278	\$84	5.4%	85	506	591	\$107,442
VAN WERT	26	669	695	\$73	-3.3%	10	323	333	\$50,988
VINTON	163	1,727	1,890	\$73	-0.9%	61	797	858	\$137,865
WARREN	152	2,236	2,388	\$76	0.1%	61	1,086	1,147	\$181,985
WASHINGTON	36	3,840	3,876	\$78	1.2%	16	1,858	1,874	\$301,132
WAYNE	645	3,793	4,438	\$81	-1.1%	240	1,870	2,110	\$360,945
WILLIAMS	245	1,301	1,546	\$79	-0.4%	85	591	676	\$121,785
WOOD	296	2,417	2,713	\$82	-3.2%	107	1,169	1,276	\$222,305
WYANDOT	44	464	508	\$71	-14.8%	15	267	282	\$35,879

Table 6A
August 2002
Medicaid Eligibles

County	Aged	Blind	Disabled	ABD Total	OWF & Related	Healthy Start	CFC Total	Total Medicaid	Foster Care	Adoption Assistance	Transitional	Nursing Facilities
STATEWIDE	128,895	851	219,226	348,972	862,143	224,912	1,087,055	1,436,027	11,743	16,329	94,863	56,151
ADAMS	770	3	1,287	2,060	3,800	1,038	4,838	6,898	21	34	521	138
ALLEN	1,110	4	1,885	2,999	7,164	2,160	9,324	12,323	102	128	581	559
ASHLAND	542	2	519	1,063	2,849	1,120	3,969	5,032	6	16	435	301
ASHTABULA	1,468	12	2,737	4,217	8,919	2,771	11,690	15,907	67	135	1,205	1,059
ATHENS	746	13	1,909	2,668	6,050	1,260	7,310	9,978	97	86	851	195
AUGLAIZE	382	3	396	781	2,082	691	2,773	3,554	17	37	334	256
BELMONT	1,353	5	1,987	3,345	6,782	1,483	8,265	11,610	60	103	856	578
BROWN	670	0	914	1,584	3,705	1,218	4,923	6,507	25	32	503	212
BUTLER	2,659	30	5,004	7,693	18,786	4,871	23,657	31,350	354	410	1,755	1,315
CARROLL	359	2	544	905	2,255	722	2,977	3,882	3	4	468	197
CHAMPAIGN	472	0	579	1,051	2,004	835	2,839	3,890	14	20	284	269
CLARK	1,947	5	3,566	5,518	13,324	2,942	16,266	21,784	187	262	1,535	1,133
CLERMONT	1,305	6	2,371	3,682	9,360	3,385	12,745	16,427	134	171	1,348	736
CLINTON	489	2	625	1,116	2,608	885	3,493	4,609	26	43	369	162
COLUMBIANA	1,422	13	2,475	3,910	10,144	3,103	13,247	17,157	85	80	1,510	664
COSHOCOTON	528	1	805	1,334	3,068	1,032	4,100	5,434	29	37	455	283
CRAWFORD	558	9	903	1,470	3,867	1,176	5,043	6,513	70	37	753	230
CUYAHOGA	21,023	145	32,307	53,475	143,940	29,774	173,714	227,189	2,842	3,629	12,216	7,694
DARKE	560	2	607	1,169	2,104	984	3,088	4,257	16	29	367	359
DEFIANCE	319	3	507	829	2,331	726	3,057	3,886	8	32	357	172
DELAWARE	658	2	877	1,537	3,641	1,093	4,734	6,271	34	59	577	312
ERIE	740	4	1,026	1,770	4,987	1,540	6,527	8,297	104	71	548	395
FAIRFIELD	1,065	4	1,619	2,688	6,120	2,103	8,223	10,911	68	112	781	436
FAYETTE	564	1	763	1,328	2,502	731	3,233	4,561	16	16	428	326
FRANKLIN	9,883	83	20,414	30,380	94,271	23,015	117,286	147,666	1,700	1,914	7,257	3,890
FULTON	349	1	323	673	1,780	732	2,512	3,185	15	21	281	197
GALLIA	790	1	1,527	2,318	4,153	887	5,040	7,358	34	35	394	202
GEAUGA	626	1	422	1,049	1,682	685	2,367	3,416	18	107	297	360
GREENE	1,186	7	1,607	2,800	7,898	1,999	9,897	12,697	75	102	1,118	623
GUERNSEY	736	5	1,312	2,053	4,982	1,513	6,495	8,548	55	65	767	182
HAMILTON	9,595	69	16,673	26,337	60,637	16,466	77,103	103,440	929	1,318	4,890	3,976
HANCOCK	568	6	697	1,271	2,851	1,224	4,075	5,346	25	27	488	296
HARDIN	368	2	517	887	1,913	764	2,677	3,564	12	27	355	159
HARRISON	277	0	439	716	1,279	473	1,752	2,468	5	27	188	121
HENRY	231	0	292	523	1,296	595	1,891	2,414	17	22	183	138
HIGHLAND	736	2	916	1,654	3,767	1,388	5,155	6,809	25	14	609	236
HOCKING	396	4	715	1,115	2,756	1,103	3,859	4,974	23	45	359	152
HOLMES	454	2	439	895	1,303	571	1,874	2,769	4	29	272	439
HURON	477	2	761	1,240	4,227	1,662	5,889	7,129	32	20	733	198
JACKSON	783	2	1,342	2,127	4,228	1,061	5,289	7,416	22	20	507	206
JEFFERSON	1,080	19	2,328	3,427	6,909	1,272	8,181	11,608	92	55	821	375
KNOX	630	0	1,138	1,768	3,253	1,326	4,579	6,347	28	33	599	562
LAKE	1,553	1	2,097	3,651	8,617	2,599	11,216	14,867	55	131	1,041	1,089
LAWRENCE	1,466	8	3,444	4,918	8,663	2,013	10,676	15,594	76	26	1,013	395

Table 6A
August 2002
Medicaid Eligibles

County	Aged	Blind	Disabled	ABD Total	OWF & Related	Healthy Start	CFC Total	Total Medicaid	Foster Care	Adoption Assistance	Transitional	Nursing Facilities
STATEWIDE	128,895	851	219,226	348,972	862,143	224,912	1,087,055	1,436,027	11,743	16,329	94,863	56,151
LICKING	1,345	5	2,157	3,507	9,040	2,995	12,035	15,542	162	274	1,587	619
LOGAN	506	3	582	1,091	3,028	859	3,887	4,978	25	30	478	205
LORAIN	2,562	19	4,546	7,127	22,227	4,765	26,992	34,119	159	345	2,206	1,336
LUCAS	5,346	41	12,266	17,653	44,211	9,889	54,100	71,753	432	1,388	3,903	1,967
MADISON	335	2	516	853	1,883	663	2,546	3,399	14	24	271	136
MAHONING	3,652	23	6,576	10,251	23,959	4,532	28,491	38,742	123	240	2,056	1,588
MARION	771	6	1,621	2,398	4,892	1,656	6,548	8,946	41	71	741	279
MEDINA	908	11	1,050	1,969	4,478	1,842	6,320	8,289	43	55	723	636
MEIGS	534	5	1,004	1,543	3,469	631	4,100	5,643	15	1	574	142
MERCER	325	1	406	732	1,438	659	2,097	2,829	18	21	282	197
MIAMI	924	9	1,158	2,091	4,018	1,734	5,752	7,843	89	114	579	483
MONROE	291	3	408	702	1,429	364	1,793	2,495	10	7	231	91
MONTGOMERY	5,634	40	11,479	17,153	41,912	8,952	50,864	68,017	981	1,012	3,519	2,423
MORGAN	286	0	482	768	1,837	516	2,353	3,121	13	16	397	110
MORROW	365	3	532	900	2,594	847	3,441	4,341	9	43	486	171
MUSKINGUM	1,327	17	2,505	3,849	9,612	2,163	11,775	15,624	65	120	1,468	513
NOBLE	227	0	239	466	994	457	1,451	1,917	3	9	178	99
OTTAWA	370	0	466	836	1,928	775	2,703	3,539	4	2	316	204
PAULDING	168	2	313	483	997	503	1,500	1,983	9	18	174	39
PERRY	465	4	979	1,448	3,882	1,119	5,001	6,449	34	26	608	198
PICKAWAY	562	1	898	1,461	3,317	1,103	4,420	5,881	18	11	379	180
PIKE	719	0	1,441	2,160	4,167	999	5,166	7,326	13	22	552	285
PORTAGE	1,023	3	1,751	2,777	7,212	2,291	9,503	12,280	101	121	918	615
PREBLE	348	6	552	906	2,232	738	2,970	3,876	32	34	406	203
PUTNAM	272	3	324	599	1,052	442	1,494	2,093	6	5	151	237
RICHLAND	1,551	1	2,570	4,122	9,513	3,267	12,780	16,902	122	239	1,189	610
ROSS	1,071	0	2,122	3,193	7,609	1,971	9,580	12,773	60	28	971	309
SANDUSKY	689	8	871	1,568	3,824	1,462	5,286	6,854	50	46	495	411
SCIOTO	2,236	14	4,670	6,920	10,652	2,319	12,971	19,891	71	45	1,109	655
SENECA	619	2	970	1,591	3,438	1,514	4,952	6,543	21	90	603	317
SHELBY	375	4	512	891	2,266	1,049	3,315	4,206	23	48	361	181
STARK	4,415	30	6,102	10,547	26,645	6,598	33,243	43,790	525	819	3,314	2,333
SUMMIT	5,779	41	10,350	16,170	42,440	8,356	50,796	66,966	473	697	4,407	2,068
TRUMBULL	2,448	24	4,535	7,007	18,460	4,788	23,248	30,255	114	217	2,639	1,248
TUSCARAWAS	1,131	7	1,386	2,524	6,102	2,115	8,217	10,741	55	122	1,106	500
UNION	306	1	388	695	1,783	642	2,425	3,120	8	36	208	136
UNKNOWN	0	0	0	0	0	0	0	0	0	0	0	0
VAN WERT	277	1	345	623	1,370	698	2,068	2,691	5	25	240	148
VINTON	279	0	582	861	2,111	653	2,764	3,625	6	19	343	79
WARREN	1,133	5	1,368	2,506	3,922	1,824	5,746	8,252	50	74	478	810
WASHINGTON	891	8	1,479	2,378	4,869	2,017	6,886	9,264	13	32	783	319
WAYNE	1,000	6	1,567	2,573	5,376	2,048	7,424	9,997	65	74	1,054	467
WILLIAMS	413	2	406	821	2,377	817	3,194	4,015	15	22	472	219
WOOD	796	3	899	1,698	3,928	1,779	5,707	7,405	8	53	491	413
WYANDOT	328	1	238	567	793	510	1,303	1,870	13	13	208	195

Source: ODJFS Report BOMM1321 Prepared: Bureau of Labor Market Information.

Table 6B
August 2002
Medicaid Expenditures

County	Aged	Blind	Disabled	ABD Total	OWF & Related	Healthy Start	CFC Total	Total Medicaid	Foster Care	Adoption Assistance	Transitional	Nursing Facilities
STATEWIDE	\$253,946,758	\$740,908	\$341,041,296	\$595,728,962	\$148,623,970	\$43,547,930	\$192,171,900	\$787,961,598	\$6,005,187	\$3,247,686	\$10,945,642	\$279,762,539
ADAMS	\$933,711	\$2,504	\$1,310,279	\$2,246,494	\$684,454	\$205,929	\$890,382	\$3,136,876	\$12,075	\$2,689	\$50,370	\$606,665
ALLEN	\$2,224,884	\$9,950	\$2,707,193	\$4,942,027	\$1,264,058	\$341,905	\$1,605,963	\$6,548,439	\$36,308	\$14,371	\$55,509	\$2,525,261
ASHLAND	\$1,129,661	\$385	\$882,567	\$2,012,613	\$426,797	\$217,090	\$643,887	\$2,656,537	\$418	\$536	\$38,422	\$1,271,736
ASHTABULA	\$3,493,072	\$4,267	\$4,820,291	\$8,317,631	\$1,656,621	\$397,080	\$2,053,701	\$10,371,332	\$26,351	\$18,537	\$111,252	\$5,305,960
ATHENS	\$1,035,852	\$2,352	\$2,270,513	\$3,308,717	\$883,334	\$404,382	\$1,287,716	\$4,596,433	\$27,111	\$14,383	\$74,099	\$737,529
AUGLAIZE	\$955,547	\$6,909	\$557,458	\$1,519,914	\$401,682	\$118,175	\$519,858	\$2,039,771	\$3,236	\$4,125	\$25,767	\$1,011,673
BELMONT	\$2,473,175	\$1,233	\$2,843,850	\$5,318,258	\$478,010	\$189,416	\$667,426	\$5,985,683	\$26,628	\$25,135	\$81,020	\$2,163,964
BROWN	\$1,156,338	\$0	\$1,203,132	\$2,359,470	\$731,557	\$230,152	\$961,709	\$3,321,179	\$5,566	\$1,590	\$66,520	\$1,021,387
BUTLER	\$5,920,976	\$45,246	\$8,954,404	\$14,920,626	\$3,326,764	\$1,134,236	\$4,461,000	\$19,383,111	\$165,289	\$87,700	\$221,879	\$7,571,597
CARROLL	\$686,201	\$804	\$948,543	\$1,635,548	\$272,513	\$82,555	\$355,068	\$1,990,616	\$565	\$368	\$44,715	\$876,917
CHAMPAIGN	\$980,279	\$0	\$896,550	\$1,876,829	\$370,833	\$180,188	\$551,021	\$2,427,850	\$18,675	\$1,488	\$26,505	\$1,193,377
CLARK	\$4,506,995	\$5,228	\$6,075,988	\$10,588,211	\$2,302,998	\$630,082	\$2,933,080	\$13,521,621	\$99,193	\$72,926	\$138,105	\$5,445,700
CLERMONT	\$2,840,604	\$20,202	\$4,856,205	\$7,717,010	\$1,638,809	\$731,160	\$2,369,969	\$10,087,403	\$75,422	\$24,887	\$135,715	\$4,594,010
CLINTON	\$785,603	\$673	\$870,550	\$1,656,826	\$493,161	\$237,451	\$730,611	\$2,387,437	\$3,485	\$3,172	\$30,120	\$700,167
COLUMBIANA	\$2,527,404	\$5,842	\$3,322,234	\$5,855,480	\$2,072,671	\$580,339	\$2,653,010	\$8,508,490	\$34,271	\$7,575	\$157,507	\$2,697,842
COSHOCTON	\$877,034	\$174	\$1,644,140	\$2,521,349	\$463,304	\$157,270	\$620,574	\$3,141,923	\$8,350	\$7,693	\$31,478	\$1,345,249
CRAWFORD	\$1,126,493	\$4,099	\$985,255	\$2,115,848	\$727,190	\$166,377	\$893,567	\$3,018,441	\$15,378	\$5,237	\$55,776	\$970,898
CUYAHOGA	\$39,674,710	\$135,034	\$48,353,776	\$88,163,521	\$24,470,140	\$5,623,929	\$30,094,069	\$118,258,677	\$1,893,293	\$989,910	\$1,692,980	\$43,289,531
DARKE	\$1,207,956	\$1,522	\$912,376	\$2,121,854	\$339,285	\$153,417	\$492,702	\$2,614,555	\$4,299	\$9,809	\$42,645	\$1,404,562
DEFIANCE	\$633,183	\$1,110	\$513,482	\$1,147,775	\$264,192	\$100,180	\$364,372	\$1,512,146	\$2,204	\$2,070	\$21,981	\$661,971
DELAWARE	\$1,383,628	\$5,976	\$1,726,980	\$3,116,583	\$736,282	\$223,160	\$959,442	\$4,076,026	\$2,058	\$19,669	\$60,719	\$1,351,030
ERIE	\$1,576,066	\$1,626	\$1,394,054	\$2,971,745	\$821,437	\$199,549	\$1,020,986	\$3,992,731	\$31,263	\$8,384	\$47,578	\$1,634,824
FAIRFIELD	\$2,403,393	\$2,302	\$2,336,154	\$4,741,848	\$1,152,710	\$361,312	\$1,514,022	\$6,256,006	\$12,836	\$13,964	\$68,516	\$2,137,309
FAYETTE	\$1,346,387	\$0	\$1,145,881	\$2,492,267	\$417,434	\$301,388	\$718,822	\$3,211,089	\$4,727	\$1,375	\$48,135	\$1,504,066
FRANKLIN	\$19,245,162	\$109,626	\$34,328,900	\$53,683,688	\$15,983,050	\$4,417,946	\$20,400,997	\$74,085,298	\$790,415	\$392,566	\$1,008,114	\$21,824,346
FULTON	\$873,527	\$0	\$566,971	\$1,440,498	\$233,899	\$81,802	\$315,701	\$1,756,199	\$3,568	\$1,306	\$32,798	\$934,199
GALLIA	\$1,680,787	\$0	\$3,273,493	\$4,954,281	\$771,089	\$200,023	\$971,112	\$5,925,392	\$11,372	\$1,645	\$36,060	\$971,965
GEAUGA	\$1,534,019	\$2,121	\$1,115,447	\$2,651,587	\$271,633	\$348,386	\$620,019	\$3,271,607	\$5,215	\$9,129	\$36,332	\$1,991,613
GREENE	\$2,698,608	\$984	\$2,712,265	\$5,411,856	\$1,385,000	\$506,903	\$1,891,903	\$7,303,759	\$22,570	\$15,513	\$135,346	\$2,973,937
GUERNSEY	\$994,961	\$2,950	\$2,408,701	\$3,406,612	\$718,455	\$181,227	\$899,682	\$4,306,308	\$11,347	\$5,769	\$97,232	\$610,515
HAMILTON	\$20,218,446	\$67,161	\$25,027,643	\$45,313,250	\$11,528,620	\$3,752,375	\$15,280,995	\$60,625,017	\$702,103	\$237,942	\$623,704	\$22,362,684
HANCOCK	\$1,129,434	\$5,667	\$1,245,141	\$2,380,242	\$653,878	\$274,068	\$927,946	\$3,308,188	\$6,524	\$10,611	\$66,474	\$1,268,314
HARDIN	\$551,194	\$158	\$625,161	\$1,176,514	\$341,693	\$107,218	\$448,911	\$1,625,423	\$7,223	\$5,357	\$27,336	\$524,744
HARRISON	\$593,003	\$0	\$479,641	\$1,072,645	\$192,448	\$62,937	\$255,385	\$1,328,030	\$650	\$5,987	\$18,082	\$609,017
HENRY	\$542,369	\$0	\$843,493	\$1,385,862	\$175,033	\$76,045	\$251,078	\$1,636,939	\$4,529	\$1,448	\$20,977	\$564,123
HIGHLAND	\$1,162,355	\$3,335	\$1,327,076	\$2,492,767	\$643,968	\$396,519	\$1,040,487	\$3,533,254	\$3,441	\$1,038	\$84,483	\$1,325,505
HOCKING	\$610,667	\$8,141	\$877,238	\$1,496,045	\$511,684	\$187,254	\$698,939	\$2,194,984	\$9,062	\$4,370	\$37,031	\$602,629
HOLMES	\$1,298,636	\$180	\$1,028,609	\$2,327,424	\$179,345	\$91,280	\$270,625	\$2,598,049	\$230	\$5,413	\$17,763	\$1,905,178
HURON	\$779,549	\$83	\$746,683	\$1,526,314	\$603,803	\$214,549	\$818,352	\$2,344,848	\$9,603	\$1,306	\$59,140	\$754,550
JACKSON	\$1,066,798	\$3,889	\$1,135,072	\$2,205,760	\$685,664	\$195,831	\$881,495	\$3,087,255	\$8,070	\$2,147	\$48,758	\$825,406
JEFFERSON	\$1,646,710	\$23,125	\$2,748,499	\$4,418,333	\$1,187,862	\$164,531	\$1,352,393	\$5,770,725	\$46,676	\$12,417	\$72,998	\$1,323,350
KNOX	\$1,510,378	\$0	\$2,765,867	\$4,276,245	\$501,406	\$162,496	\$663,901	\$4,940,146	\$4,635	\$4,304	\$37,561	\$3,046,764
LAKE	\$4,099,644	\$96	\$4,474,198	\$8,573,939	\$1,361,765	\$484,890	\$1,846,656	\$10,420,594	\$39,252	\$17,774	\$72,762	\$5,704,433
LAWRENCE	\$2,079,276	\$8,882	\$3,271,789	\$5,359,947	\$1,645,681	\$360,671	\$2,006,351	\$7,366,298	\$22,274	\$3,785	\$101,702	\$1,524,311

Table 6B
August 2002
Medicaid Expenditures

County	Aged	Blind	Disabled	ABD Total	OWF & Related	Healthy Start	CFC Total	Total Medicaid	Foster Care	Adoption Assistance	Transitional	Nursing Facilities
STATEWIDE	\$253,946,758	\$740,908	\$341,041,296	\$595,728,962	\$148,623,970	\$43,547,930	\$192,171,900	\$787,961,598	\$6,005,187	\$3,247,686	\$10,945,642	\$279,762,539
LICKING	\$2,849,889	(\$148,246)	\$4,094,377	\$6,796,020	\$1,378,508	\$472,395	\$1,850,903	\$8,646,923	\$49,787	\$41,991	\$147,606	\$2,973,897
LOGAN	\$838,289	\$494	\$863,163	\$1,701,946	\$560,319	\$146,542	\$706,862	\$2,408,807	\$7,922	\$1,436	\$55,752	\$770,719
LORAIN	\$5,616,035	\$11,777	\$7,176,407	\$12,804,219	\$3,496,680	\$743,461	\$4,240,142	\$17,044,950	\$36,266	\$34,539	\$261,466	\$7,252,139
LUCAS	\$9,628,288	\$28,668	\$19,551,802	\$29,208,759	\$8,491,170	\$2,124,475	\$10,615,645	\$39,824,401	\$231,266	\$227,419	\$683,480	\$10,170,828
MADISON	\$516,432	\$810	\$840,525	\$1,357,766	\$334,273	\$133,719	\$467,993	\$1,825,759	\$4,300	\$3,744	\$16,302	\$648,380
MAHONING	\$7,216,127	\$30,910	\$9,709,587	\$16,956,623	\$3,920,728	\$783,462	\$4,704,191	\$21,660,814	\$62,606	\$26,681	\$215,921	\$7,301,495
MARION	\$1,216,002	\$950	\$1,912,309	\$3,129,262	\$676,697	\$299,848	\$976,545	\$4,105,807	\$10,721	\$10,091	\$51,111	\$1,197,713
MEDINA	\$2,353,334	\$76,504	\$3,161,910	\$5,591,748	\$759,038	\$368,733	\$1,127,771	\$6,719,519	\$18,087	\$13,880	\$60,452	\$3,823,755
MEIGS	\$662,249	\$2,867	\$912,723	\$1,577,839	\$618,881	\$84,432	\$703,313	\$2,281,151	\$8,075	\$0	\$62,661	\$513,564
MERCER	\$713,311	\$0	\$658,743	\$1,372,054	\$315,596	\$77,321	\$392,917	\$1,764,970	\$13,451	\$4,264	\$27,279	\$823,350
MIAMI	\$2,044,084	\$5,758	\$1,461,086	\$3,510,929	\$895,288	\$387,954	\$1,283,242	\$4,794,177	\$20,668	\$14,076	\$90,536	\$2,018,684
MONROE	\$373,267	\$2,164	\$395,202	\$770,633	\$291,302	\$38,177	\$329,479	\$1,100,111	\$1,874	\$827	\$24,719	\$335,123
MONTGOMERY	\$11,806,674	\$39,627	\$17,217,752	\$29,064,053	\$7,782,051	\$1,956,825	\$9,738,876	\$38,805,313	\$535,986	\$302,806	\$498,352	\$12,306,754
MORGAN	\$433,546	\$0	\$726,112	\$1,159,659	\$238,275	\$75,998	\$314,273	\$1,473,930	\$2,827	\$1,226	\$26,233	\$396,904
MORROW	\$635,193	\$96	\$932,678	\$1,567,967	\$375,517	\$101,004	\$476,521	\$2,045,026	\$2,370	\$5,302	\$37,909	\$832,304
MUSKINGUM	\$2,163,853	\$10,827	\$2,429,129	\$4,603,809	\$1,274,219	\$349,794	\$1,624,013	\$6,227,821	\$9,322	\$13,203	\$122,551	\$2,015,919
NOBLE	\$375,954	\$0	\$272,486	\$648,440	\$133,132	\$45,269	\$178,401	\$826,841	\$135	\$598	\$23,591	\$357,534
OTTAWA	\$950,371	\$0	\$1,591,369	\$2,541,741	\$315,226	\$135,128	\$450,354	\$2,992,095	\$352	\$0	\$33,109	\$859,978
PAULDING	\$189,621	\$668	\$399,349	\$589,637	\$148,527	\$86,691	\$235,218	\$824,855	\$7,605	\$1,243	\$13,872	\$147,510
PERRY	\$580,520	\$1,570	\$1,403,351	\$1,985,442	\$602,847	\$242,178	\$845,025	\$2,830,465	\$8,881	\$1,028	\$45,515	\$990,473
PICKAWAY	\$882,680	\$0	\$1,028,424	\$1,911,105	\$634,567	\$137,912	\$772,479	\$2,683,582	\$1,591	\$648	\$30,609	\$708,184
PIKE	\$1,165,584	\$0	\$1,789,482	\$2,955,066	\$720,932	\$166,707	\$887,639	\$3,842,981	\$10,068	\$11,364	\$64,579	\$1,302,501
PORTAGE	\$1,961,352	\$26,327	\$3,623,669	\$5,611,348	\$1,438,456	\$575,427	\$2,013,883	\$7,625,863	\$42,274	\$20,860	\$74,043	\$3,309,561
PREBLE	\$709,581	\$1,741	\$921,283	\$1,632,606	\$351,561	\$118,631	\$470,192	\$2,102,797	\$14,545	\$3,982	\$44,528	\$1,014,318
PUTNAM	\$667,854	\$4,804	\$710,365	\$1,383,023	\$162,545	\$55,390	\$217,935	\$1,600,957	\$1,693	\$0	\$10,481	\$1,034,876
RICHLAND	\$2,642,067	\$149	\$4,266,946	\$6,909,162	\$1,693,234	\$694,910	\$2,388,144	\$9,299,049	\$42,847	\$33,492	\$111,817	\$2,989,695
ROSS	\$1,499,365	\$2,724	\$2,512,073	\$4,014,161	\$1,280,113	\$278,975	\$1,559,087	\$5,573,247	\$8,534	\$8,728	\$77,115	\$1,175,465
SANDUSKY	\$1,600,463	\$2,741	\$1,596,034	\$3,199,238	\$528,590	\$193,193	\$721,783	\$3,921,021	\$16,448	\$14,272	\$69,450	\$1,890,422
SCIOTO	\$3,374,173	\$9,922	\$4,918,978	\$8,303,073	\$1,797,797	\$379,977	\$2,177,774	\$10,481,545	\$41,946	\$18,521	\$86,169	\$2,698,588
SENECA	\$1,481,094	\$998	\$2,985,661	\$4,467,753	\$538,972	\$359,983	\$898,955	\$5,366,754	\$9,733	\$14,179	\$45,877	\$1,378,838
SHELBY	\$750,926	\$1,474	\$555,801	\$1,308,201	\$399,978	\$208,592	\$608,570	\$1,916,771	\$12,314	\$4,698	\$37,503	\$791,525
STARK	\$9,971,061	\$23,203	\$9,742,629	\$19,736,893	\$5,220,782	\$1,390,362	\$6,611,144	\$26,348,037	\$184,487	\$116,304	\$326,731	\$11,476,258
SUMMIT	\$10,608,233	\$33,629	\$16,807,931	\$27,449,794	\$7,055,556	\$1,726,453	\$8,782,009	\$36,231,803	\$206,391	\$105,857	\$666,902	\$9,989,847
TRUMBULL	\$4,977,946	\$58,421	\$6,208,876	\$11,245,243	\$3,182,255	\$1,018,024	\$4,200,279	\$15,445,522	\$53,352	\$29,588	\$273,000	\$5,594,795
TUSCARAWAS	\$2,193,518	\$1,711	\$2,198,960	\$4,394,189	\$1,108,944	\$365,479	\$1,474,423	\$5,877,870	\$30,023	\$23,257	\$112,054	\$1,995,393
UNION	\$736,219	(\$30)	\$502,731	\$1,238,920	\$299,605	\$119,911	\$419,516	\$1,658,436	\$3,009	\$3,833	\$29,532	\$685,989
UNKNOWN	\$0	\$0	\$0	\$0	(\$420,696)	\$0	(\$420,696)	(\$420,696)	\$0	\$0	\$0	\$0
VAN WERT	\$530,089	\$19	\$404,803	\$934,911	\$218,827	\$154,753	\$373,580	\$1,308,491	\$6,226	\$11,227	\$17,777	\$569,554
VINTON	\$407,359	\$0	\$518,778	\$926,138	\$281,319	\$76,646	\$357,964	\$1,284,101	\$1,165	\$1,699	\$37,799	\$314,329
WARREN	\$3,148,737	\$3,747	\$3,461,823	\$6,614,306	\$633,452	\$316,978	\$950,430	\$7,564,757	\$10,424	\$16,524	\$35,810	\$4,575,889
WASHINGTON	\$1,510,198	\$4,610	\$1,685,245	\$3,200,052	\$768,852	\$416,008	\$1,184,860	\$4,384,912	\$849	\$3,700	\$73,307	\$1,358,445
WAYNE	\$2,251,472	\$1,781	\$3,365,866	\$5,619,119	\$926,630	\$414,868	\$1,341,498	\$6,960,617	\$49,822	\$12,653	\$119,384	\$2,008,543
WILLIAMS	\$889,068	\$827	\$629,314	\$1,519,209	\$339,192	\$107,222	\$446,414	\$1,965,623	\$1,226	\$2,470	\$41,280	\$873,892
WOOD	\$1,934,482	\$2,831	\$1,879,392	\$3,816,705	\$702,333	\$310,787	\$1,013,120	\$4,829,835	\$1,818	\$7,559	\$71,891	\$1,891,962
WYANDOT	\$695,522	\$0	\$482,431	\$1,177,953	\$179,687	\$73,665	\$253,352	\$1,431,305	\$4,145	\$496	\$27,624	\$725,836

Source: ODJFS Report BOMM1321 Prepared: Bureau of Labor Market Information.

**TABLE 7
CHILD CARE
AUGUST 2002**

OHIO COUNTY	OWF JOBS, LEAP, and TRANSITIONAL		OTHER CHILD CARE		ALL PROGRAM SOURCES	
	CHILDREN SERVED		CHILDREN SERVED		CHILDREN SERVED	
	TOTAL	% OF STATE TOTAL	TOTAL	% OF STATE TOTAL	TOTAL	% OF STATE TOTAL
STATEWIDE	22,124	100.00%	83,567	100.00%	105,691	100.00%
ADAMS	0	0.00%	52	0.06%	52	0.05%
ALLEN	45	0.20%	454	0.54%	499	0.47%
ASHLAND	0	0.00%	129	0.15%	129	0.12%
ASHTABULA	141	0.64%	877	1.05%	1,018	0.96%
ATHENS	112	0.51%	316	0.38%	428	0.40%
AUGLAIZE	0	0.00%	221	0.26%	221	0.21%
BELMONT	122	0.55%	334	0.40%	456	0.43%
BROWN	2	0.01%	136	0.16%	138	0.13%
BUTLER	158	0.71%	1,228	1.47%	1,386	1.31%
CARROLL	18	0.08%	56	0.07%	74	0.07%
CHAMPAIGN	19	0.09%	179	0.21%	198	0.19%
CLARK	111	0.50%	855	1.02%	966	0.91%
CLERMONT	26	0.12%	426	0.51%	452	0.43%
CLINTON	9	0.04%	173	0.21%	182	0.17%
COLUMBIANA	56	0.25%	776	0.93%	832	0.79%
COSHOCTON	33	0.15%	234	0.28%	267	0.25%
CRAWFORD	44	0.20%	278	0.33%	322	0.30%
CUYAHOGA	6,873	31.07%	18,322	21.92%	25,195	23.84%
DARKE	8	0.04%	169	0.20%	177	0.17%
DEFIANCE	0	0.00%	195	0.23%	195	0.18%
DELAWARE	10	0.05%	116	0.14%	126	0.12%
ERIE	20	0.09%	945	1.13%	965	0.91%
FAIRFIELD	60	0.27%	585	0.70%	645	0.61%
FAYETTE	54	0.24%	219	0.26%	273	0.26%
FRANKLIN	3,034	13.71%	9,711	11.62%	12,745	12.06%
FULTON	5	0.02%	189	0.23%	194	0.18%
GALLIA	53	0.24%	208	0.25%	261	0.25%
GEAUGA	5	0.02%	240	0.29%	245	0.23%
GREENE	192	0.87%	675	0.81%	867	0.82%
GUERNSEY	32	0.14%	446	0.53%	478	0.45%
HAMILTON	3,898	17.62%	11,018	13.18%	14,916	14.11%
HANCOCK	23	0.10%	471	0.56%	494	0.47%
HARDIN	4	0.02%	82	0.10%	86	0.08%
HARRISON	4	0.02%	78	0.09%	82	0.08%
HENRY	7	0.03%	113	0.14%	120	0.11%
HIGHLAND	1	0.00%	256	0.31%	257	0.24%
HOCKING	23	0.10%	78	0.09%	101	0.10%
HOLMES	9	0.04%	103	0.12%	112	0.11%
HURON	0	0.00%	671	0.80%	671	0.63%
JACKSON	52	0.24%	187	0.22%	239	0.23%
JEFFERSON	164	0.74%	423	0.51%	587	0.56%
KNOX	31	0.14%	393	0.47%	424	0.40%
LAKE	125	0.56%	967	1.16%	1,092	1.03%
LAWRENCE	53	0.24%	448	0.54%	501	0.47%

SOURCE: NMR120RA.

ADC data consist of funding codes: 312, 313, 314, 326, & 327.

Other data consist of funding codes: 320, 321, 322, 323, 324, 325, 329, 342, and 899.

**TABLE 7
CHILD CARE
AUGUST 2002**

OHIO COUNTY	OWF JOBS, LEAP, and TRANSITIONAL		OTHER CHILD CARE		ALL PROGRAM SOURCES	
	CHILDREN SERVED		CHILDREN SERVED		CHILDREN SERVED	
	TOTAL	% OF STATE TOTAL	TOTAL	% OF STATE TOTAL	TOTAL	% OF STATE TOTAL
STATEWIDE	22,124	100.00%	83,567	100.00%	105,691	100.00%
LICKING	135	0.61%	1,070	1.28%	1,205	1.14%
LOGAN	15	0.07%	68	0.08%	83	0.08%
LORAIN	546	2.47%	1,863	2.23%	2,409	2.28%
LUCAS	1,295	5.85%	1,485	1.78%	2,780	2.63%
MADISON	36	0.16%	99	0.12%	135	0.13%
MAHONING	499	2.26%	2,037	2.44%	2,536	2.40%
MARION	8	0.04%	403	0.48%	411	0.39%
MEDINA	39	0.18%	426	0.51%	465	0.44%
MEIGS	26	0.12%	301	0.36%	327	0.31%
MERCER	4	0.02%	126	0.15%	130	0.12%
MIAMI	0	0.00%	403	0.48%	403	0.38%
MONROE	0	0.00%	88	0.11%	88	0.08%
MONTGOMERY	844	3.81%	4,971	5.95%	5,815	5.50%
MORGAN	7	0.03%	105	0.13%	112	0.11%
MORROW	11	0.05%	245	0.29%	256	0.24%
MUSKINGUM	230	1.04%	931	1.11%	1,161	1.10%
NOBLE	4	0.02%	97	0.12%	101	0.10%
OTTAWA	34	0.15%	99	0.12%	133	0.13%
PAULDING	6	0.03%	20	0.02%	26	0.02%
PERRY	50	0.23%	233	0.28%	283	0.27%
PICKAWAY	48	0.22%	218	0.26%	266	0.25%
PIKE	72	0.33%	134	0.16%	206	0.19%
PORTAGE	90	0.41%	754	0.90%	844	0.80%
PREBLE	25	0.11%	139	0.17%	164	0.16%
PUTNAM	22	0.10%	77	0.09%	99	0.09%
RICHLAND	158	0.71%	1,105	1.32%	1,263	1.19%
ROSS	75	0.34%	361	0.43%	436	0.41%
SANDUSKY	36	0.16%	402	0.48%	438	0.41%
SCIOTO	97	0.44%	586	0.70%	683	0.65%
SENECA	24	0.11%	270	0.32%	294	0.28%
SHELBY	5	0.02%	298	0.36%	303	0.29%
STARK	466	2.11%	2,538	3.04%	3,004	2.84%
SUMMIT	730	3.30%	3,186	3.81%	3,916	3.71%
TRUMBULL	492	2.22%	1,895	2.27%	2,387	2.26%
TUSCARAWAS	59	0.27%	374	0.45%	433	0.41%
UNION	6	0.03%	167	0.20%	173	0.16%
VAN WERT	1	0.00%	83	0.10%	84	0.08%
VINTON	13	0.06%	113	0.14%	126	0.12%
WARREN	36	0.16%	385	0.46%	421	0.40%
WASHINGTON	9	0.04%	463	0.55%	472	0.45%
WAYNE	158	0.71%	427	0.51%	585	0.55%
WILLIAMS	33	0.15%	121	0.14%	154	0.15%
WOOD	44	0.20%	332	0.40%	376	0.36%
WYANDOT	0	0.00%	37	0.04%	37	0.04%

SOURCE: NMR120RA.

ADC data consist of funding codes: 312, 313, 314, 326, and 327.

**TABLE 8
RECIPIENTS, EXPENDITURES, AND AVERAGE PAYMENT PER RECIPIENT
DURING THE LAST 12 MONTHS IN OHIO**

	OWF-R	OWF-U	OWF\ CHILD CARE	OTHER CHILD CARE	DA	TITLE IV-E	FNS BENEFITS
RECIPIENTS							
September 2001	181,270	13,707	23,347	70,448	12,137	22,917	666,167
October	187,194	14,689	22,379	67,960	12,511	23,518	691,424
November	183,107	14,674	24,146	71,211	12,210	23,972	690,033
December	184,912	15,827	22,878	70,693	12,436	23,096	721,403
January 2002	186,522	16,433	22,050	70,269	12,820	23,590	718,549
February	183,508	16,927	21,564	69,748	12,742	23,814	718,353
March	184,027	17,425	24,089	74,224	13,136	23,642	743,179
April	181,602	16,421	24,088	77,613	13,285	24,646	746,175
May	179,859	15,700	24,444	77,777	13,405	24,314	744,760
June	175,697	14,598	22,429	79,133	13,214	24,284	744,545
July	178,945	14,740	22,047	81,473	13,828	24,305	757,686
August	178,009	14,363	22,124	83,567	14,221	24,354	754,199
12 MONTH AVERAGE	182,054	15,459	22,965	74,510	12,995	23,871	724,706
EXPENDITURES							
September 2001	\$24,579,845	\$1,266,165	N.A.	N.A.	\$1,422,042	\$11,953,428	\$50,178,941
October	\$25,467,777	\$1,361,917	N.A.	N.A.	\$1,463,447	\$12,686,201	\$57,616,292
November	\$24,789,040	\$1,351,672	N.A.	N.A.	\$1,453,214	\$13,530,283	\$56,315,486
December	\$25,362,547	\$1,514,381	N.A.	N.A.	\$1,542,268	\$11,729,619	\$60,098,721
January 2002	\$25,225,638	\$1,561,528	N.A.	N.A.	\$1,507,076	\$13,474,465	\$58,978,843
February	\$25,095,306	\$1,627,902	N.A.	N.A.	\$1,499,730	\$12,488,247	\$58,738,575
March	\$25,311,970	\$1,672,857	N.A.	N.A.	\$1,615,996	\$12,743,946	\$61,626,592
April	\$24,940,081	\$1,564,950	N.A.	N.A.	\$1,692,215	\$13,076,547	\$62,402,424
May	\$24,789,326	\$1,485,036	N.A.	N.A.	\$1,682,108	\$13,147,856	\$61,401,111
June	\$24,200,171	\$1,356,962	N.A.	N.A.	\$1,634,116	\$13,142,383	\$60,688,791
July	\$24,484,280	\$1,358,338	N.A.	N.A.	\$1,771,662	\$13,340,679	\$63,005,979
August	\$24,514,856	\$1,352,022	N.A.	N.A.	\$1,900,692	\$12,879,608	\$61,893,895
TOTAL DOLLARS	\$24,896,736	\$1,456,144	N.A.	N.A.	\$1,598,714	\$12,849,439	\$59,412,138
AVERAGE PAYMENT							
September 2001	\$136	\$92	N.A.	N.A.	\$117	\$522	\$75
October	\$136	\$93	N.A.	N.A.	\$117	\$539	\$83
November	\$135	\$92	N.A.	N.A.	\$119	\$564	\$82
December	\$137	\$96	N.A.	N.A.	\$124	\$508	\$83
January 2002	\$135	\$95	N.A.	N.A.	\$118	\$571	\$82
February	\$137	\$96	N.A.	N.A.	\$118	\$524	\$82
March	\$138	\$96	N.A.	N.A.	\$123	\$539	\$83
April	\$137	\$95	N.A.	N.A.	\$127	\$531	\$84
May	\$138	\$95	N.A.	N.A.	\$125	\$541	\$82
June	\$138	\$93	N.A.	N.A.	\$124	\$541	\$82
July	\$137	\$92	N.A.	N.A.	\$128	\$549	\$83
August	\$138	\$94	N.A.	N.A.	\$134	\$529	\$82

Note: N.A. means Not Available.

**TABLE 10
PERCENT OF OHIO'S POPULATION PARTICIPATING IN SELECTED
PUBLIC ASSISTANCE PROGRAMS FOR AUGUST 2002**

OHIO COUNTY	Total Population *	Percent of Households Below Poverty Level	DISABILITY ASSISTANCE		OWF COMBINED		FOSTER CARE		FNS BENEFITS	
			Recipients	Recipients as Percent of Total Population	Recipients	Recipients as Percent of Total Population	Recipients	Recipients as Percent of Total Population	Recipients	Recipients as Percent of Total Population
STATEWIDE	11,355,212	0.10	14,221	0.13	192,372	1.69	24,354	0.21	754,199	6.64
ADAMS	27,330	0.25	58	0.21	231	0.85	51	0.19	3,350	12.26
ALLEN	108,473	0.10	66	0.06	798	0.74	227	0.21	6,103	5.63
ASHLAND	52,523	0.08	25	0.05	175	0.33	16	0.03	1,720	3.27
ASHTABULA	102,728	0.13	273	0.27	1,420	1.38	142	0.14	7,769	7.56
ATHENS	62,223	0.17	163	0.26	1,357	2.18	172	0.28	5,653	9.09
AUGLAIZE	46,611	0.05	15	0.03	100	0.21	49	0.11	1,404	3.01
BELMONT	70,226	0.14	130	0.19	1,240	1.77	126	0.18	6,481	9.23
BROWN	42,285	0.12	28	0.07	250	0.59	57	0.13	2,524	5.97
BUTLER	332,807	0.08	440	0.13	3,564	1.07	771	0.23	15,275	4.59
CARROLL	28,836	0.09	30	0.10	185	0.64	7	0.02	1,633	5.66
CHAMPAIGN	38,890	0.07	37	0.10	392	1.01	26	0.07	1,677	4.31
CLARK	144,742	0.10	226	0.16	2,727	1.88	397	0.27	12,513	8.65
CLERMONT	177,977	0.07	168	0.09	1,037	0.58	251	0.14	6,377	3.58
CLINTON	40,543	0.10	23	0.06	202	0.50	65	0.16	1,887	4.65
COLUMBIANA	112,075	0.13	166	0.15	853	0.76	131	0.12	8,421	7.51
COSHOCTON	36,655	0.10	75	0.20	672	1.83	61	0.17	2,702	7.37
CRAWFORD	46,966	0.10	47	0.10	396	0.84	35	0.07	3,070	6.54
CUYAHOGA **	1,393,845	0.11	2,138	0.15	34,780	2.50	5,887	0.42	136,228	9.77
DARKE	53,309	0.07	37	0.07	319	0.60	44	0.08	1,362	2.55
DEFIANCE	39,500	0.07	15	0.04	132	0.33	53	0.13	1,526	3.86
DELAWARE	109,989	0.04	62	0.06	548	0.50	87	0.08	2,712	2.47
ERIE	79,551	0.07	47	0.06	369	0.46	165	0.21	3,394	4.27
FAIRFIELD	122,759	0.07	102	0.08	1,153	0.94	107	0.09	5,145	4.19
FAYETTE	28,433	0.14	44	0.15	291	1.02	31	0.11	1,891	6.65
FRANKLIN	1,068,978	0.09	1,416	0.13	26,348	2.46	2,954	0.28	82,074	7.68
FULTON	42,084	0.05	18	0.04	122	0.29	29	0.07	976	2.32
GALLIA	31,069	0.18	39	0.13	1,246	4.01	75	0.24	4,222	13.59
GEAUGA	90,895	0.04	18	0.02	155	0.17	121	0.13	967	1.06
GREENE	147,886	0.07	198	0.13	1,488	1.01	86	0.06	6,351	4.29
GUERNSEY	40,792	0.15	90	0.22	306	0.75	125	0.31	3,839	9.41
HAMILTON	845,303	0.10	976	0.12	20,112	2.38	1,427	0.17	53,188	6.29
HANCOCK	71,295	0.06	29	0.04	231	0.32	58	0.08	2,033	2.85
HARDIN	31,945	0.13	13	0.04	98	0.31	39	0.12	1,318	4.13
HARRISON	15,856	0.16	50	0.32	139	0.88	33	0.21	1,169	7.37
HENRY	29,210	0.05	15	0.05	44	0.15	35	0.12	811	2.78
HIGHLAND	40,875	0.13	47	0.11	183	0.45	37	0.09	2,534	6.20
HOCKING	28,241	0.12	43	0.15	611	2.16	69	0.24	2,205	7.81
HOLMES	38,943	0.13	33	0.08	86	0.22	34	0.09	787	2.02
HURON	59,487	0.07	42	0.07	184	0.31	51	0.09	2,828	4.75
JACKSON	32,641	0.22	88	0.27	718	2.20	21	0.06	4,084	12.51
JEFFERSON	73,894	0.14	183	0.25	1,786	2.42	112	0.15	7,044	9.53
KNOX	54,500	0.09	66	0.12	489	0.90	56	0.10	2,690	4.94
LAKE	227,511	0.04	203	0.09	1,350	0.59	201	0.09	7,345	3.23
LAWRENCE	62,319	0.20	95	0.15	1,564	2.51	59	0.09	9,177	14.73

*SOURCE: 2000 Census of Ohio Population, Ohio Dept. of Development, GRP342RA, GBS003RA, GRP304RA and GRP304RC Reports from Management Information Services.

**TABLE 10
PERCENT OF OHIO'S POPULATION PARTICIPATING IN SELECTED
PUBLIC ASSISTANCE PROGRAMS FOR AUGUST 2002**

**Revised 1/23/02 OHIO COUNTY	Total Population *	Percent of Households Below Poverty Level	DISABILITY ASSISTANCE		OWF COMBINED		FOSTER CARE		FNS BENEFITS	
			Recipients	Recipients as Percent of Total Population	Recipients	Recipients as Percent of Total Population	Recipients	Recipients as Percent of Total Population	Recipients	Recipients as Percent of Total Population
STATEWIDE	11,355,212	0.10	14,221	0.13	192,372	1.69	24,354	0.21	754,199	6.64
LICKING	145,491	0.08	167	0.11	1,329	0.91	415	0.29	6,862	4.72
LOGAN	46,005	0.08	22	0.05	335	0.73	57	0.12	2,246	4.88
LORAIN	284,664	0.09	322	0.11	4,635	1.63	346	0.12	19,989	7.02
LUCAS	455,054	0.12	556	0.12	14,679	3.23	2,061	0.45	43,643	9.59
MADISON	40,213	0.06	39	0.10	437	1.09	35	0.09	1,597	3.97
MAHONING	257,555	0.13	458	0.18	5,930	2.30	337	0.13	22,558	8.76
MARION **	68,422	0.10	99	0.14	658	0.96	106	0.15	4,456	6.51
MEDINA	151,095	0.04	69	0.05	507	0.34	56	0.04	2,921	1.93
MEIGS	23,072	0.22	80	0.35	565	2.45	17	0.07	3,437	14.90
MERCER	40,924	0.05	31	0.08	233	0.57	39	0.10	965	2.36
MIAMI	98,868	0.06	42	0.04	420	0.42	200	0.20	3,007	3.04
MONROE	15,180	0.18	18	0.12	163	1.07	11	0.07	1,302	8.58
MONTGOMERY	559,062	0.10	542	0.10	12,687	2.27	1,817	0.33	37,035	6.62
MORGAN	14,897	0.16	39	0.26	101	0.68	13	0.09	1,419	9.53
MORROW	31,628	0.09	20	0.06	286	0.90	48	0.15	1,813	5.73
MUSKINGUM	84,585	0.12	279	0.33	1,697	2.01	112	0.13	9,298	10.99
NOBLE	14,058	0.12	23	0.16	65	0.46	7	0.05	919	6.54
OTTAWA	40,985	0.05	21	0.05	271	0.66	6	0.01	1,333	3.25
PAULDING	20,293	0.08	22	0.11	139	0.68	31	0.15	812	4.00
PERRY	34,078	0.16	60	0.18	503	1.48	48	0.14	3,260	9.57
PICKAWAY	52,727	0.10	48	0.09	669	1.27	29	0.06	3,244	6.15
PIKE	27,695	0.23	67	0.24	723	2.61	34	0.12	4,130	14.91
PORTAGE	152,061	0.08	137	0.09	1,087	0.71	115	0.08	5,529	3.64
PREBLE	42,337	0.08	25	0.06	317	0.75	67	0.16	1,433	3.38
PUTNAM	34,726	0.05	14	0.04	180	0.52	15	0.04	859	2.47
RICHLAND	128,852	0.08	249	0.19	1,263	0.98	243	0.19	8,037	6.24
ROSS	73,345	0.15	108	0.15	1,836	2.50	54	0.07	6,856	9.35
SANDUSKY	61,792	0.07	49	0.08	325	0.53	94	0.15	2,695	4.36
SCIOTO	79,195	0.22	229	0.29	1,876	2.37	101	0.13	12,307	15.54
SENECA	58,683	0.09	66	0.11	230	0.39	97	0.17	2,609	4.45
SHELBY	47,910	0.06	20	0.04	214	0.45	71	0.15	1,389	2.90
STARK	378,098	0.09	543	0.14	7,599	2.01	960	0.25	21,809	5.77
SUMMIT	542,899	0.10	688	0.13	12,638	2.33	1,138	0.21	38,836	7.15
TRUMBULL	225,116	0.09	388	0.17	3,217	1.43	366	0.16	14,857	6.60
TUSCARAWAS	90,914	0.09	103	0.11	865	0.95	164	0.18	4,946	5.44
UNION	40,909	0.06	28	0.07	391	0.96	41	0.10	1,278	3.12
VAN WERT	29,659	0.05	12	0.04	47	0.16	31	0.10	695	2.34
VINTON	12,806	0.19	29	0.23	302	2.36	24	0.19	1,890	14.76
WARREN	158,383	0.05	43	0.03	316	0.20	108	0.07	2,388	1.51
WASHINGTON	63,251	0.11	83	0.13	195	0.31	37	0.06	3,876	6.13
WAYNE	111,564	0.08	229	0.21	1,070	0.96	126	0.11	4,438	3.98
WILLIAMS	39,188	0.06	24	0.06	385	0.98	26	0.07	1,546	3.95
WOOD	121,065	0.05	46	0.04	477	0.39	48	0.04	2,713	2.24
WYANDOT	22,908	0.06	7	0.03	59	0.26	23	0.10	508	2.22
UNKNOWN										

*SOURCE: 2000 Census of Ohio Population, Ohio Dept. of Development, GRP342RA, GBS003RA, GRP304RA and GRP304RC Reports from Management Information Services.