

Ohio Department of Job and Family Services

PUBLIC ASSISTANCE MONTHLY STATISTICS

JUNE 2004



<http://jfs.ohio.gov/pams/index.stm>

Bureau of Research and Evaluation : Human Services Reporting Section

Office of Research, Assessment, and Accountability

P.O. Box 1618

Columbus, Ohio 43216

OHIO DEPARTMENT OF JOB AND FAMILY SERVICES
PUBLIC ASSISTANCE MONTHLY STATISTICS
TABLE OF CONTENTS

<u>TITLE</u>	<u>PAGE(S)</u>
Monthly Review of Public Assistance Statistics.	1
Statewide Summary of Public Assistance Programs.	2
Table 1: OWF (TANF) Summary	3-11
Table 2: Foster Care (Title IV-E) Program Summary.	12-13
Table 3: Disability Assistance Program Summary.	14-17
Table 3-A: DA Payments for Medical Services.	18
Table 5: FNS Benefits Program Summary.	19-22
Table 6: Medicaid (Title XIX): Eligibles and Expenditures.	23-26
Table 7: Child Day Care Summary	27-28
Table 8: Program Summaries of Recipients, Expenditures, and Average Payment Per Recipient During the Last 12 Months.	29
Table 10: Percent of Ohio's Population Participating in Selected Public Assistance Programs.	30-31

Note: *Table 4 and Table 9 were discontinued.*

All data in the PAMS report is limited to the information available at the time it was constructed. It does not account for backdated or retroactive eligibility or any adjustments made subsequent to its creation.

MONTHLY REVIEW OF PUBLIC ASSISTANCE STATISTICS FOR JUNE 2004

OHIO WORKS FIRST

For the month of June 2004, OWF-Combined assistance groups totaled 86,882; recipients totaled 193,171 and money payments totaled \$26,324,464. The percent change from May 2004 to June 2004 was 0.4% for assistance groups; 0.4% for recipients, and 0.5% for money payments. For OWF- Regular (OWF-R) there were 82,759 assistance groups; 176,410 recipients, and \$24,695,230 in money payments issued for June 2004. The percent change from May 2004 to June 2004 was 0.6% for assistance groups; 0.6% for recipients, and 0.8% for money payments. For OWF-Unemployed (OWF-U) assistance groups totaled 4,123; recipients, 16,761, and money payments were \$1,629,234. The percent change from May 2004 to June 2004 was -2.8% for assistance groups; -1.9% for recipients and -3.2% for money payments.

FOSTER CARE (TITLE IV-E)

A total of 27,023 children received \$13,541,071 in Title IV-E assistance during the month of June 2004. Included in this total were 7,825 foster care children who received \$6,346,143 in money payments. Of these Title IV-E children, 3,460 or 12.8% were in foster family homes who received \$1,421,224 and 4,365 or 16.2% children in child care institutions who received \$4,924,919 in OWF foster care assistance. The remaining 19,198 children reported as participating in Title IV-E received \$7,194,928 in adoption assistance. Overall, the average amount of Foster Care received per child was \$501.09.

DISABILITY ASSISTANCE (DA)

For the month of June 2004, there were 13,013 assistance groups; 13,125 recipients, and \$1,775,365 in DA financial assistance. The average DA financial assistance per recipient was \$135.27. Total DA expenditures for medical services for June 2004 were \$ 5,995,647. Of this total, \$4,139,452 or 69.0% was spent for prescribed drugs, and \$1,464,551 or 24.4% was spent for physician services. Medical expenses were paid for 11,754 recipients for an average expenditure of \$510.09 per recipient.

FNS BENEFITS:

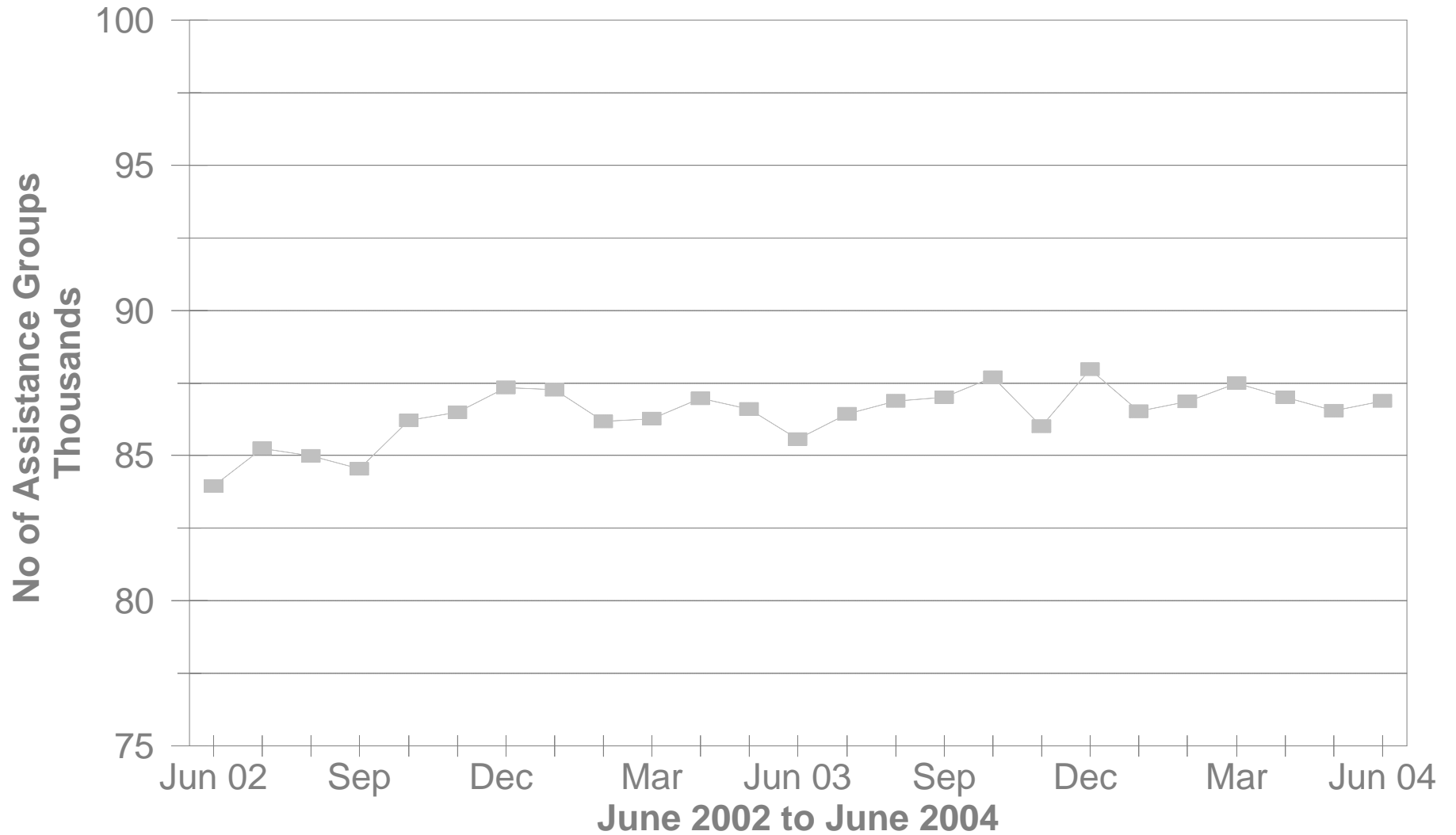
Total persons participating in the FNS benefits program during June 2004 increased to 966,742 by 8,851 or 0.9% from 957,891 persons reported in May 2004. Households increased by 4,481 or 1.1% over May 2004 levels. The total dollar value of FNS related benefits issued during June 2004 increased by \$ 1,106,543 or 1.3% from \$84,982,281 reported in May 2004 to \$86,088,824 reported in June 2004. The average benefit issuance per person increased by \$.33 or 0.4% from those issued in May 2004. The average benefit issuance per person increased from \$88.72 in May 2004 to \$89.05 in June 2004.

Please note: All data in the PAMS report is limited to the information available at the time it was constructed. It does not account for backdated or retroactive eligibility or any adjustments made subsequent to its creation.

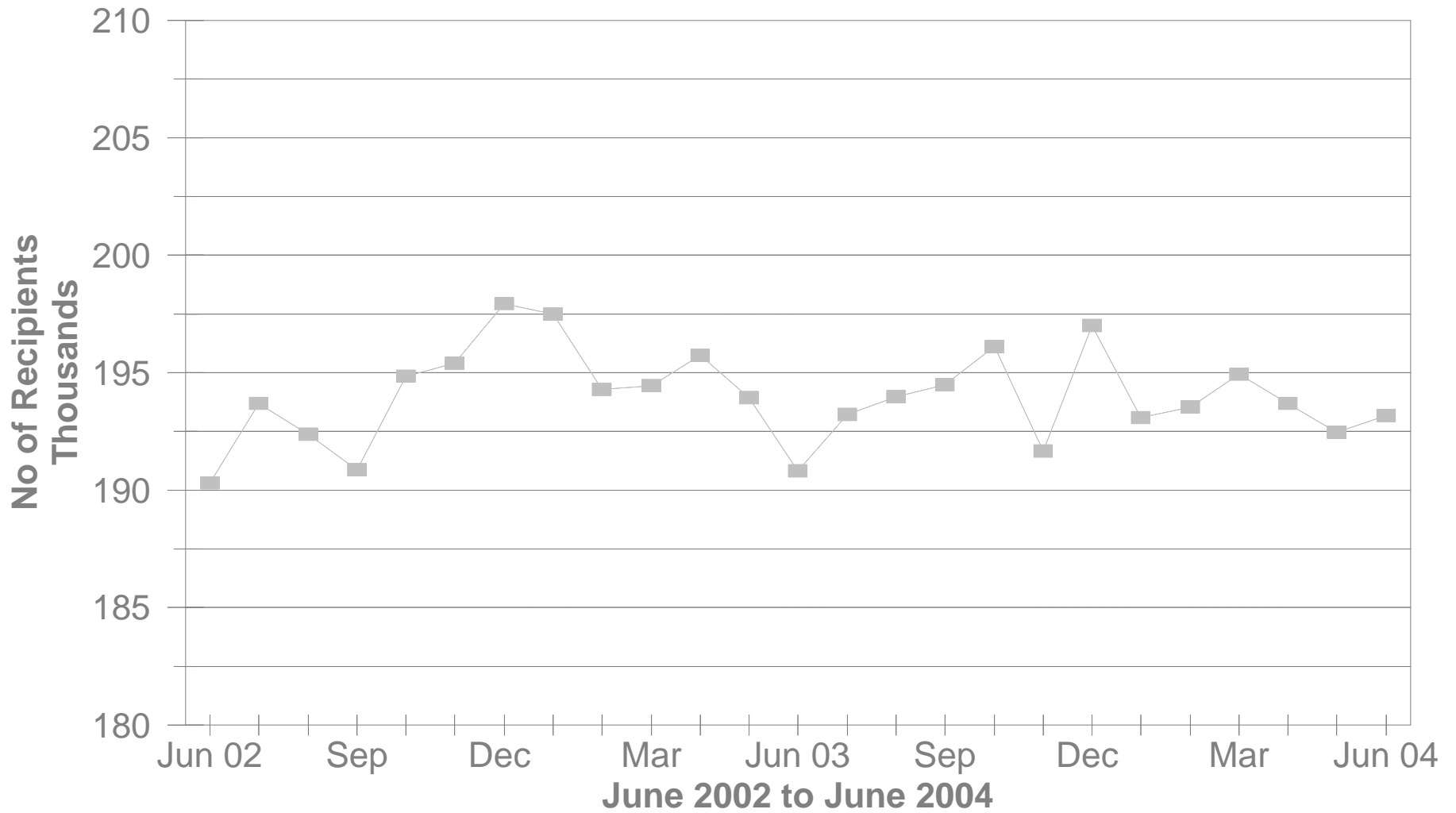
STATEWIDE SUMMARY OF PUBLIC ASSISTANCE PROGRAMS FOR JUNE 2004

	June 2004	May 2004	% CHANGE Jun 04 / May 04	June 2003	% CHANGE Jun 04 / Jun 03
OHIO WORKS FIRST (OWF)-COMBINED					
Assistance Groups	86,882	86,541	0.4%	85,570	1.5%
Recipients	193,171	192,454	0.4%	190,825	1.2%
Net Payments	\$26,324,464	\$26,194,246	0.5%	\$25,945,249	1.5%
Average Per Recipient	\$136.28	\$136.11	0.1%	\$135.96	0.2%
OWF-REGULAR, OWF-INCAPACITATED,& OWF REGULAR VENDOR PAYMENTS					
Assistance Groups	82,759	82,299	0.6%	81,816	1.2%
Recipients	176,410	175,364	0.6%	175,468	0.5%
Net Payments	\$24,695,230	\$24,510,455	0.8%	\$24,469,304	0.9%
Average Per Recipient	\$139.99	\$139.77	0.2%	\$139.45	0.4%
OWF-UNEMPLOYED AND OWF-UNEMPLOYED VENDOR PAYMENTS					
Assistance Groups	4,123	4,242	-2.8%	3,754	9.8%
Recipients	16,761	17,090	-1.9%	15,357	9.1%
Net Payments	\$1,629,234	\$1,683,791	-3.2%	\$1,475,945	10.4%
Average Per Recipient	\$97.20	\$98.52	-1.3%	\$96.11	1.1%
TITLE IV-E FOSTER CARE					
Assistance Groups/Recipients	27,023	26,728	1.1%	25,562	5.7%
Gross Payments	\$13,541,071	\$14,538,568	-6.9%	\$13,205,397	2.5%
Average Per Recipient	\$501.09	\$543.95	-7.9%	\$516.60	-3.0%
DISABILITY ASSISTANCE					
Assistance Groups	13,013	12,904	0.8%	16,709	-22.1%
Recipients	13,125	13,014	0.9%	17,114	-23.3%
Net Payments	\$1,775,365	\$1,717,225	3.4%	\$2,022,589	-12.2%
Medical Assistance	\$5,995,647	\$5,247,901	14.2%	\$7,732,402	-22.5%
FNS BENEFITS					
Assistance Groups	429,505	425,024	1.1%	392,936	9.3%
Persons	966,742	957,891	0.9%	887,138	9.0%
Total Coupons Issued	\$86,088,824	\$84,982,281	1.3%	\$75,783,427	13.6%
Average Per Recipient	\$89.05	\$88.72	0.4%	\$85.42	4.2%

No of OWF Combined Assistance Groups During The Last 25 Month

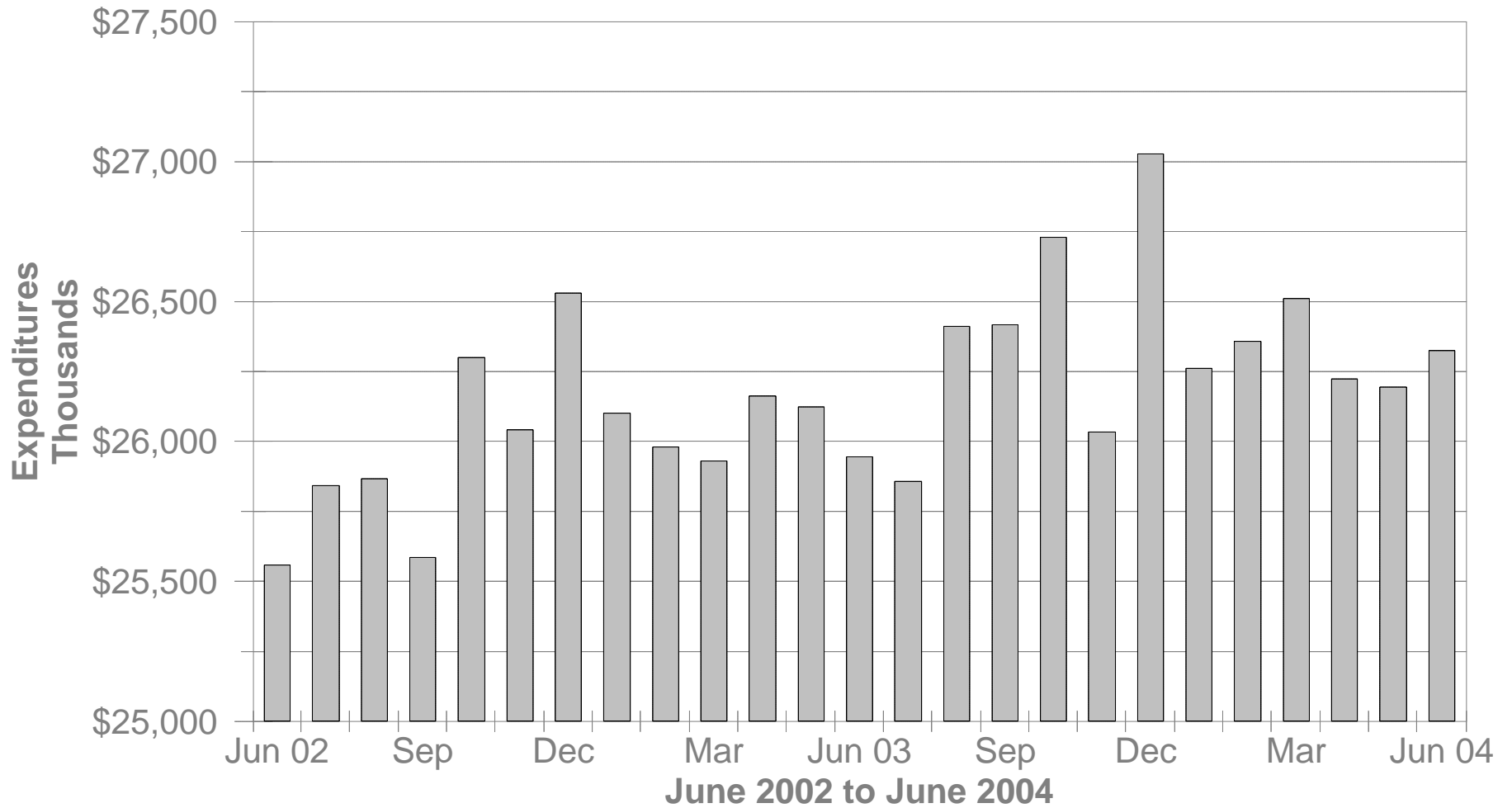


No of OWF Combined Recipients During The Last 25 Months



OWF Combined Net Expenditures

During The Last 25 Months



**TABLE 1
OWF COMBINED
JUNE 2004**

OHIO COUNTY	ASSISTANCE GROUP	RECIPIENTS	ADULTS	CHILDREN	ACTUAL EXPENDITURES		
					GROSS AMOUNT	CANCELLED AMOUNT	NET AMOUNT
STATEWIDE	86,882	193,171	50,673	142,498	\$27,018,720.00	\$694,256.00	\$26,324,464.00
ADAMS	129	208	4	204	\$34,833.00	\$446.00	\$34,387.00
ALLEN	422	783	78	705	\$123,378.00	\$4,163.00	\$119,215.00
ASHLAND	89	183	40	143	\$28,035.00	\$1,503.00	\$26,532.00
ASHTABULA	701	1,480	374	1,106	\$213,520.00	\$4,022.00	\$209,498.00
ATHENS	610	1,476	525	951	\$194,812.00	\$4,369.00	\$190,443.00
AUGLAIZE	48	70	1	69	\$13,209.00	\$928.00	\$12,281.00
BELMONT	506	1,124	354	770	\$152,603.00	\$3,568.00	\$149,035.00
BROWN	165	283	35	248	\$46,418.00	\$1,313.00	\$45,105.00
BUTLER	1,515	2,972	575	2,397	\$453,329.00	\$10,133.00	\$443,196.00
CARROLL	96	182	41	141	\$25,178.00	\$1,122.00	\$24,056.00
CHAMPAIGN	185	381	96	285	\$55,526.00	\$2,291.00	\$53,235.00
CLARK	1,317	2,926	795	2,131	\$415,431.00	\$10,460.00	\$404,971.00
CLERMONT	588	1,222	286	936	\$183,649.00	\$5,078.00	\$178,571.00
CLINTON	140	249	45	204	\$40,286.00	\$1,149.00	\$39,137.00
COLUMBIANA	520	1,020	217	803	\$148,440.00	\$1,964.00	\$146,476.00
COSHOCTON	227	505	154	351	\$70,187.00	\$833.00	\$69,354.00
CRAWFORD	225	531	165	366	\$70,720.00	\$1,320.00	\$69,400.00
CUYAHOGA	13,957	29,295	7,106	22,189	\$4,255,010.00	\$135,060.00	\$4,119,950.00
DARKE	159	341	104	237	\$51,557.00	\$2,147.00	\$49,410.00
DEFIANCE	121	272	71	201	\$38,564.00	\$1,518.00	\$37,046.00
DELAWARE	295	687	210	477	\$95,686.00	\$3,904.00	\$91,782.00
ERIE	214	365	28	337	\$59,242.00	\$528.00	\$58,714.00
FAIRFIELD	593	1,394	442	952	\$187,685.00	\$5,443.00	\$182,242.00
FAYETTE	138	257	45	212	\$38,880.00	\$1,353.00	\$37,527.00
FRANKLIN	11,432	26,013	6,572	19,441	\$3,592,257.00	\$112,520.00	\$3,479,737.00
FULTON	85	191	43	148	\$26,498.00	\$1,212.00	\$25,286.00
GALLIA	520	1,334	473	861	\$165,478.00	\$2,853.00	\$162,625.00
GEAUGA	80	151	37	114	\$22,890.00	\$892.00	\$21,998.00
GREENE	585	1,192	312	880	\$174,845.00	\$6,133.00	\$168,712.00

Source: GRP342RA Report from Management Information Services. Data includes ADC-Regular, ADC-Incapacitated, and Vendor Payments.

**TABLE 1
OWF COMBINED
JUNE 2004**

OHIO COUNTY	ASSISTANCE GROUP	RECIPIENTS	ADULTS	CHILDREN	ACTUAL EXPENDITURES		
					GROSS AMOUNT	CANCELLED AMOUNT	NET AMOUNT
STATEWIDE	86,882	193,171	50,673	142,498	\$27,018,720.00	\$694,256.00	\$26,324,464.00
GUERNSEY	214	426	96	330	\$64,093.00	\$384.00	\$63,709.00
HAMILTON	8,397	19,835	4,996	14,839	\$2,751,851.00	\$65,099.00	\$2,686,752.00
HANCOCK	177	373	94	279	\$53,724.00	\$751.00	\$52,973.00
HARDIN	55	98	11	87	\$14,648.00	\$0.00	\$14,648.00
HARRISON	103	217	58	159	\$29,010.00	\$373.00	\$28,637.00
HENRY	32	54	5	49	\$9,139.00	\$610.00	\$8,529.00
HIGHLAND	168	341	69	272	\$51,055.00	\$1,570.00	\$49,485.00
HOCKING	286	652	205	447	\$88,065.00	\$3,161.00	\$84,904.00
HOLMES	55	113	27	86	\$15,449.00	\$983.00	\$14,466.00
HURON	140	205	1	204	\$36,347.00	\$833.00	\$35,514.00
JACKSON	284	547	115	432	\$82,879.00	\$1,567.00	\$81,312.00
JEFFERSON	921	2,204	713	1,491	\$288,721.00	\$8,045.00	\$280,676.00
KNOX	240	559	160	399	\$71,097.00	\$2,283.00	\$68,814.00
LAKE	623	1,369	342	1,027	\$195,720.00	\$6,043.00	\$189,677.00
LAWRENCE	763	1,561	336	1,225	\$221,284.00	\$6,634.00	\$214,650.00
LICKING	592	1,312	380	932	\$180,198.00	\$4,921.00	\$175,277.00
LOGAN	204	481	136	345	\$57,948.00	\$1,733.00	\$56,215.00
LORAIN	2,133	4,983	1,271	3,712	\$665,982.00	\$13,359.00	\$652,623.00
LUCAS	7,197	17,240	5,065	12,175	\$2,305,223.00	\$47,098.00	\$2,258,125.00
MADISON	221	489	169	320	\$65,114.00	\$1,968.00	\$63,146.00
MAHONING	3,015	7,099	1,842	5,257	\$969,096.00	\$14,682.00	\$954,414.00
MARION	438	832	136	696	\$129,380.00	\$1,197.00	\$128,183.00
MEDINA	237	493	125	368	\$73,577.00	\$1,102.00	\$72,475.00
MEIGS	219	466	147	319	\$63,791.00	\$1,268.00	\$62,523.00
MERCER	74	193	62	131	\$23,608.00	\$596.00	\$23,012.00
MIAMI	295	558	116	442	\$81,041.00	\$1,331.00	\$79,710.00
MONROE	68	174	57	117	\$19,941.00	\$1,373.00	\$18,568.00
MONTGOMERY	5,756	12,551	3,234	9,317	\$1,749,758.00	\$43,479.00	\$1,706,279.00
MORGAN	79	138	19	119	\$22,449.00	\$223.00	\$22,226.00
MORROW	120	258	69	189	\$35,754.00	\$539.00	\$35,215.00

Source: GRP342RA Report from Management Information Services. Data includes ADC-Regular, ADC-Incapacitated, and Vendor Payments.

**TABLE 1
OWF COMBINED
JUNE 2004**

OHIO COUNTY	ASSISTANCE GROUP	RECIPIENTS	ADULTS	CHILDREN	ACTUAL EXPENDITURES		
					GROSS AMOUNT	CANCELLED AMOUNT	NET AMOUNT
STATEWIDE	86,882	193,171	50,673	142,498	\$27,018,720.00	\$694,256.00	\$26,324,464.00
MUSKINGUM	894	2,020	583	1,437	\$278,260.00	\$5,986.00	\$272,274.00
NOBLE	35	72	21	51	\$9,608.00	\$0.00	\$9,608.00
OTTAWA	117	265	86	179	\$36,010.00	\$989.00	\$35,021.00
PAULDING	86	207	78	129	\$26,629.00	\$1,274.00	\$25,355.00
PERRY	279	670	173	497	\$82,812.00	\$1,833.00	\$80,979.00
PICKAWAY	434	1,066	355	711	\$144,864.00	\$4,657.00	\$140,207.00
PIKE	320	690	170	520	\$99,863.00	\$1,890.00	\$97,973.00
PORTAGE	557	1,179	338	841	\$169,536.00	\$1,546.00	\$167,990.00
PREBLE	155	350	91	259	\$47,670.00	\$1,022.00	\$46,648.00
PUTNAM	68	143	40	103	\$20,897.00	\$1,192.00	\$19,705.00
RICHLAND	647	1,272	254	1,018	\$193,101.00	\$3,770.00	\$189,331.00
ROSS	732	1,676	504	1,172	\$232,913.00	\$8,169.00	\$224,744.00
SANDUSKY	204	377	78	299	\$57,742.00	\$2,291.00	\$55,451.00
SCIOTO	1,012	1,907	367	1,540	\$292,787.00	\$9,610.00	\$283,177.00
SENECA	130	221	18	203	\$37,137.00	\$305.00	\$36,832.00
SHELBY	123	236	36	200	\$37,408.00	\$1,182.00	\$36,226.00
STARK	3,347	7,877	2,432	5,445	\$1,068,785.00	\$22,978.00	\$1,045,807.00
SUMMIT	5,384	12,275	3,691	8,584	\$1,712,253.00	\$38,464.00	\$1,673,789.00
TRUMBULL	1,462	3,098	722	2,376	\$444,291.00	\$9,707.00	\$434,584.00
TUSCARAWAS	437	1,013	328	685	\$133,090.00	\$1,561.00	\$131,529.00
UNION	227	580	202	378	\$70,925.00	\$1,331.00	\$69,594.00
VAN WERT	35	60	5	55	\$10,071.00	\$223.00	\$9,848.00
VINTON	185	453	127	326	\$52,850.00	\$1,788.00	\$51,062.00
WARREN	214	393	71	322	\$59,900.00	\$1,124.00	\$58,776.00
WASHINGTON	147	215	9	206	\$37,580.00	\$1,502.00	\$36,078.00
WAYNE	441	993	335	658	\$136,366.00	\$4,143.00	\$132,223.00
WILLIAMS	167	411	147	264	\$51,635.00	\$2,113.00	\$49,522.00
WOOD	241	471	108	363	\$69,604.00	\$2,176.00	\$67,428.00
WYANDOT	34	73	20	53	\$10,045.00	\$0.00	\$10,045.00

Source: GRP342RA Report from Management Information Services. Data includes ADC-Regular, ADC-Incapacitated, and Vendor Payments.

**TABLE 1
OWF REGULAR
JUNE 2004**

OHIO COUNTY	ASSISTANCE GROUP	RECIPIENTS	ADULTS	CHILDREN	ACTUAL EXPENDITURES		
					GROSS AMOUNT	CANCELLED AMOUNT	NET AMOUNT
STATEWIDE	82,759	176,410	42,952	133,458	\$25,351,461.00	\$656,231.00	\$24,695,230.00
ADAMS	129	208	4	204	\$34,833.00	\$446.00	\$34,387.00
ALLEN	417	753	68	685	\$120,660.00	\$4,163.00	\$116,497.00
ASHLAND	85	163	32	131	\$25,923.00	\$1,503.00	\$24,420.00
ASHTABULA	671	1,360	317	1,043	\$201,132.00	\$4,022.00	\$197,110.00
ATHENS	495	1,035	316	719	\$149,809.00	\$3,056.00	\$146,753.00
AUGLAIZE	48	70	1	69	\$13,209.00	\$928.00	\$12,281.00
BELMONT	449	906	244	662	\$131,071.00	\$3,568.00	\$127,503.00
BROWN	164	280	33	247	\$46,045.00	\$1,313.00	\$44,732.00
BUTLER	1,489	2,885	543	2,342	\$443,319.00	\$9,760.00	\$433,559.00
CARROLL	92	164	33	131	\$23,769.00	\$1,122.00	\$22,647.00
CHAMPAIGN	180	354	86	268	\$53,442.00	\$2,291.00	\$51,151.00
CLARK	1,255	2,670	679	1,991	\$389,797.00	\$10,460.00	\$379,337.00
CLERMONT	573	1,158	258	900	\$175,232.00	\$5,078.00	\$170,154.00
CLINTON	138	240	41	199	\$39,286.00	\$1,149.00	\$38,137.00
COLUMBIANA	503	947	184	763	\$140,682.00	\$1,964.00	\$138,718.00
COSHOCTON	199	395	100	295	\$59,203.00	\$833.00	\$58,370.00
CRAWFORD	196	406	108	298	\$58,304.00	\$1,320.00	\$56,984.00
CUYAHOGA	13,538	27,557	6,301	21,256	\$4,090,712.00	\$128,613.00	\$3,962,099.00
DARKE	149	303	85	218	\$46,812.00	\$1,774.00	\$45,038.00
DEFIANCE	113	238	55	183	\$34,677.00	\$1,518.00	\$33,159.00
DELAWARE	270	586	164	422	\$83,783.00	\$3,904.00	\$79,879.00
ERIE	214	365	28	337	\$59,242.00	\$528.00	\$58,714.00
FAIRFIELD	533	1,149	323	826	\$162,093.00	\$4,148.00	\$157,945.00
FAYETTE	136	247	41	206	\$37,552.00	\$1,353.00	\$36,199.00
FRANKLIN	10,983	24,064	5,782	18,282	\$3,398,999.00	\$106,940.00	\$3,292,059.00
FULTON	81	175	37	138	\$24,806.00	\$1,212.00	\$23,594.00
GALLIA	426	960	285	675	\$130,866.00	\$2,107.00	\$128,759.00
GEAUGA	78	145	33	112	\$22,388.00	\$892.00	\$21,496.00
GREENE	561	1,103	268	835	\$166,242.00	\$6,133.00	\$160,109.00

Source: GRP342RA Report from Management Information Services. Data includes ADC-Regular, ADC-Incapacitated, and Vendor Payments.

**TABLE 1
OWF REGULAR
JUNE 2004**

OHIO COUNTY	ASSISTANCE GROUP	RECIPIENTS	ADULTS	CHILDREN	ACTUAL EXPENDITURES		
					GROSS AMOUNT	CANCELLED AMOUNT	NET AMOUNT
STATEWIDE	82,759	176,410	42,952	133,458	\$25,351,461.00	\$656,231.00	\$24,695,230.00
GUERNSEY	203	390	77	313	\$59,936.00	\$305.00	\$59,631.00
HAMILTON	8,246	19,196	4,709	14,487	\$2,686,101.00	\$64,560.00	\$2,621,541.00
HANCOCK	164	320	68	252	\$48,263.00	\$751.00	\$47,512.00
HARDIN	55	98	11	87	\$14,648.00	\$0.00	\$14,648.00
HARRISON	98	194	48	146	\$26,894.00	\$373.00	\$26,521.00
HENRY	32	54	5	49	\$9,139.00	\$610.00	\$8,529.00
HIGHLAND	164	324	61	263	\$48,867.00	\$1,570.00	\$47,297.00
HOCKING	253	528	141	387	\$76,346.00	\$3,161.00	\$73,185.00
HOLMES	51	91	20	71	\$14,627.00	\$983.00	\$13,644.00
HURON	137	199	1	198	\$34,932.00	\$528.00	\$34,404.00
JACKSON	272	498	91	407	\$77,323.00	\$1,106.00	\$76,217.00
JEFFERSON	813	1,759	499	1,260	\$245,422.00	\$7,477.00	\$237,945.00
KNOX	225	489	130	359	\$65,247.00	\$1,822.00	\$63,425.00
LAKE	566	1,164	277	887	\$171,477.00	\$4,987.00	\$166,490.00
LAWRENCE	726	1,414	261	1,153	\$206,727.00	\$6,261.00	\$200,466.00
LICKING	550	1,153	302	851	\$166,190.00	\$4,548.00	\$161,642.00
LOGAN	181	380	91	289	\$50,727.00	\$1,733.00	\$48,994.00
LORAIN	2,021	4,507	1,053	3,454	\$617,868.00	\$12,911.00	\$604,957.00
LUCAS	6,705	15,260	4,159	11,101	\$2,109,179.00	\$42,886.00	\$2,066,293.00
MADISON	199	404	126	278	\$56,565.00	\$1,429.00	\$55,136.00
MAHONING	2,869	6,492	1,558	4,934	\$909,251.00	\$12,720.00	\$896,531.00
MARION	428	800	121	679	\$124,849.00	\$1,197.00	\$123,652.00
MEDINA	226	447	103	344	\$67,503.00	\$844.00	\$66,659.00
MEIGS	200	396	114	282	\$57,445.00	\$1,268.00	\$56,177.00
MERCER	65	158	44	114	\$19,557.00	\$596.00	\$18,961.00
MIAMI	294	555	114	441	\$80,706.00	\$1,331.00	\$79,375.00
MONROE	55	124	33	91	\$15,374.00	\$1,373.00	\$14,001.00
MONTGOMERY	5,726	12,444	3,188	9,256	\$1,739,138.00	\$43,479.00	\$1,695,659.00
MORGAN	78	137	18	119	\$22,293.00	\$223.00	\$22,070.00
MORROW	107	203	43	160	\$30,673.00	\$0.00	\$30,673.00

Source: GRP342RA Report from Management Information Services. Data includes ADC-Regular, ADC-Incapacitated, and Vendor Payments.

**TABLE 1
OWF REGULAR
JUNE 2004**

OHIO COUNTY	ASSISTANCE GROUP	RECIPIENTS	ADULTS	CHILDREN	ACTUAL EXPENDITURES		
					GROSS AMOUNT	CANCELLED AMOUNT	NET AMOUNT
STATEWIDE	82,759	176,410	42,952	133,458	\$25,351,461.00	\$656,231.00	\$24,695,230.00
MUSKINGUM	832	1,770	466	1,304	\$254,980.00	\$5,986.00	\$248,994.00
NOBLE	33	66	17	49	\$8,862.00	\$0.00	\$8,862.00
OTTAWA	104	209	62	147	\$30,860.00	\$989.00	\$29,871.00
PAULDING	78	175	62	113	\$23,397.00	\$901.00	\$22,496.00
PERRY	257	576	129	447	\$75,517.00	\$1,833.00	\$73,684.00
PICKAWAY	383	852	255	597	\$120,970.00	\$4,236.00	\$116,734.00
PIKE	295	603	123	480	\$89,010.00	\$1,890.00	\$87,120.00
PORTAGE	534	1,084	292	792	\$159,668.00	\$1,546.00	\$158,122.00
PREBLE	151	332	84	248	\$45,705.00	\$1,022.00	\$44,683.00
PUTNAM	62	122	31	91	\$18,362.00	\$1,192.00	\$17,170.00
RICHLAND	642	1,253	244	1,009	\$191,251.00	\$3,770.00	\$187,481.00
ROSS	666	1,415	382	1,033	\$206,133.00	\$7,915.00	\$198,218.00
SANDUSKY	189	343	71	272	\$53,522.00	\$1,638.00	\$51,884.00
SCIOTO	966	1,724	278	1,446	\$273,189.00	\$9,071.00	\$264,118.00
SENECA	128	216	17	199	\$36,551.00	\$305.00	\$36,246.00
SHELBY	121	233	36	197	\$36,748.00	\$1,182.00	\$35,566.00
STARK	3,076	6,786	1,898	4,888	\$961,851.00	\$21,882.00	\$939,969.00
SUMMIT	5,017	10,786	2,968	7,818	\$1,562,167.00	\$33,520.00	\$1,528,647.00
TRUMBULL	1,394	2,795	586	2,209	\$415,249.00	\$9,021.00	\$406,228.00
TUSCARAWAS	384	797	224	573	\$112,747.00	\$1,561.00	\$111,186.00
UNION	188	431	128	303	\$57,608.00	\$1,331.00	\$56,277.00
VAN WERT	35	60	5	55	\$10,071.00	\$223.00	\$9,848.00
VINTON	167	380	91	289	\$45,455.00	\$1,788.00	\$43,667.00
WARREN	212	389	69	320	\$59,304.00	\$1,124.00	\$58,180.00
WASHINGTON	147	215	9	206	\$37,580.00	\$1,502.00	\$36,078.00
WAYNE	409	869	275	594	\$123,830.00	\$3,384.00	\$120,446.00
WILLIAMS	153	361	120	241	\$47,599.00	\$2,113.00	\$45,486.00
WOOD	233	446	100	346	\$67,525.00	\$2,176.00	\$65,349.00
WYANDOT	29	58	15	43	\$8,595.00	\$0.00	\$8,595.00

Source: GRP342RA Report from Management Information Services. Data includes ADC-Regular, ADC-Incapacitated, and Vendor Payments.

**TABLE 1
OWF UNEMPLOYED
JUNE 2004**

OHIO COUNTY	ASSISTANCE GROUP	RECIPIENTS	ADULTS	CHILDREN	ACTUAL EXPENDITURES		
					GROSS AMOUNT	CANCELLED AMOUNT	NET AMOUNT
STATEWIDE	4,123	16,761	7,721	9,040	\$1,667,259.00	\$38,025.00	\$1,629,234.00
ADAMS	0	0	0	0	\$0.00	\$0.00	\$0.00
ALLEN	5	30	10	20	\$2,718.00	\$0.00	\$2,718.00
ASHLAND	4	20	8	12	\$2,112.00	\$0.00	\$2,112.00
ASHTABULA	30	120	57	63	\$12,388.00	\$0.00	\$12,388.00
ATHENS	115	441	209	232	\$45,003.00	\$1,313.00	\$43,690.00
AUGLAIZE	0	0	0	0	\$0.00	\$0.00	\$0.00
BELMONT	57	218	110	108	\$21,532.00	\$0.00	\$21,532.00
BROWN	1	3	2	1	\$373.00	\$0.00	\$373.00
BUTLER	26	87	32	55	\$10,010.00	\$373.00	\$9,637.00
CARROLL	4	18	8	10	\$1,409.00	\$0.00	\$1,409.00
CHAMPAIGN	5	27	10	17	\$2,084.00	\$0.00	\$2,084.00
CLARK	62	256	116	140	\$25,634.00	\$0.00	\$25,634.00
CLERMONT	15	64	28	36	\$8,417.00	\$0.00	\$8,417.00
CLINTON	2	9	4	5	\$1,000.00	\$0.00	\$1,000.00
COLUMBIANA	17	73	33	40	\$7,758.00	\$0.00	\$7,758.00
COSHOCTON	28	110	54	56	\$10,984.00	\$0.00	\$10,984.00
CRAWFORD	29	125	57	68	\$12,416.00	\$0.00	\$12,416.00
CUYAHOGA	419	1,738	805	933	\$164,298.00	\$6,447.00	\$157,851.00
DARKE	10	38	19	19	\$4,745.00	\$373.00	\$4,372.00
DEFIANCE	8	34	16	18	\$3,887.00	\$0.00	\$3,887.00
DELAWARE	25	101	46	55	\$11,903.00	\$0.00	\$11,903.00
ERIE	0	0	0	0	\$0.00	\$0.00	\$0.00
FAIRFIELD	60	245	119	126	\$25,592.00	\$1,295.00	\$24,297.00
FAYETTE	2	10	4	6	\$1,328.00	\$0.00	\$1,328.00
FRANKLIN	449	1,949	790	1,159	\$193,258.00	\$5,580.00	\$187,678.00
FULTON	4	16	6	10	\$1,692.00	\$0.00	\$1,692.00
GALLIA	94	374	188	186	\$34,612.00	\$746.00	\$33,866.00
GEAUGA	2	6	4	2	\$502.00	\$0.00	\$502.00
GREENE	24	89	44	45	\$8,603.00	\$0.00	\$8,603.00

Source: GRP342RA Report from Management Information Services. Data includes ADC-Regular, ADC-Incapacitated, and Vendor Payments.

**TABLE 1
OWF UNEMPLOYED
JUNE 2004**

OHIO COUNTY	ASSISTANCE GROUP	RECIPIENTS	ADULTS	CHILDREN	ACTUAL EXPENDITURES		
					GROSS AMOUNT	CANCELLED AMOUNT	NET AMOUNT
STATEWIDE	4,123	16,761	7,721	9,040	\$1,667,259.00	\$38,025.00	\$1,629,234.00
GUERNSEY	11	36	19	17	\$4,157.00	\$79.00	\$4,078.00
HAMILTON	151	639	287	352	\$65,750.00	\$539.00	\$65,211.00
HANCOCK	13	53	26	27	\$5,461.00	\$0.00	\$5,461.00
HARDIN	0	0	0	0	\$0.00	\$0.00	\$0.00
HARRISON	5	23	10	13	\$2,116.00	\$0.00	\$2,116.00
HENRY	0	0	0	0	\$0.00	\$0.00	\$0.00
HIGHLAND	4	17	8	9	\$2,188.00	\$0.00	\$2,188.00
HOCKING	33	124	64	60	\$11,719.00	\$0.00	\$11,719.00
HOLMES	4	22	7	15	\$822.00	\$0.00	\$822.00
HURON	3	6	0	6	\$1,415.00	\$305.00	\$1,110.00
JACKSON	12	49	24	25	\$5,556.00	\$461.00	\$5,095.00
JEFFERSON	108	445	214	231	\$43,299.00	\$568.00	\$42,731.00
KNOX	15	70	30	40	\$5,850.00	\$461.00	\$5,389.00
LAKE	57	205	65	140	\$24,243.00	\$1,056.00	\$23,187.00
LAWRENCE	37	147	75	72	\$14,557.00	\$373.00	\$14,184.00
LICKING	42	159	78	81	\$14,008.00	\$373.00	\$13,635.00
LOGAN	23	101	45	56	\$7,221.00	\$0.00	\$7,221.00
LORAIN	112	476	218	258	\$48,114.00	\$448.00	\$47,666.00
LUCAS	492	1,980	906	1,074	\$196,044.00	\$4,212.00	\$191,832.00
MADISON	22	85	43	42	\$8,549.00	\$539.00	\$8,010.00
MAHONING	146	607	284	323	\$59,845.00	\$1,962.00	\$57,883.00
MARION	10	32	15	17	\$4,531.00	\$0.00	\$4,531.00
MEDINA	11	46	22	24	\$6,074.00	\$258.00	\$5,816.00
MEIGS	19	70	33	37	\$6,346.00	\$0.00	\$6,346.00
MERCER	9	35	18	17	\$4,051.00	\$0.00	\$4,051.00
MIAMI	1	3	2	1	\$335.00	\$0.00	\$335.00
MONROE	13	50	24	26	\$4,567.00	\$0.00	\$4,567.00
MONTGOMERY	30	107	46	61	\$10,620.00	\$0.00	\$10,620.00
MORGAN	1	1	1	0	\$156.00	\$0.00	\$156.00
MORROW	13	55	26	29	\$5,081.00	\$539.00	\$4,542.00

Source: GRP342RA Report from Management Information Services. Data includes ADC-Regular, ADC-Incapacitated, and Vendor Payments.

**TABLE 1
OWF UNEMPLOYED
JUNE 2004**

OHIO COUNTY	ASSISTANCE GROUP	RECIPIENTS	ADULTS	CHILDREN	ACTUAL EXPENDITURES		
					GROSS AMOUNT	CANCELLED AMOUNT	NET AMOUNT
STATEWIDE	4,123	16,761	7,721	9,040	\$1,667,259.00	\$38,025.00	\$1,629,234.00
MUSKINGUM	62	250	117	133	\$23,280.00	\$0.00	\$23,280.00
NOBLE	2	6	4	2	\$746.00	\$0.00	\$746.00
OTTAWA	13	56	24	32	\$5,150.00	\$0.00	\$5,150.00
PAULDING	8	32	16	16	\$3,232.00	\$373.00	\$2,859.00
PERRY	22	94	44	50	\$7,295.00	\$0.00	\$7,295.00
PICKAWAY	51	214	100	114	\$23,894.00	\$421.00	\$23,473.00
PIKE	25	87	47	40	\$10,853.00	\$0.00	\$10,853.00
PORTAGE	23	95	46	49	\$9,868.00	\$0.00	\$9,868.00
PREBLE	4	18	7	11	\$1,965.00	\$0.00	\$1,965.00
PUTNAM	6	21	9	12	\$2,535.00	\$0.00	\$2,535.00
RICHLAND	5	19	10	9	\$1,850.00	\$0.00	\$1,850.00
ROSS	66	261	122	139	\$26,780.00	\$254.00	\$26,526.00
SANDUSKY	15	34	7	27	\$4,220.00	\$653.00	\$3,567.00
SCIOTO	46	183	89	94	\$19,598.00	\$539.00	\$19,059.00
SENECA	2	5	1	4	\$586.00	\$0.00	\$586.00
SHELBY	2	3	0	3	\$660.00	\$0.00	\$660.00
STARK	271	1,091	534	557	\$106,934.00	\$1,096.00	\$105,838.00
SUMMIT	367	1,489	723	766	\$150,086.00	\$4,944.00	\$145,142.00
TRUMBULL	68	303	136	167	\$29,042.00	\$686.00	\$28,356.00
TUSCARAWAS	53	216	104	112	\$20,343.00	\$0.00	\$20,343.00
UNION	39	149	74	75	\$13,317.00	\$0.00	\$13,317.00
VAN WERT	0	0	0	0	\$0.00	\$0.00	\$0.00
VINTON	18	73	36	37	\$7,395.00	\$0.00	\$7,395.00
WARREN	2	4	2	2	\$596.00	\$0.00	\$596.00
WASHINGTON	0	0	0	0	\$0.00	\$0.00	\$0.00
WAYNE	32	124	60	64	\$12,536.00	\$759.00	\$11,777.00
WILLIAMS	14	50	27	23	\$4,036.00	\$0.00	\$4,036.00
WOOD	8	25	8	17	\$2,079.00	\$0.00	\$2,079.00
WYANDOT	5	15	5	10	\$1,450.00	\$0.00	\$1,450.00

Source: GRP342RA Report from Management Information Services. Data includes ADC-Regular, ADC-Incapacitated, and Vendor Payments.

**TABLE 2
TITLE IV-E FOSTER CARE
JUNE 2004**

OHIO COUNTY	FOSTER CARE						ADOPTION ASSISTANCE		TOTAL FOSTER CARE AND ADOPTION ASSISTANCE	
	FOSTER FAMILY HOMES		CHILD CARE INSTITUTIONS		HOMES & INSTITUTIONS		CHILDREN	GROSS AMOUNT	CHILDREN	GROSS AMOUNT
	CHILDREN	GROSS AMOUNT	CHILDREN	GROSS AMOUNT	CHILDREN	GROSS AMOUNT				
STATEWIDE	3,460	\$1,421,224.04	4,365	\$4,924,918.87	7,825	\$6,346,142.91	19,198	\$7,194,927.96	27,023	\$13,541,070.87
ADAMS	18	\$6,397.24	0	\$0.00	18	\$6,397.24	37	\$11,697.94	55	\$18,095.18
ALLEN	63	\$25,757.16	36	\$42,353.28	99	\$68,110.44	137	\$39,661.70	236	\$107,772.14
ASHLAND	2	\$710.76	0	\$0.00	2	\$710.76	9	\$2,250.00	11	\$2,960.76
ASHTABULA	0	\$0.00	6	\$1,035.00	6	\$1,035.00	167	\$58,515.86	173	\$59,550.86
ATHENS	54	\$21,667.92	47	\$62,127.93	101	\$83,795.85	110	\$36,239.47	211	\$120,035.32
AUGLAIZE	9	\$3,453.67	5	\$5,033.56	14	\$8,487.23	40	\$15,019.67	54	\$23,506.90
BELMONT	2	\$692.98	20	\$13,617.11	22	\$14,310.09	112	\$40,820.58	134	\$55,130.67
BROWN	19	\$5,648.93	1	\$4,368.13	20	\$10,017.06	35	\$9,458.95	55	\$19,476.01
BUTLER	115	\$50,848.37	164	\$155,504.59	279	\$206,352.96	509	\$151,280.73	788	\$357,633.69
CARROLL	7	\$5,763.36	0	\$0.00	7	\$5,763.36	4	\$1,000.00	11	\$6,763.36
CHAMPAIGN	1	\$553.79	15	\$13,797.76	16	\$14,351.55	14	\$4,536.49	30	\$18,888.04
CLARK	0	\$0.00	65	\$30,700.20	65	\$30,700.20	308	\$99,511.47	373	\$130,211.67
CLERMONT	81	\$23,548.86	121	\$40,670.06	202	\$64,218.92	202	\$56,008.40	404	\$120,227.32
CLINTON	22	\$12,855.27	1	\$2,718.38	23	\$15,573.65	52	\$18,315.78	75	\$33,889.43
COLUMBIANA	32	\$3,968.83	0	\$0.00	32	\$3,968.83	62	\$16,799.57	94	\$20,768.40
COSHOCTON	15	\$9,386.13	0	\$0.00	15	\$9,386.13	44	\$13,458.01	59	\$22,844.14
CRAWFORD	0	\$0.00	0	\$0.00	0	\$0.00	37	\$10,493.44	37	\$10,493.44
CUYAHOGA	725	\$201,424.86	1,148	\$2,056,383.48	1,873	\$2,257,808.34	4,648	\$2,207,739.22	6,521	\$4,465,547.56
DARKE	15	\$3,058.78	9	\$12,304.36	24	\$15,363.14	26	\$8,034.03	50	\$23,397.17
DEFIANCE	8	(\$354.70)	2	\$2,081.52	10	\$1,726.82	34	\$10,615.73	44	\$12,342.55
DELAWARE	21	\$8,753.57	1	\$6,087.34	22	\$14,840.91	58	\$17,594.71	80	\$32,435.62
ERIE	36	\$22,002.65	43	\$56,490.07	79	\$78,492.72	90	\$27,261.36	169	\$105,754.08
FAIRFIELD	0	\$0.00	0	\$0.00	0	\$0.00	135	\$35,455.77	135	\$35,455.77
FAYETTE	5	\$1,954.59	0	\$0.00	5	\$1,954.59	15	\$3,750.00	20	\$5,704.59
FRANKLIN	0	\$0.00	1,359	\$513,026.37	1,359	\$513,026.37	2,434	\$841,877.23	3,793	\$1,354,903.60
FULTON	1	\$248.76	14	\$24,859.92	15	\$25,108.68	14	\$4,092.28	29	\$29,200.96
GALLIA	11	\$3,257.63	5	\$4,550.97	16	\$7,808.60	40	\$9,965.00	56	\$17,773.60
GEAUGA	12	\$5,318.86	0	\$0.00	12	\$5,318.86	103	\$34,208.63	115	\$39,527.49
GREENE	0	\$0.00	21	\$9,975.91	21	\$9,975.91	86	\$26,005.31	107	\$35,981.22

SOURCE: GBS003RB Report from Management Information Services. Federal funds only.

**TABLE 2
TITLE IV-E FOSTER CARE
JUNE 2004**

OHIO COUNTY	FOSTER CARE						ADOPTION ASSISTANCE		TOTAL FOSTER CARE AND ADOPTION ASSISTANCE	
	FOSTER FAMILY HOMES		CHILD CARE INSTITUTIONS		HOMES & INSTITUTIONS		CHILDREN	GROSS AMOUNT	CHILDREN	GROSS AMOUNT
	CHILDREN	GROSS AMOUNT	CHILDREN	GROSS AMOUNT	CHILDREN	GROSS AMOUNT				
STATEWIDE	3,460	\$1,421,224.04	4,365	\$4,924,918.87	7,825	\$6,346,142.91	19,198	\$7,194,927.96	27,023	\$13,541,070.87
GUERNSEY	21	\$8,095.26	19	\$37,451.81	40	\$45,547.07	76	\$22,811.65	116	\$68,358.72
HAMILTON	0	\$0.00	0	\$0.00	0	\$0.00	1,497	\$597,500.55	1,497	\$597,500.55
HANCOCK	11	\$6,528.29	16	\$19,791.76	27	\$26,320.05	44	\$12,698.42	71	\$39,018.47
HARDIN	27	\$22,213.53	6	\$12,797.97	33	\$35,011.50	28	\$6,980.52	61	\$41,992.02
HARRISON	0	\$0.00	0	\$0.00	0	\$0.00	29	\$9,515.50	29	\$9,515.50
HENRY	0	\$0.00	10	\$13,658.68	10	\$13,658.68	24	\$7,425.05	34	\$21,083.73
HIGHLAND	14	\$2,676.62	10	\$13,487.93	24	\$16,164.55	14	\$5,025.11	38	\$21,189.66
HOCKING	25	\$6,618.95	8	(\$3,678.58)	33	\$2,940.37	45	\$14,453.65	78	\$17,394.02
HOLMES	5	\$2,221.10	0	\$0.00	5	\$2,221.10	27	\$11,125.29	32	\$13,346.39
HURON	20	\$10,483.68	2	\$3,001.67	22	\$13,485.35	29	\$8,321.38	51	\$21,806.73
JACKSON	0	\$0.00	13	\$12,012.47	13	\$12,012.47	15	\$3,750.00	28	\$15,762.47
JEFFERSON	37	\$23,934.61	34	\$71,016.10	71	\$94,950.71	57	\$22,240.01	128	\$117,190.72
KNOX	11	\$3,269.47	0	\$0.00	11	\$3,269.47	38	\$10,669.76	49	\$13,939.23
LAKE	42	\$16,961.22	27	\$81,318.46	69	\$98,279.68	142	\$38,177.63	211	\$136,457.31
LAWRENCE	6	\$1,688.01	0	\$0.00	6	\$1,688.01	37	\$9,990.37	43	\$11,678.38
LICKING	90	\$29,905.39	102	\$157,837.74	192	\$187,743.13	301	\$98,102.12	493	\$285,845.25
LOGAN	15	\$5,193.22	3	\$6,000.47	18	\$11,193.69	38	\$12,791.93	56	\$23,985.62
LORAIN	0	\$0.00	0	\$0.00	0	\$0.00	413	\$134,544.43	413	\$134,544.43
LUCAS	459	\$224,732.71	0	\$0.00	459	\$224,732.71	1,581	\$588,428.29	2,040	\$813,161.00
MADISON	0	\$0.00	9	\$14,614.83	9	\$14,614.83	26	\$8,847.30	35	\$23,462.13
MAHONING	126	\$75,380.36	37	\$127,598.34	163	\$202,978.70	237	\$67,924.31	400	\$270,903.01
MARION	21	\$16,104.52	14	\$36,420.10	35	\$52,524.62	74	\$24,014.20	109	\$76,538.82
MEDINA	0	\$0.00	0	\$0.00	0	\$0.00	83	\$27,987.15	83	\$27,987.15
MEIGS	1	\$444.22	6	\$4,599.66	7	\$5,043.88	5	\$1,250.00	12	\$6,293.88
MERCER	3	\$2,354.37	2	\$2,284.10	5	\$4,638.47	31	\$8,253.43	36	\$12,891.90
MIAMI	23	\$727.96	35	\$42,992.07	58	\$43,720.03	114	\$41,279.04	172	\$84,999.07
MONROE	5	\$1,903.05	2	\$2,426.19	7	\$4,329.24	9	\$2,990.35	16	\$7,319.59
MONTGOMERY	369	\$140,930.52	369	\$536,407.91	738	\$677,338.43	1,157	\$524,385.80	1,895	\$1,201,724.23
MORGAN	0	\$0.00	0	\$0.00	0	\$0.00	10	\$2,484.00	10	\$2,484.00
MORROW	0	\$0.00	0	\$0.00	0	\$0.00	42	\$11,795.37	42	\$11,795.37

SOURCE: GBS003RB Report from Management Information Services. Federal funds only.

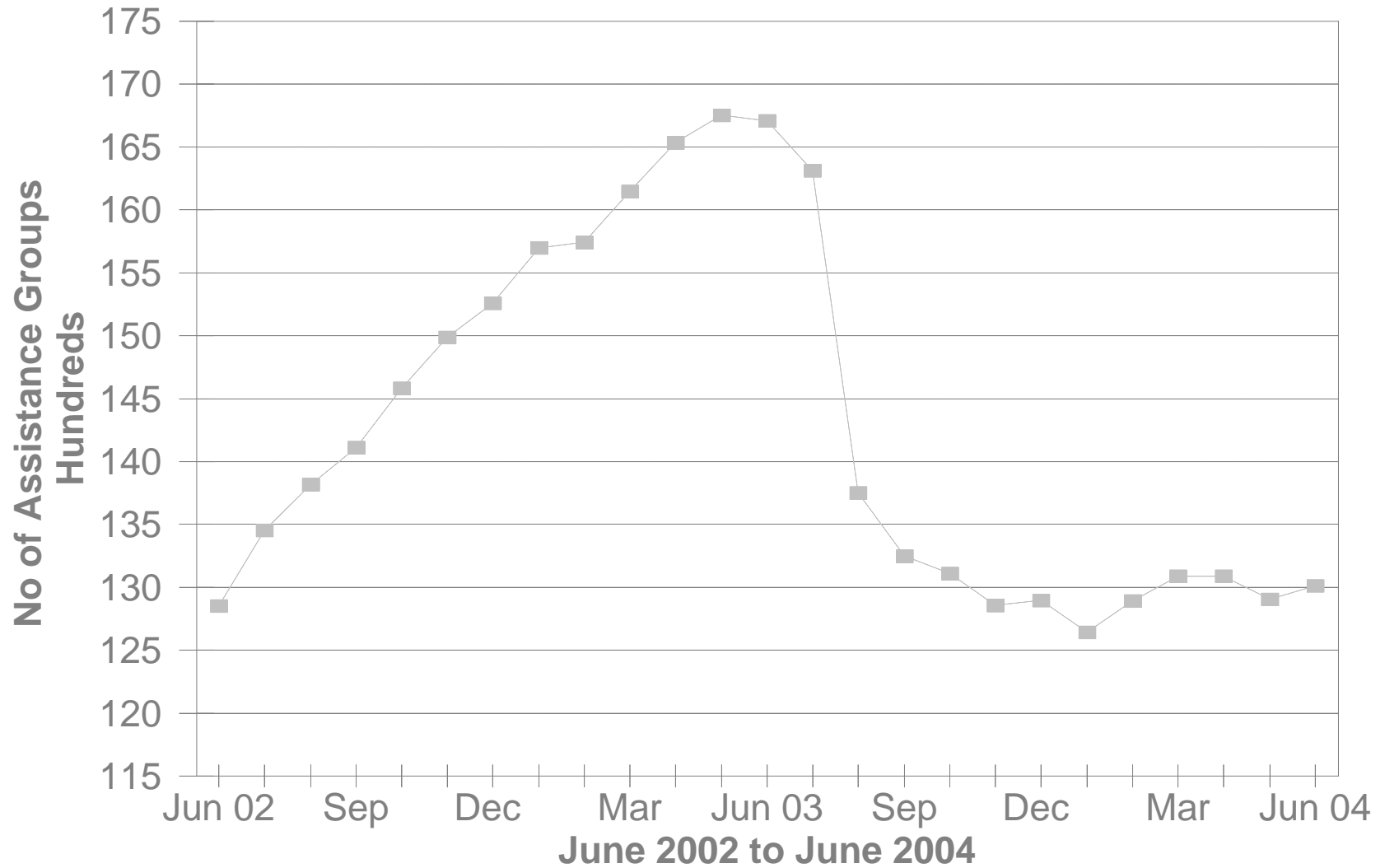
**TABLE 2
TITLE IV-E FOSTER CARE
JUNE 2004**

OHIO COUNTY	FOSTER CARE						ADOPTION ASSISTANCE		TOTAL FOSTER CARE AND ADOPTION ASSISTANCE	
	FOSTER FAMILY HOMES		CHILD CARE INSTITUTIONS		HOMES & INSTITUTIONS		CHILDREN	GROSS AMOUNT	CHILDREN	GROSS AMOUNT
	CHILDREN	GROSS AMOUNT	CHILDREN	GROSS AMOUNT	CHILDREN	GROSS AMOUNT				
STATEWIDE	3,460	\$1,421,224.04	4,365	\$4,924,918.87	7,825	\$6,346,142.91	19,198	\$7,194,927.96	27,023	\$13,541,070.87
MUSKINGUM	0	\$0.00	8	\$1,635.00	8	\$1,635.00	110	\$32,854.45	118	\$34,489.45
NOBLE	2	\$426.44	0	\$0.00	2	\$426.44	5	\$1,250.00	7	\$1,676.44
OTTAWA	0	\$0.00	0	\$0.00	0	\$0.00	3	\$898.07	3	\$898.07
PAULDING	3	\$642.62	4	\$6,035.42	7	\$6,678.04	21	\$5,812.67	28	\$12,490.71
PERRY	23	\$9,390.29	12	\$15,384.45	35	\$24,774.74	35	\$10,944.89	70	\$35,719.63
PICKAWAY	10	\$4,004.90	0	\$0.00	10	\$4,004.90	12	\$3,444.21	22	\$7,449.11
PIKE	6	\$3,287.23	21	\$15,889.61	27	\$19,176.84	22	\$5,860.91	49	\$25,037.75
PORTAGE	0	\$0.00	0	\$0.00	0	\$0.00	131	\$57,941.18	131	\$57,941.18
PREBLE	20	\$12,737.31	13	\$15,458.85	33	\$28,196.16	34	\$8,873.55	67	\$37,069.71
PUTNAM	0	\$0.00	2	\$2,601.78	2	\$2,601.78	13	\$3,250.00	15	\$5,851.78
RICHLAND	0	\$0.00	0	\$0.00	0	\$0.00	264	\$87,805.81	264	\$87,805.81
ROSS	10	\$2,034.47	47	\$41,260.22	57	\$43,294.69	44	\$15,703.95	101	\$58,998.64
SANDUSKY	11	\$1,390.15	10	\$14,707.69	21	\$16,097.84	60	\$15,643.62	81	\$31,741.46
SCIOTO	40	\$15,716.63	52	\$50,396.30	92	\$66,112.93	45	\$12,557.74	137	\$78,670.67
SENECA	28	\$18,049.48	18	\$72,197.75	46	\$90,247.23	83	\$21,389.47	129	\$111,636.70
SHELBY	4	\$2,464.54	5	\$7,499.77	9	\$9,964.31	59	\$19,674.98	68	\$29,639.29
STARK	0	\$0.00	192	\$68,542.60	192	\$68,542.60	938	\$279,830.16	1,130	\$348,372.76
SUMMIT	353	\$221,754.87	0	\$0.00	353	\$221,754.87	820	\$253,954.22	1,173	\$475,709.09
TRUMBULL	156	\$56,919.41	34	\$103,088.78	190	\$160,008.19	259	\$67,527.30	449	\$227,535.49
TUSCARAWAS	35	\$9,293.11	46	\$60,192.42	81	\$69,485.53	118	\$32,678.63	199	\$102,164.16
UNION	13	\$2,677.17	1	\$6,953.46	14	\$9,630.63	30	\$7,855.38	44	\$17,486.01
VAN WERT	2	\$768.79	5	\$22,714.01	7	\$23,482.80	22	\$8,397.56	29	\$31,880.36
VINTON	14	\$6,674.24	4	\$2,055.36	18	\$8,729.60	16	\$4,681.14	34	\$13,410.74
WARREN	32	\$9,980.24	12	\$15,582.44	44	\$25,562.68	84	\$26,402.23	128	\$51,964.91
WASHINGTON	9	\$3,245.78	3	\$4,565.95	12	\$7,811.73	35	\$9,660.35	47	\$17,472.08
WAYNE	69	\$21,835.97	37	\$101,916.38	106	\$123,752.35	68	\$25,676.80	174	\$149,429.15
WILLIAMS	7	(\$4,624.39)	9	\$11,976.38	16	\$7,351.99	22	\$5,944.21	38	\$13,296.20
WOOD	3	\$870.67	18	\$29,645.43	21	\$30,516.10	47	\$16,038.80	68	\$46,554.90
WYANDOT	5	\$2,398.79	5	\$4,893.20	10	\$7,291.99	13	\$4,945.74	23	\$12,237.73

SOURCE: GBS003RB Report from Management Information Services. Federal funds only.

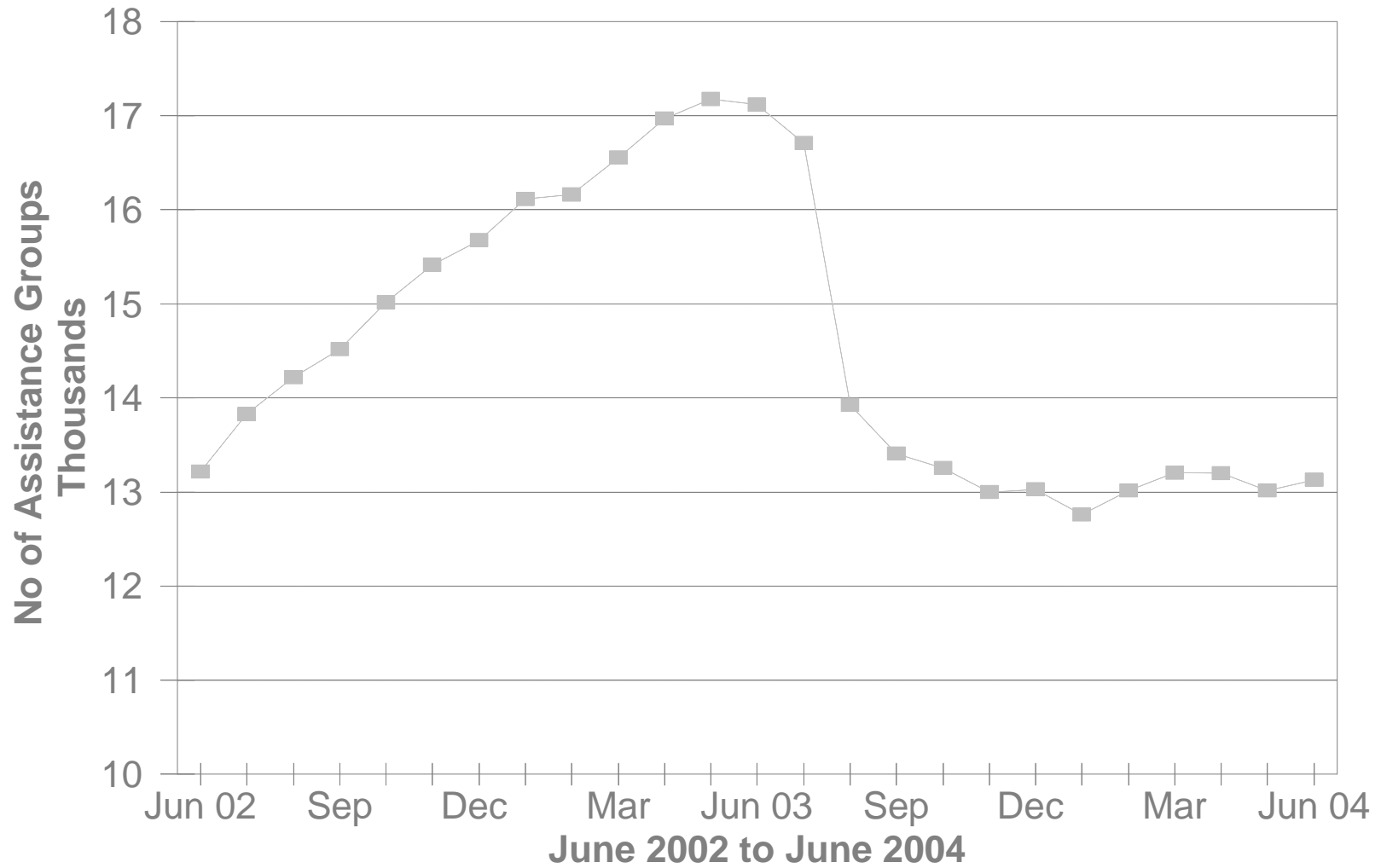
DA Cash Assistance Groups

During The Last 25 Month



DA Cash Recipients

During The Last 25 Month



**TABLE 3
DISABILITY ASSISTANCE (DA)
JUNE 2004**

OHIO COUNTY	CASH ASSISTANCE							MEDICAL ASSISTANCE	
	ASSISTANCE GROUPS	RECIPIENTS	ADULTS	CHILDREN	ACTUAL EXPENDITURES			UNDUPLICATED RECIPIENTS	ACTUAL AMOUNT PAID
					GROSS AMOUNT	CANCELLED AMOUNT	NET AMOUNT		
STATEWIDE	13,013	13,125	13,125	0	\$1,885,153.00	\$109,788.00	\$1,775,365.00	11,754	\$5,995,647.18
ADAMS	67	67	67	0	\$8,432.00	\$973.00	\$7,459.00	52	\$27,803.43
ALLEN	77	77	77	0	\$10,287.00	\$230.00	\$10,057.00	49	\$39,203.52
ASHLAND	34	35	35	0	\$4,362.00	\$115.00	\$4,247.00	31	\$15,597.63
ASHTABULA	294	294	294	0	\$40,413.00	\$1,150.00	\$39,263.00	88	\$35,862.30
ATHENS	209	211	211	0	\$29,584.00	\$1,774.00	\$27,810.00	66	\$25,718.06
AUGLAIZE	24	24	24	0	\$2,994.00	\$0.00	\$2,994.00	26	\$9,805.85
BELMONT	131	131	131	0	\$17,079.00	\$345.00	\$16,734.00	68	\$24,452.81
BROWN	38	38	38	0	\$6,625.00	\$115.00	\$6,510.00	43	\$26,737.54
BUTLER	434	434	434	0	\$65,080.00	\$8,889.00	\$56,191.00	196	\$115,839.91
CARROLL	23	23	23	0	\$2,620.00	\$0.00	\$2,620.00	17	\$7,147.11
CHAMPAIGN	36	36	36	0	\$7,559.00	\$0.00	\$7,559.00	39	\$24,169.62
CLARK	234	235	235	0	\$36,622.00	\$1,920.00	\$34,702.00	221	\$144,039.97
CLERMONT	180	182	182	0	\$29,119.00	\$1,265.00	\$27,854.00	59	\$34,184.19
CLINTON	58	58	58	0	\$9,273.00	\$230.00	\$9,043.00	28	\$19,570.27
COLUMBIANA	127	128	128	0	\$17,849.00	\$575.00	\$17,274.00	123	\$69,983.66
COSHOCTON	70	70	70	0	\$9,188.00	\$230.00	\$8,958.00	62	\$26,095.29
CRAWFORD	48	48	48	0	\$6,276.00	\$0.00	\$6,276.00	25	\$13,135.96
CUYAHOGA	1,718	1,735	1,735	0	\$227,268.00	\$19,437.00	\$207,831.00	2,605	\$1,123,406.96
DARKE	33	34	34	0	\$5,468.00	\$0.00	\$5,468.00	13	\$5,037.80
DEFIANCE	13	13	13	0	\$1,786.00	\$0.00	\$1,786.00	33	\$26,314.33
DELAWARE	63	64	64	0	\$14,636.00	\$115.00	\$14,521.00	44	\$21,933.74
ERIE	62	63	63	0	\$9,922.00	\$230.00	\$9,692.00	46	\$21,399.79
FAIRFIELD	82	82	82	0	\$13,272.00	\$658.00	\$12,614.00	59	\$43,479.98
FAYETTE	17	17	17	0	\$1,869.00	\$0.00	\$1,869.00	36	\$22,413.24
FRANKLIN	1,102	1,123	1,123	0	\$153,747.00	\$14,890.00	\$138,857.00	1,175	\$744,416.67
FULTON	15	15	15	0	\$1,725.00	\$115.00	\$1,610.00	16	\$7,149.16
GALLIA	35	35	35	0	\$3,925.00	\$0.00	\$3,925.00	92	\$56,821.07
GEAUGA	30	30	30	0	\$5,052.00	\$0.00	\$5,052.00	12	\$6,471.40
GREENE	173	173	173	0	\$27,530.00	\$1,693.00	\$25,837.00	96	\$45,592.80

*SOURCE: GRP342RA Report from Management Information Services and BOMC 9260-R001 Report from Medicaid Management Information Services.

**TABLE 3
DISABILITY ASSISTANCE (DA)
JUNE 2004**

OHIO COUNTY	CASH ASSISTANCE							MEDICAL ASSISTANCE	
	ASSISTANCE GROUPS	RECIPIENTS	ADULTS	CHILDREN	ACTUAL EXPENDITURES			UNDUPLICATED RECIPIENTS	ACTUAL AMOUNT PAID
					GROSS AMOUNT	CANCELLED AMOUNT	NET AMOUNT		
STATEWIDE	13,013	13,125	13,125	0	\$1,885,153.00	\$109,788.00	\$1,775,365.00	11,754	\$5,995,647.18
GUERNSEY	129	131	131	0	\$16,335.00	\$115.00	\$16,220.00	30	\$11,908.46
HAMILTON	883	885	885	0	\$124,571.00	\$16,770.00	\$107,801.00	390	\$185,975.91
HANCOCK	56	59	59	0	\$9,775.00	\$345.00	\$9,430.00	42	\$20,811.93
HARDIN	24	24	24	0	\$4,761.00	\$552.00	\$4,209.00	24	\$16,931.58
HARRISON	35	37	37	0	\$4,112.00	\$0.00	\$4,112.00	15	\$5,186.77
HENRY	6	6	6	0	\$1,352.00	\$52.00	\$1,300.00	8	\$2,785.38
HIGHLAND	60	60	60	0	\$9,441.00	\$115.00	\$9,326.00	47	\$25,515.53
HOCKING	50	50	50	0	\$7,409.00	\$115.00	\$7,294.00	30	\$17,924.41
HOLMES	24	24	24	0	\$2,760.00	\$0.00	\$2,760.00	10	\$5,346.55
HURON	27	27	27	0	\$3,216.00	\$115.00	\$3,101.00	27	\$19,126.54
JACKSON	94	94	94	0	\$13,554.00	\$460.00	\$13,094.00	48	\$23,452.21
JEFFERSON	166	166	166	0	\$22,390.00	\$983.00	\$21,407.00	131	\$65,254.36
KNOX	64	64	64	0	\$12,199.00	\$230.00	\$11,969.00	46	\$22,943.81
LAKE	177	177	177	0	\$25,559.00	\$2,510.00	\$23,049.00	88	\$44,838.29
LAWRENCE	76	76	76	0	\$12,269.00	\$460.00	\$11,809.00	90	\$43,345.01
LICKING	174	178	178	0	\$29,187.00	\$1,101.00	\$28,086.00	78	\$47,429.21
LOGAN	32	32	32	0	\$3,759.00	\$115.00	\$3,644.00	37	\$13,830.13
LORAIN	253	254	254	0	\$36,060.00	\$2,318.00	\$33,742.00	247	\$111,463.14
LUCAS	617	620	620	0	\$93,018.00	\$3,105.00	\$89,913.00	752	\$343,504.70
MADISON	25	25	25	0	\$3,518.00	\$0.00	\$3,518.00	34	\$19,636.69
MAHONING	338	339	339	0	\$46,743.00	\$3,167.00	\$43,576.00	507	\$282,564.63
MARION	97	98	98	0	\$12,678.00	\$460.00	\$12,218.00	36	\$24,037.90
MEDINA	93	93	93	0	\$13,783.00	\$900.00	\$12,883.00	51	\$24,327.02
MEIGS	60	61	61	0	\$6,872.00	\$115.00	\$6,757.00	70	\$34,852.98
MERCER	26	26	26	0	\$5,715.00	\$115.00	\$5,600.00	17	\$6,194.38
MIAMI	56	56	56	0	\$7,952.00	\$115.00	\$7,837.00	38	\$19,278.13
MONROE	16	16	16	0	\$3,220.00	\$0.00	\$3,220.00	27	\$11,729.54
MONTGOMERY	493	502	502	0	\$78,618.00	\$1,533.00	\$77,085.00	747	\$430,873.91
MORGAN	43	43	43	0	\$6,480.00	\$115.00	\$6,365.00	24	\$9,429.97
MORROW	22	22	22	0	\$3,142.00	\$0.00	\$3,142.00	37	\$18,827.74

*SOURCE: GRP342RA Report from Management Information Services and BOMC 9260-R001 Report from Medicaid Management Information Services.

**TABLE 3
DISABILITY ASSISTANCE (DA)
JUNE 2004**

OHIO COUNTY	CASH ASSISTANCE							MEDICAL ASSISTANCE	
	ASSISTANCE GROUPS	RECIPIENTS	ADULTS	CHILDREN	ACTUAL EXPENDITURES			UNDUPLICATED RECIPIENTS	ACTUAL AMOUNT PAID
					GROSS AMOUNT	CANCELLED AMOUNT	NET AMOUNT		
STATEWIDE	13,013	13,125	13,125	0	\$1,885,153.00	\$109,788.00	\$1,775,365.00	11,754	\$5,995,647.18
MUSKINGUM	211	213	213	0	\$31,058.00	\$115.00	\$30,943.00	98	\$42,709.92
NOBLE	24	24	24	0	\$3,264.00	\$115.00	\$3,149.00	13	\$3,673.11
OTTAWA	20	20	20	0	\$2,246.00	\$115.00	\$2,131.00	26	\$13,777.92
PAULDING	16	16	16	0	\$1,897.00	\$0.00	\$1,897.00	9	\$2,165.26
PERRY	67	69	69	0	\$10,095.00	\$0.00	\$10,095.00	52	\$32,173.19
PICKAWAY	38	39	39	0	\$6,135.00	\$0.00	\$6,135.00	51	\$26,490.90
PIKE	43	43	43	0	\$5,290.00	\$115.00	\$5,175.00	54	\$20,456.84
PORTAGE	130	131	131	0	\$16,275.00	\$230.00	\$16,045.00	81	\$47,238.54
PREBLE	28	28	28	0	\$3,220.00	\$0.00	\$3,220.00	17	\$12,459.40
PUTNAM	14	14	14	0	\$2,051.00	\$0.00	\$2,051.00	8	\$4,601.20
RICHLAND	174	175	175	0	\$23,483.00	\$1,790.00	\$21,693.00	79	\$39,353.29
ROSS	100	100	100	0	\$13,193.00	\$230.00	\$12,963.00	101	\$49,042.81
SANDUSKY	38	38	38	0	\$6,306.00	\$0.00	\$6,306.00	18	\$10,086.68
SCIOTO	215	220	220	0	\$30,064.00	\$1,195.00	\$28,869.00	107	\$47,457.61
SENECA	46	47	47	0	\$6,415.00	\$115.00	\$6,300.00	42	\$15,777.94
SHELBY	21	21	21	0	\$3,073.00	\$115.00	\$2,958.00	25	\$8,886.57
STARK	528	533	533	0	\$81,071.00	\$4,896.00	\$76,175.00	254	\$124,717.44
SUMMIT	653	661	661	0	\$99,555.00	\$3,910.00	\$95,645.00	1,046	\$529,638.93
TRUMBULL	368	369	369	0	\$53,691.00	\$1,637.00	\$52,054.00	166	\$77,300.20
TUSCARAWAS	97	98	98	0	\$13,302.00	\$249.00	\$13,053.00	65	\$32,103.72
UNION	17	17	17	0	\$1,955.00	\$0.00	\$1,955.00	45	\$24,634.38
VAN WERT	16	16	16	0	\$2,693.00	\$0.00	\$2,693.00	7	\$2,490.88
VINTON	37	37	37	0	\$4,140.00	\$230.00	\$3,910.00	42	\$25,384.64
WARREN	65	66	66	0	\$13,304.00	\$115.00	\$13,189.00	50	\$29,699.59
WASHINGTON	95	96	96	0	\$16,216.00	\$230.00	\$15,986.00	35	\$12,980.27
WAYNE	229	234	234	0	\$29,528.00	\$3,111.00	\$26,417.00	40	\$23,750.82
WILLIAMS	28	28	28	0	\$4,299.00	\$345.00	\$3,954.00	16	\$6,142.60
WOOD	44	44	44	0	\$9,139.00	\$0.00	\$9,139.00	44	\$26,808.83
WYANDOT	8	8	8	0	\$2,185.00	\$0.00	\$2,185.00	15	\$10,532.83
UNKNOWN									\$0.00

*SOURCE: GRP342RA Report from Management Information Services and BOMC 9260-R001 Report from Medicaid Management Information Services.

**TABLE 3-A
DA PAYMENTS FOR MEDICAL SERVICES
JUNE 2004**

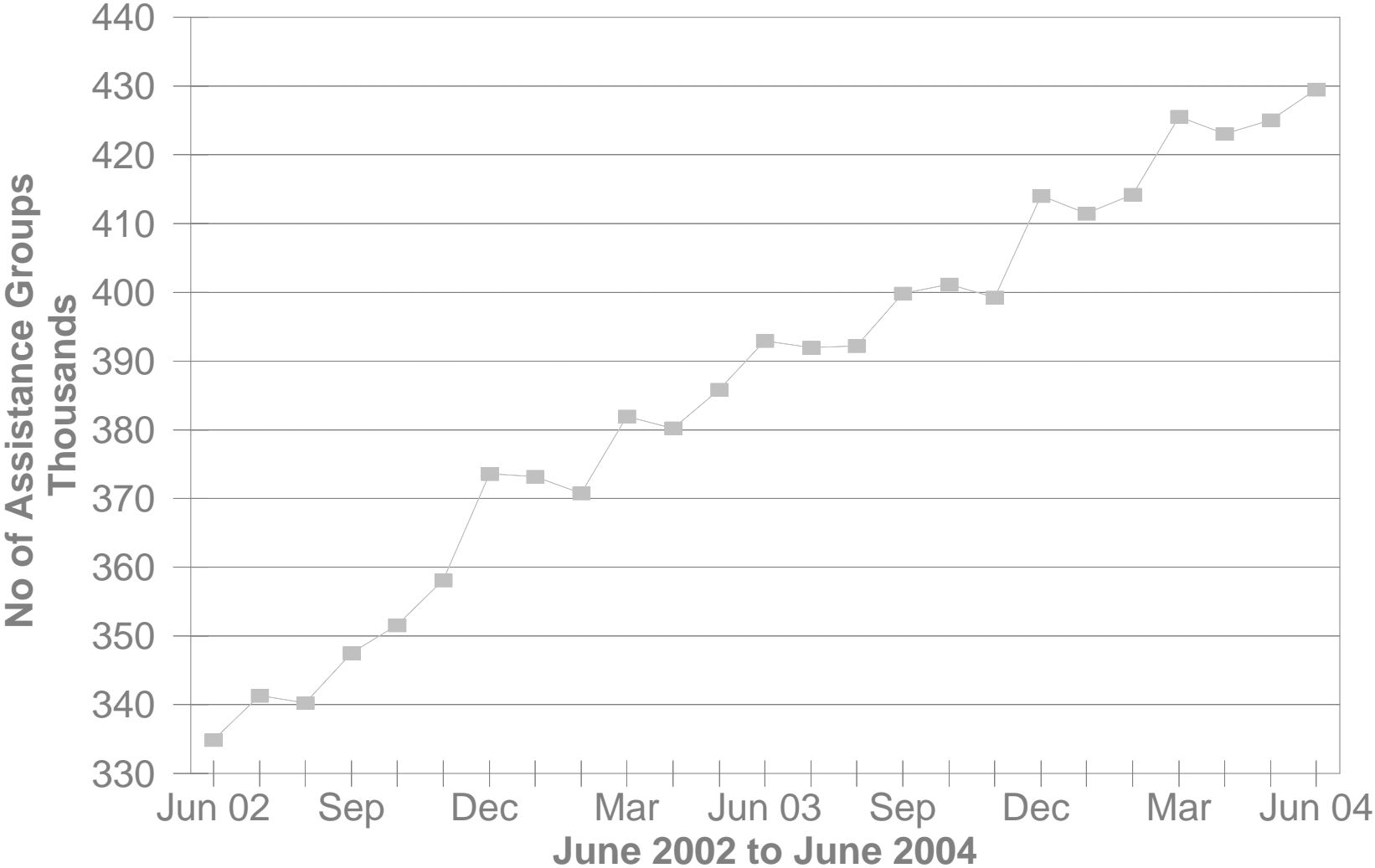
CATEGORY OF SERVICES	DISABILITY ASSISTANCE			
	PAYMENTS	CLAIM FREQUENCY	DUPLICATED RECIPIENTS	PERCENT OF TOTAL
AMBULANCE SERVICES	\$0.00	0	0	0.0%
AMBULATORY SURGERY	\$29,064.01	74	67	0.5%
AMBULETTE SERVICES	\$0.00	0	0	0.0%
CHIROPRACTER SERVICES	\$0.00	0	0	0.0%
CLINIC	\$72,130.06	1,503	625	1.2%
DENTAL SERVICES	\$22,291.35	188	163	0.4%
EPSDT	\$0.00	0	0	0.0%
FAMILY PLANNING	\$1,075.44	21	18	0.0%
FEDERALLY QUALIFIED HEALTH CTR	\$0.00	0	0	0.0%
HEALTH MAINTENANCE ORGANIZATION	\$0.00	0	0	0.0%
HOME HEALTH SERVICES	\$0.00	0	0	0.0%
INDEPENDENT LABORATORY	\$59,630.32	1,353	962	1.0%
INPATIENT HOSPITAL	\$0.00	0	0	0.0%
ICF	\$0.00	0	0	0.0%
MIDWIFERY SERVICES	\$11,856.79	202	173	0.2%
OPTOMETRIC SERVICES	\$0.00	0	0	0.0%
OUTPATIENT HEALTH SERVICES	(\$54.73)	(1)	1	-0.0%
PASSPORT WAIVER III	\$0.00	0	0	0.0%
OUTPATIENT HOSPITAL GENERAL	\$0.00	0	0	0.0%
PHYSICAL THERAPY SERVICES	\$0.00	0	0	0.0%
PHYSICIAN SERVICES	\$1,464,550.86	20,323	7,449	24.4%
PHYSIOLOGICAL LABORATORY	\$17,166.58	52	49	0.3%
PODIATRISTS THERAPY	\$27,090.70	455	322	0.5%
PRESCRIBED DRUGS	\$4,139,451.86	67,650	10,404	69.0%
PRIVATE DUTY NURSING SERVICES	\$0.00	0	0	0.0%
PSYCHOLOGY SERVICES	\$0.00	0	0	0.0%
RURAL HEALTH SERVICES	\$0.00	0	0	0.0%
SNF	\$0.00	0	0	0.0%
SUPPLIES AND MEDICAL EQUIPMENT	\$131,364.39	2,531	1,189	2.2%
WAIVERED SERVICES	\$20,029.55	185	166	0.3%
OTHER	\$0.00	0	0	0.0%
STATEWIDE TOTAL	\$5,995,647.18	94,536	21,588	100.00%

SOURCE: BOMC 9260 Report from Medicaid Management Information Services.

NOTE: Recipients are unduplicated within Category of Services, however, the Statewide Total represents a duplicated count.

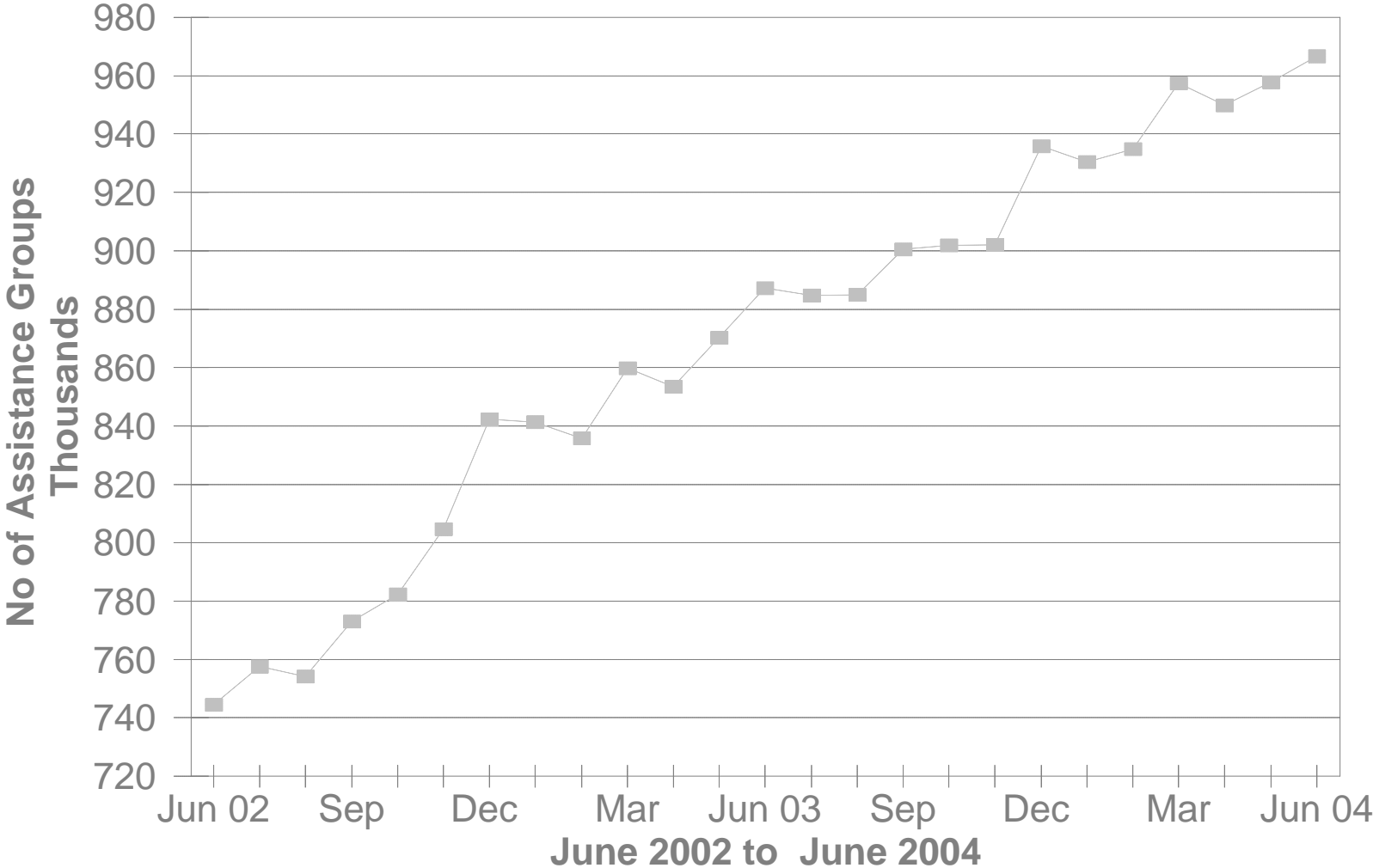
No of FNS Benefits Assistance Groups

During The Last 25 Month



No of FNS Benefits Cash Recipients

During The Last 25 Month



**TABLE 5
FNS BENEFITS
JUNE 2004**

OHIO COUNTY	PERSONS					ASSISTANCE GROUPS			TOTAL COUPONS ISSUED
	PUBLIC ASSISTANCE	NON-PUBLIC ASSISTANCE	TOTAL	AVERAGE ISSUANCE	% CHANGE PREV. MO.	PUBLIC ASSISTANCE	NON-PUBLIC ASSISTANCE	TOTAL	
STATEWIDE	113,167	853,575	966,742	\$89	0.9%	40,326	389,179	429,505	\$86,088,824.00
ADAMS	45	4,160	4,205	\$82	0.2%	16	1,750	1,766	\$343,778.00
ALLEN	533	7,705	8,238	\$88	0.6%	171	3,335	3,506	\$721,228.00
ASHLAND	98	2,558	2,656	\$85	-0.9%	34	1,055	1,089	\$225,560.00
ASHTABULA	938	9,432	10,370	\$86	-0.4%	353	4,280	4,633	\$886,696.00
ATHENS	985	5,589	6,574	\$85	0.8%	333	2,820	3,153	\$556,332.00
AUGLAIZE	9	1,632	1,641	\$86	4.9%	4	707	711	\$141,888.00
BELMONT	650	6,391	7,041	\$78	-0.6%	224	3,018	3,242	\$551,510.00
BROWN	103	3,209	3,312	\$84	1.6%	34	1,358	1,392	\$278,186.00
BUTLER	2,119	19,821	21,940	\$93	0.7%	812	9,002	9,814	\$2,032,387.00
CARROLL	89	1,922	2,011	\$82	-1.6%	33	795	828	\$163,923.00
CHAMPAIGN	282	1,954	2,236	\$87	3.6%	100	878	978	\$195,188.00
CLARK	1,741	13,706	15,447	\$88	1.1%	608	6,330	6,938	\$1,365,655.00
CLERMONT	775	7,978	8,753	\$90	1.9%	280	3,370	3,650	\$791,043.00
CLINTON	148	2,606	2,754	\$88	2.2%	56	1,184	1,240	\$243,007.00
COLUMBIANA	548	10,485	11,033	\$85	1.3%	206	4,408	4,614	\$936,715.00
COSHOCTON	387	3,118	3,505	\$85	0.8%	139	1,386	1,525	\$297,752.00
CRAWFORD	377	3,615	3,992	\$82	-1.0%	135	1,618	1,753	\$328,150.00
CUYAHOGA	14,766	154,184	168,950	\$91	0.7%	5,465	73,090	78,555	\$15,305,848.00
DARKE	211	1,748	1,959	\$79	-1.7%	74	783	857	\$155,632.00
DEFIANCE	179	1,996	2,175	\$86	1.0%	58	827	885	\$186,528.00
DELAWARE	423	3,339	3,762	\$90	1.6%	142	1,515	1,657	\$337,207.00
ERIE	156	4,698	4,854	\$85	-1.2%	53	2,086	2,139	\$411,136.00
FAIRFIELD	926	6,587	7,513	\$85	-0.2%	316	2,952	3,268	\$641,490.00
FAYETTE	108	2,236	2,344	\$82	-0.2%	40	986	1,026	\$191,061.00
FRANKLIN	15,337	93,051	108,388	\$94	0.8%	5,290	41,242	46,532	\$10,190,266.00
FULTON	79	1,709	1,788	\$83	0.0%	28	704	732	\$149,257.00
GALLIA	747	4,120	4,867	\$82	1.1%	245	1,928	2,173	\$400,058.00
GEAUGA	87	1,251	1,338	\$90	1.0%	30	571	601	\$120,509.00
GREENE	885	7,147	8,032	\$90	0.7%	343	3,281	3,624	\$722,405.00

Source: CRIS-E GRP304RA and GRP 304RC Reports from Management Information Services. Cuyahoga County data also comes from the GRP 342 RA.

**TABLE 5
FNS BENEFITS
JUNE 2004**

OHIO COUNTY	PERSONS					ASSISTANCE GROUPS			TOTAL COUPONS ISSUED
	PUBLIC ASSISTANCE	NON-PUBLIC ASSISTANCE	TOTAL	AVERAGE ISSUANCE	% CHANGE PREV. MO.	PUBLIC ASSISTANCE	NON-PUBLIC ASSISTANCE	TOTAL	
STATEWIDE	113,167	853,575	966,742	\$89	0.9%	40,326	389,179	429,505	\$86,088,824.00
GUERNSEY	198	5,154	5,352	\$82	-0.3%	69	2,287	2,356	\$438,310.00
HAMILTON	11,939	53,400	65,339	\$92	2.1%	4,130	23,892	28,022	\$5,999,028.00
HANCOCK	335	3,035	3,370	\$90	4.1%	115	1,377	1,492	\$303,626.00
HARDIN	47	1,714	1,761	\$84	0.3%	14	774	788	\$148,393.00
HARRISON	98	1,580	1,678	\$83	3.7%	36	727	763	\$138,619.00
HENRY	29	1,038	1,067	\$79	-2.9%	10	433	443	\$84,023.00
HIGHLAND	116	3,746	3,862	\$83	-1.1%	41	1,557	1,598	\$321,614.00
HOCKING	396	2,432	2,828	\$81	-4.1%	140	1,081	1,221	\$228,181.00
HOLMES	70	1,014	1,084	\$77	-2.0%	21	416	437	\$83,681.00
HURON	52	3,849	3,901	\$86	0.8%	15	1,567	1,582	\$336,834.00
JACKSON	357	4,488	4,845	\$83	1.1%	137	2,118	2,255	\$400,785.00
JEFFERSON	1,342	7,478	8,820	\$85	1.9%	437	3,554	3,991	\$749,007.00
KNOX	383	3,149	3,532	\$84	0.3%	129	1,447	1,576	\$296,392.00
LAKE	890	8,925	9,815	\$94	0.6%	310	4,073	4,383	\$921,611.00
LAWRENCE	725	9,623	10,348	\$80	0.4%	251	4,574	4,825	\$829,676.00
LICKING	1,056	8,876	9,932	\$89	1.3%	388	4,089	4,477	\$884,951.00
LOGAN	306	2,828	3,134	\$88	2.7%	97	1,163	1,260	\$274,596.00
LORAIN	3,086	22,775	25,861	\$88	0.4%	1,051	9,238	10,289	\$2,279,502.00
LUCAS	10,131	46,329	56,460	\$90	1.3%	3,521	21,917	25,438	\$5,077,144.00
MADISON	285	1,928	2,213	\$87	-0.4%	107	918	1,025	\$191,712.00
MAHONING	4,323	23,710	28,033	\$88	2.0%	1,489	11,294	12,783	\$2,465,021.00
MARION	368	5,629	5,997	\$84	-0.2%	138	2,573	2,711	\$506,076.00
MEDINA	258	3,731	3,989	\$92	-1.6%	96	1,671	1,767	\$365,549.00
MEIGS	274	3,836	4,110	\$84	2.6%	103	1,701	1,804	\$346,062.00
MERCER	120	1,081	1,201	\$84	-4.7%	39	529	568	\$100,974.00
MIAMI	427	3,706	4,133	\$85	0.2%	145	1,736	1,881	\$350,897.00
MONROE	107	1,318	1,425	\$76	2.1%	34	595	629	\$108,527.00
MONTGOMERY	7,555	39,993	47,548	\$92	1.1%	2,858	18,784	21,642	\$4,384,012.00
MORGAN	43	1,724	1,767	\$81	0.3%	17	766	783	\$142,793.00
MORROW	135	2,278	2,413	\$85	-0.8%	43	978	1,021	\$205,990.00

Source: CRIS-E GRP304RA and GRP 304RC Reports from Management Information Services. Cuyahoga County data also comes from the GRP 342 RA.

**TABLE 5
FNS BENEFITS
JUNE 2004**

OHIO COUNTY	PERSONS					ASSISTANCE GROUPS			TOTAL COUPONS ISSUED
	PUBLIC ASSISTANCE	NON-PUBLIC ASSISTANCE	TOTAL	AVERAGE ISSUANCE	% CHANGE PREV. MO.	PUBLIC ASSISTANCE	NON-PUBLIC ASSISTANCE	TOTAL	
STATEWIDE	113,167	853,575	966,742	\$89	0.9%	40,326	389,179	429,505	\$86,088,824.00
MUSKINGUM	1,201	10,765	11,966	\$86	0.7%	435	4,858	5,293	\$1,026,428.00
NOBLE	50	1,066	1,116	\$77	-1.8%	18	483	501	\$85,510.00
OTTAWA	187	1,651	1,838	\$84	-0.2%	70	718	788	\$154,662.00
PAULDING	116	933	1,049	\$85	-8.3%	46	438	484	\$89,482.00
PERRY	366	3,931	4,297	\$81	0.3%	122	1,686	1,808	\$346,233.00
PICKAWAY	656	3,753	4,409	\$85	0.9%	220	1,708	1,928	\$376,558.00
PIKE	324	4,498	4,822	\$83	0.9%	115	1,974	2,089	\$400,868.00
PORTAGE	858	6,562	7,420	\$94	-0.2%	328	3,060	3,388	\$695,797.00
PREBLE	194	1,827	2,021	\$88	3.2%	71	792	863	\$178,091.00
PUTNAM	99	1,122	1,221	\$80	3.4%	34	485	519	\$97,537.00
RICHLAND	696	9,832	10,528	\$85	0.7%	238	4,342	4,580	\$897,486.00
ROSS	902	7,893	8,795	\$85	-0.1%	311	3,442	3,753	\$748,416.00
SANDUSKY	188	3,205	3,393	\$93	2.6%	69	1,381	1,450	\$315,547.00
SCIOTO	833	13,102	13,935	\$79	2.2%	295	6,274	6,569	\$1,107,475.00
SENECA	103	3,301	3,404	\$83	-1.3%	33	1,432	1,465	\$283,928.00
SHELBY	154	1,957	2,111	\$93	-0.0%	56	807	863	\$195,806.00
STARK	4,762	23,316	28,078	\$89	1.5%	1,741	10,359	12,100	\$2,496,445.00
SUMMIT	7,761	39,770	47,531	\$92	1.0%	2,876	19,057	21,933	\$4,394,410.00
TRUMBULL	1,706	16,277	17,983	\$85	0.2%	609	6,921	7,530	\$1,535,350.00
TUSCARAWAS	685	6,017	6,702	\$83	1.5%	244	2,714	2,958	\$555,102.00
UNION	351	1,704	2,055	\$92	2.2%	117	763	880	\$189,877.00
VAN WERT	24	975	999	\$82	4.1%	8	455	463	\$82,061.00
VINTON	229	2,131	2,360	\$79	1.2%	82	912	994	\$187,115.00
WARREN	235	3,454	3,689	\$83	2.2%	93	1,493	1,586	\$307,048.00
WASHINGTON	29	5,087	5,116	\$82	2.4%	14	2,336	2,350	\$421,965.00
WAYNE	614	5,199	5,813	\$87	-0.5%	237	2,439	2,676	\$504,851.00
WILLIAMS	259	1,889	2,148	\$86	5.6%	92	823	915	\$184,960.00
WOOD	364	3,416	3,780	\$90	1.8%	134	1,608	1,742	\$341,471.00
WYANDOT	39	628	667	\$82	1.1%	15	331	346	\$54,364.00

Source: CRIS-E GRP304RA and GRP 304RC Reports from Management Information Services. Cuyahoga County data also comes from the GRP 342 RA.

**Table 6A
June 2004
Medicaid Eligibles**

County	Aged	Blind	Disabled	ABD Total	OWF & Related	Healthy Start	CFC Total	Total Medicaid	Foster Care	Adoption Assistance	Transitional	Nursing Facilities
STATEWIDE	134,112	878	238,647	373,637	984,728	248,386	1,233,114	1,606,751	11,248	18,566	116,565	54,819
ADAMS	732	4	1,358	2,094	4,344	1,117	5,461	7,555	32	38	723	123
ALLEN	1,151	4	2,036	3,191	8,708	2,468	11,176	14,367	113	138	933	557
ASHLAND	535	3	597	1,135	3,374	1,276	4,650	5,785	5	12	585	274
ASHTABULA	1,495	10	3,011	4,516	10,776	2,918	13,694	18,210	69	155	1,615	1,032
ATHENS	807	16	2,014	2,837	6,423	1,301	7,724	10,561	98	107	740	198
AUGLAIZE	412	3	434	849	2,289	879	3,168	4,017	11	42	468	270
BELMONT	1,373	5	2,092	3,470	7,089	1,666	8,755	12,225	53	108	916	536
BROWN	691	0	962	1,653	4,351	1,443	5,794	7,447	17	36	658	225
BUTLER	2,707	28	5,587	8,322	23,223	5,810	29,033	37,355	281	464	3,040	1,194
CARROLL	363	2	527	892	2,557	780	3,337	4,229	7	6	433	181
CHAMPAIGN	479	2	602	1,083	2,503	1,047	3,550	4,633	18	19	441	263
CLARK	2,042	6	3,678	5,726	15,176	3,432	18,608	24,334	140	310	1,767	1,057
CLERMONT	1,388	5	2,640	4,033	11,396	3,942	15,338	19,371	194	196	1,728	685
CLINTON	475	4	780	1,259	3,521	906	4,427	5,686	30	52	581	146
COLUMBIANA	1,523	14	2,558	4,095	11,417	3,187	14,604	18,699	79	75	1,525	649
COSHOCTON	542	1	897	1,440	3,669	1,062	4,731	6,171	22	45	448	284
CRAWFORD	585	8	938	1,531	4,741	1,120	5,861	7,392	40	38	844	215
CUYAHOGA	21,831	163	35,626	57,620	152,739	33,480	186,219	243,839	2,254	4,431	13,796	7,381
DARKE	540	0	666	1,206	2,717	1,110	3,827	5,033	28	36	382	338
DEFIANCE	335	3	545	883	2,760	993	3,753	4,636	11	31	520	174
DELAWARE	679	2	1,011	1,692	4,343	1,385	5,728	7,420	38	55	752	287
ERIE	789	3	1,175	1,967	5,573	1,495	7,068	9,035	107	85	773	419
FAIRFIELD	1,098	5	1,828	2,931	8,187	2,708	10,895	13,826	56	139	1,276	440
FAYETTE	543	0	811	1,354	2,703	841	3,544	4,898	6	15	376	316
FRANKLIN	10,607	89	22,541	33,237	109,824	25,977	135,801	169,038	1,889	2,210	10,782	3,789
FULTON	347	1	403	751	2,435	837	3,272	4,023	16	27	497	192
GALLIA	824	2	1,528	2,354	4,365	925	5,290	7,644	19	35	491	197
GEAUGA	632	1	519	1,152	2,183	814	2,997	4,149	23	107	419	360
GREENE	1,182	9	1,824	3,015	9,160	2,104	11,264	14,279	84	98	1,499	571

Source: ODJFS Report BOMM1321 Prepared: Bureau of Research and Evaluation.

**Table 6A
June 2004
Medicaid Eligibles**

County	Aged	Blind	Disabled	ABD Total	OWF & Related	Healthy Start	CFC Total	Total Medicaid	Foster Care	Adoption Assistance	Transitional	Nursing Facilities
STATEWIDE	134,112	878	238,647	373,637	984,728	248,386	1,233,114	1,606,751	11,248	18,566	116,565	54,819
GUERNSEY	769	4	1,439	2,212	5,623	1,481	7,104	9,316	50	68	782	180
HAMILTON	9,521	78	18,118	27,717	65,832	17,448	83,280	110,997	899	1,440	5,326	3,869
HANCOCK	571	2	787	1,360	3,914	1,334	5,248	6,608	34	39	590	281
HARDIN	360	2	550	912	2,392	677	3,069	3,981	32	29	308	136
HARRISON	265	0	458	723	1,693	437	2,130	2,853	2	27	255	109
HENRY	253	0	303	556	1,676	718	2,394	2,950	13	24	305	139
HIGHLAND	760	3	1,078	1,841	4,542	1,529	6,071	7,912	23	14	640	252
HOCKING	465	3	775	1,243	3,224	1,010	4,234	5,477	29	42	392	154
HOLMES	443	2	464	909	1,645	786	2,431	3,340	6	27	326	420
HURON	511	2	824	1,337	4,903	1,522	6,425	7,762	33	33	806	192
JACKSON	797	1	1,420	2,218	4,619	1,136	5,755	7,973	23	17	715	198
JEFFERSON	1,135	17	2,497	3,649	8,021	1,468	9,489	13,138	82	69	987	391
KNOX	669	3	1,226	1,898	4,134	1,348	5,482	7,380	22	41	917	527
LAKE	1,593	3	2,400	3,996	10,585	3,259	13,844	17,840	68	129	1,631	1,025
LAWRENCE	1,546	7	3,492	5,045	9,023	2,169	11,192	16,237	52	38	1,060	380
LICKING	1,413	3	2,515	3,931	11,460	3,593	15,053	18,984	180	286	1,727	601
LOGAN	540	2	640	1,182	3,784	926	4,710	5,892	18	41	636	188
LORAIN	2,689	18	5,021	7,728	25,767	5,093	30,860	38,588	84	408	2,919	1,313
LUCAS	5,618	43	13,671	19,332	52,657	9,487	62,144	81,476	477	1,428	4,756	1,925
MADISON	361	2	581	944	2,336	815	3,151	4,095	11	24	380	122
MAHONING	3,809	22	6,830	10,661	26,998	5,048	32,046	42,707	175	227	2,665	1,624
MARION	827	3	1,747	2,577	6,002	1,671	7,673	10,250	46	81	884	288
MEDINA	852	11	1,202	2,065	5,928	1,955	7,883	9,948	26	76	1,187	613
MEIGS	562	5	1,050	1,617	3,735	703	4,438	6,055	7	5	487	138
MERCER	322	1	446	769	1,559	562	2,121	2,890	8	28	313	203
MIAMI	1,015	6	1,295	2,316	5,333	1,943	7,276	9,592	62	125	781	467
MONROE	283	3	401	687	1,471	423	1,894	2,581	8	11	234	95
MONTGOMERY	6,056	44	12,395	18,495	47,985	10,766	58,751	77,246	770	1,218	4,285	2,385
MORGAN	272	1	485	758	2,184	533	2,717	3,475	3	12	425	91
MORROW	419	1	594	1,014	2,978	869	3,847	4,861	6	47	609	184

**Table 6A
June 2004
Medicaid Eligibles**

County	Aged	Blind	Disabled	ABD Total	OWF & Related	Healthy Start	CFC Total	Total Medicaid	Foster Care	Adoption Assistance	Transitional	Nursing Facilities
STATEWIDE	134,112	878	238,647	373,637	984,728	248,386	1,233,114	1,606,751	11,248	18,566	116,565	54,819
MUSKINGUM	1,380	14	2,671	4,065	10,571	2,411	12,982	17,047	78	120	1,353	483
NOBLE	241	0	248	489	1,151	440	1,591	2,080	6	7	213	92
OTTAWA	422	2	491	915	2,236	831	3,067	3,982	1	7	432	206
PAULDING	176	2	367	545	1,143	539	1,682	2,227	7	17	163	45
PERRY	506	5	1,050	1,561	4,457	1,264	5,721	7,282	42	33	560	195
PICKAWAY	597	3	964	1,564	4,236	1,147	5,383	6,947	16	13	671	200
PIKE	691	0	1,495	2,186	4,404	1,167	5,571	7,757	32	23	610	285
PORTAGE	1,135	6	1,912	3,053	8,761	2,514	11,275	14,328	101	138	1,054	598
PREBLE	365	8	628	1,001	2,865	788	3,653	4,654	36	34	496	221
PUTNAM	268	2	354	624	1,412	506	1,918	2,542	4	7	255	235
RICHLAND	1,682	1	2,666	4,349	10,888	3,338	14,226	18,575	80	260	1,541	641
ROSS	1,115	2	2,232	3,349	8,756	2,079	10,835	14,184	79	44	1,216	298
SANDUSKY	698	8	934	1,640	4,194	1,445	5,639	7,279	16	62	590	401
SCIOTO	2,257	14	4,793	7,064	11,190	2,428	13,618	20,682	110	49	1,159	599
SENECA	667	3	1,023	1,693	3,890	1,711	5,601	7,294	51	83	710	319
SHELBY	390	4	560	954	2,915	1,105	4,020	4,974	14	53	424	189
STARK	4,614	22	6,782	11,418	31,578	7,439	39,017	50,435	561	937	4,486	2,284
SUMMIT	6,042	43	11,213	17,298	45,741	9,862	55,603	72,901	505	772	4,970	2,130
TRUMBULL	2,559	22	4,757	7,338	20,432	5,248	25,680	33,018	185	236	2,957	1,235
TUSCARAWAS	1,193	5	1,502	2,700	7,317	2,333	9,650	12,350	73	130	1,212	502
UNION	322	2	427	751	2,366	712	3,078	3,829	15	33	415	133
UNKNOWN	0	0	0	0	0	0	0	0	0	0	0	0
VAN WERT	270	0	387	657	1,517	828	2,345	3,002	8	24	252	149
VINTON	313	0	604	917	2,387	674	3,061	3,978	21	16	328	79
WARREN	1,236	4	1,521	2,761	5,546	2,330	7,876	10,637	46	82	727	832
WASHINGTON	955	6	1,627	2,588	5,534	2,008	7,542	10,130	13	41	910	352
WAYNE	1,063	9	1,734	2,806	6,328	2,285	8,613	11,419	100	90	1,145	469
WILLIAMS	415	2	488	905	2,824	822	3,646	4,551	15	23	618	212
WOOD	847	4	1,053	1,904	4,732	1,841	6,573	8,477	33	55	656	421
WYANDOT	290	0	272	562	808	559	1,367	1,929	11	13	106	171

Source: ODJFS Report BOMM1321 Prepared: Bureau of Research and Evaluation.

**Table 6B
June 2004
Medicaid Expenditures**

	Aged	Blind	Disabled	ABD Total	OWF & Related	Healthy Start	CFC Total	Total Medicaid	Foster Care	Adoption Assistance	Transitional	Nursing Facilities
STATEWIDE	\$295,265,964	\$1,122,349	\$451,608,185	\$747,996,498	\$219,962,946	\$60,523,946	\$280,486,892	\$1,029,171,954	\$6,702,097	\$4,915,071	\$17,679,901	\$303,681,988
ADAMS	\$1,441,296	\$3,722	\$1,877,915	\$3,322,933	\$933,615	\$253,848	\$1,187,463	\$4,521,388	\$10,417	\$5,787	\$89,903	\$803,596
ALLEN	\$2,458,849	\$13,602	\$3,686,285	\$6,158,736	\$1,978,042	\$495,446	\$2,473,488	\$8,641,166	\$35,287	\$30,017	\$66,053	\$2,827,439
ASHLAND	\$1,309,867	\$873	\$1,302,279	\$2,613,019	\$942,560	\$315,318	\$1,257,878	\$3,871,782	\$242	\$3,395	\$57,155	\$1,279,335
ASHTABULA	\$3,871,422	\$20,259	\$6,226,586	\$10,118,268	\$2,445,016	\$804,733	\$3,249,749	\$13,378,371	\$36,297	\$36,548	\$213,111	\$5,802,263
ATHENS	\$1,423,486	\$8,331	\$2,795,064	\$4,226,882	\$1,400,432	\$504,155	\$1,904,588	\$6,132,078	\$47,563	\$20,381	\$125,441	\$926,020
AUGLAIZE	\$1,109,026	\$5,023	\$1,197,665	\$2,311,714	\$636,441	\$187,369	\$823,809	\$3,155,622	\$3,830	\$5,072	\$63,564	\$1,212,398
BELMONT	\$2,893,890	\$472	\$3,526,990	\$6,421,352	\$1,691,660	\$600,248	\$2,291,908	\$8,723,600	\$31,709	\$22,229	\$111,731	\$2,271,612
BROWN	\$1,700,302	\$0	\$1,668,951	\$3,369,253	\$1,074,160	\$338,116	\$1,412,276	\$4,785,086	\$2,044	\$8,398	\$84,550	\$1,298,030
BUTLER	\$6,422,669	\$25,867	\$11,401,326	\$17,849,861	\$5,403,726	\$1,233,535	\$6,637,261	\$24,504,277	\$151,628	\$139,251	\$585,542	\$7,361,564
CARROLL	\$779,910	\$1,966	\$901,742	\$1,683,617	\$453,877	(\$9,160)	\$444,717	\$2,128,334	\$1,540	\$1,870	\$56,807	\$859,007
CHAMPAIGN	\$1,198,768	\$651	\$1,181,138	\$2,380,557	\$645,232	\$344,923	\$990,155	\$3,370,712	\$13,760	\$2,049	\$58,896	\$1,308,286
CLARK	\$4,871,705	\$2,355	\$7,576,563	\$12,450,623	\$3,713,899	\$885,483	\$4,599,382	\$17,057,299	\$106,969	\$111,014	\$294,087	\$5,616,597
CLERMONT	\$2,905,225	\$1,718	\$5,979,018	\$8,885,961	\$2,757,532	\$1,158,168	\$3,915,700	\$12,823,869	\$80,364	\$39,749	\$227,310	\$4,755,695
CLINTON	\$854,694	\$1,432	\$1,227,958	\$2,084,083	\$1,179,357	\$236,023	\$1,415,380	\$3,504,045	\$6,992	\$12,730	\$73,651	\$683,928
COLUMBIANA	\$2,993,920	\$19,236	\$4,210,563	\$7,223,718	\$2,616,413	\$694,920	\$3,311,332	\$10,557,358	\$58,234	\$16,333	\$204,646	\$3,123,931
COSHOCTON	\$1,104,302	\$163	\$1,773,531	\$2,877,996	\$741,085	\$200,603	\$941,689	\$3,820,557	\$8,093	\$13,408	\$73,472	\$1,413,880
CRAWFORD	\$1,217,342	\$4,998	\$1,540,873	\$2,763,213	\$925,496	\$217,872	\$1,143,368	\$3,908,284	\$15,215	\$6,539	\$75,920	\$981,171
CUYAHOGA	\$44,255,540	\$200,789	\$64,717,267	\$109,173,596	\$33,695,636	\$8,085,254	\$41,780,890	\$150,977,013	\$1,450,210	\$1,239,726	\$2,515,521	\$45,239,636
DARKE	\$1,215,246	\$15	\$1,341,316	\$2,556,577	\$597,361	\$264,669	\$862,030	\$3,418,607	\$11,146	\$14,946	\$46,865	\$1,335,124
DEFIANCE	\$740,825	\$851	\$912,322	\$1,653,997	\$464,485	\$181,513	\$645,997	\$2,309,760	\$2,405	\$4,476	\$78,372	\$739,001
DELAWARE	\$1,632,035	\$6,143	\$2,581,404	\$4,219,582	\$999,360	\$359,645	\$1,359,005	\$5,578,602	\$19,726	\$30,380	\$104,186	\$1,450,988
ERIE	\$1,858,922	\$1,621	\$2,244,225	\$4,104,768	\$1,157,670	\$362,878	\$1,520,547	\$5,625,700	\$39,184	\$17,890	\$64,955	\$1,945,007
FAIRFIELD	\$2,538,207	\$3,016	\$3,524,828	\$6,066,051	\$1,951,615	\$82,511	\$2,034,125	\$8,105,904	\$16,000	\$40,236	\$210,423	\$2,264,753
FAYETTE	\$1,167,318	\$55	\$1,622,381	\$2,789,753	\$556,485	\$172,817	\$729,302	\$3,530,766	\$431	\$3,508	\$43,219	\$1,599,125
FRANKLIN	\$22,556,550	\$141,433	\$50,758,768	\$73,456,750	\$24,253,012	\$6,979,760	\$31,232,772	\$104,761,992	\$1,240,423	\$654,410	\$1,793,261	\$24,325,432
FULTON	\$914,247	\$61	\$814,630	\$1,728,938	\$493,415	\$161,974	\$655,388	\$2,384,681	\$7,372	\$7,240	\$50,508	\$917,171
GALLIA	\$1,919,808	\$4,768	\$3,600,616	\$5,525,191	\$1,049,169	\$220,566	\$1,269,735	\$6,805,174	\$5,744	\$2,599	\$55,061	\$847,987
GEAUGA	\$1,653,709	\$467	\$1,520,622	\$3,174,798	\$421,034	\$166,071	\$587,105	\$3,761,933	\$17,577	\$24,560	\$53,606	\$1,964,677
GREENE	\$2,836,709	\$6,635	\$3,234,977	\$6,078,321	\$1,868,087	\$602,671	\$2,470,758	\$8,549,149	\$42,747	\$24,393	\$175,201	\$2,896,388

**Table 6B
June 2004
Medicaid Expenditures**

	Aged	Blind	Disabled	ABD Total	OWF & Related	Healthy Start	CFC Total	Total Medicaid	Foster Care	Adoption Assistance	Transitional	Nursing Facilities
STATEWIDE	\$295,265,964	\$1,122,349	\$451,608,185	\$747,996,498	\$219,962,946	\$60,523,946	\$280,486,892	\$1,029,171,954	\$6,702,097	\$4,915,071	\$17,679,901	\$303,681,988
GUERNSEY	\$1,470,213	\$5,463	\$3,120,525	\$4,596,201	\$1,283,522	\$311,677	\$1,595,199	\$6,191,548	\$27,312	\$18,649	\$96,033	\$771,916
HAMILTON	\$23,002,341	\$145,448	\$33,743,588	\$56,891,377	\$16,723,058	\$5,889,934	\$22,612,992	\$79,656,604	\$830,492	\$402,754	\$822,117	\$24,794,728
HANCOCK	\$1,222,308	\$905	\$1,601,872	\$2,825,085	\$881,313	\$265,534	\$1,146,847	\$3,972,734	\$7,347	\$11,446	\$82,375	\$1,393,353
HARDIN	\$587,606	(\$4,552)	\$1,003,664	\$1,586,718	\$516,458	\$134,000	\$650,458	\$2,240,909	\$19,952	\$3,706	\$34,892	\$584,999
HARRISON	\$594,414	\$0	\$739,834	\$1,334,248	\$307,167	\$83,636	\$390,803	\$1,737,806	\$0	\$9,062	\$36,082	\$522,457
HENRY	\$513,115	\$0	\$1,127,225	\$1,640,340	\$347,533	\$170,049	\$517,581	\$2,157,922	\$5,333	\$3,401	\$45,347	\$489,289
HIGHLAND	\$1,493,096	\$3,660	\$1,950,436	\$3,447,191	\$1,009,300	\$367,443	\$1,376,742	\$4,823,934	\$8,460	\$3,230	\$87,929	\$1,386,095
HOCKING	\$820,790	\$4,922	\$1,289,014	\$2,114,726	\$792,184	\$188,782	\$980,966	\$3,095,693	\$14,377	\$13,556	\$69,647	\$724,213
HOLMES	\$1,369,029	\$0	\$1,354,637	\$2,723,666	\$463,411	\$131,195	\$594,605	\$3,326,346	\$1,240	\$12,055	\$59,235	\$2,106,573
HURON	\$918,432	\$187	\$1,218,076	\$2,136,695	\$1,017,023	\$384,272	\$1,401,296	\$3,537,990	\$11,696	\$4,037	\$121,623	\$844,338
JACKSON	\$1,334,932	\$78	\$1,644,970	\$2,979,980	\$1,107,084	\$217,950	\$1,325,034	\$4,308,735	\$6,958	\$2,284	\$83,630	\$846,822
JEFFERSON	\$2,406,334	\$11,215	\$3,202,558	\$5,620,107	\$2,765,325	\$358,827	\$3,124,152	\$8,751,940	\$81,610	\$19,607	\$133,385	\$1,848,253
KNOX	\$1,877,960	\$4	\$4,265,483	\$6,143,447	\$879,835	\$220,102	\$1,099,937	\$7,243,384	\$19,413	\$13,324	\$115,344	\$3,831,435
LAKE	\$4,145,962	\$858	\$6,120,346	\$10,267,166	\$2,220,328	\$818,206	\$3,038,533	\$13,307,159	\$60,148	\$41,562	\$217,404	\$5,751,784
LAWRENCE	\$3,139,937	\$4,928	\$4,017,089	\$7,161,953	\$2,250,473	\$396,395	\$2,646,868	\$9,817,522	\$24,520	\$6,590	\$156,659	\$1,742,826
LICKING	\$3,069,035	\$3,233	\$5,489,200	\$8,561,468	\$2,543,853	\$789,428	\$3,333,281	\$11,894,760	\$95,346	\$96,771	\$164,497	\$3,205,179
LOGAN	\$1,075,272	\$566	\$1,190,387	\$2,266,226	\$841,605	\$168,849	\$1,010,454	\$3,282,797	\$3,198	\$5,491	\$85,638	\$894,045
LORAIN	\$6,482,326	\$17,268	\$9,005,149	\$15,504,742	\$5,326,729	\$1,243,012	\$6,569,742	\$22,095,405	\$27,847	\$76,102	\$424,255	\$7,650,805
LUCAS	\$12,740,927	\$36,120	\$25,226,915	\$38,003,962	\$11,213,523	\$2,511,817	\$13,725,340	\$51,759,017	\$224,536	\$356,347	\$912,095	\$12,763,004
MADISON	\$654,353	\$0	\$1,274,304	\$1,928,656	\$682,329	\$187,801	\$870,130	\$2,798,786	\$26,660	\$9,122	\$66,698	\$707,067
MAHONING	\$8,192,400	\$42,923	\$11,745,919	\$19,981,242	\$6,760,115	\$1,017,388	\$7,777,502	\$27,773,041	\$98,448	\$53,205	\$467,318	\$8,227,044
MARION	\$1,525,393	\$3,621	\$2,744,527	\$4,273,540	\$1,179,223	\$409,963	\$1,589,187	\$5,878,035	\$20,434	\$16,468	\$87,280	\$1,340,814
MEDINA	\$2,417,925	\$58,610	\$3,314,203	\$5,790,738	\$1,225,550	\$388,202	\$1,613,752	\$7,407,112	\$11,780	\$35,982	\$148,198	\$3,728,252
MEIGS	\$787,822	\$6,730	\$1,298,798	\$2,093,349	\$808,785	\$136,795	\$945,579	\$3,038,927	\$14,563	\$287	\$67,065	\$546,173
MERCER	\$799,466	\$0	\$702,510	\$1,501,975	\$363,593	\$93,711	\$457,305	\$1,959,280	\$3,844	\$2,938	\$47,278	\$897,992
MIAMI	\$2,386,021	\$7,574	\$2,159,796	\$4,553,390	\$1,370,509	\$517,619	\$1,888,128	\$6,459,523	\$60,759	\$48,911	\$109,000	\$2,151,834
MONROE	\$464,996	\$882	\$645,932	\$1,111,811	\$305,158	\$65,692	\$370,850	\$1,483,407	\$7,932	\$5,716	\$23,729	\$382,377
MONTGOMERY	\$13,123,907	\$80,175	\$21,685,402	\$34,889,484	\$10,413,480	\$2,533,500	\$12,946,980	\$47,826,258	\$334,489	\$284,986	\$688,415	\$13,177,206
MORGAN	\$447,074	\$1,286	\$444,391	\$892,751	\$335,703	\$119,514	\$455,217	\$1,348,000	\$797	\$1,136	\$36,233	\$393,199
MORROW	\$926,945	\$0	\$1,173,676	\$2,100,621	\$603,036	\$203,393	\$806,428	\$2,908,807	\$4,543	\$17,995	\$82,002	\$870,872

**Table 6B
June 2004
Medicaid Expenditures**

	Aged	Blind	Disabled	ABD Total	OWF & Related	Healthy Start	CFC Total	Total Medicaid	Foster Care	Adoption Assistance	Transitional	Nursing Facilities
STATEWIDE	\$295,265,964	\$1,122,349	\$451,608,185	\$747,996,498	\$219,962,946	\$60,523,946	\$280,486,892	\$1,029,171,954	\$6,702,097	\$4,915,071	\$17,679,901	\$303,681,988
MUSKINGUM	\$2,751,447	\$8,863	\$3,354,452	\$6,114,762	\$2,213,341	\$497,165	\$2,710,506	\$8,825,427	\$16,174	\$15,615	\$135,058	\$2,120,744
NOBLE	\$472,332	\$0	\$314,949	\$787,281	\$199,025	\$64,095	\$263,120	\$1,051,435	\$220	\$995	\$26,868	\$439,059
OTTAWA	\$1,131,658	\$4,136	\$1,652,239	\$2,788,033	\$451,336	\$140,632	\$591,969	\$3,380,002	\$2,790	\$403	\$37,107	\$879,718
PAULDING	\$270,336	\$6	\$468,460	\$738,802	\$255,905	\$104,585	\$360,490	\$1,099,293	\$7,826	\$2,173	\$20,619	\$199,637
PERRY	\$704,223	\$3,961	\$2,116,009	\$2,824,193	\$916,513	\$262,629	\$1,179,142	\$4,003,401	\$12,221	\$7,560	\$58,394	\$1,017,021
PICKAWAY	\$1,312,843	\$1,104	\$1,405,014	\$2,718,961	\$1,082,205	\$284,599	\$1,366,803	\$4,094,858	\$3,542	\$1,223	\$142,271	\$919,335
PIKE	\$1,400,568	\$0	\$2,301,120	\$3,701,687	\$1,067,909	\$181,393	\$1,249,302	\$4,952,819	\$13,467	\$12,710	\$66,684	\$1,542,475
PORTAGE	\$2,324,617	\$8,213	\$4,883,624	\$7,216,453	\$2,477,110	\$658,862	\$3,135,972	\$10,355,874	\$52,852	\$51,281	\$183,218	\$3,396,239
PREBLE	\$983,816	\$8,972	\$1,523,623	\$2,516,412	\$613,064	\$133,300	\$746,365	\$3,286,201	\$15,943	\$4,747	\$53,510	\$1,298,633
PUTNAM	\$684,686	\$3,151	\$913,256	\$1,601,094	\$274,327	\$76,495	\$350,822	\$1,951,916	\$2,052	\$215	\$36,466	\$1,115,248
RICHLAND	\$3,201,954	\$277	\$4,961,259	\$8,163,489	\$2,541,821	\$778,071	\$3,319,892	\$11,488,559	\$34,048	\$62,010	\$225,909	\$2,986,491
ROSS	\$1,997,713	\$2,932	\$3,070,268	\$5,070,913	\$1,741,460	\$430,505	\$2,171,965	\$7,260,471	\$34,109	\$11,845	\$110,256	\$1,245,766
SANDUSKY	\$1,775,074	\$10,127	\$2,015,994	\$3,801,196	\$799,290	\$353,867	\$1,153,158	\$4,955,679	\$7,681	\$7,250	\$64,329	\$2,003,109
SCIOTO	\$4,621,729	\$22,936	\$6,720,684	\$11,365,349	\$2,647,562	\$544,196	\$3,191,758	\$14,562,362	\$48,538	\$42,825	\$143,642	\$2,960,875
SENECA	\$1,693,406	\$5,872	\$3,338,544	\$5,037,822	\$884,333	\$355,713	\$1,240,046	\$6,281,903	\$33,560	\$19,456	\$78,017	\$1,530,663
SHELBY	\$947,553	\$2,710	\$868,895	\$1,819,158	\$634,264	\$295,552	\$929,816	\$2,748,974	\$13,730	\$13,196	\$66,790	\$945,367
STARK	\$11,021,045	\$28,831	\$12,124,230	\$23,174,105	\$6,043,286	\$1,705,898	\$7,749,184	\$30,923,887	\$282,417	\$197,608	\$779,820	\$11,517,212
SUMMIT	\$13,156,802	\$41,059	\$20,486,416	\$33,684,276	\$9,356,243	\$2,321,794	\$11,678,037	\$45,377,275	\$336,557	\$156,002	\$910,032	\$12,072,143
TRUMBULL	\$5,566,690	\$31,854	\$8,120,570	\$13,719,114	\$4,615,018	\$1,550,377	\$6,165,395	\$19,885,717	\$103,393	\$41,249	\$429,143	\$6,027,565
TUSCARAWAS	\$2,806,169	\$1,151	\$3,216,030	\$6,023,349	\$1,710,013	\$490,118	\$2,200,132	\$8,240,731	\$57,649	\$47,713	\$147,271	\$2,227,997
UNION	\$819,541	\$4,800	\$824,392	\$1,648,733	\$715,282	\$172,241	\$887,523	\$2,536,624	\$7,485	\$5,765	\$72,092	\$758,241
UNKNOWN	\$0	\$0	\$0	\$0	(\$1,977,410)	\$0	(\$1,977,410)	(\$1,974,644)	\$0	\$0	\$0	\$0
VAN WERT	\$669,536	\$0	\$709,673	\$1,379,209	\$349,873	\$131,683	\$481,555	\$1,860,922	\$10,591	\$32,937	\$35,773	\$732,164
VINTON	\$522,499	(\$4,601)	\$733,235	\$1,251,133	\$506,159	\$95,137	\$601,295	\$1,852,859	\$8,852	\$1,165	\$33,129	\$330,652
WARREN	\$3,569,080	\$4,510	\$4,544,281	\$8,117,871	\$1,570,592	\$516,376	\$2,086,969	\$10,206,527	\$10,034	\$19,480	\$117,695	\$5,031,017
WASHINGTON	\$1,823,242	\$16,473	\$2,932,727	\$4,772,442	\$1,411,363	\$436,809	\$1,848,171	\$6,621,200	\$5,699	\$8,502	\$143,875	\$1,836,515
WAYNE	\$2,648,101	\$4,088	\$3,946,714	\$6,598,903	\$1,417,778	\$706,639	\$2,124,417	\$8,723,537	\$51,034	\$18,915	\$161,580	\$2,244,571
WILLIAMS	\$988,321	\$453	\$803,314	\$1,792,089	\$586,284	\$282,277	\$868,561	\$2,662,344	\$3,230	\$7,460	\$54,893	\$935,932
WOOD	\$2,936,621	\$1,811	\$3,198,801	\$6,137,232	\$1,134,472	\$418,063	\$1,552,535	\$7,690,125	\$8,090	\$7,699	\$109,625	\$2,079,655
WYANDOT	\$628,243	\$39	\$611,189	\$1,239,471	\$141,451	\$108,264	\$249,714	\$1,489,185	\$1,129	\$1,215	\$11,416	\$662,960

**TABLE 7
CHILD CARE
JUNE 2004**

OHIO COUNTY	OWF JOBS, LEAP, and TRANSITIONAL		OTHER CHILD CARE		ALL PROGRAM SOURCES	
	CHILDREN SERVED		CHILDREN SERVED		CHILDREN SERVED	
	TOTAL	% OF STATE TOTAL	TOTAL	% OF STATE TOTAL	TOTAL	% OF STATE TOTAL
STATEWIDE	15,873	100.00%	70,670	100.00%	86,543	100.00%
ADAMS	0	0.00%	40	0.06%	40	0.05%
ALLEN	26	0.16%	418	0.59%	444	0.51%
ASHLAND	1	0.01%	169	0.24%	170	0.20%
ASHTABULA	123	0.77%	597	0.84%	720	0.83%
ATHENS	65	0.41%	198	0.28%	263	0.30%
AUGLAIZE	3	0.02%	107	0.15%	110	0.13%
BELMONT	68	0.43%	243	0.34%	311	0.36%
BROWN	6	0.04%	105	0.15%	111	0.13%
BUTLER	198	1.25%	1,045	1.48%	1,243	1.44%
CARROLL	5	0.03%	67	0.09%	72	0.08%
CHAMPAIGN	7	0.04%	156	0.22%	163	0.19%
CLARK	122	0.77%	604	0.85%	726	0.84%
CLERMONT	65	0.41%	562	0.80%	627	0.72%
CLINTON	0	0.00%	0	0.00%	0	0.00%
COLUMBIANA	59	0.37%	548	0.78%	607	0.70%
COSHOCTON	53	0.33%	157	0.22%	210	0.24%
CRAWFORD	35	0.22%	146	0.21%	181	0.21%
CUYAHOGA	4,579	28.85%	18,865	26.69%	23,444	27.09%
DARKE	8	0.05%	98	0.14%	106	0.12%
DEFIANCE	5	0.03%	139	0.20%	144	0.17%
DELAWARE	27	0.17%	172	0.24%	199	0.23%
ERIE	4	0.03%	559	0.79%	563	0.65%
FAIRFIELD	42	0.26%	355	0.50%	397	0.46%
FAYETTE	22	0.14%	174	0.25%	196	0.23%
FRANKLIN	2,506	15.79%	9,039	12.79%	11,545	13.34%
FULTON	13	0.08%	131	0.19%	144	0.17%
GALLIA	49	0.31%	189	0.27%	238	0.28%
GEAUGA	10	0.06%	134	0.19%	144	0.17%
GREENE	135	0.85%	687	0.97%	822	0.95%

**TABLE 7
CHILD CARE
JUNE 2004**

OHIO COUNTY	OWF JOBS, LEAP, and TRANSITIONAL		OTHER CHILD CARE		ALL PROGRAM SOURCES	
	CHILDREN SERVED		CHILDREN SERVED		CHILDREN SERVED	
	TOTAL	% OF STATE TOTAL	TOTAL	% OF STATE TOTAL	TOTAL	% OF STATE TOTAL
STATEWIDE	15,873	100.00%	70,670	100.00%	86,543	100.00%
GUERNSEY	40	0.25%	301	0.43%	341	0.39%
HAMILTON	3,100	19.53%	8,988	12.72%	12,088	13.97%
HANCOCK	14	0.09%	335	0.47%	349	0.40%
HARDIN	1	0.01%	61	0.09%	62	0.07%
HARRISON	7	0.04%	52	0.07%	59	0.07%
HENRY	31	0.20%	87	0.12%	118	0.14%
HIGHLAND	11	0.07%	199	0.28%	210	0.24%
HOCKING	21	0.13%	166	0.23%	187	0.22%
HOLMES	7	0.04%	75	0.11%	82	0.09%
HURON	5	0.03%	470	0.67%	475	0.55%
JACKSON	25	0.16%	141	0.20%	166	0.19%
JEFFERSON	86	0.54%	358	0.51%	444	0.51%
KNOX	27	0.17%	282	0.40%	309	0.36%
LAKE	78	0.49%	875	1.24%	953	1.10%
LAWRENCE	57	0.36%	510	0.72%	567	0.66%
LICKING	129	0.81%	768	1.09%	897	1.04%
LOGAN	7	0.04%	50	0.07%	57	0.07%
LORAIN	429	2.70%	1,581	2.24%	2,010	2.32%
LUCAS	111	0.70%	183	0.26%	294	0.34%
MADISON	15	0.09%	77	0.11%	92	0.11%
MAHONING	519	3.27%	1,668	2.36%	2,187	2.53%
MARION	12	0.08%	335	0.47%	347	0.40%
MEDINA	43	0.27%	497	0.70%	540	0.62%
MEIGS	2	0.01%	172	0.24%	174	0.20%
MERCER	16	0.10%	98	0.14%	114	0.13%
MIAMI	3	0.02%	306	0.43%	309	0.36%
MONROE	0	0.00%	55	0.08%	55	0.06%
MONTGOMERY	704	4.44%	3,961	5.60%	4,665	5.39%
MORGAN	5	0.03%	65	0.09%	70	0.08%
MORROW	3	0.02%	154	0.22%	157	0.18%

**TABLE 7
CHILD CARE
JUNE 2004**

OHIO COUNTY	OWF JOBS, LEAP, and TRANSITIONAL		OTHER CHILD CARE		ALL PROGRAM SOURCES	
	CHILDREN SERVED		CHILDREN SERVED		CHILDREN SERVED	
	TOTAL	% OF STATE TOTAL	TOTAL	% OF STATE TOTAL	TOTAL	% OF STATE TOTAL
STATEWIDE	15,873	100.00%	70,670	100.00%	86,543	100.00%
MUSKINGUM	189	1.19%	680	0.96%	869	1.00%
NOBLE	7	0.04%	105	0.15%	112	0.13%
OTTAWA	17	0.11%	91	0.13%	108	0.12%
PAULDING	2	0.01%	9	0.01%	11	0.01%
PERRY	28	0.18%	181	0.26%	209	0.24%
PICKAWAY	38	0.24%	162	0.23%	200	0.23%
PIKE	18	0.11%	71	0.10%	89	0.10%
PORTAGE	124	0.78%	655	0.93%	779	0.90%
PREBLE	10	0.06%	84	0.12%	94	0.11%
PUTNAM	4	0.03%	81	0.11%	85	0.10%
RICHLAND	114	0.72%	797	1.13%	911	1.05%
ROSS	26	0.16%	225	0.32%	251	0.29%
SANDUSKY	73	0.46%	382	0.54%	455	0.53%
SCIOTO	83	0.52%	511	0.72%	594	0.69%
SENECA	0	0.00%	233	0.33%	233	0.27%
SHELBY	0	0.00%	173	0.24%	173	0.20%
STARK	402	2.53%	1,902	2.69%	2,304	2.66%
SUMMIT	640	4.03%	2,717	3.84%	3,357	3.88%
TRUMBULL	135	0.85%	1,471	2.08%	1,606	1.86%
TUSCARAWAS	25	0.16%	373	0.53%	398	0.46%
UNION	0	0.00%	63	0.09%	63	0.07%
VAN WERT	0	0.00%	49	0.07%	49	0.06%
VINTON	7	0.04%	70	0.10%	77	0.09%
WARREN	0	0.00%	0	0.00%	0	0.00%
WASHINGTON	36	0.23%	283	0.40%	319	0.37%
WAYNE	90	0.57%	319	0.45%	409	0.47%
WILLIAMS	5	0.03%	111	0.16%	116	0.13%
WOOD	56	0.35%	270	0.38%	326	0.38%
WYANDOT	0	0.00%	28	0.04%	28	0.03%

SOURCE: NMR120RA. The above numbers have not been reconciled between the CCIDS/3299 data collection system and 2827 ODJFS fiscal reporting system; therefore they may not be conclusive at this time.

OWF data consist of funding codes: 312, 313,314, 326, & 327. Other data consist of funding codes: 320, 321 , 322, 323, 324, 325, 328, 329, 342, and 899.

**TABLE 8
RECIPIENTS, EXPENDITURES, AND AVERAGE PAYMENT PER RECIPIENT
DURING THE LAST 12 MONTHS IN OHIO**

RECIPIENTS	OWF-R	OWF-U	OWF\ CHILD CARE	OTHER\ CHILD CARE	DISABILITY ASSISTANCE	TITLE IV-E	FNS BENEFITS
July 2003	177,427	15,796	19,871	88,257	16,705	24,980	884,678
August	178,508	15,466	19,051	82,897	13,921	26,113	884,945
September	178,759	15,723	18,171	81,175	13,405	25,073	900,572
October	180,465	15,639	18,500	79,329	13,250	25,894	901,828
November	176,454	15,201	17,506	73,557	12,995	25,730	901,990
December	180,532	16,461	18,063	76,475	13,025	25,871	935,770
January 2004	176,525	16,572	17,342	81,657	12,762	25,742	930,391
February	176,591	16,946	16,622	78,916	13,013	25,961	934,876
March	177,476	17,466	16,783	79,488	13,086	26,395	957,339
April	175,819	17,859	17,292	73,676	13,199	26,167	949,984
May	175,364	17,090	16,380	71,877	13,014	26,728	957,891
June	176,410	16,761	15,873	70,670	13,125	27,023	966,742
12 MONTH AVERAGE	177,528	16,415	17,621	78,165	13,458	25,973	925,584
EXPENDITURES							
July 2003	\$24,375,298	\$1,481,457	N.A.	N.A.	\$1,921,319	\$12,365,553	\$75,612,953
August	\$24,925,334	\$1,486,018	N.A.	N.A.	\$1,666,480	\$14,696,807	\$77,279,906
September	\$24,897,155	\$1,520,686	N.A.	N.A.	\$1,598,862	\$13,071,839	\$79,553,874
October	\$25,199,378	\$1,530,516	N.A.	N.A.	\$1,621,874	\$13,097,679	\$80,400,808
November	\$24,577,620	\$1,457,298	N.A.	N.A.	\$1,619,377	\$13,152,735	\$79,289,677
December	\$25,390,802	\$1,636,249	N.A.	N.A.	\$1,640,295	\$13,824,267	\$83,581,169
January 2004	\$24,617,828	\$1,643,023	N.A.	N.A.	\$1,633,608	\$12,754,750	\$81,551,062
February	\$24,649,146	\$1,707,835	N.A.	N.A.	\$1,708,755	\$13,462,475	\$82,969,877
March	\$24,778,004	\$1,731,579	N.A.	N.A.	\$1,760,786	\$14,811,934	\$86,088,054
April	\$24,479,601	\$1,743,512	N.A.	N.A.	\$1,743,821	\$12,812,373	\$84,433,387
May	\$24,510,455	\$1,683,791	N.A.	N.A.	\$1,717,225	\$14,538,568	\$84,982,281
June	\$24,695,230	\$1,629,234	N.A.	N.A.	\$1,775,365	\$13,541,071	\$86,088,824
TOTAL DOLLARS	\$24,757,988	\$1,604,267	N.A.	N.A.	\$1,700,647	\$13,510,838	\$81,819,323
AVERAGE PAYMENT							
July 2003	\$137	\$94	N.A.	N.A.	\$115	\$495	\$85
August	\$140	\$96	N.A.	N.A.	\$120	\$563	\$87
September	\$139	\$97	N.A.	N.A.	\$119	\$521	\$88
October	\$140	\$98	N.A.	N.A.	\$122	\$506	\$89
November	\$139	\$96	N.A.	N.A.	\$125	\$511	\$88
December	\$141	\$99	N.A.	N.A.	\$126	\$534	\$89
January 2004	\$139	\$99	N.A.	N.A.	\$128	\$495	\$88
February	\$140	\$101	N.A.	N.A.	\$131	\$519	\$89
March	\$140	\$99	N.A.	N.A.	\$135	\$561	\$90
April	\$139	\$98	N.A.	N.A.	\$132	\$490	\$89
May	\$140	\$99	N.A.	N.A.	\$132	\$544	\$89
June	\$140	\$97	N.A.	N.A.	\$135	\$501	\$89

Note: N.A. means Not Available.

**TABLE 10
PERCENT OF OHIO'S POPULATION PARTICIPATING IN SELECTED
PUBLIC ASSISTANCE PROGRAMS FOR JUNE 2004**

OHIO COUNTY	Estimated Total Population *	Percent of All Families Below Poverty Level	DISABILITY ASSISTANCE		OWF COMBINED		FOSTER CARE		FNS BENEFITS	
			Recipients as % of		Recipients	Recipients as % of	Recipients	Recipients as % of	Recipients	Recipients as % of
			Recipients	Total Population						
STATEWIDE	11,421,267	7.80%	13,125	0.11%	193,171	1.69%	27,023	0.24%	966,742	8.46%
ADAMS	27,804	12.80%	67	0.24%	208	0.75%	55	0.20%	4,205	15.12%
ALLEN	108,120	9.60%	77	0.07%	783	0.72%	236	0.22%	8,238	7.62%
ASHLAND	52,900	7.10%	35	0.07%	183	0.35%	11	0.02%	2,656	5.02%
ASHTABULA	102,515	9.20%	294	0.29%	1,480	1.44%	173	0.17%	10,370	10.12%
ATHENS	63,256	14.00%	211	0.33%	1,476	2.33%	211	0.33%	6,574	10.39%
AUGLAIZE	46,464	4.90%	24	0.05%	70	0.15%	54	0.12%	1,641	3.53%
BELMONT	69,448	11.70%	131	0.19%	1,124	1.62%	134	0.19%	7,041	10.14%
BROWN	43,464	8.80%	38	0.09%	283	0.65%	55	0.13%	3,312	7.62%
BUTLER	340,543	5.40%	434	0.13%	2,972	0.87%	788	0.23%	21,940	6.44%
CARROLL	29,166	8.50%	23	0.08%	182	0.62%	11	0.04%	2,011	6.90%
CHAMPAIGN	39,121	5.10%	36	0.09%	381	0.97%	30	0.08%	2,236	5.72%
CLARK	143,416	7.90%	235	0.16%	2,926	2.04%	373	0.26%	15,447	10.77%
CLERMONT	183,352	5.30%	182	0.10%	1,222	0.67%	404	0.22%	8,753	4.77%
CLINTON	41,090	6.40%	58	0.14%	249	0.61%	75	0.18%	2,754	6.70%
COLUMBIANA	111,806	9.00%	128	0.11%	1,020	0.91%	94	0.08%	11,033	9.87%
COSHOCTON	36,836	7.00%	70	0.19%	505	1.37%	59	0.16%	3,505	9.52%
CRAWFORD	46,420	7.80%	48	0.10%	531	1.14%	37	0.08%	3,992	8.60%
CUYAHOGA	1,379,049	10.30%	1,735	0.13%	29,295	2.12%	6,521	0.47%	168,950	12.25%
DARKE	52,966	6.00%	34	0.06%	341	0.64%	50	0.09%	1,959	3.70%
DEFIANCE	39,334	4.50%	13	0.03%	272	0.69%	44	0.11%	2,175	5.53%
DELAWARE	125,399	2.90%	64	0.05%	687	0.55%	80	0.06%	3,762	3.00%
ERIE	79,207	6.00%	63	0.08%	365	0.46%	169	0.21%	4,854	6.13%
FAIRFIELD	129,161	4.50%	82	0.06%	1,394	1.08%	135	0.10%	7,513	5.82%
FAYETTE	28,176	7.70%	17	0.06%	257	0.91%	20	0.07%	2,344	8.32%
FRANKLIN	1,086,814	8.20%	1,123	0.10%	26,013	2.39%	3,793	0.35%	108,388	9.97%
FULTON	42,573	4.00%	15	0.04%	191	0.45%	29	0.07%	1,788	4.20%
GALLIA	31,301	13.50%	35	0.11%	1,334	4.26%	56	0.18%	4,867	15.55%
GEAUGA	92,980	2.80%	30	0.03%	151	0.16%	115	0.12%	1,338	1.44%
GREENE	149,964	5.20%	173	0.12%	1,192	0.79%	107	0.07%	8,032	5.36%

*SOURCE: 2002 Ohio County Population Estimates, Ohio Dept. of Development, GRP342RA, GBS003RA, GRP304RA and GRP304RC Reports from Management Information Services.

**TABLE 10
PERCENT OF OHIO'S POPULATION PARTICIPATING IN SELECTED
PUBLIC ASSISTANCE PROGRAMS FOR JUNE 2004**

OHIO COUNTY	Estimated Total Population *	Percent of All Families Below Poverty Level	DISABILITY ASSISTANCE		OWF COMBINED		FOSTER CARE		FNS BENEFITS	
			Recipients as % of		Recipients	Recipients as % of	Recipients	Recipients as % of	Recipients	Recipients as % of
			Recipients	Total Population						
STATEWIDE	11,421,267	7.80%	13,125	0.11%	193,171	1.69%	27,023	0.24%	966,742	8.46%
GUERNSEY	40,987	12.90%	131	0.32%	426	1.04%	116	0.28%	5,352	13.06%
HAMILTON	833,721	8.80%	885	0.11%	19,835	2.38%	1,497	0.18%	65,339	7.84%
HANCOCK	72,286	5.20%	59	0.08%	373	0.52%	71	0.10%	3,370	4.66%
HARDIN	31,731	8.90%	24	0.08%	98	0.31%	61	0.19%	1,761	5.55%
HARRISON	15,890	11.00%	37	0.23%	217	1.37%	29	0.18%	1,678	10.56%
HENRY	29,478	5.30%	6	0.02%	54	0.18%	34	0.12%	1,067	3.62%
HIGHLAND	41,851	9.00%	60	0.14%	341	0.81%	38	0.09%	3,862	9.23%
HOCKING	28,481	10.30%	50	0.18%	652	2.29%	78	0.27%	2,828	9.93%
HOLMES	40,375	10.50%	24	0.06%	113	0.28%	32	0.08%	1,084	2.68%
HURON	60,020	6.50%	27	0.04%	205	0.34%	51	0.08%	3,901	6.50%
JACKSON	32,854	13.60%	94	0.29%	547	1.66%	28	0.09%	4,845	14.75%
JEFFERSON	72,402	11.40%	166	0.23%	2,204	3.04%	128	0.18%	8,820	12.18%
KNOX	56,037	7.40%	64	0.11%	559	1.00%	49	0.09%	3,532	6.30%
LAKE	229,004	3.50%	177	0.08%	1,369	0.60%	211	0.09%	9,815	4.29%
LAWRENCE	62,172	15.10%	76	0.12%	1,561	2.51%	43	0.07%	10,348	16.64%
LICKING	148,731	5.50%	178	0.12%	1,312	0.88%	493	0.33%	9,932	6.68%
LOGAN	46,262	7.10%	32	0.07%	481	1.04%	56	0.12%	3,134	6.77%
LORAIN	288,360	6.70%	254	0.09%	4,983	1.73%	413	0.14%	25,861	8.97%
LUCAS	453,506	10.70%	620	0.14%	17,240	3.80%	2,040	0.45%	56,460	12.45%
MADISON	40,365	6.20%	25	0.06%	489	1.21%	35	0.09%	2,213	5.48%
MAHONING	253,308	9.60%	339	0.13%	7,099	2.80%	400	0.16%	28,033	11.07%
MARION	66,028	7.40%	98	0.15%	832	1.26%	109	0.17%	5,997	9.08%
MEDINA	158,439	3.50%	93	0.06%	493	0.31%	83	0.05%	3,989	2.52%
MEIGS	23,111	14.30%	61	0.26%	466	2.02%	12	0.05%	4,110	17.78%
MERCER	40,815	4.60%	26	0.06%	193	0.47%	36	0.09%	1,201	2.94%
MIAMI	99,596	5.10%	56	0.06%	558	0.56%	172	0.17%	4,133	4.15%
MONROE	14,973	11.00%	16	0.11%	174	1.16%	16	0.11%	1,425	9.52%
MONTGOMERY	554,470	8.30%	502	0.09%	12,551	2.26%	1,895	0.34%	47,548	8.58%
MORGAN	14,749	15.70%	43	0.29%	138	0.94%	10	0.07%	1,767	11.98%
MORROW	32,976	6.60%	22	0.07%	258	0.78%	42	0.13%	2,413	7.32%

*SOURCE: 2002 Ohio County Population Estimates, Ohio Dept. of Development, GRP342RA, GBS003RA, GRP304RA and GRP304RC Reports from Management Information Services.

**TABLE 10
PERCENT OF OHIO'S POPULATION PARTICIPATING IN SELECTED
PUBLIC ASSISTANCE PROGRAMS FOR JUNE 2004**

OHIO COUNTY	Estimated Total Population *	Percent of All Families Below Poverty Level	DISABILITY ASSISTANCE		OWF COMBINED		FOSTER CARE		FNS BENEFITS	
			Recipients	Recipients as % of Total Population	Recipients	Recipients as % of Total Population	Recipients	Recipients as % of Total Population	Recipients	Recipients as % of Total Population
STATEWIDE	11,421,267	7.80%	13,125	0.11%	193,171	1.69%	27,023	0.24%	966,742	8.46%
MUSKINGUM	85,349	9.90%	213	0.25%	2,020	2.37%	118	0.14%	11,966	14.02%
NOBLE	14,088	8.30%	24	0.17%	72	0.51%	7	0.05%	1,116	7.92%
OTTAWA	41,049	4.20%	20	0.05%	265	0.65%	3	0.01%	1,838	4.48%
PAULDING	19,841	4.90%	16	0.08%	207	1.04%	28	0.14%	1,049	5.29%
PERRY	34,408	9.40%	69	0.20%	670	1.95%	70	0.20%	4,297	12.49%
PICKAWAY	53,437	7.60%	39	0.07%	1,066	1.99%	22	0.04%	4,409	8.25%
PIKE	27,921	15.10%	43	0.15%	690	2.47%	49	0.18%	4,822	17.27%
PORTAGE	153,886	5.90%	131	0.09%	1,179	0.77%	131	0.09%	7,420	4.82%
PREBLE	42,680	4.50%	28	0.07%	350	0.82%	67	0.16%	2,021	4.74%
PUTNAM	34,736	4.00%	14	0.04%	143	0.41%	15	0.04%	1,221	3.52%
RICHLAND	128,004	8.20%	175	0.14%	1,272	0.99%	264	0.21%	10,528	8.22%
ROSS	74,469	9.10%	100	0.13%	1,676	2.25%	101	0.14%	8,795	11.81%
SANDUSKY	61,698	5.70%	38	0.06%	377	0.61%	81	0.13%	3,393	5.50%
SCIOTO	78,041	15.20%	220	0.28%	1,907	2.44%	137	0.18%	13,935	17.86%
SENECA	58,077	6.10%	47	0.08%	221	0.38%	129	0.22%	3,404	5.86%
SHELBY	48,516	5.30%	21	0.04%	236	0.49%	68	0.14%	2,111	4.35%
STARK	377,940	6.80%	533	0.14%	7,877	2.08%	1,130	0.30%	28,078	7.43%
SUMMIT	546,381	7.50%	661	0.12%	12,275	2.25%	1,173	0.21%	47,531	8.70%
TRUMBULL	223,518	7.90%	369	0.17%	3,098	1.39%	449	0.20%	17,983	8.05%
TUSCARAWAS	91,490	7.20%	98	0.11%	1,013	1.11%	199	0.22%	6,702	7.33%
UNION	43,010	3.60%	17	0.04%	580	1.35%	44	0.10%	2,055	4.78%
VAN WERT	29,399	4.20%	16	0.05%	60	0.20%	29	0.10%	999	3.40%
VINTON	13,128	15.10%	37	0.28%	453	3.45%	34	0.26%	2,360	17.98%
WARREN	175,133	3.00%	66	0.04%	393	0.22%	128	0.07%	3,689	2.11%
WASHINGTON	62,561	8.60%	96	0.15%	215	0.34%	47	0.08%	5,116	8.18%
WAYNE	112,704	5.40%	234	0.21%	993	0.88%	174	0.15%	5,813	5.16%
WILLIAMS	39,020	3.90%	28	0.07%	411	1.05%	38	0.10%	2,148	5.50%
WOOD	122,387	4.70%	44	0.04%	471	0.38%	68	0.06%	3,780	3.09%
WYANDOT	22,773	3.80%	8	0.04%	73	0.32%	23	0.10%	667	2.93%
UNKNOWN										

*SOURCE: 2002 Ohio County Population Estimates, Ohio Dept. of Development, GRP342RA, GBS003RA, GRP304RA and GRP304RC Reports from Management Information Services.