

Ohio Department of Job and Family Services

PUBLIC ASSISTANCE MONTHLY STATISTICS MARCH 2005



<http://jfs.ohio.gov/pams/index.stm>

Bureau of Research and Evaluation : Federal Reporting\ Data Development Section
Office of Research, Assessment, and Accountability
P.O. Box 1618
Columbus, Ohio 43216

OHIO DEPARTMENT OF JOB AND FAMILY SERVICES
PUBLIC ASSISTANCE MONTHLY STATISTICS
TABLE OF CONTENTS

<u>TITLE</u>	<u>PAGE(S)</u>
Monthly Review of Public Assistance Statistics.	1
Statewide Summary of Public Assistance Programs.	2
Table 1: OWF (TANF) Summary	3-14
Table 2: Foster Care (Title IV-E) Program Summary.	15-17
Table 3: Disability Assistance Program Summary.	18-22
Table 3-A: DA Payments for Medical Services.	23
Table 5: FNS Benefits Program Summary.	24-28
Table 6: Medicaid (Title XIX): Eligibles and Expenditures.	29-34
Table 7: Child Day Care Summary	35-37
Table 8: Program Summaries of Recipients, Expenditures, and Average Payment Per Recipient During the Last 12 Months.	38
Table 10: Percent of Ohio's Population Participating in Selected Public Assistance Programs.	39-41
<i>Note: Table 4 and Table 9 were discontinued.</i>	
<i>Also: Table 7-A, Updated Child Care Summary for December 2004</i>	<i>42-44</i>

All data in the PAMS report is limited to the information available at the time it was constructed. It does not account for backdated or retroactive eligibility or any adjustments made subsequent to its creation.

MONTHLY REVIEW OF PUBLIC ASSISTANCE STATISTICS FOR MARCH 2005

OHIO WORKS FIRST

For the month of March 2005, OWF-Combined assistance groups totaled 86,291; recipients totaled 189,970 and money payments totaled \$25,994,326. The percent change from February 2005 to March 2005 was 0.5% for assistance groups; 0.2% for recipients, and 0.1% for money payments. For OWF- Regular (OWF-R) there were 81,875 assistance groups; 172,235 recipients, and \$24,234,787 in money payments issued for March 2005. The percent change from February 2005 to March 2005 was 0.3% for assistance groups; 0.0% for recipients, and -0.1% for money payments. For OWF-Unemployed (OWF-U) assistance groups totaled 4,416; recipients, 17,735 and money payments were \$1,759,539. The percent change from February 2005 to March 2005 was 3.1% for assistance groups; 2.5% for recipients and 2.5% for money payments.

FOSTER CARE (TITLE IV-E)

A total of 27,498 children received \$14,554,536 in Title IV-E assistance during the month of March 2005. Included in this total were 7,621 foster care children who received \$7,587,420 in money payments. Of these Title IV-E children, 3,089 or 11.2% were in foster family homes who received \$1,278,680 and 4,532 or 16.5% children in child care institutions who received \$5,688,435 in OWF foster care assistance. The remaining 19,877 children reported as participating in Title IV-E received \$7,587,420 in adoption assistance. Overall, the average amount of Foster Care received per child was \$529.29.

DISABILITY ASSISTANCE (DA)

For the month of March 2005, there were 14,663 assistance groups; 14,779 recipients, and \$1,927,300 in DA financial assistance. The average DA financial assistance per recipient was \$130.41. Total DA expenditures for medical services for March 2005 were \$ 7,153,049. Of this total, \$4,857,084 or 67.9% was spent for prescribed drugs, and \$1,838,528 or 25.7% was spent for physician services. Medical expenses were paid for 13,298 recipients for an average expenditure of \$537.90 per recipient.

FNS BENEFITS:

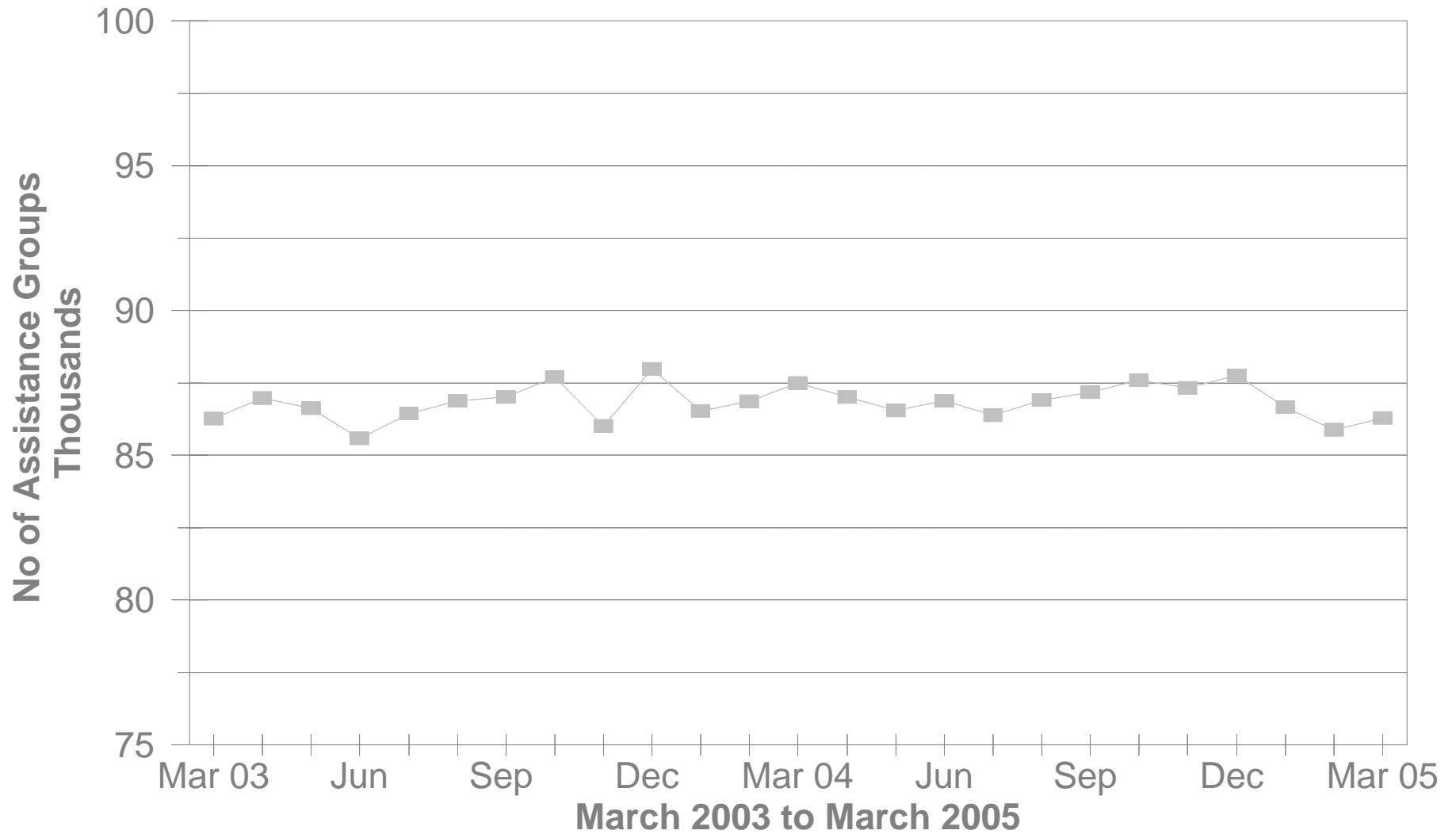
Total persons participating in the FNS benefits program during March 2005 increased to 1,017,801 by 29,790 or 3.0% from 988,011 persons reported in February 2005. Households increased by 15,088 or 3.4% over February 2005 levels. The total dollar value of FNS related benefits issued during March 2005 increased by \$ 4,560,860 or 4.9% from \$93,839,433 reported in February 2005 to \$98,400,293 reported in March 2005. The average benefit issuance per person increased by \$ 1.70 or 1.8% from those issued in February 2005. The average benefit issuance per person increased from \$94.98 in February 2005 to \$96.68 in March 2005.

Please note: All data in the PAMS report is limited to the information available at the time it was constructed. It does not account for backdated or retroactive eligibility or any adjustments made subsequent to its creation.

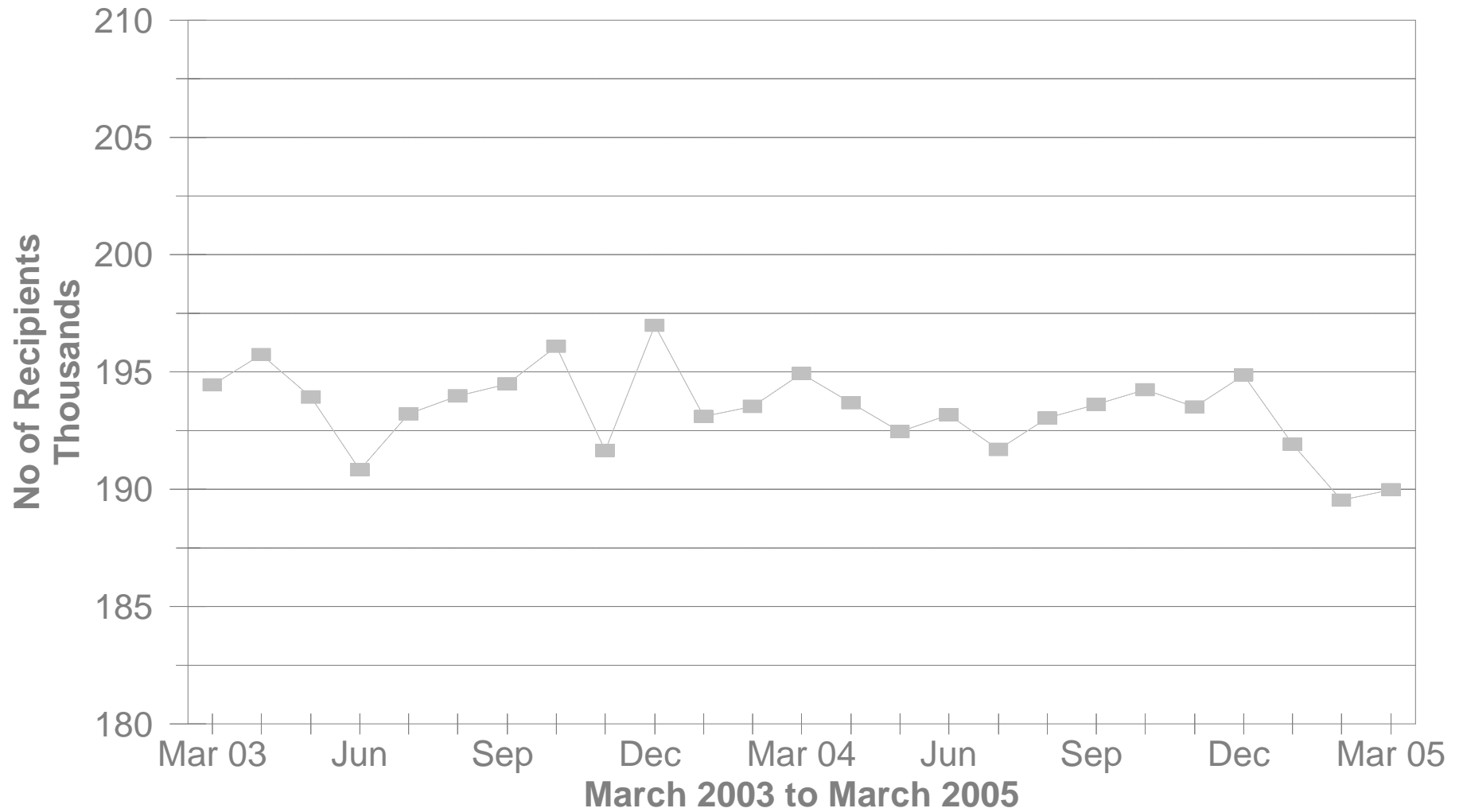
STATEWIDE SUMMARY OF PUBLIC ASSISTANCE PROGRAMS FOR MARCH 2005

	March 2005	February 2005	% CHANGE Mar 05 / Feb 05	March 2004	% CHANGE Mar 05 / Mar 04
OHIO WORKS FIRST (OWF)-COMBINED					
Assistance Groups	86,291	85,882	0.5%	87,486	-1.4%
Recipients	189,970	189,522	0.2%	194,942	-2.6%
Net Payments	\$25,994,326	\$25,968,641	0.1%	\$26,509,583	-1.9%
Average Per Recipient	\$136.83	\$137.02	-0.1%	\$135.99	0.6%
OWF-REGULAR, OWF-INCAPACITATED,& OWF REGULAR VENDOR PAYMENTS					
Assistance Groups	81,875	81,600	0.3%	83,111	-1.5%
Recipients	172,235	172,216	0.0%	177,476	-3.0%
Net Payments	\$24,234,787	\$24,251,217	-0.1%	\$24,778,004	-2.2%
Average Per Recipient	\$140.71	\$140.82	-0.1%	\$139.61	0.8%
OWF-UNEMPLOYED AND OWF-UNEMPLOYED VENDOR PAYMENTS					
Assistance Groups	4,416	4,282	3.1%	4,375	0.9%
Recipients	17,735	17,306	2.5%	17,466	1.5%
Net Payments	\$1,759,539	\$1,717,424	2.5%	\$1,731,579	1.6%
Average Per Recipient	\$99.21	\$99.24	-0.0%	\$99.14	0.1%
TITLE IV-E FOSTER CARE					
Assistance Groups/Recipients	27,498	27,963	-1.7%	26,395	4.2%
Gross Payments	\$14,554,536	\$15,420,724	-5.6%	\$14,811,934	-1.7%
Average Per Recipient	\$529.29	\$551.47	-4.0%	\$561.16	-5.7%
DISABILITY ASSISTANCE					
Assistance Groups	14,663	14,268	2.8%	13,086	12.1%
Recipients	14,779	14,379	2.8%	13,204	11.9%
Net Payments	\$1,927,300	\$2,099,424	-8.2%	\$1,760,786	9.5%
Medical Assistance	\$7,153,049	\$5,805,818	23.2%	\$6,863,742	4.2%
FNS BENEFITS					
Assistance Groups	454,051	438,963	3.4%	425,487	6.7%
Persons	1,017,801	988,011	3.0%	957,339	6.3%
Total Coupons Issued	\$98,400,293	\$93,839,433	4.9%	\$86,088,054	14.3%
Average Per Recipient	\$96.68	\$94.98	1.8%	\$89.92	7.5%

No of OWF Combined Assistance Groups During The Last 25 Months

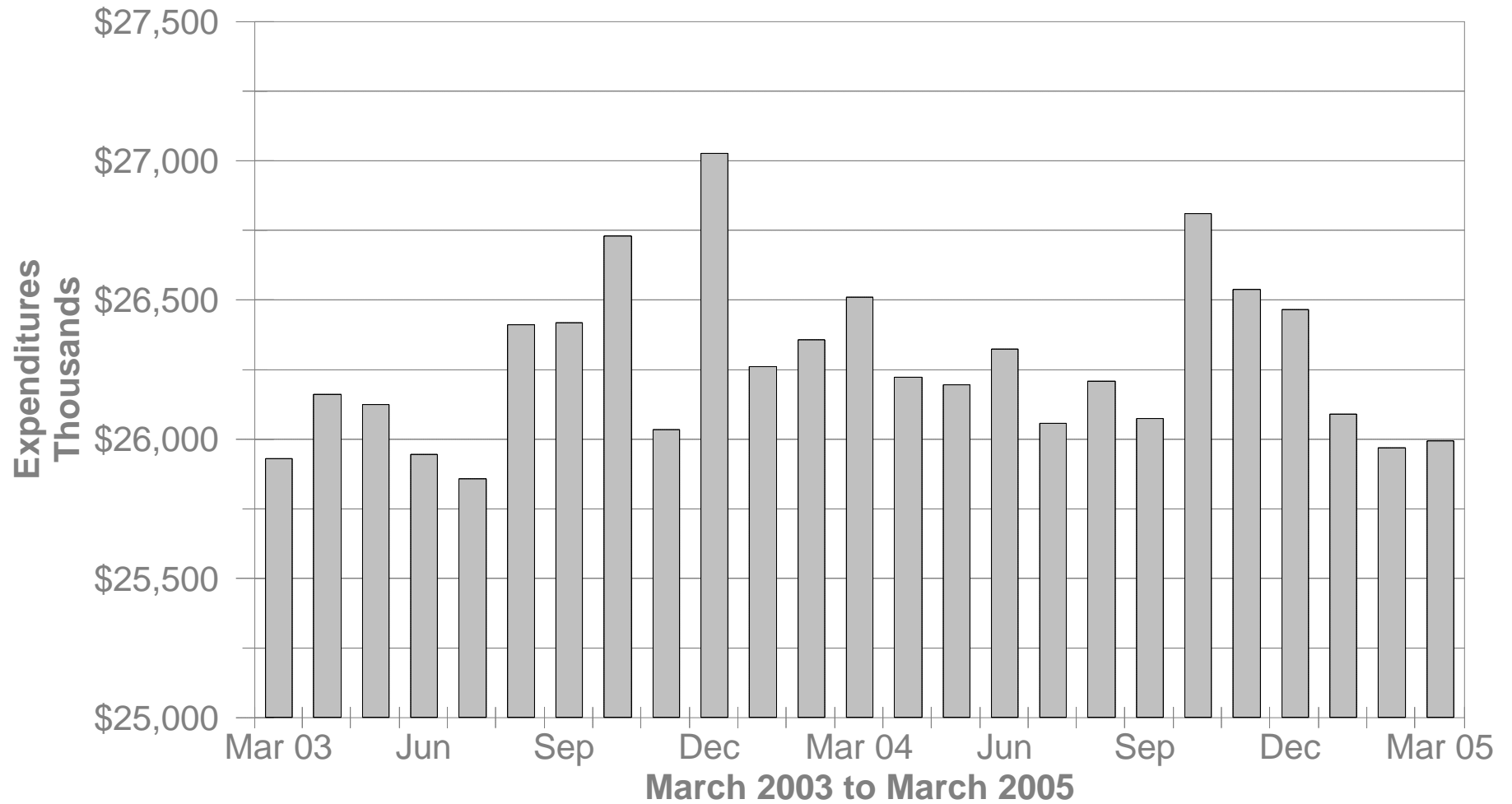


No of OWF Combined Recipients During The Last 25 Months



OWF Combined Net Expenditures

During The Last 25 Months



**TABLE 1
OWF COMBINED
MARCH 2005**

OHIO COUNTY	ASSISTANCE GROUP	RECIPIENTS	ADULTS	CHILDREN	ACTUAL EXPENDITURES		
					GROSS AMOUNT	CANCELLED AMOUNT	NET AMOUNT
STATEWIDE	86,291	189,970	49,641	140,329	\$26,911,501.00	\$917,175.00	\$25,994,326.00
ADAMS	136	218	5	213	\$35,767.00	\$1,279.00	\$34,488.00
ALLEN	466	809	86	723	\$126,873.00	\$1,875.00	\$124,998.00
ASHLAND	108	229	57	172	\$34,704.00	\$819.00	\$33,885.00
ASHTABULA	680	1,402	368	1,034	\$206,615.00	\$6,381.00	\$200,234.00
ATHENS	572	1,403	495	908	\$182,900.00	\$3,918.00	\$178,982.00
AUGLAIZE	53	75	1	74	\$13,927.00	\$985.00	\$12,942.00
BELMONT	537	1,185	389	796	\$161,991.00	\$4,821.00	\$157,170.00
BROWN	160	275	29	246	\$43,874.00	\$2,860.00	\$41,014.00
BUTLER	1,507	2,908	504	2,404	\$440,744.00	\$18,967.00	\$421,777.00
CARROLL	89	185	48	137	\$24,053.00	\$844.00	\$23,209.00
CHAMPAIGN	209	430	124	306	\$62,981.00	\$4,472.00	\$58,509.00
CLARK	1,377	3,020	822	2,198	\$428,558.00	\$11,506.00	\$417,052.00
CLERMONT	489	971	175	796	\$152,725.00	\$5,809.00	\$146,916.00
CLINTON	127	224	33	191	\$38,689.00	\$2,715.00	\$35,974.00
COLUMBIANA	496	935	182	753	\$142,360.00	\$3,481.00	\$138,879.00
COSHOCTON	212	411	112	299	\$64,118.00	\$2,369.00	\$61,749.00
CRAWFORD	178	393	111	282	\$53,384.00	\$1,599.00	\$51,785.00
CUYAHOGA	13,354	27,658	6,542	21,116	\$4,129,693.00	\$157,219.00	\$3,972,474.00
DARKE	139	307	87	220	\$48,242.00	\$1,434.00	\$46,808.00
DEFIANCE	126	294	74	220	\$40,560.00	\$1,003.00	\$39,557.00
DELAWARE	299	681	208	473	\$95,553.00	\$4,964.00	\$90,589.00
ERIE	229	379	35	344	\$62,650.00	\$3,196.00	\$59,454.00
FAIRFIELD	659	1,543	520	1,023	\$206,634.00	\$12,653.00	\$193,981.00
FAYETTE	143	277	58	219	\$42,798.00	\$1,946.00	\$40,852.00
FRANKLIN	11,405	25,873	6,535	19,338	\$3,596,857.00	\$145,080.00	\$3,451,777.00
FULTON	82	177	38	139	\$24,975.00	\$1,314.00	\$23,661.00
GALLIA	541	1,383	486	897	\$173,733.00	\$2,587.00	\$171,146.00
GEAUGA	96	210	55	155	\$28,281.00	\$0.00	\$28,281.00
GREENE	592	1,197	330	867	\$178,070.00	\$5,327.00	\$172,743.00

Source: GRP342RA Report from Management Information Services. Data includes ADC-Regular, ADC-Incapacitated, and Vendor Payments.

**TABLE 1
OWF COMBINED
MARCH 2005**

OHIO COUNTY	ASSISTANCE GROUP	RECIPIENTS	ADULTS	CHILDREN	ACTUAL EXPENDITURES		
					GROSS AMOUNT	CANCELLED AMOUNT	NET AMOUNT
STATEWIDE	86,291	189,970	49,641	140,329	\$26,911,501.00	\$917,175.00	\$25,994,326.00
GUERNSEY	206	396	78	318	\$60,189.00	\$1,350.00	\$58,839.00
HAMILTON	8,357	19,482	4,888	14,594	\$2,766,459.00	\$105,569.00	\$2,660,890.00
HANCOCK	173	350	73	277	\$53,349.00	\$766.00	\$52,583.00
HARDIN	55	85	6	79	\$14,193.00	\$446.00	\$13,747.00
HARRISON	123	283	82	201	\$36,762.00	\$373.00	\$36,389.00
HENRY	39	72	16	56	\$11,530.00	\$0.00	\$11,530.00
HIGHLAND	167	331	75	256	\$50,206.00	\$223.00	\$49,983.00
HOCKING	341	824	284	540	\$107,422.00	\$5,051.00	\$102,371.00
HOLMES	47	107	30	77	\$13,607.00	\$0.00	\$13,607.00
HURON	140	215	0	215	\$39,809.00	\$2,531.00	\$37,278.00
JACKSON	281	511	92	419	\$76,587.00	\$1,088.00	\$75,499.00
JEFFERSON	913	2,144	689	1,455	\$284,655.00	\$7,638.00	\$277,017.00
KNOX	218	488	144	344	\$64,949.00	\$2,381.00	\$62,568.00
LAKE	577	1,169	269	900	\$176,599.00	\$4,618.00	\$171,981.00
LAWRENCE	727	1,438	297	1,141	\$210,807.00	\$8,646.00	\$202,161.00
LICKING	582	1,288	370	918	\$178,666.00	\$5,504.00	\$173,162.00
LOGAN	200	440	124	316	\$62,990.00	\$3,169.00	\$59,821.00
LORAIN	2,248	5,199	1,389	3,810	\$708,409.00	\$14,805.00	\$693,604.00
LUCAS	7,443	17,849	5,349	12,500	\$2,382,356.00	\$75,653.00	\$2,306,703.00
MADISON	248	579	201	378	\$78,970.00	\$3,886.00	\$75,084.00
MAHONING	3,027	7,128	1,841	5,287	\$983,783.00	\$25,751.00	\$958,032.00
MARION	426	786	128	658	\$125,455.00	\$6,804.00	\$118,651.00
MEDINA	303	648	182	466	\$97,033.00	\$1,491.00	\$95,542.00
MEIGS	210	456	144	312	\$60,201.00	\$2,195.00	\$58,006.00
MERCER	60	160	54	106	\$20,254.00	\$0.00	\$20,254.00
MIAMI	319	602	116	486	\$91,710.00	\$2,140.00	\$89,570.00
MONROE	73	195	72	123	\$22,767.00	\$675.00	\$22,092.00
MONTGOMERY	5,652	12,180	3,122	9,058	\$1,714,567.00	\$56,803.00	\$1,657,764.00
MORGAN	88	155	22	133	\$23,262.00	\$1,351.00	\$21,911.00
MORROW	127	269	78	191	\$39,493.00	\$887.00	\$38,606.00

Source: GRP342RA Report from Management Information Services. Data includes ADC-Regular, ADC-Incapacitated, and Vendor Payments.

**TABLE 1
OWF COMBINED
MARCH 2005**

OHIO COUNTY	ASSISTANCE GROUP	RECIPIENTS	ADULTS	CHILDREN	ACTUAL EXPENDITURES		
					GROSS AMOUNT	CANCELLED AMOUNT	NET AMOUNT
STATEWIDE	86,291	189,970	49,641	140,329	\$26,911,501.00	\$917,175.00	\$25,994,326.00
MUSKINGUM	950	2,156	640	1,516	\$284,516.00	\$7,972.00	\$276,544.00
NOBLE	36	85	22	63	\$11,027.00	\$596.00	\$10,431.00
OTTAWA	130	311	99	212	\$37,920.00	\$1,060.00	\$36,860.00
PAULDING	100	226	88	138	\$28,888.00	\$610.00	\$28,278.00
PERRY	305	725	201	524	\$96,296.00	\$2,418.00	\$93,878.00
PICKAWAY	483	1,207	402	805	\$159,953.00	\$5,384.00	\$154,569.00
PIKE	311	665	153	512	\$96,258.00	\$2,326.00	\$93,932.00
PORTAGE	413	789	169	620	\$122,547.00	\$2,655.00	\$119,892.00
PREBLE	162	363	99	264	\$49,785.00	\$2,482.00	\$47,303.00
PUTNAM	51	109	28	81	\$14,942.00	\$305.00	\$14,637.00
RICHLAND	628	1,227	241	986	\$190,194.00	\$7,886.00	\$182,308.00
ROSS	859	2,000	640	1,360	\$268,905.00	\$7,649.00	\$261,256.00
SANDUSKY	179	342	70	272	\$52,487.00	\$1,224.00	\$51,263.00
SCIOTO	1,019	1,944	399	1,545	\$295,844.00	\$8,967.00	\$286,877.00
SENECA	145	264	32	232	\$41,017.00	\$989.00	\$40,028.00
SHELBY	125	217	26	191	\$36,242.00	\$1,020.00	\$35,222.00
STARK	3,129	7,177	2,164	5,013	\$988,171.00	\$37,188.00	\$950,983.00
SUMMIT	5,247	11,648	3,438	8,210	\$1,652,716.00	\$40,826.00	\$1,611,890.00
TRUMBULL	1,460	2,957	681	2,276	\$440,319.00	\$10,778.00	\$429,541.00
TUSCARAWAS	444	1,026	326	700	\$135,980.00	\$4,821.00	\$131,159.00
UNION	229	580	194	386	\$77,225.00	\$4,214.00	\$73,011.00
VAN WERT	40	60	3	57	\$10,187.00	\$305.00	\$9,882.00
VINTON	158	334	97	237	\$46,058.00	\$610.00	\$45,448.00
WARREN	211	378	57	321	\$59,256.00	\$1,856.00	\$57,400.00
WASHINGTON	143	241	11	230	\$39,218.00	\$305.00	\$38,913.00
WAYNE	465	1,100	371	729	\$145,647.00	\$5,134.00	\$140,513.00
WILLIAMS	132	298	103	195	\$40,877.00	\$1,957.00	\$38,920.00
WOOD	285	623	158	465	\$83,836.00	\$2,421.00	\$81,415.00
WYANDOT	21	37	5	32	\$5,842.00	\$0.00	\$5,842.00

Source: GRP342RA Report from Management Information Services. Data includes ADC-Regular, ADC-Incapacitated, and Vendor Payments.

**TABLE 1
OWF REGULAR
MARCH 2005**

OHIO COUNTY	ASSISTANCE GROUP	RECIPIENTS	ADULTS	CHILDREN	ACTUAL EXPENDITURES		
					GROSS AMOUNT	CANCELLED AMOUNT	NET AMOUNT
STATEWIDE	81,875	172,235	41,429	130,806	\$25,089,601.00	\$854,814.00	\$24,234,787.00
ADAMS	136	218	5	213	\$35,767.00	\$1,279.00	\$34,488.00
ALLEN	462	794	80	714	\$125,152.00	\$1,875.00	\$123,277.00
ASHLAND	102	207	45	162	\$32,221.00	\$819.00	\$31,402.00
ASHTABULA	636	1,231	286	945	\$186,825.00	\$6,381.00	\$180,444.00
ATHENS	456	974	291	683	\$135,897.00	\$3,084.00	\$132,813.00
AUGLAIZE	53	75	1	74	\$13,927.00	\$985.00	\$12,942.00
BELMONT	485	989	286	703	\$140,752.00	\$4,193.00	\$136,559.00
BROWN	158	270	26	244	\$43,201.00	\$2,860.00	\$40,341.00
BUTLER	1,492	2,856	483	2,373	\$436,187.00	\$18,344.00	\$417,843.00
CARROLL	81	151	32	119	\$20,745.00	\$844.00	\$19,901.00
CHAMPAIGN	196	383	101	282	\$57,187.00	\$3,550.00	\$53,637.00
CLARK	1,310	2,740	697	2,043	\$400,650.00	\$10,594.00	\$390,056.00
CLERMONT	483	946	163	783	\$149,941.00	\$5,713.00	\$144,228.00
CLINTON	126	220	31	189	\$38,228.00	\$2,715.00	\$35,513.00
COLUMBIANA	477	862	144	718	\$134,024.00	\$3,481.00	\$130,543.00
COSHOCTON	199	371	89	282	\$59,073.00	\$2,369.00	\$56,704.00
CRAWFORD	158	314	72	242	\$46,081.00	\$1,599.00	\$44,482.00
CUYAHOGA	12,945	25,952	5,746	20,206	\$3,962,411.00	\$153,879.00	\$3,808,532.00
DARKE	129	261	67	194	\$43,384.00	\$1,434.00	\$41,950.00
DEFIANCE	117	251	56	195	\$36,543.00	\$1,003.00	\$35,540.00
DELAWARE	271	575	154	421	\$84,314.00	\$4,964.00	\$79,350.00
ERIE	226	366	29	337	\$61,554.00	\$3,196.00	\$58,358.00
FAIRFIELD	566	1,191	342	849	\$169,507.00	\$10,234.00	\$159,273.00
FAYETTE	139	261	50	211	\$40,432.00	\$1,946.00	\$38,486.00
FRANKLIN	10,868	23,582	5,634	17,948	\$3,368,612.00	\$132,432.00	\$3,236,180.00
FULTON	79	165	33	132	\$24,237.00	\$1,267.00	\$22,970.00
GALLIA	446	1,015	300	715	\$136,299.00	\$2,445.00	\$133,854.00
GEAUGA	90	188	44	144	\$25,316.00	\$0.00	\$25,316.00
GREENE	561	1,079	272	807	\$164,905.00	\$4,788.00	\$160,117.00

Source: GRP342RA Report from Management Information Services. Data includes ADC-Regular, ADC-Incapacitated, and Vendor Payments.

**TABLE 1
OWF REGULAR
MARCH 2005**

OHIO COUNTY	ASSISTANCE GROUP	RECIPIENTS	ADULTS	CHILDREN	ACTUAL EXPENDITURES		
					GROSS AMOUNT	CANCELLED AMOUNT	NET AMOUNT
STATEWIDE	81,875	172,235	41,429	130,806	\$25,089,601.00	\$854,814.00	\$24,234,787.00
GUERNSEY	199	366	64	302	\$56,831.00	\$1,350.00	\$55,481.00
HAMILTON	8,195	18,798	4,588	14,210	\$2,692,313.00	\$101,876.00	\$2,590,437.00
HANCOCK	166	319	59	260	\$50,387.00	\$766.00	\$49,621.00
HARDIN	55	85	6	79	\$14,193.00	\$446.00	\$13,747.00
HARRISON	110	236	56	180	\$32,825.00	\$373.00	\$32,452.00
HENRY	38	67	14	53	\$10,741.00	\$0.00	\$10,741.00
HIGHLAND	159	298	59	239	\$46,789.00	\$223.00	\$46,566.00
HOCKING	271	562	150	412	\$78,819.00	\$4,254.00	\$74,565.00
HOLMES	43	89	22	67	\$11,749.00	\$0.00	\$11,749.00
HURON	135	205	0	205	\$36,430.00	\$1,624.00	\$34,806.00
JACKSON	271	467	74	393	\$72,284.00	\$1,088.00	\$71,196.00
JEFFERSON	798	1,677	462	1,215	\$238,511.00	\$6,784.00	\$231,727.00
KNOX	206	437	121	316	\$60,690.00	\$2,381.00	\$58,309.00
LAKE	517	1,003	223	780	\$153,458.00	\$3,949.00	\$149,509.00
LAWRENCE	686	1,277	221	1,056	\$194,305.00	\$8,646.00	\$185,659.00
LICKING	539	1,128	287	841	\$162,028.00	\$5,504.00	\$156,524.00
LOGAN	185	383	96	287	\$56,928.00	\$2,091.00	\$54,837.00
LORAIN	2,118	4,659	1,143	3,516	\$654,101.00	\$12,971.00	\$641,130.00
LUCAS	6,887	15,595	4,309	11,286	\$2,148,906.00	\$66,373.00	\$2,082,533.00
MADISON	215	444	136	308	\$64,389.00	\$3,347.00	\$61,042.00
MAHONING	2,895	6,572	1,589	4,983	\$927,836.00	\$25,034.00	\$902,802.00
MARION	419	764	119	645	\$122,544.00	\$6,581.00	\$115,963.00
MEDINA	293	609	162	447	\$91,474.00	\$1,491.00	\$89,983.00
MEIGS	189	378	102	276	\$52,459.00	\$2,195.00	\$50,264.00
MERCER	51	116	36	80	\$15,856.00	\$0.00	\$15,856.00
MIAMI	318	599	114	485	\$91,534.00	\$2,140.00	\$89,394.00
MONROE	57	131	40	91	\$16,713.00	\$675.00	\$16,038.00
MONTGOMERY	5,600	11,991	3,039	8,952	\$1,694,561.00	\$56,275.00	\$1,638,286.00
MORGAN	88	155	22	133	\$23,262.00	\$1,351.00	\$21,911.00
MORROW	111	207	46	161	\$32,908.00	\$887.00	\$32,021.00

Source: GRP342RA Report from Management Information Services. Data includes ADC-Regular, ADC-Incapacitated, and Vendor Payments.

**TABLE 1
OWF REGULAR
MARCH 2005**

OHIO COUNTY	ASSISTANCE GROUP	RECIPIENTS	ADULTS	CHILDREN	ACTUAL EXPENDITURES		
					GROSS AMOUNT	CANCELLED AMOUNT	NET AMOUNT
STATEWIDE	81,875	172,235	41,429	130,806	\$25,089,601.00	\$854,814.00	\$24,234,787.00
MUSKINGUM	867	1,859	482	1,377	\$255,558.00	\$5,725.00	\$249,833.00
NOBLE	35	81	20	61	\$10,893.00	\$596.00	\$10,297.00
OTTAWA	111	226	64	162	\$31,086.00	\$862.00	\$30,224.00
PAULDING	90	189	71	118	\$26,169.00	\$610.00	\$25,559.00
PERRY	267	574	129	445	\$80,655.00	\$2,418.00	\$78,237.00
PICKAWAY	419	949	274	675	\$131,968.00	\$3,923.00	\$128,045.00
PIKE	295	598	122	476	\$88,952.00	\$1,953.00	\$86,999.00
PORTAGE	405	758	153	605	\$117,646.00	\$2,655.00	\$114,991.00
PREBLE	154	336	83	253	\$46,707.00	\$2,109.00	\$44,598.00
PUTNAM	44	84	17	67	\$12,314.00	\$305.00	\$12,009.00
RICHLAND	619	1,188	225	963	\$186,069.00	\$7,886.00	\$178,183.00
ROSS	774	1,659	477	1,182	\$236,217.00	\$7,276.00	\$228,941.00
SANDUSKY	170	314	62	252	\$49,829.00	\$1,196.00	\$48,633.00
SCIOTO	962	1,731	290	1,441	\$274,523.00	\$8,967.00	\$265,556.00
SENECA	143	257	29	228	\$40,183.00	\$989.00	\$39,194.00
SHELBY	124	215	26	189	\$35,937.00	\$1,020.00	\$34,917.00
STARK	2,893	6,239	1,699	4,540	\$894,051.00	\$33,829.00	\$860,222.00
SUMMIT	4,898	10,217	2,748	7,469	\$1,504,739.00	\$36,336.00	\$1,468,403.00
TRUMBULL	1,394	2,697	550	2,147	\$412,248.00	\$10,317.00	\$401,931.00
TUSCARAWAS	391	807	222	585	\$113,914.00	\$3,125.00	\$110,789.00
UNION	197	446	130	316	\$63,138.00	\$3,090.00	\$60,048.00
VAN WERT	40	60	3	57	\$10,187.00	\$305.00	\$9,882.00
VINTON	150	307	82	225	\$43,324.00	\$610.00	\$42,714.00
WARREN	210	377	57	320	\$59,033.00	\$1,633.00	\$57,400.00
WASHINGTON	141	225	7	218	\$38,259.00	\$305.00	\$37,954.00
WAYNE	414	904	274	630	\$126,792.00	\$4,673.00	\$122,119.00
WILLIAMS	123	260	87	173	\$37,410.00	\$1,957.00	\$35,453.00
WOOD	264	539	123	416	\$77,067.00	\$1,196.00	\$75,871.00
WYANDOT	20	35	5	30	\$5,537.00	\$0.00	\$5,537.00

Source: GRP342RA Report from Management Information Services. Data includes ADC-Regular, ADC-Incapacitated, and Vendor Payments.

**TABLE 1
OWF UNEMPLOYED
MARCH 2005**

OHIO COUNTY	ASSISTANCE GROUP	RECIPIENTS	ADULTS	CHILDREN	ACTUAL EXPENDITURES		
					GROSS AMOUNT	CANCELLED AMOUNT	NET AMOUNT
STATEWIDE	4,416	17,735	8,212	9,523	\$1,821,900.00	\$62,361.00	\$1,759,539.00
ADAMS	0	0	0	0	\$0.00	\$0.00	\$0.00
ALLEN	4	15	6	9	\$1,721.00	\$0.00	\$1,721.00
ASHLAND	6	22	12	10	\$2,483.00	\$0.00	\$2,483.00
ASHTABULA	44	171	82	89	\$19,790.00	\$0.00	\$19,790.00
ATHENS	116	429	204	225	\$47,003.00	\$834.00	\$46,169.00
AUGLAIZE	0	0	0	0	\$0.00	\$0.00	\$0.00
BELMONT	52	196	103	93	\$21,239.00	\$628.00	\$20,611.00
BROWN	2	5	3	2	\$673.00	\$0.00	\$673.00
BUTLER	15	52	21	31	\$4,557.00	\$623.00	\$3,934.00
CARROLL	8	34	16	18	\$3,308.00	\$0.00	\$3,308.00
CHAMPAIGN	13	47	23	24	\$5,794.00	\$922.00	\$4,872.00
CLARK	67	280	125	155	\$27,908.00	\$912.00	\$26,996.00
CLERMONT	6	25	12	13	\$2,784.00	\$96.00	\$2,688.00
CLINTON	1	4	2	2	\$461.00	\$0.00	\$461.00
COLUMBIANA	19	73	38	35	\$8,336.00	\$0.00	\$8,336.00
COSHOCTON	13	40	23	17	\$5,045.00	\$0.00	\$5,045.00
CRAWFORD	20	79	39	40	\$7,303.00	\$0.00	\$7,303.00
CUYAHOGA	409	1,706	796	910	\$167,282.00	\$3,340.00	\$163,942.00
DARKE	10	46	20	26	\$4,858.00	\$0.00	\$4,858.00
DEFIANCE	9	43	18	25	\$4,017.00	\$0.00	\$4,017.00
DELAWARE	28	106	54	52	\$11,239.00	\$0.00	\$11,239.00
ERIE	3	13	6	7	\$1,096.00	\$0.00	\$1,096.00
FAIRFIELD	93	352	178	174	\$37,127.00	\$2,419.00	\$34,708.00
FAYETTE	4	16	8	8	\$2,366.00	\$0.00	\$2,366.00
FRANKLIN	537	2,291	901	1,390	\$228,245.00	\$12,648.00	\$215,597.00
FULTON	3	12	5	7	\$738.00	\$47.00	\$691.00
GALLIA	95	368	186	182	\$37,434.00	\$142.00	\$37,292.00
GEAUGA	6	22	11	11	\$2,965.00	\$0.00	\$2,965.00
GREENE	31	118	58	60	\$13,165.00	\$539.00	\$12,626.00

Source: GRP342RA Report from Management Information Services. Data includes ADC-Regular, ADC-Incapacitated, and Vendor Payments.

**TABLE 1
OWF UNEMPLOYED
MARCH 2005**

OHIO COUNTY	ASSISTANCE GROUP	RECIPIENTS	ADULTS	CHILDREN	ACTUAL EXPENDITURES		
					GROSS AMOUNT	CANCELLED AMOUNT	NET AMOUNT
STATEWIDE	4,416	17,735	8,212	9,523	\$1,821,900.00	\$62,361.00	\$1,759,539.00
GUERNSEY	7	30	14	16	\$3,358.00	\$0.00	\$3,358.00
HAMILTON	162	684	300	384	\$74,146.00	\$3,693.00	\$70,453.00
HANCOCK	7	31	14	17	\$2,962.00	\$0.00	\$2,962.00
HARDIN	0	0	0	0	\$0.00	\$0.00	\$0.00
HARRISON	13	47	26	21	\$3,937.00	\$0.00	\$3,937.00
HENRY	1	5	2	3	\$789.00	\$0.00	\$789.00
HIGHLAND	8	33	16	17	\$3,417.00	\$0.00	\$3,417.00
HOCKING	70	262	134	128	\$28,603.00	\$797.00	\$27,806.00
HOLMES	4	18	8	10	\$1,858.00	\$0.00	\$1,858.00
HURON	5	10	0	10	\$3,379.00	\$907.00	\$2,472.00
JACKSON	10	44	18	26	\$4,303.00	\$0.00	\$4,303.00
JEFFERSON	115	467	227	240	\$46,144.00	\$854.00	\$45,290.00
KNOX	12	51	23	28	\$4,259.00	\$0.00	\$4,259.00
LAKE	60	166	46	120	\$23,141.00	\$669.00	\$22,472.00
LAWRENCE	41	161	76	85	\$16,502.00	\$0.00	\$16,502.00
LICKING	43	160	83	77	\$16,638.00	\$0.00	\$16,638.00
LOGAN	15	57	28	29	\$6,062.00	\$1,078.00	\$4,984.00
LORAIN	130	540	246	294	\$54,308.00	\$1,834.00	\$52,474.00
LUCAS	556	2,254	1,040	1,214	\$233,450.00	\$9,280.00	\$224,170.00
MADISON	33	135	65	70	\$14,581.00	\$539.00	\$14,042.00
MAHONING	132	556	252	304	\$55,947.00	\$717.00	\$55,230.00
MARION	7	22	9	13	\$2,911.00	\$223.00	\$2,688.00
MEDINA	10	39	20	19	\$5,559.00	\$0.00	\$5,559.00
MEIGS	21	78	42	36	\$7,742.00	\$0.00	\$7,742.00
MERCER	9	44	18	26	\$4,398.00	\$0.00	\$4,398.00
MIAMI	1	3	2	1	\$176.00	\$0.00	\$176.00
MONROE	16	64	32	32	\$6,054.00	\$0.00	\$6,054.00
MONTGOMERY	52	189	83	106	\$20,006.00	\$528.00	\$19,478.00
MORGAN	0	0	0	0	\$0.00	\$0.00	\$0.00
MORROW	16	62	32	30	\$6,585.00	\$0.00	\$6,585.00

Source: GRP342RA Report from Management Information Services. Data includes ADC-Regular, ADC-Incapacitated, and Vendor Payments.

**TABLE 1
OWF UNEMPLOYED
MARCH 2005**

OHIO COUNTY	ASSISTANCE GROUP	RECIPIENTS	ADULTS	CHILDREN	ACTUAL EXPENDITURES		
					GROSS AMOUNT	CANCELLED AMOUNT	NET AMOUNT
STATEWIDE	4,416	17,735	8,212	9,523	\$1,821,900.00	\$62,361.00	\$1,759,539.00
MUSKINGUM	83	297	158	139	\$28,958.00	\$2,247.00	\$26,711.00
NOBLE	1	4	2	2	\$134.00	\$0.00	\$134.00
OTTAWA	19	85	35	50	\$6,834.00	\$198.00	\$6,636.00
PAULDING	10	37	17	20	\$2,719.00	\$0.00	\$2,719.00
PERRY	38	151	72	79	\$15,641.00	\$0.00	\$15,641.00
PICKAWAY	64	258	128	130	\$27,985.00	\$1,461.00	\$26,524.00
PIKE	16	67	31	36	\$7,306.00	\$373.00	\$6,933.00
PORTAGE	8	31	16	15	\$4,901.00	\$0.00	\$4,901.00
PREBLE	8	27	16	11	\$3,078.00	\$373.00	\$2,705.00
PUTNAM	7	25	11	14	\$2,628.00	\$0.00	\$2,628.00
RICHLAND	9	39	16	23	\$4,125.00	\$0.00	\$4,125.00
ROSS	85	341	163	178	\$32,688.00	\$373.00	\$32,315.00
SANDUSKY	9	28	8	20	\$2,658.00	\$28.00	\$2,630.00
SCIOTO	57	213	109	104	\$21,321.00	\$0.00	\$21,321.00
SENECA	2	7	3	4	\$834.00	\$0.00	\$834.00
SHELBY	1	2	0	2	\$305.00	\$0.00	\$305.00
STARK	236	938	465	473	\$94,120.00	\$3,359.00	\$90,761.00
SUMMIT	349	1,431	690	741	\$147,977.00	\$4,490.00	\$143,487.00
TRUMBULL	66	260	131	129	\$28,071.00	\$461.00	\$27,610.00
TUSCARAWAS	53	219	104	115	\$22,066.00	\$1,696.00	\$20,370.00
UNION	32	134	64	70	\$14,087.00	\$1,124.00	\$12,963.00
VAN WERT	0	0	0	0	\$0.00	\$0.00	\$0.00
VINTON	8	27	15	12	\$2,734.00	\$0.00	\$2,734.00
WARREN	1	1	0	1	\$223.00	\$223.00	\$0.00
WASHINGTON	2	16	4	12	\$959.00	\$0.00	\$959.00
WAYNE	51	196	97	99	\$18,855.00	\$461.00	\$18,394.00
WILLIAMS	9	38	16	22	\$3,467.00	\$0.00	\$3,467.00
WOOD	21	84	35	49	\$6,769.00	\$1,225.00	\$5,544.00
WYANDOT	1	2	0	2	\$305.00	\$0.00	\$305.00

Source: GRP342RA Report from Management Information Services. Data includes ADC-Regular, ADC-Incapacitated, and Vendor Payments.

**TABLE 2
TITLE IV-E FOSTER CARE
MARCH 2005**

OHIO COUNTY	FOSTER CARE						ADOPTION ASSISTANCE		TOTAL FOSTER CARE AND ADOPTION ASSISTANCE	
	FOSTER FAMILY HOMES		CHILD CARE INSTITUTIONS		HOMES & INSTITUTIONS		CHILDREN	GROSS AMOUNT	CHILDREN	GROSS AMOUNT
	CHILDREN	GROSS AMOUNT	CHILDREN	GROSS AMOUNT	CHILDREN	GROSS AMOUNT				
STATEWIDE	3,089	\$1,278,680.29	4,532	\$5,688,435.45	7,621	\$6,967,115.74	19,877	\$7,587,420.13	27,498	\$14,554,535.87
ADAMS	16	\$3,487.31	0	\$0.00	16	\$3,487.31	41	\$12,742.20	57	\$16,229.51
ALLEN	54	\$18,196.74	34	\$28,943.46	88	\$47,140.20	136	\$40,139.38	224	\$87,279.58
ASHLAND	2	\$948.91	0	\$0.00	2	\$948.91	9	\$2,250.00	11	\$3,198.91
ASHTABULA	0	\$0.00	6	\$3,353.60	6	\$3,353.60	170	\$60,115.54	176	\$63,469.14
ATHENS	41	\$17,891.82	38	\$41,280.32	79	\$59,172.14	112	\$35,482.59	191	\$94,654.73
AUGLAIZE	8	\$2,401.52	2	\$2,468.27	10	\$4,869.79	44	\$16,057.83	54	\$20,927.62
BELMONT	3	\$1,071.24	25	\$18,289.22	28	\$19,360.46	111	\$42,669.75	139	\$62,030.21
BROWN	26	\$9,356.30	1	\$2,326.10	27	\$11,682.40	37	\$9,948.34	64	\$21,630.74
BUTLER	115	\$37,952.34	118	\$140,662.70	233	\$178,615.04	531	\$164,734.89	764	\$343,349.93
CARROLL	13	\$10,274.08	0	\$0.00	13	\$10,274.08	5	\$1,250.00	18	\$11,524.08
CHAMPAIGN	1	\$861.18	0	\$0.00	1	\$861.18	14	\$4,544.40	15	\$5,405.58
CLARK	0	\$0.00	63	\$40,008.64	63	\$40,008.64	318	\$105,531.96	381	\$145,540.60
CLERMONT	65	\$15,759.74	122	\$228,394.81	187	\$244,154.55	214	\$60,903.84	401	\$305,058.39
CLINTON	33	\$15,914.88	0	\$0.00	33	\$15,914.88	60	\$22,758.40	93	\$38,673.28
COLUMBIANA	31	\$10,531.57	52	\$102,605.92	83	\$113,137.49	68	\$18,438.28	151	\$131,575.77
COSHOCTON	16	(\$15,190.47)	6	\$16,000.83	22	\$810.36	48	\$14,267.84	70	\$15,078.20
CRAWFORD	0	\$0.00	27	\$28,521.99	27	\$28,521.99	41	\$11,910.00	68	\$40,431.99
CUYAHOGA	555	\$226,749.20	1,127	\$1,791,517.16	1,682	\$2,018,266.36	4,888	\$2,332,184.33	6,570	\$4,350,450.69
DARKE	14	\$4,699.15	10	\$21,684.55	24	\$26,383.70	27	\$8,594.09	51	\$34,977.79
DEFIANCE	7	\$1,758.07	3	\$4,882.07	10	\$6,640.14	35	\$10,629.92	45	\$17,270.06
DELAWARE	10	\$6,319.17	0	\$0.00	10	\$6,319.17	59	\$17,756.56	69	\$24,075.73
ERIE	40	\$15,827.61	28	\$33,069.98	68	\$48,897.59	86	\$26,070.24	154	\$74,967.83
FAIRFIELD	0	\$0.00	0	\$0.00	0	\$0.00	151	\$40,017.18	151	\$40,017.18
FAYETTE	3	\$1,665.06	0	\$0.00	3	\$1,665.06	16	\$4,000.00	19	\$5,665.06
FRANKLIN	0	\$0.00	1,313	\$512,218.75	1,313	\$512,218.75	2,554	\$950,967.98	3,867	\$1,463,186.73
FULTON	5	\$741.37	11	\$31,923.92	16	\$32,665.29	17	\$5,483.90	33	\$38,149.19
GALLIA	13	\$4,058.76	5	\$4,988.71	18	\$9,047.47	40	\$10,465.00	58	\$19,512.47
GEAUGA	7	\$1,850.05	0	\$0.00	7	\$1,850.05	102	\$33,992.42	109	\$35,842.47
GREENE	0	\$0.00	26	\$12,177.49	26	\$12,177.49	90	\$28,991.92	116	\$41,169.41

SOURCE: GBS003RB Report from Management Information Services. Federal funds only.

**TABLE 2
TITLE IV-E FOSTER CARE
MARCH 2005**

OHIO COUNTY	FOSTER CARE						ADOPTION ASSISTANCE		TOTAL FOSTER CARE AND ADOPTION ASSISTANCE	
	FOSTER FAMILY HOMES		CHILD CARE INSTITUTIONS		HOMES & INSTITUTIONS		CHILDREN	GROSS AMOUNT	CHILDREN	GROSS AMOUNT
	CHILDREN	GROSS AMOUNT	CHILDREN	GROSS AMOUNT	CHILDREN	GROSS AMOUNT				
STATEWIDE	3,089	\$1,278,680.29	4,532	\$5,688,435.45	7,621	\$6,967,115.74	19,877	\$7,587,420.13	27,498	\$14,554,535.87
GUERNSEY	16	\$5,971.68	31	\$43,933.33	47	\$49,905.01	75	\$23,061.84	122	\$72,966.85
HAMILTON	0	\$0.00	0	\$0.00	0	\$0.00	1,543	\$602,594.77	1,543	\$602,594.77
HANCOCK	9	\$4,125.63	3	\$2,921.10	12	\$7,046.73	53	\$15,909.99	65	\$22,956.72
HARDIN	21	\$9,648.64	0	\$0.00	21	\$9,648.64	35	\$15,055.73	56	\$24,704.37
HARRISON	0	\$0.00	0	\$0.00	0	\$0.00	29	\$10,032.75	29	\$10,032.75
HENRY	0	\$0.00	9	\$9,590.79	9	\$9,590.79	25	\$7,757.49	34	\$17,348.28
HIGHLAND	25	\$9,936.64	8	\$6,663.23	33	\$16,599.87	16	\$5,536.73	49	\$22,136.60
HOCKING	25	\$9,315.78	11	\$12,154.88	36	\$21,470.66	46	\$15,354.73	82	\$36,825.39
HOLMES	12	\$4,986.91	2	\$5,246.22	14	\$10,233.13	25	\$10,569.00	39	\$20,802.13
HURON	28	\$14,800.56	2	\$5,231.38	30	\$20,031.94	29	\$8,497.47	59	\$28,529.41
JACKSON	0	\$0.00	21	\$34,459.36	21	\$34,459.36	15	\$3,750.00	36	\$38,209.36
JEFFERSON	45	\$30,377.22	21	\$43,614.48	66	\$73,991.70	62	\$26,235.33	128	\$100,227.03
KNOX	5	\$2,497.60	5	\$8,162.88	10	\$10,660.48	37	\$10,428.68	47	\$21,089.16
LAKE	48	\$11,627.37	29	\$97,339.72	77	\$108,967.09	147	\$42,888.34	224	\$151,855.43
LAWRENCE	6	\$1,757.52	89	\$289,950.59	95	\$291,708.11	38	\$10,246.00	133	\$301,954.11
LICKING	67	\$24,267.32	89	\$124,041.60	156	\$148,308.92	310	\$101,516.20	466	\$249,825.12
LOGAN	9	\$9,304.81	1	\$1,394.03	10	\$10,698.84	47	\$17,375.35	57	\$28,074.19
LORAIN	0	\$0.00	21	\$119,487.25	21	\$119,487.25	429	\$141,564.35	450	\$261,051.60
LUCAS	450	\$209,360.69	47	\$71,485.93	497	\$280,846.62	1,590	\$593,674.44	2,087	\$874,521.06
MADISON	0	\$0.00	0	\$0.00	0	\$0.00	23	\$6,699.50	23	\$6,699.50
MAHONING	135	\$83,984.62	48	\$173,416.29	183	\$257,400.91	242	\$73,389.52	425	\$330,790.43
MARION	12	\$4,628.11	13	\$32,780.86	25	\$37,408.97	77	\$25,472.91	102	\$62,881.88
MEDINA	0	\$0.00	0	\$0.00	0	\$0.00	84	\$30,193.09	84	\$30,193.09
MEIGS	2	\$129.46	7	\$5,632.15	9	\$5,761.61	7	\$1,750.00	16	\$7,511.61
MERCER	3	\$2,157.41	0	\$0.00	3	\$2,157.41	32	\$8,507.28	35	\$10,664.69
MIAMI	26	\$12,156.15	36	\$56,368.56	62	\$68,524.71	109	\$39,537.59	171	\$108,062.30
MONROE	7	\$3,496.64	1	\$398.32	8	\$3,894.96	9	\$2,996.00	17	\$6,890.96
MONTGOMERY	368	\$160,032.75	330	\$481,291.55	698	\$641,324.30	1,160	\$539,329.02	1,858	\$1,180,653.32
MORGAN	0	\$0.00	0	\$0.00	0	\$0.00	12	\$3,234.00	12	\$3,234.00
MORROW	2	\$851.03	0	\$0.00	2	\$851.03	40	\$10,963.17	42	\$11,814.20

SOURCE: GBS003RB Report from Management Information Services. Federal funds only.

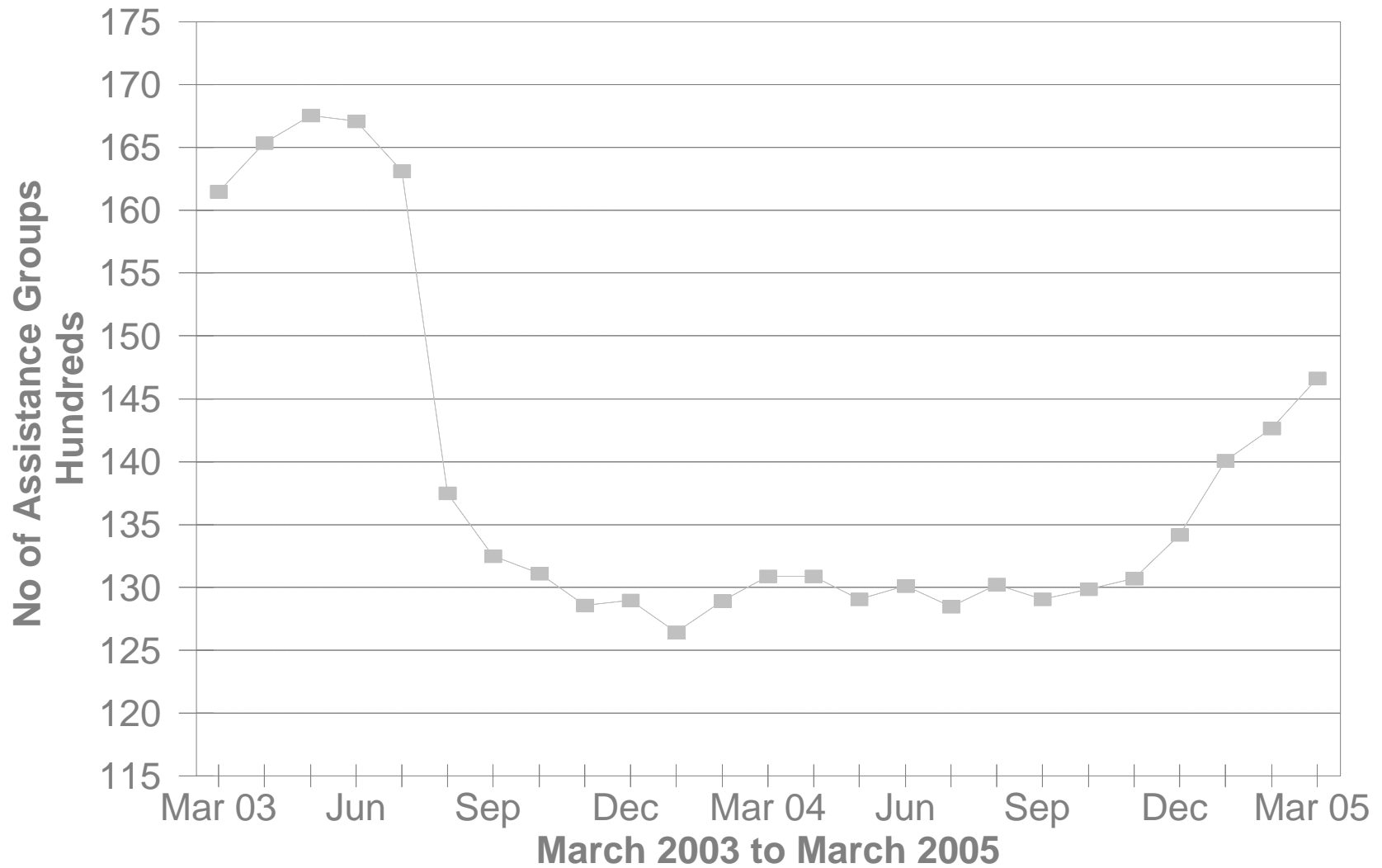
**TABLE 2
TITLE IV-E FOSTER CARE
MARCH 2005**

OHIO COUNTY	FOSTER CARE						ADOPTION ASSISTANCE		TOTAL FOSTER CARE AND ADOPTION ASSISTANCE	
	FOSTER FAMILY HOMES		CHILD CARE INSTITUTIONS		HOMES & INSTITUTIONS		CHILDREN	GROSS AMOUNT	CHILDREN	GROSS AMOUNT
	CHILDREN	GROSS AMOUNT	CHILDREN	GROSS AMOUNT	CHILDREN	GROSS AMOUNT				
STATEWIDE	3,089	\$1,278,680.29	4,532	\$5,688,435.45	7,621	\$6,967,115.74	19,877	\$7,587,420.13	27,498	\$14,554,535.87
MUSKINGUM	0	\$0.00	0	\$0.00	0	\$0.00	125	\$39,874.25	125	\$39,874.25
NOBLE	0	\$0.00	0	\$0.00	0	\$0.00	5	\$1,250.00	5	\$1,250.00
OTTAWA	0	\$0.00	0	\$0.00	0	\$0.00	3	\$899.20	3	\$899.20
PAULDING	5	\$1,445.43	4	\$4,090.84	9	\$5,536.27	23	\$6,466.16	32	\$12,002.43
PERRY	30	\$13,661.46	6	\$7,939.73	36	\$21,601.19	36	\$12,046.24	72	\$33,647.43
PICKAWAY	18	\$8,522.60	6	\$12,755.88	24	\$21,278.48	15	\$4,567.31	39	\$25,845.79
PIKE	13	\$6,937.80	9	\$6,643.57	22	\$13,581.37	23	\$6,113.88	45	\$19,695.25
PORTAGE	0	\$0.00	0	\$0.00	0	\$0.00	141	\$63,527.72	141	\$63,527.72
PREBLE	11	\$3,562.24	20	\$23,457.61	31	\$27,019.85	32	\$8,258.98	63	\$35,278.83
PUTNAM	0	\$0.00	1	\$1,604.06	1	\$1,604.06	13	\$3,250.00	14	\$4,854.06
RICHLAND	0	\$0.00	0	\$0.00	0	\$0.00	268	\$89,548.06	268	\$89,548.06
ROSS	22	\$10,656.30	0	\$0.00	22	\$10,656.30	46	\$16,939.75	68	\$27,596.05
SANDUSKY	17	\$2,990.53	13	\$19,401.30	30	\$22,391.83	63	\$16,152.24	93	\$38,544.07
SCIOTO	36	\$15,805.17	41	\$44,106.19	77	\$59,911.36	49	\$14,791.32	126	\$74,702.68
SENECA	12	\$5,727.51	27	\$41,453.26	39	\$47,180.77	76	\$20,294.87	115	\$67,475.64
SHELBY	11	\$5,678.73	9	\$9,601.59	20	\$15,280.32	57	\$19,139.57	77	\$34,419.89
STARK	0	\$0.00	204	\$63,658.83	204	\$63,658.83	966	\$289,493.53	1,170	\$353,152.36
SUMMIT	240	\$95,646.95	172	\$435,047.10	412	\$530,694.05	848	\$263,066.17	1,260	\$793,760.22
TRUMBULL	134	\$47,851.48	30	\$93,645.68	164	\$141,497.16	267	\$72,034.06	431	\$213,531.22
TUSCARAWAS	22	\$8,768.08	61	\$84,582.46	83	\$93,350.54	121	\$35,325.33	204	\$128,675.87
UNION	8	\$481.21	0	\$0.00	8	\$481.21	29	\$7,608.08	37	\$8,089.29
VAN WERT	3	\$3,015.53	5	\$18,538.41	8	\$21,553.94	21	\$7,917.69	29	\$29,471.63
VINTON	4	\$994.06	0	\$0.00	4	\$994.06	15	\$4,197.60	19	\$5,191.66
WARREN	33	\$11,625.47	16	\$16,626.43	49	\$28,251.90	85	\$26,782.82	134	\$55,034.72
WASHINGTON	16	\$6,343.55	4	\$4,136.63	20	\$10,480.18	32	\$8,328.24	52	\$18,808.42
WAYNE	43	\$14,583.50	21	\$52,013.66	64	\$66,597.16	69	\$26,269.54	133	\$92,866.70
WILLIAMS	1	\$296.01	13	\$12,793.44	14	\$13,089.45	22	\$6,037.12	36	\$19,126.57
WOOD	5	\$2,682.58	26	\$42,573.19	31	\$45,255.77	42	\$14,463.33	73	\$59,719.10
WYANDOT	6	\$2,863.96	3	\$2,882.60	9	\$5,746.56	15	\$5,757.02	24	\$11,503.58

SOURCE: GBS003RB Report from Management Information Services. Federal funds only.

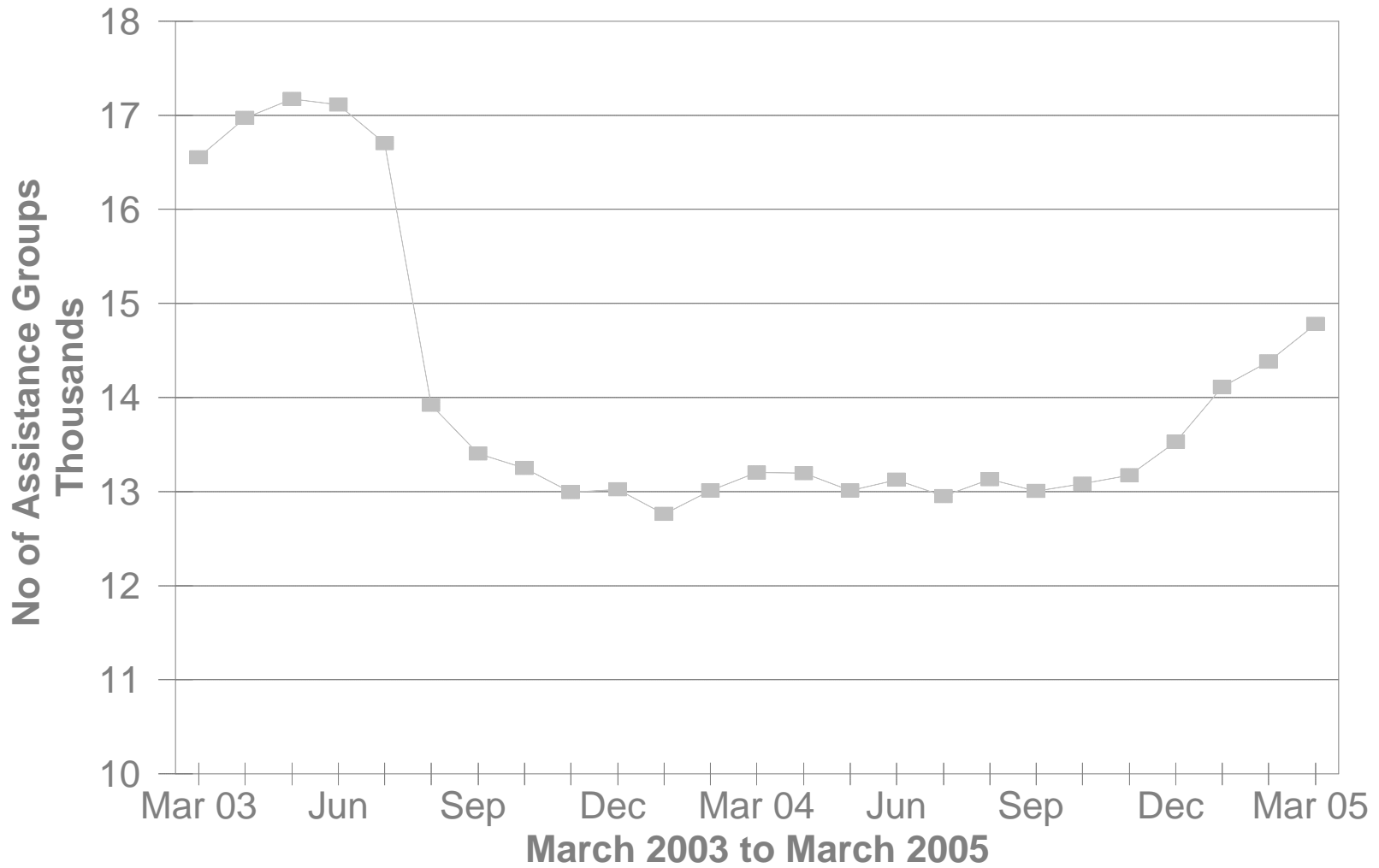
DA Cash Assistance Groups

During The Last 25 Months



DA Cash Recipients

During The Last 25 Months



**TABLE 3
DISABILITY ASSISTANCE (DA)
MARCH 2005**

OHIO COUNTY	CASH ASSISTANCE							MEDICAL ASSISTANCE	
	ASSISTANCE GROUPS	RECIPIENTS	ADULTS	CHILDREN	ACTUAL EXPENDITURES			UNDUPLICATED RECIPIENTS	ACTUAL AMOUNT PAID
					GROSS AMOUNT	CANCELLED AMOUNT	NET AMOUNT		
STATEWIDE	14,663	14,779	14,778	1	\$2,090,353.00	\$163,053.00	\$1,927,300.00	13,298	\$7,153,048.67
ADAMS	88	89	89	0	\$11,977.00	\$115.00	\$11,862.00	59	\$37,372.67
ALLEN	79	79	79	0	\$10,824.00	\$345.00	\$10,479.00	62	\$36,115.09
ASHLAND	40	41	41	0	\$7,336.00	\$0.00	\$7,336.00	46	\$26,670.87
ASHTABULA	298	300	300	0	\$40,282.00	\$1,626.00	\$38,656.00	126	\$53,573.94
ATHENS	237	244	244	0	\$32,516.00	\$1,380.00	\$31,136.00	80	\$37,306.21
AUGLAIZE	27	27	27	0	\$3,323.00	\$115.00	\$3,208.00	21	\$12,081.20
BELMONT	130	130	130	0	\$17,868.00	\$1,495.00	\$16,373.00	77	\$40,870.18
BROWN	57	57	57	0	\$7,890.00	\$230.00	\$7,660.00	46	\$28,425.83
BUTLER	508	509	509	0	\$68,526.00	\$6,462.00	\$62,064.00	252	\$155,267.77
CARROLL	32	32	32	0	\$4,005.00	\$115.00	\$3,890.00	15	\$6,040.89
CHAMPAIGN	36	36	36	0	\$4,069.00	\$0.00	\$4,069.00	49	\$31,414.61
CLARK	303	306	306	0	\$41,034.00	\$3,490.00	\$37,544.00	239	\$141,203.56
CLERMONT	197	199	199	0	\$24,455.00	\$1,821.00	\$22,634.00	84	\$50,142.81
CLINTON	69	69	69	0	\$12,197.00	\$398.00	\$11,799.00	27	\$16,646.23
COLUMBIANA	115	116	116	0	\$21,215.00	\$394.00	\$20,821.00	137	\$77,760.87
COSHOCTON	91	91	91	0	\$11,292.00	\$115.00	\$11,177.00	48	\$21,768.56
CRAWFORD	47	47	47	0	\$5,833.00	\$230.00	\$5,603.00	30	\$21,675.15
CUYAHOGA	2,046	2,061	2,061	0	\$269,076.00	\$53,804.00	\$215,272.00	2,659	\$1,212,508.95
DARKE	42	43	43	0	\$8,252.00	\$115.00	\$8,137.00	17	\$6,114.45
DEFIANCE	17	17	17	0	\$1,905.00	\$115.00	\$1,790.00	37	\$16,223.42
DELAWARE	73	73	73	0	\$8,072.00	\$230.00	\$7,842.00	67	\$35,726.41
ERIE	59	60	60	0	\$9,166.00	\$92.00	\$9,074.00	70	\$45,174.98
FAIRFIELD	116	117	117	0	\$15,260.00	\$575.00	\$14,685.00	83	\$62,901.93
FAYETTE	30	30	30	0	\$4,398.00	\$345.00	\$4,053.00	42	\$22,631.53
FRANKLIN	1,214	1,230	1,229	1	\$186,320.00	\$19,490.00	\$166,830.00	1,313	\$809,630.07
FULTON	24	24	24	0	\$2,398.00	\$394.00	\$2,004.00	14	\$5,770.52
GALLIA	39	39	39	0	\$4,459.00	\$0.00	\$4,459.00	110	\$66,067.80
GEAUGA	29	29	29	0	\$3,716.00	\$0.00	\$3,716.00	8	\$3,618.29
GREENE	162	163	163	0	\$24,601.00	\$1,108.00	\$23,493.00	122	\$69,598.99

*SOURCE: GRP342RA Report from Management Information Services and BOMC 9260-R001 Report from Medicaid Management Information Services.

**TABLE 3
DISABILITY ASSISTANCE (DA)
MARCH 2005**

OHIO COUNTY	CASH ASSISTANCE							MEDICAL ASSISTANCE	
	ASSISTANCE GROUPS	RECIPIENTS	ADULTS	CHILDREN	ACTUAL EXPENDITURES			UNDUPLICATED RECIPIENTS	ACTUAL AMOUNT PAID
					GROSS AMOUNT	CANCELLED AMOUNT	NET AMOUNT		
STATEWIDE	14,663	14,779	14,778	1	\$2,090,353.00	\$163,053.00	\$1,927,300.00	13,298	\$7,153,048.67
GUERNSEY	130	132	132	0	\$16,615.00	\$0.00	\$16,615.00	47	\$28,818.65
HAMILTON	907	907	907	0	\$127,412.00	\$14,105.00	\$113,307.00	534	\$263,746.19
HANCOCK	76	76	76	0	\$10,128.00	\$115.00	\$10,013.00	36	\$20,132.01
HARDIN	24	24	24	0	\$2,863.00	\$115.00	\$2,748.00	28	\$15,562.09
HARRISON	44	45	45	0	\$5,836.00	\$0.00	\$5,836.00	23	\$12,509.90
HENRY	6	6	6	0	\$590.00	\$0.00	\$590.00	9	\$4,466.34
HIGHLAND	83	85	85	0	\$12,701.00	\$690.00	\$12,011.00	59	\$42,646.08
HOCKING	73	73	73	0	\$9,573.00	\$115.00	\$9,458.00	31	\$15,591.56
HOLMES	27	27	27	0	\$3,027.00	\$0.00	\$3,027.00	8	\$3,857.37
HURON	41	41	41	0	\$7,234.00	\$0.00	\$7,234.00	36	\$15,096.28
JACKSON	91	91	91	0	\$11,462.00	\$115.00	\$11,347.00	55	\$30,828.25
JEFFERSON	157	158	158	0	\$18,329.00	\$345.00	\$17,984.00	138	\$70,071.70
KNOX	79	79	79	0	\$11,675.00	\$115.00	\$11,560.00	56	\$29,682.69
LAKE	213	213	213	0	\$31,193.00	\$2,802.00	\$28,391.00	97	\$54,717.59
LAWRENCE	78	78	78	0	\$10,239.00	\$690.00	\$9,549.00	88	\$49,692.35
LICKING	200	201	201	0	\$27,583.00	\$796.00	\$26,787.00	112	\$74,644.72
LOGAN	49	49	49	0	\$10,217.00	\$0.00	\$10,217.00	54	\$28,642.89
LORAIN	331	331	331	0	\$48,616.00	\$4,149.00	\$44,467.00	300	\$157,838.88
LUCAS	631	637	637	0	\$86,950.00	\$3,814.00	\$83,136.00	845	\$396,278.37
MADISON	33	33	33	0	\$5,102.00	\$246.00	\$4,856.00	35	\$20,376.27
MAHONING	346	349	349	0	\$51,048.00	\$5,361.00	\$45,687.00	558	\$339,688.09
MARION	106	111	111	0	\$21,502.00	\$230.00	\$21,272.00	59	\$34,878.92
MEDINA	96	97	97	0	\$13,556.00	\$345.00	\$13,211.00	56	\$27,405.26
MEIGS	70	70	70	0	\$10,677.00	\$0.00	\$10,677.00	76	\$38,858.68
MERCER	37	37	37	0	\$4,690.00	\$115.00	\$4,575.00	18	\$9,327.40
MIAMI	72	72	72	0	\$9,521.00	\$460.00	\$9,061.00	36	\$20,793.40
MONROE	24	24	24	0	\$4,564.00	\$0.00	\$4,564.00	31	\$12,839.17
MONTGOMERY	603	610	610	0	\$96,989.00	\$3,904.00	\$93,085.00	840	\$457,515.94
MORGAN	47	48	48	0	\$5,500.00	\$352.00	\$5,148.00	35	\$16,616.63
MORROW	30	30	30	0	\$3,572.00	\$115.00	\$3,457.00	56	\$37,479.30

*SOURCE: GRP342RA Report from Management Information Services and BOMC 9260-R001 Report from Medicaid Management Information Services.

**TABLE 3
DISABILITY ASSISTANCE (DA)
MARCH 2005**

OHIO COUNTY	CASH ASSISTANCE							MEDICAL ASSISTANCE	
	ASSISTANCE GROUPS	RECIPIENTS	ADULTS	CHILDREN	ACTUAL EXPENDITURES			UNDUPLICATED RECIPIENTS	ACTUAL AMOUNT PAID
					GROSS AMOUNT	CANCELLED AMOUNT	NET AMOUNT		
STATEWIDE	14,663	14,779	14,778	1	\$2,090,353.00	\$163,053.00	\$1,927,300.00	13,298	\$7,153,048.67
MUSKINGUM	276	281	281	0	\$39,958.00	\$1,816.00	\$38,142.00	88	\$42,975.47
NOBLE	24	24	24	0	\$3,675.00	\$0.00	\$3,675.00	14	\$5,432.13
OTTAWA	24	24	24	0	\$2,671.00	\$0.00	\$2,671.00	33	\$15,673.13
PAULDING	28	28	28	0	\$4,393.00	\$115.00	\$4,278.00	12	\$4,623.87
PERRY	90	92	92	0	\$12,987.00	\$460.00	\$12,527.00	64	\$52,418.50
PICKAWAY	50	50	50	0	\$6,395.00	\$230.00	\$6,165.00	45	\$26,510.90
PIKE	52	52	52	0	\$6,925.00	\$115.00	\$6,810.00	69	\$29,332.64
PORTAGE	132	132	132	0	\$18,861.00	\$1,154.00	\$17,707.00	106	\$59,372.16
PREBLE	40	40	40	0	\$5,647.00	\$0.00	\$5,647.00	29	\$21,213.96
PUTNAM	13	13	13	0	\$1,495.00	\$115.00	\$1,380.00	13	\$9,998.97
RICHLAND	209	211	211	0	\$28,170.00	\$1,725.00	\$26,445.00	92	\$50,989.08
ROSS	124	125	125	0	\$18,691.00	\$1,035.00	\$17,656.00	110	\$53,404.72
SANDUSKY	48	48	48	0	\$6,810.00	\$115.00	\$6,695.00	32	\$18,509.68
SCIOTO	253	257	257	0	\$39,750.00	\$4,034.00	\$35,716.00	124	\$59,037.50
SENECA	55	55	55	0	\$8,098.00	\$115.00	\$7,983.00	62	\$31,255.65
SHELBY	29	29	29	0	\$3,950.00	\$0.00	\$3,950.00	26	\$12,881.35
STARK	572	579	579	0	\$87,402.00	\$4,417.00	\$82,985.00	326	\$197,409.89
SUMMIT	638	641	641	0	\$96,442.00	\$3,101.00	\$93,341.00	1,111	\$584,985.16
TRUMBULL	342	342	342	0	\$50,461.00	\$2,425.00	\$48,036.00	228	\$124,280.67
TUSCARAWAS	111	113	113	0	\$14,153.00	\$230.00	\$13,923.00	74	\$42,495.69
UNION	35	35	35	0	\$5,311.00	\$115.00	\$5,196.00	40	\$25,708.76
VAN WERT	19	19	19	0	\$2,047.00	\$127.00	\$1,920.00	12	\$4,747.01
VINTON	42	42	42	0	\$5,683.00	\$1,543.00	\$4,140.00	42	\$21,231.35
WARREN	76	80	80	0	\$11,504.00	\$349.00	\$11,155.00	52	\$39,379.98
WASHINGTON	132	134	134	0	\$19,643.00	\$345.00	\$19,298.00	41	\$30,677.08
WAYNE	250	251	251	0	\$35,717.00	\$4,487.00	\$31,230.00	70	\$61,943.70
WILLIAMS	34	34	34	0	\$5,326.00	\$345.00	\$4,981.00	16	\$6,671.65
WOOD	49	49	49	0	\$6,154.00	\$847.00	\$5,307.00	57	\$31,309.22
WYANDOT	7	7	7	0	\$805.00	\$0.00	\$805.00	14	\$7,672.05
UNKNOWN									\$0.00

*SOURCE: GRP342RA Report from Management Information Services and BOMC 9260-R001 Report from Medicaid Management Information Services.

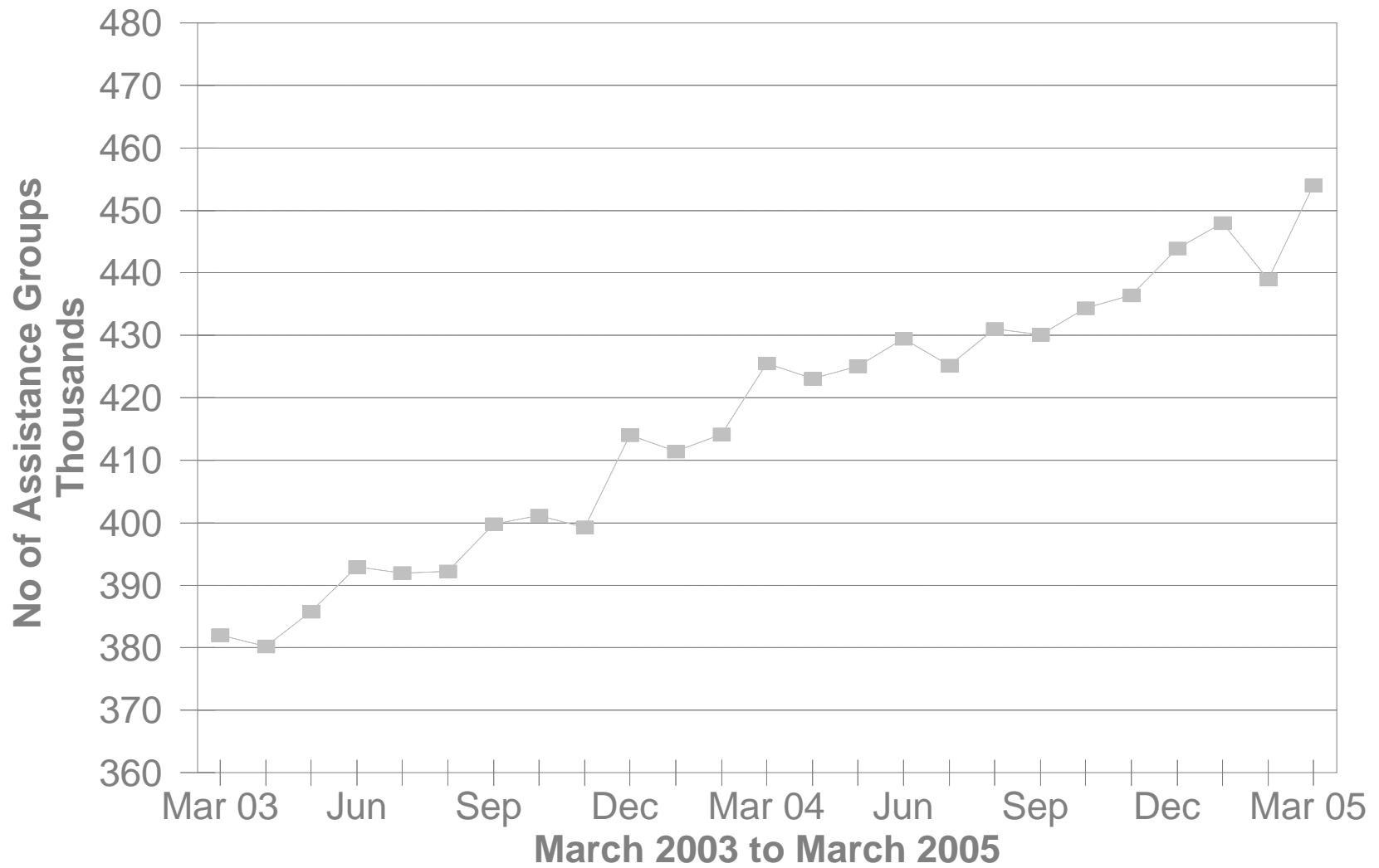
**TABLE 3-A
DA PAYMENTS FOR MEDICAL SERVICES
MARCH 2005**

CATEGORY OF SERVICES	DISABILITY ASSISTANCE			
	PAYMENTS	CLAIM FREQUENCY	DUPLICATED RECIPIENTS	PERCENT OF TOTAL
AMBULANCE SERVICES	\$0.00	0	0	0.0%
AMBULATORY SURGERY	\$31,837.57	71	66	0.4%
AMBULETTE SERVICES	\$0.00	0	0	0.0%
CHIROPRACTER SERVICES	\$0.00	0	0	0.0%
CLINIC	\$95,096.20	1,615	788	1.3%
DENTAL SERVICES	\$32,845.31	302	239	0.5%
EPSDT	\$0.00	0	0	0.0%
FAMILY PLANNING	\$1,892.93	30	25	0.0%
FEDERALLY QUALIFIED HEALTH CTR	\$0.00	0	0	0.0%
HEALTH MAINTENANCE ORGANIZATION	\$0.00	0	0	0.0%
HOME HEALTH SERVICES	\$0.00	0	0	0.0%
INDEPENDENT LABORATORY	\$59,373.91	1,332	938	0.8%
INPATIENT HOSPITAL	\$0.00	0	0	0.0%
ICF	\$0.00	0	0	0.0%
MIDWIFERY SERVICES	\$10,959.20	292	235	0.2%
OPTOMETRIC SERVICES	\$0.00	0	0	0.0%
OUTPATIENT HEALTH SERVICES	\$0.00	0	0	0.0%
PASSPORT WAIVER III	\$0.00	0	0	0.0%
OUTPATIENT HOSPITAL GENERAL	\$0.00	0	0	0.0%
PHYSICAL THERAPY SERVICES	\$0.00	0	0	0.0%
PHYSICIAN SERVICES	\$1,838,528.29	25,322	8,724	25.7%
PHYSIOLOGICAL LABORATORY	\$14,525.38	65	53	0.2%
PODIATRISTS THERAPY	\$30,177.36	488	334	0.4%
PRESCRIBED DRUGS	\$4,857,083.52	81,805	11,964	67.9%
PRIVATE DUTY NURSING SERVICES	\$0.00	0	0	0.0%
PSYCHOLOGY SERVICES	\$0.00	0	0	0.0%
RURAL HEALTH SERVICES	\$0.00	0	0	0.0%
SNF	\$0.00	0	0	0.0%
SUPPLIES AND MEDICAL EQUIPMENT	\$157,345.06	3,387	1,466	2.2%
WAIVERED SERVICES	\$23,383.94	222	228	0.3%
OTHER	\$0.00	5	3	0.0%
STATEWIDE TOTAL	\$7,153,048.67	114,936	25,063	100.00%

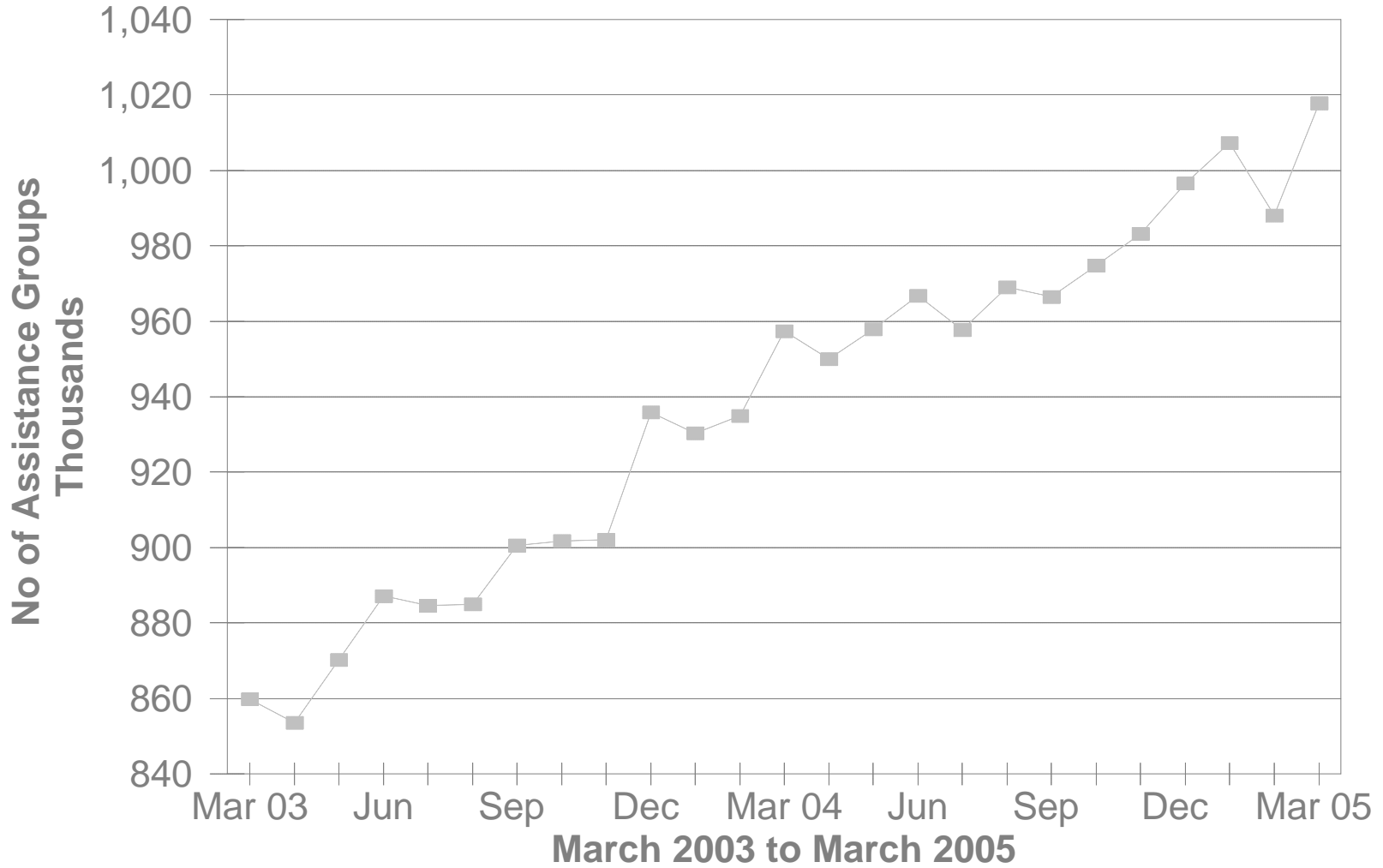
SOURCE: BOMC 9260 Report from Medicaid Management Information Services.

NOTE: Recipients are unduplicated within Category of Services, however, the Statewide Total represents a duplicated count.

No of FNS Benefits Assistance Groups During The Last 25 Months



No of FNS Benefits Cash Recipients During The Last 25 Months



**TABLE 5
FNS BENEFITS
MARCH 2005**

OHIO COUNTY	PERSONS					ASSISTANCE GROUPS			TOTAL COUPONS ISSUED
	PUBLIC ASSISTANCE	NON-PUBLIC ASSISTANCE	TOTAL	AVERAGE ISSUANCE	% CHANGE PREV. MO.	PUBLIC ASSISTANCE	NON-PUBLIC ASSISTANCE	TOTAL	
STATEWIDE	240,109	777,692	1,017,801	\$97	3.0%	162,255	291,796	454,051	\$98,400,293.00
ADAMS	953	3,510	4,463	\$89	1.7%	693	1,172	1,865	\$395,549
ALLEN	1,816	6,774	8,590	\$96	2.8%	1,292	2,360	3,652	\$825,414
ASHLAND	418	2,580	2,998	\$91	6.2%	300	876	1,176	\$272,243
ASHTABULA	2,857	8,193	11,050	\$94	3.2%	1,948	2,963	4,911	\$1,039,056
ATHENS	2,104	4,906	7,010	\$92	3.3%	1,484	1,859	3,343	\$642,142
AUGLAIZE	283	1,590	1,873	\$93	4.3%	230	567	797	\$174,422
BELMONT	1,901	5,387	7,288	\$86	4.9%	1,303	2,006	3,309	\$629,853
BROWN	639	3,018	3,657	\$91	6.4%	475	1,049	1,524	\$333,805
BUTLER	5,168	18,587	23,755	\$101	3.9%	3,770	6,724	10,494	\$2,399,150
CARROLL	319	1,843	2,162	\$91	3.9%	241	642	883	\$196,499
CHAMPAIGN	556	1,761	2,317	\$94	1.0%	384	627	1,011	\$218,063
CLARK	3,357	13,216	16,573	\$95	2.7%	2,549	4,888	7,437	\$1,574,657
CLERMONT	1,827	7,908	9,735	\$97	6.2%	1,294	2,751	4,045	\$945,861
CLINTON	548	2,405	2,953	\$96	3.8%	423	904	1,327	\$284,654
COLUMBIANA	2,353	9,074	11,427	\$90	2.1%	1,677	3,116	4,793	\$1,033,930
COSHOCTON	629	3,167	3,796	\$90	2.1%	480	1,159	1,639	\$343,520
CRAWFORD	757	3,413	4,170	\$91	2.5%	559	1,265	1,824	\$378,858
CUYAHOGA	30,000	146,303	176,303	\$98	2.5%	18,290	64,349	82,639	\$17,286,893
DARKE	406	1,651	2,057	\$91	5.8%	287	617	904	\$187,347
DEFIANCE	505	1,981	2,486	\$95	4.4%	343	666	1,009	\$235,310
DELAWARE	881	3,157	4,038	\$96	4.4%	611	1,154	1,765	\$387,911
ERIE	979	4,109	5,088	\$97	3.3%	752	1,536	2,288	\$495,513
FAIRFIELD	1,695	6,794	8,489	\$95	4.1%	1,247	2,445	3,692	\$806,015
FAYETTE	484	1,959	2,443	\$92	4.2%	374	705	1,079	\$225,346
FRANKLIN	28,352	86,361	114,713	\$103	2.9%	19,266	30,178	49,444	\$11,775,458
FULTON	347	1,713	2,060	\$85	3.4%	239	586	825	\$175,302
GALLIA	1,670	3,348	5,018	\$90	1.1%	1,057	1,196	2,253	\$451,955
GEAUGA	307	1,211	1,518	\$96	5.3%	222	453	675	\$145,547
GREENE	1,803	6,474	8,277	\$99	3.4%	1,269	2,537	3,806	\$819,077

Source: CRIS-E GRP304RA and GRP 304RC Reports from Management Information Services. Cuyahoga County data also comes from the GRP 342 RA.

**TABLE 5
FNS BENEFITS
MARCH 2005**

OHIO COUNTY	PERSONS					ASSISTANCE GROUPS			TOTAL COUPONS ISSUED
	PUBLIC ASSISTANCE	NON-PUBLIC ASSISTANCE	TOTAL	AVERAGE ISSUANCE	% CHANGE PREV. MO.	PUBLIC ASSISTANCE	NON-PUBLIC ASSISTANCE	TOTAL	
STATEWIDE	240,109	777,692	1,017,801	\$97	3.0%	162,255	291,796	454,051	\$98,400,293.00
GUERNSEY	1,121	4,549	5,670	\$89	1.7%	851	1,641	2,492	\$504,366
HAMILTON	18,171	50,637	68,808	\$100	4.1%	11,934	17,659	29,593	\$6,900,831
HANCOCK	787	2,905	3,692	\$96	3.5%	570	1,058	1,628	\$355,112
HARDIN	327	1,403	1,730	\$91	-0.7%	255	532	787	\$156,931
HARRISON	476	1,301	1,777	\$89	3.3%	336	478	814	\$157,631
HENRY	145	961	1,106	\$84	0.8%	114	322	436	\$92,561
HIGHLAND	760	3,326	4,086	\$91	2.4%	555	1,156	1,711	\$371,168
HOCKING	772	2,507	3,279	\$88	4.9%	494	875	1,369	\$288,372
HOLMES	212	956	1,168	\$87	4.7%	134	340	474	\$101,834
HURON	558	3,352	3,910	\$95	0.2%	445	1,184	1,629	\$370,700
JACKSON	1,379	3,736	5,115	\$91	3.2%	1,000	1,373	2,373	\$467,597
JEFFERSON	2,634	6,279	8,913	\$91	2.0%	1,769	2,311	4,080	\$812,239
KNOX	875	2,963	3,838	\$90	2.8%	609	1,083	1,692	\$347,250
LAKE	2,284	7,697	9,981	\$101	1.4%	1,606	2,953	4,559	\$1,004,914
LAWRENCE	3,145	7,382	10,527	\$87	3.2%	2,183	2,752	4,935	\$912,686
LICKING	2,341	8,911	11,252	\$95	2.8%	1,707	3,308	5,015	\$1,073,932
LOGAN	614	2,657	3,271	\$97	1.8%	433	923	1,356	\$317,612
LORAIN	6,297	20,944	27,241	\$96	2.6%	3,979	6,944	10,923	\$2,612,628
LUCAS	20,344	39,220	59,564	\$97	3.1%	12,661	14,333	26,994	\$5,769,584
MADISON	650	1,943	2,593	\$93	10.2%	441	722	1,163	\$242,219
MAHONING	8,720	20,034	28,754	\$95	3.3%	5,882	7,359	13,241	\$2,742,908
MARION	1,331	5,094	6,425	\$93	1.0%	1,009	1,881	2,890	\$600,309
MEDINA	1,013	3,478	4,491	\$102	5.6%	680	1,297	1,977	\$460,062
MEIGS	1,067	3,101	4,168	\$92	1.3%	747	1,102	1,849	\$382,191
MERCER	303	924	1,227	\$97	5.1%	231	348	579	\$118,826
MIAMI	1,018	3,196	4,214	\$91	3.3%	686	1,228	1,914	\$381,906
MONROE	389	1,108	1,497	\$84	5.1%	283	379	662	\$126,357
MONTGOMERY	13,677	35,895	49,572	\$100	2.4%	9,439	13,292	22,731	\$4,954,511
MORGAN	404	1,464	1,868	\$83	1.7%	304	528	832	\$155,249
MORROW	454	2,397	2,851	\$88	4.5%	332	831	1,163	\$250,090

Source: CRIS-E GRP304RA and GRP 304RC Reports from Management Information Services. Cuyahoga County data also comes from the GRP 342 RA.

**TABLE 5
FNS BENEFITS
MARCH 2005**

OHIO COUNTY	PERSONS					ASSISTANCE GROUPS			TOTAL COUPONS ISSUED
	PUBLIC ASSISTANCE	NON-PUBLIC ASSISTANCE	TOTAL	AVERAGE ISSUANCE	% CHANGE PREV. MO.	PUBLIC ASSISTANCE	NON-PUBLIC ASSISTANCE	TOTAL	
STATEWIDE	240,109	777,692	1,017,801	\$97	3.0%	162,255	291,796	454,051	\$98,400,293.00
MUSKINGUM	2,512	10,259	12,771	\$93	3.3%	1,820	3,805	5,625	\$1,193,221
NOBLE	251	897	1,148	\$84	4.6%	189	349	538	\$96,680
OTTAWA	400	1,677	2,077	\$92	2.9%	278	621	899	\$190,756
PAULDING	297	898	1,195	\$89	0.5%	204	327	531	\$105,986
PERRY	978	3,718	4,696	\$91	3.1%	669	1,314	1,983	\$426,737
PICKAWAY	1,147	3,575	4,722	\$94	2.7%	733	1,338	2,071	\$442,027
PIKE	1,151	3,735	4,886	\$92	0.5%	859	1,302	2,161	\$447,230
PORTAGE	1,734	5,762	7,496	\$100	2.7%	1,268	2,182	3,450	\$749,220
PREBLE	525	1,818	2,343	\$94	3.9%	339	627	966	\$220,933
PUTNAM	216	961	1,177	\$91	-2.5%	165	346	511	\$107,245
RICHLAND	2,107	8,537	10,644	\$95	2.3%	1,588	3,094	4,682	\$1,008,498
ROSS	2,234	7,246	9,480	\$93	2.4%	1,455	2,553	4,008	\$880,152
SANDUSKY	654	2,928	3,582	\$99	3.1%	465	1,047	1,512	\$354,233
SCIOTO	4,068	10,578	14,646	\$87	3.4%	2,964	4,041	7,005	\$1,276,688
SENECA	646	3,246	3,892	\$92	4.0%	485	1,161	1,646	\$358,255
SHELBY	371	1,982	2,353	\$95	3.4%	278	666	944	\$224,190
STARK	7,745	21,103	28,848	\$96	4.0%	5,070	7,497	12,567	\$2,781,582
SUMMIT	14,587	34,255	48,842	\$99	2.8%	9,951	12,887	22,838	\$4,847,319
TRUMBULL	4,196	14,142	18,338	\$92	2.6%	2,952	4,879	7,831	\$1,685,451
TUSCARAWAS	1,557	5,416	6,973	\$89	4.0%	1,133	1,978	3,111	\$620,314
UNION	514	1,860	2,374	\$99	6.6%	330	697	1,027	\$235,930
VAN WERT	262	930	1,192	\$89	5.5%	201	340	541	\$106,481
VINTON	615	2,021	2,636	\$89	3.2%	405	699	1,104	\$234,201
WARREN	772	2,941	3,713	\$91	1.6%	547	1,061	1,608	\$336,206
WASHINGTON	1,146	4,136	5,282	\$89	2.0%	924	1,544	2,468	\$470,839
WAYNE	1,642	4,759	6,401	\$97	6.8%	1,138	1,797	2,935	\$619,129
WILLIAMS	425	1,519	1,944	\$93	-1.1%	290	579	869	\$181,131
WOOD	1,012	3,411	4,423	\$94	2.9%	698	1,265	1,963	\$415,466
WYANDOT	163	669	832	\$87	3.0%	129	258	387	\$72,267

Source: CRIS-E GRP304RA and GRP 304RC Reports from Management Information Services. Cuyahoga County data also comes from the GRP 342 RA.

**Table 6A
March 2005
Medicaid Eligibles**

County	Aged	Blind	Disabled	ABD Total	OWF & Related	Healthy Start	CFC Total	Total Medicaid	Foster Care	Adoption Assistance	Transitional	Nursing Facilities
STATEWIDE	136,451	902	246,903	384,256	1,021,038	248,295	1,269,333	1,653,589	10,493	19,366	123,603	54,572
ADAMS	760	3	1,429	2,192	4,565	1,002	5,567	7,759	21	42	673	129
ALLEN	1,109	5	2,126	3,240	9,015	2,422	11,437	14,677	106	136	1,007	564
ASHLAND	555	2	618	1,175	3,689	1,336	5,025	6,200	4	12	706	275
ASHTABULA	1,498	8	3,063	4,569	11,075	2,934	14,009	18,578	68	157	1,765	1,028
ATHENS	843	16	2,107	2,966	6,569	1,286	7,855	10,821	72	116	880	203
AUGLAIZE	411	4	463	878	2,550	807	3,357	4,235	10	45	551	267
BELMONT	1,361	4	2,112	3,477	7,486	1,545	9,031	12,508	55	111	1,010	519
BROWN	700	0	980	1,680	4,601	1,421	6,022	7,702	25	39	733	223
BUTLER	2,792	25	5,827	8,644	25,057	5,752	30,809	39,453	272	487	2,967	1,211
CARROLL	380	2	564	946	2,575	739	3,314	4,260	12	7	517	178
CHAMPAIGN	475	2	621	1,098	2,800	911	3,711	4,809	22	19	455	259
CLARK	2,087	7	3,835	5,929	15,702	3,344	19,046	24,975	133	317	1,797	1,046
CLERMONT	1,433	5	2,792	4,230	12,056	4,038	16,094	20,324	190	208	1,719	710
CLINTON	469	3	827	1,299	3,755	887	4,642	5,941	38	59	668	145
COLUMBIANA	1,509	13	2,618	4,140	11,635	3,070	14,705	18,845	75	81	1,776	603
COSHOCTON	559	2	914	1,475	3,985	1,019	5,004	6,479	21	50	518	278
CRAWFORD	593	7	938	1,538	4,758	1,119	5,877	7,415	46	42	893	191
CUYAHOGA	21,968	162	36,810	58,940	156,179	31,430	187,609	246,549	1,945	4,637	14,349	7,258
DARKE	548	0	653	1,201	2,863	1,133	3,996	5,197	31	37	514	330
DEFIANCE	335	3	609	947	2,938	891	3,829	4,776	10	31	526	172
DELAWARE	675	1	1,022	1,698	4,470	1,406	5,876	7,574	32	55	673	271
ERIE	804	6	1,205	2,015	5,810	1,704	7,514	9,529	80	83	798	421
FAIRFIELD	1,126	6	1,922	3,054	8,901	2,851	11,752	14,806	58	158	1,331	415
FAYETTE	534	1	841	1,376	2,928	774	3,702	5,078	8	16	520	302
FRANKLIN	10,920	100	23,470	34,490	114,468	27,574	142,042	176,532	1,722	2,334	11,246	3,880
FULTON	373	0	417	790	2,545	911	3,456	4,246	13	30	508	219
GALLIA	835	2	1,568	2,405	4,422	830	5,252	7,657	24	36	540	202
GEAUGA	618	1	532	1,151	2,317	865	3,182	4,333	12	112	468	355
GREENE	1,225	12	1,820	3,057	9,522	2,200	11,722	14,779	79	111	1,598	570

Source: ODJFS Report BOMM1321 Prepared: Bureau of Research and Evaluation.

**Table 6A
March 2005
Medicaid Eligibles**

County	Aged	Blind	Disabled	ABD Total	OWF & Related	Healthy Start	CFC Total	Total Medicaid	Foster Care	Adoption Assistance	Transitional	Nursing Facilities
STATEWIDE	136,451	902	246,903	384,256	1,021,038	248,295	1,269,333	1,653,589	10,493	19,366	123,603	54,572
GUERNSEY	780	3	1,492	2,275	5,718	1,360	7,078	9,353	49	65	660	172
HAMILTON	9,758	77	18,749	28,584	68,227	17,838	86,065	114,649	879	1,597	5,535	3,860
HANCOCK	574	4	907	1,485	4,189	1,277	5,466	6,951	28	47	556	282
HARDIN	357	1	585	943	2,372	741	3,113	4,056	21	37	409	128
HARRISON	280	1	497	778	1,774	441	2,215	2,993	2	26	288	115
HENRY	247	0	324	571	1,730	727	2,457	3,028	11	25	339	144
HIGHLAND	774	1	1,104	1,879	4,707	1,417	6,124	8,003	40	16	634	238
HOCKING	453	3	781	1,237	3,534	941	4,475	5,712	40	44	534	153
HOLMES	440	2	492	934	1,620	833	2,453	3,387	9	26	315	432
HURON	530	1	849	1,380	5,195	1,522	6,717	8,097	41	34	901	188
JACKSON	850	1	1,455	2,306	4,902	1,025	5,927	8,233	16	16	834	199
JEFFERSON	1,117	16	2,494	3,627	8,129	1,577	9,706	13,333	89	74	987	366
KNOX	690	3	1,281	1,974	4,434	1,279	5,713	7,687	18	42	912	516
LAKE	1,635	3	2,500	4,138	10,714	3,311	14,025	18,163	76	133	1,610	1,062
LAWRENCE	1,577	7	3,523	5,107	9,133	2,118	11,251	16,358	65	41	981	394
LICKING	1,424	4	2,638	4,066	12,487	3,534	16,021	20,087	162	300	1,858	589
LOGAN	540	3	672	1,215	3,902	925	4,827	6,042	11	48	637	202
LORAIN	2,663	19	5,279	7,961	26,567	5,271	31,838	39,799	84	419	3,142	1,305
LUCAS	5,764	46	14,041	19,851	55,103	10,279	65,382	85,233	471	1,426	5,408	1,923
MADISON	349	1	638	988	2,524	774	3,298	4,286	18	22	369	130
MAHONING	3,828	23	6,981	10,832	26,905	5,191	32,096	42,928	169	241	2,936	1,557
MARION	843	3	1,760	2,606	6,350	1,679	8,029	10,635	33	87	911	298
MEDINA	873	9	1,295	2,177	6,454	1,923	8,377	10,554	27	78	1,193	612
MEIGS	556	7	1,030	1,593	3,674	672	4,346	5,939	5	12	415	144
MERCER	313	1	456	770	1,751	612	2,363	3,133	5	29	389	192
MIAMI	993	7	1,363	2,363	5,482	1,865	7,347	9,710	71	112	989	446
MONROE	280	3	405	688	1,842	529	2,371	3,059	14	11	234	87
MONTGOMERY	6,225	46	12,877	19,148	49,059	11,038	60,097	79,245	741	1,231	4,547	2,389
MORGAN	290	0	515	805	2,163	497	2,660	3,465	1	13	319	101
MORROW	432	3	602	1,037	3,177	972	4,149	5,186	7	45	673	166

Source: ODJFS Report BOMM1321 Prepared: Bureau of Research and Evaluation.

**Table 6A
March 2005
Medicaid Eligibles**

County	Aged	Blind	Disabled	ABD Total	OWF & Related	Healthy Start	CFC Total	Total Medicaid	Foster Care	Adoption Assistance	Transitional	Nursing Facilities
STATEWIDE	136,451	902	246,903	384,256	1,021,038	248,295	1,269,333	1,653,589	10,493	19,366	123,603	54,572
MUSKINGUM	1,425	11	2,806	4,242	11,174	2,379	13,553	17,795	63	136	1,408	470
NOBLE	245	0	256	501	1,128	354	1,482	1,983	4	6	225	86
OTTAWA	437	3	528	968	2,245	889	3,134	4,102	0	7	329	201
PAULDING	196	2	382	580	1,329	532	1,861	2,441	9	19	242	45
PERRY	509	9	1,129	1,647	4,704	1,138	5,842	7,489	39	36	575	199
PICKAWAY	581	2	1,023	1,606	4,710	1,098	5,808	7,414	27	13	715	174
PIKE	741	0	1,534	2,275	4,468	1,182	5,650	7,925	31	24	696	289
PORTAGE	1,154	9	1,962	3,125	8,745	2,651	11,396	14,521	78	147	1,145	615
PREBLE	383	7	622	1,012	3,173	789	3,962	4,974	34	34	598	218
PUTNAM	291	2	360	653	1,395	537	1,932	2,585	2	7	209	250
RICHLAND	1,690	1	2,719	4,410	10,979	3,410	14,389	18,799	72	259	1,771	627
ROSS	1,123	2	2,362	3,487	9,262	2,005	11,267	14,754	86	46	1,102	304
SANDUSKY	662	5	959	1,626	4,413	1,447	5,860	7,486	31	62	606	384
SCIOTO	2,304	13	4,896	7,213	11,620	2,322	13,942	21,155	87	55	1,233	581
SENECA	652	4	1,072	1,728	4,191	1,615	5,806	7,534	44	79	745	321
SHELBY	371	6	607	984	3,033	1,061	4,094	5,078	20	53	484	183
STARK	4,785	20	7,029	11,834	32,130	7,597	39,727	51,561	491	962	4,799	2,303
SUMMIT	6,261	51	11,460	17,772	46,580	9,649	56,229	74,001	488	807	5,411	2,136
TRUMBULL	2,601	23	4,844	7,468	20,998	5,143	26,141	33,609	166	241	3,286	1,197
TUSCARAWAS	1,275	4	1,601	2,880	7,389	2,279	9,668	12,548	83	134	1,187	515
UNION	330	2	491	823	2,680	741	3,421	4,244	10	34	437	140
UNKNOWN	0	0	0	0	0	0	0	0	0	0	0	0
VAN WERT	297	0	422	719	1,638	749	2,387	3,106	9	23	259	158
VINTON	310	0	623	933	2,602	602	3,204	4,137	25	15	380	75
WARREN	1,212	5	1,593	2,810	6,095	2,269	8,364	11,174	52	84	904	825
WASHINGTON	962	6	1,696	2,664	5,775	1,957	7,732	10,396	17	38	995	350
WAYNE	1,101	10	1,765	2,876	6,581	2,367	8,948	11,824	72	91	1,192	506
WILLIAMS	419	1	500	920	2,764	779	3,543	4,463	20	23	602	206
WOOD	889	3	1,100	1,992	5,195	1,844	7,039	9,031	36	51	693	418
WYANDOT	315	1	274	590	988	541	1,529	2,119	10	15	154	182

Source: ODJFS Report BOMM1321 Prepared: Bureau of Research and Evaluation.

**Table 6B
March 2005
Medicaid Expenditures**

	Aged	Blind	Disabled	ABD Total	OWF & Related	Healthy Start	CFC Total	Total Medicaid	Foster Care	Adoption Assistance	Transitional	Nursing Facilities
STATEWIDE	\$302,958,270	\$1,488,802	\$535,209,230	\$839,656,303	\$257,505,700	\$69,953,059	\$327,458,760	\$1,167,942,239	\$8,122,043	\$6,062,732	\$21,811,950	\$294,230,259
ADAMS	\$1,268,456	\$3,842	\$2,079,336	\$3,351,634	\$1,213,169	\$284,020	\$1,497,189	\$4,856,914	\$8,717	\$8,805	\$149,132	\$738,412
ALLEN	\$2,418,468	\$15,343	\$4,208,892	\$6,642,703	\$2,302,454	\$763,074	\$3,065,528	\$9,734,520	\$41,037	\$34,149	\$132,374	\$2,664,164
ASHLAND	\$1,373,712	\$1,552	\$1,375,923	\$2,751,187	\$844,647	\$331,208	\$1,175,855	\$3,927,544	\$808	\$1,646	\$83,951	\$1,338,215
ASHTABULA	\$3,753,829	\$15,854	\$7,095,528	\$10,865,211	\$3,329,482	\$678,793	\$4,008,275	\$14,894,812	\$45,077	\$48,140	\$182,495	\$5,675,963
ATHENS	\$1,547,864	\$9,057	\$3,083,307	\$4,640,227	\$2,048,916	\$629,608	\$2,678,524	\$7,318,750	\$84,929	\$29,720	\$101,153	\$939,387
AUGLAIZE	\$1,095,948	\$7,374	\$1,170,285	\$2,273,606	\$689,958	\$203,471	\$893,430	\$3,176,929	\$11,218	\$11,261	\$115,641	\$1,150,243
BELMONT	\$2,856,068	\$414	\$4,583,743	\$7,440,225	\$2,019,406	\$427,325	\$2,446,731	\$9,890,807	\$43,872	\$34,342	\$167,666	\$2,055,409
BROWN	\$1,557,945	\$0	\$1,893,206	\$3,451,151	\$1,266,899	\$355,480	\$1,622,379	\$5,073,530	\$10,505	\$17,961	\$131,890	\$1,240,246
BUTLER	\$7,071,059	\$348,854	\$13,028,047	\$20,447,960	\$6,633,721	\$1,378,894	\$8,012,615	\$28,516,062	\$231,118	\$152,126	\$519,648	\$7,967,486
CARROLL	\$740,500	\$1,079	\$1,728,587	\$2,470,165	\$558,774	\$260,564	\$819,338	\$3,295,747	\$3,633	\$813	\$55,586	\$1,002,247
CHAMPAIGN	\$940,468	\$4,552	\$1,445,409	\$2,390,429	\$770,449	\$246,640	\$1,017,089	\$3,407,654	\$10,603	\$2,301	\$67,918	\$1,127,478
CLARK	\$4,477,591	\$3,178	\$7,789,226	\$12,269,995	\$3,901,508	\$909,988	\$4,811,496	\$17,083,772	\$100,922	\$118,072	\$310,969	\$5,159,479
CLERMONT	\$3,145,076	\$8,714	\$7,101,276	\$10,255,066	\$3,723,472	\$1,213,857	\$4,937,329	\$15,201,900	\$118,869	\$44,175	\$320,377	\$4,523,844
CLINTON	\$853,887	\$1,365	\$1,647,937	\$2,503,190	\$1,239,965	\$256,403	\$1,496,368	\$4,003,493	\$43,595	\$11,925	\$142,524	\$678,216
COLUMBIANA	\$3,099,008	\$7,148	\$4,618,348	\$7,724,505	\$3,313,911	\$1,059,192	\$4,373,103	\$12,099,516	\$62,359	\$28,615	\$220,597	\$2,703,655
COSHOCTON	\$1,120,117	\$149	\$1,931,638	\$3,051,903	\$1,045,329	\$557,598	\$1,602,927	\$4,659,519	\$8,820	\$21,130	\$67,554	\$1,274,012
CRAWFORD	\$1,141,311	\$3,659	\$1,529,096	\$2,674,066	\$1,290,926	\$252,384	\$1,543,311	\$4,218,288	\$20,861	\$9,931	\$178,825	\$847,140
CUYAHOGA	\$55,076,305	\$254,519	\$76,719,567	\$132,050,391	\$34,838,913	\$7,556,550	\$42,395,463	\$174,507,202	\$1,885,732	\$1,409,538	\$2,623,270	\$45,617,843
DARKE	\$1,264,992	\$0	\$1,346,340	\$2,611,332	\$702,923	\$338,578	\$1,041,501	\$3,652,833	\$11,509	\$38,132	\$75,887	\$1,500,841
DEFIANCE	\$660,682	\$275	\$1,100,229	\$1,761,186	\$608,493	\$146,158	\$754,650	\$2,516,169	\$4,733	\$4,875	\$53,199	\$626,885
DELAWARE	\$1,293,387	\$5,724	\$2,438,919	\$3,738,029	\$1,151,823	\$463,832	\$1,615,655	\$5,353,684	\$33,111	\$26,853	\$119,044	\$1,128,865
ERIE	\$1,841,875	\$1,146	\$2,381,981	\$4,225,002	\$1,381,326	\$416,909	\$1,798,234	\$6,034,198	\$68,939	\$15,494	\$97,211	\$1,879,789
FAIRFIELD	\$2,443,212	\$5,464	\$3,890,929	\$6,339,605	\$2,220,458	\$1,240,816	\$3,461,274	\$9,806,959	\$16,827	\$58,611	\$211,997	\$2,036,716
FAYETTE	\$1,169,169	\$642	\$2,024,465	\$3,194,277	\$880,760	\$510,749	\$1,391,510	\$4,585,786	\$0	\$5,986	\$71,341	\$1,657,577
FRANKLIN	\$23,222,096	\$126,753	\$63,672,575	\$87,021,424	\$28,114,341	\$7,524,481	\$35,638,822	\$122,731,080	\$1,194,465	\$847,668	\$2,068,472	\$24,734,937
FULTON	\$861,637	\$0	\$834,499	\$1,696,136	\$642,664	\$246,966	\$889,630	\$2,586,066	\$7,426	\$20,536	\$58,844	\$889,607
GALLIA	\$2,008,468	\$113	\$3,763,303	\$5,771,885	\$1,416,047	\$271,809	\$1,687,856	\$7,470,216	\$6,878	\$6,884	\$99,630	\$1,016,449
GEAUGA	\$1,754,542	\$990	\$1,790,811	\$3,546,343	\$565,328	\$284,412	\$849,740	\$4,396,113	\$10,258	\$18,822	\$67,685	\$2,049,601
GREENE	\$2,776,408	\$4,275	\$3,435,448	\$6,216,130	\$2,631,827	\$477,228	\$3,109,054	\$9,325,596	\$55,628	\$21,231	\$253,565	\$2,804,232

**Table 6B
March 2005
Medicaid Expenditures**

	Aged	Blind	Disabled	ABD Total	OWF & Related	Healthy Start	CFC Total	Total Medicaid	Foster Care	Adoption Assistance	Transitional	Nursing Facilities
STATEWIDE	\$302,958,270	\$1,488,802	\$535,209,230	\$839,656,303	\$257,505,700	\$69,953,059	\$327,458,760	\$1,167,942,239	\$8,122,043	\$6,062,732	\$21,811,950	\$294,230,259
GUERNSEY	\$1,390,891	\$612	\$3,689,031	\$5,080,534	\$1,384,447	\$386,730	\$1,771,177	\$6,880,041	\$56,240	\$31,175	\$91,794	\$731,772
HAMILTON	\$23,090,976	\$123,546	\$40,179,216	\$63,393,739	\$19,288,219	\$5,950,267	\$25,238,486	\$88,687,355	\$767,583	\$494,283	\$928,108	\$22,921,211
HANCOCK	\$1,300,744	\$3,601	\$1,841,017	\$3,145,362	\$917,522	\$296,353	\$1,213,874	\$4,361,872	\$10,346	\$21,927	\$63,366	\$1,388,340
HARDIN	\$581,461	\$1,536	\$1,015,410	\$1,598,407	\$714,974	\$160,052	\$875,026	\$2,480,905	\$9,783	\$2,589	\$70,926	\$562,869
HARRISON	\$597,306	\$517	\$825,454	\$1,423,277	\$565,293	\$94,659	\$659,952	\$2,097,412	\$0	\$10,217	\$38,432	\$501,866
HENRY	\$570,651	\$0	\$1,478,575	\$2,049,227	\$492,495	\$227,678	\$720,173	\$2,769,400	\$12,150	\$5,132	\$47,289	\$619,683
HIGHLAND	\$1,387,426	\$406	\$1,747,052	\$3,134,883	\$1,187,236	\$374,251	\$1,561,488	\$4,699,122	\$13,905	\$3,109	\$87,280	\$1,097,570
HOCKING	\$839,407	\$7,214	\$1,519,547	\$2,366,168	\$1,071,931	\$290,253	\$1,362,184	\$3,728,352	\$21,141	\$9,058	\$74,383	\$681,220
HOLMES	\$1,268,280	\$36	\$1,471,373	\$2,739,690	\$571,235	\$352,731	\$923,966	\$3,665,682	\$7,269	\$8,563	\$49,601	\$2,041,092
HURON	\$953,561	(\$85)	\$1,468,441	\$2,421,917	\$1,360,080	\$433,821	\$1,793,900	\$4,215,824	\$38,360	\$16,298	\$113,549	\$790,428
JACKSON	\$1,317,874	\$350	\$2,266,726	\$3,584,950	\$1,410,935	\$260,085	\$1,671,020	\$5,267,316	\$15,075	\$4,432	\$122,123	\$809,346
JEFFERSON	\$2,328,988	\$9,727	\$4,522,777	\$6,861,492	\$1,946,853	\$396,550	\$2,343,403	\$9,212,838	\$36,636	\$19,071	\$204,724	\$1,521,146
KNOX	\$1,777,354	\$842	\$4,496,243	\$6,274,440	\$1,223,895	\$335,798	\$1,559,693	\$7,834,133	\$20,315	\$15,390	\$130,567	\$3,800,208
LAKE	\$4,694,807	\$946	\$8,639,717	\$13,335,470	\$2,842,153	\$874,862	\$3,717,015	\$17,055,246	\$64,335	\$38,533	\$240,749	\$6,477,109
LAWRENCE	\$2,825,867	\$4,743	\$4,963,826	\$7,794,437	\$2,912,084	\$931,909	\$3,843,994	\$11,640,987	\$49,999	\$8,376	\$150,601	\$1,810,230
LICKING	\$2,831,533	\$979	\$5,653,735	\$8,486,247	\$3,210,082	\$1,002,875	\$4,212,958	\$12,699,204	\$59,640	\$143,568	\$493,492	\$2,920,975
LOGAN	\$937,721	\$887	\$1,324,560	\$2,263,168	\$799,909	\$174,510	\$974,419	\$3,248,995	\$4,990	\$7,727	\$71,979	\$834,419
LORAIN	\$6,137,055	\$14,464	\$10,219,346	\$16,370,866	\$6,375,776	\$1,337,191	\$7,712,968	\$24,109,340	\$76,610	\$110,212	\$580,082	\$6,918,189
LUCAS	\$11,287,174	\$26,175	\$29,427,271	\$40,740,620	\$12,661,121	\$2,771,498	\$15,432,620	\$56,265,597	\$291,952	\$420,997	\$1,105,408	\$10,345,573
MADISON	\$686,171	\$2,213	\$1,540,489	\$2,228,872	\$963,677	\$216,444	\$1,180,121	\$3,408,992	\$56,789	\$5,677	\$69,831	\$735,483
MAHONING	\$8,301,344	\$34,495	\$13,211,327	\$21,547,166	\$7,574,924	\$1,241,579	\$8,816,503	\$30,379,103	\$138,988	\$67,281	\$524,857	\$7,310,398
MARION	\$1,534,908	\$3,077	\$3,646,211	\$5,184,197	\$1,999,873	\$766,283	\$2,766,156	\$7,953,463	\$11,471	\$21,397	\$158,613	\$1,393,478
MEDINA	\$2,442,857	\$95,649	\$4,943,194	\$7,481,700	\$2,112,980	\$466,018	\$2,578,997	\$10,065,549	\$18,005	\$22,562	\$537,668	\$4,161,515
MEIGS	\$901,111	\$7,365	\$1,393,802	\$2,302,278	\$970,718	\$159,673	\$1,130,391	\$3,432,669	\$4,015	\$1,350	\$71,884	\$685,612
MERCER	\$727,720	\$0	\$1,110,453	\$1,838,173	\$429,691	\$206,791	\$636,482	\$2,474,655	\$3,224	\$5,293	\$49,945	\$919,207
MIAMI	\$2,238,006	\$17,006	\$2,860,584	\$5,115,596	\$1,413,272	\$587,118	\$2,000,390	\$7,121,796	\$60,709	\$26,383	\$170,161	\$2,057,834
MONROE	\$427,152	\$2,307	\$581,477	\$1,010,936	\$346,122	\$70,926	\$417,048	\$1,430,611	\$2,861	\$1,902	\$25,577	\$368,773
MONTGOMERY	\$13,356,638	\$50,988	\$24,261,874	\$37,669,500	\$11,305,710	\$2,856,574	\$14,162,284	\$51,854,454	\$348,516	\$336,572	\$823,499	\$12,925,711
MORGAN	\$449,331	\$0	\$789,367	\$1,238,698	\$527,521	\$116,445	\$643,966	\$1,882,696	\$6	\$1,671	\$33,057	\$412,760
MORROW	\$896,354	\$1,894	\$1,409,908	\$2,308,156	\$647,012	\$236,776	\$883,787	\$3,192,723	\$4,987	\$16,822	\$84,994	\$805,231

**Table 6B
March 2005
Medicaid Expenditures**

	Aged	Blind	Disabled	ABD Total	OWF & Related	Healthy Start	CFC Total	Total Medicaid	Foster Care	Adoption Assistance	Transitional	Nursing Facilities
STATEWIDE	\$302,958,270	\$1,488,802	\$535,209,230	\$839,656,303	\$257,505,700	\$69,953,059	\$327,458,760	\$1,167,942,239	\$8,122,043	\$6,062,732	\$21,811,950	\$294,230,259
MUSKINGUM	\$2,794,615	\$12,447	\$4,153,705	\$6,960,767	\$2,748,071	\$692,042	\$3,440,113	\$10,402,889	\$30,230	\$22,894	\$258,038	\$1,969,770
NOBLE	\$442,601	\$0	\$552,761	\$995,362	\$268,704	\$61,206	\$329,910	\$1,325,271	\$773	\$1,219	\$47,962	\$339,058
OTTAWA	\$1,181,393	\$8,363	\$2,495,335	\$3,685,091	\$664,240	\$261,022	\$925,263	\$4,611,567	\$95	\$1,756	\$66,509	\$955,257
PAULDING	\$290,866	\$378	\$556,639	\$847,884	\$297,112	\$194,366	\$491,478	\$1,339,360	\$12,388	\$3,173	\$40,524	\$204,467
PERRY	\$823,223	\$1,841	\$2,118,740	\$2,943,805	\$1,039,657	\$234,545	\$1,274,202	\$4,218,175	\$18,286	\$4,630	\$104,282	\$994,777
PICKAWAY	\$1,032,824	\$14,885	\$1,748,490	\$2,796,199	\$1,493,417	\$283,532	\$1,776,950	\$4,575,728	\$7,486	\$2,204	\$123,812	\$856,804
PIKE	\$1,495,741	\$0	\$2,480,664	\$3,976,405	\$1,102,145	\$768,503	\$1,870,648	\$5,851,966	\$19,365	\$19,839	\$79,060	\$1,546,194
PORTAGE	\$2,514,711	\$15,379	\$6,524,387	\$9,054,477	\$3,036,496	\$882,335	\$3,918,831	\$12,973,646	\$64,106	\$54,046	\$198,399	\$3,869,179
PREBLE	\$953,251	\$4,529	\$1,373,160	\$2,330,940	\$732,845	\$213,144	\$945,989	\$3,282,849	\$25,069	\$4,836	\$101,611	\$1,161,885
PUTNAM	\$697,923	\$3,318	\$962,701	\$1,663,942	\$318,743	\$183,827	\$502,571	\$2,166,512	\$2,001	\$467	\$22,061	\$1,097,906
RICHLAND	\$3,426,746	\$390	\$5,333,000	\$8,760,135	\$2,462,747	\$795,180	\$3,257,927	\$12,034,894	\$42,121	\$57,966	\$213,126	\$3,043,467
ROSS	\$1,866,216	\$1,657	\$4,038,384	\$5,906,258	\$2,442,124	\$512,699	\$2,954,823	\$8,870,038	\$35,192	\$17,753	\$150,208	\$1,329,141
SANDUSKY	\$1,571,631	\$2,620	\$2,734,855	\$4,309,106	\$1,014,776	\$357,907	\$1,372,683	\$5,699,426	\$11,978	\$12,257	\$150,224	\$1,832,138
SCIOTO	\$3,937,668	\$22,277	\$7,523,175	\$11,483,119	\$3,657,569	\$865,158	\$4,522,727	\$16,033,196	\$41,251	\$55,153	\$275,508	\$2,554,695
SENECA	\$1,689,900	\$1,959	\$3,763,261	\$5,455,119	\$1,010,935	\$564,466	\$1,575,401	\$7,030,995	\$37,411	\$24,409	\$94,035	\$1,559,732
SHELBY	\$758,853	\$5,241	\$1,132,516	\$1,896,611	\$684,237	\$303,738	\$987,975	\$2,884,586	\$12,582	\$12,622	\$44,676	\$759,119
STARK	\$11,336,515	\$25,194	\$15,930,072	\$27,291,780	\$6,907,231	\$1,773,800	\$8,681,031	\$35,972,810	\$352,312	\$225,961	\$842,428	\$11,896,812
SUMMIT	\$12,774,853	\$53,057	\$25,171,374	\$37,999,284	\$10,905,414	\$2,469,465	\$13,374,879	\$51,421,733	\$786,571	\$356,063	\$1,058,117	\$10,573,237
TRUMBULL	\$5,909,920	\$36,483	\$9,959,355	\$15,905,758	\$5,667,749	\$1,922,034	\$7,589,783	\$23,508,636	\$79,604	\$49,972	\$607,403	\$6,050,271
TUSCARAWAS	\$2,961,979	\$5,011	\$3,589,287	\$6,556,277	\$1,896,986	\$600,296	\$2,497,283	\$9,087,577	\$56,157	\$65,865	\$192,978	\$2,204,633
UNION	\$769,294	\$6,426	\$1,659,776	\$2,435,495	\$734,130	\$232,506	\$966,636	\$3,402,928	\$11,717	\$8,634	\$106,734	\$664,125
UNKNOWN	\$0	\$0	\$0	\$0	(\$1,003,763)	\$0	(\$1,003,763)	(\$1,018,811)	\$0	\$0	\$0	\$0
VAN WERT	\$661,298	\$0	\$756,545	\$1,417,843	\$402,289	\$164,210	\$566,498	\$1,990,686	\$9,183	\$39,549	\$27,268	\$657,688
VINTON	\$441,231	\$0	\$858,217	\$1,299,448	\$733,992	\$128,220	\$862,212	\$2,162,514	\$6,725	\$2,149	\$92,489	\$299,118
WARREN	\$3,427,384	\$5,293	\$5,594,462	\$9,027,139	\$1,769,687	\$658,704	\$2,428,392	\$11,460,412	\$15,630	\$36,876	\$117,699	\$4,796,114
WASHINGTON	\$1,905,798	\$11,692	\$2,803,549	\$4,721,038	\$1,792,678	\$509,712	\$2,302,390	\$7,023,640	\$9,034	\$2,138	\$150,887	\$1,552,093
WAYNE	\$2,583,948	\$3,557	\$4,399,052	\$6,986,557	\$1,611,555	\$590,550	\$2,202,105	\$9,189,439	\$37,105	\$17,135	\$152,846	\$2,436,516
WILLIAMS	\$886,404	\$948	\$1,367,276	\$2,254,628	\$560,936	\$204,700	\$765,636	\$3,020,264	\$13,717	\$15,321	\$63,898	\$856,796
WOOD	\$2,178,934	\$1,831	\$2,826,556	\$5,007,322	\$1,422,162	\$530,363	\$1,952,525	\$6,967,584	\$31,225	\$18,227	\$136,777	\$1,900,434
WYANDOT	\$727,805	\$501	\$595,083	\$1,323,388	\$555,205	\$131,140	\$686,345	\$2,009,733	\$4,376	\$2,305	\$329,411	\$690,648

**TABLE 7
CHILD CARE
MARCH 2005**

OHIO COUNTY	OWF JOBS, LEAP, and TRANSITIONAL		OTHER CHILD CARE		LOCAL FUNDING		ALL PROGRAM SOURCES	
	CHILDREN SERVED		CHILDREN SERVED		CHILDREN SERVED		CHILDREN SERVED	
	TOTAL	% OF STATE TOTAL	TOTAL	% OF STATE TOTAL	TOTAL	% OF STATE TOTAL	TOTAL	% OF STATE TOTAL
STATEWIDE	14,649	100.00%	67,433	100.00%	696	100.00%	82,778	100.00%
ADAMS	1	0.01%	31	0.05%	0	0.00%	32	0.04%
ALLEN	44	0.30%	426	0.63%	0	0.00%	470	0.57%
ASHLAND	6	0.04%	111	0.16%	0	0.00%	117	0.14%
ASHTABULA	82	0.56%	534	0.79%	0	0.00%	616	0.74%
ATHENS	41	0.28%	187	0.28%	0	0.00%	228	0.28%
AUGLAIZE	0	0.00%	100	0.15%	0	0.00%	100	0.12%
BELMONT	66	0.45%	219	0.32%	0	0.00%	285	0.34%
BROWN	5	0.03%	101	0.15%	1	0.14%	107	0.13%
BUTLER	169	1.15%	1,230	1.82%	0	0.00%	1,399	1.69%
CARROLL	12	0.08%	42	0.06%	0	0.00%	54	0.07%
CHAMPAIGN	2	0.01%	121	0.18%	0	0.00%	123	0.15%
CLARK	77	0.53%	586	0.87%	0	0.00%	663	0.80%
CLERMONT	45	0.31%	539	0.80%	0	0.00%	584	0.71%
CLINTON	2	0.01%	120	0.18%	0	0.00%	122	0.15%
COLUMBIANA	43	0.29%	530	0.79%	0	0.00%	573	0.69%
COSHOCTON	34	0.23%	163	0.24%	0	0.00%	197	0.24%
CRAWFORD	25	0.17%	161	0.24%	0	0.00%	186	0.22%
CUYAHOGA	3,197	21.82%	17,307	25.67%	0	0.00%	20,504	24.77%
DARKE	4	0.03%	90	0.13%	0	0.00%	94	0.11%
DEFIANCE	3	0.02%	146	0.22%	0	0.00%	149	0.18%
DELAWARE	22	0.15%	185	0.27%	5	0.72%	212	0.26%
ERIE	4	0.03%	489	0.73%	0	0.00%	493	0.60%
FAIRFIELD	57	0.39%	439	0.65%	0	0.00%	496	0.60%
FAYETTE	15	0.10%	176	0.26%	0	0.00%	191	0.23%
FRANKLIN	2,534	17.30%	8,112	12.03%	222	31.90%	10,868	13.13%
FULTON	2	0.01%	147	0.22%	0	0.00%	149	0.18%
GALLIA	53	0.36%	202	0.30%	0	0.00%	255	0.31%
GEAUGA	9	0.06%	129	0.19%	0	0.00%	138	0.17%
GREENE	73	0.50%	648	0.96%	0	0.00%	721	0.87%

**TABLE 7
CHILD CARE
MARCH 2005**

OHIO COUNTY	OWF JOBS, LEAP, and TRANSITIONAL		OTHER CHILD CARE		LOCAL FUNDING		ALL PROGRAM SOURCES	
	CHILDREN SERVED		CHILDREN SERVED		CHILDREN SERVED		CHILDREN SERVED	
	TOTAL	% OF STATE TOTAL	TOTAL	% OF STATE TOTAL	TOTAL	% OF STATE TOTAL	TOTAL	% OF STATE TOTAL
STATEWIDE	14,649	100.00%	67,433	100.00%	696	100.00%	82,778	100.00%
GUERNSEY	25	0.17%	304	0.45%	0	0.00%	329	0.40%
HAMILTON	2,918	19.92%	7,810	11.58%	0	0.00%	10,728	12.96%
HANCOCK	32	0.22%	358	0.53%	0	0.00%	390	0.47%
HARDIN	0	0.00%	64	0.09%	0	0.00%	64	0.08%
HARRISON	8	0.05%	40	0.06%	0	0.00%	48	0.06%
HENRY	11	0.08%	95	0.14%	0	0.00%	106	0.13%
HIGHLAND	11	0.08%	169	0.25%	0	0.00%	180	0.22%
HOCKING	20	0.14%	179	0.27%	0	0.00%	199	0.24%
HOLMES	18	0.12%	93	0.14%	0	0.00%	111	0.13%
HURON	0	0.00%	420	0.62%	0	0.00%	420	0.51%
JACKSON	10	0.07%	145	0.22%	0	0.00%	155	0.19%
JEFFERSON	77	0.53%	321	0.48%	0	0.00%	398	0.48%
KNOX	24	0.16%	228	0.34%	0	0.00%	252	0.30%
LAKE	65	0.44%	754	1.12%	0	0.00%	819	0.99%
LAWRENCE	65	0.44%	462	0.69%	0	0.00%	527	0.64%
LICKING	100	0.68%	665	0.99%	0	0.00%	765	0.92%
LOGAN	15	0.10%	65	0.10%	0	0.00%	80	0.10%
LORAIN	402	2.74%	1,452	2.15%	0	0.00%	1,854	2.24%
LUCAS	736	5.02%	1,359	2.02%	465	66.81%	2,560	3.09%
MADISON	18	0.12%	69	0.10%	0	0.00%	87	0.11%
MAHONING	461	3.15%	1,561	2.31%	0	0.00%	2,022	2.44%
MARION	25	0.17%	320	0.47%	0	0.00%	345	0.42%
MEDINA	29	0.20%	538	0.80%	0	0.00%	567	0.68%
MEIGS	3	0.02%	142	0.21%	0	0.00%	145	0.18%
MERCER	20	0.14%	91	0.13%	0	0.00%	111	0.13%
MIAMI	0	0.00%	248	0.37%	0	0.00%	248	0.30%
MONROE	0	0.00%	47	0.07%	0	0.00%	47	0.06%
MONTGOMERY	917	6.26%	4,015	5.95%	0	0.00%	4,932	5.96%
MORGAN	1	0.01%	66	0.10%	0	0.00%	67	0.08%
MORROW	0	0.00%	143	0.21%	0	0.00%	143	0.17%

**TABLE 7
CHILD CARE
MARCH 2005**

OHIO COUNTY	OWF JOBS, LEAP, and TRANSITIONAL		OTHER CHILD CARE		LOCAL FUNDING		ALL PROGRAM SOURCES	
	CHILDREN SERVED		CHILDREN SERVED		CHILDREN SERVED		CHILDREN SERVED	
	TOTAL	% OF STATE TOTAL	TOTAL	% OF STATE TOTAL	TOTAL	% OF STATE TOTAL	TOTAL	% OF STATE TOTAL
STATEWIDE	14,649	100.00%	67,433	100.00%	696	100.00%	82,778	100.00%
MUSKINGUM	174	1.19%	564	0.84%	0	0.00%	738	0.89%
NOBLE	4	0.03%	93	0.14%	0	0.00%	97	0.12%
OTTAWA	16	0.11%	95	0.14%	0	0.00%	111	0.13%
PAULDING	2	0.01%	10	0.01%	0	0.00%	12	0.01%
PERRY	13	0.09%	202	0.30%	0	0.00%	215	0.26%
PICKAWAY	45	0.31%	117	0.17%	0	0.00%	162	0.20%
PIKE	15	0.10%	52	0.08%	0	0.00%	67	0.08%
PORTAGE	50	0.34%	593	0.88%	0	0.00%	643	0.78%
PREBLE	25	0.17%	137	0.20%	0	0.00%	162	0.20%
PUTNAM	10	0.07%	87	0.13%	0	0.00%	97	0.12%
RICHLAND	118	0.81%	730	1.08%	0	0.00%	848	1.02%
ROSS	9	0.06%	201	0.30%	0	0.00%	210	0.25%
SANDUSKY	48	0.33%	430	0.64%	0	0.00%	478	0.58%
SCIOTO	57	0.39%	502	0.74%	0	0.00%	559	0.68%
SENECA	0	0.00%	243	0.36%	0	0.00%	243	0.29%
SHELBY	2	0.01%	192	0.28%	0	0.00%	194	0.23%
STARK	418	2.85%	1,708	2.53%	0	0.00%	2,126	2.57%
SUMMIT	639	4.36%	2,670	3.96%	0	0.00%	3,309	4.00%
TRUMBULL	118	0.81%	1,512	2.24%	0	0.00%	1,630	1.97%
TUSCARAWAS	36	0.25%	333	0.49%	0	0.00%	369	0.45%
UNION	0	0.00%	55	0.08%	3	0.43%	58	0.07%
VAN WERT	0	0.00%	40	0.06%	0	0.00%	40	0.05%
VINTON	2	0.01%	77	0.11%	0	0.00%	79	0.10%
WARREN	33	0.23%	303	0.45%	0	0.00%	336	0.41%
WASHINGTON	32	0.22%	263	0.39%	0	0.00%	295	0.36%
WAYNE	89	0.61%	374	0.55%	0	0.00%	463	0.56%
WILLIAMS	10	0.07%	106	0.16%	0	0.00%	116	0.14%
WOOD	46	0.31%	233	0.35%	0	0.00%	279	0.34%
WYANDOT	0	0.00%	17	0.03%	0	0.00%	17	0.02%

SOURCE: COGNOS. The above numbers have not been reconciled between the CCIDS/3299 data collection system and 2827 ODJFS fiscal reporting system; therefore they may not be conclusive at this time.

OWF data consist of funding codes: 312, 313,314, 326, & 327. Other data consist of funding codes: 320, 321, 322, 323, 324, 325, 328, 329, and 342. Local Funding is from funding code 899.

**TABLE 8
RECIPIENTS, EXPENDITURES, AND AVERAGE PAYMENT PER RECIPIENT
DURING THE LAST 12 MONTHS IN OHIO**

RECIPIENTS	OWF-R	OWF-U	OWF/ CHILD CARE	Other/Local CHILD CARE	DISABILITY ASSISTANCE	TITLE IV-E	FNS BENEFITS
April 2004	175,819	17,859	17,292	73,676	13,199	26,167	949,984
May	175,364	17,090	16,380	71,877	13,014	26,728	957,891
June	176,410	16,761	15,873	70,670	13,125	27,023	966,742
July	175,492	16,215	17,025	76,365	12,952	27,446	961,345
August	176,900	16,141	14,955	67,418	13,128	26,794	968,953
September	177,276	16,330	15,135	68,105	13,006	27,126	966,523
October	177,652	16,591	14,753	65,414	13,085	26,963	974,870
November	177,076	16,424	14,713	65,200	13,173	27,029	983,171
December	177,811	17,045	16,077	68,274	13,527	27,440	996,586
January 2005	174,590	17,335	14,708	64,330	14,116	26,914	1,007,283
February	172,216	17,306	14,449	65,066	14,379	27,963	988,011
March	172,235	17,735	14,649	67,433	14,779	27,498	1,017,801
12 MONTH AVERAGE	175,737	16,903	15,501	68,652	13,457	27,091	978,263
EXPENDITURES							
April 2004	\$24,479,601	\$1,743,512	N.A.	N.A.	\$1,743,821	\$12,812,373	\$84,433,387
May	\$24,510,455	\$1,683,791	N.A.	N.A.	\$1,717,225	\$14,538,568	\$84,982,281
June	\$24,695,230	\$1,629,234	N.A.	N.A.	\$1,775,365	\$13,541,071	\$86,088,824
July	\$24,518,267	\$1,537,939	N.A.	N.A.	\$1,650,143	\$14,462,718	\$85,444,646
August	\$24,662,472	\$1,546,295	N.A.	N.A.	\$1,718,500	\$13,646,981	\$86,716,053
September	\$24,510,896	\$1,562,152	N.A.	N.A.	\$1,653,854	\$13,810,598	\$86,367,236
October	\$25,165,130	\$1,644,497	N.A.	N.A.	\$1,785,256	\$14,422,182	\$93,499,595
November	\$24,934,252	\$1,604,065	N.A.	N.A.	\$1,776,656	\$14,560,414	\$94,871,568
December	\$24,793,390	\$1,671,072	N.A.	N.A.	\$1,805,243	\$14,594,680	\$96,573,320
January 2005	\$24,378,521	\$1,712,404	N.A.	N.A.	\$2,036,299	\$13,778,606	\$96,636,361
February	\$24,251,217	\$1,717,424	N.A.	N.A.	\$2,099,424	\$15,420,724	\$93,839,433
March	\$24,234,787	\$1,759,539	N.A.	N.A.	\$1,927,300	\$14,554,536	\$98,400,293
TOTAL DOLLARS	\$24,594,518	\$1,650,994	N.A.	N.A.	\$1,807,424	\$14,178,621	\$90,654,416
AVERAGE PAYMENT							
April 2004	\$139	\$98	N.A.	N.A.	\$132	\$490	\$89
May	\$140	\$99	N.A.	N.A.	\$132	\$544	\$89
June	\$140	\$97	N.A.	N.A.	\$135	\$501	\$89
July	\$140	\$95	N.A.	N.A.	\$127	\$527	\$89
August	\$139	\$96	N.A.	N.A.	\$131	\$509	\$89
September	\$138	\$96	N.A.	N.A.	\$127	\$509	\$89
October	\$142	\$99	N.A.	N.A.	\$136	\$535	\$96
November	\$141	\$98	N.A.	N.A.	\$135	\$539	\$96
December	\$139	\$98	N.A.	N.A.	\$133	\$532	\$97
January 2005	\$140	\$99	N.A.	N.A.	\$144	\$512	\$96
February	\$141	\$99	N.A.	N.A.	\$146	\$551	\$95
March	\$141	\$99	N.A.	N.A.	\$130	\$529	\$97

Note: N.A. means Not Available.

**TABLE 10
PERCENT OF OHIO'S POPULATION PARTICIPATING IN SELECTED
PUBLIC ASSISTANCE PROGRAMS FOR MARCH 2005**

OHIO COUNTY	Estimated Total Population *	Percent of All Families Below Poverty Level	DISABILITY ASSISTANCE		OWF COMBINED		FOSTER CARE		FNS BENEFITS	
			Recipients	Recipients as % of Total Population	Recipients	Recipients as % of Total Population	Recipients	Recipients as % of Total Population	Recipients	Recipients as % of Total Population
STATEWIDE	11,435,798	7.80%	14,779	0.13%	189,970	1.66%	27,498	0.24%	1,017,801	8.90%
ADAMS	28,026	12.80%	89	0.32%	218	0.78%	57	0.20%	4,463	15.92%
ALLEN	108,241	9.60%	79	0.07%	809	0.75%	224	0.21%	8,590	7.94%
ASHLAND	53,749	7.10%	41	0.08%	229	0.43%	11	0.02%	2,998	5.58%
ASHTABULA	103,120	9.20%	300	0.29%	1,402	1.36%	176	0.17%	11,050	10.72%
ATHENS	64,380	14.00%	244	0.38%	1,403	2.18%	191	0.30%	7,010	10.89%
AUGLAIZE	46,740	4.90%	27	0.06%	75	0.16%	54	0.12%	1,873	4.01%
BELMONT	69,636	11.70%	130	0.19%	1,185	1.70%	139	0.20%	7,288	10.47%
BROWN	43,807	8.80%	57	0.13%	275	0.63%	64	0.15%	3,657	8.35%
BUTLER	343,207	5.40%	509	0.15%	2,908	0.85%	764	0.22%	23,755	6.92%
CARROLL	29,599	8.50%	32	0.11%	185	0.63%	18	0.06%	2,162	7.30%
CHAMPAIGN	39,544	5.10%	36	0.09%	430	1.09%	15	0.04%	2,317	5.86%
CLARK	143,351	7.90%	306	0.21%	3,020	2.11%	381	0.27%	16,573	11.56%
CLERMONT	185,799	5.30%	199	0.11%	971	0.52%	401	0.22%	9,735	5.24%
CLINTON	41,756	6.40%	69	0.17%	224	0.54%	93	0.22%	2,953	7.07%
COLUMBIANA	111,523	9.00%	116	0.10%	935	0.84%	151	0.14%	11,427	10.25%
COSHOCTON	37,132	7.00%	91	0.25%	411	1.11%	70	0.19%	3,796	10.22%
CRAWFORD	46,091	7.80%	47	0.10%	393	0.85%	68	0.15%	4,170	9.05%
CUYAHOGA	1,363,888	10.30%	2,061	0.15%	27,658	2.03%	6,570	0.48%	176,303	12.93%
DARKE	52,960	6.00%	43	0.08%	307	0.58%	51	0.10%	2,057	3.88%
DEFIANCE	39,054	4.50%	17	0.04%	294	0.75%	45	0.12%	2,486	6.37%
DELAWARE	132,797	2.90%	73	0.05%	681	0.51%	69	0.05%	4,038	3.04%
ERIE	78,709	6.00%	60	0.08%	379	0.48%	154	0.20%	5,088	6.46%
FAIRFIELD	132,549	4.50%	117	0.09%	1,543	1.16%	151	0.11%	8,489	6.40%
FAYETTE	28,158	7.70%	30	0.11%	277	0.98%	19	0.07%	2,443	8.68%
FRANKLIN	1,088,944	8.20%	1,230	0.11%	25,873	2.38%	3,867	0.36%	114,713	10.53%
FULTON	42,446	4.00%	24	0.06%	177	0.42%	33	0.08%	2,060	4.85%
GALLIA	31,398	13.50%	39	0.12%	1,383	4.40%	58	0.18%	5,018	15.98%
GEAUGA	93,941	2.80%	29	0.03%	210	0.22%	109	0.12%	1,518	1.62%
GREENE	151,257	5.20%	163	0.11%	1,197	0.79%	116	0.08%	8,277	5.47%

*SOURCE: 2003 Ohio County Population Estimates, Ohio Dept. of Development, GRP342RA, GBS003RA, GRP304RA and GRP304RC Reports from Management Information Services.

**TABLE 10
PERCENT OF OHIO'S POPULATION PARTICIPATING IN SELECTED
PUBLIC ASSISTANCE PROGRAMS FOR MARCH 2005**

OHIO COUNTY	Estimated Total Population *	Percent of All Families Below Poverty Level	DISABILITY ASSISTANCE		OWF COMBINED		FOSTER CARE		FNS BENEFITS	
			Recipients	Recipients as % of Total Population	Recipients	Recipients as % of Total Population	Recipients	Recipients as % of Total Population	Recipients	Recipients as % of Total Population
STATEWIDE	11,435,798	7.80%	14,779	0.13%	189,970	1.66%	27,498	0.24%	1,017,801	8.90%
GUERNSEY	41,362	12.90%	132	0.32%	396	0.96%	122	0.29%	5,670	13.71%
HAMILTON	823,472	8.80%	907	0.11%	19,482	2.37%	1,543	0.19%	68,808	8.36%
HANCOCK	73,133	5.20%	76	0.10%	350	0.48%	65	0.09%	3,692	5.05%
HARDIN	31,608	8.90%	24	0.08%	85	0.27%	56	0.18%	1,730	5.47%
HARRISON	15,967	11.00%	45	0.28%	283	1.77%	29	0.18%	1,777	11.13%
HENRY	29,318	5.30%	6	0.02%	72	0.25%	34	0.12%	1,106	3.77%
HIGHLAND	41,963	9.00%	85	0.20%	331	0.79%	49	0.12%	4,086	9.74%
HOCKING	28,644	10.30%	73	0.25%	824	2.88%	82	0.29%	3,279	11.45%
HOLMES	40,681	10.50%	27	0.07%	107	0.26%	39	0.10%	1,168	2.87%
HURON	60,231	6.50%	41	0.07%	215	0.36%	59	0.10%	3,910	6.49%
JACKSON	33,074	13.60%	91	0.28%	511	1.55%	36	0.11%	5,115	15.47%
JEFFERSON	71,888	11.40%	158	0.22%	2,144	2.98%	128	0.18%	8,913	12.40%
KNOX	56,930	7.40%	79	0.14%	488	0.86%	47	0.08%	3,838	6.74%
LAKE	228,878	3.50%	213	0.09%	1,169	0.51%	224	0.10%	9,981	4.36%
LAWRENCE	62,550	15.10%	78	0.12%	1,438	2.30%	133	0.21%	10,527	16.83%
LICKING	150,634	5.50%	201	0.13%	1,288	0.86%	466	0.31%	11,252	7.47%
LOGAN	46,411	7.10%	49	0.11%	440	0.95%	57	0.12%	3,271	7.05%
LORAIN	291,164	6.70%	331	0.11%	5,199	1.79%	450	0.15%	27,241	9.36%
LUCAS	454,216	10.70%	637	0.14%	17,849	3.93%	2,087	0.46%	59,564	13.11%
MADISON	40,624	6.20%	33	0.08%	579	1.43%	23	0.06%	2,593	6.38%
MAHONING	251,660	9.60%	349	0.14%	7,128	2.83%	425	0.17%	28,754	11.43%
MARION	66,396	7.40%	111	0.17%	786	1.18%	102	0.15%	6,425	9.68%
MEDINA	161,641	3.50%	97	0.06%	648	0.40%	84	0.05%	4,491	2.78%
MEIGS	23,242	14.30%	70	0.30%	456	1.96%	16	0.07%	4,168	17.93%
MERCER	40,933	4.60%	37	0.09%	160	0.39%	35	0.09%	1,227	3.00%
MIAMI	100,230	5.10%	72	0.07%	602	0.60%	171	0.17%	4,214	4.20%
MONROE	14,927	11.00%	24	0.16%	195	1.31%	17	0.11%	1,497	10.03%
MONTGOMERY	552,187	8.30%	610	0.11%	12,180	2.21%	1,858	0.34%	49,572	8.98%
MORGAN	14,843	15.70%	48	0.32%	155	1.04%	12	0.08%	1,868	12.59%
MORROW	33,568	6.60%	30	0.09%	269	0.80%	42	0.13%	2,851	8.49%

*SOURCE: 2003 Ohio County Population Estimates, Ohio Dept. of Development, GRP342RA, GBS003RA, GRP304RA and GRP304RC Reports from Management Information Services.

**TABLE 10
PERCENT OF OHIO'S POPULATION PARTICIPATING IN SELECTED
PUBLIC ASSISTANCE PROGRAMS FOR MARCH 2005**

OHIO COUNTY	Estimated Total Population *	Percent of All Families Below Poverty Level	DISABILITY ASSISTANCE		OWF COMBINED		FOSTER CARE		FNS BENEFITS	
			Recipients	Recipients as % of Total Population	Recipients	Recipients as % of Total Population	Recipients	Recipients as % of Total Population	Recipients	Recipients as % of Total Population
STATEWIDE	11,435,798	7.80%	14,779	0.13%	189,970	1.66%	27,498	0.24%	1,017,801	8.90%
MUSKINGUM	85,423	9.90%	281	0.33%	2,156	2.52%	125	0.15%	12,771	14.95%
NOBLE	14,054	8.30%	24	0.17%	85	0.60%	5	0.04%	1,148	8.17%
OTTAWA	41,192	4.20%	24	0.06%	311	0.76%	3	0.01%	2,077	5.04%
PAULDING	19,665	4.90%	28	0.14%	226	1.15%	32	0.16%	1,195	6.08%
PERRY	35,074	9.40%	92	0.26%	725	2.07%	72	0.21%	4,696	13.39%
PICKAWAY	51,723	7.60%	50	0.10%	1,207	2.33%	39	0.08%	4,722	9.13%
PIKE	28,194	15.10%	52	0.18%	665	2.36%	45	0.16%	4,886	17.33%
PORTAGE	154,870	5.90%	132	0.09%	789	0.51%	141	0.09%	7,496	4.84%
PREBLE	42,417	4.50%	40	0.09%	363	0.86%	63	0.15%	2,343	5.52%
PUTNAM	34,754	4.00%	13	0.04%	109	0.31%	14	0.04%	1,177	3.39%
RICHLAND	128,267	8.20%	211	0.16%	1,227	0.96%	268	0.21%	10,644	8.30%
ROSS	74,424	9.10%	125	0.17%	2,000	2.69%	68	0.09%	9,480	12.74%
SANDUSKY	61,753	5.70%	48	0.08%	342	0.55%	93	0.15%	3,582	5.80%
SCIOTO	77,453	15.20%	257	0.33%	1,944	2.51%	126	0.16%	14,646	18.91%
SENECA	57,734	6.10%	55	0.10%	264	0.46%	115	0.20%	3,892	6.74%
SHELBY	48,566	5.30%	29	0.06%	217	0.45%	77	0.16%	2,353	4.84%
STARK	377,519	6.80%	579	0.15%	7,177	1.90%	1,170	0.31%	28,848	7.64%
SUMMIT	546,773	7.50%	641	0.12%	11,648	2.13%	1,260	0.23%	48,842	8.93%
TRUMBULL	221,785	7.90%	342	0.15%	2,957	1.33%	431	0.19%	18,338	8.27%
TUSCARAWAS	91,706	7.20%	113	0.12%	1,026	1.12%	204	0.22%	6,973	7.60%
UNION	43,750	3.60%	35	0.08%	580	1.33%	37	0.08%	2,374	5.43%
VAN WERT	29,277	4.20%	19	0.06%	60	0.20%	29	0.10%	1,192	4.07%
VINTON	13,231	15.10%	42	0.32%	334	2.52%	19	0.14%	2,636	19.92%
WARREN	181,743	3.00%	80	0.04%	378	0.21%	134	0.07%	3,713	2.04%
WASHINGTON	62,505	8.60%	134	0.21%	241	0.39%	52	0.08%	5,282	8.45%
WAYNE	113,121	5.40%	251	0.22%	1,100	0.97%	133	0.12%	6,401	5.66%
WILLIAMS	38,802	3.90%	34	0.09%	298	0.77%	36	0.09%	1,944	5.01%
WOOD	123,020	4.70%	49	0.04%	623	0.51%	73	0.06%	4,423	3.60%
WYANDOT	22,826	3.80%	7	0.03%	37	0.16%	24	0.11%	832	3.64%
UNKNOWN										

*SOURCE: 2003 Ohio County Population Estimates, Ohio Dept. of Development, GRP342RA, GBS003RA, GRP304RA and GRP304RC Reports from Management Information Services.

**TABLE 7-A
CHILD CARE REVISION
DECEMBER 2004 UPDATE**

OHIO COUNTY	OWF JOBS, LEAP, and TRANSITIONAL		OTHER CHILD CARE		LOCAL FUNDING		ALL PROGRAM SOURCES	
	CHILDREN SERVED		CHILDREN SERVED		CHILDREN SERVED		CHILDREN SERVED	
	TOTAL	% OF STATE TOTAL	TOTAL	% OF STATE TOTAL	TOTAL	% OF STATE TOTAL	TOTAL	% OF STATE TOTAL
STATEWIDE	16,364	100.00%	69,660	100.00%	672	100.00%	86,696	100.00%
ADAMS	1	0.01%	31	0.04%	0	0.00%	32	0.04%
ALLEN	34	0.21%	428	0.61%	0	0.00%	462	0.53%
ASHLAND	2	0.01%	137	0.20%	0	0.00%	139	0.16%
ASHTABULA	78	0.48%	548	0.79%	0	0.00%	626	0.72%
ATHENS	53	0.32%	201	0.29%	0	0.00%	254	0.29%
AUGLAIZE	0	0.00%	121	0.17%	0	0.00%	121	0.14%
BELMONT	74	0.45%	256	0.37%	0	0.00%	330	0.38%
BROWN	2	0.01%	95	0.14%	0	0.00%	97	0.11%
BUTLER	182	1.11%	1,249	1.79%	0	0.00%	1,431	1.65%
CARROLL	15	0.09%	43	0.06%	0	0.00%	58	0.07%
CHAMPAIGN	4	0.02%	138	0.20%	0	0.00%	142	0.16%
CLARK	103	0.63%	581	0.83%	0	0.00%	684	0.79%
CLERMONT	62	0.38%	477	0.68%	0	0.00%	539	0.62%
CLINTON	8	0.05%	185	0.27%	0	0.00%	193	0.22%
COLUMBIANA	77	0.47%	779	1.12%	0	0.00%	856	0.99%
COSHOCTON	27	0.16%	164	0.24%	0	0.00%	191	0.22%
CRAWFORD	17	0.10%	142	0.20%	0	0.00%	159	0.18%
CUYAHOGA	4,021	24.57%	17,631	25.31%	1	0.15%	21,653	24.98%
DARKE	7	0.04%	90	0.13%	0	0.00%	97	0.11%
DEFIANCE	1	0.01%	132	0.19%	0	0.00%	133	0.15%
DELAWARE	22	0.13%	173	0.25%	3	0.45%	198	0.23%
ERIE	4	0.02%	529	0.76%	0	0.00%	533	0.61%
FAIRFIELD	63	0.38%	424	0.61%	0	0.00%	487	0.56%
FAYETTE	29	0.18%	185	0.27%	0	0.00%	214	0.25%
FRANKLIN	2,511	15.34%	8,287	11.90%	218	32.44%	11,016	12.71%
FULTON	8	0.05%	162	0.23%	0	0.00%	170	0.20%
GALLIA	50	0.31%	194	0.28%	0	0.00%	244	0.28%
GEAUGA	4	0.02%	147	0.21%	0	0.00%	151	0.17%
GREENE	70	0.43%	607	0.87%	0	0.00%	677	0.78%

**TABLE 7-A
CHILD CARE REVISION
DECEMBER 2004 UPDATE**

OHIO COUNTY	OWF JOBS, LEAP, and TRANSITIONAL		OTHER CHILD CARE		LOCAL FUNDING		ALL PROGRAM SOURCES	
	CHILDREN SERVED		CHILDREN SERVED		CHILDREN SERVED		CHILDREN SERVED	
	TOTAL	% OF STATE TOTAL	TOTAL	% OF STATE TOTAL	TOTAL	% OF STATE TOTAL	TOTAL	% OF STATE TOTAL
STATEWIDE	16,364	100.00%	69,660	100.00%	672	100.00%	86,696	100.00%
GUERNSEY	24	0.15%	302	0.43%	0	0.00%	326	0.38%
HAMILTON	3,371	20.60%	8,413	12.08%	0	0.00%	11,784	13.59%
HANCOCK	28	0.17%	330	0.47%	0	0.00%	358	0.41%
HARDIN	2	0.01%	71	0.10%	0	0.00%	73	0.08%
HARRISON	9	0.05%	47	0.07%	0	0.00%	56	0.06%
HENRY	10	0.06%	98	0.14%	0	0.00%	108	0.12%
HIGHLAND	7	0.04%	193	0.28%	0	0.00%	200	0.23%
HOCKING	24	0.15%	170	0.24%	0	0.00%	194	0.22%
HOLMES	13	0.08%	98	0.14%	0	0.00%	111	0.13%
HURON	0	0.00%	440	0.63%	0	0.00%	440	0.51%
JACKSON	19	0.12%	165	0.24%	0	0.00%	184	0.21%
JEFFERSON	100	0.61%	340	0.49%	0	0.00%	440	0.51%
KNOX	21	0.13%	269	0.39%	0	0.00%	290	0.33%
LAKE	70	0.43%	817	1.17%	0	0.00%	887	1.02%
LAWRENCE	62	0.38%	495	0.71%	0	0.00%	557	0.64%
LICKING	102	0.62%	681	0.98%	0	0.00%	783	0.90%
LOGAN	20	0.12%	52	0.07%	0	0.00%	72	0.08%
LORAIN	448	2.74%	1,478	2.12%	0	0.00%	1,926	2.22%
LUCAS	809	4.94%	1,419	2.04%	442	65.77%	2,670	3.08%
MADISON	16	0.10%	74	0.11%	0	0.00%	90	0.10%
MAHONING	489	2.99%	1,531	2.20%	0	0.00%	2,020	2.33%
MARION	32	0.20%	323	0.46%	0	0.00%	355	0.41%
MEDINA	29	0.18%	587	0.84%	0	0.00%	616	0.71%
MEIGS	8	0.05%	143	0.21%	0	0.00%	151	0.17%
MERCER	29	0.18%	98	0.14%	0	0.00%	127	0.15%
MIAMI	0	0.00%	264	0.38%	0	0.00%	264	0.30%
MONROE	1	0.01%	54	0.08%	0	0.00%	55	0.06%
MONTGOMERY	860	5.26%	4,098	5.88%	1	0.15%	4,959	5.72%
MORGAN	0	0.00%	77	0.11%	0	0.00%	77	0.09%
MORROW	3	0.02%	155	0.22%	0	0.00%	158	0.18%

**TABLE 7-A
CHILD CARE REVISION
DECEMBER 2004 UPDATE**

OHIO COUNTY	OWF JOBS, LEAP, and TRANSITIONAL		OTHER CHILD CARE		LOCAL FUNDING		ALL PROGRAM SOURCES	
	CHILDREN SERVED		CHILDREN SERVED		CHILDREN SERVED		CHILDREN SERVED	
	TOTAL	% OF STATE TOTAL	TOTAL	% OF STATE TOTAL	TOTAL	% OF STATE TOTAL	TOTAL	% OF STATE TOTAL
STATEWIDE	16,364	100.00%	69,660	100.00%	672	100.00%	86,696	100.00%
MUSKINGUM	223	1.36%	592	0.85%	0	0.00%	815	0.94%
NOBLE	2	0.01%	107	0.15%	0	0.00%	109	0.13%
OTTAWA	20	0.12%	86	0.12%	0	0.00%	106	0.12%
PAULDING	1	0.01%	9	0.01%	0	0.00%	10	0.01%
PERRY	23	0.14%	214	0.31%	0	0.00%	237	0.27%
PICKAWAY	34	0.21%	117	0.17%	0	0.00%	151	0.17%
PIKE	19	0.12%	62	0.09%	0	0.00%	81	0.09%
PORTAGE	62	0.38%	637	0.91%	0	0.00%	699	0.81%
PREBLE	8	0.05%	95	0.14%	0	0.00%	103	0.12%
PUTNAM	13	0.08%	77	0.11%	0	0.00%	90	0.10%
RICHLAND	161	0.98%	771	1.11%	0	0.00%	932	1.08%
ROSS	6	0.04%	220	0.32%	0	0.00%	226	0.26%
SANDUSKY	59	0.36%	411	0.59%	0	0.00%	470	0.54%
SCIOTO	71	0.43%	502	0.72%	0	0.00%	573	0.66%
SENECA	0	0.00%	225	0.32%	0	0.00%	225	0.26%
SHELBY	3	0.02%	159	0.23%	0	0.00%	162	0.19%
STARK	444	2.71%	1,717	2.46%	0	0.00%	2,161	2.49%
SUMMIT	695	4.25%	2,847	4.09%	0	0.00%	3,542	4.09%
TRUMBULL	132	0.81%	1,604	2.30%	0	0.00%	1,736	2.00%
TUSCARAWAS	21	0.13%	287	0.41%	0	0.00%	308	0.36%
UNION	0	0.00%	53	0.08%	7	1.04%	60	0.07%
VAN WERT	1	0.01%	43	0.06%	0	0.00%	44	0.05%
VINTON	6	0.04%	77	0.11%	0	0.00%	83	0.10%
WARREN	55	0.34%	349	0.50%	0	0.00%	404	0.47%
WASHINGTON	33	0.20%	285	0.41%	0	0.00%	318	0.37%
WAYNE	94	0.57%	304	0.44%	0	0.00%	398	0.46%
WILLIAMS	6	0.04%	110	0.16%	0	0.00%	116	0.13%
WOOD	37	0.23%	252	0.36%	0	0.00%	289	0.33%
WYANDOT	0	0.00%	30	0.04%	0	0.00%	30	0.03%

SOURCE: COGNOS. The above numbers have not been reconciled between the CCIDS/3299 data collection system and 2827 ODJFS fiscal reporting system; therefore they may not be conclusive at this time.

OWF data consist of funding codes: 312, 313,314, 326, & 327. Other data consist of funding codes: 320, 321 , 322, 323, 324, 325, 328, 329, and 342. Local Funding is from funding code 899.