

Ohio Department of Job and Family Services

PUBLIC ASSISTANCE MONTHLY STATISTICS JANUARY 2007



<http://jfs.ohio.gov/pams/index.stm>

Bureau of Research and Evaluation : Federal Reports\ Data Development Section
Office of Research, Assessment, and Accountability
P.O. Box 1618
Columbus, Ohio 43216-1618

OHIO DEPARTMENT OF JOB AND FAMILY SERVICES

PUBLIC ASSISTANCE MONTHLY STATISTICS

TABLE OF CONTENTS

<u>TITLE</u>	<u>PAGE(S)</u>
Monthly Review of Public Assistance Statistics.....	1
Statewide Summary of Public Assistance Programs.....	2
Table 1: OWF (TANF) Summary.....	3-14
Table 2: Foster Care (Title IV-E) Program Summary.....	15-17
Table 3: Disability Assistance Program Summary.....	18-22
Table 3-A: DA Payments for Medical Services.....	23
Table 5: FNS Benefits Program Summary.....	24-28
Table 6: Medicaid (Title XIX): Eligibles and Expenditures.....	29-34
Table 7: Child Day Care Summary.....	35-37
Table 8: Program Summaries of Recipients, Expenditures, and Average Payment Per Recipient During the Last 12 Months.....	38
Table 10: Percent of Ohio's Population Participating in Selected Public Assistance Programs.....	39-41
<i>Note: Table 4 and Table 9 were discontinued.</i>	
<i>Also: Table 7-A, Updated Child Day Care Summary for October 2006.....</i>	<i>42-44</i>

All data in the PAMS report is limited to the information available at the time it was constructed. It does not account for backdated or retroactive eligibility or any adjustments made subsequent to its creation.

MONTHLY REVIEW OF PUBLIC ASSISTANCE STATISTICS FOR JANUARY 2007

OHIO WORKS FIRST (OWF)

For the month of January 2007, OWF-Combined assistance groups totaled 79,061; recipients totaled 169,838 and money payments totaled \$25,952,125. The percent change from December 2006 to January 2007 was -1.4% for assistance groups; -1.7% for recipients, and -4.1% for money payments. For OWF- Regular (OWF-R) there were 75,895 assistance groups; 156,974 recipients, and \$24,563,001 in money payments issued for January 2007. The percent change from December 2006 to January 2007 was -1.3% for assistance groups; -1.6% for recipients, and -4.0% for money payments. For OWF-Unemployed (OWF-U) assistance groups totaled 3,166; recipients, 12,864 and money payments were \$1,389,124. The percent change from December 2006 to January 2007 was -3.0% for assistance groups; -2.8% for recipients and -6.8% for money payments.

FOSTER CARE (TITLE IV-E)

A total of 27,150 children received \$14,522,840 in Title IV-E assistance during the month of January 2007. Included in this total were 6,361 foster care children who received \$6,428,007 in money payments. Of these Title IV-E children, 2,893 or 10.7% were in foster family homes who received \$1,303,219 and 3,468 or 12.8% children in child care institutions who received \$5,124,788 in OWF foster care assistance. The remaining 20,789 children reported as participating in Title IV-E received \$8,094,833 in adoption assistance. Overall, the average amount of Foster Care received per child was \$534.91.

DISABILITY ASSISTANCE (DA)

For the month of January 2007, there were 13,601 assistance groups; 13,678 recipients, and \$1,860,503 in DA financial assistance. The average DA financial assistance per recipient was \$136.02. Total DA expenditures for medical services for January 2007 were \$2,252,848. Of this total, \$1,631,097 or 72.4% was spent for prescribed drugs, and \$457,196 or 20.3% was spent for physician services. Medical expenses were paid for 4,038 recipients for an average expenditure of \$557.91 per recipient.

FOOD AND NUTRITION SERVICES BENEFITS (FNS)

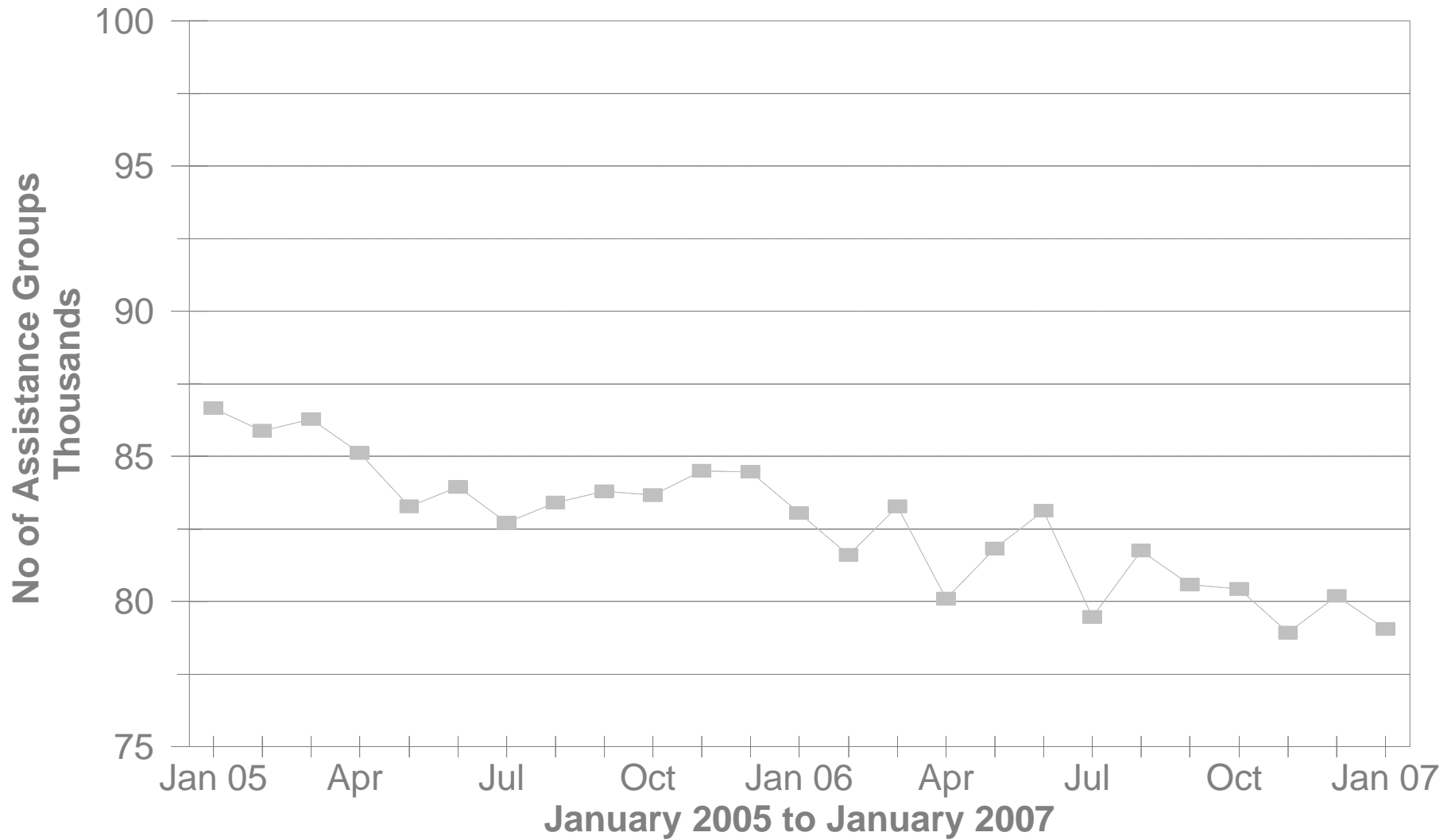
Total persons participating in the FNS benefits program during January 2007 increased to 1,074,737 by 1,526 or 0.1% from 1,073,211 persons reported in December 2006. Households increased by 47 or 0.0% over December 2006 levels. The total dollar value of FNS related benefits issued during January 2007 increased by \$34,979 or 0.0% from \$107,670,387 reported in December 2006 to \$107,705,366 reported in January 2007. The average benefit issuance per person decreased by \$.11 or -0.1% from those issued in December 2006. The average benefit issuance per person decreased from \$100.33 reported in December 2006 to \$100.18 reported in January 2007.

Please note: All data in the PAMS report is limited to the information available at the time it was constructed. It does not account for backdated or retroactive eligibility or any adjustments made subsequent to its creation.

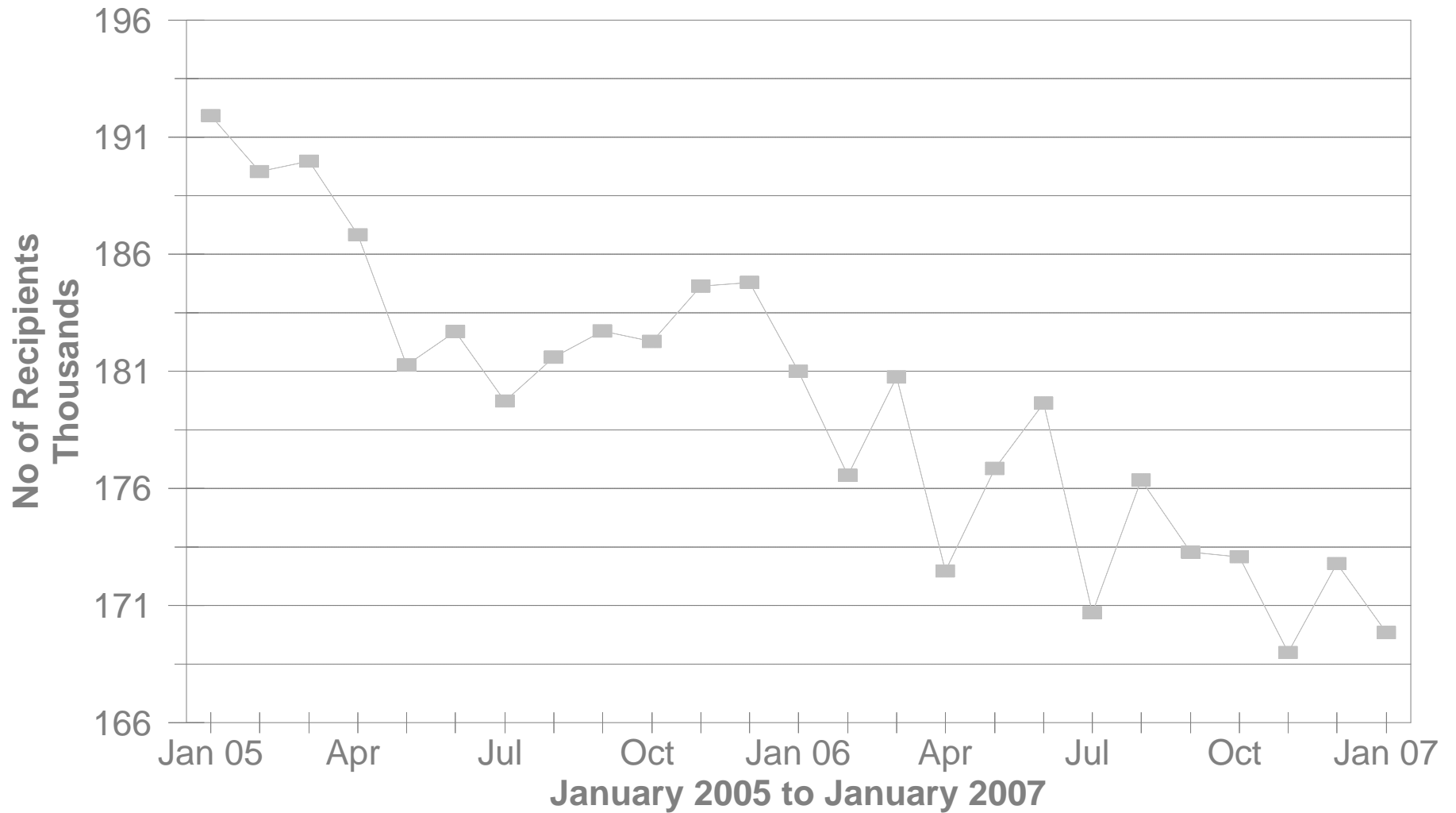
STATEWIDE SUMMARY OF PUBLIC ASSISTANCE PROGRAMS FOR JANUARY 2007

	January 2007	December 2006	% CHANGE Jan 07 / Dec 06	January 2006	% CHANGE Jan 07 / Jan 06
OHIO WORKS FIRST (OWF)-COMBINED					
Assistance Groups	79,061	80,192	-1.4%	83,046	-4.8%
Recipients	169,838	172,782	-1.7%	180,995	-6.2%
Net Payments	\$25,952,125	\$27,068,888	-4.1%	\$26,813,569	-3.2%
Average Per Recipient	\$152.81	\$156.66	-2.5%	\$148.15	3.1%
OWF-REGULAR, OWF-INCAPACITATED,& OWF REGULAR VENDOR PAYMENTS					
Assistance Groups	75,895	76,927	-1.3%	78,915	-3.8%
Recipients	156,974	159,543	-1.6%	164,367	-4.5%
Net Payments	\$24,563,001	\$25,577,815	-4.0%	\$25,052,380	-2.0%
Average Per Recipient	\$156.48	\$160.32	-2.4%	\$152.42	2.7%
OWF-UNEMPLOYED AND OWF-UNEMPLOYED VENDOR PAYMENTS					
Assistance Groups	3,166	3,265	-3.0%	4,131	-23.4%
Recipients	12,864	13,239	-2.8%	16,628	-22.6%
Net Payments	\$1,389,124	\$1,491,073	-6.8%	\$1,761,189	-21.1%
Average Per Recipient	\$107.99	\$112.63	-4.1%	\$105.92	2.0%
TITLE IV-E FOSTER CARE					
Assistance Groups/Recipients	27,150	27,223	-0.3%	27,005	0.5%
Gross Payments	\$14,522,840	\$15,347,273	-5.4%	\$15,336,409	-5.3%
Average Per Recipient	\$534.91	\$563.76	-5.1%	\$567.91	-5.8%
DISABILITY ASSISTANCE					
Assistance Groups	13,601	13,573	0.2%	12,079	12.6%
Recipients	13,678	13,654	0.2%	12,167	12.4%
Net Payments	\$1,860,503	\$1,905,592	-2.4%	\$1,597,870	16.4%
Medical Assistance	\$2,252,848	\$1,992,451	13.1%	\$3,223,416	-30.1%
FNS BENEFITS					
Assistance Groups	491,430	491,383	0.0%	471,141	4.3%
Persons	1,074,737	1,073,211	0.1%	1,051,528	2.2%
Total Coupons Issued	\$107,705,366	\$107,670,387	0.0%	\$103,129,520	4.4%
Average Per Recipient	\$100.22	\$100.33	-0.1%	\$98.08	2.2%

No of OWF Combined Assistance Groups During The Last 25 Months

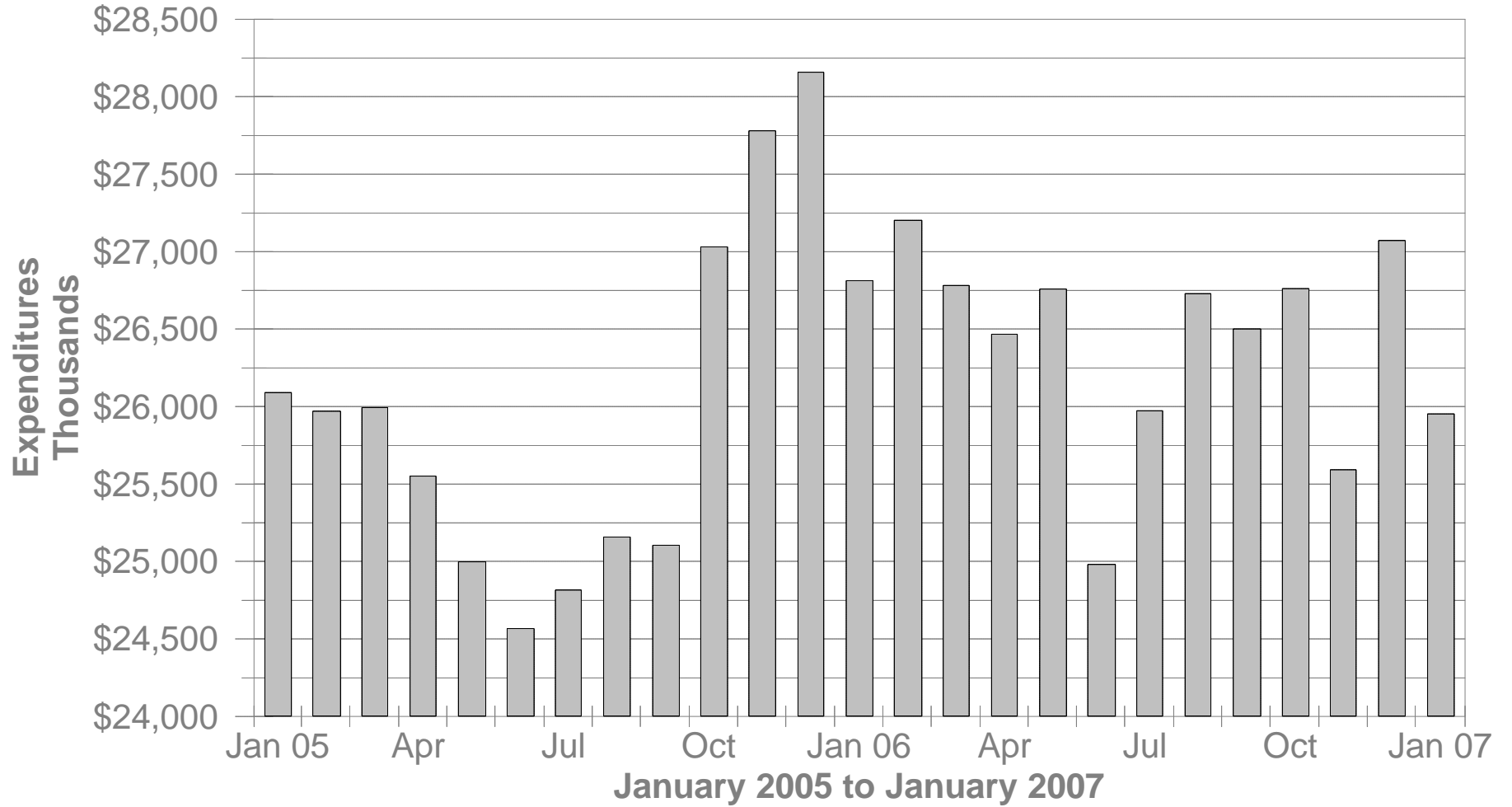


No of OWF Combined Recipients During The Last 25 Months



OWF Combined Net Expenditures

During The Last 25 Months



**TABLE 1
OHIO WORKS FIRST COMBINED
JANUARY 2007**

OHIO COUNTY	ASSISTANCE GROUP	RECIPIENTS	ADULTS	CHILDREN	ACTUAL EXPENDITURES		
					GROSS AMOUNT	CANCELLED AMOUNT	NET AMOUNT
STATEWIDE	79,061	169,838	41,440	128,398	\$27,098,839.00	\$1,146,714.00	\$25,952,125.00
ADAMS	148	229	6	223	\$42,762.00	\$336.00	\$42,426.00
ALLEN	438	718	55	663	\$138,449.00	\$6,661.00	\$131,788.00
ASHLAND	77	153	30	123	\$27,475.00	\$917.00	\$26,558.00
ASHTABULA	684	1,413	335	1,078	\$228,388.00	\$11,449.00	\$216,939.00
ATHENS	622	1,518	541	977	\$219,741.00	\$5,194.00	\$214,547.00
AUGLAIZE	65	96	1	95	\$18,848.00	\$826.00	\$18,022.00
BELMONT	340	718	183	535	\$108,291.00	\$4,629.00	\$103,662.00
BROWN	172	296	30	266	\$51,664.00	\$3,412.00	\$48,252.00
BUTLER	1,513	2,787	398	2,389	\$487,735.00	\$14,942.00	\$472,793.00
CARROLL	93	179	41	138	\$29,010.00	\$490.00	\$28,520.00
CHAMPAIGN	204	417	116	301	\$67,910.00	\$1,118.00	\$66,792.00
CLARK	1,284	2,870	734	2,136	\$453,421.00	\$13,868.00	\$439,553.00
CLERMONT	430	783	88	695	\$134,882.00	\$6,062.00	\$128,820.00
CLINTON	111	205	29	176	\$34,357.00	\$1,720.00	\$32,637.00
COLUMBIANA	440	796	120	676	\$135,579.00	\$3,019.00	\$132,560.00
COSHOCTON	220	449	135	314	\$67,766.00	\$980.00	\$66,786.00
CRAWFORD	143	312	67	245	\$49,148.00	\$2,090.00	\$47,058.00
CUYAHOGA	11,932	24,064	5,443	18,621	\$4,023,442.00	\$155,091.00	\$3,868,351.00
DARKE	149	298	92	206	\$50,058.00	\$846.00	\$49,212.00
DEFIANCE	128	302	71	231	\$46,777.00	\$1,776.00	\$45,001.00
DELAWARE	310	710	230	480	\$106,517.00	\$5,652.00	\$100,865.00
ERIE	240	412	41	371	\$71,776.00	\$3,486.00	\$68,290.00
FAIRFIELD	793	1,915	622	1,293	\$277,322.00	\$9,060.00	\$268,262.00
FAYETTE	164	338	81	257	\$56,112.00	\$1,467.00	\$54,645.00
FRANKLIN	10,674	23,974	5,788	18,186	\$3,750,211.00	\$210,916.00	\$3,539,295.00
FULTON	60	94	7	87	\$16,568.00	\$245.00	\$16,323.00
GALLIA	494	1,213	434	779	\$172,063.00	\$7,477.00	\$164,586.00
GEAUGA	70	117	15	102	\$19,477.00	\$1,628.00	\$17,849.00
GREENE	550	1,133	267	866	\$180,006.00	\$7,683.00	\$172,323.00

Source: GRP342RA Report from Management Information Services. Data includes ADC-Regular, ADC-Incapacitated, and Vendor Payments.

**TABLE 1
OHIO WORKS FIRST COMBINED
JANUARY 2007**

OHIO COUNTY	ASSISTANCE GROUP	RECIPIENTS	ADULTS	CHILDREN	ACTUAL EXPENDITURES		
					GROSS AMOUNT	CANCELLED AMOUNT	NET AMOUNT
STATEWIDE	79,061	169,838	41,440	128,398	\$27,098,839.00	\$1,146,714.00	\$25,952,125.00
GUERNSEY	183	320	48	272	\$54,477.00	\$1,082.00	\$53,395.00
HAMILTON	7,308	16,689	3,870	12,819	\$2,707,273.00	\$135,165.00	\$2,572,108.00
HANCOCK	100	140	2	138	\$27,602.00	\$1,470.00	\$26,132.00
HARDIN	64	102	5	97	\$19,062.00	\$245.00	\$18,817.00
HARRISON	90	196	46	150	\$30,189.00	\$1,242.00	\$28,947.00
HENRY	35	57	2	55	\$10,033.00	\$410.00	\$9,623.00
HIGHLAND	208	452	115	337	\$71,393.00	\$2,409.00	\$68,984.00
HOCKING	275	642	187	455	\$96,929.00	\$4,016.00	\$92,913.00
HOLMES	52	105	22	83	\$17,078.00	\$752.00	\$16,326.00
HURON	166	254	1	253	\$47,550.00	\$1,253.00	\$46,297.00
JACKSON	294	533	73	460	\$91,443.00	\$3,628.00	\$87,815.00
JEFFERSON	760	1,748	527	1,221	\$260,211.00	\$8,532.00	\$251,679.00
KNOX	260	608	179	429	\$89,916.00	\$2,216.00	\$87,700.00
LAKE	482	1,036	242	794	\$165,434.00	\$6,927.00	\$158,507.00
LAWRENCE	742	1,473	325	1,148	\$233,986.00	\$6,095.00	\$227,891.00
LICKING	578	1,218	324	894	\$191,101.00	\$3,723.00	\$187,378.00
LOGAN	206	436	108	328	\$71,118.00	\$3,180.00	\$67,938.00
LORAIN	2,046	4,468	1,053	3,415	\$710,366.00	\$44,579.00	\$665,787.00
LUCAS	6,559	15,371	4,418	10,953	\$2,331,328.00	\$111,886.00	\$2,219,442.00
MADISON	209	486	155	331	\$73,016.00	\$2,771.00	\$70,245.00
MAHONING	2,848	6,581	1,716	4,865	\$1,005,385.00	\$34,371.00	\$971,014.00
MARION	396	743	97	646	\$131,688.00	\$2,894.00	\$128,794.00
MEDINA	260	545	149	396	\$85,878.00	\$5,761.00	\$80,117.00
MEIGS	188	390	100	290	\$62,018.00	\$2,103.00	\$59,915.00
MERCER	83	185	49	136	\$27,723.00	\$2,290.00	\$25,433.00
MIAMI	296	566	106	460	\$96,518.00	\$1,939.00	\$94,579.00
MONROE	79	208	74	134	\$25,088.00	\$1,761.00	\$23,327.00
MONTGOMERY	5,130	10,705	2,497	8,208	\$1,701,483.00	\$43,704.00	\$1,657,779.00
MORGAN	72	125	14	111	\$21,592.00	\$245.00	\$21,347.00
MORROW	137	298	79	219	\$46,555.00	\$3,035.00	\$43,520.00

Source: GRP342RA Report from Management Information Services. Data includes ADC-Regular, ADC-Incapacitated, and Vendor Payments.

**TABLE 1
OHIO WORKS FIRST COMBINED
JANUARY 2007**

OHIO COUNTY	ASSISTANCE GROUP	RECIPIENTS	ADULTS	CHILDREN	ACTUAL EXPENDITURES		
					GROSS AMOUNT	CANCELLED AMOUNT	NET AMOUNT
STATEWIDE	79,061	169,838	41,440	128,398	\$27,098,839.00	\$1,146,714.00	\$25,952,125.00
MUSKINGUM	828	1,797	477	1,320	\$277,978.00	\$9,256.00	\$268,722.00
NOBLE	27	62	13	49	\$9,212.00	\$336.00	\$8,876.00
OTTAWA	135	322	96	226	\$50,346.00	\$1,069.00	\$49,277.00
PAULDING	109	276	101	175	\$39,659.00	\$3,278.00	\$36,381.00
PERRY	295	674	174	500	\$101,562.00	\$991.00	\$100,571.00
PICKAWAY	398	915	271	644	\$136,729.00	\$3,641.00	\$133,088.00
PIKE	337	713	157	556	\$116,252.00	\$1,008.00	\$115,244.00
PORTAGE	436	833	167	666	\$143,164.00	\$9,451.00	\$133,713.00
PREBLE	164	365	85	280	\$57,829.00	\$2,710.00	\$55,119.00
PUTNAM	26	37	2	35	\$7,405.00	\$0.00	\$7,405.00
RICHLAND	642	1,224	241	983	\$207,329.00	\$6,856.00	\$200,473.00
ROSS	688	1,515	410	1,105	\$246,836.00	\$7,796.00	\$239,040.00
SANDUSKY	196	362	64	298	\$61,917.00	\$1,410.00	\$60,507.00
SCIOTO	1,011	1,887	337	1,550	\$317,104.00	\$9,822.00	\$307,282.00
SENECA	156	282	42	240	\$48,753.00	\$336.00	\$48,417.00
SHELBY	127	252	25	227	\$43,650.00	\$2,360.00	\$41,290.00
STARK	2,819	6,285	1,778	4,507	\$959,432.00	\$33,576.00	\$925,856.00
SUMMIT	4,649	9,938	2,734	7,204	\$1,608,670.00	\$92,040.00	\$1,516,630.00
TRUMBULL	1,325	2,595	542	2,053	\$424,610.00	\$12,617.00	\$411,993.00
TUSCARAWAS	495	1,166	362	804	\$174,512.00	\$6,019.00	\$168,493.00
UNION	161	393	122	271	\$52,916.00	\$2,483.00	\$50,433.00
VAN WERT	45	63	0	63	\$12,448.00	\$991.00	\$11,457.00
VINTON	130	264	71	193	\$42,243.00	\$1,418.00	\$40,825.00
WARREN	219	394	52	342	\$74,516.00	\$4,319.00	\$70,197.00
WASHINGTON	138	219	5	214	\$40,364.00	\$581.00	\$39,783.00
WAYNE	437	967	320	647	\$140,181.00	\$3,638.00	\$136,543.00
WILLIAMS	158	378	130	248	\$53,945.00	\$3,857.00	\$50,088.00
WOOD	218	405	68	337	\$69,497.00	\$1,421.00	\$68,076.00
WYANDOT	38	66	11	55	\$10,592.00	\$710.00	\$9,882.00

Source: GRP342RA Report from Management Information Services. Data includes ADC-Regular, ADC-Incapacitated, and Vendor Payments.

**TABLE 1
OHIO WORKS FIRST REGULAR
JANUARY 2007**

OHIO COUNTY	ASSISTANCE GROUP	RECIPIENTS	ADULTS	CHILDREN	ACTUAL EXPENDITURES		
					GROSS AMOUNT	CANCELLED AMOUNT	NET AMOUNT
STATEWIDE	75,895	156,974	35,538	121,436	\$25,651,027.00	\$1,088,026.00	\$24,563,001.00
ADAMS	148	229	6	223	\$42,762.00	\$336.00	\$42,426.00
ALLEN	438	718	55	663	\$138,449.00	\$6,661.00	\$131,788.00
ASHLAND	76	148	28	120	\$26,882.00	\$917.00	\$25,965.00
ASHTABULA	649	1,263	274	989	\$209,675.00	\$10,696.00	\$198,979.00
ATHENS	533	1,180	380	800	\$180,972.00	\$4,784.00	\$176,188.00
AUGLAIZE	65	96	1	95	\$18,848.00	\$826.00	\$18,022.00
BELMONT	317	625	136	489	\$100,067.00	\$4,006.00	\$96,061.00
BROWN	171	292	28	264	\$51,157.00	\$3,412.00	\$47,745.00
BUTLER	1,510	2,779	396	2,383	\$486,573.00	\$14,942.00	\$471,631.00
CARROLL	87	149	29	120	\$26,262.00	\$490.00	\$25,772.00
CHAMPAIGN	197	390	102	288	\$64,877.00	\$1,118.00	\$63,759.00
CLARK	1,226	2,638	619	2,019	\$424,247.00	\$13,458.00	\$410,789.00
CLERMONT	430	783	88	695	\$134,882.00	\$6,062.00	\$128,820.00
CLINTON	111	205	29	176	\$34,357.00	\$1,720.00	\$32,637.00
COLUMBIANA	438	789	116	673	\$134,629.00	\$3,019.00	\$131,610.00
COSHOCTON	199	377	96	281	\$60,165.00	\$980.00	\$59,185.00
CRAWFORD	139	300	61	239	\$47,508.00	\$2,090.00	\$45,418.00
CUYAHOGA	11,626	22,840	4,864	17,976	\$3,892,158.00	\$149,849.00	\$3,742,309.00
DARKE	139	268	73	195	\$45,019.00	\$846.00	\$44,173.00
DEFIANCE	123	279	62	217	\$44,154.00	\$1,269.00	\$42,885.00
DELAWARE	275	575	169	406	\$90,790.00	\$5,109.00	\$85,681.00
ERIE	239	409	39	370	\$71,129.00	\$3,486.00	\$67,643.00
FAIRFIELD	702	1,556	441	1,115	\$236,818.00	\$5,586.00	\$231,232.00
FAYETTE	154	299	61	238	\$50,892.00	\$1,467.00	\$49,425.00
FRANKLIN	10,192	21,832	4,975	16,857	\$3,514,050.00	\$196,609.00	\$3,317,441.00
FULTON	59	92	7	85	\$16,232.00	\$245.00	\$15,987.00
GALLIA	416	915	279	636	\$140,977.00	\$5,823.00	\$135,154.00
GEAUGA	69	114	13	101	\$19,067.00	\$1,628.00	\$17,439.00
GREENE	534	1,062	235	827	\$171,324.00	\$7,176.00	\$164,148.00

Source: GRP342RA Report from Management Information Services. Data includes ADC-Regular, ADC-Incapacitated, and Vendor Payments.

**TABLE 1
OHIO WORKS FIRST REGULAR
JANUARY 2007**

OHIO COUNTY	ASSISTANCE GROUP	RECIPIENTS	ADULTS	CHILDREN	ACTUAL EXPENDITURES		
					GROSS AMOUNT	CANCELLED AMOUNT	NET AMOUNT
STATEWIDE	75,895	156,974	35,538	121,436	\$25,651,027.00	\$1,088,026.00	\$24,563,001.00
GUERNSEY	179	305	40	265	\$52,912.00	\$1,082.00	\$51,830.00
HAMILTON	7,172	16,098	3,618	12,480	\$2,631,925.00	\$133,706.00	\$2,498,219.00
HANCOCK	100	140	2	138	\$27,602.00	\$1,470.00	\$26,132.00
HARDIN	64	102	5	97	\$19,062.00	\$245.00	\$18,817.00
HARRISON	86	179	38	141	\$29,502.00	\$735.00	\$28,767.00
HENRY	35	57	2	55	\$10,033.00	\$410.00	\$9,623.00
HIGHLAND	202	424	103	321	\$68,050.00	\$2,409.00	\$65,641.00
HOCKING	242	508	121	387	\$80,867.00	\$3,294.00	\$77,573.00
HOLMES	50	94	18	76	\$15,549.00	\$752.00	\$14,797.00
HURON	164	252	1	251	\$46,989.00	\$1,253.00	\$45,736.00
JACKSON	288	509	61	448	\$88,766.00	\$3,628.00	\$85,138.00
JEFFERSON	690	1,439	387	1,052	\$226,357.00	\$7,591.00	\$218,766.00
KNOX	239	522	137	385	\$80,452.00	\$2,216.00	\$78,236.00
LAKE	460	944	207	737	\$153,130.00	\$6,591.00	\$146,539.00
LAWRENCE	699	1,294	240	1,054	\$215,705.00	\$5,588.00	\$210,117.00
LICKING	546	1,094	261	833	\$176,918.00	\$3,216.00	\$173,702.00
LOGAN	198	401	92	309	\$67,155.00	\$3,180.00	\$63,975.00
LORAIN	1,992	4,260	958	3,302	\$684,291.00	\$43,986.00	\$640,305.00
LUCAS	6,159	13,781	3,677	10,104	\$2,153,071.00	\$105,200.00	\$2,047,871.00
MADISON	189	411	115	296	\$65,385.00	\$2,771.00	\$62,614.00
MAHONING	2,766	6,230	1,559	4,671	\$968,561.00	\$32,678.00	\$935,883.00
MARION	391	726	93	633	\$130,241.00	\$2,894.00	\$127,347.00
MEDINA	249	499	127	372	\$81,403.00	\$5,761.00	\$75,642.00
MEIGS	174	334	72	262	\$56,433.00	\$2,103.00	\$54,330.00
MERCER	80	173	43	130	\$26,168.00	\$2,290.00	\$23,878.00
MIAMI	292	549	98	451	\$94,032.00	\$1,346.00	\$92,686.00
MONROE	67	160	50	110	\$20,406.00	\$1,761.00	\$18,645.00
MONTGOMERY	5,116	10,660	2,484	8,176	\$1,696,128.00	\$43,197.00	\$1,652,931.00
MORGAN	71	122	12	110	\$21,182.00	\$245.00	\$20,937.00
MORROW	130	266	65	201	\$43,299.00	\$3,035.00	\$40,264.00

Source: GRP342RA Report from Management Information Services. Data includes ADC-Regular, ADC-Incapacitated, and Vendor Payments.

**TABLE 1
OHIO WORKS FIRST REGULAR
JANUARY 2007**

OHIO COUNTY	ASSISTANCE GROUP	RECIPIENTS	ADULTS	CHILDREN	ACTUAL EXPENDITURES		
					GROSS AMOUNT	CANCELLED AMOUNT	NET AMOUNT
STATEWIDE	75,895	156,974	35,538	121,436	\$25,651,027.00	\$1,088,026.00	\$24,563,001.00
MUSKINGUM	777	1,602	375	1,227	\$257,057.00	\$9,256.00	\$247,801.00
NOBLE	25	53	9	44	\$8,112.00	\$336.00	\$7,776.00
OTTAWA	122	273	71	202	\$44,031.00	\$1,069.00	\$42,962.00
PAULDING	91	200	66	134	\$30,551.00	\$3,278.00	\$27,273.00
PERRY	268	565	120	445	\$89,507.00	\$581.00	\$88,926.00
PICKAWAY	377	830	229	601	\$128,067.00	\$3,641.00	\$124,426.00
PIKE	322	653	128	525	\$108,563.00	\$1,008.00	\$107,555.00
PORTAGE	429	811	157	654	\$140,411.00	\$8,399.00	\$132,012.00
PREBLE	150	304	58	246	\$52,861.00	\$2,117.00	\$50,744.00
PUTNAM	23	34	2	32	\$6,640.00	\$0.00	\$6,640.00
RICHLAND	633	1,187	223	964	\$203,114.00	\$6,856.00	\$196,258.00
ROSS	646	1,340	332	1,008	\$223,037.00	\$7,289.00	\$215,748.00
SANDUSKY	191	351	62	289	\$59,816.00	\$1,210.00	\$58,606.00
SCIOTO	965	1,707	247	1,460	\$296,390.00	\$9,315.00	\$287,075.00
SENECA	156	282	42	240	\$48,753.00	\$336.00	\$48,417.00
SHELBY	125	240	21	219	\$42,777.00	\$2,360.00	\$40,417.00
STARK	2,631	5,533	1,412	4,121	\$876,362.00	\$30,403.00	\$845,959.00
SUMMIT	4,427	9,058	2,299	6,759	\$1,508,361.00	\$83,685.00	\$1,424,676.00
TRUMBULL	1,284	2,439	464	1,975	\$406,650.00	\$12,617.00	\$394,033.00
TUSCARAWAS	446	961	264	697	\$150,399.00	\$6,019.00	\$144,380.00
UNION	149	341	98	243	\$49,147.00	\$2,483.00	\$46,664.00
VAN WERT	45	63	0	63	\$12,448.00	\$991.00	\$11,457.00
VINTON	121	231	53	178	\$38,647.00	\$1,418.00	\$37,229.00
WARREN	218	393	52	341	\$74,421.00	\$4,319.00	\$70,102.00
WASHINGTON	138	219	5	214	\$40,364.00	\$581.00	\$39,783.00
WAYNE	387	797	226	571	\$120,705.00	\$3,638.00	\$117,067.00
WILLIAMS	147	326	108	218	\$49,170.00	\$3,447.00	\$45,723.00
WOOD	213	384	58	326	\$67,715.00	\$1,421.00	\$66,294.00
WYANDOT	37	62	9	53	\$10,455.00	\$710.00	\$9,745.00

Source: GRP342RA Report from Management Information Services. Data includes ADC-Regular, ADC-Incapacitated, and Vendor Payments.

**TABLE 1
OHIO WORKS FIRST UNEMPLOYED
JANUARY 2007**

OHIO COUNTY	ASSISTANCE GROUP	RECIPIENTS	ADULTS	CHILDREN	ACTUAL EXPENDITURES		
					GROSS AMOUNT	CANCELLED AMOUNT	NET AMOUNT
STATEWIDE	3,166	12,864	5,902	6,962	\$1,447,812.00	\$58,688.00	\$1,389,124.00
ADAMS	0	0	0	0	\$0.00	\$0.00	\$0.00
ALLEN	0	0	0	0	\$0.00	\$0.00	\$0.00
ASHLAND	1	5	2	3	\$593.00	\$0.00	\$593.00
ASHTABULA	35	150	61	89	\$18,713.00	\$753.00	\$17,960.00
ATHENS	89	338	161	177	\$38,769.00	\$410.00	\$38,359.00
AUGLAIZE	0	0	0	0	\$0.00	\$0.00	\$0.00
BELMONT	23	93	47	46	\$8,224.00	\$623.00	\$7,601.00
BROWN	1	4	2	2	\$507.00	\$0.00	\$507.00
BUTLER	3	8	2	6	\$1,162.00	\$0.00	\$1,162.00
CARROLL	6	30	12	18	\$2,748.00	\$0.00	\$2,748.00
CHAMPAIGN	7	27	14	13	\$3,033.00	\$0.00	\$3,033.00
CLARK	58	232	115	117	\$29,174.00	\$410.00	\$28,764.00
CLERMONT	0	0	0	0	\$0.00	\$0.00	\$0.00
CLINTON	0	0	0	0	\$0.00	\$0.00	\$0.00
COLUMBIANA	2	7	4	3	\$950.00	\$0.00	\$950.00
COSHOCTON	21	72	39	33	\$7,601.00	\$0.00	\$7,601.00
CRAWFORD	4	12	6	6	\$1,640.00	\$0.00	\$1,640.00
CUYAHOGA	306	1,224	579	645	\$131,284.00	\$5,242.00	\$126,042.00
DARKE	10	30	19	11	\$5,039.00	\$0.00	\$5,039.00
DEFIANCE	5	23	9	14	\$2,623.00	\$507.00	\$2,116.00
DELAWARE	35	135	61	74	\$15,727.00	\$543.00	\$15,184.00
ERIE	1	3	2	1	\$647.00	\$0.00	\$647.00
FAIRFIELD	91	359	181	178	\$40,504.00	\$3,474.00	\$37,030.00
FAYETTE	10	39	20	19	\$5,220.00	\$0.00	\$5,220.00
FRANKLIN	482	2,142	813	1,329	\$236,161.00	\$14,307.00	\$221,854.00
FULTON	1	2	0	2	\$336.00	\$0.00	\$336.00
GALLIA	78	298	155	143	\$31,086.00	\$1,654.00	\$29,432.00
GEAUGA	1	3	2	1	\$410.00	\$0.00	\$410.00
GREENE	16	71	32	39	\$8,682.00	\$507.00	\$8,175.00

Source: GRP342RA Report from Management Information Services. Data includes ADC-Regular, ADC-Incapacitated, and Vendor Payments.

**TABLE 1
OHIO WORKS FIRST UNEMPLOYED
JANUARY 2007**

OHIO COUNTY	ASSISTANCE GROUP	RECIPIENTS	ADULTS	CHILDREN	ACTUAL EXPENDITURES		
					GROSS AMOUNT	CANCELLED AMOUNT	NET AMOUNT
STATEWIDE	3,166	12,864	5,902	6,962	\$1,447,812.00	\$58,688.00	\$1,389,124.00
GUERNSEY	4	15	8	7	\$1,565.00	\$0.00	\$1,565.00
HAMILTON	136	591	252	339	\$75,348.00	\$1,459.00	\$73,889.00
HANCOCK	0	0	0	0	\$0.00	\$0.00	\$0.00
HARDIN	0	0	0	0	\$0.00	\$0.00	\$0.00
HARRISON	4	17	8	9	\$687.00	\$507.00	\$180.00
HENRY	0	0	0	0	\$0.00	\$0.00	\$0.00
HIGHLAND	6	28	12	16	\$3,343.00	\$0.00	\$3,343.00
HOCKING	33	134	66	68	\$16,062.00	\$722.00	\$15,340.00
HOLMES	2	11	4	7	\$1,529.00	\$0.00	\$1,529.00
HURON	2	2	0	2	\$561.00	\$0.00	\$561.00
JACKSON	6	24	12	12	\$2,677.00	\$0.00	\$2,677.00
JEFFERSON	70	309	140	169	\$33,854.00	\$941.00	\$32,913.00
KNOX	21	86	42	44	\$9,464.00	\$0.00	\$9,464.00
LAKE	22	92	35	57	\$12,304.00	\$336.00	\$11,968.00
LAWRENCE	43	179	85	94	\$18,281.00	\$507.00	\$17,774.00
LICKING	32	124	63	61	\$14,183.00	\$507.00	\$13,676.00
LOGAN	8	35	16	19	\$3,963.00	\$0.00	\$3,963.00
LORAIN	54	208	95	113	\$26,075.00	\$593.00	\$25,482.00
LUCAS	400	1,590	741	849	\$178,257.00	\$6,686.00	\$171,571.00
MADISON	20	75	40	35	\$7,631.00	\$0.00	\$7,631.00
MAHONING	82	351	157	194	\$36,824.00	\$1,693.00	\$35,131.00
MARION	5	17	4	13	\$1,447.00	\$0.00	\$1,447.00
MEDINA	11	46	22	24	\$4,475.00	\$0.00	\$4,475.00
MEIGS	14	56	28	28	\$5,585.00	\$0.00	\$5,585.00
MERCER	3	12	6	6	\$1,555.00	\$0.00	\$1,555.00
MIAMI	4	17	8	9	\$2,486.00	\$593.00	\$1,893.00
MONROE	12	48	24	24	\$4,682.00	\$0.00	\$4,682.00
MONTGOMERY	14	45	13	32	\$5,355.00	\$507.00	\$4,848.00
MORGAN	1	3	2	1	\$410.00	\$0.00	\$410.00
MORROW	7	32	14	18	\$3,256.00	\$0.00	\$3,256.00

Source: GRP342RA Report from Management Information Services. Data includes ADC-Regular, ADC-Incapacitated, and Vendor Payments.

**TABLE 1
OHIO WORKS FIRST UNEMPLOYED
JANUARY 2007**

OHIO COUNTY	ASSISTANCE GROUP	RECIPIENTS	ADULTS	CHILDREN	ACTUAL EXPENDITURES		
					GROSS AMOUNT	CANCELLED AMOUNT	NET AMOUNT
STATEWIDE	3,166	12,864	5,902	6,962	\$1,447,812.00	\$58,688.00	\$1,389,124.00
MUSKINGUM	51	195	102	93	\$20,921.00	\$0.00	\$20,921.00
NOBLE	2	9	4	5	\$1,100.00	\$0.00	\$1,100.00
OTTAWA	13	49	25	24	\$6,315.00	\$0.00	\$6,315.00
PAULDING	18	76	35	41	\$9,108.00	\$0.00	\$9,108.00
PERRY	27	109	54	55	\$12,055.00	\$410.00	\$11,645.00
PICKAWAY	21	85	42	43	\$8,662.00	\$0.00	\$8,662.00
PIKE	15	60	29	31	\$7,689.00	\$0.00	\$7,689.00
PORTAGE	7	22	10	12	\$2,753.00	\$1,052.00	\$1,701.00
PREBLE	14	61	27	34	\$4,968.00	\$593.00	\$4,375.00
PUTNAM	3	3	0	3	\$765.00	\$0.00	\$765.00
RICHLAND	9	37	18	19	\$4,215.00	\$0.00	\$4,215.00
ROSS	42	175	78	97	\$23,799.00	\$507.00	\$23,292.00
SANDUSKY	5	11	2	9	\$2,101.00	\$200.00	\$1,901.00
SCIOTO	46	180	90	90	\$20,714.00	\$507.00	\$20,207.00
SENECA	0	0	0	0	\$0.00	\$0.00	\$0.00
SHELBY	2	12	4	8	\$873.00	\$0.00	\$873.00
STARK	188	752	366	386	\$83,070.00	\$3,173.00	\$79,897.00
SUMMIT	222	880	435	445	\$100,309.00	\$8,355.00	\$91,954.00
TRUMBULL	41	156	78	78	\$17,960.00	\$0.00	\$17,960.00
TUSCARAWAS	49	205	98	107	\$24,113.00	\$0.00	\$24,113.00
UNION	12	52	24	28	\$3,769.00	\$0.00	\$3,769.00
VAN WERT	0	0	0	0	\$0.00	\$0.00	\$0.00
VINTON	9	33	18	15	\$3,596.00	\$0.00	\$3,596.00
WARREN	1	1	0	1	\$95.00	\$0.00	\$95.00
WASHINGTON	0	0	0	0	\$0.00	\$0.00	\$0.00
WAYNE	50	170	94	76	\$19,476.00	\$0.00	\$19,476.00
WILLIAMS	11	52	22	30	\$4,775.00	\$410.00	\$4,365.00
WOOD	5	21	10	11	\$1,782.00	\$0.00	\$1,782.00
WYANDOT	1	4	2	2	\$137.00	\$0.00	\$137.00

Source: GRP342RA Report from Management Information Services. Data includes ADC-Regular, ADC-Incapacitated, and Vendor Payments.

**TABLE 2
TITLE IV-E FOSTER CARE AND ADOPTION ASSISTANCE
JANUARY 2007**

OHIO COUNTY	FOSTER CARE						ADOPTION ASSISTANCE		TOTAL FOSTER CARE AND ADOPTION ASSISTANCE	
	FOSTER FAMILY HOMES		CHILD CARE INSTITUTIONS		HOMES & INSTITUTIONS		CHILDREN	GROSS AMOUNT	CHILDREN	GROSS AMOUNT
	CHILDREN	GROSS AMOUNT	CHILDREN	GROSS AMOUNT	CHILDREN	GROSS AMOUNT				
STATEWIDE	2,893	\$1,303,219.01	3,468	\$5,124,787.65	6,361	\$6,428,006.66	20,789	\$8,094,832.91	27,150	\$14,522,839.57
ADAMS	21	\$1,553.46	8	\$30,520.04	29	\$32,073.50	35	\$10,913.24	64	\$42,986.74
ALLEN	54	\$26,802.79	33	\$102,914.81	87	\$129,717.60	128	\$37,987.60	215	\$167,705.20
ASHLAND	8	\$3,663.09	4	\$9,603.65	12	\$13,266.74	11	\$2,854.78	23	\$16,121.52
ASHTABULA	0	\$0.00	13	\$4,990.13	13	\$4,990.13	189	\$67,035.03	202	\$72,025.16
ATHENS	40	\$16,745.82	33	\$41,696.92	73	\$58,442.74	129	\$42,172.96	202	\$100,615.70
AUGLAIZE	2	\$1,756.98	2	\$2,748.86	4	\$4,505.84	46	\$17,185.54	50	\$21,691.38
BELMONT	1	\$545.88	18	\$23,221.14	19	\$23,767.02	114	\$46,179.33	133	\$69,946.35
BROWN	23	\$8,965.99	1	\$3,462.33	24	\$12,428.32	42	\$11,096.82	66	\$23,525.14
BUTLER	79	\$37,072.95	203	\$214,660.35	282	\$251,733.30	513	\$167,976.67	795	\$419,709.97
CARROLL	11	\$1,281.64	0	\$0.00	11	\$1,281.64	7	\$1,750.00	18	\$3,031.64
CHAMPAIGN	3	(\$501.15)	5	\$10,822.83	8	\$10,321.68	22	\$6,991.50	30	\$17,313.18
CLARK	0	\$0.00	35	\$30,776.16	35	\$30,776.16	318	\$115,876.65	353	\$146,652.81
CLERMONT	51	\$16,459.81	0	\$0.00	51	\$16,459.81	268	\$75,345.10	319	\$91,804.91
CLINTON	28	\$17,613.62	0	\$0.00	28	\$17,613.62	72	\$28,395.73	100	\$46,009.35
COLUMBIANA	22	\$4,850.34	25	\$48,885.03	47	\$53,735.37	80	\$24,198.08	127	\$77,933.45
COSHOCTON	0	\$0.00	0	\$0.00	0	\$0.00	48	\$14,490.79	48	\$14,490.79
CRAWFORD	0	\$0.00	0	\$0.00	0	\$0.00	47	\$14,086.28	47	\$14,086.28
CUYAHOGA	366	\$157,438.20	841	\$1,645,243.12	1,207	\$1,802,681.32	5,194	\$2,471,897.52	6,401	\$4,274,578.84
DARKE	7	\$1,514.13	21	\$51,710.39	28	\$53,224.52	34	\$10,671.60	62	\$63,896.12
DEFIANCE	12	\$3,384.41	6	\$9,667.95	18	\$13,052.36	32	\$8,626.43	50	\$21,678.79
DELAWARE	8	\$2,443.60	14	\$27,578.13	22	\$30,021.73	63	\$19,377.23	85	\$49,398.96
ERIE	26	\$11,657.46	19	\$56,708.74	45	\$68,366.20	86	\$34,985.52	131	\$103,351.72
FAIRFIELD	0	\$0.00	0	\$0.00	0	\$0.00	176	\$46,762.21	176	\$46,762.21
FAYETTE	8	\$3,698.88	0	\$0.00	8	\$3,698.88	16	\$4,000.00	24	\$7,698.88
FRANKLIN	0	\$0.00	829	\$334,495.26	829	\$334,495.26	2,564	\$1,022,598.32	3,393	\$1,357,093.58
FULTON	0	\$0.00	17	\$17,506.19	17	\$17,506.19	17	\$4,846.60	34	\$22,352.79
GALLIA	15	\$4,882.47	3	\$3,740.95	18	\$8,623.42	48	\$11,965.00	66	\$20,588.42
GEAUGA	5	\$2,428.86	5	(\$1,312.81)	10	\$1,116.05	105	\$35,071.27	115	\$36,187.32
GREENE	0	\$0.00	34	\$21,096.09	34	\$21,096.09	96	\$31,048.34	130	\$52,144.43

SOURCE: GBS003RB Report from Management Information Services. Federal funds only.

**TABLE 2
TITLE IV-E FOSTER CARE AND ADOPTION ASSISTANCE
JANUARY 2007**

OHIO COUNTY	FOSTER CARE						ADOPTION ASSISTANCE		TOTAL FOSTER CARE AND ADOPTION ASSISTANCE	
	FOSTER FAMILY HOMES		CHILD CARE INSTITUTIONS		HOMES & INSTITUTIONS		CHILDREN	GROSS AMOUNT	CHILDREN	GROSS AMOUNT
	CHILDREN	GROSS AMOUNT	CHILDREN	GROSS AMOUNT	CHILDREN	GROSS AMOUNT				
STATEWIDE	2,893	\$1,303,219.01	3,468	\$5,124,787.65	6,361	\$6,428,006.66	20,789	\$8,094,832.91	27,150	\$14,522,839.57
GUERNSEY	29	\$8,614.94	14	\$50,513.56	43	\$59,128.50	80	\$26,138.86	123	\$85,267.36
HAMILTON	171	\$73,883.84	0	\$0.00	171	\$73,883.84	1,531	\$588,097.44	1,702	\$661,981.28
HANCOCK	22	\$11,467.67	18	\$26,104.82	40	\$37,572.49	50	\$15,196.62	90	\$52,769.11
HARDIN	0	\$0.00	3	\$705.00	3	\$705.00	44	\$14,098.79	47	\$14,803.79
HARRISON	3	\$1,267.16	0	\$0.00	3	\$1,267.16	24	\$7,763.96	27	\$9,031.12
HENRY	0	\$0.00	9	\$9,373.35	9	\$9,373.35	22	\$7,266.50	31	\$16,639.85
HIGHLAND	0	\$0.00	3	\$810.00	3	\$810.00	15	\$5,297.55	18	\$6,107.55
HOCKING	18	\$7,395.35	15	\$19,988.38	33	\$27,383.73	51	\$16,618.35	84	\$44,002.08
HOLMES	10	\$6,143.75	0	\$0.00	10	\$6,143.75	19	\$7,486.02	29	\$13,629.77
HURON	30	\$18,750.05	5	\$15,274.12	35	\$34,024.17	37	\$10,890.65	72	\$44,914.82
JACKSON	4	\$2,379.32	17	\$31,245.12	21	\$33,624.44	14	\$3,500.00	35	\$37,124.44
JEFFERSON	38	\$21,489.67	35	\$116,528.62	73	\$138,018.29	59	\$24,683.32	132	\$162,701.61
KNOX	7	\$1,876.22	3	\$6,698.57	10	\$8,574.79	33	\$10,203.86	43	\$18,778.65
LAKE	37	\$21,027.36	0	\$0.00	37	\$21,027.36	155	\$45,329.73	192	\$66,357.09
LAWRENCE	2	\$869.24	0	\$0.00	2	\$869.24	48	\$13,495.75	50	\$14,364.99
LICKING	60	\$29,717.46	68	\$108,685.51	128	\$138,402.97	362	\$123,446.62	490	\$261,849.59
LOGAN	4	\$2,145.34	0	\$0.00	4	\$2,145.34	49	\$18,893.57	53	\$21,038.91
LORAIN	0	\$0.00	0	\$0.00	0	\$0.00	438	\$150,703.21	438	\$150,703.21
LUCAS	506	\$244,868.85	50	\$82,332.61	556	\$327,201.46	1,638	\$612,999.86	2,194	\$940,201.32
MADISON	0	\$0.00	16	\$38,678.91	16	\$38,678.91	25	\$8,485.36	41	\$47,164.27
MAHONING	100	\$60,838.59	56	\$263,992.50	156	\$324,831.09	241	\$74,415.42	397	\$399,246.51
MARION	16	\$14,894.48	8	\$37,017.87	24	\$51,912.35	66	\$21,857.51	90	\$73,769.86
MEDINA	0	\$0.00	0	\$0.00	0	\$0.00	86	\$30,172.71	86	\$30,172.71
MEIGS	1	\$104.40	5	\$3,943.60	6	\$4,048.00	8	\$2,000.00	14	\$6,048.00
MERCER	6	\$3,362.41	6	\$15,722.69	12	\$19,085.10	33	\$8,757.11	45	\$27,842.21
MIAMI	22	\$16,171.11	0	\$0.00	22	\$16,171.11	108	\$36,776.75	130	\$52,947.86
MONROE	4	\$1,997.40	0	\$0.00	4	\$1,997.40	11	\$3,644.90	15	\$5,642.30
MONTGOMERY	319	\$168,580.74	237	\$465,092.48	556	\$633,673.22	1,202	\$592,826.95	1,758	\$1,226,500.17
MORGAN	0	\$0.00	0	\$0.00	0	\$0.00	12	\$4,381.08	12	\$4,381.08
MORROW	0	\$0.00	0	\$0.00	0	\$0.00	29	\$7,634.80	29	\$7,634.80

SOURCE: GBS003RB Report from Management Information Services. Federal funds only.

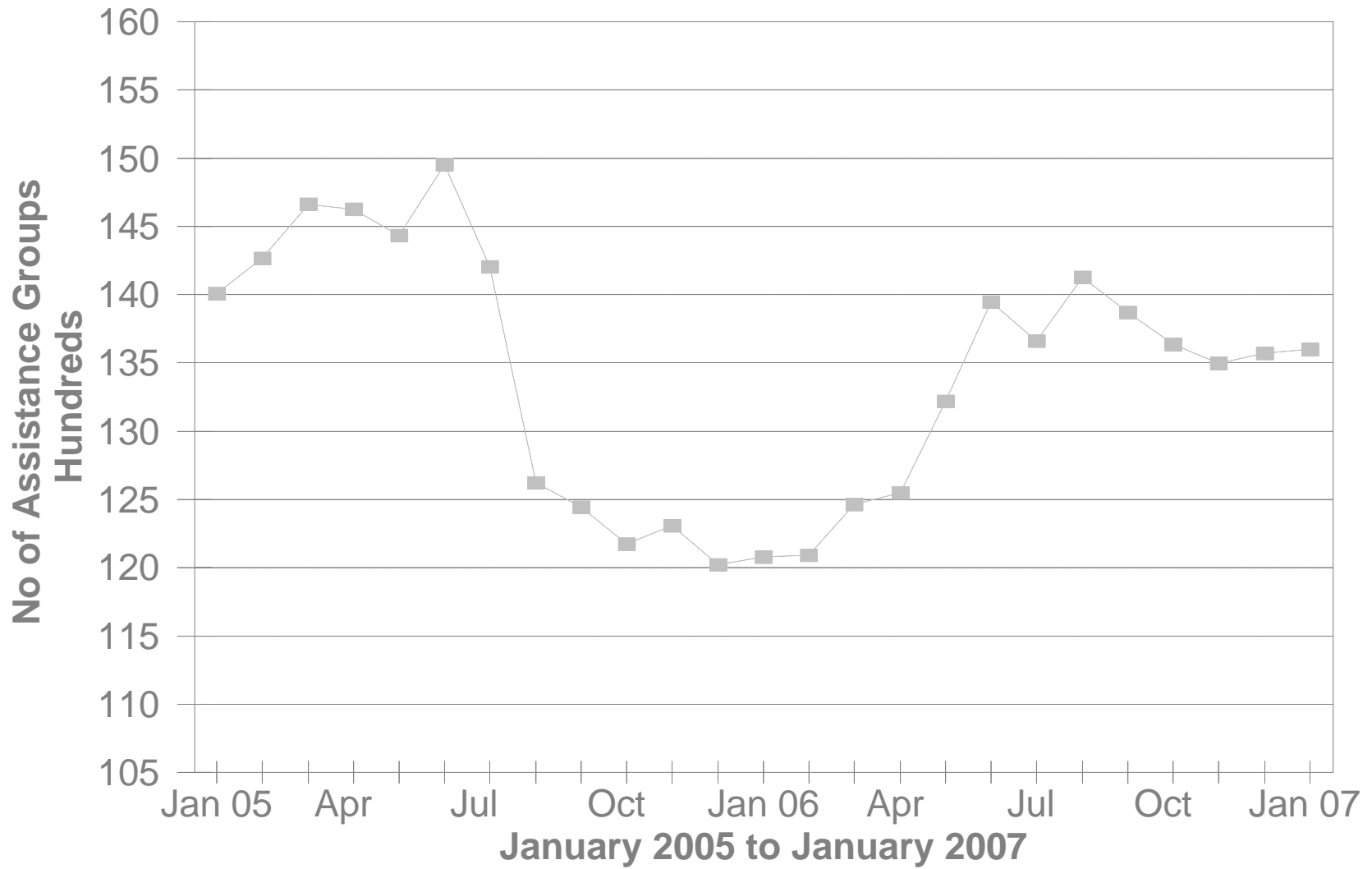
**TABLE 2
TITLE IV-E FOSTER CARE AND ADOPTION ASSISTANCE
JANUARY 2007**

OHIO COUNTY	FOSTER CARE						ADOPTION ASSISTANCE		TOTAL FOSTER CARE AND ADOPTION ASSISTANCE	
	FOSTER FAMILY HOMES		CHILD CARE INSTITUTIONS		HOMES & INSTITUTIONS		CHILDREN	GROSS AMOUNT	CHILDREN	GROSS AMOUNT
	CHILDREN	GROSS AMOUNT	CHILDREN	GROSS AMOUNT	CHILDREN	GROSS AMOUNT				
STATEWIDE	2,893	\$1,303,219.01	3,468	\$5,124,787.65	6,361	\$6,428,006.66	20,789	\$8,094,832.91	27,150	\$14,522,839.57
MUSKINGUM	0	\$0.00	6	\$1,543.00	6	\$1,543.00	153	\$56,818.54	159	\$58,361.54
NOBLE	0	\$0.00	0	\$0.00	0	\$0.00	7	\$1,750.00	7	\$1,750.00
OTTAWA	6	\$4,161.24	0	\$0.00	6	\$4,161.24	2	\$649.15	8	\$4,810.39
PAULDING	3	\$1,996.20	2	\$4,662.59	5	\$6,658.79	21	\$5,965.92	26	\$12,624.71
PERRY	30	\$12,708.60	11	\$12,667.06	41	\$25,375.66	37	\$11,439.51	78	\$36,815.17
PICKAWAY	12	\$4,061.05	7	\$15,478.90	19	\$19,539.95	20	\$6,042.25	39	\$25,582.20
PIKE	4	\$1,849.44	10	\$13,102.45	14	\$14,951.89	24	\$6,363.75	38	\$21,315.64
PORTAGE	0	\$0.00	0	\$0.00	0	\$0.00	143	\$65,130.21	143	\$65,130.21
PREBLE	23	\$10,944.56	28	\$41,829.98	51	\$52,774.54	39	\$10,801.86	90	\$63,576.40
PUTNAM	0	\$0.00	1	\$2,180.66	1	\$2,180.66	13	\$4,250.00	14	\$6,430.66
RICHLAND	0	\$0.00	0	\$0.00	0	\$0.00	259	\$88,357.69	259	\$88,357.69
ROSS	17	\$8,692.43	38	\$55,510.63	55	\$64,203.06	66	\$20,079.07	121	\$84,282.13
SANDUSKY	18	\$7,585.27	6	\$12,416.61	24	\$20,001.88	62	\$15,902.09	86	\$35,903.97
SCIOTO	20	\$7,588.50	15	\$13,853.69	35	\$21,442.19	53	\$16,491.46	88	\$37,933.65
SENECA	8	\$2,474.73	32	\$67,066.33	40	\$69,541.06	73	\$20,833.34	113	\$90,374.40
SHELBY	2	\$854.32	6	\$11,158.52	8	\$12,012.84	54	\$22,153.13	62	\$34,165.97
STARK	0	\$0.00	167	\$73,467.81	167	\$73,467.81	1,039	\$318,861.60	1,206	\$392,329.41
SUMMIT	292	\$88,901.98	214	\$494,381.23	506	\$583,283.21	930	\$301,104.72	1,436	\$884,387.93
TRUMBULL	114	\$51,193.97	25	\$81,841.65	139	\$133,035.62	301	\$81,811.40	440	\$214,847.02
TUSCARAWAS	38	(\$9,527.45)	80	\$118,161.46	118	\$108,634.01	146	\$46,298.18	264	\$154,932.19
UNION	15	\$29,087.28	0	\$0.00	15	\$29,087.28	32	\$9,700.31	47	\$38,787.59
VAN WERT	3	\$3,348.43	1	\$3,087.10	4	\$6,435.53	12	\$3,536.94	16	\$9,972.47
VINTON	0	\$0.00	3	\$5,324.74	3	\$5,324.74	23	\$6,674.73	26	\$11,999.47
WARREN	24	\$9,521.68	20	\$24,928.14	44	\$34,449.82	90	\$27,688.49	134	\$62,138.31
WASHINGTON	12	\$3,856.74	4	\$7,029.41	16	\$10,886.15	38	\$9,977.28	54	\$20,863.43
WAYNE	34	\$17,446.10	15	\$22,779.75	49	\$40,225.85	77	\$28,353.56	126	\$68,579.41
WILLIAMS	2	(\$264.98)	26	\$27,284.29	28	\$27,019.31	22	\$6,096.60	50	\$33,115.91
WOOD	7	\$2,426.95	14	\$31,587.68	21	\$34,014.63	44	\$15,883.18	65	\$49,897.81
WYANDOT	10	\$2,207.39	0	\$0.00	10	\$2,207.39	19	\$6,368.56	29	\$8,575.95

SOURCE: GBS003RB Report from Management Information Services. Federal funds only.

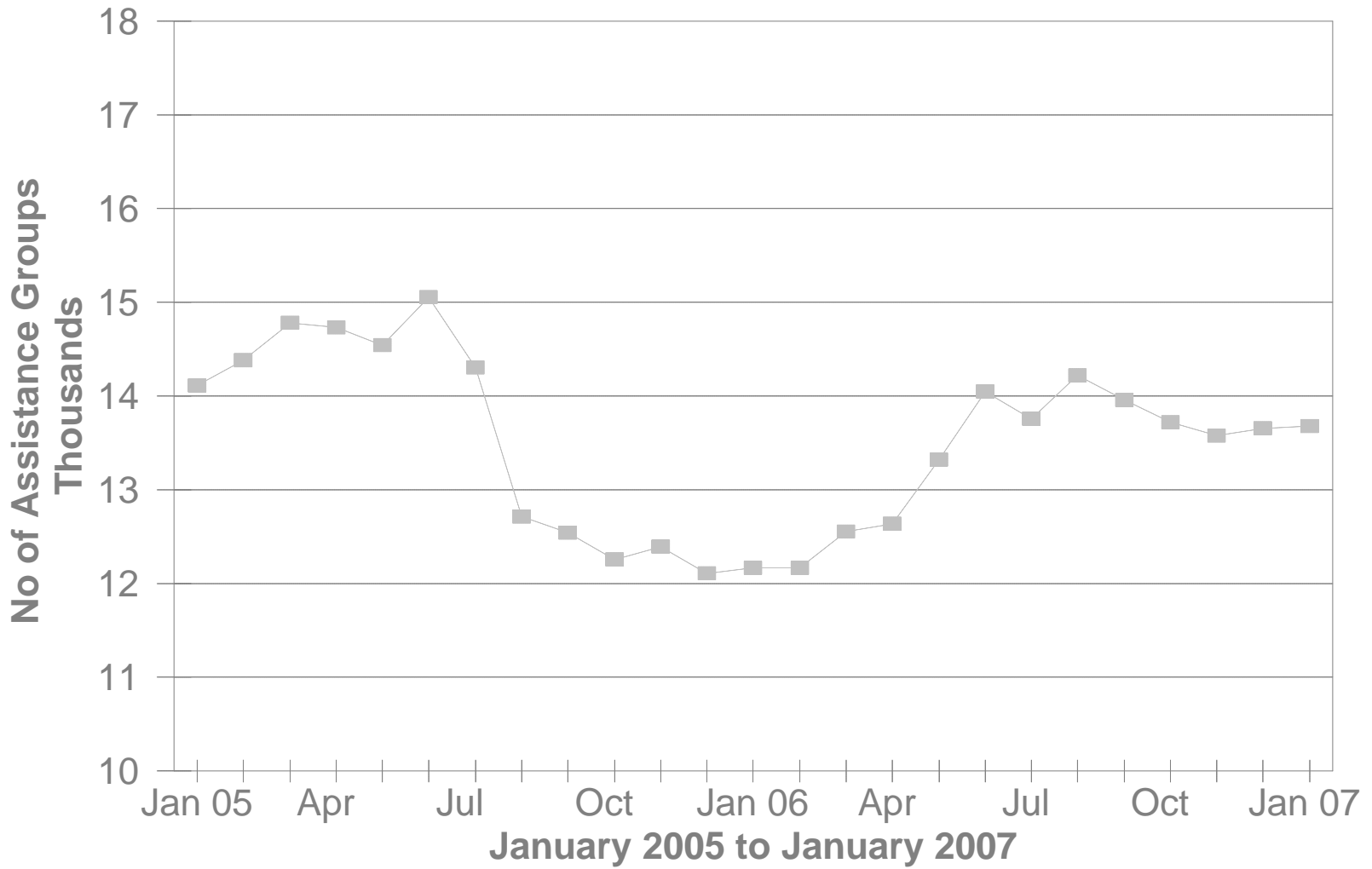
DA Cash Assistance Groups

During The Last 25 Months



DA Cash Recipients

During The Last 25 Months



**TABLE 3
DISABILITY ASSISTANCE (DA)
JANUARY 2007**

OHIO COUNTY	CASH ASSISTANCE							MEDICAL ASSISTANCE	
	ASSISTANCE GROUPS	RECIPIENTS	ADULTS	CHILDREN	ACTUAL EXPENDITURES			UNDUPLICATED RECIPIENTS	ACTUAL AMOUNT PAID
					GROSS AMOUNT	CANCELLED AMOUNT	NET AMOUNT		
STATEWIDE	13,601	13,678	13,678	0	\$1,975,584.00	\$115,081.00	\$1,860,503.00	4,038	\$2,252,848.46
ADAMS	101	104	104	0	\$14,889.00	\$389.00	\$14,500.00	22	\$12,316.51
ALLEN	110	111	111	0	\$16,467.00	\$1,245.00	\$15,222.00	14	\$9,775.10
ASHLAND	43	43	43	0	\$5,839.00	\$230.00	\$5,609.00	16	\$5,878.60
ASHTABULA	253	254	254	0	\$37,113.00	\$425.00	\$36,688.00	26	\$13,355.83
ATHENS	264	268	268	0	\$37,874.00	\$1,671.00	\$36,203.00	20	\$8,174.44
AUGLAIZE	31	31	31	0	\$3,975.00	\$441.00	\$3,534.00	10	\$3,144.05
BELMONT	139	142	142	0	\$20,603.00	\$463.00	\$20,140.00	23	\$16,642.45
BROWN	61	62	62	0	\$9,573.00	\$115.00	\$9,458.00	19	\$8,535.29
BUTLER	438	440	440	0	\$60,057.00	\$3,488.00	\$56,569.00	66	\$34,886.21
CARROLL	27	27	27	0	\$3,004.00	\$0.00	\$3,004.00	6	\$1,546.14
CHAMPAIGN	37	37	37	0	\$4,166.00	\$0.00	\$4,166.00	12	\$5,815.55
CLARK	317	318	318	0	\$40,191.00	\$920.00	\$39,271.00	81	\$58,262.89
CLERMONT	195	196	196	0	\$27,482.00	\$805.00	\$26,677.00	23	\$20,991.61
CLINTON	57	57	57	0	\$9,552.00	\$230.00	\$9,322.00	5	\$3,930.83
COLUMBIANA	122	122	122	0	\$21,574.00	\$230.00	\$21,344.00	46	\$35,469.81
COSHOCTON	108	108	108	0	\$15,415.00	\$618.00	\$14,797.00	6	\$4,724.81
CRAWFORD	61	61	61	0	\$6,849.00	\$230.00	\$6,619.00	12	\$13,263.49
CUYAHOGA	896	900	900	0	\$126,108.00	\$5,036.00	\$121,072.00	851	\$400,881.66
DARKE	35	36	36	0	\$5,098.00	\$460.00	\$4,638.00	5	\$3,505.23
DEFIANCE	27	28	28	0	\$3,430.00	\$785.00	\$2,645.00	10	\$3,841.54
DELAWARE	88	89	89	0	\$10,466.00	\$460.00	\$10,006.00	21	\$11,054.74
ERIE	80	80	80	0	\$16,872.00	\$115.00	\$16,757.00	17	\$8,416.32
FAIRFIELD	160	160	160	0	\$24,539.00	\$1,495.00	\$23,044.00	29	\$20,845.34
FAYETTE	45	45	45	0	\$7,170.00	\$115.00	\$7,055.00	19	\$11,524.82
FRANKLIN	1,072	1,078	1,078	0	\$144,727.00	\$10,047.00	\$134,680.00	384	\$277,898.69
FULTON	30	30	30	0	\$4,669.00	\$0.00	\$4,669.00	7	\$4,770.57
GALLIA	77	78	78	0	\$12,836.00	\$345.00	\$12,491.00	51	\$36,203.08
GEAUGA	32	32	32	0	\$4,919.00	\$575.00	\$4,344.00	1	\$2,413.43
GREENE	164	166	166	0	\$22,033.00	\$1,150.00	\$20,883.00	45	\$26,773.34

*SOURCE: GRP342RA Report from Management Information Services and BOMC 9260-R001 Report from Medicaid Management Information Services.

**TABLE 3
DISABILITY ASSISTANCE (DA)
JANUARY 2007**

OHIO COUNTY	CASH ASSISTANCE							MEDICAL ASSISTANCE	
	ASSISTANCE GROUPS	RECIPIENTS	ADULTS	CHILDREN	ACTUAL EXPENDITURES			UNDUPLICATED	ACTUAL AMOUNT
					GROSS AMOUNT	CANCELLED AMOUNT	NET AMOUNT	RECIPIENTS	PAID
STATEWIDE	13,601	13,678	13,678	0	\$1,975,584.00	\$115,081.00	\$1,860,503.00	4,038	\$2,252,848.46
GUERNSEY	142	143	143	0	\$16,758.00	\$230.00	\$16,528.00	14	\$8,869.30
HAMILTON	632	633	633	0	\$101,605.00	\$13,457.00	\$88,148.00	107	\$67,643.19
HANCOCK	81	81	81	0	\$11,406.00	\$460.00	\$10,946.00	11	\$7,028.47
HARDIN	44	44	44	0	\$5,378.00	\$0.00	\$5,378.00	15	\$5,677.71
HARRISON	53	54	54	0	\$8,307.00	\$0.00	\$8,307.00	7	\$1,801.31
HENRY	11	11	11	0	\$1,610.00	\$115.00	\$1,495.00	2	\$403.35
HIGHLAND	103	103	103	0	\$13,673.00	\$498.00	\$13,175.00	21	\$12,892.99
HOCKING	71	71	71	0	\$10,949.00	\$115.00	\$10,834.00	10	\$4,689.60
HOLMES	30	30	30	0	\$3,553.00	\$0.00	\$3,553.00	0	\$0.00
HURON	58	59	59	0	\$8,868.00	\$700.00	\$8,168.00	7	\$3,234.95
JACKSON	111	112	112	0	\$16,572.00	\$460.00	\$16,112.00	31	\$20,640.66
JEFFERSON	183	183	183	0	\$24,834.00	\$575.00	\$24,259.00	44	\$23,064.31
KNOX	99	100	100	0	\$19,337.00	\$619.00	\$18,718.00	14	\$8,968.30
LAKE	146	146	146	0	\$17,802.00	\$1,150.00	\$16,652.00	32	\$16,383.10
LAWRENCE	82	82	82	0	\$13,594.00	\$2,070.00	\$11,524.00	29	\$12,481.76
LICKING	232	233	233	0	\$27,639.00	\$805.00	\$26,834.00	28	\$16,084.33
LOGAN	68	69	69	0	\$9,025.00	\$4.00	\$9,021.00	16	\$5,549.35
LORAIN	321	323	323	0	\$53,399.00	\$3,028.00	\$50,371.00	71	\$37,150.50
LUCAS	876	877	877	0	\$130,476.00	\$8,149.00	\$122,327.00	261	\$131,754.46
MADISON	28	28	28	0	\$3,430.00	\$0.00	\$3,430.00	13	\$8,237.47
MAHONING	250	250	250	0	\$38,324.00	\$584.00	\$37,740.00	164	\$87,152.52
MARION	137	137	137	0	\$27,764.00	\$575.00	\$27,189.00	10	\$7,469.13
MEDINA	71	71	71	0	\$9,683.00	\$115.00	\$9,568.00	22	\$10,393.16
MEIGS	70	71	71	0	\$11,294.00	\$690.00	\$10,604.00	30	\$15,644.43
MERCER	31	31	31	0	\$3,910.00	\$230.00	\$3,680.00	6	\$1,438.07
MIAMI	77	77	77	0	\$10,810.00	\$644.00	\$10,166.00	14	\$10,098.79
MONROE	24	24	24	0	\$3,944.00	\$0.00	\$3,944.00	15	\$4,973.35
MONTGOMERY	764	770	770	0	\$103,195.00	\$3,186.00	\$100,009.00	263	\$150,827.55
MORGAN	66	69	69	0	\$8,907.00	\$230.00	\$8,677.00	16	\$9,766.29
MORROW	47	47	47	0	\$6,568.00	\$345.00	\$6,223.00	15	\$11,175.93

*SOURCE: GRP342RA Report from Management Information Services and BOMC 9260-R001 Report from Medicaid Management Information Services.

**TABLE 3
DISABILITY ASSISTANCE (DA)
JANUARY 2007**

OHIO COUNTY	CASH ASSISTANCE							MEDICAL ASSISTANCE	
	ASSISTANCE GROUPS	RECIPIENTS	ADULTS	CHILDREN	ACTUAL EXPENDITURES			UNDUPLICATED RECIPIENTS	ACTUAL AMOUNT PAID
					GROSS AMOUNT	CANCELLED AMOUNT	NET AMOUNT		
STATEWIDE	13,601	13,678	13,678	0	\$1,975,584.00	\$115,081.00	\$1,860,503.00	4,038	\$2,252,848.46
MUSKINGUM	366	370	370	0	\$53,488.00	\$3,268.00	\$50,220.00	19	\$11,575.03
NOBLE	15	15	15	0	\$1,537.00	\$115.00	\$1,422.00	5	\$1,074.86
OTTAWA	33	33	33	0	\$4,763.00	\$115.00	\$4,648.00	11	\$4,472.09
PAULDING	26	27	27	0	\$3,488.00	\$690.00	\$2,798.00	4	\$816.92
PERRY	101	105	105	0	\$14,514.00	\$651.00	\$13,863.00	18	\$8,307.39
PICKAWAY	66	66	66	0	\$10,734.00	\$460.00	\$10,274.00	14	\$10,420.46
PIKE	75	76	76	0	\$10,107.00	\$230.00	\$9,877.00	31	\$11,392.65
PORTAGE	105	105	105	0	\$13,759.00	\$2,276.00	\$11,483.00	28	\$14,842.93
PREBLE	48	48	48	0	\$5,563.00	\$0.00	\$5,563.00	12	\$9,748.97
PUTNAM	14	14	14	0	\$1,801.00	\$230.00	\$1,571.00	5	\$3,172.62
RICHLAND	269	270	270	0	\$32,092.00	\$1,307.00	\$30,785.00	18	\$11,008.19
ROSS	150	150	150	0	\$21,309.00	\$782.00	\$20,527.00	41	\$22,831.15
SANDUSKY	77	79	79	0	\$9,627.00	\$0.00	\$9,627.00	11	\$3,277.15
SCIOTO	222	223	223	0	\$33,515.00	\$1,802.00	\$31,713.00	41	\$25,898.84
SENECA	80	81	81	0	\$10,791.00	\$230.00	\$10,561.00	19	\$8,790.99
SHELBY	36	36	36	0	\$4,689.00	\$345.00	\$4,344.00	14	\$5,436.44
STARK	395	397	397	0	\$70,943.00	\$1,725.00	\$69,218.00	95	\$53,536.38
SUMMIT	492	493	493	0	\$81,502.00	\$23,181.00	\$58,321.00	388	\$211,948.27
TRUMBULL	320	320	320	0	\$51,477.00	\$2,070.00	\$49,407.00	48	\$29,280.45
TUSCARAWAS	113	114	114	0	\$14,274.00	\$460.00	\$13,814.00	15	\$6,752.26
UNION	34	34	34	0	\$5,016.00	\$115.00	\$4,901.00	4	\$1,910.27
VAN WERT	21	21	21	0	\$2,748.00	\$0.00	\$2,748.00	3	\$1,370.40
VINTON	55	55	55	0	\$7,208.00	\$253.00	\$6,955.00	13	\$4,899.87
WARREN	87	89	89	0	\$13,154.00	\$304.00	\$12,850.00	10	\$5,621.81
WASHINGTON	129	129	129	0	\$16,320.00	\$460.00	\$15,860.00	11	\$7,493.72
WAYNE	195	196	196	0	\$25,996.00	\$575.00	\$25,421.00	14	\$4,540.24
WILLIAMS	40	40	40	0	\$7,110.00	\$1,840.00	\$5,270.00	3	\$1,307.35
WOOD	49	50	50	0	\$6,855.00	\$480.00	\$6,375.00	3	\$699.23
WYANDOT	10	10	10	0	\$1,100.00	\$0.00	\$1,100.00	5	\$4,084.83
UNKNOWN									\$0.00

*SOURCE: GRP342RA Report from Management Information Services and BOMC 9260-R001 Report from Medicaid Management Information Services.

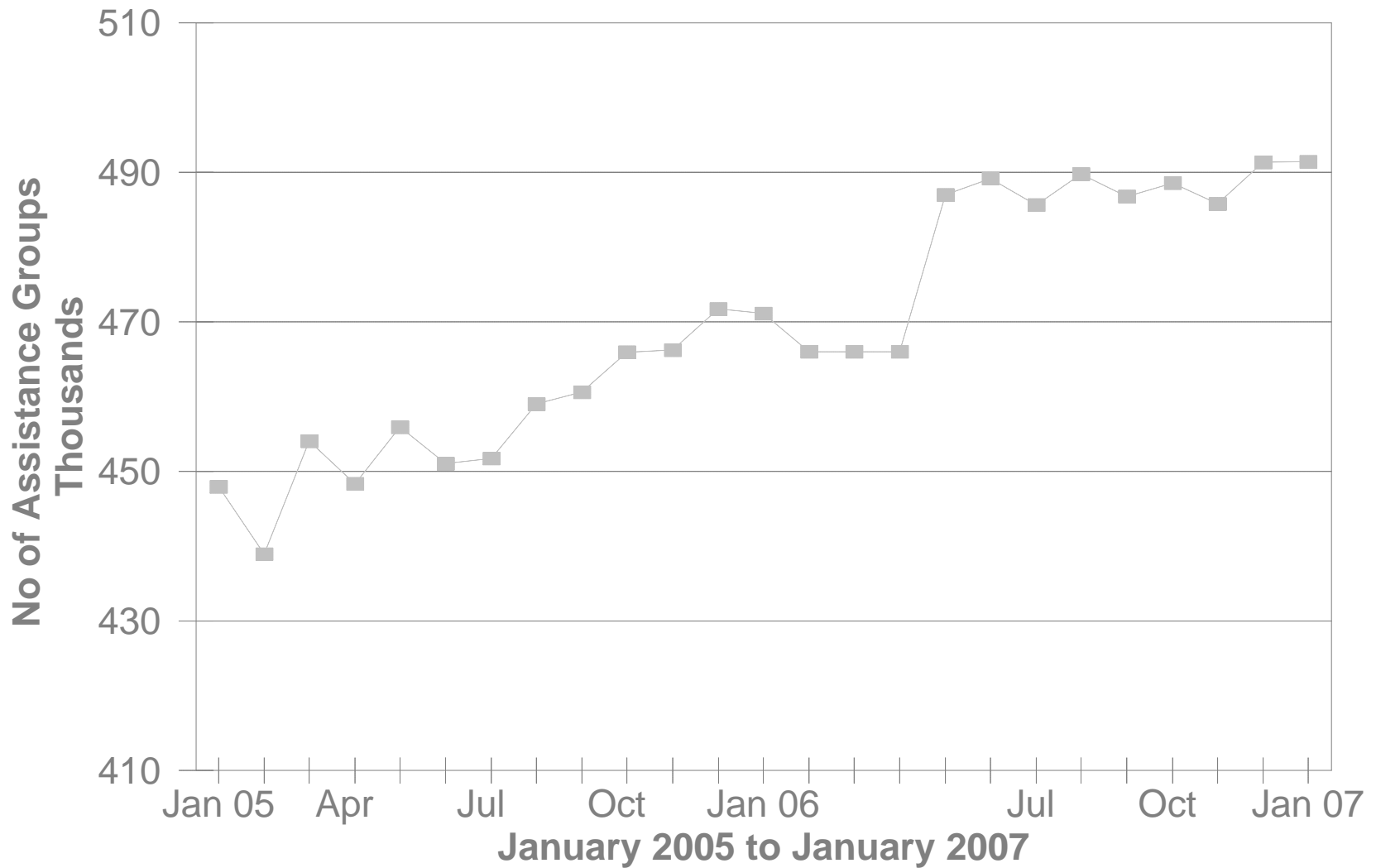
**TABLE 3-A
DA PAYMENTS FOR MEDICAL SERVICES
JANUARY 2007**

CATEGORY OF SERVICES	DISABILITY ASSISTANCE			
	PAYMENTS	CLAIM FREQUENCY	DUPLICATED RECIPIENTS	PERCENT OF TOTAL
ADVANCED PRACTICAL NURSE SVCS.	\$4,190.15	100	74	0.2%
AMBULANCE SERVICES	\$0.00	0	0	0.0%
AMBULATORY SURGERY	\$7,648.22	25	22	0.3%
CHIROPRACTER SERVICES	\$0.00	0	0	0.0%
CLINIC	\$46,964.96	530	245	2.1%
DENTAL SERVICES	\$3,904.48	47	38	0.2%
EPSDT	\$0.00	0	0	0.0%
FAMILY PLANNING	\$126.46	2	2	0.0%
FEDERALLY QUALIFIED HEALTH CTR	\$0.00	0	0	0.0%
HEALTH MAINTENANCE ORGANIZATION	\$0.00	0	0	0.0%
HOME HEALTH SERVICES	\$0.00	0	0	0.0%
INDEPENDENT LABORATORY	\$21,469.39	321	250	1.0%
INPATIENT HOSPITAL	\$0.00	0	0	0.0%
ICF	\$0.00	0	0	0.0%
MIDWIFERY SERVICES	\$0.00	0	0	0.0%
OPTOMETRIC SERVICES	\$0.00	0	0	0.0%
OUTPATIENT HEALTH SERVICES	(\$111.54)	(1)	1	-0.0%
PASSPORT WAIVER III	\$0.00	0	0	0.0%
OUTPATIENT HOSPITAL GENERAL	\$0.00	0	0	0.0%
PHYSICAL THERAPY SERVICES	\$0.00	0	0	0.0%
PHYSICIAN SERVICES	\$457,196.06	6,261	2,473	20.3%
PHYSIOLOGICAL LABORATORY	\$4,838.71	15	15	0.2%
PODIATRISTS THERAPY	\$10,088.44	171	127	0.4%
PRESCRIBED DRUGS	\$1,631,097.12	26,508	3,731	72.4%
PRIVATE DUTY NURSING SERVICES	\$0.00	0	0	0.0%
PSYCHOLOGY SERVICES	\$0.00	0	0	0.0%
RURAL HEALTH SERVICES	\$0.00	0	0	0.0%
SNF	\$0.00	0	0	0.0%
SUPPLIES AND MEDICAL EQUIPMENT	\$60,148.23	1,042	530	2.7%
WAIVERED SERVICES	\$5,287.78	51	49	0.2%
OTHER	\$0.00	1	1	0.0%
STATEWIDE TOTAL	\$2,252,848.46	35,073	7,558	100.00%

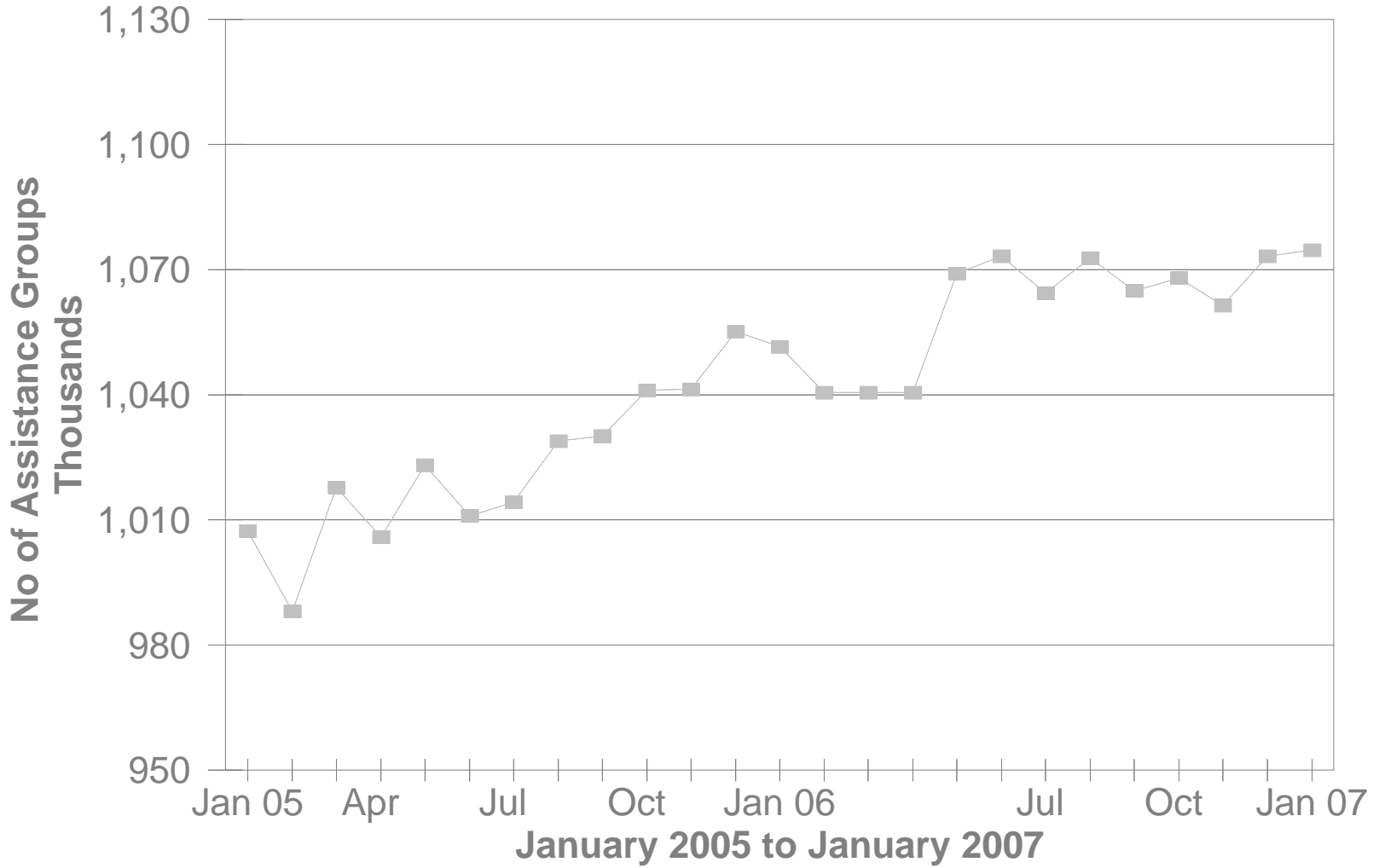
SOURCE: BOMC 9260 Report from Medicaid Management Information Services.

NOTE: Recipients are unduplicated within Category of Services, however, the Statewide Total represents a duplicated count.

No of FNS Benefits Assistance Groups During The Last 25 Months



No of FNS Benefits Cash Recipients During The Last 25 Months



**TABLE 5
FOOD AND NUTRITION BENEFITS
JANUARY 2007**

OHIO COUNTY	PERSONS					ASSISTANCE GROUPS			TOTAL COUPONS ISSUED
	PUBLIC ASSISTANCE	NON-PUBLIC ASSISTANCE	TOTAL	AVERAGE ISSUANCE	% CHANGE PREV. MO.	PUBLIC ASSISTANCE	NON-PUBLIC ASSISTANCE	TOTAL	
STATEWIDE	249,402	825,335	1,074,737	\$100	0.1%	178,586	312,844	491,430	\$107,705,366.00
ADAMS	1,153	3,616	4,769	\$95	1.7%	827	1,228	2,055	\$450,733
ALLEN	1,982	7,265	9,247	\$101	-1.5%	1,510	2,491	4,001	\$935,324
ASHLAND	515	2,548	3,063	\$93	3.0%	388	892	1,280	\$286,137
ASHTABULA	3,401	8,964	12,365	\$97	0.4%	2,413	3,249	5,662	\$1,201,298
ATHENS	2,207	5,017	7,224	\$94	-0.8%	1,645	1,952	3,597	\$677,935
AUGLAIZE	356	1,762	2,118	\$101	3.9%	311	598	909	\$213,237
BELMONT	2,020	5,162	7,182	\$88	-0.1%	1,488	1,877	3,365	\$630,583
BROWN	731	2,810	3,541	\$96	-6.2%	556	960	1,516	\$339,657
BUTLER	5,476	21,191	26,667	\$106	1.3%	4,266	7,628	11,894	\$2,817,188
CARROLL	354	1,812	2,166	\$93	4.7%	278	619	897	\$201,323
CHAMPAIGN	655	1,928	2,583	\$98	2.4%	468	674	1,142	\$252,624
CLARK	3,594	13,419	17,013	\$100	1.0%	2,830	4,926	7,756	\$1,697,744
CLERMONT	2,049	8,991	11,040	\$101	2.9%	1,564	3,116	4,680	\$1,111,852
CLINTON	653	2,649	3,302	\$95	2.6%	526	923	1,449	\$312,372
COLUMBIANA	2,731	9,622	12,353	\$95	1.8%	2,022	3,354	5,376	\$1,170,704
COSHOCTON	773	3,192	3,965	\$93	-0.0%	605	1,177	1,782	\$370,355
CRAWFORD	860	3,551	4,411	\$94	-1.6%	674	1,271	1,945	\$415,187
CUYAHOGA	26,513	151,971	178,484	\$102	-0.9%	16,414	69,288	85,702	\$18,124,456
DARKE	494	1,713	2,207	\$95	8.7%	368	614	982	\$210,677
DEFIANCE	544	2,136	2,680	\$93	5.0%	389	747	1,136	\$249,530
DELAWARE	1,091	3,086	4,177	\$101	1.1%	795	1,173	1,968	\$421,623
ERIE	1,163	4,557	5,720	\$100	-1.2%	914	1,711	2,625	\$573,405
FAIRFIELD	2,025	7,879	9,904	\$99	1.8%	1,517	2,849	4,366	\$975,761
FAYETTE	608	2,059	2,667	\$96	-0.8%	468	731	1,199	\$255,133
FRANKLIN	29,152	93,771	122,923	\$106	0.2%	20,458	33,096	53,554	\$12,999,066
FULTON	345	1,683	2,028	\$93	2.2%	277	573	850	\$189,372
GALLIA	1,758	3,403	5,161	\$94	0.2%	1,202	1,206	2,408	\$487,464
GEAUGA	370	1,340	1,710	\$94	1.7%	299	481	780	\$160,107
GREENE	1,884	6,507	8,391	\$101	-1.3%	1,447	2,534	3,981	\$848,555

Source: CRIS-E GRP304RA and GRP 304RC Reports from Management Information Services. Cuyahoga County data also comes from the GRP 342 RA.

**TABLE 5
FOOD AND NUTRITION BENEFITS
JANUARY 2007**

OHIO COUNTY	PERSONS					ASSISTANCE GROUPS			TOTAL COUPONS ISSUED
	PUBLIC ASSISTANCE	NON-PUBLIC ASSISTANCE	TOTAL	AVERAGE ISSUANCE	% CHANGE PREV. MO.	PUBLIC ASSISTANCE	NON-PUBLIC ASSISTANCE	TOTAL	
STATEWIDE	249,402	825,335	1,074,737	\$100	0.1%	178,586	312,844	491,430	\$107,705,366.00
GUERNSEY	1,273	4,685	5,958	\$94	-3.7%	1,007	1,692	2,699	\$561,046
HAMILTON	18,239	54,010	72,249	\$105	0.4%	13,114	19,658	32,772	\$7,568,058
HANCOCK	824	3,120	3,944	\$101	-0.5%	651	1,104	1,755	\$399,114
HARDIN	327	1,472	1,799	\$95	-1.3%	274	522	796	\$170,210
HARRISON	496	1,396	1,892	\$92	-1.3%	379	496	875	\$173,426
HENRY	198	1,210	1,408	\$95	8.6%	155	391	546	\$133,341
HIGHLAND	945	3,733	4,678	\$93	3.7%	708	1,242	1,950	\$436,926
HOCKING	903	2,520	3,423	\$91	4.1%	631	871	1,502	\$311,940
HOLMES	170	827	997	\$92	1.9%	136	280	416	\$91,755
HURON	790	3,770	4,560	\$97	4.7%	640	1,300	1,940	\$443,974
JACKSON	1,416	3,934	5,350	\$96	3.2%	1,075	1,444	2,519	\$515,841
JEFFERSON	2,765	6,140	8,905	\$96	0.1%	1,953	2,327	4,280	\$850,740
KNOX	1,024	3,298	4,322	\$97	-2.6%	753	1,165	1,918	\$420,949
LAKE	2,690	8,052	10,742	\$105	-0.6%	1,986	2,970	4,956	\$1,126,633
LAWRENCE	3,444	7,392	10,836	\$91	0.5%	2,512	2,734	5,246	\$984,497
LICKING	2,681	9,567	12,248	\$99	0.2%	2,008	3,503	5,511	\$1,212,395
LOGAN	679	2,819	3,498	\$98	0.4%	497	985	1,482	\$342,303
LORAIN	6,445	20,424	26,869	\$99	-1.5%	4,391	6,849	11,240	\$2,669,336
LUCAS	19,926	41,872	61,798	\$102	0.0%	13,347	15,737	29,084	\$6,279,547
MADISON	738	2,069	2,807	\$98	-0.2%	511	768	1,279	\$274,052
MAHONING	8,880	20,449	29,329	\$97	0.7%	6,358	7,688	14,046	\$2,847,002
MARION	1,441	5,731	7,172	\$99	1.7%	1,160	2,082	3,242	\$712,512
MEDINA	1,077	4,223	5,300	\$100	4.0%	816	1,513	2,329	\$529,175
MEIGS	1,188	3,038	4,226	\$98	-0.4%	854	1,064	1,918	\$412,310
MERCER	390	1,034	1,424	\$93	-1.2%	286	380	666	\$131,963
MIAMI	1,094	3,359	4,453	\$96	0.3%	814	1,231	2,045	\$428,975
MONROE	444	1,134	1,578	\$89	-0.4%	323	380	703	\$139,854
MONTGOMERY	14,555	38,936	53,491	\$103	-0.7%	10,671	14,759	25,430	\$5,524,709
MORGAN	450	1,506	1,956	\$90	-0.1%	360	514	874	\$176,106
MORROW	526	2,352	2,878	\$94	3.5%	394	798	1,192	\$270,967

Source: CRIS-E GRP304RA and GRP 304RC Reports from Management Information Services. Cuyahoga County data also comes from the GRP 342 RA.

**TABLE 5
FOOD AND NUTRITION BENEFITS
JANUARY 2007**

OHIO COUNTY	PERSONS					ASSISTANCE GROUPS			TOTAL COUPONS ISSUED
	PUBLIC ASSISTANCE	NON-PUBLIC ASSISTANCE	TOTAL	AVERAGE ISSUANCE	% CHANGE PREV. MO.	PUBLIC ASSISTANCE	NON-PUBLIC ASSISTANCE	TOTAL	
STATEWIDE	249,402	825,335	1,074,737	\$100	0.1%	178,586	312,844	491,430	\$107,705,366.00
MUSKINGUM	2,809	10,921	13,730	\$96	-0.2%	2,157	4,025	6,182	\$1,314,979
NOBLE	289	962	1,251	\$85	0.6%	225	344	569	\$105,767
OTTAWA	581	1,803	2,384	\$98	2.7%	393	644	1,037	\$234,535
PAULDING	334	1,041	1,375	\$98	-1.9%	234	375	609	\$134,355
PERRY	1,208	3,950	5,158	\$95	1.3%	841	1,384	2,225	\$487,720
PICKAWAY	1,255	3,545	4,800	\$95	0.8%	879	1,302	2,181	\$457,133
PIKE	1,248	4,067	5,315	\$97	1.5%	944	1,419	2,363	\$515,899
PORTAGE	1,791	7,092	8,883	\$103	0.5%	1,387	2,596	3,983	\$913,552
PREBLE	601	2,075	2,676	\$100	2.0%	417	680	1,097	\$266,494
PUTNAM	229	1,163	1,392	\$95	2.5%	177	400	577	\$131,624
RICHLAND	2,563	9,810	12,373	\$97	2.1%	2,002	3,495	5,497	\$1,204,116
ROSS	2,453	7,907	10,360	\$100	1.2%	1,741	2,817	4,558	\$1,034,199
SANDUSKY	720	3,232	3,952	\$101	-1.2%	566	1,147	1,713	\$398,873
SCIOTO	4,314	11,336	15,650	\$91	0.2%	3,308	4,217	7,525	\$1,422,212
SENECA	774	3,625	4,399	\$94	0.9%	599	1,267	1,866	\$413,454
SHELBY	454	2,198	2,652	\$99	0.8%	354	715	1,069	\$263,844
STARK	7,912	21,722	29,634	\$99	0.5%	5,568	7,710	13,278	\$2,924,252
SUMMIT	14,849	37,473	52,322	\$101	0.4%	10,849	14,458	25,307	\$5,302,917
TRUMBULL	4,328	13,971	18,299	\$95	-1.0%	3,285	4,787	8,072	\$1,740,585
TUSCARAWAS	1,918	5,828	7,746	\$93	1.3%	1,425	2,092	3,517	\$720,131
UNION	534	1,930	2,464	\$105	-1.6%	367	685	1,052	\$258,712
VAN WERT	282	1,083	1,365	\$85	6.6%	214	372	586	\$116,679
VINTON	647	2,015	2,662	\$89	1.1%	452	667	1,119	\$236,739
WARREN	925	2,962	3,887	\$101	0.1%	685	1,007	1,692	\$392,922
WASHINGTON	1,283	4,117	5,400	\$96	-0.8%	1,083	1,470	2,553	\$516,362
WAYNE	1,862	5,286	7,148	\$96	-1.0%	1,391	1,997	3,388	\$689,748
WILLIAMS	537	2,268	2,805	\$91	1.1%	369	824	1,193	\$256,248
WOOD	1,036	3,577	4,613	\$97	-2.6%	821	1,294	2,115	\$446,456
WYANDOT	191	700	891	\$96	3.6%	170	269	439	\$85,801

Source: CRIS-E GRP304RA and GRP 304RC Reports from Management Information Services. Cuyahoga County data also comes from the GRP 342 RA.

**Table 6A
January 2007
Medicaid Eligibles**

County	Aged	Blind	Disabled	ABD Total	OWF & Related	Healthy Start	CFC Total	Total Medicaid	Foster Care	Adoption Assistance	Transitional	Nursing Facilities
STATEWIDE	147,954	790	243,813	392,557	1,005,424	270,392	1,275,816	1,668,373	9,626	20,461	154,514	53,769
ADAMS	819	5	1,417	2,241	4,389	1,129	5,518	7,759	36	38	826	118
ALLEN	1,254	4	2,069	3,327	8,824	2,626	11,450	14,777	97	132	1,104	579
ASHLAND	592	2	619	1,213	3,363	1,512	4,875	6,088	17	14	780	263
ASHTABULA	1,618	6	3,087	4,711	10,862	3,310	14,172	18,883	70	174	2,069	998
ATHENS	873	9	2,132	3,014	6,036	1,355	7,391	10,405	78	127	884	185
AUGLAIZE	488	4	443	935	2,368	980	3,348	4,283	5	44	510	308
BELMONT	1,437	3	2,079	3,519	6,778	1,739	8,517	12,036	36	111	1,224	550
BROWN	756	0	976	1,732	4,445	1,460	5,905	7,637	13	42	831	228
BUTLER	3,207	16	5,734	8,957	27,217	6,881	34,098	43,055	328	458	4,431	1,233
CARROLL	420	2	560	982	2,461	743	3,204	4,186	13	8	572	193
CHAMPAIGN	502	1	591	1,094	2,871	1,052	3,923	5,017	7	25	704	265
CLARK	2,177	7	3,585	5,769	15,472	3,899	19,371	25,140	131	305	2,121	1,031
CLERMONT	1,645	7	2,823	4,475	11,773	4,560	16,333	20,808	205	259	2,127	695
CLINTON	512	2	768	1,282	3,724	1,069	4,793	6,075	35	74	821	149
COLUMBIANA	1,710	15	2,603	4,328	10,984	3,285	14,269	18,597	52	101	1,828	615
COSHOCTON	600	2	940	1,542	3,821	1,078	4,899	6,441	18	49	745	273
CRAWFORD	689	9	892	1,590	4,315	1,244	5,559	7,149	37	48	966	174
CUYAHOGA	22,652	137	36,161	58,950	148,907	31,632	180,539	239,489	1,436	4,954	18,397	7,072
DARKE	579	1	636	1,216	2,705	1,255	3,960	5,176	27	46	619	324
DEFIANCE	406	3	598	1,007	2,809	1,144	3,953	4,960	16	29	654	196
DELAWARE	811	3	1,053	1,867	4,721	1,756	6,477	8,344	29	64	931	285
ERIE	901	3	1,202	2,106	6,064	1,770	7,834	9,940	58	89	1,030	408
FAIRFIELD	1,294	7	2,072	3,373	9,313	3,111	12,424	15,797	48	186	1,643	439
FAYETTE	555	3	831	1,389	2,914	786	3,700	5,089	9	16	637	314
FRANKLIN	11,951	91	24,193	36,235	118,216	32,231	150,447	186,682	1,590	2,383	14,267	3,756
FULTON	389	2	402	793	2,450	904	3,354	4,147	17	31	578	220
GALLIA	869	3	1,575	2,447	4,152	970	5,122	7,569	20	43	609	176
GEAUGA	615	2	549	1,166	2,219	932	3,151	4,317	13	112	422	325
GREENE	1,387	16	1,782	3,185	9,161	2,677	11,838	15,023	87	116	1,756	580

**Table 6A
January 2007
Medicaid Eligibles**

County	Aged	Blind	Disabled	ABD Total	OWF & Related	Healthy Start	CFC Total	Total Medicaid	Foster Care	Adoption Assistance	Transitional	Nursing Facilities
STATEWIDE	147,954	790	243,813	392,557	1,005,424	270,392	1,275,816	1,668,373	9,626	20,461	154,514	53,769
GUERNSEY	811	3	1,396	2,210	5,420	1,484	6,904	9,114	37	71	874	161
HAMILTON	10,452	61	18,352	28,865	65,227	18,197	83,424	112,289	852	1,716	7,404	3,815
HANCOCK	620	5	885	1,510	4,206	1,536	5,742	7,252	47	49	903	299
HARDIN	380	4	569	953	2,294	783	3,077	4,030	6	47	380	134
HARRISON	309	1	519	829	1,711	443	2,154	2,983	7	23	364	118
HENRY	252	0	328	580	1,660	831	2,491	3,071	13	23	352	131
HIGHLAND	842	0	1,132	1,974	4,586	1,551	6,137	8,111	33	30	701	243
HOCKING	499	4	799	1,302	3,488	1,100	4,588	5,890	37	49	721	140
HOLMES	414	3	428	845	1,426	878	2,304	3,149	15	20	306	374
HURON	603	2	839	1,444	4,992	1,912	6,904	8,348	38	45	1,004	178
JACKSON	868	0	1,385	2,253	4,729	1,196	5,925	8,178	25	14	769	178
JEFFERSON	1,221	12	2,394	3,627	7,489	1,706	9,195	12,822	84	64	1,226	350
KNOX	741	2	1,272	2,015	4,755	1,361	6,116	8,131	19	38	1,258	500
LAKE	1,748	2	2,464	4,214	10,727	3,641	14,368	18,582	60	139	2,131	1,052
LAWRENCE	1,664	5	3,314	4,983	8,766	2,276	11,042	16,025	52	54	1,250	360
LICKING	1,551	3	2,639	4,193	13,086	3,711	16,797	20,990	144	359	2,810	540
LOGAN	581	3	655	1,239	3,666	1,038	4,704	5,943	5	49	715	196
LORAIN	2,847	16	5,246	8,109	25,322	6,045	31,367	39,476	118	425	3,884	1,253
LUCAS	6,422	48	14,237	20,707	56,223	10,732	66,955	87,662	511	1,434	8,006	1,994
MADISON	414	2	580	996	2,767	913	3,680	4,676	12	24	480	114
MAHONING	4,181	18	6,847	11,046	25,860	5,749	31,609	42,655	175	244	3,509	1,586
MARION	979	3	1,737	2,719	6,525	1,831	8,356	11,075	41	80	1,201	285
MEDINA	1,060	6	1,285	2,351	6,574	2,149	8,723	11,074	31	91	1,508	656
MEIGS	555	5	1,027	1,587	3,444	773	4,217	5,804	7	13	507	132
MERCER	377	0	401	778	1,589	745	2,334	3,112	15	35	405	199
MIAMI	1,093	2	1,343	2,438	5,402	1,952	7,354	9,792	65	121	1,026	411
MONROE	293	1	390	684	1,540	521	2,061	2,745	7	15	302	89
MONTGOMERY	7,205	39	12,750	19,994	50,484	12,251	62,735	82,729	652	1,273	6,620	2,392
MORGAN	311	0	533	844	2,070	509	2,579	3,423	1	13	462	112
MORROW	455	0	556	1,011	3,218	1,007	4,225	5,236	3	30	786	138

Source: ODJFS Report BOMM1321 Prepared: Bureau of Research and Evaluation.

**Table 6A
January 2007
Medicaid Eligibles**

County	Aged	Blind	Disabled	ABD Total	OWF & Related	Healthy Start	CFC Total	Total Medicaid	Foster Care	Adoption Assistance	Transitional	Nursing Facilities
STATEWIDE	147,954	790	243,813	392,557	1,005,424	270,392	1,275,816	1,668,373	9,626	20,461	154,514	53,769
MUSKINGUM	1,609	17	2,827	4,453	11,293	2,787	14,080	18,533	47	163	1,741	475
NOBLE	254	0	256	510	1,218	367	1,585	2,095	3	8	303	87
OTTAWA	456	4	517	977	2,449	928	3,377	4,354	14	7	492	158
PAULDING	209	1	373	583	1,338	560	1,898	2,481	6	18	270	43
PERRY	563	8	1,126	1,697	4,613	1,303	5,916	7,613	40	36	825	201
PICKAWAY	652	1	1,012	1,665	4,533	1,215	5,748	7,413	17	21	755	155
PIKE	810	0	1,468	2,278	4,349	1,263	5,612	7,890	23	22	621	277
PORTAGE	1,272	6	1,823	3,101	9,119	2,702	11,821	14,922	69	158	1,433	593
PREBLE	398	7	649	1,054	3,240	941	4,181	5,235	51	41	705	207
PUTNAM	297	1	330	628	1,428	634	2,062	2,690	2	7	238	231
RICHLAND	1,861	0	2,736	4,597	10,914	3,602	14,516	19,113	55	266	1,927	625
ROSS	1,208	3	2,378	3,589	9,356	2,186	11,542	15,131	69	66	1,369	304
SANDUSKY	709	6	963	1,678	4,253	1,685	5,938	7,616	27	55	754	328
SCIOTO	2,476	7	4,710	7,193	11,356	2,410	13,766	20,959	58	62	1,451	542
SENECA	731	3	1,016	1,750	4,235	1,544	5,779	7,529	48	68	908	320
SHELBY	401	3	592	996	2,945	1,125	4,070	5,066	7	51	470	179
STARK	5,190	22	6,834	12,046	31,403	8,373	39,776	51,822	467	1,037	5,908	2,349
SUMMIT	6,897	45	11,168	18,110	45,361	10,204	55,565	73,675	508	873	6,703	2,166
TRUMBULL	2,816	17	4,655	7,488	18,798	5,557	24,355	31,843	146	262	3,349	1,187
TUSCARAWAS	1,318	4	1,602	2,924	7,299	2,530	9,829	12,753	103	159	1,417	489
UNION	339	1	462	802	2,736	788	3,524	4,326	19	36	505	114
UNKNOWN	0	0	0	0	0	0	0	0	0	0	0	0
VAN WERT	322	0	396	718	1,520	835	2,355	3,073	5	12	354	164
VINTON	310	0	597	907	2,217	724	2,941	3,848	10	23	424	65
WARREN	1,406	4	1,570	2,980	5,490	2,624	8,114	11,094	51	105	1,023	818
WASHINGTON	1,078	6	1,604	2,688	5,477	1,995	7,472	10,160	13	45	1,288	349
WAYNE	1,133	3	1,674	2,810	6,640	2,443	9,083	11,893	56	95	1,372	480
WILLIAMS	480	3	485	968	3,127	856	3,983	4,951	32	24	854	199
WOOD	976	3	1,060	2,039	5,001	1,771	6,772	8,811	31	55	843	405
WYANDOT	327	0	256	583	1,136	529	1,665	2,248	9	20	262	177

Source: ODJFS Report BOMM1321 Prepared: Bureau of Research and Evaluation.

**Table 6B
January 2007
Medicaid Expenditures**

	Aged	Blind	Disabled	ABD Total	OWF & Related	Healthy Start	CFC Total	Total Medicaid	Foster Care	Adoption Assistance	Transitional	Nursing Facilities
STATEWIDE	\$267,201,172	\$882,104	\$488,685,108	\$756,768,385	\$258,824,136	\$73,293,097	\$332,117,233	\$1,089,551,377	\$6,640,018	\$4,919,063	\$34,334,808	\$268,909,874
ADAMS	\$1,128,747	\$7,943	\$2,091,052	\$3,227,742	\$1,058,106	\$281,894	\$1,340,000	\$4,586,788	\$9,412	\$8,781	\$183,264	\$555,224
ALLEN	\$2,336,804	\$10,496	\$4,349,016	\$6,696,316	\$2,355,793	\$753,516	\$3,109,309	\$9,805,794	\$47,595	\$24,770	\$261,101	\$2,571,782
ASHLAND	\$1,197,691	\$682	\$1,505,324	\$2,703,697	\$764,029	\$352,559	\$1,116,588	\$3,821,968	\$683	\$564	\$148,832	\$1,454,858
ASHTABULA	\$3,583,196	\$17,309	\$7,988,819	\$11,589,324	\$3,657,970	\$867,814	\$4,525,784	\$16,119,074	\$42,605	\$54,197	\$523,006	\$5,761,270
ATHENS	\$1,208,252	\$7,409	\$2,575,747	\$3,791,408	\$1,459,146	\$328,138	\$1,787,284	\$5,581,442	\$73,824	\$29,662	\$197,795	\$721,291
AUGLAIZE	\$1,170,398	\$6,224	\$898,459	\$2,075,080	\$530,041	\$214,462	\$744,503	\$2,821,865	\$4,395	\$6,612	\$102,126	\$1,263,010
BELMONT	\$2,570,355	\$2,223	\$3,404,288	\$5,976,866	\$1,488,471	\$375,844	\$1,864,316	\$7,850,167	\$21,329	\$23,198	\$227,842	\$2,246,955
BROWN	\$1,291,383	\$0	\$1,775,281	\$3,066,664	\$1,168,817	\$518,138	\$1,686,954	\$4,758,363	\$8,881	\$24,856	\$175,411	\$1,146,483
BUTLER	\$6,724,682	\$21,871	\$11,454,197	\$18,200,750	\$6,763,545	\$2,030,755	\$8,794,300	\$27,001,123	\$110,080	\$145,453	\$980,826	\$7,020,970
CARROLL	\$706,118	\$632	\$1,481,849	\$2,188,599	\$551,925	\$136,668	\$688,593	\$2,880,410	\$5,073	\$1,495	\$135,720	\$853,516
CHAMPAIGN	\$1,019,762	\$676	\$1,193,001	\$2,213,440	\$690,851	\$277,599	\$968,450	\$3,181,890	\$8,594	\$10,164	\$149,506	\$1,240,154
CLARK	\$4,160,882	\$3,183	\$6,158,963	\$10,323,029	\$3,852,452	\$910,272	\$4,762,724	\$15,091,845	\$117,650	\$50,630	\$457,171	\$4,810,360
CLERMONT	\$2,716,895	\$6,923	\$6,581,677	\$9,305,495	\$2,825,089	\$1,577,274	\$4,402,362	\$13,732,953	\$111,106	\$42,113	\$447,187	\$4,469,583
CLINTON	\$704,708	\$4,126	\$1,183,964	\$1,892,797	\$975,302	\$275,691	\$1,250,993	\$3,146,678	\$23,735	\$8,656	\$166,435	\$626,926
COLUMBIANA	\$2,647,239	\$6,521	\$4,552,203	\$7,205,963	\$3,023,135	\$695,734	\$3,718,869	\$10,935,408	\$70,489	\$20,111	\$299,304	\$2,510,595
COSHOCTON	\$1,027,877	\$334	\$2,257,714	\$3,285,925	\$864,435	\$316,430	\$1,180,866	\$4,484,590	\$6,909	\$13,346	\$145,421	\$1,335,257
CRAWFORD	\$1,135,593	\$10,900	\$1,231,846	\$2,378,338	\$1,790,451	\$323,017	\$2,113,468	\$4,493,054	\$13,844	\$12,058	\$277,930	\$879,087
CUYAHOGA	\$44,630,179	\$179,969	\$81,757,725	\$126,567,873	\$35,402,223	\$7,373,881	\$42,776,105	\$169,412,344	\$1,242,480	\$1,236,965	\$3,734,817	\$39,054,506
DARKE	\$1,172,278	\$0	\$1,090,105	\$2,262,383	\$663,285	\$318,512	\$981,796	\$3,246,147	\$16,650	\$6,889	\$135,088	\$1,361,609
DEFIANCE	\$687,443	\$549	\$1,007,419	\$1,695,411	\$693,015	\$228,046	\$921,061	\$2,617,505	\$4,089	\$4,654	\$141,536	\$700,816
DELAWARE	\$1,475,728	\$4,491	\$2,529,023	\$4,009,242	\$1,649,215	\$537,210	\$2,186,424	\$6,195,667	\$35,177	\$11,855	\$271,877	\$1,228,072
ERIE	\$1,552,967	\$4,518	\$2,589,949	\$4,147,434	\$1,766,462	\$479,131	\$2,245,593	\$6,393,084	\$33,386	\$26,653	\$248,443	\$1,653,210
FAIRFIELD	\$2,185,659	\$5,058	\$5,252,374	\$7,443,091	\$3,066,735	\$1,017,316	\$4,084,050	\$11,534,012	\$10,120	\$49,706	\$437,584	\$2,073,860
FAYETTE	\$1,024,262	\$16,093	\$1,842,480	\$2,882,834	\$1,079,851	\$256,537	\$1,336,387	\$4,219,222	\$5,686	\$4,780	\$156,720	\$1,613,430
FRANKLIN	\$20,051,513	\$142,791	\$54,484,559	\$74,678,863	\$28,704,115	\$8,980,165	\$37,684,280	\$112,390,884	\$1,107,794	\$598,267	\$3,089,989	\$21,877,284
FULTON	\$822,714	\$1,282	\$785,486	\$1,609,483	\$648,957	\$349,069	\$998,026	\$2,611,165	\$3,275	\$12,373	\$117,701	\$897,569
GALLIA	\$1,824,251	\$892	\$3,763,189	\$5,588,332	\$895,046	\$184,451	\$1,079,497	\$6,692,951	\$14,006	\$4,924	\$130,694	\$739,239
GEAUGA	\$1,441,707	\$2,204	\$1,761,727	\$3,205,638	\$628,416	\$240,194	\$868,611	\$4,074,442	\$4,182	\$25,879	\$114,357	\$1,622,336
GREENE	\$2,598,872	\$8,545	\$3,583,785	\$6,191,202	\$2,457,521	\$840,071	\$3,297,593	\$9,495,219	\$44,856	\$32,176	\$391,235	\$2,598,531

**Table 6B
January 2007
Medicaid Expenditures**

	Aged	Blind	Disabled	ABD Total	OWF & Related	Healthy Start	CFC Total	Total Medicaid	Foster Care	Adoption Assistance	Transitional	Nursing Facilities
STATEWIDE	\$267,201,172	\$882,104	\$488,685,108	\$756,768,385	\$258,824,136	\$73,293,097	\$332,117,233	\$1,089,551,377	\$6,640,018	\$4,919,063	\$34,334,808	\$268,909,874
GUERNSEY	\$1,118,745	\$1,241	\$2,940,814	\$4,060,800	\$1,305,387	\$308,125	\$1,613,512	\$5,677,510	\$23,695	\$16,220	\$175,492	\$682,733
HAMILTON	\$21,421,020	\$55,392	\$38,744,372	\$60,220,784	\$18,233,362	\$6,008,898	\$24,242,260	\$84,536,219	\$680,932	\$503,537	\$1,602,118	\$21,396,352
HANCOCK	\$1,221,832	\$281	\$1,750,561	\$2,972,674	\$1,028,567	\$412,971	\$1,441,537	\$4,414,484	\$16,246	\$11,076	\$193,393	\$1,334,424
HARDIN	\$528,634	\$14,804	\$735,260	\$1,278,699	\$471,652	\$196,234	\$667,886	\$1,946,583	\$2,889	\$5,668	\$80,590	\$486,603
HARRISON	\$568,160	\$401	\$719,643	\$1,288,204	\$342,126	\$79,776	\$421,902	\$1,717,686	\$1,799	\$4,735	\$66,136	\$563,276
HENRY	\$514,667	\$0	\$1,211,374	\$1,726,040	\$431,446	\$166,719	\$598,165	\$2,324,205	\$7,159	\$5,192	\$80,409	\$542,786
HIGHLAND	\$1,317,559	\$0	\$1,848,723	\$3,166,282	\$1,125,942	\$450,917	\$1,576,858	\$4,744,114	\$16,934	\$5,417	\$171,491	\$1,166,468
HOCKING	\$786,792	\$8,169	\$1,073,697	\$1,868,658	\$1,392,077	\$377,759	\$1,769,836	\$3,638,494	\$24,459	\$13,457	\$216,018	\$617,035
HOLMES	\$1,067,464	\$0	\$1,161,016	\$2,228,481	\$325,566	\$168,157	\$493,723	\$2,722,204	\$9,059	\$4,771	\$64,344	\$1,630,718
HURON	\$903,431	\$537	\$1,431,582	\$2,335,549	\$1,424,281	\$527,507	\$1,951,788	\$4,288,509	\$31,042	\$3,365	\$232,467	\$627,644
JACKSON	\$1,127,891	\$0	\$2,421,316	\$3,549,206	\$1,020,589	\$232,168	\$1,252,757	\$4,808,395	\$6,595	\$3,763	\$135,586	\$746,719
JEFFERSON	\$1,813,521	\$6,492	\$3,403,573	\$5,223,586	\$1,517,499	\$314,728	\$1,832,226	\$7,084,292	\$38,155	\$10,677	\$239,844	\$1,358,047
KNOX	\$1,745,053	\$4	\$4,244,525	\$5,989,583	\$1,814,903	\$439,726	\$2,254,630	\$8,244,367	\$4,762	\$36,005	\$354,507	\$3,689,178
LAKE	\$4,065,818	\$4,430	\$7,132,443	\$11,202,691	\$3,381,695	\$1,452,036	\$4,833,731	\$16,042,446	\$51,621	\$20,441	\$550,106	\$5,454,727
LAWRENCE	\$2,700,443	\$2,574	\$4,196,138	\$6,899,155	\$1,979,048	\$496,906	\$2,475,954	\$9,381,776	\$30,575	\$13,659	\$242,677	\$1,523,343
LICKING	\$2,518,236	\$5,365	\$5,130,965	\$7,654,566	\$4,892,539	\$1,120,618	\$6,013,157	\$13,667,723	\$71,736	\$91,906	\$819,881	\$2,745,367
LOGAN	\$868,766	\$118	\$989,848	\$1,858,732	\$1,374,631	\$437,759	\$1,812,390	\$3,680,306	\$153	\$5,617	\$190,557	\$750,616
LORAIN	\$5,636,904	\$20,762	\$10,962,596	\$16,620,263	\$5,077,311	\$1,409,408	\$6,486,719	\$23,109,136	\$60,350	\$82,548	\$723,751	\$6,452,932
LUCAS	\$9,646,815	\$14,952	\$27,097,991	\$36,759,758	\$13,649,186	\$2,857,529	\$16,506,715	\$53,314,198	\$298,475	\$374,246	\$1,670,913	\$9,807,540
MADISON	\$524,502	\$377	\$1,176,981	\$1,701,860	\$979,973	\$324,791	\$1,304,764	\$3,006,624	\$14,737	\$15,295	\$148,166	\$572,712
MAHONING	\$7,117,853	\$32,181	\$10,885,318	\$18,035,352	\$6,673,959	\$1,640,555	\$8,314,514	\$26,365,089	\$215,435	\$53,727	\$804,461	\$6,833,513
MARION	\$1,470,424	\$6,042	\$2,879,198	\$4,355,664	\$2,601,422	\$686,643	\$3,288,064	\$7,647,691	\$16,862	\$22,658	\$351,509	\$1,314,198
MEDINA	\$2,388,277	\$47,907	\$4,263,833	\$6,700,017	\$1,794,294	\$531,982	\$2,326,276	\$9,026,455	\$12,028	\$9,253	\$340,787	\$3,396,528
MEIGS	\$714,276	\$5,012	\$1,245,454	\$1,964,742	\$859,188	\$140,247	\$999,435	\$2,965,812	\$1,075	\$912	\$99,237	\$503,609
MERCER	\$701,980	\$0	\$815,265	\$1,517,245	\$463,399	\$194,389	\$657,788	\$2,176,192	\$7,690	\$11,875	\$88,895	\$816,009
MIAMI	\$2,051,723	\$5,752	\$2,482,671	\$4,540,146	\$1,267,085	\$618,308	\$1,885,393	\$6,434,680	\$36,132	\$23,811	\$240,175	\$1,712,881
MONROE	\$419,766	\$0	\$583,528	\$1,003,294	\$324,744	\$99,049	\$423,793	\$1,428,426	\$862	\$1,682	\$53,917	\$373,686
MONTGOMERY	\$13,785,994	\$33,133	\$22,795,589	\$36,614,716	\$12,741,713	\$3,118,066	\$15,859,779	\$52,511,154	\$556,779	\$321,004	\$1,436,701	\$12,583,285
MORGAN	\$557,797	\$0	\$640,481	\$1,198,278	\$410,956	\$89,617	\$500,573	\$1,698,876	\$0	\$605	\$89,086	\$459,163
MORROW	\$740,559	\$0	\$1,046,651	\$1,787,211	\$1,153,603	\$314,140	\$1,467,743	\$3,256,788	\$0	\$6,156	\$197,143	\$768,143

Source: ODJFS Report BOMM1321 Prepared: Bureau of Research and Evaluation.

**Table 6B
January 2007
Medicaid Expenditures**

	Aged	Blind	Disabled	ABD Total	OWF & Related	Healthy Start	CFC Total	Total Medicaid	Foster Care	Adoption Assistance	Transitional	Nursing Facilities
STATEWIDE	\$267,201,172	\$882,104	\$488,685,108	\$756,768,385	\$258,824,136	\$73,293,097	\$332,117,233	\$1,089,551,377	\$6,640,018	\$4,919,063	\$34,334,808	\$268,909,874
MUSKINGUM	\$2,297,202	\$6,339	\$3,251,089	\$5,554,631	\$2,365,831	\$695,524	\$3,061,355	\$8,622,583	\$13,303	\$30,902	\$341,921	\$1,849,461
NOBLE	\$396,558	\$0	\$345,370	\$741,929	\$259,268	\$59,607	\$318,875	\$1,060,804	\$0	\$360	\$56,948	\$339,523
OTTAWA	\$806,280	\$12,963	\$1,841,590	\$2,660,833	\$597,039	\$229,743	\$826,782	\$3,488,241	\$5,378	\$1,027	\$111,239	\$571,920
PAULDING	\$196,916	\$7	\$406,789	\$603,712	\$406,612	\$100,358	\$506,970	\$1,110,683	\$2,344	\$3,064	\$155,587	\$165,003
PERRY	\$669,037	\$3,416	\$2,244,318	\$2,916,771	\$1,612,263	\$341,455	\$1,953,718	\$4,873,538	\$12,360	\$4,098	\$289,723	\$1,032,090
PICKAWAY	\$822,094	\$9	\$1,606,880	\$2,428,982	\$2,063,049	\$323,773	\$2,386,822	\$4,815,728	\$8,477	\$8,342	\$214,745	\$644,314
PIKE	\$1,351,040	\$0	\$2,427,191	\$3,778,231	\$1,531,422	\$476,583	\$2,008,005	\$5,786,706	\$16,941	\$5,077	\$169,566	\$1,425,128
PORTAGE	\$2,176,742	\$12,422	\$5,022,266	\$7,211,430	\$2,604,234	\$856,687	\$3,460,921	\$10,672,862	\$32,536	\$34,677	\$311,960	\$3,327,737
PREBLE	\$732,794	\$2,393	\$1,380,021	\$2,115,209	\$813,565	\$215,480	\$1,029,045	\$3,146,143	\$27,929	\$5,519	\$149,468	\$1,059,668
PUTNAM	\$643,770	\$0	\$792,276	\$1,436,045	\$316,716	\$143,153	\$459,869	\$1,896,558	\$925	\$747	\$50,291	\$961,434
RICHLAND	\$2,836,710	\$1,388	\$4,743,542	\$7,581,640	\$2,564,925	\$940,919	\$3,505,844	\$11,094,585	\$35,702	\$40,819	\$421,565	\$3,038,906
ROSS	\$1,649,435	\$1,380	\$3,292,941	\$4,943,756	\$2,950,324	\$624,226	\$3,574,550	\$8,522,145	\$47,560	\$12,128	\$374,213	\$1,187,348
SANDUSKY	\$1,271,534	\$601	\$2,636,577	\$3,908,711	\$1,176,874	\$371,869	\$1,548,744	\$5,457,990	\$17,545	\$6,931	\$174,533	\$1,610,573
SCIOTO	\$3,691,818	\$4,738	\$6,237,947	\$9,934,502	\$4,004,557	\$726,904	\$4,731,461	\$14,687,685	\$23,999	\$18,368	\$381,875	\$2,343,488
SENECA	\$1,670,914	\$1,259	\$3,671,279	\$5,343,452	\$1,129,304	\$396,972	\$1,526,275	\$6,869,727	\$60,351	\$12,305	\$202,714	\$1,386,801
SHELBY	\$670,197	\$1,095	\$1,103,650	\$1,774,942	\$701,360	\$397,188	\$1,098,548	\$2,873,600	\$3,340	\$16,469	\$114,494	\$726,090
STARK	\$10,004,134	\$33,300	\$13,161,199	\$23,198,633	\$7,386,790	\$2,111,013	\$9,497,803	\$32,708,125	\$239,023	\$175,388	\$1,297,804	\$10,754,447
SUMMIT	\$11,386,475	\$35,263	\$19,441,535	\$30,863,273	\$10,930,118	\$2,828,674	\$13,758,792	\$44,667,951	\$414,137	\$199,201	\$1,454,352	\$10,723,023
TRUMBULL	\$4,643,839	\$14,666	\$7,991,513	\$12,650,018	\$4,195,774	\$1,251,890	\$5,447,664	\$18,097,681	\$87,480	\$46,850	\$674,995	\$5,342,826
TUSCARAWAS	\$2,444,572	\$3,752	\$2,726,281	\$5,174,605	\$1,712,286	\$679,395	\$2,391,680	\$7,589,155	\$46,294	\$42,490	\$284,111	\$1,930,869
UNION	\$618,687	\$425	\$956,016	\$1,575,128	\$1,019,053	\$233,682	\$1,252,736	\$2,827,864	\$13,571	\$6,482	\$153,834	\$502,315
UNKNOWN	\$281	\$0	\$3,569	\$3,850	(\$576,186)	\$0	(\$576,186)	(\$572,336)	\$8	\$0	\$0	\$1,377
VAN WERT	\$648,150	\$0	\$567,465	\$1,215,615	\$349,610	\$217,083	\$566,693	\$1,782,308	\$1,380	\$7,108	\$80,961	\$656,044
VINTON	\$396,820	\$0	\$743,750	\$1,140,571	\$490,458	\$120,158	\$610,616	\$1,751,923	\$1,393	\$1,628	\$88,154	\$265,818
WARREN	\$3,346,556	\$2,165	\$5,225,962	\$8,574,682	\$1,225,772	\$832,765	\$2,058,537	\$10,634,832	\$17,088	\$21,894	\$197,615	\$4,484,435
WASHINGTON	\$1,631,333	\$2,866	\$2,515,069	\$4,149,268	\$1,175,939	\$398,847	\$1,574,787	\$5,724,197	\$7,067	\$3,855	\$255,409	\$1,607,807
WAYNE	\$2,016,468	\$1,130	\$2,909,070	\$4,926,669	\$1,619,044	\$592,647	\$2,211,692	\$7,138,360	\$34,141	\$13,783	\$316,728	\$2,031,352
WILLIAMS	\$758,178	\$512	\$925,698	\$1,684,388	\$823,966	\$199,704	\$1,023,670	\$2,708,057	\$14,268	\$12,855	\$180,919	\$757,408
WOOD	\$1,895,251	\$242	\$2,771,761	\$4,667,254	\$1,548,524	\$552,276	\$2,100,800	\$6,776,606	\$15,655	\$12,896	\$258,974	\$1,701,512
WYANDOT	\$684,330	\$0	\$599,868	\$1,284,198	\$293,103	\$118,405	\$411,508	\$1,700,586	\$3,680	\$2,740	\$60,838	\$683,139

Source: ODJFS Report BOMM1321 Prepared: Bureau of Research and Evaluation.

**TABLE 7
CHILD CARE
JANUARY 2007**

OHIO COUNTY	OWF JOBS, LEAP, and TRANSITIONAL		OTHER CHILD CARE		LOCAL FUNDING		ALL PROGRAM SOURCES	
	CHILDREN SERVED		CHILDREN SERVED		CHILDREN SERVED		CHILDREN SERVED	
	TOTAL	% OF STATE TOTAL	TOTAL	% OF STATE TOTAL	TOTAL	% OF STATE TOTAL	TOTAL	% OF STATE TOTAL
STATEWIDE	22,470	100.00%	78,182	100.00%	97	100.00%	100,749	100.00%
ADAMS	38	0.17%	101	0.13%	0	0.00%	139	0.14%
ALLEN	131	0.58%	516	0.66%	0	0.00%	647	0.64%
ASHLAND	4	0.02%	213	0.27%	0	0.00%	217	0.22%
ASHTABULA	195	0.87%	672	0.86%	0	0.00%	867	0.86%
ATHENS	73	0.32%	213	0.27%	0	0.00%	286	0.28%
AUGLAIZE	17	0.08%	131	0.17%	0	0.00%	148	0.15%
BELMONT	92	0.41%	247	0.32%	0	0.00%	339	0.34%
BROWN	18	0.08%	121	0.15%	0	0.00%	139	0.14%
BUTLER	187	0.83%	1,498	1.92%	0	0.00%	1,685	1.67%
CARROLL	10	0.04%	65	0.08%	0	0.00%	75	0.07%
CHAMPAIGN	21	0.09%	138	0.18%	0	0.00%	159	0.16%
CLARK	123	0.55%	627	0.80%	0	0.00%	750	0.74%
CLERMONT	181	0.81%	611	0.78%	0	0.00%	792	0.79%
CLINTON	6	0.03%	231	0.30%	0	0.00%	237	0.24%
COLUMBIANA	184	0.82%	848	1.08%	1	1.03%	1,033	1.03%
COSHOCTON	60	0.27%	185	0.24%	0	0.00%	245	0.24%
CRAWFORD	70	0.31%	198	0.25%	0	0.00%	268	0.27%
CUYAHOGA	4,366	19.43%	17,964	22.98%	0	0.00%	22,330	22.16%
DARKE	36	0.16%	120	0.15%	0	0.00%	156	0.15%
DEFIANCE	53	0.24%	154	0.20%	0	0.00%	207	0.21%
DELAWARE	54	0.24%	357	0.46%	1	1.03%	412	0.41%
ERIE	47	0.21%	566	0.72%	0	0.00%	613	0.61%
FAIRFIELD	121	0.54%	550	0.70%	0	0.00%	671	0.67%
FAYETTE	58	0.26%	271	0.35%	0	0.00%	329	0.33%
FRANKLIN	2,839	12.63%	9,341	11.95%	88	90.72%	12,268	12.18%
FULTON	52	0.23%	166	0.21%	0	0.00%	218	0.22%
GALLIA	40	0.18%	174	0.22%	0	0.00%	214	0.21%
GEAUGA	37	0.16%	182	0.23%	0	0.00%	219	0.22%
GREENE	219	0.97%	621	0.79%	0	0.00%	840	0.83%

**TABLE 7
CHILD CARE
JANUARY 2007**

OHIO COUNTY	OWF JOBS, LEAP, and TRANSITIONAL		OTHER CHILD CARE		LOCAL FUNDING		ALL PROGRAM SOURCES	
	CHILDREN SERVED		CHILDREN SERVED		CHILDREN SERVED		CHILDREN SERVED	
	TOTAL	% OF STATE TOTAL	TOTAL	% OF STATE TOTAL	TOTAL	% OF STATE TOTAL	TOTAL	% OF STATE TOTAL
STATEWIDE	22,470	100.00%	78,182	100.00%	97	100.00%	100,749	100.00%
GUERNSEY	97	0.43%	291	0.37%	0	0.00%	388	0.39%
HAMILTON	3,436	15.29%	9,556	12.22%	0	0.00%	12,992	12.90%
HANCOCK	89	0.40%	442	0.57%	0	0.00%	531	0.53%
HARDIN	21	0.09%	52	0.07%	0	0.00%	73	0.07%
HARRISON	12	0.05%	40	0.05%	0	0.00%	52	0.05%
HENRY	36	0.16%	106	0.14%	0	0.00%	142	0.14%
HIGHLAND	14	0.06%	218	0.28%	0	0.00%	232	0.23%
HOCKING	42	0.19%	87	0.11%	0	0.00%	129	0.13%
HOLMES	38	0.17%	92	0.12%	0	0.00%	130	0.13%
HURON	8	0.04%	415	0.53%	0	0.00%	423	0.42%
JACKSON	53	0.24%	139	0.18%	0	0.00%	192	0.19%
JEFFERSON	80	0.36%	316	0.40%	0	0.00%	396	0.39%
KNOX	71	0.32%	257	0.33%	0	0.00%	328	0.33%
LAKE	259	1.15%	799	1.02%	0	0.00%	1,058	1.05%
LAWRENCE	119	0.53%	429	0.55%	0	0.00%	548	0.54%
LICKING	212	0.94%	1,069	1.37%	0	0.00%	1,281	1.27%
LOGAN	37	0.16%	54	0.07%	0	0.00%	91	0.09%
LORAIN	658	2.93%	1,754	2.24%	0	0.00%	2,412	2.39%
LUCAS	1,906	8.48%	3,008	3.85%	0	0.00%	4,914	4.88%
MADISON	25	0.11%	97	0.12%	0	0.00%	122	0.12%
MAHONING	843	3.75%	1,607	2.06%	0	0.00%	2,450	2.43%
MARION	33	0.15%	391	0.50%	0	0.00%	424	0.42%
MEDINA	74	0.33%	647	0.83%	0	0.00%	721	0.72%
MEIGS	14	0.06%	180	0.23%	0	0.00%	194	0.19%
MERCER	22	0.10%	111	0.14%	0	0.00%	133	0.13%
MIAMI	105	0.47%	292	0.37%	0	0.00%	397	0.39%
MONROE	0	0.00%	68	0.09%	0	0.00%	68	0.07%
MONTGOMERY	886	3.94%	3,906	5.00%	1	1.03%	4,793	4.76%
MORGAN	4	0.02%	106	0.14%	0	0.00%	110	0.11%
MORROW	16	0.07%	155	0.20%	0	0.00%	171	0.17%

**TABLE 7
CHILD CARE
JANUARY 2007**

OHIO COUNTY	OWF JOBS, LEAP, and TRANSITIONAL		OTHER CHILD CARE		LOCAL FUNDING		ALL PROGRAM SOURCES	
	CHILDREN SERVED		CHILDREN SERVED		CHILDREN SERVED		CHILDREN SERVED	
	TOTAL	% OF STATE TOTAL	TOTAL	% OF STATE TOTAL	TOTAL	% OF STATE TOTAL	TOTAL	% OF STATE TOTAL
STATEWIDE	22,470	100.00%	78,182	100.00%	97	100.00%	100,749	100.00%
MUSKINGUM	296	1.32%	799	1.02%	0	0.00%	1,095	1.09%
NOBLE	26	0.12%	95	0.12%	0	0.00%	121	0.12%
OTTAWA	75	0.33%	109	0.14%	0	0.00%	184	0.18%
PAULDING	4	0.02%	25	0.03%	0	0.00%	29	0.03%
PERRY	54	0.24%	253	0.32%	0	0.00%	307	0.30%
PICKAWAY	72	0.32%	138	0.18%	0	0.00%	210	0.21%
PIKE	57	0.25%	57	0.07%	0	0.00%	114	0.11%
PORTAGE	141	0.63%	572	0.73%	0	0.00%	713	0.71%
PREBLE	37	0.16%	80	0.10%	0	0.00%	117	0.12%
PUTNAM	19	0.08%	91	0.12%	0	0.00%	110	0.11%
RICHLAND	265	1.18%	752	0.96%	1	1.03%	1,018	1.01%
ROSS	107	0.48%	298	0.38%	0	0.00%	405	0.40%
SANDUSKY	78	0.35%	477	0.61%	0	0.00%	555	0.55%
SCIOTO	121	0.54%	514	0.66%	0	0.00%	635	0.63%
SENECA	16	0.07%	175	0.22%	0	0.00%	191	0.19%
SHELBY	50	0.22%	152	0.19%	0	0.00%	202	0.20%
STARK	748	3.33%	2,209	2.83%	0	0.00%	2,957	2.94%
SUMMIT	846	3.77%	3,759	4.81%	0	0.00%	4,605	4.57%
TRUMBULL	258	1.15%	1,629	2.08%	0	0.00%	1,887	1.87%
TUSCARAWAS	40	0.18%	437	0.56%	0	0.00%	477	0.47%
UNION	30	0.13%	235	0.30%	5	5.15%	270	0.27%
VAN WERT	9	0.04%	47	0.06%	0	0.00%	56	0.06%
VINTON	5	0.02%	90	0.12%	0	0.00%	95	0.09%
WARREN	159	0.71%	396	0.51%	0	0.00%	555	0.55%
WASHINGTON	78	0.35%	251	0.32%	0	0.00%	329	0.33%
WAYNE	196	0.87%	363	0.46%	0	0.00%	559	0.55%
WILLIAMS	43	0.19%	89	0.11%	0	0.00%	132	0.13%
WOOD	92	0.41%	289	0.37%	0	0.00%	381	0.38%
WYANDOT	6	0.03%	36	0.05%	0	0.00%	42	0.04%

SOURCE: COGNOS. The above numbers have not been reconciled between the CCIDS/3299 data collection system and 2827 ODJFS fiscal reporting system; therefore they may not be conclusive at this time. No OWF code 173 data available.

OWF data consist of funding codes: 173,312, 313,314, 326, & 327. Other data consist of funding codes: 320, 321, 322, 323, 324, 325, 328, 329, and 342. Local Funding is from funding code 899.

**TABLE 8
RECIPIENTS, EXPENDITURES, AND AVERAGE PAYMENT PER RECIPIENT
DURING THE LAST 12 MONTHS IN OHIO**

RECIPIENTS	OWF-R	OWF-U	OWF/ CHILD CARE	Other CHILD CARE	DISABILITY ASSISTANCE	TITLE IV-E	FNS BENEFITS
February 2006	160,208	16,357	22,960	72,979	12,165	27,024	1,040,537
March	163,689	17,055	23,613	76,835	12,555	27,204	N.A.
April	156,624	15,855	22,022	73,253	12,634	27,166	N.A.
May	160,685	16,169	23,333	75,903	13,319	27,254	1,069,042
June	163,683	15,964	24,531	76,147	14,049	27,007	1,073,268
July	156,237	14,442	24,580	77,029	13,753	26,830	1,064,369
August	161,518	14,842	25,066	78,202	14,220	27,084	1,072,753
September	159,269	14,015	25,720	75,554	13,960	27,121	1,064,886
October	159,372	13,714	26,501	74,946	13,718	27,108	1,067,925
November	156,220	12,781	23,696	78,584	13,578	26,828	1,061,392
December	159,543	13,239	23,727	79,838	13,654	27,223	1,073,211
January 2007	156,974	12,864	22,470	78,182	13,678	27,150	1,074,737
12 MONTH AVERAGE	159,502	14,775	24,018	76,454	13,440	27,083	1,066,212
EXPENDITURES							
February 2006	\$25,376,164	\$1,825,805	N.A.	N.A.	\$1,734,556	\$14,006,590	\$102,457,470
March	\$24,981,565	\$1,800,673	N.A.	N.A.	\$1,761,824	\$14,381,303	N.A.
April	\$24,730,183	\$1,736,189	N.A.	N.A.	\$1,920,212	\$13,477,491	N.A.
May	\$25,034,827	\$1,722,758	N.A.	N.A.	\$1,986,853	\$13,784,900	\$106,934,328
June	\$23,449,016	\$1,532,463	N.A.	N.A.	\$1,941,545	\$14,506,729	\$106,993,971
July	\$24,432,662	\$1,541,871	N.A.	N.A.	\$1,843,070	\$13,801,221	\$106,503,524
August	\$25,149,711	\$1,578,643	N.A.	N.A.	\$2,026,360	\$13,842,955	\$107,495,300
September	\$24,982,385	\$1,518,064	N.A.	N.A.	\$1,816,230	\$13,730,291	\$106,390,515
October	\$25,271,659	\$1,490,001	N.A.	N.A.	\$1,707,917	\$13,947,005	\$108,425,686
November	\$24,233,824	\$1,357,337	N.A.	N.A.	\$1,732,064	\$13,607,688	\$106,332,849
December	\$25,577,815	\$1,491,073	N.A.	N.A.	\$1,905,592	\$15,347,273	\$107,670,387
January 2007	\$24,563,001	\$1,389,124	N.A.	N.A.	\$1,860,503	\$14,522,840	\$107,705,366
TOTAL DOLLARS	\$24,815,234	\$1,582,000	N.A.	N.A.	\$1,853,061	\$14,079,690	\$106,690,940
AVERAGE PAYMENT							
February 2006	\$158	\$112	N.A.	N.A.	\$143	\$518	\$98
March	\$153	\$106	N.A.	N.A.	\$140	\$529	N.A.
April	\$158	\$110	N.A.	N.A.	\$152	\$496	N.A.
May	\$156	\$107	N.A.	N.A.	\$149	\$506	\$100
June	\$143	\$96	N.A.	N.A.	\$138	\$537	\$100
July	\$156	\$107	N.A.	N.A.	\$134	\$514	\$100
August	\$156	\$106	N.A.	N.A.	\$143	\$511	\$100
September	\$157	\$108	N.A.	N.A.	\$130	\$506	\$100
October	\$159	\$109	N.A.	N.A.	\$125	\$514	\$102
November	\$155	\$106	N.A.	N.A.	\$128	\$507	\$100
December	\$160	\$113	N.A.	N.A.	\$140	\$564	\$100
January 2007	\$156	\$108	N.A.	N.A.	\$136	\$535	\$100

Note: N.A. means Not Available.

**TABLE 10
PERCENT OF OHIO'S POPULATION PARTICIPATING IN SELECTED
PUBLIC ASSISTANCE PROGRAMS FOR JANUARY 2007**

OHIO COUNTY	Estimated Total Population *	Percent of All Families Below Poverty Level	DISABILITY ASSISTANCE		OWF COMBINED		FOSTER CARE		FNS BENEFITS	
			Recipients as % of		Recipients	Recipients as % of	Recipients	Recipients as % of	Recipients	Recipients as % of
			Recipients	Total Population						
STATEWIDE	11,464,042	7.80%	13,678	0.12%	169,838	1.48%	27,150	0.24%	1,074,737	9.37%
ADAMS	28,454	12.80%	104	0.37%	229	0.80%	64	0.22%	4,769	16.76%
ALLEN	106,234	9.60%	111	0.10%	718	0.68%	215	0.20%	9,247	8.70%
ASHLAND	54,123	7.10%	43	0.08%	153	0.28%	23	0.04%	3,063	5.66%
ASHTABULA	103,221	9.20%	254	0.25%	1,413	1.37%	202	0.20%	12,365	11.98%
ATHENS	62,062	14.00%	268	0.43%	1,518	2.45%	202	0.33%	7,224	11.64%
AUGLAIZE	47,242	4.90%	31	0.07%	96	0.20%	50	0.11%	2,118	4.48%
BELMONT	69,228	11.70%	142	0.21%	718	1.04%	133	0.19%	7,182	10.37%
BROWN	44,398	8.80%	62	0.14%	296	0.67%	66	0.15%	3,541	7.98%
BUTLER	350,412	5.40%	440	0.13%	2,787	0.80%	795	0.23%	26,667	7.61%
CARROLL	29,388	8.50%	27	0.09%	179	0.61%	18	0.06%	2,166	7.37%
CHAMPAIGN	39,698	5.10%	37	0.09%	417	1.05%	30	0.08%	2,583	6.51%
CLARK	142,376	7.90%	318	0.22%	2,870	2.02%	353	0.25%	17,013	11.95%
CLERMONT	190,589	5.30%	196	0.10%	783	0.41%	319	0.17%	11,040	5.79%
CLINTON	42,570	6.40%	57	0.13%	205	0.48%	100	0.23%	3,302	7.76%
COLUMBIANA	110,928	9.00%	122	0.11%	796	0.72%	127	0.11%	12,353	11.14%
COSHOCTON	36,945	7.00%	108	0.29%	449	1.22%	48	0.13%	3,965	10.73%
CRAWFORD	45,774	7.80%	61	0.13%	312	0.68%	47	0.10%	4,411	9.64%
CUYAHOGA	1,335,317	10.30%	900	0.07%	24,064	1.80%	6,401	0.48%	178,484	13.37%
DARKE	52,983	6.00%	36	0.07%	298	0.56%	62	0.12%	2,207	4.17%
DEFIANCE	39,112	4.50%	28	0.07%	302	0.77%	50	0.13%	2,680	6.85%
DELAWARE	150,268	2.90%	89	0.06%	710	0.47%	85	0.06%	4,177	2.78%
ERIE	78,665	6.00%	80	0.10%	412	0.52%	131	0.17%	5,720	7.27%
FAIRFIELD	138,423	4.50%	160	0.12%	1,915	1.38%	176	0.13%	9,904	7.15%
FAYETTE	28,199	7.70%	45	0.16%	338	1.20%	24	0.09%	2,667	9.46%
FRANKLIN	1,090,771	8.20%	1,078	0.10%	23,974	2.20%	3,393	0.31%	122,923	11.27%
FULTON	42,955	4.00%	30	0.07%	94	0.22%	34	0.08%	2,028	4.72%
GALLIA	31,362	13.50%	78	0.25%	1,213	3.87%	66	0.21%	5,161	16.46%
GEAUGA	95,218	2.80%	32	0.03%	117	0.12%	115	0.12%	1,710	1.80%
GREENE	151,996	5.20%	166	0.11%	1,133	0.75%	130	0.09%	8,391	5.52%

*SOURCE: 2005 Ohio County Population Estimates, Ohio Dept. of Development, GRP342RA, GBS003RA, GRP304RA and GRP304RC Reports from Management Information Services.

**TABLE 10
PERCENT OF OHIO'S POPULATION PARTICIPATING IN SELECTED
PUBLIC ASSISTANCE PROGRAMS FOR JANUARY 2007**

OHIO COUNTY	Estimated Total Population *	Percent of All Families Below Poverty Level	DISABILITY ASSISTANCE		OWF COMBINED		FOSTER CARE		FNS BENEFITS	
			Recipients as % of		Recipients	Recipients as % of Total Population	Recipients	Recipients as % of Total Population	Recipients	Recipients as % of Total Population
			Recipients	Total Population						
STATEWIDE	11,464,042	7.80%	13,678	0.12%	169,838	1.48%	27,150	0.24%	1,074,737	9.37%
GUERNSEY	41,123	12.90%	143	0.35%	320	0.78%	123	0.30%	5,958	14.49%
HAMILTON	806,652	8.80%	633	0.08%	16,689	2.07%	1,702	0.21%	72,249	8.96%
HANCOCK	73,503	5.20%	81	0.11%	140	0.19%	90	0.12%	3,944	5.37%
HARDIN	32,032	8.90%	44	0.14%	102	0.32%	47	0.15%	1,799	5.62%
HARRISON	15,920	11.00%	54	0.34%	196	1.23%	27	0.17%	1,892	11.88%
HENRY	29,453	5.30%	11	0.04%	57	0.19%	31	0.11%	1,408	4.78%
HIGHLAND	42,818	9.00%	103	0.24%	452	1.06%	18	0.04%	4,678	10.93%
HOCKING	29,009	10.30%	71	0.24%	642	2.21%	84	0.29%	3,423	11.80%
HOLMES	41,567	10.50%	30	0.07%	105	0.25%	29	0.07%	997	2.40%
HURON	60,385	6.50%	59	0.10%	254	0.42%	72	0.12%	4,560	7.55%
JACKSON	33,526	13.60%	112	0.33%	533	1.59%	35	0.10%	5,350	15.96%
JEFFERSON	70,599	11.40%	183	0.26%	1,748	2.48%	132	0.19%	8,905	12.61%
KNOX	58,398	7.40%	100	0.17%	608	1.04%	43	0.07%	4,322	7.40%
LAKE	232,466	3.50%	146	0.06%	1,036	0.45%	192	0.08%	10,742	4.62%
LAWRENCE	63,112	15.10%	82	0.13%	1,473	2.33%	50	0.08%	10,836	17.17%
LICKING	154,806	5.50%	233	0.15%	1,218	0.79%	490	0.32%	12,248	7.91%
LOGAN	46,580	7.10%	69	0.15%	436	0.94%	53	0.11%	3,498	7.51%
LORAIN	296,307	6.70%	323	0.11%	4,468	1.51%	438	0.15%	26,869	9.07%
LUCAS	448,229	10.70%	877	0.20%	15,371	3.43%	2,194	0.49%	61,798	13.79%
MADISON	41,295	6.20%	28	0.07%	486	1.18%	41	0.10%	2,807	6.80%
MAHONING	254,274	9.60%	250	0.10%	6,581	2.59%	397	0.16%	29,329	11.53%
MARION	65,932	7.40%	137	0.21%	743	1.13%	90	0.14%	7,172	10.88%
MEDINA	167,010	3.50%	71	0.04%	545	0.33%	86	0.05%	5,300	3.17%
MEIGS	23,232	14.30%	71	0.31%	390	1.68%	14	0.06%	4,226	18.19%
MERCER	41,202	4.60%	31	0.08%	185	0.45%	45	0.11%	1,424	3.46%
MIAMI	101,619	5.10%	77	0.08%	566	0.56%	130	0.13%	4,453	4.38%
MONROE	14,698	11.00%	24	0.16%	208	1.42%	15	0.10%	1,578	10.74%
MONTGOMERY	547,435	8.30%	770	0.14%	10,705	1.96%	1,758	0.32%	53,491	9.77%
MORGAN	14,958	15.70%	69	0.46%	125	0.84%	12	0.08%	1,956	13.08%
MORROW	34,322	6.60%	47	0.14%	298	0.87%	29	0.08%	2,878	8.39%

*SOURCE: 2005 Ohio County Population Estimates, Ohio Dept. of Development, GRP342RA, GBS003RA, GRP304RA and GRP304RC Reports from Management Information Services.

**TABLE 10
PERCENT OF OHIO'S POPULATION PARTICIPATING IN SELECTED
PUBLIC ASSISTANCE PROGRAMS FOR JANUARY 2007**

OHIO COUNTY	Estimated Total Population *	Percent of All Families Below Poverty Level	DISABILITY ASSISTANCE		OWF COMBINED		FOSTER CARE		FNS BENEFITS	
			Recipients as % of		Recipients	Recipients as % of Total Population	Recipients	Recipients as % of Total Population	Recipients	Recipients as % of Total Population
			Recipients	Total Population						
STATEWIDE	11,464,042	7.80%	13,678	0.12%	169,838	1.48%	27,150	0.24%	1,074,737	9.37%
MUSKINGUM	85,579	9.90%	370	0.43%	1,797	2.10%	159	0.19%	13,730	16.04%
NOBLE	14,156	8.30%	15	0.11%	62	0.44%	7	0.05%	1,251	8.84%
OTTAWA	41,583	4.20%	33	0.08%	322	0.77%	8	0.02%	2,384	5.73%
PAULDING	19,537	4.90%	27	0.14%	276	1.41%	26	0.13%	1,375	7.04%
PERRY	35,246	9.40%	105	0.30%	674	1.91%	78	0.22%	5,158	14.63%
PICKAWAY	52,989	7.60%	66	0.12%	915	1.73%	39	0.07%	4,800	9.06%
PIKE	28,146	15.10%	76	0.27%	713	2.53%	38	0.14%	5,315	18.88%
PORTAGE	155,631	5.90%	105	0.07%	833	0.54%	143	0.09%	8,883	5.71%
PREBLE	42,527	4.50%	48	0.11%	365	0.86%	90	0.21%	2,676	6.29%
PUTNAM	34,928	4.00%	14	0.04%	37	0.11%	14	0.04%	1,392	3.99%
RICHLAND	127,949	8.20%	270	0.21%	1,224	0.96%	259	0.20%	12,373	9.67%
ROSS	75,197	9.10%	150	0.20%	1,515	2.01%	121	0.16%	10,360	13.78%
SANDUSKY	61,676	5.70%	79	0.13%	362	0.59%	86	0.14%	3,952	6.41%
SCIOTO	76,561	15.20%	223	0.29%	1,887	2.46%	88	0.11%	15,650	20.44%
SENECA	57,483	6.10%	81	0.14%	282	0.49%	113	0.20%	4,399	7.65%
SHELBY	48,736	5.30%	36	0.07%	252	0.52%	62	0.13%	2,652	5.44%
STARK	380,608	6.80%	397	0.10%	6,285	1.65%	1,206	0.32%	29,634	7.79%
SUMMIT	546,604	7.50%	493	0.09%	9,938	1.82%	1,436	0.26%	52,322	9.57%
TRUMBULL	219,296	7.90%	320	0.15%	2,595	1.18%	440	0.20%	18,299	8.34%
TUSCARAWAS	91,944	7.20%	114	0.12%	1,166	1.27%	264	0.29%	7,746	8.42%
UNION	45,751	3.60%	34	0.07%	393	0.86%	47	0.10%	2,464	5.39%
VAN WERT	29,154	4.20%	21	0.07%	63	0.22%	16	0.05%	1,365	4.68%
VINTON	13,429	15.10%	55	0.41%	264	1.97%	26	0.19%	2,662	19.82%
WARREN	196,622	3.00%	89	0.05%	394	0.20%	134	0.07%	3,887	1.98%
WASHINGTON	62,210	8.60%	129	0.21%	219	0.35%	54	0.09%	5,400	8.68%
WAYNE	113,697	5.40%	196	0.17%	967	0.85%	126	0.11%	7,148	6.29%
WILLIAMS	38,688	3.90%	40	0.10%	378	0.98%	50	0.13%	2,805	7.25%
WOOD	123,929	4.70%	50	0.04%	405	0.33%	65	0.05%	4,613	3.72%
WYANDOT	22,813	3.80%	10	0.04%	66	0.29%	29	0.13%	891	3.91%
UNKNOWN										

*SOURCE: 2005 Ohio County Population Estimates, Ohio Dept. of Development, GRP342RA, GBS003RA, GRP304RA and GRP304RC Reports from Management Information Services.

**TABLE 7
CHILD CARE REVISION
OCTOBER 2006 UPDATE**

OHIO COUNTY	OWF JOBS, LEAP, and TRANSITIONAL		OTHER CHILD CARE		LOCAL FUNDING		ALL PROGRAM SOURCES	
	CHILDREN SERVED		CHILDREN SERVED		CHILDREN SERVED		CHILDREN SERVED	
	TOTAL	% OF STATE TOTAL	TOTAL	% OF STATE TOTAL	TOTAL	% OF STATE TOTAL	TOTAL	% OF STATE TOTAL
STATEWIDE	26,540	100.00%	75,361	100.00%	86	100.00%	101,987	100.00%
ADAMS	49	0.18%	91	0.12%	0	0.00%	140	0.14%
ALLEN	125	0.47%	462	0.61%	0	0.00%	587	0.58%
ASHLAND	6	0.02%	196	0.26%	0	0.00%	202	0.20%
ASHTABULA	214	0.81%	698	0.93%	0	0.00%	912	0.89%
ATHENS	94	0.35%	210	0.28%	0	0.00%	304	0.30%
AUGLAIZE	21	0.08%	134	0.18%	0	0.00%	155	0.15%
BELMONT	106	0.40%	259	0.34%	0	0.00%	365	0.36%
BROWN	35	0.13%	138	0.18%	0	0.00%	173	0.17%
BUTLER	215	0.81%	1,334	1.77%	0	0.00%	1,549	1.52%
CARROLL	28	0.11%	46	0.06%	0	0.00%	74	0.07%
CHAMPAIGN	28	0.11%	131	0.17%	0	0.00%	159	0.16%
CLARK	179	0.67%	638	0.85%	0	0.00%	817	0.80%
CLERMONT	219	0.83%	293	0.39%	0	0.00%	512	0.50%
CLINTON	6	0.02%	235	0.31%	0	0.00%	241	0.24%
COLUMBIANA	227	0.86%	828	1.10%	0	0.00%	1,055	1.03%
COSHOCTON	102	0.38%	170	0.23%	0	0.00%	272	0.27%
CRAWFORD	82	0.31%	190	0.25%	0	0.00%	272	0.27%
CUYAHOGA	4,931	18.58%	17,469	23.18%	0	0.00%	22,400	21.96%
DARKE	49	0.18%	134	0.18%	0	0.00%	183	0.18%
DEFIANCE	85	0.32%	159	0.21%	0	0.00%	244	0.24%
DELAWARE	59	0.22%	316	0.42%	4	4.65%	379	0.37%
ERIE	38	0.14%	629	0.83%	0	0.00%	667	0.65%
FAIRFIELD	126	0.47%	552	0.73%	0	0.00%	678	0.66%
FAYETTE	80	0.30%	243	0.32%	0	0.00%	323	0.32%
FRANKLIN	3,232	12.18%	8,212	10.90%	76	88.37%	11,520	11.30%
FULTON	51	0.19%	159	0.21%	0	0.00%	210	0.21%
GALLIA	47	0.18%	169	0.22%	0	0.00%	216	0.21%
GEAUGA	52	0.20%	175	0.23%	0	0.00%	227	0.22%
GREENE	337	1.27%	610	0.81%	0	0.00%	947	0.93%

**TABLE 7
CHILD CARE REVISION
OCTOBER 2006 UPDATE**

OHIO COUNTY	OWF JOBS, LEAP, and TRANSITIONAL		OTHER CHILD CARE		LOCAL FUNDING		ALL PROGRAM SOURCES	
	CHILDREN SERVED		CHILDREN SERVED		CHILDREN SERVED		CHILDREN SERVED	
	TOTAL	% OF STATE TOTAL	TOTAL	% OF STATE TOTAL	TOTAL	% OF STATE TOTAL	TOTAL	% OF STATE TOTAL
STATEWIDE	26,540	100.00%	75,361	100.00%	86	100.00%	101,987	100.00%
GUERNSEY	106	0.40%	283	0.38%	0	0.00%	389	0.38%
HAMILTON	4,009	15.11%	9,170	12.17%	0	0.00%	13,179	12.92%
HANCOCK	119	0.45%	422	0.56%	0	0.00%	541	0.53%
HARDIN	25	0.09%	53	0.07%	0	0.00%	78	0.08%
HARRISON	29	0.11%	45	0.06%	0	0.00%	74	0.07%
HENRY	37	0.14%	114	0.15%	0	0.00%	151	0.15%
HIGHLAND	14	0.05%	203	0.27%	0	0.00%	217	0.21%
HOCKING	53	0.20%	105	0.14%	0	0.00%	158	0.15%
HOLMES	51	0.19%	95	0.13%	0	0.00%	146	0.14%
HURON	5	0.02%	459	0.61%	0	0.00%	464	0.45%
JACKSON	54	0.20%	159	0.21%	0	0.00%	213	0.21%
JEFFERSON	80	0.30%	345	0.46%	0	0.00%	425	0.42%
KNOX	86	0.32%	265	0.35%	0	0.00%	351	0.34%
LAKE	285	1.07%	781	1.04%	0	0.00%	1,066	1.05%
LAWRENCE	163	0.61%	424	0.56%	0	0.00%	587	0.58%
LICKING	304	1.15%	975	1.29%	0	0.00%	1,279	1.25%
LOGAN	30	0.11%	57	0.08%	0	0.00%	87	0.09%
LORAIN	839	3.16%	1,668	2.21%	0	0.00%	2,507	2.46%
LUCAS	2,093	7.89%	2,766	3.67%	0	0.00%	4,859	4.76%
MADISON	27	0.10%	115	0.15%	0	0.00%	142	0.14%
MAHONING	1,035	3.90%	1,470	1.95%	0	0.00%	2,505	2.46%
MARION	51	0.19%	395	0.52%	0	0.00%	446	0.44%
MEDINA	80	0.30%	642	0.85%	0	0.00%	722	0.71%
MEIGS	13	0.05%	182	0.24%	0	0.00%	195	0.19%
MERCER	32	0.12%	117	0.16%	0	0.00%	149	0.15%
MIAMI	146	0.55%	264	0.35%	0	0.00%	410	0.40%
MONROE	1	0.00%	80	0.11%	0	0.00%	81	0.08%
MONTGOMERY	1,108	4.17%	4,580	6.08%	0	0.00%	5,688	5.58%
MORGAN	7	0.03%	95	0.13%	0	0.00%	102	0.10%
MORROW	20	0.08%	156	0.21%	0	0.00%	176	0.17%

**TABLE 7
CHILD CARE REVISION
OCTOBER 2006 UPDATE**

OHIO COUNTY	OWF JOBS, LEAP, and TRANSITIONAL		OTHER CHILD CARE		LOCAL FUNDING		ALL PROGRAM SOURCES	
	CHILDREN SERVED		CHILDREN SERVED		CHILDREN SERVED		CHILDREN SERVED	
	TOTAL	% OF STATE TOTAL	TOTAL	% OF STATE TOTAL	TOTAL	% OF STATE TOTAL	TOTAL	% OF STATE TOTAL
STATEWIDE	26,540	100.00%	75,361	100.00%	86	100.00%	101,987	100.00%
MUSKINGUM	322	1.21%	716	0.95%	0	0.00%	1,038	1.02%
NOBLE	52	0.20%	82	0.11%	0	0.00%	134	0.13%
OTTAWA	83	0.31%	98	0.13%	0	0.00%	181	0.18%
PAULDING	5	0.02%	31	0.04%	0	0.00%	36	0.04%
PERRY	54	0.20%	255	0.34%	0	0.00%	309	0.30%
PICKAWAY	89	0.34%	139	0.18%	0	0.00%	228	0.22%
PIKE	78	0.29%	55	0.07%	0	0.00%	133	0.13%
PORTAGE	192	0.72%	328	0.44%	0	0.00%	520	0.51%
PREBLE	47	0.18%	128	0.17%	0	0.00%	175	0.17%
PUTNAM	17	0.06%	99	0.13%	0	0.00%	116	0.11%
RICHLAND	347	1.31%	761	1.01%	0	0.00%	1,108	1.09%
ROSS	117	0.44%	275	0.36%	0	0.00%	392	0.38%
SANDUSKY	105	0.40%	493	0.65%	0	0.00%	598	0.59%
SCIOTO	168	0.63%	523	0.69%	0	0.00%	691	0.68%
SENECA	31	0.12%	263	0.35%	0	0.00%	294	0.29%
SHELBY	74	0.28%	282	0.37%	0	0.00%	356	0.35%
STARK	866	3.26%	2,176	2.89%	0	0.00%	3,042	2.98%
SUMMIT	996	3.75%	3,650	4.84%	1	1.16%	4,647	4.56%
TRUMBULL	367	1.38%	1,566	2.08%	0	0.00%	1,933	1.90%
TUSCARAWAS	85	0.32%	384	0.51%	0	0.00%	469	0.46%
UNION	50	0.19%	222	0.29%	5	5.81%	277	0.27%
VAN WERT	12	0.05%	50	0.07%	0	0.00%	62	0.06%
VINTON	5	0.02%	84	0.11%	0	0.00%	89	0.09%
WARREN	214	0.81%	382	0.51%	0	0.00%	596	0.58%
WASHINGTON	69	0.26%	244	0.32%	0	0.00%	313	0.31%
WAYNE	218	0.82%	297	0.39%	0	0.00%	515	0.50%
WILLIAMS	50	0.19%	91	0.12%	0	0.00%	141	0.14%
WOOD	97	0.37%	282	0.37%	0	0.00%	379	0.37%
WYANDOT	5	0.02%	40	0.05%	0	0.00%	45	0.04%

SOURCE: COGNOS. The above numbers have not been reconciled between the CCIDS/3299 data collection system and 2827 ODJFS fiscal reporting system; therefore they may not be conclusive at this time.

OWF data consist of funding codes: 173,312, 313,314, 326, & 327. Other data consist of funding codes: 320, 321, 322, 323, 324, 325, 328, 329, and 342. Local Funding is from funding code 899.