
Evaluation of the Second Ohio Title IV-E Waiver Demonstration Project: Interim Evaluation Report Appendices

Submitted By:

Human Services Research Institute
7420 SW Bridgeport Rd.
Portland, OR 97224

In Collaboration With:

Westat
Chapin Hall Center for Children at the University of Chicago
Larry Wallerstein, independent consultant

June 2007



Appendix A: Caseload Dynamics Reports

This appendix presents the detailed caseload dynamics reports that were mentioned in Chapter 1. All reports are based on children under age 18 whose case information was in FACSIS between 1996 and 2006. The data are not risk-adjusted, and thus do not present Waiver effects. They are useful for discussing local trends and workloads. The reports are grouped by county size for comparison purposes. The size groupings are provided by the State and have changed somewhat since the last report.

Exhibit A1: List of Caseload Dynamics Reports

<i>Report</i>	<i>Name of Report</i>	<i>Description</i>	<i>Data Source**</i>
1	Number of Children Served in Child Welfare by Year	Unduplicated count of children in any case or as victim in any report during the year	Events: 060; 062; 172; 198; 200; I00
2	Number of Children in Ongoing Cases by Year	Unduplicated count of children in any ongoing case during the year, grouped into cases where children were placed and were not placed	Events: 060; 062; 172; 198; 200
3	Number of New Children Served in Child Welfare by Year	Number of new children in any case or as victim in any report during the year	Events: 060; 062; 172; 198; 200; I00
4	Number of New Children in Placement by Year	Number of new children in placement for at least one day during the year	Events: 060
5	Number of Child Abuse/Neglect Incidents by Year	Number of incidents (not number of children in incidents) during the year	Event: I00
6	Number of Children in a Child Abuse/Neglect Incident by Year	Unduplicated count of children as victims in at least one child abuse/neglect incident during the year	Event: I00
7	Number of Children with a Substantiated/Indicated Child Abuse/Neglect Allegation by Year	Unduplicated count of all children with a substantiated or indicated abuse/neglect allegation during the year. NOTE: During the late 1990's, some counties began using the FRAM. Some of those counties continued to record both substantiation/indication and case resolution. Others chose one or the other. Only three counties – Montgomery, Summit, and Trumbull – never switched to the FRAM approach. Thus, care should be taken with interpretation of these data.	Events: I00; 216
8	Number of Children under Protective Supervision by Year	Unduplicated count of all children under court-ordered protective supervision during the year	Events: 172; 198
9	Number of Placement Exits to Other Relatives by Year	Unduplicated count of children exiting to relative custody during the year	Event: 084

Exhibit A1: List of Caseload Dynamics Reports (continued)

10	Placement with Relatives and Nonrelatives as of January 1 each Year	Snapshot of all children in unlicensed relative homes or unlicensed nonrelative homes, as of January 1 each year	Events: 060; 064
11	Unpaid Placement Days per Year	Number of placement days with unlicensed relatives and unlicensed nonrelatives during the year	Events: 060; 064
12	Children in Placement for more than 24 Months as of January 1 each Year	Snapshot of all children who have been in placement for more than 24 months and not in PPLA, PCC, or PS, as of January 1 each year	Events: 060; 064; 080; 082; 084
13	Children in PPLA or PCC/PS as of January 1 each Year	Snapshot of all children in placement with custody type of PPLA, PCC, or PS, as of January 1 each year	Events: 060; 064; 080; 082; 084
14	Number of Children in Subsidized Adoptions as of January 1 each Year	Snapshot of all children who are receiving adoption subsidies, excluding SAMS, as of January 1 each year	Event: 362

* Since the last Protect Ohio report, the counties have increased their capacity to generate reports at the local level. Therefore, the number of caseload reports has decreased. These reports were developed in conjunction with the data committee to reflect what they suggested would be most useful to them. All reports are based on children under the age of 18 who were in the FACSIS system between 1996 and 2006. These reports contain raw data that have not been risk adjusted; therefore, they are not useful measures of waiver effects. Waiver-related data are presented elsewhere in this report. Counties will find the caseload reports useful for discussion of local trends and for describing local workloads. The reports are grouped by size, and comparison with other counties within the same size grouping is appropriate. The size groupings are provided by the State and have changed somewhat since the last report.

** NOTE: The evaluation uses data from the state CPOE files. It is important for the user to know that there is not a one to one correspondence between FACSIS data files and FACSIS events. Data from an event record are placed into multiple data files and data files contain data from multiple events.

Report 1: Number of Children Served in Child Welfare by Year

Counties by Size	1996	1997	1998	1999	2000	2001	2002	2003	2004	2005	2006*
Small											
Coshocton	607	465	399	469	530	499	447	465	516	521	378
Hardin	614	425	392	480	372	357	338	442	431	352	216
Hocking	755	685	579	490	547	596	574	451	486	517	420
Vinton	332	340	345	348	422	406	387	326	321	249	313
Medium/Small											
Crawford	765	706	671	680	675	617	780	675	489	498	478
Highland	911	741	486	773	746	680	854	808	826	878	687
Medium											
Belmont	1,087	820	840	726	772	781	850	785	714	678	638
Hancock	623	619	629	618	446	570	590	671	573	617	491
Miami	869	669	693	783	823	700	784	748	736	750	604
Muskingum	2,020	1,752	1,887	1,932	1,485	1,522	1,805	1,632	1,351	1,453	1,245
Scioto	1,044	1,069	1,205	960	1,062	408	368	389	539	610	446
Large											
Allen	1,888	1,781	2,213	1,874	1,357	1,516	1,443	1,390	1,350	1,358	1,044
Ashtabula	822	773	625	759	846	1,082	985	909	848	889	824
Clark	2,248	1,910	1,391	1,618	1,663	1,579	1,738	1,839	2,079	2,156	1,856
Clermont	3,075	2,796	2,614	2,543	2,280	2,253	1,990	1,923	1,824	1,774	1,533
Columbiana	528	677	631	1,583	1,486	848	747	708	1,009	1,111	1,219
Fairfield	1,200	1,127	1,010	1,224	1,253	1,348	1,421	1,372	1,168	1,082	1,055
Greene	2,121	1,656	1,504	1,332	1,736	1,831	2,041	1,953	1,966	2,094	1,604
Medina	990	890	858	575	708	664	796	758	658	619	499
Portage	2,084	2,130	1,749	1,655	1,724	1,482	1,694	1,636	1,623	1,630	1,271
Richland	2,050	2,093	2,049	2,104	2,662	2,450	2,139	2,549	3,127	3,013	2,711
Warren	1,098	942	684	661	653	565	579	561	550	562	578
Wood	720	796	676	593	563	540	638	893	1,045	1,009	938
Metro											
Butler	4,115	4,109	4,841	5,290	4,894	4,563	4,498	4,150	4,381	5,376	4,379
Lorain	3,145	2,255	2,369	2,756	2,443	2,362	2,823	3,131	3,268	3,079	2,836
Mahoning	3,310	3,615	3,158	2,958	3,119	2,955	2,865	2,890	2,867	2,721	2,272
Montgomery	10,604	10,911	10,323	9,588	8,610	8,353	8,004	7,663	7,719	8,215	7,181
Stark	7,177	6,233	6,074	6,918	7,139	7,760	7,872	6,620	6,406	6,547	5,707
Summit	9,938	11,811	11,795	10,692	6,712	6,048	7,009	8,363	8,219	10,177	10,026
Trumbull	2,788	2,466	2,280	2,329	2,268	2,163	2,163	2,260	2,394	2,212	2,067
Major Metro											
Franklin	20,371	20,069	20,236	20,489	20,336	20,288	19,219	19,418	18,942	18,217	16,620

* Through 9/18/2006

Report 2: Number of Children in Ongoing Cases by Year

Counties by Size	1996					1997				
	Total	In Placement		Not Placed		Total	In Placement		Not Placed	
		#	%	#	%		#	%	#	%
Small										
Coshocton	231	32	14	199	86	189	29	15	160	85
Hardin	253	51	20	202	80	134	49	37	85	63
Hocking	281	81	29	200	71	282	86	30	196	70
Vinton	79	26	33	53	67	109	25	23	84	77
Medium/Small										
Crawford	197	124	63	73	37	196	116	59	80	41
Highland	436	70	16	366	84	341	80	23	261	77
Medium										
Belmont	393	154	39	239	61	425	166	39	259	61
Hancock	182	42	23	140	77	182	41	23	141	77
Miami	355	175	49	180	51	321	175	55	146	45
Muskingum	938	185	20	753	80	824	183	22	641	78
Scioto	304	188	62	116	38	336	179	53	157	47
Large										
Allen	746	243	33	503	67	629	183	29	446	71
Ashtabula	534	232	43	302	57	592	258	44	334	56
Clark	1,376	405	29	971	71	1,230	429	35	801	65
Clermont	678	292	43	386	57	698	312	45	386	55
Columbiana	236	99	42	137	58	259	102	39	157	61
Fairfield	525	149	28	376	72	491	167	34	324	66
Greene	1,028	225	22	803	78	878	179	20	699	80
Medina	271	100	37	171	63	273	93	34	180	66
Portage	512	280	55	232	45	585	301	51	284	49
Richland	1,351	455	34	896	66	1,266	416	33	850	67
Warren	478	109	23	369	77	440	117	27	323	73
Wood	244	135	55	109	45	233	109	47	124	53
Metro										
Butler	2,303	918	40	1,385	60	2,413	930	39	1,483	61
Lorain	1,623	487	30	1,136	70	1,335	410	31	925	69
Mahoning	1,926	417	22	1,509	78	1,917	373	19	1,544	81
Montgomery	6,900	1,741	25	5,159	75	7,171	1,861	26	5,310	74
Stark	2,936	1,429	49	1,507	51	2,917	1,205	41	1,712	59
Summit	4,699	1,856	39	2,843	61	5,439	1,981	36	3,458	64
Trumbull	2,241	394	18	1,847	82	1,997	335	17	1,662	83
Major Metro										
Franklin	11,750	4,557	39	7,193	61	12,321	4,662	38	7,659	62

Report 2: Number of Children in Ongoing Cases by Year (continued)

Counties by Size	1998					1999				
	Total	In Placement		Not Placed		Total	In Placement		Not Placed	
		#	%	#	%		#	%	#	%
Small										
Coshocton	189	41	22	148	78	241	47	20	194	80
Hardin	158	61	39	97	61	137	52	38	85	62
Hocking	284	90	32	194	68	275	87	32	188	68
Vinton	145	19	13	126	87	154	25	16	129	84
Medium/Small										
Crawford	191	98	51	93	49	209	108	52	101	48
Highland	265	106	40	159	60	507	94	19	413	81
Medium										
Belmont	391	158	40	233	60	353	135	38	218	62
Hancock	174	49	28	125	72	187	46	25	141	75
Miami	326	185	57	141	43	375	198	53	177	47
Muskingum	846	153	18	693	82	798	158	20	640	80
Scioto	349	212	61	137	39	288	189	66	99	34
Large										
Allen	679	217	32	462	68	722	226	31	496	69
Ashtabula	555	241	43	314	57	608	304	50	304	50
Clark	994	386	39	608	61	1,137	470	41	667	59
Clermont	726	342	47	384	53	773	340	44	433	56
Columbiana	265	102	38	163	62	273	98	36	175	64
Fairfield	497	161	32	336	68	458	165	36	293	64
Greene	744	197	26	547	74	632	209	33	423	67
Medina	250	99	40	151	60	243	87	36	156	64
Portage	575	269	47	306	53	557	272	49	285	51
Richland	1,112	384	35	728	65	1,331	438	33	893	67
Warren	450	138	31	312	69	445	158	36	287	64
Wood	241	94	39	147	61	214	80	37	134	63
Metro										
Butler	2,467	892	36	1,575	64	2,402	858	36	1,544	64
Lorain	1,346	399	30	947	70	1,450	416	29	1,034	71
Mahoning	1,916	354	18	1,562	82	1,839	367	20	1,472	80
Montgomery	7,562	2,064	27	5,498	73	7,239	2,026	28	5,213	72
Stark	2,747	1,237	45	1,510	55	2,843	1,309	46	1,534	54
Summit	5,434	2,220	41	3,214	59	5,148	2,212	43	2,936	57
Trumbull	2,148	273	13	1,875	87	2,276	255	11	2,021	89
Major Metro										
Franklin	12,802	4,711	37	8,091	63	13,289	5,240	39	8,049	61

Report 2: Number of Children in Ongoing Cases by Year (continued)

Counties by Size	2000					2001				
	Total	In Placement		Not Placed		Total	In Placement		Not Placed	
		#	%	#	%		#	%	#	%
Small										
Coshocton	239	42	18	197	82	276	56	20	220	80
Hardin	142	47	33	95	67	143	69	48	74	52
Hocking	276	70	25	206	75	278	84	30	194	70
Vinton	146	31	21	115	79	147	34	23	113	77
Medium/Small										
Crawford	242	120	50	122	50	279	120	43	159	57
Highland	434	99	23	335	77	299	89	30	210	70
Medium										
Belmont	354	138	39	216	61	329	137	42	192	58
Hancock	190	57	30	133	70	217	62	29	155	71
Miami	422	236	56	186	44	404	218	54	186	46
Muskingum	743	179	24	564	76	789	164	21	625	79
Scioto	361	191	53	170	47	260	135	52	125	48
Large										
Allen	673	205	30	468	70	677	206	30	471	70
Ashtabula	628	284	45	344	55	620	290	47	330	53
Clark	1,181	492	42	689	58	1,200	428	36	772	64
Clermont	677	301	44	376	56	729	336	46	393	54
Columbiana	274	117	43	157	57	339	132	39	207	61
Fairfield	518	203	39	315	61	628	228	36	400	64
Greene	746	230	31	516	69	761	194	25	567	75
Medina	264	91	34	173	66	303	102	34	201	66
Portage	570	272	48	298	52	611	274	45	337	55
Richland	1,569	462	29	1,107	71	1,495	438	29	1,057	71
Warren	482	165	34	317	66	461	179	39	282	61
Wood	233	75	32	158	68	245	71	29	174	71
Metro										
Butler	2,117	714	34	1,403	66	1,827	668	37	1,159	63
Lorain	1,683	478	28	1,205	72	1,738	490	28	1,248	72
Mahoning	1,846	355	19	1,491	81	1,767	317	18	1,450	82
Montgomery	6,407	1,973	31	4,434	69	5,658	1,955	35	3,703	65
Stark	2,826	1,292	46	1,534	54	2,967	1,367	46	1,600	54
Summit	4,324	1,994	46	2,330	54	4,345	2,200	51	2,145	49
Trumbull	2,226	249	11	1,977	89	2,111	291	14	1,820	86
Major Metro										
Franklin	13,341	5,434	41	7,907	59	14,138	5,884	42	8,254	58

Report 2: Number of Children in Ongoing Cases by Year (continued)

Counties by Size	2002					2003				
	Total	In Placement		Not Placed		Total	In Placement		Not Placed	
		#	%	#	%		#	%	#	%
Small										
Coshocton	273	49	18	224	82	272	39	14	233	86
Hardin	127	49	39	78	61	167	70	42	97	58
Hocking	293	85	29	208	71	282	70	25	212	75
Vinton	149	37	25	112	75	153	57	37	96	63
Medium/Small										
Crawford	262	124	47	138	53	219	81	37	138	63
Highland	350	89	25	261	75	325	102	31	223	69
Medium										
Belmont	326	120	37	206	63	336	117	35	219	65
Hancock	205	58	28	147	72	204	79	39	125	61
Miami	391	209	53	182	47	372	150	40	222	60
Muskingum	945	186	20	759	80	923	194	21	729	79
Scioto	273	147	54	126	46	300	171	57	129	43
Large										
Allen	710	202	28	508	72	750	206	27	544	73
Ashtabula	609	261	43	348	57	638	254	40	384	60
Clark	1,247	426	34	821	66	1,218	355	29	863	71
Clermont	784	372	47	412	53	899	442	49	457	51
Columbiana	439	165	38	274	62	505	174	34	331	66
Fairfield	659	252	38	407	62	678	271	40	407	60
Greene	865	194	22	671	78	916	209	23	707	77
Medina	345	86	25	259	75	345	110	32	235	68
Portage	611	258	42	353	58	617	293	47	324	53
Richland	1,342	354	26	988	74	1,343	258	19	1,085	81
Warren	447	170	38	277	62	473	197	42	276	58
Wood	296	97	33	199	67	319	88	28	231	72
Metro										
Butler	1,952	706	36	1,246	64	1,897	636	34	1,261	66
Lorain	1,636	386	24	1,250	76	1,614	310	19	1,304	81
Mahoning	1,924	274	14	1,650	86	1,853	278	15	1,575	85
Montgomery	5,074	1,819	36	3,255	64	4,645	1,658	36	2,987	64
Stark	3,259	1,441	44	1,818	56	3,261	1,434	44	1,827	56
Summit	4,765	2,442	51	2,323	49	4,924	2,430	49	2,494	51
Trumbull	2,117	296	14	1,821	86	2,226	359	16	1,867	84
Major Metro										
Franklin	15,363	6,188	40	9,175	60	15,591	6,160	40	9,431	60

Report 2: Number of Children in Ongoing Cases by Year (continued)

Counties by Size	2004					2005				
	Total	In Placement		Not Placed		Total	In Placement		Not Placed	
		#	%	#	%		#	%	#	%
Small										
Coshocton	314	41	13	273	87	245	30	12	215	88
Hardin	164	63	38	101	62	145	59	41	86	59
Hocking	270	85	31	185	69	256	80	31	176	69
Vinton	174	60	34	114	66	157	58	37	99	63
Medium/Small										
Crawford	271	107	39	164	61	265	108	41	157	59
Highland	344	128	37	216	63	351	123	35	228	65
Medium										
Belmont	352	110	31	242	69	335	106	32	229	68
Hancock	224	73	33	151	67	226	73	32	153	68
Miami	359	136	38	223	62	358	135	38	223	62
Muskingum	827	234	28	593	72	755	202	27	553	73
Scioto	376	217	58	159	42	400	219	55	181	45
Large										
Allen	790	227	29	563	71	721	237	33	484	67
Ashtabula	620	247	40	373	60	653	255	39	398	61
Clark	996	297	30	699	70	1,027	316	31	711	69
Clermont	979	480	49	499	51	968	525	54	443	46
Columbiana	596	157	26	439	74	573	163	28	410	72
Fairfield	634	298	47	336	53	606	267	44	339	56
Greene	930	216	23	714	77	949	239	25	710	75
Medina	280	80	29	200	71	310	91	29	219	71
Portage	562	274	49	288	51	551	253	46	298	54
Richland	1,563	209	13	1,354	87	1,722	184	11	1,538	89
Warren	456	198	43	258	57	462	190	41	272	59
Wood	296	89	30	207	70	313	95	30	218	70
Metro										
Butler	1,952	590	30	1,362	70	2,328	672	29	1,656	71
Lorain	1,695	267	16	1,428	84	1,795	256	14	1,539	86
Mahoning	1,840	351	19	1,489	81	1,766	348	20	1,418	80
Montgomery	4,628	1,564	34	3,064	66	4,604	1,483	32	3,121	68
Stark	3,069	1,270	41	1,799	59	3,191	1,302	41	1,889	59
Summit	5,056	2,335	46	2,721	54	5,209	2,256	43	2,953	57
Trumbull	2,226	323	15	1,903	85	2,060	301	15	1,759	85
Major Metro										
Franklin	15,132	5,926	39	9,206	61	14,547	5,785	40	8,762	60

Report 2: Number of Children in Ongoing Cases by Year (continued)

Counties by Size	2006*				
	Total	In Placement		Not Placed	
		#	%	#	%
Small					
Coshocton	201	26	13	175	87
Hardin	111	48	43	63	57
Hocking	204	69	34	135	66
Vinton	141	54	38	87	62
Medium/Small					
Crawford	288	108	38	180	63
Highland	356	100	28	256	72
Medium					
Belmont	360	102	28	258	72
Hancock	197	80	41	117	59
Miami	309	124	40	185	60
Muskingum	666	183	27	483	73
Scioto	330	224	68	106	32
Large					
Allen	622	219	35	403	65
Ashtabula	657	249	38	408	62
Clark	1,035	305	29	730	71
Clermont	972	500	51	472	49
Columbiana	655	188	29	467	71
Fairfield	641	281	44	360	56
Greene	802	20	27	582	73
Medina	303	106	35	197	65
Portage	529	217	41	312	59
Richland	1,599	151	9	1,448	91
Warren	484	172	36	312	64
Wood	306	77	25	229	75
Metro					
Butler	2,377	729	31	1,648	69
Lorain	1,767	265	15	1,502	85
Mahoning	1,609	346	22	1,263	78
Montgomery	4,292	1,337	31	2,955	69
Stark	3,096	1,202	39	1,894	61
Summit	6,042	2,235	37	3,807	63
Trumbull	1,952	279	14	1,673	86
Major Metro					
Franklin	14,339	5,692	40	8,647	60

* Through 9/18/2006

Report 3: Number of New Children Served in Child Welfare by Year

Counties by Size	1996	1997	1998	1999	2000	2001	2002	2003	2004	2005	2006*
Small											
Coshocton	228	186	140	183	240	191	163	172	188	190	126
Hardin	254	148	143	214	123	149	134	213	184	162	61
Hocking	343	299	222	168	227	262	232	168	189	221	153
Vinton	156	175	136	141	193	164	124	116	114	63	112
Medium/Small											
Crawford	325	276	279	290	264	234	305	257	167	174	194
Highland	398	277	200	382	333	333	437	354	357	383	215
Medium											
Belmont	398	268	299	265	299	297	345	281	236	233	206
Hancock	306	307	308	288	191	301	286	352	254	285	211
Miami	399	268	290	336	332	247	348	298	339	306	232
Muskingum	600	565	617	598	437	457	608	481	419	520	399
Scioto	447	445	544	388	486	114	101	140	215	277	141
Large											
Allen	820	683	993	726	462	590	522	517	452	489	302
Ashtabula	294	259	144	294	308	468	373	352	252	320	221
Clark	664	534	389	490	519	468	579	638	848	898	597
Clermont	1,533	1,203	1,127	1,087	895	924	772	754	691	696	476
Columbiana	235	336	262	961	741	332	279	239	429	465	490
Fairfield	481	484	415	548	541	583	586	548	407	410	374
Greene	916	593	637	592	802	862	976	820	823	902	546
Medina	567	473	452	269	377	366	443	363	312	295	188
Portage	1,009	896	761	681	767	529	688	645	712	700	471
Richland	716	741	714	730	927	822	591	938	1,119	1,014	757
Warren	552	448	284	250	266	171	198	212	185	203	200
Wood	335	390	333	263	277	271	326	524	619	560	471
Metro											
Butler	1,567	1,537	1,965	2,044	1,923	1,691	1,638	1,459	1,657	2,122	1,454
Lorain	1,285	751	982	1,180	878	769	1,162	1,356	1,378	1,198	864
Mahoning	1,177	1,336	1,021	965	1,067	985	883	904	848	801	561
Montgomery	3,696	3,688	3,148	2,645	2,447	2,521	2,506	2,508	2,528	2,823	2,075
Stark	2,481	1,835	1,873	2,336	2,403	2,578	2,418	1,765	1,924	1,960	1,504
Summit	4,317	5,135	4,526	3,601	1,626	1,525	2,002	2,724	2,488	3,467	2,712
Trumbull	793	727	715	739	697	678	720	723	779	644	520
Major Metro											
Franklin	7,028	6,662	6,601	6,468	6,348	6,084	5,415	5,195	5,143	4,957	3,501

* Through 9/18/2006

Report 4: Number of New Children in Placement by Year

Counties by Size	1996	1997	1998	1999	2000	2001	2002	2003	2004	2005	2006*
Small											
Coshocton	14	12	23	27	19	29	14	11	16	8	4
Hardin	25	30	36	18	14	29	8	43	13	21	10
Hocking	58	55	54	43	29	49	40	31	39	24	15
Vinton	11	10	11	9	17	12	20	35	28	15	17
Medium/Small											
Crawford	74	52	45	61	62	50	47	25	53	46	41
Highland	41	50	75	62	63	50	47	64	84	59	22
Medium											
Belmont	79	83	77	59	60	57	51	39	42	31	33
Hancock	33	22	27	16	28	25	23	47	32	35	22
Miami	80	60	73	75	109	67	62	43	39	36	17
Muskingum	82	84	62	70	91	85	97	86	120	77	55
Scioto	132	105	115	75	85	34	63	86	104	102	67
Large											
Allen	86	57	107	88	71	90	62	65	93	100	43
Ashtabula	81	100	77	156	113	126	93	121	81	118	61
Clark	161	153	134	214	166	174	163	116	91	137	75
Clermont	118	147	146	150	80	126	166	216	182	199	146
Columbiana	41	56	38	36	43	44	89	74	60	61	72
Fairfield	79	57	53	63	92	89	94	106	114	71	85
Greene	131	77	93	95	97	61	79	76	91	115	47
Medina	52	34	51	34	39	47	28	61	30	54	32
Portage	126	140	90	120	106	113	91	129	103	94	59
Richland	275	166	161	210	173	152	110	68	72	67	42
Warren	42	48	77	69	68	79	60	107	78	58	49
Wood	39	19	27	20	28	32	51	30	26	34	20
Metro											
Butler	450	362	306	276	232	233	266	188	214	289	274
Lorain	161	129	179	191	230	234	94	136	135	135	98
Mahoning	195	153	144	164	141	124	76	107	137	98	90
Montgomery	780	809	828	630	599	586	508	473	509	414	295
Stark	656	320	454	413	390	463	480	396	413	418	284
Summit	884	943	946	813	725	884	976	919	840	824	657
Trumbull	147	118	90	90	87	120	116	164	83	72	49
Major Metro											
Franklin	2,420	2,109	1,920	2,132	2,072	2,357	2,344	2,228	2,064	2,135	1,500

* Through 9/18/2006

Report 5: Number of Child Abuse/Neglect Incidents by Year

Counties by Size	1996	1997	1998	1999	2000	2001	2002	2003	2004	2005	2006*
Small											
Coshocton	290	238	198	214	247	223	172	170	194	240	163
Hardin	403	294	212	273	194	190	166	279	268	203	88
Hocking	354	329	253	204	246	244	229	151	184	209	162
Vinton	200	205	190	152	201	179	165	142	123	79	136
Medium/Small											
Crawford	513	429	357	340	270	261	286	269	185	207	163
Highland	436	360	232	259	311	439	409	463	502	544	291
Medium											
Belmont	575	327	337	304	346	363	444	338	304	284	230
Hancock	407	401	443	418	249	344	367	459	326	407	151
Miami	489	367	374	417	395	315	361	377	388	374	283
Muskingum	1,036	840	874	831	690	665	669	585	541	663	440
Scioto	634	603	703	565	587	138	98	100	194	221	135
Large											
Allen	1,043	999	1,068	812	708	831	695	630	605	600	415
Ashtabula	305	211	102	111	262	298	322	310	261	262	193
Clark	1,019	775	478	550	517	443	582	672	957	1,084	770
Clermont	2,269	1,889	1,643	1,554	1,329	1,282	993	922	739	684	403
Columbiana	262	345	337	792	678	311	233	214	470	502	496
Fairfield	668	607	509	690	665	747	753	694	540	509	423
Greene	1,166	814	762	698	937	1,026	1,072	981	1,014	1,172	746
Medina	610	534	509	320	365	329	386	340	328	300	190
Portage	1,182	1,232	957	867	891	708	817	894	826	866	492
Richland	897	929	970	896	1,203	1,070	934	1,266	1,766	1,574	1,319
Warren	554	452	259	233	195	129	139	128	115	120	128
Wood	375	490	381	333	285	299	315	534	639	641	488
Metro											
Butler	1,615	1,483	2,007	2,402	2,358	2,159	2,133	1,790	2,176	2,934	2,076
Lorain	1,265	834	950	1,196	870	726	1,129	1,441	1,581	1,398	1,109
Mahoning	1,140	1,446	1,087	1,002	1,113	1,011	879	826	861	840	558
Montgomery	4,217	4,307	3,492	2,991	2,798	2,892	2,597	3,063	3,206	3,422	2,717
Stark	3,710	2,725	2,907	3,140	2,767	3,027	3,115	2,684	2,674	2,696	1,928
Summit	7,833	7,289	6,982	5,695	2,602	2,089	2,621	3,594	3,377	6,253	4,320
Trumbull	651	545	171	75	52	81	85	71	253	243	212
Major Metro											
Franklin	9,146	8,488	8,408	8,286	7,975	7,386	5,823	5,803	5,496	5,174	3,642

* Through 9/18/2006

Report 6: Number of Children in a Child Abuse/Neglect Incident by Year

Counties by Size	1996	1997	1998	1999	2000	2001	2002	2003	2004	2005	2006*
Small											
Coshocton	450	345	262	305	367	307	245	251	274	331	214
Hardin	604	423	344	442	294	271	262	469	383	289	119
Hocking	642	588	433	317	389	437	415	244	340	341	272
Vinton	345	338	307	251	354	352	351	262	228	126	226
Medium/Small											
Crawford	796	661	600	598	576	472	685	594	332	318	270
Highland	734	622	378	451	487	688	749	716	796	829	489
Medium											
Belmont	902	527	560	485	521	549	675	559	447	419	379
Hancock	585	559	577	559	319	468	523	619	441	535	367
Miami	679	436	463	541	542	378	492	460	451	459	353
Muskingum	1,670	1,367	1,586	1,766	1,120	1,097	1,367	1,035	854	1,050	821
Scioto	1,015	1,097	1,180	910	989	214	152	172	285	337	198
Large											
Allen	1,609	1,545	2,271	1,650	948	1,126	1,017	909	821	848	546
Ashtabula	391	289	137	257	325	625	531	400	316	315	238
Clark	1,349	1,011	622	707	711	577	777	920	1,461	1,524	1,135
Clermont	3,461	2907	2,588	2,492	2,094	2,021	1,560	1,395	1,135	1,085	726
Columbiana	329	490	420	1,691	1,448	659	513	396	655	687	777
Fairfield	931	845	695	1,014	1,009	1,032	1,046	993	751	697	575
Greene	1,724	1,153	1,053	967	1,333	1,491	1,779	1,503	1,512	1,798	1,107
Medina	924	760	734	439	560	500	573	530	490	432	262
Portage	1,947	1,918	1,401	1,360	1,372	1,083	1,329	1,260	1,273	1,290	843
Richland	1,362	1,360	1,381	1,391	1,885	1,629	1,368	1,906	2,608	2,232	1,881
Warren	834	689	361	299	260	167	199	185	150	159	169
Wood	569	707	542	467	402	403	423	741	946	903	811
Metro											
Butler	2,413	2,248	3,048	3,857	3,726	3,468	3,411	2,919	3,373	4,477	3,070
Lorain	2,042	1,197	1,568	1,975	1,312	1,048	1,736	2,171	2,332	1,959	1,681
Mahoning	2,247	2,566	1,826	1,705	2,036	1,922	1,601	1,568	1,570	1,519	1,063
Montgomery	6,790	6,756	5,210	4,346	4,150	4,382	4,700	4,675	4,804	5,215	4,100
Stark	6,104	4,444	4,629	5,769	5,937	6,657	6,510	4,567	4,416	4,429	3,290
Summit	10,180	11,551	11,044	9,031	3,924	2,926	3,597	5,453	5,140	8,476	7,052
Trumbull	871	765	196	83	65	103	97	81	317	273	238
Major Metro											
Franklin	14,621	13,365	12,969	12,492	11,707	10,601	7,947	7,944	7,555	6,994	4,784

* Through 9/18/2006

Report 7: Number of Children with a Substantiated/Indicated
Child Abuse/Neglect Allegation by Year**

Counties by Size	1996	1997	1998	1999	2000	2001	2002	2003	2004	2005	2006*
Small											
Coshocton	129	110	219	237	254	105	77	83	108	99	73
Hardin	300	216	229	278	170	115	75	141	118	70	38
Hocking	117	84	126	264	268	203	142	89	92	99	62
Vinton	147	136	147	174	186	96	63	67	77	43	47
Medium/Small											
Crawford	273	196	284	277	245	122	117	118	92	123	118
Highland	221	155	232	329	230	210	297	177	186	188	115
Medium											
Belmont	312	179	289	366	391	234	192	187	165	177	139
Hancock	194	248	399	350	197	168	144	158	150	140	81
Miami	264	171	275	359	381	215	218	161	160	198	159
Muskingum	359	631	1,048	868	502	284	284	182	189	216	157
Scioto	147	274	610	530	564	79	67	102	181	161	103
Large											
Allen	588	776	1,480	989	468	456	414	453	359	364	249
Ashtabula	185	174	109	216	281	357	209	205	151	155	133
Clark	578	402	452	493	510	292	377	345	347	350	242
Clermont	861	713	987	1,530	1,158	740	425	413	416	421	250
Columbiana	196	325	342	1,171	843	181	181	175	302	235	192
Fairfield	204	193	481	664	586	178	204	209	178	164	123
Greene	447	551	736	664	879	554	594	378	463	479	177
Medina	323	243	270	310	417	220	228	182	192	172	117
Portage	701	612	1,077	817	810	387	355	338	408	342	184
Richland	663	589	995	872	1,088	549	391	597	685	622	460
Warren	426	342	252	204	211	110	151	141	119	108	110
Wood	280	308	379	298	268	216	150	286	330	305	271
Metro											
Butler	733	633	694	2,677	2,247	496	501	441	595	818	681
Lorain	610	431	690	861	991	542	603	685	674	672	493
Mahoning	683	842	1,296	1,140	1,208	492	393	416	381	385	299
Montgomery	3,115	2,545	2,031	1,634	1,505	1,472	1,321	1,422	1,534	1,597	1,248
Stark	2,665	1,749	3,130	3,310	3,049	2,110	1,939	1,255	1,181	1,264	706
Summit	1,531	1,810	1,746	1,287	757	874	957	1,028	1,011	1,335	993
Trumbull	550	387	113	60	49	95	84	69	220	190	136
Major Metro											
Franklin	5,324	4,518	4,315	3,716	3,301	3,362	3,088	2,966	2,890	2,686	1,902

*Through 9/18/2006 **During the late 1990's, some counties began using the FRAM. Some of those counties continued to record both substantiation/indication and case resolution. Others chose one or the other. Only three counties – Montgomery, Summit, and Trumbull – never switched to the FRAM approach. Thus, care should be taken with interpretation of these data.

Report 8: Number of Children under Protective Supervision by Year

Counties by Size	1996	1997	1998	1999	2000	2001	2002	2003	2004	2005	2006*
Small											
Coshocton	13	8	8	11	10	13	22	16	10	15	14
Hardin	12	5	28	31	36	38	17	19	31	35	31
Hocking	155	138	147	157	163	143	157	140	126	127	61
Vinton	14	30	42	23	31	25	21	34	30	33	28
Medium/Small											
Crawford	82	85	75	61	81	139	132	76	100	140	188
Highland	45	47	32	41	31	38	30	36	65	66	65
Medium											
Belmont	60	89	78	77	58	74	59	72	57	61	90
Hancock	37	52	37	17	28	28	52	69	79	70	48
Miami	128	111	113	111	77	79	95	95	104	93	56
Muskingum	217	208	166	117	156	177	219	220	199	195	147
Scioto	91	61	73	38	53	34	41	51	73	65	51
Large											
Allen	141	118	98	140	159	149	162	191	224	218	141
Ashtabula	94	84	91	105	120	136	170	172	162	149	130
Clark	121	136	107	97	107	130	124	118	141	141	106
Clermont	84	96	103	113	89	111	128	61	68	133	148
Columbiana	59	80	87	63	33	51	150	299	414	330	416
Fairfield	22	14	20	23	35	42	48	35	53	46	17
Greene	310	250	206	192	199	171	135	131	121	137	156
Medina	55	54	29	43	41	41	24	26	26	28	32
Portage	199	274	219	167	186	228	222	190	157	146	94
Richland	202	180	133	180	230	306	252	220	286	318	312
Warren	32	43	60	69	57	56	77	93	84	55	68
Wood	82	86	96	89	86	108	131	118	61	72	76
Metro											
Butler	16	27	22	27	29	36	25	35	76	240	388
Lorain	192	155	132	180	379	437	359	350	307	348	410
Mahoning	163	190	169	154	148	158	183	149	151	157	170
Montgomery	794	694	770	689	495	309	283	261	206	195	196
Stark	884	861	660	694	755	741	731	686	537	563	529
Summit	456	587	635	686	616	521	726	772	730	729	901
Trumbull	398	369	281	213	194	201	156	175	218	233	161
Major Metro											
Franklin	3,789	3,495	3,579	4,027	4,091	4,479	4,802	4,768	4,814	4,853	4,564

* Through 9/18/2006

Report 9: Number of Placement Exits to Other Relatives by Year

Counties by Size	1996			1997			1998		
	Total exits	Relative		Total exits	Relative		Total exits	Relative	
		#	%		#	%		#	%
Small									
Coshocton	20	.	.	17	.	.	31	4	13
Hardin	43	3	7	43	5	12	44	.	.
Hocking	66	31	47	74	18	24	87	25	29
Vinton	13	6	46	20	4	20	4	3	75
Medium/Small									
Crawford	90	16	18	76	11	14	70	12	17
Highland	54	.	.	66	2	3	94	14	15
Medium									
Belmont	121	20	17	126	10	8	119	15	13
Hancock	37	2	5	29	7	24	35	14	40
Miami	130	7	5	119	10	8	118	5	4
Muskingum	140	17	12	117	15	13	125	18	14
Scioto	139	2	1	113	4	4	160	.	.
Large									
Allen	179	22	12	133	19	14	167	26	16
Ashtabula	160	17	11	176	24	14	185	27	15
Clark	246	11	4	296	31	10	262	17	6
Clermont	182	21	12	207	24	12	244	32	13
Columbiana	59	3	5	62	4	6	62	6	10
Fairfield	117	5	4	118	5	4	92	4	4
Greene	189	41	22	134	20	15	155	19	12
Medina	90	11	12	69	9	13	81	5	6
Portage	206	20	10	230	19	8	211	29	14
Richland	384	41	11	357	45	13	313	36	12
Warren	74	10	14	83	10	12	97	11	11
Wood	83	4	5	68	4	6	54	2	4
Metro									
Butler	678	81	12	692	80	12	605	73	12
Lorain	337	30	9	293	26	9	306	19	6
Mahoning	314	55	18	294	57	19	264	49	19
Montgomery	1,323	325	25	1,387	243	18	1,424	248	17
Stark	984	147	15	804	122	15	774	86	11
Summit	1,384	140	10	1,464	167	11	1,623	207	13
Trumbull	259	53	20	273	48	18	207	27	13
Major Metro									
Franklin	3,452	406	12	3,590	425	12	3,559	384	11

Report 9: Number of Placement Exits to Other Relatives by Year (continued)

Counties by Size	1999			2000			2001		
	Total exits	Relative		Total exits	Relative		Total exits	Relative	
		#	%		#	%		#	%
Small									
Coshocton	27	5	19	30	.	.	25	1	4
Hardin	30	1	3	24	.	.	47	4	9
Hocking	73	27	37	59	13	22	71	24	34
Vinton	12	.	.	26	.	.	28	1	4
Medium/Small									
Crawford	71	5	7	75	7	9	87	10	11
Highland	86	9	10	82	7	9	74	4	5
Medium									
Belmont	92	5	5	105	7	7	107	6	6
Hancock	41	3	7	47	6	13	54	5	9
Miami	142	17	12	178	15	8	166	15	9
Muskingum	123	18	15	143	33	23	129	21	16
Scioto	141	4	3	135	12	9	85	9	11
Large									
Allen	185	42	23	164	33	20	158	45	28
Ashtabula	262	44	17	223	28	13	243	36	15
Clark	327	23	7	374	68	18	308	50	16
Clermont	232	32	14	218	15	7	222	16	7
Columbiana	62	1	2	62	8	13	84	8	10
Fairfield	103	10	10	151	9	6	153	19	12
Greene	160	26	16	188	30	16	152	10	7
Medina	71	5	7	77	5	6	87	3	3
Portage	213	28	13	226	32	14	196	37	19
Richland	352	31	9	385	60	16	353	47	13
Warren	125	15	12	122	14	11	123	13	11
Wood	51	3	6	61	7	11	57	8	14
Metro									
Butler	612	106	17	487	61	13	423	46	11
Lorain	296	47	16	384	83	22	378	57	15
Mahoning	270	42	16	280	47	17	245	35	14
Montgomery	1,402	231	16	1,410	198	14	1,403	133	9
Stark	821	125	15	795	103	13	866	90	10
Summit	1,637	273	17	1,312	190	14	1,638	149	9
Trumbull	165	25	15	181	29	16	166	22	13
Major Metro									
Franklin	4,044	496	12	4,133	483	12	4,535	551	12

Report 9: Number of Placement Exits to Other Relatives by Year (continued)

Counties by Size	2002			2003			2004		
	Total exits	Relative		Total exits	Relative		Total exits	Relative	
#		%	#		%	#		%	
Small									
Coshocton	26	1	4	21	.	.	26	.	.
Hardin	30	5	17	48	5	10	56	3	5
Hocking	71	23	32	45	11	24	65	22	34
Vinton	35	2	6	42	8	19	33	3	9
Medium/Small									
Crawford	103	12	12	55	7	13	80	1	1
Highland	83	6	7	89	5	6	108	3	3
Medium									
Belmont	91	8	9	80	9	11	79	5	6
Hancock	57	6	11	75	20	27	70	6	9
Miami	159	28	18	113	1	1	85	2	2
Muskingum	144	33	23	139	34	24	180	51	28
Scioto	90	17	19	111	14	13	180	32	18
Large									
Allen	143	20	14	153	17	11	180	29	16
Ashtabula	225	25	11	221	23	10	201	10	5
Clark	311	45	14	247	37	15	191	27	14
Clermont	261	28	11	305	23	8	326	45	14
Columbiana	125	16	13	133	35	26	105	23	22
Fairfield	175	24	14	200	21	11	231	32	14
Greene	145	17	12	143	15	10	166	18	11
Medina	76	1	1	99	7	7	65	.	.
Portage	190	33	17	240	30	13	239	27	11
Richland	290	23	8	200	22	11	171	14	8
Warren	127	7	6	141	14	10	155	10	6
Wood	69	13	19	49	5	10	54	4	7
Metro									
Butler	498	45	9	472	46	10	450	29	6
Lorain	318	75	24	264	47	18	220	23	10
Mahoning	190	50	26	219	26	12	252	39	15
Montgomery	1,259	206	16	1,230	133	11	1,163	136	12
Stark	1,025	145	14	1,071	201	19	889	155	17
Summit	1,829	258	14	1,811	249	14	1,768	272	15
Trumbull	199	37	19	272	40	15	247	27	11
Major Metro									
Franklin	4,716	562	12	4,872	674	14	4,653	682	15

Report 9: Number of Placement Exits to Other Relatives by Year (continued)

Counties by Size	2005			2006*		
	Total exits	Relative		Total exits	Relative	
		#	%		#	%
Small						
Coshocton	20	.	.	10	.	.
Hardin	35	4	11	28	1	4
Hocking	52	12	23	35	4	11
Vinton	45	5	11	47	5	11
Medium/Small						
Crawford	76	5	7	80	13	16
Highland	102	14	14	50	7	14
Medium						
Belmont	70	5	7	57	6	11
Hancock	63	9	14	45	8	18
Miami	97	7	7	56	6	11
Muskingum	153	44	29	105	23	22
Scioto	170	31	18	162	39	24
Large						
Allen	159	20	13	107	16	15
Ashtabula	211	9	4	172	.	.
Clark	215	37	17	175	21	12
Clermont	378	61	16	279	31	11
Columbiana	112	19	17	111	31	28
Fairfield	173	10	6	133	7	5
Greene	193	27	14	140	21	15
Medina	72	3	4	69	3	4
Portage	212	39	18	140	21	15
Richland	149	16	11	84	11	13
Warren	156	31	20	88	1	1
Wood	69	7	10	52	4	8
Metro						
Butler	537	64	12	454	62	14
Lorain	209	33	16	149	21	14
Mahoning	244	32	13	199	20	10
Montgomery	1,054	146	14	754	73	10
Stark	925	187	20	667	149	22
Summit	1,726	254	15	1,432	217	15
Trumbull	226	8	4	155	.	.
Major Metro						
Franklin	4,516	598	13	3,578	438	12

Through 9/18/2006

Report 10: Placement with Relatives and Nonrelatives as of January 1 each Year

Counties by Size	1996					1997				
	Total Placement	Relatives		Nonrelatives		Total Placement	Relatives		Nonrelatives	
		#	%	#	#		#	%	#	%
Small										
Coshocton	18	.	.	1	6	16	1	6	.	.
Hardin	28	6	21	3	11	19	5	26	.	.
Hocking	27	1	4	.	.	27
Vinton	15	1	7	.	.	15	2	13	.	.
Medium/Small										
Crawford	52	1	2	.	.	61
Highland	29	6	21	.	.	29	8	28	.	.
Medium										
Belmont	89	19	21	.	.	86	18	21	1	1
Hancock	9	18
Miami	101	4	4	.	.	113	12	11	3	3
Muskingum	112	13	12	.	.	97	5	5	.	.
Scioto	68	7	10	.	.	60	10	17	.	.
Large										
Allen	159	17	11	.	.	123	13	11	.	.
Ashtabula	152	36	24	6	4	150	24	16	7	5
Clark	258	8	3	3	1	270	24	9	3	1
Clermont	179	18	10	2	1	166	13	8	3	2
Columbiana	63	3	5	.	.	55	2	4	.	.
Fairfield	71	3	4	.	.	109	17	16	.	.
Greene	101	4	4	.	.	92	1	1	1	1
Medina	51	14	27	.	.	58	8	14	5	9
Portage	162	25	15	2	1	161	19	12	.	.
Richland	192	56	29	6	3	238	72	30	5	2
Warren	68	14	21	1	1	63	8	13	2	3
Wood	96	14	15	.	.	89	8	9	.	.
Metro										
Butler	502	5	1	1	0	550	2	0	.	.
Lorain	333	48	14	.	.	272	29	11	.	.
Mahoning	226	2	1	1	0	213	6	3	.	.
Montgomery	995	37	4	1	0	1,035	39	4	1	0
Stark	798	131	16	12	2	874	124	14	10	1
Summit	1,012	251	25	7	1	990	224	23	7	1
Trumbull	249	1	0	.	.	214
Major Metro										
Franklin	2,236	490	22	51	2	2,405	519	22	52	2

Report 10: Placement with Relatives and Nonrelatives as of January 1 each Year (continued)

Counties by Size	1998					1999				
	Total Placement	Relatives		Nonrelatives		Total Placement	Relatives		Nonrelatives	
		#	%	#	#		#	%	#	%
Small										
Coshocton	15	17
Hardin	23	1	4	4	17	30	2	7	.	.
Hocking	24	32	1	3	.	.
Vinton	8	15
Medium/Small										
Crawford	46	4	9	.	.	43
Highland	25	6	24	.	.	26	2	8	.	.
Medium										
Belmont	77	13	17	1	1	70	16	23	.	.
Hancock	19	26
Miami	103	5	5	.	.	120	3	3	.	.
Muskingum	85	6	7	.	.	69	3	4	.	.
Scioto	77	10	13	1	1	99	10	10	5	5
Large										
Allen	99	14	14	.	.	127	10	8	1	1
Ashtabula	158	38	24	.	.	135	24	18	3	2
Clark	239	12	5	3	1	239	14	6	4	2
Clermont	185	16	9	2	1	181	17	9	3	2
Columbiana	65	2	3	.	.	64
Fairfield	96	21	22	2	2	93	17	18	5	5
Greene	95	2	2	2	2	108	15	14	.	.
Medina	42	8	19	2	5	51	5	10	6	12
Portage	171	21	12	.	.	146	11	8	1	1
Richland	199	50	25	4	2	186	41	22	2	1
Warren	55	5	9	2	4	83	17	20	2	2
Wood	67	1	1	.	.	59	.	.	1	2
Metro										
Butler	554	6	1	3	1	552	8	1	20	4
Lorain	215	21	10	.	.	219	11	5	4	2
Mahoning	196	4	2	.	.	187	1	1	.	.
Montgomery	1,197	22	2	1	0	1,331	30	2	1	0
Stark	730	105	14	14	2	845	146	17	23	3
Summit	1,188	296	25	24	2	1,293	327	25	23	2
Trumbull	175	.	.	1	1	160
Major Metro										
Franklin	2,458	368	15	57	2	2,692	476	18	54	2

Report 10: Placement with Relatives and Nonrelatives as of January 1 each Year (continued)

Counties by Size	2000					2001				
	Total Placement	Relatives		Nonrelatives		Total Placement	Relatives		Nonrelatives	
		#	%	#	#		#	%	#	%
Small										
Coshocton	23	25
Hardin	29	1	3	.	.	33	1	3	.	.
Hocking	32	26
Vinton	12	2	17	.	.	10	2	20	.	.
Medium/Small										
Crawford	52	57	5	9	.	.
Highland	32	3	9	.	.	35	4	11	.	.
Medium										
Belmont	60	12	20	.	.	69	14	20	.	.
Hancock	27	35
Miami	116	6	5	.	.	145	8	6	9	6
Muskingum	84	10	12	.	.	63	3	5	1	2
Scioto	88	14	16	4	5	89	12	13	1	1
Large										
Allen	118	12	10	2	2	114	13	11	2	2
Ashtabula	168	33	20	1	1	149	33	22	3	2
Clark	297	35	12	8	3	230	4	2	6	3
Clermont	215	22	10	3	1	192	26	14	2	1
Columbiana	73	80
Fairfield	99	19	19	7	7	133	43	32	7	5
Greene	112	8	7	.	.	117	6	5	.	.
Medina	42	6	14	4	10	45	3	7	1	2
Portage	148	16	11	1	1	147	20	14	5	3
Richland	250	65	26	12	5	234	53	23	3	1
Warren	92	29	32	1	1	92	29	32	1	1
Wood	41	37
Metro										
Butler	439	4	1	2	0	388	8	2	4	1
Lorain	235	38	16	4	2	233	38	16	4	2
Mahoning	190	156	1	1	.	.
Montgomery	1,282	24	2	2	0	1,259	27	2	8	1
Stark	839	177	21	23	3	845	143	17	18	2
Summit	1,146	232	20	28	2	1,150	260	23	27	2
Trumbull	154	161
Major Metro										
Franklin	2,850	493	17	74	3	2,972	479	16	91	3

Report 10: Placement with Relatives and Nonrelatives as of January 1 each Year (continued)

Counties by Size	2002					2003				
	Total Placement	Relatives		Nonrelatives		Total Placement	Relatives		Nonrelatives	
		#	%	#	#		#	%	#	%
Small										
Coshocton	33	25
Hardin	37	23
Hocking	39	34
Vinton	16	2	13	.	.	21	8	38	.	.
Medium/Small										
Crawford	68	1	1	.	.	48	1	2	.	.
Highland	38	4	11	.	.	26	1	4	.	.
Medium										
Belmont	54	9	17	.	.	75	11	15	.	.
Hancock	33	33
Miami	137	11	8	2	1	106	1	1	1	1
Muskingum	72	3	4	.	.	92	5	5	.	.
Scioto	73	6	8	4	5	74	4	5	.	.
Large										
Allen	120	20	17	2	2	128	12	9	1	1
Ashtabula	141	32	23	1	1	115	29	25	3	3
Clark	245	3	1	.	.	225
Clermont	200	26	13	4	2	208	34	16	1	0
Columbiana	73	96	2	2	.	.
Fairfield	147	52	35	4	3	157	47	30	4	3
Greene	107	7	7	.	.	116	8	7	.	.
Medina	55	5	9	4	7	43	7	16	3	7
Portage	150	19	13	.	.	159	19	12	1	1
Richland	208	44	21	5	2	170	29	17	.	.
Warren	101	26	26	4	4	84	14	17	4	5
Wood	42	52
Metro										
Butler	393	9	2	2	1	416	11	3	.	.
Lorain	273	35	13	8	3	162	7	4	3	2
Mahoning	173	1	1	.	.	145	1	1	.	.
Montgomery	1,220	26	2	5	0	1,085	20	2	.	.
Stark	898	182	20	18	2	952	205	22	20	2
Summit	1,334	412	31	37	3	1,317	427	32	22	2
Trumbull	168	180
Major Metro										
Franklin	3,268	556	17	84	3	3,297	543	16	91	3

Report 10: Placement with Relatives and Nonrelatives as of January 1 each Year (continued)

Counties by Size	2004					2005				
	Total Placement	Relatives		Nonrelatives		Total Placement	Relatives		Nonrelatives	
		#	%	#	#		#	%	#	%
Small										
Coshocton	21	21
Hardin	45	1	2	.	.	37	2	5	.	.
Hocking	43	1	2	.	.	46	3	7	.	.
Vinton	31	6	19	.	.	39	8	21	.	.
Medium/Small										
Crawford	44	48	1	2	.	.
Highland	37	56	3	5	.	.
Medium										
Belmont	60	5	8	.	.	67	8	12	.	.
Hancock	39	38
Miami	84	1	1	.	.	95
Muskingum	89	6	7	.	.	105	12	11	1	1
Scioto	96	9	9	1	1	99	21	21	3	3
Large										
Allen	126	14	11	4	3	129	12	9	7	5
Ashtabula	144	50	35	3	2	121	32	26	10	8
Clark	190	159
Clermont	291	52	18	1	0	307	44	14	4	1
Columbiana	88	97
Fairfield	162	59	36	6	4	181	49	27	2	1
Greene	118	13	11	4	3	118	19	16	.	.
Medina	46	4	9	4	9	35	5	14	.	.
Portage	155	12	8	3	2	148	20	14	2	1
Richland	107	13	12	1	1	100	11	11	1	1
Warren	111	37	33	3	3	125	46	37	8	6
Wood	58	57
Metro										
Butler	333	6	2	1	0	340	4	1	1	0
Lorain	114	5	4	4	4	108	9	8	2	2
Mahoning	181	2	1	.	.	219	2	1	.	.
Montgomery	966	22	2	6	1	978	20	2	3	0
Stark	801	150	19	18	2	810	144	18	29	4
Summit	1,229	387	31	19	2	1,209	341	28	36	3
Trumbull	224	217
Major Metro										
Franklin	3,255	555	17	84	3	3,008	469	16	84	3

Report 10: Placement with Relatives and Nonrelatives as of January 1 each Year (continued)

Counties by Size	2006*				
	Total Placement	Relatives		Nonrelatives	
		#	%	#	%
Small					
Coshocton	15
Hardin	31	2	6	1	3
Hocking	47
Vinton	37	5	14	1	3
Medium/Small					
Crawford	49	4	8	.	.
Highland	57	12	21	.	.
Medium					
Belmont	60	7	12	.	.
Hancock	41
Miami	88	1	1	2	2
Muskingum	89	5	6	3	3
Scioto	123	41	33	3	2
Large					
Allen	160	19	12	4	3
Ashtabula	149	45	30	10	7
Clark	180
Clermont	312	54	17	4	1
Columbiana	99	7	7	.	.
Fairfield	172	48	28	4	2
Greene	149	20	13	.	.
Medina	63	14	22	.	.
Portage	140	16	11	4	3
Richland	79	9	11	.	.
Warren	100	18	18	4	4
Wood	52
Metro					
Butler	331	16	5	.	.
Lorain	123	6	5	2	2
Mahoning	213	1	0	.	.
Montgomery	885	10	1	1	0
Stark	777	134	17	20	3
Summit	1,134	309	27	25	2
Trumbull	207
Major Metro					
Franklin	3,097	554	18	109	4

* Through 9/18/2006

Report 11: Unpaid Placement Days per Year*

Counties by Size	1996			1997			1998		
	Total days	Unpaid days		Total days	Unpaid days		Total days	Unpaid days	
		#	%		#	%		#	%
Small									
Coshocton	5,577	569	10	5,225	32	1	6,751	.	.
Hardin	7,555	1,298	17	7,464	1,620	22	11,329	1,127	10
Hocking	11,315	557	5	10,053	130	1	9,944	256	3
Vinton	4,163	190	5	3,644	255	7	3,721	327	9
Medium/Small									
Crawford	20,570	199	1	17,740	406	2	15,566	340	2
Highland	11,750	1,751	15	10,495	2,012	19	10,958	1,586	14
Medium									
Belmont	31,134	6,069	19	31,577	5,776	18	26,771	5,117	19
Hancock	5,427	16	0	6,396	81	1	8,646	269	3
Miami	38,807	3,110	8	39,647	3,800	10	39,484	1,190	3
Muskingum	40,958	3,852	9	37,525	2,273	6	28,368	1,400	5
Scioto	23,773	2,280	10	26,241	3,917	15	31,469	4,330	14
Large									
Allen	51,844	4,942	10	40,020	2,474	6	44,626	6,403	14
Ashtabula	54,167	13,194	24	54,990	12,706	23	53,330	11,644	22
Clark	98,109	6,161	6	96,670	7,792	8	92,168	6,405	7
Clermont	62,864	7,493	12	66,054	6,490	10	72,078	8,095	11
Columbiana	23,703	862	4	21,490	564	3	23,362	427	2
Fairfield	32,769	4,571	14	41,526	8,058	19	34,025	6,889	20
Greene	34,248	1,168	3	34,531	1,025	3	37,120	2,570	7
Medina	19,210	4,677	24	18,267	3,996	22	17,619	4,167	24
Portage	56,540	7,465	13	62,563	8,412	13	57,157	5,355	9
Richland	77,883	22,539	29	81,332	23,528	29	67,614	16,105	24
Warren	23,109	4,759	21	22,891	3,232	14	26,677	4,261	16
Wood	34,564	4,008	12	27,159	1,046	4	23,274	771	3
Metro									
Butler	203,682	1,778	1	206,432	2,176	1	210,281	8,293	4
Lorain	116,679	14,060	12	94,042	8,785	9	83,412	6,176	7
Mahoning	88,200	1,245	1	79,586	2,662	3	76,881	546	1
Montgomery	365,185	12,581	3	412,852	11,476	3	471,354	10,484	2
Stark	321,232	53,030	17	287,845	44,136	15	291,223	55,154	19
Summit	366,345	86,500	24	407,007	96,465	24	459,473	116,414	25
Trumbull	89,402	121	0	72,225	281	0	60,482	173	0
Major Metro									
Franklin	857,054	199,376	23	913,791	187,880	21	956,062	171,974	18

* Includes unlicensed relative and unlicensed non-relative placement days.

Report 11: Unpaid Placement Days per Year (continued)

Counties by Size	1999			2000			2001		
	Total days	Unpaid days		Total days	Unpaid days		Total days	Unpaid days	
		#	%		#	%		#	%
Small									
Coshocton	6,035	.	.	9,929	.	.	11,273	.	.
Hardin	10,248	458	4	11,270	241	2	13,253	172	1
Hocking	12,782	747	6	12,448	23	0	10,976	44	0
Vinton	5,231	710	14	5,760	1,232	21	7,171	2,065	29
Medium/Small									
Crawford	16,867	67	0	19,413	743	4	21,982	609	3
Highland	12,772	970	8	14,705	1,920	13	11,639	1,251	11
Medium									
Belmont	24,298	4,619	19	24,431	3,900	16	28,277	4,907	17
Hancock	9,502	.	.	11,228	18	0	13,050	.	.
Miami	44,044	2,042	5	48,571	2,849	6	53,124	5,074	10
Muskingum	26,527	1,278	5	27,102	2,787	10	24,717	1,958	8
Scioto	36,794	6,629	18	31,025	5,212	17	31,854	5,265	17
Large									
Allen	41,126	3,300	8	40,615	4,286	11	44,885	5,486	12
Ashtabula	53,956	10,200	19	57,450	12,808	22	55,727	13,220	24
Clark	95,965	8,991	9	101,158	8,634	9	87,197	1,684	2
Clermont	73,622	9,892	13	73,836	9,144	12	73,073	9,988	14
Columbiana	24,165	.	.	27,630	14	0	29,276	182	1
Fairfield	33,766	9,434	28	43,625	14,271	33	51,284	17,388	34
Greene	39,460	3,307	8	45,265	3,755	8	42,910	2,986	7
Medina	15,957	2,589	16	15,413	3,006	20	19,341	1,970	10
Portage	58,992	7,619	13	55,888	8,636	15	56,630	8,527	15
Richland	88,593	26,807	30	93,178	24,373	26	82,072	18,535	23
Warren	33,852	9,411	28	36,225	11,463	32	37,526	10,697	29
Wood	20,702	326	2	15,669	55	0	12,586	343	3
Metro									
Butler	179,667	6,127	3	161,477	4,990	3	145,254	4,957	3
Lorain	84,016	7,441	9	86,517	13,306	15	96,521	15,722	16
Mahoning	72,969	646	1	64,630	222	0	59,217	339	1
Montgomery	491,446	12,049	2	477,352	9,348	2	473,049	11,562	2
Stark	311,599	64,699	21	315,144	62,844	20	323,708	67,023	21
Summit	469,110	120,331	26	425,106	96,171	23	459,193	127,812	28
Trumbull	60,253	167	0	61,390	.	.	63,484	.	.
Major Metro									
Franklin	1,043,699	202,807	19	1,091,715	206,812	19	1,178,407	230,724	20

Report 11: Unpaid Placement Days per Year (continued)

Counties by Size	2002			2003			2004		
	Total days	Unpaid days		Total days	Unpaid days		Total days	Unpaid days	
		#	%		#	%		#	%
Small									
Coshocton	10,292	.	.	8,613	.	.	7,270	.	.
Hardin	9,568	.	.	13,479	101	1	15,741	412	3
Hocking	13,596	88	1	14,124	151	1	15,576	1,308	8
Vinton	5,550	1,631	29	11,008	3,161	29	12,546	2,906	23
Medium/Small									
Crawford	23,871	405	2	18,409	357	2	18,227	64	0
Highland	12,509	1,179	9	10,193	421	4	17,120	1,469	9
Medium									
Belmont	25,922	3,828	15	26,311	2,827	11	24,455	2,842	12
Hancock	11,704	.	.	12,530	30	0	13,758	22	0
Miami	45,643	2,767	6	32,128	480	1	33,204	488	1
Muskingum	30,201	1,231	4	33,348	2,586	8	40,464	5,604	14
Scioto	26,220	2,555	10	30,145	2,892	10	42,276	6,690	16
Large									
Allen	41,415	3,655	9	48,663	7,543	16	46,656	5,599	12
Ashtabula	48,864	12,375	25	50,132	18,028	36	48,759	16,415	34
Clark	87,907	380	0	75,560	109	0	61,336	4	0
Clermont	78,351	11,651	15	95,289	13,776	14	112,777	18,784	17
Columbiana	32,094	240	1	34,015	707	2	35,112	14	0
Fairfield	59,939	20,401	34	58,380	21,168	36	63,973	20,957	33
Greene	41,540	2,992	7	40,621	2,544	6	46,150	8,302	18
Medina	18,528	2,767	15	17,563	3,536	20	13,864	2,305	17
Portage	56,727	6,812	12	59,039	7,304	12	55,457	5,613	10
Richland	72,689	14,763	20	48,041	6,135	13	37,326	3,879	10
Warren	35,771	8,483	24	38,470	11,908	31	43,550	18,740	43
Wood	17,822	80	0	21,375	11	0	20,455	.	.
Metro									
Butler	153,915	3,998	3	138,075	4,462	3	125,546	2,541	2
Lorain	78,208	9,134	12	51,310	3,641	7	43,750	4,776	11
Mahoning	58,147	67	0	64,856	574	1	77,311	547	1
Montgomery	440,211	9,420	2	393,488	11,377	3	368,637	9,490	3
Stark	348,423	81,898	24	336,127	76,872	23	302,322	58,802	19
Summit	504,150	177,499	35	484,111	166,412	34	445,277	141,909	32
Trumbull	62,888	.	.	77,081	.	.	83,348	.	.
Major Metro									
Franklin	1,234,190	236,774	19	1,236,216	237,266	19	1,183,124	230,126	19

Report 11: Unpaid Placement Days per Year (continued)

Counties by Size	2005			2006*		
	Total days	Unpaid days		Total days	Unpaid days	
		#	%		#	%
Small						
Coshocton	6,024	.	.	3,579	.	.
Hardin	14,162	1,577	11	6,824	143	2
Hocking	18,875	1,605	9	11,511	191	2
Vinton	12,453	2,872	23	8,732	1,295	15
Medium/Small						
Crawford	18,340	1,068	6	12,254	327	3
Highland	19,450	2,363	12	13,704	1,829	13
Medium						
Belmont	23,259	2,020	9	15,783	2,998	19
Hancock	14,970	.	.	11,488	.	.
Miami	34,192	527	2	22,506	271	1
Muskingum	34,487	4,064	12	22,013	2,046	9
Scioto	42,209	10,052	24	23,491	7,435	32
Large						
Allen	52,608	8,807	17	39,258	6,163	16
Ashtabula	52,934	19,749	37	39,187	15,760	40
Clark	60,155	4	0	39,648	14	0
Clermont	115,364	21,002	18	80,215	12,957	16
Columbiana	39,375	1,536	4	26,279	1,385	5
Fairfield	61,395	16,168	26	44,690	15,779	35
Greene	47,248	6,875	15	34,169	3,966	12
Medina	19,935	3,623	18	13,267	2,157	16
Portage	51,569	7,444	14	35,439	5,998	17
Richland	35,274	5,053	14	20,006	1,914	10
Warren	37,629	12,651	34	24,170	3,948	16
Wood	20,496	.	.	13,283	84	1
Metro						
Butler	133,075	3,554	3	92,988	2,009	2
Lorain	45,225	5,078	11	33,198	3,941	12
Mahoning	76,821	822	1	55,954	363	1
Montgomery	347,957	6,462	2	219,025	3,949	2
Stark	301,305	63,134	21	191,487	28,022	15
Summit	455,468	140,101	31	286,737	87,597	31
Trumbull	80,714	.	.	50,887	.	.
Major Metro						
Franklin	1,160,368	227,339	20	783,340	169,328	22

* Through 9/18/2006

Report 12: Children in Placement for more than 24 Months as of January 1 each Year

Counties by Size	1996			1997			1998		
	Total	>24 Months		Total	>24 Months		Total	>24 Months	
		#	%		#	%		#	%
Small									
Coshocton	18	6	33	16	8	50	15	3	20
Hardin	28	7	25	19	1	5	23	3	13
Hocking	27	7	26	27	5	19	24	2	8
Vinton	15	3	20	15	4	27	8	5	63
Medium/Small									
Crawford	52	8	15	61	16	26	46	15	33
Highland	29	5	17	29	5	17	25	2	8
Medium									
Belmont	89	20	22	86	18	21	77	22	29
Hancock	9	5	56	18	4	22	19	4	21
Miami	101	18	18	113	21	19	103	33	32
Muskingum	112	39	35	97	36	37	85	24	28
Scioto	68	12	18	60	11	18	77	18	23
Large									
Allen	159	61	38	123	50	41	99	46	46
Ashtabula	152	63	41	150	57	38	158	66	42
Clark	258	82	32	270	106	39	239	83	35
Clermont	179	64	36	166	51	31	185	57	31
Columbiana	63	31	49	55	22	40	65	7	11
Fairfield	71	30	42	109	32	29	96	27	28
Greene	101	31	31	92	21	23	95	24	25
Medina	51	9	18	58	4	7	42	8	19
Portage	162	38	23	161	32	20	171	35	20
Richland	192	37	19	238	29	12	199	33	17
Warren	68	11	16	63	25	40	55	16	29
Wood	96	39	41	89	30	34	67	36	54
Metro									
Butler	502	174	35	550	179	33	554	193	35
Lorain	333	129	39	272	112	41	215	103	48
Mahoning	226	72	32	213	77	36	196	74	38
Montgomery	995	358	36	1,035	381	37	1,197	355	30
Stark	798	274	34	874	298	34	730	313	43
Summit	1,012	423	42	990	414	42	1,188	424	36
Trumbull	249	100	40	214	85	40	175	67	38
Major Metro									
Franklin	2,236	602	27	2,405	695	29	2,458	730	30

Report 12: Children in Placement for more than 24 Months as of January 1 each Year (continued)

Counties by Size	1999			2000			2001		
	Total	>24 Months		Total	>24 Months		Total	>24 Months	
		#	%		#	%		#	%
Small									
Coshocton	17	.	.	23	.	.	25	4	16
Hardin	30	4	13	29	3	10	33	11	33
Hocking	32	6	19	32	7	22	26	6	23
Vinton	15	5	33	12	2	17	10	1	10
Medium/Small									
Crawford	43	19	44	52	12	23	57	6	11
Highland	26	2	8	32	2	6	35	4	11
Medium									
Belmont	70	21	30	60	16	27	69	9	13
Hancock	26	6	23	27	7	26	35	6	17
Miami	120	30	25	116	23	20	145	29	20
Muskingum	69	26	38	84	10	12	63	8	13
Scioto	99	11	11	88	21	24	89	40	45
Large									
Allen	127	42	33	118	24	20	114	22	19
Ashtabula	135	58	43	168	53	32	149	36	24
Clark	239	97	41	297	78	26	230	69	30
Clermont	181	49	27	215	59	27	192	58	30
Columbiana	64	2	3	73	4	5	80	14	18
Fairfield	93	33	35	99	20	20	133	18	14
Greene	108	27	25	112	30	27	117	28	24
Medina	51	11	22	42	10	24	45	10	22
Portage	146	38	26	148	46	31	147	35	24
Richland	186	33	18	250	27	11	234	35	15
Warren	83	16	19	92	17	18	92	22	24
Wood	59	26	44	41	16	39	37	8	22
Metro									
Butler	552	232	42	439	219	50	388	190	49
Lorain	219	77	35	235	63	27	233	49	21
Mahoning	187	80	43	190	75	39	156	64	41
Montgomery	1,331	415	31	1,282	509	40	1,259	553	44
Stark	845	355	42	839	335	40	845	333	39
Summit	1,293	479	37	1,146	524	46	1,150	557	48
Trumbull	160	61	38	154	58	38	161	67	42
Major Metro									
Franklin	2,692	832	31	2,850	904	32	2,972	936	31

Report 12: Children in Placement for more than 24 Months as of January 1 each Year (continued)

Counties by Size	2002			2003			2004		
	Total	>24 Months		Total	>24 Months		Total	>24 Months	
		#	%		#	%		#	%
Small									
Coshocton	33	7	21	25	8	32	21	9	43
Hardin	37	10	27	23	7	30	45	7	16
Hocking	39	5	13	34	9	26	43	9	21
Vinton	16	.	.	21	1	5	31	3	10
Medium/Small									
Crawford	68	17	25	48	18	38	44	14	32
Highland	38	4	11	26	4	15	37	8	22
Medium									
Belmont	54	10	19	75	19	25	60	17	28
Hancock	33	3	9	33	5	15	39	3	8
Miami	137	36	26	106	46	43	84	34	40
Muskingum	72	4	6	92	2	2	89	8	9
Scioto	73	30	41	74	31	42	96	24	25
Large									
Allen	120	33	28	128	39	30	126	32	25
Ashtabula	141	49	35	115	35	30	144	25	17
Clark	245	68	28	225	58	26	190	70	37
Clermont	200	68	34	208	46	22	291	58	20
Columbiana	73	17	23	96	24	25	88	25	28
Fairfield	147	29	20	157	37	24	162	32	20
Greene	107	29	27	116	38	33	118	43	36
Medina	55	10	18	43	12	28	46	9	20
Portage	150	33	22	159	34	21	155	27	17
Richland	208	33	16	170	33	19	107	33	31
Warren	101	24	24	84	14	17	111	21	19
Wood	42	7	17	52	5	10	58	9	16
Metro									
Butler	393	157	40	416	158	38	333	131	39
Lorain	273	40	15	162	42	26	114	32	28
Mahoning	173	43	25	145	45	31	181	72	40
Montgomery	1,220	481	39	1,085	470	43	966	384	40
Stark	898	330	37	952	316	33	801	301	38
Summit	1,334	516	39	1,317	488	37	1,229	462	38
Trumbull	168	61	36	180	62	34	224	43	19
Major Metro									
Franklin	3,268	943	29	3,297	952	29	3,255	865	27

Report 12: Children in Placement for more than 24 Months as of January 1 each Year (continued)

Counties by Size	2005			2006		
	Total	>24 Months		Total	>24 Months	
		#	%		#	%
Small						
Coshocton	21	6	29	15	6	40
Hardin	37	5	14	31	14	45
Hocking	46	13	28	47	11	23
Vinton	39	3	8	37	13	35
Medium/Small						
Crawford	48	4	8	49	4	8
Highland	56	6	11	57	9	16
Medium						
Belmont	67	21	31	60	19	32
Hancock	38	4	11	41	6	15
Miami	95	28	29	88	30	34
Muskingum	105	13	12	89	12	13
Scioto	99	19	19	123	27	22
Large						
Allen	129	27	21	160	38	24
Ashtabula	121	19	16	149	22	15
Clark	159	72	45	180	43	24
Clermont	307	69	22	312	85	27
Columbiana	97	30	31	99	34	34
Fairfield	181	35	19	172	31	18
Greene	118	43	36	149	35	23
Medina	35	4	11	63	9	14
Portage	148	21	14	140	27	19
Richland	100	18	18	79	13	16
Warren	125	21	17	100	27	27
Wood	57	14	25	52	21	40
Metro						
Butler	340	117	34	331	88	27
Lorain	108	23	21	123	11	9
Mahoning	219	69	32	213	77	36
Montgomery	978	332	34	885	322	36
Stark	810	326	40	777	291	37
Summit	1,209	407	34	1,134	400	35
Trumbull	217	52	24	207	78	38
Major Metro						
Franklin	3,008	809	27	3,097	787	25

Report 13: Children in Planned Permanent Living Arrangement (PPLA) or Permanent Commitment (PCC) or Permanent Surrender (PS) as of January 1 each Year

Counties by Size	1996					1997				
	Total Placement	PPLA		PCC/PS		Total Placement	PPLA		PCC/PS	
		#	%	#	%		#	%	#	%
Small										
Coshocton	18	1	6	9	50	16	1	6	7	44
Hardin	28	.	.	7	25	19	.	.	1	5
Hocking	27	4	15	4	15	27	2	7	3	11
Vinton	15	1	7	.	.	15	1	7	.	.
Medium/Small										
Crawford	52	6	12	6	12	61	8	13	12	20
Highland	29	.	.	1	3	29	.	.	1	3
Medium										
Belmont	89	3	3	36	40	86	4	5	33	38
Hancock	9	.	.	8	89	18	.	.	5	28
Miami	101	21	21	12	12	113	18	16	23	20
Muskingum	112	7	6	26	23	97	8	8	24	25
Scioto	68	.	.	3	4	60	1	2	2	3
Large										
Allen	159	30	19	33	21	123	23	19	30	24
Ashtabula	152	16	11	47	31	150	19	13	38	25
Clark	258	46	18	61	24	270	45	17	71	26
Clermont	179	26	15	44	25	166	22	13	30	18
Columbiana	63	2	3	25	40	55	4	7	21	38
Fairfield	71	8	11	24	34	109	9	8	26	24
Greene	101	10	10	15	15	92	8	9	12	13
Medina	51	9	18	9	18	58	4	7	8	14
Portage	162	16	10	49	30	161	12	7	26	16
Richland	192	32	17	26	14	238	36	15	24	10
Warren	68	10	15	10	15	63	12	19	12	19
Wood	96	20	21	22	23	89	13	15	19	21
Metro										
Butler	502	113	23	135	27	550	105	19	130	24
Lorain	333	94	28	61	18	272	70	26	49	18
Mahoning	226	19	8	70	31	213	20	9	65	31
Montgomery	995	180	18	168	17	1,035	178	17	177	17
Stark	798	152	19	190	24	874	174	20	199	23
Summit	1,012	79	8	149	15	990	80	8	153	15
Trumbull	249	23	9	80	32	214	14	7	75	35
Major Metro										
Franklin	2,236	162	7	352	16	2,405	152	6	344	14

Report 13: Children in Planned Permanent Living Arrangement (PPLA) or Permanent Commitment (PCC) or Permanent Surrender (PS) as of January 1 each Year (continued)

Counties by Size	1998					1999				
	Total Placement	PPLA		PCC/PS		Total Placement	PPLA		PCC/PS	
		#	%	#	%		#	%	#	%
Small										
Coshocton	15	1	7	5	33	17	.	.	2	12
Hardin	23	2	9	7	30	30	.	.	4	13
Hocking	24	.	.	2	8	32	4	13	6	19
Vinton	8	1	13	.	.	15	1	7	.	.
Medium/Small										
Crawford	46	7	15	14	30	43	4	9	16	37
Highland	25	1	4	3	12	26	.	.	2	8
Medium										
Belmont	77	4	5	34	44	70	1	1	25	36
Hancock	19	.	.	4	21	26	.	.	5	19
Miami	103	17	17	36	35	120	21	18	27	23
Muskingum	85	16	19	11	13	69	14	20	16	23
Scioto	77	.	.	16	21	99	.	.	12	12
Large										
Allen	99	14	14	27	27	127	11	9	33	26
Ashtabula	158	12	8	33	21	135	10	7	43	32
Clark	239	29	12	68	28	239	29	12	94	39
Clermont	185	22	12	39	21	181	22	12	31	17
Columbiana	65	2	3	25	38	64	1	2	17	27
Fairfield	96	13	14	31	32	93	8	9	22	24
Greene	95	15	16	12	13	108	13	12	20	19
Medina	42	1	2	8	19	51	3	6	12	24
Portage	171	15	9	28	16	146	18	12	35	24
Richland	199	33	17	30	15	186	23	12	16	9
Warren	55	12	22	1	2	83	8	10	12	14
Wood	67	14	21	19	28	59	12	20	15	25
Metro										
Butler	554	108	19	163	29	552	107	19	173	31
Lorain	215	60	28	56	26	219	28	13	63	29
Mahoning	196	14	7	72	37	187	17	9	73	39
Montgomery	1,197	178	15	221	18	1,331	229	17	212	16
Stark	730	147	20	226	31	845	157	19	228	27
Summit	1,188	103	9	195	16	1,293	89	7	230	18
Trumbull	175	15	9	55	31	160	14	9	67	42
Major Metro										
Franklin	2,458	143	6	399	16	2,692	152	6	539	20

Report 13: Children in Planned Permanent Living Arrangement (PPLA) or Permanent Commitment (PCC) or Permanent Surrender (PS) as of January 1 each Year (continued)

Counties by Size	2000					2001				
	Total Placement	PPLA		PCC/PS		Total Placement	PPLA		PCC/PS	
		#	%	#	%		#	%	#	%
Small										
Coshocton	23	25	2	8	2	8
Hardin	29	.	.	6	21	33	1	3	7	21
Hocking	32	6	19	4	13	26	3	12	4	15
Vinton	12	10	1	10	.	.
Medium/Small										
Crawford	52	2	4	13	25	57	2	4	5	9
Highland	32	.	.	10	31	35	1	3	7	20
Medium										
Belmont	60	1	2	20	33	69	2	3	15	22
Hancock	27	2	7	5	19	35	2	6	4	11
Miami	116	26	22	33	28	145	17	12	35	24
Muskingum	84	7	8	20	24	63	5	8	14	22
Scioto	88	.	.	26	30	89	1	1	34	38
Large										
Allen	118	5	4	26	22	114	5	4	29	25
Ashtabula	168	7	4	54	32	149	8	5	45	30
Clark	297	16	5	88	30	230	27	12	82	36
Clermont	215	33	15	35	16	192	35	18	62	32
Columbiana	73	1	1	26	36	80	2	3	23	29
Fairfield	99	3	3	21	21	133	2	2	36	27
Greene	112	11	10	30	27	117	9	8	37	32
Medina	42	4	10	11	26	45	4	9	11	24
Portage	148	19	13	44	30	147	17	12	35	24
Richland	250	28	11	34	14	234	33	14	57	24
Warren	92	5	5	12	13	92	6	7	19	21
Wood	41	7	17	12	29	37	7	19	5	14
Metro										
Butler	439	97	22	146	33	388	81	21	129	33
Lorain	235	19	8	66	28	233	16	7	64	27
Mahoning	190	18	9	64	34	156	11	7	57	37
Montgomery	1,282	253	20	252	20	1,259	299	24	301	24
Stark	839	129	15	293	35	845	117	14	302	36
Summit	1,146	100	9	304	27	1,150	117	10	291	25
Trumbull	154	13	8	56	36	161	16	10	69	43
Major Metro										
Franklin	2,850	265	9	596	21	2,972	368	12	613	21

Report 13: Children in Planned Permanent Living Arrangement (PPLA) or Permanent Commitment (PCC) or Permanent Surrender (PS) as of January 1 each Year (continued)

Counties by Size	2002					2003				
	Total Placement	PPLA		PCC/PS		Total Placement	PPLA		PCC/PS	
		#	%	#	%		#	%	#	%
Small										
Coshocton	33	5	15	1	3	25	7	28	6	24
Hardin	37	2	5	10	27	23	4	17	6	26
Hocking	39	4	10	3	8	34	5	15	8	24
Vinton	16	3	19	1	6	21	1	5	3	14
Medium/Small										
Crawford	68	8	12	6	9	48	9	19	12	25
Highland	38	1	3	4	11	26	.	.	6	23
Medium										
Belmont	54	2	4	11	20	75	2	3	14	19
Hancock	33	1	3	6	18	33	1	3	10	30
Miami	137	21	15	45	33	106	26	25	46	43
Muskingum	72	8	11	13	18	92	9	10	11	12
Scioto	73	2	3	31	42	74	2	3	28	38
Large										
Allen	120	6	5	31	26	128	4	3	33	26
Ashtabula	141	7	5	47	33	115	4	3	38	33
Clark	245	30	12	72	29	225	33	15	60	27
Clermont	200	31	16	47	24	208	29	14	29	14
Columbiana	73	2	3	16	22	96	2	2	18	19
Fairfield	147	5	3	42	29	157	4	3	46	29
Greene	107	9	8	50	47	116	13	11	49	42
Medina	55	2	4	16	29	43	6	14	18	42
Portage	150	20	13	28	19	159	18	11	29	18
Richland	208	33	16	27	13	170	24	14	32	19
Warren	101	7	7	24	24	84	10	12	6	7
Wood	42	6	14	11	26	52	7	13	3	6
Metro										
Butler	393	74	19	121	31	416	60	14	126	30
Lorain	273	8	3	82	30	162	11	7	62	38
Mahoning	173	14	8	36	21	145	18	12	21	14
Montgomery	1,220	330	27	279	23	1,085	288	27	250	23
Stark	898	109	12	294	33	952	108	11	326	34
Summit	1,334	139	10	267	20	1,317	150	11	268	20
Trumbull	168	11	7	66	39	180	13	7	68	38
Major Metro										
Franklin	3,268	439	13	578	18	3,297	478	14	542	16

Report 13: Children in Planned Permanent Living Arrangement (PPLA) or Permanent Commitment (PCC) or Permanent Surrender (PS) as of January 1 each Year (continued)

Counties by Size	2004					2005				
	Total Placement	PPLA		PCC/PS		Total Placement	PPLA		PCC/PS	
		#	%	#	%		#	%	#	%
Small										
Coshocton	21	5	24	5	24	21	5	24	5	24
Hardin	45	4	9	8	18	37	1	3	27	73
Hocking	43	7	16	7	16	46	10	22	6	13
Vinton	31	.	.	3	10	39	.	.	4	10
Medium/Small										
Crawford	44	5	11	14	32	48	1	2	9	19
Highland	37	.	.	6	16	56	.	.	6	11
Medium										
Belmont	60	4	7	15	25	67	1	1	19	28
Hancock	39	.	.	11	28	38	.	.	18	47
Miami	84	21	25	29	35	95	21	22	21	22
Muskingum	89	8	9	9	10	105	12	11	24	23
Scioto	96	3	3	22	23	99	1	1	13	13
Large										
Allen	126	5	4	28	22	129	5	4	25	19
Ashtabula	144	7	5	39	27	121	7	6	24	20
Clark	190	33	17	73	38	159	25	16	58	36
Clermont	291	27	9	32	11	307	32	10	66	21
Columbiana	88	2	2	18	20	97	4	4	25	26
Fairfield	162	2	1	55	34	181	4	2	54	30
Greene	118	8	7	42	36	118	8	7	39	33
Medina	46	4	9	11	24	35	6	17	7	20
Portage	155	10	6	32	21	148	7	5	31	21
Richland	107	13	12	24	22	100	14	14	14	14
Warren	111	8	7	8	7	125	8	6	11	9
Wood	58	11	19	3	5	57	14	25	6	11
Metro										
Butler	333	61	18	86	26	340	49	14	90	26
Lorain	114	1	1	48	42	108	3	3	27	25
Mahoning	181	28	15	45	25	219	31	14	42	19
Montgomery	966	187	19	223	23	978	147	15	211	22
Stark	801	101	13	303	38	810	95	12	323	40
Summit	1,229	136	11	229	19	1,209	146	12	261	22
Trumbull	224	8	4	48	21	217	12	6	68	31
Major Metro										
Franklin	3,255	516	16	352	11	3,008	484	16	305	10

Report 13: Children in Planned Permanent Living Arrangement (PPLA) or Permanent Commitment (PCC) or Permanent Surrender (PS) as of January 1 each Year (continued)

Counties by Size	2006				
	Total Placement	PPLA		PCC/PS	
		#	%	#	%
Small					
Coshocton	15	7	47	2	13
Hardin	31	2	6	18	58
Hocking	47	7	15	12	26
Vinton	37	.	.	12	32
Medium/Small					
Crawford	49	2	4	3	6
Highland	57	1	2	10	18
Medium					
Belmont	60	.	.	16	27
Hancock	41	1	2	8	20
Miami	88	24	27	33	38
Muskingum	89	13	15	22	25
Scioto	123	3	2	15	12
Large					
Allen	160	5	3	25	16
Ashtabula	149	3	2	27	18
Clark	180	25	14	40	22
Clermont	312	25	8	52	17
Columbiana	99	5	5	25	25
Fairfield	172	6	3	57	33
Greene	149	6	4	37	25
Medina	63	8	13	15	24
Portage	140	18	13	26	19
Richland	79	8	10	19	24
Warren	100	13	13	16	16
Wood	52	11	21	13	25
Metro					
Butler	331	36	11	85	26
Lorain	123	2	2	18	15
Mahoning	213	30	14	30	14
Montgomery	885	139	16	210	24
Stark	777	94	12	277	36
Summit	1,134	163	14	207	18
Trumbull	207	19	9	84	41
Major Metro					
Franklin	3,097	487	16	224	7

Report 14: Number of Children in Subsidized Adoptions as of January 1 each Year

Counties by Size	1996	1997	1998	1999	2000	2001	2002	2003	2004	2005	2006
Small											
Coshocton	16	21	26	31	33	37	37	42	45	50	51
Hardin	15	16	19	18	20	20	25	28	30	38	43
Hocking	37	44	44	42	42	40	44	42	44	47	53
Vinton	11	13	15	14	14	17	17	17	16	16	14
Medium/Small											
Crawford	22	23	29	28	37	39	38	42	39	43	43
Highland	14	13	10	11	8	12	15	14	14	16	22
Medium											
Belmont	76	84	89	101	99	105	109	108	112	116	119
Hancock	32	31	30	30	33	36	40	43	46	54	54
Miami	71	73	91	96	104	113	116	125	130	129	124
Muskingum	82	89	100	105	110	119	113	115	122	124	137
Scioto	44	40	40	38	37	33	42	48	49	55	52
Large											
Allen	89	92	92	101	114	123	130	137	143	146	142
Ashtabula	55	64	73	81	91	116	135	153	161	176	187
Clark	157	163	173	187	218	261	268	292	314	333	326
Clermont	81	100	104	124	128	142	180	214	231	247	285
Columbiana	63	72	73	82	75	82	81	74	69	73	82
Fairfield	63	69	89	99	99	104	117	120	134	154	187
Greene	44	49	51	55	68	85	101	106	107	123	128
Medina	29	36	38	41	51	56	64	79	89	98	105
Portage	74	84	87	93	103	111	114	119	131	143	153
Richland	149	152	168	178	178	210	237	253	276	285	290
Warren	47	48	56	57	66	71	80	92	96	95	103
Wood	28	31	37	45	50	52	55	56	58	54	52
Metro											
Butler	261	297	339	383	427	459	464	482	525	549	544
Lorain	197	210	232	247	278	319	351	392	437	456	471
Mahoning	185	194	210	224	256	274	282	289	267	285	292
Montgomery	666	702	732	779	837	917	1026	1117	1208	1257	1289
Stark	417	475	577	627	672	735	823	901	970	1020	1075
Summit	599	636	681	721	747	808	855	871	944	987	1036
Trumbull	210	221	251	258	267	255	270	273	282	292	316
Major Metro											
Franklin	1098	1205	1324	1458	1629	1896	2141	2429	2581	2738	2846

Appendix B: Methodology for the Analysis of Placement Outcomes for Children in Long-Term Placement at the Start of the First Waiver Period

The evaluation team is using Ohio administrative data for this analysis. One treatment group and three control groups were identified. The treatment group consists of eligible children in the demonstration counties at the start of 1998. One control group consists of eligible children in the comparison counties at the start of 1998. A second control group consists of eligible children in the demonstration counties at the start of 1993. A third control group consists of eligible children in the comparison counties at the start of 1993.

The collection of eligible children at each of the referenced dates is referred to as a *cohort* and the dates themselves are referred to as *cohort reference dates*. The outcome is binary and is described in detail below. Child eligibility is also explained in greater detail below. First, this appendix presents the model that was used for the analysis.

The study team assumes that the probability of a favorable outcome depends on the specific county, the point in time, and a string of child-specific covariates. The specific county effect is assumed to be a random variable itself depending on Waiver status and time. The team estimated the difference between the demonstration and comparison counties during the Waiver period. The team also estimated the difference in the demonstration counties over time. However, we give the greatest inferential weight to the differential changes over time between the demonstration and comparison counties.

In terms equations, the model is:

$$Y_{gijk} = \begin{cases} 1 & \text{if child } k \text{ in cohort } j \text{ in county } i \text{ of county group (waiver or control) } g \text{ eventually experienced a favorable outcome} \\ 0 & \text{otherwise} \end{cases}$$

$$I_{gijk} = \ln \left(\frac{\Pr\{Y_{gijk} = 1\}}{1 - \Pr\{Y_{gijk} = 1\}} \right)$$

$$I_{gijk} = a_{gij} + \mathbf{g}_j + X_{gijk} \mathbf{b}$$

$$a_{gij} = \mathbf{a}_{gj} + e_{gij}$$

$$e_{gij} \sim N(0, \mathbf{t}^2)$$

The study team then tested the hypothesis that:

$$\mathbf{a}_{T98} - \mathbf{a}_{T93} - (\mathbf{a}_{C98} - \mathbf{a}_{C93}) > 0,$$

meaning that the positive change in the risk-adjusted log odds of a favorable outcome was greater in the demonstration counties than in the comparison counties. The analysis

was based on two-sided tests. Note that this procedure does reflect the clustering in the 28 counties. The t^2 term reflects the variation among the counties at each point in time that can be explained by neither the case mix nor county Waiver status.

The team defined eligible children for the first research question (i.e., *Did the first Waiver lead to an increase in stable permanent living arrangements for children in long-term placements as of the start of the first Waiver period?*) as those who have been in care for at least 1 year as of the cohort reference date but not more than 5 years. The team excluded children in PPLA custody, children in independent living settings, children who were older than 17 and one-half as of the cohort reference date, and Interstate Courtesy Cases (ICC's).

The team defined eligible children for the second research question (i.e., *Did the first Waiver lead to an increase in the proportion of children in long-term congregate care who were able to transition to stable family-based care?*) as those who have been in care for at least 1 year as of the cohort reference date but not more than 5 years, and who were in congregate care as of the cohort reference date. The team excluded children in independent living settings, children older than 17 and one-half, and ICC's, but included those in PPLA.

The team defined a favorable outcome for the first question as having an exit from placement to a permanent living arrangement within a limited time span and then having that living arrangement be stable for an additional time span. Permanent living arrangements include adoption, reunification, and guardianship. The time span for exit from placement is generally 5 years from start of current placement. However, for teenagers as of the cohort reference date, the target exit date is the earlier of their 18th birthday or 5 years from the placement start date. So, for example, if they are 17 and 5 months as of the cohort reference date, only 7 months are allowed to bring about an exit to a permanent living arrangement for it to count as a favorable outcome. The time span to assess stability is generally 1 year, but it is also capped by the child's 18th birthday. A living arrangement is considered stable unless the child is taken back into placement.

The team defined a favorable outcome for the second question as having either a favorable outcome as defined for the first question or as having a transition from congregate care to family-based care within a certain time span and then having that arrangement either be stable or serve as a transition to an even more favorable living arrangement. As for the first question, the transition must occur within 5 years of the start of the current placement or prior to the child's 18th birthday, and the new arrangement must be stable for 1 year or up to the child's 18th birthday, whichever occurs first. Family-based care is defined as foster home, kinship care, or adoptive home. (Note that "adoptive home" refers to paid care in the home of foster parents who intend to adopt but where the adoption process is still underway.) Having the child move from one foster home to another foster home within the 1-year period disqualifies the placement from being considered stable. Changing kin providers or from foster parents to kinship care also disqualifies the placement from being considered stable. However, changing from

foster care or kinship care to adoptive home is still considered to be a stable placement. The reason for this is that an adoptive home is clearly an improvement. Moreover, available administrative records do not show whether a switch from foster care to adoptive home actually involved a physical move and new family or just a change in the administrative status of the same set of parents and home.

Findings

In the analysis of placement outcomes, the study team first fitted preliminary logistic regression models to select covariates for the final generalized mixed model presented in section 4.2.1.2. The team deliberately excluded Waiver status of the county from preliminary models to avoid being influenced by knowing the effect of covariate decisions on study conclusions.

After the covariates were determined, the team fit a generalized mixed model using GLIMMIX macro in SAS. In addition to the covariates, the team added the indicator for demonstration counties and the indicator for the treatment group – i.e, children in demonstration counties and 1998 cohort. The team estimated and tested $\mathbf{a}_{T98} - \mathbf{a}_{T93} - (\mathbf{a}_{C98} - \mathbf{a}_{C93})$, $\mathbf{a}_{T98} - \mathbf{a}_{T93}$ and $\mathbf{a}_{T98} - \mathbf{a}_{C98}$. In addition, the team produced counterfactual projections of how many favorable transitions would have occurred in demonstration counties in the absence of the Waiver.

Stable long-term placement exit. In this analysis, the favorable outcome is stable permanent exit from a long-term placement, which is defined following the rules set out above. The data included 5811 children who were eligible for the analysis. Of these, 5690 had a full set of covariates and were thus used. Among these children, there were 2698 favorable outcomes. Note that the team decided to discard 86 children from this analysis who were listed as having an adoptive home as the first resource type during their current (not necessarily first) placement. Of the 86, only one was ever adopted. It is very likely that they are not true placements, but rather post-adoption support arrangements. The clustering effect of county was accounted for in the model. The parameter estimate, confidence interval, and p-value for pre-selected covariates, Waiver status, and treatment group are presented in Table B.1. The predictions produced by the model are graphed against child age and placement duration (both as of the cohort reference date) in Figures B.1 and B.2, respectively. Figure B.3 shows predictions separately for Black and non-Black children.

Table B.1. Model for stable long-term placement exit

Effect	Estimate	Confidence limits		P-value
Intercept	0.3345	-0.0056	0.6746	0.0535
Child age as of reference date in years	-0.3729	-0.5374	-0.2084	<.0001
Child age in years squared	0.0282	0.0074	0.0489	0.0078
Child age in years cubed	-0.0010	-0.0018	-0.0002	0.0112
Child's number of years in placement as of reference date	4.7619	-0.0434	9.5672	0.0521
Child's number of years in placement squared	-3.3545	-6.3319	-0.3771	0.0272
Child's number of years in placement cubed	0.8983	0.1338	1.6628	0.0213
Child's number of years in placement to the 4th power	-0.0880	-0.1572	-0.0187	0.0128
Child was sexually abused	-0.4620	-0.6476	-0.2764	<.0001
Child is female	0.1460	0.0248	0.2672	0.0182
Child is black	-0.8548	-1.1643	-0.5453	<.0001
Child is in permanently committed custody on reference date	0.5330	0.3656	0.7004	<.0001
Child is in kinship resource on reference date	-0.7263	-0.9504	-0.5022	<.0001
Child is in adoptive home on reference date	1.7128	1.4252	2.0004	<.0001
Child is in foster home at placement start	-0.2477	-0.3935	-0.1019	0.0009
Child is in kinship at placement start and in permanently committed custody on reference date	1.0816	0.5107	1.6525	0.0002
Interaction of child's number of months in placement and child is black	0.0005	0.0002	0.0009	0.0049
Indicator for 1998 cohort	0.0893	-0.1361	0.3148	0.4374
Indicator for large county	-0.2123	-0.6618	0.2372	0.3394
Indicator for 1998 cohort and large county	-0.5181	-0.7614	-0.2748	<.0001
Indicator for demonstration county	-0.2077	-0.5559	0.1405	0.2301
Indicator for children in cohort 1998 and demonstration county	0.3417	0.0921	0.5913	0.0073

Figure B.1. Predicted probabilities of stable permanent exit from long-term placement by age of child as of cohort reference date

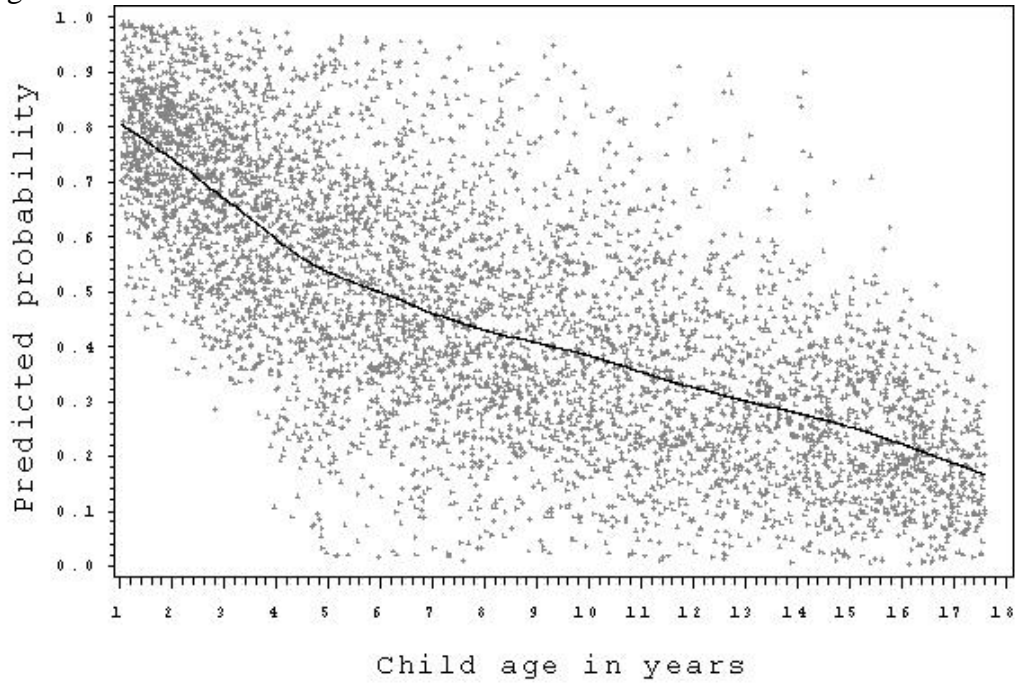


Figure B.2. Predicted probabilities of stable permanent exit from long term placement by duration of current placement as of cohort reference date

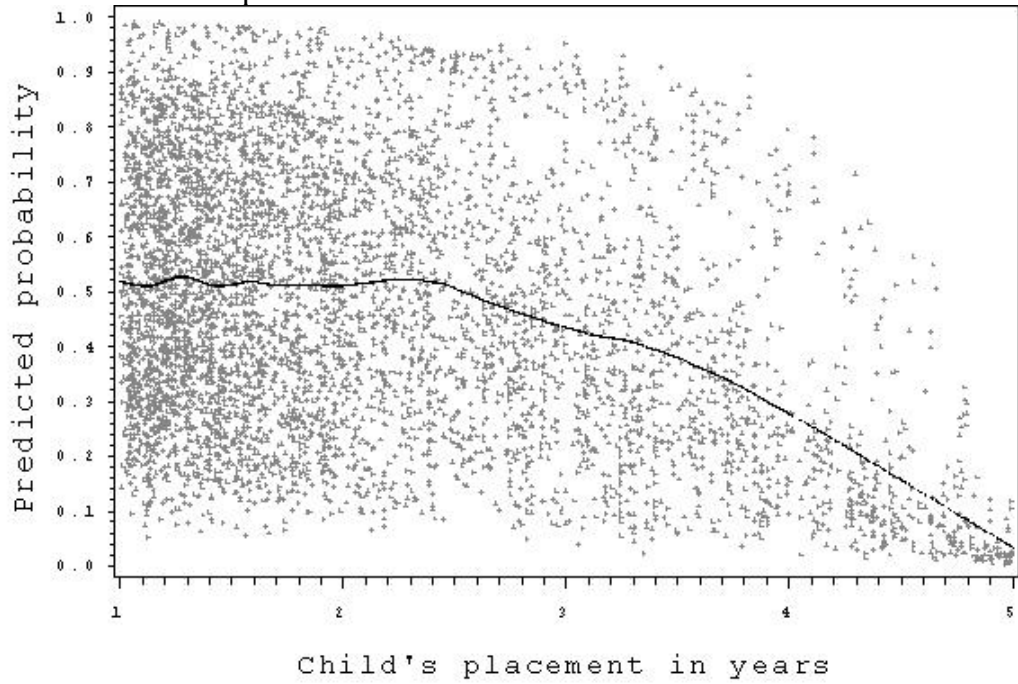
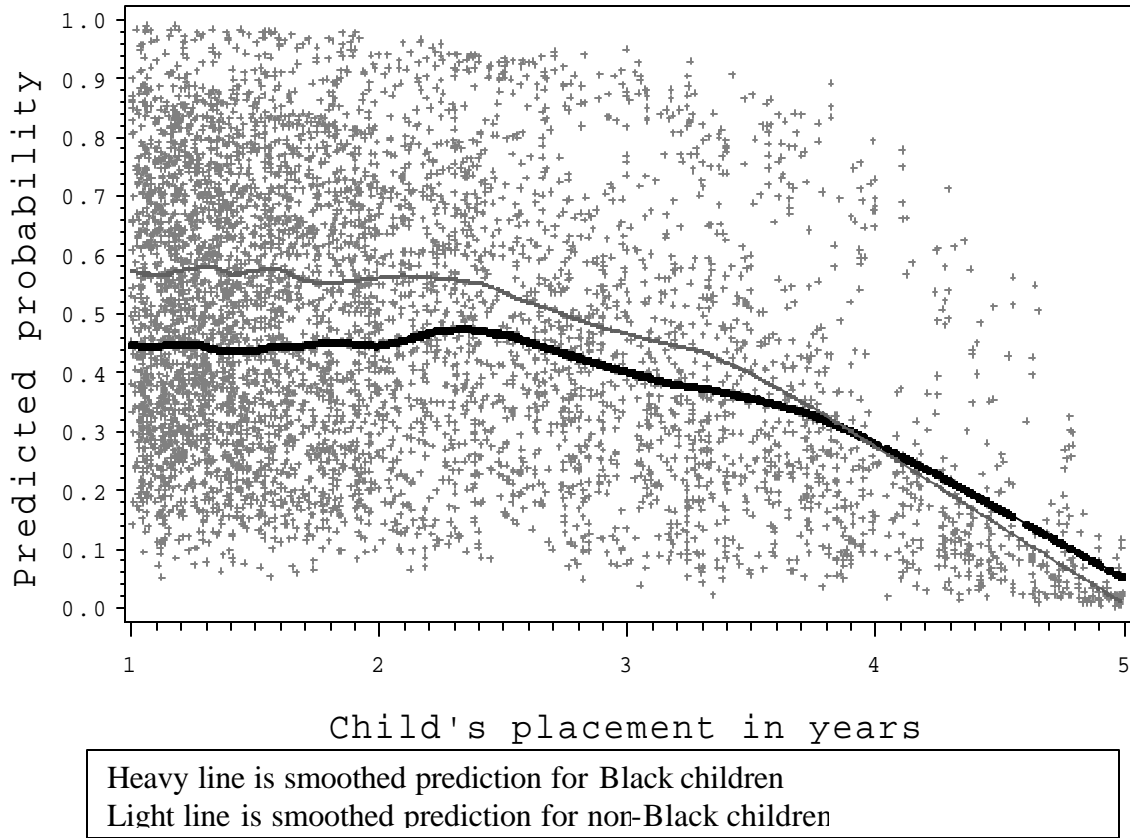


Figure B.3. Predicted probabilities of stable permanent exit from long-term placement by duration of current placement, for black and non-black children



As shown in the figures, the probability of a favorable outcome decreases with both child age and placement duration as of the reference dates, but the relationships are far from linear. The team fit 3rd- and 4th-order polynomial terms for these two variables to capture these nonlinearities. As shown in the table, sexually abused children have a lower probability of a favorable outcome. Girls fare better than boys. Children in permanently committed custody or in adoptive homes as of the cohort date fared much better. Children in kinship care as of that date did worse unless they were in permanently committed custody, perhaps indicating that kin felt little pressure to adopt. The gap between Black and other children generally diminished with the duration of the placements as of the reference dates. Children in large counties did worse in 1998 than in 1993, while the opposite was true in small counties.

The effect for treatment group – i.e., demonstration counties in 1998 cohort – is both positive and statistically significant. The estimate is 0.3417, which translates to an odds ratio of 1.4. This result confirms demonstration counties’ claim that one of their successful initiatives undertaken under the waiver was to move children languishing in long-term placements into stable permanent living arrangements.

The effect of the Waiver can also be expressed as a counterfactual projection. Among the 1768 children in long-term placements in demonstration counties as of the beginning

of 1998, 810 experienced stable permanent exits within 5 years of their placement start dates or their 18th birthdays, whichever came first. That is a favorable outcome rate of 46.2 percent. The team estimated that in the absence of the Waiver, this percentage would have only been 38.3 percent, meaning that 140 fewer of these children would have experienced this favorable outcome.

The team also estimated the differences between the 1998 and 1993 cohorts in demonstration counties, ignoring change in the control counties. The estimated odds ratio is 1.54, which is highly significant (p-value <0.0001). In contrast, the estimated odds ratio between demonstration and comparison counties in 1998 cohort is 1.14 and not significant (p-value = 0.4275). So the demonstration counties came up from weaker performance in 1993 to rough parity in 1998.

Stable step-down from congregate care to family-based care. In this analysis, there are 890 children in long-term placements in congregate facilities as of either 1/1/1993 or 1/1/1998 who had a complete set of covariates recorded about them. Of these, 317 had a favorable outcome, which is a transition to family-based care within 5 years of the start of the placement – a step-down that was not disrupted for a least a year except for better events such as adoption. The covariates for this analysis were selected from a preliminary model. Because of the smaller sample size, fewer covariates were included in the model than for the long-term placement exit analysis. The final model is shown in Table B.2. The predictions produced by the model are graphed against child age and placement duration (both as of the cohort reference date) in Figures B.3 and B.4, respectively.

Table B.2. Model for stable step-down analysis

Effect	Estimate	Confidence limits		P-value
Intercept	-0.0449	-0.4612	0.3714	0.8257
Child age as of reference date in years	-0.1474	-0.2077	-0.0871	<.0001
Child's number of years in placement as of reference date	0.3240	-0.4876	1.1356	0.4336
Child's number of years in placement squared	-0.1179	-0.2714	0.0356	0.1321
Child is in permanently committed custody on reference date	-0.4999	-1.0153	0.0155	0.0573
Child is physically disabled	-7.5289	-12.9474	-2.1104	0.0065
Child is in detention facility, hospital or other places on cohort reference date	0.5166	-0.0703	1.1035	0.0844
Interaction of child is physically disabled and child's number of months in placement	0.1631	0.0376	0.2886	0.0109
Indicator for 1998 cohort	-0.4581	-0.9044	-0.0118	0.0442
Indicator for large county	-0.4049	-0.8631	0.0533	0.0807
Indicator for demonstration county	-0.1322	-0.6216	0.3572	0.5823
Indicator for children in cohort 1998 and demonstration county	0.5693	-0.0276	1.1662	0.0615

Figure B.4. Predicted probabilities of stable step-down from long term placement in congregate care by age of child as of cohort reference date

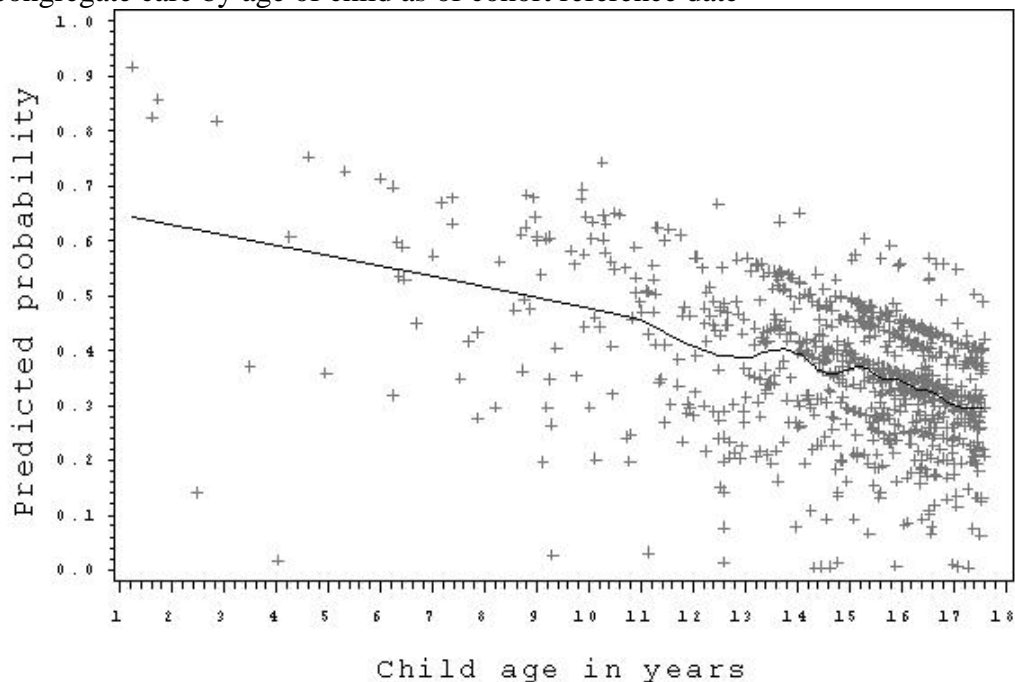
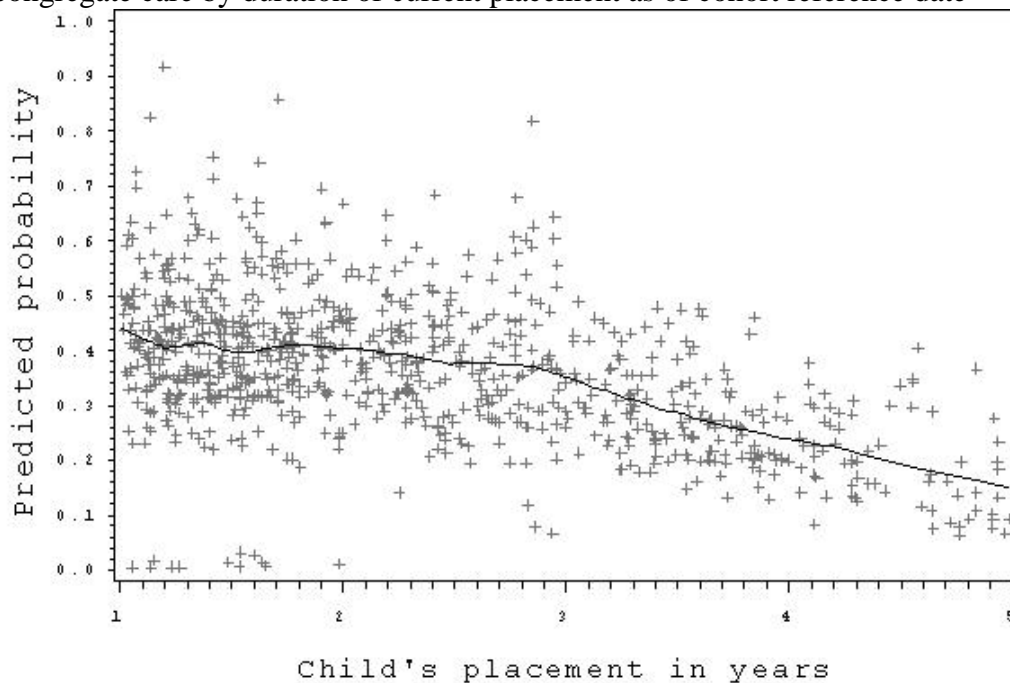


Figure B.5. Predicted probabilities of stable step-down from long term placement in congregate care by duration of current placement as of cohort reference date



The probability of a favorable outcome decreases nearly linearly with age as of the reference dates. It is also very low for the physically disabled in the early part of their placements, but this gap gradually diminishes with placement duration as of the reference dates. Other than that interaction term, placement duration is not a significant predictor, but the team left it in anyway because of the improvements in residual plots.

The estimated effect of being in demonstration counties in 1998 cohort is again positive at 0.5693, which translates to an odds ratio of 1.77. However, the p-value is slightly higher than 0.05; thus the only conclusion that can be drawn is that there is some evidence that the Waiver might have contributed to stable step-downs for children. This agrees with claims made by the demonstration counties, according to anecdotal reports.

The effect of the Waiver can also be explained in terms of counterfactual projection. Among the 221 children in demonstration counties in the 1998 cohort, 80 experienced stable step-downs, which produces a probability of 36.2 percent. Based on the model in Table B.2, the team estimated that in the absence of the Waiver, this probability would have dropped to 26.0 percent, meaning that 23 fewer of these children would have experienced this favorable outcome. Obviously, this is a modest effect, but the step-downs probably bring substantial improvements in the quality of life for these children.

The team also estimated the differences between 1998 and 1993 cohort within demonstration counties and the difference between demonstration and comparison counties in 1998 cohort. Neither was significant. The only evidence for an effect comes from examining the differential change as detailed above.

Appendix C: Supplemental FTM Tables

Using all of the FTM data provided by the counties, Table C.1 shows the number of FTMs held for children in each county.

Table C.1: Number of Meetings Held per Child, by County								
County	One Meeting	Two Meetings	Three Meetings	Four Meetings	Five Meetings	Six Meetings	Seven to Nine Meetings	Total Children
Ashtabula	70 (90%)	6 (5%)	2 (3%)	0 (0%)	0 (0%)	0 (0%)	0 (0%)	78 (100%)
Belmont	27 (28%)	22 (23%)	26 (27%)	12 (12%)	10 (10%)	0 (0%)	0 (0%)	97 (100%)
Clark	25 (36%)	19 (28%)	6 (9%)	17 (25%)	2 (3%)	0 (0%)	0 (0%)	69 (100%)
Crawford	62 (83%)	10 (13%)	3 (4%)	0 (0%)	0 (0%)	0 (0%)	0 (0%)	75 (100%)
Fairfield	33 (41%)	22 (27%)	12 (15%)	7 (9%)	2 (2%)	3 (4%)	2 (2%)	81 (100%)
Greene	154 (53%)	84 (29%)	25 (9%)	13 (4%)	12 (4%)	1 (<1%)	0 (0%)	289 (100%)
Medina	20 (87%)	3 (13%)	0 (0%)	0 (0%)	0 (0%)	0 (0%)	0 (0%)	23 (100%)
Muskingum	192 (51%)	95 (25%)	63 (17%)	8 (2%)	10 (3%)	6 (2%)	0 (0%)	377 (100%)
Portage	49 (44%)	32 (29%)	12 (11%)	14 (13%)	3 (3%)	2 (2%)	3 (3%)	112 (100%)
Richland	230 (69%)	61 (18%)	18 (5%)	16 (5%)	2 (1%)	5 (2%)	0 (0%)	332 (100%)
Stark	88 (33%)	90 (34%)	49 (19%)	25 (10%)	11 (4%)	0 (0%)	0 (0%)	263 (100%)
Total non-metro	950 (53%)	444 (25%)	216 (12%)	112 (6%)	52 (3%)	17 (1%)	5 (<1%)	1796 (100%)
Franklin	453 (40%)	411 (36%)	238 (21%)	35 (3%)	0 (0%)	0 (0%)	0 (0%)	1137 (100%)

Using all of the FTM data provided by the counties, Table C.2 shows the number of people (not counting the facilitator) who attended FTMs in each county.

Table C.2: Number of Attendees at FTMs, by County										
County	One	Two	Three	Four	Five	Six	Seven	Eight	Nine or More	Total Meetings
Ashtabula	1 (1%)	13 (15%)	37 (44%)	19 (22%)	8 (10%)	7 (8%)	0 (0%)	0 (0%)	0 (0%)	85 (100%)
Belmont	0 (0%)	22 (9%)	48 (20%)	47 (19%)	65 (27%)	60 (25%)	0 (0%)	0 (0%)	0 (0%)	242 (100%)
Clark	0 (0%)	5 (3%)	25 (16%)	35 (22%)	31 (20%)	19 (12%)	19 (12%)	16 (10%)	6 (4%)	156 (100%)
Crawford	29 (33%)	11 (13%)	23 (26%)	7 (8%)	3 (3%)	12 (14%)	0 (0%)	0 (0%)	2 (2%)	87 (100%)
Fairfield	0 (0%)	7 (4%)	28 (15%)	31 (17%)	45 (24%)	29 (16%)	28 (15%)	11 (6%)	8 (4%)	187 (100%)
Greene	1 (<1%)	62 (12%)	97 (19%)	116 (23%)	97 (19%)	55 (11%)	40 (8%)	14 (3%)	22 (4%)	504 (100%)
Medina	0 (0%)	0 (0%)	1 (4%)	5 (19%)	2 (8%)	11 (42%)	0 (0%)	3 (12%)	4 (15%)	26 (100%)
Muskingum	0 (0%)	30 (4%)	41 (6%)	81 (12%)	94 (14%)	96 (14%)	101 (15%)	88 (13%)	158 (23%)	689 (100%)
Portage	2 (1%)	16 (7%)	20 (9%)	56 (24%)	45 (19%)	42 (18%)	30 (13%)	10 (4%)	11 (5%)	232 (100%)
Richland	2 (<1%)	34 (7%)	89 (18%)	117 (24%)	83 (17%)	75 (15%)	34 (7%)	32 (7%)	25 (5%)	491 (100%)
Stark	7 (1%)	36 (6%)	103 (18%)	165 (30%)	128 (23%)	106 (19%)	6 (1%)	5 (1%)	2 (<1%)	558 (100%)
Total non-metro	42 (1%)	236 (7%)	512 (16%)	679 (21%)	601 (18%)	512 (16%)	258 (8%)	179 (5%)	238 (7%)	3257 (100%)
Franklin	333 (16%)	635 (30%)	436 (21%)	329 (16%)	221 (11%)	73 (3%)	35 (2%)	25 (1%)	14 (1%)	2101 (100%)

Using all of the FTM data provided by the counties, Table C.3 provides information on the number of FTMs that included a parent, staff person, or relative, the three most common types of attendees.

Table C.3: Who Attended FTMs: All Meetings				
County	Total # of Meetings	FTM Included Parent(s)	FTM Included Staff	FTM Included Relative(s)
Ashtabula	156 (100%)	69 (44%)	81 (52%)	27 (17%)
Belmont	249 (100%)	178 (71%)	240 (96%)	48 (19%)
Clark	163 (100%)	98 (60%)	156 (96%)	21 (13%)
Crawford	117 (100%)	56 (48%)	84 (72%)	4 (3%)
Fairfield	191 (100%)	159 (83%)	186 (97%)	59 (31%)
Greene	527 (100%)	426 (81%)	448 (85%)	130 (25%)
Medina	38 (100%)	21 (55%)	24 (63%)	10 (26%)
Muskingum	741 (100%)	605 (82%)	682 (92%)	377 (51%)
Portage	236 (100%)	191 (81%)	231 (98%)	57 (24%)
Richland	527 (100%)	396 (75%)	479 (91%)	117 (22%)
Stark	648 (100%)	491 (76%)	552 (85%)	99 (15%)
Total non-metro	3593 (100%)	2690 (75%)	3163 (88%)	949 (26%)
Franklin	2229 (100%)	934 (42%)	2098 (94%)	229 (10%)

Tables C.4, C.5, and C.6 break out the information from Table C.3 by initial meetings, second meetings, and third meetings.

Table C.4: Who Attended Initial FTMs				
County	Total # of Initial Meetings	FTM Included Parent(s)	FTM Included Staff	FTM Included Relative(s)
Ashtabula	75 (100%)	61 (81%)	73 (97%)	24 (32%)
Belmont	94 (100%)	77 (82%)	94 (100%)	24 (26%)
Clark	69 (100%)	41 (59%)	69 (100%)	11 (16%)
Crawford	71 (100%)	46 (65%)	68 (96%)	3 (4%)
Fairfield	81 (100%)	63 (78%)	81 (100%)	25 (31%)
Greene	280 (100%)	232 (83%)	234 (84%)	74 (26%)
Medina	23 (100%)	20 (87%)	21 (91%)	8 (35%)
Muskingum	365 (100%)	330 (90%)	361 (99%)	205 (56%)
Portage	112 (100%)	91 (81%)	112 (100%)	26 (23%)
Richland	318 (100%)	271 (85%)	308 (97%)	64 (20%)
Stark	255 (100%)	232 (91%)	253 (99%)	60 (24%)
Total non-metro	1743 (100%)	1464 (84%)	1674 (96%)	524 (30%)
Franklin	1121 (100%)	639 (57%)	1121 (100%)	168 (15%)

Table C.5: Who Attended Second FTMs				
County	Total # of Second Meetings	FTM Included Parent(s)	FTM Included Staff	FTM Included Relative(s)
Ashtabula	8 (100%)	6 (75%)	6 (75%)	3 (38%)
Belmont	69 (100%)	51 (74%)	69 (100%)	10 (14%)
Clark	42 (100%)	26 (62%)	42 (100%)	4 (10%)
Crawford	13 (100%)	8 (62%)	13 (100%)	1 (8%)
Fairfield	48 (100%)	42 (88%)	48 (100%)	11 (23%)
Greene	134 (100%)	110 (82%)	126 (94%)	36 (27%)
Medina	3 (100%)	1 (33%)	3 (100%)	2 (67%)
Muskingum	176 (100%)	158 (90%)	173 (98%)	101 (57%)
Portage	63 (100%)	55 (87%)	63 (100%)	16 (25%)
Richland	98 (100%)	77 (79%)	96 (98%)	24 (24%)
Stark	172 (100%)	138 (80%)	168 (98%)	20 (12%)
Total non-metro	826 (100%)	672 (81%)	807 (98%)	228 (28%)
Franklin	674 (100%)	211 (31%)	671 (>99%)	38 (6%)

Table C.6: Who Attended Third FTMs				
County	Total # of Third Meetings	FTM Included Parent(s)	FTM Included Staff	FTM Included Relative(s)
Ashtabula	2 (100%)	2 (100%)	2 (100%)	0 (0%)
Belmont	47 (100%)	30 (64%)	45 (96%)	8 (17%)
Clark	24 (100%)	21 (88%)	24 (100%)	3 (13%)
Crawford	3 (100%)	2 (67%)	3 (100%)	0 (0%)
Fairfield	26 (100%)	25 (96%)	26 (100%)	11 (42%)
Greene	51 (100%)	50 (98%)	49 (96%)	12 (24%)
Medina	0 (100%)	0 (0%)	0 (0%)	0 (0%)
Muskingum	89 (100%)	71 (80%)	89 (100%)	46 (52%)
Portage	31 (100%)	24 (77%)	31 (100%)	5 (16%)
Richland	40 (100%)	27 (68%)	40 (100%)	14 (35%)
Stark	84 (100%)	76 (90%)	84 (100%)	10 (12%)
Total non-metro	397 (100%)	328 (83%)	393 (99%)	109 (27%)
Franklin	271 (100%)	79 (29%)	271 (100%)	23 (8%)

Using all of the FTM data provided by counties, Table C.7 describes the custody and living arrangements of children at the time of their FTM in each county.

Table C.7: Custody and Living Arrangements of Children at time of FTM: All Meetings							
County	Custody of Parent(s), Live w/ Parent(s)	Custody of Kin, Live w/ Kin	Custody of Parent(s), Live w/Kin	Custody of PCSA, Live w/Kin	Custody of PCSA, Live w/ Sub. Care	All other arrangements, including living in Hosp, Juv. Hall, Unapproved Setting or AWOL	Total Meetings
Ashtabula	27 (32%)	0 (0%)	12 (14%)	17 (20%)	27 (32%)	2 (2%)	85 (100%)
Belmont	129 (54%)	23 (10%)	35 (15%)	38 (16%)	7 (3%)	8 (3%)	240 (100%)
Clark	67 (42%)	22 (14%)	2 (1%)	2 (1%)	54 (34%)	11 (7%)	158 (100%)
Crawford	55 (60%)	15 (16%)	4 (4%)	0 (0%)	17 (19%)	0 (0%)	91 (100%)
Fairfield	79 (42%)	4 (2%)	49 (26%)	32 (17%)	17 (9%)	6 (3%)	187 (100%)
Greene	331 (64%)	23 (4%)	70 (14%)	24 (5%)	49 (10%)	18 (3%)	515 (100%)
Medina	0 (0%)	5 (38%)	8 (62%)	0 (0%)	0 (0%)	0 (0%)	13 (100%)
Muskingum	265 (39%)	129 (19%)	55 (8%)	30 (4%)	120 (18%)	78 (12%)	677 (100%)
Portage	114 (49%)	2 (1%)	9 (4%)	33 (14%)	62 (27%)	11 (5%)	231 (100%)
Richland	302 (60%)	40 (8%)	103 (20%)	2 (<1%)	33 (7%)	23 (5%)	503 (100%)
Stark	305 (54%)	56 (10%)	30 (5%)	68 (12%)	103 (18%)	4 (1%)	566 (100%)
Total non-metro	1674 (51%)	319 (10%)	377 (12%)	246 (8%)	489 (15%)	161 (5%)	3266 (100%)
Franklin	1253 (59%)	141 (7%)	26 (1%)	173 (8%)	463 (22%)	65 (3%)	2121 (100%)

Tables C.8, C.9, and C.10 break out the information from Table C.7 by initial, second, and third meetings.

Table C.8: Custody and Living Arrangements of Children at time of Initial FTM							
County	Custody of Parent(s), Live w/ Parent(s)	Custody of Kin, Live w/ Kin	Custody of Parent(s), Live w/Kin	Custody of PCSA, Live w/Ki n	Custody of PCSA, Live w/ Sub. Care	All other arrangements, including living in Hosp, Juv. Hall, Unapproved Setting or AWOL	Total Initial Meetings
Ashtabula	20 (28%)	0 (0%)	11 (15%)	13 (18%)	26 (36%)	2 (3%)	72 (100%)
Belmont	53 (55%)	4 (4%)	17 (18%)	15 (16%)	2 (2%)	5 (5%)	96 (100%)
Clark	36 (53%)	14 (21%)	2 (3%)	2 (3%)	10 (15%)	4 (6%)	68 (100%)
Crawford	43 (58%)	13 (18%)	3 (4%)	0 (0%)	15 (20%)	0 (0%)	74 (100%)
Fairfield	39 (48%)	3 (4%)	19 (23%)	11 (14%)	5 (6%)	4 (5%)	81 (100%)
Greene	176 (61%)	16 (6%)	40 (14%)	13 (4%)	2 (10%)	15 (5%)	289 (100%)
Medina	0 (0%)	3 (15%)	4 (20%)	0 (0%)	0 (0%)	13 (65%)	20 (100%)
Muskingum	159 (45%)	48 (14%)	35 (10%)	11 (3%)	58 (16%)	43 (12%)	354 (100%)
Portage	48 (43%)	2 (2%)	9 (8%)	11 (10%)	37 (33%)	5 (4%)	112 (100%)
Richland	201 (62%)	28 (9%)	62 (19%)	0 (0%)	18 (6%)	14 (4%)	323 (100%)
Stark	115 (51%)	30 (13%)	12 (5%)	31 (14%)	35 (15%)	3 (1%)	226 (100%)
Total non-metro	890 (52%)	161 (9%)	214 (12%)	107 (6%)	235 (14%)	108 (6%)	1715 (100%)
Franklin	684 (61%)	63 (6%)	17 (2%)	97 (9%)	226 (20%)	41 (4%)	1128 (100%)

Table C.9: Custody and Living Arrangements of Children at time of Second FTM

County	Custody of Parent(s), Live w/ Parent(s)	Custody of Kin, Live w/ Kin	Custody of Parent(s), Live w/Kin	Custody of PCSA, Live w/Kin	Custody of PCSA, Live w/ Sub. Care	All other arrangements, including living in Hosp, Juv. Hall, Unapproved Setting or AWOL	Total Second Meetings
Ashtabula	5 (63%)	0 (0%)	1 (13%)	1 (13%)	1 (13%)	0 (0%)	8 (100%)
Belmont	37 (56%)	6 (9%)	10 (15%)	9 (14%)	1 (2%)	3 (5%)	66 (100%)
Clark	17 (39%)	4 (9%)	0 (0%)	0 (0%)	18 (41%)	5 (11%)	44 (100%)
Crawford	9 (69%)	2 (15%)	1 (8%)	0 (0%)	1 (8%)	0 (0%)	13 (100%)
Fairfield	26 (55%)	1 (2%)	13 (28%)	3 (6%)	3 (6%)	1 (2%)	47 (100%)
Greene	87 (66%)	3 (2%)	23 (18%)	8 (6%)	9 (7%)	1 (1%)	131 (100%)
Medina	0 (0%)	2 (67%)	1 (33%)	0 (0%)	0 (0%)	0 (0%)	3 (100%)
Muskingum	71 (40%)	39 (22%)	12 (7%)	6 (3%)	32 (18%)	18 (10%)	178 (100%)
Portage	33 (52%)	0 (0%)	0 (0%)	11 (17%)	14 (22%)	5 (8%)	63 (100%)
Richland	68 (67%)	7 (7%)	17 (17%)	0 (0%)	6 (6%)	3 (3%)	101 (100%)
Stark	91 (59%)	15 (10%)	6 (4%)	13 (8%)	29 (19%)	0 (0%)	154 (100%)
Total non-metro	444 (55%)	79 (10%)	84 (10%)	51 (6%)	114 (14%)	36 (4%)	808 (100%)
Franklin	410 (37%)	473 (43%)	5 (<1%)	52 (5%)	146 (13%)	19 (2%)	1105 (100%)

Table C.10: Custody and Living Arrangements of Children at time of Third FTM

County	Custody of Parent(s), Live w/ Parent(s)	Custody of Kin, Live w/ Kin	Custody of Parent(s), Live w/Kin	Custody of PCSA, Live w/Kin	Custody of PCSA, Live w/ Sub. Care	All other arrangements, including living in Hosp, Juv. Hall, Unapproved Setting or AWOL	Total Third Meetings
Ashtabula	2 (100%)	0 (0%)	0 (0%)	0 (0%)	0 (0%)	0 (0%)	2 (100%)
Belmont	22 (46%)	7 (15%)	4 (8%)	10 (21%)	3 (6%)	2 (4%)	48 (100%)
Clark	6 (24%)	2 (8%)	0 (0%)	0 (0%)	16 (64%)	1 (4%)	25 (100%)
Crawford	3 (100%)	0 (0%)	0 (0%)	0 (0%)	0 (0%)	0 (0%)	3 (100%)
Fairfield	8 (31%)	0 (0%)	8 (31%)	6 (23%)	3 (12%)	1 (4%)	26 (100%)
Greene	37 (73%)	1 (2%)	4 (8%)	2 (4%)	7 (14%)	0 (0%)	51 (100%)
Medina	0 (0%)	0 (0%)	0 (0%)	0 (0%)	0 (0%)	0 (0%)	0 (100%)
Muskingum	27 (31%)	27 (31%)	8 (9%)	4 (5%)	9 (10%)	11 (13%)	86 (100%)
Portage	19 (61%)	0 (0%)	0 (0%)	8 (26%)	3 (10%)	1 (3%)	31 (100%)
Richland	19 (48%)	3 (8%)	11 (28%)	0 (0%)	5 (13%)	2 (5%)	40 (100%)
Stark	44 (58%)	6 (8%)	3 (4%)	6 (8%)	17 (22%)	0 (0%)	76 (100%)
Total non-metro	187 (48%)	46 (12%)	38 (10%)	36 (9%)	63 (16%)	18 (5%)	388 (100%)
Franklin	140 (51%)	26 (10%)	4 (1%)	15 (5%)	83 (30%)	5 (2%)	273 (100%)

Table C.11 shows county-level data describing the service and custody recommendations resulting from meetings. (Percentages may not total 100% across rows because some meetings may have had changes in both service and custody/placement recommendation).

Table C.11: Service & Custody/Placement Recommendations				
County	No change	Change in service	Change in custody/placement recommendation	Total # Meetings
Ashtabula	71 (81%)	5 (6%)	12 (14%)	88 (100%)
Belmont	124 (50%)	104 (42%)	34 (14%)	247 (100%)
Clark	86 (54%)	64 (40%)	26 (16%)	159 (100%)
Crawford	89 (99%)	0 (0%)	1 (1%)	90 (100%)
Fairfield	149 (80%)	11 (6%)	29 (16%)	186 (100%)
Greene	230 (45%)	239 (47%)	117 (23%)	511 (100%)
Medina	13 (57%)	9 (39%)	6 (26%)	23 (100%)
Muskingum	260 (37%)	299 (43%)	280 (40%)	699 (100%)
Portage	171 (74%)	51 (22%)	35 (15%)	232 (100%)
Richland	398 (79%)	26 (5%)	99 (20%)	503 (100%)
Stark	416 (83%)	46 (9%)	47 (9%)	503 (100%)
Total non-metro	2007 (62%)	854 (26%)	686 (21%)	3241 (100%)
Franklin	1999 (94%)	41 (2%)	93 (4%)	2122 (100%)

Table C.12 presents county-level data on the purpose of FTMs.

Table C.12: Purpose of FTM								
County	Crisis-Possible Placement	Initial Planning Meeting	Agency Requests Meeting	Quarterly Review	Placement Change	Family Requests Meeting	Reunification, PPLA/TPR, Guardianship/ Legal Custody, Other	Total Meetings
Ashtabula	6 (7%)	62 (70%)	4 (5%)	9 (10%)	1 (1%)	0 (0%)	6 (7%)	88 (100%)
Belmont	31 (13%)	63 (26%)	20 (8%)	113 (46%)	8 (3%)	5 (2%)	7 (3%)	247 (100%)
Clark	2 (1%)	71 (45%)	0 (0%)	82 (52%)	0 (0%)	0 (0%)	4 (3%)	159 (100%)
Crawford	0 (0%)	39 (43%)	33 (36%)	15 (16%)	1 (1%)	0 (0%)	3 (3%)	91 (100%)
Fairfield	10 (5)	78 (42%)	21 (11%)	71 (38%)	3 (2%)	0 (0%)	4 (2%)	187 (100%)
Greene	109 (21%)	52 (10%)	202 (39%)	94 (18%)	9 (2%)	29 (6%)	20 (4%)	515 (100%)
Medina	2 (9%)	14 (61%)	2 (9%)	4 (17%)	0 (0%)	1 (4%)	0 (0%)	23 (100%)
Muskingum	133 (19%)	188 (27%)	47 (7%)	232 (33%)	69 (10%)	3 (<1%)	34 (5%)	706 (100%)
Portage	5 (2%)	98 (42%)	34 (15%)	32 (14%)	5 (2%)	6 (3%)	52 (22%)	232 (100%)
Richland	59 (12%)	99 (20%)	324 (64%)	3 (1%)	4 (1%)	11 (2%)	4 (1%)	504 (100%)
Stark	6 (1%)	270 (48%)	13 (2%)	262 (46%)	3 (1%)	1 (<1%)	11 (2%)	566 (100%)
Total non-metro	363 (11%)	1034 (31%)	700 (21%)	917 (28%)	103 (3%)	56 (2%)	145 (4%)	3318 (100%)
Franklin	13 (1%)	878 (41%)	0 (0%)	1232 (58%)	0 (0%)	0 (0%)	0 (0%)	2123 (100%)

Table C.13 presents county-level data on the number of children whose third FTM was within 100 days of their second FTM.

Table C.13: Children whose third FTM was within 100 days of the second FTM			
County	Start Date	# children who should have had a third FTM	# children who had a third FTM within 100 days of the second FTM
Ashtabula	11/4/05	4	2 (50%)
Belmont	12/27/05	47	46 (98%)
Clark	10/4/05	21	20 (95%)
Crawford	2/1/06	1	1 (100%)
Fairfield	1/1/06	27	24 (89%)
Greene	12/1/05	36	30 (83%)
Medina	11/10/05	0	0 (NA)
Muskingum	10/4/05	77	40 (52%)
Portage	12/20/05	31	30 (97%)
Richland	1/1/06	10	6 (60%)
Stark	11/1/05	82	57 (57%)
Total non-metro		336	256 (76%)
Franklin	1/1/06	270	222 (82%)

Table C.14 presents county-level data on who attended FTMs, using only those children who are included in the fidelity analysis.

Table C.14: Who Attended Meetings								
County	# meetings	# Meetings that Included:						
		parents	staff	child voice	relatives	providers	parent supports	primary caregivers
Ashtabula	73	57 (78%)	69 (95%)	22 (30%)	24 (33%)	4 (6%)	7 (10%)	10 (14%)
Belmont	218	159 (73%)	216 (99%)	68 (31%)	42 (19%)	39 (18%)	24 (11%)	89 (41%)
Clark	139	90 (65%)	137 (99%)	28 (20%)	17 (12%)	65 (47%)	4 (3%)	15 (11%)
Crawford	70	42 (60%)	66 (94%)	6 (9%)	4 (6%)	2 (3%)	0 (0%)	15 (21%)
Fairfield	165	137 (83%)	164 (99%)	38 (23%)	52 (32%)	68 (41%)	41 (25%)	32 (19%)
Greene	217	183 (84%)	213 (98%)	38 (18%)	49 (23%)	40 (18%)	8 (4%)	18 (8%)
Medina	22	17 (77%)	21 (96%)	16 (73%)	7 (32%)	9 (41%)	13 (59%)	12 (55%)
Muskingum	409	364 (89%)	406 (99%)	94 (23%)	215 (53%)	128 (31%)	102 (25%)	60 (15%)
Portage	213	175 (82%)	212 (>99%)	85 (40%)	53 (25%)	72 (34%)	12 (6%)	36 (17%)
Richland	197	178 (90%)	194 (99%)	130 (66%)	36 (18%)	21 (11%)	0 (0%)	37 (19%)
Stark	498	441 (89%)	492 (99%)	134 (27%)	89 (18%)	70 (14%)	48 (10%)	82 (17%)
Total non-metro	2221	1843 (83%)	2190 (99%)	659 (30%)	588 (27%)	518 (23%)	259 (12%)	406 (18%)
Franklin	1952	849 (44%)	1949 (>99%)	362 (19%)	205 (11%)	228 (12%)	10 (1%)	144 (7%)

Appendix D: Methodology for the Evaluation of Franklin County's Managed Care Strategy

This appendix presents the study team's approach to constructing files and identifying target children for evaluating the Franklin County Children Services (FCCS) managed care strategy, as described in Chapter 8. It is a description of some of the processes used to identify the target children and child outcomes for all cases that were randomly assigned at the time of referral between January 1, 1999 and December 31, 2001. It describes the statistical analysis for the child outcome findings in Chapter 8, and presents the detailed tables for the hold-back and crossover analyses in that chapter. The steps involved were the following:

1. A major task was to remove cases that were inappropriate for the analysis from all cases randomly assigned to the private contractors and public agency in order to identify the target children of the study. Since the outcomes of interest involved permanency, safety, and well-being, the team restricted the analysis to youth under the age of 17, for whom there would be sufficient time to achieve the outcomes. In addition, these outcomes are not the focus in cases that involve only information referrals, so those cases were excluded. Accordingly, the team removed all cases that involved either (1) a child age 17 years and older, or (2) only information referrals.
2. In order to identify the target children and siblings for this analysis, the team determined which children had case episodes that opened no more than 45 days before or after the dates of their random assignments. All cases that opened more than 45 days before or after the random assignment dates were excluded. The team used the criterion of 45 days based on their understanding of FCCS's typical case practices.
3. After identifying the target children, the team identified the children's siblings who also had cases opened. For siblings who had cases that opened after target children's random assignment dates, the team incorporated them into the same cases as the target children and included them in the analysis. Since the private managed care agencies have a contractual responsibility to serve any sibling whose case opens up to 180 days after the case closing of any other family member, the team also included any sibling whose case opened during the 180-day window. However, the team excluded siblings whose case opened prior to the random assignment date of the target children.
4. After identifying the target children and their siblings, the team distinguished cases that were opened but never placed from cases that were opened and had a placement.
5. Among the cases that were opened but never placed, the team identified cases that had a subsequent maltreatment report and/or subsequent placement from those that did not have any subsequent events.
6. Among the cases that opened and had a placement, the team identified cases that had a subsequent maltreatment report and/or subsequent second placement and distinguished them from those that did not have any subsequent events.

7. These processes resulted in identifying the following four groups to begin to develop the managed care (MC) hierarchy presented in Chapter 8:
 - I. Opened cases with no placements and no second maltreatment report and/or no subsequent placement, and the case closed during the study period (Level 1 in the MC hierarchy);
 - II. Opened cases with a placement and no second maltreatment report and/or no second placement (Level 2 in the MC hierarchy);
 - III. Opened cases with no placements, but with a second maltreatment report and/or a first placement (Levels 3-5 in the MC hierarchy)¹; and
 - IV. Opened cases with a placement, and with a second maltreatment report and/or a second placement (Levels 3-5 in the MC hierarchy).
8. Within Groups III and IV, the team distinguished cases that were still in care from those that had exited the system. The team classified as Level 3 those cases still in care that had stable placements (i.e., experienced no change in resource case type after 30 days) or only changed to adoptive homes. The team classified as Level 4 those cases still in care that had unstable placements (i.e., experienced a change in resource case type after 30 days) and no change to adoptive homes. All remaining cases (i.e., subsequent maltreatment reports, re-entries, runaways, etc.) were classified as Level 5.

The study team used the following files derived from FACSIS to implement the above-described processes:

- **CASEEPIS.** All Ongoing Case Episodes;
- **VICTIM.** Victim File;
- **SPANS.** Case Span;
- **PLACEPIS.** Placement Episodes; and
- **PLACSPAN.** Placement Spans.

The study team also used the following files sent from FCCS:

- **BOOKS 1 & 2.** Original Assignment Dates and Agency Types; and
- **RANDOM ASSIGNMENT LIST.** An Excel spreadsheet that listed all randomly assigned cases by individual and family ID's and dates of assignment.

To analyze the data, the team used a cluster-correct nonparametric analysis of variance model (Rosner, Glynn, and Lee, 2003). This approach essentially assumes that there is a latent continuous case quality variable that underlies the five-level quality scale, and tests for evidence that this latent quality is higher for one of the two groups of cases. The cluster correction

¹ Group III includes a very small number of opened cases where the child stayed at home and the case was still open at the end of the study period.

adjusted the significance level for the fact that outcome qualities for siblings are probably highly correlated with each other.

The results are presented in Table 8.2, in Chapter 8 of this report. None of the differences in outcomes between cases assigned to private agencies and those assigned to the public agency were statistically significant. Although it might appear that there were slightly fewer of the most negative case histories among cases assigned to the private contractors, the formal test for a shift in quality levels between the groups was nowhere close to significant (p-value = 0.61). A simple chi-square test uncorrected for clustering between the two columns also failed significance testing (p-value = 0.28). A simple pairwise comparison for the last row (uncorrected for clustering) also failed (p-value). The odds ratio for a level 5 outcome was 0.95 with an approximate 95 percent confidence interval (uncorrected for clustering²) from 0.88 to 1.02 indicates that we have adequate power to declare that a private-assigned case was no less safe than the public-assigned case. However, it is important to note that the data showed a high rate of hold-backs (children assigned to a private agency who were actually served by the public agency), which makes it difficult to detect effects.

Given the high hold-back rate (49 percent), the study team decided to investigate these cases (as well as the few cases involving crossovers, in which children assigned to the public agency were actually served by a private agency). If the hold-backs and crossovers were not randomly distributed, the result could be that the public agency caseload was not comparable to the private agency caseloads. The team examined four risk characteristics that FCCS might have considered in decision-making about whether or not to transfer a case to a private agency: (1) any disability; (2) ever in congregate care; (3) whether a placement episode ever occurred prior to a child’s random assignment date; and (4) whether the child was a recent (within 45 days) victim of child maltreatment. The results are summarized in Chapter 8. This appendix presents the detailed tables underlying the summary in Chapter 8. The data in the following tables show only target children, and exclude siblings.

Table D.1: Total Cases Assigned to Public and Private Agencies			
	Assigned to Public	Assigned to Private	Total Assigned
Served by Public	7549	1947	9496
Served by Private	64	2034	2098
Total Served	7613	3981	11594

Crossover rate= $64/7613 = 0.84\%$

Hold-back rate= $1947/3981 = 48.9\%$

² The team attempted several corrections for the clustering but were unsatisfied with them. The fact that most clusters are of size 1 defeats most software designed for multi-level analysis of binary outcomes.

Table D.2a: If Child Had Any Disabilities-- YES			
	Assigned to Public	Assigned to Private	Total Assigned
Served by Public	3760	943	4703
Served by Private	25	950	975
Total Served	3785	1893	5678

Crossover rate= $25/3785 = 0.66\%$

Hold-back rate= $943/1893 = 49.8\%$

Table D.2b: If Child had any Disabilities--NO			
	Assigned to Public	Assigned to Private	Total Assigned
Served by Public	3789	1004	4793
Served by Private	39	1084	1123
Total Served	3828	2088	5916

Crossover rate= $39/3828 = 1.02\%$

Hold-back rate= $1004/2088 = 48.1\%$

Table D.3a: If Child Ever in Congregate Care?-- YES			
	Assigned to Public	Assigned to Private	Total Assigned
Served by Public	1640	390	2030
Served by Private	16	382	398
Total Served	1656	772	2428

Crossover rate= $18/1656 = 1.09\%$

Hold-back rate= $390/772 = 50.5\%$

Table D.3b: If Child Ever in Congregate Care?--NO			
	Assigned to Public	Assigned to Private	Total Assigned
Served by Public	5909	1557	7466
Served by Private	48	1652	1700
Total Served	5957	3209	9166

Crossover rate= $48/5957 = 0.81\%$

Hold-back rate= $1557/3209 = 48.5\%$

Table D.4a: If Placement Episode Ever Occurred Prior to Random Assignment Date?--YES			
	Assigned to Public	Assigned to Private	Total Assigned
Served by Public	1949	483	2432
Served by Private	19	495	514
Total Served	1968	978	2946

Crossover rate= 19/1968= 0.97%

Hold-back rate= 483/978= 49.4%

Table D.4b: If Placement Episode Ever Occurred Prior to Random Assignment Date?--NO			
	Assigned to Public	Assigned to Private	Total Assigned
Served by Public	5600	1464	7064
Served by Private	45	1539	1584
Total Served	5645	3003	8648

Crossover rate= 45/5645= 0.80%

Hold-back rate= 1464/3003= 48.8%

Table D.5a: If Child is Victim No More Than 45 Days Prior to Random Assignment Date?--YES			
	Assigned to Public	Assigned to Private	Total Assigned
Served by Public	3629	955	4584
Served by Private	27	924	951
Total Served	3656	1879	5535

Crossover rate= 27/3656= 0.74%

Hold-back rate= 955/1879= 50.8%

Table D.5b: If Child is Victim No More Than 45 Days Prior to Random Assignment Date?--NO			
	Assigned to Public	Assigned to Private	Total Assigned
Served by Public	3920	992	4912
Served by Private	37	1110	1147
Total Served	3957	2102	6059

Crossover rate= 37/3957= 0.94%

Hold-back rate= 992/2102= 47.2%

Reference

Bernard Rosner, Robert J. Glynn, Mei-Ling Ting Lee (2003). "Incorporation of Clustering Effects for the Wilcoxon Rank Sum Test: A Large-Sample Approach." *Biometrics* 59 (4), 1089–1098.

Appendix E: Fiscal Tables and Figures

Table E.1
Paid Foster Care Placement Days Recorded in FACSIS, 2001-2005

	2001	2002	2003	2004	Baseline (Avg 2003-04)	2005
Demonstration						
Ashtabula	42,169	35,943	32,344	33,207	32,776	33,228
Belmont	18,541	17,628	17,857	16,229	17,043	14,780
Clark	72,874	73,747	66,798	55,432	61,115	52,879
Crawford	21,428	23,319	18,158	18,454	18,306	18,399
Fairfield	35,440	42,793	39,798	44,654	42,226	46,079
Franklin	965,109	1,019,406	1,028,249	983,232	1,005,741	964,839
Greene	38,522	38,125	37,258	38,009	37,634	39,171
Lorain	82,742	70,962	49,906	41,843	45,875	42,260
Medina	17,939	16,419	14,370	11,574	12,972	16,082
Muskingum	22,335	28,483	30,286	34,228	32,257	30,059
Portage	48,704	50,085	52,946	50,017	51,482	43,552
Richland	63,608	58,088	41,881	33,476	37,679	30,613
Stark	260,580	271,731	265,113	251,885	258,499	246,612
Comparison						
Allen	38,881	38,482	41,731	41,976	41,854	44,010
Butler	141,408	152,411	135,433	124,364	129,899	128,419
Clermont	64,711	68,956	82,709	95,574	89,142	97,382
Columbiana	28,935	31,790	33,860	35,526	34,693	37,654
Hancock	13,199	11,686	12,477	13,737	13,107	14,935
Hocking	11,255	13,491	14,463	14,827	14,645	18,080
Mahoning	59,725	58,750	65,013	77,529	71,271	77,655
Miami	48,764	43,048	31,761	33,097	32,429	33,899
Montgomery	463,225	437,721	386,918	364,511	375,715	347,552
Scioto	26,237	23,290	27,804	34,819	31,312	30,960
Summit	373,974	375,941	370,064	362,493	366,279	377,931
Trumbull	63,929	63,078	77,485	84,531	81,008	82,239
Warren	27,269	28,133	26,470	25,136	25,803	25,131
Wood	12,759	18,049	22,275	21,154	21,715	21,952

Table E.2
 Percent Difference, Average 2001 and
 2002 Placement Days vs.
 Average 2003 and 2004 Placement Days

Group	County	Percent Change
Demo	Lorain	(40%)
Demo	Richland	(38%)
Comp	Miami	(29%)
Demo	Medina	(24%)
Demo	Crawford	(18%)
Demo	Clark	(17%)
Comp	Montgomery	(17%)
Demo	Ashtabula	(16%)
Comp	Butler	(12%)
Comp	Warren	(7%)
Demo	Belmont	(6%)
Demo	Stark	(3%)
Comp	Summit	(2%)
Demo	Greene	(2%)
Demo	Franklin	1%
Demo	Portage	4%
Comp	Hancock	5%
Demo	Fairfield	8%
Comp	Allen	8%
Comp	Columbiana	14%
Comp	Hocking	18%
Comp	Mahoning	20%
Comp	Scioto	26%
Demo	Muskingum	27%
Comp	Trumbull	28%
Comp	Clermont	33%
Comp	Wood	41%

Table E.3
 Percent Difference, Average 2003 and
 2004 Placement Days vs.
 2005 Placement Days

Group	County	Percent Change
Demo	Richland	(19%)
Demo	Portage	(15%)
Demo	Clark	(13%)
Demo	Belmont	(13%)
Demo	Lorain	(8%)
Comp	Montgomery	(7%)
Demo	Muskingum	(7%)
Demo	Stark	(5%)
Demo	Franklin	(4%)
Comp	Warren	(3%)
Comp	Butler	(1%)
Comp	Scioto	(1%)
Demo	Crawford	1%
Comp	Wood	1%
Demo	Ashtabula	1%
Comp	Trumbull	2%
Comp	Summit	3%
Demo	Greene	4%
Comp	Miami	5%
Comp	Allen	5%
Comp	Columbiana	9%
Comp	Mahoning	9%
Demo	Fairfield	9%
Comp	Clermont	9%
Comp	Hancock	14%
Comp	Hocking	23%
Demo	Medina	24%

Figure E.1
 Percent Difference, Average 2001 and 2002 Placement Days vs.
 Average 2003 and 2004 Days
Demonstration counties are shaded black.

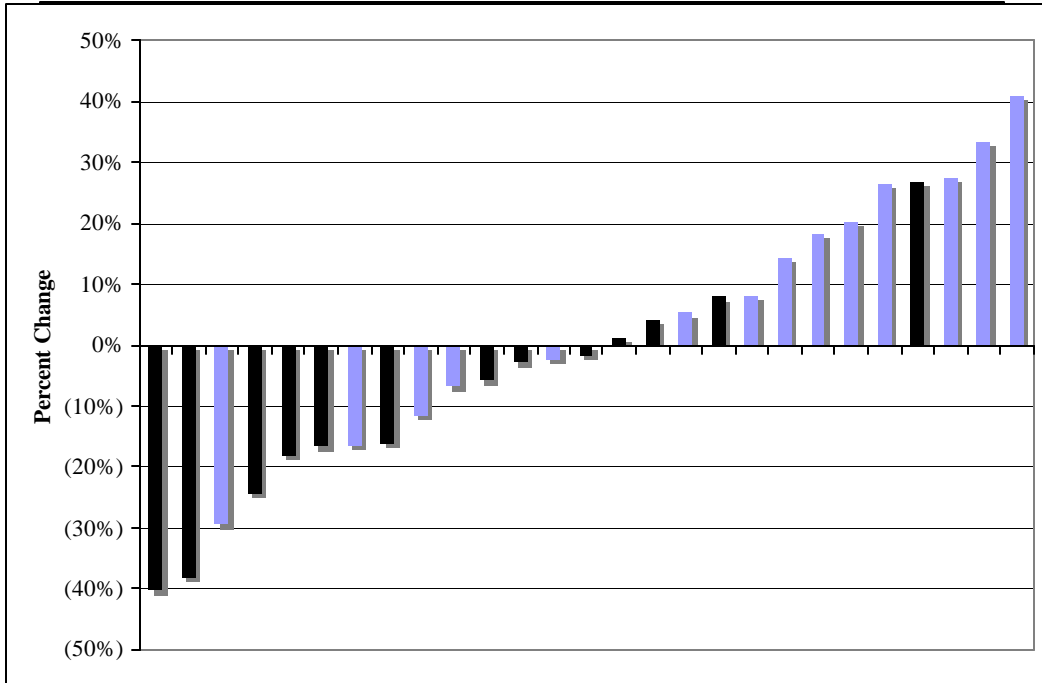


Figure E.2
 Percent Difference, Average 2003 and 2004 Placement Days vs. 2005 Days

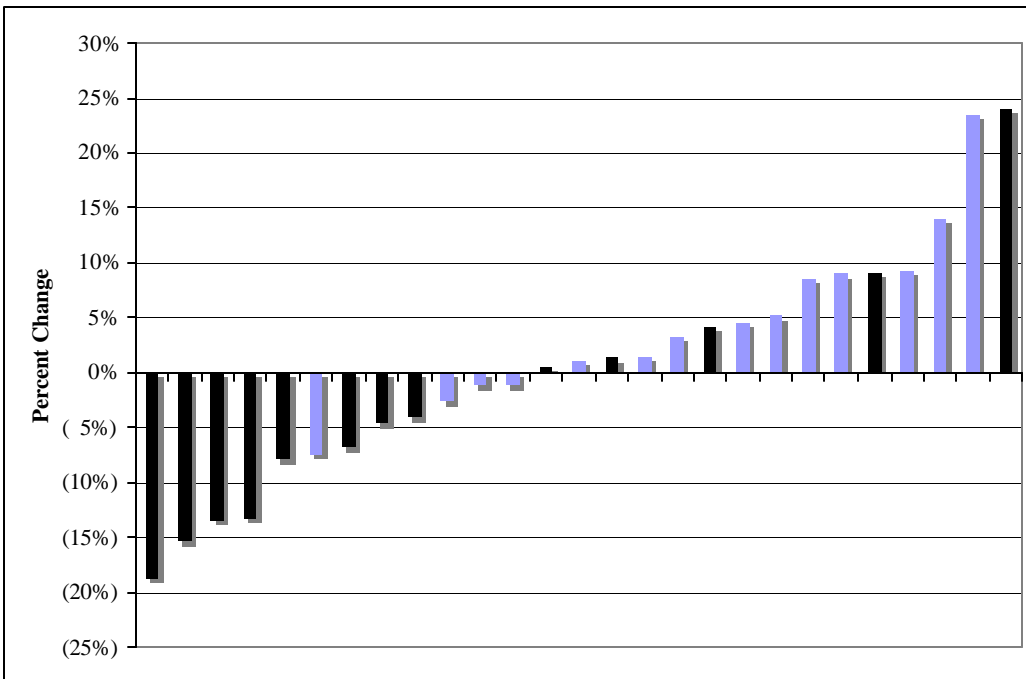


Table E.4
Average Daily Cost of Foster Care Placements, 2001-2005

	2001	2002	2003	2004	Baseline (Avg. 2003-04)	2005
Demonstration						
Ashtabula	\$52.91	\$71.25	\$84.41	\$80.34	\$82.37	\$52.21
Belmont	\$62.35	\$71.08	\$55.50	\$57.55	\$56.52	\$40.80
Clark	\$52.05	\$61.82	\$76.41	\$73.04	\$74.73	\$79.99
Crawford	TBD	TBD	TBD	TBD	TBD	TBD
Fairfield	N/A	\$31.73	\$34.35	\$30.37	\$32.36	\$31.40
Franklin	\$63.56	\$68.86	\$71.44	\$76.88	\$74.16	\$74.19
Greene	\$65.31	\$61.43	\$72.28	\$66.67	\$69.47	\$65.48
Lorain	\$47.45	\$53.13	\$58.99	\$61.97	\$60.48	\$62.83
Medina	\$61.54	\$70.83	\$81.77	\$85.62	\$83.70	\$67.28
Muskingum	\$115.20	\$89.81	\$106.45	\$103.45	\$104.95	\$106.89
Portage	\$71.47	\$64.89	\$64.89	\$73.96	TBD	TBD
Richland	\$43.88	\$42.07	\$40.47	\$25.48	\$32.98	\$27.67
Stark	\$44.39	\$48.19	\$50.48	\$50.77	\$50.62	\$53.64
Average, Demos	\$61.83	\$61.26	\$66.45	\$65.51	\$65.67	\$60.22
Comparison						
Allen	\$51.59	\$54.23	\$52.72	\$39.17	\$45.94	\$39.99
Butler	\$58.72	\$61.52	\$63.17	\$56.25	\$59.71	\$61.92
Clermont	\$54.44	\$65.10	\$67.47	\$70.06	\$68.76	\$63.94
Columbiana	\$71.92	\$64.23	\$86.21	\$67.44	\$76.83	\$65.46
Hancock	TBD	TBD	TBD	TBD	TBD	TBD
Hocking	\$45.49	\$44.03	\$33.40	\$35.88	\$34.64	\$36.84
Mahoning	\$42.26	\$53.14	\$64.82	\$70.01	\$67.42	\$74.79
Miami	\$45.87	\$53.10	\$68.20	\$62.48	\$65.34	\$63.87
Montgomery	\$45.69	\$48.36	\$51.85	\$48.13	\$49.99	\$48.11
Scioto	\$39.91	\$46.50	\$43.34	\$51.24	\$47.29	\$49.19
Summit	\$26.84	\$36.42	\$38.11	\$42.18	\$40.14	\$45.15
Trumbull	\$71.75	\$67.69	\$65.25	\$66.25	\$65.75	\$63.42
Warren	\$39.46	\$43.15	\$39.33	\$42.65	\$40.99	\$43.41
Wood	\$65.13	\$75.30	\$79.69	\$89.91	\$84.80	\$85.91
Average, Comp	\$49.50	\$53.12	\$56.15	\$54.31	\$55.23	\$54.67

Table E.5
 Percent Difference, Average 2001 and
 2002 Unit Costs vs.
 Average 2003 and 2004 Unit Costs

Group	County	Percent Change
Demo	Richland	(23%)
Comp	Hocking	(23%)
Demo	Belmont	(15%)
Comp	Allen	(13%)
Comp	Trumbull	(6%)
Comp	Warren	(1%)
Comp	Butler	(1%)
Demo	Fairfield	2%
Demo	Muskingum	2%
Comp	Montgomery	6%
Demo	Stark	9%
Comp	Scioto	9%
Demo	Greene	10%
Demo	Franklin	12%
Comp	Columbiana	13%
Comp	Clermont	15%
Demo	Lorain	20%
Comp	Wood	21%
Demo	Medina	26%
Comp	Summit	27%
Demo	Clark	31%
Comp	Miami	32%
Demo	Ashtabula	33%
Comp	Mahoning	41%
Demo	Crawford	TBD
Demo	Portage	TBD
Comp	Hancock	TBD

Table E.6
 Percent Difference, Average 2003 and
 2004 Unit Costs vs. 2005 Unit Costs

Group	County	Percent Change
Demo	Ashtabula	(37%)
Demo	Belmont	(28%)
Demo	Medina	(20%)
Demo	Richland	(16%)
Comp	Columbiana	(15%)
Comp	Allen	(13%)
Comp	Clermont	(7%)
Demo	Greene	(6%)
Comp	Montgomery	(4%)
Comp	Trumbull	(4%)
Demo	Fairfield	(3%)
Comp	Miami	(2%)
Demo	Franklin	0%
Comp	Wood	1%
Demo	Muskingum	2%
Comp	Butler	4%
Demo	Lorain	4%
Comp	Scioto	4%
Comp	Warren	6%
Demo	Stark	6%
Comp	Hocking	6%
Demo	Clark	7%
Comp	Mahoning	11%
Comp	Summit	12%
Demo	Crawford	TBD
Demo	Portage	TBD
Comp	Hancock	TBD

Figure E3
 Percent Difference, Average 2001 and 2002 Unit Costs vs.
 Average 2003 and 2004 Unit Costs
Demonstration counties are shaded black.

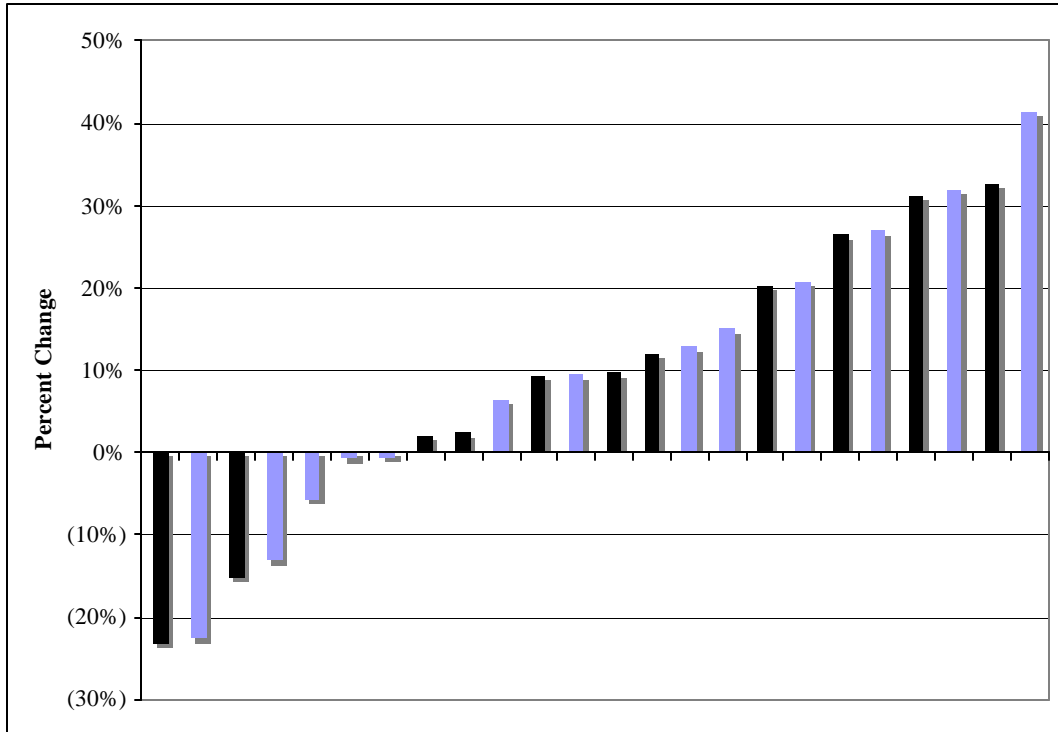


Figure E4
 Percent Difference, Average 2003 and 2004 Unit Costs vs. 2005 Unit Costs

