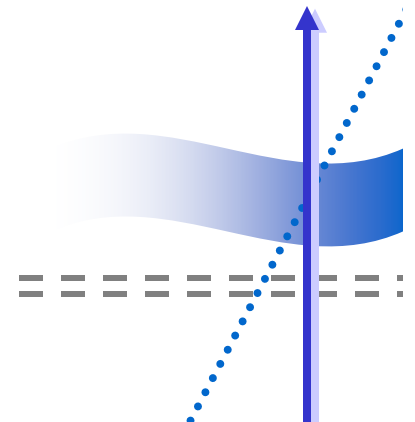
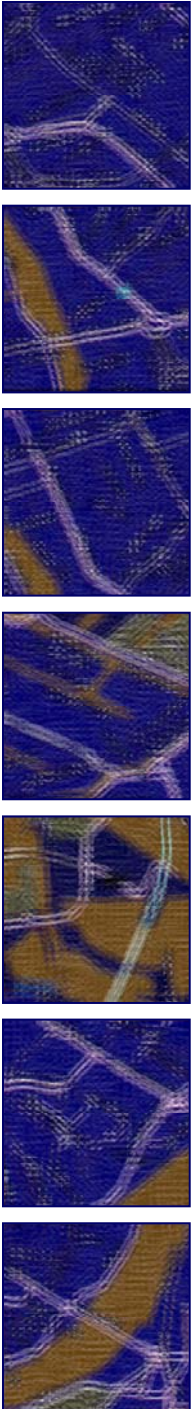


# WIB Operating Plan Session

**Keith R. Hyde**  
**Presenter**

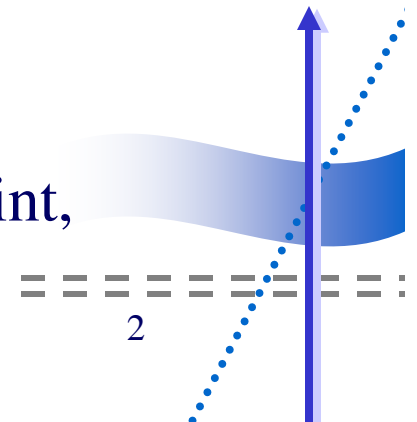


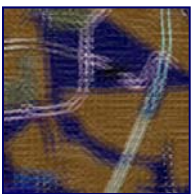
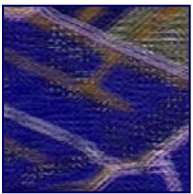
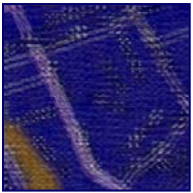
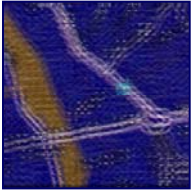
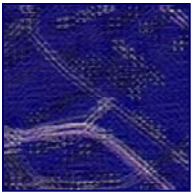


Since 8/28/2008

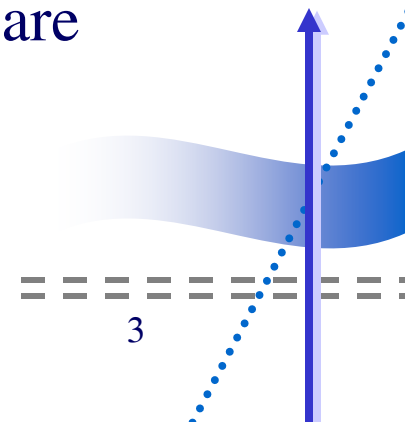
Through Formula Funds, RR &/or NEG \$

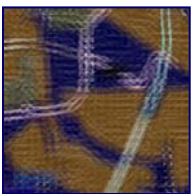
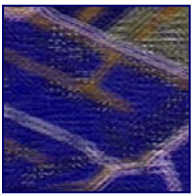
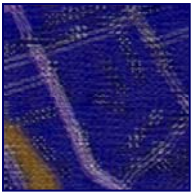
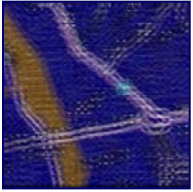
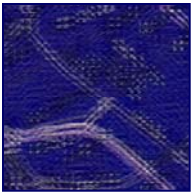
- 17 County Coordinating Committee established
- Since 8/28/2008 78 Rapid (TCO) Sessions for over 2,000
- Set up 2 on airbase and 1 off airbase Transition Centers/shared cost
- Almost 1,900 have attended some type of class, pre-layoff or post  
(Excel, Word Basic, Intro-PC , PowerPoint, Resume Prep, Living On less)





- Management Team on airbase composed of WIA, WSU, ABX, DHL, BPI, Right Management - meets weekly
- Trained people who are part of layoff to perform case management, SCOTI entry, and support
- 13.5 Case Managers, 13 Trainers to do workshops
- All centers, plus local CCWorks One-Stop are open 11-14 hours per day

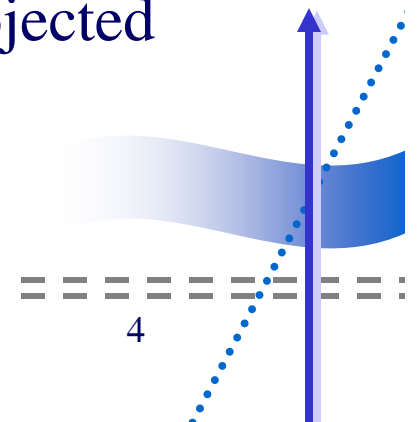




- Early pre-layoff work improves outcome/results
- Involving impacted people in the delivery of program improves results
- Flexibility and adaptability is key to customers satisfaction

EVERY EVENT IS A NEW CHALLENGE

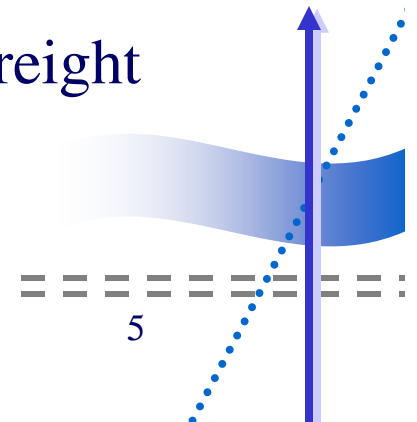
- Clinton & Highland County alone, have already exceeded the Planned Participant Number in the NEG Grant for the 17 County Area projected thru 3/31/2009.

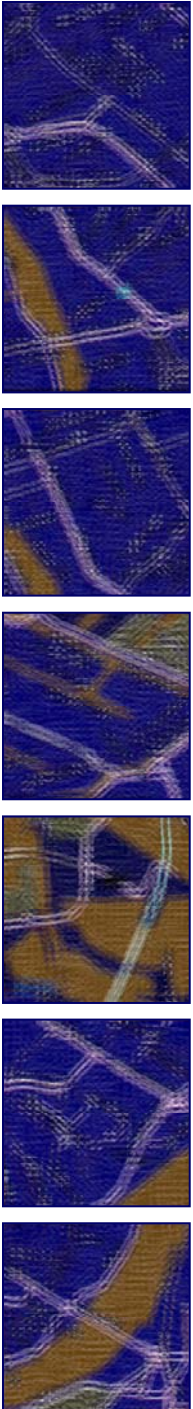




## BIG Picture Workforce Status

- As of 5/28/2008, ABX, DHL & Astar had 9,300 workers
- Currently the number has shrunk to 4,670±
- ABX alone has had 1,400 resignations - mostly due to reduced hours & uncertainty of the future
- 2<sup>nd</sup> level employees have gone from 1,500 to 800±
- Balance hinges on the future of international freight business location and the airpark ownership





▶ **Give US A CALL**

**WSU**

*Workforce Services Unlimited Inc.*

200 E. High St., P. O. Box 220, Circleville, Ohio 43113

Phone: 740-474-7518 Fax: 740-474-9675

Email Keith R. Hyde, Executive Director at [krhyde@wsu-inc.org](mailto:krhyde@wsu-inc.org)

