

## Ohio Department of Job and Family Services



### Public Assistance Monthly Statistics Report

**January 2008**

<http://jfs.ohio.gov/pams/index.stm>

Bureau of Research and Evaluation : Federal Reports Section

Office of Research, Assessment, and Accountability

P.O. Box 1618

Columbus, Ohio 43216-1618

**OHIO DEPARTMENT OF JOB AND FAMILY SERVICES  
PUBLIC ASSISTANCE MONTHLY STATISTICS  
TABLE OF CONTENTS  
January 2008**

<u>TITLE</u>	<u>PAGE(S)</u>
Monthly Review of Public Assistance Statistics	1
Statewide Summary of Public Assistance Programs	2
OWF (TANF) Summary	3-17
<b>Foster Care (Title IV-E) Program Summary. . . Temporarily Unavailable</b>	<b>18-21</b>
Disability Assistance Program Summary	22-27
DA Payments for Medical Services	28
FNS Benefits Program Summary	29-34
Medicaid (Title XIX): Eligibles and Expenditures	35-42
Child Day Care Summary Preliminary	43-46
Program Summaries of Recipients, Expenditures, and Average Payment Per Recipient During the Last 12 Months	47
Percent of Ohio's Population Participating in Selected Public Assistance Programs	48-51
<i>Table 4 and Table 9 were discontinued.</i>	
<b>Table 7-A, Updated Child Day Care Summary for October 2007</b>	<b>52-55</b>
<i>All data in the PAMS report is limited to the information available at the time it was constructed. It does not account for backdated or retroactive eligibility or any adjustments made subsequent to its creation.</i>	

## Monthly Review of Public Assistance Statistics for January 2008

---

### Ohio Works First (OWF)

---

For the month of January 2008, OWF-Combined assistance groups totaled 79,869; recipients totaled 172,830 and money payments totaled \$27,092,236. The percent change from December 2007 to January 2008 was -0.5% for assistance groups; -0.2% for recipients, and 0.7% for money payments. For OWF- Regular (OWF-R) there were 76,394 assistance groups; 158,784 recipients, and \$25,476,766 in money payments issued for January 2008. The percent change from December 2007 to January 2008 was -0.9% for assistance groups; -0.8% for recipients, and 0.3% for money payments. For OWF-Unemployed (OWF-U), assistance groups totaled 3,475; recipients, 14,046 and money payments were \$1,615,470. The percent change from December 2007 to January 2008 was 7.9% for assistance groups; 6.2% for recipients and 7.7% for money payments.

---

### Foster Care (TITLE IV-E)

---

**Data not available due to SACWIS implementation.**

---

### Disability Assistance (DA)

---

For the month of January 2008, there were 16,051 assistance groups; 16,149 recipients, and \$2,378,057 in DA financial assistance. The average DA financial assistance per recipient was \$147.26. Total DA expenditures for medical services for January 2008 were \$1,363,663. Of this total, \$1,022,616 or 75.0% was spent for prescribed drugs, and \$243,500 or 17.9% was spent for physician services. Medical expenses were paid for 2,488 recipients for an average expenditure of \$548.10 per recipient.

---

### Food And Nutrition Services Benefits (FNS) (Food Stamps)

---

Total persons participating in the FNS benefits program during January 2008 increased to 1,139,495 by 12,009 or 1.1% from 1,127,486 persons reported in December 2007. Households increased by 4,845 or 0.9% over December 2007 levels. The total dollar value of FNS related benefits issued during January 2008 increased by \$2,011,459 or 1.7% from \$119,050,719 reported in December 2007 to \$121,062,178 reported in January 2008. The average benefit issuance per person increased by \$ 0.65 or 0.6% from those issued in December 2007. The average benefit issuance per person increased from \$105.59 reported in December 2007 to \$106.24 reported in January 2008.

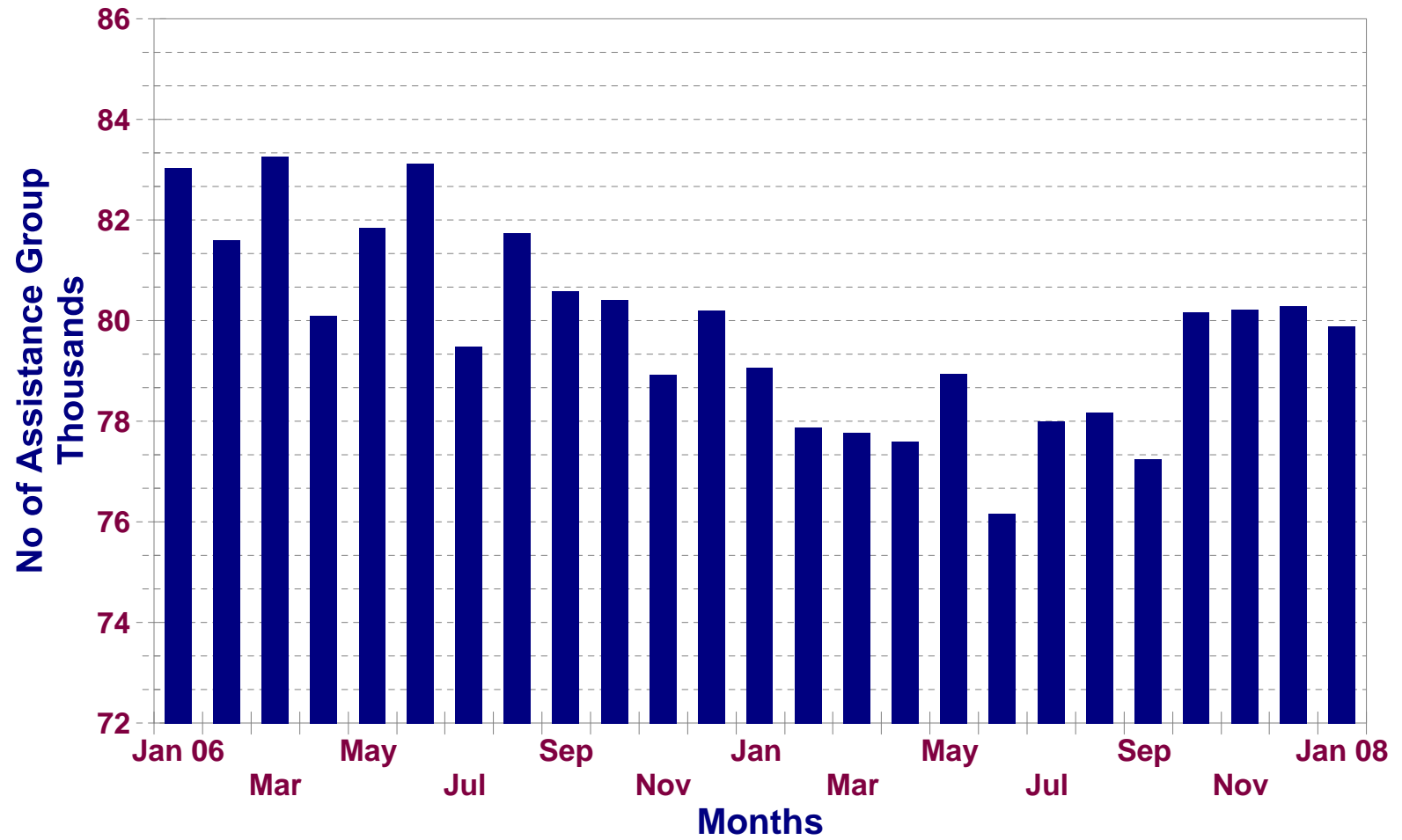
---

Please note: All data in the PAMS report is limited to the information available at the time it was constructed. It does not account for backdated or retroactive eligibility or any adjustments made subsequent to its creation.

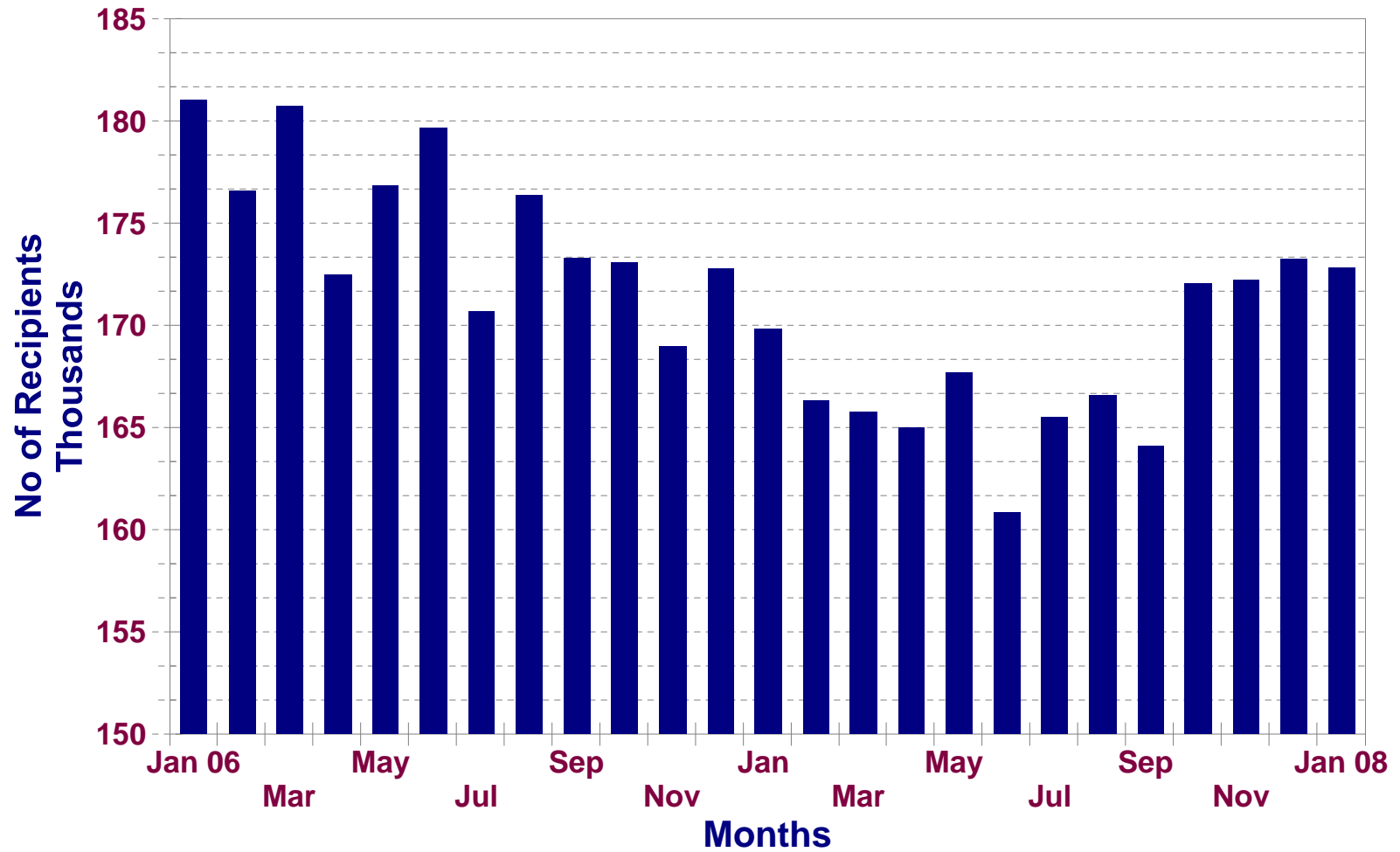
## Statewide Summary of Public Assistance Programs for January 2008

	January 2008	December 2007	% CHANGE Jan 08 / Dec 07	January 2007	% CHANGE Jan 08 / Jan 07
<b>Ohio Works First (OWF) Combined</b>					
Assistance Groups	79,869	80,284	-0.5%	79,061	1.0%
Recipients	172,830	173,254	-0.2%	169,838	1.8%
Net Payments	\$27,092,236	\$26,892,023	0.7%	\$25,952,125	4.4%
Average Per Recipient	\$156.76	\$155.22	1.0%	\$152.81	2.6%
<b>OWF-Regular, OWF-Incapacitated, &amp; OWF Regular Vendor Payments</b>					
Assistance Groups	76,394	77,063	-0.9%	75,895	0.7%
Recipients	158,784	160,029	-0.8%	156,974	1.2%
Net Payments	\$25,476,766	\$25,392,128	0.3%	\$24,563,001	3.7%
Average Per Recipient	\$160.45	\$158.67	1.1%	\$156.48	2.5%
<b>OWF-Unemployed and OWF-Unemployed Vendor Payments</b>					
Assistance Groups	3,475	3,221	7.9%	3,166	9.8%
Recipients	14,046	13,225	6.2%	12,864	9.2%
Net Payments	\$1,615,470	\$1,499,895	7.7%	\$1,389,124	16.3%
Average Per Recipient	\$115.01	\$113.41	1.4%	\$107.99	6.5%
<b>Title IV-E Foster Care</b>					
Assistance Groups/Recipients	N.A.	N.A.	N.A.	27,150	N.A.
Gross Payments	N.A.	N.A.	N.A.	\$14,522,840	N.A.
Average Per Recipient	N.A.	N.A.	N.A.	\$534.91	N.A.
<b>Disability Assistance</b>					
Assistance Groups	16,051	15,765	1.8%	13,601	18.0%
Recipients	16,149	15,860	1.8%	13,678	18.1%
Net Payments	\$2,378,057	\$2,135,947	11.3%	\$1,860,503	27.8%
Medical Assistance	\$1,363,663	\$1,100,313	23.9%	\$2,252,848	-39.5%
<b>Food And Nutrition Services Benefits (FNS) (Food Stamps)</b>					
Assistance Groups	520,328	515,483	0.9%	491,430	5.9%
Persons	1,139,495	1,127,486	1.1%	1,074,737	6.0%
Total Coupons Issued	\$121,062,178	\$119,050,719	1.7%	\$107,705,366	12.4%
Average Per Recipient	\$106.24	\$105.59	0.6%	\$100.22	6.0%

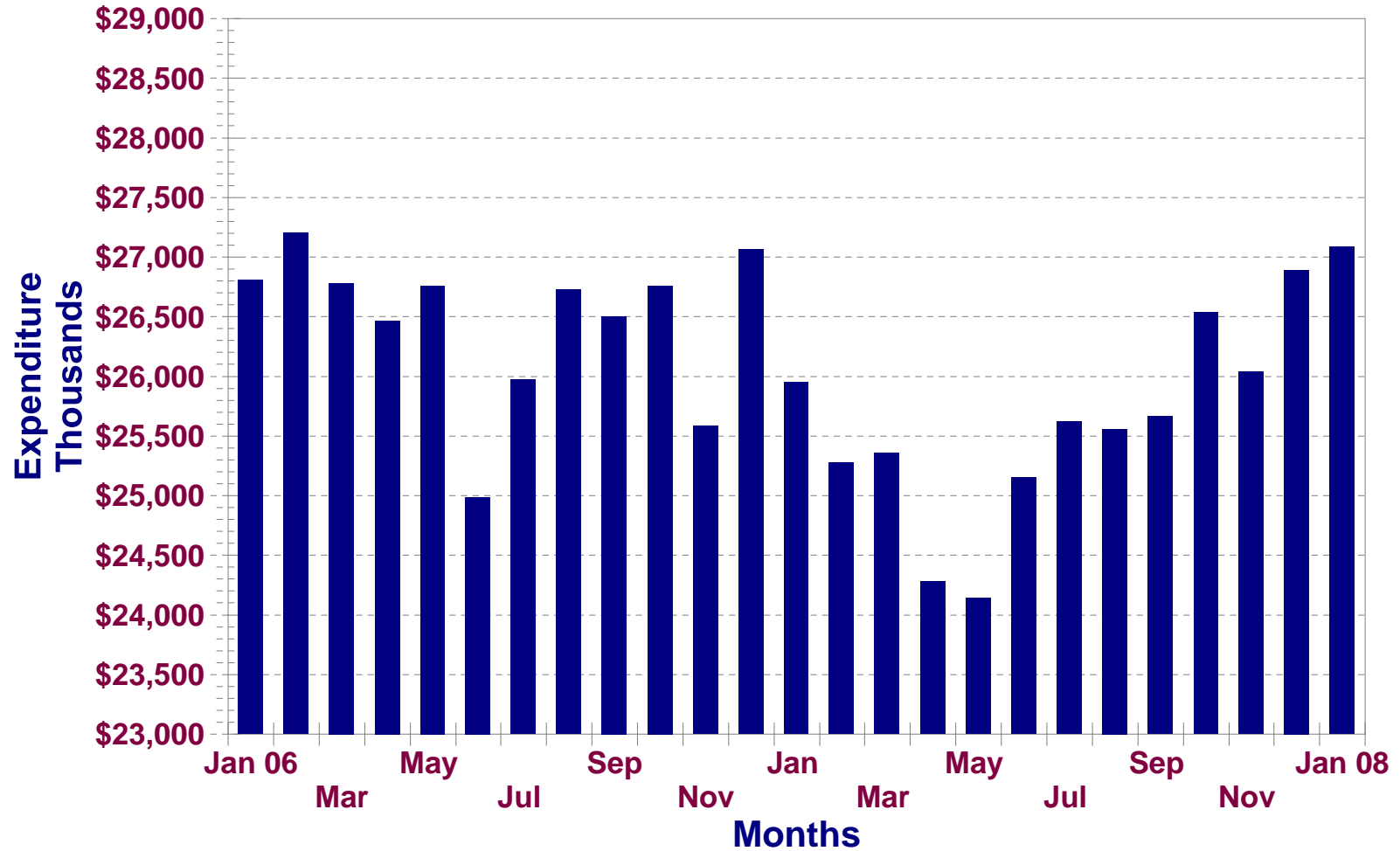
## No of OWF Combined Assistance Groups During The Last 25 Months



## No of OWF Combined Recipients During The Last 25 Months



## No of OWF Combined Net Expenditure During The Last 25 Months





**Table 1**  
**Ohio Work First (OWF) Combined** *(Excludes OWF Refugee Data)*  
**January 2008**

	Assistance Group	Recipients	Adults	Children	Actual Expenditure		
					Gross Amount	Cancelled Amount	Net Amount
<b>Ohio</b>	<b>79,869</b>	<b>172,830</b>	<b>43,168</b>	<b>129,662</b>	<b>\$27,464,082.00</b>	<b>\$371,846.00</b>	<b>\$27,092,236.00</b>
Adams	137	213	5	208	\$39,309.00	\$245.00	\$39,064.00
Allen	409	659	36	623	\$125,819.00	\$1,782.00	\$124,037.00
Ashland	114	241	65	176	\$39,743.00	\$245.00	\$39,498.00
Ashtabula	706	1,494	376	1,118	\$234,522.00	\$1,832.00	\$232,690.00
Athens	700	1,732	638	1,094	\$253,036.00	\$3,757.00	\$249,279.00
Auglaize	73	105	2	103	\$21,154.00	\$0.00	\$21,154.00
Belmont	312	639	151	488	\$96,466.00	\$746.00	\$95,720.00
Brown	156	263	30	233	\$48,549.00	\$0.00	\$48,549.00
Butler	1,546	2,917	440	2,477	\$490,067.00	\$1,925.00	\$488,142.00
Carroll	91	165	40	125	\$26,497.00	\$369.00	\$26,128.00
Champaign	195	445	131	314	\$66,044.00	\$0.00	\$66,044.00
Clark	1,396	3,053	829	2,224	\$480,939.00	\$4,090.00	\$476,849.00
Clermont	432	765	77	688	\$134,807.00	\$1,491.00	\$133,316.00
Clinton	134	258	44	214	\$43,941.00	\$245.00	\$43,696.00
Columbiana	448	826	129	697	\$140,941.00	\$997.00	\$139,944.00
Coshocton	238	499	162	337	\$75,510.00	\$1,291.00	\$74,219.00
Crawford	178	405	103	302	\$67,353.00	\$752.00	\$66,601.00
Cuyahoga	10,880	22,010	4,826	17,184	\$3,735,113.00	\$55,660.00	\$3,679,453.00
Darke	161	354	106	248	\$56,202.00	\$0.00	\$56,202.00
Defiance	159	400	107	293	\$60,690.00	\$1,636.00	\$59,054.00
Delaware	354	821	273	548	\$129,318.00	\$672.00	\$128,646.00
Erie	238	442	41	401	\$77,103.00	\$410.00	\$76,693.00



**Table 1**  
**Ohio Work First (OWF) Combined** *(Excludes OWF Refugee Data)*  
**January 2008**

	Assistance Group	Recipients	Adults	Children	Actual Expenditure		
					Gross Amount	Cancelled Amount	Net Amount
<b>Ohio</b>	<b>79,869</b>	<b>172,830</b>	<b>43,168</b>	<b>129,662</b>	<b>\$27,464,082.00</b>	<b>\$371,846.00</b>	<b>\$27,092,236.00</b>
Fairfield	770	1,753	536	1,217	\$260,009.00	\$5,371.00	\$254,638.00
Fayette	145	324	74	250	\$48,936.00	\$752.00	\$48,184.00
Franklin	12,122	27,876	7,359	20,517	\$4,263,550.00	\$83,232.00	\$4,180,318.00
Fulton	69	114	4	110	\$20,739.00	\$507.00	\$20,232.00
Gallia	429	1,007	337	670	\$149,603.00	\$2,237.00	\$147,366.00
Geauga	64	105	8	97	\$19,695.00	\$1,216.00	\$18,479.00
Greene	564	1,166	285	881	\$187,340.00	\$1,754.00	\$185,586.00
Guernsey	174	303	47	256	\$53,549.00	\$0.00	\$53,549.00
Hamilton	7,415	17,353	4,001	13,352	\$2,761,696.00	\$54,364.00	\$2,707,332.00
Hancock	94	136	0	136	\$27,394.00	\$245.00	\$27,149.00
Hardin	66	105	5	100	\$19,725.00	\$245.00	\$19,480.00
Harrison	99	216	63	153	\$32,588.00	\$905.00	\$31,683.00
Henry	38	64	5	59	\$11,422.00	\$0.00	\$11,422.00
Highland	245	584	153	431	\$86,859.00	\$581.00	\$86,278.00
Hocking	279	620	191	429	\$94,549.00	\$631.00	\$93,918.00
Holmes	33	69	11	58	\$10,687.00	\$0.00	\$10,687.00
Huron	200	356	36	320	\$62,880.00	\$1,408.00	\$61,472.00
Jackson	323	615	117	498	\$105,434.00	\$0.00	\$105,434.00
Jefferson	698	1,623	484	1,139	\$243,099.00	\$3,631.00	\$239,468.00
Knox	268	611	187	424	\$93,135.00	\$929.00	\$92,206.00
Lake	458	964	213	751	\$163,325.00	\$2,573.00	\$160,752.00
Lawrence	745	1,447	312	1,135	\$237,346.00	\$2,970.00	\$234,376.00



**Table 1**  
**Ohio Work First (OWF) Combined** *(Excludes OWF Refugee Data)*  
**January 2008**

	Assistance Group					Actual Expenditure		
		Recipients	Adults	Children	Gross Amount	Cancelled Amount	Net Amount	
<b>Ohio</b>	<b>79,869</b>	<b>172,830</b>	<b>43,168</b>	<b>129,662</b>	<b>\$27,464,082.00</b>	<b>\$371,846.00</b>	<b>\$27,092,236.00</b>	
Licking	594	1,268	343	925	\$192,176.00	\$2,163.00	\$190,013.00	
Logan	198	433	109	324	\$65,162.00	\$0.00	\$65,162.00	
Lorain	1,912	4,082	930	3,152	\$656,758.00	\$7,857.00	\$648,901.00	
Lucas	5,835	13,109	3,700	9,409	\$2,024,399.00	\$26,704.00	\$1,997,695.00	
Madison	233	536	160	376	\$87,527.00	\$1,339.00	\$86,188.00	
Mahoning	2,944	6,789	1,897	4,892	\$1,048,156.00	\$11,828.00	\$1,036,328.00	
Marion	387	713	99	614	\$125,234.00	\$490.00	\$124,744.00	
Medina	250	518	123	395	\$79,100.00	\$1,753.00	\$77,347.00	
Meigs	240	583	179	404	\$85,399.00	\$1,381.00	\$84,018.00	
Mercer	79	161	45	116	\$26,342.00	\$245.00	\$26,097.00	
Miami	317	615	123	492	\$100,674.00	\$2,614.00	\$98,060.00	
Monroe	49	123	31	92	\$16,793.00	\$817.00	\$15,976.00	
Montgomery	5,406	11,285	2,795	8,490	\$1,774,520.00	\$16,213.00	\$1,758,307.00	
Morgan	93	174	37	137	\$30,063.00	\$336.00	\$29,727.00	
Morrow	120	241	53	188	\$38,898.00	\$779.00	\$38,119.00	
Muskingum	860	1,839	509	1,330	\$287,489.00	\$3,786.00	\$283,703.00	
Noble	32	83	21	62	\$10,392.00	\$0.00	\$10,392.00	
Ottawa	118	280	80	200	\$41,635.00	\$593.00	\$41,042.00	
Paulding	92	240	78	162	\$34,730.00	\$1,546.00	\$33,184.00	
Perry	346	801	228	573	\$115,829.00	\$490.00	\$115,339.00	
Pickaway	395	901	266	635	\$141,045.00	\$838.00	\$140,207.00	
Pike	381	855	242	613	\$134,466.00	\$1,938.00	\$132,528.00	



**Table 1**  
**Ohio Work First (OWF) Combined** *(Excludes OWF Refugee Data)*  
**January 2008**

	Assistance Group	Recipients	Adults	Children	Actual Expenditure		
					Gross Amount	Cancelled Amount	Net Amount
<b>Ohio</b>	<b>79,869</b>	<b>172,830</b>	<b>43,168</b>	<b>129,662</b>	<b>\$27,464,082.00</b>	<b>\$371,846.00</b>	<b>\$27,092,236.00</b>
Portage	420	796	146	650	\$129,556.00	\$1,027.00	\$128,529.00
Preble	191	407	100	307	\$64,497.00	\$581.00	\$63,916.00
Putnam	21	31	1	30	\$5,878.00	\$0.00	\$5,878.00
Richland	665	1,318	270	1,048	\$220,191.00	\$2,749.00	\$217,442.00
Ross	681	1,463	368	1,095	\$232,684.00	\$2,334.00	\$230,350.00
Sandusky	185	350	61	289	\$60,660.00	\$1,118.00	\$59,542.00
Scioto	1,114	2,197	474	1,723	\$361,263.00	\$3,560.00	\$357,703.00
Seneca	177	350	68	282	\$58,511.00	\$245.00	\$58,266.00
Shelby	154	266	28	238	\$49,646.00	\$1,236.00	\$48,410.00
Stark	2,894	6,583	1,928	4,655	\$985,047.00	\$5,884.00	\$979,163.00
Summit	4,843	10,609	3,038	7,571	\$1,682,676.00	\$15,901.00	\$1,666,775.00
Trumbull	1,421	2,912	675	2,237	\$480,425.00	\$3,355.00	\$477,070.00
Tuscarawas	368	753	201	552	\$124,858.00	\$1,123.00	\$123,735.00
Union	140	336	95	241	\$47,995.00	\$997.00	\$46,998.00
Van Wert	52	85	8	77	\$15,696.00	\$0.00	\$15,696.00
Vinton	145	316	80	236	\$48,536.00	\$410.00	\$48,126.00
Warren	223	386	54	332	\$70,096.00	\$1,332.00	\$68,764.00
Washington	133	193	2	191	\$37,138.00	\$490.00	\$36,648.00
Wayne	402	912	296	616	\$146,147.00	\$2,771.00	\$143,376.00
Williams	152	387	136	251	\$51,890.00	\$1,082.00	\$50,808.00
Wood	212	353	36	317	\$64,249.00	\$245.00	\$64,004.00
Wyandot	40	81	16	65	\$12,973.00	\$0.00	\$12,973.00

Source: GRP342RA Report from Management Information Services. Data includes OWF-Regular, OWF-Incapacitated, OWF-Unemployed and Vendor Payments.



**Table 1**  
**Ohio Work First (OWF) Regular**  
**January 2008**

	Assistance Group	Recipients	Adults	Children	Actual Expenditure		
					Gross Amount	Cancelled Amount	Net Amount
<b>Ohio</b>	<b>76,394</b>	<b>158,784</b>	<b>36,699</b>	<b>122,085</b>	<b>\$25,830,377.00</b>	<b>\$353,611.00</b>	<b>\$25,476,766.00</b>
Adams	137	213	5	208	\$39,309.00	\$245.00	\$39,064.00
Allen	409	659	36	623	\$125,819.00	\$1,782.00	\$124,037.00
Ashland	106	211	49	162	\$36,333.00	\$245.00	\$36,088.00
Ashtabula	659	1,303	286	1,017	\$213,556.00	\$1,422.00	\$212,134.00
Athens	605	1,379	459	920	\$211,110.00	\$3,288.00	\$207,822.00
Auglaize	73	105	2	103	\$21,154.00	\$0.00	\$21,154.00
Belmont	296	581	120	461	\$89,906.00	\$746.00	\$89,160.00
Brown	156	263	30	233	\$48,549.00	\$0.00	\$48,549.00
Butler	1,545	2,913	438	2,475	\$489,839.00	\$1,925.00	\$487,914.00
Carroll	89	156	36	120	\$25,895.00	\$369.00	\$25,526.00
Champaign	183	400	106	294	\$60,997.00	\$0.00	\$60,997.00
Clark	1,317	2,729	676	2,053	\$443,493.00	\$4,090.00	\$439,403.00
Clermont	432	765	77	688	\$134,807.00	\$1,491.00	\$133,316.00
Clinton	133	255	44	211	\$43,531.00	\$245.00	\$43,286.00
Columbiana	443	806	119	687	\$138,467.00	\$997.00	\$137,470.00
Coshocton	215	418	119	299	\$67,532.00	\$1,291.00	\$66,241.00
Crawford	163	352	75	277	\$59,989.00	\$752.00	\$59,237.00
Cuyahoga	10,627	20,990	4,348	16,642	\$3,607,794.00	\$53,508.00	\$3,554,286.00
Darke	147	299	78	221	\$47,703.00	\$0.00	\$47,703.00
Defiance	149	355	87	268	\$55,118.00	\$1,636.00	\$53,482.00
Delaware	311	662	193	469	\$109,315.00	\$672.00	\$108,643.00
Erie	235	427	37	390	\$75,836.00	\$410.00	\$75,426.00



**Table 1**  
**Ohio Work First (OWF) Regular**  
**January 2008**

	Assistance Group				Actual Expenditure		
		Recipients	Adults	Children	Gross Amount	Cancelled Amount	Net Amount
<b>Ohio</b>	<b>76,394</b>	<b>158,784</b>	<b>36,699</b>	<b>122,085</b>	<b>\$25,830,377.00</b>	<b>\$353,611.00</b>	<b>\$25,476,766.00</b>
Fairfield	697	1,464	397	1,067	\$228,385.00	\$5,371.00	\$223,014.00
Fayette	139	305	62	243	\$46,316.00	\$752.00	\$45,564.00
Franklin	11,444	25,011	6,210	18,801	\$3,936,598.00	\$76,479.00	\$3,860,119.00
Fulton	69	114	4	110	\$20,739.00	\$507.00	\$20,232.00
Gallia	380	819	239	580	\$129,200.00	\$2,237.00	\$126,963.00
Geauga	64	105	8	97	\$19,695.00	\$1,216.00	\$18,479.00
Greene	540	1,078	241	837	\$177,630.00	\$1,754.00	\$175,876.00
Guernsey	169	283	37	246	\$49,908.00	\$0.00	\$49,908.00
Hamilton	7,277	16,770	3,754	13,016	\$2,692,490.00	\$53,612.00	\$2,638,878.00
Hancock	94	136	0	136	\$27,394.00	\$245.00	\$27,149.00
Hardin	66	105	5	100	\$19,725.00	\$245.00	\$19,480.00
Harrison	86	159	37	122	\$26,034.00	\$905.00	\$25,129.00
Henry	38	64	5	59	\$11,422.00	\$0.00	\$11,422.00
Highland	231	519	125	394	\$80,243.00	\$581.00	\$79,662.00
Hocking	253	518	139	379	\$82,397.00	\$631.00	\$81,766.00
Holmes	30	55	5	50	\$9,531.00	\$0.00	\$9,531.00
Huron	193	338	34	304	\$60,211.00	\$1,408.00	\$58,803.00
Jackson	307	552	86	466	\$98,216.00	\$0.00	\$98,216.00
Jefferson	635	1,363	359	1,004	\$213,796.00	\$3,204.00	\$210,592.00
Knox	240	496	131	365	\$79,293.00	\$336.00	\$78,957.00
Lake	433	860	168	692	\$149,596.00	\$2,573.00	\$147,023.00
Lawrence	712	1,321	250	1,071	\$223,362.00	\$2,970.00	\$220,392.00



**Table 1**  
**Ohio Work First (OWF) Regular**  
**January 2008**

	Assistance Group	Recipients	Adults	Children	Actual Expenditure		
					Gross Amount	Cancelled Amount	Net Amount
<b>Ohio</b>	<b>76,394</b>	<b>158,784</b>	<b>36,699</b>	<b>122,085</b>	<b>\$25,830,377.00</b>	<b>\$353,611.00</b>	<b>\$25,476,766.00</b>
Licking	550	1,084	254	830	\$173,482.00	\$2,163.00	\$171,319.00
Logan	189	395	91	304	\$61,834.00	\$0.00	\$61,834.00
Lorain	1,856	3,872	835	3,037	\$629,845.00	\$7,857.00	\$621,988.00
Lucas	5,459	11,671	3,013	8,658	\$1,865,009.00	\$22,963.00	\$1,842,046.00
Madison	214	461	122	339	\$76,816.00	\$1,339.00	\$75,477.00
Mahoning	2,838	6,351	1,688	4,663	\$998,667.00	\$11,418.00	\$987,249.00
Marion	381	687	89	598	\$122,370.00	\$490.00	\$121,880.00
Medina	243	493	109	384	\$75,856.00	\$1,753.00	\$74,103.00
Meigs	207	441	113	328	\$68,493.00	\$1,381.00	\$67,112.00
Mercer	76	147	39	108	\$24,278.00	\$245.00	\$24,033.00
Miami	305	572	99	473	\$95,587.00	\$2,614.00	\$92,973.00
Monroe	45	96	23	73	\$14,594.00	\$817.00	\$13,777.00
Montgomery	5,385	11,206	2,769	8,437	\$1,763,937.00	\$16,213.00	\$1,747,724.00
Morgan	87	155	26	129	\$27,031.00	\$336.00	\$26,695.00
Morrow	115	219	43	176	\$35,721.00	\$245.00	\$35,476.00
Muskingum	805	1,626	399	1,227	\$263,317.00	\$3,786.00	\$259,531.00
Noble	30	71	17	54	\$9,072.00	\$0.00	\$9,072.00
Ottawa	110	244	65	179	\$36,516.00	\$593.00	\$35,923.00
Paulding	79	179	52	127	\$28,267.00	\$1,546.00	\$26,721.00
Perry	314	666	164	502	\$100,806.00	\$490.00	\$100,316.00
Pickaway	374	814	224	590	\$132,365.00	\$838.00	\$131,527.00
Pike	355	749	190	559	\$120,470.00	\$1,528.00	\$118,942.00



**Table 1**  
**Ohio Work First (OWF) Regular**  
**January 2008**

	Assistance Group				Actual Expenditure		
		Recipients	Adults	Children	Gross Amount	Cancelled Amount	Net Amount
<b>Ohio</b>	<b>76,394</b>	<b>158,784</b>	<b>36,699</b>	<b>122,085</b>	<b>\$25,830,377.00</b>	<b>\$353,611.00</b>	<b>\$25,476,766.00</b>
Portage	408	755	128	627	\$124,000.00	\$1,027.00	\$122,973.00
Preble	185	384	88	296	\$61,613.00	\$581.00	\$61,032.00
Putnam	17	25	1	24	\$4,859.00	\$0.00	\$4,859.00
Richland	648	1,247	238	1,009	\$211,851.00	\$2,749.00	\$209,102.00
Ross	651	1,345	315	1,030	\$219,443.00	\$2,334.00	\$217,109.00
Sandusky	178	330	55	275	\$57,490.00	\$1,118.00	\$56,372.00
Scioto	1,061	1,987	369	1,618	\$336,344.00	\$3,560.00	\$332,784.00
Seneca	173	338	62	276	\$56,960.00	\$245.00	\$56,715.00
Shelby	154	266	28	238	\$49,646.00	\$1,236.00	\$48,410.00
Stark	2,680	5,711	1,501	4,210	\$886,856.00	\$5,120.00	\$881,736.00
Summit	4,562	9,433	2,482	6,951	\$1,544,344.00	\$15,491.00	\$1,528,853.00
Trumbull	1,367	2,696	568	2,128	\$452,463.00	\$3,355.00	\$449,108.00
Tuscarawas	342	650	151	499	\$110,693.00	\$713.00	\$109,980.00
Union	129	291	73	218	\$42,980.00	\$997.00	\$41,983.00
Van Wert	52	85	8	77	\$15,696.00	\$0.00	\$15,696.00
Vinton	134	275	58	217	\$44,244.00	\$410.00	\$43,834.00
Warren	222	382	52	330	\$69,622.00	\$1,332.00	\$68,290.00
Washington	133	193	2	191	\$37,138.00	\$490.00	\$36,648.00
Wayne	369	779	230	549	\$130,302.00	\$2,771.00	\$127,531.00
Williams	134	306	100	206	\$44,517.00	\$1,082.00	\$43,435.00
Wood	212	353	36	317	\$64,249.00	\$245.00	\$64,004.00
Wyandot	39	78	14	64	\$12,501.00	\$0.00	\$12,501.00

Source: GRP342RA Report from Management Information Services. Data includes OEF-Regular, OWF-Incapacitated and Vendor Payments.



**Table 1**  
**Ohio Work First (OWF) Unemployed**  
**January 2008**

	Assistance Group				Actual Expenditure		
		Recipients	Adults	Children	Gross Amount	Cancelled Amount	Net Amount
<b>Ohio</b>	<b>3,475</b>	<b>14,046</b>	<b>6,469</b>	<b>7,577</b>	<b>\$1,633,705.00</b>	<b>\$18,235.00</b>	<b>\$1,615,470.00</b>
Adams	0	0	0	0	\$0.00	\$0.00	\$0.00
Allen	0	0	0	0	\$0.00	\$0.00	\$0.00
Ashland	8	30	16	14	\$3,410.00	\$0.00	\$3,410.00
Ashtabula	47	191	90	101	\$20,966.00	\$410.00	\$20,556.00
Athens	95	353	179	174	\$41,926.00	\$469.00	\$41,457.00
Auglaize	0	0	0	0	\$0.00	\$0.00	\$0.00
Belmont	16	58	31	27	\$6,560.00	\$0.00	\$6,560.00
Brown	0	0	0	0	\$0.00	\$0.00	\$0.00
Butler	1	4	2	2	\$228.00	\$0.00	\$228.00
Carroll	2	9	4	5	\$602.00	\$0.00	\$602.00
Champaign	12	45	25	20	\$5,047.00	\$0.00	\$5,047.00
Clark	79	324	153	171	\$37,446.00	\$0.00	\$37,446.00
Clermont	0	0	0	0	\$0.00	\$0.00	\$0.00
Clinton	1	3	0	3	\$410.00	\$0.00	\$410.00
Columbiana	5	20	10	10	\$2,474.00	\$0.00	\$2,474.00
Coshocton	23	81	43	38	\$7,978.00	\$0.00	\$7,978.00
Crawford	15	53	28	25	\$7,364.00	\$0.00	\$7,364.00
Cuyahoga	253	1,020	478	542	\$127,319.00	\$2,152.00	\$125,167.00
Darke	14	55	28	27	\$8,499.00	\$0.00	\$8,499.00
Defiance	10	45	20	25	\$5,572.00	\$0.00	\$5,572.00
Delaware	43	159	80	79	\$20,003.00	\$0.00	\$20,003.00
Erie	3	15	4	11	\$1,267.00	\$0.00	\$1,267.00



**Table 1**  
**Ohio Work First (OWF) Unemployed**  
**January 2008**

	Assistance Group				Actual Expenditure		
		Recipients	Adults	Children	Gross Amount	Cancelled Amount	Net Amount
<b>Ohio</b>	<b>3,475</b>	<b>14,046</b>	<b>6,469</b>	<b>7,577</b>	<b>\$1,633,705.00</b>	<b>\$18,235.00</b>	<b>\$1,615,470.00</b>
Fairfield	73	289	139	150	\$31,624.00	\$0.00	\$31,624.00
Fayette	6	19	12	7	\$2,620.00	\$0.00	\$2,620.00
Franklin	678	2,865	1,149	1,716	\$326,952.00	\$6,753.00	\$320,199.00
Fulton	0	0	0	0	\$0.00	\$0.00	\$0.00
Gallia	49	188	98	90	\$20,403.00	\$0.00	\$20,403.00
Geauga	0	0	0	0	\$0.00	\$0.00	\$0.00
Greene	24	88	44	44	\$9,710.00	\$0.00	\$9,710.00
Guernsey	5	20	10	10	\$3,641.00	\$0.00	\$3,641.00
Hamilton	138	583	247	336	\$69,206.00	\$752.00	\$68,454.00
Hancock	0	0	0	0	\$0.00	\$0.00	\$0.00
Hardin	0	0	0	0	\$0.00	\$0.00	\$0.00
Harrison	13	57	26	31	\$6,554.00	\$0.00	\$6,554.00
Henry	0	0	0	0	\$0.00	\$0.00	\$0.00
Highland	14	65	28	37	\$6,616.00	\$0.00	\$6,616.00
Hocking	26	102	52	50	\$12,152.00	\$0.00	\$12,152.00
Holmes	3	14	6	8	\$1,156.00	\$0.00	\$1,156.00
Huron	7	18	2	16	\$2,669.00	\$0.00	\$2,669.00
Jackson	16	63	31	32	\$7,218.00	\$0.00	\$7,218.00
Jefferson	63	260	125	135	\$29,303.00	\$427.00	\$28,876.00
Knox	28	115	56	59	\$13,842.00	\$593.00	\$13,249.00
Lake	25	104	45	59	\$13,729.00	\$0.00	\$13,729.00
Lawrence	33	126	62	64	\$13,984.00	\$0.00	\$13,984.00



**Table 1**  
**Ohio Work First (OWF) Unemployed**  
**January 2008**

	Assistance Group				Actual Expenditure		
		Recipients	Adults	Children	Gross Amount	Cancelled Amount	Net Amount
<b>Ohio</b>	<b>3,475</b>	<b>14,046</b>	<b>6,469</b>	<b>7,577</b>	<b>\$1,633,705.00</b>	<b>\$18,235.00</b>	<b>\$1,615,470.00</b>
Licking	44	184	89	95	\$18,694.00	\$0.00	\$18,694.00
Logan	9	38	18	20	\$3,328.00	\$0.00	\$3,328.00
Lorain	56	210	95	115	\$26,913.00	\$0.00	\$26,913.00
Lucas	376	1,438	687	751	\$159,390.00	\$3,741.00	\$155,649.00
Madison	19	75	38	37	\$10,711.00	\$0.00	\$10,711.00
Mahoning	106	438	209	229	\$49,489.00	\$410.00	\$49,079.00
Marion	6	26	10	16	\$2,864.00	\$0.00	\$2,864.00
Medina	7	25	14	11	\$3,244.00	\$0.00	\$3,244.00
Meigs	33	142	66	76	\$16,906.00	\$0.00	\$16,906.00
Mercer	3	14	6	8	\$2,064.00	\$0.00	\$2,064.00
Miami	12	43	24	19	\$5,087.00	\$0.00	\$5,087.00
Monroe	4	27	8	19	\$2,199.00	\$0.00	\$2,199.00
Montgomery	21	79	26	53	\$10,583.00	\$0.00	\$10,583.00
Morgan	6	19	11	8	\$3,032.00	\$0.00	\$3,032.00
Morrow	5	22	10	12	\$3,177.00	\$534.00	\$2,643.00
Muskingum	55	213	110	103	\$24,172.00	\$0.00	\$24,172.00
Noble	2	12	4	8	\$1,320.00	\$0.00	\$1,320.00
Ottawa	8	36	15	21	\$5,119.00	\$0.00	\$5,119.00
Paulding	13	61	26	35	\$6,463.00	\$0.00	\$6,463.00
Perry	32	135	64	71	\$15,023.00	\$0.00	\$15,023.00
Pickaway	21	87	42	45	\$8,680.00	\$0.00	\$8,680.00
Pike	26	106	52	54	\$13,996.00	\$410.00	\$13,586.00



**Table 1**  
**Ohio Work First (OWF) Unemployed**  
**January 2008**

	Assistance Group				Actual Expenditure		
		Recipients	Adults	Children	Gross Amount	Cancelled Amount	Net Amount
<b>Ohio</b>	<b>3,475</b>	<b>14,046</b>	<b>6,469</b>	<b>7,577</b>	<b>\$1,633,705.00</b>	<b>\$18,235.00</b>	<b>\$1,615,470.00</b>
Portage	12	41	18	23	\$5,556.00	\$0.00	\$5,556.00
Preble	6	23	12	11	\$2,884.00	\$0.00	\$2,884.00
Putnam	4	6	0	6	\$1,019.00	\$0.00	\$1,019.00
Richland	17	71	32	39	\$8,340.00	\$0.00	\$8,340.00
Ross	30	118	53	65	\$13,241.00	\$0.00	\$13,241.00
Sandusky	7	20	6	14	\$3,170.00	\$0.00	\$3,170.00
Scioto	53	210	105	105	\$24,919.00	\$0.00	\$24,919.00
Seneca	4	12	6	6	\$1,551.00	\$0.00	\$1,551.00
Shelby	0	0	0	0	\$0.00	\$0.00	\$0.00
Stark	214	872	427	445	\$98,191.00	\$764.00	\$97,427.00
Summit	281	1,176	556	620	\$138,332.00	\$410.00	\$137,922.00
Trumbull	54	216	107	109	\$27,962.00	\$0.00	\$27,962.00
Tuscarawas	26	103	50	53	\$14,165.00	\$410.00	\$13,755.00
Union	11	45	22	23	\$5,015.00	\$0.00	\$5,015.00
Van Wert	0	0	0	0	\$0.00	\$0.00	\$0.00
Vinton	11	41	22	19	\$4,292.00	\$0.00	\$4,292.00
Warren	1	4	2	2	\$474.00	\$0.00	\$474.00
Washington	0	0	0	0	\$0.00	\$0.00	\$0.00
Wayne	33	133	66	67	\$15,845.00	\$0.00	\$15,845.00
Williams	18	81	36	45	\$7,373.00	\$0.00	\$7,373.00
Wood	0	0	0	0	\$0.00	\$0.00	\$0.00
Wyandot	1	3	2	1	\$472.00	\$0.00	\$472.00

Source: GRP342RA Report from Management Information Services. Data includes OWF-Unemployed and Vendor Payments.



**Table 2**  
**Title IV-E Foster Care and Adpotion Assistance**

**Data not available for January 2008**

	Foster Care						Adoption Assistance		Total Foster Care and	
	Foster Family Homes		Child Care Institutions		Homes & institutions		Adoption Assistance		Adoption Assistance	
	Children	Gross Amount	Children	Gross Amount	Children	Gross Amount	Children	Gross Amount	Children	Gross Amount
Ohio	0	0	0	0	0	0	0	0	0	0
Adams	0	0	0	0	0	0	0	0	0	0
Allen	0	0	0	0	0	0	0	0	0	0
Ashland	0	0	0	0	0	0	0	0	0	0
Ashtabula	0	0	0	0	0	0	0	0	0	0
Athens	0	0	0	0	0	0	0	0	0	0
Auglaize	0	0	0	0	0	0	0	0	0	0
Belmont	0	0	0	0	0	0	0	0	0	0
Brown	0	0	0	0	0	0	0	0	0	0
Butler	0	0	0	0	0	0	0	0	0	0
Carroll	0	0	0	0	0	0	0	0	0	0
Champaign	0	0	0	0	0	0	0	0	0	0
Clark	0	0	0	0	0	0	0	0	0	0
Clermont	0	0	0	0	0	0	0	0	0	0
Clinton	0	0	0	0	0	0	0	0	0	0
Columbiana	0	0	0	0	0	0	0	0	0	0
Coshocton	0	0	0	0	0	0	0	0	0	0
Crawford	0	0	0	0	0	0	0	0	0	0
Cuyahoga	0	0	0	0	0	0	0	0	0	0
Darke	0	0	0	0	0	0	0	0	0	0
Defiance	0	0	0	0	0	0	0	0	0	0
Delaware	0	0	0	0	0	0	0	0	0	0
Erie	0	0	0	0	0	0	0	0	0	0



**Table 2**  
**Title IV-E Foster Care and Adpotion Assistance**

**Data not available for January 2008**

	Foster Care						Adoption Assistance		Total Foster Care and	
	Foster Family Homes		Child Care Institutions		Homes & institutions		Adoption Assistance		Adoption Assistance	
	Children	Gross Amount	Children	Gross Amount	Children	Gross Amount	Children	Gross Amount	Children	Gross Amount
Ohio	0	0	0	0	0	0	0	0	0	0
Fairfield	0	0	0	0	0	0	0	0	0	0
Fayette	0	0	0	0	0	0	0	0	0	0
Franklin	0	0	0	0	0	0	0	0	0	0
Fulton	0	0	0	0	0	0	0	0	0	0
Gallia	0	0	0	0	0	0	0	0	0	0
Geauga	0	0	0	0	0	0	0	0	0	0
Greene	0	0	0	0	0	0	0	0	0	0
Guernsey	0	0	0	0	0	0	0	0	0	0
Hamilton	0	0	0	0	0	0	0	0	0	0
Hancock	0	0	0	0	0	0	0	0	0	0
Hardin	0	0	0	0	0	0	0	0	0	0
Harrison	0	0	0	0	0	0	0	0	0	0
Henry	0	0	0	0	0	0	0	0	0	0
Highland	0	0	0	0	0	0	0	0	0	0
Hocking	0	0	0	0	0	0	0	0	0	0
Holmes	0	0	0	0	0	0	0	0	0	0
Huron	0	0	0	0	0	0	0	0	0	0
Jackson	0	0	0	0	0	0	0	0	0	0
Jefferson	0	0	0	0	0	0	0	0	0	0
Knox	0	0	0	0	0	0	0	0	0	0
Lake	0	0	0	0	0	0	0	0	0	0
Lawrence	0	0	0	0	0	0	0	0	0	0



**Table 2**  
**Title IV-E Foster Care and Adpotion Assistance**

**Data not available for January 2008**

	Foster Care						Adoption Assistance		Total Foster Care and	
	Foster Family Homes		Child Care Institutions		Homes & institutions		Adoption Assistance		Adoption Assistance	
	Children	Gross Amount	Children	Gross Amount	Children	Gross Amount	Children	Gross Amount	Children	Gross Amount
Ohio	0	0	0	0	0	0	0	0	0	0
Licking	0	0	0	0	0	0	0	0	0	0
Logan	0	0	0	0	0	0	0	0	0	0
Lorain	0	0	0	0	0	0	0	0	0	0
Lucas	0	0	0	0	0	0	0	0	0	0
Madison	0	0	0	0	0	0	0	0	0	0
Mahoning	0	0	0	0	0	0	0	0	0	0
Marion	0	0	0	0	0	0	0	0	0	0
Medina	0	0	0	0	0	0	0	0	0	0
Meigs	0	0	0	0	0	0	0	0	0	0
Mercer	0	0	0	0	0	0	0	0	0	0
Miami	0	0	0	0	0	0	0	0	0	0
Monroe	0	0	0	0	0	0	0	0	0	0
Montgomery	0	0	0	0	0	0	0	0	0	0
Morgan	0	0	0	0	0	0	0	0	0	0
Morrow	0	0	0	0	0	0	0	0	0	0
Muskingum	0	0	0	0	0	0	0	0	0	0
Noble	0	0	0	0	0	0	0	0	0	0
Ottawa	0	0	0	0	0	0	0	0	0	0
Paulding	0	0	0	0	0	0	0	0	0	0
Perry	0	0	0	0	0	0	0	0	0	0
Pickaway	0	0	0	0	0	0	0	0	0	0
Pike	0	0	0	0	0	0	0	0	0	0



**Table 2**  
**Title IV-E Foster Care and Adpotion Assistance**

**Data not available for January 2008**

	Foster Care						Adoption Assistance		Total Foster Care and	
	Foster Family Homes		Child Care Institutions		Homes & institutions		Adoption Assistance		Adoption Assistance	
	Children	Gross Amount	Children	Gross Amount	Children	Gross Amount	Children	Gross Amount	Children	Gross Amount
Ohio	0	0	0	0	0	0	0	0	0	0
Portage	0	0	0	0	0	0	0	0	0	0
Preble	0	0	0	0	0	0	0	0	0	0
Putnam	0	0	0	0	0	0	0	0	0	0
Richland	0	0	0	0	0	0	0	0	0	0
Ross	0	0	0	0	0	0	0	0	0	0
Sandusky	0	0	0	0	0	0	0	0	0	0
Scioto	0	0	0	0	0	0	0	0	0	0
Seneca	0	0	0	0	0	0	0	0	0	0
Shelby	0	0	0	0	0	0	0	0	0	0
Stark	0	0	0	0	0	0	0	0	0	0
Summit	0	0	0	0	0	0	0	0	0	0
Trumbull	0	0	0	0	0	0	0	0	0	0
Tuscarawas	0	0	0	0	0	0	0	0	0	0
Union	0	0	0	0	0	0	0	0	0	0
Van Wert	0	0	0	0	0	0	0	0	0	0
Vinton	0	0	0	0	0	0	0	0	0	0
Warren	0	0	0	0	0	0	0	0	0	0
Washington	0	0	0	0	0	0	0	0	0	0
Wayne	0	0	0	0	0	0	0	0	0	0
Williams	0	0	0	0	0	0	0	0	0	0
Wood	0	0	0	0	0	0	0	0	0	0
Wyandot	0	0	0	0	0	0	0	0	0	0







**Table 3**  
**Disability Assistance (DA)**  
**January 2008**

	Cash Assistance							Medical Assistance	
	Assistance Group				Actual Expenditure			Unduplicated	Actual
		Recipients	Adults	Children	Gross Amount	Cancelled Amount	Net Amount	Recipients	Amount Paid
<b>Ohio</b>	<b>16,051</b>	<b>16,149</b>	<b>16,149</b>	<b>0</b>	<b>\$2,433,303</b>	<b>\$55,246</b>	<b>\$2,378,057</b>	2,488	\$1,363,663
Adams	93	94	94	0	\$12,049	\$0	\$12,049	15	\$9,369
Allen	136	136	136	0	\$20,162	\$0	\$20,162	8	\$5,986
Ashland	36	36	36	0	\$5,310	\$0	\$5,310	13	\$5,514
Ashtabula	363	364	364	0	\$52,906	\$1,215	\$51,691	19	\$8,880
Athens	309	314	314	0	\$44,400	\$975	\$43,425	13	\$5,822
Auglaize	29	29	29	0	\$3,360	\$0	\$3,360	9	\$3,871
Belmont	158	159	159	0	\$21,501	\$115	\$21,386	19	\$11,498
Brown	97	98	98	0	\$16,019	\$0	\$16,019	8	\$3,546
Butler	452	452	452	0	\$63,906	\$345	\$63,561	31	\$16,980
Carroll	26	26	26	0	\$4,686	\$115	\$4,571	4	\$1,444
Champaign	33	33	33	0	\$4,987	\$0	\$4,987	9	\$3,797
Clark	416	419	419	0	\$60,288	\$690	\$59,598	57	\$37,157
Clermont	224	225	225	0	\$38,375	\$3,641	\$34,734	15	\$11,662
Clinton	82	83	83	0	\$11,682	\$115	\$11,567	2	\$1,404
Columbiana	152	153	153	0	\$29,811	\$230	\$29,581	24	\$10,455
Coshocton	115	117	117	0	\$16,245	\$1,046	\$15,199	4	\$2,743
Crawford	51	51	51	0	\$7,123	\$0	\$7,123	9	\$9,154
Cuyahoga	992	995	995	0	\$141,591	\$4,895	\$136,696	504	\$223,293
Darke	38	38	38	0	\$5,021	\$0	\$5,021	5	\$2,653
Defiance	28	28	28	0	\$4,051	\$115	\$3,936	7	\$2,752
Delaware	82	83	83	0	\$11,435	\$0	\$11,435	9	\$1,843
Erie	100	100	100	0	\$14,167	\$690	\$13,477	8	\$4,485



**Table 3**  
**Disability Assistance (DA)**  
**January 2008**

	Cash Assistance							Medical Assistance	
	Assistance Group				Actual Expenditure			Unduplicated	Actual
		Recipients	Adults	Children	Gross Amount	Cancelled Amount	Net Amount	Recipients	Amount Paid
<b>Ohio</b>	<b>16,051</b>	<b>16,149</b>	<b>16,149</b>	<b>0</b>	<b>\$2,433,303</b>	<b>\$55,246</b>	<b>\$2,378,057</b>	2,488	\$1,363,663
Fairfield	189	189	189	0	\$26,364	\$115	\$26,249	17	\$12,701
Fayette	47	47	47	0	\$9,669	\$0	\$9,669	12	\$3,605
Franklin	1,471	1,478	1,478	0	\$241,181	\$5,382	\$235,799	183	\$118,175
Fulton	38	38	38	0	\$5,159	\$0	\$5,159	4	\$2,141
Gallia	90	91	91	0	\$15,791	\$0	\$15,791	35	\$26,306
Geauga	26	26	26	0	\$2,986	\$115	\$2,871	1	\$739
Greene	189	189	189	0	\$30,426	\$1,035	\$29,391	29	\$19,742
Guernsey	159	159	159	0	\$25,167	\$0	\$25,167	11	\$9,190
Hamilton	809	809	809	0	\$144,729	\$6,785	\$137,944	72	\$39,995
Hancock	79	79	79	0	\$12,124	\$230	\$11,894	9	\$5,932
Hardin	55	56	56	0	\$7,811	\$230	\$7,581	9	\$6,156
Harrison	55	55	55	0	\$7,543	\$0	\$7,543	3	\$588
Henry	7	7	7	0	\$819	\$0	\$819	1	\$37
Highland	122	124	124	0	\$20,489	\$734	\$19,755	13	\$5,972
Hocking	60	62	62	0	\$7,270	\$233	\$7,037	8	\$3,233
Holmes	27	27	27	0	\$3,171	\$0	\$3,171	1	\$657
Huron	68	69	69	0	\$8,935	\$0	\$8,935	4	\$2,169
Jackson	135	137	137	0	\$20,221	\$0	\$20,221	25	\$19,782
Jefferson	161	161	161	0	\$20,835	\$575	\$20,260	24	\$10,709
Knox	124	124	124	0	\$16,747	\$230	\$16,517	8	\$4,087
Lake	149	149	149	0	\$21,608	\$345	\$21,263	22	\$11,877
Lawrence	78	78	78	0	\$10,732	\$126	\$10,606	24	\$12,180



**Table 3**  
**Disability Assistance (DA)**  
**January 2008**

	Cash Assistance							Medical Assistance	
	Assistance Group				Actual Expenditure			Unduplicated	Actual
		Recipients	Adults	Children	Gross Amount	Cancelled Amount	Net Amount	Recipients	Amount Paid
<b>Ohio</b>	<b>16,051</b>	<b>16,149</b>	<b>16,149</b>	<b>0</b>	<b>\$2,433,303</b>	<b>\$55,246</b>	<b>\$2,378,057</b>	2,488	\$1,363,663
Licking	292	297	297	0	\$44,932	\$805	\$44,127	13	\$9,808
Logan	78	81	81	0	\$13,292	\$3,220	\$10,072	12	\$4,042
Lorain	368	371	371	0	\$59,566	\$419	\$59,147	44	\$21,173
Lucas	1,084	1,087	1,087	0	\$156,500	\$3,901	\$152,599	152	\$73,000
Madison	26	26	26	0	\$3,220	\$856	\$2,364	9	\$4,624
Mahoning	280	280	280	0	\$51,631	\$690	\$50,941	98	\$61,520
Marion	188	189	189	0	\$28,998	\$737	\$28,261	6	\$5,724
Medina	82	84	84	0	\$10,988	\$620	\$10,368	14	\$5,102
Meigs	87	92	92	0	\$11,996	\$0	\$11,996	19	\$7,065
Mercer	36	36	36	0	\$4,387	\$0	\$4,387	5	\$689
Miami	86	88	88	0	\$11,964	\$230	\$11,734	10	\$5,192
Monroe	34	34	34	0	\$6,696	\$0	\$6,696	12	\$3,424
Montgomery	963	966	966	0	\$138,187	\$2,300	\$135,887	187	\$129,847
Morgan	66	67	67	0	\$8,250	\$0	\$8,250	10	\$4,588
Morrow	84	86	86	0	\$12,617	\$0	\$12,617	6	\$2,533
Muskingum	387	395	395	0	\$56,275	\$460	\$55,815	9	\$5,674
Noble	22	22	22	0	\$2,905	\$115	\$2,790	3	\$1,090
Ottawa	42	42	42	0	\$6,116	\$115	\$6,001	9	\$3,577
Paulding	33	34	34	0	\$3,884	\$115	\$3,769	2	\$977
Perry	113	115	115	0	\$16,108	\$230	\$15,878	12	\$6,052
Pickaway	87	88	88	0	\$13,308	\$0	\$13,308	10	\$4,046
Pike	74	74	74	0	\$10,559	\$115	\$10,444	29	\$15,460



**Table 3**  
**Disability Assistance (DA)**  
**January 2008**

	Cash Assistance							Medical Assistance	
	Assistance Group				Actual Expenditure			Unduplicated	Actual
		Recipients	Adults	Children	Gross Amount	Cancelled Amount	Net Amount	Recipients	Amount Paid
<b>Ohio</b>	<b>16,051</b>	<b>16,149</b>	<b>16,149</b>	<b>0</b>	<b>\$2,433,303</b>	<b>\$55,246</b>	<b>\$2,378,057</b>	2,488	\$1,363,663
Portage	118	118	118	0	\$14,647	\$0	\$14,647	21	\$9,704
Preble	58	59	59	0	\$7,839	\$0	\$7,839	7	\$10,567
Putnam	5	5	5	0	\$575	\$0	\$575	3	\$2,599
Richland	268	269	269	0	\$38,135	\$444	\$37,691	14	\$8,053
Ross	152	153	153	0	\$22,493	\$230	\$22,263	40	\$27,081
Sandusky	109	111	111	0	\$14,194	\$0	\$14,194	6	\$2,407
Scioto	299	299	299	0	\$45,205	\$1,028	\$44,177	33	\$22,239
Seneca	79	79	79	0	\$10,065	\$0	\$10,065	19	\$8,247
Shelby	41	41	41	0	\$4,753	\$115	\$4,638	8	\$4,691
Stark	511	513	513	0	\$83,725	\$3,130	\$80,595	57	\$34,457
Summit	556	558	558	0	\$96,728	\$920	\$95,808	209	\$106,307
Trumbull	334	335	335	0	\$47,766	\$1,544	\$46,222	31	\$20,091
Tuscarawas	128	129	129	0	\$19,156	\$920	\$18,236	10	\$4,916
Union	33	33	33	0	\$3,816	\$0	\$3,816	2	\$2,462
Van Wert	35	37	37	0	\$5,857	\$0	\$5,857	3	\$1,204
Vinton	70	72	72	0	\$11,643	\$0	\$11,643	11	\$4,061
Warren	89	90	90	0	\$14,755	\$0	\$14,755	8	\$6,509
Washington	147	147	147	0	\$19,705	\$345	\$19,360	10	\$6,084
Wayne	238	239	239	0	\$35,266	\$1,205	\$34,061	9	\$2,737
Williams	39	39	39	0	\$4,476	\$0	\$4,476	3	\$709
Wood	63	64	64	0	\$8,451	\$115	\$8,336	1	\$12
Wyandot	17	18	18	0	\$2,822	\$0	\$2,822	5	\$3,036
<b>Unknown</b>								0	\$0

\*SOURCE: GRP342RA Report from Management Information Services and BOMC 9260-R001 Report from Medicaid Management Information Services.



**Table 3-A**  
**DA Payments For Medical Services**  
**January 2008**

Category of services	Disability Assistance			
	Payments	Claim Frequency	Duplicated Recipients	Percent of Total
Advanced Practical Nurse Services.	\$2,126.86	60	52	0.2%
Ambulance Services	\$0.00	0	0	0.0%
Ambulatory Surgery.	\$5,970.81	14	14	0.4%
Chiropracter Services.	\$0.00	0	0	0.0%
Clinic	\$19,724.54	227	96	1.4%
Dental Services.	\$4,199.74	35	27	0.3%
EPSDT	\$0.00	0	0	0.0%
Family Planning.	\$0.00	0	0	0.0%
Federally Qualified Health Center.	\$0.00	0	0	0.0%
Health Maintenance Organization.	\$0.00	0	0	0.0%
Home Health Services.	\$0.00	0	0	0.0%
Independent Laboratory.	\$11,524.46	204	157	0.8%
Independent Hospital.	(\$61.18)	-1	1	-0.0%
ICF	\$0.00	0	0	0.0%
Midwifery Services.	\$0.00	0	0	0.0%
Optometric Services.	\$0.00	0	0	0.0%
Outpatient Health Services.	\$0.00	0	0	0.0%
Passport Waiver III.	\$0.00	0	0	0.0%
Outpatient Hospital General.	\$0.00	0	0	0.0%
Physical Therapy Services.	\$0.00	0	0	0.0%
Physician Services.	\$243,499.69	3,596	1,446	17.9%
Physiological Laboratory.	\$6,394.76	14	13	0.5%
Podiatrists Therapy.	\$6,946.04	112	77	0.5%
Prescribed Drugs.	\$1,022,615.99	16,676	2,344	75.0%
Private Duty Nursing Services.	\$0.00	0	0	0.0%
Psychology Services.	\$0.00	0	0	0.0%
Rural Health Services.	\$0.00	0	0	0.0%
SNF	\$0.00	0	0	0.0%
Supplies and Medical Equipment.	\$38,423.50	820	366	2.8%
Waivered Services.	\$2,297.47	29	26	0.2%
Other	\$0.00	0	0	0.0%
<b>Statewide Total</b>	<b>\$1,363,662.68</b>	<b>21,786</b>	<b>4,619</b>	<b>100.0%</b>

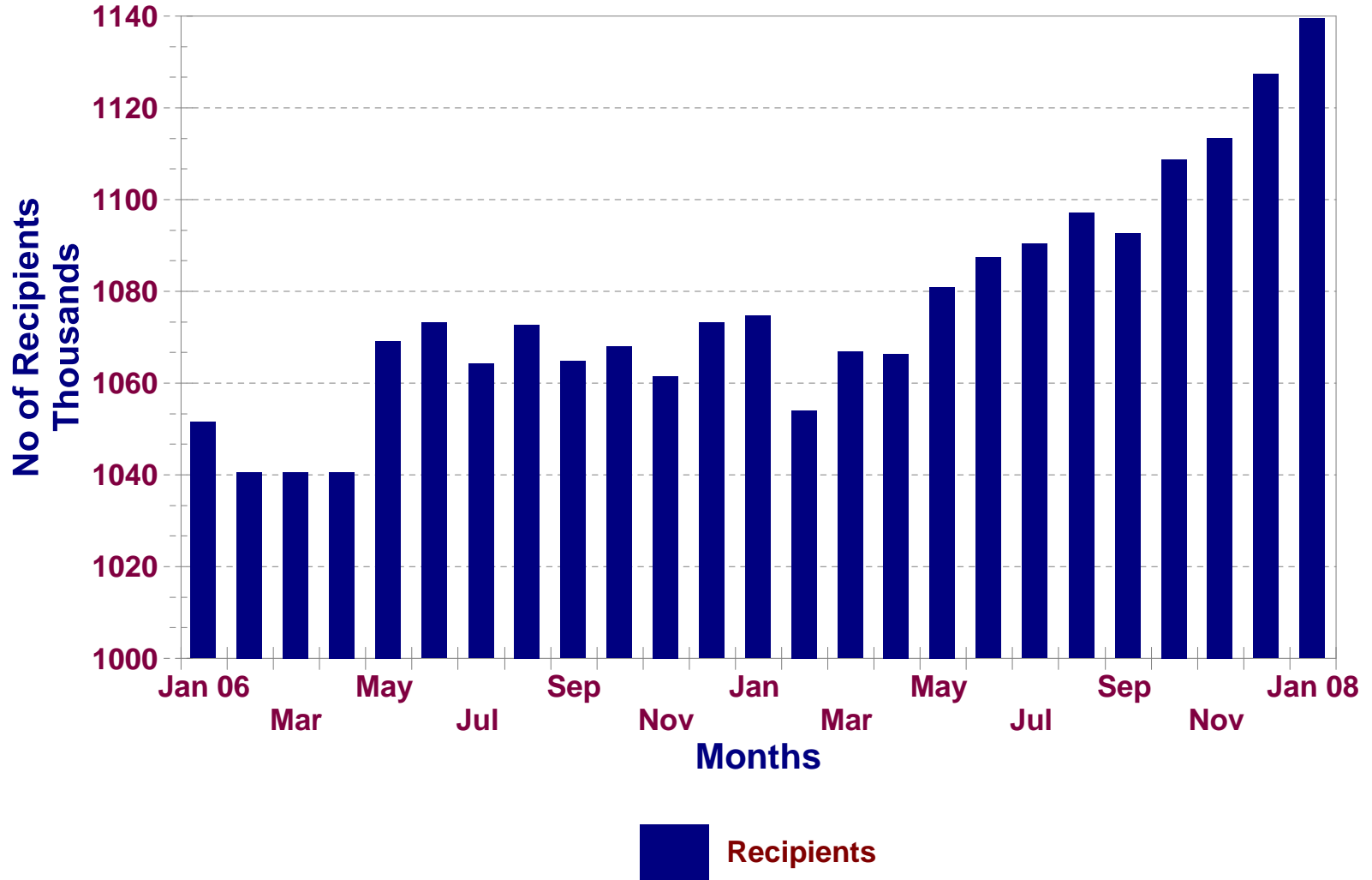
SOURCE: BOMC 9260 Report from Medicaid Management Information Services.

NOTE: Recipients are unduplicated within Catagory of Services, however, the Statewide Total represents a duplicated count.

## Food Stamp Benefits Assistance Groups During The Last 25 Months



## Food Stamp Benefits Cash Recipients During The Last 25 Months





**Table 5**  
**Food and Nutrition Benefits**  
**January 2008**

	Persons					Assistance Groups			Total Coupons Issued
	Public Assistance	Non-Public Assistance	Total	Average Issuance	% Change from Previous Month	Public Assistance	Non-Public Assistance	Total	
<b>Ohio</b>	<b>250,287</b>	<b>889,208</b>	<b>1,139,495</b>	<b>\$106</b>	<b>1.1%</b>	<b>184,007</b>	<b>336,321</b>	<b>520,328</b>	<b>\$121,062,178</b>
Adams	1,153	3,879	5,032	\$100	1.9%	865	1,277	2,142	\$504,629
Allen	1,928	7,621	9,549	\$111	1.8%	1,511	2,618	4,129	\$1,059,608
Ashland	543	2,924	3,467	\$100	2.8%	398	1,016	1,414	\$347,383
Ashtabula	3,530	10,042	13,572	\$102	1.8%	2,591	3,662	6,253	\$1,390,884
Athens	2,245	5,301	7,546	\$100	1.9%	1,656	2,063	3,719	\$756,562
Auglaize	344	1,959	2,303	\$105	1.9%	302	671	973	\$242,398
Belmont	1,907	5,170	7,077	\$94	1.3%	1,471	1,879	3,350	\$664,766
Brown	711	3,100	3,811	\$102	2.8%	555	1,066	1,621	\$389,140
Butler	5,288	22,562	27,850	\$109	2.2%	4,199	8,014	12,213	\$3,043,549
Carroll	326	1,952	2,278	\$102	-1.1%	275	664	939	\$232,238
Champaign	612	2,471	3,083	\$98	1.9%	453	847	1,300	\$301,094
Clark	3,662	14,845	18,507	\$106	1.5%	2,943	5,529	8,472	\$1,963,897
Clermont	2,116	9,815	11,931	\$106	2.5%	1,667	3,404	5,071	\$1,267,530
Clinton	684	2,741	3,425	\$103	2.4%	567	979	1,546	\$353,893
Columbiana	2,712	9,729	12,441	\$99	1.9%	2,083	3,403	5,486	\$1,233,336
Coshocton	782	3,690	4,472	\$98	3.0%	616	1,334	1,950	\$440,061
Crawford	895	3,897	4,792	\$101	2.7%	718	1,398	2,116	\$484,983
Cuyahoga	27,323	159,047	186,370	\$108	0.3%	17,886	72,362	90,248	\$20,102,659
Darke	499	2,053	2,552	\$99	4.3%	384	718	1,102	\$253,236
Defiance	552	2,450	3,002	\$105	2.3%	397	845	1,242	\$315,566
Delaware	1,140	3,646	4,786	\$105	1.3%	847	1,365	2,212	\$503,953
Erie	1,158	5,048	6,206	\$110	-0.2%	966	1,936	2,902	\$682,429



**Table 5**  
**Food and Nutrition Benefits**  
**January 2008**

	Persons					Assistance Groups			Total Coupons Issued
	Public Assistance	Non-Public Assistance	Total	Average Issuance	% Change from Previous Month	Public Assistance	Non-Public Assistance	Total	
<b>Ohio</b>	<b>250,287</b>	<b>889,208</b>	<b>1,139,495</b>	<b>\$106</b>	<b>1.1%</b>	<b>184,007</b>	<b>336,321</b>	<b>520,328</b>	<b>\$121,062,178</b>
Fairfield	2,132	8,961	11,093	\$106	0.3%	1,638	3,279	4,917	\$1,175,091
Fayette	631	2,420	3,051	\$104	3.7%	489	856	1,345	\$316,987
Franklin	29,920	100,397	130,317	\$111	0.4%	21,487	35,492	56,979	\$14,454,006
Fulton	373	1,833	2,206	\$98	2.9%	277	621	898	\$216,527
Gallia	1,805	3,424	5,229	\$101	-0.3%	1,238	1,202	2,440	\$528,814
Geauga	371	1,280	1,651	\$112	2.0%	306	463	769	\$185,270
Greene	1,895	6,957	8,852	\$106	0.8%	1,441	2,679	4,120	\$940,313
Guernsey	1,241	4,920	6,161	\$101	2.9%	1,009	1,782	2,791	\$620,194
Hamilton	17,631	58,296	75,927	\$112	-0.8%	12,993	21,026	34,019	\$8,470,392
Hancock	776	3,489	4,265	\$107	-1.6%	641	1,267	1,908	\$457,807
Hardin	349	1,724	2,073	\$98	4.3%	287	614	901	\$202,229
Harrison	535	1,472	2,007	\$101	2.8%	407	537	944	\$202,214
Henry	198	1,255	1,453	\$100	3.3%	154	395	549	\$145,910
Highland	1,079	4,059	5,138	\$99	0.1%	804	1,361	2,165	\$508,808
Hocking	863	2,752	3,615	\$99	3.8%	626	967	1,593	\$357,451
Holmes	171	863	1,034	\$99	0.4%	143	297	440	\$102,437
Huron	713	4,587	5,300	\$102	2.6%	572	1,567	2,139	\$541,059
Jackson	1,391	4,202	5,593	\$103	3.1%	1,078	1,535	2,613	\$576,363
Jefferson	2,601	6,219	8,820	\$99	1.9%	1,890	2,368	4,258	\$871,353
Knox	983	3,761	4,744	\$101	1.4%	733	1,323	2,056	\$477,585
Lake	2,708	8,667	11,375	\$113	1.3%	2,076	3,296	5,372	\$1,285,373
Lawrence	3,469	7,538	11,007	\$96	2.7%	2,565	2,795	5,360	\$1,056,403



**Table 5**  
**Food and Nutrition Benefits**  
**January 2008**

	Persons					Assistance Groups			Total Coupons Issued
	Public Assistance	Non-Public Assistance	Total	Average Issuance	% Change from Previous Month	Public Assistance	Non-Public Assistance	Total	
<b>Ohio</b>	<b>250,287</b>	<b>889,208</b>	<b>1,139,495</b>	<b>\$106</b>	<b>1.1%</b>	<b>184,007</b>	<b>336,321</b>	<b>520,328</b>	<b>\$121,062,178</b>
Licking	2,551	10,412	12,963	\$104	0.4%	1,984	3,766	5,750	\$1,344,996
Logan	686	3,187	3,873	\$106	1.3%	510	1,091	1,601	\$410,212
Lorain	6,434	21,964	28,398	\$106	0.7%	4,541	7,468	12,009	\$3,014,978
Lucas	19,461	45,809	65,270	\$108	0.7%	13,614	17,231	30,845	\$7,033,389
Madison	678	2,408	3,086	\$104	-0.5%	490	883	1,373	\$320,933
Mahoning	8,864	21,846	30,710	\$103	1.2%	6,446	8,284	14,730	\$3,174,302
Marion	1,492	6,306	7,798	\$103	2.4%	1,208	2,253	3,461	\$801,849
Medina	1,038	4,291	5,329	\$102	0.5%	804	1,584	2,388	\$543,175
Meigs	1,194	3,084	4,278	\$103	2.1%	861	1,085	1,946	\$440,264
Mercer	346	1,253	1,599	\$95	0.6%	276	433	709	\$152,004
Miami	1,047	3,738	4,785	\$97	3.9%	803	1,366	2,169	\$465,283
Monroe	423	1,243	1,666	\$98	0.5%	310	412	722	\$163,696
Montgomery	14,822	43,118	57,940	\$109	1.1%	11,154	16,094	27,248	\$6,336,076
Morgan	426	1,508	1,934	\$94	0.0%	344	532	876	\$181,981
Morrow	556	2,519	3,075	\$98	0.2%	420	854	1,274	\$301,170
Muskingum	2,911	11,415	14,326	\$103	2.3%	2,294	4,196	6,490	\$1,473,160
Noble	270	903	1,173	\$90	0.3%	224	326	550	\$105,643
Ottawa	596	2,121	2,717	\$104	2.5%	409	751	1,160	\$282,805
Paulding	343	1,101	1,444	\$101	0.8%	245	380	625	\$146,264
Perry	1,128	4,586	5,714	\$101	2.3%	831	1,594	2,425	\$578,959
Pickaway	1,257	3,840	5,097	\$104	2.1%	901	1,444	2,345	\$528,278
Pike	1,244	4,293	5,537	\$103	0.7%	944	1,512	2,456	\$572,358



**Table 5**  
**Food and Nutrition Benefits**  
**January 2008**

	Persons					Assistance Groups			Total Coupons Issued
	Public Assistance	Non-Public Assistance	Total	Average Issuance	% Change from Previous Month	Public Assistance	Non-Public Assistance	Total	
<b>Ohio</b>	<b>250,287</b>	<b>889,208</b>	<b>1,139,495</b>	<b>\$106</b>	<b>1.1%</b>	<b>184,007</b>	<b>336,321</b>	<b>520,328</b>	<b>\$121,062,178</b>
Portage	1,933	7,955	9,888	\$109	3.0%	1,493	2,825	4,318	\$1,077,356
Preble	584	2,216	2,800	\$105	2.5%	418	753	1,171	\$295,027
Putnam	217	1,279	1,496	\$102	6.4%	182	437	619	\$153,201
Richland	2,554	10,627	13,181	\$105	3.4%	2,070	3,754	5,824	\$1,379,732
Ross	2,469	8,998	11,467	\$108	2.4%	1,775	3,242	5,017	\$1,239,900
Sandusky	757	3,585	4,342	\$108	3.5%	604	1,283	1,887	\$466,978
Scioto	4,348	11,731	16,079	\$96	0.5%	3,407	4,382	7,789	\$1,539,642
Seneca	813	3,933	4,746	\$101	-1.1%	622	1,376	1,998	\$477,498
Shelby	466	2,372	2,838	\$109	2.2%	362	803	1,165	\$309,555
Stark	8,426	24,847	33,273	\$105	2.3%	5,886	8,894	14,780	\$3,485,439
Summit	14,514	40,150	54,664	\$107	1.2%	10,859	15,368	26,227	\$5,855,341
Trumbull	4,549	15,677	20,226	\$102	2.7%	3,499	5,505	9,004	\$2,072,539
Tuscarawas	1,784	6,334	8,118	\$99	0.6%	1,397	2,258	3,655	\$799,746
Union	481	2,119	2,600	\$101	2.7%	351	727	1,078	\$261,724
Van Wert	298	1,207	1,505	\$97	2.4%	231	418	649	\$146,269
Vinton	611	2,087	2,698	\$101	5.2%	449	721	1,170	\$272,252
Warren	914	3,232	4,146	\$99	-2.4%	695	1,106	1,801	\$408,676
Washington	1,300	4,213	5,513	\$101	-1.6%	1,121	1,532	2,653	\$556,142
Wayne	1,817	5,772	7,589	\$106	4.0%	1,390	2,106	3,496	\$805,471
Williams	523	2,445	2,968	\$96	4.3%	389	886	1,275	\$284,909
Wood	1,011	3,696	4,707	\$103	2.6%	825	1,334	2,159	\$483,442
Wyandot	206	770	976	\$95	-2.0%	165	300	465	\$93,184

Source: CRIS-E GRP304RA and GRP 304RC Reports from Management Information Services. Cuyahoga County data also comes from the GRP 342 RA.



**Table 6A**  
**Medicaid Eligibles**  
**January 2008**

	Aged Blind and Disabled (ABD)				OWF & Related	Healthy Start	CFC Total	Total Medicaid	Foster Care	Adoption Assistance	Transitional	Nursing Facilities
	Aged	Blind	Disabled	Total								
<b>Ohio</b>	<b>151,507</b>	<b>752</b>	<b>248,757</b>	<b>401,016</b>	<b>1,025,066</b>	<b>267,830</b>	<b>1,292,896</b>	<b>1,693,912</b>	<b>10,781</b>	<b>23,473</b>	<b>148,588</b>	<b>52,937</b>
Adams	825	5	1,420	2,250	4,485	1,184	5,669	7,919	27	74	709	123
Allen	1,303	4	2,076	3,383	9,836	2,704	12,540	15,923	219	379	1,267	584
Ashland	604	2	646	1,252	3,613	1,464	5,077	6,329	41	18	636	276
Ashtabula	1,670	6	3,332	5,008	11,204	2,969	14,173	19,181	79	201	2,077	1,010
Athens	889	10	2,170	3,069	6,104	1,170	7,274	10,343	91	148	751	186
Auglaize	465	5	476	946	2,616	940	3,556	4,502	4	47	482	265
Belmont	1,435	3	2,104	3,542	6,863	1,729	8,592	12,134	32	216	1,260	514
Brown	760	0	1,068	1,828	4,286	1,370	5,656	7,484	16	50	724	219
Butler	3,331	20	5,921	9,272	27,694	6,669	34,363	43,635	420	562	4,611	1,185
Carroll	419	2	580	1,001	2,587	796	3,383	4,384	7	21	632	186
Champaign	510	0	629	1,139	3,133	1,171	4,304	5,443	6	26	694	251
Clark	2,271	7	3,666	5,944	16,500	3,896	20,396	26,340	248	328	2,448	987
Clermont	1,783	10	2,896	4,689	12,535	4,385	16,920	21,609	190	278	1,958	714
Clinton	547	1	803	1,351	3,807	1,033	4,840	6,191	36	78	726	157
Columbiana	1,730	16	2,678	4,424	10,733	3,226	13,959	18,383	65	112	1,839	612
Coshocton	624	2	973	1,599	3,944	1,045	4,989	6,588	22	85	677	283
Crawford	706	7	892	1,605	4,520	1,261	5,781	7,386	60	90	939	186
Cuyahoga	23,209	132	36,307	59,648	145,992	32,101	178,093	237,741	1,270	4,894	17,717	6,991
Darke	582	1	659	1,242	2,813	1,264	4,077	5,319	37	42	560	306
Defiance	405	4	624	1,033	3,153	1,136	4,289	5,322	11	27	591	192
Delaware	832	0	1,051	1,883	4,702	1,766	6,468	8,351	22	115	812	318
Erie	924	3	1,258	2,185	6,209	1,823	8,032	10,217	72	65	973	420



**Table 6A**  
**Medicaid Eligibles**  
**January 2008**

	Aged Blind and Disabled (ABD)				OWF & Related	Healthy Start	CFC Total	Total Medicaid	Foster Care	Adoption Assistance	Transitional	Nursing Facilities
	Aged	Blind	Disabled	Total								
<b>Ohio</b>	<b>151,507</b>	<b>752</b>	<b>248,757</b>	<b>401,016</b>	<b>1,025,066</b>	<b>267,830</b>	<b>1,292,896</b>	<b>1,693,912</b>	<b>10,781</b>	<b>23,473</b>	<b>148,588</b>	<b>52,937</b>
Fairfield	1,340	7	2,149	3,496	10,702	2,941	13,643	17,139	25	360	2,101	430
Fayette	576	3	855	1,434	3,053	810	3,863	5,297	21	33	519	319
Franklin	12,295	81	24,872	37,248	119,553	32,170	151,723	188,971	2,110	2,915	13,919	3,719
Fulton	401	1	416	818	2,634	967	3,601	4,419	17	43	434	205
Gallia	876	3	1,584	2,463	4,298	952	5,250	7,713	24	53	603	182
Geauga	602	1	533	1,136	2,227	1,058	3,285	4,421	14	109	382	281
Greene	1,392	20	1,888	3,300	9,527	2,585	12,112	15,412	78	124	1,736	588
Guernsey	832	4	1,405	2,241	5,413	1,433	6,846	9,087	40	156	803	163
Hamilton	10,591	57	18,460	29,108	67,818	18,374	86,192	115,300	822	1,734	6,753	3,588
Hancock	659	5	934	1,598	4,289	1,341	5,630	7,228	52	64	651	297
Hardin	387	3	571	961	2,396	739	3,135	4,096	14	51	400	143
Harrison	307	0	544	851	1,711	475	2,186	3,037	22	15	269	128
Henry	269	0	340	609	1,852	700	2,552	3,161	9	43	367	134
Highland	868	1	1,147	2,016	4,840	1,429	6,269	8,285	31	33	698	250
Hocking	510	5	833	1,348	3,490	1,046	4,536	5,884	34	52	648	135
Holmes	434	2	422	858	1,449	844	2,293	3,151	15	27	299	388
Huron	641	2	868	1,511	5,643	1,793	7,436	8,947	39	53	863	180
Jackson	878	0	1,408	2,286	4,998	1,092	6,090	8,376	37	19	737	166
Jefferson	1,250	10	2,371	3,631	7,294	1,665	8,959	12,590	79	117	1,138	370
Knox	752	2	1,315	2,069	4,944	1,378	6,322	8,391	16	64	1,129	384
Lake	1,787	3	2,551	4,341	10,628	3,528	14,156	18,497	61	89	1,917	1,048
Lawrence	1,654	6	3,292	4,952	8,369	2,288	10,657	15,609	60	71	1,181	337



**Table 6A**  
**Medicaid Eligibles**  
**January 2008**

	Aged Blind and Disabled (ABD)				OWF & Related	Healthy Start	CFC Total	Total Medicaid	Foster Care	Adoption Assistance	Transitional	Nursing Facilities
	Aged	Blind	Disabled	Total								
<b>Ohio</b>	<b>151,507</b>	<b>752</b>	<b>248,757</b>	<b>401,016</b>	<b>1,025,066</b>	<b>267,830</b>	<b>1,292,896</b>	<b>1,693,912</b>	<b>10,781</b>	<b>23,473</b>	<b>148,588</b>	<b>52,937</b>
Licking	1,600	3	2,729	4,332	13,055	3,799	16,854	21,186	219	410	2,563	575
Logan	598	2	677	1,277	3,953	1,010	4,963	6,240	8	102	681	195
Lorain	2,920	14	5,469	8,403	25,849	6,224	32,073	40,476	93	764	3,858	1,228
Lucas	6,633	51	14,537	21,221	56,389	10,494	66,883	88,104	462	1,528	7,414	1,969
Madison	420	1	609	1,030	2,876	959	3,835	4,865	29	27	473	117
Mahoning	4,144	16	6,963	11,123	26,180	5,523	31,703	42,826	268	155	3,144	1,498
Marion	989	3	1,787	2,779	6,761	1,813	8,574	11,353	48	80	1,157	266
Medina	1,065	8	1,275	2,348	6,693	2,125	8,818	11,166	31	153	1,494	640
Meigs	567	4	1,052	1,623	3,404	774	4,178	5,801	14	11	445	145
Mercer	392	0	411	803	1,661	777	2,438	3,241	19	53	398	196
Miami	1,142	2	1,298	2,442	5,680	1,887	7,567	10,009	93	214	866	427
Monroe	302	0	390	692	1,540	438	1,978	2,670	10	23	237	93
Montgomery	7,468	27	12,982	20,477	52,612	12,011	64,623	85,100	755	1,366	6,843	2,371
Morgan	330	0	530	860	1,905	512	2,417	3,277	0	16	347	116
Morrow	450	1	617	1,068	3,053	1,003	4,056	5,124	4	43	745	154
Muskingum	1,656	18	2,928	4,602	11,516	2,764	14,280	18,882	121	227	1,796	466
Noble	230	0	259	489	1,130	404	1,534	2,023	3	7	267	77
Ottawa	471	3	550	1,024	2,604	815	3,419	4,443	14	6	464	162
Paulding	202	1	383	586	1,382	620	2,002	2,588	8	23	281	46
Perry	586	6	1,189	1,781	5,052	1,191	6,243	8,024	30	77	814	194
Pickaway	676	1	1,052	1,729	4,724	1,155	5,879	7,608	32	40	848	176
Pike	830	0	1,470	2,300	4,279	1,275	5,554	7,854	22	42	576	273



**Table 6A**  
**Medicaid Eligibles**  
**January 2008**

	Aged Blind and Disabled (ABD)				OWF & Related	Healthy Start	CFC Total	Total Medicaid	Foster Care	Adoption Assistance	Transitional	Nursing Facilities
	Aged	Blind	Disabled	Total								
<b>Ohio</b>	<b>151,507</b>	<b>752</b>	<b>248,757</b>	<b>401,016</b>	<b>1,025,066</b>	<b>267,830</b>	<b>1,292,896</b>	<b>1,693,912</b>	<b>10,781</b>	<b>23,473</b>	<b>148,588</b>	<b>52,937</b>
Portage	1,306	4	1,884	3,194	9,626	2,531	12,157	15,351	101	169	1,429	591
Preble	415	6	669	1,090	3,307	962	4,269	5,359	44	42	664	202
Putnam	290	0	324	614	1,503	615	2,118	2,732	5	13	267	201
Richland	1,942	0	2,744	4,686	11,266	3,409	14,675	19,361	51	259	1,779	621
Ross	1,223	3	2,380	3,606	9,892	2,100	11,992	15,598	77	128	1,419	290
Sandusky	765	5	1,048	1,818	4,465	1,651	6,116	7,934	19	54	793	358
Scioto	2,507	5	4,826	7,338	11,531	2,379	13,910	21,248	93	67	1,519	590
Seneca	741	3	1,025	1,769	4,478	1,705	6,183	7,952	59	74	947	326
Shelby	418	3	607	1,028	3,218	1,043	4,261	5,289	19	53	487	185
Stark	5,245	22	7,152	12,419	31,965	8,364	40,329	52,748	419	1,060	5,743	2,250
Summit	7,161	41	11,192	18,394	46,137	9,975	56,112	74,506	465	885	6,431	2,155
Trumbull	2,892	14	4,811	7,717	19,785	5,642	25,427	33,144	183	549	2,945	1,189
Tuscarawas	1,350	8	1,643	3,001	7,465	2,530	9,995	12,996	111	182	1,282	462
Union	369	1	459	829	2,485	908	3,393	4,222	34	62	371	122
Unknown	0	0	0	0	0	0	0	0	0	0	0	0
Van Wert	315	0	430	745	1,578	897	2,475	3,220	5	18	300	156
Vinton	322	0	603	925	2,300	639	2,939	3,864	14	24	292	61
Warren	1,454	5	1,637	3,096	5,382	2,537	7,919	11,015	40	103	975	838
Washington	1,039	6	1,582	2,627	5,309	1,922	7,231	9,858	16	47	1,212	326
Wayne	1,151	2	1,721	2,874	6,913	2,485	9,398	12,272	87	110	1,350	490
Williams	484	2	518	1,004	3,255	892	4,147	5,151	17	42	870	182
Wood	1,008	5	1,095	2,108	5,303	1,754	7,057	9,165	38	64	917	399
Wyandot	314	0	263	577	1,148	607	1,755	2,332	6	20	255	159



**Table 6B**  
**Medicaid Expenditures**  
**January 2008**

	Aged Blind and Disabled (ABD)				OWF & Related	Healthy Start	CFC Total	Total Medicaid	Foster Care	Adoption Assistance	Transitional	Nursing Facilities
	Aged	Blind	Disabled	Total								
<b>Ohio</b>	<b>\$252,489,064</b>	<b>\$928,807</b>	<b>\$504,052,742</b>	<b>\$757,470,614</b>	<b>\$246,622,485</b>	<b>\$67,141,285</b>	<b>\$313,763,770</b>	<b>\$1,072,167,340</b>	<b>\$6,039,897</b>	<b>\$5,126,027</b>	<b>\$30,828,526</b>	<b>\$263,596,026</b>
Adams	\$879,828	\$5,951	\$2,340,509	\$3,226,287	\$1,053,665	\$286,882	\$1,340,546	\$4,585,012	\$7,071	\$10,262	\$180,550	\$597,481
Allen	\$2,396,045	\$13,827	\$3,697,442	\$6,107,315	\$2,184,594	-\$50,732	\$2,133,863	\$8,256,902	\$35,654	\$21,525	\$251,778	\$2,722,177
Ashland	\$1,129,078	\$1,100	\$1,254,506	\$2,384,684	\$810,897	\$356,260	\$1,167,157	\$3,553,121	\$10,121	\$3,981	\$126,535	\$1,199,283
Ashtabula	\$3,405,164	\$10,766	\$6,813,156	\$10,229,086	\$2,658,494	\$731,884	\$3,390,378	\$13,631,423	\$62,031	\$31,968	\$460,005	\$5,223,174
Athens	\$1,153,519	\$8,722	\$3,167,585	\$4,329,826	\$1,450,914	\$382,504	\$1,833,418	\$6,169,170	\$73,661	\$26,766	\$161,531	\$870,212
Auglaize	\$1,033,321	\$10,559	\$930,033	\$1,973,913	\$619,331	\$267,950	\$887,282	\$2,862,967	\$3,801	\$9,945	\$91,371	\$1,172,755
Belmont	\$2,171,742	\$5,993	\$3,450,575	\$5,628,310	\$1,639,541	\$340,691	\$1,980,232	\$7,613,540	\$41,581	\$22,095	\$275,762	\$1,928,325
Brown	\$1,294,467	\$0	\$1,984,067	\$3,278,534	\$1,073,152	\$464,185	\$1,537,337	\$4,816,319	\$14,321	\$14,935	\$146,047	\$1,101,330
Butler	\$6,508,903	\$31,490	\$12,334,627	\$18,875,019	\$7,309,732	\$1,964,915	\$9,274,647	\$28,161,838	\$178,113	\$241,615	\$1,028,264	\$6,645,662
Carroll	\$678,983	\$2,200	\$1,390,052	\$2,071,235	\$546,711	\$169,116	\$715,828	\$2,787,333	\$3,096	\$586	\$118,705	\$843,115
Champaign	\$786,283	\$0	\$1,374,360	\$2,160,643	\$689,409	\$327,063	\$1,016,471	\$3,177,115	\$9,857	\$5,986	\$148,290	\$699,675
Clark	\$3,844,957	\$5,817	\$7,445,374	\$11,296,149	\$4,013,204	\$966,140	\$4,979,344	\$16,283,937	\$121,506	\$45,204	\$513,510	\$4,509,775
Clermont	\$2,951,179	\$48,643	\$6,764,327	\$9,764,149	\$4,020,723	\$1,229,767	\$5,250,490	\$15,038,665	\$157,910	\$54,118	\$467,990	\$4,712,472
Clinton	\$811,136	\$1,076	\$1,205,056	\$2,017,267	\$988,644	\$76,407	\$1,065,051	\$3,083,998	\$29,127	\$13,798	\$169,028	\$765,604
Columbiana	\$2,691,114	\$10,380	\$5,196,591	\$7,898,085	\$2,801,941	\$817,456	\$3,619,397	\$11,554,609	\$29,856	\$21,954	\$301,755	\$2,663,754
Coshocton	\$1,177,112	\$1,981	\$1,929,027	\$3,108,121	\$880,365	\$208,891	\$1,089,256	\$4,198,972	\$6,055	\$11,039	\$133,365	\$1,619,493
Crawford	\$988,254	\$6,713	\$1,370,888	\$2,365,855	\$982,142	\$274,244	\$1,256,386	\$3,631,059	\$20,097	\$9,471	\$172,347	\$740,915
Cuyahoga	\$37,615,946	\$109,021	\$68,616,968	\$106,341,935	\$33,725,710	\$7,042,426	\$40,768,136	\$147,244,958	\$998,124	\$1,141,994	\$3,571,464	\$37,942,905
Darke	\$1,128,998	\$4	\$1,478,577	\$2,607,579	\$602,214	\$330,853	\$933,067	\$3,540,646	\$17,075	\$5,462	\$118,129	\$1,225,606
Defiance	\$727,488	\$2,500	\$844,666	\$1,574,654	\$706,962	\$200,425	\$907,386	\$2,482,853	\$2,072	\$9,234	\$125,638	\$753,941
Delaware	\$1,299,303	\$0	\$2,841,323	\$4,140,626	\$1,060,151	\$502,243	\$1,562,394	\$5,703,021	\$14,850	\$11,354	\$181,959	\$1,139,852
Erie	\$1,593,971	\$3,577	\$2,488,884	\$4,086,432	\$1,365,283	\$394,053	\$1,759,336	\$5,847,051	\$22,291	\$22,761	\$199,480	\$1,688,566



**Table 6B**  
**Medicaid Expenditures**  
**January 2008**

	Aged Blind and Disabled (ABD)				OWF & Related	Healthy Start	CFC Total	Total Medicaid	Foster Care	Adoption Assistance	Transitional	Nursing Facilities
	Aged	Blind	Disabled	Total								
<b>Ohio</b>	<b>\$252,489,064</b>	<b>\$928,807</b>	<b>\$504,052,742</b>	<b>\$757,470,614</b>	<b>\$246,622,485</b>	<b>\$67,141,285</b>	<b>\$313,763,770</b>	<b>\$1,072,167,340</b>	<b>\$6,039,897</b>	<b>\$5,126,027</b>	<b>\$30,828,526</b>	<b>\$263,596,026</b>
Fairfield	\$2,192,666	\$7,421	\$3,989,082	\$6,189,169	\$2,374,939	\$786,741	\$3,161,680	\$9,365,369	\$6,109	\$48,710	\$407,412	\$1,995,412
Fayette	\$1,139,013	\$21,568	\$1,978,760	\$3,139,342	\$700,155	\$192,267	\$892,422	\$4,031,763	\$951	\$4,337	\$104,093	\$1,707,845
Franklin	\$20,462,305	\$100,631	\$68,192,206	\$88,755,142	\$28,700,320	\$8,028,507	\$36,728,826	\$125,535,404	\$943,819	\$486,224	\$2,955,665	\$23,322,195
Fulton	\$802,979	\$1,089	\$874,136	\$1,678,204	\$616,704	\$206,309	\$823,013	\$2,521,343	\$6,265	\$7,615	\$96,480	\$801,954
Gallia	\$1,634,945	\$7,167	\$3,982,799	\$5,624,911	\$950,956	\$215,262	\$1,166,218	\$6,791,856	\$9,929	\$3,413	\$129,014	\$724,228
Geauga	\$1,136,059	\$1,108	\$1,407,748	\$2,544,915	\$498,210	\$246,667	\$744,877	\$3,289,844	\$5,634	\$22,101	\$74,726	\$1,446,738
Greene	\$2,709,245	\$19,510	\$3,790,680	\$6,519,435	\$2,551,896	\$762,861	\$3,314,757	\$9,837,615	\$45,015	\$27,613	\$377,517	\$2,904,832
Guernsey	\$957,723	\$1,116	\$2,821,100	\$3,779,939	\$1,240,860	\$314,992	\$1,555,852	\$5,348,830	\$14,784	\$20,387	\$159,760	\$738,963
Hamilton	\$19,362,650	\$86,009	\$39,879,133	\$59,327,791	\$19,289,265	\$6,169,572	\$25,458,837	\$84,824,139	\$724,012	\$393,351	\$1,537,763	\$19,637,960
Hancock	\$1,193,950	\$9,888	\$1,848,651	\$3,052,488	\$1,001,465	\$383,269	\$1,384,734	\$4,438,086	\$16,942	\$15,089	\$148,286	\$1,305,645
Hardin	\$514,330	\$92	\$790,513	\$1,304,934	\$553,716	\$178,273	\$731,990	\$2,036,924	\$9,899	\$5,061	\$70,922	\$473,979
Harrison	\$534,361	\$0	\$786,742	\$1,321,103	\$370,276	\$106,943	\$477,219	\$1,798,948	\$5,929	\$3,777	\$64,189	\$579,065
Henry	\$530,993	\$0	\$1,331,557	\$1,862,550	\$425,137	\$153,448	\$578,585	\$2,460,954	\$1,534	\$8,777	\$79,668	\$566,436
Highland	\$1,084,482	\$220	\$2,245,696	\$3,330,397	\$1,175,328	\$387,822	\$1,563,150	\$4,894,642	\$4,631	\$9,310	\$151,085	\$1,014,081
Hocking	\$783,477	\$10,062	\$1,448,866	\$2,242,405	\$858,365	\$264,831	\$1,123,196	\$3,366,294	\$25,773	\$6,966	\$133,927	\$734,401
Holmes	\$1,305,464	\$2,200	\$1,267,166	\$2,574,830	\$307,175	\$205,856	\$513,031	\$3,087,861	\$2,903	\$1,268	\$58,437	\$1,878,918
Huron	\$826,690	\$335	\$1,374,720	\$2,201,745	\$1,051,583	\$482,295	\$1,533,878	\$3,740,448	\$23,612	\$11,898	\$161,913	\$659,942
Jackson	\$871,833	\$0	\$1,674,198	\$2,546,030	\$1,135,225	\$334,478	\$1,469,703	\$4,028,951	\$19,334	\$905	\$153,463	\$636,141
Jefferson	\$1,666,275	\$4,393	\$3,626,565	\$5,297,233	\$1,901,431	\$401,960	\$2,303,391	\$7,625,019	\$32,367	\$27,218	\$263,016	\$1,574,280
Knox	\$1,669,859	\$1,142	\$4,529,699	\$6,200,700	\$1,124,858	\$292,039	\$1,416,897	\$7,617,597	\$3,958	\$18,826	\$223,810	\$2,558,654
Lake	\$3,638,134	\$17,408	\$6,755,644	\$10,411,186	\$2,490,319	\$889,267	\$3,379,586	\$13,802,682	\$53,113	\$14,542	\$413,251	\$5,642,878
Lawrence	\$1,986,524	\$5,677	\$4,170,537	\$6,162,738	\$2,043,164	\$474,389	\$2,517,553	\$8,683,514	\$44,468	\$15,071	\$224,976	\$1,324,259



**Table 6B**  
**Medicaid Expenditures**  
**January 2008**

	Aged Blind and Disabled (ABD)				OWF & Related	Healthy Start	CFC Total	Total Medicaid	Foster Care	Adoption Assistance	Transitional	Nursing Facilities
	Aged	Blind	Disabled	Total								
<b>Ohio</b>	<b>\$252,489,064</b>	<b>\$928,807</b>	<b>\$504,052,742</b>	<b>\$757,470,614</b>	<b>\$246,622,485</b>	<b>\$67,141,285</b>	<b>\$313,763,770</b>	<b>\$1,072,167,340</b>	<b>\$6,039,897</b>	<b>\$5,126,027</b>	<b>\$30,828,526</b>	<b>\$263,596,026</b>
Licking	\$2,517,453	\$1,163	\$6,642,987	\$9,161,604	\$3,484,746	\$1,191,620	\$4,676,367	\$13,861,959	\$82,961	\$95,672	\$517,448	\$3,175,602
Logan	\$788,801	\$1,097	\$955,895	\$1,745,792	\$1,537,922	\$266,355	\$1,804,277	\$3,550,709	\$331	\$13,507	\$129,854	\$600,072
Lorain	\$5,618,602	\$13,358	\$9,598,165	\$15,230,125	\$5,679,086	\$1,537,440	\$7,216,526	\$22,466,116	\$30,081	\$107,219	\$775,090	\$6,741,978
Lucas	\$9,862,298	\$41,189	\$26,873,590	\$36,777,077	\$13,494,515	\$2,771,320	\$16,265,835	\$53,084,777	\$280,456	\$349,584	\$1,638,393	\$9,560,288
Madison	\$508,726	\$135	\$2,000,641	\$2,509,502	\$749,201	\$218,903	\$968,104	\$3,477,606	\$18,859	\$6,372	\$87,236	\$570,220
Mahoning	\$7,100,768	\$25,503	\$12,303,878	\$19,430,149	\$5,914,040	\$1,186,802	\$7,100,841	\$26,556,620	\$227,987	\$21,591	\$602,804	\$6,738,626
Marion	\$1,536,846	\$2,402	\$3,350,055	\$4,889,303	\$1,426,531	\$441,099	\$1,867,630	\$6,759,589	\$32,537	\$14,925	\$228,459	\$1,209,441
Medina	\$2,231,747	\$41,703	\$3,449,473	\$5,722,923	\$1,448,650	\$506,630	\$1,955,279	\$7,683,252	\$10,597	\$13,271	\$305,046	\$3,451,719
Meigs	\$636,439	\$4,120	\$1,398,253	\$2,038,812	\$728,870	\$160,530	\$889,400	\$2,928,212	\$1,177	\$565	\$96,498	\$630,080
Mercer	\$784,794	\$0	\$803,611	\$1,588,405	\$385,615	\$172,421	\$558,036	\$2,147,382	\$8,725	\$8,480	\$82,719	\$890,287
Miami	\$2,173,450	\$5,879	\$2,657,585	\$4,836,914	\$1,344,906	\$519,110	\$1,864,016	\$6,703,488	\$37,552	\$23,020	\$190,009	\$1,835,749
Monroe	\$359,720	\$0	\$546,084	\$905,803	\$326,151	\$88,725	\$414,876	\$1,321,281	\$3,203	\$1,942	\$44,143	\$385,285
Montgomery	\$12,349,334	\$27,318	\$25,011,419	\$37,388,070	\$12,578,884	\$3,388,817	\$15,967,701	\$53,440,456	\$309,907	\$222,953	\$1,393,471	\$11,761,301
Morgan	\$469,900	\$0	\$673,780	\$1,143,680	\$388,365	\$121,681	\$510,046	\$1,654,004	\$0	\$1,802	\$65,051	\$442,684
Morrow	\$895,802	\$0	\$849,217	\$1,745,018	\$763,566	\$228,579	\$992,145	\$2,739,821	\$0	\$10,840	\$152,579	\$408,722
Muskingum	\$2,132,539	\$13,470	\$3,802,586	\$5,948,594	\$2,494,516	\$613,773	\$3,108,289	\$9,060,348	\$16,402	\$32,930	\$343,453	\$1,882,208
Noble	\$330,334	\$0	\$315,316	\$645,650	\$248,386	\$106,264	\$354,650	\$1,000,300	\$0	\$225	\$49,771	\$303,737
Ottawa	\$926,727	\$10,941	\$1,708,671	\$2,646,339	\$704,310	\$159,162	\$863,472	\$3,510,786	\$5,927	\$1,155	\$97,200	\$680,737
Paulding	\$214,824	\$193	\$522,780	\$737,797	\$283,722	\$134,721	\$418,443	\$1,156,238	\$8,087	\$3,447	\$58,708	\$163,171
Perry	\$706,831	\$3,420	\$2,039,688	\$2,749,939	\$1,037,784	\$241,081	\$1,278,865	\$4,030,519	\$9,056	\$4,615	\$142,305	\$1,098,693
Pickaway	\$824,125	\$23	\$1,513,641	\$2,337,789	\$1,022,034	\$293,489	\$1,315,523	\$3,653,311	\$11,273	\$14,245	\$173,279	\$753,288
Pike	\$1,316,249	\$0	\$2,517,158	\$3,833,406	\$1,090,741	\$263,663	\$1,354,404	\$5,188,148	\$18,488	\$3,198	\$104,312	\$1,510,645



**Table 6B**  
**Medicaid Expenditures**  
**January 2008**

	Aged Blind and Disabled (ABD)				OWF & Related	Healthy Start	CFC Total	Total Medicaid	Foster Care	Adoption Assistance	Transitional	Nursing Facilities
	Aged	Blind	Disabled	Total								
<b>Ohio</b>	<b>\$252,489,064</b>	<b>\$928,807</b>	<b>\$504,052,742</b>	<b>\$757,470,614</b>	<b>\$246,622,485</b>	<b>\$67,141,285</b>	<b>\$313,763,770</b>	<b>\$1,072,167,340</b>	<b>\$6,039,897</b>	<b>\$5,126,027</b>	<b>\$30,828,526</b>	<b>\$263,596,026</b>
Portage	\$2,246,261	\$14,543	\$5,211,163	\$7,471,967	\$2,542,639	\$731,961	\$3,274,600	\$10,749,948	\$69,907	\$34,438	\$310,959	\$3,691,476
Preble	\$757,311	\$5,375	\$1,337,890	\$2,100,577	\$735,661	\$236,119	\$971,780	\$3,076,734	\$15,830	\$8,911	\$150,256	\$990,067
Putnam	\$609,348	\$0	\$923,861	\$1,533,208	\$411,836	\$142,779	\$554,615	\$2,088,026	\$1,628	\$298	\$56,009	\$871,938
Richland	\$2,774,586	\$0	\$5,020,823	\$7,795,409	\$2,873,788	\$895,265	\$3,769,053	\$11,596,695	\$13,800	\$78,666	\$386,220	\$2,932,444
Ross	\$1,542,771	\$3,355	\$4,304,757	\$5,850,883	\$2,169,791	\$474,951	\$2,644,741	\$8,512,056	\$40,992	\$12,614	\$274,476	\$1,107,670
Sandusky	\$1,354,276	\$3,909	\$2,587,278	\$3,945,463	\$1,006,921	\$425,530	\$1,432,451	\$5,385,687	\$8,040	\$7,363	\$143,889	\$1,694,260
Scioto	\$3,147,164	\$3,205	\$7,260,812	\$10,411,180	\$2,760,995	\$482,406	\$3,243,401	\$13,706,912	\$22,401	\$85,905	\$332,780	\$2,503,564
Seneca	\$1,621,970	\$2,178	\$3,885,796	\$5,509,943	\$972,114	\$429,964	\$1,402,079	\$6,912,022	\$20,343	\$15,068	\$178,817	\$1,416,957
Shelby	\$717,050	\$1,358	\$1,069,422	\$1,787,830	\$717,416	\$289,969	\$1,007,386	\$2,795,333	\$12,185	\$10,806	\$82,140	\$798,940
Stark	\$9,674,328	\$31,414	\$14,531,413	\$24,237,155	\$7,966,408	\$1,998,293	\$9,964,701	\$34,207,469	\$258,591	\$363,908	\$1,158,197	\$10,076,901
Summit	\$12,234,640	\$49,783	\$21,437,042	\$33,721,465	\$10,821,529	\$2,427,827	\$13,249,356	\$47,016,941	\$359,675	\$190,759	\$1,335,640	\$10,341,562
Trumbull	\$4,639,135	\$9,977	\$9,028,665	\$13,677,777	\$4,280,286	\$1,268,329	\$5,548,616	\$19,227,494	\$93,687	\$49,787	\$561,123	\$5,277,630
Tuscarawas	\$2,284,448	\$14,719	\$2,925,465	\$5,224,632	\$1,666,300	\$531,186	\$2,197,486	\$7,433,380	\$39,964	\$37,172	\$242,161	\$1,859,145
Union	\$607,497	\$177	\$884,852	\$1,492,526	\$543,079	\$233,518	\$776,597	\$2,269,123	\$28,082	\$4,756	\$72,742	\$522,729
Unknown	\$204	\$0	\$1,106	\$1,310	-\$17,544	\$0	-\$17,544	-\$16,234	\$122	\$289,202	\$0	\$679
Van Wert	\$555,462	\$0	\$777,823	\$1,333,285	\$349,513	\$386,410	\$735,923	\$2,069,592	\$320	\$9,829	\$58,703	\$593,156
Vinton	\$350,623	\$0	\$687,601	\$1,038,223	\$515,193	\$123,574	\$638,768	\$1,677,801	\$4,723	\$288	\$60,809	\$221,701
Warren	\$3,196,576	\$8,106	\$4,843,658	\$8,048,340	\$1,391,309	\$796,205	\$2,187,514	\$10,240,240	\$16,638	\$24,855	\$209,716	\$4,670,036
Washington	\$1,373,918	\$3,433	\$2,523,127	\$3,900,477	\$1,190,384	\$447,312	\$1,637,696	\$5,538,173	\$9,998	\$4,553	\$237,722	\$1,443,747
Wayne	\$1,877,715	\$2,300	\$4,095,799	\$5,975,813	\$1,608,140	\$649,849	\$2,257,989	\$8,240,210	\$31,222	\$16,411	\$290,247	\$1,803,243
Williams	\$777,463	\$2,245	\$873,092	\$1,652,800	\$764,513	\$196,857	\$961,370	\$2,614,170	\$990	\$21,443	\$187,010	\$693,677
Wood	\$1,925,145	\$3,461	\$2,148,812	\$4,077,418	\$1,387,068	\$478,201	\$1,865,269	\$5,952,308	\$13,030	\$16,048	\$236,570	\$1,664,987
Wyandot	\$664,118	\$0	\$473,225	\$1,137,344	\$287,475	\$120,926	\$408,401	\$1,545,745	\$4,874	\$2,878	\$51,632	\$630,108



**Table 7**  
**Child Care Preliminary**  
**January 2008**

	OWF JOBS, LEAP, and Transitional		Other Child Care		Local Funding		All Program Sources	
	Children Served		Children Served		Children Served		Children Served	
	Total	% Of State Total	Total	% Of State Total	Total	% Of State Total	Total	% Of State Total
<b>Ohio</b>	<b>23,742</b>	<b>100.00%</b>	<b>79,691</b>	<b>100.00%</b>	<b>162</b>	<b>100.00%</b>	<b>103,595</b>	<b>100.00%</b>
Adams	36	0.15%	118	0.15%	0	0.00%	154	0.15%
Allen	199	0.84%	409	0.51%	0	0.00%	608	0.59%
Ashland	18	0.08%	170	0.21%	0	0.00%	188	0.18%
Ashtabula	217	0.91%	689	0.86%	0	0.00%	906	0.87%
Athens	102	0.43%	175	0.22%	0	0.00%	277	0.27%
Auglaize	13	0.05%	87	0.11%	0	0.00%	100	0.10%
Belmont	65	0.27%	255	0.32%	0	0.00%	320	0.31%
Brown	19	0.08%	145	0.18%	0	0.00%	164	0.16%
Butler	203	0.86%	1,671	2.10%	0	0.00%	1,874	1.81%
Carroll	45	0.19%	81	0.10%	0	0.00%	126	0.12%
Champaign	52	0.22%	150	0.19%	0	0.00%	202	0.19%
Clark	188	0.79%	709	0.89%	0	0.00%	897	0.87%
Clermont	271	1.14%	408	0.51%	0	0.00%	679	0.66%
Clinton	10	0.04%	209	0.26%	0	0.00%	219	0.21%
Columbiana	221	0.93%	856	1.07%	0	0.00%	1,077	1.04%
Coshocton	83	0.35%	215	0.27%	0	0.00%	298	0.29%
Crawford	52	0.22%	209	0.26%	0	0.00%	261	0.25%
Cuyahoga	4,259	17.94%	18,056	22.66%	0	0.00%	22,315	21.54%
Darke	51	0.21%	101	0.13%	0	0.00%	152	0.15%
Defiance	84	0.35%	179	0.22%	0	0.00%	263	0.25%
Delaware	66	0.28%	365	0.46%	0	0.00%	431	0.42%
Erie	61	0.26%	622	0.78%	0	0.00%	683	0.66%



**Table 7**  
**Child Care Preliminary**  
**January 2008**

	OWF JOBS, LEAP, and Transitional		Other Child Care		Local Funding		All Program Sources	
	Children Served		Children Served		Children Served		Children Served	
	Total	% Of State Total	Total	% Of State Total	Total	% Of State Total	Total	% Of State Total
<b>Ohio</b>	<b>23,742</b>	<b>100.00%</b>	<b>79,691</b>	<b>100.00%</b>	<b>162</b>	<b>100.00%</b>	<b>103,595</b>	<b>100.00%</b>
Fairfield	90	0.38%	518	0.65%	0	0.00%	608	0.59%
Fayette	64	0.27%	252	0.32%	0	0.00%	316	0.31%
Franklin	2,837	11.95%	9,804	12.30%	152	93.83%	12,793	12.35%
Fulton	69	0.29%	168	0.21%	0	0.00%	237	0.23%
Gallia	40	0.17%	167	0.21%	0	0.00%	207	0.20%
Geauga	37	0.16%	216	0.27%	0	0.00%	253	0.24%
Greene	118	0.50%	536	0.67%	0	0.00%	654	0.63%
Guernsey	134	0.56%	269	0.34%	0	0.00%	403	0.39%
Hamilton	3,394	14.30%	9,724	12.20%	0	0.00%	13,118	12.66%
Hancock	128	0.54%	313	0.39%	0	0.00%	441	0.43%
Hardin	25	0.11%	45	0.06%	0	0.00%	70	0.07%
Harrison	15	0.06%	38	0.05%	0	0.00%	53	0.05%
Henry	48	0.20%	113	0.14%	0	0.00%	161	0.16%
Highland	9	0.04%	186	0.23%	0	0.00%	195	0.19%
Hocking	45	0.19%	81	0.10%	0	0.00%	126	0.12%
Holmes	54	0.23%	102	0.13%	0	0.00%	156	0.15%
Huron	12	0.05%	449	0.56%	0	0.00%	461	0.45%
Jackson	44	0.19%	128	0.16%	0	0.00%	172	0.17%
Jefferson	59	0.25%	323	0.41%	0	0.00%	382	0.37%
Knox	62	0.26%	276	0.35%	0	0.00%	338	0.33%
Lake	250	1.05%	1,002	1.26%	1	0.62%	1,253	1.21%
Lawrence	184	0.77%	402	0.50%	0	0.00%	586	0.57%



**Table 7**  
**Child Care Preliminary**  
**January 2008**

	OWF JOBS, LEAP, and Transitional		Other Child Care		Local Funding		All Program Sources	
	Children Served		Children Served		Children Served		Children Served	
	Total	% Of State Total	Total	% Of State Total	Total	% Of State Total	Total	% Of State Total
<b>Ohio</b>	<b>23,742</b>	<b>100.00%</b>	<b>79,691</b>	<b>100.00%</b>	<b>162</b>	<b>100.00%</b>	<b>103,595</b>	<b>100.00%</b>
Licking	214	0.90%	1,193	1.50%	0	0.00%	1,407	1.36%
Logan	49	0.21%	61	0.08%	1	0.62%	111	0.11%
Lorain	695	2.93%	1,848	2.32%	0	0.00%	2,543	2.45%
Lucas	1,865	7.86%	1,952	2.45%	0	0.00%	3,817	3.68%
Madison	25	0.11%	109	0.14%	0	0.00%	134	0.13%
Mahoning	984	4.14%	1,416	1.78%	0	0.00%	2,400	2.32%
Marion	41	0.17%	386	0.48%	0	0.00%	427	0.41%
Medina	108	0.45%	654	0.82%	0	0.00%	762	0.74%
Meigs	13	0.05%	217	0.27%	0	0.00%	230	0.22%
Mercer	19	0.08%	156	0.20%	0	0.00%	175	0.17%
Miami	130	0.55%	380	0.48%	0	0.00%	510	0.49%
Monroe	17	0.07%	47	0.06%	0	0.00%	64	0.06%
Montgomery	862	3.63%	5,011	6.29%	0	0.00%	5,873	5.67%
Morgan	9	0.04%	107	0.13%	0	0.00%	116	0.11%
Morrow	34	0.14%	147	0.18%	0	0.00%	181	0.17%
Muskingum	379	1.60%	746	0.94%	0	0.00%	1,125	1.09%
Noble	54	0.23%	71	0.09%	0	0.00%	125	0.12%
Ottawa	55	0.23%	122	0.15%	0	0.00%	177	0.17%
Paulding	4	0.02%	25	0.03%	0	0.00%	29	0.03%
Perry	45	0.19%	237	0.30%	0	0.00%	282	0.27%
Pickaway	71	0.30%	118	0.15%	0	0.00%	189	0.18%
Pike	52	0.22%	66	0.08%	0	0.00%	118	0.11%



**Table 7**  
**Child Care Preliminary**  
**January 2008**

	OWF JOBS, LEAP, and Transitional		Other Child Care		Local Funding		All Program Sources	
	Children Served		Children Served		Children Served		Children Served	
	Total	% Of State Total	Total	% Of State Total	Total	% Of State Total	Total	% Of State Total
<b>Ohio</b>	<b>23,742</b>	<b>100.00%</b>	<b>79,691</b>	<b>100.00%</b>	<b>162</b>	<b>100.00%</b>	<b>103,595</b>	<b>100.00%</b>
Portage	175	0.74%	775	0.97%	2	1.23%	952	0.92%
Preble	67	0.28%	126	0.16%	0	0.00%	193	0.19%
Putnam	14	0.06%	93	0.12%	0	0.00%	107	0.10%
Richland	307	1.29%	842	1.06%	1	0.62%	1,150	1.11%
Ross	101	0.43%	337	0.42%	0	0.00%	438	0.42%
Sandusky	74	0.31%	453	0.57%	0	0.00%	527	0.51%
Scioto	132	0.56%	543	0.68%	0	0.00%	675	0.65%
Seneca	18	0.08%	302	0.38%	0	0.00%	320	0.31%
Shelby	107	0.45%	210	0.26%	0	0.00%	317	0.31%
Stark	837	3.53%	2,339	2.94%	0	0.00%	3,176	3.07%
Summit	1,140	4.80%	3,660	4.59%	0	0.00%	4,800	4.63%
Trumbull	351	1.48%	1,541	1.93%	0	0.00%	1,892	1.83%
Tuscarawas	37	0.16%	399	0.50%	0	0.00%	436	0.42%
Union	27	0.11%	253	0.32%	5	3.09%	285	0.28%
Van Wert	7	0.03%	47	0.06%	0	0.00%	54	0.05%
Vinton	8	0.03%	78	0.10%	0	0.00%	86	0.08%
Warren	183	0.77%	437	0.55%	0	0.00%	620	0.60%
Washington	58	0.24%	318	0.40%	0	0.00%	376	0.36%
Wayne	186	0.78%	357	0.45%	0	0.00%	543	0.52%
Williams	42	0.18%	110	0.14%	0	0.00%	152	0.15%
Wood	107	0.45%	358	0.45%	0	0.00%	465	0.45%
Wyandot	6	0.03%	53	0.07%	0	0.00%	59	0.06%

SOURCE: COGNOS. The above numbers have not been reconciled between the CCIDS/3299 data collection system and 2827 ODJFS fiscal reporting system; therefore they may not be conclusive at this time.

OWF data consist of funding codes: 173,312, 313,314, 326, & 327. Other data consist of funding codes: 320, 321, 322, 323, 324, 325, 328, 329, and 342. Local Funding is from funding code 899.



**Table 8**  
**Recipients, Expenditures, and Average Payment per Recipient**  
**During Tthe Last 12 Months in Ohio**

RECIPIENTS	OWF-R	OWF-U	OWF\ CHILD CARE	Other CHILD CARE	DISABILTY ASSISTANCE	TITLE IV-E	FNS BENEFITS
February 2007	153,574	12,747	23,275	74,852	13,709	26,969	1,054,032
March	152,985	12,792	23,584	78,334	13,965	26,244	1,066,951
April	152,556	12,406	23,527	77,738	13,947	26,182	1,066,248
May	155,417	12,271	24,152	80,832	14,564	25,706	1,080,781
June	149,827	11,014	22,927	80,331	15,145	23,939	1,087,411
July	154,067	11,428	12,135	83,212	15,614	N.A.	1,090,411
August	154,690	11,902	12,173	83,746	16,113	N.A.	1,097,227
September	152,800	11,309	11,026	80,414	15,652	N.A.	1,092,555
October	159,461	12,613	22,320	78,918	15,985	N.A.	1,108,749
November	159,745	12,511	23,726	81,688	15,883	N.A.	1,113,367
December 2007	160,029	13,225	24,479	83,265	15,860	N.A.	1,127,486
January 2008	158,784	14,046	23,742	79,691	16,149	N.A.	1,139,495
<b>12 MONTH AVERAGE</b>	<b>155,328</b>	<b>12,355</b>	<b>20,589</b>	<b>80,252</b>	<b>15,216</b>	<b>10,753</b>	<b>1,093,726</b>
EXPENDITURES							
February 2007	\$23,926,643	\$1,349,595	N.A.	N.A.	\$1,847,646	\$13,904,623	\$105,628,316
March	\$23,971,956	\$1,384,820	N.A.	N.A.	\$1,952,139	\$13,522,041	\$107,457,412
April	\$23,014,252	\$1,269,486	N.A.	N.A.	\$1,768,558	\$17,403,927	\$107,329,580
May	\$22,934,016	\$1,208,788	N.A.	N.A.	\$2,040,201	\$13,271,398	\$108,138,296
June	\$23,962,387	\$1,187,020	N.A.	N.A.	\$2,347,409	\$18,639,187	\$108,329,737
July	\$24,360,922	\$1,261,090	N.A.	N.A.	\$2,333,309	N.A.	\$109,603,726
August	\$24,283,786	\$1,266,545	N.A.	N.A.	\$2,376,545	N.A.	\$110,301,820
September	\$24,408,901	\$1,256,532	N.A.	N.A.	\$2,091,985	N.A.	\$109,690,552
October	\$25,159,772	\$1,376,116	N.A.	N.A.	\$2,175,937	N.A.	\$118,686,943
November	\$24,712,019	\$1,326,799	N.A.	N.A.	\$2,066,469	N.A.	\$117,500,130
December 2007	\$25,392,128	\$1,499,895	N.A.	N.A.	\$2,135,947	N.A.	\$119,050,719
January 2008	\$25,476,766	\$1,615,470	N.A.	N.A.	\$2,378,057	N.A.	\$121,062,178
<b>TOTAL DOLLARS</b>	<b>\$24,300,296</b>	<b>\$1,333,513</b>	<b>N.A.</b>	<b>N.A.</b>	<b>\$2,126,184</b>	<b>\$15,348,235</b>	<b>\$111,898,284</b>
AVERAGE PAYMENT							
February 2007	\$156	\$106	N.A.	N.A.	\$135	\$516	\$100
March	\$157	\$108	N.A.	N.A.	\$140	\$515	\$101
April	\$151	\$102	N.A.	N.A.	\$127	\$665	\$101
May	\$148	\$99	N.A.	N.A.	\$140	\$516	\$100
June	\$160	\$108	N.A.	N.A.	\$155	\$779	\$100
July	\$158	\$110	N.A.	N.A.	\$149	N.A.	\$101
August	\$157	\$106	N.A.	N.A.	\$147	N.A.	\$101
September	\$160	\$111	N.A.	N.A.	\$134	N.A.	\$100
October	\$158	\$109	N.A.	N.A.	\$136	N.A.	\$107
November	\$155	\$106	N.A.	N.A.	\$130	N.A.	\$106
December 2007	\$159	\$113	N.A.	N.A.	\$135	N.A.	\$106
January 2008	\$160	\$115	N.A.	N.A.	\$147	N.A.	\$106

Note: N.A. means Not Available.



**Table 10**  
**Percent of Ohio's Population Participating in Selected**  
**Public Assistance Programs for January 2008**

	Percent All		Disability Assistance		OWF Combined		Foster Care Unavailable		FNS Benefits	
	Estimated Total Population *	Families Below Poverty Level	Recipients	Recipients as % of Total Population	Recipients	Recipients as % of Total Population	Recipients	Recipients as % of Total Population	Recipients	Recipients as % of Total Population
<b>Ohio</b>	<b>11,478,006</b>	<b>7.80%</b>	<b>16,149</b>	<b>0.14%</b>	<b>172,830</b>	<b>1.51%</b>	<b>0</b>	<b>0.00%</b>	<b>1,139,495</b>	<b>9.93%</b>
Adams	28,516	12.80%	94	0.33%	213	0.75%	0	0.00%	5,032	17.65%
Allen	105,788	9.60%	136	0.13%	659	0.62%	0	0.00%	9,549	9.03%
Ashland	54,727	7.10%	36	0.07%	241	0.44%	0	0.00%	3,467	6.34%
Ashtabula	102,703	9.20%	364	0.35%	1,494	1.45%	0	0.00%	13,572	13.21%
Athens	61,860	14.00%	314	0.51%	1,732	2.80%	0	0.00%	7,546	12.20%
Auglaize	47,060	4.90%	29	0.06%	105	0.22%	0	0.00%	2,303	4.89%
Belmont	68,771	11.70%	159	0.23%	639	0.93%	0	0.00%	7,077	10.29%
Brown	44,423	8.80%	98	0.22%	263	0.59%	0	0.00%	3,811	8.58%
Butler	354,992	5.40%	452	0.13%	2,917	0.82%	0	0.00%	27,850	7.85%
Carroll	29,189	8.50%	26	0.09%	165	0.57%	0	0.00%	2,278	7.80%
Champaign	39,921	5.10%	33	0.08%	445	1.11%	0	0.00%	3,083	7.72%
Clark	141,872	7.90%	419	0.30%	3,053	2.15%	0	0.00%	18,507	13.04%
Clermont	192,706	5.30%	225	0.12%	765	0.40%	0	0.00%	11,931	6.19%
Clinton	43,399	6.40%	83	0.19%	258	0.59%	0	0.00%	3,425	7.89%
Columbiana	110,542	9.00%	153	0.14%	826	0.75%	0	0.00%	12,441	11.25%
Coshocton	36,976	7.00%	117	0.32%	499	1.35%	0	0.00%	4,472	12.09%
Crawford	45,047	7.80%	51	0.11%	405	0.90%	0	0.00%	4,792	10.64%
Cuyahoga	1,314,241	10.30%	995	0.08%	22,010	1.67%	0	0.00%	186,370	14.18%
Darke	52,780	6.00%	38	0.07%	354	0.67%	0	0.00%	2,552	4.84%
Defiance	39,091	4.50%	28	0.07%	400	1.02%	0	0.00%	3,002	7.68%
Delaware	156,697	2.90%	83	0.05%	821	0.52%	0	0.00%	4,786	3.05%
Erie	78,116	6.00%	100	0.13%	442	0.57%	0	0.00%	6,206	7.94%



**Table 10**  
**Percent of Ohio's Population Participating in Selected**  
**Public Assistance Programs for January 2008**

	Percent All		Disability Assistance		OWF Combined		Foster Care Unavailable		FNS Benefits	
	Estimated Total Population *	Families Below Poverty Level	Recipients	Recipients as % of Total Population	Recipients	Recipients as % of Total Population	Recipients	Recipients as % of Total Population	Recipients	Recipients as % of Total Population
<b>Ohio</b>	<b>11,478,006</b>	<b>7.80%</b>	<b>16,149</b>	<b>0.14%</b>	<b>172,830</b>	<b>1.51%</b>	<b>0</b>	<b>0.00%</b>	<b>1,139,495</b>	<b>9.93%</b>
Fairfield	140,591	4.50%	189	0.13%	1,753	1.25%	0	0.00%	11,093	7.89%
Fayette	28,305	7.70%	47	0.17%	324	1.14%	0	0.00%	3,051	10.78%
Franklin	1,095,662	8.20%	1,478	0.13%	27,876	2.54%	0	0.00%	130,317	11.89%
Fulton	42,900	4.00%	38	0.09%	114	0.27%	0	0.00%	2,206	5.14%
Gallia	31,313	13.50%	91	0.29%	1,007	3.22%	0	0.00%	5,229	16.70%
Geauga	95,676	2.80%	26	0.03%	105	0.11%	0	0.00%	1,651	1.73%
Greene	152,298	5.20%	189	0.12%	1,166	0.77%	0	0.00%	8,852	5.81%
Guernsey	40,876	12.90%	159	0.39%	303	0.74%	0	0.00%	6,161	15.07%
Hamilton	822,596	8.80%	809	0.10%	17,353	2.11%	0	0.00%	75,927	9.23%
Hancock	73,824	5.20%	79	0.11%	136	0.18%	0	0.00%	4,265	5.78%
Hardin	31,966	8.90%	56	0.18%	105	0.33%	0	0.00%	2,073	6.49%
Harrison	15,799	11.00%	55	0.35%	216	1.37%	0	0.00%	2,007	12.70%
Henry	29,520	5.30%	7	0.02%	64	0.22%	0	0.00%	1,453	4.92%
Highland	42,833	9.00%	124	0.29%	584	1.36%	0	0.00%	5,138	12.00%
Hocking	28,973	10.30%	62	0.21%	620	2.14%	0	0.00%	3,615	12.48%
Holmes	41,574	10.50%	27	0.06%	69	0.17%	0	0.00%	1,034	2.49%
Huron	60,313	6.50%	69	0.11%	356	0.59%	0	0.00%	5,300	8.79%
Jackson	33,543	13.60%	137	0.41%	615	1.83%	0	0.00%	5,593	16.67%
Jefferson	70,125	11.40%	161	0.23%	1,623	2.31%	0	0.00%	8,820	12.58%
Knox	58,561	7.40%	124	0.21%	611	1.04%	0	0.00%	4,744	8.10%
Lake	232,892	3.50%	149	0.06%	964	0.41%	0	0.00%	11,375	4.88%
Lawrence	63,179	15.10%	78	0.12%	1,447	2.29%	0	0.00%	11,007	17.42%



**Table 10**  
**Percent of Ohio's Population Participating in Selected**  
**Public Assistance Programs for January 2008**

	Percent All		Disability Assistance		OWF Combined		Foster Care Unavailable		FNS Benefits	
	Estimated Total Population *	Families Below Poverty Level	Recipients	Recipients as % of Total Population	Recipients	Recipients as % of Total Population	Recipients	Recipients as % of Total Population	Recipients	Recipients as % of Total Population
<b>Ohio</b>	<b>11,478,006</b>	<b>7.80%</b>	<b>16,149</b>	<b>0.14%</b>	<b>172,830</b>	<b>1.51%</b>	<b>0</b>	<b>0.00%</b>	<b>1,139,495</b>	<b>9.93%</b>
Licking	156,287	5.50%	297	0.19%	1,268	0.81%	0	0.00%	12,963	8.29%
Logan	46,189	7.10%	81	0.18%	433	0.94%	0	0.00%	3,873	8.39%
Lorain	301,993	6.70%	371	0.12%	4,082	1.35%	0	0.00%	28,398	9.40%
Lucas	445,281	10.70%	1,087	0.24%	13,109	2.94%	0	0.00%	65,270	14.66%
Madison	41,496	6.20%	26	0.06%	536	1.29%	0	0.00%	3,086	7.44%
Mahoning	251,026	9.60%	280	0.11%	6,789	2.70%	0	0.00%	30,710	12.23%
Marion	65,583	7.40%	189	0.29%	713	1.09%	0	0.00%	7,798	11.89%
Medina	169,353	3.50%	84	0.05%	518	0.31%	0	0.00%	5,329	3.15%
Meigs	23,092	14.30%	92	0.40%	583	2.52%	0	0.00%	4,278	18.53%
Mercer	41,303	4.60%	36	0.09%	161	0.39%	0	0.00%	1,599	3.87%
Miami	101,914	5.10%	88	0.09%	615	0.60%	0	0.00%	4,785	4.70%
Monroe	14,606	11.00%	34	0.23%	123	0.84%	0	0.00%	1,666	11.41%
Montgomery	542,237	8.30%	966	0.18%	11,285	2.08%	0	0.00%	57,940	10.69%
Morgan	14,821	15.70%	67	0.45%	174	1.17%	0	0.00%	1,934	13.05%
Morrow	34,529	6.60%	86	0.25%	241	0.70%	0	0.00%	3,075	8.91%
Muskingum	86,125	9.90%	395	0.46%	1,839	2.14%	0	0.00%	14,326	16.63%
Noble	14,165	8.30%	22	0.16%	83	0.59%	0	0.00%	1,173	8.28%
Ottawa	41,331	4.20%	42	0.10%	280	0.68%	0	0.00%	2,717	6.57%
Paulding	19,432	4.90%	34	0.17%	240	1.24%	0	0.00%	1,444	7.43%
Perry	35,313	9.40%	115	0.33%	801	2.27%	0	0.00%	5,714	16.18%
Pickaway	53,606	7.60%	88	0.16%	901	1.68%	0	0.00%	5,097	9.51%
Pike	28,269	15.10%	74	0.26%	855	3.02%	0	0.00%	5,537	19.59%
Portage	155,012	5.90%	118	0.08%	796	0.51%	0	0.00%	9,888	6.38%



**Table 10**  
**Percent of Ohio's Population Participating in Selected**  
**Public Assistance Programs for January 2008**

	Percent All		Disability Assistance		OWF Combined		Foster Care Unavailable		FNS Benefits	
	Estimated Total Population *	Families Below Poverty Level	Recipients	Recipients as % of Total Population	Recipients	Recipients as % of Total Population	Recipients	Recipients as % of Total Population	Recipients	Recipients as % of Total Population
<b>Ohio</b>	<b>11,478,006</b>	<b>7.80%</b>	<b>16,149</b>	<b>0.14%</b>	<b>172,830</b>	<b>1.51%</b>	<b>0</b>	<b>0.00%</b>	<b>1,139,495</b>	<b>9.93%</b>
Preble	42,491	4.50%	59	0.14%	407	0.96%	0	0.00%	2,800	6.59%
Putnam	34,744	4.00%	5	0.01%	31	0.09%	0	0.00%	1,496	4.31%
Richland	127,010	8.20%	269	0.21%	1,318	1.04%	0	0.00%	13,181	10.38%
Ross	75,556	9.10%	153	0.20%	1,463	1.94%	0	0.00%	11,467	15.18%
Sandusky	61,625	5.70%	111	0.18%	350	0.57%	0	0.00%	4,342	7.05%
Scioto	76,441	15.20%	299	0.39%	2,197	2.87%	0	0.00%	16,079	21.03%
Seneca	57,255	6.10%	79	0.14%	350	0.61%	0	0.00%	4,746	8.29%
Shelby	48,884	5.30%	41	0.08%	266	0.54%	0	0.00%	2,838	5.81%
Stark	380,575	6.80%	513	0.13%	6,583	1.73%	0	0.00%	33,273	8.74%
Summit	545,931	7.50%	558	0.10%	10,609	1.94%	0	0.00%	54,664	10.01%
Trumbull	217,362	7.90%	335	0.15%	2,912	1.34%	0	0.00%	20,226	9.31%
Tuscarawas	91,766	7.20%	129	0.14%	753	0.82%	0	0.00%	8,118	8.85%
Union	46,702	3.60%	33	0.07%	336	0.72%	0	0.00%	2,600	5.57%
Van Wert	29,303	4.20%	37	0.13%	85	0.29%	0	0.00%	1,505	5.14%
Vinton	13,519	15.10%	72	0.53%	316	2.34%	0	0.00%	2,698	19.96%
Warren	201,871	3.00%	90	0.04%	386	0.19%	0	0.00%	4,146	2.05%
Washington	61,867	8.60%	147	0.24%	193	0.31%	0	0.00%	5,513	8.91%
Wayne	113,950	5.40%	239	0.21%	912	0.80%	0	0.00%	7,589	6.66%
Williams	38,719	3.90%	39	0.10%	387	1.00%	0	0.00%	2,968	7.67%
Wood	124,183	4.70%	64	0.05%	353	0.28%	0	0.00%	4,707	3.79%
Wyandot	22,553	3.80%	18	0.08%	81	0.36%	0	0.00%	976	4.33%

\*SOURCE: 2006 Ohio County Population Estimates, Ohio Dept. of Development, GRP342RA, GBS003RA, GRP304RA and GRP304RC Reports from Management Information Services.



**Table 7**  
**Child Care Revision**  
**October 2007 Update**

	OWF JOBS, LEAP, and Transitional		Other Child Care		Local Funding		All Program Sources	
	Children Served		Children Served		Children Served		Children Served	
	Total	% Of State Total	Total	% Of State Total	Total	% Of State Total	Total	% Of State Total
<b>Ohio</b>	<b>22,320</b>	<b>100.00%</b>	<b>78,918</b>	<b>100.00%</b>	<b>106</b>	<b>100.00%</b>	<b>101,344</b>	<b>100.00%</b>
Adams	36	0.16%	114	0.14%	0	0.00%	150	0.15%
Allen	191	0.86%	424	0.54%	0	0.00%	615	0.61%
Ashland	15	0.07%	189	0.24%	0	0.00%	204	0.20%
Ashtabula	200	0.90%	675	0.86%	0	0.00%	875	0.86%
Athens	108	0.48%	185	0.23%	0	0.00%	293	0.29%
Auglaize	14	0.06%	89	0.11%	0	0.00%	103	0.10%
Belmont	78	0.35%	257	0.33%	0	0.00%	335	0.33%
Brown	21	0.09%	130	0.16%	0	0.00%	151	0.15%
Butler	178	0.80%	1,547	1.96%	0	0.00%	1,725	1.70%
Carroll	32	0.14%	85	0.11%	0	0.00%	117	0.12%
Champaign	42	0.19%	158	0.20%	0	0.00%	200	0.20%
Clark	169	0.76%	678	0.86%	0	0.00%	847	0.84%
Clermont	256	1.15%	662	0.84%	0	0.00%	918	0.91%
Clinton	16	0.07%	253	0.32%	0	0.00%	269	0.27%
Columbiana	181	0.81%	887	1.12%	0	0.00%	1,068	1.05%
Coshocton	76	0.34%	239	0.30%	0	0.00%	315	0.31%
Crawford	54	0.24%	220	0.28%	0	0.00%	274	0.27%
Cuyahoga	4,069	18.23%	17,734	22.47%	0	0.00%	21,803	21.51%
Darke	32	0.14%	93	0.12%	0	0.00%	125	0.12%
Defiance	72	0.32%	169	0.21%	0	0.00%	241	0.24%
Delaware	65	0.29%	395	0.50%	0	0.00%	460	0.45%
Erie	48	0.22%	674	0.85%	0	0.00%	722	0.71%



**Table 7**  
**Child Care Revision**  
**October 2007 Update**

	OWF JOBS, LEAP, and Transitional		Other Child Care		Local Funding		All Program Sources	
	Children Served		Children Served		Children Served		Children Served	
	Total	% Of State Total	Total	% Of State Total	Total	% Of State Total	Total	% Of State Total
<b>Ohio</b>	<b>22,320</b>	<b>100.00%</b>	<b>78,918</b>	<b>100.00%</b>	<b>106</b>	<b>100.00%</b>	<b>101,344</b>	<b>100.00%</b>
Fairfield	83	0.37%	662	0.84%	0	0.00%	745	0.74%
Fayette	60	0.27%	262	0.33%	0	0.00%	322	0.32%
Franklin	2,604	11.67%	9,513	12.05%	101	95.28%	12,218	12.06%
Fulton	57	0.26%	172	0.22%	0	0.00%	229	0.23%
Gallia	39	0.17%	150	0.19%	0	0.00%	189	0.19%
Geauga	37	0.17%	209	0.26%	0	0.00%	246	0.24%
Greene	196	0.88%	764	0.97%	0	0.00%	960	0.95%
Guernsey	99	0.44%	333	0.42%	0	0.00%	432	0.43%
Hamilton	3,197	14.32%	9,769	12.38%	0	0.00%	12,966	12.79%
Hancock	119	0.53%	372	0.47%	0	0.00%	491	0.48%
Hardin	25	0.11%	57	0.07%	0	0.00%	82	0.08%
Harrison	12	0.05%	42	0.05%	0	0.00%	54	0.05%
Henry	43	0.19%	114	0.14%	0	0.00%	157	0.15%
Highland	11	0.05%	197	0.25%	0	0.00%	208	0.21%
Hocking	51	0.23%	82	0.10%	0	0.00%	133	0.13%
Holmes	44	0.20%	124	0.16%	0	0.00%	168	0.17%
Huron	8	0.04%	439	0.56%	0	0.00%	447	0.44%
Jackson	34	0.15%	135	0.17%	0	0.00%	169	0.17%
Jefferson	72	0.32%	317	0.40%	0	0.00%	389	0.38%
Knox	71	0.32%	281	0.36%	0	0.00%	352	0.35%
Lake	243	1.09%	951	1.21%	0	0.00%	1,194	1.18%
Lawrence	175	0.78%	399	0.51%	0	0.00%	574	0.57%



**Table 7**  
**Child Care Revision**  
**October 2007 Update**

	OWF JOBS, LEAP, and Transitional		Other Child Care		Local Funding		All Program Sources	
	Children Served		Children Served		Children Served		Children Served	
	Total	% Of State Total	Total	% Of State Total	Total	% Of State Total	Total	% Of State Total
<b>Ohio</b>	<b>22,320</b>	<b>100.00%</b>	<b>78,918</b>	<b>100.00%</b>	<b>106</b>	<b>100.00%</b>	<b>101,344</b>	<b>100.00%</b>
Licking	209	0.94%	1,134	1.44%	0	0.00%	1,343	1.33%
Logan	45	0.20%	55	0.07%	0	0.00%	100	0.10%
Lorain	623	2.79%	1,597	2.02%	0	0.00%	2,220	2.19%
Lucas	1,672	7.49%	1,867	2.37%	0	0.00%	3,539	3.49%
Madison	33	0.15%	143	0.18%	0	0.00%	176	0.17%
Mahoning	963	4.31%	1,466	1.86%	0	0.00%	2,429	2.40%
Marion	30	0.13%	388	0.49%	0	0.00%	418	0.41%
Medina	122	0.55%	646	0.82%	0	0.00%	768	0.76%
Meigs	14	0.06%	180	0.23%	0	0.00%	194	0.19%
Mercer	23	0.10%	147	0.19%	0	0.00%	170	0.17%
Miami	126	0.56%	336	0.43%	0	0.00%	462	0.46%
Monroe	15	0.07%	55	0.07%	0	0.00%	70	0.07%
Montgomery	743	3.33%	4,397	5.57%	0	0.00%	5,140	5.07%
Morgan	4	0.02%	115	0.15%	0	0.00%	119	0.12%
Morrow	33	0.15%	187	0.24%	0	0.00%	220	0.22%
Muskingum	375	1.68%	722	0.91%	0	0.00%	1,097	1.08%
Noble	42	0.19%	106	0.13%	0	0.00%	148	0.15%
Ottawa	49	0.22%	103	0.13%	0	0.00%	152	0.15%
Paulding	4	0.02%	42	0.05%	0	0.00%	46	0.05%
Perry	47	0.21%	259	0.33%	0	0.00%	306	0.30%
Pickaway	79	0.35%	127	0.16%	0	0.00%	206	0.20%
Pike	48	0.22%	66	0.08%	0	0.00%	114	0.11%



**Table 7**  
**Child Care Revision**  
**October 2007 Update**

	OWF JOBS, LEAP, and Transitional		Other Child Care		Local Funding		All Program Sources	
	Children Served		Children Served		Children Served		Children Served	
	Total	% Of State Total	Total	% Of State Total	Total	% Of State Total	Total	% Of State Total
<b>Ohio</b>	<b>22,320</b>	<b>100.00%</b>	<b>78,918</b>	<b>100.00%</b>	<b>106</b>	<b>100.00%</b>	<b>101,344</b>	<b>100.00%</b>
Portage	169	0.76%	663	0.84%	0	0.00%	832	0.82%
Preble	70	0.31%	139	0.18%	0	0.00%	209	0.21%
Putnam	17	0.08%	94	0.12%	0	0.00%	111	0.11%
Richland	262	1.17%	888	1.13%	0	0.00%	1,150	1.13%
Ross	96	0.43%	333	0.42%	0	0.00%	429	0.42%
Sandusky	80	0.36%	454	0.58%	0	0.00%	534	0.53%
Scioto	118	0.53%	568	0.72%	0	0.00%	686	0.68%
Seneca	26	0.12%	268	0.34%	0	0.00%	294	0.29%
Shelby	108	0.48%	187	0.24%	0	0.00%	295	0.29%
Stark	836	3.75%	2,364	3.00%	0	0.00%	3,200	3.16%
Summit	1,055	4.73%	3,614	4.58%	0	0.00%	4,669	4.61%
Trumbull	322	1.44%	1,525	1.93%	0	0.00%	1,847	1.82%
Tuscarawas	31	0.14%	496	0.63%	0	0.00%	527	0.52%
Union	23	0.10%	255	0.32%	5	4.72%	283	0.28%
Van Wert	7	0.03%	44	0.06%	0	0.00%	51	0.05%
Vinton	8	0.04%	79	0.10%	0	0.00%	87	0.09%
Warren	153	0.69%	454	0.58%	0	0.00%	607	0.60%
Washington	85	0.38%	285	0.36%	0	0.00%	370	0.37%
Wayne	173	0.78%	375	0.48%	0	0.00%	548	0.54%
Williams	45	0.20%	108	0.14%	0	0.00%	153	0.15%
Wood	99	0.44%	327	0.41%	0	0.00%	426	0.42%
Wyandot	5	0.02%	59	0.07%	0	0.00%	64	0.06%

SOURCE: COGNOS. The above numbers have not been reconciled between the CCIDS/3299 data collection system and 2827 ODJFS fiscal reporting system; therefore they may not be conclusive at this time.

OWF data consist of funding codes: 173,312, 313,314, 326, & 327. Other data consist of funding codes: 320, 321, 322, 323, 324, 325, 328, 329, and 342. Local Funding is from funding code 899.