

Ohio Department of Job and Family Services

PUBLIC ASSISTANCE MONTHLY STATISTICS OCTOBER 2007



<http://jfs.ohio.gov/pams/index.stm>

Bureau of Research and Evaluation : Federal Reports\ Data Development Section
Office of Research, Assessment, and Accountability
P.O. Box 1618
Columbus, Ohio 43216-1618

OHIO DEPARTMENT OF JOB AND FAMILY SERVICES
PUBLIC ASSISTANCE MONTHLY STATISTICS
TABLE OF CONTENTS

<u>TITLE</u>	<u>PAGE(S)</u>
Monthly Review of Public Assistance Statistics.	1
Statewide Summary of Public Assistance Programs.	2
Table 1: OWF (TANF) Summary	3-14
Table 2: Foster Care (Title IV-E) Program Summary. . Temporarily Unavailable.	15-17
Table 3: Disability Assistance Program Summary.	18-22
Table 3-A: DA Payments for Medical Services.	23
Table 5: FNS Benefits Program Summary.	24-28
Table 6: Medicaid (Title XIX): Eligibles and Expenditures.	29-34
Table 7: Child Day Care Summary	35-37
Table 8: Program Summaries of Recipients, Expenditures, and Average Payment Per Recipient During the Last 12 Months.	38
Table 10: Percent of Ohio's Population Participating in Selected Public Assistance Programs.	39-41
<i>Note: Table 4 and Table 9 were discontinued.</i>	
Also: <i>Table 7-A, Updated Child Day Care Summary for July 2007.</i>	<i>42-44</i>

All data in the PAMS report is limited to the information available at the time it was constructed. It does not account for backdated or retroactive eligibility or any adjustments made subsequent to its creation.

MONTHLY REVIEW OF PUBLIC ASSISTANCE STATISTICS FOR OCTOBER 2007

OHIO WORKS FIRST (OWF)

For the month of October 2007, OWF-Combined assistance groups totaled 80,161; recipients totaled 172,074 and money payments totaled \$26,535,888. The percent change from September 2007 to October 2007 was 3.8% for assistance groups; 4.9% for recipients, and 3.4% for money payments. For OWF- Regular (OWF-R) there were 77,051 assistance groups; 159,461 recipients, and \$25,159,772 in money payments issued for October 2007. The percent change from September 2007 to October 2007 was 3.5% for assistance groups; 4.4% for recipients, and 3.4% for money payments. For OWF-Unemployed (OWF-U), assistance groups totaled 3,110; recipients, 12,613 and money payments were \$1,376,116. The percent change from September 2007 to October 2007 was 10.1% for assistance groups; 11.5% for recipients and 9.5% for money payments.

FOSTER CARE (TITLE IV-E)

Data not available due to SACWIS implementation.

DISABILITY ASSISTANCE (DA)

For the month of October 2007, there were 15,893 assistance groups; 15,985 recipients, and \$2,175,937 in DA financial assistance. The average DA financial assistance per recipient was \$136.12. Total DA expenditures for medical services for October 2007 were \$1,652,796. Of this total, \$1,186,843 or 71.8% was spent for prescribed drugs, and \$344,381 or 20.8% was spent for physician services. Medical expenses were paid for 2,849 recipients for an average expenditure of \$580.13 per recipient.

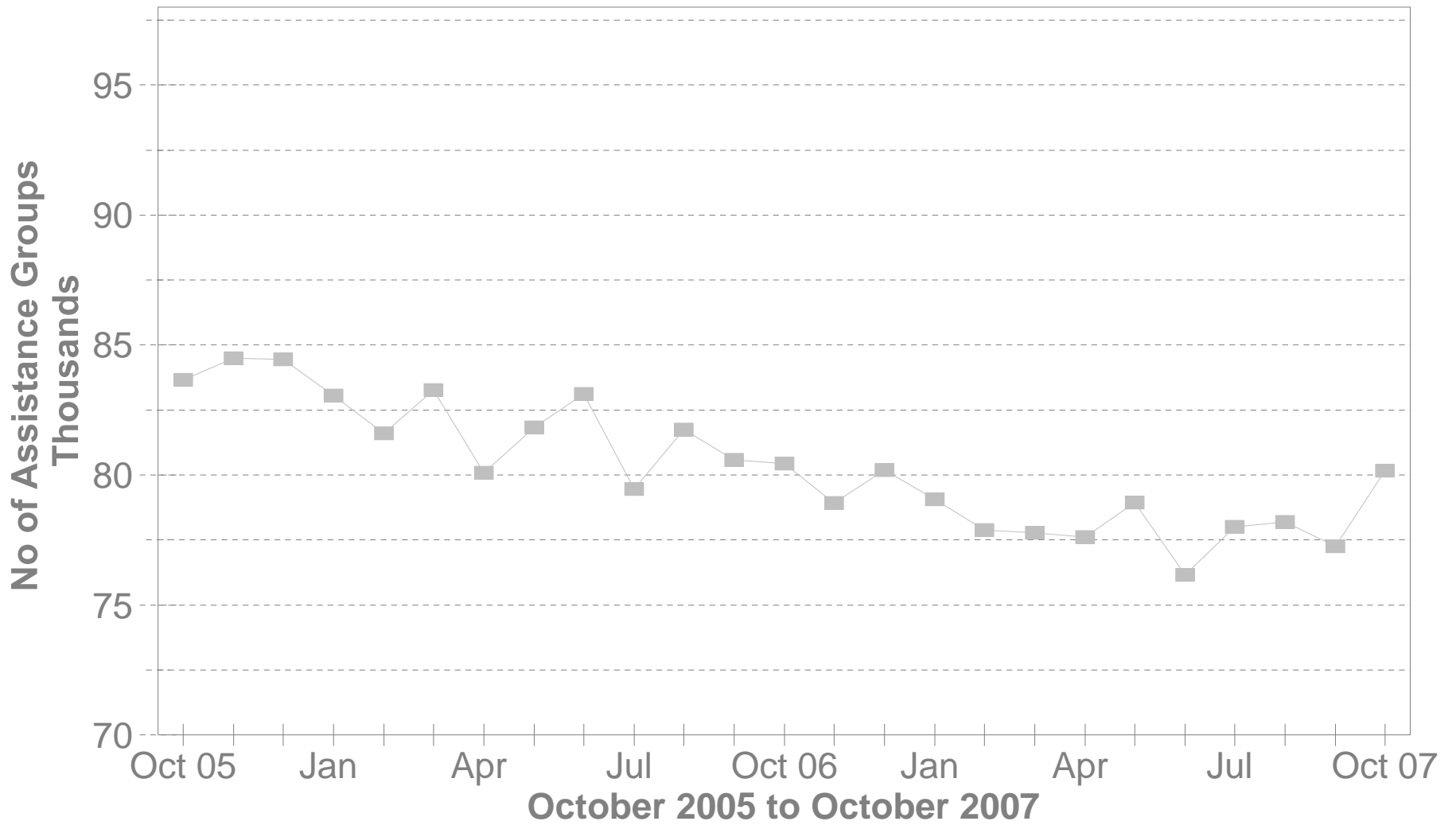
FOOD AND NUTRITION SERVICES BENEFITS (FNS)

Total persons participating in the FNS benefits program during October 2007 increased to 1,108,749 by 16,194 or 1.5% from 1,092,555 persons reported in September 2007. Households increased by 7,097 or 1.4% over September 2007 levels. The total dollar value of FNS related benefits issued during October 2007 increased by \$8,996,391 or 8.2% from \$109,690,552 reported in September 2007 to \$118,686,943 reported in October 2007. The average benefit issuance per person increased by \$6.65 or 6.6% from those issued in September 2007. The average benefit issuance per person increased from \$100.40 reported in September 2007 to \$107.05 reported in October 2007.

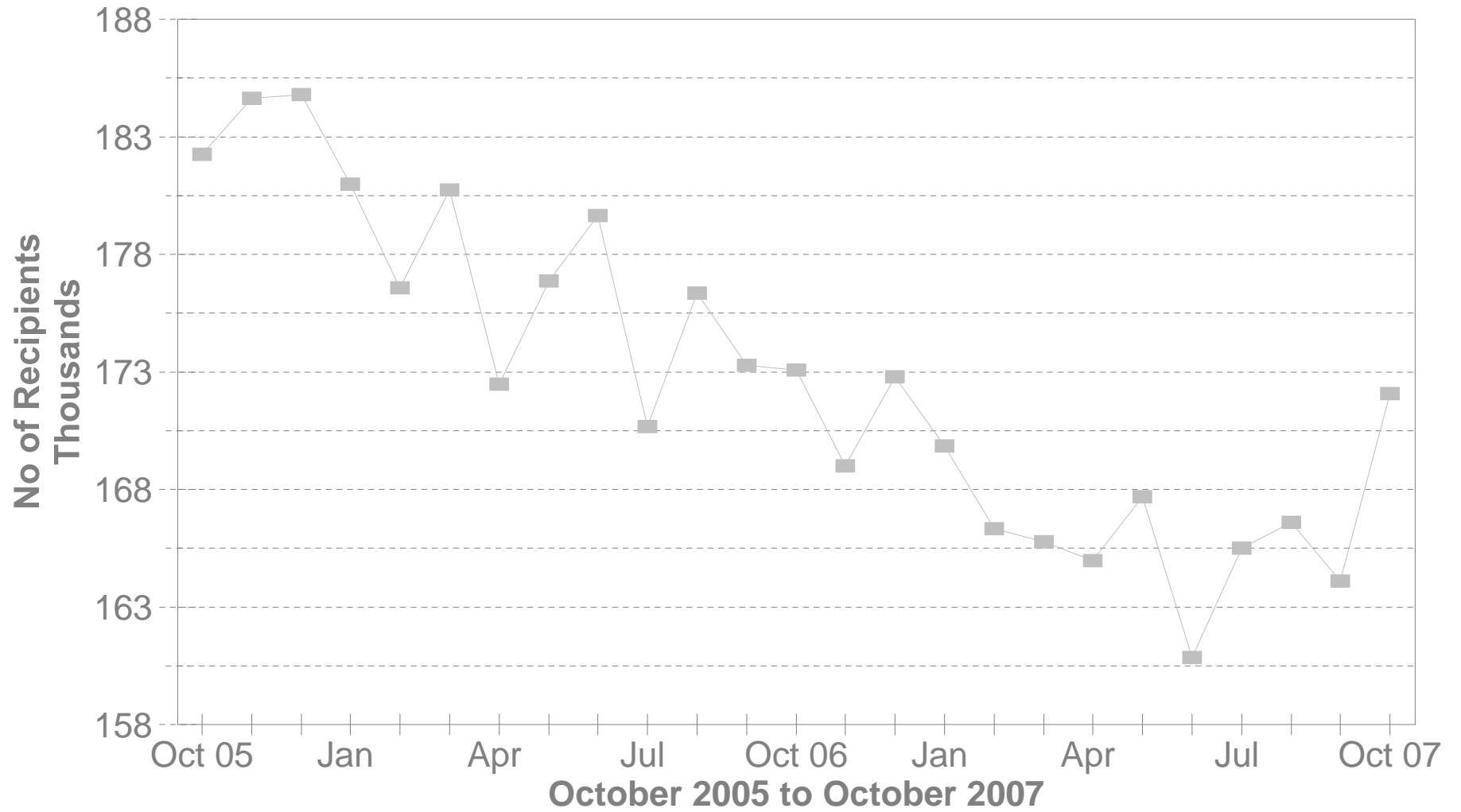
Please note: All data in the PAMS report is limited to the information available at the time it was constructed. It does not account for backdated or retroactive eligibility or any adjustments made subsequent to its creation.

STATEWIDE SUMMARY OF PUBLIC ASSISTANCE PROGRAMS FOR OCTOBER 2007					
	October 2007	September 2007	% CHANGE Oct 07 / Sep 07	October 2006	% CHANGE Oct 07 / Oct 06
OHIO WORKS FIRST (OWF)-COMBI					
Assistance Groups	80,161	77,249	3.8%	80,428	-0.3%
Recipients	172,074	164,109	4.9%	173,086	-0.6%
Net Payments	\$26,535,888	\$25,665,433	3.4%	\$26,761,660	-0.8%
Average Per Recipient	\$154.21	\$156.39	-1.4%	\$154.61	-0.3%
OWF-REGULAR, OWF-INCAPACITATED,& OWF REGULAR VENDOR PAYMENTS					
Assistance Groups	77,051	74,425	3.5%	77,023	0.0%
Recipients	159,461	152,800	4.4%	159,372	0.1%
Net Payments	\$25,159,772	\$24,408,901	3.1%	\$25,271,659	-0.4%
Average Per Recipient	\$157.78	\$159.74	-1.2%	\$158.57	-0.5%
OWF-UNEMPLOYED AND OWF-UNEMPLOYED VENDOR PAYMENTS					
Assistance Groups	3,110	2,824	10.1%	3,405	-8.7%
Recipients	12,613	11,309	11.5%	13,714	-8.0%
Net Payments	\$1,376,116	\$1,256,532	9.5%	\$1,490,001	-7.6%
Average Per Recipient	\$109.10	\$111.11	-1.8%	\$108.65	0.4%
TITLE IV-E FOSTER CARE					
Assistance Groups/Recipients	N.A.	N.A.	N.A.	27,108	N.A.
Gross Payments	N.A.	N.A.	N.A.	\$13,947,005	N.A.
Average Per Recipient	N.A.	N.A.	N.A.	\$514.50	N.A.
DISABILITY ASSISTANCE					
Assistance Groups	15,893	15,561	2.1%	13,637	16.5%
Recipients	15,985	15,652	2.1%	13,718	16.5%
Net Payments	\$2,175,937	\$2,091,985	4.0%	\$1,707,917	27.4%
Medical Assistance	\$1,652,796	\$1,352,912	22.2%	\$2,161,630	-23.5%
FNS BENEFITS					
Assistance Groups	508,332	501,235	1.4%	488,603	4.0%
Persons	1,108,749	1,092,555	1.5%	1,067,925	3.8%
Total Coupons Issued	\$118,686,943	\$109,690,552	8.2%	\$108,425,686	9.5%
Average Per Recipient	\$107.05	\$100.40	6.6%	\$101.53	5.4%

No of OWF Combined Assistance Groups During The Last 25 Months

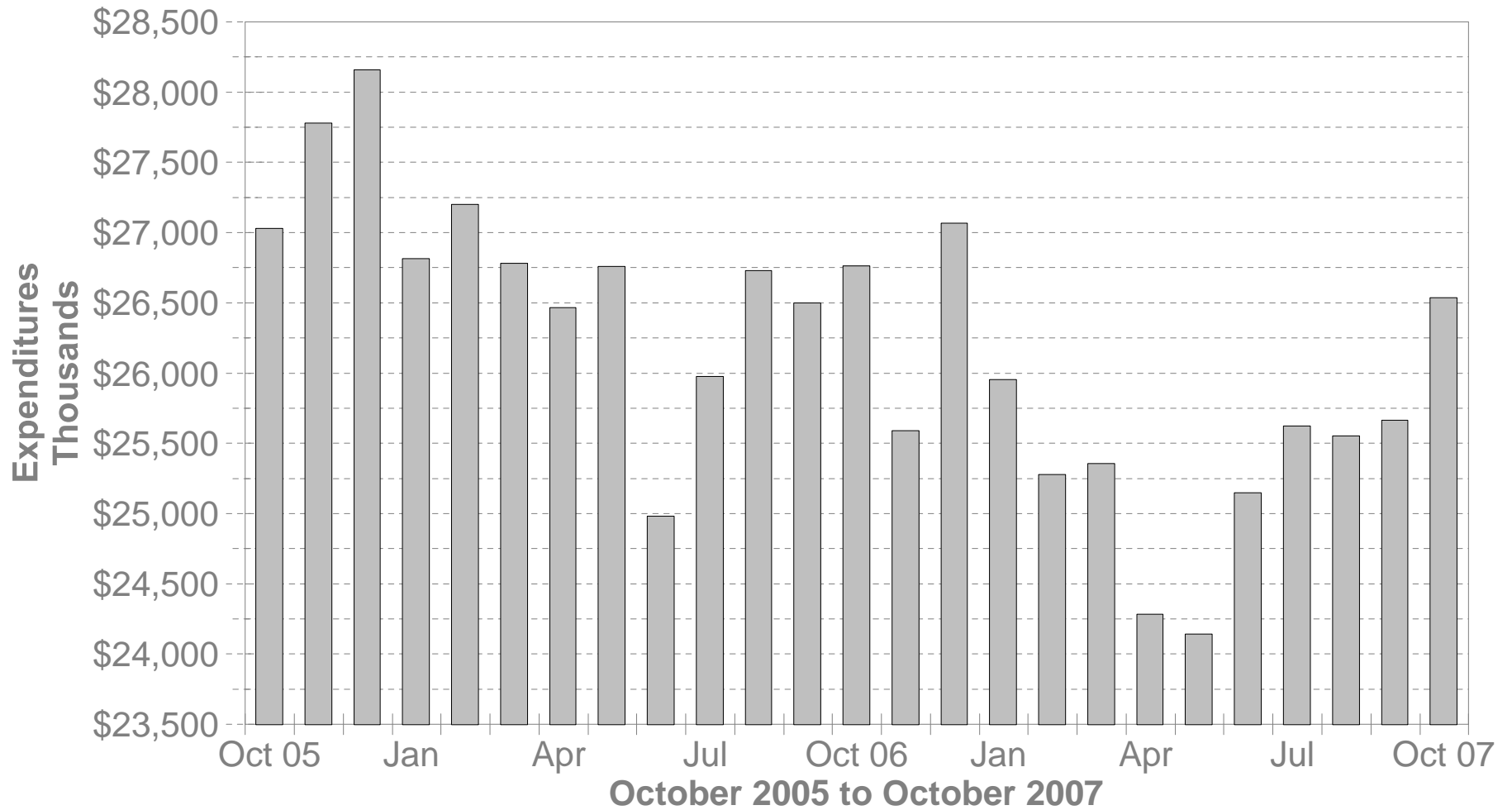


No of OWF Combined Recipients During The Last 25 Months



OWF Combined Net Expenditures

During The Last 25 Months



**TABLE 1
OHIO WORKS FIRST COMBINED
OCTOBER 2007**

OHIO COUNTY	ASSISTANCE GROUP	RECIPIENTS	ADULTS	CHILDREN	ACTUAL EXPENDITURES		
					GROSS AMOUNT	CANCELLED AMOUNT	NET AMOUNT
STATEWIDE	80,161	172,074	42,316	129,758	\$27,386,925.00	\$851,037.00	\$26,535,888.00
ADAMS	132	204	3	201	\$37,577.00	\$490.00	\$37,087.00
ALLEN	428	734	67	667	\$131,250.00	\$3,061.00	\$128,189.00
ASHLAND	97	200	45	155	\$33,937.00	\$0.00	\$33,937.00
ASHTABULA	675	1,439	366	1,073	\$224,329.00	\$8,363.00	\$215,966.00
ATHENS	675	1,626	599	1,027	\$228,325.00	\$4,115.00	\$224,210.00
AUGLAIZE	71	103	2	101	\$19,901.00	\$490.00	\$19,411.00
BELMONT	311	642	150	492	\$102,573.00	\$2,338.00	\$100,235.00
BROWN	156	263	33	230	\$45,531.00	\$490.00	\$45,041.00
BUTLER	1,581	3,001	462	2,539	\$497,586.00	\$17,353.00	\$480,233.00
CARROLL	93	180	47	133	\$28,912.00	\$336.00	\$28,576.00
CHAMPAIGN	203	456	130	326	\$68,703.00	\$2,036.00	\$66,667.00
CLARK	1,351	2,906	754	2,152	\$461,951.00	\$14,578.00	\$447,373.00
CLERMONT	428	752	85	667	\$135,752.00	\$2,786.00	\$132,966.00
CLINTON	132	248	40	208	\$43,564.00	\$1,008.00	\$42,556.00
COLUMBIANA	446	808	130	678	\$136,273.00	\$3,483.00	\$132,790.00
COSHOCTON	241	525	161	364	\$77,907.00	\$2,244.00	\$75,663.00
CRAWFORD	160	333	75	258	\$55,941.00	\$1,740.00	\$54,201.00
CUYAHOGA	11,312	22,690	4,979	17,711	\$3,873,795.00	\$152,803.00	\$3,720,992.00
DARKE	157	341	89	252	\$55,342.00	\$2,006.00	\$53,336.00
DEFIANCE	137	313	80	233	\$49,503.00	\$826.00	\$48,677.00
DELAWARE	307	676	221	455	\$109,033.00	\$800.00	\$108,233.00
ERIE	231	417	31	386	\$71,263.00	\$2,301.00	\$68,962.00
FAIRFIELD	845	1,980	617	1,363	\$291,802.00	\$7,762.00	\$284,040.00
FAYETTE	143	296	63	233	\$48,068.00	\$655.00	\$47,413.00
FRANKLIN	11,940	27,230	7,038	20,192	\$4,177,479.00	\$153,598.00	\$4,023,881.00
FULTON	71	117	5	112	\$21,902.00	\$336.00	\$21,566.00
GALLIA	407	942	313	629	\$136,083.00	\$2,646.00	\$133,437.00
GEAUGA	72	119	14	105	\$21,457.00	\$1,572.00	\$19,885.00
GREENE	578	1,200	293	907	\$186,171.00	\$8,341.00	\$177,830.00

Source: GRP342RA Report from Management Information Services. Data includes ADC-Regular, ADC-Incapacitated, and Vendor Payments.

**TABLE 1
OHIO WORKS FIRST COMBINED
OCTOBER 2007**

OHIO COUNTY	ASSISTANCE GROUP	RECIPIENTS	ADULTS	CHILDREN	ACTUAL EXPENDITURES		
					GROSS AMOUNT	CANCELLED AMOUNT	NET AMOUNT
STATEWIDE	80,161	172,074	42,316	129,758	\$27,386,925.00	\$851,037.00	\$26,535,888.00
GUERNSEY	173	304	45	259	\$53,759.00	\$1,351.00	\$52,408.00
HAMILTON	7,782	18,355	4,353	14,002	\$2,884,913.00	\$100,417.00	\$2,784,496.00
HANCOCK	97	139	0	139	\$28,059.00	\$410.00	\$27,649.00
HARDIN	70	112	6	106	\$20,348.00	\$856.00	\$19,492.00
HARRISON	89	173	39	134	\$26,485.00	\$1,134.00	\$25,351.00
HENRY	41	74	7	67	\$13,389.00	\$336.00	\$13,053.00
HIGHLAND	230	540	122	418	\$84,918.00	\$974.00	\$83,944.00
HOCKING	284	654	196	458	\$102,485.00	\$3,154.00	\$99,331.00
HOLMES	47	91	19	72	\$14,395.00	\$0.00	\$14,395.00
HURON	164	256	8	248	\$46,804.00	\$303.00	\$46,501.00
JACKSON	319	592	103	489	\$101,427.00	\$2,037.00	\$99,390.00
JEFFERSON	701	1,592	459	1,133	\$242,334.00	\$8,801.00	\$233,533.00
KNOX	272	616	189	427	\$90,172.00	\$1,678.00	\$88,494.00
LAKE	456	941	202	739	\$168,498.00	\$5,934.00	\$162,564.00
LAWRENCE	743	1,475	321	1,154	\$232,068.00	\$3,150.00	\$228,918.00
LICKING	622	1,313	350	963	\$200,856.00	\$3,818.00	\$197,038.00
LOGAN	195	404	103	301	\$63,234.00	\$431.00	\$62,803.00
LORAIN	1,972	4,159	958	3,201	\$657,402.00	\$18,640.00	\$638,762.00
LUCAS	5,896	13,314	3,691	9,623	\$2,056,458.00	\$60,529.00	\$1,995,929.00
MADISON	234	559	169	390	\$84,457.00	\$2,693.00	\$81,764.00
MAHONING	2,890	6,590	1,797	4,793	\$1,019,799.00	\$20,243.00	\$999,556.00
MARION	394	739	98	641	\$125,252.00	\$1,782.00	\$123,470.00
MEDINA	244	525	132	393	\$82,586.00	\$2,768.00	\$79,818.00
MEIGS	228	513	148	365	\$76,255.00	\$917.00	\$75,338.00
MERCER	60	115	33	82	\$18,177.00	\$410.00	\$17,767.00
MIAMI	309	574	106	468	\$96,103.00	\$2,935.00	\$93,168.00
MONROE	48	115	30	85	\$17,001.00	\$0.00	\$17,001.00
MONTGOMERY	5,329	11,018	2,656	8,362	\$1,763,394.00	\$45,857.00	\$1,717,537.00
MORGAN	77	126	18	108	\$22,984.00	\$325.00	\$22,659.00
MORROW	119	222	45	177	\$37,322.00	\$245.00	\$37,077.00

Source: GRP342RA Report from Management Information Services. Data includes ADC-Regular, ADC-Incapacitated, and Vendor Payments.

**TABLE 1
OHIO WORKS FIRST COMBINED
OCTOBER 2007**

OHIO COUNTY	ASSISTANCE GROUP	RECIPIENTS	ADULTS	CHILDREN	ACTUAL EXPENDITURES		
					GROSS AMOUNT	CANCELLED AMOUNT	NET AMOUNT
STATEWIDE	80,161	172,074	42,316	129,758	\$27,386,925.00	\$851,037.00	\$26,535,888.00
MUSKINGUM	873	1,901	509	1,392	\$285,807.00	\$8,602.00	\$277,205.00
NOBLE	38	83	23	60	\$12,574.00	\$0.00	\$12,574.00
OTTAWA	132	309	81	228	\$44,206.00	\$1,219.00	\$42,987.00
PAULDING	89	214	63	151	\$31,648.00	\$701.00	\$30,947.00
PERRY	318	728	193	535	\$105,200.00	\$5,639.00	\$99,561.00
PICKAWAY	380	871	254	617	\$132,614.00	\$3,217.00	\$129,397.00
PIKE	368	801	219	582	\$127,480.00	\$4,809.00	\$122,671.00
PORTAGE	434	816	166	650	\$140,313.00	\$3,898.00	\$136,415.00
PREBLE	177	354	79	275	\$54,661.00	\$3,384.00	\$51,277.00
PUTNAM	27	42	3	39	\$7,546.00	\$0.00	\$7,546.00
RICHLAND	628	1,192	223	969	\$206,026.00	\$5,995.00	\$200,031.00
ROSS	667	1,447	357	1,090	\$233,569.00	\$2,837.00	\$230,732.00
SANDUSKY	196	371	48	323	\$63,486.00	\$1,787.00	\$61,699.00
SCIOTO	1,110	2,161	438	1,723	\$354,054.00	\$11,759.00	\$342,295.00
SENECA	179	358	65	293	\$60,989.00	\$980.00	\$60,009.00
SHELBY	141	246	24	222	\$42,789.00	\$2,504.00	\$40,285.00
STARK	2,828	6,326	1,814	4,512	\$937,514.00	\$24,397.00	\$913,117.00
SUMMIT	4,883	10,521	2,990	7,531	\$1,686,160.00	\$47,363.00	\$1,638,797.00
TRUMBULL	1,388	2,751	621	2,130	\$460,874.00	\$11,408.00	\$449,466.00
TUSCARAWAS	321	609	143	466	\$101,454.00	\$2,639.00	\$98,815.00
UNION	120	264	74	190	\$39,474.00	\$245.00	\$39,229.00
VAN WERT	52	85	7	78	\$14,858.00	\$581.00	\$14,277.00
VINTON	142	289	74	215	\$47,939.00	\$655.00	\$47,284.00
WARREN	250	448	72	376	\$78,553.00	\$3,698.00	\$74,855.00
WASHINGTON	140	200	2	198	\$38,721.00	\$1,002.00	\$37,719.00
WAYNE	394	881	282	599	\$137,124.00	\$8,344.00	\$128,780.00
WILLIAMS	158	386	137	249	\$54,958.00	\$917.00	\$54,041.00
WOOD	219	387	40	347	\$68,444.00	\$294.00	\$68,150.00
WYANDOT	44	92	20	72	\$14,646.00	\$1,478.00	\$13,168.00

Source: GRP342RA Report from Management Information Services. Data includes ADC-Regular, ADC-Incapacitated, and Vendor Payments.

**TABLE 1
OHIO WORKS FIRST REGULAR
OCTOBER 2007**

OHIO COUNTY	ASSISTANCE GROUP	RECIPIENTS	ADULTS	CHILDREN	ACTUAL EXPENDITURES		
					GROSS AMOUNT	CANCELLED AMOUNT	NET AMOUNT
STATEWIDE	77,051	159,461	36,590	122,871	\$25,961,016.00	\$801,244.00	\$25,159,772.00
ADAMS	132	204	3	201	\$37,577.00	\$490.00	\$37,087.00
ALLEN	427	726	65	661	\$131,250.00	\$3,061.00	\$128,189.00
ASHLAND	96	194	43	151	\$33,277.00	\$0.00	\$33,277.00
ASHTABULA	630	1,251	278	973	\$203,867.00	\$8,234.00	\$195,633.00
ATHENS	587	1,305	433	872	\$193,226.00	\$3,514.00	\$189,712.00
AUGLAIZE	71	103	2	101	\$19,901.00	\$490.00	\$19,411.00
BELMONT	288	547	106	441	\$91,378.00	\$2,338.00	\$89,040.00
BROWN	156	263	33	230	\$45,531.00	\$490.00	\$45,041.00
BUTLER	1,581	3,001	462	2,539	\$497,586.00	\$17,353.00	\$480,233.00
CARROLL	91	168	43	125	\$28,218.00	\$336.00	\$27,882.00
CHAMPAIGN	194	419	111	308	\$64,953.00	\$1,336.00	\$63,617.00
CLARK	1,300	2,697	651	2,046	\$433,344.00	\$14,168.00	\$419,176.00
CLERMONT	428	752	85	667	\$135,752.00	\$2,786.00	\$132,966.00
CLINTON	132	248	40	208	\$43,564.00	\$1,008.00	\$42,556.00
COLUMBIANA	444	799	126	673	\$135,342.00	\$3,483.00	\$131,859.00
COSHOCTON	228	472	135	337	\$73,795.00	\$2,056.00	\$71,739.00
CRAWFORD	159	330	73	257	\$55,477.00	\$1,740.00	\$53,737.00
CUYAHOGA	11,078	21,790	4,549	17,241	\$3,761,062.00	\$149,247.00	\$3,611,815.00
DARKE	151	315	76	239	\$52,061.00	\$2,006.00	\$50,055.00
DEFIANCE	131	288	68	220	\$46,310.00	\$826.00	\$45,484.00
DELAWARE	279	563	170	393	\$95,604.00	\$614.00	\$94,990.00
ERIE	230	410	29	381	\$70,695.00	\$2,301.00	\$68,394.00
FAIRFIELD	757	1,626	447	1,179	\$251,453.00	\$6,748.00	\$244,705.00
FAYETTE	141	288	59	229	\$46,763.00	\$655.00	\$46,108.00
FRANKLIN	11,325	24,590	6,008	18,582	\$3,888,237.00	\$140,463.00	\$3,747,774.00
FULTON	71	117	5	112	\$21,902.00	\$336.00	\$21,566.00
GALLIA	363	781	226	555	\$118,905.00	\$1,308.00	\$117,597.00
GEAUGA	72	119	14	105	\$21,457.00	\$1,572.00	\$19,885.00
GREENE	556	1,109	249	860	\$177,253.00	\$5,868.00	\$171,385.00

Source: GRP342RA Report from Management Information Services. Data includes ADC-Regular, ADC-Incapacitated, and Vendor Payments.

**TABLE 1
OHIO WORKS FIRST REGULAR
OCTOBER 2007**

OHIO COUNTY	ASSISTANCE GROUP	RECIPIENTS	ADULTS	CHILDREN	ACTUAL EXPENDITURES		
					GROSS AMOUNT	CANCELLED AMOUNT	NET AMOUNT
STATEWIDE	77,051	159,461	36,590	122,871	\$25,961,016.00	\$801,244.00	\$25,159,772.00
GUERNSEY	167	284	33	251	\$51,501.00	\$1,351.00	\$50,150.00
HAMILTON	7,623	17,676	4,057	13,619	\$2,803,942.00	\$96,510.00	\$2,707,432.00
HANCOCK	97	139	0	139	\$28,059.00	\$410.00	\$27,649.00
HARDIN	70	112	6	106	\$20,348.00	\$856.00	\$19,492.00
HARRISON	84	149	29	120	\$24,510.00	\$1,134.00	\$23,376.00
HENRY	41	74	7	67	\$13,389.00	\$336.00	\$13,053.00
HIGHLAND	226	508	114	394	\$81,412.00	\$974.00	\$80,438.00
HOCKING	254	528	135	393	\$83,138.00	\$2,076.00	\$81,062.00
HOLMES	46	87	17	70	\$14,183.00	\$0.00	\$14,183.00
HURON	162	252	8	244	\$46,179.00	\$303.00	\$45,876.00
JACKSON	306	539	77	462	\$95,039.00	\$2,037.00	\$93,002.00
JEFFERSON	655	1,406	370	1,036	\$219,561.00	\$8,556.00	\$211,005.00
KNOX	253	545	151	394	\$80,922.00	\$1,225.00	\$79,697.00
LAKE	439	868	174	694	\$158,719.00	\$5,934.00	\$152,785.00
LAWRENCE	707	1,331	251	1,080	\$217,627.00	\$3,150.00	\$214,477.00
LICKING	593	1,187	292	895	\$189,717.00	\$3,788.00	\$185,929.00
LOGAN	188	380	89	291	\$60,443.00	\$336.00	\$60,107.00
LORAIN	1,914	3,928	852	3,076	\$632,054.00	\$18,047.00	\$614,007.00
LUCAS	5,562	11,992	3,076	8,916	\$1,911,967.00	\$54,166.00	\$1,857,801.00
MADISON	216	479	132	347	\$75,270.00	\$2,693.00	\$72,577.00
MAHONING	2,798	6,206	1,617	4,589	\$977,546.00	\$20,243.00	\$957,303.00
MARION	384	696	82	614	\$121,257.00	\$1,511.00	\$119,746.00
MEDINA	230	471	104	367	\$76,575.00	\$2,358.00	\$74,217.00
MEIGS	209	442	110	332	\$67,550.00	\$917.00	\$66,633.00
MERCER	58	106	29	77	\$16,950.00	\$410.00	\$16,540.00
MIAMI	303	558	94	464	\$94,209.00	\$2,935.00	\$91,274.00
MONROE	43	87	20	67	\$14,046.00	\$0.00	\$14,046.00
MONTGOMERY	5,309	10,939	2,633	8,306	\$1,754,533.00	\$45,857.00	\$1,708,676.00
MORGAN	77	126	18	108	\$22,984.00	\$325.00	\$22,659.00
MORROW	114	204	35	169	\$34,460.00	\$245.00	\$34,215.00

Source: GRP342RA Report from Management Information Services. Data includes ADC-Regular, ADC-Incapacitated, and Vendor Payments.

**TABLE 1
OHIO WORKS FIRST REGULAR
OCTOBER 2007**

OHIO COUNTY	ASSISTANCE GROUP	RECIPIENTS	ADULTS	CHILDREN	ACTUAL EXPENDITURES		
					GROSS AMOUNT	CANCELLED AMOUNT	NET AMOUNT
STATEWIDE	77,051	159,461	36,590	122,871	\$25,961,016.00	\$801,244.00	\$25,159,772.00
MUSKINGUM	811	1,641	385	1,256	\$261,409.00	\$8,095.00	\$253,314.00
NOBLE	36	72	19	53	\$11,321.00	\$0.00	\$11,321.00
OTTAWA	116	258	63	195	\$37,405.00	\$1,219.00	\$36,186.00
PAULDING	83	188	51	137	\$28,758.00	\$701.00	\$28,057.00
PERRY	287	606	130	476	\$91,398.00	\$4,819.00	\$86,579.00
PICKAWAY	356	776	206	570	\$123,399.00	\$3,217.00	\$120,182.00
PIKE	343	699	169	530	\$116,301.00	\$4,399.00	\$111,902.00
PORTAGE	427	791	154	637	\$136,766.00	\$3,488.00	\$133,278.00
PREBLE	171	326	67	259	\$51,950.00	\$3,384.00	\$48,566.00
PUTNAM	23	37	3	34	\$6,618.00	\$0.00	\$6,618.00
RICHLAND	620	1,159	207	952	\$201,341.00	\$5,995.00	\$195,346.00
ROSS	629	1,286	288	998	\$214,188.00	\$2,244.00	\$211,944.00
SANDUSKY	179	331	48	283	\$58,209.00	\$1,315.00	\$56,894.00
SCIOTO	1,053	1,943	327	1,616	\$328,310.00	\$11,353.00	\$316,957.00
SENECA	178	355	63	292	\$60,579.00	\$980.00	\$59,599.00
SHELBY	140	243	22	221	\$42,789.00	\$2,094.00	\$40,695.00
STARK	2,641	5,562	1,447	4,115	\$860,979.00	\$23,844.00	\$837,135.00
SUMMIT	4,633	9,510	2,501	7,009	\$1,565,109.00	\$41,656.00	\$1,523,453.00
TRUMBULL	1,341	2,571	530	2,041	\$440,283.00	\$10,405.00	\$429,878.00
TUSCARAWAS	302	539	109	430	\$93,292.00	\$2,229.00	\$91,063.00
UNION	114	238	62	176	\$37,142.00	\$245.00	\$36,897.00
VAN WERT	52	85	7	78	\$14,858.00	\$581.00	\$14,277.00
VINTON	136	265	62	203	\$44,797.00	\$655.00	\$44,142.00
WARREN	243	428	63	365	\$75,412.00	\$3,288.00	\$72,124.00
WASHINGTON	140	200	2	198	\$38,721.00	\$1,002.00	\$37,719.00
WAYNE	370	794	235	559	\$126,140.00	\$7,837.00	\$118,303.00
WILLIAMS	144	332	111	221	\$49,351.00	\$917.00	\$48,434.00
WOOD	214	365	40	325	\$66,308.00	\$294.00	\$66,014.00
WYANDOT	43	87	18	69	\$14,053.00	\$1,478.00	\$12,575.00

Source: GRP342RA Report from Management Information Services. Data includes ADC-Regular, ADC-Incapacitated, and Vendor Payments.

**TABLE 1
OHIO WORKS FIRST UNEMPLOYED
OCTOBER 2007**

OHIO COUNTY	ASSISTANCE GROUP	RECIPIENTS	ADULTS	CHILDREN	ACTUAL EXPENDITURES		
					GROSS AMOUNT	CANCELLED AMOUNT	NET AMOUNT
STATEWIDE	3,110	12,613	5,726	6,887	\$1,425,909.00	\$49,793.00	\$1,376,116.00
ADAMS	0	0	0	0	\$0.00	\$0.00	\$0.00
ALLEN	1	8	2	6	\$0.00	\$0.00	\$0.00
ASHLAND	1	6	2	4	\$660.00	\$0.00	\$660.00
ASHTABULA	45	188	88	100	\$20,462.00	\$129.00	\$20,333.00
ATHENS	88	321	166	155	\$35,099.00	\$601.00	\$34,498.00
AUGLAIZE	0	0	0	0	\$0.00	\$0.00	\$0.00
BELMONT	23	95	44	51	\$11,195.00	\$0.00	\$11,195.00
BROWN	0	0	0	0	\$0.00	\$0.00	\$0.00
BUTLER	0	0	0	0	\$0.00	\$0.00	\$0.00
CARROLL	2	12	4	8	\$694.00	\$0.00	\$694.00
CHAMPAIGN	9	37	19	18	\$3,750.00	\$700.00	\$3,050.00
CLARK	51	209	103	106	\$28,607.00	\$410.00	\$28,197.00
CLERMONT	0	0	0	0	\$0.00	\$0.00	\$0.00
CLINTON	0	0	0	0	\$0.00	\$0.00	\$0.00
COLUMBIANA	2	9	4	5	\$931.00	\$0.00	\$931.00
COSHOCTON	13	53	26	27	\$4,112.00	\$188.00	\$3,924.00
CRAWFORD	1	3	2	1	\$464.00	\$0.00	\$464.00
CUYAHOGA	234	900	430	470	\$112,733.00	\$3,556.00	\$109,177.00
DARKE	6	26	13	13	\$3,281.00	\$0.00	\$3,281.00
DEFIANCE	6	25	12	13	\$3,193.00	\$0.00	\$3,193.00
DELAWARE	28	113	51	62	\$13,429.00	\$186.00	\$13,243.00
ERIE	1	7	2	5	\$568.00	\$0.00	\$568.00
FAIRFIELD	88	354	170	184	\$40,349.00	\$1,014.00	\$39,335.00
FAYETTE	2	8	4	4	\$1,305.00	\$0.00	\$1,305.00
FRANKLIN	615	2,640	1,030	1,610	\$289,242.00	\$13,135.00	\$276,107.00
FULTON	0	0	0	0	\$0.00	\$0.00	\$0.00
GALLIA	44	161	87	74	\$17,178.00	\$1,338.00	\$15,840.00
GEAUGA	0	0	0	0	\$0.00	\$0.00	\$0.00
GREENE	22	91	44	47	\$8,918.00	\$2,473.00	\$6,445.00

Source: GRP342RA Report from Management Information Services. Data includes ADC-Regular, ADC-Incapacitated, and Vendor Payments.

**TABLE 1
OHIO WORKS FIRST UNEMPLOYED
OCTOBER 2007**

OHIO COUNTY	ASSISTANCE GROUP	RECIPIENTS	ADULTS	CHILDREN	ACTUAL EXPENDITURES		
					GROSS AMOUNT	CANCELLED AMOUNT	NET AMOUNT
STATEWIDE	3,110	12,613	5,726	6,887	\$1,425,909.00	\$49,793.00	\$1,376,116.00
GUERNSEY	6	20	12	8	\$2,258.00	\$0.00	\$2,258.00
HAMILTON	159	679	296	383	\$80,971.00	\$3,907.00	\$77,064.00
HANCOCK	0	0	0	0	\$0.00	\$0.00	\$0.00
HARDIN	0	0	0	0	\$0.00	\$0.00	\$0.00
HARRISON	5	24	10	14	\$1,975.00	\$0.00	\$1,975.00
HENRY	0	0	0	0	\$0.00	\$0.00	\$0.00
HIGHLAND	4	32	8	24	\$3,506.00	\$0.00	\$3,506.00
HOCKING	30	126	61	65	\$19,347.00	\$1,078.00	\$18,269.00
HOLMES	1	4	2	2	\$212.00	\$0.00	\$212.00
HURON	2	4	0	4	\$625.00	\$0.00	\$625.00
JACKSON	13	53	26	27	\$6,388.00	\$0.00	\$6,388.00
JEFFERSON	46	186	89	97	\$22,773.00	\$245.00	\$22,528.00
KNOX	19	71	38	33	\$9,250.00	\$453.00	\$8,797.00
LAKE	17	73	28	45	\$9,779.00	\$0.00	\$9,779.00
LAWRENCE	36	144	70	74	\$14,441.00	\$0.00	\$14,441.00
LICKING	29	126	58	68	\$11,139.00	\$30.00	\$11,109.00
LOGAN	7	24	14	10	\$2,791.00	\$95.00	\$2,696.00
LORAIN	58	231	106	125	\$25,348.00	\$593.00	\$24,755.00
LUCAS	334	1,322	615	707	\$144,491.00	\$6,363.00	\$138,128.00
MADISON	18	80	37	43	\$9,187.00	\$0.00	\$9,187.00
MAHONING	92	384	180	204	\$42,253.00	\$0.00	\$42,253.00
MARION	10	43	16	27	\$3,995.00	\$271.00	\$3,724.00
MEDINA	14	54	28	26	\$6,011.00	\$410.00	\$5,601.00
MEIGS	19	71	38	33	\$8,705.00	\$0.00	\$8,705.00
MERCER	2	9	4	5	\$1,227.00	\$0.00	\$1,227.00
MIAMI	6	16	12	4	\$1,894.00	\$0.00	\$1,894.00
MONROE	5	28	10	18	\$2,955.00	\$0.00	\$2,955.00
MONTGOMERY	20	79	23	56	\$8,861.00	\$0.00	\$8,861.00
MORGAN	0	0	0	0	\$0.00	\$0.00	\$0.00
MORROW	5	18	10	8	\$2,862.00	\$0.00	\$2,862.00

Source: GRP342RA Report from Management Information Services. Data includes ADC-Regular, ADC-Incapacitated, and Vendor Payments.

**TABLE 1
OHIO WORKS FIRST UNEMPLOYED
OCTOBER 2007**

OHIO COUNTY	ASSISTANCE GROUP	RECIPIENTS	ADULTS	CHILDREN	ACTUAL EXPENDITURES		
					GROSS AMOUNT	CANCELLED AMOUNT	NET AMOUNT
STATEWIDE	3,110	12,613	5,726	6,887	\$1,425,909.00	\$49,793.00	\$1,376,116.00
MUSKINGUM	62	260	124	136	\$24,398.00	\$507.00	\$23,891.00
NOBLE	2	11	4	7	\$1,253.00	\$0.00	\$1,253.00
OTTAWA	16	51	18	33	\$6,801.00	\$0.00	\$6,801.00
PAULDING	6	26	12	14	\$2,890.00	\$0.00	\$2,890.00
PERRY	31	122	63	59	\$13,802.00	\$820.00	\$12,982.00
PICKAWAY	24	95	48	47	\$9,215.00	\$0.00	\$9,215.00
PIKE	25	102	50	52	\$11,179.00	\$410.00	\$10,769.00
PORTAGE	7	25	12	13	\$3,547.00	\$410.00	\$3,137.00
PREBLE	6	28	12	16	\$2,711.00	\$0.00	\$2,711.00
PUTNAM	4	5	0	5	\$928.00	\$0.00	\$928.00
RICHLAND	8	33	16	17	\$4,685.00	\$0.00	\$4,685.00
ROSS	38	161	69	92	\$19,381.00	\$593.00	\$18,788.00
SANDUSKY	17	40	0	40	\$5,277.00	\$472.00	\$4,805.00
SCIOTO	57	218	111	107	\$25,744.00	\$406.00	\$25,338.00
SENECA	1	3	2	1	\$410.00	\$0.00	\$410.00
SHELBY	1	3	2	1	\$0.00	\$410.00	-\$410.00
STARK	187	764	367	397	\$76,535.00	\$553.00	\$75,982.00
SUMMIT	250	1,011	489	522	\$121,051.00	\$5,707.00	\$115,344.00
TRUMBULL	47	180	91	89	\$20,591.00	\$1,003.00	\$19,588.00
TUSCARAWAS	19	70	34	36	\$8,162.00	\$410.00	\$7,752.00
UNION	6	26	12	14	\$2,332.00	\$0.00	\$2,332.00
VAN WERT	0	0	0	0	\$0.00	\$0.00	\$0.00
VINTON	6	24	12	12	\$3,142.00	\$0.00	\$3,142.00
WARREN	7	20	9	11	\$3,141.00	\$410.00	\$2,731.00
WASHINGTON	0	0	0	0	\$0.00	\$0.00	\$0.00
WAYNE	24	87	47	40	\$10,984.00	\$507.00	\$10,477.00
WILLIAMS	14	54	26	28	\$5,607.00	\$0.00	\$5,607.00
WOOD	5	22	0	22	\$2,136.00	\$0.00	\$2,136.00
WYANDOT	1	5	2	3	\$593.00	\$0.00	\$593.00

Source: GRP342RA Report from Management Information Services. Data includes ADC-Regular, ADC-Incapacitated, and Vendor Payments.

**TABLE 2
TITLE IV-E FOSTER CARE AND ADOPTION ASSISTANCE**

DATA NOT AVAILABLE FOR OCTOBER 2007

OHIO COUNTY	FOSTER CARE						ADOPTION ASSISTANCE		TOTAL FOSTER CARE AND ADOPTION ASSISTANCE	
	FOSTER FAMILY HOMES		CHILD CARE INSTITUTIONS		HOMES & INSTITUTIONS		CHILDREN	GROSS AMOUNT	CHILDREN	GROSS AMOUNT
	CHILDREN	GROSS AMOUNT	CHILDREN	GROSS AMOUNT	CHILDREN	GROSS AMOUNT	CHILDREN	GROSS AMOUNT	CHILDREN	GROSS AMOUNT
STATEWIDE	0	\$0.00	0	\$0.00	0	\$0.00	0	\$0.00	0	\$0.00
ADAMS					0	\$0.00			0	\$0.00
ALLEN					0	\$0.00			0	\$0.00
ASHLAND					0	\$0.00			0	\$0.00
ASHTABULA					0	\$0.00			0	\$0.00
ATHENS					0	\$0.00			0	\$0.00
AUGLAIZE					0	\$0.00			0	\$0.00
BELMONT					0	\$0.00			0	\$0.00
BROWN					0	\$0.00			0	\$0.00
BUTLER					0	\$0.00			0	\$0.00
CARROLL					0	\$0.00			0	\$0.00
CHAMPAIGN					0	\$0.00			0	\$0.00
CLARK					0	\$0.00			0	\$0.00
CLERMONT					0	\$0.00			0	\$0.00
CLINTON					0	\$0.00			0	\$0.00
COLUMBIANA					0	\$0.00			0	\$0.00
COSHOCTON					0	\$0.00			0	\$0.00
CRAWFORD					0	\$0.00			0	\$0.00
CUYAHOGA					0	\$0.00			0	\$0.00
DARKE					0	\$0.00			0	\$0.00
DEFIANCE					0	\$0.00			0	\$0.00
DELAWARE					0	\$0.00			0	\$0.00
ERIE					0	\$0.00			0	\$0.00
FAIRFIELD					0	\$0.00			0	\$0.00
FAYETTE					0	\$0.00			0	\$0.00
FRANKLIN					0	\$0.00			0	\$0.00
FULTON					0	\$0.00			0	\$0.00
GALLIA					0	\$0.00			0	\$0.00
GEAUGA					0	\$0.00			0	\$0.00
GREENE					0	\$0.00			0	\$0.00

SOURCE: GBS003RB Report from Management Information Services. Federal funds only.

TABLE 2
TITLE IV-E FOSTER CARE AND ADOPTION ASSISTANCE
DATA NOT AVAILABLE FOR OCTOBER 2007

OHIO COUNTY	FOSTER CARE						ADOPTION ASSISTANCE		TOTAL FOSTER CARE AND ADOPTION ASSISTANCE	
	FOSTER FAMILY HOMES		CHILD CARE INSTITUTIONS		HOMES & INSTITUTIONS		CHILDREN	GROSS AMOUNT	CHILDREN	GROSS AMOUNT
	CHILDREN	GROSS AMOUNT	CHILDREN	GROSS AMOUNT	CHILDREN	GROSS AMOUNT				
STATEWIDE	0	\$0.00	0	\$0.00	0	\$0.00	0	\$0.00	0	\$0.00
GUERNSEY					0	\$0.00			0	\$0.00
HAMILTON					0	\$0.00			0	\$0.00
HANCOCK					0	\$0.00			0	\$0.00
HARDIN					0	\$0.00			0	\$0.00
HARRISON					0	\$0.00			0	\$0.00
HENRY					0	\$0.00			0	\$0.00
HIGHLAND					0	\$0.00			0	\$0.00
HOCKING					0	\$0.00			0	\$0.00
HOLMES					0	\$0.00			0	\$0.00
HURON					0	\$0.00			0	\$0.00
JACKSON					0	\$0.00			0	\$0.00
JEFFERSON					0	\$0.00			0	\$0.00
KNOX					0	\$0.00			0	\$0.00
LAKE					0	\$0.00			0	\$0.00
LAWRENCE					0	\$0.00			0	\$0.00
LICKING					0	\$0.00			0	\$0.00
LOGAN					0	\$0.00			0	\$0.00
LORAIN					0	\$0.00			0	\$0.00
LUCAS					0	\$0.00			0	\$0.00
MADISON					0	\$0.00			0	\$0.00
MAHONING					0	\$0.00			0	\$0.00
MARION					0	\$0.00			0	\$0.00
MEDINA					0	\$0.00			0	\$0.00
MEIGS					0	\$0.00			0	\$0.00
MERCER					0	\$0.00			0	\$0.00
MIAMI					0	\$0.00			0	\$0.00
MONROE					0	\$0.00			0	\$0.00
MONTGOMERY					0	\$0.00			0	\$0.00
MORGAN					0	\$0.00			0	\$0.00
MORROW					0	\$0.00			0	\$0.00

SOURCE: GBS003RB Report from Management Information Services. Federal funds only.

**TABLE 2
TITLE IV-E FOSTER CARE AND ADOPTION ASSISTANCE**

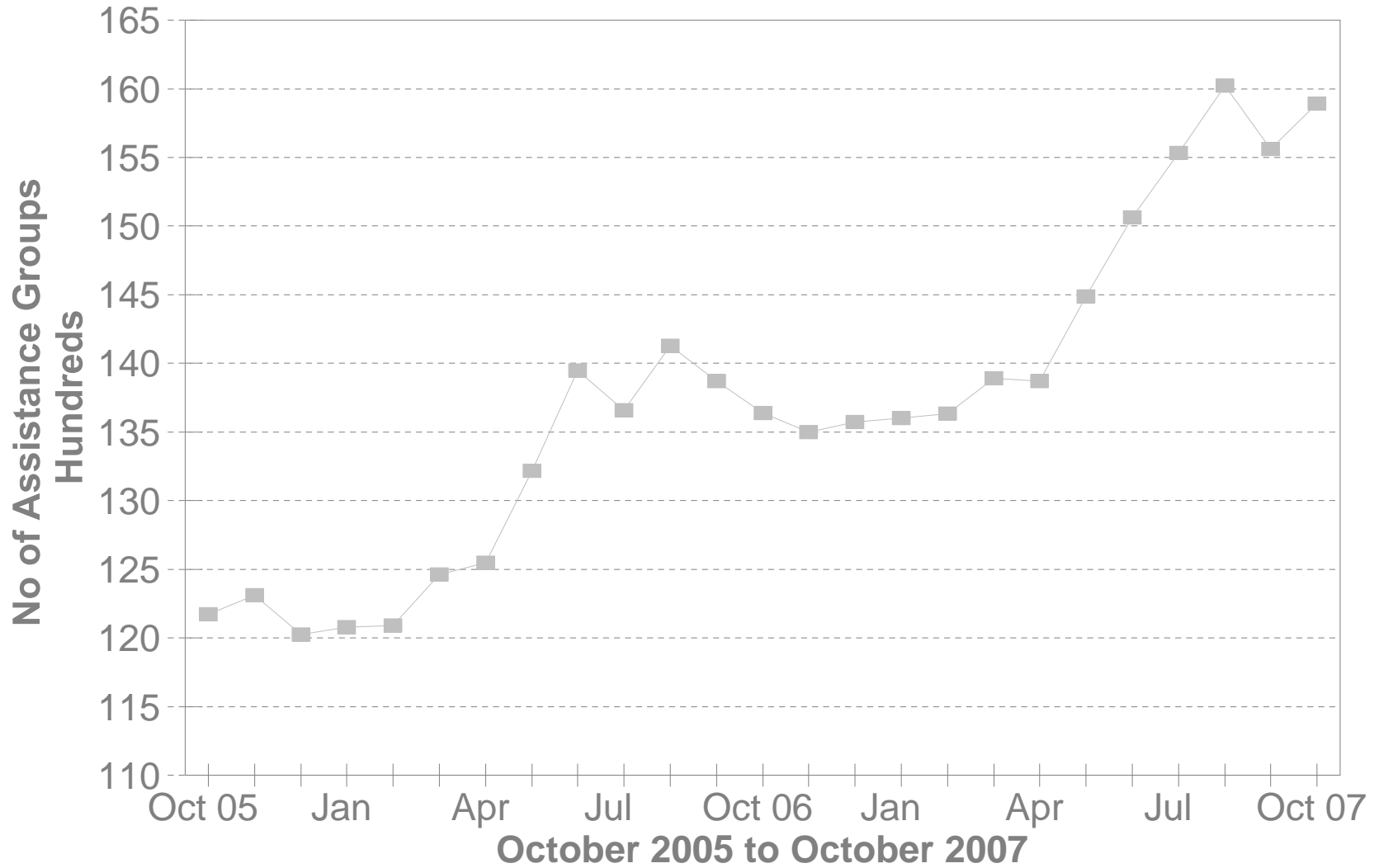
DATA NOT AVAILABLE FOR OCTOBER 2007

OHIO COUNTY	FOSTER CARE						ADOPTION ASSISTANCE		TOTAL FOSTER CARE AND ADOPTION ASSISTANCE	
	FOSTER FAMILY HOMES		CHILD CARE INSTITUTIONS		HOMES & INSTITUTIONS		CHILDREN	GROSS AMOUNT	CHILDREN	GROSS AMOUNT
	CHILDREN	GROSS AMOUNT	CHILDREN	GROSS AMOUNT	CHILDREN	GROSS AMOUNT	CHILDREN	GROSS AMOUNT	CHILDREN	GROSS AMOUNT
STATEWIDE	0	\$0.00	0	\$0.00	0	\$0.00	0	\$0.00	0	\$0.00
MUSKINGUM					0	\$0.00			0	\$0.00
NOBLE					0	\$0.00			0	\$0.00
OTTAWA					0	\$0.00			0	\$0.00
PAULDING					0	\$0.00			0	\$0.00
PERRY					0	\$0.00			0	\$0.00
PICKAWAY					0	\$0.00			0	\$0.00
PIKE					0	\$0.00			0	\$0.00
PORTAGE					0	\$0.00			0	\$0.00
PREBLE					0	\$0.00			0	\$0.00
PUTNAM					0	\$0.00			0	\$0.00
RICHLAND					0	\$0.00			0	\$0.00
ROSS					0	\$0.00			0	\$0.00
SANDUSKY					0	\$0.00			0	\$0.00
SCIOTO					0	\$0.00			0	\$0.00
SENECA					0	\$0.00			0	\$0.00
SHELBY					0	\$0.00			0	\$0.00
STARK					0	\$0.00			0	\$0.00
SUMMIT					0	\$0.00			0	\$0.00
TRUMBULL					0	\$0.00			0	\$0.00
TUSCARAWAS					0	\$0.00			0	\$0.00
UNION					0	\$0.00			0	\$0.00
VAN WERT					0	\$0.00			0	\$0.00
VINTON					0	\$0.00			0	\$0.00
WARREN					0	\$0.00			0	\$0.00
WASHINGTON					0	\$0.00			0	\$0.00
WAYNE					0	\$0.00			0	\$0.00
WILLIAMS					0	\$0.00			0	\$0.00
WOOD					0	\$0.00			0	\$0.00
WYANDOT					0	\$0.00			0	\$0.00

SOURCE: GBS003RB Report from Management Information Services. Federal funds only.

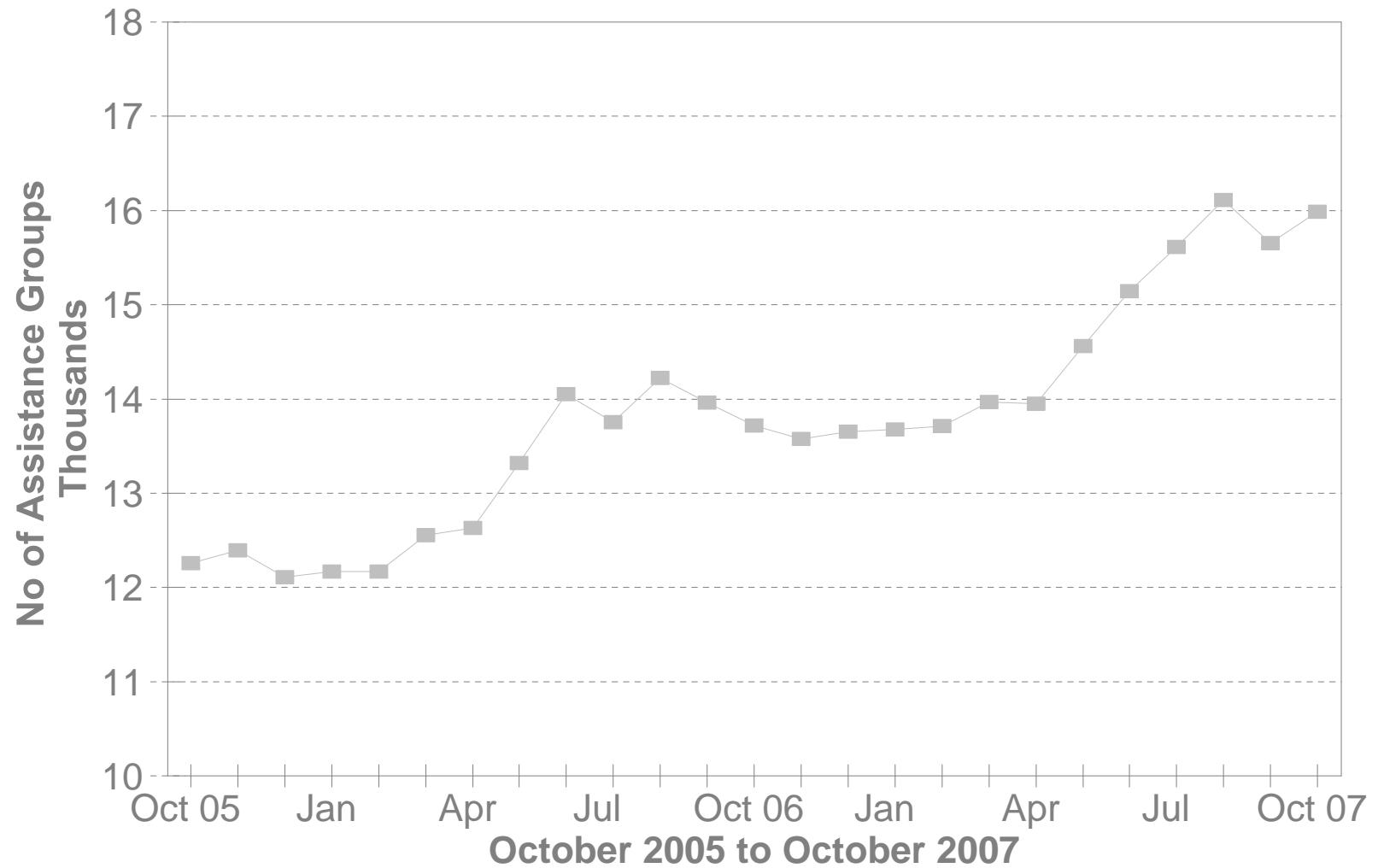
DA Cash Assistance Groups

During The Last 25 Months



DA Cash Recipients

During The Last 25 Months



**TABLE 3
DISABILITY ASSISTANCE (DA)
OCTOBER 2007**

OHIO COUNTY	CASH ASSISTANCE							MEDICAL ASSISTANCE	
	ASSISTANCE GROUPS	RECIPIENTS	ADULTS	CHILDREN	ACTUAL EXPENDITURES			UNDUPLICATED RECIPIENTS	ACTUAL AMOUNT PAID
					GROSS AMOUNT	CANCELLED AMOUNT	NET AMOUNT		
STATEWIDE	15,893	15,985	15,985	0	\$2,278,277.00	\$102,340.00	\$2,175,937.00	2,849	\$1,652,795.63
ADAMS	104	106	106	0	\$13,464.00	\$230.00	\$13,234.00	17	\$10,651.65
ALLEN	133	133	133	0	\$16,427.00	\$345.00	\$16,082.00	11	\$7,984.86
ASHLAND	38	38	38	0	\$5,782.00	\$0.00	\$5,782.00	12	\$5,117.00
ASHTABULA	334	335	335	0	\$50,115.00	\$2,923.00	\$47,192.00	21	\$8,053.72
ATHENS	295	302	302	0	\$37,061.00	\$575.00	\$36,486.00	16	\$5,984.98
AUGLAIZE	30	30	30	0	\$4,710.00	\$0.00	\$4,710.00	9	\$2,519.11
BELMONT	153	155	155	0	\$22,178.00	\$115.00	\$22,063.00	22	\$9,027.06
BROWN	100	102	102	0	\$14,162.00	\$975.00	\$13,187.00	11	\$3,915.91
BUTLER	482	482	482	0	\$74,312.00	\$4,263.00	\$70,049.00	43	\$32,641.14
CARROLL	29	29	29	0	\$3,272.00	\$0.00	\$3,272.00	4	\$1,015.14
CHAMPAIGN	34	34	34	0	\$4,929.00	\$12.00	\$4,917.00	10	\$4,808.65
CLARK	404	406	406	0	\$57,596.00	\$1,583.00	\$56,013.00	64	\$48,774.51
CLERMONT	228	229	229	0	\$31,365.00	\$1,265.00	\$30,100.00	16	\$11,833.12
CLINTON	81	82	82	0	\$12,504.00	\$0.00	\$12,504.00	2	\$1,390.59
COLUMBIANA	139	140	140	0	\$24,388.00	\$460.00	\$23,928.00	30	\$14,255.93
COSHOCTON	122	123	123	0	\$14,502.00	\$115.00	\$14,387.00	4	\$3,356.08
CRAWFORD	53	53	53	0	\$6,681.00	\$115.00	\$6,566.00	10	\$11,663.91
CUYAHOGA	1,047	1,051	1,051	0	\$144,661.00	\$7,304.00	\$137,357.00	576	\$266,077.19
DARKE	39	39	39	0	\$6,279.00	\$115.00	\$6,164.00	4	\$3,622.88
DEFIANCE	30	30	30	0	\$3,335.00	\$115.00	\$3,220.00	8	\$3,882.24
DELAWARE	84	85	85	0	\$9,487.00	\$805.00	\$8,682.00	11	\$14,228.71
ERIE	97	97	97	0	\$13,291.00	\$115.00	\$13,176.00	12	\$4,815.53
FAIRFIELD	192	192	192	0	\$23,783.00	\$920.00	\$22,863.00	21	\$16,171.52
FAYETTE	45	45	45	0	\$7,139.00	\$115.00	\$7,024.00	14	\$6,833.69
FRANKLIN	1,339	1,348	1,348	0	\$220,520.00	\$9,754.00	\$210,766.00	227	\$154,753.71
FULTON	45	45	45	0	\$6,382.00	\$115.00	\$6,267.00	4	\$1,990.46
GALLIA	80	81	81	0	\$9,129.00	\$115.00	\$9,014.00	42	\$31,150.79
GEAUGA	29	29	29	0	\$3,407.00	\$115.00	\$3,292.00	1	\$687.62
GREENE	178	178	178	0	\$22,119.00	\$931.00	\$21,188.00	33	\$19,249.16

*SOURCE: GRP342RA Report from Management Information Services and BOMC 9260-R001 Report from Medicaid Management Information Services.

**TABLE 3
DISABILITY ASSISTANCE (DA)
OCTOBER 2007**

OHIO COUNTY	CASH ASSISTANCE							MEDICAL ASSISTANCE	
	ASSISTANCE GROUPS	RECIPIENTS	ADULTS	CHILDREN	ACTUAL EXPENDITURES			UNDUPLICATED RECIPIENTS	ACTUAL AMOUNT PAID
					GROSS AMOUNT	CANCELLED AMOUNT	NET AMOUNT		
STATEWIDE	15,893	15,985	15,985	0	\$2,278,277.00	\$102,340.00	\$2,175,937.00	2,849	\$1,652,795.63
GUERNSEY	155	155	155	0	\$25,421.00	\$115.00	\$25,306.00	14	\$7,027.34
HAMILTON	762	762	762	0	\$130,574.00	\$10,530.00	\$120,044.00	80	\$44,523.97
HANCOCK	85	85	85	0	\$15,978.00	\$345.00	\$15,633.00	9	\$5,968.44
HARDIN	47	47	47	0	\$6,792.00	\$230.00	\$6,562.00	11	\$4,715.19
HARRISON	61	61	61	0	\$6,940.00	\$345.00	\$6,595.00	4	\$438.53
HENRY	8	8	8	0	\$853.00	\$0.00	\$853.00	2	\$444.11
HIGHLAND	126	127	127	0	\$21,955.00	\$460.00	\$21,495.00	16	\$9,545.43
HOCKING	67	70	70	0	\$10,025.00	\$159.00	\$9,866.00	9	\$5,509.88
HOLMES	28	28	28	0	\$3,697.00	\$0.00	\$3,697.00	1	\$837.70
HURON	64	65	65	0	\$8,325.00	\$115.00	\$8,210.00	4	\$1,393.29
JACKSON	128	129	129	0	\$15,384.00	\$2,133.00	\$13,251.00	25	\$21,885.04
JEFFERSON	180	180	180	0	\$23,422.00	\$1,384.00	\$22,038.00	30	\$14,171.17
KNOX	117	117	117	0	\$15,650.00	\$230.00	\$15,420.00	11	\$7,114.60
LAKE	143	143	143	0	\$16,293.00	\$575.00	\$15,718.00	26	\$14,891.93
LAWRENCE	88	88	88	0	\$15,724.00	\$0.00	\$15,724.00	27	\$17,767.62
LICKING	296	298	298	0	\$46,280.00	\$5,068.00	\$41,212.00	16	\$14,345.38
LOGAN	77	80	80	0	\$9,855.00	\$345.00	\$9,510.00	13	\$5,582.21
LORAIN	375	379	379	0	\$51,791.00	\$3,082.00	\$48,709.00	54	\$27,941.28
LUCAS	1,097	1,101	1,101	0	\$152,387.00	\$7,935.00	\$144,452.00	176	\$91,558.06
MADISON	30	30	30	0	\$3,611.00	\$0.00	\$3,611.00	11	\$10,215.00
MAHONING	284	284	284	0	\$44,156.00	\$3,105.00	\$41,051.00	116	\$75,961.86
MARION	195	198	198	0	\$25,342.00	\$823.00	\$24,519.00	8	\$5,211.44
MEDINA	82	84	84	0	\$12,045.00	\$345.00	\$11,700.00	14	\$6,968.77
MEIGS	78	80	80	0	\$9,859.00	\$345.00	\$9,514.00	23	\$11,592.24
MERCER	36	36	36	0	\$5,038.00	\$0.00	\$5,038.00	5	\$1,106.70
MIAMI	81	82	82	0	\$10,652.00	\$812.00	\$9,840.00	11	\$4,322.61
MONROE	29	29	29	0	\$5,620.00	\$115.00	\$5,505.00	11	\$3,789.26
MONTGOMERY	908	912	912	0	\$118,843.00	\$8,078.00	\$110,765.00	196	\$129,007.08
MORGAN	64	66	66	0	\$7,819.00	\$345.00	\$7,474.00	15	\$9,861.51
MORROW	82	82	82	0	\$21,642.00	\$460.00	\$21,182.00	7	\$9,119.45

*SOURCE: GRP342RA Report from Management Information Services and BOMC 9260-R001 Report from Medicaid Management Information Services.

**TABLE 3
DISABILITY ASSISTANCE (DA)
OCTOBER 2007**

OHIO COUNTY	CASH ASSISTANCE							MEDICAL ASSISTANCE	
	ASSISTANCE GROUPS	RECIPIENTS	ADULTS	CHILDREN	ACTUAL EXPENDITURES			UNDUPLICATED RECIPIENTS	ACTUAL AMOUNT PAID
					GROSS AMOUNT	CANCELLED AMOUNT	NET AMOUNT		
STATEWIDE	15,893	15,985	15,985	0	\$2,278,277.00	\$102,340.00	\$2,175,937.00	2,849	\$1,652,795.63
MUSKINGUM	383	390	390	0	\$49,046.00	\$1,486.00	\$47,560.00	13	\$6,551.39
NOBLE	20	20	20	0	\$3,840.00	\$115.00	\$3,725.00	3	\$1,048.03
OTTAWA	44	45	45	0	\$5,818.00	\$460.00	\$5,358.00	9	\$4,218.15
PAULDING	30	31	31	0	\$4,089.00	\$230.00	\$3,859.00	2	\$657.96
PERRY	124	126	126	0	\$15,814.00	\$1,916.00	\$13,898.00	15	\$6,959.50
PICKAWAY	80	81	81	0	\$10,753.00	\$460.00	\$10,293.00	11	\$9,554.08
PIKE	74	74	74	0	\$8,558.00	\$230.00	\$8,328.00	28	\$15,503.56
PORTAGE	124	124	124	0	\$17,706.00	\$1,380.00	\$16,326.00	22	\$17,004.17
PREBLE	61	62	62	0	\$7,169.00	\$230.00	\$6,939.00	7	\$9,035.08
PUTNAM	8	8	8	0	\$1,242.00	\$115.00	\$1,127.00	4	\$2,211.10
RICHLAND	288	289	289	0	\$34,494.00	\$615.00	\$33,879.00	14	\$7,577.49
ROSS	154	155	155	0	\$20,625.00	\$460.00	\$20,165.00	39	\$25,569.75
SANDUSKY	99	100	100	0	\$13,994.00	\$560.00	\$13,434.00	8	\$3,092.96
SCIOTO	289	290	290	0	\$39,601.00	\$1,891.00	\$37,710.00	35	\$25,399.80
SENECA	76	76	76	0	\$8,931.00	\$0.00	\$8,931.00	19	\$9,068.92
SHELBY	42	42	42	0	\$5,267.00	\$0.00	\$5,267.00	10	\$3,427.72
STARK	497	497	497	0	\$71,841.00	\$2,514.00	\$69,327.00	67	\$43,019.77
SUMMIT	538	538	538	0	\$82,195.00	\$3,465.00	\$78,730.00	242	\$129,097.18
TRUMBULL	339	339	339	0	\$50,944.00	\$345.00	\$50,599.00	34	\$21,491.61
TUSCARAWAS	128	129	129	0	\$15,431.00	\$1,088.00	\$14,343.00	10	\$5,448.20
UNION	32	32	32	0	\$3,836.00	\$0.00	\$3,836.00	3	\$1,889.75
VAN WERT	37	38	38	0	\$4,846.00	\$690.00	\$4,156.00	3	\$2,368.73
VINTON	70	71	71	0	\$10,974.00	\$460.00	\$10,514.00	9	\$9,451.17
WARREN	95	96	96	0	\$12,888.00	\$115.00	\$12,773.00	10	\$8,170.30
WASHINGTON	152	152	152	0	\$19,268.00	\$345.00	\$18,923.00	10	\$5,850.54
WAYNE	238	239	239	0	\$33,295.00	\$1,966.00	\$31,329.00	10	\$4,773.80
WILLIAMS	45	45	45	0	\$5,133.00	\$0.00	\$5,133.00	3	\$1,268.44
WOOD	71	72	72	0	\$13,629.00	\$230.00	\$13,399.00	3	\$1,055.77
WYANDOT	18	19	19	0	\$2,097.00	\$0.00	\$2,097.00	6	\$2,756.76
UNKNOWN									\$0.00

*SOURCE: GRP342RA Report from Management Information Services and BOMC 9260-R001 Report from Medicaid Management Information Services.

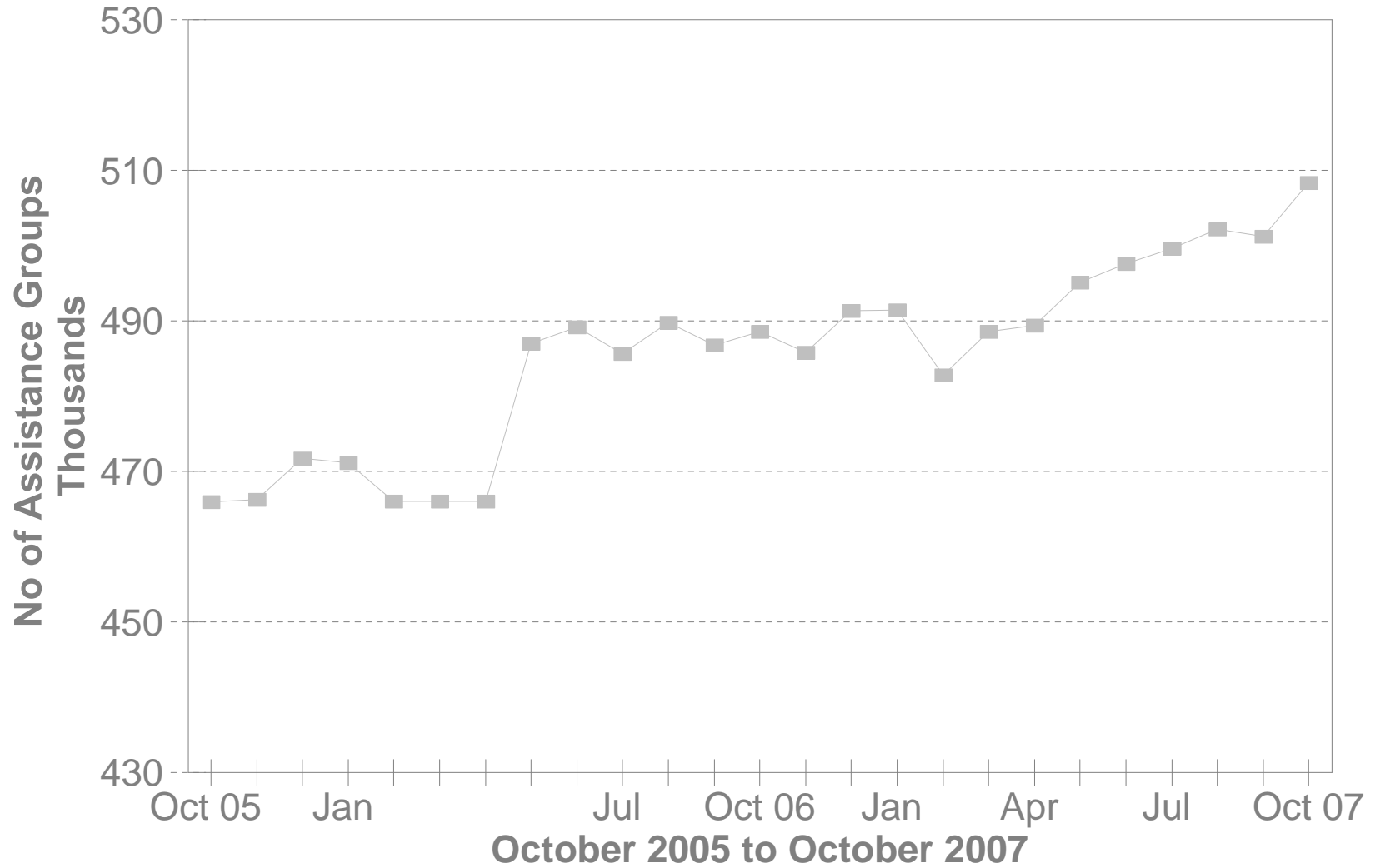
**TABLE 3-A
DA PAYMENTS FOR MEDICAL SERVICES
OCTOBER 2007**

CATEGORY OF SERVICES	DISABILITY ASSISTANCE			
	PAYMENTS	CLAIM FREQUENCY	DUPLICATED RECIPIENTS	PERCENT OF TOTAL
ADVANCED PRACTICAL NURSE SVCS.	\$3,506.28	92	76	0.2%
AMBULANCE SERVICES	\$0.00	0	0	0.0%
AMBULATORY SURGERY	\$6,700.42	19	18	0.4%
CHIROPRACTER SERVICES	\$0.00	0	0	0.0%
CLINIC	\$20,705.80	325	144	1.3%
DENTAL SERVICES	\$4,059.32	41	31	0.2%
EPSDT	\$0.00	0	0	0.0%
FAMILY PLANNING	\$166.51	3	3	0.0%
FEDERALLY QUALIFIED HEALTH CTR	\$0.00	0	0	0.0%
HEALTH MAINTENANCE ORGANIZATION	\$0.00	0	0	0.0%
HOME HEALTH SERVICES	\$0.00	0	0	0.0%
INDEPENDENT LABORATORY	\$21,121.65	326	219	1.3%
INPATIENT HOSPITAL	\$0.00	0	0	0.0%
ICF	\$0.00	0	0	0.0%
MIDWIFERY SERVICES	\$0.00	0	0	0.0%
OPTOMETRIC SERVICES	\$0.00	0	0	0.0%
OUTPATIENT HEALTH SERVICES	\$0.00	0	0	0.0%
PASSPORT WAIVER III	\$0.00	0	0	0.0%
OUTPATIENT HOSPITAL GENERAL	\$0.00	0	0	0.0%
PHYSICAL THERAPY SERVICES	\$0.00	0	0	0.0%
PHYSICIAN SERVICES	\$344,381.44	4,909	1,797	20.8%
PHYSIOLOGICAL LABORATORY	\$6,380.78	17	16	0.4%
PODIATRISTS THERAPY	\$10,079.73	134	100	0.6%
PRESCRIBED DRUGS	\$1,186,842.57	19,389	2,658	71.8%
PRIVATE DUTY NURSING SERVICES	\$0.00	0	0	0.0%
PSYCHOLOGY SERVICES	\$0.00	0	0	0.0%
RURAL HEALTH SERVICES	\$0.00	0	0	0.0%
SNF	\$0.00	0	0	0.0%
SUPPLIES AND MEDICAL EQUIPMENT	\$45,276.00	852	390	2.7%
WAIVERED SERVICES	\$3,575.13	35	32	0.2%
OTHER	\$0.00	0	0	0.0%
STATEWIDE TOTAL	\$1,652,795.63	26,142	5,484	100.00%

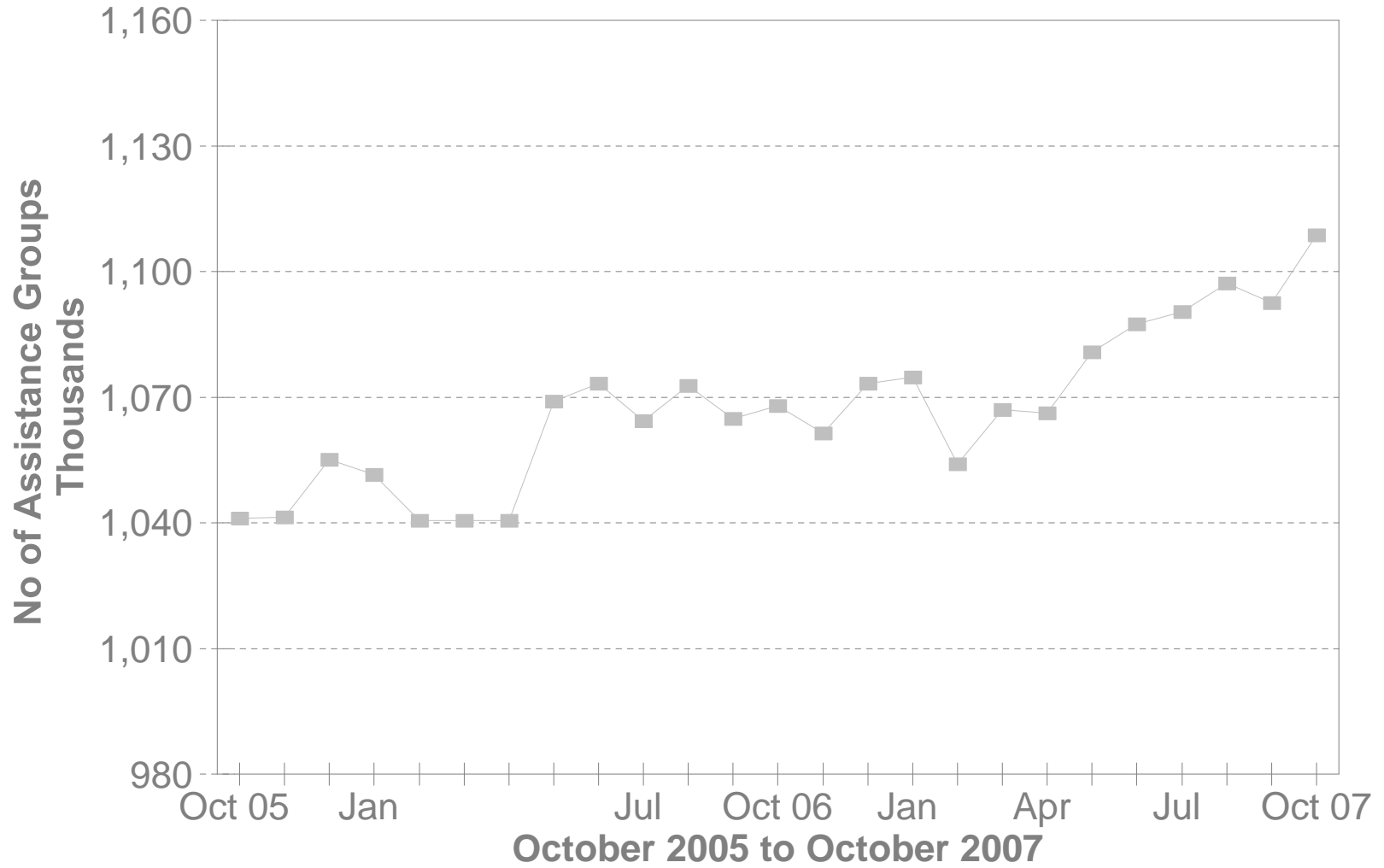
SOURCE: BOMC 9260 Report from Medicaid Management Information Services.

NOTE: Recipients are unduplicated within Category of Services, however, the Statewide Total represents a duplicated count.

No of FNS Benefits Assistance Groups During The Last 25 Months



No of FNS Benefits Cash Recipients During The Last 25 Months



**TABLE 5
FOOD AND NUTRITION BENEFITS
OCTOBER 2007**

OHIO COUNTY	PERSONS					ASSISTANCE GROUPS			TOTAL COUPONS ISSUED
	PUBLIC ASSISTANCE	NON-PUBLIC ASSISTANCE	TOTAL	AVERAGE ISSUANCE	% CHANGE PREV. MO.	PUBLIC ASSISTANCE	NON-PUBLIC ASSISTANCE	TOTAL	
STATEWIDE	247,699	861,050	1,108,749	\$107	1.5%	180,793	327,539	508,332	\$118,686,943
ADAMS	1,166	3,660	4,826	\$101	0.5%	859	1,226	2,085	\$489,053
ALLEN	1,929	7,330	9,259	\$110	1.5%	1,507	2,459	3,966	\$1,021,943
ASHLAND	500	2,737	3,237	\$103	5.5%	380	948	1,328	\$334,440
ASHTABULA	3,412	9,287	12,699	\$103	1.4%	2,480	3,418	5,898	\$1,311,777
ATHENS	2,290	4,969	7,259	\$103	0.4%	1,676	1,932	3,608	\$745,868
AUGLAIZE	347	1,834	2,181	\$105	3.2%	302	630	932	\$228,967
BELMONT	1,866	5,128	6,994	\$94	1.8%	1,425	1,881	3,306	\$660,733
BROWN	692	2,890	3,582	\$103	5.1%	541	1,011	1,552	\$368,207
BUTLER	5,422	21,876	27,298	\$111	1.3%	4,227	7,858	12,085	\$3,038,805
CARROLL	352	1,790	2,142	\$102	1.1%	278	635	913	\$218,079
CHAMPAIGN	650	2,397	3,047	\$103	5.4%	457	834	1,291	\$314,873
CLARK	3,582	14,102	17,684	\$107	1.2%	2,870	5,268	8,138	\$1,891,288
CLERMONT	2,092	9,398	11,490	\$106	2.3%	1,636	3,315	4,951	\$1,223,247
CLINTON	700	2,657	3,357	\$104	4.6%	549	946	1,495	\$347,941
COLUMBIANA	2,621	9,483	12,104	\$103	1.9%	2,014	3,321	5,335	\$1,244,748
COSHOCTON	692	3,560	4,252	\$100	0.7%	562	1,301	1,863	\$424,789
CRAWFORD	866	3,583	4,449	\$100	-1.3%	693	1,311	2,004	\$446,428
CUYAHOGA	26,868	155,273	182,141	\$108	0.6%	17,279	71,112	88,391	\$19,650,107
DARKE	508	1,881	2,389	\$99	-1.5%	380	652	1,032	\$237,362
DEFIANCE	515	2,336	2,851	\$100	-3.0%	383	800	1,183	\$286,487
DELAWARE	1,132	3,381	4,513	\$107	3.4%	809	1,288	2,097	\$482,869
ERIE	1,179	4,599	5,778	\$109	3.2%	961	1,747	2,708	\$630,673
FAIRFIELD	2,047	8,693	10,740	\$106	2.7%	1,546	3,170	4,716	\$1,133,883
FAYETTE	585	2,165	2,750	\$107	5.0%	466	774	1,240	\$295,459
FRANKLIN	29,678	99,669	129,347	\$112	1.7%	21,234	35,203	56,437	\$14,446,213
FULTON	348	1,689	2,037	\$98	-3.5%	267	593	860	\$200,293
GALLIA	1,649	3,389	5,038	\$103	1.0%	1,156	1,211	2,367	\$520,715
GEAUGA	337	1,326	1,663	\$109	2.1%	284	483	767	\$181,082
GREENE	1,864	6,735	8,599	\$108	2.5%	1,402	2,618	4,020	\$928,478

Source: CRIS-E GRP304RA and GRP 304RC Reports from Management Information Services. Cuyahoga County data also comes from the GRP 342 RA.

**TABLE 5
FOOD AND NUTRITION BENEFITS
OCTOBER 2007**

OHIO COUNTY	PERSONS					ASSISTANCE GROUPS			TOTAL COUPONS ISSUED
	PUBLIC ASSISTANCE	NON-PUBLIC ASSISTANCE	TOTAL	AVERAGE ISSUANCE	% CHANGE PREV. MO.	PUBLIC ASSISTANCE	NON-PUBLIC ASSISTANCE	TOTAL	
STATEWIDE	247,699	861,050	1,108,749	\$107	1.5%	180,793	327,539	508,332	\$118,686,943
GUERNSEY	1,225	4,825	6,050	\$100	3.6%	996	1,753	2,749	\$606,367
HAMILTON	17,791	58,547	76,338	\$112	2.0%	13,072	21,165	34,237	\$8,586,913
HANCOCK	787	3,458	4,245	\$107	-0.1%	641	1,256	1,897	\$455,769
HARDIN	349	1,571	1,920	\$100	4.2%	283	568	851	\$191,417
HARRISON	505	1,487	1,992	\$98	0.9%	385	546	931	\$195,408
HENRY	222	1,144	1,366	\$98	-0.4%	165	354	519	\$134,343
HIGHLAND	1,053	3,986	5,039	\$102	1.9%	772	1,354	2,126	\$514,865
HOCKING	870	2,586	3,456	\$102	3.1%	617	917	1,534	\$351,083
HOLMES	158	885	1,043	\$99	9.0%	134	296	430	\$102,995
HURON	703	4,372	5,075	\$101	4.7%	578	1,494	2,072	\$513,464
JACKSON	1,371	3,921	5,292	\$104	-0.3%	1,059	1,458	2,517	\$548,796
JEFFERSON	2,543	6,098	8,641	\$103	3.0%	1,846	2,299	4,145	\$890,585
KNOX	966	3,537	4,503	\$105	2.6%	712	1,272	1,984	\$471,783
LAKE	2,558	8,426	10,984	\$113	2.8%	1,951	3,202	5,153	\$1,245,720
LAWRENCE	3,574	7,008	10,582	\$99	0.6%	2,587	2,644	5,231	\$1,043,760
LICKING	2,716	9,694	12,410	\$105	1.0%	2,036	3,577	5,613	\$1,297,662
LOGAN	672	2,970	3,642	\$107	3.6%	507	1,032	1,539	\$388,666
LORAIN	6,554	21,264	27,818	\$108	1.1%	4,521	7,181	11,702	\$2,997,754
LUCAS	19,351	44,339	63,690	\$109	1.5%	13,429	16,791	30,220	\$6,925,398
MADISON	736	2,267	3,003	\$105	0.9%	523	823	1,346	\$315,755
MAHONING	8,708	21,076	29,784	\$105	1.0%	6,292	7,989	14,281	\$3,127,798
MARION	1,481	5,979	7,460	\$105	3.1%	1,173	2,147	3,320	\$782,169
MEDINA	1,113	4,127	5,240	\$106	3.0%	838	1,515	2,353	\$557,425
MEIGS	1,172	2,907	4,079	\$102	0.9%	860	1,032	1,892	\$417,771
MERCER	345	1,215	1,560	\$100	8.9%	271	422	693	\$156,099
MIAMI	1,057	3,562	4,619	\$98	2.8%	787	1,310	2,097	\$452,168
MONROE	400	1,197	1,597	\$97	5.4%	311	406	717	\$154,214
MONTGOMERY	14,895	42,387	57,282	\$109	2.0%	11,090	15,859	26,949	\$6,258,903
MORGAN	418	1,461	1,879	\$98	-1.1%	341	504	845	\$183,426
MORROW	534	2,439	2,973	\$98	2.3%	395	825	1,220	\$291,644

Source: CRIS-E GRP304RA and GRP 304RC Reports from Management Information Services. Cuyahoga County data also comes from the GRP 342 RA.

**TABLE 5
FOOD AND NUTRITION BENEFITS
OCTOBER 2007**

OHIO COUNTY	PERSONS					ASSISTANCE GROUPS			TOTAL COUPONS ISSUED
	PUBLIC ASSISTANCE	NON-PUBLIC ASSISTANCE	TOTAL	AVERAGE ISSUANCE	% CHANGE PREV. MO.	PUBLIC ASSISTANCE	NON-PUBLIC ASSISTANCE	TOTAL	
STATEWIDE	247,699	861,050	1,108,749	\$107	1.5%	180,793	327,539	508,332	\$118,686,943
MUSKINGUM	2,824	11,187	14,011	\$101	0.0%	2,224	4,154	6,378	\$1,420,840
NOBLE	286	897	1,183	\$91	-2.3%	215	330	545	\$107,618
OTTAWA	573	1,963	2,536	\$105	3.2%	404	689	1,093	\$266,068
PAULDING	321	1,038	1,359	\$99	-1.4%	232	362	594	\$135,076
PERRY	1,116	4,268	5,384	\$100	0.9%	813	1,491	2,304	\$538,882
PICKAWAY	1,200	3,624	4,824	\$104	-2.5%	865	1,368	2,233	\$500,439
PIKE	1,222	4,043	5,265	\$104	3.1%	928	1,423	2,351	\$549,562
PORTAGE	1,766	7,623	9,389	\$109	4.7%	1,414	2,745	4,159	\$1,022,789
PREBLE	538	2,099	2,637	\$103	2.5%	398	709	1,107	\$271,287
PUTNAM	223	1,292	1,515	\$104	-1.0%	178	445	623	\$156,841
RICHLAND	2,454	9,795	12,249	\$108	1.3%	1,958	3,555	5,513	\$1,316,930
ROSS	2,433	8,517	10,950	\$109	1.8%	1,745	3,111	4,856	\$1,194,655
SANDUSKY	651	3,454	4,105	\$104	-4.0%	522	1,250	1,772	\$427,843
SCIOTO	4,279	11,447	15,726	\$98	0.2%	3,329	4,335	7,664	\$1,534,143
SENECA	803	3,984	4,787	\$106	0.4%	622	1,413	2,035	\$508,159
SHELBY	467	2,274	2,741	\$107	5.8%	350	771	1,121	\$293,392
STARK	8,089	23,285	31,374	\$105	1.5%	5,701	8,353	14,054	\$3,301,665
SUMMIT	14,508	39,047	53,555	\$108	0.7%	10,884	15,079	25,963	\$5,785,646
TRUMBULL	4,364	14,689	19,053	\$103	2.0%	3,383	5,146	8,529	\$1,965,695
TUSCARAWAS	1,753	5,832	7,585	\$97	1.4%	1,363	2,114	3,477	\$738,975
UNION	458	2,003	2,461	\$106	5.1%	345	705	1,050	\$259,686
VAN WERT	306	1,102	1,408	\$92	3.5%	234	386	620	\$128,891
VINTON	602	1,960	2,562	\$100	3.5%	435	677	1,112	\$256,827
WARREN	872	3,099	3,971	\$99	2.7%	667	1,077	1,744	\$394,211
WASHINGTON	1,308	4,135	5,443	\$103	2.3%	1,103	1,527	2,630	\$558,790
WAYNE	1,789	5,268	7,057	\$106	1.7%	1,331	1,969	3,300	\$746,376
WILLIAMS	568	2,316	2,884	\$99	3.8%	404	844	1,248	\$284,672
WOOD	1,009	3,506	4,515	\$103	4.2%	794	1,279	2,073	\$465,324
WYANDOT	201	751	952	\$95	-1.1%	157	296	453	\$90,734

Source: CRIS-E GRP304RA and GRP 304RC Reports from Management Information Services. Cuyahoga County data also comes from the GRP 342 RA.

**Table 6A
October 2007
Medicaid Eligibles**

County	Aged	Blind	Disabled	ABD Total	OWF & Related	Healthy Start	CFC Total	Total Medicaid	Foster Care	Adoption Assistance	Transitional	Nursing Facilities
STATEWIDE	151,436	772	248,928	401,136	1,014,721	272,259	1,286,980	1,688,116	10,562	23,258	142,474	53,314
ADAMS	824	5	1,417	2,246	4,391	1,168	5,559	7,805	28	62	777	122
ALLEN	1,290	4	2,104	3,398	9,727	2,685	12,412	15,810	197	365	1,298	534
ASHLAND	610	2	631	1,243	3,505	1,450	4,955	6,198	36	26	597	275
ASHTABULA	1,669	5	3,263	4,937	11,095	3,073	14,168	19,105	82	228	2,066	1,013
ATHENS	882	9	2,141	3,032	5,911	1,317	7,228	10,260	80	143	674	186
AUGLAIZE	479	5	477	961	2,512	960	3,472	4,433	5	45	550	276
BELMONT	1,409	4	2,090	3,503	6,821	1,732	8,553	12,056	36	115	1,236	496
BROWN	755	0	1,079	1,834	4,140	1,449	5,589	7,423	16	41	790	231
BUTLER	3,280	16	5,951	9,247	27,552	6,826	34,378	43,625	399	547	4,243	1,177
CARROLL	425	2	569	996	2,538	782	3,320	4,316	6	18	579	188
CHAMPAIGN	496	1	614	1,111	3,128	1,224	4,352	5,463	7	35	716	238
CLARK	2,262	7	3,695	5,964	16,372	4,153	20,525	26,489	232	511	2,266	983
CLERMONT	1,774	11	2,893	4,678	12,379	4,483	16,862	21,540	201	279	2,071	717
CLINTON	536	1	803	1,340	3,674	1,057	4,731	6,071	37	78	619	156
COLUMBIANA	1,720	15	2,675	4,410	10,693	3,362	14,055	18,465	80	109	1,686	601
COSHOCTON	631	1	955	1,587	3,932	1,085	5,017	6,604	22	81	648	288
CRAWFORD	706	8	893	1,607	4,331	1,219	5,550	7,157	48	54	846	187
CUYAHOGA	23,240	135	36,492	59,867	146,619	33,089	179,708	239,575	1,342	4,920	16,522	7,043
DARKE	593	1	666	1,260	2,800	1,277	4,077	5,337	35	50	524	311
DEFIANCE	414	5	612	1,031	3,046	1,092	4,138	5,169	12	26	669	203
DELAWARE	833	1	1,071	1,905	4,562	1,726	6,288	8,193	22	96	741	307
ERIE	920	4	1,232	2,156	6,056	1,800	7,856	10,012	67	67	986	409
FAIRFIELD	1,337	7	2,162	3,506	10,589	3,006	13,595	17,101	26	352	2,025	441
FAYETTE	578	3	858	1,439	2,858	821	3,679	5,118	13	18	477	321
FRANKLIN	12,238	87	24,850	37,175	118,596	32,122	150,718	187,893	2,040	2,855	12,582	3,737
FULTON	392	1	432	825	2,533	984	3,517	4,342	17	43	548	209
GALLIA	876	3	1,577	2,456	4,246	942	5,188	7,644	20	63	639	186
GEAUGA	587	1	546	1,134	2,233	1,012	3,245	4,379	16	127	441	275
GREENE	1,387	20	1,870	3,277	9,431	2,598	12,029	15,306	79	117	1,780	579

Source: ODJFS Report BOMM1321 Prepared: Bureau of Research and Evaluation.

**Table 6A
October 2007
Medicaid Eligibles**

County	Aged	Blind	Disabled	ABD Total	OWF & Related	Healthy Start	CFC Total	Total Medicaid	Foster Care	Adoption Assistance	Transitional	Nursing Facilities
STATEWIDE	151,436	772	248,928	401,136	1,014,721	272,259	1,286,980	1,688,116	10,562	23,258	142,474	53,314
GUERNSEY	841	4	1,400	2,245	5,257	1,522	6,779	9,024	37	152	844	169
HAMILTON	10,570	63	18,534	29,167	67,685	18,379	86,064	115,231	829	1,706	6,151	3,613
HANCOCK	649	7	928	1,584	4,249	1,491	5,740	7,324	48	62	618	289
HARDIN	391	2	592	985	2,378	766	3,144	4,129	16	79	359	146
HARRISON	319	1	536	856	1,727	460	2,187	3,043	20	21	256	127
HENRY	269	0	335	604	1,809	748	2,557	3,161	10	35	386	140
HIGHLAND	866	1	1,157	2,024	4,827	1,439	6,266	8,290	25	33	781	251
HOCKING	519	4	836	1,359	3,476	1,003	4,479	5,838	32	62	583	144
HOLMES	429	3	430	862	1,432	860	2,292	3,154	13	20	265	378
HURON	631	2	895	1,528	5,393	2,003	7,396	8,924	44	48	880	189
JACKSON	883	0	1,396	2,279	4,841	1,144	5,985	8,264	32	16	727	169
JEFFERSON	1,241	10	2,360	3,611	7,276	1,696	8,972	12,583	79	116	1,121	372
KNOX	756	2	1,316	2,074	4,755	1,313	6,068	8,142	16	63	1,029	460
LAKE	1,758	3	2,531	4,292	10,393	3,659	14,052	18,344	68	100	1,893	1,024
LAWRENCE	1,685	6	3,301	4,992	8,286	2,375	10,661	15,653	60	67	1,111	344
LICKING	1,541	3	2,730	4,274	13,061	3,707	16,768	21,042	204	397	2,493	548
LOGAN	605	2	683	1,290	3,829	1,037	4,866	6,156	10	97	709	199
LORAIN	2,948	14	5,461	8,423	25,242	6,257	31,499	39,922	94	483	3,548	1,204
LUCAS	6,697	48	14,496	21,241	55,673	10,711	66,384	87,625	484	1,514	6,950	1,976
MADISON	415	1	594	1,010	2,899	942	3,841	4,851	31	34	446	123
MAHONING	4,146	15	6,934	11,095	26,014	5,666	31,680	42,775	253	188	3,010	1,555
MARION	995	3	1,795	2,793	6,523	1,890	8,413	11,206	50	131	1,032	266
MEDINA	1,081	7	1,277	2,365	6,595	2,221	8,816	11,181	32	157	1,356	651
MEIGS	569	4	1,043	1,616	3,339	807	4,146	5,762	9	11	483	138
MERCER	389	0	412	801	1,616	765	2,381	3,182	18	55	372	195
MIAMI	1,156	2	1,307	2,465	5,306	1,992	7,298	9,763	70	128	871	425
MONROE	302	0	401	703	1,496	454	1,950	2,653	13	17	274	97
MONTGOMERY	7,392	27	12,934	20,353	51,835	12,331	64,166	84,519	693	1,344	6,424	2,336
MORGAN	334	0	526	860	1,929	568	2,497	3,357	0	13	401	114
MORROW	444	1	636	1,081	3,099	1,060	4,159	5,240	4	56	699	149

Source: ODJFS Report BOMM1321 Prepared: Bureau of Research and Evaluation.

**Table 6A
October 2007
Medicaid Eligibles**

County	Aged	Blind	Disabled	ABD Total	OWF & Related	Healthy Start	CFC Total	Total Medicaid	Foster Care	Adoption Assistance	Transitional	Nursing Facilities
STATEWIDE	151,436	772	248,928	401,136	1,014,721	272,259	1,286,980	1,688,116	10,562	23,258	142,474	53,314
MUSKINGUM	1,685	18	2,924	4,627	11,606	2,687	14,293	18,920	117	219	1,901	494
NOBLE	241	0	260	501	1,187	383	1,570	2,071	4	10	287	84
OTTAWA	454	4	547	1,005	2,564	880	3,444	4,449	13	6	517	169
PAULDING	207	1	371	579	1,310	619	1,929	2,508	6	25	272	46
PERRY	579	7	1,183	1,769	5,035	1,264	6,299	8,068	31	71	824	195
PICKAWAY	663	2	1,068	1,733	4,583	1,189	5,772	7,505	21	24	716	181
PIKE	834	0	1,487	2,321	4,344	1,319	5,663	7,984	22	28	577	280
PORTAGE	1,288	5	1,852	3,145	9,394	2,433	11,827	14,972	98	203	1,312	593
PREBLE	419	6	661	1,086	3,280	977	4,257	5,343	46	42	698	206
PUTNAM	285	0	337	622	1,500	615	2,115	2,737	2	15	247	209
RICHLAND	1,942	0	2,752	4,694	10,937	3,527	14,464	19,158	51	266	1,694	637
ROSS	1,222	3	2,441	3,666	9,740	2,210	11,950	15,616	73	89	1,354	312
SANDUSKY	755	5	1,052	1,812	4,478	1,623	6,101	7,913	25	55	812	354
SCIOTO	2,576	6	4,816	7,398	11,443	2,368	13,811	21,209	94	86	1,529	594
SENECA	750	4	1,040	1,794	4,546	1,648	6,194	7,988	49	127	818	330
SHELBY	422	3	618	1,043	3,098	1,106	4,204	5,247	14	60	459	185
STARK	5,223	24	7,091	12,338	31,231	8,542	39,773	52,111	407	1,058	5,688	2,281
SUMMIT	7,167	42	11,247	18,456	45,781	10,075	55,856	74,312	511	873	6,164	2,230
TRUMBULL	2,919	15	4,798	7,732	19,495	5,779	25,274	33,006	155	528	3,097	1,202
TUSCARAWAS	1,342	6	1,640	2,988	7,403	2,549	9,952	12,940	104	215	1,339	464
UNION	358	1	475	834	2,508	892	3,400	4,234	23	42	463	113
UNKNOWN	0	0	0	0	0	0	0	0	0	0	0	0
VAN WERT	324	0	420	744	1,462	870	2,332	3,076	3	13	367	168
VINTON	316	0	602	918	2,189	707	2,896	3,814	15	25	299	62
WARREN	1,436	6	1,638	3,080	5,304	2,515	7,819	10,899	40	111	944	835
WASHINGTON	1,056	6	1,607	2,669	5,365	1,964	7,329	9,998	14	74	1,130	341
WAYNE	1,186	3	1,731	2,920	6,773	2,438	9,211	12,131	76	149	1,263	510
WILLIAMS	473	2	528	1,003	3,250	857	4,107	5,110	17	44	941	180
WOOD	1,018	4	1,089	2,111	5,246	1,836	7,082	9,193	30	104	893	405
WYANDOT	332	0	259	591	1,159	627	1,786	2,377	6	20	201	174

Source: ODJFS Report BOMM1321 Prepared: Bureau of Research and Evaluation.

**Table 6B
October 2007
Medicaid Expenditures**

	Aged	Blind	Disabled	ABD Total	OWF & Related	Healthy Start	CFC Total	Total Medicaid	Foster Care	Adoption Assistance	Transitional	Nursing Facilities
STATEWIDE	\$259,665,508	\$880,711	\$503,114,995	\$763,661,214	\$240,826,883	\$73,047,352	\$313,874,236	\$1,078,623,266	\$5,896,006	\$4,712,964	\$31,271,922	\$267,480,147
ADAMS	\$985,997	\$6,217	\$2,319,529	\$3,311,743	\$1,025,720	\$329,870	\$1,355,590	\$4,684,375	\$17,474	\$10,845	\$179,555	\$628,935
ALLEN	\$2,232,821	\$13,507	\$4,565,221	\$6,811,549	\$2,237,986	\$947,063	\$3,185,049	\$10,030,219	\$33,964	\$20,789	\$280,834	\$2,772,815
ASHLAND	\$1,187,482	\$1,110	\$1,371,082	\$2,559,674	\$820,372	\$480,790	\$1,301,162	\$3,861,543	\$3,960	\$4,241	\$145,984	\$1,220,779
ASHTABULA	\$3,179,651	\$10,626	\$6,860,206	\$10,050,484	\$2,524,176	\$765,648	\$3,289,824	\$13,343,624	\$40,323	\$34,045	\$460,513	\$5,000,427
ATHENS	\$1,036,790	\$5,372	\$2,951,842	\$3,994,004	\$1,524,952	\$635,657	\$2,160,609	\$6,156,425	\$75,470	\$37,797	\$163,643	\$712,210
AUGLAIZE	\$1,049,431	\$11,672	\$962,630	\$2,023,733	\$731,761	\$218,590	\$950,352	\$2,980,985	\$2,797	\$9,535	\$114,686	\$1,122,854
BELMONT	\$2,101,658	\$7,492	\$3,625,762	\$5,734,912	\$1,486,922	\$362,135	\$1,849,057	\$7,586,856	\$11,213	\$24,629	\$255,274	\$1,862,424
BROWN	\$1,326,386	\$0	\$2,169,242	\$3,495,629	\$1,038,430	\$441,997	\$1,480,427	\$4,981,328	\$9,915	\$22,203	\$200,486	\$1,162,587
BUTLER	\$6,452,633	\$28,259	\$13,176,265	\$19,657,157	\$6,944,318	\$2,150,122	\$9,094,440	\$28,772,104	\$118,406	\$109,840	\$978,967	\$6,622,170
CARROLL	\$628,444	\$2,146	\$1,469,203	\$2,099,793	\$530,137	\$142,724	\$672,861	\$2,772,859	\$6,595	\$1,270	\$124,452	\$842,744
CHAMPAIGN	\$976,635	-\$83	\$1,370,509	\$2,347,062	\$696,166	\$317,959	\$1,014,125	\$3,361,186	\$12,488	\$7,298	\$151,623	\$1,165,084
CLARK	\$4,254,929	\$6,676	\$7,095,481	\$11,357,087	\$3,840,718	\$1,260,773	\$5,101,491	\$16,475,785	\$127,589	\$49,158	\$515,398	\$5,033,160
CLERMONT	\$2,689,095	\$18,191	\$6,920,359	\$9,627,645	\$3,809,457	\$1,284,466	\$5,093,924	\$14,785,048	\$502,991	\$53,528	\$472,929	\$4,382,488
CLINTON	\$768,742	\$1,098	\$1,558,618	\$2,328,458	\$867,832	\$264,838	\$1,132,670	\$3,462,403	\$18,810	\$14,386	\$152,113	\$715,259
COLUMBIANA	\$2,714,803	\$8,970	\$4,784,602	\$7,508,375	\$3,070,143	\$786,787	\$3,856,930	\$11,399,205	\$43,654	\$18,398	\$275,234	\$2,414,471
COSHOCTON	\$1,023,748	\$929	\$2,210,804	\$3,235,481	\$837,061	\$202,609	\$1,039,670	\$4,277,021	\$7,591	\$12,088	\$141,895	\$1,561,282
CRAWFORD	\$1,109,763	\$7,180	\$1,398,584	\$2,515,527	\$1,170,053	\$256,276	\$1,426,329	\$3,947,983	\$9,656	\$12,568	\$197,338	\$822,662
CUYAHOGA	\$40,378,908	\$138,345	\$71,820,312	\$112,337,564	\$32,904,467	\$7,755,490	\$40,659,957	\$153,078,857	\$829,954	\$1,087,198	\$3,456,488	\$39,274,696
DARKE	\$1,333,967	\$9	\$1,521,224	\$2,855,201	\$681,030	\$310,488	\$991,518	\$3,849,204	\$10,999	\$6,755	\$142,340	\$1,416,686
DEFIANCE	\$720,737	\$3,296	\$960,446	\$1,684,479	\$752,748	\$238,224	\$990,972	\$2,676,297	\$1,734	\$7,159	\$157,389	\$748,528
DELAWARE	\$1,475,725	\$0	\$2,910,060	\$4,385,785	\$1,055,080	\$545,974	\$1,601,054	\$5,986,839	\$11,144	\$10,736	\$163,765	\$1,270,536
ERIE	\$1,606,774	\$3,945	\$2,135,682	\$3,746,400	\$1,414,763	\$463,108	\$1,877,871	\$5,625,628	\$22,314	\$42,810	\$221,972	\$1,733,734
FAIRFIELD	\$2,455,706	\$6,640	\$3,955,520	\$6,417,866	\$2,415,951	\$745,801	\$3,161,752	\$9,592,434	\$6,824	\$42,665	\$440,342	\$2,246,820
FAYETTE	\$1,067,704	\$17,163	\$1,886,621	\$2,971,488	\$667,591	\$179,882	\$847,473	\$3,818,961	\$530	\$5,200	\$105,917	\$1,587,552
FRANKLIN	\$21,343,180	\$92,431	\$59,172,018	\$80,607,629	\$27,981,283	\$8,779,155	\$36,760,437	\$117,433,676	\$956,015	\$520,290	\$2,909,553	\$22,625,980
FULTON	\$896,718	\$1,033	\$966,861	\$1,864,612	\$534,473	\$203,181	\$737,653	\$2,632,763	\$5,743	\$13,688	\$116,174	\$930,003
GALLIA	\$1,621,824	\$7,315	\$3,831,356	\$5,460,494	\$931,615	\$199,173	\$1,130,788	\$6,592,246	\$10,325	\$3,932	\$121,179	\$834,912
GEAUGA	\$1,047,524	\$1,099	\$1,559,683	\$2,608,307	\$489,270	\$380,612	\$869,882	\$3,478,375	\$5,436	\$23,140	\$88,501	\$1,196,105
GREENE	\$2,317,815	\$27,943	\$3,517,229	\$5,862,987	\$2,362,956	\$716,741	\$3,079,697	\$8,950,184	\$49,249	\$19,965	\$415,008	\$2,547,937

**Table 6B
October 2007
Medicaid Expenditures**

	Aged	Blind	Disabled	ABD Total	OWF & Related	Healthy Start	CFC Total	Total Medicaid	Foster Care	Adoption Assistance	Transitional	Nursing Facilities
STATEWIDE	\$259,665,508	\$880,711	\$503,114,995	\$763,661,214	\$240,826,883	\$73,047,352	\$313,874,236	\$1,078,623,266	\$5,896,006	\$4,712,964	\$31,271,922	\$267,480,147
GUERNSEY	\$1,411,627	\$1,638	\$3,268,814	\$4,682,078	\$1,157,612	\$297,729	\$1,455,341	\$6,158,393	\$14,326	\$24,277	\$170,358	\$1,071,976
HAMILTON	\$20,024,496	\$81,590	\$37,185,840	\$57,291,926	\$18,119,745	\$6,759,093	\$24,878,839	\$82,255,178	\$652,501	\$421,939	\$1,418,468	\$20,731,947
HANCOCK	\$1,193,566	\$5,860	\$1,749,453	\$2,948,879	\$914,746	\$485,230	\$1,399,976	\$4,353,837	\$23,371	\$12,115	\$131,899	\$1,258,564
HARDIN	\$601,628	\$0	\$1,298,452	\$1,900,080	\$517,790	\$195,670	\$713,460	\$2,613,709	\$5,095	\$4,864	\$82,222	\$538,814
HARRISON	\$536,864	\$0	\$722,020	\$1,258,883	\$362,096	\$82,546	\$444,643	\$1,705,743	\$4,364	\$4,018	\$66,537	\$547,151
HENRY	\$521,856	\$0	\$1,365,423	\$1,887,278	\$406,985	\$182,308	\$589,293	\$2,530,021	\$1,043	\$10,205	\$89,225	\$546,689
HIGHLAND	\$1,250,656	\$1,757	\$1,947,682	\$3,200,095	\$944,668	\$353,068	\$1,297,736	\$4,499,835	\$9,188	\$8,202	\$158,338	\$1,157,798
HOCKING	\$1,027,048	\$9,506	\$1,370,478	\$2,407,033	\$864,496	\$210,057	\$1,074,553	\$3,481,585	\$27,374	\$13,624	\$145,240	\$906,521
HOLMES	\$996,523	\$2,150	\$1,247,783	\$2,246,456	\$308,461	\$252,257	\$560,718	\$2,807,174	\$6,074	\$2,721	\$63,206	\$1,611,841
HURON	\$891,078	\$186	\$1,484,055	\$2,375,319	\$1,191,091	\$489,820	\$1,680,912	\$4,056,961	\$24,194	\$11,138	\$185,317	\$802,565
JACKSON	\$1,033,095	\$0	\$1,707,605	\$2,740,700	\$1,286,327	\$293,466	\$1,579,793	\$4,334,935	\$24,656	\$2,555	-\$66,303	\$689,817
JEFFERSON	\$1,665,605	\$4,532	\$3,067,317	\$4,737,454	\$1,420,466	\$307,311	\$1,727,777	\$6,476,103	\$26,307	\$14,731	\$231,408	\$1,430,751
KNOX	\$1,899,200	\$1,060	\$4,864,703	\$6,764,962	\$1,289,005	\$315,906	\$1,604,911	\$8,369,961	\$935	\$21,464	\$253,657	\$3,305,094
LAKE	\$3,879,053	\$375	\$6,939,712	\$10,819,140	\$2,733,174	\$855,303	\$3,588,478	\$14,454,623	\$32,033	\$13,252	\$365,990	\$5,630,060
LAWRENCE	\$2,076,914	\$4,723	\$4,465,314	\$6,546,951	\$1,812,280	\$496,138	\$2,308,418	\$8,860,444	\$49,618	\$19,172	\$223,365	\$1,424,639
LICKING	\$2,721,530	\$358	\$5,809,585	\$8,531,473	\$2,951,751	\$599,825	\$3,551,576	\$12,100,093	\$79,030	\$67,264	\$529,332	\$2,639,606
LOGAN	\$905,801	\$1,060	\$1,123,086	\$2,029,947	\$846,500	\$313,039	\$1,159,539	\$3,190,991	\$418	\$8,811	\$169,563	\$711,877
LORAIN	\$4,878,067	\$7,725	\$10,135,400	\$15,021,192	\$5,724,032	\$1,451,675	\$7,175,706	\$22,210,718	\$48,793	\$100,202	\$774,918	\$6,021,905
LUCAS	\$10,503,778	\$40,093	\$27,769,092	\$38,312,963	\$13,451,238	\$2,918,415	\$16,369,654	\$54,752,605	\$215,632	\$324,681	\$1,589,788	\$9,799,301
MADISON	\$602,372	\$297	\$1,357,863	\$1,960,532	\$733,435	\$218,953	\$952,388	\$2,912,920	\$14,501	\$10,598	\$97,050	\$684,581
MAHONING	\$6,985,503	\$32,184	\$12,823,293	\$19,840,980	\$6,301,644	\$1,367,401	\$7,669,046	\$27,544,365	\$184,273	\$20,197	\$698,628	\$6,908,069
MARION	\$1,694,653	\$2,354	\$3,387,571	\$5,084,578	\$1,234,423	\$1,412,952	\$2,647,376	\$7,737,252	\$56,112	\$18,210	\$246,035	\$1,431,069
MEDINA	\$2,307,697	\$40,678	\$4,187,799	\$6,536,174	\$1,459,121	\$456,364	\$1,915,484	\$8,458,774	\$15,236	\$14,385	\$317,574	\$3,397,096
MEIGS	\$610,883	\$4,348	\$1,342,891	\$1,958,122	\$710,460	\$148,030	\$858,490	\$2,817,749	\$1,638	\$1,029	\$92,546	\$503,473
MERCER	\$636,448	\$0	\$968,065	\$1,604,513	\$318,210	\$211,058	\$529,269	\$2,135,233	\$8,842	\$15,496	\$86,147	\$773,809
MIAMI	\$2,240,502	\$5,155	\$2,458,222	\$4,703,878	\$1,241,219	\$719,526	\$1,960,745	\$6,674,231	\$27,117	\$27,902	\$196,044	\$1,917,528
MONROE	\$377,821	\$0	\$606,115	\$983,937	\$305,125	\$82,587	\$387,712	\$1,372,143	\$2,839	\$2,245	\$59,273	\$374,296
MONTGOMERY	\$12,343,613	\$29,661	\$24,132,673	\$36,505,947	\$13,389,832	\$3,095,402	\$16,485,235	\$53,035,790	\$287,169	\$267,685	\$1,498,689	\$11,599,618
MORGAN	\$461,703	\$46	\$703,437	\$1,165,187	\$380,583	\$157,229	\$537,811	\$1,703,275	\$0	\$1,347	\$84,438	\$441,988
MORROW	\$745,015	\$1,101	\$1,264,716	\$2,010,832	\$749,908	\$232,404	\$982,312	\$2,995,084	\$0	\$3,774	\$159,386	\$733,528

**Table 6B
October 2007
Medicaid Expenditures**

	Aged	Blind	Disabled	ABD Total	OWF & Related	Healthy Start	CFC Total	Total Medicaid	Foster Care	Adoption Assistance	Transitional	Nursing Facilities
STATEWIDE	\$259,665,508	\$880,711	\$503,114,995	\$763,661,214	\$240,826,883	\$73,047,352	\$313,874,236	\$1,078,623,266	\$5,896,006	\$4,712,964	\$31,271,922	\$267,480,147
MUSKINGUM	\$2,233,651	\$12,460	\$3,933,443	\$6,179,555	\$2,527,475	\$553,227	\$3,080,702	\$9,265,401	\$21,850	\$26,684	\$381,750	\$1,995,930
NOBLE	\$369,499	\$0	\$334,839	\$704,339	\$231,663	\$74,689	\$306,352	\$1,010,691	\$0	\$472	\$51,379	\$315,459
OTTAWA	\$945,002	\$9,048	\$1,714,790	\$2,668,840	\$584,955	\$183,581	\$768,536	\$3,438,326	\$8,100	\$949	\$116,472	\$721,946
PAULDING	\$211,718	\$481	\$485,813	\$698,012	\$331,207	\$136,344	\$467,551	\$1,165,563	\$15,127	\$2,931	\$68,521	\$157,044
PERRY	\$496,612	\$3,970	\$2,253,256	\$2,753,837	\$1,103,110	\$296,047	\$1,399,157	\$4,154,343	\$10,047	\$6,480	\$191,484	\$930,260
PICKAWAY	\$918,994	\$239	\$1,605,505	\$2,524,737	\$1,024,570	\$214,253	\$1,238,823	\$3,763,560	\$9,193	\$6,210	\$161,460	\$781,818
PIKE	\$1,305,818	\$0	\$2,654,897	\$3,960,715	\$991,401	\$268,449	\$1,259,849	\$5,221,192	\$16,689	\$2,935	\$114,866	\$1,528,138
PORTAGE	\$2,108,231	\$18,382	\$5,028,619	\$7,155,231	\$2,426,096	\$753,262	\$3,179,358	\$10,336,639	\$52,068	\$46,305	\$286,870	\$3,378,566
PREBLE	\$722,722	\$5,855	\$1,384,379	\$2,112,957	\$765,253	\$220,830	\$986,083	\$3,099,304	\$15,020	\$7,561	\$159,983	\$1,015,576
PUTNAM	\$600,812	\$0	\$913,745	\$1,514,556	\$404,801	\$218,767	\$623,567	\$2,142,284	\$2,518	\$484	\$52,752	\$905,023
RICHLAND	\$2,978,740	\$0	\$5,371,579	\$8,350,319	\$2,545,397	\$921,009	\$3,466,405	\$11,869,468	\$34,426	\$60,827	\$360,479	\$3,160,327
ROSS	\$1,598,596	\$3,304	\$3,960,282	\$5,562,182	\$2,253,220	\$546,053	\$2,799,273	\$8,372,592	\$42,374	\$16,681	\$303,957	\$1,401,175
SANDUSKY	\$1,381,332	\$5,382	\$2,845,580	\$4,232,293	\$1,011,482	\$369,385	\$1,380,867	\$5,616,437	\$13,759	\$5,006	\$174,780	\$1,686,619
SCIOTO	\$3,350,728	\$8,328	\$7,144,741	\$10,503,797	\$2,877,667	\$523,865	\$3,401,533	\$13,933,869	\$20,422	\$36,733	\$341,197	\$2,593,233
SENECA	\$1,638,330	\$2,211	\$4,019,315	\$5,659,856	\$1,025,090	\$430,576	\$1,455,667	\$7,115,523	\$20,983	\$15,127	\$181,905	\$1,427,090
SHELBY	\$714,534	\$1,382	\$1,128,360	\$1,844,276	\$746,208	\$348,008	\$1,094,216	\$2,938,548	\$4,971	\$14,822	\$122,768	\$824,794
STARK	\$10,139,981	\$31,265	\$13,903,679	\$24,074,925	\$7,297,987	\$2,177,303	\$9,475,290	\$33,578,245	\$235,305	\$180,592	\$1,220,655	\$10,229,678
SUMMIT	\$12,017,352	\$37,670	\$23,966,271	\$36,021,293	\$10,847,806	\$2,667,941	\$13,515,747	\$49,581,900	\$385,179	\$178,547	\$1,357,507	\$10,582,655
TRUMBULL	\$5,005,245	\$11,043	\$9,373,445	\$14,389,732	\$4,514,710	\$1,785,004	\$6,299,714	\$20,694,447	\$57,868	\$50,100	\$634,792	\$5,613,121
TUSCARAWAS	\$2,180,609	\$3,046	\$3,130,358	\$5,314,013	\$1,702,822	\$692,203	\$2,395,025	\$7,713,281	\$43,844	\$48,963	\$273,568	\$1,748,627
UNION	\$636,149	\$298	\$923,886	\$1,560,333	\$595,351	\$230,988	\$826,339	\$2,386,672	\$18,712	\$7,109	\$114,455	\$536,061
UNKNOWN	\$301	\$0	\$2,623	\$2,923	-\$635,174	\$0	-\$635,174	-\$632,251	\$0	\$211,625	\$0	\$1,644
VAN WERT	\$629,544	\$0	\$815,123	\$1,444,668	\$330,721	\$243,650	\$574,371	\$2,019,582	\$1,287	\$12,267	\$66,051	\$632,397
VINTON	\$370,633	\$0	\$757,653	\$1,128,286	\$500,004	\$157,941	\$657,945	\$1,786,880	\$5,449	\$2,020	\$52,982	\$247,754
WARREN	\$3,079,820	\$6,507	\$5,340,597	\$8,426,924	\$1,322,713	\$809,344	\$2,132,056	\$10,565,756	\$14,545	\$24,454	\$252,164	\$4,466,677
WASHINGTON	\$1,439,552	\$5,024	\$2,401,503	\$3,846,078	\$1,152,358	\$409,618	\$1,561,977	\$5,408,055	\$9,446	\$3,221	\$231,528	\$1,325,441
WAYNE	\$2,080,875	\$2,359	\$3,817,653	\$5,900,886	\$1,545,021	\$602,885	\$2,147,906	\$8,050,880	\$17,617	\$16,324	\$264,550	\$2,103,728
WILLIAMS	\$797,107	\$2,192	\$1,045,124	\$1,844,423	\$720,590	\$224,675	\$945,265	\$2,789,793	\$7,407	\$19,792	\$204,874	\$724,431
WOOD	\$1,971,178	\$3,252	\$2,411,366	\$4,385,796	\$1,288,072	\$512,086	\$1,800,158	\$6,196,410	\$10,020	\$11,226	\$207,833	\$1,693,050
WYANDOT	\$731,655	\$0	\$645,162	\$1,376,817	\$320,451	\$148,474	\$468,925	\$1,845,742	\$5,932	\$2,261	\$52,450	\$704,076

**TABLE 7
CHILD CARE
OCTOBER 2007**

OHIO COUNTY	OWF JOBS, LEAP, and TRANSITIONAL		OTHER CHILD CARE		LOCAL FUNDING		ALL PROGRAM SOURCES	
	CHILDREN SERVED		CHILDREN SERVED		CHILDREN SERVED		CHILDREN SERVED	
	TOTAL	% OF STATE TOTAL	TOTAL	% OF STATE TOTAL	TOTAL	% OF STATE TOTAL	TOTAL	% OF STATE TOTAL
STATEWIDE	22,320	100.00%	78,918	100.00%	106	100.00%	101,344	100.00%
ADAMS	36	0.16%	114	0.14%	0	0.00%	150	0.15%
ALLEN	191	0.86%	424	0.54%	0	0.00%	615	0.61%
ASHLAND	15	0.07%	189	0.24%	0	0.00%	204	0.20%
ASHTABULA	200	0.90%	675	0.86%	0	0.00%	875	0.86%
ATHENS	108	0.48%	185	0.23%	0	0.00%	293	0.29%
AUGLAIZE	14	0.06%	89	0.11%	0	0.00%	103	0.10%
BELMONT	78	0.35%	257	0.33%	0	0.00%	335	0.33%
BROWN	21	0.09%	130	0.16%	0	0.00%	151	0.15%
BUTLER	178	0.80%	1,547	1.96%	0	0.00%	1,725	1.70%
CARROLL	32	0.14%	85	0.11%	0	0.00%	117	0.12%
CHAMPAIGN	42	0.19%	158	0.20%	0	0.00%	200	0.20%
CLARK	169	0.76%	678	0.86%	0	0.00%	847	0.84%
CLERMONT	256	1.15%	662	0.84%	0	0.00%	918	0.91%
CLINTON	16	0.07%	253	0.32%	0	0.00%	269	0.27%
COLUMBIANA	181	0.81%	887	1.12%	0	0.00%	1,068	1.05%
COSHOCTON	76	0.34%	239	0.30%	0	0.00%	315	0.31%
CRAWFORD	54	0.24%	220	0.28%	0	0.00%	274	0.27%
CUYAHOGA	4,069	18.23%	17,734	22.47%	0	0.00%	21,803	21.51%
DARKE	32	0.14%	93	0.12%	0	0.00%	125	0.12%
DEFIANCE	72	0.32%	169	0.21%	0	0.00%	241	0.24%
DELAWARE	65	0.29%	395	0.50%	0	0.00%	460	0.45%
ERIE	48	0.22%	674	0.85%	0	0.00%	722	0.71%
FAIRFIELD	83	0.37%	662	0.84%	0	0.00%	745	0.74%
FAYETTE	60	0.27%	262	0.33%	0	0.00%	322	0.32%
FRANKLIN	2,604	11.67%	9,513	12.05%	101	95.28%	12,218	12.06%
FULTON	57	0.26%	172	0.22%	0	0.00%	229	0.23%
GALLIA	39	0.17%	150	0.19%	0	0.00%	189	0.19%
GAUGA	37	0.17%	209	0.26%	0	0.00%	246	0.24%
GREENE	196	0.88%	764	0.97%	0	0.00%	960	0.95%

**TABLE 7
CHILD CARE
OCTOBER 2007**

OHIO COUNTY	OWF JOBS, LEAP, and TRANSITIONAL		OTHER CHILD CARE		LOCAL FUNDING		ALL PROGRAM SOURCES	
	CHILDREN SERVED		CHILDREN SERVED		CHILDREN SERVED		CHILDREN SERVED	
	TOTAL	% OF STATE TOTAL	TOTAL	% OF STATE TOTAL	TOTAL	% OF STATE TOTAL	TOTAL	% OF STATE TOTAL
STATEWIDE	22,320	100.00%	78,918	100.00%	106	100.00%	101,344	100.00%
GUERNSEY	99	0.44%	333	0.42%	0	0.00%	432	0.43%
HAMILTON	3,197	14.32%	9,769	12.38%	0	0.00%	12,966	12.79%
HANCOCK	119	0.53%	372	0.47%	0	0.00%	491	0.48%
HARDIN	25	0.11%	57	0.07%	0	0.00%	82	0.08%
HARRISON	12	0.05%	42	0.05%	0	0.00%	54	0.05%
HENRY	43	0.19%	114	0.14%	0	0.00%	157	0.15%
HIGHLAND	11	0.05%	197	0.25%	0	0.00%	208	0.21%
HOCKING	51	0.23%	82	0.10%	0	0.00%	133	0.13%
HOLMES	44	0.20%	124	0.16%	0	0.00%	168	0.17%
HURON	8	0.04%	439	0.56%	0	0.00%	447	0.44%
JACKSON	34	0.15%	135	0.17%	0	0.00%	169	0.17%
JEFFERSON	72	0.32%	317	0.40%	0	0.00%	389	0.38%
KNOX	71	0.32%	281	0.36%	0	0.00%	352	0.35%
LAKE	243	1.09%	951	1.21%	0	0.00%	1,194	1.18%
LAWRENCE	175	0.78%	399	0.51%	0	0.00%	574	0.57%
LICKING	209	0.94%	1,134	1.44%	0	0.00%	1,343	1.33%
LOGAN	45	0.20%	55	0.07%	0	0.00%	100	0.10%
LORAIN	623	2.79%	1,597	2.02%	0	0.00%	2,220	2.19%
LUCAS	1,672	7.49%	1,867	2.37%	0	0.00%	3,539	3.49%
MADISON	33	0.15%	143	0.18%	0	0.00%	176	0.17%
MAHONING	963	4.31%	1,466	1.86%	0	0.00%	2,429	2.40%
MARION	30	0.13%	388	0.49%	0	0.00%	418	0.41%
MEDINA	122	0.55%	646	0.82%	0	0.00%	768	0.76%
MEIGS	14	0.06%	180	0.23%	0	0.00%	194	0.19%
MERCER	23	0.10%	147	0.19%	0	0.00%	170	0.17%
MIAMI	126	0.56%	336	0.43%	0	0.00%	462	0.46%
MONROE	15	0.07%	55	0.07%	0	0.00%	70	0.07%
MONTGOMERY	743	3.33%	4,397	5.57%	0	0.00%	5,140	5.07%
MORGAN	4	0.02%	115	0.15%	0	0.00%	119	0.12%
MORROW	33	0.15%	187	0.24%	0	0.00%	220	0.22%

**TABLE 7
CHILD CARE
OCTOBER 2007**

OHIO COUNTY	OWF JOBS, LEAP, and TRANSITIONAL		OTHER CHILD CARE		LOCAL FUNDING		ALL PROGRAM SOURCES	
	CHILDREN SERVED		CHILDREN SERVED		CHILDREN SERVED		CHILDREN SERVED	
	TOTAL	% OF STATE TOTAL	TOTAL	% OF STATE TOTAL	TOTAL	% OF STATE TOTAL	TOTAL	% OF STATE TOTAL
STATEWIDE	22,320	100.00%	78,918	100.00%	106	100.00%	101,344	100.00%
MUSKINGUM	375	1.68%	722	0.91%	0	0.00%	1,097	1.08%
NOBLE	42	0.19%	106	0.13%	0	0.00%	148	0.15%
OTTAWA	49	0.22%	103	0.13%	0	0.00%	152	0.15%
PAULDING	4	0.02%	42	0.05%	0	0.00%	46	0.05%
PERRY	47	0.21%	259	0.33%	0	0.00%	306	0.30%
PICKAWAY	79	0.35%	127	0.16%	0	0.00%	206	0.20%
PIKE	48	0.22%	66	0.08%	0	0.00%	114	0.11%
PORTAGE	169	0.76%	663	0.84%	0	0.00%	832	0.82%
PREBLE	70	0.31%	139	0.18%	0	0.00%	209	0.21%
PUTNAM	17	0.08%	94	0.12%	0	0.00%	111	0.11%
RICHLAND	262	1.17%	888	1.13%	0	0.00%	1,150	1.13%
ROSS	96	0.43%	333	0.42%	0	0.00%	429	0.42%
SANDUSKY	80	0.36%	454	0.58%	0	0.00%	534	0.53%
SCIOTO	118	0.53%	568	0.72%	0	0.00%	686	0.68%
SENECA	26	0.12%	268	0.34%	0	0.00%	294	0.29%
SHELBY	108	0.48%	187	0.24%	0	0.00%	295	0.29%
STARK	836	3.75%	2,364	3.00%	0	0.00%	3,200	3.16%
SUMMIT	1,055	4.73%	3,614	4.58%	0	0.00%	4,669	4.61%
TRUMBULL	322	1.44%	1,525	1.93%	0	0.00%	1,847	1.82%
TUSCARAWAS	31	0.14%	496	0.63%	0	0.00%	527	0.52%
UNION	23	0.10%	255	0.32%	5	4.72%	283	0.28%
VAN WERT	7	0.03%	44	0.06%	0	0.00%	51	0.05%
VINTON	8	0.04%	79	0.10%	0	0.00%	87	0.09%
WARREN	153	0.69%	454	0.58%	0	0.00%	607	0.60%
WASHINGTON	85	0.38%	285	0.36%	0	0.00%	370	0.37%
WAYNE	173	0.78%	375	0.48%	0	0.00%	548	0.54%
WILLIAMS	45	0.20%	108	0.14%	0	0.00%	153	0.15%
WOOD	99	0.44%	327	0.41%	0	0.00%	426	0.42%
WYANDOT	5	0.02%	59	0.07%	0	0.00%	64	0.06%

SOURCE: COGNOS. The above numbers have not been reconciled between the CCIDS/3299 data collection system and 2827 ODJFS fiscal reporting system; therefore they may not be conclusive at this time.

OWF data consist of funding codes: 173,312, 313,314, 326, & 327. Other data consist of funding codes: 320, 321, 322, 323, 324, 325, 328, 329, and 342. Local Funding is from funding code 899.

**TABLE 8
RECIPIENTS, EXPENDITURES, AND AVERAGE PAYMENT PER RECIPIENT
DURING THE LAST 12 MONTHS IN OHIO**

RECIPIENTS	OWF-R	OWF-U	OWF\ CHILD CARE	Other CHILD CARE	DISABILITY ASSISTANCE	TITLE IV-E	FNS BENEFITS
November 2006	156,220	12,781	23,696	78,584	13,578	26,828	1,061,392
December	159,543	13,239	23,727	79,838	13,654	27,223	1,073,211
January 2007	156,974	12,864	22,470	78,182	13,678	27,150	1,074,737
February	153,574	12,747	23,275	74,852	13,709	26,969	1,054,032
March	152,985	12,792	23,584	78,334	13,965	26,244	1,066,951
April	152,556	12,406	23,527	77,738	13,947	26,182	1,066,248
May	155,417	12,271	24,152	80,832	14,564	25,706	1,080,781
June	149,827	11,014	22,927	80,331	15,145	23,939	1,087,411
July	154,067	11,428	12,135	83,212	15,614	N.A.	1,090,411
August	154,690	11,902	12,173	83,746	16,113	N.A.	1,097,227
September	152,800	11,309	11,026	80,414	15,652	N.A.	1,092,555
October 2007	159,461	12,613	22,320	78,918	15,985	N.A.	1,108,749
12 MONTH AVERAGE	154,843	12,281	20,418	79,582	14,634	26,280	1,079,475
EXPENDITURES							
November 2006	\$24,233,824	\$1,357,337	N.A.	N.A.	\$1,732,064	\$13,607,688	\$106,332,849
December	\$25,577,815	\$1,491,073	N.A.	N.A.	\$1,905,592	\$15,347,273	\$107,670,387
January 2007	\$24,563,001	\$1,389,124	N.A.	N.A.	\$1,860,503	\$14,522,840	\$107,705,366
February	\$23,926,643	\$1,349,595	N.A.	N.A.	\$1,847,646	\$13,904,623	\$105,628,316
March	\$23,971,956	\$1,384,820	N.A.	N.A.	\$1,952,139	\$13,522,041	\$107,457,412
April	\$23,014,252	\$1,269,486	N.A.	N.A.	\$1,768,558	\$17,403,927	\$107,329,580
May	\$22,934,016	\$1,208,788	N.A.	N.A.	\$2,040,201	\$13,271,398	\$108,138,296
June	\$23,962,387	\$1,187,020	N.A.	N.A.	\$2,347,409	\$18,639,187	\$108,329,737
July	\$24,360,922	\$1,261,090	N.A.	N.A.	\$2,333,309	N.A.	\$109,603,726
August	\$24,283,786	\$1,266,545	N.A.	N.A.	\$2,376,545	N.A.	\$110,301,820
September	\$24,408,901	\$1,256,532	N.A.	N.A.	\$2,091,985	N.A.	\$109,690,552
October 2007	\$25,159,772	\$1,376,116	N.A.	N.A.	\$2,175,937	N.A.	\$118,686,943
TOTAL DOLLARS	\$24,199,773	\$1,316,461	N.A.	N.A.	\$2,035,991	\$15,027,372	\$108,906,249
AVERAGE PAYMENT							
November 2006	\$155	\$106	N.A.	N.A.	\$128	\$507	\$100
December	\$160	\$113	N.A.	N.A.	\$140	\$564	\$100
January 2007	\$156	\$108	N.A.	N.A.	\$136	\$535	\$100
February	\$156	\$106	N.A.	N.A.	\$135	\$516	\$100
March	\$157	\$108	N.A.	N.A.	\$140	\$515	\$101
April	\$151	\$102	N.A.	N.A.	\$127	\$665	\$101
May	\$148	\$99	N.A.	N.A.	\$140	\$516	\$100
June	\$160	\$108	N.A.	N.A.	\$155	\$779	\$100
July	\$158	\$110	N.A.	N.A.	\$149	N.A.	\$101
August	\$157	\$106	N.A.	N.A.	\$147	N.A.	\$101
September	\$160	\$111	N.A.	N.A.	\$134	N.A.	\$100
October 2007	\$158	\$109	N.A.	N.A.	\$136	N.A.	\$107

Note: N.A. means Not Available.

TABLE 10
PERCENT OF OHIO'S POPULATION PARTICIPATING IN SELECTED
PUBLIC ASSISTANCE PROGRAMS FOR OCTOBER 2007

OHIO COUNTY	Estimated Total Population *	Percent of All Families Below Poverty Level	DISABILITY ASSISTANCE		OWF COMBINED		FOSTER CARE UNAVAILABLE		FNS BENEFITS	
			Recipients as % of		Recipients	Recipients as % of	Recipients	Recipients as % of	Recipients	Recipients as % of
			Recipients	Total Population						
STATEWIDE	11,478,006	7.80%	15,985	0.14%	172,074	1.50%	0	0.00%	1,108,749	9.66%
ADAMS	28,516	12.80%	106	0.37%	204	0.72%	0	0.00%	4,826	16.92%
ALLEN	105,788	9.60%	133	0.13%	734	0.69%	0	0.00%	9,259	8.75%
ASHLAND	54,727	7.10%	38	0.07%	200	0.37%	0	0.00%	3,237	5.91%
ASHTABULA	102,703	9.20%	335	0.33%	1,439	1.40%	0	0.00%	12,699	12.36%
ATHENS	61,860	14.00%	302	0.49%	1,626	2.63%	0	0.00%	7,259	11.73%
AUGLAIZE	47,060	4.90%	30	0.06%	103	0.22%	0	0.00%	2,181	4.63%
BELMONT	68,771	11.70%	155	0.23%	642	0.93%	0	0.00%	6,994	10.17%
BROWN	44,423	8.80%	102	0.23%	263	0.59%	0	0.00%	3,582	8.06%
BUTLER	354,992	5.40%	482	0.14%	3,001	0.85%	0	0.00%	27,298	7.69%
CARROLL	29,189	8.50%	29	0.10%	180	0.62%	0	0.00%	2,142	7.34%
CHAMPAIGN	39,921	5.10%	34	0.09%	456	1.14%	0	0.00%	3,047	7.63%
CLARK	141,872	7.90%	406	0.29%	2,906	2.05%	0	0.00%	17,684	12.46%
CLERMONT	192,706	5.30%	229	0.12%	752	0.39%	0	0.00%	11,490	5.96%
CLINTON	43,399	6.40%	82	0.19%	248	0.57%	0	0.00%	3,357	7.74%
COLUMBIANA	110,542	9.00%	140	0.13%	808	0.73%	0	0.00%	12,104	10.95%
COSHOCTON	36,976	7.00%	123	0.33%	525	1.42%	0	0.00%	4,252	11.50%
CRAWFORD	45,047	7.80%	53	0.12%	333	0.74%	0	0.00%	4,449	9.88%
CUYAHOGA	1,314,241	10.30%	1,051	0.08%	22,690	1.73%	0	0.00%	182,141	13.86%
DARKE	52,780	6.00%	39	0.07%	341	0.65%	0	0.00%	2,389	4.53%
DEFIANCE	39,091	4.50%	30	0.08%	313	0.80%	0	0.00%	2,851	7.29%
DELAWARE	156,697	2.90%	85	0.05%	676	0.43%	0	0.00%	4,513	2.88%
ERIE	78,116	6.00%	97	0.12%	417	0.53%	0	0.00%	5,778	7.40%
FAIRFIELD	140,591	4.50%	192	0.14%	1,980	1.41%	0	0.00%	10,740	7.64%
FAYETTE	28,305	7.70%	45	0.16%	296	1.05%	0	0.00%	2,750	9.72%
FRANKLIN	1,095,662	8.20%	1,348	0.12%	27,230	2.49%	0	0.00%	129,347	11.81%
FULTON	42,900	4.00%	45	0.10%	117	0.27%	0	0.00%	2,037	4.75%
GALLIA	31,313	13.50%	81	0.26%	942	3.01%	0	0.00%	5,038	16.09%
GEAUGA	95,676	2.80%	29	0.03%	119	0.12%	0	0.00%	1,663	1.74%
GREENE	152,298	5.20%	178	0.12%	1,200	0.79%	0	0.00%	8,599	5.65%

*SOURCE: 2006 Ohio County Population Estimates, Ohio Dept. of Development, GRP342RA, GBS003RA, GRP304RA and GRP304RC Reports from Management Information Services.

TABLE 10
PERCENT OF OHIO'S POPULATION PARTICIPATING IN SELECTED
PUBLIC ASSISTANCE PROGRAMS FOR OCTOBER 2007

OHIO COUNTY	Estimated Total Population *	Percent of All Families Below Poverty Level	DISABILITY ASSISTANCE		OWF COMBINED		FOSTER CARE UNAVAILABLE		FNS BENEFITS	
			Recipients as % of		Recipients	Recipients as % of	Recipients	Recipients as % of	Recipients	Recipients as % of
			Recipients	Total Population						
STATEWIDE	11,478,006	7.80%	15,985	0.14%	172,074	1.50%	0	0.00%	1,108,749	9.66%
GUERNSEY	40,876	12.90%	155	0.38%	304	0.74%	0	0.00%	6,050	14.80%
HAMILTON	822,596	8.80%	762	0.09%	18,355	2.23%	0	0.00%	76,338	9.28%
HANCOCK	73,824	5.20%	85	0.12%	139	0.19%	0	0.00%	4,245	5.75%
HARDIN	31,966	8.90%	47	0.15%	112	0.35%	0	0.00%	1,920	6.01%
HARRISON	15,799	11.00%	61	0.39%	173	1.10%	0	0.00%	1,992	12.61%
HENRY	29,520	5.30%	8	0.03%	74	0.25%	0	0.00%	1,366	4.63%
HIGHLAND	42,833	9.00%	127	0.30%	540	1.26%	0	0.00%	5,039	11.76%
HOCKING	28,973	10.30%	70	0.24%	654	2.26%	0	0.00%	3,456	11.93%
HOLMES	41,574	10.50%	28	0.07%	91	0.22%	0	0.00%	1,043	2.51%
HURON	60,313	6.50%	65	0.11%	256	0.42%	0	0.00%	5,075	8.41%
JACKSON	33,543	13.60%	129	0.38%	592	1.76%	0	0.00%	5,292	15.78%
JEFFERSON	70,125	11.40%	180	0.26%	1,592	2.27%	0	0.00%	8,641	12.32%
KNOX	58,561	7.40%	117	0.20%	616	1.05%	0	0.00%	4,503	7.69%
LAKE	232,892	3.50%	143	0.06%	941	0.40%	0	0.00%	10,984	4.72%
LAWRENCE	63,179	15.10%	88	0.14%	1,475	2.33%	0	0.00%	10,582	16.75%
LICKING	156,287	5.50%	298	0.19%	1,313	0.84%	0	0.00%	12,410	7.94%
LOGAN	46,189	7.10%	80	0.17%	404	0.87%	0	0.00%	3,642	7.88%
LORAIN	301,993	6.70%	379	0.13%	4,159	1.38%	0	0.00%	27,818	9.21%
LUCAS	445,281	10.70%	1,101	0.25%	13,314	2.99%	0	0.00%	63,690	14.30%
MADISON	41,496	6.20%	30	0.07%	559	1.35%	0	0.00%	3,003	7.24%
MAHONING	251,026	9.60%	284	0.11%	6,590	2.63%	0	0.00%	29,784	11.86%
MARION	65,583	7.40%	198	0.30%	739	1.13%	0	0.00%	7,460	11.37%
MEDINA	169,353	3.50%	84	0.05%	525	0.31%	0	0.00%	5,240	3.09%
MEIGS	23,092	14.30%	80	0.35%	513	2.22%	0	0.00%	4,079	17.66%
MERCER	41,303	4.60%	36	0.09%	115	0.28%	0	0.00%	1,560	3.78%
MIAMI	101,914	5.10%	82	0.08%	574	0.56%	0	0.00%	4,619	4.53%
MONROE	14,606	11.00%	29	0.20%	115	0.79%	0	0.00%	1,597	10.93%
MONTGOMERY	542,237	8.30%	912	0.17%	11,018	2.03%	0	0.00%	57,282	10.56%
MORGAN	14,821	15.70%	66	0.45%	126	0.85%	0	0.00%	1,879	12.68%
MORROW	34,529	6.60%	82	0.24%	222	0.64%	0	0.00%	2,973	8.61%

*SOURCE: 2006 Ohio County Population Estimates, Ohio Dept. of Development, GRP342RA, GBS003RA, GRP304RA and GRP304RC Reports from Management Information Services.

TABLE 10
PERCENT OF OHIO'S POPULATION PARTICIPATING IN SELECTED
PUBLIC ASSISTANCE PROGRAMS FOR OCTOBER 2007

OHIO COUNTY	Estimated Total Population *	Percent of All Families Below Poverty Level	DISABILITY ASSISTANCE		OWF COMBINED		FOSTER CARE UNAVAILABLE		FNS BENEFITS	
			Recipients as % of		Recipients	Recipients as % of	Recipients	Recipients as % of	Recipients	Recipients as % of
			Recipients	Total Population						
STATEWIDE	11,478,006	7.80%	15,985	0.14%	172,074	1.50%	0	0.00%	1,108,749	9.66%
MUSKINGUM	86,125	9.90%	390	0.45%	1,901	2.21%	0	0.00%	14,011	16.27%
NOBLE	14,165	8.30%	20	0.14%	83	0.59%	0	0.00%	1,183	8.35%
OTTAWA	41,331	4.20%	45	0.11%	309	0.75%	0	0.00%	2,536	6.14%
PAULDING	19,432	4.90%	31	0.16%	214	1.10%	0	0.00%	1,359	6.99%
PERRY	35,313	9.40%	126	0.36%	728	2.06%	0	0.00%	5,384	15.25%
PICKAWAY	53,606	7.60%	81	0.15%	871	1.62%	0	0.00%	4,824	9.00%
PIKE	28,269	15.10%	74	0.26%	801	2.83%	0	0.00%	5,265	18.62%
PORTAGE	155,012	5.90%	124	0.08%	816	0.53%	0	0.00%	9,389	6.06%
PREBLE	42,491	4.50%	62	0.15%	354	0.83%	0	0.00%	2,637	6.21%
PUTNAM	34,744	4.00%	8	0.02%	42	0.12%	0	0.00%	1,515	4.36%
RICHLAND	127,010	8.20%	289	0.23%	1,192	0.94%	0	0.00%	12,249	9.64%
ROSS	75,556	9.10%	155	0.21%	1,447	1.92%	0	0.00%	10,950	14.49%
SANDUSKY	61,625	5.70%	100	0.16%	371	0.60%	0	0.00%	4,105	6.66%
SCIOTO	76,441	15.20%	290	0.38%	2,161	2.83%	0	0.00%	15,726	20.57%
SENECA	57,255	6.10%	76	0.13%	358	0.63%	0	0.00%	4,787	8.36%
SHELBY	48,884	5.30%	42	0.09%	246	0.50%	0	0.00%	2,741	5.61%
STARK	380,575	6.80%	497	0.13%	6,326	1.66%	0	0.00%	31,374	8.24%
SUMMIT	545,931	7.50%	538	0.10%	10,521	1.93%	0	0.00%	53,555	9.81%
TRUMBULL	217,362	7.90%	339	0.16%	2,751	1.27%	0	0.00%	19,053	8.77%
TUSCARAWAS	91,766	7.20%	129	0.14%	609	0.66%	0	0.00%	7,585	8.27%
UNION	46,702	3.60%	32	0.07%	264	0.57%	0	0.00%	2,461	5.27%
VAN WERT	29,303	4.20%	38	0.13%	85	0.29%	0	0.00%	1,408	4.80%
VINTON	13,519	15.10%	71	0.53%	289	2.14%	0	0.00%	2,562	18.95%
WARREN	201,871	3.00%	96	0.05%	448	0.22%	0	0.00%	3,971	1.97%
WASHINGTON	61,867	8.60%	152	0.25%	200	0.32%	0	0.00%	5,443	8.80%
WAYNE	113,950	5.40%	239	0.21%	881	0.77%	0	0.00%	7,057	6.19%
WILLIAMS	38,719	3.90%	45	0.12%	386	1.00%	0	0.00%	2,884	7.45%
WOOD	124,183	4.70%	72	0.06%	387	0.31%	0	0.00%	4,515	3.64%
WYANDOT	22,553	3.80%	19	0.08%	92	0.41%	0	0.00%	952	4.22%
UNKNOWN										

*SOURCE: 2006 Ohio County Population Estimates, Ohio Dept. of Development, GRP342RA, GBS003RA, GRP304RA and GRP304RC Reports from Management Information Services.

**TABLE 7
CHILD CARE REVISION
JULY UPDATE**

OHIO COUNTY	OWF JOBS, LEAP, and TRANSITIONAL		OTHER CHILD CARE		LOCAL FUNDING		ALL PROGRAM SOURCES	
	CHILDREN SERVED		CHILDREN SERVED		CHILDREN SERVED		CHILDREN SERVED	
	TOTAL	% OF STATE TOTAL	TOTAL	% OF STATE TOTAL	TOTAL	% OF STATE TOTAL	TOTAL	% OF STATE TOTAL
STATEWIDE	22,215	100.00%	82,106	100.00%	114	100.00%	104,435	100.00%
ADAMS	17	0.08%	117	0.14%	0	0.00%	134	0.13%
ALLEN	178	0.80%	484	0.59%	0	0.00%	662	0.63%
ASHLAND	16	0.07%	218	0.27%	0	0.00%	234	0.22%
ASHTABULA	149	0.67%	293	0.36%	0	0.00%	442	0.42%
ATHENS	69	0.31%	221	0.27%	0	0.00%	290	0.28%
AUGLAIZE	22	0.10%	97	0.12%	0	0.00%	119	0.11%
BELMONT	66	0.30%	284	0.35%	0	0.00%	350	0.34%
BROWN	14	0.06%	135	0.16%	0	0.00%	149	0.14%
BUTLER	188	0.85%	1,543	1.88%	0	0.00%	1,731	1.66%
CARROLL	20	0.09%	55	0.07%	0	0.00%	75	0.07%
CHAMPAIGN	31	0.14%	135	0.16%	0	0.00%	166	0.16%
CLARK	144	0.65%	764	0.93%	0	0.00%	908	0.87%
CLERMONT	165	0.74%	600	0.73%	0	0.00%	765	0.73%
CLINTON	5	0.02%	249	0.30%	0	0.00%	254	0.24%
COLUMBIANA	155	0.70%	899	1.09%	0	0.00%	1,054	1.01%
COSHOCTON	75	0.34%	205	0.25%	0	0.00%	280	0.27%
CRAWFORD	63	0.28%	256	0.31%	0	0.00%	319	0.31%
CUYAHOGA	4,306	19.38%	18,865	22.98%	0	0.00%	23,171	22.19%
DARKE	19	0.09%	91	0.11%	0	0.00%	110	0.11%
DEFIANCE	54	0.24%	174	0.21%	0	0.00%	228	0.22%
DELAWARE	47	0.21%	348	0.42%	1	0.88%	396	0.38%
ERIE	35	0.16%	660	0.80%	0	0.00%	695	0.67%
FAIRFIELD	98	0.44%	541	0.66%	0	0.00%	639	0.61%
FAYETTE	23	0.10%	255	0.31%	0	0.00%	278	0.27%
FRANKLIN	2,899	13.05%	10,591	12.90%	108	94.74%	13,598	13.02%
FULTON	43	0.19%	173	0.21%	0	0.00%	216	0.21%
GALLIA	49	0.22%	169	0.21%	0	0.00%	218	0.21%
GAUGA	35	0.16%	199	0.24%	0	0.00%	234	0.22%
GREENE	238	1.07%	690	0.84%	0	0.00%	928	0.89%

**TABLE 7
CHILD CARE REVISION
JULY UPDATE**

OHIO COUNTY	OWF JOBS, LEAP, and TRANSITIONAL		OTHER CHILD CARE		LOCAL FUNDING		ALL PROGRAM SOURCES	
	CHILDREN SERVED		CHILDREN SERVED		CHILDREN SERVED		CHILDREN SERVED	
	TOTAL	% OF STATE TOTAL	TOTAL	% OF STATE TOTAL	TOTAL	% OF STATE TOTAL	TOTAL	% OF STATE TOTAL
STATEWIDE	22,215	100.00%	82,106	100.00%	114	100.00%	104,435	100.00%
GUERNSEY	116	0.52%	299	0.36%	0	0.00%	415	0.40%
HAMILTON	3,099	13.95%	10,604	12.92%	0	0.00%	13,703	13.12%
HANCOCK	113	0.51%	336	0.41%	0	0.00%	449	0.43%
HARDIN	16	0.07%	64	0.08%	0	0.00%	80	0.08%
HARRISON	8	0.04%	45	0.05%	0	0.00%	53	0.05%
HENRY	32	0.14%	116	0.14%	0	0.00%	148	0.14%
HIGHLAND	9	0.04%	203	0.25%	0	0.00%	212	0.20%
HOCKING	39	0.18%	84	0.10%	0	0.00%	123	0.12%
HOLMES	59	0.27%	118	0.14%	0	0.00%	177	0.17%
HURON	5	0.02%	444	0.54%	0	0.00%	449	0.43%
JACKSON	41	0.18%	124	0.15%	0	0.00%	165	0.16%
JEFFERSON	67	0.30%	300	0.37%	0	0.00%	367	0.35%
KNOX	79	0.36%	244	0.30%	0	0.00%	323	0.31%
LAKE	257	1.16%	865	1.05%	0	0.00%	1,122	1.07%
LAWRENCE	135	0.61%	425	0.52%	0	0.00%	560	0.54%
LICKING	209	0.94%	1,159	1.41%	0	0.00%	1,368	1.31%
LOGAN	35	0.16%	55	0.07%	0	0.00%	90	0.09%
LORAIN	721	3.25%	1,846	2.25%	0	0.00%	2,567	2.46%
LUCAS	1,642	7.39%	1,656	2.02%	0	0.00%	3,298	3.16%
MADISON	31	0.14%	131	0.16%	0	0.00%	162	0.16%
MAHONING	883	3.97%	1,456	1.77%	0	0.00%	2,339	2.24%
MARION	34	0.15%	378	0.46%	0	0.00%	412	0.39%
MEDINA	106	0.48%	805	0.98%	0	0.00%	911	0.87%
MEIGS	11	0.05%	178	0.22%	0	0.00%	189	0.18%
MERCER	33	0.15%	147	0.18%	0	0.00%	180	0.17%
MIAMI	103	0.46%	285	0.35%	0	0.00%	388	0.37%
MONROE	4	0.02%	57	0.07%	0	0.00%	61	0.06%
MONTGOMERY	757	3.41%	4,633	5.64%	0	0.00%	5,390	5.16%
MORGAN	11	0.05%	113	0.14%	0	0.00%	124	0.12%
MORROW	36	0.16%	169	0.21%	0	0.00%	205	0.20%

**TABLE 7
CHILD CARE REVISION
JULY UPDATE**

OHIO COUNTY	OWF JOBS, LEAP, and TRANSITIONAL		OTHER CHILD CARE		LOCAL FUNDING		ALL PROGRAM SOURCES	
	CHILDREN SERVED		CHILDREN SERVED		CHILDREN SERVED		CHILDREN SERVED	
	TOTAL	% OF STATE TOTAL	TOTAL	% OF STATE TOTAL	TOTAL	% OF STATE TOTAL	TOTAL	% OF STATE TOTAL
STATEWIDE	22,215	100.00%	82,106	100.00%	114	100.00%	104,435	100.00%
MUSKINGUM	300	1.35%	812	0.99%	0	0.00%	1,112	1.06%
NOBLE	34	0.15%	92	0.11%	0	0.00%	126	0.12%
OTTAWA	73	0.33%	114	0.14%	0	0.00%	187	0.18%
PAULDING	6	0.03%	46	0.06%	0	0.00%	52	0.05%
PERRY	33	0.15%	190	0.23%	0	0.00%	223	0.21%
PICKAWAY	84	0.38%	157	0.19%	0	0.00%	241	0.23%
PIKE	53	0.24%	82	0.10%	0	0.00%	135	0.13%
PORTAGE	195	0.88%	613	0.75%	0	0.00%	808	0.77%
PREBLE	73	0.33%	168	0.20%	0	0.00%	241	0.23%
PUTNAM	18	0.08%	103	0.13%	0	0.00%	121	0.12%
RICHLAND	253	1.14%	908	1.11%	0	0.00%	1,161	1.11%
ROSS	118	0.53%	337	0.41%	0	0.00%	455	0.44%
SANDUSKY	97	0.44%	452	0.55%	0	0.00%	549	0.53%
SCIOTO	123	0.55%	616	0.75%	0	0.00%	739	0.71%
SENECA	25	0.11%	221	0.27%	0	0.00%	246	0.24%
SHELBY	55	0.25%	266	0.32%	0	0.00%	321	0.31%
STARK	811	3.65%	2,419	2.95%	0	0.00%	3,230	3.09%
SUMMIT	976	4.39%	3,872	4.72%	0	0.00%	4,848	4.64%
TRUMBULL	308	1.39%	1,526	1.86%	0	0.00%	1,834	1.76%
TUSCARAWAS	44	0.20%	486	0.59%	0	0.00%	530	0.51%
UNION	29	0.13%	229	0.28%	4	3.51%	262	0.25%
VAN WERT	19	0.09%	54	0.07%	0	0.00%	73	0.07%
VINTON	6	0.03%	101	0.12%	0	0.00%	107	0.10%
WARREN	174	0.78%	412	0.50%	0	0.00%	586	0.56%
WASHINGTON	80	0.36%	284	0.35%	1	0.88%	365	0.35%
WAYNE	162	0.73%	416	0.51%	0	0.00%	578	0.55%
WILLIAMS	45	0.20%	101	0.12%	0	0.00%	146	0.14%
WOOD	101	0.45%	326	0.40%	0	0.00%	427	0.41%
WYANDOT	6	0.03%	53	0.06%	0	0.00%	59	0.06%

SOURCE: COGNOS. The above numbers have not been reconciled between the CCIDS/3299 data collection system and 2827 ODJFS fiscal reporting system; therefore they may not be conclusive at this time.

OWF data consist of funding codes: 173,312, 313,314, 326, & 327. Other data consist of funding codes: 320, 321, 322, 323, 324, 325, 328, 329, and 342. Local Funding is from funding code 899.