

# Ohio Department of Job and Family Services

## PUBLIC ASSISTANCE MONTHLY STATISTICS AUGUST 2007



<http://jfs.ohio.gov/pams/index.stm>

Bureau of Research and Evaluation : Federal Reports\ Data Development Section  
Office of Research, Assessment, and Accountability  
P.O. Box 1618  
Columbus, Ohio 43216-1618

OHIO DEPARTMENT OF JOB AND FAMILY SERVICES

PUBLIC ASSISTANCE MONTHLY STATISTICS

TABLE OF CONTENTS

<u>TITLE</u>	<u>PAGE(S)</u>
Monthly Review of Public Assistance Statistics.....	1
Statewide Summary of Public Assistance Programs.....	2
Table 1: OWF (TANF) Summary.....	3-14
Table 2: Foster Care (Title IV-E) Program Summary. . Temporarily Unavailable.....	15-17
Table 3: Disability Assistance Program Summary.....	18-22
Table 3-A: DA Payments for Medical Services.....	23
Table 5: FNS Benefits Program Summary.....	24-28
Table 6: Medicaid (Title XIX): Eligibles and Expenditures.....	29-34
Table 7: Child Day Care Summary.....	35-37
Table 8: Program Summaries of Recipients, Expenditures, and Average Payment Per Recipient During the Last 12 Months.....	38
Table 10: Percent of Ohio's Population Participating in Selected Public Assistance Programs.....	39-41
<i>Note: Table 4 and Table 9 were discontinued.</i>	
Also: Table 7-A, Updated Child Day Care Summary for May 2007.....	42-44

All data in the PAMS report is limited to the information available at the time it was constructed. It does not account for backdated or retroactive eligibility or any adjustments made subsequent to its creation.

## MONTHLY REVIEW OF PUBLIC ASSISTANCE STATISTICS FOR AUGUST 2007

### OHIO WORKS FIRST (OWF)

For the month of August 2007, OWF-Combined assistance groups totaled 78,185; recipients totaled 166,592 and money payments totaled \$25,522,087. The percent change from July 2007 to August 2007 was 0.2% for assistance groups; 0.7% for recipients, and -0.3% for money payments. For OWF- Regular (OWF-R) there were 75,251 assistance groups; 154,690 recipients, and \$24,285,786 in money payments issued for August 2007. The percent change from July 2007 to August 2007 was 0.1% for assistance groups; 0.4% for recipients, and -0.3% for money payments. For OWF-Unemployed (OWF-U), assistance groups totaled 2,984; recipients, 11,902 and money payments were \$1,266,301. The percent change from July 2007 to August 2007 was 3.6% for assistance groups; 4.1% for recipients and 0.4% for money payments.

### FOSTER CARE (TITLE IV-E)

**Data not available due to SACWIS implementation.**

### DISABILITY ASSISTANCE (DA)

For the month of August 2007, there were 16,023 assistance groups; 16,113 recipients, and \$2,376,545 in DA financial assistance. The average DA financial assistance per recipient was \$147.49. Total DA expenditures for medical services for August 2007 were \$1,733,482. Of this total, \$1,277,021 or 73.7% was spent for prescribed drugs, and \$351,548 or 20.3% was spent for physician services. Medical expenses were paid for 3,047 recipients for an average expenditure of \$568.91 per recipient.

### FOOD AND NUTRITION SERVICES BENEFITS (FNS)

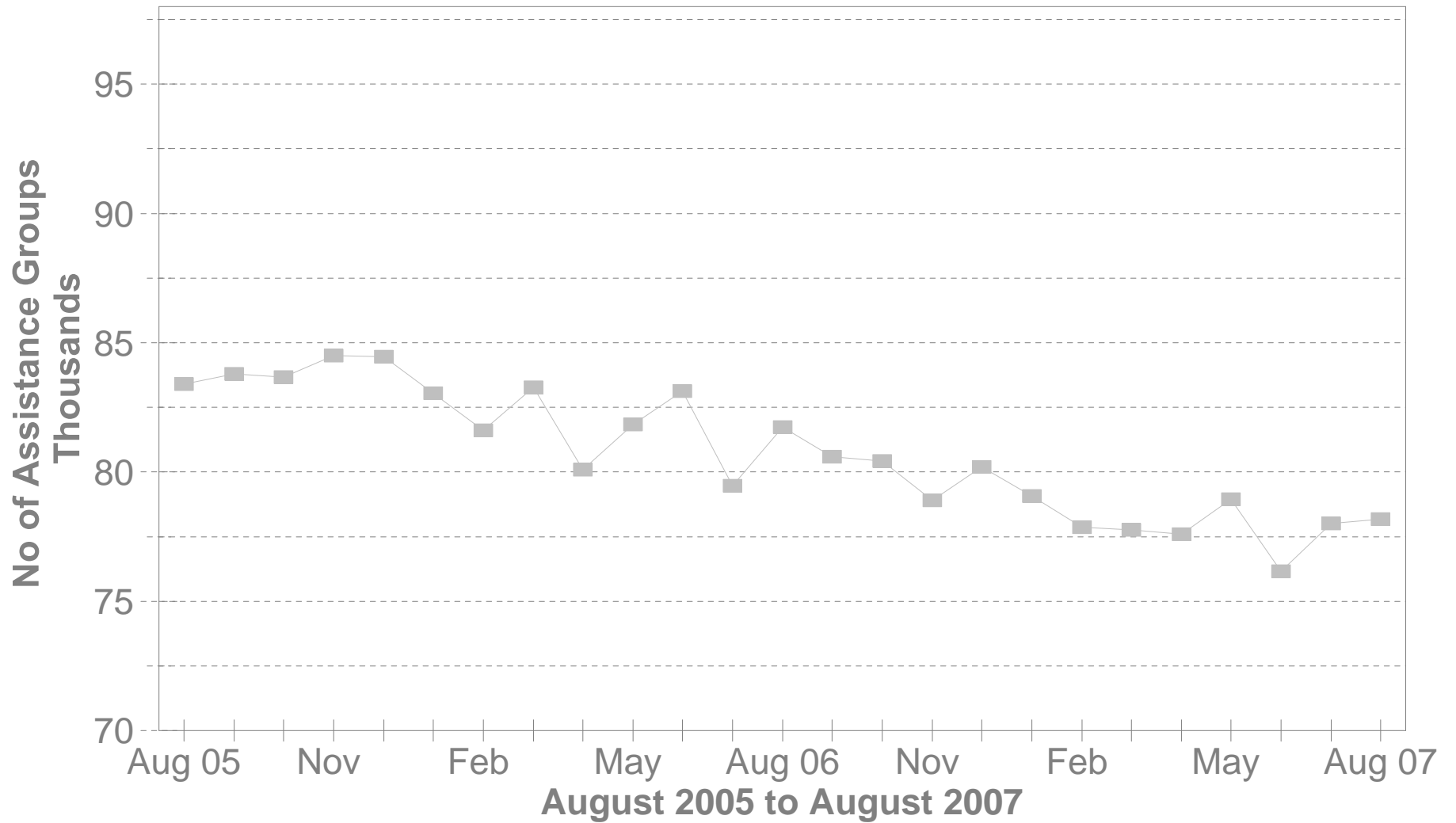
Total persons participating in the FNS benefits program during August 2007 increased to 1,097,227 by 6,816 or 0.6% from 1,090,411 persons reported in July 2007. Households increased by 2,576 or 0.5% over July 2007 levels. The total dollar value of FNS related benefits issued during August 2007 increased by \$698,094 or 0.6% from \$109,603,726 reported in July 2007 to \$110,301,820 reported in August 2007. The average benefit issuance per person increased by \$.01 or 0.0% from those issued in July 2007. The average benefit issuance per person increased from \$100.52 reported in July 2007 to \$100.53 reported in August 2007.

*Please note: All data in the PAMS report is limited to the information available at the time it was constructed. It does not account for backdated or retroactive eligibility or any adjustments made subsequent to its creation.*

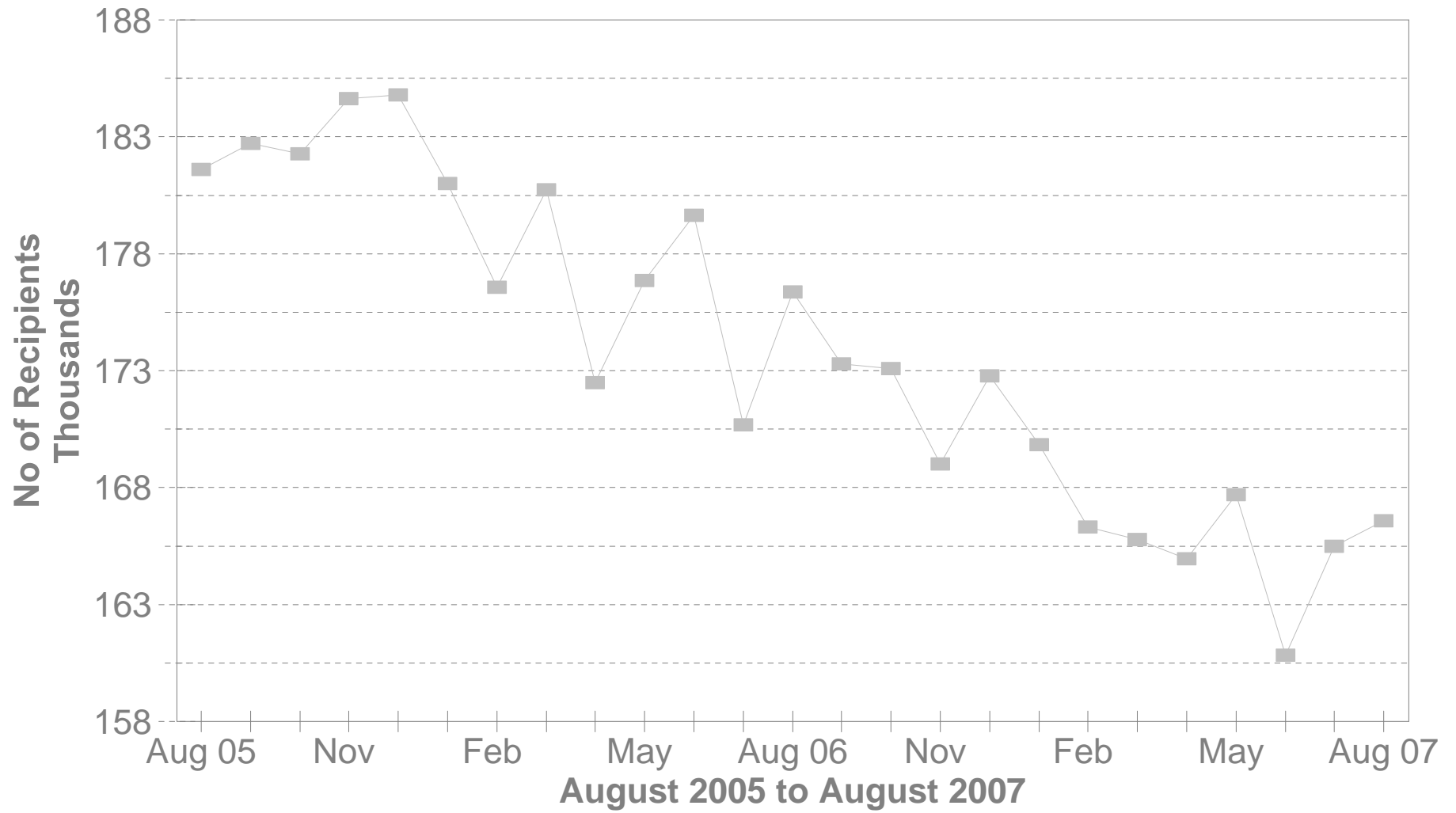
**STATEWIDE SUMMARY OF PUBLIC ASSISTANCE PROGRAMS FOR AUGUST 2007**

	August 2007	July 2007	% CHANGE Aug 07 / Jul 07	August 2006	% CHANGE Aug 07 / Aug 06
<b>OHIO WORKS FIRST (OWF)-COMBI</b>					
Assistance Groups	78,185	78,001	0.2%	81,742	-4.4%
Recipients	166,592	165,495	0.7%	176,360	-5.5%
Net Payments	\$25,552,087	\$25,622,012	-0.3%	\$26,728,354	-4.4%
Average Per Recipient	\$153.38	\$154.82	-0.9%	\$151.56	1.2%
<b>OWF-REGULAR, OWF-INCAPACITATED, &amp; OWF REGULAR VENDOR PAYMENTS</b>					
Assistance Groups	75,251	75,169	0.1%	78,078	-3.6%
Recipients	154,690	154,067	0.4%	161,518	-4.2%
Net Payments	\$24,285,786	\$24,360,922	-0.3%	\$25,149,711	-3.4%
Average Per Recipient	\$157.00	\$158.12	-0.7%	\$155.71	0.8%
<b>OWF-UNEMPLOYED AND OWF-UNEMPLOYED VENDOR PAYMENTS</b>					
Assistance Groups	2,934	2,832	3.6%	3,664	-19.9%
Recipients	11,902	11,428	4.1%	14,842	-19.8%
Net Payments	\$1,266,301	\$1,261,090	0.4%	\$1,578,643	-19.8%
Average Per Recipient	\$106.39	\$110.35	-3.6%	\$106.36	0.0%
<b>TITLE IV-E FOSTER CARE</b>					
Assistance Groups/Recipients	N.A.	N.A.	N.A.	27,084	N.A.
Gross Payments	N.A.	N.A.	N.A.	\$13,842,955	N.A.
Average Per Recipient	N.A.	N.A.	N.A.	\$511.11	N.A.
<b>DISABILITY ASSISTANCE</b>					
Assistance Groups	16,023	15,532	3.2%	14,128	13.4%
Recipients	16,113	15,614	3.2%	14,220	13.3%
Net Payments	\$2,376,545	\$2,333,309	1.9%	\$2,026,360	17.3%
Medical Assistance	\$1,733,482	\$1,462,385	18.5%	\$2,817,958	-38.5%
<b>FNS BENEFITS</b>					
Assistance Groups	502,185	499,609	0.5%	489,804	2.5%
Persons	1,097,227	1,090,411	0.6%	1,072,753	2.3%
Total Coupons Issued	\$110,301,820	\$109,603,726	0.6%	\$107,495,300	2.6%
Average Per Recipient	\$100.53	\$100.52	0.0%	\$100.21	0.3%

# No of OWF Combined Assistance Groups During The Last 25 Months



# No of OWF Combined Recipients During The Last 25 Months





**TABLE 1  
OHIO WORKS FIRST COMBINED  
AUGUST 2007**

OHIO COUNTY	ASSISTANCE GROUP	RECIPIENTS	ADULTS	CHILDREN	ACTUAL EXPENDITURES		
					GROSS AMOUNT	CANCELLED AMOUNT	NET AMOUNT
<b>STATEWIDE</b>	<b>78,185</b>	<b>166,592</b>	<b>40,197</b>	<b>126,395</b>	<b>\$26,472,758.00</b>	<b>\$920,671.00</b>	<b>\$25,552,087.00</b>
ADAMS	134	212	2	210	\$39,056.00	\$1,082.00	\$37,974.00
ALLEN	425	679	49	630	\$129,307.00	\$2,472.00	\$126,835.00
ASHLAND	87	174	34	140	\$29,323.00	\$0.00	\$29,323.00
ASHTABULA	644	1,378	321	1,057	\$211,159.00	\$3,749.00	\$207,410.00
ATHENS	637	1,545	556	989	\$220,468.00	\$7,820.00	\$212,648.00
AUGLAIZE	69	98	2	96	\$19,715.00	\$916.00	\$18,799.00
BELMONT	305	599	124	475	\$95,604.00	\$3,866.00	\$91,738.00
BROWN	150	255	26	229	\$43,380.00	\$1,230.00	\$42,150.00
BUTLER	1,515	2,769	393	2,376	\$482,554.00	\$17,894.00	\$464,660.00
CARROLL	87	157	36	121	\$26,422.00	\$18.00	\$26,404.00
CHAMPAIGN	211	476	138	338	\$76,180.00	\$2,427.00	\$73,753.00
CLARK	1,311	2,801	710	2,091	\$450,733.00	\$14,532.00	\$436,201.00
CLERMONT	417	736	80	656	\$130,323.00	\$3,395.00	\$126,928.00
CLINTON	126	230	32	198	\$40,223.00	\$1,418.00	\$38,805.00
COLUMBIANA	413	726	93	633	\$127,815.00	\$4,038.00	\$123,777.00
COSHOCTON	219	447	135	312	\$67,636.00	\$2,206.00	\$65,430.00
CRAWFORD	149	304	70	234	\$47,965.00	\$1,399.00	\$46,566.00
CUYAHOGA	11,560	23,293	5,191	18,102	\$3,892,669.00	\$160,538.00	\$3,732,131.00
DARKE	152	325	88	237	\$51,952.00	\$1,757.00	\$50,195.00
DEFIANCE	139	298	72	226	\$48,998.00	\$1,925.00	\$47,073.00
DELAWARE	329	732	244	488	\$115,639.00	\$3,794.00	\$111,845.00
ERIE	237	434	37	397	\$73,695.00	\$826.00	\$72,869.00
FAIRFIELD	850	2,004	630	1,374	\$300,560.00	\$9,494.00	\$291,066.00
FAYETTE	130	243	41	202	\$39,948.00	\$3,489.00	\$36,459.00
FRANKLIN	11,514	26,075	6,583	19,492	\$3,971,206.00	\$176,783.00	\$3,794,423.00
FULTON	61	100	3	97	\$18,014.00	\$410.00	\$17,604.00
GALLIA	402	924	316	608	\$135,792.00	\$2,489.00	\$133,303.00
GEAUGA	68	111	10	101	\$21,037.00	\$245.00	\$20,792.00
GREENE	528	1,076	240	836	\$172,307.00	\$4,646.00	\$167,661.00

Source: GRP342RA Report from Management Information Services. Data includes ADC-Regular, ADC-Incapacitated, and Vendor Payments.



**TABLE 1  
OHIO WORKS FIRST COMBINED  
AUGUST 2007**

OHIO COUNTY	ASSISTANCE GROUP	RECIPIENTS	ADULTS	CHILDREN	ACTUAL EXPENDITURES		
					GROSS AMOUNT	CANCELLED AMOUNT	NET AMOUNT
<b>STATEWIDE</b>	<b>78,185</b>	<b>166,592</b>	<b>40,197</b>	<b>126,395</b>	<b>\$26,472,758.00</b>	<b>\$920,671.00</b>	<b>\$25,552,087.00</b>
GUERNSEY	164	280	38	242	\$49,392.00	\$1,561.00	\$47,831.00
HAMILTON	7,506	17,508	4,093	13,415	\$2,750,293.00	\$100,507.00	\$2,649,786.00
HANCOCK	104	145	0	145	\$29,913.00	\$0.00	\$29,913.00
HARDIN	72	114	5	109	\$20,614.00	\$1,812.00	\$18,802.00
HARRISON	97	211	54	157	\$30,158.00	\$655.00	\$29,503.00
HENRY	39	59	5	54	\$12,048.00	\$0.00	\$12,048.00
HIGHLAND	203	447	96	351	\$68,247.00	\$2,828.00	\$65,419.00
HOCKING	280	617	178	439	\$93,619.00	\$5,229.00	\$88,390.00
HOLMES	42	82	16	66	\$13,151.00	\$0.00	\$13,151.00
HURON	161	245	4	241	\$46,662.00	\$1,796.00	\$44,866.00
JACKSON	298	529	72	457	\$95,587.00	\$1,498.00	\$94,089.00
JEFFERSON	714	1,648	477	1,171	\$244,319.00	\$5,089.00	\$239,230.00
KNOX	276	607	187	420	\$91,057.00	\$1,792.00	\$89,265.00
LAKE	428	841	182	659	\$141,217.00	\$4,086.00	\$137,131.00
LAWRENCE	745	1,461	326	1,135	\$231,139.00	\$7,114.00	\$224,025.00
LICKING	609	1,289	336	953	\$198,642.00	\$9,198.00	\$189,444.00
LOGAN	178	361	87	274	\$57,871.00	\$1,014.00	\$56,857.00
LORAIN	1,921	4,137	927	3,210	\$657,271.00	\$21,771.00	\$635,500.00
LUCAS	5,809	13,121	3,647	9,474	\$1,989,769.00	\$85,995.00	\$1,903,774.00
MADISON	210	497	149	348	\$73,889.00	\$3,077.00	\$70,812.00
MAHONING	2,867	6,597	1,755	4,842	\$1,021,877.00	\$35,454.00	\$986,423.00
MARION	381	713	92	621	\$122,196.00	\$3,526.00	\$118,670.00
MEDINA	220	457	110	347	\$70,581.00	\$1,481.00	\$69,100.00
MEIGS	203	417	112	305	\$64,192.00	\$3,236.00	\$60,956.00
MERCER	64	132	38	94	\$20,604.00	\$927.00	\$19,677.00
MIAMI	308	576	105	471	\$89,845.00	\$2,079.00	\$87,766.00
MONROE	50	107	32	75	\$15,913.00	\$672.00	\$15,241.00
MONTGOMERY	5,111	10,437	2,465	7,972	\$1,674,220.00	\$39,682.00	\$1,634,538.00
MORGAN	83	144	20	124	\$23,179.00	\$1,145.00	\$22,034.00
MORROW	107	202	39	163	\$32,680.00	\$971.00	\$31,709.00

Source: GRP342RA Report from Management Information Services. Data includes ADC-Regular, ADC-Incapacitated, and Vendor Payments.

**TABLE 1  
OHIO WORKS FIRST COMBINED  
AUGUST 2007**

OHIO COUNTY	ASSISTANCE GROUP	RECIPIENTS	ADULTS	CHILDREN	ACTUAL EXPENDITURES		
					GROSS AMOUNT	CANCELLED AMOUNT	NET AMOUNT
<b>STATEWIDE</b>	<b>78,185</b>	<b>166,592</b>	<b>40,197</b>	<b>126,395</b>	<b>\$26,472,758.00</b>	<b>\$920,671.00</b>	<b>\$25,552,087.00</b>
MUSKINGUM	859	1,828	493	1,335	\$284,271.00	\$8,035.00	\$276,236.00
NOBLE	36	80	22	58	\$11,804.00	\$490.00	\$11,314.00
OTTAWA	128	294	66	228	\$42,599.00	\$1,565.00	\$41,034.00
PAULDING	95	239	79	160	\$33,153.00	\$695.00	\$32,458.00
PERRY	278	624	154	470	\$92,543.00	\$1,156.00	\$91,387.00
PICKAWAY	367	826	233	593	\$126,302.00	\$2,578.00	\$123,724.00
PIKE	345	739	182	557	\$118,670.00	\$2,233.00	\$116,437.00
PORTAGE	404	765	148	617	\$129,580.00	\$3,975.00	\$125,605.00
PREBLE	168	340	73	267	\$53,546.00	\$690.00	\$52,856.00
PUTNAM	29	44	2	42	\$8,134.00	\$0.00	\$8,134.00
RICHLAND	631	1,184	219	965	\$200,759.00	\$4,958.00	\$195,801.00
ROSS	655	1,397	340	1,057	\$225,574.00	\$4,410.00	\$221,164.00
SANDUSKY	201	368	39	329	\$62,658.00	\$843.00	\$61,815.00
SCIOTO	1,054	1,982	387	1,595	\$332,502.00	\$8,331.00	\$324,171.00
SENECA	166	328	53	275	\$56,082.00	\$1,071.00	\$55,011.00
SHELBY	143	255	26	229	\$44,955.00	\$2,347.00	\$42,608.00
STARK	2,774	6,108	1,726	4,382	\$917,947.00	\$24,490.00	\$893,457.00
SUMMIT	4,568	9,691	2,632	7,059	\$1,596,383.00	\$47,573.00	\$1,548,810.00
TRUMBULL	1,342	2,677	566	2,111	\$440,892.00	\$7,619.00	\$433,273.00
TUSCARAWAS	339	696	168	528	\$110,719.00	\$5,363.00	\$105,356.00
UNION	130	285	89	196	\$40,614.00	\$1,014.00	\$39,600.00
VAN WERT	54	83	3	80	\$15,180.00	\$1,288.00	\$13,892.00
VINTON	129	267	68	199	\$42,961.00	\$1,337.00	\$41,624.00
WARREN	210	350	43	307	\$65,521.00	\$1,151.00	\$64,370.00
WASHINGTON	138	203	3	200	\$38,714.00	\$1,726.00	\$36,988.00
WAYNE	392	850	272	578	\$129,533.00	\$3,893.00	\$125,640.00
WILLIAMS	168	428	153	275	\$55,249.00	\$1,289.00	\$53,960.00
WOOD	218	383	33	350	\$69,658.00	\$826.00	\$68,832.00
WYANDOT	45	96	22	74	\$16,430.00	\$672.00	\$15,758.00

Source: GRP342RA Report from Management Information Services. Data includes ADC-Regular, ADC-Incapacitated, and Vendor Payments.

**TABLE 1  
OHIO WORKS FIRST REGULAR  
AUGUST 2007**

OHIO COUNTY	ASSISTANCE GROUP	RECIPIENTS	ADULTS	CHILDREN	ACTUAL EXPENDITURES		
					GROSS AMOUNT	CANCELLED AMOUNT	NET AMOUNT
<b>STATEWIDE</b>	<b>75,251</b>	<b>154,690</b>	<b>34,825</b>	<b>119,865</b>	<b>\$25,156,013.00</b>	<b>\$870,227.00</b>	<b>\$24,285,786.00</b>
ADAMS	134	212	2	210	\$39,056.00	\$1,082.00	\$37,974.00
ALLEN	425	679	49	630	\$129,307.00	\$2,472.00	\$126,835.00
ASHLAND	86	170	32	138	\$29,152.00	\$0.00	\$29,152.00
ASHTABULA	610	1,233	257	976	\$197,224.00	\$3,749.00	\$193,475.00
ATHENS	540	1,188	377	811	\$179,711.00	\$5,853.00	\$173,858.00
AUGLAIZE	69	98	2	96	\$19,715.00	\$916.00	\$18,799.00
BELMONT	288	536	91	445	\$88,562.00	\$3,866.00	\$84,696.00
BROWN	150	255	26	229	\$43,380.00	\$1,230.00	\$42,150.00
BUTLER	1,515	2,769	393	2,376	\$482,554.00	\$17,894.00	\$464,660.00
CARROLL	85	145	32	113	\$25,792.00	\$18.00	\$25,774.00
CHAMPAIGN	200	436	117	319	\$69,974.00	\$2,427.00	\$67,547.00
CLARK	1,266	2,628	619	2,009	\$428,262.00	\$14,532.00	\$413,730.00
CLERMONT	414	724	74	650	\$129,320.00	\$2,888.00	\$126,432.00
CLINTON	126	230	32	198	\$40,223.00	\$1,418.00	\$38,805.00
COLUMBIANA	410	712	87	625	\$126,122.00	\$4,038.00	\$122,084.00
COSHOCTON	202	381	102	279	\$61,283.00	\$1,961.00	\$59,322.00
CRAWFORD	148	299	68	231	\$47,372.00	\$1,399.00	\$45,973.00
CUYAHOGA	11,317	22,345	4,741	17,604	\$3,780,612.00	\$157,091.00	\$3,623,521.00
DARKE	143	290	70	220	\$47,408.00	\$1,757.00	\$45,651.00
DEFIANCE	133	274	60	214	\$45,206.00	\$1,925.00	\$43,281.00
DELAWARE	299	613	193	420	\$102,912.00	\$3,233.00	\$99,679.00
ERIE	235	421	33	388	\$72,298.00	\$826.00	\$71,472.00
FAIRFIELD	762	1,632	458	1,174	\$258,945.00	\$8,480.00	\$250,465.00
FAYETTE	128	235	37	198	\$38,842.00	\$3,489.00	\$35,353.00
FRANKLIN	10,938	23,569	5,605	17,964	\$3,701,871.00	\$163,593.00	\$3,538,278.00
FULTON	61	100	3	97	\$18,014.00	\$410.00	\$17,604.00
GALLIA	359	760	231	529	\$117,029.00	\$2,489.00	\$114,540.00
GEAUGA	68	111	10	101	\$21,037.00	\$245.00	\$20,792.00
GREENE	514	1,020	211	809	\$168,107.00	\$4,530.00	\$163,577.00

Source: GRP342RA Report from Management Information Services. Data includes ADC-Regular, ADC-Incapacitated, and Vendor Payments.

**TABLE 1  
OHIO WORKS FIRST REGULAR  
AUGUST 2007**

OHIO COUNTY	ASSISTANCE GROUP	RECIPIENTS	ADULTS	CHILDREN	ACTUAL EXPENDITURES		
					GROSS AMOUNT	CANCELLED AMOUNT	NET AMOUNT
<b>STATEWIDE</b>	<b>75,251</b>	<b>154,690</b>	<b>34,825</b>	<b>119,865</b>	<b>\$25,156,013.00</b>	<b>\$870,227.00</b>	<b>\$24,285,786.00</b>
GUERNSEY	159	263	29	234	\$47,078.00	\$1,561.00	\$45,517.00
HAMILTON	7,358	16,872	3,807	13,065	\$2,678,945.00	\$98,713.00	\$2,580,232.00
HANCOCK	104	145	0	145	\$29,913.00	\$0.00	\$29,913.00
HARDIN	72	114	5	109	\$20,614.00	\$1,812.00	\$18,802.00
HARRISON	92	191	44	147	\$28,066.00	\$655.00	\$27,411.00
HENRY	39	59	5	54	\$12,048.00	\$0.00	\$12,048.00
HIGHLAND	197	421	85	336	\$66,164.00	\$2,418.00	\$63,746.00
HOCKING	259	533	137	396	\$85,460.00	\$5,229.00	\$80,231.00
HOLMES	41	79	14	65	\$12,808.00	\$0.00	\$12,808.00
HURON	161	245	4	241	\$46,662.00	\$1,796.00	\$44,866.00
JACKSON	293	512	62	450	\$92,919.00	\$1,498.00	\$91,421.00
JEFFERSON	657	1,408	366	1,042	\$218,622.00	\$3,836.00	\$214,786.00
KNOX	260	549	155	394	\$85,142.00	\$1,792.00	\$83,350.00
LAKE	410	771	153	618	\$131,766.00	\$3,750.00	\$128,016.00
LAWRENCE	710	1,332	259	1,073	\$217,041.00	\$5,656.00	\$211,385.00
LICKING	584	1,183	286	897	\$188,293.00	\$8,952.00	\$179,341.00
LOGAN	174	348	79	269	\$56,806.00	\$1,014.00	\$55,792.00
LORAIN	1,863	3,890	821	3,069	\$627,407.00	\$21,771.00	\$605,636.00
LUCAS	5,476	11,813	3,038	8,775	\$1,847,917.00	\$76,693.00	\$1,771,224.00
MADISON	193	421	114	307	\$65,979.00	\$3,077.00	\$62,902.00
MAHONING	2,778	6,225	1,581	4,644	\$980,707.00	\$34,451.00	\$946,256.00
MARION	375	686	82	604	\$118,819.00	\$3,526.00	\$115,293.00
MEDINA	210	415	90	325	\$67,260.00	\$1,481.00	\$65,779.00
MEIGS	189	367	84	283	\$60,000.00	\$1,863.00	\$58,137.00
MERCER	61	120	32	88	\$19,094.00	\$927.00	\$18,167.00
MIAMI	300	549	89	460	\$86,687.00	\$2,079.00	\$84,608.00
MONROE	47	95	26	69	\$14,900.00	\$672.00	\$14,228.00
MONTGOMERY	5,090	10,346	2,439	7,907	\$1,665,602.00	\$38,505.00	\$1,627,097.00
MORGAN	82	141	18	123	\$23,179.00	\$859.00	\$22,320.00
MORROW	105	195	35	160	\$32,456.00	\$490.00	\$31,966.00

Source: GRP342RA Report from Management Information Services. Data includes ADC-Regular, ADC-Incapacitated, and Vendor Payments.

**TABLE 1  
OHIO WORKS FIRST REGULAR  
AUGUST 2007**

OHIO COUNTY	ASSISTANCE GROUP	RECIPIENTS	ADULTS	CHILDREN	ACTUAL EXPENDITURES		
					GROSS AMOUNT	CANCELLED AMOUNT	NET AMOUNT
<b>STATEWIDE</b>	<b>75,251</b>	<b>154,690</b>	<b>34,825</b>	<b>119,865</b>	<b>\$25,156,013.00</b>	<b>\$870,227.00</b>	<b>\$24,285,786.00</b>
MUSKINGUM	800	1,591	375	1,216	\$257,874.00	\$7,625.00	\$250,249.00
NOBLE	35	74	20	54	\$11,166.00	\$490.00	\$10,676.00
OTTAWA	112	245	52	193	\$36,076.00	\$1,565.00	\$34,511.00
PAULDING	84	189	57	132	\$27,558.00	\$695.00	\$26,863.00
PERRY	252	518	102	416	\$80,687.00	\$746.00	\$79,941.00
PICKAWAY	355	783	209	574	\$121,141.00	\$2,578.00	\$118,563.00
PIKE	322	650	136	514	\$107,580.00	\$2,233.00	\$105,347.00
PORTAGE	400	749	140	609	\$127,627.00	\$3,975.00	\$123,652.00
PREBLE	164	322	65	257	\$51,539.00	\$690.00	\$50,849.00
PUTNAM	25	39	2	37	\$7,063.00	\$0.00	\$7,063.00
RICHLAND	620	1,141	197	944	\$197,612.00	\$4,958.00	\$192,654.00
ROSS	627	1,282	290	992	\$211,380.00	\$4,410.00	\$206,970.00
SANDUSKY	171	296	39	257	\$53,157.00	\$843.00	\$52,314.00
SCIOTO	1,011	1,821	303	1,518	\$314,090.00	\$8,331.00	\$305,759.00
SENECA	164	321	49	272	\$54,671.00	\$1,071.00	\$53,600.00
SHELBY	143	255	26	229	\$44,955.00	\$2,347.00	\$42,608.00
STARK	2,606	5,438	1,400	4,038	\$850,503.00	\$22,137.00	\$828,366.00
SUMMIT	4,362	8,835	2,229	6,606	\$1,495,967.00	\$43,990.00	\$1,451,977.00
TRUMBULL	1,297	2,498	481	2,017	\$419,795.00	\$5,874.00	\$413,921.00
TUSCARAWAS	319	602	132	470	\$99,713.00	\$3,851.00	\$95,862.00
UNION	119	237	67	170	\$37,114.00	\$1,014.00	\$36,100.00
VAN WERT	54	83	3	80	\$15,180.00	\$1,288.00	\$13,892.00
VINTON	124	246	58	188	\$40,649.00	\$1,337.00	\$39,312.00
WARREN	206	336	37	299	\$63,668.00	\$1,151.00	\$62,517.00
WASHINGTON	138	203	3	200	\$38,714.00	\$1,726.00	\$36,988.00
WAYNE	371	774	231	543	\$122,100.00	\$3,628.00	\$118,472.00
WILLIAMS	151	361	121	240	\$48,209.00	\$1,289.00	\$46,920.00
WOOD	211	357	31	326	\$67,183.00	\$826.00	\$66,357.00
WYANDOT	44	91	19	72	\$15,398.00	\$672.00	\$14,726.00

Source: GRP342RA Report from Management Information Services. Data includes ADC-Regular, ADC-Incapacitated, and Vendor Payments.

**TABLE 1  
OHIO WORKS FIRST UNEMPLOYED  
AUGUST 2007**

OHIO COUNTY	ASSISTANCE GROUP	RECIPIENTS	ADULTS	CHILDREN	ACTUAL EXPENDITURES		
					GROSS AMOUNT	CANCELLED AMOUNT	NET AMOUNT
<b>STATEWIDE</b>	<b>2,934</b>	<b>11,902</b>	<b>5,372</b>	<b>6,530</b>	<b>\$1,316,745.00</b>	<b>\$50,444.00</b>	<b>\$1,266,301.00</b>
ADAMS	0	0	0	0	\$0.00	\$0.00	\$0.00
ALLEN	0	0	0	0	\$0.00	\$0.00	\$0.00
ASHLAND	1	4	2	2	\$171.00	\$0.00	\$171.00
ASHTABULA	34	145	64	81	\$13,935.00	\$0.00	\$13,935.00
ATHENS	97	357	179	178	\$40,757.00	\$1,967.00	\$38,790.00
AUGLAIZE	0	0	0	0	\$0.00	\$0.00	\$0.00
BELMONT	17	63	33	30	\$7,042.00	\$0.00	\$7,042.00
BROWN	0	0	0	0	\$0.00	\$0.00	\$0.00
BUTLER	0	0	0	0	\$0.00	\$0.00	\$0.00
CARROLL	2	12	4	8	\$630.00	\$0.00	\$630.00
CHAMPAIGN	11	40	21	19	\$6,206.00	\$0.00	\$6,206.00
CLARK	45	173	91	82	\$22,471.00	\$0.00	\$22,471.00
CLERMONT	3	12	6	6	\$1,003.00	\$507.00	\$496.00
CLINTON	0	0	0	0	\$0.00	\$0.00	\$0.00
COLUMBIANA	3	14	6	8	\$1,693.00	\$0.00	\$1,693.00
COSHOCTON	17	66	33	33	\$6,353.00	\$245.00	\$6,108.00
CRAWFORD	1	5	2	3	\$593.00	\$0.00	\$593.00
CUYAHOGA	243	948	450	498	\$112,057.00	\$3,447.00	\$108,610.00
DARKE	9	35	18	17	\$4,544.00	\$0.00	\$4,544.00
DEFIANCE	6	24	12	12	\$3,792.00	\$0.00	\$3,792.00
DELAWARE	30	119	51	68	\$12,727.00	\$561.00	\$12,166.00
ERIE	2	13	4	9	\$1,397.00	\$0.00	\$1,397.00
FAIRFIELD	88	372	172	200	\$41,615.00	\$1,014.00	\$40,601.00
FAYETTE	2	8	4	4	\$1,106.00	\$0.00	\$1,106.00
FRANKLIN	576	2,506	978	1,528	\$269,335.00	\$13,190.00	\$256,145.00
FULTON	0	0	0	0	\$0.00	\$0.00	\$0.00
GALLIA	43	164	85	79	\$18,763.00	\$0.00	\$18,763.00
GEAUGA	0	0	0	0	\$0.00	\$0.00	\$0.00
GREENE	14	56	29	27	\$4,200.00	\$116.00	\$4,084.00

Source: GRP342RA Report from Management Information Services. Data includes ADC-Regular, ADC-Incapacitated, and Vendor Payments.

**TABLE 1  
OHIO WORKS FIRST UNEMPLOYED  
AUGUST 2007**

OHIO COUNTY	ASSISTANCE GROUP	RECIPIENTS	ADULTS	CHILDREN	ACTUAL EXPENDITURES		
					GROSS AMOUNT	CANCELLED AMOUNT	NET AMOUNT
<b>STATEWIDE</b>	<b>2,934</b>	<b>11,902</b>	<b>5,372</b>	<b>6,530</b>	<b>\$1,316,745.00</b>	<b>\$50,444.00</b>	<b>\$1,266,301.00</b>
GUERNSEY	5	17	9	8	\$2,314.00	\$0.00	\$2,314.00
HAMILTON	148	636	286	350	\$71,348.00	\$1,794.00	\$69,554.00
HANCOCK	0	0	0	0	\$0.00	\$0.00	\$0.00
HARDIN	0	0	0	0	\$0.00	\$0.00	\$0.00
HARRISON	5	20	10	10	\$2,092.00	\$0.00	\$2,092.00
HENRY	0	0	0	0	\$0.00	\$0.00	\$0.00
HIGHLAND	6	26	11	15	\$2,083.00	\$410.00	\$1,673.00
HOCKING	21	84	41	43	\$8,159.00	\$0.00	\$8,159.00
HOLMES	1	3	2	1	\$343.00	\$0.00	\$343.00
HURON	0	0	0	0	\$0.00	\$0.00	\$0.00
JACKSON	5	17	10	7	\$2,668.00	\$0.00	\$2,668.00
JEFFERSON	57	240	111	129	\$25,697.00	\$1,253.00	\$24,444.00
KNOX	16	58	32	26	\$5,915.00	\$0.00	\$5,915.00
LAKE	18	70	29	41	\$9,451.00	\$336.00	\$9,115.00
LAWRENCE	35	129	67	62	\$14,098.00	\$1,458.00	\$12,640.00
LICKING	25	106	50	56	\$10,349.00	\$246.00	\$10,103.00
LOGAN	4	13	8	5	\$1,065.00	\$0.00	\$1,065.00
LORAIN	58	247	106	141	\$29,864.00	\$0.00	\$29,864.00
LUCAS	333	1,308	609	699	\$141,852.00	\$9,302.00	\$132,550.00
MADISON	17	76	35	41	\$7,910.00	\$0.00	\$7,910.00
MAHONING	89	372	174	198	\$41,170.00	\$1,003.00	\$40,167.00
MARION	6	27	10	17	\$3,377.00	\$0.00	\$3,377.00
MEDINA	10	42	20	22	\$3,321.00	\$0.00	\$3,321.00
MEIGS	14	50	28	22	\$4,192.00	\$1,373.00	\$2,819.00
MERCER	3	12	6	6	\$1,510.00	\$0.00	\$1,510.00
MIAMI	8	27	16	11	\$3,158.00	\$0.00	\$3,158.00
MONROE	3	12	6	6	\$1,013.00	\$0.00	\$1,013.00
MONTGOMERY	21	91	26	65	\$8,618.00	\$1,177.00	\$7,441.00
MORGAN	1	3	2	1	\$0.00	\$286.00	-\$286.00
MORROW	2	7	4	3	\$224.00	\$481.00	-\$257.00

Source: GRP342RA Report from Management Information Services. Data includes ADC-Regular, ADC-Incapacitated, and Vendor Payments.

**TABLE 1  
OHIO WORKS FIRST UNEMPLOYED  
AUGUST 2007**

OHIO COUNTY	ASSISTANCE GROUP	RECIPIENTS	ADULTS	CHILDREN	ACTUAL EXPENDITURES		
					GROSS AMOUNT	CANCELLED AMOUNT	NET AMOUNT
<b>STATEWIDE</b>	<b>2,934</b>	<b>11,902</b>	<b>5,372</b>	<b>6,530</b>	<b>\$1,316,745.00</b>	<b>\$50,444.00</b>	<b>\$1,266,301.00</b>
MUSKINGUM	59	237	118	119	\$26,397.00	\$410.00	\$25,987.00
NOBLE	1	6	2	4	\$638.00	\$0.00	\$638.00
OTTAWA	16	49	14	35	\$6,523.00	\$0.00	\$6,523.00
PAULDING	11	50	22	28	\$5,595.00	\$0.00	\$5,595.00
PERRY	26	106	52	54	\$11,856.00	\$410.00	\$11,446.00
PICKAWAY	12	43	24	19	\$5,161.00	\$0.00	\$5,161.00
PIKE	23	89	46	43	\$11,090.00	\$0.00	\$11,090.00
PORTAGE	4	16	8	8	\$1,953.00	\$0.00	\$1,953.00
PREBLE	4	18	8	10	\$2,007.00	\$0.00	\$2,007.00
PUTNAM	4	5	0	5	\$1,071.00	\$0.00	\$1,071.00
RICHLAND	11	43	22	21	\$3,147.00	\$0.00	\$3,147.00
ROSS	28	115	50	65	\$14,194.00	\$0.00	\$14,194.00
SANDUSKY	30	72	0	72	\$9,501.00	\$0.00	\$9,501.00
SCIOTO	43	161	84	77	\$18,412.00	\$0.00	\$18,412.00
SENECA	2	7	4	3	\$1,411.00	\$0.00	\$1,411.00
SHELBY	0	0	0	0	\$0.00	\$0.00	\$0.00
STARK	168	670	326	344	\$67,444.00	\$2,353.00	\$65,091.00
SUMMIT	206	856	403	453	\$100,416.00	\$3,583.00	\$96,833.00
TRUMBULL	45	179	85	94	\$21,097.00	\$1,745.00	\$19,352.00
TUSCARAWAS	20	94	36	58	\$11,006.00	\$1,512.00	\$9,494.00
UNION	11	48	22	26	\$3,500.00	\$0.00	\$3,500.00
VAN WERT	0	0	0	0	\$0.00	\$0.00	\$0.00
VINTON	5	21	10	11	\$2,312.00	\$0.00	\$2,312.00
WARREN	4	14	6	8	\$1,853.00	\$0.00	\$1,853.00
WASHINGTON	0	0	0	0	\$0.00	\$0.00	\$0.00
WAYNE	21	76	41	35	\$7,433.00	\$265.00	\$7,168.00
WILLIAMS	17	67	32	35	\$7,040.00	\$0.00	\$7,040.00
WOOD	7	26	2	24	\$2,475.00	\$0.00	\$2,475.00
WYANDOT	1	5	3	2	\$1,032.00	\$0.00	\$1,032.00

Source: GRP342RA Report from Management Information Services. Data includes ADC-Regular, ADC-Incapacitated, and Vendor Payments.



**TABLE 2**  
**TITLE IV-E FOSTER CARE AND ADOPTION ASSISTANCE**  
**DATA NOT AVAILABLE FOR AUGUST 2007**

OHIO COUNTY	FOSTER CARE						ADOPTION ASSISTANCE		TOTAL FOSTER CARE AND ADOPTION ASSISTANCE	
	FOSTER FAMILY HOMES		CHILD CARE INSTITUTIONS		HOMES & INSTITUTIONS		CHILDREN	GROSS AMOUNT	CHILDREN	GROSS AMOUNT
	CHILDREN	GROSS AMOUNT	CHILDREN	GROSS AMOUNT	CHILDREN	GROSS AMOUNT				
STATEWIDE	0	\$0.00	0	\$0.00	0	\$0.00	0	\$0.00	0	\$0.00
ADAMS					0	\$0.00			0	\$0.00
ALLEN					0	\$0.00			0	\$0.00
ASHLAND					0	\$0.00			0	\$0.00
ASHTABULA					0	\$0.00			0	\$0.00
ATHENS					0	\$0.00			0	\$0.00
AUGLAIZE					0	\$0.00			0	\$0.00
BELMONT					0	\$0.00			0	\$0.00
BROWN					0	\$0.00			0	\$0.00
BUTLER					0	\$0.00			0	\$0.00
CARROLL					0	\$0.00			0	\$0.00
CHAMPAIGN					0	\$0.00			0	\$0.00
CLARK					0	\$0.00			0	\$0.00
CLERMONT					0	\$0.00			0	\$0.00
CLINTON					0	\$0.00			0	\$0.00
COLUMBIANA					0	\$0.00			0	\$0.00
COSHOCTON					0	\$0.00			0	\$0.00
CRAWFORD					0	\$0.00			0	\$0.00
CUYAHOGA					0	\$0.00			0	\$0.00
DARKE					0	\$0.00			0	\$0.00
DEFIANCE					0	\$0.00			0	\$0.00
DELAWARE					0	\$0.00			0	\$0.00
ERIE					0	\$0.00			0	\$0.00
FAIRFIELD					0	\$0.00			0	\$0.00
FAYETTE					0	\$0.00			0	\$0.00
FRANKLIN					0	\$0.00			0	\$0.00
FULTON					0	\$0.00			0	\$0.00
GALLIA					0	\$0.00			0	\$0.00
GEAUGA					0	\$0.00			0	\$0.00
GREENE					0	\$0.00			0	\$0.00

SOURCE: GBS003RB Report from Management Information Services. Federal funds only.

**TABLE 2**  
**TITLE IV-E FOSTER CARE AND ADOPTION ASSISTANCE**  
**DATA NOT AVAILABLE FOR AUGUST 2007**

OHIO COUNTY	FOSTER CARE						ADOPTION ASSISTANCE		TOTAL FOSTER CARE AND ADOPTION ASSISTANCE	
	FOSTER FAMILY HOMES		CHILD CARE INSTITUTIONS		HOMES & INSTITUTIONS		CHILDREN	GROSS AMOUNT	CHILDREN	GROSS AMOUNT
	CHILDREN	GROSS AMOUNT	CHILDREN	GROSS AMOUNT	CHILDREN	GROSS AMOUNT				
STATEWIDE	0	\$0.00	0	\$0.00	0	\$0.00	0	\$0.00	0	\$0.00
GUERNSEY					0	\$0.00			0	\$0.00
HAMILTON					0	\$0.00			0	\$0.00
HANCOCK					0	\$0.00			0	\$0.00
HARDIN					0	\$0.00			0	\$0.00
HARRISON					0	\$0.00			0	\$0.00
HENRY					0	\$0.00			0	\$0.00
HIGHLAND					0	\$0.00			0	\$0.00
HOCKING					0	\$0.00			0	\$0.00
HOLMES					0	\$0.00			0	\$0.00
HURON					0	\$0.00			0	\$0.00
JACKSON					0	\$0.00			0	\$0.00
JEFFERSON					0	\$0.00			0	\$0.00
KNOX					0	\$0.00			0	\$0.00
LAKE					0	\$0.00			0	\$0.00
LAWRENCE					0	\$0.00			0	\$0.00
LICKING					0	\$0.00			0	\$0.00
LOGAN					0	\$0.00			0	\$0.00
LORAIN					0	\$0.00			0	\$0.00
LUCAS					0	\$0.00			0	\$0.00
MADISON					0	\$0.00			0	\$0.00
MAHONING					0	\$0.00			0	\$0.00
MARION					0	\$0.00			0	\$0.00
MEDINA					0	\$0.00			0	\$0.00
MEIGS					0	\$0.00			0	\$0.00
MERCER					0	\$0.00			0	\$0.00
MIAMI					0	\$0.00			0	\$0.00
MONROE					0	\$0.00			0	\$0.00
MONTGOMERY					0	\$0.00			0	\$0.00
MORGAN					0	\$0.00			0	\$0.00
MORROW					0	\$0.00			0	\$0.00

SOURCE: GBS003RB Report from Management Information Services. Federal funds only.

**TABLE 2**  
**TITLE IV-E FOSTER CARE AND ADOPTION ASSISTANCE**  
**DATA NOT AVAILABLE FOR AUGUST 2007**

OHIO COUNTY	FOSTER CARE						ADOPTION ASSISTANCE		TOTAL FOSTER CARE AND ADOPTION ASSISTANCE	
	FOSTER FAMILY HOMES		CHILD CARE INSTITUTIONS		HOMES & INSTITUTIONS		CHILDREN	GROSS AMOUNT	CHILDREN	GROSS AMOUNT
	CHILDREN	GROSS AMOUNT	CHILDREN	GROSS AMOUNT	CHILDREN	GROSS AMOUNT				
STATEWIDE	0	\$0.00	0	\$0.00	0	\$0.00	0	\$0.00	0	\$0.00
MUSKINGUM					0	\$0.00			0	\$0.00
NOBLE					0	\$0.00			0	\$0.00
OTTAWA					0	\$0.00			0	\$0.00
PAULDING					0	\$0.00			0	\$0.00
PERRY					0	\$0.00			0	\$0.00
PICKAWAY					0	\$0.00			0	\$0.00
PIKE					0	\$0.00			0	\$0.00
PORTAGE					0	\$0.00			0	\$0.00
PREBLE					0	\$0.00			0	\$0.00
PUTNAM					0	\$0.00			0	\$0.00
RICHLAND					0	\$0.00			0	\$0.00
ROSS					0	\$0.00			0	\$0.00
SANDUSKY					0	\$0.00			0	\$0.00
SCIOTO					0	\$0.00			0	\$0.00
SENECA					0	\$0.00			0	\$0.00
SHELBY					0	\$0.00			0	\$0.00
STARK					0	\$0.00			0	\$0.00
SUMMIT					0	\$0.00			0	\$0.00
TRUMBULL					0	\$0.00			0	\$0.00
TUSCARAWAS					0	\$0.00			0	\$0.00
UNION					0	\$0.00			0	\$0.00
VAN WERT					0	\$0.00			0	\$0.00
VINTON					0	\$0.00			0	\$0.00
WARREN					0	\$0.00			0	\$0.00
WASHINGTON					0	\$0.00			0	\$0.00
WAYNE					0	\$0.00			0	\$0.00
WILLIAMS					0	\$0.00			0	\$0.00
WOOD					0	\$0.00			0	\$0.00
WYANDOT					0	\$0.00			0	\$0.00

SOURCE: GBS003RB Report from Management Information Services. Federal funds only.





**TABLE 3  
DISABILITY ASSISTANCE (DA)  
AUGUST 2007**

OHIO COUNTY	CASH ASSISTANCE							MEDICAL ASSISTANCE	
	ASSISTANCE GROUPS	RECIPIENTS	ADULTS	CHILDREN	ACTUAL EXPENDITURES			UNDUPLICATED RECIPIENTS	ACTUAL AMOUNT PAID
					GROSS AMOUNT	CANCELLED AMOUNT	NET AMOUNT		
<b>STATEWIDE</b>	<b>16,023</b>	<b>16,113</b>	<b>16,113</b>	<b>0</b>	<b>\$2,471,625.00</b>	<b>\$95,080.00</b>	<b>\$2,376,545.00</b>	<b>3,047</b>	<b>\$1,733,482.15</b>
ADAMS	108	111	111	0	\$16,479.00	\$0.00	\$16,479.00	19	\$8,238.99
ALLEN	132	132	132	0	\$21,979.00	\$460.00	\$21,519.00	11	\$9,155.13
ASHLAND	36	37	37	0	\$5,912.00	\$0.00	\$5,912.00	13	\$7,551.03
ASHTABULA	316	317	317	0	\$60,149.00	\$805.00	\$59,344.00	22	\$8,262.46
ATHENS	295	299	299	0	\$37,210.00	\$1,150.00	\$36,060.00	16	\$6,526.87
AUGLAIZE	28	28	28	0	\$3,565.00	\$0.00	\$3,565.00	8	\$2,916.04
BELMONT	154	157	157	0	\$21,350.00	\$805.00	\$20,545.00	23	\$12,398.05
BROWN	105	108	108	0	\$23,710.00	\$338.00	\$23,372.00	9	\$4,058.83
BUTLER	458	458	458	0	\$64,205.00	\$2,990.00	\$61,215.00	49	\$30,640.86
CARROLL	29	29	29	0	\$4,027.00	\$0.00	\$4,027.00	4	\$1,215.22
CHAMPAIGN	39	39	39	0	\$4,224.00	\$579.00	\$3,645.00	10	\$4,554.74
CLARK	406	409	409	0	\$58,288.00	\$2,244.00	\$56,044.00	65	\$46,690.64
CLERMONT	235	236	236	0	\$39,632.00	\$805.00	\$38,827.00	17	\$12,555.95
CLINTON	81	82	82	0	\$13,530.00	\$115.00	\$13,415.00	1	\$1,249.52
COLUMBIANA	138	138	138	0	\$24,975.00	\$976.00	\$23,999.00	33	\$21,406.30
COSHOCTON	119	119	119	0	\$16,540.00	\$0.00	\$16,540.00	4	\$2,703.04
CRAWFORD	56	56	56	0	\$7,687.00	\$0.00	\$7,687.00	10	\$12,456.82
CUYAHOGA	1,065	1,070	1,070	0	\$174,531.00	\$8,488.00	\$166,043.00	609	\$269,491.92
DARKE	35	36	36	0	\$5,431.00	\$0.00	\$5,431.00	4	\$2,458.64
DEFIANCE	36	36	36	0	\$6,546.00	\$345.00	\$6,201.00	8	\$4,098.17
DELAWARE	96	97	97	0	\$13,980.00	\$805.00	\$13,175.00	14	\$6,803.87
ERIE	105	105	105	0	\$13,807.00	\$2,094.00	\$11,713.00	13	\$6,327.16
FAIRFIELD	194	194	194	0	\$25,450.00	\$575.00	\$24,875.00	20	\$17,305.21
FAYETTE	49	49	49	0	\$6,939.00	\$115.00	\$6,824.00	16	\$9,664.33
FRANKLIN	1,275	1,283	1,283	0	\$201,456.00	\$10,195.00	\$191,261.00	250	\$171,825.87
FULTON	45	45	45	0	\$5,616.00	\$0.00	\$5,616.00	5	\$4,418.11
GALLIA	89	90	90	0	\$13,844.00	\$1,035.00	\$12,809.00	47	\$27,533.31
GEAUGA	29	29	29	0	\$3,195.00	\$115.00	\$3,080.00	1	\$144.32
GREENE	190	190	190	0	\$24,535.00	\$1,250.00	\$23,285.00	34	\$21,776.32

\*SOURCE: GRP342RA Report from Management Information Services and BOMC 9260-R001 Report from Medicaid Management Information Services.

**TABLE 3  
DISABILITY ASSISTANCE (DA)  
AUGUST 2007**

OHIO COUNTY	CASH ASSISTANCE							MEDICAL ASSISTANCE	
	ASSISTANCE GROUPS	RECIPIENTS	ADULTS	CHILDREN	ACTUAL EXPENDITURES			UNDUPLICATED RECIPIENTS	ACTUAL AMOUNT PAID
					GROSS AMOUNT	CANCELLED AMOUNT	NET AMOUNT		
<b>STATEWIDE</b>	<b>16,023</b>	<b>16,113</b>	<b>16,113</b>	<b>0</b>	<b>\$2,471,625.00</b>	<b>\$95,080.00</b>	<b>\$2,376,545.00</b>	<b>3,047</b>	<b>\$1,733,482.15</b>
GUERNSEY	151	152	152	0	\$21,249.00	\$115.00	\$21,134.00	14	\$7,141.27
HAMILTON	751	751	751	0	\$118,881.00	\$11,153.00	\$107,728.00	90	\$59,017.73
HANCOCK	85	85	85	0	\$12,059.00	\$230.00	\$11,829.00	9	\$4,652.66
HARDIN	47	47	47	0	\$8,937.00	\$0.00	\$8,937.00	11	\$5,465.52
HARRISON	61	61	61	0	\$8,518.00	\$115.00	\$8,403.00	5	\$778.95
HENRY	7	7	7	0	\$805.00	\$115.00	\$690.00	2	\$827.84
HIGHLAND	120	120	120	0	\$16,571.00	\$690.00	\$15,881.00	16	\$8,634.53
HOCKING	70	72	72	0	\$9,870.00	\$0.00	\$9,870.00	8	\$4,640.61
HOLMES	32	32	32	0	\$5,276.00	\$115.00	\$5,161.00	1	\$781.63
HURON	67	68	68	0	\$9,218.00	\$230.00	\$8,988.00	5	\$3,065.38
JACKSON	128	129	129	0	\$17,080.00	\$230.00	\$16,850.00	27	\$17,477.83
JEFFERSON	191	191	191	0	\$29,615.00	\$460.00	\$29,155.00	33	\$16,001.55
KNOX	127	127	127	0	\$22,038.00	\$460.00	\$21,578.00	12	\$8,848.28
LAKE	148	148	148	0	\$24,631.00	\$230.00	\$24,401.00	28	\$14,204.58
LAWRENCE	82	82	82	0	\$14,780.00	\$230.00	\$14,550.00	26	\$15,509.21
LICKING	293	295	295	0	\$50,785.00	\$1,935.00	\$48,850.00	20	\$15,734.14
LOGAN	77	79	79	0	\$13,194.00	\$211.00	\$12,983.00	15	\$5,280.31
LORAIN	399	401	401	0	\$58,545.00	\$1,620.00	\$56,925.00	57	\$34,290.37
LUCAS	1,127	1,130	1,130	0	\$184,032.00	\$7,470.00	\$176,562.00	199	\$94,702.36
MADISON	31	31	31	0	\$4,735.00	\$715.00	\$4,020.00	13	\$11,080.75
MAHONING	280	280	280	0	\$50,810.00	\$1,696.00	\$49,114.00	120	\$79,732.20
MARION	187	191	191	0	\$26,367.00	\$1,866.00	\$24,501.00	9	\$11,462.13
MEDINA	83	85	85	0	\$10,920.00	\$345.00	\$10,575.00	16	\$6,962.11
MEIGS	80	80	80	0	\$9,347.00	\$115.00	\$9,232.00	28	\$10,056.40
MERCER	36	36	36	0	\$4,826.00	\$0.00	\$4,826.00	5	\$1,318.25
MIAMI	78	79	79	0	\$11,638.00	\$230.00	\$11,408.00	10	\$5,955.97
MONROE	30	30	30	0	\$4,236.00	\$0.00	\$4,236.00	11	\$3,668.88
MONTGOMERY	918	923	923	0	\$137,284.00	\$6,386.00	\$130,898.00	209	\$126,633.39
MORGAN	66	68	68	0	\$9,756.00	\$426.00	\$9,330.00	10	\$7,053.98
MORROW	74	74	74	0	\$13,726.00	\$230.00	\$13,496.00	10	\$6,810.94

\*SOURCE: GRP342RA Report from Management Information Services and BOMC 9260-R001 Report from Medicaid Management Information Services.

**TABLE 3  
DISABILITY ASSISTANCE (DA)  
AUGUST 2007**

OHIO COUNTY	CASH ASSISTANCE							MEDICAL ASSISTANCE	
	ASSISTANCE GROUPS	RECIPIENTS	ADULTS	CHILDREN	ACTUAL EXPENDITURES			UNDUPLICATED RECIPIENTS	ACTUAL AMOUNT PAID
					GROSS AMOUNT	CANCELLED AMOUNT	NET AMOUNT		
<b>STATEWIDE</b>	<b>16,023</b>	<b>16,113</b>	<b>16,113</b>	<b>0</b>	<b>\$2,471,625.00</b>	<b>\$95,080.00</b>	<b>\$2,376,545.00</b>	<b>3,047</b>	<b>\$1,733,482.15</b>
MUSKINGUM	410	415	415	0	\$56,652.00	\$3,344.00	\$53,308.00	14	\$6,652.45
NOBLE	18	18	18	0	\$2,803.00	\$115.00	\$2,688.00	4	\$1,862.56
OTTAWA	47	48	48	0	\$5,367.00	\$89.00	\$5,278.00	10	\$4,542.83
PAULDING	29	31	31	0	\$4,845.00	\$0.00	\$4,845.00	2	\$472.20
PERRY	115	117	117	0	\$13,301.00	\$956.00	\$12,345.00	16	\$7,458.95
PICKAWAY	89	91	91	0	\$13,587.00	\$345.00	\$13,242.00	12	\$8,902.39
PIKE	77	77	77	0	\$10,891.00	\$115.00	\$10,776.00	28	\$11,294.08
PORTAGE	119	119	119	0	\$16,823.00	\$460.00	\$16,363.00	22	\$12,167.25
PREBLE	54	55	55	0	\$7,069.00	\$115.00	\$6,954.00	9	\$10,162.16
PUTNAM	9	9	9	0	\$1,035.00	\$0.00	\$1,035.00	4	\$2,617.96
RICHLAND	325	326	326	0	\$44,224.00	\$1,312.00	\$42,912.00	14	\$8,241.03
ROSS	169	170	170	0	\$23,637.00	\$1,004.00	\$22,633.00	41	\$24,373.84
SANDUSKY	102	103	103	0	\$15,677.00	\$230.00	\$15,447.00	8	\$1,484.13
SCIOTO	299	300	300	0	\$62,845.00	\$1,526.00	\$61,319.00	38	\$24,866.82
SENECA	81	81	81	0	\$9,604.00	\$115.00	\$9,489.00	16	\$9,248.16
SHELBY	41	41	41	0	\$7,286.00	\$0.00	\$7,286.00	10	\$4,435.69
STARK	505	505	505	0	\$74,186.00	\$1,906.00	\$72,280.00	73	\$47,840.94
SUMMIT	532	532	532	0	\$94,402.00	\$1,840.00	\$92,562.00	268	\$156,688.18
TRUMBULL	360	360	360	0	\$53,291.00	\$2,914.00	\$50,377.00	35	\$18,651.07
TUSCARAWAS	130	131	131	0	\$19,729.00	\$1,104.00	\$18,625.00	12	\$7,552.85
UNION	33	33	33	0	\$3,761.00	\$0.00	\$3,761.00	4	\$3,996.21
VAN WERT	31	32	32	0	\$4,135.00	\$0.00	\$4,135.00	3	\$1,314.45
VINTON	64	65	65	0	\$11,152.00	\$230.00	\$10,922.00	10	\$12,347.95
WARREN	90	92	92	0	\$12,515.00	\$460.00	\$12,055.00	9	\$6,810.75
WASHINGTON	153	153	153	0	\$21,449.00	\$877.00	\$20,572.00	10	\$5,499.25
WAYNE	240	241	241	0	\$34,861.00	\$996.00	\$33,865.00	10	\$6,931.38
WILLIAMS	49	49	49	0	\$5,958.00	\$895.00	\$5,063.00	3	\$980.12
WOOD	61	63	63	0	\$7,901.00	\$230.00	\$7,671.00	3	\$553.34
WYANDOT	22	23	23	0	\$4,118.00	\$0.00	\$4,118.00	5	\$3,315.69
UNKNOWN									\$0.00

\*SOURCE: GRP342RA Report from Management Information Services and BOMC 9260-R001 Report from Medicaid Management Information Services.



**TABLE 3-A  
DA PAYMENTS FOR MEDICAL SERVICES  
AUGUST 2007**

CATEGORY OF SERVICES	DISABILITY ASSISTANCE			
	PAYMENTS	CLAIM FREQUENCY	DUPLICATED RECIPIENTS	PERCENT OF TOTAL
ADVANCED PRACTICAL NURSE SVCS.	\$2,757.88	68	61	0.2%
AMBULANCE SERVICES	\$0.00	0	0	0.0%
AMBULATORY SURGERY	\$3,988.20	10	9	0.2%
CHIROPRACTER SERVICES	\$0.00	0	0	0.0%
CLINIC	\$30,307.24	369	112	1.7%
DENTAL SERVICES	\$3,028.93	38	30	0.2%
EPSDT	\$0.00	0	0	0.0%
FAMILY PLANNING	\$66.87	1	1	0.0%
FEDERALLY QUALIFIED HEALTH CTR	\$0.00	0	0	0.0%
HEALTH MAINTENANCE ORGANIZATION	\$0.00	0	0	0.0%
HOME HEALTH SERVICES	\$0.00	0	0	0.0%
INDEPENDENT LABORATORY	\$17,568.07	287	198	1.0%
INPATIENT HOSPITAL	(\$93.78)	-4	2	-0.0%
ICF	\$0.00	0	0	0.0%
MIDWIFERY SERVICES	\$0.00	0	0	0.0%
OPTOMETRIC SERVICES	\$0.00	0	0	0.0%
OUTPATIENT HEALTH SERVICES	\$0.00	0	0	0.0%
PASSPORT WAIVER III	\$0.00	0	0	0.0%
OUTPATIENT HOSPITAL GENERAL	\$0.00	0	0	0.0%
PHYSICAL THERAPY SERVICES	\$0.00	0	0	0.0%
PHYSICIAN SERVICES	\$351,548.45	4,798	1,821	20.3%
PHYSIOLOGICAL LABORATORY	\$2,174.87	7	8	0.1%
PODIATRISTS THERAPY	\$6,821.32	107	80	0.4%
PRESCRIBED DRUGS	\$1,277,020.57	20,614	2,862	73.7%
PRIVATE DUTY NURSING SERVICES	\$0.00	0	0	0.0%
PSYCHOLOGY SERVICES	\$0.00	0	0	0.0%
RURAL HEALTH SERVICES	\$0.00	0	0	0.0%
SNF	\$0.00	0	0	0.0%
SUPPLIES AND MEDICAL EQUIPMENT	\$35,236.99	663	327	2.0%
WAIVERED SERVICES	\$3,056.54	30	28	0.2%
OTHER	\$0.00	0	0	0.0%
<b>STATEWIDE TOTAL</b>	<b>\$1,733,482.15</b>	<b>26,988</b>	<b>5,539</b>	<b>100.00%</b>

SOURCE: BOMC 9260 Report from Medicaid Management Information Services.

NOTE: Recipients are unduplicated within Category of Services, however, the Statewide Total represents a duplicated count.





**TABLE 5  
FOOD AND NUTRITION BENEFITS  
AUGUST 2007**

OHIO COUNTY	PERSONS					ASSISTANCE GROUPS			TOTAL COUPONS ISSUED
	PUBLIC ASSISTANCE	NON-PUBLIC ASSISTANCE	TOTAL	AVERAGE ISSUANCE	% CHANGE PREV. MO.	PUBLIC ASSISTANCE	NON-PUBLIC ASSISTANCE	TOTAL	
<b>STATEWIDE</b>	<b>248,304</b>	<b>848,923</b>	<b>1,097,227</b>	<b>\$101</b>	<b>0.6%</b>	<b>180,647</b>	<b>321,538</b>	<b>502,185</b>	<b>\$110,301,820</b>
ADAMS	1,188	3,569	4,757	\$93	0.3%	862	1,201	2,063	\$444,133
ALLEN	1,932	7,333	9,265	\$103	-1.6%	1,497	2,472	3,969	\$950,318
ASHLAND	478	2,541	3,019	\$97	-2.2%	363	899	1,262	\$293,479
ASHTABULA	3,407	9,153	12,560	\$97	0.6%	2,474	3,315	5,789	\$1,218,958
ATHENS	2,216	5,063	7,279	\$94	2.2%	1,648	1,928	3,576	\$684,412
AUGLAIZE	329	1,763	2,092	\$96	-0.3%	290	616	906	\$199,950
BELMONT	1,920	4,978	6,898	\$89	-0.9%	1,452	1,815	3,267	\$611,373
BROWN	697	2,773	3,470	\$95	1.6%	551	956	1,507	\$327,920
BUTLER	5,505	21,447	26,952	\$105	0.9%	4,255	7,698	11,953	\$2,817,465
CARROLL	346	1,863	2,209	\$94	-0.4%	275	647	922	\$206,864
CHAMPAIGN	671	2,299	2,970	\$100	5.3%	467	785	1,252	\$297,841
CLARK	3,604	14,091	17,695	\$101	1.9%	2,875	5,239	8,114	\$1,781,558
CLERMONT	2,172	8,960	11,132	\$99	0.9%	1,662	3,099	4,761	\$1,105,292
CLINTON	673	2,592	3,265	\$97	1.3%	537	914	1,451	\$316,560
COLUMBIANA	2,625	9,451	12,076	\$96	-1.3%	1,992	3,288	5,280	\$1,158,010
COSHOCTON	746	3,342	4,088	\$94	-3.7%	585	1,229	1,814	\$383,834
CRAWFORD	846	3,647	4,493	\$102	1.0%	678	1,332	2,010	\$456,733
CUYAHOGA	26,756	154,008	180,764	\$102	0.3%	17,005	70,280	87,285	\$18,461,752
DARKE	508	1,788	2,296	\$92	-2.0%	383	633	1,016	\$211,458
DEFIANCE	525	2,285	2,810	\$95	-2.2%	386	774	1,160	\$265,642
DELAWARE	1,151	3,319	4,470	\$99	2.4%	821	1,240	2,061	\$441,606
ERIE	1,147	4,648	5,795	\$101	0.3%	921	1,746	2,667	\$586,264
FAIRFIELD	2,036	8,469	10,505	\$99	1.9%	1,560	3,072	4,632	\$1,039,722
FAYETTE	590	2,118	2,708	\$102	-0.1%	475	753	1,228	\$275,185
FRANKLIN	29,351	98,777	128,128	\$106	1.2%	20,973	34,682	55,655	\$13,519,910
FULTON	363	1,785	2,148	\$93	1.9%	274	612	886	\$198,936
GALLIA	1,717	3,374	5,091	\$95	0.0%	1,210	1,196	2,406	\$484,270
GEAUGA	378	1,298	1,676	\$93	-0.7%	307	480	787	\$155,543
GREENE	1,933	6,549	8,482	\$102	1.9%	1,449	2,508	3,957	\$862,353

Source: CRIS-E GRP304RA and GRP 304RC Reports from Management Information Services. Cuyahoga County data also comes from the GRP 342 RA.

**TABLE 5  
FOOD AND NUTRITION BENEFITS  
AUGUST 2007**

OHIO COUNTY	PERSONS					ASSISTANCE GROUPS			TOTAL COUPONS ISSUED
	PUBLIC ASSISTANCE	NON-PUBLIC ASSISTANCE	TOTAL	AVERAGE ISSUANCE	% CHANGE PREV. MO.	PUBLIC ASSISTANCE	NON-PUBLIC ASSISTANCE	TOTAL	
<b>STATEWIDE</b>	<b>248,304</b>	<b>848,923</b>	<b>1,097,227</b>	<b>\$101</b>	<b>0.6%</b>	<b>180,647</b>	<b>321,538</b>	<b>502,185</b>	<b>\$110,301,820</b>
GUERNSEY	1,229	4,680	5,909	\$94	1.7%	1,000	1,695	2,695	\$558,119
HAMILTON	17,758	56,955	74,713	\$106	0.3%	13,052	20,577	33,629	\$7,902,912
HANCOCK	797	3,449	4,246	\$100	4.7%	655	1,241	1,896	\$423,048
HARDIN	365	1,471	1,836	\$93	-0.4%	292	542	834	\$171,489
HARRISON	533	1,490	2,023	\$91	3.8%	393	535	928	\$184,411
HENRY	217	1,211	1,428	\$93	4.5%	162	385	547	\$132,608
HIGHLAND	1,016	3,916	4,932	\$93	-0.1%	765	1,344	2,109	\$456,539
HOCKING	873	2,522	3,395	\$94	-0.8%	630	880	1,510	\$319,386
HOLMES	143	812	955	\$89	1.2%	126	283	409	\$84,615
HURON	757	4,025	4,782	\$95	0.2%	613	1,361	1,974	\$452,507
JACKSON	1,370	3,911	5,281	\$96	0.9%	1,053	1,446	2,499	\$509,176
JEFFERSON	2,607	6,106	8,713	\$95	1.1%	1,888	2,275	4,163	\$827,333
KNOX	1,011	3,585	4,596	\$97	3.7%	727	1,277	2,004	\$445,165
LAKE	2,563	8,260	10,823	\$105	0.3%	1,953	3,056	5,009	\$1,138,789
LAWRENCE	3,522	7,017	10,539	\$92	0.6%	2,555	2,663	5,218	\$965,996
LICKING	2,741	9,484	12,225	\$99	0.2%	2,049	3,447	5,496	\$1,211,163
LOGAN	694	2,858	3,552	\$96	3.1%	515	965	1,480	\$339,300
LORAIN	6,544	20,602	27,146	\$99	1.1%	4,500	6,937	11,437	\$2,680,185
LUCAS	19,456	43,858	63,314	\$103	0.0%	13,496	16,622	30,118	\$6,502,995
MADISON	740	2,284	3,024	\$98	2.0%	521	821	1,342	\$296,813
MAHONING	8,866	21,326	30,192	\$96	1.8%	6,349	8,008	14,357	\$2,912,739
MARION	1,447	5,871	7,318	\$114	0.5%	1,174	2,102	3,276	\$830,694
MEDINA	1,107	3,998	5,105	\$101	0.0%	846	1,467	2,313	\$513,160
MEIGS	1,167	2,893	4,060	\$95	-0.3%	859	1,010	1,869	\$387,524
MERCER	356	1,100	1,456	\$95	-0.1%	285	384	669	\$138,892
MIAMI	1,106	3,467	4,573	\$91	5.0%	829	1,241	2,070	\$416,528
MONROE	395	1,130	1,525	\$88	-2.0%	313	382	695	\$133,504
MONTGOMERY	14,577	41,356	55,933	\$103	0.9%	10,860	15,483	26,343	\$5,764,209
MORGAN	436	1,543	1,979	\$87	3.7%	353	513	866	\$172,206
MORROW	540	2,393	2,933	\$93	3.1%	406	792	1,198	\$271,346

Source: CRIS-E GRP304RA and GRP 304RC Reports from Management Information Services. Cuyahoga County data also comes from the GRP 342 RA.

**TABLE 5  
FOOD AND NUTRITION BENEFITS  
AUGUST 2007**

OHIO COUNTY	PERSONS					ASSISTANCE GROUPS			TOTAL COUPONS ISSUED
	PUBLIC ASSISTANCE	NON-PUBLIC ASSISTANCE	TOTAL	AVERAGE ISSUANCE	% CHANGE PREV. MO.	PUBLIC ASSISTANCE	NON-PUBLIC ASSISTANCE	TOTAL	
<b>STATEWIDE</b>	<b>248,304</b>	<b>848,923</b>	<b>1,097,227</b>	<b>\$101</b>	<b>0.6%</b>	<b>180,647</b>	<b>321,538</b>	<b>502,185</b>	<b>\$110,301,820</b>
MUSKINGUM	2,789	11,255	14,044	\$95	0.1%	2,187	4,146	6,333	\$1,339,315
NOBLE	278	899	1,177	\$86	1.5%	222	326	548	\$101,126
OTTAWA	649	1,834	2,483	\$95	0.6%	419	639	1,058	\$235,790
PAULDING	343	1,096	1,439	\$91	2.1%	239	376	615	\$131,258
PERRY	1,138	4,114	5,252	\$93	1.7%	835	1,422	2,257	\$486,881
PICKAWAY	1,304	3,515	4,819	\$96	0.9%	905	1,330	2,235	\$463,391
PIKE	1,236	3,859	5,095	\$96	-2.2%	919	1,378	2,297	\$487,142
PORTAGE	1,725	7,484	9,209	\$104	1.1%	1,363	2,693	4,056	\$958,849
PREBLE	507	2,037	2,544	\$98	-2.5%	380	698	1,078	\$249,900
PUTNAM	228	1,229	1,457	\$93	-3.3%	185	419	604	\$135,115
RICHLAND	2,544	9,908	12,452	\$100	0.7%	1,996	3,551	5,547	\$1,245,627
ROSS	2,451	8,320	10,771	\$102	0.4%	1,766	2,981	4,747	\$1,099,459
SANDUSKY	721	3,632	4,353	\$95	4.7%	562	1,285	1,847	\$414,727
SCIOTO	4,390	11,423	15,813	\$90	0.8%	3,383	4,279	7,662	\$1,425,704
SENECA	784	3,967	4,751	\$98	4.0%	618	1,366	1,984	\$464,775
SHELBY	468	2,199	2,667	\$103	4.5%	355	744	1,099	\$273,914
STARK	8,141	22,804	30,945	\$99	0.1%	5,711	8,183	13,894	\$3,050,273
SUMMIT	14,476	38,713	53,189	\$101	0.6%	10,847	14,957	25,804	\$5,375,416
TRUMBULL	4,490	14,549	19,039	\$97	1.3%	3,428	5,037	8,465	\$1,839,077
TUSCARAWAS	1,780	5,644	7,424	\$93	-1.1%	1,368	2,069	3,437	\$687,977
UNION	490	1,887	2,377	\$99	1.1%	363	673	1,036	\$234,230
VAN WERT	290	1,077	1,367	\$88	1.2%	227	368	595	\$120,911
VINTON	590	1,876	2,466	\$92	-2.2%	437	650	1,087	\$226,687
WARREN	898	2,956	3,854	\$94	-0.8%	694	1,002	1,696	\$363,326
WASHINGTON	1,342	4,185	5,527	\$94	-0.5%	1,130	1,508	2,638	\$520,654
WAYNE	1,773	5,315	7,088	\$100	-1.5%	1,327	2,006	3,333	\$709,106
WILLIAMS	577	2,154	2,731	\$91	-2.1%	407	793	1,200	\$248,262
WOOD	967	3,388	4,355	\$98	-2.2%	773	1,227	2,000	\$425,941
WYANDOT	192	748	940	\$92	-3.9%	155	289	444	\$86,295

Source: CRIS-E GRP304RA and GRP 304RC Reports from Management Information Services. Cuyahoga County data also comes from the GRP 342 RA.

**Table 6A  
August 2007  
Medicaid Eligibles**

County	Aged	Blind	Disabled	ABD Total	OWF & Related	Healthy Start	CFC Total	Total Medicaid	Foster Care	Adoption Assistance	Transitional	Nursing Facilities
STATEWIDE	150,352	758	248,653	399,763	1,005,041	271,448	1,276,489	1,676,252	10,391	22,021	138,053	53,600
ADAMS	827	5	1,456	2,288	4,290	1,201	5,491	7,779	40	39	760	127
ALLEN	1,304	5	2,114	3,423	9,577	2,630	12,207	15,630	198	256	1,241	599
ASHLAND	592	2	621	1,215	3,330	1,459	4,789	6,004	35	25	564	274
ASHTABULA	1,623	6	3,209	4,838	11,007	3,134	14,141	18,979	81	231	1,906	997
ATHENS	877	8	2,185	3,070	5,909	1,294	7,203	10,273	82	155	726	185
AUGLAIZE	486	5	465	956	2,510	941	3,451	4,407	4	45	480	280
BELMONT	1,394	4	2,107	3,505	6,736	1,758	8,494	11,999	33	107	1,160	503
BROWN	738	0	1,067	1,805	4,146	1,445	5,591	7,396	17	41	806	238
BUTLER	3,230	18	5,930	9,178	27,352	6,865	34,217	43,395	360	539	4,272	1,191
CARROLL	430	2	573	1,005	2,505	754	3,259	4,264	6	8	545	195
CHAMPAIGN	490	1	597	1,088	3,040	1,201	4,241	5,329	7	24	648	236
CLARK	2,248	7	3,671	5,926	16,242	4,152	20,394	26,320	194	514	2,092	963
CLERMONT	1,713	10	2,893	4,616	11,956	4,402	16,358	20,974	200	270	1,969	699
CLINTON	530	1	812	1,343	3,660	1,090	4,750	6,093	41	77	681	159
COLUMBIANA	1,716	14	2,661	4,391	10,712	3,269	13,981	18,372	90	110	1,579	615
COSHOCTON	632	1	960	1,593	3,881	1,099	4,980	6,573	15	47	680	292
CRAWFORD	705	8	891	1,604	4,358	1,198	5,556	7,160	47	44	843	177
CUYAHOGA	23,111	138	36,548	59,797	146,857	32,694	179,551	239,348	1,361	4,934	16,550	7,101
DARKE	579	1	652	1,232	2,783	1,276	4,059	5,291	24	42	514	297
DEFIANCE	416	3	609	1,028	3,055	1,101	4,156	5,184	15	26	607	204
DELAWARE	828	1	1,067	1,896	4,366	1,705	6,071	7,967	24	64	748	302
ERIE	927	4	1,234	2,165	5,974	1,760	7,734	9,899	63	76	928	421
FAIRFIELD	1,332	7	2,141	3,480	10,227	3,008	13,235	16,715	36	191	1,927	458
FAYETTE	577	3	860	1,440	2,767	780	3,547	4,987	9	17	442	325
FRANKLIN	12,052	87	24,777	36,916	117,717	31,583	149,300	186,216	1,986	2,850	12,205	3,705
FULTON	392	1	412	805	2,514	957	3,471	4,276	18	34	523	212
GALLIA	876	3	1,589	2,468	4,143	995	5,138	7,606	15	45	574	187
GEAUGA	607	1	557	1,165	2,259	1,027	3,286	4,451	16	124	431	284
GREENE	1,385	17	1,833	3,235	9,241	2,565	11,806	15,041	86	117	1,675	572

Source: ODJFS Report BOMM1321 Prepared: Bureau of Research and Evaluation.

**Table 6A  
August 2007  
Medicaid Eligibles**

County	Aged	Blind	Disabled	ABD Total	OWF & Related	Healthy Start	CFC Total	Total Medicaid	Foster Care	Adoption Assistance	Transitional	Nursing Facilities
STATEWIDE	150,352	758	248,653	399,763	1,005,041	271,448	1,276,489	1,676,252	10,391	22,021	138,053	53,600
GUERNSEY	832	4	1,417	2,253	5,191	1,519	6,710	8,963	32	78	813	173
HAMILTON	10,508	58	18,557	29,123	66,335	18,735	85,070	114,193	826	1,706	6,103	3,661
HANCOCK	633	7	899	1,539	4,177	1,461	5,638	7,177	47	64	620	293
HARDIN	386	2	601	989	2,245	788	3,033	4,022	11	48	360	144
HARRISON	329	1	535	865	1,778	470	2,248	3,113	19	21	264	123
HENRY	263	0	337	600	1,738	780	2,518	3,118	9	23	359	139
HIGHLAND	861	2	1,141	2,004	4,686	1,416	6,102	8,106	20	37	722	248
HOCKING	523	3	838	1,364	3,467	999	4,466	5,830	34	49	590	151
HOLMES	424	3	435	862	1,419	860	2,279	3,141	17	18	262	380
HURON	613	3	883	1,499	5,306	1,914	7,220	8,719	43	44	887	185
JACKSON	877	0	1,397	2,274	4,666	1,189	5,855	8,129	43	14	726	168
JEFFERSON	1,248	8	2,363	3,619	7,168	1,761	8,929	12,548	81	66	1,063	369
KNOX	755	1	1,329	2,085	4,601	1,380	5,981	8,066	14	37	994	469
LAKE	1,739	3	2,526	4,268	10,427	3,636	14,063	18,331	68	95	1,762	1,020
LAWRENCE	1,682	4	3,323	5,009	8,251	2,362	10,613	15,622	63	63	1,069	341
LICKING	1,562	2	2,687	4,251	12,848	3,719	16,567	20,818	189	394	2,444	545
LOGAN	610	2	675	1,287	3,757	1,008	4,765	6,052	8	54	712	195
LORAIN	2,905	14	5,441	8,360	24,809	6,269	31,078	39,438	90	427	3,450	1,213
LUCAS	6,568	46	14,483	21,097	55,472	10,885	66,357	87,454	501	1,482	6,752	2,000
MADISON	410	1	611	1,022	2,823	966	3,789	4,811	28	34	449	129
MAHONING	4,169	15	6,891	11,075	25,859	5,840	31,699	42,774	223	185	2,989	1,588
MARION	976	3	1,812	2,791	6,462	1,938	8,400	11,191	45	132	1,107	271
MEDINA	1,055	8	1,286	2,349	6,405	2,250	8,655	11,004	32	90	1,276	637
MEIGS	561	5	1,038	1,604	3,316	778	4,094	5,698	11	12	438	138
MERCER	397	0	411	808	1,609	766	2,375	3,183	18	42	379	198
MIAMI	1,150	2	1,321	2,473	5,372	1,879	7,251	9,724	70	118	911	426
MONROE	298	0	395	693	1,440	465	1,905	2,598	12	15	270	96
MONTGOMERY	7,379	28	12,919	20,326	51,224	12,277	63,501	83,827	668	1,417	6,054	2,383
MORGAN	316	1	525	842	1,918	556	2,474	3,316	0	13	394	114
MORROW	437	0	616	1,053	3,002	1,066	4,068	5,121	4	59	615	148

Source: ODJFS Report BOMM1321 Prepared: Bureau of Research and Evaluation.



**Table 6A  
August 2007  
Medicaid Eligibles**

County	Aged	Blind	Disabled	ABD Total	OWF & Related	Healthy Start	CFC Total	Total Medicaid	Foster Care	Adoption Assistance	Transitional	Nursing Facilities
<b>STATEWIDE</b>	<b>150,352</b>	<b>758</b>	<b>248,653</b>	<b>399,763</b>	<b>1,005,041</b>	<b>271,448</b>	<b>1,276,489</b>	<b>1,676,252</b>	<b>10,391</b>	<b>22,021</b>	<b>138,053</b>	<b>53,600</b>
MUSKINGUM	1,672	19	2,929	4,620	11,513	2,708	14,221	18,841	108	217	1,664	487
NOBLE	250	0	263	513	1,174	373	1,547	2,060	4	12	252	89
OTTAWA	459	4	541	1,004	2,581	862	3,443	4,447	13	7	554	166
PAULDING	204	1	381	586	1,366	609	1,975	2,561	6	25	285	44
PERRY	566	8	1,190	1,764	4,950	1,236	6,186	7,950	37	37	769	193
PICKAWAY	656	2	1,074	1,732	4,531	1,204	5,735	7,467	15	20	709	177
PIKE	834	0	1,466	2,300	4,250	1,349	5,599	7,899	23	22	517	281
PORTAGE	1,273	5	1,855	3,133	9,149	2,541	11,690	14,823	108	205	1,283	618
PREBLE	415	7	655	1,077	3,197	985	4,182	5,259	45	42	616	207
PUTNAM	286	0	334	620	1,505	594	2,099	2,719	2	8	246	219
RICHLAND	1,929	0	2,756	4,685	10,937	3,529	14,466	19,151	49	266	1,638	632
ROSS	1,222	3	2,413	3,638	9,578	2,302	11,880	15,518	67	70	1,279	316
SANDUSKY	734	5	1,036	1,775	4,587	1,644	6,231	8,006	25	54	754	358
SCIOTO	2,533	5	4,860	7,398	11,538	2,391	13,929	21,327	81	87	1,406	588
SENECA	750	3	1,047	1,800	4,427	1,648	6,075	7,875	45	108	849	327
SHELBY	412	3	621	1,036	3,035	1,076	4,111	5,147	15	51	407	173
STARK	5,250	24	7,072	12,346	31,394	8,378	39,772	52,118	399	1,052	5,530	2,312
SUMMIT	7,110	41	11,245	18,396	45,393	9,946	55,339	73,735	527	869	5,995	2,219
TRUMBULL	2,886	13	4,772	7,671	18,987	5,704	24,691	32,362	143	267	2,942	1,180
TUSCARAWAS	1,333	3	1,604	2,940	7,300	2,529	9,829	12,769	108	214	1,269	475
UNION	345	1	474	820	2,460	878	3,338	4,158	28	35	471	114
UNKNOWN	0	0	0	0	0	0	0	0	0	0	0	0
VAN WERT	327	0	420	747	1,459	870	2,329	3,076	3	14	344	166
VINTON	306	0	599	905	2,143	719	2,862	3,767	15	24	258	58
WARREN	1,427	7	1,644	3,078	5,214	2,375	7,589	10,667	48	108	862	831
WASHINGTON	1,072	6	1,607	2,685	5,366	1,972	7,338	10,023	13	74	1,112	351
WAYNE	1,185	3	1,738	2,926	6,741	2,410	9,151	12,077	74	138	1,208	510
WILLIAMS	481	2	525	1,008	3,201	876	4,077	5,085	21	29	897	189
WOOD	1,015	4	1,085	2,104	5,023	1,838	6,861	8,965	34	57	823	401
WYANDOT	337	0	264	601	1,157	627	1,784	2,385	6	20	204	176

Source: ODJFS Report BOMM1321 Prepared: Bureau of Research and Evaluation.

**Table 6B  
August 2007  
Medicaid Expenditures**

	Aged	Blind	Disabled	ABD Total	OWF & Related	Healthy Start	CFC Total	Total Medicaid	Foster Care	Adoption Assistance	Transitional	Nursing Facilities
<b>STATEWIDE</b>	\$267,582,164	\$1,231,946	\$623,509,675	\$892,323,785	\$410,970,525	\$108,463,537	\$519,434,062	\$1,412,602,244	\$6,250,757	\$5,508,158	\$56,318,907	\$278,783,931
ADAMS	\$960,779	\$7,146	\$3,104,655	\$4,072,580	\$1,803,390	\$470,536	\$2,273,927	\$6,372,767	\$13,460	\$15,274	\$328,977	\$605,560
ALLEN	\$2,336,501	\$15,056	\$5,106,333	\$7,457,891	\$4,179,723	\$1,596,411	\$5,776,134	\$13,271,760	\$40,308	\$23,822	\$488,607	\$2,885,024
ASHLAND	\$1,199,995	\$2,426	\$1,666,584	\$2,869,005	\$1,285,296	\$573,022	\$1,858,318	\$4,728,973	\$2,808	\$4,178	\$234,490	\$1,301,912
ASHTABULA	\$3,270,489	\$15,085	\$8,454,530	\$11,740,104	\$4,702,438	\$988,999	\$5,691,437	\$17,435,251	\$38,377	\$40,154	\$801,010	\$5,422,454
ATHENS	\$1,061,364	\$9,892	\$4,380,689	\$5,451,945	\$2,389,009	\$638,762	\$3,027,771	\$8,481,064	\$74,110	\$42,633	\$281,284	\$734,761
AUGLAIZE	\$1,101,676	\$11,505	\$1,160,501	\$2,273,682	\$1,008,805	\$385,164	\$1,393,969	\$3,676,963	\$2,299	\$11,086	\$192,245	\$1,146,885
BELMONT	\$2,166,592	\$50,584	\$4,351,356	\$6,568,532	\$2,511,309	\$564,722	\$3,076,030	\$9,651,048	\$15,124	\$19,752	\$461,042	\$1,917,250
BROWN	\$1,407,558	\$0	\$2,683,367	\$4,090,925	\$1,782,859	\$613,459	\$2,396,318	\$6,492,481	\$14,305	\$18,401	\$349,708	\$1,123,751
BUTLER	\$6,998,242	\$22,419	\$16,401,525	\$23,422,186	\$11,041,998	\$2,796,664	\$13,838,662	\$37,282,643	\$113,165	\$96,408	\$1,754,898	\$7,313,041
CARROLL	\$626,504	\$4,291	\$1,584,314	\$2,215,109	\$974,147	\$268,739	\$1,242,886	\$3,458,469	\$4,104	\$838	\$217,313	\$834,226
CHAMPAIGN	\$919,507	-\$3,303	\$1,538,552	\$2,454,756	\$1,259,919	\$559,954	\$1,819,874	\$4,274,630	\$12,923	\$7,649	\$277,963	\$1,160,976
CLARK	\$4,380,947	\$11,971	\$9,427,360	\$13,820,278	\$6,804,616	\$1,631,234	\$8,435,850	\$22,272,727	\$81,648	\$49,204	\$908,436	\$4,967,895
CLERMONT	\$2,904,812	\$16,441	\$8,519,596	\$11,440,850	\$5,100,060	\$1,902,506	\$7,002,566	\$18,474,026	\$130,546	\$62,109	\$841,312	\$4,799,861
CLINTON	\$728,056	\$2,195	\$1,877,567	\$2,607,818	\$1,492,439	\$419,338	\$1,911,777	\$4,520,986	\$23,290	\$12,862	\$286,624	\$777,127
COLUMBIANA	\$2,694,716	\$6,192	\$4,806,135	\$7,507,043	\$3,056,954	\$660,337	\$3,717,291	\$11,264,516	\$49,802	\$27,210	\$196,010	\$2,468,403
COSHOCTON	\$973,006	\$1,830	\$2,781,942	\$3,756,779	\$1,459,915	\$347,199	\$1,807,114	\$5,564,654	\$5,693	\$10,062	\$257,310	\$1,792,222
CRAWFORD	\$1,183,798	\$11,702	\$1,862,406	\$3,057,906	\$1,714,814	\$418,777	\$2,133,591	\$5,197,561	\$17,969	\$7,721	\$361,851	\$944,820
CUYAHOGA	\$41,317,930	\$205,405	\$91,089,987	\$132,613,322	\$58,976,386	\$11,861,949	\$70,838,335	\$203,484,961	\$1,202,335	\$1,491,954	\$6,357,101	\$41,271,947
DARKE	\$1,082,946	\$0	\$1,688,613	\$2,771,559	\$1,089,265	\$455,226	\$1,544,491	\$4,320,781	\$12,835	\$13,198	\$207,020	\$1,277,584
DEFIANCE	\$765,128	\$2,527	\$1,238,599	\$2,006,254	\$1,186,151	\$382,481	\$1,568,632	\$3,577,633	\$7,335	\$9,348	\$235,888	\$804,538
DELAWARE	\$1,447,643	\$2,292	\$3,304,837	\$4,754,772	\$1,886,573	\$888,513	\$2,775,086	\$7,529,858	\$20,774	\$11,579	\$329,381	\$1,302,971
ERIE	\$1,547,896	\$7,036	\$2,967,350	\$4,522,282	\$2,278,929	\$633,450	\$2,912,379	\$7,438,130	\$33,948	\$78,146	\$360,581	\$1,596,618
FAIRFIELD	\$2,307,946	\$7,839	\$4,866,459	\$7,182,245	\$4,139,717	\$1,160,954	\$5,300,671	\$12,499,058	\$13,923	\$44,557	\$780,284	\$2,134,684
FAYETTE	\$1,219,424	\$17,833	\$2,103,140	\$3,340,398	\$1,170,006	\$326,094	\$1,496,101	\$4,836,498	\$1,301	\$5,809	\$199,559	\$1,757,979
FRANKLIN	\$21,024,062	\$120,062	\$67,914,392	\$89,058,516	\$50,239,658	\$13,700,810	\$63,940,468	\$153,059,885	\$1,043,890	\$656,063	\$5,071,999	\$22,596,528
FULTON	\$822,818	\$2,087	\$1,044,575	\$1,869,481	\$1,020,448	\$365,336	\$1,385,784	\$3,257,708	\$12,364	\$14,777	\$209,521	\$892,367
GALLIA	\$1,733,146	\$5,161	\$4,770,177	\$6,508,484	\$1,632,246	\$339,899	\$1,972,145	\$8,482,526	\$17,005	\$2,397	\$219,254	\$770,825
GEAUGA	\$1,331,657	\$2,198	\$1,890,171	\$3,224,026	\$877,650	\$919,018	\$1,796,668	\$5,020,765	\$8,544	\$27,901	\$164,612	\$1,657,678
GREENE	\$2,467,007	\$21,883	\$4,431,934	\$6,920,823	\$3,924,049	\$1,038,301	\$4,962,350	\$11,884,950	\$55,879	\$17,949	\$702,244	\$2,594,780

**Table 6B  
August 2007  
Medicaid Expenditures**

	Aged	Blind	Disabled	ABD Total	OWF & Related	Healthy Start	CFC Total	Total Medicaid	Foster Care	Adoption Assistance	Transitional	Nursing Facilities
<b>STATEWIDE</b>	<b>\$267,582,164</b>	<b>\$1,231,946</b>	<b>\$623,509,675</b>	<b>\$892,323,785</b>	<b>\$410,970,525</b>	<b>\$108,463,537</b>	<b>\$519,434,062</b>	<b>\$1,412,602,244</b>	<b>\$6,250,757</b>	<b>\$5,508,158</b>	<b>\$56,318,907</b>	<b>\$278,783,931</b>
GUERNSEY	\$1,019,756	\$791	\$3,723,984	\$4,744,531	\$2,012,908	\$517,224	\$2,530,132	\$7,314,569	\$10,763	\$19,614	\$318,083	\$750,546
HAMILTON	\$22,523,460	\$128,136	\$43,779,041	\$66,430,637	\$28,233,179	\$7,954,384	\$36,187,564	\$102,674,988	\$709,983	\$438,466	\$2,557,844	\$22,262,785
HANCOCK	\$1,193,084	\$7,534	\$2,424,853	\$3,625,471	\$1,701,083	\$670,508	\$2,371,590	\$6,005,716	\$19,015	\$14,708	\$269,542	\$1,343,512
HARDIN	\$675,497	\$46	\$1,352,341	\$2,027,884	\$900,137	\$315,769	\$1,215,906	\$3,243,790	\$4,481	\$8,273	\$140,425	\$705,786
HARRISON	\$551,476	\$2,752	\$1,013,850	\$1,568,078	\$677,670	\$143,900	\$821,571	\$2,390,554	\$4,952	\$4,098	\$98,970	\$526,008
HENRY	\$543,467	\$0	\$1,336,049	\$1,879,516	\$683,312	\$281,599	\$964,911	\$2,847,565	\$3,787	\$12,010	\$155,493	\$652,678
HIGHLAND	\$1,287,327	\$639	\$2,674,312	\$3,962,278	\$1,865,053	\$546,181	\$2,411,233	\$6,376,642	\$10,505	\$11,601	\$313,188	\$1,191,514
HOCKING	\$798,997	\$11,278	\$1,769,799	\$2,580,074	\$1,477,006	\$381,396	\$1,858,402	\$4,438,476	\$33,063	\$12,250	\$254,060	\$752,438
HOLMES	\$1,083,717	\$4,291	\$1,003,699	\$2,091,707	\$570,224	\$324,810	\$895,034	\$2,986,741	\$4,937	\$2,602	\$100,543	\$1,716,020
HURON	\$931,101	\$1,645	\$1,781,508	\$2,714,255	\$1,899,054	\$735,088	\$2,634,142	\$5,348,514	\$25,190	\$3,013	\$328,124	\$780,920
JACKSON	\$1,118,473	\$0	\$2,523,169	\$3,641,642	\$1,720,767	\$523,285	\$2,244,053	\$5,889,292	\$17,380	\$4,364	\$272,472	\$871,521
JEFFERSON	\$1,691,641	\$8,036	\$4,438,014	\$6,137,691	\$2,940,323	\$569,972	\$3,510,295	\$9,658,307	\$54,019	\$16,726	\$423,286	\$1,357,385
KNOX	\$1,758,776	\$2,093	\$5,306,798	\$7,067,667	\$2,181,943	\$968,197	\$3,150,140	\$10,217,808	\$1,417	\$13,731	\$412,342	\$3,543,187
LAKE	\$3,519,613	\$4,640	\$8,647,478	\$12,171,732	\$4,156,770	\$1,575,429	\$5,732,199	\$17,934,561	\$38,948	\$19,476	\$776,802	\$5,283,372
LAWRENCE	\$2,314,704	\$8,574	\$6,345,322	\$8,668,601	\$3,281,084	\$800,830	\$4,081,914	\$12,754,369	\$40,966	\$16,106	\$438,924	\$1,635,570
LICKING	\$2,542,104	\$1,720	\$6,630,598	\$9,174,422	\$4,996,903	\$1,766,671	\$6,763,575	\$15,946,571	\$65,829	\$56,442	\$1,008,582	\$2,699,769
LOGAN	\$950,359	\$2,087	\$1,616,716	\$2,569,161	\$1,519,874	\$473,227	\$1,993,101	\$4,570,705	\$133	\$8,037	\$280,900	\$873,335
LORAIN	\$5,062,862	\$19,486	\$12,995,712	\$18,078,059	\$10,139,228	\$2,385,894	\$12,525,121	\$30,619,405	\$38,644	\$84,534	\$1,355,743	\$6,417,199
LUCAS	\$10,947,785	\$55,327	\$37,033,787	\$48,036,899	\$24,020,614	\$4,441,635	\$28,462,249	\$76,550,601	\$275,304	\$369,152	\$2,748,493	\$11,383,240
MADISON	\$597,239	\$355	\$1,589,462	\$2,187,056	\$1,062,547	\$400,798	\$1,463,346	\$3,650,402	\$13,577	\$8,860	\$193,829	\$672,231
MAHONING	\$6,937,597	\$25,566	\$12,645,036	\$19,608,199	\$10,413,768	\$2,137,147	\$12,550,915	\$32,183,159	\$149,739	\$21,739	\$1,233,851	\$6,867,096
MARION	\$1,540,790	\$4,450	\$3,999,961	\$5,545,201	\$2,564,959	\$986,284	\$3,551,243	\$9,099,410	\$15,477	\$20,199	\$433,276	\$1,288,205
MEDINA	\$2,388,209	\$44,756	\$4,486,292	\$6,919,256	\$2,496,523	\$754,355	\$3,250,878	\$10,181,279	\$15,917	\$10,287	\$496,724	\$3,362,948
MEIGS	\$696,648	\$12,117	\$1,985,794	\$2,694,559	\$1,241,383	\$255,725	\$1,497,108	\$4,192,447	\$4,138	\$1,387	\$200,180	\$547,667
MERCER	\$671,797	\$0	\$1,068,084	\$1,739,881	\$766,545	\$314,871	\$1,081,416	\$2,823,042	\$13,431	\$62,675	\$147,551	\$1,046,560
MIAMI	\$2,120,554	\$5,585	\$3,450,331	\$5,576,469	\$2,120,547	\$745,904	\$2,866,451	\$8,450,437	\$49,639	\$25,806	\$361,493	\$1,820,475
MONROE	\$375,728	\$0	\$812,583	\$1,188,311	\$523,495	\$211,949	\$735,444	\$1,924,246	\$1,922	\$1,553	\$103,738	\$385,656
MONTGOMERY	\$13,242,002	\$41,459	\$38,501,814	\$51,785,275	\$21,273,654	\$4,770,254	\$26,043,908	\$77,860,103	\$276,136	\$313,759	\$2,529,633	\$11,855,925
MORGAN	\$504,012	\$117	\$870,637	\$1,374,765	\$665,133	\$181,727	\$846,860	\$2,221,964	\$0	\$1,519	\$156,293	\$438,008
MORROW	\$711,302	\$1,101	\$1,933,521	\$2,645,924	\$1,246,312	\$401,859	\$1,648,171	\$4,295,090	\$0	\$6,148	\$277,078	\$1,007,650

**Table 6B  
August 2007  
Medicaid Expenditures**

	Aged	Blind	Disabled	ABD Total	OWF & Related	Healthy Start	CFC Total	Total Medicaid	Foster Care	Adoption Assistance	Transitional	Nursing Facilities
<b>STATEWIDE</b>	<b>\$267,582,164</b>	<b>\$1,231,946</b>	<b>\$623,509,675</b>	<b>\$892,323,785</b>	<b>\$410,970,525</b>	<b>\$108,463,537</b>	<b>\$519,434,062</b>	<b>\$1,412,602,244</b>	<b>\$6,250,757</b>	<b>\$5,508,158</b>	<b>\$56,318,907</b>	<b>\$278,783,931</b>
MUSKINGUM	\$2,100,947	\$24,591	\$5,485,463	\$7,611,001	\$4,297,967	\$893,799	\$5,191,766	\$12,804,416	\$20,983	\$27,038	\$673,301	\$1,996,500
NOBLE	\$362,016	\$0	\$521,428	\$883,444	\$435,169	\$121,114	\$556,283	\$1,439,727	\$0	\$374	\$103,131	\$326,890
OTTAWA	\$1,168,354	\$12,135	\$2,054,583	\$3,235,073	\$1,066,952	\$273,716	\$1,340,668	\$4,579,344	\$2,422	\$411	\$227,553	\$918,429
PAULDING	\$257,961	\$20	\$703,439	\$961,420	\$1,025,246	\$199,578	\$1,224,823	\$2,186,243	\$10,528	\$4,992	\$569,189	\$143,880
PERRY	\$605,745	\$9,943	\$2,831,039	\$3,446,727	\$1,925,798	\$461,856	\$2,387,655	\$5,837,906	\$14,593	\$4,712	\$305,847	\$1,061,704
PICKAWAY	\$912,556	\$23	\$2,507,593	\$3,420,172	\$1,862,457	\$410,025	\$2,272,482	\$5,692,654	\$8,853	\$14,329	\$296,646	\$724,068
PIKE	\$1,437,909	\$0	\$3,366,286	\$4,804,195	\$1,825,465	\$463,810	\$2,289,275	\$7,093,469	\$19,627	\$3,638	\$209,440	\$1,556,331
PORTAGE	\$2,372,091	\$17,404	\$5,649,239	\$8,038,734	\$3,906,027	\$1,056,470	\$4,962,497	\$13,004,763	\$65,070	\$55,873	\$565,767	\$3,796,258
PREBLE	\$755,527	\$9,822	\$1,579,672	\$2,345,020	\$1,058,014	\$387,049	\$1,445,063	\$3,791,122	\$27,121	\$5,575	\$267,165	\$1,101,094
PUTNAM	\$666,154	\$0	\$1,020,053	\$1,686,207	\$561,294	\$230,346	\$791,640	\$2,478,066	\$3,073	\$440	\$103,165	\$1,035,173
RICHLAND	\$3,252,143	\$0	\$7,952,292	\$11,204,435	\$4,732,057	\$1,450,793	\$6,182,851	\$17,425,509	\$24,060	\$63,458	\$672,663	\$3,293,788
ROSS	\$1,712,746	\$6,596	\$4,608,644	\$6,327,986	\$3,928,595	\$890,616	\$4,819,211	\$11,155,854	\$47,106	\$21,176	\$545,980	\$1,269,723
SANDUSKY	\$1,341,560	\$7,313	\$3,359,615	\$4,708,489	\$1,802,251	\$586,089	\$2,388,340	\$7,101,915	\$23,416	\$4,352	\$307,138	\$1,946,230
SCIOTO	\$3,841,723	\$6,156	\$10,427,573	\$14,275,452	\$4,930,285	\$1,206,808	\$6,137,093	\$20,437,357	\$25,423	\$179,952	\$593,054	\$2,878,783
SENECA	\$1,641,645	\$5,911	\$4,415,267	\$6,062,823	\$1,756,097	\$649,821	\$2,405,918	\$8,468,741	\$28,974	\$9,632	\$333,169	\$1,387,086
SHELBY	\$676,267	\$2,563	\$1,409,768	\$2,088,598	\$1,338,480	\$514,901	\$1,853,381	\$3,943,160	\$6,330	\$60,347	\$170,637	\$777,561
STARK	\$10,174,515	\$42,776	\$17,807,599	\$28,024,890	\$12,447,814	\$3,109,591	\$15,557,406	\$43,597,992	\$252,761	\$171,337	\$2,251,318	\$10,706,604
SUMMIT	\$12,455,505	\$61,377	\$27,058,444	\$39,575,326	\$18,462,186	\$3,831,963	\$22,294,148	\$61,900,328	\$488,359	\$200,093	\$2,428,327	\$10,605,312
TRUMBULL	\$4,556,102	\$8,773	\$9,918,150	\$14,483,025	\$7,687,596	\$2,157,499	\$9,845,095	\$24,338,248	\$62,862	\$37,298	\$1,198,625	\$5,351,612
TUSCARAWAS	\$2,438,657	\$4,782	\$3,766,085	\$6,209,524	\$2,905,924	\$895,799	\$3,801,723	\$10,028,445	\$36,744	\$71,071	\$522,944	\$1,968,259
UNION	\$624,512	\$230	\$1,045,328	\$1,670,069	\$944,947	\$341,879	\$1,286,827	\$2,956,896	\$12,291	\$3,738	\$195,137	\$475,080
UNKNOWN	\$308	\$0	\$2,955	\$3,262	-\$671,079	\$0	-\$671,079	-\$667,817	\$800	\$58,143	\$0	\$1,637
VAN WERT	\$619,587	\$0	\$800,237	\$1,419,825	\$570,236	\$341,904	\$912,139	\$2,333,391	\$1,444	\$8,317	\$134,787	\$638,126
VINTON	\$314,273	\$0	\$980,418	\$1,294,690	\$858,797	\$261,652	\$1,120,449	\$2,415,649	\$6,460	\$2,281	\$95,213	\$220,508
WARREN	\$3,465,896	\$15,619	\$5,500,771	\$8,982,286	\$2,127,851	\$1,298,559	\$3,426,410	\$12,415,077	\$13,640	\$27,609	\$326,215	\$4,678,527
WASHINGTON	\$1,498,498	\$6,837	\$3,497,109	\$5,002,444	\$2,076,397	\$662,865	\$2,739,261	\$7,741,706	\$10,901	\$3,965	\$434,269	\$1,445,870
WAYNE	\$2,516,629	\$4,484	\$4,588,792	\$7,109,905	\$2,596,694	\$1,027,658	\$3,624,352	\$10,734,278	\$20,353	\$16,876	\$491,484	\$2,435,796
WILLIAMS	\$811,382	\$4,397	\$1,196,409	\$2,012,187	\$1,366,238	\$326,593	\$1,692,830	\$3,706,259	\$12,700	\$22,717	\$388,432	\$770,052
WOOD	\$1,992,982	\$5,860	\$3,702,839	\$5,701,681	\$2,310,655	\$708,907	\$3,019,562	\$8,726,876	\$25,516	\$13,201	\$348,909	\$1,702,733
WYANDOT	\$725,752	\$0	\$994,389	\$1,720,141	\$493,349	\$257,154	\$750,503	\$2,470,644	\$8,990	\$3,037	\$95,415	\$676,445

**TABLE 7  
CHILD CARE  
AUGUST 2007**

OHIO COUNTY	OWF JOBS, LEAP, and TRANSITIONAL		OTHER CHILD CARE		LOCAL FUNDING		ALL PROGRAM SOURCES	
	CHILDREN SERVED		CHILDREN SERVED		CHILDREN SERVED		CHILDREN SERVED	
	TOTAL	% OF STATE TOTAL	TOTAL	% OF STATE TOTAL	TOTAL	% OF STATE TOTAL	TOTAL	% OF STATE TOTAL
<b>STATEWIDE</b>	<b>12,173</b>	<b>100.00%</b>	<b>83,746</b>	<b>100.00%</b>	<b>106</b>	<b>100.00%</b>	<b>96,025</b>	<b>100.00%</b>
ADAMS	0	0.00%	113	0.13%	0	0.00%	113	0.12%
ALLEN	25	0.21%	482	0.58%	0	0.00%	507	0.53%
ASHLAND	5	0.04%	206	0.25%	0	0.00%	211	0.22%
ASHTABULA	76	0.62%	709	0.85%	0	0.00%	785	0.82%
ATHENS	44	0.36%	198	0.24%	0	0.00%	242	0.25%
AUGLAIZE	0	0.00%	93	0.11%	0	0.00%	93	0.10%
BELMONT	33	0.27%	287	0.34%	0	0.00%	320	0.33%
BROWN	5	0.04%	122	0.15%	0	0.00%	127	0.13%
BUTLER	121	0.99%	1,658	1.98%	0	0.00%	1,779	1.85%
CARROLL	2	0.02%	60	0.07%	0	0.00%	62	0.06%
CHAMPAIGN	31	0.25%	117	0.14%	0	0.00%	148	0.15%
CLARK	57	0.47%	662	0.79%	0	0.00%	719	0.75%
CLERMONT	31	0.25%	713	0.85%	0	0.00%	744	0.77%
CLINTON	0	0.00%	215	0.26%	0	0.00%	215	0.22%
COLUMBIANA	56	0.46%	860	1.03%	0	0.00%	916	0.95%
COSHOCTON	17	0.14%	204	0.24%	0	0.00%	221	0.23%
CRAWFORD	27	0.22%	232	0.28%	0	0.00%	259	0.27%
CUYAHOGA	2,268	18.63%	18,341	21.90%	0	0.00%	20,609	21.46%
DARKE	3	0.02%	84	0.10%	0	0.00%	87	0.09%
DEFIANCE	11	0.09%	144	0.17%	0	0.00%	155	0.16%
DELAWARE	38	0.31%	370	0.44%	1	0.94%	409	0.43%
ERIE	2	0.02%	648	0.77%	0	0.00%	650	0.68%
FAIRFIELD	71	0.58%	782	0.93%	0	0.00%	853	0.89%
FAYETTE	21	0.17%	237	0.28%	0	0.00%	258	0.27%
FRANKLIN	1,824	14.98%	9,729	11.62%	103	97.17%	11,656	12.14%
FULTON	2	0.02%	173	0.21%	0	0.00%	175	0.18%
GALLIA	45	0.37%	150	0.18%	0	0.00%	195	0.20%
GEAUGA	7	0.06%	196	0.23%	0	0.00%	203	0.21%
GREENE	67	0.55%	740	0.88%	0	0.00%	807	0.84%

**TABLE 7  
CHILD CARE  
AUGUST 2007**

OHIO COUNTY	OWF JOBS, LEAP, and TRANSITIONAL		OTHER CHILD CARE		LOCAL FUNDING		ALL PROGRAM SOURCES	
	CHILDREN SERVED		CHILDREN SERVED		CHILDREN SERVED		CHILDREN SERVED	
	TOTAL	% OF STATE TOTAL	TOTAL	% OF STATE TOTAL	TOTAL	% OF STATE TOTAL	TOTAL	% OF STATE TOTAL
<b>STATEWIDE</b>	<b>12,173</b>	<b>100.00%</b>	<b>83,746</b>	<b>100.00%</b>	<b>106</b>	<b>100.00%</b>	<b>96,025</b>	<b>100.00%</b>
GUERNSEY	19	0.16%	300	0.36%	0	0.00%	319	0.33%
HAMILTON	2,533	20.81%	10,649	12.72%	0	0.00%	13,182	13.73%
HANCOCK	4	0.03%	358	0.43%	0	0.00%	362	0.38%
HARDIN	5	0.04%	59	0.07%	0	0.00%	64	0.07%
HARRISON	5	0.04%	49	0.06%	0	0.00%	54	0.06%
HENRY	3	0.02%	95	0.11%	0	0.00%	98	0.10%
HIGHLAND	5	0.04%	205	0.24%	0	0.00%	210	0.22%
HOCKING	19	0.16%	90	0.11%	0	0.00%	109	0.11%
HOLMES	24	0.20%	128	0.15%	0	0.00%	152	0.16%
HURON	0	0.00%	420	0.50%	0	0.00%	420	0.44%
JACKSON	27	0.22%	124	0.15%	0	0.00%	151	0.16%
JEFFERSON	64	0.53%	291	0.35%	0	0.00%	355	0.37%
KNOX	25	0.21%	270	0.32%	0	0.00%	295	0.31%
LAKE	57	0.47%	940	1.12%	0	0.00%	997	1.04%
LAWRENCE	47	0.39%	440	0.53%	0	0.00%	487	0.51%
LICKING	99	0.81%	1,161	1.39%	0	0.00%	1,260	1.31%
LOGAN	7	0.06%	58	0.07%	0	0.00%	65	0.07%
LORAIN	320	2.63%	1,661	1.98%	0	0.00%	1,981	2.06%
LUCAS	1,035	8.50%	3,315	3.96%	0	0.00%	4,350	4.53%
MADISON	22	0.18%	137	0.16%	0	0.00%	159	0.17%
MAHONING	476	3.91%	1,463	1.75%	0	0.00%	1,939	2.02%
MARION	10	0.08%	346	0.41%	0	0.00%	356	0.37%
MEDINA	19	0.16%	551	0.66%	0	0.00%	570	0.59%
MEIGS	4	0.03%	166	0.20%	0	0.00%	170	0.18%
MERCER	21	0.17%	127	0.15%	0	0.00%	148	0.15%
MIAMI	8	0.07%	332	0.40%	0	0.00%	340	0.35%
MONROE	0	0.00%	59	0.07%	0	0.00%	59	0.06%
MONTGOMERY	507	4.16%	5,512	6.58%	0	0.00%	6,019	6.27%
MORGAN	5	0.04%	113	0.13%	0	0.00%	118	0.12%
MORROW	12	0.10%	180	0.21%	0	0.00%	192	0.20%

**TABLE 7  
CHILD CARE  
AUGUST 2007**

OHIO COUNTY	OWF JOBS, LEAP, and TRANSITIONAL		OTHER CHILD CARE		LOCAL FUNDING		ALL PROGRAM SOURCES	
	CHILDREN SERVED		CHILDREN SERVED		CHILDREN SERVED		CHILDREN SERVED	
	TOTAL	% OF STATE TOTAL	TOTAL	% OF STATE TOTAL	TOTAL	% OF STATE TOTAL	TOTAL	% OF STATE TOTAL
<b>STATEWIDE</b>	<b>12,173</b>	<b>100.00%</b>	<b>83,746</b>	<b>100.00%</b>	<b>106</b>	<b>100.00%</b>	<b>96,025</b>	<b>100.00%</b>
MUSKINGUM	158	1.30%	771	0.92%	0	0.00%	929	0.97%
NOBLE	4	0.03%	92	0.11%	0	0.00%	96	0.10%
OTTAWA	27	0.22%	107	0.13%	0	0.00%	134	0.14%
PAULDING	3	0.02%	49	0.06%	0	0.00%	52	0.05%
PERRY	48	0.39%	266	0.32%	0	0.00%	314	0.33%
PICKAWAY	55	0.45%	162	0.19%	0	0.00%	217	0.23%
PIKE	8	0.07%	80	0.10%	0	0.00%	88	0.09%
PORTAGE	65	0.53%	700	0.84%	0	0.00%	765	0.80%
PREBLE	41	0.34%	147	0.18%	0	0.00%	188	0.20%
PUTNAM	0	0.00%	100	0.12%	0	0.00%	100	0.10%
RICHLAND	56	0.46%	947	1.13%	0	0.00%	1,003	1.04%
ROSS	22	0.18%	319	0.38%	0	0.00%	341	0.36%
SANDUSKY	42	0.35%	461	0.55%	0	0.00%	503	0.52%
SCIOTO	78	0.64%	586	0.70%	0	0.00%	664	0.69%
SENECA	9	0.07%	267	0.32%	0	0.00%	276	0.29%
SHELBY	4	0.03%	275	0.33%	0	0.00%	279	0.29%
STARK	395	3.24%	2,387	2.85%	0	0.00%	2,782	2.90%
SUMMIT	572	4.70%	3,835	4.58%	0	0.00%	4,407	4.59%
TRUMBULL	125	1.03%	1,544	1.84%	0	0.00%	1,669	1.74%
TUSCARAWAS	7	0.06%	415	0.50%	0	0.00%	422	0.44%
UNION	3	0.02%	252	0.30%	2	1.89%	257	0.27%
VAN WERT	3	0.02%	46	0.05%	0	0.00%	49	0.05%
VINTON	4	0.03%	92	0.11%	0	0.00%	96	0.10%
WARREN	53	0.44%	517	0.62%	0	0.00%	570	0.59%
WASHINGTON	46	0.38%	283	0.34%	0	0.00%	329	0.34%
WAYNE	44	0.36%	400	0.48%	0	0.00%	444	0.46%
WILLIAMS	10	0.08%	103	0.12%	0	0.00%	113	0.12%
WOOD	19	0.16%	360	0.43%	0	0.00%	379	0.39%
WYANDOT	1	0.01%	59	0.07%	0	0.00%	60	0.06%

SOURCE: COGNOS. The above numbers have not been reconciled between the CCIDS/3299 data collection system and 2827 ODJFS fiscal reporting system; therefore they may not be conclusive at this time. ELI data missing in counts above.

OWF data consist of funding codes: 173,312, 313,314, 326, & 327. Other data consist of funding codes: 320, 321, 322, 323, 324, 325, 328, 329, and 342. Local Funding is from funding code 899.

**TABLE 8  
RECIPIENTS, EXPENDITURES, AND AVERAGE PAYMENT PER RECIPIENT  
DURING THE LAST 12 MONTHS IN OHIO**

<b>RECIPIENTS</b>	<b>OWF-R</b>	<b>OWF-U</b>	<b>OWF\ CHILD CARE</b>	<b>Other CHILD CARE</b>	<b>DISABILITY ASSISTANCE</b>	<b>TITLE IV-E</b>	<b>FNS BENEFITS</b>
September 2006	159,269	14,015	25,720	75,554	13,960	27,121	1,064,886
October	159,372	13,714	26,501	74,946	13,718	27,108	1,067,925
November	156,220	12,781	23,696	78,584	13,578	26,828	1,061,392
December	159,543	13,239	23,727	79,838	13,654	27,223	1,073,211
January 2007	156,974	12,864	22,470	78,182	13,678	27,150	1,074,737
February	153,574	12,747	23,275	74,852	13,709	26,969	1,054,032
March	152,985	12,792	23,584	78,334	13,965	26,244	1,066,951
April	152,556	12,406	23,527	77,738	13,947	26,182	1,066,248
May	155,417	12,271	24,152	80,832	14,564	25,706	1,080,781
June	149,827	11,014	22,927	80,331	15,145	23,939	1,087,411
July	154,067	11,428	12,135	83,212	15,614	N.A.	1,090,411
August 2007	154,690	11,902	12,173	83,746	16,113	N.A.	1,097,227
<b>12 MONTH AVERAGE</b>	<b>155,375</b>	<b>12,598</b>	<b>21,991</b>	<b>78,846</b>	<b>14,304</b>	<b>26,447</b>	<b>1,073,768</b>
<b>EXPENDITURES</b>							
September 2006	\$24,982,385	\$1,518,064	N.A.	N.A.	\$1,816,230	\$13,730,291	\$106,390,515
October	\$25,271,659	\$1,490,001	N.A.	N.A.	\$1,707,917	\$13,947,005	\$108,425,686
November	\$24,233,824	\$1,357,337	N.A.	N.A.	\$1,732,064	\$13,607,688	\$106,332,849
December	\$25,577,815	\$1,491,073	N.A.	N.A.	\$1,905,592	\$15,347,273	\$107,670,387
January 2007	\$24,563,001	\$1,389,124	N.A.	N.A.	\$1,860,503	\$14,522,840	\$107,705,366
February	\$23,926,643	\$1,349,595	N.A.	N.A.	\$1,847,646	\$13,904,623	\$105,628,316
March	\$23,971,956	\$1,384,820	N.A.	N.A.	\$1,952,139	\$13,522,041	\$107,457,412
April	\$23,014,252	\$1,269,486	N.A.	N.A.	\$1,768,558	\$17,403,927	\$107,329,580
May	\$22,934,016	\$1,208,788	N.A.	N.A.	\$2,040,201	\$13,271,398	\$108,138,296
June	\$23,962,387	\$1,187,020	N.A.	N.A.	\$2,347,409	\$18,639,187	\$108,329,737
July	\$24,360,922	\$1,261,090	N.A.	N.A.	\$2,333,309	N.A.	\$109,603,726
August 2007	\$24,283,786	\$1,266,545	N.A.	N.A.	\$2,376,545	N.A.	\$110,301,820
<b>TOTAL DOLLARS</b>	<b>\$24,256,887</b>	<b>\$1,347,745</b>	<b>N.A.</b>	<b>N.A.</b>	<b>\$1,974,009</b>	<b>\$14,789,627</b>	<b>\$107,776,141</b>
<b>AVERAGE PAYMENT</b>							
September 2006	\$157	\$108	N.A.	N.A.	\$130	\$506	\$100
October	\$159	\$109	N.A.	N.A.	\$125	\$514	\$102
November	\$155	\$106	N.A.	N.A.	\$128	\$507	\$100
December	\$160	\$113	N.A.	N.A.	\$140	\$564	\$100
January 2007	\$156	\$108	N.A.	N.A.	\$136	\$535	\$100
February	\$156	\$106	N.A.	N.A.	\$135	\$516	\$100
March	\$157	\$108	N.A.	N.A.	\$140	\$515	\$101
April	\$151	\$102	N.A.	N.A.	\$127	\$665	\$101
May	\$148	\$99	N.A.	N.A.	\$140	\$516	\$100
June	\$160	\$108	N.A.	N.A.	\$155	\$779	\$100
July	\$158	\$110	N.A.	N.A.	\$149	N.A.	\$101
August 2007	\$157	\$106	N.A.	N.A.	\$147	N.A.	\$101

Note: N.A. means Not Available.



**TABLE 10  
PERCENT OF OHIO'S POPULATION PARTICIPATING IN SELECTED  
PUBLIC ASSISTANCE PROGRAMS FOR AUGUST 2007**

OHIO COUNTY	Estimated Total Population *	Percent of All Families Below Poverty Level	DISABILITY ASSISTANCE		OWF COMBINED		FOSTER CARE UNAVAILABLE		FNS BENEFITS	
			Recipients as % of		Recipients	Recipients as % of	Recipients	Recipients as % of	Recipients	Recipients as % of
			Recipients	Total Population						
<b>STATEWIDE</b>	<b>11,478,006</b>	<b>7.80%</b>	<b>16,113</b>	<b>0.14%</b>	<b>166,592</b>	<b>1.45%</b>	<b>0</b>	<b>0.00%</b>	<b>1,097,227</b>	<b>9.56%</b>
ADAMS	28,516	12.80%	111	0.39%	212	0.74%	0	0.00%	4,757	16.68%
ALLEN	105,788	9.60%	132	0.12%	679	0.64%	0	0.00%	9,265	8.76%
ASHLAND	54,727	7.10%	37	0.07%	174	0.32%	0	0.00%	3,019	5.52%
ASHTABULA	102,703	9.20%	317	0.31%	1,378	1.34%	0	0.00%	12,560	12.23%
ATHENS	61,860	14.00%	299	0.48%	1,545	2.50%	0	0.00%	7,279	11.77%
AUGLAIZE	47,060	4.90%	28	0.06%	98	0.21%	0	0.00%	2,092	4.45%
BELMONT	68,771	11.70%	157	0.23%	599	0.87%	0	0.00%	6,898	10.03%
BROWN	44,423	8.80%	108	0.24%	255	0.57%	0	0.00%	3,470	7.81%
BUTLER	354,992	5.40%	458	0.13%	2,769	0.78%	0	0.00%	26,952	7.59%
CARROLL	29,189	8.50%	29	0.10%	157	0.54%	0	0.00%	2,209	7.57%
CHAMPAIGN	39,921	5.10%	39	0.10%	476	1.19%	0	0.00%	2,970	7.44%
CLARK	141,872	7.90%	409	0.29%	2,801	1.97%	0	0.00%	17,695	12.47%
CLERMONT	192,706	5.30%	236	0.12%	736	0.38%	0	0.00%	11,132	5.78%
CLINTON	43,399	6.40%	82	0.19%	230	0.53%	0	0.00%	3,265	7.52%
COLUMBIANA	110,542	9.00%	138	0.12%	726	0.66%	0	0.00%	12,076	10.92%
COSHOCTON	36,976	7.00%	119	0.32%	447	1.21%	0	0.00%	4,088	11.06%
CRAWFORD	45,047	7.80%	56	0.12%	304	0.67%	0	0.00%	4,493	9.97%
CUYAHOGA	1,314,241	10.30%	1,070	0.08%	23,293	1.77%	0	0.00%	180,764	13.75%
DARKE	52,780	6.00%	36	0.07%	325	0.62%	0	0.00%	2,296	4.35%
DEFIANCE	39,091	4.50%	36	0.09%	298	0.76%	0	0.00%	2,810	7.19%
DELAWARE	156,697	2.90%	97	0.06%	732	0.47%	0	0.00%	4,470	2.85%
ERIE	78,116	6.00%	105	0.13%	434	0.56%	0	0.00%	5,795	7.42%
FAIRFIELD	140,591	4.50%	194	0.14%	2,004	1.43%	0	0.00%	10,505	7.47%
FAYETTE	28,305	7.70%	49	0.17%	243	0.86%	0	0.00%	2,708	9.57%
FRANKLIN	1,095,662	8.20%	1,283	0.12%	26,075	2.38%	0	0.00%	128,128	11.69%
FULTON	42,900	4.00%	45	0.10%	100	0.23%	0	0.00%	2,148	5.01%
GALLIA	31,313	13.50%	90	0.29%	924	2.95%	0	0.00%	5,091	16.26%
GEAUGA	95,676	2.80%	29	0.03%	111	0.12%	0	0.00%	1,676	1.75%
GREENE	152,298	5.20%	190	0.12%	1,076	0.71%	0	0.00%	8,482	5.57%

\*SOURCE: 2006 Ohio County Population Estimates, Ohio Dept. of Development, GRP342RA, GBS003RA, GRP304RA and GRP304RC Reports from Management Information Services.

**TABLE 10  
PERCENT OF OHIO'S POPULATION PARTICIPATING IN SELECTED  
PUBLIC ASSISTANCE PROGRAMS FOR AUGUST 2007**

OHIO COUNTY	Estimated Total Population *	Percent of All Families Below Poverty Level	DISABILITY ASSISTANCE		OWF COMBINED		FOSTER CARE UNAVAILABLE		FNS BENEFITS	
			Recipients as % of		Recipients	Recipients as % of	Recipients	Recipients as % of	Recipients	Recipients as % of
			Recipients	Total Population						
<b>STATEWIDE</b>	<b>11,478,006</b>	<b>7.80%</b>	<b>16,113</b>	<b>0.14%</b>	<b>166,592</b>	<b>1.45%</b>	<b>0</b>	<b>0.00%</b>	<b>1,097,227</b>	<b>9.56%</b>
GUERNSEY	40,876	12.90%	152	0.37%	280	0.68%	0	0.00%	5,909	14.46%
HAMILTON	822,596	8.80%	751	0.09%	17,508	2.13%	0	0.00%	74,713	9.08%
HANCOCK	73,824	5.20%	85	0.12%	145	0.20%	0	0.00%	4,246	5.75%
HARDIN	31,966	8.90%	47	0.15%	114	0.36%	0	0.00%	1,836	5.74%
HARRISON	15,799	11.00%	61	0.39%	211	1.34%	0	0.00%	2,023	12.80%
HENRY	29,520	5.30%	7	0.02%	59	0.20%	0	0.00%	1,428	4.84%
HIGHLAND	42,833	9.00%	120	0.28%	447	1.04%	0	0.00%	4,932	11.51%
HOCKING	28,973	10.30%	72	0.25%	617	2.13%	0	0.00%	3,395	11.72%
HOLMES	41,574	10.50%	32	0.08%	82	0.20%	0	0.00%	955	2.30%
HURON	60,313	6.50%	68	0.11%	245	0.41%	0	0.00%	4,782	7.93%
JACKSON	33,543	13.60%	129	0.38%	529	1.58%	0	0.00%	5,281	15.74%
JEFFERSON	70,125	11.40%	191	0.27%	1,648	2.35%	0	0.00%	8,713	12.42%
KNOX	58,561	7.40%	127	0.22%	607	1.04%	0	0.00%	4,596	7.85%
LAKE	232,892	3.50%	148	0.06%	841	0.36%	0	0.00%	10,823	4.65%
LAWRENCE	63,179	15.10%	82	0.13%	1,461	2.31%	0	0.00%	10,539	16.68%
LICKING	156,287	5.50%	295	0.19%	1,289	0.82%	0	0.00%	12,225	7.82%
LOGAN	46,189	7.10%	79	0.17%	361	0.78%	0	0.00%	3,552	7.69%
LORAIN	301,993	6.70%	401	0.13%	4,137	1.37%	0	0.00%	27,146	8.99%
LUCAS	445,281	10.70%	1,130	0.25%	13,121	2.95%	0	0.00%	63,314	14.22%
MADISON	41,496	6.20%	31	0.07%	497	1.20%	0	0.00%	3,024	7.29%
MAHONING	251,026	9.60%	280	0.11%	6,597	2.63%	0	0.00%	30,192	12.03%
MARION	65,583	7.40%	191	0.29%	713	1.09%	0	0.00%	7,318	11.16%
MEDINA	169,353	3.50%	85	0.05%	457	0.27%	0	0.00%	5,105	3.01%
MEIGS	23,092	14.30%	80	0.35%	417	1.81%	0	0.00%	4,060	17.58%
MERCER	41,303	4.60%	36	0.09%	132	0.32%	0	0.00%	1,456	3.53%
MIAMI	101,914	5.10%	79	0.08%	576	0.57%	0	0.00%	4,573	4.49%
MONROE	14,606	11.00%	30	0.21%	107	0.73%	0	0.00%	1,525	10.44%
MONTGOMERY	542,237	8.30%	923	0.17%	10,437	1.92%	0	0.00%	55,933	10.32%
MORGAN	14,821	15.70%	68	0.46%	144	0.97%	0	0.00%	1,979	13.35%
MORROW	34,529	6.60%	74	0.21%	202	0.59%	0	0.00%	2,933	8.49%

\*SOURCE: 2006 Ohio County Population Estimates, Ohio Dept. of Development, GRP342RA, GBS003RA, GRP304RA and GRP304RC Reports from Management Information Services.

**TABLE 10  
PERCENT OF OHIO'S POPULATION PARTICIPATING IN SELECTED  
PUBLIC ASSISTANCE PROGRAMS FOR AUGUST 2007**

OHIO COUNTY	Estimated Total Population *	Percent of All Families Below Poverty Level	DISABILITY ASSISTANCE		OWF COMBINED		FOSTER CARE UNAVAILABLE		FNS BENEFITS	
			Recipients as % of		Recipients	Recipients as % of	Recipients	Recipients as % of	Recipients	Recipients as % of
			Recipients	Total Population						
<b>STATEWIDE</b>	<b>11,478,006</b>	<b>7.80%</b>	<b>16,113</b>	<b>0.14%</b>	<b>166,592</b>	<b>1.45%</b>	<b>0</b>	<b>0.00%</b>	<b>1,097,227</b>	<b>9.56%</b>
MUSKINGUM	86,125	9.90%	415	0.48%	1,828	2.12%	0	0.00%	14,044	16.31%
NOBLE	14,165	8.30%	18	0.13%	80	0.56%	0	0.00%	1,177	8.31%
OTTAWA	41,331	4.20%	48	0.12%	294	0.71%	0	0.00%	2,483	6.01%
PAULDING	19,432	4.90%	31	0.16%	239	1.23%	0	0.00%	1,439	7.41%
PERRY	35,313	9.40%	117	0.33%	624	1.77%	0	0.00%	5,252	14.87%
PICKAWAY	53,606	7.60%	91	0.17%	826	1.54%	0	0.00%	4,819	8.99%
PIKE	28,269	15.10%	77	0.27%	739	2.61%	0	0.00%	5,095	18.02%
PORTAGE	155,012	5.90%	119	0.08%	765	0.49%	0	0.00%	9,209	5.94%
PREBLE	42,491	4.50%	55	0.13%	340	0.80%	0	0.00%	2,544	5.99%
PUTNAM	34,744	4.00%	9	0.03%	44	0.13%	0	0.00%	1,457	4.19%
RICHLAND	127,010	8.20%	326	0.26%	1,184	0.93%	0	0.00%	12,452	9.80%
ROSS	75,556	9.10%	170	0.22%	1,397	1.85%	0	0.00%	10,771	14.26%
SANDUSKY	61,625	5.70%	103	0.17%	368	0.60%	0	0.00%	4,353	7.06%
SCIOTO	76,441	15.20%	300	0.39%	1,982	2.59%	0	0.00%	15,813	20.69%
SENECA	57,255	6.10%	81	0.14%	328	0.57%	0	0.00%	4,751	8.30%
SHELBY	48,884	5.30%	41	0.08%	255	0.52%	0	0.00%	2,667	5.46%
STARK	380,575	6.80%	505	0.13%	6,108	1.60%	0	0.00%	30,945	8.13%
SUMMIT	545,931	7.50%	532	0.10%	9,691	1.78%	0	0.00%	53,189	9.74%
TRUMBULL	217,362	7.90%	360	0.17%	2,677	1.23%	0	0.00%	19,039	8.76%
TUSCARAWAS	91,766	7.20%	131	0.14%	696	0.76%	0	0.00%	7,424	8.09%
UNION	46,702	3.60%	33	0.07%	285	0.61%	0	0.00%	2,377	5.09%
VAN WERT	29,303	4.20%	32	0.11%	83	0.28%	0	0.00%	1,367	4.67%
VINTON	13,519	15.10%	65	0.48%	267	1.97%	0	0.00%	2,466	18.24%
WARREN	201,871	3.00%	92	0.05%	350	0.17%	0	0.00%	3,854	1.91%
WASHINGTON	61,867	8.60%	153	0.25%	203	0.33%	0	0.00%	5,527	8.93%
WAYNE	113,950	5.40%	241	0.21%	850	0.75%	0	0.00%	7,088	6.22%
WILLIAMS	38,719	3.90%	49	0.13%	428	1.11%	0	0.00%	2,731	7.05%
WOOD	124,183	4.70%	63	0.05%	383	0.31%	0	0.00%	4,355	3.51%
WYANDOT	22,553	3.80%	23	0.10%	96	0.43%	0	0.00%	940	4.17%
UNKNOWN										

\*SOURCE: 2006 Ohio County Population Estimates, Ohio Dept. of Development, GRP342RA, GBS003RA, GRP304RA and GRP304RC Reports from Management Information Services.

**TABLE 7  
CHILD CARE REVISION  
MAY 2007 UPDATE**

OHIO COUNTY	OWF JOBS, LEAP, and TRANSITIONAL		OTHER CHILD CARE		LOCAL FUNDING		ALL PROGRAM SOURCES	
	CHILDREN SERVED		CHILDREN SERVED		CHILDREN SERVED		CHILDREN SERVED	
	TOTAL	% OF STATE TOTAL	TOTAL	% OF STATE TOTAL	TOTAL	% OF STATE TOTAL	TOTAL	% OF STATE TOTAL
<b>STATEWIDE</b>	<b>24,162</b>	<b>100.00%</b>	<b>80,903</b>	<b>100.00%</b>	<b>113</b>	<b>100.00%</b>	<b>105,178</b>	<b>100.00%</b>
ADAMS	37	0.15%	113	0.14%	0	0.00%	150	0.14%
ALLEN	167	0.69%	419	0.52%	0	0.00%	586	0.56%
ASHLAND	9	0.04%	210	0.26%	0	0.00%	219	0.21%
ASHTABULA	188	0.78%	641	0.79%	0	0.00%	829	0.79%
ATHENS	97	0.40%	220	0.27%	0	0.00%	317	0.30%
AUGLAIZE	25	0.10%	116	0.14%	0	0.00%	141	0.13%
BELMONT	77	0.32%	251	0.31%	0	0.00%	328	0.31%
BROWN	21	0.09%	121	0.15%	0	0.00%	142	0.14%
BUTLER	199	0.82%	1,604	1.98%	0	0.00%	1,803	1.71%
CARROLL	17	0.07%	58	0.07%	0	0.00%	75	0.07%
CHAMPAIGN	33	0.14%	137	0.17%	0	0.00%	170	0.16%
CLARK	124	0.51%	655	0.81%	0	0.00%	779	0.74%
CLERMONT	191	0.79%	470	0.58%	0	0.00%	661	0.63%
CLINTON	10	0.04%	255	0.32%	0	0.00%	265	0.25%
COLUMBIANA	175	0.72%	868	1.07%	0	0.00%	1,043	0.99%
COSHOCTON	74	0.31%	188	0.23%	0	0.00%	262	0.25%
CRAWFORD	66	0.27%	230	0.28%	0	0.00%	296	0.28%
CUYAHOGA	4,574	18.93%	18,048	22.31%	0	0.00%	22,622	21.51%
DARKE	32	0.13%	101	0.12%	0	0.00%	133	0.13%
DEFIANCE	64	0.26%	156	0.19%	0	0.00%	220	0.21%
DELAWARE	44	0.18%	336	0.42%	0	0.00%	380	0.36%
ERIE	52	0.22%	573	0.71%	0	0.00%	625	0.59%
FAIRFIELD	93	0.38%	518	0.64%	0	0.00%	611	0.58%
FAYETTE	59	0.24%	229	0.28%	0	0.00%	288	0.27%
FRANKLIN	3,019	12.49%	10,167	12.57%	108	95.58%	13,294	12.64%
FULTON	51	0.21%	155	0.19%	0	0.00%	206	0.20%
GALLIA	45	0.19%	148	0.18%	0	0.00%	193	0.18%
GEAUGA	49	0.20%	196	0.24%	0	0.00%	245	0.23%
GREENE	241	1.00%	768	0.95%	0	0.00%	1,009	0.96%

**TABLE 7  
CHILD CARE REVISION  
MAY 2007 UPDATE**

OHIO COUNTY	OWF JOBS, LEAP, and TRANSITIONAL		OTHER CHILD CARE		LOCAL FUNDING		ALL PROGRAM SOURCES	
	CHILDREN SERVED		CHILDREN SERVED		CHILDREN SERVED		CHILDREN SERVED	
	TOTAL	% OF STATE TOTAL	TOTAL	% OF STATE TOTAL	TOTAL	% OF STATE TOTAL	TOTAL	% OF STATE TOTAL
<b>STATEWIDE</b>	<b>24,162</b>	<b>100.00%</b>	<b>80,903</b>	<b>100.00%</b>	<b>113</b>	<b>100.00%</b>	<b>105,178</b>	<b>100.00%</b>
GUERNSEY	120	0.50%	297	0.37%	0	0.00%	417	0.40%
HAMILTON	3,518	14.56%	10,282	12.71%	0	0.00%	13,800	13.12%
HANCOCK	113	0.47%	341	0.42%	0	0.00%	454	0.43%
HARDIN	23	0.10%	62	0.08%	0	0.00%	85	0.08%
HARRISON	11	0.05%	54	0.07%	0	0.00%	65	0.06%
HENRY	36	0.15%	115	0.14%	0	0.00%	151	0.14%
HIGHLAND	12	0.05%	189	0.23%	0	0.00%	201	0.19%
HOCKING	47	0.19%	80	0.10%	0	0.00%	127	0.12%
HOLMES	53	0.22%	103	0.13%	0	0.00%	156	0.15%
HURON	9	0.04%	434	0.54%	0	0.00%	443	0.42%
JACKSON	44	0.18%	123	0.15%	0	0.00%	167	0.16%
JEFFERSON	77	0.32%	291	0.36%	0	0.00%	368	0.35%
KNOX	79	0.33%	246	0.30%	0	0.00%	325	0.31%
LAKE	275	1.14%	849	1.05%	0	0.00%	1,124	1.07%
LAWRENCE	139	0.58%	466	0.58%	0	0.00%	605	0.58%
LICKING	200	0.83%	1,053	1.30%	0	0.00%	1,253	1.19%
LOGAN	39	0.16%	51	0.06%	0	0.00%	90	0.09%
LORAIN	736	3.05%	1,680	2.08%	0	0.00%	2,416	2.30%
LUCAS	2,101	8.70%	2,958	3.66%	0	0.00%	5,059	4.81%
MADISON	32	0.13%	136	0.17%	0	0.00%	168	0.16%
MAHONING	963	3.99%	1,445	1.79%	0	0.00%	2,408	2.29%
MARION	28	0.12%	384	0.47%	0	0.00%	412	0.39%
MEDINA	125	0.52%	739	0.91%	0	0.00%	864	0.82%
MEIGS	12	0.05%	189	0.23%	0	0.00%	201	0.19%
MERCER	26	0.11%	136	0.17%	0	0.00%	162	0.15%
MIAMI	127	0.53%	334	0.41%	0	0.00%	461	0.44%
MONROE	1	0.00%	53	0.07%	0	0.00%	54	0.05%
MONTGOMERY	927	3.84%	5,120	6.33%	1	0.88%	6,048	5.75%
MORGAN	8	0.03%	90	0.11%	0	0.00%	98	0.09%
MORROW	20	0.08%	170	0.21%	0	0.00%	190	0.18%

**TABLE 7  
CHILD CARE REVISION  
MAY 2007 UPDATE**

OHIO COUNTY	OWF JOBS, LEAP, and TRANSITIONAL		OTHER CHILD CARE		LOCAL FUNDING		ALL PROGRAM SOURCES	
	CHILDREN SERVED		CHILDREN SERVED		CHILDREN SERVED		CHILDREN SERVED	
	TOTAL	% OF STATE TOTAL	TOTAL	% OF STATE TOTAL	TOTAL	% OF STATE TOTAL	TOTAL	% OF STATE TOTAL
<b>STATEWIDE</b>	<b>24,162</b>	<b>100.00%</b>	<b>80,903</b>	<b>100.00%</b>	<b>113</b>	<b>100.00%</b>	<b>105,178</b>	<b>100.00%</b>
MUSKINGUM	294	1.22%	752	0.93%	0	0.00%	1,046	0.99%
NOBLE	41	0.17%	82	0.10%	0	0.00%	123	0.12%
OTTAWA	84	0.35%	117	0.14%	0	0.00%	201	0.19%
PAULDING	7	0.03%	33	0.04%	0	0.00%	40	0.04%
PERRY	64	0.26%	247	0.31%	0	0.00%	311	0.30%
PICKAWAY	76	0.31%	134	0.17%	0	0.00%	210	0.20%
PIKE	58	0.24%	78	0.10%	0	0.00%	136	0.13%
PORTAGE	187	0.77%	651	0.80%	0	0.00%	838	0.80%
PREBLE	55	0.23%	126	0.16%	0	0.00%	181	0.17%
PUTNAM	23	0.10%	97	0.12%	0	0.00%	120	0.11%
RICHLAND	278	1.15%	836	1.03%	0	0.00%	1,114	1.06%
ROSS	110	0.46%	298	0.37%	0	0.00%	408	0.39%
SANDUSKY	91	0.38%	440	0.54%	0	0.00%	531	0.50%
SCIOTO	123	0.51%	573	0.71%	0	0.00%	696	0.66%
SENECA	26	0.11%	187	0.23%	0	0.00%	213	0.20%
SHELBY	50	0.21%	175	0.22%	0	0.00%	225	0.21%
STARK	845	3.50%	2,211	2.73%	0	0.00%	3,056	2.91%
SUMMIT	979	4.05%	3,644	4.50%	0	0.00%	4,623	4.40%
TRUMBULL	308	1.27%	1,524	1.88%	0	0.00%	1,832	1.74%
TUSCARAWAS	50	0.21%	328	0.41%	0	0.00%	378	0.36%
UNION	34	0.14%	223	0.28%	4	3.54%	261	0.25%
VAN WERT	21	0.09%	46	0.06%	0	0.00%	67	0.06%
VINTON	7	0.03%	92	0.11%	0	0.00%	99	0.09%
WARREN	168	0.70%	472	0.58%	0	0.00%	640	0.61%
WASHINGTON	102	0.42%	247	0.31%	0	0.00%	349	0.33%
WAYNE	186	0.77%	385	0.48%	0	0.00%	571	0.54%
WILLIAMS	48	0.20%	93	0.11%	0	0.00%	141	0.13%
WOOD	102	0.42%	343	0.42%	0	0.00%	445	0.42%
WYANDOT	11	0.05%	48	0.06%	0	0.00%	59	0.06%

SOURCE: COGNOS. The above numbers have not been reconciled between the CCIDS/3299 data collection system and 2827 ODJFS fiscal reporting system; therefore they may not be conclusive at this time.

OWF data consist of funding codes: 173,312, 313,314, 326, & 327. Other data consist of funding codes: 320, 321, 322, 323, 324, 325, 328, 329, and 342. Local Funding is from funding code 899.