

Ohio Department of Job and Family Services

PUBLIC ASSISTANCE MONTHLY STATISTICS DECEMBER 2006



<http://jfs.ohio.gov/pams/index.stm>

Bureau of Research and Evaluation : Federal Reporting\ Data Development Section
Office of Research, Assessment, and Accountability
P.O. Box 1618
Columbus, Ohio 43216-1618

OHIO DEPARTMENT OF JOB AND FAMILY SERVICES
PUBLIC ASSISTANCE MONTHLY STATISTICS
TABLE OF CONTENTS

<u>TITLE</u>	<u>PAGE(S)</u>
Monthly Review of Public Assistance Statistics.	1
Statewide Summary of Public Assistance Programs.	2
Table 1: OWF (TANF) Summary	3-14
Table 2: Foster Care (Title IV-E) Program Summary.	15-17
Table 3: Disability Assistance Program Summary.	18-22
Table 3-A: DA Payments for Medical Services.	23
Table 5: FNS Benefits Program Summary.	24-28
Table 6: Medicaid (Title XIX): Eligibles and Expenditures.	29-34
Table 7: Child Day Care Summary	35-37
Table 8: Program Summaries of Recipients, Expenditures, and Average Payment Per Recipient During the Last 12 Months.	38
Table 10: Percent of Ohio's Population Participating in Selected Public Assistance Programs.	39-41
<i>Note: Table 4 and Table 9 were discontinued.</i>	
<i>Also: Table 7-A, Updated Child Day Care Summary for September 2006.</i>	<i>42-44</i>

All data in the PAMS report is limited to the information available at the time it was constructed. It does not account for backdated or retroactive eligibility or any adjustments made subsequent to its creation.

MONTHLY REVIEW OF PUBLIC ASSISTANCE STATISTICS FOR DECEMBER 2006

OHIO WORKS FIRST (OWF)

For the month of December 2006, OWF-Combined assistance groups totaled 80,192; recipients totaled 172,782 and money payments totaled \$27,068,888. The percent change from November 2006 to December 2006 was 1.6% for assistance groups; 2.2% for recipients, and 5.8% for money payments. For OWF- Regular (OWF-R) there were 76,927 assistance groups; 159,543 recipients, and \$25,577,815 in money payments issued for December 2006. The percent change from November 2006 to December 2006 was 1.6% for assistance groups; 2.1% for recipients, and 5.5% for money payments. For OWF-Unemployed (OWF-U) assistance groups totaled 3,265; recipients, 13,239 and money payments were \$1,491,073. The percent change from November 2006 to December 2006 was 3.0% for assistance groups; 3.6% for recipients and 9.9% for money payments.

FOSTER CARE (TITLE IV-E)

A total of 27,223 children received \$15,347,273 in Title IV-E assistance during the month of December 2006. Included in this total were 6,458 foster care children who received \$7,296,480 in money payments. Of these Title IV-E children, 2,858 or 10.5% were in foster family homes who received \$1,730,189 and 3,600 or 13.2% children in child care institutions who received \$5,566,291 in OWF foster care assistance. The remaining 20,765 children reported as participating in Title IV-E received \$8,050,794 in adoption assistance. Overall, the average amount of Foster Care received per child was \$563.76.

DISABILITY ASSISTANCE (DA)

For the month of December 2006, there were 13,573 assistance groups; 13,654 recipients, and \$1,905,592 in DA financial assistance. The average DA financial assistance per recipient was \$139.56. Total DA expenditures for medical services for December 2006 were \$1,992,451. Of this total, \$1,377,417 or 69.1% was spent for prescribed drugs, and \$453,090 or 22.7% was spent for physician services. Medical expenses were paid for 4,076 recipients for an average expenditure of \$488.83 per recipient.

FOOD AND NUTRITION SERVICES BENEFITS (FNS)

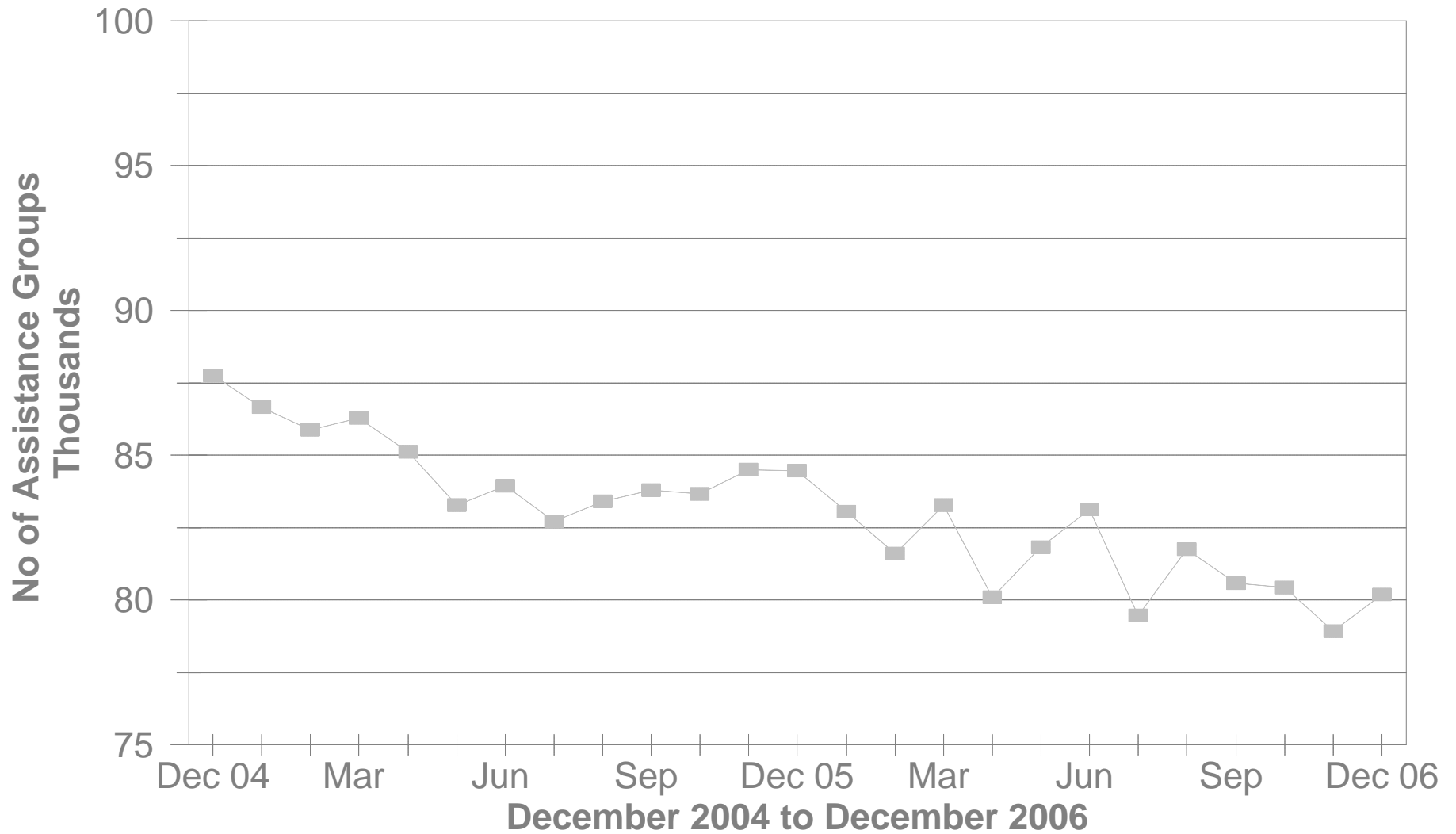
Total persons participating in the FNS benefits program during December 2006 increased to 1,073,211 by 11,819 or 1.1% from 1,061,392 persons reported in November 2006. Households increased by 5,595 or 1.2% over November 2006 levels. The total dollar value of FNS related benefits issued during December 2006 increased by \$1,337,538 or 1.3% from \$106,332,849 reported in November 2006 to \$107,670,387 reported in December 2006. The average benefit issuance per person increased by \$.15 or 0.1% from those issued in November 2006. The average benefit issuance per person increased from \$100.18 reported in November 2006 to \$100.33 reported in December 2006.

Please note: All data in the PAMS report is limited to the information available at the time it was constructed. It does not account for backdated or retroactive eligibility or any adjustments made subsequent to its creation.

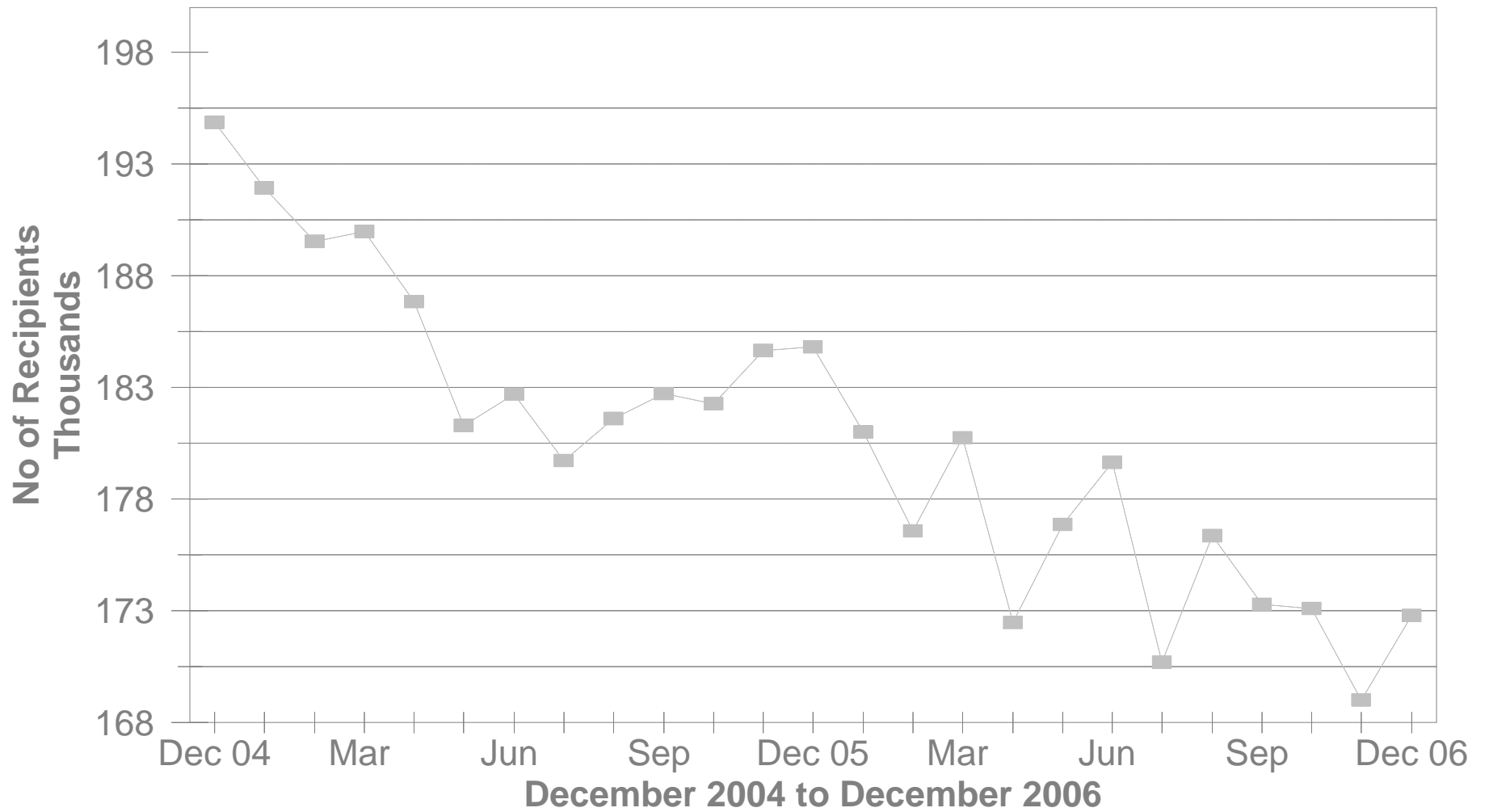
STATEWIDE SUMMARY OF PUBLIC ASSISTANCE PROGRAMS FOR DECEMBER 2006

	December 2006	November 2006	% CHANGE Dec 06 / Nov 06	December 2005	% CHANGE Dec 06 / Dec 05
OHIO WORKS FIRST (OWF)-COMBINED					
Assistance Groups	80,192	78,913	1.6%	84,457	-5.0%
Recipients	172,782	169,001	2.2%	184,798	-6.5%
Net Payments	\$27,068,888	\$25,591,161	5.8%	\$28,157,960	-3.9%
Average Per Recipient	\$156.66	\$151.43	3.5%	\$152.37	2.8%
OWF-REGULAR, OWF-INCAPACITATED,& OWF REGULAR VENDOR PAYMENTS					
Assistance Groups	76,927	75,743	1.6%	80,336	-4.2%
Recipients	159,543	156,220	2.1%	168,095	-5.1%
Net Payments	\$25,577,815	\$24,233,824	5.5%	\$26,315,386	-2.8%
Average Per Recipient	\$160.32	\$155.13	3.3%	\$156.55	2.4%
OWF-UNEMPLOYED AND OWF-UNEMPLOYED VENDOR PAYMENTS					
Assistance Groups	3,265	3,170	3.0%	4,121	-20.8%
Recipients	13,239	12,781	3.6%	16,703	-20.7%
Net Payments	\$1,491,073	\$1,357,337	9.9%	\$1,842,574	-19.1%
Average Per Recipient	\$112.63	\$106.20	6.1%	\$110.31	2.1%
TITLE IV-E FOSTER CARE					
Assistance Groups/Recipients	27,223	26,828	1.5%	26,903	1.2%
Gross Payments	\$15,347,273	\$13,607,688	12.8%	\$14,353,892	6.9%
Average Per Recipient	\$563.76	\$507.22	11.1%	\$533.54	5.7%
DISABILITY ASSISTANCE					
Assistance Groups	13,573	13,497	0.6%	12,023	12.9%
Recipients	13,654	13,578	0.6%	12,107	12.8%
Net Payments	\$1,905,592	\$1,732,064	10.0%	\$1,661,825	14.7%
Medical Assistance	\$1,992,451	\$2,493,512	-20.1%	\$3,529,929	-43.6%
FNS BENEFITS					
Assistance Groups	491,383	485,788	1.2%	471,694	4.2%
Persons	1,073,211	1,061,392	1.1%	1,055,074	1.7%
Total Coupons Issued	\$107,670,387	\$106,332,849	1.3%	\$105,178,691	2.4%
Average Per Recipient	\$100.33	\$100.18	0.1%	\$99.69	0.6%

No of OWF Combined Assistance Groups During The Last 25 Months

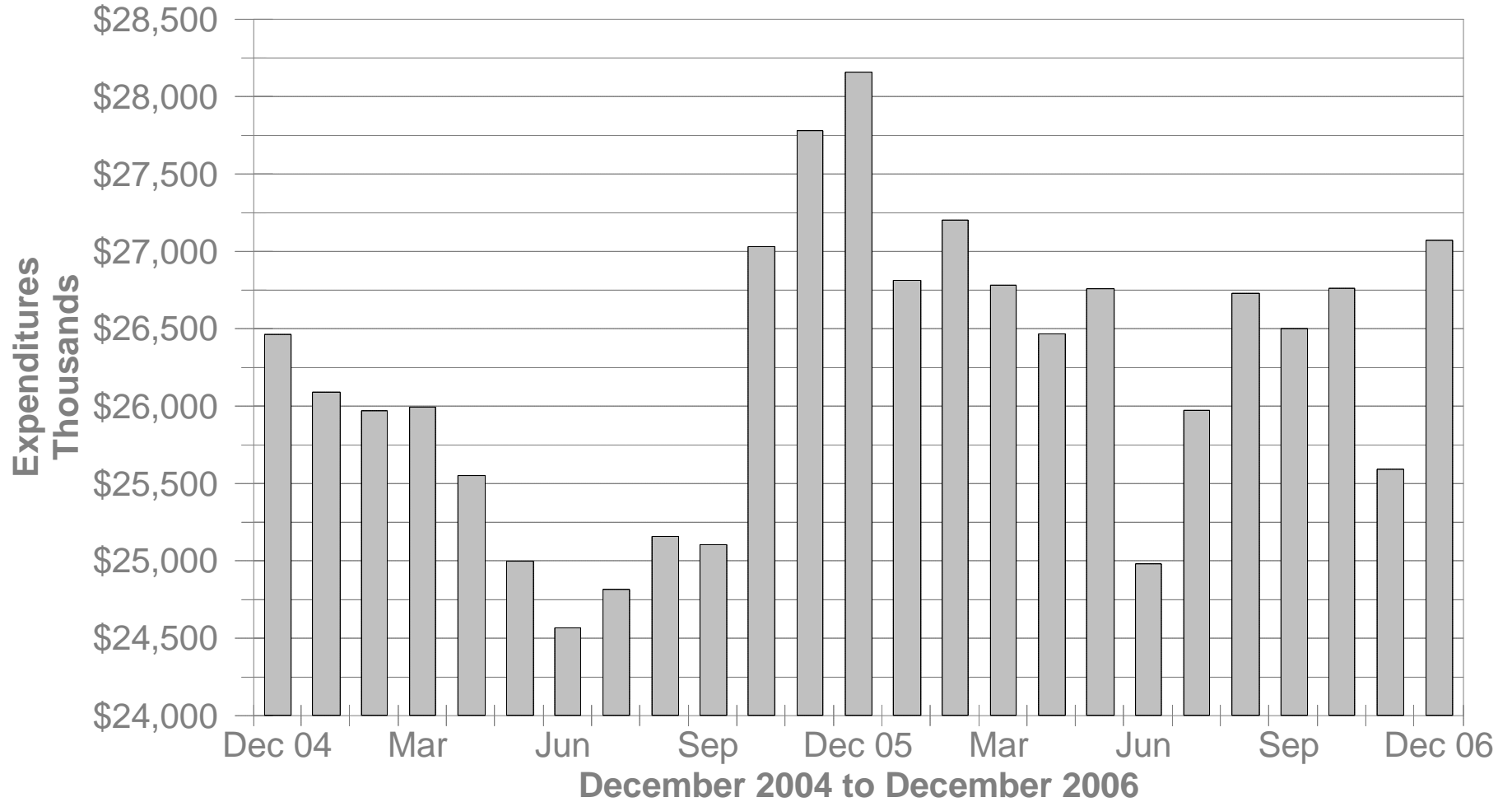


No of OWF Combined Recipients During The Last 25 Months



OWF Combined Net Expenditures

During The Last 25 Months



**TABLE 1
OHIO WORKS FIRST COMBINED
DECEMBER 2006**

OHIO COUNTY	ASSISTANCE GROUP	RECIPIENTS	ADULTS	CHILDREN	ACTUAL EXPENDITURES		
					GROSS AMOUNT	CANCELLED AMOUNT	NET AMOUNT
STATEWIDE	80,192	172,782	42,362	130,420	\$27,949,752.00	\$880,864.00	\$27,068,888.00
ADAMS	147	232	5	227	\$43,064.00	\$746.00	\$42,318.00
ALLEN	435	704	43	661	\$138,410.00	\$2,088.00	\$136,322.00
ASHLAND	76	148	30	118	\$27,375.00	\$0.00	\$27,375.00
ASHTABULA	711	1,486	360	1,126	\$246,275.00	\$5,006.00	\$241,269.00
ATHENS	614	1,498	526	972	\$221,269.00	\$4,027.00	\$217,242.00
AUGLAIZE	70	103	1	102	\$22,892.00	\$1,490.00	\$21,402.00
BELMONT	367	790	211	579	\$122,756.00	\$2,211.00	\$120,545.00
BROWN	167	279	31	248	\$50,901.00	\$1,047.00	\$49,854.00
BUTLER	1,565	2,926	439	2,487	\$510,909.00	\$19,551.00	\$491,358.00
CARROLL	94	180	45	135	\$29,897.00	\$0.00	\$29,897.00
CHAMPAIGN	197	403	108	295	\$64,985.00	\$2,636.00	\$62,349.00
CLARK	1,315	2,908	757	2,151	\$461,571.00	\$11,967.00	\$449,604.00
CLERMONT	426	772	86	686	\$138,892.00	\$5,106.00	\$133,786.00
CLINTON	115	218	29	189	\$40,101.00	\$655.00	\$39,446.00
COLUMBIANA	443	802	124	678	\$140,828.00	\$3,118.00	\$137,710.00
COSHOCTON	212	433	120	313	\$68,824.00	\$1,225.00	\$67,599.00
CRAWFORD	157	342	84	258	\$55,121.00	\$336.00	\$54,785.00
CUYAHOGA	12,261	24,978	5,755	19,223	\$4,216,833.00	\$122,698.00	\$4,094,135.00
DARKE	148	287	86	201	\$49,970.00	\$581.00	\$49,389.00
DEFIANCE	123	286	66	220	\$43,584.00	\$1,533.00	\$42,051.00
DELAWARE	327	734	242	492	\$119,041.00	\$4,767.00	\$114,274.00
ERIE	256	443	43	400	\$83,099.00	\$2,138.00	\$80,961.00
FAIRFIELD	803	1,892	609	1,283	\$290,570.00	\$10,282.00	\$280,288.00
FAYETTE	170	349	84	265	\$59,258.00	\$1,082.00	\$58,176.00
FRANKLIN	10,780	24,395	5,936	18,459	\$3,864,654.00	\$165,744.00	\$3,698,910.00
FULTON	65	103	9	94	\$18,582.00	\$1,006.00	\$17,576.00
GALLIA	512	1,251	449	802	\$186,875.00	\$5,061.00	\$181,814.00
GEAUGA	66	109	13	96	\$20,977.00	\$2,152.00	\$18,825.00
GREENE	556	1,156	281	875	\$186,758.00	\$5,525.00	\$181,233.00

Source: GRP342RA Report from Management Information Services. Data includes ADC-Regular, ADC-Incapacitated, and Vendor Payments.

**TABLE 1
OHIO WORKS FIRST COMBINED
DECEMBER 2006**

OHIO COUNTY	ASSISTANCE GROUP	RECIPIENTS	ADULTS	CHILDREN	ACTUAL EXPENDITURES		
					GROSS AMOUNT	CANCELLED AMOUNT	NET AMOUNT
STATEWIDE	80,192	172,782	42,362	130,420	\$27,949,752.00	\$880,864.00	\$27,068,888.00
GUERNSEY	177	307	44	263	\$52,021.00	\$769.00	\$51,252.00
HAMILTON	7,317	16,724	3,842	12,882	\$2,689,840.00	\$122,713.00	\$2,567,127.00
HANCOCK	100	145	3	142	\$30,564.00	\$1,643.00	\$28,921.00
HARDIN	61	99	6	93	\$18,955.00	\$245.00	\$18,710.00
HARRISON	97	211	54	157	\$31,155.00	\$581.00	\$30,574.00
HENRY	37	59	2	57	\$12,245.00	\$0.00	\$12,245.00
HIGHLAND	200	437	107	330	\$69,388.00	\$2,138.00	\$67,250.00
HOCKING	273	614	179	435	\$91,130.00	\$3,487.00	\$87,643.00
HOLMES	50	105	23	82	\$18,293.00	\$336.00	\$17,957.00
HURON	161	248	0	248	\$47,180.00	\$2,139.00	\$45,041.00
JACKSON	294	527	79	448	\$96,877.00	\$3,304.00	\$93,573.00
JEFFERSON	800	1,853	569	1,284	\$273,270.00	\$7,690.00	\$265,580.00
KNOX	254	584	166	418	\$87,720.00	\$1,453.00	\$86,267.00
LAKE	509	1,081	263	818	\$173,090.00	\$3,077.00	\$170,013.00
LAWRENCE	734	1,462	315	1,147	\$234,905.00	\$3,949.00	\$230,956.00
LICKING	587	1,252	326	926	\$193,771.00	\$12,679.00	\$181,092.00
LOGAN	206	431	108	323	\$71,756.00	\$980.00	\$70,776.00
LORAIN	2,026	4,471	1,043	3,428	\$731,923.00	\$13,396.00	\$718,527.00
LUCAS	6,735	15,804	4,578	11,226	\$2,445,132.00	\$98,797.00	\$2,346,335.00
MADISON	222	527	168	359	\$77,426.00	\$2,469.00	\$74,957.00
MAHONING	2,798	6,446	1,687	4,759	\$1,003,578.00	\$21,321.00	\$982,257.00
MARION	405	754	108	646	\$133,429.00	\$2,683.00	\$130,746.00
MEDINA	266	580	162	418	\$93,896.00	\$3,386.00	\$90,510.00
MEIGS	186	405	109	296	\$61,335.00	\$2,726.00	\$58,609.00
MERCER	83	180	48	132	\$27,008.00	\$336.00	\$26,672.00
MIAMI	307	609	120	489	\$100,962.00	\$4,028.00	\$96,934.00
MONROE	87	239	87	152	\$30,408.00	\$143.00	\$30,265.00
MONTGOMERY	5,219	10,872	2,541	8,331	\$1,764,247.00	\$45,813.00	\$1,718,434.00
MORGAN	71	123	15	108	\$21,657.00	\$410.00	\$21,247.00
MORROW	132	301	78	223	\$48,096.00	\$1,589.00	\$46,507.00

Source: GRP342RA Report from Management Information Services. Data includes ADC-Regular, ADC-Incapacitated, and Vendor Payments.

**TABLE 1
OHIO WORKS FIRST COMBINED
DECEMBER 2006**

OHIO COUNTY	ASSISTANCE GROUP	RECIPIENTS	ADULTS	CHILDREN	ACTUAL EXPENDITURES		
					GROSS AMOUNT	CANCELLED AMOUNT	NET AMOUNT
STATEWIDE	80,192	172,782	42,362	130,420	\$27,949,752.00	\$880,864.00	\$27,068,888.00
MUSKINGUM	856	1,858	508	1,350	\$283,579.00	\$6,440.00	\$277,139.00
NOBLE	31	73	17	56	\$11,223.00	\$0.00	\$11,223.00
OTTAWA	140	337	95	242	\$51,953.00	\$1,636.00	\$50,317.00
PAULDING	110	276	96	180	\$38,783.00	\$1,749.00	\$37,034.00
PERRY	299	690	176	514	\$98,170.00	\$3,527.00	\$94,643.00
PICKAWAY	396	916	268	648	\$138,643.00	\$3,305.00	\$135,338.00
PIKE	329	696	148	548	\$113,086.00	\$5,412.00	\$107,674.00
PORTAGE	445	839	163	676	\$154,412.00	\$3,207.00	\$151,205.00
PREBLE	154	335	75	260	\$51,615.00	\$429.00	\$51,186.00
PUTNAM	19	31	1	30	\$5,832.00	\$0.00	\$5,832.00
RICHLAND	668	1,265	241	1,024	\$215,144.00	\$4,562.00	\$210,582.00
ROSS	686	1,509	397	1,112	\$244,489.00	\$7,045.00	\$237,444.00
SANDUSKY	200	386	73	313	\$66,372.00	\$1,071.00	\$65,301.00
SCIOTO	1,047	1,993	361	1,632	\$341,341.00	\$9,510.00	\$331,831.00
SENECA	152	283	47	236	\$48,602.00	\$336.00	\$48,266.00
SHELBY	131	248	27	221	\$43,706.00	\$1,357.00	\$42,349.00
STARK	2,831	6,266	1,750	4,516	\$978,702.00	\$24,527.00	\$954,175.00
SUMMIT	4,715	10,080	2,781	7,299	\$1,656,309.00	\$28,786.00	\$1,627,523.00
TRUMBULL	1,329	2,588	543	2,045	\$440,158.00	\$8,518.00	\$431,640.00
TUSCARAWAS	499	1,171	369	802	\$178,830.00	\$3,219.00	\$175,611.00
UNION	168	440	136	304	\$61,982.00	\$1,962.00	\$60,020.00
VAN WERT	43	59	0	59	\$11,718.00	\$336.00	\$11,382.00
VINTON	132	263	70	193	\$43,507.00	\$410.00	\$43,097.00
WARREN	221	398	53	345	\$76,582.00	\$6,609.00	\$69,973.00
WASHINGTON	132	212	4	208	\$40,383.00	\$843.00	\$39,540.00
WAYNE	468	1,041	344	697	\$159,527.00	\$3,380.00	\$156,147.00
WILLIAMS	163	399	138	261	\$58,450.00	\$2,372.00	\$56,078.00
WOOD	219	412	70	342	\$69,042.00	\$1,479.00	\$67,563.00
WYANDOT	37	61	9	52	\$12,084.00	\$779.00	\$11,305.00

Source: GRP342RA Report from Management Information Services. Data includes ADC-Regular, ADC-Incapacitated, and Vendor Payments.

**TABLE 1
OHIO WORKS FIRST REGULAR
DECEMBER 2006**

OHIO COUNTY	ASSISTANCE GROUP	RECIPIENTS	ADULTS	CHILDREN	ACTUAL EXPENDITURES		
					GROSS AMOUNT	CANCELLED AMOUNT	NET AMOUNT
STATEWIDE	76,927	159,543	36,281	123,262	\$26,411,554.00	\$833,739.00	\$25,577,815.00
ADAMS	147	232	5	227	\$43,064.00	\$746.00	\$42,318.00
ALLEN	435	704	43	661	\$138,410.00	\$2,088.00	\$136,322.00
ASHLAND	74	138	26	112	\$24,947.00	\$0.00	\$24,947.00
ASHTABULA	673	1,331	293	1,038	\$227,384.00	\$4,168.00	\$223,216.00
ATHENS	522	1,155	358	797	\$183,039.00	\$2,345.00	\$180,694.00
AUGLAIZE	70	103	1	102	\$22,892.00	\$1,490.00	\$21,402.00
BELMONT	341	686	158	528	\$112,355.00	\$2,056.00	\$110,299.00
BROWN	166	275	29	246	\$50,149.00	\$1,047.00	\$49,102.00
BUTLER	1,560	2,913	434	2,479	\$508,850.00	\$19,551.00	\$489,299.00
CARROLL	88	148	33	115	\$27,013.00	\$0.00	\$27,013.00
CHAMPAIGN	193	387	100	287	\$63,013.00	\$2,636.00	\$60,377.00
CLARK	1,256	2,686	646	2,040	\$431,367.00	\$11,557.00	\$419,810.00
CLERMONT	424	767	84	683	\$138,505.00	\$5,106.00	\$133,399.00
CLINTON	115	218	29	189	\$40,101.00	\$655.00	\$39,446.00
COLUMBIANA	438	782	115	667	\$137,973.00	\$3,066.00	\$134,907.00
COSHOCTON	195	372	88	284	\$61,749.00	\$1,225.00	\$60,524.00
CRAWFORD	151	324	74	250	\$52,806.00	\$336.00	\$52,470.00
CUYAHOGA	11,919	23,595	5,106	18,489	\$4,059,852.00	\$117,609.00	\$3,942,243.00
DARKE	141	267	74	193	\$46,877.00	\$581.00	\$46,296.00
DEFIANCE	118	259	56	203	\$40,935.00	\$1,533.00	\$39,402.00
DELAWARE	294	613	187	426	\$103,180.00	\$4,767.00	\$98,413.00
ERIE	256	443	43	400	\$83,099.00	\$2,138.00	\$80,961.00
FAIRFIELD	733	1,617	470	1,147	\$258,821.00	\$9,264.00	\$249,557.00
FAYETTE	161	315	66	249	\$54,210.00	\$1,082.00	\$53,128.00
FRANKLIN	10,283	22,229	5,093	17,136	\$3,621,814.00	\$156,583.00	\$3,465,231.00
FULTON	64	101	9	92	\$18,246.00	\$1,006.00	\$17,240.00
GALLIA	432	958	290	668	\$153,567.00	\$4,651.00	\$148,916.00
GEAUGA	65	106	11	95	\$20,285.00	\$2,152.00	\$18,133.00
GREENE	536	1,066	241	825	\$177,518.00	\$5,228.00	\$172,290.00

Source: GRP342RA Report from Management Information Services. Data includes ADC-Regular, ADC-Incapacitated, and Vendor Payments.

**TABLE 1
OHIO WORKS FIRST REGULAR
DECEMBER 2006**

OHIO COUNTY	ASSISTANCE GROUP	RECIPIENTS	ADULTS	CHILDREN	ACTUAL EXPENDITURES		
					GROSS AMOUNT	CANCELLED AMOUNT	NET AMOUNT
STATEWIDE	76,927	159,543	36,281	123,262	\$26,411,554.00	\$833,739.00	\$25,577,815.00
GUERNSEY	172	287	34	253	\$50,510.00	\$560.00	\$49,950.00
HAMILTON	7,177	16,107	3,581	12,526	\$2,613,779.00	\$120,414.00	\$2,493,365.00
HANCOCK	100	145	3	142	\$30,564.00	\$1,643.00	\$28,921.00
HARDIN	61	99	6	93	\$18,955.00	\$245.00	\$18,710.00
HARRISON	93	196	46	150	\$28,964.00	\$581.00	\$28,383.00
HENRY	37	59	2	57	\$12,245.00	\$0.00	\$12,245.00
HIGHLAND	196	418	99	319	\$67,132.00	\$1,545.00	\$65,587.00
HOCKING	243	493	118	375	\$79,014.00	\$2,786.00	\$76,228.00
HOLMES	46	87	15	72	\$16,032.00	\$336.00	\$15,696.00
HURON	160	247	0	247	\$46,935.00	\$2,139.00	\$44,796.00
JACKSON	288	505	67	438	\$93,787.00	\$3,304.00	\$90,483.00
JEFFERSON	724	1,535	419	1,116	\$238,268.00	\$7,466.00	\$230,802.00
KNOX	238	513	135	378	\$80,296.00	\$1,453.00	\$78,843.00
LAKE	489	992	231	761	\$163,097.00	\$2,854.00	\$160,243.00
LAWRENCE	694	1,301	236	1,065	\$219,430.00	\$3,442.00	\$215,988.00
LICKING	555	1,118	264	854	\$179,830.00	\$11,644.00	\$168,186.00
LOGAN	198	398	92	306	\$67,491.00	\$980.00	\$66,511.00
LORAIN	1,969	4,252	942	3,310	\$704,121.00	\$12,803.00	\$691,318.00
LUCAS	6,308	14,097	3,788	10,309	\$2,237,294.00	\$87,991.00	\$2,149,303.00
MADISON	199	438	123	315	\$66,325.00	\$2,150.00	\$64,175.00
MAHONING	2,703	6,041	1,503	4,538	\$959,013.00	\$20,814.00	\$938,199.00
MARION	400	737	102	635	\$131,530.00	\$2,683.00	\$128,847.00
MEDINA	251	515	132	383	\$85,057.00	\$3,386.00	\$81,671.00
MEIGS	171	344	78	266	\$56,542.00	\$2,726.00	\$53,816.00
MERCER	82	175	46	129	\$26,415.00	\$336.00	\$26,079.00
MIAMI	301	580	108	472	\$97,311.00	\$4,028.00	\$93,283.00
MONROE	71	170	55	115	\$23,835.00	\$143.00	\$23,692.00
MONTGOMERY	5,207	10,827	2,525	8,302	\$1,759,213.00	\$44,799.00	\$1,714,414.00
MORGAN	70	120	13	107	\$20,837.00	\$0.00	\$20,837.00
MORROW	118	243	51	192	\$40,898.00	\$1,589.00	\$39,309.00

Source: GRP342RA Report from Management Information Services. Data includes ADC-Regular, ADC-Incapacitated, and Vendor Payments.

**TABLE 1
OHIO WORKS FIRST REGULAR
DECEMBER 2006**

OHIO COUNTY	ASSISTANCE GROUP	RECIPIENTS	ADULTS	CHILDREN	ACTUAL EXPENDITURES		
					GROSS AMOUNT	CANCELLED AMOUNT	NET AMOUNT
STATEWIDE	76,927	159,543	36,281	123,262	\$26,411,554.00	\$833,739.00	\$25,577,815.00
MUSKINGUM	799	1,647	394	1,253	\$261,879.00	\$5,857.00	\$256,022.00
NOBLE	28	61	11	50	\$9,456.00	\$0.00	\$9,456.00
OTTAWA	124	281	71	210	\$45,190.00	\$490.00	\$44,700.00
PAULDING	96	216	69	147	\$32,551.00	\$1,749.00	\$30,802.00
PERRY	271	575	120	455	\$86,089.00	\$3,527.00	\$82,562.00
PICKAWAY	374	830	224	606	\$129,278.00	\$3,305.00	\$125,973.00
PIKE	314	638	121	517	\$106,124.00	\$5,412.00	\$100,712.00
PORTAGE	440	823	157	666	\$149,715.00	\$3,207.00	\$146,508.00
PREBLE	143	287	53	234	\$45,322.00	\$429.00	\$44,893.00
PUTNAM	19	31	1	30	\$5,832.00	\$0.00	\$5,832.00
RICHLAND	662	1,241	229	1,012	\$213,061.00	\$4,562.00	\$208,499.00
ROSS	649	1,354	330	1,024	\$224,213.00	\$5,064.00	\$219,149.00
SANDUSKY	195	372	69	303	\$64,879.00	\$1,039.00	\$63,840.00
SCIOTO	1,004	1,828	277	1,551	\$321,754.00	\$9,510.00	\$312,244.00
SENECA	149	270	42	228	\$47,658.00	\$336.00	\$47,322.00
SHELBY	130	244	25	219	\$43,199.00	\$1,357.00	\$41,842.00
STARK	2,659	5,566	1,420	4,146	\$895,856.00	\$21,735.00	\$874,121.00
SUMMIT	4,472	9,108	2,308	6,800	\$1,540,514.00	\$27,157.00	\$1,513,357.00
TRUMBULL	1,289	2,444	466	1,978	\$421,664.00	\$8,518.00	\$413,146.00
TUSCARAWAS	444	954	262	692	\$153,402.00	\$3,219.00	\$150,183.00
UNION	149	358	98	260	\$54,004.00	\$1,962.00	\$52,042.00
VAN WERT	43	59	0	59	\$11,718.00	\$336.00	\$11,382.00
VINTON	126	241	58	183	\$40,741.00	\$410.00	\$40,331.00
WARREN	219	393	51	342	\$75,773.00	\$6,609.00	\$69,164.00
WASHINGTON	132	212	4	208	\$40,383.00	\$843.00	\$39,540.00
WAYNE	426	891	265	626	\$143,003.00	\$2,970.00	\$140,033.00
WILLIAMS	150	342	113	229	\$52,383.00	\$2,372.00	\$50,011.00
WOOD	214	391	60	331	\$67,474.00	\$1,479.00	\$65,995.00
WYANDOT	36	57	7	50	\$11,698.00	\$779.00	\$10,919.00

Source: GRP342RA Report from Management Information Services. Data includes ADC-Regular, ADC-Incapacitated, and Vendor Payments.

**TABLE 1
OHIO WORKS FIRST UNEMPLOYED
DECEMBER 2006**

OHIO COUNTY	ASSISTANCE GROUP	RECIPIENTS	ADULTS	CHILDREN	ACTUAL EXPENDITURES		
					GROSS AMOUNT	CANCELLED AMOUNT	NET AMOUNT
STATEWIDE	3,265	13,239	6,081	7,158	\$1,538,198.00	\$47,125.00	\$1,491,073.00
ADAMS	0	0	0	0	\$0.00	\$0.00	\$0.00
ALLEN	0	0	0	0	\$0.00	\$0.00	\$0.00
ASHLAND	2	10	4	6	\$2,428.00	\$0.00	\$2,428.00
ASHTABULA	38	155	67	88	\$18,891.00	\$838.00	\$18,053.00
ATHENS	92	343	168	175	\$38,230.00	\$1,682.00	\$36,548.00
AUGLAIZE	0	0	0	0	\$0.00	\$0.00	\$0.00
BELMONT	26	104	53	51	\$10,401.00	\$155.00	\$10,246.00
BROWN	1	4	2	2	\$752.00	\$0.00	\$752.00
BUTLER	5	13	5	8	\$2,059.00	\$0.00	\$2,059.00
CARROLL	6	32	12	20	\$2,884.00	\$0.00	\$2,884.00
CHAMPAIGN	4	16	8	8	\$1,972.00	\$0.00	\$1,972.00
CLARK	59	222	111	111	\$30,204.00	\$410.00	\$29,794.00
CLERMONT	2	5	2	3	\$387.00	\$0.00	\$387.00
CLINTON	0	0	0	0	\$0.00	\$0.00	\$0.00
COLUMBIANA	5	20	9	11	\$2,855.00	\$52.00	\$2,803.00
COSHOCTON	17	61	32	29	\$7,075.00	\$0.00	\$7,075.00
CRAWFORD	6	18	10	8	\$2,315.00	\$0.00	\$2,315.00
CUYAHOGA	342	1,383	649	734	\$156,981.00	\$5,089.00	\$151,892.00
DARKE	7	20	12	8	\$3,093.00	\$0.00	\$3,093.00
DEFIANCE	5	27	10	17	\$2,649.00	\$0.00	\$2,649.00
DELAWARE	33	121	55	66	\$15,861.00	\$0.00	\$15,861.00
ERIE	0	0	0	0	\$0.00	\$0.00	\$0.00
FAIRFIELD	70	275	139	136	\$31,749.00	\$1,018.00	\$30,731.00
FAYETTE	9	34	18	16	\$5,048.00	\$0.00	\$5,048.00
FRANKLIN	497	2,166	843	1,323	\$242,840.00	\$9,161.00	\$233,679.00
FULTON	1	2	0	2	\$336.00	\$0.00	\$336.00
GALLIA	80	293	159	134	\$33,308.00	\$410.00	\$32,898.00
GEAUGA	1	3	2	1	\$692.00	\$0.00	\$692.00
GREENE	20	90	40	50	\$9,240.00	\$297.00	\$8,943.00

Source: GRP342RA Report from Management Information Services. Data includes ADC-Regular, ADC-Incapacitated, and Vendor Payments.

**TABLE 1
OHIO WORKS FIRST UNEMPLOYED
DECEMBER 2006**

OHIO COUNTY	ASSISTANCE GROUP	RECIPIENTS	ADULTS	CHILDREN	ACTUAL EXPENDITURES		
					GROSS AMOUNT	CANCELLED AMOUNT	NET AMOUNT
STATEWIDE	3,265	13,239	6,081	7,158	\$1,538,198.00	\$47,125.00	\$1,491,073.00
GUERNSEY	5	20	10	10	\$1,511.00	\$209.00	\$1,302.00
HAMILTON	140	617	261	356	\$76,061.00	\$2,299.00	\$73,762.00
HANCOCK	0	0	0	0	\$0.00	\$0.00	\$0.00
HARDIN	0	0	0	0	\$0.00	\$0.00	\$0.00
HARRISON	4	15	8	7	\$2,191.00	\$0.00	\$2,191.00
HENRY	0	0	0	0	\$0.00	\$0.00	\$0.00
HIGHLAND	4	19	8	11	\$2,256.00	\$593.00	\$1,663.00
HOCKING	30	121	61	60	\$12,116.00	\$701.00	\$11,415.00
HOLMES	4	18	8	10	\$2,261.00	\$0.00	\$2,261.00
HURON	1	1	0	1	\$245.00	\$0.00	\$245.00
JACKSON	6	22	12	10	\$3,090.00	\$0.00	\$3,090.00
JEFFERSON	76	318	150	168	\$35,002.00	\$224.00	\$34,778.00
KNOX	16	71	31	40	\$7,424.00	\$0.00	\$7,424.00
LAKE	20	89	32	57	\$9,993.00	\$223.00	\$9,770.00
LAWRENCE	40	161	79	82	\$15,475.00	\$507.00	\$14,968.00
LICKING	32	134	62	72	\$13,941.00	\$1,035.00	\$12,906.00
LOGAN	8	33	16	17	\$4,265.00	\$0.00	\$4,265.00
LORAIN	57	219	101	118	\$27,802.00	\$593.00	\$27,209.00
LUCAS	427	1,707	790	917	\$207,838.00	\$10,806.00	\$197,032.00
MADISON	23	89	45	44	\$11,101.00	\$319.00	\$10,782.00
MAHONING	95	405	184	221	\$44,565.00	\$507.00	\$44,058.00
MARION	5	17	6	11	\$1,899.00	\$0.00	\$1,899.00
MEDINA	15	65	30	35	\$8,839.00	\$0.00	\$8,839.00
MEIGS	15	61	31	30	\$4,793.00	\$0.00	\$4,793.00
MERCER	1	5	2	3	\$593.00	\$0.00	\$593.00
MIAMI	6	29	12	17	\$3,651.00	\$0.00	\$3,651.00
MONROE	16	69	32	37	\$6,573.00	\$0.00	\$6,573.00
MONTGOMERY	12	45	16	29	\$5,034.00	\$1,014.00	\$4,020.00
MORGAN	1	3	2	1	\$820.00	\$410.00	\$410.00
MORROW	14	58	27	31	\$7,198.00	\$0.00	\$7,198.00

Source: GRP342RA Report from Management Information Services. Data includes ADC-Regular, ADC-Incapacitated, and Vendor Payments.

**TABLE 1
OHIO WORKS FIRST UNEMPLOYED
DECEMBER 2006**

OHIO COUNTY	ASSISTANCE GROUP	RECIPIENTS	ADULTS	CHILDREN	ACTUAL EXPENDITURES		
					GROSS AMOUNT	CANCELLED AMOUNT	NET AMOUNT
STATEWIDE	3,265	13,239	6,081	7,158	\$1,538,198.00	\$47,125.00	\$1,491,073.00
MUSKINGUM	57	211	114	97	\$21,700.00	\$583.00	\$21,117.00
NOBLE	3	12	6	6	\$1,767.00	\$0.00	\$1,767.00
OTTAWA	16	56	24	32	\$6,763.00	\$1,146.00	\$5,617.00
PAULDING	14	60	27	33	\$6,232.00	\$0.00	\$6,232.00
PERRY	28	115	56	59	\$12,081.00	\$0.00	\$12,081.00
PICKAWAY	22	86	44	42	\$9,365.00	\$0.00	\$9,365.00
PIKE	15	58	27	31	\$6,962.00	\$0.00	\$6,962.00
PORTAGE	5	16	6	10	\$4,697.00	\$0.00	\$4,697.00
PREBLE	11	48	22	26	\$6,293.00	\$0.00	\$6,293.00
PUTNAM	0	0	0	0	\$0.00	\$0.00	\$0.00
RICHLAND	6	24	12	12	\$2,083.00	\$0.00	\$2,083.00
ROSS	37	155	67	88	\$20,276.00	\$1,981.00	\$18,295.00
SANDUSKY	5	14	4	10	\$1,493.00	\$32.00	\$1,461.00
SCIOTO	43	165	84	81	\$19,587.00	\$0.00	\$19,587.00
SENECA	3	13	5	8	\$944.00	\$0.00	\$944.00
SHELBY	1	4	2	2	\$507.00	\$0.00	\$507.00
STARK	172	700	330	370	\$82,846.00	\$2,792.00	\$80,054.00
SUMMIT	243	972	473	499	\$115,795.00	\$1,629.00	\$114,166.00
TRUMBULL	40	144	77	67	\$18,494.00	\$0.00	\$18,494.00
TUSCARAWAS	55	217	107	110	\$25,428.00	\$0.00	\$25,428.00
UNION	19	82	38	44	\$7,978.00	\$0.00	\$7,978.00
VAN WERT	0	0	0	0	\$0.00	\$0.00	\$0.00
VINTON	6	22	12	10	\$2,766.00	\$0.00	\$2,766.00
WARREN	2	5	2	3	\$809.00	\$0.00	\$809.00
WASHINGTON	0	0	0	0	\$0.00	\$0.00	\$0.00
WAYNE	42	150	79	71	\$16,524.00	\$410.00	\$16,114.00
WILLIAMS	13	57	25	32	\$6,067.00	\$0.00	\$6,067.00
WOOD	5	21	10	11	\$1,568.00	\$0.00	\$1,568.00
WYANDOT	1	4	2	2	\$386.00	\$0.00	\$386.00

Source: GRP342RA Report from Management Information Services. Data includes ADC-Regular, ADC-Incapacitated, and Vendor Payments.

**TABLE 2
TITLE IV-E FOSTER CARE AND ADOPTION ASSISTANCE
DECEMBER 2006**

OHIO COUNTY	FOSTER CARE						ADOPTION ASSISTANCE		TOTAL FOSTER CARE AND ADOPTION ASSISTANCE	
	FOSTER FAMILY HOMES		CHILD CARE INSTITUTIONS		HOMES & INSTITUTIONS		CHILDREN	GROSS AMOUNT	CHILDREN	GROSS AMOUNT
	CHILDREN	GROSS AMOUNT	CHILDREN	GROSS AMOUNT	CHILDREN	GROSS AMOUNT				
STATEWIDE	2,858	\$1,730,189.18	3,600	\$5,566,290.55	6,458	\$7,296,479.73	20,765	\$8,050,793.75	27,223	\$15,347,273.48
ADAMS	19	\$5,936.64	10	\$28,368.22	29	\$34,304.86	35	\$11,551.03	64	\$45,855.89
ALLEN	55	\$29,184.33	3	\$8,991.56	58	\$38,175.89	128	\$38,078.28	186	\$76,254.17
ASHLAND	7	\$3,283.66	4	\$7,553.73	11	\$10,837.39	10	\$2,750.00	21	\$13,587.39
ASHTABULA	0	\$0.00	12	\$5,718.69	12	\$5,718.69	187	\$66,599.73	199	\$72,318.42
ATHENS	37	\$12,742.16	34	\$61,831.02	71	\$74,573.18	130	\$43,216.43	201	\$117,789.61
AUGLAIZE	4	\$2,737.18	2	\$2,840.49	6	\$5,577.67	46	\$17,435.54	52	\$23,013.21
BELMONT	1	\$406.88	15	\$12,622.33	16	\$13,029.21	114	\$46,203.05	130	\$59,232.26
BROWN	16	\$5,414.10	0	\$0.00	16	\$5,414.10	41	\$11,657.03	57	\$17,071.13
BUTLER	73	\$35,983.69	187	\$232,798.03	260	\$268,781.72	510	\$168,800.14	770	\$437,581.86
CARROLL	9	\$6,958.70	0	\$0.00	9	\$6,958.70	8	\$2,000.00	17	\$8,958.70
CHAMPAIGN	3	\$1,155.00	4	\$21,184.34	7	\$22,339.34	22	\$6,991.50	29	\$29,330.84
CLARK	0	\$0.00	0	\$0.00	0	\$0.00	316	\$114,303.51	316	\$114,303.51
CLERMONT	54	\$17,569.46	144	\$210,154.02	198	\$227,723.48	270	\$75,160.50	468	\$302,883.98
CLINTON	21	\$11,210.55	7	\$27,501.22	28	\$38,711.77	72	\$29,033.52	100	\$67,745.29
COLUMBIANA	46	\$11,491.62	30	\$54,526.77	76	\$66,018.39	78	\$22,703.68	154	\$88,722.07
COSHOCTON	0	\$0.00	2	\$4,012.26	2	\$4,012.26	47	\$14,121.47	49	\$18,133.73
CRAWFORD	0	\$0.00	0	\$0.00	0	\$0.00	46	\$13,852.54	46	\$13,852.54
CUYAHOGA	344	\$141,448.09	815	\$1,780,806.84	1,159	\$1,922,254.93	5,206	\$2,487,970.61	6,365	\$4,410,225.54
DARKE	7	\$2,008.12	26	\$65,900.27	33	\$67,908.39	34	\$10,754.90	67	\$78,663.29
DEFIANCE	12	\$3,524.78	6	\$9,990.23	18	\$13,515.01	32	\$8,626.43	50	\$22,141.44
DELAWARE	11	\$3,516.86	0	\$0.00	11	\$3,516.86	61	\$17,481.28	72	\$20,998.14
ERIE	26	\$11,902.99	16	\$31,997.19	42	\$43,900.18	83	\$26,210.69	125	\$70,110.87
FAIRFIELD	0	\$0.00	2	\$6,661.48	2	\$6,661.48	178	\$47,911.36	180	\$54,572.84
FAYETTE	7	\$4,647.05	1	\$694.26	8	\$5,341.31	15	\$3,750.00	23	\$9,091.31
FRANKLIN	0	\$0.00	852	\$353,835.09	852	\$353,835.09	2,527	\$957,341.72	3,379	\$1,311,176.81
FULTON	2	\$208.11	21	\$20,521.44	23	\$20,729.55	18	\$5,346.60	41	\$26,076.15
GALLIA	18	\$5,179.08	2	\$1,884.68	20	\$7,063.76	48	\$12,465.00	68	\$19,528.76
GEAUGA	4	\$3,522.67	7	\$1,479.75	11	\$5,002.42	105	\$35,321.27	116	\$40,323.69
GREENE	0	\$0.00	37	\$21,113.77	37	\$21,113.77	97	\$31,587.11	134	\$52,700.88

SOURCE: GBS003RB Report from Management Information Services. Federal funds only.

**TABLE 2
TITLE IV-E FOSTER CARE AND ADOPTION ASSISTANCE
DECEMBER 2006**

OHIO COUNTY	FOSTER CARE						ADOPTION ASSISTANCE		TOTAL FOSTER CARE AND ADOPTION ASSISTANCE	
	FOSTER FAMILY HOMES		CHILD CARE INSTITUTIONS		HOMES & INSTITUTIONS		CHILDREN	GROSS AMOUNT	CHILDREN	GROSS AMOUNT
	CHILDREN	GROSS AMOUNT	CHILDREN	GROSS AMOUNT	CHILDREN	GROSS AMOUNT				
STATEWIDE	2,858	\$1,730,189.18	3,600	\$5,566,290.55	6,458	\$7,296,479.73	20,765	\$8,050,793.75	27,223	\$15,347,273.48
GUERNSEY	17	\$10,141.51	7	\$15,471.20	24	\$25,612.71	80	\$26,755.48	104	\$52,368.19
HAMILTON	349	\$603,690.37	1	(\$992.00)	350	\$602,698.37	1,532	\$582,639.48	1,882	\$1,185,337.85
HANCOCK	19	\$7,250.96	18	\$22,744.78	37	\$29,995.74	51	\$15,498.22	88	\$45,493.96
HARDIN	0	\$0.00	7	\$2,446.00	7	\$2,446.00	44	\$14,098.79	51	\$16,544.79
HARRISON	4	\$2,931.67	0	\$0.00	4	\$2,931.67	24	\$7,763.96	28	\$10,695.63
HENRY	0	\$0.00	11	\$10,337.03	11	\$10,337.03	24	\$8,117.92	35	\$18,454.95
HIGHLAND	2	\$1,113.76	3	\$837.00	5	\$1,950.76	14	\$4,773.13	19	\$6,723.89
HOCKING	18	\$8,381.17	13	\$24,192.53	31	\$32,573.70	51	\$16,618.35	82	\$49,192.05
HOLMES	12	\$1,749.18	3	\$8,328.64	15	\$10,077.82	19	\$7,515.85	34	\$17,593.67
HURON	34	\$18,173.64	6	\$19,570.67	40	\$37,744.31	37	\$12,289.80	77	\$50,034.11
JACKSON	4	\$1,479.56	0	\$0.00	4	\$1,479.56	14	\$3,500.00	18	\$4,979.56
JEFFERSON	38	\$19,045.75	0	\$0.00	38	\$19,045.75	59	\$24,683.32	97	\$43,729.07
KNOX	7	\$5,137.85	3	\$6,497.94	10	\$11,635.79	33	\$10,203.86	43	\$21,839.65
LAKE	37	\$28,081.25	26	\$98,104.55	63	\$126,185.80	154	\$45,353.58	217	\$171,539.38
LAWRENCE	2	\$869.24	0	\$0.00	2	\$869.24	48	\$12,745.75	50	\$13,614.99
LICKING	52	\$22,276.00	66	\$105,678.82	118	\$127,954.82	363	\$126,189.53	481	\$254,144.35
LOGAN	5	\$1,059.53	0	\$0.00	5	\$1,059.53	49	\$17,874.11	54	\$18,933.64
LORAIN	0	\$0.00	0	\$0.00	0	\$0.00	437	\$150,419.83	437	\$150,419.83
LUCAS	450	\$253,192.78	57	\$92,798.32	507	\$345,991.10	1,650	\$623,844.10	2,157	\$969,835.20
MADISON	0	\$0.00	0	\$0.00	0	\$0.00	24	\$7,178.28	24	\$7,178.28
MAHONING	96	\$50,756.87	51	\$128,014.36	147	\$178,771.23	240	\$75,905.16	387	\$254,676.39
MARION	0	\$0.00	0	\$0.00	0	\$0.00	67	\$22,107.51	67	\$22,107.51
MEDINA	0	\$0.00	0	\$0.00	0	\$0.00	87	\$30,672.71	87	\$30,672.71
MEIGS	0	\$0.00	5	\$4,431.64	5	\$4,431.64	8	\$2,000.00	13	\$6,431.64
MERCER	6	\$3,177.46	0	\$0.00	6	\$3,177.46	33	\$8,757.11	39	\$11,934.57
MIAMI	24	\$14,775.94	31	\$50,566.97	55	\$65,342.91	110	\$37,628.74	165	\$102,971.65
MONROE	4	\$1,997.40	0	\$0.00	4	\$1,997.40	11	\$3,644.90	15	\$5,642.30
MONTGOMERY	305	\$102,315.54	222	\$308,029.10	527	\$410,344.64	1,207	\$594,696.01	1,734	\$1,005,040.65
MORGAN	0	\$0.00	0	\$0.00	0	\$0.00	11	\$2,736.00	11	\$2,736.00
MORROW	0	\$0.00	0	\$0.00	0	\$0.00	31	\$8,134.80	31	\$8,134.80

SOURCE: GBS003RB Report from Management Information Services. Federal funds only.

**TABLE 2
TITLE IV-E FOSTER CARE AND ADOPTION ASSISTANCE
DECEMBER 2006**

OHIO COUNTY	FOSTER CARE						ADOPTION ASSISTANCE		TOTAL FOSTER CARE AND ADOPTION ASSISTANCE	
	FOSTER FAMILY HOMES		CHILD CARE INSTITUTIONS		HOMES & INSTITUTIONS		CHILDREN	GROSS AMOUNT	CHILDREN	GROSS AMOUNT
	CHILDREN	GROSS AMOUNT	CHILDREN	GROSS AMOUNT	CHILDREN	GROSS AMOUNT				
STATEWIDE	2,858	\$1,730,189.18	3,600	\$5,566,290.55	6,458	\$7,296,479.73	20,765	\$8,050,793.75	27,223	\$15,347,273.48
MUSKINGUM	0	\$0.00	0	\$0.00	0	\$0.00	151	\$55,277.97	151	\$55,277.97
NOBLE	1	\$462.36	0	\$0.00	1	\$462.36	7	\$1,750.00	8	\$2,212.36
OTTAWA	6	\$4,161.24	2	\$1,588.59	8	\$5,749.83	2	\$649.15	10	\$6,398.98
PAULDING	3	\$1,996.20	2	\$4,818.01	5	\$6,814.21	21	\$5,965.92	26	\$12,780.13
PERRY	28	\$12,412.33	14	\$26,692.44	42	\$39,104.77	36	\$11,379.85	78	\$50,484.62
PICKAWAY	13	\$5,241.23	0	\$0.00	13	\$5,241.23	19	\$5,775.58	32	\$11,016.81
PIKE	11	\$6,495.92	8	\$8,906.13	19	\$15,402.05	24	\$7,113.75	43	\$22,515.80
PORTAGE	0	\$0.00	41	\$105,349.34	41	\$105,349.34	144	\$66,553.02	185	\$171,902.36
PREBLE	26	\$14,563.31	24	\$46,334.07	50	\$60,897.38	38	\$9,801.86	88	\$70,699.24
PUTNAM	0	\$0.00	1	\$2,253.35	1	\$2,253.35	13	\$3,250.00	14	\$5,503.35
RICHLAND	0	\$0.00	0	\$0.00	0	\$0.00	258	\$87,357.69	258	\$87,357.69
ROSS	20	\$11,394.57	37	\$34,375.55	57	\$45,770.12	63	\$19,135.63	120	\$64,905.75
SANDUSKY	22	\$3,037.85	6	\$18,824.03	28	\$21,861.88	63	\$16,152.09	91	\$38,013.97
SCIOTO	19	\$8,991.91	23	\$16,196.13	42	\$25,188.04	53	\$16,491.46	95	\$41,679.50
SENECA	9	\$2,794.09	10	\$27,874.27	19	\$30,668.36	74	\$21,059.02	93	\$51,727.38
SHELBY	6	\$3,274.48	8	\$19,970.03	14	\$23,244.51	54	\$27,926.35	68	\$51,170.86
STARK	0	\$0.00	168	\$78,973.72	168	\$78,973.72	1,043	\$321,030.47	1,211	\$400,004.19
SUMMIT	190	\$71,539.30	287	\$851,099.04	477	\$922,638.34	925	\$298,042.31	1,402	\$1,220,680.65
TRUMBULL	120	\$54,456.82	28	\$86,809.94	148	\$141,266.76	300	\$81,142.43	448	\$222,409.19
TUSCARAWAS	15	\$5,327.11	81	\$215,384.09	96	\$220,711.20	145	\$46,554.14	241	\$267,265.34
UNION	13	\$9,010.13	2	\$11,039.55	15	\$20,049.68	33	\$9,950.31	48	\$29,999.99
VAN WERT	3	\$3,751.41	1	\$3,190.00	4	\$6,941.41	11	\$3,286.94	15	\$10,228.35
VINTON	0	\$0.00	0	\$0.00	0	\$0.00	23	\$6,674.73	23	\$6,674.73
WARREN	22	\$8,842.16	25	\$38,537.50	47	\$47,379.66	90	\$29,177.13	137	\$76,556.79
WASHINGTON	13	\$2,665.92	3	\$3,579.33	16	\$6,245.25	38	\$9,977.28	54	\$16,222.53
WAYNE	37	\$12,056.92	18	\$32,950.37	55	\$45,007.29	77	\$28,353.56	132	\$73,360.85
WILLIAMS	1	\$295.91	25	\$31,162.29	26	\$31,458.20	22	\$6,096.60	48	\$37,554.80
WOOD	9	\$4,702.89	15	\$24,713.27	24	\$29,416.16	44	\$15,178.75	68	\$44,594.91
WYANDOT	10	\$5,085.97	2	\$5,624.28	12	\$10,710.25	18	\$6,118.56	30	\$16,828.81

SOURCE: GBS003RB Report from Management Information Services. Federal funds only.

DA Cash Assistance Groups

During The Last 25 Months

