

Ohio Department of Job and Family Services

PUBLIC ASSISTANCE MONTHLY STATISTICS JULY 2006



<http://jfs.ohio.gov/pams/index.stm>

Bureau of Research and Evaluation : Federal Reporting\ Data Development Section
Office of Research, Assessment, and Accountability
P.O. Box 1618
Columbus, Ohio 43216-1618

OHIO DEPARTMENT OF JOB AND FAMILY SERVICES

PUBLIC ASSISTANCE MONTHLY STATISTICS

TABLE OF CONTENTS

<u>TITLE</u>	<u>PAGE(S)</u>
Monthly Review of Public Assistance Statistics.....	1
Statewide Summary of Public Assistance Programs.....	2
Table 1: OWF (TANF) Summary.....	3-14
Table 2: Foster Care (Title IV-E) Program Summary.....	15-17
Table 3: Disability Assistance Program Summary.....	18-22
Table 3-A: DA Payments for Medical Services.....	23
Table 5: FNS Benefits Program Summary.....	24-28
Table 6: Medicaid (Title XIX): Eligibles and Expenditures.....	29-34
Table 7: Child Day Care Summary.....	35-37
Table 8: Program Summaries of Recipients, Expenditures, and Average Payment Per Recipient During the Last 12 Months.....	38
Table 10: Percent of Ohio's Population Participating in Selected Public Assistance Programs.....	39-41
<i>Note: Table 4 and Table 9 were discontinued.</i>	
<i>Also: Table 7-A, Updated Child Day Care Summary for April 2006.....</i>	<i>42-44</i>

All data in the PAMS report is limited to the information available at the time it was constructed. It does not account for backdated or retroactive eligibility or any adjustments made subsequent to its creation.

MONTHLY REVIEW OF PUBLIC ASSISTANCE STATISTICS FOR JULY 2006

OHIO WORKS FIRST

For the month of July 2006, OWF-Combined assistance groups totaled 79,467; recipients totaled 170,679 and money payments totaled \$25,974,533. The percent change from June 2006 to July 2006 was -4.4% for assistance groups; -5.0% for recipients, and 4.0% for money payments. For OWF- Regular (OWF-R) there were 75,884 assistance groups; 156,237 recipients, and \$24,432,662 in money payments issued for July 2006. The percent change from June 2006 to July 2006 was -4.1% for assistance groups; -4.5% for recipients, and 4.2% for money payments. For OWF-Unemployed (OWF-U) assistance groups totaled 3,583; recipients, 14,442 and money payments were \$1,541,871. The percent change from June 2006 to July 2006 was -9.7% for assistance groups; -9.5% for recipients and 0.6% for money payments.

FOSTER CARE (TITLE IV-E)

A total of 26,830 children received \$13,801,221 in Title IV-E assistance during the month of July 2006. Included in this total were 6,201 foster care children who received \$5,847,312 in money payments. Of these Title IV-E children, 2,718 or 10.1% were in foster family homes who received \$1,235,157 and 3,483 or 13.0% children in child care institutions who received \$4,612,156 in OWF foster care assistance. The remaining 20,629 children reported as participating in Title IV-E received \$7,953,908 in adoption assistance. Overall, the average amount of Foster Care received per child was \$514.40.

DISABILITY ASSISTANCE (DA)

For the month of July 2006, there were 13,660 assistance groups; 13,753 recipients, and \$1,843,070 in DA financial assistance. The average DA financial assistance per recipient was \$134.01. Total DA expenditures for medical services for July 2006 were \$2,366,844. Of this total, \$1,666,894 or 70.4% was spent for prescribed drugs, and \$530,868 or 22.4% was spent for physician services. Medical expenses were paid for 5,142 recipients for an average expenditure of \$460.30 per recipient.

FNS BENEFITS

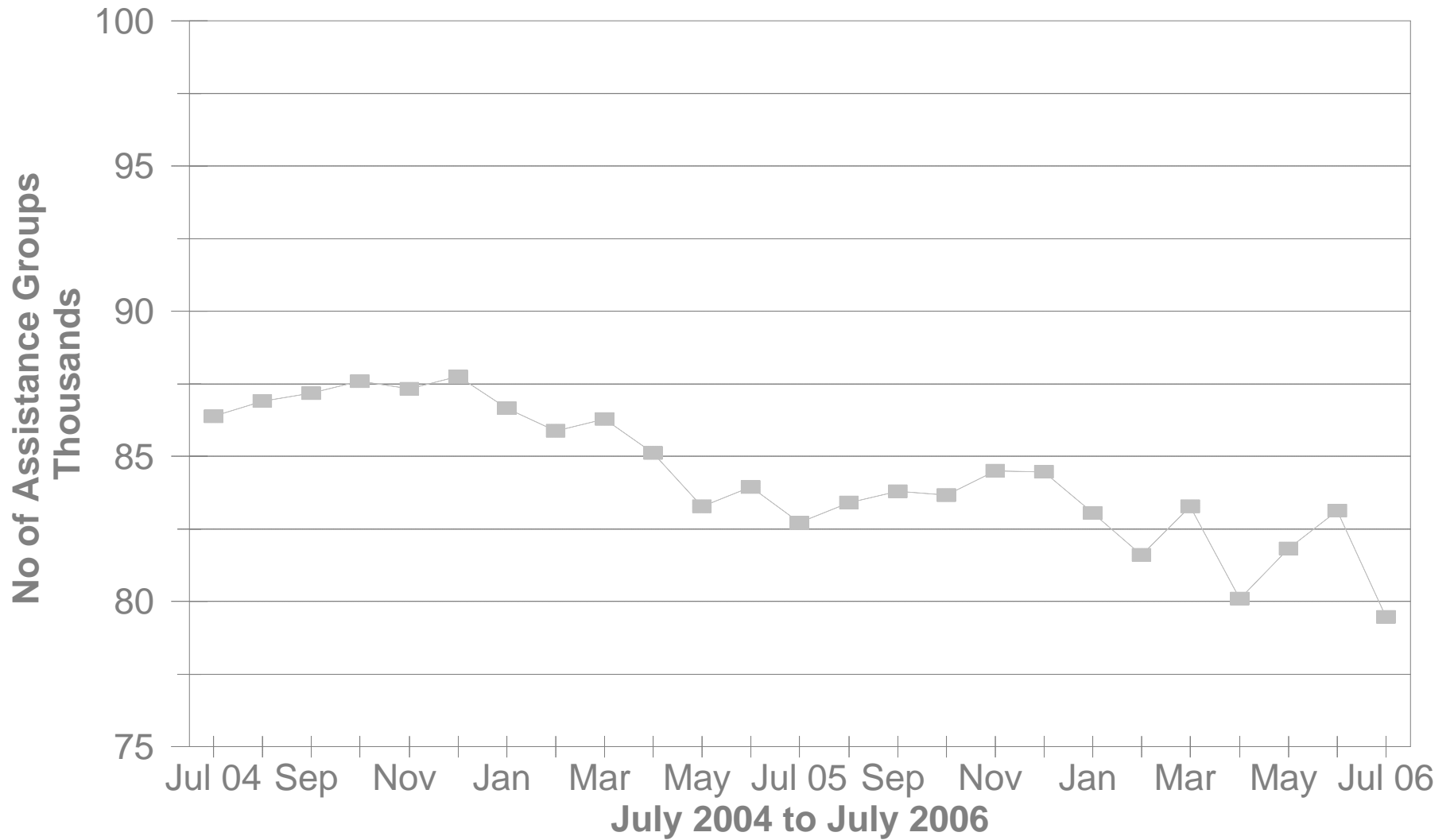
Total persons participating in the FNS benefits program during July 2006 decreased to 1,064,369 by 8,899 or -0.8% from 1,073,268 persons reported in June 2006. Households decreased by 3,521 or -0.7% over June 2006 levels. The total dollar value of FNS related benefits issued during July 2006 decreased by \$490,447 or -0.5% from \$106,993,971 reported in June 2006 to \$106,503,524 reported in July 2006. The average benefit issuance per person increased by \$0.37 or 0.4% from those issued in June 2006. The average benefit issuance per person increased from \$99.69 in June 2006 to \$100.06 in July 2006.

Please note: All data in the PAMS report is limited to the information available at the time it was constructed. It does not account for backdated or retroactive eligibility or any adjustments made subsequent to its creation.

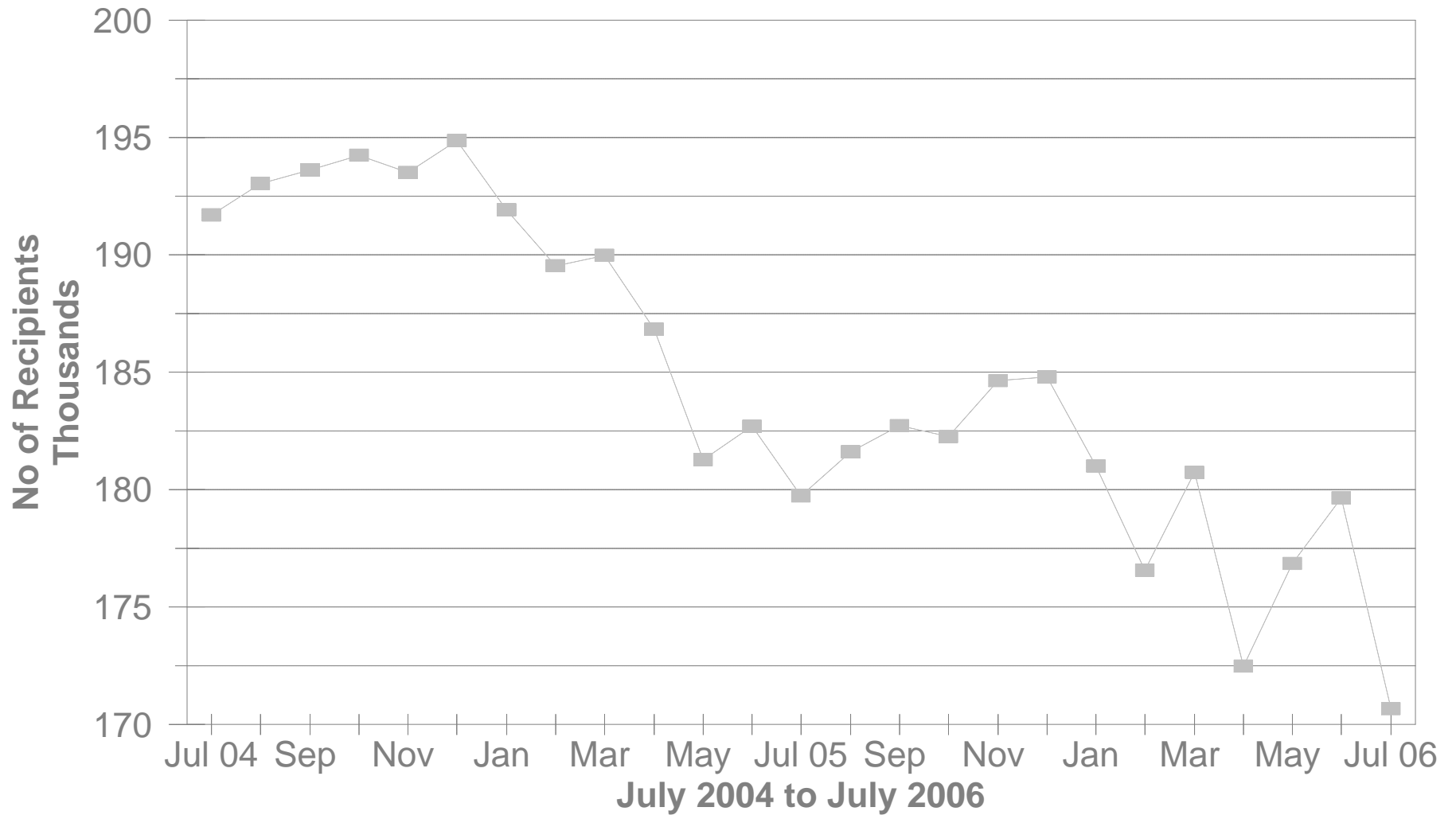
STATEWIDE SUMMARY OF PUBLIC ASSISTANCE PROGRAMS FOR JULY 2006

	July 2006	June 2006	% CHANGE Jul 06 / Jun 06	July 2005	% CHANGE Jul 06 / Jul 05
OHIO WORKS FIRST (OWF)-COMBINED					
Assistance Groups	79,467	83,126	-4.4%	82,723	-3.9%
Recipients	170,679	179,647	-5.0%	179,724	-5.0%
Net Payments	\$25,974,533	\$24,981,481	4.0%	\$24,813,857	4.7%
Average Per Recipient	\$152.18	\$139.06	9.4%	\$138.07	10.2%
OWF-REGULAR, OWF-INCAPACITATED,& OWF REGULAR VENDOR PAYMENTS					
Assistance Groups	75,884	79,157	-4.1%	78,986	-3.9%
Recipients	156,237	163,683	-4.5%	164,719	-5.1%
Net Payments	\$24,432,662	\$23,449,018	4.2%	\$23,347,150	4.6%
Average Per Recipient	\$156.38	\$143.26	9.2%	\$141.74	10.3%
OWF-UNEMPLOYED AND OWF-UNEMPLOYED VENDOR PAYMENTS					
Assistance Groups	3,583	3,969	-9.7%	3,737	-4.1%
Recipients	14,442	15,964	-9.5%	15,005	-3.8%
Net Payments	\$1,541,871	\$1,532,463	0.6%	\$1,466,707	5.1%
Average Per Recipient	\$106.76	\$95.99	11.2%	\$97.75	9.2%
TITLE IV-E FOSTER CARE					
Assistance Groups/Recipients	26,830	27,007	-0.7%	26,528	1.1%
Gross Payments	\$13,801,221	\$14,506,729	-4.9%	\$13,236,170	4.3%
Average Per Recipient	\$514.40	\$537.15	-4.2%	\$498.95	3.1%
DISABILITY ASSISTANCE					
Assistance Groups	13,660	13,947	-2.1%	14,205	-3.8%
Recipients	13,753	14,049	-2.1%	14,303	-3.8%
Net Payments	\$1,843,070	\$1,941,545	-5.1%	\$1,804,610	2.1%
Medical Assistance	\$2,366,844	\$2,959,897	-20.0%	\$4,109,407	-42.4%
FNS BENEFITS					
Assistance Groups	485,648	489,169	-0.7%	451,695	7.5%
Persons	1,064,369	1,073,268	-0.8%	1,014,236	4.9%
Total Coupons Issued	\$106,503,524	\$106,993,971	-0.5%	\$96,263,324	10.6%
Average Per Recipient	\$100.06	\$99.69	0.4%	\$94.91	5.4%

No of OWF Combined Assistance Groups During The Last 25 Months

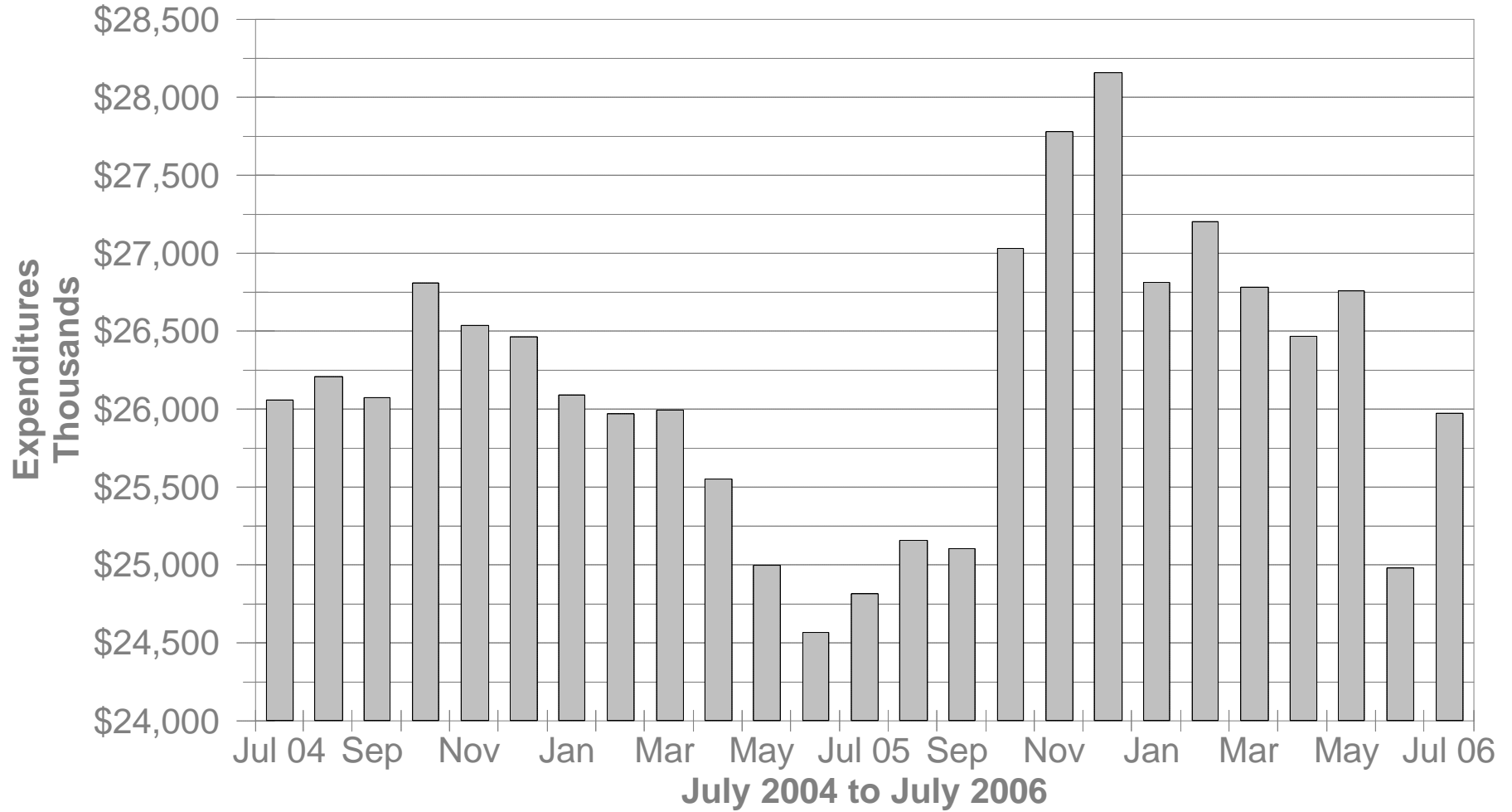


No of OWF Combined Recipients During The Last 25 Months



OWF Combined Net Expenditures

During The Last 25 Months



**TABLE 1
OHIO WORKS FIRST COMBINED
JULY 2006**

OHIO COUNTY	ASSISTANCE GROUP	RECIPIENTS	ADULTS	CHILDREN	ACTUAL EXPENDITURES		
					GROSS AMOUNT	CANCELLED AMOUNT	NET AMOUNT
STATEWIDE	79,467	170,679	41,962	128,717	\$26,772,743.00	\$798,210.00	\$25,974,533.00
ADAMS	140	218	2	216	\$40,435.00	\$1,743.00	\$38,692.00
ALLEN	436	728	45	683	\$135,433.00	\$4,226.00	\$131,207.00
ASHLAND	66	123	23	100	\$20,717.00	\$0.00	\$20,717.00
ASHTABULA	674	1,412	340	1,072	\$222,472.00	\$2,501.00	\$219,971.00
ATHENS	562	1,393	483	910	\$199,702.00	\$4,633.00	\$195,069.00
AUGLAIZE	58	87	1	86	\$16,217.00	\$245.00	\$15,972.00
BELMONT	453	1,022	322	700	\$151,193.00	\$2,999.00	\$148,194.00
BROWN	161	281	36	245	\$49,332.00	\$245.00	\$49,087.00
BUTLER	1,500	2,807	415	2,392	\$478,709.00	\$11,575.00	\$467,134.00
CARROLL	98	197	55	142	\$28,988.00	\$1,095.00	\$27,893.00
CHAMPAIGN	217	449	126	323	\$74,178.00	\$4,990.00	\$69,188.00
CLARK	1,239	2,616	650	1,966	\$416,601.00	\$10,789.00	\$405,812.00
CLERMONT	440	813	128	685	\$139,377.00	\$6,646.00	\$132,731.00
CLINTON	127	222	27	195	\$41,096.00	\$1,327.00	\$39,769.00
COLUMBIANA	491	933	179	754	\$152,653.00	\$2,908.00	\$149,745.00
COSHOCTON	219	446	133	313	\$67,112.00	\$1,643.00	\$65,469.00
CRAWFORD	181	390	101	289	\$64,089.00	\$336.00	\$63,753.00
CUYAHOGA	12,244	24,858	5,654	19,204	\$4,039,508.00	\$110,993.00	\$3,928,515.00
DARKE	153	315	92	223	\$51,023.00	\$629.00	\$50,394.00
DEFIANCE	116	256	63	193	\$39,848.00	\$1,236.00	\$38,612.00
DELAWARE	331	764	249	515	\$112,072.00	\$3,011.00	\$109,061.00
ERIE	239	400	35	365	\$71,625.00	\$336.00	\$71,289.00
FAIRFIELD	778	1,829	586	1,243	\$273,512.00	\$14,477.00	\$259,035.00
FAYETTE	152	286	67	219	\$46,466.00	\$0.00	\$46,466.00
FRANKLIN	10,570	23,900	5,804	18,096	\$3,688,224.00	\$170,141.00	\$3,518,083.00
FULTON	67	113	10	103	\$19,659.00	\$0.00	\$19,659.00
GALLIA	548	1,389	520	869	\$196,898.00	\$4,445.00	\$192,453.00
GEAUGA	72	124	19	105	\$20,007.00	\$0.00	\$20,007.00
GREENE	562	1,134	265	869	\$184,384.00	\$7,981.00	\$176,403.00

Source: GRP342RA Report from Management Information Services. Data includes ADC-Regular, ADC-Incapacitated, and Vendor Payments.

**TABLE 1
OHIO WORKS FIRST COMBINED
JULY 2006**

OHIO COUNTY	ASSISTANCE GROUP	RECIPIENTS	ADULTS	CHILDREN	ACTUAL EXPENDITURES		
					GROSS AMOUNT	CANCELLED AMOUNT	NET AMOUNT
STATEWIDE	79,467	170,679	41,962	128,717	\$26,772,743.00	\$798,210.00	\$25,974,533.00
GUERNSEY	190	332	59	273	\$56,431.00	\$3,015.00	\$53,416.00
HAMILTON	7,275	16,442	3,783	12,659	\$2,601,258.00	\$81,298.00	\$2,519,960.00
HANCOCK	126	193	20	173	\$36,561.00	\$1,225.00	\$35,336.00
HARDIN	58	99	6	93	\$18,332.00	\$1,071.00	\$17,261.00
HARRISON	107	230	59	171	\$32,200.00	\$760.00	\$31,440.00
HENRY	38	62	5	57	\$11,086.00	\$245.00	\$10,841.00
HIGHLAND	198	441	109	332	\$67,941.00	\$1,688.00	\$66,253.00
HOCKING	278	636	198	438	\$92,304.00	\$2,580.00	\$89,724.00
HOLMES	49	102	18	84	\$17,599.00	\$719.00	\$16,880.00
HURON	152	226	2	224	\$45,226.00	\$2,233.00	\$42,993.00
JACKSON	264	459	61	398	\$82,859.00	\$1,553.00	\$81,306.00
JEFFERSON	842	1,930	604	1,326	\$283,114.00	\$13,040.00	\$270,074.00
KNOX	246	545	156	389	\$80,182.00	\$3,174.00	\$77,008.00
LAKE	564	1,226	296	930	\$189,377.00	\$5,409.00	\$183,968.00
LAWRENCE	727	1,432	305	1,127	\$230,178.00	\$5,161.00	\$225,017.00
LICKING	580	1,242	330	912	\$188,089.00	\$5,882.00	\$182,207.00
LOGAN	206	452	116	336	\$70,464.00	\$2,101.00	\$68,363.00
LORAIN	2,045	4,549	1,107	3,442	\$694,418.00	\$12,943.00	\$681,475.00
LUCAS	6,742	15,894	4,647	11,247	\$2,353,100.00	\$58,260.00	\$2,294,840.00
MADISON	231	545	185	360	\$80,021.00	\$490.00	\$79,531.00
MAHONING	2,717	6,081	1,545	4,536	\$941,885.00	\$24,963.00	\$916,922.00
MARION	406	765	105	660	\$129,934.00	\$1,889.00	\$128,045.00
MEDINA	267	577	164	413	\$89,853.00	\$947.00	\$88,906.00
MEIGS	181	388	112	276	\$59,389.00	\$1,435.00	\$57,954.00
MERCER	83	172	55	117	\$27,232.00	\$1,475.00	\$25,757.00
MIAMI	331	659	131	528	\$103,567.00	\$2,530.00	\$101,037.00
MONROE	80	223	75	148	\$27,724.00	\$369.00	\$27,355.00
MONTGOMERY	5,076	10,503	2,442	8,061	\$1,664,386.00	\$49,508.00	\$1,614,878.00
MORGAN	67	116	13	103	\$19,783.00	\$0.00	\$19,783.00
MORROW	133	291	86	205	\$41,382.00	\$2,018.00	\$39,364.00

Source: GRP342RA Report from Management Information Services. Data includes ADC-Regular, ADC-Incapacitated, and Vendor Payments.

**TABLE 1
OHIO WORKS FIRST COMBINED
JULY 2006**

OHIO COUNTY	ASSISTANCE GROUP	RECIPIENTS	ADULTS	CHILDREN	ACTUAL EXPENDITURES		
					GROSS AMOUNT	CANCELLED AMOUNT	NET AMOUNT
STATEWIDE	79,467	170,679	41,962	128,717	\$26,772,743.00	\$798,210.00	\$25,974,533.00
MUSKINGUM	887	1,997	554	1,443	\$294,793.00	\$4,886.00	\$289,907.00
NOBLE	37	85	24	61	\$12,994.00	\$655.00	\$12,339.00
OTTAWA	121	280	81	199	\$41,866.00	\$843.00	\$41,023.00
PAULDING	110	258	98	160	\$36,585.00	\$1,062.00	\$35,523.00
PERRY	309	701	186	515	\$99,906.00	\$1,736.00	\$98,170.00
PICKAWAY	424	992	284	708	\$146,510.00	\$5,706.00	\$140,804.00
PIKE	324	666	144	522	\$107,536.00	\$4,352.00	\$103,184.00
PORTAGE	453	852	189	663	\$142,944.00	\$1,443.00	\$141,501.00
PREBLE	153	317	76	241	\$47,681.00	\$1,292.00	\$46,389.00
PUTNAM	26	45	3	42	\$7,630.00	\$0.00	\$7,630.00
RICHLAND	666	1,307	271	1,036	\$211,608.00	\$6,337.00	\$205,271.00
ROSS	640	1,376	361	1,015	\$218,323.00	\$5,352.00	\$212,971.00
SANDUSKY	223	399	63	336	\$67,040.00	\$1,534.00	\$65,506.00
SCIOTO	1,028	1,964	365	1,599	\$323,967.00	\$8,013.00	\$315,954.00
SENECA	148	278	46	232	\$47,522.00	\$1,481.00	\$46,041.00
SHELBY	120	212	19	193	\$39,813.00	\$1,512.00	\$38,301.00
STARK	2,718	6,053	1,686	4,367	\$933,625.00	\$27,954.00	\$905,671.00
SUMMIT	4,533	9,561	2,591	6,970	\$1,514,512.00	\$34,882.00	\$1,479,630.00
TRUMBULL	1,297	2,542	501	2,041	\$419,760.00	\$12,946.00	\$406,814.00
TUSCARAWAS	462	1,067	333	734	\$156,914.00	\$2,837.00	\$154,077.00
UNION	172	422	130	292	\$59,458.00	\$815.00	\$58,643.00
VAN WERT	47	75	5	70	\$13,453.00	\$0.00	\$13,453.00
VINTON	141	268	71	197	\$42,204.00	\$504.00	\$41,700.00
WARREN	225	412	62	350	\$69,672.00	\$2,766.00	\$66,906.00
WASHINGTON	127	199	3	196	\$37,460.00	\$490.00	\$36,970.00
WAYNE	485	1,129	371	758	\$160,077.00	\$1,676.00	\$158,401.00
WILLIAMS	161	390	136	254	\$56,521.00	\$3,020.00	\$53,501.00
WOOD	235	438	72	366	\$71,206.00	\$3,840.00	\$67,366.00
WYANDOT	42	77	13	64	\$13,758.00	\$1,145.00	\$12,613.00

Source: GRP342RA Report from Management Information Services. Data includes ADC-Regular, ADC-Incapacitated, and Vendor Payments.

**TABLE 1
OHIO WORKS FIRST REGULAR
JULY 2006**

OHIO COUNTY	ASSISTANCE GROUP	RECIPIENTS	ADULTS	CHILDREN	ACTUAL EXPENDITURES		
					GROSS AMOUNT	CANCELLED AMOUNT	NET AMOUNT
STATEWIDE	75,884	156,237	35,361	120,876	\$25,186,906.00	\$754,244.00	\$24,432,662.00
ADAMS	140	218	2	216	\$40,435.00	\$1,743.00	\$38,692.00
ALLEN	435	725	45	680	\$135,023.00	\$4,226.00	\$130,797.00
ASHLAND	65	118	21	97	\$20,622.00	\$0.00	\$20,622.00
ASHTABULA	627	1,211	257	954	\$199,849.00	\$1,908.00	\$197,941.00
ATHENS	470	1,038	312	726	\$163,736.00	\$4,176.00	\$159,560.00
AUGLAIZE	58	87	1	86	\$16,217.00	\$245.00	\$15,972.00
BELMONT	396	813	208	605	\$126,931.00	\$2,999.00	\$123,932.00
BROWN	158	267	30	237	\$47,999.00	\$245.00	\$47,754.00
BUTLER	1,491	2,786	413	2,373	\$476,091.00	\$11,165.00	\$464,926.00
CARROLL	87	154	33	121	\$26,087.00	\$1,095.00	\$24,992.00
CHAMPAIGN	206	406	106	300	\$68,907.00	\$4,779.00	\$64,128.00
CLARK	1,198	2,457	573	1,884	\$397,558.00	\$10,789.00	\$386,769.00
CLERMONT	431	780	110	670	\$136,320.00	\$6,646.00	\$129,674.00
CLINTON	126	220	27	193	\$40,760.00	\$1,327.00	\$39,433.00
COLUMBIANA	477	879	152	727	\$146,648.00	\$2,371.00	\$144,277.00
COSHOCTON	199	378	98	280	\$60,727.00	\$1,643.00	\$59,084.00
CRAWFORD	173	361	85	276	\$60,788.00	\$336.00	\$60,452.00
CUYAHOGA	11,868	23,383	4,943	18,440	\$3,879,979.00	\$108,814.00	\$3,771,165.00
DARKE	148	297	82	215	\$48,689.00	\$629.00	\$48,060.00
DEFIANCE	109	228	49	179	\$35,901.00	\$1,236.00	\$34,665.00
DELAWARE	308	677	208	469	\$103,495.00	\$3,011.00	\$100,484.00
ERIE	237	390	31	359	\$70,445.00	\$336.00	\$70,109.00
FAIRFIELD	686	1,472	413	1,059	\$232,582.00	\$12,923.00	\$219,659.00
FAYETTE	147	270	57	213	\$45,093.00	\$0.00	\$45,093.00
FRANKLIN	10,019	21,400	4,846	16,554	\$3,423,045.00	\$160,746.00	\$3,262,299.00
FULTON	66	111	10	101	\$19,323.00	\$0.00	\$19,323.00
GALLIA	435	973	298	675	\$147,269.00	\$2,935.00	\$144,334.00
GEAUGA	72	124	19	105	\$20,007.00	\$0.00	\$20,007.00
GREENE	543	1,069	231	838	\$175,999.00	\$7,474.00	\$168,525.00

Source: GRP342RA Report from Management Information Services. Data includes ADC-Regular, ADC-Incapacitated, and Vendor Payments.

**TABLE 1
OHIO WORKS FIRST REGULAR
JULY 2006**

OHIO COUNTY	ASSISTANCE GROUP	RECIPIENTS	ADULTS	CHILDREN	ACTUAL EXPENDITURES		
					GROSS AMOUNT	CANCELLED AMOUNT	NET AMOUNT
STATEWIDE	75,884	156,237	35,361	120,876	\$25,186,906.00	\$754,244.00	\$24,432,662.00
GUERNSEY	186	318	52	266	\$55,089.00	\$3,015.00	\$52,074.00
HAMILTON	7,130	15,832	3,515	12,317	\$2,529,758.00	\$79,300.00	\$2,450,458.00
HANCOCK	126	193	20	173	\$36,561.00	\$1,225.00	\$35,336.00
HARDIN	57	95	4	91	\$17,528.00	\$1,071.00	\$16,457.00
HARRISON	101	210	49	161	\$29,712.00	\$581.00	\$29,131.00
HENRY	37	59	3	56	\$10,676.00	\$245.00	\$10,431.00
HIGHLAND	190	403	93	310	\$63,225.00	\$1,688.00	\$61,537.00
HOCKING	243	497	129	368	\$76,688.00	\$1,843.00	\$74,845.00
HOLMES	46	90	12	78	\$15,774.00	\$719.00	\$15,055.00
HURON	150	218	0	218	\$43,909.00	\$2,233.00	\$41,676.00
JACKSON	261	450	57	393	\$81,700.00	\$1,553.00	\$80,147.00
JEFFERSON	757	1,577	436	1,141	\$244,259.00	\$10,449.00	\$233,810.00
KNOX	234	492	133	359	\$75,659.00	\$3,174.00	\$72,485.00
LAKE	533	1,092	249	843	\$175,241.00	\$5,409.00	\$169,832.00
LAWRENCE	688	1,280	230	1,050	\$215,438.00	\$4,185.00	\$211,253.00
LICKING	545	1,110	263	847	\$174,990.00	\$5,675.00	\$169,315.00
LOGAN	196	411	96	315	\$66,261.00	\$1,834.00	\$64,427.00
LORAIN	1,956	4,188	935	3,253	\$651,849.00	\$11,929.00	\$639,920.00
LUCAS	6,273	14,028	3,779	10,249	\$2,147,144.00	\$53,216.00	\$2,093,928.00
MADISON	202	426	128	298	\$66,788.00	\$490.00	\$66,298.00
MAHONING	2,617	5,693	1,363	4,330	\$896,949.00	\$24,439.00	\$872,510.00
MARION	401	749	101	648	\$128,178.00	\$1,553.00	\$126,625.00
MEDINA	256	527	142	385	\$84,955.00	\$947.00	\$84,008.00
MEIGS	170	344	90	254	\$55,392.00	\$1,435.00	\$53,957.00
MERCER	77	152	44	108	\$24,830.00	\$1,475.00	\$23,355.00
MIAMI	328	647	125	522	\$102,373.00	\$2,530.00	\$99,843.00
MONROE	64	155	43	112	\$20,228.00	\$369.00	\$19,859.00
MONTGOMERY	5,061	10,453	2,430	8,023	\$1,659,310.00	\$49,123.00	\$1,610,187.00
MORGAN	64	102	7	95	\$18,090.00	\$0.00	\$18,090.00
MORROW	119	228	58	170	\$36,051.00	\$1,424.00	\$34,627.00

Source: GRP342RA Report from Management Information Services. Data includes ADC-Regular, ADC-Incapacitated, and Vendor Payments.

**TABLE 1
OHIO WORKS FIRST REGULAR
JULY 2006**

OHIO COUNTY	ASSISTANCE GROUP	RECIPIENTS	ADULTS	CHILDREN	ACTUAL EXPENDITURES		
					GROSS AMOUNT	CANCELLED AMOUNT	NET AMOUNT
STATEWIDE	75,884	156,237	35,361	120,876	\$25,186,906.00	\$754,244.00	\$24,432,662.00
MUSKINGUM	817	1,722	416	1,306	\$268,811.00	\$3,861.00	\$264,950.00
NOBLE	34	72	18	54	\$11,460.00	\$655.00	\$10,805.00
OTTAWA	106	222	57	165	\$35,603.00	\$336.00	\$35,267.00
PAULDING	96	204	72	132	\$31,838.00	\$1,062.00	\$30,776.00
PERRY	283	584	135	449	\$89,278.00	\$1,736.00	\$87,542.00
PICKAWAY	398	886	237	649	\$134,051.00	\$5,706.00	\$128,345.00
PIKE	317	640	133	507	\$104,559.00	\$4,352.00	\$100,207.00
PORTAGE	443	819	171	648	\$137,993.00	\$1,443.00	\$136,550.00
PREBLE	149	304	68	236	\$46,277.00	\$1,292.00	\$44,985.00
PUTNAM	26	45	3	42	\$7,630.00	\$0.00	\$7,630.00
RICHLAND	656	1,258	251	1,007	\$206,379.00	\$6,337.00	\$200,042.00
ROSS	602	1,230	291	939	\$201,342.00	\$4,025.00	\$197,317.00
SANDUSKY	190	339	59	280	\$57,899.00	\$1,057.00	\$56,842.00
SCIOTO	979	1,767	268	1,499	\$300,859.00	\$8,013.00	\$292,846.00
SENECA	145	268	43	225	\$45,787.00	\$1,481.00	\$44,306.00
SHELBY	119	208	18	190	\$39,306.00	\$1,005.00	\$38,301.00
STARK	2,552	5,415	1,366	4,049	\$858,477.00	\$25,394.00	\$833,083.00
SUMMIT	4,322	8,698	2,174	6,524	\$1,418,810.00	\$33,091.00	\$1,385,719.00
TRUMBULL	1,265	2,408	437	1,971	\$405,298.00	\$11,331.00	\$393,967.00
TUSCARAWAS	411	868	234	634	\$135,394.00	\$2,100.00	\$133,294.00
UNION	152	334	90	244	\$51,604.00	\$815.00	\$50,789.00
VAN WERT	47	75	5	70	\$13,453.00	\$0.00	\$13,453.00
VINTON	133	240	56	184	\$40,006.00	\$504.00	\$39,502.00
WARREN	220	398	54	344	\$67,763.00	\$2,766.00	\$64,997.00
WASHINGTON	127	199	3	196	\$37,460.00	\$490.00	\$36,970.00
WAYNE	436	914	275	639	\$137,920.00	\$968.00	\$136,952.00
WILLIAMS	145	317	104	213	\$47,856.00	\$2,513.00	\$45,343.00
WOOD	231	423	68	355	\$69,759.00	\$3,840.00	\$65,919.00
WYANDOT	40	69	9	60	\$12,904.00	\$1,145.00	\$11,759.00

Source: GRP342RA Report from Management Information Services. Data includes ADC-Regular, ADC-Incapacitated, and Vendor Payments.

**TABLE 1
OHIO WORKS FIRST UNEMPLOYED
JULY 2006**

OHIO COUNTY	ASSISTANCE GROUP	RECIPIENTS	ADULTS	CHILDREN	ACTUAL EXPENDITURES		
					GROSS AMOUNT	CANCELLED AMOUNT	NET AMOUNT
STATEWIDE	3,583	14,442	6,601	7,841	\$1,585,837.00	\$43,966.00	\$1,541,871.00
ADAMS	0	0	0	0	\$0.00	\$0.00	\$0.00
ALLEN	1	3	0	3	\$410.00	\$0.00	\$410.00
ASHLAND	1	5	2	3	\$95.00	\$0.00	\$95.00
ASHTABULA	47	201	83	118	\$22,623.00	\$593.00	\$22,030.00
ATHENS	92	355	171	184	\$35,966.00	\$457.00	\$35,509.00
AUGLAIZE	0	0	0	0	\$0.00	\$0.00	\$0.00
BELMONT	57	209	114	95	\$24,262.00	\$0.00	\$24,262.00
BROWN	3	14	6	8	\$1,333.00	\$0.00	\$1,333.00
BUTLER	9	21	2	19	\$2,618.00	\$410.00	\$2,208.00
CARROLL	11	43	22	21	\$2,901.00	\$0.00	\$2,901.00
CHAMPAIGN	11	43	20	23	\$5,271.00	\$211.00	\$5,060.00
CLARK	41	159	77	82	\$19,043.00	\$0.00	\$19,043.00
CLERMONT	9	33	18	15	\$3,057.00	\$0.00	\$3,057.00
CLINTON	1	2	0	2	\$336.00	\$0.00	\$336.00
COLUMBIANA	14	54	27	27	\$6,005.00	\$537.00	\$5,468.00
COSHOCTON	20	68	35	33	\$6,385.00	\$0.00	\$6,385.00
CRAWFORD	8	29	16	13	\$3,301.00	\$0.00	\$3,301.00
CUYAHOGA	376	1,475	711	764	\$159,529.00	\$2,179.00	\$157,350.00
DARKE	5	18	10	8	\$2,334.00	\$0.00	\$2,334.00
DEFIANCE	7	28	14	14	\$3,947.00	\$0.00	\$3,947.00
DELAWARE	23	87	41	46	\$8,577.00	\$0.00	\$8,577.00
ERIE	2	10	4	6	\$1,180.00	\$0.00	\$1,180.00
FAIRFIELD	92	357	173	184	\$40,930.00	\$1,554.00	\$39,376.00
FAYETTE	5	16	10	6	\$1,373.00	\$0.00	\$1,373.00
FRANKLIN	551	2,500	958	1,542	\$265,179.00	\$9,395.00	\$255,784.00
FULTON	1	2	0	2	\$336.00	\$0.00	\$336.00
GALLIA	113	416	222	194	\$49,629.00	\$1,510.00	\$48,119.00
GEAUGA	0	0	0	0	\$0.00	\$0.00	\$0.00
GREENE	19	65	34	31	\$8,385.00	\$507.00	\$7,878.00

Source: GRP342RA Report from Management Information Services. Data includes ADC-Regular, ADC-Incapacitated, and Vendor Payments.

**TABLE 1
OHIO WORKS FIRST UNEMPLOYED
JULY 2006**

OHIO COUNTY	ASSISTANCE GROUP	RECIPIENTS	ADULTS	CHILDREN	ACTUAL EXPENDITURES		
					GROSS AMOUNT	CANCELLED AMOUNT	NET AMOUNT
STATEWIDE	3,583	14,442	6,601	7,841	\$1,585,837.00	\$43,966.00	\$1,541,871.00
GUERNSEY	4	14	7	7	\$1,342.00	\$0.00	\$1,342.00
HAMILTON	145	610	268	342	\$71,500.00	\$1,998.00	\$69,502.00
HANCOCK	0	0	0	0	\$0.00	\$0.00	\$0.00
HARDIN	1	4	2	2	\$804.00	\$0.00	\$804.00
HARRISON	6	20	10	10	\$2,488.00	\$179.00	\$2,309.00
HENRY	1	3	2	1	\$410.00	\$0.00	\$410.00
HIGHLAND	8	38	16	22	\$4,716.00	\$0.00	\$4,716.00
HOCKING	35	139	69	70	\$15,616.00	\$737.00	\$14,879.00
HOLMES	3	12	6	6	\$1,825.00	\$0.00	\$1,825.00
HURON	2	8	2	6	\$1,317.00	\$0.00	\$1,317.00
JACKSON	3	9	4	5	\$1,159.00	\$0.00	\$1,159.00
JEFFERSON	85	353	168	185	\$38,855.00	\$2,591.00	\$36,264.00
KNOX	12	53	23	30	\$4,523.00	\$0.00	\$4,523.00
LAKE	31	134	47	87	\$14,136.00	\$0.00	\$14,136.00
LAWRENCE	39	152	75	77	\$14,740.00	\$976.00	\$13,764.00
LICKING	35	132	67	65	\$13,099.00	\$207.00	\$12,892.00
LOGAN	10	41	20	21	\$4,203.00	\$267.00	\$3,936.00
LORAIN	89	361	172	189	\$42,569.00	\$1,014.00	\$41,555.00
LUCAS	469	1,866	868	998	\$205,956.00	\$5,044.00	\$200,912.00
MADISON	29	119	57	62	\$13,233.00	\$0.00	\$13,233.00
MAHONING	100	388	182	206	\$44,936.00	\$524.00	\$44,412.00
MARION	5	16	4	12	\$1,756.00	\$336.00	\$1,420.00
MEDINA	11	50	22	28	\$4,898.00	\$0.00	\$4,898.00
MEIGS	11	44	22	22	\$3,997.00	\$0.00	\$3,997.00
MERCER	6	20	11	9	\$2,402.00	\$0.00	\$2,402.00
MIAMI	3	12	6	6	\$1,194.00	\$0.00	\$1,194.00
MONROE	16	68	32	36	\$7,496.00	\$0.00	\$7,496.00
MONTGOMERY	15	50	12	38	\$5,076.00	\$385.00	\$4,691.00
MORGAN	3	14	6	8	\$1,693.00	\$0.00	\$1,693.00
MORROW	14	63	28	35	\$5,331.00	\$594.00	\$4,737.00

Source: GRP342RA Report from Management Information Services. Data includes ADC-Regular, ADC-Incapacitated, and Vendor Payments.

**TABLE 1
OHIO WORKS FIRST UNEMPLOYED
JULY 2006**

OHIO COUNTY	ASSISTANCE GROUP	RECIPIENTS	ADULTS	CHILDREN	ACTUAL EXPENDITURES		
					GROSS AMOUNT	CANCELLED AMOUNT	NET AMOUNT
STATEWIDE	3,583	14,442	6,601	7,841	\$1,585,837.00	\$43,966.00	\$1,541,871.00
MUSKINGUM	70	275	138	137	\$25,982.00	\$1,025.00	\$24,957.00
NOBLE	3	13	6	7	\$1,534.00	\$0.00	\$1,534.00
OTTAWA	15	58	24	34	\$6,263.00	\$507.00	\$5,756.00
PAULDING	14	54	26	28	\$4,747.00	\$0.00	\$4,747.00
PERRY	26	117	51	66	\$10,628.00	\$0.00	\$10,628.00
PICKAWAY	26	106	47	59	\$12,459.00	\$0.00	\$12,459.00
PIKE	7	26	11	15	\$2,977.00	\$0.00	\$2,977.00
PORTAGE	10	33	18	15	\$4,951.00	\$0.00	\$4,951.00
PREBLE	4	13	8	5	\$1,404.00	\$0.00	\$1,404.00
PUTNAM	0	0	0	0	\$0.00	\$0.00	\$0.00
RICHLAND	10	49	20	29	\$5,229.00	\$0.00	\$5,229.00
ROSS	38	146	70	76	\$16,981.00	\$1,327.00	\$15,654.00
SANDUSKY	33	60	4	56	\$9,141.00	\$477.00	\$8,664.00
SCIOTO	49	197	97	100	\$23,108.00	\$0.00	\$23,108.00
SENECA	3	10	3	7	\$1,735.00	\$0.00	\$1,735.00
SHELBY	1	4	1	3	\$507.00	\$507.00	\$0.00
STARK	166	638	320	318	\$75,148.00	\$2,560.00	\$72,588.00
SUMMIT	211	863	417	446	\$95,702.00	\$1,791.00	\$93,911.00
TRUMBULL	32	134	64	70	\$14,462.00	\$1,615.00	\$12,847.00
TUSCARAWAS	51	199	99	100	\$21,520.00	\$737.00	\$20,783.00
UNION	20	88	40	48	\$7,854.00	\$0.00	\$7,854.00
VAN WERT	0	0	0	0	\$0.00	\$0.00	\$0.00
VINTON	8	28	15	13	\$2,198.00	\$0.00	\$2,198.00
WARREN	5	14	8	6	\$1,909.00	\$0.00	\$1,909.00
WASHINGTON	0	0	0	0	\$0.00	\$0.00	\$0.00
WAYNE	49	215	96	119	\$22,157.00	\$708.00	\$21,449.00
WILLIAMS	16	73	32	41	\$8,665.00	\$507.00	\$8,158.00
WOOD	4	15	4	11	\$1,447.00	\$0.00	\$1,447.00
WYANDOT	2	8	4	4	\$854.00	\$0.00	\$854.00

Source: GRP342RA Report from Management Information Services. Data includes ADC-Regular, ADC-Incapacitated, and Vendor Payments.

**TABLE 2
TITLE IV-E FOSTER CARE AND ADOPTION ASSISTANCE
JULY 2006**

OHIO COUNTY	FOSTER CARE						ADOPTION ASSISTANCE		TOTAL FOSTER CARE AND ADOPTION ASSISTANCE	
	FOSTER FAMILY HOMES		CHILD CARE INSTITUTIONS		HOMES & INSTITUTIONS		CHILDREN	GROSS AMOUNT	CHILDREN	GROSS AMOUNT
	CHILDREN	GROSS AMOUNT	CHILDREN	GROSS AMOUNT	CHILDREN	GROSS AMOUNT				
STATEWIDE	2,718	\$1,235,156.56	3,483	\$4,612,155.72	6,201	\$5,847,312.28	20,629	\$7,953,908.36	26,830	\$13,801,220.64
ADAMS	21	\$7,322.02	11	\$53,201.73	32	\$60,523.75	34	10,282	66	\$70,805.75
ALLEN	63	\$28,163.77	28	\$34,999.70	91	\$63,163.47	127	38,266	218	\$101,429.02
ASHLAND	14	\$4,355.02	1	\$2,540.71	15	\$6,895.73	11	2,750	26	\$9,645.73
ASHTABULA	0	\$0.00	21	\$7,185.70	21	\$7,185.70	174	63,594	195	\$70,779.36
ATHENS	46	\$16,079.39	32	\$40,798.57	78	\$56,877.96	128	42,372	206	\$99,249.65
AUGLAIZE	3	\$1,683.21	2	\$2,846.93	5	\$4,530.14	45	16,897	50	\$21,426.78
BELMONT	1	\$408.38	13	\$95,636.52	14	\$96,044.90	112	44,347	126	\$140,392.05
BROWN	20	\$13,425.50	2	\$2,206.93	22	\$15,632.43	37	9,761	59	\$25,393.16
BUTLER	63	\$18,992.24	171	\$211,801.83	234	\$230,794.07	515	166,402	749	\$397,196.27
CARROLL	9	\$7,072.41	0	\$0.00	9	\$7,072.41	8	2,000	17	\$9,072.41
CHAMPAIGN	1	\$371.25	4	\$8,302.16	5	\$8,673.41	22	6,997	27	\$15,670.41
CLARK	0	\$0.00	41	\$24,062.76	41	\$24,062.76	316	110,437	357	\$134,500.01
CLERMONT	57	\$14,092.60	118	\$153,446.68	175	\$167,539.28	251	70,493	426	\$238,032.28
CLINTON	23	\$12,365.72	6	\$22,900.62	29	\$35,266.34	71	27,975	100	\$63,240.85
COLUMBIANA	28	\$6,088.56	0	\$0.00	28	\$6,088.56	76	22,180	104	\$28,268.17
COSHOCTON	9	\$7,945.77	3	\$2,926.41	12	\$10,872.18	47	13,981	59	\$24,852.71
CRAWFORD	0	\$0.00	0	\$0.00	0	\$0.00	43	13,051	43	\$13,051.35
CUYAHOGA	385	\$160,159.40	809	\$1,427,549.23	1,194	\$1,587,708.63	5,131	2,426,646	6,325	\$4,014,354.24
DARKE	15	\$4,402.77	12	\$25,601.50	27	\$30,004.27	31	9,930	58	\$39,933.87
DEFIANCE	14	\$5,302.61	2	\$3,601.86	16	\$8,904.47	35	9,679	51	\$18,583.86
DELAWARE	13	\$4,030.47	14	\$30,519.29	27	\$34,549.76	59	17,555	86	\$52,105.14
ERIE	25	\$12,095.63	15	\$36,459.02	40	\$48,554.65	91	28,729	131	\$77,283.65
FAIRFIELD	0	\$0.00	0	\$0.00	0	\$0.00	182	48,373	182	\$48,372.74
FAYETTE	9	\$27,641.33	1	\$24,131.40	10	\$51,772.73	14	3,500	24	\$55,272.73
FRANKLIN	0	\$0.00	956	\$381,268.97	956	\$381,268.97	2,590	975,908	3,546	\$1,357,177.43
FULTON	5	\$418.05	14	\$23,012.40	19	\$23,430.45	18	5,349	37	\$28,779.25
GALLIA	12	\$4,065.17	1	\$1,646.92	13	\$5,712.09	49	12,215	62	\$17,927.09
GEAUGA	2	\$1,388.00	0	\$0.00	2	\$1,388.00	108	37,983	110	\$39,370.53
GREENE	0	\$0.00	29	\$17,595.58	29	\$17,595.58	97	31,727	126	\$49,322.96

SOURCE: GBS003RB Report from Management Information Services. Federal funds only.

**TABLE 2
TITLE IV-E FOSTER CARE AND ADOPTION ASSISTANCE
JULY 2006**

OHIO COUNTY	FOSTER CARE						ADOPTION ASSISTANCE		TOTAL FOSTER CARE AND ADOPTION ASSISTANCE	
	FOSTER FAMILY HOMES		CHILD CARE INSTITUTIONS		HOMES & INSTITUTIONS		CHILDREN	GROSS AMOUNT	CHILDREN	GROSS AMOUNT
	CHILDREN	GROSS AMOUNT	CHILDREN	GROSS AMOUNT	CHILDREN	GROSS AMOUNT				
STATEWIDE	2,718	\$1,235,156.56	3,483	\$4,612,155.72	6,201	\$5,847,312.28	20,629	\$7,953,908.36	26,830	\$13,801,220.64
GUERNSEY	32	\$16,934.53	14	\$31,107.84	46	\$48,042.37	77	24,324	123	\$72,366.01
HAMILTON	13	\$4,991.55	0	\$0.00	13	\$4,991.55	1,548	587,651	1,561	\$592,642.77
HANCOCK	17	\$7,798.68	20	\$29,244.29	37	\$37,042.97	49	14,837	86	\$51,879.77
HARDIN	5	(\$576.05)	4	\$6,931.56	9	\$6,355.51	44	13,961	53	\$20,316.37
HARRISON	3	\$3,722.13	0	\$0.00	3	\$3,722.13	25	8,112	28	\$11,834.27
HENRY	0	\$0.00	14	\$16,778.88	14	\$16,778.88	25	8,023	39	\$24,801.89
HIGHLAND	21	\$10,868.14	1	\$1,160.92	22	\$12,029.06	15	4,915	37	\$16,943.70
HOCKING	15	\$6,917.84	13	\$14,930.42	28	\$21,848.26	51	16,453	79	\$38,301.23
HOLMES	14	\$6,956.58	5	\$15,581.85	19	\$22,538.43	21	8,649	40	\$31,187.79
HURON	29	\$14,757.32	6	\$19,887.00	35	\$34,644.32	34	10,680	69	\$45,324.44
JACKSON	2	\$359.28	13	\$25,182.33	15	\$25,541.61	14	3,500	29	\$29,041.61
JEFFERSON	40	\$23,751.59	9	\$24,640.96	49	\$48,392.55	63	29,521	112	\$77,913.12
KNOX	2	\$605.38	5	\$10,337.46	7	\$10,942.84	32	9,961	39	\$20,903.91
LAKE	31	\$20,216.92	17	\$56,912.43	48	\$77,129.35	155	44,998	203	\$122,127.36
LAWRENCE	2	\$872.44	68	\$265,102.53	70	\$265,974.97	44	11,749	114	\$277,723.47
LICKING	58	\$19,041.55	79	\$109,515.36	137	\$128,556.91	339	115,328	476	\$243,884.41
LOGAN	10	\$5,457.41	0	\$0.00	10	\$5,457.41	48	17,655	58	\$23,112.77
LORAIN	0	\$0.00	0	\$0.00	0	\$0.00	437	148,993	437	\$148,993.19
LUCAS	488	\$258,837.59	35	\$45,574.08	523	\$304,411.67	1,644	617,326	2,167	\$921,737.93
MADISON	0	\$0.00	15	\$44,390.66	15	\$44,390.66	22	6,984	37	\$51,374.19
MAHONING	97	\$50,051.23	51	\$151,039.54	148	\$201,090.77	243	72,973	391	\$274,063.41
MARION	16	\$7,431.63	4	\$7,871.62	20	\$15,303.25	70	26,456	90	\$41,758.92
MEDINA	0	\$0.00	3	\$3,102.00	3	\$3,102.00	88	30,735	91	\$33,836.67
MEIGS	0	\$0.00	3	\$2,961.39	3	\$2,961.39	8	2,250	11	\$5,211.39
MERCER	8	\$5,148.46	5	\$14,774.65	13	\$19,923.11	32	8,509	45	\$28,432.09
MIAMI	24	\$12,356.11	27	\$38,132.72	51	\$50,488.83	106	36,491	157	\$86,979.77
MONROE	5	\$2,505.95	0	\$0.00	5	\$2,505.95	10	3,648	15	\$6,154.15
MONTGOMERY	317	\$120,627.36	168	\$267,884.96	485	\$388,512.32	1,206	589,285	1,691	\$977,797.36
MORGAN	0	\$0.00	0	\$0.00	0	\$0.00	11	2,984	11	\$2,984.00
MORROW	0	\$0.00	0	\$0.00	0	\$0.00	35	9,286	35	\$9,285.92

SOURCE: GBS003RB Report from Management Information Services. Federal funds only.

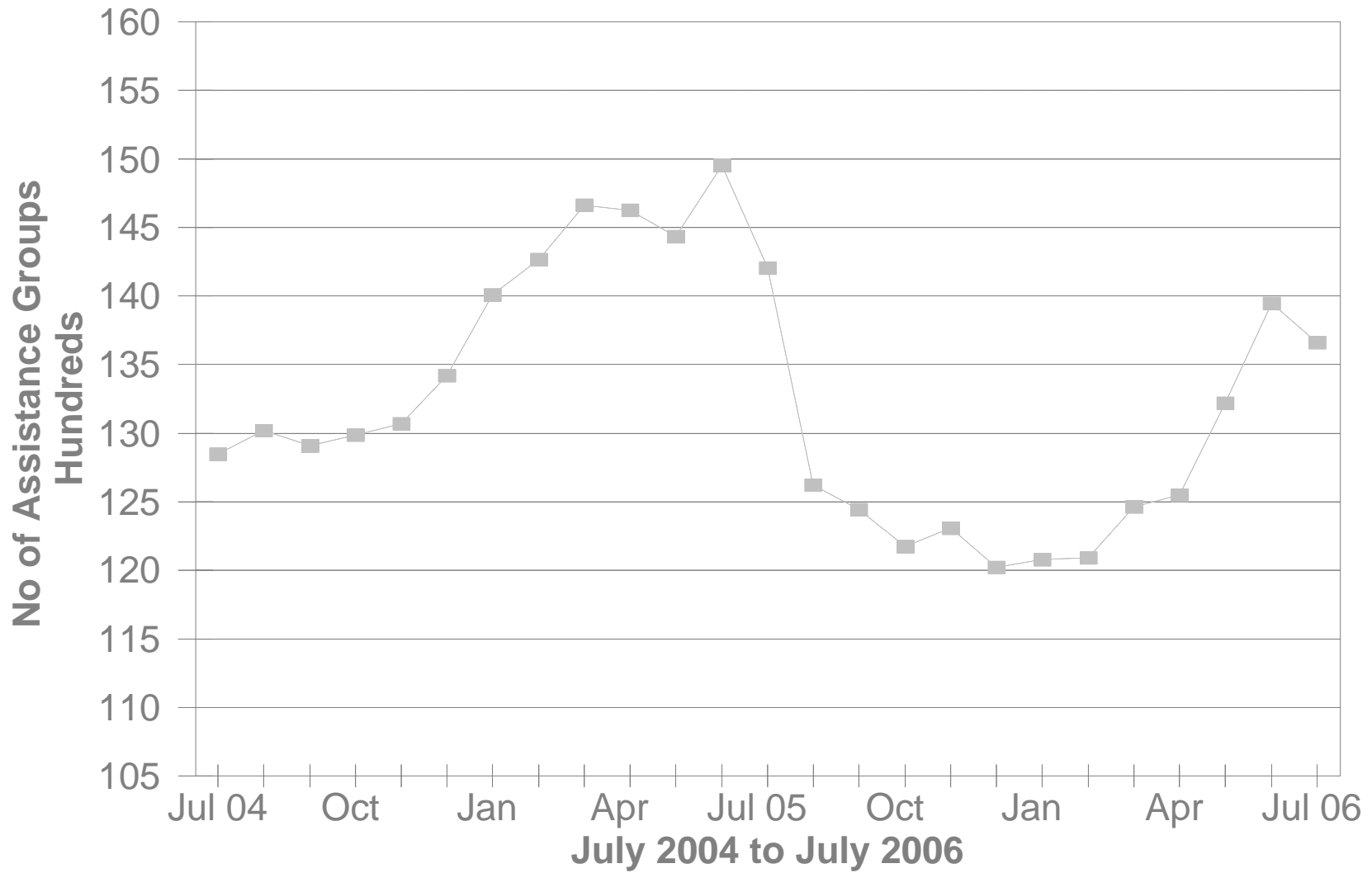
**TABLE 2
TITLE IV-E FOSTER CARE AND ADOPTION ASSISTANCE
JULY 2006**

OHIO COUNTY	FOSTER CARE						ADOPTION ASSISTANCE		TOTAL FOSTER CARE AND ADOPTION ASSISTANCE	
	FOSTER FAMILY HOMES		CHILD CARE INSTITUTIONS		HOMES & INSTITUTIONS		CHILDREN	GROSS AMOUNT	CHILDREN	GROSS AMOUNT
	CHILDREN	GROSS AMOUNT	CHILDREN	GROSS AMOUNT	CHILDREN	GROSS AMOUNT				
STATEWIDE	2,718	\$1,235,156.56	3,483	\$4,612,155.72	6,201	\$5,847,312.28	20,629	\$7,953,908.36	26,830	\$13,801,220.64
MUSKINGUM	0	\$0.00	12	\$3,924.50	12	\$3,924.50	141	56,390	153	\$60,314.12
NOBLE	1	\$464.07	0	\$0.00	1	\$464.07	7	1,750	8	\$2,214.07
OTTAWA	7	\$5,502.94	1	\$3,287.41	8	\$8,790.35	2	650	10	\$9,440.05
PAULDING	2	\$631.12	7	\$9,810.59	9	\$10,441.71	22	6,719	31	\$17,160.27
PERRY	30	\$14,443.33	6	\$10,850.99	36	\$25,294.32	39	12,427	75	\$37,720.94
PICKAWAY	14	\$5,188.55	0	\$0.00	14	\$5,188.55	18	6,134	32	\$11,322.90
PIKE	16	\$7,425.12	5	\$8,088.47	21	\$15,513.59	24	6,365	45	\$21,878.79
PORTAGE	0	\$0.00	0	\$0.00	0	\$0.00	146	68,951	146	\$68,950.69
PREBLE	16	\$7,425.02	19	\$19,565.49	35	\$26,990.51	41	10,543	76	\$37,533.49
PUTNAM	0	\$0.00	1	\$2,261.60	1	\$2,261.60	13	3,250	14	\$5,511.60
RICHLAND	0	\$0.00	2	\$1,193.05	2	\$1,193.05	261	88,576	263	\$89,769.37
ROSS	18	\$8,984.36	20	\$20,085.44	38	\$29,069.80	61	18,678	99	\$47,747.89
SANDUSKY	14	\$9,839.17	11	\$18,774.99	25	\$28,614.16	61	15,654	86	\$44,267.74
SCIOTO	25	\$7,441.70	18	\$10,977.00	43	\$18,418.70	50	15,560	93	\$33,978.82
SENECA	17	\$4,279.23	29	\$33,424.44	46	\$37,703.67	76	21,624	122	\$59,327.54
SHELBY	6	\$3,642.53	5	\$9,436.40	11	\$13,078.93	54	21,967	65	\$35,046.15
STARK	0	\$0.00	145	\$61,267.42	145	\$61,267.42	1,009	304,412	1,154	\$365,678.99
SUMMIT	208	\$80,098.62	134	\$221,441.30	342	\$301,539.92	911	302,148	1,253	\$603,688.08
TRUMBULL	123	\$62,697.54	35	\$114,371.93	158	\$177,069.47	296	81,803	454	\$258,872.67
TUSCARAWAS	23	\$18,937.20	49	\$78,984.00	72	\$97,921.20	141	43,934	213	\$141,855.50
UNION	2	\$1,485.02	0	\$0.00	2	\$1,485.02	33	9,957	35	\$11,441.60
VAN WERT	1	\$408.38	3	\$7,131.16	4	\$7,539.54	16	5,988	20	\$13,527.55
VINTON	22	\$10,193.66	7	\$6,198.65	29	\$16,392.31	14	3,949	43	\$20,341.41
WARREN	24	\$6,383.08	23	\$21,824.41	47	\$28,207.49	89	28,059	136	\$56,266.96
WASHINGTON	11	\$2,185.90	2	\$3,215.02	13	\$5,400.92	33	8,669	46	\$14,070.08
WAYNE	37	\$14,577.45	26	\$48,153.75	63	\$62,731.20	77	28,566	140	\$91,297.34
WILLIAMS	3	\$983.81	16	\$30,880.99	19	\$31,864.80	21	5,699	40	\$37,563.90
WOOD	9	\$3,507.73	20	\$19,241.56	29	\$22,749.29	40	14,022	69	\$36,770.81
WYANDOT	2	\$928.14	2	\$10,476.29	4	\$11,404.43	15	5,854	19	\$17,257.99

SOURCE: GBS003RB Report from Management Information Services. Federal funds only.

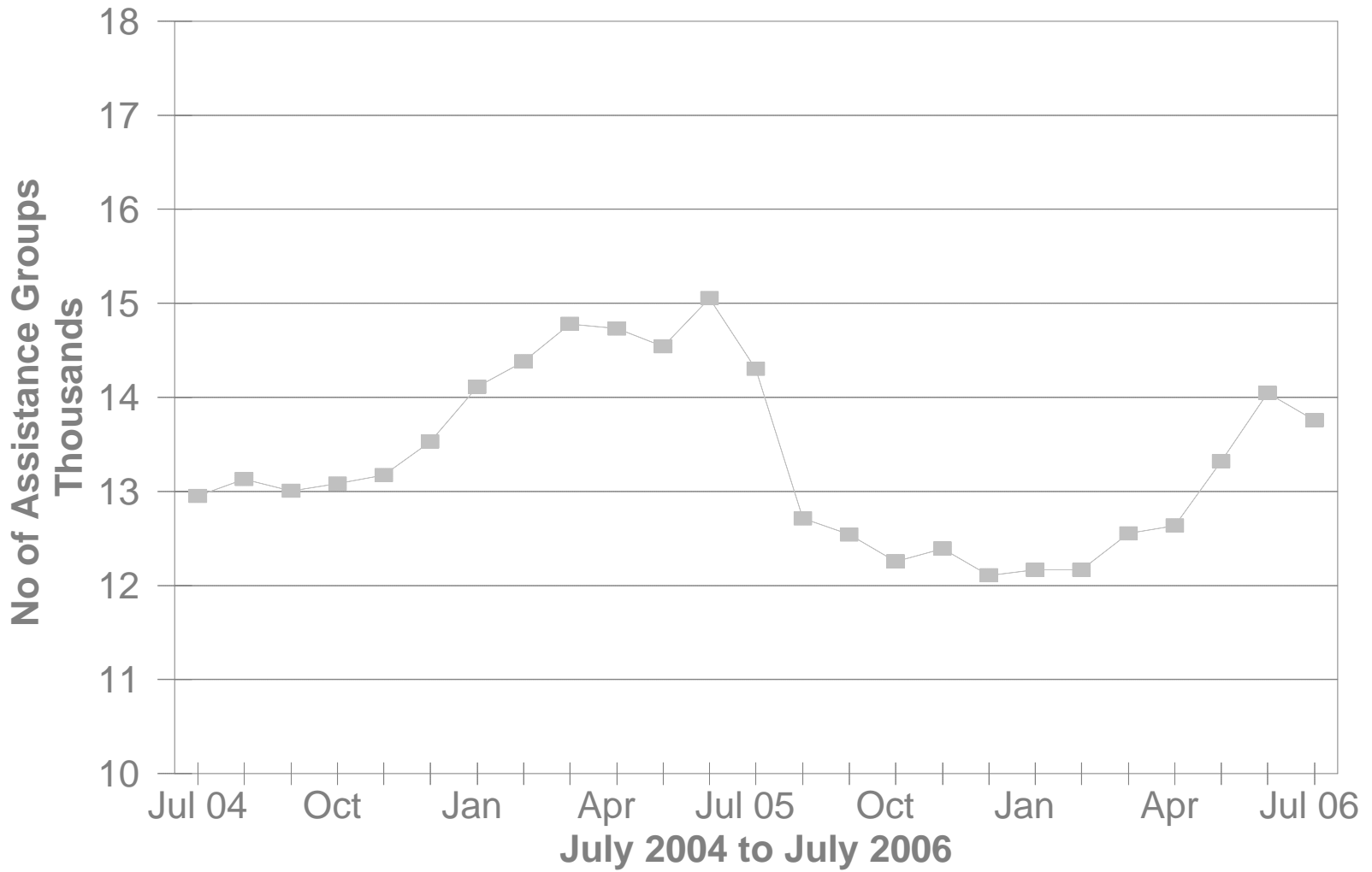
DA Cash Assistance Groups

During The Last 25 Months



DA Cash Recipients

During The Last 25 Months



**TABLE 3
DISABILITY ASSISTANCE (DA)
JULY 2006**

OHIO COUNTY	CASH ASSISTANCE							MEDICAL ASSISTANCE	
	ASSISTANCE GROUPS	RECIPIENTS	ADULTS	CHILDREN	ACTUAL EXPENDITURES			UNDUPLICATED RECIPIENTS	ACTUAL AMOUNT PAID
					GROSS AMOUNT	CANCELLED AMOUNT	NET AMOUNT		
STATEWIDE	13,660	13,753	13,753	0	\$1,928,110.00	\$85,040.00	\$1,843,070.00	5,142	\$2,366,844.00
ADAMS	94	96	96	0	\$13,162.00	\$0.00	\$13,162.00	22	\$8,748.53
ALLEN	105	105	105	0	\$14,925.00	\$820.00	\$14,105.00	22	\$23,347.99
ASHLAND	42	42	42	0	\$5,412.00	\$0.00	\$5,412.00	17	\$6,010.31
ASHTABULA	293	299	299	0	\$45,776.00	\$224.00	\$45,552.00	41	\$11,723.60
ATHENS	245	247	247	0	\$29,986.00	\$1,253.00	\$28,733.00	22	\$6,287.76
AUGLAIZE	33	33	33	0	\$4,414.00	\$115.00	\$4,299.00	10	\$2,009.81
BELMONT	131	134	134	0	\$19,328.00	\$1,035.00	\$18,293.00	36	\$19,083.99
BROWN	57	58	58	0	\$7,451.00	\$0.00	\$7,451.00	20	\$9,149.85
BUTLER	413	414	414	0	\$54,141.00	\$460.00	\$53,681.00	80	\$36,871.60
CARROLL	33	33	33	0	\$4,780.00	\$115.00	\$4,665.00	4	\$555.07
CHAMPAIGN	39	39	39	0	\$6,182.00	\$230.00	\$5,952.00	14	\$7,067.41
CLARK	329	330	330	0	\$45,009.00	\$2,007.00	\$43,002.00	99	\$57,181.83
CLERMONT	192	193	193	0	\$26,100.00	\$1,648.00	\$24,452.00	32	\$16,927.88
CLINTON	69	69	69	0	\$9,032.00	\$230.00	\$8,802.00	6	\$4,895.07
COLUMBIANA	121	121	121	0	\$21,043.00	\$690.00	\$20,353.00	57	\$25,255.88
COSHOCTON	96	98	98	0	\$11,859.00	\$230.00	\$11,629.00	10	\$4,511.41
CRAWFORD	62	63	63	0	\$8,056.00	\$460.00	\$7,596.00	19	\$11,707.24
CUYAHOGA	957	964	964	0	\$130,581.00	\$4,648.00	\$125,933.00	1,117	\$438,584.99
DARKE	42	43	43	0	\$5,383.00	\$115.00	\$5,268.00	6	\$2,792.46
DEFIANCE	27	27	27	0	\$4,471.00	\$0.00	\$4,471.00	11	\$3,858.51
DELAWARE	87	88	88	0	\$13,330.00	\$345.00	\$12,985.00	22	\$6,258.38
ERIE	74	74	74	0	\$10,119.00	\$460.00	\$9,659.00	23	\$9,566.38
FAIRFIELD	145	145	145	0	\$19,927.00	\$2,500.00	\$17,427.00	42	\$24,149.73
FAYETTE	41	41	41	0	\$6,012.00	\$330.00	\$5,682.00	22	\$8,611.11
FRANKLIN	1,087	1,097	1,097	0	\$142,643.00	\$7,515.00	\$135,128.00	493	\$275,130.44
FULTON	23	23	23	0	\$3,220.00	\$115.00	\$3,105.00	9	\$4,415.98
GALLIA	71	71	71	0	\$9,184.00	\$1,215.00	\$7,969.00	65	\$34,051.61
GEAUGA	38	38	38	0	\$4,870.00	\$1,361.00	\$3,509.00	1	\$2,182.14
GREENE	145	147	147	0	\$21,728.00	\$920.00	\$20,808.00	49	\$26,423.51

*SOURCE: GRP342RA Report from Management Information Services and BOMC 9260-R001 Report from Medicaid Management Information Services.

**TABLE 3
DISABILITY ASSISTANCE (DA)
JULY 2006**

OHIO COUNTY	CASH ASSISTANCE							MEDICAL ASSISTANCE	
	ASSISTANCE GROUPS	RECIPIENTS	ADULTS	CHILDREN	ACTUAL EXPENDITURES			UNDUPLICATED	ACTUAL AMOUNT
					GROSS AMOUNT	CANCELLED AMOUNT	NET AMOUNT	RECIPIENTS	PAID
STATEWIDE	13,660	13,753	13,753	0	\$1,928,110.00	\$85,040.00	\$1,843,070.00	5,142	\$2,366,844.00
GUERNSEY	144	146	146	0	\$21,039.00	\$690.00	\$20,349.00	17	\$8,607.03
HAMILTON	610	610	610	0	\$101,010.00	\$5,681.00	\$95,329.00	155	\$68,624.64
HANCOCK	90	90	90	0	\$12,392.00	\$0.00	\$12,392.00	14	\$8,893.78
HARDIN	40	40	40	0	\$6,836.00	\$115.00	\$6,721.00	14	\$5,579.15
HARRISON	51	51	51	0	\$7,263.00	\$0.00	\$7,263.00	7	\$1,633.91
HENRY	18	18	18	0	\$2,507.00	\$935.00	\$1,572.00	2	\$601.64
HIGHLAND	105	106	106	0	\$14,649.00	\$115.00	\$14,534.00	22	\$9,840.66
HOCKING	74	74	74	0	\$9,766.00	\$345.00	\$9,421.00	10	\$4,012.40
HOLMES	28	29	29	0	\$3,264.00	\$230.00	\$3,034.00	1	\$34.55
HURON	58	58	58	0	\$7,899.00	\$115.00	\$7,784.00	11	\$4,682.85
JACKSON	106	108	108	0	\$14,118.00	\$230.00	\$13,888.00	32	\$20,176.48
JEFFERSON	180	180	180	0	\$25,741.00	\$2,729.00	\$23,012.00	62	\$20,745.70
KNOX	102	103	103	0	\$13,793.00	\$460.00	\$13,333.00	18	\$8,290.55
LAKE	170	170	170	0	\$23,078.00	\$695.00	\$22,383.00	40	\$13,325.89
LAWRENCE	88	88	88	0	\$12,939.00	\$894.00	\$12,045.00	38	\$19,196.04
LICKING	232	234	234	0	\$31,169.00	\$920.00	\$30,249.00	30	\$16,392.25
LOGAN	69	70	70	0	\$12,266.00	\$575.00	\$11,691.00	19	\$7,561.69
LORAIN	321	322	322	0	\$46,343.00	\$2,983.00	\$43,360.00	90	\$37,344.78
LUCAS	839	840	840	0	\$137,281.00	\$8,901.00	\$128,380.00	307	\$129,380.78
MADISON	26	26	26	0	\$3,429.00	\$0.00	\$3,429.00	17	\$14,137.00
MAHONING	254	254	254	0	\$32,706.00	\$230.00	\$32,476.00	229	\$92,940.83
MARION	121	122	122	0	\$17,317.00	\$325.00	\$16,992.00	11	\$7,847.32
MEDINA	77	78	78	0	\$8,986.00	\$230.00	\$8,756.00	29	\$14,730.83
MEIGS	64	65	65	0	\$9,277.00	\$2,603.00	\$6,674.00	38	\$21,627.61
MERCER	33	33	33	0	\$5,228.00	\$0.00	\$5,228.00	8	\$2,834.05
MIAMI	94	94	94	0	\$10,977.00	\$528.00	\$10,449.00	17	\$8,827.40
MONROE	26	26	26	0	\$2,948.00	\$73.00	\$2,875.00	14	\$4,769.04
MONTGOMERY	696	701	701	0	\$96,214.00	\$4,098.00	\$92,116.00	318	\$162,864.69
MORGAN	70	73	73	0	\$8,337.00	\$115.00	\$8,222.00	17	\$8,617.83
MORROW	37	37	37	0	\$5,792.00	\$0.00	\$5,792.00	21	\$14,281.85

*SOURCE: GRP342RA Report from Management Information Services and BOMC 9260-R001 Report from Medicaid Management Information Services.

**TABLE 3
DISABILITY ASSISTANCE (DA)
JULY 2006**

OHIO COUNTY	CASH ASSISTANCE							MEDICAL ASSISTANCE	
	ASSISTANCE GROUPS	RECIPIENTS	ADULTS	CHILDREN	ACTUAL EXPENDITURES			UNDUPLICATED RECIPIENTS	ACTUAL AMOUNT PAID
					GROSS AMOUNT	CANCELLED AMOUNT	NET AMOUNT		
STATEWIDE	13,660	13,753	13,753	0	\$1,928,110.00	\$85,040.00	\$1,843,070.00	5,142	\$2,366,844.00
MUSKINGUM	378	382	382	0	\$48,501.00	\$1,964.00	\$46,537.00	25	\$12,572.20
NOBLE	21	21	21	0	\$3,898.00	\$0.00	\$3,898.00	6	\$1,288.86
OTTAWA	29	29	29	0	\$4,987.00	\$115.00	\$4,872.00	15	\$4,750.51
PAULDING	26	27	27	0	\$3,149.00	\$0.00	\$3,149.00	5	\$1,263.12
PERRY	107	112	112	0	\$14,064.00	\$276.00	\$13,788.00	28	\$12,738.03
PICKAWAY	66	66	66	0	\$12,115.00	\$345.00	\$11,770.00	19	\$10,777.65
PIKE	74	75	75	0	\$10,311.00	\$289.00	\$10,022.00	31	\$10,825.49
PORTAGE	115	115	115	0	\$16,684.00	\$230.00	\$16,454.00	39	\$14,183.07
PREBLE	55	55	55	0	\$7,710.00	\$115.00	\$7,595.00	13	\$8,022.83
PUTNAM	15	15	15	0	\$1,725.00	\$0.00	\$1,725.00	6	\$4,433.29
RICHLAND	265	266	266	0	\$33,247.00	\$115.00	\$33,132.00	25	\$11,290.53
ROSS	145	145	145	0	\$16,160.00	\$1,840.00	\$14,320.00	51	\$30,262.72
SANDUSKY	66	67	67	0	\$9,130.00	\$760.00	\$8,370.00	12	\$3,174.49
SCIOTO	237	238	238	0	\$34,454.00	\$2,788.00	\$31,666.00	54	\$19,340.69
SENECA	77	78	78	0	\$10,600.00	\$230.00	\$10,370.00	26	\$12,113.46
SHELBY	33	33	33	0	\$4,595.00	\$199.00	\$4,396.00	14	\$4,650.23
STARK	436	441	441	0	\$66,432.00	\$2,530.00	\$63,902.00	122	\$64,479.49
SUMMIT	522	523	523	0	\$74,085.00	\$6,120.00	\$67,965.00	477	\$228,925.50
TRUMBULL	325	326	326	0	\$45,500.00	\$1,142.00	\$44,358.00	69	\$32,291.66
TUSCARAWAS	97	98	98	0	\$14,104.00	\$364.00	\$13,740.00	28	\$9,972.54
UNION	45	45	45	0	\$6,349.00	\$230.00	\$6,119.00	9	\$2,583.11
VAN WERT	17	18	18	0	\$1,999.00	\$0.00	\$1,999.00	5	\$1,605.64
VINTON	51	52	52	0	\$8,097.00	\$230.00	\$7,867.00	14	\$6,101.37
WARREN	77	79	79	0	\$13,257.00	\$0.00	\$13,257.00	13	\$7,235.23
WASHINGTON	146	147	147	0	\$21,791.00	\$230.00	\$21,561.00	13	\$8,044.37
WAYNE	216	217	217	0	\$28,342.00	\$460.00	\$27,882.00	18	\$6,411.17
WILLIAMS	41	41	41	0	\$5,381.00	\$497.00	\$4,884.00	2	\$1,358.83
WOOD	56	56	56	0	\$7,566.00	\$115.00	\$7,451.00	15	\$8,549.91
WYANDOT	8	8	8	0	\$1,189.00	\$0.00	\$1,189.00	9	\$1,834.32
UNKNOWN									\$0.00

*SOURCE: GRP342RA Report from Management Information Services and BOMC 9260-R001 Report from Medicaid Management Information Services.

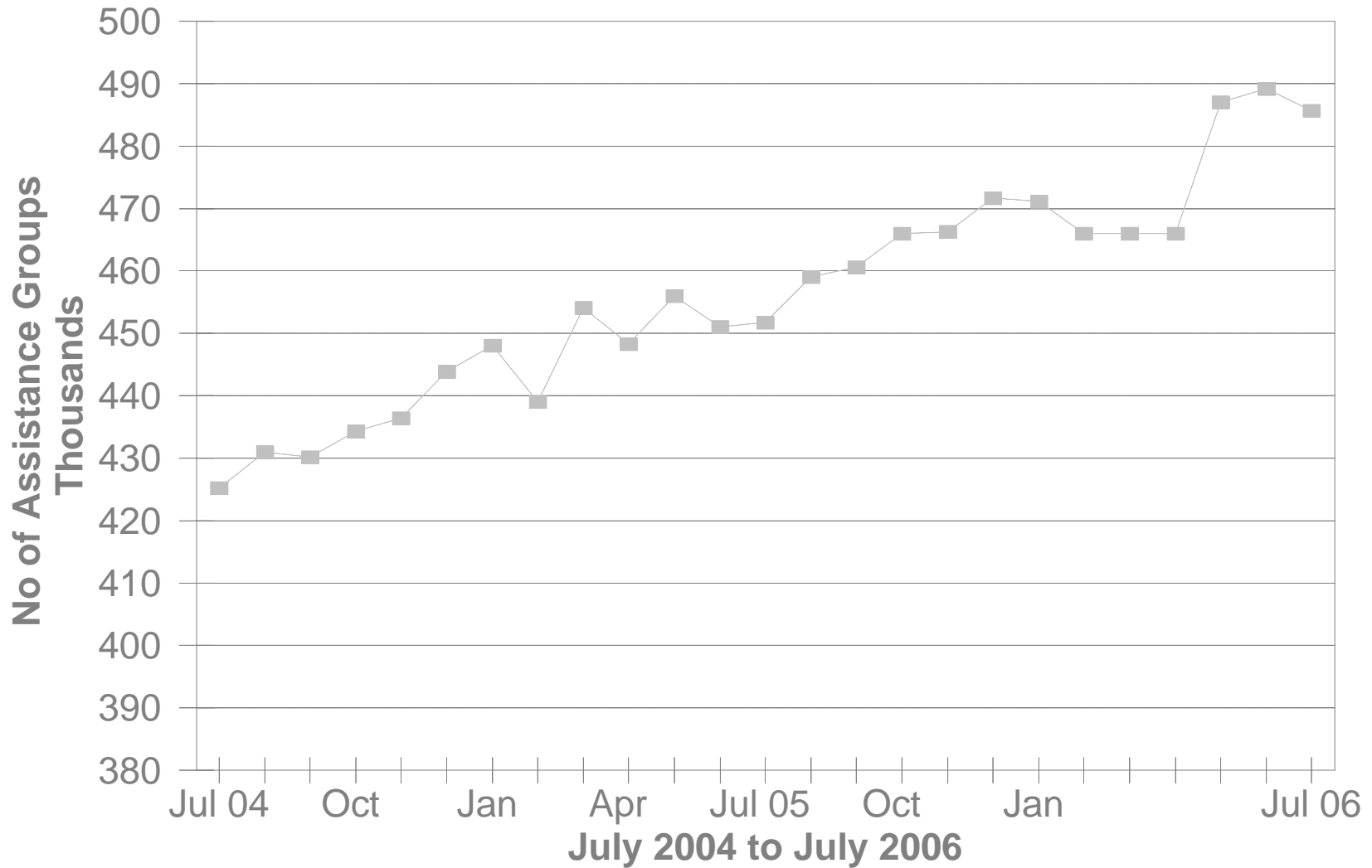
**TABLE 3-A
DA PAYMENTS FOR MEDICAL SERVICES
JULY 2006**

CATEGORY OF SERVICES	DISABILITY ASSISTANCE			
	PAYMENTS	CLAIM FREQUENCY	DUPLICATED RECIPIENTS	PERCENT OF TOTAL
ADVANCED PRACTICAL NURSE SVCS.	\$3,777.42	107	91	0.2%
AMBULANCE SERVICES	\$0.00	0	0	0.0%
AMBULATORY SURGERY	\$12,509.37	40	34	0.5%
CHIROPRACTER SERVICES	\$0.00	0	0	0.0%
CLINIC	\$39,528.74	586	274	1.7%
DENTAL SERVICES	\$4,535.93	60	55	0.2%
EPSDT	\$0.00	0	0	0.0%
FAMILY PLANNING	\$251.01	4	4	0.0%
FEDERALLY QUALIFIED HEALTH CTR	\$0.00	1	1	0.0%
HEALTH MAINTENANCE ORGANIZATION	\$0.00	0	0	0.0%
HOME HEALTH SERVICES	\$0.00	0	0	0.0%
INDEPENDENT LABORATORY	\$22,032.74	356	265	0.9%
INPATIENT HOSPITAL	\$0.00	0	0	0.0%
ICF	\$0.00	0	0	0.0%
MIDWIFERY SERVICES	\$0.00	0	0	0.0%
OPTOMETRIC SERVICES	\$0.00	0	0	0.0%
OUTPATIENT HEALTH SERVICES	\$0.00	0	0	0.0%
PASSPORT WAIVER III	\$0.00	0	0	0.0%
OUTPATIENT HOSPITAL GENERAL	\$0.00	0	0	0.0%
PHYSICAL THERAPY SERVICES	\$0.00	0	0	0.0%
PHYSICIAN SERVICES	\$530,868.31	7,117	2,977	22.4%
PHYSIOLOGICAL LABORATORY	\$10,692.71	32	34	0.5%
PODIATRISTS THERAPY	\$11,499.54	194	132	0.5%
PRESCRIBED DRUGS	\$1,666,893.69	27,162	4,631	70.4%
PRIVATE DUTY NURSING SERVICES	\$0.00	0	0	0.0%
PSYCHOLOGY SERVICES	\$0.00	0	0	0.0%
RURAL HEALTH SERVICES	\$0.00	0	0	0.0%
SNF	\$0.00	0	0	0.0%
SUPPLIES AND MEDICAL EQUIPMENT	\$59,011.29	1,078	592	2.5%
WAIVERED SERVICES	\$5,243.25	51	49	0.2%
OTHER	\$0.00	0	0	0.0%
STATEWIDE TOTAL	\$2,366,844.00	36,788	9,139	100.00%

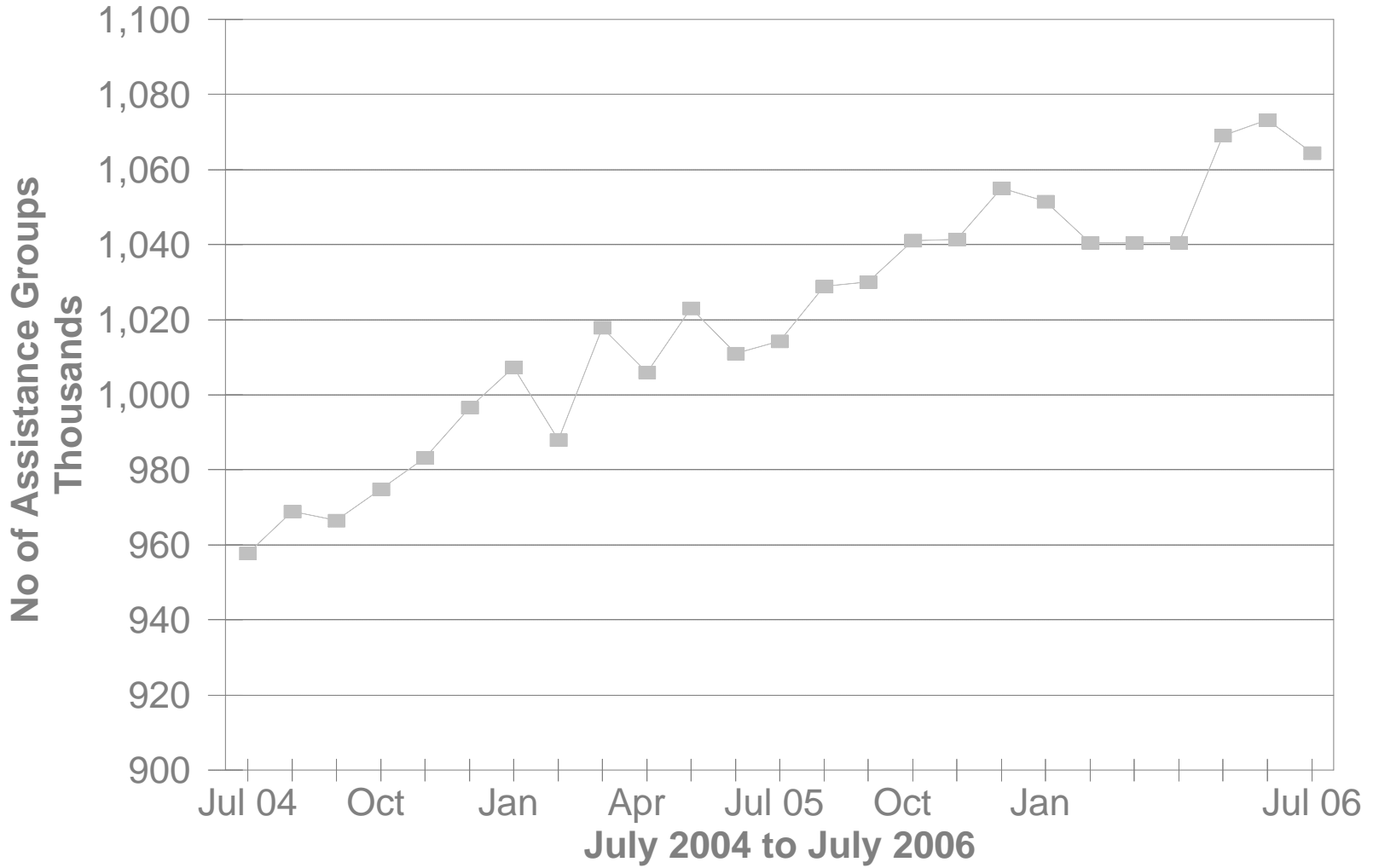
SOURCE: BOMC 9260 Report from Medicaid Management Information Services.

NOTE: Recipients are unduplicated within Category of Services, however, the Statewide Total represents a duplicated count.

No of FNS Benefits Assistance Groups During The Last 25 Months



No of FNS Benefits Cash Recipients During The Last 25 Months



**TABLE 5
FOOD AND NUTRITION BENEFITS
JULY 2006**

OHIO COUNTY	PERSONS					ASSISTANCE GROUPS			TOTAL COUPONS ISSUED
	PUBLIC ASSISTANCE	NON-PUBLIC ASSISTANCE	TOTAL	AVERAGE ISSUANCE	% CHANGE PREV. MO.	PUBLIC ASSISTANCE	NON-PUBLIC ASSISTANCE	TOTAL	
STATEWIDE	242,941	821,428	1,064,369	\$100	-0.8%	170,712	314,936	485,648	\$106,503,524.00
ADAMS	1,098	3,502	4,600	\$96	-0.3%	780	1,186	1,966	\$441,604
ALLEN	1,964	7,321	9,285	\$102	-1.4%	1,488	2,505	3,993	\$943,548
ASHLAND	473	2,487	2,960	\$90	-0.1%	366	871	1,237	\$265,049
ASHTABULA	3,216	8,690	11,906	\$98	-1.2%	2,268	3,210	5,478	\$1,169,330
ATHENS	2,173	5,137	7,310	\$95	-0.8%	1,583	1,965	3,548	\$697,823
AUGLAIZE	336	1,652	1,988	\$106	-1.6%	293	594	887	\$210,841
BELMONT	2,035	5,369	7,404	\$90	-1.1%	1,443	1,984	3,427	\$665,298
BROWN	694	3,152	3,846	\$97	4.0%	542	1,107	1,649	\$372,256
BUTLER	5,365	20,283	25,648	\$103	-1.2%	4,070	7,389	11,459	\$2,643,260
CARROLL	346	1,836	2,182	\$92	-0.6%	269	640	909	\$201,211
CHAMPAIGN	577	1,863	2,440	\$101	-2.0%	398	702	1,100	\$247,499
CLARK	3,413	13,192	16,605	\$100	-1.0%	2,701	4,907	7,608	\$1,655,316
CLERMONT	2,072	8,454	10,526	\$98	-0.6%	1,534	2,980	4,514	\$1,035,707
CLINTON	618	2,493	3,111	\$97	-0.1%	503	913	1,416	\$302,380
COLUMBIANA	2,601	9,251	11,852	\$97	-2.0%	1,874	3,256	5,130	\$1,145,912
COSHOCTON	758	3,252	4,010	\$97	-0.8%	584	1,223	1,807	\$387,388
CRAWFORD	830	3,586	4,416	\$93	-0.5%	641	1,307	1,948	\$412,326
CUYAHOGA	25,820	152,803	178,623	\$100	-1.8%	15,465	69,773	85,238	\$17,897,682
DARKE	465	1,696	2,161	\$93	-1.6%	329	623	952	\$201,122
DEFIANCE	557	1,984	2,541	\$99	-2.0%	404	702	1,106	\$252,093
DELAWARE	978	3,304	4,282	\$99	1.4%	716	1,245	1,961	\$425,989
ERIE	1,060	4,396	5,456	\$101	-1.9%	844	1,646	2,490	\$548,795
FAIRFIELD	1,934	7,445	9,379	\$98	-2.2%	1,435	2,793	4,228	\$918,328
FAYETTE	512	2,098	2,610	\$94	-1.4%	400	748	1,148	\$246,527
FRANKLIN	28,340	93,432	121,772	\$106	-0.1%	19,680	33,240	52,920	\$12,920,452
FULTON	311	1,567	1,878	\$96	-4.9%	249	562	811	\$179,519
GALLIA	1,727	3,506	5,233	\$97	0.4%	1,146	1,259	2,405	\$505,622
GEAUGA	335	1,311	1,646	\$102	2.7%	276	477	753	\$167,079
GREENE	1,857	6,488	8,345	\$102	-1.0%	1,357	2,581	3,938	\$848,375

Source: CRIS-E GRP304RA and GRP 304RC Reports from Management Information Services. Cuyahoga County data also comes from the GRP 342 RA.

**TABLE 5
FOOD AND NUTRITION BENEFITS
JULY 2006**

OHIO COUNTY	PERSONS					ASSISTANCE GROUPS			TOTAL COUPONS ISSUED
	PUBLIC ASSISTANCE	NON-PUBLIC ASSISTANCE	TOTAL	AVERAGE ISSUANCE	% CHANGE PREV. MO.	PUBLIC ASSISTANCE	NON-PUBLIC ASSISTANCE	TOTAL	
STATEWIDE	242,941	821,428	1,064,369	\$100	-0.8%	170,712	314,936	485,648	\$106,503,524.00
GUERNSEY	1,189	4,733	5,922	\$94	-0.8%	929	1,724	2,653	\$556,363
HAMILTON	18,227	55,430	73,657	\$104	0.5%	12,897	20,278	33,175	\$7,690,161
HANCOCK	783	3,211	3,994	\$101	-3.0%	612	1,153	1,765	\$404,305
HARDIN	326	1,521	1,847	\$93	-2.6%	263	543	806	\$171,012
HARRISON	505	1,423	1,928	\$94	0.5%	369	518	887	\$182,005
HENRY	241	1,042	1,283	\$88	3.0%	170	339	509	\$113,521
HIGHLAND	885	3,484	4,369	\$93	-2.4%	638	1,193	1,831	\$404,526
HOCKING	838	2,480	3,318	\$93	-1.6%	575	874	1,449	\$308,472
HOLMES	198	876	1,074	\$90	-9.2%	150	303	453	\$97,122
HURON	681	3,535	4,216	\$95	-2.3%	553	1,249	1,802	\$401,598
JACKSON	1,336	3,849	5,185	\$97	-1.9%	984	1,458	2,442	\$504,022
JEFFERSON	2,715	6,482	9,197	\$95	-0.2%	1,888	2,417	4,305	\$875,742
KNOX	984	3,317	4,301	\$96	-1.1%	700	1,192	1,892	\$411,515
LAKE	2,531	8,326	10,857	\$102	-0.1%	1,834	3,177	5,011	\$1,104,814
LAWRENCE	3,377	7,426	10,803	\$95	-0.5%	2,405	2,807	5,212	\$1,022,612
LICKING	2,633	9,439	12,072	\$98	-1.6%	1,921	3,512	5,433	\$1,188,160
LOGAN	650	2,714	3,364	\$98	0.8%	465	972	1,437	\$330,059
LORAIN	6,270	20,324	26,594	\$99	-2.3%	4,155	6,906	11,061	\$2,639,007
LUCAS	19,974	42,386	62,360	\$100	-1.2%	13,054	16,221	29,275	\$6,266,843
MADISON	719	2,049	2,768	\$101	-2.7%	515	761	1,276	\$278,261
MAHONING	8,857	20,616	29,473	\$97	0.7%	6,265	7,743	14,008	\$2,850,075
MARION	1,414	5,504	6,918	\$99	0.2%	1,110	2,053	3,163	\$685,615
MEDINA	1,051	4,068	5,119	\$99	-1.7%	791	1,518	2,309	\$508,171
MEIGS	1,127	3,049	4,176	\$97	-0.0%	826	1,088	1,914	\$406,008
MERCER	309	1,109	1,418	\$95	-1.2%	229	402	631	\$134,498
MIAMI	1,135	3,306	4,441	\$96	-3.9%	803	1,259	2,062	\$424,568
MONROE	442	1,100	1,542	\$93	-1.1%	322	380	702	\$143,730
MONTGOMERY	13,926	39,085	53,011	\$104	1.0%	10,062	14,892	24,954	\$5,519,048
MORGAN	423	1,576	1,999	\$94	4.4%	334	549	883	\$186,910
MORROW	493	2,260	2,753	\$97	-2.2%	356	776	1,132	\$265,729

Source: CRIS-E GRP304RA and GRP 304RC Reports from Management Information Services. Cuyahoga County data also comes from the GRP 342 RA.

**TABLE 5
FOOD AND NUTRITION BENEFITS
JULY 2006**

OHIO COUNTY	PERSONS					ASSISTANCE GROUPS			TOTAL COUPONS ISSUED
	PUBLIC ASSISTANCE	NON-PUBLIC ASSISTANCE	TOTAL	AVERAGE ISSUANCE	% CHANGE PREV. MO.	PUBLIC ASSISTANCE	NON-PUBLIC ASSISTANCE	TOTAL	
STATEWIDE	242,941	821,428	1,064,369	\$100	-0.8%	170,712	314,936	485,648	\$106,503,524.00
MUSKINGUM	2,793	10,965	13,758	\$97	-1.1%	2,073	4,113	6,186	\$1,335,677
NOBLE	286	906	1,192	\$91	-5.5%	220	337	557	\$107,985
OTTAWA	590	1,600	2,190	\$93	1.0%	367	574	941	\$204,523
PAULDING	324	1,066	1,390	\$99	-0.9%	222	384	606	\$136,968
PERRY	1,115	3,786	4,901	\$96	-2.4%	791	1,345	2,136	\$469,149
PICKAWAY	1,265	3,498	4,763	\$97	-1.6%	869	1,300	2,169	\$460,178
PIKE	1,316	3,855	5,171	\$96	0.2%	929	1,360	2,289	\$493,887
PORTAGE	1,780	6,745	8,525	\$102	0.2%	1,380	2,505	3,885	\$866,087
PREBLE	587	1,984	2,571	\$97	-1.6%	407	684	1,091	\$250,170
PUTNAM	236	1,142	1,378	\$99	0.7%	178	393	571	\$136,158
RICHLAND	2,475	9,509	11,984	\$98	0.3%	1,885	3,470	5,355	\$1,178,171
ROSS	2,421	7,652	10,073	\$100	-1.1%	1,656	2,772	4,428	\$1,009,008
SANDUSKY	644	3,516	4,160	\$98	0.7%	504	1,272	1,776	\$408,763
SCIOTO	4,281	11,134	15,415	\$92	0.1%	3,199	4,190	7,389	\$1,422,469
SENECA	767	3,381	4,148	\$97	1.7%	553	1,231	1,784	\$403,239
SHELBY	393	2,070	2,463	\$101	0.3%	310	698	1,008	\$249,921
STARK	7,742	21,694	29,436	\$99	-0.5%	5,312	7,844	13,156	\$2,911,962
SUMMIT	14,103	36,532	50,635	\$101	-1.4%	10,269	14,203	24,472	\$5,109,898
TRUMBULL	4,244	14,043	18,287	\$96	-2.3%	3,165	4,896	8,061	\$1,750,557
TUSCARAWAS	1,754	5,653	7,407	\$92	-2.5%	1,288	2,080	3,368	\$679,008
UNION	504	1,840	2,344	\$102	-2.5%	344	685	1,029	\$239,519
VAN WERT	285	950	1,235	\$93	1.9%	209	348	557	\$114,640
VINTON	609	1,861	2,470	\$97	-5.9%	435	660	1,095	\$239,268
WARREN	918	3,084	4,002	\$95	0.8%	676	1,086	1,762	\$381,875
WASHINGTON	1,262	4,172	5,434	\$92	0.2%	1,049	1,553	2,602	\$502,542
WAYNE	1,800	5,127	6,927	\$98	-2.0%	1,308	1,920	3,228	\$678,159
WILLIAMS	484	2,061	2,545	\$97	-0.0%	343	769	1,112	\$247,449
WOOD	1,074	3,618	4,692	\$96	0.1%	806	1,331	2,137	\$448,473
WYANDOT	185	714	899	\$95	-0.3%	152	288	440	\$85,018

Source: CRIS-E GRP304RA and GRP 304RC Reports from Management Information Services. Cuyahoga County data also comes from the GRP 342 RA.

**Table 6A
July 2006
Medicaid Eligibles**

County	Aged	Blind	Disabled	ABD Total	OWF & Related	Healthy Start	CFC Total	Total Medicaid	Foster Care	Adoption Assistance	Transitional	Nursing Facilities
STATEWIDE	147,309	802	243,199	391,310	1,034,902	267,506	1,302,408	1,693,718	9,902	20,251	162,190	54,222
ADAMS	823	3	1,401	2,227	4,559	1,073	5,632	7,859	31	35	939	120
ALLEN	1,259	6	2,114	3,379	9,298	2,609	11,907	15,286	109	131	1,260	514
ASHLAND	606	2	612	1,220	3,639	1,417	5,056	6,276	16	14	942	273
ASHTABULA	1,613	5	3,077	4,695	11,410	3,084	14,494	19,189	78	158	2,290	1,040
ATHENS	878	12	2,084	2,974	6,353	1,386	7,739	10,713	82	125	906	202
AUGLAIZE	494	5	460	959	2,583	903	3,486	4,445	6	46	557	312
BELMONT	1,431	4	2,090	3,525	7,380	1,630	9,010	12,535	37	110	1,531	533
BROWN	721	0	966	1,687	4,675	1,454	6,129	7,816	21	36	899	217
BUTLER	3,253	14	5,659	8,926	26,701	6,943	33,644	42,570	264	459	4,373	1,253
CARROLL	405	2	548	955	2,610	760	3,370	4,325	12	9	610	186
CHAMPAIGN	499	2	616	1,117	3,030	1,028	4,058	5,175	6	25	736	259
CLARK	2,195	7	3,641	5,843	15,977	3,732	19,709	25,552	129	304	2,469	1,065
CLERMONT	1,621	6	2,794	4,421	12,426	4,550	16,976	21,397	207	244	2,615	682
CLINTON	503	2	799	1,304	3,802	981	4,783	6,087	34	69	878	153
COLUMBIANA	1,702	13	2,585	4,300	11,468	3,304	14,772	19,072	70	92	2,086	612
COSHOCTON	584	2	924	1,510	4,051	1,054	5,105	6,615	18	48	877	280
CRAWFORD	691	9	871	1,571	4,589	1,238	5,827	7,398	42	44	1,133	195
CUYAHOGA	22,649	141	36,236	59,026	152,339	30,391	182,730	241,756	1,538	4,892	19,138	7,112
DARKE	604	1	628	1,233	2,867	1,246	4,113	5,346	34	43	593	327
DEFIANCE	382	3	631	1,016	2,903	1,052	3,955	4,971	15	31	498	190
DELAWARE	809	3	1,012	1,824	4,867	1,561	6,428	8,252	36	55	1,013	294
ERIE	881	4	1,183	2,068	5,928	1,852	7,780	9,848	56	95	996	414
FAIRFIELD	1,280	7	2,028	3,315	9,523	3,050	12,573	15,888	29	195	1,863	454
FAYETTE	530	3	812	1,345	3,048	876	3,924	5,269	10	14	612	322
FRANKLIN	12,006	91	23,861	35,958	119,751	31,376	151,127	187,085	1,636	2,383	14,454	3,803
FULTON	389	1	401	791	2,504	900	3,404	4,195	15	31	614	220
GALLIA	879	3	1,568	2,450	4,399	939	5,338	7,788	22	44	587	189
GEAUGA	610	2	517	1,129	2,386	946	3,332	4,461	11	115	500	323
GREENE	1,379	15	1,763	3,157	9,567	2,514	12,081	15,238	82	115	1,901	577

Source: ODJFS Report BOMM1321 Prepared: Bureau of Research and Evaluation.

**Table 6A
July 2006
Medicaid Eligibles**

County	Aged	Blind	Disabled	ABD Total	OWF & Related	Healthy Start	CFC Total	Total Medicaid	Foster Care	Adoption Assistance	Transitional	Nursing Facilities
STATEWIDE	147,309	802	243,199	391,310	1,034,902	267,506	1,302,408	1,693,718	9,902	20,251	162,190	54,222
GUERNSEY	809	3	1,414	2,226	5,634	1,559	7,193	9,419	51	70	912	176
HAMILTON	10,291	65	18,524	28,880	68,464	19,043	87,507	116,387	851	1,717	7,185	3,768
HANCOCK	632	4	885	1,521	4,436	1,378	5,814	7,335	39	47	821	299
HARDIN	381	3	564	948	2,369	799	3,168	4,116	9	48	462	143
HARRISON	295	1	518	814	1,767	438	2,205	3,019	7	24	342	119
HENRY	258	0	336	594	1,739	834	2,573	3,167	16	25	372	138
HIGHLAND	855	1	1,090	1,946	4,736	1,561	6,297	8,243	34	21	832	253
HOCKING	485	4	770	1,259	3,524	986	4,510	5,769	33	49	638	156
HOLMES	441	3	434	878	1,603	924	2,527	3,405	13	22	396	375
HURON	597	2	835	1,434	5,306	1,785	7,091	8,525	38	40	1,191	180
JACKSON	861	1	1,365	2,227	4,948	1,240	6,188	8,415	19	15	868	180
JEFFERSON	1,222	11	2,444	3,677	8,048	1,616	9,664	13,341	75	69	1,239	381
KNOX	739	1	1,292	2,032	4,842	1,374	6,216	8,248	17	37	1,140	525
LAKE	1,818	5	2,525	4,348	11,334	3,698	15,032	19,380	56	136	2,347	1,089
LAWRENCE	1,646	5	3,330	4,981	8,988	2,360	11,348	16,329	63	47	1,285	370
LICKING	1,576	4	2,582	4,162	13,252	3,529	16,781	20,943	146	338	2,949	559
LOGAN	590	3	626	1,219	3,777	969	4,746	5,965	11	48	864	215
LORAIN	2,831	14	5,247	8,092	25,796	6,031	31,827	39,919	108	420	3,597	1,270
LUCAS	6,396	44	14,132	20,572	57,095	10,881	67,976	88,548	543	1,450	7,585	2,017
MADISON	410	3	585	998	2,768	929	3,697	4,695	16	23	526	129
MAHONING	4,155	20	6,820	10,995	26,664	5,583	32,247	43,242	175	247	3,890	1,606
MARION	976	4	1,729	2,709	6,646	1,803	8,449	11,158	34	83	1,139	304
MEDINA	1,033	7	1,261	2,301	6,922	2,036	8,958	11,259	31	90	1,641	642
MEIGS	558	5	1,027	1,590	3,567	771	4,338	5,928	4	13	669	137
MERCER	353	1	410	764	1,782	667	2,449	3,213	13	32	470	206
MIAMI	1,064	3	1,390	2,457	5,801	2,025	7,826	10,283	58	115	1,133	416
MONROE	293	1	390	684	1,721	489	2,210	2,894	8	14	421	96
MONTGOMERY	7,080	41	12,604	19,725	50,296	12,234	62,530	82,255	665	1,276	6,292	2,388
MORGAN	311	0	527	838	2,237	514	2,751	3,589	1	12	513	113
MORROW	445	1	542	988	3,294	1,028	4,322	5,310	3	37	834	167

Source: ODJFS Report BOMM1321 Prepared: Bureau of Research and Evaluation.

**Table 6A
July 2006
Medicaid Eligibles**

County	Aged	Blind	Disabled	ABD Total	OWF & Related	Healthy Start	CFC Total	Total Medicaid	Foster Care	Adoption Assistance	Transitional	Nursing Facilities
STATEWIDE	147,309	802	243,199	391,310	1,034,902	267,506	1,302,408	1,693,718	9,902	20,251	162,190	54,222
MUSKINGUM	1,558	12	2,782	4,352	11,740	2,698	14,438	18,790	67	154	1,856	449
NOBLE	248	0	267	515	1,271	354	1,625	2,140	3	8	355	79
OTTAWA	451	4	523	978	2,340	946	3,286	4,264	9	7	498	162
PAULDING	198	1	353	552	1,433	541	1,974	2,526	10	18	263	46
PERRY	577	9	1,141	1,727	4,831	1,271	6,102	7,829	43	38	869	192
PICKAWAY	670	0	1,020	1,690	4,707	1,273	5,980	7,670	25	18	906	167
PIKE	817	1	1,456	2,274	4,448	1,265	5,713	7,987	34	23	858	272
PORTAGE	1,240	6	1,871	3,117	9,004	2,772	11,776	14,893	71	158	1,452	590
PREBLE	392	6	646	1,044	3,290	940	4,230	5,274	47	42	708	208
PUTNAM	302	1	334	637	1,531	648	2,179	2,816	2	7	291	252
RICHLAND	1,868	3	2,723	4,594	11,290	3,521	14,811	19,405	65	264	2,112	646
ROSS	1,212	2	2,392	3,606	9,634	2,117	11,751	15,357	86	62	1,445	324
SANDUSKY	718	5	949	1,672	4,859	1,692	6,551	8,223	24	54	799	319
SCIOTO	2,424	10	4,755	7,189	11,442	2,497	13,939	21,128	61	62	1,500	574
SENECA	731	3	1,024	1,758	4,382	1,583	5,965	7,723	56	74	1,063	333
SHELBY	416	3	567	986	3,096	1,157	4,253	5,239	12	51	559	189
STARK	5,127	25	6,834	11,986	32,357	8,239	40,596	52,582	494	1,009	6,155	2,280
SUMMIT	6,869	41	11,127	18,037	46,595	10,328	56,923	74,960	491	864	6,834	2,114
TRUMBULL	2,841	19	4,615	7,475	19,840	5,714	25,554	33,029	170	267	3,867	1,199
TUSCARAWAS	1,297	5	1,581	2,883	7,533	2,493	10,026	12,909	102	149	1,647	493
UNION	330	1	473	804	2,868	731	3,599	4,403	10	37	658	107
UNKNOWN	0	0	0	0	0	0	0	0	0	0	0	0
VAN WERT	323	0	411	734	1,599	836	2,435	3,169	5	19	373	169
VINTON	296	0	607	903	2,459	619	3,078	3,981	29	13	613	61
WARREN	1,333	4	1,577	2,914	5,764	2,750	8,514	11,428	57	104	1,157	817
WASHINGTON	1,066	6	1,618	2,690	5,859	1,864	7,723	10,413	9	42	1,378	353
WAYNE	1,150	3	1,659	2,812	6,776	2,542	9,318	12,130	67	93	1,427	496
WILLIAMS	479	2	477	958	3,232	854	4,086	5,044	22	21	875	211
WOOD	971	2	1,078	2,051	5,475	1,840	7,315	9,366	37	51	937	405
WYANDOT	328	0	260	588	1,258	488	1,746	2,334	11	15	312	177

Source: ODJFS Report BOMM1321 Prepared: Bureau of Research and Evaluation.

**Table 6B
July 2006
Medicaid Expenditures**

	Aged	Blind	Disabled	ABD Total	OWF & Related	Healthy Start	CFC Total	Total Medicaid	Foster Care	Adoption Assistance	Transitional	Nursing Facilities
STATEWIDE	\$224,462,863	\$775,132	\$393,074,973	\$618,312,967	\$106,571,936	\$36,944,243	\$143,516,179	\$762,380,082	\$4,865,611	\$4,395,011	\$9,493,637	\$250,226,992
ADAMS	\$765,265	\$871	\$1,305,760	\$2,071,896	\$759,359	\$182,340	\$941,700	\$3,019,091	\$8,676	\$12,175	\$75,551	\$481,342
ALLEN	\$1,743,595	\$11,225	\$3,269,416	\$5,024,236	\$1,470,219	\$481,253	\$1,951,472	\$6,976,663	\$24,935	\$23,312	\$146,622	\$2,110,165
ASHLAND	\$1,067,287	\$741	\$1,054,245	\$2,122,274	\$508,506	\$200,374	\$708,880	\$2,832,286	\$4,717	\$2,521	\$76,630	\$1,165,734
ASHTABULA	\$2,762,862	\$10,103	\$5,544,739	\$8,317,704	\$2,443,882	\$434,744	\$2,878,626	\$11,200,317	\$25,810	\$70,387	\$202,986	\$5,000,043
ATHENS	\$1,075,946	\$4,310	\$2,031,654	\$3,111,910	\$1,181,557	\$388,012	\$1,569,569	\$4,684,644	\$50,509	\$25,871	\$89,484	\$731,512
AUGLAIZE	\$1,087,569	\$6,427	\$906,119	\$2,000,116	\$487,241	\$99,950	\$587,191	\$2,599,864	\$4,545	\$10,955	\$51,885	\$1,411,543
BELMONT	\$1,946,602	\$268	\$2,723,764	\$4,670,635	\$1,230,276	\$220,011	\$1,450,287	\$6,121,468	\$13,144	\$24,061	\$136,941	\$1,665,434
BROWN	\$1,122,329	\$0	\$1,286,840	\$2,409,169	\$856,908	\$197,743	\$1,054,652	\$3,463,953	\$6,899	\$14,869	\$84,168	\$1,032,406
BUTLER	\$6,080,943	\$17,848	\$9,684,849	\$15,783,640	\$1,659,346	\$630,953	\$2,290,299	\$18,088,017	\$128,589	\$99,519	\$90,700	\$6,645,207
CARROLL	\$540,108	\$290	\$805,204	\$1,345,602	\$364,791	\$63,582	\$428,373	\$1,779,335	\$4,479	\$1,449	\$49,308	\$591,835
CHAMPAIGN	\$738,687	\$510	\$963,872	\$1,703,069	\$567,180	\$169,629	\$736,809	\$2,439,877	\$8,541	\$4,407	\$76,380	\$1,051,000
CLARK	\$3,580,970	\$20,424	\$5,675,566	\$9,276,960	\$863,067	\$244,590	\$1,107,657	\$10,387,778	\$62,211	\$60,664	\$71,031	\$4,544,891
CLERMONT	\$2,253,396	\$6,798	\$5,757,218	\$8,017,413	\$2,321,381	\$792,165	\$3,113,546	\$11,169,674	\$81,216	\$40,017	\$293,419	\$3,996,033
CLINTON	\$681,357	\$7,071	\$1,217,351	\$1,905,779	\$612,390	\$138,736	\$751,126	\$2,657,831	\$14,989	\$9,165	\$50,671	\$643,962
COLUMBIANA	\$2,200,228	\$4,288	\$3,919,317	\$6,123,834	\$2,060,613	\$713,652	\$2,774,265	\$8,917,198	\$39,169	\$27,662	\$254,059	\$2,230,346
COSHOCTON	\$723,953	\$35	\$1,937,395	\$2,661,383	\$608,004	\$183,260	\$791,264	\$3,453,845	\$9,518	\$10,402	\$72,980	\$1,204,220
CRAWFORD	\$926,164	\$8,663	\$1,162,256	\$2,097,083	\$777,259	\$168,083	\$945,342	\$3,043,942	\$9,421	\$6,707	\$126,639	\$794,418
CUYAHOGA	\$35,057,053	\$160,437	\$60,072,247	\$95,289,737	\$7,987,542	\$3,134,151	\$11,121,693	\$106,436,291	\$975,783	\$1,186,234	\$382,234	\$35,785,890
DARKE	\$977,690	\$105	\$918,113	\$1,895,908	\$481,761	\$177,318	\$659,079	\$2,554,987	\$10,974	\$13,321	\$41,610	\$1,209,296
DEFIANCE	\$634,749	\$3,454	\$647,493	\$1,285,697	\$619,464	\$121,284	\$740,749	\$2,026,963	\$3,336	\$2,443	\$32,498	\$647,490
DELAWARE	\$1,238,960	\$5,643	\$2,128,329	\$3,372,933	\$813,269	\$251,979	\$1,065,248	\$4,438,180	\$16,924	\$24,541	\$101,828	\$1,252,106
ERIE	\$982,401	\$2,048	\$1,467,532	\$2,451,980	\$806,843	\$245,860	\$1,052,704	\$3,504,684	\$22,050	\$12,728	\$68,363	\$1,109,838
FAIRFIELD	\$1,843,827	\$5,896	\$3,292,166	\$5,141,889	\$1,936,753	\$533,432	\$2,470,185	\$7,613,915	\$8,940	\$41,660	\$284,991	\$1,957,439
FAYETTE	\$879,184	\$13,925	\$1,621,542	\$2,514,651	\$510,630	\$268,522	\$779,152	\$3,293,802	\$191	\$4,368	\$49,977	\$1,506,912
FRANKLIN	\$17,007,385	\$94,755	\$43,202,234	\$60,304,374	\$7,961,342	\$3,707,792	\$11,669,134	\$72,012,157	\$842,717	\$662,550	\$307,924	\$20,961,099
FULTON	\$612,859	\$0	\$767,307	\$1,380,166	\$638,175	\$253,318	\$891,493	\$2,277,816	\$4,268	\$7,729	\$37,931	\$747,429
GALLIA	\$1,660,126	\$745	\$3,451,191	\$5,112,062	\$829,085	\$138,345	\$967,430	\$6,087,270	\$6,108	\$4,394	\$80,616	\$786,586
GEAUGA	\$1,210,139	\$21	\$1,211,747	\$2,421,908	\$342,243	\$252,239	\$594,482	\$3,016,419	\$7,291	\$15,096	\$42,563	\$1,526,279
GREENE	\$2,333,795	\$4,019	\$2,758,669	\$5,096,484	\$1,508,339	\$644,425	\$2,152,764	\$7,249,247	\$39,553	\$16,424	\$137,967	\$2,545,098

**Table 6B
July 2006
Medicaid Expenditures**

	Aged	Blind	Disabled	ABD Total	OWF & Related	Healthy Start	CFC Total	Total Medicaid	Foster Care	Adoption Assistance	Transitional	Nursing Facilities
STATEWIDE	\$224,462,863	\$775,132	\$393,074,973	\$618,312,967	\$106,571,936	\$36,944,243	\$143,516,179	\$762,380,082	\$4,865,611	\$4,395,011	\$9,493,637	\$250,226,992
GUERNSEY	\$880,157	\$149	\$2,474,572	\$3,354,878	\$1,043,305	\$196,655	\$1,239,960	\$4,606,725	\$27,372	\$12,540	\$87,274	\$654,699
HAMILTON	\$18,444,772	\$51,930	\$28,869,081	\$47,365,783	\$4,921,896	\$2,369,161	\$7,291,057	\$54,701,836	\$490,068	\$320,348	\$227,585	\$19,538,307
HANCOCK	\$1,053,483	\$1,249	\$1,478,146	\$2,532,878	\$890,221	\$263,319	\$1,153,540	\$3,689,301	\$11,505	\$6,949	\$72,716	\$1,291,245
HARDIN	\$425,653	\$30	\$707,666	\$1,133,348	\$407,365	\$138,259	\$545,623	\$1,678,971	\$2,971	\$4,371	\$44,936	\$444,809
HARRISON	\$420,129	\$138	\$656,613	\$1,076,880	\$433,375	\$59,683	\$493,057	\$1,570,550	\$2,083	\$4,042	\$28,832	\$459,933
HENRY	\$447,368	\$0	\$1,069,829	\$1,517,197	\$281,000	\$147,806	\$428,806	\$1,946,003	\$5,249	\$4,370	\$23,006	\$517,659
HIGHLAND	\$1,057,633	\$47	\$1,489,124	\$2,546,804	\$879,383	\$405,251	\$1,284,635	\$3,832,263	\$6,516	\$13,161	\$90,506	\$1,098,618
HOCKING	\$641,670	\$6,528	\$919,877	\$1,568,074	\$573,689	\$186,032	\$759,722	\$2,328,990	\$14,092	\$3,037	\$41,196	\$618,810
HOLMES	\$1,089,517	\$259	\$894,151	\$1,983,928	\$246,384	\$162,767	\$409,150	\$2,393,078	\$10,108	\$2,884	\$31,373	\$1,612,185
HURON	\$848,559	\$71	\$920,867	\$1,769,498	\$932,935	\$426,673	\$1,359,608	\$3,129,106	\$15,487	\$3,490	\$113,681	\$697,480
JACKSON	\$884,055	\$18	\$1,404,487	\$2,288,559	\$1,326,204	\$178,768	\$1,504,972	\$3,802,281	\$5,508	\$985	\$102,467	\$698,325
JEFFERSON	\$1,575,047	\$7,826	\$2,928,219	\$4,511,091	\$1,484,396	\$247,655	\$1,732,052	\$6,250,321	\$46,435	\$14,009	\$179,965	\$1,389,041
KNOX	\$1,564,421	\$61	\$3,818,854	\$5,383,335	\$826,145	\$270,115	\$1,096,260	\$6,480,424	\$5,307	\$14,313	\$116,003	\$3,481,537
LAKE	\$3,636,755	\$4,548	\$6,326,128	\$9,967,431	\$1,909,056	\$745,761	\$2,654,818	\$12,626,988	\$47,758	\$29,767	\$210,187	\$5,329,775
LAWRENCE	\$1,925,994	\$2,386	\$3,330,970	\$5,259,350	\$1,800,069	\$477,279	\$2,277,348	\$7,548,603	\$23,368	\$9,057	\$152,833	\$1,427,095
LICKING	\$2,023,888	\$3,060	\$4,578,898	\$6,605,846	\$2,326,915	\$561,029	\$2,887,943	\$9,493,789	\$54,810	\$94,555	\$273,432	\$2,773,984
LOGAN	\$849,420	\$3,899	\$1,046,333	\$1,899,651	\$588,973	\$169,443	\$758,416	\$2,658,993	\$4,589	\$9,272	\$74,602	\$825,634
LORAIN	\$4,905,154	\$10,265	\$7,383,965	\$12,299,384	\$1,295,404	\$535,310	\$1,830,714	\$14,161,378	\$36,781	\$59,321	\$90,759	\$6,140,349
LUCAS	\$7,696,453	\$36,908	\$22,898,676	\$30,632,037	\$2,921,530	\$1,004,330	\$3,925,860	\$34,588,033	\$173,347	\$263,377	\$169,088	\$9,588,670
MADISON	\$473,605	\$2,993	\$925,263	\$1,401,862	\$626,619	\$213,147	\$839,766	\$2,245,250	\$13,932	\$5,319	\$64,415	\$546,729
MAHONING	\$6,156,425	\$30,845	\$9,527,334	\$15,714,604	\$1,477,663	\$495,765	\$1,973,427	\$17,699,194	\$93,624	\$38,693	\$72,641	\$6,666,149
MARION	\$1,340,037	\$3,067	\$2,597,975	\$3,941,079	\$1,059,027	\$280,472	\$1,339,499	\$5,282,101	\$9,856	\$19,531	\$115,523	\$1,258,009
MEDINA	\$2,069,111	\$40,909	\$3,349,151	\$5,459,171	\$1,355,419	\$518,826	\$1,874,245	\$7,335,161	\$11,928	\$10,495	\$181,931	\$3,261,988
MEIGS	\$498,906	\$4,904	\$951,520	\$1,455,330	\$751,348	\$100,857	\$852,206	\$2,311,323	\$5,378	\$868	\$70,136	\$447,921
MERCER	\$634,156	\$0	\$588,804	\$1,222,960	\$501,591	\$88,453	\$590,044	\$1,813,794	\$7,211	\$6,025	\$37,197	\$799,911
MIAMI	\$1,785,044	\$4,916	\$1,843,077	\$3,633,036	\$922,251	\$347,404	\$1,269,655	\$4,910,747	\$20,307	\$19,404	\$135,901	\$1,798,588
MONROE	\$348,118	\$441	\$449,597	\$798,157	\$241,011	\$46,702	\$287,713	\$1,087,444	\$1,614	\$2,118	\$36,109	\$368,365
MONTGOMERY	\$11,287,874	\$20,746	\$18,825,489	\$30,134,109	\$3,256,042	\$2,256,699	\$5,512,741	\$35,675,989	\$279,610	\$287,473	\$215,410	\$11,644,930
MORGAN	\$412,690	\$31	\$556,679	\$969,400	\$247,263	\$71,678	\$318,941	\$1,289,169	\$15	\$527	\$39,072	\$417,027
MORROW	\$651,503	\$4,827	\$1,137,549	\$1,793,880	\$498,213	\$129,252	\$627,465	\$2,427,044	\$0	\$10,348	\$59,144	\$708,224

**Table 6B
July 2006
Medicaid Expenditures**

	Aged	Blind	Disabled	ABD Total	OWF & Related	Healthy Start	CFC Total	Total Medicaid	Foster Care	Adoption Assistance	Transitional	Nursing Facilities
STATEWIDE	\$224,462,863	\$775,132	\$393,074,973	\$618,312,967	\$106,571,936	\$36,944,243	\$143,516,179	\$762,380,082	\$4,865,611	\$4,395,011	\$9,493,637	\$250,226,992
MUSKINGUM	\$1,899,501	\$9,253	\$2,574,806	\$4,483,560	\$1,624,462	\$396,100	\$2,020,562	\$6,507,020	\$10,537	\$40,569	\$147,634	\$1,633,546
NOBLE	\$322,661	\$0	\$212,564	\$535,225	\$315,240	\$35,811	\$351,051	\$886,276	\$223	\$374	\$22,044	\$275,044
OTTAWA	\$861,697	\$9,413	\$2,192,185	\$3,063,294	\$323,896	\$121,435	\$445,331	\$3,508,639	\$627	\$635	\$39,729	\$737,241
PAULDING	\$219,826	\$54	\$408,941	\$628,821	\$193,526	\$52,071	\$245,597	\$874,737	\$2,890	\$1,843	\$13,272	\$201,587
PERRY	\$509,934	\$605	\$1,605,510	\$2,116,048	\$755,152	\$197,161	\$952,313	\$3,070,735	\$13,712	\$6,179	\$69,606	\$943,382
PICKAWAY	\$752,642	\$9	\$1,169,051	\$1,921,701	\$876,017	\$150,448	\$1,026,464	\$2,949,982	\$9,330	\$5,140	\$77,093	\$646,786
PIKE	\$1,168,404	\$0	\$1,988,810	\$3,157,214	\$806,409	\$188,153	\$994,562	\$4,152,242	\$10,676	\$3,281	\$88,754	\$1,360,862
PORTAGE	\$1,834,296	\$15,186	\$4,355,746	\$6,205,228	\$2,132,612	\$600,489	\$2,733,101	\$8,943,700	\$41,818	\$42,192	\$227,880	\$3,145,137
PREBLE	\$643,059	\$1,435	\$1,130,136	\$1,774,630	\$644,849	\$119,391	\$764,240	\$2,539,455	\$10,203	\$10,372	\$84,040	\$972,878
PUTNAM	\$645,584	\$0	\$675,182	\$1,320,766	\$212,436	\$66,238	\$278,675	\$1,599,440	\$885	\$144	\$20,400	\$943,055
RICHLAND	\$2,608,883	\$0	\$4,470,844	\$7,079,727	\$1,812,061	\$571,370	\$2,383,430	\$9,483,819	\$23,083	\$48,954	\$261,677	\$2,867,142
ROSS	\$1,411,841	\$1,380	\$3,029,181	\$4,442,402	\$1,530,767	\$371,094	\$1,901,861	\$6,360,103	\$28,845	\$10,613	\$138,903	\$1,121,774
SANDUSKY	\$1,122,693	\$798	\$1,909,676	\$3,033,167	\$800,775	\$215,477	\$1,016,252	\$4,050,265	\$9,443	\$8,632	\$77,472	\$1,482,280
SCIOTO	\$2,770,763	\$9,092	\$5,367,797	\$8,147,652	\$2,251,985	\$371,221	\$2,623,206	\$10,787,514	\$22,265	\$21,211	\$134,609	\$2,296,636
SENECA	\$1,521,881	\$1,193	\$3,442,148	\$4,965,222	\$664,523	\$305,179	\$969,701	\$5,934,924	\$15,170	\$9,959	\$104,620	\$1,329,997
SHELBY	\$684,343	\$2,039	\$687,284	\$1,373,665	\$638,205	\$336,035	\$974,241	\$2,348,024	\$6,423	\$8,948	\$32,204	\$827,028
STARK	\$9,333,855	\$30,905	\$10,314,831	\$19,679,590	\$1,648,896	\$608,900	\$2,257,797	\$21,947,938	\$322,032	\$169,273	\$110,431	\$10,055,469
SUMMIT	\$10,535,591	\$34,450	\$18,101,935	\$28,671,976	\$2,828,665	\$924,923	\$3,753,588	\$32,455,894	\$276,144	\$155,315	\$175,997	\$9,769,163
TRUMBULL	\$3,758,617	\$17,915	\$7,294,273	\$11,070,804	\$914,642	\$374,003	\$1,288,644	\$12,363,710	\$46,008	\$36,264	\$81,092	\$4,793,414
TUSCARAWAS	\$2,147,796	\$701	\$2,325,821	\$4,474,317	\$1,274,133	\$545,900	\$1,820,032	\$6,306,585	\$55,904	\$49,099	\$135,328	\$1,859,028
UNION	\$572,366	\$158	\$864,917	\$1,437,441	\$602,393	\$124,623	\$727,015	\$2,164,456	\$6,717	\$3,526	\$59,032	\$427,374
UNKNOWN	\$144	\$0	\$1,347	\$1,491	(\$1,300,415)	\$0	(\$1,300,415)	(\$1,298,925)	\$0	\$0	\$0	\$700
VAN WERT	\$548,153	\$0	\$604,803	\$1,152,955	\$284,490	\$123,304	\$407,794	\$1,561,391	\$7,553	\$9,063	\$51,692	\$654,506
VINTON	\$296,683	\$0	\$770,519	\$1,067,203	\$460,758	\$92,853	\$553,611	\$1,621,215	\$3,435	\$1,332	\$54,574	\$203,687
WARREN	\$2,652,811	\$2,166	\$4,216,064	\$6,871,041	\$1,027,618	\$492,188	\$1,519,806	\$8,392,127	\$11,801	\$16,826	\$88,137	\$4,062,864
WASHINGTON	\$1,311,982	\$2,365	\$2,304,719	\$3,619,066	\$1,043,635	\$440,018	\$1,483,653	\$5,102,900	\$9,987	\$1,539	\$187,010	\$1,293,428
WAYNE	\$1,586,051	\$1,815	\$2,696,461	\$4,284,327	\$1,340,729	\$465,660	\$1,806,389	\$6,090,716	\$32,487	\$11,685	\$124,452	\$1,548,362
WILLIAMS	\$704,013	\$185	\$755,502	\$1,459,699	\$466,861	\$131,662	\$598,523	\$2,058,222	\$9,363	\$5,054	\$69,755	\$745,892
WOOD	\$1,644,592	\$44	\$2,446,281	\$4,090,917	\$905,486	\$325,733	\$1,231,218	\$5,322,667	\$11,528	\$8,999	\$107,954	\$1,535,716
WYANDOT	\$629,176	\$0	\$424,613	\$1,053,789	\$259,013	\$64,513	\$323,526	\$1,381,948	\$4,195	\$1,710	\$32,370	\$651,465

Source: ODJFS Report BOMM1321 Prepared: Bureau of Research and Evaluation.

**TABLE 7
CHILD CARE
JULY 2006**

OHIO COUNTY	OWF JOBS, LEAP, and TRANSITIONAL		OTHER CHILD CARE		LOCAL FUNDING		ALL PROGRAM SOURCES	
	CHILDREN SERVED		CHILDREN SERVED		CHILDREN SERVED		CHILDREN SERVED	
	TOTAL	% OF STATE TOTAL	TOTAL	% OF STATE TOTAL	TOTAL	% OF STATE TOTAL	TOTAL	% OF STATE TOTAL
STATEWIDE	24,580	100.00%	77,029	100.00%	109	100.00%	101,718	100.00%
ADAMS	29	0.12%	114	0.15%	0	0.00%	143	0.14%
ALLEN	90	0.37%	474	0.62%	0	0.00%	564	0.55%
ASHLAND	3	0.01%	203	0.26%	0	0.00%	206	0.20%
ASHTABULA	222	0.90%	653	0.85%	0	0.00%	875	0.86%
ATHENS	70	0.28%	167	0.22%	0	0.00%	237	0.23%
AUGLAIZE	10	0.04%	141	0.18%	0	0.00%	151	0.15%
BELMONT	84	0.34%	260	0.34%	0	0.00%	344	0.34%
BROWN	24	0.10%	149	0.19%	0	0.00%	173	0.17%
BUTLER	206	0.84%	1,396	1.81%	0	0.00%	1,602	1.57%
CARROLL	23	0.09%	47	0.06%	0	0.00%	70	0.07%
CHAMPAIGN	15	0.06%	154	0.20%	0	0.00%	169	0.17%
CLARK	166	0.68%	729	0.95%	0	0.00%	895	0.88%
CLERMONT	161	0.66%	191	0.25%	0	0.00%	352	0.35%
CLINTON	6	0.02%	276	0.36%	0	0.00%	282	0.28%
COLUMBIANA	211	0.86%	813	1.06%	0	0.00%	1,024	1.01%
COSHOCTON	84	0.34%	207	0.27%	0	0.00%	291	0.29%
CRAWFORD	83	0.34%	185	0.24%	0	0.00%	268	0.26%
CUYAHOGA	4,768	19.40%	19,355	25.13%	0	0.00%	24,123	23.72%
DARKE	29	0.12%	91	0.12%	0	0.00%	120	0.12%
DEFIANCE	74	0.30%	123	0.16%	0	0.00%	197	0.19%
DELAWARE	39	0.16%	199	0.26%	1	0.92%	239	0.23%
ERIE	18	0.07%	663	0.86%	0	0.00%	681	0.67%
FAIRFIELD	132	0.54%	545	0.71%	0	0.00%	677	0.67%
FAYETTE	38	0.15%	252	0.33%	0	0.00%	290	0.29%
FRANKLIN	3,260	13.26%	8,668	11.25%	108	99.08%	12,036	11.83%
FULTON	30	0.12%	174	0.23%	0	0.00%	204	0.20%
GALLIA	66	0.27%	180	0.23%	0	0.00%	246	0.24%
GEAUGA	41	0.17%	194	0.25%	0	0.00%	235	0.23%
GREENE	265	1.08%	502	0.65%	0	0.00%	767	0.75%

**TABLE 7
CHILD CARE
JULY 2006**

OHIO COUNTY	OWF JOBS, LEAP, and TRANSITIONAL		OTHER CHILD CARE		LOCAL FUNDING		ALL PROGRAM SOURCES	
	CHILDREN SERVED		CHILDREN SERVED		CHILDREN SERVED		CHILDREN SERVED	
	TOTAL	% OF STATE TOTAL	TOTAL	% OF STATE TOTAL	TOTAL	% OF STATE TOTAL	TOTAL	% OF STATE TOTAL
STATEWIDE	24,580	100.00%	77,029	100.00%	109	100.00%	101,718	100.00%
GUERNSEY	90	0.37%	310	0.40%	0	0.00%	400	0.39%
HAMILTON	4,047	16.46%	9,475	12.30%	0	0.00%	13,522	13.29%
HANCOCK	101	0.41%	445	0.58%	0	0.00%	546	0.54%
HARDIN	16	0.07%	47	0.06%	0	0.00%	63	0.06%
HARRISON	28	0.11%	42	0.05%	0	0.00%	70	0.07%
HENRY	30	0.12%	118	0.15%	0	0.00%	148	0.15%
HIGHLAND	15	0.06%	198	0.26%	0	0.00%	213	0.21%
HOCKING	44	0.18%	102	0.13%	0	0.00%	146	0.14%
HOLMES	43	0.17%	82	0.11%	0	0.00%	125	0.12%
HURON	0	0.00%	472	0.61%	0	0.00%	472	0.46%
JACKSON	41	0.17%	141	0.18%	0	0.00%	182	0.18%
JEFFERSON	83	0.34%	319	0.41%	0	0.00%	402	0.40%
KNOX	93	0.38%	270	0.35%	0	0.00%	363	0.36%
LAKE	247	1.00%	929	1.21%	0	0.00%	1,176	1.16%
LAWRENCE	134	0.55%	484	0.63%	0	0.00%	618	0.61%
LICKING	279	1.14%	1,013	1.32%	0	0.00%	1,292	1.27%
LOGAN	38	0.15%	73	0.09%	0	0.00%	111	0.11%
LORAIN	782	3.18%	1,668	2.17%	0	0.00%	2,450	2.41%
LUCAS	1,773	7.21%	2,765	3.59%	0	0.00%	4,538	4.46%
MADISON	16	0.07%	98	0.13%	0	0.00%	114	0.11%
MAHONING	942	3.83%	1,596	2.07%	0	0.00%	2,538	2.50%
MARION	41	0.17%	362	0.47%	0	0.00%	403	0.40%
MEDINA	84	0.34%	589	0.76%	0	0.00%	673	0.66%
MEIGS	11	0.04%	190	0.25%	0	0.00%	201	0.20%
MERCER	29	0.12%	96	0.12%	0	0.00%	125	0.12%
MIAMI	114	0.46%	154	0.20%	0	0.00%	268	0.26%
MONROE	0	0.00%	95	0.12%	0	0.00%	95	0.09%
MONTGOMERY	890	3.62%	3,172	4.12%	0	0.00%	4,062	3.99%
MORGAN	2	0.01%	95	0.12%	0	0.00%	97	0.10%
MORROW	12	0.05%	161	0.21%	0	0.00%	173	0.17%

**TABLE 7
CHILD CARE
JULY 2006**

OHIO COUNTY	OWF JOBS, LEAP, and TRANSITIONAL		OTHER CHILD CARE		LOCAL FUNDING		ALL PROGRAM SOURCES	
	CHILDREN SERVED		CHILDREN SERVED		CHILDREN SERVED		CHILDREN SERVED	
	TOTAL	% OF STATE TOTAL	TOTAL	% OF STATE TOTAL	TOTAL	% OF STATE TOTAL	TOTAL	% OF STATE TOTAL
STATEWIDE	24,580	100.00%	77,029	100.00%	109	100.00%	101,718	100.00%
MUSKINGUM	268	1.09%	767	1.00%	0	0.00%	1,035	1.02%
NOBLE	31	0.13%	104	0.14%	0	0.00%	135	0.13%
OTTAWA	66	0.27%	123	0.16%	0	0.00%	189	0.19%
PAULDING	6	0.02%	17	0.02%	0	0.00%	23	0.02%
PERRY	52	0.21%	248	0.32%	0	0.00%	300	0.29%
PICKAWAY	75	0.31%	156	0.20%	0	0.00%	231	0.23%
PIKE	69	0.28%	74	0.10%	0	0.00%	143	0.14%
PORTAGE	203	0.83%	600	0.78%	0	0.00%	803	0.79%
PREBLE	49	0.20%	106	0.14%	0	0.00%	155	0.15%
PUTNAM	8	0.03%	105	0.14%	0	0.00%	113	0.11%
RICHLAND	313	1.27%	733	0.95%	0	0.00%	1,046	1.03%
ROSS	96	0.39%	264	0.34%	0	0.00%	360	0.35%
SANDUSKY	91	0.37%	503	0.65%	0	0.00%	594	0.58%
SCIOTO	169	0.69%	522	0.68%	0	0.00%	691	0.68%
SENECA	31	0.13%	261	0.34%	0	0.00%	292	0.29%
SHELBY	63	0.26%	262	0.34%	0	0.00%	325	0.32%
STARK	749	3.05%	2,218	2.88%	0	0.00%	2,967	2.92%
SUMMIT	1,023	4.16%	3,706	4.81%	0	0.00%	4,729	4.65%
TRUMBULL	293	1.19%	1,619	2.10%	0	0.00%	1,912	1.88%
TUSCARAWAS	74	0.30%	305	0.40%	0	0.00%	379	0.37%
UNION	35	0.14%	165	0.21%	0	0.00%	200	0.20%
VAN WERT	5	0.02%	52	0.07%	0	0.00%	57	0.06%
VINTON	3	0.01%	80	0.10%	0	0.00%	83	0.08%
WARREN	175	0.71%	343	0.45%	0	0.00%	518	0.51%
WASHINGTON	71	0.29%	261	0.34%	0	0.00%	332	0.33%
WAYNE	187	0.76%	403	0.52%	0	0.00%	590	0.58%
WILLIAMS	33	0.13%	102	0.13%	0	0.00%	135	0.13%
WOOD	66	0.27%	228	0.30%	0	0.00%	294	0.29%
WYANDOT	4	0.02%	36	0.05%	0	0.00%	40	0.04%

SOURCE: COGNOS. The above numbers have not been reconciled between the CCIDS/3299 data collection system and 2827 ODJFS fiscal reporting system; therefore they may not be conclusive at this time. No OWF code 173 data available.

OWF data consist of funding codes: 173,312, 313,314, 326, & 327. Other data consist of funding codes: 320, 321, 322, 323, 324, 325, 328, 329, and 342. Local Funding is from funding code 899.

**TABLE 8
RECIPIENTS, EXPENDITURES, AND AVERAGE PAYMENT PER RECIPIENT
DURING THE LAST 12 MONTHS IN OHIO**

RECIPIENTS	OWF-R	OWF-U	OWF/ CHILD CARE	Other CHILD CARE	DISABILITY ASSISTANCE	TITLE IV-E	FNS BENEFITS
August 2005	166,397	15,206	14,404	66,479	12,716	26,563	1,028,817
September	167,302	15,424	14,109	67,011	12,539	26,838	1,030,121
October	166,513	15,751	13,661	66,812	12,257	27,029	1,041,114
November	168,417	16,220	14,586	69,255	12,393	26,765	1,041,403
December	168,095	16,703	15,009	71,563	12,107	26,903	1,055,074
January 2006	164,367	16,628	21,701	72,217	12,167	27,005	1,051,528
February	160,208	16,357	22,960	72,979	12,165	27,024	1,040,537
March	163,689	17,055	23,613	76,835	12,555	27,204	N.A.
April	156,624	15,855	22,022	73,253	12,634	27,166	N.A.
May	160,685	16,169	23,333	75,903	13,319	27,254	1,069,042
June	163,683	15,964	24,531	76,147	14,049	27,007	1,073,268
July	156,237	14,442	24,580	77,029	13,753	26,830	1,064,369
12 MONTH AVERAGE	163,518	15,981	19,542	72,124	12,721	26,966	1,049,527
EXPENDITURES							
August 2005	\$23,669,346	\$1,488,833	N.A.	N.A.	\$1,518,756	\$13,470,540	\$98,676,185
September	\$23,598,932	\$1,506,145	N.A.	N.A.	\$1,619,707	\$13,410,051	\$98,491,845
October	\$25,360,810	\$1,667,872	N.A.	N.A.	\$1,572,501	\$13,946,486	\$104,447,942
November	\$26,036,089	\$1,743,326	N.A.	N.A.	\$1,566,804	\$14,316,360	\$103,589,082
December	\$26,315,386	\$1,842,574	N.A.	N.A.	\$1,661,825	\$14,353,892	\$105,178,691
January 2006	\$25,052,380	\$1,761,189	N.A.	N.A.	\$1,597,870	\$15,336,409	\$103,129,520
February	\$25,376,164	\$1,825,805	N.A.	N.A.	\$1,734,556	\$14,006,590	\$102,457,470
March	\$24,981,565	\$1,800,673	N.A.	N.A.	\$1,761,824	\$14,381,303	N.A.
April	\$24,730,183	\$1,736,189	N.A.	N.A.	\$1,920,212	\$13,477,491	N.A.
May	\$25,034,827	\$1,722,758	N.A.	N.A.	\$1,986,853	\$13,784,900	\$106,934,328
June	\$23,449,016	\$1,532,463	N.A.	N.A.	\$1,941,545	\$14,506,729	\$106,993,971
July	\$24,432,662	\$1,541,871	N.A.	N.A.	\$1,843,070	\$13,801,221	\$106,503,524
TOTAL DOLLARS	\$24,836,447	\$1,680,808	N.A.	N.A.	\$1,727,127	\$14,065,998	\$103,640,256
AVERAGE PAYMENT							
August 2005	\$142	\$98	N.A.	N.A.	\$119	\$507	\$96
September	\$141	\$98	N.A.	N.A.	\$129	\$500	\$96
October	\$152	\$106	N.A.	N.A.	\$128	\$516	\$100
November	\$155	\$107	N.A.	N.A.	\$126	\$535	\$99
December	\$157	\$110	N.A.	N.A.	\$137	\$534	\$100
January 2006	\$152	\$106	N.A.	N.A.	\$131	\$568	\$98
February	\$158	\$112	N.A.	N.A.	\$143	\$518	\$98
March	\$153	\$106	N.A.	N.A.	\$140	\$529	N.A.
April	\$158	\$110	N.A.	N.A.	\$152	\$496	N.A.
May	\$156	\$107	N.A.	N.A.	\$149	\$506	\$100
June	\$143	\$96	N.A.	N.A.	\$138	\$537	\$100
July	\$156	\$107	N.A.	N.A.	\$134	\$514	\$100

Note: N.A. means Not Available.

**TABLE 10
PERCENT OF OHIO'S POPULATION PARTICIPATING IN SELECTED
PUBLIC ASSISTANCE PROGRAMS FOR JULY 2006**

OHIO COUNTY	Estimated Total Population *	Percent of All Families Below Poverty Level	DISABILITY ASSISTANCE		OWF COMBINED		FOSTER CARE		FNS BENEFITS	
			Recipients as % of		Recipients	Recipients as % of	Recipients	Recipients as % of	Recipients	Recipients as % of
			Recipients	Total Population						
STATEWIDE	11,464,042	7.80%	13,753	0.12%	170,679	1.49%	26,830	0.23%	1,064,369	9.28%
ADAMS	28,454	12.80%	96	0.34%	218	0.77%	66	0.23%	4,600	16.17%
ALLEN	106,234	9.60%	105	0.10%	728	0.69%	218	0.21%	9,285	8.74%
ASHLAND	54,123	7.10%	42	0.08%	123	0.23%	26	0.05%	2,960	5.47%
ASHTABULA	103,221	9.20%	299	0.29%	1,412	1.37%	195	0.19%	11,906	11.53%
ATHENS	62,062	14.00%	247	0.40%	1,393	2.24%	206	0.33%	7,310	11.78%
AUGLAIZE	47,242	4.90%	33	0.07%	87	0.18%	50	0.11%	1,988	4.21%
BELMONT	69,228	11.70%	134	0.19%	1,022	1.48%	126	0.18%	7,404	10.70%
BROWN	44,398	8.80%	58	0.13%	281	0.63%	59	0.13%	3,846	8.66%
BUTLER	350,412	5.40%	414	0.12%	2,807	0.80%	749	0.21%	25,648	7.32%
CARROLL	29,388	8.50%	33	0.11%	197	0.67%	17	0.06%	2,182	7.42%
CHAMPAIGN	39,698	5.10%	39	0.10%	449	1.13%	27	0.07%	2,440	6.15%
CLARK	142,376	7.90%	330	0.23%	2,616	1.84%	357	0.25%	16,605	11.66%
CLERMONT	190,589	5.30%	193	0.10%	813	0.43%	426	0.22%	10,526	5.52%
CLINTON	42,570	6.40%	69	0.16%	222	0.52%	100	0.23%	3,111	7.31%
COLUMBIANA	110,928	9.00%	121	0.11%	933	0.84%	104	0.09%	11,852	10.68%
COSHOCTON	36,945	7.00%	98	0.27%	446	1.21%	59	0.16%	4,010	10.85%
CRAWFORD	45,774	7.80%	63	0.14%	390	0.85%	43	0.09%	4,416	9.65%
CUYAHOGA	1,335,317	10.30%	964	0.07%	24,858	1.86%	6,325	0.47%	178,623	13.38%
DARKE	52,983	6.00%	43	0.08%	315	0.59%	58	0.11%	2,161	4.08%
DEFIANCE	39,112	4.50%	27	0.07%	256	0.65%	51	0.13%	2,541	6.50%
DELAWARE	150,268	2.90%	88	0.06%	764	0.51%	86	0.06%	4,282	2.85%
ERIE	78,665	6.00%	74	0.09%	400	0.51%	131	0.17%	5,456	6.94%
FAIRFIELD	138,423	4.50%	145	0.10%	1,829	1.32%	182	0.13%	9,379	6.78%
FAYETTE	28,199	7.70%	41	0.15%	286	1.01%	24	0.09%	2,610	9.26%
FRANKLIN	1,090,771	8.20%	1,097	0.10%	23,900	2.19%	3,546	0.33%	121,772	11.16%
FULTON	42,955	4.00%	23	0.05%	113	0.26%	37	0.09%	1,878	4.37%
GALLIA	31,362	13.50%	71	0.23%	1,389	4.43%	62	0.20%	5,233	16.69%
GEAUGA	95,218	2.80%	38	0.04%	124	0.13%	110	0.12%	1,646	1.73%
GREENE	151,996	5.20%	147	0.10%	1,134	0.75%	126	0.08%	8,345	5.49%

*SOURCE: 2005 Ohio County Population Estimates, Ohio Dept. of Development, GRP342RA, GBS003RA, GRP304RA and GRP304RC Reports from Management Information Services.

**TABLE 10
PERCENT OF OHIO'S POPULATION PARTICIPATING IN SELECTED
PUBLIC ASSISTANCE PROGRAMS FOR JULY 2006**

OHIO COUNTY	Estimated Total Population *	Percent of All Families Below Poverty Level	DISABILITY ASSISTANCE		OWF COMBINED		FOSTER CARE		FNS BENEFITS	
			Recipients as % of		Recipients	Recipients as % of	Recipients	Recipients as % of	Recipients	Recipients as % of
			Recipients	Total Population						
STATEWIDE	11,464,042	7.80%	13,753	0.12%	170,679	1.49%	26,830	0.23%	1,064,369	9.28%
GUERNSEY	41,123	12.90%	146	0.36%	332	0.81%	123	0.30%	5,922	14.40%
HAMILTON	806,652	8.80%	610	0.08%	16,442	2.04%	1,561	0.19%	73,657	9.13%
HANCOCK	73,503	5.20%	90	0.12%	193	0.26%	86	0.12%	3,994	5.43%
HARDIN	32,032	8.90%	40	0.12%	99	0.31%	53	0.17%	1,847	5.77%
HARRISON	15,920	11.00%	51	0.32%	230	1.44%	28	0.18%	1,928	12.11%
HENRY	29,453	5.30%	18	0.06%	62	0.21%	39	0.13%	1,283	4.36%
HIGHLAND	42,818	9.00%	106	0.25%	441	1.03%	37	0.09%	4,369	10.20%
HOCKING	29,009	10.30%	74	0.26%	636	2.19%	79	0.27%	3,318	11.44%
HOLMES	41,567	10.50%	29	0.07%	102	0.25%	40	0.10%	1,074	2.58%
HURON	60,385	6.50%	58	0.10%	226	0.37%	69	0.11%	4,216	6.98%
JACKSON	33,526	13.60%	108	0.32%	459	1.37%	29	0.09%	5,185	15.47%
JEFFERSON	70,599	11.40%	180	0.25%	1,930	2.73%	112	0.16%	9,197	13.03%
KNOX	58,398	7.40%	103	0.18%	545	0.93%	39	0.07%	4,301	7.36%
LAKE	232,466	3.50%	170	0.07%	1,226	0.53%	203	0.09%	10,857	4.67%
LAWRENCE	63,112	15.10%	88	0.14%	1,432	2.27%	114	0.18%	10,803	17.12%
LICKING	154,806	5.50%	234	0.15%	1,242	0.80%	476	0.31%	12,072	7.80%
LOGAN	46,580	7.10%	70	0.15%	452	0.97%	58	0.12%	3,364	7.22%
LORAIN	296,307	6.70%	322	0.11%	4,549	1.54%	437	0.15%	26,594	8.98%
LUCAS	448,229	10.70%	840	0.19%	15,894	3.55%	2,167	0.48%	62,360	13.91%
MADISON	41,295	6.20%	26	0.06%	545	1.32%	37	0.09%	2,768	6.70%
MAHONING	254,274	9.60%	254	0.10%	6,081	2.39%	391	0.15%	29,473	11.59%
MARION	65,932	7.40%	122	0.19%	765	1.16%	90	0.14%	6,918	10.49%
MEDINA	167,010	3.50%	78	0.05%	577	0.35%	91	0.05%	5,119	3.07%
MEIGS	23,232	14.30%	65	0.28%	388	1.67%	11	0.05%	4,176	17.98%
MERCER	41,202	4.60%	33	0.08%	172	0.42%	45	0.11%	1,418	3.44%
MIAMI	101,619	5.10%	94	0.09%	659	0.65%	157	0.15%	4,441	4.37%
MONROE	14,698	11.00%	26	0.18%	223	1.52%	15	0.10%	1,542	10.49%
MONTGOMERY	547,435	8.30%	701	0.13%	10,503	1.92%	1,691	0.31%	53,011	9.68%
MORGAN	14,958	15.70%	73	0.49%	116	0.78%	11	0.07%	1,999	13.36%
MORROW	34,322	6.60%	37	0.11%	291	0.85%	35	0.10%	2,753	8.02%

*SOURCE: 2005 Ohio County Population Estimates, Ohio Dept. of Development, GRP342RA, GBS003RA, GRP304RA and GRP304RC Reports from Management Information Services.

**TABLE 10
PERCENT OF OHIO'S POPULATION PARTICIPATING IN SELECTED
PUBLIC ASSISTANCE PROGRAMS FOR JULY 2006**

OHIO COUNTY	Estimated Total Population *	Percent of All Families Below Poverty Level	DISABILITY ASSISTANCE		OWF COMBINED		FOSTER CARE		FNS BENEFITS	
			Recipients as % of		Recipients	Recipients as % of	Recipients	Recipients as % of	Recipients	Recipients as % of
			Recipients	Total Population						
STATEWIDE	11,464,042	7.80%	13,753	0.12%	170,679	1.49%	26,830	0.23%	1,064,369	9.28%
MUSKINGUM	85,579	9.90%	382	0.45%	1,997	2.33%	153	0.18%	13,758	16.08%
NOBLE	14,156	8.30%	21	0.15%	85	0.60%	8	0.06%	1,192	8.42%
OTTAWA	41,583	4.20%	29	0.07%	280	0.67%	10	0.02%	2,190	5.27%
PAULDING	19,537	4.90%	27	0.14%	258	1.32%	31	0.16%	1,390	7.11%
PERRY	35,246	9.40%	112	0.32%	701	1.99%	75	0.21%	4,901	13.91%
PICKAWAY	52,989	7.60%	66	0.12%	992	1.87%	32	0.06%	4,763	8.99%
PIKE	28,146	15.10%	75	0.27%	666	2.37%	45	0.16%	5,171	18.37%
PORTAGE	155,631	5.90%	115	0.07%	852	0.55%	146	0.09%	8,525	5.48%
PREBLE	42,527	4.50%	55	0.13%	317	0.75%	76	0.18%	2,571	6.05%
PUTNAM	34,928	4.00%	15	0.04%	45	0.13%	14	0.04%	1,378	3.95%
RICHLAND	127,949	8.20%	266	0.21%	1,307	1.02%	263	0.21%	11,984	9.37%
ROSS	75,197	9.10%	145	0.19%	1,376	1.83%	99	0.13%	10,073	13.40%
SANDUSKY	61,676	5.70%	67	0.11%	399	0.65%	86	0.14%	4,160	6.74%
SCIOTO	76,561	15.20%	238	0.31%	1,964	2.57%	93	0.12%	15,415	20.13%
SENECA	57,483	6.10%	78	0.14%	278	0.48%	122	0.21%	4,148	7.22%
SHELBY	48,736	5.30%	33	0.07%	212	0.43%	65	0.13%	2,463	5.05%
STARK	380,608	6.80%	441	0.12%	6,053	1.59%	1,154	0.30%	29,436	7.73%
SUMMIT	546,604	7.50%	523	0.10%	9,561	1.75%	1,253	0.23%	50,635	9.26%
TRUMBULL	219,296	7.90%	326	0.15%	2,542	1.16%	454	0.21%	18,287	8.34%
TUSCARAWAS	91,944	7.20%	98	0.11%	1,067	1.16%	213	0.23%	7,407	8.06%
UNION	45,751	3.60%	45	0.10%	422	0.92%	35	0.08%	2,344	5.12%
VAN WERT	29,154	4.20%	18	0.06%	75	0.26%	20	0.07%	1,235	4.24%
VINTON	13,429	15.10%	52	0.39%	268	2.00%	43	0.32%	2,470	18.39%
WARREN	196,622	3.00%	79	0.04%	412	0.21%	136	0.07%	4,002	2.04%
WASHINGTON	62,210	8.60%	147	0.24%	199	0.32%	46	0.07%	5,434	8.73%
WAYNE	113,697	5.40%	217	0.19%	1,129	0.99%	140	0.12%	6,927	6.09%
WILLIAMS	38,688	3.90%	41	0.11%	390	1.01%	40	0.10%	2,545	6.58%
WOOD	123,929	4.70%	56	0.05%	438	0.35%	69	0.06%	4,692	3.79%
WYANDOT	22,813	3.80%	8	0.04%	77	0.34%	19	0.08%	899	3.94%
UNKNOWN										

*SOURCE: 2005 Ohio County Population Estimates, Ohio Dept. of Development, GRP342RA, GBS003RA, GRP304RA and GRP304RC Reports from Management Information Services.

**TABLE 7
CHILD CARE REVISION
APRIL 2006 UPDATE**

OHIO COUNTY	OWF JOBS, LEAP, and TRANSITIONAL		OTHER CHILD CARE		LOCAL FUNDING		ALL PROGRAM SOURCES	
	CHILDREN SERVED		CHILDREN SERVED		CHILDREN SERVED		CHILDREN SERVED	
	TOTAL	% OF STATE TOTAL	TOTAL	% OF STATE TOTAL	TOTAL	% OF STATE TOTAL	TOTAL	% OF STATE TOTAL
STATEWIDE	22,025	100.00%	73,279	100.00%	120	100.00%	95,424	100.00%
ADAMS	17	0.08%	82	0.11%	0	0.00%	99	0.10%
ALLEN	60	0.27%	443	0.60%	0	0.00%	503	0.53%
ASHLAND	4	0.02%	186	0.25%	0	0.00%	190	0.20%
ASHTABULA	169	0.77%	610	0.83%	0	0.00%	779	0.82%
ATHENS	66	0.30%	174	0.24%	0	0.00%	240	0.25%
AUGLAIZE	10	0.05%	132	0.18%	0	0.00%	142	0.15%
BELMONT	80	0.36%	249	0.34%	0	0.00%	329	0.34%
BROWN	22	0.10%	128	0.17%	0	0.00%	150	0.16%
BUTLER	225	1.02%	1,465	2.00%	0	0.00%	1,690	1.77%
CARROLL	18	0.08%	30	0.04%	0	0.00%	48	0.05%
CHAMPAIGN	12	0.05%	115	0.16%	0	0.00%	127	0.13%
CLARK	162	0.74%	636	0.87%	0	0.00%	798	0.84%
CLERMONT	168	0.76%	601	0.82%	0	0.00%	769	0.81%
CLINTON	4	0.02%	224	0.31%	0	0.00%	228	0.24%
COLUMBIANA	148	0.67%	776	1.06%	0	0.00%	924	0.97%
COSHOCTON	67	0.30%	203	0.28%	0	0.00%	270	0.28%
CRAWFORD	66	0.30%	149	0.20%	0	0.00%	215	0.23%
CUYAHOGA	4,507	20.46%	18,629	25.42%	0	0.00%	23,136	24.25%
DARKE	26	0.12%	105	0.14%	0	0.00%	131	0.14%
DEFIANCE	54	0.25%	121	0.17%	0	0.00%	175	0.18%
DELAWARE	26	0.12%	143	0.20%	2	1.67%	171	0.18%
ERIE	17	0.08%	563	0.77%	0	0.00%	580	0.61%
FAIRFIELD	100	0.45%	445	0.61%	0	0.00%	545	0.57%
FAYETTE	45	0.20%	232	0.32%	0	0.00%	277	0.29%
FRANKLIN	2,984	13.55%	8,324	11.36%	117	97.50%	11,425	11.97%
FULTON	22	0.10%	141	0.19%	0	0.00%	163	0.17%
GALLIA	74	0.34%	179	0.24%	0	0.00%	253	0.27%
GEAUGA	45	0.20%	147	0.20%	0	0.00%	192	0.20%
GREENE	221	1.00%	437	0.60%	0	0.00%	658	0.69%

**TABLE 7
CHILD CARE REVISION
APRIL 2006 UPDATE**

OHIO COUNTY	OWF JOBS, LEAP, and TRANSITIONAL		OTHER CHILD CARE		LOCAL FUNDING		ALL PROGRAM SOURCES	
	CHILDREN SERVED		CHILDREN SERVED		CHILDREN SERVED		CHILDREN SERVED	
	TOTAL	% OF STATE TOTAL	TOTAL	% OF STATE TOTAL	TOTAL	% OF STATE TOTAL	TOTAL	% OF STATE TOTAL
STATEWIDE	22,025	100.00%	73,279	100.00%	120	100.00%	95,424	100.00%
GUERNSEY	58	0.26%	282	0.38%	0	0.00%	340	0.36%
HAMILTON	3,697	16.79%	8,549	11.67%	0	0.00%	12,246	12.83%
HANCOCK	67	0.30%	391	0.53%	0	0.00%	458	0.48%
HARDIN	12	0.05%	45	0.06%	0	0.00%	57	0.06%
HARRISON	23	0.10%	38	0.05%	0	0.00%	61	0.06%
HENRY	29	0.13%	107	0.15%	0	0.00%	136	0.14%
HIGHLAND	16	0.07%	172	0.23%	0	0.00%	188	0.20%
HOCKING	48	0.22%	115	0.16%	0	0.00%	163	0.17%
HOLMES	33	0.15%	91	0.12%	0	0.00%	124	0.13%
HURON	1	0.00%	394	0.54%	0	0.00%	395	0.41%
JACKSON	36	0.16%	125	0.17%	0	0.00%	161	0.17%
JEFFERSON	65	0.30%	331	0.45%	0	0.00%	396	0.41%
KNOX	69	0.31%	239	0.33%	0	0.00%	308	0.32%
LAKE	171	0.78%	875	1.19%	0	0.00%	1,046	1.10%
LAWRENCE	95	0.43%	436	0.59%	0	0.00%	531	0.56%
LICKING	264	1.20%	838	1.14%	0	0.00%	1,102	1.15%
LOGAN	20	0.09%	59	0.08%	0	0.00%	79	0.08%
LORAIN	669	3.04%	1,584	2.16%	0	0.00%	2,253	2.36%
LUCAS	1,586	7.20%	2,894	3.95%	0	0.00%	4,480	4.69%
MADISON	17	0.08%	104	0.14%	0	0.00%	121	0.13%
MAHONING	870	3.95%	1,467	2.00%	0	0.00%	2,337	2.45%
MARION	48	0.22%	339	0.46%	0	0.00%	387	0.41%
MEDINA	65	0.30%	600	0.82%	0	0.00%	665	0.70%
MEIGS	17	0.08%	155	0.21%	0	0.00%	172	0.18%
MERCER	25	0.11%	112	0.15%	0	0.00%	137	0.14%
MIAMI	77	0.35%	308	0.42%	0	0.00%	385	0.40%
MONROE	3	0.01%	91	0.12%	0	0.00%	94	0.10%
MONTGOMERY	918	4.17%	4,173	5.69%	1	0.83%	5,092	5.34%
MORGAN	1	0.00%	79	0.11%	0	0.00%	80	0.08%
MORROW	5	0.02%	144	0.20%	0	0.00%	149	0.16%

**TABLE 7
CHILD CARE REVISION
APRIL 2006 UPDATE**

OHIO COUNTY	OWF JOBS, LEAP, and TRANSITIONAL		OTHER CHILD CARE		LOCAL FUNDING		ALL PROGRAM SOURCES	
	CHILDREN SERVED		CHILDREN SERVED		CHILDREN SERVED		CHILDREN SERVED	
	TOTAL	% OF STATE TOTAL	TOTAL	% OF STATE TOTAL	TOTAL	% OF STATE TOTAL	TOTAL	% OF STATE TOTAL
STATEWIDE	22,025	100.00%	73,279	100.00%	120	100.00%	95,424	100.00%
MUSKINGUM	226	1.03%	647	0.88%	0	0.00%	873	0.91%
NOBLE	32	0.15%	84	0.11%	0	0.00%	116	0.12%
OTTAWA	45	0.20%	113	0.15%	0	0.00%	158	0.17%
PAULDING	2	0.01%	22	0.03%	0	0.00%	24	0.03%
PERRY	51	0.23%	233	0.32%	0	0.00%	284	0.30%
PICKAWAY	67	0.30%	131	0.18%	0	0.00%	198	0.21%
PIKE	67	0.30%	48	0.07%	0	0.00%	115	0.12%
PORTAGE	154	0.70%	514	0.70%	0	0.00%	668	0.70%
PREBLE	44	0.20%	139	0.19%	0	0.00%	183	0.19%
PUTNAM	8	0.04%	84	0.11%	0	0.00%	92	0.10%
RICHLAND	239	1.09%	667	0.91%	0	0.00%	906	0.95%
ROSS	64	0.29%	247	0.34%	0	0.00%	311	0.33%
SANDUSKY	74	0.34%	480	0.66%	0	0.00%	554	0.58%
SCIOTO	133	0.60%	497	0.68%	0	0.00%	630	0.66%
SENECA	19	0.09%	241	0.33%	0	0.00%	260	0.27%
SHELBY	45	0.20%	170	0.23%	0	0.00%	215	0.23%
STARK	685	3.11%	2,011	2.74%	0	0.00%	2,696	2.83%
SUMMIT	910	4.13%	3,277	4.47%	0	0.00%	4,187	4.39%
TRUMBULL	193	0.88%	978	1.33%	0	0.00%	1,171	1.23%
TUSCARAWAS	72	0.33%	292	0.40%	0	0.00%	364	0.38%
UNION	30	0.14%	164	0.22%	0	0.00%	194	0.20%
VAN WERT	5	0.02%	51	0.07%	0	0.00%	56	0.06%
VINTON	5	0.02%	58	0.08%	0	0.00%	63	0.07%
WARREN	115	0.52%	276	0.38%	0	0.00%	391	0.41%
WASHINGTON	52	0.24%	255	0.35%	0	0.00%	307	0.32%
WAYNE	165	0.75%	393	0.54%	0	0.00%	558	0.58%
WILLIAMS	19	0.09%	100	0.14%	0	0.00%	119	0.12%
WOOD	78	0.35%	261	0.36%	0	0.00%	339	0.36%
WYANDOT	2	0.01%	40	0.05%	0	0.00%	42	0.04%

SOURCE: COGNOS. The above numbers have not been reconciled between the CCIDS/3299 data collection system and 2827 ODJFS fiscal reporting system; therefore they may not be conclusive at this time.

OWF data consist of funding codes: 173,312, 313,314, 326, & 327. Other data consist of funding codes: 320, 321, 322, 323, 324, 325, 328, 329, and 342. Local Funding is from funding code 899.