

# MONTHLY REVIEW OF PUBLIC ASSISTANCE STATISTICS FOR MAY 2003

## OHIO WORKS FIRST

For the month of May 2003, OWF-Combined assistance groups totaled 86,610; recipients totaled 193,932 and money payments totaled \$26,124,406. The percent change from April 2003 to May 2003 was -0.4% for assistance groups; -0.9% for recipients, and -0.1% for money payments. For OWF- Regular (OWF-R) there were 82,559 assistance groups; 177,334 recipients, and \$24,547,967 in money payments issued for May 2003. The percent change from April 2003 to May 2003 was -0.2% for assistance groups; -0.6% for recipients, and 0.1% for money payments. For OWF-Unemployed (OWF-U) assistance groups totaled 4,051; recipients 16,598, and money payments were \$1,576,439. The percent change from April 2003 to May 2003 was -4.6% for assistance groups; -4.2% for recipients and -3.8% for money payments.

## FOSTER CARE (TITLE IV-E)

A total of 25,725 children received \$14,275,218 in Title IV-E assistance during the month of May 2003. Included in this total were 7,750 foster care children who received \$7,537,128 in money payments. Of these Title IV-E children, 3,361 or 13.1% were in foster family homes who received \$1,439,753 and 4,389 or 17.1% children in child care institutions who received \$6,097,375 in OWF foster care assistance. The remaining 17,975 children reported as participating in Title IV-E received \$6,758,089 in adoption assistance. Overall, the average amount of Foster Care received per child was \$554.92.

## DISABILITY ASSISTANCE (DA)

For the month of May 2003, there were 16,755 assistance groups; 17,175 recipients, and \$2,110,924 in DA financial assistance. The average DA financial assistance per recipient was \$122.91. Total DA expenditures for medical services for May 2003 were \$7,731,470. Of this total, \$5,172,710 or 66.9% was spent for prescribed drugs, and \$2,052,964 or 26.6% was spent for physician services. Medical expenses were paid for 21,207 recipients for an average expenditure of \$364.57 per recipient.

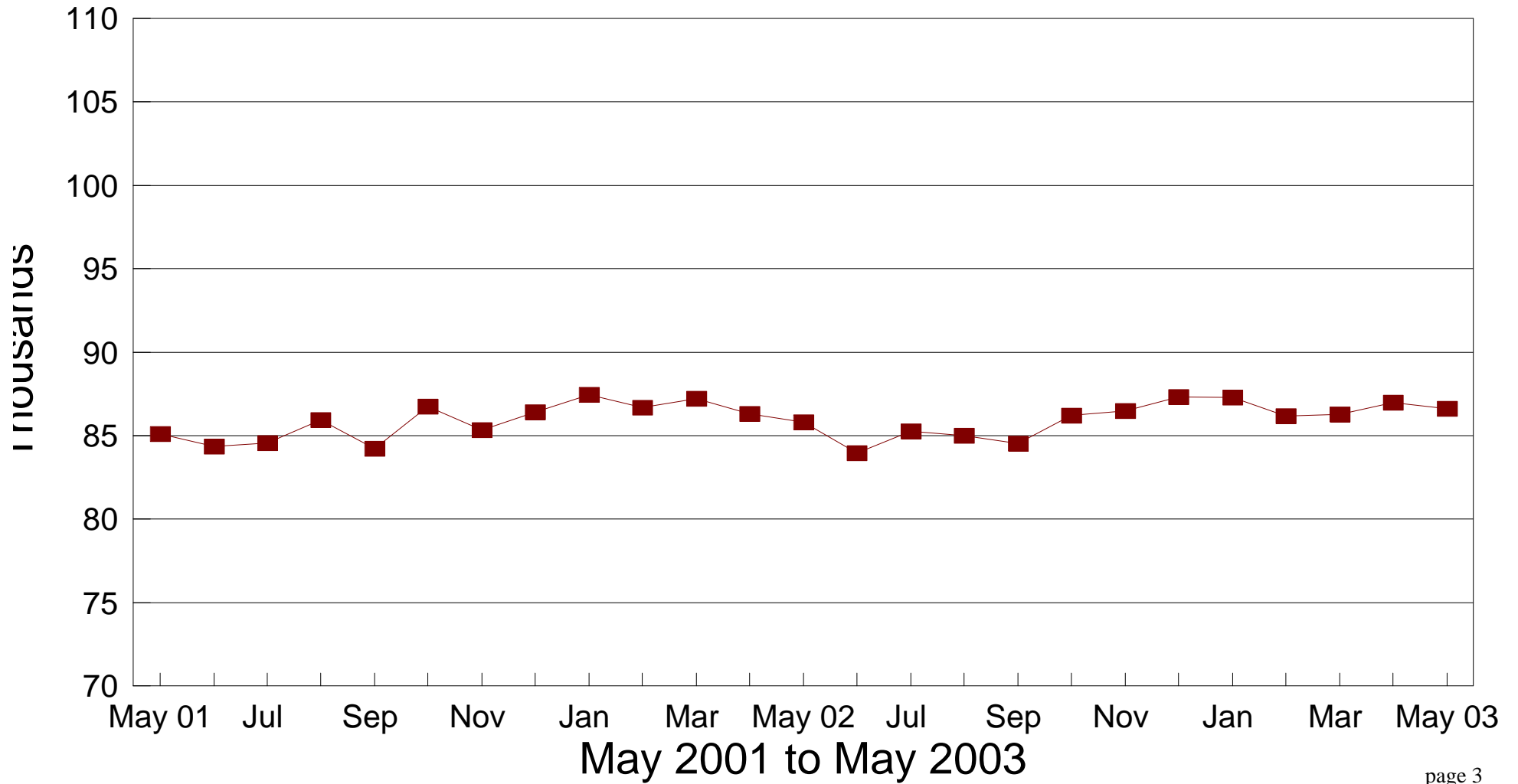
## FNS BENEFITS:

Total persons participating in the FNS benefits program during May 2003 increased to 870,179 by 16,709 or 2.0% from 853,470 persons reported in April 2003. Households increased by 5,567 or 1.5% over April 2003 levels. The total dollar value of FNS related benefits issued during May 2003 increased by \$ 856,110 or 1.2% from \$72,884,256 reported in April 2003 to \$73,740,366 reported in May 2003. The average benefit issuance per person decreased by \$ .66 or -0.8% from those issued in April 2003. The average benefit issuance per person decreased from \$85.40 in April 2003 to \$84.74 in May 2003.

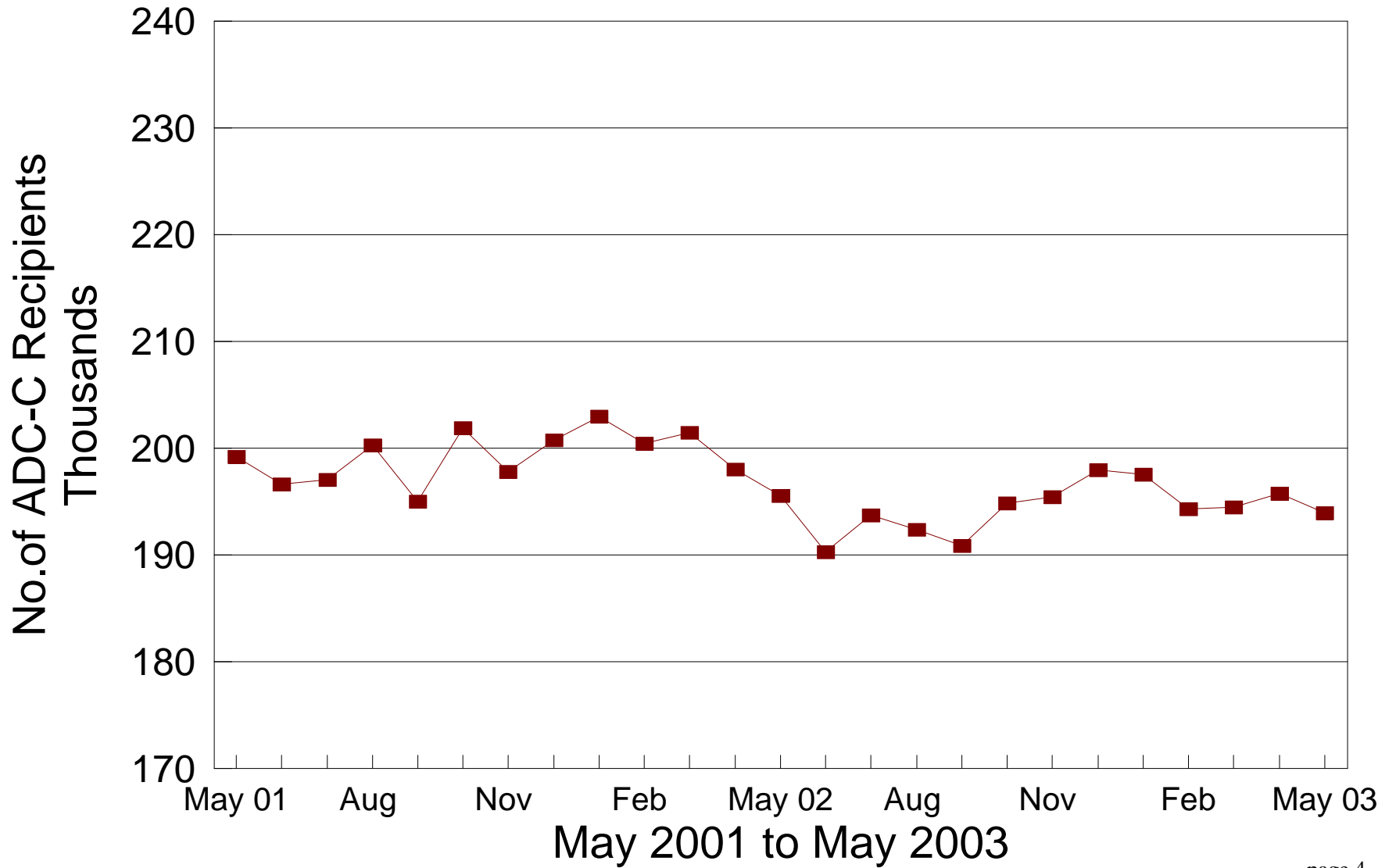
<b>STATEWIDE SUMMARY OF PUBLIC ASSISTANCE PROGRAMS FOR MAY 2003</b>					
	<b>May 2003</b>	<b>April 2003</b>	<b>% CHANGE May 03 / Apr 03</b>	<b>May 2002</b>	<b>% CHANGE May 03 / May 02</b>
<b>OHIO WORKS FIRST (OWF)-COMBINED</b>					
Assistance Groups	86,610	86,973	-0.4%	85,790	1.0%
Recipients	193,932	195,740	-0.9%	195,559	-0.8%
Net Payments	\$26,124,406	\$26,162,193	-0.1%	\$26,274,362	-0.6%
Average Per Recipient	\$134.71	\$133.66	0.8%	\$134.36	0.3%
<b>OWF-REGULAR, OWF-INCAPACITATED,&amp; OWF REGULAR VENDOR PAYMENTS</b>					
Assistance Groups	82,559	82,728	-0.2%	82,021	0.7%
Recipients	177,334	178,408	-0.6%	179,859	-1.4%
Net Payments	\$24,547,967	\$24,523,197	0.1%	\$24,789,326	-1.0%
Average Per Recipient	\$138.43	\$137.46	0.7%	\$137.83	0.4%
<b>OWF-UNEMPLOYED AND OWF-UNEMPLOYED VENDOR PAYMENTS</b>					
Assistance Groups	4,051	4,245	-4.6%	3,769	7.5%
Recipients	16,598	17,332	-4.2%	15,700	5.7%
Net Payments	\$1,576,439	\$1,638,996	-3.8%	\$1,485,036	6.2%
Average Per Recipient	\$94.98	\$94.56	0.4%	\$94.59	0.4%
<b>TITLE IV-E FOSTER CARE</b>					
Assistance Groups/Recipients	25,725	25,432	1.2%	24,314	5.8%
Gross Payments	\$14,275,218	\$14,225,007	0.4%	\$13,147,856	8.6%
Average Per Recipient	\$554.92	\$559.33	-0.8%	\$540.75	2.6%
<b>DISABILITY ASSISTANCE</b>					
Assistance Groups	16,755	16,537	1.3%	13,043	28.5%
Recipients	17,175	16,970	1.2%	13,405	28.1%
Net Payments	\$2,110,924	\$2,027,682	4.1%	\$1,682,108	25.5%
Medical Assistance	\$7,731,470	\$9,883,662	-21.8%	\$5,980,641	29.3%
<b>FNS BENEFITS</b>					
Assistance Groups	385,793	380,226	1.5%	336,244	14.7%
Persons	870,179	853,470	2.0%	744,760	16.8%
Total Coupons Issued	\$73,740,366	\$72,884,256	1.2%	\$61,401,111	20.1%
Average Per Recipient	\$84.74	\$85.40	-0.8%	\$82.44	2.8%

# No. of OWF-Combined Assistance Groups

During the Last 25 Months

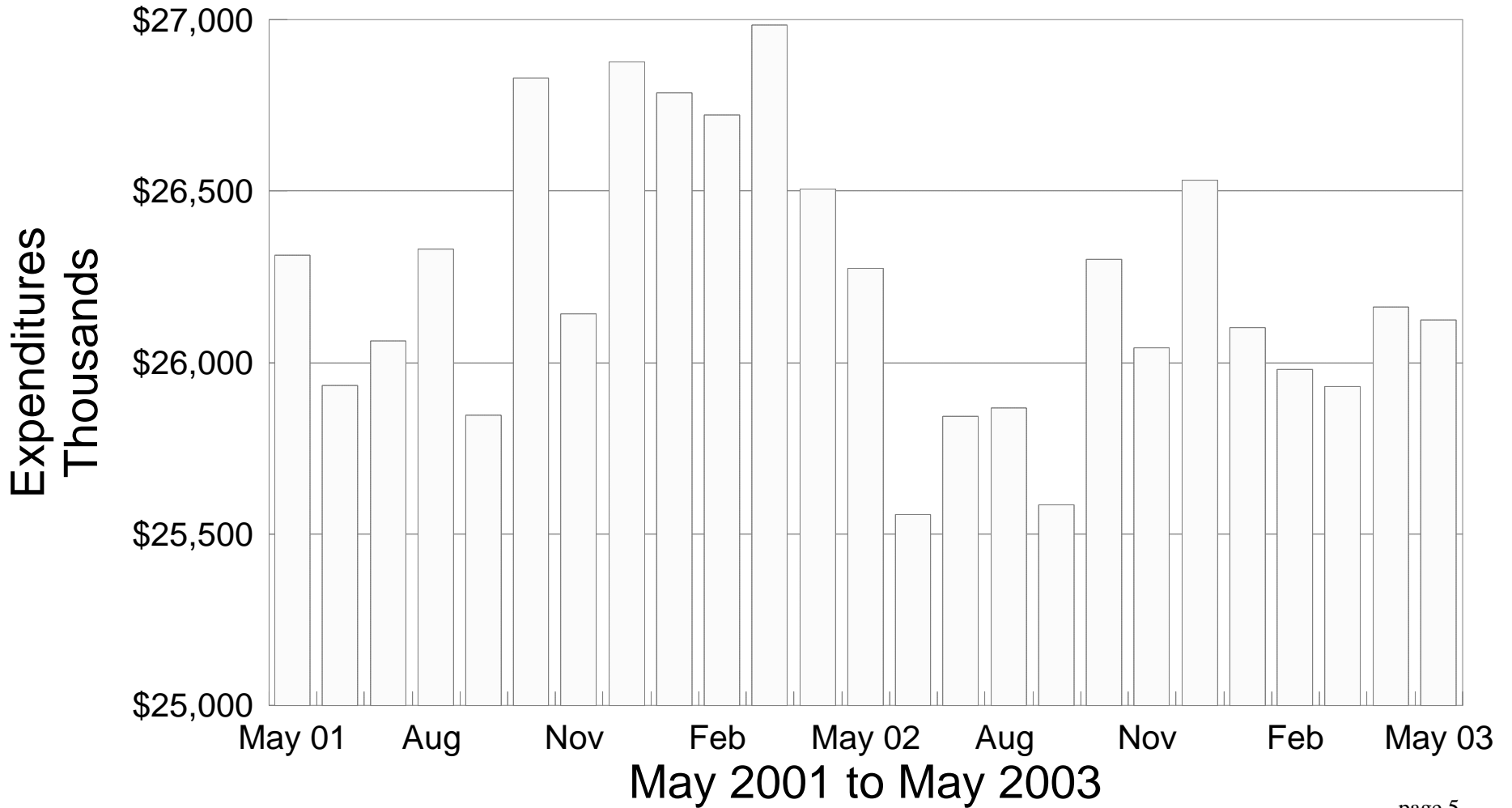


# Number of OWF-Combined Recipients During the Last 25 Months



# OWF-Combined Net Expenditures

## During the Last 25 Months



**TABLE 1  
OWF COMBINED  
MAY 2003**

OHIO COUNTY	ASSISTANCE GROUP	RECIPIENTS	ADULTS	CHILDREN	ACTUAL EXPENDITURES		
					GROSS AMOUNT	CANCELLED AMOUNT	NET AMOUNT
STATEWIDE	86,610	193,932	51,047	142,885	\$26,831,146.58	\$706,741.00	\$26,124,405.58
ADAMS	144	248	12	236	\$38,010.00	\$610.00	\$37,400.00
ALLEN	472	864	97	767	\$141,351.00	\$3,759.00	\$137,592.00
ASHLAND	84	181	39	142	\$27,365.00	\$1,106.00	\$26,259.00
ASHTABULA	729	1,696	447	1,249	\$229,638.00	\$5,109.00	\$224,529.00
ATHENS	621	1,523	516	1,007	\$191,977.00	\$5,742.00	\$186,235.00
AUGLAIZE	61	98	11	87	\$17,175.00	\$223.00	\$16,952.00
BELMONT	576	1,279	408	871	\$167,290.00	\$1,936.00	\$165,354.00
BROWN	152	262	20	242	\$41,214.00	\$1,181.00	\$40,033.00
BUTLER	1,544	3,103	670	2,433	\$460,181.00	\$11,006.00	\$449,175.00
CARROLL	117	248	67	181	\$34,002.00	\$668.00	\$33,334.00
CHAMPAIGN	205	474	135	339	\$63,745.00	\$911.00	\$62,834.00
CLARK	1,295	2,818	767	2,051	\$395,332.00	\$7,614.00	\$387,718.00
CLERMONT	525	1,064	231	833	\$159,758.00	\$5,697.00	\$154,061.00
CLINTON	133	226	46	180	\$38,056.00	\$1,098.00	\$36,958.00
COLUMBIANA	502	1,001	233	768	\$145,823.00	\$1,552.00	\$144,271.00
COSHOCTON	240	520	149	371	\$72,218.00	\$2,598.00	\$69,620.00
CRAWFORD	237	552	177	375	\$74,794.00	\$2,157.00	\$72,637.00
CUYAHOGA	15,044	32,738	8,144	24,594	\$4,656,328.44	\$124,331.00	\$4,531,997.44
DARKE	153	340	103	237	\$48,475.00	\$305.00	\$48,170.00
DEFIANCE	94	174	30	144	\$27,696.00	\$746.00	\$26,950.00
DELAWARE	277	636	195	441	\$90,822.17	\$3,183.00	\$87,639.17
ERIE	203	319	23	296	\$53,417.00	\$446.00	\$52,971.00
FAIRFIELD	552	1,317	424	893	\$177,641.00	\$4,492.00	\$173,149.00
FAYETTE	164	321	73	248	\$45,939.00	\$1,175.00	\$44,764.00
FRANKLIN	11,381	26,352	6,752	19,600	\$3,567,151.00	\$102,723.00	\$3,464,428.00
FULTON	68	137	32	105	\$17,885.00	\$226.00	\$17,659.00
GALLIA	502	1,235	429	806	\$155,206.00	\$1,672.00	\$153,534.00
GEAUGA	84	163	31	132	\$24,226.00	\$409.00	\$23,817.00
GREENE	632	1,372	413	959	\$190,486.00	\$4,594.00	\$185,892.00
GUERNSEY	192	387	91	296	\$57,086.00	\$679.00	\$56,407.00
HAMILTON	8,288	19,509	4,876	14,633	\$2,664,858.00	\$85,607.00	\$2,579,251.00
HANCOCK	152	306	68	238	\$46,025.00	\$892.00	\$45,133.00
HARDIN	56	104	13	91	\$15,810.00	\$0.00	\$15,810.00
HARRISON	104	231	64	167	\$31,527.00	\$596.00	\$30,931.00
HENRY	33	62	7	55	\$8,886.00	\$0.00	\$8,886.00
HIGHLAND	126	246	44	202	\$38,737.00	\$2,614.00	\$36,123.00
HOCKING	300	712	242	470	\$98,526.00	\$678.00	\$97,848.00
HOLMES	44	104	24	80	\$13,082.00	\$305.00	\$12,777.00
HURON	127	204	7	197	\$34,729.00	\$1,044.00	\$33,685.00
JACKSON	355	755	197	558	\$107,100.00	\$3,008.00	\$104,092.00
JEFFERSON	881	2,042	664	1,378	\$273,181.00	\$8,697.00	\$264,484.00
KNOX	239	567	187	380	\$69,976.00	\$2,102.00	\$67,874.00
LAKE	623	1,335	366	969	\$182,516.00	\$5,384.00	\$177,132.00
LAWRENCE	798	1,642	382	1,260	\$229,487.00	\$7,325.00	\$222,162.00

**TABLE 1  
OWF COMBINED  
MAY 2003**

OHIO COUNTY	ASSISTANCE GROUP	RECIPIENTS	ADULTS	CHILDREN	ACTUAL EXPENDITURES		
					GROSS AMOUNT	CANCELLED AMOUNT	NET AMOUNT
STATEWIDE	86,610	193,932	51,047	142,885	\$26,831,146.58	\$706,741.00	\$26,124,405.58
LICKING	662	1,467	476	991	\$193,000.00	\$10,542.00	\$182,458.00
LOGAN	171	353	93	260	\$51,398.00	\$305.00	\$51,093.00
LORAIN	1,958	4,558	1,192	3,366	\$614,497.00	\$15,163.00	\$599,334.00
LUCAS	6,380	14,853	4,182	10,671	\$1,981,570.00	\$52,748.00	\$1,928,822.00
MADISON	197	444	146	298	\$57,942.00	\$373.00	\$57,569.00
MAHONING	2,804	6,414	1,616	4,798	\$870,329.00	\$14,879.00	\$855,450.00
MARION	380	670	88	582	\$110,943.00	\$3,383.00	\$107,560.00
MEDINA	241	534	139	395	\$76,981.00	\$3,473.00	\$73,508.00
MEIGS	245	544	172	372	\$75,514.00	\$2,154.00	\$73,360.00
MERCER	83	213	61	152	\$27,705.00	\$305.00	\$27,400.00
MIAMI	275	521	107	414	\$76,732.00	\$3,699.00	\$73,033.00
MONROE	89	214	74	140	\$26,719.00	\$461.00	\$26,258.00
MONTGOMERY	5,811	12,877	3,273	9,604	\$1,777,524.00	\$37,541.00	\$1,739,983.00
MORGAN	76	126	11	115	\$19,422.00	\$610.00	\$18,812.00
MORROW	135	273	67	206	\$38,395.00	\$901.00	\$37,494.00
MUSKINGUM	796	1,755	480	1,275	\$248,040.00	\$5,044.00	\$242,996.00
NOBLE	30	62	19	43	\$8,287.00	\$0.00	\$8,287.00
OTTAWA	126	283	92	191	\$37,424.00	\$531.00	\$36,893.00
PAULDING	89	216	79	137	\$27,523.00	\$610.00	\$26,913.00
PERRY	252	569	148	421	\$76,436.00	\$1,953.00	\$74,483.00
PICKAWAY	387	924	307	617	\$122,587.00	\$3,531.00	\$119,056.00
PIKE	359	811	195	616	\$110,153.00	\$1,584.00	\$108,569.00
PORTAGE	535	1,133	317	816	\$171,003.00	\$3,916.00	\$167,087.00
PREBLE	156	344	88	256	\$44,815.00	\$1,305.00	\$43,510.00
PUTNAM	67	161	47	114	\$20,761.00	\$684.00	\$20,077.00
RICHLAND	679	1,388	285	1,103	\$199,228.00	\$3,601.00	\$195,627.00
ROSS	664	1,555	448	1,107	\$206,964.00	\$2,502.00	\$204,462.00
SANDUSKY	169	324	61	263	\$50,946.00	\$373.00	\$50,573.00
SCIOTO	1,039	2,052	440	1,612	\$303,226.00	\$10,019.00	\$293,207.00
SENECA	122	211	31	180	\$32,939.00	\$305.00	\$32,634.00
SHELBY	127	243	41	202	\$39,496.00	\$1,773.00	\$37,723.00
STARK	3,301	7,750	2,424	5,326	\$1,054,310.65	\$27,093.00	\$1,027,217.65
SUMMIT	5,490	12,708	3,799	8,909	\$1,756,023.32	\$45,533.00	\$1,710,490.32
TRUMBULL	1,552	3,380	820	2,560	\$472,905.00	\$13,999.00	\$458,906.00
TUSCARAWAS	400	950	307	643	\$123,817.00	\$2,692.00	\$121,125.00
UNION	175	430	133	297	\$52,734.00	\$1,802.00	\$50,932.00
VAN WERT	37	57	8	49	\$10,058.00	\$669.00	\$9,389.00
VINTON	143	328	79	249	\$44,526.00	\$0.00	\$44,526.00
WARREN	198	376	83	293	\$54,745.00	\$1,291.00	\$53,454.00
WASHINGTON	145	229	13	216	\$39,693.00	\$2,151.00	\$37,542.00
WAYNE	474	1,078	367	711	\$153,075.00	\$5,301.00	\$147,774.00
WILLIAMS	180	444	149	295	\$54,300.00	\$2,854.00	\$51,446.00
WOOD	261	557	161	396	\$80,617.00	\$1,846.00	\$78,771.00
WYANDOT	41	86	23	63	\$11,116.00	\$1,042.00	\$10,074.00

**TABLE 1  
OWF REGULAR  
MAY 2003**

OHIO COUNTY	ASSISTANCE GROUP	RECIPIENTS	ADULTS	CHILDREN	ACTUAL EXPENDITURES		
					GROSS AMOUNT	CANCELLED AMOUNT	NET AMOUNT
STATEWIDE	82,559	177,334	43,313	134,021	\$25,209,227.58	\$661,261.00	\$24,547,966.58
ADAMS	144	248	12	236	\$38,010.00	\$610.00	\$37,400.00
ALLEN	469	854	95	759	\$140,191.00	\$3,759.00	\$136,432.00
ASHLAND	82	172	35	137	\$26,392.00	\$1,106.00	\$25,286.00
ASHTABULA	680	1,476	347	1,129	\$209,376.00	\$4,418.00	\$204,958.00
ATHENS	512	1,098	313	785	\$152,386.00	\$5,058.00	\$147,328.00
AUGLAIZE	61	98	11	87	\$17,175.00	\$223.00	\$16,952.00
BELMONT	514	1,037	285	752	\$145,513.00	\$1,563.00	\$143,950.00
BROWN	152	262	20	242	\$41,214.00	\$1,181.00	\$40,033.00
BUTLER	1,524	3,036	641	2,395	\$451,372.00	\$10,892.00	\$440,480.00
CARROLL	106	207	46	161	\$29,579.00	\$668.00	\$28,911.00
CHAMPAIGN	191	421	107	314	\$59,116.00	\$911.00	\$58,205.00
CLARK	1,239	2,599	664	1,935	\$372,827.00	\$7,614.00	\$365,213.00
CLERMONT	511	1,005	204	801	\$152,347.00	\$5,286.00	\$147,061.00
CLINTON	133	226	46	180	\$38,056.00	\$1,098.00	\$36,958.00
COLUMBIANA	472	896	177	719	\$134,459.00	\$1,552.00	\$132,907.00
COSHOCTON	224	460	121	339	\$66,029.00	\$2,137.00	\$63,892.00
CRAWFORD	205	420	113	307	\$62,559.00	\$1,511.00	\$61,048.00
CUYAHOGA	14,536	30,594	7,163	23,431	\$4,458,200.44	\$117,161.00	\$4,341,039.44
DARKE	141	289	81	208	\$42,767.00	\$305.00	\$42,462.00
DEFIANCE	92	167	26	141	\$26,899.00	\$746.00	\$26,153.00
DELAWARE	256	550	156	394	\$81,696.17	\$3,183.00	\$78,513.17
ERIE	202	316	21	295	\$53,044.00	\$446.00	\$52,598.00
FAIRFIELD	498	1,103	316	787	\$154,129.00	\$4,031.00	\$150,098.00
FAYETTE	157	293	59	234	\$42,866.00	\$1,175.00	\$41,691.00
FRANKLIN	10,993	24,551	6,033	18,518	\$3,399,026.00	\$95,882.00	\$3,303,144.00
FULTON	66	131	28	103	\$17,800.00	\$226.00	\$17,574.00
GALLIA	424	923	278	645	\$124,928.00	\$1,672.00	\$123,256.00
GEAUGA	81	150	24	126	\$22,320.00	\$409.00	\$21,911.00
GREENE	587	1,208	330	878	\$174,134.00	\$4,221.00	\$169,913.00
GUERNSEY	179	336	65	271	\$51,252.00	\$679.00	\$50,573.00
HAMILTON	8,146	18,925	4,601	14,324	\$2,607,793.00	\$84,634.00	\$2,523,159.00
HANCOCK	145	279	54	225	\$43,122.00	\$892.00	\$42,230.00
HARDIN	55	100	11	89	\$15,171.00	\$0.00	\$15,171.00
HARRISON	101	220	58	162	\$30,491.00	\$596.00	\$29,895.00
HENRY	32	59	7	52	\$8,824.00	\$0.00	\$8,824.00
HIGHLAND	123	233	38	195	\$37,579.00	\$2,614.00	\$34,965.00
HOCKING	250	517	142	375	\$78,410.00	\$678.00	\$77,732.00
HOLMES	39	84	14	70	\$11,648.00	\$305.00	\$11,343.00
HURON	123	196	7	189	\$33,937.00	\$596.00	\$33,341.00
JACKSON	327	637	140	497	\$94,640.00	\$3,008.00	\$91,632.00
JEFFERSON	793	1,682	490	1,192	\$239,317.00	\$8,697.00	\$230,620.00
KNOX	214	466	139	327	\$61,635.00	\$1,190.00	\$60,445.00
LAKE	567	1,154	294	860	\$163,738.00	\$3,892.00	\$159,846.00
LAWRENCE	741	1,418	267	1,151	\$210,195.00	\$7,325.00	\$202,870.00

Source: GRP342RA Report from Management Information Services. Data includes ADC-Regular, ADC-Incapacitated, and Vendor Payments.



**TABLE 1  
OWF REGULAR  
MAY 2003**

OHIO COUNTY	ASSISTANCE GROUP	RECIPIENTS	ADULTS	CHILDREN	ACTUAL EXPENDITURES		
					GROSS AMOUNT	CANCELLED AMOUNT	NET AMOUNT
STATEWIDE	82,559	177,334	43,313	134,021	\$25,209,227.58	\$661,261.00	\$24,547,966.58
LICKING	602	1,240	362	878	\$172,172.00	\$8,491.00	\$163,681.00
LOGAN	166	329	83	246	\$48,997.00	\$305.00	\$48,692.00
LORAIN	1,847	4,107	986	3,121	\$569,180.00	\$14,218.00	\$554,962.00
LUCAS	6,031	13,429	3,514	9,915	\$1,841,058.00	\$48,533.00	\$1,792,525.00
MADISON	177	362	108	254	\$50,401.00	\$373.00	\$50,028.00
MAHONING	2,690	5,944	1,396	4,548	\$828,703.00	\$13,672.00	\$815,031.00
MARION	376	656	81	575	\$109,662.00	\$3,383.00	\$106,279.00
MEDINA	232	500	121	379	\$72,576.00	\$3,473.00	\$69,103.00
MEIGS	221	452	126	326	\$65,476.00	\$1,414.00	\$64,062.00
MERCER	69	150	38	112	\$21,795.00	\$305.00	\$21,490.00
MIAMI	272	507	101	406	\$75,397.00	\$3,699.00	\$71,698.00
MONROE	72	150	40	110	\$20,314.00	\$461.00	\$19,853.00
MONTGOMERY	5,786	12,769	3,233	9,536	\$1,767,602.00	\$37,541.00	\$1,730,061.00
MORGAN	76	126	11	115	\$19,422.00	\$610.00	\$18,812.00
MORROW	127	242	51	191	\$34,827.00	\$901.00	\$33,926.00
MUSKINGUM	750	1,577	393	1,184	\$229,740.00	\$4,668.00	\$225,072.00
NOBLE	27	52	13	39	\$7,267.00	\$0.00	\$7,267.00
OTTAWA	115	230	71	159	\$32,983.00	\$531.00	\$32,452.00
PAULDING	78	168	57	111	\$23,700.00	\$610.00	\$23,090.00
PERRY	235	496	114	382	\$69,116.00	\$1,953.00	\$67,163.00
PICKAWAY	336	716	206	510	\$101,537.00	\$3,158.00	\$98,379.00
PIKE	336	723	151	572	\$101,547.00	\$1,584.00	\$99,963.00
PORTAGE	523	1,090	297	793	\$165,400.00	\$3,144.00	\$162,256.00
PREBLE	150	319	76	243	\$42,482.00	\$1,305.00	\$41,177.00
PUTNAM	63	146	39	107	\$19,191.00	\$684.00	\$18,507.00
RICHLAND	673	1,365	275	1,090	\$197,080.00	\$3,601.00	\$193,479.00
ROSS	605	1,309	334	975	\$182,057.00	\$2,502.00	\$179,555.00
SANDUSKY	156	293	51	242	\$46,757.00	\$373.00	\$46,384.00
SCIOTO	972	1,780	304	1,476	\$279,175.00	\$10,019.00	\$269,156.00
SENECA	121	208	29	179	\$32,783.00	\$305.00	\$32,478.00
SHELBY	125	237	39	198	\$38,265.00	\$1,773.00	\$36,492.00
STARK	3,011	6,563	1,850	4,713	\$931,769.65	\$22,261.00	\$909,508.65
SUMMIT	5,127	11,230	3,081	8,149	\$1,606,813.32	\$40,255.00	\$1,566,558.32
TRUMBULL	1,462	2,981	642	2,339	\$432,615.00	\$13,236.00	\$419,379.00
TUSCARAWAS	340	714	192	522	\$100,515.00	\$2,407.00	\$98,108.00
UNION	152	334	87	247	\$44,570.00	\$1,429.00	\$43,141.00
VAN WERT	37	57	8	49	\$10,058.00	\$669.00	\$9,389.00
VINTON	132	288	57	231	\$40,198.00	\$0.00	\$40,198.00
WARREN	196	368	79	289	\$54,538.00	\$1,291.00	\$53,247.00
WASHINGTON	145	229	13	216	\$39,693.00	\$2,151.00	\$37,542.00
WAYNE	427	891	276	615	\$132,045.00	\$4,765.00	\$127,280.00
WILLIAMS	162	365	114	251	\$46,827.00	\$2,854.00	\$43,973.00
WOOD	238	482	120	362	\$71,713.00	\$1,385.00	\$70,328.00
WYANDOT	34	64	15	49	\$9,048.00	\$819.00	\$8,229.00

Source: GRP342RA Report from Management Information Services. Data includes ADC-Regular, ADC-Incapacitated, and Vendor Payments.

**TABLE 1  
OWF UNEMPLOYED  
MAY 2003**

OHIO COUNTY	ASSISTANCE GROUP	RECIPIENTS	ADULTS	CHILDREN	ACTUAL EXPENDITURES		
					GROSS AMOUNT	CANCELLED AMOUNT	NET AMOUNT
STATEWIDE	4,051	16,598	7,734	8,864	\$1,621,919.00	\$45,480.00	\$1,576,439.00
ADAMS	0	0	0	0	\$0.00	\$0.00	\$0.00
ALLEN	3	10	2	8	\$1,160.00	\$0.00	\$1,160.00
ASHLAND	2	9	4	5	\$973.00	\$0.00	\$973.00
ASHTABULA	49	220	100	120	\$20,262.00	\$691.00	\$19,571.00
ATHENS	109	425	203	222	\$39,591.00	\$684.00	\$38,907.00
AUGLAIZE	0	0	0	0	\$0.00	\$0.00	\$0.00
BELMONT	62	242	123	119	\$21,777.00	\$373.00	\$21,404.00
BROWN	0	0	0	0	\$0.00	\$0.00	\$0.00
BUTLER	20	67	29	38	\$8,809.00	\$114.00	\$8,695.00
CARROLL	11	41	21	20	\$4,423.00	\$0.00	\$4,423.00
CHAMPAIGN	14	53	28	25	\$4,629.00	\$0.00	\$4,629.00
CLARK	56	219	103	116	\$22,505.00	\$0.00	\$22,505.00
CLERMONT	14	59	27	32	\$7,411.00	\$411.00	\$7,000.00
CLINTON	0	0	0	0	\$0.00	\$0.00	\$0.00
COLUMBIANA	30	105	56	49	\$11,364.00	\$0.00	\$11,364.00
COSHOCTON	16	60	28	32	\$6,189.00	\$461.00	\$5,728.00
CRAWFORD	32	132	64	68	\$12,235.00	\$646.00	\$11,589.00
CUYAHOGA	508	2,144	981	1,163	\$198,128.00	\$7,170.00	\$190,958.00
DARKE	12	51	22	29	\$5,708.00	\$0.00	\$5,708.00
DEFIANCE	2	7	4	3	\$797.00	\$0.00	\$797.00
DELAWARE	21	86	39	47	\$9,126.00	\$0.00	\$9,126.00
ERIE	1	3	2	1	\$373.00	\$0.00	\$373.00
FAIRFIELD	54	214	108	106	\$23,512.00	\$461.00	\$23,051.00
FAYETTE	7	28	14	14	\$3,073.00	\$0.00	\$3,073.00
FRANKLIN	388	1,801	719	1,082	\$168,125.00	\$6,841.00	\$161,284.00
FULTON	2	6	4	2	\$85.00	\$0.00	\$85.00
GALLIA	78	312	151	161	\$30,278.00	\$0.00	\$30,278.00
GEAUGA	3	13	7	6	\$1,906.00	\$0.00	\$1,906.00
GREENE	45	164	83	81	\$16,352.00	\$373.00	\$15,979.00
GUERNSEY	13	51	26	25	\$5,834.00	\$0.00	\$5,834.00
HAMILTON	142	584	275	309	\$57,065.00	\$973.00	\$56,092.00
HANCOCK	7	27	14	13	\$2,903.00	\$0.00	\$2,903.00
HARDIN	1	4	2	2	\$639.00	\$0.00	\$639.00
HARRISON	3	11	6	5	\$1,036.00	\$0.00	\$1,036.00
HENRY	1	3	0	3	\$62.00	\$0.00	\$62.00
HIGHLAND	3	13	6	7	\$1,158.00	\$0.00	\$1,158.00
HOCKING	50	195	100	95	\$20,116.00	\$0.00	\$20,116.00
HOLMES	5	20	10	10	\$1,434.00	\$0.00	\$1,434.00
HURON	4	8	0	8	\$792.00	\$448.00	\$344.00
JACKSON	28	118	57	61	\$12,460.00	\$0.00	\$12,460.00
JEFFERSON	88	360	174	186	\$33,864.00	\$0.00	\$33,864.00
KNOX	25	101	48	53	\$8,341.00	\$912.00	\$7,429.00
LAKE	56	181	72	109	\$18,778.00	\$1,492.00	\$17,286.00
LAWRENCE	57	224	115	109	\$19,292.00	\$0.00	\$19,292.00

**TABLE 1  
OWF UNEMPLOYED  
MAY 2003**

OHIO COUNTY	ASSISTANCE GROUP	RECIPIENTS	ADULTS	CHILDREN	ACTUAL EXPENDITURES		
					GROSS AMOUNT	CANCELLED AMOUNT	NET AMOUNT
STATEWIDE	4,051	16,598	7,734	8,864	\$1,621,919.00	\$45,480.00	\$1,576,439.00
LICKING	60	227	114	113	\$20,828.00	\$2,051.00	\$18,777.00
LOGAN	5	24	10	14	\$2,401.00	\$0.00	\$2,401.00
LORAIN	111	451	206	245	\$45,317.00	\$945.00	\$44,372.00
LUCAS	349	1,424	668	756	\$140,512.00	\$4,215.00	\$136,297.00
MADISON	20	82	38	44	\$7,541.00	\$0.00	\$7,541.00
MAHONING	114	470	220	250	\$41,626.00	\$1,207.00	\$40,419.00
MARION	4	14	7	7	\$1,281.00	\$0.00	\$1,281.00
MEDINA	9	34	18	16	\$4,405.00	\$0.00	\$4,405.00
MEIGS	24	92	46	46	\$10,038.00	\$740.00	\$9,298.00
MERCER	14	63	23	40	\$5,910.00	\$0.00	\$5,910.00
MIAMI	3	14	6	8	\$1,335.00	\$0.00	\$1,335.00
MONROE	17	64	34	30	\$6,405.00	\$0.00	\$6,405.00
MONTGOMERY	25	108	40	68	\$9,922.00	\$0.00	\$9,922.00
MORGAN	0	0	0	0	\$0.00	\$0.00	\$0.00
MORROW	8	31	16	15	\$3,568.00	\$0.00	\$3,568.00
MUSKINGUM	46	178	87	91	\$18,300.00	\$376.00	\$17,924.00
NOBLE	3	10	6	4	\$1,020.00	\$0.00	\$1,020.00
OTTAWA	11	53	21	32	\$4,441.00	\$0.00	\$4,441.00
PAULDING	11	48	22	26	\$3,823.00	\$0.00	\$3,823.00
PERRY	17	73	34	39	\$7,320.00	\$0.00	\$7,320.00
PICKAWAY	51	208	101	107	\$21,050.00	\$373.00	\$20,677.00
PIKE	23	88	44	44	\$8,606.00	\$0.00	\$8,606.00
PORTAGE	12	43	20	23	\$5,603.00	\$772.00	\$4,831.00
PREBLE	6	25	12	13	\$2,333.00	\$0.00	\$2,333.00
PUTNAM	4	15	8	7	\$1,570.00	\$0.00	\$1,570.00
RICHLAND	6	23	10	13	\$2,148.00	\$0.00	\$2,148.00
ROSS	59	246	114	132	\$24,907.00	\$0.00	\$24,907.00
SANDUSKY	13	31	10	21	\$4,189.00	\$0.00	\$4,189.00
SCIOTO	67	272	136	136	\$24,051.00	\$0.00	\$24,051.00
SENECA	1	3	2	1	\$156.00	\$0.00	\$156.00
SHELBY	2	6	2	4	\$1,231.00	\$0.00	\$1,231.00
STARK	290	1,187	574	613	\$122,541.00	\$4,832.00	\$117,709.00
SUMMIT	363	1,478	718	760	\$149,210.00	\$5,278.00	\$143,932.00
TRUMBULL	90	399	178	221	\$40,290.00	\$763.00	\$39,527.00
TUSCARAWAS	60	236	115	121	\$23,302.00	\$285.00	\$23,017.00
UNION	23	96	46	50	\$8,164.00	\$373.00	\$7,791.00
VAN WERT	0	0	0	0	\$0.00	\$0.00	\$0.00
VINTON	11	40	22	18	\$4,328.00	\$0.00	\$4,328.00
WARREN	2	8	4	4	\$207.00	\$0.00	\$207.00
WASHINGTON	0	0	0	0	\$0.00	\$0.00	\$0.00
WAYNE	47	187	91	96	\$21,030.00	\$536.00	\$20,494.00
WILLIAMS	18	79	35	44	\$7,473.00	\$0.00	\$7,473.00
WOOD	23	75	41	34	\$8,904.00	\$461.00	\$8,443.00
WYANDOT	7	22	8	14	\$2,068.00	\$223.00	\$1,845.00

**TABLE 2  
TITLE IV-E FOSTER CARE  
MAY 2003**

OHIO COUNTY	FOSTER CARE						ADOPTION ASSISTANCE		TOTAL FOSTER CARE AND ADOPTION ASSISTANCE	
	FOSTER FAMILY HOMES		CHILD CARE INSTITUTIONS		HOMES & INSTITUTIONS		CHILDREN	GROSS AMOUNT	CHILDREN	GROSS AMOUNT
	CHILDREN	GROSS AMOUNT	CHILDREN	GROSS AMOUNT	CHILDREN	GROSS AMOUNT				
STATEWIDE	3,361	\$1,439,752.89	4,389	\$6,097,375.17	7,750	\$7,537,128.06	17,975	\$6,738,089.48	25,725	\$14,275,217.54
ADAMS	18	\$3,928.50	6	\$10,126.34	24	\$14,054.84	30	\$7,500.00	54	\$21,554.84
ALLEN	78	\$25,108.46	31	\$35,573.89	109	\$60,682.35	133	\$37,610.77	242	\$98,293.12
ASHLAND	0	\$0.00	0	\$0.00	0	\$0.00	10	\$2,475.00	10	\$2,475.00
ASHTABULA	0	\$0.00	5	\$2,790.00	5	\$2,790.00	150	\$52,181.08	155	\$54,971.08
ATHENS	48	\$16,666.32	42	\$43,075.41	90	\$59,741.73	94	\$29,328.50	184	\$89,070.23
AUGLAIZE	12	\$6,119.25	5	\$4,660.08	17	\$10,779.33	36	\$15,312.08	53	\$26,091.41
BELMONT	2	\$711.84	23	\$23,123.98	25	\$23,835.82	109	\$40,726.97	134	\$64,562.79
BROWN	22	\$6,427.81	2	\$1,966.11	24	\$8,393.92	35	\$9,630.18	59	\$18,024.10
BUTLER	133	\$50,397.70	202	\$204,217.38	335	\$254,615.08	482	\$139,343.44	817	\$393,958.52
CARROLL	6	\$4,476.35	0	\$0.00	6	\$4,476.35	5	\$1,250.00	11	\$5,726.35
CHAMPAIGN	1	\$767.13	14	\$27,502.94	15	\$28,270.07	12	\$3,588.28	27	\$31,858.35
CLARK	1	\$1,306.02	67	\$41,294.65	68	\$42,600.67	287	\$90,900.97	355	\$133,501.64
CLERMONT	68	\$17,254.36	71	\$112,694.64	139	\$129,949.00	190	\$49,983.35	329	\$179,932.35
CLINTON	29	\$12,609.77	0	\$0.00	29	\$12,609.77	45	\$14,235.56	74	\$26,845.33
COLUMBIANA	26	\$5,307.04	29	\$46,708.39	55	\$52,015.43	63	\$15,750.00	118	\$67,765.43
COSHOTOXN	18	\$13,582.57	5	\$4,884.33	23	\$18,466.90	39	\$12,103.17	62	\$30,570.07
CRAWFORD	0	\$0.00	0	\$0.00	0	\$0.00	41	\$11,797.90	41	\$11,797.90
CUYAHOGA	771	\$355,755.10	1,358	\$3,062,673.95	2,129	\$3,418,429.05	4,176	\$2,104,010.00	6,305	\$5,522,439.05
DARKE	8	\$2,480.24	4	\$3,565.22	12	\$6,045.46	28	\$8,523.67	40	\$14,569.13
DEFIANCE	8	\$2,924.52	2	\$1,793.95	10	\$4,718.47	35	\$10,603.13	45	\$15,321.60
DELAWARE	17	\$5,689.91	14	\$61,631.17	31	\$67,321.08	64	\$20,000.34	95	\$87,321.42
ERIE	32	\$12,927.10	41	\$64,087.40	73	\$77,014.50	87	\$25,706.17	160	\$102,720.67
FAIRFIELD	0	\$0.00	0	\$0.00	0	\$0.00	120	\$31,850.11	120	\$31,850.11
FAYETTE	8	\$3,194.41	0	\$0.00	8	\$3,194.41	17	\$4,250.00	25	\$7,444.41
FRANKLIN	0	\$0.00	1,191	\$608,089.95	1,191	\$608,089.95	2,265	\$743,916.80	3,456	\$1,352,006.75
FULTON	1	\$255.32	16	\$21,210.84	17	\$21,466.16	16	\$4,147.07	33	\$25,613.23
GALLIA	8	\$2,644.37	12	(\$2,620.53)	20	\$23.84	43	\$10,715.00	63	\$10,738.84
GEAUGA	16	\$5,072.65	14	\$18,059.88	30	\$23,132.53	101	\$34,518.35	131	\$57,650.88
GREENE	0	\$0.00	0	\$0.00	0	\$0.00	81	\$23,245.88	81	\$23,245.88
GUERNSEY	19	\$3,698.21	0	\$0.00	19	\$3,698.21	74	\$23,182.11	93	\$26,880.32
HAMILTON	0	\$0.00	13	\$7,884.73	13	\$7,884.73	1,440	\$601,436.28	1,453	\$609,321.01
HANCOCK	14	\$6,991.47	10	\$10,926.28	24	\$17,917.75	41	\$11,673.06	65	\$29,590.81
HARDIN	14	\$12,601.89	3	\$4,547.44	17	\$17,149.33	31	\$7,351.72	48	\$24,501.05
HARRISON	0	\$0.00	0	\$0.00	0	\$0.00	28	\$9,160.00	28	\$9,160.00
HENRY	0	\$0.00	9	\$11,158.41	9	\$11,158.41	24	\$7,340.12	33	\$18,498.53
HIGHLAND	9	\$1,858.99	7	\$6,228.08	16	\$8,087.07	14	\$5,014.81	30	\$13,101.88
HOCKING	20	\$7,225.60	6	\$5,911.91	26	\$13,137.51	40	\$12,770.18	66	\$25,907.69
HOLMES	3	\$1,379.29	1	\$4,329.56	4	\$5,708.85	31	\$11,891.60	35	\$17,600.45
HURON	24	\$12,659.91	6	\$21,549.10	30	\$34,209.01	23	\$6,684.25	53	\$40,893.26
JACKSON	0	\$0.00	0	\$0.00	0	\$0.00	20	\$5,000.00	20	\$5,000.00
JEFFERSON	39	\$22,012.34	27	\$61,611.94	66	\$83,624.28	51	\$19,501.81	117	\$103,126.09
KNOX	6	\$2,345.52	14	\$13,404.03	20	\$15,749.55	33	\$9,235.39	53	\$24,984.94
LAKE	32	\$15,359.31	25	\$53,912.34	57	\$69,271.65	141	\$37,457.20	198	\$106,728.85
LAWRENCE	8	\$2,170.18	0	\$0.00	8	\$2,170.18	27	\$7,485.37	35	\$9,655.55

SOURCE: GBS003RB Report from Management Information Services. Federal funds only.

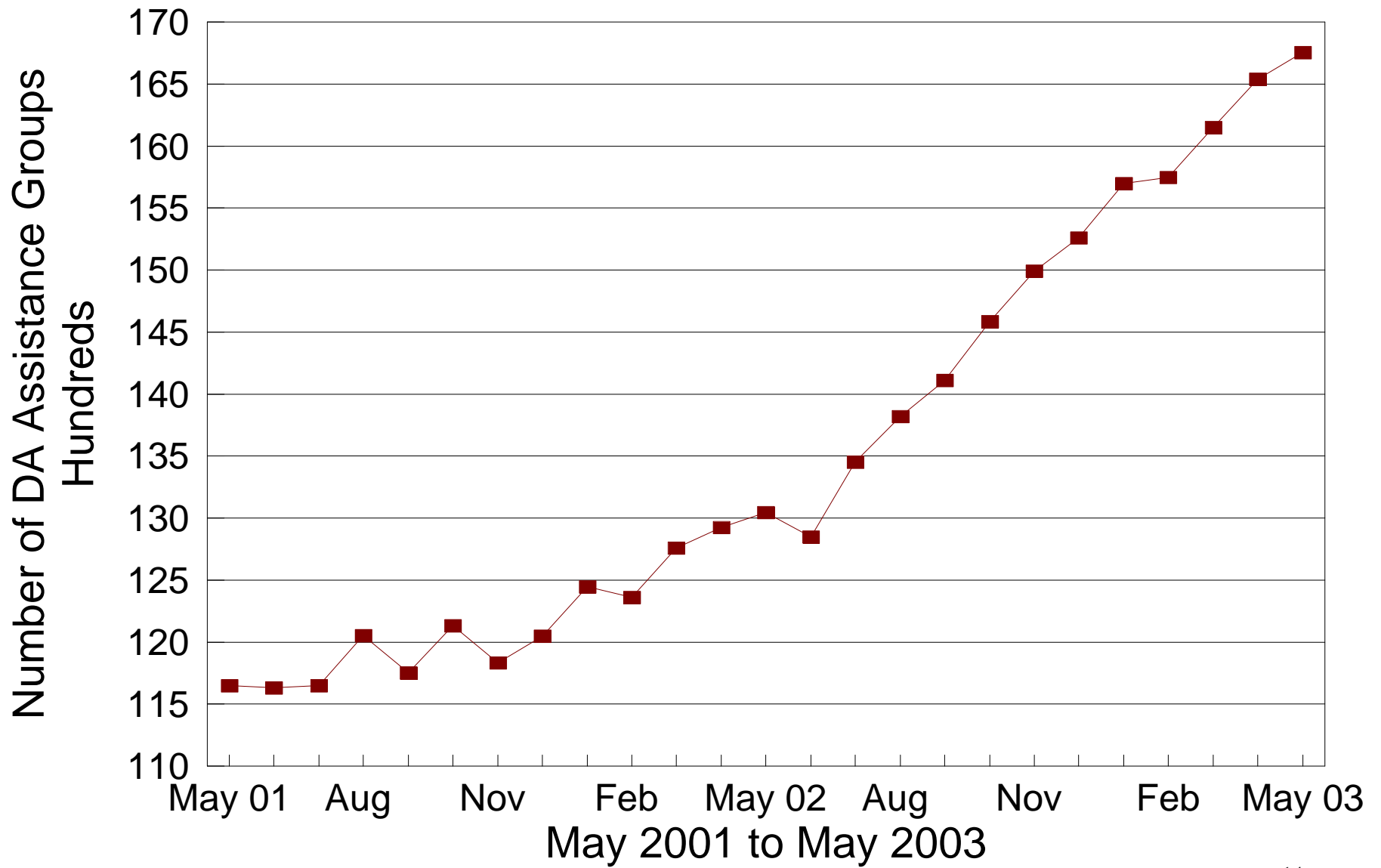
**TABLE 2  
TITLE IV-E FOSTER CARE  
MAY 2003**

OHIO COUNTY	FOSTER CARE						ADOPTION ASSISTANCE		TOTAL FOSTER CARE AND ADOPTION ASSISTANCE	
	FOSTER FAMILY HOMES		CHILD CARE INSTITUTIONS		HOMES & INSTITUTIONS		CHILDREN	GROSS AMOUNT	CHILDREN	GROSS AMOUNT
	CHILDREN	GROSS AMOUNT	CHILDREN	GROSS AMOUNT	CHILDREN	GROSS AMOUNT				
STATEWIDE	3,361	\$1,439,752.89	4,389	\$6,097,375.17	7,750	\$7,537,128.06	17,975	\$6,738,089.48	25,725	\$14,275,217.54
LICKING	108	\$38,144.88	88	\$116,838.81	196	\$154,983.69	285	\$89,208.82	481	\$244,192.51
LOGAN	35	\$10,275.70	4	\$5,092.74	39	\$15,368.44	32	\$9,754.84	71	\$25,123.28
LORAIN	0	\$0.00	0	\$0.00	0	\$0.00	385	\$122,635.34	385	\$122,635.34
LUCAS	484	\$238,820.95	55	\$63,358.80	539	\$302,179.75	1,563	\$566,735.74	2,102	\$868,915.49
MADISON	0	\$0.00	0	\$0.00	0	\$0.00	24	\$7,470.74	24	\$7,470.74
MAHONING	80	\$39,942.83	0	\$0.00	80	\$39,942.83	239	\$67,119.31	319	\$107,062.14
MARION	23	\$16,172.89	5	\$24,013.05	28	\$40,185.94	74	\$23,585.86	102	\$63,771.80
MEDINA	0	\$0.00	0	\$0.00	0	\$0.00	70	\$26,223.40	70	\$26,223.40
MEIGS	4	\$2,573.77	9	\$5,479.50	13	\$8,053.27	1	\$250.00	14	\$8,303.27
MERCER	12	\$7,269.27	2	\$2,523.46	14	\$9,792.73	27	\$7,000.00	41	\$16,792.73
MIAMI	27	\$22,142.31	42	\$18,037.97	69	\$40,180.28	119	\$42,218.28	188	\$82,398.56
MONROE	8	\$4,876.35	1	\$3,767.72	9	\$8,644.07	7	\$2,191.21	16	\$10,835.28
MONTGOMERY	320	\$124,369.46	390	\$495,219.97	710	\$619,589.43	1,053	\$460,422.89	1,763	\$1,080,012.32
MORGAN	0	\$0.00	1	\$867.14	1	\$867.14	13	\$3,234.00	14	\$4,101.14
MORROW	9	\$9,177.43	0	\$0.00	9	\$9,177.43	44	\$11,991.25	53	\$21,168.68
MUSKINGUM	0	\$0.00	0	\$0.00	0	\$0.00	102	\$28,388.44	102	\$28,388.44
NOBLE	2	\$762.42	0	\$0.00	2	\$762.42	6	\$1,500.00	8	\$2,262.42
OTTAWA	0	\$0.00	2	\$2,646.22	2	\$2,646.22	3	\$897.07	5	\$3,543.29
PAULDING	5	\$2,151.82	4	\$3,541.60	9	\$5,693.42	22	\$6,058.87	31	\$11,752.29
PERRY	25	\$13,296.37	9	\$9,302.22	34	\$22,598.59	36	\$12,933.83	70	\$35,532.42
PICKAWAY	23	\$6,912.03	1	\$74.12	24	\$6,986.15	11	\$2,926.48	35	\$9,912.63
PIKE	1	\$729.49	10	\$9,190.95	11	\$9,920.44	21	\$5,602.39	32	\$15,522.83
PORTAGE	0	\$0.00	0	\$0.00	0	\$0.00	116	\$47,350.61	116	\$47,350.61
PREBLE	22	\$16,332.26	12	\$11,097.14	34	\$27,429.40	35	\$8,961.66	69	\$36,391.06
PUTNAM	1	\$638.30	2	\$2,788.00	3	\$3,426.30	11	\$2,750.00	14	\$6,176.30
RICHLAND	0	\$0.00	3	\$409.00	3	\$409.00	250	\$79,919.14	253	\$80,328.14
ROSS	12	\$2,630.18	37	\$34,467.11	49	\$37,097.29	29	\$10,510.73	78	\$47,608.02
SANDUSKY	24	\$8,221.76	17	\$40,809.91	41	\$49,031.67	49	\$12,588.86	90	\$61,620.53
SCIOTO	34	\$15,553.49	25	\$21,561.34	59	\$37,114.83	44	\$12,168.01	103	\$49,282.84
SENECA	16	\$4,906.30	8	\$42,495.32	24	\$47,401.62	82	\$20,488.27	106	\$67,889.89
SHELBY	4	\$364.52	7	\$21,719.09	11	\$22,083.61	59	\$18,827.72	70	\$40,911.33
STARK	0	\$0.00	149	\$53,753.15	149	\$53,753.15	872	\$251,833.32	1,021	\$305,586.47
SUMMIT	270	\$117,942.11	113	\$269,357.15	383	\$387,299.26	780	\$239,700.05	1,163	\$626,999.31
TRUMBULL	117	\$37,174.36	27	\$95,542.46	144	\$132,716.82	252	\$63,124.43	396	\$195,841.25
TUSCARAWAS	31	\$16,323.40	34	\$48,274.02	65	\$64,597.42	113	\$30,441.03	178	\$95,038.45
UNION	11	\$5,977.07	0	\$0.00	11	\$5,977.07	35	\$9,102.98	46	\$15,080.05
VAN WERT	2	\$729.48	0	\$0.00	2	\$729.48	25	\$11,247.44	27	\$11,976.92
VINTON	13	\$5,678.96	6	\$4,739.66	19	\$10,418.62	17	\$4,926.54	36	\$15,345.16
WARREN	39	\$2,558.43	8	\$9,336.92	47	\$11,895.35	91	\$28,019.24	138	\$39,914.59
WASHINGTON	20	\$8,578.40	0	\$0.00	20	\$8,578.40	26	\$7,565.97	46	\$16,144.37
WAYNE	46	\$10,187.20	17	\$28,734.36	63	\$38,921.56	61	\$23,423.01	124	\$62,344.57
WILLIAMS	7	\$1,146.58	7	\$6,715.38	14	\$7,861.96	20	\$5,294.14	34	\$13,156.10
WOOD	3	\$1,148.93	12	\$37,377.98	15	\$38,526.91	47	\$17,627.50	62	\$56,154.41
WYANDOT	4	\$2,133.74	7	\$9,669.12	11	\$11,802.86	12	\$3,482.40	23	\$15,285.26

SOURCE: GBS003RB Report from Management Information Services. Federal funds only.

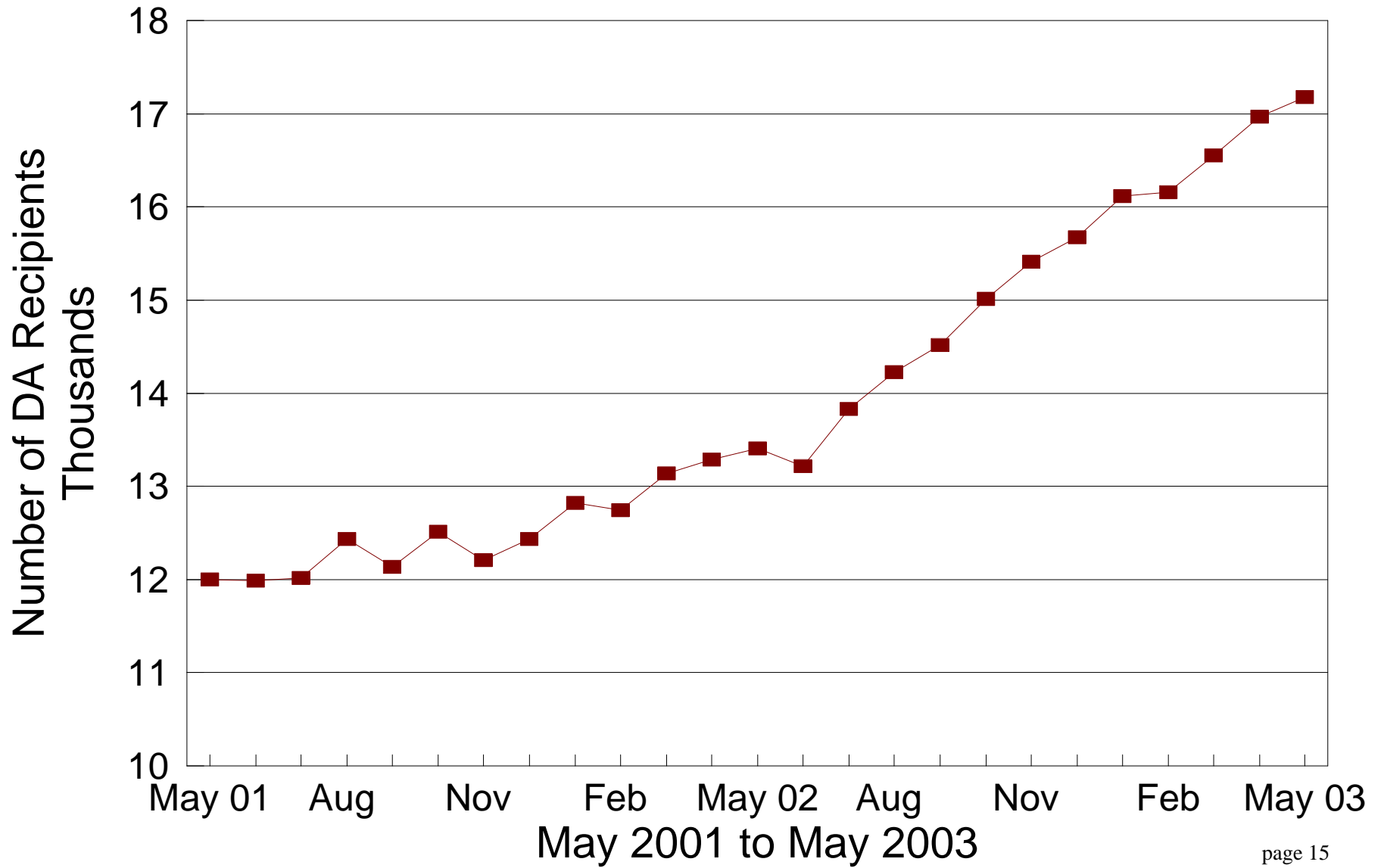
# DA Cash Assistance Groups

During the Last 25 Months



# DA Cash Recipients

During the Last 25 Months



**TABLE 3  
DISABILITY ASSISTANCE (DA)  
MAY 2003**

OHIO COUNTY	CASH ASSISTANCE							MEDICAL ASSISTANCE	
	ASSISTANCE GROUPS	RECIPIENTS	ADULTS	CHILDREN	ACTUAL EXPENDITURES			UNDUPLICATED RECIPIENTS	ACTUAL AMOUNT PAID
					GROSS AMOUNT	CANCELLED AMOUNT	NET AMOUNT		
STATEWIDE	16,755	17,175	16,097	1,078	\$2,272,896.00	\$161,972.00	\$2,110,924.00	21,207	\$7,731,469.51
ADAMS	89	91	90	1	\$12,338.00	\$115.00	\$12,223.00	89	\$27,241.25
ALLEN	100	104	94	10	\$15,228.00	\$768.00	\$14,460.00	101	\$42,071.38
ASHLAND	31	32	32	0	\$6,668.00	\$1,406.00	\$5,262.00	48	\$20,785.35
ASHTABULA	315	323	314	9	\$41,896.00	\$1,497.00	\$40,399.00	227	\$68,570.64
ATHENS	187	191	185	6	\$27,515.00	\$2,021.00	\$25,494.00	155	\$54,069.48
AUGLAIZE	30	30	30	0	\$6,597.00	\$230.00	\$6,367.00	40	\$14,182.18
BELMONT	169	170	167	3	\$21,913.00	\$1,414.00	\$20,499.00	151	\$38,732.96
BROWN	32	32	31	1	\$4,104.00	\$0.00	\$4,104.00	72	\$27,708.59
BUTLER	512	515	506	9	\$64,525.00	\$3,561.00	\$60,964.00	436	\$176,967.05
CARROLL	40	40	36	4	\$6,863.00	\$230.00	\$6,633.00	34	\$12,308.76
CHAMPAIGN	40	41	39	2	\$5,500.00	\$349.00	\$5,151.00	59	\$25,811.49
CLARK	306	308	295	13	\$40,410.00	\$4,835.00	\$35,575.00	473	\$181,636.28
CLERMONT	200	202	195	7	\$26,649.00	\$2,112.00	\$24,537.00	146	\$54,328.23
CLINTON	56	56	56	0	\$6,400.00	\$1,150.00	\$5,250.00	53	\$21,850.62
COLUMBIANA	170	172	167	5	\$25,281.00	\$1,165.00	\$24,116.00	217	\$80,313.85
COSHOCTON	77	78	75	3	\$8,836.00	\$896.00	\$7,940.00	82	\$21,012.30
CRAWFORD	60	60	52	8	\$8,947.00	\$115.00	\$8,832.00	63	\$28,670.93
CUYAHOGA	2,532	2,601	2,469	132	\$319,862.00	\$32,557.00	\$287,305.00	3,822	\$1,168,256.00
DARKE	34	37	33	4	\$4,147.00	\$297.00	\$3,850.00	27	\$6,859.62
DEFIANCE	20	20	19	1	\$2,717.00	\$0.00	\$2,717.00	50	\$20,031.34
DELAWARE	69	72	70	2	\$9,449.00	\$230.00	\$9,219.00	106	\$44,043.46
ERIE	63	64	59	5	\$13,232.00	\$1,121.00	\$12,111.00	115	\$31,646.42
FAIRFIELD	140	148	136	12	\$17,276.00	\$404.00	\$16,872.00	134	\$58,919.85
FAYETTE	31	33	33	0	\$3,984.00	\$345.00	\$3,639.00	57	\$23,315.30
FRANKLIN	1,545	1,607	1,489	118	\$200,930.00	\$16,491.00	\$184,439.00	2,014	\$833,402.67
FULTON	20	20	20	0	\$2,300.00	\$0.00	\$2,300.00	38	\$11,577.03
GALLIA	57	58	58	0	\$7,189.00	\$0.00	\$7,189.00	134	\$65,197.97
GEAUGA	24	25	25	0	\$3,178.00	\$0.00	\$3,178.00	23	\$10,205.18
GREENE	198	199	197	2	\$23,645.00	\$1,696.00	\$21,949.00	273	\$94,753.08
GUERNSEY	133	136	134	2	\$23,104.00	\$575.00	\$22,529.00	104	\$33,522.68
HAMILTON	1,108	1,148	963	185	\$156,288.00	\$18,789.00	\$137,499.00	884	\$287,463.70
HANCOCK	50	52	47	5	\$7,119.00	\$115.00	\$7,004.00	94	\$38,212.48
HARDIN	23	23	22	1	\$3,117.00	\$230.00	\$2,887.00	37	\$15,678.88
HARRISON	42	45	44	1	\$5,101.00	\$230.00	\$4,871.00	41	\$10,427.24
HENRY	11	11	11	0	\$2,043.00	\$0.00	\$2,043.00	25	\$9,934.15
HIGHLAND	69	69	67	2	\$10,272.00	\$345.00	\$9,927.00	95	\$38,407.11
HOCKING	44	45	43	2	\$6,925.00	\$318.00	\$6,607.00	57	\$23,457.17
HOLMES	42	43	43	0	\$4,787.00	\$0.00	\$4,787.00	20	\$5,936.69
HURON	49	50	50	0	\$6,462.00	\$0.00	\$6,462.00	85	\$31,670.15
JACKSON	103	103	103	0	\$14,024.00	\$460.00	\$13,564.00	90	\$38,818.47
JEFFERSON	176	180	173	7	\$24,854.00	\$927.00	\$23,927.00	254	\$76,923.67
KNOX	79	80	77	3	\$11,968.00	\$190.00	\$11,778.00	88	\$34,649.36
LAKE	230	236	229	7	\$28,663.00	\$3,379.00	\$25,284.00	214	\$67,194.53
LAWRENCE	116	117	114	3	\$16,343.00	\$354.00	\$15,989.00	167	\$70,830.60

\*SOURCE: GRP342RA Report from Management Information Services and BOMC 9260-R001 Report from Medicaid Management Information Services.



**TABLE 3  
DISABILITY ASSISTANCE (DA)  
MAY 2003**

OHIO COUNTY	CASH ASSISTANCE							MEDICAL ASSISTANCE	
	ASSISTANCE GROUPS	RECIPIENTS	ADULTS	CHILDREN	ACTUAL EXPENDITURES			UNDUPLICATED RECIPIENTS	ACTUAL AMOUNT PAID
					GROSS AMOUNT	CANCELLED AMOUNT	NET AMOUNT		
STATEWIDE	16,755	17,175	16,097	1,078	\$2,272,896.00	\$161,972.00	\$2,110,924.00	21,207	\$7,731,469.51
LICKING	198	200	193	7	\$27,273.00	\$460.00	\$26,813.00	212	\$81,840.07
LOGAN	32	32	32	0	\$6,447.00	\$115.00	\$6,332.00	87	\$31,334.94
LORAIN	332	341	294	47	\$48,454.00	\$2,696.00	\$45,758.00	500	\$185,527.07
LUCAS	774	796	739	57	\$124,345.00	\$7,330.00	\$117,015.00	1,288	\$462,233.46
MADISON	33	33	33	0	\$4,541.00	\$556.00	\$3,985.00	64	\$27,048.87
MAHONING	526	536	500	36	\$69,311.00	\$5,360.00	\$63,951.00	772	\$271,159.57
MARION	117	119	108	11	\$17,258.00	\$968.00	\$16,290.00	92	\$38,922.77
MEDINA	93	96	87	9	\$12,866.00	\$460.00	\$12,406.00	100	\$46,877.18
MEIGS	84	84	82	2	\$10,828.00	\$0.00	\$10,828.00	108	\$39,564.51
MERCER	37	37	36	1	\$6,456.00	\$0.00	\$6,456.00	28	\$7,030.15
MIAMI	62	62	62	0	\$8,737.00	\$0.00	\$8,737.00	66	\$21,709.17
MONROE	18	18	18	0	\$1,928.00	\$0.00	\$1,928.00	44	\$16,487.50
MONTGOMERY	654	680	597	83	\$88,075.00	\$7,220.00	\$80,855.00	1,362	\$625,545.84
MORGAN	55	55	54	1	\$7,171.00	\$230.00	\$6,941.00	36	\$10,863.01
MORROW	20	20	20	0	\$2,240.00	\$0.00	\$2,240.00	81	\$37,816.02
MUSKINGUM	283	286	281	5	\$37,408.00	\$2,933.00	\$34,475.00	188	\$64,067.90
NOBLE	19	19	19	0	\$2,280.00	\$204.00	\$2,076.00	20	\$10,342.19
OTTAWA	31	31	29	2	\$3,311.00	\$0.00	\$3,311.00	44	\$12,635.27
PAULDING	32	32	32	0	\$4,169.00	\$394.00	\$3,775.00	24	\$6,720.90
PERRY	68	71	65	6	\$9,029.00	\$412.00	\$8,617.00	86	\$34,182.01
PICKAWAY	69	70	68	2	\$9,544.00	\$1,342.00	\$8,202.00	89	\$34,503.50
PIKE	73	74	69	5	\$10,290.00	\$60.00	\$10,230.00	91	\$32,378.98
PORTAGE	158	158	153	5	\$19,838.00	\$2,905.00	\$16,933.00	119	\$38,443.57
PREBLE	27	28	28	0	\$3,149.00	\$460.00	\$2,689.00	44	\$12,851.48
PUTNAM	14	14	14	0	\$3,078.00	\$142.00	\$2,936.00	23	\$10,156.31
RICHLAND	229	235	222	13	\$28,209.00	\$1,165.00	\$27,044.00	183	\$57,082.25
ROSS	132	134	129	5	\$18,778.00	\$1,145.00	\$17,633.00	159	\$50,792.17
SANDUSKY	48	48	46	2	\$5,724.00	\$0.00	\$5,724.00	61	\$18,284.04
SCIOTO	291	294	279	15	\$38,676.00	\$2,146.00	\$36,530.00	209	\$67,062.99
SENECA	63	69	61	8	\$7,971.00	\$115.00	\$7,856.00	94	\$21,540.32
SHELBY	25	27	22	5	\$3,218.00	\$0.00	\$3,218.00	59	\$24,248.29
STARK	695	717	647	70	\$90,768.00	\$7,686.00	\$83,082.00	544	\$200,786.50
SUMMIT	849	880	814	66	\$133,187.00	\$7,669.00	\$125,518.00	1,679	\$611,988.34
TRUMBULL	424	430	412	18	\$52,635.00	\$1,265.00	\$51,370.00	338	\$118,406.82
TUSCARAWAS	107	108	107	1	\$13,539.00	\$748.00	\$12,791.00	126	\$43,597.38
UNION	32	35	31	4	\$3,730.00	\$230.00	\$3,500.00	37	\$12,890.80
VAN WERT	12	12	12	0	\$1,486.00	\$0.00	\$1,486.00	10	\$2,325.31
VINTON	40	40	39	1	\$6,368.00	\$115.00	\$6,253.00	66	\$25,073.74
WARREN	63	64	62	2	\$9,093.00	\$460.00	\$8,633.00	114	\$59,530.27
WASHINGTON	112	113	111	2	\$14,652.00	\$115.00	\$14,537.00	79	\$28,897.15
WAYNE	286	290	284	6	\$33,363.00	\$2,783.00	\$30,580.00	182	\$100,498.03
WILLIAMS	33	34	33	1	\$4,150.00	\$575.00	\$3,575.00	62	\$21,913.58
WOOD	71	73	68	5	\$9,280.00	\$591.00	\$8,689.00	113	\$42,341.26
WYANDOT	12	13	13	0	\$1,394.00	\$0.00	\$1,394.00	30	\$16,371.89
UNKNOWN									\$0.00

\*SOURCE: GRP342RA Report from Management Information Services and BOMC 9260-R001 Report from Medicaid Management Information Services.

**TABLE 3-A  
DA PAYMENTS FOR MEDICAL SERVICES  
MAY 2003**

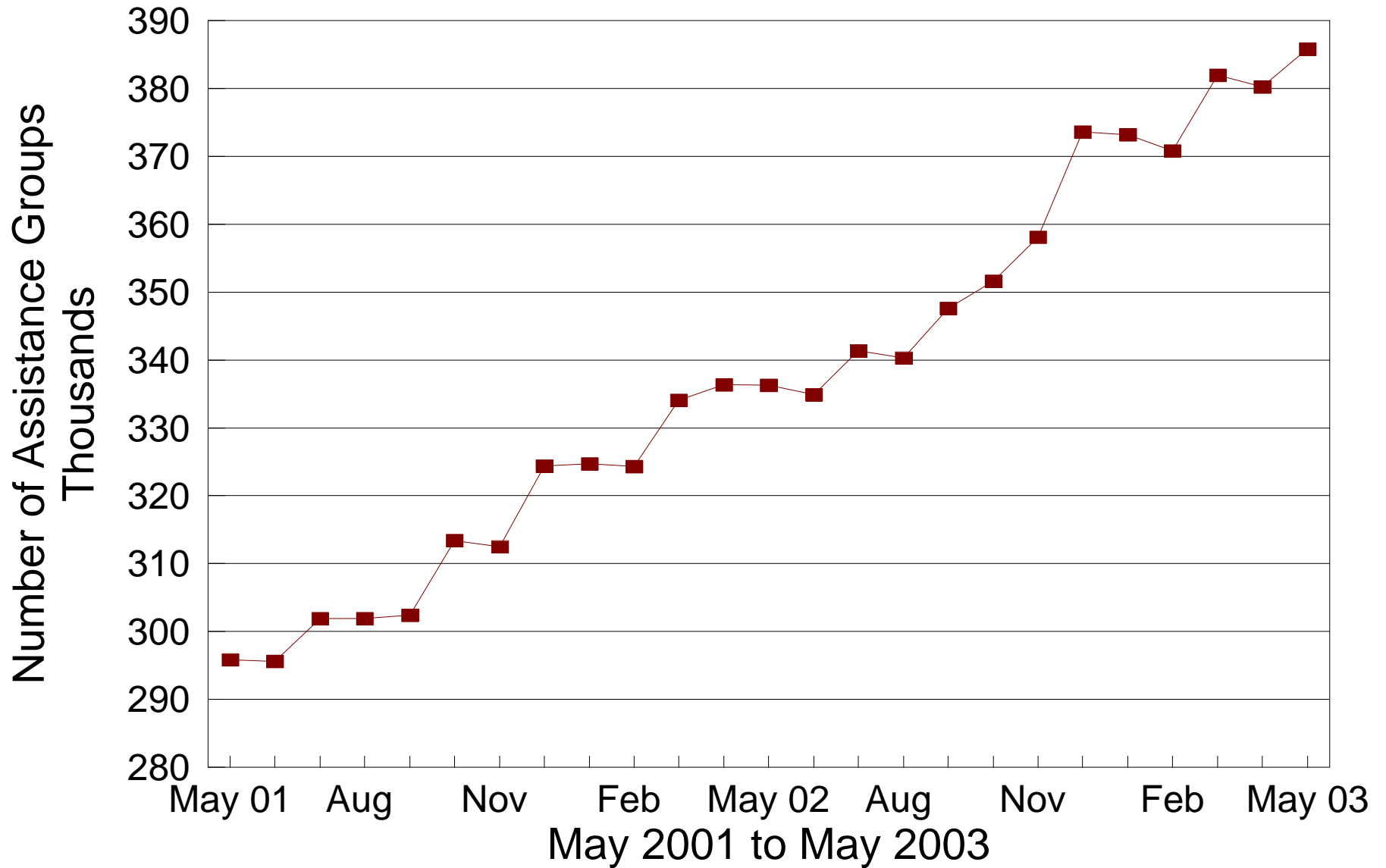
CATEGORY OF SERVICES	DISABILITY ASSISTANCE			
	PAYMENTS	CLAIM FREQUENCY	DUPLICATED RECIPIENTS	PERCENT OF TOTAL
AMBULANCE SERVICES	\$0.00	0	0	0.0%
AMBULATORY SURGERY	\$33,576.46	83	79	0.4%
AMBULETTE SERVICES	\$0.00	0	0	0.0%
CHIROPRACTER SERVICES	\$0.00	0	0	0.0%
CLINIC	\$165,873.38	2,179	989	2.1%
DENTAL SERVICES	\$40,004.06	412	348	0.5%
EPSDT	\$0.00	0	0	0.0%
FAMILY PLANNING	\$4,118.56	81	61	0.1%
FEDERALLY QUALIFIED HEALTH CTR	\$0.00	1	1	0.0%
HEALTH MAINTENANCE ORGANIZATION	\$0.00	0	0	0.0%
HOME HEALTH SERVICES	\$0.00	0	0	0.0%
INDEPENDENT LABORATORY	\$71,454.69	1,708	1,182	0.9%
INPATIENT HOSPITAL	\$0.00	0	0	0.0%
ICF	\$0.00	0	0	0.0%
MIDWIFERY SERVICES	\$8,220.86	268	227	0.1%
OPTOMETRIC SERVICES	\$0.00	0	0	0.0%
OUTPATIENT HEALTH SERVICES	\$0.00	0	0	0.0%
PASSPORT WAIVER III	\$0.00	0	0	0.0%
OUTPATIENT HOSPITAL GENERAL	\$0.00	0	0	0.0%
PHYSICAL THERAPY SERVICES	\$0.00	0	0	0.0%
PHYSICIAN SERVICES	\$2,052,963.88	28,762	11,821	26.6%
PHYSIOLOGICAL LABORATORY	\$16,695.10	68	62	0.2%
PODIATRISTS THERAPY	\$27,891.42	471	342	0.4%
PRESCRIBED DRUGS	\$5,172,710.09	90,780	18,779	66.9%
PRIVATE DUTY NURSING SERVICES	\$0.00	0	0	0.0%
PSYCHOLOGY SERVICES	\$0.00	0	0	0.0%
RURAL HEALTH SERVICES	\$0.00	1	1	0.0%
SNF	\$0.00	0	0	0.0%
SUPPLIES AND MEDICAL EQUIPMENT	\$113,113.55	2,266	1,262	1.5%
WAIVERED SERVICES	\$24,847.46	218	218	0.3%
OTHER	\$0.00	0	0	0.0%
<b>STATEWIDE TOTAL</b>	<b>\$7,731,469.51</b>	<b>127,298</b>	<b>35,372</b>	<b>100.0%</b>

SOURCE: BOMC 9260 Report from Medicaid Management Information Services.

NOTE: Recipients are unduplicated within Category of Services, however, the Statewide Total represents a duplicated count.

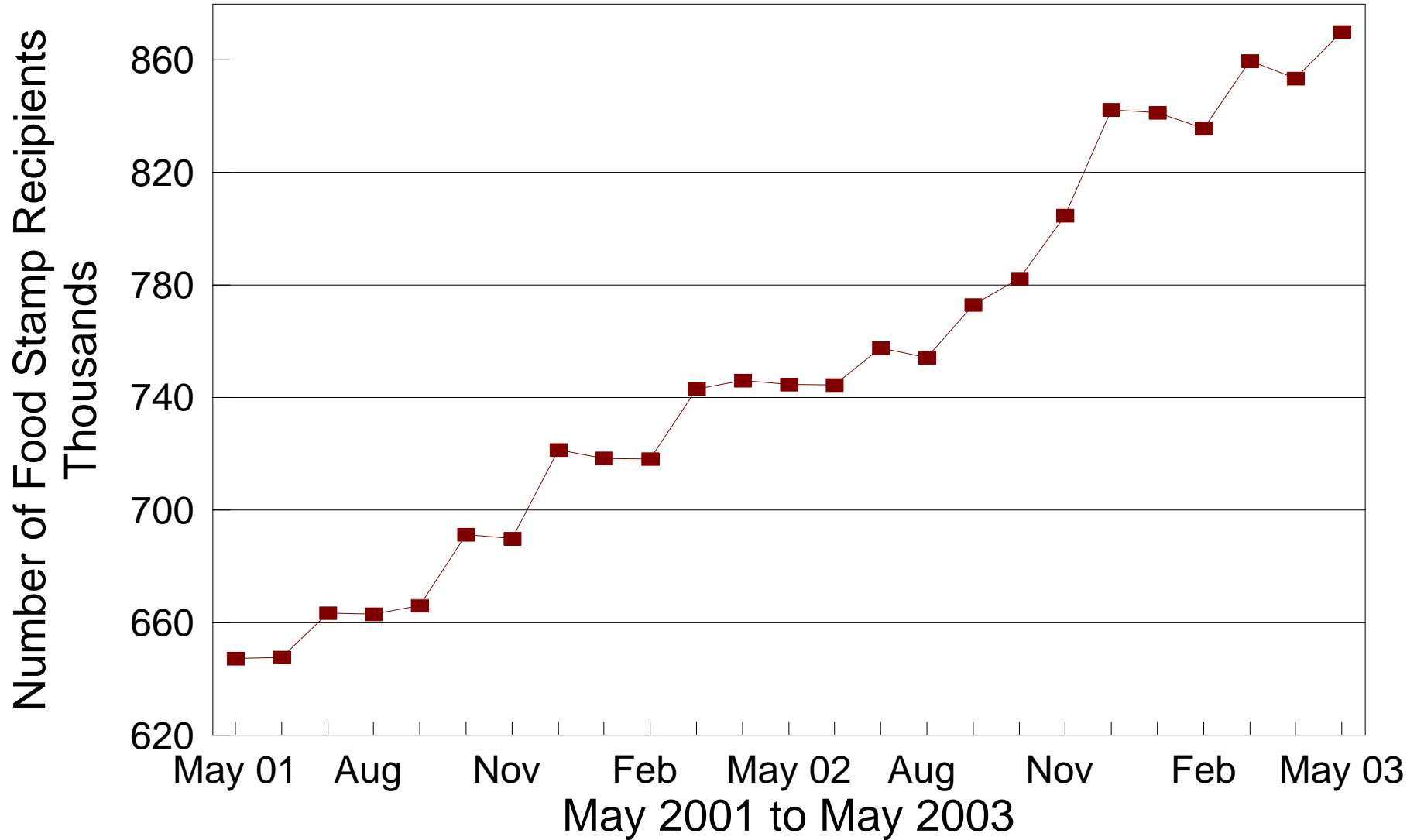
# Number of FNS Benefits Assist. Groups

During the Last 25 Months



# Number of FNS Benefits Recipients

During the Last 25 Months



**TABLE 5  
FNS BENEFITS  
MAY 2003**

OHIO COUNTY	PERSONS					ASSISTANCE GROUPS			TOTAL COUPONS ISSUED
	PUBLIC ASSISTANCE	NON-PUBLIC ASSISTANCE	TOTAL	AVERAGE ISSUANCE	% CHANGE PREV. MO.	PUBLIC ASSISTANCE	NON-PUBLIC ASSISTANCE	TOTAL	
STATEWIDE	112,164	758,015	870,179	\$85	2.0%	39,509	346,284	385,793	\$73,740,366
ADAMS	93	3,897	3,990	\$77	2.9%	34	1,637	1,671	\$305,907
ALLEN	475	6,821	7,296	\$86	1.3%	168	3,001	3,169	\$629,100
ASHLAND	103	2,181	2,284	\$84	3.6%	35	897	932	\$191,256
ASHTABULA	1,009	8,343	9,352	\$83	0.9%	371	3,840	4,211	\$779,207
ATHENS	1,003	5,410	6,413	\$78	0.8%	347	2,690	3,037	\$502,765
AUGLAIZE	24	1,481	1,505	\$86	2.5%	9	644	653	\$129,270
BELMONT	692	6,321	7,013	\$73	0.6%	234	2,900	3,134	\$509,092
BROWN	56	3,000	3,056	\$79	1.4%	18	1,255	1,273	\$242,472
BUTLER	2,289	16,248	18,537	\$88	3.5%	846	7,703	8,549	\$1,638,652
CARROLL	122	1,853	1,975	\$78	-0.4%	43	766	809	\$154,987
CHAMPAIGN	298	1,720	2,018	\$81	1.9%	98	777	875	\$164,303
CLARK	1,807	12,192	13,999	\$85	0.4%	642	5,706	6,348	\$1,187,163
CLERMONT	710	6,627	7,337	\$85	-0.4%	257	2,858	3,115	\$622,723
CLINTON	148	2,126	2,274	\$81	-1.0%	60	992	1,052	\$184,713
COLUMBIANA	584	9,536	10,120	\$80	1.5%	221	3,988	4,209	\$812,785
COSHOCTON	367	2,670	3,037	\$80	-0.3%	134	1,199	1,333	\$242,292
CRAWFORD	353	3,359	3,712	\$78	2.5%	118	1,454	1,572	\$290,620
CUYAHOGA	16,924	137,198	154,122	\$87	2.2%	5,983	64,792	70,775	\$13,369,549
DARKE	207	1,486	1,693	\$76	5.0%	71	670	741	\$128,927
DEFIANCE	88	1,845	1,933	\$83	2.0%	32	776	808	\$160,221
DELAWARE	397	2,914	3,311	\$85	3.8%	130	1,342	1,472	\$282,343
ERIE	128	4,341	4,469	\$83	2.7%	44	1,857	1,901	\$372,436
FAIRFIELD	828	5,721	6,549	\$83	0.6%	279	2,614	2,893	\$540,713
FAYETTE	138	1,946	2,084	\$80	1.9%	53	898	951	\$167,315
FRANKLIN	15,281	80,475	95,756	\$89	2.3%	5,229	35,795	41,024	\$8,560,911
FULTON	56	1,409	1,465	\$75	3.3%	19	581	600	\$109,674
GALLIA	734	3,815	4,549	\$77	1.4%	248	1,823	2,071	\$350,485
GEAUGA	84	1,154	1,238	\$81	2.7%	29	511	540	\$99,918
GREENE	987	6,409	7,396	\$85	1.6%	375	2,936	3,311	\$625,286
GUERNSEY	140	4,663	4,803	\$78	2.5%	51	2,056	2,107	\$373,223
HAMILTON	11,217	46,044	57,261	\$88	2.4%	3,841	20,762	24,603	\$5,064,358
HANCOCK	264	2,457	2,721	\$84	4.2%	101	1,122	1,223	\$228,963
HARDIN	30	1,512	1,542	\$79	4.5%	11	685	696	\$122,507
HARRISON	106	1,456	1,562	\$73	0.2%	36	674	710	\$114,323
HENRY	67	867	934	\$77	-6.7%	20	360	380	\$71,696
HIGHLAND	77	3,188	3,265	\$78	2.7%	25	1,341	1,366	\$255,961
HOCKING	398	2,272	2,670	\$75	2.5%	133	1,011	1,144	\$200,515
HOLMES	32	978	1,010	\$73	1.4%	12	389	401	\$73,541
HURON	57	3,520	3,577	\$78	1.3%	18	1,456	1,474	\$279,976
JACKSON	494	4,021	4,515	\$78	5.1%	181	1,915	2,096	\$352,385
JEFFERSON	1,207	6,821	8,028	\$79	-0.3%	407	3,267	3,674	\$634,624
KNOX	374	2,865	3,239	\$81	0.0%	125	1,327	1,452	\$261,012
LAKE	897	7,607	8,504	\$92	1.2%	334	3,565	3,899	\$780,082
LAWRENCE	666	9,332	9,998	\$76	1.2%	241	4,412	4,653	\$755,282

Source: CRIS-E GRP304RA and GRP 304RC Reports from Management Information Services. Cuyahoga County data also comes from the GRP 342 RA.

**TABLE 5  
FNS BENEFITS  
MAY 2003**

OHIO COUNTY	PERSONS					ASSISTANCE GROUPS			TOTAL COUPONS ISSUED
	PUBLIC ASSISTANCE	NON-PUBLIC ASSISTANCE	TOTAL	AVERAGE ISSUANCE	% CHANGE PREV. MO.	PUBLIC ASSISTANCE	NON-PUBLIC ASSISTANCE	TOTAL	
STATEWIDE	112,164	758,015	870,179	\$85	2.0%	39,509	346,284	385,793	\$73,740,366
LICKING	1,079	7,402	8,481	\$86	1.9%	392	3,449	3,841	\$727,970
LOGAN	198	2,416	2,614	\$84	0.3%	72	1,046	1,118	\$219,778
LORAIN	3,078	19,799	22,877	\$84	1.7%	1,054	8,044	9,098	\$1,924,887
LUCAS	8,460	41,403	49,863	\$85	1.9%	3,006	19,448	22,454	\$4,251,692
MADISON	321	1,682	2,003	\$83	3.8%	109	811	920	\$167,030
MAHONING	3,666	22,179	25,845	\$83	2.8%	1,294	10,504	11,798	\$2,154,452
MARION	251	4,983	5,234	\$77	1.1%	99	2,268	2,367	\$403,940
MEDINA	331	3,262	3,593	\$84	2.3%	125	1,481	1,606	\$301,503
MEIGS	271	3,438	3,709	\$78	0.4%	98	1,537	1,635	\$290,437
MERCER	89	1,116	1,205	\$80	-1.7%	32	513	545	\$96,013
MIAMI	399	3,297	3,696	\$79	4.3%	136	1,540	1,676	\$290,750
MONROE	133	1,369	1,502	\$69	0.1%	44	613	657	\$104,279
MONTGOMERY	7,458	35,107	42,565	\$87	3.5%	2,645	16,249	18,894	\$3,714,007
MORGAN	38	1,629	1,667	\$74	-2.2%	15	717	732	\$122,637
MORROW	146	2,047	2,193	\$80	1.1%	55	884	939	\$174,458
MUSKINGUM	966	9,950	10,916	\$81	1.5%	361	4,413	4,774	\$885,005
NOBLE	29	952	981	\$74	-3.7%	11	437	448	\$72,811
OTTAWA	208	1,375	1,583	\$87	0.3%	80	619	699	\$137,414
PAULDING	126	1,032	1,158	\$81	4.3%	45	462	507	\$94,162
PERRY	311	3,702	4,013	\$76	3.9%	108	1,597	1,705	\$306,468
PICKAWAY	543	3,345	3,888	\$82	-0.4%	180	1,567	1,747	\$317,578
PIKE	457	4,174	4,631	\$77	0.3%	156	1,823	1,979	\$354,560
PORTAGE	825	5,589	6,414	\$88	1.9%	325	2,623	2,948	\$567,003
PREBLE	159	1,535	1,694	\$84	0.1%	59	658	717	\$141,616
PUTNAM	118	919	1,037	\$78	5.5%	39	418	457	\$81,025
RICHLAND	657	8,792	9,449	\$82	1.2%	229	3,915	4,144	\$771,208
ROSS	1,057	6,868	7,925	\$82	-0.4%	371	3,032	3,403	\$646,804
SANDUSKY	194	2,713	2,907	\$87	2.6%	71	1,196	1,267	\$251,508
SCIOTO	915	12,348	13,263	\$76	0.2%	324	5,924	6,248	\$1,007,920
SENECA	150	2,915	3,065	\$82	-1.3%	51	1,291	1,342	\$249,884
SHELBY	137	1,664	1,801	\$84	0.1%	47	695	742	\$151,680
STARK	4,664	21,084	25,748	\$86	2.3%	1,646	9,443	11,089	\$2,203,688
SUMMIT	8,142	35,802	43,944	\$88	1.4%	2,945	17,086	20,031	\$3,857,620
TRUMBULL	1,791	15,179	16,970	\$82	2.4%	626	6,417	7,043	\$1,385,709
TUSCARAWAS	600	5,405	6,005	\$79	2.5%	205	2,401	2,606	\$474,037
UNION	310	1,302	1,612	\$86	2.5%	97	607	704	\$138,791
VAN WERT	31	784	815	\$78	0.9%	11	373	384	\$63,564
VINTON	178	1,892	2,070	\$73	1.0%	63	845	908	\$151,670
WARREN	210	3,004	3,214	\$85	5.3%	90	1,338	1,428	\$273,483
WASHINGTON	38	4,511	4,549	\$77	1.2%	17	2,105	2,122	\$349,636
WAYNE	707	4,803	5,510	\$82	2.3%	250	2,240	2,490	\$452,760
WILLIAMS	271	1,569	1,840	\$84	2.0%	97	707	804	\$154,555
WOOD	416	3,016	3,432	\$84	2.1%	156	1,403	1,559	\$286,701
WYANDOT	25	561	586	\$75	0.3%	10	301	311	\$44,140

Source: CRIS-E GRP304RA and GRP 304RC Reports from Management Information Services. Cuyahoga County data also comes from the GRP 342 RA.

Table 6A  
May 2003  
Medicaid Eligibles

County	Aged	Blind	Disabled	ABD Total	OWF & Related	Healthy Start	CFC Total	Total Medicaid	Foster Care	Adoption Assistance	Transitional	Nursing Facilities
STATEWIDE	130,602	884	228,134	359,620	908,726	243,016	1,151,742	1,511,362	11,418	17,333	111,599	55,321
ADAMS	753	4	1,350	2,107	4,034	1,131	5,165	7,272	38	31	666	135
ALLEN	1,122	5	1,968	3,095	7,877	2,337	10,214	13,309	119	131	820	547
ASHLAND	529	2	548	1,079	3,048	1,249	4,297	5,376	4	13	555	285
ASHTABULA	1,456	10	2,840	4,306	9,762	3,053	12,815	17,121	62	138	1,483	1,021
ATHENS	774	16	1,956	2,746	6,245	1,268	7,513	10,259	94	94	939	186
AUGLAIZE	387	3	422	812	2,065	837	2,902	3,714	18	39	376	250
BELMONT	1,357	6	2,067	3,430	7,010	1,580	8,590	12,020	63	105	1,099	585
BROWN	679	0	973	1,652	3,955	1,330	5,285	6,937	18	37	561	224
BUTLER	2,665	21	5,284	7,970	20,241	5,456	25,697	33,667	324	430	2,368	1,282
CARROLL	349	2	546	897	2,441	733	3,174	4,071	5	4	470	181
CHAMPAIGN	495	0	576	1,071	2,247	957	3,204	4,275	20	17	318	268
CLARK	1,874	7	3,626	5,507	14,139	3,345	17,484	22,991	179	275	1,858	1,057
CLERMONT	1,303	4	2,480	3,787	9,971	3,917	13,888	17,675	144	184	1,403	721
CLINTON	487	4	731	1,222	2,845	964	3,809	5,031	31	42	471	161
COLUMBIANA	1,454	12	2,514	3,980	10,711	3,237	13,948	17,928	72	77	1,574	656
COSHOCTON	535	1	874	1,410	3,242	1,072	4,314	5,724	29	39	594	280
CRAWFORD	574	9	893	1,476	4,254	1,157	5,411	6,887	49	41	839	233
CUYAHOGA	21,447	162	34,059	55,668	147,198	32,304	179,502	235,170	2,688	3,995	14,565	7,600
DARKE	549	1	612	1,162	2,431	1,024	3,455	4,617	19	34	372	348
DEFIANCE	337	3	515	855	2,432	874	3,306	4,161	10	33	356	178
DELAWARE	683	4	929	1,616	3,962	1,260	5,222	6,838	31	60	667	316
ERIE	763	4	1,085	1,852	5,376	1,544	6,920	8,772	88	80	803	394
FAIRFIELD	1,095	4	1,639	2,738	7,071	2,470	9,541	12,279	54	125	952	431
FAYETTE	556	2	756	1,314	2,549	865	3,414	4,728	9	17	437	309
FRANKLIN	10,141	91	21,238	31,470	101,360	23,807	125,167	156,637	1,779	2,048	9,884	3,826
FULTON	383	1	341	725	1,968	838	2,806	3,531	16	27	316	207
GALLIA	821	2	1,537	2,360	4,202	899	5,101	7,461	21	36	471	202
GEAUGA	633	3	442	1,078	1,869	852	2,721	3,799	18	105	304	375
GREENE	1,154	8	1,697	2,859	8,258	2,198	10,456	13,315	82	101	1,356	572
GUERNSEY	764	5	1,403	2,172	5,177	1,625	6,802	8,974	34	66	761	181
HAMILTON	9,503	80	17,121	26,704	61,902	17,455	79,357	106,061	924	1,356	5,726	3,999
HANCOCK	558	2	749	1,309	3,280	1,307	4,587	5,896	29	34	566	270
HARDIN	347	2	541	890	1,977	815	2,792	3,682	17	30	288	138
HARRISON	287	0	464	751	1,425	510	1,935	2,686	2	26	240	139
HENRY	220	0	289	509	1,506	680	2,186	2,695	14	24	270	123
HIGHLAND	735	1	1,008	1,744	4,249	1,556	5,805	7,549	26	14	789	239
HOCKING	434	4	762	1,200	2,925	1,076	4,001	5,201	28	39	403	157
HOLMES	459	2	448	909	1,455	619	2,074	2,983	4	30	276	439
HURON	503	2	804	1,309	4,549	1,598	6,147	7,456	34	27	778	190
JACKSON	764	2	1,413	2,179	4,299	1,216	5,515	7,694	21	19	662	201
JEFFERSON	1,129	16	2,378	3,523	7,299	1,363	8,662	12,185	86	66	844	400
KNOX	631	2	1,184	1,817	3,655	1,490	5,145	6,962	25	30	768	538
LAKE	1,572	3	2,262	3,837	9,342	3,045	12,387	16,224	66	133	1,550	1,088
LAWRENCE	1,475	9	3,481	4,965	8,667	2,114	10,781	15,746	56	28	1,063	359

Table 6A  
May 2003  
Medicaid Eligibles

County	Aged	Blind	Disabled	ABD Total	OWF & Related	Healthy Start	CFC Total	Total Medicaid	Foster Care	Adoption Assistance	Transitional	Nursing Facilities
STATEWIDE	130,602	884	228,134	359,620	908,726	243,016	1,151,742	1,511,362	11,418	17,333	111,599	55,321
LICKING	1,321	4	2,313	3,638	10,098	3,321	13,419	17,057	180	275	1,423	596
LOGAN	521	2	601	1,124	3,332	955	4,287	5,411	23	35	584	201
LORAIN	2,615	21	4,721	7,357	23,189	5,260	28,449	35,806	96	381	2,919	1,294
LUCAS	5,418	43	12,826	18,287	46,456	11,022	57,478	75,765	470	1,419	4,453	1,956
MADISON	352	2	557	911	2,049	802	2,851	3,762	13	23	307	143
MAHONING	3,676	22	6,632	10,330	25,201	4,922	30,123	40,453	134	244	2,787	1,556
MARION	769	6	1,717	2,492	5,239	1,723	6,962	9,454	40	77	776	260
MEDINA	861	12	1,141	2,014	5,156	1,919	7,075	9,089	28	63	817	615
MEIGS	530	4	1,045	1,579	3,472	721	4,193	5,772	13	1	576	130
MERCER	342	1	447	790	1,539	614	2,153	2,943	14	25	300	209
MIAMI	925	8	1,210	2,143	4,488	1,928	6,416	8,559	56	126	676	461
MONROE	275	3	416	694	1,477	398	1,875	2,569	11	9	276	91
MONTGOMERY	5,826	40	11,758	17,624	44,594	10,216	54,810	72,434	793	1,104	4,532	2,352
MORGAN	261	1	490	752	1,937	575	2,512	3,264	13	15	303	93
MORROW	365	2	552	919	2,754	857	3,611	4,530	11	48	502	159
MUSKINGUM	1,323	12	2,617	3,952	9,699	2,346	12,045	15,997	71	113	1,363	488
NOBLE	226	0	233	459	1,020	513	1,533	1,992	3	9	201	84
OTTAWA	394	1	488	883	2,053	746	2,799	3,682	2	3	370	203
PAULDING	170	0	369	539	1,266	411	1,677	2,216	7	18	196	44
PERRY	483	5	1,024	1,512	4,154	1,234	5,388	6,900	34	34	644	198
PICKAWAY	566	2	922	1,490	3,822	1,118	4,940	6,430	19	12	504	177
PIKE	690	0	1,476	2,166	4,272	1,039	5,311	7,477	19	22	554	272
PORTAGE	1,040	7	1,813	2,860	7,755	2,377	10,132	12,992	94	119	907	592
PREBLE	371	6	559	936	2,502	827	3,329	4,265	32	36	438	221
PUTNAM	269	4	338	611	1,147	569	1,716	2,327	4	7	201	234
RICHLAND	1,578	0	2,598	4,176	9,877	3,300	13,177	17,353	103	247	1,415	620
ROSS	1,067	0	2,195	3,262	8,127	2,169	10,296	13,558	81	30	1,093	298
SANDUSKY	695	8	875	1,578	3,523	1,487	5,010	6,588	41	54	583	395
SCIOTO	2,247	17	4,778	7,042	10,845	2,367	13,212	20,254	74	48	1,181	628
SENECA	681	3	985	1,669	3,626	1,449	5,075	6,744	26	89	688	346
SHELBY	397	5	521	923	2,440	1,170	3,610	4,533	8	53	333	182
STARK	4,542	28	6,445	11,015	29,138	7,097	36,235	47,250	536	868	3,961	2,357
SUMMIT	5,946	40	10,801	16,787	43,227	9,597	52,824	69,611	470	717	4,742	2,080
TRUMBULL	2,513	22	4,659	7,194	19,396	5,259	24,655	31,849	153	234	3,083	1,261
TUSCARAWAS	1,138	5	1,448	2,591	6,494	2,192	8,686	11,277	81	128	1,147	474
UNION	318	1	403	722	2,028	732	2,760	3,482	12	35	350	143
UNKNOWN	0	0	0	0	0	0	0	0	0	0	0	0
VAN WERT	277	1	351	629	1,417	735	2,152	2,781	7	30	320	155
VINTON	300	0	606	906	2,103	736	2,839	3,745	13	17	319	77
WARREN	1,126	5	1,465	2,596	4,687	2,034	6,721	9,317	46	87	606	786
WASHINGTON	893	8	1,572	2,473	5,195	2,045	7,240	9,713	20	32	926	316
WAYNE	1,026	6	1,666	2,698	5,834	2,279	8,113	10,811	68	77	1,064	466
WILLIAMS	420	2	422	844	2,493	811	3,304	4,148	14	21	490	227
WOOD	810	4	1,011	1,825	4,396	1,610	6,006	7,831	23	55	697	417
WYANDOT	303	0	263	566	739	507	1,246	1,812	12	13	131	173



Table 6B

May 2003

## Medicaid Expenditures

County	Aged	Blind	Disabled	ABD Total	OWF & Related	Healthy Start	CFC Total	Total Medicaid	Foster Care	Adoption Assistance	Transitional	Nursing Facilities
STATEWIDE	\$251,090,941	\$937,041	\$367,582,333	\$619,610,316	\$171,687,852	\$51,086,710	\$222,774,562	\$842,821,856	\$5,729,136	\$3,681,042	\$14,398,666	\$273,838,616
ADAMS	\$909,900	\$6,417	\$1,471,757	\$2,388,073	\$484,061	\$148,689	\$632,750	\$3,024,563	\$18,725	\$1,935	\$69,397	\$605,147
ALLEN	\$2,279,966	\$9,876	\$2,556,023	\$4,845,866	\$1,259,466	\$514,174	\$1,773,640	\$6,630,913	\$62,860	\$17,730	\$53,449	\$2,463,850
ADAMS	\$909,900	\$6,417	\$1,471,757	\$2,388,073	\$484,061	\$148,689	\$632,750	\$3,024,563	\$18,725	\$1,935	\$69,397	\$605,147
ALLEN	\$2,279,966	\$9,876	\$2,556,023	\$4,845,866	\$1,259,466	\$514,174	\$1,773,640	\$6,630,913	\$62,860	\$17,730	\$53,449	\$2,463,850
ASHLAND	\$1,121,977	\$656	\$865,094	\$1,987,727	\$491,239	\$221,229	\$712,468	\$2,711,741	\$360	\$2,553	\$57,249	\$1,250,695
ASHTABULA	\$3,343,358	\$16,784	\$5,225,411	\$8,585,552	\$1,568,804	\$501,091	\$2,069,896	\$10,656,594	\$24,896	\$16,504	\$150,168	\$5,339,065
ATHENS	\$1,076,392	\$5,303	\$2,136,559	\$3,218,255	\$1,210,030	\$296,291	\$1,506,321	\$4,726,338	\$47,132	\$13,815	\$106,232	\$709,355
AUGLAIZE	\$947,389	\$6,873	\$591,806	\$1,546,068	\$360,774	\$115,519	\$476,293	\$2,025,564	\$5,612	\$16,811	\$35,576	\$946,932
BELMONT	\$2,676,520	\$2,839	\$3,337,960	\$6,017,319	\$1,140,301	\$315,299	\$1,455,599	\$7,472,918	\$35,694	\$25,775	\$113,020	\$2,235,381
BROWN	\$1,231,522	\$0	\$1,265,250	\$2,496,772	\$780,860	\$200,251	\$981,110	\$3,477,882	\$3,207	\$2,000	\$84,946	\$1,081,172
BUTLER	\$5,890,132	\$22,543	\$9,289,149	\$15,201,824	\$4,015,638	\$1,014,783	\$5,030,421	\$20,237,664	\$166,270	\$85,510	\$388,221	\$7,390,685
CARROLL	\$611,255	\$4,244	\$971,360	\$1,586,859	\$398,381	\$105,417	\$503,798	\$2,090,657	\$743	\$81	\$35,292	\$754,028
CHAMPAIGN	\$976,589	\$0	\$948,282	\$1,924,870	\$203,221	\$145,592	\$348,813	\$2,273,683	\$7,105	\$2,032	\$33,554	\$1,140,235
CLARK	\$4,428,552	\$6,056	\$5,969,934	\$10,404,542	\$2,997,514	\$673,579	\$3,671,093	\$14,083,917	\$94,202	\$58,676	\$286,458	\$5,262,169
CLERMONT	\$2,761,706	\$12,378	\$5,336,447	\$8,110,531	\$1,988,187	\$1,086,688	\$3,074,874	\$11,190,713	\$90,900	\$28,131	\$168,994	\$4,395,008
CLINTON	\$808,605	\$1,093	\$887,058	\$1,696,755	\$480,345	\$139,432	\$619,777	\$2,317,213	\$10,252	\$5,309	\$80,132	\$637,014
COLUMBIANA	\$2,796,521	\$3,696	\$3,671,387	\$6,471,604	\$2,021,885	\$653,124	\$2,675,008	\$9,147,122	\$44,420	\$10,948	\$232,414	\$2,856,898
COSHOCTON	\$795,051	\$493	\$1,632,210	\$2,427,753	\$485,929	\$131,968	\$617,897	\$3,045,650	\$8,406	\$6,802	\$35,873	\$1,204,315
CRAWFORD	\$971,829	\$2,474	\$1,201,590	\$2,175,893	\$701,043	\$157,560	\$858,603	\$3,041,508	\$10,757	\$6,949	\$93,540	\$879,044
CUYAHOGA	\$38,635,942	\$164,853	\$53,192,532	\$91,993,327	\$29,362,138	\$6,881,891	\$36,244,029	\$128,258,602	\$1,660,741	\$1,001,140	\$2,301,808	\$42,214,438
DARKE	\$1,237,362	\$429	\$874,418	\$2,112,208	\$427,637	\$126,072	\$553,709	\$2,666,407	\$7,645	\$4,808	\$41,176	\$1,402,713
DEFIANCE	\$679,256	\$237	\$678,861	\$1,358,353	\$364,110	\$206,244	\$570,355	\$1,928,708	\$1,770	\$2,072	\$41,969	\$725,226
DELAWARE	\$1,492,341	\$5,146	\$2,011,520	\$3,509,007	\$811,976	\$257,308	\$1,069,284	\$4,578,292	\$11,302	\$42,048	\$63,185	\$1,449,129
ERIE	\$1,630,937	\$412	\$1,655,676	\$3,287,025	\$836,439	\$224,196	\$1,060,636	\$4,347,661	\$20,026	\$8,315	\$86,797	\$1,642,831
FAIRFIELD	\$2,294,519	\$4,145	\$2,864,046	\$5,162,710	\$1,426,872	\$695,302	\$2,122,173	\$7,285,165	\$21,810	\$39,285	\$131,858	\$2,094,512
FAYETTE	\$1,165,874	\$583	\$1,452,250	\$2,618,707	\$443,267	\$180,009	\$623,276	\$3,241,983	\$2,440	\$1,649	\$86,793	\$1,595,869
FRANKLIN	\$19,125,222	\$92,865	\$39,022,746	\$58,240,832	\$19,033,007	\$5,867,252	\$24,900,259	\$83,163,523	\$903,126	\$551,764	\$1,455,603	\$21,350,827
FULTON	\$852,383	\$0	\$667,531	\$1,519,913	\$336,035	\$133,668	\$469,703	\$1,989,616	\$8,321	\$7,289	\$41,866	\$845,724
GALLIA	\$1,587,359	\$2,538	\$3,050,361	\$4,640,258	\$1,031,713	\$186,913	\$1,218,626	\$5,860,080	\$15,545	\$1,986	\$60,022	\$861,907
GEAUGA	\$1,536,318	\$1,267	\$1,034,471	\$2,572,056	\$331,847	\$216,214	\$548,061	\$3,134,645	\$23,539	\$9,304	\$30,034	\$1,802,978
GREENE	\$2,312,213	\$3,737	\$2,746,204	\$5,062,154	\$1,691,907	\$486,677	\$2,178,584	\$7,240,738	\$17,199	\$17,995	\$209,220	\$2,644,458
GUERNSEY	\$1,008,539	\$2,571	\$2,494,670	\$3,505,780	\$837,800	\$250,489	\$1,088,290	\$4,594,069	\$9,512	\$11,745	\$44,375	\$662,935
HAMILTON	\$20,427,373	\$127,849	\$27,954,261	\$48,509,483	\$12,834,060	\$4,352,735	\$17,186,796	\$65,863,016	\$565,788	\$321,809	\$785,286	\$22,029,356
HANCOCK	\$1,091,984	\$748	\$1,361,112	\$2,453,845	\$525,289	\$238,404	\$763,693	\$3,221,156	\$8,238	\$19,403	\$54,058	\$1,202,294
HARDIN	\$525,295	\$1,074	\$683,357	\$1,209,725	\$405,079	\$94,921	\$500,000	\$1,709,800	\$6,154	\$3,205	\$48,570	\$508,220
HARRISON	\$547,619	\$0	\$490,032	\$1,037,651	\$306,022	\$91,158	\$397,180	\$1,438,873	\$0	\$9,432	\$26,634	\$529,771
HENRY	\$480,475	\$0	\$998,494	\$1,478,969	\$277,782	\$116,543	\$394,324	\$1,873,293	\$2,839	\$5,059	\$38,217	\$496,810
HIGHLAND	\$1,295,888	\$2,133	\$1,325,920	\$2,623,942	\$693,704	\$476,239	\$1,169,943	\$3,793,885	\$2,835	\$1,118	\$117,945	\$1,235,932
HOCKING	\$687,138	\$8,835	\$888,960	\$1,584,933	\$467,726	\$202,140	\$669,866	\$2,254,799	\$5,812	\$6,584	\$44,543	\$640,664
HOLMES	\$1,231,290	\$228	\$964,748	\$2,196,266	\$314,655	\$75,070	\$389,725	\$2,586,205	\$307	\$5,531	\$22,922	\$1,823,282
HURON	\$736,640	\$71	\$1,048,379	\$1,785,090	\$760,477	\$229,976	\$990,453	\$2,775,651	\$9,173	\$2,249	\$67,007	\$743,713
JACKSON	\$1,080,131	\$2,857	\$1,454,084	\$2,537,071	\$881,633	\$238,052	\$1,119,685	\$3,656,956	\$9,204	\$1,156	\$65,638	\$831,798
JEFFERSON	\$1,890,761	\$8,845	\$2,681,813	\$4,581,419	\$1,297,515	\$262,179	\$1,559,694	\$6,142,697	\$51,696	\$9,517	\$102,997	\$1,654,011
KNOX	\$1,400,295	\$95	\$3,125,458	\$4,525,848	\$809,038	\$324,871	\$1,133,909	\$5,659,756	\$29,400	\$25,274	\$54,308	\$3,089,982
LAKE	\$3,930,365	\$643	\$5,461,814	\$9,392,823	\$1,627,518	\$548,667	\$2,176,185	\$11,570,699	\$27,134	\$25,884	\$161,162	\$5,554,858
LAWRENCE	\$2,039,176	\$9,790	\$3,375,607	\$5,424,573	\$1,561,585	\$320,250	\$1,881,835	\$7,306,408	\$21,842	\$3,829	\$136,089	\$1,474,855

Table 6B

May 2003

## Medicaid Expenditures

County	Aged	Blind	Disabled	ABD Total	OWF & Related	Healthy Start	CFC Total	Total Medicaid	Foster Care	Adoption Assistance	Transitional	Nursing Facilities
STATEWIDE	\$251,090,941	\$937,041	\$367,582,333	\$619,610,316	\$171,687,852	\$51,086,710	\$222,774,562	\$842,821,856	\$5,729,136	\$3,681,042	\$14,398,666	\$273,838,616
ADAMS	\$909,900	\$6,417	\$1,471,757	\$2,388,073	\$484,061	\$148,689	\$632,750	\$3,024,563	\$18,725	\$1,935	\$69,397	\$605,147
ALLEN	\$2,279,966	\$9,876	\$2,556,023	\$4,845,866	\$1,259,466	\$514,174	\$1,773,640	\$6,630,913	\$62,860	\$17,730	\$53,449	\$2,463,850
LICKING	\$2,505,142	\$3,110	\$4,095,009	\$6,603,261	\$1,757,406	\$639,985	\$2,397,391	\$9,002,985	\$98,837	\$43,005	\$155,287	\$2,710,526
LOGAN	\$837,475	\$403	\$983,408	\$1,821,285	\$567,170	\$156,693	\$723,863	\$2,545,349	\$5,194	\$4,249	\$83,394	\$781,244
LORAIN	\$4,958,793	\$15,619	\$7,687,302	\$12,661,714	\$4,433,365	\$897,939	\$5,331,304	\$17,997,628	\$41,641	\$29,435	\$363,049	\$6,301,510
LUCAS	\$9,823,798	\$21,432	\$18,901,028	\$28,746,257	\$8,652,623	\$2,382,115	\$11,034,739	\$39,825,445	\$180,278	\$210,468	\$709,059	\$9,888,321
MADISON	\$619,225	\$534	\$1,111,224	\$1,730,984	\$392,623	\$150,836	\$543,460	\$2,274,444	\$5,943	\$4,098	\$36,643	\$747,089
MAHONING	\$7,076,956	\$30,802	\$10,094,042	\$17,201,800	\$5,512,238	\$997,073	\$6,509,311	\$23,725,143	\$45,957	\$24,436	\$312,668	\$7,246,155
MARION	\$1,139,916	\$7,156	\$2,173,298	\$3,320,369	\$781,304	\$322,910	\$1,104,213	\$4,424,582	\$12,196	\$11,949	\$59,754	\$1,189,149
MEDINA	\$2,202,838	\$78,832	\$3,063,855	\$5,345,524	\$859,310	\$335,563	\$1,194,873	\$6,540,397	\$17,126	\$10,057	\$114,461	\$3,526,817
MEIGS	\$620,757	\$1,007	\$1,018,023	\$1,639,787	\$568,159	\$101,639	\$669,798	\$2,309,585	\$4,486	\$0	\$52,583	\$502,908
MERCER	\$697,648	\$0	\$910,715	\$1,608,364	\$325,038	\$140,009	\$465,047	\$2,073,409	\$1,647	\$6,326	\$27,787	\$802,516
MIAMI	\$2,065,585	\$3,682	\$1,821,397	\$3,890,665	\$788,126	\$430,503	\$1,218,629	\$5,111,222	\$27,658	\$11,909	\$58,961	\$1,979,939
MONROE	\$367,245	\$476	\$587,041	\$954,762	\$249,649	\$45,930	\$295,579	\$1,250,845	\$6,222	\$1,262	\$15,592	\$301,282
MONTGOMERY	\$10,988,946	\$37,204	\$17,135,395	\$28,161,545	\$8,826,607	\$2,361,864	\$11,188,471	\$39,384,319	\$332,499	\$232,947	\$622,396	\$12,169,964
MORGAN	\$388,662	\$99	\$762,597	\$1,151,358	\$269,610	\$411,850	\$681,461	\$1,832,917	\$1,604	\$1,407	\$31,707	\$355,235
MORROW	\$585,659	\$10	\$1,016,737	\$1,602,406	\$488,663	\$332,818	\$821,481	\$2,425,657	\$4,000	\$6,668	\$42,189	\$731,620
MUSKINGUM	\$2,016,436	\$7,131	\$2,685,476	\$4,709,043	\$1,435,785	\$486,945	\$1,922,729	\$6,632,153	\$18,540	\$9,445	\$97,817	\$1,799,190
NOBLE	\$371,153	\$0	\$262,196	\$633,349	\$161,384	\$62,579	\$223,963	\$857,312	\$0	\$1,347	\$16,433	\$353,224
OTTAWA	\$1,057,082	\$0	\$1,380,275	\$2,437,356	\$387,959	\$182,819	\$570,778	\$3,008,135	\$1,821	\$0	\$41,054	\$926,129
PAULDING	\$244,022	\$229	\$533,988	\$778,239	\$199,795	\$70,756	\$270,550	\$1,048,789	\$878	\$1,226	\$13,311	\$177,050
PERRY	\$619,425	\$1,971	\$1,386,109	\$2,007,504	\$694,624	\$176,491	\$871,115	\$2,878,783	\$9,569	\$2,363	\$102,657	\$940,339
PICKAWAY	\$868,863	\$1,633	\$1,039,274	\$1,909,770	\$781,528	\$185,445	\$966,973	\$2,876,902	\$2,473	\$2,692	\$57,418	\$702,525
PIKE	\$1,054,709	\$0	\$2,022,967	\$3,077,677	\$822,188	\$184,103	\$1,006,292	\$4,085,046	\$20,044	\$22,202	\$51,557	\$1,550,096
PORTAGE	\$2,046,652	\$9,072	\$4,011,935	\$6,067,660	\$1,512,851	\$468,281	\$1,981,132	\$8,049,019	\$48,142	\$49,897	\$109,002	\$3,212,342
PREBLE	\$749,001	\$2,951	\$954,586	\$1,706,538	\$397,574	\$166,636	\$564,209	\$2,270,748	\$14,520	\$3,439	\$33,234	\$1,049,380
PUTNAM	\$612,264	\$4,966	\$833,032	\$1,450,262	\$305,449	\$151,601	\$457,050	\$1,907,312	(\$623)	\$25	\$12,437	\$1,029,635
RICHLAND	\$2,631,662	\$28	\$3,945,234	\$6,576,924	\$1,299,342	\$307,603	\$1,606,945	\$8,184,288	\$36,797	\$29,597	\$139,135	\$3,037,232
ROSS	\$1,512,255	\$0	\$2,777,173	\$4,289,428	\$1,579,132	\$425,389	\$2,004,522	\$6,295,473	\$18,531	\$8,542	\$163,719	\$1,101,281
SANDUSKY	\$1,559,064	\$1,991	\$1,836,456	\$3,397,512	\$559,843	\$394,389	\$954,233	\$4,351,772	\$18,698	\$11,205	\$66,381	\$1,880,857
SCIOTO	\$3,265,026	\$32,812	\$5,293,824	\$8,591,662	\$2,341,004	\$488,299	\$2,829,303	\$11,423,156	\$32,280	\$17,066	\$131,401	\$2,646,261
SENECA	\$1,643,578	\$1,459	\$2,970,770	\$4,615,807	\$532,045	\$290,180	\$822,225	\$5,442,483	\$2,550	\$19,150	\$52,579	\$1,629,626
SHELBY	\$846,198	\$1,659	\$663,849	\$1,511,707	\$469,281	\$281,564	\$750,845	\$2,263,000	\$3,915	\$6,218	\$60,503	\$805,822
STARK	\$10,301,814	\$44,945	\$10,603,120	\$20,949,878	\$5,350,824	\$1,424,473	\$6,775,297	\$27,725,175	\$185,845	\$127,937	\$375,843	\$11,263,580
SUMMIT	\$11,116,852	\$34,103	\$18,840,124	\$29,991,079	\$8,489,261	\$2,024,577	\$10,513,839	\$40,505,964	\$309,271	\$204,214	\$800,582	\$9,967,577
TRUMBULL	\$5,020,456	\$28,831	\$6,837,004	\$11,886,291	\$3,682,053	\$1,083,320	\$4,765,373	\$16,652,805	\$41,698	\$25,939	\$359,678	\$5,651,086
TUSCARAWAS	\$2,181,798	\$2,645	\$2,703,428	\$4,887,871	\$1,093,988	\$356,372	\$1,450,360	\$6,356,071	\$43,779	\$27,686	\$96,105	\$1,903,940
UNION	\$678,933	\$132	\$713,183	\$1,392,249	\$442,717	\$110,985	\$553,702	\$1,945,950	\$5,347	\$2,654	\$56,058	\$662,560
UNKNOWN	\$0	\$0	\$0	\$0	(\$699,822)	\$0	(\$699,822)	(\$699,822)	\$0	\$0	\$0	\$0
VAN WERT	\$590,324	\$5	\$465,210	\$1,055,539	\$315,048	\$176,270	\$491,318	\$1,546,857	\$4,585	\$27,779	\$34,480	\$584,984
VINTON	\$426,885	\$0	\$516,477	\$943,362	\$429,836	\$226,404	\$656,239	\$1,600,022	\$2,635	\$2,160	\$52,303	\$313,336
WARREN	\$3,084,366	\$1,701	\$3,508,418	\$6,594,485	\$886,721	\$390,641	\$1,277,362	\$7,872,973	\$10,605	\$10,691	\$66,100	\$4,305,164
WASHINGTON	\$1,433,271	\$6,803	\$1,862,309	\$3,302,383	\$823,423	\$332,810	\$1,156,233	\$4,458,683	\$4,290	\$6,288	\$115,201	\$1,329,996
WAYNE	\$2,262,430	\$992	\$3,566,508	\$5,829,931	\$1,142,144	\$364,807	\$1,506,951	\$7,338,534	\$24,882	\$10,468	\$100,066	\$2,023,094
WILLIAMS	\$936,860	\$1,050	\$745,531	\$1,683,441	\$445,797	\$255,743	\$701,540	\$2,388,852	\$3,705	\$2,970	\$38,906	\$925,323
WOOD	\$1,885,766	\$5,893	\$1,844,846	\$3,736,504	\$940,873	\$413,074	\$1,353,947	\$5,086,514	\$1,619	\$6,298	\$97,171	\$1,900,533
WYANDOT	\$645,186	\$0	\$501,366	\$1,146,553	\$108,803	\$192,302	\$301,104	\$1,447,657	\$2,510	\$2,319	\$27,409	\$672,089

**TABLE 7  
CHILD CARE  
MAY 2003**

OHIO COUNTY	OWF JOBS, LEAP, and TRANSITIONAL		OTHER CHILD CARE		ALL PROGRAM SOURCES	
	CHILDREN SERVED		CHILDREN SERVED		CHILDREN SERVED	
	TOTAL	% OF STATE TOTAL	TOTAL	% OF STATE TOTAL	TOTAL	% OF STATE TOTAL
STATEWIDE	20,461	100.00%	86,141	100.00%	106,602	100.00%
ADAMS	0	0.00%	39	0.05%	39	0.04%
ALLEN	20	0.10%	449	0.52%	469	0.44%
ASHLAND	2	0.01%	130	0.15%	132	0.12%
ASHTABULA	154	0.75%	830	0.96%	984	0.92%
ATHENS	76	0.37%	286	0.33%	362	0.34%
AUGLAIZE	20	0.10%	129	0.15%	149	0.14%
BELMONT	93	0.45%	322	0.37%	415	0.39%
BROWN	2	0.01%	109	0.13%	111	0.10%
BUTLER	151	0.74%	1,347	1.56%	1,498	1.41%
CARROLL	14	0.07%	68	0.08%	82	0.08%
CHAMPAIGN	16	0.08%	199	0.23%	215	0.20%
CLARK	94	0.46%	805	0.93%	899	0.84%
CLERMONT	25	0.12%	289	0.34%	314	0.29%
CLINTON	0	0.00%	0	0.00%	0	0.00%
COLUMBIANA	51	0.25%	695	0.81%	746	0.70%
COSHOCTON	54	0.26%	224	0.26%	278	0.26%
CRAWFORD	26	0.13%	245	0.28%	271	0.25%
CUYAHOGA	6,208	30.34%	20,271	23.53%	26,479	24.84%
DARKE	4	0.02%	151	0.18%	155	0.15%
DEFIANCE	5	0.02%	205	0.24%	210	0.20%
DELAWARE	36	0.18%	266	0.31%	302	0.28%
ERIE	4	0.02%	826	0.96%	830	0.78%
FAIRFIELD	65	0.32%	546	0.63%	611	0.57%
FAYETTE	35	0.17%	246	0.29%	281	0.26%
FRANKLIN	3,068	14.99%	11,497	13.35%	14,565	13.66%
FULTON	3	0.01%	174	0.20%	177	0.17%
GALLIA	52	0.25%	228	0.26%	280	0.26%
GEAUGA	8	0.04%	209	0.24%	217	0.20%
GREENE	177	0.87%	757	0.88%	934	0.88%
GUERNSEY	54	0.26%	411	0.48%	465	0.44%
HAMILTON	3,304	16.15%	10,635	12.35%	13,939	13.08%
HANCOCK	19	0.09%	445	0.52%	464	0.44%
HARDIN	0	0.00%	88	0.10%	88	0.08%
HARRISON	15	0.07%	53	0.06%	68	0.06%
HENRY	18	0.09%	125	0.15%	143	0.13%
HIGHLAND	0	0.00%	261	0.30%	261	0.24%
HOCKING	0	0.00%	0	0.00%	0	0.00%
HOLMES	10	0.05%	128	0.15%	138	0.13%
HURON	4	0.02%	608	0.71%	612	0.57%
JACKSON	58	0.28%	193	0.22%	251	0.24%
JEFFERSON	111	0.54%	368	0.43%	479	0.45%
KNOX	32	0.16%	385	0.45%	417	0.39%
LAKE	136	0.66%	1,014	1.18%	1,150	1.08%
LAWRENCE	36	0.18%	504	0.59%	540	0.51%

SOURCE: NMR120RA.

OWF data consist of funding codes: 312, 313, 314, 326, & 327.

Other data consist of funding codes: 320, 321, 322, 323, 324, 325, 329, 342, and 899.

**TABLE 7  
CHILD CARE  
MAY 2003**

OHIO COUNTY	OWF JOBS, LEAP, and TRANSITIONAL		OTHER CHILD CARE		ALL PROGRAM SOURCES	
	CHILDREN SERVED		CHILDREN SERVED		CHILDREN SERVED	
	TOTAL	% OF STATE TOTAL	TOTAL	% OF STATE TOTAL	TOTAL	% OF STATE TOTAL
STATEWIDE	20,461	100.00%	86,141	100.00%	106,602	100.00%
LICKING	124	0.61%	832	0.97%	956	0.90%
LOGAN	15	0.07%	67	0.08%	82	0.08%
LORAIN	529	2.59%	2,048	2.38%	2,577	2.42%
LUCAS	1,270	6.21%	1,803	2.09%	3,073	2.88%
MADISON	48	0.23%	80	0.09%	128	0.12%
MAHONING	568	2.78%	2,022	2.35%	2,590	2.43%
MARION	19	0.09%	432	0.50%	451	0.42%
MEDINA	93	0.45%	534	0.62%	627	0.59%
MEIGS	10	0.05%	240	0.28%	250	0.23%
MERCER	18	0.09%	170	0.20%	188	0.18%
MIAMI	1	0.00%	376	0.44%	377	0.35%
MONROE	1	0.00%	92	0.11%	93	0.09%
MONTGOMERY	831	4.06%	5,188	6.02%	6,019	5.65%
MORGAN	9	0.04%	89	0.10%	98	0.09%
MORROW	0	0.00%	0	0.00%	0	0.00%
MUSKINGUM	201	0.98%	846	0.98%	1,047	0.98%
NOBLE	0	0.00%	29	0.03%	29	0.03%
OTTAWA	34	0.17%	98	0.11%	132	0.12%
PAULDING	1	0.00%	27	0.03%	28	0.03%
PERRY	49	0.24%	237	0.28%	286	0.27%
PICKAWAY	43	0.21%	172	0.20%	215	0.20%
PIKE	33	0.16%	115	0.13%	148	0.14%
PORTAGE	106	0.52%	850	0.99%	956	0.90%
PREBLE	14	0.07%	150	0.17%	164	0.15%
PUTNAM	3	0.01%	79	0.09%	82	0.08%
RICHLAND	139	0.68%	860	1.00%	999	0.94%
ROSS	62	0.30%	314	0.36%	376	0.35%
SANDUSKY	69	0.34%	404	0.47%	473	0.44%
SCIOTO	101	0.49%	608	0.71%	709	0.67%
SENECA	30	0.15%	290	0.34%	320	0.30%
SHELBY	3	0.01%	316	0.37%	319	0.30%
STARK	466	2.28%	2,459	2.85%	2,925	2.74%
SUMMIT	703	3.44%	3,202	3.72%	3,905	3.66%
TRUMBULL	228	1.11%	1,979	2.30%	2,207	2.07%
TUSCARAWAS	60	0.29%	448	0.52%	508	0.48%
UNION	0	0.00%	162	0.19%	162	0.15%
VAN WERT	0	0.00%	47	0.05%	47	0.04%
VINTON	18	0.09%	132	0.15%	150	0.14%
WARREN	42	0.21%	287	0.33%	329	0.31%
WASHINGTON	34	0.17%	362	0.42%	396	0.37%
WAYNE	139	0.68%	456	0.53%	595	0.56%
WILLIAMS	28	0.14%	127	0.15%	155	0.15%
WOOD	57	0.28%	307	0.36%	364	0.34%
WYANDOT	2	0.01%	45	0.05%	47	0.04%

SOURCE: NMR120RA.

OWF data consist of funding codes: 312, 313, 314, 326, and 327.

Other data consist of funding codes: 320, 321, 322, 323, 324, 325, 329, 342, and 899.

**TABLE 8  
RECIPIENTS, EXPENDITURES, AND AVERAGE PAYMENT PER RECIPIENT  
DURING THE LAST 12 MONTHS IN OHIO**

	OWF-R	OWF-U	OWF\ CHILD CARE	OTHER\ CHILD CARE	DISABILITY ASSISTANCE	TITLE IV-E	FNS BENEFITS
<b>RECIPIENTS</b>							
June 2002	175,697	14,598	22,429	79,133	13,214	24,284	744,545
July	178,945	14,740	22,047	81,473	13,828	24,305	757,686
August	178,009	14,363	22,124	83,567	14,221	24,354	754,199
September	176,457	14,405	21,184	81,795	14,518	24,326	773,105
October	180,031	14,816	21,146	79,902	15,012	24,284	782,349
November	180,040	15,366	20,413	80,206	15,412	23,882	804,746
December	181,407	16,537	21,674	82,473	15,672	23,836	842,378
January 2003	180,357	17,145	20,986	84,041	16,114	24,428	841,323
February	177,379	16,899	20,315	83,341	16,159	24,080	835,650
March	177,267	17,176	20,255	82,934	16,553	24,734	859,754
April	178,408	17,332	20,380	84,098	16,970	25,432	853,470
May	177,334	16,598	20,461	86,141	17,175	25,725	870,179
<b>12 MONTH AVERAGE</b>	178,444	15,831	21,118	82,425	15,404	24,473	809,949
<b>EXPENDITURES</b>							
June 2002	\$24,200,171	\$1,356,962	N.A.	N.A.	\$1,634,116	\$13,142,383	\$60,688,791
July	\$24,484,280	\$1,358,338	N.A.	N.A.	\$1,771,662	\$13,340,679	\$63,005,979
August	\$24,514,856	\$1,352,022	N.A.	N.A.	\$1,900,692	\$12,879,608	\$61,893,895
September	\$24,235,034	\$1,350,313	N.A.	N.A.	\$1,829,682	\$12,552,968	\$64,454,949
October	\$24,908,150	\$1,392,805	N.A.	N.A.	\$1,953,311	\$12,299,864	\$67,169,736
November	\$24,595,097	\$1,446,878	N.A.	N.A.	\$1,859,545	\$11,556,365	\$67,986,461
December	\$24,928,511	\$1,603,240	N.A.	N.A.	\$1,922,076	\$12,756,184	\$72,028,907
January 2003	\$24,475,480	\$1,625,487	N.A.	N.A.	\$2,010,561	\$12,572,951	\$70,756,684
February	\$24,357,664	\$1,622,731	N.A.	N.A.	\$1,940,964	\$12,009,964	\$70,932,602
March	\$24,293,390	\$1,636,010	N.A.	N.A.	\$2,014,058	\$12,846,053	\$74,487,017
April	\$24,523,197	\$1,638,996	N.A.	N.A.	\$2,027,682	\$14,225,007	\$72,884,256
May	\$24,547,967	\$1,576,439	N.A.	N.A.	\$2,110,924	\$14,275,218	\$73,740,366
<b>TOTAL DOLLARS</b>	\$24,505,316	\$1,496,685	N.A.	N.A.	\$1,914,606	\$12,871,437	\$68,335,804
<b>AVERAGE PAYMENT</b>							
June 2002	\$138	\$93	N.A.	N.A.	\$124	\$541	\$82
July	\$137	\$92	N.A.	N.A.	\$128	\$549	\$83
August	\$138	\$94	N.A.	N.A.	\$134	\$529	\$82
September	\$137	\$94	N.A.	N.A.	\$126	\$516	\$83
October	\$138	\$94	N.A.	N.A.	\$130	\$507	\$86
November	\$137	\$94	N.A.	N.A.	\$121	\$484	\$84
December	\$137	\$97	N.A.	N.A.	\$123	\$535	\$86
January 2003	\$136	\$95	N.A.	N.A.	\$125	\$515	\$84
February	\$137	\$96	N.A.	N.A.	\$120	\$499	\$85
March	\$137	\$95	N.A.	N.A.	\$122	\$519	\$87
April	\$137	\$95	N.A.	N.A.	\$119	\$559	\$85
May	\$138	\$95	N.A.	N.A.	\$123	\$555	\$85

Note: N.A. means Not Available.

**TABLE 10  
PERCENT OF OHIO'S POPULATION PARTICIPATING IN SELECTED  
PUBLIC ASSISTANCE PROGRAMS FOR MAY 2003**

OHIO COUNTY	Estimated Total Population *	Percent of All Families Below Poverty Level	DISABILITY ASSISTANCE		OWF COMBINED		FOSTER CARE		FNS BENEFITS	
			Recipients	Recipients as Percent of Total Population	Recipients	Recipients as Percent of Total Population	Recipients	Recipients as Percent of Total Population	Recipients	Recipients as Percent of Total Population
STATEWIDE	11,373,541	0.08	17,175	0.15	193,932	1.71	25,725	0.23	870,179	7.65
ADAMS	27,566	0.13	91	0.33	248	0.90	54	0.20	3,990	14.47
ALLEN	108,276	0.10	104	0.10	864	0.80	242	0.22	7,296	6.74
ASHLAND	52,754	0.07	32	0.06	181	0.34	10	0.02	2,284	4.33
ASHTABULA	102,514	0.09	323	0.32	1,696	1.65	155	0.15	9,352	9.12
ATHENS	62,235	0.14	191	0.31	1,523	2.45	184	0.30	6,413	10.30
AUGLAIZE	46,797	0.05	30	0.06	98	0.21	53	0.11	1,505	3.22
BELMONT	69,451	0.12	170	0.24	1,279	1.84	134	0.19	7,013	10.10
BROWN	42,890	0.09	32	0.07	262	0.61	59	0.14	3,056	7.13
BUTLER	337,013	0.05	515	0.15	3,103	0.92	817	0.24	18,537	5.50
CARROLL	29,086	0.09	40	0.14	248	0.85	11	0.04	1,975	6.79
CHAMPAIGN	39,182	0.05	41	0.10	474	1.21	27	0.07	2,018	5.15
CLARK	144,076	0.08	308	0.21	2,818	1.96	355	0.25	13,999	9.72
CLERMONT	181,673	0.05	202	0.11	1,064	0.59	329	0.18	7,337	4.04
CLINTON	40,987	0.06	56	0.14	226	0.55	74	0.18	2,274	5.55
COLUMBIANA	111,678	0.09	172	0.15	1,001	0.90	118	0.11	10,120	9.06
COSHOCTON	36,779	0.07	78	0.21	520	1.41	62	0.17	3,037	8.26
CRAWFORD	46,594	0.08	60	0.13	552	1.18	41	0.09	3,712	7.97
CUYAHOGA	1,380,421	0.10	2,601	0.19	32,738	2.37	6,305	0.46	154,122	11.16
DARKE	53,078	0.06	37	0.07	340	0.64	40	0.08	1,693	3.19
DEFIANCE	39,360	0.05	20	0.05	174	0.44	45	0.11	1,933	4.91
DELAWARE	119,752	0.03	72	0.06	636	0.53	95	0.08	3,311	2.76
ERIE	79,312	0.06	64	0.08	319	0.40	160	0.20	4,469	5.63
FAIRFIELD	127,395	0.05	148	0.12	1,317	1.03	120	0.09	6,549	5.14
FAYETTE	28,241	0.08	33	0.12	321	1.14	25	0.09	2,084	7.38
FRANKLIN	1,071,524	0.08	1,607	0.15	26,352	2.46	3,456	0.32	95,756	8.94
FULTON	42,205	0.04	20	0.05	137	0.32	33	0.08	1,465	3.47
GALLIA	31,183	0.14	58	0.19	1,235	3.96	63	0.20	4,549	14.59
GEAUGA	92,180	0.03	25	0.03	163	0.18	131	0.14	1,238	1.34
GREENE	148,426	0.05	199	0.13	1,372	0.92	81	0.05	7,396	4.98
GUERNSEY	40,959	0.13	136	0.33	387	0.94	93	0.23	4,803	11.73
HAMILTON	835,362	0.09	1,148	0.14	19,509	2.34	1,453	0.17	57,261	6.85
HANCOCK	72,046	0.05	52	0.07	306	0.42	65	0.09	2,721	3.78
HARDIN	31,762	0.09	23	0.07	104	0.33	48	0.15	1,542	4.85
HARRISON	15,886	0.11	45	0.28	231	1.45	28	0.18	1,562	9.83
HENRY	29,310	0.05	11	0.04	62	0.21	33	0.11	934	3.19
HIGHLAND	41,439	0.09	69	0.17	246	0.59	30	0.07	3,265	7.88
HOCKING	28,436	0.10	45	0.16	712	2.50	66	0.23	2,670	9.39
HOLMES	39,854	0.11	43	0.11	104	0.26	35	0.09	1,010	2.53
HURON	59,437	0.07	50	0.08	204	0.34	53	0.09	3,577	6.02
JACKSON	32,668	0.14	103	0.32	755	2.31	20	0.06	4,515	13.82
JEFFERSON	72,855	0.11	180	0.25	2,042	2.80	117	0.16	8,028	11.02
KNOX	55,521	0.07	80	0.14	567	1.02	53	0.10	3,239	5.83
LAKE	228,100	0.04	236	0.10	1,335	0.59	198	0.09	8,504	3.73
LAWRENCE	62,009	0.15	117	0.19	1,642	2.65	35	0.06	9,998	16.12

\*SOURCE: 2001 Ohio Population Estimates, Poverty Report 2000, Ohio Dept. of Development, GRP342RA, GBS003RA, GRP304RA and GRP304RC Reports from Management Information Services.

**TABLE 10  
PERCENT OF OHIO'S POPULATION PARTICIPATING IN SELECTED  
PUBLIC ASSISTANCE PROGRAMS FOR MAY 2003**

OHIO COUNTY	Estimated Total Population *	Percent of All Families Below Poverty Level	DISABILITY ASSISTANCE		OWF COMBINED		FOSTER CARE		FNS BENEFITS	
			Recipients	Recipients as Percent of Total Population	Recipients	Recipients as Percent of Total Population	Recipients	Recipients as Percent of Total Population	Recipients	Recipients as Percent of Total Population
STATEWIDE	11,373,541	0.08	17,175	0.15	193,932	1.71	25,725	0.23	870,179	7.65
LICKING	147,723	0.06	200	0.14	1,467	0.99	481	0.33	8,481	5.74
LOGAN	46,023	0.07	32	0.07	353	0.77	71	0.15	2,614	5.68
LORAIN	286,768	0.07	341	0.12	4,558	1.59	385	0.13	22,877	7.98
LUCAS	453,348	0.11	796	0.18	14,853	3.28	2,102	0.46	49,863	11.00
MADISON	40,217	0.06	33	0.08	444	1.10	24	0.06	2,003	4.98
MAHONING	254,958	0.10	536	0.21	6,414	2.52	319	0.13	25,845	10.14
MARION	66,014	0.07	119	0.18	670	1.01	102	0.15	5,234	7.93
MEDINA	155,698	0.04	96	0.06	534	0.34	70	0.04	3,593	2.31
MEIGS	22,987	0.14	84	0.37	544	2.37	14	0.06	3,709	16.14
MERCER	40,899	0.05	37	0.09	213	0.52	41	0.10	1,205	2.95
MIAMI	99,351	0.05	62	0.06	521	0.52	188	0.19	3,696	3.72
MONROE	15,163	0.11	18	0.12	214	1.41	16	0.11	1,502	9.91
MONTGOMERY	554,232	0.08	680	0.12	12,877	2.32	1,763	0.32	42,565	7.68
MORGAN	14,891	0.16	55	0.37	126	0.85	14	0.09	1,667	11.19
MORROW	32,674	0.07	20	0.06	273	0.84	53	0.16	2,193	6.71
MUSKINGUM	84,900	0.10	286	0.34	1,755	2.07	102	0.12	10,916	12.86
NOBLE	14,038	0.08	19	0.14	62	0.44	8	0.06	981	6.99
OTTAWA	41,029	0.04	31	0.08	283	0.69	5	0.01	1,583	3.86
PAULDING	20,081	0.05	32	0.16	216	1.08	31	0.15	1,158	5.77
PERRY	34,380	0.09	71	0.21	569	1.66	70	0.20	4,013	11.67
PICKAWAY	52,986	0.08	70	0.13	924	1.74	35	0.07	3,888	7.34
PIKE	27,841	0.15	74	0.27	811	2.91	32	0.11	4,631	16.63
PORTAGE	152,743	0.06	158	0.10	1,133	0.74	116	0.08	6,414	4.20
PREBLE	42,520	0.05	28	0.07	344	0.81	69	0.16	1,694	3.98
PUTNAM	34,808	0.04	14	0.04	161	0.46	14	0.04	1,037	2.98
RICHLAND	128,051	0.08	235	0.18	1,388	1.08	253	0.20	9,449	7.38
ROSS	74,061	0.09	134	0.18	1,555	2.10	78	0.11	7,925	10.70
SANDUSKY	61,673	0.06	48	0.08	324	0.53	90	0.15	2,907	4.71
SCIOTO	78,435	0.15	294	0.37	2,052	2.62	103	0.13	13,263	16.91
SENECA	58,314	0.06	69	0.12	211	0.36	106	0.18	3,065	5.26
SHELBY	48,183	0.05	27	0.06	243	0.50	70	0.15	1,801	3.74
STARK	377,438	0.07	717	0.19	7,750	2.05	1,021	0.27	25,748	6.82
SUMMIT	544,217	0.08	880	0.16	12,708	2.34	1,163	0.21	43,944	8.07
TRUMBULL	223,982	0.08	430	0.19	3,380	1.51	396	0.18	16,970	7.58
TUSCARAWAS	91,066	0.07	108	0.12	950	1.04	178	0.20	6,005	6.59
UNION	42,793	0.04	35	0.08	430	1.00	46	0.11	1,612	3.77
VAN WERT	29,440	0.04	12	0.04	57	0.19	27	0.09	815	2.77
VINTON	13,150	0.15	40	0.30	328	2.49	36	0.27	2,070	15.74
WARREN	169,025	0.03	64	0.04	376	0.22	138	0.08	3,214	1.90
WASHINGTON	62,991	0.09	113	0.18	229	0.36	46	0.07	4,549	7.22
WAYNE	112,193	0.05	290	0.26	1,078	0.96	124	0.11	5,510	4.91
WILLIAMS	39,211	0.04	34	0.09	444	1.13	34	0.09	1,840	4.69
WOOD	122,001	0.05	73	0.06	557	0.46	62	0.05	3,432	2.81
WYANDOT	22,773	0.04	13	0.06	86	0.38	23	0.10	586	2.57
UNKNOWN										

\*SOURCE: 2001 Ohio Population Estimates, Poverty Report 2000, Ohio Dept. of Development, GRP342RA, GBS003RA, GRP304RA and GRP304RC Reports from Management Information Services.