

# Ohio Department of Job and Family Services

## PUBLIC ASSISTANCE MONTHLY STATISTICS APRIL 2006



<http://jfs.ohio.gov/pams/index.stm>  
Bureau of Research and Evaluation : Federal Reporting\ Data Development Section  
Office of Research, Assessment, and Accountability  
P.O. Box 1618  
Columbus, Ohio 43216

OHIO DEPARTMENT OF JOB AND FAMILY SERVICES

PUBLIC ASSISTANCE MONTHLY STATISTICS

TABLE OF CONTENTS

<u>TITLE</u>	<u>PAGE(S)</u>
Monthly Review of Public Assistance Statistics. ....	1
Statewide Summary of Public Assistance Programs. ....	2
Table 1: OWF (TANF) Summary . . . . .	3-14
Table 2: Foster Care (Title IV-E) Program Summary. ....	15-17
Table 3: Disability Assistance Program Summary. ....	18-22
Table 3-A: DA Payments for Medical Services. ....	23
Table 5: FNS Benefits Program Summary. ....	24-28
Table 6: Medicaid (Title XIX): Eligibles and Expenditures. ....	29-34
Table 7: Child Day Care Summary . . . . .	35-37
Table 8: Program Summaries of Recipients, Expenditures, and Average Payment Per Recipient During the Last 12 Months. ....	38
Table 10: Percent of Ohio's Population Participating in Selected Public Assistance Programs. ....	39-41
<i>Note: Table 4 and Table 9 were discontinued.</i>	
<i>Also: Table 7-A, Updated Child Care Summary for January 2006. ....</i>	<i>42-44</i>

*All data in the PAMS report is limited to the information available at the time it was constructed. It does not account for backdated or retroactive eligibility or any adjustments made subsequent to its creation.*

## MONTHLY REVIEW OF PUBLIC ASSISTANCE STATISTICS FOR APRIL 2006

### OHIO WORKS FIRST

For the month of April 2006, OWF-Combined assistance groups totaled 80,090; recipients totaled 172,479 and money payments totaled \$26,466,372. The percent change from March 2006 to April 2006 was -3.8% for assistance groups; -4.6% for recipients, and -1.2% for money payments. For OWF- Regular (OWF-R) there were 76,127 assistance groups; 156,624 recipients, and \$24,730,183 in money payments issued for April 2006. The percent change from March 2006 to April 2006 was -3.6% for assistance groups; -4.3% for recipients, and -1.0% for money payments. For OWF-Unemployed (OWF-U) assistance groups totaled 3,963; recipients, 15,855 and money payments were \$1,736,189. The percent change from March 2006 to April 2006 was -6.9% for assistance groups; -7.0% for recipients and -3.6% for money payments.

### FOSTER CARE (TITLE IV-E)

A total of 27,166 children received \$13,477,491 in Title IV-E assistance during the month of April 2006. Included in this total were 6,631 foster care children who received \$5,580,217 in money payments. Of these Title IV-E children, 2,962 or 10.9% were in foster family homes who received \$1,243,170 and 3,669 or 13.5% children in child care institutions who received \$4,337,047 in OWF foster care assistance. The remaining 20,535 children reported as participating in Title IV-E received \$7,897,274 in adoption assistance. Overall, the average amount of Foster Care received per child was \$496.12.

### DISABILITY ASSISTANCE (DA)

For the month of April 2006, there were 12,548 assistance groups; 12,634 recipients, and \$1,920,212 in DA financial assistance. The average DA financial assistance per recipient was \$151.99. Total DA expenditures for medical services for April 2006 were \$2,816,161. Of this total, \$1,944,306 or 69.0% was spent for prescribed drugs, and \$ 682,702 or 24.2% was spent for physician services. Medical expenses were paid for 6,131 recipients for an average expenditure of \$459.33 per recipient.

**FNS BENEFITS: APRIL DATA COMPARISON NOT AVAILABLE DUE TO DECISION CARD IMPLEMENTATION**

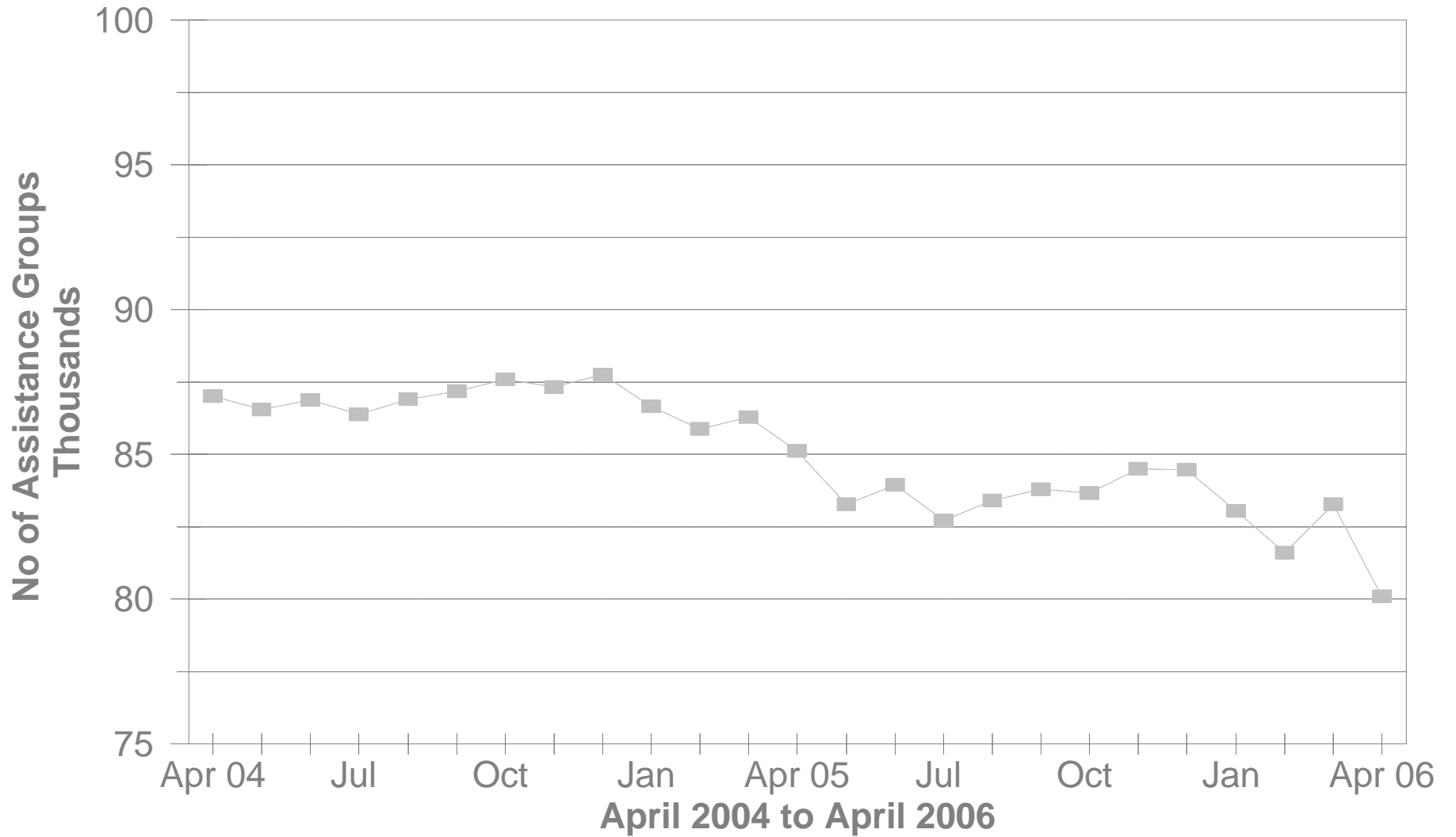
---

*Please note: All data in the PAMS report is limited to the information available at the time it was constructed. It does not account for backdated or retroactive eligibility or any adjustments made subsequent to its creation.*

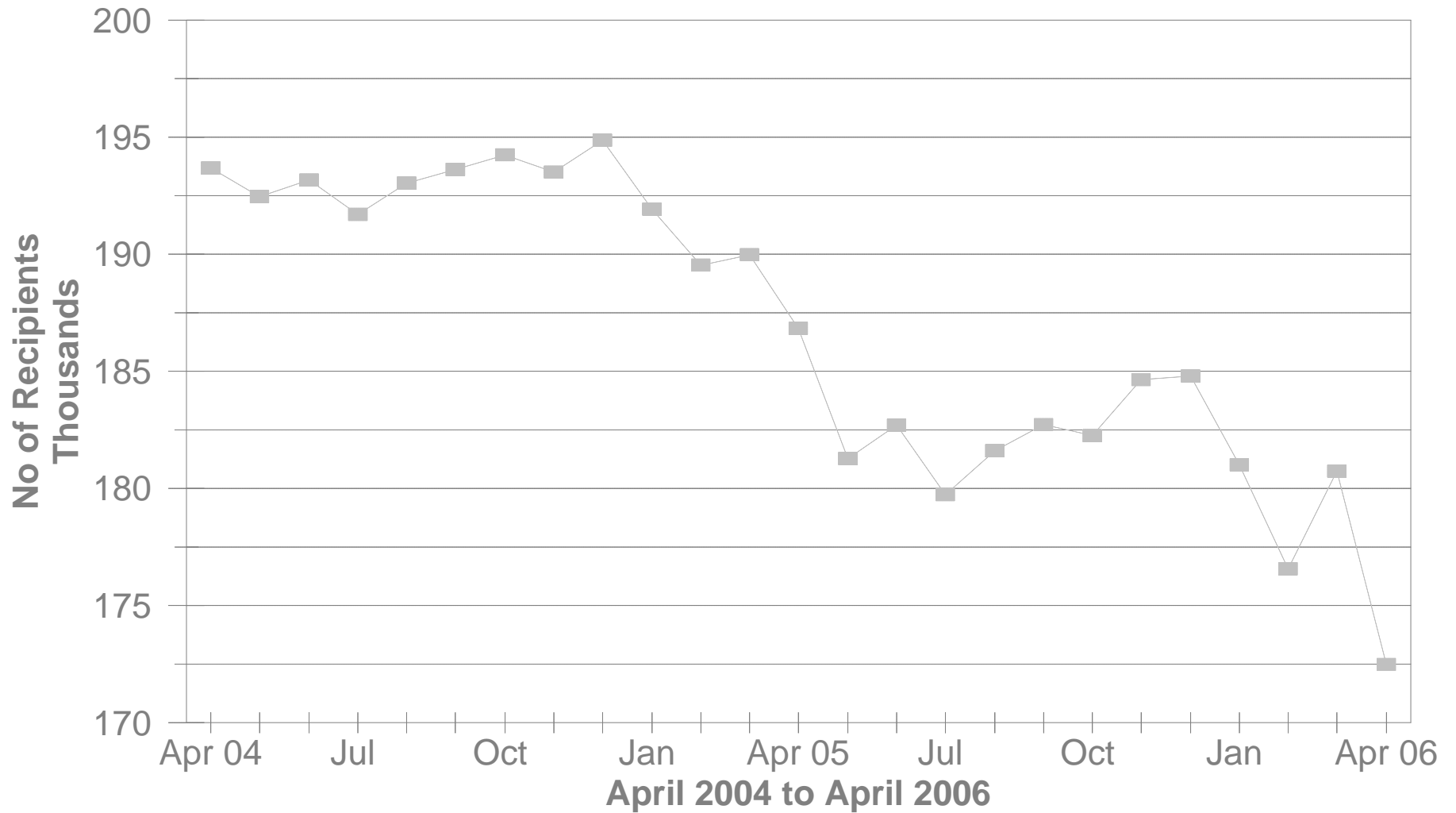
**STATEWIDE SUMMARY OF PUBLIC ASSISTANCE PROGRAMS FOR APRIL 2006**

	April 2006	March 2006	% CHANGE Apr 06 / Mar 06	April 2005	% CHANGE Apr 06 / Apr 05
<b>OHIO WORKS FIRST (OWF)-COMBINED</b>					
Assistance Groups	80,090	83,264	-3.8%	85,106	-5.9%
Recipients	172,479	180,744	-4.6%	186,834	-7.7%
Net Payments	\$26,466,372	\$26,782,238	-1.2%	\$25,550,561	3.6%
Average Per Recipient	\$153.45	\$148.18	3.6%	\$136.76	12.2%
<b>OWF-REGULAR, OWF-INCAPACITATED,&amp; OWF REGULAR VENDOR PAYMENTS</b>					
Assistance Groups	76,127	79,005	-3.6%	80,828	-5.8%
Recipients	156,624	163,689	-4.3%	169,563	-7.6%
Net Payments	\$24,730,183	\$24,981,565	-1.0%	\$23,862,670	3.6%
Average Per Recipient	\$157.90	\$152.62	3.5%	\$140.73	12.2%
<b>OWF-UNEMPLOYED AND OWF-UNEMPLOYED VENDOR PAYMENTS</b>					
Assistance Groups	3,963	4,259	-6.9%	4,278	-7.4%
Recipients	15,855	17,055	-7.0%	17,271	-8.2%
Net Payments	\$1,736,189	\$1,800,673	-3.6%	\$1,687,891	2.9%
Average Per Recipient	\$109.50	\$105.58	3.7%	\$97.73	12.0%
<b>TITLE IV-E FOSTER CARE</b>					
Assistance Groups/Recipients	27,166	27,204	-0.1%	27,063	0.4%
Gross Payments	\$13,477,491	\$14,381,303	-6.3%	\$13,460,634	0.1%
Average Per Recipient	\$496.12	\$528.65	-6.2%	\$497.38	-0.3%
<b>DISABILITY ASSISTANCE</b>					
Assistance Groups	12,548	12,463	0.7%	14,628	-14.2%
Recipients	12,634	12,555	0.6%	14,734	-14.3%
Net Payments	\$1,920,212	\$1,761,824	9.0%	\$1,895,414	1.3%
Medical Assistance	\$2,816,161	\$3,771,681	-25.3%	\$5,011,486	-43.8%
<b>FNS BENEFITS</b>					
Assistance Groups	N.A.	N.A.	N.A.	448,336	N.A.
Persons	N.A.	N.A.	N.A.	1,005,898	N.A.
Total Coupons Issued	N.A.	N.A.	N.A.	\$95,440,098	N.A.
Average Per Recipient	N.A.	N.A.	N.A.	\$94.88	N.A.

# No of OWF Combined Assistance Groups During The Last 25 Months

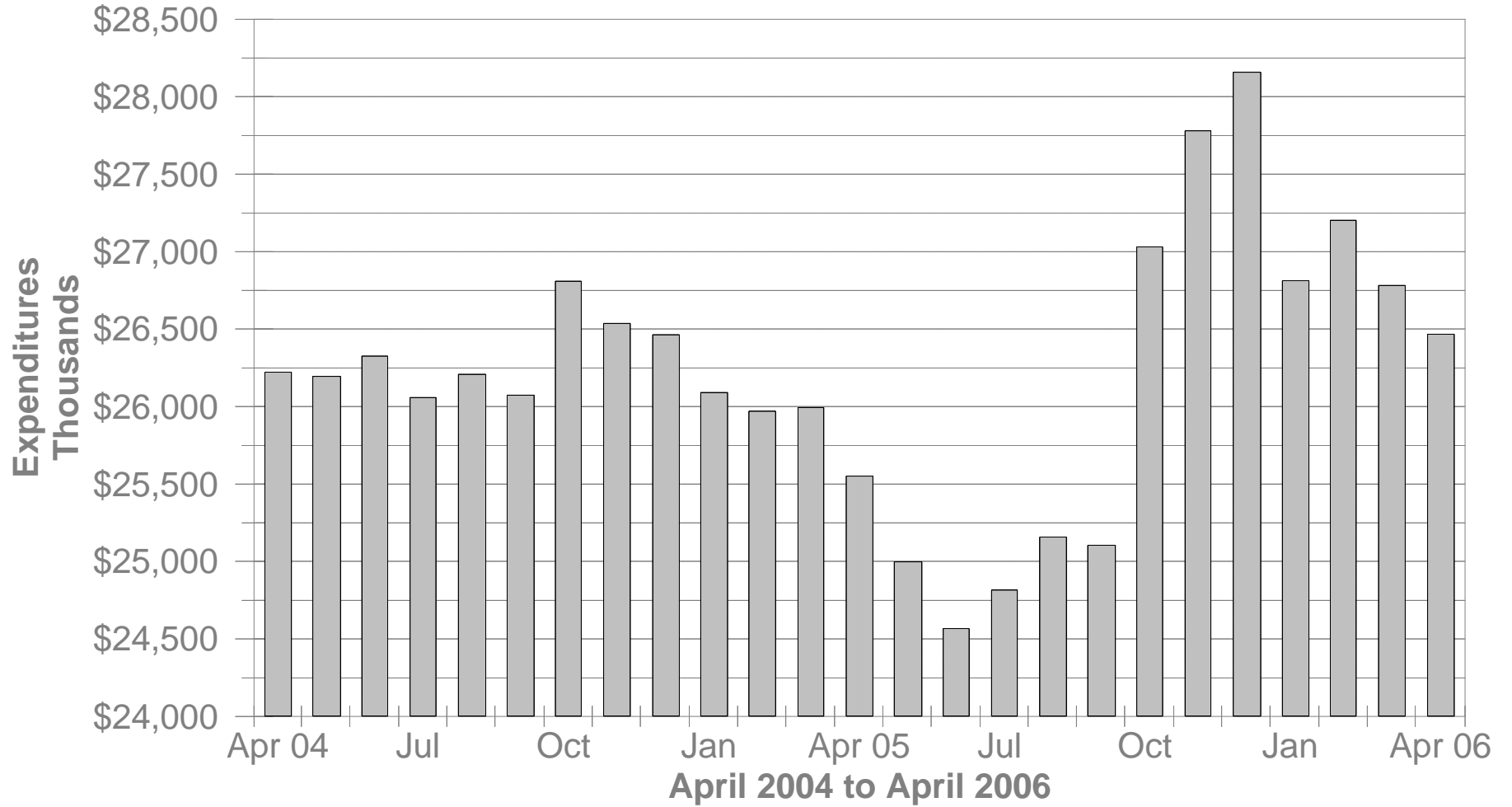


# No of OWF Combined Recipients During The Last 25 Months



# OWF Combined Net Expenditures

## During The Last 25 Months



**TABLE 1  
OWF COMBINED  
APRIL 2006**

OHIO COUNTY	ASSISTANCE GROUP	RECIPIENTS	ADULTS	CHILDREN	ACTUAL EXPENDITURES		
					GROSS AMOUNT	CANCELLED AMOUNT	NET AMOUNT
<b>STATEWIDE</b>	<b>80,090</b>	<b>172,479</b>	<b>42,916</b>	<b>129,563</b>	<b>\$27,168,938.00</b>	<b>\$702,566.00</b>	<b>\$26,466,372.00</b>
ADAMS	155	248	5	243	\$46,279.00	\$1,123.00	\$45,156.00
ALLEN	441	745	52	693	\$136,236.00	\$517.00	\$135,719.00
ASHLAND	71	137	27	110	\$22,316.00	\$746.00	\$21,570.00
ASHTABULA	668	1,356	332	1,024	\$220,793.00	\$6,600.00	\$214,193.00
ATHENS	574	1,409	493	916	\$199,229.00	\$5,361.00	\$193,868.00
AUGLAIZE	60	88	0	88	\$16,861.00	\$245.00	\$16,616.00
BELMONT	491	1,125	372	753	\$166,456.00	\$2,200.00	\$164,256.00
BROWN	158	266	31	235	\$48,874.00	\$1,481.00	\$47,393.00
BUTLER	1,490	2,781	434	2,347	\$481,767.00	\$12,613.00	\$469,154.00
CARROLL	90	181	41	140	\$27,340.00	\$1,236.00	\$26,104.00
CHAMPAIGN	207	420	125	295	\$68,626.00	\$2,136.00	\$66,490.00
CLARK	1,288	2,747	682	2,065	\$435,846.00	\$10,838.00	\$425,008.00
CLERMONT	441	821	125	696	\$139,957.00	\$3,186.00	\$136,771.00
CLINTON	134	230	34	196	\$42,032.00	\$0.00	\$42,032.00
COLUMBIANA	477	900	158	742	\$152,122.00	\$4,434.00	\$147,688.00
COSHOCTON	204	405	115	290	\$64,558.00	\$1,349.00	\$63,209.00
CRAWFORD	188	414	111	303	\$63,461.00	\$1,259.00	\$62,202.00
CUYAHOGA	12,284	24,888	5,701	19,187	\$4,089,380.00	\$88,792.00	\$4,000,588.00
DARKE	151	319	91	228	\$51,006.00	\$1,906.00	\$49,100.00
DEFIANCE	134	304	77	227	\$46,165.00	\$735.00	\$45,430.00
DELAWARE	314	728	242	486	\$106,255.00	\$900.00	\$105,355.00
ERIE	246	416	39	377	\$74,117.00	\$2,473.00	\$71,644.00
FAIRFIELD	760	1,820	601	1,219	\$265,724.00	\$6,537.00	\$259,187.00
FAYETTE	137	244	44	200	\$41,455.00	\$2,091.00	\$39,364.00
FRANKLIN	10,469	23,498	5,692	17,806	\$3,636,518.00	\$130,052.00	\$3,506,466.00
FULTON	76	139	23	116	\$23,189.00	\$1,863.00	\$21,326.00
GALLIA	557	1,422	524	898	\$195,540.00	\$3,319.00	\$192,221.00
GEAUGA	63	111	13	98	\$17,483.00	\$843.00	\$16,640.00
GREENE	556	1,127	276	851	\$183,807.00	\$5,841.00	\$177,966.00

Source: GRP342RA Report from Management Information Services. Data includes ADC-Regular, ADC-Incapacitated, and Vendor Payments.



**TABLE 1  
OWF COMBINED  
APRIL 2006**

OHIO COUNTY	ASSISTANCE GROUP	RECIPIENTS	ADULTS	CHILDREN	ACTUAL EXPENDITURES		
					GROSS AMOUNT	CANCELLED AMOUNT	NET AMOUNT
<b>STATEWIDE</b>	<b>80,090</b>	<b>172,479</b>	<b>42,916</b>	<b>129,563</b>	<b>\$27,168,938.00</b>	<b>\$702,566.00</b>	<b>\$26,466,372.00</b>
GUERNSEY	221	430	95	335	\$67,772.00	\$1,368.00	\$66,404.00
HAMILTON	7,374	16,630	3,863	12,767	\$2,634,196.00	\$87,681.00	\$2,546,515.00
HANCOCK	130	211	24	187	\$40,449.00	\$2,136.00	\$38,313.00
HARDIN	50	81	5	76	\$13,909.00	\$0.00	\$13,909.00
HARRISON	112	272	75	197	\$38,438.00	\$683.00	\$37,755.00
HENRY	38	65	9	56	\$11,596.00	\$77.00	\$11,519.00
HIGHLAND	208	471	118	353	\$72,966.00	\$2,942.00	\$70,024.00
HOCKING	283	688	216	472	\$98,741.00	\$1,788.00	\$96,953.00
HOLMES	50	97	20	77	\$16,972.00	\$336.00	\$16,636.00
HURON	144	212	1	211	\$42,242.00	\$1,481.00	\$40,761.00
JACKSON	282	504	73	431	\$88,910.00	\$3,865.00	\$85,045.00
JEFFERSON	862	1,970	632	1,338	\$295,353.00	\$7,784.00	\$287,569.00
KNOX	248	565	167	398	\$82,648.00	\$1,162.00	\$81,486.00
LAKE	611	1,355	332	1,023	\$214,012.00	\$6,238.00	\$207,774.00
LAWRENCE	723	1,400	305	1,095	\$228,832.00	\$3,890.00	\$224,942.00
LICKING	584	1,269	343	926	\$192,929.00	\$3,911.00	\$189,018.00
LOGAN	207	486	128	358	\$71,458.00	\$1,088.00	\$70,370.00
LORAIN	2,203	4,990	1,269	3,721	\$753,281.00	\$11,513.00	\$741,768.00
LUCAS	6,792	16,072	4,701	11,371	\$2,399,356.00	\$59,386.00	\$2,339,970.00
MADISON	228	530	179	351	\$77,910.00	\$1,418.00	\$76,492.00
MAHONING	2,677	5,981	1,500	4,481	\$942,011.00	\$24,978.00	\$917,033.00
MARION	395	738	93	645	\$127,202.00	\$2,085.00	\$125,117.00
MEDINA	299	654	201	453	\$101,665.00	\$2,681.00	\$98,984.00
MEIGS	190	406	114	292	\$60,465.00	\$0.00	\$60,465.00
MERCER	81	167	56	111	\$28,443.00	\$478.00	\$27,965.00
MIAMI	309	615	118	497	\$97,428.00	\$2,555.00	\$94,873.00
MONROE	60	165	51	114	\$21,136.00	\$0.00	\$21,136.00
MONTGOMERY	5,019	10,393	2,428	7,965	\$1,656,913.00	\$37,865.00	\$1,619,048.00
MORGAN	77	123	12	111	\$22,849.00	\$641.00	\$22,208.00
MORROW	115	215	57	158	\$35,790.00	\$1,743.00	\$34,047.00

Source: GRP342RA Report from Management Information Services. Data includes ADC-Regular, ADC-Incapacitated, and Vendor Payments.

**TABLE 1  
OWF COMBINED  
APRIL 2006**

OHIO COUNTY	ASSISTANCE GROUP	RECIPIENTS	ADULTS	CHILDREN	ACTUAL EXPENDITURES		
					GROSS AMOUNT	CANCELLED AMOUNT	NET AMOUNT
<b>STATEWIDE</b>	<b>80,090</b>	<b>172,479</b>	<b>42,916</b>	<b>129,563</b>	<b>\$27,168,938.00</b>	<b>\$702,566.00</b>	<b>\$26,466,372.00</b>
MUSKINGUM	954	2,167	643	1,524	\$319,373.00	\$9,867.00	\$309,506.00
NOBLE	45	104	30	74	\$15,386.00	\$424.00	\$14,962.00
OTTAWA	137	318	104	214	\$47,382.00	\$1,327.00	\$46,055.00
PAULDING	100	266	98	168	\$37,530.00	\$389.00	\$37,141.00
PERRY	324	764	210	554	\$106,667.00	\$1,743.00	\$104,924.00
PICKAWAY	429	1,025	311	714	\$148,952.00	\$3,913.00	\$145,039.00
PIKE	316	675	154	521	\$106,217.00	\$1,586.00	\$104,631.00
PORTAGE	442	841	177	664	\$146,111.00	\$3,246.00	\$142,865.00
PREBLE	157	333	81	252	\$50,227.00	\$1,180.00	\$49,047.00
PUTNAM	29	57	5	52	\$8,736.00	\$0.00	\$8,736.00
RICHLAND	670	1,350	286	1,064	\$220,398.00	\$4,467.00	\$215,931.00
ROSS	723	1,639	480	1,159	\$252,687.00	\$3,468.00	\$249,219.00
SANDUSKY	183	336	69	267	\$59,797.00	\$2,067.00	\$57,730.00
SCIOTO	1,051	2,069	401	1,668	\$338,059.00	\$9,097.00	\$328,962.00
SENECA	154	284	46	238	\$48,954.00	\$1,043.00	\$47,911.00
SHELBY	118	208	24	184	\$37,306.00	\$0.00	\$37,306.00
STARK	2,779	6,126	1,735	4,391	\$950,701.00	\$25,495.00	\$925,206.00
SUMMIT	4,527	9,571	2,580	6,991	\$1,531,989.00	\$33,001.00	\$1,498,988.00
TRUMBULL	1,423	2,873	629	2,244	\$466,876.00	\$9,202.00	\$457,674.00
TUSCARAWAS	453	1,049	333	716	\$156,002.00	\$2,414.00	\$153,588.00
UNION	171	415	134	281	\$56,705.00	\$1,179.00	\$55,526.00
VAN WERT	49	81	11	70	\$14,805.00	\$463.00	\$14,342.00
VINTON	153	328	101	227	\$48,682.00	\$470.00	\$48,212.00
WARREN	226	411	58	353	\$69,656.00	\$2,035.00	\$67,621.00
WASHINGTON	122	188	4	184	\$36,146.00	\$0.00	\$36,146.00
WAYNE	455	1,021	328	693	\$149,981.00	\$7,590.00	\$142,391.00
WILLIAMS	149	357	117	240	\$51,800.00	\$2,492.00	\$49,308.00
WOOD	256	502	105	397	\$79,760.00	\$1,714.00	\$78,046.00
WYANDOT	39	77	17	60	\$12,789.00	\$245.00	\$12,544.00

Source: GRP342RA Report from Management Information Services. Data includes ADC-Regular, ADC-Incapacitated, and Vendor Payments.

**TABLE 1  
OWF REGULAR  
APRIL 2006**

OHIO COUNTY	ASSISTANCE GROUP	RECIPIENTS	ADULTS	CHILDREN	ACTUAL EXPENDITURES		
					GROSS AMOUNT	CANCELLED AMOUNT	NET AMOUNT
<b>STATEWIDE</b>	<b>76,127</b>	<b>156,624</b>	<b>35,604</b>	<b>121,020</b>	<b>\$25,392,255.00</b>	<b>\$662,072.00</b>	<b>\$24,730,183.00</b>
ADAMS	155	248	5	243	\$46,279.00	\$1,123.00	\$45,156.00
ALLEN	440	742	52	690	\$135,826.00	\$517.00	\$135,309.00
ASHLAND	68	125	21	104	\$20,937.00	\$746.00	\$20,191.00
ASHTABULA	624	1,190	260	930	\$200,178.00	\$6,430.00	\$193,748.00
ATHENS	473	1,041	312	729	\$157,935.00	\$3,854.00	\$154,081.00
AUGLAIZE	60	88	0	88	\$16,861.00	\$245.00	\$16,616.00
BELMONT	424	882	239	643	\$138,765.00	\$1,908.00	\$136,857.00
BROWN	157	262	29	233	\$48,367.00	\$1,481.00	\$46,886.00
BUTLER	1,476	2,735	418	2,317	\$475,116.00	\$12,277.00	\$462,839.00
CARROLL	84	158	30	128	\$25,924.00	\$1,236.00	\$24,688.00
CHAMPAIGN	193	370	99	271	\$63,547.00	\$2,136.00	\$61,411.00
CLARK	1,244	2,567	607	1,960	\$415,403.00	\$10,502.00	\$404,901.00
CLERMONT	440	817	123	694	\$139,843.00	\$3,186.00	\$136,657.00
CLINTON	133	228	34	194	\$41,696.00	\$0.00	\$41,696.00
COLUMBIANA	463	844	130	714	\$145,195.00	\$3,927.00	\$141,268.00
COSHOCTON	193	364	94	270	\$59,342.00	\$1,349.00	\$57,993.00
CRAWFORD	180	381	95	286	\$60,235.00	\$826.00	\$59,409.00
CUYAHOGA	11,872	23,216	4,908	18,308	\$3,916,080.00	\$84,183.00	\$3,831,897.00
DARKE	140	278	69	209	\$46,094.00	\$1,906.00	\$44,188.00
DEFIANCE	124	262	58	204	\$42,337.00	\$735.00	\$41,602.00
DELAWARE	283	611	186	425	\$94,209.00	\$900.00	\$93,309.00
ERIE	242	396	31	365	\$72,343.00	\$2,473.00	\$69,870.00
FAIRFIELD	657	1,416	407	1,009	\$219,637.00	\$6,292.00	\$213,345.00
FAYETTE	135	236	40	196	\$40,948.00	\$2,091.00	\$38,857.00
FRANKLIN	9,932	21,121	4,771	16,350	\$3,369,114.00	\$121,324.00	\$3,247,790.00
FULTON	75	137	23	114	\$22,853.00	\$1,863.00	\$20,990.00
GALLIA	446	1,026	311	715	\$151,578.00	\$2,672.00	\$148,906.00
GEAUGA	62	107	11	96	\$16,976.00	\$843.00	\$16,133.00
GREENE	529	1,029	224	805	\$172,732.00	\$5,536.00	\$167,196.00

Source: GRP342RA Report from Management Information Services. Data includes ADC-Regular, ADC-Incapacitated, and Vendor Payments.

**TABLE 1  
OWF REGULAR  
APRIL 2006**

OHIO COUNTY	ASSISTANCE GROUP	RECIPIENTS	ADULTS	CHILDREN	ACTUAL EXPENDITURES		
					GROSS AMOUNT	CANCELLED AMOUNT	NET AMOUNT
<b>STATEWIDE</b>	<b>76,127</b>	<b>156,624</b>	<b>35,604</b>	<b>121,020</b>	<b>\$25,392,255.00</b>	<b>\$662,072.00</b>	<b>\$24,730,183.00</b>
GUERNSEY	208	382	69	313	\$62,426.00	\$548.00	\$61,878.00
HAMILTON	7,205	15,927	3,558	12,369	\$2,548,367.00	\$86,079.00	\$2,462,288.00
HANCOCK	128	204	22	182	\$39,683.00	\$2,136.00	\$37,547.00
HARDIN	50	81	5	76	\$13,909.00	\$0.00	\$13,909.00
HARRISON	103	236	57	179	\$35,266.00	\$683.00	\$34,583.00
HENRY	37	62	7	55	\$11,028.00	\$77.00	\$10,951.00
HIGHLAND	197	424	96	328	\$68,156.00	\$2,942.00	\$65,214.00
HOCKING	236	499	122	377	\$77,868.00	\$1,720.00	\$76,148.00
HOLMES	48	89	16	73	\$15,519.00	\$336.00	\$15,183.00
HURON	143	211	1	210	\$41,997.00	\$1,481.00	\$40,516.00
JACKSON	275	482	62	420	\$85,503.00	\$3,455.00	\$82,048.00
JEFFERSON	766	1,583	441	1,142	\$252,674.00	\$6,867.00	\$245,807.00
KNOX	233	510	138	372	\$76,790.00	\$1,162.00	\$75,628.00
LAKE	545	1,122	254	868	\$183,397.00	\$5,413.00	\$177,984.00
LAWRENCE	684	1,246	231	1,015	\$210,329.00	\$2,996.00	\$207,333.00
LICKING	533	1,064	244	820	\$172,771.00	\$3,911.00	\$168,860.00
LOGAN	189	397	92	305	\$62,247.00	\$1,088.00	\$61,159.00
LORAIN	2,071	4,483	1,018	3,465	\$695,811.00	\$9,605.00	\$686,206.00
LUCAS	6,304	14,125	3,801	10,324	\$2,187,889.00	\$55,606.00	\$2,132,283.00
MADISON	201	420	129	291	\$66,869.00	\$1,008.00	\$65,861.00
MAHONING	2,580	5,606	1,323	4,283	\$897,095.00	\$23,880.00	\$873,215.00
MARION	388	717	86	631	\$124,443.00	\$2,085.00	\$122,358.00
MEDINA	278	559	159	400	\$91,420.00	\$2,681.00	\$88,739.00
MEIGS	178	360	90	270	\$55,777.00	\$0.00	\$55,777.00
MERCER	78	157	50	107	\$27,188.00	\$478.00	\$26,710.00
MIAMI	299	575	98	477	\$93,978.00	\$2,555.00	\$91,423.00
MONROE	47	114	27	87	\$15,477.00	\$0.00	\$15,477.00
MONTGOMERY	4,995	10,315	2,404	7,911	\$1,646,080.00	\$37,455.00	\$1,608,625.00
MORGAN	75	114	8	106	\$21,749.00	\$641.00	\$21,108.00
MORROW	106	184	39	145	\$31,395.00	\$1,743.00	\$29,652.00

Source: GRP342RA Report from Management Information Services. Data includes ADC-Regular, ADC-Incapacitated, and Vendor Payments.

**TABLE 1  
OWF REGULAR  
APRIL 2006**

OHIO COUNTY	ASSISTANCE GROUP	RECIPIENTS	ADULTS	CHILDREN	ACTUAL EXPENDITURES		
					GROSS AMOUNT	CANCELLED AMOUNT	NET AMOUNT
<b>STATEWIDE</b>	<b>76,127</b>	<b>156,624</b>	<b>35,604</b>	<b>121,020</b>	<b>\$25,392,255.00</b>	<b>\$662,072.00</b>	<b>\$24,730,183.00</b>
MUSKINGUM	866	1,827	470	1,357	\$280,811.00	\$9,457.00	\$271,354.00
NOBLE	42	93	25	68	\$14,068.00	\$424.00	\$13,644.00
OTTAWA	122	253	75	178	\$40,595.00	\$1,327.00	\$39,268.00
PAULDING	83	183	64	119	\$29,301.00	\$389.00	\$28,912.00
PERRY	288	612	141	471	\$90,311.00	\$1,743.00	\$88,568.00
PICKAWAY	391	865	236	629	\$128,966.00	\$2,899.00	\$126,067.00
PIKE	301	620	127	493	\$99,101.00	\$1,586.00	\$97,515.00
PORTAGE	430	797	155	642	\$139,030.00	\$3,246.00	\$135,784.00
PREBLE	152	318	72	246	\$48,739.00	\$1,014.00	\$47,725.00
PUTNAM	28	52	3	49	\$8,299.00	\$0.00	\$8,299.00
RICHLAND	661	1,311	268	1,043	\$215,277.00	\$4,467.00	\$210,810.00
ROSS	655	1,378	354	1,024	\$224,494.00	\$3,468.00	\$221,026.00
SANDUSKY	179	325	66	259	\$58,044.00	\$2,067.00	\$55,977.00
SCIOTO	989	1,828	284	1,544	\$310,814.00	\$8,687.00	\$302,127.00
SENECA	152	278	43	235	\$48,134.00	\$1,043.00	\$47,091.00
SHELBY	118	208	24	184	\$37,306.00	\$0.00	\$37,306.00
STARK	2,602	5,446	1,397	4,049	\$869,317.00	\$23,100.00	\$846,217.00
SUMMIT	4,310	8,658	2,158	6,500	\$1,430,298.00	\$31,220.00	\$1,399,078.00
TRUMBULL	1,365	2,642	515	2,127	\$440,414.00	\$8,695.00	\$431,719.00
TUSCARAWAS	393	826	218	608	\$130,217.00	\$1,907.00	\$128,310.00
UNION	150	324	91	233	\$47,070.00	\$1,179.00	\$45,891.00
VAN WERT	45	64	3	61	\$12,891.00	\$463.00	\$12,428.00
VINTON	135	267	68	199	\$42,738.00	\$148.00	\$42,590.00
WARREN	225	410	58	352	\$69,586.00	\$2,035.00	\$67,551.00
WASHINGTON	122	188	4	184	\$36,146.00	\$0.00	\$36,146.00
WAYNE	415	865	249	616	\$133,631.00	\$6,425.00	\$127,206.00
WILLIAMS	142	333	103	230	\$48,842.00	\$2,227.00	\$46,615.00
WOOD	247	467	90	377	\$77,038.00	\$1,419.00	\$75,619.00
WYANDOT	35	61	9	52	\$11,326.00	\$245.00	\$11,081.00

Source: GRP342RA Report from Management Information Services. Data includes ADC-Regular, ADC-Incapacitated, and Vendor Payments.

**TABLE 1  
OWF UNEMPLOYED  
APRIL 2006**

OHIO COUNTY	ASSISTANCE GROUP	RECIPIENTS	ADULTS	CHILDREN	ACTUAL EXPENDITURES		
					GROSS AMOUNT	CANCELLED AMOUNT	NET AMOUNT
<b>STATEWIDE</b>	<b>3,963</b>	<b>15,855</b>	<b>7,312</b>	<b>8,543</b>	<b>\$1,776,683.00</b>	<b>\$40,494.00</b>	<b>\$1,736,189.00</b>
ADAMS	0	0	0	0	\$0.00	\$0.00	\$0.00
ALLEN	1	3	0	3	\$410.00	\$0.00	\$410.00
ASHLAND	3	12	6	6	\$1,379.00	\$0.00	\$1,379.00
ASHTABULA	44	166	72	94	\$20,615.00	\$170.00	\$20,445.00
ATHENS	101	368	181	187	\$41,294.00	\$1,507.00	\$39,787.00
AUGLAIZE	0	0	0	0	\$0.00	\$0.00	\$0.00
BELMONT	67	243	133	110	\$27,691.00	\$292.00	\$27,399.00
BROWN	1	4	2	2	\$507.00	\$0.00	\$507.00
BUTLER	14	46	16	30	\$6,651.00	\$336.00	\$6,315.00
CARROLL	6	23	11	12	\$1,416.00	\$0.00	\$1,416.00
CHAMPAIGN	14	50	26	24	\$5,079.00	\$0.00	\$5,079.00
CLARK	44	180	75	105	\$20,443.00	\$336.00	\$20,107.00
CLERMONT	1	4	2	2	\$114.00	\$0.00	\$114.00
CLINTON	1	2	0	2	\$336.00	\$0.00	\$336.00
COLUMBIANA	14	56	28	28	\$6,927.00	\$507.00	\$6,420.00
COSHOCTON	11	41	21	20	\$5,216.00	\$0.00	\$5,216.00
CRAWFORD	8	33	16	17	\$3,226.00	\$433.00	\$2,793.00
CUYAHOGA	412	1,672	793	879	\$173,300.00	\$4,609.00	\$168,691.00
DARKE	11	41	22	19	\$4,912.00	\$0.00	\$4,912.00
DEFIANCE	10	42	19	23	\$3,828.00	\$0.00	\$3,828.00
DELAWARE	31	117	56	61	\$12,046.00	\$0.00	\$12,046.00
ERIE	4	20	8	12	\$1,774.00	\$0.00	\$1,774.00
FAIRFIELD	103	404	194	210	\$46,087.00	\$245.00	\$45,842.00
FAYETTE	2	8	4	4	\$507.00	\$0.00	\$507.00
FRANKLIN	537	2,377	921	1,456	\$267,404.00	\$8,728.00	\$258,676.00
FULTON	1	2	0	2	\$336.00	\$0.00	\$336.00
GALLIA	111	396	213	183	\$43,962.00	\$647.00	\$43,315.00
GEAUGA	1	4	2	2	\$507.00	\$0.00	\$507.00
GREENE	27	98	52	46	\$11,075.00	\$305.00	\$10,770.00

Source: GRP342RA Report from Management Information Services. Data includes ADC-Regular, ADC-Incapacitated, and Vendor Payments.

**TABLE 1  
OWF UNEMPLOYED  
APRIL 2006**

OHIO COUNTY	ASSISTANCE GROUP	RECIPIENTS	ADULTS	CHILDREN	ACTUAL EXPENDITURES		
					GROSS AMOUNT	CANCELLED AMOUNT	NET AMOUNT
<b>STATEWIDE</b>	<b>3,963</b>	<b>15,855</b>	<b>7,312</b>	<b>8,543</b>	<b>\$1,776,683.00</b>	<b>\$40,494.00</b>	<b>\$1,736,189.00</b>
GUERNSEY	13	48	26	22	\$5,346.00	\$820.00	\$4,526.00
HAMILTON	169	703	305	398	\$85,829.00	\$1,602.00	\$84,227.00
HANCOCK	2	7	2	5	\$766.00	\$0.00	\$766.00
HARDIN	0	0	0	0	\$0.00	\$0.00	\$0.00
HARRISON	9	36	18	18	\$3,172.00	\$0.00	\$3,172.00
HENRY	1	3	2	1	\$568.00	\$0.00	\$568.00
HIGHLAND	11	47	22	25	\$4,810.00	\$0.00	\$4,810.00
HOCKING	47	189	94	95	\$20,873.00	\$68.00	\$20,805.00
HOLMES	2	8	4	4	\$1,453.00	\$0.00	\$1,453.00
HURON	1	1	0	1	\$245.00	\$0.00	\$245.00
JACKSON	7	22	11	11	\$3,407.00	\$410.00	\$2,997.00
JEFFERSON	96	387	191	196	\$42,679.00	\$917.00	\$41,762.00
KNOX	15	55	29	26	\$5,858.00	\$0.00	\$5,858.00
LAKE	66	233	78	155	\$30,615.00	\$825.00	\$29,790.00
LAWRENCE	39	154	74	80	\$18,503.00	\$894.00	\$17,609.00
LICKING	51	205	99	106	\$20,158.00	\$0.00	\$20,158.00
LOGAN	18	89	36	53	\$9,211.00	\$0.00	\$9,211.00
LORAIN	132	507	251	256	\$57,470.00	\$1,908.00	\$55,562.00
LUCAS	488	1,947	900	1,047	\$211,467.00	\$3,780.00	\$207,687.00
MADISON	27	110	50	60	\$11,041.00	\$410.00	\$10,631.00
MAHONING	97	375	177	198	\$44,916.00	\$1,098.00	\$43,818.00
MARION	7	21	7	14	\$2,759.00	\$0.00	\$2,759.00
MEDINA	21	95	42	53	\$10,245.00	\$0.00	\$10,245.00
MEIGS	12	46	24	22	\$4,688.00	\$0.00	\$4,688.00
MERCER	3	10	6	4	\$1,255.00	\$0.00	\$1,255.00
MIAMI	10	40	20	20	\$3,450.00	\$0.00	\$3,450.00
MONROE	13	51	24	27	\$5,659.00	\$0.00	\$5,659.00
MONTGOMERY	24	78	24	54	\$10,833.00	\$410.00	\$10,423.00
MORGAN	2	9	4	5	\$1,100.00	\$0.00	\$1,100.00
MORROW	9	31	18	13	\$4,395.00	\$0.00	\$4,395.00

Source: GRP342RA Report from Management Information Services. Data includes ADC-Regular, ADC-Incapacitated, and Vendor Payments.

**TABLE 1  
OWF UNEMPLOYED  
APRIL 2006**

OHIO COUNTY	ASSISTANCE GROUP	RECIPIENTS	ADULTS	CHILDREN	ACTUAL EXPENDITURES		
					GROSS AMOUNT	CANCELLED AMOUNT	NET AMOUNT
<b>STATEWIDE</b>	<b>3,963</b>	<b>15,855</b>	<b>7,312</b>	<b>8,543</b>	<b>\$1,776,683.00</b>	<b>\$40,494.00</b>	<b>\$1,736,189.00</b>
MUSKINGUM	88	340	173	167	\$38,562.00	\$410.00	\$38,152.00
NOBLE	3	11	5	6	\$1,318.00	\$0.00	\$1,318.00
OTTAWA	15	65	29	36	\$6,787.00	\$0.00	\$6,787.00
PAULDING	17	83	34	49	\$8,229.00	\$0.00	\$8,229.00
PERRY	36	152	69	83	\$16,356.00	\$0.00	\$16,356.00
PICKAWAY	38	160	75	85	\$19,986.00	\$1,014.00	\$18,972.00
PIKE	15	55	27	28	\$7,116.00	\$0.00	\$7,116.00
PORTAGE	12	44	22	22	\$7,081.00	\$0.00	\$7,081.00
PREBLE	5	15	9	6	\$1,488.00	\$166.00	\$1,322.00
PUTNAM	1	5	2	3	\$437.00	\$0.00	\$437.00
RICHLAND	9	39	18	21	\$5,121.00	\$0.00	\$5,121.00
ROSS	68	261	126	135	\$28,193.00	\$0.00	\$28,193.00
SANDUSKY	4	11	3	8	\$1,753.00	\$0.00	\$1,753.00
SCIOTO	62	241	117	124	\$27,245.00	\$410.00	\$26,835.00
SENECA	2	6	3	3	\$820.00	\$0.00	\$820.00
SHELBY	0	0	0	0	\$0.00	\$0.00	\$0.00
STARK	177	680	338	342	\$81,384.00	\$2,395.00	\$78,989.00
SUMMIT	217	913	422	491	\$101,691.00	\$1,781.00	\$99,910.00
TRUMBULL	58	231	114	117	\$26,462.00	\$507.00	\$25,955.00
TUSCARAWAS	60	223	115	108	\$25,785.00	\$507.00	\$25,278.00
UNION	21	91	43	48	\$9,635.00	\$0.00	\$9,635.00
VAN WERT	4	17	8	9	\$1,914.00	\$0.00	\$1,914.00
VINTON	18	61	33	28	\$5,944.00	\$322.00	\$5,622.00
WARREN	1	1	0	1	\$70.00	\$0.00	\$70.00
WASHINGTON	0	0	0	0	\$0.00	\$0.00	\$0.00
WAYNE	40	156	79	77	\$16,350.00	\$1,165.00	\$15,185.00
WILLIAMS	7	24	14	10	\$2,958.00	\$265.00	\$2,693.00
WOOD	9	35	15	20	\$2,722.00	\$295.00	\$2,427.00
WYANDOT	4	16	8	8	\$1,463.00	\$0.00	\$1,463.00

Source: GRP342RA Report from Management Information Services. Data includes ADC-Regular, ADC-Incapacitated, and Vendor Payments.



**TABLE 2  
TITLE IV-E FOSTER CARE  
APRIL 2006**

OHIO COUNTY	FOSTER CARE						ADOPTION ASSISTANCE		TOTAL FOSTER CARE AND ADOPTION ASSISTANCE	
	FOSTER FAMILY HOMES		CHILD CARE INSTITUTIONS		HOMES & INSTITUTIONS		CHILDREN	GROSS AMOUNT	CHILDREN	GROSS AMOUNT
	CHILDREN	GROSS AMOUNT	CHILDREN	GROSS AMOUNT	CHILDREN	GROSS AMOUNT				
STATEWIDE	2,962	\$1,243,170.04	3,669	\$4,337,046.78	6,631	\$5,580,216.82	20,535	\$7,897,273.84	27,166	\$13,477,490.66
ADAMS	18	\$4,742.43	11	\$40,998.04	29	\$45,740.47	34	\$10,282.00	63	\$56,022.47
ALLEN	57	\$21,132.80	36	\$41,822.74	93	\$62,955.54	129	\$38,466.15	222	\$101,421.69
ASHLAND	16	\$4,100.50	1	\$2,370.07	17	\$6,470.57	11	\$2,724.91	28	\$9,195.48
ASHTABULA	0	\$0.00	18	\$5,694.64	18	\$5,694.64	179	\$64,934.76	197	\$70,629.40
ATHENS	45	\$21,078.00	34	\$44,476.82	79	\$65,554.82	123	\$40,206.67	202	\$105,761.49
AUGLAIZE	6	\$1,898.19	3	\$2,925.92	9	\$4,824.11	43	\$16,552.32	52	\$21,376.43
BELMONT	1	\$350.29	18	\$11,819.10	19	\$12,169.39	114	\$44,806.73	133	\$56,976.12
BROWN	20	\$5,979.58	1	\$1,006.15	21	\$6,985.73	38	\$10,229.50	59	\$17,215.23
BUTLER	72	\$32,969.82	91	\$147,156.51	163	\$180,126.33	521	\$167,249.33	684	\$347,375.66
CARROLL	4	\$2,730.52	0	\$0.00	4	\$2,730.52	8	\$2,000.00	12	\$4,730.52
CHAMPAIGN	6	(\$155.67)	7	\$21,720.96	13	\$21,565.29	22	\$7,146.70	35	\$28,711.99
CLARK	0	\$0.00	0	\$0.00	0	\$0.00	312	\$108,723.18	312	\$108,723.18
CLERMONT	59	\$26,835.30	110	\$124,377.28	169	\$151,212.58	244	\$70,135.00	413	\$221,347.58
CLINTON	28	\$9,063.93	5	\$11,421.78	33	\$20,485.71	66	\$25,841.28	99	\$46,326.99
COLUMBIANA	31	\$4,994.02	36	\$52,114.06	67	\$57,108.08	72	\$20,616.74	139	\$77,724.82
COSHOCTON	8	\$5,513.19	2	\$6,174.72	10	\$11,687.91	49	\$14,525.44	59	\$26,213.35
CRAWFORD	0	\$0.00	0	\$0.00	0	\$0.00	43	\$13,075.53	43	\$13,075.53
CUYAHOGA	414	\$182,804.16	857	\$1,312,194.24	1,271	\$1,494,998.40	5,090	\$2,410,490.04	6,361	\$3,905,488.44
DARKE	11	\$5,330.93	16	\$32,387.39	27	\$37,718.32	31	\$9,929.60	58	\$47,647.92
DEFIANCE	11	\$3,892.78	2	\$2,292.10	13	\$6,184.88	35	\$9,887.72	48	\$16,072.60
DELAWARE	15	\$4,042.90	13	\$22,969.68	28	\$27,012.58	59	\$17,055.38	87	\$44,067.96
ERIE	22	\$12,203.52	17	\$31,215.44	39	\$43,418.96	96	\$30,038.28	135	\$73,457.24
FAIRFIELD	0	\$0.00	0	\$0.00	0	\$0.00	179	\$48,372.37	179	\$48,372.37
FAYETTE	2	\$898.20	0	\$0.00	2	\$898.20	15	\$3,750.00	17	\$4,648.20
FRANKLIN	0	\$0.00	1,074	\$500,684.81	1,074	\$500,684.81	2,620	\$992,929.01	3,694	\$1,493,613.82
FULTON	0	\$0.00	18	\$40,750.15	18	\$40,750.15	17	\$4,848.80	35	\$45,598.95
GALLIA	12	\$3,627.47	2	\$1,786.25	14	\$5,413.72	50	\$12,465.00	64	\$17,878.72
GEAUGA	2	\$1,390.05	0	\$0.00	2	\$1,390.05	107	\$36,232.54	109	\$37,622.59
GREENE	0	\$0.00	0	\$0.00	0	\$0.00	95	\$30,864.80	95	\$30,864.80

SOURCE: GBS003RB Report from Management Information Services. Federal funds only.

**TABLE 2  
TITLE IV-E FOSTER CARE  
APRIL 2006**

OHIO COUNTY	FOSTER CARE						ADOPTION ASSISTANCE		TOTAL FOSTER CARE AND ADOPTION ASSISTANCE	
	FOSTER FAMILY HOMES		CHILD CARE INSTITUTIONS		HOMES & INSTITUTIONS		CHILDREN	GROSS AMOUNT	CHILDREN	GROSS AMOUNT
	CHILDREN	GROSS AMOUNT	CHILDREN	GROSS AMOUNT	CHILDREN	GROSS AMOUNT				
STATEWIDE	2,962	\$1,243,170.04	3,669	\$4,337,046.78	6,631	\$5,580,216.82	20,535	\$7,897,273.84	27,166	\$13,477,490.66
GUERNSEY	32	\$18,005.50	18	\$51,216.12	50	\$69,221.62	68	\$21,005.94	118	\$90,227.56
HAMILTON	0	\$0.00	0	\$0.00	0	\$0.00	1,551	\$601,655.17	1,551	\$601,655.17
HANCOCK	23	\$443.60	0	\$0.00	23	\$443.60	48	\$15,046.38	71	\$15,489.98
HARDIN	11	\$3,566.41	3	\$4,602.22	14	\$8,168.63	46	\$14,460.86	60	\$22,629.49
HARRISON	2	\$2,308.37	0	\$0.00	2	\$2,308.37	28	\$9,136.97	30	\$11,445.34
HENRY	0	\$0.00	13	\$15,736.11	13	\$15,736.11	24	\$7,663.43	37	\$23,399.54
HIGHLAND	24	\$12,592.76	9	\$9,937.45	33	\$22,530.21	16	\$5,314.34	49	\$27,844.55
HOCKING	20	\$4,790.95	15	\$18,273.87	35	\$23,064.82	53	\$17,147.58	88	\$40,212.40
HOLMES	9	\$4,068.84	5	\$23,569.17	14	\$27,638.01	21	\$8,649.36	35	\$36,287.37
HURON	32	\$11,375.66	5	\$14,777.27	37	\$26,152.93	32	\$9,490.00	69	\$35,642.93
JACKSON	2	\$1,946.08	9	\$9,329.72	11	\$11,275.80	15	\$3,750.00	26	\$15,025.80
JEFFERSON	38	\$25,796.75	21	\$45,559.43	59	\$71,356.18	55	\$23,816.37	114	\$95,172.55
KNOX	3	\$1,041.30	5	\$5,800.83	8	\$6,842.13	35	\$10,411.67	43	\$17,253.80
LAKE	38	\$23,013.15	22	\$68,571.52	60	\$91,584.67	154	\$43,660.40	214	\$135,245.07
LAWRENCE	2	\$844.30	0	\$0.00	2	\$844.30	44	\$11,748.50	46	\$12,592.80
LICKING	55	\$20,886.13	79	\$97,734.61	134	\$118,620.74	338	\$114,968.10	472	\$233,588.84
LOGAN	12	\$6,215.52	0	\$0.00	12	\$6,215.52	48	\$17,315.54	60	\$23,531.06
LORAIN	0	\$0.00	10	\$29,115.13	10	\$29,115.13	437	\$147,704.27	447	\$176,819.40
LUCAS	514	\$279,888.77	53	\$81,645.85	567	\$361,534.62	1,642	\$618,099.29	2,209	\$979,633.91
MADISON	0	\$0.00	12	\$10,530.04	12	\$10,530.04	21	\$6,324.84	33	\$16,854.88
MAHONING	102	\$52,757.71	47	\$126,408.49	149	\$179,166.20	242	\$71,592.53	391	\$250,758.73
MARION	18	(\$10,920.58)	3	\$11,032.42	21	\$111.84	72	\$26,121.24	93	\$26,233.08
MEDINA	0	\$0.00	0	\$0.00	0	\$0.00	86	\$30,234.67	86	\$30,234.67
MEIGS	0	\$0.00	3	\$5,399.78	3	\$5,399.78	8	\$2,000.00	11	\$7,399.78
MERCER	10	(\$1,240.07)	6	\$6,230.31	16	\$4,990.24	32	\$8,508.98	48	\$13,499.22
MIAMI	32	\$18,724.48	31	\$35,454.96	63	\$54,179.44	102	\$35,071.78	165	\$89,251.22
MONROE	6	\$2,910.12	0	\$0.00	6	\$2,910.12	10	\$3,248.50	16	\$6,158.62
MONTGOMERY	349	\$154,837.39	276	\$390,135.93	625	\$544,973.32	1,200	\$581,788.21	1,825	\$1,126,761.53
MORGAN	0	\$0.00	0	\$0.00	0	\$0.00	12	\$2,984.00	12	\$2,984.00
MORROW	1	(\$4,061.69)	1	\$4,531.19	2	\$469.50	35	\$9,285.92	37	\$9,755.42

SOURCE: GBS003RB Report from Management Information Services. Federal funds only.

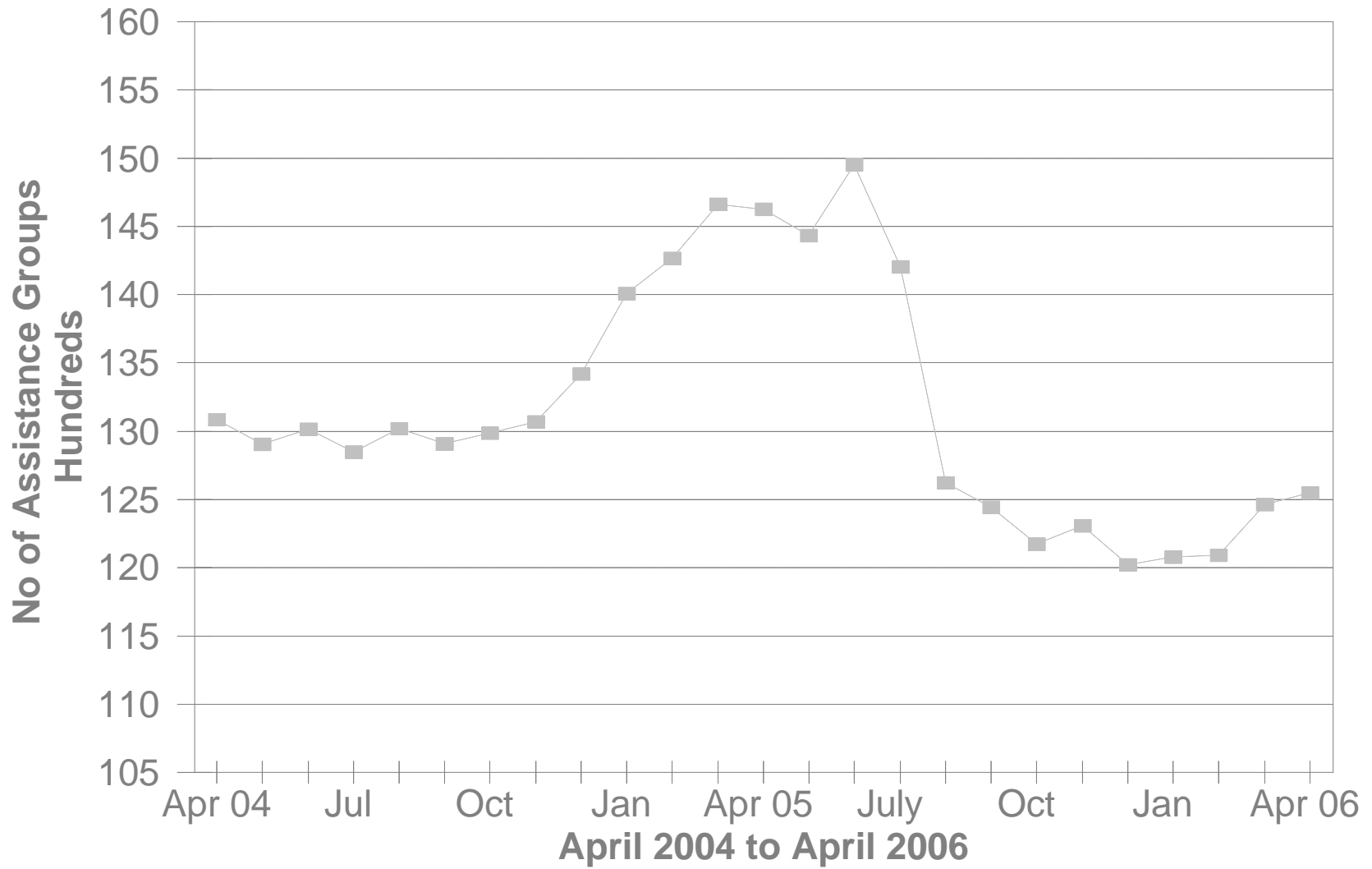
**TABLE 2  
TITLE IV-E FOSTER CARE  
APRIL 2006**

OHIO COUNTY	FOSTER CARE						ADOPTION ASSISTANCE		TOTAL FOSTER CARE AND ADOPTION ASSISTANCE	
	FOSTER FAMILY HOMES		CHILD CARE INSTITUTIONS		HOMES & INSTITUTIONS		CHILDREN	GROSS AMOUNT	CHILDREN	GROSS AMOUNT
	CHILDREN	GROSS AMOUNT	CHILDREN	GROSS AMOUNT	CHILDREN	GROSS AMOUNT				
STATEWIDE	2,962	\$1,243,170.04	3,669	\$4,337,046.78	6,631	\$5,580,216.82	20,535	\$7,897,273.84	27,166	\$13,477,490.66
MUSKINGUM	0	\$0.00	12	\$2,957.50	12	\$2,957.50	132	\$44,240.93	144	\$47,198.43
NOBLE	1	\$449.10	0	\$0.00	1	\$449.10	7	\$1,750.00	8	\$2,199.10
OTTAWA	7	\$5,325.72	1	\$1,455.08	8	\$6,780.80	3	\$899.70	11	\$7,680.50
PAULDING	2	\$610.76	7	\$12,365.22	9	\$12,975.98	22	\$6,218.56	31	\$19,194.54
PERRY	25	\$12,931.51	8	\$8,953.97	33	\$21,885.48	39	\$12,426.62	72	\$34,312.10
PICKAWAY	14	\$5,021.45	6	\$7,722.30	20	\$12,743.75	17	\$5,058.38	37	\$17,802.13
PIKE	15	\$15,891.69	7	\$8,909.43	22	\$24,801.12	24	\$6,365.20	46	\$31,166.32
PORTAGE	0	\$0.00	0	\$0.00	0	\$0.00	142	\$65,476.52	142	\$65,476.52
PREBLE	18	\$6,832.27	18	\$18,309.56	36	\$25,141.83	39	\$10,042.98	75	\$35,184.81
PUTNAM	0	\$0.00	1	\$1,648.81	1	\$1,648.81	13	\$3,250.00	14	\$4,898.81
RICHLAND	0	\$0.00	0	\$0.00	0	\$0.00	270	\$92,236.17	270	\$92,236.17
ROSS	18	\$9,862.10	32	\$4,023.17	50	\$13,885.27	61	\$20,409.61	111	\$34,294.88
SANDUSKY	16	\$4,773.65	10	\$20,957.42	26	\$25,731.07	63	\$16,153.58	89	\$41,884.65
SCIOTO	34	\$15,273.41	29	\$24,137.50	63	\$39,410.91	48	\$15,730.36	111	\$55,141.27
SENECA	17	\$5,686.88	23	\$34,301.15	40	\$39,988.03	74	\$20,781.97	114	\$60,770.00
SHELBY	4	\$2,572.99	4	\$5,216.98	8	\$7,789.97	52	\$21,481.36	60	\$29,271.33
STARK	0	\$0.00	161	\$64,655.77	161	\$64,655.77	1,003	\$301,901.01	1,164	\$366,556.78
SUMMIT	300	\$83,088.44	124	\$229,503.96	424	\$312,592.40	888	\$278,355.96	1,312	\$590,948.36
TRUMBULL	139	\$25,434.21	36	\$105,100.75	175	\$130,534.96	294	\$81,499.30	469	\$212,034.26
TUSCARAWAS	29	\$16,612.44	71	\$79,769.14	100	\$96,381.58	133	\$40,397.48	233	\$136,779.06
UNION	4	\$2,604.78	0	\$0.00	4	\$2,604.78	32	\$9,706.58	36	\$12,311.36
VAN WERT	1	\$395.20	2	\$5,199.92	3	\$5,595.12	16	\$5,988.01	19	\$11,583.13
VINTON	27	\$12,961.71	9	\$11,257.24	36	\$24,218.95	14	\$3,949.10	50	\$28,168.05
WARREN	33	\$8,863.49	23	\$21,604.95	56	\$30,468.44	83	\$25,807.99	139	\$56,276.43
WASHINGTON	11	\$3,712.50	2	\$2,842.61	13	\$6,555.11	33	\$8,669.16	46	\$15,224.27
WAYNE	32	\$11,067.25	31	\$81,429.41	63	\$92,496.66	78	\$29,308.04	141	\$121,804.70
WILLIAMS	3	\$952.08	16	\$15,324.10	19	\$16,276.18	22	\$5,949.10	41	\$22,225.28
WOOD	10	\$3,888.35	17	\$44,861.29	27	\$48,749.64	41	\$14,442.17	68	\$63,191.81
WYANDOT	7	\$3,143.70	1	\$588.28	8	\$3,731.98	15	\$6,193.38	23	\$9,925.36

SOURCE: GBS003RB Report from Management Information Services. Federal funds only.

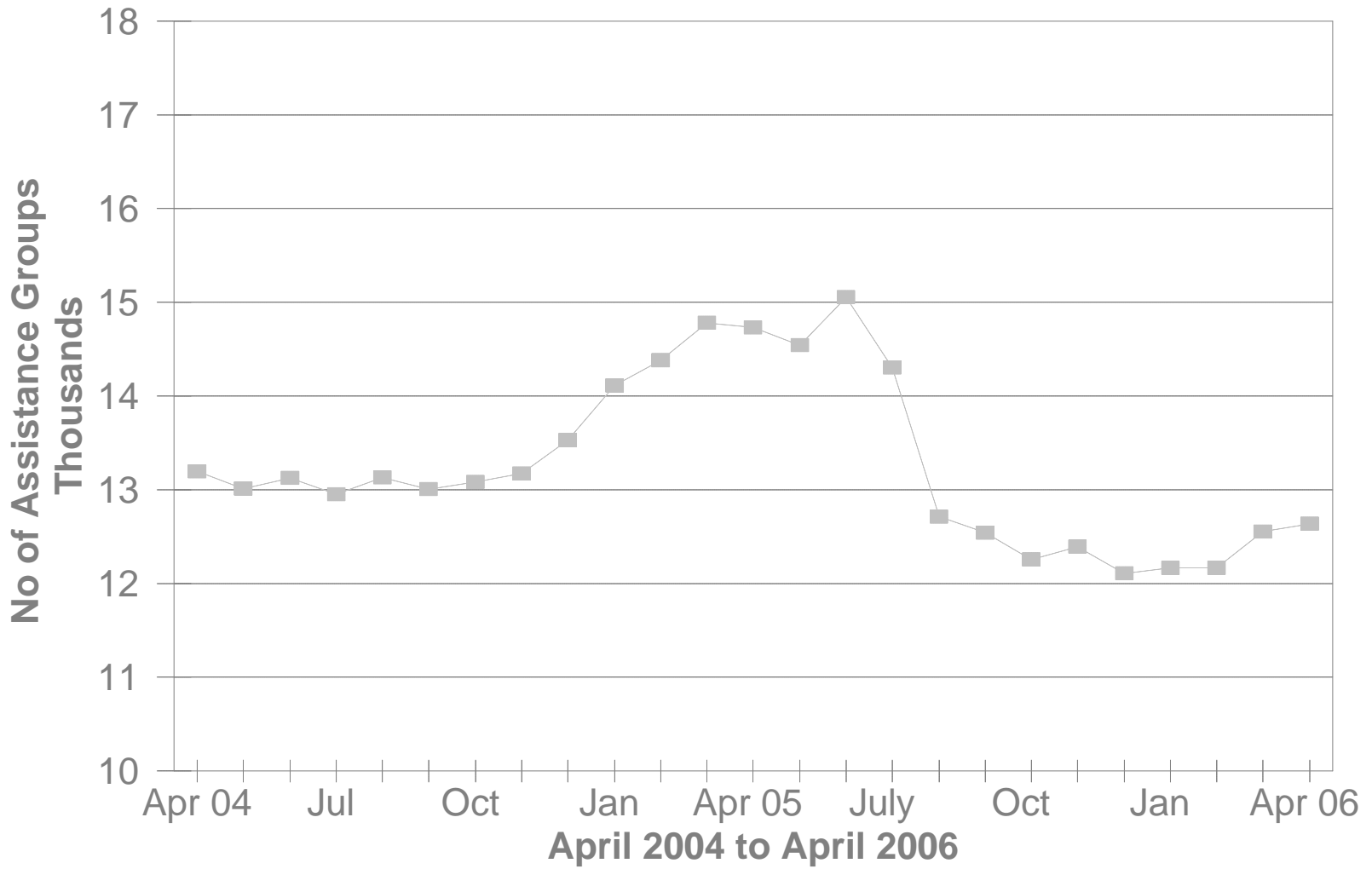
# DA Cash Assistance Groups

## During The Last 25 Months



# DA Cash Recipients

## During The Last 25 Months



**TABLE 3  
DISABILITY ASSISTANCE (DA)  
APRIL 2006**

OHIO COUNTY	CASH ASSISTANCE							MEDICAL ASSISTANCE	
	ASSISTANCE GROUPS	RECIPIENTS	ADULTS	CHILDREN	ACTUAL EXPENDITURES			UNDUPLICATED	ACTUAL AMOUNT
					GROSS AMOUNT	CANCELLED AMOUNT	NET AMOUNT	RECIPIENTS	PAID
<b>STATEWIDE</b>	<b>12,548</b>	<b>12,634</b>	<b>12,634</b>	<b>0</b>	<b>\$1,979,573.00</b>	<b>\$59,361.00</b>	<b>\$1,920,212.00</b>	<b>6,131</b>	<b>\$2,816,160.85</b>
ADAMS	93	95	95	0	\$12,282.00	\$0.00	\$12,282.00	32	\$12,269.77
ALLEN	95	96	96	0	\$17,672.00	\$1,721.00	\$15,951.00	24	\$24,349.53
ASHLAND	38	38	38	0	\$6,834.00	\$0.00	\$6,834.00	19	\$7,210.07
ASHTABULA	255	259	259	0	\$40,681.00	\$115.00	\$40,566.00	47	\$17,563.96
ATHENS	234	236	236	0	\$32,345.00	\$115.00	\$32,230.00	32	\$12,051.27
AUGLAIZE	30	30	30	0	\$4,645.00	\$0.00	\$4,645.00	12	\$4,374.36
BELMONT	127	129	129	0	\$17,509.00	\$567.00	\$16,942.00	41	\$21,546.45
BROWN	45	46	46	0	\$6,141.00	\$115.00	\$6,026.00	21	\$9,011.46
BUTLER	370	370	370	0	\$53,909.00	\$2,136.00	\$51,773.00	104	\$48,658.25
CARROLL	21	21	21	0	\$3,505.00	\$0.00	\$3,505.00	6	\$1,596.66
CHAMPAIGN	38	38	38	0	\$7,334.00	\$853.00	\$6,481.00	17	\$7,323.74
CLARK	309	311	311	0	\$40,648.00	\$1,379.00	\$39,269.00	112	\$63,217.16
CLERMONT	173	174	174	0	\$28,708.00	\$115.00	\$28,593.00	38	\$23,014.72
CLINTON	76	77	77	0	\$13,099.00	\$115.00	\$12,984.00	9	(\$6,902.69)
COLUMBIANA	113	114	114	0	\$22,793.00	\$0.00	\$22,793.00	60	\$30,026.07
COSHOCTON	87	88	88	0	\$11,329.00	\$115.00	\$11,214.00	15	\$6,256.47
CRAWFORD	52	52	52	0	\$11,568.00	\$0.00	\$11,568.00	17	\$12,929.53
CUYAHOGA	906	912	912	0	\$136,577.00	\$3,126.00	\$133,451.00	1,365	\$534,667.32
DARKE	37	38	38	0	\$5,588.00	\$0.00	\$5,588.00	6	\$2,812.60
DEFIANCE	20	20	20	0	\$4,258.00	\$0.00	\$4,258.00	17	\$9,049.29
DELAWARE	75	75	75	0	\$10,099.00	\$115.00	\$9,984.00	26	\$11,354.79
ERIE	70	71	71	0	\$19,610.00	\$230.00	\$19,380.00	29	\$20,582.44
FAIRFIELD	121	121	121	0	\$18,486.00	\$345.00	\$18,141.00	44	\$25,210.69
FAYETTE	32	32	32	0	\$4,307.00	\$0.00	\$4,307.00	25	\$10,844.41
FRANKLIN	1,048	1,057	1,057	0	\$159,940.00	\$6,225.00	\$153,715.00	606	\$348,194.46
FULTON	19	19	19	0	\$2,615.00	\$981.00	\$1,634.00	10	\$5,817.84
GALLIA	58	58	58	0	\$13,685.00	\$115.00	\$13,570.00	70	\$39,644.80
GEAUGA	27	27	27	0	\$3,205.00	\$230.00	\$2,975.00	1	\$2,315.18
GREENE	123	124	124	0	\$18,841.00	\$805.00	\$18,036.00	56	\$26,987.54

\*SOURCE: GRP342RA Report from Management Information Services and BOMC 9260-R001 Report from Medicaid Management Information Services.

**TABLE 3  
DISABILITY ASSISTANCE (DA)  
APRIL 2006**

OHIO COUNTY	CASH ASSISTANCE							MEDICAL ASSISTANCE	
	ASSISTANCE GROUPS	RECIPIENTS	ADULTS	CHILDREN	ACTUAL EXPENDITURES			UNDUPLICATED RECIPIENTS	ACTUAL AMOUNT PAID
					GROSS AMOUNT	CANCELLED AMOUNT	NET AMOUNT		
<b>STATEWIDE</b>	<b>12,548</b>	<b>12,634</b>	<b>12,634</b>	<b>0</b>	<b>\$1,979,573.00</b>	<b>\$59,361.00</b>	<b>\$1,920,212.00</b>	<b>6,131</b>	<b>\$2,816,160.85</b>
GUERNSEY	133	134	134	0	\$22,711.00	\$1,796.00	\$20,915.00	21	\$8,710.71
HAMILTON	526	526	526	0	\$89,267.00	\$3,806.00	\$85,461.00	185	\$81,447.97
HANCOCK	75	75	75	0	\$12,210.00	\$115.00	\$12,095.00	13	\$8,280.42
HARDIN	31	31	31	0	\$4,801.00	\$0.00	\$4,801.00	16	\$9,831.94
HARRISON	42	42	42	0	\$5,496.00	\$115.00	\$5,381.00	8	\$1,958.24
HENRY	15	15	15	0	\$2,287.00	\$0.00	\$2,287.00	1	\$626.40
HIGHLAND	91	92	92	0	\$13,476.00	\$345.00	\$13,131.00	26	\$10,233.59
HOCKING	69	69	69	0	\$11,456.00	\$115.00	\$11,341.00	10	\$4,845.26
HOLMES	30	30	30	0	\$3,967.00	\$0.00	\$3,967.00	2	\$792.26
HURON	51	51	51	0	\$9,829.00	\$0.00	\$9,829.00	12	\$4,852.58
JACKSON	100	103	103	0	\$13,755.00	\$230.00	\$13,525.00	34	\$19,882.64
JEFFERSON	172	172	172	0	\$27,883.00	\$460.00	\$27,423.00	71	\$28,351.53
KNOX	97	98	98	0	\$14,670.00	\$1,380.00	\$13,290.00	21	\$7,596.75
LAKE	156	156	156	0	\$28,534.00	\$460.00	\$28,074.00	46	\$19,227.42
LAWRENCE	76	76	76	0	\$10,816.00	\$115.00	\$10,701.00	34	\$15,855.64
LICKING	204	206	206	0	\$34,390.00	\$575.00	\$33,815.00	39	\$23,830.48
LOGAN	46	46	46	0	\$6,105.00	\$115.00	\$5,990.00	28	\$8,352.90
LORAIN	280	280	280	0	\$43,570.00	\$575.00	\$42,995.00	106	\$44,382.22
LUCAS	751	752	752	0	\$121,007.00	\$3,385.00	\$117,622.00	367	\$147,087.02
MADISON	29	29	29	0	\$4,595.00	\$0.00	\$4,595.00	21	\$12,108.08
MAHONING	249	249	249	0	\$44,080.00	\$115.00	\$43,965.00	272	\$120,778.09
MARION	113	114	114	0	\$16,312.00	\$519.00	\$15,793.00	15	\$6,537.44
MEDINA	75	75	75	0	\$11,039.00	\$115.00	\$10,924.00	28	\$15,697.30
MEIGS	61	61	61	0	\$7,084.00	\$316.00	\$6,768.00	42	\$19,738.93
MERCER	30	30	30	0	\$3,485.00	\$0.00	\$3,485.00	8	\$2,768.03
MIAMI	89	90	90	0	\$13,515.00	\$345.00	\$13,170.00	17	\$7,827.55
MONROE	25	25	25	0	\$3,379.00	\$0.00	\$3,379.00	15	\$4,545.86
MONTGOMERY	662	669	669	0	\$107,630.00	\$5,402.00	\$102,228.00	387	\$202,265.67
MORGAN	64	67	67	0	\$9,164.00	\$0.00	\$9,164.00	19	\$10,209.29
MORROW	35	35	35	0	\$6,103.00	\$0.00	\$6,103.00	24	\$27,648.60

\*SOURCE: GRP342RA Report from Management Information Services and BOMC 9260-R001 Report from Medicaid Management Information Services.

**TABLE 3  
DISABILITY ASSISTANCE (DA)  
APRIL 2006**

OHIO COUNTY	CASH ASSISTANCE							MEDICAL ASSISTANCE	
	ASSISTANCE GROUPS	RECIPIENTS	ADULTS	CHILDREN	ACTUAL EXPENDITURES			UNDUPLICATED RECIPIENTS	ACTUAL AMOUNT PAID
					GROSS AMOUNT	CANCELLED AMOUNT	NET AMOUNT		
<b>STATEWIDE</b>	<b>12,548</b>	<b>12,634</b>	<b>12,634</b>	<b>0</b>	<b>\$1,979,573.00</b>	<b>\$59,361.00</b>	<b>\$1,920,212.00</b>	<b>6,131</b>	<b>\$2,816,160.85</b>
MUSKINGUM	355	360	360	0	\$51,598.00	\$970.00	\$50,628.00	28	\$10,726.85
NOBLE	20	20	20	0	\$2,719.00	\$0.00	\$2,719.00	7	\$1,918.39
OTTAWA	28	28	28	0	\$3,424.00	\$770.00	\$2,654.00	16	\$8,330.87
PAULDING	27	27	27	0	\$4,179.00	\$0.00	\$4,179.00	5	\$1,139.66
PERRY	95	99	99	0	\$12,880.00	\$460.00	\$12,420.00	32	\$20,617.80
PICKAWAY	54	55	55	0	\$6,571.00	\$0.00	\$6,571.00	23	\$13,677.94
PIKE	64	64	64	0	\$10,790.00	\$115.00	\$10,675.00	35	\$13,222.33
PORTAGE	102	102	102	0	\$14,931.00	\$115.00	\$14,816.00	41	\$16,872.09
PREBLE	47	47	47	0	\$5,592.00	\$0.00	\$5,592.00	15	\$6,464.88
PUTNAM	12	12	12	0	\$1,380.00	\$0.00	\$1,380.00	9	\$3,564.57
RICHLAND	236	237	237	0	\$38,743.00	\$1,164.00	\$37,579.00	36	\$18,845.59
ROSS	140	141	141	0	\$20,022.00	\$1,035.00	\$18,987.00	61	\$25,866.27
SANDUSKY	53	53	53	0	\$8,668.00	\$0.00	\$8,668.00	15	\$5,694.53
SCIOTO	210	211	211	0	\$34,915.00	\$1,687.00	\$33,228.00	62	\$26,876.40
SENECA	73	74	74	0	\$11,506.00	\$1,150.00	\$10,356.00	31	\$15,214.72
SHELBY	30	30	30	0	\$3,560.00	\$115.00	\$3,445.00	15	\$5,465.07
STARK	415	420	420	0	\$72,145.00	\$3,008.00	\$69,137.00	144	\$62,935.87
SUMMIT	504	505	505	0	\$77,726.00	\$3,687.00	\$74,039.00	572	\$249,905.46
TRUMBULL	318	319	319	0	\$56,171.00	\$690.00	\$55,481.00	87	\$35,648.52
TUSCARAWAS	96	98	98	0	\$13,307.00	\$230.00	\$13,077.00	31	\$13,664.29
UNION	47	47	47	0	\$7,350.00	\$693.00	\$6,657.00	13	\$5,102.70
VAN WERT	15	15	15	0	\$2,044.00	\$460.00	\$1,584.00	5	\$1,649.13
VINTON	50	51	51	0	\$7,267.00	\$115.00	\$7,152.00	16	\$6,612.33
WARREN	70	72	72	0	\$13,844.00	\$690.00	\$13,154.00	18	\$8,612.53
WASHINGTON	137	139	139	0	\$25,408.00	\$115.00	\$25,293.00	15	\$7,165.33
WAYNE	201	202	202	0	\$29,751.00	\$1,520.00	\$28,231.00	18	\$5,658.35
WILLIAMS	29	29	29	0	\$3,447.00	\$0.00	\$3,447.00	4	\$911.28
WOOD	46	46	46	0	\$8,231.00	\$655.00	\$7,576.00	19	\$9,434.32
WYANDOT	5	5	5	0	\$575.00	\$0.00	\$575.00	9	\$6,113.83
UNKNOWN									\$0.00

\*SOURCE: GRP342RA Report from Management Information Services and BOMC 9260-R001 Report from Medicaid Management Information Services.



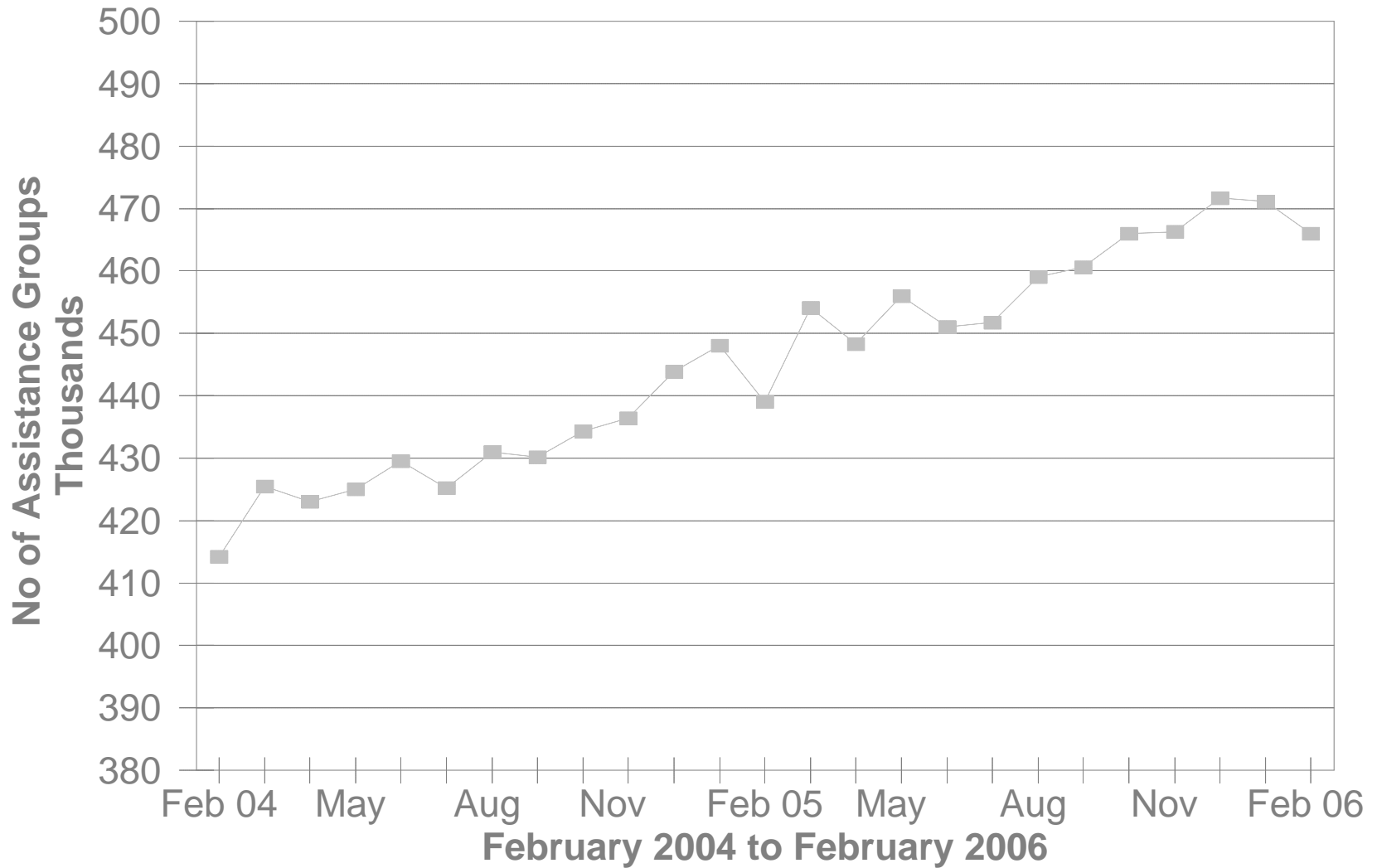
**TABLE 3-A  
DA PAYMENTS FOR MEDICAL SERVICES  
APRIL 2006**

CATEGORY OF SERVICES	DISABILITY ASSISTANCE			
	PAYMENTS	CLAIM FREQUENCY	DUPLICATED RECIPIENTS	PERCENT OF TOTAL
ADVANCED PRACTICAL NURSE SVCS.	\$4,946.11	128	112	0.2%
AMBULANCE SERVICES	\$0.00	0	0	0.0%
AMBULATORY SURGERY	\$15,227.97	43	34	0.5%
CHIROPRACTER SERVICES	\$0.00	0	0	0.0%
CLINIC	\$42,694.80	640	305	1.5%
DENTAL SERVICES	\$6,852.36	79	69	0.2%
EPSDT	\$0.00	0	0	0.0%
FAMILY PLANNING	\$320.06	5	5	0.0%
FEDERALLY QUALIFIED HEALTH CTR	\$0.00	0	0	0.0%
HEALTH MAINTENANCE ORGANIZATION	\$0.00	0	0	0.0%
HOME HEALTH SERVICES	\$0.00	0	0	0.0%
INDEPENDENT LABORATORY	\$19,612.42	434	302	0.7%
INPATIENT HOSPITAL	\$0.00	0	0	0.0%
ICF	\$0.00	0	0	0.0%
MIDWIFERY SERVICES	\$0.00	0	0	0.0%
OPTOMETRIC SERVICES	\$0.00	0	0	0.0%
OUTPATIENT HEALTH SERVICES	\$0.00	0	0	0.0%
PASSPORT WAIVER III	\$0.00	0	0	0.0%
OUTPATIENT HOSPITAL GENERAL	\$0.00	0	0	0.0%
PHYSICAL THERAPY SERVICES	\$0.00	0	0	0.0%
PHYSICIAN SERVICES	\$682,702.43	8,936	3,604	24.2%
PHYSIOLOGICAL LABORATORY	\$11,717.79	32	31	0.4%
PODIATRISTS THERAPY	\$12,987.92	225	160	0.5%
PRESCRIBED DRUGS	\$1,944,305.76	32,428	5,602	69.0%
PRIVATE DUTY NURSING SERVICES	\$0.00	0	0	0.0%
PSYCHOLOGY SERVICES	\$0.00	0	0	0.0%
RURAL HEALTH SERVICES	\$0.00	0	0	0.0%
SNF	\$0.00	0	0	0.0%
SUPPLIES AND MEDICAL EQUIPMENT	\$67,447.06	1,232	649	2.4%
WAIVERED SERVICES	\$7,263.73	66	67	0.3%
OTHER	\$82.44	4	4	0.0%
<b>STATEWIDE TOTAL</b>	<b>\$2,816,160.85</b>	<b>44,252</b>	<b>10,944</b>	<b>100.00%</b>

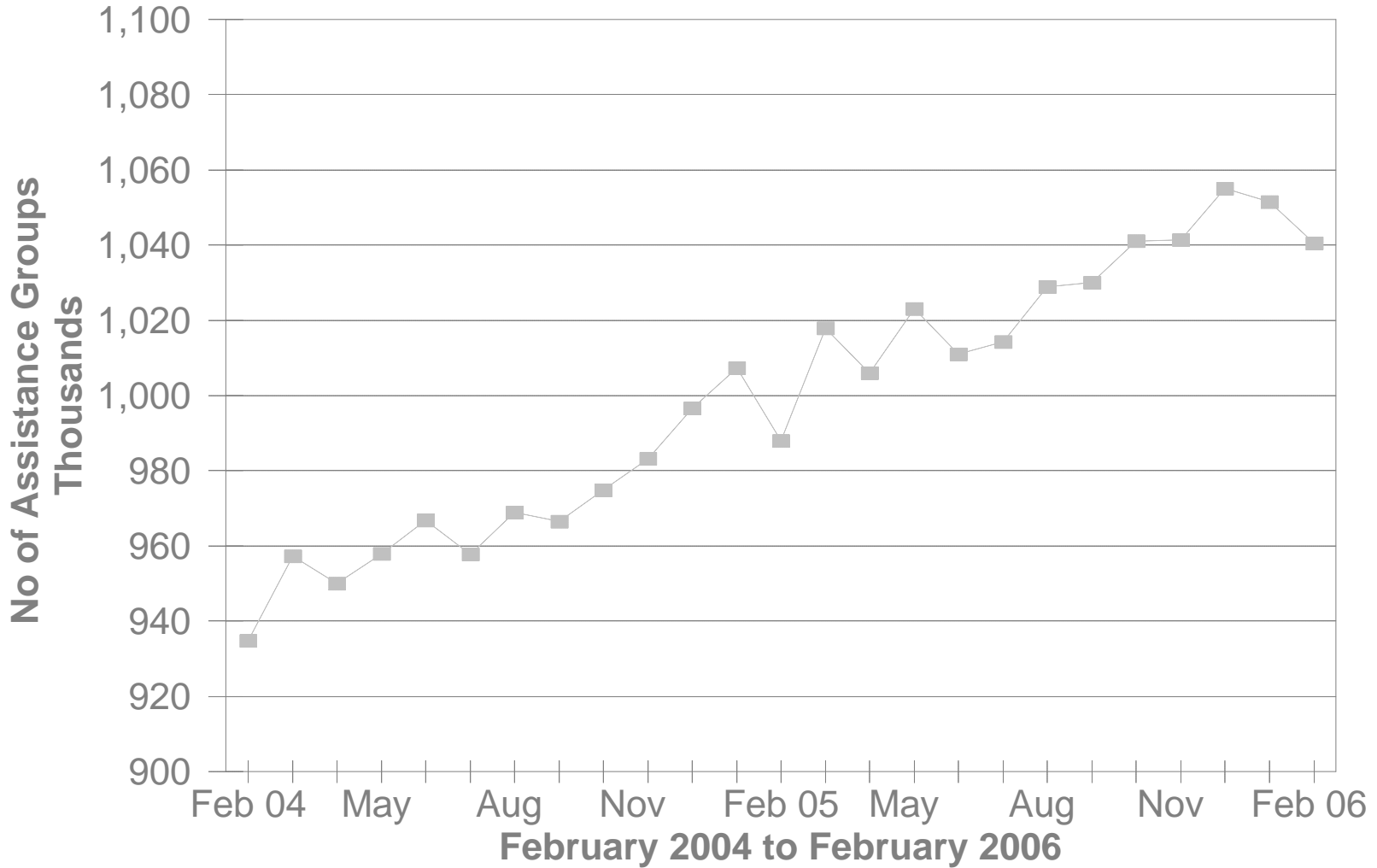
SOURCE: BOMC 9260 Report from Medicaid Management Information Services.

NOTE: Recipients are unduplicated within Category of Services, however, the Statewide Total represents a duplicated count.

# No of FNS Benefits Assistance Groups During The Last 25 Months



# No of FNS Benefits Cash Recipients During The Last 25 Months



**TABLE 5  
FNS BENEFITS**

**APRIL 2006 DATA UNAVAILABLE DUE TO SYSTEM CONVERSION TO THE DECISION CARD**

OHIO COUNTY	PERSONS					ASSISTANCE GROUPS			TOTAL COUPONS ISSUED
	PUBLIC ASSISTANCE	NON-PUBLIC ASSISTANCE	TOTAL	AVERAGE ISSUANCE	% CHANGE PREV. MO.	PUBLIC ASSISTANCE	NON-PUBLIC ASSISTANCE	TOTAL	
STATEWIDE	0	0	0	N.A.	N.A.	0	0	0	\$0.00
ADAMS	0	0	0	N.A.	N.A.	0	0	0	\$0.00
ALLEN	0	0	0	N.A.	N.A.	0	0	0	\$0.00
ASHLAND	0	0	0	N.A.	N.A.	0	0	0	\$0.00
ASHTABULA	0	0	0	N.A.	N.A.	0	0	0	\$0.00
ATHENS	0	0	0	N.A.	N.A.	0	0	0	\$0.00
AUGLAIZE	0	0	0	N.A.	N.A.	0	0	0	\$0.00
BELMONT	0	0	0	N.A.	N.A.	0	0	0	\$0.00
BROWN	0	0	0	N.A.	N.A.	0	0	0	\$0.00
BUTLER	0	0	0	N.A.	N.A.	0	0	0	\$0.00
CARROLL	0	0	0	N.A.	N.A.	0	0	0	\$0.00
CHAMPAIGN	0	0	0	N.A.	N.A.	0	0	0	\$0.00
CLARK	0	0	0	N.A.	N.A.	0	0	0	\$0.00
CLERMONT	0	0	0	N.A.	N.A.	0	0	0	\$0.00
CLINTON	0	0	0	N.A.	N.A.	0	0	0	\$0.00
COLUMBIANA	0	0	0	N.A.	N.A.	0	0	0	\$0.00
COSHOCTON	0	0	0	N.A.	N.A.	0	0	0	\$0.00
CRAWFORD	0	0	0	N.A.	N.A.	0	0	0	\$0.00
CUYAHOGA	0	0	0	N.A.	N.A.	0	0	0	\$0.00
DARKE	0	0	0	N.A.	N.A.	0	0	0	\$0.00
DEFIANCE	0	0	0	N.A.	N.A.	0	0	0	\$0.00
DELAWARE	0	0	0	N.A.	N.A.	0	0	0	\$0.00
ERIE	0	0	0	N.A.	N.A.	0	0	0	\$0.00
FAIRFIELD	0	0	0	N.A.	N.A.	0	0	0	\$0.00
FAYETTE	0	0	0	N.A.	N.A.	0	0	0	\$0.00
FRANKLIN	0	0	0	N.A.	N.A.	0	0	0	\$0.00
FULTON	0	0	0	N.A.	N.A.	0	0	0	\$0.00
GALLIA	0	0	0	N.A.	N.A.	0	0	0	\$0.00
GEAUGA	0	0	0	N.A.	N.A.	0	0	0	\$0.00
GREENE	0	0	0	N.A.	N.A.	0	0	0	\$0.00

Source: CRIS-E GRP304RA and GRP 304RC Reports from Management Information Services. Cuyahoga County data also comes from the GRP 342 RA.

**TABLE 5  
FNS BENEFITS**

**APRIL 2006 DATA UNAVAILABLE DUE TO SYSTEM CONVERSION TO THE DECISION CARD**

OHIO COUNTY	PERSONS					ASSISTANCE GROUPS			TOTAL COUPONS ISSUED
	PUBLIC ASSISTANCE	NON-PUBLIC ASSISTANCE	TOTAL	AVERAGE ISSUANCE	% CHANGE PREV. MO.	PUBLIC ASSISTANCE	NON-PUBLIC ASSISTANCE	TOTAL	
STATEWIDE	0	0	0	N.A.	N.A.	0	0	0	\$0.00
GUERNSEY	0	0	0	N.A.	N.A.	0	0	0	\$0.00
HAMILTON	0	0	0	N.A.	N.A.	0	0	0	\$0.00
HANCOCK	0	0	0	N.A.	N.A.	0	0	0	\$0.00
HARDIN	0	0	0	N.A.	N.A.	0	0	0	\$0.00
HARRISON	0	0	0	N.A.	N.A.	0	0	0	\$0.00
HENRY	0	0	0	N.A.	N.A.	0	0	0	\$0.00
HIGHLAND	0	0	0	N.A.	N.A.	0	0	0	\$0.00
HOCKING	0	0	0	N.A.	N.A.	0	0	0	\$0.00
HOLMES	0	0	0	N.A.	N.A.	0	0	0	\$0.00
HURON	0	0	0	N.A.	N.A.	0	0	0	\$0.00
JACKSON	0	0	0	N.A.	N.A.	0	0	0	\$0.00
JEFFERSON	0	0	0	N.A.	N.A.	0	0	0	\$0.00
KNOX	0	0	0	N.A.	N.A.	0	0	0	\$0.00
LAKE	0	0	0	N.A.	N.A.	0	0	0	\$0.00
LAWRENCE	0	0	0	N.A.	N.A.	0	0	0	\$0.00
LICKING	0	0	0	N.A.	N.A.	0	0	0	\$0.00
LOGAN	0	0	0	N.A.	N.A.	0	0	0	\$0.00
LORAIN	0	0	0	N.A.	N.A.	0	0	0	\$0.00
LUCAS	0	0	0	N.A.	N.A.	0	0	0	\$0.00
MADISON	0	0	0	N.A.	N.A.	0	0	0	\$0.00
MAHONING	0	0	0	N.A.	N.A.	0	0	0	\$0.00
MARION	0	0	0	N.A.	N.A.	0	0	0	\$0.00
MEDINA	0	0	0	N.A.	N.A.	0	0	0	\$0.00
MEIGS	0	0	0	N.A.	N.A.	0	0	0	\$0.00
MERCER	0	0	0	N.A.	N.A.	0	0	0	\$0.00
MIAMI	0	0	0	N.A.	N.A.	0	0	0	\$0.00
MONROE	0	0	0	N.A.	N.A.	0	0	0	\$0.00
MONTGOMERY	0	0	0	N.A.	N.A.	0	0	0	\$0.00
MORGAN	0	0	0	N.A.	N.A.	0	0	0	\$0.00
MORROW	0	0	0	N.A.	N.A.	0	0	0	\$0.00

Source: CRIS-E GRP304RA and GRP 304RC Reports from Management Information Services. Cuyahoga County data also comes from the GRP 342 RA.

**TABLE 5  
FNS BENEFITS**

**APRIL 2006 DATA UNAVAILABLE DUE TO SYSTEM CONVERSION TO THE DECISION CARD**

OHIO COUNTY	PERSONS					ASSISTANCE GROUPS			TOTAL COUPONS ISSUED
	PUBLIC ASSISTANCE	NON-PUBLIC ASSISTANCE	TOTAL	AVERAGE ISSUANCE	% CHANGE PREV. MO.	PUBLIC ASSISTANCE	NON-PUBLIC ASSISTANCE	TOTAL	
STATEWIDE	0	0	0	N.A.	N.A.	0	0	0	\$0.00
MUSKINGUM	0	0	0	N.A.	N.A.	0	0	0	\$0.00
NOBLE	0	0	0	N.A.	N.A.	0	0	0	\$0.00
OTTAWA	0	0	0	N.A.	N.A.	0	0	0	\$0.00
PAULDING	0	0	0	N.A.	N.A.	0	0	0	\$0.00
PERRY	0	0	0	N.A.	N.A.	0	0	0	\$0.00
PICKAWAY	0	0	0	N.A.	N.A.	0	0	0	\$0.00
PIKE	0	0	0	N.A.	N.A.	0	0	0	\$0.00
PORTAGE	0	0	0	N.A.	N.A.	0	0	0	\$0.00
PREBLE	0	0	0	N.A.	N.A.	0	0	0	\$0.00
PUTNAM	0	0	0	N.A.	N.A.	0	0	0	\$0.00
RICHLAND	0	0	0	N.A.	N.A.	0	0	0	\$0.00
ROSS	0	0	0	N.A.	N.A.	0	0	0	\$0.00
SANDUSKY	0	0	0	N.A.	N.A.	0	0	0	\$0.00
SCIOTO	0	0	0	N.A.	N.A.	0	0	0	\$0.00
SENECA	0	0	0	N.A.	N.A.	0	0	0	\$0.00
SHELBY	0	0	0	N.A.	N.A.	0	0	0	\$0.00
STARK	0	0	0	N.A.	N.A.	0	0	0	\$0.00
SUMMIT	0	0	0	N.A.	N.A.	0	0	0	\$0.00
TRUMBULL	0	0	0	N.A.	N.A.	0	0	0	\$0.00
TUSCARAWAS	0	0	0	N.A.	N.A.	0	0	0	\$0.00
UNION	0	0	0	N.A.	N.A.	0	0	0	\$0.00
VAN WERT	0	0	0	N.A.	N.A.	0	0	0	\$0.00
VINTON	0	0	0	N.A.	N.A.	0	0	0	\$0.00
WARREN	0	0	0	N.A.	N.A.	0	0	0	\$0.00
WASHINGTON	0	0	0	N.A.	N.A.	0	0	0	\$0.00
WAYNE	0	0	0	N.A.	N.A.	0	0	0	\$0.00
WILLIAMS	0	0	0	N.A.	N.A.	0	0	0	\$0.00
WOOD	0	0	0	N.A.	N.A.	0	0	0	\$0.00
WYANDOT	0	0	0	N.A.	N.A.	0	0	0	\$0.00

Source: CRIS-E GRP304RA and GRP 304RC Reports from Management Information Services. Cuyahoga County data also comes from the GRP 342 RA.

**Table 6A  
April 2006  
Medicaid Eligibles**

County	Aged	Blind	Disabled	ABD Total	OWF & Related	Healthy Start	CFC Total	Total Medicaid	Foster Care	Adoption Assistance	Transitional	Nursing Facilities
<b>STATEWIDE</b>	<b>146,427</b>	<b>840</b>	<b>241,808</b>	<b>389,075</b>	<b>1,034,141</b>	<b>261,805</b>	<b>1,295,946</b>	<b>1,685,021</b>	<b>10,008</b>	<b>20,148</b>	<b>150,562</b>	<b>54,339</b>
ADAMS	821	3	1,405	2,229	4,620	1,110	5,730	7,959	32	35	816	115
ALLEN	1,250	6	2,115	3,371	9,216	2,619	11,835	15,206	105	129	1,232	549
ASHLAND	604	3	581	1,188	3,568	1,453	5,021	6,209	15	14	882	262
ASHTABULA	1,595	5	3,016	4,616	11,361	3,023	14,384	19,000	76	163	2,030	1,036
ATHENS	881	15	2,061	2,957	6,350	1,441	7,791	10,748	79	120	878	190
AUGLAIZE	476	4	448	928	2,469	907	3,376	4,304	8	44	521	261
BELMONT	1,412	4	2,130	3,546	7,433	1,620	9,053	12,599	44	113	1,322	543
BROWN	731	0	949	1,680	4,619	1,475	6,094	7,774	21	37	860	210
BUTLER	3,211	18	5,626	8,855	27,138	6,352	33,490	42,345	263	474	3,937	1,258
CARROLL	403	2	536	941	2,684	716	3,400	4,341	10	9	612	174
CHAMPAIGN	494	4	608	1,106	2,980	1,019	3,999	5,105	8	25	684	256
CLARK	2,187	8	3,661	5,856	16,004	3,688	19,692	25,548	139	301	2,345	1,075
CLERMONT	1,668	7	2,753	4,428	12,498	4,376	16,874	21,302	191	234	2,243	712
CLINTON	501	3	788	1,292	3,778	954	4,732	6,024	34	66	786	161
COLUMBIANA	1,697	11	2,581	4,289	11,491	3,265	14,756	19,045	74	91	1,977	608
COSHOCTON	593	2	890	1,485	4,131	1,021	5,152	6,637	16	50	837	276
CRAWFORD	670	9	868	1,547	4,590	1,209	5,799	7,346	42	42	1,109	197
CUYAHOGA	22,662	146	36,347	59,155	153,178	29,467	182,645	241,800	1,590	4,863	17,841	7,160
DARKE	584	1	611	1,196	2,933	1,207	4,140	5,336	24	42	601	326
DEFIANCE	372	2	613	987	2,907	1,033	3,940	4,927	12	31	548	175
DELAWARE	802	1	992	1,795	4,802	1,490	6,292	8,087	33	55	1,018	303
ERIE	890	4	1,178	2,072	5,978	1,796	7,774	9,846	56	97	889	410
FAIRFIELD	1,279	7	1,969	3,255	9,423	3,012	12,435	15,690	30	189	1,716	461
FAYETTE	525	1	828	1,354	3,037	864	3,901	5,255	9	15	667	315
FRANKLIN	11,789	99	23,654	35,542	119,555	30,113	149,668	185,210	1,678	2,402	13,483	3,829
FULTON	406	1	387	794	2,500	911	3,411	4,205	17	30	475	224
GALLIA	882	3	1,583	2,468	4,479	922	5,401	7,869	17	45	574	199
GEAUGA	615	2	504	1,121	2,390	941	3,331	4,452	10	114	448	335
GREENE	1,371	15	1,744	3,130	9,398	2,462	11,860	14,990	92	113	1,694	581

**Table 6A  
April 2006  
Medicaid Eligibles**

County	Aged	Blind	Disabled	ABD Total	OWF & Related	Healthy Start	CFC Total	Total Medicaid	Foster Care	Adoption Assistance	Transitional	Nursing Facilities
<b>STATEWIDE</b>	<b>146,427</b>	<b>840</b>	<b>241,808</b>	<b>389,075</b>	<b>1,034,141</b>	<b>261,805</b>	<b>1,295,946</b>	<b>1,685,021</b>	<b>10,008</b>	<b>20,148</b>	<b>150,562</b>	<b>54,339</b>
GUERNSEY	810	3	1,374	2,187	5,602	1,517	7,119	9,306	57	65	749	181
HAMILTON	10,183	68	18,361	28,612	67,667	18,734	86,401	115,013	818	1,717	6,640	3,746
HANCOCK	623	4	898	1,525	4,335	1,347	5,682	7,207	41	45	789	308
HARDIN	388	4	563	955	2,408	775	3,183	4,138	10	48	475	138
HARRISON	298	1	497	796	1,716	462	2,178	2,974	8	26	222	125
HENRY	258	0	331	589	1,655	834	2,489	3,078	16	24	324	138
HIGHLAND	844	2	1,080	1,926	4,936	1,460	6,396	8,322	41	21	689	259
HOCKING	498	4	741	1,243	3,480	1,004	4,484	5,727	30	51	525	153
HOLMES	434	3	430	867	1,659	906	2,565	3,432	14	22	401	375
HURON	610	1	812	1,423	5,124	1,703	6,827	8,250	37	36	1,093	190
JACKSON	867	1	1,345	2,213	4,840	1,278	6,118	8,331	18	16	817	188
JEFFERSON	1,221	15	2,440	3,676	8,041	1,642	9,683	13,359	80	62	1,201	388
KNOX	724	2	1,253	1,979	4,867	1,326	6,193	8,172	16	39	981	520
LAKE	1,791	5	2,505	4,301	11,570	3,584	15,154	19,455	65	135	2,088	1,061
LAWRENCE	1,667	5	3,341	5,013	9,016	2,321	11,337	16,350	67	48	1,300	379
LICKING	1,581	5	2,532	4,118	13,271	3,534	16,805	20,923	151	327	2,635	566
LOGAN	592	4	621	1,217	3,793	981	4,774	5,991	13	49	815	206
LORAIN	2,796	14	5,204	8,014	26,242	5,709	31,951	39,965	109	421	3,506	1,277
LUCAS	6,333	45	14,194	20,572	56,501	11,081	67,582	88,154	536	1,448	7,056	1,997
MADISON	407	3	587	997	2,671	920	3,591	4,588	13	21	439	135
MAHONING	4,130	21	6,740	10,891	26,649	5,577	32,226	43,117	177	244	3,670	1,607
MARION	956	4	1,694	2,654	6,634	1,803	8,437	11,091	30	88	1,082	299
MEDINA	993	8	1,260	2,261	7,007	2,041	9,048	11,309	34	91	1,479	634
MEIGS	559	5	1,001	1,565	3,643	757	4,400	5,965	7	13	571	137
MERCER	356	1	402	759	1,806	661	2,467	3,226	13	31	468	207
MIAMI	1,069	6	1,379	2,454	5,808	1,910	7,718	10,172	67	111	1,088	424
MONROE	295	1	373	669	1,793	484	2,277	2,946	10	14	404	95
MONTGOMERY	7,031	41	12,585	19,657	49,539	12,213	61,752	81,409	678	1,267	6,085	2,443
MORGAN	302	0	514	816	2,219	530	2,749	3,565	1	13	500	111
MORROW	447	2	527	976	3,230	955	4,185	5,161	3	38	811	163

Source: ODJFS Report BOMM1321 Prepared: Bureau of Research and Evaluation.



**Table 6A  
April 2006  
Medicaid Eligibles**

County	Aged	Blind	Disabled	ABD Total	OWF & Related	Healthy Start	CFC Total	Total Medicaid	Foster Care	Adoption Assistance	Transitional	Nursing Facilities
<b>STATEWIDE</b>	<b>146,427</b>	<b>840</b>	<b>241,808</b>	<b>389,075</b>	<b>1,034,141</b>	<b>261,805</b>	<b>1,295,946</b>	<b>1,685,021</b>	<b>10,008</b>	<b>20,148</b>	<b>150,562</b>	<b>54,339</b>
MUSKINGUM	1,574	16	2,778	4,368	11,817	2,570	14,387	18,755	59	143	1,762	455
NOBLE	239	0	268	507	1,239	356	1,595	2,102	3	8	290	79
OTTAWA	461	3	508	972	2,316	911	3,227	4,199	8	7	512	172
PAULDING	203	1	348	552	1,355	558	1,913	2,465	10	18	259	43
PERRY	560	8	1,141	1,709	4,828	1,226	6,054	7,763	39	38	782	197
PICKAWAY	675	1	992	1,668	4,698	1,221	5,919	7,587	23	17	836	176
PIKE	799	0	1,471	2,270	4,433	1,301	5,734	8,004	35	24	714	270
PORTAGE	1,237	7	1,903	3,147	8,914	2,742	11,656	14,803	85	153	1,460	591
PREBLE	379	6	637	1,022	3,332	900	4,232	5,254	38	41	719	215
PUTNAM	306	1	324	631	1,386	643	2,029	2,660	2	7	247	250
RICHLAND	1,898	0	2,690	4,588	11,309	3,454	14,763	19,351	61	272	1,990	646
ROSS	1,195	2	2,366	3,563	9,542	2,074	11,616	15,179	78	61	1,312	309
SANDUSKY	718	5	928	1,651	4,646	1,570	6,216	7,867	24	56	783	317
SCIOTO	2,438	9	4,711	7,158	11,521	2,452	13,973	21,131	86	53	1,380	581
SENECA	723	3	1,000	1,726	4,359	1,564	5,923	7,649	52	71	1,008	335
SHELBY	409	4	589	1,002	3,162	1,070	4,232	5,234	14	49	462	203
STARK	5,049	24	6,789	11,862	32,146	8,022	40,168	52,030	489	1,009	5,548	2,286
SUMMIT	6,798	47	11,079	17,924	46,488	10,456	56,944	74,868	500	845	6,411	2,130
TRUMBULL	2,821	17	4,589	7,427	20,073	5,568	25,641	33,068	170	266	3,643	1,173
TUSCARAWAS	1,295	4	1,551	2,850	7,681	2,306	9,987	12,837	96	151	1,516	487
UNION	345	1	476	822	2,818	744	3,562	4,384	4	37	483	117
UNKNOWN	0	0	0	0	0	0	0	0	0	0	0	0
VAN WERT	322	0	419	741	1,650	819	2,469	3,210	5	19	451	157
VINTON	305	0	606	911	2,584	597	3,181	4,092	30	14	543	64
WARREN	1,287	4	1,574	2,865	6,178	2,547	8,725	11,590	52	95	1,077	805
WASHINGTON	1,069	6	1,604	2,679	5,810	1,922	7,732	10,411	12	39	1,241	342
WAYNE	1,125	3	1,673	2,801	6,760	2,457	9,217	12,018	76	95	1,280	485
WILLIAMS	466	2	466	934	3,186	847	4,033	4,967	22	22	761	217
WOOD	959	2	1,060	2,021	5,475	1,873	7,348	9,369	40	49	912	399
WYANDOT	338	0	258	596	1,203	520	1,723	2,319	10	15	252	187

Source: ODJFS Report BOMM1321 Prepared: Bureau of Research and Evaluation.

**Table 6B  
April 2006  
Medicaid Expenditures**

	Aged	Blind	Disabled	ABD Total	OWF & Related	Healthy Start	CFC Total	Total Medicaid	Foster Care	Adoption Assistance	Transitional	Nursing Facilities
<b>STATEWIDE</b>	<b>\$236,356,530</b>	<b>\$878,329</b>	<b>\$418,401,290</b>	<b>\$655,636,149</b>	<b>\$228,840,734</b>	<b>\$63,053,429</b>	<b>\$291,894,163</b>	<b>\$948,102,835</b>	<b>\$5,613,672</b>	<b>\$4,851,516</b>	<b>\$24,529,942</b>	<b>\$264,635,873</b>
ADAMS	\$643,297	\$1,330	\$1,442,711	\$2,087,337	\$940,193	\$198,183	\$1,138,377	\$3,242,096	\$16,544	\$5,758	\$117,534	\$488,463
ALLEN	\$2,222,074	\$10,707	\$3,065,242	\$5,298,023	\$1,816,252	\$510,913	\$2,327,165	\$7,634,027	\$27,102	\$20,242	\$143,543	\$2,689,342
ASHLAND	\$1,056,494	\$452	\$1,088,728	\$2,145,674	\$775,761	\$716,256	\$1,492,017	\$3,638,656	\$2,804	\$1,258	\$94,898	\$1,242,172
ASHTABULA	\$2,839,452	\$12,425	\$5,776,179	\$8,628,056	\$2,538,009	\$502,022	\$3,040,031	\$11,678,344	\$42,947	\$55,215	\$260,886	\$5,124,622
ATHENS	\$982,436	\$5,192	\$2,455,882	\$3,443,510	\$1,329,590	\$521,785	\$1,851,375	\$5,297,065	\$63,803	\$31,059	\$99,604	\$475,655
AUGLAIZE	\$1,030,923	\$6,227	\$1,018,240	\$2,055,390	\$442,669	\$195,566	\$638,235	\$2,698,942	\$3,704	\$5,254	\$56,602	\$1,163,495
BELMONT	\$2,081,026	\$578	\$2,905,943	\$4,987,547	\$1,337,585	\$245,595	\$1,583,180	\$6,571,119	\$23,879	\$27,678	\$130,727	\$1,836,304
BROWN	\$950,112	\$0	\$1,420,741	\$2,370,853	\$980,452	\$506,906	\$1,487,358	\$3,860,233	\$7,183	\$24,003	\$136,150	\$956,876
BUTLER	\$6,913,609	\$17,017	\$10,726,244	\$17,656,870	\$6,128,390	\$1,747,799	\$7,876,189	\$25,534,292	\$129,263	\$112,560	\$870,215	\$7,858,918
CARROLL	\$611,500	\$994	\$1,005,417	\$1,617,912	\$428,365	\$99,903	\$528,268	\$2,147,486	\$2,144	\$1,195	\$62,710	\$743,113
CHAMPAIGN	\$961,273	\$689	\$1,306,060	\$2,268,023	\$471,268	\$175,823	\$647,091	\$2,915,114	\$8,346	\$3,286	\$83,468	\$1,125,005
CLARK	\$3,829,468	\$6,409	\$6,524,745	\$10,360,622	\$3,407,845	\$731,219	\$4,139,064	\$14,502,694	\$69,764	\$70,003	\$477,515	\$5,155,151
CLERMONT	\$2,985,708	\$6,275	\$6,514,796	\$9,506,778	\$2,469,380	\$1,068,345	\$3,537,724	\$13,085,275	\$105,841	\$36,767	\$337,073	\$4,590,158
CLINTON	\$746,790	\$5,136	\$966,440	\$1,718,366	\$570,702	\$245,086	\$815,788	\$2,535,006	\$8,974	\$11,263	\$87,850	\$630,788
COLUMBIANA	\$2,434,869	\$6,790	\$3,880,049	\$6,321,708	\$2,462,193	\$759,464	\$3,221,657	\$9,553,609	\$51,218	\$18,849	\$232,293	\$2,479,155
COSHOCTON	\$826,670	\$439	\$1,622,545	\$2,449,655	\$908,685	\$203,547	\$1,112,232	\$3,562,243	\$4,032	\$10,461	\$90,666	\$1,318,411
CRAWFORD	\$1,217,976	\$4,944	\$1,219,485	\$2,442,405	\$839,912	\$157,636	\$997,548	\$3,441,353	\$17,807	\$9,335	\$108,167	\$720,172
CUYAHOGA	\$37,612,672	\$130,786	\$58,345,996	\$96,089,454	\$34,061,575	\$7,130,704	\$41,192,279	\$137,318,090	\$1,125,471	\$1,236,336	\$3,588,923	\$38,597,891
DARKE	\$1,202,268	\$165	\$957,103	\$2,159,535	\$481,316	\$226,953	\$708,269	\$2,867,804	\$8,686	\$11,113	\$53,650	\$1,350,504
DEFIANCE	\$589,901	\$18	\$685,009	\$1,274,929	\$522,301	\$159,958	\$682,259	\$1,959,297	\$2,162	\$2,993	\$59,691	\$611,609
DELAWARE	\$1,301,976	\$5,273	\$1,856,644	\$3,163,893	\$1,200,415	\$308,686	\$1,509,101	\$4,672,994	\$17,664	\$28,228	\$158,650	\$1,177,658
ERIE	\$1,235,504	\$4,172	\$1,533,773	\$2,773,449	\$1,190,351	\$312,605	\$1,502,955	\$4,277,090	\$41,304	\$27,651	\$99,718	\$1,314,642
FAIRFIELD	\$1,835,806	\$3,207	\$3,328,686	\$5,167,699	\$2,247,826	\$571,164	\$2,818,990	\$7,992,141	\$17,486	\$35,842	\$237,015	\$1,873,955
FAYETTE	\$1,038,126	\$7,659	\$1,763,124	\$2,808,909	\$1,064,969	\$175,007	\$1,239,976	\$4,048,885	\$75	\$3,828	\$72,132	\$1,603,007
FRANKLIN	\$19,855,399	\$96,754	\$55,460,927	\$75,413,080	\$27,228,580	\$7,882,089	\$35,110,669	\$110,553,895	\$878,955	\$699,332	\$2,714,603	\$22,855,373
FULTON	\$835,719	\$112	\$573,098	\$1,408,929	\$474,419	\$230,650	\$705,069	\$2,115,401	\$4,614	\$10,274	\$45,410	\$914,750
GALLIA	\$1,404,831	\$645	\$3,958,835	\$5,364,311	\$1,086,131	\$261,299	\$1,347,430	\$6,728,947	\$7,172	\$7,845	\$64,951	\$788,557
GEAUGA	\$1,295,928	\$1,002	\$1,459,101	\$2,756,031	\$413,855	\$195,737	\$609,592	\$3,365,775	\$7,851	\$27,601	\$39,037	\$1,682,245
GREENE	\$2,281,211	\$3,043	\$2,615,597	\$4,899,851	\$1,982,461	\$618,666	\$2,601,128	\$7,500,978	\$57,778	\$24,279	\$199,910	\$2,781,593

**Table 6B  
April 2006  
Medicaid Expenditures**

	Aged	Blind	Disabled	ABD Total	OWF & Related	Healthy Start	CFC Total	Total Medicaid	Foster Care	Adoption Assistance	Transitional	Nursing Facilities
<b>STATEWIDE</b>	<b>\$236,356,530</b>	<b>\$878,329</b>	<b>\$418,401,290</b>	<b>\$655,636,149</b>	<b>\$228,840,734</b>	<b>\$63,053,429</b>	<b>\$291,894,163</b>	<b>\$948,102,835</b>	<b>\$5,613,672</b>	<b>\$4,851,516</b>	<b>\$24,529,942</b>	<b>\$264,635,873</b>
GUERNSEY	\$920,242	\$128	\$2,789,198	\$3,709,568	\$1,191,188	\$263,498	\$1,454,687	\$5,165,736	\$25,824	\$16,040	\$91,203	\$668,572
HAMILTON	\$18,897,274	\$87,668	\$31,447,244	\$50,432,186	\$15,725,057	\$5,479,160	\$21,204,216	\$71,698,722	\$566,755	\$350,119	\$1,351,637	\$20,316,561
HANCOCK	\$1,750,389	\$1,837	\$1,633,769	\$3,385,994	\$852,520	\$263,915	\$1,116,435	\$4,504,867	\$35,218	\$8,986	\$73,614	\$1,973,381
HARDIN	\$495,971	\$332	\$672,629	\$1,168,931	\$466,397	\$132,021	\$598,418	\$1,767,469	\$3,449	\$4,530	\$52,465	\$479,874
HARRISON	\$468,151	\$133	\$556,602	\$1,024,885	\$320,182	\$120,337	\$440,518	\$1,465,591	\$1,212	\$5,350	\$21,882	\$502,113
HENRY	\$517,976	\$0	\$1,237,598	\$1,755,574	\$385,553	\$163,137	\$548,690	\$2,304,263	\$5,237	\$4,311	\$51,033	\$566,194
HIGHLAND	\$900,926	\$1,205	\$1,483,758	\$2,385,890	\$1,249,024	\$374,993	\$1,624,018	\$4,010,736	\$7,239	\$12,427	\$122,011	\$1,104,487
HOCKING	\$720,354	\$6,842	\$869,285	\$1,596,481	\$829,892	\$212,560	\$1,042,451	\$2,638,932	\$17,076	\$7,969	\$57,817	\$649,454
HOLMES	\$1,212,464	\$551	\$890,462	\$2,103,477	\$295,628	\$169,039	\$464,667	\$2,568,143	\$14,638	\$2,879	\$32,757	\$1,700,926
HURON	\$721,492	\$0	\$1,098,849	\$1,820,341	\$890,089	\$251,260	\$1,141,348	\$2,961,689	\$16,250	\$6,460	\$117,458	\$724,949
JACKSON	\$802,558	\$51	\$1,218,748	\$2,021,358	\$947,040	\$272,867	\$1,219,907	\$3,250,006	\$4,016	\$4,070	\$116,693	\$746,385
JEFFERSON	\$1,681,881	\$8,813	\$2,815,453	\$4,506,147	\$1,470,427	\$247,944	\$1,718,371	\$6,228,882	\$44,091	\$17,048	\$152,462	\$1,480,733
KNOX	\$1,537,377	\$964	\$4,124,935	\$5,663,277	\$903,660	\$212,922	\$1,116,582	\$6,780,006	\$12,346	\$17,255	\$134,078	\$3,728,300
LAKE	\$3,470,289	\$4,174	\$6,808,175	\$10,282,638	\$2,499,369	\$841,112	\$3,340,481	\$13,631,245	\$74,097	\$50,995	\$242,467	\$5,410,208
LAWRENCE	\$1,322,139	\$4,157	\$3,721,155	\$5,047,452	\$2,401,512	\$450,029	\$2,851,541	\$7,908,180	\$39,080	\$10,515	\$168,280	\$1,454,010
LICKING	\$2,449,782	\$1,126	\$4,674,775	\$7,125,683	\$2,760,578	\$850,454	\$3,611,032	\$10,736,715	\$110,142	\$108,408	\$246,682	\$2,769,037
LOGAN	\$897,207	\$302	\$816,671	\$1,714,180	\$797,231	\$179,921	\$977,152	\$2,691,873	\$1,943	\$7,759	\$109,124	\$777,188
LORAIN	\$4,631,444	\$9,304	\$8,292,841	\$12,933,589	\$5,006,011	\$1,164,854	\$6,170,865	\$19,112,424	\$53,889	\$58,014	\$653,163	\$5,953,233
LUCAS	\$9,048,640	\$14,368	\$24,439,450	\$33,502,458	\$13,070,923	\$2,603,283	\$15,674,206	\$49,220,367	\$272,925	\$311,900	\$1,477,188	\$9,585,247
MADISON	\$312,872	\$358	\$1,320,714	\$1,633,944	\$563,712	\$203,455	\$767,167	\$2,406,085	\$12,205	\$5,252	\$56,967	\$429,018
MAHONING	\$6,409,906	\$39,314	\$9,876,876	\$16,326,095	\$6,621,935	\$1,516,049	\$8,137,984	\$24,477,344	\$124,646	\$46,733	\$812,791	\$6,405,508
MARION	\$1,046,336	\$2,499	\$2,628,235	\$3,677,070	\$1,253,555	\$427,807	\$1,681,362	\$5,365,908	\$7,381	\$16,969	\$116,113	\$1,310,416
MEDINA	\$2,119,606	\$54,090	\$3,256,818	\$5,430,514	\$1,754,973	\$482,562	\$2,237,535	\$7,668,049	\$20,026	\$6,735	\$183,210	\$3,309,248
MEIGS	\$568,577	\$4,790	\$1,158,332	\$1,731,699	\$676,255	\$111,457	\$787,712	\$2,529,174	\$5,524	\$800	\$50,790	\$519,603
MERCER	\$750,843	\$53	\$778,161	\$1,529,056	\$433,066	\$104,365	\$537,431	\$2,067,681	\$3,050	\$2,055	\$29,307	\$840,572
MIAMI	\$1,879,267	\$15,880	\$1,901,861	\$3,797,008	\$995,585	\$434,289	\$1,429,874	\$5,234,787	\$21,237	\$27,155	\$108,185	\$1,778,333
MONROE	\$377,520	\$511	\$329,130	\$707,162	\$312,768	\$58,115	\$370,883	\$1,082,717	\$2,633	\$3,572	\$41,568	\$342,588
MONTGOMERY	\$10,058,015	\$47,493	\$20,912,154	\$31,017,661	\$12,377,929	\$2,940,217	\$15,318,146	\$46,357,658	\$256,527	\$390,925	\$1,242,851	\$11,995,785
MORGAN	\$415,605	\$0	\$737,655	\$1,153,260	\$314,424	\$78,015	\$392,439	\$1,545,852	\$0	\$1,212	\$35,555	\$413,968
MORROW	\$612,349	\$3,188	\$1,012,610	\$1,628,147	\$564,791	\$164,579	\$729,371	\$2,358,247	\$176	\$8,255	\$84,634	\$707,242

Source: ODJFS Report BOMM1321 Prepared: Bureau of Research and Evaluation.

**Table 6B  
April 2006  
Medicaid Expenditures**

	Aged	Blind	Disabled	ABD Total	OWF & Related	Healthy Start	CFC Total	Total Medicaid	Foster Care	Adoption Assistance	Transitional	Nursing Facilities
<b>STATEWIDE</b>	<b>\$236,356,530</b>	<b>\$878,329</b>	<b>\$418,401,290</b>	<b>\$655,636,149</b>	<b>\$228,840,734</b>	<b>\$63,053,429</b>	<b>\$291,894,163</b>	<b>\$948,102,835</b>	<b>\$5,613,672</b>	<b>\$4,851,516</b>	<b>\$24,529,942</b>	<b>\$264,635,873</b>
MUSKINGUM	\$2,043,361	\$9,744	\$3,528,980	\$5,582,085	\$2,514,627	\$537,247	\$3,051,874	\$8,639,155	\$16,960	\$18,458	\$154,791	\$1,782,988
NOBLE	\$349,550	\$0	\$285,584	\$635,134	\$378,840	\$51,646	\$430,486	\$1,065,619	\$533	\$893	\$25,400	\$309,089
OTTAWA	\$937,019	\$10,970	\$1,589,311	\$2,537,300	\$412,620	\$137,632	\$550,252	\$3,088,025	\$1,124	\$1,088	\$43,087	\$754,290
PAULDING	\$171,161	\$0	\$386,354	\$557,515	\$202,130	\$87,101	\$289,231	\$846,746	(\$14,784)	\$1,823	\$23,904	\$130,302
PERRY	\$565,420	\$1,656	\$1,467,024	\$2,034,100	\$911,976	\$184,815	\$1,096,791	\$3,131,326	\$12,585	\$4,208	\$85,339	\$969,989
PICKAWAY	\$825,229	(\$235)	\$1,372,834	\$2,197,828	\$1,047,032	\$216,191	\$1,263,223	\$3,463,422	\$9,245	\$6,643	\$85,613	\$651,341
PIKE	\$924,985	\$0	\$2,035,243	\$2,960,228	\$976,329	\$247,342	\$1,223,671	\$4,184,732	\$15,380	\$12,576	\$75,194	\$1,387,021
PORTAGE	\$1,816,619	\$25,934	\$4,285,778	\$6,128,330	\$2,688,636	\$776,720	\$3,465,356	\$9,594,967	\$49,272	\$38,371	\$177,993	\$3,165,377
PREBLE	\$665,555	\$2,511	\$1,132,925	\$1,800,991	\$593,415	\$140,270	\$733,685	\$2,535,141	\$8,829	\$6,947	\$65,251	\$1,086,318
PUTNAM	\$492,878	\$456	\$635,017	\$1,128,351	\$218,486	\$50,382	\$268,868	\$1,397,219	\$1,090	\$20	\$20,772	\$818,335
RICHLAND	\$2,283,579	\$0	\$3,434,509	\$5,718,088	\$2,309,954	\$1,831,856	\$4,141,809	\$9,885,929	\$27,119	\$63,257	\$206,837	\$2,934,513
ROSS	\$1,069,755	\$1,072	\$2,966,418	\$4,037,244	\$1,969,572	\$440,150	\$2,409,722	\$6,454,850	\$27,590	\$7,826	\$134,242	\$1,004,302
SANDUSKY	\$1,345,306	\$1,391	\$2,024,893	\$3,371,589	\$846,079	\$398,641	\$1,244,720	\$4,619,238	\$13,103	\$4,284	\$66,950	\$1,543,791
SCIOTO	\$2,172,943	\$5,322	\$5,746,020	\$7,924,286	\$2,478,860	\$520,852	\$2,999,712	\$10,936,129	\$21,984	\$34,685	\$154,195	\$2,347,229
SENECA	\$1,518,908	\$1,307	\$3,384,204	\$4,904,419	\$768,317	\$299,526	\$1,067,843	\$5,972,261	\$29,379	\$9,589	\$87,259	\$1,318,799
SHELBY	\$694,387	\$1,596	\$722,353	\$1,418,336	\$500,356	\$254,683	\$755,040	\$2,173,730	\$11,394	\$9,715	\$48,396	\$790,698
STARK	\$9,466,082	\$24,479	\$10,839,924	\$20,330,485	\$7,300,704	\$1,833,491	\$9,134,195	\$29,469,648	\$294,352	\$207,954	\$1,128,808	\$10,192,978
SUMMIT	\$11,025,833	\$102,488	\$19,791,068	\$30,919,389	\$12,079,577	\$2,764,157	\$14,843,735	\$45,816,119	\$370,724	\$163,767	\$1,281,998	\$10,614,663
TRUMBULL	\$4,337,412	\$23,487	\$6,923,522	\$11,284,421	\$4,672,680	\$1,398,674	\$6,071,354	\$17,357,965	\$66,370	\$34,485	\$806,730	\$5,100,286
TUSCARAWAS	\$2,113,508	\$2,809	\$2,302,896	\$4,419,213	\$1,544,372	\$632,221	\$2,176,592	\$6,608,393	\$41,649	\$57,295	\$173,092	\$1,925,259
UNION	\$545,643	\$758	\$969,885	\$1,516,287	\$625,033	\$199,670	\$824,703	\$2,340,990	\$5,109	\$8,761	\$42,906	\$502,307
UNKNOWN	\$0	\$0	\$0	\$0	(\$1,521,124)	\$0	(\$1,521,124)	(\$1,521,124)	\$0	\$0	\$0	\$0
VAN WERT	\$563,090	\$0	\$688,745	\$1,251,834	\$365,029	\$134,451	\$499,480	\$1,759,923	\$8,589	\$26,174	\$42,847	\$629,542
VINTON	\$298,287	\$0	\$584,489	\$882,777	\$522,236	\$123,861	\$646,096	\$1,529,486	\$4,997	\$1,341	\$65,367	\$247,220
WARREN	\$3,128,878	\$8,501	\$4,017,526	\$7,154,905	\$1,709,461	\$632,725	\$2,342,186	\$9,500,037	\$16,474	\$17,874	\$162,441	\$4,610,888
WASHINGTON	\$1,544,602	\$3,823	\$2,135,280	\$3,683,705	\$1,180,371	\$377,002	\$1,557,373	\$5,241,599	\$4,300	\$1,950	\$163,665	\$1,568,546
WAYNE	\$2,293,636	\$1,258	\$2,542,820	\$4,837,714	\$1,832,034	\$506,123	\$2,338,157	\$7,175,894	\$25,675	\$19,051	\$175,426	\$2,240,066
WILLIAMS	\$810,465	\$277	\$704,700	\$1,515,443	\$570,870	\$295,229	\$866,099	\$2,381,541	\$8,800	\$4,619	\$105,578	\$815,920
WOOD	\$1,865,943	\$159	\$2,334,248	\$4,200,350	\$1,191,404	\$448,462	\$1,639,866	\$5,845,731	\$19,926	\$11,635	\$137,353	\$1,653,728
WYANDOT	\$666,026	\$0	\$587,257	\$1,253,283	\$218,132	\$98,534	\$316,666	\$1,569,949	\$2,499	\$2,017	\$30,931	\$747,372

Source: ODJFS Report BOMM1321 Prepared: Bureau of Research and Evaluation.

**TABLE 7  
CHILD CARE  
APRIL 2006**

OHIO COUNTY	OWF JOBS, LEAP, and TRANSITIONAL		OTHER CHILD CARE		LOCAL FUNDING		ALL PROGRAM SOURCES	
	CHILDREN SERVED		CHILDREN SERVED		CHILDREN SERVED		CHILDREN SERVED	
	TOTAL	% OF STATE TOTAL	TOTAL	% OF STATE TOTAL	TOTAL	% OF STATE TOTAL	TOTAL	% OF STATE TOTAL
<b>STATEWIDE</b>	<b>21,022</b>	<b>100.00%</b>	<b>73,253</b>	<b>100.00%</b>	<b>120</b>	<b>100.00%</b>	<b>94,395</b>	<b>100.00%</b>
ADAMS	17	0.08%	82	0.11%	0	0.00%	99	0.10%
ALLEN	60	0.29%	443	0.60%	0	0.00%	503	0.53%
ASHLAND	4	0.02%	186	0.25%	0	0.00%	190	0.20%
ASHTABULA	169	0.80%	610	0.83%	0	0.00%	779	0.83%
ATHENS	66	0.31%	174	0.24%	0	0.00%	240	0.25%
AUGLAIZE	10	0.05%	132	0.18%	0	0.00%	142	0.15%
BELMONT	80	0.38%	249	0.34%	0	0.00%	329	0.35%
BROWN	22	0.10%	128	0.17%	0	0.00%	150	0.16%
BUTLER	225	1.07%	1,465	2.00%	0	0.00%	1,690	1.79%
CARROLL	18	0.09%	30	0.04%	0	0.00%	48	0.05%
CHAMPAIGN	12	0.06%	115	0.16%	0	0.00%	127	0.13%
CLARK	162	0.77%	636	0.87%	0	0.00%	798	0.85%
CLERMONT	168	0.80%	601	0.82%	0	0.00%	769	0.81%
CLINTON	4	0.02%	224	0.31%	0	0.00%	228	0.24%
COLUMBIANA	148	0.70%	776	1.06%	0	0.00%	924	0.98%
COSHOCTON	67	0.32%	203	0.28%	0	0.00%	270	0.29%
CRAWFORD	66	0.31%	149	0.20%	0	0.00%	215	0.23%
CUYAHOGA	4,499	21.40%	18,601	25.39%	0	0.00%	23,100	24.47%
DARKE	26	0.12%	105	0.14%	0	0.00%	131	0.14%
DEFIANCE	54	0.26%	121	0.17%	0	0.00%	175	0.19%
DELAWARE	26	0.12%	143	0.20%	2	1.67%	171	0.18%
ERIE	17	0.08%	563	0.77%	0	0.00%	580	0.61%
FAIRFIELD	100	0.48%	445	0.61%	0	0.00%	545	0.58%
FAYETTE	45	0.21%	232	0.32%	0	0.00%	277	0.29%
FRANKLIN	2,984	14.19%	8,324	11.36%	117	97.50%	11,425	12.10%
FULTON	22	0.10%	141	0.19%	0	0.00%	163	0.17%
GALLIA	79	0.38%	179	0.24%	0	0.00%	258	0.27%
GEAUGA	45	0.21%	147	0.20%	0	0.00%	192	0.20%
GREENE	221	1.05%	437	0.60%	0	0.00%	658	0.70%

**TABLE 7  
CHILD CARE  
APRIL 2006**

OHIO COUNTY	OWF JOBS, LEAP, and TRANSITIONAL		OTHER CHILD CARE		LOCAL FUNDING		ALL PROGRAM SOURCES	
	CHILDREN SERVED		CHILDREN SERVED		CHILDREN SERVED		CHILDREN SERVED	
	TOTAL	% OF STATE TOTAL	TOTAL	% OF STATE TOTAL	TOTAL	% OF STATE TOTAL	TOTAL	% OF STATE TOTAL
<b>STATEWIDE</b>	<b>21,022</b>	<b>100.00%</b>	<b>73,253</b>	<b>100.00%</b>	<b>120</b>	<b>100.00%</b>	<b>94,395</b>	<b>100.00%</b>
GUERNSEY	58	0.28%	282	0.38%	0	0.00%	340	0.36%
HAMILTON	2,697	12.83%	8,549	11.67%	0	0.00%	11,246	11.91%
HANCOCK	67	0.32%	391	0.53%	0	0.00%	458	0.49%
HARDIN	12	0.06%	45	0.06%	0	0.00%	57	0.06%
HARRISON	23	0.11%	38	0.05%	0	0.00%	61	0.06%
HENRY	29	0.14%	107	0.15%	0	0.00%	136	0.14%
HIGHLAND	16	0.08%	172	0.23%	0	0.00%	188	0.20%
HOCKING	48	0.23%	115	0.16%	0	0.00%	163	0.17%
HOLMES	33	0.16%	91	0.12%	0	0.00%	124	0.13%
HURON	1	0.00%	394	0.54%	0	0.00%	395	0.42%
JACKSON	36	0.17%	125	0.17%	0	0.00%	161	0.17%
JEFFERSON	65	0.31%	331	0.45%	0	0.00%	396	0.42%
KNOX	69	0.33%	239	0.33%	0	0.00%	308	0.33%
LAKE	171	0.81%	875	1.19%	0	0.00%	1,046	1.11%
LAWRENCE	95	0.45%	436	0.60%	0	0.00%	531	0.56%
LICKING	264	1.26%	838	1.14%	0	0.00%	1,102	1.17%
LOGAN	20	0.10%	59	0.08%	0	0.00%	79	0.08%
LORAIN	669	3.18%	1,584	2.16%	0	0.00%	2,253	2.39%
LUCAS	1,586	7.54%	2,894	3.95%	0	0.00%	4,480	4.75%
MADISON	17	0.08%	104	0.14%	0	0.00%	121	0.13%
MAHONING	870	4.14%	1,467	2.00%	0	0.00%	2,337	2.48%
MARION	48	0.23%	339	0.46%	0	0.00%	387	0.41%
MEDINA	65	0.31%	600	0.82%	0	0.00%	665	0.70%
MEIGS	17	0.08%	155	0.21%	0	0.00%	172	0.18%
MERCER	25	0.12%	112	0.15%	0	0.00%	137	0.15%
MIAMI	77	0.37%	308	0.42%	0	0.00%	385	0.41%
MONROE	3	0.01%	91	0.12%	0	0.00%	94	0.10%
MONTGOMERY	918	4.37%	4,173	5.70%	1	0.83%	5,092	5.39%
MORGAN	1	0.00%	79	0.11%	0	0.00%	80	0.08%
MORROW	5	0.02%	144	0.20%	0	0.00%	149	0.16%

**TABLE 7  
CHILD CARE  
APRIL 2006**

OHIO COUNTY	OWF JOBS, LEAP, and TRANSITIONAL		OTHER CHILD CARE		LOCAL FUNDING		ALL PROGRAM SOURCES	
	CHILDREN SERVED		CHILDREN SERVED		CHILDREN SERVED		CHILDREN SERVED	
	TOTAL	% OF STATE TOTAL	TOTAL	% OF STATE TOTAL	TOTAL	% OF STATE TOTAL	TOTAL	% OF STATE TOTAL
<b>STATEWIDE</b>	<b>21,022</b>	<b>100.00%</b>	<b>73,253</b>	<b>100.00%</b>	<b>120</b>	<b>100.00%</b>	<b>94,395</b>	<b>100.00%</b>
MUSKINGUM	226	1.08%	647	0.88%	0	0.00%	873	0.92%
NOBLE	32	0.15%	84	0.11%	0	0.00%	116	0.12%
OTTAWA	45	0.21%	113	0.15%	0	0.00%	158	0.17%
PAULDING	2	0.01%	22	0.03%	0	0.00%	24	0.03%
PERRY	51	0.24%	233	0.32%	0	0.00%	284	0.30%
PICKAWAY	67	0.32%	131	0.18%	0	0.00%	198	0.21%
PIKE	67	0.32%	48	0.07%	0	0.00%	115	0.12%
PORTAGE	154	0.73%	514	0.70%	0	0.00%	668	0.71%
PREBLE	44	0.21%	139	0.19%	0	0.00%	183	0.19%
PUTNAM	8	0.04%	84	0.11%	0	0.00%	92	0.10%
RICHLAND	239	1.14%	667	0.91%	0	0.00%	906	0.96%
ROSS	64	0.30%	247	0.34%	0	0.00%	311	0.33%
SANDUSKY	74	0.35%	480	0.66%	0	0.00%	554	0.59%
SCIOTO	133	0.63%	497	0.68%	0	0.00%	630	0.67%
SENECA	19	0.09%	241	0.33%	0	0.00%	260	0.28%
SHELBY	45	0.21%	170	0.23%	0	0.00%	215	0.23%
STARK	685	3.26%	2,011	2.75%	0	0.00%	2,696	2.86%
SUMMIT	910	4.33%	3,277	4.47%	0	0.00%	4,187	4.44%
TRUMBULL	193	0.92%	978	1.34%	0	0.00%	1,171	1.24%
TUSCARAWAS	72	0.34%	292	0.40%	0	0.00%	364	0.39%
UNION	30	0.14%	164	0.22%	0	0.00%	194	0.21%
VAN WERT	5	0.02%	51	0.07%	0	0.00%	56	0.06%
VINTON	5	0.02%	58	0.08%	0	0.00%	63	0.07%
WARREN	115	0.55%	276	0.38%	0	0.00%	391	0.41%
WASHINGTON	52	0.25%	255	0.35%	0	0.00%	307	0.33%
WAYNE	165	0.78%	395	0.54%	0	0.00%	560	0.59%
WILLIAMS	19	0.09%	100	0.14%	0	0.00%	119	0.13%
WOOD	78	0.37%	261	0.36%	0	0.00%	339	0.36%
WYANDOT	2	0.01%	40	0.05%	0	0.00%	42	0.04%

SOURCE: COGNOS. The above numbers have not been reconciled between the CCIDS/3299 data collection system and 2827 ODJFS fiscal reporting system; therefore they may not be conclusive at this time. No 173 OWF code related data available.

OWF data consist of funding codes: 173,312, 313,314, 326, & 327. Other data consist of funding codes: 320, 321, 322, 323, 324, 325, 328, 329, and 342. Local Funding is from funding code 899.

**TABLE 8  
RECIPIENTS, EXPENDITURES, AND AVERAGE PAYMENT PER RECIPIENT  
DURING THE LAST 12 MONTHS IN OHIO**

<b>RECIPIENTS</b>	<b>OWF-R</b>	<b>OWF-U</b>	<b>OWF/ CHILD CARE</b>	<b>Other CHILD CARE</b>	<b>DISABILITY ASSISTANCE</b>	<b>TITLE IV-E</b>	<b>FNS BENEFITS</b>
May 2005	165,279	16,000	15,369	68,571	14,539	27,224	1,023,138
June	166,976	15,722	15,934	71,324	15,055	27,143	1,010,979
July	164,719	15,005	15,342	70,918	14,303	26,528	1,014,236
August	166,397	15,206	14,404	66,479	12,716	26,563	1,028,817
September	167,302	15,424	14,109	67,011	12,539	26,838	1,030,121
October	166,513	15,751	13,661	66,812	12,257	27,029	1,041,114
November	168,417	16,220	14,586	69,255	12,393	26,765	1,041,403
December	168,095	16,703	15,009	71,563	12,107	26,903	1,055,074
January 2006	164,367	16,628	21,701	72,217	12,167	27,005	1,051,528
February	160,208	16,357	22,960	72,979	12,165	27,024	1,040,537
March	163,689	17,055	23,613	76,835	12,555	27,204	N.A.
April	156,624	15,855	22,022	73,253	12,634	27,166	N.A.
<b>12 MONTH AVERAGE</b>	<b>164,882</b>	<b>15,994</b>	<b>17,393</b>	<b>70,601</b>	<b>12,953</b>	<b>26,949</b>	N.A.
<b>EXPENDITURES</b>							
May 2005	\$23,417,266	\$1,578,606	N.A.	N.A.	\$1,889,618	\$14,305,678	\$98,245,457
June	\$23,094,088	\$1,474,122	N.A.	N.A.	\$1,825,070	\$14,010,354	\$95,657,995
July	\$23,347,150	\$1,466,707	N.A.	N.A.	\$1,804,610	\$13,236,170	\$96,263,324
August	\$23,669,346	\$1,488,833	N.A.	N.A.	\$1,518,756	\$13,470,540	\$98,676,185
September	\$23,598,932	\$1,506,145	N.A.	N.A.	\$1,619,707	\$13,410,051	\$98,491,845
October	\$25,360,810	\$1,667,872	N.A.	N.A.	\$1,572,501	\$13,946,486	\$104,447,942
November	\$26,036,089	\$1,743,326	N.A.	N.A.	\$1,566,804	\$14,316,360	\$103,589,082
December	\$26,315,386	\$1,842,574	N.A.	N.A.	\$1,661,825	\$14,353,892	\$105,178,691
January 2006	\$25,052,380	\$1,761,189	N.A.	N.A.	\$1,597,870	\$15,336,409	\$103,129,520
February	\$25,376,164	\$1,825,805	N.A.	N.A.	\$1,734,556	\$14,006,590	\$102,457,470
March	\$24,981,565	\$1,800,673	N.A.	N.A.	\$1,761,824	\$14,381,303	N.A.
April	\$24,730,183	\$1,736,189	N.A.	N.A.	\$1,920,212	\$13,477,491	N.A.
<b>TOTAL DOLLARS</b>	<b>\$24,581,613</b>	<b>\$1,657,670</b>	<b>N.A.</b>	<b>N.A.</b>	<b>\$1,706,113</b>	<b>\$14,020,944</b>	<b>N.A.</b>
<b>AVERAGE PAYMENT</b>							
May 2005	\$142	\$99	N.A.	N.A.	\$130	\$525	\$96
June	\$138	\$94	N.A.	N.A.	\$121	\$516	\$95
July	\$142	\$98	N.A.	N.A.	\$126	\$499	\$95
August	\$142	\$98	N.A.	N.A.	\$119	\$507	\$96
September	\$141	\$98	N.A.	N.A.	\$129	\$500	\$96
October	\$152	\$106	N.A.	N.A.	\$128	\$516	\$100
November	\$155	\$107	N.A.	N.A.	\$126	\$535	\$99
December	\$157	\$110	N.A.	N.A.	\$137	\$534	\$100
January 2006	\$152	\$106	N.A.	N.A.	\$131	\$568	\$98
February	\$158	\$112	N.A.	N.A.	\$143	\$518	\$98
March	\$153	\$106	N.A.	N.A.	\$140	\$529	N.A.
April	\$158	\$110	N.A.	N.A.	\$152	\$496	N.A.

Note: N.A. means Not Available.



**TABLE 10  
PERCENT OF OHIO'S POPULATION PARTICIPATING IN SELECTED  
PUBLIC ASSISTANCE PROGRAMS FOR APRIL 2006**

OHIO COUNTY	Estimated Total Population *	Percent of All Families Below Poverty Level	DISABILITY ASSISTANCE		OWF COMBINED		FOSTER CARE		FNS BENEFITS	
			Recipients as % of		Recipients	Recipients as % of	Recipients	Recipients as % of	Recipients	Recipients as % of
			Recipients	Total Population						
<b>STATEWIDE</b>	<b>11,464,042</b>	<b>7.80%</b>	<b>12,634</b>	<b>0.11%</b>	<b>172,479</b>	<b>1.50%</b>	<b>27,166</b>	<b>0.24%</b>	<b>0</b>	<b>0.00%</b>
ADAMS	28,454	12.80%	95	0.33%	248	0.87%	63	0.22%	0	0.00%
ALLEN	106,234	9.60%	96	0.09%	745	0.70%	222	0.21%	0	0.00%
ASHLAND	54,123	7.10%	38	0.07%	137	0.25%	28	0.05%	0	0.00%
ASHTABULA	103,221	9.20%	259	0.25%	1,356	1.31%	197	0.19%	0	0.00%
ATHENS	62,062	14.00%	236	0.38%	1,409	2.27%	202	0.33%	0	0.00%
AUGLAIZE	47,242	4.90%	30	0.06%	88	0.19%	52	0.11%	0	0.00%
BELMONT	69,228	11.70%	129	0.19%	1,125	1.63%	133	0.19%	0	0.00%
BROWN	44,398	8.80%	46	0.10%	266	0.60%	59	0.13%	0	0.00%
BUTLER	350,412	5.40%	370	0.11%	2,781	0.79%	684	0.20%	0	0.00%
CARROLL	29,388	8.50%	21	0.07%	181	0.62%	12	0.04%	0	0.00%
CHAMPAIGN	39,698	5.10%	38	0.10%	420	1.06%	35	0.09%	0	0.00%
CLARK	142,376	7.90%	311	0.22%	2,747	1.93%	312	0.22%	0	0.00%
CLERMONT	190,589	5.30%	174	0.09%	821	0.43%	413	0.22%	0	0.00%
CLINTON	42,570	6.40%	77	0.18%	230	0.54%	99	0.23%	0	0.00%
COLUMBIANA	110,928	9.00%	114	0.10%	900	0.81%	139	0.13%	0	0.00%
COSHOCTON	36,945	7.00%	88	0.24%	405	1.10%	59	0.16%	0	0.00%
CRAWFORD	45,774	7.80%	52	0.11%	414	0.90%	43	0.09%	0	0.00%
CUYAHOGA	1,335,317	10.30%	912	0.07%	24,888	1.86%	6,361	0.48%	0	0.00%
DARKE	52,983	6.00%	38	0.07%	319	0.60%	58	0.11%	0	0.00%
DEFIANCE	39,112	4.50%	20	0.05%	304	0.78%	48	0.12%	0	0.00%
DELAWARE	150,268	2.90%	75	0.05%	728	0.48%	87	0.06%	0	0.00%
ERIE	78,665	6.00%	71	0.09%	416	0.53%	135	0.17%	0	0.00%
FAIRFIELD	138,423	4.50%	121	0.09%	1,820	1.31%	179	0.13%	0	0.00%
FAYETTE	28,199	7.70%	32	0.11%	244	0.87%	17	0.06%	0	0.00%
FRANKLIN	1,090,771	8.20%	1,057	0.10%	23,498	2.15%	3,694	0.34%	0	0.00%
FULTON	42,955	4.00%	19	0.04%	139	0.32%	35	0.08%	0	0.00%
GALLIA	31,362	13.50%	58	0.18%	1,422	4.53%	64	0.20%	0	0.00%
GEAUGA	95,218	2.80%	27	0.03%	111	0.12%	109	0.11%	0	0.00%
GREENE	151,996	5.20%	124	0.08%	1,127	0.74%	95	0.06%	0	0.00%

\*SOURCE: 2005 Ohio County Population Estimates, Ohio Dept. of Development, GRP342RA, GBS003RA, GRP304RA and GRP304RC Reports from Management Information Services.

**TABLE 10  
PERCENT OF OHIO'S POPULATION PARTICIPATING IN SELECTED  
PUBLIC ASSISTANCE PROGRAMS FOR APRIL 2006**

OHIO COUNTY	Estimated Total Population *	Percent of All Families Below Poverty Level	DISABILITY ASSISTANCE		OWF COMBINED		FOSTER CARE		FNS BENEFITS	
			Recipients	Recipients as % of Total Population	Recipients	Recipients as % of Total Population	Recipients	Recipients as % of Total Population	Recipients	Recipients as % of Total Population
<b>STATEWIDE</b>	<b>11,464,042</b>	<b>7.80%</b>	<b>12,634</b>	<b>0.11%</b>	<b>172,479</b>	<b>1.50%</b>	<b>27,166</b>	<b>0.24%</b>	<b>0</b>	<b>0.00%</b>
GUERNSEY	41,123	12.90%	134	0.33%	430	1.05%	118	0.29%	0	0.00%
HAMILTON	806,652	8.80%	526	0.07%	16,630	2.06%	1,551	0.19%	0	0.00%
HANCOCK	73,503	5.20%	75	0.10%	211	0.29%	71	0.10%	0	0.00%
HARDIN	32,032	8.90%	31	0.10%	81	0.25%	60	0.19%	0	0.00%
HARRISON	15,920	11.00%	42	0.26%	272	1.71%	30	0.19%	0	0.00%
HENRY	29,453	5.30%	15	0.05%	65	0.22%	37	0.13%	0	0.00%
HIGHLAND	42,818	9.00%	92	0.21%	471	1.10%	49	0.11%	0	0.00%
HOCKING	29,009	10.30%	69	0.24%	688	2.37%	88	0.30%	0	0.00%
HOLMES	41,567	10.50%	30	0.07%	97	0.23%	35	0.08%	0	0.00%
HURON	60,385	6.50%	51	0.08%	212	0.35%	69	0.11%	0	0.00%
JACKSON	33,526	13.60%	103	0.31%	504	1.50%	26	0.08%	0	0.00%
JEFFERSON	70,599	11.40%	172	0.24%	1,970	2.79%	114	0.16%	0	0.00%
KNOX	58,398	7.40%	98	0.17%	565	0.97%	43	0.07%	0	0.00%
LAKE	232,466	3.50%	156	0.07%	1,355	0.58%	214	0.09%	0	0.00%
LAWRENCE	63,112	15.10%	76	0.12%	1,400	2.22%	46	0.07%	0	0.00%
LICKING	154,806	5.50%	206	0.13%	1,269	0.82%	472	0.30%	0	0.00%
LOGAN	46,580	7.10%	46	0.10%	486	1.04%	60	0.13%	0	0.00%
LORAIN	296,307	6.70%	280	0.09%	4,990	1.68%	447	0.15%	0	0.00%
LUCAS	448,229	10.70%	752	0.17%	16,072	3.59%	2,209	0.49%	0	0.00%
MADISON	41,295	6.20%	29	0.07%	530	1.28%	33	0.08%	0	0.00%
MAHONING	254,274	9.60%	249	0.10%	5,981	2.35%	391	0.15%	0	0.00%
MARION	65,932	7.40%	114	0.17%	738	1.12%	93	0.14%	0	0.00%
MEDINA	167,010	3.50%	75	0.04%	654	0.39%	86	0.05%	0	0.00%
MEIGS	23,232	14.30%	61	0.26%	406	1.75%	11	0.05%	0	0.00%
MERCER	41,202	4.60%	30	0.07%	167	0.41%	48	0.12%	0	0.00%
MIAMI	101,619	5.10%	90	0.09%	615	0.61%	165	0.16%	0	0.00%
MONROE	14,698	11.00%	25	0.17%	165	1.12%	16	0.11%	0	0.00%
MONTGOMERY	547,435	8.30%	669	0.12%	10,393	1.90%	1,825	0.33%	0	0.00%
MORGAN	14,958	15.70%	67	0.45%	123	0.82%	12	0.08%	0	0.00%
MORROW	34,322	6.60%	35	0.10%	215	0.63%	37	0.11%	0	0.00%

\*SOURCE: 2005 Ohio County Population Estimates, Ohio Dept. of Development, GRP342RA, GBS003RA, GRP304RA and GRP304RC Reports from Management Information Services.

**TABLE 10  
PERCENT OF OHIO'S POPULATION PARTICIPATING IN SELECTED  
PUBLIC ASSISTANCE PROGRAMS FOR APRIL 2006**

OHIO COUNTY	Estimated Total Population *	Percent of All Families Below Poverty Level	DISABILITY ASSISTANCE		OWF COMBINED		FOSTER CARE		FNS BENEFITS	
			Recipients as % of		Recipients	Recipients as % of Total Population	Recipients	Recipients as % of Total Population	Recipients	Recipients as % of Total Population
			Recipients	Total Population						
<b>STATEWIDE</b>	<b>11,464,042</b>	<b>7.80%</b>	<b>12,634</b>	<b>0.11%</b>	<b>172,479</b>	<b>1.50%</b>	<b>27,166</b>	<b>0.24%</b>	<b>0</b>	<b>0.00%</b>
MUSKINGUM	85,579	9.90%	360	0.42%	2,167	2.53%	144	0.17%	0	0.00%
NOBLE	14,156	8.30%	20	0.14%	104	0.73%	8	0.06%	0	0.00%
OTTAWA	41,583	4.20%	28	0.07%	318	0.76%	11	0.03%	0	0.00%
PAULDING	19,537	4.90%	27	0.14%	266	1.36%	31	0.16%	0	0.00%
PERRY	35,246	9.40%	99	0.28%	764	2.17%	72	0.20%	0	0.00%
PICKAWAY	52,989	7.60%	55	0.10%	1,025	1.93%	37	0.07%	0	0.00%
PIKE	28,146	15.10%	64	0.23%	675	2.40%	46	0.16%	0	0.00%
PORTAGE	155,631	5.90%	102	0.07%	841	0.54%	142	0.09%	0	0.00%
PREBLE	42,527	4.50%	47	0.11%	333	0.78%	75	0.18%	0	0.00%
PUTNAM	34,928	4.00%	12	0.03%	57	0.16%	14	0.04%	0	0.00%
RICHLAND	127,949	8.20%	237	0.19%	1,350	1.06%	270	0.21%	0	0.00%
ROSS	75,197	9.10%	141	0.19%	1,639	2.18%	111	0.15%	0	0.00%
SANDUSKY	61,676	5.70%	53	0.09%	336	0.54%	89	0.14%	0	0.00%
SCIOTO	76,561	15.20%	211	0.28%	2,069	2.70%	111	0.14%	0	0.00%
SENECA	57,483	6.10%	74	0.13%	284	0.49%	114	0.20%	0	0.00%
SHELBY	48,736	5.30%	30	0.06%	208	0.43%	60	0.12%	0	0.00%
STARK	380,608	6.80%	420	0.11%	6,126	1.61%	1,164	0.31%	0	0.00%
SUMMIT	546,604	7.50%	505	0.09%	9,571	1.75%	1,312	0.24%	0	0.00%
TRUMBULL	219,296	7.90%	319	0.15%	2,873	1.31%	469	0.21%	0	0.00%
TUSCARAWAS	91,944	7.20%	98	0.11%	1,049	1.14%	233	0.25%	0	0.00%
UNION	45,751	3.60%	47	0.10%	415	0.91%	36	0.08%	0	0.00%
VAN WERT	29,154	4.20%	15	0.05%	81	0.28%	19	0.07%	0	0.00%
VINTON	13,429	15.10%	51	0.38%	328	2.44%	50	0.37%	0	0.00%
WARREN	196,622	3.00%	72	0.04%	411	0.21%	139	0.07%	0	0.00%
WASHINGTON	62,210	8.60%	139	0.22%	188	0.30%	46	0.07%	0	0.00%
WAYNE	113,697	5.40%	202	0.18%	1,021	0.90%	141	0.12%	0	0.00%
WILLIAMS	38,688	3.90%	29	0.07%	357	0.92%	41	0.11%	0	0.00%
WOOD	123,929	4.70%	46	0.04%	502	0.41%	68	0.05%	0	0.00%
WYANDOT	22,813	3.80%	5	0.02%	77	0.34%	23	0.10%	0	0.00%
UNKNOWN										

\*SOURCE: 2005 Ohio County Population Estimates, Ohio Dept. of Development, GRP342RA, GBS003RA, GRP304RA and GRP304RC Reports from Management Information Services.

**TABLE 7  
CHILD CARE REVISION  
JANUARY 2006 UPDATE**

OHIO COUNTY	OWF JOBS, LEAP, and TRANSITIONAL		OTHER CHILD CARE		LOCAL FUNDING		ALL PROGRAM SOURCES	
	CHILDREN SERVED		CHILDREN SERVED		CHILDREN SERVED		CHILDREN SERVED	
	TOTAL	% OF STATE TOTAL	TOTAL	% OF STATE TOTAL	TOTAL	% OF STATE TOTAL	TOTAL	% OF STATE TOTAL
<b>STATEWIDE</b>	<b>21,716</b>	<b>100.00%</b>	<b>72,300</b>	<b>100.00%</b>	<b>133</b>	<b>100.00%</b>	<b>94,149</b>	<b>100.00%</b>
ADAMS	18	0.08%	80	0.11%	0	0.00%	98	0.10%
ALLEN	48	0.22%	442	0.61%	0	0.00%	490	0.52%
ASHLAND	6	0.03%	173	0.24%	0	0.00%	179	0.19%
ASHTABULA	155	0.71%	635	0.88%	0	0.00%	790	0.84%
ATHENS	56	0.26%	184	0.25%	0	0.00%	240	0.25%
AUGLAIZE	8	0.04%	131	0.18%	0	0.00%	139	0.15%
BELMONT	73	0.34%	240	0.33%	0	0.00%	313	0.33%
BROWN	22	0.10%	122	0.17%	0	0.00%	144	0.15%
BUTLER	240	1.11%	1,528	2.11%	0	0.00%	1,768	1.88%
CARROLL	12	0.06%	46	0.06%	0	0.00%	58	0.06%
CHAMPAIGN	6	0.03%	143	0.20%	0	0.00%	149	0.16%
CLARK	149	0.69%	638	0.88%	0	0.00%	787	0.84%
CLERMONT	159	0.73%	425	0.59%	0	0.00%	584	0.62%
CLINTON	2	0.01%	183	0.25%	0	0.00%	185	0.20%
COLUMBIANA	130	0.60%	777	1.07%	0	0.00%	907	0.96%
COSHOCTON	54	0.25%	199	0.28%	0	0.00%	253	0.27%
CRAWFORD	56	0.26%	150	0.21%	0	0.00%	206	0.22%
CUYAHOGA	4,434	20.42%	18,347	25.38%	0	0.00%	22,781	24.20%
DARKE	18	0.08%	56	0.08%	0	0.00%	74	0.08%
DEFIANCE	41	0.19%	136	0.19%	0	0.00%	177	0.19%
DELAWARE	46	0.21%	203	0.28%	2	1.50%	251	0.27%
ERIE	12	0.06%	587	0.81%	0	0.00%	599	0.64%
FAIRFIELD	93	0.43%	457	0.63%	0	0.00%	550	0.58%
FAYETTE	51	0.23%	224	0.31%	0	0.00%	275	0.29%
FRANKLIN	3,134	14.43%	8,586	11.88%	130	97.74%	11,850	12.59%
FULTON	7	0.03%	152	0.21%	0	0.00%	159	0.17%
GALLIA	74	0.34%	157	0.22%	0	0.00%	231	0.25%
GEAUGA	33	0.15%	147	0.20%	0	0.00%	180	0.19%
GREENE	176	0.81%	494	0.68%	0	0.00%	670	0.71%

**TABLE 7  
CHILD CARE REVISION  
JANUARY 2006 UPDATE**

OHIO COUNTY	OWF JOBS, LEAP, and TRANSITIONAL		OTHER CHILD CARE		LOCAL FUNDING		ALL PROGRAM SOURCES	
	CHILDREN SERVED		CHILDREN SERVED		CHILDREN SERVED		CHILDREN SERVED	
	TOTAL	% OF STATE TOTAL	TOTAL	% OF STATE TOTAL	TOTAL	% OF STATE TOTAL	TOTAL	% OF STATE TOTAL
<b>STATEWIDE</b>	<b>21,716</b>	<b>100.00%</b>	<b>72,300</b>	<b>100.00%</b>	<b>133</b>	<b>100.00%</b>	<b>94,149</b>	<b>100.00%</b>
GUERNSEY	53	0.24%	311	0.43%	0	0.00%	364	0.39%
HAMILTON	4,006	18.45%	8,353	11.55%	0	0.00%	12,359	13.13%
HANCOCK	83	0.38%	409	0.57%	0	0.00%	492	0.52%
HARDIN	8	0.04%	36	0.05%	0	0.00%	44	0.05%
HARRISON	17	0.08%	40	0.06%	0	0.00%	57	0.06%
HENRY	25	0.12%	109	0.15%	0	0.00%	134	0.14%
HIGHLAND	9	0.04%	194	0.27%	0	0.00%	203	0.22%
HOCKING	42	0.19%	129	0.18%	0	0.00%	171	0.18%
HOLMES	30	0.14%	99	0.14%	0	0.00%	129	0.14%
HURON	0	0.00%	397	0.55%	0	0.00%	397	0.42%
JACKSON	38	0.17%	138	0.19%	0	0.00%	176	0.19%
JEFFERSON	75	0.35%	311	0.43%	0	0.00%	386	0.41%
KNOX	59	0.27%	234	0.32%	0	0.00%	293	0.31%
LAKE	135	0.62%	732	1.01%	0	0.00%	867	0.92%
LAWRENCE	71	0.33%	412	0.57%	0	0.00%	483	0.51%
LICKING	262	1.21%	811	1.12%	0	0.00%	1,073	1.14%
LOGAN	19	0.09%	70	0.10%	0	0.00%	89	0.09%
LORAIN	678	3.12%	1,704	2.36%	0	0.00%	2,382	2.53%
LUCAS	1,469	6.76%	2,722	3.76%	0	0.00%	4,191	4.45%
MADISON	17	0.08%	94	0.13%	0	0.00%	111	0.12%
MAHONING	858	3.95%	1,533	2.12%	0	0.00%	2,391	2.54%
MARION	45	0.21%	332	0.46%	0	0.00%	377	0.40%
MEDINA	53	0.24%	523	0.72%	0	0.00%	576	0.61%
MEIGS	10	0.05%	146	0.20%	0	0.00%	156	0.17%
MERCER	29	0.13%	97	0.13%	0	0.00%	126	0.13%
MIAMI	74	0.34%	298	0.41%	0	0.00%	372	0.40%
MONROE	2	0.01%	84	0.12%	0	0.00%	86	0.09%
MONTGOMERY	951	4.38%	3,904	5.40%	0	0.00%	4,855	5.16%
MORGAN	1	0.00%	65	0.09%	0	0.00%	66	0.07%
MORROW	7	0.03%	174	0.24%	0	0.00%	181	0.19%

**TABLE 7  
CHILD CARE REVISION  
JANUARY 2006 UPDATE**

OHIO COUNTY	OWF JOBS, LEAP, and TRANSITIONAL		OTHER CHILD CARE		LOCAL FUNDING		ALL PROGRAM SOURCES	
	CHILDREN SERVED		CHILDREN SERVED		CHILDREN SERVED		CHILDREN SERVED	
	TOTAL	% OF STATE TOTAL	TOTAL	% OF STATE TOTAL	TOTAL	% OF STATE TOTAL	TOTAL	% OF STATE TOTAL
<b>STATEWIDE</b>	<b>21,716</b>	<b>100.00%</b>	<b>72,300</b>	<b>100.00%</b>	<b>133</b>	<b>100.00%</b>	<b>94,149</b>	<b>100.00%</b>
MUSKINGUM	226	1.04%	648	0.90%	0	0.00%	874	0.93%
NOBLE	26	0.12%	81	0.11%	0	0.00%	107	0.11%
OTTAWA	33	0.15%	112	0.15%	0	0.00%	145	0.15%
PAULDING	2	0.01%	19	0.03%	0	0.00%	21	0.02%
PERRY	40	0.18%	202	0.28%	0	0.00%	242	0.26%
PICKAWAY	58	0.27%	134	0.19%	0	0.00%	192	0.20%
PIKE	43	0.20%	47	0.07%	0	0.00%	90	0.10%
PORTAGE	149	0.69%	612	0.85%	0	0.00%	761	0.81%
PREBLE	24	0.11%	58	0.08%	0	0.00%	82	0.09%
PUTNAM	9	0.04%	89	0.12%	0	0.00%	98	0.10%
RICHLAND	213	0.98%	692	0.96%	0	0.00%	905	0.96%
ROSS	66	0.30%	226	0.31%	0	0.00%	292	0.31%
SANDUSKY	70	0.32%	381	0.53%	0	0.00%	451	0.48%
SCIOTO	133	0.61%	509	0.70%	0	0.00%	642	0.68%
SENECA	16	0.07%	237	0.33%	0	0.00%	253	0.27%
SHELBY	37	0.17%	157	0.22%	0	0.00%	194	0.21%
STARK	665	3.06%	2,049	2.83%	0	0.00%	2,714	2.88%
SUMMIT	851	3.92%	3,343	4.62%	1	0.75%	4,195	4.46%
TRUMBULL	171	0.79%	656	0.91%	0	0.00%	827	0.88%
TUSCARAWAS	80	0.37%	294	0.41%	0	0.00%	374	0.40%
UNION	28	0.13%	136	0.19%	0	0.00%	164	0.17%
VAN WERT	5	0.02%	62	0.09%	0	0.00%	67	0.07%
VINTON	5	0.02%	72	0.10%	0	0.00%	77	0.08%
WARREN	77	0.35%	370	0.51%	0	0.00%	447	0.47%
WASHINGTON	44	0.20%	269	0.37%	0	0.00%	313	0.33%
WAYNE	127	0.58%	358	0.50%	0	0.00%	485	0.52%
WILLIAMS	18	0.08%	86	0.12%	0	0.00%	104	0.11%
WOOD	55	0.25%	254	0.35%	0	0.00%	309	0.33%
WYANDOT	6	0.03%	44	0.06%	0	0.00%	50	0.05%

SOURCE: COGNOS. The above numbers have not been reconciled between the CCIDS/3299 data collection system and 2827 ODJFS fiscal reporting system; therefore they may not be conclusive at this time. No 173 OWF code related data available. OWF data consist of funding codes: 173,312, 313,314, 326, & 327. Other data consist of funding codes: 320, 321, 322, 323, 324, 325, 328, 329, and 342. Local Funding is from funding code 899.