

MONTHLY REVIEW OF PUBLIC ASSISTANCE STATISTICS FOR MARCH 2004

OHIO WORKS FIRST

For the month of March 2004, OWF-Combined assistance groups totaled 87,486; recipients totaled 194,942 and money payments totaled \$26,509,583. The percent change from February 2004 to March 2004 was 0.7% for assistance groups; 0.7% for recipients, and 0.6% for money payments. For OWF- Regular (OWF-R) there were 83,111 assistance groups; 177,476 recipients, and \$24,778,004 in money payments issued for March 2004. The percent change from February 2004 to March 2004 was 0.6% for assistance groups; 0.5% for recipients, and 0.5% for money payments. For OWF-Unemployed (OWF-U) assistance groups totaled 4,375; recipients, 17,466, and money payments were \$1,731,579. The percent change from February 2004 to March 2004 was 3.0% for assistance groups; 3.1% for recipients and 1.4% for money payments.

FOSTER CARE (TITLE IV-E)

A total of 26,395 children received \$14,811,934 in Title IV-E assistance during the month of March 2004. Included in this total were 7,431 foster care children who received \$7,672,877 in money payments. Of these Title IV-E children, 3,174 or 12.0% were in foster family homes who received \$1,327,233 and 4,257 or 16.1% children in child care institutions who received \$6,345,644 in OWF foster care assistance. The remaining 18,964 children reported as participating in Title IV-E received \$7,139,057 in adoption assistance. Overall, the average amount of Foster Care received per child was \$561.16

DISABILITY ASSISTANCE (DA)

For the month of March 2004, there were 13,086 assistance groups; 13,204 recipients, and \$1,760,786 in DA financial assistance. The average DA financial assistance per recipient was \$133.35. Total DA expenditures for medical services for March 2004 were \$ 6,863,742. Of this total, \$4,830,250 or 70.4% was spent for prescribed drugs, and \$1,649,411 or 24.0% was spent for physician services. Medical expenses were paid for 14,398 recipients for an average expenditure of \$476.71 per recipient.

FNS BENEFITS:

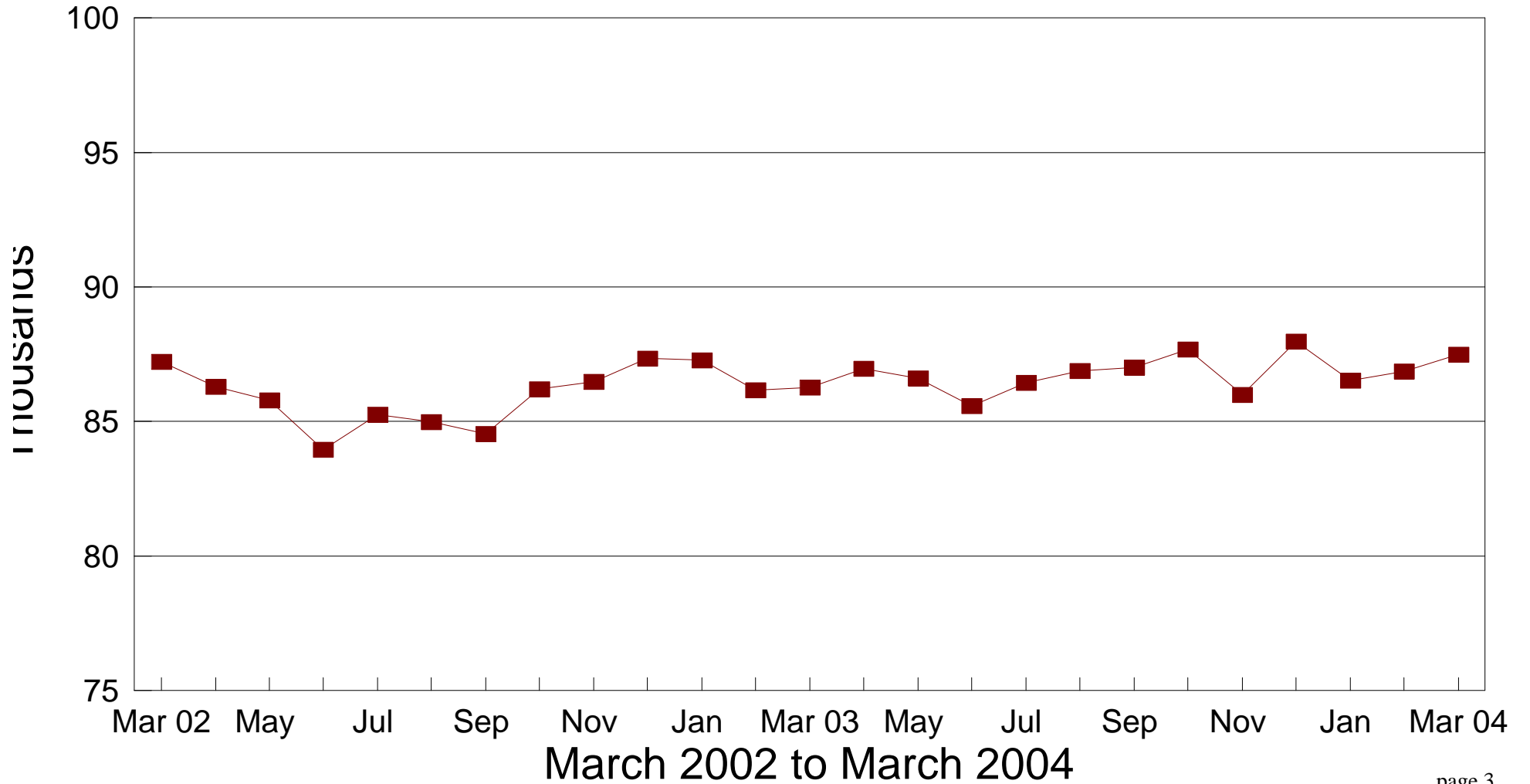
Total persons participating in the FNS benefits program during March 2004 increased to 957,339 by 22,463 or 2.4% from 934,876 persons reported in February 2004. Households increased by 11,316 or 2.7% over February 2004 levels. The total dollar value of FNS related benefits issued during March 2004 increased by \$3,118,177 or 3.8% from \$82,969,877 reported in February 2004 to \$86,088,054 reported in March 2004. The average benefit issuance per person increased by \$1.17 or 1.3% from those issued in February 2004. The average benefit issuance per person increased from \$88.75 in February 2004 to \$89.92 in March 2004.

Please note: All data in the PAMS report is limited to the information available at the time it was constructed. It does not account for backdated or retroactive eligibility or any adjustments made subsequent to its creation.

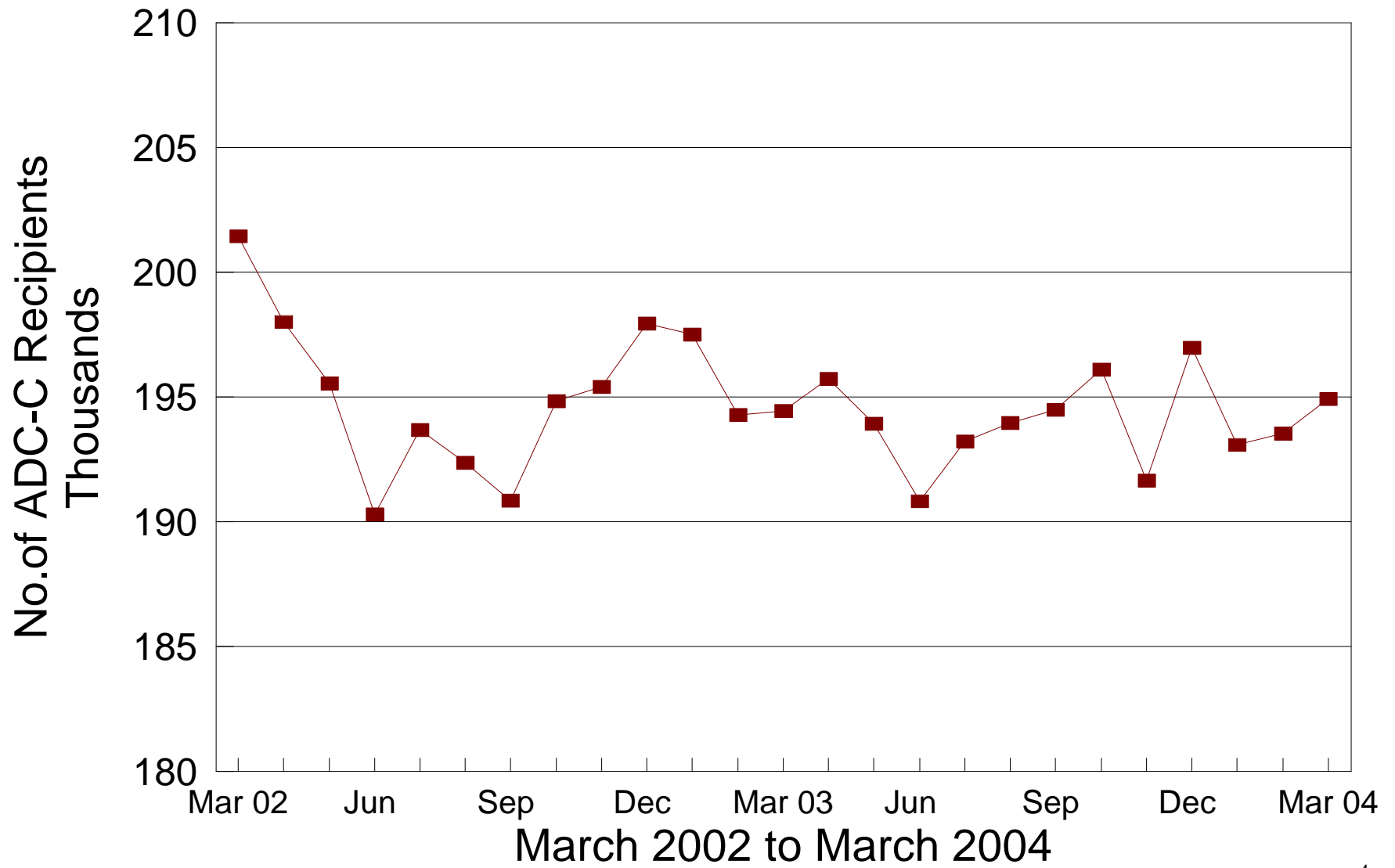
STATEWIDE SUMMARY OF PUBLIC ASSISTANCE PROGRAMS FOR MARCH 2004					
	March 2004	February 2004	% CHANGE Mar 04 / Feb 04	March 2003	% CHANGE Mar 04 / Mar 03
OHIO WORKS FIRST (OWF)-COMBINED					
Assistance Groups	87,486	86,859	0.7%	86,263	1.4%
Recipients	194,942	193,537	0.7%	194,443	0.3%
Net Payments	\$26,509,583	\$26,356,981	0.6%	\$25,929,400	2.2%
Average Per Recipient	\$135.99	\$136.19	-0.1%	\$133.35	2.0%
OWF-REGULAR, OWF-INCAPACITATED,& OWF REGULAR VENDOR PAYMENTS					
Assistance Groups	83,111	82,611	0.6%	82,065	1.3%
Recipients	177,476	176,591	0.5%	177,267	0.1%
Net Payments	\$24,778,004	\$24,649,146	0.5%	\$24,293,390	2.0%
Average Per Recipient	\$139.61	\$139.58	0.0%	\$137.04	1.9%
OWF-UNEMPLOYED AND OWF-UNEMPLOYED VENDOR PAYMENTS					
Assistance Groups	4,375	4,248	3.0%	4,198	4.2%
Recipients	17,466	16,946	3.1%	17,176	1.7%
Net Payments	\$1,731,579	\$1,707,835	1.4%	\$1,636,010	5.8%
Average Per Recipient	\$99.14	\$100.78	-1.6%	\$95.25	4.1%
TITLE IV-E FOSTER CARE					
Assistance Groups/Recipients	26,395	25,961	1.7%	24,734	6.7%
Gross Payments	\$14,811,934	\$13,462,475	10.0%	\$12,846,053	15.3%
Average Per Recipient	\$561.16	\$518.57	8.2%	\$519.37	8.0%
DISABILITY ASSISTANCE					
Assistance Groups	13,086	12,893	1.5%	16,148	-19.0%
Recipients	13,204	13,013	1.5%	16,553	-20.2%
Net Payments	\$1,760,786	\$1,708,755	3.0%	\$2,014,058	-12.6%
Medical Assistance	\$6,863,742	\$5,630,494	21.9%	\$7,527,672	-8.8%
FNS BENEFITS					
Assistance Groups	425,487	414,171	2.7%	381,975	11.4%
Persons	957,339	934,876	2.4%	859,754	11.4%
Total Coupons Issued	\$86,088,054	\$82,969,877	3.8%	\$74,487,017	15.6%
Average Per Recipient	\$89.92	\$88.75	1.3%	\$86.64	3.8%

No. of OWF-Combined Assistance Groups

During the Last 25 Months

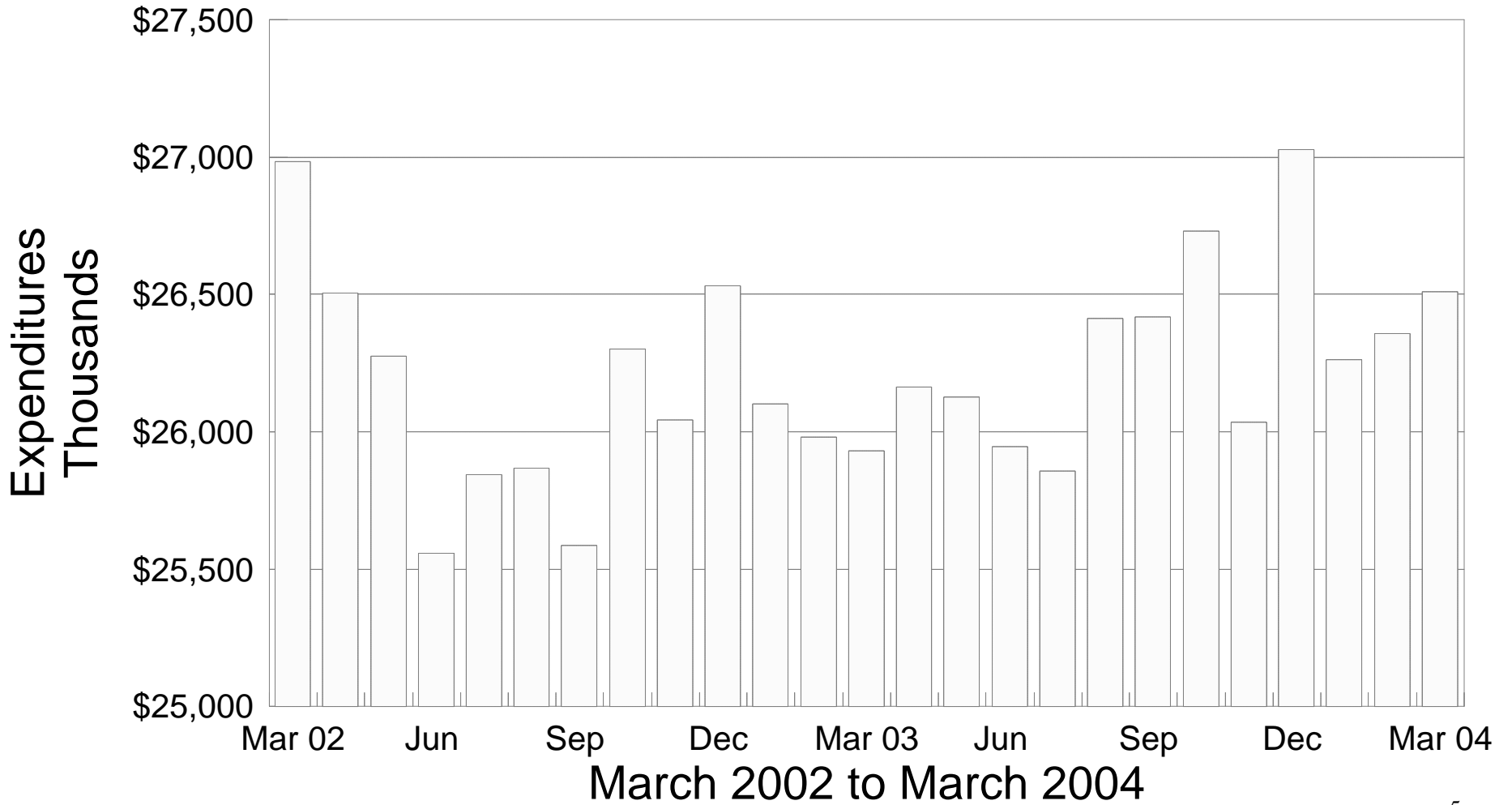


Number of OWF-Combined Recipients During the Last 25 Months



OWF-Combined Net Expenditures

During the Last 25 Months



**TABLE 1
OWF COMBINED
MARCH 2004**

OHIO COUNTY	ASSISTANCE GROUP	RECIPIENTS	ADULTS	CHILDREN	ACTUAL EXPENDITURES		
					GROSS AMOUNT	CANCELLED AMOUNT	NET AMOUNT
STATEWIDE	87,486	194,942	51,544	143,398	\$27,299,100.40	\$789,517.00	\$26,509,583.40
ADAMS	134	219	5	214	\$36,418.00	\$901.00	\$35,517.00
ALLEN	443	838	89	749	\$128,881.00	\$3,754.00	\$125,127.00
ASHLAND	95	218	53	165	\$30,741.00	\$0.00	\$30,741.00
ASHTABULA	726	1,607	421	1,186	\$223,887.00	\$3,822.00	\$220,065.00
ATHENS	619	1,509	531	978	\$194,753.30	\$4,069.00	\$190,684.30
AUGLAIZE	52	79	3	76	\$13,827.00	\$446.00	\$13,381.00
BELMONT	516	1,150	370	780	\$155,204.00	\$4,508.00	\$150,696.00
BROWN	172	294	35	259	\$46,426.00	\$819.00	\$45,607.00
BUTLER	1,564	3,085	629	2,456	\$469,272.00	\$12,896.00	\$456,376.00
CARROLL	100	212	55	157	\$30,128.00	\$1,751.00	\$28,377.00
CHAMPAIGN	171	328	83	245	\$50,875.00	\$1,825.00	\$49,050.00
CLARK	1,365	3,064	861	2,203	\$421,226.00	\$10,855.00	\$410,371.00
CLERMONT	561	1,115	255	860	\$169,603.00	\$4,784.00	\$164,819.00
CLINTON	128	220	38	182	\$35,466.00	\$461.00	\$35,005.00
COLUMBIANA	542	1,065	220	845	\$156,080.00	\$1,631.00	\$154,449.00
COSHOCTON	222	485	145	340	\$68,103.00	\$1,731.00	\$66,372.00
CRAWFORD	257	593	191	402	\$83,149.00	\$3,931.00	\$79,218.00
CUYAHOGA	14,333	30,411	7,480	22,931	\$4,433,645.00	\$165,761.00	\$4,267,884.00
DARKE	162	370	115	255	\$54,418.00	\$2,456.00	\$51,962.00
DEFIANCE	123	253	70	183	\$37,872.00	\$2,085.00	\$35,787.00
DELAWARE	292	676	209	467	\$95,911.00	\$1,430.00	\$94,481.00
ERIE	217	385	32	353	\$62,594.00	\$2,575.00	\$60,019.00
FAIRFIELD	574	1,373	452	921	\$180,678.00	\$5,381.00	\$175,297.00
FAYETTE	147	267	43	224	\$39,718.00	\$1,208.00	\$38,510.00
FRANKLIN	11,471	26,067	6,672	19,395	\$3,554,826.60	\$103,317.00	\$3,451,509.60
FULTON	86	187	43	144	\$24,695.00	\$461.00	\$24,234.00
GALLIA	507	1,270	439	831	\$161,319.00	\$5,505.00	\$155,814.00
GEAUGA	97	215	57	158	\$28,983.00	\$223.00	\$28,760.00
GREENE	598	1,265	351	914	\$184,919.00	\$4,768.00	\$180,151.00
GUERNSEY	196	369	80	289	\$54,900.00	\$1,206.00	\$53,694.00
HAMILTON	8,357	19,605	4,905	14,700	\$2,752,720.00	\$83,536.00	\$2,669,184.00
HANCOCK	167	355	88	267	\$53,634.00	\$2,041.00	\$51,593.00
HARDIN	60	108	11	97	\$17,607.00	\$1,042.00	\$16,565.00
HARRISON	107	223	62	161	\$31,386.00	\$833.00	\$30,553.00
HENRY	33	58	9	49	\$9,278.00	\$983.00	\$8,295.00
HIGHLAND	170	355	75	280	\$52,925.00	\$1,515.00	\$51,410.00
HOCKING	295	683	219	464	\$97,173.00	\$5,052.00	\$92,121.00
HOLMES	53	115	29	86	\$16,382.00	\$528.00	\$15,854.00
HURON	138	209	2	207	\$36,786.00	\$983.00	\$35,803.00
JACKSON	314	640	160	480	\$94,204.00	\$1,875.00	\$92,329.00
JEFFERSON	900	2,106	688	1,418	\$284,012.00	\$4,223.00	\$279,789.00
KNOX	257	604	186	418	\$76,155.00	\$1,309.00	\$74,846.00
LAKE	611	1,283	301	982	\$187,252.00	\$3,504.00	\$183,748.00
LAWRENCE	783	1,630	367	1,263	\$228,625.00	\$5,207.00	\$223,418.00

**TABLE 1
OWF COMBINED
MARCH 2004**

OHIO COUNTY	ASSISTANCE GROUP	RECIPIENTS	ADULTS	CHILDREN	ACTUAL EXPENDITURES		
					GROSS AMOUNT	CANCELLED AMOUNT	NET AMOUNT
STATEWIDE	87,486	194,942	51,544	143,398	\$27,299,100.40	\$789,517.00	\$26,509,583.40
LICKING	627	1,385	425	960	\$188,466.00	\$6,717.00	\$181,749.00
LOGAN	208	485	139	346	\$64,175.50	\$1,119.00	\$63,056.50
LORAIN	2,135	5,061	1,295	3,766	\$681,279.00	\$14,288.00	\$666,991.00
LUCAS	7,071	16,924	4,919	12,005	\$2,267,218.00	\$64,090.00	\$2,203,128.00
MADISON	229	512	177	335	\$71,265.00	\$1,429.00	\$69,836.00
MAHONING	2,980	7,015	1,807	5,208	\$970,569.00	\$16,615.00	\$953,954.00
MARION	396	715	99	616	\$116,331.00	\$1,725.00	\$114,606.00
MEDINA	273	618	178	440	\$90,426.00	\$2,027.00	\$88,399.00
MEIGS	229	470	147	323	\$63,992.00	\$901.00	\$63,091.00
MERCER	70	171	57	114	\$22,696.00	\$195.00	\$22,501.00
MIAMI	310	611	135	476	\$85,443.00	\$2,452.00	\$82,991.00
MONROE	84	207	74	133	\$26,283.00	\$907.00	\$25,376.00
MONTGOMERY	5,777	12,627	3,243	9,384	\$1,757,508.00	\$51,137.00	\$1,706,371.00
MORGAN	75	133	20	113	\$21,285.00	\$596.00	\$20,689.00
MORROW	139	303	87	216	\$41,494.00	\$1,921.00	\$39,573.00
MUSKINGUM	914	2,133	620	1,513	\$282,385.00	\$6,891.00	\$275,494.00
NOBLE	36	84	25	59	\$11,296.00	\$596.00	\$10,700.00
OTTAWA	130	301	101	200	\$38,821.00	\$926.00	\$37,895.00
PAULDING	101	252	91	161	\$33,347.00	\$945.00	\$32,402.00
PERRY	248	592	157	435	\$76,604.00	\$2,999.00	\$73,605.00
PICKAWAY	427	1,063	363	700	\$140,311.00	\$3,246.00	\$137,065.00
PIKE	354	807	202	605	\$109,217.00	\$3,214.00	\$106,003.00
PORTAGE	573	1,202	354	848	\$179,587.00	\$5,426.00	\$174,161.00
PREBLE	158	347	98	249	\$48,175.00	\$305.00	\$47,870.00
PUTNAM	82	205	70	135	\$27,022.00	\$1,128.00	\$25,894.00
RICHLAND	678	1,400	303	1,097	\$202,387.00	\$4,783.00	\$197,604.00
ROSS	672	1,529	439	1,090	\$213,104.00	\$8,027.00	\$205,077.00
SANDUSKY	194	350	75	275	\$56,743.00	\$1,337.00	\$55,406.00
SCIOTO	1,010	1,891	355	1,536	\$288,559.00	\$7,294.00	\$281,265.00
SENECA	127	226	26	200	\$35,563.00	\$663.00	\$34,900.00
SHELBY	119	217	37	180	\$33,482.00	\$2,697.00	\$30,785.00
STARK	3,240	7,537	2,339	5,198	\$1,028,765.00	\$28,758.00	\$1,000,007.00
SUMMIT	5,464	12,502	3,813	8,689	\$1,745,729.00	\$43,864.00	\$1,701,865.00
TRUMBULL	1,468	3,162	726	2,436	\$448,791.00	\$10,863.00	\$437,928.00
TUSCARAWAS	445	1,050	341	709	\$142,273.00	\$2,980.00	\$139,293.00
UNION	233	589	215	374	\$75,383.00	\$2,715.00	\$72,668.00
VAN WERT	37	69	6	63	\$10,442.00	\$0.00	\$10,442.00
VINTON	188	438	140	298	\$59,724.00	\$2,527.00	\$57,197.00
WARREN	251	488	109	379	\$71,466.00	\$2,525.00	\$68,941.00
WASHINGTON	143	216	9	207	\$37,861.00	\$1,365.00	\$36,496.00
WAYNE	447	993	343	650	\$142,680.00	\$4,886.00	\$137,794.00
WILLIAMS	160	380	130	250	\$49,308.00	\$3,108.00	\$46,200.00
WOOD	242	468	116	352	\$67,235.00	\$1,693.00	\$65,542.00
WYANDOT	27	51	10	41	\$7,753.00	\$446.00	\$7,307.00

**TABLE 1
OWF REGULAR
MARCH 2004**

OHIO COUNTY	ASSISTANCE GROUP	RECIPIENTS	ADULTS	CHILDREN	ACTUAL EXPENDITURES		
					GROSS AMOUNT	CANCELLED AMOUNT	NET AMOUNT
STATEWIDE	83,111	177,476	43,349	134,127	\$25,517,506.10	\$739,502.00	\$24,778,004.10
ADAMS	134	219	5	214	\$36,418.00	\$901.00	\$35,517.00
ALLEN	437	811	78	733	\$124,857.00	\$3,381.00	\$121,476.00
ASHLAND	86	176	35	141	\$26,421.00	\$0.00	\$26,421.00
ASHTABULA	678	1,418	326	1,092	\$204,594.00	\$3,822.00	\$200,772.00
ATHENS	506	1,078	323	755	\$148,962.00	\$4,069.00	\$144,893.00
AUGLAIZE	52	79	3	76	\$13,827.00	\$446.00	\$13,381.00
BELMONT	460	935	261	674	\$135,442.00	\$3,601.00	\$131,841.00
BROWN	169	284	29	255	\$45,219.00	\$819.00	\$44,400.00
BUTLER	1,540	3,019	604	2,415	\$462,265.00	\$12,408.00	\$449,857.00
CARROLL	91	175	37	138	\$26,888.00	\$1,212.00	\$25,676.00
CHAMPAIGN	165	306	71	235	\$48,516.00	\$1,825.00	\$46,691.00
CLARK	1,283	2,729	708	2,021	\$388,771.00	\$10,444.00	\$378,327.00
CLERMONT	543	1,047	219	828	\$162,100.00	\$4,784.00	\$157,316.00
CLINTON	126	213	34	179	\$34,171.00	\$0.00	\$34,171.00
COLUMBIANA	527	1,002	190	812	\$150,187.00	\$1,631.00	\$148,556.00
COSHOCTON	205	419	114	305	\$61,118.00	\$1,731.00	\$59,387.00
CRAWFORD	224	458	128	330	\$68,348.00	\$3,931.00	\$64,417.00
CUYAHOGA	13,874	28,468	6,588	21,880	\$4,238,281.00	\$159,044.00	\$4,079,237.00
DARKE	150	328	93	235	\$48,379.00	\$2,278.00	\$46,101.00
DEFIANCE	116	223	56	167	\$34,686.00	\$1,348.00	\$33,338.00
DELAWARE	272	596	171	425	\$87,056.00	\$1,430.00	\$85,626.00
ERIE	217	385	32	353	\$62,594.00	\$2,575.00	\$60,019.00
FAIRFIELD	498	1,070	301	769	\$150,722.00	\$4,920.00	\$145,802.00
FAYETTE	146	263	41	222	\$39,222.00	\$1,208.00	\$38,014.00
FRANKLIN	11,045	24,254	5,925	18,329	\$3,378,280.60	\$97,735.00	\$3,280,545.60
FULTON	82	172	37	135	\$23,307.00	\$461.00	\$22,846.00
GALLIA	422	930	273	657	\$127,678.00	\$3,216.00	\$124,462.00
GEAUGA	91	194	45	149	\$27,291.00	\$223.00	\$27,068.00
GREENE	561	1,127	281	846	\$171,463.00	\$4,768.00	\$166,695.00
GUERNSEY	189	339	66	273	\$52,264.00	\$1,206.00	\$51,058.00
HAMILTON	8,218	19,025	4,637	14,388	\$2,688,584.00	\$80,423.00	\$2,608,161.00
HANCOCK	153	294	59	235	\$47,106.00	\$1,502.00	\$45,604.00
HARDIN	59	104	9	95	\$17,186.00	\$1,042.00	\$16,144.00
HARRISON	102	204	52	152	\$29,135.00	\$833.00	\$28,302.00
HENRY	33	58	9	49	\$9,278.00	\$983.00	\$8,295.00
HIGHLAND	163	328	61	267	\$50,068.00	\$1,515.00	\$48,553.00
HOCKING	258	544	146	398	\$81,916.00	\$5,052.00	\$76,864.00
HOLMES	49	102	21	81	\$14,802.00	\$528.00	\$14,274.00
HURON	134	202	2	200	\$35,666.00	\$983.00	\$34,683.00
JACKSON	289	543	110	433	\$82,819.00	\$1,875.00	\$80,944.00
JEFFERSON	802	1,703	494	1,209	\$243,311.00	\$3,762.00	\$239,549.00
KNOX	232	504	137	367	\$67,616.00	\$1,309.00	\$66,307.00
LAKE	548	1,106	252	854	\$162,291.00	\$3,504.00	\$158,787.00
LAWRENCE	722	1,395	248	1,147	\$207,089.00	\$5,207.00	\$201,882.00

**TABLE 1
OWF REGULAR
MARCH 2004**

OHIO COUNTY	ASSISTANCE GROUP	RECIPIENTS	ADULTS	CHILDREN	ACTUAL EXPENDITURES		
					GROSS AMOUNT	CANCELLED AMOUNT	NET AMOUNT
STATEWIDE	83,111	177,476	43,349	134,127	\$25,517,506.10	\$739,502.00	\$24,778,004.10
LICKING	567	1,157	315	842	\$165,844.00	\$5,134.00	\$160,710.00
LOGAN	187	397	98	299	\$55,171.50	\$1,119.00	\$54,052.50
LORAIN	1,998	4,491	1,038	3,453	\$624,152.00	\$14,288.00	\$609,864.00
LUCAS	6,597	15,060	4,055	11,005	\$2,078,458.00	\$55,039.00	\$2,023,419.00
MADISON	205	418	130	288	\$61,916.00	\$1,429.00	\$60,487.00
MAHONING	2,847	6,460	1,551	4,909	\$914,609.00	\$15,242.00	\$899,367.00
MARION	390	696	89	607	\$114,400.00	\$1,725.00	\$112,675.00
MEDINA	247	509	127	382	\$77,552.00	\$1,281.00	\$76,271.00
MEIGS	206	390	105	285	\$56,831.00	\$901.00	\$55,930.00
MERCER	58	122	35	87	\$17,563.00	\$195.00	\$17,368.00
MIAMI	303	584	121	463	\$83,643.00	\$2,452.00	\$81,191.00
MONROE	67	143	42	101	\$19,195.00	\$907.00	\$18,288.00
MONTGOMERY	5,732	12,473	3,171	9,302	\$1,741,239.00	\$51,137.00	\$1,690,102.00
MORGAN	71	117	12	105	\$19,302.00	\$596.00	\$18,706.00
MORROW	124	245	57	188	\$35,635.00	\$1,921.00	\$33,714.00
MUSKINGUM	840	1,839	477	1,362	\$252,854.00	\$6,352.00	\$246,502.00
NOBLE	30	60	13	47	\$8,811.00	\$596.00	\$8,215.00
OTTAWA	114	237	69	168	\$33,119.00	\$713.00	\$32,406.00
PAULDING	88	201	66	135	\$27,925.00	\$572.00	\$27,353.00
PERRY	225	502	113	389	\$67,839.00	\$2,515.00	\$65,324.00
PICKAWAY	371	826	253	573	\$115,268.00	\$2,732.00	\$112,536.00
PIKE	327	704	151	553	\$97,215.00	\$2,284.00	\$94,931.00
PORTAGE	551	1,110	310	800	\$169,245.00	\$5,426.00	\$163,819.00
PREBLE	149	314	81	233	\$45,389.00	\$305.00	\$45,084.00
PUTNAM	68	155	47	108	\$21,500.00	\$1,128.00	\$20,372.00
RICHLAND	667	1,354	283	1,071	\$198,951.00	\$4,410.00	\$194,541.00
ROSS	614	1,287	326	961	\$188,474.00	\$7,566.00	\$180,908.00
SANDUSKY	184	326	65	261	\$54,194.00	\$883.00	\$53,311.00
SCIOTO	962	1,708	263	1,445	\$270,218.00	\$7,294.00	\$262,924.00
SENECA	123	217	22	195	\$34,439.00	\$663.00	\$33,776.00
SHELBY	118	216	37	179	\$33,282.00	\$2,697.00	\$30,585.00
STARK	2,973	6,456	1,812	4,644	\$922,388.00	\$25,491.00	\$896,897.00
SUMMIT	5,087	11,024	3,073	7,951	\$1,591,270.00	\$40,205.00	\$1,551,065.00
TRUMBULL	1,401	2,864	592	2,272	\$421,094.00	\$10,384.00	\$410,710.00
TUSCARAWAS	384	810	226	584	\$117,226.00	\$2,980.00	\$114,246.00
UNION	189	425	132	293	\$58,374.00	\$2,143.00	\$56,231.00
VAN WERT	37	69	6	63	\$10,442.00	\$0.00	\$10,442.00
VINTON	163	344	92	252	\$48,932.00	\$2,046.00	\$46,886.00
WARREN	246	472	101	371	\$70,189.00	\$2,525.00	\$67,664.00
WASHINGTON	143	216	9	207	\$37,861.00	\$1,365.00	\$36,496.00
WAYNE	407	849	265	584	\$126,425.00	\$4,513.00	\$121,912.00
WILLIAMS	145	322	100	222	\$43,118.00	\$2,274.00	\$40,844.00
WOOD	233	440	102	338	\$63,508.00	\$1,693.00	\$61,815.00
WYANDOT	22	38	6	32	\$6,251.00	\$446.00	\$5,805.00

**TABLE 1
OWF UNEMPLOYED
MARCH 2004**

OHIO COUNTY	ASSISTANCE GROUP	RECIPIENTS	ADULTS	CHILDREN	ACTUAL EXPENDITURES		
					GROSS AMOUNT	CANCELLED AMOUNT	NET AMOUNT
STATEWIDE	4,375	17,466	8,195	9,271	\$1,781,594.30	\$50,015.00	\$1,731,579.30
ADAMS	0	0	0	0	\$0.00	\$0.00	\$0.00
ALLEN	6	27	11	16	\$4,024.00	\$373.00	\$3,651.00
ASHLAND	9	42	18	24	\$4,320.00	\$0.00	\$4,320.00
ASHTABULA	48	189	95	94	\$19,293.00	\$0.00	\$19,293.00
ATHENS	113	431	208	223	\$45,791.30	\$0.00	\$45,791.30
AUGLAIZE	0	0	0	0	\$0.00	\$0.00	\$0.00
BELMONT	56	215	109	106	\$19,762.00	\$907.00	\$18,855.00
BROWN	3	10	6	4	\$1,207.00	\$0.00	\$1,207.00
BUTLER	24	66	25	41	\$7,007.00	\$488.00	\$6,519.00
CARROLL	9	37	18	19	\$3,240.00	\$539.00	\$2,701.00
CHAMPAIGN	6	22	12	10	\$2,359.00	\$0.00	\$2,359.00
CLARK	82	335	153	182	\$32,455.00	\$411.00	\$32,044.00
CLERMONT	18	68	36	32	\$7,503.00	\$0.00	\$7,503.00
CLINTON	2	7	4	3	\$1,295.00	\$461.00	\$834.00
COLUMBIANA	15	63	30	33	\$5,893.00	\$0.00	\$5,893.00
COSHOCTON	17	66	31	35	\$6,985.00	\$0.00	\$6,985.00
CRAWFORD	33	135	63	72	\$14,801.00	\$0.00	\$14,801.00
CUYAHOGA	459	1,943	892	1,051	\$195,364.00	\$6,717.00	\$188,647.00
DARKE	12	42	22	20	\$6,039.00	\$178.00	\$5,861.00
DEFIANCE	7	30	14	16	\$3,186.00	\$737.00	\$2,449.00
DELAWARE	20	80	38	42	\$8,855.00	\$0.00	\$8,855.00
ERIE	0	0	0	0	\$0.00	\$0.00	\$0.00
FAIRFIELD	76	303	151	152	\$29,956.00	\$461.00	\$29,495.00
FAYETTE	1	4	2	2	\$496.00	\$0.00	\$496.00
FRANKLIN	426	1,813	747	1,066	\$176,546.00	\$5,582.00	\$170,964.00
FULTON	4	15	6	9	\$1,388.00	\$0.00	\$1,388.00
GALLIA	85	340	166	174	\$33,641.00	\$2,289.00	\$31,352.00
GEAUGA	6	21	12	9	\$1,692.00	\$0.00	\$1,692.00
GREENE	37	138	70	68	\$13,456.00	\$0.00	\$13,456.00
GUERNSEY	7	30	14	16	\$2,636.00	\$0.00	\$2,636.00
HAMILTON	139	580	268	312	\$64,136.00	\$3,113.00	\$61,023.00
HANCOCK	14	61	29	32	\$6,528.00	\$539.00	\$5,989.00
HARDIN	1	4	2	2	\$421.00	\$0.00	\$421.00
HARRISON	5	19	10	9	\$2,251.00	\$0.00	\$2,251.00
HENRY	0	0	0	0	\$0.00	\$0.00	\$0.00
HIGHLAND	7	27	14	13	\$2,857.00	\$0.00	\$2,857.00
HOCKING	37	139	73	66	\$15,257.00	\$0.00	\$15,257.00
HOLMES	4	13	8	5	\$1,580.00	\$0.00	\$1,580.00
HURON	4	7	0	7	\$1,120.00	\$0.00	\$1,120.00
JACKSON	25	97	50	47	\$11,385.00	\$0.00	\$11,385.00
JEFFERSON	98	403	194	209	\$40,701.00	\$461.00	\$40,240.00
KNOX	25	100	49	51	\$8,539.00	\$0.00	\$8,539.00
LAKE	63	177	49	128	\$24,961.00	\$0.00	\$24,961.00
LAWRENCE	61	235	119	116	\$21,536.00	\$0.00	\$21,536.00

**TABLE 1
OWF UNEMPLOYED
MARCH 2004**

OHIO COUNTY	ASSISTANCE GROUP	RECIPIENTS	ADULTS	CHILDREN	ACTUAL EXPENDITURES		
					GROSS AMOUNT	CANCELLED AMOUNT	NET AMOUNT
STATEWIDE	4,375	17,466	8,195	9,271	\$1,781,594.30	\$50,015.00	\$1,731,579.30
LICKING	60	228	110	118	\$22,622.00	\$1,583.00	\$21,039.00
LOGAN	21	88	41	47	\$9,004.00	\$0.00	\$9,004.00
LORAIN	137	570	257	313	\$57,127.00	\$0.00	\$57,127.00
LUCAS	474	1,864	864	1,000	\$188,760.00	\$9,051.00	\$179,709.00
MADISON	24	94	47	47	\$9,349.00	\$0.00	\$9,349.00
MAHONING	133	555	256	299	\$55,960.00	\$1,373.00	\$54,587.00
MARION	6	19	10	9	\$1,931.00	\$0.00	\$1,931.00
MEDINA	26	109	51	58	\$12,874.00	\$746.00	\$12,128.00
MEIGS	23	80	42	38	\$7,161.00	\$0.00	\$7,161.00
MERCER	12	49	22	27	\$5,133.00	\$0.00	\$5,133.00
MIAMI	7	27	14	13	\$1,800.00	\$0.00	\$1,800.00
MONROE	17	64	32	32	\$7,088.00	\$0.00	\$7,088.00
MONTGOMERY	45	154	72	82	\$16,269.00	\$0.00	\$16,269.00
MORGAN	4	16	8	8	\$1,983.00	\$0.00	\$1,983.00
MORROW	15	58	30	28	\$5,859.00	\$0.00	\$5,859.00
MUSKINGUM	74	294	143	151	\$29,531.00	\$539.00	\$28,992.00
NOBLE	6	24	12	12	\$2,485.00	\$0.00	\$2,485.00
OTTAWA	16	64	32	32	\$5,702.00	\$213.00	\$5,489.00
PAULDING	13	51	25	26	\$5,422.00	\$373.00	\$5,049.00
PERRY	23	90	44	46	\$8,765.00	\$484.00	\$8,281.00
PICKAWAY	56	237	110	127	\$25,043.00	\$514.00	\$24,529.00
PIKE	27	103	51	52	\$12,002.00	\$930.00	\$11,072.00
PORTAGE	22	92	44	48	\$10,342.00	\$0.00	\$10,342.00
PREBLE	9	33	17	16	\$2,786.00	\$0.00	\$2,786.00
PUTNAM	14	50	23	27	\$5,522.00	\$0.00	\$5,522.00
RICHLAND	11	46	20	26	\$3,436.00	\$373.00	\$3,063.00
ROSS	58	242	113	129	\$24,630.00	\$461.00	\$24,169.00
SANDUSKY	10	24	10	14	\$2,549.00	\$454.00	\$2,095.00
SCIOTO	48	183	92	91	\$18,341.00	\$0.00	\$18,341.00
SENECA	4	9	4	5	\$1,124.00	\$0.00	\$1,124.00
SHELBY	1	1	0	1	\$200.00	\$0.00	\$200.00
STARK	267	1,081	527	554	\$106,377.00	\$3,267.00	\$103,110.00
SUMMIT	377	1,478	740	738	\$154,459.00	\$3,659.00	\$150,800.00
TRUMBULL	67	298	134	164	\$27,697.00	\$479.00	\$27,218.00
TUSCARAWAS	61	240	115	125	\$25,047.00	\$0.00	\$25,047.00
UNION	44	164	83	81	\$17,009.00	\$572.00	\$16,437.00
VAN WERT	0	0	0	0	\$0.00	\$0.00	\$0.00
VINTON	25	94	48	46	\$10,792.00	\$481.00	\$10,311.00
WARREN	5	16	8	8	\$1,277.00	\$0.00	\$1,277.00
WASHINGTON	0	0	0	0	\$0.00	\$0.00	\$0.00
WAYNE	40	144	78	66	\$16,255.00	\$373.00	\$15,882.00
WILLIAMS	15	58	30	28	\$6,190.00	\$834.00	\$5,356.00
WOOD	9	28	14	14	\$3,727.00	\$0.00	\$3,727.00
WYANDOT	5	13	4	9	\$1,502.00	\$0.00	\$1,502.00

**TABLE 2
TITLE IV-E FOSTER CARE
MARCH 2004**

OHIO COUNTY	FOSTER CARE						ADOPTION ASSISTANCE		TOTAL FOSTER CARE AND ADOPTION ASSISTANCE	
	FOSTER FAMILY HOMES		CHILD CARE INSTITUTIONS		HOMES & INSTITUTIONS		CHILDREN	GROSS AMOUNT	CHILDREN	GROSS AMOUNT
	CHILDREN	GROSS AMOUNT	CHILDREN	GROSS AMOUNT	CHILDREN	GROSS AMOUNT				
STATEWIDE	3,174	\$1,327,233.04	4,257	\$6,345,643.71	7,431	\$7,672,876.75	18,964	\$7,139,057.12	26,395	\$14,811,933.87
ADAMS	12	\$4,035.24	7	\$18,880.83	19	\$22,916.07	38	\$9,750.00	57	\$32,666.07
ALLEN	61	\$25,549.30	29	\$36,721.93	90	\$62,271.23	136	\$39,807.75	226	\$102,078.98
ADAMS	12	\$4,035.24	7	\$18,880.83	19	\$22,916.07	38	\$9,750.00	57	\$32,666.07
ALLEN	61	\$25,549.30	29	\$36,721.93	90	\$62,271.23	136	\$39,807.75	226	\$102,078.98
ASHLAND	1	\$337.61	0	\$0.00	1	\$337.61	10	\$2,475.00	11	\$2,812.61
ASHTABULA	0	\$0.00	3	\$1,091.00	3	\$1,091.00	157	\$55,675.53	160	\$56,766.53
ATHENS	41	\$11,541.36	46	\$63,662.26	87	\$75,203.62	104	\$33,708.62	191	\$108,912.24
AUGLAIZE	9	\$4,700.45	4	\$4,176.71	13	\$8,877.16	35	\$13,283.63	48	\$22,160.79
BELMONT	3	\$1,075.02	0	\$0.00	3	\$1,075.02	112	\$42,742.81	115	\$43,817.83
BROWN	13	\$5,154.76	0	\$0.00	13	\$5,154.76	35	\$9,458.95	48	\$14,613.71
BUTLER	122	\$44,686.07	125	\$149,220.02	247	\$193,906.09	506	\$150,785.33	753	\$344,691.42
CARROLL	7	\$5,003.13	0	\$0.00	7	\$5,003.13	5	\$1,250.00	12	\$6,253.13
CHAMPAIGN	1	\$563.86	13	\$14,382.92	14	\$14,946.78	14	\$4,536.49	28	\$19,483.27
CLARK	1	\$1,314.90	70	\$31,837.64	71	\$33,152.54	305	\$98,214.19	376	\$131,366.73
CLERMONT	71	\$17,825.62	78	\$128,752.13	149	\$146,577.75	192	\$53,510.23	341	\$200,087.98
CLINTON	25	\$13,770.75	0	\$0.00	25	\$13,770.75	50	\$17,164.26	75	\$30,935.01
COLUMBIANA	43	\$5,837.65	38	\$63,012.70	81	\$68,850.35	60	\$15,088.84	141	\$83,939.19
COSHOCTON	13	\$6,830.38	0	\$0.00	13	\$6,830.38	44	\$13,458.01	57	\$20,288.39
CRAWFORD	0	\$0.00	11	\$4,220.50	11	\$4,220.50	35	\$9,939.09	46	\$14,159.59
CUYAHOGA	660	\$295,370.81	1,306	\$2,961,218.92	1,966	\$3,256,589.73	4,573	\$2,194,220.62	6,539	\$5,450,810.35
DARKE	3	\$936.42	5	\$11,405.38	8	\$12,341.80	28	\$8,534.03	36	\$20,875.83
DEFIANCE	11	(\$1,029.03)	3	\$4,427.87	14	\$3,398.84	33	\$10,400.81	47	\$13,799.65
DELAWARE	13	\$4,222.99	0	\$0.00	13	\$4,222.99	60	\$18,344.71	73	\$22,567.70
ERIE	32	\$25,159.38	41	\$113,007.01	73	\$138,166.39	87	\$25,876.38	160	\$164,042.77
FAIRFIELD	0	\$0.00	0	\$0.00	0	\$0.00	130	\$35,205.77	130	\$35,205.77
FAYETTE	5	\$2,019.71	0	\$0.00	5	\$2,019.71	15	\$3,750.00	20	\$5,769.71
FRANKLIN	0	\$0.00	1,198	\$504,134.40	1,198	\$504,134.40	2,423	\$837,352.27	3,621	\$1,341,486.67
FULTON	1	\$257.05	12	\$17,339.67	13	\$17,596.72	15	\$4,342.28	28	\$21,939.00
GALLIA	12	\$3,793.04	4	\$3,601.34	16	\$7,394.38	41	\$10,215.00	57	\$17,609.38
GEAUGA	12	\$6,659.81	0	\$0.00	12	\$6,659.81	105	\$34,488.24	117	\$41,148.05
GREENE	0	\$0.00	16	\$6,296.40	16	\$6,296.40	84	\$25,393.60	100	\$31,690.00
GUERNSEY	27	\$13,522.64	18	\$49,374.63	45	\$62,897.27	74	\$22,569.87	119	\$85,467.14
HAMILTON	0	\$0.00	49	\$15,567.49	49	\$15,567.49	1,465	\$582,757.44	1,514	\$598,324.93
HANCOCK	15	\$6,544.25	12	\$16,506.20	27	\$23,050.45	45	\$13,228.03	72	\$36,278.48
HARDIN	24	\$20,667.73	5	\$16,373.08	29	\$37,040.81	28	\$6,915.52	57	\$43,956.33
HARRISON	0	\$0.00	0	\$0.00	0	\$0.00	29	\$10,196.74	29	\$10,196.74
HENRY	0	\$0.00	11	\$12,490.32	11	\$12,490.32	23	\$7,099.24	34	\$19,589.56
HIGHLAND	14	\$13,453.27	6	\$6,708.47	20	\$20,161.74	14	\$5,025.11	34	\$25,186.85
HOCKING	28	\$11,903.44	0	\$0.00	28	\$11,903.44	45	\$14,127.89	73	\$26,031.33
HOLMES	10	\$1,095.74	1	\$4,628.16	11	\$5,723.90	27	\$11,125.29	38	\$16,849.19
HURON	27	\$15,423.41	0	\$0.00	27	\$15,423.41	25	\$7,487.98	52	\$22,911.39
JACKSON	0	\$0.00	0	\$0.00	0	\$0.00	15	\$3,750.00	15	\$3,750.00
JEFFERSON	50	(\$12,995.18)	31	\$71,271.85	81	\$58,276.67	56	\$21,414.24	137	\$79,690.91
KNOX	12	\$5,993.05	6	\$6,754.53	18	\$12,747.58	35	\$9,830.93	53	\$22,578.51
LAKE	36	\$18,017.69	27	\$130,497.02	63	\$148,514.71	142	\$37,817.13	205	\$186,331.84
LAWRENCE	7	\$2,892.16	0	\$0.00	7	\$2,892.16	33	\$8,990.37	40	\$11,882.53

SOURCE: GBS003RB Report from Management Information Services. Federal funds only.

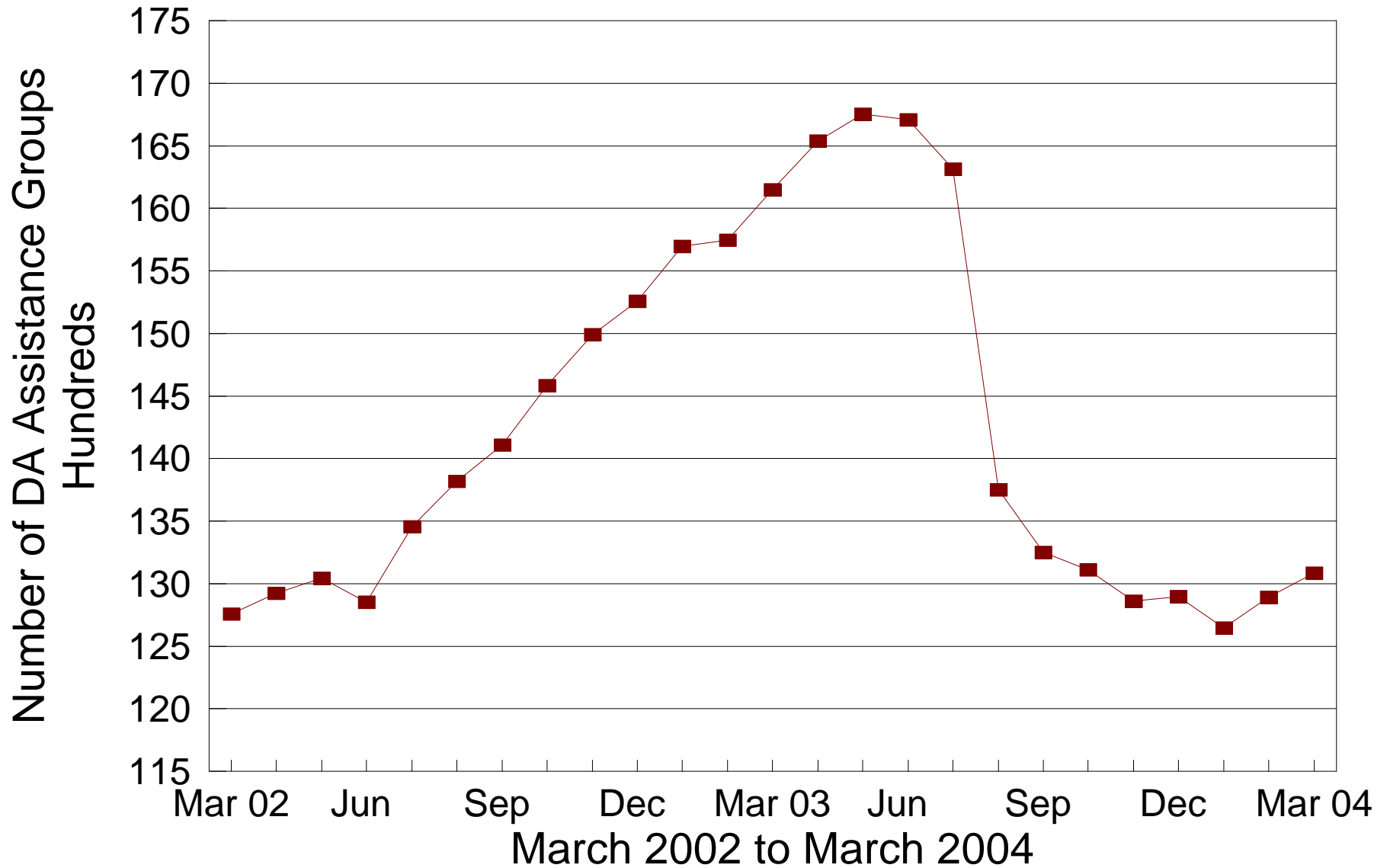
**TABLE 2
TITLE IV-E FOSTER CARE
MARCH 2004**

OHIO COUNTY	FOSTER CARE						ADOPTION ASSISTANCE		TOTAL FOSTER CARE AND ADOPTION ASSISTANCE	
	FOSTER FAMILY HOMES		CHILD CARE INSTITUTIONS		HOMES & INSTITUTIONS		CHILDREN	GROSS AMOUNT	CHILDREN	GROSS AMOUNT
	CHILDREN	GROSS AMOUNT	CHILDREN	GROSS AMOUNT	CHILDREN	GROSS AMOUNT				
STATEWIDE	3,174	\$1,327,233.04	4,257	\$6,345,643.71	7,431	\$7,672,876.75	18,964	\$7,139,057.12	26,395	\$14,811,933.87
ADAMS	12	\$4,035.24	7	\$18,880.83	19	\$22,916.07	38	\$9,750.00	57	\$32,666.07
ALLEN	61	\$25,549.30	29	\$36,721.93	90	\$62,271.23	136	\$39,807.75	226	\$102,078.98
LICKING	60	\$27,032.14	89	\$109,621.61	149	\$136,653.75	293	\$93,958.28	442	\$230,612.03
LOGAN	10	\$2,762.41	5	\$11,051.97	15	\$13,814.38	38	\$12,791.93	53	\$26,606.31
LORAIN	0	\$0.00	0	\$0.00	0	\$0.00	403	\$129,278.92	403	\$129,278.92
LUCAS	439	\$180,595.11	48	\$95,289.33	487	\$275,884.44	1,593	\$605,013.28	2,080	\$880,897.72
MADISON	0	\$0.00	11	\$14,165.72	11	\$14,165.72	26	\$8,301.16	37	\$22,466.88
MAHONING	105	\$41,217.20	50	\$478,239.37	155	\$519,456.57	239	\$68,803.61	394	\$588,260.18
MARION	17	\$8,155.32	9	\$52,809.38	26	\$60,964.70	74	\$24,014.20	100	\$84,978.90
MEDINA	0	\$0.00	0	\$0.00	0	\$0.00	80	\$29,661.14	80	\$29,661.14
MEIGS	3	\$1,193.47	7	\$5,465.01	10	\$6,658.48	3	\$750.00	13	\$7,408.48
MERCER	5	\$2,608.74	2	\$2,283.98	7	\$4,892.72	32	\$8,348.07	39	\$13,240.79
MIAMI	23	\$9,137.32	36	\$48,234.53	59	\$57,371.85	114	\$41,555.61	173	\$98,927.46
MONROE	4	\$1,983.00	0	\$0.00	4	\$1,983.00	8	\$2,592.28	12	\$4,575.28
MONTGOMERY	334	\$102,487.61	326	\$425,886.65	660	\$528,374.26	1,124	\$503,807.83	1,784	\$1,032,182.09
MORGAN	0	\$0.00	0	\$0.00	0	\$0.00	13	\$3,234.00	13	\$3,234.00
MORROW	1	\$1,009.87	0	\$0.00	1	\$1,009.87	43	\$12,861.99	44	\$13,871.86
MUSKINGUM	0	\$0.00	7	\$814.50	7	\$814.50	110	\$31,952.89	117	\$32,767.39
NOBLE	3	\$660.99	0	\$0.00	3	\$660.99	5	\$1,250.00	8	\$1,910.99
OTTAWA	0	\$0.00	1	\$2,120.74	1	\$2,120.74	3	\$898.07	4	\$3,018.81
PAULDING	3	\$656.84	3	\$3,738.41	6	\$4,395.25	21	\$5,812.67	27	\$10,207.92
PERRY	26	\$13,264.39	10	\$12,265.10	36	\$25,529.49	35	\$11,004.12	71	\$36,533.61
PICKAWAY	13	\$4,339.05	3	\$2,853.63	16	\$7,192.68	12	\$3,444.21	28	\$10,636.89
PIKE	1	\$734.45	17	\$16,329.62	18	\$17,064.07	22	\$5,860.91	40	\$22,924.98
PORTAGE	0	\$0.00	0	\$0.00	0	\$0.00	129	\$58,366.33	129	\$58,366.33
PREBLE	12	(\$1,916.09)	18	\$50,906.03	30	\$48,989.94	35	\$8,963.70	65	\$57,953.64
PUTNAM	1	\$642.64	2	\$4,884.05	3	\$5,526.69	13	\$3,250.00	16	\$8,776.69
RICHLAND	0	\$0.00	0	\$0.00	0	\$0.00	262	\$87,638.37	262	\$87,638.37
ROSS	9	\$1,945.62	47	\$29,707.31	56	\$31,652.93	37	\$11,999.76	93	\$43,652.69
SANDUSKY	14	\$3,327.53	9	\$20,052.13	23	\$23,379.66	58	\$16,033.14	81	\$39,412.80
SCIOTO	35	\$18,175.14	26	\$26,113.69	61	\$44,288.83	44	\$12,587.36	105	\$56,876.19
SENECA	33	\$21,986.65	7	\$55,387.24	40	\$77,373.89	84	\$22,087.77	124	\$99,461.66
SHELBY	5	\$5,937.90	5	\$7,281.61	10	\$13,219.51	59	\$19,480.76	69	\$32,700.27
STARK	0	\$0.00	170	\$69,173.36	170	\$69,173.36	922	\$271,061.40	1,092	\$340,234.76
SUMMIT	268	\$180,747.53	55	\$99,857.22	323	\$280,604.75	828	\$271,463.20	1,151	\$552,067.95
TRUMBULL	130	\$45,997.30	27	\$87,019.84	157	\$133,017.14	263	\$67,466.92	420	\$200,484.06
TUSCARAWAS	39	\$17,916.07	31	\$42,702.37	70	\$60,618.44	110	\$30,286.13	180	\$90,904.57
UNION	11	\$7,715.13	1	\$9,124.17	12	\$16,839.30	31	\$8,605.38	43	\$25,444.68
VAN WERT	2	\$807.88	5	\$18,724.00	7	\$19,531.88	23	\$8,397.56	30	\$27,929.44
VINTON	23	\$8,910.54	0	\$0.00	23	\$8,910.54	16	\$4,681.14	39	\$13,591.68
WARREN	25	\$8,001.83	7	\$6,484.92	32	\$14,486.75	89	\$28,245.81	121	\$42,732.56
WASHINGTON	19	\$3,518.21	2	\$2,011.40	21	\$5,529.61	35	\$9,571.52	56	\$15,101.13
WAYNE	70	\$16,893.20	29	\$46,108.99	99	\$63,002.19	66	\$25,558.34	165	\$88,560.53
WILLIAMS	2	\$587.55	0	\$0.00	2	\$587.55	21	\$5,944.21	23	\$6,531.76
WOOD	2	\$624.28	12	\$14,286.89	14	\$14,911.17	47	\$16,393.03	61	\$31,304.20
WYANDOT	5	\$5,441.74	5	\$7,087.56	10	\$12,529.30	13	\$4,471.90	23	\$17,001.20

SOURCE: GBS003RB Report from Management Information Services. Federal funds only.

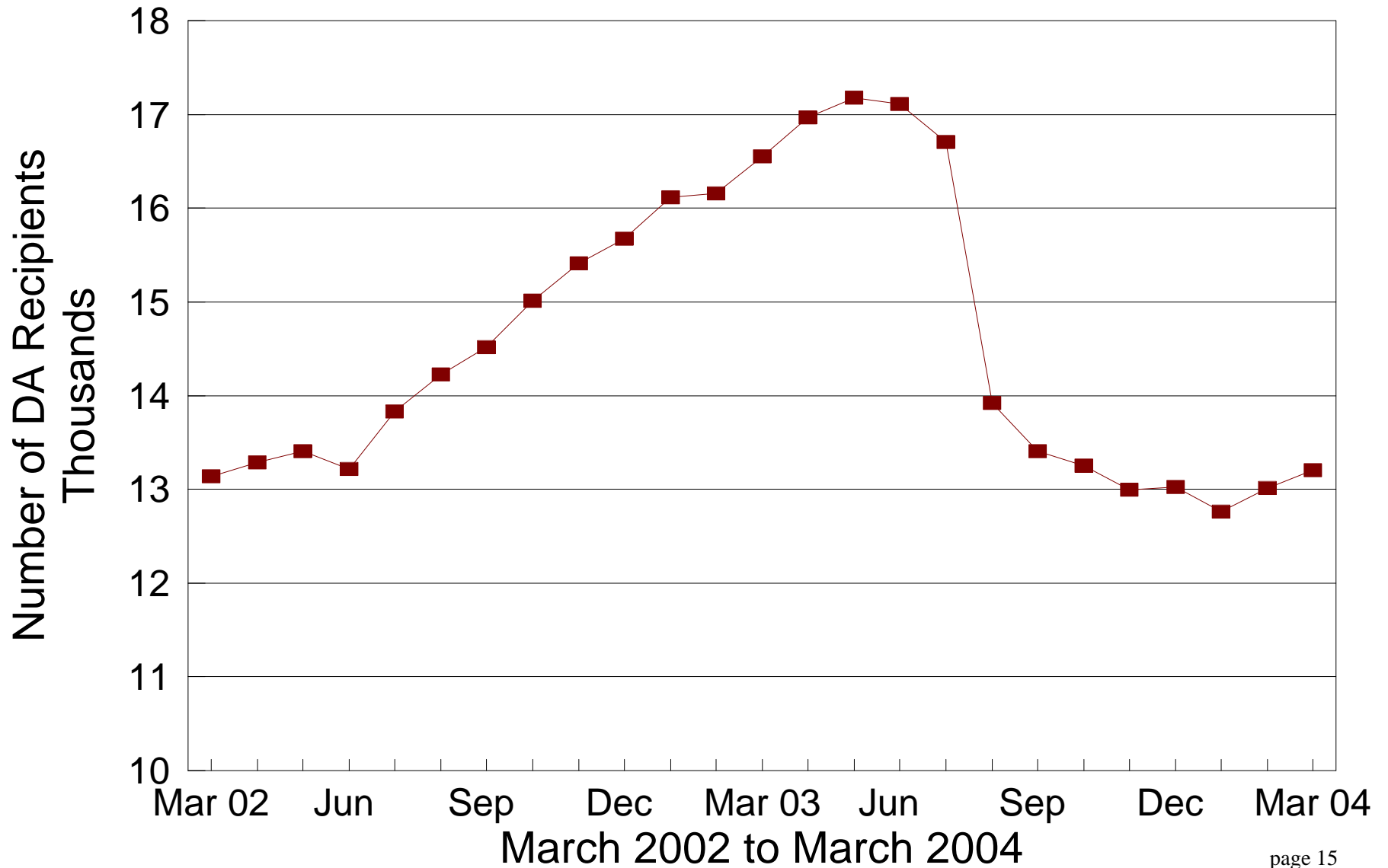
DA Cash Assistance Groups

During the Last 25 Months



DA Cash Recipients

During the Last 25 Months



**TABLE 3
DISABILITY ASSISTANCE (DA)
MARCH 2004**

OHIO COUNTY	CASH ASSISTANCE							MEDICAL ASSISTANCE	
	ASSISTANCE GROUPS	RECIPIENTS	ADULTS	CHILDREN	ACTUAL EXPENDITURES			UNDUPLICATED RECIPIENTS	ACTUAL AMOUNT PAID
					GROSS AMOUNT	CANCELLED AMOUNT	NET AMOUNT		
STATEWIDE	13,086	13,204	13,204	0	\$1,888,507.00	\$127,721.00	\$1,760,786.00	14,398	\$6,863,741.80
ADAMS	70	71	71	0	\$11,637.00	\$115.00	\$11,522.00	73	\$34,562.33
ALLEN	72	72	72	0	\$12,662.00	\$345.00	\$12,317.00	73	\$45,231.82
ASHLAND	31	32	32	0	\$5,297.00	\$0.00	\$5,297.00	33	\$15,382.46
ASHTABULA	276	276	276	0	\$36,155.00	\$1,038.00	\$35,117.00	106	\$43,961.43
ATHENS	214	219	219	0	\$34,761.00	\$575.00	\$34,186.00	94	\$39,522.75
AUGLAIZE	29	29	29	0	\$3,924.00	\$115.00	\$3,809.00	43	\$16,691.28
BELMONT	136	137	137	0	\$21,992.00	\$575.00	\$21,417.00	78	\$27,056.44
BROWN	36	36	36	0	\$5,129.00	\$0.00	\$5,129.00	46	\$25,593.40
BUTLER	441	441	441	0	\$64,143.00	\$3,769.00	\$60,374.00	278	\$143,183.95
CARROLL	23	23	23	0	\$2,940.00	\$0.00	\$2,940.00	22	\$8,495.19
CHAMPAIGN	37	38	38	0	\$6,581.00	\$345.00	\$6,236.00	45	\$23,217.37
CLARK	234	235	235	0	\$33,505.00	\$1,265.00	\$32,240.00	276	\$179,495.31
CLERMONT	171	172	172	0	\$25,705.00	\$1,693.00	\$24,012.00	83	\$39,619.84
CLINTON	53	53	53	0	\$8,101.00	\$0.00	\$8,101.00	30	\$23,382.52
COLUMBIANA	136	137	137	0	\$17,550.00	\$916.00	\$16,634.00	136	\$65,105.01
COSHOCTON	66	66	66	0	\$8,230.00	\$460.00	\$7,770.00	87	\$23,142.56
CRAWFORD	44	44	44	0	\$6,755.00	\$0.00	\$6,755.00	35	\$24,034.15
CUYAHOGA	1,796	1,817	1,817	0	\$232,061.00	\$29,193.00	\$202,868.00	3,065	\$1,191,008.64
DARKE	35	36	36	0	\$5,249.00	\$115.00	\$5,134.00	22	\$12,217.36
DEFIANCE	11	11	11	0	\$1,266.00	\$115.00	\$1,151.00	32	\$21,882.48
DELAWARE	48	48	48	0	\$5,792.00	\$0.00	\$5,792.00	54	\$33,109.38
ERIE	50	50	50	0	\$7,141.00	\$1,725.00	\$5,416.00	53	\$32,161.26
FAIRFIELD	86	86	86	0	\$10,554.00	\$312.00	\$10,242.00	77	\$54,331.10
FAYETTE	18	18	18	0	\$2,574.00	\$0.00	\$2,574.00	42	\$24,373.74
FRANKLIN	1,090	1,113	1,113	0	\$153,817.00	\$15,917.00	\$137,900.00	1,482	\$859,854.10
FULTON	18	18	18	0	\$2,070.00	\$0.00	\$2,070.00	20	\$7,525.52
GALLIA	41	41	41	0	\$4,615.00	\$230.00	\$4,385.00	112	\$67,080.95
GEAUGA	29	29	29	0	\$3,576.00	\$115.00	\$3,461.00	16	\$8,911.85
GREENE	183	183	183	0	\$27,273.00	\$2,486.00	\$24,787.00	126	\$65,292.42
GUERNSEY	121	122	122	0	\$15,437.00	\$115.00	\$15,322.00	39	\$16,167.41
HAMILTON	891	893	893	0	\$139,972.00	\$17,347.00	\$122,625.00	534	\$233,483.48
HANCOCK	48	48	48	0	\$5,835.00	\$115.00	\$5,720.00	52	\$31,480.87
HARDIN	22	22	22	0	\$2,674.00	\$115.00	\$2,559.00	27	\$16,241.00
HARRISON	40	40	40	0	\$5,480.00	\$0.00	\$5,480.00	20	\$4,924.01
HENRY	8	8	8	0	\$1,413.00	\$0.00	\$1,413.00	13	\$6,165.77
HIGHLAND	59	59	59	0	\$11,493.00	\$115.00	\$11,378.00	66	\$34,210.41
HOCKING	43	43	43	0	\$5,204.00	\$850.00	\$4,354.00	44	\$19,985.97
HOLMES	26	26	26	0	\$2,887.00	\$230.00	\$2,657.00	11	\$6,113.71
HURON	33	34	34	0	\$6,557.00	\$0.00	\$6,557.00	32	\$18,644.34
JACKSON	95	95	95	0	\$12,479.00	\$115.00	\$12,364.00	63	\$34,451.56
JEFFERSON	170	170	170	0	\$25,717.00	\$531.00	\$25,186.00	151	\$74,893.94
KNOX	63	63	63	0	\$7,538.00	\$115.00	\$7,423.00	53	\$27,397.75
LAKE	160	160	160	0	\$21,971.00	\$1,926.00	\$20,045.00	117	\$47,015.84
LAWRENCE	73	73	73	0	\$8,605.00	\$575.00	\$8,030.00	104	\$58,047.58

*SOURCE: GRP342RA Report from Management Information Services and BOMC 9260-R001 Report from Medicaid Management Information Services.

**TABLE 3
DISABILITY ASSISTANCE (DA)
MARCH 2004**

OHIO COUNTY	CASH ASSISTANCE							MEDICAL ASSISTANCE	
	ASSISTANCE GROUPS	RECIPIENTS	ADULTS	CHILDREN	ACTUAL EXPENDITURES			UNDUPLICATED RECIPIENTS	ACTUAL AMOUNT PAID
					GROSS AMOUNT	CANCELLED AMOUNT	NET AMOUNT		
STATEWIDE	13,086	13,204	13,204	0	\$1,888,507.00	\$127,721.00	\$1,760,786.00	14,398	\$6,863,741.80
LICKING	181	184	184	0	\$27,143.00	\$1,035.00	\$26,108.00	95	\$63,140.30
LOGAN	34	34	34	0	\$5,312.00	\$0.00	\$5,312.00	47	\$20,204.92
LORAIN	280	280	280	0	\$38,044.00	\$4,330.00	\$33,714.00	298	\$139,709.54
LUCAS	620	624	624	0	\$93,593.00	\$3,497.00	\$90,096.00	888	\$362,214.83
MADISON	29	29	29	0	\$3,522.00	\$2.00	\$3,520.00	36	\$24,147.66
MAHONING	353	356	356	0	\$51,667.00	\$3,342.00	\$48,325.00	565	\$295,879.18
MARION	96	97	97	0	\$13,669.00	\$690.00	\$12,979.00	49	\$32,616.16
MEDINA	88	88	88	0	\$11,976.00	\$345.00	\$11,631.00	64	\$24,556.73
MEIGS	64	65	65	0	\$8,205.00	\$115.00	\$8,090.00	85	\$42,095.88
MERCER	27	27	27	0	\$3,231.00	\$115.00	\$3,116.00	21	\$6,608.12
MIAMI	55	55	55	0	\$8,268.00	\$230.00	\$8,038.00	41	\$21,373.85
MONROE	13	13	13	0	\$2,070.00	\$0.00	\$2,070.00	33	\$9,952.00
MONTGOMERY	453	464	464	0	\$66,235.00	\$2,659.00	\$63,576.00	893	\$476,435.50
MORGAN	40	40	40	0	\$6,982.00	\$115.00	\$6,867.00	31	\$12,579.93
MORROW	22	22	22	0	\$3,841.00	\$230.00	\$3,611.00	51	\$25,267.80
MUSKINGUM	212	213	213	0	\$32,465.00	\$920.00	\$31,545.00	116	\$46,651.28
NOBLE	19	19	19	0	\$2,770.00	\$0.00	\$2,770.00	14	\$4,058.21
OTTAWA	23	23	23	0	\$3,376.00	\$460.00	\$2,916.00	30	\$14,179.53
PAULDING	16	16	16	0	\$3,924.00	\$0.00	\$3,924.00	12	\$4,218.74
PERRY	70	72	72	0	\$10,902.00	\$812.00	\$10,090.00	69	\$38,914.84
PICKAWAY	46	47	47	0	\$7,482.00	\$230.00	\$7,252.00	65	\$34,546.89
PIKE	64	64	64	0	\$8,955.00	\$230.00	\$8,725.00	67	\$23,003.20
PORTAGE	127	128	128	0	\$17,774.00	\$2,106.00	\$15,668.00	102	\$50,445.56
PREBLE	29	29	29	0	\$7,924.00	\$805.00	\$7,119.00	26	\$10,989.88
PUTNAM	10	10	10	0	\$1,924.00	\$0.00	\$1,924.00	9	\$3,853.22
RICHLAND	178	180	180	0	\$28,163.00	\$1,411.00	\$26,752.00	103	\$48,183.58
ROSS	101	101	101	0	\$15,375.00	\$805.00	\$14,570.00	120	\$58,492.91
SANDUSKY	40	40	40	0	\$5,664.00	\$115.00	\$5,549.00	26	\$13,572.61
SCIOTO	217	221	221	0	\$33,206.00	\$2,595.00	\$30,611.00	128	\$54,838.63
SENECA	48	49	49	0	\$6,290.00	\$115.00	\$6,175.00	52	\$20,432.85
SHELBY	18	18	18	0	\$2,506.00	\$0.00	\$2,506.00	38	\$17,432.45
STARK	551	557	557	0	\$87,433.00	\$5,463.00	\$81,970.00	339	\$160,662.89
SUMMIT	631	640	640	0	\$87,729.00	\$6,051.00	\$81,678.00	1,227	\$555,743.08
TRUMBULL	353	354	354	0	\$48,082.00	\$1,495.00	\$46,587.00	210	\$97,042.26
TUSCARAWAS	89	90	90	0	\$15,583.00	\$115.00	\$15,468.00	92	\$41,862.44
UNION	16	16	16	0	\$1,840.00	\$0.00	\$1,840.00	67	\$42,912.15
VAN WERT	15	15	15	0	\$2,381.00	\$0.00	\$2,381.00	8	\$3,858.12
VINTON	42	42	42	0	\$9,644.00	\$270.00	\$9,374.00	45	\$20,536.38
WARREN	53	54	54	0	\$12,097.00	\$1,380.00	\$10,717.00	72	\$44,059.70
WASHINGTON	103	103	103	0	\$12,983.00	\$230.00	\$12,753.00	37	\$18,695.21
WAYNE	249	253	253	0	\$33,102.00	\$1,495.00	\$31,607.00	64	\$50,629.26
WILLIAMS	22	22	22	0	\$3,191.00	\$0.00	\$3,191.00	21	\$6,394.03
WOOD	55	55	55	0	\$6,747.00	\$345.00	\$6,402.00	60	\$24,374.72
WYANDOT	8	8	8	0	\$920.00	\$0.00	\$920.00	17	\$11,724.53
UNKNOWN									\$0.00

*SOURCE: GRP342RA Report from Management Information Services and BOMC 9260-R001 Report from Medicaid Management Information Services.

**TABLE 3-A
DA PAYMENTS FOR MEDICAL SERVICES
MARCH 2004**

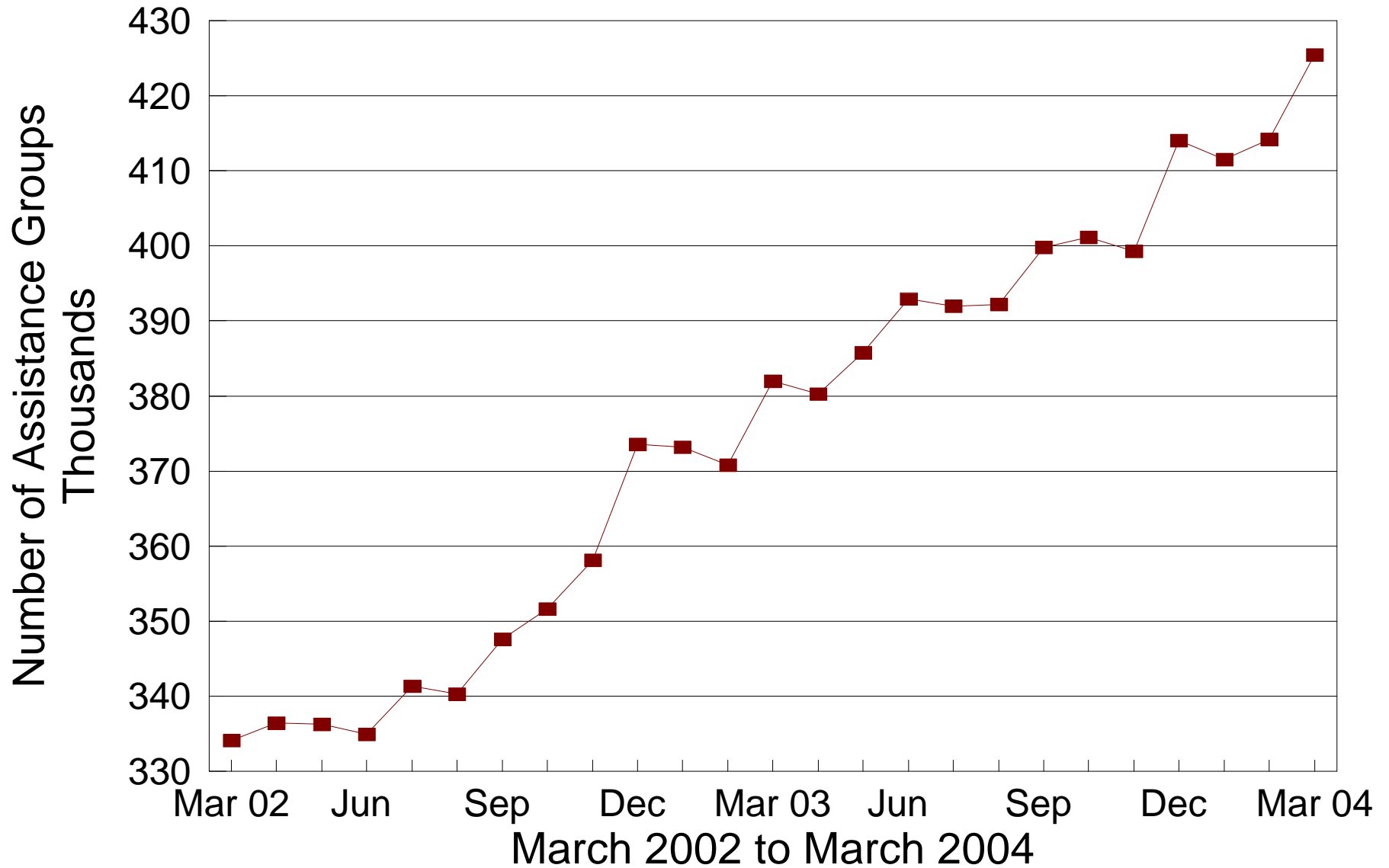
CATEGORY OF SERVICES	DISABILITY ASSISTANCE			
	PAYMENTS	CLAIM FREQUENCY	DUPLICATED RECIPIENTS	PERCENT OF TOTAL
AMBULANCE SERVICES	\$0.00	0	0	0.0%
AMBULATORY SURGERY	\$43,212.97	102	94	0.6%
AMBULETTE SERVICES	\$0.00	0	0	0.0%
CHIROPRACTER SERVICES	\$0.00	0	0	0.0%
CLINIC	\$65,885.33	1,378	674	1.0%
DENTAL SERVICES	\$29,683.12	310	271	0.4%
EPSDT	\$0.00	0	0	0.0%
FAMILY PLANNING	\$927.41	20	19	0.0%
FEDERALLY QUALIFIED HEALTH CTR	\$0.00	0	0	0.0%
HEALTH MAINTENANCE ORGANIZATION	\$0.00	0	0	0.0%
HOME HEALTH SERVICES	\$0.00	0	0	0.0%
INDEPENDENT LABORATORY	\$47,337.77	1,038	757	0.7%
INPATIENT HOSPITAL	\$0.00	0	0	0.0%
ICF	\$0.00	0	0	0.0%
MIDWIFERY SERVICES	\$7,882.82	214	182	0.1%
OPTOMETRIC SERVICES	\$0.00	0	0	0.0%
OUTPATIENT HEALTH SERVICES	\$0.00	0	0	0.0%
PASSPORT WAIVER III	\$0.00	0	0	0.0%
OUTPATIENT HOSPITAL GENERAL	\$0.00	0	0	0.0%
PHYSICAL THERAPY SERVICES	\$0.00	0	0	0.0%
PHYSICIAN SERVICES	\$1,649,410.61	24,858	9,019	24.0%
PHYSIOLOGICAL LABORATORY	\$14,831.97	62	57	0.2%
PODIATRISTS THERAPY	\$31,533.69	534	349	0.5%
PRESCRIBED DRUGS	\$4,830,249.98	81,849	12,877	70.4%
PRIVATE DUTY NURSING SERVICES	\$0.00	0	0	0.0%
PSYCHOLOGY SERVICES	\$0.00	0	0	0.0%
RURAL HEALTH SERVICES	\$0.00	0	0	0.0%
SNF	\$0.00	0	0	0.0%
SUPPLIES AND MEDICAL EQUIPMENT	\$123,100.88	2,746	1,295	1.8%
WAIVERED SERVICES	\$19,685.25	186	182	0.3%
OTHER	\$0.00	0	0	0.0%
STATEWIDE TOTAL	\$6,863,741.80	113,297	25,776	100.00%

SOURCE: BOMC 9260 Report from Medicaid Management Information Services.

NOTE: Recipients are unduplicated within Category of Services, however, the Statewide Total represents a duplicated count.

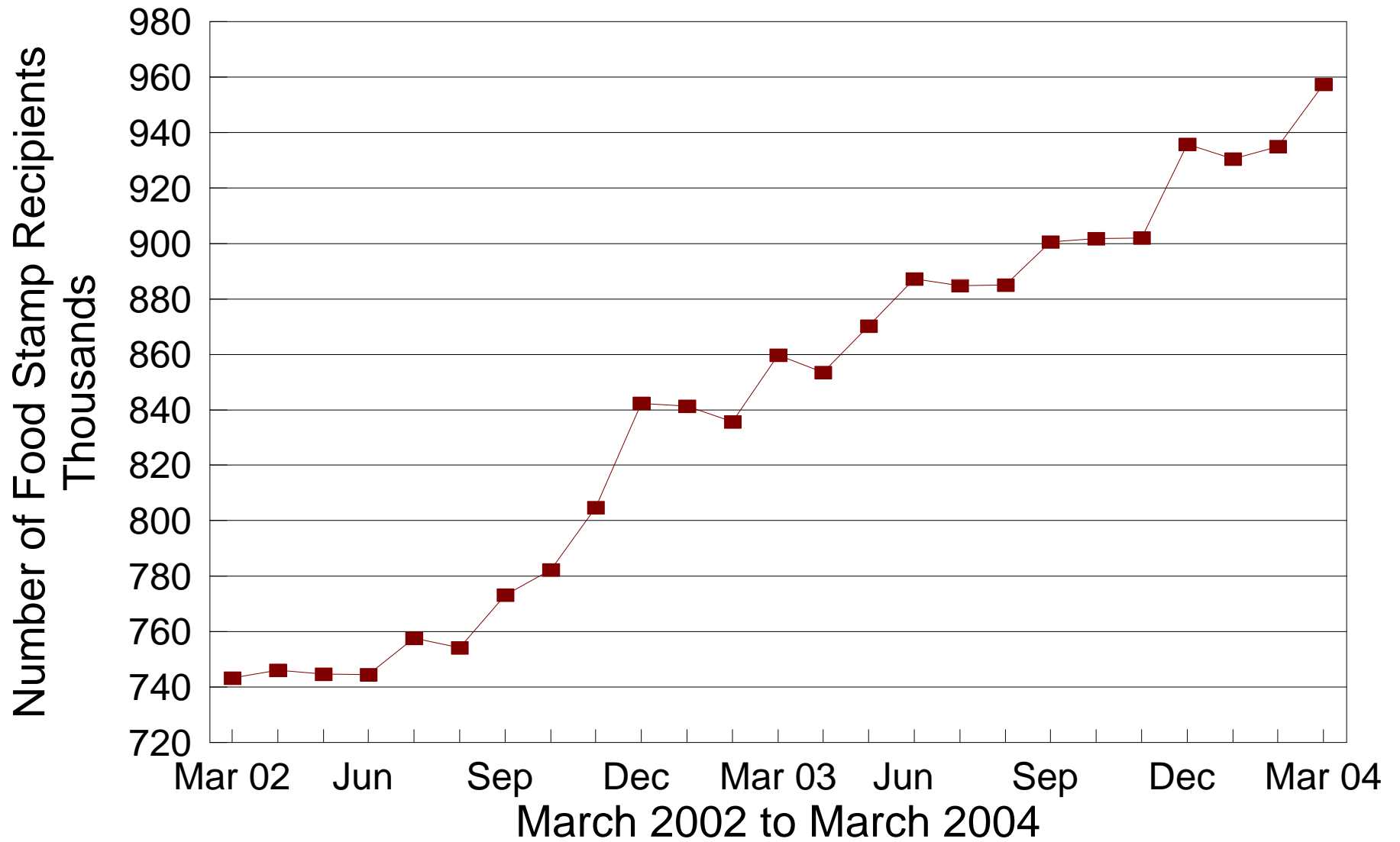
Number of FNS Benefits Assist. Groups

During the Last 25 Months



Number of FNS Benefits Recipients

During the Last 25 Months



**TABLE 5
FNS BENEFITS
MARCH 2004**

COUNTY	PERSONS					ASSISTANCE GROUPS			TOTAL COUPONS ISSUED
	PUBLIC ASSISTANCE	NON-PUBLIC ASSISTANCE	TOTAL	AVERAGE ISSUANCE	% CHANGE PREV. MO.	PUBLIC ASSISTANCE	NON-PUBLIC ASSISTANCE	TOTAL	
STATEWIDE	112,842	844,497	957,339	\$90	2.4%	40,270	385,217	425,487	\$86,088,054.00
ADAMS	40	4,190	4,230	\$83	2.8%	13	1,761	1,774	\$349,167
ALLEN	495	7,896	8,391	\$89	4.5%	160	3,394	3,554	\$750,350
ASHLAND	136	2,560	2,696	\$89	2.1%	42	1,049	1,091	\$239,859
ASHTABULA	1,000	9,247	10,247	\$86	1.9%	354	4,227	4,581	\$882,095
ATHENS	950	5,708	6,658	\$84	2.2%	326	2,842	3,168	\$560,542
AUGLAIZE	13	1,636	1,649	\$92	3.8%	5	717	722	\$151,867
BELMONT	659	6,373	7,032	\$80	0.4%	223	3,025	3,248	\$562,233
BROWN	103	3,301	3,404	\$84	1.2%	33	1,373	1,406	\$285,456
BUTLER	2,127	19,447	21,574	\$94	4.2%	802	8,876	9,678	\$2,022,297
CARROLL	113	1,981	2,094	\$83	-0.9%	42	831	873	\$174,667
CHAMPAIGN	243	1,876	2,119	\$86	-0.8%	86	855	941	\$182,331
CLARK	1,776	13,733	15,509	\$89	1.7%	630	6,375	7,005	\$1,375,524
CLERMONT	701	7,950	8,651	\$92	4.2%	269	3,363	3,632	\$797,308
CLINTON	125	2,549	2,674	\$88	6.4%	49	1,164	1,213	\$236,115
COLUMBIANA	627	10,260	10,887	\$86	1.5%	232	4,303	4,535	\$937,492
COSHOCTON	365	3,138	3,503	\$87	2.6%	130	1,376	1,506	\$305,392
CRAWFORD	379	3,692	4,071	\$84	2.3%	135	1,608	1,743	\$343,797
CUYAHOGA	15,076	151,574	166,650	\$91	1.7%	5,553	71,955	77,508	\$15,115,808
DARKE	232	1,780	2,012	\$85	2.7%	82	797	879	\$171,047
DEFIANCE	171	2,098	2,269	\$88	6.8%	58	866	924	\$198,831
DELAWARE	448	3,251	3,699	\$92	3.8%	154	1,498	1,652	\$338,811
ERIE	150	4,766	4,916	\$88	1.9%	51	2,131	2,182	\$434,907
FAIRFIELD	897	6,530	7,427	\$87	4.1%	314	2,913	3,227	\$644,672
FAYETTE	95	2,176	2,271	\$82	1.4%	37	970	1,007	\$186,347
FRANKLIN	14,975	91,276	106,251	\$94	2.4%	5,184	40,543	45,727	\$10,033,973
FULTON	67	1,673	1,740	\$82	4.1%	21	699	720	\$142,799
GALLIA	765	4,033	4,798	\$84	1.5%	253	1,912	2,165	\$400,768
GEAUGA	118	1,332	1,450	\$89	3.3%	38	619	657	\$129,396
GREENE	905	7,229	8,134	\$92	3.8%	359	3,312	3,671	\$747,286
GUERNSEY	158	5,096	5,254	\$84	1.6%	65	2,266	2,331	\$440,854
HAMILTON	11,549	51,741	63,290	\$94	3.4%	3,987	23,206	27,193	\$5,945,895
HANCOCK	285	3,030	3,315	\$91	6.9%	101	1,390	1,491	\$302,686
HARDIN	43	1,669	1,712	\$84	2.5%	13	761	774	\$144,076
HARRISON	92	1,504	1,596	\$82	-1.7%	36	702	738	\$131,531
HENRY	23	1,041	1,064	\$79	2.0%	8	429	437	\$84,223
HIGHLAND	133	3,876	4,009	\$86	3.1%	47	1,578	1,625	\$344,026
HOCKING	401	2,524	2,925	\$80	2.7%	137	1,100	1,237	\$234,207
HOLMES	78	1,070	1,148	\$79	2.8%	24	436	460	\$90,255
HURON	40	3,895	3,935	\$86	2.4%	13	1,584	1,597	\$337,076
JACKSON	479	4,327	4,806	\$83	0.9%	180	2,066	2,246	\$400,378
JEFFERSON	1,293	7,402	8,695	\$85	2.1%	435	3,527	3,962	\$738,662
KNOX	381	3,160	3,541	\$85	3.1%	130	1,436	1,566	\$302,623
LAKE	897	9,005	9,902	\$95	4.5%	313	4,139	4,452	\$941,030
LAWRENCE	723	9,548	10,271	\$81	1.1%	260	4,553	4,813	\$835,708

**TABLE 5
FNS BENEFITS
MARCH 2004**

COUNTY	PERSONS					ASSISTANCE GROUPS			TOTAL COUPONS ISSUED
	PUBLIC ASSISTANCE	NON-PUBLIC ASSISTANCE	TOTAL	AVERAGE ISSUANCE	% CHANGE PREV. MO.	PUBLIC ASSISTANCE	NON-PUBLIC ASSISTANCE	TOTAL	
STATEWIDE	112,842	844,497	957,339	\$90	2.4%	40,270	385,217	425,487	\$86,088,054.00
LICKING	1,045	8,892	9,937	\$90	4.5%	394	4,029	4,423	\$897,068
LOGAN	282	2,748	3,030	\$90	4.7%	92	1,146	1,238	\$271,484
LORAIN	3,059	22,490	25,549	\$90	2.6%	1,028	9,191	10,219	\$2,307,758
LUCAS	9,875	45,587	55,462	\$91	2.7%	3,440	21,527	24,967	\$5,032,536
MADISON	314	1,907	2,221	\$89	2.1%	115	906	1,021	\$197,242
MAHONING	4,113	23,412	27,525	\$89	1.6%	1,419	11,179	12,598	\$2,462,237
MARION	287	5,727	6,014	\$85	5.4%	104	2,614	2,718	\$513,510
MEDINA	380	3,885	4,265	\$92	5.4%	135	1,733	1,868	\$392,919
MEIGS	249	3,785	4,034	\$85	4.2%	92	1,686	1,778	\$343,649
MERCER	96	1,146	1,242	\$90	3.3%	31	545	576	\$111,256
MIAMI	462	3,638	4,100	\$89	3.1%	161	1,732	1,893	\$363,286
MONROE	112	1,307	1,419	\$80	-1.5%	39	597	636	\$113,934
MONTGOMERY	7,639	39,511	47,150	\$93	3.2%	2,897	18,524	21,421	\$4,372,748
MORGAN	67	1,751	1,818	\$82	0.3%	25	782	807	\$149,775
MORROW	149	2,298	2,447	\$85	1.5%	53	973	1,026	\$208,185
MUSKINGUM	1,250	10,766	12,016	\$86	2.7%	440	4,805	5,245	\$1,032,500
NOBLE	43	1,060	1,103	\$77	-0.1%	15	486	501	\$85,227
OTTAWA	226	1,616	1,842	\$85	0.1%	79	723	802	\$156,279
PAULDING	167	995	1,162	\$83	-4.8%	57	459	516	\$96,606
PERRY	366	4,017	4,383	\$83	2.5%	120	1,697	1,817	\$365,871
PICKAWAY	628	3,832	4,460	\$87	2.2%	210	1,728	1,938	\$389,184
PIKE	369	4,418	4,787	\$84	-1.5%	136	1,928	2,064	\$400,637
PORTAGE	795	6,580	7,375	\$94	2.3%	329	3,040	3,369	\$690,285
PREBLE	213	1,796	2,009	\$90	1.3%	75	762	837	\$180,133
PUTNAM	131	1,091	1,222	\$82	9.3%	47	469	516	\$100,017
RICHLAND	703	9,771	10,474	\$86	0.7%	245	4,334	4,579	\$905,788
ROSS	871	8,010	8,881	\$84	2.1%	299	3,452	3,751	\$749,340
SANDUSKY	218	3,027	3,245	\$90	3.7%	80	1,326	1,406	\$292,343
SCIOTO	835	12,920	13,755	\$80	0.5%	297	6,234	6,531	\$1,104,170
SENECA	119	3,332	3,451	\$87	1.4%	37	1,449	1,486	\$301,198
SHELBY	145	2,016	2,161	\$91	3.5%	52	826	878	\$197,381
STARK	4,610	22,998	27,608	\$91	2.4%	1,679	10,349	12,028	\$2,507,027
SUMMIT	8,023	39,122	47,145	\$93	1.9%	2,960	18,736	21,696	\$4,376,291
TRUMBULL	1,671	16,553	18,224	\$86	1.7%	600	6,977	7,577	\$1,567,820
TUSCARAWAS	741	5,945	6,686	\$84	2.3%	259	2,670	2,929	\$564,451
UNION	413	1,667	2,080	\$93	5.2%	142	754	896	\$192,989
VAN WERT	20	988	1,008	\$84	-3.4%	6	445	451	\$84,226
VINTON	199	2,169	2,368	\$84	1.2%	76	917	993	\$199,656
WARREN	262	3,474	3,736	\$85	3.6%	105	1,506	1,611	\$317,178
WASHINGTON	41	4,924	4,965	\$84	1.4%	15	2,276	2,291	\$416,312
WAYNE	658	5,437	6,095	\$88	2.1%	251	2,512	2,763	\$535,386
WILLIAMS	271	1,773	2,044	\$89	4.6%	102	787	889	\$181,008
WOOD	374	3,330	3,704	\$89	1.4%	138	1,541	1,679	\$330,242
WYANDOT	25	643	668	\$85	0.8%	10	338	348	\$56,555

Table 6A
March 2004

Medicaid Eligibles

County	Aged	Blind	Disabled	ABD Total	OWF & Related	Healthy Start	CFC Total	Total Medicaid	Foster Care	Adoption Assistance	Transitional	Nursing Facilities
STATEWIDE	131,749	903	236,778	369,430	970,928	250,457	1,221,385	1,590,815	11,201	18,328	119,599	54,566
ADAMS	726	4	1,353	2,083	4,199	1,169	5,368	7,451	22	39	564	126
ALLEN	1,128	5	2,021	3,154	8,599	2,406	11,005	14,159	108	135	1,022	534
ASHLAND	527	3	592	1,122	3,326	1,286	4,612	5,734	4	13	559	273
ASHTABULA	1,453	12	2,961	4,426	10,553	3,054	13,607	18,033	63	150	1,735	1,019
ATHENS	787	15	1,994	2,796	6,274	1,358	7,632	10,428	82	104	770	193
AUGLAIZE	398	3	436	837	2,195	921	3,116	3,953	13	37	406	261
BELMONT	1,353	5	2,121	3,479	7,006	1,710	8,716	12,195	53	110	1,020	542
BROWN	673	0	972	1,645	4,295	1,365	5,660	7,305	13	36	634	216
BUTLER	2,634	26	5,578	8,238	22,735	5,747	28,482	36,720	277	458	3,076	1,182
CARROLL	359	2	515	876	2,578	793	3,371	4,247	7	5	440	185
CHAMPAIGN	468	2	594	1,064	2,483	979	3,462	4,526	18	19	518	264
CLARK	1,977	5	3,686	5,668	15,004	3,408	18,412	24,080	144	304	1,908	1,053
CLERMONT	1,337	4	2,592	3,933	11,094	3,984	15,078	19,011	197	193	1,781	708
CLINTON	452	4	768	1,224	3,338	891	4,229	5,453	35	48	570	137
COLUMBIANA	1,506	13	2,568	4,087	11,337	3,343	14,680	18,767	80	77	1,469	646
COSHOCTON	512	2	888	1,402	3,483	1,132	4,615	6,017	24	45	410	282
CRAWFORD	594	8	927	1,529	4,667	1,123	5,790	7,319	38	34	790	215
CUYAHOGA	21,669	174	35,414	57,257	151,379	33,494	184,873	242,130	2,362	4,353	14,765	7,487
DARKE	543	0	637	1,180	2,622	1,087	3,709	4,889	20	38	395	337
DEFIANCE	326	2	536	864	2,697	1,041	3,738	4,602	12	30	497	171
DELAWARE	675	1	979	1,655	4,249	1,368	5,617	7,272	39	56	736	300
ERIE	769	5	1,187	1,961	5,517	1,583	7,100	9,061	96	82	737	407
FAIRFIELD	1,071	4	1,786	2,861	8,015	2,651	10,666	13,527	61	134	1,335	418
FAYETTE	524	1	804	1,329	2,624	868	3,492	4,821	6	15	378	305
FRANKLIN	10,386	89	22,188	32,663	107,445	25,852	133,297	165,960	1,894	2,198	11,095	3,849
FULTON	343	1	386	730	2,318	874	3,192	3,922	19	27	510	180
GALLIA	807	2	1,533	2,342	4,338	951	5,289	7,631	22	35	516	191
GEAUGA	613	1	508	1,122	2,098	820	2,918	4,040	21	107	408	350
GREENE	1,171	9	1,789	2,969	9,015	2,161	11,176	14,145	80	97	1,379	545
GUERNSEY	737	3	1,432	2,172	5,536	1,521	7,057	9,229	48	66	787	176
HAMILTON	9,441	83	17,876	27,400	65,372	17,996	83,368	110,768	922	1,390	5,960	3,839
HANCOCK	546	2	799	1,347	3,785	1,302	5,087	6,434	33	39	635	264
HARDIN	342	1	553	896	2,279	721	3,000	3,896	34	29	303	135
HARRISON	260	0	462	722	1,665	448	2,113	2,835	2	27	283	109
HENRY	240	0	305	545	1,574	743	2,317	2,862	13	24	324	132
HIGHLAND	750	3	1,065	1,818	4,536	1,583	6,119	7,937	23	14	674	248
HOCKING	446	3	769	1,218	3,220	1,080	4,300	5,518	33	43	434	158
HOLMES	438	3	466	907	1,642	738	2,380	3,287	7	27	312	421
HURON	513	2	811	1,326	4,745	1,592	6,337	7,663	38	30	733	184
JACKSON	774	1	1,447	2,222	4,484	1,261	5,745	7,967	20	16	702	191
JEFFERSON	1,142	18	2,494	3,654	7,944	1,455	9,399	13,053	74	68	1,002	403
KNOX	641	3	1,227	1,871	4,106	1,379	5,485	7,356	27	38	863	527
LAKE	1,567	3	2,365	3,935	10,428	3,267	13,695	17,630	69	129	1,688	1,042
LAWRENCE	1,492	6	3,497	4,995	8,935	2,156	11,091	16,086	59	34	1,079	361

Table 6A
March 2004

Medicaid Eligibles

County	Aged	Blind	Disabled	ABD Total	OWF & Related	Healthy Start	CFC Total	Total Medicaid	Foster Care	Adoption Assistance	Transitional	Nursing Facilities
STATEWIDE	131,749	903	236,778	369,430	970,928	250,457	1,221,385	1,590,815	11,201	18,328	119,599	54,566
LICKING	1,389	5	2,468	3,862	11,272	3,644	14,916	18,778	167	282	1,718	590
LOGAN	521	2	636	1,159	3,784	891	4,675	5,834	13	41	710	193
LORAIN	2,622	20	5,029	7,671	25,650	5,192	30,842	38,513	88	406	2,981	1,316
LUCAS	5,483	43	13,429	18,955	51,628	9,632	61,260	80,215	460	1,442	4,914	1,935
MADISON	344	2	577	923	2,339	788	3,127	4,050	11	24	414	116
MAHONING	3,754	23	6,819	10,596	26,713	5,134	31,847	42,443	156	233	2,922	1,603
MARION	810	4	1,741	2,555	5,817	1,727	7,544	10,099	41	80	853	288
MEDINA	839	12	1,201	2,052	5,877	2,009	7,886	9,938	26	71	1,162	621
MEIGS	551	5	1,038	1,594	3,644	761	4,405	5,999	10	3	475	134
MERCER	311	1	459	771	1,667	533	2,200	2,971	7	30	313	189
MIAMI	996	7	1,295	2,298	5,378	1,947	7,325	9,623	66	124	711	467
MONROE	286	3	398	687	1,481	417	1,898	2,585	9	10	248	100
MONTGOMERY	5,925	47	12,204	18,176	47,371	10,659	58,030	76,206	766	1,189	4,510	2,365
MORGAN	267	0	478	745	2,135	556	2,691	3,436	7	14	403	92
MORROW	388	2	595	985	2,967	872	3,839	4,824	7	48	653	176
MUSKINGUM	1,380	14	2,643	4,037	10,442	2,488	12,930	16,967	71	120	1,357	491
NOBLE	231	0	247	478	1,129	456	1,585	2,063	9	7	213	89
OTTAWA	410	2	476	888	2,142	849	2,991	3,879	1	7	409	199
PAULDING	177	2	354	533	1,223	502	1,725	2,258	6	17	208	45
PERRY	495	4	1,044	1,543	4,488	1,198	5,686	7,229	40	34	568	199
PICKAWAY	596	3	963	1,562	4,185	1,140	5,325	6,887	15	13	585	187
PIKE	682	0	1,503	2,185	4,475	1,178	5,653	7,838	32	23	665	269
PORTAGE	1,096	8	1,915	3,019	8,586	2,537	11,123	14,142	92	136	1,099	593
PREBLE	349	8	620	977	2,777	845	3,622	4,599	35	35	456	220
PUTNAM	263	3	349	615	1,347	516	1,863	2,478	4	7	252	237
RICHLAND	1,648	1	2,670	4,319	10,673	3,547	14,220	18,539	80	264	1,506	624
ROSS	1,103	2	2,241	3,346	8,739	2,045	10,784	14,130	89	37	1,309	290
SANDUSKY	701	7	936	1,644	3,878	1,499	5,377	7,021	19	58	601	401
SCIOTO	2,243	15	4,820	7,078	11,249	2,416	13,665	20,743	115	47	1,328	609
SENECA	662	3	1,014	1,679	3,868	1,625	5,493	7,172	44	89	657	330
SHELBY	387	4	551	942	2,926	1,087	4,013	4,955	12	53	497	191
STARK	4,456	26	6,698	11,180	30,828	7,496	38,324	49,504	534	912	4,418	2,266
SUMMIT	5,991	39	11,145	17,175	45,303	9,854	55,157	72,332	444	779	4,821	2,074
TRUMBULL	2,517	18	4,762	7,297	20,246	5,343	25,589	32,886	171	240	3,060	1,247
TUSCARAWAS	1,168	5	1,484	2,657	7,136	2,401	9,537	12,194	84	124	1,269	475
UNION	303	2	432	737	2,414	737	3,151	3,888	17	34	389	127
UNKNOWN	0	0	0	0	0	0	0	0	0	0	0	0
VAN WERT	270	0	376	646	1,456	848	2,304	2,950	8	24	277	146
VINTON	305	0	607	912	2,395	684	3,079	3,991	27	16	318	76
WARREN	1,198	5	1,528	2,731	5,491	2,245	7,736	10,467	41	87	712	816
WASHINGTON	933	6	1,639	2,578	5,507	2,034	7,541	10,119	17	41	870	338
WAYNE	1,031	9	1,728	2,768	6,262	2,324	8,586	11,354	96	84	1,088	464
WILLIAMS	414	3	471	888	2,771	826	3,597	4,485	10	23	603	216
WOOD	844	4	1,046	1,894	4,729	1,789	6,518	8,412	31	54	764	423
WYANDOT	300	1	268	569	806	525	1,331	1,900	11	13	111	173

Table 6B

March 2004

Medicaid Expenditures

County	Aged	Blind	Disabled	ABD Total	OWF & Related	Healthy Start	CFC Total	Total Medicaid	Foster Care	Adoption Assistance	Transitional	Nursing Facilities
STATEWIDE	\$284,899,231	\$1,314,664	\$466,406,815	\$752,620,710	\$226,708,612	\$63,544,032	\$290,252,644	\$1,043,474,515	\$6,692,745	\$5,156,979	\$18,364,151	\$292,601,169
ADAMS	\$1,176,672	\$3,938	\$1,974,576	\$3,155,186	\$1,051,195	\$282,398	\$1,333,593	\$4,514,344	\$7,294	\$3,211	\$92,957	\$682,249
ALLEN	\$2,547,890	\$12,736	\$3,529,714	\$6,090,340	\$1,762,118	\$658,125	\$2,420,244	\$8,518,887	\$49,312	\$25,825	\$89,726	\$2,621,050
ASHLAND	\$1,297,223	\$1,458	\$1,555,705	\$2,854,386	\$722,600	\$363,507	\$1,086,107	\$3,941,015	\$1,449	\$2,250	\$68,862	\$1,274,347
ASHTABULA	\$3,803,377	\$6,066	\$6,201,240	\$10,010,683	\$2,451,782	\$768,672	\$3,220,454	\$13,238,411	\$42,815	\$39,336	\$234,726	\$5,679,145
ATHENS	\$1,315,174	\$9,510	\$3,022,464	\$4,347,148	\$1,585,087	\$330,627	\$1,915,713	\$6,263,147	\$67,885	\$27,313	\$113,758	\$831,210
AUGLAIZE	\$1,021,234	\$6,457	\$913,372	\$1,941,063	\$496,135	\$177,527	\$673,662	\$2,615,145	\$4,736	\$6,593	\$49,744	\$1,127,903
BELMONT	\$2,487,669	\$2,334	\$3,895,008	\$6,385,012	\$1,858,277	\$379,666	\$2,237,943	\$8,633,659	\$51,936	\$34,200	\$133,079	\$2,226,308
BROWN	\$1,745,197	\$0	\$1,920,197	\$3,665,394	\$1,039,527	\$297,531	\$1,337,058	\$5,009,009	\$2,544	\$7,880	\$88,576	\$1,459,084
BUTLER	\$6,194,504	\$25,466	\$11,304,538	\$17,524,508	\$5,098,645	\$1,810,556	\$6,909,201	\$24,457,852	\$121,201	\$153,769	\$466,312	\$7,110,371
CARROLL	\$648,991	\$1,857	\$1,208,732	\$1,859,579	\$446,296	\$180,486	\$626,782	\$2,486,361	\$1,621	\$766	\$57,615	\$851,944
CHAMPAIGN	\$1,097,953	\$76	\$1,358,986	\$2,457,015	\$740,864	\$259,388	\$1,000,251	\$3,457,266	\$17,937	\$2,212	\$86,236	\$1,281,947
CLARK	\$4,709,080	\$3,349	\$7,517,908	\$12,230,337	\$3,789,983	\$1,271,527	\$5,061,510	\$17,292,703	\$80,842	\$207,120	\$336,910	\$5,309,401
CLERMONT	\$3,283,334	\$1,780	\$6,055,476	\$9,340,590	\$3,169,689	\$999,424	\$4,169,113	\$13,520,806	\$121,774	\$34,556	\$264,017	\$4,741,809
CLINTON	\$894,332	\$2,975	\$1,477,759	\$2,375,067	\$1,002,748	\$452,351	\$1,455,099	\$3,830,551	\$7,819	\$10,043	\$90,059	\$733,277
COLUMBIANA	\$2,952,834	\$13,861	\$4,490,437	\$7,457,132	\$3,091,023	\$761,916	\$3,852,939	\$11,325,975	\$80,250	\$19,390	\$248,783	\$2,797,449
COSHOCTON	\$866,870	\$1,698	\$1,896,065	\$2,764,633	\$738,237	\$201,804	\$940,041	\$3,704,928	\$13,199	\$16,498	\$62,906	\$1,398,539
CRAWFORD	\$1,255,713	\$6,436	\$1,685,602	\$2,947,751	\$1,075,820	\$246,836	\$1,322,657	\$4,271,980	\$11,181	\$5,809	\$85,601	\$947,205
CUYAHOGA	\$48,623,908	\$252,342	\$68,519,082	\$117,395,331	\$32,276,363	\$7,848,383	\$40,124,746	\$157,553,323	\$1,548,481	\$1,173,845	\$2,644,503	\$47,391,754
DARKE	\$1,262,570	\$0	\$1,231,449	\$2,494,019	\$609,740	\$264,837	\$874,578	\$3,368,645	\$15,726	\$9,697	\$55,894	\$1,396,072
DEFIANCE	\$695,413	\$1,923	\$844,258	\$1,541,594	\$468,611	\$247,460	\$716,071	\$2,263,382	\$2,146	\$3,414	\$54,347	\$701,717
DELAWARE	\$1,641,936	\$5,242	\$2,467,036	\$4,114,214	\$1,016,646	\$359,209	\$1,375,855	\$5,490,069	\$21,609	\$29,793	\$104,944	\$1,596,431
ERIE	\$1,716,331	\$3,469	\$2,311,613	\$4,031,413	\$1,287,657	\$340,589	\$1,628,247	\$5,659,659	\$32,927	\$15,812	\$106,581	\$1,691,552
FAIRFIELD	\$2,409,081	\$3,372	\$3,523,850	\$5,936,303	\$2,232,056	\$493,488	\$2,725,544	\$8,665,546	\$14,567	\$43,608	\$222,671	\$2,119,932
FAYETTE	\$1,172,648	\$55	\$1,878,784	\$3,051,486	\$643,330	\$197,215	\$840,546	\$3,892,031	\$323	\$3,614	\$75,053	\$1,635,023
FRANKLIN	\$22,175,074	\$133,568	\$48,015,333	\$70,323,975	\$24,573,001	\$6,677,866	\$31,250,867	\$101,633,572	\$1,179,933	\$718,547	\$1,843,753	\$23,277,268
FULTON	\$887,983	\$0	\$914,031	\$1,802,014	\$426,719	\$134,243	\$560,962	\$2,363,287	\$11,435	\$6,187	\$40,799	\$814,283
GALLIA	\$1,952,913	\$1,301	\$3,817,252	\$5,771,466	\$1,280,089	\$306,690	\$1,586,779	\$7,362,228	\$4,823	\$4,521	\$81,320	\$1,029,319
GEAUGA	\$1,760,168	\$3,239	\$1,369,027	\$3,132,434	\$542,681	\$214,152	\$756,833	\$3,889,503	\$14,411	\$17,695	\$31,930	\$1,851,292
GREENE	\$2,660,368	\$8,229	\$3,793,276	\$6,461,873	\$2,679,409	\$533,360	\$3,212,769	\$9,675,370	\$40,184	\$21,233	\$209,906	\$2,748,569
GUERNSEY	\$1,014,588	\$3,446	\$3,182,199	\$4,200,234	\$1,222,876	\$281,668	\$1,504,544	\$5,704,879	\$30,875	\$26,659	\$112,320	\$662,499
HAMILTON	\$22,040,264	\$304,604	\$32,767,378	\$55,112,246	\$16,056,610	\$5,429,695	\$21,486,304	\$76,671,026	\$705,911	\$384,351	\$970,618	\$22,891,381
HANCOCK	\$1,222,852	\$3,156	\$1,617,187	\$2,843,194	\$827,251	\$298,534	\$1,125,786	\$3,969,646	\$8,060	\$13,491	\$88,190	\$1,338,479
HARDIN	\$607,877	\$1,020	\$1,087,200	\$1,696,097	\$485,288	\$147,521	\$632,808	\$2,337,407	\$12,066	\$4,209	\$44,435	\$572,409
HARRISON	\$507,626	\$0	\$632,175	\$1,139,800	\$532,827	\$95,148	\$627,975	\$1,767,944	\$0	\$7,582	\$29,043	\$503,422
HENRY	\$541,761	\$0	\$1,194,293	\$1,736,054	\$363,911	\$158,644	\$522,555	\$2,258,609	\$4,474	\$3,803	\$56,170	\$513,201
HIGHLAND	\$1,398,447	\$827	\$1,664,944	\$3,064,219	\$1,113,188	\$400,883	\$1,514,072	\$4,578,290	\$7,633	\$2,293	\$95,025	\$1,235,469
HOCKING	\$868,212	\$7,210	\$1,516,184	\$2,391,606	\$793,837	\$264,177	\$1,058,014	\$3,449,620	\$22,915	\$7,379	\$74,994	\$774,737
HOLMES	\$1,301,441	\$0	\$1,260,361	\$2,561,802	\$426,860	\$210,408	\$637,268	\$3,203,359	\$2,031	\$9,306	\$18,573	\$2,015,537
HURON	\$808,142	\$266	\$1,258,165	\$2,066,573	\$1,137,983	\$504,588	\$1,642,571	\$3,709,143	\$12,692	\$2,093	\$102,409	\$831,622
JACKSON	\$1,120,062	\$314	\$1,606,841	\$2,727,217	\$1,216,565	\$341,428	\$1,557,993	\$4,288,064	\$5,094	\$3,669	\$105,392	\$738,147
JEFFERSON	\$1,881,535	\$9,882	\$3,508,118	\$5,399,535	\$2,005,399	\$292,985	\$2,298,384	\$7,706,010	\$49,836	\$27,603	\$146,497	\$1,699,811
KNOX	\$1,848,430	\$205	\$4,197,756	\$6,046,391	\$845,996	\$311,588	\$1,157,584	\$7,204,050	\$23,896	\$15,902	\$81,057	\$3,938,039
LAKE	\$4,181,026	\$1,586	\$6,727,877	\$10,910,490	\$2,552,520	\$737,464	\$3,289,983	\$14,207,186	\$66,779	\$30,252	\$173,558	\$5,514,901
LAWRENCE	\$2,561,161	\$4,354	\$4,702,759	\$7,268,274	\$2,511,183	\$679,022	\$3,190,205	\$10,464,665	\$18,823	\$7,763	\$201,711	\$1,542,327

Table 6B
March 2004

Medicaid Expenditures

County	Aged	Blind	Disabled	ABD Total	OWF & Related	Healthy Start	CFC Total	Total Medicaid	Foster Care	Adoption Assistance	Transitional	Nursing Facilities
STATEWIDE	\$284,899,231	\$1,314,664	\$466,406,815	\$752,620,710	\$226,708,612	\$63,544,032	\$290,252,644	\$1,043,474,515	\$6,692,745	\$5,156,979	\$18,364,151	\$292,601,169
LICKING	\$3,002,859	\$4,137	\$4,920,743	\$7,927,738	\$2,556,092	\$757,848	\$3,313,940	\$11,242,946	\$62,674	\$144,530	\$213,824	\$3,100,417
LOGAN	\$903,003	\$765	\$1,400,724	\$2,304,492	\$850,201	\$169,907	\$1,020,108	\$3,336,208	\$8,762	\$7,578	\$86,245	\$756,562
LORAIN	\$6,246,590	\$8,086	\$9,944,839	\$16,199,515	\$5,695,323	\$1,264,103	\$6,959,426	\$23,166,810	\$44,991	\$174,123	\$454,283	\$7,288,741
LUCAS	\$10,599,502	\$33,525	\$24,768,547	\$35,401,574	\$11,059,108	\$2,552,337	\$13,611,445	\$49,085,755	\$236,775	\$344,492	\$890,432	\$10,275,587
MADISON	\$611,278	\$82	\$1,143,051	\$1,754,410	\$565,459	\$215,348	\$780,807	\$2,535,218	\$17,127	\$7,800	\$56,537	\$682,550
MAHONING	\$7,910,226	\$33,804	\$12,234,414	\$20,178,443	\$8,069,585	\$1,736,115	\$9,805,700	\$29,995,387	\$83,927	\$43,483	\$508,471	\$7,840,590
MARION	\$1,464,097	\$7,781	\$3,368,583	\$4,840,462	\$1,366,225	\$509,108	\$1,875,333	\$6,719,966	\$20,258	\$21,843	\$114,954	\$1,304,006
MEDINA	\$2,481,012	\$82,554	\$3,717,025	\$6,280,591	\$1,320,733	\$465,400	\$1,786,133	\$8,071,090	\$8,502	\$22,956	\$113,320	\$3,744,528
MEIGS	\$790,977	\$7,743	\$1,314,863	\$2,113,583	\$970,537	\$224,435	\$1,194,972	\$3,308,555	\$6,348	\$34	\$52,843	\$525,654
MERCER	\$742,554	\$0	\$932,274	\$1,674,828	\$432,628	\$137,317	\$569,945	\$2,244,773	\$2,493	\$3,809	\$45,946	\$862,950
MIAMI	\$2,316,255	\$13,129	\$2,400,496	\$4,729,880	\$1,321,495	\$545,267	\$1,866,762	\$6,604,009	\$49,372	\$22,344	\$86,345	\$2,163,636
MONROE	\$430,583	\$1,107	\$537,804	\$969,495	\$348,355	\$70,154	\$418,509	\$1,388,752	\$5,788	\$2,528	\$55,791	\$354,893
MONTGOMERY	\$12,763,794	\$73,161	\$22,510,611	\$35,347,566	\$11,539,607	\$2,865,455	\$14,405,062	\$49,776,556	\$378,742	\$302,417	\$828,309	\$12,770,582
MORGAN	\$485,789	\$0	\$664,287	\$1,150,076	\$355,742	\$88,503	\$444,245	\$1,594,320	\$2,313	\$2,131	\$22,106	\$433,355
MORROW	\$2,424,911	\$124	\$1,484,701	\$2,227,317	\$849,763	\$5,177	\$854,940	\$3,094,434	\$4,123	\$20,562	\$68,126	\$750,032
MUSKINGUM	\$2,071,981	\$7,633	\$3,710,006	\$5,789,621	\$2,443,497	\$535,704	\$2,979,201	\$8,768,981	\$18,287	\$19,520	\$179,390	\$1,821,838
NOBLE	\$340,731	\$0	\$547,271	\$888,002	\$237,313	\$112,048	\$349,362	\$1,237,364	\$376	\$725	\$39,679	\$302,546
OTTAWA	\$1,098,726	\$1,041	\$1,471,533	\$2,571,299	\$537,511	\$248,906	\$786,418	\$3,357,717	\$3,710	\$0	\$54,064	\$870,079
PAULDING	\$259,223	\$90	\$495,359	\$754,672	\$246,548	\$90,204	\$336,751	\$1,091,423	\$8,109	\$2,350	\$29,466	\$158,382
PERRY	\$737,322	\$880	\$2,046,153	\$2,784,355	\$923,337	\$272,990	\$1,196,327	\$3,980,787	\$8,372	\$3,461	\$69,941	\$1,008,452
PICKAWAY	\$1,051,430	\$805	\$1,383,788	\$2,436,023	\$934,248	\$246,220	\$1,180,468	\$3,616,490	\$6,376	\$1,213	\$89,213	\$765,605
PIKE	\$1,242,137	\$0	\$2,300,187	\$3,542,324	\$1,144,851	\$293,255	\$1,438,106	\$4,983,235	\$25,421	\$23,620	\$80,404	\$1,354,696
PORTAGE	\$2,375,043	\$15,967	\$5,479,507	\$7,870,516	\$2,184,988	\$612,786	\$2,797,774	\$10,674,844	\$50,687	\$39,861	\$162,622	\$3,599,640
PREBLE	\$899,218	\$2,901	\$1,423,944	\$2,326,062	\$579,408	\$158,813	\$738,221	\$3,064,282	\$19,558	\$5,588	\$40,718	\$1,164,923
PUTNAM	\$647,565	\$6,531	\$1,019,296	\$1,673,392	\$277,009	\$82,154	\$359,162	\$2,032,555	\$1,299	\$53	\$23,234	\$1,063,659
RICHLAND	\$3,349,402	\$547	\$5,118,874	\$8,468,822	\$2,484,727	\$875,970	\$3,360,697	\$11,838,138	\$50,317	\$90,970	\$201,926	\$3,063,045
ROSS	\$1,704,743	\$2,337	\$3,566,157	\$5,273,237	\$1,918,458	\$412,912	\$2,331,370	\$7,609,736	\$24,856	\$12,505	\$148,273	\$1,168,686
SANDUSKY	\$1,613,530	\$5,595	\$2,502,865	\$4,121,990	\$1,010,807	\$323,531	\$1,334,338	\$5,461,797	\$7,293	\$49,731	\$78,831	\$1,909,555
SCIOTO	\$4,044,978	\$22,787	\$6,912,181	\$10,979,946	\$2,826,641	\$596,817	\$3,423,458	\$14,414,863	\$57,129	\$59,383	\$166,972	\$2,821,485
SENECA	\$1,720,684	\$1,175	\$3,608,179	\$5,330,039	\$962,126	\$513,526	\$1,475,652	\$6,815,958	\$25,745	\$20,683	\$106,182	\$1,626,111
SHELBY	\$895,314	\$2,369	\$1,033,511	\$1,931,195	\$561,155	\$351,206	\$912,361	\$2,843,556	\$6,517	\$5,890	\$40,046	\$964,303
STARK	\$10,448,994	\$20,227	\$13,304,964	\$23,774,186	\$6,187,950	\$1,817,823	\$8,005,772	\$31,791,680	\$295,597	\$169,633	\$715,937	\$11,188,314
SUMMIT	\$12,076,799	\$40,033	\$23,426,427	\$35,543,260	\$8,762,188	\$2,288,399	\$11,050,587	\$46,607,026	\$341,281	\$169,598	\$847,153	\$10,860,610
TRUMBULL	\$5,309,791	\$27,585	\$9,167,404	\$14,504,780	\$5,261,182	\$1,503,552	\$6,764,734	\$21,271,915	\$80,634	\$29,319	\$485,249	\$5,879,524
TUSCARAWAS	\$2,214,272	\$7,452	\$3,151,504	\$5,373,228	\$1,804,072	\$455,620	\$2,259,692	\$7,655,352	\$58,587	\$28,566	\$142,386	\$1,990,211
UNION	\$685,642	\$16,565	\$973,950	\$1,676,158	\$800,166	\$186,171	\$986,337	\$2,662,495	\$3,799	\$5,129	\$69,350	\$650,189
UNKNOWN	\$0	\$0	\$0	\$0	(\$553,964)	\$0	(\$553,964)	(\$553,964)	\$0	\$0	\$0	\$0
VAN WERT	\$617,296	\$0	\$616,936	\$1,234,232	\$416,530	\$199,455	\$615,985	\$1,857,371	\$11,946	\$35,233	\$44,523	\$607,587
VINTON	\$449,024	\$0	\$704,534	\$1,153,558	\$614,952	\$116,621	\$731,573	\$1,885,950	\$10,457	\$1,985	\$51,656	\$295,372
WARREN	\$3,351,299	\$6,411	\$4,947,844	\$8,305,553	\$1,872,574	\$390,626	\$2,263,200	\$10,571,039	\$18,643	\$18,611	\$91,226	\$5,131,803
WASHINGTON	\$1,710,960	\$5,471	\$2,637,826	\$4,354,258	\$1,339,971	\$484,052	\$1,824,023	\$6,179,822	\$4,831	\$10,997	\$174,114	\$1,560,461
WAYNE	\$2,601,722	\$2,989	\$4,225,899	\$6,830,610	\$1,428,816	\$710,110	\$2,138,926	\$8,969,834	\$64,875	\$18,076	\$108,818	\$2,228,588
WILLIAMS	\$875,889	\$587	\$1,011,177	\$1,887,653	\$614,816	\$195,041	\$809,857	\$2,697,796	\$4,812	\$7,013	\$51,982	\$843,075
WOOD	\$2,147,989	\$1,103	\$2,025,690	\$4,174,782	\$1,134,400	\$409,946	\$1,544,346	\$5,719,461	\$9,116	\$13,475	\$107,260	\$2,046,257
WYANDOT	\$706,651	(\$24)	\$634,681	\$1,341,308	\$202,861	\$239,512	\$442,374	\$1,783,682	\$480	\$2,068	\$24,446	\$705,659

Source: ODJFS Report BOMM1321 Prepared: Bureau of Research and Evaluation.

**TABLE 7
CHILD CARE
MARCH 2004**

OHIO COUNTY	OWF JOBS, LEAP, and TRANSITIONAL		OTHER CHILD CARE		ALL PROGRAM SOURCES	
	CHILDREN SERVED		CHILDREN SERVED		CHILDREN SERVED	
	TOTAL	% OF STATE TOTAL	TOTAL	% OF STATE TOTAL	TOTAL	% OF STATE TOTAL
STATEWIDE	16,783	100.00%	79,488	100.00%	96,271	100.00%
ADAMS	0	0.00%	25	0.03%	25	0.03%
ALLEN	27	0.16%	489	0.62%	516	0.54%
ASHLAND	1	0.01%	272	0.34%	273	0.28%
ASHTABULA	112	0.67%	675	0.85%	787	0.82%
ATHENS	40	0.24%	298	0.37%	338	0.35%
AUGLAIZE	11	0.07%	113	0.14%	124	0.13%
BELMONT	79	0.47%	320	0.40%	399	0.41%
BROWN	12	0.07%	154	0.19%	166	0.17%
BUTLER	182	1.08%	1,167	1.47%	1,349	1.40%
CARROLL	11	0.07%	144	0.18%	155	0.16%
CHAMPAIGN	5	0.03%	228	0.29%	233	0.24%
CLARK	113	0.67%	679	0.85%	792	0.82%
CLERMONT	64	0.38%	672	0.85%	736	0.76%
CLINTON	0	0.00%	0	0.00%	0	0.00%
COLUMBIANA	57	0.34%	630	0.79%	687	0.71%
COSHOCTON	52	0.31%	239	0.30%	291	0.30%
CRAWFORD	35	0.21%	205	0.26%	240	0.25%
CUYAHOGA	4,463	26.59%	18,306	23.03%	22,769	23.65%
DARKE	11	0.07%	181	0.23%	192	0.20%
DEFIANCE	3	0.02%	209	0.26%	212	0.22%
DELAWARE	17	0.10%	222	0.28%	239	0.25%
ERIE	7	0.04%	710	0.89%	717	0.74%
FAIRFIELD	45	0.27%	533	0.67%	578	0.60%
FAYETTE	25	0.15%	168	0.21%	193	0.20%
FRANKLIN	2,826	16.84%	9,575	12.05%	12,401	12.88%
FULTON	12	0.07%	180	0.23%	192	0.20%
GALLIA	45	0.27%	277	0.35%	322	0.33%
GEAUGA	14	0.08%	176	0.22%	190	0.20%
GREENE	161	0.96%	703	0.88%	864	0.90%
GUERNSEY	32	0.19%	384	0.48%	416	0.43%
HAMILTON	2,929	17.45%	9,171	11.54%	12,100	12.57%
HANCOCK	18	0.11%	402	0.51%	420	0.44%
HARDIN	1	0.01%	165	0.21%	166	0.17%
HARRISON	15	0.09%	187	0.23%	202	0.21%
HENRY	10	0.06%	136	0.17%	146	0.15%
HIGHLAND	10	0.06%	274	0.34%	284	0.29%
HOCKING	24	0.14%	263	0.33%	287	0.30%
HOLMES	11	0.07%	143	0.18%	154	0.16%
HURON	0	0.00%	466	0.59%	466	0.48%
JACKSON	33	0.20%	239	0.30%	272	0.28%
JEFFERSON	90	0.54%	452	0.57%	542	0.56%
KNOX	30	0.18%	393	0.49%	423	0.44%
LAKE	60	0.36%	851	1.07%	911	0.95%
LAWRENCE	46	0.27%	593	0.75%	639	0.66%

SOURCE: NMR120RA. The above numbers have not been reconciled between the CCIDS/3299 data collection system and 2827 ODJFS fiscal reporting system; therefore they may not be conclusive at this time.

OWF data consist of funding codes: 312, 313,314, 326, & 327. Other data consist of funding codes: 320, 321 , 322, 323, 324, 325,328, 329, 342, and 899.

**TABLE 7
CHILD CARE
MARCH 2004**

OHIO COUNTY	OWF JOBS, LEAP, and TRANSITIONAL		OTHER CHILD CARE		ALL PROGRAM SOURCES	
	CHILDREN SERVED		CHILDREN SERVED		CHILDREN SERVED	
	TOTAL	% OF STATE TOTAL	TOTAL	% OF STATE TOTAL	TOTAL	% OF STATE TOTAL
STATEWIDE	16,783	100.00%	79,488	100.00%	96,271	100.00%
LICKING	153	0.91%	828	1.04%	981	1.02%
LOGAN	20	0.12%	132	0.17%	152	0.16%
LORAIN	417	2.48%	1,599	2.01%	2,016	2.09%
LUCAS	898	5.35%	1,804	2.27%	2,702	2.81%
MADISON	12	0.07%	199	0.25%	211	0.22%
MAHONING	519	3.09%	1,727	2.17%	2,246	2.33%
MARION	15	0.09%	402	0.51%	417	0.43%
MEDINA	54	0.32%	601	0.76%	655	0.68%
MEIGS	4	0.02%	240	0.30%	244	0.25%
MERCER	14	0.08%	172	0.22%	186	0.19%
MIAMI	1	0.01%	318	0.40%	319	0.33%
MONROE	0	0.00%	4	0.01%	4	0.00%
MONTGOMERY	746	4.44%	4,658	5.86%	5,404	5.61%
MORGAN	4	0.02%	182	0.23%	186	0.19%
MORROW	4	0.02%	275	0.35%	279	0.29%
MUSKINGUM	149	0.89%	774	0.97%	923	0.96%
NOBLE	1	0.01%	239	0.30%	240	0.25%
OTTAWA	18	0.11%	157	0.20%	175	0.18%
PAULDING	2	0.01%	67	0.08%	69	0.07%
PERRY	36	0.21%	239	0.30%	275	0.29%
PICKAWAY	42	0.25%	198	0.25%	240	0.25%
PIKE	11	0.07%	190	0.24%	201	0.21%
PORTAGE	117	0.70%	712	0.90%	829	0.86%
PREBLE	25	0.15%	189	0.24%	214	0.22%
PUTNAM	6	0.04%	230	0.29%	236	0.25%
RICHLAND	102	0.61%	872	1.10%	974	1.01%
ROSS	30	0.18%	309	0.39%	339	0.35%
SANDUSKY	73	0.43%	471	0.59%	544	0.57%
SCIOTO	74	0.44%	618	0.78%	692	0.72%
SENECA	2	0.01%	234	0.29%	236	0.25%
SHELBY	0	0.00%	213	0.27%	213	0.22%
STARK	401	2.39%	1,964	2.47%	2,365	2.46%
SUMMIT	655	3.90%	2,920	3.67%	3,575	3.71%
TRUMBULL	135	0.80%	1,607	2.02%	1,742	1.81%
TUSCARAWAS	42	0.25%	510	0.64%	552	0.57%
UNION	0	0.00%	22	0.03%	22	0.02%
VAN WERT	0	0.00%	45	0.06%	45	0.05%
VINTON	8	0.05%	120	0.15%	128	0.13%
WARREN	61	0.36%	436	0.55%	497	0.52%
WASHINGTON	34	0.20%	304	0.38%	338	0.35%
WAYNE	107	0.64%	425	0.53%	532	0.55%
WILLIAMS	11	0.07%	204	0.26%	215	0.22%
WOOD	41	0.24%	386	0.49%	427	0.44%
WYANDOT	0	0.00%	26	0.03%	26	0.03%

SOURCE: NMR120RA. The above numbers have not been reconciled between the CCIDS/3299 data collection system and 2827 ODJFS fiscal reporting system; therefore they may not be conclusive at this time.

OWF data consist of funding codes: 312, 313,314, 326, & 327. Other data consist of funding codes: 320, 321 , 322, 323, 324, 325, 328, 329, 342, and 899.

**TABLE 8
RECIPIENTS, EXPENDITURES, AND AVERAGE PAYMENT PER RECIPIENT
DURING THE LAST 12 MONTHS IN OHIO**

	OWF-R	OWF-U	OWF\ CHILD CARE	OTHER\ CHILD CARE	DISABILITY ASSISTANCE	TITLE IV-E	FNS BENEFITS
RECIPIENTS							
April 2003	178,408	17,332	20,380	84,098	16,970	25,432	853,470
May	177,334	16,598	20,461	86,141	17,175	25,725	870,179
June	175,468	15,357	19,942	86,134	17,114	25,562	887,138
July	177,427	15,796	19,871	88,257	16,705	24,980	884,678
August	178,508	15,466	19,051	82,897	13,921	26,113	884,945
September	178,759	15,723	18,171	81,175	13,405	25,073	900,572
October	180,465	15,639	18,500	79,329	13,250	25,894	901,828
November	176,454	15,201	17,506	73,557	12,995	25,730	901,990
December	180,532	16,461	18,063	76,475	13,025	25,871	935,770
January 2004	176,525	16,572	17,342	81,657	12,762	25,742	930,391
February	176,591	16,946	16,622	78,916	13,013	25,961	934,876
March	177,476	17,466	16,783	79,488	13,086	26,395	957,339
12 MONTH AVERAGE	177,829	16,213	18,558	81,510	14,452	25,707	903,598
EXPENDITURES							
April 2003	\$24,523,197	\$1,638,996	N.A.	N.A.	\$2,027,682	\$14,225,007	\$72,884,256
May	\$24,547,967	\$1,576,439	N.A.	N.A.	\$2,110,924	\$14,275,218	\$73,740,366
June	\$24,469,304	\$1,475,945	N.A.	N.A.	\$2,022,589	\$13,205,397	\$75,783,427
July	\$24,375,298	\$1,481,457	N.A.	N.A.	\$1,921,319	\$12,365,553	\$75,612,953
August	\$24,925,334	\$1,486,018	N.A.	N.A.	\$1,666,480	\$14,696,807	\$77,279,906
September	\$24,897,155	\$1,520,686	N.A.	N.A.	\$1,598,862	\$13,071,839	\$79,553,874
October	\$25,199,378	\$1,530,516	N.A.	N.A.	\$1,621,874	\$13,097,679	\$80,400,808
November	\$24,577,620	\$1,457,298	N.A.	N.A.	\$1,619,377	\$13,152,735	\$79,289,677
December	\$25,390,802	\$1,636,249	N.A.	N.A.	\$1,640,295	\$13,824,267	\$83,581,169
January 2004	\$24,617,828	\$1,643,023	N.A.	N.A.	\$1,633,608	\$12,754,750	\$81,551,062
February	\$24,649,146	\$1,707,835	N.A.	N.A.	\$1,708,755	\$13,462,475	\$82,969,877
March	\$24,778,004	\$1,731,579	N.A.	N.A.	\$1,760,786	\$14,811,934	\$86,088,054
TOTAL DOLLARS	\$24,745,919	\$1,573,837	N.A.	N.A.	\$1,777,713	\$13,578,638	\$79,061,286
AVERAGE PAYMENT							
April 2003	\$137	\$95	N.A.	N.A.	\$119	\$559	\$85
May	\$138	\$95	N.A.	N.A.	\$123	\$555	\$85
June	\$139	\$96	N.A.	N.A.	\$118	\$517	\$85
July	\$137	\$94	N.A.	N.A.	\$115	\$495	\$85
August	\$140	\$96	N.A.	N.A.	\$120	\$563	\$87
September	\$139	\$97	N.A.	N.A.	\$119	\$521	\$88
October	\$140	\$98	N.A.	N.A.	\$122	\$506	\$89
November	\$139	\$96	N.A.	N.A.	\$125	\$511	\$88
December	\$141	\$99	N.A.	N.A.	\$126	\$534	\$89
January 2004	\$139	\$99	N.A.	N.A.	\$128	\$495	\$88
February	\$140	\$101	N.A.	N.A.	\$131	\$519	\$89
March	\$140	\$99	N.A.	N.A.	\$135	\$561	\$90

Note: N.A. means Not Available.

**TABLE 10
PERCENT OF OHIO'S POPULATION PARTICIPATING IN SELECTED
PUBLIC ASSISTANCE PROGRAMS FOR MARCH 2004**

OHIO COUNTY	Estimated Total Population *	Percent of All Families Below Poverty Level	DISABILITY ASSISTANCE		OWF COMBINED		FOSTER CARE		FNS BENEFITS	
			Recipients	Recipients as Percent of Total Population	Recipients	Recipients as Percent of Total Population	Recipients	Recipients as Percent of Total Population	Recipients	Recipients as Percent of Total Population
STATEWIDE	11,421,267	0.08	13,204	0.12	194,942	1.71	26,395	0.23	957,339	8.38
ADAMS	27,804	0.13	71	0.26	219	0.79	57	0.21	4,230	15.21
ALLEN	108,120	0.10	72	0.07	838	0.78	226	0.21	8,391	7.76
ASHLAND	52,900	0.07	32	0.06	218	0.41	11	0.02	2,696	5.10
ASHTABULA	102,515	0.09	276	0.27	1,607	1.57	160	0.16	10,247	10.00
ATHENS	63,256	0.14	219	0.35	1,509	2.39	191	0.30	6,658	10.53
AUGLAIZE	46,464	0.05	29	0.06	79	0.17	48	0.10	1,649	3.55
BELMONT	69,448	0.12	137	0.20	1,150	1.66	115	0.17	7,032	10.13
BROWN	43,464	0.09	36	0.08	294	0.68	48	0.11	3,404	7.83
BUTLER	340,543	0.05	441	0.13	3,085	0.91	753	0.22	21,574	6.34
CARROLL	29,166	0.09	23	0.08	212	0.73	12	0.04	2,094	7.18
CHAMPAIGN	39,121	0.05	38	0.10	328	0.84	28	0.07	2,119	5.42
CLARK	143,416	0.08	235	0.16	3,064	2.14	376	0.26	15,509	10.81
CLERMONT	183,352	0.05	172	0.09	1,115	0.61	341	0.19	8,651	4.72
CLINTON	41,090	0.06	53	0.13	220	0.54	75	0.18	2,674	6.51
COLUMBIANA	111,806	0.09	137	0.12	1,065	0.95	141	0.13	10,887	9.74
COSHOCTON	36,836	0.07	66	0.18	485	1.32	57	0.15	3,503	9.51
CRAWFORD	46,420	0.08	44	0.09	593	1.28	46	0.10	4,071	8.77
CUYAHOGA	1,379,049	0.10	1,817	0.13	30,411	2.21	6,539	0.47	166,650	12.08
DARKE	52,966	0.06	36	0.07	370	0.70	36	0.07	2,012	3.80
DEFIANCE	39,334	0.05	11	0.03	253	0.64	47	0.12	2,269	5.77
DELAWARE	125,399	0.03	48	0.04	676	0.54	73	0.06	3,699	2.95
ERIE	79,207	0.06	50	0.06	385	0.49	160	0.20	4,916	6.21
FAIRFIELD	129,161	0.05	86	0.07	1,373	1.06	130	0.10	7,427	5.75
FAYETTE	28,176	0.08	18	0.06	267	0.95	20	0.07	2,271	8.06
FRANKLIN	1,086,814	0.08	1,113	0.10	26,067	2.40	3,621	0.33	106,251	9.78
FULTON	42,573	0.04	18	0.04	187	0.44	28	0.07	1,740	4.09
GALLIA	31,301	0.14	41	0.13	1,270	4.06	57	0.18	4,798	15.33
GEAUGA	92,980	0.03	29	0.03	215	0.23	117	0.13	1,450	1.56
GREENE	149,964	0.05	183	0.12	1,265	0.84	100	0.07	8,134	5.42
GUERNSEY	40,987	0.13	122	0.30	369	0.90	119	0.29	5,254	12.82
HAMILTON	833,721	0.09	893	0.11	19,605	2.35	1,514	0.18	63,290	7.59
HANCOCK	72,286	0.05	48	0.07	355	0.49	72	0.10	3,315	4.59
HARDIN	31,731	0.09	22	0.07	108	0.34	57	0.18	1,712	5.40
HARRISON	15,890	0.11	40	0.25	223	1.40	29	0.18	1,596	10.04
HENRY	29,478	0.05	8	0.03	58	0.20	34	0.12	1,064	3.61
HIGHLAND	41,851	0.09	59	0.14	355	0.85	34	0.08	4,009	9.58
HOCKING	28,481	0.10	43	0.15	683	2.40	73	0.26	2,925	10.27
HOLMES	40,375	0.11	26	0.06	115	0.28	38	0.09	1,148	2.84
HURON	60,020	0.07	34	0.06	209	0.35	52	0.09	3,935	6.56
JACKSON	32,854	0.14	95	0.29	640	1.95	15	0.05	4,806	14.63
JEFFERSON	72,402	0.11	170	0.23	2,106	2.91	137	0.19	8,695	12.01
KNOX	56,037	0.07	63	0.11	604	1.08	53	0.09	3,541	6.32
LAKE	229,004	0.04	160	0.07	1,283	0.56	205	0.09	9,902	4.32
LAWRENCE	62,172	0.15	73	0.12	1,630	2.62	40	0.06	10,271	16.52

*SOURCE: 2002 Ohio County Population Estimates, Ohio Dept. of Development, GRP342RA, GBS003RA, GRP304RA and GRP304RC Reports from Management Information Services.

**TABLE 10
PERCENT OF OHIO'S POPULATION PARTICIPATING IN SELECTED
PUBLIC ASSISTANCE PROGRAMS FOR MARCH 2004**

OHIO COUNTY	Estimated Total Population *	Percent of All Families Below Poverty Level	DISABILITY ASSISTANCE		OWF COMBINED		FOSTER CARE		FNS BENEFITS	
			Recipients	Recipients as Percent of Total Population	Recipients	Recipients as Percent of Total Population	Recipients	Recipients as Percent of Total Population	Recipients	Recipients as Percent of Total Population
STATEWIDE	11,421,267	0.08	13,204	0.12	194,942	1.71	26,395	0.23	957,339	8.38
LICKING	148,731	0.06	184	0.12	1,385	0.93	442	0.30	9,937	6.68
LOGAN	46,262	0.07	34	0.07	485	1.05	53	0.11	3,030	6.55
LORAIN	288,360	0.07	280	0.10	5,061	1.76	403	0.14	25,549	8.86
LUCAS	453,506	0.11	624	0.14	16,924	3.73	2,080	0.46	55,462	12.23
MADISON	40,365	0.06	29	0.07	512	1.27	37	0.09	2,221	5.50
MAHONING	253,308	0.10	356	0.14	7,015	2.77	394	0.16	27,525	10.87
MARION	66,028	0.07	97	0.15	715	1.08	100	0.15	6,014	9.11
MEDINA	158,439	0.04	88	0.06	618	0.39	80	0.05	4,265	2.69
MEIGS	23,111	0.14	65	0.28	470	2.03	13	0.06	4,034	17.45
MERCER	40,815	0.05	27	0.07	171	0.42	39	0.10	1,242	3.04
MIAMI	99,596	0.05	55	0.06	611	0.61	173	0.17	4,100	4.12
MONROE	14,973	0.11	13	0.09	207	1.38	12	0.08	1,419	9.48
MONTGOMERY	554,470	0.08	464	0.08	12,627	2.28	1,784	0.32	47,150	8.50
MORGAN	14,749	0.16	40	0.27	133	0.90	13	0.09	1,818	12.33
MORROW	32,976	0.07	22	0.07	303	0.92	44	0.13	2,447	7.42
MUSKINGUM	85,349	0.10	213	0.25	2,133	2.50	117	0.14	12,016	14.08
NOBLE	14,088	0.08	19	0.13	84	0.60	8	0.06	1,103	7.83
OTTAWA	41,049	0.04	23	0.06	301	0.73	4	0.01	1,842	4.49
PAULDING	19,841	0.05	16	0.08	252	1.27	27	0.14	1,162	5.86
PERRY	34,408	0.09	72	0.21	592	1.72	71	0.21	4,383	12.74
PICKAWAY	53,437	0.08	47	0.09	1,063	1.99	28	0.05	4,460	8.35
PIKE	27,921	0.15	64	0.23	807	2.89	40	0.14	4,787	17.14
PORTAGE	153,886	0.06	128	0.08	1,202	0.78	129	0.08	7,375	4.79
PREBLE	42,680	0.05	29	0.07	347	0.81	65	0.15	2,009	4.71
PUTNAM	34,736	0.04	10	0.03	205	0.59	16	0.05	1,222	3.52
RICHLAND	128,004	0.08	180	0.14	1,400	1.09	262	0.20	10,474	8.18
ROSS	74,469	0.09	101	0.14	1,529	2.05	93	0.12	8,881	11.93
SANDUSKY	61,698	0.06	40	0.06	350	0.57	81	0.13	3,245	5.26
SCIOTO	78,041	0.15	221	0.28	1,891	2.42	105	0.13	13,755	17.63
SENECA	58,077	0.06	49	0.08	226	0.39	124	0.21	3,451	5.94
SHELBY	48,516	0.05	18	0.04	217	0.45	69	0.14	2,161	4.45
STARK	377,940	0.07	557	0.15	7,537	1.99	1,092	0.29	27,608	7.30
SUMMIT	546,381	0.08	640	0.12	12,502	2.29	1,151	0.21	47,145	8.63
TRUMBULL	223,518	0.08	354	0.16	3,162	1.41	420	0.19	18,224	8.15
TUSCARAWAS	91,490	0.07	90	0.10	1,050	1.15	180	0.20	6,686	7.31
UNION	43,010	0.04	16	0.04	589	1.37	43	0.10	2,080	4.84
VAN WERT	29,399	0.04	15	0.05	69	0.23	30	0.10	1,008	3.43
VINTON	13,128	0.15	42	0.32	438	3.34	39	0.30	2,368	18.04
WARREN	175,133	0.03	54	0.03	488	0.28	121	0.07	3,736	2.13
WASHINGTON	62,561	0.09	103	0.16	216	0.35	56	0.09	4,965	7.94
WAYNE	112,704	0.05	253	0.22	993	0.88	165	0.15	6,095	5.41
WILLIAMS	39,020	0.04	22	0.06	380	0.97	23	0.06	2,044	5.24
WOOD	122,387	0.05	55	0.04	468	0.38	61	0.05	3,704	3.03
WYANDOT	22,773	0.04	8	0.04	51	0.22	23	0.10	668	2.93
UNKNOWN										

*SOURCE: 2002 Ohio County Population Estimates, Ohio Dept. of Development, GRP342RA, GBS003RA, GRP304RA and GRP304RC Reports from Management Information Services.