

MONTHLY REVIEW OF PUBLIC ASSISTANCE STATISTICS FOR FEBRUARY 2004

OHIO WORKS FIRST

For the month of February 2004, OWF-Combined assistance groups totaled 86,859; recipients totaled 193,537 and money payments totaled \$26,356,981. The percent change from January 2004 to February 2004 was 0.4% for assistance groups; 0.2% for recipients, and 0.4% for money payments. For OWF- Regular (OWF-R) there were 82,611 assistance groups; 176,591 recipients, and \$24,649,146 in money payments issued for February 2004. The percent change from January 2004 to February 2004 was 0.2% for assistance groups; 0.0% for recipients, and 0.1% for money payments. For OWF-Unemployed (OWF-U) assistance groups totaled 4,248; recipients, 16,946, and money payments were \$1,707,835. The percent change from January 2004 to February 2004 was 4.5% for assistance groups; 2.3% for recipients and 3.9% for money payments.

FOSTER CARE (TITLE IV-E)

A total of 25,961 children received \$13,462,475 in Title IV-E assistance during the month of February 2004. Included in this total were 7,090 foster care children who received \$6,297,369 in money payments. Of these Title IV-E children, 2,989 or 11.5% were in foster family homes who received \$1,220,842 and 4,101 or 15.8% children in child care institutions who received \$5,076,527 in OWF foster care assistance. The remaining 18,871 children reported as participating in Title IV-E received \$7,165,106 in adoption assistance. Overall, the average amount of Foster Care received per child was \$518.57.

DISABILITY ASSISTANCE (DA)

For the month of February 2004, there were 12,893 assistance groups; 13,013 recipients, and \$1,708,755 in DA financial assistance. The average DA financial assistance per recipient was \$131.31. Total DA expenditures for medical services for February 2004 were \$ 5,630,494. Of this total, \$3,881,769 or 68.9% was spent for prescribed drugs, and \$1,409,212 or 25.0% was spent for physician services. Medical expenses were paid for 14,285 recipients for an average expenditure of \$394.15 per recipient.

FNS BENEFITS:

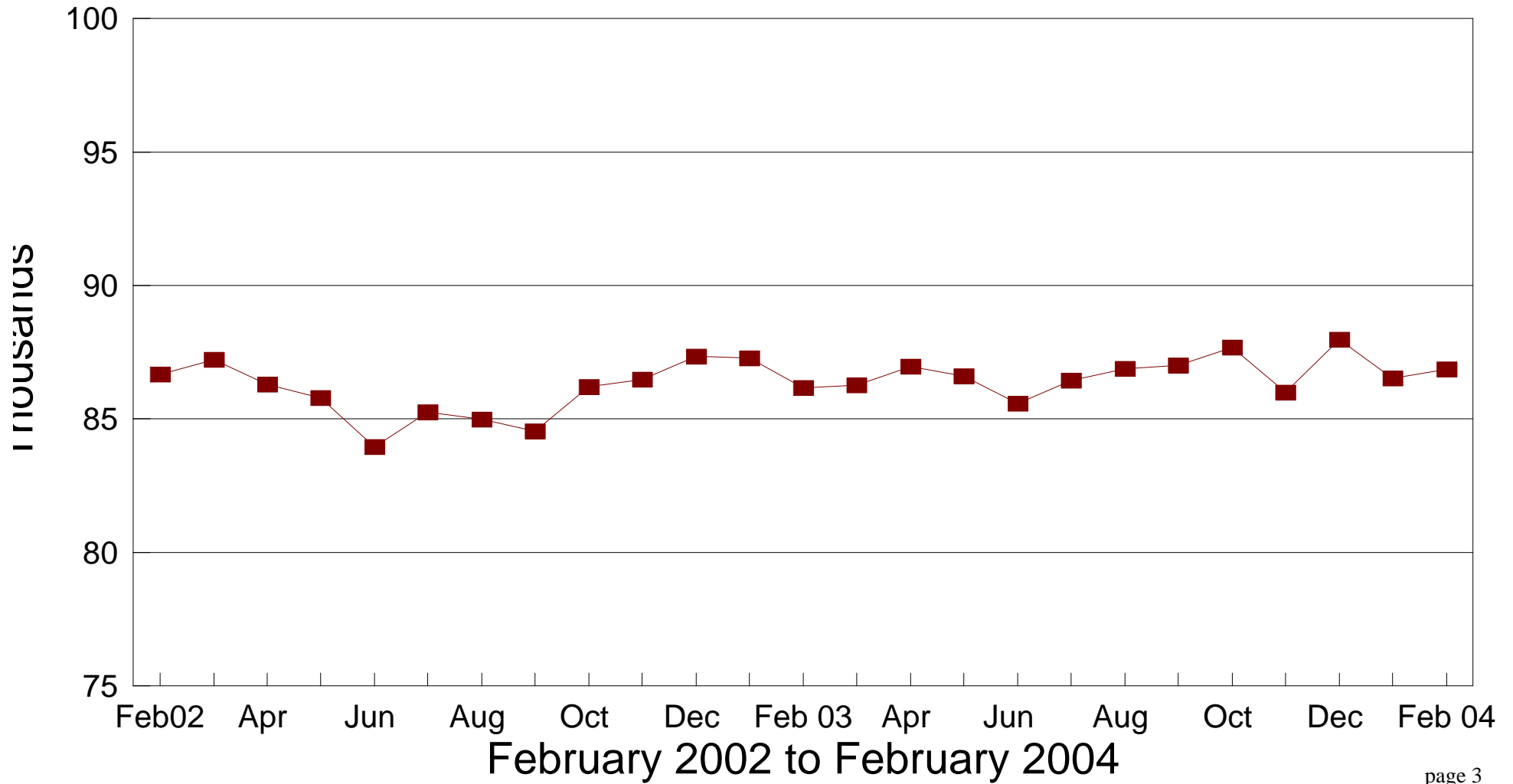
Total persons participating in the FNS benefits program during February 2004 increased to 934,876 by 4,485 or 0.5% from 930,391 persons reported in January 2004. Households increased by 2,700 or 0.7% over January 2004 levels. The total dollar value of FNS related benefits issued during February 2004 increased by \$1,418,815 or 1.7% from \$81,551,062 reported in January 2004 to \$82,969,877 reported in February 2004. The average benefit issuance per person increased by \$1.10 or 1.3% from those issued in January 2004. The average benefit issuance per person increased from \$87.65 in January 2004 to \$88.75 in February 2004.

Please note: All data in the PAMS report is limited to the information available at the time it was constructed. It does not account for backdated or retroactive eligibility or any adjustments made subsequent to its creation.

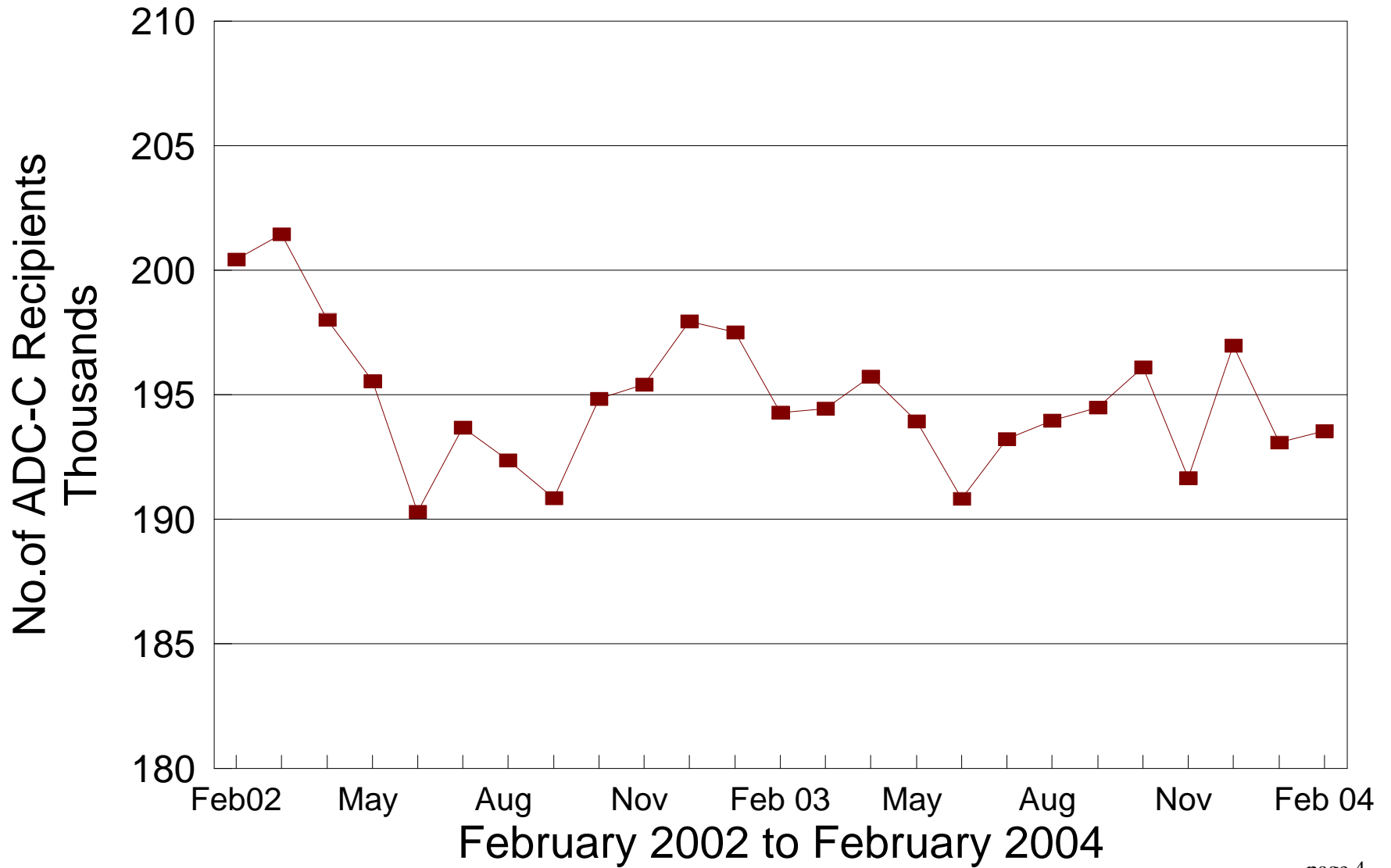
STATEWIDE SUMMARY OF PUBLIC ASSISTANCE PROGRAMS FOR FEBRUARY 2004					
	February 2004	January 2004	% CHANGE Feb 04 / Jan 04	February 2003	% CHANGE Feb 04 / Feb 03
OHIO WORKS FIRST (OWF)-COMBINED					
Assistance Groups	86,859	86,527	0.4%	86,172	0.8%
Recipients	193,537	193,097	0.2%	194,278	-0.4%
Net Payments	\$26,356,981	\$26,260,851	0.4%	\$25,980,395	1.4%
Average Per Recipient	\$136.19	\$136.00	0.1%	\$133.73	1.8%
OWF-REGULAR, OWF-INCAPACITATED,& OWF REGULAR VENDOR PAYMENTS					
Assistance Groups	82,611	82,463	0.2%	82,048	0.7%
Recipients	176,591	176,525	0.0%	177,379	-0.4%
Net Payments	\$24,649,146	\$24,617,828	0.1%	\$24,357,664	1.2%
Average Per Recipient	\$139.58	\$139.46	0.1%	\$137.32	1.6%
OWF-UNEMPLOYED AND OWF-UNEMPLOYED VENDOR PAYMENTS					
Assistance Groups	4,248	4,064	4.5%	4,124	3.0%
Recipients	16,946	16,572	2.3%	16,899	0.3%
Net Payments	\$1,707,835	\$1,643,023	3.9%	\$1,622,731	5.2%
Average Per Recipient	\$100.78	\$99.14	1.7%	\$96.03	5.0%
TITLE IV-E FOSTER CARE					
Assistance Groups/Recipients	25,961	25,742	0.9%	24,080	7.8%
Gross Payments	\$13,462,475	\$12,754,750	5.5%	\$12,009,081	12.1%
Average Per Recipient	\$518.57	\$495.48	4.7%	\$498.72	4.0%
DISABILITY ASSISTANCE					
Assistance Groups	12,893	12,644	2.0%	15,745	-18.1%
Recipients	13,013	12,762	2.0%	16,159	-19.5%
Net Payments	\$1,708,755	\$1,633,608	4.6%	\$1,940,964	-12.0%
Medical Assistance	\$5,630,494	\$5,825,099	-3.3%	\$7,178,384	-21.6%
FNS BENEFITS					
Assistance Groups	414,171	411,471	0.7%	370,810	11.7%
Persons	934,876	930,391	0.5%	835,650	11.9%
Total Coupons Issued	\$82,969,877	\$81,551,062	1.7%	\$70,932,602	17.0%
Average Per Recipient	\$88.75	\$87.65	1.3%	\$84.88	4.6%

No. of OWF-Combined Assistance Groups

During the Last 25 Months

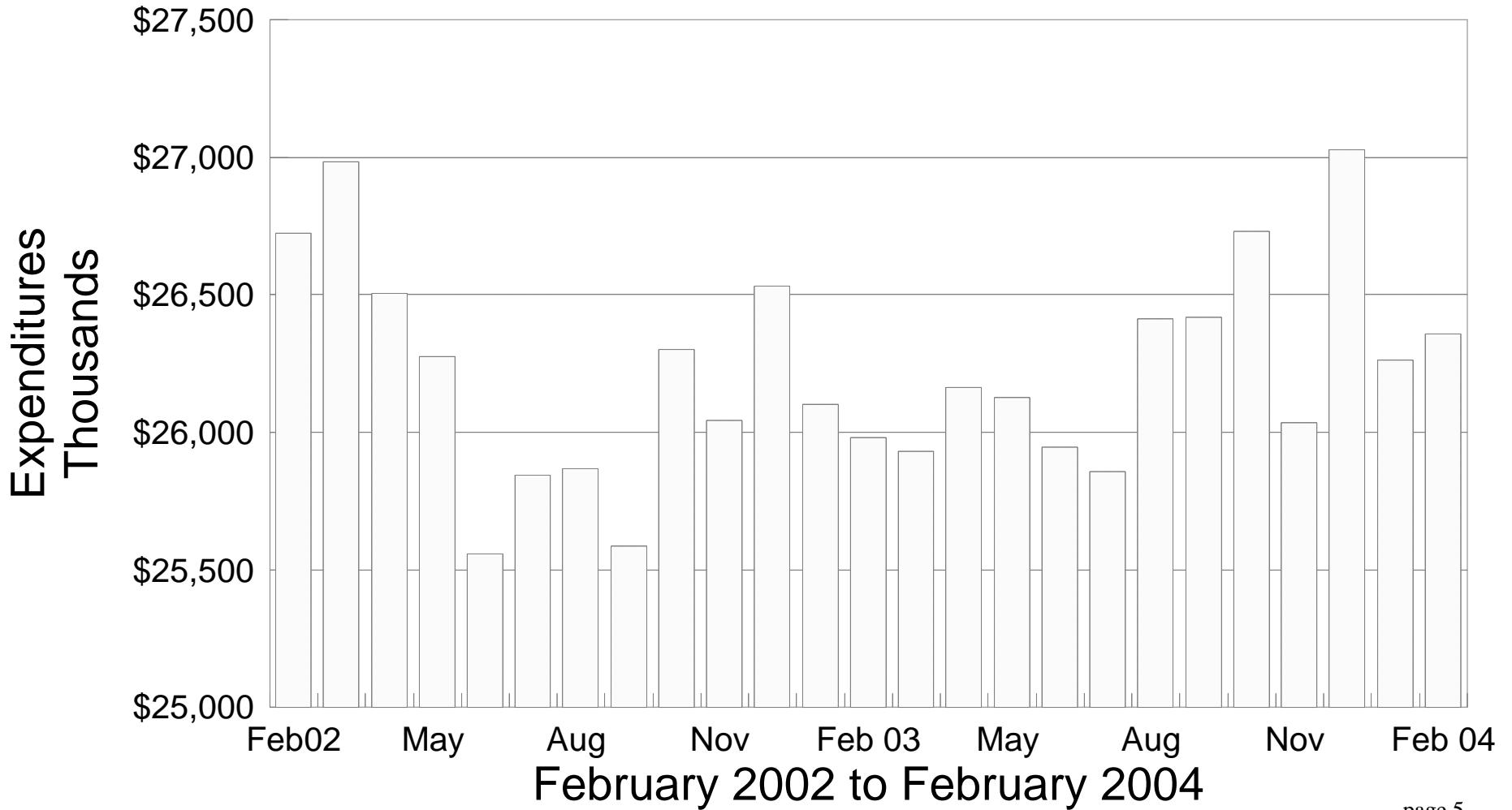


Number of OWF-Combined Recipients During the Last 25 Months



OWF-Combined Net Expenditures

During the Last 25 Months



**TABLE 1
OWF COMBINED
FEBRUARY 2004**

OHIO COUNTY	ASSISTANCE GROUP	RECIPIENTS	ADULTS	CHILDREN	ACTUAL EXPENDITURES		
					GROSS AMOUNT	CANCELLED AMOUNT	NET AMOUNT
STATEWIDE	86,859	193,537	50,953	142,584	\$27,098,414.39	\$741,433.00	\$26,356,981.39
ADAMS	135	215	8	207	\$34,774.00	\$596.00	\$34,178.00
ALLEN	433	818	86	732	\$129,894.00	\$2,267.00	\$127,627.00
ASHLAND	90	207	48	159	\$27,972.00	\$0.00	\$27,972.00
ASHTABULA	728	1,653	442	1,211	\$233,962.00	\$4,850.00	\$229,112.00
ATHENS	625	1,501	529	972	\$197,114.00	\$4,829.00	\$192,285.00
AUGLAIZE	51	78	3	75	\$13,876.00	\$0.00	\$13,876.00
BELMONT	525	1,176	378	798	\$153,195.00	\$3,400.00	\$149,795.00
BROWN	166	283	31	252	\$45,065.00	\$0.00	\$45,065.00
BUTLER	1,522	3,015	592	2,423	\$450,637.00	\$14,606.00	\$436,031.00
CARROLL	111	233	63	170	\$31,907.00	\$223.00	\$31,684.00
CHAMPAIGN	172	328	88	240	\$49,801.00	\$941.00	\$48,860.00
CLARK	1,384	3,131	874	2,257	\$430,562.00	\$7,839.00	\$422,723.00
CLERMONT	552	1,117	254	863	\$171,475.00	\$4,580.00	\$166,895.00
CLINTON	127	213	37	176	\$35,526.00	\$610.00	\$34,916.00
COLUMBIANA	543	1,084	226	858	\$160,214.00	\$2,310.00	\$157,904.00
COSHOCTON	229	488	150	338	\$69,644.46	\$2,257.00	\$67,387.46
CRAWFORD	265	625	206	419	\$82,652.00	\$2,285.00	\$80,367.00
CUYAHOGA	14,351	30,258	7,441	22,817	\$4,411,361.00	\$165,139.00	\$4,246,222.00
DARKE	161	368	110	258	\$52,661.00	\$2,423.00	\$50,238.00
DEFIANCE	119	258	68	190	\$39,204.00	\$1,001.00	\$38,203.00
DELAWARE	294	685	207	478	\$94,515.00	\$3,185.00	\$91,330.00
ERIE	211	366	32	334	\$60,045.00	\$1,673.00	\$58,372.00
FAIRFIELD	571	1,360	457	903	\$182,902.00	\$7,245.00	\$175,657.00
FAYETTE	152	300	54	246	\$43,897.00	\$892.00	\$43,005.00
FRANKLIN	11,403	25,997	6,614	19,383	\$3,555,839.93	\$112,057.00	\$3,443,782.93
FULTON	77	168	33	135	\$22,767.00	\$484.00	\$22,283.00
GALLIA	503	1,253	431	822	\$160,126.00	\$5,276.00	\$154,850.00
GEAUGA	90	189	45	144	\$28,145.00	\$0.00	\$28,145.00
GREENE	592	1,244	354	890	\$179,323.00	\$2,905.00	\$176,418.00
GUERNSEY	215	441	107	334	\$67,496.00	\$2,058.00	\$65,438.00
HAMILTON	8,198	19,232	4,760	14,472	\$2,682,767.00	\$67,928.00	\$2,614,839.00
HANCOCK	151	300	68	232	\$46,693.00	\$1,513.00	\$45,180.00
HARDIN	61	115	12	103	\$18,167.00	\$1,808.00	\$16,359.00
HARRISON	109	237	66	171	\$32,250.00	\$1,091.00	\$31,159.00
HENRY	31	48	6	42	\$8,824.00	\$915.00	\$7,909.00
HIGHLAND	189	400	93	307	\$57,661.00	\$1,553.00	\$56,108.00
HOCKING	293	669	217	452	\$96,821.00	\$3,110.00	\$93,711.00
HOLMES	49	104	23	81	\$15,262.00	\$0.00	\$15,262.00
HURON	136	209	2	207	\$34,811.00	\$678.00	\$34,133.00
JACKSON	311	631	151	480	\$94,610.00	\$305.00	\$94,305.00
JEFFERSON	892	2,068	672	1,396	\$274,447.00	\$10,161.00	\$264,286.00
KNOX	244	562	169	393	\$72,705.00	\$3,323.00	\$69,382.00
LAKE	575	1,203	286	917	\$173,932.00	\$3,685.00	\$170,247.00
LAWRENCE	782	1,636	363	1,273	\$232,551.00	\$3,112.00	\$229,439.00

Source: GRP342RA Report from Management Information Services. Data includes ADC-Regular, ADC-Incapacitated, ADC-Unemployed, and Vendor Payments.

**TABLE 1
OWF COMBINED
FEBRUARY 2004**

OHIO COUNTY	ASSISTANCE GROUP	RECIPIENTS	ADULTS	CHILDREN	ACTUAL EXPENDITURES		
					GROSS AMOUNT	CANCELLED AMOUNT	NET AMOUNT
STATEWIDE	86,859	193,537	50,953	142,584	\$27,098,414.39	\$741,433.00	\$26,356,981.39
LICKING	621	1,391	437	954	\$192,236.00	\$9,083.00	\$183,153.00
LOGAN	186	418	115	303	\$58,229.00	\$2,646.00	\$55,583.00
LORAIN	2,123	5,021	1,278	3,743	\$684,104.00	\$12,045.00	\$672,059.00
LUCAS	6,934	16,456	4,745	11,711	\$2,202,054.00	\$62,952.00	\$2,139,102.00
MADISON	214	494	165	329	\$68,270.00	\$1,438.00	\$66,832.00
MAHONING	2,924	6,919	1,753	5,166	\$944,489.00	\$13,606.00	\$930,883.00
MARION	389	700	92	608	\$112,654.00	\$882.00	\$111,772.00
MEDINA	267	595	177	418	\$89,276.00	\$446.00	\$88,830.00
MEIGS	226	469	139	330	\$68,965.00	\$2,030.00	\$66,935.00
MERCER	70	171	58	113	\$22,860.00	\$669.00	\$22,191.00
MIAMI	303	586	123	463	\$83,097.00	\$1,765.00	\$81,332.00
MONROE	93	220	78	142	\$28,387.00	\$305.00	\$28,082.00
MONTGOMERY	5,828	12,725	3,313	9,412	\$1,790,709.00	\$52,201.00	\$1,738,508.00
MORGAN	78	143	23	120	\$21,590.00	\$0.00	\$21,590.00
MORROW	141	304	89	215	\$43,732.00	\$746.00	\$42,986.00
MUSKINGUM	901	2,096	619	1,477	\$278,861.00	\$4,202.00	\$274,659.00
NOBLE	33	79	20	59	\$10,242.00	\$373.00	\$9,869.00
OTTAWA	121	294	93	201	\$38,346.00	\$246.00	\$38,100.00
PAULDING	103	257	97	160	\$34,607.00	\$1,099.00	\$33,508.00
PERRY	257	605	159	446	\$79,771.00	\$3,085.00	\$76,686.00
PICKAWAY	419	1,052	357	695	\$138,232.00	\$2,216.00	\$136,016.00
PIKE	349	786	187	599	\$110,798.00	\$1,971.00	\$108,827.00
PORTAGE	554	1,155	333	822	\$166,050.00	\$3,299.00	\$162,751.00
PREBLE	169	388	110	278	\$52,244.00	\$983.00	\$51,261.00
PUTNAM	73	160	53	107	\$24,752.00	\$2,677.00	\$22,075.00
RICHLAND	674	1,381	299	1,082	\$200,251.00	\$4,978.00	\$195,273.00
ROSS	670	1,518	425	1,093	\$207,644.00	\$5,503.00	\$202,141.00
SANDUSKY	184	338	70	268	\$51,940.00	\$446.00	\$51,494.00
SCIOTO	1,004	1,919	360	1,559	\$292,800.00	\$7,953.00	\$284,847.00
SENECA	124	212	24	188	\$35,513.00	\$669.00	\$34,844.00
SHELBY	130	250	48	202	\$36,360.00	\$901.00	\$35,459.00
STARK	3,171	7,445	2,280	5,165	\$1,010,838.00	\$18,597.00	\$992,241.00
SUMMIT	5,433	12,537	3,790	8,747	\$1,739,681.00	\$41,953.00	\$1,697,728.00
TRUMBULL	1,501	3,204	753	2,451	\$455,059.00	\$7,706.00	\$447,353.00
TUSCARAWAS	456	1,098	361	737	\$144,844.00	\$4,055.00	\$140,789.00
UNION	224	564	204	360	\$70,397.00	\$2,224.00	\$68,173.00
VAN WERT	35	58	4	54	\$9,750.00	\$223.00	\$9,527.00
VINTON	177	427	133	294	\$54,455.00	\$802.00	\$53,653.00
WARREN	250	482	113	369	\$70,177.00	\$1,688.00	\$68,489.00
WASHINGTON	142	211	7	204	\$36,658.00	\$682.00	\$35,976.00
WAYNE	440	979	337	642	\$141,414.00	\$3,954.00	\$137,460.00
WILLIAMS	174	419	142	277	\$55,157.00	\$2,270.00	\$52,887.00
WOOD	250	498	125	373	\$76,001.00	\$446.00	\$75,555.00
WYANDOT	26	47	9	38	\$6,867.00	\$305.00	\$6,562.00

Source: GRP342RA Report from Management Information Services. Data includes ADC-Regular, ADC-Incapacitated, and Vendor Payments.

**TABLE 1
OWF REGULAR
FEBRUARY 2004**

OHIO COUNTY	ASSISTANCE GROUP	RECIPIENTS	ADULTS	CHILDREN	ACTUAL EXPENDITURES		
					GROSS AMOUNT	CANCELLED AMOUNT	NET AMOUNT
STATEWIDE	82,611	176,591	43,003	133,588	\$25,349,064.39	\$699,918.00	\$24,649,146.39
ADAMS	135	215	8	207	\$34,774.00	\$596.00	\$34,178.00
ALLEN	428	795	77	718	\$126,462.00	\$2,267.00	\$124,195.00
ASHLAND	81	165	30	135	\$23,393.00	\$0.00	\$23,393.00
ASHTABULA	673	1,436	333	1,103	\$208,016.00	\$3,631.00	\$204,385.00
ATHENS	517	1,104	332	772	\$157,569.00	\$4,456.00	\$153,113.00
AUGLAIZE	51	78	3	75	\$13,876.00	\$0.00	\$13,876.00
BELMONT	468	947	266	681	\$132,234.00	\$2,975.00	\$129,259.00
BROWN	163	273	25	248	\$43,858.00	\$0.00	\$43,858.00
BUTLER	1,499	2,961	574	2,387	\$444,077.00	\$14,508.00	\$429,569.00
CARROLL	99	184	39	145	\$26,900.00	\$223.00	\$26,677.00
CHAMPAIGN	166	307	76	231	\$47,441.00	\$941.00	\$46,500.00
CLARK	1,311	2,823	736	2,087	\$400,682.00	\$7,300.00	\$393,382.00
CLERMONT	530	1,036	212	824	\$161,010.00	\$4,580.00	\$156,430.00
CLINTON	126	210	35	175	\$34,877.00	\$610.00	\$34,267.00
COLUMBIANA	526	1,015	193	822	\$152,189.00	\$2,310.00	\$149,879.00
COSHOCTON	207	414	113	301	\$60,958.46	\$1,796.00	\$59,162.46
CRAWFORD	228	479	135	344	\$68,719.00	\$2,285.00	\$66,434.00
CUYAHOGA	13,931	28,494	6,632	21,862	\$4,233,379.00	\$159,751.00	\$4,073,628.00
DARKE	151	333	91	242	\$48,089.00	\$2,423.00	\$45,666.00
DEFIANCE	111	226	52	174	\$35,004.00	\$461.00	\$34,543.00
DELAWARE	270	581	163	418	\$82,800.00	\$3,185.00	\$79,615.00
ERIE	211	366	32	334	\$60,045.00	\$1,673.00	\$58,372.00
FAIRFIELD	494	1,062	305	757	\$151,986.00	\$5,536.00	\$146,450.00
FAYETTE	149	285	48	237	\$42,611.00	\$892.00	\$41,719.00
FRANKLIN	10,978	24,214	5,872	18,342	\$3,380,674.93	\$107,041.00	\$3,273,633.93
FULTON	75	159	29	130	\$22,056.00	\$484.00	\$21,572.00
GALLIA	413	900	260	640	\$126,663.00	\$3,803.00	\$122,860.00
GEAUGA	87	179	39	140	\$26,969.00	\$0.00	\$26,969.00
GREENE	559	1,120	289	831	\$165,989.00	\$2,905.00	\$163,084.00
GUERNSEY	199	379	75	304	\$60,320.00	\$2,058.00	\$58,262.00
HAMILTON	8,060	18,656	4,498	14,158	\$2,619,420.00	\$64,277.00	\$2,555,143.00
HANCOCK	140	258	46	212	\$40,841.00	\$974.00	\$39,867.00
HARDIN	59	106	8	98	\$17,207.00	\$1,808.00	\$15,399.00
HARRISON	102	211	52	159	\$29,824.00	\$1,091.00	\$28,733.00
HENRY	31	48	6	42	\$8,824.00	\$915.00	\$7,909.00
HIGHLAND	179	364	74	290	\$54,118.00	\$1,042.00	\$53,076.00
HOCKING	259	545	150	395	\$81,773.00	\$3,110.00	\$78,663.00
HOLMES	46	94	17	77	\$14,155.00	\$0.00	\$14,155.00
HURON	131	201	2	199	\$33,464.00	\$678.00	\$32,786.00
JACKSON	289	544	107	437	\$84,717.00	\$305.00	\$84,412.00
JEFFERSON	802	1,697	494	1,203	\$236,322.00	\$8,085.00	\$228,237.00
KNOX	227	489	135	354	\$66,939.00	\$3,323.00	\$63,616.00
LAKE	512	1,031	232	799	\$152,883.00	\$3,312.00	\$149,571.00
LAWRENCE	726	1,421	253	1,168	\$211,293.00	\$3,112.00	\$208,181.00

Source: GRP342RA Report from Management Information Services. Data includes ADC-Regular, ADC-Incapacitated, and Vendor Payments.

**TABLE 1
OWF REGULAR
FEBRUARY 2004**

OHIO COUNTY	ASSISTANCE GROUP	RECIPIENTS	ADULTS	CHILDREN	ACTUAL EXPENDITURES		
					GROSS AMOUNT	CANCELLED AMOUNT	NET AMOUNT
STATEWIDE	82,611	176,591	43,003	133,588	\$25,349,064.39	\$699,918.00	\$24,649,146.39
LICKING	559	1,165	322	843	\$168,218.00	\$9,083.00	\$159,135.00
LOGAN	170	346	83	263	\$51,447.00	\$2,646.00	\$48,801.00
LORAIN	1,996	4,500	1,039	3,461	\$623,167.00	\$11,445.00	\$611,722.00
LUCAS	6,489	14,687	3,928	10,759	\$2,027,096.00	\$58,217.00	\$1,968,879.00
MADISON	191	393	120	273	\$58,078.00	\$915.00	\$57,163.00
MAHONING	2,804	6,404	1,520	4,884	\$891,398.00	\$13,572.00	\$877,826.00
MARION	384	686	86	600	\$111,023.00	\$882.00	\$110,141.00
MEDINA	244	500	132	368	\$78,276.00	\$446.00	\$77,830.00
MEIGS	209	407	107	300	\$61,459.00	\$2,030.00	\$59,429.00
MERCER	57	116	34	82	\$17,087.00	\$669.00	\$16,418.00
MIAMI	300	574	117	457	\$81,823.00	\$1,765.00	\$80,058.00
MONROE	78	167	51	116	\$23,265.00	\$305.00	\$22,960.00
MONTGOMERY	5,779	12,552	3,226	9,326	\$1,771,672.00	\$51,315.00	\$1,720,357.00
MORGAN	75	133	17	116	\$20,715.00	\$0.00	\$20,715.00
MORROW	126	249	59	190	\$37,846.00	\$746.00	\$37,100.00
MUSKINGUM	821	1,778	466	1,312	\$247,835.00	\$4,202.00	\$243,633.00
NOBLE	29	62	12	50	\$8,749.00	\$373.00	\$8,376.00
OTTAWA	106	230	64	166	\$32,544.00	\$246.00	\$32,298.00
PAULDING	92	213	75	138	\$30,143.00	\$638.00	\$29,505.00
PERRY	234	509	113	396	\$70,384.00	\$3,085.00	\$67,299.00
PICKAWAY	362	811	244	567	\$113,563.00	\$1,843.00	\$111,720.00
PIKE	325	695	141	554	\$101,495.00	\$1,971.00	\$99,524.00
PORTAGE	538	1,092	303	789	\$159,472.00	\$2,928.00	\$156,544.00
PREBLE	157	343	87	256	\$47,324.00	\$983.00	\$46,341.00
PUTNAM	64	135	41	94	\$21,657.00	\$2,677.00	\$18,980.00
RICHLAND	663	1,337	279	1,058	\$194,074.00	\$4,978.00	\$189,096.00
ROSS	623	1,324	334	990	\$189,086.00	\$5,503.00	\$183,583.00
SANDUSKY	174	316	61	255	\$48,956.00	\$0.00	\$48,956.00
SCIOTO	951	1,719	259	1,460	\$271,704.00	\$7,953.00	\$263,751.00
SENECA	122	208	22	186	\$34,917.00	\$669.00	\$34,248.00
SHELBY	129	249	48	201	\$36,160.00	\$901.00	\$35,259.00
STARK	2,901	6,337	1,749	4,588	\$899,147.00	\$15,331.00	\$883,816.00
SUMMIT	5,060	11,039	3,055	7,984	\$1,582,284.00	\$37,869.00	\$1,544,415.00
TRUMBULL	1,432	2,903	615	2,288	\$425,866.00	\$7,706.00	\$418,160.00
TUSCARAWAS	393	844	242	602	\$118,901.00	\$4,055.00	\$114,846.00
UNION	184	412	127	285	\$54,701.00	\$1,681.00	\$53,020.00
VAN WERT	35	58	4	54	\$9,750.00	\$223.00	\$9,527.00
VINTON	150	327	80	247	\$44,604.00	\$0.00	\$44,604.00
WARREN	244	463	103	360	\$68,348.00	\$1,688.00	\$66,660.00
WASHINGTON	142	211	7	204	\$36,658.00	\$682.00	\$35,976.00
WAYNE	398	829	256	573	\$124,492.00	\$3,954.00	\$120,538.00
WILLIAMS	162	373	118	255	\$50,145.00	\$2,270.00	\$47,875.00
WOOD	237	452	103	349	\$72,153.00	\$446.00	\$71,707.00
WYANDOT	23	38	6	32	\$5,981.00	\$305.00	\$5,676.00

Source: GRP342RA Report from Management Information Services. Data includes ADC-Regular, ADC-Incapacitated, and Vendor Payments.

**TABLE 1
OWF UNEMPLOYED
FEBRUARY 2004**

OHIO COUNTY	ASSISTANCE GROUP	RECIPIENTS	ADULTS	CHILDREN	ACTUAL EXPENDITURES		
					GROSS AMOUNT	CANCELLED AMOUNT	NET AMOUNT
STATEWIDE	4,248	16,946	7,950	8,996	\$1,749,350.00	\$41,515.00	\$1,707,835.00
ADAMS	0	0	0	0	\$0.00	\$0.00	\$0.00
ALLEN	5	23	9	14	\$3,432.00	\$0.00	\$3,432.00
ASHLAND	9	42	18	24	\$4,579.00	\$0.00	\$4,579.00
ASHTABULA	55	217	109	108	\$25,946.00	\$1,219.00	\$24,727.00
ATHENS	108	397	197	200	\$39,545.00	\$373.00	\$39,172.00
AUGLAIZE	0	0	0	0	\$0.00	\$0.00	\$0.00
BELMONT	57	229	112	117	\$20,961.00	\$425.00	\$20,536.00
BROWN	3	10	6	4	\$1,207.00	\$0.00	\$1,207.00
BUTLER	23	54	18	36	\$6,560.00	\$98.00	\$6,462.00
CARROLL	12	49	24	25	\$5,007.00	\$0.00	\$5,007.00
CHAMPAIGN	6	21	12	9	\$2,360.00	\$0.00	\$2,360.00
CLARK	73	308	138	170	\$29,880.00	\$539.00	\$29,341.00
CLERMONT	22	81	42	39	\$10,465.00	\$0.00	\$10,465.00
CLINTON	1	3	2	1	\$649.00	\$0.00	\$649.00
COLUMBIANA	17	69	33	36	\$8,025.00	\$0.00	\$8,025.00
COSHOCTON	22	74	37	37	\$8,686.00	\$461.00	\$8,225.00
CRAWFORD	37	146	71	75	\$13,933.00	\$0.00	\$13,933.00
CUYAHOGA	420	1,764	809	955	\$177,982.00	\$5,388.00	\$172,594.00
DARKE	10	35	19	16	\$4,572.00	\$0.00	\$4,572.00
DEFIANCE	8	32	16	16	\$4,200.00	\$540.00	\$3,660.00
DELAWARE	24	104	44	60	\$11,715.00	\$0.00	\$11,715.00
ERIE	0	0	0	0	\$0.00	\$0.00	\$0.00
FAIRFIELD	77	298	152	146	\$30,916.00	\$1,709.00	\$29,207.00
FAYETTE	3	15	6	9	\$1,286.00	\$0.00	\$1,286.00
FRANKLIN	425	1,783	742	1,041	\$175,165.00	\$5,016.00	\$170,149.00
FULTON	2	9	4	5	\$711.00	\$0.00	\$711.00
GALLIA	90	353	171	182	\$33,463.00	\$1,473.00	\$31,990.00
GEAUGA	3	10	6	4	\$1,176.00	\$0.00	\$1,176.00
GREENE	33	124	65	59	\$13,334.00	\$0.00	\$13,334.00
GUERNSEY	16	62	32	30	\$7,176.00	\$0.00	\$7,176.00
HAMILTON	138	576	262	314	\$63,347.00	\$3,651.00	\$59,696.00
HANCOCK	11	42	22	20	\$5,852.00	\$539.00	\$5,313.00
HARDIN	2	9	4	5	\$960.00	\$0.00	\$960.00
HARRISON	7	26	14	12	\$2,426.00	\$0.00	\$2,426.00
HENRY	0	0	0	0	\$0.00	\$0.00	\$0.00
HIGHLAND	10	36	19	17	\$3,543.00	\$511.00	\$3,032.00
HOCKING	34	124	67	57	\$15,048.00	\$0.00	\$15,048.00
HOLMES	3	10	6	4	\$1,107.00	\$0.00	\$1,107.00
HURON	5	8	0	8	\$1,347.00	\$0.00	\$1,347.00
JACKSON	22	87	44	43	\$9,893.00	\$0.00	\$9,893.00
JEFFERSON	90	371	178	193	\$38,125.00	\$2,076.00	\$36,049.00
KNOX	17	73	34	39	\$5,766.00	\$0.00	\$5,766.00
LAKE	63	172	54	118	\$21,049.00	\$373.00	\$20,676.00
LAWRENCE	56	215	110	105	\$21,258.00	\$0.00	\$21,258.00

Source: GRP342RA Report from Management Information Services. Data includes ADC-Unemployed and Vendor Payments.

**TABLE 1
OWF UNEMPLOYED
FEBRUARY 2004**

OHIO COUNTY	ASSISTANCE GROUP	RECIPIENTS	ADULTS	CHILDREN	ACTUAL EXPENDITURES		
					GROSS AMOUNT	CANCELLED AMOUNT	NET AMOUNT
STATEWIDE	4,248	16,946	7,950	8,996	\$1,749,350.00	\$41,515.00	\$1,707,835.00
LICKING	62	226	115	111	\$24,018.00	\$0.00	\$24,018.00
LOGAN	16	72	32	40	\$6,782.00	\$0.00	\$6,782.00
LORAIN	127	521	239	282	\$60,937.00	\$600.00	\$60,337.00
LUCAS	445	1,769	817	952	\$174,958.00	\$4,735.00	\$170,223.00
MADISON	23	101	45	56	\$10,192.00	\$523.00	\$9,669.00
MAHONING	120	515	233	282	\$53,091.00	\$34.00	\$53,057.00
MARION	5	14	6	8	\$1,631.00	\$0.00	\$1,631.00
MEDINA	23	95	45	50	\$11,000.00	\$0.00	\$11,000.00
MEIGS	17	62	32	30	\$7,506.00	\$0.00	\$7,506.00
MERCER	13	55	24	31	\$5,773.00	\$0.00	\$5,773.00
MIAMI	3	12	6	6	\$1,274.00	\$0.00	\$1,274.00
MONROE	15	53	27	26	\$5,122.00	\$0.00	\$5,122.00
MONTGOMERY	49	173	87	86	\$19,037.00	\$886.00	\$18,151.00
MORGAN	3	10	6	4	\$875.00	\$0.00	\$875.00
MORROW	15	55	30	25	\$5,886.00	\$0.00	\$5,886.00
MUSKINGUM	80	318	153	165	\$31,026.00	\$0.00	\$31,026.00
NOBLE	4	17	8	9	\$1,493.00	\$0.00	\$1,493.00
OTTAWA	15	64	29	35	\$5,802.00	\$0.00	\$5,802.00
PAULDING	11	44	22	22	\$4,464.00	\$461.00	\$4,003.00
PERRY	23	96	46	50	\$9,387.00	\$0.00	\$9,387.00
PICKAWAY	57	241	113	128	\$24,669.00	\$373.00	\$24,296.00
PIKE	24	91	46	45	\$9,303.00	\$0.00	\$9,303.00
PORTAGE	16	63	30	33	\$6,578.00	\$371.00	\$6,207.00
PREBLE	12	45	23	22	\$4,920.00	\$0.00	\$4,920.00
PUTNAM	9	25	12	13	\$3,095.00	\$0.00	\$3,095.00
RICHLAND	11	44	20	24	\$6,177.00	\$0.00	\$6,177.00
ROSS	47	194	91	103	\$18,558.00	\$0.00	\$18,558.00
SANDUSKY	10	22	9	13	\$2,984.00	\$446.00	\$2,538.00
SCIOTO	53	200	101	99	\$21,096.00	\$0.00	\$21,096.00
SENECA	2	4	2	2	\$596.00	\$0.00	\$596.00
SHELBY	1	1	0	1	\$200.00	\$0.00	\$200.00
STARK	270	1,108	531	577	\$111,691.00	\$3,266.00	\$108,425.00
SUMMIT	373	1,498	735	763	\$157,397.00	\$4,084.00	\$153,313.00
TRUMBULL	69	301	138	163	\$29,193.00	\$0.00	\$29,193.00
TUSCARAWAS	63	254	119	135	\$25,943.00	\$0.00	\$25,943.00
UNION	40	152	77	75	\$15,696.00	\$543.00	\$15,153.00
VAN WERT	0	0	0	0	\$0.00	\$0.00	\$0.00
VINTON	27	100	53	47	\$9,851.00	\$802.00	\$9,049.00
WARREN	6	19	10	9	\$1,829.00	\$0.00	\$1,829.00
WASHINGTON	0	0	0	0	\$0.00	\$0.00	\$0.00
WAYNE	42	150	81	69	\$16,922.00	\$0.00	\$16,922.00
WILLIAMS	12	46	24	22	\$5,012.00	\$0.00	\$5,012.00
WOOD	13	46	22	24	\$3,848.00	\$0.00	\$3,848.00
WYANDOT	3	9	3	6	\$886.00	\$0.00	\$886.00

**TABLE 2
TITLE IV-E FOSTER CARE
FEBRUARY 2004**

OHIO COUNTY	FOSTER CARE						ADOPTION ASSISTANCE		TOTAL FOSTER CARE AND ADOPTION ASSISTANCE	
	FOSTER FAMILY HOMES		CHILD CARE INSTITUTIONS		HOMES & INSTITUTIONS		CHILDREN	GROSS AMOUNT	CHILDREN	GROSS AMOUNT
	CHILDREN	GROSS AMOUNT	CHILDREN	GROSS AMOUNT	CHILDREN	GROSS AMOUNT				
STATEWIDE	2,989	\$1,220,841.99	4,101	\$5,076,527.42	7,090	\$6,297,369.41	18,871	\$7,165,105.82	25,961	\$13,462,475.23
ADAMS	16	\$2,787.62	5	\$9,308.54	21	\$12,096.16	38	\$9,500.00	59	\$21,596.16
ALLEN	68	\$22,272.54	30	\$31,424.67	98	\$53,697.21	132	\$37,992.58	230	\$91,689.79
ASHLAND	1	\$284.30	0	\$0.00	1	\$284.30	10	\$2,475.00	11	\$2,759.30
ASHTABULA	0	\$0.00	2	\$821.50	2	\$821.50	155	\$55,585.39	157	\$56,406.89
ATHENS	38	\$12,613.49	40	\$47,712.99	78	\$60,326.48	103	\$33,310.55	181	\$93,637.03
AUGLAIZE	9	\$4,397.19	3	\$3,061.44	12	\$7,458.63	36	\$13,738.93	48	\$21,197.56
BELMONT	3	\$1,005.72	20	\$17,508.89	23	\$18,514.61	111	\$43,098.12	134	\$61,612.73
BROWN	12	\$5,749.12	0	\$0.00	12	\$5,749.12	35	\$9,958.95	47	\$15,708.07
BUTLER	100	\$38,819.48	123	\$117,477.33	223	\$156,296.81	509	\$152,854.97	732	\$309,151.78
CARROLL	7	\$4,680.89	0	\$0.00	7	\$4,680.89	6	\$1,500.00	13	\$6,180.89
CHAMPAIGN	1	\$544.32	15	\$13,825.58	16	\$14,369.90	13	\$4,138.42	29	\$18,508.32
CLARK	1	\$1,229.61	74	\$38,658.85	75	\$39,888.46	300	\$95,123.68	375	\$135,012.14
CLERMONT	59	\$27,182.02	91	\$133,985.35	150	\$161,167.37	192	\$52,339.70	342	\$213,507.07
CLINTON	26	\$17,149.03	2	\$9,577.28	28	\$26,726.31	51	\$17,414.26	79	\$44,140.57
COLUMBIANA	27	\$5,359.02	31	\$52,784.61	58	\$58,143.63	60	\$16,641.45	118	\$74,785.08
COSHOCTON	14	\$8,382.18	0	\$0.00	14	\$8,382.18	44	\$13,458.01	58	\$21,840.19
CRAWFORD	0	\$0.00	17	\$4,057.50	17	\$4,057.50	33	\$8,689.09	50	\$12,746.59
CUYAHOGA	664	\$259,479.84	1,178	\$1,952,628.90	1,842	\$2,212,108.74	4,547	\$2,200,082.77	6,389	\$4,412,191.51
DARKE	8	\$760.18	7	\$17,038.78	15	\$17,798.96	28	\$8,784.03	43	\$26,582.99
DEFIANCE	9	\$2,805.60	1	\$1,075.45	10	\$3,881.05	34	\$10,365.73	44	\$14,246.78
DELAWARE	13	\$2,884.50	11	\$38,352.70	24	\$41,237.20	60	\$18,094.71	84	\$59,331.91
ERIE	27	\$14,248.26	36	\$58,686.99	63	\$72,935.25	87	\$26,876.38	150	\$99,811.63
FAIRFIELD	0	\$0.00	0	\$0.00	0	\$0.00	127	\$34,205.77	127	\$34,205.77
FAYETTE	5	\$1,889.42	0	\$0.00	5	\$1,889.42	15	\$3,750.00	20	\$5,639.42
FRANKLIN	0	\$0.00	995	\$375,743.86	995	\$375,743.86	2,418	\$840,600.71	3,413	\$1,216,344.57
FULTON	1	\$240.47	18	\$23,797.64	19	\$24,038.11	15	\$4,342.28	34	\$28,380.39
GALLIA	11	\$3,572.71	5	\$4,601.68	16	\$8,174.39	42	\$10,965.00	58	\$19,139.39
GEAUGA	10	\$5,103.21	9	\$36,675.13	19	\$41,778.34	105	\$34,695.13	124	\$76,473.47
GREENE	0	\$0.00	17	\$12,852.62	17	\$12,852.62	84	\$25,258.17	101	\$38,110.79
GUERNSEY	28	\$15,030.61	20	\$25,637.57	48	\$40,668.18	73	\$22,171.91	121	\$62,840.09
HAMILTON	0	\$0.00	121	\$34,971.71	121	\$34,971.71	1,472	\$654,962.69	1,593	\$689,934.40
HANCOCK	16	\$8,694.61	12	\$16,506.20	28	\$25,200.81	41	\$11,918.81	69	\$37,119.62
HARDIN	25	\$18,499.19	0	\$0.00	25	\$18,499.19	28	\$6,915.52	53	\$25,414.71
HARRISON	0	\$0.00	0	\$0.00	0	\$0.00	28	\$9,174.88	28	\$9,174.88
HENRY	0	\$0.00	11	\$18,181.71	11	\$18,181.71	23	\$7,599.24	34	\$25,780.95
HIGHLAND	12	\$6,020.12	7	\$8,557.87	19	\$14,577.99	14	\$5,025.11	33	\$19,603.10
HOCKING	26	\$9,515.76	7	\$8,812.89	33	\$18,328.65	43	\$13,598.28	76	\$31,926.93
HOLMES	13	\$5,341.04	0	\$0.00	13	\$5,341.04	27	\$11,125.29	40	\$16,466.33
HURON	31	\$17,081.72	3	\$8,106.64	34	\$25,188.36	26	\$8,431.56	60	\$33,619.92
JACKSON	0	\$0.00	16	\$40,340.27	16	\$40,340.27	15	\$3,750.00	31	\$44,090.27
JEFFERSON	41	\$21,113.53	39	\$144,222.35	80	\$165,335.88	53	\$19,631.39	133	\$184,967.27
KNOX	15	\$3,316.43	6	\$5,999.32	21	\$9,315.75	35	\$9,830.93	56	\$19,146.68
LAKE	33	\$15,649.53	24	\$94,959.06	57	\$110,608.59	145	\$38,317.13	202	\$148,925.72
LAWRENCE	8	\$3,779.44	0	\$0.00	8	\$3,779.44	30	\$8,240.37	38	\$12,019.81

SOURCE: GBS003RB Report from Management Information Services. Federal funds only.

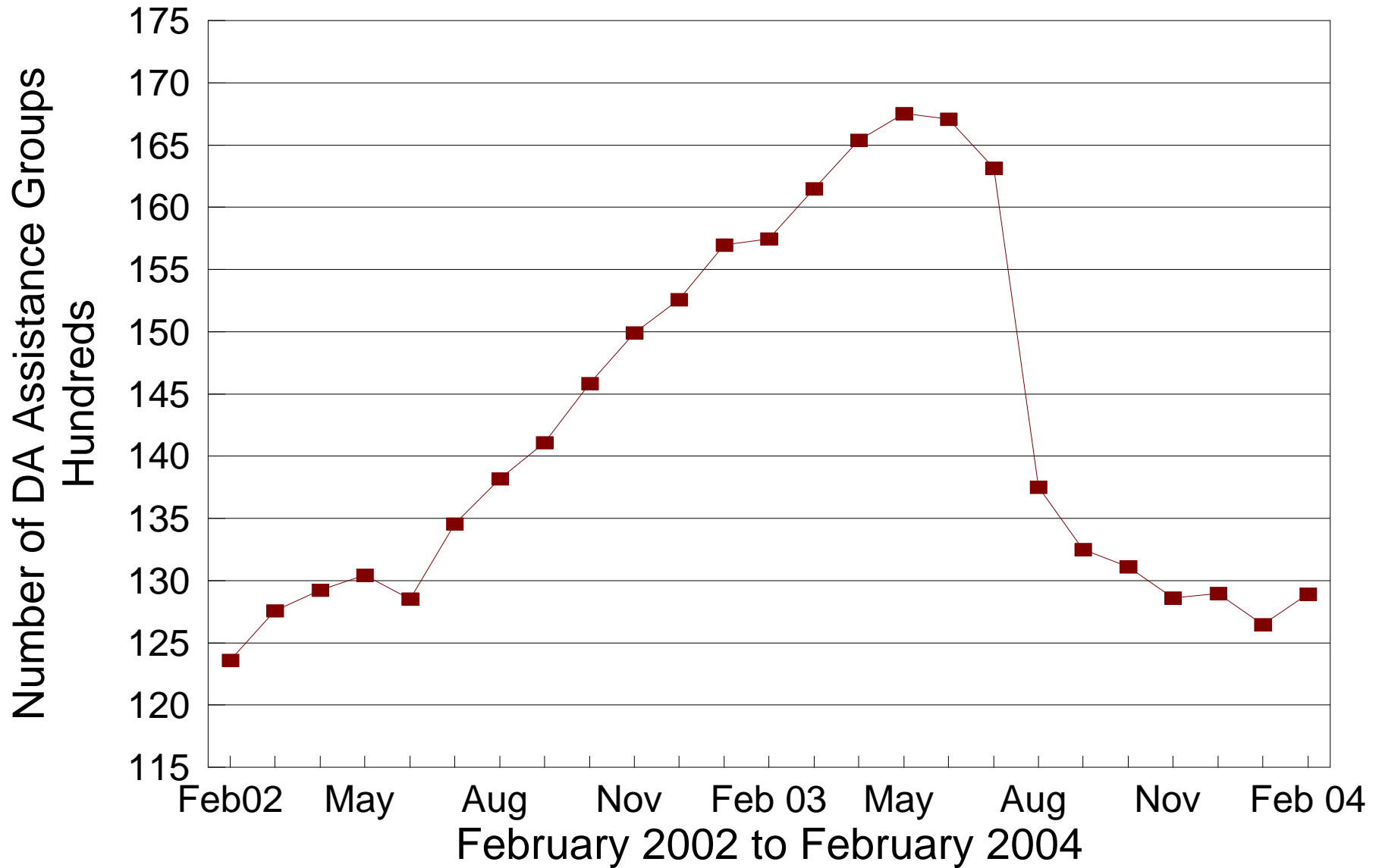
**TABLE 2
TITLE IV-E FOSTER CARE
FEBRUARY 2004**

OHIO COUNTY	FOSTER CARE						ADOPTION ASSISTANCE		TOTAL FOSTER CARE AND ADOPTION ASSISTANCE	
	FOSTER FAMILY HOMES		CHILD CARE INSTITUTIONS		HOMES & INSTITUTIONS		CHILDREN	GROSS AMOUNT	CHILDREN	GROSS AMOUNT
	CHILDREN	GROSS AMOUNT	CHILDREN	GROSS AMOUNT	CHILDREN	GROSS AMOUNT				
STATEWIDE	2,989	\$1,220,841.99	4,101	\$5,076,527.42	7,090	\$6,297,369.41	18,871	\$7,165,105.82	25,961	\$13,462,475.23
LICKING	57	\$23,337.54	99	\$119,324.89	156	\$142,662.43	293	\$94,963.55	449	\$237,625.98
LOGAN	10	\$1,907.20	1	\$1,372.81	11	\$3,280.01	38	\$12,791.93	49	\$16,071.94
LORAIN	0	\$0.00	0	\$0.00	0	\$0.00	403	\$131,627.89	403	\$131,627.89
LUCAS	375	\$145,840.17	41	\$53,546.86	416	\$199,387.03	1,584	\$589,666.67	2,000	\$789,053.70
MADISON	0	\$0.00	12	\$15,426.79	12	\$15,426.79	26	\$8,234.24	38	\$23,661.03
MAHONING	124	\$72,757.79	0	\$0.00	124	\$72,757.79	236	\$67,771.08	360	\$140,528.87
MARION	22	\$4,972.90	0	\$0.00	22	\$4,972.90	74	\$24,014.20	96	\$28,987.10
MEDINA	0	\$0.00	0	\$0.00	0	\$0.00	79	\$26,726.56	79	\$26,726.56
MEIGS	3	\$1,116.47	7	\$5,735.45	10	\$6,851.92	3	\$750.00	13	\$7,601.92
MERCER	7	\$4,050.96	0	\$0.00	7	\$4,050.96	30	\$7,500.00	37	\$11,550.96
MIAMI	26	\$5,631.85	34	\$60,030.85	60	\$65,662.70	111	\$39,305.61	171	\$104,968.31
MONROE	6	\$2,513.76	3	\$6,551.88	9	\$9,065.64	8	\$2,592.28	17	\$11,657.92
MONTGOMERY	344	\$152,165.67	364	\$524,100.76	708	\$676,266.43	1,117	\$498,687.32	1,825	\$1,174,953.75
MORGAN	0	\$0.00	0	\$0.00	0	\$0.00	13	\$3,234.00	13	\$3,234.00
MORROW	1	\$944.71	0	\$0.00	1	\$944.71	42	\$11,497.99	43	\$12,442.70
MUSKINGUM	0	\$0.00	0	\$0.00	0	\$0.00	109	\$32,749.85	109	\$32,749.85
NOBLE	3	\$618.36	1	\$804.12	4	\$1,422.48	5	\$1,250.00	9	\$2,672.48
OTTAWA	0	\$0.00	1	\$1,526.93	1	\$1,526.93	3	\$898.07	4	\$2,425.00
PAULDING	3	\$628.42	3	\$9,929.07	6	\$10,557.49	21	\$5,812.67	27	\$16,370.16
PERRY	25	\$8,049.94	9	\$13,291.21	34	\$21,341.15	35	\$11,681.81	69	\$33,022.96
PICKAWAY	12	\$3,323.17	3	\$2,791.17	15	\$6,114.34	12	\$3,444.21	27	\$9,558.55
PIKE	1	\$687.06	15	\$12,710.70	16	\$13,397.76	22	\$5,860.91	38	\$19,258.67
PORTAGE	0	\$0.00	0	\$0.00	0	\$0.00	126	\$55,899.91	126	\$55,899.91
PREBLE	15	\$767.07	0	\$0.00	15	\$767.07	35	\$8,963.70	50	\$9,730.77
PUTNAM	1	\$601.18	2	\$2,688.50	3	\$3,289.68	13	\$3,250.00	16	\$6,539.68
RICHLAND	0	\$0.00	0	\$0.00	0	\$0.00	260	\$85,877.08	260	\$85,877.08
ROSS	12	\$2,648.06	34	\$25,580.93	46	\$28,228.99	35	\$11,291.50	81	\$39,520.49
SANDUSKY	21	\$3,107.02	8	\$20,088.03	29	\$23,195.05	55	\$14,960.74	84	\$38,155.79
SCIOTO	34	\$15,597.41	33	\$28,564.05	67	\$44,161.46	44	\$11,909.67	111	\$56,071.13
SENECA	20	\$9,876.58	0	\$0.00	20	\$9,876.58	84	\$22,114.38	104	\$31,990.96
SHELBY	4	\$2,266.66	5	\$7,281.61	9	\$9,548.27	59	\$19,730.76	68	\$29,279.03
STARK	0	\$0.00	165	\$70,520.48	165	\$70,520.48	923	\$270,550.09	1,088	\$341,070.57
SUMMIT	187	\$62,902.54	144	\$385,996.97	331	\$448,899.51	822	\$252,243.43	1,153	\$701,142.94
TRUMBULL	133	\$53,516.39	26	\$134,539.02	159	\$188,055.41	260	\$69,711.56	419	\$257,766.97
TUSCARAWAS	34	\$10,500.29	32	\$46,375.60	66	\$56,875.89	107	\$28,917.68	173	\$85,793.57
UNION	9	\$4,477.72	0	\$0.00	9	\$4,477.72	31	\$8,605.38	40	\$13,083.10
VAN WERT	2	\$825.18	5	\$26,669.17	7	\$27,494.35	23	\$9,397.56	30	\$36,891.91
VINTON	22	\$11,656.80	1	\$291.49	23	\$11,948.29	16	\$4,681.14	39	\$16,629.43
WARREN	24	\$7,051.25	6	\$7,882.55	30	\$14,933.80	89	\$27,533.77	119	\$42,467.57
WASHINGTON	10	\$4,347.44	0	\$0.00	10	\$4,347.44	36	\$9,821.52	46	\$14,168.96
WAYNE	53	\$22,151.78	26	\$56,314.68	79	\$78,466.46	66	\$25,847.31	145	\$104,313.77
WILLIAMS	3	\$807.30	5	\$6,403.45	8	\$7,210.75	21	\$5,694.21	29	\$12,904.96
WOOD	2	\$584.00	16	\$18,107.36	18	\$18,691.36	46	\$16,038.80	64	\$34,730.16
WYANDOT	6	\$11,128.65	4	\$4,126.17	10	\$15,254.82	13	\$4,471.90	23	\$19,726.72

SOURCE: GBS003RB Report from Management Information Services. Federal funds only.

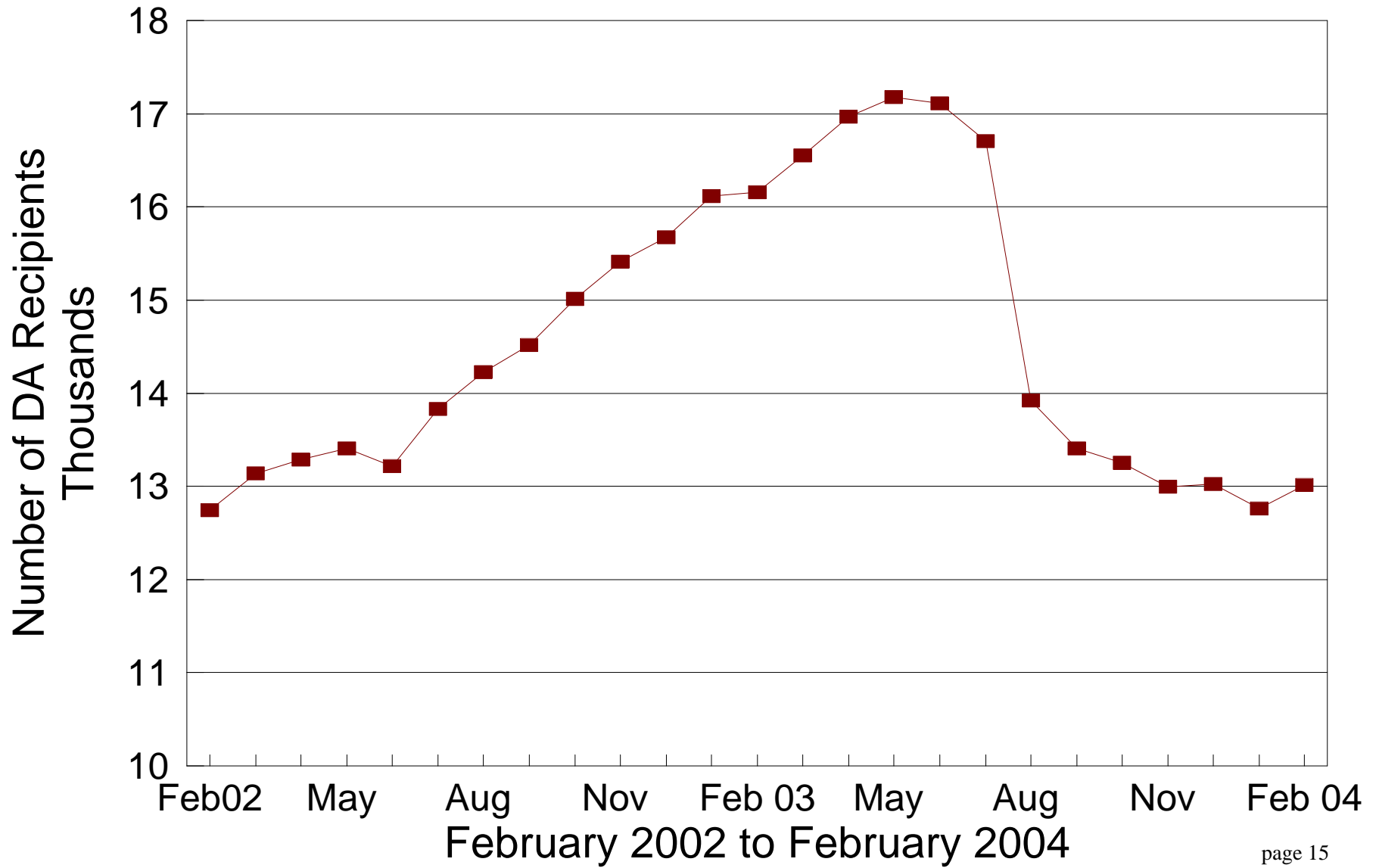
DA Cash Assistance Groups

During the Last 25 Months



DA Cash Recipients

During the Last 25 Months



**TABLE 3
DISABILITY ASSISTANCE (DA)
FEBRUARY 2004**

OHIO COUNTY	CASH ASSISTANCE							MEDICAL ASSISTANCE	
	ASSISTANCE GROUPS	RECIPIENTS	ADULTS	CHILDREN	ACTUAL EXPENDITURES			UNDUPLICATED RECIPIENTS	ACTUAL AMOUNT PAID
					GROSS AMOUNT	CANCELLED AMOUNT	NET AMOUNT		
STATEWIDE	12,893	13,013	13,013	0	\$1,834,365.00	\$125,610.00	\$1,708,755.00	14,285	\$5,630,494.49
ADAMS	74	75	75	0	\$12,344.00	\$115.00	\$12,229.00	72	\$29,679.76
ALLEN	74	74	74	0	\$9,278.00	\$115.00	\$9,163.00	75	\$33,314.60
ASHLAND	32	33	33	0	\$7,064.00	\$115.00	\$6,949.00	34	\$11,614.51
ASHTABULA	295	296	296	0	\$42,098.00	\$2,010.00	\$40,088.00	118	\$38,330.11
ATHENS	208	210	210	0	\$35,952.00	\$575.00	\$35,377.00	90	\$27,004.73
AUGLAIZE	22	22	22	0	\$3,836.00	\$115.00	\$3,721.00	35	\$15,987.22
BELMONT	134	135	135	0	\$18,859.00	\$1,006.00	\$17,853.00	82	\$25,224.03
BROWN	36	36	36	0	\$5,304.00	\$0.00	\$5,304.00	55	\$23,311.40
BUTLER	414	415	415	0	\$54,589.00	\$920.00	\$53,669.00	281	\$123,669.54
CARROLL	26	26	26	0	\$6,691.00	\$1,380.00	\$5,311.00	26	\$11,400.26
CHAMPAIGN	39	40	40	0	\$4,790.00	\$115.00	\$4,675.00	45	\$26,106.04
CLARK	227	228	228	0	\$27,855.00	\$1,799.00	\$26,056.00	280	\$142,208.46
CLERMONT	163	164	164	0	\$23,671.00	\$2,147.00	\$21,524.00	89	\$39,042.44
CLINTON	52	52	52	0	\$6,497.00	\$0.00	\$6,497.00	32	\$18,653.76
COLUMBIANA	138	139	139	0	\$25,563.00	\$1,571.00	\$23,992.00	142	\$63,801.21
COSHOCTON	63	63	63	0	\$7,660.00	\$575.00	\$7,085.00	88	\$22,545.99
CRAWFORD	37	37	37	0	\$4,173.00	\$115.00	\$4,058.00	33	\$14,420.04
CUYAHOGA	1,814	1,837	1,837	0	\$228,211.00	\$33,589.00	\$194,622.00	2,946	\$933,541.87
DARKE	32	33	33	0	\$3,730.00	\$115.00	\$3,615.00	21	\$8,832.37
DEFIANCE	11	11	11	0	\$2,651.00	\$0.00	\$2,651.00	37	\$17,520.72
DELAWARE	62	62	62	0	\$15,651.00	\$0.00	\$15,651.00	62	\$25,447.32
ERIE	50	50	50	0	\$10,120.00	\$115.00	\$10,005.00	50	\$23,191.83
FAIRFIELD	86	87	87	0	\$9,862.00	\$575.00	\$9,287.00	75	\$42,230.52
FAYETTE	20	21	21	0	\$2,827.00	\$115.00	\$2,712.00	43	\$18,307.88
FRANKLIN	1,109	1,131	1,131	0	\$162,260.00	\$19,687.00	\$142,573.00	1,493	\$734,210.48
FULTON	22	22	22	0	\$3,502.00	\$500.00	\$3,002.00	20	\$4,716.66
GALLIA	45	45	45	0	\$5,190.00	\$0.00	\$5,190.00	109	\$48,905.31
GEAUGA	25	25	25	0	\$2,662.00	\$0.00	\$2,662.00	14	\$11,274.47
GREENE	165	165	165	0	\$19,214.00	\$1,736.00	\$17,478.00	129	\$50,296.86
GUERNSEY	119	120	120	0	\$16,993.00	\$1,174.00	\$15,819.00	42	\$12,597.72
HAMILTON	823	825	825	0	\$128,020.00	\$11,640.00	\$116,380.00	539	\$199,690.33
HANCOCK	55	55	55	0	\$9,302.00	\$180.00	\$9,122.00	59	\$25,154.21
HARDIN	20	20	20	0	\$3,790.00	\$115.00	\$3,675.00	25	\$9,676.11
HARRISON	41	41	41	0	\$6,102.00	\$0.00	\$6,102.00	17	\$4,815.06
HENRY	10	10	10	0	\$1,000.00	\$345.00	\$655.00	15	\$4,008.30
HIGHLAND	57	57	57	0	\$6,978.00	\$0.00	\$6,978.00	57	\$23,625.81
HOCKING	44	44	44	0	\$8,198.00	\$0.00	\$8,198.00	42	\$18,599.45
HOLMES	27	27	27	0	\$3,190.00	\$0.00	\$3,190.00	14	\$4,036.30
HURON	36	37	37	0	\$4,885.00	\$230.00	\$4,655.00	33	\$23,721.91
JACKSON	96	96	96	0	\$12,288.00	\$1,446.00	\$10,842.00	73	\$29,498.09
JEFFERSON	168	168	168	0	\$27,039.00	\$2,238.00	\$24,801.00	153	\$59,078.58
KNOX	73	73	73	0	\$11,111.00	\$345.00	\$10,766.00	57	\$20,939.68
LAKE	158	158	158	0	\$22,625.00	\$460.00	\$22,165.00	118	\$43,006.43
LAWRENCE	77	77	77	0	\$13,241.00	\$230.00	\$13,011.00	107	\$53,420.80

*SOURCE: GRP342RA Report from Management Information Services and BOMC 9260-R001 Report from Medicaid Management Information Services.

**TABLE 3
DISABILITY ASSISTANCE (DA)
FEBRUARY 2004**

OHIO COUNTY	CASH ASSISTANCE							MEDICAL ASSISTANCE	
	ASSISTANCE GROUPS	RECIPIENTS	ADULTS	CHILDREN	ACTUAL EXPENDITURES			UNDUPLICATED RECIPIENTS	ACTUAL AMOUNT PAID
					GROSS AMOUNT	CANCELLED AMOUNT	NET AMOUNT		
STATEWIDE	12,893	13,013	13,013	0	\$1,834,365.00	\$125,610.00	\$1,708,755.00	14,285	\$5,630,494.49
LICKING	173	177	177	0	\$29,973.00	\$2,918.00	\$27,055.00	99	\$39,800.29
LOGAN	33	33	33	0	\$3,795.00	\$0.00	\$3,795.00	48	\$14,281.59
LORAIN	274	274	274	0	\$35,970.00	\$3,949.00	\$32,021.00	294	\$110,601.57
LUCAS	593	598	598	0	\$83,127.00	\$4,521.00	\$78,606.00	883	\$305,262.93
MADISON	27	27	27	0	\$3,061.00	\$115.00	\$2,946.00	39	\$21,149.50
MAHONING	369	372	372	0	\$50,038.00	\$3,391.00	\$46,647.00	544	\$227,768.00
MARION	91	92	92	0	\$14,167.00	\$271.00	\$13,896.00	52	\$22,266.65
MEDINA	87	87	87	0	\$11,304.00	\$345.00	\$10,959.00	69	\$22,289.92
MEIGS	59	59	59	0	\$8,328.00	\$0.00	\$8,328.00	83	\$27,909.07
MERCER	25	25	25	0	\$4,354.00	\$126.00	\$4,228.00	16	\$4,908.71
MIAMI	57	57	57	0	\$9,010.00	\$0.00	\$9,010.00	40	\$16,647.90
MONROE	12	12	12	0	\$1,380.00	\$0.00	\$1,380.00	29	\$8,196.18
MONTGOMERY	451	462	462	0	\$62,781.00	\$2,477.00	\$60,304.00	904	\$405,689.04
MORGAN	37	37	37	0	\$4,112.00	\$115.00	\$3,997.00	29	\$8,934.48
MORROW	19	19	19	0	\$2,185.00	\$115.00	\$2,070.00	58	\$20,001.03
MUSKINGUM	199	200	200	0	\$27,344.00	\$230.00	\$27,114.00	121	\$40,525.59
NOBLE	18	18	18	0	\$2,110.00	\$0.00	\$2,110.00	14	\$3,126.01
OTTAWA	19	19	19	0	\$2,165.00	\$115.00	\$2,050.00	27	\$12,051.90
PAULDING	17	17	17	0	\$3,294.00	\$0.00	\$3,294.00	18	\$6,021.30
PERRY	65	67	67	0	\$7,637.00	\$378.00	\$7,259.00	62	\$26,113.92
PICKAWAY	46	47	47	0	\$5,664.00	\$115.00	\$5,549.00	59	\$26,542.34
PIKE	60	60	60	0	\$7,560.00	\$0.00	\$7,560.00	66	\$19,979.67
PORTAGE	127	127	127	0	\$23,953.00	\$460.00	\$23,493.00	106	\$44,491.58
PREBLE	22	22	22	0	\$3,880.00	\$115.00	\$3,765.00	24	\$10,944.20
PUTNAM	11	11	11	0	\$1,124.00	\$115.00	\$1,009.00	9	\$4,403.47
RICHLAND	170	172	172	0	\$23,998.00	\$678.00	\$23,320.00	101	\$44,100.25
ROSS	102	102	102	0	\$13,196.00	\$230.00	\$12,966.00	113	\$43,783.44
SANDUSKY	41	41	41	0	\$4,945.00	\$230.00	\$4,715.00	28	\$9,691.51
SCIOTO	226	229	229	0	\$32,216.00	\$2,144.00	\$30,072.00	122	\$41,447.09
SENECA	44	45	45	0	\$5,894.00	\$0.00	\$5,894.00	60	\$23,202.99
SHELBY	17	17	17	0	\$2,533.00	\$0.00	\$2,533.00	34	\$11,188.99
STARK	493	499	499	0	\$69,246.00	\$5,609.00	\$63,637.00	349	\$144,805.23
SUMMIT	644	653	653	0	\$97,657.00	\$2,487.00	\$95,170.00	1,155	\$433,096.29
TRUMBULL	355	356	356	0	\$51,458.00	\$2,645.00	\$48,813.00	222	\$85,756.85
TUSCARAWAS	86	87	87	0	\$15,519.00	\$115.00	\$15,404.00	86	\$34,538.91
UNION	19	19	19	0	\$2,645.00	\$230.00	\$2,415.00	59	\$27,698.84
VAN WERT	14	14	14	0	\$1,610.00	\$0.00	\$1,610.00	9	\$2,656.85
VINTON	33	33	33	0	\$4,197.00	\$609.00	\$3,588.00	49	\$21,678.95
WARREN	46	47	47	0	\$9,261.00	\$115.00	\$9,146.00	69	\$32,171.07
WASHINGTON	102	103	103	0	\$13,598.00	\$230.00	\$13,368.00	37	\$15,388.19
WAYNE	252	256	256	0	\$30,797.00	\$2,794.00	\$28,003.00	69	\$53,286.66
WILLIAMS	20	20	20	0	\$2,806.00	\$115.00	\$2,691.00	26	\$8,197.08
WOOD	50	50	50	0	\$6,561.00	\$0.00	\$6,561.00	56	\$21,103.75
WYANDOT	9	9	9	0	\$1,046.00	\$0.00	\$1,046.00	21	\$10,135.54
UNKNOWN									\$0.00

*SOURCE: GRP342RA Report from Management Information Services and BOMC 9260-R001 Report from Medicaid Management Information Services.

**TABLE 3-A
DA PAYMENTS FOR MEDICAL SERVICES
FEBRUARY 2004**

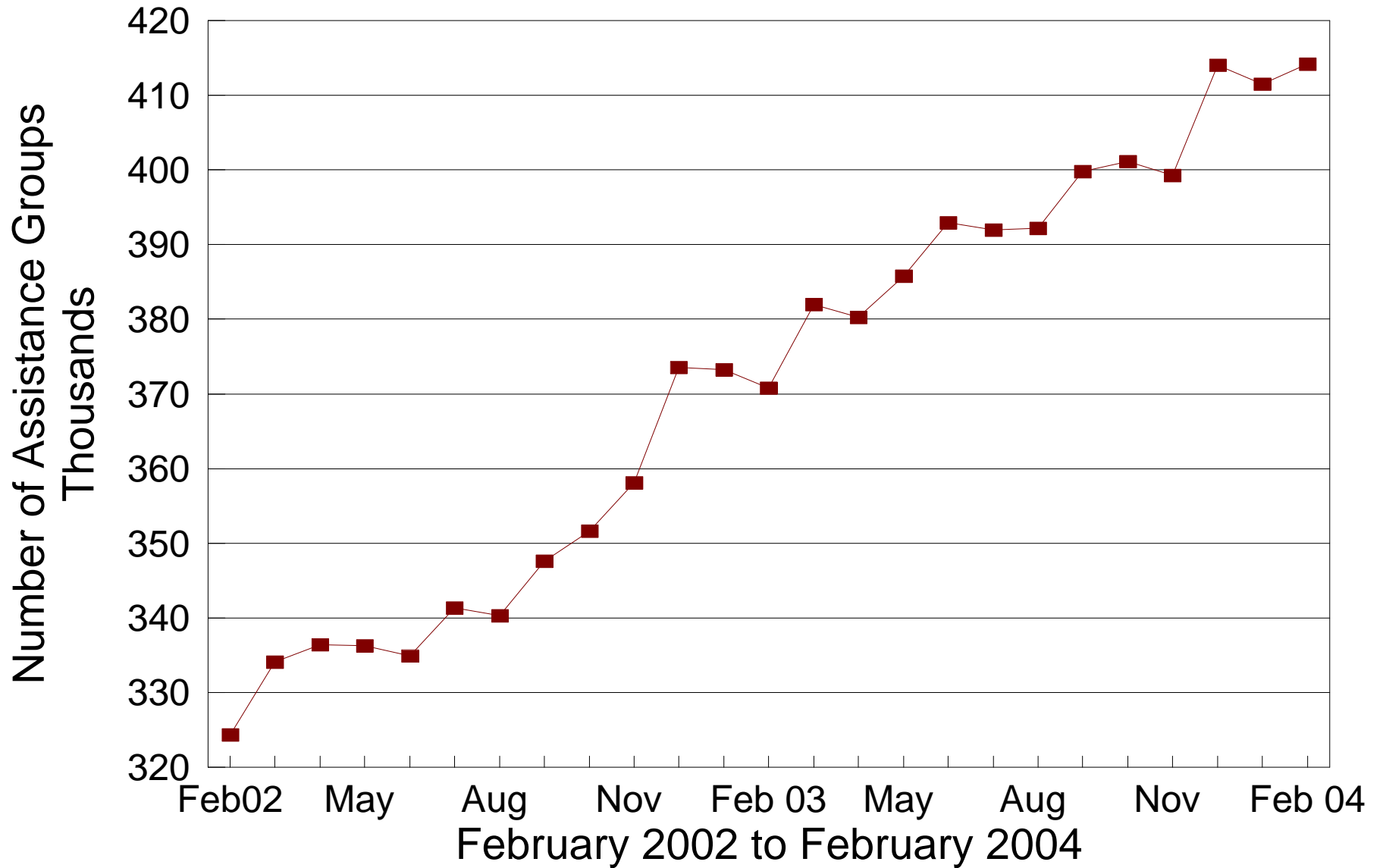
CATEGORY OF SERVICES	DISABILITY ASSISTANCE			
	PAYMENTS	CLAIM FREQUENCY	DUPLICATED RECIPIENTS	PERCENT OF TOTAL
AMBULANCE SERVICES	\$0.00	0	0	0.0%
AMBULATORY SURGERY	\$27,198.72	65	61	0.5%
AMBULETTE SERVICES	\$0.00	0	0	0.0%
CHIROPRACTER SERVICES	\$0.00	0	0	0.0%
CLINIC	\$66,908.91	1,463	746	1.2%
DENTAL SERVICES	\$20,447.58	229	205	0.4%
EPSDT	\$0.00	0	0	0.0%
FAMILY PLANNING	\$1,131.96	23	20	0.0%
FEDERALLY QUALIFIED HEALTH CTR	\$0.00	1	1	0.0%
HEALTH MAINTENANCE ORGANIZATION	\$0.00	0	0	0.0%
HOME HEALTH SERVICES	\$0.00	0	0	0.0%
INDEPENDENT LABORATORY	\$36,971.97	818	619	0.7%
INPATIENT HOSPITAL	\$0.00	0	0	0.0%
ICF	\$0.00	0	0	0.0%
MIDWIFERY SERVICES	\$7,554.33	174	156	0.1%
OPTOMETRIC SERVICES	\$0.00	0	0	0.0%
OUTPATIENT HEALTH SERVICES	\$0.00	0	0	0.0%
PASSPORT WAIVER III	\$0.00	0	0	0.0%
OUTPATIENT HOSPITAL GENERAL	\$0.00	0	0	0.0%
PHYSICAL THERAPY SERVICES	\$0.00	0	0	0.0%
PHYSICIAN SERVICES	\$1,409,212.34	20,957	8,616	25.0%
PHYSIOLOGICAL LABORATORY	\$17,112.96	59	55	0.3%
PODIATRISTS THERAPY	\$26,026.00	456	309	0.5%
PRESCRIBED DRUGS	\$3,881,768.52	66,090	12,363	68.9%
PRIVATE DUTY NURSING SERVICES	\$0.00	0	0	0.0%
PSYCHOLOGY SERVICES	\$0.00	0	0	0.0%
RURAL HEALTH SERVICES	\$0.00	0	0	0.0%
SNF	\$0.00	0	0	0.0%
SUPPLIES AND MEDICAL EQUIPMENT	\$117,535.04	2,358	1,223	2.1%
WAIVERED SERVICES	\$18,626.16	152	144	0.3%
OTHER	\$0.00	0	0	0.0%
STATEWIDE TOTAL	\$5,630,494.49	92,845	24,518	100.00%

SOURCE: BOMC 9260 Report from Medicaid Management Information Services.

NOTE: Recipients are unduplicated within Category of Services, however, the Statewide Total represents a duplicated count.

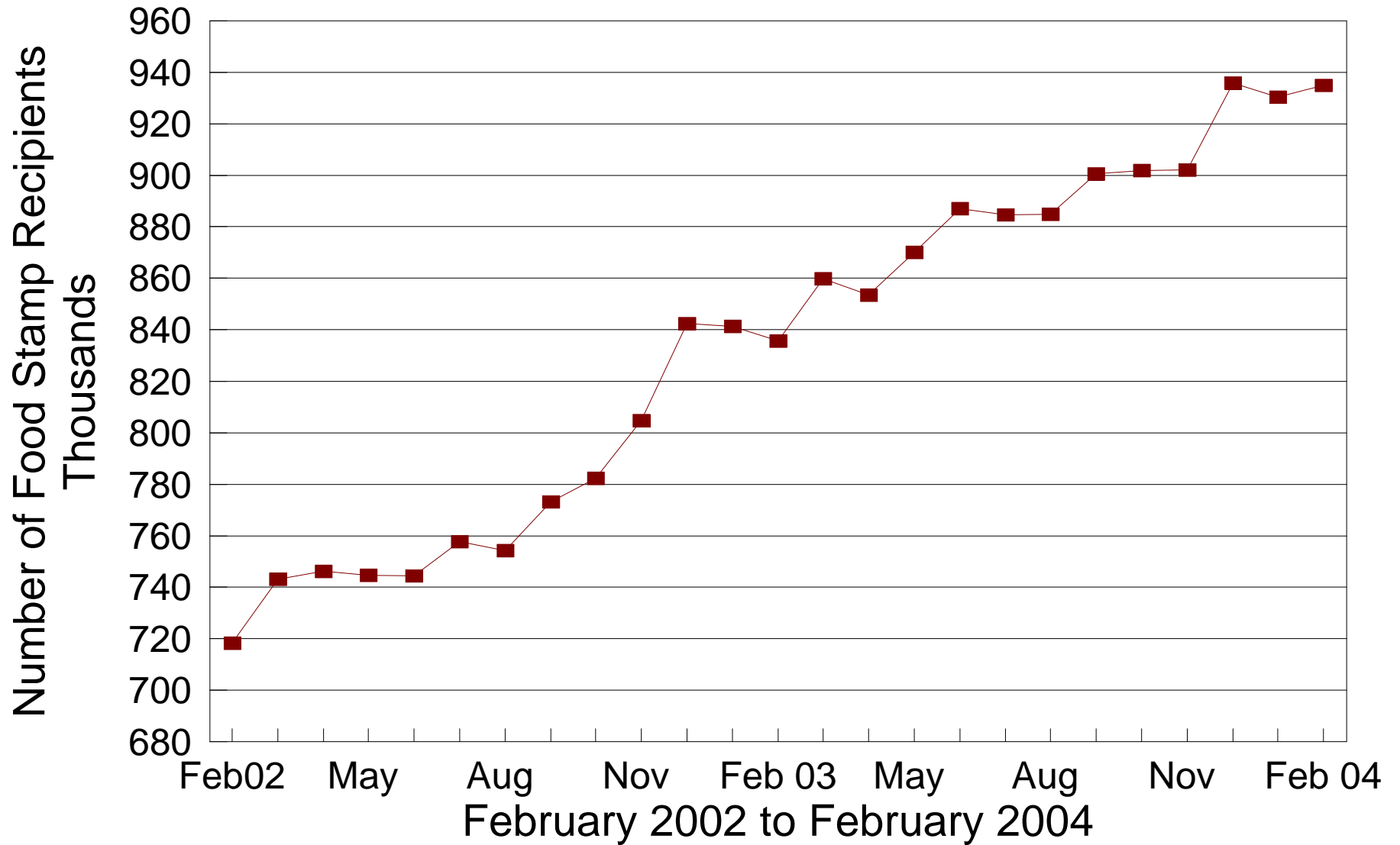
Number of FNS Benefits Assist. Groups

During the Last 25 Months



Number of FNS Benefits Recipients

During the Last 25 Months



**TABLE 5
FNS BENEFITS
FEBRUARY 2004**

COUNTY	PERSONS					ASSISTANCE GROUPS			TOTAL COUPONS ISSUED
	PUBLIC ASSISTANCE	NON-PUBLIC ASSISTANCE	TOTAL	AVERAGE ISSUANCE	% CHANGE PREV. MO.	PUBLIC ASSISTANCE	NON-PUBLIC ASSISTANCE	TOTAL	
STATEWIDE	111,201	823,675	934,876	\$89	0.5%	39,464	374,707	414,171	\$82,969,877.00
ADAMS	36	4,077	4,113	\$84	-0.6%	11	1,734	1,745	343,980.00
ALLEN	425	7,608	8,033	\$86	0.5%	140	3,263	3,403	688,148.00
ASHLAND	115	2,526	2,641	\$87	4.5%	36	1,035	1,071	229,906.00
ASHTABULA	1,022	9,034	10,056	\$86	0.9%	356	4,132	4,488	861,849.00
ATHENS	906	5,609	6,515	\$84	0.3%	307	2,814	3,121	547,722.00
AUGLAIZE	9	1,579	1,588	\$87	1.3%	3	692	695	138,091.00
BELMONT	665	6,336	7,001	\$79	0.9%	222	2,983	3,205	550,179.00
BROWN	89	3,273	3,362	\$83	1.4%	29	1,353	1,382	280,564.00
BUTLER	2,070	18,626	20,696	\$93	-0.1%	788	8,542	9,330	1,916,424.00
CARROLL	132	1,980	2,112	\$84	3.7%	47	824	871	176,909.00
CHAMPAIGN	210	1,926	2,136	\$86	-0.5%	77	851	928	182,903.00
CLARK	1,843	13,407	15,250	\$88	0.2%	653	6,191	6,844	1,337,038.00
CLERMONT	656	7,649	8,305	\$89	0.2%	244	3,244	3,488	739,805.00
CLINTON	138	2,374	2,512	\$86	2.5%	54	1,099	1,153	216,132.00
COLUMBIANA	563	10,160	10,723	\$86	0.1%	211	4,233	4,444	920,092.00
COSHOCTON	364	3,050	3,414	\$85	1.9%	130	1,340	1,470	289,281.00
CRAWFORD	403	3,577	3,980	\$83	0.1%	140	1,562	1,702	331,667.00
CUYAHOGA	15,050	148,768	163,818	\$90	0.3%	5,523	70,468	75,991	14,729,765.00
DARKE	222	1,737	1,959	\$86	6.2%	81	762	843	168,173.00
DEFIANCE	184	1,940	2,124	\$87	-0.4%	63	809	872	185,382.00
DELAWARE	394	3,171	3,565	\$87	-0.4%	134	1,445	1,579	311,357.00
ERIE	134	4,691	4,825	\$86	-0.1%	46	2,061	2,107	414,756.00
FAIRFIELD	864	6,273	7,137	\$86	0.5%	297	2,808	3,105	614,624.00
FAYETTE	143	2,097	2,240	\$82	1.1%	51	952	1,003	184,727.00
FRANKLIN	15,183	88,548	103,731	\$93	0.2%	5,210	39,152	44,362	9,667,897.00
FULTON	62	1,609	1,671	\$79	3.7%	18	684	702	132,808.00
GALLIA	750	3,979	4,729	\$83	0.6%	253	1,897	2,150	393,743.00
GEAUGA	98	1,305	1,403	\$87	2.6%	35	590	625	122,738.00
GREENE	899	6,934	7,833	\$90	1.6%	354	3,188	3,542	703,760.00
GUERNSEY	197	4,974	5,171	\$85	0.0%	71	2,202	2,273	439,176.00
HAMILTON	11,168	50,016	61,184	\$92	0.9%	3,838	22,275	26,113	5,619,654.00
HANCOCK	266	2,835	3,101	\$88	-2.6%	100	1,314	1,414	273,482.00
HARDIN	49	1,622	1,671	\$82	-2.4%	14	737	751	137,570.00
HARRISON	104	1,519	1,623	\$82	8.4%	36	698	734	132,475.00
HENRY	21	1,022	1,043	\$80	4.8%	8	413	421	83,489.00
HIGHLAND	162	3,728	3,890	\$84	2.0%	59	1,509	1,568	328,514.00
HOCKING	404	2,445	2,849	\$82	2.3%	141	1,065	1,206	232,504.00
HOLMES	58	1,059	1,117	\$76	2.5%	19	420	439	84,468.00
HURON	49	3,794	3,843	\$86	0.3%	15	1,551	1,566	329,373.00
JACKSON	455	4,308	4,763	\$84	1.2%	170	2,050	2,220	398,873.00
JEFFERSON	1,297	7,216	8,513	\$84	-0.8%	439	3,450	3,889	713,339.00
KNOX	328	3,106	3,434	\$86	-1.3%	115	1,417	1,532	295,532.00
LAKE	839	8,638	9,477	\$93	0.5%	300	3,955	4,255	881,121.00
LAWRENCE	718	9,438	10,156	\$81	-0.8%	249	4,490	4,739	819,639.00

Source: CRIS-E GRP304RA and GRP 304RC Reports from Management Information Services. Cuyahoga County data also comes from the GRP 342 RA.

**TABLE 5
FNS BENEFITS
FEBRUARY 2004**

COUNTY	PERSONS					ASSISTANCE GROUPS			TOTAL COUPONS ISSUED
	PUBLIC ASSISTANCE	NON-PUBLIC ASSISTANCE	TOTAL	AVERAGE ISSUANCE	% CHANGE PREV. MO.	PUBLIC ASSISTANCE	NON-PUBLIC ASSISTANCE	TOTAL	
STATEWIDE	111,201	823,675	934,876	\$89	0.5%	39,464	374,707	414,171	\$82,969,877.00
LICKING	999	8,511	9,510	\$89	1.2%	373	3,872	4,245	848,845.00
LOGAN	274	2,619	2,893	\$87	2.7%	88	1,096	1,184	252,483.00
LORAIN	2,951	21,947	24,898	\$89	0.4%	997	8,912	9,909	2,220,268.00
LUCAS	9,423	44,594	54,017	\$89	-0.1%	3,300	20,972	24,272	4,818,783.00
MADISON	304	1,872	2,176	\$87	3.4%	111	886	997	189,940.00
MAHONING	4,064	23,015	27,079	\$88	0.0%	1,399	10,967	12,366	2,375,399.00
MARION	238	5,468	5,706	\$84	-1.7%	92	2,496	2,588	477,571.00
MEDINA	332	3,715	4,047	\$93	2.3%	127	1,662	1,789	375,906.00
MEIGS	243	3,630	3,873	\$84	1.7%	91	1,633	1,724	324,985.00
MERCER	97	1,105	1,202	\$86	2.5%	30	526	556	103,077.00
MIAMI	422	3,553	3,975	\$88	0.2%	148	1,678	1,826	349,429.00
MONROE	120	1,320	1,440	\$78	-1.5%	39	595	634	112,140.00
MONTGOMERY	7,491	38,175	45,666	\$91	-0.0%	2,786	17,859	20,645	4,156,124.00
MORGAN	58	1,755	1,813	\$81	-1.5%	20	764	784	146,353.00
MORROW	153	2,258	2,411	\$83	1.8%	53	963	1,016	199,666.00
MUSKINGUM	1,245	10,451	11,696	\$85	0.3%	428	4,669	5,097	999,992.00
NOBLE	38	1,066	1,104	\$76	-0.9%	12	482	494	83,470.00
OTTAWA	224	1,617	1,841	\$88	0.2%	76	723	799	161,408.00
PAULDING	175	1,046	1,221	\$86	3.5%	60	473	533	104,658.00
PERRY	343	3,934	4,277	\$82	2.1%	117	1,668	1,785	350,108.00
PICKAWAY	639	3,727	4,366	\$87	2.1%	203	1,692	1,895	379,934.00
PIKE	398	4,464	4,862	\$83	2.6%	141	1,952	2,093	404,261.00
PORTAGE	802	6,407	7,209	\$94	1.6%	320	2,967	3,287	677,347.00
PREBLE	227	1,756	1,983	\$88	1.5%	76	752	828	174,206.00
PUTNAM	116	1,002	1,118	\$80	0.5%	43	433	476	89,450.00
RICHLAND	715	9,689	10,404	\$86	1.2%	251	4,270	4,521	897,642.00
ROSS	851	7,845	8,696	\$83	1.4%	292	3,363	3,655	725,142.00
SANDUSKY	196	2,932	3,128	\$88	1.6%	72	1,298	1,370	275,362.00
SCIOTO	896	12,796	13,692	\$80	-0.0%	310	6,151	6,461	1,101,958.00
SENECA	92	3,311	3,403	\$87	0.7%	30	1,425	1,455	294,450.00
SHELBY	141	1,947	2,088	\$87	2.0%	52	796	848	181,162.00
STARK	4,555	22,406	26,961	\$89	-0.3%	1,645	10,000	11,645	2,404,770.00
SUMMIT	7,929	38,328	46,257	\$92	0.6%	2,902	18,218	21,120	4,263,093.00
TRUMBULL	1,774	16,144	17,918	\$84	0.2%	628	6,809	7,437	1,513,695.00
TUSCARAWAS	744	5,791	6,535	\$84	2.8%	251	2,601	2,852	550,628.00
UNION	371	1,606	1,977	\$90	1.4%	130	717	847	177,799.00
VAN WERT	12	1,031	1,043	\$78	6.9%	4	451	455	81,175.00
VINTON	210	2,129	2,339	\$85	1.9%	75	904	979	198,348.00
WARREN	231	3,375	3,606	\$86	1.3%	90	1,481	1,571	308,411.00
WASHINGTON	43	4,852	4,895	\$83	2.5%	14	2,232	2,246	408,726.00
WAYNE	650	5,322	5,972	\$88	2.9%	254	2,451	2,705	525,057.00
WILLIAMS	262	1,693	1,955	\$85	0.3%	100	746	846	166,049.00
WOOD	383	3,271	3,654	\$87	2.2%	138	1,513	1,651	317,536.00
WYANDOT	26	637	663	\$81	-0.2%	9	335	344	53,442.00

Source: CRIS-E GRP304RA and GRP 304RC Reports from Management Information Services. Cuyahoga County data also comes from the GRP 342 RA.

Table 6A
February 2004

Medicaid Eligibles

County	Aged	Blind	Disabled	ABD Total	OWF & Related	Healthy Start	CFC Total	Total Medicaid	Foster Care	Adoption Assistance	Transitional	Nursing Facilities
STATEWIDE	131,313	896	234,344	366,553	959,813	248,677	1,208,490	1,575,043	10,948	18,209	121,629	54,471
ADAMS	739	5	1,343	2,087	4,150	1,186	5,336	7,423	24	39	604	129
ALLEN	1,136	5	2,015	3,156	8,354	2,407	10,761	13,917	107	132	1,037	543
ASHLAND	527	2	565	1,094	3,283	1,289	4,572	5,666	3	13	561	268
ASHTABULA	1,450	11	2,930	4,391	10,374	3,070	13,444	17,835	64	146	1,742	1,019
ATHENS	787	14	1,966	2,767	6,243	1,314	7,557	10,324	88	103	788	187
AUGLAIZE	392	3	427	822	2,183	860	3,043	3,865	13	38	415	255
BELMONT	1,372	5	2,109	3,486	6,973	1,714	8,687	12,173	52	109	1,073	559
BROWN	667	0	974	1,641	4,252	1,384	5,636	7,277	12	36	646	214
BUTLER	2,626	24	5,530	8,180	22,399	5,745	28,144	36,324	267	460	3,155	1,192
CARROLL	351	2	519	872	2,590	781	3,371	4,243	7	6	473	184
CHAMPAIGN	474	2	601	1,077	2,494	941	3,435	4,512	19	18	552	270
CLARK	1,943	6	3,693	5,642	14,864	3,326	18,190	23,832	159	298	1,944	1,051
CLERMONT	1,327	4	2,544	3,875	10,907	3,964	14,871	18,746	190	189	1,875	695
CLINTON	464	5	763	1,232	3,270	912	4,182	5,414	35	49	594	139
COLUMBIANA	1,479	13	2,540	4,032	11,305	3,296	14,601	18,633	82	73	1,664	635
COSHOCTON	506	2	881	1,389	3,407	1,115	4,522	5,911	24	45	471	279
CRAWFORD	597	8	913	1,518	4,655	1,091	5,746	7,264	38	34	841	221
CUYAHOGA	21,596	173	35,146	56,915	150,557	33,231	183,788	240,703	2,392	4,328	14,782	7,485
DARKE	534	0	643	1,177	2,566	1,085	3,651	4,828	16	39	406	338
DEFIANCE	332	2	527	861	2,604	1,016	3,620	4,481	12	30	507	173
DELAWARE	682	1	963	1,646	4,193	1,348	5,541	7,187	39	56	765	309
ERIE	766	4	1,172	1,942	5,495	1,562	7,057	8,999	92	81	762	404
FAIRFIELD	1,059	4	1,777	2,840	7,858	2,634	10,492	13,332	59	132	1,381	427
FAYETTE	531	1	805	1,337	2,644	869	3,513	4,850	6	15	418	309
FRANKLIN	10,409	91	21,946	32,446	106,924	25,859	132,783	165,229	1,826	2,188	11,228	3,884
FULTON	342	1	376	719	2,228	909	3,137	3,856	20	27	510	179
GALLIA	812	2	1,520	2,334	4,291	943	5,234	7,568	19	36	506	202
GEAUGA	605	2	500	1,107	2,073	823	2,896	4,003	21	106	446	344
GREENE	1,167	8	1,775	2,950	8,828	2,154	10,982	13,932	81	96	1,414	541
GUERNSEY	745	4	1,415	2,164	5,417	1,576	6,993	9,157	48	65	817	168
HAMILTON	9,456	81	17,580	27,117	64,463	17,810	82,273	109,390	887	1,388	6,026	3,842
HANCOCK	536	2	781	1,319	3,710	1,280	4,990	6,309	34	36	673	264
HARDIN	362	1	551	914	2,243	748	2,991	3,905	32	29	321	141
HARRISON	262	0	460	722	1,612	458	2,070	2,792	2	27	264	117
HENRY	240	0	296	536	1,527	735	2,262	2,798	13	23	332	130
HIGHLAND	740	2	1,049	1,791	4,423	1,610	6,033	7,824	23	14	620	244
HOCKING	441	4	755	1,200	3,177	1,045	4,222	5,422	35	41	475	158
HOLMES	445	2	457	904	1,632	719	2,351	3,255	11	27	293	419
HURON	510	2	816	1,328	4,702	1,553	6,255	7,583	40	30	777	184
JACKSON	767	1	1,409	2,177	4,519	1,203	5,722	7,899	17	16	735	189
JEFFERSON	1,124	18	2,483	3,625	7,820	1,421	9,241	12,866	76	68	1,003	397
KNOX	639	3	1,219	1,861	4,028	1,389	5,417	7,278	27	38	854	526
LAKE	1,567	3	2,326	3,896	10,234	3,179	13,413	17,309	70	133	1,695	1,048
LAWRENCE	1,478	6	3,476	4,960	8,766	2,122	10,888	15,848	58	34	1,038	356

Table 6A
February 2004

Medicaid Eligibles

County	Aged	Blind	Disabled	ABD Total	OWF & Related	Healthy Start	CFC Total	Total Medicaid	Foster Care	Adoption Assistance	Transitional	Nursing Facilities
STATEWIDE	131,313	896	234,344	366,553	959,813	248,677	1,208,490	1,575,043	10,948	18,209	121,629	54,471
LICKING	1,371	6	2,426	3,803	10,985	3,671	14,656	18,459	168	282	1,753	599
LOGAN	518	2	634	1,154	3,708	907	4,615	5,769	12	41	725	191
LORAIN	2,629	19	4,965	7,613	25,222	5,158	30,380	37,993	77	403	2,991	1,293
LUCAS	5,462	42	13,297	18,801	50,857	9,458	60,315	79,116	447	1,434	5,076	1,890
MADISON	350	2	577	929	2,307	759	3,066	3,995	12	24	430	123
MAHONING	3,710	22	6,770	10,502	26,513	5,118	31,631	42,133	150	230	3,029	1,551
MARION	802	4	1,726	2,532	5,659	1,746	7,405	9,937	37	80	865	286
MEDINA	832	12	1,194	2,038	5,707	2,023	7,730	9,768	23	71	1,111	612
MEIGS	548	5	1,035	1,588	3,557	776	4,333	5,921	10	3	496	134
MERCER	311	1	440	752	1,635	530	2,165	2,917	6	29	316	189
MIAMI	973	6	1,278	2,257	5,222	1,936	7,158	9,415	64	124	729	472
MONROE	276	3	399	678	1,503	404	1,907	2,585	9	10	253	99
MONTGOMERY	5,887	47	12,107	18,041	46,608	10,603	57,211	75,252	734	1,180	4,485	2,367
MORGAN	266	0	478	744	2,151	547	2,698	3,442	8	14	361	96
MORROW	381	2	577	960	2,981	857	3,838	4,798	7	47	646	173
MUSKINGUM	1,369	14	2,613	3,996	10,379	2,404	12,783	16,779	68	119	1,464	487
NOBLE	235	0	248	483	1,121	452	1,573	2,056	6	7	230	93
OTTAWA	404	2	470	876	2,107	847	2,954	3,830	1	3	462	198
PAULDING	178	2	349	529	1,243	525	1,768	2,297	7	17	209	43
PERRY	494	4	1,033	1,531	4,342	1,228	5,570	7,101	39	33	582	202
PICKAWAY	579	3	958	1,540	4,139	1,139	5,278	6,818	15	13	637	189
PIKE	682	0	1,508	2,190	4,462	1,154	5,616	7,806	28	23	645	265
PORTAGE	1,078	8	1,885	2,971	8,361	2,527	10,888	13,859	90	133	1,101	592
PREBLE	363	7	608	978	2,750	829	3,579	4,557	33	35	473	223
PUTNAM	257	3	352	612	1,327	540	1,867	2,479	4	7	238	234
RICHLAND	1,614	1	2,647	4,262	10,626	3,461	14,087	18,349	82	263	1,504	618
ROSS	1,089	2	2,219	3,310	8,659	1,985	10,644	13,954	83	35	1,317	289
SANDUSKY	697	7	924	1,628	3,859	1,460	5,319	6,947	21	57	606	401
SCIOTO	2,218	13	4,773	7,004	11,223	2,304	13,527	20,531	96	48	1,340	600
SENECA	671	3	999	1,673	3,807	1,583	5,390	7,063	41	89	650	336
SHELBY	385	5	542	932	2,806	1,080	3,886	4,818	10	53	445	194
STARK	4,466	26	6,567	11,059	30,376	7,435	37,811	48,870	515	910	4,404	2,251
SUMMIT	5,950	38	11,027	17,015	44,882	9,863	54,745	71,760	413	767	4,999	2,060
TRUMBULL	2,502	20	4,726	7,248	20,013	5,317	25,330	32,578	167	239	3,157	1,235
TUSCARAWAS	1,174	6	1,466	2,646	7,144	2,364	9,508	12,154	84	120	1,298	472
UNION	305	2	421	728	2,355	714	3,069	3,797	12	33	386	123
UNKNOWN	0	0	0	0	0	0	0	0	0	0	0	0
VAN WERT	270	0	381	651	1,459	860	2,319	2,970	9	24	298	147
VINTON	307	0	602	909	2,368	677	3,045	3,954	26	16	337	76
WARREN	1,199	5	1,511	2,715	5,369	2,233	7,602	10,317	37	87	746	818
WASHINGTON	937	7	1,618	2,562	5,442	2,028	7,470	10,032	15	42	908	338
WAYNE	1,021	9	1,719	2,749	6,224	2,342	8,566	11,315	92	84	1,050	463
WILLIAMS	424	3	457	884	2,711	838	3,549	4,433	9	22	564	223
WOOD	850	3	1,023	1,876	4,614	1,771	6,385	8,261	30	54	702	443
WYANDOT	295	1	259	555	793	548	1,341	1,896	11	13	128	165

Table 6B

February 2004

Medicaid Expenditures

County	Aged	Blind	Disabled	ABD Total	OWF & Related	Healthy Start	CFC Total	Total Medicaid	Foster Care	Adoption Assistance	Transitional	Nursing Facilities
STATEWIDE	\$274,868,524	\$1,046,858	\$391,643,361	\$667,558,743	\$189,196,715	\$53,572,312	\$242,769,027	\$910,717,273	\$6,232,633	\$4,028,154	\$16,480,482	\$299,722,274
ADAMS	\$1,038,927	\$3,157	\$1,521,502	\$2,563,587	\$828,385	\$193,408	\$1,021,793	\$3,595,626	\$4,263	\$2,801	\$89,343	\$643,473
ALLEN	\$2,611,310	\$13,498	\$3,176,345	\$5,801,153	\$1,457,955	\$430,075	\$1,888,030	\$7,701,326	\$28,421	\$24,100	\$100,677	\$2,768,672
ASHLAND	\$1,137,285	\$813	\$1,042,559	\$2,180,656	\$640,091	\$243,861	\$883,952	\$3,064,892	\$76	\$2,894	\$66,789	\$1,236,759
ASHTABULA	\$3,705,170	\$5,819	\$5,590,593	\$9,301,583	\$1,900,217	\$467,058	\$2,367,275	\$11,677,897	\$49,185	\$23,322	\$196,289	\$5,735,699
ATHENS	\$1,151,343	\$7,934	\$2,144,453	\$3,303,730	\$1,238,706	\$275,832	\$1,514,538	\$4,818,275	\$66,746	\$20,060	\$71,732	\$758,736
AUGLAIZE	\$951,197	\$5,443	\$663,260	\$1,619,900	\$456,846	\$155,549	\$612,395	\$2,232,819	\$3,231	\$10,752	\$38,360	\$1,047,502
BELMONT	\$2,833,974	\$1,764	\$2,962,756	\$5,798,493	\$1,190,737	\$274,109	\$1,464,846	\$7,263,591	\$20,930	\$30,791	\$109,598	\$2,362,256
BROWN	\$1,334,434	\$0	\$1,308,183	\$2,642,617	\$869,063	\$314,258	\$1,183,321	\$3,825,936	\$1,584	\$5,768	\$75,215	\$1,148,708
BUTLER	\$6,487,492	\$15,598	\$10,181,186	\$16,684,276	\$4,382,355	\$1,564,222	\$5,946,577	\$22,639,095	\$126,668	\$113,837	\$511,849	\$7,743,343
CARROLL	\$668,579	\$1,252	\$886,558	\$1,556,389	\$427,375	\$284,873	\$712,248	\$2,268,638	\$726	\$871	\$62,975	\$794,802
CHAMPAIGN	\$1,042,740	\$704	\$1,157,878	\$2,201,322	\$452,877	\$202,690	\$655,567	\$2,856,888	\$13,103	\$1,118	\$65,988	\$1,211,285
CLARK	\$4,679,166	\$8,052	\$6,514,798	\$11,202,016	\$3,223,188	\$749,834	\$3,973,022	\$15,176,341	\$76,905	\$63,401	\$344,076	\$5,515,577
CLERMONT	\$2,988,322	\$2,385	\$5,476,396	\$8,467,103	\$2,751,266	\$919,371	\$3,670,636	\$12,145,788	\$103,301	\$33,319	\$199,064	\$5,025,900
CLINTON	\$727,640	\$3,040	\$1,047,461	\$1,778,141	\$750,303	\$230,985	\$981,288	\$2,759,713	\$8,306	\$69,773	\$632,592	\$1,047,502
COLUMBIANA	\$2,824,494	\$28,121	\$3,979,409	\$6,832,023	\$2,174,243	\$557,987	\$2,732,230	\$9,579,948	\$48,692	\$17,313	\$168,992	\$3,124,600
COSHOCTON	\$904,748	\$241	\$1,748,227	\$2,653,215	\$645,589	\$127,484	\$773,073	\$3,426,288	\$8,830	\$12,036	\$41,518	\$1,322,094
CRAWFORD	\$1,168,999	\$4,051	\$1,223,175	\$2,396,226	\$801,949	\$169,090	\$971,039	\$3,368,098	\$9,848	\$8,941	\$77,709	\$978,355
CUYAHOGA	\$43,978,277	\$198,277	\$54,634,329	\$98,810,882	\$31,783,278	\$7,128,589	\$38,911,866	\$137,753,731	\$1,723,565	\$1,047,133	\$2,643,725	\$46,776,707
DARKE	\$1,280,358	\$195	\$1,107,742	\$2,388,295	\$449,695	\$260,339	\$710,035	\$3,098,516	\$4,303	\$8,591	\$51,170	\$1,491,974
DEFIANCE	\$702,065	\$332	\$479,762	\$1,182,158	\$525,100	\$177,923	\$703,023	\$1,887,509	\$2,186	\$3,284	\$105,303	\$667,449
DELAWARE	\$1,506,121	\$5,560	\$1,979,885	\$3,491,565	\$797,146	\$336,330	\$1,133,477	\$4,625,042	\$16,134	\$32,386	\$94,369	\$1,532,571
ERIE	\$1,692,358	\$228	\$1,907,331	\$3,599,917	\$897,822	\$283,070	\$1,180,892	\$4,780,809	\$25,188	\$13,275	\$77,909	\$1,747,139
FAIRFIELD	\$2,325,249	\$1,492	\$3,442,472	\$5,769,213	\$1,671,115	\$501,417	\$2,172,532	\$7,943,501	\$11,778	\$33,885	\$150,395	\$2,206,236
FAYETTE	\$1,098,053	\$231	\$1,433,422	\$2,531,705	\$479,911	\$121,788	\$601,699	\$3,133,404	\$982	\$2,705	\$60,316	\$1,505,667
FRANKLIN	\$20,685,474	\$95,616	\$40,425,437	\$61,206,527	\$21,450,255	\$5,764,522	\$27,214,777	\$88,471,594	\$1,068,725	\$602,801	\$1,771,720	\$25,047,607
FULTON	\$880,085	\$4,774	\$592,209	\$1,477,068	\$343,767	\$237,230	\$580,997	\$2,058,905	\$7,119	\$11,099	\$41,134	\$836,309
GALLIA	\$1,794,975	\$112	\$3,395,441	\$5,190,528	\$908,450	\$261,098	\$1,169,548	\$6,360,215	\$3,980	\$2,871	\$73,573	\$951,879
GEAUGA	\$1,631,280	\$2,369	\$1,230,814	\$2,864,464	\$319,435	\$143,433	\$462,869	\$3,327,375	\$7,378	\$16,839	\$37,741	\$1,954,609
GREENE	\$2,416,540	\$6,199	\$2,727,383	\$5,150,122	\$2,138,328	\$559,728	\$2,698,056	\$7,851,425	\$30,964	\$16,393	\$138,962	\$2,770,851
GUERNSEY	\$1,146,785	\$5,454	\$2,966,792	\$4,119,031	\$1,156,947	\$327,006	\$1,483,953	\$5,603,195	\$24,809	\$34,766	\$80,462	\$673,690
HAMILTON	\$21,836,639	\$144,790	\$31,220,662	\$53,202,092	\$14,784,281	\$5,163,334	\$19,947,615	\$73,211,385	\$817,407	\$332,049	\$984,258	\$24,697,364
HANCOCK	\$1,089,770	\$3,554	\$1,591,449	\$2,684,772	\$603,260	\$283,728	\$886,989	\$3,572,331	\$8,697	\$9,994	\$67,939	\$1,323,123
HARDIN	\$561,410	\$318	\$765,373	\$1,327,101	\$366,951	\$119,633	\$486,584	\$1,819,725	\$9,164	\$2,492	\$32,150	\$508,024
HARRISON	\$539,610	\$0	\$516,573	\$1,056,183	\$276,108	\$54,483	\$330,591	\$1,387,162	\$0	\$7,170	\$21,121	\$542,956
HENRY	\$557,631	\$0	\$1,010,891	\$1,568,522	\$274,621	\$103,291	\$377,912	\$1,946,435	\$4,232	\$2,414	\$24,972	\$542,203
HIGHLAND	\$1,257,444	\$358	\$1,471,043	\$2,728,845	\$627,937	\$246,819	\$874,756	\$3,603,601	\$4,033	\$1,534	\$18,041	\$1,303,630
HOCKING	\$771,486	\$5,990	\$929,192	\$1,706,669	\$559,855	\$218,649	\$778,504	\$2,485,173	\$14,562	\$4,811	\$37,922	\$729,817
HOLMES	\$1,371,138	\$0	\$1,188,422	\$2,559,560	\$298,532	\$113,983	\$412,515	\$2,976,225	\$1,162	\$6,839	\$24,676	\$1,982,707
HURON	\$858,382	\$145	\$1,116,322	\$1,974,849	\$818,249	\$333,681	\$1,151,930	\$3,126,779	\$15,549	\$4,416	\$83,709	\$770,324
JACKSON	\$1,008,400	\$198	\$1,242,388	\$2,250,986	\$903,980	\$263,087	\$1,167,067	\$3,418,896	\$3,504	\$1,520	\$75,823	\$743,895
JEFFERSON	\$2,108,459	\$12,068	\$2,625,815	\$4,746,341	\$1,361,094	\$213,931	\$1,575,025	\$6,324,102	\$43,411	\$6,573	\$85,577	\$1,822,337
KNOX	\$1,747,937	\$271	\$3,690,897	\$5,439,105	\$634,547	\$264,009	\$898,556	\$6,337,729	\$18,378	\$9,468	\$71,764	\$3,727,478
LAKE	\$3,949,963	\$551	\$5,694,717	\$9,645,232	\$1,899,390	\$592,748	\$2,492,138	\$12,138,276	\$42,583	\$53,710	\$188,936	\$5,620,867
LAWRENCE	\$2,372,292	\$7,478	\$3,907,792	\$6,287,562	\$1,934,991	\$477,330	\$2,412,322	\$8,701,249	\$19,536	\$13,437	\$125,331	\$1,646,335

Source: ODJFS Report BOMM1321 Prepared: Bureau of Research and Evaluation.

Page 25

Table 6B

February 2004

Medicaid Expenditures

County	Aged	Blind	Disabled	ABD Total	OWF & Related	Healthy Start	CFC Total	Total Medicaid	Foster Care	Adoption Assistance	Transitional	Nursing Facilities
STATEWIDE	\$274,868,524	\$1,046,858	\$391,643,361	\$667,558,743	\$189,196,715	\$53,572,312	\$242,769,027	\$910,717,273	\$6,232,633	\$4,028,154	\$16,480,482	\$299,722,274
LICKING	\$3,049,011	\$4,443	\$4,591,851	\$7,645,304	\$2,067,224	\$625,918	\$2,693,141	\$10,338,445	\$54,397	\$105,030	\$198,193	\$3,255,478
LOGAN	\$941,089	\$367	\$1,069,099	\$2,010,554	\$628,608	\$184,297	\$812,905	\$2,838,609	\$10,515	\$7,048	\$80,808	\$834,226
LORAIN	\$5,593,256	\$11,996	\$7,864,026	\$13,469,278	\$4,294,551	\$979,137	\$5,273,688	\$18,749,830	\$40,281	\$67,144	\$426,397	\$7,451,559
LUCAS	\$9,935,003	\$46,385	\$21,656,855	\$31,638,243	\$9,866,007	\$2,171,815	\$12,037,822	\$43,704,672	\$242,356	\$265,396	\$864,986	\$10,607,161
MADISON	\$608,812	\$0	\$1,122,320	\$1,731,133	\$447,395	\$102,045	\$549,439	\$2,280,572	\$19,544	\$7,397	\$47,920	\$696,697
MAHONING	\$7,798,969	\$28,511	\$10,300,758	\$18,128,238	\$4,812,456	\$1,043,364	\$5,855,820	\$23,993,482	\$99,595	\$30,307	\$324,015	\$7,977,171
MARION	\$1,310,034	\$2,850	\$2,486,516	\$3,799,400	\$962,139	\$175,299	\$1,137,438	\$4,954,988	\$15,894	\$9,305	\$82,170	\$1,256,356
MEDINA	\$2,332,661	\$78,379	\$3,712,878	\$6,123,918	\$1,007,499	\$293,371	\$1,300,870	\$7,424,836	\$7,127	\$13,430	\$123,338	\$3,791,081
MEIGS	\$768,527	\$7,652	\$1,103,801	\$1,879,979	\$657,303	\$156,929	\$814,232	\$2,694,211	\$6,076	\$48	\$63,704	\$545,954
MERCER	\$849,711	\$0	\$775,827	\$1,625,538	\$326,553	\$112,828	\$439,381	\$2,064,920	\$2,532	\$4,039	\$47,045	\$47,897
MIAMI	\$2,344,706	\$8,554	\$2,265,577	\$4,618,837	\$999,713	\$501,915	\$1,501,628	\$6,122,329	\$62,506	\$14,084	\$83,081	\$2,235,687
MONROE	\$398,377	\$1,326	\$402,325	\$802,028	\$272,746	\$99,629	\$372,375	\$1,174,955	\$1,408	\$2,256	\$23,040	\$356,253
MONTGOMERY	\$11,603,214	\$83,304	\$19,200,283	\$30,886,801	\$9,242,913	\$2,480,061	\$11,722,974	\$42,618,975	\$327,934	\$225,414	\$597,508	\$12,688,701
MORGAN	\$450,310	\$0	\$557,102	\$1,007,412	\$288,189	\$69,503	\$357,692	\$1,365,103	\$3,667	\$1,294	\$23,342	\$392,912
MORROW	\$761,528	\$190	\$1,222,821	\$1,984,539	\$649,110	\$150,388	\$799,498	\$2,785,140	\$3,432	\$16,829	\$74,505	\$836,459
MUSKINGUM	\$2,228,530	\$6,433	\$3,286,794	\$5,521,757	\$1,610,173	\$532,073	\$2,142,246	\$7,664,296	\$15,008	\$13,426	\$135,641	\$1,962,514
NOBLE	\$413,796	\$0	\$238,057	\$651,853	\$215,064	\$77,858	\$292,921	\$944,774	\$486	\$1,655	\$34,159	\$404,436
OTTAWA	\$1,105,145	\$463	\$1,738,155	\$2,843,763	\$431,649	\$165,892	\$597,541	\$3,441,305	\$2,350	\$555	\$40,702	\$891,044
PAULDING	\$232,904	\$92	\$611,796	\$844,793	\$234,425	\$78,442	\$312,867	\$1,157,660	\$7,809	\$1,325	\$21,755	\$162,852
PERRY	\$625,065	\$450	\$1,563,933	\$2,189,448	\$777,102	\$174,802	\$951,904	\$3,141,574	\$10,084	\$3,226	\$72,445	\$992,726
PICKAWAY	\$1,043,125	\$1,710	\$1,274,576	\$2,319,412	\$849,365	\$236,715	\$1,086,080	\$3,405,491	\$5,596	\$1,374	\$83,800	\$857,944
PIKE	\$1,116,281	\$0	\$1,793,983	\$2,910,264	\$762,893	\$236,875	\$999,768	\$3,911,856	\$17,304	\$14,305	\$72,529	\$1,370,221
PORTAGE	\$2,565,340	\$15,329	\$4,443,636	\$7,024,304	\$1,668,518	\$510,947	\$2,179,465	\$9,212,983	\$44,732	\$25,580	\$140,352	\$3,710,325
PREBLE	\$798,882	\$2,937	\$1,381,903	\$2,183,722	\$426,189	\$139,784	\$565,973	\$2,749,696	\$9,621	\$2,710	\$52,303	\$1,181,764
PUTNAM	\$601,446	\$4,869	\$1,066,745	\$1,673,060	\$281,713	\$79,495	\$361,208	\$2,034,268	\$2,262	\$40	\$37,021	\$1,039,818
RICHLAND	\$3,009,862	\$305	\$3,902,363	\$6,912,530	\$1,728,434	\$503,962	\$2,232,396	\$9,152,478	\$35,351	\$51,633	\$149,214	\$3,016,079
ROSS	\$1,516,756	\$12	\$2,629,837	\$4,146,605	\$1,435,505	\$350,193	\$1,785,698	\$5,940,100	\$15,607	\$25,069	\$105,246	\$1,174,404
SANDUSKY	\$1,593,313	\$7,337	\$1,879,440	\$3,480,090	\$776,237	\$427,159	\$1,203,396	\$4,683,419	\$6,766	\$15,578	\$71,569	\$1,908,115
SCIOTO	\$3,457,904	\$15,443	\$5,849,891	\$9,323,238	\$2,127,674	\$410,431	\$2,538,105	\$11,865,060	\$27,712	\$36,968	\$117,260	\$2,683,523
SENECA	\$1,801,439	\$1,733	\$3,590,358	\$5,393,530	\$924,310	\$300,768	\$1,225,078	\$6,622,473	\$5,338	\$13,950	\$42,879	\$1,718,476
SHELBY	\$831,117	\$2,135	\$856,257	\$1,689,509	\$411,152	\$242,447	\$653,599	\$2,343,108	\$5,134	\$5,513	\$48,364	\$937,388
STARK	\$11,430,745	\$18,499	\$10,948,677	\$22,397,920	\$5,673,585	\$1,669,345	\$7,342,930	\$29,746,144	\$204,790	\$126,338	\$742,402	\$11,796,408
SUMMIT	\$12,883,627	\$27,506	\$17,033,312	\$29,944,445	\$8,920,691	\$2,141,219	\$11,061,910	\$41,014,234	\$221,267	\$121,611	\$893,076	\$10,775,926
TRUMBULL	\$5,633,710	\$37,921	\$7,223,957	\$12,895,588	\$3,873,038	\$1,047,655	\$4,920,693	\$17,817,269	\$61,768	\$19,821	\$344,550	\$6,368,174
TUSCARAWAS	\$2,391,627	\$6,203	\$2,522,471	\$4,920,301	\$1,330,213	\$432,843	\$1,763,056	\$6,688,622	\$45,876	\$26,571	\$144,880	\$2,171,867
UNION	\$675,815	\$2,009	\$777,245	\$1,455,070	\$547,623	\$238,872	\$786,496	\$2,241,565	\$3,481	\$2,431	\$53,788	\$611,068
UNKNOWN	\$0	\$0	\$0	\$0	(\$479,125)	\$0	(\$479,125)	(\$478,168)	\$0	\$0	\$0	\$0
VAN WERT	\$590,921	\$0	\$595,780	\$1,186,701	\$265,753	\$138,850	\$404,603	\$1,594,055	\$12,210	\$22,859	\$26,866	\$621,783
VINTON	\$403,640	\$314	\$651,491	\$1,055,446	\$443,774	\$90,579	\$534,353	\$1,590,530	\$9,266	\$3,337	\$41,414	\$295,760
WARREN	\$3,563,979	\$2,813	\$4,261,651	\$7,828,444	\$1,072,959	\$701,940	\$1,774,899	\$9,606,864	\$15,721	\$13,373	\$74,846	\$5,120,272
WASHINGTON	\$1,676,740	\$7,998	\$2,185,475	\$3,870,214	\$1,157,796	\$471,920	\$1,629,715	\$5,500,385	\$5,102	\$12,495	\$111,781	\$1,782,786
WAYNE	\$2,563,784	\$5,520	\$3,796,056	\$6,365,360	\$1,259,804	\$542,804	\$1,802,608	\$8,168,292	\$35,584	\$13,839	\$137,672	\$2,206,537
WILLIAMS	\$993,981	\$2,012	\$905,867	\$1,901,861	\$473,072	\$220,395	\$693,467	\$2,595,633	\$5,359	\$3,640	\$76,279	\$1,020,553
WOOD	\$2,213,276	\$378	\$1,901,480	\$4,115,134	\$889,413	\$464,044	\$1,353,457	\$5,468,590	\$2,604	\$17,614	\$76,717	\$2,133,343
WYANDOT	\$736,563	\$4,047	\$480,845	\$1,221,455	\$129,120	\$85,634	\$214,754	\$1,436,209	\$1,042	\$1,341	\$11,972	\$751,476

Source: ODJFS Report BOMM1321 Prepared: Bureau of Research and Evaluation.

Page 26

**TABLE 7
CHILD CARE
FEBRUARY 2004**

OHIO COUNTY	OWF JOBS, LEAP, and TRANSITIONAL		OTHER CHILD CARE		ALL PROGRAM SOURCES	
	CHILDREN SERVED		CHILDREN SERVED		CHILDREN SERVED	
	TOTAL	% OF STATE TOTAL	TOTAL	% OF STATE TOTAL	TOTAL	% OF STATE TOTAL
STATEWIDE	16,622	100.00%	78,916	100.00%	95,538	100.00%
ADAMS	0	0.00%	25	0.03%	25	0.03%
ALLEN	34	0.20%	469	0.59%	503	0.53%
ASHLAND	1	0.01%	221	0.28%	222	0.23%
ASHTABULA	115	0.69%	670	0.85%	785	0.82%
ATHENS	46	0.28%	302	0.38%	348	0.36%
AUGLAIZE	13	0.08%	118	0.15%	131	0.14%
BELMONT	74	0.45%	312	0.40%	386	0.40%
BROWN	9	0.05%	107	0.14%	116	0.12%
BUTLER	174	1.05%	1,119	1.42%	1,293	1.35%
CARROLL	14	0.08%	113	0.14%	127	0.13%
CHAMPAIGN	6	0.04%	209	0.26%	215	0.23%
CLARK	112	0.67%	673	0.85%	785	0.82%
CLERMONT	49	0.29%	552	0.70%	601	0.63%
CLINTON	3	0.02%	340	0.43%	343	0.36%
COLUMBIANA	53	0.32%	628	0.80%	681	0.71%
COSHOCTON	54	0.32%	241	0.31%	295	0.31%
CRAWFORD	26	0.16%	243	0.31%	269	0.28%
CUYAHOGA	4,608	27.72%	18,251	23.13%	22,859	23.93%
DARKE	7	0.04%	179	0.23%	186	0.19%
DEFIANCE	1	0.01%	250	0.32%	251	0.26%
DELAWARE	18	0.11%	251	0.32%	269	0.28%
ERIE	11	0.07%	699	0.89%	710	0.74%
FAIRFIELD	46	0.28%	534	0.68%	580	0.61%
FAYETTE	23	0.14%	176	0.22%	199	0.21%
FRANKLIN	2,832	17.04%	9,429	11.95%	12,261	12.83%
FULTON	5	0.03%	200	0.25%	205	0.21%
GALLIA	49	0.29%	267	0.34%	316	0.33%
GEAUGA	8	0.05%	200	0.25%	208	0.22%
GREENE	128	0.77%	571	0.72%	699	0.73%
GUERNSEY	31	0.19%	359	0.45%	390	0.41%
HAMILTON	2,960	17.81%	9,283	11.76%	12,243	12.81%
HANCOCK	15	0.09%	436	0.55%	451	0.47%
HARDIN	1	0.01%	151	0.19%	152	0.16%
HARRISON	15	0.09%	109	0.14%	124	0.13%
HENRY	10	0.06%	125	0.16%	135	0.14%
HIGHLAND	6	0.04%	311	0.39%	317	0.33%
HOCKING	22	0.13%	280	0.35%	302	0.32%
HOLMES	7	0.04%	123	0.16%	130	0.14%
HURON	0	0.00%	472	0.60%	472	0.49%
JACKSON	34	0.20%	211	0.27%	245	0.26%
JEFFERSON	91	0.55%	440	0.56%	531	0.56%
KNOX	19	0.11%	426	0.54%	445	0.47%
LAKE	76	0.46%	1,002	1.27%	1,078	1.13%
LAWRENCE	38	0.23%	590	0.75%	628	0.66%

SOURCE: NMR120RA. The above numbers have not been reconciled between the CCIDS/3299 data collection system and 2827 ODJFS fiscal reporting system; therefore they may not be conclusive at this time.

OWF data consist of funding codes: 312, 313,314, 326, & 327. Other data consist of funding codes: 320, 321 , 322, 323, 324, 325,328, 329, 342, and 899.

**TABLE 7
CHILD CARE
FEBRUARY 2004**

OHIO COUNTY	OWF JOBS, LEAP, and TRANSITIONAL CHILDREN SERVED		OTHER CHILD CARE CHILDREN SERVED		ALL PROGRAM SOURCES CHILDREN SERVED	
	TOTAL	% OF STATE TOTAL	TOTAL	% OF STATE TOTAL	TOTAL	% OF STATE TOTAL
	STATEWIDE	16,622	100.00%	78,916	100.00%	95,538
LICKING	150	0.90%	854	1.08%	1,004	1.05%
LOGAN	13	0.08%	142	0.18%	155	0.16%
LORAIN	371	2.23%	1,589	2.01%	1,960	2.05%
LUCAS	813	4.89%	1,752	2.22%	2,565	2.68%
MADISON	20	0.12%	151	0.19%	171	0.18%
MAHONING	497	2.99%	1,627	2.06%	2,124	2.22%
MARION	10	0.06%	398	0.50%	408	0.43%
MEDINA	37	0.22%	569	0.72%	606	0.63%
MEIGS	5	0.03%	261	0.33%	266	0.28%
MERCER	17	0.10%	184	0.23%	201	0.21%
MIAMI	0	0.00%	248	0.31%	248	0.26%
MONROE	3	0.02%	52	0.07%	55	0.06%
MONTGOMERY	730	4.39%	4,493	5.69%	5,223	5.47%
MORGAN	3	0.02%	163	0.21%	166	0.17%
MORROW	1	0.01%	256	0.32%	257	0.27%
MUSKINGUM	136	0.82%	774	0.98%	910	0.95%
NOBLE	1	0.01%	218	0.28%	219	0.23%
OTTAWA	23	0.14%	145	0.18%	168	0.18%
PAULDING	2	0.01%	36	0.05%	38	0.04%
PERRY	38	0.23%	232	0.29%	270	0.28%
PICKAWAY	43	0.26%	199	0.25%	242	0.25%
PIKE	23	0.14%	197	0.25%	220	0.23%
PORTAGE	116	0.70%	693	0.88%	809	0.85%
PREBLE	24	0.14%	191	0.24%	215	0.23%
PUTNAM	6	0.04%	152	0.19%	158	0.17%
RICHLAND	90	0.54%	877	1.11%	967	1.01%
ROSS	27	0.16%	324	0.41%	351	0.37%
SANDUSKY	62	0.37%	463	0.59%	525	0.55%
SCIOTO	96	0.58%	610	0.77%	706	0.74%
SENECA	5	0.03%	247	0.31%	252	0.26%
SHELBY	0	0.00%	268	0.34%	268	0.28%
STARK	357	2.15%	2,016	2.55%	2,373	2.48%
SUMMIT	622	3.74%	2,859	3.62%	3,481	3.64%
TRUMBULL	139	0.84%	1,639	2.08%	1,778	1.86%
TUSCARAWAS	39	0.23%	438	0.56%	477	0.50%
UNION	0	0.00%	0	0.00%	0	0.00%
VAN WERT	0	0.00%	46	0.06%	46	0.05%
VINTON	7	0.04%	171	0.22%	178	0.19%
WARREN	46	0.28%	372	0.47%	418	0.44%
WASHINGTON	34	0.20%	296	0.38%	330	0.35%
WAYNE	104	0.63%	441	0.56%	545	0.57%
WILLIAMS	13	0.08%	201	0.25%	214	0.22%
WOOD	55	0.33%	373	0.47%	428	0.45%
WYANDOT	0	0.00%	32	0.04%	32	0.03%

SOURCE: NMR120RA. The above numbers have not been reconciled between the CCIDS/3299 data collection system and 2827 ODJFS fiscal reporting system; therefore they may not be conclusive at this time.

OWF data consist of funding codes: 312, 313,314, 326, & 327. Other data consist of funding codes: 320, 321 , 322, 323, 324, 325, 328, 329, 342, and 899.

**TABLE 8
RECIPIENTS, EXPENDITURES, AND AVERAGE PAYMENT PER RECIPIENT
DURING THE LAST 12 MONTHS IN OHIO**

	OWF-R	OWF-U	OWF\ CHILD CARE	OTHER\ CHILD CARE	DISABILTY ASSISTANCE	TITLE IV-E	FNS BENEFITS
RECIPIENTS							
March 2003	177,267	17,176	20,255	82,934	16,553	24,734	859,754
April	178,408	17,332	20,380	84,098	16,970	25,432	853,470
May	177,334	16,598	20,461	86,141	17,175	25,725	870,179
June	175,468	15,357	19,942	86,134	17,114	25,562	887,138
July	177,427	15,796	19,871	88,257	16,705	24,980	884,678
August	178,508	15,466	19,051	82,897	13,921	26,113	884,945
September	178,759	15,723	18,171	81,175	13,405	25,073	900,572
October	180,465	15,639	18,500	79,329	13,250	25,894	901,828
November	176,454	15,201	17,506	73,557	12,995	25,730	901,990
December	180,532	16,461	18,063	76,475	13,025	25,871	935,770
January 2004	176,525	16,572	17,342	81,657	12,762	25,742	930,391
February	176,591	16,946	16,622	78,916	13,013	25,961	934,876
12 MONTH AVERAGE	177,812	16,189	18,847	81,798	14,741	25,568	895,466
EXPENDITURES							
March 2003	\$24,293,390	\$1,636,010	N.A.	N.A.	\$2,014,058	\$12,846,053	\$74,487,017
April	\$24,523,197	\$1,638,996	N.A.	N.A.	\$2,027,682	\$14,225,007	\$72,884,256
May	\$24,547,967	\$1,576,439	N.A.	N.A.	\$2,110,924	\$14,275,218	\$73,740,366
June	\$24,469,304	\$1,475,945	N.A.	N.A.	\$2,022,589	\$13,205,397	\$75,783,427
July	\$24,375,298	\$1,481,457	N.A.	N.A.	\$1,921,319	\$12,365,553	\$75,612,953
August	\$24,925,334	\$1,486,018	N.A.	N.A.	\$1,666,480	\$14,696,807	\$77,279,906
September	\$24,897,155	\$1,520,686	N.A.	N.A.	\$1,598,862	\$13,071,839	\$79,553,874
October	\$25,199,378	\$1,530,516	N.A.	N.A.	\$1,621,874	\$13,097,679	\$80,400,808
November	\$24,577,620	\$1,457,298	N.A.	N.A.	\$1,619,377	\$13,152,735	\$79,289,677
December	\$25,390,802	\$1,636,249	N.A.	N.A.	\$1,640,295	\$13,824,267	\$83,581,169
January 2004	\$24,617,828	\$1,643,023	N.A.	N.A.	\$1,633,308	\$12,754,750	\$81,551,062
February	\$24,649,146	\$1,707,835	N.A.	N.A.	\$1,708,755	\$13,462,475	\$82,969,877
TOTAL DOLLARS	\$24,705,535	\$1,565,873	N.A.	N.A.	\$1,798,794	\$13,414,815	\$78,094,533
AVERAGE PAYMENT							
March 2003	\$137	\$95	N.A.	N.A.	\$122	\$519	\$87
April	\$137	\$95	N.A.	N.A.	\$119	\$559	\$85
May	\$138	\$95	N.A.	N.A.	\$123	\$555	\$85
June	\$139	\$96	N.A.	N.A.	\$118	\$517	\$85
July	\$137	\$94	N.A.	N.A.	\$115	\$495	\$85
August	\$140	\$96	N.A.	N.A.	\$120	\$563	\$87
September	\$139	\$97	N.A.	N.A.	\$119	\$521	\$88
October	\$140	\$98	N.A.	N.A.	\$122	\$506	\$89
November	\$139	\$96	N.A.	N.A.	\$125	\$511	\$88
December	\$141	\$99	N.A.	N.A.	\$126	\$534	\$89
January 2004	\$139	\$99	N.A.	N.A.	\$128	\$495	\$88
February	\$140	\$101	N.A.	N.A.	\$131	\$519	\$89

Note: N.A. means Not Available.

**TABLE 10
PERCENT OF OHIO'S POPULATION PARTICIPATING IN SELECTED
PUBLIC ASSISTANCE PROGRAMS FOR FEBRUARY 2004**

OHIO COUNTY	Estimated Total Population *	Percent of All Families Below Poverty Level	DISABILITY ASSISTANCE		OWF COMBINED		FOSTER CARE		FNS BENEFITS	
			Recipients	Recipients as Percent of Total Population	Recipients	Recipients as Percent of Total Population	Recipients	Recipients as Percent of Total Population	Recipients	Recipients as Percent of Total Population
STATEWIDE	11,421,267	0.08	13,013	0.11	193,537	1.69	25,961	0.23	934,876	8.19
ADAMS	27,804	0.13	75	0.27	215	0.77	59	0.21	4,113	14.79
ALLEN	108,120	0.10	74	0.07	818	0.76	230	0.21	8,033	7.43
ASHLAND	52,900	0.07	33	0.06	207	0.39	11	0.02	2,641	4.99
ASHTABULA	102,515	0.09	296	0.29	1,653	1.61	157	0.15	10,056	9.81
ATHENS	63,256	0.14	210	0.33	1,501	2.37	181	0.29	6,515	10.30
AUGLAIZE	46,464	0.05	22	0.05	78	0.17	48	0.10	1,588	3.42
BELMONT	69,448	0.12	135	0.19	1,176	1.69	134	0.19	7,001	10.08
BROWN	43,464	0.09	36	0.08	283	0.65	47	0.11	3,362	7.74
BUTLER	340,543	0.05	415	0.12	3,015	0.89	732	0.21	20,696	6.08
CARROLL	29,166	0.09	26	0.09	233	0.80	13	0.04	2,112	7.24
CHAMPAIGN	39,121	0.05	40	0.10	328	0.84	29	0.07	2,136	5.46
CLARK	143,416	0.08	228	0.16	3,131	2.18	375	0.26	15,250	10.63
CLERMONT	183,352	0.05	164	0.09	1,117	0.61	342	0.19	8,305	4.53
CLINTON	41,090	0.06	52	0.13	213	0.52	79	0.19	2,512	6.11
COLUMBIANA	111,806	0.09	139	0.12	1,084	0.97	118	0.11	10,723	9.59
COSHOCTON	36,836	0.07	63	0.17	488	1.32	58	0.16	3,414	9.27
CRAWFORD	46,420	0.08	37	0.08	625	1.35	50	0.11	3,980	8.57
CUYAHOGA	1,379,049	0.10	1,837	0.13	30,258	2.19	6,389	0.46	163,818	11.88
DARKE	52,966	0.06	33	0.06	368	0.69	43	0.08	1,959	3.70
DEFIANCE	39,334	0.05	11	0.03	258	0.66	44	0.11	2,124	5.40
DELAWARE	125,399	0.03	62	0.05	685	0.55	84	0.07	3,565	2.84
ERIE	79,207	0.06	50	0.06	366	0.46	150	0.19	4,825	6.09
FAIRFIELD	129,161	0.05	87	0.07	1,360	1.05	127	0.10	7,137	5.53
FAYETTE	28,176	0.08	21	0.07	300	1.06	20	0.07	2,240	7.95
FRANKLIN	1,086,814	0.08	1,131	0.10	25,997	2.39	3,413	0.31	103,731	9.54
FULTON	42,573	0.04	22	0.05	168	0.39	34	0.08	1,671	3.93
GALLIA	31,301	0.14	45	0.14	1,253	4.00	58	0.19	4,729	15.11
GEAUGA	92,980	0.03	25	0.03	189	0.20	124	0.13	1,403	1.51
GREENE	149,964	0.05	165	0.11	1,244	0.83	101	0.07	7,833	5.22
GUERNSEY	40,987	0.13	120	0.29	441	1.08	121	0.30	5,171	12.62
HAMILTON	833,721	0.09	825	0.10	19,232	2.31	1,593	0.19	61,184	7.34
HANCOCK	72,286	0.05	55	0.08	300	0.42	69	0.10	3,101	4.29
HARDIN	31,731	0.09	20	0.06	115	0.36	53	0.17	1,671	5.27
HARRISON	15,890	0.11	41	0.26	237	1.49	28	0.18	1,623	10.21
HENRY	29,478	0.05	10	0.03	48	0.16	34	0.12	1,043	3.54
HIGHLAND	41,851	0.09	57	0.14	400	0.96	33	0.08	3,890	9.29
HOCKING	28,481	0.10	44	0.15	669	2.35	76	0.27	2,849	10.00
HOLMES	40,375	0.11	27	0.07	104	0.26	40	0.10	1,117	2.77
HURON	60,020	0.07	37	0.06	209	0.35	60	0.10	3,843	6.40
JACKSON	32,854	0.14	96	0.29	631	1.92	31	0.09	4,763	14.50
JEFFERSON	72,402	0.11	168	0.23	2,068	2.86	133	0.18	8,513	11.76
KNOX	56,037	0.07	73	0.13	562	1.00	56	0.10	3,434	6.13
LAKE	229,004	0.04	158	0.07	1,203	0.53	202	0.09	9,477	4.14
LAWRENCE	62,172	0.15	77	0.12	1,636	2.63	38	0.06	10,156	16.34

*SOURCE: 2002 Ohio County Population Estimates, Ohio Dept. of Development, GRP342RA, GBS003RA, GRP304RA and GRP304RC Reports from Management Information Services.

**TABLE 10
PERCENT OF OHIO'S POPULATION PARTICIPATING IN SELECTED
PUBLIC ASSISTANCE PROGRAMS FOR FEBRUARY 2004**

OHIO COUNTY	Estimated Total Population *	Percent of All Families Below Poverty Level	DISABILITY ASSISTANCE		OWF COMBINED		FOSTER CARE		FNS BENEFITS	
			Recipients	Recipients as Percent of Total Population	Recipients	Recipients as Percent of Total Population	Recipients	Recipients as Percent of Total Population	Recipients	Recipients as Percent of Total Population
STATEWIDE	11,421,267	0.08	13,013	0.11	193,537	1.69	25,961	0.23	934,876	8.19
LICKING	148,731	0.06	177	0.12	1,391	0.94	449	0.30	9,510	6.39
LOGAN	46,262	0.07	33	0.07	418	0.90	49	0.11	2,893	6.25
LORAIN	288,360	0.07	274	0.10	5,021	1.74	403	0.14	24,898	8.63
LUCAS	453,506	0.11	598	0.13	16,456	3.63	2,000	0.44	54,017	11.91
MADISON	40,365	0.06	27	0.07	494	1.22	38	0.09	2,176	5.39
MAHONING	253,308	0.10	372	0.15	6,919	2.73	360	0.14	27,079	10.69
MARION	66,028	0.07	92	0.14	700	1.06	96	0.15	5,706	8.64
MEDINA	158,439	0.04	87	0.05	595	0.38	79	0.05	4,047	2.55
MEIGS	23,111	0.14	59	0.26	469	2.03	13	0.06	3,873	16.76
MERCER	40,815	0.05	25	0.06	171	0.42	37	0.09	1,202	2.94
MIAMI	99,596	0.05	57	0.06	586	0.59	171	0.17	3,975	3.99
MONROE	14,973	0.11	12	0.08	220	1.47	17	0.11	1,440	9.62
MONTGOMERY	554,470	0.08	462	0.08	12,725	2.29	1,825	0.33	45,666	8.24
MORGAN	14,749	0.16	37	0.25	143	0.97	13	0.09	1,813	12.29
MORROW	32,976	0.07	19	0.06	304	0.92	43	0.13	2,411	7.31
MUSKINGUM	85,349	0.10	200	0.23	2,096	2.46	109	0.13	11,696	13.70
NOBLE	14,088	0.08	18	0.13	79	0.56	9	0.06	1,104	7.84
OTTAWA	41,049	0.04	19	0.05	294	0.72	4	0.01	1,841	4.48
PAULDING	19,841	0.05	17	0.09	257	1.30	27	0.14	1,221	6.15
PERRY	34,408	0.09	67	0.19	605	1.76	69	0.20	4,277	12.43
PICKAWAY	53,437	0.08	47	0.09	1,052	1.97	27	0.05	4,366	8.17
PIKE	27,921	0.15	60	0.21	786	2.82	38	0.14	4,862	17.41
PORTAGE	153,886	0.06	127	0.08	1,155	0.75	126	0.08	7,209	4.68
PREBLE	42,680	0.05	22	0.05	388	0.91	50	0.12	1,983	4.65
PUTNAM	34,736	0.04	11	0.03	160	0.46	16	0.05	1,118	3.22
RICHLAND	128,004	0.08	172	0.13	1,381	1.08	260	0.20	10,404	8.13
ROSS	74,469	0.09	102	0.14	1,518	2.04	81	0.11	8,696	11.68
SANDUSKY	61,698	0.06	41	0.07	338	0.55	84	0.14	3,128	5.07
SCIOTO	78,041	0.15	229	0.29	1,919	2.46	111	0.14	13,692	17.54
SENECA	58,077	0.06	45	0.08	212	0.37	104	0.18	3,403	5.86
SHELBY	48,516	0.05	17	0.04	250	0.52	68	0.14	2,088	4.30
STARK	377,940	0.07	499	0.13	7,445	1.97	1,088	0.29	26,961	7.13
SUMMIT	546,381	0.08	653	0.12	12,537	2.29	1,153	0.21	46,257	8.47
TRUMBULL	223,518	0.08	356	0.16	3,204	1.43	419	0.19	17,918	8.02
TUSCARAWAS	91,490	0.07	87	0.10	1,098	1.20	173	0.19	6,535	7.14
UNION	43,010	0.04	19	0.04	564	1.31	40	0.09	1,977	4.60
VAN WERT	29,399	0.04	14	0.05	58	0.20	30	0.10	1,043	3.55
VINTON	13,128	0.15	33	0.25	427	3.25	39	0.30	2,339	17.82
WARREN	175,133	0.03	47	0.03	482	0.28	119	0.07	3,606	2.06
WASHINGTON	62,561	0.09	103	0.16	211	0.34	46	0.07	4,895	7.82
WAYNE	112,704	0.05	256	0.23	979	0.87	145	0.13	5,972	5.30
WILLIAMS	39,020	0.04	20	0.05	419	1.07	29	0.07	1,955	5.01
WOOD	122,387	0.05	50	0.04	498	0.41	64	0.05	3,654	2.99
WYANDOT	22,773	0.04	9	0.04	47	0.21	23	0.10	663	2.91
UNKNOWN										

*SOURCE: 2002 Ohio County Population Estimates, Ohio Dept. of Development, GRP342RA, GBS003RA, GRP304RA and GRP304RC Reports from Management Information Services.