

Ohio Department of Job and Family Services

PUBLIC ASSISTANCE MONTHLY STATISTICS JANUARY 2006



<http://jfs.ohio.gov/pams/index.stm>

Bureau of Research and Evaluation : Federal Reporting\ Data Development Section
Office of Research, Assessment, and Accountability
P.O. Box 1618
Columbus, Ohio 43216

OHIO DEPARTMENT OF JOB AND FAMILY SERVICES
PUBLIC ASSISTANCE MONTHLY STATISTICS
TABLE OF CONTENTS

<u>TITLE</u>	<u>PAGE(S)</u>
Monthly Review of Public Assistance Statistics.	1
Statewide Summary of Public Assistance Programs.	2
Table 1: OWF (TANF) Summary	3-14
Table 2: Foster Care (Title IV-E) Program Summary.	15-17
Table 3: Disability Assistance Program Summary.	18-22
Table 3-A: DA Payments for Medical Services.	23
Table 5: FNS Benefits Program Summary.	24-28
Table 6: Medicaid (Title XIX): Eligibles and Expenditures.	29-34
Table 7: Child Day Care Summary	35-37
Table 8: Program Summaries of Recipients, Expenditures, and Average Payment Per Recipient During the Last 12 Months.	38
Table 10: Percent of Ohio's Population Participating in Selected Public Assistance Programs.	39-41
<i>Note: Table 4 and Table 9 were discontinued.</i>	
<i>Also: Table 7-A, Updated Child Care Summary for October 2005.</i>	<i>42-44</i>

All data in the PAMS report is limited to the information available at the time it was constructed. It does not account for backdated or retroactive eligibility or any adjustments made subsequent to its creation.

MONTHLY REVIEW OF PUBLIC ASSISTANCE STATISTICS FOR JANUARY 2006

OHIO WORKS FIRST

For the month of January 2006, OWF-Combined assistance groups totaled 83,046; recipients totaled 180,995 and money payments totaled \$26,813,569. The percent change from December 2005 to January 2006 was -1.7% for assistance groups; -2.1% for recipients, and -4.8% for money payments. For OWF- Regular (OWF-R) there were 78,915 assistance groups; 164,367 recipients, and \$25,052,380 in money payments issued for January 2006. The percent change from December 2005 to January 2006 was -1.8% for assistance groups; -2.2% for recipients, and -4.8% for money payments. For OWF-Unemployed (OWF-U) assistance groups totaled 4,131; recipients, 16,628 and money payments were \$1,761,189. The percent change from December 2005 to January 2006 was 0.2% for assistance groups; -0.4% for recipients and -4.4% for money payments.

FOSTER CARE (TITLE IV-E)

A total of 27,005 children received \$15,336,409 in Title IV-E assistance during the month of January 2006. Included in this total were 6,594 foster care children who received \$7,504,272 in money payments. Of these Title IV-E children, 2,780 or 10.3% were in foster family homes who received \$1,254,626 and 3,814 or 14.1% children in child care institutions who received \$6,249,646 in OWF foster care assistance. The remaining 20,411 children reported as participating in Title IV-E received \$7,832,137 in adoption assistance. Overall, the average amount of Foster Care received per child was \$567.91.

DISABILITY ASSISTANCE (DA)

For the month of January 2006, there were 12,079 assistance groups; 12,167 recipients, and \$1,597,870 in DA financial assistance. The average DA financial assistance per recipient was \$131.65 Total DA expenditures for medical services for January 2006 were \$ 3,223,416. Of this total, \$2,367,800 or 73.5% was spent for prescribed drugs, and \$ 647,990 or 20.1% was spent for physician services. Medical expenses were paid for 7,218 recipients for an average expenditure of \$446.58 per recipient.

FNS BENEFITS:

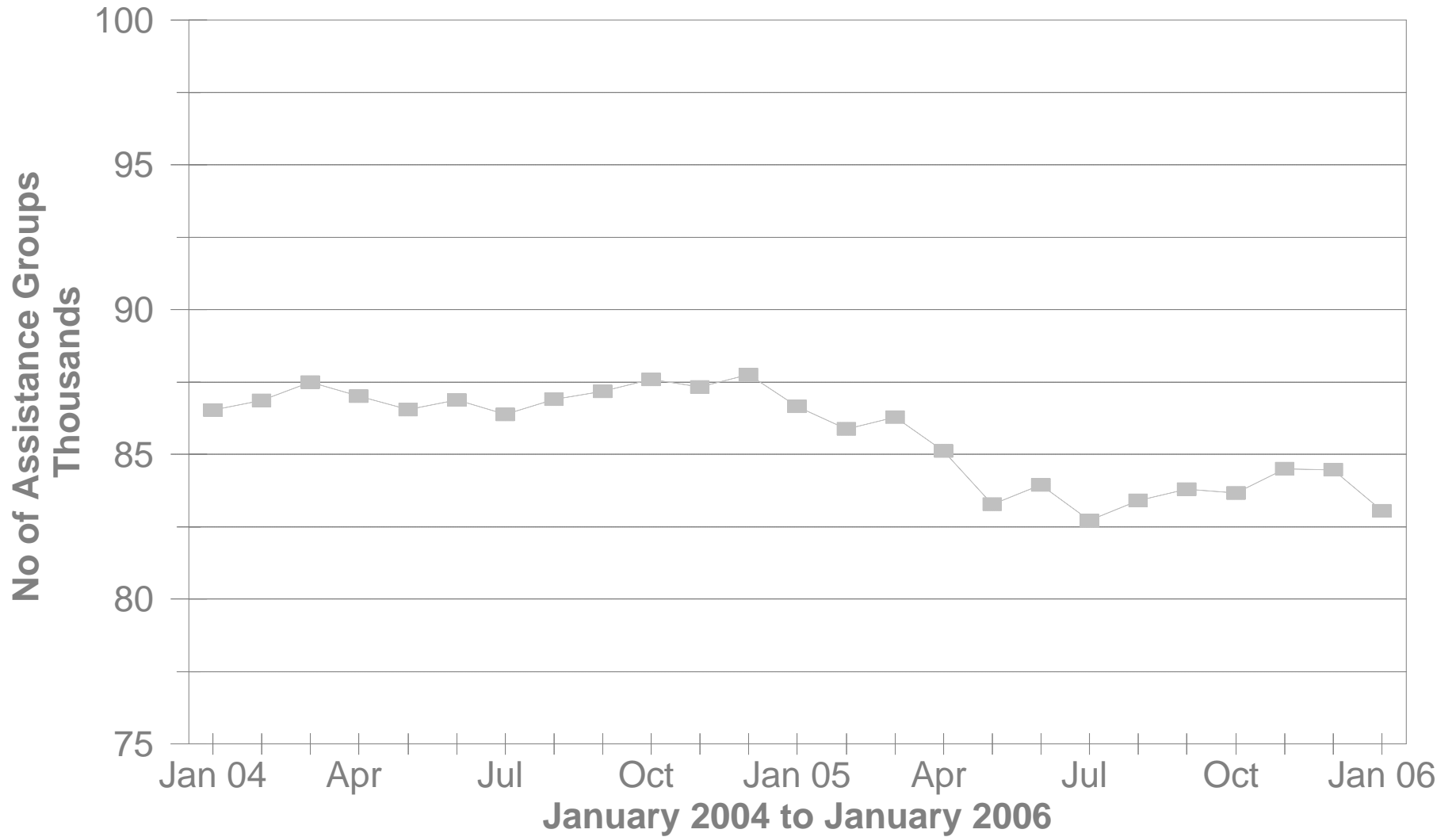
Total persons participating in the FNS benefits program during January 2006 decreased to 1,051,528 by 3,546 or -0.3% from 1,055,074 persons reported in December 2005. Households increased by 553 or -0.1% over December 2005 levels. The total dollar value of FNS related benefits issued during January 2006 decreased by \$2,049,171 or -1.9% from \$105,178,691 reported in December 2005 to \$103,129,520 reported in January 2006. The average benefit issuance per person decreased by \$1.61 or -1.6% from those issued in December 2005. The average benefit issuance per person decreased from \$ 99.69 in December 2005 to \$98.08 in January 2006.

Please note: All data in the PAMS report is limited to the information available at the time it was constructed. It does not account for backdated or retroactive eligibility or any adjustments made subsequent to its creation.

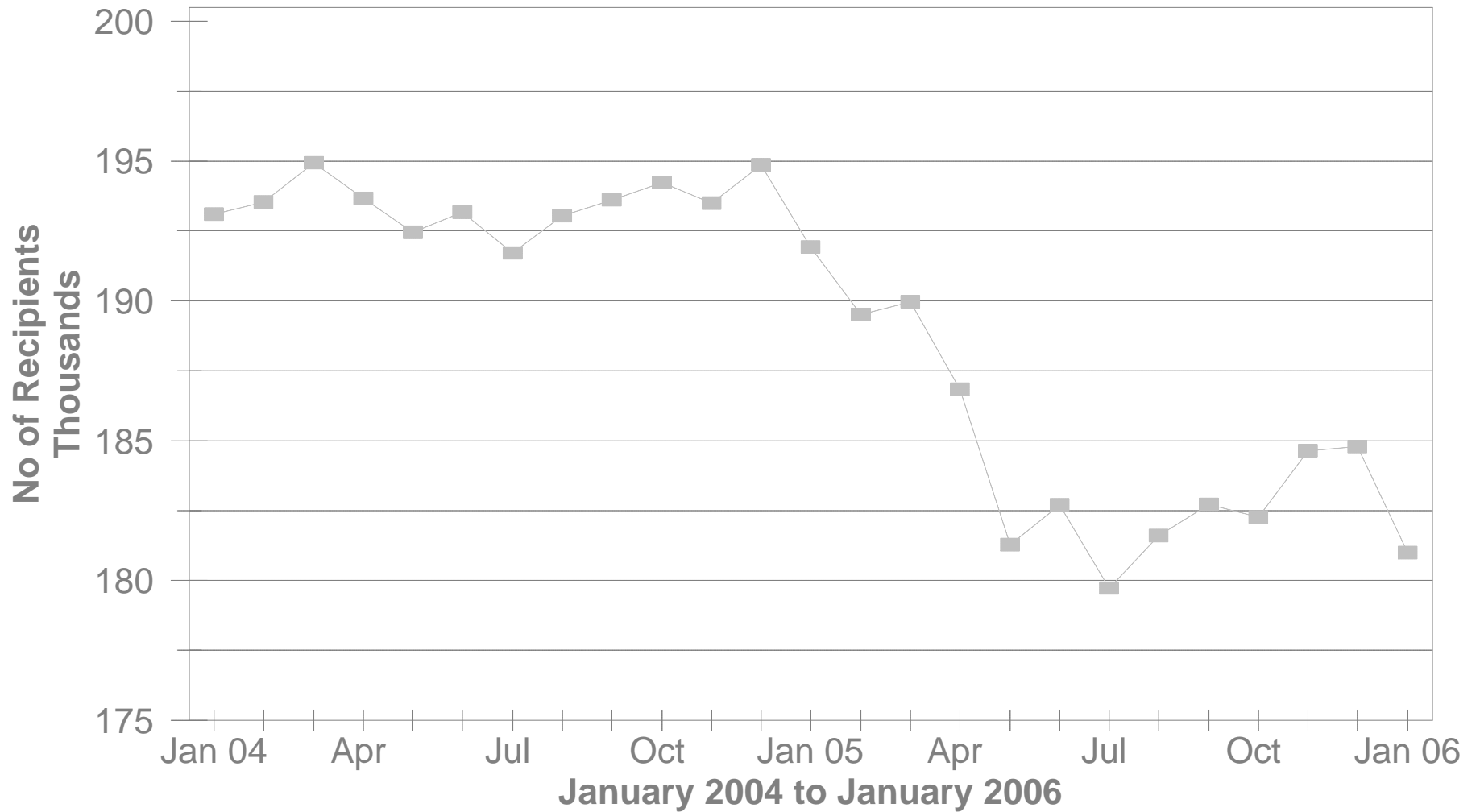
STATEWIDE SUMMARY OF PUBLIC ASSISTANCE PROGRAMS FOR JANUARY 2006

	January 2006	December 2005	% CHANGE Jan 06 / Dec 05	January 2005	% CHANGE Jan 06 / Jan 05
OHIO WORKS FIRST (OWF)-COMBINED					
Assistance Groups	83,046	84,457	-1.7%	86,654	-4.2%
Recipients	180,995	184,798	-2.1%	191,925	-5.7%
Net Payments	\$26,813,569	\$28,157,960	-4.8%	26,090,925	2.8%
Average Per Recipient	\$148.15	\$152.37	-2.8%	\$135.94	9.0%
OWF-REGULAR, OWF-INCAPACITATED,& OWF REGULAR VENDOR PAYMENTS					
Assistance Groups	78,915	80,336	-1.8%	82,398	-4.2%
Recipients	164,367	168,095	-2.2%	174,590	-5.9%
Net Payments	\$25,052,380	\$26,315,386	-4.8%	24,378,521	2.8%
Average Per Recipient	\$152.42	\$156.55	-2.6%	\$139.63	9.2%
OWF-UNEMPLOYED AND OWF-UNEMPLOYED VENDOR PAYMENTS					
Assistance Groups	4,131	4,121	0.2%	4,256	-2.9%
Recipients	16,628	16,703	-0.4%	17,335	-4.1%
Net Payments	\$1,761,189	\$1,842,574	-4.4%	1,712,404	2.8%
Average Per Recipient	\$105.92	\$110.31	-4.0%	\$98.78	7.2%
TITLE IV-E FOSTER CARE					
Assistance Groups/Recipients	27,005	26,903	0.4%	26,914	0.3%
Gross Payments	\$15,336,409	\$14,353,892	6.8%	13,778,606	11.3%
Average Per Recipient	\$567.91	\$533.54	6.4%	\$511.95	10.9%
DISABILITY ASSISTANCE					
Assistance Groups	12,079	12,023	0.5%	14,008	-13.8%
Recipients	12,167	12,107	0.5%	14,116	-13.8%
Net Payments	\$1,597,870	\$1,661,825	-3.8%	2,036,299	-21.5%
Medical Assistance	\$3,223,416	\$3,529,929	-8.7%	5,736,699	-43.8%
FNS BENEFITS					
Assistance Groups	471,141	471,694	-0.1%	447,995	5.2%
Persons	1,051,528	1,055,074	-0.3%	1,007,283	4.4%
Total Coupons Issued	\$103,129,520	\$105,178,691	-1.9%	96,636,361	6.7%
Average Per Recipient	\$98.08	\$99.69	-1.6%	\$95.94	2.2%

No of OWF Combined Assistance Groups During The Last 25 Months

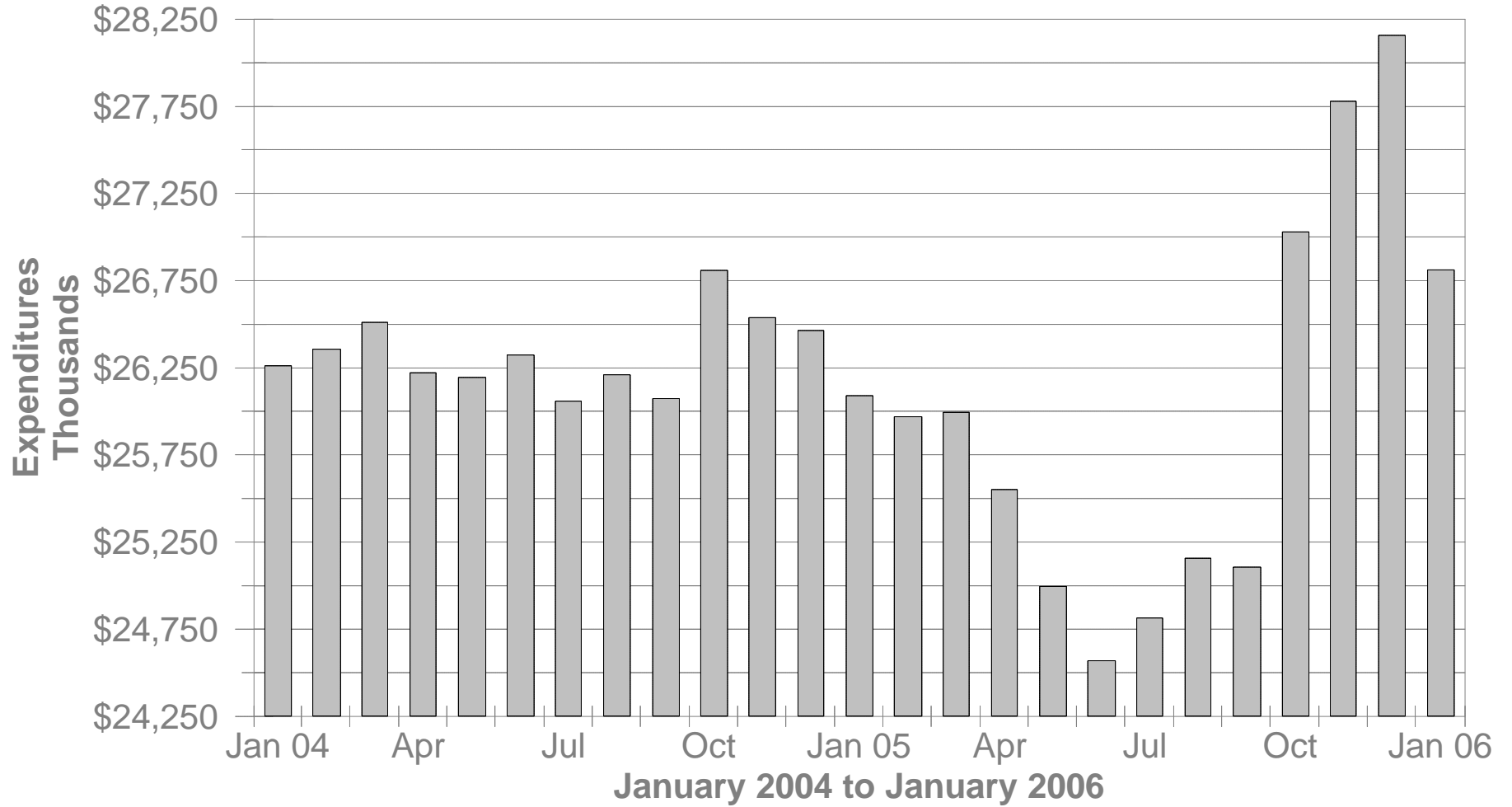


No of OWF Combined Recipients During The Last 25 Months



OWF Combined Net Expenditures

During The Last 25 Months



**TABLE 1
OWF COMBINED
JANUARY 2006**

OHIO COUNTY	ASSISTANCE GROUP	RECIPIENTS	ADULTS	CHILDREN	ACTUAL EXPENDITURES		
					GROSS AMOUNT	CANCELLED AMOUNT	NET AMOUNT
STATEWIDE	83,046	180,995	45,830	135,165	\$28,088,275.00	\$1,274,706.00	\$26,813,569.00
ADAMS	159	246	7	239	\$44,777.00	\$2,111.00	\$42,666.00
ALLEN	447	749	52	697	\$136,939.00	\$2,903.00	\$134,036.00
ASHLAND	82	161	38	123	\$26,678.00	\$1,038.00	\$25,640.00
ASHTABULA	689	1,434	362	1,072	\$226,255.00	\$10,793.00	\$215,462.00
ATHENS	583	1,414	499	915	\$198,260.00	\$4,893.00	\$193,367.00
AUGLAIZE	64	94	0	94	\$18,106.00	\$468.00	\$17,638.00
BELMONT	532	1,256	419	837	\$178,619.00	\$4,242.00	\$174,377.00
BROWN	158	260	28	232	\$47,308.00	\$1,998.00	\$45,310.00
BUTLER	1,550	2,925	473	2,452	\$490,592.00	\$23,057.00	\$467,535.00
CARROLL	82	151	32	119	\$23,320.00	\$735.00	\$22,585.00
CHAMPAIGN	237	504	160	344	\$78,313.00	\$2,956.00	\$75,357.00
CLARK	1,350	2,953	772	2,181	\$457,015.00	\$15,007.00	\$442,008.00
CLERMONT	449	845	125	720	\$147,686.00	\$8,490.00	\$139,196.00
CLINTON	125	207	23	184	\$36,641.00	\$336.00	\$36,305.00
COLUMBIANA	511	968	189	779	\$158,817.00	\$3,515.00	\$155,302.00
COSHOCTON	242	509	167	342	\$75,974.00	\$1,552.00	\$74,422.00
CRAWFORD	193	455	127	328	\$71,125.00	\$3,648.00	\$67,477.00
CUYAHOGA	12,770	26,208	6,104	20,104	\$4,222,648.00	\$262,358.00	\$3,960,290.00
DARKE	138	277	71	206	\$46,648.00	\$511.00	\$46,137.00
DEFIANCE	126	274	69	205	\$41,841.00	\$1,116.00	\$40,725.00
DELAWARE	312	730	234	496	\$111,453.00	\$7,271.00	\$104,182.00
ERIE	243	401	37	364	\$72,943.00	\$4,299.00	\$68,644.00
FAIRFIELD	749	1,830	595	1,235	\$262,196.00	\$15,783.00	\$246,413.00
FAYETTE	155	286	65	221	\$48,860.00	\$1,276.00	\$47,584.00
FRANKLIN	10,952	24,909	6,179	18,730	\$3,799,957.00	\$196,977.00	\$3,602,980.00
FULTON	81	160	28	132	\$24,660.00	\$591.00	\$24,069.00
GALLIA	555	1,440	525	915	\$199,712.00	\$9,829.00	\$189,883.00
GEAUGA	76	151	27	124	\$21,986.00	\$730.00	\$21,256.00
GREENE	536	1,068	252	816	\$175,899.00	\$7,322.00	\$168,577.00

Source: GRP342RA Report from Management Information Services. Data includes ADC-Regular, ADC-Incapacitated, and Vendor Payments.

**TABLE 1
OWF COMBINED
JANUARY 2006**

OHIO COUNTY	ASSISTANCE GROUP	RECIPIENTS	ADULTS	CHILDREN	ACTUAL EXPENDITURES		
					GROSS AMOUNT	CANCELLED AMOUNT	NET AMOUNT
STATEWIDE	83,046	180,995	45,830	135,165	\$28,088,275.00	\$1,274,706.00	\$26,813,569.00
GUERNSEY	218	433	97	336	\$65,435.00	\$1,214.00	\$64,221.00
HAMILTON	7,845	18,006	4,299	13,707	\$2,763,879.00	\$139,648.00	\$2,624,231.00
HANCOCK	137	241	35	206	\$41,827.00	\$1,107.00	\$40,720.00
HARDIN	55	85	8	77	\$15,009.00	\$490.00	\$14,519.00
HARRISON	109	266	75	191	\$37,197.00	\$0.00	\$37,197.00
HENRY	37	62	8	54	\$10,257.00	\$922.00	\$9,335.00
HIGHLAND	190	417	102	315	\$65,585.00	\$1,121.00	\$64,464.00
HOCKING	311	782	261	521	\$108,935.00	\$4,931.00	\$104,004.00
HOLMES	54	114	25	89	\$17,389.00	\$0.00	\$17,389.00
HURON	155	225	1	224	\$44,335.00	\$2,491.00	\$41,844.00
JACKSON	297	562	92	470	\$93,282.00	\$2,855.00	\$90,427.00
JEFFERSON	901	2,056	664	1,392	\$307,296.00	\$6,784.00	\$300,512.00
KNOX	259	608	180	428	\$84,668.00	\$3,816.00	\$80,852.00
LAKE	651	1,440	361	1,079	\$225,884.00	\$10,522.00	\$215,362.00
LAWRENCE	741	1,475	330	1,145	\$237,011.00	\$7,631.00	\$229,380.00
LICKING	585	1,287	348	939	\$190,370.00	\$11,678.00	\$178,692.00
LOGAN	203	466	119	347	\$69,444.00	\$4,460.00	\$64,984.00
LORAIN	2,349	5,482	1,432	4,050	\$816,688.00	\$36,189.00	\$780,499.00
LUCAS	7,086	16,883	4,980	11,903	\$2,500,690.00	\$106,585.00	\$2,394,105.00
MADISON	231	541	187	354	\$78,449.00	\$2,923.00	\$75,526.00
MAHONING	2,715	6,145	1,528	4,617	\$941,975.00	\$31,748.00	\$910,227.00
MARION	382	720	99	621	\$126,889.00	\$3,751.00	\$123,138.00
MEDINA	271	564	158	406	\$97,099.00	\$6,628.00	\$90,471.00
MEIGS	184	375	109	266	\$60,801.00	\$1,768.00	\$59,033.00
MERCER	79	181	60	121	\$26,555.00	\$863.00	\$25,692.00
MIAMI	331	678	128	550	\$109,107.00	\$2,990.00	\$106,117.00
MONROE	61	171	53	118	\$21,923.00	\$0.00	\$21,923.00
MONTGOMERY	5,092	10,637	2,492	8,145	\$1,677,839.00	\$71,847.00	\$1,605,992.00
MORGAN	86	158	28	130	\$27,360.00	\$746.00	\$26,614.00
MORROW	128	261	77	184	\$40,295.00	\$1,589.00	\$38,706.00

Source: GRP342RA Report from Management Information Services. Data includes ADC-Regular, ADC-Incapacitated, and Vendor Payments.

**TABLE 1
OWF COMBINED
JANUARY 2006**

OHIO COUNTY	ASSISTANCE GROUP	RECIPIENTS	ADULTS	CHILDREN	ACTUAL EXPENDITURES		
					GROSS AMOUNT	CANCELLED AMOUNT	NET AMOUNT
STATEWIDE	83,046	180,995	45,830	135,165	\$28,088,275.00	\$1,274,706.00	\$26,813,569.00
MUSKINGUM	998	2,248	686	1,562	\$339,242.00	\$12,535.00	\$326,707.00
NOBLE	44	95	23	72	\$13,951.00	\$0.00	\$13,951.00
OTTAWA	149	359	117	242	\$54,333.00	\$2,022.00	\$52,311.00
PAULDING	112	280	100	180	\$36,528.00	\$2,562.00	\$33,966.00
PERRY	331	774	214	560	\$110,048.00	\$4,463.00	\$105,585.00
PICKAWAY	453	1,119	335	784	\$160,363.00	\$5,864.00	\$154,499.00
PIKE	339	722	180	542	\$114,762.00	\$3,045.00	\$111,717.00
PORTAGE	438	835	182	653	\$139,616.00	\$5,366.00	\$134,250.00
PREBLE	158	366	91	275	\$54,416.00	\$2,879.00	\$51,537.00
PUTNAM	30	60	7	53	\$8,446.00	\$336.00	\$8,110.00
RICHLAND	699	1,412	316	1,096	\$227,253.00	\$6,475.00	\$220,778.00
ROSS	801	1,864	565	1,299	\$285,394.00	\$9,325.00	\$276,069.00
SANDUSKY	181	326	53	273	\$56,193.00	\$1,347.00	\$54,846.00
SCIOTO	1,072	2,115	427	1,688	\$348,326.00	\$10,525.00	\$337,801.00
SENECA	143	267	44	223	\$45,826.00	\$1,247.00	\$44,579.00
SHELBY	117	218	28	190	\$38,519.00	\$1,316.00	\$37,203.00
STARK	2,868	6,347	1,815	4,532	\$983,244.00	\$34,861.00	\$948,383.00
SUMMIT	4,678	9,973	2,731	7,242	\$1,559,314.00	\$58,809.00	\$1,500,505.00
TRUMBULL	1,423	2,850	637	2,213	\$466,482.00	\$19,941.00	\$446,541.00
TUSCARAWAS	466	1,080	341	739	\$158,470.00	\$4,978.00	\$153,492.00
UNION	216	560	192	368	\$78,161.00	\$1,802.00	\$76,359.00
VAN WERT	41	58	0	58	\$11,301.00	\$0.00	\$11,301.00
VINTON	156	317	95	222	\$47,738.00	\$1,952.00	\$45,786.00
WARREN	226	425	73	352	\$71,268.00	\$2,543.00	\$68,725.00
WASHINGTON	118	180	1	179	\$35,673.00	\$3,316.00	\$32,357.00
WAYNE	439	987	320	667	\$140,839.00	\$5,690.00	\$135,149.00
WILLIAMS	156	383	139	244	\$56,460.00	\$2,969.00	\$53,491.00
WOOD	264	515	107	408	\$83,302.00	\$3,906.00	\$79,396.00
WYANDOT	41	74	16	58	\$14,106.00	\$1,530.00	\$12,576.00

Source: GRP342RA Report from Management Information Services. Data includes ADC-Regular, ADC-Incapacitated, and Vendor Payments.

**TABLE 1
OWF REGULAR
JANUARY 2006**

OHIO COUNTY	ASSISTANCE GROUP	RECIPIENTS	ADULTS	CHILDREN	ACTUAL EXPENDITURES		
					GROSS AMOUNT	CANCELLED AMOUNT	NET AMOUNT
STATEWIDE	78,915	164,367	38,141	126,226	\$26,246,331.00	\$1,193,951.00	\$25,052,380.00
ADAMS	159	246	7	239	\$44,777.00	\$2,111.00	\$42,666.00
ALLEN	445	739	50	689	\$135,127.00	\$2,903.00	\$132,224.00
ASHLAND	80	153	34	119	\$25,675.00	\$1,038.00	\$24,637.00
ASHTABULA	639	1,232	271	961	\$205,632.00	\$10,040.00	\$195,592.00
ATHENS	475	1,013	303	710	\$157,212.00	\$4,483.00	\$152,729.00
AUGLAIZE	64	94	0	94	\$18,106.00	\$468.00	\$17,638.00
BELMONT	457	974	271	703	\$149,826.00	\$3,948.00	\$145,878.00
BROWN	158	260	28	232	\$47,308.00	\$1,998.00	\$45,310.00
BUTLER	1,542	2,893	465	2,428	\$486,946.00	\$23,057.00	\$463,889.00
CARROLL	77	131	22	109	\$21,335.00	\$735.00	\$20,600.00
CHAMPAIGN	221	444	129	315	\$71,787.00	\$2,546.00	\$69,241.00
CLARK	1,278	2,666	643	2,023	\$425,230.00	\$13,900.00	\$411,330.00
CLERMONT	442	814	111	703	\$142,897.00	\$7,572.00	\$135,325.00
CLINTON	124	205	23	182	\$36,305.00	\$336.00	\$35,969.00
COLUMBIANA	496	909	161	748	\$152,562.00	\$3,515.00	\$149,047.00
COSHOCTON	220	428	124	304	\$67,555.00	\$1,552.00	\$66,003.00
CRAWFORD	178	401	98	303	\$63,497.00	\$3,648.00	\$59,849.00
CUYAHOGA	12,356	24,559	5,306	19,253	\$4,044,447.00	\$248,253.00	\$3,796,194.00
DARKE	132	256	59	197	\$43,885.00	\$511.00	\$43,374.00
DEFIANCE	118	235	54	181	\$38,376.00	\$1,116.00	\$37,260.00
DELAWARE	279	602	173	429	\$95,858.00	\$7,271.00	\$88,587.00
ERIE	242	397	35	362	\$72,436.00	\$4,299.00	\$68,137.00
FAIRFIELD	638	1,374	380	994	\$211,523.00	\$13,008.00	\$198,515.00
FAYETTE	151	271	57	214	\$46,883.00	\$1,276.00	\$45,607.00
FRANKLIN	10,385	22,375	5,187	17,188	\$3,528,136.00	\$180,479.00	\$3,347,657.00
FULTON	81	160	28	132	\$24,660.00	\$591.00	\$24,069.00
GALLIA	444	1,011	305	706	\$148,896.00	\$7,498.00	\$141,398.00
GEAUGA	73	142	21	121	\$21,526.00	\$730.00	\$20,796.00
GREENE	512	974	206	768	\$165,345.00	\$6,912.00	\$158,433.00

Source: GRP342RA Report from Management Information Services. Data includes ADC-Regular, ADC-Incapacitated, and Vendor Payments.

**TABLE 1
OWF REGULAR
JANUARY 2006**

OHIO COUNTY	ASSISTANCE GROUP	RECIPIENTS	ADULTS	CHILDREN	ACTUAL EXPENDITURES		
					GROSS AMOUNT	CANCELLED AMOUNT	NET AMOUNT
STATEWIDE	78,915	164,367	38,141	126,226	\$26,246,331.00	\$1,193,951.00	\$25,052,380.00
GUERNSEY	207	384	76	308	\$61,166.00	\$1,214.00	\$59,952.00
HAMILTON	7,672	17,295	3,978	13,317	\$2,680,781.00	\$131,498.00	\$2,549,283.00
HANCOCK	135	233	31	202	\$40,843.00	\$1,107.00	\$39,736.00
HARDIN	55	85	8	77	\$15,009.00	\$490.00	\$14,519.00
HARRISON	101	225	57	168	\$33,345.00	\$0.00	\$33,345.00
HENRY	36	59	6	53	\$9,847.00	\$922.00	\$8,925.00
HIGHLAND	181	377	84	293	\$61,059.00	\$1,121.00	\$59,938.00
HOCKING	250	542	142	400	\$82,966.00	\$4,347.00	\$78,619.00
HOLMES	52	105	21	84	\$16,462.00	\$0.00	\$16,462.00
HURON	153	223	1	222	\$43,514.00	\$2,491.00	\$41,023.00
JACKSON	287	524	72	452	\$88,079.00	\$2,855.00	\$85,224.00
JEFFERSON	806	1,670	476	1,194	\$265,367.00	\$5,756.00	\$259,611.00
KNOX	243	546	150	396	\$77,935.00	\$3,816.00	\$74,119.00
LAKE	593	1,250	300	950	\$201,904.00	\$9,183.00	\$192,721.00
LAWRENCE	697	1,295	244	1,051	\$216,224.00	\$5,900.00	\$210,324.00
LICKING	547	1,127	273	854	\$172,568.00	\$11,217.00	\$161,351.00
LOGAN	188	399	90	309	\$62,473.00	\$3,953.00	\$58,520.00
LORAIN	2,215	4,940	1,175	3,765	\$756,127.00	\$31,492.00	\$724,635.00
LUCAS	6,584	14,886	4,063	10,823	\$2,280,349.00	\$99,229.00	\$2,181,120.00
MADISON	200	418	127	291	\$65,678.00	\$2,923.00	\$62,755.00
MAHONING	2,622	5,769	1,358	4,411	\$899,069.00	\$30,171.00	\$868,898.00
MARION	375	701	93	608	\$123,915.00	\$3,751.00	\$120,164.00
MEDINA	257	505	130	375	\$90,600.00	\$6,014.00	\$84,586.00
MEIGS	173	335	87	248	\$55,743.00	\$1,768.00	\$53,975.00
MERCER	69	139	40	99	\$22,488.00	\$863.00	\$21,625.00
MIAMI	326	659	119	540	\$106,737.00	\$2,990.00	\$103,747.00
MONROE	50	122	33	89	\$16,996.00	\$0.00	\$16,996.00
MONTGOMERY	5,064	10,547	2,461	8,086	\$1,667,979.00	\$71,474.00	\$1,596,505.00
MORGAN	82	142	20	122	\$25,407.00	\$746.00	\$24,661.00
MORROW	118	223	57	166	\$35,693.00	\$1,589.00	\$34,104.00

Source: GRP342RA Report from Management Information Services. Data includes ADC-Regular, ADC-Incapacitated, and Vendor Payments.

**TABLE 1
OWF REGULAR
JANUARY 2006**

OHIO COUNTY	ASSISTANCE GROUP	RECIPIENTS	ADULTS	CHILDREN	ACTUAL EXPENDITURES		
					GROSS AMOUNT	CANCELLED AMOUNT	NET AMOUNT
STATEWIDE	78,915	164,367	38,141	126,226	\$26,246,331.00	\$1,193,951.00	\$25,052,380.00
MUSKINGUM	894	1,863	483	1,380	\$294,468.00	\$11,474.00	\$282,994.00
NOBLE	41	84	18	66	\$12,939.00	\$0.00	\$12,939.00
OTTAWA	127	267	77	190	\$45,213.00	\$1,678.00	\$43,535.00
PAULDING	99	222	73	149	\$31,369.00	\$2,189.00	\$29,180.00
PERRY	297	642	147	495	\$94,394.00	\$4,463.00	\$89,931.00
PICKAWAY	402	898	237	661	\$135,629.00	\$5,864.00	\$129,765.00
PIKE	327	680	160	520	\$109,228.00	\$3,045.00	\$106,183.00
PORTAGE	427	791	161	630	\$134,169.00	\$5,366.00	\$128,803.00
PREBLE	151	339	77	262	\$50,779.00	\$2,879.00	\$47,900.00
PUTNAM	27	45	1	44	\$7,848.00	\$336.00	\$7,512.00
RICHLAND	690	1,377	300	1,077	\$222,552.00	\$5,429.00	\$217,123.00
ROSS	730	1,585	431	1,154	\$252,643.00	\$9,048.00	\$243,595.00
SANDUSKY	179	320	53	267	\$55,373.00	\$548.00	\$54,825.00
SCIOTO	1,011	1,874	309	1,565	\$321,365.00	\$9,670.00	\$311,695.00
SENECA	141	261	41	220	\$45,006.00	\$1,247.00	\$43,759.00
SHELBY	117	218	28	190	\$38,519.00	\$1,316.00	\$37,203.00
STARK	2,693	5,671	1,476	4,195	\$904,506.00	\$32,853.00	\$871,653.00
SUMMIT	4,440	9,007	2,266	6,741	\$1,456,908.00	\$56,924.00	\$1,399,984.00
TRUMBULL	1,375	2,659	543	2,116	\$442,927.00	\$18,284.00	\$424,643.00
TUSCARAWAS	406	844	225	619	\$133,364.00	\$4,404.00	\$128,960.00
UNION	182	414	125	289	\$61,627.00	\$1,557.00	\$60,070.00
VAN WERT	41	58	0	58	\$11,301.00	\$0.00	\$11,301.00
VINTON	144	271	71	200	\$43,458.00	\$1,445.00	\$42,013.00
WARREN	221	407	65	342	\$69,189.00	\$2,543.00	\$66,646.00
WASHINGTON	118	180	1	179	\$35,673.00	\$3,316.00	\$32,357.00
WAYNE	403	853	248	605	\$125,375.00	\$5,280.00	\$120,095.00
WILLIAMS	138	319	103	216	\$49,641.00	\$2,969.00	\$46,672.00
WOOD	251	469	87	382	\$77,769.00	\$3,620.00	\$74,149.00
WYANDOT	39	66	12	54	\$13,028.00	\$1,530.00	\$11,498.00

Source: GRP342RA Report from Management Information Services. Data includes ADC-Regular, ADC-Incapacitated, and Vendor Payments.

**TABLE 1
OWF UNEMPLOYED
JANUARY 2006**

OHIO COUNTY	ASSISTANCE GROUP	RECIPIENTS	ADULTS	CHILDREN	ACTUAL EXPENDITURES		
					GROSS AMOUNT	CANCELLED AMOUNT	NET AMOUNT
STATEWIDE	4,131	16,628	7,689	8,939	\$1,841,944.00	\$80,755.00	\$1,761,189.00
ADAMS	0	0	0	0	\$0.00	\$0.00	\$0.00
ALLEN	2	10	2	8	\$1,812.00	\$0.00	\$1,812.00
ASHLAND	2	8	4	4	\$1,003.00	\$0.00	\$1,003.00
ASHTABULA	50	202	91	111	\$20,623.00	\$753.00	\$19,870.00
ATHENS	108	401	196	205	\$41,048.00	\$410.00	\$40,638.00
AUGLAIZE	0	0	0	0	\$0.00	\$0.00	\$0.00
BELMONT	75	282	148	134	\$28,793.00	\$294.00	\$28,499.00
BROWN	0	0	0	0	\$0.00	\$0.00	\$0.00
BUTLER	8	32	8	24	\$3,646.00	\$0.00	\$3,646.00
CARROLL	5	20	10	10	\$1,985.00	\$0.00	\$1,985.00
CHAMPAIGN	16	60	31	29	\$6,526.00	\$410.00	\$6,116.00
CLARK	72	287	129	158	\$31,785.00	\$1,107.00	\$30,678.00
CLERMONT	7	31	14	17	\$4,789.00	\$918.00	\$3,871.00
CLINTON	1	2	0	2	\$336.00	\$0.00	\$336.00
COLUMBIANA	15	59	28	31	\$6,255.00	\$0.00	\$6,255.00
COSHOCTON	22	81	43	38	\$8,419.00	\$0.00	\$8,419.00
CRAWFORD	15	54	29	25	\$7,628.00	\$0.00	\$7,628.00
CUYAHOGA	414	1,649	798	851	\$178,201.00	\$14,105.00	\$164,096.00
DARKE	6	21	12	9	\$2,763.00	\$0.00	\$2,763.00
DEFIANCE	8	39	15	24	\$3,465.00	\$0.00	\$3,465.00
DELAWARE	33	128	61	67	\$15,595.00	\$0.00	\$15,595.00
ERIE	1	4	2	2	\$507.00	\$0.00	\$507.00
FAIRFIELD	111	456	215	241	\$50,673.00	\$2,775.00	\$47,898.00
FAYETTE	4	15	8	7	\$1,977.00	\$0.00	\$1,977.00
FRANKLIN	567	2,534	992	1,542	\$271,821.00	\$16,498.00	\$255,323.00
FULTON	0	0	0	0	\$0.00	\$0.00	\$0.00
GALLIA	111	429	220	209	\$50,816.00	\$2,331.00	\$48,485.00
GEAUGA	3	9	6	3	\$460.00	\$0.00	\$460.00
GREENE	24	94	46	48	\$10,554.00	\$410.00	\$10,144.00

Source: GRP342RA Report from Management Information Services. Data includes ADC-Regular, ADC-Incapacitated, and Vendor Payments.

**TABLE 1
OWF UNEMPLOYED
JANUARY 2006**

OHIO COUNTY	ASSISTANCE GROUP	RECIPIENTS	ADULTS	CHILDREN	ACTUAL EXPENDITURES		
					GROSS AMOUNT	CANCELLED AMOUNT	NET AMOUNT
STATEWIDE	4,131	16,628	7,689	8,939	\$1,841,944.00	\$80,755.00	\$1,761,189.00
GUERNSEY	11	49	21	28	\$4,269.00	\$0.00	\$4,269.00
HAMILTON	173	711	321	390	\$83,098.00	\$8,150.00	\$74,948.00
HANCOCK	2	8	4	4	\$984.00	\$0.00	\$984.00
HARDIN	0	0	0	0	\$0.00	\$0.00	\$0.00
HARRISON	8	41	18	23	\$3,852.00	\$0.00	\$3,852.00
HENRY	1	3	2	1	\$410.00	\$0.00	\$410.00
HIGHLAND	9	40	18	22	\$4,526.00	\$0.00	\$4,526.00
HOCKING	61	240	119	121	\$25,969.00	\$584.00	\$25,385.00
HOLMES	2	9	4	5	\$927.00	\$0.00	\$927.00
HURON	2	2	0	2	\$821.00	\$0.00	\$821.00
JACKSON	10	38	20	18	\$5,203.00	\$0.00	\$5,203.00
JEFFERSON	95	386	188	198	\$41,929.00	\$1,028.00	\$40,901.00
KNOX	16	62	30	32	\$6,733.00	\$0.00	\$6,733.00
LAKE	58	190	61	129	\$23,980.00	\$1,339.00	\$22,641.00
LAWRENCE	44	180	86	94	\$20,787.00	\$1,731.00	\$19,056.00
LICKING	38	160	75	85	\$17,802.00	\$461.00	\$17,341.00
LOGAN	15	67	29	38	\$6,971.00	\$507.00	\$6,464.00
LORAIN	134	542	257	285	\$60,561.00	\$4,697.00	\$55,864.00
LUCAS	502	1,997	917	1,080	\$220,341.00	\$7,356.00	\$212,985.00
MADISON	31	123	60	63	\$12,771.00	\$0.00	\$12,771.00
MAHONING	93	376	170	206	\$42,906.00	\$1,577.00	\$41,329.00
MARION	7	19	6	13	\$2,974.00	\$0.00	\$2,974.00
MEDINA	14	59	28	31	\$6,499.00	\$614.00	\$5,885.00
MEIGS	11	40	22	18	\$5,058.00	\$0.00	\$5,058.00
MERCER	10	42	20	22	\$4,067.00	\$0.00	\$4,067.00
MIAMI	5	19	9	10	\$2,370.00	\$0.00	\$2,370.00
MONROE	11	49	20	29	\$4,927.00	\$0.00	\$4,927.00
MONTGOMERY	28	90	31	59	\$9,860.00	\$373.00	\$9,487.00
MORGAN	4	16	8	8	\$1,953.00	\$0.00	\$1,953.00
MORROW	10	38	20	18	\$4,602.00	\$0.00	\$4,602.00

Source: GRP342RA Report from Management Information Services. Data includes ADC-Regular, ADC-Incapacitated, and Vendor Payments.

**TABLE 1
OWF UNEMPLOYED
JANUARY 2006**

OHIO COUNTY	ASSISTANCE GROUP	RECIPIENTS	ADULTS	CHILDREN	ACTUAL EXPENDITURES		
					GROSS AMOUNT	CANCELLED AMOUNT	NET AMOUNT
STATEWIDE	4,131	16,628	7,689	8,939	\$1,841,944.00	\$80,755.00	\$1,761,189.00
MUSKINGUM	104	385	203	182	\$44,774.00	\$1,061.00	\$43,713.00
NOBLE	3	11	5	6	\$1,012.00	\$0.00	\$1,012.00
OTTAWA	22	92	40	52	\$9,120.00	\$344.00	\$8,776.00
PAULDING	13	58	27	31	\$5,159.00	\$373.00	\$4,786.00
PERRY	34	132	67	65	\$15,654.00	\$0.00	\$15,654.00
PICKAWAY	51	221	98	123	\$24,734.00	\$0.00	\$24,734.00
PIKE	12	42	20	22	\$5,534.00	\$0.00	\$5,534.00
PORTAGE	11	44	21	23	\$5,447.00	\$0.00	\$5,447.00
PREBLE	7	27	14	13	\$3,637.00	\$0.00	\$3,637.00
PUTNAM	3	15	6	9	\$598.00	\$0.00	\$598.00
RICHLAND	9	35	16	19	\$4,701.00	\$1,046.00	\$3,655.00
ROSS	71	279	134	145	\$32,751.00	\$277.00	\$32,474.00
SANDUSKY	2	6	0	6	\$820.00	\$799.00	\$21.00
SCIOTO	61	241	118	123	\$26,961.00	\$855.00	\$26,106.00
SENECA	2	6	3	3	\$820.00	\$0.00	\$820.00
SHELBY	0	0	0	0	\$0.00	\$0.00	\$0.00
STARK	175	676	339	337	\$78,738.00	\$2,008.00	\$76,730.00
SUMMIT	238	966	465	501	\$102,406.00	\$1,885.00	\$100,521.00
TRUMBULL	48	191	94	97	\$23,555.00	\$1,657.00	\$21,898.00
TUSCARAWAS	60	236	116	120	\$25,106.00	\$574.00	\$24,532.00
UNION	34	146	67	79	\$16,534.00	\$245.00	\$16,289.00
VAN WERT	0	0	0	0	\$0.00	\$0.00	\$0.00
VINTON	12	46	24	22	\$4,280.00	\$507.00	\$3,773.00
WARREN	5	18	8	10	\$2,079.00	\$0.00	\$2,079.00
WASHINGTON	0	0	0	0	\$0.00	\$0.00	\$0.00
WAYNE	36	134	72	62	\$15,464.00	\$410.00	\$15,054.00
WILLIAMS	18	64	36	28	\$6,819.00	\$0.00	\$6,819.00
WOOD	13	46	20	26	\$5,533.00	\$286.00	\$5,247.00
WYANDOT	2	8	4	4	\$1,078.00	\$0.00	\$1,078.00

Source: GRP342RA Report from Management Information Services. Data includes ADC-Regular, ADC-Incapacitated, and Vendor Payments.

**TABLE 2
TITLE IV-E FOSTER CARE
JANUARY 2006**

OHIO COUNTY	FOSTER CARE						ADOPTION ASSISTANCE		TOTAL FOSTER CARE AND ADOPTION ASSISTANCE	
	FOSTER FAMILY HOMES		CHILD CARE INSTITUTIONS		HOMES & INSTITUTIONS		CHILDREN	GROSS AMOUNT	CHILDREN	GROSS AMOUNT
	CHILDREN	GROSS AMOUNT	CHILDREN	GROSS AMOUNT	CHILDREN	GROSS AMOUNT				
STATEWIDE	2,780	\$1,254,625.95	3,814	\$6,249,646.18	6,594	\$7,504,272.13	20,411	\$7,832,136.59	27,005	\$15,336,408.72
ADAMS	14	\$3,564.02	6	\$13,598.08	20	\$17,162.10	35	10831.4	55	\$27,993.50
ALLEN	56	\$24,198.84	35	\$46,427.91	91	\$70,626.75	132	38936.21	223	\$109,562.96
ASHLAND	12	\$9,950.41	0	\$0.00	12	\$9,950.41	10	2862.7	22	\$12,813.11
ASHTABULA	0	\$0.00	0	\$0.00	0	\$0.00	181	65213.42	181	\$65,213.42
ATHENS	32	\$16,170.57	29	\$37,533.78	61	\$53,704.35	121	39621.15	182	\$93,325.50
AUGLAIZE	4	\$1,466.44	3	\$4,575.45	7	\$6,041.89	43	16552.32	50	\$22,594.21
BELMONT	1	\$362.27	22	\$14,769.72	23	\$15,131.99	114	44327.69	137	\$59,459.68
BROWN	20	\$5,916.95	1	\$2,191.97	21	\$8,108.92	36	9716.73	57	\$17,825.65
BUTLER	86	\$30,372.44	142	\$208,707.79	228	\$239,080.23	528	168521.51	756	\$407,601.74
CARROLL	5	\$2,380.03	3	(\$17.50)	8	\$2,362.53	8	2000	16	\$4,362.53
CHAMPAIGN	7	\$3,189.16	0	\$0.00	7	\$3,189.16	17	5297.9	24	\$8,487.06
CLARK	0	\$0.00	56	\$86,609.88	56	\$86,609.88	314	109774.08	370	\$196,383.96
CLERMONT	42	\$13,272.28	109	\$153,402.86	151	\$166,675.14	231	63352.94	382	\$230,028.08
CLINTON	25	\$14,020.19	0	\$0.00	25	\$14,020.19	61	23693.08	86	\$37,713.27
COLUMBIANA	23	\$5,255.63	43	\$138,763.67	66	\$144,019.30	67	18390.7	133	\$162,410.00
COSHOCTON	12	\$9,173.29	2	\$4,114.45	14	\$13,287.74	49	14525.44	63	\$27,813.18
CRAWFORD	0	\$0.00	0	\$0.00	0	\$0.00	44	13294.35	44	\$13,294.35
CUYAHOGA	396	\$131,450.80	1,008	\$2,106,600.88	1,404	\$2,238,051.68	5053	2396696.93	6,457	\$4,634,748.61
DARKE	8	\$1,689.74	0	\$0.00	8	\$1,689.74	31	9600.26	39	\$11,290.00
DEFIANCE	6	\$804.57	0	\$0.00	6	\$804.57	34	10537.72	40	\$11,342.29
DELAWARE	14	\$4,484.87	19	\$44,095.87	33	\$48,580.74	59	17747	92	\$66,327.74
ERIE	23	\$14,099.97	19	\$50,490.54	42	\$64,590.51	95	31895.93	137	\$96,486.44
FAIRFIELD	0	\$0.00	0	\$0.00	0	\$0.00	177	46751.26	177	\$46,751.26
FAYETTE	5	\$2,041.88	0	\$0.00	5	\$2,041.88	16	4000	21	\$6,041.88
FRANKLIN	0	\$0.00	932	\$392,864.25	932	\$392,864.25	2596	967087.82	3,528	\$1,359,952.07
FULTON	6	\$1,106.53	15	\$72,770.81	21	\$73,877.34	18	5098.8	39	\$78,976.14
GALLIA	12	\$3,440.10	3	\$3,788.91	15	\$7,229.01	49	12215	64	\$19,444.01
GEAUGA	6	(\$611.17)	13	\$121,621.38	19	\$121,010.21	107	36150.2	126	\$157,160.41
GREENE	0	\$0.00	0	\$0.00	0	\$0.00	95	36189.91	95	\$36,189.91

SOURCE: GBS003RB Report from Management Information Services. Federal funds only.

**TABLE 2
TITLE IV-E FOSTER CARE
JANUARY 2006**

OHIO COUNTY	FOSTER CARE						ADOPTION ASSISTANCE		TOTAL FOSTER CARE AND ADOPTION ASSISTANCE	
	FOSTER FAMILY HOMES		CHILD CARE INSTITUTIONS		HOMES & INSTITUTIONS		CHILDREN	GROSS AMOUNT	CHILDREN	GROSS AMOUNT
	CHILDREN	GROSS AMOUNT	CHILDREN	GROSS AMOUNT	CHILDREN	GROSS AMOUNT				
STATEWIDE	2,780	\$1,254,625.95	3,814	\$6,249,646.18	6,594	\$7,504,272.13	20,411	\$7,832,136.59	27,005	\$15,336,408.72
GUERNSEY	34	\$21,848.48	0	\$0.00	34	\$21,848.48	69	21,376	103	\$43,224.18
HAMILTON	0	\$0.00	0	\$0.00	0	\$0.00	1,554	598,474	1,554	\$598,473.66
HANCOCK	13	\$6,092.73	13	\$25,668.84	26	\$31,761.57	47	14,618	73	\$46,379.50
HARDIN	21	\$14,368.59	5	\$44,196.44	26	\$58,565.03	34	9,078	60	\$67,642.69
HARRISON	4	\$1,791.61	0	\$0.00	4	\$1,791.61	28	9,137	32	\$10,928.58
HENRY	0	\$0.00	13	\$20,276.09	13	\$20,276.09	25	7,913	38	\$28,189.52
HIGHLAND	23	\$9,502.88	6	\$5,693.53	29	\$15,196.41	17	5,792	46	\$20,988.29
HOCKING	17	\$7,577.01	16	\$18,566.87	33	\$26,143.88	51	16,618	84	\$42,761.52
HOLMES	11	\$8,047.22	0	\$0.00	11	\$8,047.22	22	9,504	33	\$17,551.36
HURON	31	\$14,744.16	2	\$5,044.07	33	\$19,788.23	33	10,367	66	\$30,154.89
JACKSON	0	\$0.00	0	\$0.00	0	\$0.00	15	3,750	15	\$3,750.00
JEFFERSON	46	\$27,617.62	0	\$0.00	46	\$27,617.62	59	26,875	105	\$54,492.37
KNOX	4	\$2,134.71	0	\$0.00	4	\$2,134.71	35	9,873	39	\$12,007.46
LAKE	36	\$16,804.26	29	\$85,538.73	65	\$102,342.99	152	43,003	217	\$145,345.88
LAWRENCE	2	\$872.44	0	\$0.00	2	\$872.44	45	11,999	47	\$12,870.94
LICKING	49	\$16,791.39	85	\$147,079.54	134	\$163,870.93	343	114,385	477	\$278,255.53
LOGAN	12	\$12,275.88	0	\$0.00	12	\$12,275.88	47	16,646	59	\$28,922.26
LORAIN	0	\$0.00	22	\$112,375.21	22	\$112,375.21	436	146,625	458	\$259,000.14
LUCAS	443	\$241,958.60	74	\$138,543.22	517	\$380,501.82	1,621	615,812	2,138	\$996,314.16
MADISON	0	\$0.00	13	\$15,392.12	13	\$15,392.12	22	6,996	35	\$22,388.51
MAHONING	102	\$51,341.32	49	\$193,296.05	151	\$244,637.37	242	71,341	393	\$315,978.07
MARION	14	\$7,413.05	4	\$12,005.29	18	\$19,418.34	74	24,652	92	\$44,070.44
MEDINA	0	\$0.00	0	\$0.00	0	\$0.00	84	29,765	84	\$29,764.61
MEIGS	0	\$0.00	5	\$5,426.19	5	\$5,426.19	8	2,000	13	\$7,426.19
MERCER	7	\$6,243.67	0	\$0.00	7	\$6,243.67	32	8,509	39	\$14,752.65
MIAMI	24	\$9,560.55	31	\$41,597.62	55	\$51,158.17	107	36,631	162	\$87,788.93
MONROE	7	\$3,508.33	0	\$0.00	7	\$3,508.33	10	3,249	17	\$6,756.83
MONTGOMERY	359	\$143,755.91	261	\$352,632.35	620	\$496,388.26	1,192	568,231	1,812	\$1,064,619.12
MORGAN	0	\$0.00	0	\$0.00	0	\$0.00	12	2,984	12	\$2,984.00
MORROW	4	(\$4,015.69)	1	\$5,127.17	5	\$1,111.48	34	9,036	39	\$10,147.40

SOURCE: GBS003RB Report from Management Information Services. Federal funds only.

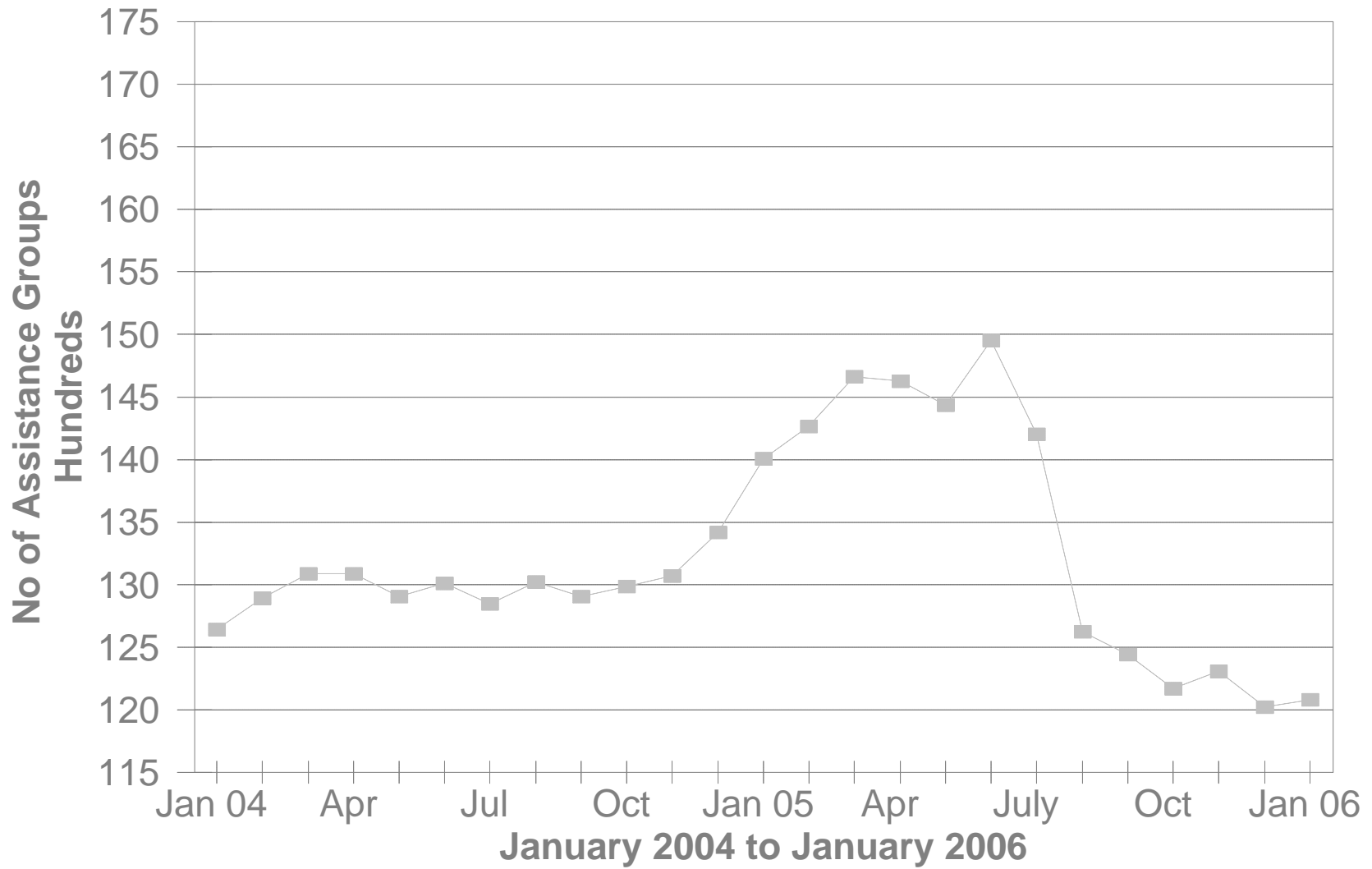
**TABLE 2
TITLE IV-E FOSTER CARE
JANUARY 2006**

OHIO COUNTY	FOSTER CARE						ADOPTION ASSISTANCE		TOTAL FOSTER CARE AND ADOPTION ASSISTANCE	
	FOSTER FAMILY HOMES		CHILD CARE INSTITUTIONS		HOMES & INSTITUTIONS		CHILDREN	GROSS AMOUNT	CHILDREN	GROSS AMOUNT
	CHILDREN	GROSS AMOUNT	CHILDREN	GROSS AMOUNT	CHILDREN	GROSS AMOUNT				
STATEWIDE	2,780	\$1,254,625.95	3,814	\$6,249,646.18	6,594	\$7,504,272.13	20,411	\$7,832,136.59	27,005	\$15,336,408.72
MUSKINGUM	0	\$0.00	12	\$2,905.00	12	\$2,905.00	129	44,974	141	\$47,878.93
NOBLE	0	\$0.00	0	\$0.00	0	\$0.00	7	1,750	7	\$1,750.00
OTTAWA	7	\$5,502.94	1	\$1,616.76	8	\$7,119.70	3	900	11	\$8,019.40
PAULDING	2	\$631.12	0	\$0.00	2	\$631.12	22	6,219	24	\$6,849.68
PERRY	29	\$16,593.49	7	\$9,171.05	36	\$25,764.54	40	13,003	76	\$38,767.35
PICKAWAY	17	\$5,439.64	5	\$8,409.36	22	\$13,849.00	18	5,308	40	\$19,157.38
PIKE	17	\$13,616.10	0	\$0.00	17	\$13,616.10	24	6,365	41	\$19,981.30
PORTAGE	0	\$0.00	0	\$0.00	0	\$0.00	140	64,414	140	\$64,413.65
PREBLE	12	\$5,475.95	18	\$20,456.19	30	\$25,932.14	36	9,793	66	\$35,725.12
PUTNAM	0	\$0.00	1	\$3,527.46	1	\$3,527.46	13	3,250	14	\$6,777.46
RICHLAND	0	\$0.00	0	\$0.00	0	\$0.00	268	90,507	268	\$90,507.46
ROSS	17	\$18,932.64	43	\$75,659.91	60	\$94,592.55	59	21,004	119	\$115,596.95
SANDUSKY	20	\$4,949.54	9	\$20,455.54	29	\$25,405.08	61	15,654	90	\$41,058.66
SCIOTO	32	\$17,185.11	41	\$80,552.77	73	\$97,737.88	49	15,294	122	\$113,031.76
SENECA	13	\$6,009.62	25	\$33,904.50	38	\$39,914.12	73	20,532	111	\$60,446.09
SHELBY	6	\$3,543.91	10	\$12,590.57	16	\$16,134.48	50	17,137	66	\$33,270.98
STARK	0	\$0.00	163	\$66,144.14	163	\$66,144.14	1,009	306,441	1,172	\$372,585.35
SUMMIT	244	\$96,291.86	217	\$873,374.40	461	\$969,666.26	883	285,124	1,344	\$1,254,789.92
TRUMBULL	135	\$77,770.15	33	\$107,770.44	168	\$185,540.59	293	79,348	461	\$264,888.71
TUSCARAWAS	24	\$13,347.60	64	\$82,205.28	88	\$95,552.88	131	38,852	219	\$134,405.03
UNION	4	\$2,691.60	0	\$0.00	4	\$2,691.60	31	9,157	35	\$11,848.78
VAN WERT	5	\$1,142.96	3	\$10,936.26	8	\$12,079.22	18	7,057	26	\$19,136.09
VINTON	18	\$9,896.93	0	\$0.00	18	\$9,896.93	14	3,949	32	\$13,846.03
WARREN	33	\$7,479.01	20	\$24,250.51	53	\$31,729.52	81	25,128	134	\$56,857.87
WASHINGTON	12	\$4,873.60	1	\$2,374.87	13	\$7,248.47	32	8,419	45	\$15,667.63
WAYNE	34	\$14,395.56	22	\$37,291.13	56	\$51,686.69	76	28,853	132	\$80,539.35
WILLIAMS	4	\$3,564.07	13	\$18,236.47	17	\$21,800.54	23	6,922	40	\$28,722.46
WOOD	9	\$3,452.65	16	\$25,813.24	25	\$29,265.89	42	14,812	67	\$44,077.46
WYANDOT	8	\$3,805.37	1	\$630.30	9	\$4,435.67	15	5,854	24	\$10,289.23

SOURCE: GBS003RB Report from Management Information Services. Federal funds only.

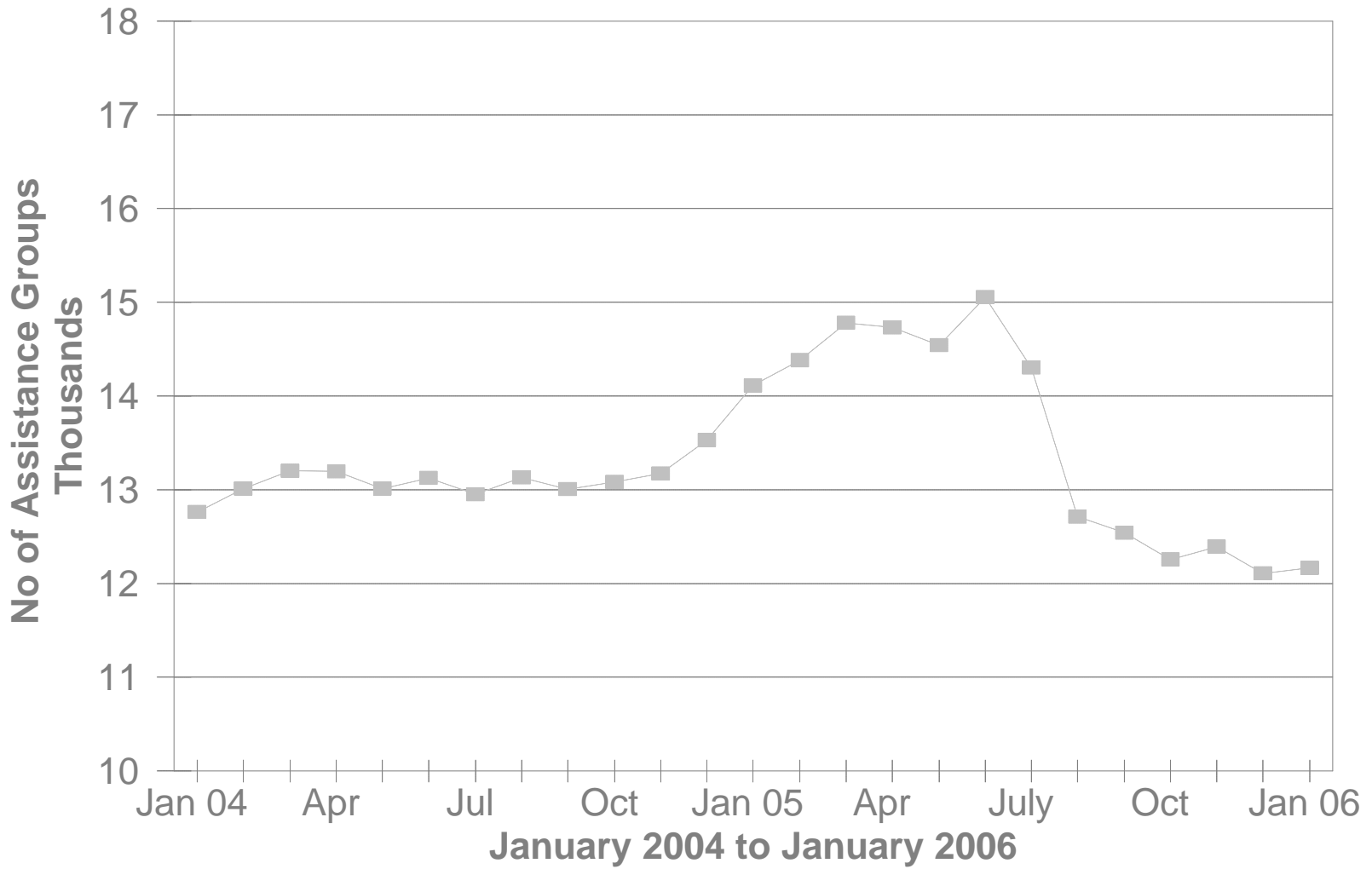
DA Cash Assistance Groups

During The Last 25 Months



DA Cash Recipients

During The Last 25 Months



**TABLE 3
DISABILITY ASSISTANCE (DA)
JANUARY 2006**

OHIO COUNTY	CASH ASSISTANCE							MEDICAL ASSISTANCE	
	ASSISTANCE GROUPS	RECIPIENTS	ADULTS	CHILDREN	ACTUAL EXPENDITURES			UNDUPLICATED RECIPIENTS	ACTUAL AMOUNT PAID
					GROSS AMOUNT	CANCELLED AMOUNT	NET AMOUNT		
STATEWIDE	12,079	12,167	12,167	0	\$1,702,804.00	\$104,934.00	\$1,597,870.00	7,218	\$3,223,416.48
ADAMS	94	96	96	0	\$11,831.00	\$920.00	\$10,911.00	39	\$18,384.82
ALLEN	86	87	87	0	\$14,221.00	\$2,844.00	\$11,377.00	30	\$19,977.10
ASHLAND	43	43	43	0	\$5,231.00	\$115.00	\$5,116.00	23	\$10,459.17
ASHTABULA	234	236	236	0	\$30,479.00	\$1,013.00	\$29,466.00	55	\$22,163.70
ATHENS	226	229	229	0	\$30,773.00	\$1,625.00	\$29,148.00	38	\$10,332.90
AUGLAIZE	25	25	25	0	\$3,531.00	\$237.00	\$3,294.00	13	\$6,711.91
BELMONT	113	115	115	0	\$14,955.00	\$530.00	\$14,425.00	46	\$17,148.51
BROWN	50	51	51	0	\$8,878.00	\$115.00	\$8,763.00	26	\$12,225.92
BUTLER	358	358	358	0	\$49,369.00	\$2,753.00	\$46,616.00	120	\$58,598.00
CARROLL	22	22	22	0	\$3,501.00	\$0.00	\$3,501.00	7	\$1,252.13
CHAMPAIGN	32	32	32	0	\$3,671.00	\$115.00	\$3,556.00	23	\$16,592.45
CLARK	303	305	305	0	\$44,447.00	\$1,035.00	\$43,412.00	123	\$71,081.25
CLERMONT	159	160	160	0	\$23,283.00	\$920.00	\$22,363.00	43	\$20,992.05
CLINTON	77	77	77	0	\$11,634.00	\$980.00	\$10,654.00	11	\$2,874.24
COLUMBIANA	110	111	111	0	\$15,151.00	\$460.00	\$14,691.00	73	\$31,832.84
COSHOCTON	84	84	84	0	\$11,237.00	\$230.00	\$11,007.00	16	\$6,232.70
CRAWFORD	45	45	45	0	\$6,049.00	\$115.00	\$5,934.00	18	\$10,234.36
CUYAHOGA	955	960	960	0	\$115,935.00	\$16,959.00	\$98,976.00	1,597	\$583,830.14
DARKE	34	35	35	0	\$4,291.00	\$0.00	\$4,291.00	9	\$5,627.76
DEFIANCE	12	12	12	0	\$1,380.00	\$0.00	\$1,380.00	16	\$8,160.60
DELAWARE	80	80	80	0	\$14,710.00	\$463.00	\$14,247.00	33	\$12,416.28
ERIE	58	59	59	0	\$8,042.00	\$575.00	\$7,467.00	34	\$19,291.11
FAIRFIELD	104	104	104	0	\$12,679.00	\$460.00	\$12,219.00	50	\$37,603.04
FAYETTE	33	33	33	0	\$4,511.00	\$0.00	\$4,511.00	27	\$13,386.13
FRANKLIN	994	1,001	1,001	0	\$149,944.00	\$8,796.00	\$141,148.00	717	\$389,114.75
FULTON	21	21	21	0	\$6,611.00	\$115.00	\$6,496.00	12	\$4,842.51
GALLIA	41	41	41	0	\$6,325.00	\$460.00	\$5,865.00	78	\$41,864.99
GEAUGA	26	26	26	0	\$4,291.00	\$445.00	\$3,846.00	1	\$501.75
GREENE	126	127	127	0	\$18,714.00	\$2,476.00	\$16,238.00	66	\$33,847.01

*SOURCE: GRP342RA Report from Management Information Services and BOMC 9260-R001 Report from Medicaid Management Information Services.

**TABLE 3
DISABILITY ASSISTANCE (DA)
JANUARY 2006**

OHIO COUNTY	CASH ASSISTANCE							MEDICAL ASSISTANCE	
	ASSISTANCE GROUPS	RECIPIENTS	ADULTS	CHILDREN	ACTUAL EXPENDITURES			UNDUPLICATED	ACTUAL AMOUNT
					GROSS AMOUNT	CANCELLED AMOUNT	NET AMOUNT	RECIPIENTS	PAID
STATEWIDE	12,079	12,167	12,167	0	\$1,702,804.00	\$104,934.00	\$1,597,870.00	7,218	\$3,223,416.48
GUERNSEY	115	116	116	0	\$14,940.00	\$0.00	\$14,940.00	23	\$10,122.77
HAMILTON	539	539	539	0	\$87,699.00	\$12,829.00	\$74,870.00	245	\$107,292.02
HANCOCK	73	73	73	0	\$8,904.00	\$473.00	\$8,431.00	18	\$8,409.45
HARDIN	21	21	21	0	\$2,959.00	\$0.00	\$2,959.00	18	\$8,285.88
HARRISON	48	48	48	0	\$6,120.00	\$115.00	\$6,005.00	9	\$2,018.36
HENRY	14	14	14	0	\$1,873.00	\$0.00	\$1,873.00	2	\$1,114.85
HIGHLAND	95	97	97	0	\$15,312.00	\$274.00	\$15,038.00	28	\$13,238.28
HOCKING	64	64	64	0	\$7,596.00	\$296.00	\$7,300.00	13	\$4,774.50
HOLMES	32	32	32	0	\$4,841.00	\$0.00	\$4,841.00	3	\$498.76
HURON	49	49	49	0	\$5,444.00	\$345.00	\$5,099.00	13	\$5,204.58
JACKSON	98	101	101	0	\$12,073.00	\$1,928.00	\$10,145.00	37	\$19,879.18
JEFFERSON	161	161	161	0	\$26,024.00	\$935.00	\$25,089.00	81	\$37,246.69
KNOX	87	88	88	0	\$12,318.00	\$345.00	\$11,973.00	23	\$9,014.61
LAKE	159	160	160	0	\$18,945.00	\$1,884.00	\$17,061.00	55	\$26,628.48
LAWRENCE	80	81	81	0	\$12,329.00	\$518.00	\$11,811.00	44	\$23,650.98
LICKING	198	199	199	0	\$28,768.00	\$1,617.00	\$27,151.00	51	\$25,014.17
LOGAN	42	42	42	0	\$5,104.00	\$460.00	\$4,644.00	35	\$13,029.21
LORAIN	276	277	277	0	\$35,150.00	\$2,327.00	\$32,823.00	128	\$54,000.06
LUCAS	688	688	688	0	\$100,470.00	\$4,498.00	\$95,972.00	448	\$175,447.66
MADISON	24	24	24	0	\$2,994.00	\$1,142.00	\$1,852.00	25	\$13,436.81
MAHONING	214	214	214	0	\$30,960.00	\$690.00	\$30,270.00	326	\$139,504.80
MARION	117	117	117	0	\$18,878.00	\$575.00	\$18,303.00	20	\$7,730.57
MEDINA	88	88	88	0	\$12,585.00	\$853.00	\$11,732.00	29	\$14,605.92
MEIGS	69	70	70	0	\$8,913.00	\$230.00	\$8,683.00	42	\$20,800.27
MERCER	30	30	30	0	\$3,642.00	\$0.00	\$3,642.00	11	\$3,551.07
MIAMI	80	82	82	0	\$9,720.00	\$230.00	\$9,490.00	21	\$11,863.11
MONROE	26	26	26	0	\$5,690.00	\$0.00	\$5,690.00	14	\$4,789.90
MONTGOMERY	595	602	602	0	\$77,452.00	\$5,297.00	\$72,155.00	453	\$238,441.35
MORGAN	56	59	59	0	\$7,604.00	\$0.00	\$7,604.00	24	\$11,387.11
MORROW	35	35	35	0	\$4,573.00	\$460.00	\$4,113.00	29	\$26,547.92

*SOURCE: GRP342RA Report from Management Information Services and BOMC 9260-R001 Report from Medicaid Management Information Services.

**TABLE 3
DISABILITY ASSISTANCE (DA)
JANUARY 2006**

OHIO COUNTY	CASH ASSISTANCE							MEDICAL ASSISTANCE	
	ASSISTANCE GROUPS	RECIPIENTS	ADULTS	CHILDREN	ACTUAL EXPENDITURES			UNDUPLICATED RECIPIENTS	ACTUAL AMOUNT PAID
					GROSS AMOUNT	CANCELLED AMOUNT	NET AMOUNT		
STATEWIDE	12,079	12,167	12,167	0	\$1,702,804.00	\$104,934.00	\$1,597,870.00	7,218	\$3,223,416.48
MUSKINGUM	336	343	343	0	\$48,884.00	\$1,905.00	\$46,979.00	35	\$11,281.29
NOBLE	18	18	18	0	\$1,944.00	\$0.00	\$1,944.00	8	\$2,447.69
OTTAWA	29	29	29	0	\$3,404.00	\$115.00	\$3,289.00	18	\$4,273.54
PAULDING	27	27	27	0	\$3,342.00	\$230.00	\$3,112.00	5	\$1,125.80
PERRY	94	101	101	0	\$13,994.00	\$115.00	\$13,879.00	36	\$18,098.33
PICKAWAY	54	56	56	0	\$11,935.00	\$550.00	\$11,385.00	27	\$12,074.48
PIKE	56	56	56	0	\$6,651.00	\$230.00	\$6,421.00	36	\$13,228.33
PORTAGE	113	113	113	0	\$12,818.00	\$1,466.00	\$11,352.00	49	\$21,001.96
PREBLE	43	43	43	0	\$7,696.00	\$0.00	\$7,696.00	15	\$8,009.04
PUTNAM	14	14	14	0	\$2,320.00	\$115.00	\$2,205.00	11	\$3,925.76
RICHLAND	215	216	216	0	\$29,716.00	\$537.00	\$29,179.00	47	\$18,196.88
ROSS	131	131	131	0	\$19,753.00	\$1,060.00	\$18,693.00	69	\$36,031.25
SANDUSKY	56	56	56	0	\$7,196.00	\$474.00	\$6,722.00	15	\$6,598.13
SCIOTO	219	220	220	0	\$31,912.00	\$964.00	\$30,948.00	71	\$29,547.23
SENECA	59	60	60	0	\$7,666.00	\$115.00	\$7,551.00	31	\$15,502.08
SHELBY	27	27	27	0	\$3,156.00	\$115.00	\$3,041.00	17	\$5,123.34
STARK	424	429	429	0	\$63,102.00	\$3,635.00	\$59,467.00	165	\$75,110.83
SUMMIT	483	485	485	0	\$66,113.00	\$3,871.00	\$62,242.00	665	\$285,487.96
TRUMBULL	307	308	308	0	\$46,229.00	\$1,725.00	\$44,504.00	100	\$41,480.65
TUSCARAWAS	87	87	87	0	\$14,232.00	\$115.00	\$14,117.00	42	\$17,206.63
UNION	43	43	43	0	\$5,843.00	\$115.00	\$5,728.00	19	\$13,202.26
VAN WERT	18	18	18	0	\$2,385.00	\$0.00	\$2,385.00	5	\$2,402.67
VINTON	47	47	47	0	\$6,736.00	\$115.00	\$6,621.00	25	\$8,195.67
WARREN	55	57	57	0	\$6,918.00	\$115.00	\$6,803.00	21	\$10,755.83
WASHINGTON	133	138	138	0	\$17,321.00	\$942.00	\$16,379.00	17	\$8,746.57
WAYNE	194	194	194	0	\$25,902.00	\$2,107.00	\$23,795.00	19	\$6,224.47
WILLIAMS	25	25	25	0	\$2,792.00	\$115.00	\$2,677.00	5	\$1,591.50
WOOD	49	49	49	0	\$6,600.00	\$781.00	\$5,819.00	25	\$18,334.26
WYANDOT	5	5	5	0	\$690.00	\$230.00	\$460.00	8	\$3,102.61
UNKNOWN									\$0.00

*SOURCE: GRP342RA Report from Management Information Services and BOMC 9260-R001 Report from Medicaid Management Information Services.

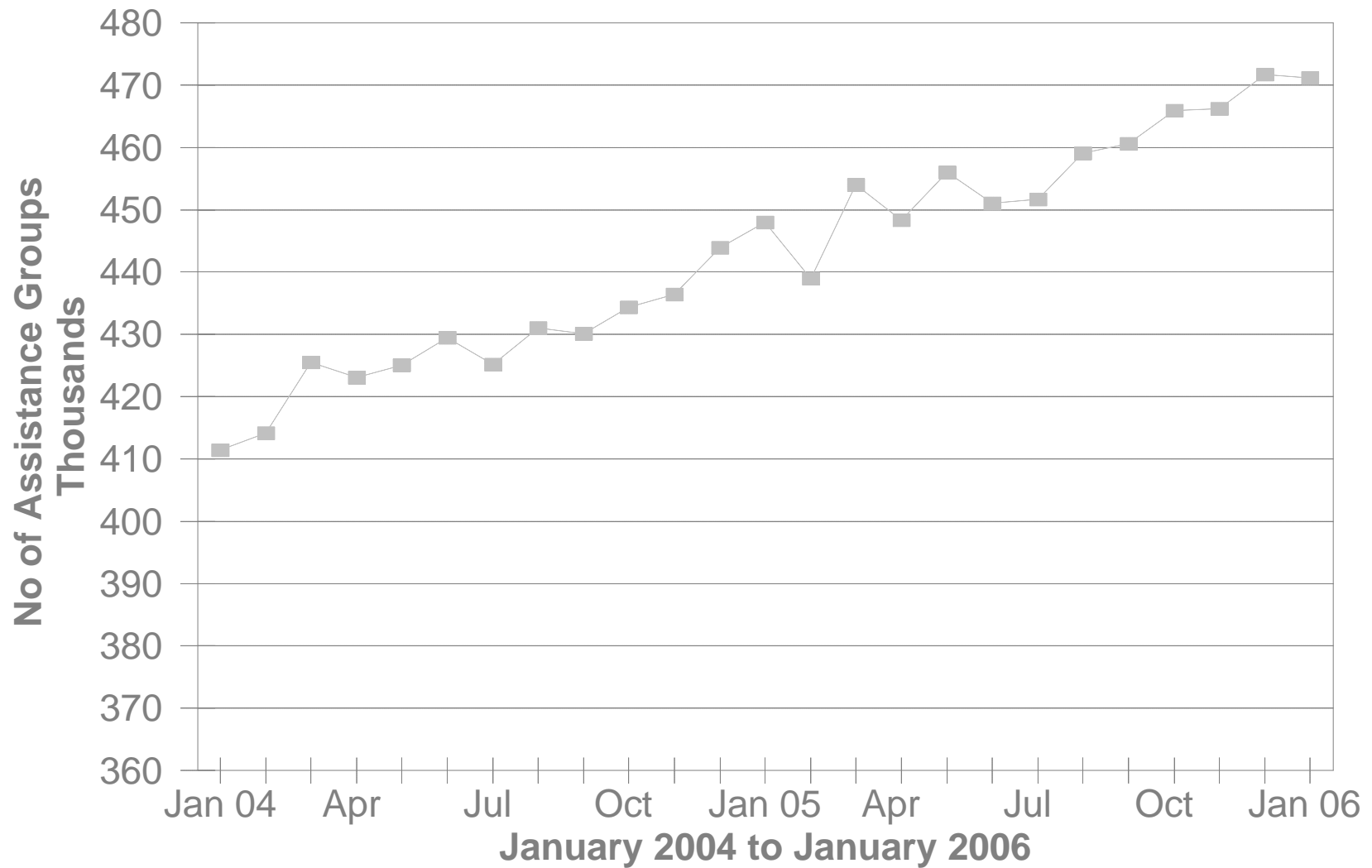
**TABLE 3-A
DA PAYMENTS FOR MEDICAL SERVICES
JANUARY 2006**

CATEGORY OF SERVICES	DISABILITY ASSISTANCE			
	PAYMENTS	CLAIM FREQUENCY	DUPLICATED RECIPIENTS	PERCENT OF TOTAL
ADVANCED PRACTICAL NURSE SVCS.	\$4,648.57	131	111	0.1%
AMBULANCE SERVICES	\$0.00	0	0	0.0%
AMBULATORY SURGERY	\$13,324.24	36	31	0.4%
CHIROPRACTER SERVICES	\$0.00	0	0	0.0%
CLINIC	\$44,080.14	693	338	1.4%
DENTAL SERVICES	\$12,837.09	106	92	0.4%
EPSDT	\$0.00	0	0	0.0%
FAMILY PLANNING	\$260.27	5	5	0.0%
FEDERALLY QUALIFIED HEALTH CTR	\$0.00	2	2	0.0%
HEALTH MAINTENANCE ORGANIZATION	\$0.00	0	0	0.0%
HOME HEALTH SERVICES	\$0.00	0	0	0.0%
INDEPENDENT LABORATORY	\$24,014.83	497	399	0.7%
INPATIENT HOSPITAL	\$0.00	0	0	0.0%
ICF	\$0.00	0	0	0.0%
MIDWIFERY SERVICES	\$0.00	0	0	0.0%
OPTOMETRIC SERVICES	\$0.00	0	0	0.0%
OUTPATIENT HEALTH SERVICES	\$0.00	0	0	0.0%
PASSPORT WAIVER III	\$0.00	0	0	0.0%
OUTPATIENT HOSPITAL GENERAL	\$0.00	0	0	0.0%
PHYSICAL THERAPY SERVICES	\$0.00	0	0	0.0%
PHYSICIAN SERVICES	\$647,990.38	8,875	3,891	20.1%
PHYSIOLOGICAL LABORATORY	\$8,483.38	22	18	0.3%
PODIATRISTS THERAPY	\$11,498.38	196	152	0.4%
PRESCRIBED DRUGS	\$2,367,800.17	39,292	6,644	73.5%
PRIVATE DUTY NURSING SERVICES	\$0.00	0	0	0.0%
PSYCHOLOGY SERVICES	\$0.00	0	0	0.0%
RURAL HEALTH SERVICES	\$0.00	1	1	0.0%
SNF	\$0.00	0	0	0.0%
SUPPLIES AND MEDICAL EQUIPMENT	\$81,235.39	1,429	749	2.5%
WAIVERED SERVICES	\$7,243.64	69	64	0.2%
OTHER	\$0.00	2	2	0.0%
STATEWIDE TOTAL	\$3,223,416.48	51,356	12,499	100.00%

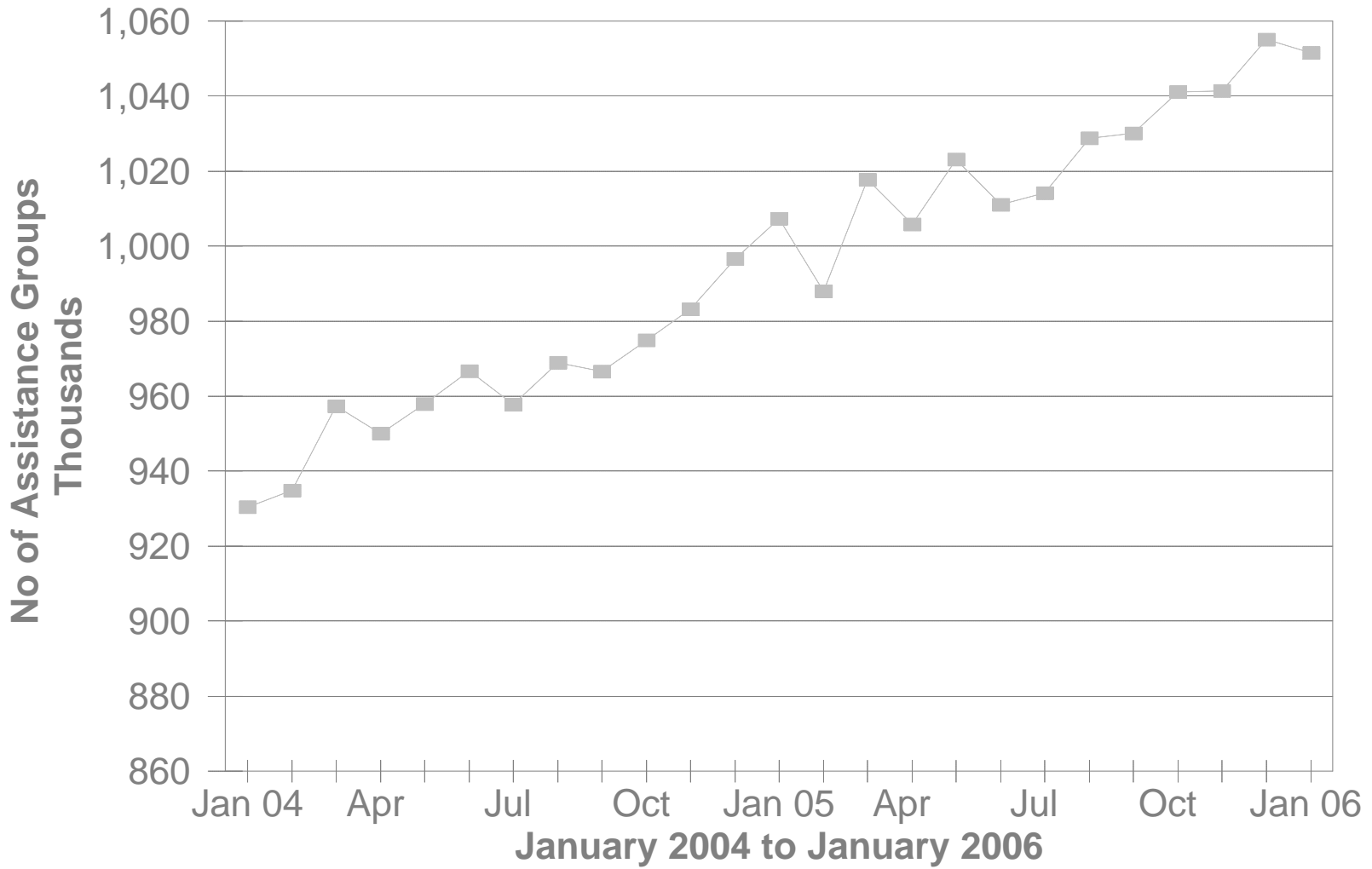
SOURCE: BOMC 9260 Report from Medicaid Management Information Services.

NOTE: Recipients are unduplicated within Category of Services, however, the Statewide Total represents a duplicated count.

No of FNS Benefits Assistance Groups During The Last 25 Months



No of FNS Benefits Cash Recipients During The Last 25 Months



**TABLE 5
FNS BENEFITS
JANUARY 2006**

OHIO COUNTY	PERSONS					ASSISTANCE GROUPS			TOTAL COUPONS ISSUED
	PUBLIC ASSISTANCE	NON-PUBLIC ASSISTANCE	TOTAL	AVERAGE ISSUANCE	% CHANGE PREV. MO.	PUBLIC ASSISTANCE	NON-PUBLIC ASSISTANCE	TOTAL	
STATEWIDE	233,476	818,052	1,051,528	\$98	-0.3%	160,397	310,744	471,141	\$103,129,520.00
ADAMS	971	3,839	4,810	\$94	1.7%	722	1,292	2,014	\$449,813
ALLEN	1,778	7,282	9,060	\$98	-1.2%	1,323	2,567	3,890	\$885,073
ASHLAND	443	2,567	3,010	\$92	0.9%	321	910	1,231	\$277,603
ASHTABULA	2,815	8,807	11,622	\$95	1.5%	1,926	3,207	5,133	\$1,100,641
ATHENS	2,075	5,102	7,177	\$94	0.6%	1,502	1,983	3,485	\$674,339
AUGLAIZE	287	1,611	1,898	\$100	1.7%	243	594	837	\$189,121
BELMONT	1,884	5,473	7,357	\$90	-0.4%	1,294	2,043	3,337	\$660,326
BROWN	600	3,203	3,803	\$95	3.0%	460	1,118	1,578	\$360,781
BUTLER	4,894	19,621	24,515	\$101	0.1%	3,654	7,147	10,801	\$2,476,174
CARROLL	314	1,938	2,252	\$92	3.0%	244	672	916	\$206,232
CHAMPAIGN	538	2,062	2,600	\$99	0.8%	372	772	1,144	\$258,171
CLARK	3,386	13,433	16,819	\$98	-0.0%	2,571	5,050	7,621	\$1,646,432
CLERMONT	1,840	8,471	10,311	\$98	-0.7%	1,348	2,981	4,329	\$1,011,376
CLINTON	513	2,600	3,113	\$98	2.5%	408	974	1,382	\$306,106
COLUMBIANA	2,400	9,601	12,001	\$93	0.8%	1,744	3,328	5,072	\$1,119,960
COSHOCTON	647	3,307	3,954	\$94	3.1%	482	1,217	1,699	\$371,987
CRAWFORD	726	3,538	4,264	\$94	1.8%	547	1,304	1,851	\$399,474
CUYAHOGA	27,861	152,276	180,137	\$98	-1.0%	17,082	67,868	84,950	\$17,680,379
DARKE	403	1,720	2,123	\$88	0.8%	303	629	932	\$187,139
DEFIANCE	514	2,068	2,582	\$96	5.0%	352	722	1,074	\$248,476
DELAWARE	990	3,231	4,221	\$97	2.5%	681	1,207	1,888	\$410,997
ERIE	1,028	4,553	5,581	\$99	0.3%	780	1,728	2,508	\$554,898
FAIRFIELD	1,814	7,575	9,389	\$98	1.5%	1,294	2,807	4,101	\$918,852
FAYETTE	479	2,065	2,544	\$93	-0.4%	373	749	1,122	\$236,518
FRANKLIN	28,248	92,992	121,240	\$104	-1.6%	19,408	32,510	51,918	\$12,607,813
FULTON	322	1,598	1,920	\$90	3.3%	226	564	790	\$173,589
GALLIA	1,746	3,540	5,286	\$96	1.1%	1,089	1,277	2,366	\$507,573
GEAUGA	274	1,322	1,596	\$98	-3.3%	200	485	685	\$156,122
GREENE	1,741	6,497	8,238	\$100	-1.8%	1,225	2,612	3,837	\$825,832

Source: CRIS-E GRP304RA and GRP 304RC Reports from Management Information Services. Cuyahoga County data also comes from the GRP 342 RA.

**TABLE 5
FNS BENEFITS
JANUARY 2006**

OHIO COUNTY	PERSONS					ASSISTANCE GROUPS			TOTAL COUPONS ISSUED
	PUBLIC ASSISTANCE	NON-PUBLIC ASSISTANCE	TOTAL	AVERAGE ISSUANCE	% CHANGE PREV. MO.	PUBLIC ASSISTANCE	NON-PUBLIC ASSISTANCE	TOTAL	
STATEWIDE	233,476	818,052	1,051,528	\$98	-0.3%	160,397	310,744	471,141	\$103,129,520.00
GUERNSEY	1,145	4,594	5,739	\$93	-0.4%	862	1,692	2,554	\$533,958
HAMILTON	17,735	52,766	70,501	\$101	-1.2%	12,036	18,930	30,966	\$7,131,471
HANCOCK	742	3,189	3,931	\$100	-2.1%	558	1,151	1,709	\$394,788
HARDIN	319	1,536	1,855	\$92	-1.5%	244	566	810	\$171,421
HARRISON	463	1,408	1,871	\$93	-1.1%	335	504	839	\$173,541
HENRY	143	972	1,115	\$89	-0.4%	112	340	452	\$98,793
HIGHLAND	798	3,542	4,340	\$94	2.4%	582	1,221	1,803	\$409,356
HOCKING	803	2,574	3,377	\$91	5.1%	524	893	1,417	\$306,023
HOLMES	176	930	1,106	\$93	1.3%	122	332	454	\$102,915
HURON	589	3,662	4,251	\$98	7.9%	456	1,299	1,755	\$416,529
JACKSON	1,318	3,808	5,126	\$96	-1.7%	976	1,413	2,389	\$493,272
JEFFERSON	2,572	6,565	9,137	\$94	0.8%	1,742	2,451	4,193	\$857,610
KNOX	861	3,477	4,338	\$95	3.0%	601	1,283	1,884	\$413,968
LAKE	2,438	8,607	11,045	\$100	-0.2%	1,711	3,292	5,003	\$1,108,243
LAWRENCE	3,285	7,770	11,055	\$91	0.1%	2,261	2,913	5,174	\$1,005,893
LICKING	2,293	9,382	11,675	\$97	2.1%	1,655	3,533	5,188	\$1,138,058
LOGAN	621	2,748	3,369	\$96	1.9%	445	958	1,403	\$324,984
LORAIN	6,276	21,149	27,425	\$96	-0.5%	3,904	7,187	11,091	\$2,626,631
LUCAS	19,160	41,865	61,025	\$98	0.2%	12,218	15,770	27,988	\$5,999,881
MADISON	657	2,058	2,715	\$97	0.3%	442	783	1,225	\$263,389
MAHONING	8,160	20,493	28,653	\$96	-0.9%	5,711	7,669	13,380	\$2,741,695
MARION	1,309	5,541	6,850	\$98	2.2%	1,003	2,078	3,081	\$671,019
MEDINA	954	3,943	4,897	\$98	-0.8%	678	1,473	2,151	\$482,254
MEIGS	1,007	3,199	4,206	\$96	0.4%	727	1,160	1,887	\$402,706
MERCER	306	1,149	1,455	\$92	-2.6%	216	414	630	\$133,289
MIAMI	1,065	3,449	4,514	\$95	0.4%	731	1,352	2,083	\$428,910
MONROE	389	1,126	1,515	\$91	2.8%	291	384	675	\$138,361
MONTGOMERY	13,136	36,448	49,584	\$102	-1.3%	9,304	13,754	23,058	\$5,055,534
MORGAN	396	1,593	1,989	\$90	-0.8%	301	578	879	\$178,818
MORROW	436	2,372	2,808	\$96	1.2%	326	841	1,167	\$268,971

Source: CRIS-E GRP304RA and GRP 304RC Reports from Management Information Services. Cuyahoga County data also comes from the GRP 342 RA.

**TABLE 5
FNS BENEFITS
JANUARY 2006**

OHIO COUNTY	PERSONS					ASSISTANCE GROUPS			TOTAL COUPONS ISSUED
	PUBLIC ASSISTANCE	NON-PUBLIC ASSISTANCE	TOTAL	AVERAGE ISSUANCE	% CHANGE PREV. MO.	PUBLIC ASSISTANCE	NON-PUBLIC ASSISTANCE	TOTAL	
STATEWIDE	233,476	818,052	1,051,528	\$98	-0.3%	160,397	310,744	471,141	\$103,129,520.00
MUSKINGUM	2,459	11,017	13,476	\$95	0.7%	1,836	4,123	5,959	\$1,286,889
NOBLE	254	952	1,206	\$88	0.0%	198	364	562	\$106,108
OTTAWA	441	1,763	2,204	\$96	3.7%	283	656	939	\$212,081
PAULDING	285	1,093	1,378	\$92	-2.1%	200	384	584	\$127,123
PERRY	1,043	3,986	5,029	\$91	0.7%	716	1,423	2,139	\$458,856
PICKAWAY	1,129	3,772	4,901	\$96	1.4%	752	1,408	2,160	\$472,320
PIKE	1,247	4,038	5,285	\$94	3.9%	896	1,419	2,315	\$498,130
PORTAGE	1,597	6,390	7,987	\$100	-0.3%	1,206	2,420	3,626	\$802,676
PREBLE	488	1,979	2,467	\$95	-1.6%	320	675	995	\$235,503
PUTNAM	187	1,052	1,239	\$93	1.1%	150	371	521	\$115,221
RICHLAND	2,138	9,192	11,330	\$96	-0.5%	1,618	3,341	4,959	\$1,083,883
ROSS	2,215	7,796	10,011	\$98	0.7%	1,484	2,768	4,252	\$976,636
SANDUSKY	621	3,407	4,028	\$101	0.3%	454	1,227	1,681	\$407,739
SCIOTO	3,901	11,015	14,916	\$91	-0.9%	2,905	4,235	7,140	\$1,351,929
SENECA	680	3,364	4,044	\$94	0.4%	492	1,209	1,701	\$381,990
SHELBY	424	2,111	2,535	\$100	3.5%	318	721	1,039	\$253,452
STARK	7,241	21,534	28,775	\$97	-0.4%	4,842	7,807	12,649	\$2,789,240
SUMMIT	14,055	35,551	49,606	\$99	-0.4%	9,750	13,513	23,263	\$4,928,905
TRUMBULL	4,081	14,521	18,602	\$94	0.7%	2,927	5,127	8,054	\$1,745,836
TUSCARAWAS	1,537	5,845	7,382	\$90	-0.2%	1,129	2,168	3,297	\$665,515
UNION	490	1,978	2,468	\$103	-0.2%	346	739	1,085	\$254,033
VAN WERT	241	1,019	1,260	\$90	0.9%	188	373	561	\$113,450
VINTON	551	2,149	2,700	\$94	0.9%	385	743	1,128	\$253,392
WARREN	776	3,058	3,834	\$93	0.5%	544	1,109	1,653	\$355,074
WASHINGTON	1,097	4,446	5,543	\$92	-1.7%	922	1,655	2,577	\$507,868
WAYNE	1,616	5,007	6,623	\$95	-1.2%	1,141	1,914	3,055	\$630,165
WILLIAMS	447	1,928	2,375	\$95	2.0%	300	714	1,014	\$224,536
WOOD	998	3,564	4,562	\$95	-1.3%	718	1,326	2,044	\$434,488
WYANDOT	154	718	872	\$95	-5.1%	129	281	410	\$82,404

Source: CRIS-E GRP304RA and GRP 304RC Reports from Management Information Services. Cuyahoga County data also comes from the GRP 342 RA.

**Table 6A
January 2006
Medicaid Eligibles**

County	Aged	Blind	Disabled	ABD Total	OWF & Related	Healthy Start	CFC Total	Total Medicaid	Foster Care	Adoption Assistance	Transitional	Nursing Facilities
STATEWIDE	144,446	836	242,439	387,721	1,037,705	249,404	1,287,109	1,674,830	9,963	20,000	139,964	54,765
ADAMS	814	3	1,407	2,224	4,762	1,025	5,787	8,011	24	36	864	121
ALLEN	1,249	5	2,097	3,351	9,286	2,459	11,745	15,096	110	131	1,120	600
ASHLAND	629	2	582	1,213	3,591	1,385	4,976	6,189	17	13	770	280
ASHTABULA	1,587	4	2,973	4,564	11,267	2,929	14,196	18,760	77	163	1,898	1,015
ATHENS	888	15	2,057	2,960	6,345	1,367	7,712	10,672	60	119	823	196
AUGLAIZE	478	4	457	939	2,529	878	3,407	4,346	9	45	466	304
BELMONT	1,404	4	2,112	3,520	7,443	1,593	9,036	12,556	38	110	1,282	539
BROWN	731	0	943	1,674	4,785	1,396	6,181	7,855	23	35	948	206
BUTLER	3,115	19	5,687	8,821	25,943	6,080	32,023	40,844	262	477	3,944	1,276
CARROLL	407	2	538	947	2,676	703	3,379	4,326	8	9	576	179
CHAMPAIGN	495	4	601	1,100	2,955	945	3,900	5,000	14	20	664	259
CLARK	2,194	6	3,659	5,859	16,149	3,629	19,778	25,637	153	304	2,145	1,070
CLERMONT	1,626	7	2,712	4,345	12,371	4,150	16,521	20,866	185	236	1,957	692
CLINTON	511	2	794	1,307	3,910	904	4,814	6,121	36	62	737	155
COLUMBIANA	1,654	13	2,537	4,204	11,709	3,089	14,798	19,002	80	81	1,899	612
COSHOCTON	593	2	898	1,493	4,082	968	5,050	6,543	18	50	699	286
CRAWFORD	676	6	869	1,551	4,640	1,146	5,786	7,337	32	44	1,055	193
CUYAHOGA	22,526	147	36,526	59,199	154,209	28,403	182,612	241,811	1,598	4,809	15,718	7,248
DARKE	597	1	617	1,215	2,914	1,098	4,012	5,227	22	42	611	328
DEFIANCE	370	3	614	987	2,922	985	3,907	4,894	8	33	629	187
DELAWARE	778	1	994	1,773	4,748	1,398	6,146	7,919	31	55	904	295
ERIE	873	4	1,166	2,043	5,907	1,736	7,643	9,686	65	96	775	418
FAIRFIELD	1,235	8	1,977	3,220	9,691	2,772	12,463	15,683	40	183	1,660	454
FAYETTE	539	1	844	1,384	2,940	863	3,803	5,187	8	16	614	328
FRANKLIN	11,498	100	23,691	35,289	120,478	28,335	148,813	184,102	1,678	2,382	11,871	3,822
FULTON	391	1	386	778	2,587	883	3,470	4,248	19	31	581	217
GALLIA	874	3	1,581	2,458	4,438	884	5,322	7,780	12	45	538	205
GEAUGA	606	2	506	1,114	2,350	890	3,240	4,354	12	113	384	333
GREENE	1,348	15	1,766	3,129	9,262	2,320	11,582	14,711	86	113	1,532	595

**Table 6A
January 2006
Medicaid Eligibles**

County	Aged	Blind	Disabled	ABD Total	OWF & Related	Healthy Start	CFC Total	Total Medicaid	Foster Care	Adoption Assistance	Transitional	Nursing Facilities
STATEWIDE	144,446	836	242,439	387,721	1,037,705	249,404	1,287,109	1,674,830	9,963	20,000	139,964	54,765
GUERNSEY	799	3	1,387	2,189	5,600	1,441	7,041	9,230	55	61	795	183
HAMILTON	10,045	71	18,587	28,703	68,348	17,519	85,867	114,570	826	1,707	6,213	3,894
HANCOCK	623	5	875	1,503	4,374	1,325	5,699	7,202	33	42	720	297
HARDIN	378	2	566	946	2,391	752	3,143	4,089	19	42	458	132
HARRISON	297	1	510	808	1,724	460	2,184	2,992	6	26	265	127
HENRY	253	0	308	561	1,781	733	2,514	3,075	16	25	393	141
HIGHLAND	808	2	1,084	1,894	4,874	1,351	6,225	8,119	42	22	741	238
HOCKING	499	4	732	1,235	3,499	979	4,478	5,713	35	48	581	163
HOLMES	426	3	432	861	1,639	883	2,522	3,383	16	23	361	377
HURON	580	1	845	1,426	5,122	1,584	6,706	8,132	38	36	1,089	192
JACKSON	862	1	1,368	2,231	5,125	1,084	6,209	8,440	17	16	815	182
JEFFERSON	1,218	15	2,407	3,640	8,109	1,604	9,713	13,353	77	72	1,110	380
KNOX	730	2	1,275	2,007	4,738	1,318	6,056	8,063	17	39	919	521
LAKE	1,777	4	2,493	4,274	11,486	3,410	14,896	19,170	60	134	1,811	1,074
LAWRENCE	1,647	5	3,375	5,027	9,212	2,167	11,379	16,406	56	48	1,108	376
LICKING	1,558	5	2,512	4,075	13,120	3,362	16,482	20,557	148	332	2,546	570
LOGAN	580	2	616	1,198	3,863	899	4,762	5,960	15	48	791	199
LORAIN	2,750	14	5,207	7,971	26,489	5,352	31,841	39,812	96	424	3,512	1,291
LUCAS	6,125	45	14,204	20,374	56,473	10,659	67,132	87,506	525	1,436	6,684	1,976
MADISON	399	2	587	988	2,696	890	3,586	4,574	16	21	478	135
MAHONING	4,049	21	6,822	10,892	27,001	5,259	32,260	43,152	168	243	3,305	1,593
MARION	930	3	1,718	2,651	6,610	1,755	8,365	11,016	29	87	1,001	297
MEDINA	987	8	1,272	2,267	6,791	2,041	8,832	11,099	37	84	1,388	644
MEIGS	576	5	1,015	1,596	3,693	712	4,405	6,001	6	13	532	141
MERCER	355	1	415	771	1,843	643	2,486	3,257	12	31	449	203
MIAMI	1,034	5	1,355	2,394	5,830	1,835	7,665	10,059	63	116	1,081	422
MONROE	284	1	376	661	1,851	495	2,346	3,007	10	14	399	91
MONTGOMERY	6,701	43	12,715	19,459	49,786	11,246	61,032	80,491	687	1,260	5,243	2,431
MORGAN	301	0	503	804	2,182	533	2,715	3,519	1	13	388	107
MORROW	452	1	536	989	3,211	985	4,196	5,185	5	37	704	168

Source: ODJFS Report BOMM1321 Prepared: Bureau of Research and Evaluation.

**Table 6A
January 2006
Medicaid Eligibles**

County	Aged	Blind	Disabled	ABD Total	OWF & Related	Healthy Start	CFC Total	Total Medicaid	Foster Care	Adoption Assistance	Transitional	Nursing Facilities
STATEWIDE	144,446	836	242,439	387,721	1,037,705	249,404	1,287,109	1,674,830	9,963	20,000	139,964	54,765
MUSKINGUM	1,558	16	2,747	4,321	11,655	2,466	14,121	18,442	68	140	1,668	470
NOBLE	240	0	257	497	1,207	358	1,565	2,062	3	8	291	76
OTTAWA	465	4	491	960	2,385	861	3,246	4,206	8	7	468	185
PAULDING	194	0	360	554	1,354	559	1,913	2,467	10	18	224	45
PERRY	557	7	1,152	1,716	4,923	1,085	6,008	7,724	40	39	870	201
PICKAWAY	674	1	1,004	1,679	4,812	1,143	5,955	7,634	23	18	809	180
PIKE	780	0	1,474	2,254	4,578	1,194	5,772	8,026	38	24	636	278
PORTAGE	1,223	8	1,902	3,133	8,910	2,632	11,542	14,675	85	152	1,286	612
PREBLE	382	6	626	1,014	3,195	868	4,063	5,077	39	38	630	217
PUTNAM	309	1	346	656	1,402	610	2,012	2,668	2	7	279	257
RICHLAND	1,844	0	2,667	4,511	11,115	3,486	14,601	19,112	64	270	1,679	626
ROSS	1,158	2	2,351	3,511	9,536	1,985	11,521	15,032	81	59	1,275	296
SANDUSKY	705	5	936	1,646	4,653	1,521	6,174	7,820	28	54	781	334
SCIOTO	2,439	9	4,690	7,138	11,477	2,356	13,833	20,971	90	53	1,367	589
SENECA	731	3	980	1,714	4,446	1,545	5,991	7,705	45	70	896	331
SHELBY	416	4	577	997	3,212	1,030	4,242	5,239	17	47	512	196
STARK	4,993	20	6,839	11,852	32,225	7,743	39,968	51,820	468	1,003	5,302	2,295
SUMMIT	6,762	48	11,042	17,852	47,010	9,901	56,911	74,763	492	839	5,953	2,086
TRUMBULL	2,784	18	4,618	7,420	20,350	5,362	25,712	33,132	164	270	3,428	1,205
TUSCARAWAS	1,307	4	1,542	2,853	7,554	2,325	9,879	12,732	94	146	1,470	502
UNION	332	1	498	831	2,899	732	3,631	4,462	4	35	497	121
UNKNOWN	0	0	0	0	0	0	0	0	0	0	0	0
VAN WERT	324	0	419	743	1,665	761	2,426	3,169	9	21	353	160
VINTON	325	0	594	919	2,574	631	3,205	4,124	26	14	483	70
WARREN	1,263	4	1,579	2,846	6,017	2,353	8,370	11,216	53	93	1,075	832
WASHINGTON	1,052	6	1,618	2,676	5,882	1,906	7,788	10,464	13	38	1,226	343
WAYNE	1,152	6	1,666	2,824	6,613	2,409	9,022	11,846	75	96	1,336	487
WILLIAMS	455	2	459	916	3,120	805	3,925	4,841	18	24	668	203
WOOD	973	2	1,065	2,040	5,428	1,769	7,197	9,237	40	49	755	419
WYANDOT	340	0	252	592	1,158	519	1,677	2,269	10	15	203	191

Source: ODJFS Report BOMM1321 Prepared: Bureau of Research and Evaluation.

**Table 6B
January 2006
Medicaid Expenditures**

	Aged	Blind	Disabled	ABD Total	OWF & Related	Healthy Start	CFC Total	Total Medicaid	Foster Care	Adoption Assistance	Transitional	Nursing Facilities
STATEWIDE	\$263,063,141	\$1,008,548	\$409,497,783	\$673,569,473	\$110,457,494	\$38,361,493	\$148,818,987	\$822,990,705	\$4,741,097	\$4,062,547	\$8,658,640	\$276,894,352
ADAMS	\$884,278	\$1,552	\$1,365,130	\$2,250,960	\$825,482	\$296,306	\$1,121,788	\$3,374,449	\$3,912	\$5,378	\$108,787	\$513,859
ALLEN	\$2,528,133	\$14,287	\$3,406,731	\$5,949,151	\$1,952,554	\$375,617	\$2,328,172	\$8,294,822	\$25,228	\$17,079	\$171,436	\$2,749,781
ASHLAND	\$1,210,532	\$4,872	\$1,024,719	\$2,240,123	\$703,072	\$221,351	\$924,423	\$3,165,654	\$1,951	\$1,716	\$62,950	\$1,237,079
ASHTABULA	\$3,417,613	\$11,110	\$5,855,549	\$9,284,272	\$2,235,664	\$505,575	\$2,741,238	\$12,031,255	\$36,316	\$38,267	\$165,499	\$5,503,041
ATHENS	\$1,222,696	\$5,799	\$2,122,076	\$3,350,570	\$1,177,379	\$430,517	\$1,607,896	\$4,968,014	\$42,107	\$58,688	\$62,803	\$667,018
AUGLAIZE	\$1,316,606	\$6,499	\$993,883	\$2,316,987	\$432,172	\$351,812	\$783,984	\$3,108,267	\$4,227	\$5,739	\$46,832	\$1,371,367
BELMONT	\$2,247,161	\$950	\$3,078,504	\$5,326,614	\$1,320,476	\$225,506	\$1,545,982	\$6,872,774	\$22,203	\$25,688	\$210,249	\$1,886,013
BROWN	\$1,288,790	\$0	\$1,341,544	\$2,630,334	\$852,255	\$264,083	\$1,116,338	\$3,746,672	\$10,493	\$18,061	\$82,292	\$1,155,215
BUTLER	\$7,282,513	\$25,689	\$12,046,113	\$19,354,315	\$1,642,552	\$579,485	\$2,222,037	\$21,596,214	\$98,762	\$104,194	\$92,526	\$8,076,972
CARROLL	\$614,824	\$751	\$936,151	\$1,551,726	\$360,541	\$73,131	\$433,672	\$1,986,044	\$1,057	\$1,692	\$55,610	\$747,229
CHAMPAIGN	\$988,909	\$1,630	\$1,143,701	\$2,134,240	\$485,838	\$252,454	\$738,292	\$2,872,577	\$11,064	\$3,464	\$37,758	\$1,213,151
CLARK	\$4,349,085	\$2,931	\$6,791,918	\$11,143,933	\$1,401,222	\$397,034	\$1,798,256	\$12,950,602	\$60,552	\$59,248	\$112,383	\$5,188,983
CLERMONT	\$2,246,500	\$4,240	\$5,390,859	\$7,641,599	\$2,362,846	\$841,346	\$3,204,192	\$10,850,173	\$130,435	\$39,984	\$190,617	\$3,721,685
CLINTON	\$716,615	\$1,220	\$1,082,445	\$1,800,279	\$762,287	\$162,531	\$924,818	\$2,725,599	\$12,560	\$7,105	\$61,672	\$539,136
COLUMBIANA	\$2,624,951	\$6,735	\$3,878,110	\$6,509,795	\$2,172,238	\$578,392	\$2,750,630	\$9,264,404	\$55,547	\$14,298	\$212,353	\$2,478,650
COSHOCTON	\$901,300	\$2,337	\$1,791,669	\$2,695,306	\$631,089	\$120,058	\$751,147	\$3,447,515	\$13,472	\$9,277	\$59,119	\$1,358,658
CRAWFORD	\$1,050,844	\$11,945	\$1,226,745	\$2,289,534	\$942,689	\$271,407	\$1,214,097	\$3,505,396	\$13,933	\$9,374	\$166,757	\$772,849
CUYAHOGA	\$39,101,043	\$118,774	\$55,014,500	\$94,234,317	\$8,802,239	\$2,610,714	\$11,412,952	\$105,686,109	\$798,286	\$969,738	\$324,250	\$40,139,838
DARKE	\$1,424,444	\$6	\$1,027,679	\$2,452,130	\$471,405	\$193,214	\$664,619	\$3,116,749	\$5,849	\$11,376	\$51,803	\$1,525,648
DEFIANCE	\$628,036	\$182	\$738,337	\$1,366,555	\$451,175	\$139,108	\$590,282	\$1,957,107	\$901	\$4,685	\$50,160	\$530,397
DELAWARE	\$1,427,404	\$4,515	\$1,874,899	\$3,306,818	\$896,639	\$259,082	\$1,155,721	\$4,462,540	\$14,323	\$22,238	\$68,548	\$1,289,820
ERIE	\$1,700,492	\$2,109	\$1,571,410	\$3,274,011	\$833,570	\$243,086	\$1,076,656	\$4,352,783	\$29,877	\$28,880	\$60,062	\$1,739,538
FAIRFIELD	\$2,169,907	\$3,643	\$3,589,469	\$5,763,020	\$1,926,923	\$546,032	\$2,472,955	\$8,237,402	\$7,765	\$40,464	\$172,672	\$2,138,259
FAYETTE	\$1,101,224	\$7,957	\$1,527,810	\$2,636,991	\$481,056	\$296,672	\$777,728	\$3,414,719	\$448	\$3,386	\$49,307	\$1,588,168
FRANKLIN	\$19,857,504	\$99,404	\$50,579,173	\$70,536,082	\$14,538,209	\$4,810,778	\$19,348,987	\$89,924,902	\$848,583	\$590,627	\$564,996	\$23,136,272
FULTON	\$783,169	\$0	\$693,651	\$1,476,820	\$475,543	\$138,448	\$613,991	\$2,091,118	\$7,698	\$13,548	\$38,357	\$838,126
GALLIA	\$1,817,387	\$139	\$3,709,422	\$5,526,947	\$818,350	\$100,309	\$918,659	\$6,481,402	\$7,995	\$3,138	\$61,183	\$945,455
GEAUGA	\$1,279,876	\$1,034	\$1,282,526	\$2,563,437	\$458,462	\$310,810	\$769,272	\$3,332,746	\$6,036	\$15,582	\$32,157	\$1,645,074
GREENE	\$2,632,738	\$5,516	\$2,652,558	\$5,290,812	\$1,580,189	\$446,401	\$2,026,590	\$7,317,402	\$32,512	\$19,633	\$158,942	\$2,843,753

**Table 6B
January 2006
Medicaid Expenditures**

	Aged	Blind	Disabled	ABD Total	OWF & Related	Healthy Start	CFC Total	Total Medicaid	Foster Care	Adoption Assistance	Transitional	Nursing Facilities
STATEWIDE	\$263,063,141	\$1,008,548	\$409,497,783	\$673,569,473	\$110,457,494	\$38,361,493	\$148,818,987	\$822,990,705	\$4,741,097	\$4,062,547	\$8,658,640	\$276,894,352
GUERNSEY	\$1,084,446	\$626	\$2,619,733	\$3,704,806	\$1,036,897	\$268,141	\$1,305,037	\$5,026,768	\$18,492	\$12,478	\$75,856	\$770,368
HAMILTON	\$19,560,671	\$98,029	\$30,125,949	\$49,784,648	\$4,686,970	\$2,476,214	\$7,163,184	\$57,046,331	\$574,421	\$289,941	\$199,257	\$20,157,308
HANCOCK	\$934,016	\$5,140	\$1,644,209	\$2,583,365	\$661,532	\$235,346	\$896,879	\$3,482,259	\$9,284	\$8,219	\$70,421	\$1,129,362
HARDIN	\$373,201	\$386	\$647,859	\$1,021,446	\$212,645	\$245,767	\$458,412	\$1,479,857	\$6,893	\$5,174	\$21,659	\$331,780
HARRISON	\$568,561	\$126	\$582,971	\$1,151,658	\$254,284	\$58,365	\$312,649	\$1,465,431	\$401	\$4,427	\$20,701	\$548,572
HENRY	\$539,396	\$0	\$1,121,269	\$1,660,665	\$303,273	\$116,067	\$419,339	\$2,080,004	\$6,094	\$3,761	\$61,970	\$562,720
HIGHLAND	\$941,714	\$465	\$1,707,821	\$2,650,001	\$904,401	\$269,512	\$1,173,913	\$3,825,059	\$5,977	\$15,345	\$61,628	\$859,623
HOCKING	\$745,565	\$5,860	\$909,806	\$1,661,231	\$890,550	\$169,358	\$1,059,908	\$2,721,139	\$13,817	\$5,678	\$51,983	\$699,591
HOLMES	\$1,182,831	\$160	\$937,935	\$2,120,926	\$296,898	\$141,713	\$438,610	\$2,559,536	\$7,417	\$6,549	\$26,023	\$1,742,253
HURON	\$852,938	\$144	\$1,151,164	\$2,004,246	\$821,445	\$440,455	\$1,261,900	\$3,266,146	\$19,727	\$6,569	\$72,411	\$757,623
JACKSON	\$1,400,704	\$78	\$1,503,754	\$2,904,536	\$1,116,927	\$327,853	\$1,444,780	\$4,346,002	\$5,404	\$4,209	\$80,728	\$1,091,148
JEFFERSON	\$1,697,647	\$7,619	\$2,660,462	\$4,365,727	\$1,438,386	\$188,110	\$1,626,496	\$5,993,063	\$28,699	\$11,075	\$86,269	\$1,292,676
KNOX	\$1,751,516	\$1,075	\$4,214,903	\$5,967,494	\$795,103	\$222,383	\$1,017,486	\$6,984,980	\$15,209	\$11,895	\$83,175	\$3,797,294
LAKE	\$5,298,313	\$4,414	\$6,032,747	\$11,335,474	\$2,141,114	\$681,521	\$2,822,636	\$14,161,339	\$58,468	\$44,808	\$288,543	\$6,886,449
LAWRENCE	\$2,296,942	\$3,364	\$3,623,073	\$5,923,378	\$1,773,302	\$1,386,240	\$3,159,542	\$9,090,367	\$34,405	\$9,315	\$98,351	\$1,537,874
LICKING	\$2,879,917	\$4,748	\$5,032,891	\$7,917,556	\$2,035,671	\$896,839	\$2,932,510	\$10,850,066	\$45,933	\$107,421	\$249,171	\$2,992,970
LOGAN	\$932,433	\$71	\$1,057,106	\$1,989,610	\$610,435	\$182,386	\$792,821	\$2,783,253	\$3,343	\$10,061	\$73,476	\$756,705
LORAIN	\$6,377,614	\$8,349	\$8,057,766	\$14,443,729	\$1,053,091	\$398,260	\$1,451,351	\$15,919,015	\$26,647	\$55,114	\$96,308	\$7,600,742
LUCAS	\$10,759,510	\$3,441	\$24,030,555	\$34,793,506	\$2,936,143	\$1,112,863	\$4,049,007	\$38,880,186	\$158,573	\$241,795	\$132,847	\$10,825,985
MADISON	\$626,380	\$382	\$1,300,703	\$1,927,465	\$430,969	\$140,977	\$571,946	\$2,508,495	\$14,883	\$3,785	\$33,942	\$685,757
MAHONING	\$7,765,379	\$31,198	\$11,284,072	\$19,080,648	\$1,637,220	\$177,233	\$1,814,452	\$20,906,223	\$100,891	\$42,073	\$83,057	\$7,392,429
MARION	\$1,763,479	\$23,002	\$2,969,493	\$4,755,974	\$1,115,143	\$342,744	\$1,457,887	\$6,215,169	\$4,525	\$17,642	\$81,950	\$1,945,851
MEDINA	\$2,375,672	\$56,288	\$3,803,577	\$6,235,537	\$1,119,790	\$273,769	\$1,393,559	\$7,629,835	\$15,128	\$8,956	\$130,685	\$3,594,888
MEIGS	\$642,160	\$5,355	\$1,135,646	\$1,783,162	\$664,540	\$86,444	\$750,985	\$2,535,998	\$2,221	\$508	\$78,510	\$557,845
MERCER	\$798,974	\$0	\$505,697	\$1,304,672	\$307,594	\$91,221	\$398,815	\$1,703,487	\$3,814	\$2,467	\$34,332	\$913,323
MIAMI	\$2,136,627	\$9,349	\$2,103,608	\$4,249,585	\$1,081,962	\$360,728	\$1,442,690	\$5,708,549	\$26,994	\$18,397	\$122,195	\$1,970,229
MONROE	\$362,728	\$275	\$360,997	\$724,000	\$270,594	\$52,728	\$323,321	\$1,049,283	\$4,578	\$3,374	\$32,342	\$336,227
MONTGOMERY	\$11,903,123	\$232,914	\$18,487,509	\$30,623,545	\$4,203,933	\$1,687,018	\$5,890,951	\$36,530,831	\$273,470	\$254,376	\$181,316	\$12,191,490
MORGAN	\$480,188	\$0	\$612,925	\$1,093,114	\$280,855	\$76,377	\$357,232	\$1,450,441	\$0	\$1,085	\$34,237	\$455,634
MORROW	\$746,874	\$2,715	\$899,952	\$1,649,541	\$497,372	\$125,181	\$622,553	\$2,272,339	\$1,254	\$8,060	\$47,404	\$724,808

**Table 6B
January 2006
Medicaid Expenditures**

	Aged	Blind	Disabled	ABD Total	OWF & Related	Healthy Start	CFC Total	Total Medicaid	Foster Care	Adoption Assistance	Transitional	Nursing Facilities
STATEWIDE	\$263,063,141	\$1,008,548	\$409,497,783	\$673,569,473	\$110,457,494	\$38,361,493	\$148,818,987	\$822,990,705	\$4,741,097	\$4,062,547	\$8,658,640	\$276,894,352
MUSKINGUM	\$2,332,995	\$7,422	\$2,939,753	\$5,280,170	\$1,892,159	\$551,002	\$2,443,160	\$7,725,009	\$16,215	\$14,152	\$142,939	\$1,909,121
NOBLE	\$389,197	\$0	\$284,634	\$673,831	\$173,658	\$53,753	\$227,411	\$901,242	\$0	\$1,534	\$15,768	\$343,266
OTTAWA	\$952,886	\$9,986	\$1,678,550	\$2,641,422	\$403,155	\$130,691	\$533,847	\$3,176,063	\$398	\$767	\$30,489	\$585,201
PAULDING	\$252,008	\$12	\$571,616	\$823,636	\$242,114	\$118,855	\$360,969	\$1,184,605	\$13,118	\$4,545	\$20,028	\$260,793
PERRY	\$709,122	\$3,256	\$1,939,366	\$2,651,744	\$834,162	\$155,005	\$989,167	\$3,641,192	\$14,205	\$213	\$82,791	\$1,103,221
PICKAWAY	\$978,601	\$1,409	\$1,342,340	\$2,322,350	\$870,460	\$177,062	\$1,047,521	\$3,373,865	\$5,877	\$1,961	\$81,177	\$754,071
PIKE	\$1,166,080	\$0	\$2,912,221	\$4,078,302	\$831,869	\$187,916	\$1,019,786	\$5,098,239	\$10,289	\$13,382	\$52,901	\$1,433,327
PORTAGE	\$2,413,614	\$15,819	\$4,266,438	\$6,695,870	\$1,529,684	\$565,486	\$2,095,171	\$8,791,909	\$30,966	\$27,293	\$138,702	\$3,431,526
PREBLE	\$864,692	\$415	\$1,153,176	\$2,018,284	\$613,091	\$147,918	\$761,009	\$2,779,970	\$13,714	\$5,646	\$40,169	\$1,133,622
PUTNAM	\$654,254	\$987	\$719,210	\$1,374,452	\$188,521	\$78,423	\$266,944	\$1,641,395	\$1,136	\$0	\$18,062	\$1,037,847
RICHLAND	\$3,085,348	\$0	\$4,258,808	\$7,344,156	\$1,750,273	\$436,470	\$2,186,743	\$9,573,453	\$23,236	\$45,020	\$126,650	\$3,046,261
ROSS	\$1,525,020	\$1,127	\$2,661,730	\$4,187,878	\$1,567,996	\$348,504	\$1,916,499	\$6,108,792	\$21,885	\$5,400	\$126,523	\$1,135,918
SANDUSKY	\$1,401,763	\$2,113	\$2,048,738	\$3,452,614	\$766,587	\$225,292	\$991,879	\$4,461,605	\$9,987	\$4,130	\$71,174	\$1,624,789
SCIOTO	\$3,308,566	\$12,504	\$5,334,096	\$8,655,166	\$2,192,600	\$439,568	\$2,632,168	\$11,315,867	\$34,960	\$30,545	\$125,713	\$2,303,672
SENECA	\$1,680,540	\$1,092	\$3,567,824	\$5,249,457	\$1,113,600	\$300,599	\$1,414,199	\$6,663,824	\$21,665	\$12,261	\$80,130	\$1,475,271
SHELBY	\$826,906	\$2,227	\$834,161	\$1,663,294	\$463,657	\$227,655	\$691,311	\$2,354,641	\$14,087	\$5,556	\$60,186	\$903,793
STARK	\$10,511,775	\$19,585	\$11,629,493	\$22,160,853	\$1,645,939	\$549,857	\$2,195,796	\$24,359,389	\$237,062	\$161,410	\$96,163	\$10,961,962
SUMMIT	\$11,166,827	\$44,281	\$17,250,280	\$28,461,389	\$2,764,000	\$1,020,536	\$3,784,536	\$32,257,402	\$292,053	\$184,695	\$121,515	\$9,312,211
TRUMBULL	\$4,971,775	\$23,824	\$7,256,833	\$12,252,432	\$1,131,425	\$853,210	\$1,984,635	\$14,237,080	\$75,288	\$64,569	\$87,722	\$5,630,376
TUSCARAWAS	\$2,335,685	\$2,678	\$2,497,336	\$4,835,700	\$1,352,301	\$383,766	\$1,736,067	\$6,586,452	\$22,823	\$33,786	\$110,997	\$1,921,178
UNION	\$641,465	\$2,014	\$772,642	\$1,416,120	\$550,677	\$137,135	\$687,812	\$2,103,932	\$211	\$2,503	\$68,276	\$549,578
UNKNOWN	\$0	\$0	\$0	\$0	(\$5,656,644)	\$0	(\$5,656,644)	(\$5,656,644)	\$0	\$0	\$0	\$0
VAN WERT	\$783,856	\$9	\$565,166	\$1,349,031	\$331,713	\$91,442	\$423,155	\$1,781,805	\$9,651	\$17,533	\$28,734	\$850,576
VINTON	\$435,192	\$0	\$847,447	\$1,282,640	\$464,647	\$62,681	\$527,329	\$1,810,365	\$5,193	\$640	\$71,728	\$304,989
WARREN	\$3,222,216	\$2,656	\$4,283,947	\$7,508,819	\$1,042,854	\$382,882	\$1,425,736	\$8,936,399	\$20,850	\$22,347	\$92,732	\$4,811,624
WASHINGTON	\$1,653,910	\$1,098	\$2,345,406	\$4,000,414	\$938,100	\$444,891	\$1,382,991	\$5,383,527	\$4,817	\$1,812	\$138,134	\$1,650,263
WAYNE	\$2,490,751	\$1,890	\$3,191,396	\$5,684,038	\$1,237,526	\$463,755	\$1,701,281	\$7,385,323	\$29,869	\$25,616	\$223,377	\$2,287,639
WILLIAMS	\$769,097	\$287	\$842,398	\$1,611,782	\$593,539	\$130,222	\$723,761	\$2,335,543	\$10,663	\$6,945	\$38,893	\$744,866
WOOD	\$2,202,096	\$456	\$2,257,908	\$4,460,460	\$787,878	\$333,205	\$1,121,083	\$5,589,919	\$7,499	\$9,643	\$99,468	\$1,989,420
WYANDOT	\$742,809	\$0	\$381,436	\$1,124,246	\$266,802	\$90,637	\$357,439	\$1,481,685	\$2,327	\$1,540	\$24,671	\$747,416

Source: ODJFS Report BOMM1321 Prepared: Bureau of Research and Evaluation.

**TABLE 7
CHILD CARE
JANUARY 2006**

OHIO COUNTY	OWF JOBS, LEAP, and TRANSITIONAL		OTHER CHILD CARE		LOCAL FUNDING		ALL PROGRAM SOURCES	
	CHILDREN SERVED		CHILDREN SERVED		CHILDREN SERVED		CHILDREN SERVED	
	TOTAL	% OF STATE TOTAL	TOTAL	% OF STATE TOTAL	TOTAL	% OF STATE TOTAL	TOTAL	% OF STATE TOTAL
STATEWIDE	21,701	100.00%	72,217	100.00%	133	100.00%	94,051	100.00%
ADAMS	18	0.08%	80	0.11%	0	0.00%	98	0.10%
ALLEN	48	0.22%	442	0.61%	0	0.00%	490	0.52%
ASHLAND	6	0.03%	173	0.24%	0	0.00%	179	0.19%
ASHTABULA	155	0.71%	635	0.88%	0	0.00%	790	0.84%
ATHENS	56	0.26%	184	0.25%	0	0.00%	240	0.26%
AUGLAIZE	8	0.04%	131	0.18%	0	0.00%	139	0.15%
BELMONT	70	0.32%	227	0.31%	0	0.00%	297	0.32%
BROWN	22	0.10%	122	0.17%	0	0.00%	144	0.15%
BUTLER	240	1.11%	1,528	2.12%	0	0.00%	1,768	1.88%
CARROLL	12	0.06%	46	0.06%	0	0.00%	58	0.06%
CHAMPAIGN	6	0.03%	143	0.20%	0	0.00%	149	0.16%
CLARK	149	0.69%	638	0.88%	0	0.00%	787	0.84%
CLERMONT	159	0.73%	425	0.59%	0	0.00%	584	0.62%
CLINTON	2	0.01%	183	0.25%	0	0.00%	185	0.20%
COLUMBIANA	130	0.60%	777	1.08%	0	0.00%	907	0.96%
COSHOCTON	54	0.25%	199	0.28%	0	0.00%	253	0.27%
CRAWFORD	56	0.26%	150	0.21%	0	0.00%	206	0.22%
CUYAHOGA	4,427	20.40%	18,316	25.36%	0	0.00%	22,743	24.18%
DARKE	18	0.08%	56	0.08%	0	0.00%	74	0.08%
DEFIANCE	41	0.19%	136	0.19%	0	0.00%	177	0.19%
DELAWARE	46	0.21%	203	0.28%	2	1.50%	251	0.27%
ERIE	12	0.06%	587	0.81%	0	0.00%	599	0.64%
FAIRFIELD	93	0.43%	457	0.63%	0	0.00%	550	0.58%
FAYETTE	51	0.24%	224	0.31%	0	0.00%	275	0.29%
FRANKLIN	3,134	14.44%	8,586	11.89%	130	97.74%	11,850	12.60%
FULTON	7	0.03%	152	0.21%	0	0.00%	159	0.17%
GALLIA	74	0.34%	157	0.22%	0	0.00%	231	0.25%
GEAUGA	33	0.15%	146	0.20%	0	0.00%	179	0.19%
GREENE	176	0.81%	494	0.68%	0	0.00%	670	0.71%

**TABLE 7
CHILD CARE
JANUARY 2006**

OHIO COUNTY	OWF JOBS, LEAP, and TRANSITIONAL		OTHER CHILD CARE		LOCAL FUNDING		ALL PROGRAM SOURCES	
	CHILDREN SERVED		CHILDREN SERVED		CHILDREN SERVED		CHILDREN SERVED	
	TOTAL	% OF STATE TOTAL	TOTAL	% OF STATE TOTAL	TOTAL	% OF STATE TOTAL	TOTAL	% OF STATE TOTAL
STATEWIDE	21,701	100.00%	72,217	100.00%	133	100.00%	94,051	100.00%
GUERNSEY	53	0.24%	311	0.43%	0	0.00%	364	0.39%
HAMILTON	4,006	18.46%	8,353	11.57%	0	0.00%	12,359	13.14%
HANCOCK	83	0.38%	409	0.57%	0	0.00%	492	0.52%
HARDIN	8	0.04%	36	0.05%	0	0.00%	44	0.05%
HARRISON	17	0.08%	40	0.06%	0	0.00%	57	0.06%
HENRY	25	0.12%	109	0.15%	0	0.00%	134	0.14%
HIGHLAND	9	0.04%	194	0.27%	0	0.00%	203	0.22%
HOCKING	42	0.19%	129	0.18%	0	0.00%	171	0.18%
HOLMES	30	0.14%	99	0.14%	0	0.00%	129	0.14%
HURON	0	0.00%	397	0.55%	0	0.00%	397	0.42%
JACKSON	38	0.18%	138	0.19%	0	0.00%	176	0.19%
JEFFERSON	75	0.35%	311	0.43%	0	0.00%	386	0.41%
KNOX	59	0.27%	234	0.32%	0	0.00%	293	0.31%
LAKE	135	0.62%	732	1.01%	0	0.00%	867	0.92%
LAWRENCE	71	0.33%	412	0.57%	0	0.00%	483	0.51%
LICKING	262	1.21%	811	1.12%	0	0.00%	1,073	1.14%
LOGAN	19	0.09%	70	0.10%	0	0.00%	89	0.09%
LORAIN	678	3.12%	1,704	2.36%	0	0.00%	2,382	2.53%
LUCAS	1,469	6.77%	2,722	3.77%	0	0.00%	4,191	4.46%
MADISON	17	0.08%	94	0.13%	0	0.00%	111	0.12%
MAHONING	858	3.95%	1,533	2.12%	0	0.00%	2,391	2.54%
MARION	45	0.21%	332	0.46%	0	0.00%	377	0.40%
MEDINA	53	0.24%	523	0.72%	0	0.00%	576	0.61%
MEIGS	10	0.05%	146	0.20%	0	0.00%	156	0.17%
MERCER	29	0.13%	97	0.13%	0	0.00%	126	0.13%
MIAMI	74	0.34%	298	0.41%	0	0.00%	372	0.40%
MONROE	2	0.01%	84	0.12%	0	0.00%	86	0.09%
MONTGOMERY	951	4.38%	3,904	5.41%	0	0.00%	4,855	5.16%
MORGAN	1	0.00%	65	0.09%	0	0.00%	66	0.07%
MORROW	7	0.03%	174	0.24%	0	0.00%	181	0.19%

**TABLE 7
CHILD CARE
JANUARY 2006**

OHIO COUNTY	OWF JOBS, LEAP, and TRANSITIONAL		OTHER CHILD CARE		LOCAL FUNDING		ALL PROGRAM SOURCES	
	CHILDREN SERVED		CHILDREN SERVED		CHILDREN SERVED		CHILDREN SERVED	
	TOTAL	% OF STATE TOTAL	TOTAL	% OF STATE TOTAL	TOTAL	% OF STATE TOTAL	TOTAL	% OF STATE TOTAL
STATEWIDE	21,701	100.00%	72,217	100.00%	133	100.00%	94,051	100.00%
MUSKINGUM	226	1.04%	648	0.90%	0	0.00%	874	0.93%
NOBLE	26	0.12%	81	0.11%	0	0.00%	107	0.11%
OTTAWA	33	0.15%	112	0.16%	0	0.00%	145	0.15%
PAULDING	2	0.01%	19	0.03%	0	0.00%	21	0.02%
PERRY	40	0.18%	202	0.28%	0	0.00%	242	0.26%
PICKAWAY	58	0.27%	134	0.19%	0	0.00%	192	0.20%
PIKE	43	0.20%	47	0.07%	0	0.00%	90	0.10%
PORTAGE	149	0.69%	612	0.85%	0	0.00%	761	0.81%
PREBLE	24	0.11%	58	0.08%	0	0.00%	82	0.09%
PUTNAM	9	0.04%	89	0.12%	0	0.00%	98	0.10%
RICHLAND	213	0.98%	692	0.96%	0	0.00%	905	0.96%
ROSS	66	0.30%	226	0.31%	0	0.00%	292	0.31%
SANDUSKY	70	0.32%	381	0.53%	0	0.00%	451	0.48%
SCIOTO	133	0.61%	509	0.70%	0	0.00%	642	0.68%
SENECA	16	0.07%	237	0.33%	0	0.00%	253	0.27%
SHELBY	37	0.17%	157	0.22%	0	0.00%	194	0.21%
STARK	665	3.06%	2,049	2.84%	0	0.00%	2,714	2.89%
SUMMIT	847	3.90%	3,336	4.62%	1	0.75%	4,184	4.45%
TRUMBULL	171	0.79%	656	0.91%	0	0.00%	827	0.88%
TUSCARAWAS	80	0.37%	294	0.41%	0	0.00%	374	0.40%
UNION	27	0.12%	108	0.15%	0	0.00%	135	0.14%
VAN WERT	5	0.02%	62	0.09%	0	0.00%	67	0.07%
VINTON	5	0.02%	72	0.10%	0	0.00%	77	0.08%
WARREN	77	0.35%	370	0.51%	0	0.00%	447	0.48%
WASHINGTON	44	0.20%	269	0.37%	0	0.00%	313	0.33%
WAYNE	127	0.59%	358	0.50%	0	0.00%	485	0.52%
WILLIAMS	18	0.08%	86	0.12%	0	0.00%	104	0.11%
WOOD	55	0.25%	254	0.35%	0	0.00%	309	0.33%
WYANDOT	6	0.03%	41	0.06%	0	0.00%	47	0.05%

SOURCE: COGNOS. The above numbers have not been reconciled between the CCIDS/3299 data collection system and 2827 ODJFS fiscal reporting system; therefore they may not be conclusive at this time.

OWF data consist of funding codes: 173,312, 313,314, 326, & 327. Other data consist of funding codes: 320, 321, 322, 323, 324, 325, 328, 329, and 342. Local Funding is from funding code 899.

**TABLE 8
RECIPIENTS, EXPENDITURES, AND AVERAGE PAYMENT PER RECIPIENT
DURING THE LAST 12 MONTHS IN OHIO**

RECIPIENTS	OWF-R	OWF-U	OWF/ CHILD CARE	Other CHILD CARE	DISABILITY ASSISTANCE	TITLE IV-E	FNS BENEFITS
February 2005	172,216	17,306	14,449	65,066	14,379	27,963	988,011
March	172,235	17,735	14,649	67,433	14,779	27,498	1,017,801
April	169,563	17,271	15,502	68,533	14,734	27,063	1,005,898
May	165,279	16,000	15,369	68,571	14,539	27,224	1,023,138
June	166,976	15,722	15,934	71,324	15,055	27,143	1,010,979
July	164,719	15,005	15,342	70,918	14,303	26,528	1,014,236
August	166,397	15,206	14,404	66,479	12,716	26,563	1,028,817
September	167,302	15,424	14,109	67,011	12,539	26,838	1,030,121
October	166,513	15,751	13,661	66,812	12,257	27,029	1,041,114
November	168,417	16,220	14,586	69,255	12,393	26,765	1,041,403
December	168,095	16,703	15,009	71,563	12,107	26,903	1,055,074
January 2006	164,367	16,628	21,701	72,217	12,167	27,005	1,051,528
12 MONTH AVERAGE	167,673	16,248	15,393	68,765	13,497	27,044	1,025,677
EXPENDITURES							
February 2005	\$24,251,217	\$1,717,424	N.A.	N.A.	\$2,099,424	\$15,420,724	\$93,839,433
March	\$24,234,787	\$1,759,539	N.A.	N.A.	\$1,927,300	\$14,554,536	\$98,400,293
April	\$23,862,670	\$1,687,891	N.A.	N.A.	\$1,895,414	\$13,460,634	\$95,440,098
May	\$23,417,266	\$1,578,606	N.A.	N.A.	\$1,889,618	\$14,305,678	\$98,245,457
June	\$23,094,088	\$1,474,122	N.A.	N.A.	\$1,825,070	\$14,010,354	\$95,657,995
July	\$23,347,150	\$1,466,707	N.A.	N.A.	\$1,804,610	\$13,236,170	\$96,263,324
August	\$23,669,346	\$1,488,833	N.A.	N.A.	\$1,518,756	\$13,470,540	\$98,676,185
September	\$23,598,932	\$1,506,145	N.A.	N.A.	\$1,619,707	\$13,410,051	\$98,491,845
October	\$25,360,810	\$1,667,872	N.A.	N.A.	\$1,572,501	\$13,946,486	\$104,447,942
November	\$26,036,089	\$1,743,326	N.A.	N.A.	\$1,566,804	\$14,316,360	\$103,589,082
December	\$26,315,386	\$1,842,574	N.A.	N.A.	\$1,661,825	\$14,353,892	\$105,178,691
January 2006	\$25,052,380	\$1,761,189	N.A.	N.A.	\$1,597,870	\$15,336,409	\$103,129,520
TOTAL DOLLARS	\$24,353,343	\$1,641,186	N.A.	N.A.	\$1,748,242	\$14,151,819	\$99,279,989
AVERAGE PAYMENT							
February 2005	\$141	\$99	N.A.	N.A.	\$146	\$551	\$95
March	\$141	\$99	N.A.	N.A.	\$130	\$529	\$97
April	\$141	\$98	N.A.	N.A.	\$129	\$497	\$95
May	\$142	\$99	N.A.	N.A.	\$130	\$525	\$96
June	\$138	\$94	N.A.	N.A.	\$121	\$516	\$95
July	\$142	\$98	N.A.	N.A.	\$126	\$499	\$95
August	\$142	\$98	N.A.	N.A.	\$119	\$507	\$96
September	\$141	\$98	N.A.	N.A.	\$129	\$500	\$96
October	\$152	\$106	N.A.	N.A.	\$128	\$516	\$100
November	\$155	\$107	N.A.	N.A.	\$126	\$535	\$99
December	\$157	\$110	N.A.	N.A.	\$137	\$534	\$100
January 2006	\$152	\$106	N.A.	N.A.	\$131	\$568	\$98

Note: N.A. means Not Available.

**TABLE 10
PERCENT OF OHIO'S POPULATION PARTICIPATING IN SELECTED
PUBLIC ASSISTANCE PROGRAMS FOR JANUARY 2006**

OHIO COUNTY	Estimated Total Population *	Percent of All Families Below Poverty Level	DISABILITY ASSISTANCE		OWF COMBINED		FOSTER CARE		FNS BENEFITS	
			Recipients as % of		Recipients	Recipients as % of	Recipients	Recipients as % of	Recipients	Recipients as % of
			Recipients	Total Population						
STATEWIDE	11,459,011	7.80%	12,167	0.11%	180,995	1.58%	27,005	0.24%	1,051,528	9.18%
ADAMS	28,398	12.80%	96	0.34%	246	0.87%	55	0.19%	4,810	16.94%
ALLEN	106,873	9.60%	87	0.08%	749	0.70%	223	0.21%	9,060	8.48%
ASHLAND	54,058	7.10%	43	0.08%	161	0.30%	22	0.04%	3,010	5.57%
ASHTABULA	103,152	9.20%	236	0.23%	1,434	1.39%	181	0.18%	11,622	11.27%
ATHENS	63,187	14.00%	229	0.36%	1,414	2.24%	182	0.29%	7,177	11.36%
AUGLAIZE	46,938	4.90%	25	0.05%	94	0.20%	50	0.11%	1,898	4.04%
BELMONT	69,366	11.70%	115	0.17%	1,256	1.81%	137	0.20%	7,357	10.61%
BROWN	44,239	8.80%	51	0.12%	260	0.59%	57	0.13%	3,803	8.60%
BUTLER	346,560	5.40%	358	0.10%	2,925	0.84%	756	0.22%	24,515	7.07%
CARROLL	29,576	8.50%	22	0.07%	151	0.51%	16	0.05%	2,252	7.61%
CHAMPAIGN	39,645	5.10%	32	0.08%	504	1.27%	24	0.06%	2,600	6.56%
CLARK	142,613	7.90%	305	0.21%	2,953	2.07%	370	0.26%	16,819	11.79%
CLERMONT	188,614	5.30%	160	0.08%	845	0.45%	382	0.20%	10,311	5.47%
CLINTON	42,280	6.40%	77	0.18%	207	0.49%	86	0.20%	3,113	7.36%
COLUMBIANA	111,519	9.00%	111	0.10%	968	0.87%	133	0.12%	12,001	10.76%
COSHOCTON	37,039	7.00%	84	0.23%	509	1.37%	63	0.17%	3,954	10.68%
CRAWFORD	45,961	7.80%	45	0.10%	455	0.99%	44	0.10%	4,264	9.28%
CUYAHOGA	1,351,009	10.30%	960	0.07%	26,208	1.94%	6,457	0.48%	180,137	13.33%
DARKE	53,260	6.00%	35	0.07%	277	0.52%	39	0.07%	2,123	3.99%
DEFIANCE	39,038	4.50%	12	0.03%	274	0.70%	40	0.10%	2,582	6.61%
DELAWARE	142,503	2.90%	80	0.06%	730	0.51%	92	0.06%	4,221	2.96%
ERIE	78,992	6.00%	59	0.07%	401	0.51%	137	0.17%	5,581	7.07%
FAIRFIELD	136,063	4.50%	104	0.08%	1,830	1.34%	177	0.13%	9,389	6.90%
FAYETTE	28,134	7.70%	33	0.12%	286	1.02%	21	0.07%	2,544	9.04%
FRANKLIN	1,088,971	8.20%	1,001	0.09%	24,909	2.29%	3,528	0.32%	121,240	11.13%
FULTON	42,919	4.00%	21	0.05%	160	0.37%	39	0.09%	1,920	4.47%
GALLIA	31,256	13.50%	41	0.13%	1,440	4.61%	64	0.20%	5,286	16.91%
GEAUGA	94,602	2.80%	26	0.03%	151	0.16%	126	0.13%	1,596	1.69%
GREENE	152,233	5.20%	127	0.08%	1,068	0.70%	95	0.06%	8,238	5.41%

*SOURCE: 2004 Ohio County Population Estimates, Ohio Dept. of Development, GRP342RA, GBS003RA, GRP304RA and GRP304RC Reports from Management Information Services.

**TABLE 10
PERCENT OF OHIO'S POPULATION PARTICIPATING IN SELECTED
PUBLIC ASSISTANCE PROGRAMS FOR JANUARY 2006**

OHIO COUNTY	Estimated Total Population *	Percent of All Families Below Poverty Level	DISABILITY ASSISTANCE		OWF COMBINED		FOSTER CARE		FNS BENEFITS	
			Recipients as % of		Recipients	Recipients as % of Total Population	Recipients	Recipients as % of Total Population	Recipients	Recipients as % of Total Population
			Recipients	Total Population						
STATEWIDE	11,459,011	7.80%	12,167	0.11%	180,995	1.58%	27,005	0.24%	1,051,528	9.18%
GUERNSEY	41,304	12.90%	116	0.28%	433	1.05%	103	0.25%	5,739	13.89%
HAMILTON	814,611	8.80%	539	0.07%	18,006	2.21%	1,554	0.19%	70,501	8.65%
HANCOCK	73,602	5.20%	73	0.10%	241	0.33%	73	0.10%	3,931	5.34%
HARDIN	32,171	8.90%	21	0.07%	85	0.26%	60	0.19%	1,855	5.77%
HARRISON	15,938	11.00%	48	0.30%	266	1.67%	32	0.20%	1,871	11.74%
HENRY	29,382	5.30%	14	0.05%	62	0.21%	38	0.13%	1,115	3.79%
HIGHLAND	42,610	9.00%	97	0.23%	417	0.98%	46	0.11%	4,340	10.19%
HOCKING	28,838	10.30%	64	0.22%	782	2.71%	84	0.29%	3,377	11.71%
HOLMES	41,273	10.50%	32	0.08%	114	0.28%	33	0.08%	1,106	2.68%
HURON	60,404	6.50%	49	0.08%	225	0.37%	66	0.11%	4,251	7.04%
JACKSON	33,411	13.60%	101	0.30%	562	1.68%	15	0.04%	5,126	15.34%
JEFFERSON	71,420	11.40%	161	0.23%	2,056	2.88%	105	0.15%	9,137	12.79%
KNOX	57,785	7.40%	88	0.15%	608	1.05%	39	0.07%	4,338	7.51%
LAKE	232,061	3.50%	160	0.07%	1,440	0.62%	217	0.09%	11,045	4.76%
LAWRENCE	62,705	15.10%	81	0.13%	1,475	2.35%	47	0.07%	11,055	17.63%
LICKING	152,866	5.50%	199	0.13%	1,287	0.84%	477	0.31%	11,675	7.64%
LOGAN	46,616	7.10%	42	0.09%	466	1.00%	59	0.13%	3,369	7.23%
LORAIN	294,324	6.70%	277	0.09%	5,482	1.86%	458	0.16%	27,425	9.32%
LUCAS	450,632	10.70%	688	0.15%	16,883	3.75%	2,138	0.47%	61,025	13.54%
MADISON	41,113	6.20%	24	0.06%	541	1.32%	35	0.09%	2,715	6.60%
MAHONING	249,755	9.60%	214	0.09%	6,145	2.46%	393	0.16%	28,653	11.47%
MARION	66,310	7.40%	117	0.18%	720	1.09%	92	0.14%	6,850	10.33%
MEDINA	165,077	3.50%	88	0.05%	564	0.34%	84	0.05%	4,897	2.97%
MEIGS	23,286	14.30%	70	0.30%	375	1.61%	13	0.06%	4,206	18.06%
MERCER	41,075	4.60%	30	0.07%	181	0.44%	39	0.09%	1,455	3.54%
MIAMI	100,797	5.10%	82	0.08%	678	0.67%	162	0.16%	4,514	4.48%
MONROE	15,063	11.00%	26	0.17%	171	1.14%	17	0.11%	1,515	10.06%
MONTGOMERY	550,063	8.30%	602	0.11%	10,637	1.93%	1,812	0.33%	49,584	9.01%
MORGAN	14,941	15.70%	59	0.39%	158	1.06%	12	0.08%	1,989	13.31%
MORROW	34,247	6.60%	35	0.10%	261	0.76%	39	0.11%	2,808	8.20%

*SOURCE: 2004 Ohio County Population Estimates, Ohio Dept. of Development, GRP342RA, GBS003RA, GRP304RA and GRP304RC Reports from Management Information Services.

**TABLE 10
PERCENT OF OHIO'S POPULATION PARTICIPATING IN SELECTED
PUBLIC ASSISTANCE PROGRAMS FOR JANUARY 2006**

OHIO COUNTY	Estimated Total Population *	Percent of All Families Below Poverty Level	DISABILITY ASSISTANCE		OWF COMBINED		FOSTER CARE		FNS BENEFITS	
			Recipients as % of		Recipients	Recipients as % of Total Population	Recipients	Recipients as % of Total Population	Recipients	Recipients as % of Total Population
			Recipients	Total Population						
STATEWIDE	11,459,011	7.80%	12,167	0.11%	180,995	1.58%	27,005	0.24%	1,051,528	9.18%
MUSKINGUM	85,669	9.90%	343	0.40%	2,248	2.62%	141	0.16%	13,476	15.73%
NOBLE	14,021	8.30%	18	0.13%	95	0.68%	7	0.05%	1,206	8.60%
OTTAWA	41,407	4.20%	29	0.07%	359	0.87%	11	0.03%	2,204	5.32%
PAULDING	19,486	4.90%	27	0.14%	280	1.44%	24	0.12%	1,378	7.07%
PERRY	35,040	9.40%	101	0.29%	774	2.21%	76	0.22%	5,029	14.35%
PICKAWAY	53,656	7.60%	56	0.10%	1,119	2.09%	40	0.07%	4,901	9.13%
PIKE	28,294	15.10%	56	0.20%	722	2.55%	41	0.14%	5,285	18.68%
PORTAGE	154,764	5.90%	113	0.07%	835	0.54%	140	0.09%	7,987	5.16%
PREBLE	42,553	4.50%	43	0.10%	366	0.86%	66	0.16%	2,467	5.80%
PUTNAM	34,718	4.00%	14	0.04%	60	0.17%	14	0.04%	1,239	3.57%
RICHLAND	128,096	8.20%	216	0.17%	1,412	1.10%	268	0.21%	11,330	8.84%
ROSS	74,466	9.10%	131	0.18%	1,864	2.50%	119	0.16%	10,011	13.44%
SANDUSKY	61,948	5.70%	56	0.09%	326	0.53%	90	0.15%	4,028	6.50%
SCIOTO	77,046	15.20%	220	0.29%	2,115	2.75%	122	0.16%	14,916	19.36%
SENECA	57,789	6.10%	60	0.10%	267	0.46%	111	0.19%	4,044	7.00%
SHELBY	48,517	5.30%	27	0.06%	218	0.45%	66	0.14%	2,535	5.22%
STARK	381,229	6.80%	429	0.11%	6,347	1.66%	1,172	0.31%	28,775	7.55%
SUMMIT	547,314	7.50%	485	0.09%	9,973	1.82%	1,344	0.25%	49,606	9.06%
TRUMBULL	220,486	7.90%	308	0.14%	2,850	1.29%	461	0.21%	18,602	8.44%
TUSCARAWAS	92,221	7.20%	87	0.09%	1,080	1.17%	219	0.24%	7,382	8.00%
UNION	44,487	3.60%	43	0.10%	560	1.26%	35	0.08%	2,468	5.55%
VAN WERT	29,276	4.20%	18	0.06%	58	0.20%	26	0.09%	1,260	4.30%
VINTON	13,352	15.10%	47	0.35%	317	2.37%	32	0.24%	2,700	20.22%
WARREN	189,276	3.00%	57	0.03%	425	0.22%	134	0.07%	3,834	2.03%
WASHINGTON	62,577	8.60%	138	0.22%	180	0.29%	45	0.07%	5,543	8.86%
WAYNE	113,577	5.40%	194	0.17%	987	0.87%	132	0.12%	6,623	5.83%
WILLIAMS	38,912	3.90%	25	0.06%	383	0.98%	40	0.10%	2,375	6.10%
WOOD	123,278	4.70%	49	0.04%	515	0.42%	67	0.05%	4,562	3.70%
WYANDOT	22,878	3.80%	5	0.02%	74	0.32%	24	0.10%	872	3.81%
UNKNOWN										

*SOURCE: 2004 Ohio County Population Estimates, Ohio Dept. of Development, GRP342RA, GBS003RA, GRP304RA and GRP304RC Reports from Management Information Services.

**TABLE 7-A
CHILD CARE REVISION
OCTOBER 2005 UPDATE**

OHIO COUNTY	OWF JOBS, LEAP, and TRANSITIONAL		OTHER CHILD CARE		LOCAL FUNDING		ALL PROGRAM SOURCES	
	CHILDREN SERVED		CHILDREN SERVED		CHILDREN SERVED		CHILDREN SERVED	
	TOTAL	% OF STATE TOTAL	TOTAL	% OF STATE TOTAL	TOTAL	% OF STATE TOTAL	TOTAL	% OF STATE TOTAL
STATEWIDE	19,313	100.00%	68,964	100.00%	131	100.00%	88,408	100.00%
ADAMS	20	0.10%	58	0.08%	0	0.00%	78	0.09%
ALLEN	48	0.25%	457	0.66%	0	0.00%	505	0.57%
ASHLAND	9	0.05%	154	0.22%	0	0.00%	163	0.18%
ASHTABULA	105	0.54%	620	0.90%	0	0.00%	725	0.82%
ATHENS	41	0.21%	148	0.21%	0	0.00%	189	0.21%
AUGLAIZE	5	0.03%	114	0.17%	0	0.00%	119	0.13%
BELMONT	77	0.40%	238	0.35%	0	0.00%	315	0.36%
BROWN	22	0.11%	91	0.13%	0	0.00%	113	0.13%
BUTLER	261	1.35%	1,429	2.07%	0	0.00%	1,690	1.91%
CARROLL	17	0.09%	55	0.08%	0	0.00%	72	0.08%
CHAMPAIGN	2	0.01%	153	0.22%	0	0.00%	155	0.18%
CLARK	134	0.69%	658	0.95%	0	0.00%	792	0.90%
CLERMONT	117	0.61%	471	0.68%	0	0.00%	588	0.67%
CLINTON	0	0.00%	198	0.29%	0	0.00%	198	0.22%
COLUMBIANA	122	0.63%	800	1.16%	0	0.00%	922	1.04%
COSHOCTON	46	0.24%	194	0.28%	0	0.00%	240	0.27%
CRAWFORD	32	0.17%	158	0.23%	0	0.00%	190	0.21%
CUYAHOGA	3,879	20.08%	17,557	25.46%	0	0.00%	21,436	24.25%
DARKE	23	0.12%	77	0.11%	0	0.00%	100	0.11%
DEFIANCE	37	0.19%	142	0.21%	0	0.00%	179	0.20%
DELAWARE	26	0.13%	235	0.34%	3	2.29%	264	0.30%
ERIE	12	0.06%	566	0.82%	0	0.00%	578	0.65%
FAIRFIELD	77	0.40%	414	0.60%	0	0.00%	491	0.56%
FAYETTE	37	0.19%	229	0.33%	0	0.00%	266	0.30%
FRANKLIN	2,525	13.07%	6,946	10.07%	114	87.02%	9,585	10.84%
FULTON	2	0.01%	158	0.23%	0	0.00%	160	0.18%
GALLIA	59	0.31%	189	0.27%	0	0.00%	248	0.28%
GEAUGA	21	0.11%	152	0.22%	0	0.00%	173	0.20%
GREENE	164	0.85%	469	0.68%	0	0.00%	633	0.72%

**TABLE 7-A
CHILD CARE REVISION
OCTOBER 2005 UPDATE**

OHIO COUNTY	OWF JOBS, LEAP, and TRANSITIONAL		OTHER CHILD CARE		LOCAL FUNDING		ALL PROGRAM SOURCES	
	CHILDREN SERVED		CHILDREN SERVED		CHILDREN SERVED		CHILDREN SERVED	
	TOTAL	% OF STATE TOTAL	TOTAL	% OF STATE TOTAL	TOTAL	% OF STATE TOTAL	TOTAL	% OF STATE TOTAL
STATEWIDE	19,313	100.00%	68,964	100.00%	131	100.00%	88,408	100.00%
GUERNSEY	35	0.18%	332	0.48%	0	0.00%	367	0.42%
HAMILTON	3,627	18.78%	7,980	11.57%	0	0.00%	11,607	13.13%
HANCOCK	69	0.36%	410	0.59%	0	0.00%	479	0.54%
HARDIN	2	0.01%	28	0.04%	0	0.00%	30	0.03%
HARRISON	9	0.05%	28	0.04%	0	0.00%	37	0.04%
HENRY	24	0.12%	100	0.15%	0	0.00%	124	0.14%
HIGHLAND	7	0.04%	183	0.27%	0	0.00%	190	0.21%
HOCKING	37	0.19%	166	0.24%	0	0.00%	203	0.23%
HOLMES	27	0.14%	100	0.15%	0	0.00%	127	0.14%
HURON	0	0.00%	431	0.62%	0	0.00%	431	0.49%
JACKSON	22	0.11%	130	0.19%	0	0.00%	152	0.17%
JEFFERSON	115	0.60%	326	0.47%	0	0.00%	441	0.50%
KNOX	55	0.28%	223	0.32%	0	0.00%	278	0.31%
LAKE	128	0.66%	760	1.10%	0	0.00%	888	1.00%
LAWRENCE	78	0.40%	411	0.60%	0	0.00%	489	0.55%
LICKING	218	1.13%	745	1.08%	0	0.00%	963	1.09%
LOGAN	20	0.10%	56	0.08%	0	0.00%	76	0.09%
LORAIN	566	2.93%	1,477	2.14%	0	0.00%	2,043	2.31%
LUCAS	1,461	7.56%	2,786	4.04%	0	0.00%	4,247	4.80%
MADISON	16	0.08%	80	0.12%	0	0.00%	96	0.11%
MAHONING	692	3.58%	1,537	2.23%	0	0.00%	2,229	2.52%
MARION	39	0.20%	358	0.52%	0	0.00%	397	0.45%
MEDINA	53	0.27%	502	0.73%	9	6.87%	564	0.64%
MEIGS	12	0.06%	131	0.19%	0	0.00%	143	0.16%
MERCER	27	0.14%	103	0.15%	0	0.00%	130	0.15%
MIAMI	65	0.34%	281	0.41%	0	0.00%	346	0.39%
MONROE	0	0.00%	85	0.12%	0	0.00%	85	0.10%
MONTGOMERY	950	4.92%	4,223	6.12%	0	0.00%	5,173	5.85%
MORGAN	2	0.01%	65	0.09%	0	0.00%	67	0.08%
MORROW	5	0.03%	171	0.25%	0	0.00%	176	0.20%

**TABLE 7-A
CHILD CARE REVISION
OCTOBER 2005 UPDATE**

OHIO COUNTY	OWF JOBS, LEAP, and TRANSITIONAL		OTHER CHILD CARE		LOCAL FUNDING		ALL PROGRAM SOURCES	
	CHILDREN SERVED		CHILDREN SERVED		CHILDREN SERVED		CHILDREN SERVED	
	TOTAL	% OF STATE TOTAL	TOTAL	% OF STATE TOTAL	TOTAL	% OF STATE TOTAL	TOTAL	% OF STATE TOTAL
STATEWIDE	19,313	100.00%	68,964	100.00%	131	100.00%	88,408	100.00%
MUSKINGUM	246	1.27%	646	0.94%	0	0.00%	892	1.01%
NOBLE	22	0.11%	99	0.14%	0	0.00%	121	0.14%
OTTAWA	28	0.14%	85	0.12%	0	0.00%	113	0.13%
PAULDING	2	0.01%	20	0.03%	0	0.00%	22	0.02%
PERRY	39	0.20%	214	0.31%	0	0.00%	253	0.29%
PICKAWAY	46	0.24%	132	0.19%	0	0.00%	178	0.20%
PIKE	38	0.20%	54	0.08%	0	0.00%	92	0.10%
PORTAGE	121	0.63%	547	0.79%	1	0.76%	669	0.76%
PREBLE	36	0.19%	111	0.16%	0	0.00%	147	0.17%
PUTNAM	9	0.05%	78	0.11%	0	0.00%	87	0.10%
RICHLAND	170	0.88%	589	0.85%	0	0.00%	759	0.86%
ROSS	43	0.22%	200	0.29%	0	0.00%	243	0.27%
SANDUSKY	69	0.36%	374	0.54%	0	0.00%	443	0.50%
SCIOTO	117	0.61%	498	0.72%	0	0.00%	615	0.70%
SENECA	17	0.09%	225	0.33%	0	0.00%	242	0.27%
SHELBY	20	0.10%	237	0.34%	0	0.00%	257	0.29%
STARK	653	3.38%	1,901	2.76%	0	0.00%	2,554	2.89%
SUMMIT	817	4.23%	3,170	4.60%	4	3.05%	3,991	4.51%
TRUMBULL	116	0.60%	461	0.67%	0	0.00%	577	0.65%
TUSCARAWAS	76	0.39%	344	0.50%	0	0.00%	420	0.48%
UNION	28	0.14%	111	0.16%	0	0.00%	139	0.16%
VAN WERT	2	0.01%	55	0.08%	0	0.00%	57	0.06%
VINTON	2	0.01%	77	0.11%	0	0.00%	79	0.09%
WARREN	75	0.39%	358	0.52%	0	0.00%	433	0.49%
WASHINGTON	27	0.14%	258	0.37%	0	0.00%	285	0.32%
WAYNE	139	0.72%	359	0.52%	0	0.00%	498	0.56%
WILLIAMS	15	0.08%	102	0.15%	0	0.00%	117	0.13%
WOOD	55	0.28%	286	0.41%	0	0.00%	341	0.39%
WYANDOT	4	0.02%	35	0.05%	0	0.00%	39	0.04%

SOURCE: COGNOS. The above numbers have not been reconciled between the CCIDS/3299 data collection system and 2827 ODJFS fiscal reporting system; therefore they may not be conclusive at this time.

OWF data consist of funding codes: 173,312, 313,314, 326, & 327. Other data consist of funding codes: 320, 321, 322, 323, 324, 325, 328, 329, and 342. Local Funding is from funding code 899.