

TANF Allowability

NON-ASSISTANCE

Benefits or services intended to help achieve and maintain self-sufficiency; does not include time limits, work participation requirements, or child support cooperation.

- Nonrecurrent short term (four months or less) benefits that deal with a specific needs/barriers
- Subsidized employment
- Supportive services for employed individuals (e.g. transportation, child care, etc.)
- Services: counseling, case management, peer support, child care information and referral, transitional services, job retention, job advancement, and other employment related services

ASSISTANCE

Programs designed to meet ongoing basic needs beyond 4 months. Assistance is time limited, and requires work participation, cooperation of child support, and case specific reporting requirements. In Ohio, the only assistance program is OWF.

- Ongoing basic needs including: food, clothing, shelter, utilities, household goods, personal care items, and general incidental expenses provided in the form of cash, payments or vouchers
- Supportive services to unemployed individuals

***Reminder:** CCMEP participants in receipt of OWF can receive supportive services beyond four months in order to participate in an assigned activity, even if they are unemployed, because they are already in receipt of assistance and are subject to the time limits and other requirements.

*TANF prohibitions include but not limited to:

- Medical Services
- Supplanting child support enforcement, foster care, or adoption assistance funds
- Cost sharing/matching funds of another federal program unless authorized by rule
- Property including construction or purchase of buildings, facilities, or real-estate
- Juvenile justice services (e.g. expungement)

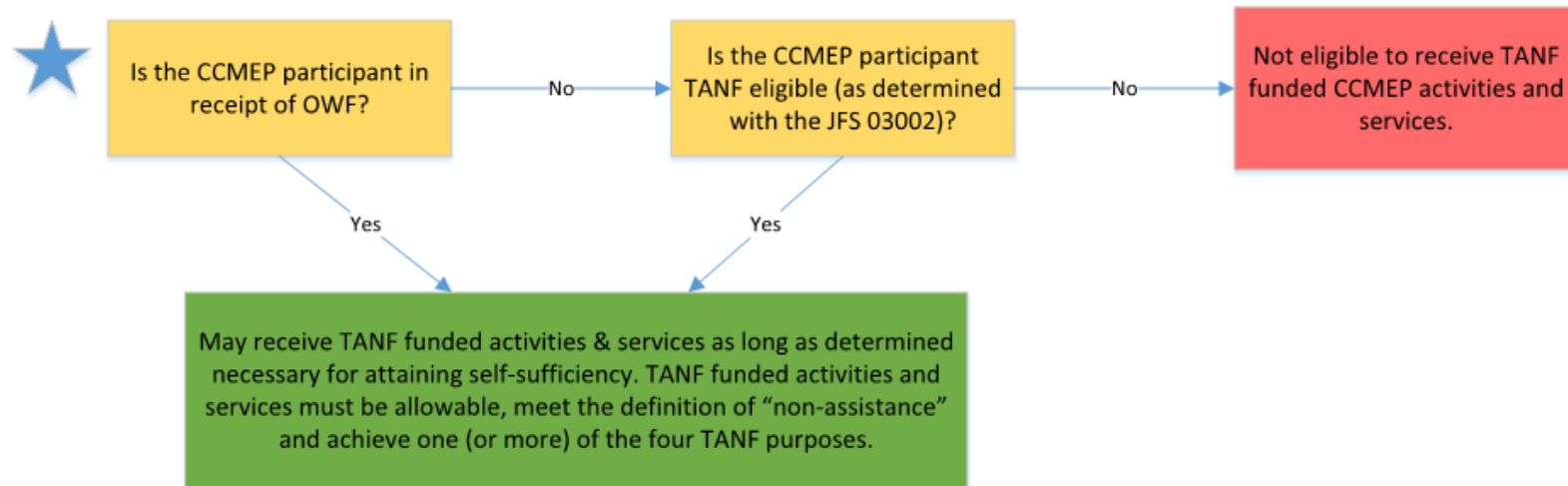


CCMEP = Non-Assistance



CCMEP ≠ Assistance

TANF Funding Eligibility



**Always check the Services Matrix to determine funding restrictions (e.g. length of time, prohibitions)*

TANF Eligibility Requirements

- Gross income less than **200% FPL**.
- **One of the following:** minor child; parent, specified relative, legal guardian or legal custodian of a minor child; non-custodial parent lives in state, does not reside with his/her minor child(ren); pregnant; or individual 18-24 part of a family with a minor child; **and**
- **SSN** (or has applied for);
- Is a **US citizen** or non-citizen national or qualified alien;
- Does not individually owe any **TANF fraud** costs;
- Afforded the opportunity to register to **vote**.