

Date: March 24, 2017

Sequence: BCFTA Update 2017 – 01

Topic: New PAAs for FAET 100% and FAET Participation

Post Allocated Adjustments (PAAs) are now available for Public Assistance Agencies to move Food Assistance Employment and Training (FAET) expenditures to Community & Protective Services as follows:

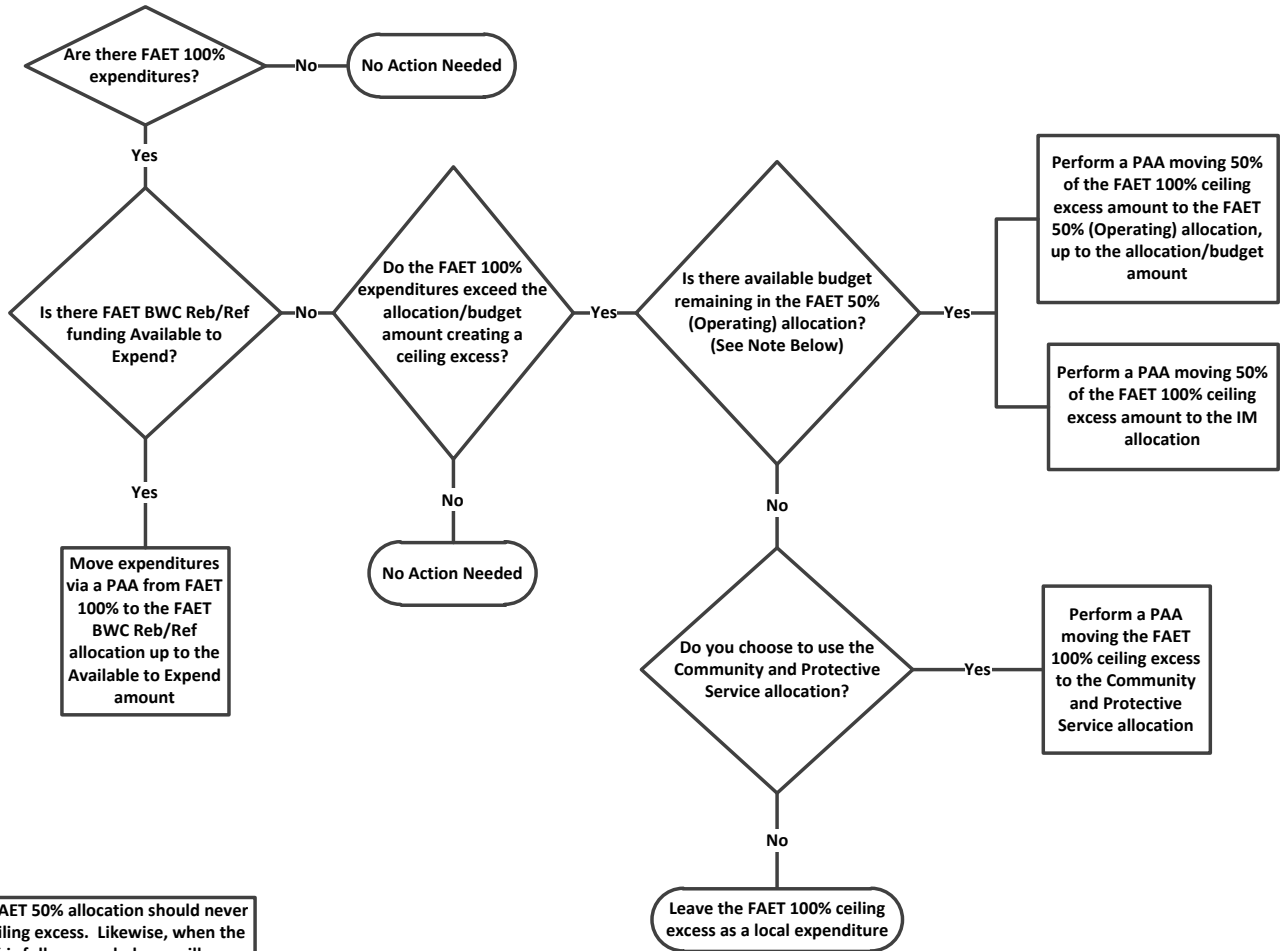
FROM Budget Reference/ Grant	TO Budget Reference
FAET - 100% (adm) JFSCAFST JFSCF1YY	Community and Protective Services JFSCACPS
FAET PARTICIPATION 50% JFSCAFPA JFSCFPYY (federal)	Community and Protective Services JFSCACPS
FAET PARTICIPATION 50% JFSCAFPA JFSFSFYY (state)	Community and Protective Services JFSCACPS

See attached flow chart for moving FAET 100% (administration) expenditures.

Please remember FAET 100% (administration) expenditures must be moved to utilize any remaining BWC rebate/refund prior to drawing FAET 100% funding.

Please contact your BCFTA Fiscal Supervisor or the CFIS Help Desk if you have any questions.

Post Allocated Adjustment (PAA)/
Ceiling Excess Flow for the FAET
100% Grant



Note: The FAET 50% allocation should never be put in ceiling excess. Likewise, when the FAET 50% is fully expended you will no longer do the PAA to IM.