



MITS News

Your link to all things MITS

April 2008, Issue 1

A letter from John Corlett, Ohio Medicaid Director

Welcome to the first edition of the ODJFS MITS Newsletter! ODJFS will be publishing this newsletter on a monthly basis to keep interested stakeholders aware of the progress in developing our new Medicaid Information Technology System (MITS). This newsletter will provide status updates, frequently asked questions, and provide an educational focus on various aspects of the MITS project.

We are very excited about the implementation of MITS, which will replace the 20-year-old legacy Medicaid Management Information System (MMIS). MITS will improve efficiency by automating many processes that are currently performed manually. It will also allow providers and consumers to conveniently access our system via a dedicated Web portal.

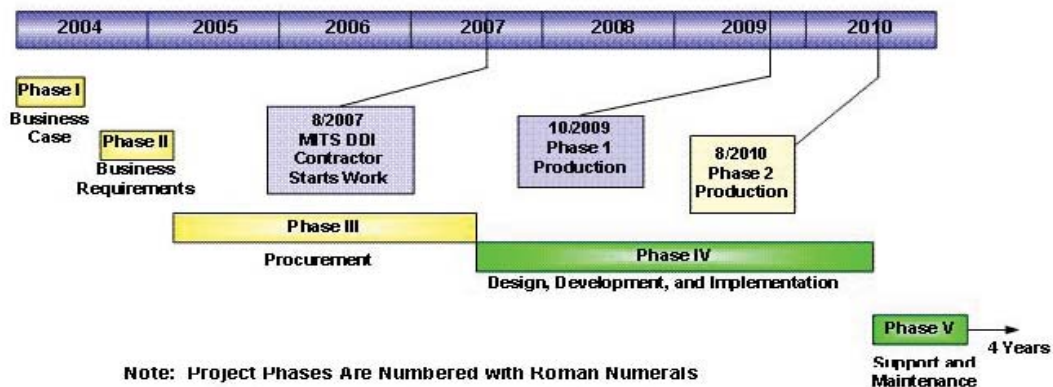
MITS is first and foremost a strategic project to enable Ohio Medicaid to respond to current and emerging business demands in the health care marketplace. We look forward to communicating with you about the implementation of this system and the far reaching effects it will have on Medicaid consumers, providers and other key stakeholders.

Planning for MITS: A Brief History

In June 2004, the Centers for Medicare and Medicaid Services (CMS) approved Ohio's plan for the new Medicaid system and selected Ohio as an early adopter state for their new Medicaid Information Technology Architecture – MITA. (See more on MITA below.) In 2005, ODJFS identified approximately 3,000 business requirements that were needed to support the business needs of Ohio's ever evolving Medicaid program.

In Autumn 2007, Electronic Data Systems was selected, via competitive bidding, as the vendor to design MITS. EDS will provide services such as: project management, business transformation management, systems analysis and design, data conversion, training, implementation, operation and maintenance, and transferring knowledge to ODJFS to support and maintain MITS in future years.

MITS High Level Timeline

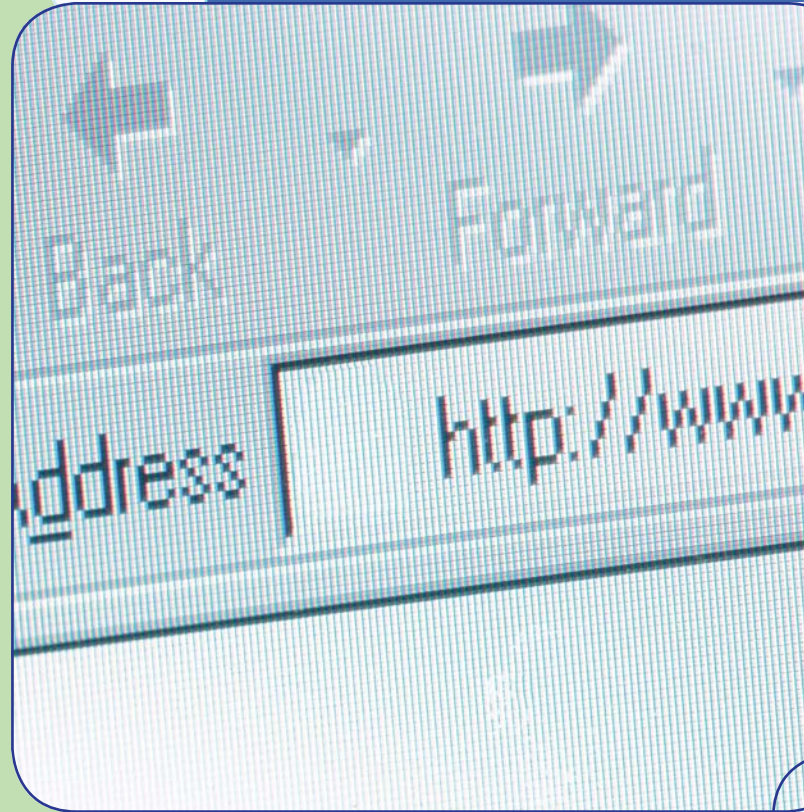


Note: Project Phases Are Numbered with Roman Numerals
Production Phases Are Numbered with Arabic Numbers

Business Rationale

The key business driver for MITS is the need for an information technology system capable of rapidly implementing state and federal Medicaid program changes and meeting today's business needs for Ohio Medicaid. Ohio's current Medicaid Management Information System (MMIS) is a mainframe-based system which processed about 64 million health care claims in calendar year 2007 for more than 2 million Ohioans covered by Ohio Medicaid. Unfortunately, MMIS does not provide the functionality needed to support the increasing demands placed on Ohio's Medicaid program. It must be replaced with web-based technology that can easily adapt to program fluctuations and needs.

The development and implementation of MITS provides the opportunity to improve operations and to streamline functionality for managed care plans, fee-for-service providers, and Medicaid consumers. MITS will provide a secure Web site that will offer more support through an array of automated business solutions to increase self-service capabilities.



Ask MITSy!

**Dear MITSy,
I keep hearing people talk about MITA, but I don't know what that is or why it is important to MITS. Can you help me understand?**

Dear Reader,

Medicaid Information Technology Architecture, or MITA, is the framework designed by the federal government to standardize best practices for state Medicaid programs. More uniform standards are needed to improve how each state's program is administered. States who adopt the MITA framework will see several benefits which will allow them to be at the forefront of the federal vision for changing the way Medicaid is managed in the future. Adopting principles outlined in MITA will provide us with a clear vision and steps for progress to reach the desired future state of Ohio Medicaid.

MITA states receive additional federal dollars to develop and implement their IT systems. Future federal funding will be based on how well Ohio implements the MITA framework. For more information on MITA, please visit: <http://www.cms.hhs.gov/MedicaidInfoTechArch>

Have a question about MITS?

Submit it to MITSy@jfs.ohio.gov Some will be featured in this column, but most will be answered via the Frequently Asked Questions page on the MITS Web site: <http://innerweb/ohp/mits.shtml>