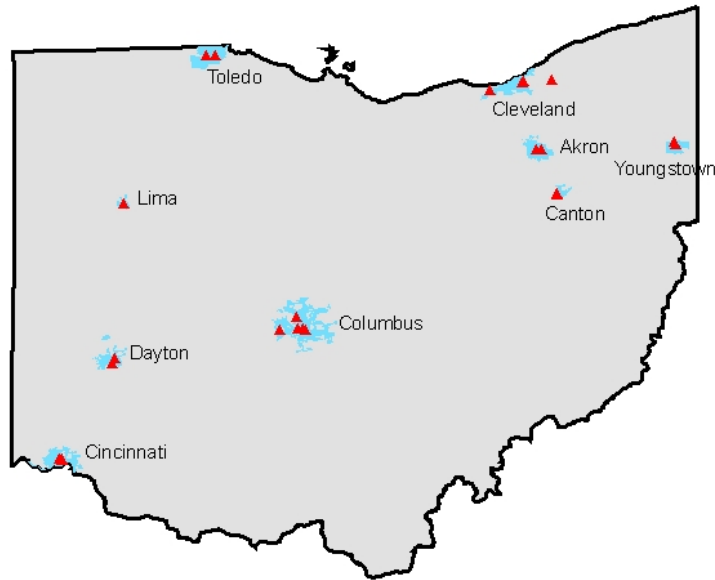


# Improving Perinatal Outcomes in Ohio by Improving the Health of Women and Newborns



Reducing the proportion of Ohio births with prematurity  
associated poor outcomes:  
**a statewide improvement collaborative**

# OPQC Participating Sites



# THE FIRST NEWBORN PROJECT

## 24 Ohio NICUs

82% of Ohio's infants born at 22-29 weeks  
are cared for in OPQC NICUs

### Where are we?

- ✓ NICUs are engaged
- ✓ Outcomes and processes of care reported monthly – data available Sept to Dec 2008
- ✓ Improvement ideas are being tested

# IMPROVING HEALTH OUTCOMES

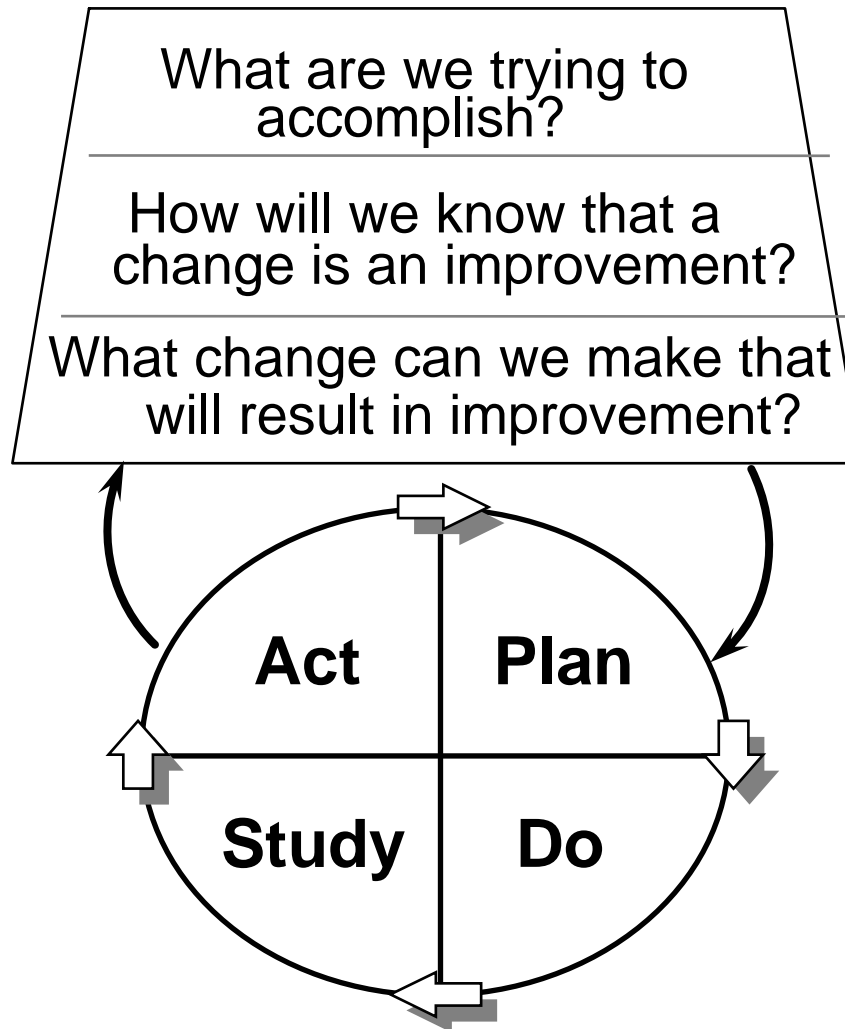
## Changing what we do for our patients

- ✓ Using evidence to guide care
- ✓ Standardizing practices
- ✓ Measuring for reliability

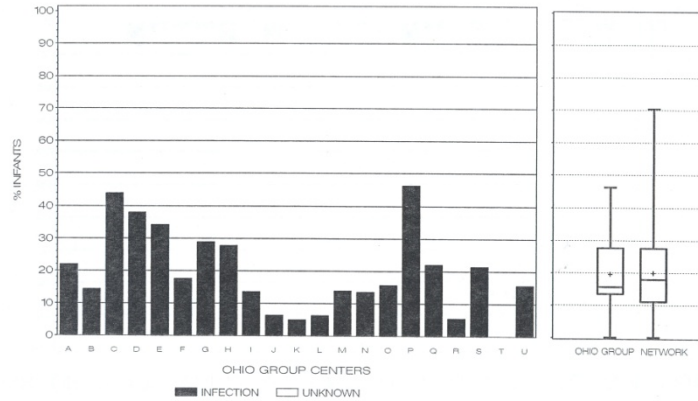
## Changing patient health outcomes

- ✓ Preventing disease (prematurity)
- ✓ Preventing death and disability (infection)

# Model for Improvement



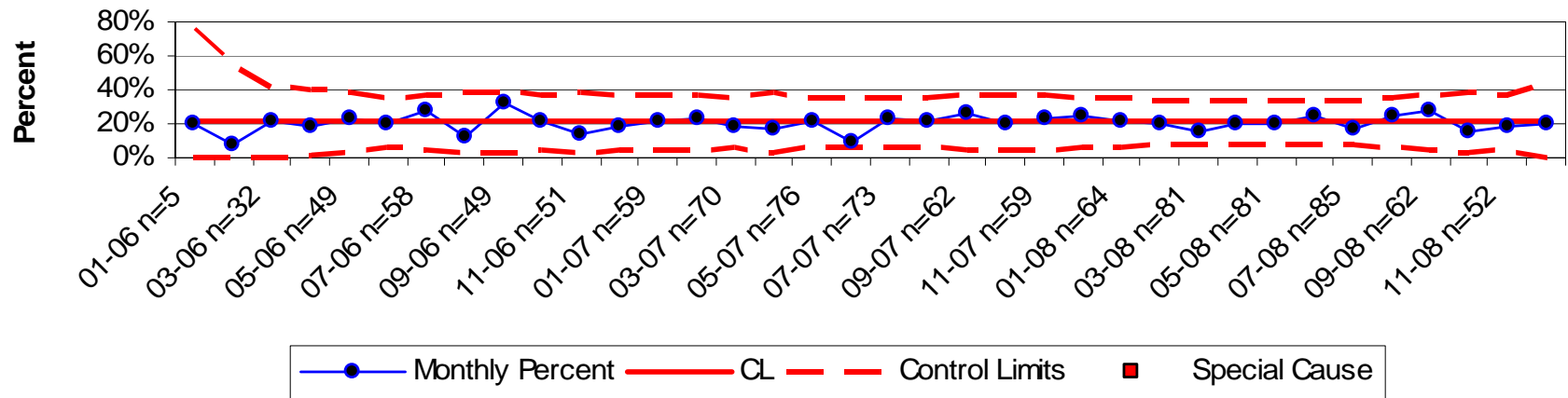
NOSOCOMIAL INFECTION  
GROUP CENTERS AND NETWORK, INFANTS 501 TO 1500 GM, 2004



INCLUDES LATE BACTERIAL INFECTIONS AND COAGULASE NEGATIVE STAPH

FIGURE 2.19

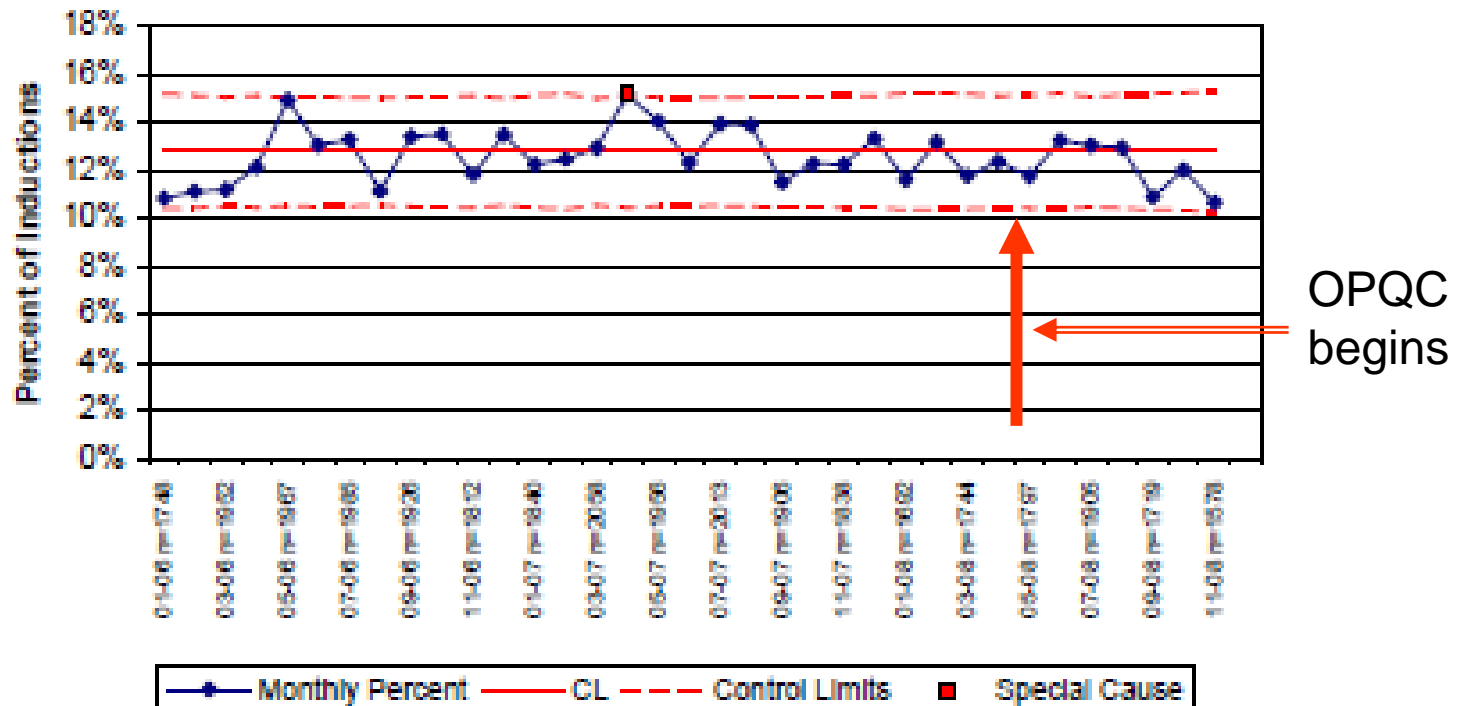
**Infants 22 - 29 Weeks with at least one Late Bacterial Infection**  
p-chart, data from Jan, 2006 through Dec, 2007 used to compute control limits



# Inductions of labor at 36-38 Weeks with no documented indication

Percent of Inductions 36 to 38 Weeks Without Medical or Obstetric Indication

Baseline: January, 2006 through December, 2007



# www.OPQC.net

