

Ohio Department of Job and Family Services

PUBLIC ASSISTANCE MONTHLY STATISTICS

APRIL 2004



<http://jfs.ohio.gov/pams/index.stm>

Bureau of Research and Evaluation : Human Services Reporting Section

Office of Research, Assessment, and Accountability

P.O. Box 1618

Columbus, Ohio 43216

OHIO DEPARTMENT OF JOB AND FAMILY SERVICES
PUBLIC ASSISTANCE MONTHLY STATISTICS
TABLE OF CONTENTS

<u>TITLE</u>	<u>PAGE(S)</u>
Monthly Review of Public Assistance Statistics.	1
Statewide Summary of Public Assistance Programs.	2
Table 1: OWF (TANF) Summary	3-11
Table 2: Foster Care (Title IV-E) Program Summary.	12-13
Table 3: Disability Assistance Program Summary.	14-17
Table 3-A: DA Payments for Medical Services.	18
Table 5: FNS Benefits Program Summary.	19-22
Table 6: Medicaid (Title XIX): Eligibles and Expenditures.	23-26
Table 7: Child Day Care Summary	27-28
Table 8: Program Summaries of Recipients, Expenditures, and Average Payment Per Recipient During the Last 12 Months.	29
Table 10: Percent of Ohio's Population Participating in Selected Public Assistance Programs.	30-31

Note: *Table 4 and Table 9 were discontinued.*

All data in the PAMS report is limited to the information available at the time it was constructed. It does not account for backdated or retroactive eligibility or any adjustments made subsequent to its creation.

MONTHLY REVIEW OF PUBLIC ASSISTANCE STATISTICS FOR APRIL 2004

OHIO WORKS FIRST

For the month of April 2004, OWF-Combined assistance groups totaled 87,003; recipients totaled 193,678 and money payments totaled \$26,223,113. The percent change from March 2004 to April 2004 was -0.6% for assistance groups; -0.6% for recipients, and -1.1% for money payments. For OWF- Regular (OWF-R) there were 82,548 assistance groups; 175,819 recipients, and \$24,479,601 in money payments issued for April 2004. The percent change from March 2004 to April 2004 was -0.7% for assistance groups; -0.9% for recipients, and -1.2% for money payments. For OWF-Unemployed (OWF-U) assistance groups totaled 4,455; recipients, 17,859, and money payments were \$1,743,512. The percent change from March 2004 to April 2004 was 1.8% for assistance groups; 2.3% for recipients and 0.7% for money payments.

FOSTER CARE (TITLE IV-E)

A total of 26,133 children received \$12,763,814 in Title IV-E assistance during the month of April 2004. Included in this total were 7,147 foster care children who received \$5,672,160 in money payments. Of these Title IV-E children, 3,288 or 12.6% were in foster family homes who received \$1,450,267 and 3,859 or 14.8% children in child care institutions who received \$4,221,893 in OWF foster care assistance. The remaining 18,986 children reported as participating in Title IV-E received \$7,091,654 in adoption assistance. Overall, the average amount of Foster Care received per child was \$488.42.

DISABILITY ASSISTANCE (DA)

For the month of April 2004, there were 13,086 assistance groups; 13,199 recipients, and \$1,743,821 in DA financial assistance. The average DA financial assistance per recipient was \$132.12. Total DA expenditures for medical services for April 2004 were \$ 5,018,969. Of this total, \$3,609,988 or 71.9% was spent for prescribed drugs, and \$1,089,443 or 21.7% was spent for physician services. Medical expenses were paid for 12,565 recipients for an average expenditure of \$399.44 per recipient.

FNS BENEFITS:

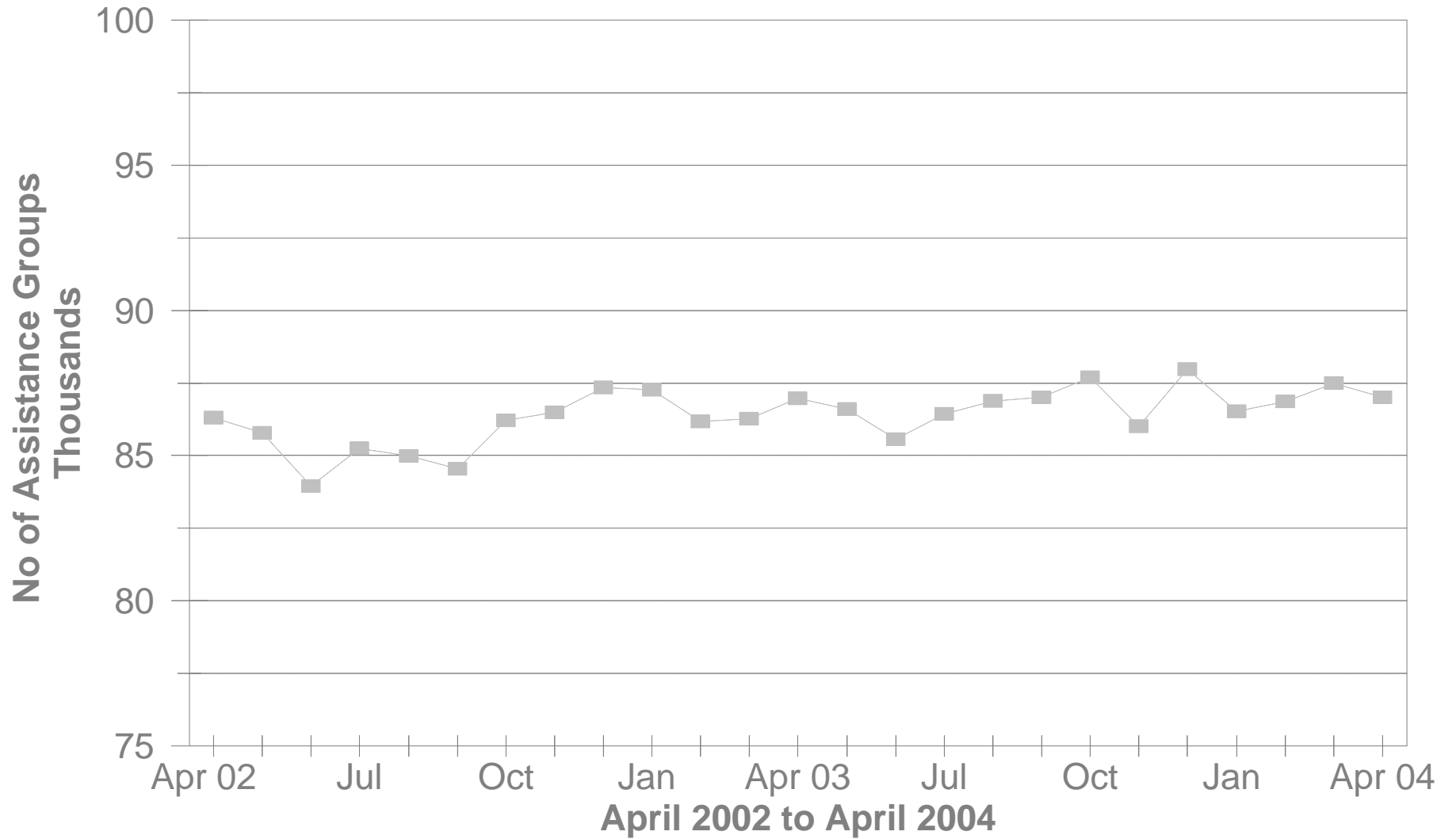
Total persons participating in the FNS benefits program during April 2004 decreased to 949,984 by 7,355 or -0.8% from 957,339 persons reported in March 2004. Households decreased by 2,410 or -0.6% over March 2004 levels. The total dollar value of FNS related benefits issued during April 2004 decreased by \$1,654,667 or -1.9% from \$86,088,054 reported in March 2004 to \$84,433,387 reported in April 2004. The average benefit issuance per person decreased by \$1.04 or -1.2% from those issued in March 2004. The average benefit issuance per person decreased from \$89.92 in March 2004 to \$88.88 in April 2004.

Please note: All data in the PAMS report is limited to the information available at the time it was constructed. It does not account for backdated or retroactive eligibility or any adjustments made subsequent to its creation.

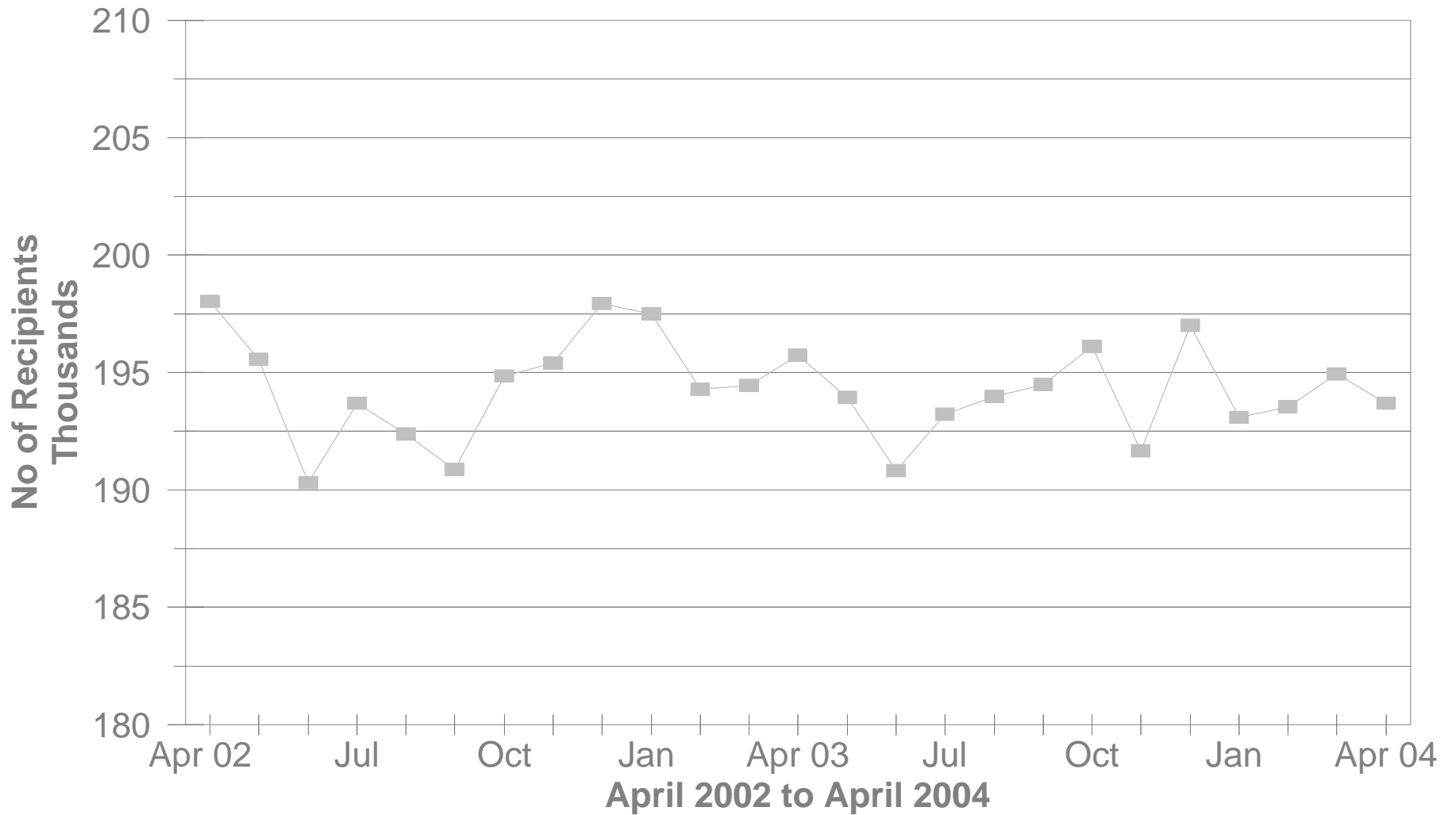
STATEWIDE SUMMARY OF PUBLIC ASSISTANCE PROGRAMS FOR APRIL 2004

	April 2004	March 2004	% CHANGE Apr 04 / Mar 04	April 2003	% CHANGE Apr 04 / Apr 03
OHIO WORKS FIRST (OWF)-COMBINED					
Assistance Groups	87,003	87,486	-0.6%	86,973	0.0%
Recipients	193,678	194,942	-0.6%	195,740	-1.1%
Net Payments	\$26,223,113	\$26,509,583	-1.1%	\$26,162,193	0.2%
Average Per Recipient	\$135.40	\$135.99	-0.4%	\$133.66	1.3%
OWF-REGULAR, OWF-INCAPACITATED,& OWF REGULAR VENDOR PAYMENTS					
Assistance Groups	82,548	83,111	-0.7%	82,728	-0.2%
Recipients	175,819	177,476	-0.9%	178,408	-1.5%
Net Payments	\$24,479,601	\$24,778,004	-1.2%	\$24,523,197	-0.2%
Average Per Recipient	\$139.23	\$139.61	-0.3%	\$137.46	1.3%
OWF-UNEMPLOYED AND OWF-UNEMPLOYED VENDOR PAYMENTS					
Assistance Groups	4,455	4,375	1.8%	4,245	4.9%
Recipients	17,859	17,466	2.3%	17,332	3.0%
Net Payments	\$1,743,512	\$1,731,579	0.7%	\$1,638,996	6.4%
Average Per Recipient	\$97.63	\$99.14	-1.5%	\$94.56	3.2%
TITLE IV-E FOSTER CARE					
Assistance Groups/Recipients	26,133	26,395	-1.0%	25,432	2.8%
Gross Payments	\$12,763,814	\$14,811,934	-13.8%	\$14,225,007	-10.3%
Average Per Recipient	\$488.42	\$561.16	-13.0%	\$559.33	-12.7%
DISABILITY ASSISTANCE					
Assistance Groups	13,086	13,086	0.0%	16,537	-20.9%
Recipients	13,199	13,204	-0.0%	16,970	-22.2%
Net Payments	\$1,743,821	\$1,760,786	-1.0%	\$2,027,682	-14.0%
Medical Assistance	\$5,018,969	\$6,863,742	-26.9%	\$9,883,662	-49.2%
FNS BENEFITS					
Assistance Groups	423,077	425,487	-0.6%	380,226	11.3%
Persons	949,984	957,339	-0.8%	853,470	11.3%
Total Coupons Issued	\$84,433,387	\$86,088,054	-1.9%	\$72,884,256	15.8%
Average Per Recipient	\$88.88	\$89.92	-1.2%	\$85.40	4.1%

No of OWF Combined Assistance Groups During The Last 25 Month

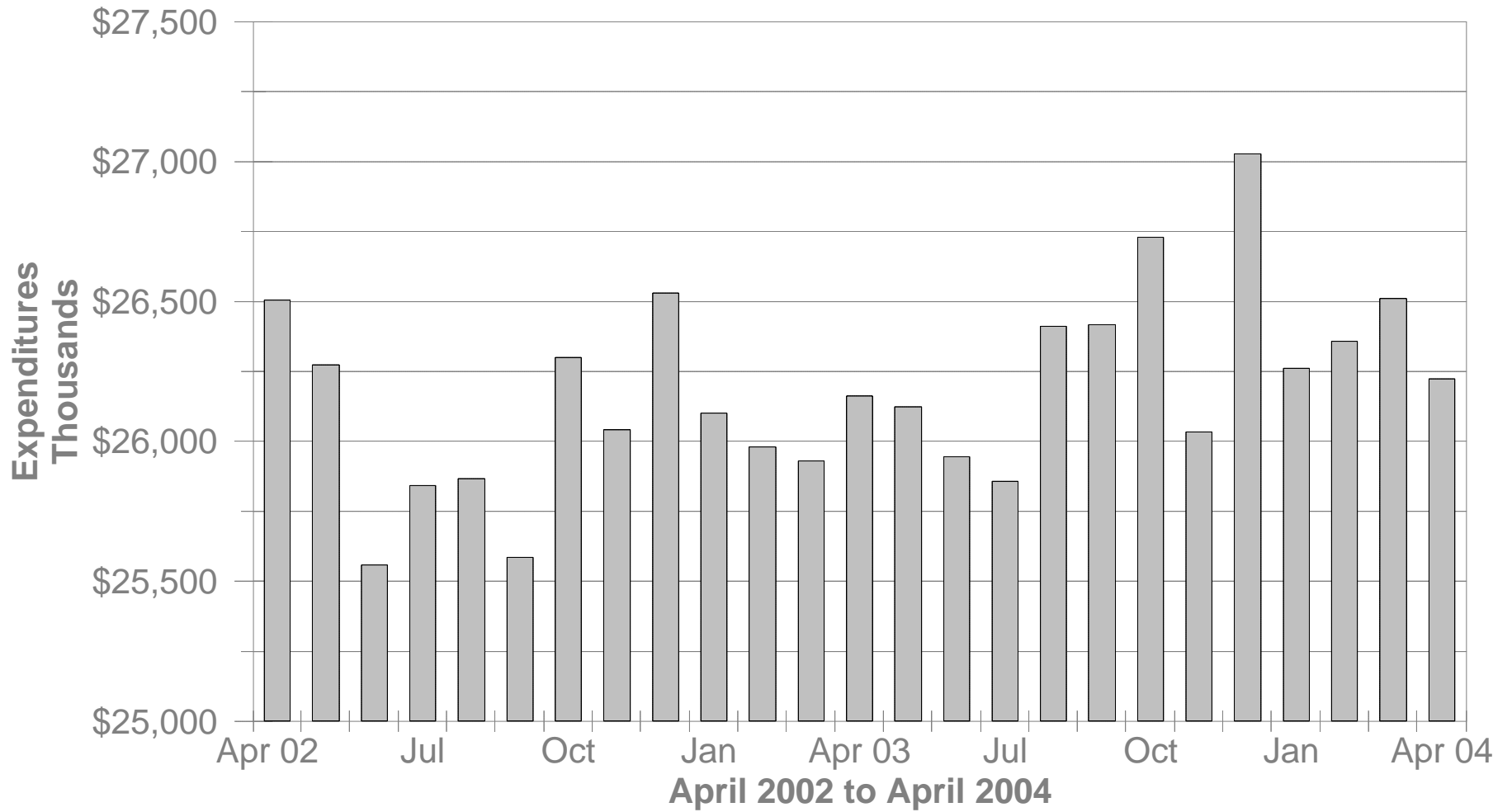


No of OWF Combined Recipients During The Last 25 Months



OWF Combined Net Expenditures

During The Last 25 Months



**TABLE 1
OWF COMBINED
APRIL 2004**

OHIO COUNTY	ASSISTANCE GROUP	RECIPIENTS	ADULTS	CHILDREN	ACTUAL EXPENDITURES		
					GROSS AMOUNT	CANCELLED AMOUNT	NET AMOUNT
STATEWIDE	87,003	193,678	51,211	142,467	\$27,012,773.46	\$789,660.00	\$26,223,113.46
ADAMS	127	206	6	200	\$34,437.00	\$0.00	\$34,437.00
ALLEN	443	833	88	745	\$130,094.00	\$2,086.00	\$128,008.00
ASHLAND	92	200	47	153	\$28,242.00	\$1,914.00	\$26,328.00
ASHTABULA	735	1,617	432	1,185	\$224,720.00	\$4,580.00	\$220,140.00
ATHENS	608	1,475	517	958	\$188,879.00	\$2,601.00	\$186,278.00
AUGLAIZE	51	75	3	72	\$12,724.00	\$446.00	\$12,278.00
BELMONT	492	1,068	340	728	\$143,011.00	\$373.00	\$142,638.00
BROWN	170	293	34	259	\$46,627.00	\$0.00	\$46,627.00
BUTLER	1,518	3,027	600	2,427	\$453,636.00	\$13,204.00	\$440,432.00
CARROLL	103	205	54	151	\$28,334.00	\$373.00	\$27,961.00
CHAMPAIGN	168	341	93	248	\$49,546.00	\$500.00	\$49,046.00
CLARK	1,338	2,966	825	2,141	\$412,609.00	\$11,013.00	\$401,596.00
CLERMONT	538	1,093	250	843	\$166,161.00	\$6,628.00	\$159,533.00
CLINTON	135	242	46	196	\$41,818.00	\$678.00	\$41,140.00
COLUMBIANA	538	1,071	222	849	\$153,900.00	\$4,642.00	\$149,258.00
COSHOCTON	239	523	163	360	\$71,432.00	\$1,238.00	\$70,194.00
CRAWFORD	265	636	206	430	\$82,716.00	\$6,726.00	\$75,990.00
CUYAHOGA	14,181	29,959	7,345	22,614	\$4,367,023.00	\$159,767.00	\$4,207,256.00
DARKE	171	395	124	271	\$57,395.00	\$223.00	\$57,172.00
DEFIANCE	115	260	71	189	\$36,301.00	\$678.00	\$35,623.00
DELAWARE	298	679	209	470	\$96,694.00	\$3,252.00	\$93,442.00
ERIE	219	388	39	349	\$61,375.00	\$751.00	\$60,624.00
FAIRFIELD	597	1,434	467	967	\$187,856.00	\$8,438.00	\$179,418.00
FAYETTE	145	274	51	223	\$41,874.00	\$1,347.00	\$40,527.00
FRANKLIN	11,347	25,758	6,504	19,254	\$3,525,306.00	\$111,035.00	\$3,414,271.00
FULTON	84	181	41	140	\$24,522.00	\$99.00	\$24,423.00
GALLIA	522	1,360	476	884	\$165,419.00	\$3,014.00	\$162,405.00
GEAUGA	93	191	51	140	\$25,685.00	\$0.00	\$25,685.00
GREENE	595	1,220	335	885	\$183,699.00	\$7,641.00	\$176,058.00

Source: GRP342RA Report from Management Information Services. Data includes ADC-Regular, ADC-Incapacitated, and Vendor Payments.

**TABLE 1
OWF COMBINED
APRIL 2004**

OHIO COUNTY	ASSISTANCE GROUP	RECIPIENTS	ADULTS	CHILDREN	ACTUAL EXPENDITURES		
					GROSS AMOUNT	CANCELLED AMOUNT	NET AMOUNT
STATEWIDE	87,003	193,678	51,211	142,467	\$27,012,773.46	\$789,660.00	\$26,223,113.46
GUERNSEY	202	412	99	313	\$61,012.00	\$788.00	\$60,224.00
HAMILTON	8,310	19,508	4,911	14,597	\$2,705,581.00	\$77,607.00	\$2,627,974.00
HANCOCK	171	378	95	283	\$53,380.00	\$1,948.00	\$51,432.00
HARDIN	53	92	7	85	\$14,140.00	\$901.00	\$13,239.00
HARRISON	103	213	62	151	\$30,205.00	\$446.00	\$29,759.00
HENRY	33	56	8	48	\$9,791.00	\$223.00	\$9,568.00
HIGHLAND	167	351	69	282	\$51,059.00	\$2,439.00	\$48,620.00
HOCKING	301	689	233	456	\$93,991.00	\$5,128.00	\$88,863.00
HOLMES	52	113	31	82	\$15,472.00	\$380.00	\$15,092.00
HURON	139	209	0	209	\$35,545.00	\$763.00	\$34,782.00
JACKSON	305	601	140	461	\$89,289.00	\$2,501.00	\$86,788.00
JEFFERSON	903	2,121	682	1,439	\$281,885.00	\$6,403.00	\$275,482.00
KNOX	249	595	180	415	\$74,497.00	\$1,220.00	\$73,277.00
LAKE	627	1,337	326	1,011	\$190,940.00	\$4,224.00	\$186,716.00
LAWRENCE	761	1,524	319	1,205	\$224,837.00	\$5,127.00	\$219,710.00
LICKING	617	1,352	407	945	\$178,555.00	\$7,387.00	\$171,168.00
LOGAN	210	480	139	341	\$64,425.00	\$2,471.00	\$61,954.00
LORAIN	2,142	5,062	1,315	3,747	\$676,018.00	\$20,236.00	\$655,782.00
LUCAS	7,125	17,063	5,006	12,057	\$2,266,572.46	\$64,854.00	\$2,201,718.46
MADISON	239	533	192	341	\$74,780.00	\$3,451.00	\$71,329.00
MAHONING	2,978	6,927	1,796	5,131	\$958,212.00	\$15,393.00	\$942,819.00
MARION	421	795	120	675	\$124,728.00	\$1,612.00	\$123,116.00
MEDINA	261	575	162	413	\$82,022.00	\$1,964.00	\$80,058.00
MEIGS	224	465	141	324	\$66,620.00	\$2,166.00	\$64,454.00
MERCER	62	156	56	100	\$19,793.00	\$107.00	\$19,686.00
MIAMI	311	602	129	473	\$85,929.00	\$2,589.00	\$83,340.00
MONROE	85	210	76	134	\$24,002.00	\$0.00	\$24,002.00
MONTGOMERY	5,674	12,348	3,175	9,173	\$1,712,923.00	\$46,080.00	\$1,666,843.00
MORGAN	80	147	24	123	\$23,724.00	\$223.00	\$23,501.00
MORROW	139	301	82	219	\$44,373.00	\$2,504.00	\$41,869.00

Source: GRP342RA Report from Management Information Services. Data includes ADC-Regular, ADC-Incapacitated, and Vendor Payments.

**TABLE 1
OWF COMBINED
APRIL 2004**

OHIO COUNTY	ASSISTANCE GROUP	RECIPIENTS	ADULTS	CHILDREN	ACTUAL EXPENDITURES		
					GROSS AMOUNT	CANCELLED AMOUNT	NET AMOUNT
STATEWIDE	87,003	193,678	51,211	142,467	\$27,012,773.46	\$789,660.00	\$26,223,113.46
MUSKINGUM	917	2,117	628	1,489	\$278,764.00	\$5,779.00	\$272,985.00
NOBLE	30	70	20	50	\$9,592.00	\$305.00	\$9,287.00
OTTAWA	121	278	91	187	\$34,855.00	\$625.00	\$34,230.00
PAULDING	95	232	88	144	\$28,964.00	\$117.00	\$28,847.00
PERRY	256	608	156	452	\$81,647.00	\$1,585.00	\$80,062.00
PICKAWAY	435	1,098	371	727	\$149,064.00	\$4,544.00	\$144,520.00
PIKE	335	752	183	569	\$100,336.00	\$3,532.00	\$96,804.00
PORTAGE	590	1,255	376	879	\$179,623.00	\$5,536.00	\$174,087.00
PREBLE	155	354	96	258	\$47,847.00	\$461.00	\$47,386.00
PUTNAM	72	177	57	120	\$24,053.00	\$1,555.00	\$22,498.00
RICHLAND	651	1,272	264	1,008	\$192,236.00	\$4,381.00	\$187,855.00
ROSS	704	1,597	467	1,130	\$216,211.00	\$4,309.00	\$211,902.00
SANDUSKY	185	311	67	244	\$51,115.00	\$969.00	\$50,146.00
SCIOTO	1,015	1,917	379	1,538	\$285,952.00	\$7,410.00	\$278,542.00
SENECA	130	225	25	200	\$35,174.00	\$1,195.00	\$33,979.00
SHELBY	117	215	33	182	\$33,589.00	\$1,597.00	\$31,992.00
STARK	3,246	7,628	2,364	5,264	\$1,049,338.00	\$34,525.00	\$1,014,813.00
SUMMIT	5,411	12,404	3,751	8,653	\$1,723,048.00	\$47,328.00	\$1,675,720.00
TRUMBULL	1,487	3,196	752	2,444	\$446,765.00	\$7,074.00	\$439,691.00
TUSCARAWAS	451	1,080	349	731	\$145,400.00	\$2,383.00	\$143,017.00
UNION	213	541	189	352	\$67,681.00	\$1,454.00	\$66,227.00
VAN WERT	37	61	5	56	\$10,271.00	\$0.00	\$10,271.00
VINTON	181	422	128	294	\$55,103.00	\$3,002.00	\$52,101.00
WARREN	234	443	95	348	\$67,624.00	\$2,520.00	\$65,104.00
WASHINGTON	149	221	8	213	\$39,706.00	\$1,279.00	\$38,427.00
WAYNE	456	1,020	359	661	\$142,005.00	\$7,184.00	\$134,821.00
WILLIAMS	172	426	150	276	\$55,270.00	\$2,715.00	\$52,555.00
WOOD	258	517	125	392	\$76,963.00	\$1,914.00	\$75,049.00
WYANDOT	29	56	14	42	\$8,242.00	\$0.00	\$8,242.00

Source: GRP342RA Report from Management Information Services. Data includes ADC-Regular, ADC-Incapacitated, and Vendor Payments.

**TABLE 1
OWF REGULAR
APRIL 2004**

OHIO COUNTY	ASSISTANCE GROUP	RECIPIENTS	ADULTS	CHILDREN	ACTUAL EXPENDITURES		
					GROSS AMOUNT	CANCELLED AMOUNT	NET AMOUNT
STATEWIDE	82,548	175,819	42,829	132,990	\$25,215,729.46	\$736,128.00	\$24,479,601.46
ADAMS	127	206	6	200	\$34,437.00	\$0.00	\$34,437.00
ALLEN	437	804	77	727	\$127,253.00	\$2,086.00	\$125,167.00
ASHLAND	84	165	31	134	\$24,309.00	\$1,914.00	\$22,395.00
ASHTABULA	687	1,419	338	1,081	\$202,493.00	\$3,014.00	\$199,479.00
ATHENS	502	1,073	323	750	\$146,974.00	\$2,317.00	\$144,657.00
AUGLAIZE	51	75	3	72	\$12,724.00	\$446.00	\$12,278.00
BELMONT	443	882	245	637	\$125,734.00	\$373.00	\$125,361.00
BROWN	168	287	30	257	\$45,881.00	\$0.00	\$45,881.00
BUTLER	1,491	2,943	566	2,377	\$444,797.00	\$13,204.00	\$431,593.00
CARROLL	95	173	38	135	\$25,934.00	\$373.00	\$25,561.00
CHAMPAIGN	159	307	76	231	\$45,635.00	\$500.00	\$45,135.00
CLARK	1,270	2,701	700	2,001	\$385,505.00	\$10,640.00	\$374,865.00
CLERMONT	522	1,031	218	813	\$160,222.00	\$6,255.00	\$153,967.00
CLINTON	131	226	38	188	\$38,940.00	\$678.00	\$38,262.00
COLUMBIANA	522	1,005	190	815	\$147,026.00	\$4,642.00	\$142,384.00
COSHOCTON	218	442	122	320	\$63,438.00	\$1,238.00	\$62,200.00
CRAWFORD	228	482	136	346	\$68,135.00	\$5,980.00	\$62,155.00
CUYAHOGA	13,717	28,019	6,444	21,575	\$4,175,137.00	\$150,259.00	\$4,024,878.00
DARKE	155	329	94	235	\$50,005.00	\$223.00	\$49,782.00
DEFIANCE	105	216	51	165	\$31,841.00	\$678.00	\$31,163.00
DELAWARE	276	592	169	423	\$86,400.00	\$3,252.00	\$83,148.00
ERIE	219	388	39	349	\$61,375.00	\$751.00	\$60,624.00
FAIRFIELD	526	1,141	326	815	\$158,214.00	\$7,153.00	\$151,061.00
FAYETTE	140	255	41	214	\$39,520.00	\$1,347.00	\$38,173.00
FRANKLIN	10,906	23,898	5,731	18,167	\$3,345,752.00	\$104,057.00	\$3,241,695.00
FULTON	81	170	37	133	\$23,369.00	\$99.00	\$23,270.00
GALLIA	424	960	281	679	\$127,534.00	\$2,268.00	\$125,266.00
GEAUGA	89	177	43	134	\$24,478.00	\$0.00	\$24,478.00
GREENE	565	1,106	279	827	\$172,492.00	\$7,641.00	\$164,851.00

Source: GRP342RA Report from Management Information Services. Data includes ADC-Regular, ADC-Incapacitated, and Vendor Payments.

**TABLE 1
OWF REGULAR
APRIL 2004**

OHIO COUNTY	ASSISTANCE GROUP	RECIPIENTS	ADULTS	CHILDREN	ACTUAL EXPENDITURES		
					GROSS AMOUNT	CANCELLED AMOUNT	NET AMOUNT
STATEWIDE	82,548	175,819	42,829	132,990	\$25,215,729.46	\$736,128.00	\$24,479,601.46
GUERNSEY	189	355	73	282	\$55,311.00	\$788.00	\$54,523.00
HAMILTON	8,151	18,844	4,603	14,241	\$2,637,599.00	\$76,567.00	\$2,561,032.00
HANCOCK	153	299	58	241	\$44,781.00	\$1,948.00	\$42,833.00
HARDIN	53	92	7	85	\$14,140.00	\$901.00	\$13,239.00
HARRISON	96	191	49	142	\$27,708.00	\$446.00	\$27,262.00
HENRY	32	52	6	46	\$9,330.00	\$223.00	\$9,107.00
HIGHLAND	160	321	55	266	\$47,357.00	\$2,439.00	\$44,918.00
HOCKING	258	526	148	378	\$78,421.00	\$4,667.00	\$73,754.00
HOLMES	47	96	21	75	\$13,447.00	\$380.00	\$13,067.00
HURON	136	203	0	203	\$34,648.00	\$458.00	\$34,190.00
JACKSON	285	526	100	426	\$81,419.00	\$2,501.00	\$78,918.00
JEFFERSON	804	1,712	486	1,226	\$243,198.00	\$5,412.00	\$237,786.00
KNOX	224	491	131	360	\$66,078.00	\$1,220.00	\$64,858.00
LAKE	560	1,120	263	857	\$164,667.00	\$3,750.00	\$160,917.00
LAWRENCE	720	1,374	240	1,134	\$210,199.00	\$5,127.00	\$205,072.00
LICKING	559	1,141	301	840	\$157,656.00	\$6,926.00	\$150,730.00
LOGAN	188	385	95	290	\$55,164.00	\$2,471.00	\$52,693.00
LORAIN	2,006	4,493	1,053	3,440	\$619,355.00	\$19,029.00	\$600,326.00
LUCAS	6,618	15,051	4,076	10,975	\$2,067,076.46	\$54,731.00	\$2,012,345.46
MADISON	211	431	136	295	\$62,501.00	\$2,073.00	\$60,428.00
MAHONING	2,836	6,333	1,520	4,813	\$897,715.00	\$15,393.00	\$882,322.00
MARION	413	772	109	663	\$121,702.00	\$1,229.00	\$120,473.00
MEDINA	242	498	125	373	\$73,843.00	\$1,964.00	\$71,879.00
MEIGS	205	396	108	288	\$59,378.00	\$1,793.00	\$57,585.00
MERCER	50	111	32	79	\$15,277.00	\$107.00	\$15,170.00
MIAMI	305	582	117	465	\$83,064.00	\$2,589.00	\$80,475.00
MONROE	68	149	44	105	\$18,418.00	\$0.00	\$18,418.00
MONTGOMERY	5,637	12,221	3,116	9,105	\$1,700,699.00	\$46,080.00	\$1,654,619.00
MORGAN	77	136	18	118	\$22,455.00	\$223.00	\$22,232.00
MORROW	130	266	64	202	\$40,549.00	\$2,504.00	\$38,045.00

Source: GRP342RA Report from Management Information Services. Data includes ADC-Regular, ADC-Incapacitated, and Vendor Payments.

**TABLE 1
OWF REGULAR
APRIL 2004**

OHIO COUNTY	ASSISTANCE GROUP	RECIPIENTS	ADULTS	CHILDREN	ACTUAL EXPENDITURES		
					GROSS AMOUNT	CANCELLED AMOUNT	NET AMOUNT
STATEWIDE	82,548	175,819	42,829	132,990	\$25,215,729.46	\$736,128.00	\$24,479,601.46
MUSKINGUM	839	1,808	476	1,332	\$248,571.00	\$5,282.00	\$243,289.00
NOBLE	25	51	10	41	\$7,419.00	\$305.00	\$7,114.00
OTTAWA	109	225	67	158	\$30,614.00	\$625.00	\$29,989.00
PAULDING	85	192	68	124	\$25,252.00	\$0.00	\$25,252.00
PERRY	236	523	116	407	\$73,497.00	\$1,585.00	\$71,912.00
PICKAWAY	377	858	258	600	\$122,011.00	\$4,099.00	\$117,912.00
PIKE	309	655	132	523	\$91,079.00	\$2,688.00	\$88,391.00
PORTAGE	561	1,137	318	819	\$169,435.00	\$5,163.00	\$164,272.00
PREBLE	150	337	87	250	\$45,706.00	\$461.00	\$45,245.00
PUTNAM	60	133	38	95	\$17,857.00	\$446.00	\$17,411.00
RICHLAND	644	1,247	252	995	\$189,734.00	\$4,381.00	\$185,353.00
ROSS	642	1,347	350	997	\$191,345.00	\$3,936.00	\$187,409.00
SANDUSKY	177	294	60	234	\$49,533.00	\$969.00	\$48,564.00
SCIOTO	958	1,703	267	1,436	\$263,617.00	\$7,410.00	\$256,207.00
SENECA	127	212	20	192	\$33,984.00	\$1,195.00	\$32,789.00
SHELBY	116	214	33	181	\$33,389.00	\$1,597.00	\$31,792.00
STARK	2,955	6,439	1,786	4,653	\$933,519.00	\$29,978.00	\$903,541.00
SUMMIT	5,033	10,911	3,012	7,899	\$1,570,203.00	\$44,184.00	\$1,526,019.00
TRUMBULL	1,411	2,867	600	2,267	\$413,776.00	\$7,074.00	\$406,702.00
TUSCARAWAS	391	836	232	604	\$119,526.00	\$1,443.00	\$118,083.00
UNION	177	395	120	275	\$53,464.00	\$1,454.00	\$52,010.00
VAN WERT	37	61	5	56	\$10,271.00	\$0.00	\$10,271.00
VINTON	161	346	90	256	\$46,790.00	\$2,629.00	\$44,161.00
WARREN	231	433	90	343	\$66,051.00	\$2,520.00	\$63,531.00
WASHINGTON	149	221	8	213	\$39,706.00	\$1,279.00	\$38,427.00
WAYNE	410	845	272	573	\$121,286.00	\$6,184.00	\$115,102.00
WILLIAMS	154	357	115	242	\$48,292.00	\$2,000.00	\$46,292.00
WOOD	249	490	111	379	\$74,305.00	\$1,914.00	\$72,391.00
WYANDOT	24	43	10	33	\$6,788.00	\$0.00	\$6,788.00

Source: GRP342RA Report from Management Information Services. Data includes ADC-Regular, ADC-Incapacitated, and Vendor Payments.

**TABLE 1
OWF UNEMPLOYED
APRIL 2004**

OHIO COUNTY	ASSISTANCE GROUP	RECIPIENTS	ADULTS	CHILDREN	ACTUAL EXPENDITURES		
					GROSS AMOUNT	CANCELLED AMOUNT	NET AMOUNT
STATEWIDE	4,455	17,859	8,382	9,477	\$1,797,044.00	\$53,532.00	\$1,743,512.00
ADAMS	0	0	0	0	\$0.00	\$0.00	\$0.00
ALLEN	6	29	11	18	\$2,841.00	\$0.00	\$2,841.00
ASHLAND	8	35	16	19	\$3,933.00	\$0.00	\$3,933.00
ASHTABULA	48	198	94	104	\$22,227.00	\$1,566.00	\$20,661.00
ATHENS	106	402	194	208	\$41,905.00	\$284.00	\$41,621.00
AUGLAIZE	0	0	0	0	\$0.00	\$0.00	\$0.00
BELMONT	49	186	95	91	\$17,277.00	\$0.00	\$17,277.00
BROWN	2	6	4	2	\$746.00	\$0.00	\$746.00
BUTLER	27	84	34	50	\$8,839.00	\$0.00	\$8,839.00
CARROLL	8	32	16	16	\$2,400.00	\$0.00	\$2,400.00
CHAMPAIGN	9	34	17	17	\$3,911.00	\$0.00	\$3,911.00
CLARK	68	265	125	140	\$27,104.00	\$373.00	\$26,731.00
CLERMONT	16	62	32	30	\$5,939.00	\$373.00	\$5,566.00
CLINTON	4	16	8	8	\$2,878.00	\$0.00	\$2,878.00
COLUMBIANA	16	66	32	34	\$6,874.00	\$0.00	\$6,874.00
COSHOCTON	21	81	41	40	\$7,994.00	\$0.00	\$7,994.00
CRAWFORD	37	154	70	84	\$14,581.00	\$746.00	\$13,835.00
CUYAHOGA	464	1,940	901	1,039	\$191,886.00	\$9,508.00	\$182,378.00
DARKE	16	66	30	36	\$7,390.00	\$0.00	\$7,390.00
DEFIANCE	10	44	20	24	\$4,460.00	\$0.00	\$4,460.00
DELAWARE	22	87	40	47	\$10,294.00	\$0.00	\$10,294.00
ERIE	0	0	0	0	\$0.00	\$0.00	\$0.00
FAIRFIELD	71	293	141	152	\$29,642.00	\$1,285.00	\$28,357.00
FAYETTE	5	19	10	9	\$2,354.00	\$0.00	\$2,354.00
FRANKLIN	441	1,860	773	1,087	\$179,554.00	\$6,978.00	\$172,576.00
FULTON	3	11	4	7	\$1,153.00	\$0.00	\$1,153.00
GALLIA	98	400	195	205	\$37,885.00	\$746.00	\$37,139.00
GEAUGA	4	14	8	6	\$1,207.00	\$0.00	\$1,207.00
GREENE	30	114	56	58	\$11,207.00	\$0.00	\$11,207.00

Source: GRP342RA Report from Management Information Services. Data includes ADC-Regular, ADC-Incapacitated, and Vendor Payments.

**TABLE 1
OWF UNEMPLOYED
APRIL 2004**

OHIO COUNTY	ASSISTANCE GROUP	RECIPIENTS	ADULTS	CHILDREN	ACTUAL EXPENDITURES		
					GROSS AMOUNT	CANCELLED AMOUNT	NET AMOUNT
STATEWIDE	4,455	17,859	8,382	9,477	\$1,797,044.00	\$53,532.00	\$1,743,512.00
GUERNSEY	13	57	26	31	\$5,701.00	\$0.00	\$5,701.00
HAMILTON	159	664	308	356	\$67,982.00	\$1,040.00	\$66,942.00
HANCOCK	18	79	37	42	\$8,599.00	\$0.00	\$8,599.00
HARDIN	0	0	0	0	\$0.00	\$0.00	\$0.00
HARRISON	7	22	13	9	\$2,497.00	\$0.00	\$2,497.00
HENRY	1	4	2	2	\$461.00	\$0.00	\$461.00
HIGHLAND	7	30	14	16	\$3,702.00	\$0.00	\$3,702.00
HOCKING	43	163	85	78	\$15,570.00	\$461.00	\$15,109.00
HOLMES	5	17	10	7	\$2,025.00	\$0.00	\$2,025.00
HURON	3	6	0	6	\$897.00	\$305.00	\$592.00
JACKSON	20	75	40	35	\$7,870.00	\$0.00	\$7,870.00
JEFFERSON	99	409	196	213	\$38,687.00	\$991.00	\$37,696.00
KNOX	25	104	49	55	\$8,419.00	\$0.00	\$8,419.00
LAKE	67	217	63	154	\$26,273.00	\$474.00	\$25,799.00
LAWRENCE	41	150	79	71	\$14,638.00	\$0.00	\$14,638.00
LICKING	58	211	106	105	\$20,899.00	\$461.00	\$20,438.00
LOGAN	22	95	44	51	\$9,261.00	\$0.00	\$9,261.00
LORAIN	136	569	262	307	\$56,663.00	\$1,207.00	\$55,456.00
LUCAS	507	2,012	930	1,082	\$199,496.00	\$10,123.00	\$189,373.00
MADISON	28	102	56	46	\$12,279.00	\$1,378.00	\$10,901.00
MAHONING	142	594	276	318	\$60,497.00	\$0.00	\$60,497.00
MARION	8	23	11	12	\$3,026.00	\$383.00	\$2,643.00
MEDINA	19	77	37	40	\$8,179.00	\$0.00	\$8,179.00
MEIGS	19	69	33	36	\$7,242.00	\$373.00	\$6,869.00
MERCER	12	45	24	21	\$4,516.00	\$0.00	\$4,516.00
MIAMI	6	20	12	8	\$2,865.00	\$0.00	\$2,865.00
MONROE	17	61	32	29	\$5,584.00	\$0.00	\$5,584.00
MONTGOMERY	37	127	59	68	\$12,224.00	\$0.00	\$12,224.00
MORGAN	3	11	6	5	\$1,269.00	\$0.00	\$1,269.00
MORROW	9	35	18	17	\$3,824.00	\$0.00	\$3,824.00

Source: GRP342RA Report from Management Information Services. Data includes ADC-Regular, ADC-Incapacitated, and Vendor Payments.

**TABLE 1
OWF UNEMPLOYED
APRIL 2004**

OHIO COUNTY	ASSISTANCE GROUP	RECIPIENTS	ADULTS	CHILDREN	ACTUAL EXPENDITURES		
					GROSS AMOUNT	CANCELLED AMOUNT	NET AMOUNT
STATEWIDE	4,455	17,859	8,382	9,477	\$1,797,044.00	\$53,532.00	\$1,743,512.00
MUSKINGUM	78	309	152	157	\$30,193.00	\$497.00	\$29,696.00
NOBLE	5	19	10	9	\$2,173.00	\$0.00	\$2,173.00
OTTAWA	12	53	24	29	\$4,241.00	\$0.00	\$4,241.00
PAULDING	10	40	20	20	\$3,712.00	\$117.00	\$3,595.00
PERRY	20	85	40	45	\$8,150.00	\$0.00	\$8,150.00
PICKAWAY	58	240	113	127	\$27,053.00	\$445.00	\$26,608.00
PIKE	26	97	51	46	\$9,257.00	\$844.00	\$8,413.00
PORTAGE	29	118	58	60	\$10,188.00	\$373.00	\$9,815.00
PREBLE	5	17	9	8	\$2,141.00	\$0.00	\$2,141.00
PUTNAM	12	44	19	25	\$6,196.00	\$1,109.00	\$5,087.00
RICHLAND	7	25	12	13	\$2,502.00	\$0.00	\$2,502.00
ROSS	62	250	117	133	\$24,866.00	\$373.00	\$24,493.00
SANDUSKY	8	17	7	10	\$1,582.00	\$0.00	\$1,582.00
SCIOTO	57	214	112	102	\$22,335.00	\$0.00	\$22,335.00
SENECA	3	13	5	8	\$1,190.00	\$0.00	\$1,190.00
SHELBY	1	1	0	1	\$200.00	\$0.00	\$200.00
STARK	291	1,189	578	611	\$115,819.00	\$4,547.00	\$111,272.00
SUMMIT	378	1,493	739	754	\$152,845.00	\$3,144.00	\$149,701.00
TRUMBULL	76	329	152	177	\$32,989.00	\$0.00	\$32,989.00
TUSCARAWAS	60	244	117	127	\$25,874.00	\$940.00	\$24,934.00
UNION	36	146	69	77	\$14,217.00	\$0.00	\$14,217.00
VAN WERT	0	0	0	0	\$0.00	\$0.00	\$0.00
VINTON	20	76	38	38	\$8,313.00	\$373.00	\$7,940.00
WARREN	3	10	5	5	\$1,573.00	\$0.00	\$1,573.00
WASHINGTON	0	0	0	0	\$0.00	\$0.00	\$0.00
WAYNE	46	175	87	88	\$20,719.00	\$1,000.00	\$19,719.00
WILLIAMS	18	69	35	34	\$6,978.00	\$715.00	\$6,263.00
WOOD	9	27	14	13	\$2,658.00	\$0.00	\$2,658.00
WYANDOT	5	13	4	9	\$1,454.00	\$0.00	\$1,454.00

Source: GRP342RA Report from Management Information Services. Data includes ADC-Regular, ADC-Incapacitated, and Vendor Payments.

**TABLE 2
TITLE IV-E FOSTER CARE
APRIL 2004**

OHIO COUNTY	FOSTER CARE						ADOPTION ASSISTANCE		TOTAL FOSTER CARE AND ADOPTION ASSISTANCE	
	FOSTER FAMILY HOMES		CHILD CARE INSTITUTIONS		HOMES & INSTITUTIONS		CHILDREN	GROSS AMOUNT	CHILDREN	GROSS AMOUNT
	CHILDREN	GROSS AMOUNT	CHILDREN	GROSS AMOUNT	CHILDREN	GROSS AMOUNT				
STATEWIDE	3,288	\$1,450,266.83	3,859	\$4,221,892.84	7,147	\$5,672,159.67	18,986	\$7,091,654.29	26,133	\$12,763,813.96
ADAMS	14	\$4,677.86	6	\$15,506.25	20	\$20,184.11	38	\$9,500.00	58	\$29,684.11
ALLEN	65	\$20,569.25	30	\$28,523.11	95	\$49,092.36	135	\$38,365.56	230	\$87,457.92
ASHLAND	2	\$710.76	0	\$0.00	2	\$710.76	10	\$2,475.00	12	\$3,185.76
ASHTABULA	0	\$0.00	2	\$758.00	2	\$758.00	164	\$57,323.17	166	\$58,081.17
ATHENS	41	\$15,790.62	46	\$52,690.02	87	\$68,480.64	108	\$36,084.48	195	\$104,565.12
AUGLAIZE	9	\$4,548.84	4	\$5,647.11	13	\$10,195.95	35	\$12,964.15	48	\$23,160.10
BELMONT	3	\$877.17	29	\$55,932.52	32	\$56,809.69	112	\$41,478.66	144	\$98,288.35
BROWN	18	\$3,007.90	0	\$0.00	18	\$3,007.90	35	\$9,458.95	53	\$12,466.85
BUTLER	122	\$47,595.71	117	\$133,934.31	239	\$181,530.02	502	\$149,544.56	741	\$331,074.58
CARROLL	9	\$7,018.63	0	\$0.00	9	\$7,018.63	4	\$1,000.00	13	\$8,018.63
CHAMPAIGN	1	\$553.79	16	\$33,637.83	17	\$34,191.62	14	\$4,934.56	31	\$39,126.18
CLARK	1	\$1,272.26	69	\$33,767.16	70	\$35,039.42	305	\$97,689.81	375	\$132,729.23
CLERMONT	75	\$27,424.91	112	\$159,156.03	187	\$186,580.94	197	\$54,159.58	384	\$240,740.52
CLINTON	28	\$13,790.29	2	\$4,070.47	30	\$17,860.76	51	\$17,621.56	81	\$35,482.32
COLUMBIANA	34	\$7,599.57	42	\$64,726.99	76	\$72,326.56	62	\$15,855.36	138	\$88,181.92
COSHOCTON	15	\$3,975.20	7	\$21,280.03	22	\$25,255.23	44	\$13,458.01	66	\$38,713.24
CRAWFORD	0	\$0.00	11	\$19,028.00	11	\$19,028.00	35	\$9,485.23	46	\$28,513.23
CUYAHOGA	690	\$283,681.89	894	\$1,352,770.12	1,584	\$1,636,452.01	4,579	\$2,176,457.34	6,163	\$3,812,909.35
DARKE	12	\$9,412.01	8	\$15,741.06	20	\$25,153.07	28	\$8,534.03	48	\$33,687.10
DEFIANCE	9	\$3,138.93	2	\$1,418.88	11	\$4,557.81	33	\$10,115.73	44	\$14,673.54
DELAWARE	13	\$4,086.82	17	\$82,151.49	30	\$86,238.31	60	\$18,742.78	90	\$104,981.09
ERIE	27	\$17,601.88	40	\$77,771.00	67	\$95,372.88	87	\$27,126.38	154	\$122,499.26
FAIRFIELD	0	\$0.00	0	\$0.00	0	\$0.00	133	\$34,955.77	133	\$34,955.77
FAYETTE	5	\$1,954.59	0	\$0.00	5	\$1,954.59	15	\$3,750.00	20	\$5,704.59
FRANKLIN	0	\$0.00	1,219	\$424,921.43	1,219	\$424,921.43	2,418	\$829,480.65	3,637	\$1,254,402.08
FULTON	4	\$475.90	19	\$28,689.82	23	\$29,165.72	14	\$4,092.28	37	\$33,258.00
GALLIA	26	\$8,559.42	4	\$3,422.63	30	\$11,982.05	40	\$9,965.00	70	\$21,947.05
GEAUGA	12	\$5,431.14	0	\$0.00	12	\$5,431.14	105	\$33,780.94	117	\$39,212.08
GREENE	0	\$0.00	21	\$11,008.25	21	\$11,008.25	84	\$24,929.56	105	\$35,937.81

SOURCE: GBS003RB Report from Management Information Services. Federal funds only.

**TABLE 2
TITLE IV-E FOSTER CARE
APRIL 2004**

OHIO COUNTY	FOSTER CARE						ADOPTION ASSISTANCE		TOTAL FOSTER CARE AND ADOPTION ASSISTANCE	
	FOSTER FAMILY HOMES		CHILD CARE INSTITUTIONS		HOMES & INSTITUTIONS		CHILDREN	GROSS AMOUNT	CHILDREN	GROSS AMOUNT
	CHILDREN	GROSS AMOUNT	CHILDREN	GROSS AMOUNT	CHILDREN	GROSS AMOUNT				
STATEWIDE	3,288	\$1,450,266.83	3,859	\$4,221,892.84	7,147	\$5,672,159.67	18,986	\$7,091,654.29	26,133	\$12,763,813.96
GUERNSEY	27	\$10,525.76	0	\$0.00	27	\$10,525.76	74	\$22,421.91	101	\$32,947.67
HAMILTON	0	\$0.00	26	\$6,787.65	26	\$6,787.65	1,456	\$582,005.86	1,482	\$588,793.51
HANCOCK	16	\$2,354.20	16	\$27,935.87	32	\$30,290.07	45	\$12,948.42	77	\$43,238.49
HARDIN	26	\$12,015.75	5	\$18,471.06	31	\$30,486.81	28	\$6,980.52	59	\$37,467.33
HARRISON	0	\$0.00	0	\$0.00	0	\$0.00	29	\$9,515.50	29	\$9,515.50
HENRY	0	\$0.00	9	\$8,203.36	9	\$8,203.36	24	\$7,425.05	33	\$15,628.41
HIGHLAND	13	\$8.32	7	\$8,914.55	20	\$8,922.87	14	\$5,025.11	34	\$13,947.98
HOCKING	27	\$8,449.08	7	\$21,580.41	34	\$30,029.49	45	\$14,127.89	79	\$44,157.38
HOLMES	6	\$2,665.32	1	\$4,628.16	7	\$7,293.48	27	\$11,125.29	34	\$18,418.77
HURON	27	\$16,249.66	3	\$15,690.27	30	\$31,939.93	26	\$7,737.98	56	\$39,677.91
JACKSON	0	\$0.00	13	\$21,580.11	13	\$21,580.11	15	\$3,750.00	28	\$25,330.11
JEFFERSON	32	\$15,818.99	31	\$70,132.33	63	\$85,951.32	56	\$20,927.53	119	\$106,878.85
KNOX	13	\$2,473.98	6	\$8,549.12	19	\$11,023.10	38	\$10,669.76	57	\$21,692.86
LAKE	41	\$16,103.23	25	\$92,431.60	66	\$108,534.83	141	\$37,817.13	207	\$146,351.96
LAWRENCE	6	\$1,688.01	0	\$0.00	6	\$1,688.01	33	\$8,990.37	39	\$10,678.38
LICKING	52	\$19,889.38	85	\$104,512.22	137	\$124,401.60	298	\$95,443.42	435	\$219,845.02
LOGAN	15	\$12,795.17	3	\$5,800.45	18	\$18,595.62	38	\$12,791.93	56	\$31,387.55
LORAIN	0	\$0.00	0	\$0.00	0	\$0.00	411	\$132,759.65	411	\$132,759.65
LUCAS	487	\$233,910.56	50	\$91,051.59	537	\$324,962.15	1,591	\$593,218.87	2,128	\$918,181.02
MADISON	0	\$0.00	10	\$12,409.60	10	\$12,409.60	26	\$10,301.16	36	\$22,710.76
MAHONING	126	\$98,286.64	36	\$138,792.16	162	\$237,078.80	239	\$68,424.31	401	\$305,503.11
MARION	20	\$10,456.94	0	\$0.00	20	\$10,456.94	74	\$24,014.20	94	\$34,471.14
MEDINA	0	\$0.00	0	\$0.00	0	\$0.00	82	\$28,124.61	82	\$28,124.61
MEIGS	4	\$1,222.06	7	\$5,688.14	11	\$6,910.20	3	\$750.00	14	\$7,660.20
MERCER	6	\$2,014.38	3	\$2,574.08	9	\$4,588.46	31	\$8,253.43	40	\$12,841.89
MIAMI	22	\$8,446.72	34	\$46,444.75	56	\$54,891.47	114	\$40,094.45	170	\$94,985.92
MONROE	4	\$1,919.04	0	\$0.00	4	\$1,919.04	9	\$2,990.35	13	\$4,909.39
MONTGOMERY	352	\$134,373.86	327	\$419,732.81	679	\$554,106.67	1,126	\$508,777.89	1,805	\$1,062,884.56
MORGAN	0	\$0.00	0	\$0.00	0	\$0.00	13	\$3,234.00	13	\$3,234.00
MORROW	1	\$57.06	0	\$0.00	1	\$57.06	42	\$11,415.07	43	\$11,472.13

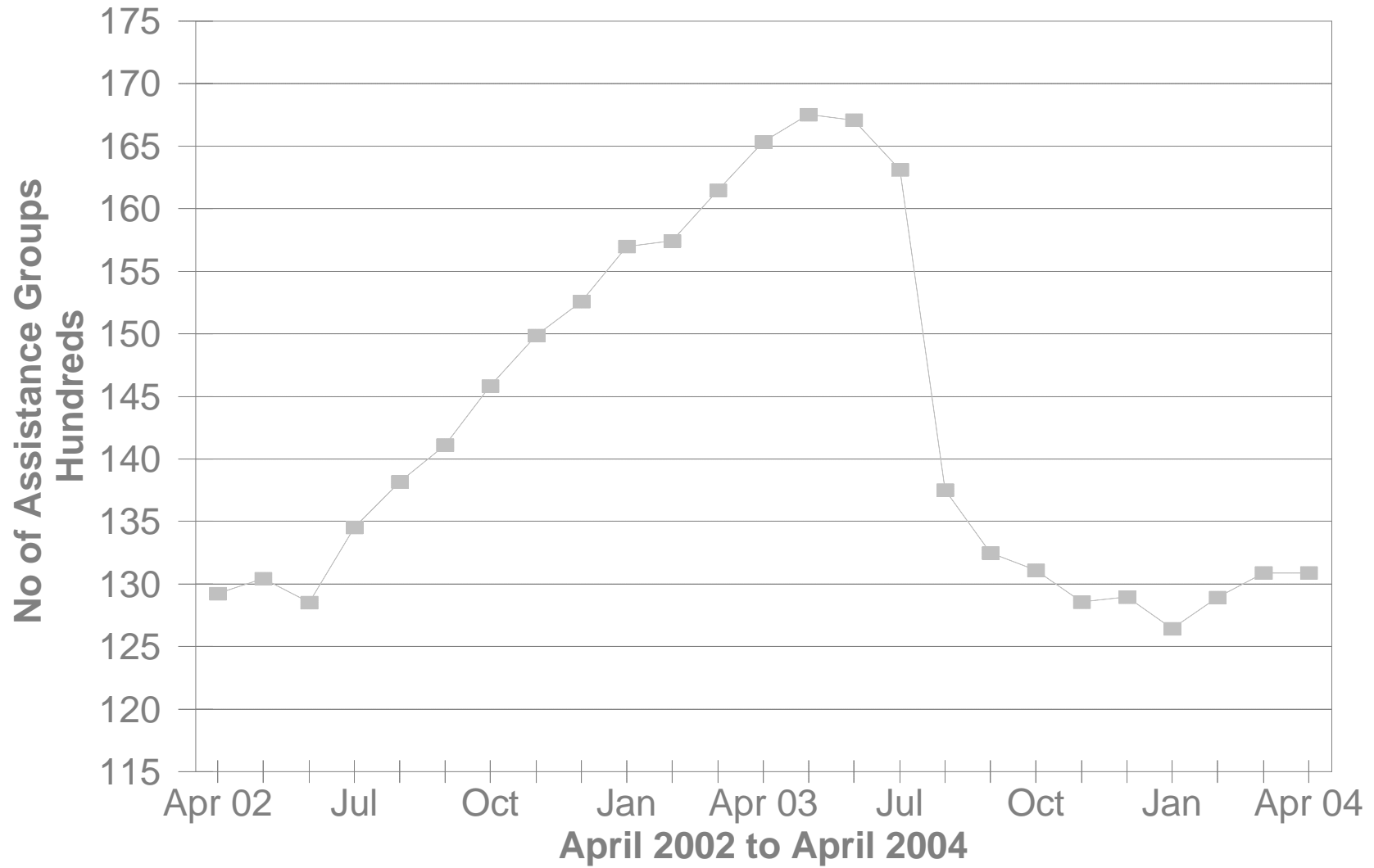
SOURCE: GBS003RB Report from Management Information Services. Federal funds only.

**TABLE 2
TITLE IV-E FOSTER CARE
APRIL 2004**

OHIO COUNTY	FOSTER CARE						ADOPTION ASSISTANCE		TOTAL FOSTER CARE AND ADOPTION ASSISTANCE	
	FOSTER FAMILY HOMES		CHILD CARE INSTITUTIONS		HOMES & INSTITUTIONS		CHILDREN	GROSS AMOUNT	CHILDREN	GROSS AMOUNT
	CHILDREN	GROSS AMOUNT	CHILDREN	GROSS AMOUNT	CHILDREN	GROSS AMOUNT				
STATEWIDE	3,288	\$1,450,266.83	3,859	\$4,221,892.84	7,147	\$5,672,159.67	18,986	\$7,091,654.29	26,133	\$12,763,813.96
MUSKINGUM	0	\$0.00	11	\$1,717.00	11	\$1,717.00	108	\$31,240.73	119	\$32,957.73
NOBLE	6	\$1,279.32	1	\$4,223.76	7	\$5,503.08	5	\$1,250.00	12	\$6,753.08
OTTAWA	0	\$0.00	1	\$2,035.91	1	\$2,035.91	3	\$898.07	4	\$2,933.98
PAULDING	3	\$642.62	3	\$3,452.54	6	\$4,095.16	21	\$5,812.67	27	\$9,907.83
PERRY	25	\$10,904.22	10	\$10,979.48	35	\$21,883.70	36	\$11,681.81	71	\$33,565.51
PICKAWAY	16	\$3,430.48	0	\$0.00	16	\$3,430.48	12	\$3,597.46	28	\$7,027.94
PIKE	1	\$710.76	20	\$14,422.58	21	\$15,133.34	22	\$5,860.91	43	\$20,994.25
PORTAGE	0	\$0.00	0	\$0.00	0	\$0.00	127	\$54,843.32	127	\$54,843.32
PREBLE	19	\$6,613.21	16	\$23,667.85	35	\$30,281.06	34	\$8,723.70	69	\$39,004.76
PUTNAM	2	\$1,120.75	2	\$2,515.06	4	\$3,635.81	13	\$3,250.00	17	\$6,885.81
RICHLAND	0	\$0.00	0	\$0.00	0	\$0.00	262	\$85,878.55	262	\$85,878.55
ROSS	16	\$9,770.87	43	\$35,275.34	59	\$45,046.21	37	\$12,245.37	96	\$57,291.58
SANDUSKY	11	\$3,105.32	10	\$16,633.06	21	\$19,738.38	57	\$14,619.58	78	\$34,357.96
SCIOTO	37	\$18,776.28	36	\$43,585.80	73	\$62,362.08	44	\$11,909.67	117	\$74,271.75
SENECA	35	\$36,116.79	5	\$67,415.10	40	\$103,531.89	82	\$21,139.47	122	\$124,671.36
SHELBY	5	\$6,372.66	5	\$6,891.18	10	\$13,263.84	59	\$18,980.76	69	\$32,244.60
STARK	0	\$0.00	162	\$62,724.28	162	\$62,724.28	930	\$275,490.74	1,092	\$338,215.02
SUMMIT	217	\$103,068.93	0	\$0.00	217	\$103,068.93	820	\$256,558.69	1,037	\$359,627.62
TRUMBULL	125	\$45,224.10	0	\$0.00	125	\$45,224.10	263	\$68,027.30	388	\$113,251.40
TUSCARAWAS	50	\$5,513.40	37	\$42,278.30	87	\$47,791.70	111	\$30,558.65	198	\$78,350.35
UNION	15	\$17,126.27	1	\$3,074.45	16	\$20,200.72	32	\$9,355.38	48	\$29,556.10
VAN WERT	2	\$734.76	5	\$18,385.48	7	\$19,120.24	23	\$8,397.56	30	\$27,517.80
VINTON	24	\$9,104.08	2	\$1,537.43	26	\$10,641.51	16	\$4,681.14	42	\$15,322.65
WARREN	23	\$8,007.89	12	\$11,610.87	35	\$19,618.76	89	\$27,902.23	124	\$47,520.99
WASHINGTON	17	\$2,408.89	0	\$0.00	17	\$2,408.89	35	\$9,571.52	52	\$11,980.41
WAYNE	69	\$50,551.28	29	\$53,510.23	98	\$104,061.51	68	\$26,833.34	166	\$130,894.85
WILLIAMS	3	\$835.13	6	\$11,278.84	9	\$12,113.97	22	\$6,444.21	31	\$18,558.18
WOOD	3	\$870.67	16	\$21,421.76	19	\$22,292.43	47	\$16,038.80	66	\$38,331.23
WYANDOT	6	\$2,498.70	5	\$4,793.74	11	\$7,292.44	13	\$4,471.90	24	\$11,764.34

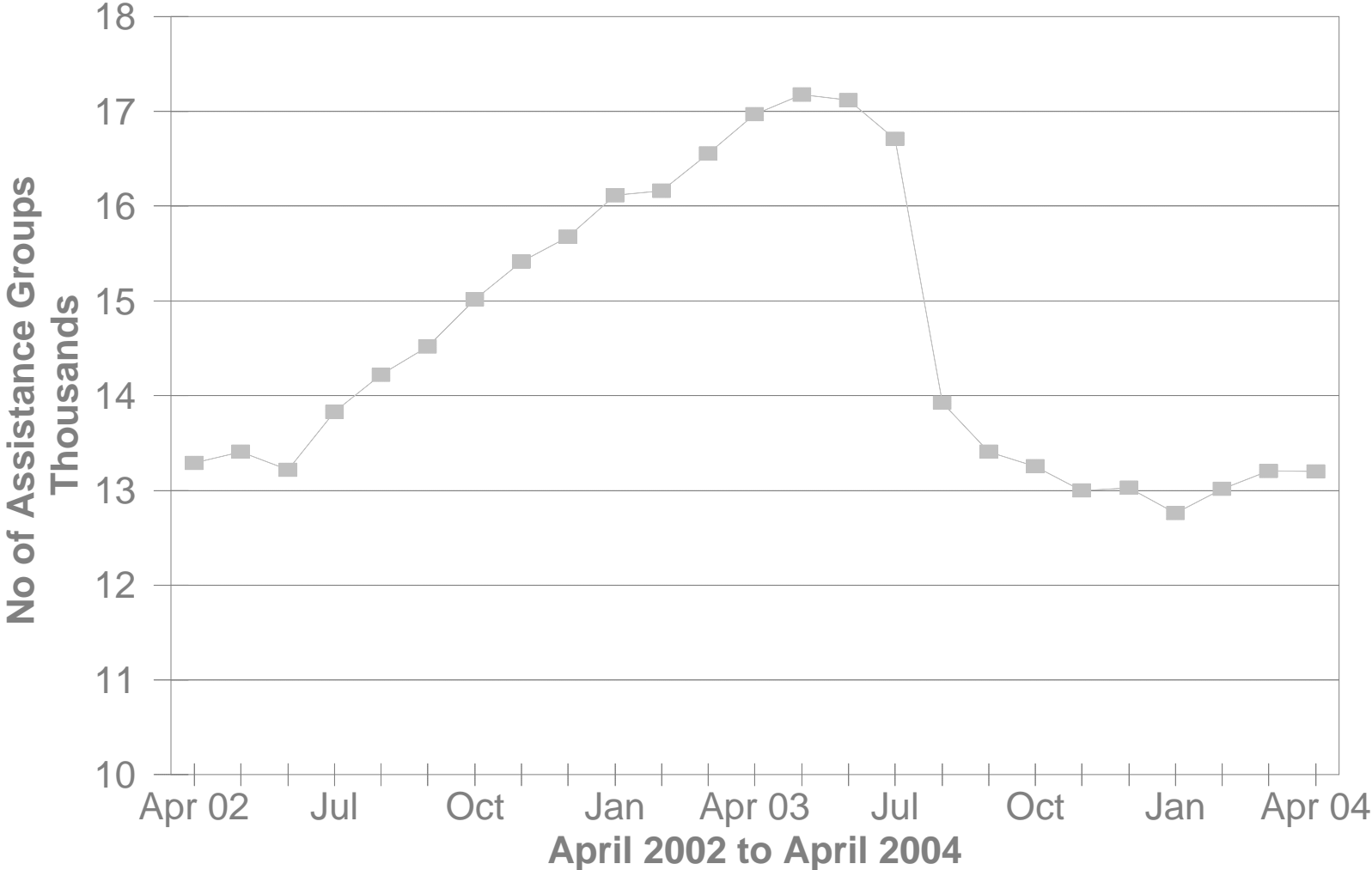
SOURCE: GBS003RB Report from Management Information Services. Federal funds only.

DA Cash Assistance Groups During The Last 25 Month



DA Cash Recipients

During The Last 25 Month



**TABLE 3
DISABILITY ASSISTANCE (DA)
APRIL 2004**

OHIO COUNTY	CASH ASSISTANCE							MEDICAL ASSISTANCE	
	ASSISTANCE GROUPS	RECIPIENTS	ADULTS	CHILDREN	ACTUAL EXPENDITURES			UNDUPLICATED RECIPIENTS	ACTUAL AMOUNT PAID
					GROSS AMOUNT	CANCELLED AMOUNT	NET AMOUNT		
STATEWIDE	13,086	13,199	13,199	0	\$1,876,139.00	\$132,318.00	\$1,743,821.00	12,565	\$5,018,969.49
ADAMS	72	73	73	0	\$11,227.00	\$115.00	\$11,112.00	63	\$23,831.25
ALLEN	82	82	82	0	\$14,515.00	\$988.00	\$13,527.00	58	\$35,264.88
ASHLAND	36	37	37	0	\$5,905.00	\$0.00	\$5,905.00	31	\$11,006.42
ASHTABULA	295	295	295	0	\$39,343.00	\$1,495.00	\$37,848.00	93	\$28,121.59
ATHENS	205	209	209	0	\$25,800.00	\$790.00	\$25,010.00	78	\$25,078.57
AUGLAIZE	27	27	27	0	\$3,690.00	\$0.00	\$3,690.00	35	\$12,147.12
BELMONT	126	127	127	0	\$17,972.00	\$575.00	\$17,397.00	67	\$21,282.34
BROWN	35	35	35	0	\$4,552.00	\$0.00	\$4,552.00	42	\$20,673.99
BUTLER	439	439	439	0	\$62,144.00	\$3,353.00	\$58,791.00	232	\$101,372.45
CARROLL	24	24	24	0	\$2,706.00	\$0.00	\$2,706.00	17	\$5,292.36
CHAMPAIGN	33	33	33	0	\$4,646.00	\$345.00	\$4,301.00	36	\$20,427.43
CLARK	221	222	222	0	\$29,370.00	\$1,150.00	\$28,220.00	246	\$128,012.47
CLERMONT	174	175	175	0	\$26,162.00	\$1,774.00	\$24,388.00	65	\$26,647.04
CLINTON	55	55	55	0	\$9,860.00	\$1,305.00	\$8,555.00	28	\$17,929.11
COLUMBIANA	130	131	131	0	\$18,624.00	\$1,495.00	\$17,129.00	119	\$49,456.35
COSHOCTON	61	61	61	0	\$9,535.00	\$115.00	\$9,420.00	67	\$17,168.16
CRAWFORD	42	42	42	0	\$7,121.00	\$115.00	\$7,006.00	48	\$12,938.52
CUYAHOGA	1,845	1,863	1,863	0	\$231,244.00	\$27,302.00	\$203,942.00	2,698	\$927,900.46
DARKE	34	35	35	0	\$6,421.00	\$0.00	\$6,421.00	19	\$6,860.18
DEFIANCE	11	11	11	0	\$1,861.00	\$115.00	\$1,746.00	34	\$17,230.48
DELAWARE	60	60	60	0	\$10,786.00	\$879.00	\$9,907.00	46	\$34,023.29
ERIE	58	58	58	0	\$9,157.00	\$230.00	\$8,927.00	51	\$20,026.47
FAIRFIELD	84	84	84	0	\$12,687.00	\$345.00	\$12,342.00	69	\$34,425.47
FAYETTE	18	18	18	0	\$2,530.00	\$0.00	\$2,530.00	38	\$17,828.94
FRANKLIN	1,089	1,113	1,113	0	\$151,429.00	\$19,293.00	\$132,136.00	1,273	\$601,601.40
FULTON	17	17	17	0	\$2,218.00	\$230.00	\$1,988.00	16	\$8,542.50
GALLIA	42	42	42	0	\$7,720.00	\$230.00	\$7,490.00	97	\$43,561.77
GEAUGA	29	29	29	0	\$4,474.00	\$115.00	\$4,359.00	14	\$4,656.65
GREENE	178	178	178	0	\$26,840.00	\$1,876.00	\$24,964.00	107	\$65,973.40

*SOURCE: GRP342RA Report from Management Information Services and BOMC 9260-R001 Report from Medicaid Management Information Services.

**TABLE 3
DISABILITY ASSISTANCE (DA)
APRIL 2004**

OHIO COUNTY	CASH ASSISTANCE							MEDICAL ASSISTANCE	
	ASSISTANCE GROUPS	RECIPIENTS	ADULTS	CHILDREN	ACTUAL EXPENDITURES			UNDUPLICATED RECIPIENTS	ACTUAL AMOUNT PAID
					GROSS AMOUNT	CANCELLED AMOUNT	NET AMOUNT		
STATEWIDE	13,086	13,199	13,199	0	\$1,876,139.00	\$132,318.00	\$1,743,821.00	12,565	\$5,018,969.49
GUERNSEY	127	129	129	0	\$21,827.00	\$443.00	\$21,384.00	31	\$11,107.39
HAMILTON	842	844	844	0	\$124,399.00	\$18,130.00	\$106,269.00	431	\$170,668.35
HANCOCK	57	57	57	0	\$9,863.00	\$1,150.00	\$8,713.00	57	\$23,812.97
HARDIN	20	20	20	0	\$2,605.00	\$0.00	\$2,605.00	20	\$8,373.94
HARRISON	34	34	34	0	\$3,909.00	\$0.00	\$3,909.00	16	\$5,177.62
HENRY	8	8	8	0	\$1,132.00	\$80.00	\$1,052.00	10	\$2,550.23
HIGHLAND	54	54	54	0	\$7,208.00	\$0.00	\$7,208.00	56	\$19,992.70
HOCKING	45	45	45	0	\$9,763.00	\$690.00	\$9,073.00	35	\$14,214.24
HOLMES	26	26	26	0	\$3,527.00	\$115.00	\$3,412.00	11	\$4,850.68
HURON	28	28	28	0	\$3,220.00	\$0.00	\$3,220.00	31	\$21,152.39
JACKSON	86	86	86	0	\$10,005.00	\$345.00	\$9,660.00	56	\$21,025.15
JEFFERSON	169	169	169	0	\$27,917.00	\$835.00	\$27,082.00	133	\$50,608.96
KNOX	64	64	64	0	\$7,896.00	\$115.00	\$7,781.00	54	\$18,265.46
LAKE	177	177	177	0	\$22,021.00	\$3,448.00	\$18,573.00	102	\$33,873.95
LAWRENCE	72	72	72	0	\$9,718.00	\$1,046.00	\$8,672.00	98	\$40,352.91
LICKING	168	172	172	0	\$20,849.00	\$2,025.00	\$18,824.00	77	\$42,574.66
LOGAN	33	33	33	0	\$3,883.00	\$115.00	\$3,768.00	44	\$16,107.15
LORAIN	273	274	274	0	\$39,173.00	\$3,273.00	\$35,900.00	265	\$103,442.84
LUCAS	622	625	625	0	\$92,479.00	\$5,740.00	\$86,739.00	761	\$276,320.93
MADISON	25	25	25	0	\$2,794.00	\$0.00	\$2,794.00	33	\$17,648.76
MAHONING	357	359	359	0	\$50,170.00	\$3,385.00	\$46,785.00	519	\$209,148.58
MARION	101	102	102	0	\$14,677.00	\$230.00	\$14,447.00	43	\$18,259.73
MEDINA	84	84	84	0	\$13,537.00	\$460.00	\$13,077.00	56	\$17,382.81
MEIGS	62	63	63	0	\$9,078.00	\$356.00	\$8,722.00	74	\$26,459.96
MERCER	26	26	26	0	\$3,870.00	\$0.00	\$3,870.00	17	\$6,322.08
MIAMI	56	56	56	0	\$7,013.00	\$690.00	\$6,323.00	34	\$16,620.77
MONROE	17	17	17	0	\$4,255.00	\$0.00	\$4,255.00	27	\$7,098.66
MONTGOMERY	465	475	475	0	\$72,035.00	\$2,628.00	\$69,407.00	796	\$345,119.33
MORGAN	42	42	42	0	\$6,025.00	\$115.00	\$5,910.00	24	\$7,620.78
MORROW	25	25	25	0	\$4,346.00	\$0.00	\$4,346.00	50	\$13,711.19

*SOURCE: GRP342RA Report from Management Information Services and BOMC 9260-R001 Report from Medicaid Management Information Services.

**TABLE 3
DISABILITY ASSISTANCE (DA)
APRIL 2004**

OHIO COUNTY	CASH ASSISTANCE							MEDICAL ASSISTANCE	
	ASSISTANCE GROUPS	RECIPIENTS	ADULTS	CHILDREN	ACTUAL EXPENDITURES			UNDUPLICATED RECIPIENTS	ACTUAL AMOUNT PAID
					GROSS AMOUNT	CANCELLED AMOUNT	NET AMOUNT		
STATEWIDE	13,086	13,199	13,199	0	\$1,876,139.00	\$132,318.00	\$1,743,821.00	12,565	\$5,018,969.49
MUSKINGUM	206	207	207	0	\$35,075.00	\$1,570.00	\$33,505.00	104	\$37,524.66
NOBLE	20	20	20	0	\$3,362.00	\$0.00	\$3,362.00	13	\$3,784.07
OTTAWA	20	20	20	0	\$2,782.00	\$0.00	\$2,782.00	27	\$12,426.09
PAULDING	18	18	18	0	\$3,848.00	\$115.00	\$3,733.00	9	\$2,445.24
PERRY	71	73	73	0	\$9,787.00	\$345.00	\$9,442.00	57	\$24,907.60
PICKAWAY	46	47	47	0	\$6,810.00	\$460.00	\$6,350.00	53	\$24,803.28
PIKE	64	64	64	0	\$8,783.00	\$1,150.00	\$7,633.00	63	\$18,575.82
PORTAGE	142	143	143	0	\$28,338.00	\$1,035.00	\$27,303.00	90	\$38,974.60
PREBLE	31	31	31	0	\$6,691.00	\$115.00	\$6,576.00	18	\$7,430.48
PUTNAM	13	13	13	0	\$2,943.00	\$0.00	\$2,943.00	7	\$3,537.69
RICHLAND	174	175	175	0	\$26,596.00	\$2,006.00	\$24,590.00	109	\$28,408.18
ROSS	100	100	100	0	\$13,827.00	\$115.00	\$13,712.00	104	\$40,790.67
SANDUSKY	42	42	42	0	\$5,243.00	\$115.00	\$5,128.00	21	\$8,007.99
SCIOTO	218	223	223	0	\$29,693.00	\$2,071.00	\$27,622.00	105	\$41,769.70
SENECA	46	47	47	0	\$5,391.00	\$575.00	\$4,816.00	47	\$15,893.11
SHELBY	19	19	19	0	\$3,086.00	\$0.00	\$3,086.00	30	\$11,766.85
STARK	548	553	553	0	\$78,958.00	\$3,705.00	\$75,253.00	292	\$116,941.25
SUMMIT	621	630	630	0	\$88,697.00	\$2,815.00	\$85,882.00	1,077	\$424,943.02
TRUMBULL	349	350	350	0	\$50,944.00	\$575.00	\$50,369.00	180	\$71,176.30
TUSCARAWAS	94	95	95	0	\$16,836.00	\$115.00	\$16,721.00	80	\$31,087.86
UNION	16	16	16	0	\$2,834.00	\$0.00	\$2,834.00	55	\$21,179.29
VAN WERT	15	15	15	0	\$2,415.00	\$0.00	\$2,415.00	7	\$2,472.93
VINTON	44	44	44	0	\$6,210.00	\$1,066.00	\$5,144.00	42	\$18,545.64
WARREN	55	56	56	0	\$12,892.00	\$1,265.00	\$11,627.00	50	\$26,672.36
WASHINGTON	101	102	102	0	\$13,952.00	\$719.00	\$13,233.00	34	\$14,891.83
WAYNE	248	252	252	0	\$30,447.00	\$2,512.00	\$27,935.00	59	\$27,713.66
WILLIAMS	25	25	25	0	\$4,060.00	\$115.00	\$3,945.00	19	\$4,878.05
WOOD	46	46	46	0	\$5,101.00	\$115.00	\$4,986.00	51	\$20,525.65
WYANDOT	7	7	7	0	\$805.00	\$0.00	\$805.00	14	\$7,749.39
UNKNOWN									\$0.00

*SOURCE: GRP342RA Report from Management Information Services and BOMC 9260-R001 Report from Medicaid Management Information Services.

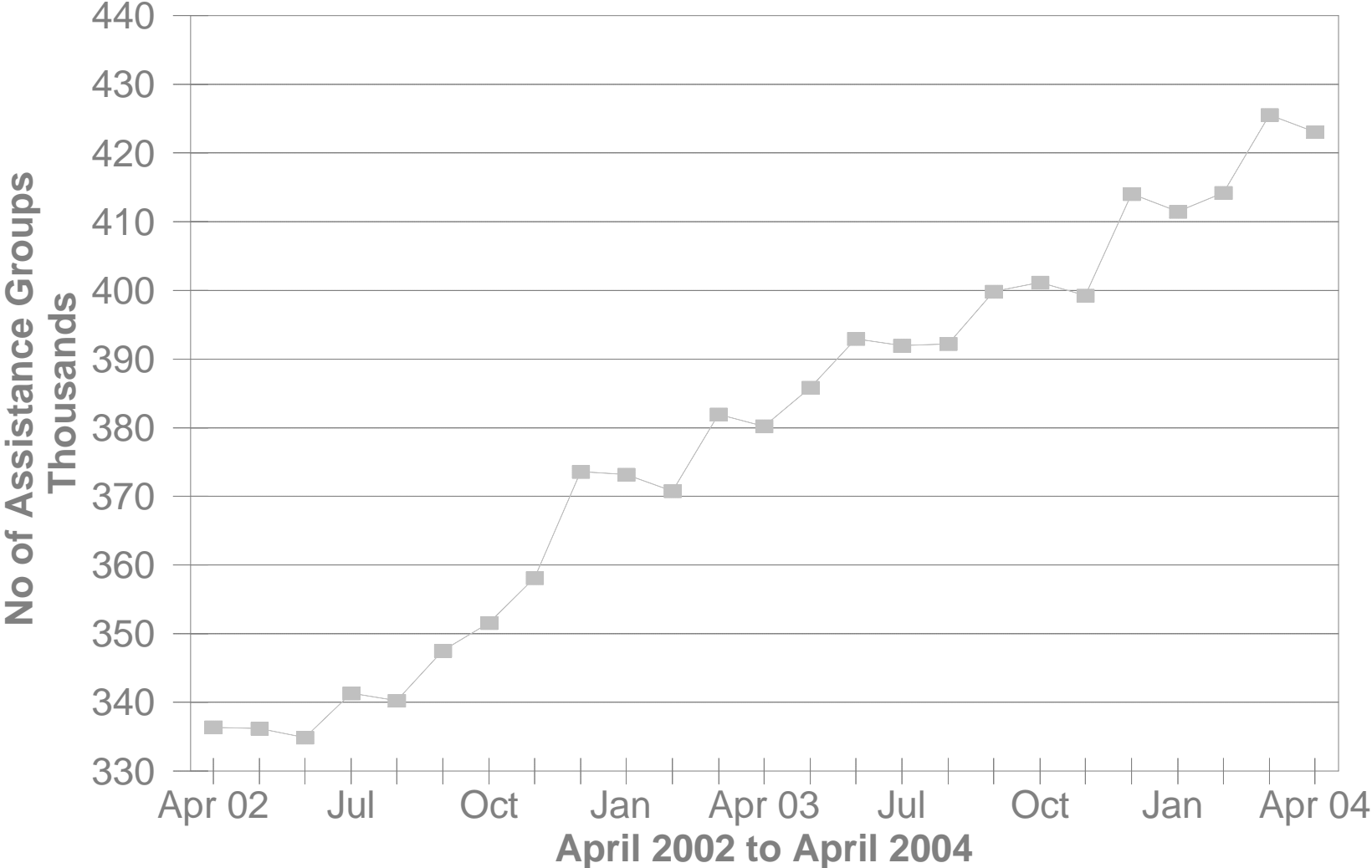
**TABLE 3-A
DA PAYMENTS FOR MEDICAL SERVICES
APRIL 2004**

CATEGORY OF SERVICES	DISABILITY ASSISTANCE			
	PAYMENTS	CLAIM FREQUENCY	DUPLICATED RECIPIENTS	PERCENT OF TOTAL
AMBULANCE SERVICES	\$0.00	0	0	0.0%
AMBULATORY SURGERY	\$24,533.26	51	47	0.5%
AMBULETTE SERVICES	\$0.00	0	0	0.0%
CHIROPRACTER SERVICES	\$0.00	0	0	0.0%
CLINIC	\$36,424.77	964	546	0.7%
DENTAL SERVICES	\$13,845.25	111	246	0.3%
EPSDT	\$0.00	0	0	0.0%
FAMILY PLANNING	\$1,013.35	17	14	0.0%
FEDERALLY QUALIFIED HEALTH CTR	\$0.00	0	0	0.0%
HEALTH MAINTENANCE ORGANIZATION	\$0.00	0	0	0.0%
HOME HEALTH SERVICES	\$0.00	0	0	0.0%
INDEPENDENT LABORATORY	\$30,717.49	710	556	0.6%
INPATIENT HOSPITAL	\$0.00	0	0	0.0%
ICF	\$0.00	0	0	0.0%
MIDWIFERY SERVICES	\$7,574.35	177	141	0.2%
OPTOMETRIC SERVICES	\$0.00	0	0	0.0%
OUTPATIENT HEALTH SERVICES	\$0.00	0	0	0.0%
PASSPORT WAIVER III	\$0.00	0	0	0.0%
OUTPATIENT HOSPITAL GENERAL	\$0.00	0	0	0.0%
PHYSICAL THERAPY SERVICES	\$0.00	0	0	0.0%
PHYSICIAN SERVICES	\$1,089,442.97	16,237	7,141	21.7%
PHYSIOLOGICAL LABORATORY	\$15,841.38	40	40	0.3%
PODIATRISTS THERAPY	\$20,827.22	293	237	0.4%
PRESCRIBED DRUGS	\$3,609,987.80	60,410	11,034	71.9%
PRIVATE DUTY NURSING SERVICES	\$0.00	0	0	0.0%
PSYCHOLOGY SERVICES	\$0.00	0	0	0.0%
RURAL HEALTH SERVICES	\$0.00	0	0	0.0%
SNF	\$0.00	0	0	0.0%
SUPPLIES AND MEDICAL EQUIPMENT	\$155,936.22	2,917	1,230	3.1%
WAIVERED SERVICES	\$12,825.43	115	107	0.3%
OTHER	\$0.00	1	1	0.0%
STATEWIDE TOTAL	\$5,018,969.49	82,043	21,340	100.00%

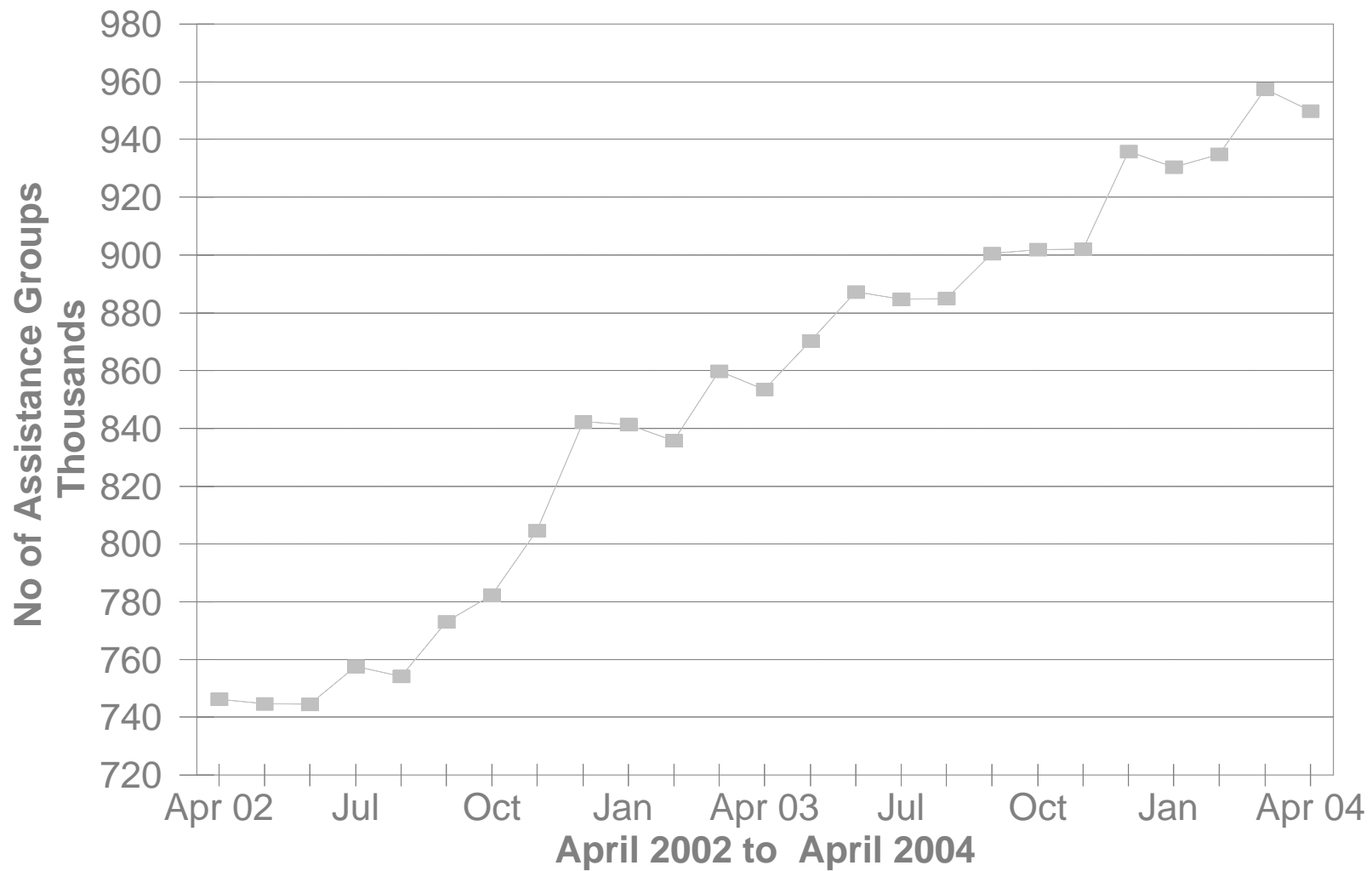
SOURCE: BOMC 9260 Report from Medicaid Management Information Services.

NOTE: Recipients are unduplicated within Category of Services, however, the Statewide Total represents a duplicated count.

No of FNS Benefits Assistance Groups During The Last 25 Month



No of FNS Benefits Cash Recipients During The Last 25 Month



**TABLE 5
FNS BENEFITS
APRIL 2004**

OHIO COUNTY	PERSONS					ASSISTANCE GROUPS			TOTAL COUPONS ISSUED
	PUBLIC ASSISTANCE	NON-PUBLIC ASSISTANCE	TOTAL	AVERAGE ISSUANCE	% CHANGE PREV. MO.	PUBLIC ASSISTANCE	NON-PUBLIC ASSISTANCE	TOTAL	
STATEWIDE	110,698	839,286	949,984	\$7,514	-0.8%	39,470	383,604	423,074	\$84,433,387.00
ADAMS	42	4,130	4,172	\$82	-1.4%	14	1,759	1,773	\$341,356.00
ALLEN	475	7,668	8,143	\$87	-3.0%	152	3,322	3,474	\$709,149.00
ASHLAND	122	2,547	2,669	\$88	-1.0%	41	1,052	1,093	\$233,561.00
ASHTABULA	949	9,301	10,250	\$86	0.0%	350	4,245	4,595	\$878,566.00
ATHENS	933	5,601	6,534	\$83	-1.9%	325	2,810	3,135	\$545,250.00
AUGLAIZE	6	1,589	1,595	\$87	-3.3%		694	694	\$139,524.00
BELMONT	644	6,307	6,951	\$78	-1.2%	224	2,984	3,208	\$541,709.00
BROWN	98	3,171	3,269	\$85	-4.0%	31	1,337	1,368	\$277,487.00
BUTLER	2,039	19,469	21,508	\$92	-0.3%	769	8,845	9,614	\$1,972,081.00
CARROLL	105	1,967	2,072	\$84	-1.1%	42	827	869	\$173,599.00
CHAMPAIGN	244	1,886	2,130	\$86	0.5%	88	863	951	\$183,658.00
CLARK	1,686	13,448	15,134	\$89	-2.4%	595	6,251	6,846	\$1,339,929.00
CLERMONT	665	7,722	8,387	\$90	-3.1%	258	3,292	3,550	\$751,505.00
CLINTON	121	2,505	2,626	\$87	-1.8%	46	1,152	1,198	\$227,320.00
COLUMBIANA	593	10,179	10,772	\$85	-1.1%	222	4,280	4,502	\$913,624.00
COSHOCTON	360	3,054	3,414	\$86	-2.5%	129	1,356	1,485	\$292,746.00
CRAWFORD	377	3,711	4,088	\$82	0.4%	135	1,631	1,766	\$335,271.00
CUYAHOGA	14,756	151,838	166,594	\$90	-0.0%	5,429	72,272	77,701	\$15,048,961.00
DARKE	255	1,798	2,053	\$83	2.0%	85	798	883	\$170,380.00
DEFIANCE	147	2,059	2,206	\$86	-2.8%	51	850	901	\$190,167.00
DELAWARE	380	3,274	3,654	\$89	-1.2%	133	1,494	1,627	\$326,811.00
ERIE	182	4,788	4,970	\$87	1.1%	57	2,151	2,208	\$434,373.00
FAIRFIELD	944	6,502	7,446	\$86	0.3%	319	2,916	3,235	\$642,401.00
FAYETTE	106	2,215	2,321	\$81	2.2%	41	973	1,014	\$188,699.00
FRANKLIN	14,638	90,900	105,538	\$94	-0.7%	5,052	40,399	45,451	\$9,870,181.00
FULTON	69	1,681	1,750	\$82	0.6%	23	697	720	\$143,095.00
GALLIA	801	3,950	4,751	\$81	-1.0%	256	1,887	2,143	\$385,065.00
GEAUGA	99	1,281	1,380	\$87	-4.8%	36	592	628	\$120,393.00
GREENE	862	7,055	7,917	\$91	-2.7%	342	3,260	3,602	\$720,565.00

Source: CRIS-E GRP304RA and GRP 304RC Reports from Management Information Services. Cuyahoga County data also comes from the GRP 342 RA.

**TABLE 5
FNS BENEFITS
APRIL 2004**

OHIO COUNTY	PERSONS					ASSISTANCE GROUPS			TOTAL COUPONS ISSUED
	PUBLIC ASSISTANCE	NON-PUBLIC ASSISTANCE	TOTAL	AVERAGE ISSUANCE	% CHANGE PREV. MO.	PUBLIC ASSISTANCE	NON-PUBLIC ASSISTANCE	TOTAL	
STATEWIDE	110,698	839,286	949,984	\$7,514	-0.8%	39,470	383,604	423,074	\$84,433,387.00
GUERNSEY	163	5,177	5,340	\$82	1.6%	64	2,278	2,342	\$438,427.00
HAMILTON	11,451	51,604	63,055	\$92	-0.4%	3,957	23,109	27,066	\$5,789,694.00
HANCOCK	307	2,933	3,240	\$90	-2.3%	109	1,337	1,446	\$291,083.00
HARDIN	42	1,695	1,737	\$84	1.5%	13	767	780	\$145,867.00
HARRISON	84	1,575	1,659	\$82	3.9%	32	707	739	\$135,729.00
HENRY	12	1,047	1,059	\$80	-0.5%	5	430	435	\$84,852.00
HIGHLAND	134	3,797	3,931	\$84	-1.9%	49	1,557	1,606	\$329,688.00
HOCKING	397	2,547	2,944	\$80	0.6%	144	1,106	1,250	\$234,337.00
HOLMES	74	1,023	1,097	\$76	-4.4%	22	416	438	\$83,330.00
HURON	53	3,766	3,819	\$85	-2.9%	17	1,545	1,562	\$324,464.00
JACKSON	440	4,300	4,740	\$83	-1.4%	160	2,054	2,214	\$393,212.00
JEFFERSON	1,282	7,382	8,664	\$85	-0.4%	427	3,526	3,953	\$737,509.00
KNOX	375	3,176	3,551	\$86	0.3%	124	1,459	1,583	\$304,557.00
LAKE	850	8,885	9,735	\$95	-1.7%	302	4,097	4,399	\$922,404.00
LAWRENCE	702	9,470	10,172	\$80	-1.0%	245	4,536	4,781	\$809,141.00
LICKING	1,022	8,788	9,810	\$88	-1.3%	388	3,994	4,382	\$865,753.00
LOGAN	308	2,677	2,985	\$90	-1.5%	100	1,126	1,226	\$268,088.00
LORAIN	2,941	22,548	25,489	\$88	-0.2%	998	9,170	10,168	\$2,244,640.00
LUCAS	9,805	45,349	55,154	\$90	-0.6%	3,414	21,426	24,840	\$4,954,759.00
MADISON	311	1,866	2,177	\$88	-2.0%	111	888	999	\$191,979.00
MAHONING	4,053	23,177	27,230	\$89	-1.1%	1,412	11,074	12,486	\$2,409,957.00
MARION	314	5,613	5,927	\$84	-1.4%	118	2,564	2,682	\$496,132.00
MEDINA	351	3,818	4,169	\$89	-2.3%	123	1,684	1,807	\$372,929.00
MEIGS	265	3,728	3,993	\$84	-1.0%	99	1,666	1,765	\$336,049.00
MERCER	101	1,178	1,279	\$84	3.0%	33	555	588	\$107,360.00
MIAMI	465	3,580	4,045	\$86	-1.3%	156	1,715	1,871	\$346,618.00
MONROE	100	1,316	1,416	\$77	-0.2%	35	597	632	\$108,467.00
MONTGOMERY	7,544	39,032	46,576	\$91	-1.2%	2,845	18,370	21,215	\$4,257,820.00
MORGAN	63	1,726	1,789	\$81	-1.6%	23	775	798	\$144,342.00
MORROW	148	2,249	2,397	\$85	-2.0%	52	961	1,013	\$203,378.00

Source: CRIS-E GRP304RA and GRP 304RC Reports from Management Information Services. Cuyahoga County data also comes from the GRP 342 RA.

**TABLE 5
FNS BENEFITS
APRIL 2004**

OHIO COUNTY	PERSONS					ASSISTANCE GROUPS			TOTAL COUPONS ISSUED
	PUBLIC ASSISTANCE	NON-PUBLIC ASSISTANCE	TOTAL	AVERAGE ISSUANCE	% CHANGE PREV. MO.	PUBLIC ASSISTANCE	NON-PUBLIC ASSISTANCE	TOTAL	
STATEWIDE	110,698	839,286	949,984	\$7,514	-0.8%	39,470	383,604	423,074	\$84,433,387.00
MUSKINGUM	1,135	10,809	11,944	\$86	-0.6%	404	4,818	5,222	\$1,022,422.00
NOBLE	43	1,081	1,124	\$77	1.9%	14	492	506	\$86,280.00
OTTAWA	195	1,622	1,817	\$86	-1.4%	73	716	789	\$155,895.00
PAULDING	182	941	1,123	\$84	-3.4%	62	446	508	\$94,578.00
PERRY	343	3,873	4,216	\$83	-3.8%	115	1,652	1,767	\$347,836.00
PICKAWAY	619	3,767	4,386	\$86	-1.7%	203	1,708	1,911	\$377,546.00
PIKE	354	4,430	4,784	\$83	-0.1%	119	1,947	2,066	\$398,551.00
PORTAGE	835	6,502	7,337	\$92	-0.5%	328	3,021	3,349	\$677,712.00
PREBLE	192	1,782	1,974	\$89	-1.7%	69	773	842	\$174,837.00
PUTNAM	141	990	1,131	\$78	-7.4%	50	438	488	\$88,029.00
RICHLAND	633	9,922	10,555	\$85	0.8%	229	4,333	4,562	\$897,779.00
ROSS	892	7,824	8,716	\$85	-1.9%	314	3,403	3,717	\$740,455.00
SANDUSKY	167	3,015	3,182	\$89	-1.9%	64	1,327	1,391	\$282,419.00
SCIOTO	777	12,946	13,723	\$81	-0.2%	270	6,243	6,513	\$1,112,263.00
SENECA	108	3,255	3,363	\$82	-2.5%	31	1,423	1,454	\$274,642.00
SHELBY	138	1,906	2,044	\$85	-5.4%	49	774	823	\$173,824.00
STARK	4,594	22,649	27,243	\$89	-1.3%	1,683	10,198	11,881	\$2,433,713.00
SUMMIT	7,937	38,954	46,891	\$92	-0.5%	2,918	18,716	21,634	\$4,311,370.00
TRUMBULL	1,684	16,322	18,006	\$86	-1.2%	600	6,944	7,544	\$1,551,489.00
TUSCARAWAS	706	5,957	6,663	\$83	-0.3%	246	2,690	2,936	\$550,847.00
UNION	368	1,577	1,945	\$91	-6.5%	127	723	850	\$177,802.00
VAN WERT	21	958	979	\$80	-2.9%	6	439	445	\$78,169.00
VINTON	198	2,132	2,330	\$84	-1.6%	77	923	1,000	\$194,618.00
WARREN	247	3,452	3,699	\$84	-1.0%	100	1,511	1,611	\$311,717.00
WASHINGTON	30	4,912	4,942	\$82	-0.5%	14	2,278	2,292	\$405,892.00
WAYNE	620	5,283	5,903	\$87	-3.2%	235	2,474	2,709	\$512,754.00
WILLIAMS	268	1,817	2,085	\$86	2.0%	98	799	897	\$179,532.00
WOOD	388	3,375	3,763	\$90	1.6%	140	1,588	1,728	\$337,634.00
WYANDOT	28	615	643	\$82	-3.7%	10	329	339	\$52,791.00

Source: CRIS-E GRP304RA and GRP 304RC Reports from Management Information Services. Cuyahoga County data also comes from the GRP 342 RA.

**Table 6A
April 2004
Medicaid Eligibles**

County	Aged	Blind	Disabled	ABD Total	OWF & Related	Healthy Start	CFC Total	Total Medicaid	Foster Care	Adoption Assistance	Transitional	Nursing Facilities
STATEWIDE	132,687	890	237,067	370,644	973,492	251,093	1,224,585	1,595,229	11,144	18,403	117,564	54,887
ADAMS	726	4	1,351	2,081	4,278	1,145	5,423	7,504	19	39	612	129
ALLEN	1,136	4	2,015	3,155	8,625	2,413	11,038	14,193	106	136	973	544
ASHLAND	535	3	594	1,132	3,311	1,307	4,618	5,750	5	13	588	272
ASHTABULA	1,464	12	2,962	4,438	10,600	3,092	13,692	18,130	58	154	1,628	1,017
ATHENS	798	15	1,995	2,808	6,239	1,337	7,576	10,384	88	108	701	198
AUGLAIZE	401	3	435	839	2,254	901	3,155	3,994	15	37	444	257
BELMONT	1,365	5	2,111	3,481	7,021	1,698	8,719	12,200	47	109	950	547
BROWN	679	0	970	1,649	4,307	1,368	5,675	7,324	14	36	663	221
BUTLER	2,642	26	5,591	8,259	22,850	5,822	28,672	36,931	269	458	3,032	1,175
CARROLL	363	2	527	892	2,585	768	3,353	4,245	8	4	453	185
CHAMPAIGN	473	2	575	1,050	2,471	1,030	3,501	4,551	17	19	458	262
CLARK	1,995	6	3,679	5,680	15,017	3,447	18,464	24,144	140	304	1,831	1,064
CLERMONT	1,364	4	2,614	3,982	11,050	3,983	15,033	19,015	195	194	1,797	698
CLINTON	466	4	768	1,238	3,386	932	4,318	5,556	34	49	533	141
COLUMBIANA	1,520	12	2,552	4,084	11,371	3,286	14,657	18,741	78	77	1,520	658
COSHOCTON	519	2	894	1,415	3,544	1,125	4,669	6,084	24	45	411	283
CRAWFORD	607	8	926	1,541	4,639	1,147	5,786	7,327	34	36	739	216
CUYAHOGA	21,716	163	35,556	57,435	151,857	33,626	185,483	242,918	2,304	4,380	14,514	7,487
DARKE	546	0	658	1,204	2,658	1,072	3,730	4,934	24	38	389	343
DEFIANCE	321	3	531	855	2,684	1,005	3,689	4,544	12	30	510	170
DELAWARE	653	2	988	1,643	4,248	1,386	5,634	7,277	41	56	760	288
ERIE	782	5	1,189	1,976	5,497	1,560	7,057	9,033	94	85	699	418
FAIRFIELD	1,085	4	1,786	2,875	8,040	2,646	10,686	13,561	57	137	1,329	437
FAYETTE	529	1	810	1,340	2,632	895	3,527	4,867	6	15	367	310
FRANKLIN	10,526	93	22,161	32,780	108,292	26,129	134,421	167,201	1,918	2,191	11,022	3,892
FULTON	342	1	390	733	2,349	860	3,209	3,942	18	27	466	181
GALLIA	815	2	1,530	2,347	4,331	949	5,280	7,627	21	34	515	186
GEAUGA	622	1	505	1,128	2,122	820	2,942	4,070	21	107	409	355
GREENE	1,174	9	1,814	2,997	9,086	2,180	11,266	14,263	82	95	1,396	551

Source: ODJFS Report BOMM1321 Prepared: Bureau of Research and Evaluation.

**Table 6A
April 2004
Medicaid Eligibles**

County	Aged	Blind	Disabled	ABD Total	OWF & Related	Healthy Start	CFC Total	Total Medicaid	Foster Care	Adoption Assistance	Transitional	Nursing Facilities
STATEWIDE	132,687	890	237,067	370,644	973,492	251,093	1,224,585	1,595,229	11,144	18,403	117,564	54,887
GUERNSEY	743	5	1,438	2,186	5,550	1,522	7,072	9,258	50	66	749	179
HAMILTON	9,478	84	17,900	27,462	65,087	17,923	83,010	110,472	895	1,397	5,708	3,825
HANCOCK	549	2	794	1,345	3,799	1,331	5,130	6,475	35	40	585	269
HARDIN	348	2	552	902	2,340	757	3,097	3,999	32	29	286	134
HARRISON	262	0	463	725	1,654	456	2,110	2,835	2	27	266	107
HENRY	250	0	308	558	1,580	733	2,313	2,871	12	24	275	134
HIGHLAND	758	3	1,071	1,832	4,568	1,524	6,092	7,924	24	14	672	252
HOCKING	444	3	777	1,224	3,267	1,023	4,290	5,514	34	44	429	155
HOLMES	435	3	474	912	1,645	751	2,396	3,308	7	27	331	416
HURON	507	2	824	1,333	4,743	1,572	6,315	7,648	37	30	727	191
JACKSON	779	1	1,435	2,215	4,480	1,192	5,672	7,887	20	16	712	192
JEFFERSON	1,145	18	2,489	3,652	8,045	1,442	9,487	13,139	77	68	1,003	397
KNOX	649	3	1,230	1,882	4,112	1,358	5,470	7,352	24	41	861	528
LAKE	1,585	3	2,361	3,949	10,468	3,294	13,762	17,711	68	129	1,662	1,043
LAWRENCE	1,525	6	3,493	5,024	8,923	2,191	11,114	16,138	55	38	1,093	371
LICKING	1,396	6	2,479	3,881	11,295	3,687	14,982	18,863	166	284	1,656	600
LOGAN	522	2	629	1,153	3,737	900	4,637	5,790	20	41	626	185
LORAIN	2,625	18	5,043	7,686	25,539	5,265	30,804	38,490	77	408	2,907	1,329
LUCAS	5,577	39	13,466	19,082	52,009	9,746	61,755	80,837	464	1,448	4,816	1,953
MADISON	351	1	572	924	2,396	789	3,185	4,109	11	24	438	120
MAHONING	3,756	24	6,838	10,618	26,690	5,093	31,783	42,401	168	229	2,811	1,631
MARION	826	3	1,746	2,575	5,893	1,744	7,637	10,212	45	80	836	300
MEDINA	852	12	1,180	2,044	5,836	1,985	7,821	9,865	21	74	1,127	627
MEIGS	552	6	1,033	1,591	3,743	749	4,492	6,083	9	5	488	136
MERCER	307	1	450	758	1,593	548	2,141	2,899	7	28	294	193
MIAMI	999	6	1,306	2,311	5,327	1,938	7,265	9,576	64	125	695	462
MONROE	277	3	411	691	1,498	417	1,915	2,606	9	11	220	94
MONTGOMERY	5,978	49	12,192	18,219	47,424	10,746	58,170	76,389	776	1,193	4,391	2,394
MORGAN	278	0	473	751	2,151	555	2,706	3,457	7	14	409	93
MORROW	394	2	596	992	2,915	882	3,797	4,789	6	48	636	177

Source: ODJFS Report BOMM1321 Prepared: Bureau of Research and Evaluation.

**Table 6A
April 2004
Medicaid Eligibles**

County	Aged	Blind	Disabled	ABD Total	OWF & Related	Healthy Start	CFC Total	Total Medicaid	Foster Care	Adoption Assistance	Transitional	Nursing Facilities
STATEWIDE	132,687	890	237,067	370,644	973,492	251,093	1,224,585	1,595,229	11,144	18,403	117,564	54,887
MUSKINGUM	1,392	14	2,655	4,061	10,468	2,465	12,933	16,994	70	119	1,344	496
NOBLE	242	0	245	487	1,122	463	1,585	2,072	9	7	223	92
OTTAWA	409	2	487	898	2,142	855	2,997	3,895	1	7	371	195
PAULDING	182	2	352	536	1,196	524	1,720	2,256	7	17	198	46
PERRY	502	5	1,060	1,567	4,466	1,227	5,693	7,260	40	34	570	198
PICKAWAY	595	3	969	1,567	4,176	1,184	5,360	6,927	15	13	578	191
PIKE	683	0	1,502	2,185	4,439	1,180	5,619	7,804	32	23	622	271
PORTAGE	1,102	7	1,920	3,029	8,706	2,526	11,232	14,261	96	134	1,065	597
PREBLE	357	8	622	987	2,840	825	3,665	4,652	34	34	481	218
PUTNAM	263	2	351	616	1,365	523	1,888	2,504	4	7	266	233
RICHLAND	1,652	1	2,659	4,312	10,849	3,384	14,233	18,545	76	266	1,553	635
ROSS	1,114	2	2,237	3,353	8,729	2,023	10,752	14,105	87	37	1,280	297
SANDUSKY	701	7	934	1,642	3,990	1,465	5,455	7,097	20	58	589	409
SCIOTO	2,223	10	4,827	7,060	11,193	2,457	13,650	20,710	113	47	1,237	604
SENECA	660	3	1,021	1,684	3,877	1,630	5,507	7,191	41	88	704	321
SHELBY	393	4	552	949	2,963	1,086	4,049	4,998	11	53	461	193
STARK	4,520	23	6,708	11,251	31,021	7,567	38,588	49,839	546	922	4,287	2,289
SUMMIT	6,016	42	11,142	17,200	45,205	9,838	55,043	72,243	451	778	4,866	2,103
TRUMBULL	2,525	19	4,744	7,288	20,308	5,322	25,630	32,918	173	241	3,048	1,243
TUSCARAWAS	1,195	5	1,478	2,678	7,105	2,439	9,544	12,222	82	124	1,222	488
UNION	314	2	429	745	2,322	760	3,082	3,827	19	34	424	134
UNKNOWN	0	0	0	0	0	0	0	0	0	0	0	0
VAN WERT	269	0	382	651	1,466	853	2,319	2,970	8	24	279	151
VINTON	308	0	606	914	2,376	682	3,058	3,972	27	16	327	77
WARREN	1,214	5	1,525	2,744	5,453	2,285	7,738	10,482	38	87	749	820
WASHINGTON	942	6	1,640	2,588	5,424	2,074	7,498	10,086	17	41	911	340
WAYNE	1,037	8	1,735	2,780	6,295	2,246	8,541	11,321	99	86	1,105	463
WILLIAMS	423	2	472	897	2,800	831	3,631	4,528	15	23	596	220
WOOD	850	4	1,045	1,899	4,756	1,789	6,545	8,444	31	55	677	418
WYANDOT	293	1	268	562	789	548	1,337	1,899	11	13	113	173

**Table 6B
April 2004
Medicaid Expenditures**

	Aged	Blind	Disabled	ABD Total	OWF & Related	Healthy Start	CFC Total	Total Medicaid	Foster Care	Adoption Assistance	Transitional	Nursing Facilities
STATEWIDE	\$275,415,740	\$959,224	\$390,434,141	\$666,809,105	\$189,257,231	\$49,947,254	\$239,204,485	\$906,486,630	\$5,392,648	\$3,611,467	\$15,951,735	\$298,242,908
ADAMS	\$819,111	\$2,559	\$1,445,941	\$2,267,611	\$739,436	\$200,455	\$939,891	\$3,216,738	\$5,268		\$48,184	\$640,286
ALLEN	\$2,526,195	\$11,457	\$3,053,561	\$5,591,213	\$1,498,052	\$515,402	\$2,013,454	\$7,618,290	\$32,354	\$23,311	\$105,972	\$2,842,047
ASHLAND	\$1,228,819	\$565	\$990,753	\$2,220,137	\$621,937	\$239,908	\$861,845	\$3,082,629	(\$12)	\$2,118	\$92,579	\$1,278,971
ASHTABULA	\$3,808,913	\$17,726	\$5,404,832	\$9,231,470	\$1,795,211	\$768,365	\$2,563,576	\$11,806,652	\$22,368	\$23,041	\$170,668	\$5,650,296
ATHENS	\$1,284,125	\$8,409	\$2,180,610	\$3,473,143	\$1,132,403	\$323,509	\$1,455,912	\$4,943,582	\$51,511	\$17,959	\$78,744	\$913,071
AUGLAIZE	\$1,051,747	\$5,292	\$819,934	\$1,876,973	\$371,714	\$175,825	\$547,539	\$2,424,811	\$4,676	\$3,922	\$48,951	\$1,201,685
BELMONT	\$2,393,329	\$1,546	\$3,108,732	\$5,503,607	\$1,350,818	\$493,658	\$1,844,476	\$7,356,325	\$26,086	\$25,084	\$100,768	\$2,172,232
BROWN	\$1,259,239	\$0	\$1,549,584	\$2,808,823	\$724,704	\$195,275	\$919,979	\$3,737,203	\$2,372	\$5,088	\$50,436	\$1,304,738
BUTLER	\$6,278,738	\$22,691	\$10,042,588	\$16,344,017	\$4,581,082	\$1,281,110	\$5,862,192	\$22,218,536	\$125,925	\$116,745	\$418,680	\$7,635,584
CARROLL	\$776,734	\$900	\$880,814	\$1,658,448	\$391,837	\$75,365	\$467,203	\$2,125,651	\$1,295	\$1,046	\$45,913	\$783,003
CHAMPAIGN	\$902,934	\$689	\$941,567	\$1,845,190	\$466,976	\$160,902	\$627,878	\$2,473,068	\$13,723	\$1,857	\$56,968	\$1,147,665
CLARK	\$4,627,665	\$1,519	\$6,570,032	\$11,199,216	\$3,099,169	\$674,314	\$3,773,483	\$14,978,360	\$50,511	\$73,740	\$279,283	\$5,329,235
CLERMONT	\$3,228,898	\$6,635	\$5,066,335	\$8,301,868	\$2,025,112	\$1,168,738	\$3,193,850	\$11,520,430	\$76,288	\$30,099	\$175,658	\$4,649,965
CLINTON	\$753,334	\$2,215	\$1,146,522	\$1,902,070	\$770,280	\$157,147	\$927,427	\$2,829,894	\$9,260	\$8,635	\$49,274	\$656,992
COLUMBIANA	\$3,026,632	\$15,105	\$3,744,686	\$6,786,422	\$2,655,236	\$605,895	\$3,261,130	\$10,057,932	\$49,626	\$11,041	\$199,984	\$3,016,232
COSHOCTON	\$896,138	\$700	\$1,459,200	\$2,356,037	\$651,076	\$167,219	\$818,296	\$3,181,897	\$7,290	\$10,355	\$49,786	\$1,325,030
CRAWFORD	\$1,152,293	\$2,958	\$1,198,688	\$2,353,939	\$646,617	\$138,325	\$784,943	\$3,139,976	\$6,846	\$5,011	\$30,097	\$956,541
CUYAHOGA	\$43,855,946	\$178,135	\$53,921,900	\$97,955,981	\$29,979,504	\$6,168,792	\$36,148,296	\$134,160,528	\$1,241,096	\$845,731	\$2,405,464	\$45,199,443
DARKE	\$1,240,617	\$0	\$928,491	\$2,169,108	\$535,970	\$284,831	\$820,801	\$2,989,968	\$8,525	\$10,798	\$50,625	\$1,426,770
DEFIANCE	\$710,553	\$341	\$605,852	\$1,316,747	\$424,484	\$152,879	\$577,363	\$1,900,296	\$5,789	\$4,427	\$28,762	\$692,554
DELAWARE	\$1,600,136	\$5,287	\$2,094,602	\$3,700,026	\$699,104	(\$117,540)	\$581,564	\$4,281,590	\$17,922	\$20,865	\$60,971	\$1,525,416
ERIE	\$1,714,493	\$2,099	\$1,683,625	\$3,400,217	\$945,105	\$226,279	\$1,171,385	\$4,571,602	\$33,182	\$12,069	\$62,256	\$1,715,963
FAIRFIELD	\$2,406,699	\$2,817	\$2,964,913	\$5,374,429	\$1,406,776	\$446,531	\$1,853,307	\$7,231,535	\$14,068	\$18,460	\$180,566	\$2,187,599
FAYETTE	\$1,084,039	\$109	\$1,346,116	\$2,430,264	\$435,102	\$143,104	\$578,206	\$3,008,649	\$52	\$959	\$43,756	\$1,488,840
FRANKLIN	\$20,674,937	\$104,853	\$40,355,187	\$61,134,977	\$21,576,445	\$5,857,089	\$27,433,534	\$88,609,230	\$1,093,311	\$489,109	\$1,824,786	\$23,517,374
FULTON	\$942,491	\$0	\$533,724	\$1,476,215	\$387,604	\$122,878	\$510,482	\$1,987,229	\$8,823	\$4,099	\$39,470	\$878,810
GALLIA	\$1,645,794	\$112	\$3,304,403	\$4,950,310	\$877,775	\$206,738	\$1,084,513	\$6,036,024	\$6,177	\$2,553	\$42,515	\$945,743
GEAUGA	\$1,746,937	\$367	\$1,475,994	\$3,223,298	\$369,571	\$177,862	\$547,433	\$3,770,761	\$10,151	\$20,093	\$36,157	\$2,055,325
GREENE	\$2,619,053	\$2,336	\$2,725,572	\$5,346,961	\$1,902,415	\$468,774	\$2,371,189	\$7,720,462	\$33,171	\$17,582	\$153,952	\$2,787,715

Source: ODJFS Report BOMM1321 Prepared: Bureau of Research and Evaluation.

**Table 6B
April 2004
Medicaid Expenditures**

	Aged	Blind	Disabled	ABD Total	OWF & Related	Healthy Start	CFC Total	Total Medicaid	Foster Care	Adoption Assistance	Transitional	Nursing Facilities
STATEWIDE	\$275,415,740	\$959,224	\$390,434,141	\$666,809,105	\$189,257,231	\$49,947,254	\$239,204,485	\$906,486,630	\$5,392,648	\$3,611,467	\$15,951,735	\$298,242,908
GUERNSEY	\$1,098,104	\$2,711	\$2,833,160	\$3,933,975	\$1,071,443	\$283,032	\$1,354,475	\$5,288,943	\$14,764	\$13,812	\$85,291	\$785,023
HAMILTON	\$22,697,286	\$124,464	\$29,138,422	\$51,960,171	\$14,315,778	\$4,583,439	\$18,899,216	\$70,910,796	\$508,048	\$342,731	\$1,123,575	\$24,158,843
HANCOCK	\$1,206,533	\$408	\$1,440,566	\$2,647,508	\$748,546	\$196,268	\$944,815	\$3,592,676	\$9,902	\$8,251	\$56,600	\$1,334,380
HARDIN	\$578,850	\$194	\$865,740	\$1,444,784	\$450,188	\$103,229	\$553,417	\$2,009,702	\$16,136	\$1,984	\$32,440	\$547,319
HARRISON	\$496,650	\$0	\$568,474	\$1,065,124	\$280,200	\$74,431	\$354,632	\$1,419,903	\$733	\$6,530	\$23,260	\$503,384
HENRY	\$584,639	\$0	\$965,304	\$1,549,944	\$252,341	\$100,226	\$352,566	\$1,902,510	\$3,351	\$3,104	\$36,749	\$540,469
HIGHLAND	\$1,160,850	\$1,693	\$1,343,505	\$2,506,047	\$1,177,785	\$548,266	\$1,726,051	\$4,232,098	\$6,965	\$2,296	\$78,550	\$1,222,628
HOCKING	\$792,085	\$4,900	\$927,434	\$1,724,419	\$676,882	\$156,602	\$833,484	\$2,557,903	\$36,161	\$5,507	\$72,192	\$738,337
HOLMES	\$1,313,506	\$614	\$1,274,058	\$2,588,178	\$246,601	\$99,404	\$346,006	\$2,935,540	\$1,810	\$7,801	\$26,887	\$2,045,436
HURON	\$882,748	\$154	\$1,021,365	\$1,904,267	\$701,574	\$283,331	\$984,905	\$2,889,172	\$10,294	\$4,040	\$55,635	\$876,552
JACKSON	\$993,700	\$0	\$1,383,233	\$2,376,933	\$908,446	\$232,140	\$1,140,585	\$3,518,106	\$7,303	\$2,928	\$81,892	\$773,660
JEFFERSON	\$1,772,004	\$9,938	\$3,025,518	\$4,807,460	\$1,723,609	\$242,886	\$1,966,495	\$6,776,992	\$56,698	\$9,764	\$94,560	\$1,682,538
KNOX	\$1,731,814	\$233	\$3,542,489	\$5,274,536	\$500,050	\$192,121	\$692,171	\$5,966,707	\$17,235	\$10,219	\$37,482	\$3,683,909
LAKE	\$4,069,521	\$526	\$6,263,718	\$10,333,765	\$2,671,304	\$595,605	\$3,266,909	\$13,601,640	\$49,141	\$19,585	\$390,712	\$5,802,500
LAWRENCE	\$1,915,520	\$2,616	\$4,710,729	\$6,628,865	\$1,870,359	\$355,784	\$2,226,142	\$8,858,949	\$22,450	\$7,738	\$128,772	\$1,655,499
LICKING	\$2,851,165	\$4,146	\$4,602,801	\$7,458,112	\$1,953,430	\$727,401	\$2,680,831	\$10,139,146	\$58,107	\$84,781	\$173,110	\$3,120,793
LOGAN	\$840,280	\$526	\$943,490	\$1,784,296	\$566,781	\$124,660	\$691,441	\$2,480,046	\$2,807	\$6,837	\$43,000	\$784,657
LORAIN	\$6,188,752	\$8,665	\$8,804,069	\$15,001,485	\$4,397,896	\$951,973	\$5,349,869	\$20,356,885	\$34,008	\$76,615	\$341,869	\$8,137,340
LUCAS	\$11,126,686	\$39,413	\$23,077,061	\$34,243,159	\$10,676,705	\$2,134,335	\$12,811,040	\$47,075,231	\$200,171	\$246,125	\$860,367	\$12,136,428
MADISON	\$566,556	\$1,249	\$1,212,201	\$1,780,006	\$421,896	\$130,780	\$552,676	\$2,332,683	\$12,984	\$3,964	\$33,252	\$669,019
MAHONING	\$8,304,670	\$39,274	\$11,944,304	\$20,288,248	\$5,747,075	\$926,257	\$6,673,333	\$26,967,438	\$78,477	\$48,200	\$303,710	\$8,372,547
MARION	\$1,404,166	\$3,378	\$1,865,440	\$3,272,984	\$965,928	\$315,762	\$1,281,689	\$4,559,966	\$10,952	\$14,298	\$60,559	\$1,364,098
MEDINA	\$2,669,400	\$77,506	\$3,712,938	\$6,459,844	\$976,992	\$314,537	\$1,291,529	\$7,753,432	\$6,142	\$14,516	\$113,303	\$4,281,062
MEIGS	\$752,348	\$6,350	\$1,042,926	\$1,801,624	\$672,523	\$126,593	\$799,116	\$2,600,740	\$5,781	\$0	\$43,140	\$556,763
MERCER	\$748,993	\$390	\$1,020,606	\$1,769,990	\$245,028	\$103,743	\$348,772	\$2,118,761	\$3,099	\$2,604	\$22,493	\$872,542
MIAMI	\$2,180,858	\$8,104	\$2,250,317	\$4,439,279	\$997,817	\$376,671	\$1,374,488	\$5,820,342	\$70,930	\$13,717	\$99,024	\$2,177,868
MONROE	\$484,689	\$582	\$435,514	\$920,785	\$214,825	\$56,290	\$271,115	\$1,192,766	\$1,119	\$668	\$25,749	\$410,016
MONTGOMERY	\$12,312,329	\$55,402	\$17,960,994	\$30,328,725	\$9,546,883	\$2,210,370	\$11,757,253	\$42,110,487	\$267,400	\$255,457	\$700,734	\$12,659,319
MORGAN	\$463,648	\$0	\$405,369	\$869,017	\$316,576	\$61,880	\$378,455	\$1,247,471	\$1,213	\$841	\$31,281	\$406,185
MORROW	\$797,778	\$712	\$1,094,771	\$1,893,262	\$556,515	\$158,405	\$714,920	\$2,609,501	\$2,549	\$15,861	\$71,637	\$780,131

Source: ODJFS Report BOMM1321 Prepared: Bureau of Research and Evaluation.

**Table 6B
April 2004
Medicaid Expenditures**

	Aged	Blind	Disabled	ABD Total	OWF & Related	Healthy Start	CFC Total	Total Medicaid	Foster Care	Adoption Assistance	Transitional	Nursing Facilities
STATEWIDE	\$275,415,740	\$959,224	\$390,434,141	\$666,809,105	\$189,257,231	\$49,947,254	\$239,204,485	\$906,486,630	\$5,392,648	\$3,611,467	\$15,951,735	\$298,242,908
MUSKINGUM	\$2,290,083	\$10,897	\$3,302,034	\$5,603,014	\$1,867,983	\$427,533	\$2,295,516	\$7,898,732	\$17,782	\$23,466	\$136,165	\$2,158,589
NOBLE	\$403,243	\$0	\$297,512	\$700,755	\$209,269	\$82,805	\$292,074	\$992,829	\$398	\$841	\$26,070	\$356,783
OTTAWA	\$1,114,069	\$0	\$1,321,333	\$2,435,402	\$324,367	\$133,259	\$457,627	\$2,893,028	\$2,309	\$428	\$42,495	\$898,819
PAULDING	\$262,186	\$144	\$423,087	\$685,417	\$188,252	\$73,967	\$262,219	\$947,637	\$6,878	\$1,689	\$16,523	\$173,581
PERRY	\$680,795	\$288	\$1,764,114	\$2,445,196	\$792,918	\$180,625	\$973,544	\$3,418,820	\$14,911	\$3,066	\$51,368	\$1,142,772
PICKAWAY	\$1,013,040	\$1,014	\$1,114,223	\$2,128,278	\$699,124	\$191,186	\$890,309	\$3,018,678	\$2,811	\$696	\$42,359	\$801,139
PIKE	\$1,065,255	\$0	\$1,726,158	\$2,791,414	\$826,498	\$204,505	\$1,031,002	\$3,825,076	\$16,434	\$2,977	\$59,976	\$1,330,704
PORTAGE	\$2,259,849	\$16,388	\$4,100,870	\$6,377,107	\$1,620,031	\$412,525	\$2,032,556	\$8,412,727	\$43,015	\$29,527	\$99,563	\$3,475,294
PREBLE	\$815,871	\$10,132	\$1,028,050	\$1,854,052	\$703,970	\$119,197	\$823,167	\$2,681,479	\$13,477	\$3,837	\$40,906	\$1,132,750
PUTNAM	\$619,541	\$5,055	\$808,951	\$1,433,548	\$293,652	\$63,165	\$356,817	\$1,790,365	\$1,179	\$314	\$23,336	\$1,050,420
RICHLAND	\$3,029,651	\$354	\$3,958,000	\$6,988,005	\$1,730,096	\$624,184	\$2,354,281	\$9,349,602	\$46,620	\$53,971	\$143,363	\$3,016,880
ROSS	\$1,538,157	\$1,606	\$2,571,414	\$4,111,177	\$1,726,761	\$405,959	\$2,132,721	\$6,248,990	\$19,031	\$9,535	\$115,202	\$1,269,831
SANDUSKY	\$1,582,363	\$4,745	\$2,055,964	\$3,643,072	\$707,632	\$284,590	\$992,223	\$4,641,141	\$6,194	\$11,761	\$190,830	\$1,882,053
SCIOTO	\$3,095,331	\$13,526	\$6,420,652	\$9,529,509	\$2,194,795	\$407,800	\$2,602,596	\$12,145,520	\$50,597	\$17,161	\$136,470	\$2,794,934
SENECA	\$1,812,407	\$1,121	\$3,263,169	\$5,076,697	\$559,352	\$320,601	\$879,953	\$5,962,480	\$6,082	\$21,113	\$56,245	\$1,711,483
SHELBY	\$810,775	\$1,951	\$792,860	\$1,605,586	\$430,963	\$205,577	\$636,540	\$2,242,126	\$7,120	\$6,240	\$39,999	\$989,251
STARK	\$10,517,974	\$21,328	\$10,578,637	\$21,117,938	\$5,809,148	\$1,383,772	\$7,192,920	\$28,312,839	\$243,424	\$136,450	\$717,538	\$11,366,075
SUMMIT	\$12,193,198	\$31,609	\$19,611,748	\$31,836,556	\$8,817,554	\$1,901,037	\$10,718,591	\$42,566,849	\$211,612	\$136,955	\$864,496	\$11,329,074
TRUMBULL	\$5,556,697	\$24,728	\$6,898,378	\$12,479,803	\$4,202,699	\$1,412,528	\$5,615,227	\$18,096,358	\$68,026	\$23,000	\$357,623	\$6,005,689
TUSCARAWAS	\$2,191,175	\$2,109	\$2,375,601	\$4,568,885	\$1,279,180	\$447,173	\$1,726,352	\$6,307,997	\$46,106	\$19,121	\$103,330	\$2,099,680
UNION	\$693,405	\$1,365	\$822,505	\$1,517,274	\$361,919	\$226,066	\$587,985	\$2,105,258	\$3,559	\$937	\$40,081	\$686,834
UNKNOWN	\$0	\$0	\$0	\$0	(\$490,037)	\$0	(\$490,037)	(\$490,037)	\$0	\$0	\$0	\$0
VAN WERT	\$582,212	\$0	\$604,119	\$1,186,331	\$255,387	\$117,658	\$373,044	\$1,562,542	\$12,790	\$18,987	\$19,738	\$602,792
VINTON	\$368,589	\$0	\$589,863	\$958,452	\$404,523	\$82,296	\$486,818	\$1,445,430	\$11,467	\$1,036	\$25,706	\$296,251
WARREN	\$3,417,445	\$3,866	\$3,860,360	\$7,281,671	\$1,351,050	\$439,817	\$1,790,867	\$9,074,955	\$11,392	\$11,705	\$76,608	\$4,830,186
WASHINGTON	\$1,605,562	\$9,591	\$2,166,349	\$3,781,502	\$958,197	\$436,309	\$1,394,506	\$5,176,150	\$4,814	\$6,802	\$95,373	\$1,646,726
WAYNE	\$2,606,430	\$4,091	\$3,574,446	\$6,184,966	\$1,113,413	\$560,326	\$1,673,739	\$7,858,704	\$39,489	\$19,941	\$112,005	\$2,318,001
WILLIAMS	\$943,722	\$288	\$708,828	\$1,652,837	\$435,964	\$132,497	\$568,461	\$2,221,495	\$4,181	\$4,435	\$47,361	\$916,174
WOOD	\$2,314,626	\$1,460	\$1,983,022	\$4,299,108	\$846,386	\$344,384	\$1,190,770	\$5,489,877	\$5,434	\$8,118	\$69,108	\$2,143,161
WYANDOT	\$789,425	\$0	\$490,622	\$1,280,047	\$122,694	\$79,862	\$202,556	\$1,482,602	\$1,135	\$785	\$22,847	\$812,614

Source: ODJFS Report BOMM1321 Prepared: Bureau of Research and Evaluation.

**TABLE 7
CHILD CARE
APRIL 2004**

OHIO COUNTY	OWF JOBS, LEAP, and TRANSITIONAL		OTHER CHILD CARE		ALL PROGRAM SOURCES	
	CHILDREN SERVED		CHILDREN SERVED		CHILDREN SERVED	
	TOTAL	% OF STATE TOTAL	TOTAL	% OF STATE TOTAL	TOTAL	% OF STATE TOTAL
STATEWIDE	17,292	100.00%	73,676	100.00%	90,968	100.00%
ADAMS	0	0.00%	26	0.04%	26	0.03%
ALLEN	21	0.12%	415	0.56%	436	0.48%
ASHLAND	1	0.01%	163	0.22%	164	0.18%
ASHTABULA	116	0.67%	613	0.83%	729	0.80%
ATHENS	52	0.30%	208	0.28%	260	0.29%
AUGLAIZE	7	0.04%	103	0.14%	110	0.12%
BELMONT	79	0.46%	253	0.34%	332	0.36%
BROWN	9	0.05%	98	0.13%	107	0.12%
BUTLER	211	1.22%	1,084	1.47%	1,295	1.42%
CARROLL	11	0.06%	66	0.09%	77	0.08%
CHAMPAIGN	6	0.03%	140	0.19%	146	0.16%
CLARK	130	0.75%	601	0.82%	731	0.80%
CLERMONT	38	0.22%	406	0.55%	444	0.49%
CLINTON	0	0.00%	0	0.00%	0	0.00%
COLUMBIANA	56	0.32%	547	0.74%	603	0.66%
COSHOCTON	60	0.35%	178	0.24%	238	0.26%
CRAWFORD	34	0.20%	125	0.17%	159	0.17%
CUYAHOGA	4,601	26.61%	18,792	25.51%	23,393	25.72%
DARKE	7	0.04%	96	0.13%	103	0.11%
DEFIANCE	3	0.02%	150	0.20%	153	0.17%
DELAWARE	20	0.12%	216	0.29%	236	0.26%
ERIE	8	0.05%	559	0.76%	567	0.62%
FAIRFIELD	46	0.27%	409	0.56%	455	0.50%
FAYETTE	18	0.10%	164	0.22%	182	0.20%
FRANKLIN	3,021	17.47%	10,205	13.85%	13,226	14.54%
FULTON	13	0.08%	134	0.18%	147	0.16%
GALLIA	51	0.29%	196	0.27%	247	0.27%
GEAUGA	12	0.07%	141	0.19%	153	0.17%
GREENE	141	0.82%	628	0.85%	769	0.85%

**TABLE 7
CHILD CARE
APRIL 2004**

OHIO COUNTY	OWF JOBS, LEAP, and TRANSITIONAL		OTHER CHILD CARE		ALL PROGRAM SOURCES	
	CHILDREN SERVED		CHILDREN SERVED		CHILDREN SERVED	
	TOTAL	% OF STATE TOTAL	TOTAL	% OF STATE TOTAL	TOTAL	% OF STATE TOTAL
STATEWIDE	17,292	100.00%	73,676	100.00%	90,968	100.00%
GUERNSEY	39	0.23%	309	0.42%	348	0.38%
HAMILTON	3,012	17.42%	9,061	12.30%	12,073	13.27%
HANCOCK	16	0.09%	323	0.44%	339	0.37%
HARDIN	0	0.00%	66	0.09%	66	0.07%
HARRISON	12	0.07%	47	0.06%	59	0.06%
HENRY	22	0.13%	81	0.11%	103	0.11%
HIGHLAND	11	0.06%	193	0.26%	204	0.22%
HOCKING	25	0.14%	174	0.24%	199	0.22%
HOLMES	3	0.02%	82	0.11%	85	0.09%
HURON	4	0.02%	470	0.64%	474	0.52%
JACKSON	30	0.17%	144	0.20%	174	0.19%
JEFFERSON	95	0.55%	347	0.47%	442	0.49%
KNOX	28	0.16%	302	0.41%	330	0.36%
LAKE	71	0.41%	894	1.21%	965	1.06%
LAWRENCE	43	0.25%	505	0.69%	548	0.60%
LICKING	141	0.82%	780	1.06%	921	1.01%
LOGAN	16	0.09%	54	0.07%	70	0.08%
LORAIN	414	2.39%	1,502	2.04%	1,916	2.11%
LUCAS	942	5.45%	1,677	2.28%	2,619	2.88%
MADISON	19	0.11%	74	0.10%	93	0.10%
MAHONING	503	2.91%	1,594	2.16%	2,097	2.31%
MARION	14	0.08%	332	0.45%	346	0.38%
MEDINA	31	0.18%	296	0.40%	327	0.36%
MEIGS	1	0.01%	154	0.21%	155	0.17%
MERCER	16	0.09%	110	0.15%	126	0.14%
MIAMI	0	0.00%	306	0.42%	306	0.34%
MONROE	0	0.00%	47	0.06%	47	0.05%
MONTGOMERY	734	4.24%	4,270	5.80%	5,004	5.50%
MORGAN	3	0.02%	60	0.08%	63	0.07%
MORROW	3	0.02%	163	0.22%	166	0.18%

**TABLE 7
CHILD CARE
APRIL 2004**

OHIO COUNTY	OWF JOBS, LEAP, and TRANSITIONAL		OTHER CHILD CARE		ALL PROGRAM SOURCES	
	CHILDREN SERVED		CHILDREN SERVED		CHILDREN SERVED	
	TOTAL	% OF STATE TOTAL	TOTAL	% OF STATE TOTAL	TOTAL	% OF STATE TOTAL
STATEWIDE	17,292	100.00%	73,676	100.00%	90,968	100.00%
MUSKINGUM	172	0.99%	706	0.96%	878	0.97%
NOBLE	3	0.02%	88	0.12%	91	0.10%
OTTAWA	19	0.11%	85	0.12%	104	0.11%
PAULDING	2	0.01%	8	0.01%	10	0.01%
PERRY	32	0.19%	182	0.25%	214	0.24%
PICKAWAY	38	0.22%	149	0.20%	187	0.21%
PIKE	10	0.06%	83	0.11%	93	0.10%
PORTAGE	129	0.75%	666	0.90%	795	0.87%
PREBLE	18	0.10%	66	0.09%	84	0.09%
PUTNAM	8	0.05%	80	0.11%	88	0.10%
RICHLAND	102	0.59%	780	1.06%	882	0.97%
ROSS	35	0.20%	249	0.34%	284	0.31%
SANDUSKY	77	0.45%	370	0.50%	447	0.49%
SCIOTO	83	0.48%	487	0.66%	570	0.63%
SENECA	3	0.02%	232	0.31%	235	0.26%
SHELBY	0	0.00%	249	0.34%	249	0.27%
STARK	400	2.31%	1,848	2.51%	2,248	2.47%
SUMMIT	697	4.03%	2,818	3.82%	3,515	3.86%
TRUMBULL	140	0.81%	1,519	2.06%	1,659	1.82%
TUSCARAWAS	35	0.20%	325	0.44%	360	0.40%
UNION	0	0.00%	75	0.10%	75	0.08%
VAN WERT	0	0.00%	47	0.06%	47	0.05%
VINTON	7	0.04%	72	0.10%	79	0.09%
WARREN	62	0.36%	337	0.46%	399	0.44%
WASHINGTON	28	0.16%	260	0.35%	288	0.32%
WAYNE	107	0.62%	343	0.47%	450	0.49%
WILLIAMS	14	0.08%	119	0.16%	133	0.15%
WOOD	51	0.29%	278	0.38%	329	0.36%
WYANDOT	0	0.00%	22	0.03%	22	0.02%

SOURCE: NMR120RA. The above numbers have not been reconciled between the CCIDS/3299 data collection system and 2827 ODJFS fiscal reporting system; therefore they may not be conclusive at this time.

OWF data consist of funding codes: 312, 313,314, 326, & 327. Other data consist of funding codes: 320, 321 , 322, 323, 324, 325, 328, 329, 342, and 899.

**TABLE 8
RECIPIENTS, EXPENDITURES, AND AVERAGE PAYMENT PER RECIPIENT
DURING THE LAST 12 MONTHS IN OHIO**

RECIPIENTS	OWF-R	OWF-U	OWF\ CHILD CARE	OTHER\ CHILD CARE	DISABILITY ASSISTANCE	TITLE IV-E	FNS BENEFITS
May 2003	177,334	16,598	20,461	86,141	17,175	25,725	870,179
June	175,468	15,357	19,942	86,134	17,114	25,562	887,138
July	177,427	15,796	19,871	88,257	16,705	24,980	884,678
August	178,508	15,466	19,051	82,897	13,921	26,113	884,945
September	178,759	15,723	18,171	81,175	13,405	25,073	900,572
October	180,465	15,639	18,500	79,329	13,250	25,894	901,828
November	176,454	15,201	17,506	73,557	12,995	25,730	901,990
December	180,532	16,461	18,063	76,475	13,025	25,871	935,770
January 2004	176,525	16,572	17,342	81,657	12,762	25,742	930,391
February	176,591	16,946	16,622	78,916	13,013	25,961	934,876
March	177,476	17,466	16,783	79,488	13,086	26,395	957,339
April	175,819	17,859	17,292	73,676	13,199	26,133	949,984
12 MONTH AVERAGE	177,613	16,257	18,300	80,642	14,138	25,765	911,641
EXPENDITURES							
May 2003	\$24,547,967	\$1,576,439	N.A.	N.A.	\$2,110,924	\$14,275,218	\$73,740,366
June	\$24,469,304	\$1,475,945	N.A.	N.A.	\$2,022,589	\$13,205,397	\$75,783,427
July	\$24,375,298	\$1,481,457	N.A.	N.A.	\$1,921,319	\$12,365,553	\$75,612,953
August	\$24,925,334	\$1,486,018	N.A.	N.A.	\$1,666,480	\$14,696,807	\$77,279,906
September	\$24,897,155	\$1,520,686	N.A.	N.A.	\$1,598,862	\$13,071,839	\$79,553,874
October	\$25,199,378	\$1,530,516	N.A.	N.A.	\$1,621,874	\$13,097,679	\$80,400,808
November	\$24,577,620	\$1,457,298	N.A.	N.A.	\$1,619,377	\$13,152,735	\$79,289,677
December	\$25,390,802	\$1,636,249	N.A.	N.A.	\$1,640,295	\$13,824,267	\$83,581,169
January 2004	\$24,617,828	\$1,643,023	N.A.	N.A.	\$1,633,608	\$12,754,750	\$81,551,062
February	\$24,649,146	\$1,707,835	N.A.	N.A.	\$1,708,755	\$13,462,475	\$82,969,877
March	\$24,778,004	\$1,731,579	N.A.	N.A.	\$1,760,786	\$14,811,934	\$86,088,054
April	\$24,479,601	\$1,743,512	N.A.	N.A.	\$1,743,821	\$12,763,814	\$84,433,387
TOTAL DOLLARS	\$24,742,286	\$1,582,546	N.A.	N.A.	\$1,754,058	\$13,456,872	\$80,023,713
AVERAGE PAYMENT							
May 2003	\$138	\$95	N.A.	N.A.	\$123	\$555	\$85
June	\$139	\$96	N.A.	N.A.	\$118	\$517	\$85
July	\$137	\$94	N.A.	N.A.	\$115	\$495	\$85
August	\$140	\$96	N.A.	N.A.	\$120	\$563	\$87
September	\$139	\$97	N.A.	N.A.	\$119	\$521	\$88
October	\$140	\$98	N.A.	N.A.	\$122	\$506	\$89
November	\$139	\$96	N.A.	N.A.	\$125	\$511	\$88
December	\$141	\$99	N.A.	N.A.	\$126	\$534	\$89
January 2004	\$139	\$99	N.A.	N.A.	\$128	\$495	\$88
February	\$140	\$101	N.A.	N.A.	\$131	\$519	\$89
March	\$140	\$99	N.A.	N.A.	\$135	\$561	\$90
April	\$139	\$98	N.A.	N.A.	\$132	\$488	\$89

Note: N.A. means Not Available.

**TABLE 10
PERCENT OF OHIO'S POPULATION PARTICIPATING IN SELECTED
PUBLIC ASSISTANCE PROGRAMS FOR APRIL 2004**

OHIO COUNTY	Estimated Total Population *	Percent of All Families Below Poverty Level	DISABILITY ASSISTANCE		OWF COMBINED		FOSTER CARE		FNS BENEFITS	
			Recipients as % of		Recipients	Recipients as % of	Recipients	Recipients as % of	Recipients	Recipients as % of
			Recipients	Total Population						
STATEWIDE	11,421,267	7.80%	13,199	0.12%	193,678	1.70%	26,133	0.23%	949,984	8.32%
ADAMS	27,804	12.80%	73	0.26%	206	0.74%	58	0.21%	4,172	15.01%
ALLEN	108,120	9.60%	82	0.08%	833	0.77%	230	0.21%	8,143	7.53%
ASHLAND	52,900	7.10%	37	0.07%	200	0.38%	12	0.02%	2,669	5.05%
ASHTABULA	102,515	9.20%	295	0.29%	1,617	1.58%	166	0.16%	10,250	10.00%
ATHENS	63,256	14.00%	209	0.33%	1,475	2.33%	195	0.31%	6,534	10.33%
AUGLAIZE	46,464	4.90%	27	0.06%	75	0.16%	48	0.10%	1,595	3.43%
BELMONT	69,448	11.70%	127	0.18%	1,068	1.54%	144	0.21%	6,951	10.01%
BROWN	43,464	8.80%	35	0.08%	293	0.67%	53	0.12%	3,269	7.52%
BUTLER	340,543	5.40%	439	0.13%	3,027	0.89%	741	0.22%	21,508	6.32%
CARROLL	29,166	8.50%	24	0.08%	205	0.70%	13	0.04%	2,072	7.10%
CHAMPAIGN	39,121	5.10%	33	0.08%	341	0.87%	31	0.08%	2,130	5.44%
CLARK	143,416	7.90%	222	0.15%	2,966	2.07%	375	0.26%	15,134	10.55%
CLERMONT	183,352	5.30%	175	0.10%	1,093	0.60%	384	0.21%	8,387	4.57%
CLINTON	41,090	6.40%	55	0.13%	242	0.59%	81	0.20%	2,626	6.39%
COLUMBIANA	111,806	9.00%	131	0.12%	1,071	0.96%	138	0.12%	10,772	9.63%
COSHOCTON	36,836	7.00%	61	0.17%	523	1.42%	66	0.18%	3,414	9.27%
CRAWFORD	46,420	7.80%	42	0.09%	636	1.37%	46	0.10%	4,088	8.81%
CUYAHOGA	1,379,049	10.30%	1,863	0.14%	29,959	2.17%	6,163	0.45%	166,594	12.08%
DARKE	52,966	6.00%	35	0.07%	395	0.75%	48	0.09%	2,053	3.88%
DEFIANCE	39,334	4.50%	11	0.03%	260	0.66%	44	0.11%	2,206	5.61%
DELAWARE	125,399	2.90%	60	0.05%	679	0.54%	90	0.07%	3,654	2.91%
ERIE	79,207	6.00%	58	0.07%	388	0.49%	154	0.19%	4,970	6.27%
FAIRFIELD	129,161	4.50%	84	0.07%	1,434	1.11%	133	0.10%	7,446	5.76%
FAYETTE	28,176	7.70%	18	0.06%	274	0.97%	20	0.07%	2,321	8.24%
FRANKLIN	1,086,814	8.20%	1,113	0.10%	25,758	2.37%	3,637	0.33%	105,538	9.71%
FULTON	42,573	4.00%	17	0.04%	181	0.43%	37	0.09%	1,750	4.11%
GALLIA	31,301	13.50%	42	0.13%	1,360	4.34%	70	0.22%	4,751	15.18%
GEAUGA	92,980	2.80%	29	0.03%	191	0.21%	117	0.13%	1,380	1.48%
GREENE	149,964	5.20%	178	0.12%	1,220	0.81%	105	0.07%	7,917	5.28%

*SOURCE: 2002 Ohio County Population Estimates, Ohio Dept. of Development, GRP342RA, GBS003RA, GRP304RA and GRP304RC Reports from Management Information Services.

**TABLE 10
PERCENT OF OHIO'S POPULATION PARTICIPATING IN SELECTED
PUBLIC ASSISTANCE PROGRAMS FOR APRIL 2004**

OHIO COUNTY	Estimated Total Population *	Percent of All Families Below Poverty Level	DISABILITY ASSISTANCE		OWF COMBINED		FOSTER CARE		FNS BENEFITS	
			Recipients as % of		Recipients	Recipients as % of Total Population	Recipients	Recipients as % of Total Population	Recipients	Recipients as % of Total Population
			Recipients	Total Population						
STATEWIDE	11,421,267	7.80%	13,199	0.12%	193,678	1.70%	26,133	0.23%	949,984	8.32%
GUERNSEY	40,987	12.90%	129	0.31%	412	1.01%	101	0.25%	5,340	13.03%
HAMILTON	833,721	8.80%	844	0.10%	19,508	2.34%	1,482	0.18%	63,055	7.56%
HANCOCK	72,286	5.20%	57	0.08%	378	0.52%	77	0.11%	3,240	4.48%
HARDIN	31,731	8.90%	20	0.06%	92	0.29%	59	0.19%	1,737	5.47%
HARRISON	15,890	11.00%	34	0.21%	213	1.34%	29	0.18%	1,659	10.44%
HENRY	29,478	5.30%	8	0.03%	56	0.19%	33	0.11%	1,059	3.59%
HIGHLAND	41,851	9.00%	54	0.13%	351	0.84%	34	0.08%	3,931	9.39%
HOCKING	28,481	10.30%	45	0.16%	689	2.42%	79	0.28%	2,944	10.34%
HOLMES	40,375	10.50%	26	0.06%	113	0.28%	34	0.08%	1,097	2.72%
HURON	60,020	6.50%	28	0.05%	209	0.35%	56	0.09%	3,819	6.36%
JACKSON	32,854	13.60%	86	0.26%	601	1.83%	28	0.09%	4,740	14.43%
JEFFERSON	72,402	11.40%	169	0.23%	2,121	2.93%	119	0.16%	8,664	11.97%
KNOX	56,037	7.40%	64	0.11%	595	1.06%	57	0.10%	3,551	6.34%
LAKE	229,004	3.50%	177	0.08%	1,337	0.58%	207	0.09%	9,735	4.25%
LAWRENCE	62,172	15.10%	72	0.12%	1,524	2.45%	39	0.06%	10,172	16.36%
LICKING	148,731	5.50%	172	0.12%	1,352	0.91%	435	0.29%	9,810	6.60%
LOGAN	46,262	7.10%	33	0.07%	480	1.04%	56	0.12%	2,985	6.45%
LORAIN	288,360	6.70%	274	0.10%	5,062	1.76%	411	0.14%	25,489	8.84%
LUCAS	453,506	10.70%	625	0.14%	17,063	3.76%	2,128	0.47%	55,154	12.16%
MADISON	40,365	6.20%	25	0.06%	533	1.32%	36	0.09%	2,177	5.39%
MAHONING	253,308	9.60%	359	0.14%	6,927	2.73%	401	0.16%	27,230	10.75%
MARION	66,028	7.40%	102	0.15%	795	1.20%	94	0.14%	5,927	8.98%
MEDINA	158,439	3.50%	84	0.05%	575	0.36%	82	0.05%	4,169	2.63%
MEIGS	23,111	14.30%	63	0.27%	465	2.01%	14	0.06%	3,993	17.28%
MERCER	40,815	4.60%	26	0.06%	156	0.38%	40	0.10%	1,279	3.13%
MIAMI	99,596	5.10%	56	0.06%	602	0.60%	170	0.17%	4,045	4.06%
MONROE	14,973	11.00%	17	0.11%	210	1.40%	13	0.09%	1,416	9.46%
MONTGOMERY	554,470	8.30%	475	0.09%	12,348	2.23%	1,805	0.33%	46,576	8.40%
MORGAN	14,749	15.70%	42	0.28%	147	1.00%	13	0.09%	1,789	12.13%
MORROW	32,976	6.60%	25	0.08%	301	0.91%	43	0.13%	2,397	7.27%

*SOURCE: 2002 Ohio County Population Estimates, Ohio Dept. of Development, GRP342RA, GBS003RA, GRP304RA and GRP304RC Reports from Management Information Services.

**TABLE 10
PERCENT OF OHIO'S POPULATION PARTICIPATING IN SELECTED
PUBLIC ASSISTANCE PROGRAMS FOR APRIL 2004**

OHIO COUNTY	Estimated Total Population *	Percent of All Families Below Poverty Level	DISABILITY ASSISTANCE		OWF COMBINED		FOSTER CARE		FNS BENEFITS	
			Recipients as % of		Recipients	Recipients as % of Total Population	Recipients	Recipients as % of Total Population	Recipients	Recipients as % of Total Population
			Recipients	Total Population						
STATEWIDE	11,421,267	7.80%	13,199	0.12%	193,678	1.70%	26,133	0.23%	949,984	8.32%
MUSKINGUM	85,349	9.90%	207	0.24%	2,117	2.48%	119	0.14%	11,944	13.99%
NOBLE	14,088	8.30%	20	0.14%	70	0.50%	12	0.09%	1,124	7.98%
OTTAWA	41,049	4.20%	20	0.05%	278	0.68%	4	0.01%	1,817	4.43%
PAULDING	19,841	4.90%	18	0.09%	232	1.17%	27	0.14%	1,123	5.66%
PERRY	34,408	9.40%	73	0.21%	608	1.77%	71	0.21%	4,216	12.25%
PICKAWAY	53,437	7.60%	47	0.09%	1,098	2.05%	28	0.05%	4,386	8.21%
PIKE	27,921	15.10%	64	0.23%	752	2.69%	43	0.15%	4,784	17.13%
PORTAGE	153,886	5.90%	143	0.09%	1,255	0.82%	127	0.08%	7,337	4.77%
PREBLE	42,680	4.50%	31	0.07%	354	0.83%	69	0.16%	1,974	4.63%
PUTNAM	34,736	4.00%	13	0.04%	177	0.51%	17	0.05%	1,131	3.26%
RICHLAND	128,004	8.20%	175	0.14%	1,272	0.99%	262	0.20%	10,555	8.25%
ROSS	74,469	9.10%	100	0.13%	1,597	2.14%	96	0.13%	8,716	11.70%
SANDUSKY	61,698	5.70%	42	0.07%	311	0.50%	78	0.13%	3,182	5.16%
SCIOTO	78,041	15.20%	223	0.29%	1,917	2.46%	117	0.15%	13,723	17.58%
SENECA	58,077	6.10%	47	0.08%	225	0.39%	122	0.21%	3,363	5.79%
SHELBY	48,516	5.30%	19	0.04%	215	0.44%	69	0.14%	2,044	4.21%
STARK	377,940	6.80%	553	0.15%	7,628	2.02%	1,092	0.29%	27,243	7.21%
SUMMIT	546,381	7.50%	630	0.12%	12,404	2.27%	1,037	0.19%	46,891	8.58%
TRUMBULL	223,518	7.90%	350	0.16%	3,196	1.43%	388	0.17%	18,006	8.06%
TUSCARAWAS	91,490	7.20%	95	0.10%	1,080	1.18%	198	0.22%	6,663	7.28%
UNION	43,010	3.60%	16	0.04%	541	1.26%	48	0.11%	1,945	4.52%
VAN WERT	29,399	4.20%	15	0.05%	61	0.21%	30	0.10%	979	3.33%
VINTON	13,128	15.10%	44	0.34%	422	3.21%	42	0.32%	2,330	17.75%
WARREN	175,133	3.00%	56	0.03%	443	0.25%	124	0.07%	3,699	2.11%
WASHINGTON	62,561	8.60%	102	0.16%	221	0.35%	52	0.08%	4,942	7.90%
WAYNE	112,704	5.40%	252	0.22%	1,020	0.91%	166	0.15%	5,903	5.24%
WILLIAMS	39,020	3.90%	25	0.06%	426	1.09%	31	0.08%	2,085	5.34%
WOOD	122,387	4.70%	46	0.04%	517	0.42%	66	0.05%	3,763	3.07%
WYANDOT	22,773	3.80%	7	0.03%	56	0.25%	24	0.11%	643	2.82%
UNKNOWN										

*SOURCE: 2002 Ohio County Population Estimates, Ohio Dept. of Development, GRP342RA, GBS003RA, GRP304RA and GRP304RC Reports from Management Information Services.